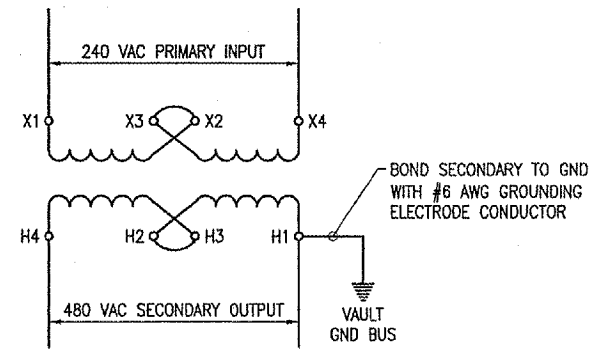


- NOTES
1. SEE ELECTRICAL ONE-LINE DIAGRAMS FOR ADDITIONAL INFORMATION ON EQUIPMENT AND WIRING.
 2. FIELD VERIFY LOCATION OF EACH STEP-DOWN TRANSFORMER INSTALLATION WITH RESIDENT ENGINEER.
 3. LIQUID TIGHT FLEXIBLE METAL CONDUIT SHALL BE U.L. LISTED SUITABLE FOR GROUNDING AND SUNLIGHT RESISTANT. NEC 350.6 NOTES LIQUID TIGHT FLEXIBLE METAL CONDUIT AND ASSOCIATED FITTINGS SHALL BE LISTED. DO NOT INSTALL LIQUID TIGHT FLEXIBLE METAL CONDUIT THAT IS NOT UL LISTED.

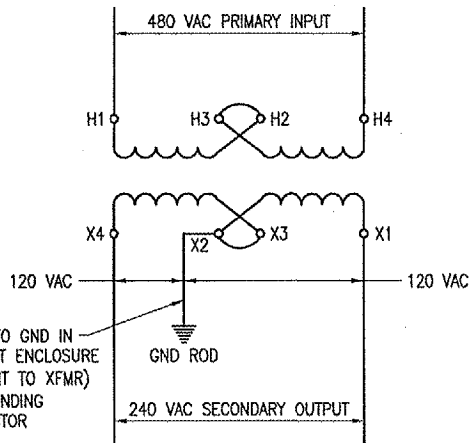
RUNWAY 2 STEP-DOWN TRANSFORMER ELEVATION

(TYPICAL FOR 2. ONE STEP-DOWN TRANSFORMER INSTALLATION SHALL BE PROVIDED FOR RUNWAY 2 PAPI RELOCATION, THE OTHER STEP-DOWN TRANSFORMER INSTALLATION SHALL BE FOR RUNWAY 2 REIL RELOCATION)



NOTES: CONFIRM WIRING WITH RESPECTIVE TRANSFORMER MFR.

240 VAC TO 480 VAC STEP UP TRANSFORMER CONNECTION DIAGRAM FOR ACME T-2-53013-S TRANSFORMER



NOTES: CONFIRM WIRING WITH RESPECTIVE TRANSFORMER MFR.

480 VAC TO 120/240 VAC STEP DOWN TRANSFORMER CONNECTION DIAGRAM FOR ACME T-2-53013-S TRANSFORMER

DATE	REVISION	BY



IL PROJ.: DKB-3448 AIP PROJ.: 3-17-0139-B42

IFPS Project No. 80305TXAD_0800	DATE 04/22/05
Drawn E-501.DWG	LAYOUT KNL 02/03/05
Scale NONE	DRAWN MW 02/03/05
	REVIEWED CAH 12/16/05



Hanson Professional Services Inc.
1626 South Sixth Street
Springfield, Illinois 62703-2806
Chicago, Illinois

REMOVE AND REGRADE
RUNWAY END 2
STEP-UP AND STEP-DOWN
TRANSFORMER
DETAILS

APR 07 2006 10:06 AM BAK
I:\AIRPORTS\DEKALB\803-05TXA\AIRPORT\SHEETS\ELECTRICAL\E-501.DWG