

BY	
REVISION	
DATE	

DIMA
 DEKALB TAYLOR MUNICIPAL AIRPORT
 ILL. PROJ.: DK8-3448
 AIP PROJ.: 3-17-0139-B42

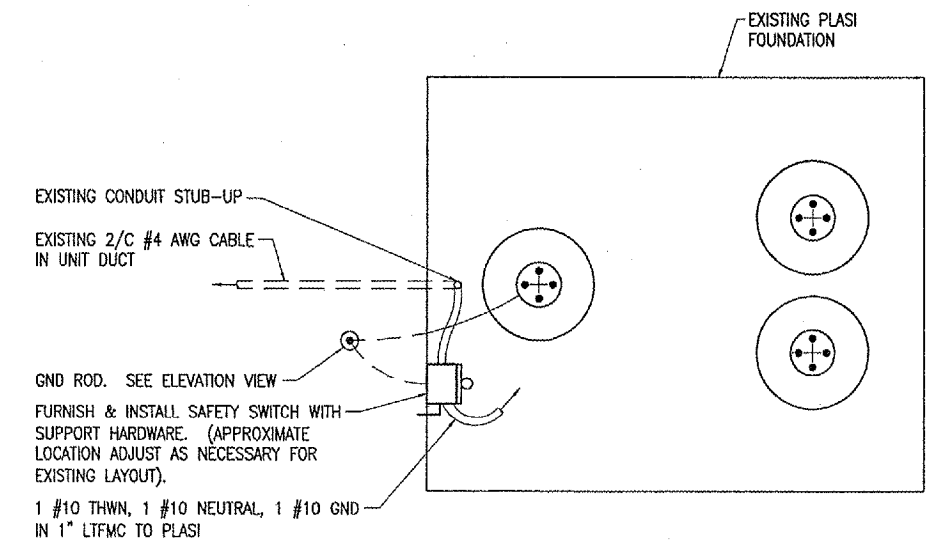
Project No.	803051XXAD_0800
Filename	E-610.DWG
Scale	NONE
Date	04/22/05
LAYOUT	KNL 09/23/05
DRAWN	MM 09/27/05
REVIEWED	CAH 12/16/05

HANSON
 Hanson Professional Services Inc.
 1525 South State Street
 Springfield, Illinois 62703-2885
 Offices Nationwide

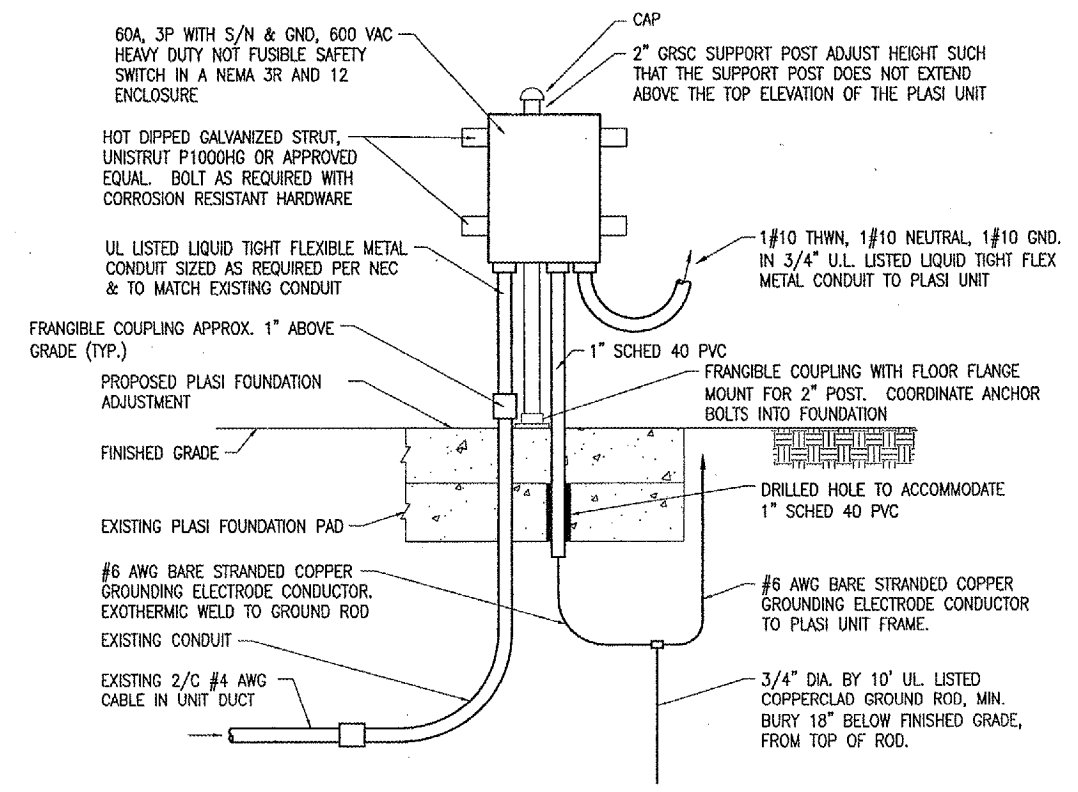
REMOVE AND REGRADE
 RUNWAY END 2
 PROPOSED
 PLASI WIRING DETAILS
 AND NOTES

NOTES

1. PLASI UNIT LOCATED ON RUNWAY 27 IS EXISTING. A HEAVY DUTY 60 AMP, 2 POLE OR 3 POLE WITH SOLID NEUTRAL & GND, 600 VAC NOT FUSIBLE SAFETY SWITCH IN A NEMA 3R AND 12 ENCLOSURE SHALL BE FURNISHED & INSTALLED AT THE PLASI. 60 AMP SAFETY SWITCH IS REQUIRED TO ACCOMMODATE #4 AWG CONDUCTORS FOR LUG TERMINATIONS & WIRE BENDING SPACE. NEUTRAL SHALL BE BONDED TO GROUND IN SAFETY SWITCH & GND ROD SHALL BE INSTALLED TO CONFORM WITH NEC 250.32
2. LTFMC DENOTES LIQUID TIGHT FLEXIBLE METAL CONDUIT UL LISTED, SUITABLE FOR GROUNDING, AND SUNLIGHT RESISTANT. NEC 350.6 NOTES LIQUID TIGHT FLEXIBLE METAL CONDUIT AND ASSOCIATED FITTINGS SHALL BE LISTED. DO NOT INSTALL LTFMC THAT IS NOT UL LISTED.
3. PLASI WIRING AND GROUNDING SHALL BE AS RECOMMENDED BY THE PLASI MANUFACTURER (DEVORE AVIATION CORPORATION, 6104 JEFFERSON BLVD, N.E., ALBUQUERQUE, NEW MEXICO 87109-3410, PHONE: 505-345-8713, FAX: 505-344-3835), AS DETAILED HEREIN ON THE PLANS, AND PER THE REQUIREMENTS OF THE SPECIAL PROVISION SPECIFICATIONS ITEM AR125989 REFURBISH PLASI.
4. INSTALLATION OF THE SAFETY SWITCH AND ASSOCIATED CONDUIT, WIRING, FITTINGS, GROUNDING, & ACCESSORIES FOR EACH PLASI UNIT SHALL BE PAID FOR UNDER ITEM AR125950 ADJUST PLASI PER EACH.

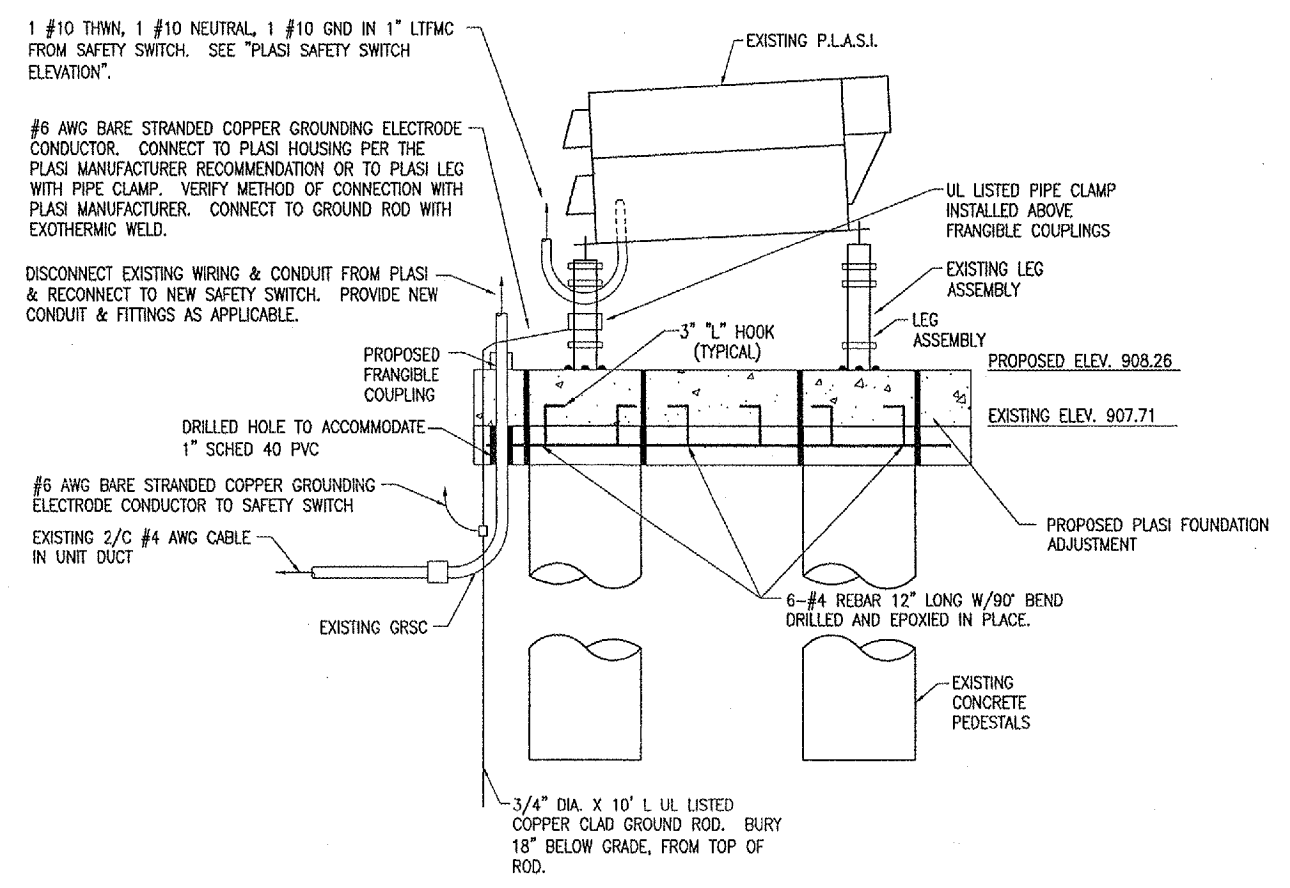


PLASI FOUNDATION PLAN VIEW



NOTE: SEE NEW ELECTRICAL ONE LINE DIAGRAM FOR VAULT AND PLASI FOR ADDITIONAL INFORMATION ON EQUIPMENT AND WIRING.

PLASI SAFETY SWITCH ELEVATION
 "NOT TO SCALE"



PLASI ELEVATION

ALL WORK SHOWN ON THIS SHEET SHALL BE PAID FOR UNDER ITEM AR125950 - ADJUST PLASI - PER EA.

APR 14, 2006 7:14 AM BAK I:\AIRPORTS\DEKALB\803-051XXA\AIRPORT\ SHEETS\ELECTRICAL\E-610.DWG