

P.A.P.I. NOTES

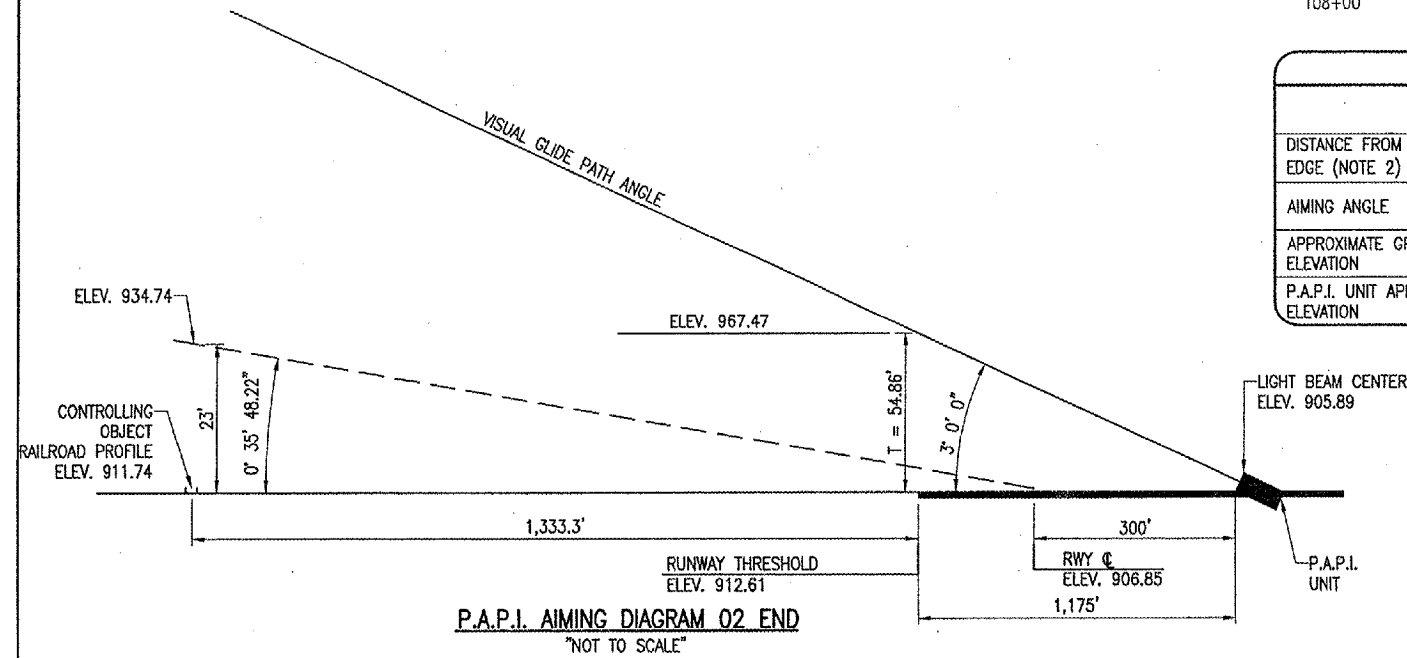
THE PROPOSED PRECISION APPROACH PATH INDICATOR (PAPI) SYSTEM WILL BE PLACED AT THE LOCATION SHOWN ON THE PREVIOUS SHEET.

THE PROPOSED CONCRETE FOUNDATIONS WILL BE AS DETAILED ON THIS SHEET, AND COMPATIBLE WITH THE RELOCATED PAPI UNITS.

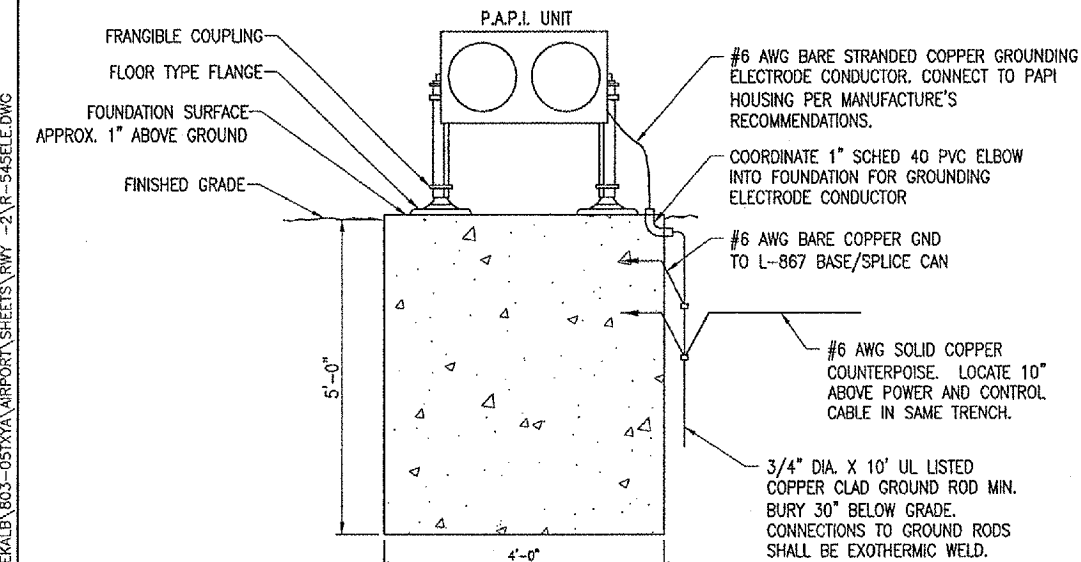
SIX (6") INCHES OF CA-6 ON TOP OF BLACK PLASTIC WILL BE PLACED AROUND EACH PAPI UNIT TO HALT VEGETATION GROWTH. SEE PAPI LAYOUT DETAIL.

EACH PAPI UNIT WILL BE CONSTRUCTED SUCH THAT THE BEAM CENTERS WILL BE WITHIN ±1" OF ELEVATION _____905.89.

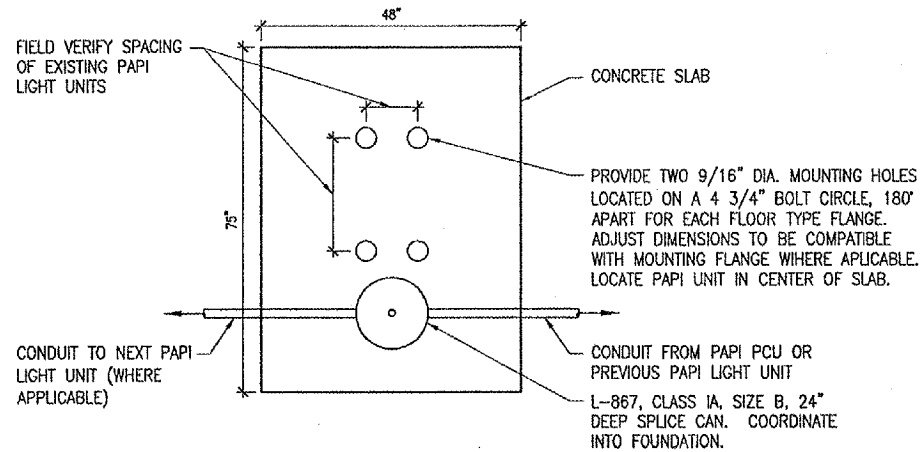
THE EXISTING POWER CABLE TO THE PAPI SYSTEM WILL BE ABANDONED IN PLACE. THE CONTRACTOR WILL INTERCEPT THE EXISTING PAPI POWER CABLE AT THE PROPOSED MANHOLE SHOWN, HE WILL EXPOSE A SUFFICIENT LENGTH OF CABLE TO ALLOW HIM TO CUT THE CABLE AND USE THIS CABLE TO POWER THE RELOCATED PAPI UNITS.



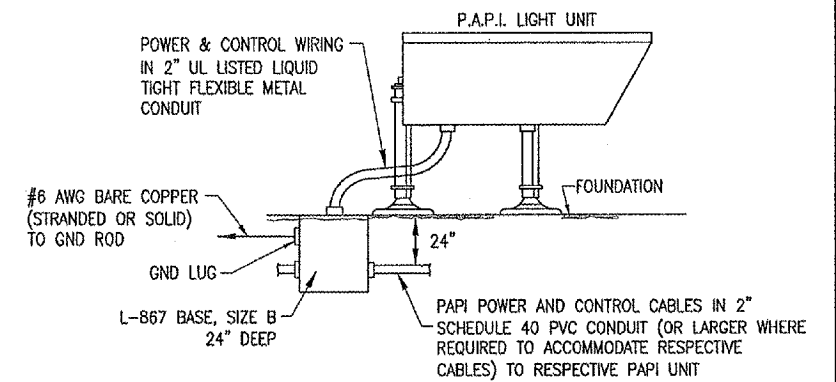
P.A.P.I. AIMING DIAGRAM 02 END
"NOT TO SCALE"



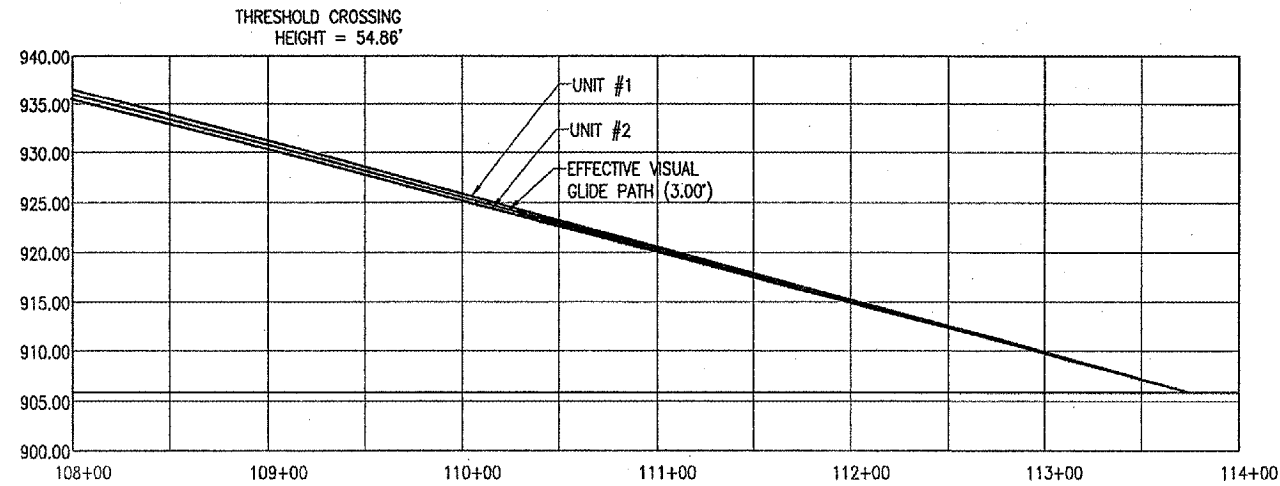
FRONT ELEVATION P.A.P.I. LIGHT UNIT
"NOT TO SCALE"



PLAN VIEW PAPI FOUNDATION
"NOT TO SCALE"



SIDE ELEVATION P.A.P.I. LIGHT UNIT
"NOT TO SCALE"



STATIONING IN FEET ALONG RUNWAY CENTERLINE
RUNWAY CENTERLINE PROFILE

TABLE "A"		
	P.A.P.I. UNIT #1	P.A.P.I. UNIT #2
DISTANCE FROM RUNWAY EDGE (NOTE 2)	50'	80'
AIMING ANGLE	3'-15'	2' 45'
APPROXIMATE GROUND ELEVATION	903.80	903.20
P.A.P.I. UNIT APERTURE ELEVATION	905.89	905.89

LIGHTING NOTES

ALL RELOCATED RUNWAY, TAXIWAY, AND THRESHOLD LIGHTS WILL BE PLACED 10' FROM THE PAVEMENT EDGE UNLESS SHOWN OTHERWISE.

ALL RELOCATED RUNWAY, TAXIWAY, AND THRESHOLD LIGHTS WILL BE CONSTRUCTED AT THE LOCATIONS SHOWN AND IN ACCORDANCE WITH THE DETAILS, WITHIN THESE CONSTRUCTION PLANS AND SPECIFICATIONS.

ALL RELOCATED RUNWAY LIGHTS, TAXIWAY LIGHTS, AND GUIDANCE SIGNS WILL BE TAGGED IN ACCORDANCE WITH THE NUMBERS SHOWN WITHIN THESE CONSTRUCTION PLANS.

EXISTING RUNWAY LIGHTS 2-6 AND 2-15 WILL BE REMOVED AND TURNED OVER TO THE AIRPORT MANAGER. THE CONTRACTOR WILL REMOVE THE LENSES FROM THESE LIGHTS AND PLACE THESE LENSES ON THE TWO RUNWAY EDGE LIGHTS LOCATED AT STATION 122+14. THE AMBER SIDE OF THE LENSE WILL FACE TOWARD RUNWAY END 20. THE 360° CLEAR LENSES THAT ARE REMOVED FROM THESE TWO LIGHTS WILL BE TURNED OVER TO THE AIRPORT MANAGER.

ANY DAMAGE TO ANY EXISTING LIGHTS TO BE RELOCATED OR TO REMAIN WILL BE REPAIRED IMMEDIATELY TO THE SATISFACTION OF THE RESIDENT ENGINEER AT THE CONTRACTOR'S OWN EXPENSE.

P.A.P.I. BASE REMOVAL NOTES

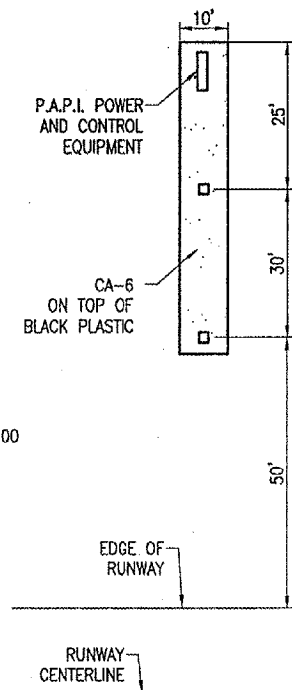
THE EXISTING P.A.P.I. CONCRETE BASES ARE TO BE REMOVED TO THEIR FULL DEPTH AND DISPOSED OF OFF THE AIRPORT.

THE HOLES LEFT FROM THE P.A.P.I. BASES WILL BE FILLED IN WITH EARTH TO PREVENT FUTURE SETTLEMENT.

THE DISTURBED AREA WILL BE SEEDED AND MULCHED IN ACCORDANCE WITH THE SUPPLEMENTAL SPECIFICATIONS AND RECURRING PROVISIONS.

THE COORESPONDING CABLE WILL BE ABANDONED IN PLACE.

THIS WORK WILL BE CONSIDERED PART OF THE "RELOCATE P.A.P.I." PAY ITEM AND NO OTHER COMPENSATION WILL BE ALLOWED.



P.A.P.I. LAYOUT DETAIL
"NOT TO SCALE"

DK050

DATE	REVISION	BY

DIMA
DEKALB TAYLOR MUNICIPAL AIRPORT
IL PROJ.: 3-17-0139-B42
IL PROJ.: DK8-3448

FILE PROJECT NO.	DATE	BY	REVIEWED
803051XVAD_0800	01/22/04	CAH	CAH
R-545ELE.DWG	01/22/04	MDR	CAH
N/A	01/22/04		

HANSON
Hanson Professional Services Inc.
1524 South Sixth Street
Springfield, Illinois 62709-2886
Offices Nationwide

REMOVE AND REGRADE RUNWAY END 2
PROPOSED ELECTRICAL NOTES AND DETAILS

APR 04, 2006 8:24 AM BAK
I:\AIRPORTS\DEKALB\B03-0517X1A\AIRPORT SHEETS\RWY -2\R-545ELE.DWG