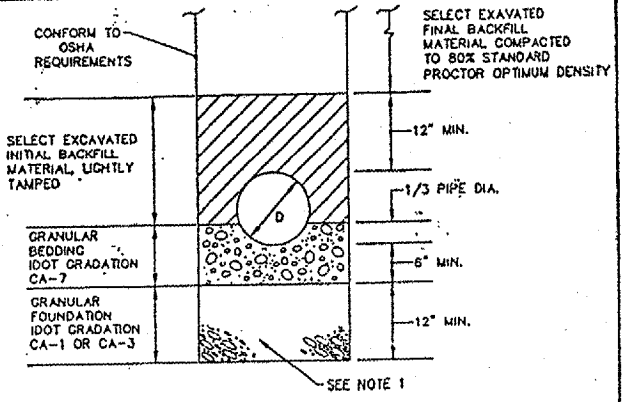
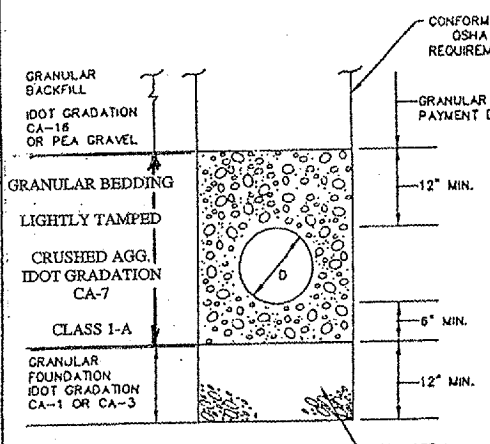


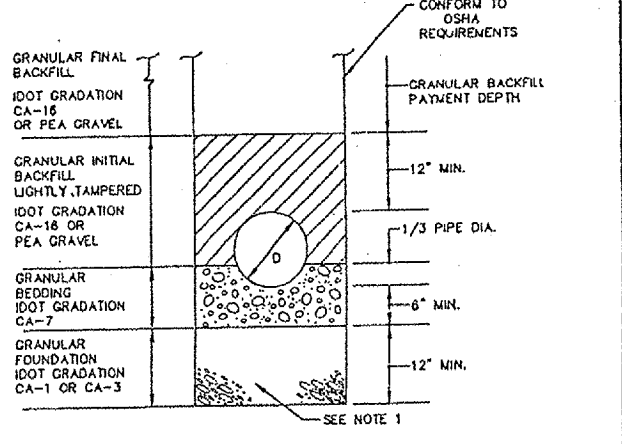
BEDDING AND BACKFILL REQUIREMENTS FOR POLYVINYL CHLORIDE (PVC) SEWERS IN NON-STRUCTURAL LOCATIONS



BEDDING AND BACKFILL REQUIREMENTS FOR DUCTILE IRON PIPE SEWERS IN NON-STRUCTURAL LOCATIONS

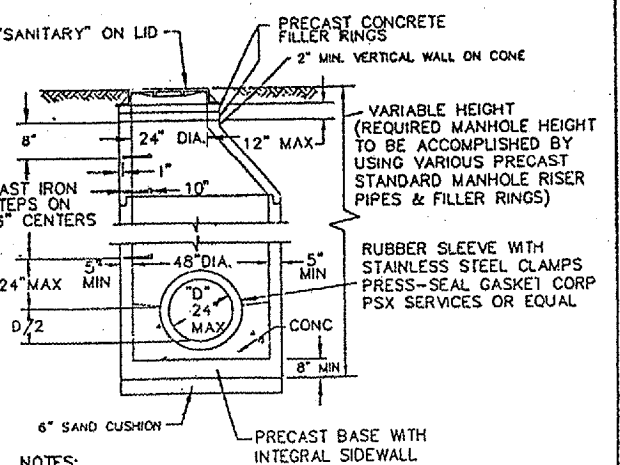
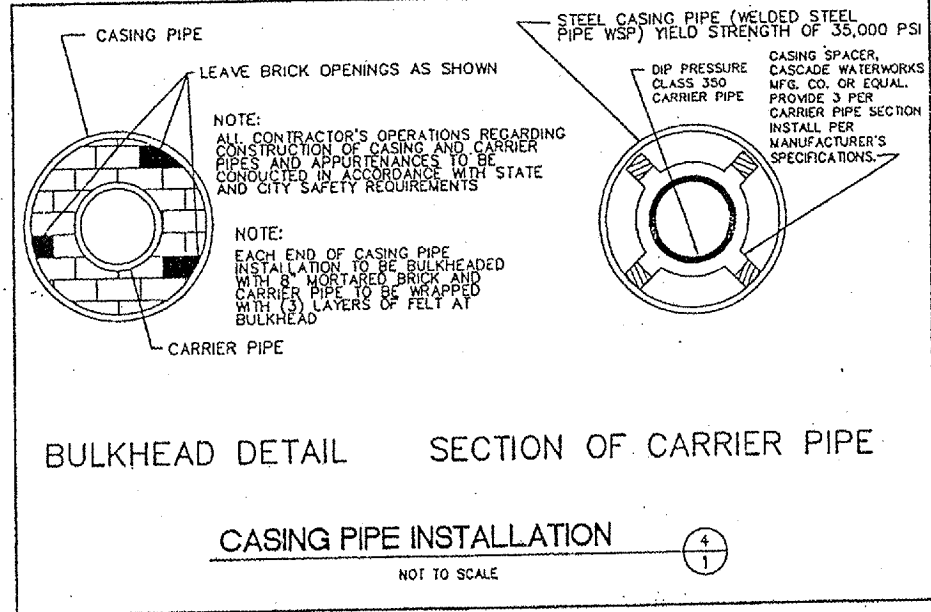


BEDDING AND BACKFILL REQUIREMENTS FOR POLYVINYL CHLORIDE (PVC) SEWERS IN STRUCTURAL LOCATIONS



BEDDING AND BACKFILL REQUIREMENTS FOR DUCTILE IRON PIPE SEWERS IN STRUCTURAL LOCATIONS

NOTE 1
CONSTRUCT GRANULAR FOUNDATION WHERE UNSUITABLE MATERIAL OR WET CONDITIONS ARE ENCOUNTERED AT BOTTOM OF TRENCH

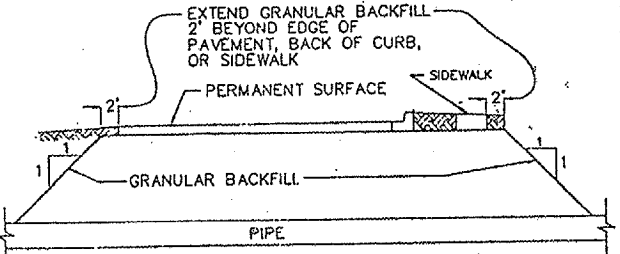


NOTES:

- ENTIRE EXTERIOR OF MANHOLE TO BE COATED WITH BITUMASTIC COATING.
- MANHOLE CONSTRUCTION SHALL CONFORM TO ASTM C478, LATEST REVISION. CONCENTRIC CONES WILL NOT BE ALLOWED.
- ALL JOINTS SHALL BE SEALED WATER-TIGHT BY MEANS OF E-Z STIK, KENT-SEAL OR RUB R NEK (INCLUDING BOTTOM OF CAST IRON FRAME AND PRECAST CONCRETE FILLER RINGS).
- MANHOLE FRAME & LID SHALL BE NEENAH R-1015-2000 OR EAST JORDAN WORKS 1050 WITH SELF-SEALING LID WITH CONCEALED PICKHOLES.
- CONSTRUCT FLEXIBLE WATERTIGHT CHIMNEY SEAL PER (1/2)
- FOR NEW CONNECTIONS TO EXISTING MANHOLES, CORE DRILL OPENING & INSTALL WATERTIGHT PIPE TO MANHOLE SEAL, LINK SEAL OR EQUAL.
- STEPS SHALL BE POLYPROPYLENE COATED STEEL REINFORCED RODS.

SANITARY MANHOLE (2/1)

NO SCALE



TYPICAL SECTION OF PIPE CROSSING UNDER PERMANENT SURFACE

NOTE:
THESE SECTIONS APPLY WHEREVER PIPE IS ADJACENT TO, OR CROSSES UNDER A ROADWAY, PARKING LOT, SIDEWALK, DRIVEWAY, STRUCTURE OR PAVEMENT.

EXCAVATION

PERMANENT SURFACE

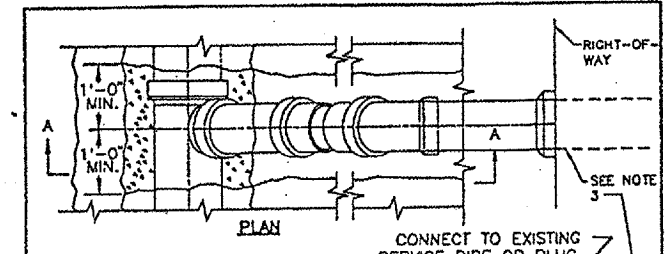
LIMIT OF EXCAVATION

GRANULAR BACKFILL

PIPE

TYPICAL SECTION OF PIPE PARALLEL TO PERMANENT SURFACE (5/1)

NO SCALE



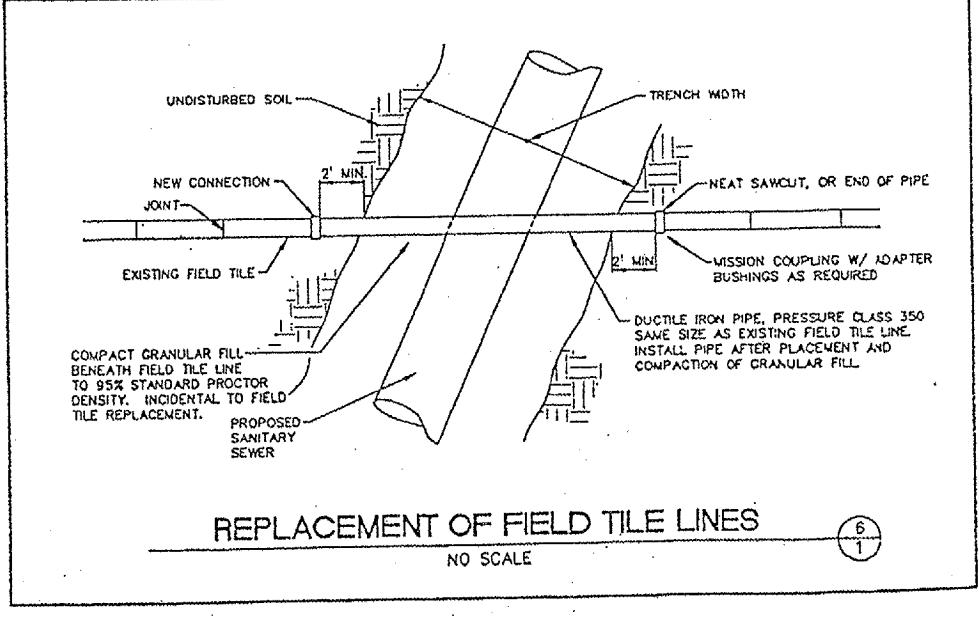
SECTION A-A

NOTES:

- MAXIMUM SLOPE SHALL BE LESS THAN 1 TO 1 WHEN IT IS NECESSARY TO SECURE BEDDING IN UNDISTURBED EARTH.
- SERVICE RISERS SHALL BE CONSTRUCTED OF SAME MATERIALS AS MAINLINE SEWER, 4" MIN. DIA.
- CONFORM TO LOCAL REQUIREMENTS FOR PIPE MATERIALS AND INSTALLATION OUTSIDE OF PUBLIC RIGHT-OF-WAY. PROVIDE SUITABLE ADAPTER COUPLING (FERRO OR EQUAL) TO JOIN DISSIMILAR PIPE MATERIALS OR SIZES.

SERVICE RISER (3/1)

NO SCALE



REV.	DATE	REMARKS

DESIGNED: DLB
DRAWN: EMK
CHECKED: MLP
DATE: 7/14/97

BELING CONSULTANTS

Professional Engineering Since 1936
Moline, Il. Columbus, Oh. Davenport, Ia.
Chicago, Il. Joliet, Il. Peoria, Il. Decatur, Il.

PRELIMINARY
FINAL
RECORD

STANDARD DETAILS
DEKALB SANITARY DISTRICT
DEKALB ILLINOIS

JOB NO.
49125-B-10,779-62

SHEET NO. 1 of 2