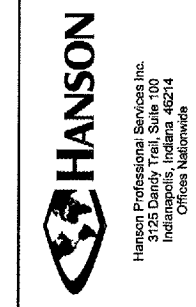


BY	
REVISION	
DATE	

**KEWANEE MUNICIPAL AIRPORT
KEWANEE, HENRY COUNTY, ILLINOIS**

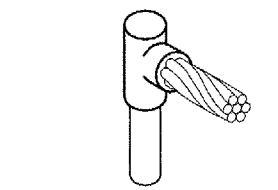
A.I.P. PROJ.: 3-17-0058-B12
I.L. PROJ.: EZI-3586

Project No.	810-06ALTD
Revision	E-502.DWG
Scale	NONE
Date	04/28/06
LAYOUT	KNL 09/23/05
DRAWN	WV 09/27/05
REVIEWED	LDP 01/17/06

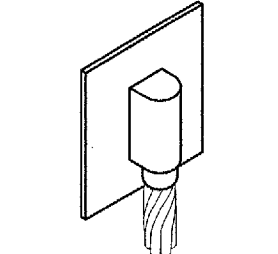


CONSTRUCT VAULT

**LIGHTNING PROTECTION
DETAILS FOR BEACON**



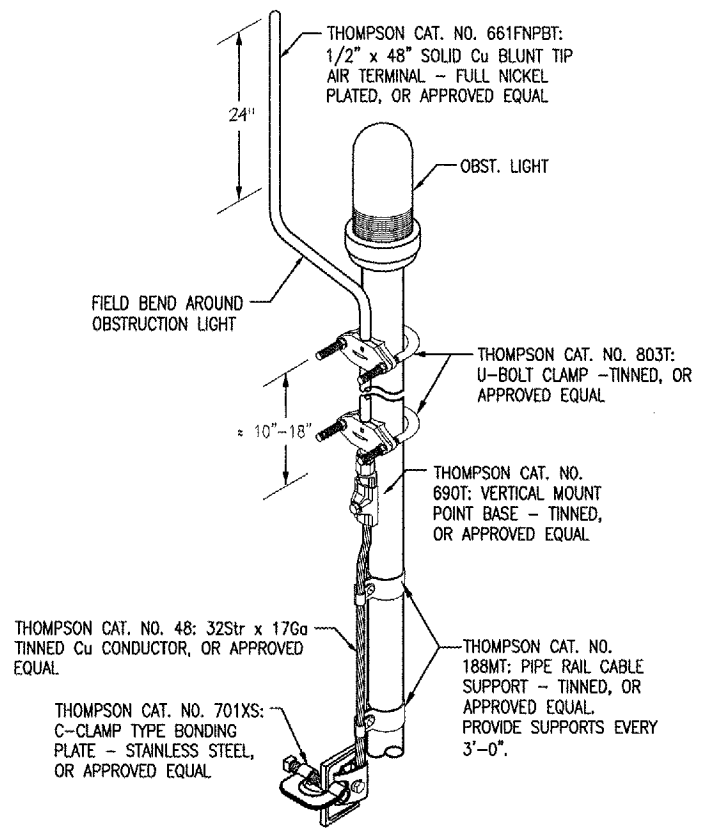
CABLE TO GROUND ROD



CABLE TO SURFACE

- DETAIL NOTES**
- EXOTHERMIC WELDS SHALL BE CADWELD AS MANUFACTURED BY ERICO PRODUCTS, SOLON, OHIO, ULTRAWELD AS MANUFACTURED BY HARGER LIGHTNING PROTECTION & GROUNDING EQUIPMENT, GRAYSLAKE, IL, OR THERMOWELD AS MANUFACTURED BY CONTINENTAL INDUSTRIES, TULSA, OKLAHOMA. VERIFY PROPER SIZES, MOLDS, TYPES, AND REQUIREMENTS FOR THE RESPECTIVE APPLICATION WITH THE MANUFACTURER, AND INSTALL PER THEIR DIRECTIONS.
 - FOR APPLICATIONS TO GALVANIZED STEEL OR PAINTED STEEL, REMOVE GALVANIZING AND/OR PAINT & CLEAN THE SURFACE TO EXPOSE BARE STEEL BEFORE MAKING EXOTHERMIC WELD CONNECTION.
 - VERIFY EXOTHERMIC MOLDS ARE SUITABLE FOR USE WITH THE RESPECTIVE TYPE (SOLID OR STRANDED) & SIZE CONDUCTOR.

EXOTHERMIC WELD DETAILS



DETAIL A

NTS

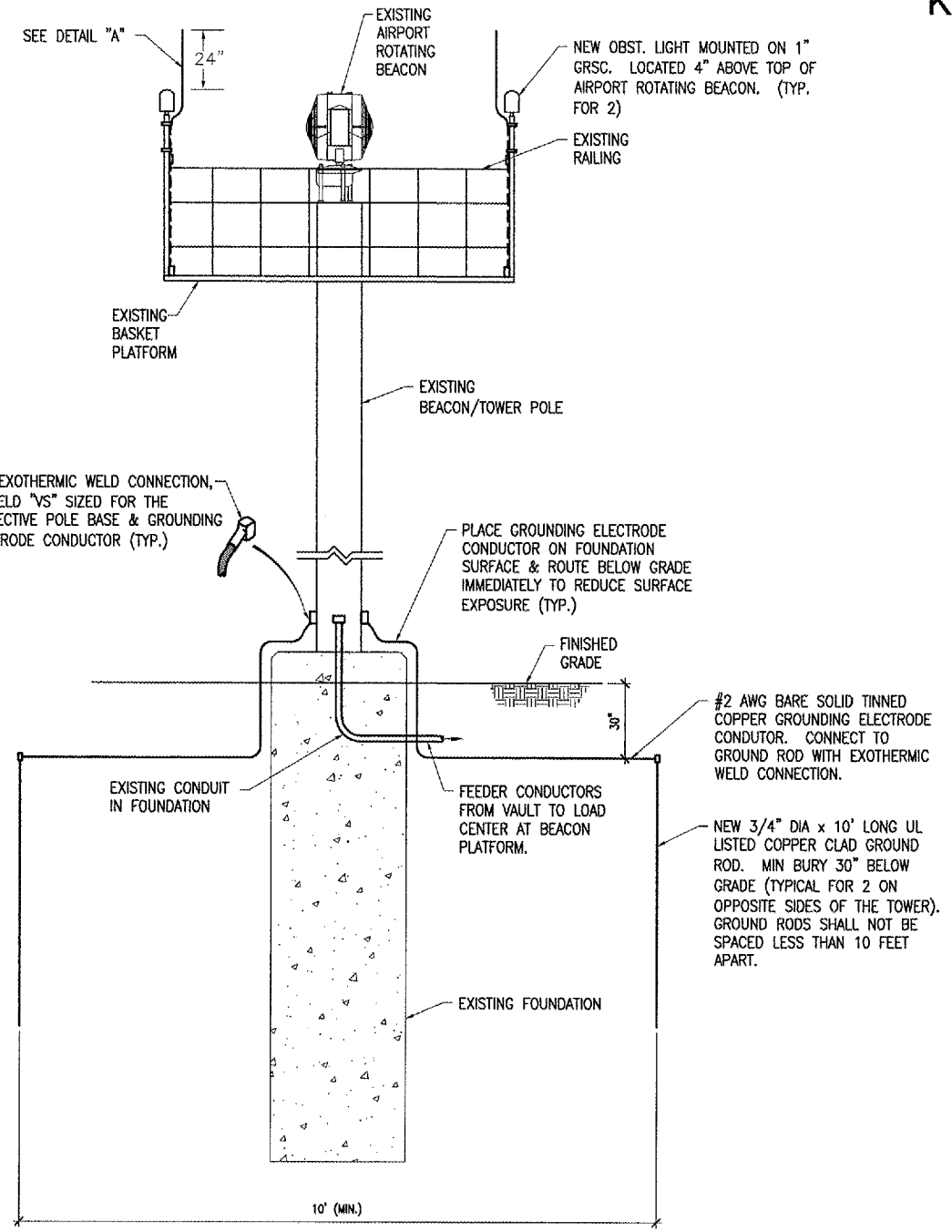
- NOTES**
- REFERENCES TO THOMPSON ARE THOMPSON LIGHTNING PROTECTION INC., 901 SIBLEY MEMORIAL HWY, ST. PAUL, MN 55188, PHONE: 651-455-7661, 800-777-1230, FAX: 651-455-2545.
 - VERIFY LIGHTNING PROTECTION COMPONENTS AND CATALOG NUMBERS WITH THE RESPECTIVE LIGHTNING PROTECTION EQUIPMENT MANUFACTURER.

AIRPORT ROTATING BEACON PANEL							
CKT #	DUTY	SIZE		SIZE	DUTY	CKT #	
1	AIRPORT ROTATING BEACON	15A 1P		30A 2P	SURGE PROTECTOR	2	
3	OBSTRUCTION LIGHTS	15A 1P		---			4
5	BLANK					BLANK	6
7	GFCI RECEPTACLE	20A 1P				BLANK	8
9	BLANK					BLANK	10
11	BLANK					BLANK	12

125 AMP, 120/240 VAC, 1 PHASE, 3 WIRE, 12 CIRCUIT LOAD CENTER WITH CONVERTIBLE MAIN LUGS IN A NEMA 3R RAIN PROOF ENCLOSURE, SQUARE D CAT. NO. Q0112L125GRB OR APPROVED EQUAL.

- NOTES**
- INCLUDE EQUIPT GROUND BAR KIT.
 - ALL BREAKERS SHALL HAVE 10,000 AIC RATING AT 120/240 VAC.
 - PHASE "A" SHALL BE SWITCHED THROUGH A LIGHTING CONTACTOR AT THE VAULT. PHASE "B" SHALL BE UNSWITCHED.
 - INCLUDE ENGRAVED PHENOLIC LEGEND PLATE LABELED ARB PANEL, 120/240 VAC, 1PH, 3W, FED FROM VAULT.

NOTE: SEE SHEETS 38, 42, 43, & 46 FOR ADDITIONAL INFORMATION REGARDING WIRING FOR THE AIRPORT ROTATING BEACON CIRCUIT.



**LIGHTNING PROTECTION DETAIL
FOR AIRPORT ROTATING BEACON**

NTS

**ALL WORK SHOWN ON THIS SHEET SHALL
BE PAID FOR UNDER ITEM AR800591 -
UPGRADE AIRPORT ROTATING BEACON -
PER L.S.**