

1A SOUTHERN ILLINOIS AIRPORT AUTHORITY MURPHYSBORO / CARBONDALE, ILLINOIS

CONSTRUCTION PLANS FOR SOUTHERN ILLINOIS AIRPORT HANGAR 1 RAMP REPLACEMENT ILLINOIS PROJECT: MDH -3576 A.I.P. PROJ.: 3-17-0009-B25

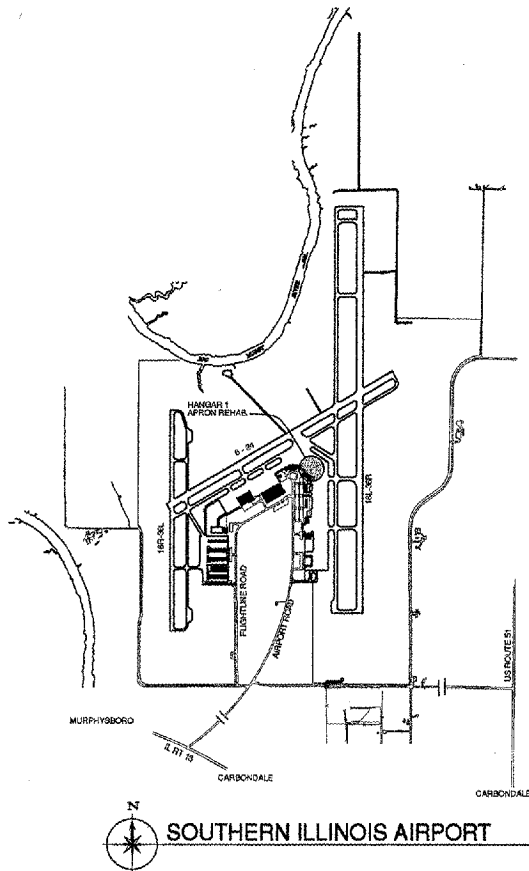
**SOUTHERN ILLINOIS
AIRPORT**
TOWNSHIP: 8 S. DESOTO TOWNSHIP
RANGE: 1 W. (SECTION: 31)
JACKSON COUNTY
DESIGN AIRCRAFT APPROACH CATEGORY: C
DESIGN AIRCRAFT GROUP: III

**CALL J.U.L.I.E.
BEFORE EXCAVATING
1-800-892-0123**

**SOUTHERN ILLINOIS
AIRPORT AUTHORITY**
APPROVED *Patricia J. Brady* CHAIRMAN
DATE 06 APRIL 2006
APPROVED *Paul S. Stokes* SECRETARY
DATE 06 APRIL 2006

**PREPARED BY
POIRIER ASSOCIATES P.C.
ENGINEERING AND ARCHITECTURAL
SERVICES GROUP
MURPHYSBORO, ILLINOIS**
APPROVED _____
DATE 06 APRIL 2006

[Signature]
**BOB POIRIER
081-849838
LICENSED
PROFESSIONAL
ENGINEER
STATE OF ILLINOIS**
EXPIRES 11-30-07



INDEX

- 1 COVER SHEET
- 2 SUMMARY OF QUANTITIES
- 3 SAFETY PLAN
- 4 EXISTING CONDITIONS
- 5 REMOVALS PLAN
- 6 STAKING PLAN
- 7 JOINTING PLAN
- 8 JOINTING DETAILS & NOTES
- 9 PAVT. MARKING & DRAINAGE PLAN & DETAILS
- 10 ELECTRICAL PLAN
- 11 ELECTRICAL DETAILS
- 12 CROSS SECTIONS
- 13 CROSS SECTIONS
- 14 CROSS SECTIONS

APR 06 2006 - 14:00
C:\PROJECTS\SI\AIPDOT\PROJECTS\MDH-3576 HANGAR 1 RAMP\01 TITLE PAGE.dwg



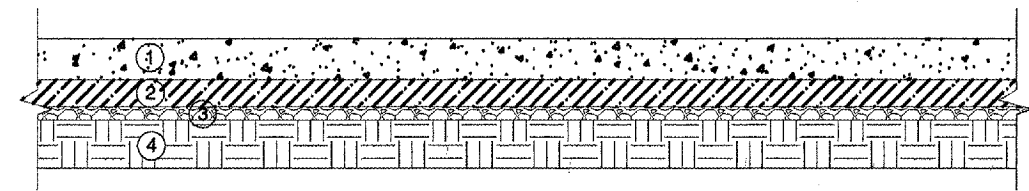
Poirier Associates P.C.
Engineering and Architectural
Services Group
665 N. Airport Road
Suite 113 Terminal Building
Murphysboro, Illinois 62906
Telephone (618) 549-5181
Fax (618) 525-5444
E-mail poirier@intnet.net



**HANGAR 1 RAMP REPLACEMENT
SOUTHERN ILLINOIS AIRPORT
MURPHYSBORO / CARBONDALE, ILLINOIS**

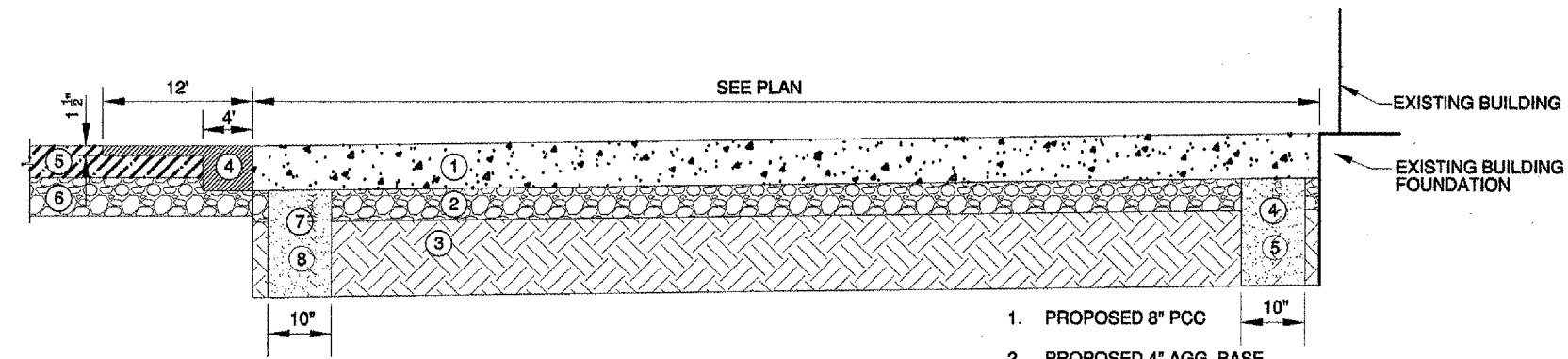
DATE: 06 APRIL, 2006
DRAWN: CUB
CHECKED: DD
APPROVED: BCP
PROJECT NO. PA05036
I.L. PROJ. NO. MDH-3576
A.I.P. PROJ. 3-17-0009-B25
REVISIONS:
© 2006 POIRIER ASSOCIATES P.C.
ALL RIGHTS RESERVED

COVER SHEET
SHEET NO.
1
OF 14



1 TYPICAL SECTION (EXISTING)
2 PER AS BUILT DRAWINGS
N.T.S.

1. EXISTING 8" CONCRETE PAVING
2. EXISTING 4" BITUMINOUS PAVING
3. EXISTING 2" AGG. BASE
4. EXISTING COMPACTED SOIL SUBGRADE



2 TYPICAL SECTION (PROPOSED)
2 N.T.S.

1. PROPOSED 8" PCC
2. PROPOSED 4" AGG. BASE
3. PROPOSED 12" MODIFIED SOIL
4. EXISTING BITUMINOUS REMOVAL AND REPLACEMENT
5. EXISTING 5" BITUMINOUS PAVEMENT
6. EXISTING 6" AGG. BASE
7. POROUS BACKFILL #2
8. 4" PERFORATED UNDERDRAIN WITH SOCK

SUMMARY OF QUANTITIES

ITEM NO.	DESCRIPTION	QUANTITY	UNITS
AR106612	TYPE A ASSEMBLY - 2 FIXTURE	6	EACH
AR106621	TYPE B ASSEMBLY - 1 FIXTURE	1	EACH
AR106905	REMOVE LIGHT POLE & FIXTURE	5	EACH
AR106910	REMOVE LIGHT FIXTURE	1	EACH
AR108652	3/C #2 600 V UG CABLE IN UD	915	L.F.
AR110212	2" STEEL DUCT, DIRECT BURY	130	L.F.
AR152410	UNCLASSIFIED EXCAVATION	260	C.Y.
AR155540	BY-PRODUCT LIME	120	TON
AR155612	SOIL PROCESSING - 12"	4375	S.Y.
AR209510	CRUSHED AGGREGATE BASE COURSE	855	TON
AR401610	BITUMINOUS SURFACE COURSE	115	TON
AR401900	REMOVE BITUMINOUS PAVEMENT	540	S.Y.
AR501508	8" PCC PAVEMENT	4381	S.Y.
AR501530	PCC TEST BATCH	1	EACH
AR501900	REMOVE PCC PAVEMENT	4383	S.Y.
AR602510	BITUMINOUS PRIME COAT	60	GAL.
AR603510	BITUMINOUS TACK COAT	60	GAL.
AR620520	PAVEMENT MARKING-WATERBORNE	170	S.F.
AR705524	4" PERFORATED UNDERDRAIN W/ SOCK	762	L.F.
AR705630	UNDERDRAIN INSPECTION HOLE	4	EACH
AR751949	ADJUST INSPECTION HOLE	1	EACH

Apr 12, 2006 - 3:08pm
J:\PROJECTS\SIA\DOT PROJECTS\MCH-5876 HANGAR 1 RAMP_Q2 QUANTITIES.dwg



Poirier Associates P.C.
Engineering and Architectural
Services Group
665 N. Airport Road
Suite 113 Terminal Building
Murphysboro, Illinois 62956
Telephone (618)549-5191
Fax (618)529-5444
E-mail poirier@aimet.net



HANGAR 1 RAMP REPLACEMENT
SOUTHERN ILLINOIS AIRPORT
MURPHYSBORO / CARBONDALE, ILLINOIS

DATE: 06 APRIL, 2006
DRAWN: CUB
CHECKED: DD
APPROVED: BCP
PROJECT NO. PA05036
IL PROJ. NO. MDH-3376
A.P. PROJ. 3-17-0009-B25
REVISIONS:
© 2006 POIRIER ASSOCIATES P.C.
ALL RIGHTS RESERVED

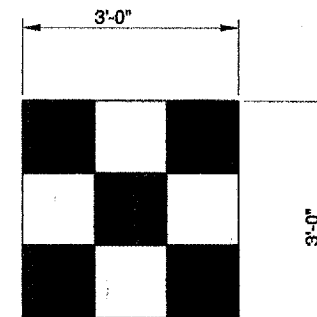
SUMMARY OF QUANTITIES
SHEET NO.
2
OF 14

GENERAL NOTES:

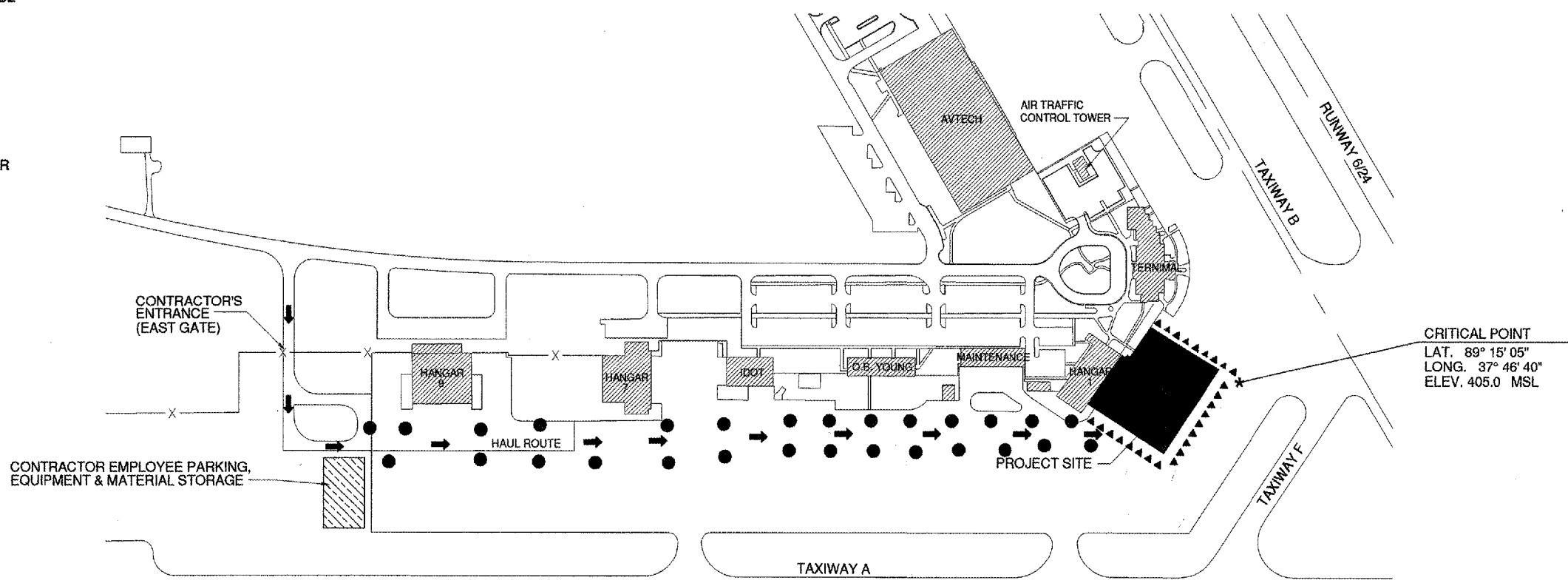
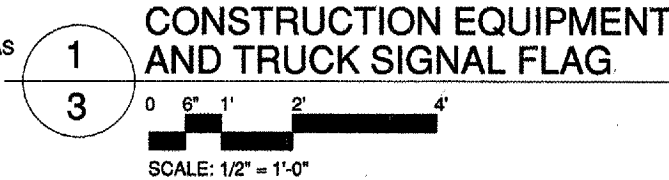
1. ALL RUNWAYS, TAXIWAYS AND APRONS SHALL BE KEPT OPEN TO AIRCRAFT TRAFFIC DURING CONSTRUCTION EXCEPT AS NOTED.
2. WHILE ON THE AIRPORT SITE, THE CONTRACTOR'S VEHICLES ARE TO BE PROPERLY MARKED. THE MARKINGS SHALL CONSIST OF A 3 FOOT SQUARE FLAG CONSISTING OF A CHECKERED PATTERN OF INTERNATIONAL ORANGE AND WHITE SQUARES (SEE DETAIL THIS SHEET) DISPLAYED IN FULL VIEW ABOVE THE VEHICLE.
3. WHEN CONFLICTS ARISE BETWEEN CONSTRUCTION ACTIVITIES AND AIRCRAFT OPERATIONS AND SAFETY, AIRCRAFT OPERATIONS AND SAFETY SHALL TAKE PRECEDENCE AND SHALL GOVERN. FINAL AUTHORITY IN THE APPROVAL OF CONSTRUCTION SEQUENCING LIES WITH THE AIRPORT MANAGER.
4. REFER TO THE SPECIFICATIONS FOR REQUIREMENTS CONCERNING COORDINATION OF CONSTRUCTION ACTIVITIES.
5. THE CONTRACTOR WILL BE PERMITTED TO STORE EQUIPMENT AND MATERIALS AT THE LOCATION SHOWN. THE CONTRACTOR'S EMPLOYEES SHALL PARK ONLY IN THE AREA SHOWN AND SHALL BE TRANSPORTED TO THE WORK SITE BY THE CONTRACTOR'S SUPERINTENDANT.
6. ALL PAVEMENTS, DRIVES OR ANY OTHER AREAS UTILIZED BY THE CONTRACTOR FOR HAUL ROADS OR STORAGE AREAS SHALL BE MAINTAINED AND REPAIRED IN KIND BY THE CONTRACTOR TO THE SATISFACTION OF THE AIRPORT MANAGER. NO ADDITIONAL COMPENSATION SHALL BE MADE TO THE CONTRACTOR FOR THIS WORK.
7. TURF AREAS DISTURBED BY THE CONTRACTOR'S OPERATIONS OUTSIDE OF THE CONSTRUCTION LIMITS SHALL BE RESTORED BY HIM AT HIS EXPENSE TO THE SATISFACTION OF THE AIRPORT MANAGER.
8. THE CONTRACTOR SHALL CONTINUOUSLY CLEAN ALL CONSTRUCTION AREAS WHICH WILL BE OPENED TO AIR TRAFFIC.
9. IT WILL BE NECESSARY FOR THE CONTRACTOR TO MAKE HIS OWN FIELD INVESTIGATION TO DETERMINE THE EXACT LOCATION OF THE UNDERGROUND UTILITIES AT CRITICAL POINTS SO AS TO AVOID ANY DAMAGE. ANY UTILITY, INCLUDING AIRFIELD ELECTRICAL CABLE AND LIGHTS, DAMAGED BY THE CONTRACTOR SHALL BE REPAIRED BY HIM AT HIS OWN EXPENSE IN A MANNER WHICH IS SATISFACTORY TO THE RESIDENT ENGINEER, THE AIRPORT MANAGER AND TO THE OWNER OF THE UTILITY. ANY REPAIRS THAT MUST BE MADE BY THE OWNER OF THE UTILITY SHALL HAVE THE COST REIMBURSED TO THE UTILITY BY THE CONTRACTOR. AIRFIELD LIGHTING CABLES DAMAGED BY THE CONTRACTOR SHALL BE REPAIRED BY A QUALIFIED ELECTRICIAN WITH THE COSTS TO BE BORNE BY THE CONTRACTOR.

10. CONTRACTOR'S ACCESS SHALL BE AS FOLLOWS:

- A. THE CONTRACTOR'S ACCESS TO THE WORK SHALL BE THROUGH THE EAST ACCESS GATE, AS SHOWN. THE CONTRACTOR SHALL BE PROVIDED WITH TWO (2) ACCESS CARDS THAT WILL BE RETURNED TO THE AIRPORT PRIOR TO PROJECT ACCEPTANCE.
- B. THE ACCESS GATE SHALL REMAIN IN NORMAL OPERATING MODE DURING WORKHOURS. WHEN THE CONTRACTOR'S ACTIVITIES REQUIRE THE GATE TO BE HELD OPEN CONTINUOUSLY, HE SHALL POST A COMPETENT SECURITY GUARD TO PREVENT UNAUTHORIZED ENTRIES. THE CONTRACTOR SHALL REPLACE ANY UNSATISFACTORY SECURITY GUARDS IF SO DIRECTED BY THE RESIDENT ENGINEER.
- C. THE CONTRACTOR SHALL ENSURE THAT THE ELECTRIC ACCESS GATE IS CLOSED AND OPERATING PROPERLY PRIOR TO LEAVING THE SITE.
- D. ALL COSTS RELATING TO CONTRACTOR'S ACCESS AND SECURITY SHALL BE THE RESPONSIBILITY OF THE CONTRACTOR INCLUDING THE COST OF: ERECTING AND MAINTAINING THE BARRICADES, SECURITY PERSONNEL AND FLAGMEN.
- E. THE CONTRACTOR SHALL STORE EQUIPMENT AND MATERIALS IN SUCH A WAY AS NOT TO VIOLATE AIRPORT PART 77 SURFACES, OR RUNWAY AND TAXIWAY SAFETY AREAS.
- F. THE CONTRACTOR SHALL BE RESPONSIBLE FOR CLEANING ACTIVE AIRFIELD PAVEMENTS WHICH ARE CROSSED BY HIS VEHICLES ACCESSING THE WORK SITE OR DEPARTING THE WORK SITE. THE PAVEMENT(S) SHALL BE CLEANED IMMEDIATELY FOLLOWING SAID VEHICLE, AND AT ALL OTHER TIMES WHEN DIRECTED BY THE RESIDENT ENGINEER, AIRPORT MANAGER OR OTHER AIRPORT REPRESENTATIVE.
- G. UPON COMPLETION OF PROJECT, CONTRACTOR SHALL RESTORE THE ACCESS ROADS AND LAYDOWN AREA AND ANY OTHER AREAS DISTURBED BY THE CONTRACTOR TO PRE-CONSTRUCTION CONDITION AT NO ADDITIONAL EXPENSE TO THE PROJECT.

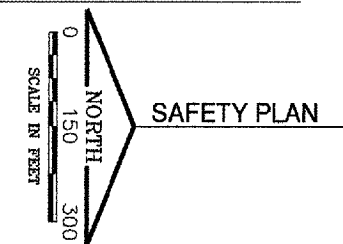
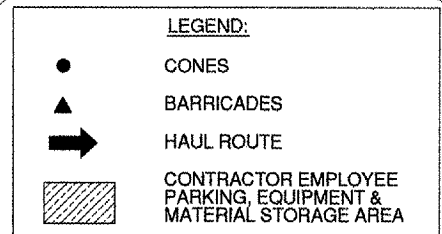


ORANGE AND WHITE



HEIGHT OF CONSTRUCTION EQUIPMENT
THE MAXIMUM ANTICIPATED HEIGHT OF THE CONSTRUCTION EQUIPMENT WILL BE 25 FEET. THE TALLEST EQUIPMENT IS EXPECTED TO BE A DUMP TRAILER.

BARRICADES / TRAFFIC CONTROL
IT WILL BE THE CONTRACTOR'S RESPONSIBILITY TO PLACE AND MAINTAIN BARRICADES, TRAFFIC CONES, SIGNS OR OTHER TEMPORARY BARRIERS TO SEPARATE AIRCRAFT TRAFFIC AND CONSTRUCTION TRAFFIC. BARRICADES USED ON THE AIRFIELD WILL BE EQUIPPED WITH 20" SQUARE ORANGE FLAGS AND RED FLASHING LIGHTS SPACED ON 15' CENTERS, AND SHALL BE WEIGHTED WITH SANDBAGS. THE RESPONSIBILITY OF AND COST OF ERECTION, MAINTENANCE AND REMOVAL OF ALL TRAFFIC CONTROL MEASURES USED BY THE CONTRACTOR SHALL BE CONSIDERED AS INCIDENTAL TO THE CONTRACT AND NO ADDITIONAL COMPENSATION WILL BE ALLOWED.



Poirier Associates P.C.
Engineering and Architectural
Services Group
665 N. Airport Road
Suite 113 Terminal Building
Murphysboro, Illinois 62906
Telephone: (618) 549-5181
Fax: (618) 523-5444
E-mail: poirier@att.net

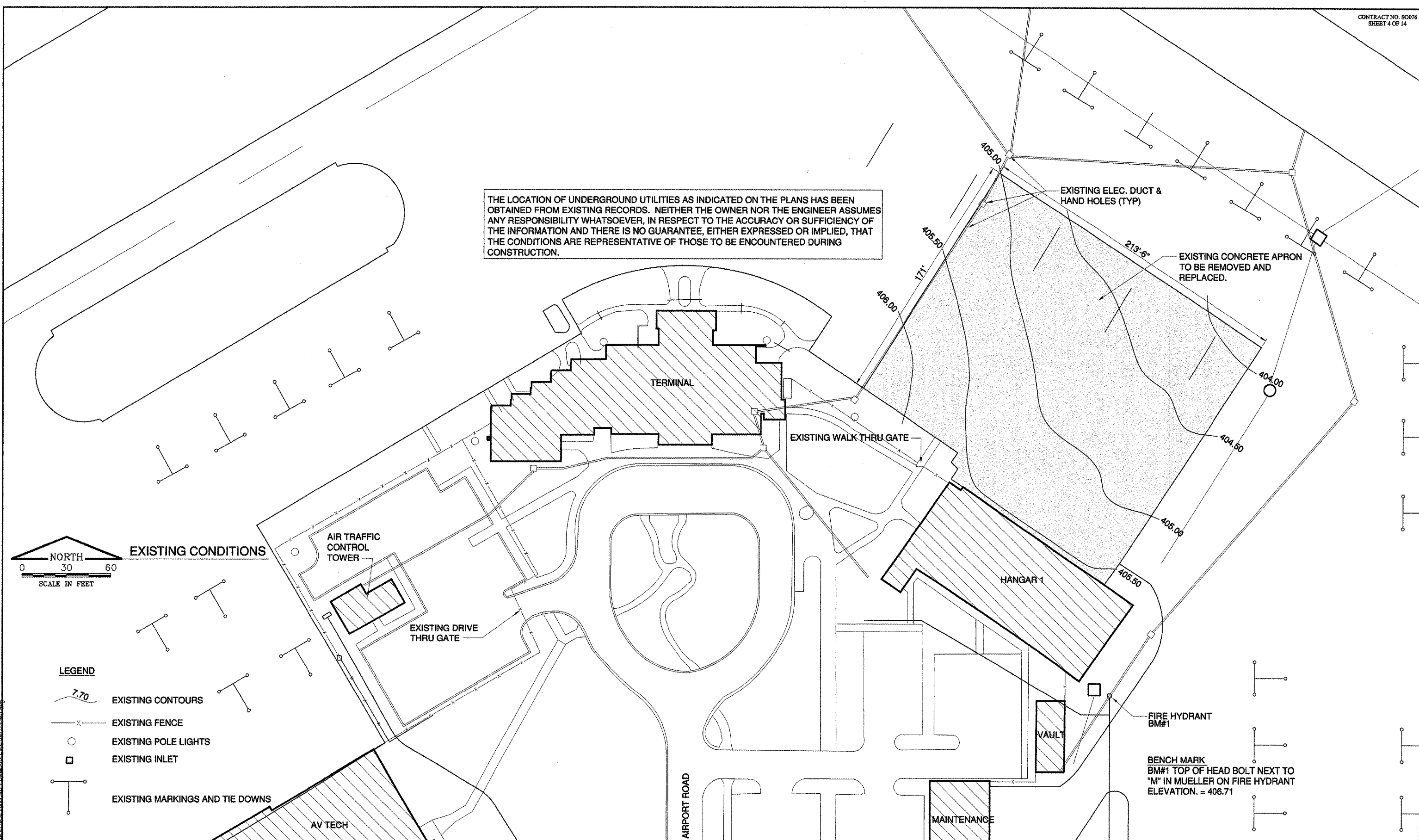


**HANGAR 1 RAMP REPLACEMENT
SOUTHERN ILLINOIS AIRPORT
MURPHYSBORO / CARBONDALE, ILLINOIS**

DATE: 06 APRIL, 2006
DRAWN: CUB
CHECKED: DD
APPROVED: BCP
PROJECT NO. FA05036
I.L. PROJ. NO. MDE-3576
A.I.P. PROJ. 3-17-0009-B25
REVISIONS:
© 2006 POIRIER ASSOCIATES P.C.
ALL RIGHTS RESERVED

SAFETY PLAN
SHEET NO.
3
OF 14

THE LOCATION OF UNDERGROUND UTILITIES AS INDICATED ON THE PLANS HAS BEEN OBTAINED FROM EXISTING RECORDS. NEITHER THE OWNER NOR THE ENGINEER ASSUMES ANY RESPONSIBILITY WHATSOEVER, IN RESPECT TO THE ACCURACY OR SUFFICIENCY OF THE INFORMATION AND THERE IS NO GUARANTEE, EITHER EXPRESSED OR IMPLIED, THAT THE CONDITIONS ARE REPRESENTATIVE OF THOSE TO BE ENCOUNTERED DURING CONSTRUCTION.



EXISTING CONDITIONS

LEGEND

- EXISTING CONTOURS
- EXISTING FENCE
- EXISTING POLE LIGHTS
- EXISTING INLET
- EXISTING MARKINGS AND TIE DOWNS

AEC 05/20/06 - 1:41 PM



Poirier Associates P.C.
Engineering and Architectural
Services Group
665 N. Airport Road
Suite 113 Terminal Building
Murphysboro, Illinois 62966
Telephone (618)549-5181
Fax (618)528-5444
E-mail poirier@netnet.net



**HANGAR 1 RAMP REPLACEMENT
SOUTHERN ILLINOIS AIRPORT
MURPHYSBORO / CARBONDALE, ILLINOIS**

DATE: 06 APRIL, 2006
DRAWN: CWB
CHECKED: DO
APPROVED: BCF
PROJECT NO. PA05036
IL. PROJ. NO. MDH-3576

REVISIONS:
© 2006 POIRIER ASSOCIATES P.C.
ALL RIGHTS RESERVED

EXISTING CONDITIONS
SHEET NO.
4
OF 14

THE LOCATION OF UNDERGROUND UTILITIES AS INDICATED ON THE PLANS HAS BEEN OBTAINED FROM EXISTING RECORDS. NEITHER THE OWNER NOR THE ENGINEER ASSUMES ANY RESPONSIBILITY WHATSOEVER, IN RESPECT TO THE ACCURACY OR SUFFICIENCY OF THE INFORMATION AND THERE IS NO GUARANTEE, EITHER EXPRESSED OR IMPLIED, THAT THE CONDITIONS ARE REPRESENTATIVE OF THOSE TO BE ENCOUNTERED DURING CONSTRUCTION.

PAVEMENT CORING FINDINGS

- C-1 7" CONCRETE 4" BITUMINOUS BASE
- C-2 6 1/2" CONCRETE 4 1/2" BITUMINOUS BASE
- C-3 7 1/4" CONCRETE 3 1/2" BITUMINOUS BASE
- C-4 6 1/2" CONCRETE 3" BITUMINOUS BASE
- C-5 7 3/4" CONCRETE 4" BITUMINOUS BASE

ELECTRIC HANDHOLE TO BE ADJUSTED

FULL DEPTH SAWCUT AT THIS JOINT.

EXISTING RAMP - 8" PCC PAVING OVER 4" CRUSHED AGG. BASE PER RECORD DRAWINGS

EXISTING DUCT BANKS TO REMAIN.

EXISTING RAMP - 5" BITUMINOUS PAVING OVER 6" CRUSHED AGG. BASE PER RECORD DRAWINGS

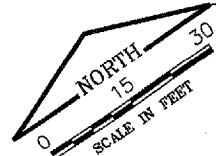
EXISTING RAMP - 6" PCC PAVING OVER 4" BITUMINOUS PAVING OVER 2" CRUSHED AGG. BASE PER RECORD DRAWINGS

EXISTING STORM SEWER T.O.C. 403.91 F.L. 399.41

SAWCUT THE SECTION OF EXISTING BITUMINOUS PAVING TO BE REMOVED FOR PROPOSED UNDERDRAIN CONNECTION

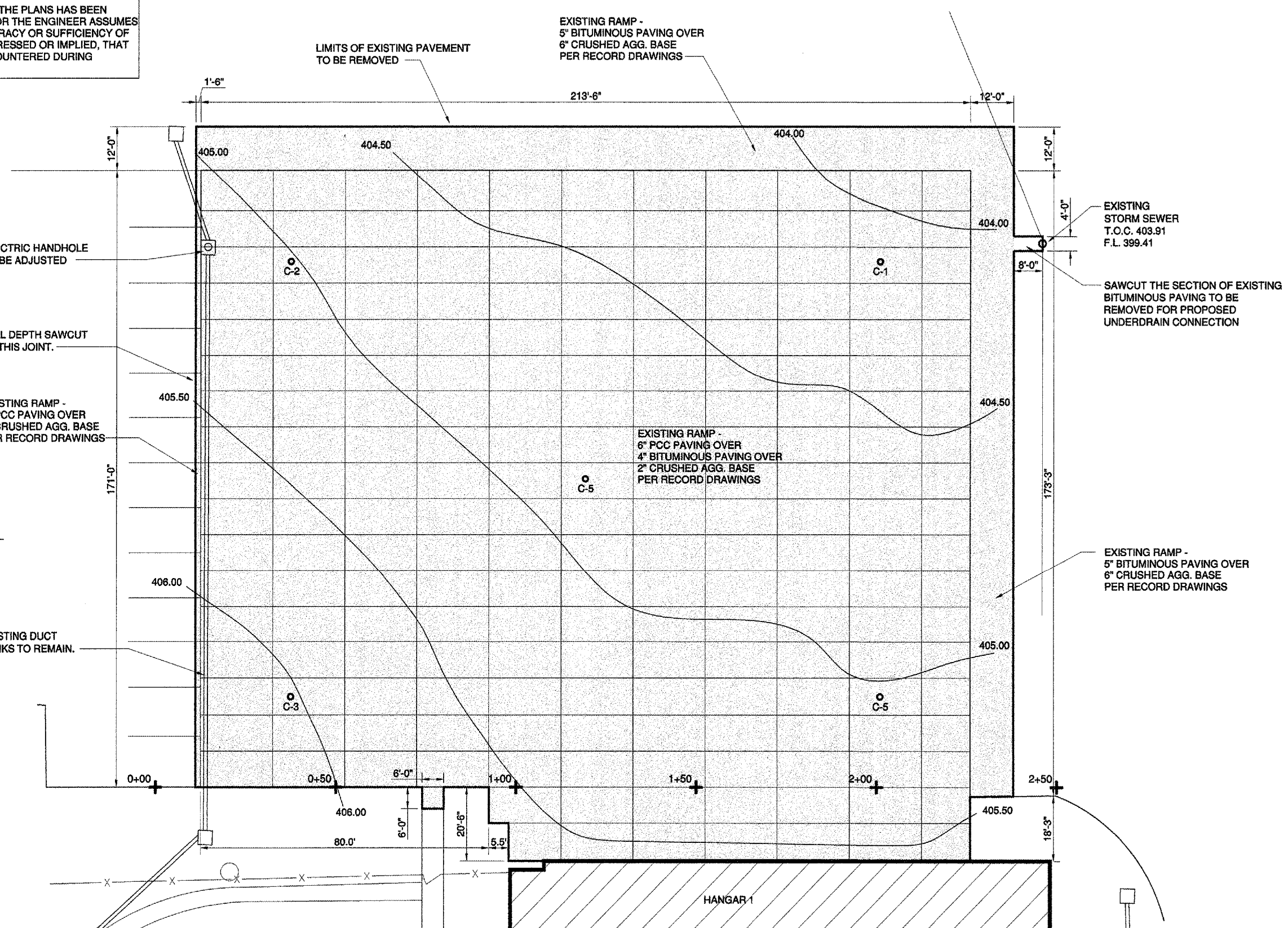
EXISTING RAMP - 5" BITUMINOUS PAVING OVER 6" CRUSHED AGG. BASE PER RECORD DRAWINGS

EXISTING CONDITIONS



LEGEND

- 7.70 EXISTING CONTOURS
- EXISTING PCC PANEL LINES
- EXISTING FENCE
- EXISTING POLE LIGHTS
- EXISTING INLET
- EXISTING MARKINGS AND TIE DOWNS



A:\PROJECTS\AIDOT PROJECTS\MDH-3576 HANGAR 1 RAMP US REMOVAL S.dwg



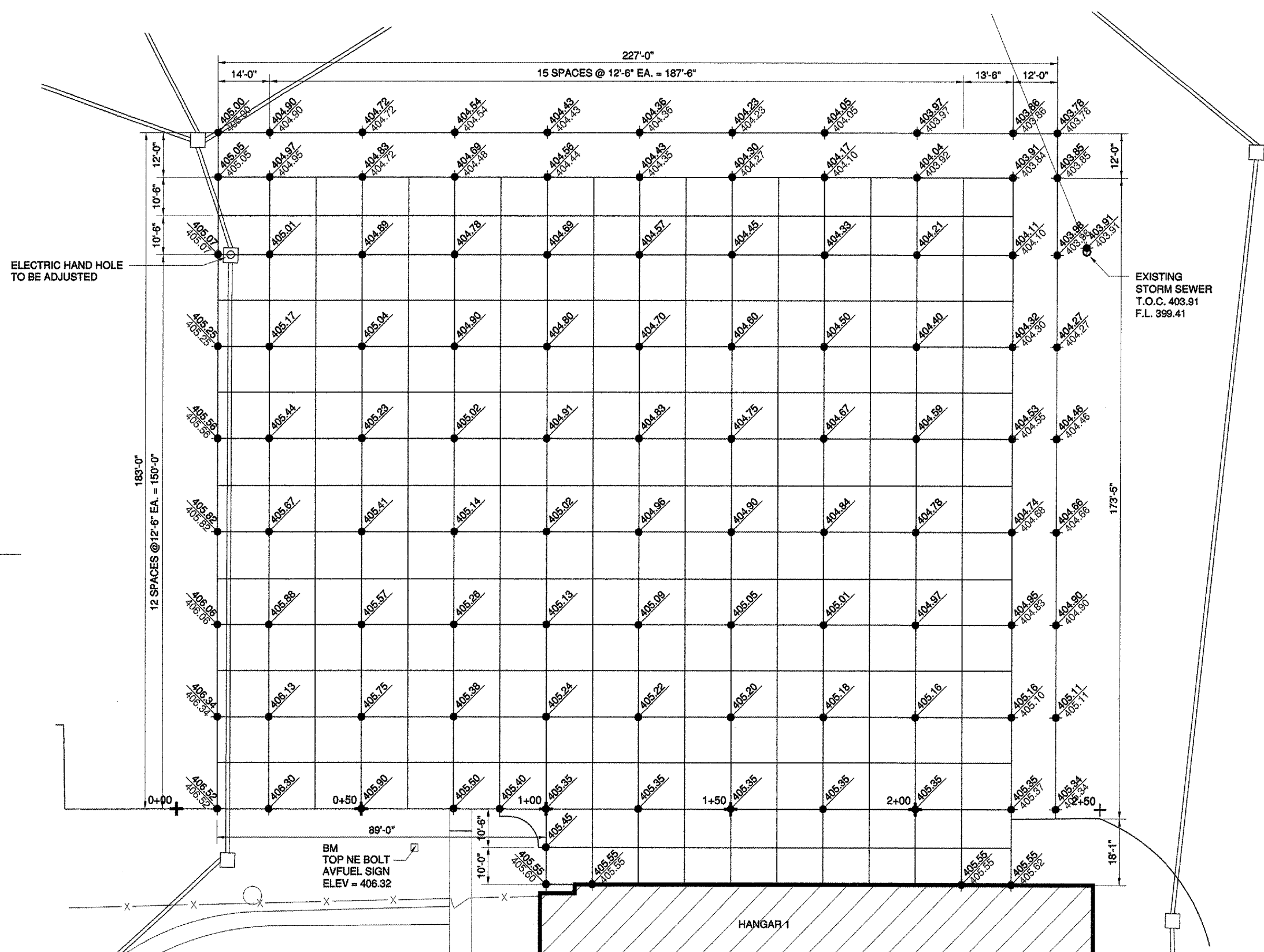
Poirier Associates P.C.
Engineering and Architectural
Services Group
665 N. Airport Road
Suite 115 Terminal Building
Murphysboro, Illinois 62906
Telephone (618)549-5181
Fax (618)529-5444
E-mail poirier@attnet.net



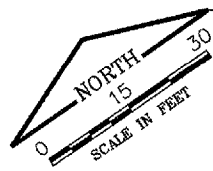
**HANGAR 1 RAMP REPLACEMENT
SOUTHERN ILLINOIS AIRPORT
MURPHYSBORO / CARBONDALE, ILLINOIS**

DATE: 06 APRIL, 2006
DRAWN: CWS
CHECKED: DD
APPROVED: BCF
PROJECT NO. PA05036
IL PROJ. NO. MDH-3576
REVISIONS:
© 2006 POIRIER ASSOCIATES P.C.
ALL RIGHTS RESERVED

REMOVALS PLAN
SHEET NO.
5
OF 14



STAKING PLAN



LEGEND

- EXISTING ELEVATIONS
- PROPOSED ELEVATIONS
- PROPOSED PCC PANEL LINES
- EXISTING FENCE
- EXISTING POLE LIGHTS
- EXISTING INLET
- EXISTING MARKINGS AND TIE DOWNS

D:\PROJECTS\SIA\DOT PROJECTS\MPH-576 HANGAR 1 RAMP 06 GRADING PLAN.dwg



Illinois Department of Transportation
Division of Aeronautics



Poirier Associates P.C.
Engineering and Architectural
Services Group
665 N. Airport Road
Suite 115 Terminal Building
Murphysboro, Illinois 62906
Telephone (618) 549-5181
Fax (618) 529-5444
E-mail poirier@intnet.net



HANGAR 1 RAMP REPLACEMENT
SOUTHERN ILLINOIS AIRPORT
MURPHYSBORO / CARBONDALE, ILLINOIS

DATE: 06 APRIL, 2006
DRAWN: CUB
CHECKED: DD
APPROVED: BCP
PROJECT NO. PA05036
IL PROJ. NO. MDH-3576
REVISIONS:
© 2006 POIRIER ASSOCIATES P.C.
ALL RIGHTS RESERVED

STAKING PLAN

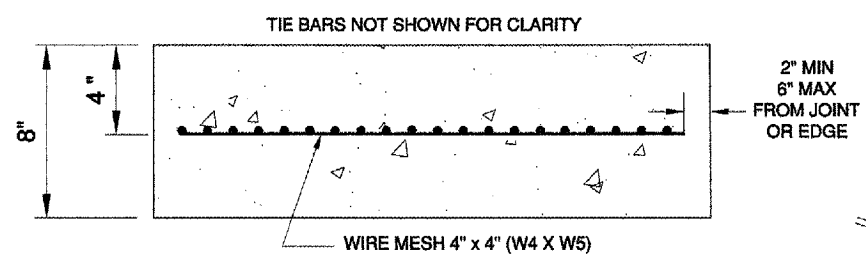
SHEET NO.

6

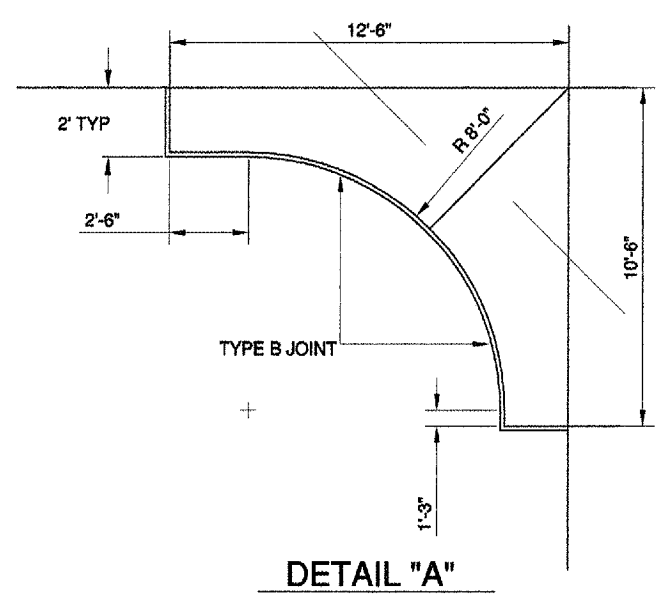
OF 14

LEGEND:

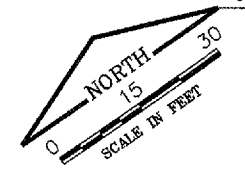
- TYPE B JOINT
- LONGITUDINAL CONSTRUCTION JOINT w/ DOWEL BARS (TYPE D)
- LONGITUDINAL CONSTRUCTION JOINT w/ TIE BARS (TYPE E MODIFIED)
- TRANSVERSE CONTRACTION JOINT w/ DOWEL BARS (TYPE F)
- TRANSVERSE CONTRACTION JOINT - DUMMY (TYPE H)
- BITUMINOUS BUTT JOINT



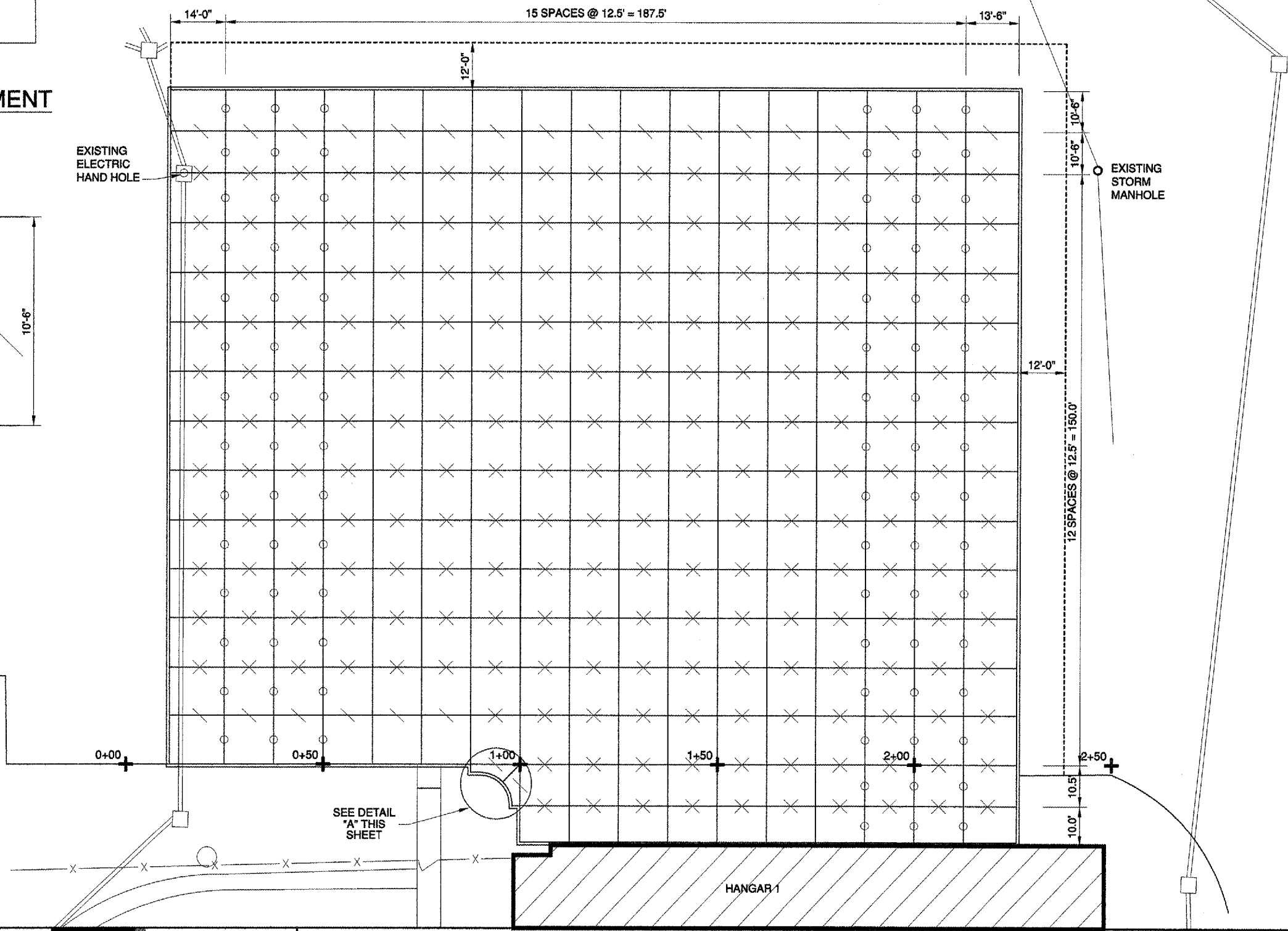
RADIUS PANEL REINFORCEMENT
NOT TO SCALE



JOINTING PLAN



- LEGEND**
- PROPOSED PCC PANEL LINES
 - EXISTING FENCE
 - EXISTING POLE LIGHTS
 - EXISTING INLET



I:\PROJECTS\SIA\DOT PROJECTS\MDH-3576 HANGAR 1 RAMP 07 JOINTING PLAN.dwg



Poirier Associates P.C.
Engineering and Architectural
Services Group
665 N. Airport Road
Suite 115 Terminal Building
Murphysboro, Illinois 62966
Telephone (618)549-5181
Fax (618)529-5444
E-mail poirier@intrnet.net

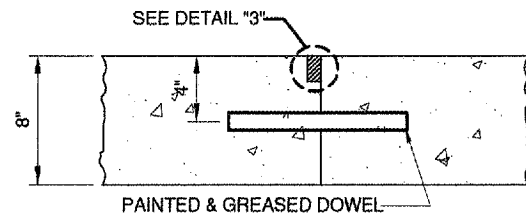


HANGAR 1 RAMP REPLACEMENT
SOUTHERN ILLINOIS AIRPORT
MURPHYSBORO / CARBONDALE, ILLINOIS

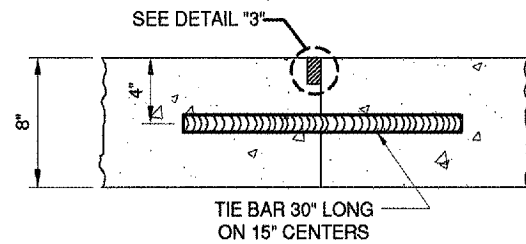
DATE: 05 APRIL, 2006
DRAWN: CWS
CHECKED: DDP
APPROVED: BCP
PROJECT NO. PA05036
IL. PROJ. NO. MDH-3576
REVISIONS:

JOINTING PLAN
SHEET NO.
7
OF 14

CONSTRUCTION JOINTS

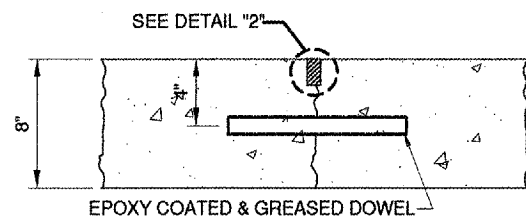


TYPE D DOWELED
NOT TO SCALE

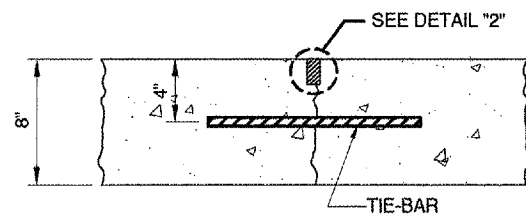


MODIFIED TYPE E-HINGED - (BUTT)
NOT TO SCALE

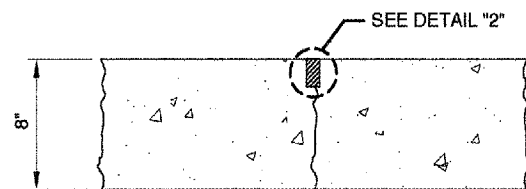
CONTRACTION JOINTS



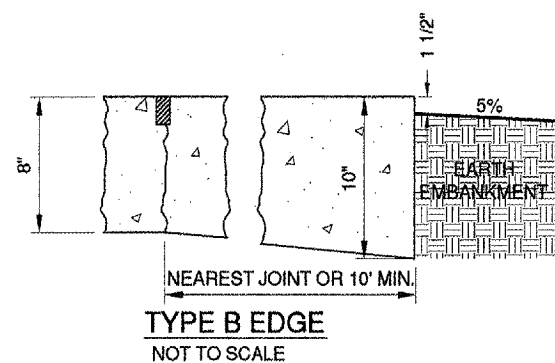
TYPE F DOWELED
NOT TO SCALE



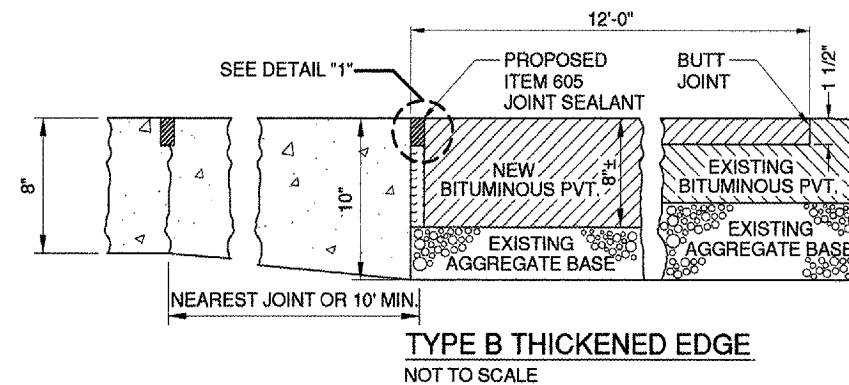
TYPE G HINGED (NOT USED)
NOT TO SCALE



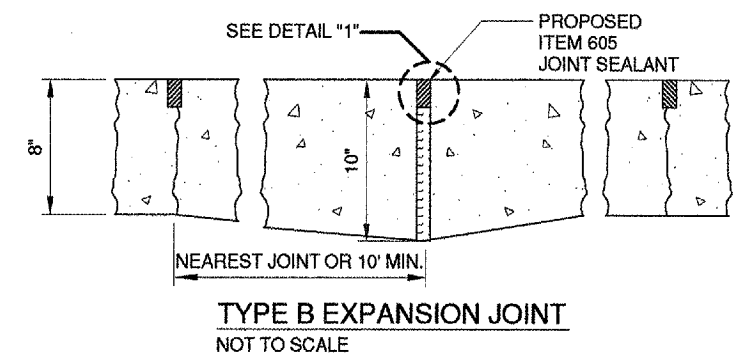
TYPE H DUMMY
NOT TO SCALE



TYPE B EDGE
NOT TO SCALE



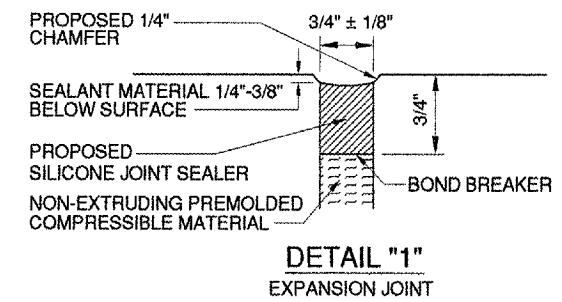
TYPE B THICKENED EDGE
NOT TO SCALE



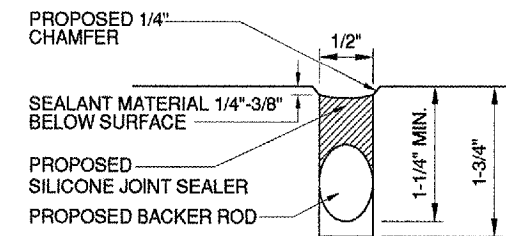
TYPE B EXPANSION JOINT
NOT TO SCALE

PCC JOINTING NOTES:

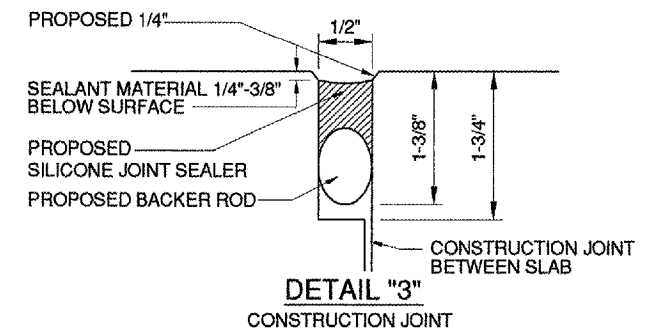
- ALL EXPOSED JOINT EDGES SHALL BE EDGED WITH AN APPROVED TOOL HAVING A RADIUS OF 1/4" OR STONED TO PRODUCE THE 1/8" CHAMFER.
- ALL LONGITUDINAL AND TRANSVERSE CONTRACTION JOINTS SHALL BE SAWED.
- ALL DOWEL BARS SHALL BE SECURELY HELD IN PLACE BY MEANS OF A DOWEL BAR ASSEMBLY WHICH WILL INSURE THAT THEY WILL REMAIN PARALLEL TO THE SURFACE OF THE PAVEMENT AND TO THE CENTERLINES OF THE PAVEMENT LANES. THE DOWEL BAR ASSEMBLIES SHALL BE APPROVED BY THE ENGINEER PRIOR TO INSTALLATION. DOWELS SHALL BE 3/4" DIA, 18" IN LENGTH AND 12" SPACING.
- ALL TIE BARS SHALL BE SECURELY HELD IN PLACE BY MEANS OF AN ASSEMBLY WHICH WILL INSURE THAT THEY WILL REMAIN PARALLEL TO THE SURFACE OF THE PAVEMENT AND PERPENDICULAR TO THE CENTERLINES OF THE PAVEMENT LANES.
- ALL TIE-BARS SHALL BE IN CONFORMANCE WITH ASTM A615, SHALL BE GRADE 60, AND BE PLACED AT A POINT NOT EXCEEDING 8" OR CLOSER THAN 6" FROM A TRANSVERSE, CONTRACTION, EXPANSION, OR CONSTRUCTION JOINT AND SPACED 15" ON CENTERS AND SHALL BE NO. 5 DEFORMED BARS, 30" IN LENGTH.
- DOWELS SHALL BE EPOXY COATED AND HALF THE LENGTH GREASED WITH A HEAVY GREASE.
- ALLOWABLE TOLERANCES FOR GROOVE DEPTH WILL BE ±1/8" FOR CONSTRUCTION JOINTS AND ±1/4" FOR CONTRACTION JOINTS.
- THE COST OF ALL DOWEL BARS, TIE-BARS, WW FABRIC, SAWING AND SEALING SHALL BE INCLUDED IN THE COST OF THE P.C.C. PAVEMENT.
- PRIOR TO PLACING ADJACENT PAVEMENT SECTIONS, THE VERTICAL EDGE SHALL BE CHECKED FOR TRUENESS, IF THE FACE IS BURRED OR IRREGULAR, THE CONTRACTOR SHALL GRIND, STONE, OR SAW THE FACE A MINIMUM OF 2" FROM THE EDGE TO PRODUCE A SMOOTH AND STRAIGHT EDGE.
- WHEN CONSTRUCTING "FILL-IN" PAVEMENT LANES USING A SELF PROPELLED PAVER, THE CONTRACTOR SHALL USE BELTING OR OTHER PROTECTIVE MATERIAL FOR THE PAVING MACHINE TO TRAVEL ON AND SHALL ROPE THE ADJACENT TRANSVERSE JOINTS TO PREVENT DEBRIS INTRUSION IN THE JOINTS.
- JOINT SEALANT SHALL BE AS SPECIFIED IN THE SPECIAL PROVISIONS ITEM 605.
- CURING COMPOUND WILL BE AS SPECIFIED IN THE SPECIAL PROVISIONS, ITEM 501-2.9 AND SHALL BE APPROVED PRIOR TO THE PAVING OPERATION BY THE ENGINEER.
- ALL NON-ALIGNED EDGES WILL BE SAWED FULL DEPTH.



DETAIL "1"
EXPANSION JOINT



DETAIL "2"
CONTRACTION JOINT



DETAIL "3"
CONSTRUCTION JOINT

NOTES:

- BACKER ROD MATERIAL MUST BE COMPATIBLE WITH THE TYPE OF LIQUID SEALANT USED AND SIZED TO PROVIDE THE DESIRED SHAPE FACTOR.

Apr 06 2006 - 1:42pm I:\PROJECTS\SIAM\DR_3576 HANGAR 1 RAMP JOB - JOINT DETAIL S.dwg



Illinois Department of Transportation
Division of Aeronautics



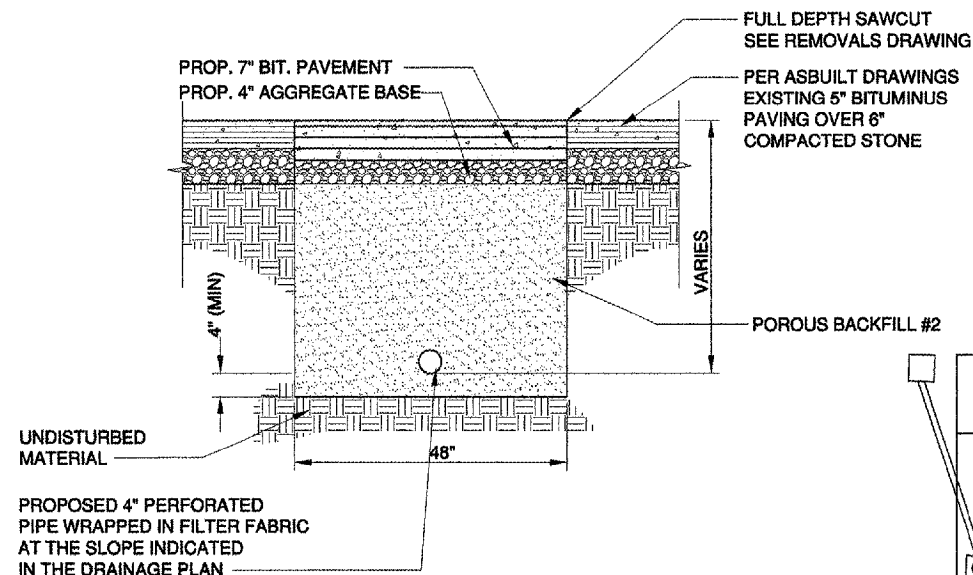
Poirier Associates P.C.
Engineering and Architectural
Services Group
665 N. Airport Road
Suite 113 Terminal Building
Morton, Illinois 62450
Telephone: (618)549-5161
Fax: (618)529-3444
E-mail: poirier@intmet.net



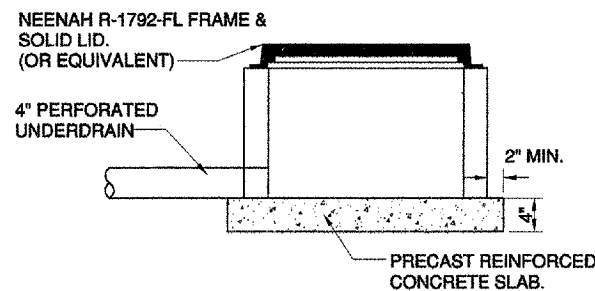
REHABILITATE HANGAR 1 APRON
SOUTHERN ILLINOIS AIRPORT
MURPHYSBORO / CARBONDALE, ILLINOIS

DATE: 06 APRIL, 2006
DRAWN: CWS
CHECKED: DCP
APPROVED: BCP
PROJECT NO. PA05036
IL PROJ. NO. MDH-3576
REVISIONS:
© 2006 POIRIER ASSOCIATES P.C.
ALL RIGHTS RESERVED

JOINTING DETAILS
& NOTES
SHEET NO.
8
OF 14

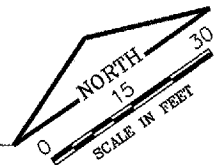


1 UNDERDRAIN TRENCH DETAIL
9 N.T.S STA. 2+26 - STA. 2+48



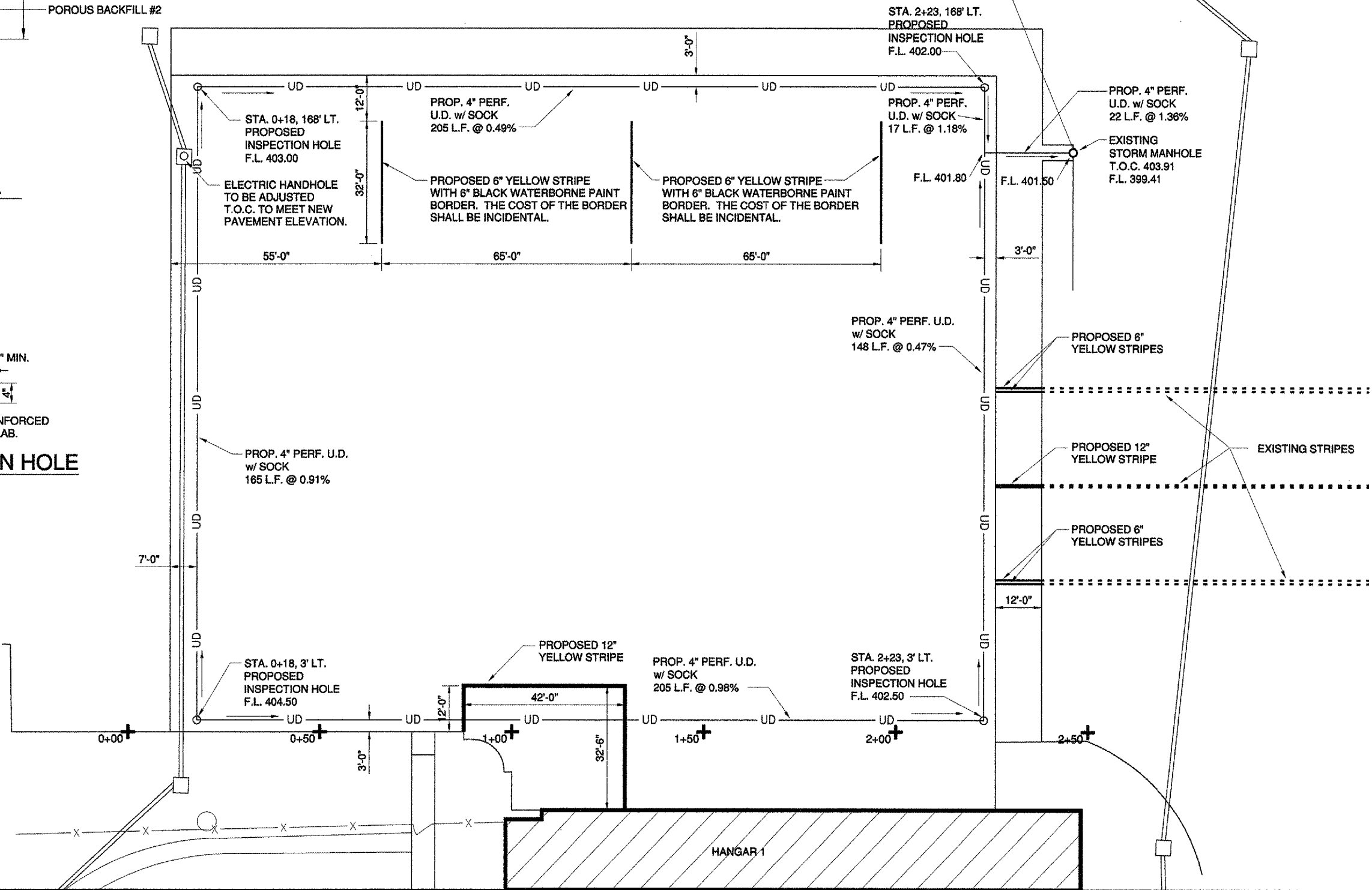
2 UNDERDRAIN INSPECTION HOLE
9 NOT TO SCALE

PAVT. MARKING & DRAINAGE PLAN



LEGEND

- EXISTING STORM SEWER
- EXISTING PAVEMENT MARKING
- PROPOSED PAVEMENT MARKING
- X EXISTING FENCE
- EXISTING POLE LIGHTS
- EXISTING INLET



Illinois Department of Transportation
Division of Aeronautics



Poirier Associates P.C.
Engineering and Architectural
Services Group
665 N. Airport Road
Suite 114 Terminal Building
Murphysboro, Illinois 62956
Telephone (618) 549-5181
Fax (618) 529-5444
E-mail poirier@intnet.net



HANGAR 1 RAMP REPLACEMENT
SOUTHERN ILLINOIS AIRPORT
MURPHYSBORO / CARBONDALE, ILLINOIS

DATE: 06 APRIL, 2006
DRAWN: GUS
CHECKED: DO
APPROVED: BCF
PROJECT NO. PA05036
IL PROJ. NO. MDH-3576
REVISIONS:

PAVT. MARKING & DRAINAGE PLAN
SHEET NO.
9
OF 14

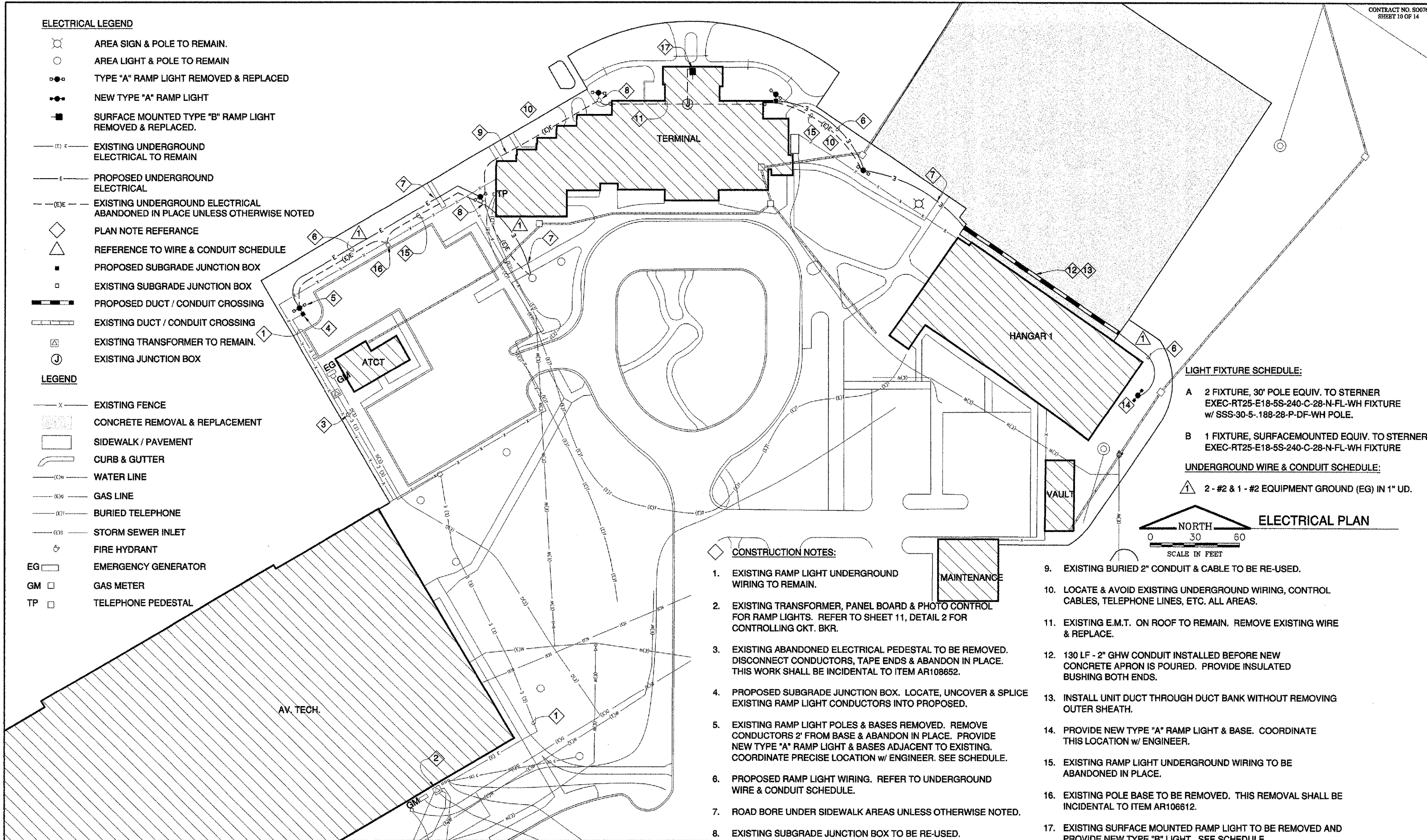
PROJECTS\SI\DOT PROJECTS\MDH-3576 HANGAR 1 RAMP UD DRAINAGE PLAN.dwg

ELECTRICAL LEGEND

- AREA SIGN & POLE TO REMAIN.
- AREA LIGHT & POLE TO REMAIN
- TYPE "A" RAMP LIGHT REMOVED & REPLACED
- NEW TYPE "A" RAMP LIGHT
- SURFACE MOUNTED TYPE "B" RAMP LIGHT REMOVED & REPLACED.
- EXISTING UNDERGROUND ELECTRICAL TO REMAIN
- PROPOSED UNDERGROUND ELECTRICAL
- EXISTING UNDERGROUND ELECTRICAL ABANDONED IN PLACE UNLESS OTHERWISE NOTED
- PLAN NOTE REFERENCE
- REFERENCE TO WIRE & CONDUIT SCHEDULE
- PROPOSED SUBGRADE JUNCTION BOX
- EXISTING SUBGRADE JUNCTION BOX
- PROPOSED DUCT / CONDUIT CROSSING
- EXISTING DUCT / CONDUIT CROSSING
- EXISTING TRANSFORMER TO REMAIN.
- EXISTING JUNCTION BOX

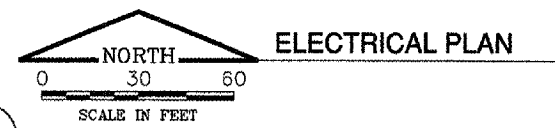
LEGEND

- EXISTING FENCE
- CONCRETE REMOVAL & REPLACEMENT
- SIDEWALK / PAVEMENT
- CURB & GUTTER
- WATER LINE
- GAS LINE
- BURIED TELEPHONE
- STORM SEWER INLET
- FIRE HYDRANT
- EMERGENCY GENERATOR
- GAS METER
- TELEPHONE PEDESTAL



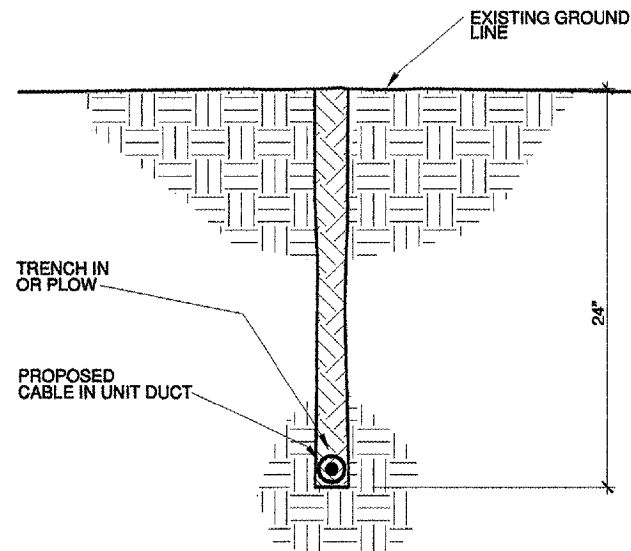
- LIGHT FIXTURE SCHEDULE:**
- A 2 FIXTURE, 30' POLE EQUIV. TO STERNER EXEC-RT25-E18-5S-240-C-28-N-FL-WH FIXTURE w/ SSS-30-5-188-28-P-DF-WH POLE.
 - B 1 FIXTURE, SURFACEMOUNTED EQUIV. TO STERNER EXEC-RT25-E18-5S-240-C-28-N-FL-WH FIXTURE

- UNDERGROUND WIRE & CONDUIT SCHEDULE:**
- 1 2 - #2 & 1 - #2 EQUIPMENT GROUND (EG) IN 1" UD.



CONSTRUCTION NOTES:

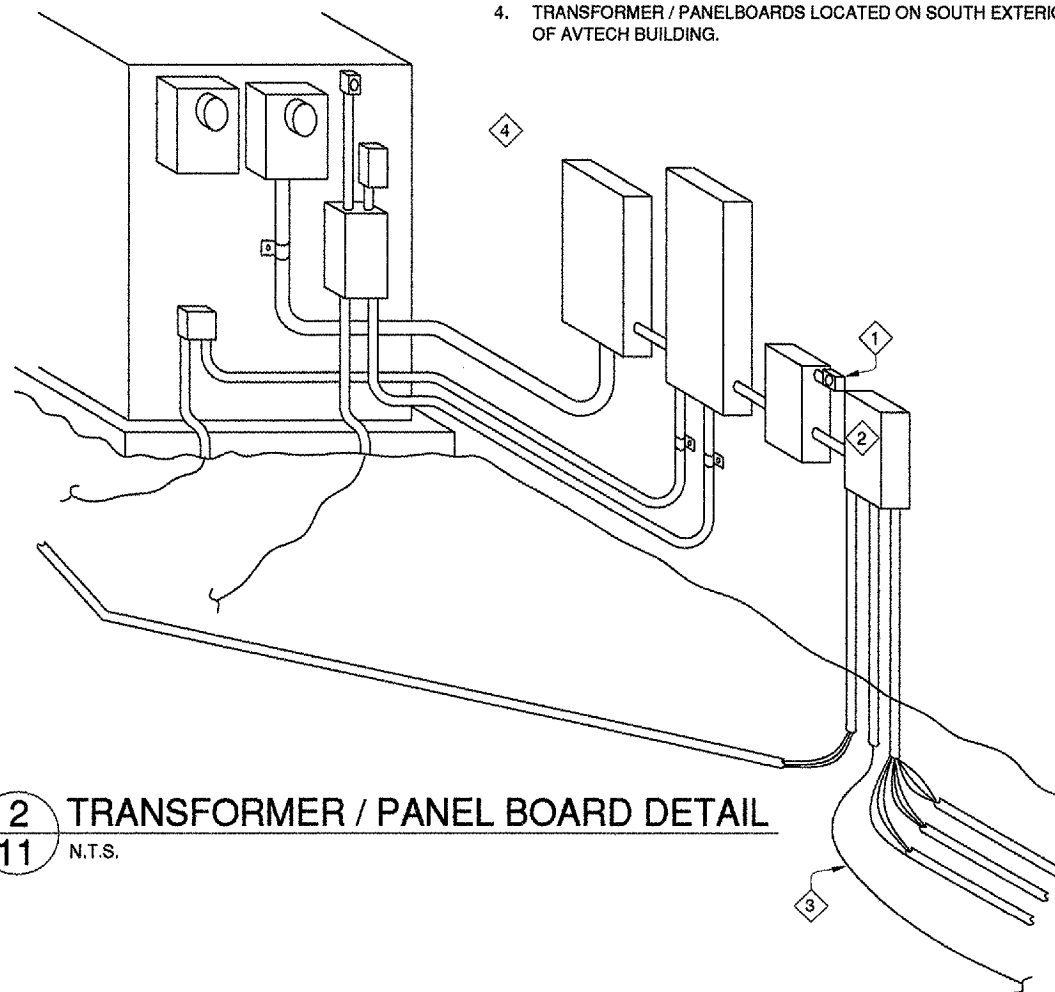
1. EXISTING RAMP LIGHT UNDERGROUND WIRING TO REMAIN.
2. EXISTING TRANSFORMER, PANEL BOARD & PHOTO CONTROL FOR RAMP LIGHTS. REFER TO SHEET 11, DETAIL 2 FOR CONTROLLING CKT. BKR.
3. EXISTING ABANDONED ELECTRICAL PEDESTAL TO BE REMOVED. DISCONNECT CONDUCTORS, TAPE ENDS & ABANDON IN PLACE. THIS WORK SHALL BE INCIDENTAL TO ITEM AR108652.
4. PROPOSED SUBGRADE JUNCTION BOX. LOCATE, UNCOVER & SPLICE EXISTING RAMP LIGHT CONDUCTORS INTO PROPOSED.
5. EXISTING RAMP LIGHT POLES & BASES REMOVED. REMOVE CONDUCTORS 2" FROM BASE & ABANDON IN PLACE. PROVIDE NEW TYPE "A" RAMP LIGHT & BASES ADJACENT TO EXISTING. COORDINATE PRECISE LOCATION w/ ENGINEER. SEE SCHEDULE.
6. PROPOSED RAMP LIGHT WIRING. REFER TO UNDERGROUND WIRE & CONDUIT SCHEDULE.
7. ROAD BORE UNDER SIDEWALK AREAS UNLESS OTHERWISE NOTED.
8. EXISTING SUBGRADE JUNCTION BOX TO BE RE-USED.
9. EXISTING BURIED 2" CONDUIT & CABLE TO BE RE-USED.
10. LOCATE & AVOID EXISTING UNDERGROUND WIRING, CONTROL CABLES, TELEPHONE LINES, ETC. ALL AREAS.
11. EXISTING E.M.T. ON ROOF TO REMAIN. REMOVE EXISTING WIRE & REPLACE.
12. 130 LF - 2" GHW CONDUIT INSTALLED BEFORE NEW CONCRETE APRON IS POURED. PROVIDE INSULATED BUSHING BOTH ENDS.
13. INSTALL UNIT DUCT THROUGH DUCT BANK WITHOUT REMOVING OUTER SHEATH.
14. PROVIDE NEW TYPE "A" RAMP LIGHT & BASE. COORDINATE THIS LOCATION w/ ENGINEER.
15. EXISTING RAMP LIGHT UNDERGROUND WIRING TO BE ABANDONED IN PLACE.
16. EXISTING POLE BASE TO BE REMOVED. THIS REMOVAL SHALL BE INCIDENTAL TO ITEM AR106612.
17. EXISTING SURFACE MOUNTED RAMP LIGHT TO BE REMOVED AND PROVIDE NEW TYPE "B" LIGHT. SEE SCHEDULE.



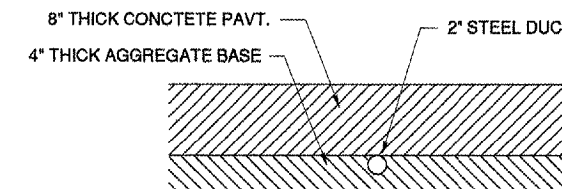
1 CABLE IN UNIT DUCT DETAIL
11 N.T.S.

THE LOCATION OF UNDERGROUND UTILITIES AS INDICATED ON THE PLANS HAS BEEN OBTAINED FROM THE EXISTING RECORDS. NEITHER THE OWNER NOR THE ENGINEER ASSUMES ANY RESPONSIBILITY WHATSOEVER IN RESPECT TO THE ACCURACY, COMPLETENESS, OR SUFFICIENCY OF THE INFORMATION. THERE IS NO GUARANTEE, EITHER EXPRESSED OR IMPLIED, THAT THE LOCATIONS, SIZE AND TYPE OF MATERIAL OF EXISTING UNDERGROUND UTILITIES INDICATED ARE REPRESENTATIVE OF THOSE TO BE ENCOUNTERED IN THE CONSTRUCTION.

- ◇ TRANSFORMER / PANELBOARD DETAIL NOTES:
- EXISTING LIGHTING CONTACTOR & PHOTO CONTROL TO REMAIN.
 - EXISTING PANELBOARD "D" TO REMAIN. NORTH RAMP LIGHTS CONNECTED TO 2P/40 AMP CKT. #1 & 3.
 - EXISTING BUIED NORTH RAMP LIGHT WIRING TO REMAIN.
 - TRANSFORMER / PANELBOARDS LOCATED ON SOUTH EXTERIOR WALL OF AVTECH BUILDING.

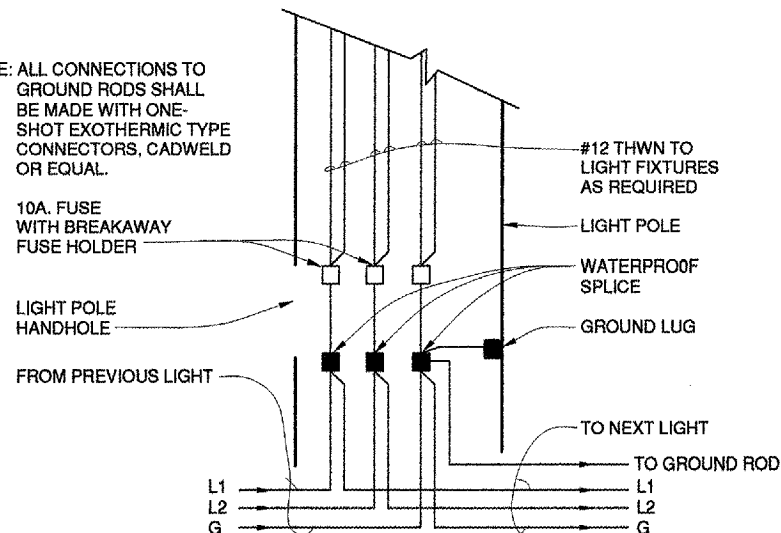


2 TRANSFORMER / PANEL BOARD DETAIL
11 N.T.S.



6 STEEL DUCT, DIRECT BURY DETAIL
11 N.T.S.

NOTE: ALL CONNECTIONS TO GROUND RODS SHALL BE MADE WITH ONE-SHOT EXOTHERMIC TYPE CONNECTORS, CADWELD OR EQUAL.

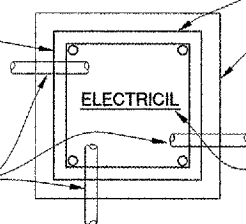


3 LIGHT POLE HANDHOLE WIRING DIAGRAM
11 N.T.S.

BOX SHALL BE 12" x 12" x 12" COMPOSOLITE WITH COVER RATED FOR 8,000 LBS LOADING - QUAZITE #PC1212BG12/PC1212CG00, OR EQUAL. THIS BOX SHALL BE INCIDENTAL TO ITEM AR108652.

SET BOX WITH TOP 1" ABOVE GRADE.

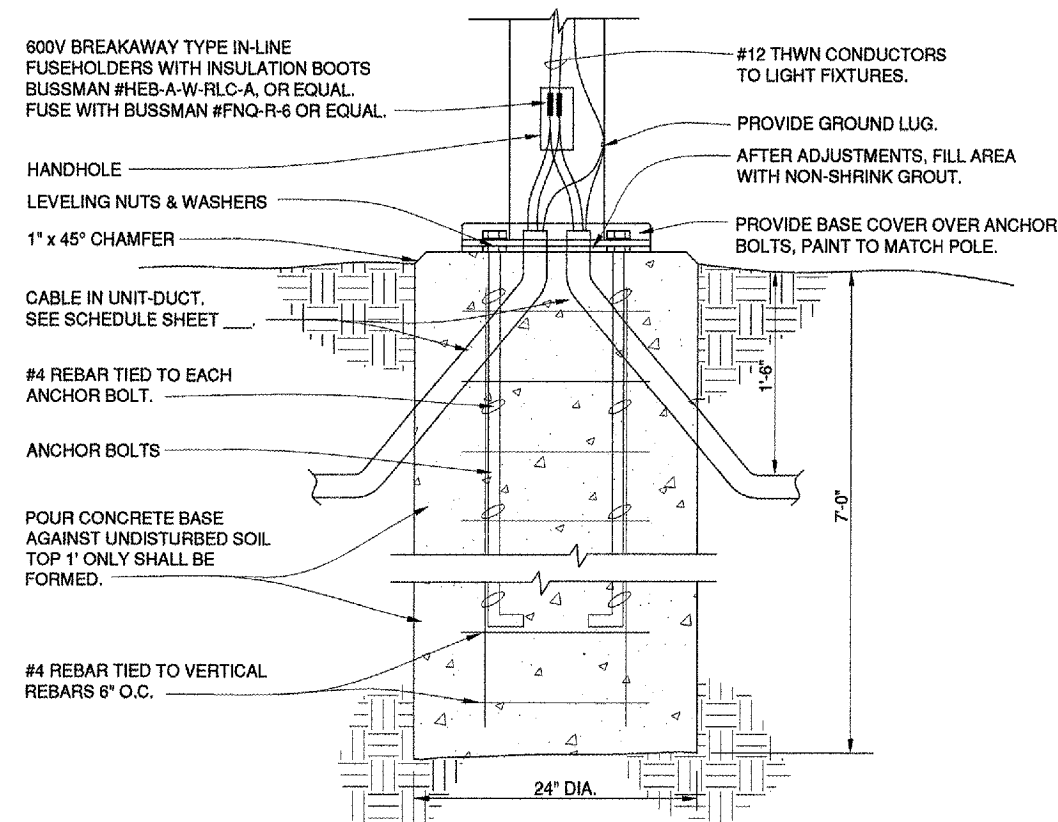
SEE SITE PLANS FOR CONDUITS REQUIRED. PROVIDE 1 SPARE - 1" PVC CONDUIT STUBBED OUT FOR FUTURE USE.



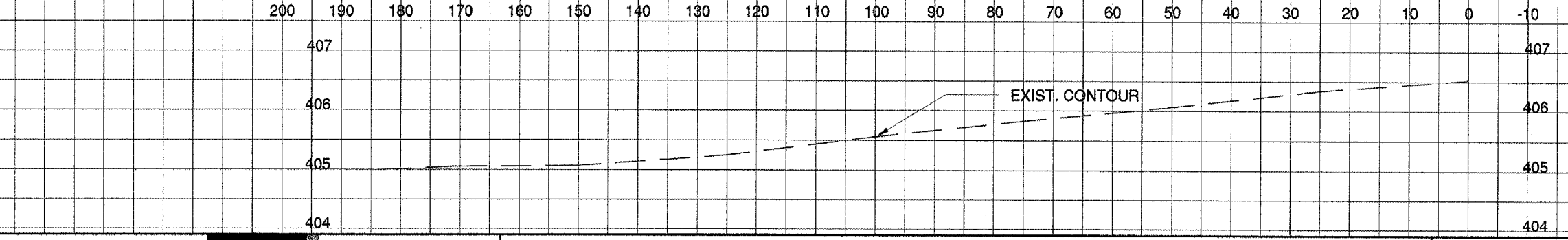
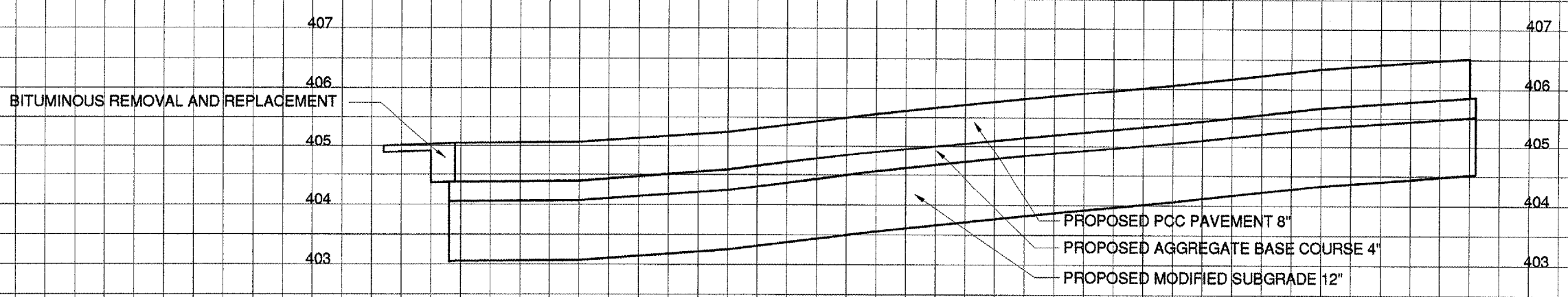
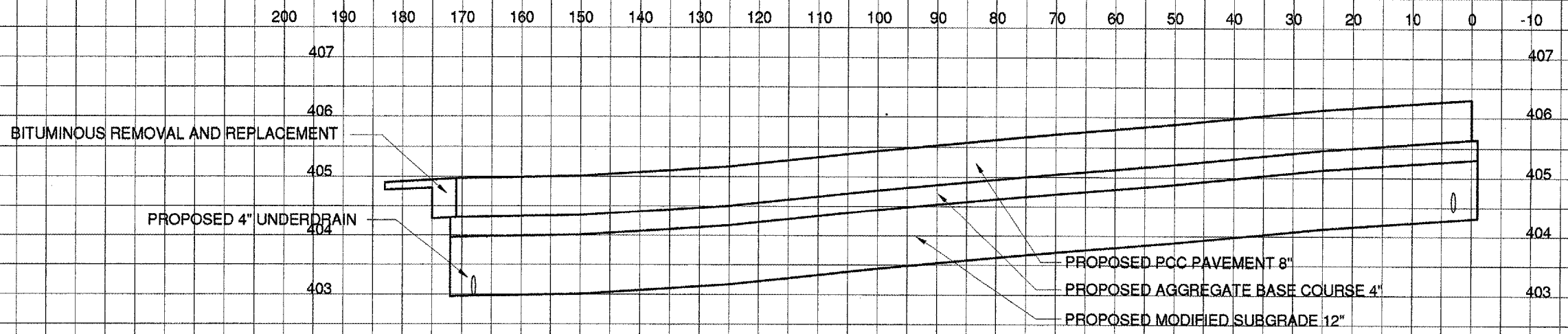
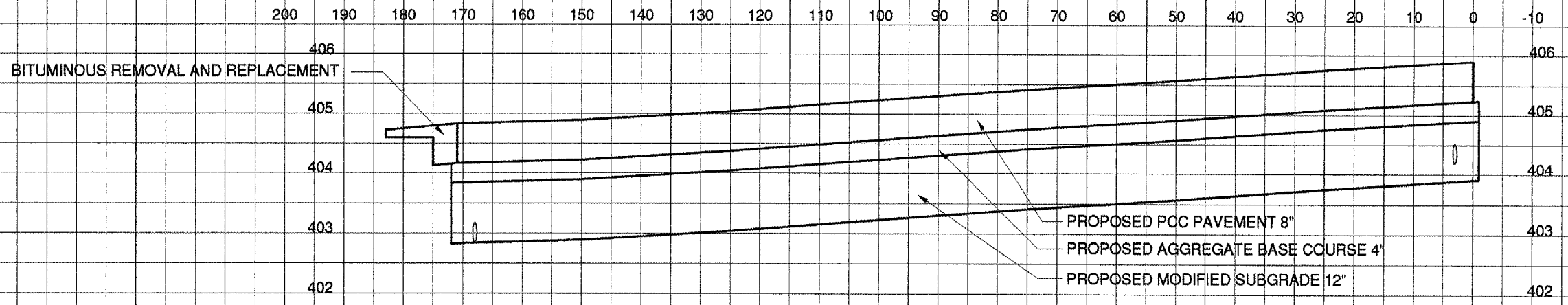
4 DETAIL SUBGRADE JUNCTION BOX
11 N.T.S.

FASTEN BOX TO A 4" THICK CONCRETE PAD POURED ON UNDISTURBED SOIL.

PROVIDE COVER WITH EMBOSSED LEGEND.



5 RAMP LIGHT ASSEMBLY - BASE DETAIL
11 N.T.S.



I:\PROJECTS\SIA\DOT PROJECTS\MDH-3576 HANGAR 1 RAMP\12 CROSS SECTIONS.dwg



Illinois Department of Transportation
Division of Aeronautics



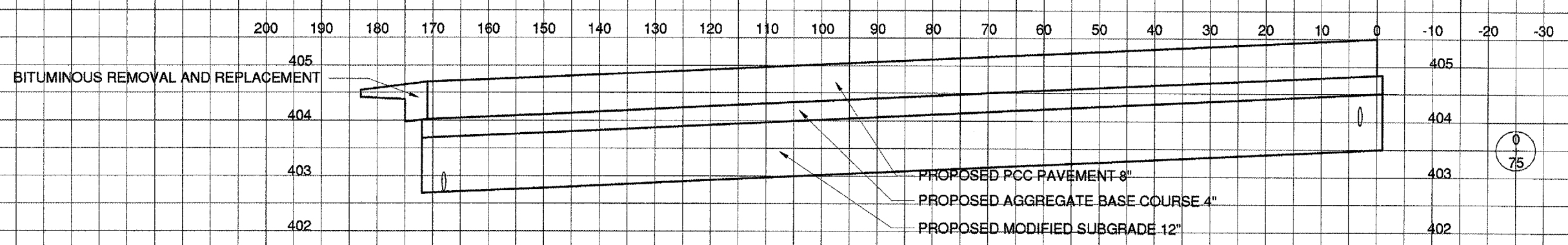
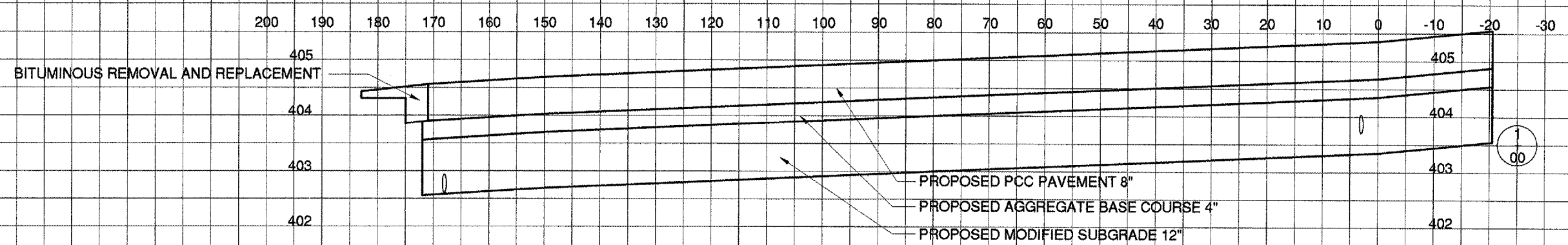
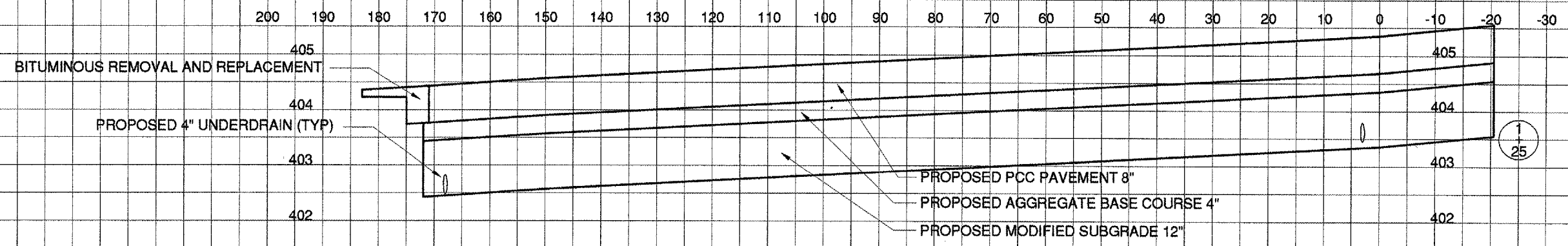
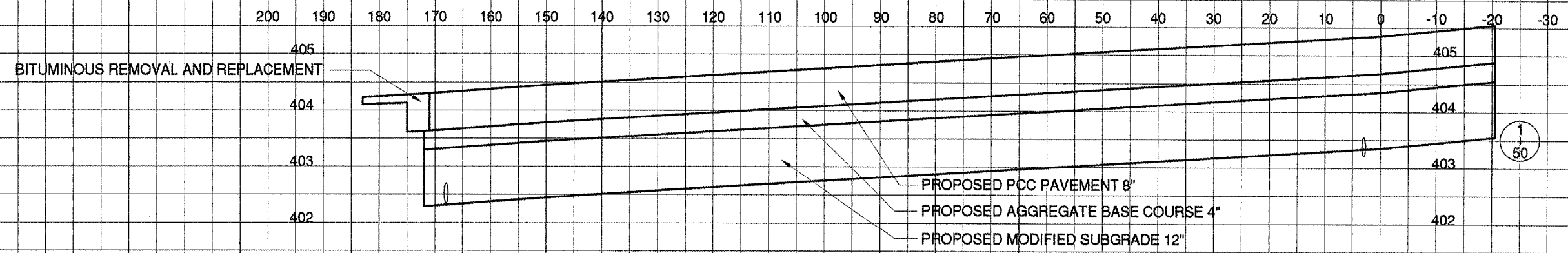
Poirier Associates P.C.
Engineering and Architectural
Services Group
665 N. Airport Road
Suite 115 Terminal Building
Murphysboro, Illinois 62966
Telephone (618)549-5181
Fax (618)529-5444
E-mail poirier@intmet.net



REHABILITATE HANGAR 1 APRON
SOUTHERN ILLINOIS AIRPORT
CARBONDALE / MURPHYSBORO, ILLINOIS

DATE: 06 APRIL, 2006
DRAWN: CWB
CHECKED: DD
APPROVED: BCP
PROJECT NO. PA05036
IL PROJ. NO. MDH-3576
REVISIONS:
© 2006 POIRIER ASSOCIATES P.C.
ALL RIGHTS RESERVED

CROSS SECTIONS
SHEET NO.
12
OF 14



Apr 06 2006 - 1:43pm J:\PROJECTS\SIA\DOT PROJECTS\MDH-3576 HANGAR 1 RAMP\13 CROSS SECTIONS.dwg



PA
POIRIER ASSOCIATES

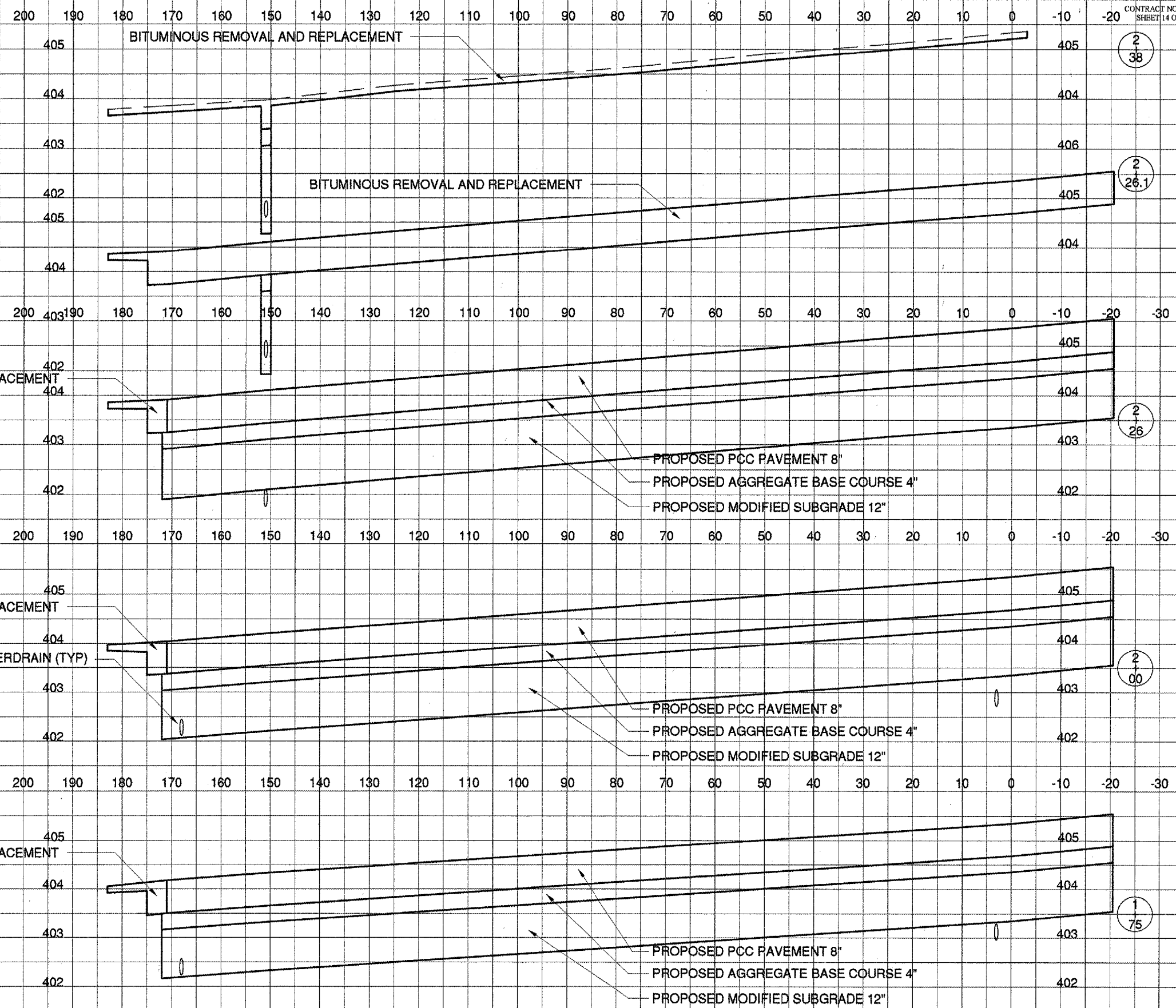
Poirier Associates P.C.
Engineering and Architectural Services Group
665 N. Airport Road
Suite 115 Terminal Building
Murphysboro, Illinois 62956
Telephone (618)549-5181
Fax (618)529-5444
E-mail poirier@intnet.net



**REHABILITATE HANGAR 1 APRON
SOUTHERN ILLINOIS AIRPORT
CARBONDALE / MURPHYSBORO, ILLINOIS**

DATE: 06 APRIL, 2006
DRAWN: CWS
CHECKED: DP
APPROVED: BCP
PROJECT NO. PA05036
IL PROJ. NO. MDH- 3576
REVISIONS:

CROSS SECTIONS
SHEET NO.
13
OF 14



A:\PROJECTS\SI\AIDOT PROJECTS\MDH-3576 HANGAR 1 RAMP\14 CROSS SECTIONS.dwg
 1/4/06 1:43:07 PM



Illinois Department of Transportation
Division of Aeronautics



Poirier Associates P.C.
Engineering and Architectural
Services Group
665 N. Airport Road
Suite 113 Terminal Building
Murphysboro, Illinois 62966
Telephone (618)549-5181
Fax (618)529-5444
E-mail poirier@intnet.net



REHABILITATE HANGAR 1 APRON
SOUTHERN ILLINOIS AIRPORT
CARBONDALE / MURPHYSBORO, ILLINOIS

DATE: 06 APRIL, 2006
DRAWN: CWB
CHECKED: DP
APPROVED: BCP
PROJECT NO. PA05036
IL PROJ. NO. MDH-3576
REVISIONS:
© 2006 POIRIER ASSOCIATES P.C.
ALL RIGHTS RESERVED

CROSS SECTIONS
SHEET NO.
14
OF 14