

STATE OF ILLINOIS
DEPARTMENT OF TRANSPORTATION

F.A.P. RTE.	SECTION	COUNTY	TOTAL SHEETS	SHEET NO.
350	3068B-BR-2	COOK	17	1
ILLINOIS			CONTRACT NO. 62C26	

FOR INDEX OF SHEETS, SEE SHEET NO. 2

THE IMPROVEMENT IS LOCATED IN THE VILLAGE OF CRESTWOOD.

TRAFFIC DATA

IL 50 /83 (CICERO AVE.)

ADT (2015) = 36,400

POSTED SPEED LIMIT = 35 MPH

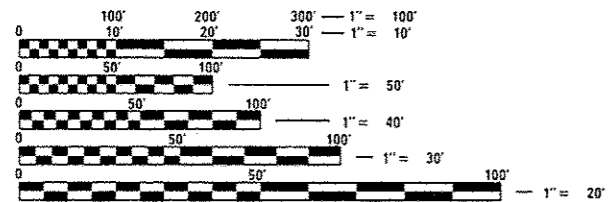
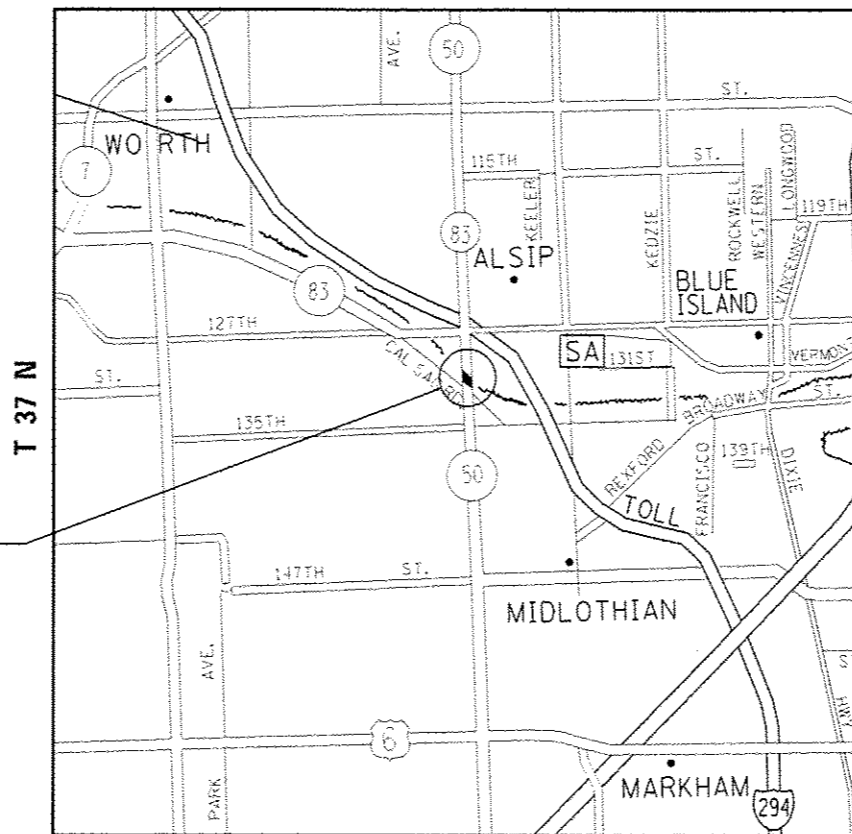
**PROPOSED
HIGHWAY PLANS**

FAP ROUTE 350: IL 50 /83 (CICERO AVE.)
OVER CAL SAG CHANNEL
SECTION: 3068B-BR-2
BRIDGE REPAIRS (STEEL REPAIRS)
COOK COUNTY

PROJECT NHPP-0350(044)

C-91-325-16

R 13 E



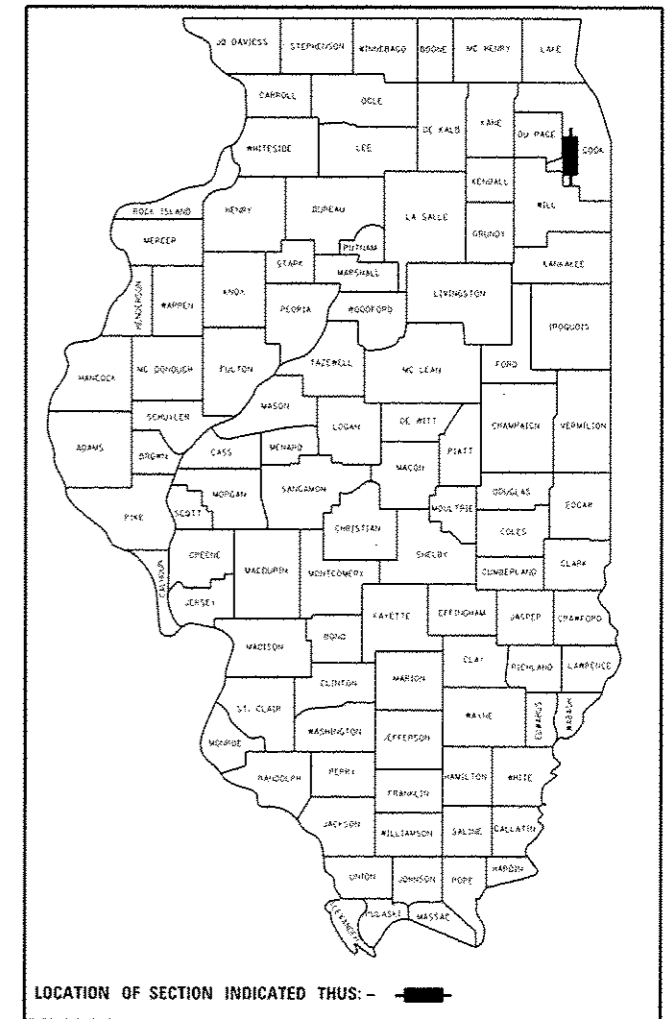
FULL SIZE PLANS HAVE BEEN PREPARED USING STANDARD ENGINEERING SCALES. REDUCED SIZED PLANS WILL NOT CONFORM TO STANDARD SCALES. IN MAKING MEASUREMENTS ON REDUCED PLANS, THE ABOVE SCALES MAY BE USED.

J.U.L.I.E.
JOINT UTILITY LOCATION INFORMATION FOR EXCAVATION
1-800-892-0123
OR 811

PROJECT ENGINEER: J. ALAIN MIDY (847) 221-3056
PROJECT MANAGER: ISSAM RAYYAN (847) 705-4178

CONTRACT NO. 62C26

GROSS LENGTH = 331.6 FT FT. = 0.063 MILE
NET LENGTH = 331.6 FT FT. = 0.063 MILE



LOCATION OF SECTION INDICATED THUS: [black rectangle]

STATE OF ILLINOIS
DEPARTMENT OF TRANSPORTATION

SUBMITTED *April 3 2017*
Anthony J. Douglas
REGIONAL ENGINEER

May 12 2017
Naimeen M. Addis, P.E.
ENGINEER OF DESIGN AND ENVIRONMENT

May 12 2017
Francis J. [Signature]
DIRECTOR OF PROGRAM DEVELOPMENT

PRINTED BY THE AUTHORITY
OF THE STATE OF ILLINOIS

INDEX OF SHEETS

SHEET NO.	DESCRIPTION
1.	TITLE SHEET
2.	INDEX OF SHEETS, STATE STANDARDS, AND GENERAL NOTES
3.	SUMMARY OF QUANTITIES
4-11.	BRIDGE PLANS (SN 016-0421)
12.	DETOUR PLAN
12A-12B.	STAGING DETAIL
13.	TRAFFIC CONTROL AND PROTECTION FOR SIDE ROADS, INTERSECTIONS AND DRIVEWAYS (TC-10)
14.	DETOUR SIGNING FOR CLOSING STATE HIGHWAYS (TC-21)
15.	ARTERIAL ROAD INFORMATION SIGNING (TC-22)

STATE STANDARDS

701427-05	LANE CLOSURE, MULTILANE, INTERMITTANT OR MOVING OPERATIONS \leq 40 MPH
701601-09	URBAN LANE CLOSURE, MULTILANE, 1W, 2W WITH NONTRAVERSABLE MEDIAN
701606-10	URBAN SINGLE LANE CLOSURE, MULTILANE, 2W WITH MOUNTABLE MEDIAN
701701-10	URBAN LANE CLOSURE, MULTILANE, INTERSECTION
701801-06	SIDEWALK, CORNER OR CROSSWALK CLOSURE
701901-06	TRAFFIC CONTROL DEVICES

GENERAL NOTES

- BEFORE STARTING ANY EXCAVATION, THE CONTRACTOR SHALL CALL "J.U.L.I.E." AT (800)892-0123 OR 811 FOR FIELD LOCATIONS OF BURIED ELECTRIC, TELEPHONE AND GAS UTILITIES. (48 HOUR NOTIFICATION IS REQUIRED).
- THE CONTRACTOR SHALL COORDINATE CONSTRUCTION ACTIVITIES WITH UTILITY COMPANIES, AND THE VILLAGE OF CRESTWOOD.
- THE CONTRACTOR WILL NOT BE ALLOWED TO SET UP A YARD OR FIELD OFFICE ON STATE PROPERTY WITHOUT WRITTEN PERMISSION FROM THE DEPARTMENT.
- IT SHALL BE THE CONTRACTOR'S RESPONSIBILITY TO VERIFY ALL DIMENSIONS AND CONDITIONS EXISTING IN THE FIELD PRIOR TO CONSTRUCTION AND ORDERING OF MATERIALS.
- THE CONTRACTOR SHALL CONTACT THE DISTRICT ONE TRAFFIC CONTROL SUPERVISOR AT (847)705-4470 A MINIMUM OF 72 HOURS IN ADVANCE OF BEGINNING WORK.
- THE CONTRACTOR SHALL BE REQUIRED TO PROVIDE ACCESS TO ABUTTING PROPERTY AT ALL TIMES DURING THE CONSTRUCTION OF THIS PROJECT.
- THE CONTRACTOR SHALL BE RESPONSIBLE FOR THE NOTIFICATION OF ALL EMERGENCY SERVICES, SCHOOL DISTRICTS, I.D.O.T.'S COMMUNICATIONS CENTER, SPRINGFIELD TRUCK PERMIT SECTION AND OTHER AGENCIES AFFECTED BY THE CLOSURE. THE CONTRACTOR SHALL ALSO BE RESPONSIBLE FOR POSTING SIGNS THAT WILL INDICATE THE DATES THE CLOSURE WILL BE IN PLACE.
- DO NOT SCALE PLANS FOR CONSTRUCTION DIMENSIONS.
- THE DEPARTMENT HAS DETERMINED THAT IN STREAM WORK IS NOT REQUIRED FOR THE WORK SPECIFIED IN THIS CONTRACT. THE DEPARTMENT HAS NOT OBTAINED A 404 PERMIT. IF THE CONTRACTOR CHOOSES TO USE ACTIVITIES REQUIRING AN USACE 404 PERMIT IT IS THE CONTRACTOR'S RESPONSIBILITY TO SECURE THE PROPER USACE PERMITS.
- THE CONTRACTOR SHALL TAKE THE NECESSARY PRECAUTIONS TO INSURE THAT NO DEBRIS WILL ENDANGER OR INTERFERE WITH ANY ACTIVITIES BENEATH THE BRIDGE ACCORDING TO ARTICLE 107.09 OF THE STANDARD SPECIFICATIONS AND SHALL PREVENT ANY DEBRIS FROM FALLING IN THE RIVER. THIS WORK WILL NOT BE PAID FOR SEPARATELY, BUT SHALL BE INCLUDED IN THE CONTRACT UNIT PRICE FOR THE APPROPRIATE PAY ITEM INVOLVED AND NO ADDITIONAL COMPENSATION WILL BE ALLOWED.
- CONTRACTOR SHALL MAINTAIN PEDESTRIAN ACCESS AT ALL TIMES DURING CONSTRUCTION.

FILE NAME :	USER NAME : pyzanoski	DESIGNED -	REVISED -	STATE OF ILLINOIS DEPARTMENT OF TRANSPORTATION	IL 50 /83 (CICERO AVE.) OVER CAL SAG CHANNEL (SN 016-0421) STATE STANDARDS & GENERAL NOTES	F.A.P. RTE:	SECTION	COUNTY	TOTAL SHEETS	SHEET NO.
Documents\IDOT Offices\District 1\Projects\0132516\Drawings\Design\0132516-shr-plan.dgn	REVISOR	REVISOR	350			3068B-BR-2	COOK	15	2	
Default	FL01 SCALE = 100.0000' / in.	CHECKED -	REVISED -			CONTRACT NO. 62C26		ILLINOIS FED. AID PROJECT		
	PL01 DATE = 5/12/2017	DATE -	REVISED -			SCALE:	SHEET 1 OF 1 SHEETS	STA.	TO STA.	

URBAN

URBAN

SUMMARY OF QUANTITIES			CONSTRUCTION TYPE CODE 0014	
CODE NO	ITEM	UNIT	TOTAL QUANTITIES	80/20 (FED/STATE) 0014
50102400	CONCRETE REMOVAL	CU YD	0.2	0.2
50300255	CONCRETE SUPERSTRUCTURE	CU YD	0.2	0.2
67000400	ENGINEER'S FIELD OFFICE, TYPE A	CAL MO	6	6
67100100	MOBILIZATION	LSUM	1	1
X7010216	TRAFFIC CONTROL AND PROTECTION, (SPECIAL)	LSUM	1	1
X7011015	TRAFFIC CONTROL AND PROTECTION, (EXPRESSWAYS)	LSUM	1	1
X7015005	CHANGEABLE MESSAGE SIGN	CAL DA	40	40
Z0001905	STRUCTURAL STEEL REPAIR	POUND	44580	44580
Z0073510	TEMPORARY TRAFFIC SIGNAL TIMING	EACH	4	4
70102625	TRAFFIC CONTROL AND PROTECTION, STANDARD 701606	L SUM	1	1
70102630	TRAFFIC CONTROL AND PROTECTION, STANDARD 701601	L SUM	1	1
70102635	TRAFFIC CONTROL AND PROTECTION, STANDARD 701701	L SUM	1	1
70102640	TRAFFIC CONTROL AND PROTECTION, STANDARD 701801	L SUM	1	1
70300905	PAVEMENT MARKING TAPE, TYPE IV, 5"	FOOT	606	606
70300908	PAVEMENT MARKING TAPE, TYPE IV, 8"	FOOT	130	130

SUMMARY OF QUANTITIES			CONSTRUCTION TYPE CODE	
CODE NO	ITEM	UNIT	TOTAL QUANTITIES	80/20 (FED/STATE) 0014
70300912	PAVEMENT MARKING TAPE, TYPE IV, 12"	FOOT	502	502
*X4300001	POLYUREA PAVEMENT MARKING, TYPE I - LINE 10"	FOOT	508	508
X0327980	PAVEMENT MARKING REMOVAL - WATER BLASTING	SQ FT	424	424
X7030005	TEMPORARY PAVEMENT MARKING REMOVAL	SQ FT	842	842

16

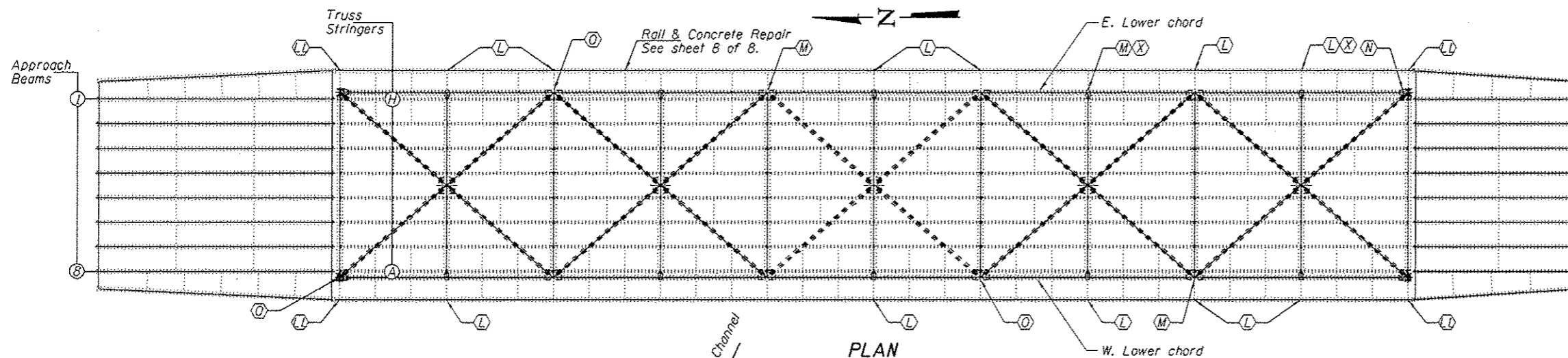
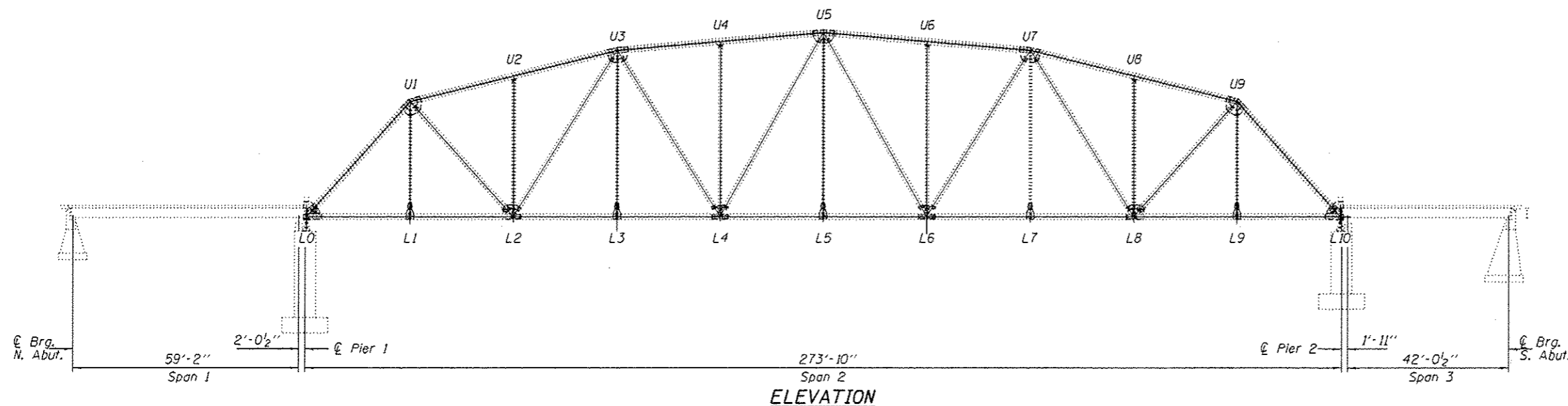
FILE NAME :	USER NAME :	DESIGNED :	REVISED :	STATE OF ILLINOIS DEPARTMENT OF TRANSPORTATION	IL 50 /83 (CICERO AVE.) - S.N. 016-0421 SUMMARY OF QUANTITIES	F.A.P. RTE.:	SECTION	COUNTY	TOTAL SHEETS	SHEET NO.	
dw:\NOR4EB\BID\T\T\DOT Documents\DOT	Office\Desiree N...	6/10/2007	6/10/2007			350	30688-BR-2	COOK	15	3	
PLOT SCALE :	CHECKED :	REVISIONS :	DATE :			CONTRACT NO. 62C26					
PLOT DATE :	DATE :					FED. ROAD DIST. NO. 1 ILLINOIS FED. AID PROJECT					

Rev

SCOPE OF WORK

East Truss East Channel		East Truss West Channel	
	Repair		Repair
U1L2	A	U1L2	A
L2U3	A & C	L2U3	A
U3L4	A & C	L6U7	B
L4U5	A	L8U9	B
U5L6	A & C		
L6U7	B		
U7L8	A & C		
L8U9	A		
L2-L8	E	L2-L8	E
L2-L8	F	L2-L8	F
L2-L8	G	L2-L8	G

West Truss East Channel		West Truss West Channel	
	Repair		Repair
U5L6	A	U1L2	A
U7L8	A	L2U3	B & D
		U3L4	B
		L4U5	B & C
		U5L6	B
		U7L8	B
		L8U9	A
L3-L7	E	L3-L7	E
L3-L7	F	L3-L7	F
L3-L5	G	L3-L5	G
L6-L7	G	L6-L7	G



- (L) - Exterior web repair
- (L) - Modified Exterior web repair
- (M) - Interior web repair
- (N) - Lower flange replacement
- (O) - Lower flange repair
- (X) - Previous repair

FLOORBEAM REPAIR H

FB 1E thru 9E
FB 2W thru 8W

STRINGER REPAIR I

Str H, FB 2(NS)
Str A, FB 3(NS)
Str A, FB 6(NS)
Str H, FB 6(NS)
Str H, FB 7(SS)
Str H, FB 8(SS)
Str A, FB 2(NS)
Str A, FB 2(SS)
Str A, FB 8(NS)

APPROACH BEAM REPAIR J

Span 1, N. Abut, Beam 1
Span 1, N. Abut, East Fascia
Span 1, N. Abut, Beam 1
Span 3, S. Abut, Beam 2
Span 3, S. Abut, Beam 3
Span 3, S. Abut, Beam 8

APPROACH BEAM REPAIR K

Span 1, N. Abut, Beam 8
Span 3, S. Abut, East Fascia

NS denotes North side
SS denotes South side

GENERAL NOTES

All structural steel shall conform to AASHTO Classification M-270 Gr. 36, unless otherwise noted.

Fasteners shall be high strength bolts. Bolts 7/8" φ, open holes 15/16" φ, unless otherwise noted.

Plan dimensions and details relative to existing plans are subject to nominal construction variations. The Contractor shall field verify existing dimensions and details affecting new construction and make necessary approved adjustments prior to construction or ordering of materials. Such variations shall not be cause for additional compensation for a change in scope of the work, however, the Contractor will be paid for the quantity actually furnished at the unit price bid for the work.

Cost of removal and re-installation of all members necessary to complete the work as detailed on the plans and as specified in the Special Provisions shall be included with Structural Steel Repair.

The existing structural steel coating contains lead. The Contractor shall take appropriate precautions to deal with the presence of lead on this project.

Existing structural steel that will be in contact with new structural steel shall be cleaned and painted prior to erection as required by the special provision "Cleaning and Painting Contact Surface Areas of Existing Steel Structures".

All structural steel shall be shop painted with the inorganic zinc rich primer per AASHTO M300, Type 1. Cost included with Structural Steel Repair.

Existing reinforcement bars extending into the removal area shall be cleaned, straightened and incorporated into the new construction. Any reinforcement bars that are damaged during concrete removal shall be replaced with an approved bar splicer or anchorage system. Cost included with Concrete Removal.

Reinforcement bars designated (E) shall be epoxy coated.

Cleaning & painting of all structural steel repairs shall meet the requirements for Primary Connections as specified in the special provision for "Cleaning and Painting Contact Surface Areas of Existing Steel Structures", unless noted otherwise.

TOTAL BILL OF MATERIAL

Item	Unit	Quantity
Structural Steel Repair	Lbs.	44580
Concrete Removal	Cu. Yd.	0.2
Concrete Superstructure	Cu. Yd.	0.2



EXPIRES 11-30-2018

DESIGNED: *[Signature]*
CHECKED: *[Signature]*
DRAWN: *[Signature]*
CHECKED: *[Signature]*

PASSED: *[Signature]*
ENGINEER OF BRIDGES AND STRUCTURES

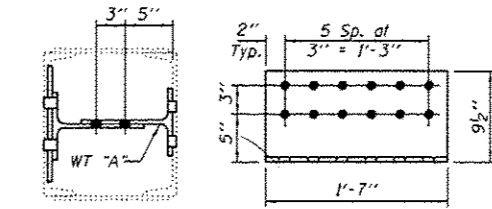
DATE: MAY 12, 2017
REVISED:
REVISED:

STATE OF ILLINOIS
DEPARTMENT OF TRANSPORTATION

PLAN AND ELEVATION
FAP 350 (IL 5083-CICERO AVE) OVER THE CAL SAG CHANNEL
SN 016-0421
SHEET NO. 1 OF 8 SHEETS

F.A.P. RTE. 350	SECTION 30588-BR-2	COUNTY COOK	TOTAL SHEETS 15	SHEET NO. 4
CONTRACT NO. 62C26 ILLINOIS FED. AID PROJECT				

Note:
 All lacing bars removed to complete the work shall have their contact surface areas cleaned per special provision "Cleaning and Painting Contact Surface Areas".
 Replace all removed rivets with HS bolts.



SECTION D-D

WT
 WT12x27.5
 (2 Required)
 Shop drill holes in stem of WT "A"
 Field drill all other holes

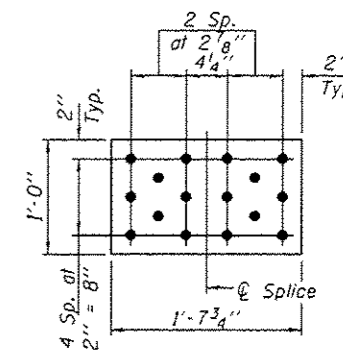
SECTION A-A



SECTION B-B



SECTION C-C



SPLICE PLATE C
 P 1/2" x 1'-0" x 1'-7 3/4"
 (15 Required)

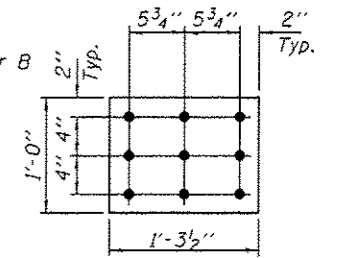
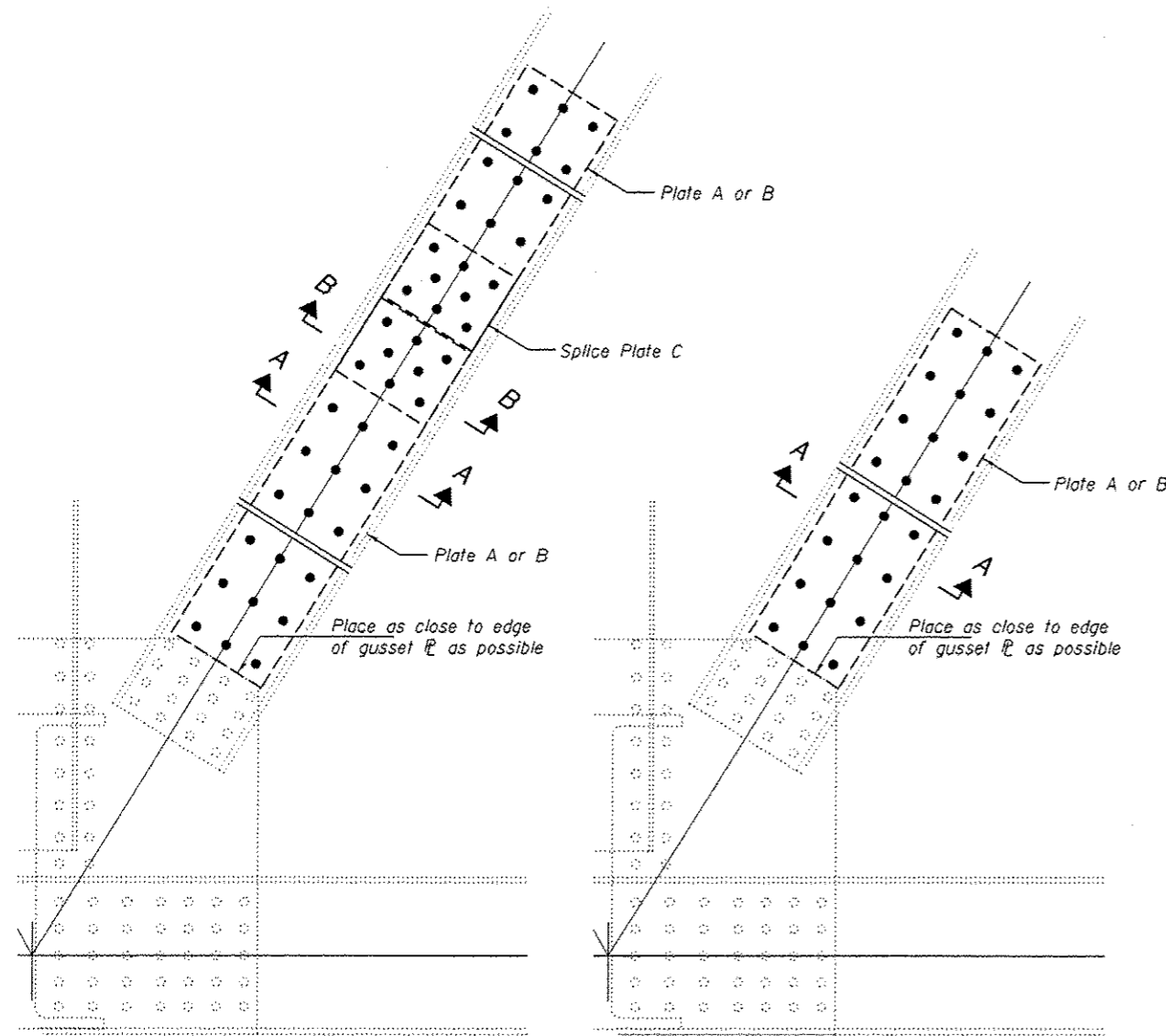
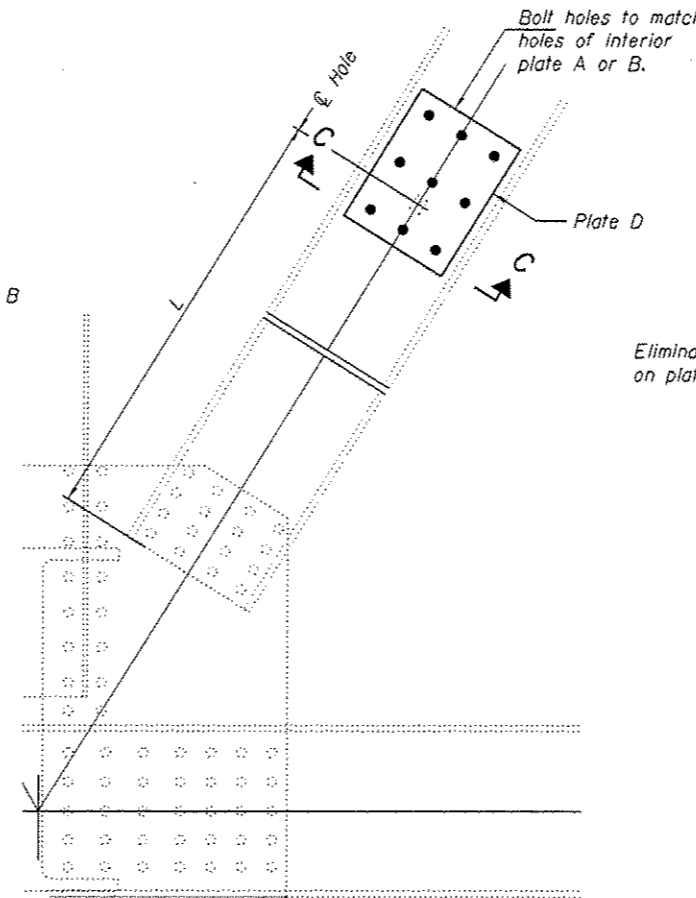


PLATE D
 P 1/2" x 1'-0" x 1'-3 1/2"
 (7 Required)

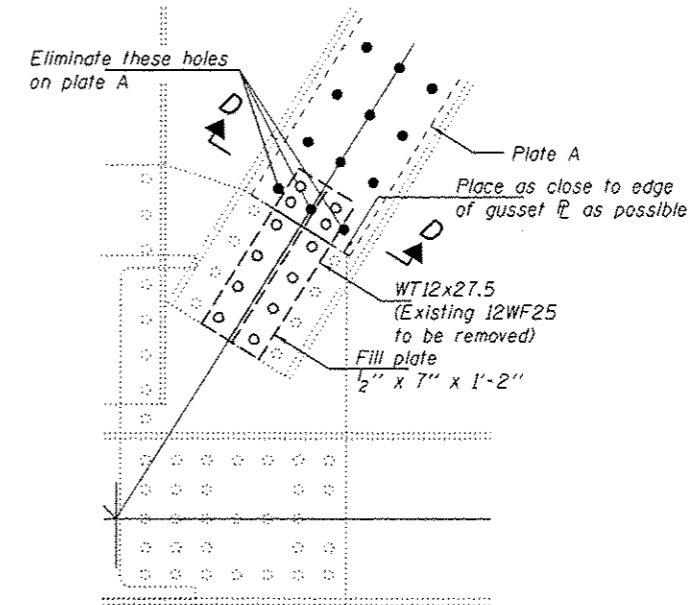


REPAIR A

REPAIR B



REPAIR C



REPAIR D

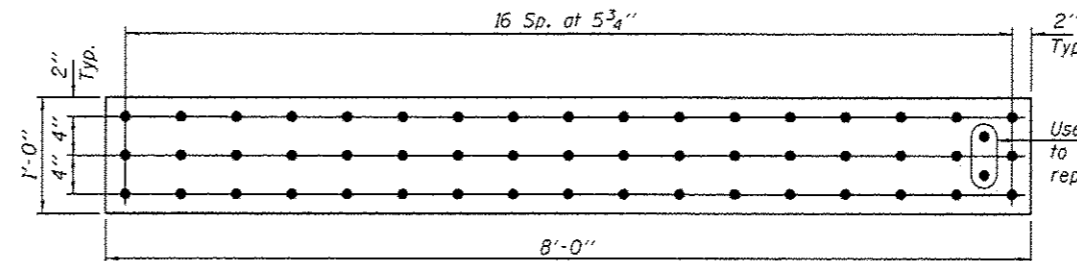


PLATE A
 P 1/2" x 1'-0" x 8'-0"
 (26 Required)

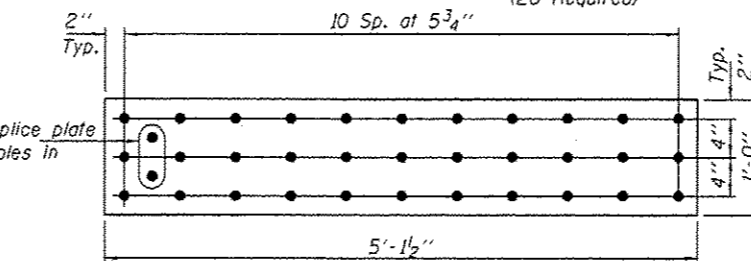
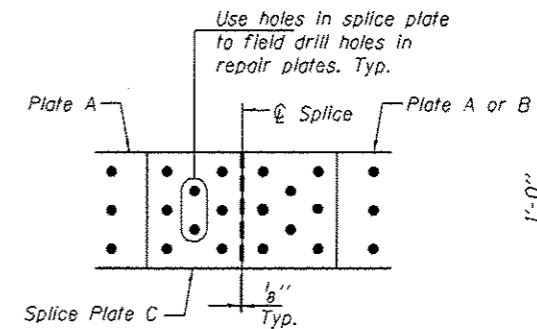


PLATE B
 P 1/2" x 1'-0" x 5'-1 1/2"
 (10 Required)



DETAIL AT SPLICE

East Truss East Channel				
	Repair	Spliced Plates	Single Plates	L
U1L2	A	A+A		
L2U3	A & C	A+A	D (2)	3' & 8'
U3L4	A & C	A+B	D	7'-6"
L4U5	A	A+B		
U5L6	A & C	A+A	D (2)	8'-9" & 12'
L6U7	B		A	
U7L8	A & C	A+B	D	4'-6"
L8U9	A	A+A + A+B		

East Truss West Channel				
	Repair	Spliced Plates	Single Plates	L
U1L2	A	A+A		
L2U3	A	A+A		
L6U7	B		B	
L8U9	B		B	

West Truss East Channel				
	Repair	Spliced Plates	Single Plates	L
U5L6	A	A+B		
U7L8	A	A+B		

West Truss West Channel				
	Repair	Spliced Plates	Single Plates	L
U1L2	A	A+B		
L2U3	B & D		A	
U3L4	B		A	
L4U5	B & C		A & D	6'-3"
U5L6	B		A	
U7L8	B		A	
L8U9	A	A+B		

DESIGNED JSB
 CHECKED SMR
 DRAWN baliva
 CHECKED JSB SMR

PASSED
 ENGINEER OF BRIDGES AND STRUCTURES

DATE MAY 12, 2017
 REVISED
 REVISED

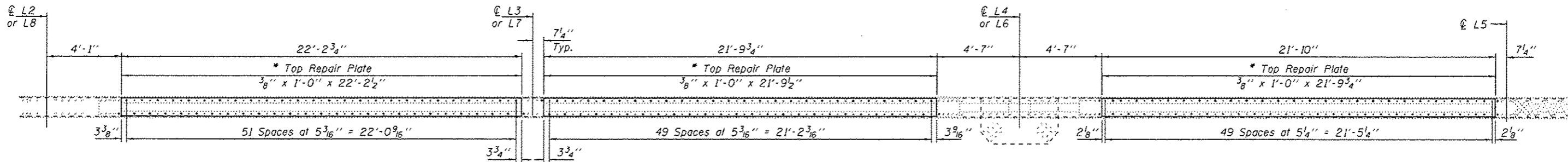
STATE OF ILLINOIS
 DEPARTMENT OF TRANSPORTATION

UPPER CHORD STRENGTHENING DETAILS
 SN 016-0421

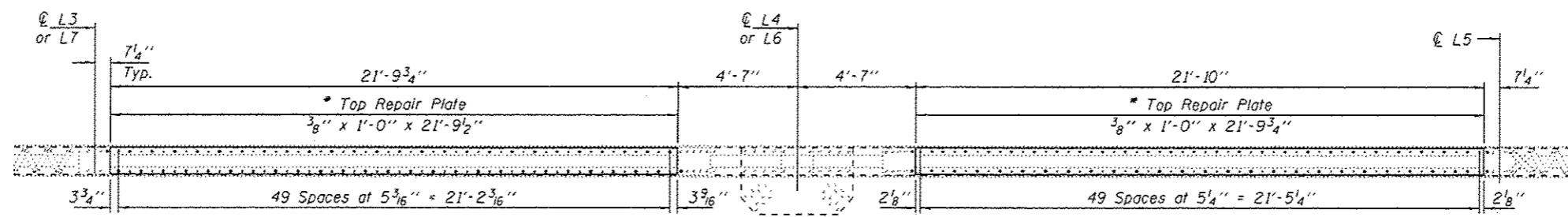
SHEET NO. 2 OF 8 SHEETS

F.A.P. RTE.	SECTION	COUNTY	TOTAL SHEETS	SHEET NO.
350	30688-08-2	COOK	15	5

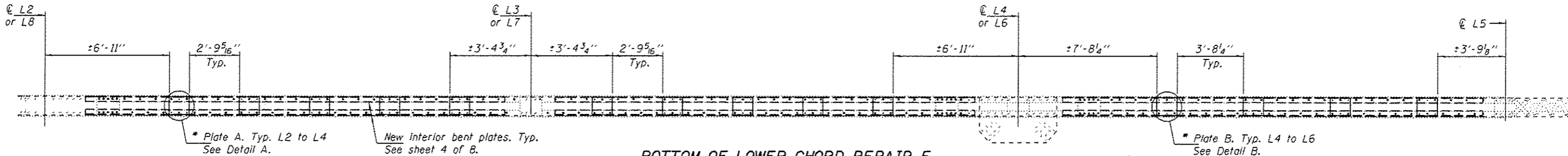
CONTRACT NO. 62C26
 ILLINOIS FED. AID PROJECT



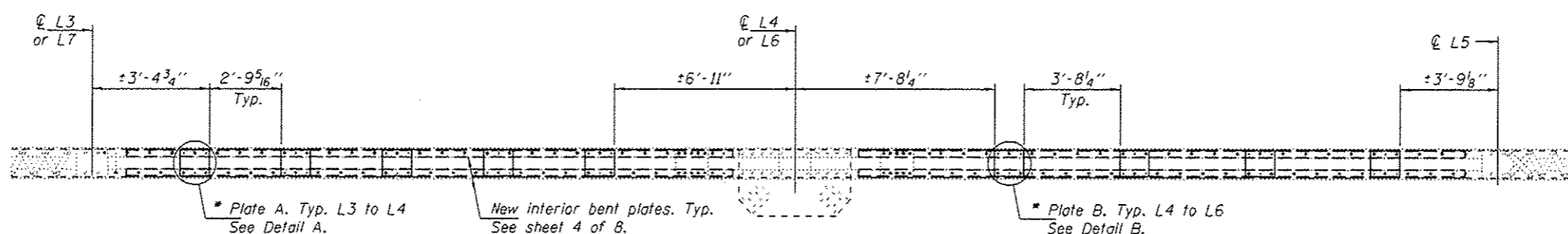
TOP OF LOWER CHORD REPAIR E
(East truss)



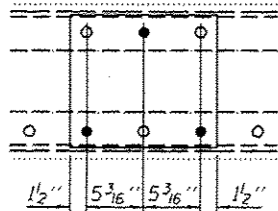
TOP OF LOWER CHORD REPAIR E
(West truss)



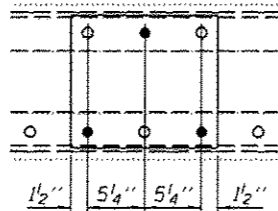
BOTTOM OF LOWER CHORD REPAIR F
(East truss)



BOTTOM OF LOWER CHORD REPAIR F
(West truss)



DETAIL A



DETAIL B

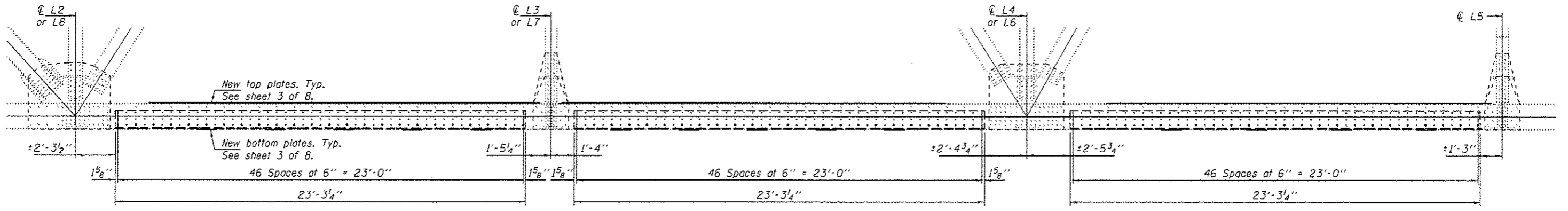
* Plate A. 3/8" x 1'-0" x 1'-1 3/8"
(20 Required, East Truss)
(10 Required, West Truss)

* Plate B. 3/8" x 1'-0" x 1'-1 1/2"
(8 Required, East Truss)
(8 Required, West Truss)

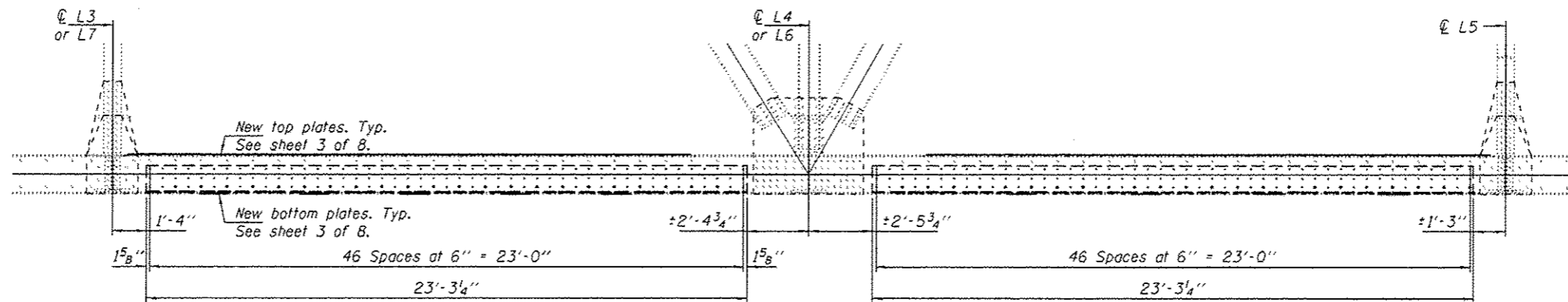
Remove all lacing in bays where repair plates are to be installed.
Lacing holes to be used as templates for drilling holes in repair plates.
Top & bottom lacing shall not be removed at the same time.
All open holes to be filled with bolts.

* Top repair plates and lower plates A & B shall be cleaned and painted to meet the requirements of Secondary Connections as specified in the special provision for "Cleaning and Painting Contact Surface Areas of Existing Steel Structures".

DESIGNED JSB	DATE MAY 12, 2017	STATE OF ILLINOIS DEPARTMENT OF TRANSPORTATION	LOWER CHORD STRENGTHENING DETAILS SN 016-0421	F.A.P. RTE. 350	SECTION 30680-BR-2	COUNTY COOK	TOTAL SHEETS 15	SHEET NO. 6
CHECKED SMR	REVISIONS			SHEET NO. 3 OF 8 SHEETS		CONTRACT NO. 62C26		
DRAWN baliva	ENGINEER OF BRIDGES AND STRUCTURES			ILLINOIS FED. AID PROJECT				

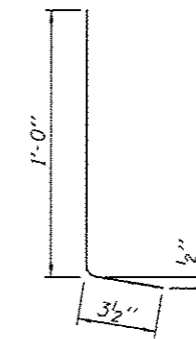
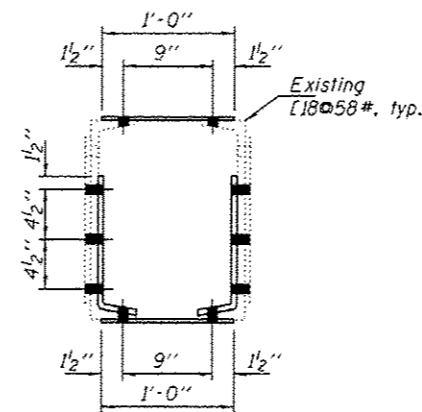


LOWER CHORD REPAIR G
INTERIOR BENT PLATES
 (East truss)



LOWER CHORD REPAIR G
INTERIOR BENT PLATES
 (West truss)

Note:
 Interior bent plates not required
 from L5 to L6 on the West truss.



INTERIOR BENT PLATE
 L 1/2" x 1'-3 1/2" x 23'-3 1/4"
 (12 Required, East Truss)
 (8 Required, West Truss)

SECTION AT LOWER CHORD REPAIR

DESIGNED JSB
 CHECKED SMR
 DRAWN baliva
 CHECKED JSB SMR

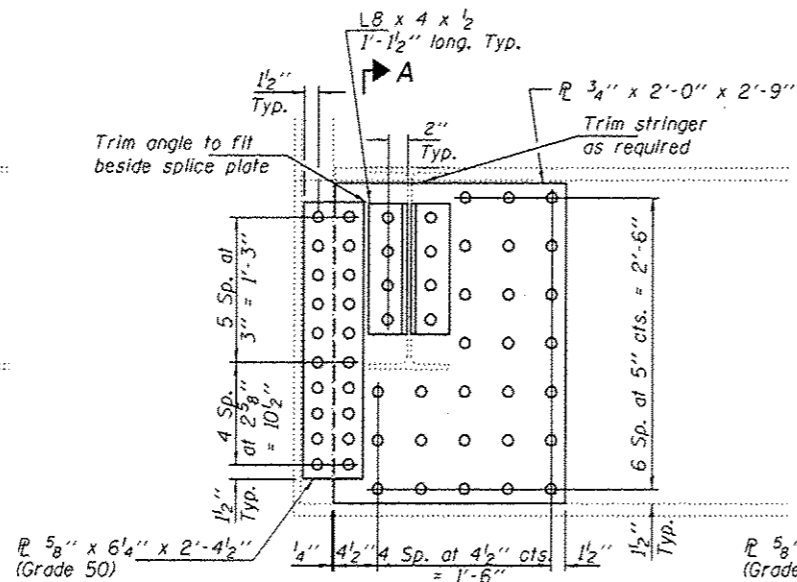
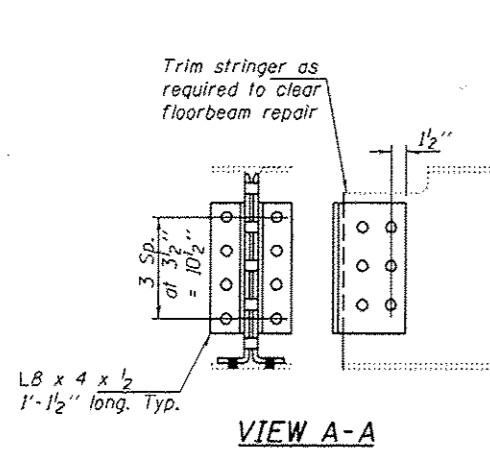
DATE MAY 12, 2017
 PASSED
 ENGINEER OF BRIDGES AND STRUCTURES
 REVISED
 REVISED

STATE OF ILLINOIS
 DEPARTMENT OF TRANSPORTATION

UPPER CHORD STRENGTHENING DETAILS
 SN 016-0421

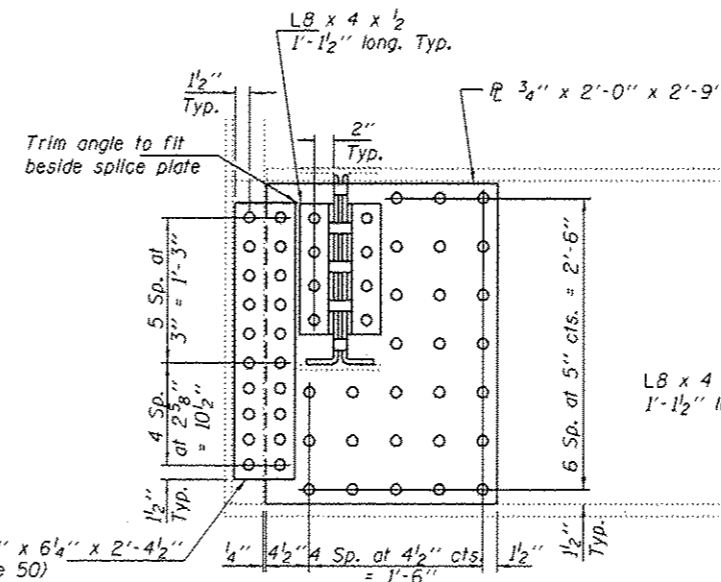
SHEET NO. 4 OF 8 SHEETS

F.A.P. RTE.	SECTION	COUNTY	TOTAL SHEETS	SHEET NO.
350	J0688-BR-2	COOK	15	7
CONTRACT NO. 62C26			ILLINOIS FED. AID PROJECT	



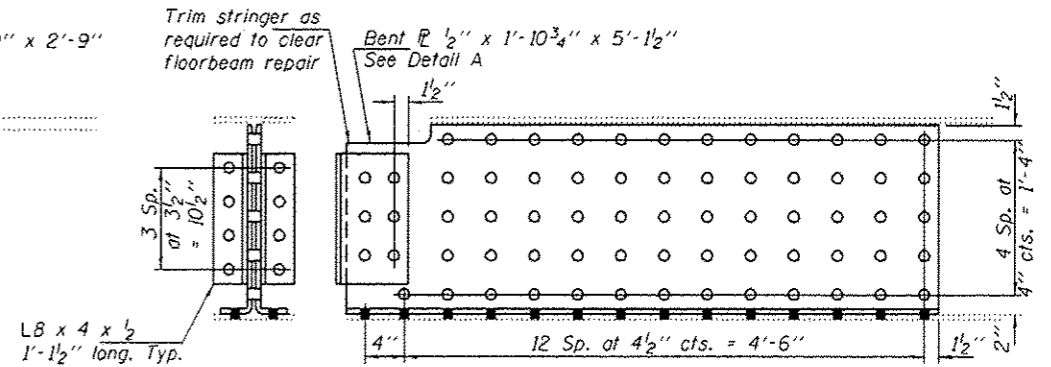
FLOORBEAM REPAIR H

- FB
1E (N & S)
2E (S)
3E (N & S)
3W (S)
4E (N & S)
4W (N & S)
5E (N & S)
5W (N & S)
6E (S)
6W (S)
7E (N)
7W (N & S)
8E (N)
8W (S)
9E (N & S)



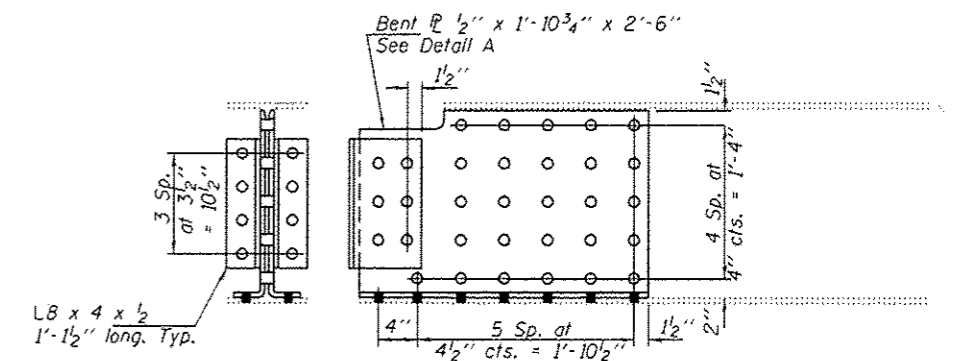
FLOORBEAM REPAIR H

- FB
2E (N)
2W (N & S)
3W (N)
6E (N)
6W (N)
7E (S)
8E (S)
8W (N)



STRINGER REPAIR I

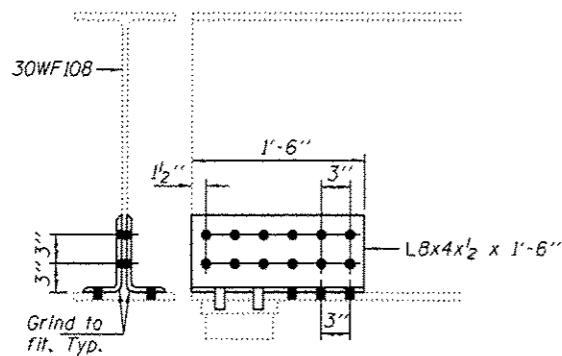
- Str H, FB 2(NS)
Str A, FB 6(NS)
Str H, FB 7(SS)



STRINGER REPAIR I

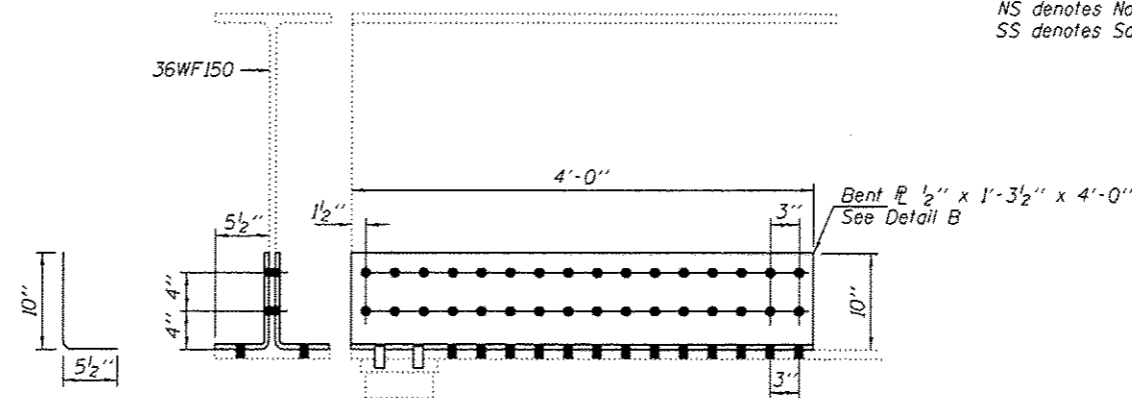
- Str H, FB 6(NS)
Str H, FB 8(SS)
Str A, FB 2(NS)
Str A, FB 3(NS)
Str A, FB 2(SS)
Str A, FB 8(NS)

NS denotes North side
SS denotes South side



APPROACH BEAM REPAIR J

- Span 1, N. Abut, Beam 1
Span 1, N. Abut, East Fascia
Span 3, S. Abut, Beam 2
Span 3, S. Abut, Beam 3
Span 3, S. Abut, Beam 8



APPROACH BEAM REPAIR K

- Span 1, N. Abut, Beam 8
Span 3, S. Abut, East Fascia

DETAIL A

DETAIL B

Work shall not be performed on both ends of the same floorbeam at the same time.
Likewise, work shall not be performed on adjacent floorbeams at the same time.
Additionally, both ends of the same stringer shall not be disconnected at the same time.

DESIGNED JSB
CHECKED SMR
DRAWN baliva
CHECKED JSB SMR

PASSED

Carl Perry
ENGINEER OF BRIDGES AND STRUCTURES

DATE MAY 12, 2017

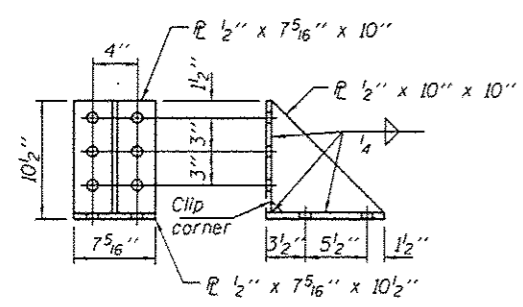
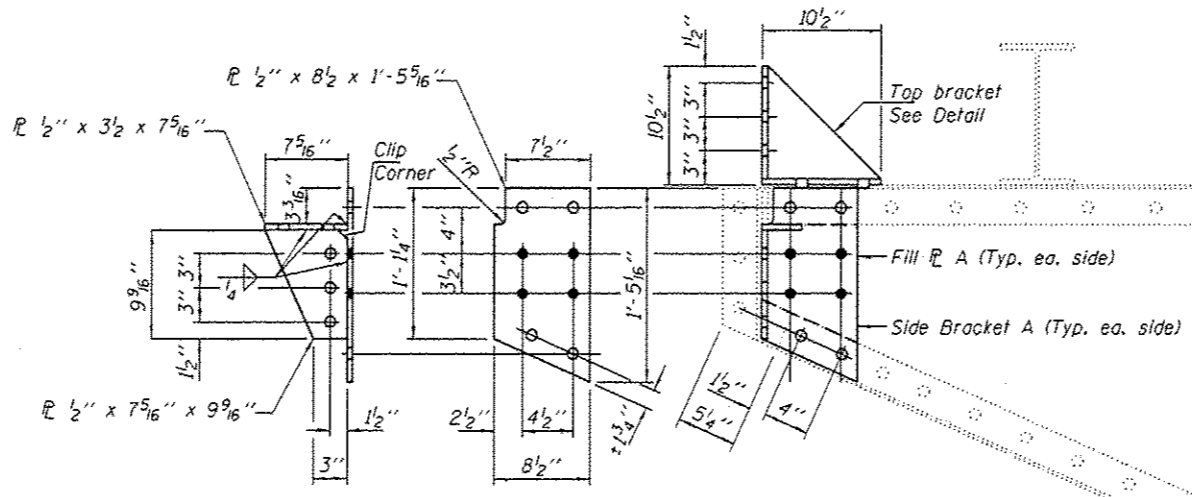
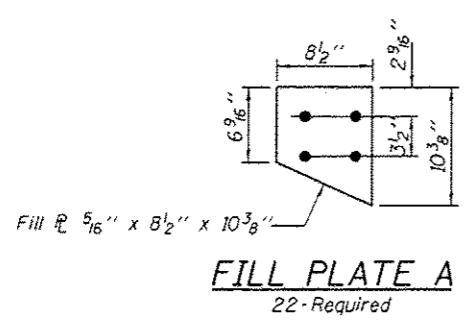
REVISED
REVISED

STATE OF ILLINOIS
DEPARTMENT OF TRANSPORTATION

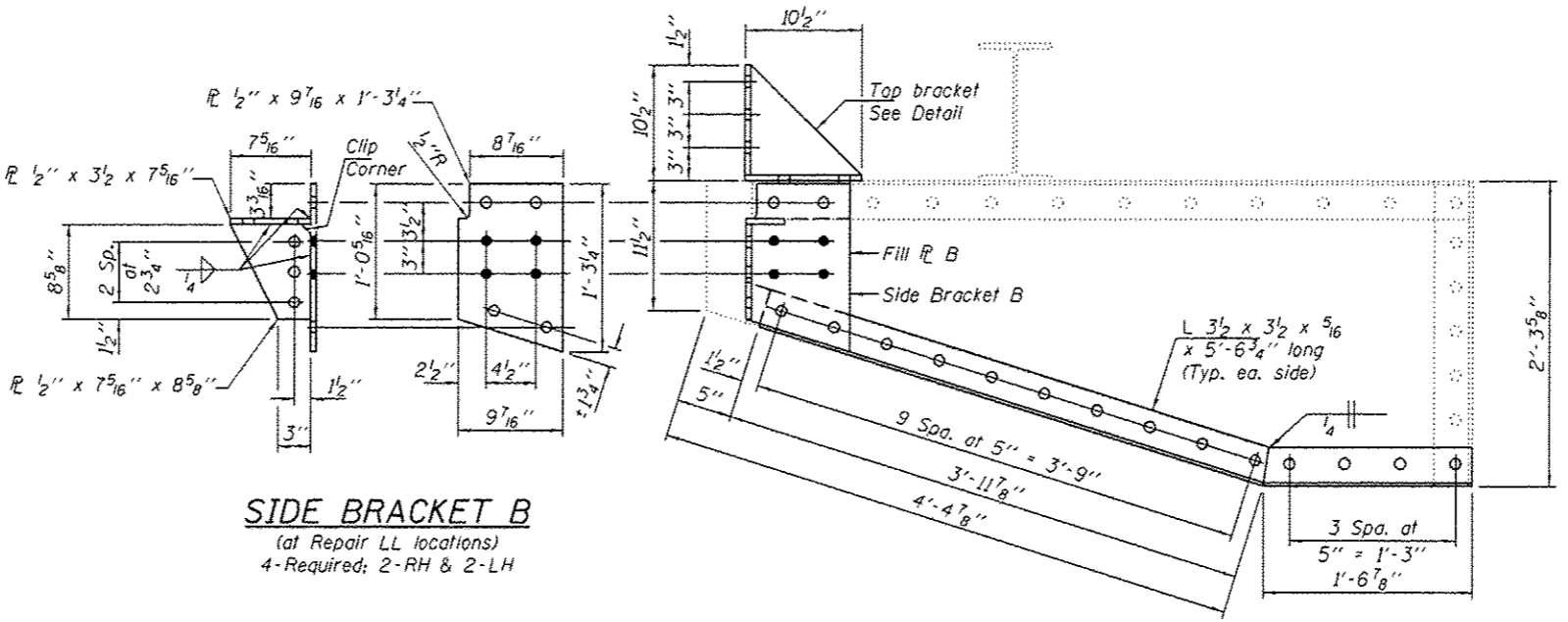
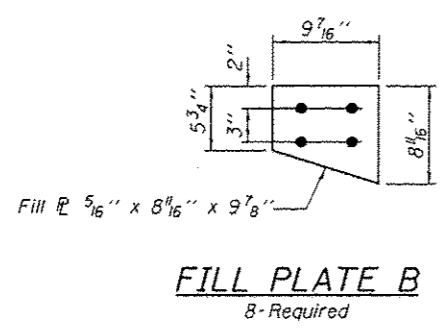
FLOORBEAM AND STRINGER STRENGTHENING DETAILS
SN 016-0421

SHEET NO. 5 OF 8 SHEETS

F.A.P. RTE.	SECTION	COUNTY	TOTAL SHEETS	SHEET NO.
350	30688-BR-2	COOK	15	8
CONTRACT NO. 62C26			ILLINOIS FED. AID PROJECT	



REPAIR L
(Repair LL similar but Side Bracket and Fill PL on one side only.)



REPAIR N AT L10

DESIGNED JSB
CHECKED SMR
DRAWN baliva
CHECKED JSB SMR

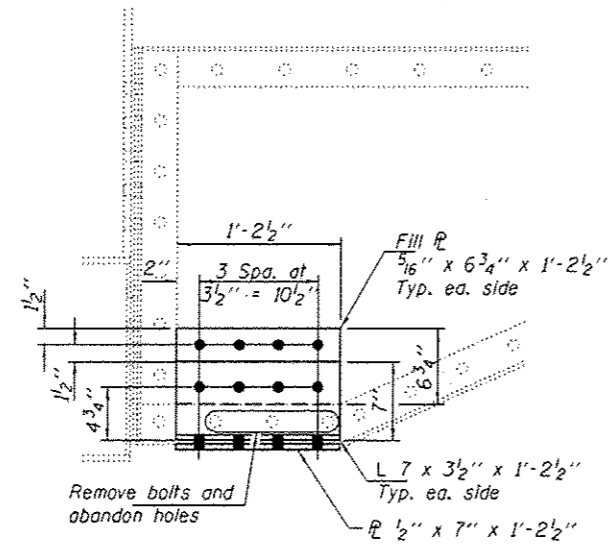
PASSED
DATE MAY 12, 2017
ENGINEER OF BRIDGES AND STRUCTURES

REVISIONS
REVISOR
REVISION

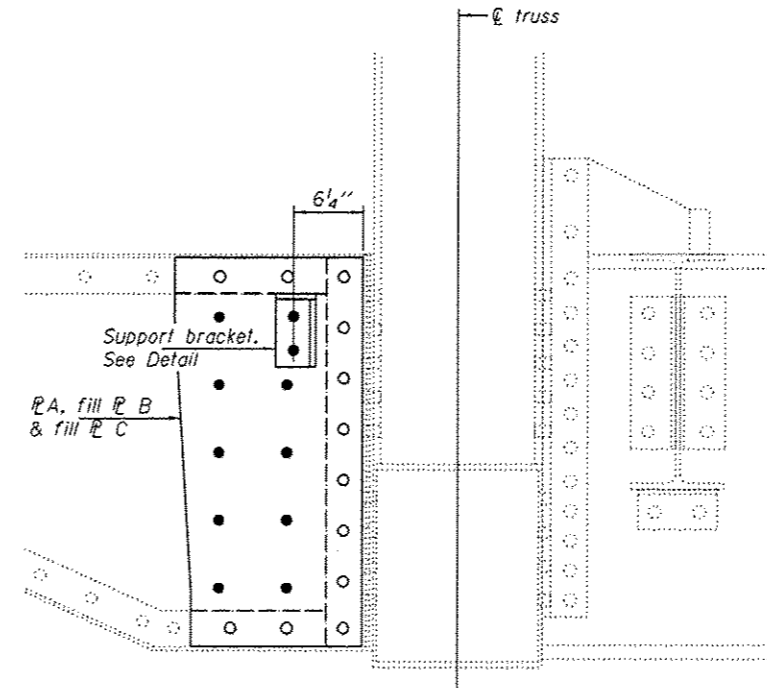
STATE OF ILLINOIS
DEPARTMENT OF TRANSPORTATION

BRACKET REPAIR DETAILS
SN 016-0421
SHEET NO. 6 OF 8 SHEETS

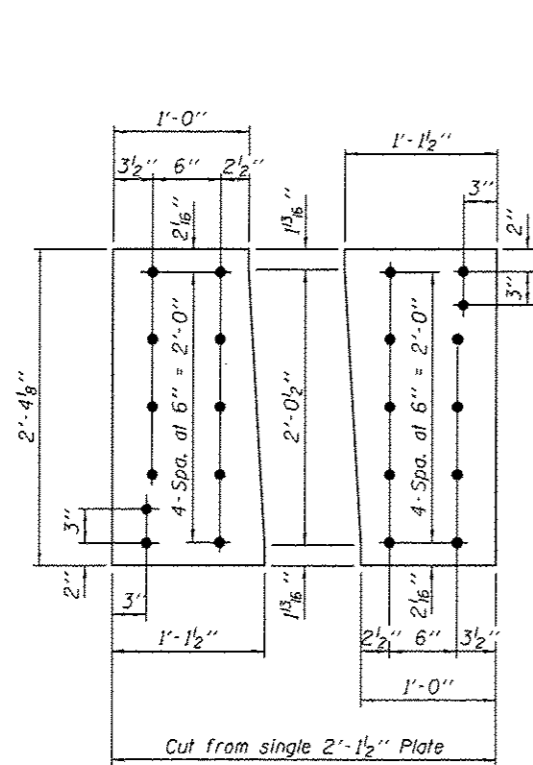
F.A.P. RTE.	SECTION	COUNTY	TOTAL SHEETS	SHEET NO.
350	30688-BR-2	COOK	15	9
CONTRACT NO. 62C26			ILLINOIS FED. AID PROJECT	



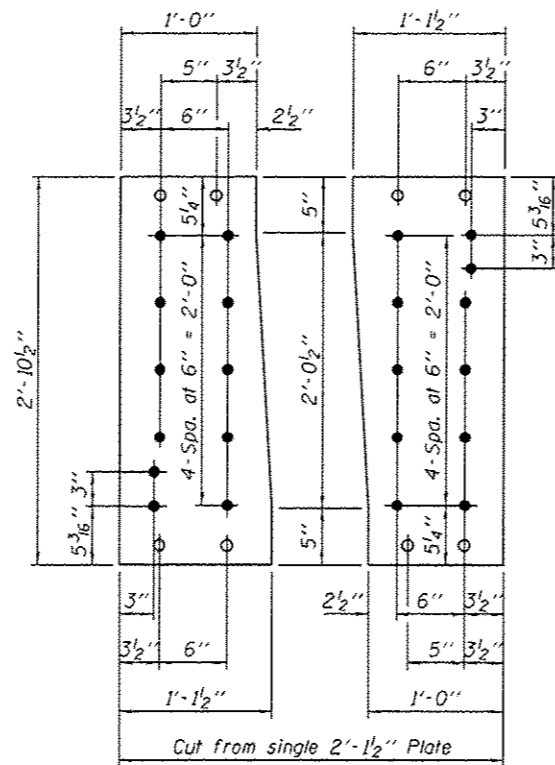
REPAIR O
3-Locations



REPAIR M
3-Locations



FILL PLATE C
5/16" Plate



FILL PLATE B
5/16" Plate

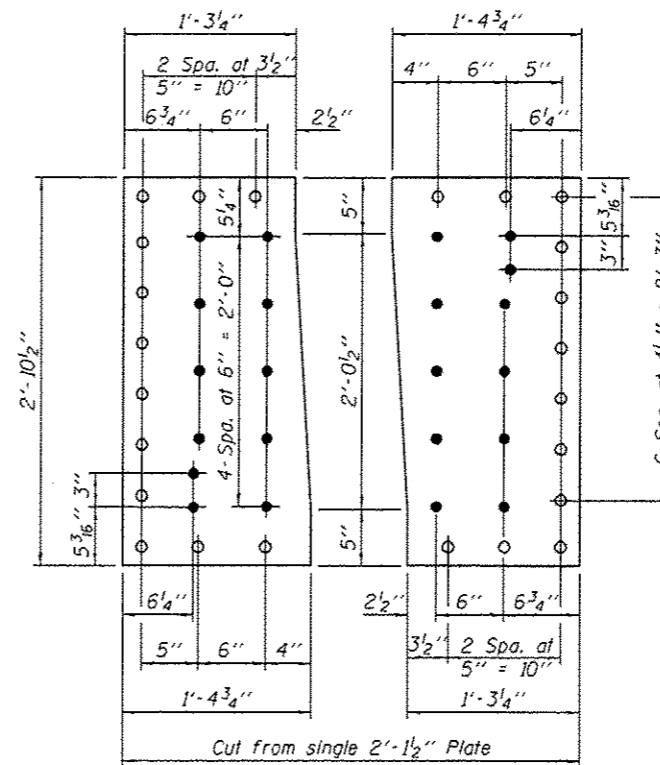
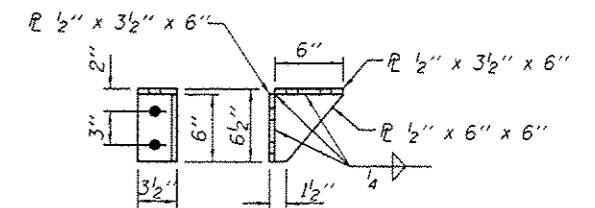


PLATE A
1/2" Plate



SUPPORT BRACKET
6-Required
3-RH, 3-LH

DESIGNED JSB
CHECKED SMR
DRAWN baliva
CHECKED JSB SMR

PASSED

J. Carl Papp
ENGINEER OF BRIDGES AND STRUCTURES

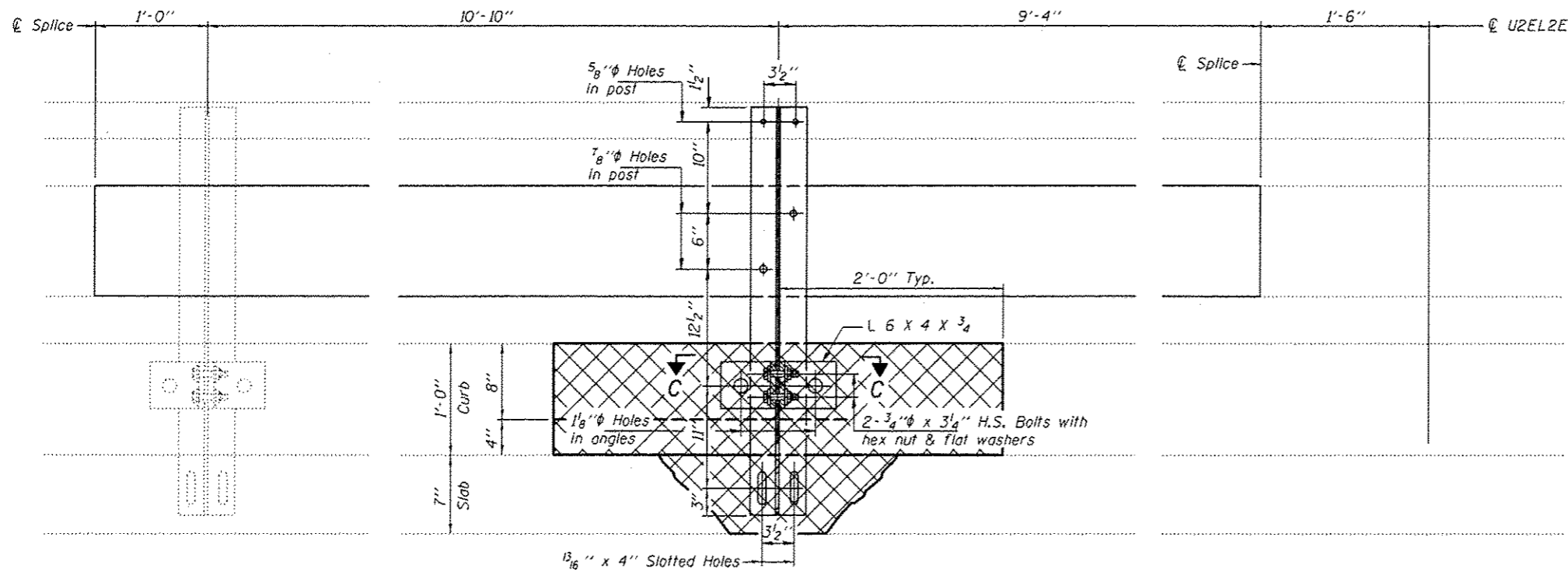
DATE MAY 12, 2017
REVISED
REVISED

STATE OF ILLINOIS
DEPARTMENT OF TRANSPORTATION

BRACKET REPAIR DETAILS
SN 016-0421

SHEET NO. 7 OF 8 SHEETS

F.A.P. RTE.	SECTION	COUNTY	TOTAL SHEETS	SHEET NO.
350	30688-BR-2	COOK	15	10
CONTRACT NO. 62C26			ILLINOIS FED. AID PROJECT	



SECTION B-B

Crosshatched areas indicate Concrete Removal and Concrete Superstructures.

Notes:

All loose concrete in the removal area to be chipped away to sound concrete. Concrete attached to reinforcing steel but not to the concrete of the beam shall also be removed.

Existing reinforcement extending into the removal area shall be cleaned, straightened, and incorporated into the new construction. Any reinforcement bars that are damaged during concrete removal shall be replaced with an approved bar splicer or anchorage system. Cost shall be included with Concrete Superstructure.

All steel rail elements shall be galvanized according to Article 509.05 of the Standard Specifications.

Reinforcement bars designated (E) shall be epoxy coated.

Cost of labor and steel rail elements shall be included with Structural Steel Repair.

* Threaded areas shall be plugged or blocked off during repair of beam.

2-1/2" φ x 6" Round Head Bolts with locknut & flat washer
5/8" φ Holes in hollow structural section may be drilled in the field.

2-3/4" φ x 6" Round Head Bolts with locknut & flat washer
7/8" φ Holes in hollow structural section may be drilled in the field.

2-1" φ x 3 3/4" H.S. Bolts with flat washer
1 3/16" x 4" Slotted Hole in post

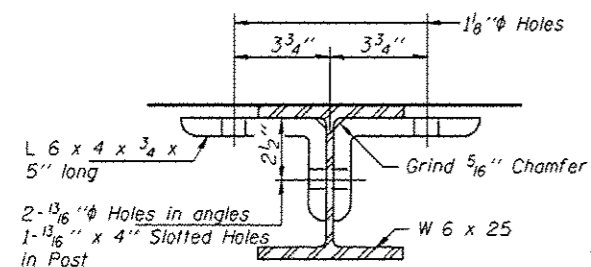
2-5/8" φ x 1 3/4" Cap Screws with flat washer

SECTION AT RAIL POST

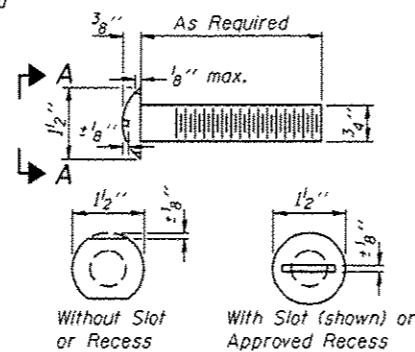
SPLICE DIMENSIONS

T	D	A	B	C	E
≤ 4"	2 1/2"	1'-8"	2"	4"	2 1/2"
> 4" ≤ 6 1/2"	3 3/4"	2'-0"	2 1/2"	5 1/2"	3 1/2"
> 6 1/2" ≤ 9"	5"	2'-4"	3 1/2"	6 1/2"	9"
> 9" ≤ 13"	7"	2'-10"	4 1/2"	8 1/2"	11"
Rail Splice	1/4"	1'-8"	2"	4"	

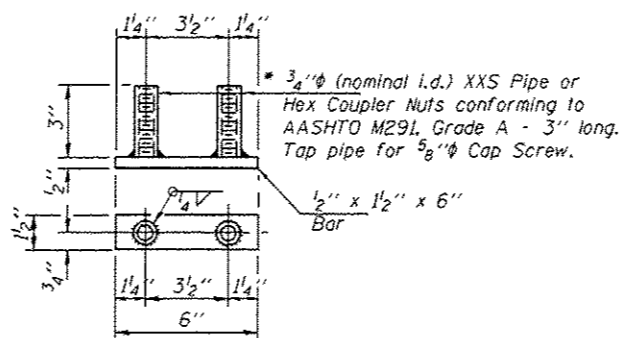
T = Total movement at expansion joint as shown on the design plans.



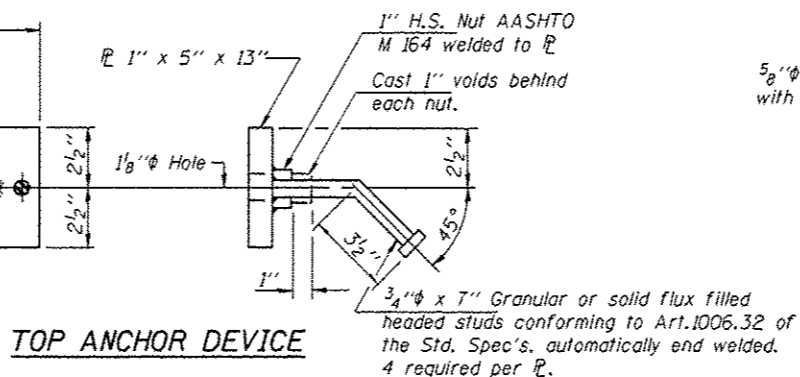
SECTION C-C



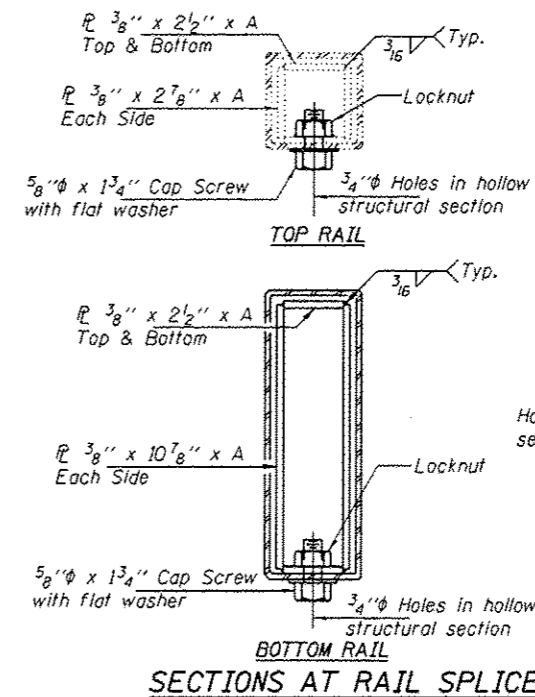
VIEW A-A ROUND HEAD BOLT



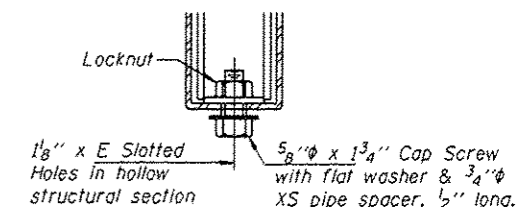
BOTTOM ANCHOR DEVICE



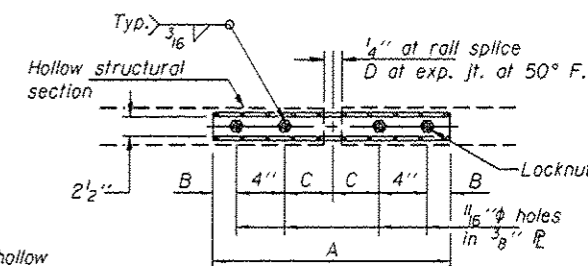
TOP ANCHOR DEVICE



SECTIONS AT RAIL SPLICE



RAIL SPLICE CONNECTION AT EXPANSION JT.



PLAN-BOTT. SPLICE AT TYPICAL

BILL OF MATERIAL

Item	Unit	Quantity
Concrete Removal	Cu. Yd.	0.2
Concrete Superstructure	Cu. Yd.	0.2

DESIGNED JSB
CHECKED SMR
DRAWN baliva
CHECKED JSB SMR

PASSED

ENGINEER OF BRIDGES AND STRUCTURES

DATE MAY 12, 2017

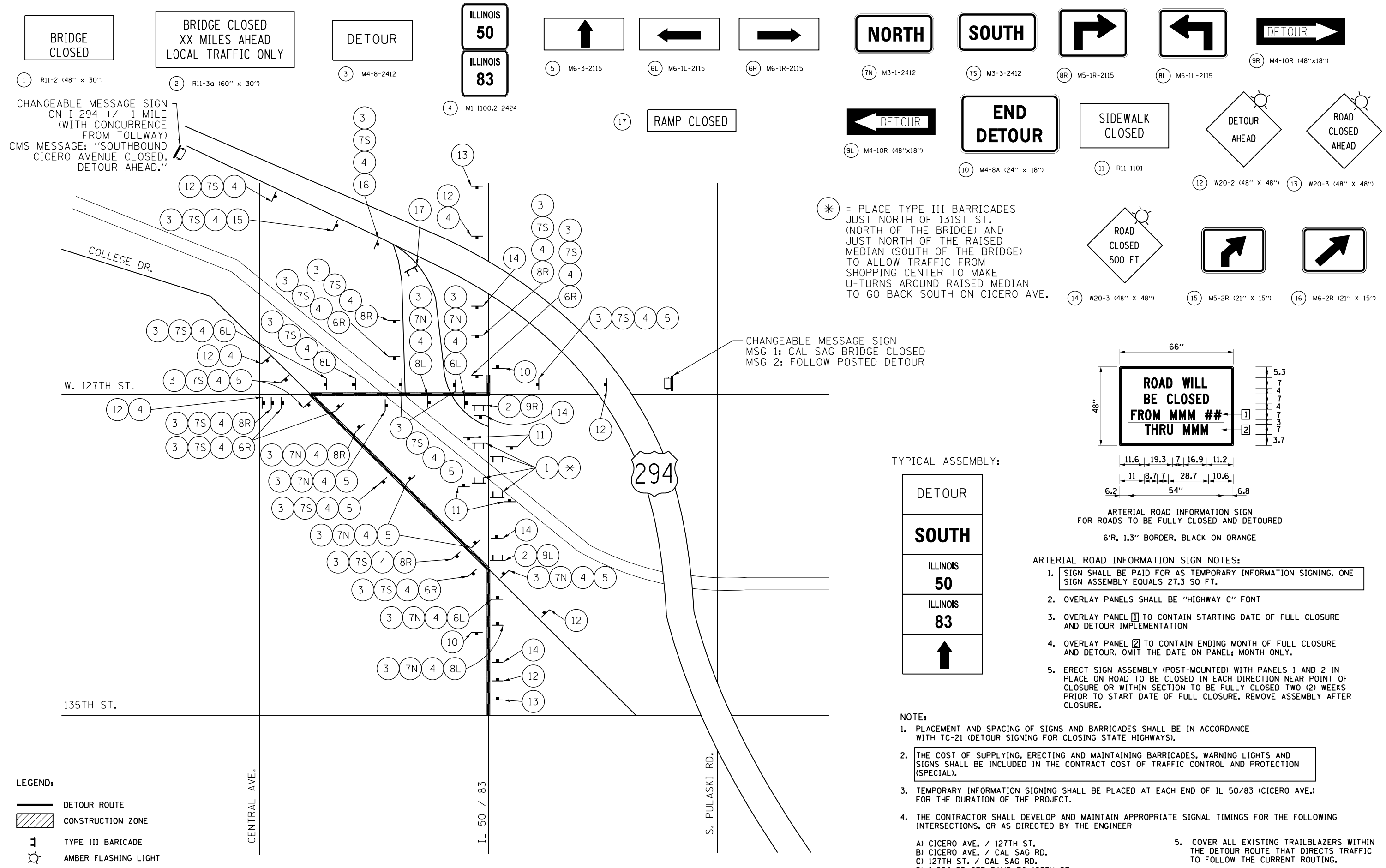
REVISED
REVISED

STATE OF ILLINOIS
DEPARTMENT OF TRANSPORTATION

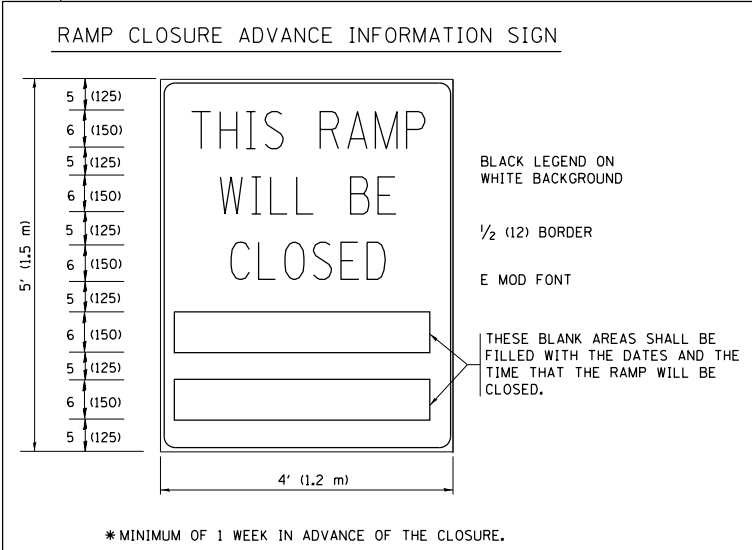
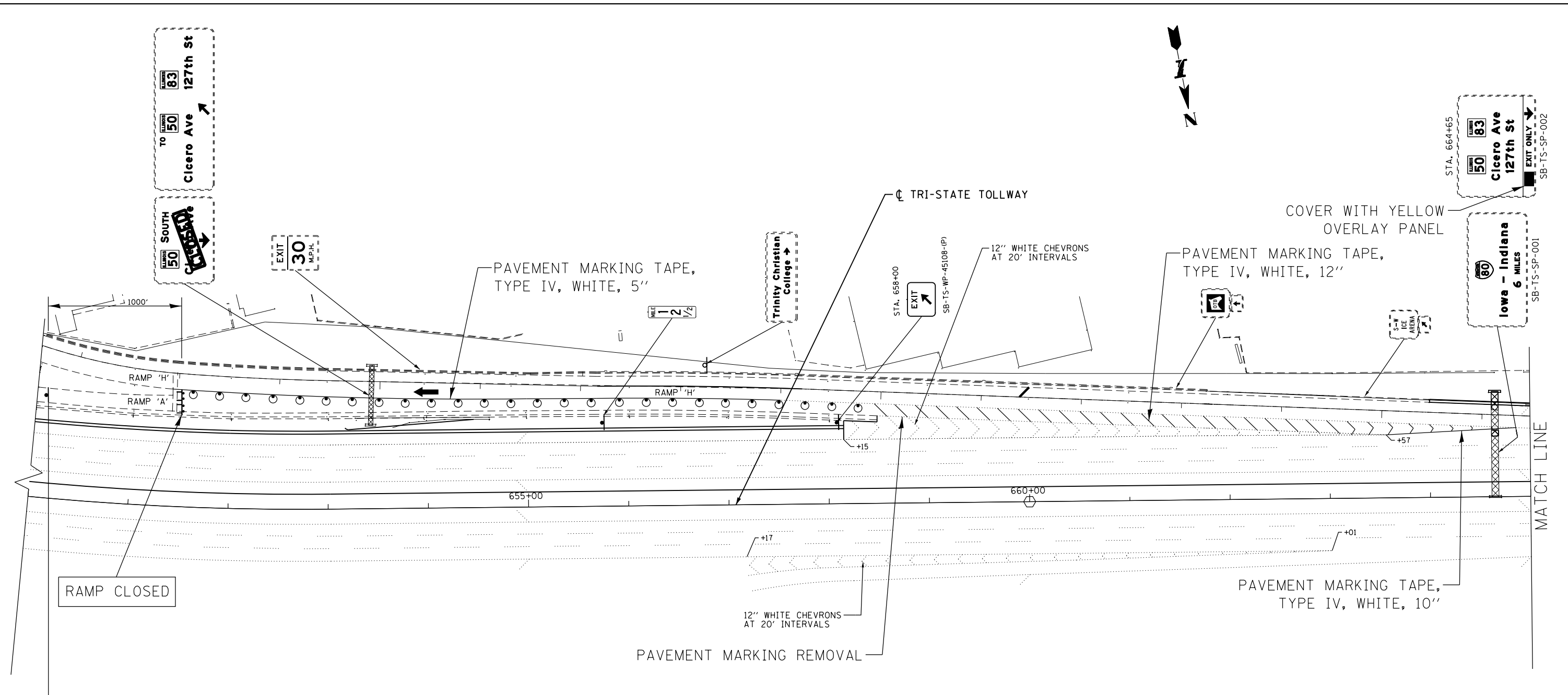
STEEL RAILING REPAIR DETAILS
SN 016-0421

SHEET NO. 8 OF 8 SHEETS

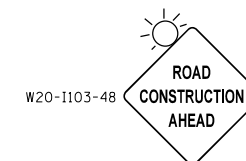
F.A.P. SECTION COUNTY TOTAL SHEETS SHEET NO.
RTE. 350 30688-BR-2 COOK 15 11
CONTRACT NO. 62C26
ILLINOIS FED. AID PROJECT



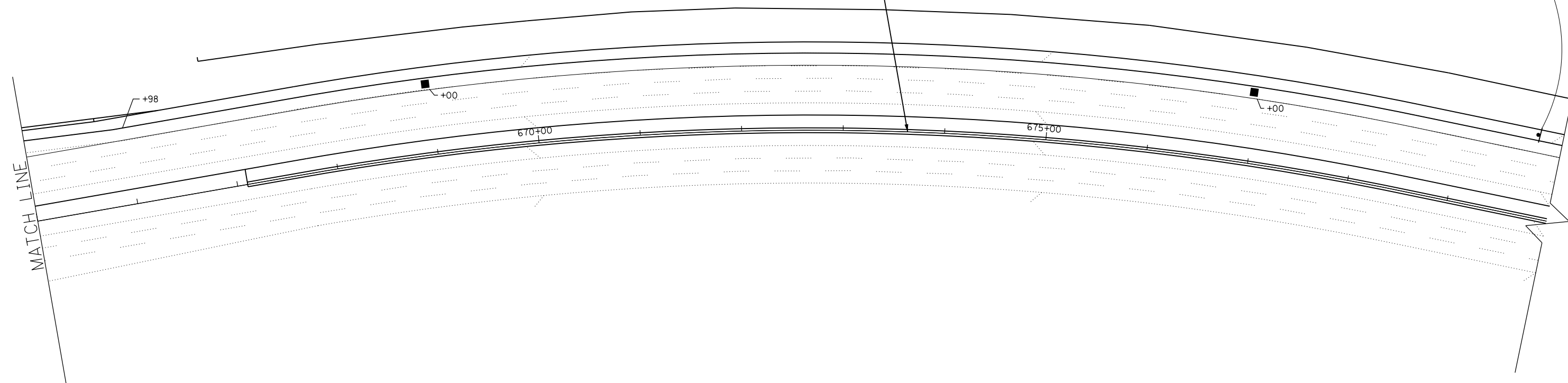
FILE NAME =	USER NAME = pyrzenowski	DESIGNED -	REVISED -	STATE OF ILLINOIS DEPARTMENT OF TRANSPORTATION	DETOUR PLAN			F.A.P. R.T.E.	SECTION	COUNTY	TOTAL SHEETS	SHEET NO.
pw:\IL084EBIDINTEG\Illinois.gov\PIWIDOT\Documents\IDOT Offices\District 1\Projects\DI3256\Drawings\Design\DI32516-shr-pln.dgn		CHECKED -	REVISED -		IL 50 / 83 (CICERO AVE.) OVER CAL SAG CHANNEL (SN 016-0421)			350	3068B-BR-2	COOK	15	12
Default	PLOT SCALE = 100.0000' / in.	DATE -	REVISED -		SCALE:	SHEET 1	OF 1 SHEETS	STA.	TO STA.	CONTRACT NO. 62C26		
	PLOT DATE = 5/11/2017				ILLINOIS FED. AID PROJECT							



FILE NAME =	USER NAME = pyrzanowski	DESIGNED -	REVISED -	STATE OF ILLINOIS DEPARTMENT OF TRANSPORTATION	STAGING PLAN I-294 (TRI-STATE TOLLWAY)			F.A.P. RTE.	SECTION	COUNTY	TOTAL SHEETS	SHEET NO.			
pw:\IL04EB\INTEG\Illinois.gov\PWIDOT\Documents\DOT Offices\District 11\Projects\D132516\CADD\Design\132516-01.dgn		CHECKED -	REVISED -		SCALE:	SHEET 2	OF 2	SHEETS	STA.	TO STA.	350	3068B-BR-2	COOK	15	
Default		DATE -	REVISED -		CONTRACT NO. 62C26										
					ILLINOIS FED. AID PROJECT										



☒ TRI-STATE TOLLWAY



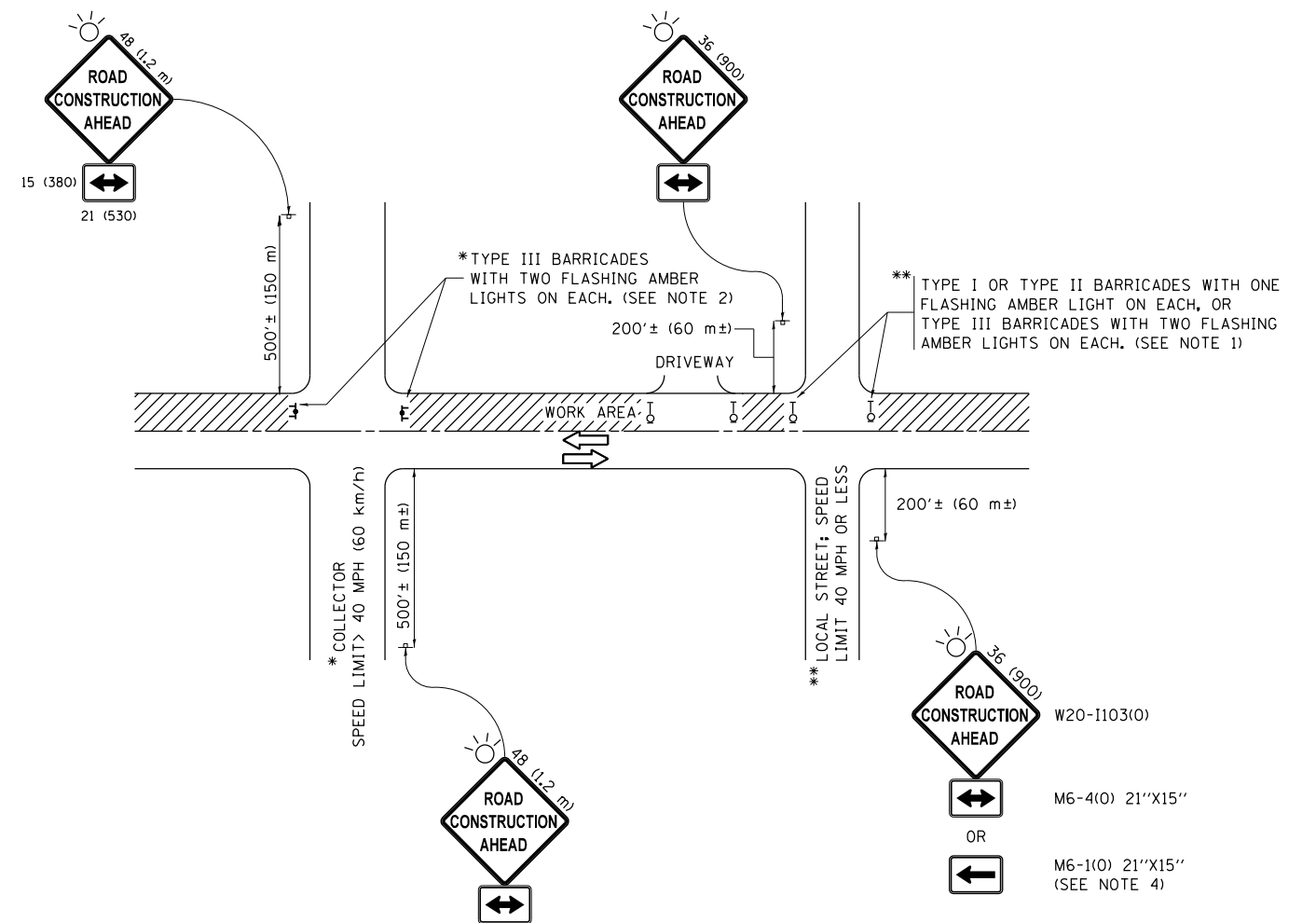
FILE NAME =	USER NAME = pyrzanowski	DESIGNED -	REVISED -
pw:\IL084EB\INTEGR\Illinois.gov\PW\DOT\Documents\DOT Offices\District 11\Projects\132516\CADD\Design\132516-6-DRAWN.dgn		DESIGNED -	REVISED -
Default	PLOT SCALE = 100.0000 "/in.	CHECKED -	REVISED -
	PLOT DATE = 5/11/2017	DATE -	REVISED -

**STATE OF ILLINOIS
DEPARTMENT OF TRANSPORTATION**

**STAGING PLAN
I-294 (TRI-STATE TOLLWAY)**

SCALE: SHEET 1 OF 2 SHEETS STA. TO STA.

F.A.P. RTE.	SECTION	COUNTY	TOTAL SHEETS	SHEET NO.
350	3068B-BR-2	COOK	15	
			CONTRACT NO. 62C26	
		ILLINOIS	FED. AID PROJECT	



NOTES:

1. SIDE ROAD WITH A SPEED LIMIT OF 40 MPH (60 km/h) OR LESS AS SHOWN ON THE DRAWING AND AS DIRECTED BY THE ENGINEER:
 - a) ONE "ROAD CONSTRUCTION AHEAD" SIGN 36 x 36 (900x900) WITH A FLASHER MOUNTED ON IT APPROXIMATELY 200' (60 m) IN ADVANCE OF THE MAIN ROUTE.
 - b) THE CLOSED PORTION OF THE MAIN ROUTE SHALL BE PROTECTED BY BLOCKING WITH TYPE I, TYPE II OR TYPE III BARRICADES, 1/3 OF THE CROSS SECTION OF THE CLOSED PORTION.
2. SIDE ROAD WITH A SPEED LIMIT GREATER THAN 40 MPH (60 km/h) AS SHOWN ON THE DRAWING AND AS DIRECTED BY THE ENGINEER:
 - a) ONE "ROAD CONSTRUCTION AHEAD" SIGN 48 x 48 (1.2 m x 1.2 m) WITH A FLASHER MOUNTED ON IT APPROXIMATELY 500' (150 m) IN ADVANCE OF THE MAIN ROUTE.
 - b) THE CLOSED PORTION OF THE MAIN ROUTE SHALL BE PROTECTED BY BLOCKING WITH TYPE III BARRICADES, 1/2 OF THE CROSS SECTION OF THE CLOSED PORTION.
3. CONES MAY BE SUBSTITUTED FOR BARRICADES OR DRUMS AT HALF THE SPACING DURING DAY OPERATIONS. CONES SHALL BE A MINIMUM OF 28 (710) IN HEIGHT.
4. WHEN THE SIDE ROAD LIES BETWEEN THE BEGINNING OF THE MAINLINE SIGNING AND THE WORK ZONE, A SINGLE HEADED ARROW (M6-1) SHALL BE USED IN LIEU OF THE DOUBLE HEADED ARROW (M6-4).
5. WHEN WORK IS BEING PERFORMED ON A SIDE ROAD OR DRIVEWAY, FOLLOW THE APPLICABLE STANDARD(S). THE DIRECTIONAL ARROW (M6-1 OR M6-4) SHALL BE COVERED OR REMOVED WHEN NO LONGER CONSISTENT WITH THE TRAFFIC CONTROL SET-UP.
6. ADVANCE WARNING SIGNS ARE TO BE OMITTED ON DRIVEWAYS UNLESS OTHERWISE SPECIFIED IN THE PLANS OR BY THE ENGINEER.
7. THE TRAFFIC CONTROL AND PROTECTION FOR SIDE ROADS, INTERSECTIONS, AND DRIVEWAYS SHALL BE INCLUDED IN THE COST OF SPECIFIED TRAFFIC CONTROL STANDARDS OR ITEMS.

All dimensions are in inches (millimeters) unless otherwise shown.

FILE NAME =	USER NAME = pyznowskirb	DESIGNED - L.H.A.	REVISED - A. HOUSEH 10-15-96
pw:\IL\084EBIDINTEG\illinois.gov\PWIDOT\Documents\IDOT Offices\District 1\Projects\DI3256\Drawings\Design\DI32516-sh1-plan.dgn			REVISED - T. RAMMACHER 01-06-00
Default	PLOT SCALE = 100.0000' / in.	CHECKED -	REVISED - A. SCHUETZE 07-01-13
	PLOT DATE = 4/4/2017	DATE - 06-89	REVISED - A. SCHUETZE 09-15-16

**STATE OF ILLINOIS
DEPARTMENT OF TRANSPORTATION**

**TRAFFIC CONTROL AND PROTECTION FOR
SIDE ROADS, INTERSECTIONS, AND DRIVEWAYS**

SCALE: NONE SHEET 1 OF 1 SHEETS STA. TO STA.

F.A. RTE.	SECTION	COUNTY	TOTAL SHEETS	SHEET NO.
350	3068B-BR-2	COOK	15	13
TC-10			CONTRACT NO. 62C26	
ILLINOIS FED. AID PROJECT				

ROUTE MARKERS

FOR U.S. ROUTES
M1-40-2424

FOR ILLINOIS ROUTES
M1-50-2424

R.R., UNMARKED ROUTES
SPECIAL 24" x 18" VARIABLE
4" BLACK LETTERS ON WHITE
REFLECTIVE BACKGROUND

ARROWS SIGNS

M5-1L-2115

M5-1R-2115

M6-1-2115

M6-1-2115

M6-3-2115

CARDINAL DIRECTION & DETOUR SIGNS

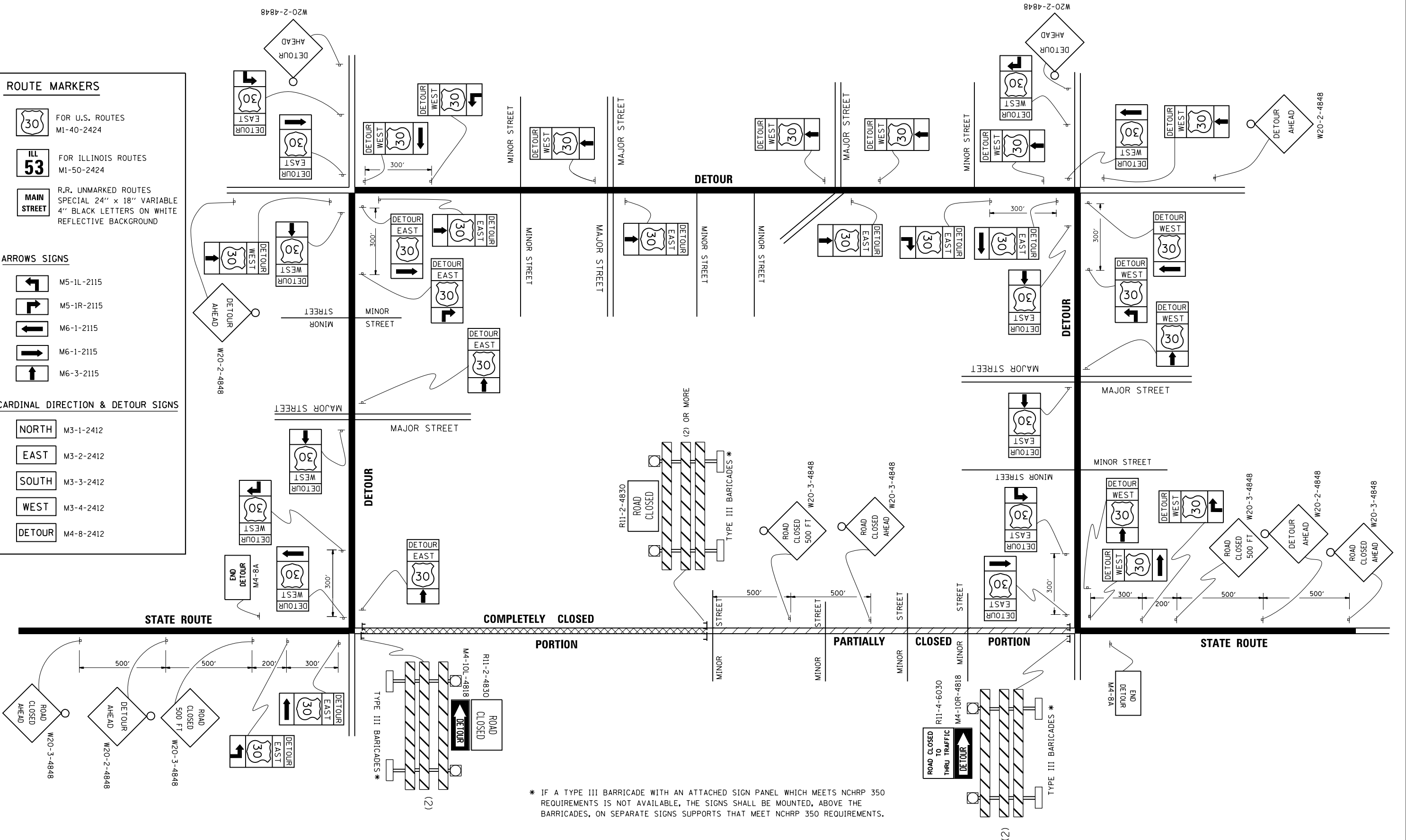
NORTH M3-1-2412

EAST M3-2-2412

SOUTH M3-3-2412

WEST M3-4-2412

DETOUR M4-8-2412



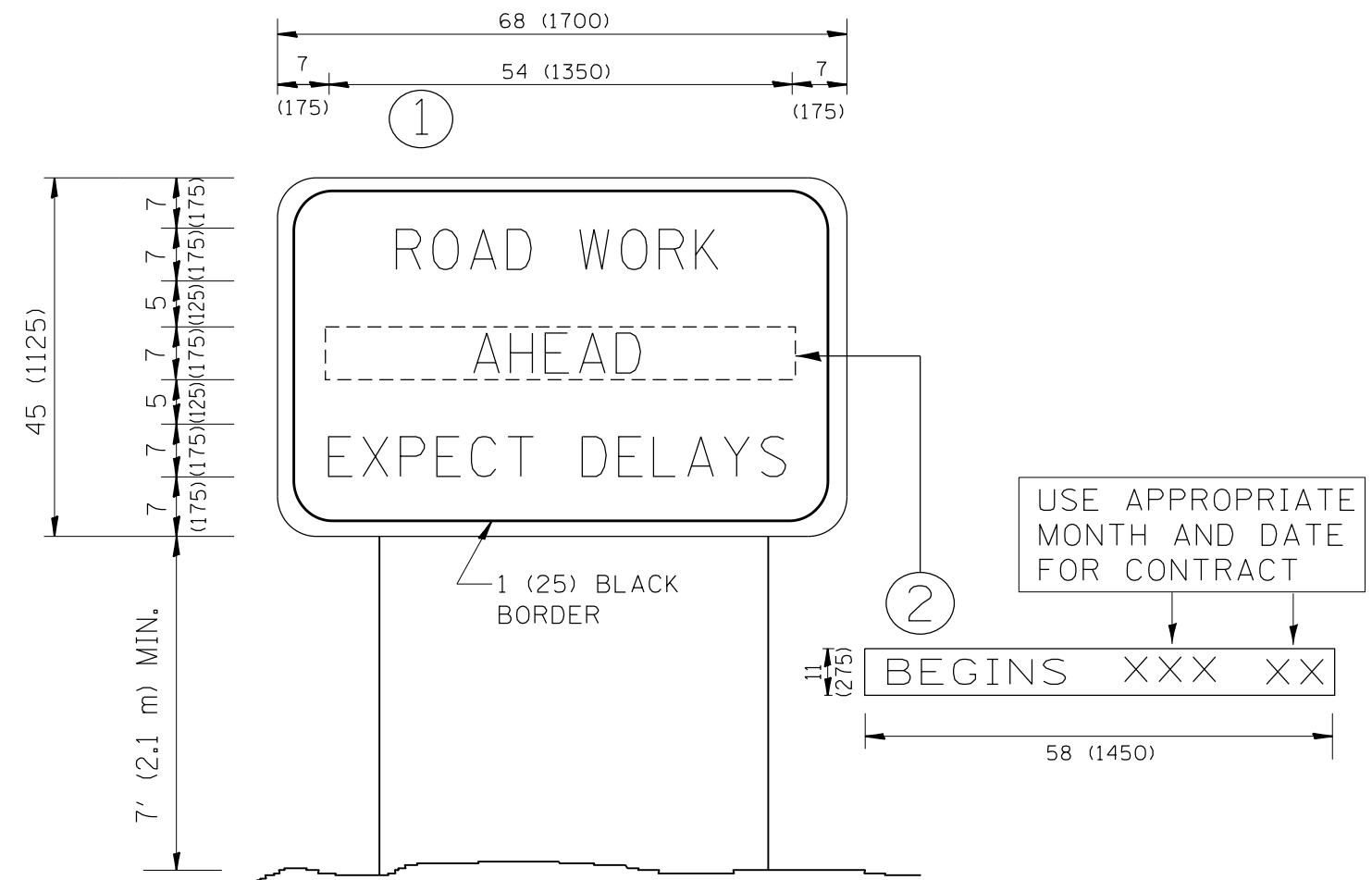
* IF A TYPE III BARRICADE WITH AN ATTACHED SIGN PANEL WHICH MEETS NCHRP 350 REQUIREMENTS IS NOT AVAILABLE, THE SIGNS SHALL BE MOUNTED, ABOVE THE BARRICADES, ON SEPARATE SIGNS SUPPORTS THAT MEET NCHRP 350 REQUIREMENTS.

FILE NAME =	USER NAME = pyrzenowski	DESIGNED -	REVISED - 10-18-02
p:\1\084EBID\INTEG\illinois.gov\PIWIDOT\Documents\IDOT Offices\District 1\Projects\DI3256\Design\DI3256-sh-t-plan.dgn		CHECKED -	REVISED - R. BORO 09-14-09
		DATE -	REVISED -
			REVISED -

**STATE OF ILLINOIS
DEPARTMENT OF TRANSPORTATION**

DETOUR SIGNING FOR CLOSING STATE HIGHWAYS			
SCALE: NONE	SHEET NO. 1 OF 1 SHEETS	STA.	TO STA.

F.A. RTE.	SECTION	COUNTY	TOTAL SHEETS	SHEET NO.
350	3068B-BR-2	COOK	15	14
TC-21		CONTRACT NO. 62C26		
FED. ROAD DIST. NO. 1 ILLINOIS FED. AID PROJECT				



NOTES:

1. USE BLACK LETTERING ON ORANGE BACKGROUND.
2. ERECT SIGNS IN ADVANCE OF THE LOCATION FOR THE "ROAD CONSTRUCTION AHEAD" SIGN AT LOCATIONS AS DIRECTED BY THE ENGINEER.
3. ERECT SIGN ① WITH INSTALLED PANEL ② ONE WEEK PRIOR TO THE START OF CONSTRUCTION.
4. REMOVE PANEL ② SOON AFTER THE START OF CONSTRUCTION.
5. SEE SPECIAL PROVISION FOR "TEMPORARY INFORMATION SIGNING" FOR ADDITIONAL INFORMATION.
6. ONE SIGN ASSEMBLY EQUALS 25.70 SQ. FT. (2.3 SQ. M.)
7. SHALL BE PAID FOR AS TEMPORARY INFORMATION SIGNING.

ALL DIMENSIONS ARE IN INCHES (MILLIMETERS) UNLESS OTHERWISE SHOWN.

FILE NAME =	USER NAME = pyrzenowski	DESIGNED -	REVISED - R. MIRS 09-15-97
p:\11\084EBIDINTEG.illinois.gov\PIWIDOT\Documents\DOT Offices\District 1\Projects\DI3256\Drawings\Design\DI32516-sht-plen.dgn		CHECKED -	REVISED - R. MIRS 12-11-97
		PLOT SCALE = 100.0000' / 1in.	REVISED - T. RAMMACHER 02-02-99
		DATE -	REVISED - C. JUCIUS 01-31-07

**STATE OF ILLINOIS
DEPARTMENT OF TRANSPORTATION**

**ARTERIAL ROAD
INFORMATION SIGN**

SCALE: NONE SHEET NO. 1 OF 1 SHEETS STA. TO STA.

F.A. RTE.	SECTION	COUNTY	TOTAL SHEETS	SHEET NO.
350	3068B-BR-2	COOK	15	15
TC-22			CONTRACT NO. 62C26	
FED. ROAD DIST. NO. 1 ILLINOIS FED. AID PROJECT				