

STATE OF ILLINOIS
DEPARTMENT OF TRANSPORTATION

F.A.P. RTE.	SECTION	COUNTY	TOTAL SHEETS	SHEET NO.
315	(120,121)I	MCLEAN	6	1
		ILLINOIS	CONTRACT NO. 70C71	

FOR INDEX OF SHEETS, SEE SHEET NO. 2
FOR SUMMARY OF QUANTITIES, SEE SHEET NO. 4

PROPOSED HIGHWAY PLANS

F.A.P. ROUTE 315 (U.S. 136)
SECTION (120,121)I

SHOULDER REPAIR
MCLEAN COUNTY

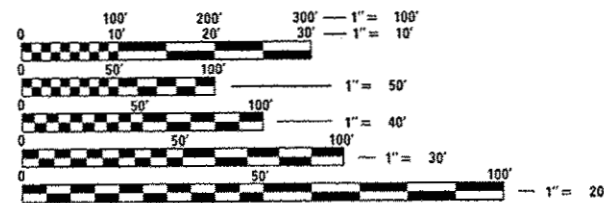
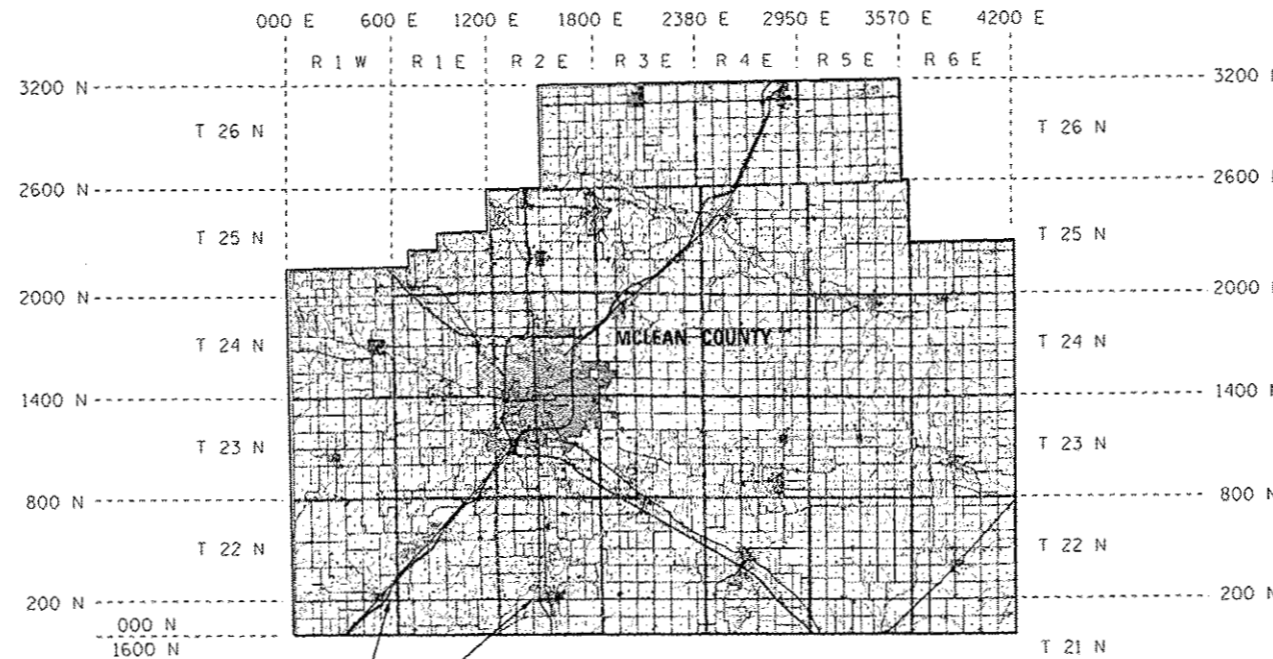
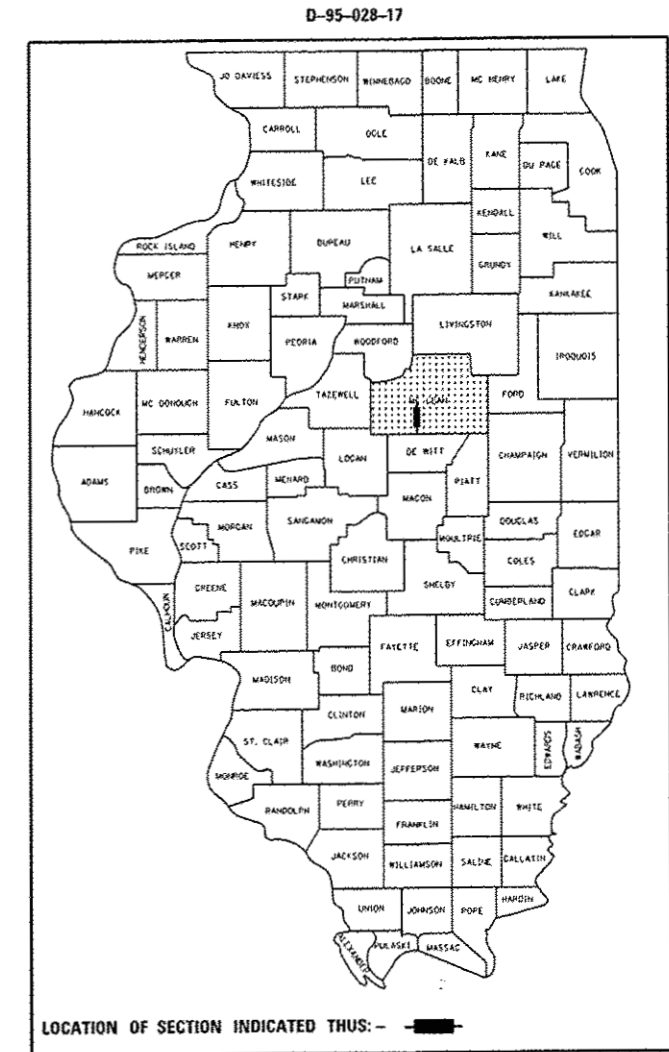
C-95-028-17

E. OF MCLEAN TO W. OF HEYWORTH

SEE PAGE 3 FOR DETAILED LOCATION MAP

CURRENT TRAFFIC DATA

F.A.P. 315 / (U.S. 136)
FROM EAST OF MCLEAN TO WEST OF HEYWORTH
AVERAGE ADT = 2,250



FULL SIZE PLANS HAVE BEEN PREPARED USING STANDARD ENGINEERING SCALES. REDUCED SIZED PLANS WILL NOT CONFORM TO STANDARD SCALES. IN MAKING MEASUREMENTS ON REDUCED PLANS, THE ABOVE SCALES MAY BE USED.

J.U.L.I.E.
JOINT UTILITY LOCATION INFORMATION FOR EXCAVATION
1-800-892-0123
OR 811

PROJECT ENGINEER: JASON STULTS
DESIGNER: GREG ROBINSON
TELEPHONE: (217)465-4181
CONTRACT NO. 70C71

SECTION (120,121)I
BEGINS STA. 2065+80.00
ENDS STA. 483+35.00

SCALE
0.0 — 2.0
MILES

GROSS & NET LENGTH = 45,359 FT = 8.59 MILES

STATE OF ILLINOIS
DEPARTMENT OF TRANSPORTATION

SUBMITTED MARCH 21, 2017

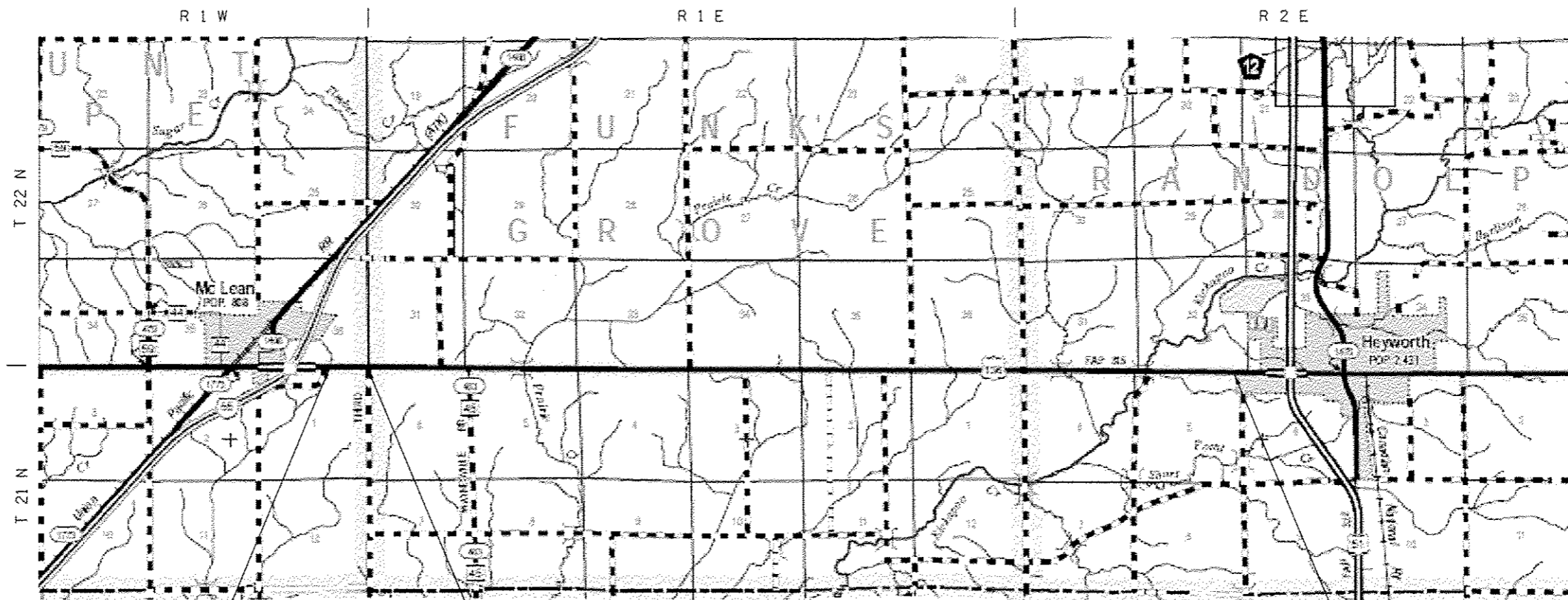
Kensil G. Garnett
REGIONAL ENGINEER *ent*

MAy 12 2017
MAUREEN M. ADDIS P.E.
ENGINEER OF DESIGN AND ENVIRONMENT

MAy 12 2017
FRANCE
DIRECTOR OF PROGRAM DEVELOPMENT

PRINTED BY THE AUTHORITY
OF THE STATE OF ILLINOIS

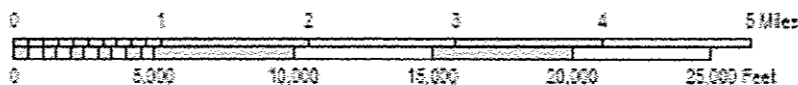
LOCATION MAP
MCLEAN COUNTY
F.A.P. 315 (U.S. 136)
EAST OF MCLEAN TO WEST OF HEYWORTH



PROJECT BEGINS
STATION 2065+80.00

STATION EQUATION:
STA. 2069+52.00 (BK) =
STA. 33+48.00 (AH)

PROJECT ENDS
STATION 483+35.00



GROSS & NET LENGTH OF LOCATION = 45,359 FT = 8.59 MILES

TOWNSHIPS:
MOUNT HOPE, FUNKS GROVE,
RANDOLPH

FILE NAME	USER NAME	DESIGNED	REVISED	STATE OF ILLINOIS DEPARTMENT OF TRANSPORTATION	LOCATION MAP F.A.P. 315 (U.S. 136)	F.A.P. RTE. 315	SECTION (120,121)	COUNTY MCLEAN	TOTAL SHEETS 6	SHEET NO. 3
DRAWN	CHECKED	DATE	REVISED	SCALE:	SHEET 1 OF 1 SHEETS	STA.	TO STA.	CONTRACT NO. 70C71		
ILLINOIS FED. AID PROJECT										

SUMMARY OF QUANTITIES

705 8-1 MAY

LOCATION OF WORK: F.A.P. 315
 RURAL ✓
 COUNTY: MCLEAN
 100% STATE ✓
 CONSTRUCTION TYPE CODE: 0021 ✓

CODE NO	ITEM	UNIT	TOTAL QUANTITY
48101200	AGGREGATE SHOULDERS, TYPE B	TON	3,780.0
67100100	MOBILIZATION	L SUM	1.0
70100460	TRAFFIC CONTROL AND PROTECTION, STANDARD 701306	L SUM	1.0

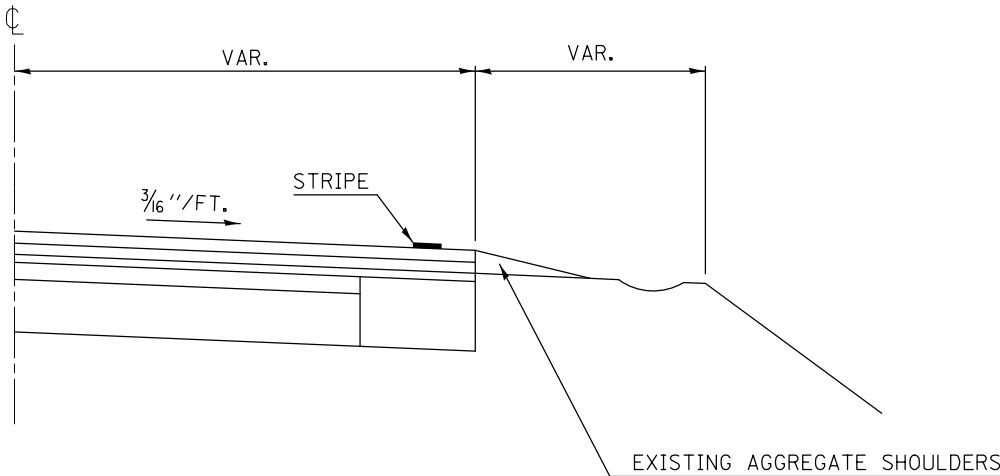
SCHEDULE OF QUANTITIES

48101200 AGGREGATE SHOULDERS, TYPE B

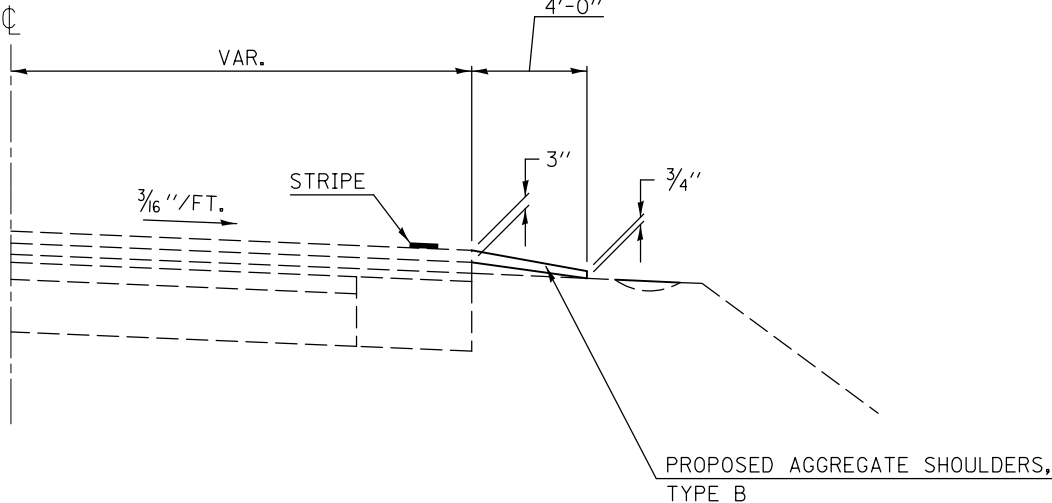
LOCATION	STATION	TO	STATION	LENGTH	WIDTH	AVERAGE DEPTH	QUANTITY
				(FT)	(FT)	(INCH)	(TON)
MCLEAN COUNTY							
RT. SHOULDER	2065+80.00		2069+52.00 (BK)	372.00	4.00	1.875	15.50
RT. SHOULDER	33+48.00 (AH)		483+35.00 (BK)	44987.00	4.00	1.875	1874.46
LT. SHOULDER	2065+80.00		2069+52.00 (BK)	372.00	4.00	1.875	15.50
LT. SHOULDER	33+48.00 (AH)		483+35.00 (BK)	44987.00	4.00	1.875	1874.46
TOTAL =							3780.00 TON

DETAIL OF AGGREGATE SHOULDER

EXISTING SHOULDER



PROPOSED SHOULDER



NOTE: THE EXISTING SHOULDERS SHALL BE GRADED TO ELIMINATE ANY LOW OR POORLY DRAINING AREAS OF THE EXISTING SHOULDER AND PROVIDE A 3 INCH DROP-OFF AT THE EDGE OF PAVEMENT.

FILE NAME =	USER NAME = ppersonbr	DESIGNED -	REVISED -	STATE OF ILLINOIS DEPARTMENT OF TRANSPORTATION	DETAIL OF AGGREGATE SHOULDER	F.A.P. RTE.	SECTION	COUNTY	TOTAL SHEETS	SHEET NO.
						315	(120,121)I	MCLEAN	6	6
MODELNAME	PLOT DATE = 3/21/2017	CHECKED -	REVISED -		SCALE: NONE	SHEET 1 OF 1 SHEETS		STA.	TO STA.	
										ILLINOIS FED. AID PROJECT
										CONTRACT NO. 70C71