

06-16-2017 LETTING ITEM 027

STATE OF ILLINOIS
DEPARTMENT OF TRANSPORTATION

F.A. R.T.E.	SECTION	COUNTY	TOTAL SHEETS	SHEET NO.
*VAR	**	VARIOUS	17	1
		ILLINOIS	CONTRACT NO. 72J62	
** D6 CABLE/GUARDRAIL 2017-3				

PROPOSED HIGHWAY PLANS

VARIOUS ROUTES
SECTION D6 CABLE/GUARDRAIL 2017-3

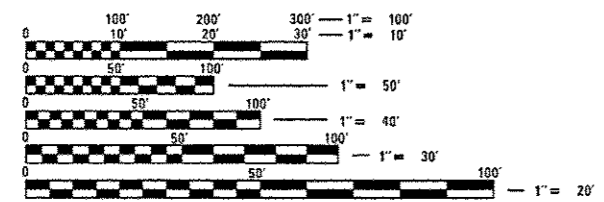
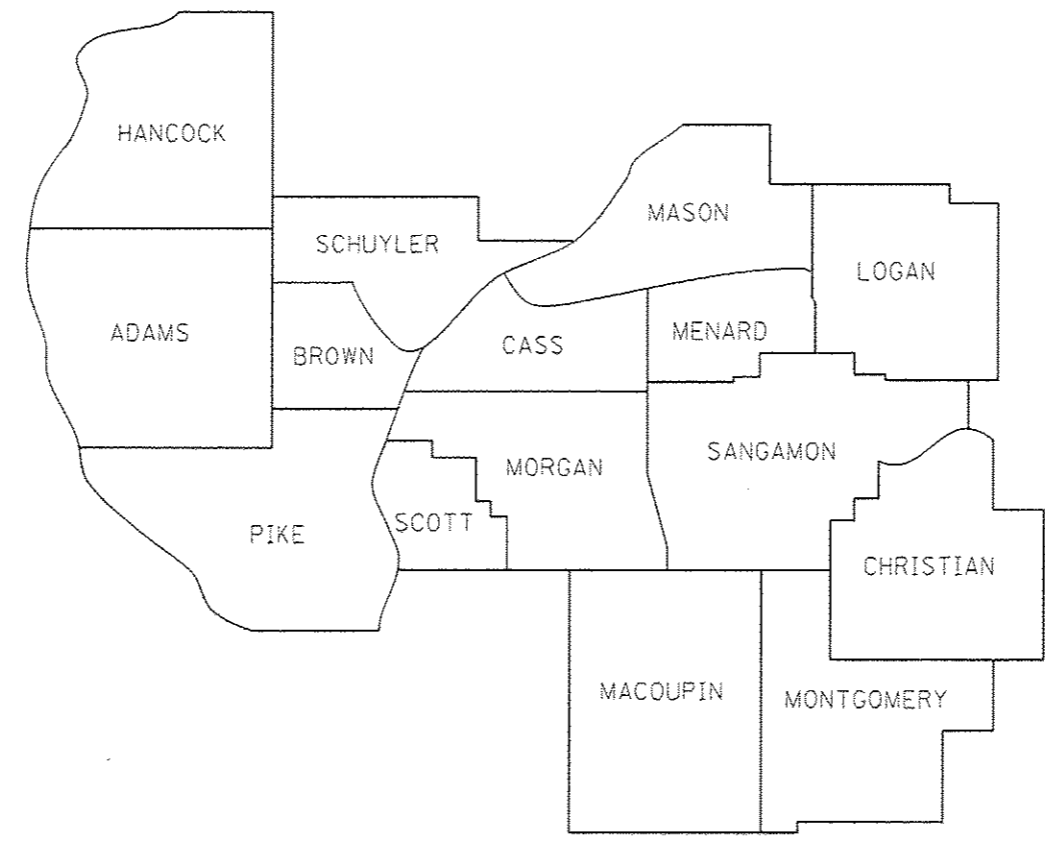
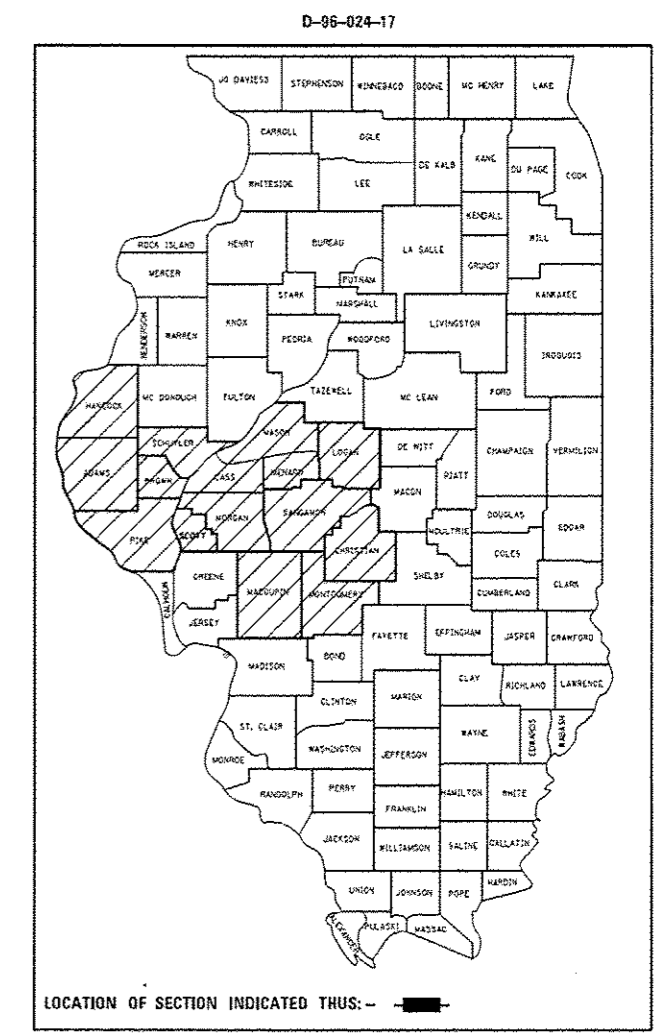
SAFETY ITEM REPAIR
VARIOUS COUNTIES IN D6
C-96-024-17

FOR INDEX OF SHEETS, SEE SHEET NO.

INDEX OF SHEETS

- 1 COVER SHEET
- 2 GENERAL NOTES
- 3-5 SUMMARY OF QUANTITIES
- 6-16 PRE-MGS HIGHWAY STANDARDS
- 17 CABLE GUARD MARKER DETAIL

FOR LIST OF STANDARDS, SEE SHEET 2



FULL SIZE PLANS HAVE BEEN PREPARED USING STANDARD ENGINEERING SCALES. REDUCED SIZED PLANS WILL NOT CONFORM TO STANDARD SCALES. IN MAKING MEASUREMENTS ON REDUCED PLANS, THE ABOVE SCALES MAY BE USED.

J.U.L.I.E.
JOINT UTILITY LOCATION INFORMATION FOR EXCAVATION
1-800-892-0123
OR 811

PROJECT ENGINEER: JAY EDWARDS 217-785-0597
TEAM MANAGER: JONATHAN COX 217-782-1378

CONTRACT NO. 72J62

GROSS LENGTH = x.xx FT. = x.xxx MILE
NET LENGTH = x.xx FT. = x.xxx MILE

STATE OF ILLINOIS
DEPARTMENT OF TRANSPORTATION

SUBMITTED 17 March 2017
[Signature] REGIONAL ENGINEER

May 12 2017
[Signature] ENGINEER OF DESIGN AND ENVIRONMENT

May 12 2017
[Signature] DIRECTOR OF PROGRAM DEVELOPMENT

PRINTED BY THE AUTHORITY
OF THE STATE OF ILLINOIS

HIGHWAY STANDARDS

STANDARD NO.	TITLE
630001-11	STEEL PLATE BEAM GUARDRAIL
630301-07	SHOULDER WIDENING FOR TYPE 1 (SPECIAL) GUARDRAIL TERMINALS
631011-10	TRAFFIC BARRIER TERMINAL, TYPE 2
631026-06	TRAFFIC BARRIER TERMINAL, TYPE 5
631031-15	TRAFFIC BARRIER TERMINAL, TYPE 6
643001-02	SAND MODULE IMPACT ATTENUATORS
664001-02	CHAIN LINK FENCE
665001-02	WOVEN WIRE FENCE
701001-02	OFF-ROAD OPERATIONS, 2L, 2W, MORE THAN 15' (4.5 M) AWAY
701006-05	OFF-ROAD OPERATIONS, 2L, 2W, 15' (4.5 M) TO 24" (600 MM) FROM PAVEMENT EDGE
701101-05	OFF-ROAD OPERATIONS, MULTILANE, 15' (4.5 M) TO 24" (600 MM) FROM PAVEMENT EDGE
701106-02	OFF-ROAD OPERATIONS, MULTILANE, MORE THAN 15' (4.5 M) AWAY
701201-04	LANE CLOSURE, 2L, 2W, DAY ONLY, FOR SPEEDS > 45 MPH
701301-04	LANE CLOSURE, 2L, 2W, SHORT TIME OPERATIONS
701400-09	APPROACH TO LANE CLOSURE, FREEWAY/EXPRESSWAY
701406-11	LANE CLOSURE, FREEWAY/EXPRESSWAY, DAY OPERATIONS ONLY
701411-09	LANE CLOSURE, MULTILANE, AT ENTRANCE OR EXIT RAMP, FOR SPEEDS > 45 MPH
701421-08	LANE CLOSURE, MULTILANE, DAY OPERATIONS ONLY, FOR SPEEDS > 45 MPH TO 55 MPH
701422-09	LANE CLOSURE, MULTILANE, FOR SPEEDS > 45 MPH TO 55 MPH
701426-09	LANE CLOSURE, MULTILANE, INTERMITTENT OR MOVING OPERATION, FOR SPEEDS ≥ 45 MPH
701427-05	LANE CLOSURE, MULTILANE, INTERMITTENT OR MOVING OPERATION, FOR SPEEDS < 40 MPH
701428-01	TRAFFIC CONTROL SET UP AND REMOVAL FREEWAY/EXPRESSWAY
701456-04	PARTIAL EXIT RAMP CLOSURE FREEWAY/EXPRESSWAY
701501-06	URBAN LANE CLOSURE, 2L, 2W, UNDIVIDED
701502-07	URBAN LANE CLOSURE, 2L, 2W, WITH BIDIRECTIONAL LEFT TURN LANE
701601-09	URBAN LANE CLOSURE, MULTILANE, 1W OR 2W WITH NONTRAVERSABLE MEDIAN
701602-08	URBAN LANE CLOSURE, MULTILANE, 2W WITH BIDIRECTIONAL LEFT TURN LANE
701606-10	URBAN LANE CLOSURE, MULTILANE, 2W WITH MOUNTABLE MEDIAN
701701-10	URBAN LANE CLOSURE, MULTILANE INTERSECTION
701901-06	TRAFFIC CONTROL DEVICES
725001-01	OBJECT AND TERMINAL MARKERS

GENERAL NOTES

ALL DISTURBED AREAS CAUSED BY THE CONTRACTOR'S OPERATIONS SHALL BE GRADED AND SEEDED WITH CLASS 2 ROADSIDE MIXTURE AND FERTILIZED AS STATED IN SECTION 250 OF THE STANDARD SPECIFICATIONS. COST SHALL BE CONSIDERED INCLUDED IN THE UNIT COST OF THE WORK BEING PERFORMED.

REMOVAL OF DAMAGED IMPACT ATTENUATORS SHALL BE INCLUDED IN THE COST OF THE IMPACT ATTENUATOR BEING INSTALLED.

REMOVAL AND DISPOSAL OF DAMAGED FENCE SHALL BE INCLUDED IN THE COST OF THE FENCE BEING INSTALLED.

DISTRICT SIX	
EXAMINED	February 17 20 17
<i>John C. Murawski</i>	
OPERATIONS ENGINEER	
EXAMINED	February 15 20 17
<i>Ron Duchambeau</i>	
PROJECT IMPLEMENTATION ENGINEER	
EXAMINED	March 1 20 17
<i>Jeffrey P. Meyer</i>	
PROGRAM DEVELOPMENT ENGINEER	

FILE NAME *	USER NAME *	DESIGNED - JWC	REVISED -	STATE OF ILLINOIS DEPARTMENT OF TRANSPORTATION	GENERAL NOTES	F.A. RTE.	SECTION	COUNTY	TOTAL SHEETS	SHEET NO.	
pw\1\084EB1D\INTEG\illinois.gov\PW1007\00	Users\1007\Office\District 6\Projects\067	DRAMM\DATA\CAD\JWC\0872282-shr-genn	REVISED -			*VAR	**	VARIOUS	17	2	
	PLOT SCALE * 1/8" = 1' / in.	CHECKED - JWC	REVISED -			SCALE: SHEET 1 OF 1 SHEETS STA. TO STA.					
Default	PLOT DATE * 3/9/2017	DATE -	REVISED -			ILLINOIS/FED. AID PROJECT					

CODE NO.	ITEM	UNIT	TOTAL QUANTITY	6-00664-0600	6-00664-9995	0-01856-6001
				VARIOUS GR	MCHD	MED CBL BAR
				100% STATE ROADWAY	100% MCHD ROADWAY	100% STATE ROADWAY
				0021 ✓ RURAL ✓	0021 ✓ RURAL ✓	0021 ✓ RURAL ✓
6300001	STEEL PLATE BEAM GUARDRAIL, TYPE A, 6 FOOT POSTS	FOOT	525	200	325	
6300003	STEEL PLATE BEAM GUARDRAIL, TYPE A, 9 FOOT POSTS	FOOT	350	150	200	
6300030	STRONG POST GUARDRAIL ATTACHED TO CULVERT	FOOT	325	125	200	
6300031	WEAK POST GUARDRAIL ATTACHED TO CULVERT	FOOT	325	125	200	
6310045	TRAFFIC BARRIER TERMINAL, TYPE 2	EACH	8	4	4	
6310070	TRAFFIC BARRIER TERMINAL, TYPE 5	EACH	8	4	4	
6310085	TRAFFIC BARRIER TERMINAL, TYPE 6	EACH	8	4	4	
63100167	TRAFFIC BARRIER TERMINAL, TYPE 1 (SPECIAL) TANGENT	EACH	39	14	25	
63100169	TRAFFIC BARRIER TERMINAL, TYPE 1 (SPECIAL) FLARED	EACH	6	2	4	
63200310	GUARDRAIL REMOVAL	FOOT	850	500	350	
64300450	IMPACT ATTENUATORS (NON-REDIRECTIVE), TEST LEVEL 3	EACH	4	2	2	
64401300	HIGH TENSION CABLE MEDIAN BARRIER TERMINALS	EACH	6	2		4
66400105	CHAIN LINK FENCE, 4'	FOOT	425	225	200	
66500105	WOVEN WIRE FENCE, 4'	FOOT	300	100	200	

FILE NAME :	USER NAME : Verenskifa	DESIGNED - JWC	REVISED -
Documents\1007 Offices\District 6\Projects\0672J62\0672J62-shr-500.dwg		CHECKED - JWC	REVISED -
Default	PLOT SCALE * 100.0000 / 1 in.	DATE -	REVISED -
	PLOT DATE * 3/20/2017		

**STATE OF ILLINOIS
DEPARTMENT OF TRANSPORTATION**

SUMMARY OF QUANTITIES

SCALE: SHEET 1 OF 3 SHEETS STA. TO STA.

F.A. RTE.	SECTION	COUNTY	TOTAL SHEETS	SHEET NO.
*VAR	**	VARIOUS	17	3
			CONTRACT NO. 72J62	
ILLINOIS FED. AID PROJECT				

CODE NO.	ITEM	UNIT	TOTAL QUANTITY	6-00664-0600	6-00664-9995	0-01856-6001
				VARIOUS GR 100% STATE ROADWAY 0021 RURAL	MCHD 100% MCHD ROADWAY 0021 RURAL	MED CBL BAR 100% STATE ROADWAY 0021 RURAL
67100100	MOBILIZATION	LSUM	1	0.3	0.4	0.3
70100420	TRAFFIC CONTROL AND PROTECTION, STANDARD 701411	EACH	2	1	1	
72501000	TERMINAL MARKER - DIRECT APPLIED	EACH	275	125	150	
78200005	GUARDRAIL REFLECTORS, TYPE A	EACH	80	20	60	
Z0008759	CALL OUT	EACH	30	10	10	10
Z0008760	EMERGENCY WORK CALL OUT	EACH	50	10	30	10
Z0052000	REPAIR STEEL PLATE BEAM GUARDRAIL, TYPE A	FOOT	625	400	225	
Z0052410	REPAIR TRAFFIC BARRIER TERMINAL, TYPE 1 SPECIAL (TANGENT)	EACH	50	20	30	
Z0052415	REPAIR TRAFFIC BARRIER TERMINAL, TYPE 1 SPECIAL (FLARED)	EACH	4	2	2	
Z0052600	REPAIR TRAFFIC BARRIER TERMINAL, TYPE 2	EACH	4	2	2	
Z0053000	REPAIR TRAFFIC BARRIER TERMINAL, TYPE 5	EACH	5	2	3	
X0325231	CABLE GUARD MARKER	EACH	650	100		550
X0325899	REPAIR HIGH TENSION CABLE (GIBRALTAR)	FOOT	1000	250		750
X0325900	REPAIR HIGH TENSION BARRIER TERMINAL (GIBRALTAR)	EACH	14	4		10

STATE OF ILLINOIS
DEPARTMENT OF TRANSPORTATION

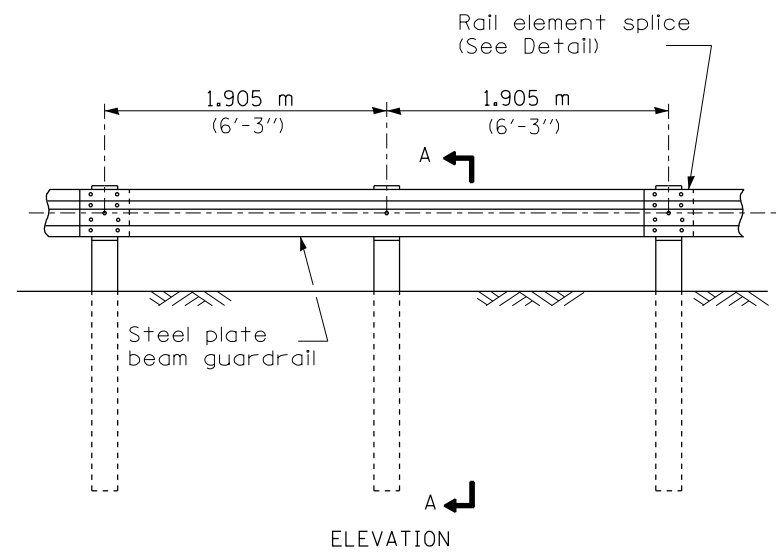
SUMMARY OF QUANTITIES

FILE NAME :	USER NAME : Varonski,fa	DESIGNED - JWC	REVISED -	SCALE:				F.A. RTE.	SECTION	COUNTY	TOTAL SHEETS	SHEET NO.
p:\11084E\BID\INTEG\Illinois.gov\PWIDOT\Documents\DOT Offices\District 6\Projects\067		CHECKED - JWC	REVISED -	SHEET 2 OF 3 SHEETS				*VAR	**	VARIOUS	17	4
Default	PLOT SCALE * 100.0000 ' / in.	DATE -	REVISED -	STA. TO STA.				CONTRACT NO. 72J62				
	PLOT DATE * 3/20/2017							ILLINOIS FED. AID PROJECT				

101 28 WDM

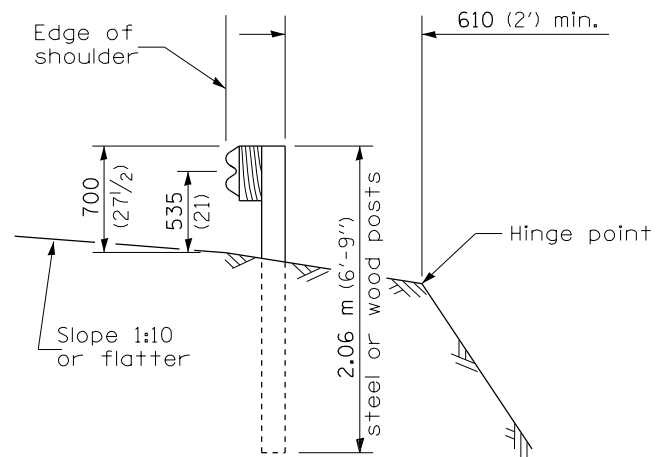
CODE NO.	ITEM	UNIT	TOTAL QUANTITY	6-00664-0600	6-00664-9995	0-01856-6001
				VARIOUS GR	MCHD	MED CBL BAR
				100% STATE	100% MCHD	100% STATE
				ROADWAY	ROADWAY	ROADWAY
				0021	0021	0021
				RURAL	RURAL	RURAL
X0325901	REPAIR POSTS (GIBRALTAR)	EACH	275	50		225
X0325902	REMOVE AND REPLACE POSTS (GIBRALTAR)	EACH	270	45		225
X0327490	REPAIR HIGH TENSION CABLE (NU-CABLE)	FOOT	450	100		350
X0327491	REPAIR POSTS (NU-CABLE)	EACH	130	10		120
X0327492	REMOVE AND REPLACE POSTS (NU-CABLE)	EACH	170	20		150
X0327493	REPAIR HIGH TENSION BARRIER TERMINAL (NU-CABLE)	EACH	15	4		11
X6431220	REMOVE AND REPLACE IMPACT ATTENUATOR SAND MODULE	EACH	40	10	30	
X7011834	TRAFFIC CONTROL AND PROTECTION, CALL OUT WORK	EACH	35	10	25	
X7011836	TRAFFIC CONTROL AND PROTECTION, FREEWAY/EXPRESSWAY, CALL OUT WORK	EACH	51	10	25	16

9

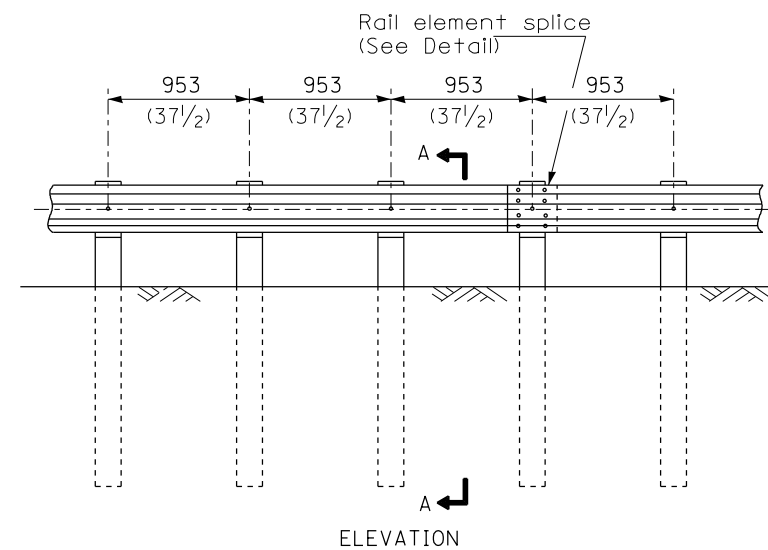


TYPE A

1.905 m (6'-3") Typical post spacing

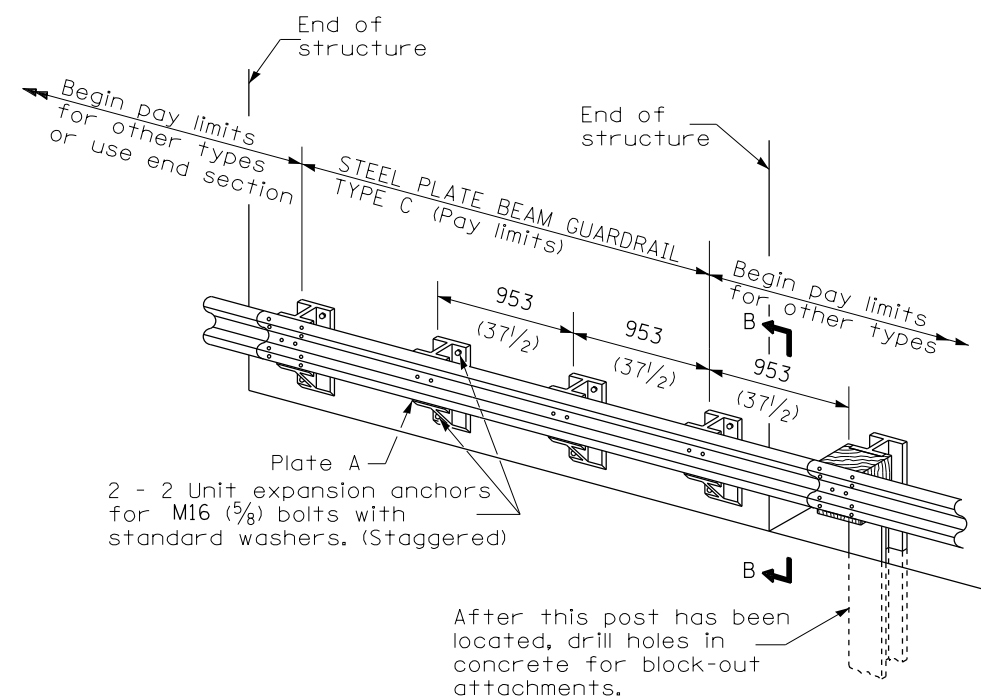


SECTION A-A



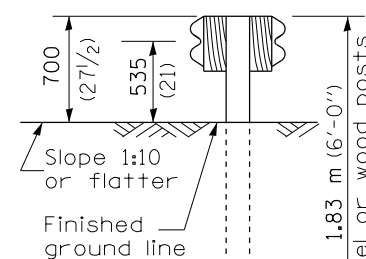
TYPE B

953 (37 1/2) Closed post spacing

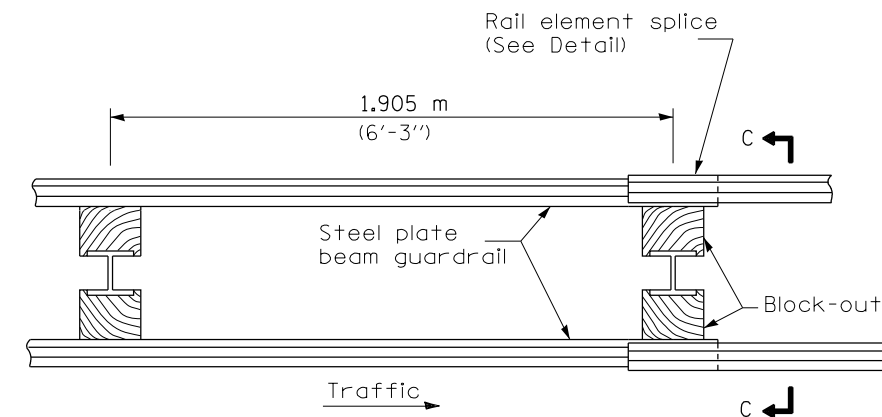


TYPE C

953 (37 1/2) Block-out spacing

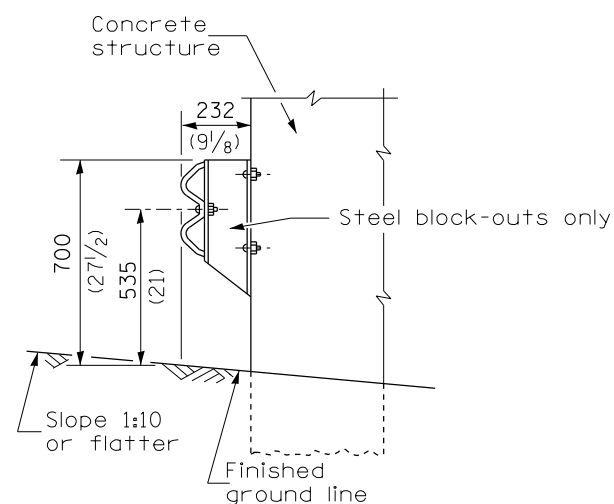


SECTION C-C



TYPE D

Double steel plate beam guardrail
1.905 m (6'-3") typical post spacing



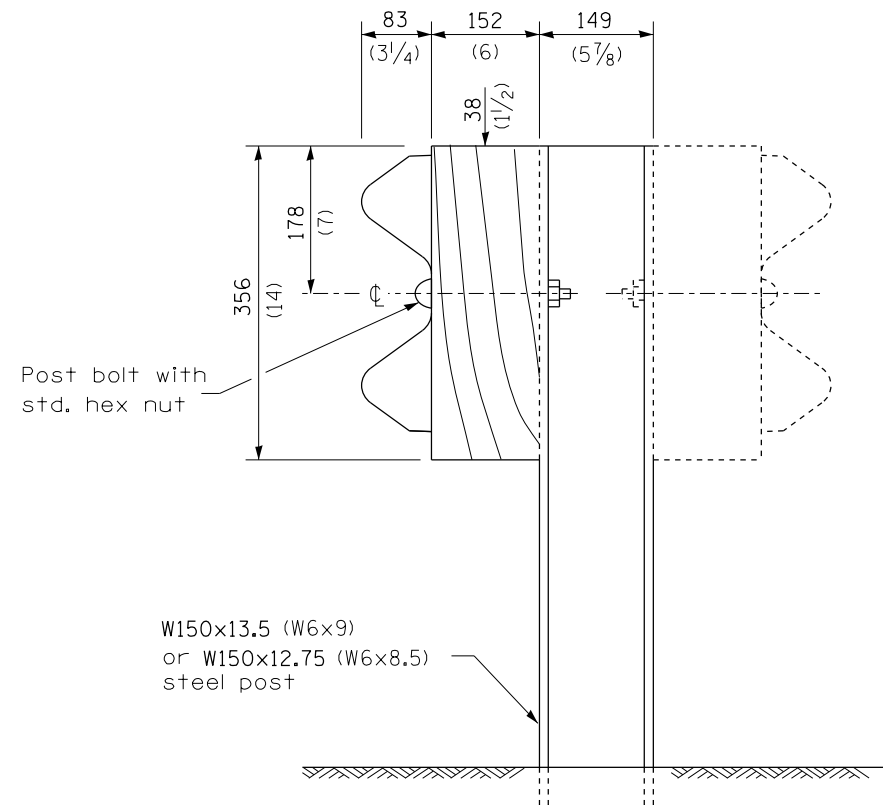
SECTION B-B

GENERAL NOTES

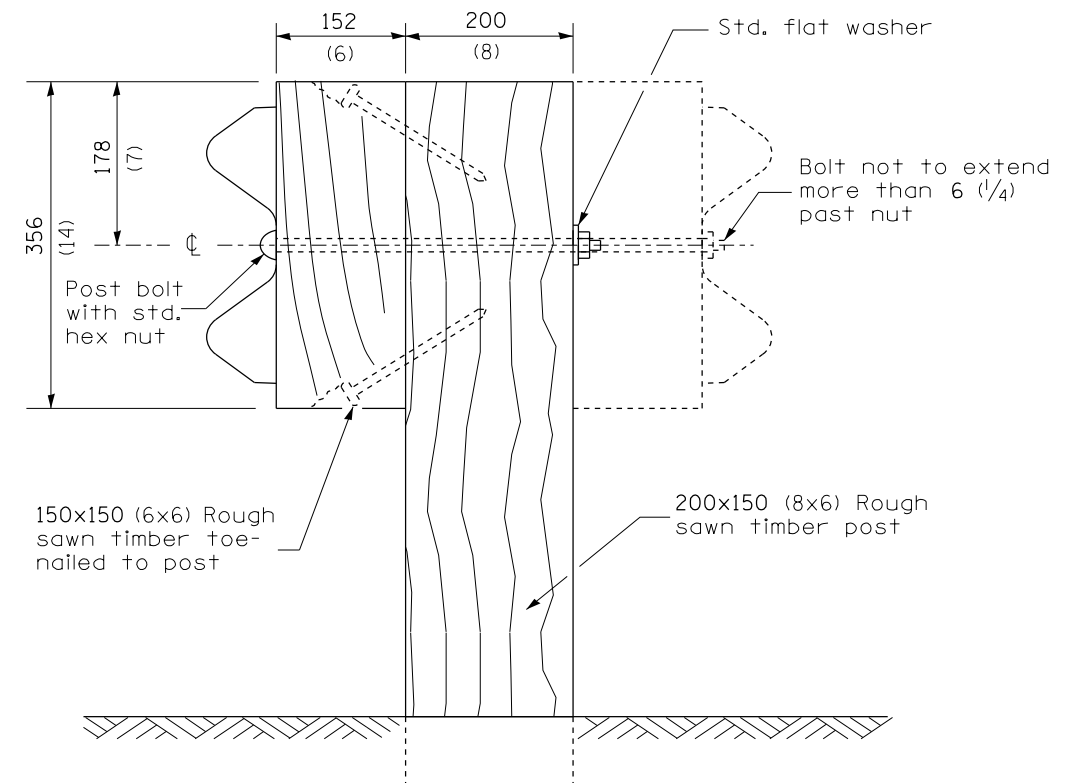
All slope ratios are expressed as units of vertical displacement to units of horizontal displacement (V:H).

All dimensions are in millimeters (inches) unless otherwise shown.

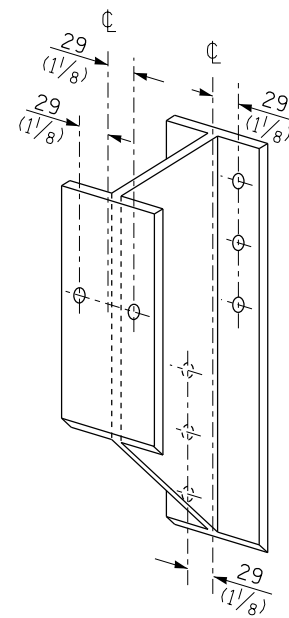
FILE NAME =	USER NAME = Verenskif	DESIGNED -	REVISED -	STATE OF ILLINOIS DEPARTMENT OF TRANSPORTATION	PRE-MGS HIGHWAY STANDARD 630001-06 STEEL PLATE BEAM GUARDRAIL EFFECTIVE 4-1-06	F.A. RTE.	SECTION	COUNTY	TOTAL SHEETS	SHEET NO.	
pw:\IL\084EBIDINTEG\illinois.gov\PIWIDOT\Documents\DOT Offices\District 6\Projects\0672\Drawings\630001\630001-06.dwg	DRWN =	CHECKED -	REVISED -			VAR	**	VARIOUS	17	6	
PLOT SCALE = 26.0000' / in.	DATE =	DATE =	DATE =			CONTRACT NO. 72J62					
Default	PLOT DATE = 3/20/2017	DATE =	DATE =			ILLINOIS FED. AID PROJECT					



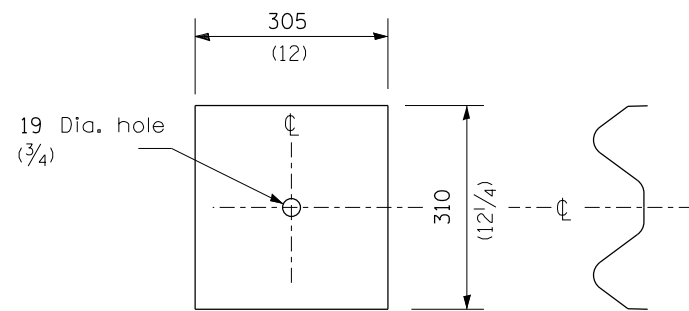
STEEL POST CONSTRUCTION



WOOD POST CONSTRUCTION



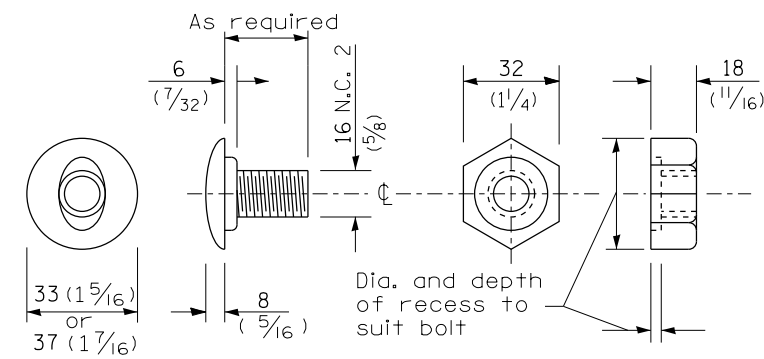
STEEL BLOCK-OUT DETAIL



NOTE

Plate A shall be placed between rail element and block-out at non-splice mounting points only when steel block-outs are used.

PLATE A



POST OR SPLICE BOLT & NUT

FILE NAME =	USER NAME = Verenskif	DESIGNED -	REVISED -
pw:\IL\084EBIDINTEG.illinois.gov\PIWIDOT\Documents\DOT Offices\District 6\Projects\0672\Drawings\60sheets\0672J62-sht-630001-REVISED.STB.dgn			
PLOT SCALE = 26.0000' / in.	CHECKED -	REVISED -	
Default	DATE -	REVISED -	

**STATE OF ILLINOIS
DEPARTMENT OF TRANSPORTATION**

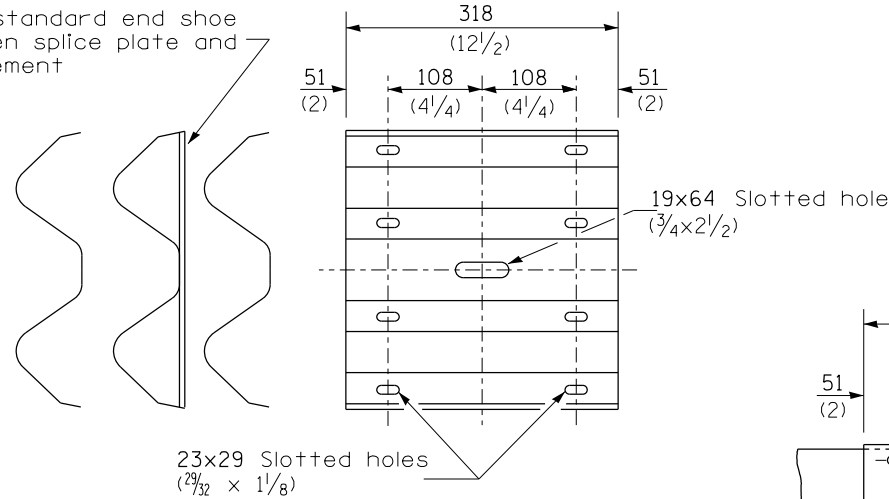
**PRE-MGS HIGHWAY STANDARD 630001-06
STEEL PLATE BEAM GUARDRAIL EFFECTIVE 4-1-06**

SCALE: SHEET 2 OF 4 SHEETS STA. TO STA.

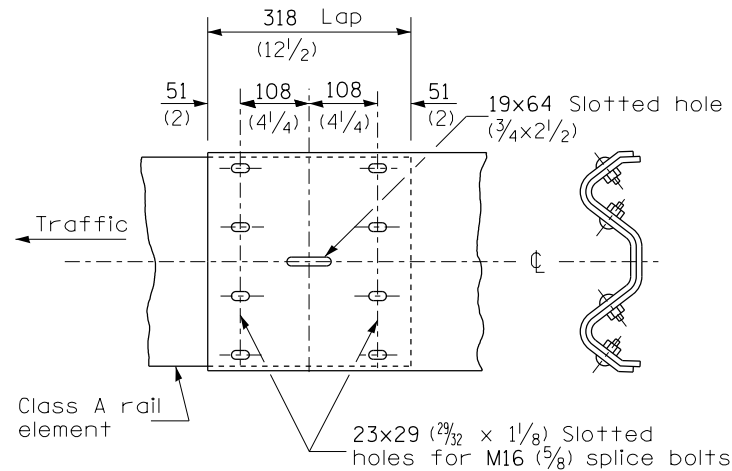
F.A. RTE.	SECTION	COUNTY	TOTAL SHEETS	SHEET NO.
•VAR	••	VARIOUS	17	7
			CONTRACT NO.	72J62

ILLINOIS FED. AID PROJECT
••D6 CABLE/GUARDRAIL 2017-3

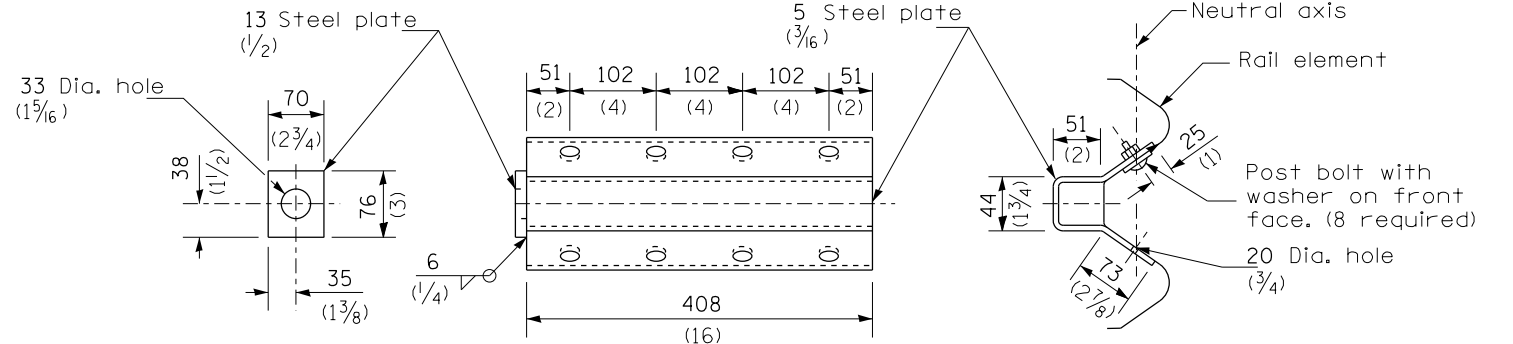
Place standard end shoe between splice plate and rail element



SPLICE PLATE

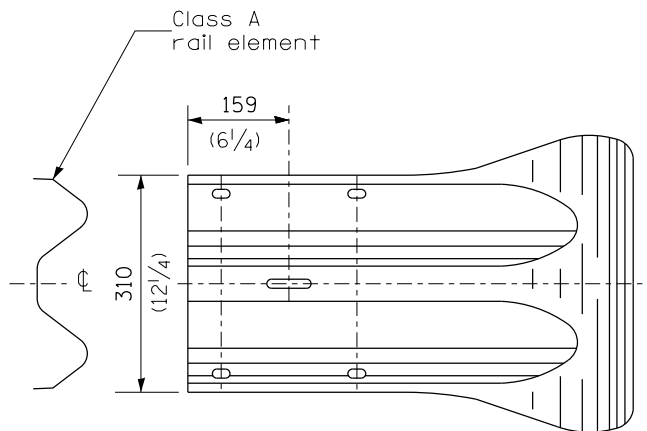
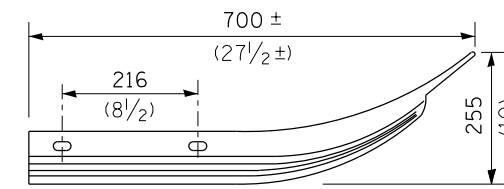


RAIL ELEMENT SPLICE

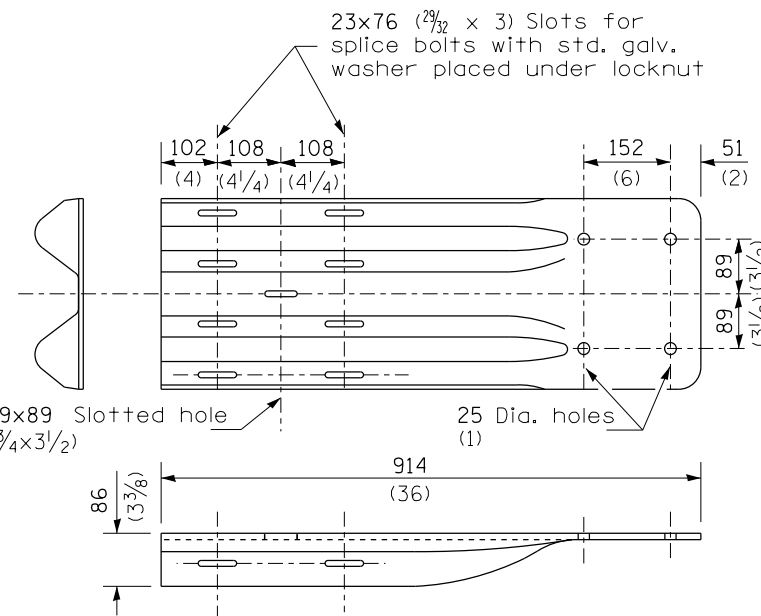


NOTE
Anchor plate T shall be used to attach cable assembly to guardrail when required on traffic barrier terminals.

ANCHOR PLATE T DETAILS



END SECTION



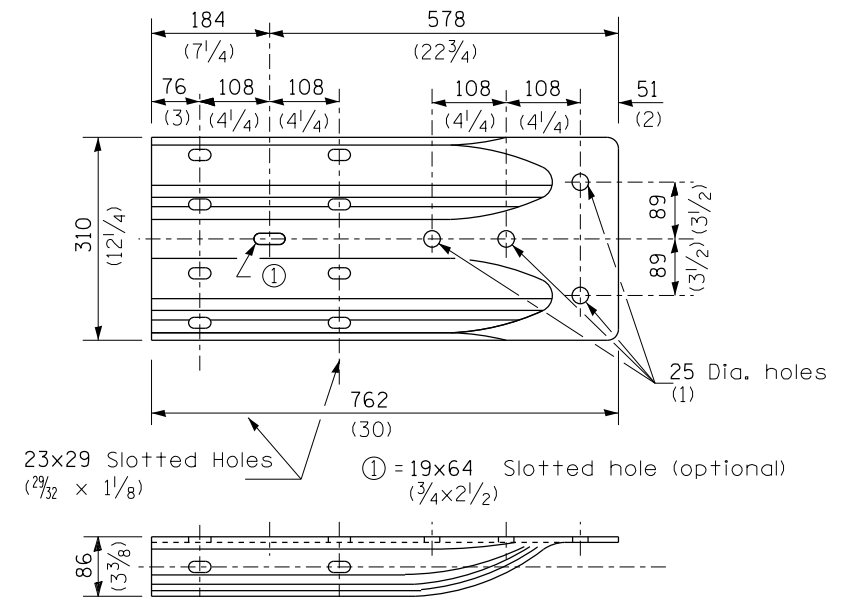
NOTE

When end shoe is attached to a bridge parapet which has an expansion joint, the bolts shall be provided with a locknut or double nut and shall be tightened only to a point that will allow guardrail movement.

The standard end shoe shall be attached to the concrete with pre-drilled or self-drilling anchor bolts. The anchor cone shall be set flush with the surface of the concrete.

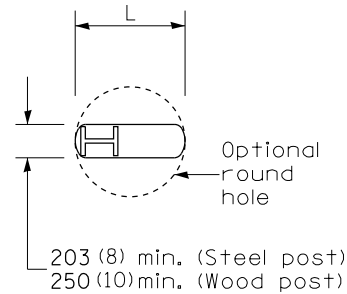
Externally threaded studs protruding from the surface of the concrete will not be permitted.

END SHOE

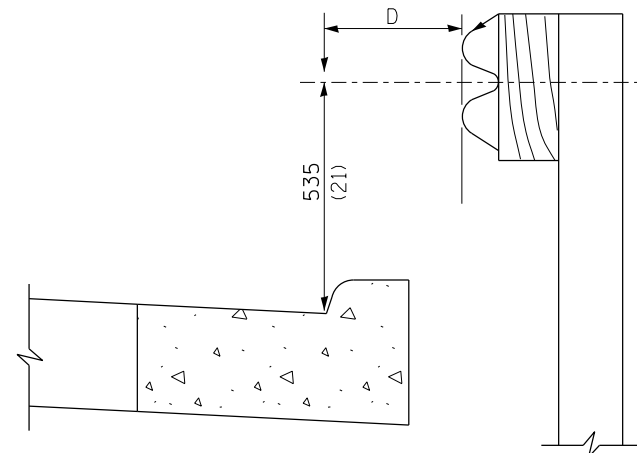


ALTERNATE END SHOE

FILE NAME =	USER NAME = Verenskif	DESIGNED -	REVISED -	STATE OF ILLINOIS DEPARTMENT OF TRANSPORTATION	PRE-MGS HIGHWAY STANDARD 630001-06 STEEL PLATE BEAM GUARDRAIL EFFECTIVE 4-1-06	F.A. RE.	SECTION	COUNTY	TOTAL SHEETS	SHEET NO.	
p:\11\084EBIDINTEG.illinois.gov\PIWIDOT\Documents\DOT Offices\District 6\Projects\0672\Drawings\60\Sheets\0672J62-sht-630001-06.dgn	PLotted SCALE = 26.0000' / in.	CHECKED -	REVISED -			VAR	**	VARIOUS	17	8	
Default	PLOT DATE = 3/20/2017	DATE -	REVISED -			SCALE: SHEET 3 OF 4 SHEETS STA. TO STA.					
						ILLINOIS FED. AID PROJECT CONTRACT NO. 72J62					



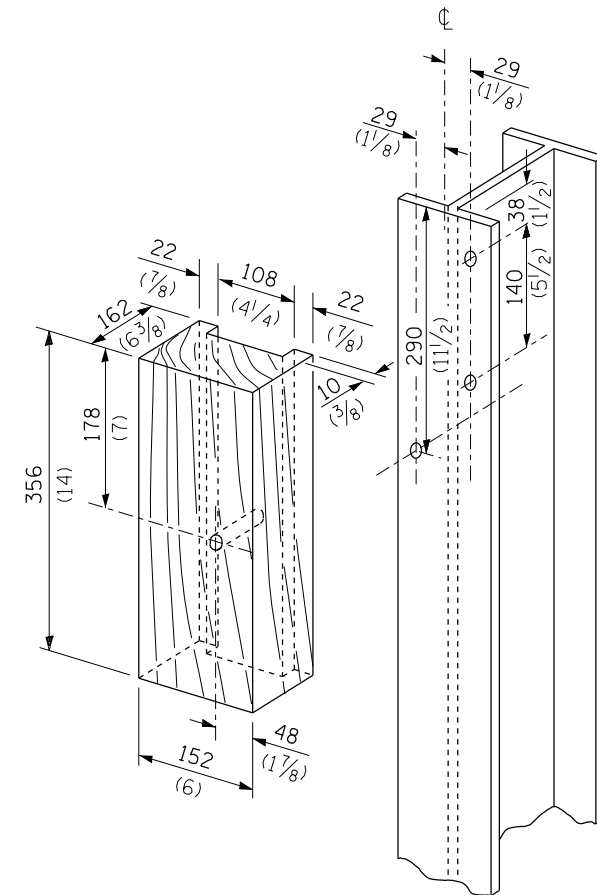
PLAN



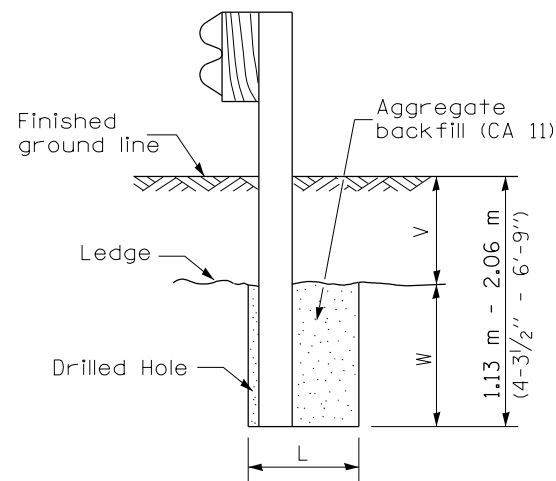
Note:
If it is necessary for D to be more than 300 (12) and less than 3.0 m (10'-0") type M-5 (M-2) curb and gutter (Std. 606001) shall be used in front of and in advance of the guardrail.

GUARDRAIL PLACED BEHIND CURB

(D = 0 desirable to 300 (12) maximum)



WOOD BLOCK-OUT AND STEEL POST DETAILS

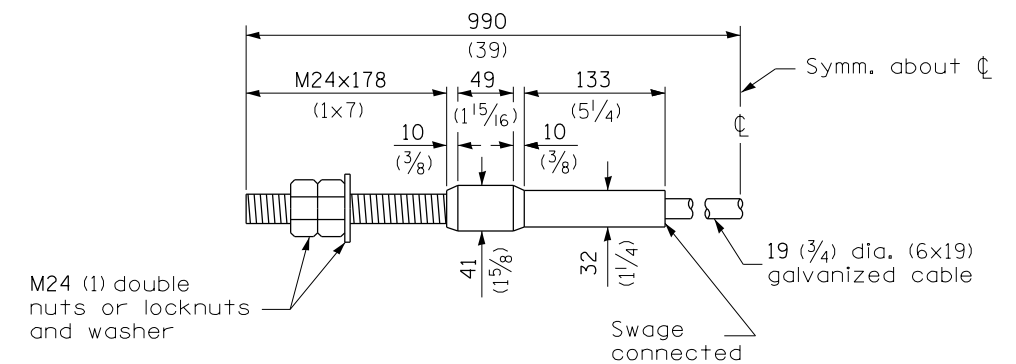


Note:
Ledge line is top of rock ledge or hard slag fill.

ELEVATION

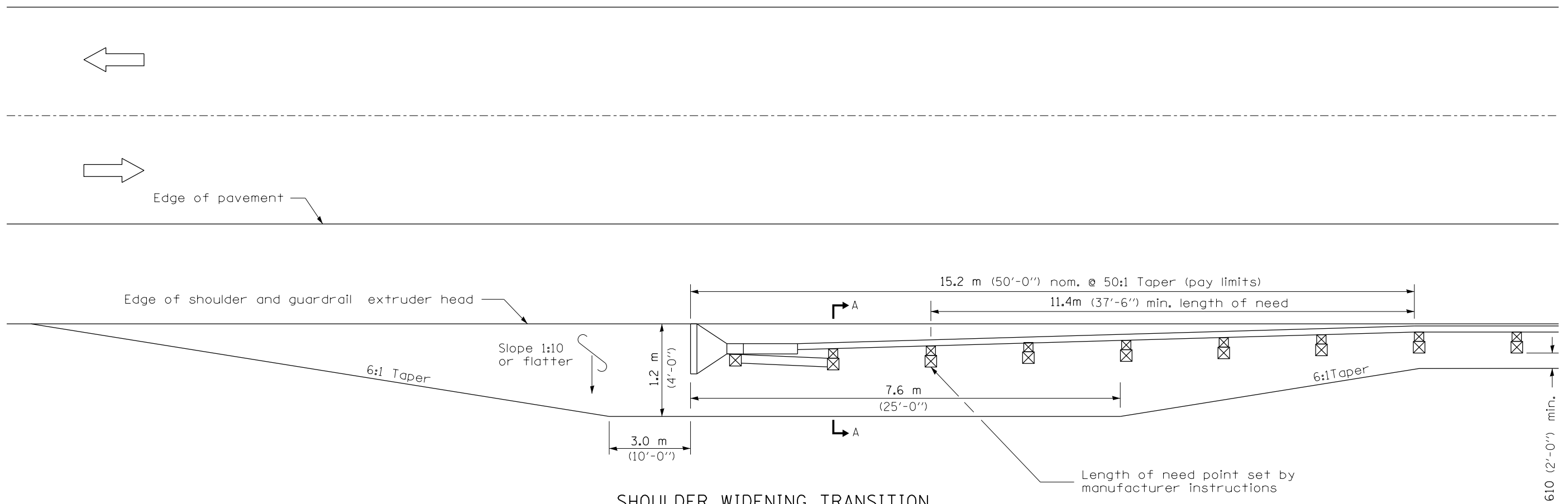
FOOTING FOR POST WHEN IMPERVIOUS MATERIAL IS ENCOUNTERED

V	W	L	
		Steel Post	Wood Post
0 - 460 (0 - 18)	610 (24)	530 (21)	580 (23)
>460 - 825 (>18 - 41.5)	305 (12)	203 (8)	250 (10)
>825 - 1.13 m (>41.5 - 53.5)	305 - 0 (12 - 0)	203 (8)	250 (10)

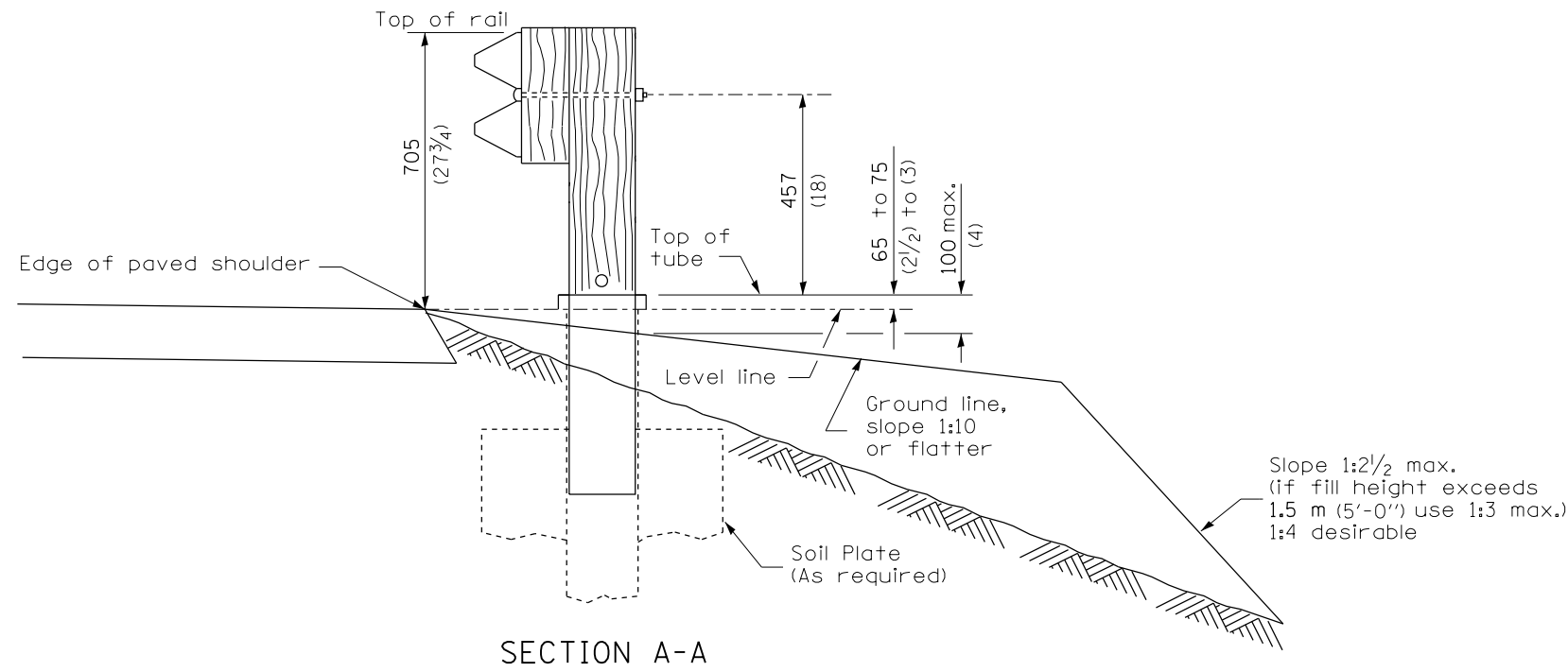


CABLE ASSEMBLY

(18,100 kg (40,000 lbs.) min. breaking strength)
Tighten to taut tension.



**SHOULDER WIDENING TRANSITION
FOR TANGENT TERMINAL**

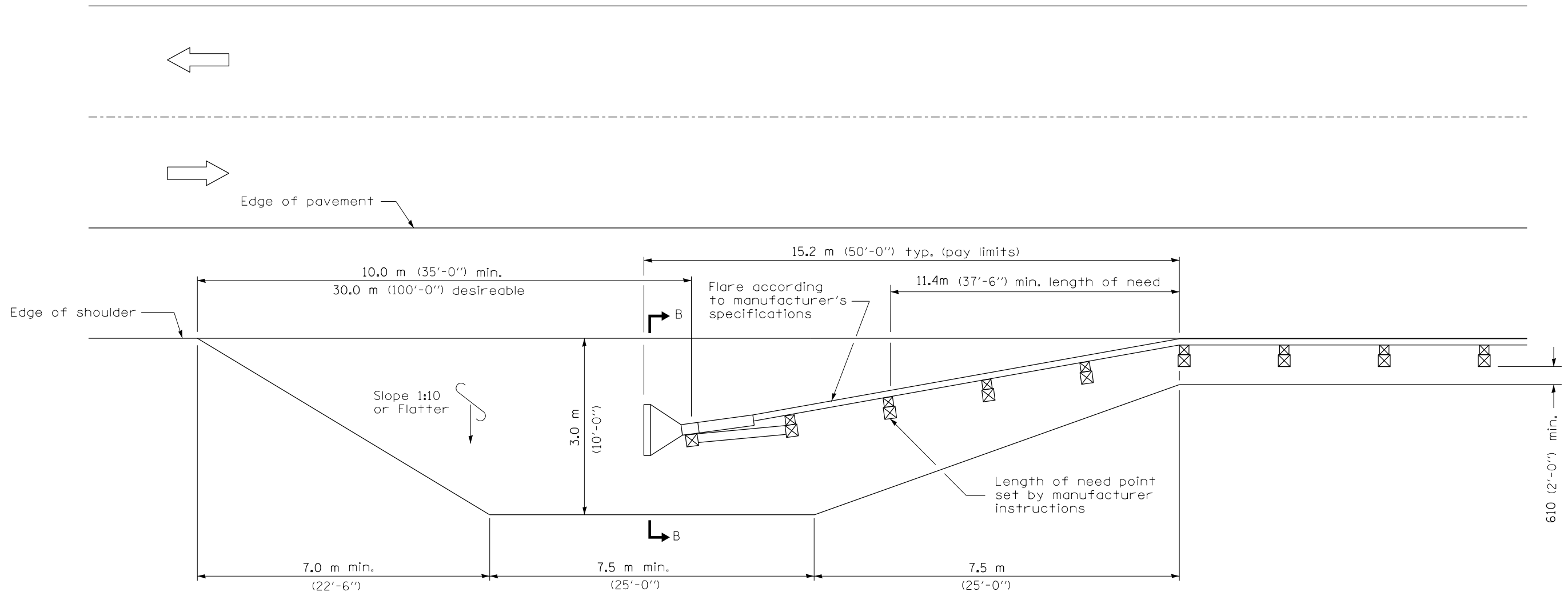


SECTION A-A

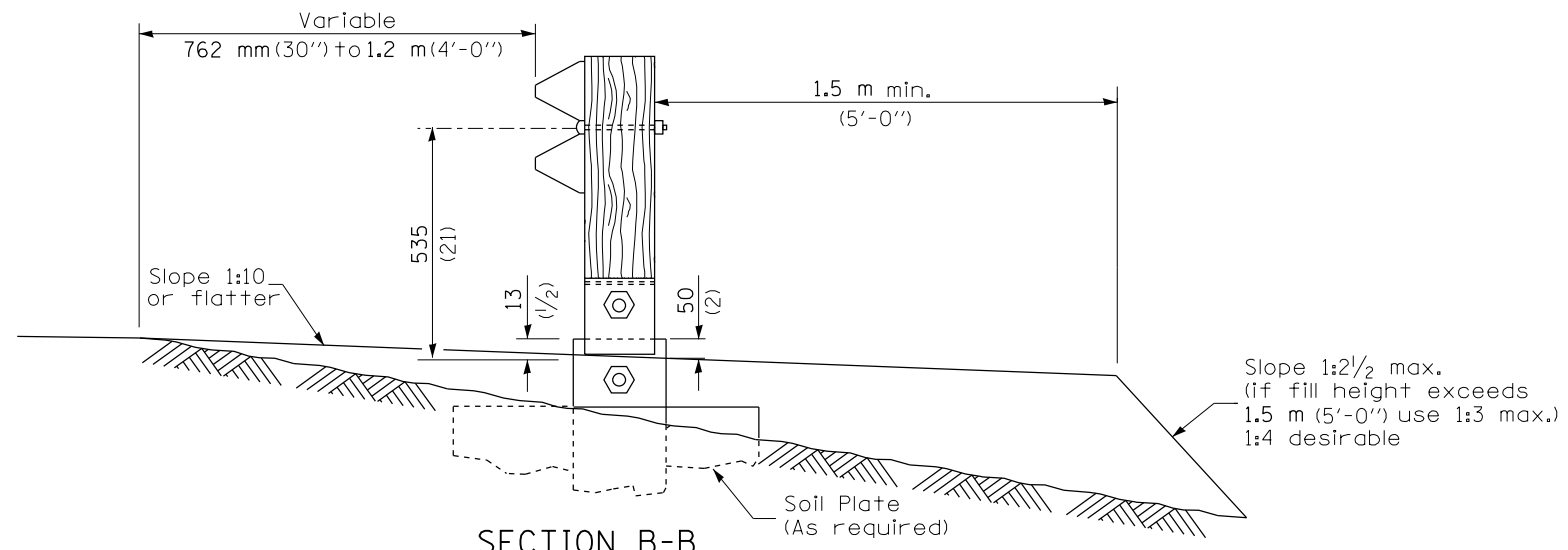
GENERAL NOTES

- 50:1 Taper required so the guardrail head will not encroach on the shoulder.
- All slope ratios are expressed as units of vertical displacement to units of horizontal displacement (V:H).
- All dimensions are in millimeters (inches) unless otherwise shown.

FILE NAME =	USER NAME = Verenskifa	DESIGNED -	REVISED -	STATE OF ILLINOIS DEPARTMENT OF TRANSPORTATION	PRE-MGS HIGHWAY STANDARD 630301-03 SHOULDER WID. FOR TYPE 1 (SPL) GUARDRAIL TERMINAL EFFECTIVE 4-1-06			F.A. RTE.	SECTION	COUNTY	TOTAL SHEETS	SHEET NO.	
pw\ill004EBIDINTEG\illinois.gov\PIDOT\Documents\IDOT Offices\District 6\Projects\0672\BROWData\CADsheets\0672\62-sht-630301-REVISED\WID-GR_TERM.dgn		CHECKED -	REVISED -		SCALE:	SHEET 1	OF 2 SHEETS	STA.	TO STA.	ILLINOIS FED. AID PROJECT	VARIOUS	17	10
Default	PLOT DATE = 3/20/2017	DATE -	REVISED -		CONTRACT NO. 72J62								
**06 CABLE/GUARDRAIL 2017.2													

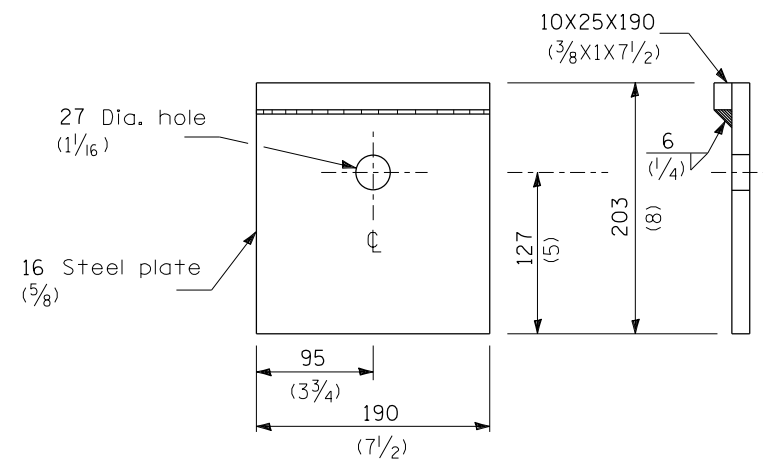


**SHOULDER WIDENING TRANSITION
FOR FLARED TERMINAL**

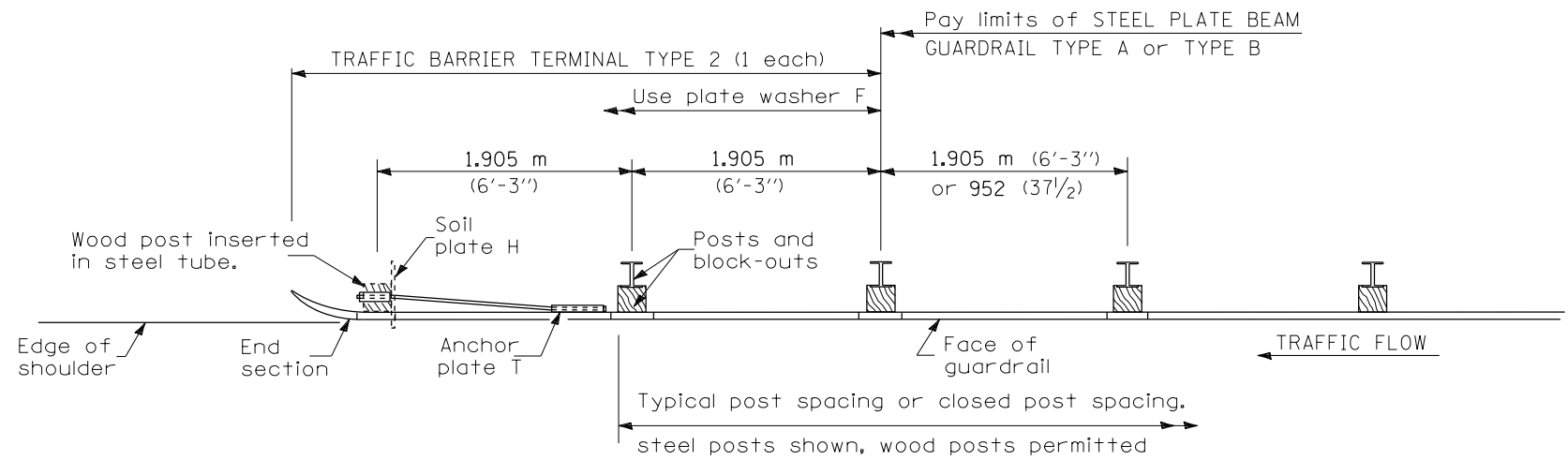


SECTION B-B
(End section omitted for clarity.)

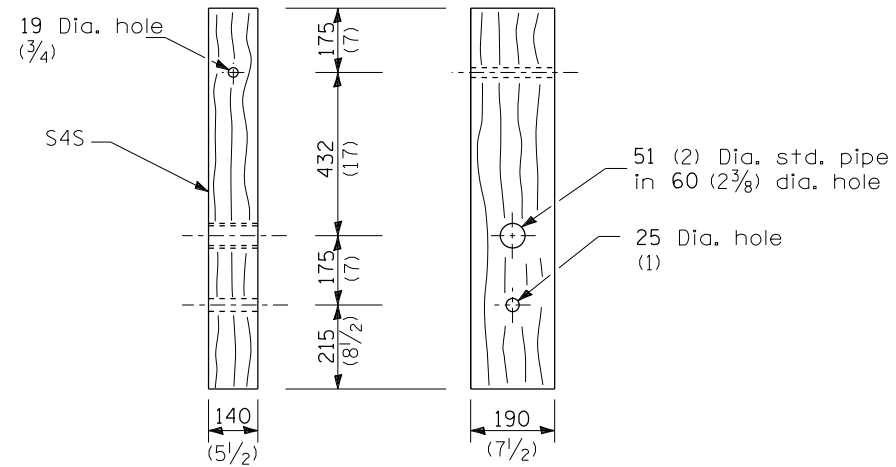
FILE NAME =	USER NAME = Verenskifa	DESIGNED -	REVISED -	STATE OF ILLINOIS DEPARTMENT OF TRANSPORTATION	PRE-MGS HIGHWAY STANDARD 630301-03 SHOULDER WID. FOR TYPE 1 (SPL) GUARDRAIL TERMINAL EFFECTIVE 4-1-06			F.A. RTE.	SECTION	COUNTY	TOTAL SHEETS	SHEET NO.	
pw:\IL\04EB\IDINTEG\Illinois.gov\PWIDOT\Documents\IDOT Offices\District 6\Projects\0672\BROWData\CADsheets\0672\62-sh-630301-REVISED\WID-GR_TERM.dgn		CHECKED -	REVISED -		SCALE:	SHEET 2	OF 2	SHEETS	STA.	TO STA.	ILLINOIS	FED. AID PROJECT	
Default	PLOT SCALE = 26.0000' / in.	DATE -	REVISED -								VARIOUS	17	11
	PLOT DATE = 3/20/2017	DATE -	REVISED -								CONTRACT NO. 72J62		



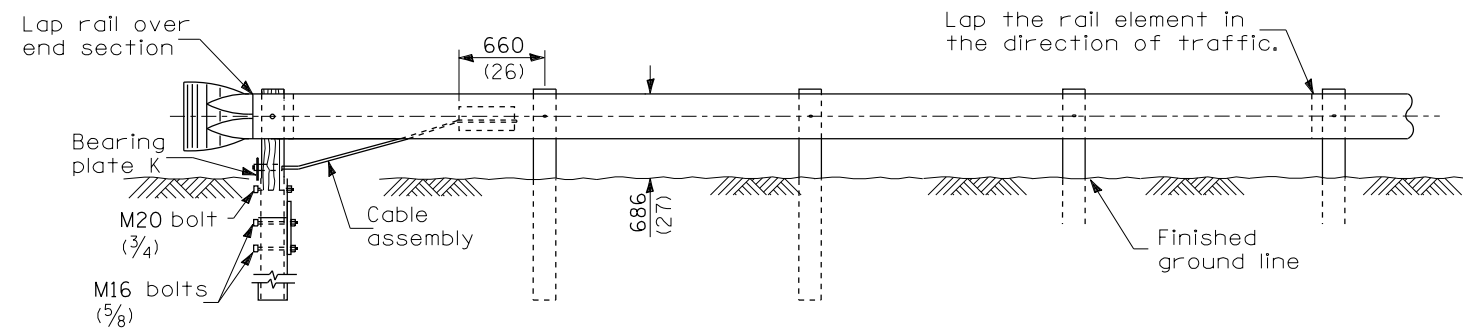
BEARING PLATE K



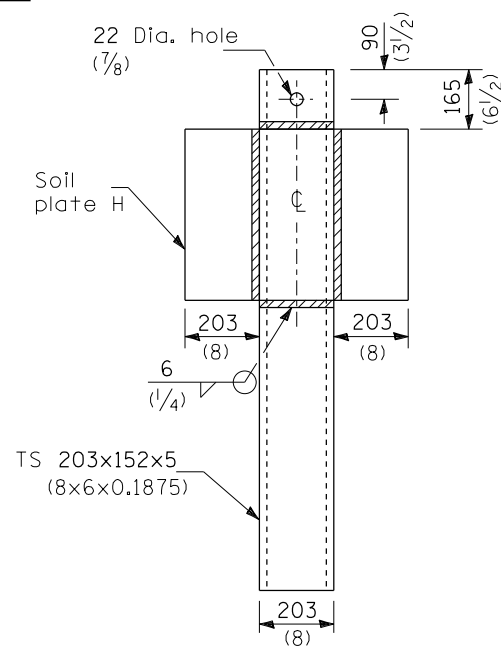
PLAN



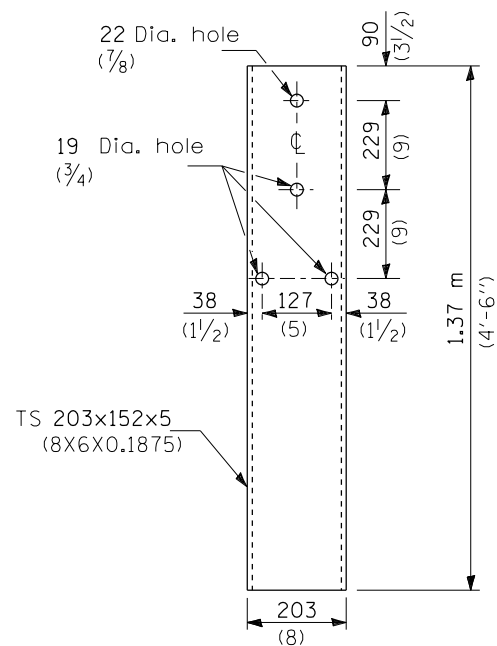
WOOD POST



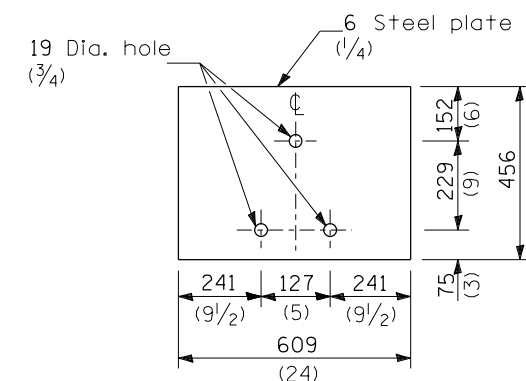
ELEVATION



ALTERNATE SOIL PLATE CONNECTION



STEEL TUBE



SOIL PLATE H

GENERAL NOTES

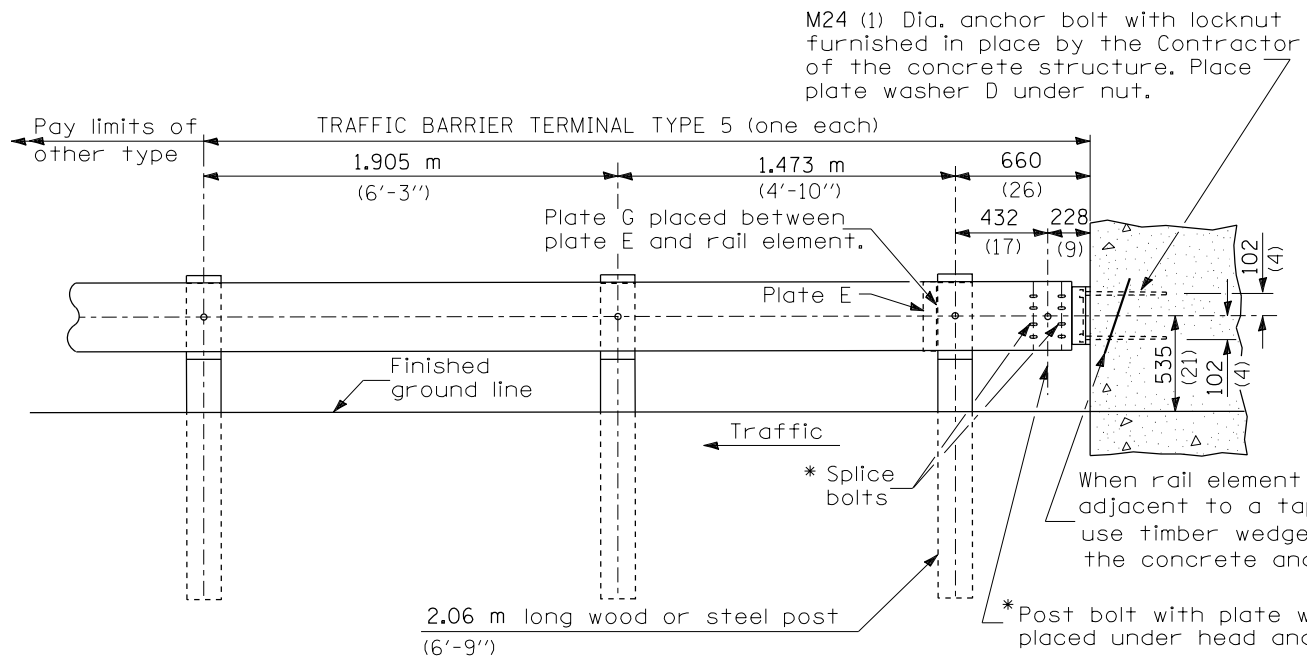
See Standard 630001 for details of guardrail not shown.

Use plate washer F at all posts.

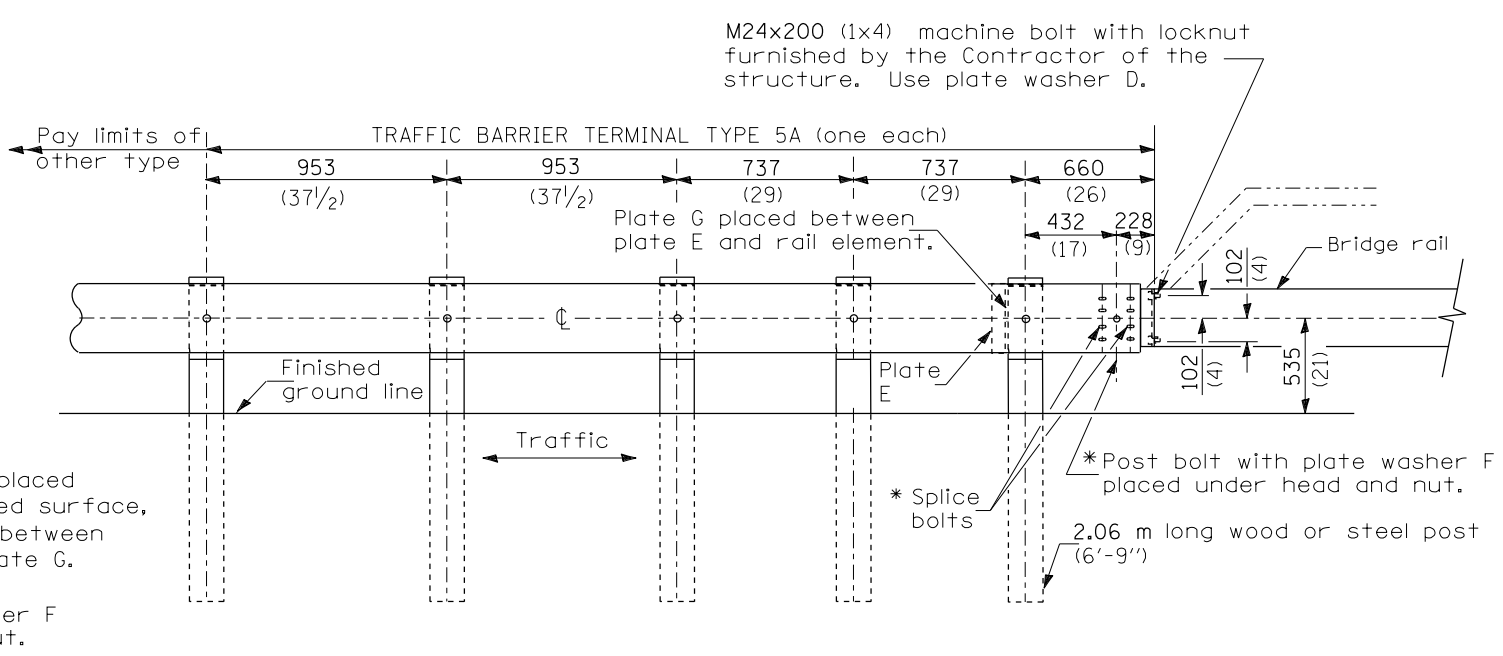
The bearing plate K shall be held in position by (2) two eight penny nails driven into the post and bent over the top of the plate.

All dimensions are in millimeters (inches) unless otherwise shown.

FILE NAME =	USER NAME = Verenskif	DESIGNED -	REVISED -	STATE OF ILLINOIS DEPARTMENT OF TRANSPORTATION	PRE-MGS HIGHWAY STANDARD 631011-02 TRAFFIC BARRIER TERMINAL, TYPE 2 EFFECTIVE 4-1-06	F.A. RTÉ.	SECTION	COUNTY	TOTAL SHEETS	SHEET NO.
pw:\IL\084EBIDINTEG\Illinois.gov\PWIDOT\Documents\DOT Offices\District 6\Projects\0672\Drawings\60\Sheets\0672J62-sht-631011-02.dgn	PLOT SCALE = 26.0000' / in.	CHECKED -	REVISED -			•VAR	••	VARIOUS	17	12
Default	PLOT DATE = 3/20/2017	DATE -	REVISED -			CONTRACT NO. 72J62				
						SCALE:	SHEET 1 OF 1 SHEETS	STA. TO STA.	ILLINOIS FED. AID PROJECT	



TYPE 5 - CONCRETE BRIDGE PARAPET



TYPE 5A - STEEL BRIDGE RAIL

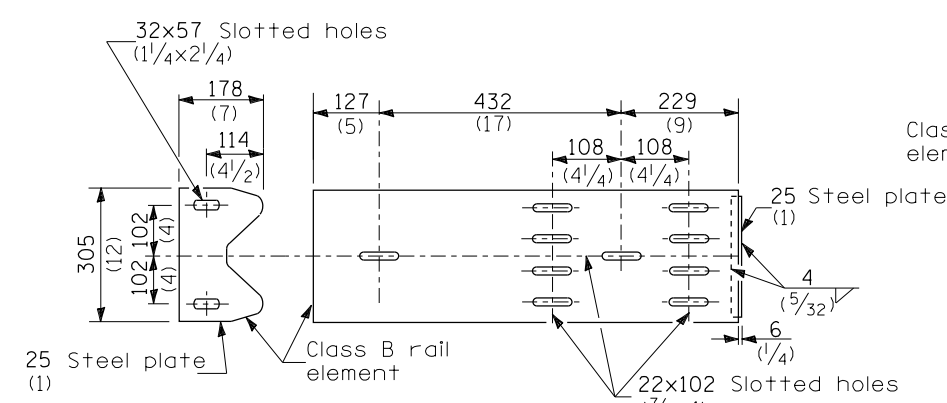


PLATE G

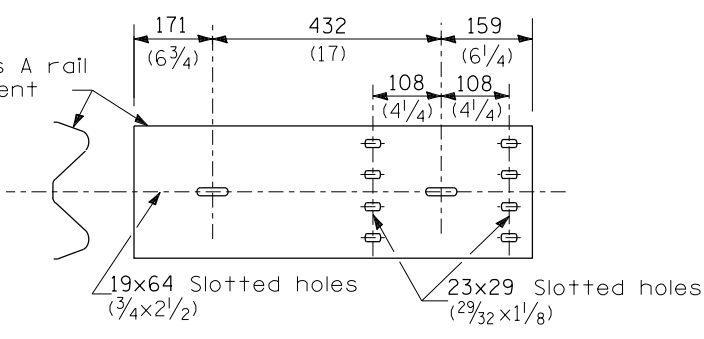
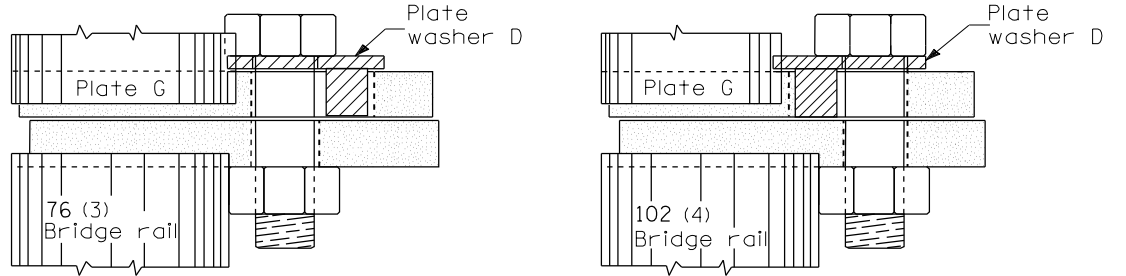


PLATE E



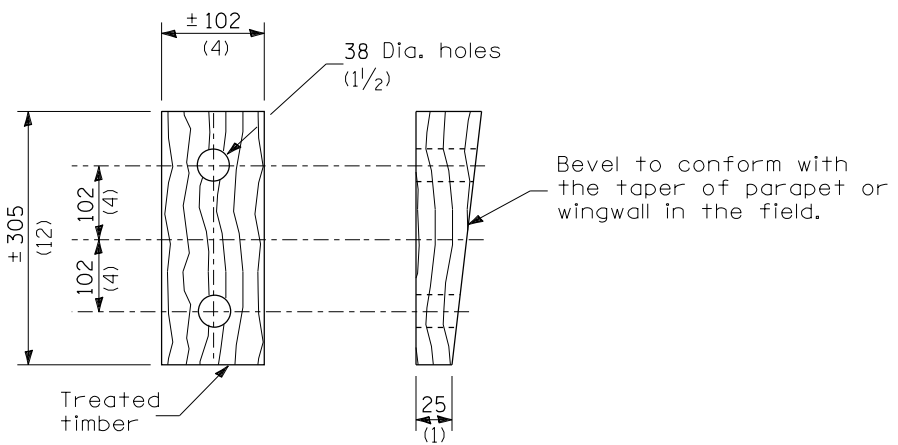
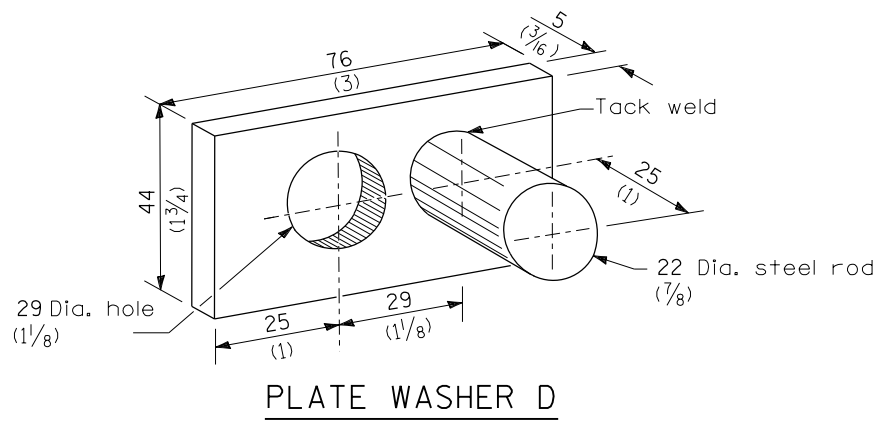
GENERAL NOTES

Install plate washer D so that the 25 mm (1") projection fills the remainder of the slotted holes in the 25 mm (1") end plate on plate G after the M24 (1") dia. bolts are in place.

* Bolts shall be provided with locknut or double nut and shall be tightened only to a point that will allow plate G to be free to move when an expansion joint exists below the connector.

See Standard 630001 for details of guardrail not shown.

All dimensions are in millimeters (inches) unless otherwise shown.



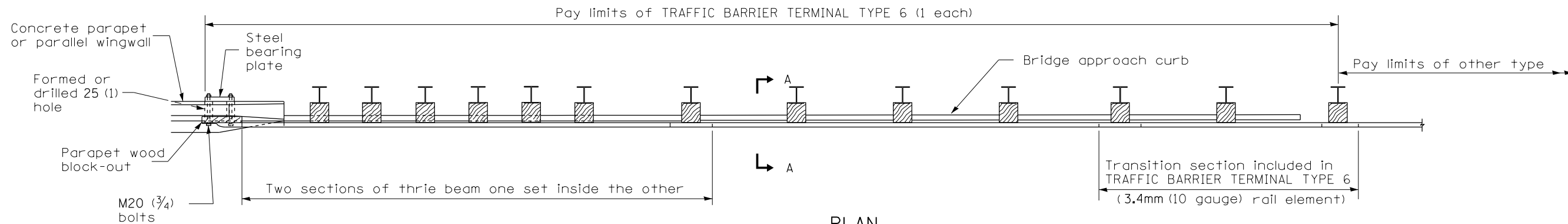
FILE NAME =	USER NAME = Verenskif	DESIGNED -	REVISED -
p:\11\084EBIDINTEG\Illinois.gov\PIDOT\Documents\DOT Offices\District 6\Projects\D672\Drawings\631026-02\631026-02-01\631026-02-01-01.dgn		DRWN -	REVISED -
		CHECKED -	REVISED -
Default	PLOT DATE = 3/20/2017	DATE -	REVISED -

**STATE OF ILLINOIS
DEPARTMENT OF TRANSPORTATION**

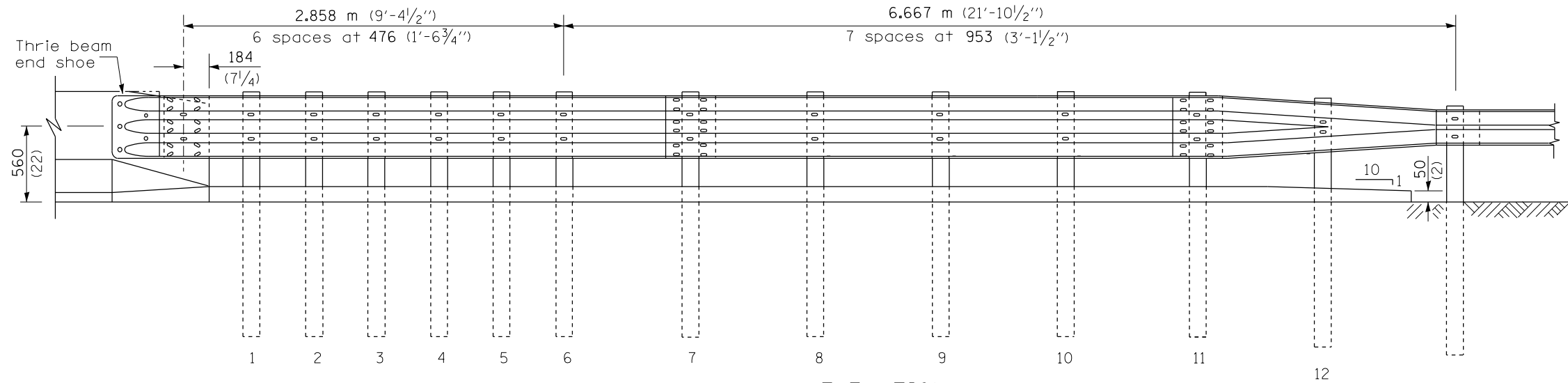
**PRE-MGS HIGHWAY STANDARD 631026-02
TRAFFIC BARRIER TERMINAL, 5 & 5A EFFECTIVE 4-1-06**

SCALE: SHEET 1 OF 1 SHEETS STA. TO STA.

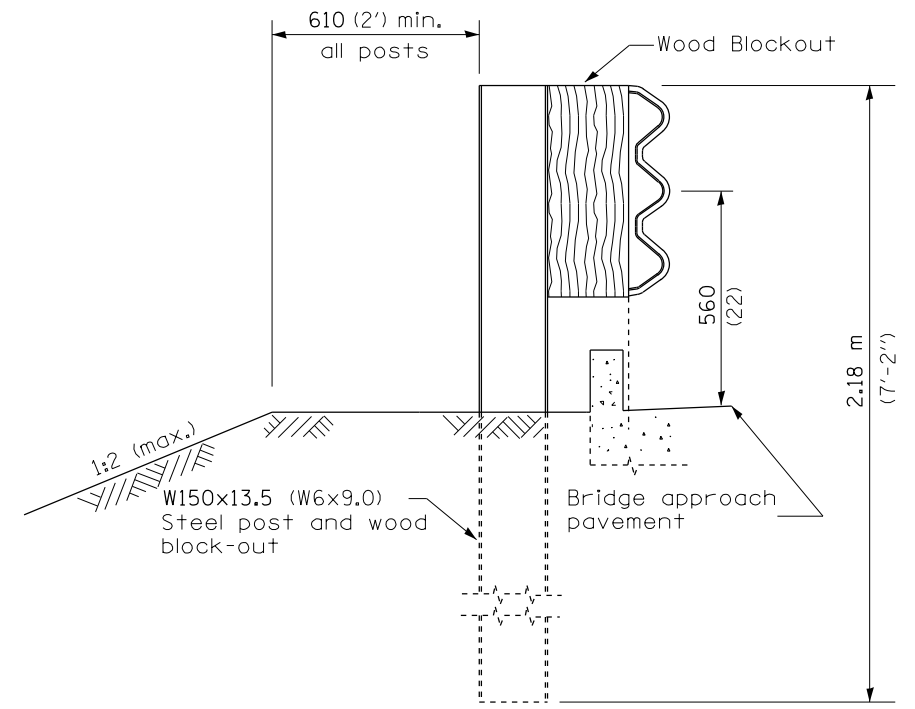
F.A. R.E.	SECTION	COUNTY	TOTAL SHEETS	SHEET NO.
VAR.	**	VARIOUS	17	13
CONTRACT NO. 72J62			ILLINOIS FED. AID PROJECT	



PLAN



ELEVATION

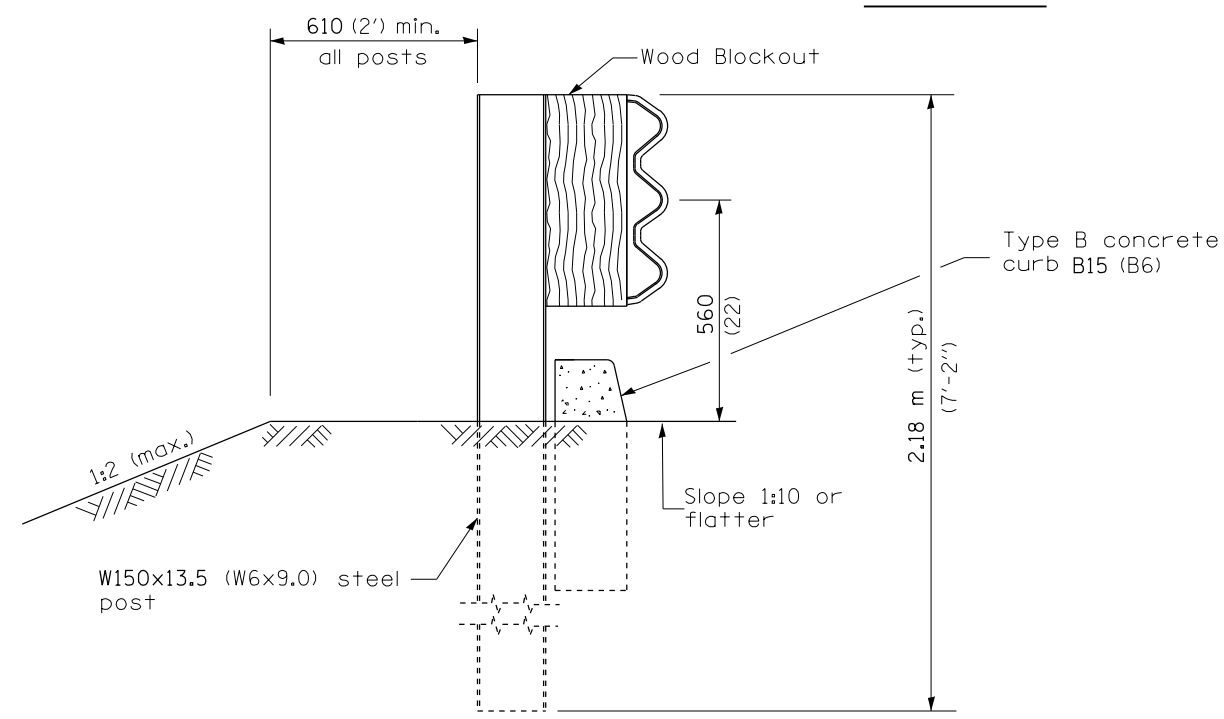
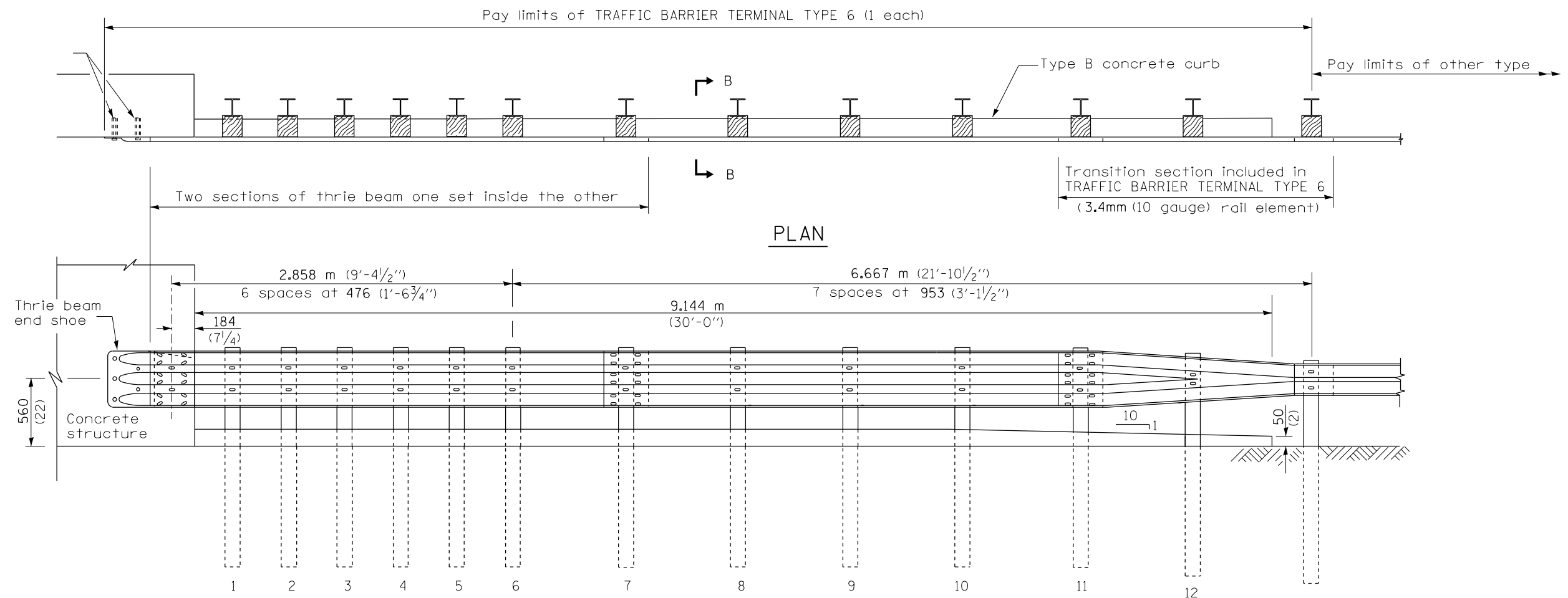


SECTION A-A

GENERAL NOTES

- See Standard 630001 for details of guardrail not shown.
- Thrie beam rail shall be bolted to block-out at all posts.
- See Standard 420401 for details of bridge approach pavement.
- All slope ratios are expressed as units of vertical displacement to units of horizontal displacement (V:H).
- All dimensions are in millimeters (inches) unless otherwise shown.

FILE NAME =	USER NAME = Verenskif	DESIGNED -	REVISED -	STATE OF ILLINOIS DEPARTMENT OF TRANSPORTATION	PRE-MGS HIGHWAY STANDARD 631031-05 TRAFFIC BARRIER TERMINAL, TYPE 6 EFFECTIVE 4-1-06	F.A. RTÉ.	SECTION	COUNTY	TOTAL SHEETS	SHEET NO.
Default	PLOT SCALE = 26.0000' / in.	CHECKED -	REVISED -			•VAR	**	VARIOUS	17	14
	PLOT DATE = 3/20/2017	DATE -	REVISED -			SCALE: SHEET 1 OF 3 SHEETS STA. TO STA.		ILLINOIS FED. AID PROJECT CONTRACT NO. 72J62		

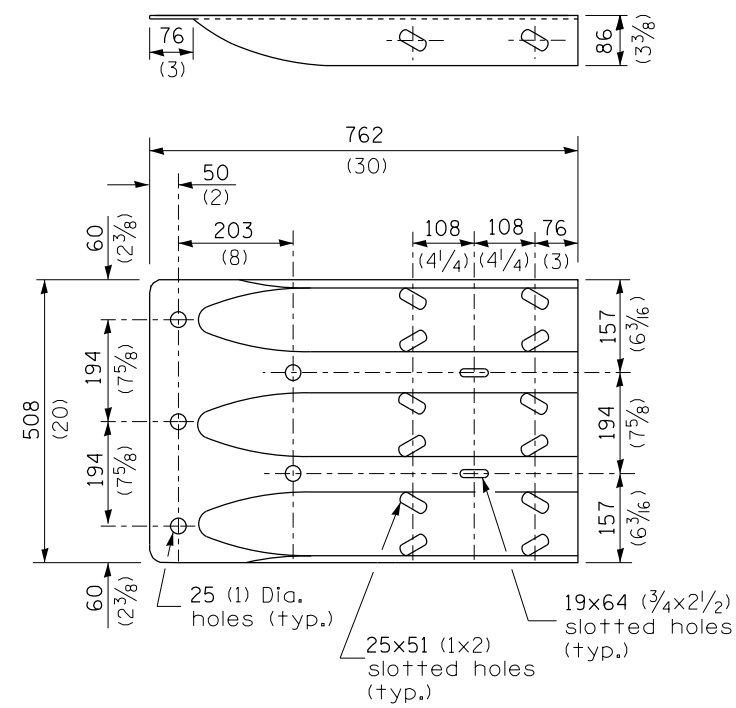


SECTION B-B

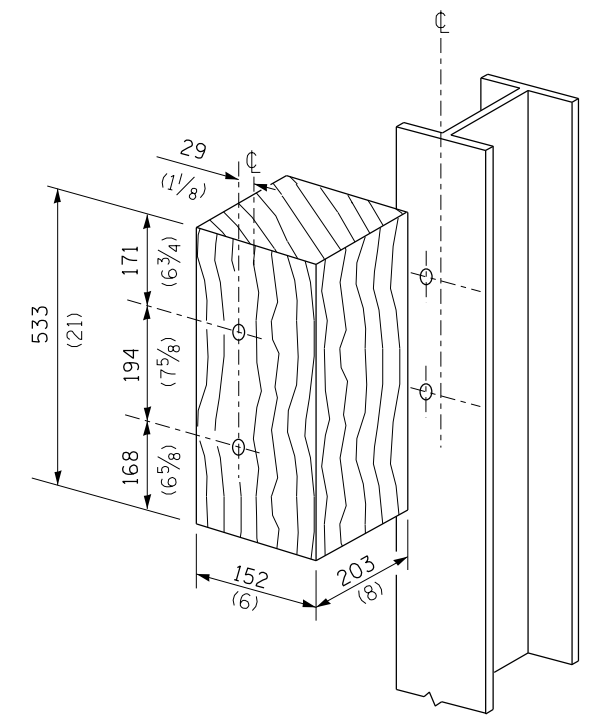
FILE NAME =	USER NAME = Verenskif	DESIGNED -	REVISED -	STATE OF ILLINOIS DEPARTMENT OF TRANSPORTATION	PRE-MGS HIGHWAY STANDARD 631031-05 TRAFFIC BARRIER TERMINAL, TYPE 6 EFFECTIVE 4-1-06	F.A. RTE.	SECTION	COUNTY	TOTAL SHEETS	SHEET NO.
pw:\IL\084EBIDINTEG.illinois.gov\PIWIDOT\Documents\DOT Offices\District 6\Projects\0672\Drawings\631031-05\631031-05-01\631031-05-01-01.dwg	DRAWN =	CHECKED -	REVISED -			•VAR	**	VARIOUS	17	15
Default	PLOT SCALE = 26.0000' / in.	DATE -	REVISED -			CONTRACT NO. 72J62		ILLINOIS FED. AID PROJECT		

SCALE: SHEET 2 OF 3 SHEETS STA. TO STA.

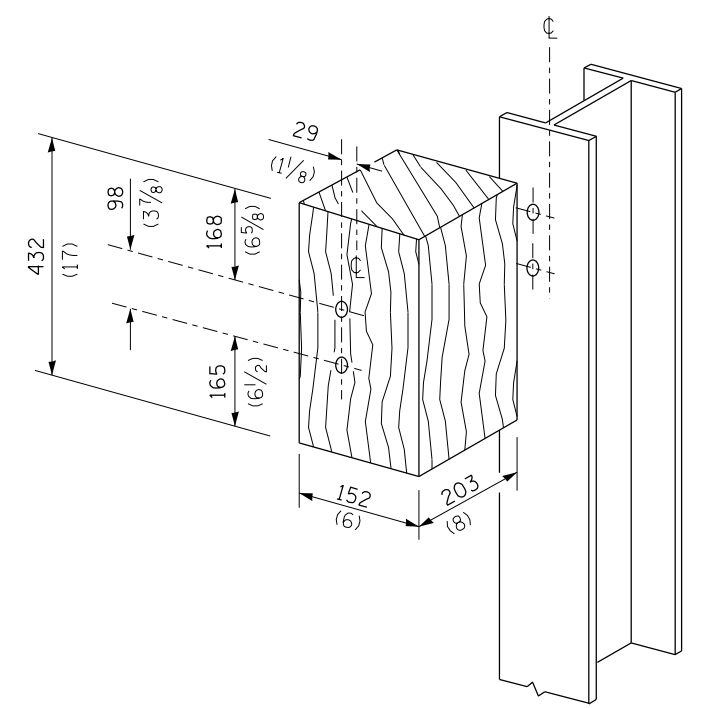
**D6 CABLE/GUARDRAIL 2017-3



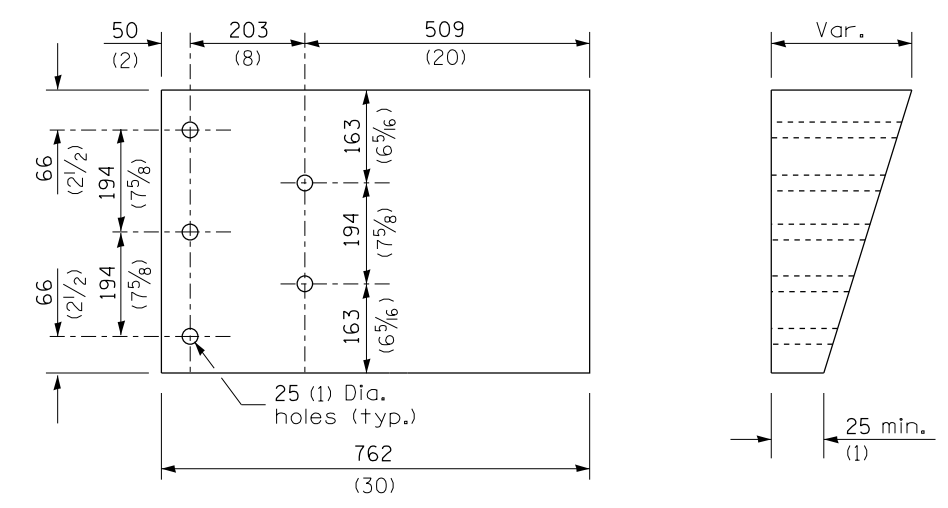
THRIE BEAM END SHOE DETAIL



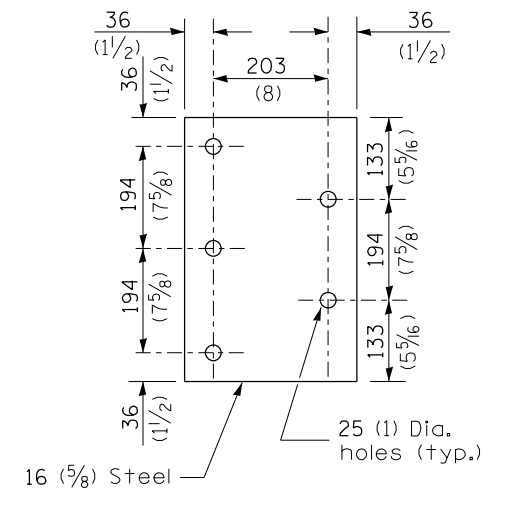
POSTS 1-11 WOOD BLOCKOUT DETAIL



POST 12 WOOD BLOCKOUT DETAIL



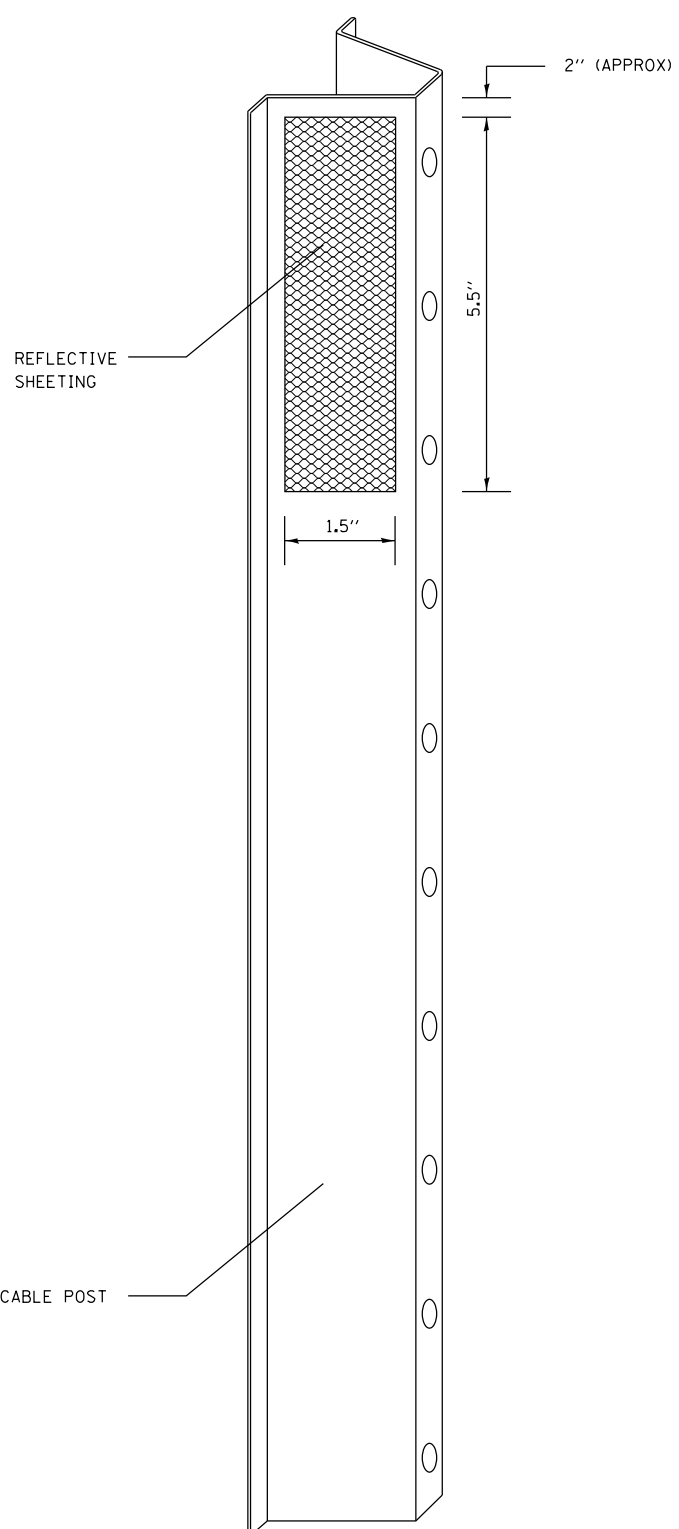
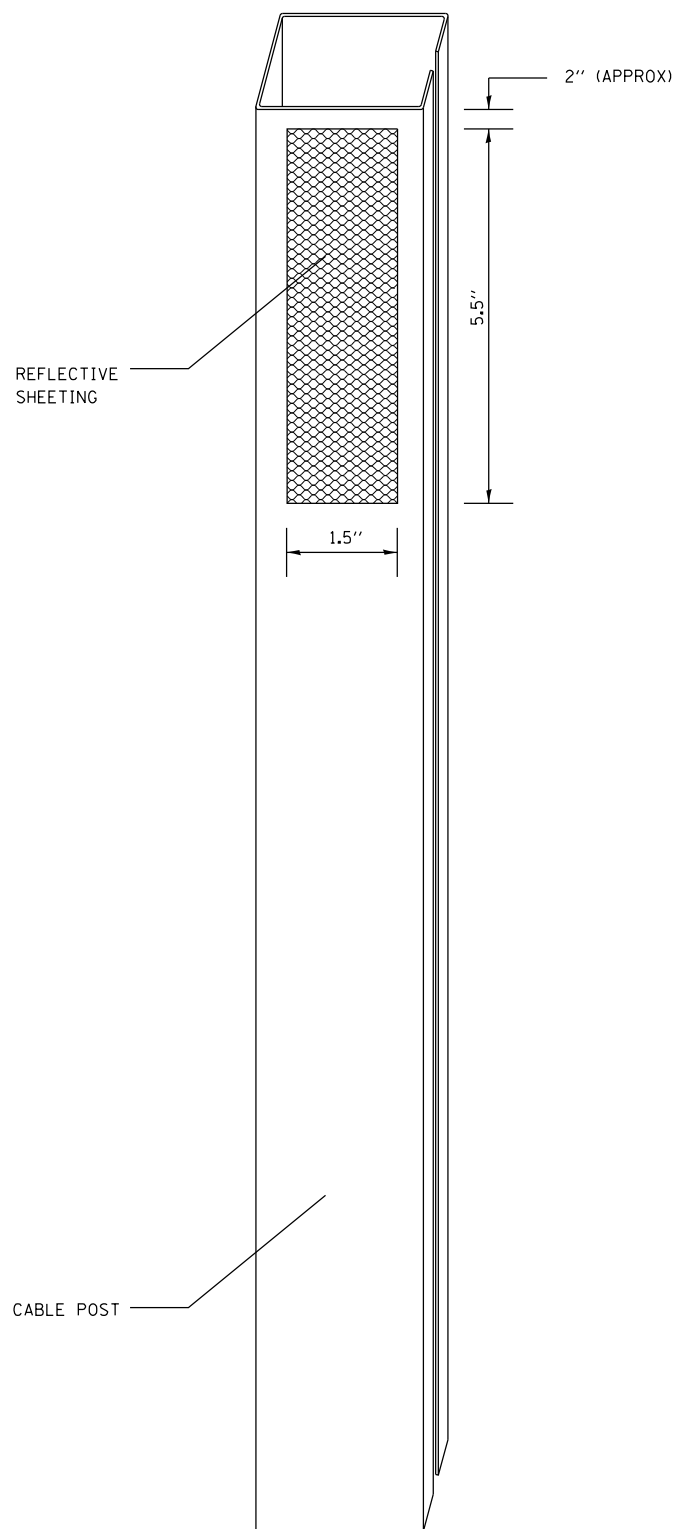
PARAPET WOOD BLOCK-OUT DETAIL



PARAPET STEEL BEARING PLATE DETAIL

(5 each individual 125x125x16 (5x5x5/8) steel plates with centered 25 (1)holes may be substituted for the plate shown.)

FILE NAME =	USER NAME = Verenskif	DESIGNED -	REVISED -	STATE OF ILLINOIS DEPARTMENT OF TRANSPORTATION	PRE-MGS HIGHWAY STANDARD 631031-05 TRAFFIC BARRIER TERMINAL, TYPE 6 EFFECTIVE 4-1-06	F.A. RTE.	SECTION	COUNTY	TOTAL SHEETS	SHEET NO.
Default	PLOT DATE = 3/20/2017	CHECKED -	REVISED -			VAR	**	VARIOUS	17	16
		DATE -	REVISED -			CONTRACT NO. 72J62		ILLINOIS FED. AID PROJECT		



NOTES:

MATERIAL: THE MATERIAL SHALL BE IN ACCORDANCE WITH SECTION 1090 AND 1091 OF THE STANDARD SPECIFICATIONS.

CONSTRUCTION REQUIREMENTS: THE REFLECTIVE SHEETING SHALL BE INSTALLED DIRECTLY ON THE CABLE POSTS. THE REFLECTIVE SHEETING SHALL BE INSTALLED AS SHOWN IN THE PLANS, ON EVERY OTHER POST (IN ORDER TO PROVIDE A SPACING OF 40'). THE SURFACE OF THE POST SHALL BE CLEANED OF ALL CONTAMINANTS PRIOR TO THE INSTALLATION OF THE REFLECTIVE SHEETING. THE SURFACE SHALL BE CLEANED USING A 5-8 PERCENT PHOSPHORIC ACID SOLUTION AND RINSED WITH CLEAN WATER OR AS RECOMMENDED BY THE MANUFACTURER OF THE REFLECTIVE SHEETING AND AS APPROVED BY THE ENGINEER.

BASIS OF PAYMENT: THIS WORK WILL BE PAID FOR AT THE CONTRACT UNIT PRICE EACH FOR CABLE GUARD MARKER.

FILE NAME =	USER NAME = Verenskif	DESIGNED -	REVISED -
p:\11\084EBIDINTEG\Illinois.gov\PWIDOT\Documents\DOT Offices\District 6\Projects\0672.DRAWING\EA0\Sheets\D672J62-sht-CABLE	DRAWN BY =	CHECKED -	REVISED -
Default	PLOT SCALE = 100.0000' / 1in.	DATE -	REVISED -
	PLOT DATE = 3/20/2017		

**STATE OF ILLINOIS
DEPARTMENT OF TRANSPORTATION**

CABLE GUARD MARKER DETAIL

SCALE: SHEET 1 OF 1 SHEETS STA. TO STA.

F.A. RTE.	SECTION	COUNTY	TOTAL SHEETS	SHEET NO.
	••	VARIOUS	17	17
CONTRACT NO. 72J62				
ILLINOIS FED. AID PROJECT				