

STATE OF ILLINOIS
DEPARTMENT OF TRANSPORTATION

F.A.U. RTE.	SECTION	COUNTY	TOTAL SHEETS	SHEET NO.
7968	1791 RS-5	SANGAMON	13	1
ILLINOIS			CONTRACT NO. 72J70	

FOR INDEX OF SHEETS, SEE SHEET NO. 2

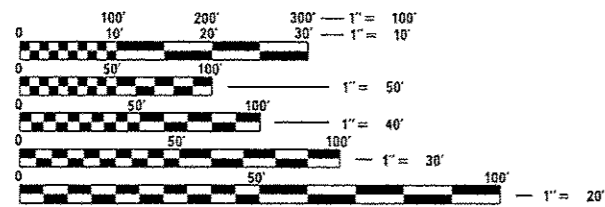
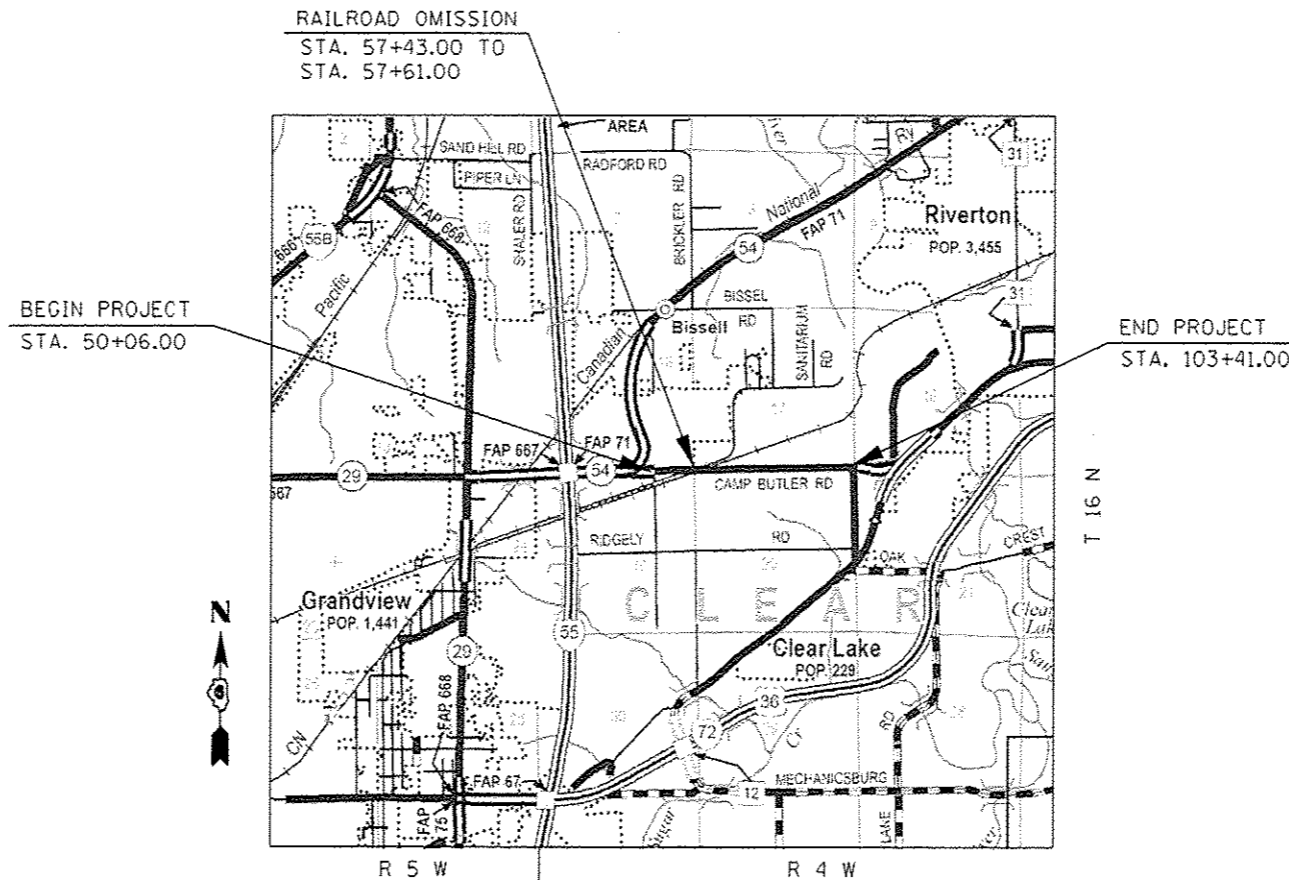
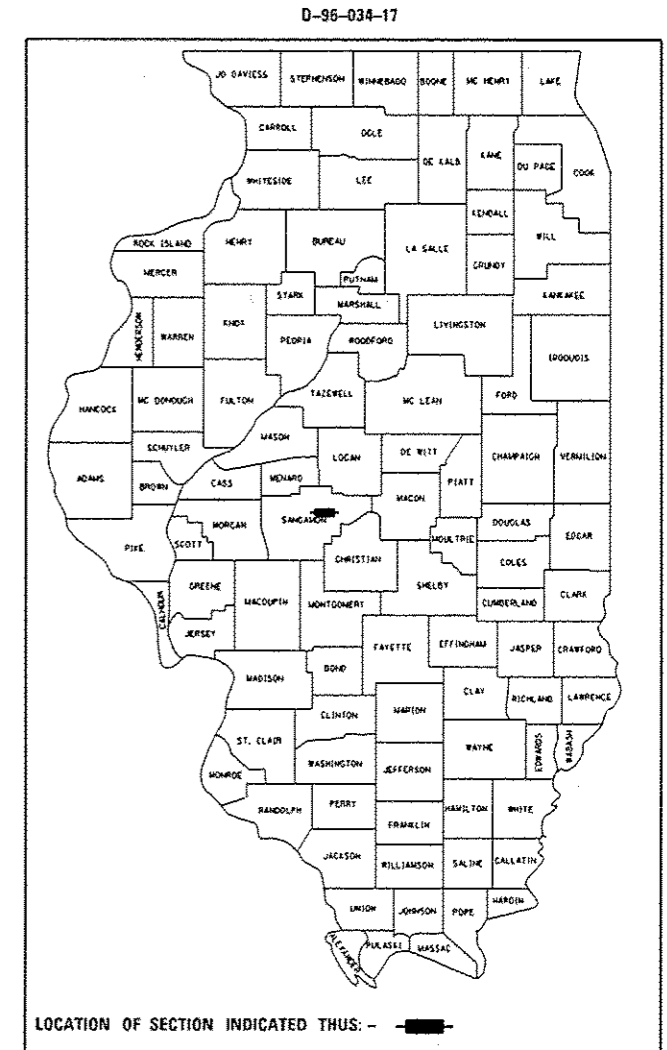
HIGHWAY STANDARDS

- 000001-06
- 001006
- 542401-02
- 701006-05
- 701201-04
- 701301-04
- 701306-03
- 701311-03
- 701901-06
- 780001-05
- 781001-04

PROPOSED
HIGHWAY PLANS

FAU ROUTE 7968 (CAMP BUTLER RD)
SECTION (79) RS-5
PROJECT STP-7968(002)
3P RESURFACING
SANGAMON COUNTY

C-96-034-17



FULL SIZE PLANS HAVE BEEN PREPARED USING STANDARD ENGINEERING SCALES. REDUCED SIZED PLANS WILL NOT CONFORM TO STANDARD SCALES. IN MAKING MEASUREMENTS ON REDUCED PLANS, THE ABOVE SCALES MAY BE USED.

J.U.L.I.E.
JOINT UTILITY LOCATION INFORMATION FOR EXCAVATION
1-800-892-0123
OR 811

PROJECT ENGINEER JAY EDWARDS (217)785-0597
PROJECT MANAGER GLENN STARKE (217)524-0066

CONTRACT NO. 72J70

GROSS LENGTH = 5335.00 FT. = 1.010 MILE
NET LENGTH = 5255.00 FT. = 0.995 MILE

ADT (2012) = 6,000
SU = 400
MU = 200

STATE OF ILLINOIS
DEPARTMENT OF TRANSPORTATION

SUBMITTED *24 March 2017*
[Signature] REGIONAL ENGINEER
May 12 2017
Maxine M. Addis, PE
ENGINEER OF DESIGN AND ENVIRONMENT
May 12 2017
[Signature] 2
DIRECTOR OF PROGRAM DEVELOPMENT

PRINTED BY THE AUTHORITY
OF THE STATE OF ILLINOIS

CODE NO.	ITEM	UNIT	TOTAL QUANTITY	CONSTR. CODE	
				6-01020-0000	FEDERAL 80%/STATE 20%
				ROADWAY	
				0005	
				URBAN	
40200800	AGGREGATE SURFACE COURSE, TYPE B	TON	67	67	
40600290	BITUMINOUS MATERIALS (TACK COAT)	POUND	8019	8019	
40600625	LEVELING BINDER (MACHINE METHOD), N50	TON	700	700	
40600982	HOT-MIX ASPHALT SURFACE REMOVAL - BUTT JOINT	SQ YD	1851	1851	
40600990	TEMPORARY RAMP	SQ YD	113	113	
40603335	HOT-MIX ASPHALT SURFACE COURSE, MIX "D", N50	TON	1401	1401	
40800050	INCIDENTAL HOT-MIX ASPHALT SURFACING	TON	107	107	
42300400	PORTLAND CEMENT CONCRETE DRIVEWAY PAVEMENT, 8 INCH	SQ YD	438	438	
44000200	DRIVEWAY PAVEMENT REMOVAL	SQ YD	438	438	
48102100	AGGREGATE WEDGE SHOULDER, TYPE B	TON	383	383	
50104400	CONCRETE HEADWALL REMOVAL	EACH	8	8	
50105220	PIPE CULVERT REMOVAL	FOOT	132	132	
54200220	PIPE CULVERTS, CLASS D, TYPE 1 15"	FOOT	220	220	
67100100	MOBILIZATION	LSUM	1	1	

FILE NAME = USER NAME = DESIGNED - REVISED -
 p:\11084EBIDINTEG\Illinois.gov\PW\DOT\Documents\DOT Offices\District 6\Projects\0673\BANK\DATA\EA0\shets\0672J70-shs-500.dwg REVISED -
 PLOT SCALE = 100.0000 * / in. CHECKED - REVISED -
 PLOT DATE = 3/24/2017 DATE - REVISED -

STATE OF ILLINOIS
DEPARTMENT OF TRANSPORTATION

SUMMARY OF QUANTITIES

SCALE: SHEET OF SHEETS STA. TO STA.

F.A.U. RTE.	SECTION	COUNTY	TOTAL SHEETS	SHEET NO.
796B	(79) RS-5	SANGAMON	13	3
CONTRACT NO. 72J70				
ILLINOIS FED. AID PROJECT				

CONSTR. CODE
 6-01020-0000
 FEDERAL 80%/STATE 20%
 ROADWAY
 0005
 URBAN

CODE NO.	ITEM	UNIT	TOTAL QUANTITY	
70100450	TRAFFIC CONTROL AND PROTECTION, STANDARD 701201	LSUM	1	1
70100460	TRAFFIC CONTROL AND PROTECTION, STANDARD 701306	LSUM	1	1
70300100	SHORT TERM PAVEMENT MARKING	FOOT	1641	1641
70300150	SHORT TERM PAVEMENT MARKING REMOVAL	SO FT	182	182
70300230	TEMPORARY PAVEMENT MARKING - LINE 5"	FOOT	14512	14512
* 78004200	PREFORMED PLASTIC PAVEMENT MARKING, TYPE B - INLAID - LETTERS AND SYMBOLS	SO FT	122.4	122.4
* 78004280	PREFORMED PLASTIC PAVEMENT MARKING, TYPE B - INLAID - LINE 24"	FOOT	66	66
* 78009005	MODIFIED URETHANE PAVEMENT MARKING - LINE 5"	FOOT	14512	14512
* 78100100	RAISED REFLECTIVE PAVEMENT MARKER	EACH	66	66
78300200	RAISED REFLECTIVE PAVEMENT MARKER REMOVAL	EACH	66	66
X4401198	HOT-MIX ASPHALT SURFACE REMOVAL, VARIABLE DEPTH	SO YD	17006	17006
X7015005	CHANGEABLE MESSAGE SIGN	CAL DA	60	60
Z0048665	RAILROAD PROTECTIVE LIABILITY INSURANCE	LSUM	1	1

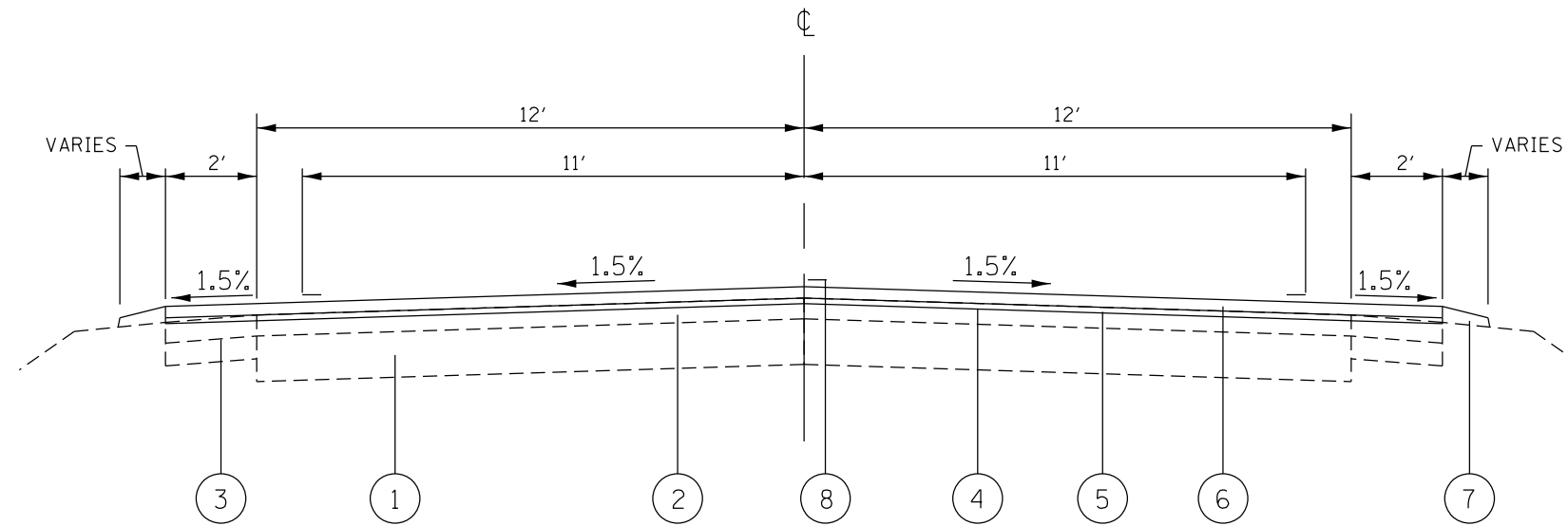
B

SIDEROADS AND ENTRANCES SCHEDULE											
LOCATION		TYPE	LENGTH	WIDTH FRONT	WIDTH BACK	AREA	HMA SURFACE REMOVAL - BUTT JOINT	DRIVEWAY PAVEMENT REMOVAL	PCC DRIVEWAY PAVEMENT, 8"	BITUMINOUS MATERIALS (TACK COAT)	INCIDENTAL HMA SURFACING
STATION	LT / RT		FT	FT	FT	SQ FT	SQ YD	SQ YD	SQ YD	POUND	TON
53+38.00	LT	SR	48	103	32	3240	360			81	30.2
56+18.00	LT	SR	91	177	31	4080	453			102	38.1
65+00.00	LT	PE	10	26	18	220	24			11	4.1
65+62.00	LT	PE	10	38	20	290	32			15	5.4
66+82.00	LT	PE	10	66	24	450	50			23	4.2
68+14.00	LT	PE	10	54	28	410	46			21	3.8
69+79.00	LT	CE	10	62	37	495		55	55		
70+42.00	RT	PE	10	34	16	250	28			13	4.7
71+37.00	RT	PE	10	24	12	180	20			9	3.4
71+37.00	LT	MB	4	76	27	206	23			10	1.9
73+05.00	LT	CE	10	69	41	550		61	61		
77+13.00	LT	CE	10	80	40	600		67	67		
79+45.00	LT	CE	10	50	31	405		45	45		
80+65.00	RT	CE	10	55	43	490		54	54		
81+91.00	LT	CE	10	72	38	550		61	61		
83+78.00	RT	PE	10	22	12	170	19			9	3.2
85+76.00	LT	CE	10	53	33	430		48	48		
87+72.00	LT	CE	10	53	32	425		47	47		
91+77.00	LT	PE	10	37	16	265	29			13	2.5
101+90.00	LT	PE	10	28	16	220	24			11	2.1
103+10.00	LT	PE	10	44	36	400	44			20	3.7
TOTAL							1153	438	438	336	107

BUTT JOINTS AND TEMPORARY RAMPS SCHEDULE						
LOCATION			LENGTH	WIDTH	HMA SURFACE REMOVAL - BUTT JOINT	TEMPORARY RAMP
STATION	TO	STATION	FT	FT	SQ YD	SQ YD
50+06.00	TO	50+36.00	30	31	103.3	17.2
56+66.00	TO	57+43.00	30 + SKEW	30	242.3	39.4
57+61.00	TO	58+37.00	30 + SKEW	30	252.6	39.4
103+11.00	TO	103+41.00	30	30	100.0	16.7
TOTAL					698	113

RAISED REFLECTOR SCHEDULE					
LOCATION			LENGTH	RAISED REFLECTIVE PAVEMENT MARKER REMOVAL	RAISED REFLECTIVE PAVEMENT MARKER
STATION	TO	STATION	FT	EACH	EACH
50+06.00	TO	57+12.00	706	9	9
57+92.00	TO	103+41.00	4549	57	57
TOTAL				66	66

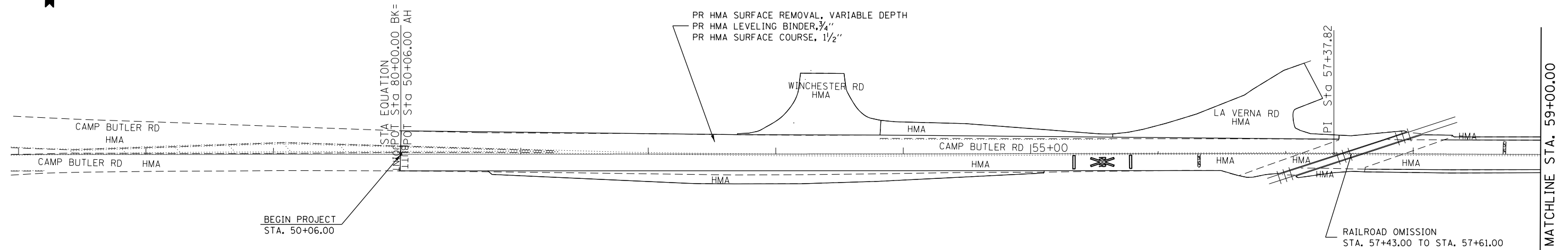
PIPE CULVERT SCHEDULE					
LOCATION		PIPE CULVERT REMOVAL	CONCRETE HEADWALL REMOVAL	PIPE CULVERTS, CLASS D, TYPE 1, 15"	AGGREGATE SURFACE COURSE, TYPE B
STATION	LT / RT	FT	EACH	FT	TON
65+00.00	LT	28	2	36	10.9
65+62.00	LT	28	2	36	10.9
69+59.00	RT	16		40	12.5
70+43.00	RT	24	2	36	10.9
71+37.00	RT	18	2	36	10.9
83+78.00	RT	18		36	10.9
TOTAL		132	8	220	67



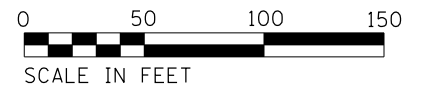
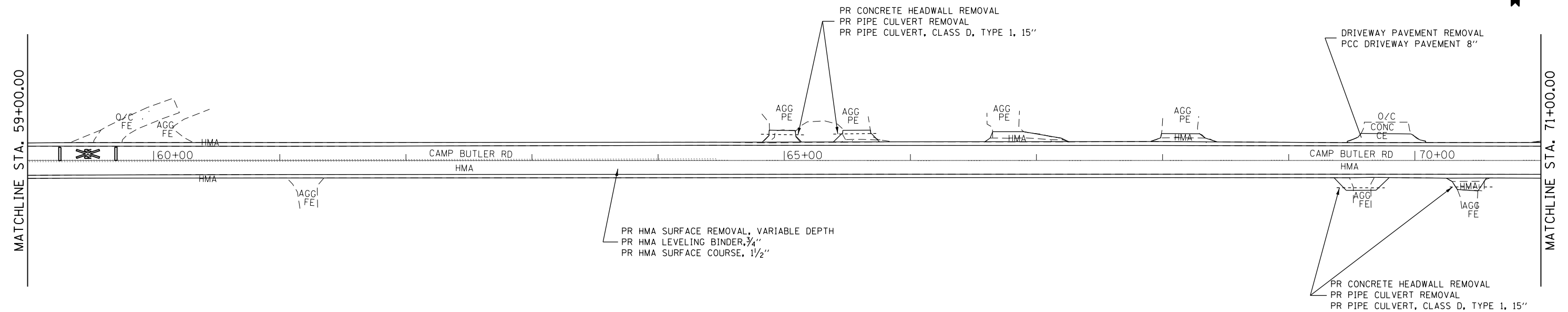
STA. 50+06 TO STA. 103+41

- 1 EXISTING BRICK PAVEMENT W/ 3" BIT. OVERLAY - 6"
- 2 EXISTING BIT. SURFACE - 2³/₄"
- 3 EXISTING BIT. SHOULDERS
- 4 PROPOSED HMA SURFACE REMOVAL - VARIABLE DEPTH
- 5 PROPOSED HMA LEVELING BINDER - 3/4"
- 6 PROPOSED HMA SURFACE COURSE - 1¹/₂"
- 7 PROPOSED AGGREGATE WEDGE SHOULDER
- 8 PROPOSED PAINT PAVEMENT MARKING - 5"

FILE NAME =	USER NAME = coxte	DESIGNED -	REVISED -	STATE OF ILLINOIS DEPARTMENT OF TRANSPORTATION	TYPICAL SECTIONS				F.A.U. RTE.	SECTION	COUNTY	TOTAL SHEETS	SHEET NO.
pw:\IL\084EBIDINTEG.illinois.gov\PWIDOT\Documents\IDOT Offices\District 6\Projects\0672\Drawings\EA0sheets\0672J70-sht-typical		DRAWN -	REVISED -		7968	(79) RS-5	SANGAMON	13	7				
Default	PLOT SCALE = 4.0000' / in.	CHECKED -	REVISED -		SCALE: SHEET OF SHEETS STA. TO STA.				CONTRACT NO. 72J70				
	PLOT DATE = 3/24/2017	DATE -	REVISED -		ILLINOIS FED. AID PROJECT								



NOTE: PROPOSED CULVERT FLOWLINES TO BE SET BY ENGINEER IN THE FIELD

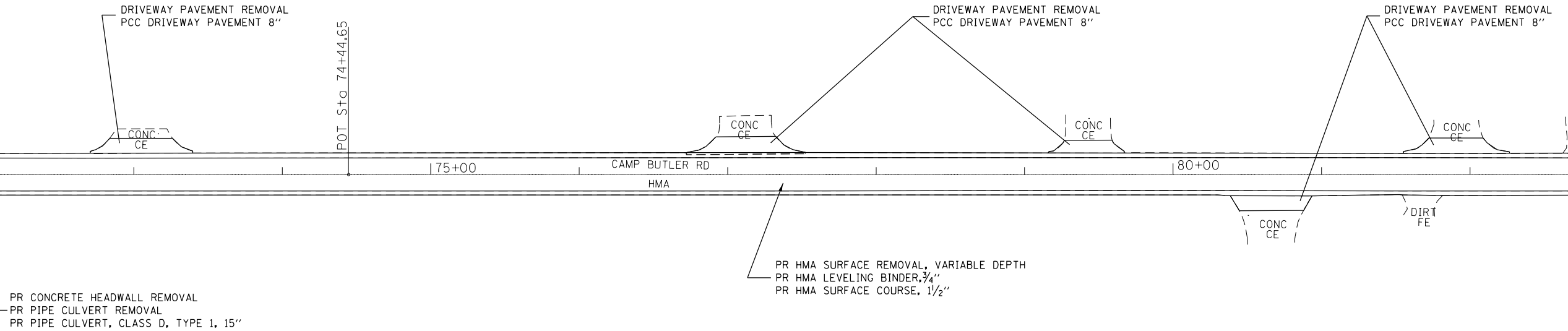


FILE NAME =	USER NAME = coxte	DESIGNED -	REVISED -	STATE OF ILLINOIS DEPARTMENT OF TRANSPORTATION	CAMP BUTLER RD PLAN SHEETS				F.A.U. R.T.E.	SECTION	COUNTY	TOTAL SHEETS	SHEET NO.
pw:\IL084EBIDINTEG.illinois.gov\PI\DOT\Documents\DOT Offices\District 6\Projects\0672\Drawings\6A0\Sheets\0672J70-SHT-PlanS		DRAWN	REVISED		7968	(79)	RS-5	SANGAMON	13	8			
Default	PLOT SCALE = 80.0000' / in.	CHECKED -	REVISED -		SCALE: SHEET OF SHEETS STA. TO STA.				CONTRACT NO. 72J70				
	PLOT DATE = 3/24/2017	DATE -	REVISED -						ILLINOIS FED. AID PROJECT				



MATCHLINE STA. 71+00.00

MATCHLINE STA. 83+00.00

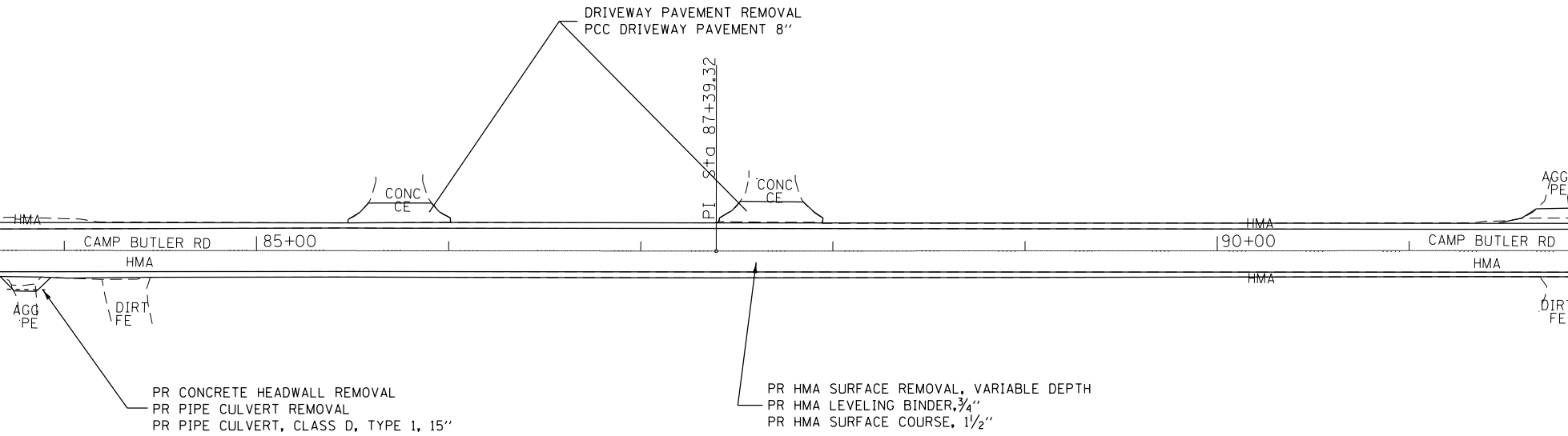


NOTE: PROPOSED CULVERT FLOWLINES TO BE SET BY ENGINEER IN THE FIELD



MATCHLINE STA. 83+00.00

MATCHLINE STA. 95+00.00



FILE NAME =	USER NAME = coxte	DESIGNED -	REVISED -
pw:\IL084EBIDINTEG.illinois.gov\PI\DOT\Documents\DOT Offices\District 6\Projects\0672\Drawings\EA0\Sheets\0672J70-SHT-PlanS		DRAWN -	REVISED -
Default	PLOT SCALE = 80.0000' / in.	CHECKED -	REVISED -
	PLOT DATE = 3/24/2017	DATE -	REVISED -

**STATE OF ILLINOIS
DEPARTMENT OF TRANSPORTATION**

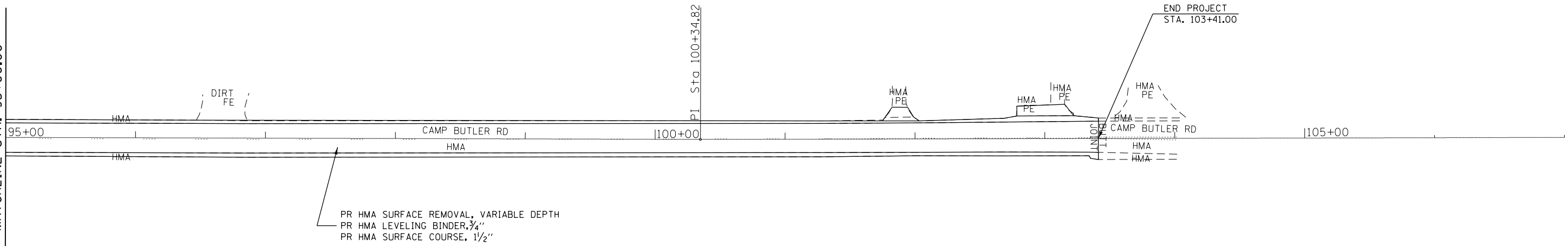
CAMP BUTLER RD PLAN SHEETS

SCALE: SHEET OF SHEETS STA. TO STA.

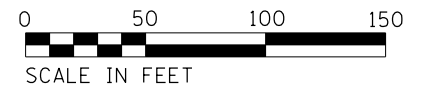
F.A.U. RTE.	SECTION	COUNTY	TOTAL SHEETS	SHEET NO.
7968	(79) RS-5	SANGAMON	13	9
CONTRACT NO. 72J70			ILLINOIS FED. AID PROJECT	



MATCHLINE STA. 95+00.00



PR HMA SURFACE REMOVAL, VARIABLE DEPTH
 PR HMA LEVELING BINDER, 3/4"
 PR HMA SURFACE COURSE, 1 1/2"



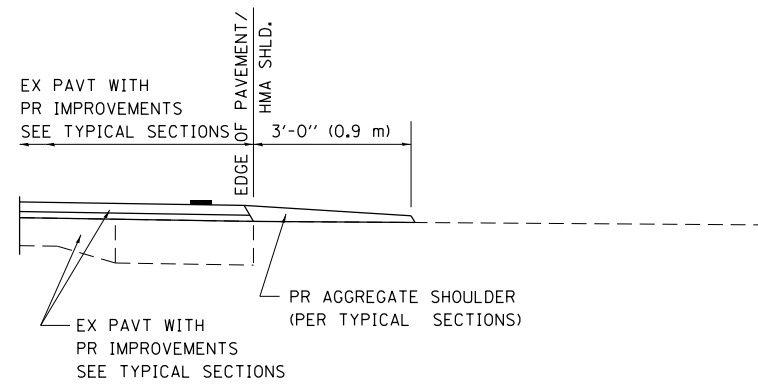
FILE NAME =	USER NAME = coxte	DESIGNED -	REVISED -
p:\1\084EBIDINTEG.illinois.gov\PI\DOT\Documents\DOT Offices\District 6\Projects\0672\DRAWING\EA0\Sheets\0672J70-SHT-PlanS		DRAWN -	REVISED -
Default	PLOT SCALE = 80.0000' / in.	CHECKED -	REVISED -
	PLOT DATE = 3/24/2017	DATE -	REVISED -

**STATE OF ILLINOIS
 DEPARTMENT OF TRANSPORTATION**

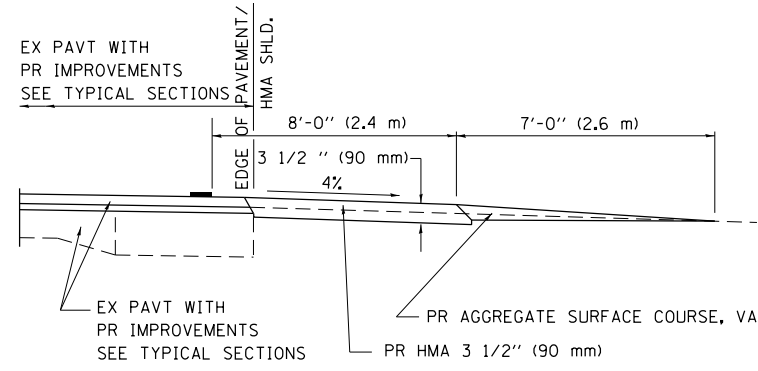
CAMP BUTLER RD PLAN SHEETS

SCALE: SHEET OF SHEETS STA. TO STA.

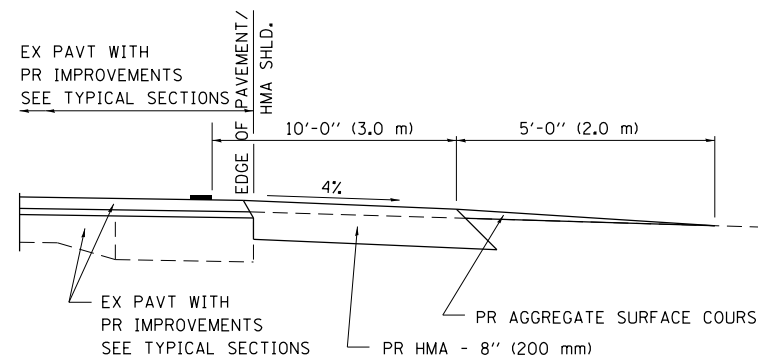
F.A.U. RTE.	SECTION	COUNTY	TOTAL SHEETS	SHEET NO.
7968	(79) RS-5	SANGAMON	13	10
CONTRACT NO. 72J70			ILLINOIS FED. AID PROJECT	



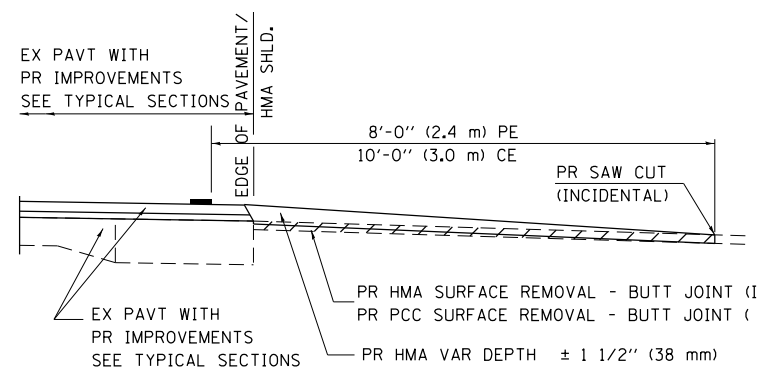
SECTION A-A FOR EX EARTH/ AGGREGATE FE



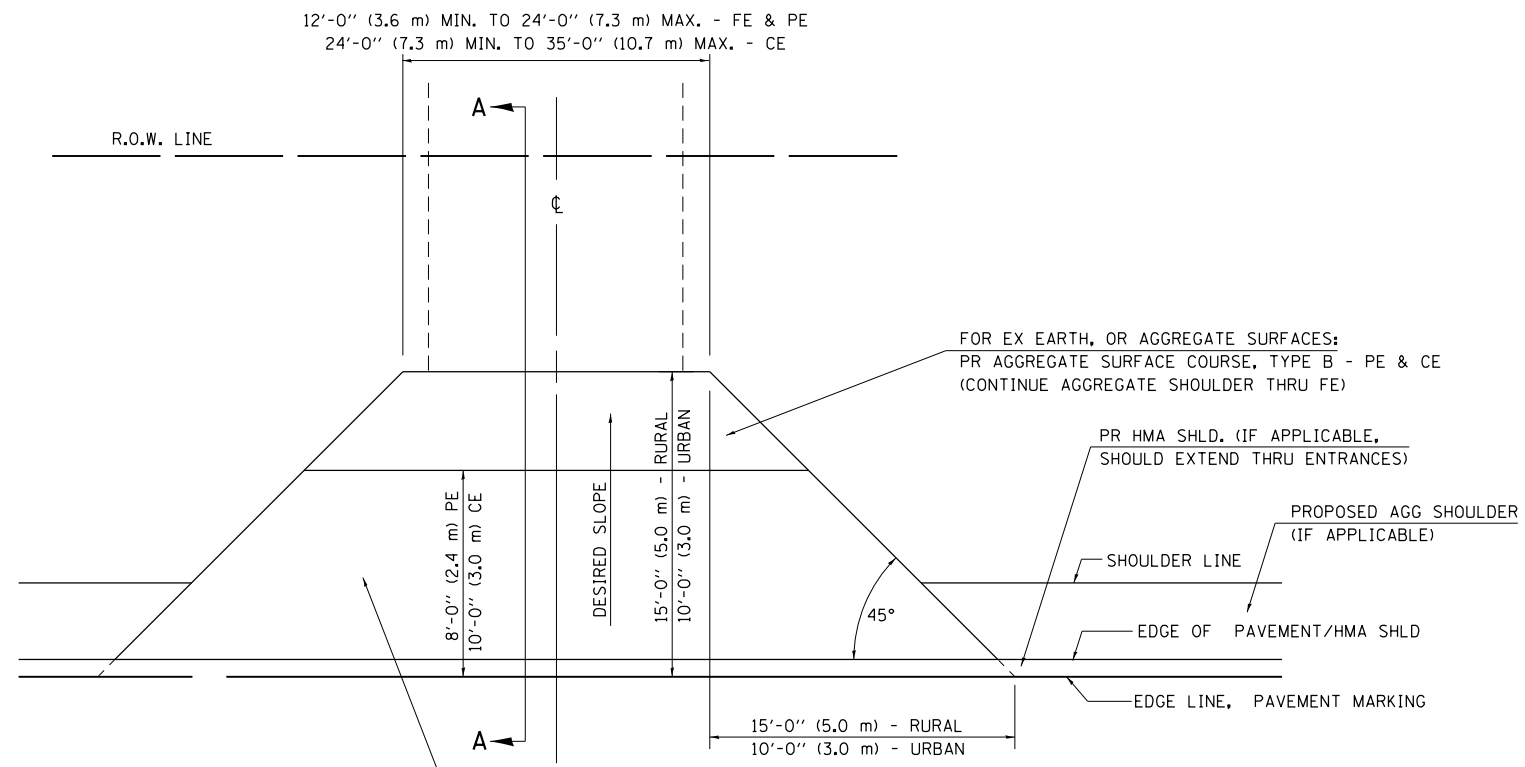
SECTION A-A FOR EX EARTH/AGGREGATE PE



SECTION A-A FOR EX EARTH/AGGREGATE CE & SIDE ROAD



SECTION A-A FOR EX HMA/ PC CONCRETE PE, CE & SIDE ROAD



FOR EX EARTH OR AGGREGATE SURFACES:
 PR HMA SURFACE REMOVAL (IF APPLICABLE)
 PR AGGREGATE SHOULDER THRU - FE
 PR HMA CONCRETE 3 1/2" (90 mm) - PE
 PR HMA CONCRETE 8" (200 mm) - CE

FOR EX HMA CONCRETE SURFACES:
 PR HMA SURFACE REMOVAL-BUTT JOINT

FOR EX PCC SURFACES:
 PR PCC SURFACE REMOVAL-BUTT JOINT

GENERAL NOTES:

THE RESIDENT ENGINEER WILL DETERMINE THE EXACT TYPE OF IMPROVEMENT TO BE COMPLETED FOR ALL ENTRANCES, SIDEROADS AND MAILBOX TURNOUTS ON THIS PROJECT.

THE PLAN DETAILS AND SCHEDULES SHOULD BE USED AS A GUIDE FOR THE ENGINEER TO IMPLEMENT THE FINAL DESIGN. THE ENGINEER MAY DECIDE TO SALVAGE PORTIONS OF THE EXISTING ENTRANCE PAVEMENT STRUCTURE; THEREFORE, REDUCING PAY ITEM QUANTITIES. NO ADDITIONAL PAYMENT WILL BE ALLOWED FOR THIS REDUCTION IN QUANTITIES.

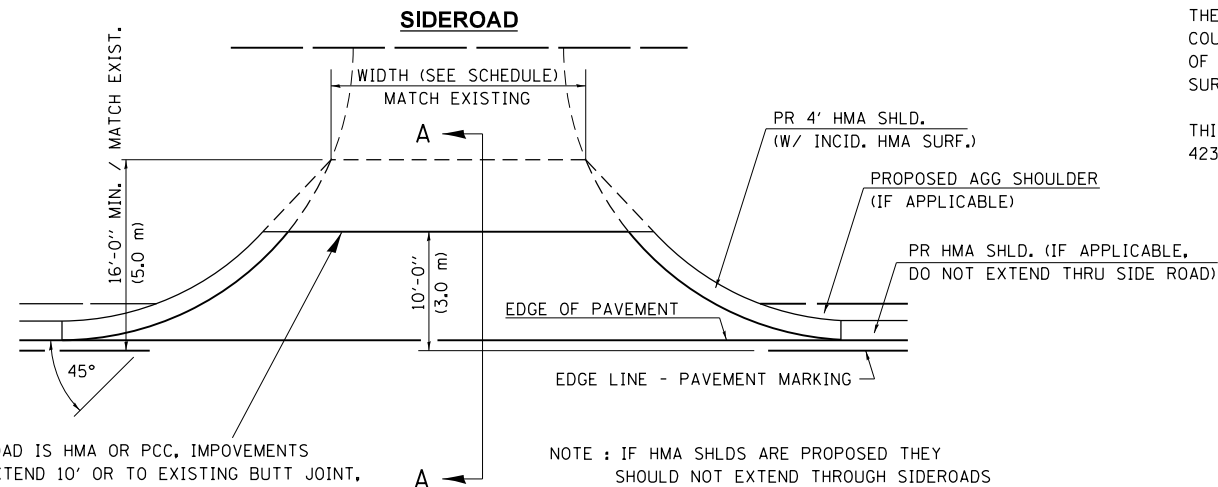
ANY WORK THE ENGINEER REQUIRES WHICH IS NOT COVERED BY A PAY ITEM CONTAINED IN THE PLANS WILL BE PAID FOR IN ACCORDANCE WITH ARTICLE 109.04 OF THE STANDARD SPECIFICATIONS.

HMA CONCRETE REQUIRED TO CONSTRUCT THE ENTRANCES SHALL BE IN ACCORDANCE WITH THE APPLICABLE PORTIONS OF SECTION 406 AND 408 OF THE STANDARD SPECIFICATIONS AND AS DIRECTED BY THE ENGINEER.

WHEN THE HMA CONCRETE PROPOSED FOR THE IMPROVEMENT IS THICKER THAN 3 INCHES (75 mm) AND REQUIRE PLACEMENT IN MORE THAN ONE LIFT. THE BOTTOM LIFT(S) SHALL MEET THE REQUIREMENTS OF HMA BASE COURSE IN SECTION 406 OF THE STANDARD SPECIFICATIONS AND THE TOP LIFT OF 2 INCHES (50 mm) SHALL MEET THE REQUIREMENTS OF HMA CONCRETE SURFACE COURSE, SUPERPAVE.

THIS WORK WILL BE PAID FOR IN ACCORDANCE WITH SECTIONS 351, 358, 408, 423 AND 440 OF THE STANDARD SPECIFICATIONS.

ALL DIMENSIONS ARE IN INCHES (MILLIMETERS) UNLESS OTHERWISE SHOWN.



NOTE : IF SIDEROAD IS HMA OR PCC, IMPROVEMENTS SHOULD EXTEND 10' OR TO EXISTING BUTT JOINT, WHICHEVER IS GREATER

NOTE : IF HMA SHLDS ARE PROPOSED THEY SHOULD NOT EXTEND THROUGH SIDEROADS

FILE NAME =	USER NAME = coxte	DESIGNED -	REVISED - 2/19/03 JCN
ENT PPP.DGN		CHECKED - JCN	REVISED - 4/01/04 JCN
		DATE - FEBRUARY 23, 1999	REVISED -

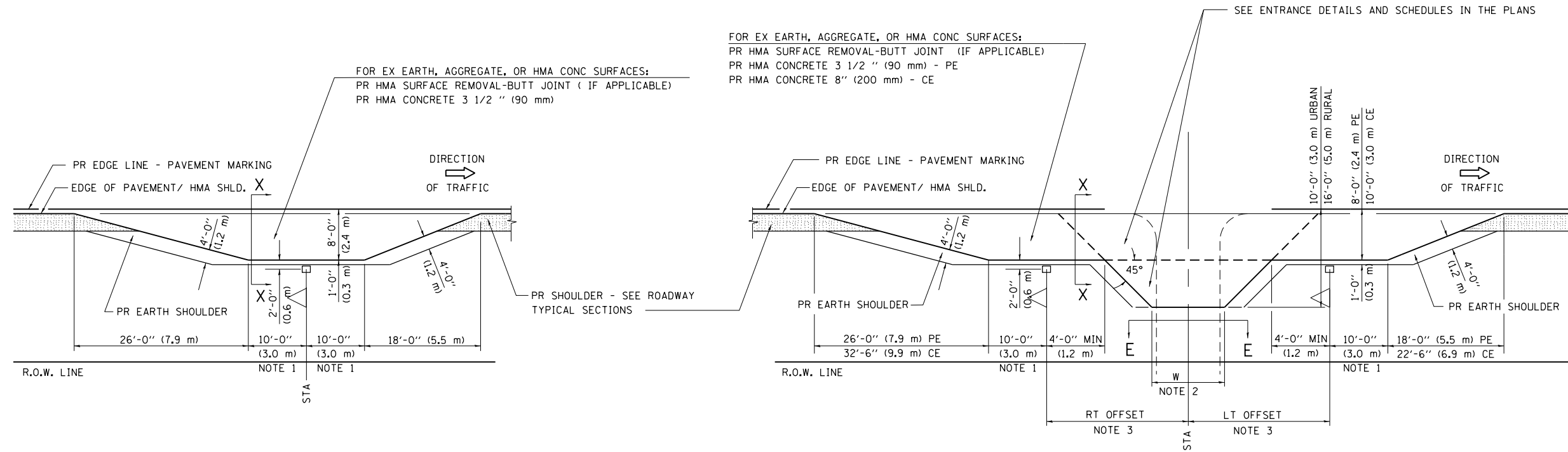
**STATE OF ILLINOIS
 DEPARTMENT OF TRANSPORTATION**

**DIST.6 DETAILS FOR RURAL/URBAN ENT., MAILBOX
 TURNOUT & SIDEROADS W/O CONC. GUTTER (3P-PROJ.)**

SCALE: SHEET OF SHEETS STA. TO STA.

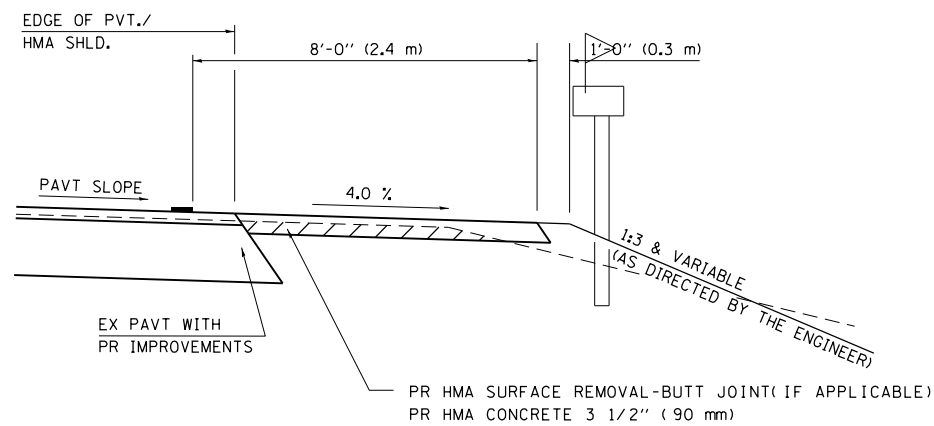
F.A.U. RTE.	SECTION	COUNTY	TOTAL SHEETS	SHEET NO.
7968	(79) RS-5	SANGAMON	13	12
CONTRACT NO. 72J70				
ILLINOIS FED. AID PROJECT				

DETAILS OF MAILBOX TURNOUTS



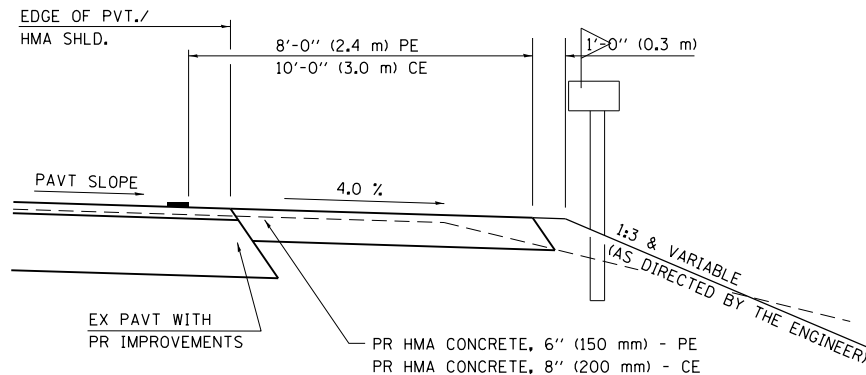
PLAN - MAILBOX TURNOUTS

PLAN - COMBINED MAILBOX TURNOUT WITH TRAILING OR LEADING ENTRANCE



**SECTION X-X THRU MAILBOX TURNOUT
ALSO APPLIES TO MAILBOX TURNOUTS COMBINED WITH
EX EARTH, AGGREGATE, OR HMA PE & FE**

(DETAIL APPLIES WHEN M.B. TURNOUT DOES NOT EXIST.
IF EXISTING, TREAT SAME AS ENTRANCE.)



**SECTION X-X THRU MAILBOX TURNOUT
COMBINED WITH EX HMA CONC & PC CONC PE & CE**

(DETAIL APPLIES WHEN M.B. TURNOUT DOES NOT EXIST.
IF EXISTING, TREAT SAME AS ENTRANCE.)

- NOTE 1 IF MORE THAN ONE MAILBOX IS PRESENT, DIMENSION FROM CENTER OF END MAILBOX.
- NOTE 2 FOR ENTRANCE LAYOUT DIMENSIONS AND SECTIONS A-A & E-E REFER TO THE SCHEDULES IN THE PLANS.
- NOTE 3 BOTH LT OR RT OFFSETS FOR MAILBOX SHOWN USE OFFSET DIMENSION PER SCHEDULE AND REFER TO LAYOUT SHOWN ON THE PLAN.

ALL DIMENSIONS ARE IN INCHES (MILLIMETERS)
UNLESS OTHERWISE SHOWN.

FILE NAME =	USER NAME = coxte	DESIGNED -	REVISED - 2/19/03 JCN
ENT PPP.DGN		CHECKED - JCN	REVISED - 4/01/04 JCN
		DATE - FEBRUARY 23, 1999	REVISED -

**STATE OF ILLINOIS
DEPARTMENT OF TRANSPORTATION**

**DIST.6 DETAILS FOR RURAL/URBAN ENT., MAILBOX
TURNOUT & SIDEROADS W/O CONC. GUTTER (3P-PROJ.)**

SCALE: SHEET OF SHEETS STA. TO STA.

F.A.U. RTE.	SECTION	COUNTY	TOTAL SHEETS	SHEET NO.
7968	(79) RS-5	SANGAMON	13	13
CONTRACT NO. 72J70				
ILLINOIS FED. AID PROJECT				