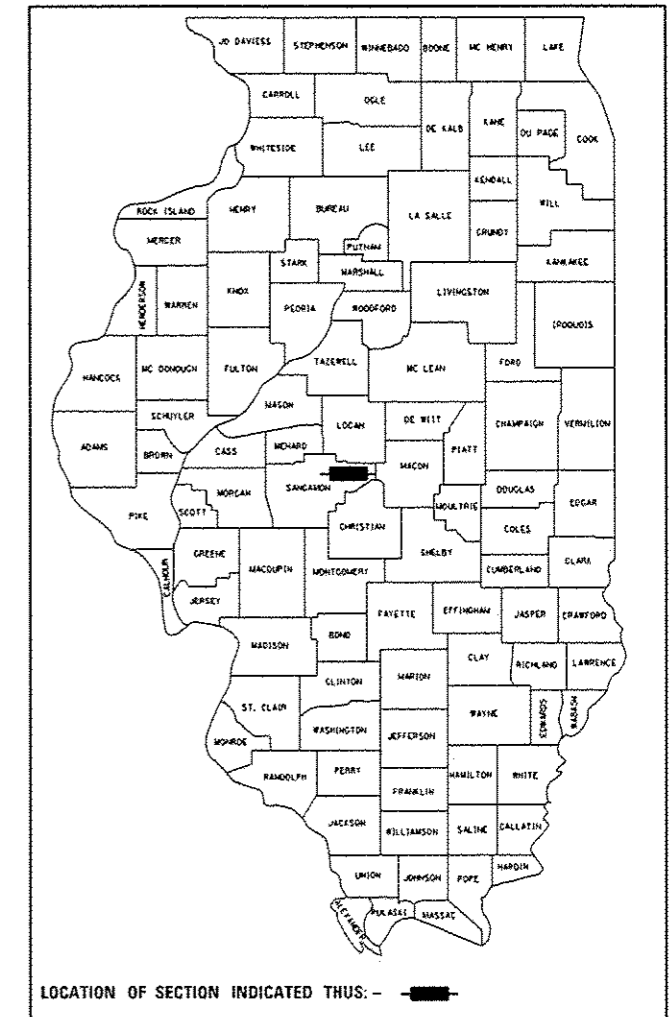


STATE OF ILLINOIS
DEPARTMENT OF TRANSPORTATION

F.A.I. RTE.	SECTION	COUNTY	TOTAL SHEETS	SHEET NO.
72A	(84-10-3) RS-6	SANGAMON	10	1
ILLINOIS			CONTRACT NO. 72J73	

D-96-037-17



PROPOSED HIGHWAY PLANS

FAI ROUTE 72A WBDL (I-72)
SECTION (84-10-3) RS-6
PROJECT NHPP-0072(406)
RESURFACING
SANGAMON COUNTY

C-96-037-17

FOR INDEX OF SHEETS, SEE SHEET NO. 2

ADT = 13,400 (2015)

SU% = 4.1%

MU% = 13.81%

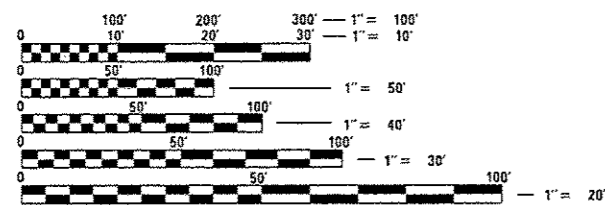
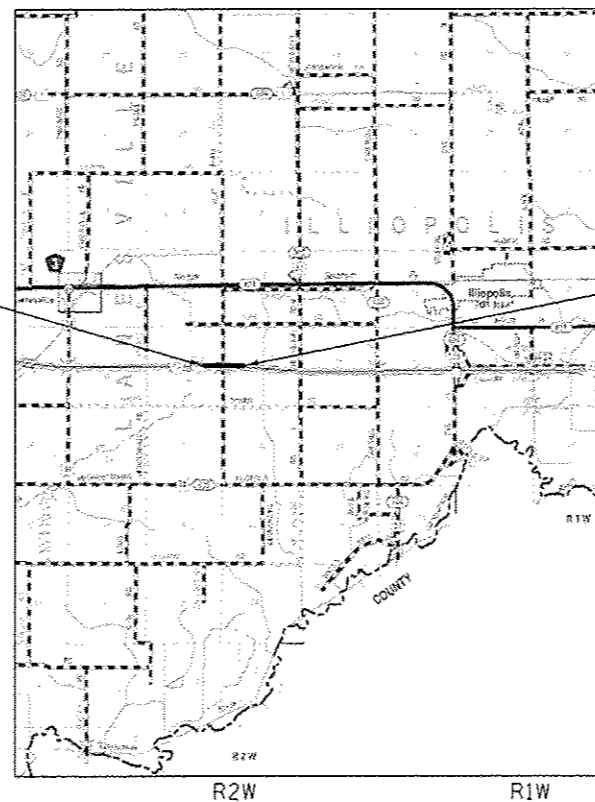
CRS = 8.3 (2016)

STANDARDS

- 000001-06
- 001006
- 701101-05
- 701106-02
- 701400-09
- 701401-10
- 701901-06

BEGIN IMPROVEMENT
STA 555+00.00

END IMPROVEMENT
STA 573+00.00



FULL SIZE PLANS HAVE BEEN PREPARED USING STANDARD ENGINEERING SCALES. REDUCED SIZED PLANS WILL NOT CONFORM TO STANDARD SCALES. IN MAKING MEASUREMENTS ON REDUCED PLANS, THE ABOVE SCALES MAY BE USED.

J.U.L.I.E.
JOINT UTILITY LOCATION INFORMATION FOR EXCAVATION
1-800-892-0123
OR 811

PROJECT ENGINEER: JAY WAVERING 217-785-9046
PROJECT MANAGER: JON KELLEY 217-785-2739

CONTRACT NO. 72J73

GROSS LENGTH = 1,800.0 FT. = 0.3 MILE
NET LENGTH = 1,800.0 FT. = 0.3 MILE

STATE OF ILLINOIS
DEPARTMENT OF TRANSPORTATION

SUBMITTED 22 March 2017

[Signature] REGIONAL ENGINEER

May 12 2017
Maureen M. Addis ENGINEER OF DESIGN AND ENVIRONMENT

May 12 2017
[Signature] DIRECTOR OF PROGRAM DEVELOPMENT

PRINTED BY THE AUTHORITY
OF THE STATE OF ILLINOIS

GENERAL NOTES

1. IN ADDITION TO FIELD SURVEYS AND AERIAL SURVEYS, PLAN DIMENSIONS AND DETAILS RELATIVE TO THE EXISTING FACILITIES HAVE BEEN TAKEN FROM EXISTING PLANS AND ARE SUBJECT TO CONSTRUCTION VARIATIONS. IT SHALL BE THE CONTRACTOR'S RESPONSIBILITY TO VERIFY SUCH DIMENSIONS AND DETAILS IN THE FIELD. SUCH VARIATIONS SHALL NOT BE A CAUSE FOR ADDITIONAL COMPENSATION DUE TO A CHANGE IN THE SCOPE OF THE WORK. HOWEVER, THE CONTRACTOR WILL BE PAID FOR THE QUANTITY ACTUALLY FURNISHED AT THE BID PRICE FOR THE WORK.
2. WHERE SECTION OR SUBSECTION MONUMENTS ARE ENCOUNTERED, THE ENGINEER SHALL BE NOTIFIED BEFORE SUCH MONUMENTS ARE REMOVED. THE CONTRACTOR SHALL PROTECT AND CAREFULLY PRESERVE ALL PROPERTY MARKERS, MONUMENTS, AND PERMANENT SURVEY MARKERS UNTIL THE OWNER AND AUTHORIZED SURVEYOR OR AGENT HAS WITNESSED OR OTHERWISE REFERENCED THEIR LOCATION.
3. EXISTING PAVEMENT DAMAGED DUE TO THE CONTRACTOR'S OPERATIONS, AND NOT OTHERWISE NECESSARY TO REPLACE, SHALL BE REPLACED AT THE EXPENSE OF THE CONTRACTOR.
4. THE CONTRACTOR SHALL NOTIFY THE DISTRICT 6 BUREAU OF OPERATIONS AT (217) 785-5312 THREE WEEKS PRIOR TO IMPLEMENTING ANY TRAFFIC CONTROL.
5. THE CONTRACTOR WILL BE RESPONSIBLE FOR THE TRAFFIC CONTROL DEVICES AT ALL TIMES DURING CONSTRUCTION ACTIVITIES AND SHALL COORDINATE THE ITEMS OF WORK IN ORDER TO KEEP HAZARD TRAFFIC INCONVENIENCES TO A MINIMUM.
6. NO WORK SHALL COMMENCE UNTIL ALL TRAFFIC CONTROL REQUIREMENTS ARE MET.
7. ALL SIGNS AND DELINEATORS CONFLICTING WITH TRAFFIC CONTROL OR CONSTRUCTION SHALL BE REMOVED AND REPLACED BY THE CONTRACTOR. THIS WORK WILL BE INCLUDED WITH THE COST FOR TRAFFIC CONTROL ON THE PROJECT. IN ADDITION, THE COST TO RELOCATE SIGNS DESIGNATED ON THE PLAN SHEETS WILL ALSO BE INCIDENTAL TO THE TRAFFIC CONTROL FOR THOSE AREAS.
8. ALL TEMPORARY PAVEMENT MARKINGS WILL BE PLACED IN SUCH A MANNER SO AS NOT TO INTERFERE WITH THE PLACEMENT OF PERMANENT PAVEMENT MARKINGS.
9. THE THICKNESS OF HMA MIXTURES SHOWN ON THE PLANS IS THE NOMINAL THICKNESS. DEVIATIONS FROM THE NOMINAL THICKNESS WILL BE PERMITTED WHEN SUCH DEVIATIONS OCCUR DUE TO IRREGULARITIES IN THE EXISTING SURFACE OR BASE ON WHICH THE HMA MIXTURE IS PLACED.
10. ALL DAMAGE TO EXISTING PAVEMENT MARKINGS OR RAISED REFLECTIVE PAVEMENT MARKERS OUTSIDE THE REMOVAL LINE SHOWN ON THE PLANS SHALL BE REPLACED AT NO ADDITIONAL COST TO THE DEPARTMENT.

COMMITMENTS

1. THE RESIDENT ENGINEER SHALL CONTACT STUDIES & PLANS CONCERNING ANY MAJOR PLAN CHANGES.
2. THE PROPOSED PAVEMENT MARKINGS FOR EDGE LINES AND GROOVING FOR RECESSED PAVEMENT MARKINGS SHALL BE DONE BY THE DISTRICT 6 OPERATIONS. ON COMPLETION OF THE PROJECT, THE CONTRACTOR SHALL CONTACT DISTRICT 6 OPERATIONS AT (217) 785-5312 TWO WEEKS PRIOR TO MAKE ARRANGEMENTS FOR THIS WORK.

MIXTURE TABLE

LOCATION(S):	MAINLINE
MIXTURE USE(S):	HMA SURFACE
PG:	SBS PG 70-22
DESIGN AIR VOIDS:	4.0% @ N90
MIXTURE COMPOSITION:	IL 9.5
FRICTION AGGREGATE:	MIX "D"
QUALITY MANAGEMENT:	QC/OA
MIXTURE SUBLOT SIZE:	N/A

INDEX OF SHEETS

- 1 COVER SHEET
- 2 GENERAL NOTES
- 3 SUMMARY OF QUANTITIES
- 4 SCHEDULE OF QUANTITIES
- 5 TYPICAL SECTION
- 6-9 PLAN SHEETS
- 10 PAVEMENT MARKING DETAIL SHEET

THE FOLLOWING RATES OF APPLICATION HAVE BEEN USED TO CALCULATE THE PLAN QUANTITIES:

BITUMINOUS MATERIALS (TACK COAT) 0.05 LBS / SQ FT (MILLED SURFACE)
 HMA RESURFACING 112 LBS / SQ YD • IN

DISTRICT SIX

EXAMINED March 6th 20 17
[Signature]
 OPERATIONS ENGINEER

EXAMINED March 1 20 17
[Signature]
 PROJECT IMPLEMENTATION ENGINEER

EXAMINED March 1 20 17
[Signature]
 PROGRAM DEVELOPMENT ENGINEER

7/10/17 10:00 AM

PPS# 6-01022-0000
 CONSTR. CODE
 NHPP
 90%-10% ✓
 ROADWAY
 0005 ✓
 RURAL ✓

CODE NO.	ITEM	UNIT	TOTAL QUANTITY	
40600290	BITUMINOUS MATERIALS (TACK COAT)	POUND	1080	1080
40600982	HOT-MIX ASPHALT SURFACE REMOVAL - BUTT JOINT	SQ YD	27	27
40600990	TEMPORARY RAMP	SQ YD	14	14
40603545	POLYMERIZED HOT-MIX ASPHALT SURFACE COURSE, MIX "D", N90	TON	202	202
44000155	HOT-MIX ASPHALT SURFACE REMOVAL, 1 1/2"	SQ YD	2400	2400
67100100	MOBILIZATION	LSUM	1	1
70100800	TRAFFIC CONTROL AND PROTECTION, STANDARD 701401	LSUM	1	1
70300100	SHORT TERM PAVEMENT MARKING	FOOT	40	40
70300150	SHORT TERM PAVEMENT MARKING REMOVAL	SQ FT	14	14
X7010410	SPEED DISPLAY TRAILER	CAL MO	1	1

10

PAVEMENT SCHEDULE							
FAI 72A WBDL LOCATION I-72	LENGTH	WIDTH	AREA	BITUMINOUS MATERIALS (TACK COAT)	HMA SURFACE REMOVAL-BUTT JOINT	POLYMERIZED HMA SURFACE COURSE, MIX "D", N90	HMA SURFACE REMOVAL 1 1/2"
STATION	(FT)	(FT)	(SQ YD)	(POUND)	(SQ YD)	(TON)	(SQ YD)
555+00.00 573+00.00	1800	12	2400	1080	26.7	201.6	2400

TEMPORARY RAMP			
FAI 72A WBDL LOCATION I-72	LENGTH	WIDTH	AREA
	(FT)	(FT)	(SQ YD)
STA 555+00.00	5	12	6.7
STA 573+00.00	5	12	6.7
TOTAL			13.3

PAVEMENT MARKING SCHEDULE				
FAI 72A WBDL LOCATION I-72	STATION TO STATION DISTANCE	SHORT TERM PAVEMENT MARKING	SHORT TERM PAVEMENT MARKING REMOVAL	
STATION	(FOOT)	(FOOT)	(SQ FT)	
555+00.00 573+00.00	1800	40	13.3	



EXIST. R.O.W. & A/C

----- AC ----- AC ----- AC ----- AC ----- AC ----- AC ----- AC ----- AC ----- AC -----

PR. MILLING 1 1/2"
PR. HMA SURF. CSE., 1 1/2"

BEGIN IMPROVEMENT
555+00.00

10' BUTT JOINT

12'

FAI 72A WB

FAI 72A EB

553+00.00

559+00.00

553

554

555+00

556

557

558

EXIST. R.O.W. & A/C

----- AC ----- AC ----- AC ----- AC ----- AC ----- AC ----- AC ----- AC ----- AC -----

NOTES

FINAL PAVEMENT MARKINGS SHALL BE
COMPLETED BY DISTRICT 6 OPERATIONS.

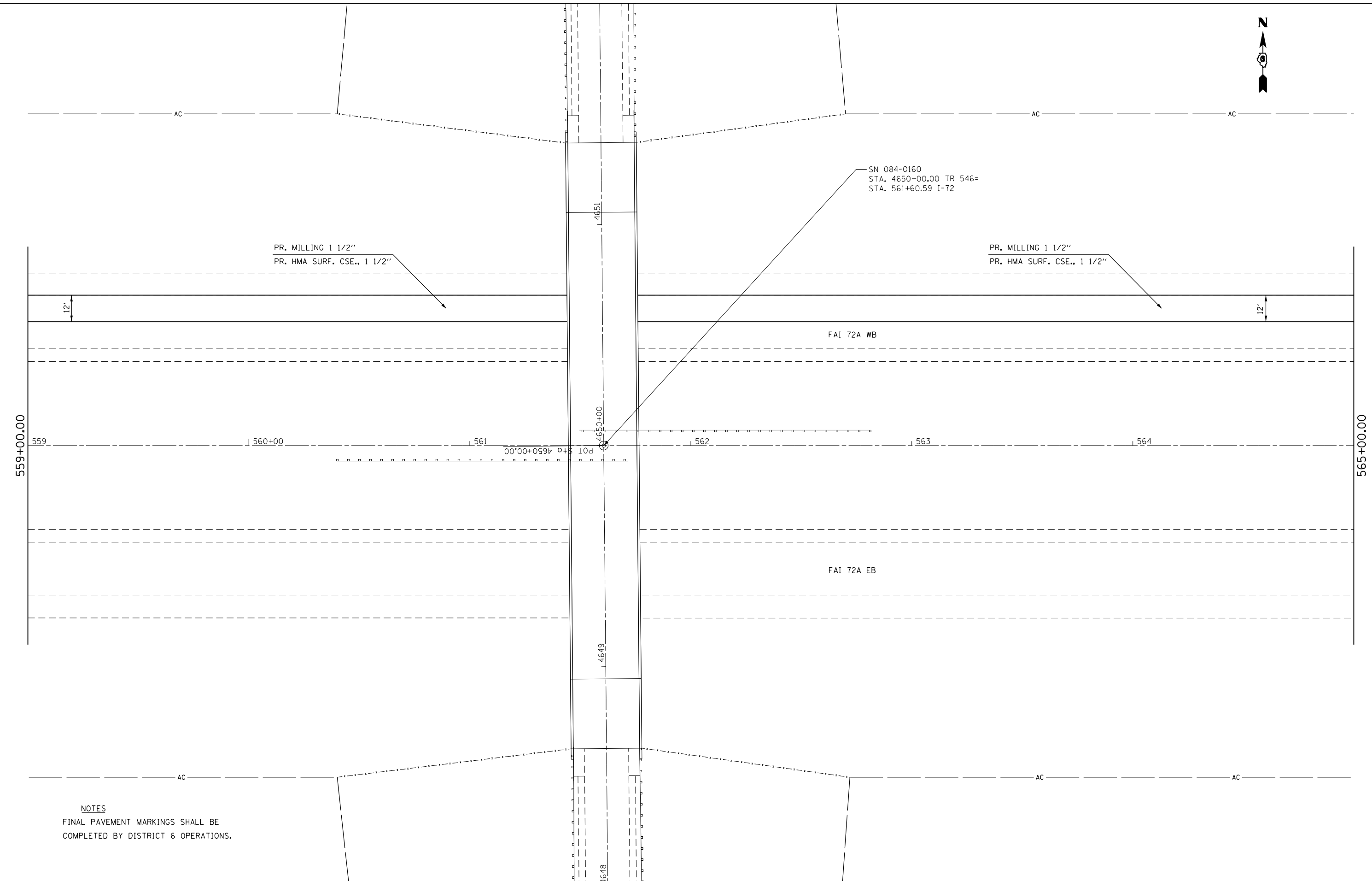
FILE NAME =	USER NAME = Verenskif	DESIGNED -	REVISED -
pw:\IL084EBIDINTEG\Illinois.gov\PWIDOT\Documents\DOT Offices\District 6\Projects\0672\Drawings\EA0\Sheets\0672J73-sht-plan-2017.dwg		DRAWN -	REVISED -
Default	PLOT SCALE = 40.0000' / in.	CHECKED -	REVISED -
	PLOT DATE = 3/22/2017	DATE -	REVISED -

**STATE OF ILLINOIS
DEPARTMENT OF TRANSPORTATION**

PLANS SHEETS

SCALE: SHEET OF SHEETS STA. TO STA.

F.A.I. RTE.	SECTION	COUNTY	TOTAL SHEETS	SHEET NO.
72A	(84-10-3) RS-6	SANGAMON	10	6
CONTRACT NO. 72J73			ILLINOIS FED. AID PROJECT	



PR. MILLING 1 1/2"
PR. HMA SURF. CSE., 1 1/2"

PR. MILLING 1 1/2"
PR. HMA SURF. CSE., 1 1/2"

SN 084-0160
STA. 4650+00.00 TR 546=
STA. 561+60.59 I-72

FAI 72A WB

FAI 72A EB

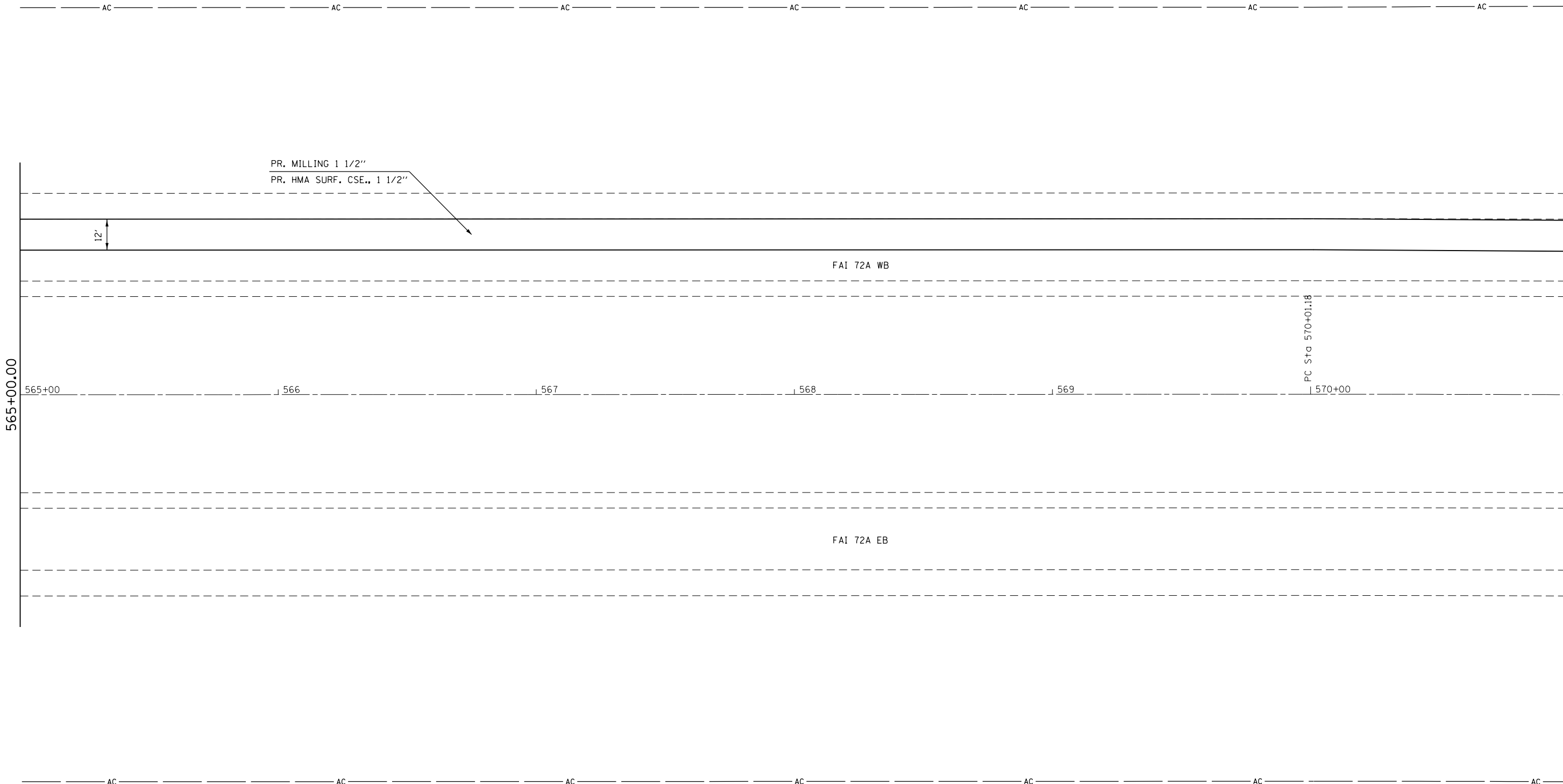
NOTES
FINAL PAVEMENT MARKINGS SHALL BE
COMPLETED BY DISTRICT 6 OPERATIONS.

FILE NAME =	USER NAME = Verenskif	DESIGNED -	REVISED -
p:\11\084EBIDINTEG.illinois.gov\PIDOT\Documents\DOT Offices\District 6\Projects\0672\DRAWING\DATA\EA0\Sheets\D672J73-sht-plan-2017.dwg		DRAWN -	REVISED -
Default	PLOT SCALE = 40.0000' / in.	CHECKED -	REVISED -
	PLOT DATE = 3/22/2017	DATE -	REVISED -

**STATE OF ILLINOIS
DEPARTMENT OF TRANSPORTATION**

PLANS SHEETS			
SCALE:	SHEET	OF	SHEETS
	STA.	TO	STA.

F.A.I. RTE.	SECTION	COUNTY	TOTAL SHEETS	SHEET NO.
72A	(84-10-3) RS-6	SANGAMON	10	7
CONTRACT NO. 72J73			ILLINOIS FED. AID PROJECT	



NOTES
 FINAL PAVEMENT MARKINGS SHALL BE COMPLETED BY DISTRICT 6 OPERATIONS.

FILE NAME =	USER NAME = Verenskif	DESIGNED -	REVISED -
p:\11084EBIDINTEG.illinois.gov\PIWIDOT\Documents\DOT Offices\District 6\Projects\0672-DRAWING\EA0\Drawings\0672J73-sht-plan-2017.dwg		DRAWN -	REVISED -
Default	PLOT SCALE = 40.0000' / in.	CHECKED -	REVISED -
	PLOT DATE = 3/22/2017	DATE -	REVISED -

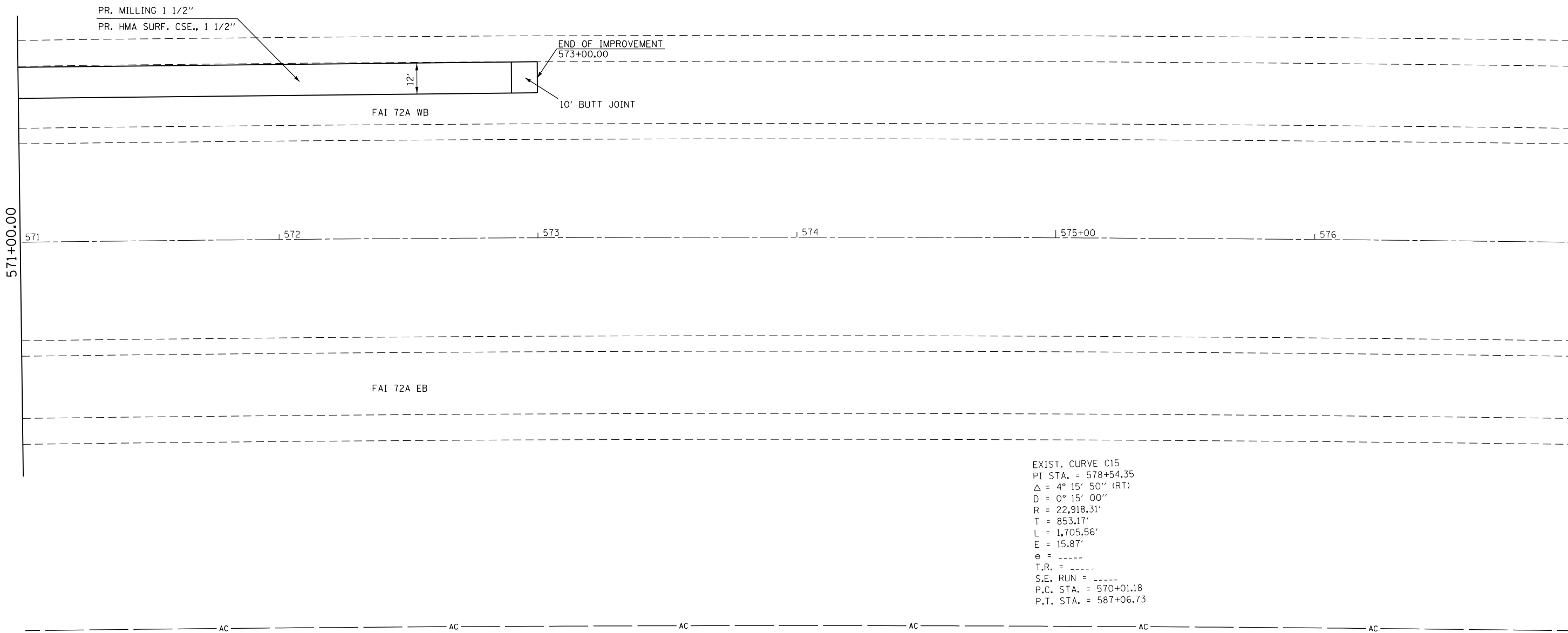
**STATE OF ILLINOIS
 DEPARTMENT OF TRANSPORTATION**

PLANS SHEETS			
SCALE:	SHEET	OF	SHEETS
	STA.	TO	STA.

F.A.I. RTE.	SECTION	COUNTY	TOTAL SHEETS	SHEET NO.
72A	(84-10-3) RS-6	SANGAMON	10	8
CONTRACT NO.			72J73	
ILLINOIS FED. AID PROJECT				



EXIST. R.O.W. & A/C

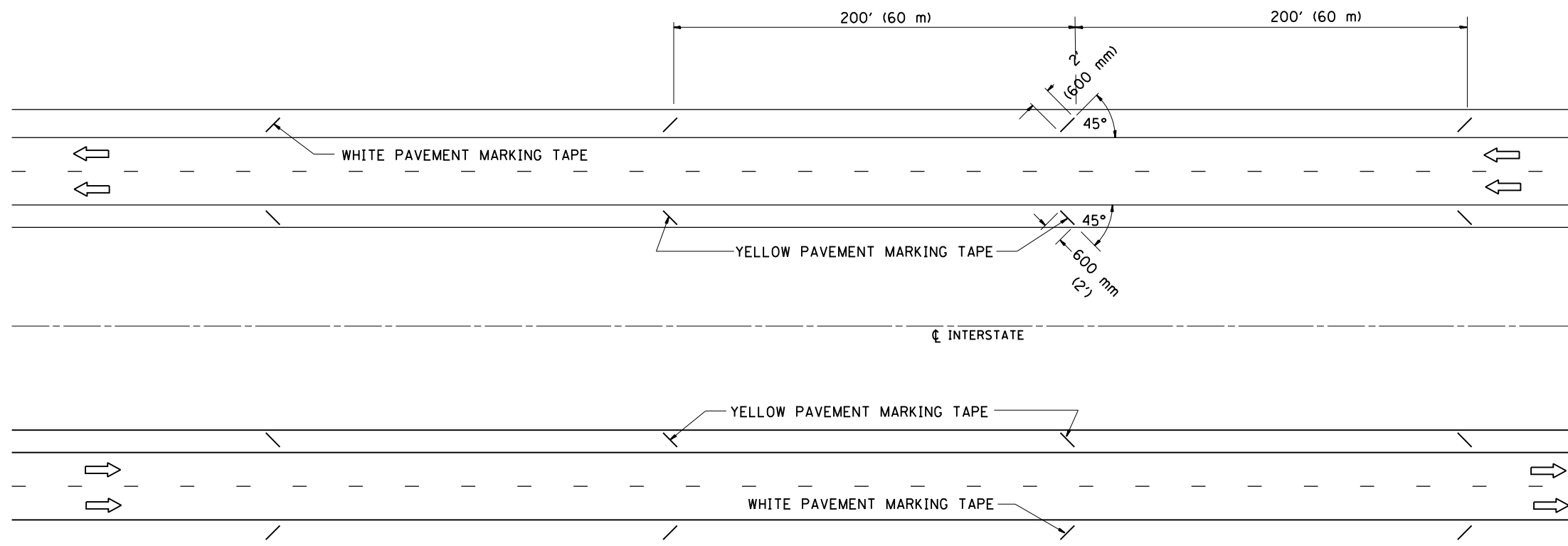


EXIST. CURVE C15
 PI STA. = 578+54.35
 Δ = 4° 15' 50" (RT)
 D = 0° 15' 00"
 R = 22,918.31'
 T = 853.17'
 L = 1,705.56'
 E = 15.87'
 e = -----
 T.R. = -----
 S.E. RUN = -----
 P.C. STA. = 570+01.18
 P.T. STA. = 587+06.73

NOTES
 FINAL PAVEMENT MARKINGS SHALL BE
 COMPLETED BY DISTRICT 6 OPERATIONS.

FILE NAME =	USER NAME = Verenskif	DESIGNED -	REVISED -	STATE OF ILLINOIS DEPARTMENT OF TRANSPORTATION	PLANS SHEETS				F.A.I. RTE.	SECTION	COUNTY	TOTAL SHEETS	SHEET NO.
Default		CHECKED -	REVISED -		SCALE:	SHEET	OF	SHEETS	STA.	TO STA.	(84-10-3) RS-6	10	9
		DATE -	REVISED -		CONTRACT NO. 72J73								
					ILLINOIS FED. AID PROJECT								

TYPICAL SHORT TERM PAVEMENT MARKING FOR INTERSTATE ROUTES



FILE NAME =	USER NAME = Verenskifa	DESIGNED -	REVISED -
p:\11084EBIDINTEG\illinois.gov\PWIDOT\Documents\DOT Offices\District 6\Projects\D672-DRAWING\672-DATA\672-sht-det\672-DATA\672-sht-det\672-sht-det.dwg		CHECKED -	REVISED -
Default	PLOT DATE = 3/22/2017	DATE -	REVISED -

STATE OF ILLINOIS
DEPARTMENT OF TRANSPORTATION

SHORT TERM PAVEMENT MARKING
FOR INTERSTATE ROUTES

SCALE:	SHEET	OF	SHEETS	STA.	TO	STA.
--------	-------	----	--------	------	----	------

F.A.I. RTE.	SECTION	COUNTY	TOTAL SHEETS	SHEET NO.
72A	(84-10-3) RS-6	SANGAMON	10	10
CONTRACT NO. 72J73			ILLINOIS FED. AID PROJECT	