

STATE OF ILLINOIS
DEPARTMENT OF TRANSPORTATION

F.A.P. RTE.	SECTION	COUNTY	TOTAL SHEETS	SHEET NO.
*	(101) RS-5, (1) I-2, (7) I	ADAMS	10	1
		ILLINOIS	CONTRACT NO. 72J74	

*733, 518

FOR INDEX OF SHEETS, SEE SHEET NO. 2

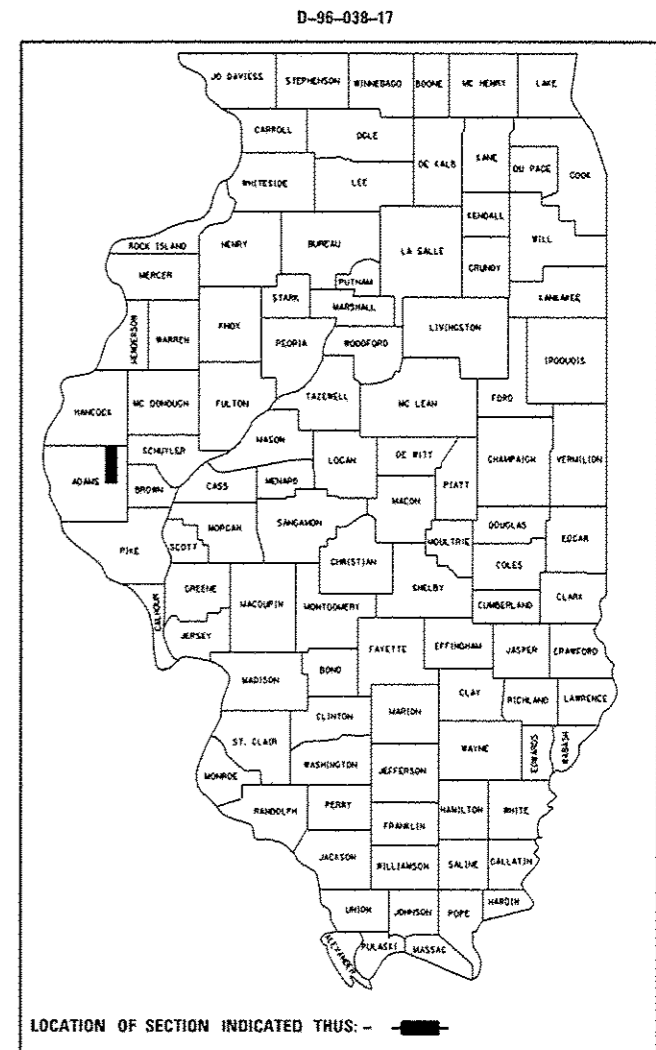
PROPOSED IMPROVEMENTS

FAP 733, 518 (IL 61/94, IL 94)
SECTION (101) RS-5, (1) I-2, (7) I
BRIDGE APPROACH ROADWAY,
RESURFACING INTERMITTENT
ADAMS CO.

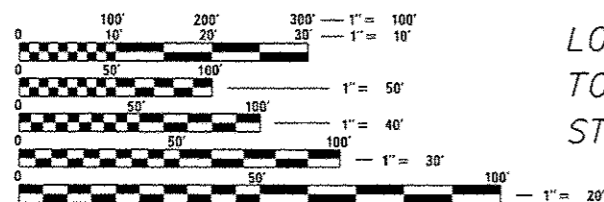
C-96-038-17

STP-000V(115)

R 6 W



ADT = 950
SU = 30
MU = 60

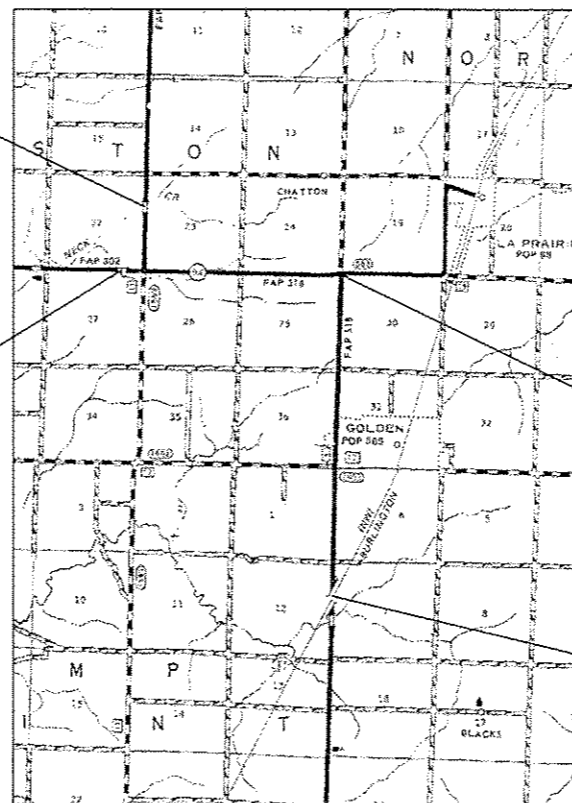


FULL SIZE PLANS HAVE BEEN PREPARED USING STANDARD ENGINEERING SCALES. REDUCED SIZED PLANS WILL NOT CONFORM TO STANDARD SCALES. IN MAKING MEASUREMENTS ON REDUCED PLANS, THE ABOVE SCALES MAY BE USED.

J.U.L.I.E.
JOINT UTILITY LOCATION INFORMATION FOR EXCAVATION
1-800-892-0123
OR 811

LOCATION #1 STA. 1259+07.00
TO 1262+65.00 BRIDGE OMISSION
STA. 1260+55.75 TO 1260+84.25

LOCATION #2 STA. 1219+00.00
TO 1223+20.00 BRIDGE OMISSION
STA. 1220+83.25 TO 1221+08.75



LOCATION #3
STA. 115+57.00
TO 120+00.00

LOCATION #4
STA. 285+00.00
TO 297+09.00

PROJECT ENGINEER : MIKE IRWIN - (217)524-7765
PROJECT MANAGER : TIM SHARP - (217)524-9160

CONTRACT NO. 72J74

STATE OF ILLINOIS
DEPARTMENT OF TRANSPORTATION

SUBMITTED 30 March 2017

[Signature]
REGION FOUR ENGINEER

May 12 2017
[Signature]
ENGINEER OF DESIGN AND ENVIRONMENT

May 12 2017
[Signature]
DIRECTOR OF HIGHWAYS, CHIEF ENGINEER

PRINTED BY THE AUTHORITY
OF THE STATE OF ILLINOIS

INDEX OF SHEETS

SHEET NO.	DESCRIPTION
1.	COVER SHEET
2.	INDEX OF SHEETS, STANDARDS, GENERAL NOTES & SIGNATURE
3.	SUMMARY OF QUANTITIES
4-7.	PROJECT LOCATION MAP
8-10.	PROJECT TYPICAL SECTIONS

STANDARDS

STANDARD NO.	DESCRIPTION
442201-03	CLASS C and D PATCHES
606101-05	TYPE A GUTTER (INLET, OUTLET & ENTRANCE)
701201-04	LANE CLOSURE, 2L, 2W, DAY ONLY, FOR SPEEDS ≥ 45 MPH
701301-04	LANE CLOSURE, 2L, 2W, SHORT TERM OPERATIONS
701306-03	LANE CLOSURE, 2L, 2W, SLOW MOVING OPERATIONS DAY ONLY, FOR SPEEDS ≥ 45 MPH
701311-03	LANE CLOSURE, 2L, 2W, MOVING OPERATIONS, DAY ONLY
701316-11	LANE CLOSURE, 2L, 2W, BRIDGE REPAIR, FOR SPEEDS ≥ 45 MPH
701901-06	TRAFFIC CONTROL DEVICES
780001-05	TYPICAL PAVEMENT MARKINGS

NOTES:

D-6 OPERATIONS WILL PLACE PERMANENT PAVEMENT MARKINGS

MIXTURE REQUIREMENTS

THE FOLLOWING MIXTURE REQUIREMENTS ARE APPLICABLE FOR THIS PROJECT

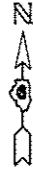
MIXTURE USE(S):	H.M.A SURFACE COURSE
AC/PG:	PG 64-22
DESIGN AIR VOIDS:	4.0% @ N50
MIXTURE COMPOSITION:	IL 9.5
FRICITION AGGREGATE:	MIX C
QUALITY MANAGEMENT:	QC/QA

STATE OF ILLINOIS DEPARTMENT OF TRANSPORTATION DIVISION OF HIGHWAYS DISTRICT 6	
EXAMINED <u>March 20th</u> 20 <u>17</u>	<u>John C. Wagoner</u> ENGINEER OF OPERATIONS
EXAMINED <u>March 23</u> 20 <u>17</u>	<u>Subj. [Signature]</u> ENGINEER OF PROJECT IMPLEMENTATION
EXAMINED <u>March 27</u> 20 <u>17</u>	<u>[Signature]</u> ENGINEER OF PROGRAM DEVELOPMENT

				LOCATION #1	LOCATION #2	LOCATION #3	LOCATION #4
80% FEDERAL 20% STATE				6-0123-0000	6-01023-0000	6-01024-0000	6-01024-0000
				ADAMS	ADAMS	ADAMS	ADAMS
CODE NO.	ITEM	UNIT	TOTAL QUANTITY	ROADWAY	ROADWAY	ROADWAY	ROADWAY
				✓0005	0005	0005	0005
				RURAL	RURAL	RURAL	RURAL
40600290	BITUMINOUS MATERIALS (TACK COAT)	POUND	2,693	429	513	391	1,360
40600990	TEMPORARY RAMP	SQ YD	1,805	520	520	505	260
40603310	HOT-MIX ASPHALT SURFACE COURSE, MIX C, N50	TON	521	88	106	73	254
4400155	HOT-MIX ASPHALT SURFACE REMOVAL 1 1/2"	SQ YD	5,865	837	1,140	867	3,021
44000400	GUTTER REMOVAL	FOOT	564	0	0	0	564
44201815	CLASS D PATCHES, TYPE II, 14 INCH	SQ YD	70	0	0	0	70
44201819	CLASS D PATCHES, TYPE III 14 INCH	SQ YD	30	0	0	0	30
44201821	CLASS D PATCHES, TYPE IV, 14 INCH	SQ YD	225	0	0	0	225
60602500	CONCRETE GUTTER, TYPE A	FOOT	564	0	0	0	564
63302700	REMOVE AND REERECT TRAFFIC BARRIER TERMINAL, TYPE 6	EACH	1	0	0	0	1
67100100	MOBILIZATION	L SUM	1	0.25	0.25	0.25	0.25
70100100	TRAFFIC CONTROL AND PROTECTION, STANDARD 701316	EACH	1	0	0	0	1
70100450	TRAFFIC CONTROL AND PROTECTION, STANDARD 701201	L SUM	1	0.25	0.25	0.25	0.25
70106500	TEMPORARY BRIDGE TRAFFIC SIGNALS	EACH	1	0	0	0	1
70100460	TRAFFIC CONTROL AND PROTECTION, STANDARD 701306	L SUM	1	0.25	0.25	0.25	0.25
70106700	TEMPORARY RUMBLE STRIPS	EACH	6	0	0	0	6
* X6330190	REMOVE AND REERECT TRAFFIC BARRIER TERMINAL, TYPE 1, SPECIAL	EACH	1	0	0	0	1

* SPECIALTY ITEM

FILE NAME * S:\CONTRACTMAINT\CAD\72J74 - Adams Co. - IL	USER NAME * sharptd	DESIGNED - 94 -Mill & Fill - 4 Locations\PLANS\72J74-01	REVISED - DMS	STATE OF ILLINOIS DEPARTMENT OF TRANSPORTATION				SUMMARY OF QUANTITIES				F.A.P. RTE.	SECTION	COUNTY	TOTAL SHEETS	SHEET NO.
Default	PLLOT SCALE * 0.0000 / in.	CHECKED -	REVISED -									733,518	(10) RS-5, (1) I-2, (7) I	ADAMS	10	3
	PLLOT DATE * 3/29/2017	DATE -	REVISED -	SCALE: _____ SHEET _____ OF _____ SHEETS STA. _____ TO STA. _____				CONTRACT NO. 72J74				ILLINOIS FED. AID PROJECT				



LOCATION #1
END PROJECT
STA. 1262+65.00

BRIDGE OMISSION
STA. 1260+55.75
TO 1260+84.25

LOCATION #1
BEGIN PROJECT
STA. 1259+07.00

FILE NAME *	USER NAME * sharp1d	DESIGNED -	REVISED -	STATE OF ILLINOIS DEPARTMENT OF TRANSPORTATION	LOCATION MAP		F.A.P. RTE.	SECTION	COUNTY	TOTAL SHEETS	SHEET NO.
S:\CONTRMAINT\CAD\72J74 - Adams Co. - IL	94 - Mill & Fill - 4 locations\PLANS\72J74-sharp1d.dgn	CHECKED -	REVISED -		733,518	(10)	RS-5, (1) [-2, (7)]	ADAMS	10	4	
Default	PLOT SCALE * 40.0000 1 / in.	DATE -	REVISED -		SCALE: _____ SHEET _____ OF _____ SHEETS STA. _____ TO STA. _____		ILLINOIS FED. AID PROJECT				
	PLOT DATE * 3/20/2017										



LOCATION #2
BEGIN PROJECT
STA. 1219+00.00

BRIDGE OMISSION
STA. 1220+83.25
TO 1221+08.75

LOCATION #2
END PROJECT
STA. 1223+20.00

FILE NAME *	USER NAME * shorptd	DESIGNED -	REVISED -	STATE OF ILLINOIS DEPARTMENT OF TRANSPORTATION	LOCATION MAP	F.A.P. RTE.	SECTION	COUNTY	TOTAL SHEETS	SHEET NO.	
S:\CONTRMAINT\CAD\72J74 - Adams Co. - IL	94 - Mill & Fill - 4 locations\PLANS\72J74-1	CHECKED -	REVISED -			733.518	(10) RS-5, (1) I-2, (7) I	ADAMS	10	5	
Default	PLOT SCALE = 40,0000 1 / in.	DATE -	REVISED -			CONTRACT NO. 72J74					
	PLOT DATE = 3/28/2017	DATE -	REVISED -			ILLINOIS FED. AID PROJECT					



LOCATION #3
 BEGIN PROJECT
 STA. 115+57.00

WORK IN NORTHBOUND
 LANE ONLY

LOCATION #3
 END PROJECT
 STA. 120+00.00

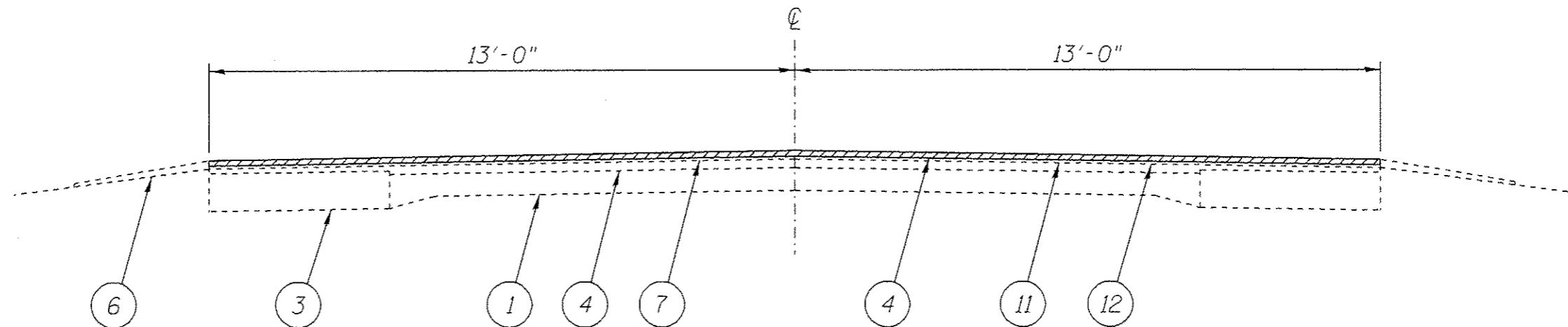
FILE NAME * S:\CONTRMAINT_CAD\72J74 - Adams Co. - IL	USER NAME * sharptd	DESIGNED - ORFANAKIS.dgn	REVISED -	STATE OF ILLINOIS DEPARTMENT OF TRANSPORTATION	LOCATION MAP		F.A.P. RTE.	SECTION	COUNTY	TOTAL SHEETS	SHEET NO.	
94 - Mill & Fill - 4 locations\PLANS\72J74-sharptd	REVISOR	CHECKED -	REVISED -		733.518	(101) RS-5, (1) I-2, (7) I	ADAMS	10	6			
PLOT SCALE * 40,0000' / in.	DATE	DATE	DATE		CONTRACT NO. 72J74			[ILLINOIS] FED. AID PROJECT				
Default	PLOT DATE * 3/28/2017	DATE	DATE		SCALE: _____	SHEET _____	OF _____	SHEETS	STA. _____	TO STA. _____		



LOCATION #4
 BEGIN PROJECT
 STA. 285+00.00

LOCATION #4
 END PROJECT
 STA. 297+50.00

FILE NAME =	USER NAME = sharptd	DESIGNED -	REVISED -	STATE OF ILLINOIS DEPARTMENT OF TRANSPORTATION	LOCATION MAP		F.A.P. RTE.	SECTION	COUNTY	TOTAL SHEETS	SHEET NO.
S:\CONTRMAINT.CAD\72J74 - Adams Co. - IL	94 - Mill & Fill - 4 locations\PLANS\72J74-sharptd.dgn	CHECKED -	REVISED -				733.518	(10) RS-5, (1) I-2, (7) I	ADAMS	10	7
Default	PLOT SCALE = 40.1189' / in.	DATE -	REVISED -		SCALE: _____ SHEET _____ OF _____ SHEETS STA. _____ TO STA. _____		CONTRACT NO. 72J74		ILLINOIS FED. AID PROJECT		
	PLOT DATE = 3/28/2017										



LOCATION #1 STA. 1259+07.00 TO 1260+55.75
 BRIDGE OMISSION STA. 1260+55.75 TO 1260+84.25
 STA. 1260+84.25 TO 1262+65.00

LOCATION #2 STA. 1219+00.00 TO 1220+83.25
 BRIDGE OMISSION STA. 1220+83.25 TO 1221+08.75
 STA. 1221+08.75 TO 1223+20.00

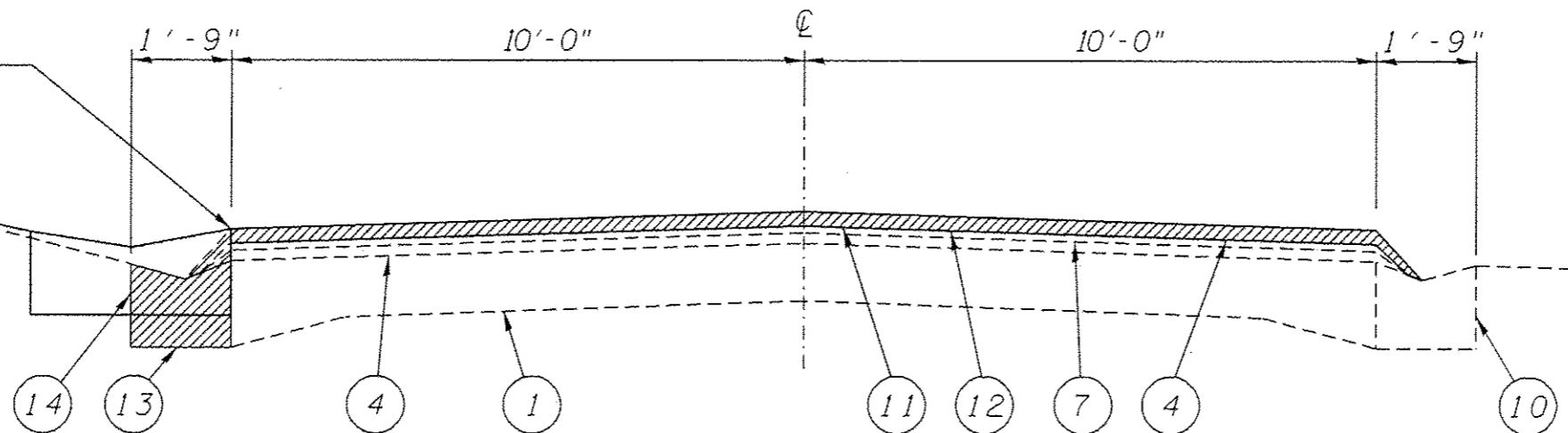
LOCATION #3 STA. 118+07.66 TO 120+00.00

LEGEND

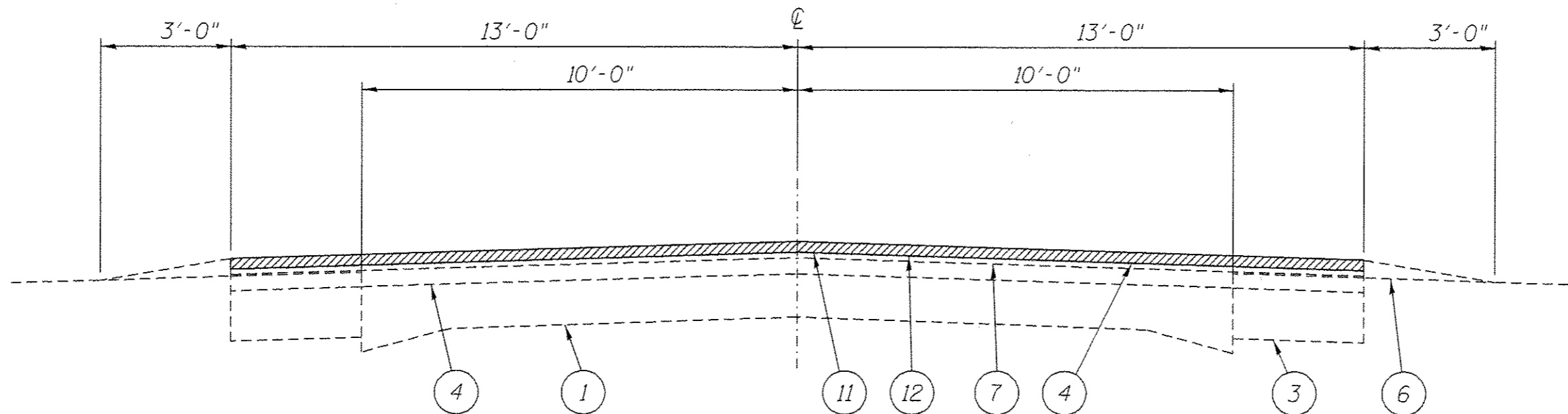
- 1- EXIST. P.C.C. PAVEMENT 9-6-9
- 2- EXIST. H.M.A. CONCRETE 10 1/2"
- 3- EXIST. H.M.A. BASE COURSE WIDENING
- 4- EXIST. H.M.A. SURFACE COURSE
- 5- EXIST. H.M.A. SHOULDERS, SUPERPAVE, 8"
- 6- EXIST. AGGREGATE SHOULDER, TYPE B
- 7- EXIST. H.M.A. LEVELING BINDERS (MACHINE METHOD), SUPERPAVE, N50 3/4"
- 8- EXIST. H.M.A. SURFACE COURSE, SUPERPAVE, N50, 1 1/2"
- 9- EXIST. GRANULAR SUB-BASE 10"
- 10- EXIST CONCRETE GUTTER, TYPE A
- 11- PROP. H.M.A. SURFACE REMOVAL 1 1/2"
- 12- PROP. H.M.A. SURFACE COURSE, MIX C, N50 1 1/2"
- 13- PROP. GUTTER REMOVAL
- 14- PROP. CONCRETE GUTTER, TYPE A

FILE NAME *	USER NAME * sharpd	DESIGNED -	REVISED -	STATE OF ILLINOIS DEPARTMENT OF TRANSPORTATION	TYPICALS	F.A.P. RTE.	SECTION	COUNTY	TOTAL SHEETS	SHEET NO.	
S:\CONTRMAINT_CAD\72J74 - Adams Co. - IL	94 - Mill & Fill - 4 locations\PLANS\72J74-SHT	ORRMM\ericoladgn	REVISED -			733,518	(10) RS-5, (1) I-2, (7) I	ADAMS	10	8	
Default	PLOT SCALE * 3/8000 ' / in.	CHECKED -	REVISED -			CONTRACT NO. 72J74		[ILLINOIS] FED. AID PROJECT			
	PLOT DATE = 3/20/2017	DATE -	REVISED -			SCALE:	SHEET OF SHEETS	STA. TO STA.			

SAW CUTTING AT EDGE OF PAVEMENT IS REQUIRED FOR GUTTER REMOVAL



LOCATION #4
 STA 288+90.00 to STA 296+97.00
 GUTTER REMOVAL AND CONCRETE
 GUTTER, TYPE A FROM
 LT. STA. 288+90.00 TO 292+85.00 &
 LT. STA. 295+28.00 TO 296+97.00
 (MATCH EXIST. GUTTER FROM 2004)



LOCATION #4
 STA 296+97.00 to STA 297+09.00

SEE SHEET 8 FOR LEGEND

FILE NAME *	USER NAME * sharptd	DESIGNED -	REVISED -	STATE OF ILLINOIS DEPARTMENT OF TRANSPORTATION	TYPICALS	F.A.P. RTE.	SECTION	COUNTY	TOTAL SHEETS	SHEET NO.	
S:\CONTRMAINT_CAD\72J74 - Adana Co. - IL	94 - Mill & Fill - 4 Injections\PLANS\72J74-SH	CHECKED -	REVISED -			733,518	(101) RS-5, (1) I-2, (7) I	ADAMS	10	10	
Default	PLOT SCALE * 3.0000' / in.	DATE -	REVISED -			CONTRACT NO. 72J74		ILLINOIS FED. AID PROJECT			
	PLOT DATE * 3/29/2017					SCALE:	SHEET	OF	SHEETS	STA.	TO