

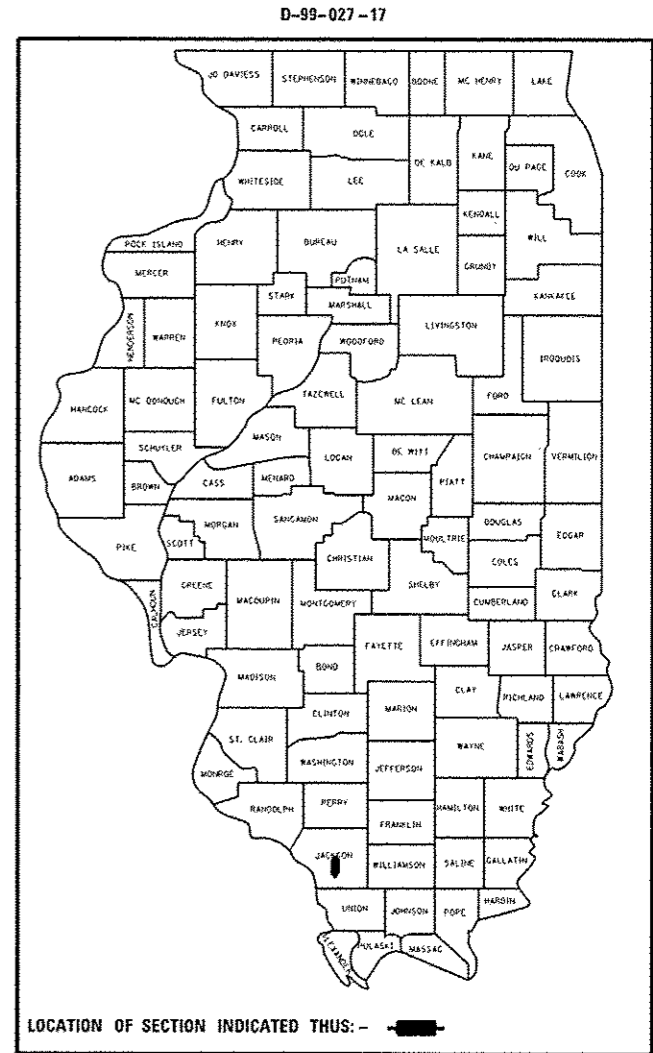
STATE OF ILLINOIS  
DEPARTMENT OF TRANSPORTATION

F.A.P. RTE. 331/42	SECTION (12-1, 13-1)RS-3	COUNTY ILLINOIS JACKSON	TOTAL SHEETS 27	SHEET NO. 1
CONTRACT NO. 78576				

FOR INDEX OF SHEETS, SEE SHEET NO. 3  
FOR SUMMARY OF QUANTITIES, SEE SHEET NO. 5-7

# PROPOSED HIGHWAY PLANS

FAP ROUTE 331 /42 (IL 13 /IL 127 /IL 149)  
SECTION (12-1,13-1)RS-3  
PROJECT NHPP-000V(109)  
RESURFACING  
JACKSON COUNTY  
C-99-027-17



**STATION EQUATIONS:**

IL 13 (WALNUT RD.)  
STA 357+12.29 BK = STA 356+95.5 AH

IL 13 /IL 127 /IL 149  
STA 330+17.07 BK = 330+19.04 AH

**TRAFFIC DATA**

IL 13 (WALNUT ST./EAST LEG)  
ADT = 17,500  
SU = 375  
MU = 226

IL 13 /IL 127 /IL 149 (N. 2ND ST./NORTH LEG)  
ADT = 11,700  
SU = 287  
MU = 259

IL 149 (WALNUT ST./WEST LEG)  
ADT = 12,300  
SU = 276  
MU = 170

**TOWNSHIPS**

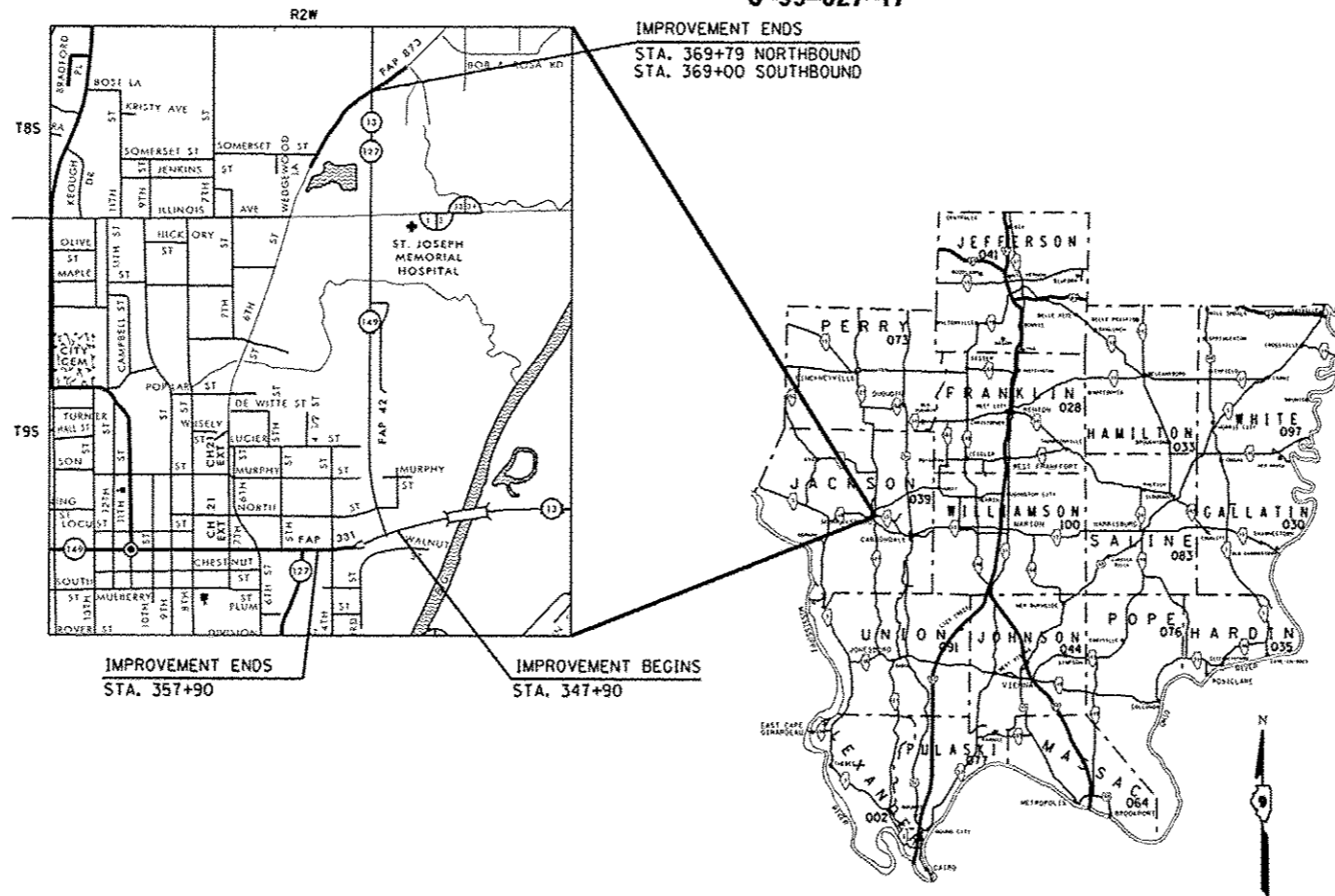
MURPHYSBORO

DESIGN DESIGNATION : N/A  
POSTED SPEED : 45 MPH

J.U.L.I.E.  
JOINT UTILITY LOCATION INFORMATION FOR EXCAVATION  
1-800-892-0123  
OR 811

PROJECT ENGINEER: SEAN GREENLEE  
PROJECT MANAGER: SUSAN POE

CONTRACT NO. 78576



GROSS LENGTH = 5,885 FT. = 1.11 MILE  
NET LENGTH = 5,885 FT. = 1.11 MILE

STATE OF ILLINOIS  
DEPARTMENT OF TRANSPORTATION

SUBMITTED March 16 20 17  
Duffrey L Keen  
REGION FIVE ENGINEER

May 12 20 17  
Muhammad M. Addis, P.E.  
ENGINEER OF DESIGN AND ENVIRONMENT

May 12 20 17  
James Allen  
DIRECTOR OF PROGRAM DEVELOPMENT

PRINTED BY THE AUTHORITY  
OF THE STATE OF ILLINOIS



# GENERAL NOTES

# INDEX OF SHEETS

SHEET NO.	DESCRIPTION
1	COVER SHEET
2	SIGNATURE SHEET
3	INDEX OF SHEETS, STANDARDS, GENERAL NOTES
4	MIXTURES REQUIREMENTS TABLE, MTD CROSSING RESTRICTION TABLE
5 - 7	SUMMARY OF QUANTITIES
8 - 11	TYPICAL SECTIONS
12 - 17	SCHEDULES OF QUANTITIES
18 - 24	DETAILS: PAVEMENT MARKINGS LAYOUT
25 - 26	DETAILS: PROPOSED DETECTOR LOOP LAYOUT
27	DETAILS: DETECTOR LOOPS, UNEVEN LANES, ROUGH GROOVED SURFACE

- QUANTITIES SHOWN IN THE PLANS FOR PATCHING ARE ESTIMATES. THE ACTUAL AMOUNT OF PATCHING REQUIRED WILL BE DETERMINED BY THE ENGINEER.
- FACTORS USED FOR ESTIMATING PLAN QUANTITIES ARE AS FOLLOWS AND SHALL NOT BE USED FOR THE BASIS OF FINAL QUANTITIES:  

ALL HOT MIX ASPHALT	2.016 TONS/CU. YD.
ALL AGGREGATE	2.05 TONS/CU. YD.
- THE THICKNESS OF HOT MIX ASPHALT MIXTURE SHOWN ON THE PLANS IS THE NOMINAL THICKNESS. DEVIATIONS FROM THE NOMINAL THICKNESS WILL BE PERMITTED WHEN SUCH DEVIATIONS OCCUR DUE TO IRREGULARITIES IN THE EXISTING SURFACE OR BASE ON WHICH THE HOT MIX ASPHALT MIXTURE IS PLACED.
- THE QUANTITY OF SHORT TERM PAVEMENT MARKING SHOWN IN THE PLANS IS BASED ON ONE APPLICATION EACH FOR THE HMA SURFACE REMOVAL AND SURFACE COURSE
- THE CONTRACTOR SHALL STAMP STATIONING IN THE HOT MIX ASPHALT SURFACE AT 300 FT INTERVALS ON THE INSIDE EDGE OF THE OUTSIDE SHOULDER AND AS DIRECTED BY THE ENGINEER. THE STATION SYMBOL STAMPS USED SHALL BE FURNISHED BY THE CONTRACTOR. THEY SHALL BE 5 1/2 IN TALL OF A DESIGN APPROVED BY THE ENGINEER, AND SHALL REMAIN THE PROPERTY OF THE CONTRACTOR.
- HMA RESURFACING SHALL BE PLACED IN A SEQUENCE THAT WILL MINIMIZE THE TIME THE CENTERLINE EDGE IS EXPOSED TO TRAFFIC. WHEN AT THE END OF A DAY'S OPERATION THE EXPOSED CENTERLINE EDGE IS GREATER THAN 2,000 FT, THE CONTRACTOR SHALL BE REQUIRED TO PAVE IN THE ADJACENT LANE ON THE FOLLOWING WORK DAY. PRIOR TO WINTER SHUTDOWN, RESURFACING ON ADJACENT LANES IS TO BE BROUGHT UP TO THE SAME ELEVATION.
- PRIOR TO PLACEMENT OF THE FINAL PAVEMENT MARKINGS THE RESIDENT ENGINEER SHALL CONTACT THE BUREAU OF OPERATIONS AND ARRANGE FOR INSPECTION AND APPROVAL OF THE PAVEMENT MARKING LAYOUT.
- ALL DETECTOR LOOP CORNERS SHALL BE CORE DRILLED 2 IN. MINIMUM DIAMETER EXCEPT THOSE PLACED UNDER RESURFACING. THE DETECTOR LOOP CORNERS PLACED UNDER RESURFACING SHALL BE DIAGONALLY SAWCUT.
- SAWED SLOTS FOR TWISTED PAIR ELECTRIC CABLES SHALL BE LARGER THAN SINGLE CONDUCTOR LOOP SLOTS.
- THE LOCATION OF THE DETECTOR LOOPS AND TRAFFIC SIGNAL FOUNDATIONS, AS SHOWN ON THE PLANS, MAY BE ADJUSTED TO FIT FIELD CONDITIONS AS DIRECTED BY THE ENGINEER OF TRAFFIC OPERATIONS.
- ALL DETECTOR LOOPS SHALL BE INSTALLED PRIOR TO RESURFACING.
- THE CONTRACTOR SHALL NOTIFY THE ENGINEER OF TRAFFIC OPERATIONS 72 HOURS PRIOR TO THE SHUT-DOWN OR CUTTING OF EXISTING DETECTOR LOOPS.
- AFTER A LIFT OF HOT MIX ASPHALT HAS BEEN PLACED, THE LANE SHALL REMAIN CLOSED TO TRAFFIC UNTIL THE NEW MAT HAS COOLED TO 150 DEGREES FAHRENHEIT
- THERE ARE NO AVAILABLE WASTE SITES ON THE EXISTING RIGHT OF WAY WITHIN THE PROJECT LIMITS. DISPOSAL WILL BE THE RESPONSIBILITY OF THE CONTRACTOR AND WASTE MUST BE DISPOSED OF IN ACCORDANCE WITH ARTICLE 202.03 OF THE STANDARD SPECIFICATIONS.
- CONTRACTOR SHALL COMPLETE ALL PATCHING PRIOR TO THE HOT MIX ASPHALT SURFACE REMOVAL.
- THE 5'X5' DETECTOR LOOPS SHALL BE TYPE I AND EACH DETECTOR LOOP SHALL HAVE 4 TURNS OF LOOP WIRE. THE DETECTOR LOOPS SHALL BE INSTALLED IN ACCORDANCE WITH THE APPLICABLE PORTIONS OF SECTION 886 OF THE STANDARD SPECIFICATIONS FOR TRAFFIC CONTROL ITEMS.
- MILLED PAVEMENT SHALL BE RESURFACED WITHIN TEN CALENDAR DAYS.

# HIGHWAY STANDARDS

- 000001-06 Standard Symbols Abbreviations & Patterns
- 001006 Decimal of Inch & Foot
- 442201-03 Class C & D Patches
- 701101-05 Off Rd Op - Multi Ln - Less Than 15ft To EOP
- 701106-02 Off Rd Op - Multi Ln - More Than 15ft Away
- 701421-08 Ln Closure Multi Ln - Day Op Only 45-55MPH
- 701422-09 Ln Closure Multi Ln - 45-55 MPH
- 701426-09 Ln Closure Multi Ln - Intermittant Or Moving Op 45 MPH Or More
- 701601-09 Urban Ln Closure Multi Ln 1W2W With Nontrvsable Med
- 701701-10 Urban Ln Closure Multi Ln Intersection
- 701901-06 Traf Cntrl Devices
- 780001-05 Typical Pvmt Mrkings
- 781001-04 Typical App Raised Reflc Pvmt Mrkrs
- 886001-01 Detector Loop Installations
- 886006-01 Typical Layouts For Detection Loops

# COMMITMENTS

NONE

FILE NAME =	USER NAME = greenleesm	DESIGNED -	REVISED -	<b>STATE OF ILLINOIS DEPARTMENT OF TRANSPORTATION</b>	<b>INDEX OF SHEETS, STANDARDS, GENERAL NOTES,</b>	F.A.P. RTE.	SECTION	COUNTY	TOTAL SHEETS	SHEET NO.	
p:\11\084EBIDINTEG.illinois.gov\PIWIDOT\Documents\DOT Offices\District 9\Projects\78576\Drawings\CAD\Sheets\d978576_shta-cvr.scp						331	(12-1, 13-1)RS-3	JACKSON	27	3	
Default						<b>CONTRACT NO. 78576</b>					
PLOT SCALE = 100.0000' / in.						ILLINOIS FED. AID PROJECT					
PLOT DATE = 3/20/2017				SCALE:		SHEET OF SHEETS		STA. TO STA.			

# MIXTURES REQUIREMENTS

Locations	Hot-Mix Asphalt Surface Course
Mixture Use(s):	Polymerized Hot-Mix Asphalt Surface Course, Mix D, N90
AC/PG:	SBS PG76-22
ABR % (Max):	See Special Provision
Design Air Voids:	4.0 %, 90 Gyration Design
Mixture Composition: (Gradation Mixture)	IL-9.5mm
Friction Aggregate:	D Surface
Quality Management Program:	QCP
Mixture Weight:	112 lbs/sq yd/in
Sublot Size:	TBD
Number of Roller Passes:	N/A

Locations	Hot-Mix Asphalt Binder Course
Mixture Use(s):	Polymerized Hot-Mix Asphalt Binder Course, N90, IL-19.0
AC/PG:	SBS PG76-22
ABR % (Max):	See Special Provision
Design Air Voids:	4.0 %, 90 Gyration Design
Mixture Composition: (Gradation Mixture)	IL-19.0mm
Friction Aggregate:	None
Quality Management Program:	QCQA
Mixture Weight:	112 lbs/sq yd/in
Sublot Size:	TBD
Number of Roller Passes:	N/A

Locations	Class D Patching
Mixture Use(s):	Hot-Mix Asphalt Binder Course, N90, IL-19.0
AC/PG:	PG64-22
ABR % (Max):	See Special Provision
Design Air Voids:	4.0 %, 90 Gyration Design
Mixture Composition: (Gradation Mixture)	IL-19.0mm
Friction Aggregate:	None
Quality Management Program:	QCQA
Mixture Weight:	112 lbs/sq yd/in
Sublot Size:	TBD
Number of Roller Passes:	N/A

MTD CROSSING RESTRICTIONS TABLE

SN & CENTERLINE STATION ROUTE IL 13/127/149	EXISTING FILL HEIGHT OVER BOX CULVERT	THICKNESS OF EXISTING PAVEMENT OVER BOX CULVERT	MTD CROSSING RESTRICTIONS
	FOOT	FOOT	
SN 039-0075 (STA. 340+96.56)	N/A (PCC BRIDGE)	N/A (PCC BRIDGE)	EMPTIED
SN 039-0076 (STA. 340+69.53)	N/A (PCC BRIDGE)	N/A (PCC BRIDGE)	EMPTIED

# SUMMARY OF QUANTITIES

COUNTY:	Jackson
ROUTE:	FAP 331/42
FUNDING:	80% FED / 20% STATE
LOCATION:	URBAN
	ROADWAY
	0005

CODE NUMBER	ITEM DESCRIPTION	UNIT	TOTAL QUANTITY	ROADWAY
X4401198	HOT-MIX ASPHALT SURFACE REMOVAL, VARIABLE DEPTH	SQ YD	214	214
X7015005	CHANGEABLE MESSAGE SIGN	CAL DA	114	114
X7030005	TEMPORARY PAVEMENT MARKING REMOVAL	SQ FT	10,096	10,096
Z0034105	MATERIAL TRANSFER DEVICE	TON	4,222	4,222
40600285	POLYMERIZED BITUMINOUS MATERIALS (PRIME COAT)	POUND	17,222	17,222
40600990	TEMPORARY RAMP	SQ YD	165	165
40603240	POLYMERIZED HOT-MIX ASPHALT BINDER COURSE, IL-19.0, N90	TON	141	141
40603545	POLYMERIZED HOT-MIX ASPHALT SURFACE COURSE, MIX "D", N90	TON	4,222	4,222
44000157	HOT-MIX ASPHALT SURFACE REMOVAL, 2"	SQ YD	36,212	36,212
44000165	HOT-MIX ASPHALT SURFACE REMOVAL, 4"	SQ YD	1,212	1,212
44201815	CLASS D PATCHES, TYPE II, 14 INCH	SQ YD	64	64
44201819	CLASS D PATCHES, TYPE III, 14 INCH	SQ YD	64	64

12

# SUMMARY OF QUANTITIES - CONT

COUNTY:	Jackson
ROUTE:	FAP 331/42
FUNDING:	80% FED / 20% STATE
LOCATION:	URBAN
TOTAL QUANTITY	ROADWAY 0005

CODE NUMBER	ITEM DESCRIPTION	UNIT	TOTAL QUANTITY	ROADWAY 0005
67000400	ENGINEER'S FIELD OFFICE, TYPE A	CAL MO	2	2
67100100	MOBILIZATION	LSUM	1	1
70100310	TRAFFIC CONTROL AND PROTECTION, STANDARD 701421	LSUM	1	1
70100320	TRAFFIC CONTROL AND PROTECTION, STANDARD 701422	LSUM	1	1
70102630	TRAFFIC CONTROL AND PROTECTION, STANDARD 701601	LSUM	1	1
70102635	TRAFFIC CONTROL AND PROTECTION, STANDARD 701701	LSUM	1	1
70200100	NIGHTTIME WORK ZONE LIGHTING	LSUM	1	1
70300100	SHORT TERM PAVEMENT MARKING	FOOT	3,348	3,348
70300150	SHORT TERM PAVEMENT MARKING REMOVAL	SQ FT	1,116	1,116
70300210	TEMPORARY PAVEMENT MARKING LETTERS AND SYMBOLS	SQ FT	582	582
70300220	TEMPORARY PAVEMENT MARKING - LINE 4"	FOOT	26,534	26,534
70300260	TEMPORARY PAVEMENT MARKING - LINE 12"	FOOT	217	217

# SUMMARY OF QUANTITIES - CONT

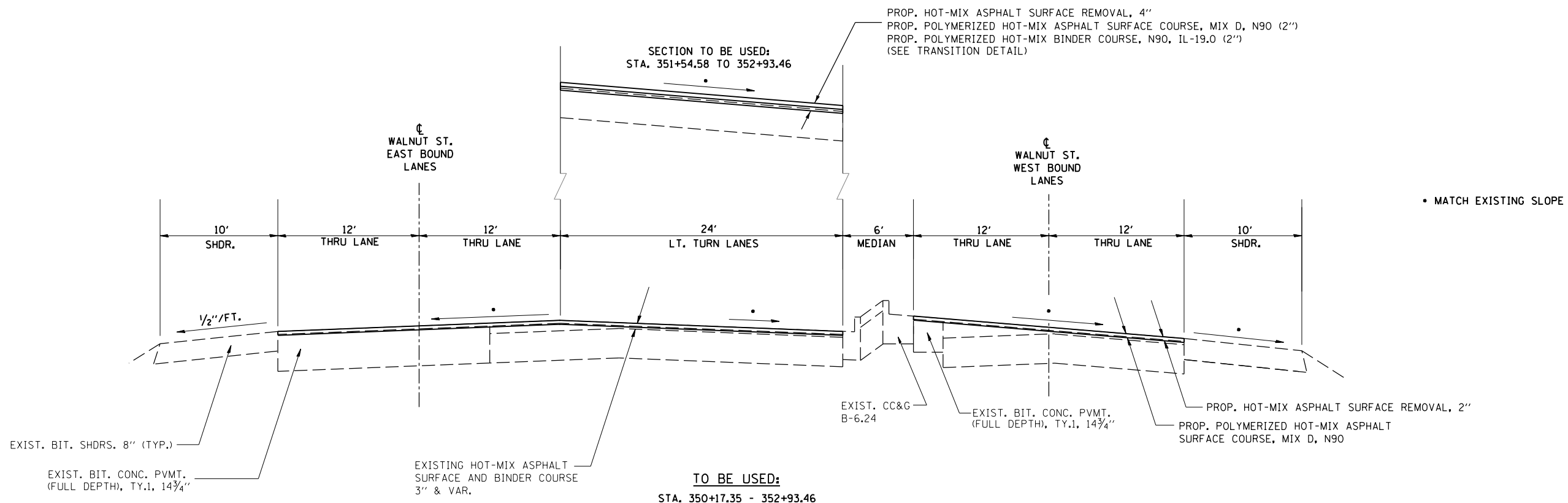
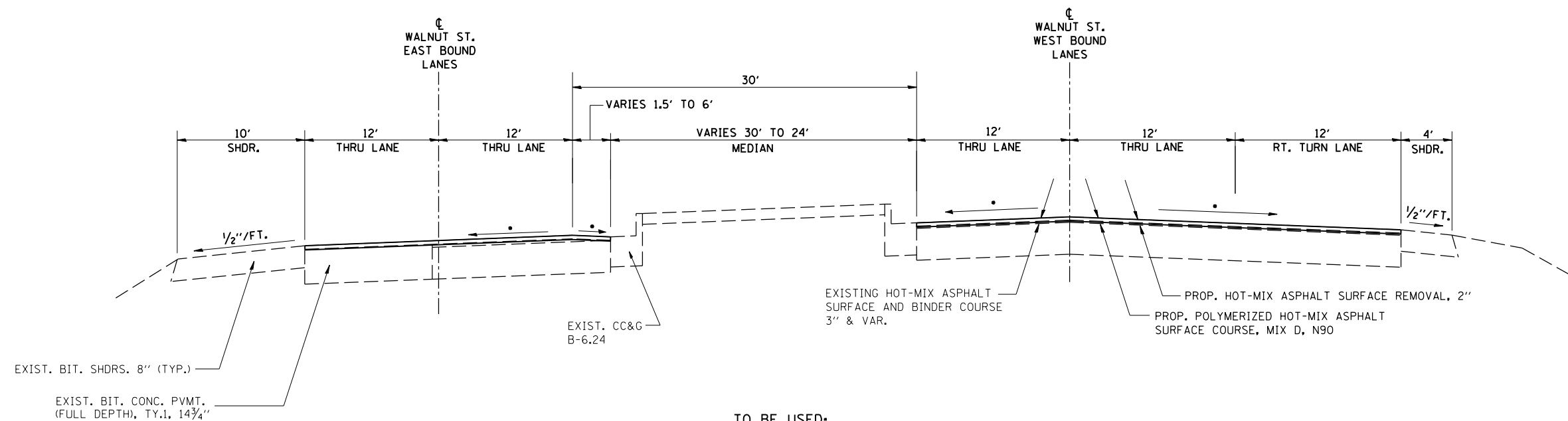
COUNTY:	Jackson
ROUTE:	FAP 331/42
FUNDING:	80% FED / 20% STATE
LOCATION:	URBAN

CODE NUMBER	ITEM DESCRIPTION	UNIT	TOTAL QUANTITY	ROADWAY 0005
70300280	TEMPORARY PAVEMENT MARKING - LINE 24"	FOOT	226	226
* 78008200	POLYUREA PAVEMENT MARKING TYPE I - LETTERS AND SYMBOLS	SO FT	582	582
* 78008210	POLYUREA PAVEMENT MARKING TYPE I - LINE 4"	FOOT	26,534	26,534
* 78008250	POLYUREA PAVEMENT MARKING TYPE I - LINE 12"	FOOT	217	217
* 78008270	POLYUREA PAVEMENT MARKING TYPE I - LINE 24"	FOOT	226	226
* 78100100	RAISED REFLECTIVE PAVEMENT MARKER	EACH	209	209
78300200	RAISED REFLECTIVE PAVEMENT MARKER REMOVAL	EACH	209	209
* 88600100	DETECTOR LOOP, TYPE I	FOOT	1,413	1,413

g

\* SPECIALTY ITEM

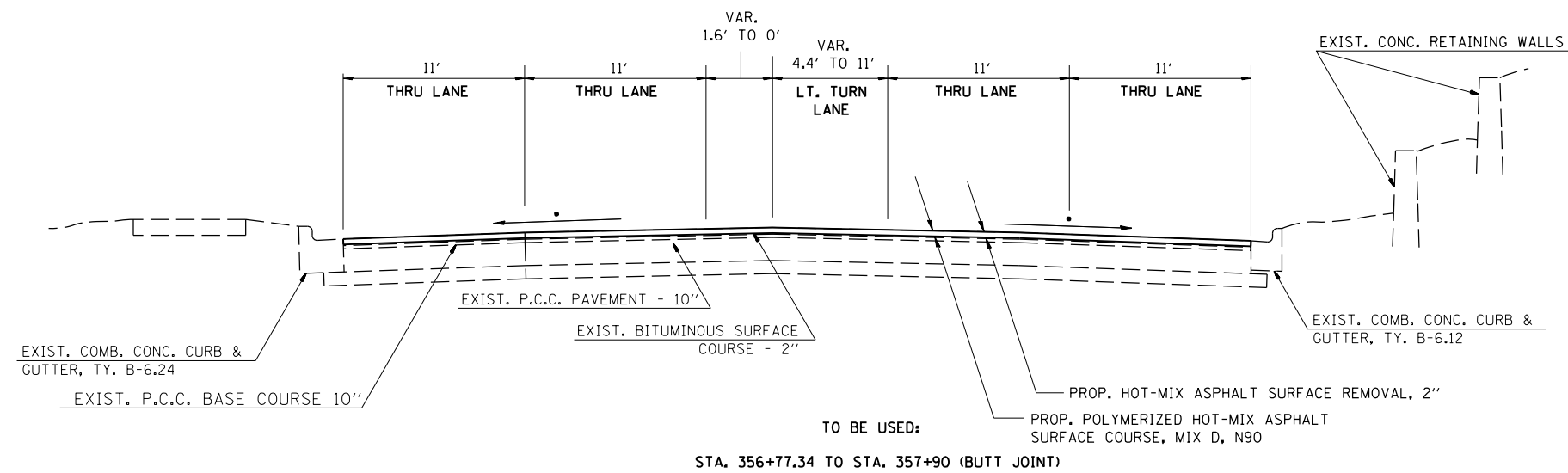
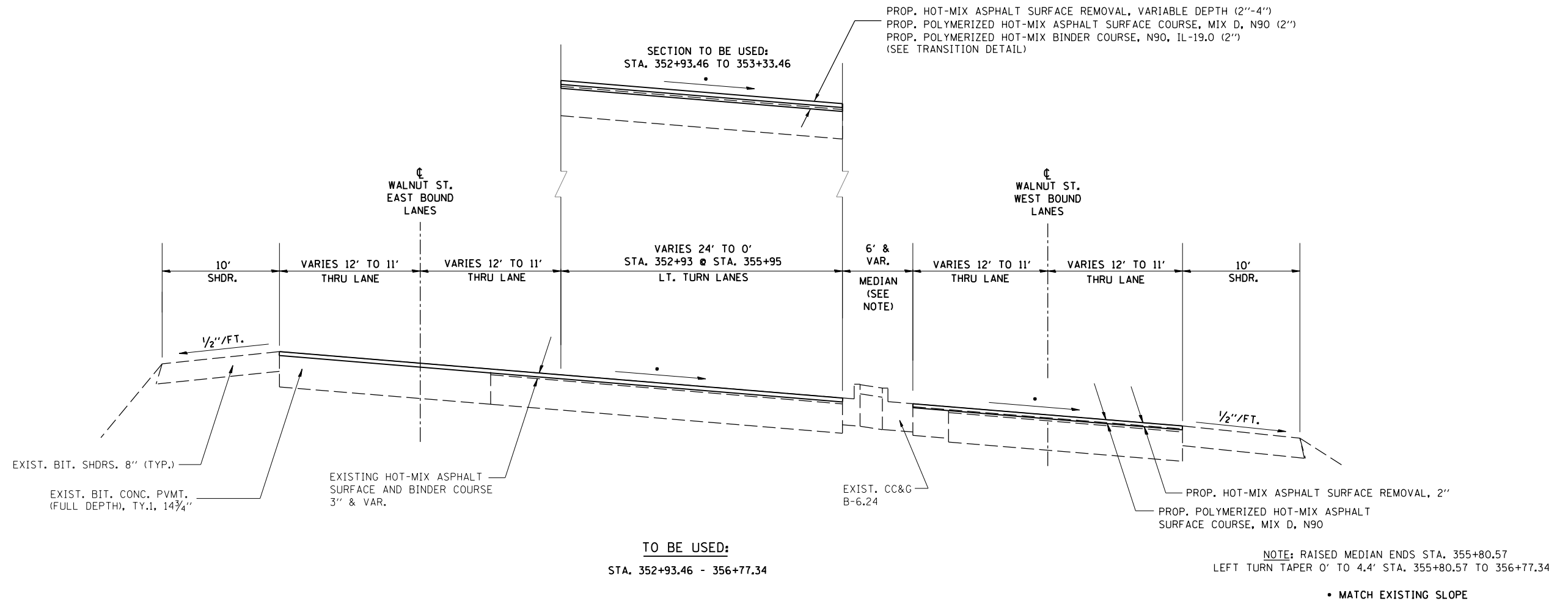
# TYPICAL SECTIONS



FILE NAME =	USER NAME = greenleem	DESIGNED -	REVISED -	<b>STATE OF ILLINOIS DEPARTMENT OF TRANSPORTATION</b>	<b>TYPICAL SECTIONS</b>	F.A.P. RT. 331/42	SECTION (12-1,13-1)RS-3	COUNTY JACKSON	TOTAL SHEETS 27	SHEET NO. 8		
Default	PLOT SCALE = 10.0000' / in.	CHECKED -	REVISED -			SCALE:	SHEET 1 OF 3 SHEETS	STA.	TO STA.	CONTRACT NO. 78576		
	PLOT DATE = 3/20/2017	DATE -	REVISED -			ILLINOIS FED. AID PROJECT						

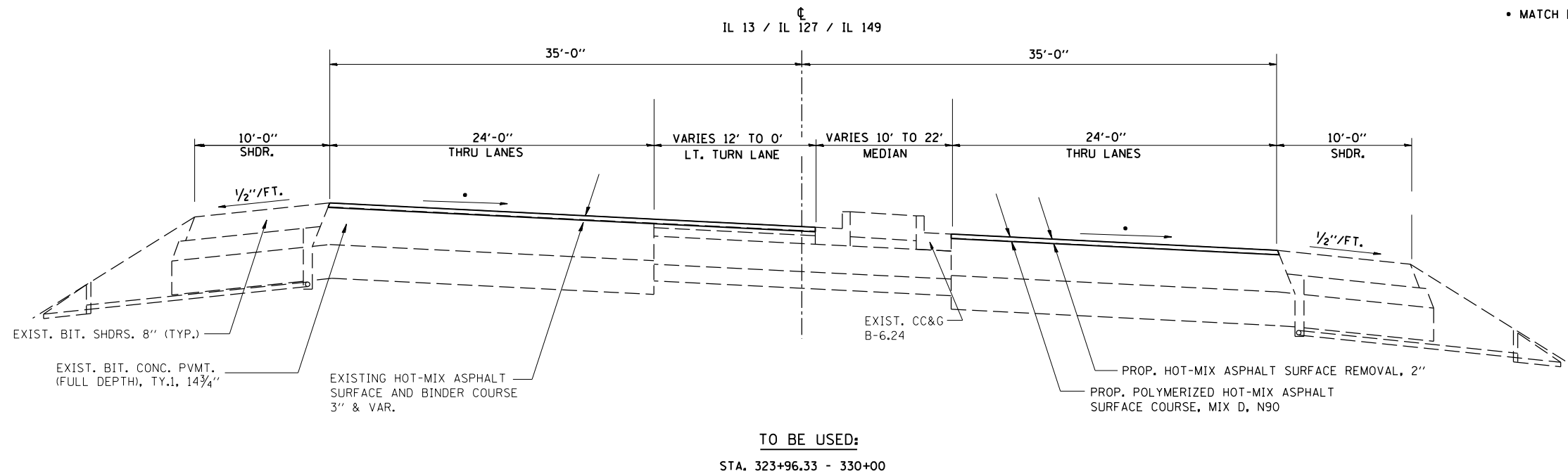
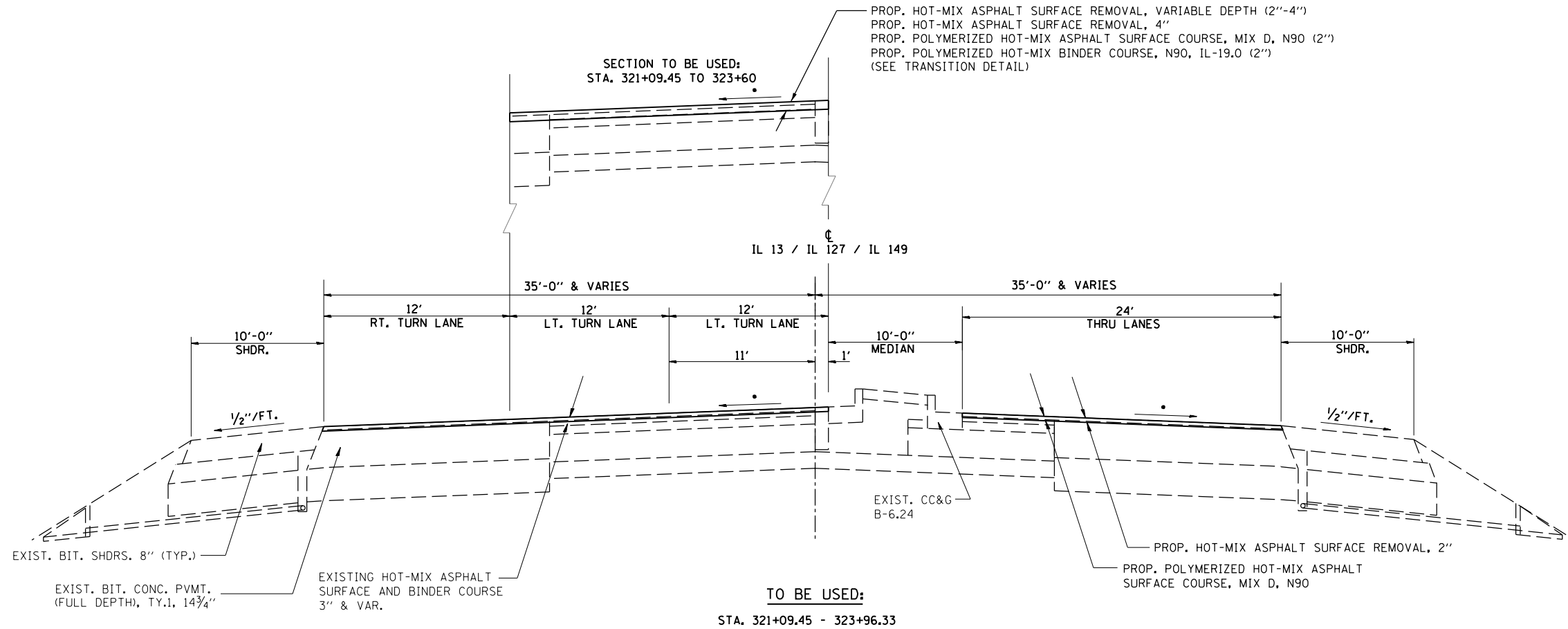


# TYPICAL SECTIONS



FILE NAME =	USER NAME = greenleem	DESIGNED -	REVISED -	<b>STATE OF ILLINOIS DEPARTMENT OF TRANSPORTATION</b>	<b>TYPICAL SECTIONS</b>			F.A.P. RT. 331/42	SECTION (12-1,13-1)RS-3	COUNTY JACKSON	TOTAL SHEETS 27	SHEET NO. 9			
pw:\11\084EBIDINTEG.illinois.gov\PWIDOT\Documents\DOT Offices\District 9\Projects\78578\Drawings\CAD\Sheets\shb-typ_sch_ties.gpr	DRAWN -	CHECKED -	REVISED -					SCALE:	SHEET 1	OF 3	SHEETS	STA.	TO STA.	CONTRACT NO. 78576	
Default	PLOT SCALE = 10.0000' / in.	DATE -	REVISED -					ILLINOIS FED. AID PROJECT							

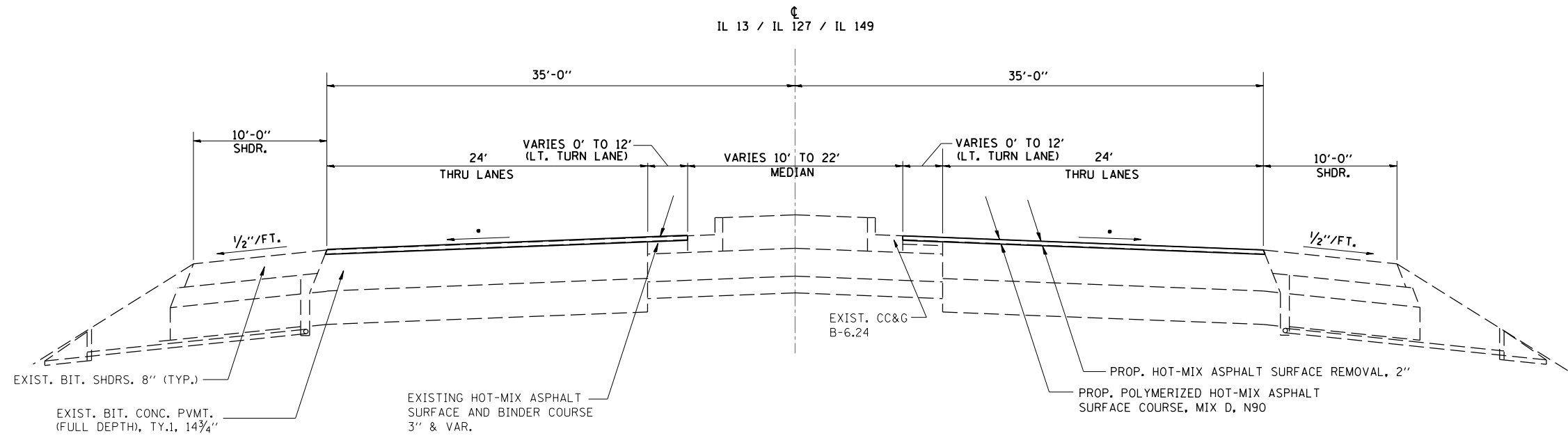
# TYPICAL SECTIONS



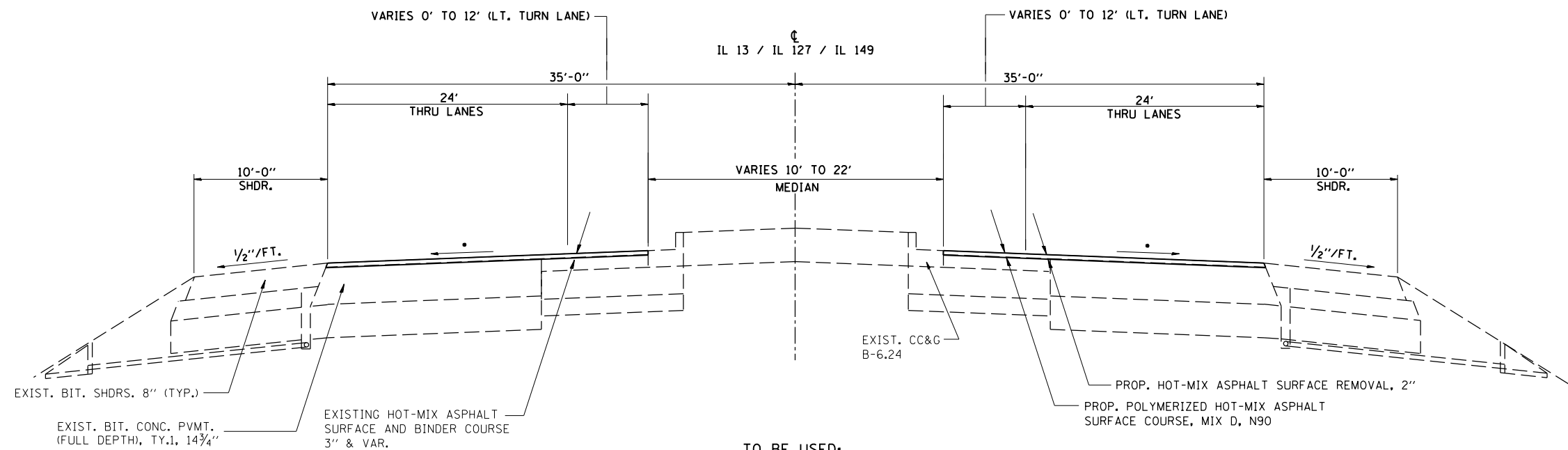
• MATCH EXISTING SLOPE

FILE NAME =	USER NAME = greenleem	DESIGNED -	REVISED -	<b>STATE OF ILLINOIS DEPARTMENT OF TRANSPORTATION</b>	<b>TYPICAL SECTIONS</b>			F.A.P. RTE.	SECTION	COUNTY	TOTAL SHEETS	SHEET NO.
pw:\IL\084EBIDINTEG\illinois.gov\PWIDOT\Documents\DOT Offices\District 9\Projects\78576\Drawings\CAD\Sheets\shb-typ_sch_ties.gpr		DRAWN	REVISED		331/42	(12-1,13-1)RS-3	JACKSON	27	10			
Default	PLOT SCALE = 10.0000" / in.	CHECKED -	REVISED -		SCALE: SHEET 1 OF 3 SHEETS STA. TO STA.			CONTRACT NO. 78576				
	PLOT DATE = 3/20/2017	DATE -	REVISED -		ILLINOIS FED. AID PROJECT							

# TYPICAL SECTIONS



**TO BE USED:**  
STA. 330+00 - 360+30



**TO BE USED:**  
STA. 360+30 - 369+90

• MATCH EXISTING SLOPE

FILE NAME =	USER NAME = greenleem	DESIGNED -	REVISED -	<b>STATE OF ILLINOIS DEPARTMENT OF TRANSPORTATION</b>	<b>TYPICAL SECTIONS</b>			F.A.P. RTE.	SECTION	COUNTY	TOTAL SHEETS	SHEET NO.
pw:\IL\084EBIDINTEG\illinois.gov\PWIDOT\Documents\DOT Offices\District 9\Projects\78578\Drawings\CAD\Sheets\shb-typ_sch_ties.gpr		DRAWN -	REVISOR -		331/42	(12-1,13-1)RS-3	JACKSON	27	11			
Default	PLOT SCALE = 10.0000' / in.	CHECKED -	REVISED -		SCALE: SHEET 1 OF 3 SHEETS STA. TO STA.			CONTRACT NO. 78576				
	PLOT DATE = 3/20/2017	DATE -	REVISED -		ILLINOIS FED. AID PROJECT							

# RESURFACING SCHEDULE

LOCATION STATION TO STATION	LENGTH	WIDTH	HOT-MIX ASPHALT SURFACE REMOVAL, 2"	HOT-MIX ASPHALT SURFACE REMOVAL, VARIABLE DEPTH	HOT-MIX ASPHALT SURFACE REMOVAL, 4"	POLYMERIZED BITUMINOUS MATERIALS (TACK COAT)	POLYMERIZED HOT-MIX ASPHALT SURFACE COURSE, MIX D, N90	POLYMERIZED HOT-MIX ASPHALT BINDER COURSE, N90, IL-19.0	TEMPORARY RAMP	REMARKS	
	FOOT	FOOT	SQ YD			POUND	TON	TON	SQ YD		
<b>IL 13 / IL 127 NORTHBOUND LANES</b>											
NE RADIUS			452			204	50.7			MEASURED IN MICROSTATION	
SMALL CENTER AREA			41			18	4.5			MEASURED IN MICROSTATION	
321+09.5 RT TO 324+61.4 RT	351.9	24	938			422	105.1		18		
SR 323+96.33			140			63	15.7			NORTH ST. (LT) MEASURED IN MICROSTATION	
324+61.4 RT TO 330+17.07 BK RT	555.7	24	1482			667	166.0				
330+19.04 AH RT TO 333+80. RT	361.0	25	1003			451	112.3				
333+80. RT TO 336+10. RT	230.0	30	767			345	85.9				
336+10. RT TO 337+10. RT	100.0	36	400			180	44.8				
337+10. RT TO 341+81. RT	471.0	24	1256			565	140.7				
PE 337+60			174			78	19.4			PRIVATE ENTRANCE (LT) MEASURED IN MICROSTATION	
341+81. RT TO 344+11. RT	230.0	30	767			345	85.9				
344+11. RT TO 345+11. RT	100.0	36	400			180	44.8				
345+11. RT TO 363+15.63 RT	1804.6	24	4812			2166	539.0				
SR 345+61.			240			108	26.9			MOBILE RANCH RD. (RT) MEASURED IN MICROSTATION	
SR 351+76.19			202			91	22.6			HOSPITAL RD. (RT) MEASURED IN MICROSTATION	
363+15.63 RT TO 365+45.63 RT	230.0	30	767			345	85.9				
365+45.63 RT TO 367+50.63 RT	205.0	36	820			369	91.8				
SR 368+33.77			351			158	39.3			IL 149 MEASURED IN MICROSTATION	
367+50.63 RT TO 369+79. RT	228.4	24	609			274	68.2		18		
<b>IL 13 / IL 127 SOUTHBOUND LANES</b>											
NW RADIUS			499			224	55.9			MEASURED IN MICROSTATION	
321+09.5 LT TO 323+20. LT	210.5	24			561	379	62.9	62.9	18	DUAL LEFT TURN LANES	
322+48.58 LT TO 323+60. LT	111.4	12	149			67	16.6			RIGHT TURN LANE (TO RADIUS RETURN)	
323+20. LT TO 323+60. LT	40.0	24		107		54	15.3	2.6		HMA SURFACE REMOVAL TRANSITION AREA	
323+60. LT TO 326+58.3 LT	298.3	36	1193			537	133.6				
326+58.3 LT TO 328+63.3 LT	205.0	30	683			308	76.5				
328+63.3 LT TO 330+17.07 BK LT	153.8	24	410			185	45.9				
330+19.04 AH LT TO 346+21. LT	1602.0	24	4272			1922	478.5				
346+21. LT TO 348+26. LT	205.0	36	820			369	91.8				
348+26. LT TO 350+56. LT	230.0	30	767			345	85.9				
350+56. LT TO 352+36.19 LT	180.2	24	481			216	53.8				
352+36.19 LT TO 354+41.19 LT	205.0	36	820			369	91.8				
354+41.19 LT TO 356+71.19 LT	230.0	30	767			345	85.9				
356+71.19 LT TO 369+00. LT	1228.8	24	3277			1475	367.0		27		
<b>SHEET TOTAL =</b>			9767	697	29756	107	561	13823	3411	65	80

## RESURFACING SCHEDULE CONTINUED

LOCATION STATION TO STATION	LENGTH	WIDTH	HOT-MIX ASPHALT SURFACE REMOVAL, 2"	HOT-MIX ASPHALT SURFACE REMOVAL, VARIABLE DEPTH	HOT-MIX ASPHALT SURFACE REMOVAL, 4"	POLYMERIZED BITUMINOUS MATERIALS (TACK COAT)	POLYMERIZED HOT-MIX ASPHALT SURFACE COURSE, MIX D, N90	POLYMERIZED HOT-MIX ASPHALT BINDER COURSE, N90, IL-19.0	TEMPORARY RAMP	REMARKS
	FOOT	FOOT	SQ YD	SQ YD	SQ YD	POUND	TON		SQ YD	
<b>WALNUT ST. WESTBOUND LANES</b>										
347+90. RT TO 348+53.8 RT	63.8	36	255				115	28.6	27	
348+53.8 RT TO 355+80.57 RT	726.8	24	1938				872	217.1		
CENTER OF IL 13/127/149 INTERSECTION			331				149	37.1		MEASURED IN MICROSTATION
355+80.57 TO 357+12.29 BK	131.7	29.625	434				195	48.6		INCLUDES MEDIAN AND LEFT LANE TAPER
356+95.5 AH 357+83.	87.5	31.125	303				136	33.9		
357+83. TO 357+90.	7.0	33	26				12	2.9	24	
<b>WALNUT ST. EASTBOUND LANES</b>										
347+90. LT TO 349+26.35 LT	136.3	27	409				184	45.8	18	
349+26.35 LT TO 350+96.34 LT	170.0	24	453				204	50.8		
350+96.34 LT TO 352+93.46 LT	197.1	24	526				237	58.9		
350+54.58 LT TO 352+93.46 LT	238.9	24' & VAR.			651	439	72.9	72.9		MEASURED IN MICROSTATION
352+93.46 LT TO 353+33.46 LT	40.0	24		107		54	15.3	2.6		
352+93.46 LT TO 355+61. LT	267.5	VAR.	1136			511	127.2			MEASURED IN MICROSTATION
355+61. LT TO 357+12.29 BK LT	151.3	25	416			187	46.6			
356+95.5 AH LT 357+83. LT	87.5	22	214			96	24.0			
357+83. LT TO 357+90. LT	7.0	22	17			8	1.9		16	
<b>SHEET TOTAL =</b>										
	2312	322	6457	107	651	3399	811	76	85	
<b>TOTALS</b>										
	12080	1019	36212	214	1212	17222	4222	141	165	

## PAVEMENT MARKING SCHEDULE

LOCATION STATION TO STATION	LENGTH	POLYUREA PAVEMENT MARKING TYPE I - LINE 4"			POLYUREA PAVEMENT MARKING TYPE I - LINE 12"	POLYUREA PAVEMENT MARKING TYPE I - LINE 24"	POLYUREA PAVEMENT MARKING TYPE I - LETTERS AND SYMBOLS	REMARKS
		WHITE SOLID	WHITE SKIP DASH	YELLOW				
	FOOT	FOOT	FOOT	FOOT	FOOT	FOOT	SQ FT	
<b>IL 13 / IL 127 NORTHBOUND LANES</b>								
348+54 RT TO 322+57 RT		215						RADIUS EOP (WALNUT RD. TO IL 13/127/149)
320+09. RT TO 320+49. RT	40.0	128			100			ISLAND OUTLINE & HATCHING
321+41. RT TO 323+21. RT	180.0			380				DIVIDED MEDIAN OUTLINE
321+69. RT TO 368+00. RT	4631.0		1158					CENTERLINE
322+57. RT TO 323+19. RT	62.0	62						RT EOP
324+36. RT TO 344+44. RT	2008.0	2008						RT EOP
324+38. RT TO 337+32. RT	1294.0			2608				DIVIDED MEDIAN OUTLINE
336+10. RT TO 337+10. RT	100.0	100						LT TURN STORAGE LINE
336+20 RT						36.4		
337+82. RT TO 345+23. RT	741.0			1514				DIVIDED MEDIAN OUTLINE
344+11. RT TO 345+11. RT	100.0	100						LT TURN STORAGE LINE
344+21 RT						36.4		
345+74. RT TO 346+13. RT	39.0	39						RT EOP
346+00. RT TO 351+53. RT	553.0			1138				DIVIDED MEDIAN OUTLINE
347+13. RT TO 350+84. RT	371.0	371						RT EOP
352+17. RT TO 367+71. RT	1554.0			3128				DIVIDED MEDIAN OUTLINE
352+50. RT TO 367+85. RT	1535.0	1535						RT EOP
365+46. RT TO 367+97. RT	251.0	251						LT TURN STORAGE LINE
365+56 RT						36.4		
366+61 RT						36.4		
367+67 RT						14		
367+98 RT						26		
368+92. RT TO 369+45. RT	53.0	53						RT EOP
368+97. RT TO 369+79. RT	82.0			92				DIVIDED MEDIAN OUTLINE
369+00. RT TO 369+79. RT	79.0		25					CENTERLINE
SHEET SUB TOTAL =		4862	1183	8860				
SHEET TOTAL =		14905			100	40	146	



## PAVEMENT MARKING SCHEDULE - CONTINUED

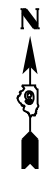
LOCATION STATION TO STATION	LENGTH	POLYUREA PAVEMENT MARKING TYPE I - LINE 4"			POLYUREA PAVEMENT MARKING TYPE I - LINE 12"	POLYUREA PAVEMENT MARKING TYPE I - LINE 24"	POLYUREA PAVEMENT MARKING TYPE I - LETTERS AND SYMBOLS	REMARKS
		WHITE SOLID	WHITE SKIP DASH	YELLOW				
<b>WALNUT ST. WESTBOUND LANES</b>								
347+90 RT						15.6		
347+90. RT TO 348+54. RT	64.0	64					TURN LANE EDGE LINE	
347+90. RT TO 349+18. RT	128.0	128						
347+90. TO 349+62.	172.0		43				CENTERLINE	
349+62 RT					24			
347+90. LT TO 349+70. LT	180.0			370			DIVIDED MEDIAN OUTLINE	
349+55 LT					22			
350+70. LT TO 356+00. LT	530.0			1260			DIVIDED MEDIAN OUTLINE	
350+83. TO 357+12.29 BK	629.3		157				CENTERLINE	
351+97. RT TO 355+76. RT	379.0	379					RT EOP	
356+40. RT TO 357+12.29 BK	72.3	72		145			RT EOP AND MEDIAN DOUBLE STRIPE	
356+95.5 AH TO 357+90.	94.5	112	24	189			CENTERLINE. RT EOP, MEDIAN OUTLINE	
357+75 LT						20.8		
<b>WALNUT ST. EASTBOUND LANES</b>								
350+70 LT TO 321+52 RT	124.0		31				LT TURN LANE GUIDELINES (2' ON 8' CENTERS)	
347+90. LT TO 349+26. LT	136.0		34				CENTERLINE	
347+90. LT TO 352+95. LT	505.0	505					RT EOP	
350+55. LT TO 352+95. LT	240.0		60				CENTERLINE	
350+55. LT TO 354+75. LT	420.0	420					TURN LANE EDGE LINE	
350+55 LT					24			
350+70. LT TO 352+95.	225.0	225					TURN LANE EDGE LINE	
350+70 LT					28			
351+60 LT						73		
352+83 LT						73		
352+95. LT TO 356+04. LT	309.0	309	77				RT EOP AND CENTERLINE	
354+75 LT								
356+60. LT TO 357+12.29 BK	52.3	52	13					
356+95.5 AH TO 357+90. LT	94.5	95	24					
SHEET SUB TOTAL =			2361	463	1964			
SHEET TOTAL =				4787	0	98	182	

TOTALS =		26534	217	226	582	
----------	--	-------	-----	-----	-----	--



## DETECTOR LOOP SCHEDULE

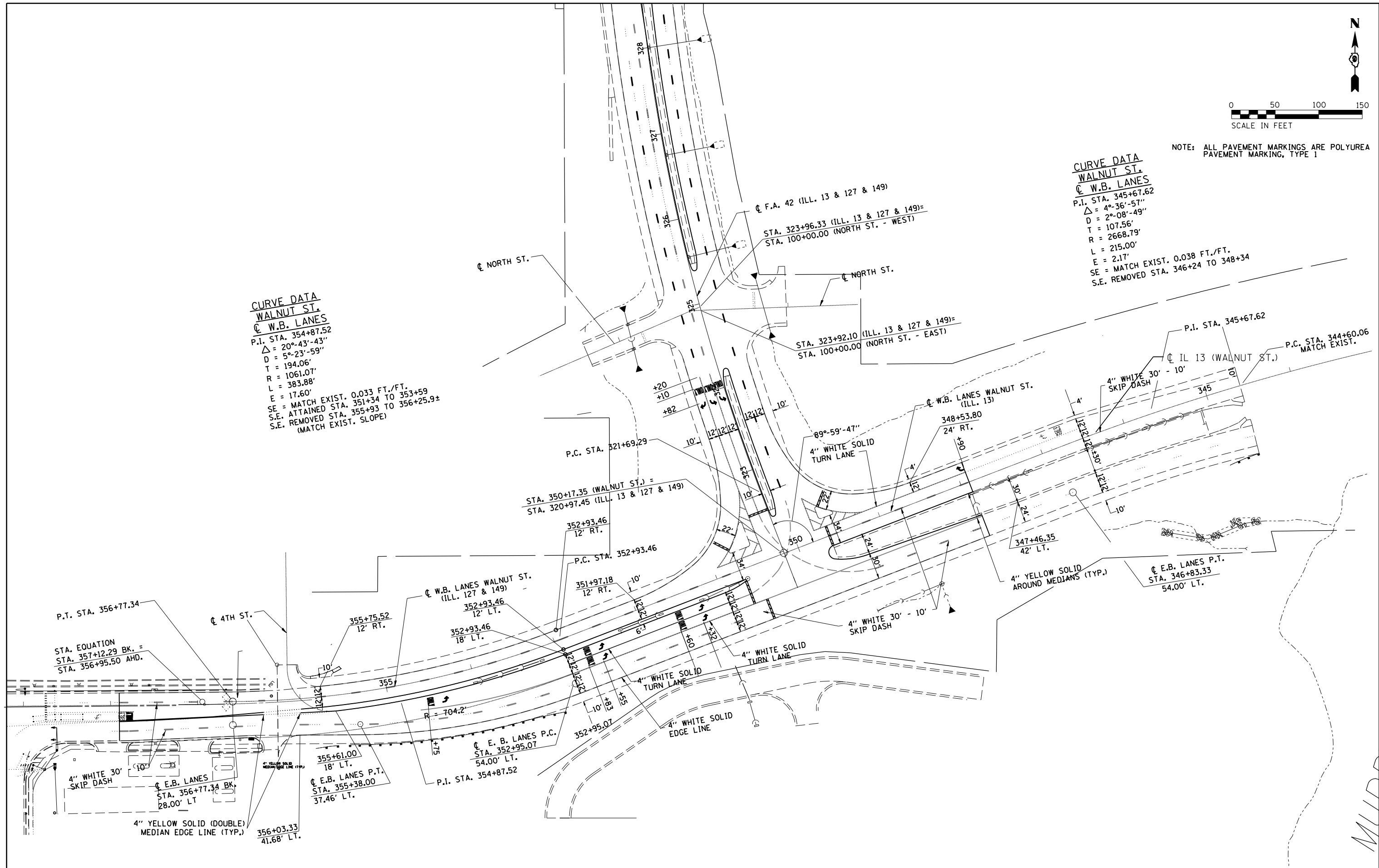
LOCATION STATION TO STATION	EOP TO LOOP	BETWEEN LOOPS	LOOP AMOUNT	DETECTOR LOOP TYPE 1	REMARKS
	FOR INFORMATION USE ONLY				
	FOOT	FOOT	FOOT	FOOT	
<b>IL 13 / IL 127 NORTHBOUND LANES</b>					
363+30.	6	12	40	58	2 - 5'x5'
365+60.	36	12	60	108	3 - 5'x5'
367+50.	6	6	52	64	1 - 6'x20' LT TURN LANE
<b>IL 13 / IL 127 SOUTHBOUND LANES</b>					
320+42.	8	6	104	118	2 - 6'x20' RT TURN LANE
320+70.	12	12	208	232	4 - 6'x20'
323+26.	18	12	40	70	2 - 5'x5'
325+45.	6	12	40	58	2 - 5'x5'
369+03.	3		52	55	1 - 6'x20'
<b>IL 13 / IL 127 EASTBOUND LANES</b>					
350+84.	6	12	208	226	4 - 6'x20'
352+77.	36	24	80	140	4 - 5'x5'
354+55.	56	12	40	108	2 - 5'x5'
<b>IL 13 / IL 127 WESTBOUND LANES</b>					
349+45.	8	6	104	118	2 - 6'x20' RT TURN LANE
356+80.	6	12	40	58	2 - 5'x5'
<b>TOTAL</b>					
				1413	



NOTE: ALL PAVEMENT MARKINGS ARE POLYUREA PAVEMENT MARKING, TYPE 1

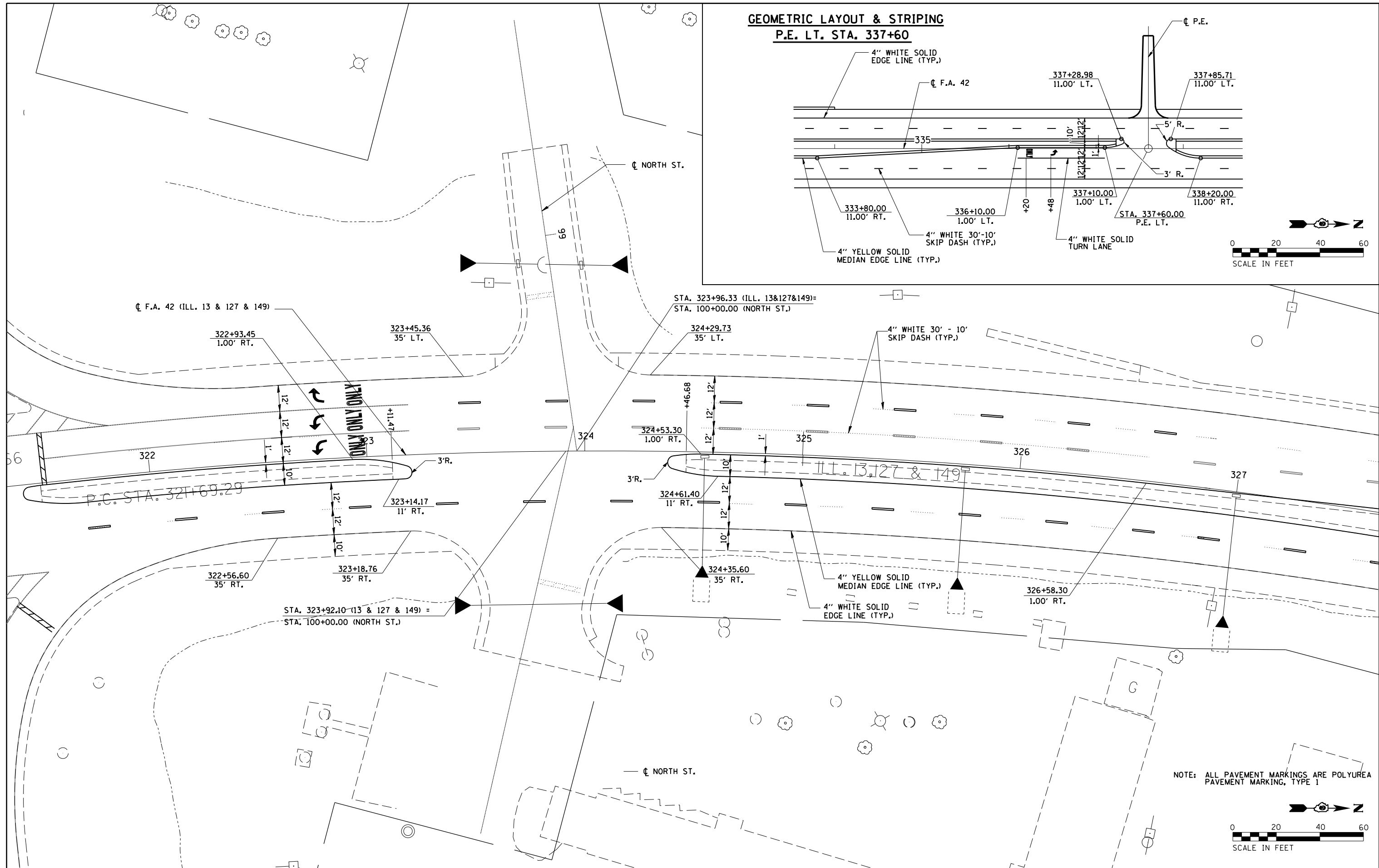
**CURVE DATA**  
**WALNUT ST.**  
**W.B. LANES**  
 P.I. STA. 345+67.62  
 $\Delta = 4^{\circ}-36'-57''$   
 $D = 2^{\circ}-08'-49''$   
 $T = 107.56'$   
 $R = 2668.79'$   
 $L = 215.00'$   
 $E = 2.17'$   
 SE = MATCH EXIST. 0.038 FT./FT.  
 S.E. REMOVED STA. 346+24 TO 348+34

**CURVE DATA**  
**WALNUT ST.**  
**W.B. LANES**  
 P.I. STA. 354+87.52  
 $\Delta = 20^{\circ}-43'-43''$   
 $D = 5^{\circ}-23'-59''$   
 $T = 194.06'$   
 $R = 1061.07'$   
 $L = 383.88'$   
 $E = 17.60'$   
 SE = MATCH EXIST. 0.033 FT./FT.  
 S.E. ATTAINED STA. 351+34 TO 353+59  
 S.E. REMOVED STA. 355+93 TO 356+25.9±  
 (MATCH EXIST. SLOPE)

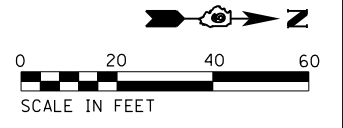
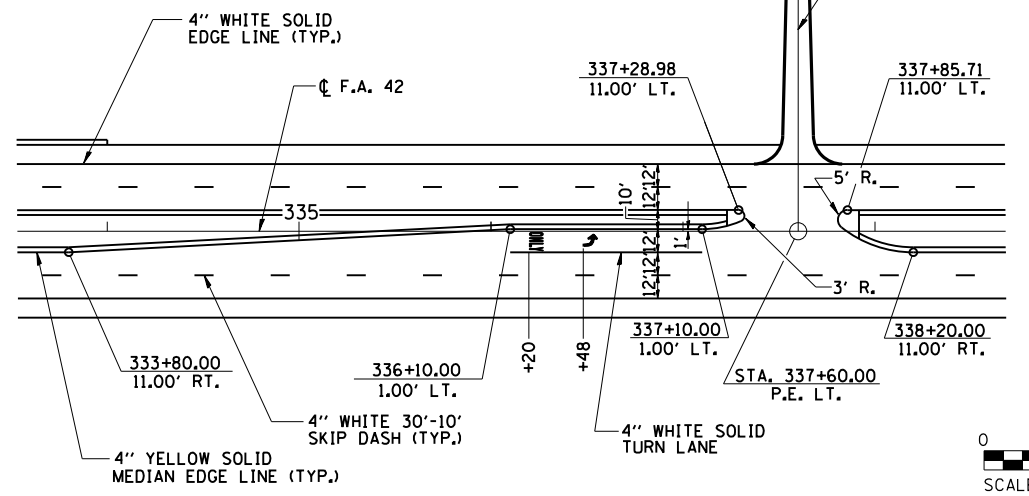


FILE NAME =	USER NAME = greenlees	DESIGNED -	REVISED -	<b>STATE OF ILLINOIS DEPARTMENT OF TRANSPORTATION</b>	<b>PAVEMENT MARKING LAYOUT SHEET</b>			F.A.P. R.E.	SECTION	COUNTY	TOTAL SHEETS	SHEET NO.
pw\11084EBIDINTEG\illinois.gov\PIWIDOT\Documents\DOT Offices\District 9\Projects\78576\Drawings\CAD\Sheets\d978576_shta-cvr.scp	DRAWN	CHECKED -	REVISED -					331	(12-1, 13-1RS-3)	JACKSON	27	18
Default	PLOT SCALE = 100.0000' / in.	DATE -	REVISED -		SCALE: SHEET OF SHEETS STA. TO STA.			CONTRACT NO. 78576				
	PLOT DATE = 3/20/2017	DATE -	REVISED -		ILLINOIS FED. AID PROJECT							

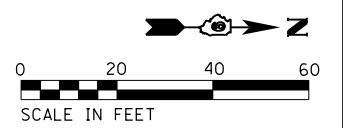




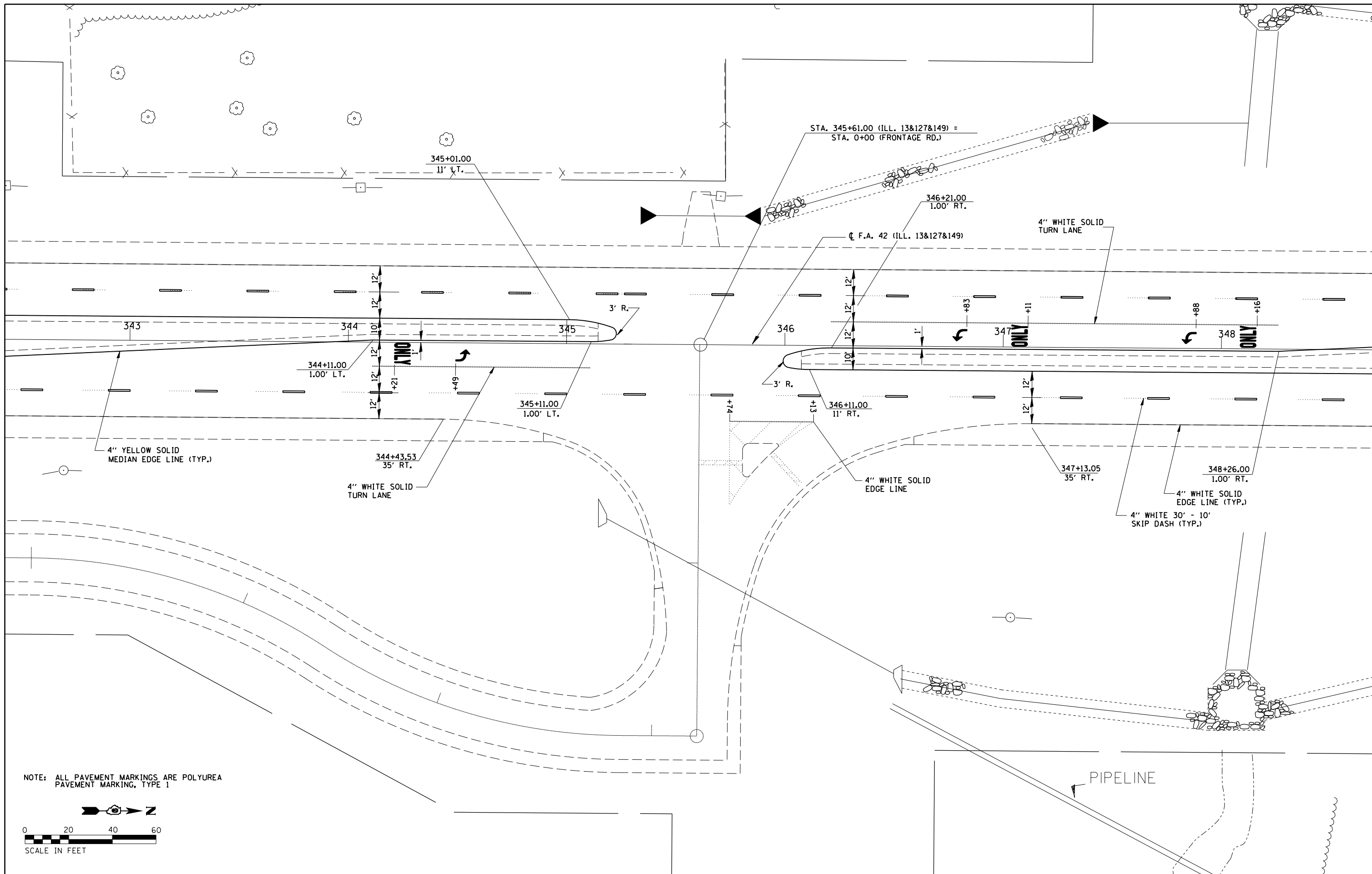
**GEOMETRIC LAYOUT & STRIPING**  
**P.E. LT. STA. 337+60**



NOTE: ALL PAVEMENT MARKINGS ARE POLYUREA PAVEMENT MARKING, TYPE 1



FILE NAME =	USER NAME = greenleesm	DESIGNED -	REVISED -	<b>STATE OF ILLINOIS DEPARTMENT OF TRANSPORTATION</b>	<b>PAVEMENT MARKING LAYOUT SHEET</b>			F.A.P. R.E.	SECTION	COUNTY	TOTAL SHEETS	SHEET NO.
pw:\IL\084EBIDINTEG\illinois.gov\PI\DOT\Documents\DOT Offices\District 9\Projects\78576\Drawings\CAD\Sheets\978576.sht-cvr.scp	DRAWN -	CHECKED -	REVISED -					331	(12-1, 13-1)RS-3	JACKSON	27	20
Default	PLOT SCALE = 40.0000' / in.	DATE -	REVISED -		CONTRACT NO. 78576			ILLINOIS FED. AID PROJECT				
	PLOT DATE = 3/20/2017	DATE -	REVISED -		SCALE:	SHEET	OF	SHEETS	STA.	TO	STA.	

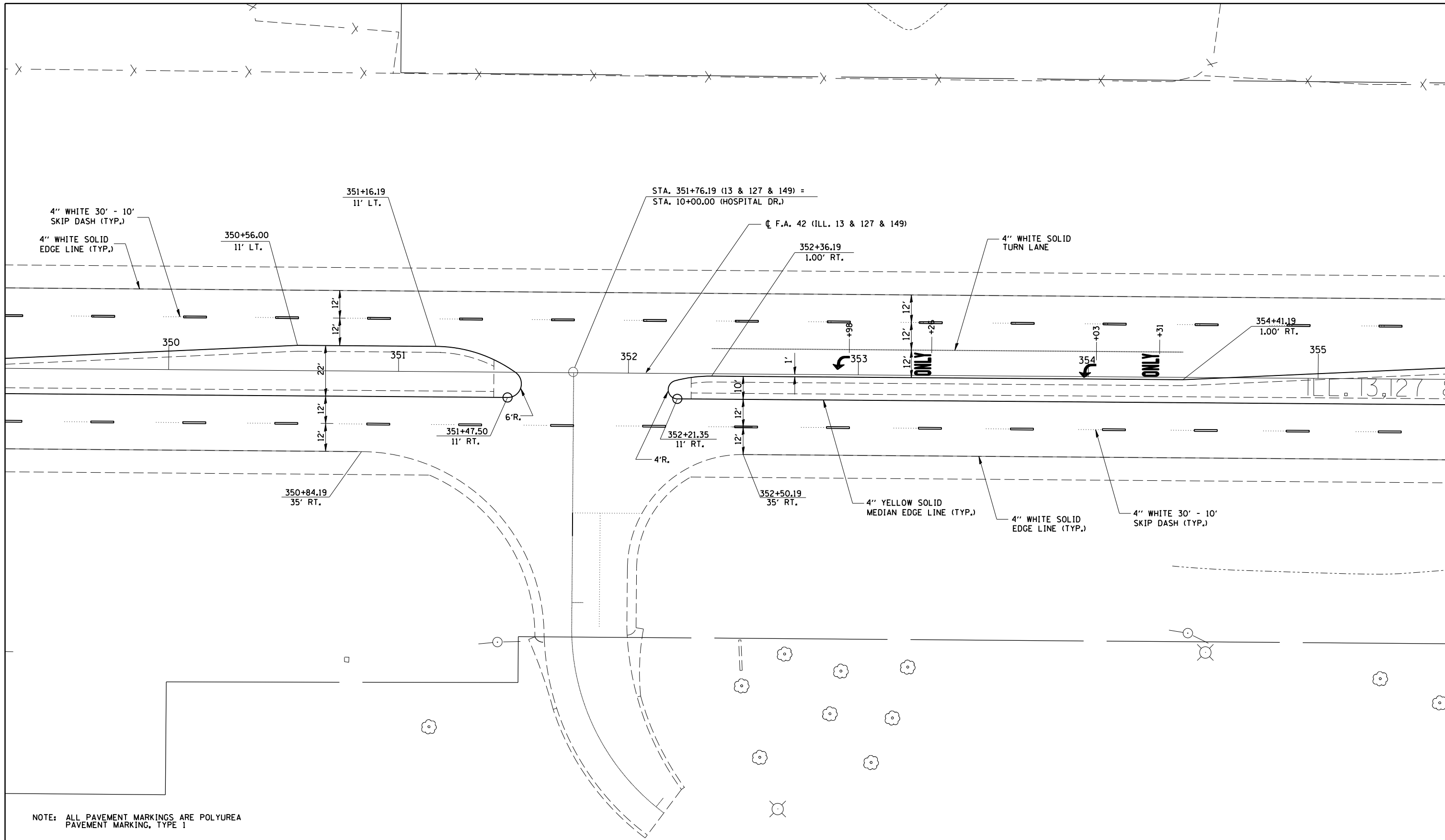


FILE NAME =	USER NAME = greenleesm	DESIGNED -	REVISED -
p:\11084EBIDINTEG.illinois.gov\PIWIDOT\Documents\DOT Offices\District 9\Projects\78576\Drawings\CAD\Sheets\d978576.sht-cvr.sop		DRAWN -	REVISED -
Default	PLOT SCALE = 40.0000' / in.	CHECKED -	REVISED -
	PLOT DATE = 3/20/2017	DATE -	REVISED -

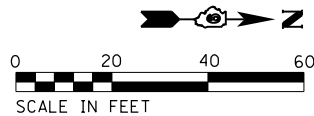
**STATE OF ILLINOIS  
DEPARTMENT OF TRANSPORTATION**

PAVEMENT MARKING LAYOUT SHEET			
SCALE:	SHEET	OF SHEETS	STA. TO STA.

F.A.P. RTE.	SECTION	COUNTY	TOTAL SHEETS	SHEET NO.
331	(12-1, 13-1)RS-3	JACKSON	27	21
CONTRACT NO. 78576				
ILLINOIS FED. AID PROJECT				



NOTE: ALL PAVEMENT MARKINGS ARE POLYUREA PAVEMENT MARKING, TYPE 1



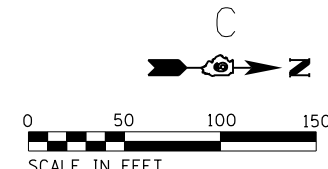
FILE NAME =	USER NAME = greenleem	DESIGNED -	REVISED -
pw:\IL\084EBIDINTEG.illinois.gov\PIWIDOT\Documents\DOT Offices\District 9\Projects\78576\Drawings\CAD\Drawings\78576.dwg		DRAWN -	REVISED -
Default	PLOT SCALE = 40.0000' / in.	CHECKED -	REVISED -
	PLOT DATE = 3/20/2017	DATE -	REVISED -

STATE OF ILLINOIS  
DEPARTMENT OF TRANSPORTATION

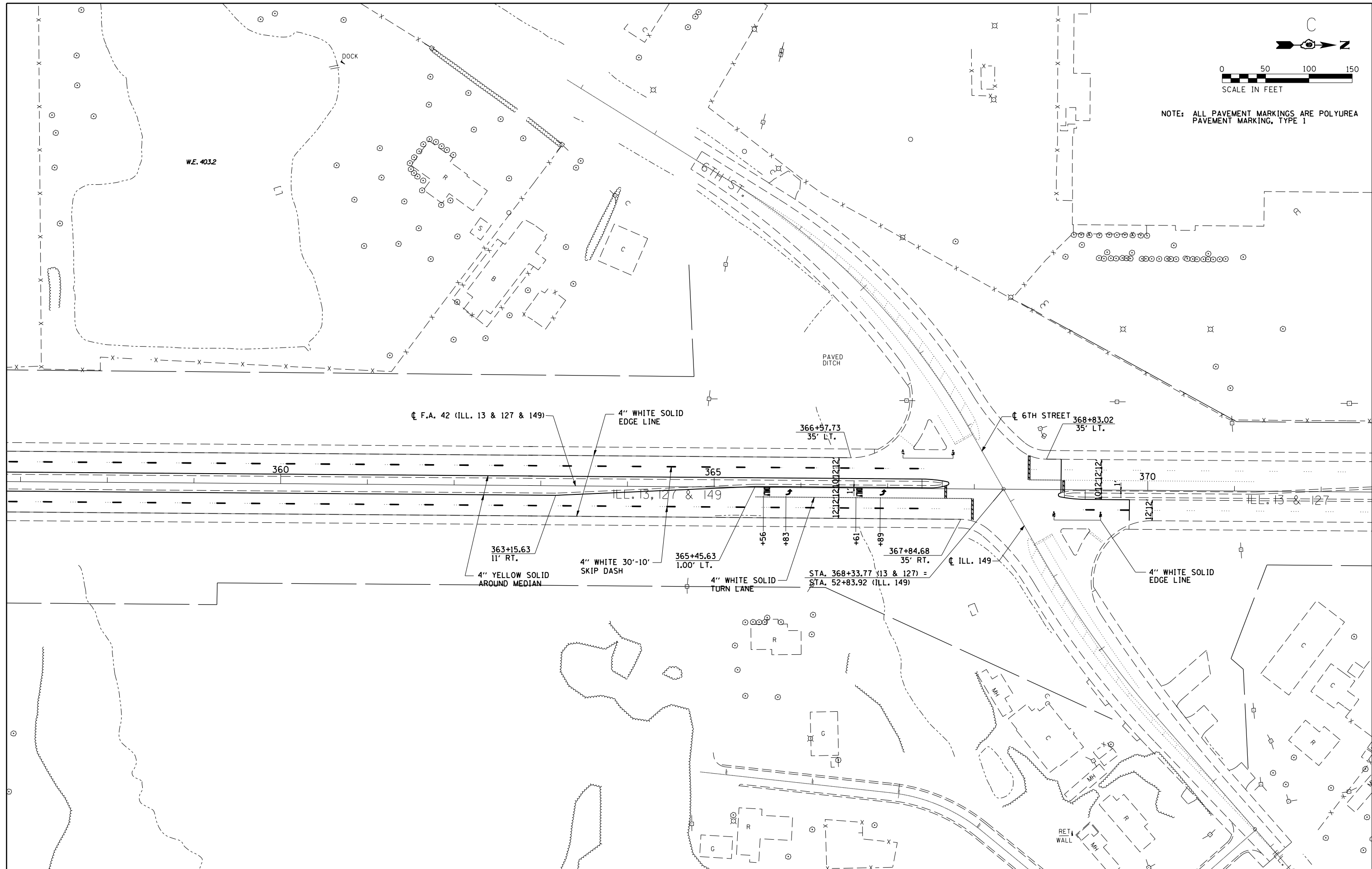
PAVEMENT MARKING LAYOUT SHEET

SCALE: SHEET OF SHEETS STA. TO STA.

F.A.P. RTE.	SECTION	COUNTY	TOTAL SHEETS	SHEET NO.
331	(12-1, 13-1)RS-3	JACKSON	27	22
CONTRACT NO. 78576				
ILLINOIS FED. AID PROJECT				



NOTE: ALL PAVEMENT MARKINGS ARE POLYUREA PAVEMENT MARKING, TYPE 1

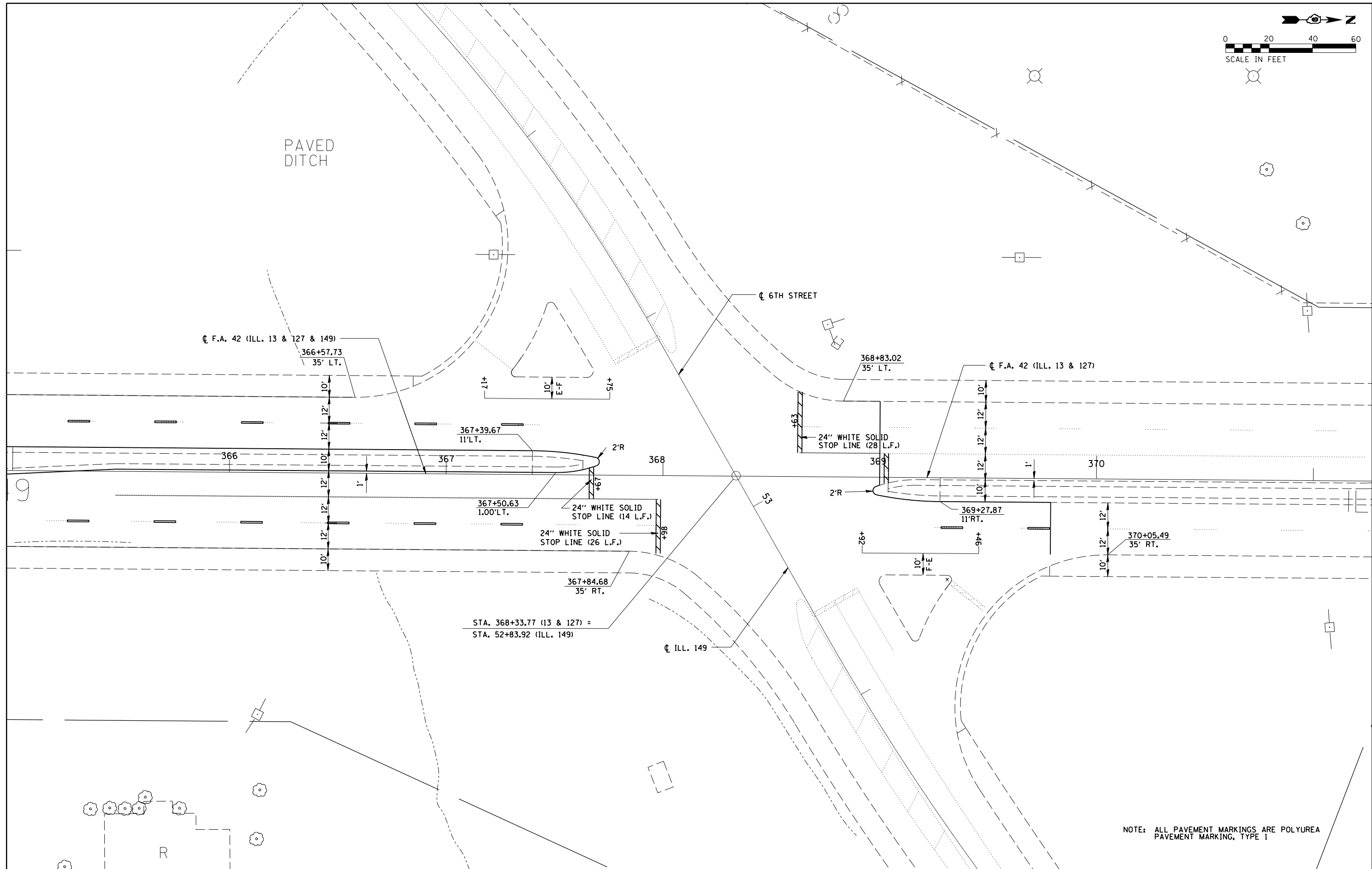
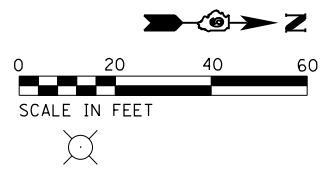


FILE NAME =	USER NAME = greeniesm	DESIGNED -	REVISED -
p:\IL084EBIDINTEG.illinois.gov\PIWIDOT\Documents\DOT Offices\District 9\Projects\78576\Drawings\CAD\Sheets\d978576_sht-cvr.scp		DRAWN -	REVISED -
Default	PLOT SCALE = 100.0000' / in.	CHECKED -	REVISED -
	PLOT DATE = 3/20/2017	DATE -	REVISED -

**STATE OF ILLINOIS  
DEPARTMENT OF TRANSPORTATION**

PAVEMENT MARKING LAYOUT SHEET			
SCALE:	SHEET	OF SHEETS	STA. TO STA.

F.A.P. RTE.	SECTION	COUNTY	TOTAL SHEETS	SHEET NO.
331	(12-1, 13-1RS-3)	JACKSON	27	23
CONTRACT NO. 78576				
ILLINOIS FED. AID PROJECT				



NOTE: ALL PAVEMENT MARKINGS ARE POLYUREA PAVEMENT MARKING, TYPE 1

FILE NAME =	USER NAME = greenleem	DESIGNED -	REVISED -
pw:\IL\084EBIDINTEG\illinois.gov\PI\DOT\Documents\DOT Offices\District 9\Projects\78578\Drawings\CAD\Sheets\d978576_sht-cvr.scp		DRAWN -	REVISED -
Default	PLOT SCALE = 40.0000' / in.	CHECKED -	REVISED -
	PLOT DATE = 3/20/2017	DATE -	REVISED -

STATE OF ILLINOIS  
DEPARTMENT OF TRANSPORTATION

PAVEMENT MARKING LAYOUT SHEET

SCALE: SHEET OF SHEETS STA. TO STA.

F.A.P. RTE.	SECTION	COUNTY	TOTAL SHEETS	SHEET NO.
331	(12-1, 13-1)RS-3	JACKSON	27	24
CONTRACT NO. 78576				
ILLINOIS FED. AID PROJECT				

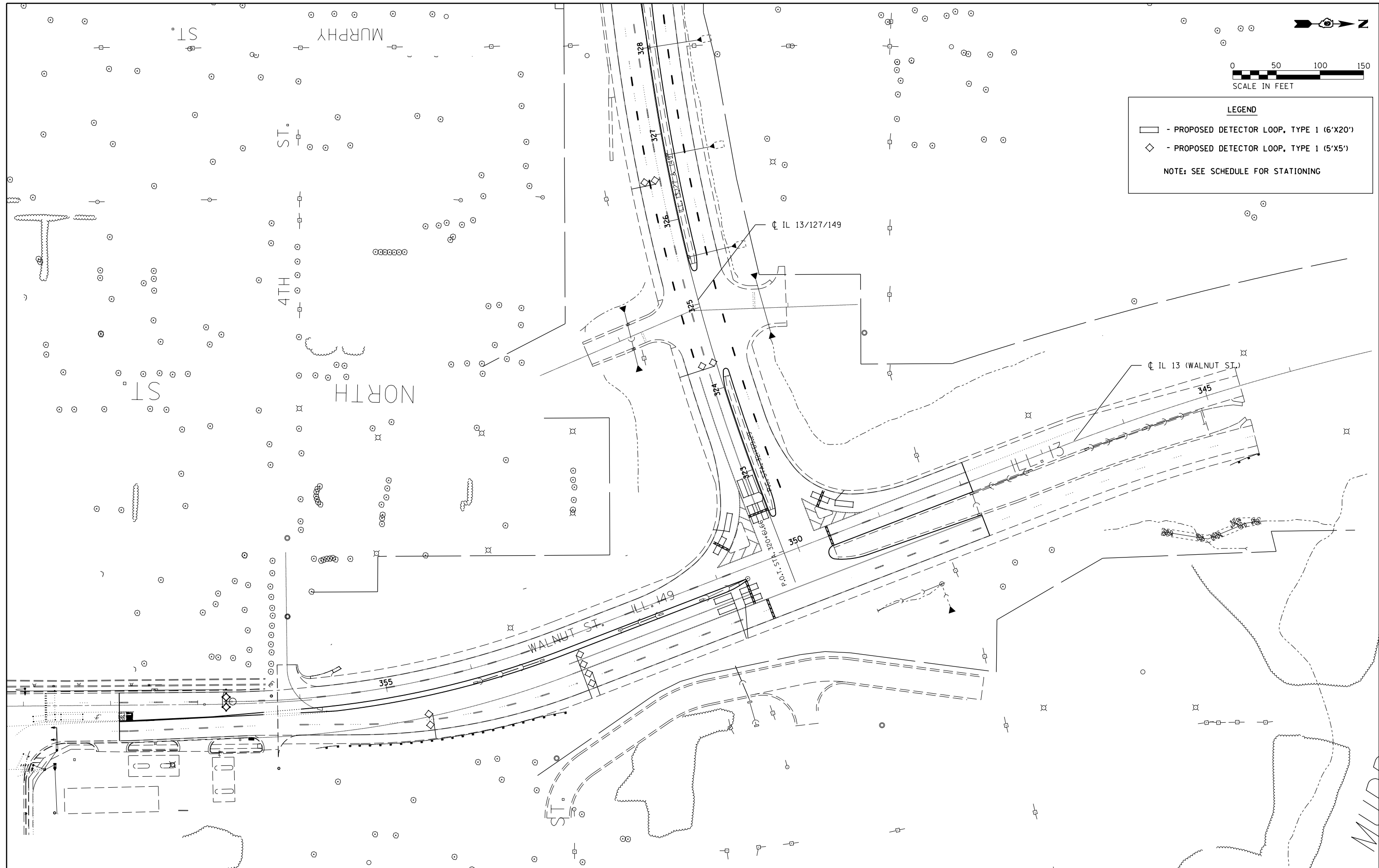




**LEGEND**

- - PROPOSED DETECTOR LOOP, TYPE 1 (6'X20')
- ◇ - PROPOSED DETECTOR LOOP, TYPE 1 (5'X5')

NOTE: SEE SCHEDULE FOR STATIONING



FILE NAME =	USER NAME = greenleem	DESIGNED -	REVISED -
pw:\IL\084EBIDINTEG\Illinois.gov\PWIDOT\Documents\DOT Offices\District 9\Projects\78578\Drawings\CAD\Sheets\d978576_sht-cvr.scp		DRAWN -	REVISED -
Default	PLOT SCALE = 100.0000' / in.	CHECKED -	REVISED -
	PLOT DATE = 3/20/2017	DATE -	REVISED -

**STATE OF ILLINOIS  
DEPARTMENT OF TRANSPORTATION**

<b>DETECTOR LOOP LAYOUT SHEET</b>			
SCALE:	SHEET	OF	SHEETS
	STA.	TO	STA.

F.A.P. RTE.	SECTION	COUNTY	TOTAL SHEETS	SHEET NO.
331	(12-1, 13-1)RS-3	JACKSON	27	25
CONTRACT NO. 78576				
ILLINOIS FED. AID PROJECT				

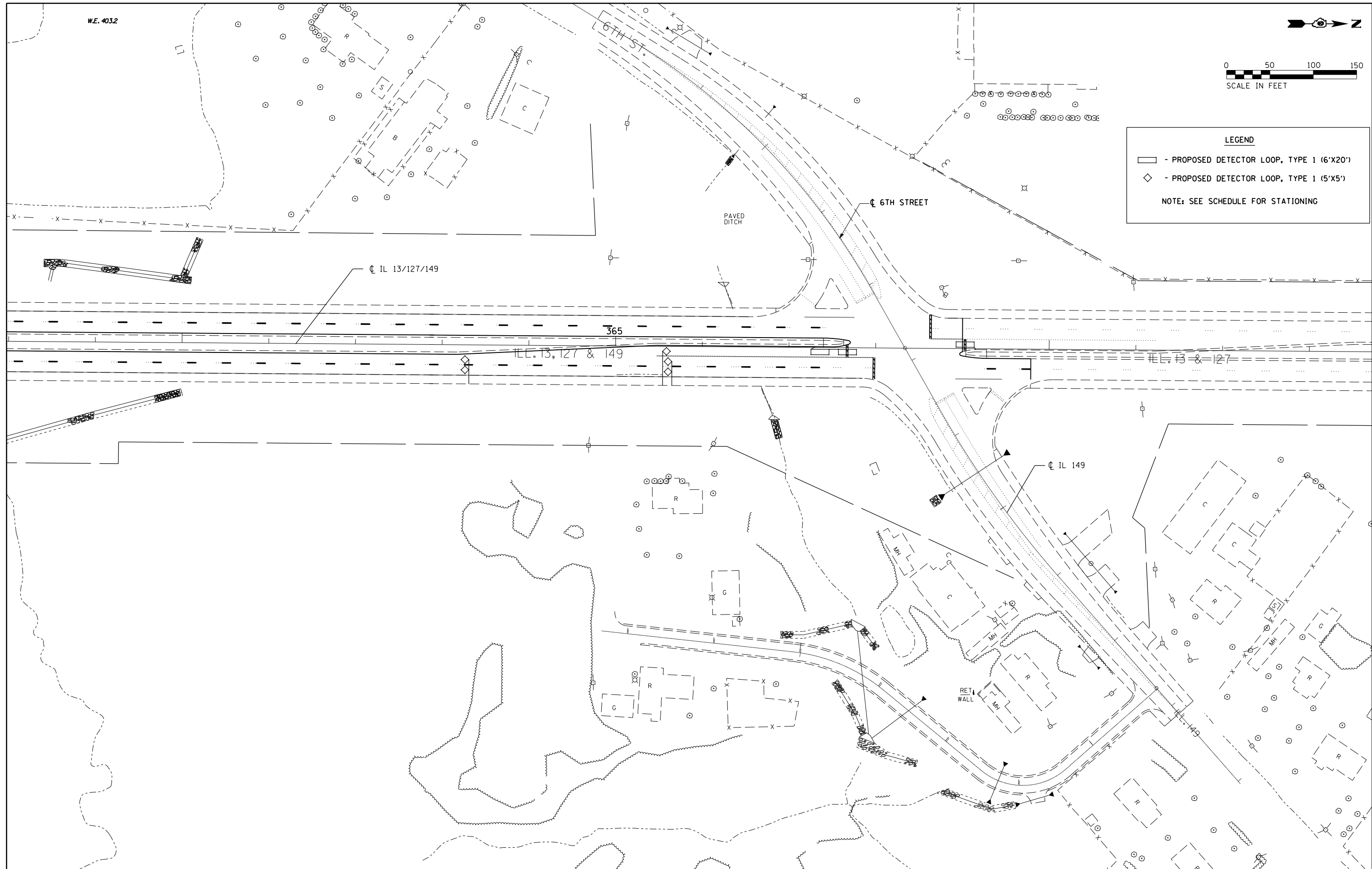
W.E. 4032



**LEGEND**

- - PROPOSED DETECTOR LOOP, TYPE 1 (6'X20')
- ◇ - PROPOSED DETECTOR LOOP, TYPE 1 (5'X5')

NOTE: SEE SCHEDULE FOR STATIONING



FILE NAME =	USER NAME = greenleem	DESIGNED -	REVISED -
pw:\IL\084EBIDINTEG\illinois.gov\PI\DOT\Documents\DOT Offices\District 9\Projects\78576\Drawings\CAD\Drawings\978576_sht-cvr.scp		DRAWN -	REVISED -
Default	PLOT SCALE = 100.0000' / in.	CHECKED -	REVISED -
	PLOT DATE = 3/20/2017	DATE -	REVISED -

**STATE OF ILLINOIS  
DEPARTMENT OF TRANSPORTATION**

<b>DETECTOR LOOP LAYOUT SHEET</b>			
SCALE:	SHEET	OF SHEETS	STA. TO STA.

F.A.P. RTE.	SECTION	COUNTY	TOTAL SHEETS	SHEET NO.
331	(12-1, 13-1)RS-3	JACKSON	27	26
CONTRACT NO. 78576				
ILLINOIS FED. AID PROJECT				

## DETAIL OF DETECTOR LOOPS

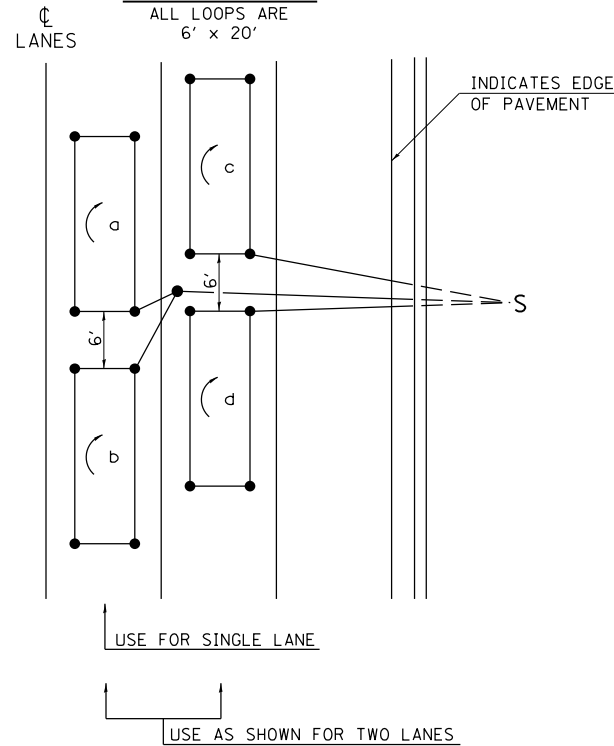
### NOTES

1. THE DETECTOR LOOPS SHALL BE TYPE I. EACH DETECTOR LOOP SHALL HAVE 3 TURNS OF LOOP WIRE AND BE INSTALLED IN ACCORDANCE WITH THE APPLICABLE PORTIONS OF SECTION 886 OF THE STANDARD SPECIFICATIONS FOR TRAFFIC CONTROL ITEMS.
2. BEGINNING LEAD WIRES SHALL BE CONNECTED TO THE BLACK LEAD AND THE ENDING LEAD WIRES SHALL BE CONNECTED TO THE WHITE LEAD OF THE TWIN TWISTED FEED CABLES AT THE SPLICE POINT.
3. WHERE THE LOOPS ARE INSTALLED PRIOR TO RESURFACING, THE LOOP CORNERS SHALL BE DIAGONALLY CUT.

### LOOP LEGEND

- ( ) CLOCKWISE ROTATION FOR LOOP WIRES
- S INDICATES SPLICE POINT FOR DETECTOR LOOP LEAD
- INDICATES 2" CORE-DRILL

### LOOP LAYOUT



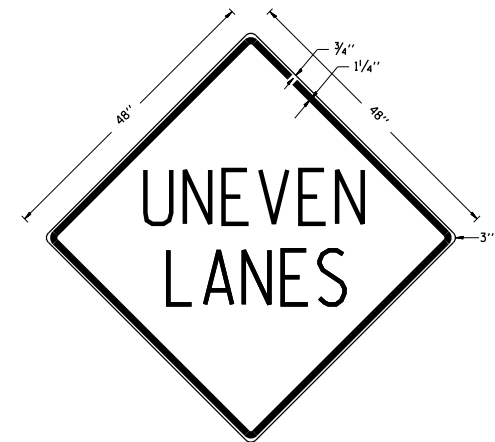
DETAIL 6' x 20' DETECTOR LOOPS

REVISIONS	
REDRAWN	5-13-02
REVISED	10-27-05
REVISED	3-26-08
REDRAWN	3-16-11
REVISED	4-12-13

STD. 9-92

## UNEVEN LANES SIGN

W8-11 (48" x 48")



**COLORS:**  
LEGEND AND BORDER - BLACK NON-REFLECTORIZED  
BACKGROUND - ORANGE REFLECTORIZED

**NOTE:** PRIOR TO ALLOWING TRAFFIC ON ANY PORTION OF THE ROADWAY THAT HAS BEEN COLDMILLED OR BEFORE RESURFACING OPERATIONS BEGIN, THE CONTRACTOR SHALL HAVE ERECTED "UNEVEN PAVEMENT" SIGNS THAT CONFORM TO THE ABOVE DETAILS. A MINIMUM OF ONE SIGN AT EACH END OF THE IMPROVEMENT WILL BE REQUIRED. THE CONTRACTOR SHALL MAINTAIN THE "UNEVEN PAVEMENT" SIGNS UNTIL THE RESURFACING OPERATIONS ARE COMPLETED.

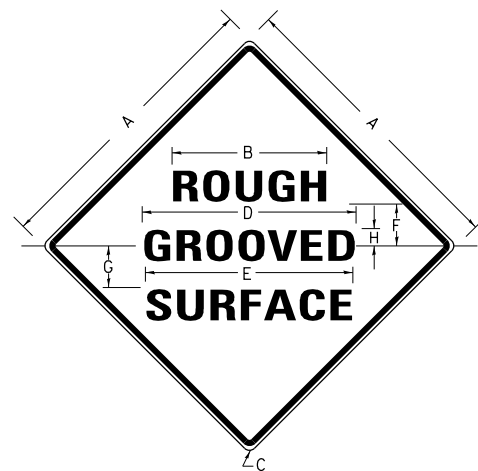
IF AT ANY TIME THE SIGNS ARE IN PLACE BUT NOT APPLICABLE, THEY SHALL BE TURNED FROM THE VIEW OF MOTORISTS OR COVERED AS DIRECTED BY THE ENGINEER.

THE COST OF FURNISHING, ERECTING, MAINTAINING, AND REMOVING THE REQUIRED SIGNS SHALL BE INCLUDED IN THE CONTRACT.

REVISIONS	
DRAWN	2-15-89
REVISED	4-06-93
RESIGNED	7-23-04
RESIZED	5-08-08
REVIEWED	5-17-13

STD. 9-41

## ILLINOIS STANDARD



### COLORS:

LEGEND AND BORDER- BLACK NON-REFLECTORIZED  
BACKGROUND- ORANGE REFLECTORIZED

SIGN SIZE	DIMENSIONS							
	A	B	C	D	E	F	G	H
48X48	48.0	24.1	3.0	34.0	33.0	6.0	13.0	3.5

SIGN SIZE	SERIES LINES			MAR-GIN	BOR-DER	BLANK STD.
	1	2	3			
48X48	7C	7C	7C	0.8	1.2	B4-48D

ALL DIMENSIONS IN INCHES

### NOTES:

PRIOR TO ALLOWING TRAFFIC ON ANY PORTION OF THE ROADWAY THAT HAS BEEN COLDMILLED, THE CONTRACTOR SHALL HAVE ERECTED "ROUGH GROOVED SURFACE" SIGNS THAT CONFORM TO THE ABOVE DETAILS. A MINIMUM OF ONE SIGN AT EACH END OF THE IMPROVEMENT WILL BE REQUIRED. THE CONTRACTOR SHALL MAINTAIN THE "ROUGH GROOVED SURFACE" SIGNS UNTIL THE COLDMILLED SURFACE IS COVERED WITH LEVELING BINDER OR SURFACE COURSE.

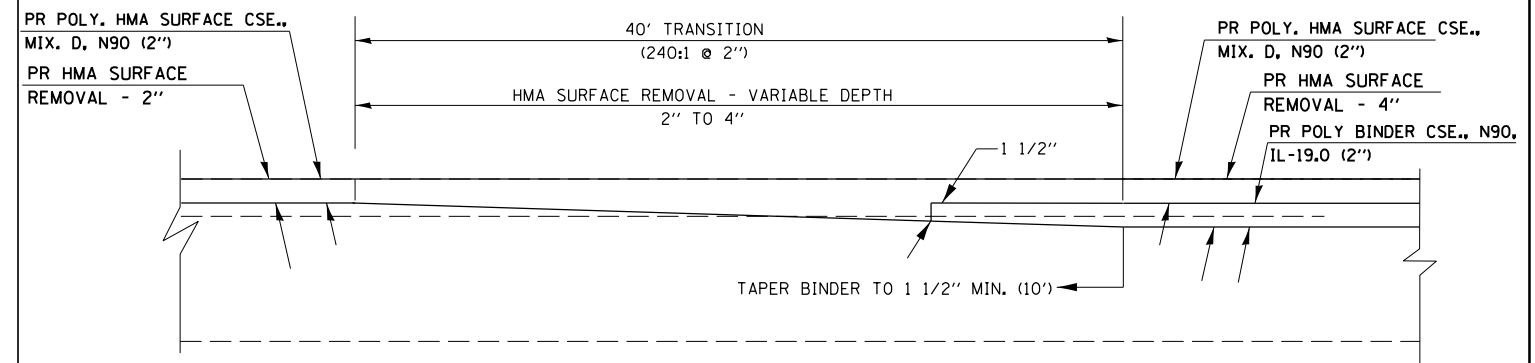
IF AT ANY TIME THE SIGNS ARE IN PLACE BUT NOT APPLICABLE, THEY SHALL BE TURNED FROM THE VIEW OF MOTORISTS OR COVERED AS DIRECTED BY THE ENGINEER.

THE COST OF FURNISHING, ERECTING, MAINTAINING, AND REMOVING THE REQUIRED SIGNS SHALL BE INCLUDED IN THE CONTRACT.

REVISIONS	
REDRAWN	2-15-89
REVISED	4-6-93
REVISED	3-27-08
REVIEWED	5-17-13

STD. 9-39

## HMA TRANSITIONS



**TO BE USED:**  
STA 352+93.46 TO STA 353+33.46 (WALNUT ST.)  
STA 323+20 TO STA 323+60 (N. 2ND ST.)

FILE NAME =	USER NAME = greenleesm	DESIGNED =	REVISED =
p:\1\084EBIDINTEG\illinois.gov\PIWIDOT\Documents\DOT Offices\District 9\Projects\78578\Drawings\CAD\Drawings\shtr-details.dgn			
PLOT SCALE = 100.0000' / in.	CHECKED =	REVISED =	
Default	DATE = 3/20/2017	REVISED =	

**STATE OF ILLINOIS  
DEPARTMENT OF TRANSPORTATION**

**DETAILS: DETECTOR LOOPS, UNEVEN LANES SIGN,  
ROUGH GROOVED SURFACE, HMA TRANSITIONS**

SCALE: SHEET OF SHEETS STA. TO STA.

F.A.P. RTE.	SECTION	COUNTY	TOTAL SHEETS	SHEET NO.
331	(12-1, 13-1)RS-3	JACKSON	27	27
CONTRACT NO. 78576				
ILLINOIS FED. AID PROJECT				