

INDEX OF SHEETS 06-16-2017 LETTING ITEM 053

STATE OF ILLINOIS

F.A.U. RTE.	SECTION	COUNTY	TOTAL SHEETS	SHEET NO.
7813	16-00322-00-RS	ADAMS	10	1

SEE SHEET #2

DEPARTMENT OF TRANSPORTATION  
DIVISION OF HIGHWAYS

CONTRACT NO. 93702

HIGHWAY STANDARDS

SEE SHEET #2

**PLANS FOR PROPOSED  
R.J. PETERS DRIVE RESURFACING**

FAU ROUTE 7813

CITY OF QUINCY, ADAMS COUNTY, ILLINOIS

DESIGN DESIGNATIONS

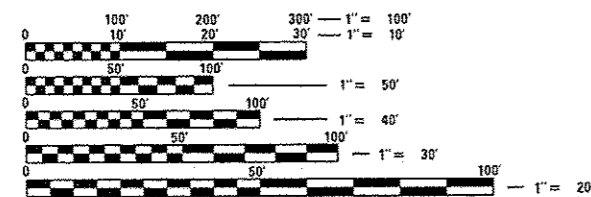
FAU 7813 (RJ PETERS DRIVE): URBAN MAJOR COLLECTOR  
ADT = 2700 (2014); DESIGN SPEED: 30 MPH

JOB NUMBER C-96-220-16  
SECTION 16-00322-00-RS  
PROJECT M-5058(032)

FUNDING - STR /MFT

PROJECT DESCRIPTION

PROJECT CONSISTS OF MILLING AND OVERLAY,  
ADA SIDEWALK RAMPS ALONG WITH  
OTHER MISCELLANEOUS APPURTENANCES.



FULL SIZE PLANS HAVE BEEN PREPARED USING STANDARD  
ENGINEERING SCALES. REDUCED SIZED PLANS WILL NOT  
CONFORM TO STANDARD SCALES. IN MAKING MEASUREMENTS  
ON REDUCED PLANS, THE ABOVE SCALES MAY BE USED.

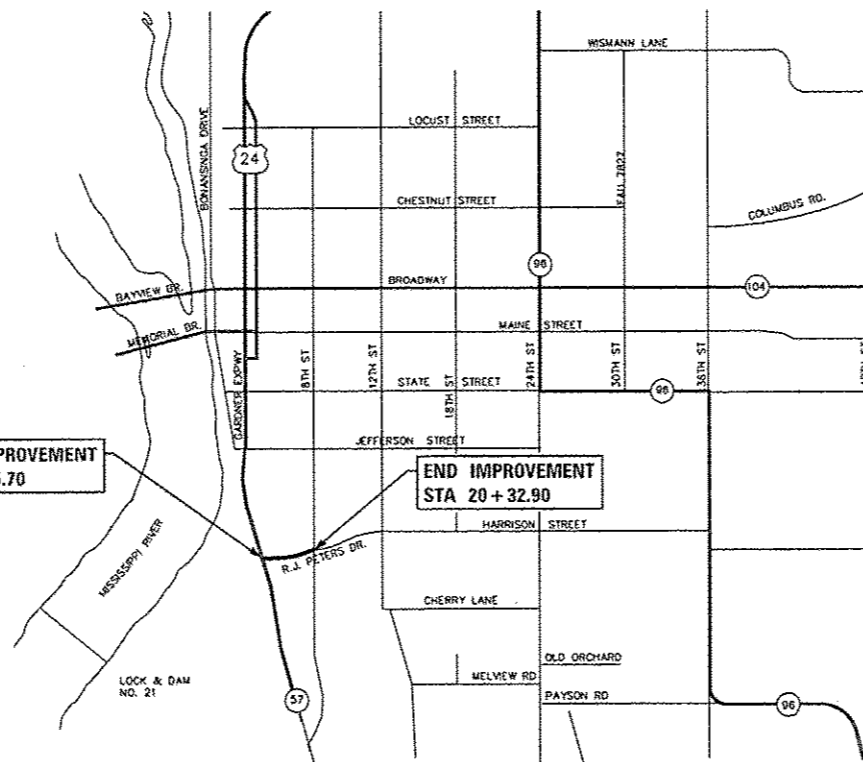
J.U.L.I.E.  
JOINT UTILITY LOCATION INFORMATION FOR EXCAVATION  
1-800-892-0123  
OR 811

UTILITIES



PLANS PREPARED BY THE CITY OF QUINCY  
DEPARTMENT OF UTILITIES  
AND ENGINEERING

CONTRACT NO. 93702



LOCATION MAP

LENGTH OF IMPROVEMENT = 2007.20 FT (0.38 MILES)

QUINCY



Steve E. Bange 2/9/17  
DATE  
STEVE E. BANGE, P.E.  
REGISTERED PROFESSIONAL ENGINEER  
STATE OF ILLINOIS NO 062-053338  
LICENSE EXPIRES NOVEMBER 30, 2017



LOCATION OF SECTION INDICATED THUS: -

STATE OF ILLINOIS DEPARTMENT OF TRANSPORTATION	
APPROVED	Feb. 10 <sup>th</sup> 20 17 <i>[Signature]</i> CITY OF QUINCY, MAYOR
PASSED	March 31 20 17 <i>[Signature]</i> DISTRICT 6 ENGINEER OF LOCAL ROADS AND STREETS
PASSED	March 31 20 17 <i>[Signature]</i> DISTRICT 6 ENGINEER OF CONSTRUCTION
RELEASED FOR BID	March 31 20 17
BASED ON LIMITED REVIEW	<i>[Signature]</i> REGION FOUR ENGINEER

**INDEX OF SHEETS**

- 1 COVER SHEET
- 2 INDEX OF SHEETS, HIGHWAY STANDARDS, AND GENERAL NOTES
- 3 SUMMARY OF QUANTITIES
- 4 TYPICAL SECTIONS
- 5 SCHEDULE OF QUANTITIES
- 6-7 FAU 7813 (R.J. PETERS DRIVE) PLAN
- 8 SIDEWALK DETAILS
- 9 MISCELLANEOUS DETAILS
- 10 TRAFFIC CONTROL AND PROTECTION SPECIAL

**GENERAL NOTES**

- 1 ASPHALT THICKNESS: DEVIATIONS FROM THE NOMINAL THICKNESS WILL BE PERMITTED WHEN SUCH DEVIATIONS OCCUR DUE TO IRREGULARITIES IN THE EXISTING SURFACE OR BASE ON WHICH THE BITUMINOUS MIXTURE IS PLACED.
2. THE CONTRACTOR SHALL PROTECT AND CAREFULLY PRESERVE ALL PROPERTY MARKERS AND MONUMENTS UNTIL THE OWNER, AUTHORIZED AGENT, OR LAND SURVEYOR HAS WITNESSED OR OTHERWISE REFERENCED THEIR LOCATION. WHERE SECTION OR SUB-SECTION MONUMENTS ARE ENCOUNTERED, THE ENGINEER SHALL BE NOTIFIED BEFORE SUCH MONUMENTS ARE REMOVED. THE CONTRACTOR SHALL BE RESPONSIBLE FOR HAVING AN AUTHORIZED SURVEYOR RE-ESTABLISH ANY SECTION OR SUB-SECTION MONUMENTS DESTROYED BY HIS OPERATIONS.
3. ALL DISTURBED AREAS CAUSED BY THIS PROJECT SHALL BE SEEDED, FERTILIZED, AND MULCHED AS SHOWN IN THE PLANS AND AS DIRECTED BY THE ENGINEER. COST TO BE INCIDENTAL TO THE CONTRACT.
4. THE CONTRACTOR SHALL BE RESPONSIBLE FOR PROTECTING UTILITY PROPERTY FROM CONSTRUCTION OPERATIONS AS OUTLINED IN ARTICLE 107.31 OF THE STANDARD SPECIFICATIONS. THE J.U.L.I.E. NUMBER IS 1-800-892-0123. A MINIMUM OF 48 HOURS ADVANCE NOTICE IS REQUIRED.
5. THE LOCATION OF BURIED AND ABOVE GROUND UTILITIES SHOWN ARE APPROXIMATE AND ARE SHOWN FOR THE CONTRACTOR INFORMATIONAL USE ONLY. LOCATIONS ARE NOT TO BE REFERENCED FOR CONSTRUCTION PURPOSES. THE IMPLIED PRESENCE OR ABSENCE OF UTILITIES IS NOT TO BE CONSTRUED BY THE THE OWNER, ENGINEER, CONTRACTOR, OR SUBCONTRACTORS TO BE AN ACCURATE AND COMPLETE REPRESENTATION OF UTILITIES THAT MAY OR MAY NOT EXIST ON THE CONSTRUCTION SITE. BURIED AND ABOVE GROUND UTILITY LOCATIONS, IDENTIFICATION, AND MARKING ARE THE SOLE RESPONSIBILITY OF THE CONTRACTOR. REROUTING, DISCONNECTION, PROTECTION, ETC. OF ANY UTILITIES MUST BE COORDINATED BETWEEN THE CONTRACTOR, UTILITY COMPANY, AND OWNER. SITE SAFETY, INCLUDING THE AVOIDANCE OF HAZARDS ASSOCIATED WITH BURIED AND ABOVE GROUND UTILITIES, REMAINS THE SOLE RESPONSIBILITY OF THE CONTRACTOR.
6. IN ADDITION TO FIELD SURVEYS, PLAN DIMENSIONS AND DETAILS RELATIVE TO THE EXISTING FACILITIES HAVE BEEN TAKEN FROM EXISTING PLANS AND ARE SUBJECT TO CONSTRUCTION VARIATIONS. IT SHALL BE THE CONTRACTORS RESPONSIBILITY TO VERIFY SUCH DIMENSIONS AND DETAILS IN THE FIELD. SUCH VARIATIONS SHALL NOT BE A CAUSE FOR ADDITIONAL COMPENSATION DUE TO A CHANGE IN THE SCOPE OF WORK; HOWEVER, THE CONTRACTOR WILL BE PAID FOR THE QUANTITY ACTUALLY FURNISHED AT THE UNIT PRICE BID FOR THE WORK. THE THICKNESS OF BITUMINOUS MIXTURES SHOWN ON THE PLANS IS THE NOMINAL.
7. ANY REFERENCE TO A STANDARD IN THESE PLANS SHALL BE INTERPRETED TO MEAN THE EDITION AS INDICATED BY THE SUB-NUMBER IN THE INDEX OF SHEETS OR THE COPY OF THE STANDARD INCLUDED IN THESE PLANS.
8. ANY EXISTING ROAD SIGNS THAT INTERFERE WITH CONSTRUCTION WILL BE REMOVED OR RELOCATED AS DIRECTED BY THE ENGINEER. AFTER THE CONSTRUCTION IS COMPLETED, THE CONTRACTOR WILL REPLACE THE SIGNS AS DIRECTED BY THE ENGINEER. THIS WORK WILL BE DONE AT NO ADDITIONAL COST TO THE CITY.
9. ALL SAW CUTS, NECESSARY TO COMPLETE THE WORK DETAILED IN THESE PLANS, SHALL BE INCLUDED IN THE COST FOR THE VARIOUS PAY ITEMS INVOLVED.
10. SEEDING WILL NOT BE PERMITTED AT ANY TIME WHEN THE GROUND IS FROZEN, WET, OR IN AN UNTILLABLE CONDITION. LOCATIONS TO BE SEEDED SHALL BE DETERMINED BY THE ENGINEER.

**RATES OF APPLICATION TABLE**

AGGREGATE (SURFACE, BASE, SUBBASE, OR BACKFILL)	2.05 TON / CU YD
STONE DUMPED RIPRAP	1.50 TON / CU YD
<b>HOT-MIX ASPHALT:</b>	
BITUMINOUS MATERIALS (TACK COAT)	0.05 LB / SQ FT (on milled HMA)
	0.025 LB / SQ FT (on HMA lifts & brick)
BITUMINOUS MATERIALS (PRIME COAT)	0.25 LB / SQ FT (on aggregate)
SURFACE / BINDER / LEVELING BINDER (112 lbs)	0.056 TON / SQ YD IN
<b>SEEDING:</b>	
NITROGEN FERTILIZER NUTRIENT	90 LBS / ACRE
PHOSPHORUS FERTILIZER NUTRIENT	90 LBS / ACRE
POTASSIUM FERTILIZER NUTRIENT	90 LBS / ACRE
AGRICULTURAL GROUND LIMESTONE	2.0 TON / ACRE
TEMPORARY EROSION CONTROL SEEDING	100 LBS / ACRE PER APPLICATION

**COMMITMENTS**

1. THE CONTRACTOR SHALL DELIVER MATERIAL FROM THE SELF-PROPELLED MILLING MACHINE TO THE CITY OF QUINCY'S BARGE DOCK FACILITY AT 121 WEST HARRISON.

**HIGHWAY STANDARDS**

000001-06	STANDARD SYMBOLS, ABBREVIATIONS AND PATTERNS
424001-09	PERPENDICULAR CURB RAMPS FOR SIDEWALKS
424006-02	DIAGONAL CURB RAMPS FOR SIDEWALKS
442201-03	CLASS C AND D PATCHES
606001-06	CONCRETE CURB TYPE B AND COMBINATION CONCRETE CURB AND GUTTER
701001-02	OFF-ROAD OPERATIONS, 2L, 2W, MORE THAN 15' (4.5 M) AWAY
701006-05	OFF-ROAD OPERATIONS, 2L, 2W, 15' (4.5 M) TO 24" (600 MM) FROM PAVEMENT EDGE
701011-04	OFF-ROAD MOVING OPERATIONS, 2L, 2W, DAY ONLY
701501-06	URBAN LANE CLOSURE, 2L, 2W, UNDIVIDED
701801-06	SIDEWALK, CORNER OR CROSSWALK CLOSURE
701901-06	TRAFFIC CONTROL DEVICES
780001-05	TYPICAL PAVEMENT MARKINGS

FILE NAME = EN:\PROJECT FILES\M1122 - R.J. Peters - 2017 FAUCADDD SHEETS\02 General Notes\_M1122.dgn

<b>CITY OF QUINCY UTILITIES &amp; ENGINEERING</b>	USER NAME = ebanga	DESIGNED -	REVISED -	<b>CITY OF QUINCY, ILLINOIS</b>	<b>R.J. PETERS DRIVE - IL 57 TO SOUTH 8TH INDEX OF SHEETS, HIGHWAY STANDARDS, AND GENERAL NOTES</b>	F.A.U. RTE. 7813	SECTION 16-00322-00-R5	COUNTY ADAMS	TOTAL SHEETS 10	SHEET NO. 2
	PLOT SCALE = 48.00 / in.	DRAWN -	REVISED -			SCALE: NONE	SHEET NO. 1 OF 1 SHEETS	STA. - TO STA.	ILLINOIS FED. AID PROJECT	
	PLOT DATE = 2/9/2017	CHECKED -	REVISED -							
		DATE -	REVISED -							

CODE NO.	ITEM	UNIT	TOTAL QUANTITY	CONSTRUCTION CODE / LOCATION						
				80% FEDERAL 20% LOCAL ROADWAY 0005 URBAN						
21001000	GEOTECHNICAL FABRIC FOR GROUND STABILIZATION	SQ YD	387	387						
35100700	AGGREGATE BASE COURSE, TYPE A 8"	SQ YD	387	387						
35800200	AGGREGATE BASE REPAIR	TON	300	300						
40600275	BITUMINOUS MATERIALS (PRIME COAT)	POUND	870	870						
40600290	BITUMINOUS MATERIALS (TACK COAT)	POUND	2734	2734						
40600982	HOT-MIX ASPHALT SURFACE REMOVAL - BUTT JOINT	SQ YD	184	184						
40600990	TEMPORARY RAMP	SQ YD	111	111						
40602978	HOT-MIX ASPHALT BINDER COURSE, IL-9.5, N50	TON	43	43						
40603510	POLYMERIZED HOT-MIX ASPHALT SURFACE COURSE, MIX "C", N50	TON	526	526						
42400100	PORTLAND CEMENT CONCRETE SIDEWALK 4 INCH	SQ FT	708	708						
42400800	DETECTABLE WARNINGS	SQ FT	52	52						
44000100	PAVEMENT REMOVAL	SQ YD	387	387						
44000154	HOT-MIX ASPHALT SURFACE REMOVAL, 1 1/4"	SQ YD	5697	5697						
44000500	COMBINATION CURB AND GUTTER REMOVAL	FOOT	105	105						
44000600	SIDEWALK REMOVAL	SQ FT	589	589						
44200128	PAVEMENT PATCHING, TYPE I, 11 INCH	SQ YD	100	100						
44200132	PAVEMENT PATCHING, TYPE II, 11 INCH	SQ YD	130	130						
44200136	PAVEMENT PATCHING, TYPE III, 11 INCH	SQ YD	180	180						
60108200	PIPE UNDERDRAINS 6" (SPECIAL)	FOOT	105	105						
60108206	PIPE UNDERDRAINS, TYPE 2, 6"	FOOT	162	162						
60255500	MANHOLES TO BE ADJUSTED	EACH	1	1						
60603800	COMBINATION CONCRETE CURB AND GUTTER, TYPE B-6.12	FOOT	105	105						
67100100	MOBILIZATION	LSUM	1	1						
70102620	TRAFFIC CONTROL AND PROTECTION, STANDARD 701501	LSUM	1	1						
70102640	TRAFFIC CONTROL AND PROTECTION, STANDARD 701801	LSUM	1	1						
70103815	TRAFFIC CONTROL SURVEILLANCE	CAL DA	8	8						
70300100	SHORT TERM PAVEMENT MARKING	FOOT	392	392						
70300150	SHORT TERM PAVEMENT MARKING REMOVAL	SQ FT	98	98						
78000100	THERMOPLASTIC PAVEMENT MARKING - LETTERS AND SYMBOLS	SQ FT	62.4	62.4						
78000400	THERMOPLASTIC PAVEMENT MARKING - LINE 6"	FOOT	263	263						
78000600	THERMOPLASTIC PAVEMENT MARKING - LINE 12"	FOOT	17	17						
78000650	THERMOPLASTIC PAVEMENT MARKING - LINE 24"	FOOT	49	49						
78001120	PAINT PAVEMENT MARKING - LINE 5"	FOOT	730	730						
78001130	PAINT PAVEMENT MARKING - LINE 6"	FOOT	196	196						
20013798	CONSTRUCTION LAYOUT	LSUM	1	1						
X7010216	TRAFFIC CONTROL AND PROTECTION, (SPECIAL)	LSUM	1	1						

\* - SEE SPECIAL PROVISIONS      Δ SPECIALTY ITEMS

FILE NAME: C:\PROJECT FILES\132 - R1 - 2017\16-00322-SUMMARY SHEETS\132.dwg



**CITY OF QUINCY**  
**UTILITIES &**  
**ENGINEERING**

USER NAME: sbanga	DESIGNED: SEB	REVISED: -
	DRAWN: SEB	REVISED: -
PLOT SCALE: 48.00 / in.	CHECKED: -	REVISED: -
PLOT DATE: 2/9/2017	DATE: -	REVISED: -

**CITY OF QUINCY, ILLINOIS**

**R.J. PETERS DRIVE - IL 57 TO SOUTH 8TH**  
**SUMMARY OF QUANTITIES**

SCALE: NONE    SHEET NO. 1 OF 1 SHEETS    STA. - TO STA.

F.A.U. RTE. 7813	SECTION 16-00322-00-R5	COUNTY ADAMS	TOTAL SHEETS 10	SHEET NO. 3
			CONTRACT NO. 93702	
ILLINOIS FED. AID PROJECT				

**EXISTING LEGEND**

- (E1) - EXISTING HOT-MIX ASPHALT 3"
- (E2) - EXISTING ASPHALT BASE COURSE 8" (STA 0+26 TO STA 15+00)  
VARIES 8" TO 14" (STA 15+00 TO STA 15+50)  
14" (STA 115+50 TO STA 20+34.3)
- (E3) - EXISTING CONCRETE CURB & GUTTER 8-6.12
- (E4) - EXISTING CONCRETE SIDEWALK

**PROPOSED LEGEND**

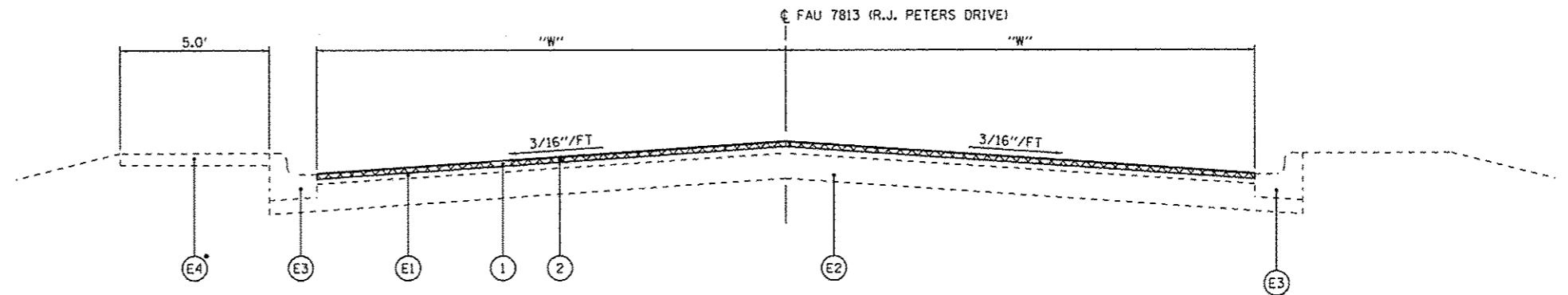
- (1) - POLYMERIZED HOT-MIX ASPHALT SURFACE COURSE, MIX "C", N50, 1 1/2"
- (2) - HOT-MIX ASPHALT SURFACE REMOVAL, 1 1/4"
- (3) - HOT-MIX ASPHALT BINDER COURSE, IL-9.5, N50, 2"
- (4) - AGGREGATE BASE COURSE, TYPE A, 8"
- (5) - GEOTECHNICAL FABRIC FOR GROUND STABILIZATION
- (6) - PAVEMENT REMOVAL

**PAVEMENT WIDTH TABLE**

	"W" LT	"W" RT
STA 0+26.0 TO STA 2+50.0	22.0'	22.0'
STA 2+50.0 TO STA 3+53.0	22.0'	TRANSITION
STA 3+53.0 TO STA 4+70.6	TRANSITION	12.0'
STA 4+70.6 TO STA 20+34.2	12.0'	12.0'

**MIXTURE REQUIREMENTS**

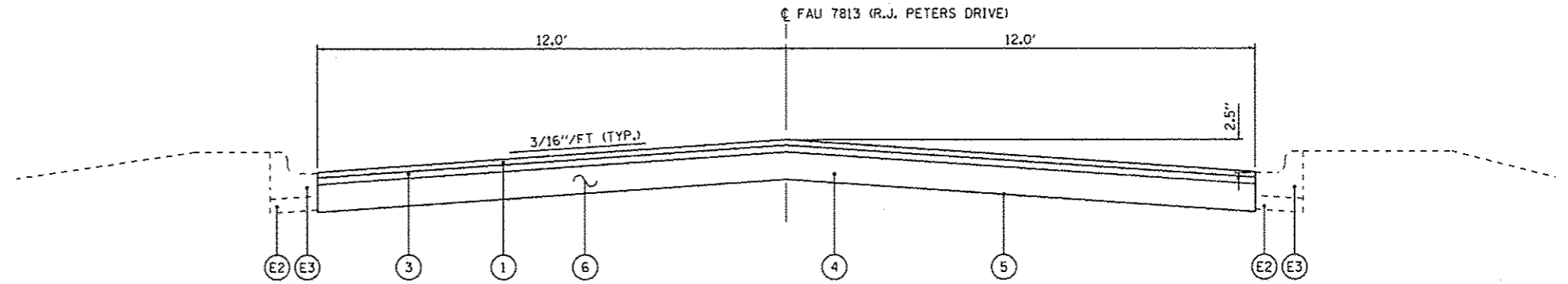
LOCATION(S)	R.J. PETERS DRIVE	RJ PETERS DRIVE	RJ PETERS DRIVE
MIXTURE USE(S)	SURFACE INCIDENTAL	BINDER	PATCHING
AC/PG	SBS-PG64-28	PG 64-22	PG 64-22
DESIGN AIR VOIDS	4% N50 DESIGN	4% N50 DESIGN	4% N50 DESIGN
MIXTURE COMPOSITION (MIXTURE GRADATION)	IL 9.5	IL 9.5	IL 19.0
FRICTION AGGREGATE	MIX "C"	-	-



**TYPICAL SECTION R.J. PETERS DRIVE**

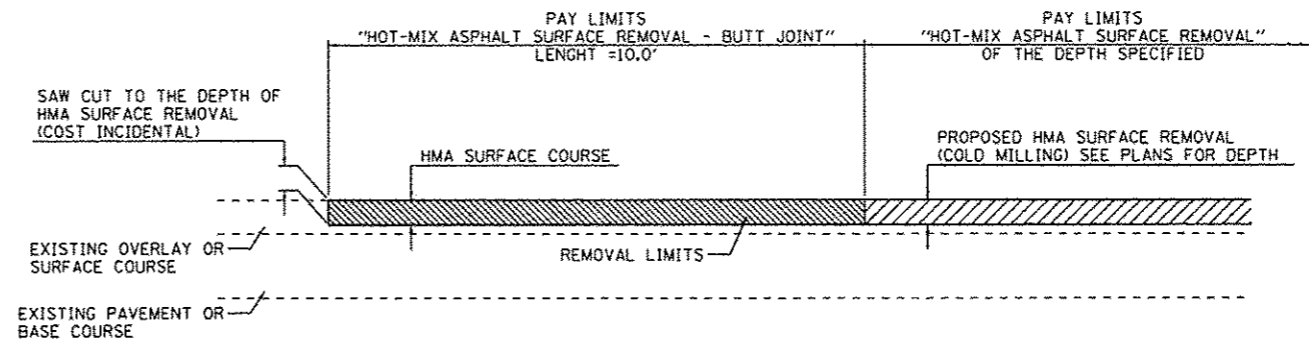
STA 0+25.7 TO STA 13+92.0  
STA 15+37.0 TO STA 20+32.90

• - SIDEWALK EXITS ROW STA 11+73



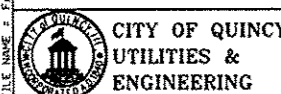
**TYPICAL SECTION R.J. PETERS DRIVE**

STA 13+92.0 TO STA 15+37.0



**BUTT JOINT & SURFACE REMOVAL W/RESURFACING DETAIL**

FILE NAME: F:\PROJECT FILES\17122 - R.J. Peters - 2017 FAUCAD00 SHEETS\004-Typical\17122.dwg



USER NAME	DESIGNED	REVISIONS
• ebonga	-	-
PLOT SCALE	CHECKED	REVISIONS
• 20.00 / in.	-	-
PLOT DATE	DATE	REVISIONS
• 2/9/2017	-	-

CITY OF QUINCY, ILLINOIS

R.J. PETERS DRIVE - IL 57 TO SOUTH 8TH  
TYPICAL SECTIONS

SCALE: none SHEET NO. 1 OF 1 SHEETS STA. TO STA.

F.A.U. RTE.	SECTION	COUNTY	TOTAL SHEETS	SHEET NO.
7813	16-00322-00-RS	ADAMS	10	4
CONTRACT NO. 93702				
ILLINOIS FED. AID PROJECT				

**PAVEMENT SCHEDULE**

LOCATION	21001000	35100700	40600275	40600290	40600990	40600990	40602978	40603510	44000100	44000154
	GEOTECHNICAL FABRIC FOR GROUND STABILIZATION SQ YD	AGGREGATE BASE COURSE, TYPE A 8" SQ YD	BITUMINOUS MATERIALS (PRIME COAT) POUND	BITUMINOUS MATERIALS (TACK COAT) POUND	HMA SURFACE REMOVAL - BUTT JOINT SQ YD	TEMPORARY RAMP SQ YD	HMA BINDER COURSE, IL-9.5, N50 TON	POLYMERIZED HMA SURF COURSE, MIX "C", N50 TON	PAVEMENT REMOVAL SQ YD	HMA SURFACE REMOVAL, 1 1/4" SQ YD
0+25.7 TO 5+00.0				927	91	54		173		1969
5+00.0 TO 10+00.0				600				112		1333
10+00.0 TO 15+50.0	387	387	870	573			43	123	387	1080
15+50.0 TO 20+32.9				634	93	57		118		1315
<b>TOTAL:</b>	<b>387</b>	<b>387</b>	<b>870</b>	<b>2734</b>	<b>184</b>	<b>111</b>	<b>43</b>	<b>526</b>	<b>387</b>	<b>5697</b>

**SIDEWALK SCHEDULE**

LOCATION	42400100	42400800	44000600
	PORTLAND CEMENT CONCRETE SIDEWALK 4" SQ FT	DETECTABLE WARNINGS SQ FT	SIDEWALK REMOVAL SQ FT
RJ PETERS & S. 8TH - NE QUADRANT	306	16	291
RJ PETERS & S. 8TH - SE QUADRANT	241	10	191
RJ PETERS & S. 8TH - SW QUADRANT	88	10	42
RJ PETERS & S. 8TH - NW QUADRANT	73	16	65
<b>TOTAL:</b>	<b>708</b>	<b>52</b>	<b>589</b>

**UTILITY ADJUSTMENT SCHEDULE**

LOCATION	60255500
	MANHOLES TO BE ADJUSTED EACH
R. J. PETERS DR 2+63.0 3.2' LT	1
<b>TOTAL:</b>	<b>1</b>

**CURB AND GUTTER SCHEDULE**

LOCATION	44000500	60603800
	COMBINATION CURB AND GUTTER REMOVAL FOOT	COMBINATION CONC CURB AND GUTTER, TYPE B-6.12 SQ FT
RJ PETERS & S. 8TH - NE QUADRANT	24	24
RJ PETERS & S. 8TH - SE QUADRANT	25	25
RJ PETERS & S. 8TH - SW QUADRANT	23	23
RJ PETERS & S. 8TH - NW QUADRANT	33	33
<b>TOTAL:</b>	<b>105</b>	<b>105</b>

**PAVEMENT REPAIR SCHEDULE**

ITEM	QUANTITY
AGGREGATE BASE REPAIR	300 TON
PAVEMENT PATCHING, TYPE II, 11 INCH	100 SQ YD
PAVEMENT PATCHING, TYPE III, 11 INCH	130 SQ YD
PAVEMENT PATCHING, TYPE IV, 11 INCH	180 SQ YD

ESTIMATED QUANTITIES - ENGINEER TO DETERMINE LOCATION OF PAVEMENT REPAIR IN THE FIELD.

**PAVEMENT MARKING SCHEDULE**

LOCATION	70300150	78000100	78000100	78000400	78000600	78000650	78001120		78001130
	SHORT TERM PAVEMENT MARKING FT	SHORT TERM PAVEMENT MARKING REMOVAL SQ FT	THERMOPLASTIC LETTERS & SYMBOLS WHITE SQ FT	THERMOPLASTIC LINE 6" WHITE FOOT	THERMOPLASTIC LINE 12" WHITE FOOT	THERMOPLASTIC LINE 24" WHITE FOOT	PAINT LINE 5" DBL YELLOW   YELLOW SKIP FOOT   FOOT		PAINT LINE 6" WHITE FOOT
CROSSWALK @ IL 57			62.4	29	17	24			
0+47 TO 1+82 LT							270		
0+47 TO 1+82 C	24	6							
0+47 TO 1+82 LT									
LT PARKING LANE									42
RT PARKING LANE									34
1+82 TO 20+09 C	368	92						460	
CROSSWALK @ SOUTH 8TH (WEST)				111		25			
CROSSWALK @ SOUTH 8TH (EAST)									120
<b>TOTAL:</b>	<b>392</b>	<b>98</b>	<b>62.4</b>	<b>263</b>	<b>17</b>	<b>49</b>	<b>730</b>		<b>196</b>

FILE NAME: E:\PROJECT FILES\MF1322 - RJ PETERS - 2017 FUNDING SHEETS\025\_Schedule\_MF1322.dwg



**CITY OF QUINCY  
UTILITIES &  
ENGINEERING**

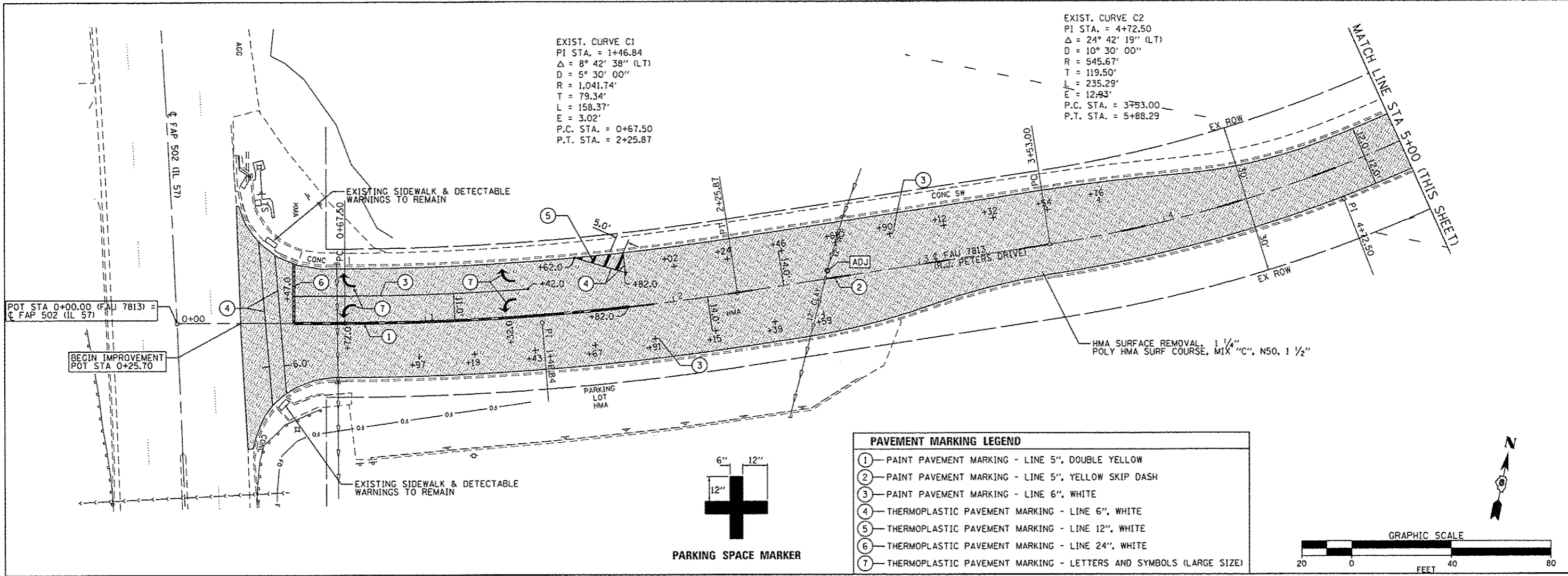
USER NAME: vbanga	DESIGNED: -	REVISED: -
PLOT SCALE: 48.00 / in.	DRAWN: -	REVISED: -
PLOT DATE: 2/9/2017	CHECKED: -	REVISED: -
	DATE: -	REVISED: -

**CITY OF QUINCY, ILLINOIS**

**R.J. PETERS DRIVE - IL 57 TO SOUTH 8TH  
SCHEDULE OF QUANTITIES**

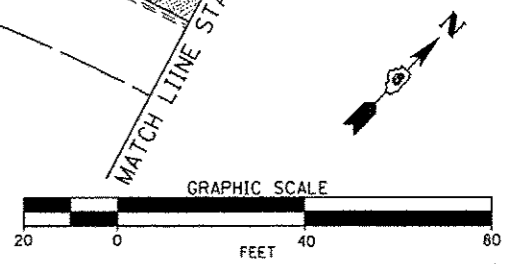
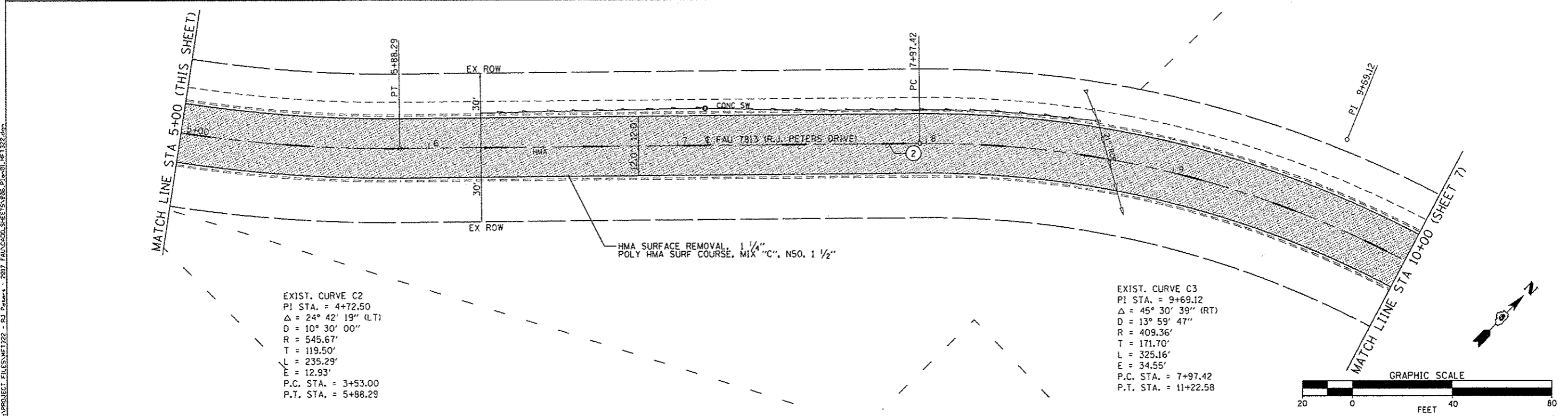
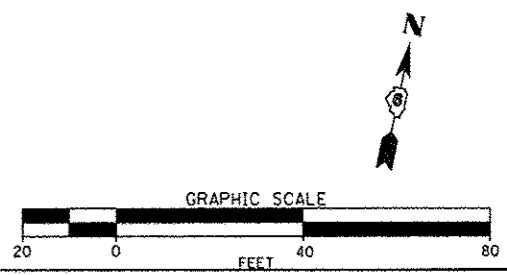
SCALE: NONE SHEET NO. 1 OF 1 SHEETS STA. - TO STA.

F.A.U. RTE. 7813	SECTION 16-00322-00-RS	COUNTY ADAMS	TOTAL SHEETS 10	SHEET NO. 5
			CONTRACT NO. 93702	
ILLINOIS FED. AID PROJECT				



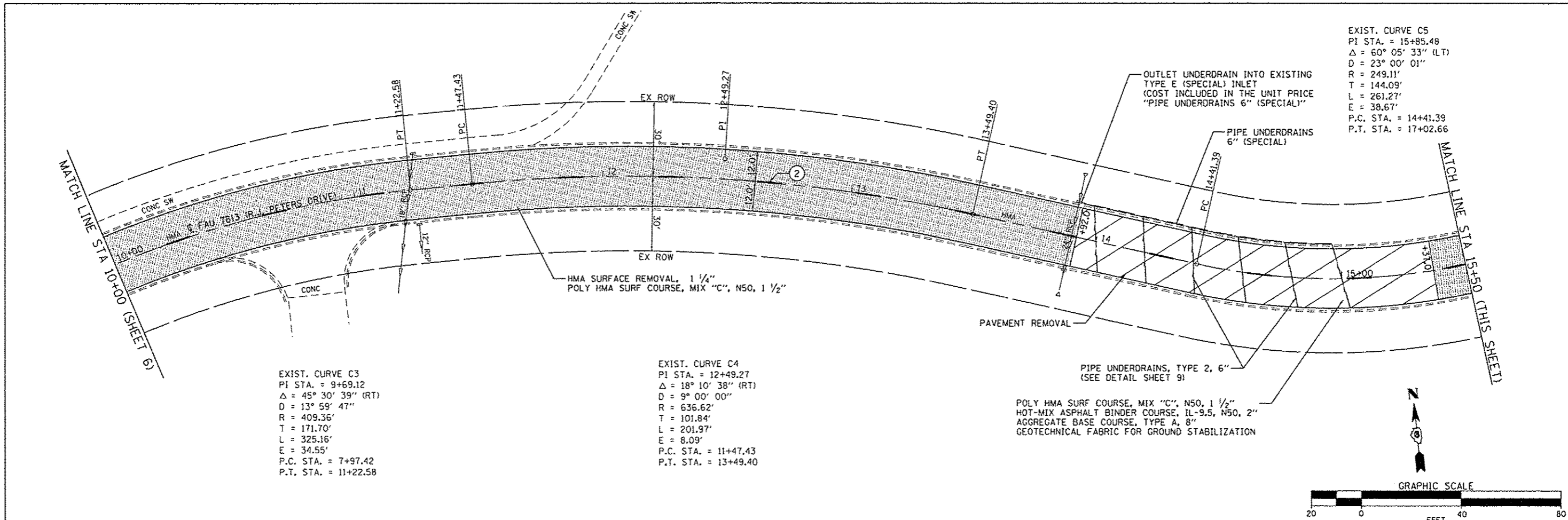
**PAVEMENT MARKING LEGEND**

- ① - PAINT PAVEMENT MARKING - LINE 5", DOUBLE YELLOW
- ② - PAINT PAVEMENT MARKING - LINE 5", YELLOW SKIP DASH
- ③ - PAINT PAVEMENT MARKING - LINE 6", WHITE
- ④ - THERMOPLASTIC PAVEMENT MARKING - LINE 6", WHITE
- ⑤ - THERMOPLASTIC PAVEMENT MARKING - LINE 12", WHITE
- ⑥ - THERMOPLASTIC PAVEMENT MARKING - LINE 24", WHITE
- ⑦ - THERMOPLASTIC PAVEMENT MARKING - LETTERS AND SYMBOLS (LARGE SIZE)



<b>CITY OF QUINCY</b> UTILITIES & ENGINEERING	USER NAME = sbange	DESIGNED -	REVISED -	<b>CITY OF QUINCY, ILLINOIS</b>	<b>R.J. PETERS DRIVE - IL 57 TO SOUTH 8TH</b> <b>PLAN</b>	F.A.U. RTE. = 7813	SECTION = 16-00322-00-R5	COUNTY = ADAMS	TOTAL SHEETS = 10	SHEET NO. = 6
	PLOT SCALE = 40.0000' / 1" =	CHECKED -	REVISED -			SCALE = 1" = 20'	SHEET NO. 1 OF 2 SHEETS	STA. 0+00 TO STA. 10+00	CONTRACT NO. 93702	
	PLOT DATE = 2/9/2017	DATE -	REVISED -			ILLINOIS FED. AID PROJECT				



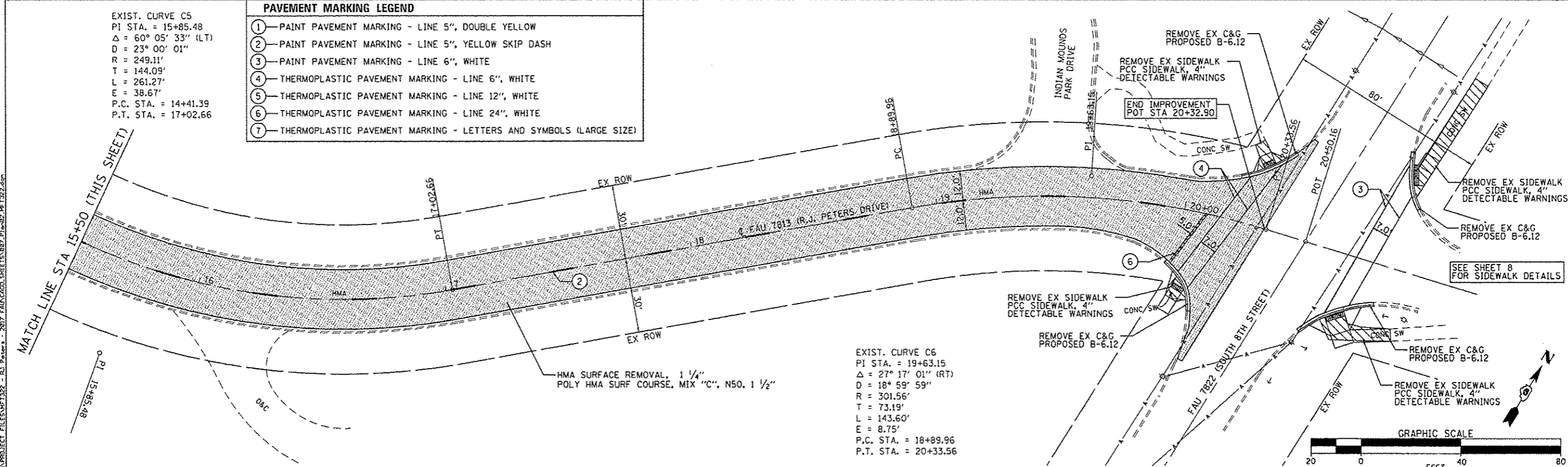
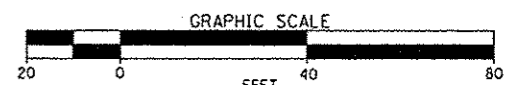


EXIST. CURVE C5  
 PI STA. = 15+85.48  
 $\Delta = 60^\circ 05' 33''$  (LT)  
 D = 23' 00' 01"  
 R = 249.11'  
 T = 144.09'  
 L = 261.27'  
 E = 38.67'  
 P.C. STA. = 14+41.39  
 P.T. STA. = 17+02.66

EXIST. CURVE C3  
 PI STA. = 9+69.12  
 $\Delta = 45^\circ 30' 39''$  (RT)  
 D = 13' 59' 47"  
 R = 409.36'  
 T = 171.70'  
 L = 325.16'  
 E = 34.55'  
 P.C. STA. = 7+97.42  
 P.T. STA. = 11+22.58

EXIST. CURVE C4  
 PI STA. = 12+49.27  
 $\Delta = 18^\circ 10' 38''$  (RT)  
 D = 9' 00' 00"  
 R = 636.62'  
 T = 101.84'  
 L = 201.97'  
 E = 8.09'  
 P.C. STA. = 11+47.43  
 P.T. STA. = 13+49.40

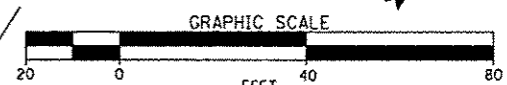
POLY HMA SURF COURSE, MIX "C", N50, 1 1/2"  
 HOT-MIX ASPHALT BINDER COURSE, IL-9.5, N50, 2"  
 AGGREGATE BASE COURSE, TYPE A, 8"  
 GEOTECHNICAL FABRIC FOR GROUND STABILIZATION



EXIST. CURVE C5  
 PI STA. = 15+85.48  
 $\Delta = 60^\circ 05' 33''$  (LT)  
 D = 23' 00' 01"  
 R = 249.11'  
 T = 144.09'  
 L = 261.27'  
 E = 38.67'  
 P.C. STA. = 14+41.39  
 P.T. STA. = 17+02.66

PAVEMENT MARKING LEGEND	
①	PAINT PAVEMENT MARKING - LINE 5", DOUBLE YELLOW
②	PAINT PAVEMENT MARKING - LINE 5", YELLOW SKIP DASH
③	PAINT PAVEMENT MARKING - LINE 6", WHITE
④	THERMOPLASTIC PAVEMENT MARKING - LINE 6", WHITE
⑤	THERMOPLASTIC PAVEMENT MARKING - LINE 12", WHITE
⑥	THERMOPLASTIC PAVEMENT MARKING - LINE 24", WHITE
⑦	THERMOPLASTIC PAVEMENT MARKING - LETTERS AND SYMBOLS (LARGE SIZE)

EXIST. CURVE C6  
 PI STA. = 19+63.15  
 $\Delta = 27^\circ 17' 01''$  (RT)  
 D = 18' 59' 59"  
 R = 301.56'  
 T = 73.19'  
 L = 143.60'  
 E = 8.75'  
 P.C. STA. = 18+89.96  
 P.T. STA. = 20+33.56

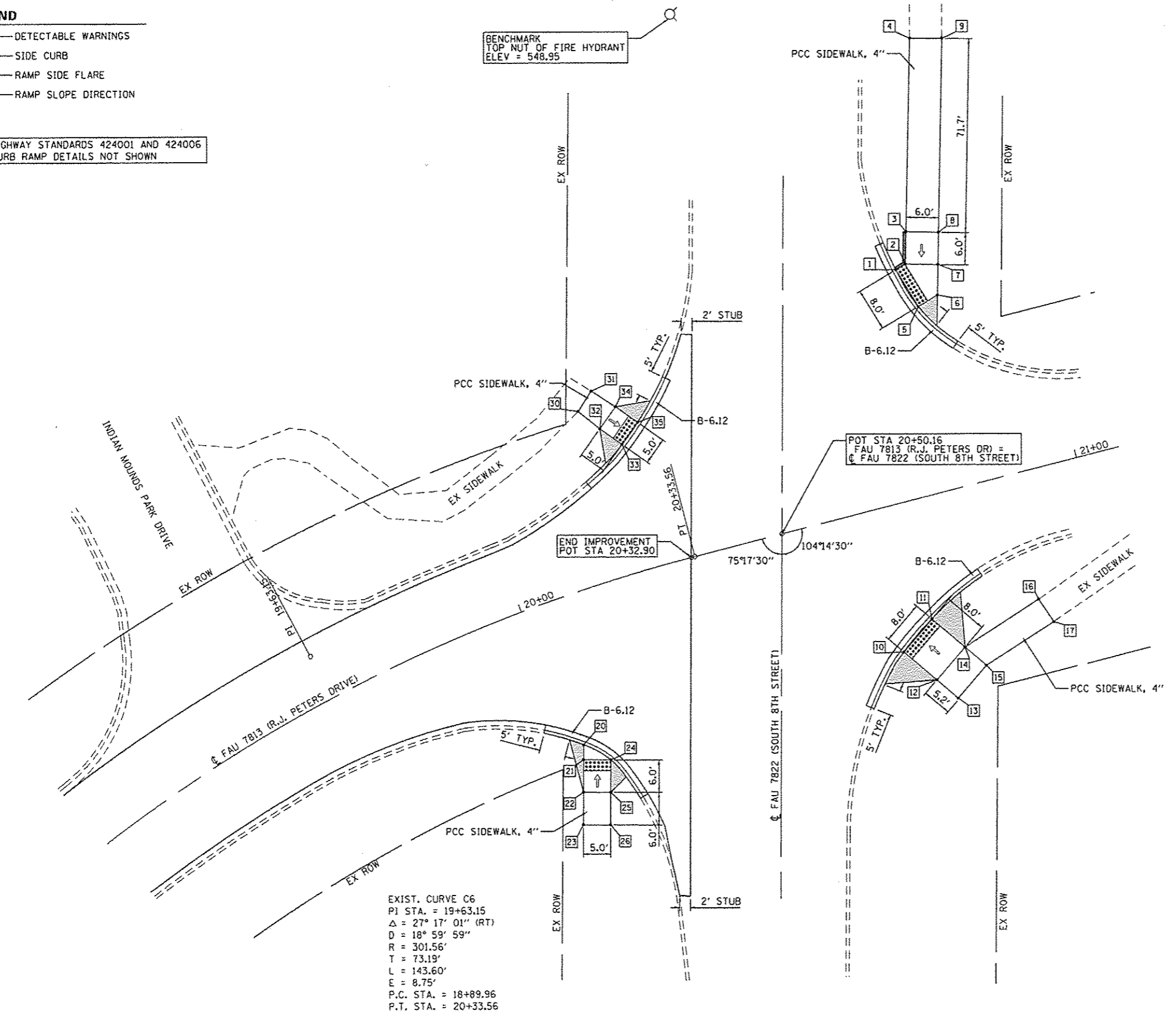


**LEGEND**

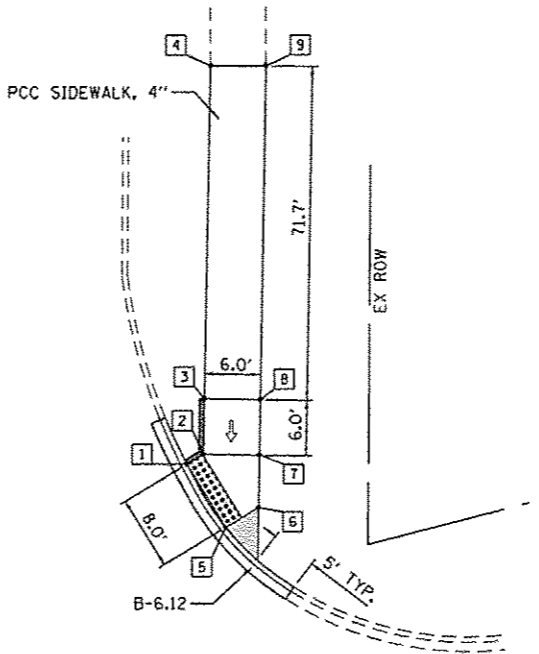
- DETECTABLE WARNINGS
- SIDE CURB
- RAMP SIDE FLARE
- RAMP SLOPE DIRECTION

SEE HIGHWAY STANDARDS 424001 AND 424006 FOR CURB RAMP DETAILS NOT SHOWN

BENCHMARK  
TOP NUT OF FIRE HYDRANT  
ELEV = 548.95



EXIST. CURVE C6  
 P1 STA. = 19+63.15  
 $\Delta = 27^\circ 17' 01''$  (RT)  
 $D = 18^\circ 59' 59''$   
 $R = 301.56'$   
 $T = 73.19'$   
 $L = 143.60'$   
 $E = 8.75'$   
 P.C. STA. = 18+89.96  
 P.T. STA. = 20+33.56



POT STA 20+50.16  
 FAU 7813 (R.J. PETERS DR) =  
 & FAU 7822 (SOUTH 8TH STREET)

**SIDEWALK ELEVATIONS**

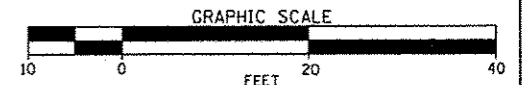
POINT#	R.J. PETERS DRIVE		ELEVATION
	STATION	OFFSET	
1	20+82.65	42.01' LT	544.60
2	20+84.64	42.61' LT	544.63
3	20+86.24	48.39' LT	544.97
4	20+95.83	82.80' LT	546.42*
5	20+84.97	34.35' LT	544.45
6	20+88.91	35.54' LT	544.51
7	20+90.42	41.01' LT	544.59
8	20+92.02	46.79' LT	545.06
9	21+01.59	81.32' LT	546.47*

POINT#	R.J. PETERS DRIVE		ELEVATION
	STATION	OFFSET	
10	20+66.38	26.74' RT	542.51
11	20+72.93	22.14' RT	542.61
12	20+70.99	33.28' RT	543.17
13	20+73.99	37.55' RT	543.25
14	20+77.53	28.68' RT	543.27
15	20+80.53	32.95' RT	543.35
16	20+92.90	23.52' RT	544.30*
17	20+94.55	28.24' RT	544.41*

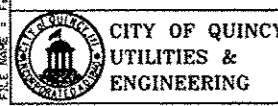
POINT#	R.J. PETERS DRIVE		ELEVATION
	STATION	OFFSET	
20	20+02.10	27.08' RT	540.93
21	20+00.99	29.71' RT	540.94
22	19+98.57	35.30' RT	541.33
23	19+96.04	40.88' RT	541.42
24	20+06.22	31.43' RT	540.85
25	20+03.88	37.08' RT	541.25
26	20+01.45	42.70' RT	541.34

POINT#	R.J. PETERS DRIVE		ELEVATION
	STATION	OFFSET	
30	20+20.79	31.57' LT	543.25*
31	20+23.81	34.50' LT	543.45*
32	20+23.42	27.35' LT	543.24
33	20+26.30	23.45' LT	542.84
34	20+26.98	30.48' LT	543.31
35	20+29.87	26.61' LT	542.82

\* - MATCH EXISTING



FILE NAME = FAUPROJECT FILES\MP1222 - R.J. Peters - 2017 FAU\ADD\_SHEETS\088\_0201\_MP1222.dwg



USER NAME = schange	DESIGNED - SEB	REVISED -
PLLOT SCALE = 20.0000' / in.	DRAWN - SEB	REVISED -
PLLOT DATE = 2/9/2017	CHECKED -	REVISED -
	DATE -	REVISED -

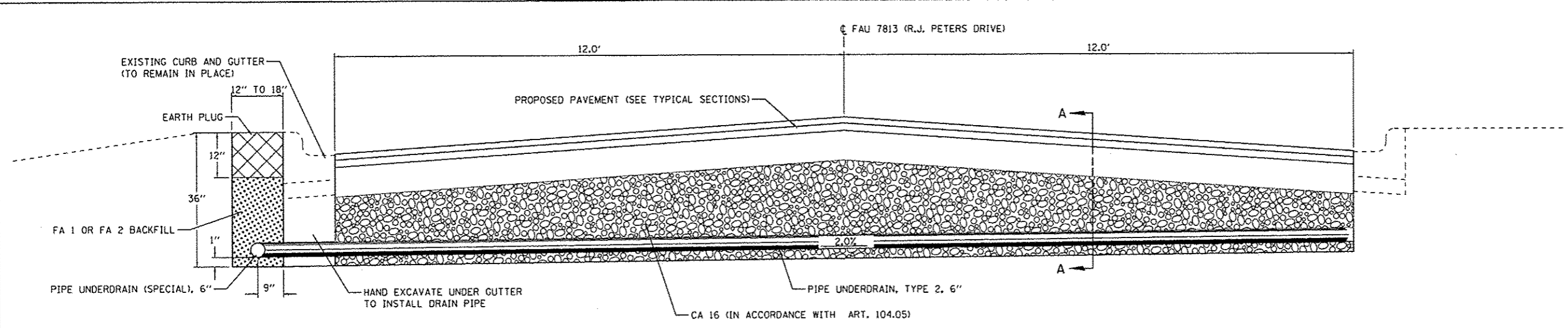
CITY OF QUINCY, ILLINOIS

R.J. PETERS DRIVE - IL 57 TO SOUTH 8TH  
 SIDEWALK DETAILS

SCALE: 1"=10' SHEET NO. 1 OF 1 SHEETS STA. TO STA.

F.A.U. RTE. 7813	SECTION 16-00322-00-R5	COUNTY ADAMS	TOTAL SHEETS 10	SHEET NO. 8
			CONTRACT NO. 93702	
ILLINOIS FED. AID PROJECT				

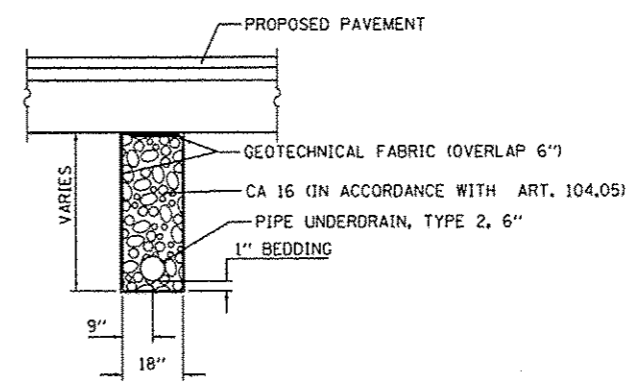




SECTION VIEW

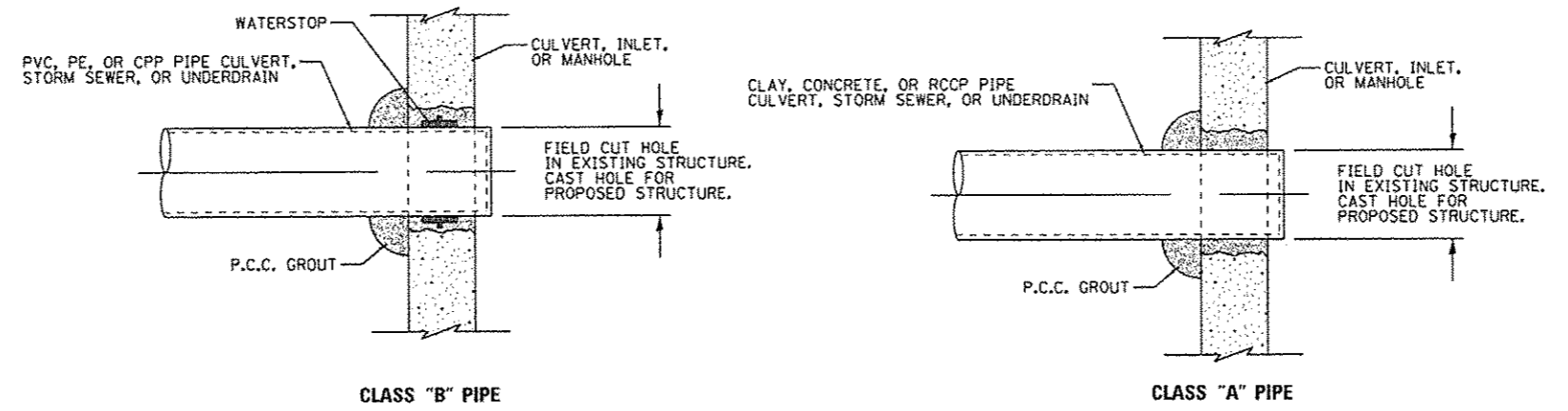
**PIPE UNDERDRAIN SCHEDULE**

	PIPE UNDERDRAINS, TYPE 2, 6"	PIPE UNDERDRAINS, (SPECIAL)
STA 13+91 TO STA 14+96 LT		105'
STA 14+00 (SKEW 15° RT AH)	27'	
STA 14+20 (SKEW 15° RT AH)	27'	
STA 14+40 (SKEW 15° RT AH)	27'	
STA 14+60 (SKEW 15° RT AH)	27'	
STA 14+80 (SKEW 15° RT AH)	27'	
STA 15+00 (SKEW 15° RT AH)	27'	
<b>TOTAL:</b>	<b>162</b>	<b>105</b>



SECTION A-A

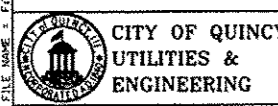
TRANSVERSE INSTALLATION - PIPE UNDERDRAINS  
NOT TO SCALE



PLACING PIPE IN CONCRETE STRUCTURE  
NOT TO SCALE

NOTE: THE COST OF PLACING PIPE IN THE CONCRETE STRUCTURE SHALL BE INCLUDED IN THE COST OF THE PIPE, UNDERDRAIN, OR STRUCTURE.

FILE NAME: E:\PROJECT FILES\MT1322 - R.J. Peters - 2017 FAU 7813 (R.J. PETERS DRIVE) SHEETS\RSB\Details\MT1322.dwg



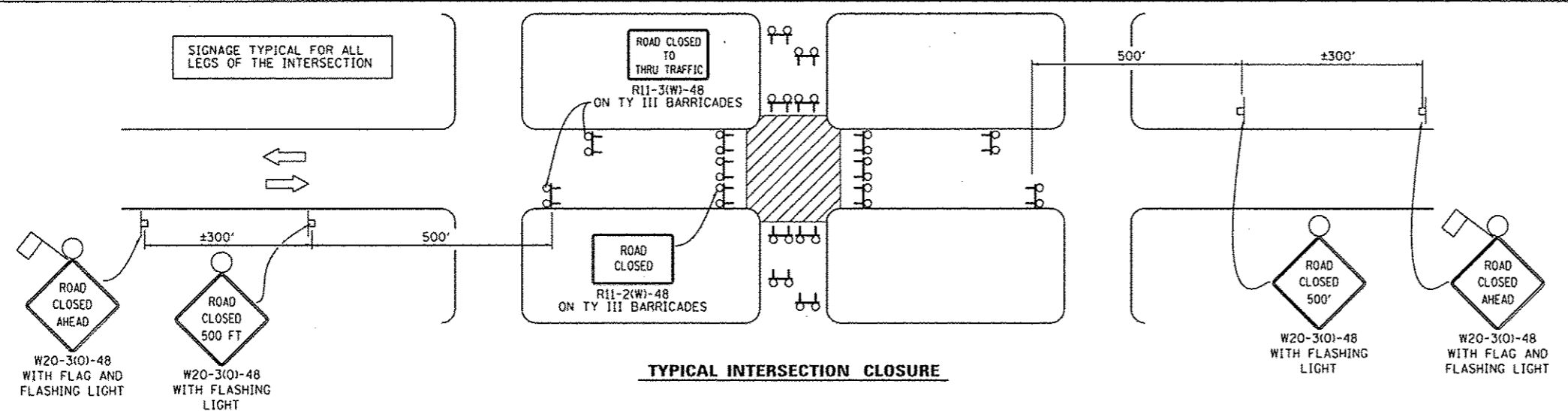
USER NAME: sbongo	DESIGNED: -	REVISED: -
PLLOT SCALE: 20.00 / in.	DRAWN: -	REVISED: -
PLLOT DATE: 2/9/2017	CHECKED: -	REVISED: -
	DATE: -	REVISED: -

CITY OF QUINCY, ILLINOIS

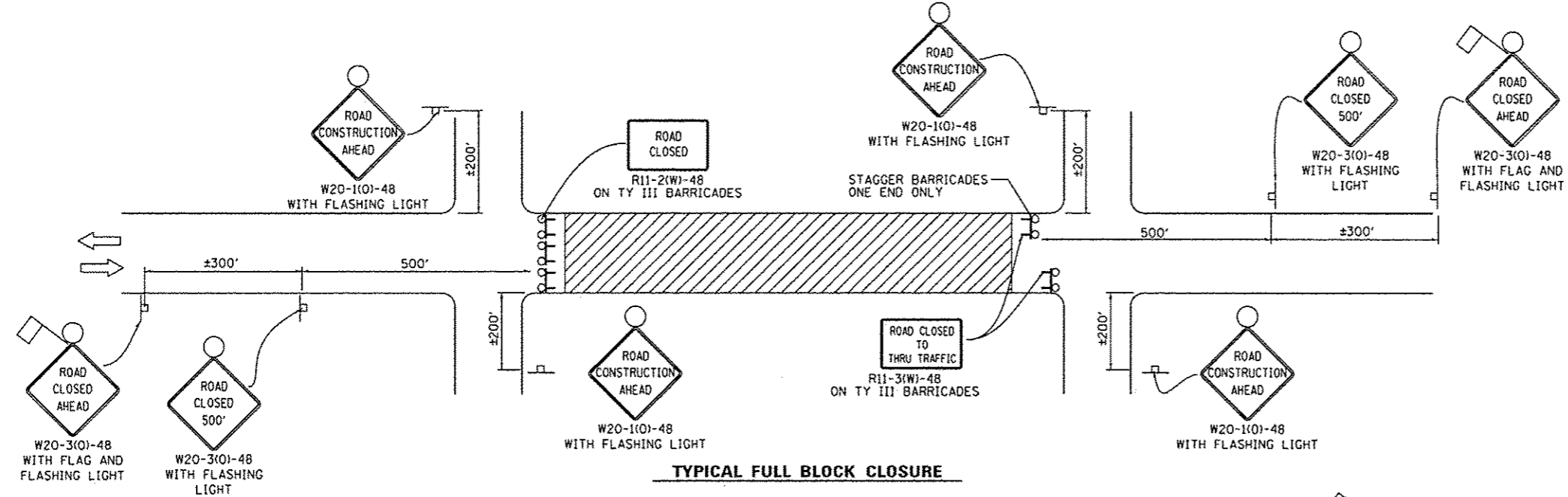
R.J. PETERS DRIVE - IL 57 TO SOUTH 8TH  
MISCELLANEOUS DETAILS

SCALE: none	SHEET NO. 1 OF 1 SHEETS	STA. TO STA.
-------------	-------------------------	--------------

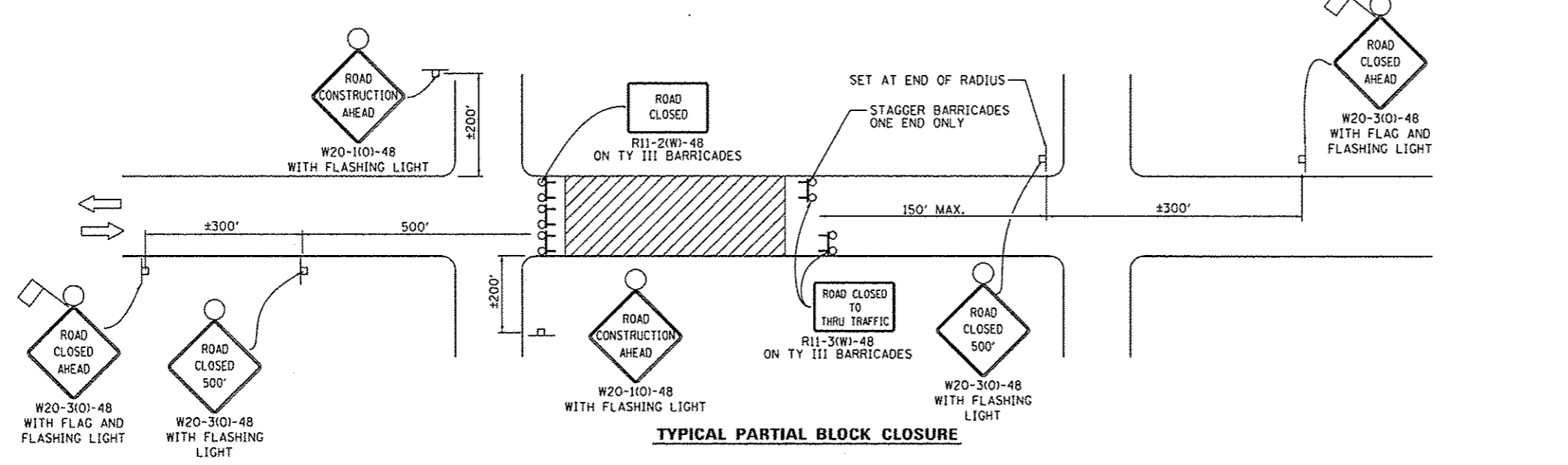
F.A.U. RTE. 7813	SECTION 16-00322-00-RS	COUNTY ADAMS	TOTAL SHEETS 10	SHEET NO. 9
			CONTRACT NO. 93702	
ILLINOIS FED. AID PROJECT				



**TYPICAL INTERSECTION CLOSURE**



**TYPICAL FULL BLOCK CLOSURE**



**TYPICAL PARTIAL BLOCK CLOSURE**

- LEGEND**
- WORK AREA
  - TYPE III BARRICADE WITH FLASHING LIGHTS
  - SIGN ON PORTABLE OR POST MOUNTED SUPPORT

- GENERAL NOTES**
1. CLOSURES CAN BE COMBINED AS NEEDED TO MEET THE LIMITS OF THE WORK ZONE.
  2. THE EXACT NUMBER OF TYPE III BARRICADES REQUIRED TO BE DETERMINED IN THE FILED BY THE ENGINEER.
  3. SIGNS SHALL BE POST MOUNTED IF THE CLOSURE IS GREATER THAN FOUR (4) CALENDAR DAYS.
  4. DIMENSIONS MAY BE VARIED DUE TO SIGH CONDITIONS, TOPOGRAPHY, AND URBAN LANDSCAPE.
  5. ORANGE FLAG - MINIMUM 18" BY 18"
  6. FOR CLOSURES ON ONE-WAY STREETS, PLACE WARNING SIGNS ON APPROACH SIDE ONLY.
  7. ENGINEER TO DETERMINE WHICH APPROACH TO STAGGER THE TYPE III BARRICADES.
  8. TRAFFIC CONTROL AND PROTECTION IN THIS DETAIL TO BE MEASURED ON AN EACH BASIS. WORK ZONES MUST BE SPACED GREATER THAN 800' APART FOR THE TRAFFIC CONTROL AND PROTECTION TO BE MEASURED FOR SEPARATELY.

FILE NAME: F:\PROJECT FILES\1322 - R.J. Peters - 2017 F.A.U. CHD SHEETS\SPR\Drawings\M21322.dwg

	USER NAME: ebango PLOT SCALE: 20.00 / in. PLOT DATE: 2/9/2017	DESIGNED: - DRAWN: - CHECKED: - DATE: -	REVISED: - REVISED: - REVISED: - REVISED: -	<b>CITY OF QUINCY, ILLINOIS</b>	<b>R.J. PETERS DRIVE - IL 57 TO SOUTH 8TH</b> <b>TRAFFIC CONTROL AND PROTECTION SPECIAL</b>	F.A.U. RTE.: 7813	SECTION: 16-00322-00-RS	COUNTY: ADAMS	TOTAL SHEETS: 10	SHEET NO.: 10
	SCALE: NONE    SHEET NO. 1 OF 1 SHEETS    STA. TO STA.						CONTRACT NO. 93702 ILLINOIS FED. AID PROJECT			