

ROAD CLASSIFICATION: MAJOR COLLECTOR
 DESIGN SPEED: 50 M.P.H.

STATE OF ILLINOIS 06-16-2017 LETTING ITEM 058

ROUTE	SECTION	COUNTY	SHEET NO.
FAS 1880	14-00184-00-RS	FRANKLIN	1 OF 8
			CONTRACT 99580

ADT:
 (2016) = 600
 (2036) = 810
 PC = 713
 SU = 57
 MU = 40
 DHV₂₀ = 81

DEPARTMENT OF TRANSPORTATION

DIVISION OF HIGHWAYS

PLANS FOR PROPOSED ROADWAY IMPROVEMENTS

FAS 1880 CROCKER ROAD
 Franklin County, Illinois
 Section 14-00184-00-RS
 Project RS-1880(110)
 Job C-99-517-15

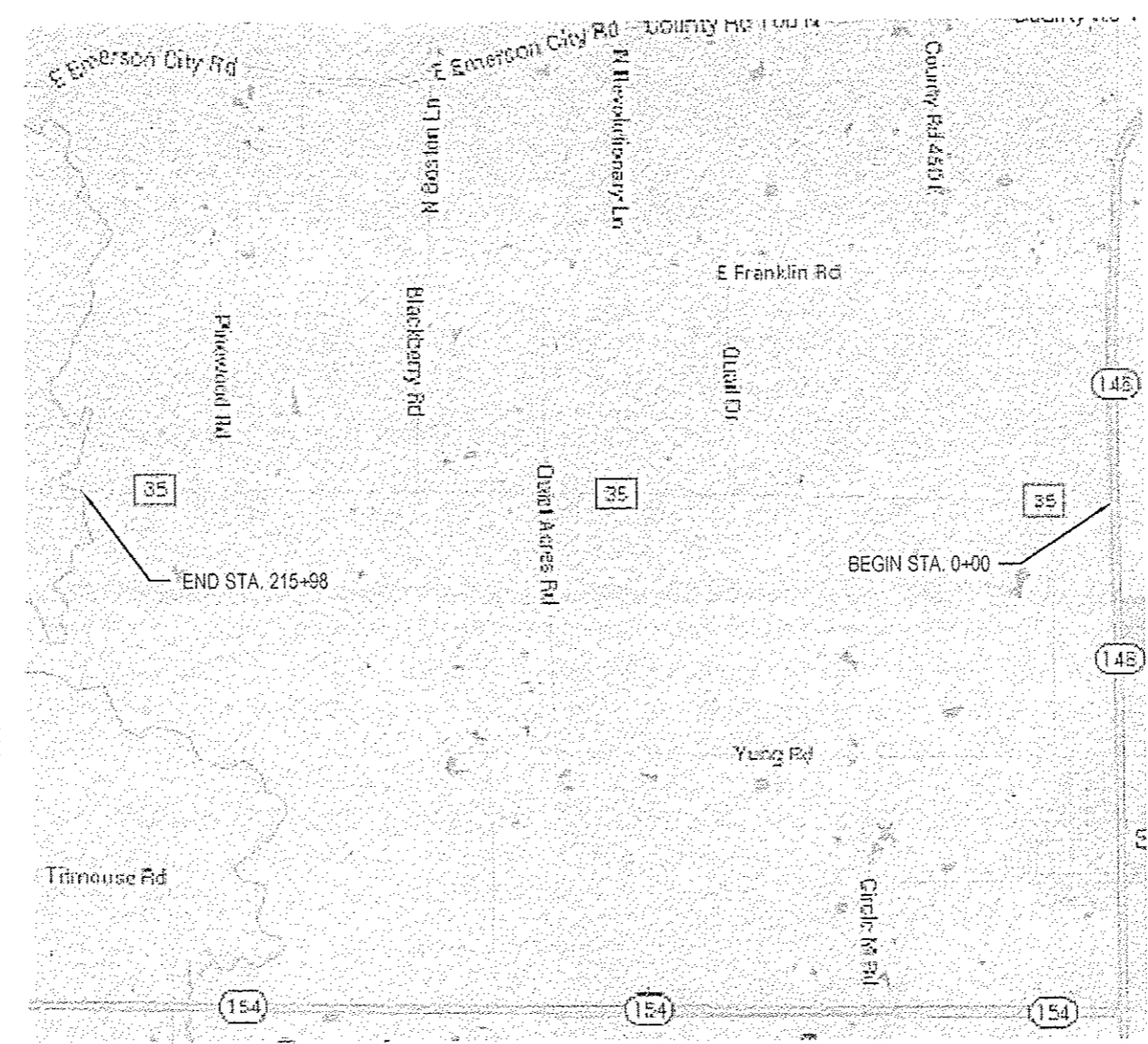
SHEET NO.	TITLE
1	COVER SHEET AND SUMMARY OF QUANTITIES
2	MISCELLANEOUS DETAILS AND TYPICAL SECTIONS
3	MISCELLANEOUS DETAILS
4-8	PLAN

STANDARDS

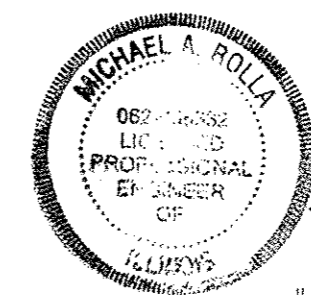
- 701006-05
- 701201-04
- 701301-04
- 701306-03
- 701311-03
- 701901-06
- 780001-05
- BLR 24-2



SUMMARY OF QUANTITIES			
CODE NO.	PAY ITEM	UNIT	TOTAL
40200800	AGGREGATE SURFACE COURSE, TYPE B	TON	116
40600275	BITUMINOUS MATERIALS (PRIME COAT)	POUND	7,617
40600982	HOT-MIX ASPHALT SURFACE REMOVAL	SQ YD	251
	-BUTT JOINT		
40603090	HOT-MIX ASPHALT BINDER COURSE,	TON	5,997
	IL 19.0, N90		
40603320	HOT-MIX ASPHALT SURFACE COURSE,	TON	4,716
	MIX "C", N90		
48100100	AGGREGATE SHOULDERS, TYPE A	TON	3,779
67100100	MOBILIZATION	L SUM	1
70300100	SHORT-TERM PAVEMENT MARKING	FOOT	4,320
Δ78001110	PAINT PAVEMENT MARKING - LINE 4"	FOOT	59,572
X4401198	HOT-MIX ASPHALT SURFACE REMOVAL	SQ YD	1,538
	-VARIABLE DEPTH		
Δ	SPECIALTY ITEMS		



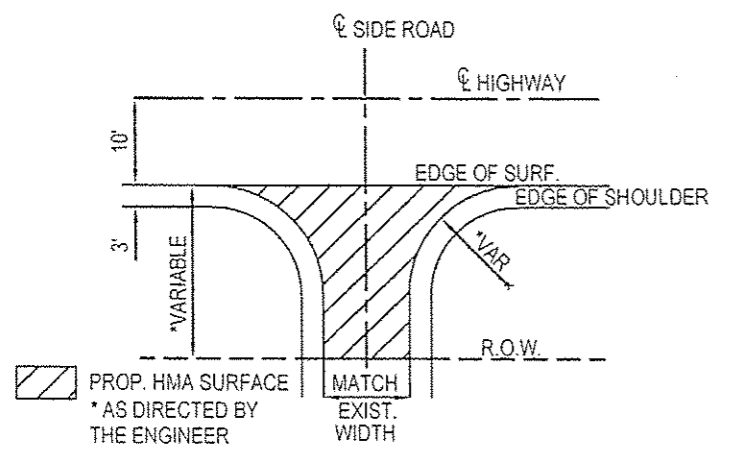
STATE OF ILLINOIS	
DEPARTMENT OF TRANSPORTATION	
APPROVED	<i>[Signature]</i>
FRANKLIN COUNTY HIGHWAY ENGINEER	
PASSED	<i>[Signature]</i>
DISTRICT 9 ENGINEER OF LOCAL ROADS & STREETS	
RELEASING FOR BID	
BASED ON LIMITED	
REVIEW	<i>[Signature]</i>
DEPUTY DIRECTOR OF HIGHWAYS, REGION 5 ENGINEER	



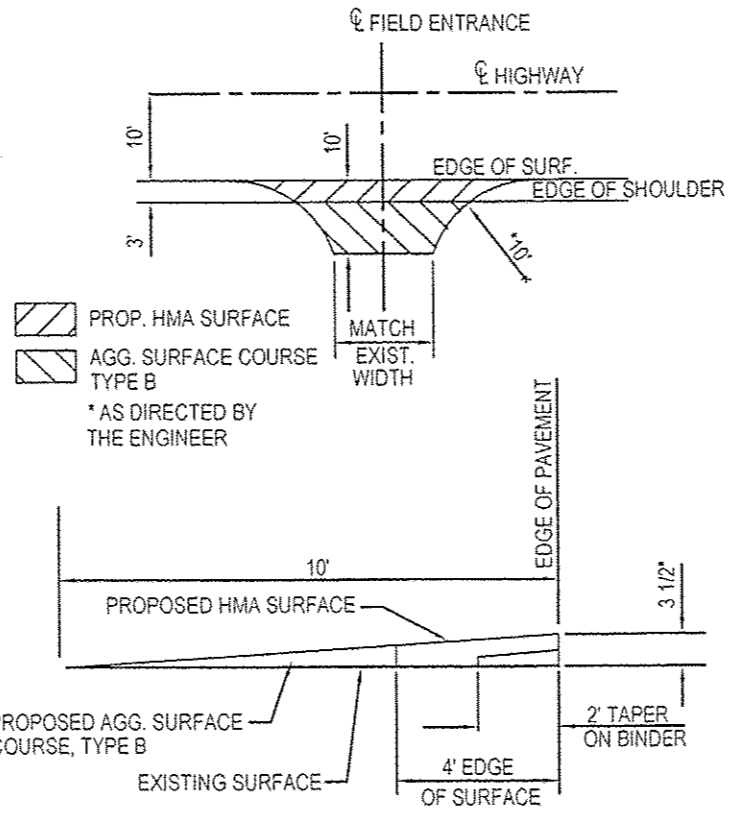
[Signature]
 MICHAEL A. ROLLA
 ILLINOIS REGISTERED PROFESSIONAL ENGINEER
 #062-056332
 LIC. EXPIRES 11/30/2017

LOCATION MAP
 NET LENGTH = 4.09 MILES (21,598 FEET)

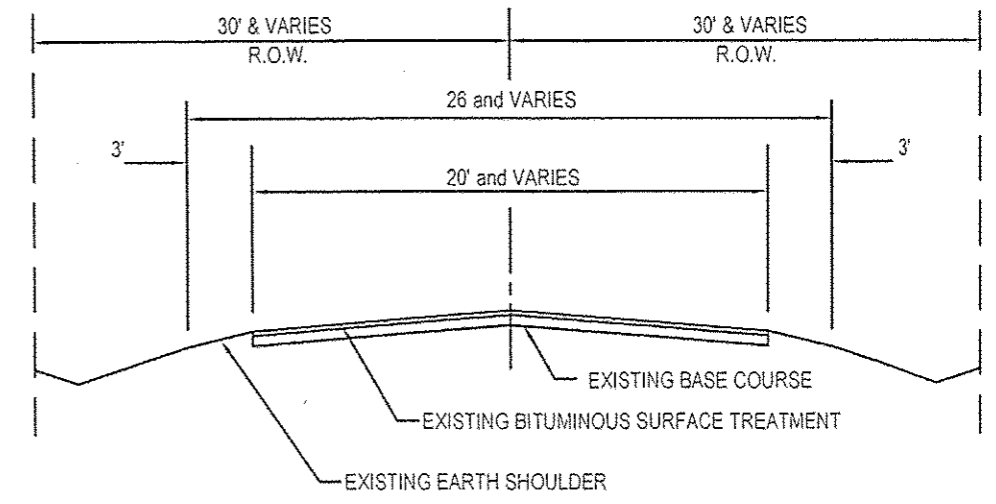
CONTRACT NO. 99580



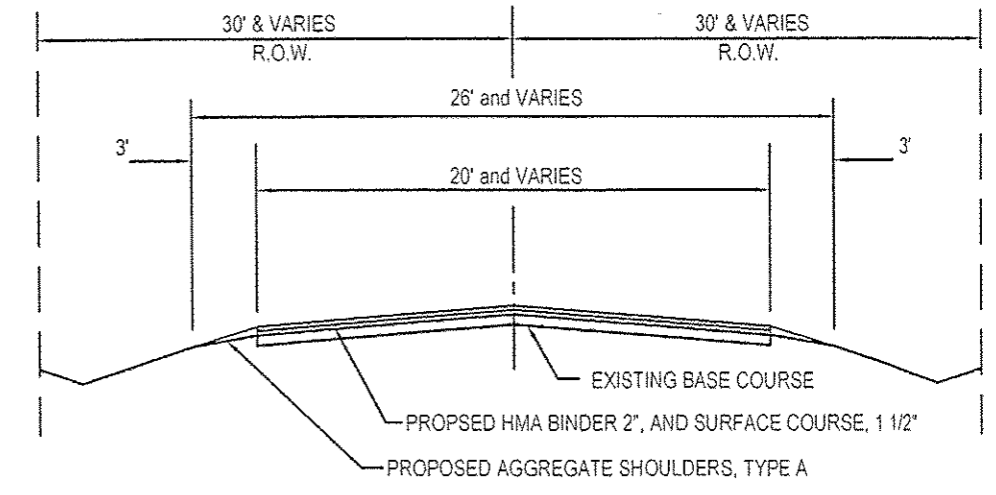
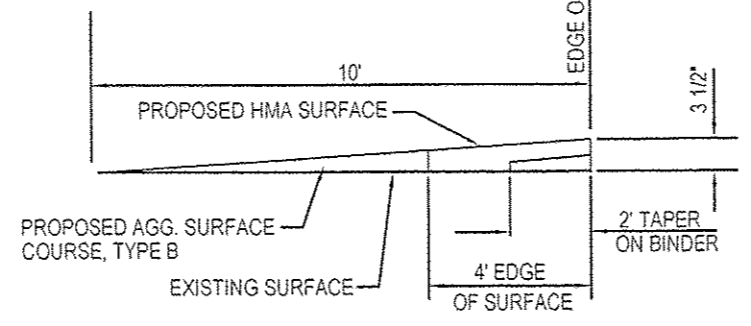
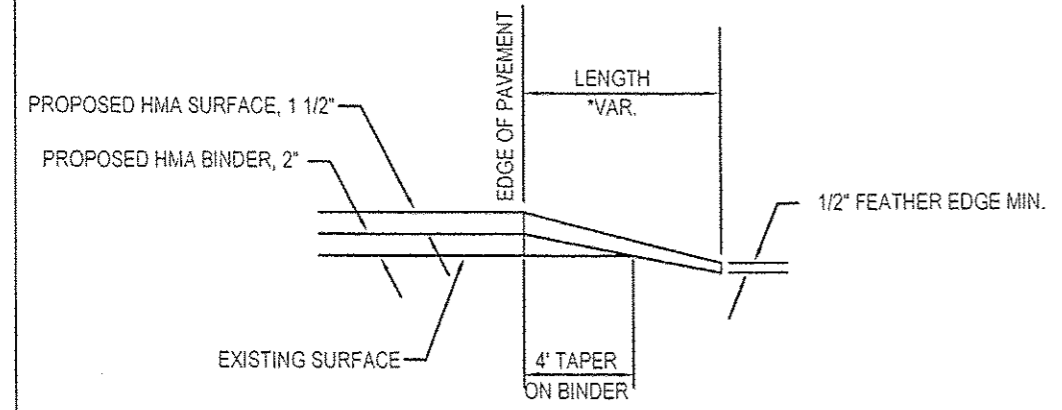
SIDEROAD DETAILS



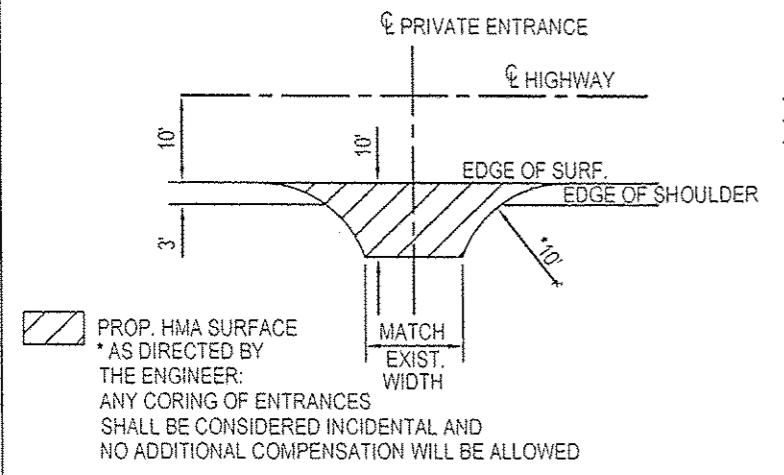
FIELD ENTRANCE DETAILS



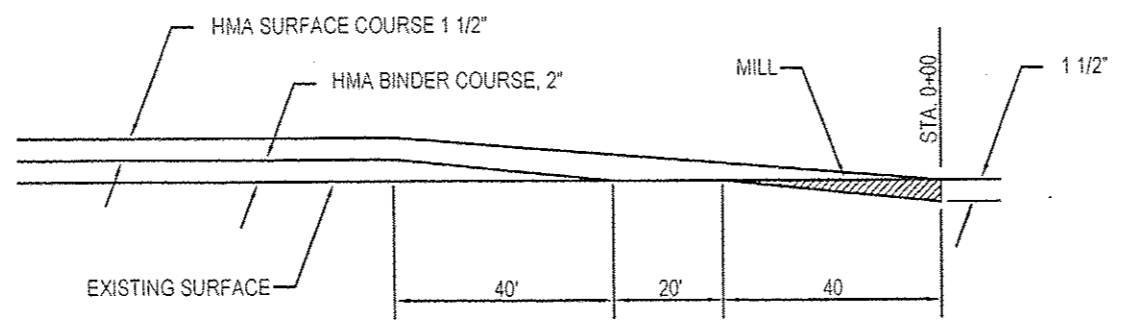
TYPICAL EXISTING SECTION



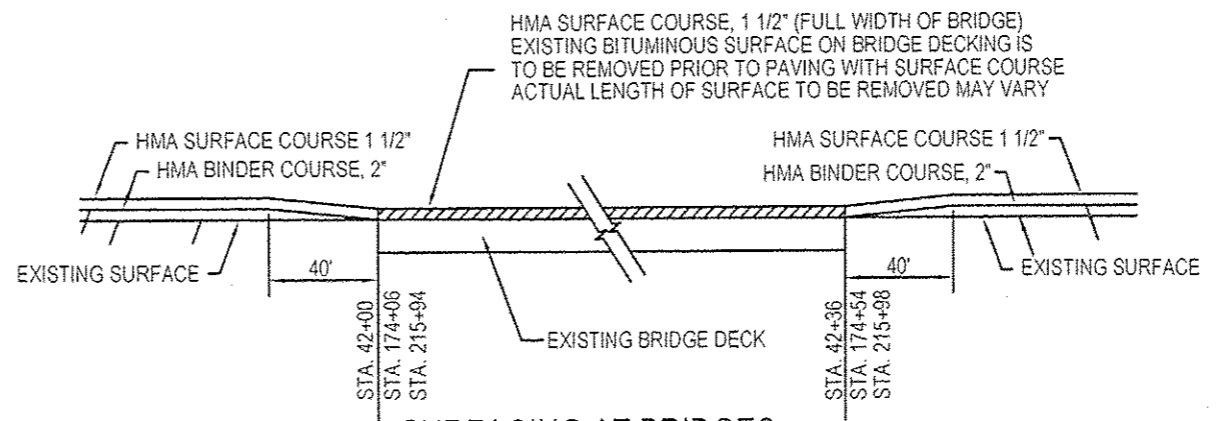
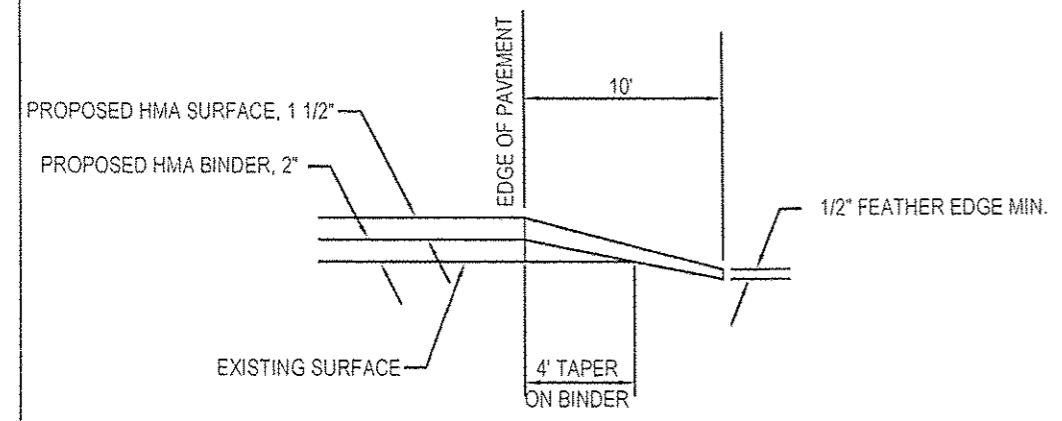
TYPICAL PROPOSED SECTION



PRIVATE AND COMMERCIAL ENTRANCE DETAILS



BUTT JOINT



SURFACING AT BRIDGES

MISCELLANEOUS DETAILS & TYPICAL SECTIONS

FIELD ENTRANCE QUANTITIES		
ENTRANCES	AGGREGATE SURFACE COURSE TYPE B, TON	HOT MIX ASPHALT SURFACE COURSE, MIX "C", N70, TON
ONE (1) ENTRANCE	4	2
TOTAL = 29 ENTRANCES	116	58

MAILBOX TURNOUT QUANTITIES		
TURNOUT	BITUMINOUS MATERIALS (PRIME COAT) GALLON	HOT MIX ASPHALT SURFACE COURSE, MIX "C", N70, TON
ONE (1) TURNOUT	2	1
TOTAL = 20 TURNOUTS	40	20

PRIVATE ENTRANCE QUANTITIES		
ENTRANCES	BITUMINOUS MATERIALS (PRIME COAT) GALLON	HOT MIX ASPHALT SURFACE COURSE, MIX "C", N70, TON
ONE (1) ENTRANCE	10	3
TOTAL = 38 ENTRANCES	380	114

COMMERCIAL ENTRANCE QUANTITIES		
ENTRANCES	BITUMINOUS MATERIALS (PRIME COAT) GALLON	HOT MIX ASPHALT SURFACE COURSE, MIX "C", N70, TON
ONE (1) ENTRANCE	13	2
TOTAL = 5 ENTRANCES	65	10

SCHEDULE OF PAVEMENT MARKING LINE, 4"							
WESTBOUND LANE			EASTBOUND LANE				
STATION	NO PASSING (YELLOW SOLID)	PASSING (YELLOW DASHED)	STATION	NO PASSING (YELLOW SOLID)	PASSING (YELLOW DASHED)	STATION	EDGE LINE (WHITE SOLID)
0+00 TO 7+50	750		0+00 TO 7+50		188	0+00 TO 215+98	42763
7+50 TO 23+00		388	22+25 TO 26+00	375			
23+00 TO 30+00	700		26+00 TO 30+00		100		
30+00 TO 43+00		326	30+00 TO 36+50	650			
43+00 TO 53+00	1000		43+00 TO 53+00		250		
53+00 TO 59+00		150	57+25 TO 63+75	650			
59+00 TO 65+00	600		63+75 TO 65+00		31		
65+00 TO 71+25		156	66+00 TO 71+75	575			
71+25 TO 77+00	625		71+75 TO 77+00		144		
77+00 TO 145+25		1681	139+00 TO 144+75	575			
144+25 TO 150+09	584		144+75 TO 150+09		134		
150+09 TO 152+25		54	151+00 TO 157+00	600			
152+25 TO 158+75	650		157+00 TO 158+75		44		
158+75 TO 179+50		519	163+00 TO 173+00	1000			
179+50 TO 185+75	625		179+50 TO 185+75		156		
185+75 TO 190+00		106	185+75 TO 193+00	725			
190+00 TO 193+75	375		193+00 TO 193+75		19		
193+75 TO 215+98		556	208+50 TO 215+98	748			
TOTALS	5909	3936		5898	1066		42763

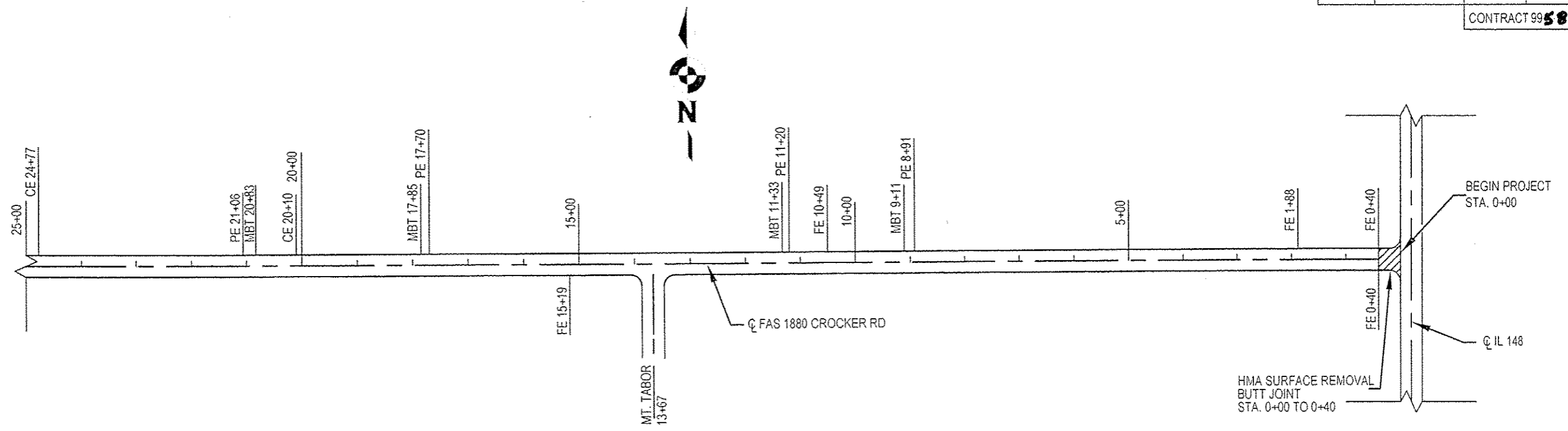
SIDEROAD ENTRANCE QUANTITIES	
LOCATION	HOT MIX ASPHALT SURFACE COURSE, MIX "C", N70, TON
STA 13+67 LT	17.3
STA 80+48 RT	8.1
STA 119+88 RT	9.2
STA 119+90 LT	20.6
STA 146+43 RT	8.5
STA 187+17 RT	18.9
TOTAL = 6 SIDEROADS	82.60

MILLING SCHEDULE		
LOCATION	TYPE	COLD MILLING
STA. 0+00 TO 0+40	BUTT JOINT	251
STA. 40+93 TO 43+43	VARIABLE DEPTH	611
STA. 173+13 TO 175+47	VARIABLE DEPTH	572
STA. 214+53 TO 215+98	VARIABLE DEPTH	354
TOTAL		1788

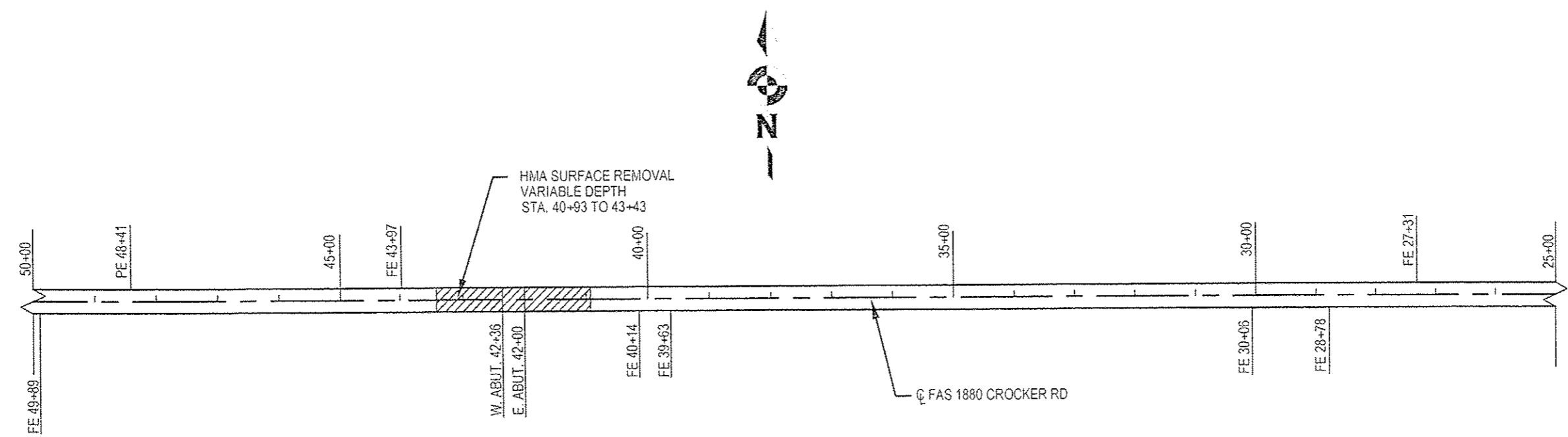
MISCELLANEOUS DETAILS

SCALE 1" = 200'

ROUTE	SECTION	COUNTY	SHEET NO.
FAS 1880	14-00184-00-RS	FRANKLIN	4 OF 8
			CONTRACT 99 580



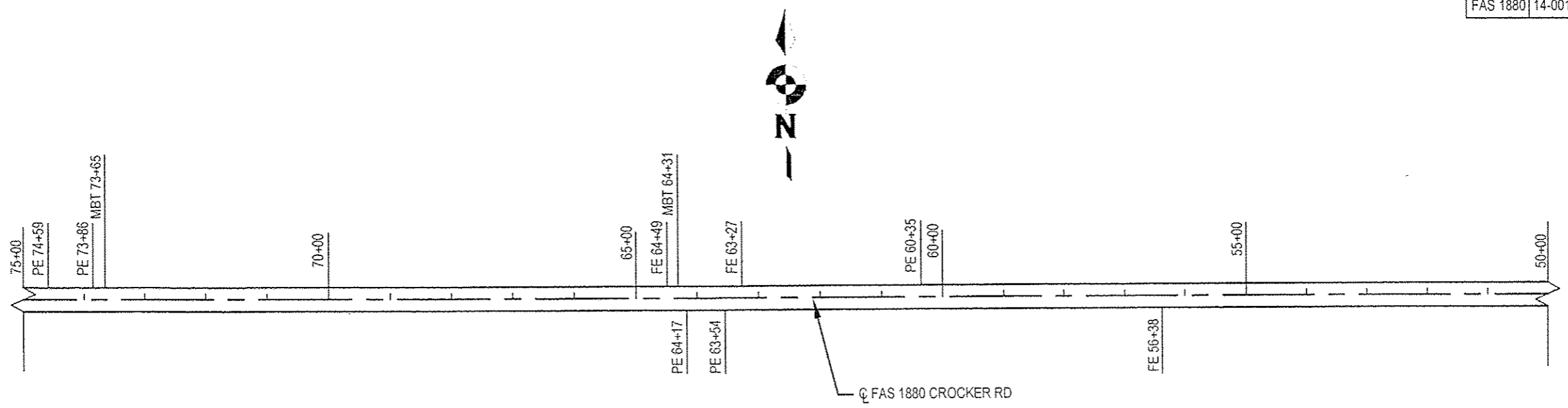
SCALE 1" = 200'



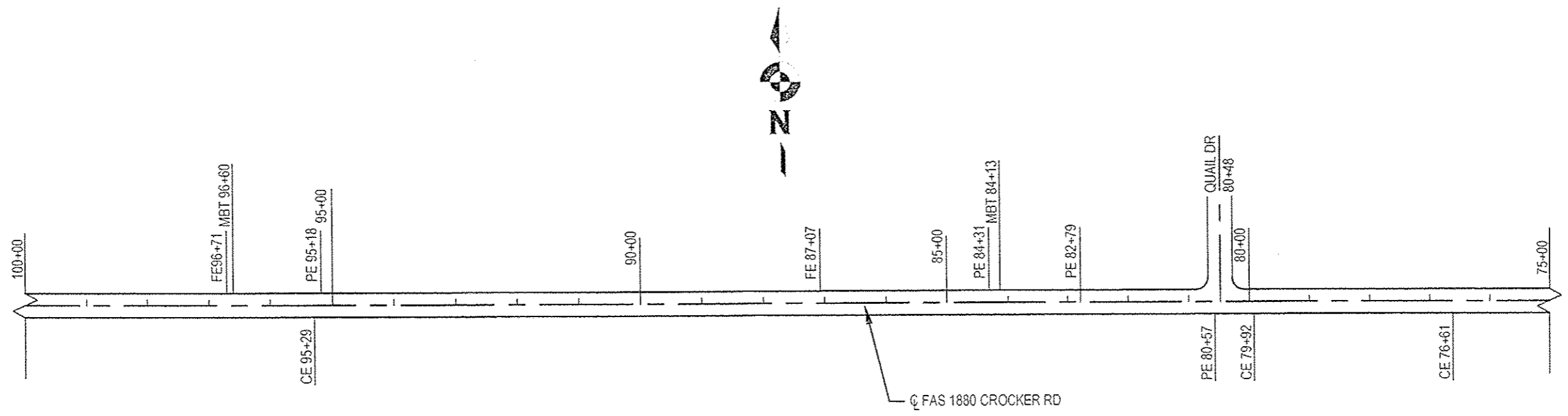
PLAN
STATION 0+00 TO 50+00

SCALE 1" = 200'

ROUTE	SECTION	COUNTY	SHEET NO.
FAS 1880	14-00184-00-RS	FRANKLIN	5 OF 8
CONTRACT 99 580			



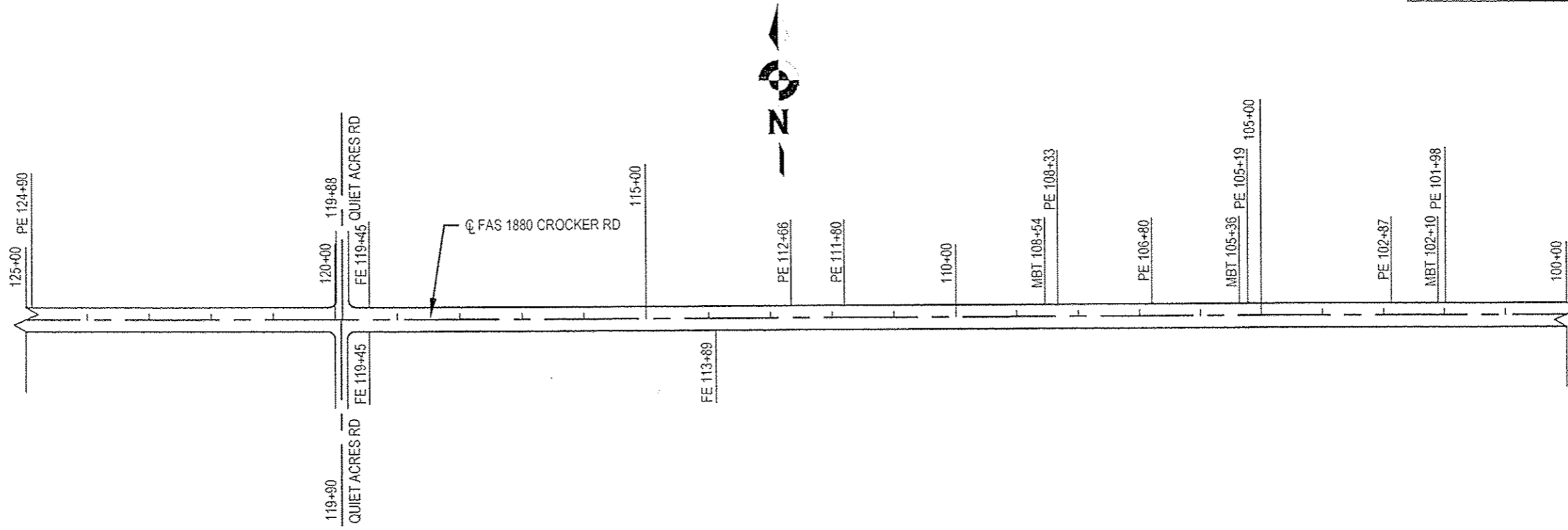
SCALE 1" = 200'



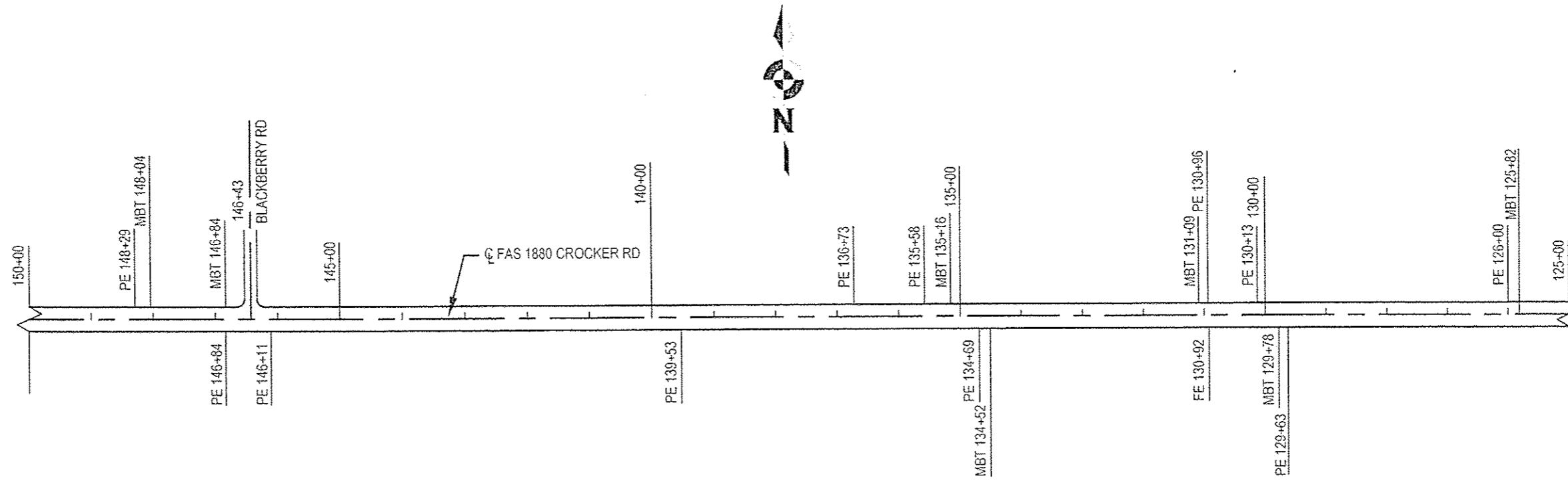
PLAN
STATION 50+00 TO 100+00

SCALE 1" = 200'

ROUTE	SECTION	COUNTY	SHEET NO.
FAS 1880	14-00184-00-RS	FRANKLIN	6 OF 8
CONTRACT 99500			



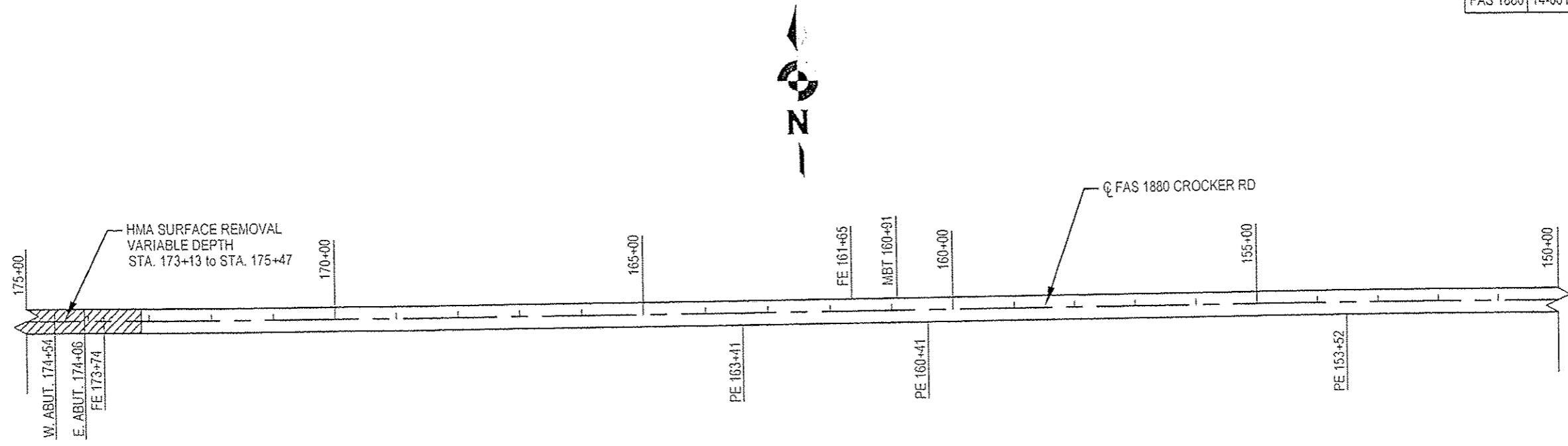
SCALE 1" = 200'



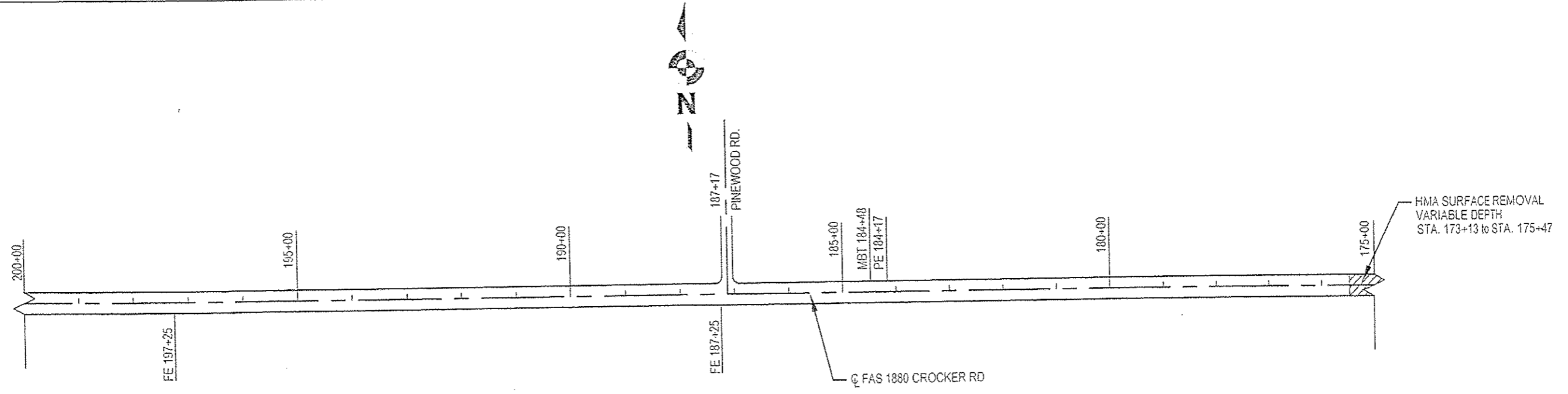
PLAN
STATION 100+00 TO 150+00

ROUTE	SECTION	COUNTY	SHEET NO.
FAS 1880	14-00184-00-RS	FRANKLIN	7 OF 8
			CONTRACT 99 580

SCALE 1" = 200'



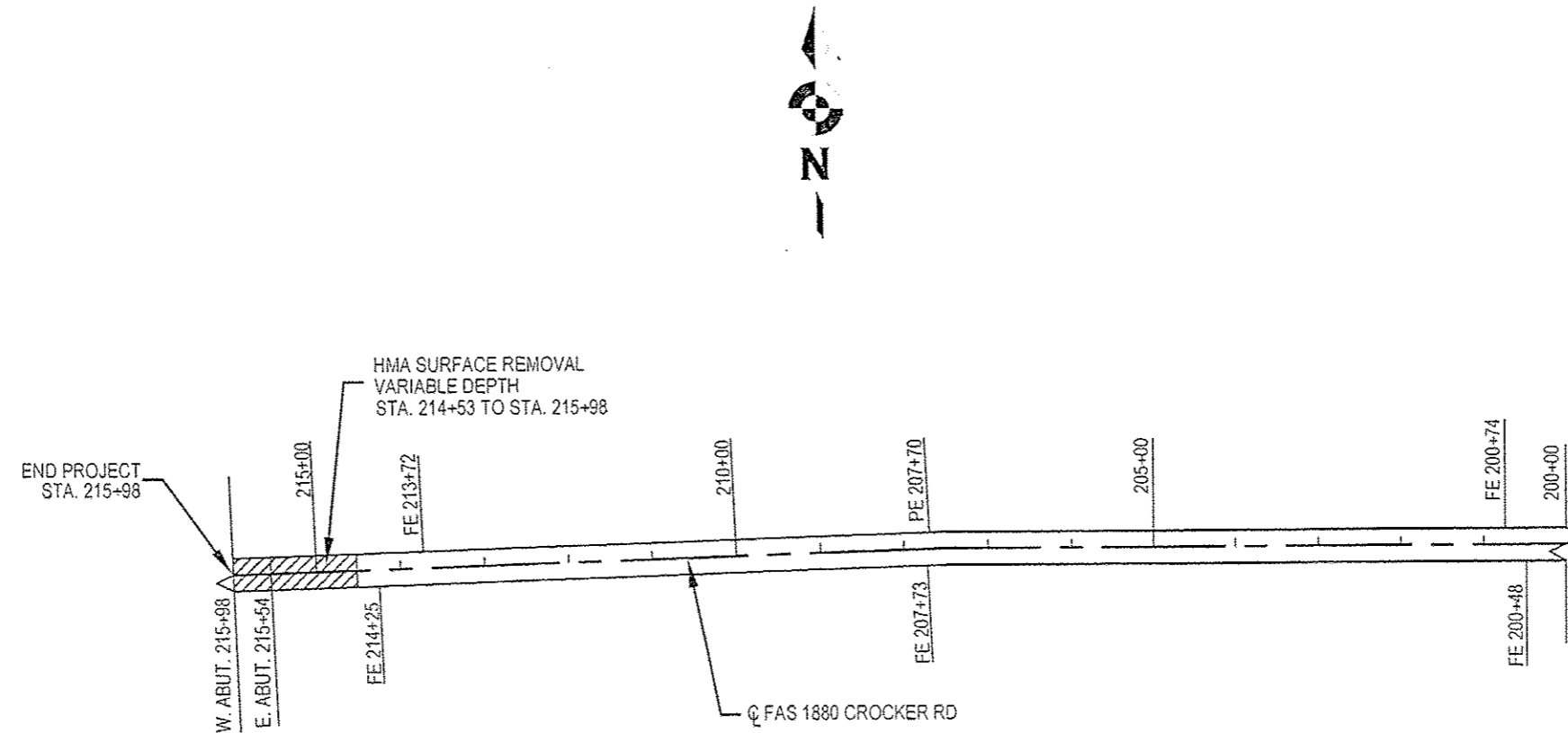
SCALE 1" = 200'



PLAN
STATION 150+00 TO 200+00

SCALE 1" = 200'

ROUTE	SECTION	COUNTY	SHEET NO.
FAS 1880	14-00184-00-RS	FRANKLIN	8 OF 8
CONTRACT 99580			



PLAN
STATION 200+00 to 215+98