

STATE OF ILLINOIS
DEPARTMENT OF TRANSPORTATION

F.A.P. RTE.	SECTION	COUNTY	TOTAL SHEETS	SHEET NO.
345	2016-045RS	COOK	36	1
ILLINOIS			CONTRACT NO. 62D03	

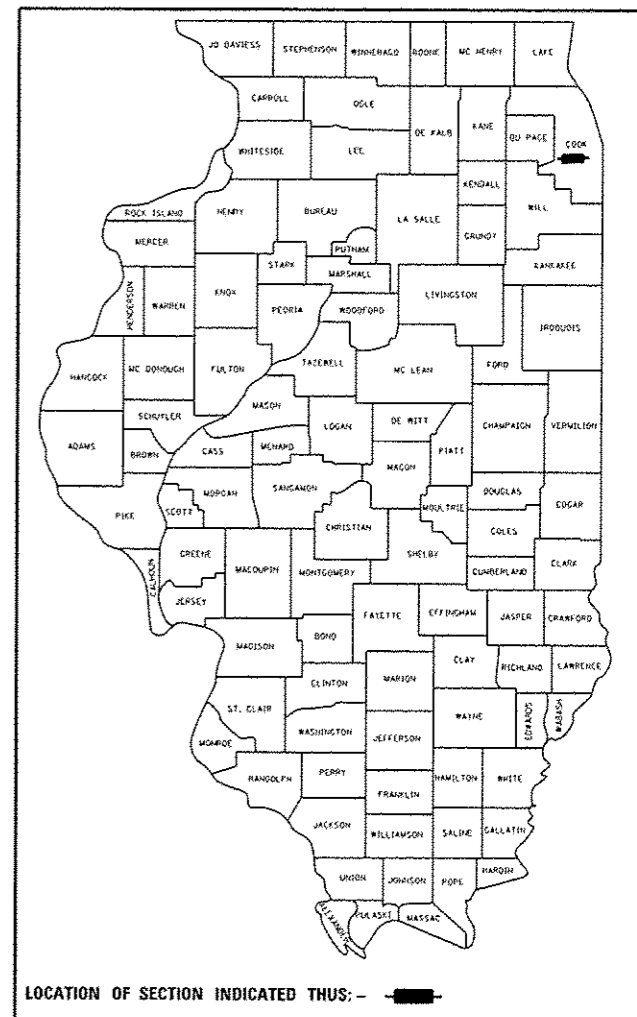
*** 36 + 19 = 55 total sheets**
D-91-420-16

FOR INDEX OF SHEETS, SEE SHEET NO. 2

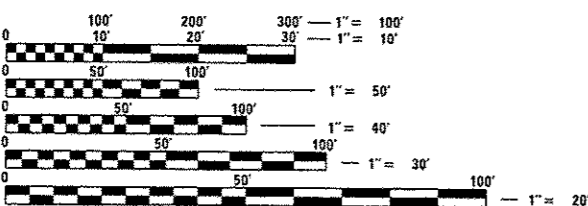
**PROPOSED
HIGHWAY PLANS**

F.A.P. ROUTE 345 (IL 19) IRVING PARK RD.
WEST OF SEYMOUR AVE. TO DES PLAINES RIVER
SECTION: 2016-045RS
PROJECT: NHPP-0345(064)
RESURFACING (3P), PEDESTRIAN RAMPS (ADA), DRAINAGE
COOK COUNTY
C-91-420-16

THE IMPROVEMENT IS LOCATED IN
THE VILLAGE OF SCHILLER PARK



TRAFFIC DATA:
2014 & 2015 ADT = 33100
SPEED LIMIT = 30 to 55 MPH



FULL SIZE PLANS HAVE BEEN PREPARED USING STANDARD
ENGINEERING SCALES. REDUCED SIZED PLANS WILL NOT
CONFORM TO STANDARD SCALES. IN MAKING MEASUREMENTS
ON REDUCED PLANS, THE ABOVE SCALES MAY BE USED.

J.U.L.I.E.
JOINT UTILITY LOCATION INFORMATION FOR EXCAVATION
1-800-892-0123
OR 811

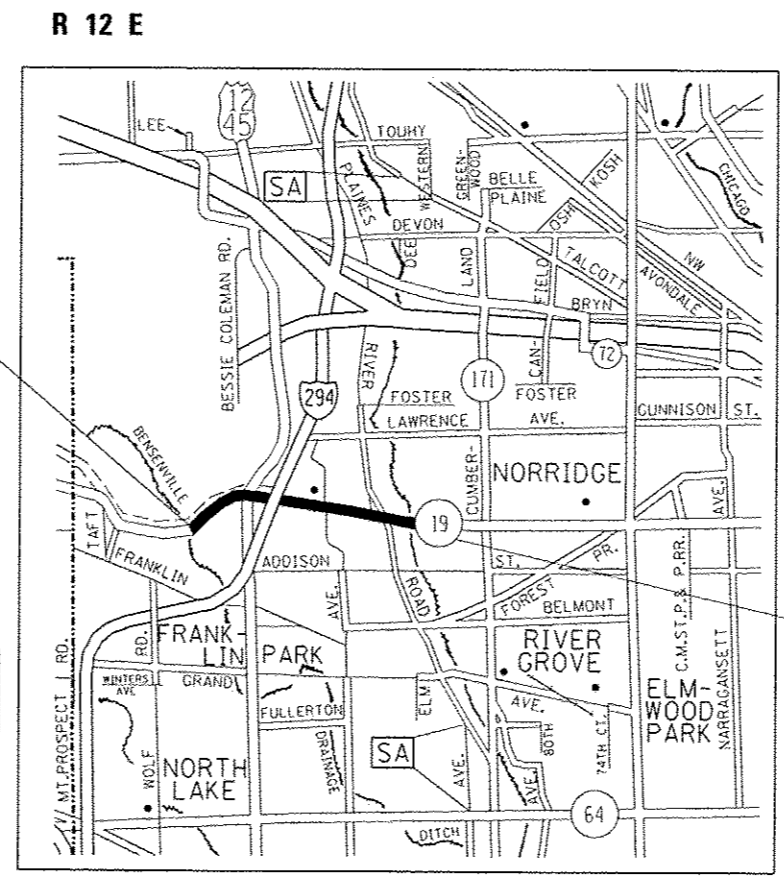
PROJECT ENGINEER DAN WILGREEN (847) 705-4240
PROJECT MANAGER FAWAD AQUEEL (847) 705-4247

CONTRACT NO. 62D03

IMPROVEMENT BEGINS
STA 16+00

RESURFACING OMISSION
STA. 113+63 TO STA. 115+00

IMPROVEMENT ENDS
STA 143+00



LEYDEN TOWNSHIP
GROSS LENGTH = 12,700 FT. = 2.41 MILE
NET LENGTH = 12,563 FT. = 2.38 MILE

STATE OF ILLINOIS
DEPARTMENT OF TRANSPORTATION

SUBMITTED *March 22* 20 *17*

[Signature] REGIONAL ENGINEER

May 12 20 *17*

Marcoson M. Adziz, PE
ENGINEER OF DESIGN AND ENVIRONMENT

May 12 20 *17*

[Signature] 2
DIRECTOR OF PROGRAM DEVELOPMENT

PRINTED BY THE AUTHORITY
OF THE STATE OF ILLINOIS

REV 6-7-17

INDEX OF SHEETS

SHEET NO.

DESCRIPTION

STATE STANDARDS

GENERAL NOTES:

1	TITLE SHEET
2	INDEX OF SHEETS, STATE STANDARDS, AND GENERAL NOTES
3-5	SUMMARY OF QUANTITIES
6-11	TYPICAL SECTIONS
12-16	ROADWAY & PAVEMENT MARKING PLANS
17	PROPOSED DRAINAGE PLAN
18 - 18S	ADA SIDEWALK DETAIL SHEETS
19-24	DETECTOR LOOP REPLACEMENT PLANS
25	DRIVEWAY DETAILS - DISTANCE BETWEEN R.O.W. AND FACE OF CURB > 15' (BD-01)
26	DETAILS FOR FRAMES AND LIDS WITH MILLING (BD-08)
27	PAVEMENT PATCHING FOR HOT-MIX ASPHALT SURFACED PAVEMENT (BD-22)
28	CURB OR CURB AND GUTTER REMOVAL AND REPLACEMENT (BD-24)
29	BUTT JOINT AND HOT-MIX ASPHALT TAPER DETAILS (BD-32)
30	HMA TAPER AT EDGE OF PCC PAVEMENT (BD-33)
31	TRAFFIC CONTROL AND PROTECTION FOR SIDE ROADS, INTERSECTIONS AND DRIVEWAYS (TC-10)
32	RAISED REFLECTIVE PAVEMENT MARKERS (SNOW PLOW RESISTANT) (TC-11)
33	DISTRICT ONE TYPICAL PAVEMENT MARKINGS (TC-13)
34	SHORT TERM PAVEMENT MARKING LETTERS AND SYMBOLS (TC-16)
35	ARTERIAL ROAD INFORMATION SIGNING (TC-22)
36	DISTRICT 1 - DETECTOR LOOP INSTALLATION DETAILS FOR ROADWAY RESURFACING (ITS-07)

000001-06	STANDARD SYMBOLS, ABBREVIATIONS, AND PATTERNS
424001-09	PERPENDICULAR CURB RAMPS FOR SIDEWALKS
424006-02	DIAGONAL CURB RAMPS FOR SIDEWALKS
424011-03	CORNER PARALLEL CURB RAMPS FOR SIDEWALKS
424016-03	MID-BLOCK CURB RAMPS FOR SIDEWALKS
424021-03	DEPRESSED CORNER FOR SIDEWALKS
442201-03	CLASS C AND D PATCHES
604001-04	FRAMES AND LIDS TYPE 1
604091-03	FRAME AND GRATE TYPE 24
701101-05	OFF ROAD OPERATIONS MULTILANE, 15' TO 24" FROM PAVEMENT EDGE
701301-04	LANE CLOSURE, 2L, 2W, SHORT TIME OPERATIONS
701421-08	LANE CLOSURE, MULTILANE, DAY OPERATIONS ONLY, FOR SPEEDS ≥45MPH TO 55MPH
701426-09	LANE CLOSURE, MULTILANE, INTERMITTENT OR MOVING OPERATIONS FOR SPEEDS ≥45MPH
701427-05	LANE CLOSURE, MULTILANE, INTERMITTENT OR MOVING OPERATIONS, FOR SPEEDS ≥40MPH
701601-09	URBAN LANE CLOSURE, MULTILANE, 1W OR 2W WITH NON TRAVERSABLE MEDIAN
701602-08	URBAN LANE CLOSURE, MULTILANE, 2W WITH BI-DIRECTIONAL LEFT TURN LANE
701606-10	LANE SINGLE LANE CLOSURE, MULTILANE, 2W WITH MOUNTABLE MEDIAN
701701-10	URBAN LANE CLOSURE, MULTILANE INTERSECTION
701801-06	SIDEWALK, CORNER OR CROSSWALK CLOSURE
701901-06	TRAFFIC CONTROL DEVICES
780001-05	TYPICAL PAVEMENT MARKING
814001-03	HANDHOLES

BEFORE STARTING ANY EXCAVATION, THE CONTRACTOR SHALL CALL "JULIE" AT 800-892-0123 OR 811 FOR FIELD LOCATIONS OF BURIED ELECTRIC, TELEPHONE AND GAS FACILITIES. (48 HOUR NOTIFICATION IS REQUIRED)

THE CONTRACTOR SHALL COORDINATE CONSTRUCTION ACTIVITIES WITH UTILITY COMPANIES, AND THE CITY OF HARWOOD HEIGHTS.

THE CONTRACTOR WILL NOT BE ALLOWED TO SET UP A YARD OR FIELD OFFICE ON STATE PROPERTY WITHOUT WRITTEN PERMISSION FROM THE DEPARTMENT.

ALL HOT-MIX ASPHALT PAVEMENT PATCHING SHALL BE CLASS D, LOCATIONS TO BE DETERMINED IN FIELD BY RESIDENT ENGINEER.

BUTT JOINTS WILL BE INSTALLED AT THE ENDS OF ALL RESURFACING (WHERE RESURFACING MEETS EXISTING PAVEMENT). IN ACCORDANCE WITH THE "BUTT JOINT AND HMA TAPER DETAILS" SHEET INCLUDED IN THE PLANS, UNLESS OTHERWISE SPECIFIED.

WHEN MILLED PAVEMENT IS OPEN TO TRAFFIC THE MAXIMUM GRADE DIFFERENTIAL BETWEEN PASSES OF THE MILLING MACHINE SHALL NOT EXCEED 1/2 INCHES (40MM) WHERE THE SPEED LIMIT IS 45 MPH (80 KM/H) OR LESS AND 1 INCH (25 M/M) WHERE THE SPEED LIMIT IS GREATER THAN 45 MPH (80 KM/HR), WITH WRITTEN APPROVAL FROM THE ENGINEER, A MAXIMUM GRADE DIFFERENTIAL OF 3 INCHES (75 MM) MAYBE ALLOWED IF THE EDGE OF THE MILLING IS SLOPED A MINIMUM 1:3 (V:H).

10 FEET (3 METER) TRANSITIONAL SHALL BE USED TO MATCH PROPOSED CURB AND GUTTER TO EXISTING CURB AND GUTTERS IN THE FIELD, UNLESS OTHERWISE SHOWN. THE TRANSITION SHALL BE PAID FOR AT THE CONTRACT UNITY PRICE FOR THE PROPOSED ITEMS OF WORK SPECIFIED.

THE RESIDENT ENGINEER SHALL VERIFY THE LOCATIONS OF ALL EXISTING PAVEMENT MARKINGS PRIOR TO MILLING OR RESURFACING.

THE RESIDENT ENGINEER SHALL CONTACT CORY JUCIUS, TRAFFIC ARTERIAL OPERATIONS UNIT CHIEF VIA EMAIL AT CORY.JUCIUS@ILLINOIS.GOV OR PHONE (847)-705-4411 A MINIMUM OF 2 WEEKS PRIOR TO PLACEMENT OF PERMANENT PAVEMENT MARKINGS.

RAISED REFLECTIVE PAVEMENT MARKERS SHALL BE PLACED THROUGHOUT THE IMPROVEMENT ACCORDING TO THE DISTRICT STANDARDS AS NOTED IN THE DETAIL.

WHEN ARTIFICIAL LIGHTING IS USED IN NIGHT OPERATIONS THE CONTRACTOR SHALL EXERCISE THE UTMOST PRECAUTIONS IN PREVENTING ADVERSE VISIBILITY TO THE MOTORING PUBLIC AND ADJOINING RESIDENTIAL AREAS.

THE RESIDENT ENGINEER SHALL CONTACT THE TRAFFIC CONTROL SUPERVISOR AT (847) 705-4470 A MINIMUM OF 72 HOURS PRIOR TO THE PLACEMENT OF ANY TEMPORARY TRAFFIC CONTROL DEVICES.

ALL SIDEWALK RAMPS WITHIN THE LIMITS OF THE PROJECT SHALL CONFORM TO CURRENT ADA REQUIREMENTS AND APPLICABLE STATE HIGHWAY STANDARDS OR AS DETERMINED BY ENGINEER.

SIDEWALK REMOVAL AND P.C.C. SIDEWALK 5" LOCATIONS SHALL BE DETERMINED BY THE ENGINEER.

NIGHTTIME FLAGGERS OR WORKERS SHALL BE EQUIPPED WITH A FLUORESCENT ORANGE OR FLUORESCENT YELLOW/GREEN VEST MEETING THE REQUIREMENTS OF ANSI/ISEA 107-2004 FOR CONSPICUITY CLASS 3 GARMENTS.

PAVEMENT MARKING TAPE, TYPE III SHALL BE USED FOR SHORT TERM PAVEMENT MARKINGS ON ALL FINAL SURFACES.

THE CONTRACTOR SHALL MAINTAIN PEDESTRIAN ACCESS AT ALL TIMES DURING CONSTRUCTION.

THE CONTRACTOR SHALL CONTACT THE UNITED STATES POSTAL SERVICE AT (847) 678-1308 A MINIMUM OF 2 WEEKS IN ADVANCE OF BEGINNING ADA RAMP IMPROVEMENTS AT THE NORTHWEST CORNER OF IL 19 AND ATLANTIC AVENUE, AS WELL AS UPON COMPLETION OF SAID IMPROVEMENTS FOR REMOVAL AND RELOCATION OF USPS MAIL COLLECTION BOX BY USPS.

FILE NAME *	USER NAME * 81grmisa	DESIGNED -	REVISED - 5/30/17 V.V.	STATE OF ILLINOIS DEPARTMENT OF TRANSPORTATION	IL 19 (WO SEYMOUR AVE. TO DES PLAINES RIVER) INDEX OF SHEETS STATE STANDARDS AND GENERAL NOTES	F.A.P. RTE.	SECTION	COUNTY	TOTAL SHEETS	SHEET NO.	
Default	PLLOT SCALE * 100.0000 ' / in.	CHECKED -	REVISED -			345	2016-045RS	COOK	36	2	
	PLLOT DATE * 5/28/2017	DATE -	REVISED -			CONTRACT NO. 62D03					
						ILLINOIS FED. AID PROJECT					

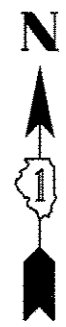
REV 6-7-17

URBAN

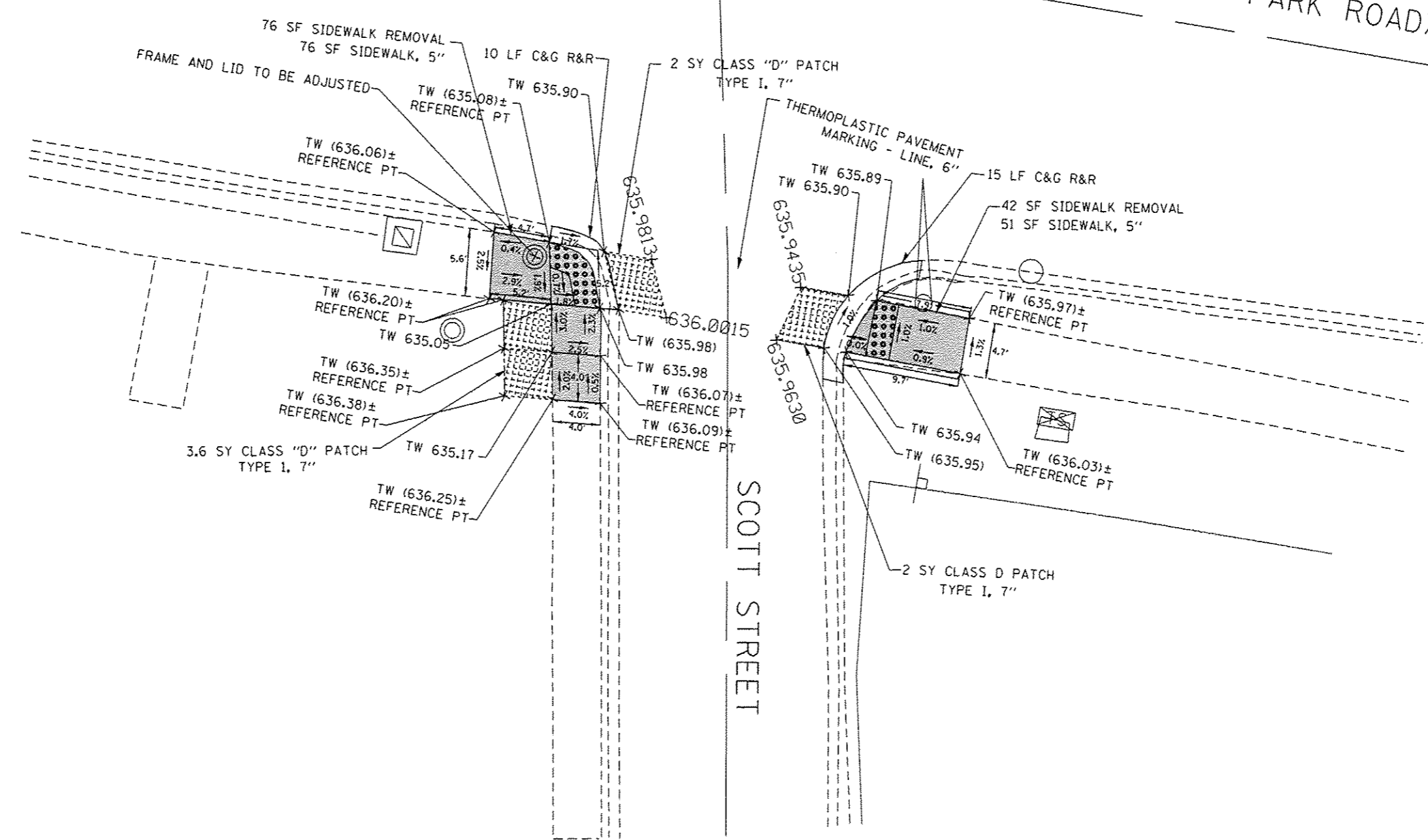
URBAN

SUMMARY OF QUANTITIES				CONSTRUCTION TYPE CODE			
CODE NO	ITEM	UNIT	TOTAL QUANTITIES	80% FED 20% STATE ROADWAY 0005	80% FED 20% STATE DRAINAGE 0044		
20200100	EARTH EXCAVATION	CU YD	44	44			
20800150	TRENCH BACKFILL	CU YD	128		128		
21101615	TOPSOIL FURNISH AND PLACE, 4"	SO YD	440	440			
25000400	NITROGEN FERTILIZER NUTRIENT	POUND	9	9			
25000600	POTASSIUM FERTILIZER NUTRIENT	POUND	9	9			
25200110	SODDING, SALT TOLERANT	SO YD	440	440			
25200200	SUPPLEMENTAL WATERING	UNIT	11	11			
35501308	HOT-MIX ASPHALT BASE COURSE, 6"	SO YD	16	16			
40600290	BITUMINOUS MATERIALS (TACK COAT)	POUND	71772	71772			
40600400	MIXTURE FOR CRACKS, JOINTS, AND FLANGEWAYS	TON	160	160			
40600827	POLYMERIZED LEVELING BINDER (MACHINE METHOD), IL-4.75, N50	TON	4387	4387			
40600982	HOT-MIX ASPHALT SURFACE REMOVAL - BUTT JOINT	SO YD	715	715			
40603335	HOT-MIX ASPHALT SURFACE COURSE, MIX "D", N50	TON	2	2			

SUMMARY OF QUANTITIES				CONSTRUCTION TYPE CODE			
CODE NO	ITEM	UNIT	TOTAL QUANTITIES	80% FED 20% STATE ROADWAY 0005	80% FED 20% STATE DRAINAGE 0044		
40603340	HOT MIX ASPHALT SURFACE COURSE, MIX "D", N70	TON	1618	1618			
42001300	PROTECTIVE COAT	SO YD	1254	1254			⚠
42300400	PORTLAND CEMENT CONCRETE DRIVEWAY PAVEMENT, 8 INCH	SO YD	43	43			
42400200	PORTLAND CEMENT CONCRETE SIDEWALK 5 INCH	SO FT	5511	5511			⚠
42400800	DETECTABLE WARNINGS	SO FT	502	502			
44000159	HOT-MIX ASPHALT SURFACE REMOVAL, 2 1/2"	SO YD	106329	106329			
44000600	SIDEWALK REMOVAL	SO FT	5413	5413			⚠
44003100	MEDIAN REMOVAL	SO FT	1350	1350			
44003510	MEDIAN REMOVAL PARTIAL DEPTH	SO FT	6350	6350			
44201725	CLASS D PATCHES, TYPE I, 7 INCH	SO YD	12	12			⚠
44201729	CLASS D PATCHES, TYPE II, 7 INCH	SO YD	948	948			
44201733	CLASS D PATCHES, TYPE III, 7 INCH	SO YD	177	177			
44201735	CLASS D PATCHES, TYPE IV, 7 INCH	SO YD	453	453			
44201796	CLASS D PATCHES, TYPE IV, 12 INCH	SO YD	60		60		
*SPECIALTY ITEMS							



ILL RT 19 (IRVING PARK ROAD)



SCOTT STREET

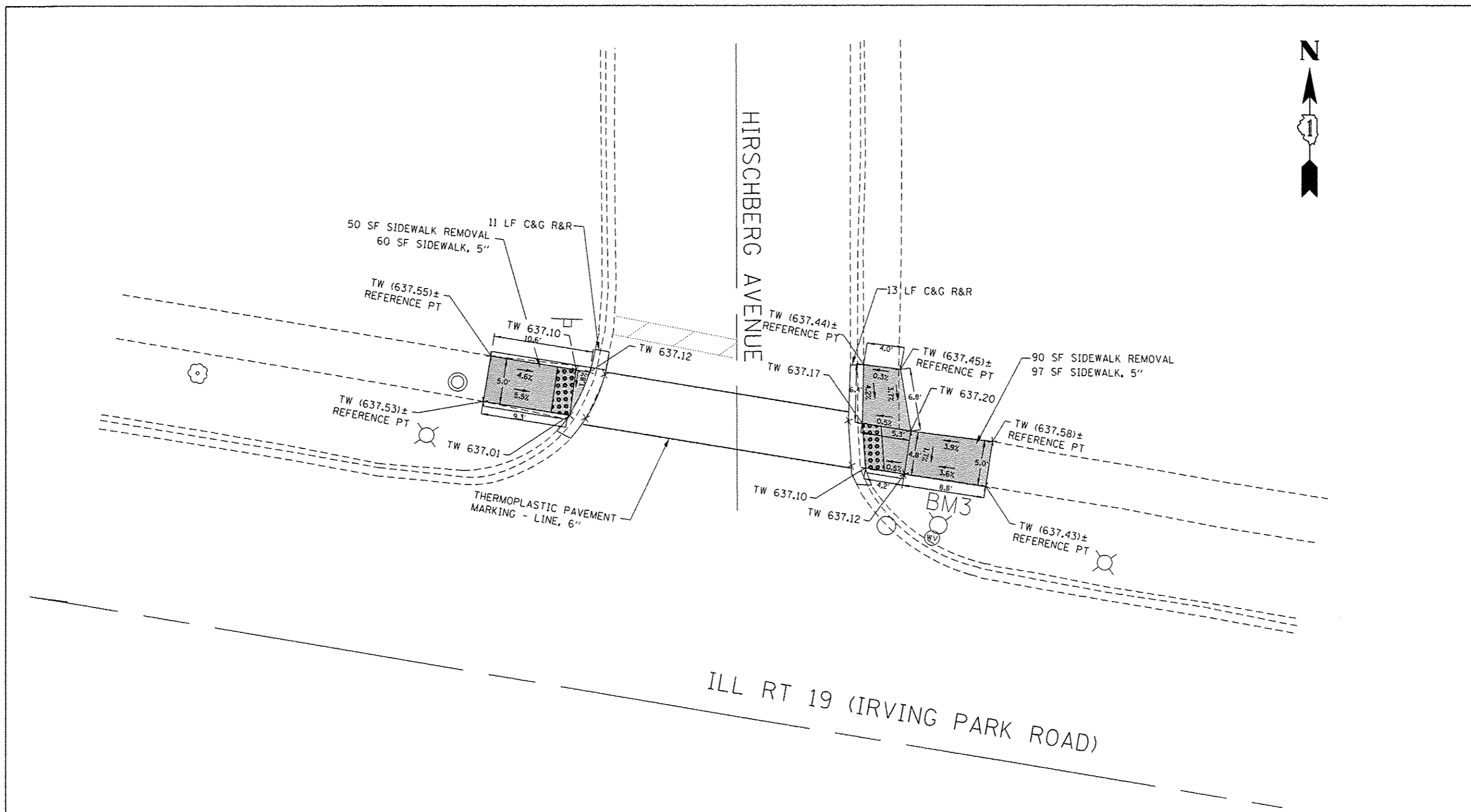
LEGEND

- xx.xx' EXISTING LENGTH
- PROPOSED SIDE CURB
- () EXISTING ELEVATION/SLOPE
- PROPOSED SIDEWALK
- DETECTABLE WARNINGS
- SIDEWALK REMOVAL REPLACE W/TOPSOIL & SOD

REFERENCE BENCHMARK ELEV 636.722
 BENCHMARK : TRAFFIC CONTROL BOX SQUARE NORTH EAST CORNER
 LOCATION : ON SOUTH EAST CORNER OF IL ROUTE 19 AND SCOTT ST.

FILE NAME :	USER NAME : Bilgromiso	DESIGNED -	REVISED -	STATE OF ILLINOIS DEPARTMENT OF TRANSPORTATION	IL 19 (IRVING PARK RD.) AT SCOTT ST. SOUTH ADA SIDEWALK DETAIL SHEETS	F.A.P. RTE.	SECTION	COUNTY	TOTAL SHEETS	SHEET NO.
...	...	CHECKED -	REVISED -			345	2016-045RS	COOK	36	188
PLDT SCALE : 10.0000' / 1"	PLDT DATE : 5/30/2017	DATE -	REVISED -			CONTRACT NO. 62D03			ILLINOIS FED. AID PROJECT	
Default						SCALE:	SHEET	OF	SHEETS	STA.

Sheet Added 6-7-17



LEGEND

- xx.xx' EXISTING LENGTH
- PROPOSED SIDE CURB
- EXISTING ELEVATION/SLOPE
- PROPOSED SIDEWALK
- DETECTABLE WARNINGS
- SIDEWALK REMOVAL REPLACE W/TOPSOIL & SOD

REFERENCE BENCHMARK ELEV 638.890
 BENCHMARK : FIRE HYDRANT AT NORTH EAST CORNER
 LOCATION : ON NORTH EAST CORNER OF IL ROUTE 19 AND HIRSCHBERG AVENUE

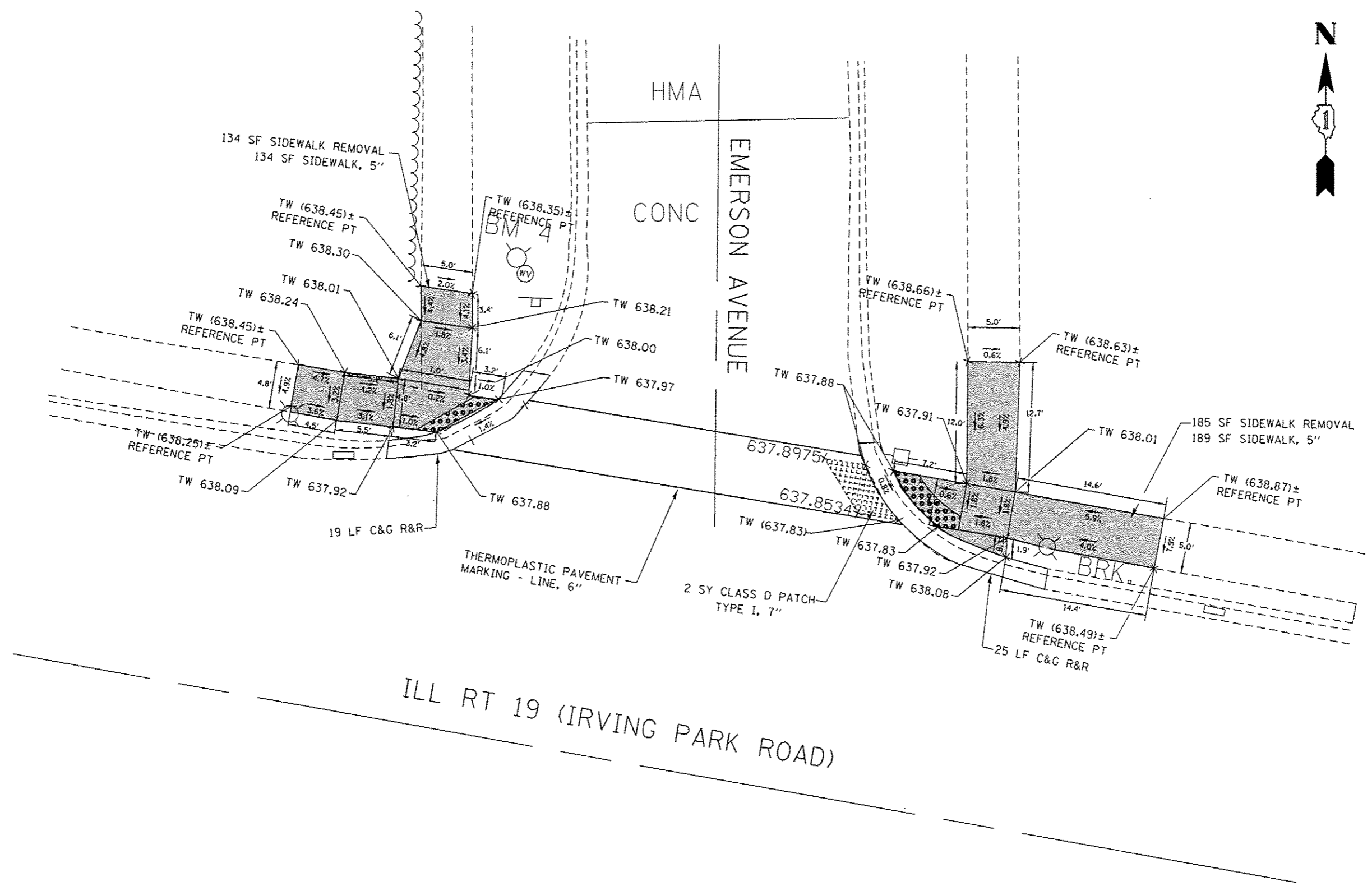
FILE NAME =	USER NAME = Bilgoreux	DESIGNED -	REVISED -

**STATE OF ILLINOIS
 DEPARTMENT OF TRANSPORTATION**

**IL 19 (IRVING PARK RD.) AT HIRSCHBERG AVE.
 ADA SIDEWALK DETAIL SHEETS**

F.A.P. RTE.	SECTION	COUNTY	TOTAL SHEETS	SHEET NO.
345	2016-045RS	COOK	36	18C
CONTRACT NO. 62D03				
ILLINOIS FED. AID PROJECT				

Sheet Added 6-7-17



ILL RT 19 (IRVING PARK ROAD)

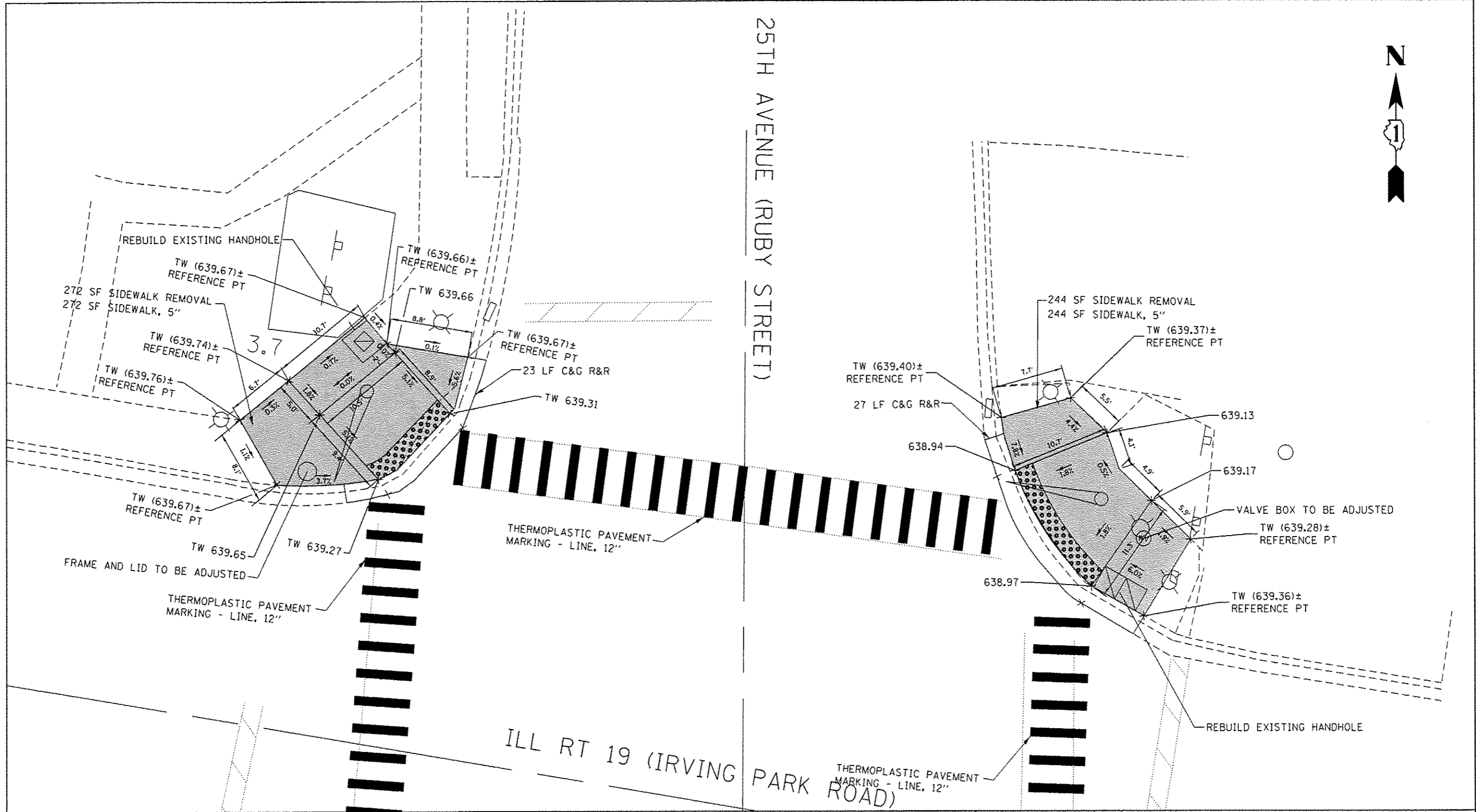
LEGEND

- xx.xx' EXISTING LENGTH
- PROPOSED SIDE CURB
- () EXISTING ELEVATION/SLOPE
- PROPOSED SIDEWALK
- DETECTABLE WARNINGS
- SIDEWALK REMOVAL REPLACE W/TOPSOIL & SOD

REFERENCE BENCHMARK ELEV 640.514
 BENCHMARK : NORTH EAST BOLT AT FIRE HYDRANT
 LOCATION : ON NORTH WEST CORNER OF IL ROUTE 19 AND EMERSON AVENUE

FILE NAME : p:\11084EBI\INTEG.illinois.gov\WIDOT\Do	USER NAME : B1jgromiso unanca\1001\Office\District 1\Projects\DI42	DESIGNED - DATE: 5/30/2017	REVISED - DATE: -	STATE OF ILLINOIS DEPARTMENT OF TRANSPORTATION	IL 19 (IRVING PARK RD.) AT EMERSON AVE. ADA SIDEWALK DETAIL SHEETS	F.A.P. RTE. 345	SECTION 2016-045RS	COUNTY COOK	TOTAL SHEETS 36 SHEET NO. 180
PLOT SCALE = 10.0000' / in. PLOT DATE = 5/30/2017				SCALE: SHEET OF SHEETS STA. TO STA.		CONTRACT NO. 62D03 ILLINOIS FED. AID PROJECT			

Sheet Added 6-7-17

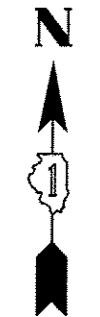
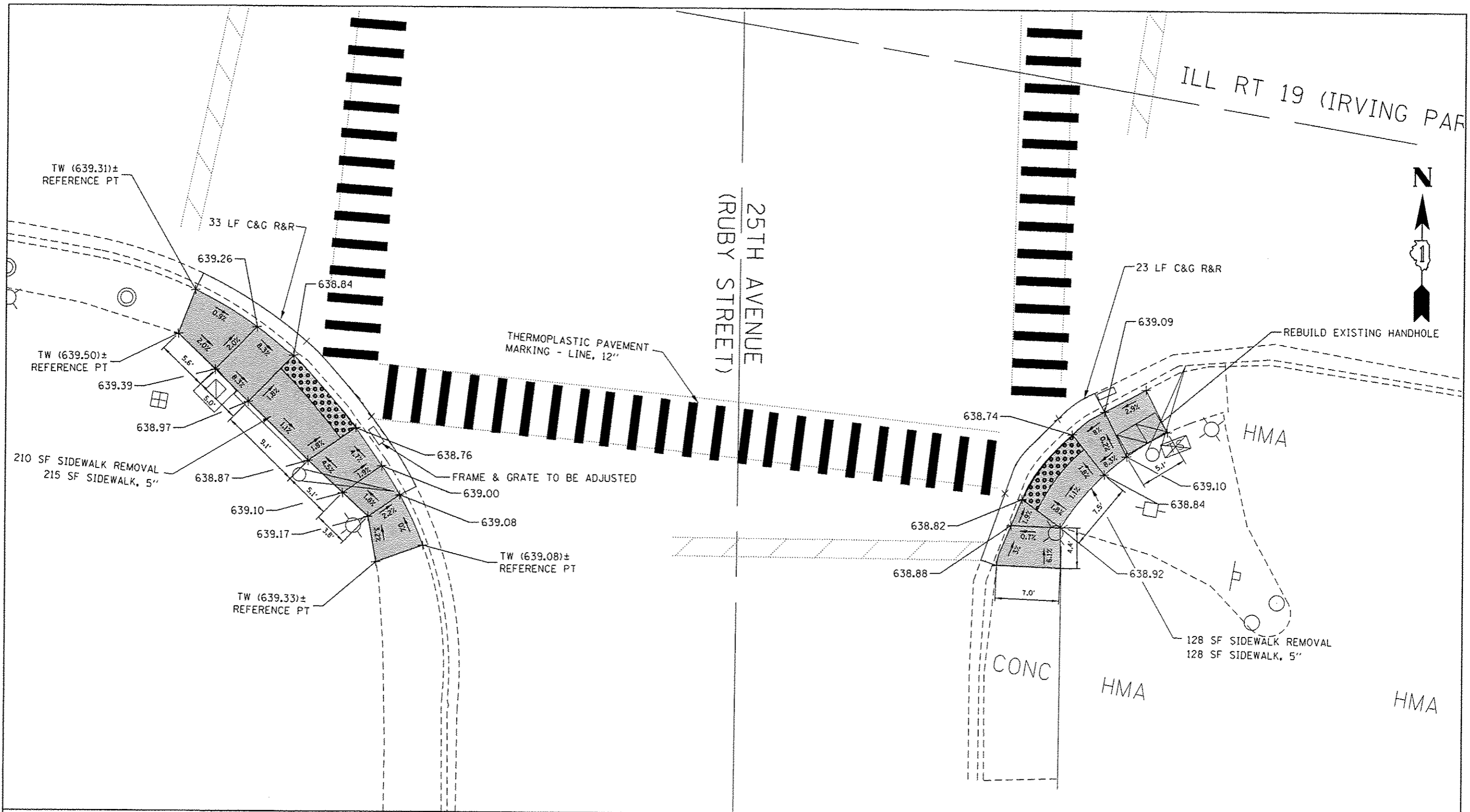


LEGEND	
xx.xx'	EXISTING LENGTH
—	PROPOSED SIDE CURB
()	EXISTING ELEVATION/SLOPE
[Hatched Box]	PROPOSED SIDEWALK
[Dotted Box]	DETECTABLE WARNINGS
[Cross-hatched Box]	SIDEWALK REMOVAL REPLACE W/TOPSOIL & SOD

REFERENCE BENCHMARK ELEV 640.086
 BENCHMARK : TRAFFIC CONTROL BOX SQUARE NORTH WEST
 LOCATION : ON SOUTH EAST CORNER OF IL ROUTE 19 AND 25TH AVENUE

FILE NAME :	USER NAME : Bigrmsisa	DESIGNED -	REVISED -	STATE OF ILLINOIS DEPARTMENT OF TRANSPORTATION	IL 19 (IRVING PARK RD.) AT 25TH AVE /RUBY ST. NORTH ADA SIDEWALK DETAIL SHEETS	F.A.P. RTE.	SECTION	COUNTY	TOTAL SHEETS	SHEET NO.
pw\11804EBIDINTEG.illinois.gov\PIDOT\Docu	umensa\DOT Offices\District 1\Projects\0142016\Design\0142016-ahd-detail.dgn	CHECKED -	REVISED -			345	2016-045RS	COOK	36	18E
Default	PLOT SCALE : 10.0000' / in.	DATE -	REVISED -			CONTRACT NO. 62D03			ILLINOIS FED. AID PROJECT	
	PLOT DATE : 5/30/2017					SCALE:	SHEET	OF	SHEETS	STA.

Sheet Added 6-7-17



LEGEND

xx.xx'

EXISTING LENGTH

=====

PROPOSED SIDE CURB

()

EXISTING ELEVATION/SLOPE



PROPOSED SIDEWALK



DETECTABLE WARNINGS



SIDEWALK REMOVAL
REPLACE W/TOPSOIL & SOD

REFERENCE BENCHMARK ELEV 640.086

BENCHMARK : TRAFFIC CONTROL BOX SQUARE NORTH WEST

LOCATION : ON SOUTH EAST CORNER OF IL ROUTE 19 AND 25TH AVENUE

FILE NAME :	USER NAME : Bilgramsa	DESIGNED -	REVISED -
Documents\1001 Offices\District 1\Projects\0142016\0142016-shr-details.dwg			REVISED -
PLOT SCALE = 1/8" = 1'-0"	CHECKED -	DATE -	REVISED -
PLOT DATE = 5/30/2017			

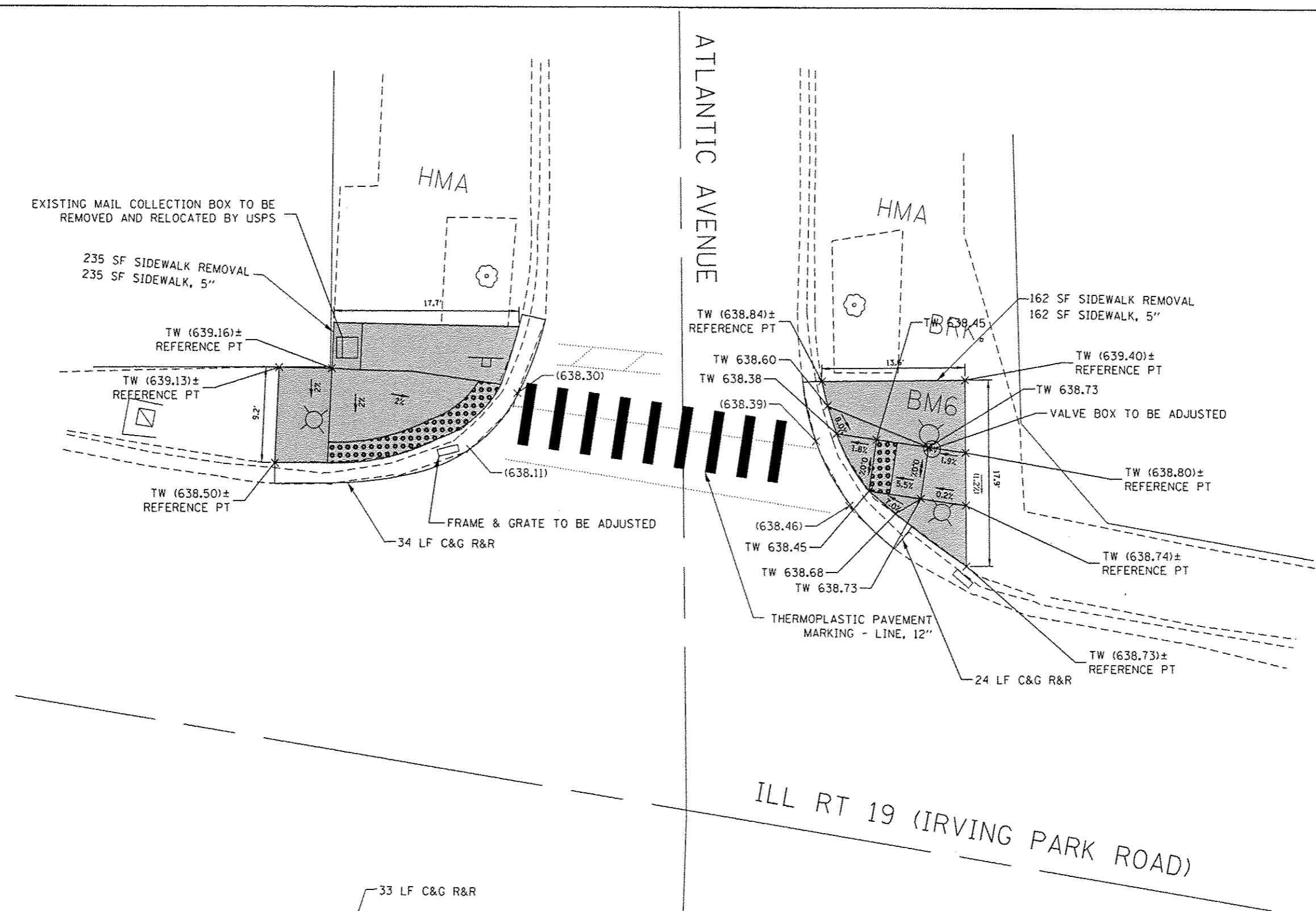
**STATE OF ILLINOIS
DEPARTMENT OF TRANSPORTATION**

**IL 19 (IRVING PARK RD.) AT 25TH AVE /RUBY ST SOUTH
ADA SIDEWALK DETAIL SHEETS**

SCALE: SHEET OF SHEETS STA. TO STA.

F.A.P. RTE.	SECTION	COUNTY	TOTAL SHEETS	SHEET NO.
345	2016-045RS	COOK	36	18F
CONTRACT NO. 62D03			ILLINOIS FED. AID PROJECT	

Sheet Added 6-7-17

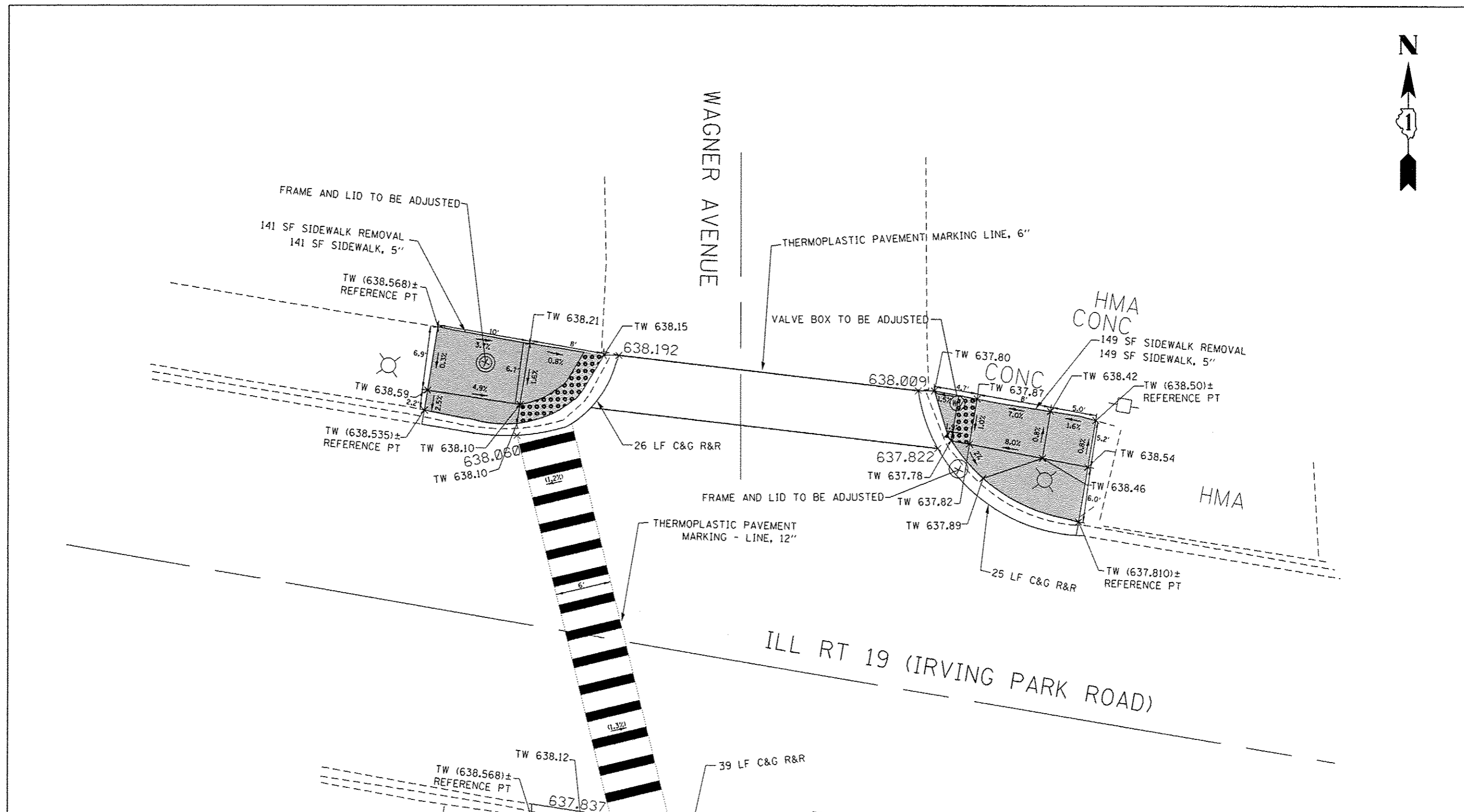


LEGEND	
xx.xx'	EXISTING LENGTH
=====	PROPOSED SIDE CURB
()	EXISTING ELEVATION/SLOPE
	PROPOSED SIDEWALK
	DETECTABLE WARNINGS
	SIDEWALK REMOVAL REPLACE W/TOPSOIL & SOD

REFERENCE BENCHMARK ELEV 641.207
 BENCHMARK : TOP OF FIRE HYDRANT NORTH EAST CORNER
 LOCATION : ON NORTH EAST CORNER OF IL ROUTE 19 AND ATLANTIC AVENUE

FILE NAME *	USER NAME = Bilgramia	DESIGNED -	REVISED -	STATE OF ILLINOIS DEPARTMENT OF TRANSPORTATION	IL 19. (IRVING PARK RD.) AT ATLANTIC AVE. NORTH ADA SIDEWALK DETAIL SHEETS		F.A.P. RTE.	SECTION	COUNTY	TOTAL SHEETS	SHEET NO.
Default	Documents\DOT Office\District 1\Projects\DI42016\Drawings\Design\DI42016-shd-details.dgn	CHECKED -	REVISED -				345	2016-045RS	COOK	36	180
	PLOT SCALE * 10,0000' / 1"	DATE -	REVISED -		SCALE:	SHEET	OF	SHEETS	STA.	TO STA.	CONTRACT NO. 62D03
	PLOT DATE * 5/30/2017										ILLINOIS FED. AID PROJECT

Sheet Added 6-7-17



LEGEND

- xx.xx' EXISTING LENGTH
- PROPOSED SIDE CURB
- () EXISTING ELEVATION/SLOPE
- PROPOSED SIDEWALK
- DETECTABLE WARNINGS
- SIDEWALK REMOVAL REPLACE W/TOPSOIL & SOD

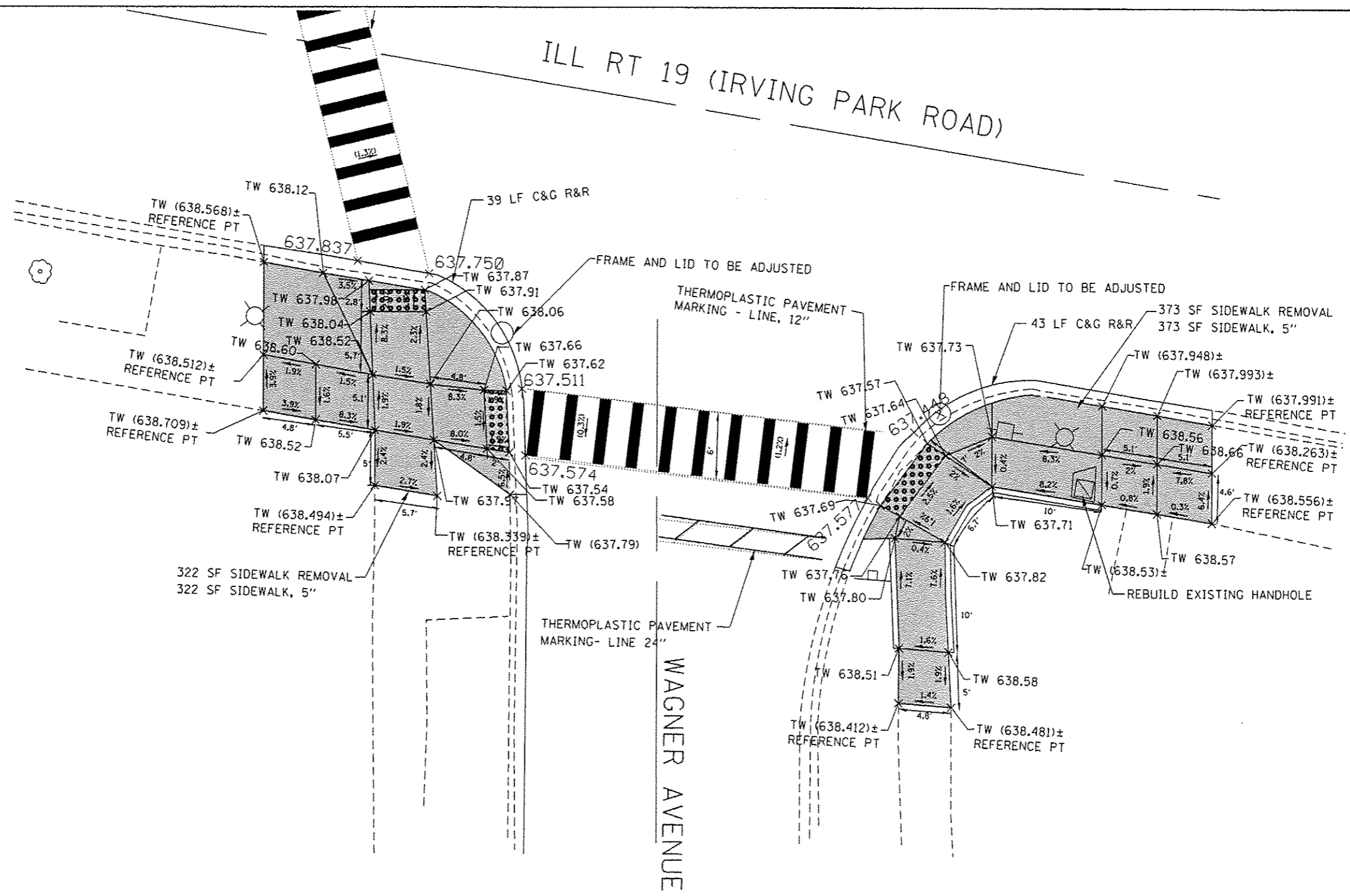
REFERENCE BENCHMARK ELEV 638.970
 BENCHMARK : ON NORTH FACE OF LIGHT POLE BASE 2ND LIGHT POLE WEST OF ENTRANCE
 LOCATION : ON NORTH WEST CORNER OF IL ROUTE 19 AND WAGNER AVENUE

FILE NAME *	USER NAME * B1gromiso	DESIGNED -	REVISED -	STATE OF ILLINOIS DEPARTMENT OF TRANSPORTATION	IL 19. (IRVING PARK RD.) AT WAGNER AVE. NORTH ADA SIDEWALK DETAIL SHEETS	F.A.P. RTE.	SECTION	COUNTY	TOTAL SHEETS	SHEET NO.	
Default	Documents\1001 Offices\District 1\Projects\0142\Drawings\Design\0142016-shs-details.dgn	CHECKED -	REVISED -			345	2016-045RS	COOK	36	181	
	PLOT SCALE * 10.0000' / in.	DATE -	REVISED -			SCALE: SHEET OF SHEETS STA. TO STA.		CONTRACT NO. 62D03			
	PLOT DATE * 5/30/2017					ILLINOIS FED. AID PROJECT					

Sheet Added 6-7-17



ILL RT 19 (IRVING PARK ROAD)



LEGEND

- xx.xx' EXISTING LENGTH
- ==== PROPOSED SIDE CURB
- () EXISTING ELEVATION/SLOPE
- PROPOSED SIDEWALK
- DETECTABLE WARNINGS
- SIDEWALK REMOVAL
REPLACE W/TOPSOIL & SOD

REFERENCE BENCHMARK ELEV 638.970
 BENCHMARK : ON NORTH FACE OF LIGHT POLE BASE 2ND LIGHT POLE WEST OF ENTRANCE
 LOCATION : ON NORTH WEST CORNER OF IL ROUTE 19 AND WAGNER AVENUE

FILE NAME *	USER NAME = Bilgramia	DESIGNED -	REVISED -
p:\11\004\CB10\INTEG-illinois.gov\WIDOT\Documents\1001 Offices\District 1\Projects\DI42\BRW\Browns\Design\DI42016-ehc-detailed.dgn		CHECKED -	REVISED -
Default	PLOT SCALE = 10.0000' / 1"	DATE -	REVISED -
	PLOT DATE = 5/30/2017		

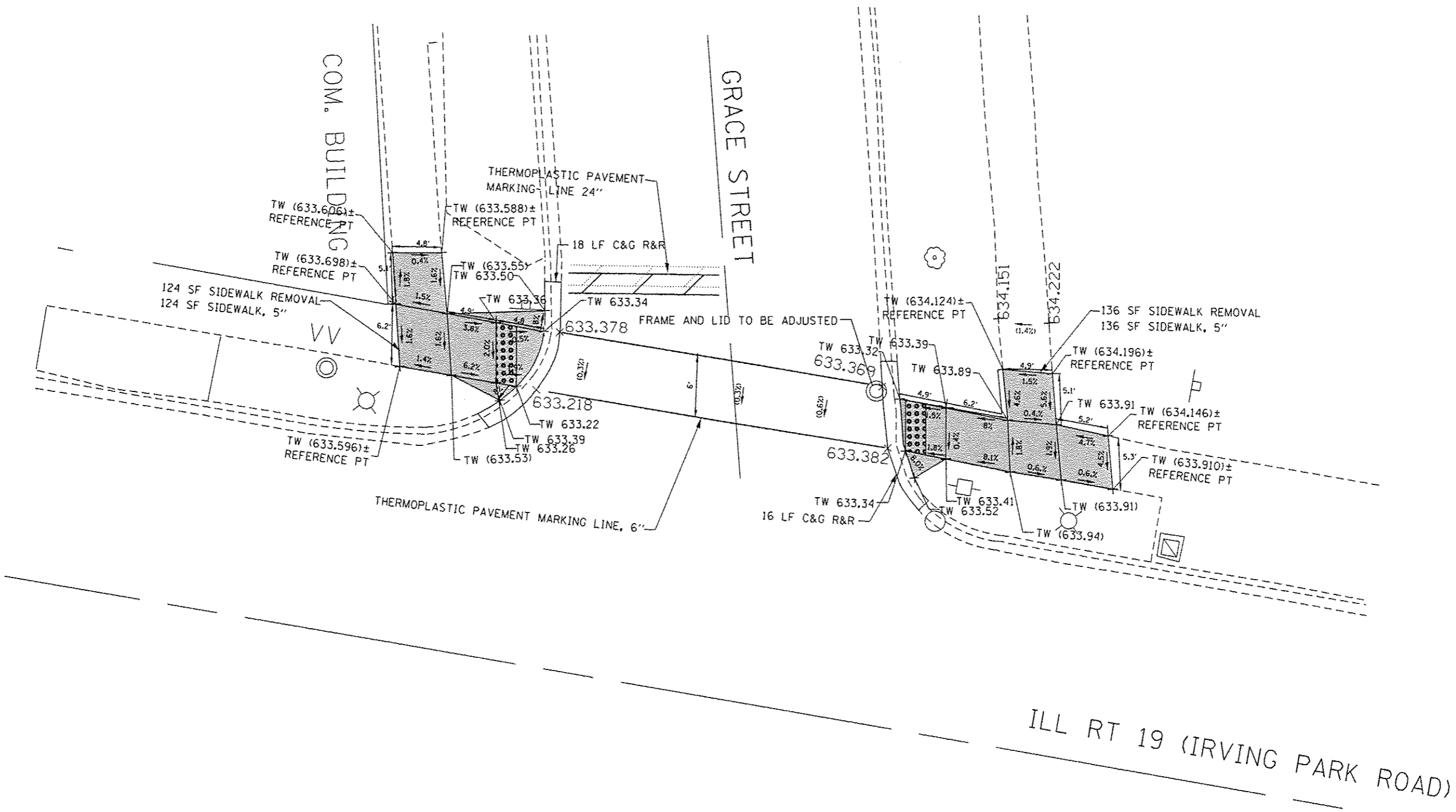
**STATE OF ILLINOIS
DEPARTMENT OF TRANSPORTATION**

**IL 19. (IRVING PARK RD.) AT WAGNER AVE. SOUTH
ADA SIDEWALK DETAIL SHEETS**

SCALE: SHEET OF SHEETS STA. TO STA.

F.A.P. RTE.	SECTION	COUNTY	TOTAL SHEETS	SHEET NO.
345	2016-045RS	COOK	36	18J
CONTRACT NO. 62003			ILLINOIS FED. AID PROJECT	

Sheet Added 6-7-17



LEGEND

- xx.xx' EXISTING LENGTH
- PROPOSED SIDE CURB
- () EXISTING ELEVATION/SLOPE
- PROPOSED SIDEWALK
- DETECTABLE WARNINGS
- SIDEWALK REMOVAL REPLACE W/TOPSOIL & SOD

REFERENCE BENCHMARK ELEV 635.830
 BENCHMARK : AT POWER POLE SOUTH EAST CORNER
 LOCATION : ON SOUTH EAST CORNER OF IL ROUTE 19 AND GRACE STREET

FILE NAME :	USER NAME : Bilgornisa	DESIGNED -	REVISED -
Documents\1007_Offices\District 1\Projects\014280\Drawings\Design\0142016-shr-details.dgn		REVISED -	REVISED -
Default	PLOT SCALE : 10.0000' / 1"	CHECKED -	REVISED -
	PLOT DATE : 5/30/2017	DATE -	REVISED -

**STATE OF ILLINOIS
 DEPARTMENT OF TRANSPORTATION**

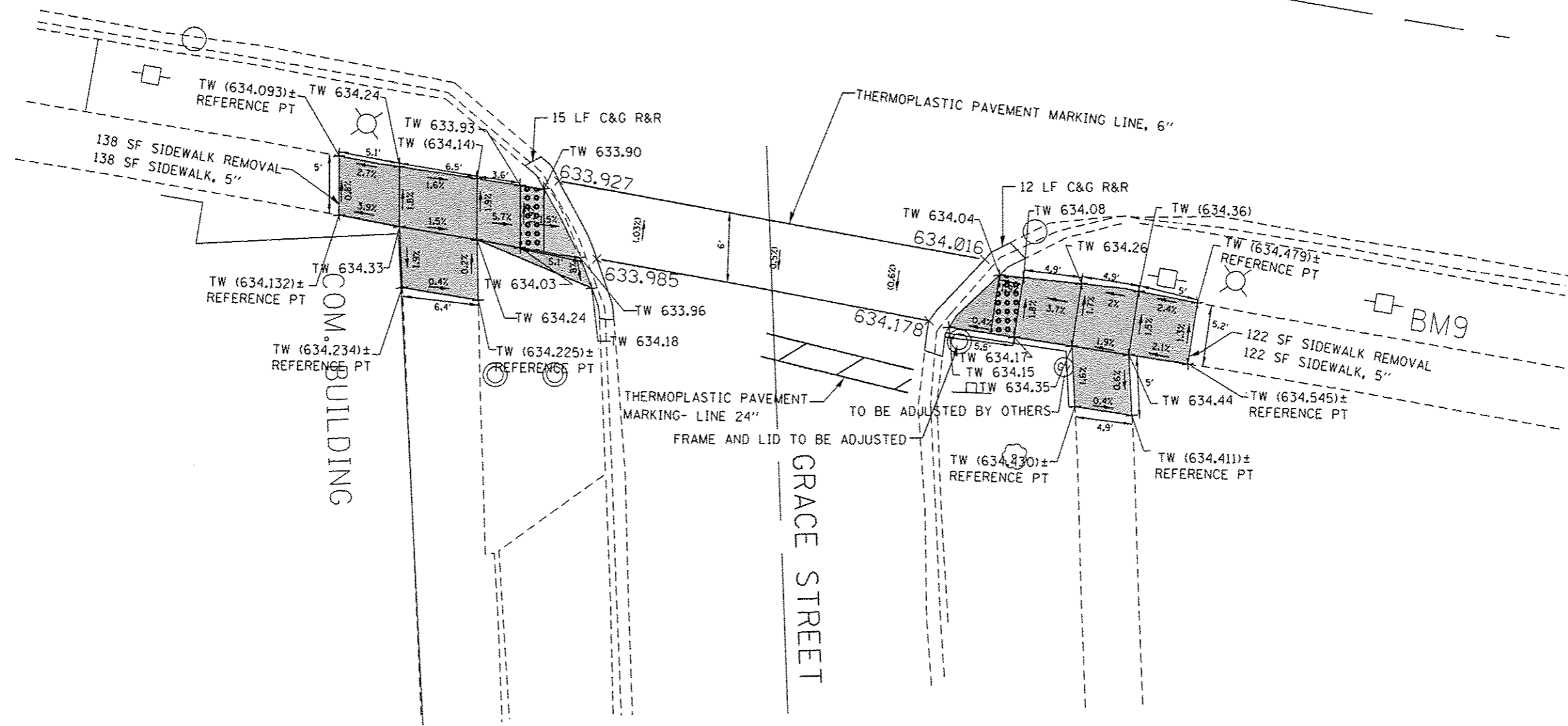
**IL 19. (IRVING PARK RD.) AT GRACE ST. NORTH
 ADA SIDEWALK DETAIL SHEETS**

SCALE: SHEET OF SHEETS STA. TO STA.

F.A.P. RTE.	SECTION	COUNTY	TOTAL SHEETS	SHEET NO.
345	2016-045RS	COOK	36	18L
ILLINOIS FED. AID PROJECT			CONTRACT NO. 62003	

Sheet Added 6-7-17

ILL RT 19 (IRVING PARK ROAD)



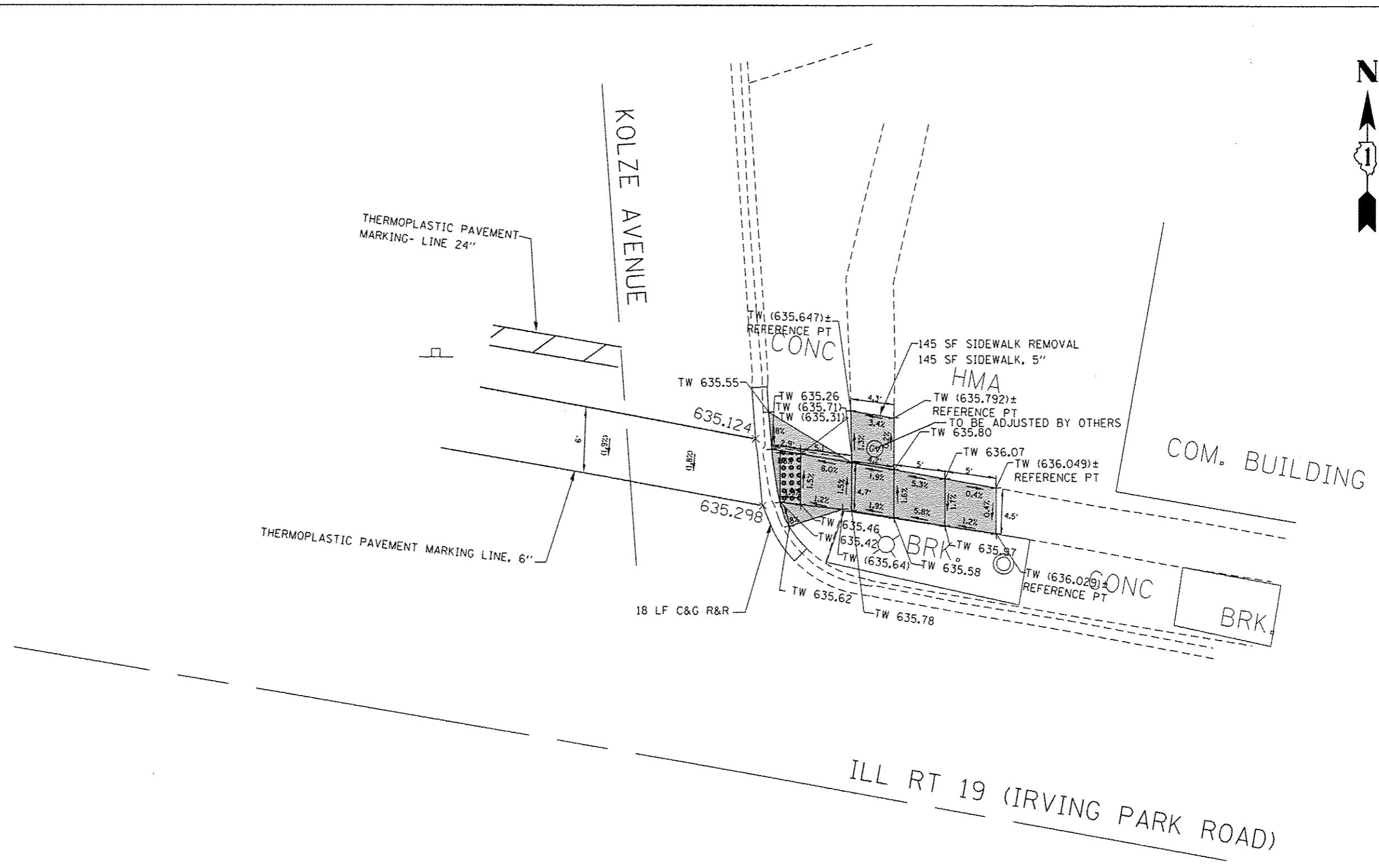
LEGEND

- xx.xx' EXISTING LENGTH
- PROPOSED SIDE CURB
- () EXISTING ELEVATION/SLOPE
- PROPOSED SIDEWALK
- DETECTABLE WARNINGS
- SIDEWALK REMOVAL REPLACE W/TOPSOIL & SOD

REFERENCE BENCHMARK ELEV 635.830
 BENCHMARK : AT POWER POLE SOUTH EAST CORNER
 LOCATION : ON SOUTH EAST CORNER OF IL ROUTE 19 AND GRACE STREET

FILE NAME =	USER NAME = Bigranisa	DESIGNED -	REVISED -	STATE OF ILLINOIS DEPARTMENT OF TRANSPORTATION	IL 19. (IRVING PARK RD.) AT GRACE ST. SOUTH ADA SIDEWALK DETAIL SHEETS	F.A.P. RATE.	SECTION	COUNTY	TOTAL SHEETS	SHEET NO.	
Default	\\s:\IL004EB\INTEG\Illinois.gov\PI\DOT\Do	umants\DOT Offices\Districts\VP\Projects\0142	BRW\Design\0142016\shl-details.dgn			345	2016-045RS	COOK	36	18M	
	PLOT SCALE = 10.0000' / 1"	CHECKED -	REVISED -			SCALE: SHEET OF SHEETS STA. TO STA.		CONTRACT NO. 62D03			
	PLOT DATE = 5/30/2017	DATE -	REVISED -			ILLINOIS FED. AID PROJECT					

Sheet Added 6-7-17



LEGEND	
xx.xx'	EXISTING LENGTH
=====	PROPOSED SIDE CURB
()	EXISTING ELEVATION/SLOPE
	PROPOSED SIDEWALK
	DETECTABLE WARNINGS
	SIDEWALK REMOVAL REPLACE W/TOPSOIL & SOD

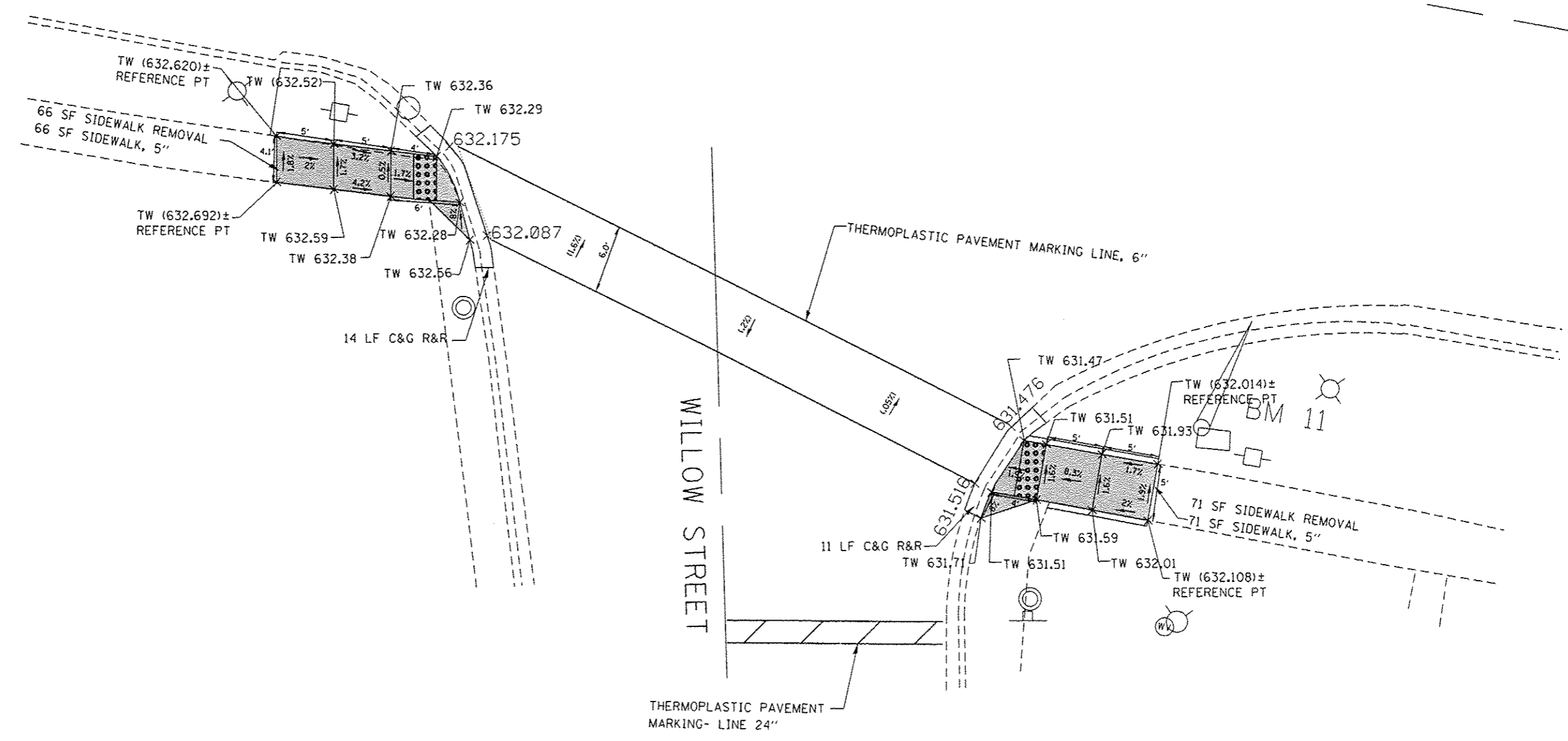
REFERENCE BENCHMARK ELEV 635.862
 BENCHMARK : AT NORTH EAST CORNER OF IL 19 AND KOLZE
 LOCATION : ON NORTH EAST CORNER OF IL ROUTE 19 AND KOLZE AVENUE

FILE NAME :	USER NAME : Bilgramia	DESIGNED -	REVISED -	STATE OF ILLINOIS DEPARTMENT OF TRANSPORTATION	IL 19. (IRVING PARK RD.) AT AT KOLZE AVE. ADA SIDEWALK DETAIL SHEETS	F.A.P. RTE.	SECTION	COUNTY	TOTAL SHEETS	SHEET NO.	
pm\11004EB10\NTEG\Illinois.gov\PHDOT\Documents\1007\Offices\District 1\Projects\DI42016\Design\DI42016-ent-detail.dgn		REVISOR	REVISOR			345	2016-045RS	COOK	36	18N	
Default	PLOT SCALE = 10.0000' / in.	CHECKED -	REVISOR			CONTRACT NO. 62D03					
	PLOT DATE = 5/30/2017	DATE -	REVISOR			ILLINOIS FED. AID PROJECT					

Sheet Added 6-7-17



ILL RT 19 (IRVING PARK ROAD)



LEGEND

- xx.xx' EXISTING LENGTH
- PROPOSED SIDE CURB
- () EXISTING ELEVATION/SLOPE
- PROPOSED SIDEWALK
- DETECTABLE WARNINGS
- SIDEWALK REMOVAL
REPLACE W/TOPSOIL & SOD

REFERENCE BENCHMARK ELEV 632.116
 BENCHMARK : TRAFFIC CONTROL BOX SQUARE ON NORTH WEST CORNER
 LOCATION : ON SOUTH EAST CORNER OF IL ROUTE 19 AND WILLOW STREET

FILE NAME :	USER NAME : Bilgramisa	DESIGNED -	REVISED -
pw\ML004EBID\INTEG\Illinois.gov\PIDOT\Documents\DOT Offices\District 3\Projects\DI42016\Drawings\Design\DI42016-ehf-detail.dwg		CHECKED -	REVISED -
Default	PLOT DATE : 5/30/2017	DATE -	REVISED -

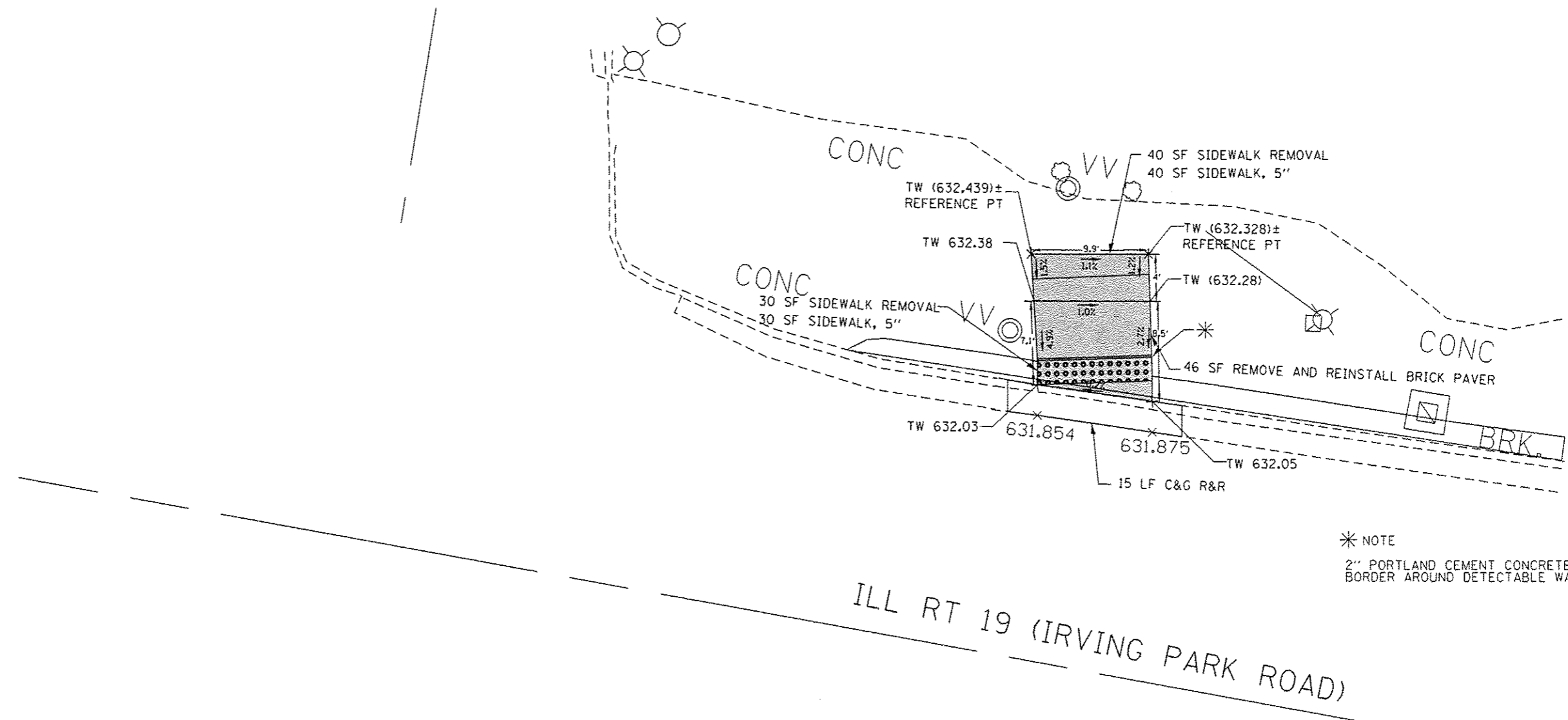
**STATE OF ILLINOIS
 DEPARTMENT OF TRANSPORTATION**

**IL 19. (IRVING PARK RD.) AT WILLOW ST.
 ADA SIDEWALK DETAIL SHEETS**

SCALE:	SHEET	OF	SHEETS	STA.	TO	STA.
--------	-------	----	--------	------	----	------

F.A.P. RTE.	SECTION	COUNTY	TOTAL SHEETS	SHEET NO.
345	2016-045RS	COOK	36	18P
ILLINOIS FED. AID PROJECT			CONTRACT NO. 62003	

Sheet Added 6-7-17



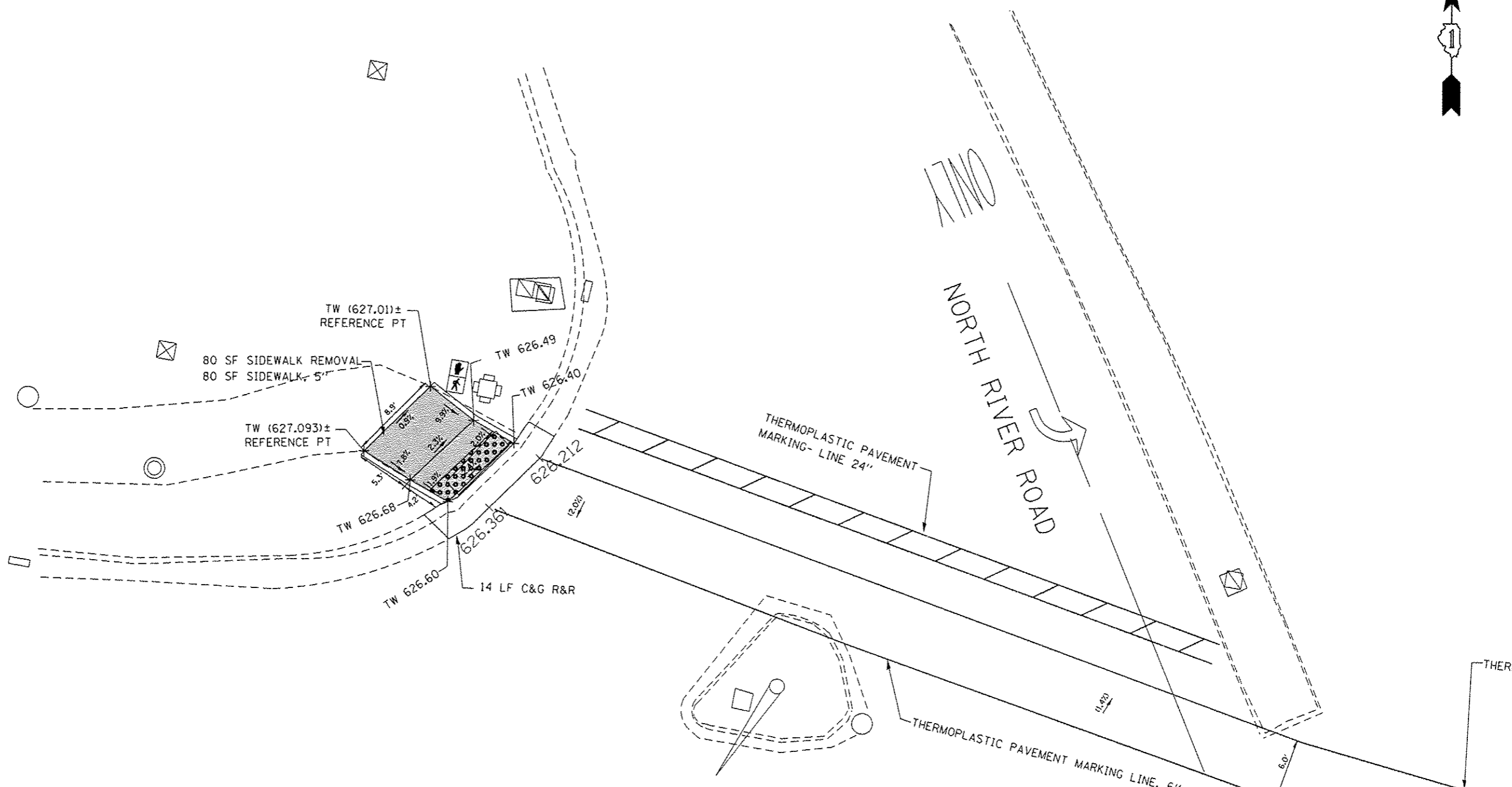
* NOTE
2" PORTLAND CEMENT CONCRETE
BORDER AROUND DETECTABLE WARNING

LEGEND	
xxx.xx'	EXISTING LENGTH
=====	PROPOSED SIDE CURB
()	EXISTING ELEVATION/SLOPE
	PROPOSED SIDEWALK
	DETECTABLE WARNINGS
	SIDEWALK REMOVAL REPLACE W/TOPSOIL & SOD

REFERENCE BENCHMARK ELEV 632.116
BENCHMARK : TRAFFIC CONTROL BOX SQUARE ON NORTH WEST CORNER
LOCATION : ON SOUTH EAST CORNER OF IL ROUTE 19 AND WILLOW STREET

FILE NAME :	USER NAME : Bilgramisa	DESIGNED -	REVISED -	STATE OF ILLINOIS DEPARTMENT OF TRANSPORTATION	IL 19. (IRVING PARK RD.) AT BUS RAMP EAST OF WILLOW ST. ADA SIDEWALK DETAIL SHEETS	F.A.P. RITE:	SECTION	COUNTY	TOTAL SHEETS	SHEET NO.	
Default	Documents\DOT Offices\District 1\Projects\DI428\BROWNS\Design\0142016-ehs-details.dgn	CHECKED -	REVISED -			345	2016-045RS	COOK	36	180	
	PLOT SCALE = 10,000' / in.	DATE -	REVISED -			CONTRACT NO. 62003		ILLINOIS FED. AID PROJECT			
	PLOT DATE = 5/30/2017					SCALE:	SHEET	OF	SHEETS	STA.	TO

Sheet Added 6-7-17



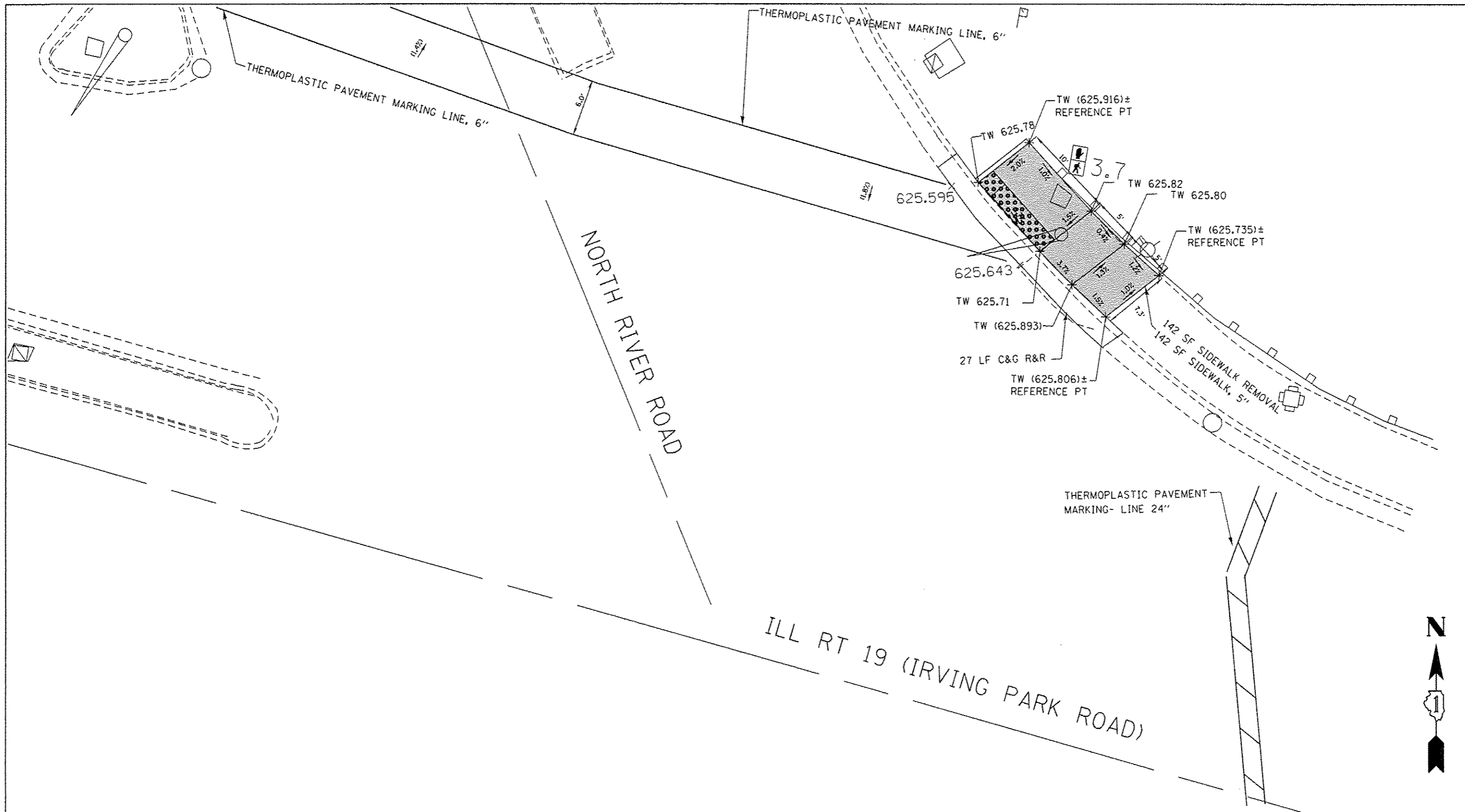
LEGEND

- xx.xx' EXISTING LENGTH
- PROPOSED SIDE CURB
- () EXISTING ELEVATION/SLOPE
- PROPOSED SIDEWALK
- DETECTABLE WARNINGS
- SIDEWALK REMOVAL REPLACE W/TOPSOIL & SOD

REFERENCE BENCHMARK ELEV 626.304
 BENCHMARK : TRAFFIC CONTROL BOX SQUARE ON SOUTH WEST CORNER
 LOCATION : ON SOUTH WEST CORNER OF IL 19 AND NORTH RIVER ROAD

FILE NAME #	USER NAME # Bilgromsa	DESIGNED -	REVISED -	STATE OF ILLINOIS DEPARTMENT OF TRANSPORTATION	IL 19. (IRVING PARK RD.) AT NORTH RIVER RD. WEST SIDE ADA SIDEWALK DETAIL SHEETS	F.A.P. B.T.E.	SECTION	COUNTY	TOTAL SHEETS	SHEET NO.	
<p style="font-size: 8px;">p:\11\084E010\INTEG.illinois.gov\PI\DOT\Documents\DOT Offices\District 1\Projects\0142016\BRM\Notes\Design\0142016-shr-detail.dgn</p>						345	2016-045RS	COOK	36	18R	
<p style="font-size: 8px;">PLOT SCALE * 10,0000' / in.</p>						CONTRACT NO. 62D03					
<p style="font-size: 8px;">PLOT DATE * 5/30/2017</p>						[ILLINOIS] FED. AID PROJECT					

Sheet Added 6-7-17



LEGEND	
xx.xx'	EXISTING LENGTH
—	PROPOSED SIDE CURB
()	EXISTING ELEVATION/SLOPE
[Shaded Grid]	PROPOSED SIDEWALK
[Dotted Grid]	DETECTABLE WARNINGS
[Cross-hatched]	SIDEWALK REMOVAL REPLACE W/TOPSOIL & SOD

REFERENCE BENCHMARK ELEV 6326.304
 BENCHMARK : TRAFFIC CONTROL BOX SQUARE ON SOUTH WEST CORNER
 LOCATION : ON SOUTH WEST CORNER OF IL ROUTE 19 AND NORTH RIVER ROAD

FILE NAME *	USER NAME * B1grmiso	DESIGNED -	REVISED -	STATE OF ILLINOIS DEPARTMENT OF TRANSPORTATION	IL 19 (IRVING PARK RD.) AT NORTH RIVER RD. EAST SIDE ADA SIDEWALK DETAIL SHEETS	F.A.P. RTE.	SECTION	COUNTY	TOTAL SHEETS	SHEET NO.
Default	Documents\DOT Offices\District 1\Projects\DI428\DRAWING\Design\DI42816-shi-detail.dgn	CHECKED -	REVISED -			345	2016-045RS	COOK	36	185
	PLDT SCALE * 10,0000 / in.	DATE -	REVISED -			SCALE: SHEET OF SHEETS STA. TO STA.		CONTRACT NO. 62003		
	PLDT DATE * 5/30/2017					ILLINOIS FED. AID PROJECT				

Sheet Added 6-7-17