

STATE OF ILLINOIS
DEPARTMENT OF TRANSPORTATION

F.A.U. RTE. 2906	SECTION 68-RS	COUNTY COOK	TOTAL SHEETS 23	SHEET NO. 1
ILLINOIS CONTRACT NO.: 62C59				

***23+10=33 total sheets**
D-91-366-16

FOR INDEX OF SHEETS, SEE SHEET NO. 2

PROPOSED HIGHWAY PLANS
F.A.U. 2906 (WILLIAMS ST./GLENWOOD-THORNTON RD.)
MAIN ST. TO MARION ST.
RESURFACING (3P) AND
ADA PEDESTRIAN RAMPS
SECTION NO.: 68-RS
PROJECT: STP-2906(006)
COOK COUNTY
C-91-366-16

PROJECT LOCATED IN THE VILLAGES
OF GLENWOOD AND THORNTON



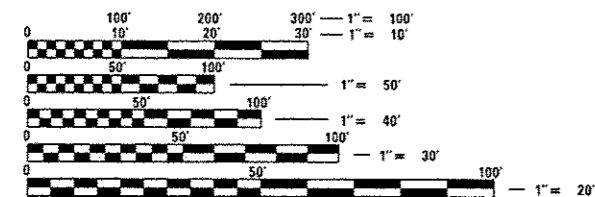
LOCATION OF SECTION INDICATED THUS: —

TRAFFIC DATA:

2014 ADT - 5050 TO 6600
SPEED LIMIT - 25 TO 35 MPH

OMISSIONS:

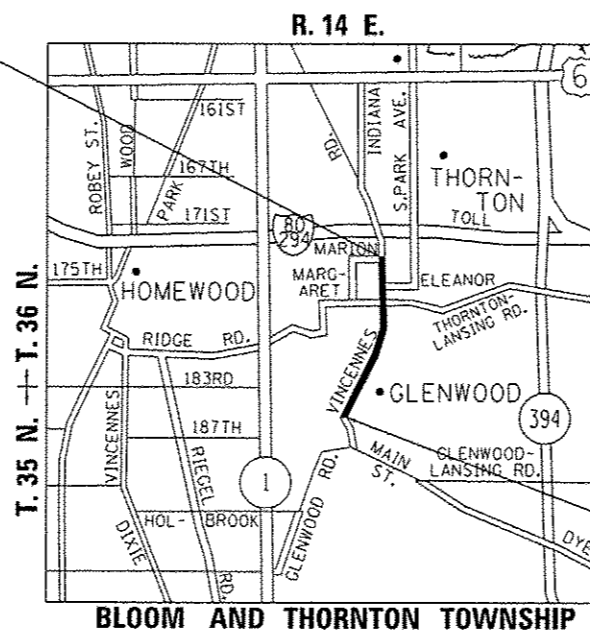
BRIDGE OMISSION OVER THORN CREEK
STA. 15+65 TO STA. 16+29



FULL SIZE PLANS HAVE BEEN PREPARED USING STANDARD ENGINEERING SCALES. REDUCED SIZED PLANS WILL NOT CONFORM TO STANDARD SCALES. IN MAKING MEASUREMENTS ON REDUCED PLANS, THE ABOVE SCALES MAY BE USED.

J.U.L.I.E.
JOINT UTILITY LOCATION INFORMATION FOR EXCAVATION
1-800-892-0123
OR 811

PROJECT ENDS
STA. 99 + 28



PROJECT BEGINS
STA. 9 + 16

PROJECT ENGINEER: JENPAI CHANG (847) 705-4432
PROJECT MANAGER: FAWAD AQUEEL (847) 705-4247

GROSS LENGTH OF IMPROVEMENT - 9012 FEET - 1.71 MILES
NET LENGTH OF IMPROVEMENT - 8948 FEET - 1.69 MILES

CONTRACT NO. 62C59

STATE OF ILLINOIS
DEPARTMENT OF TRANSPORTATION

SUBMITTED April 3 2017
[Signature]
REGIONAL ENGINEER

May 12 2017
Maureen M. Addis, P.E.
ENGINEER OF DESIGN AND ENVIRONMENT

May 12 2017
[Signature]
DIRECTOR OF PROGRAM DEVELOPMENT

PRINTED BY THE AUTHORITY
OF THE STATE OF ILLINOIS

REV 6-7-17

INDEX OF SHEETS

SHEET NO.

DESCRIPTION:

STATE STANDARDS

GENERAL NOTES:

1	COVER SHEET	000001-06	STANDARD SYMBOLS, ABBREVIATIONS AND PATTERNS
2	INDEX OF SHEETS, STATE STANDARDS AND GENERAL NOTES	424001-09	PERPENDICULAR CURB AND RAMPS FOR SIDEWALKS
3-5	SUMMARY OF QUANTITIES	424006-02	DIAGONAL CURB RAMPS FOR SIDEWALKS
6-8	TYPICAL SECTIONS	424021-03	DEPRESSED CORNER FOR SIDEWALKS
9-11	ROADWAY AND PAVEMENT MARKING PLANS	442201-04	CLASS C AND D PATCHES
11A-11J	ADA SIDEWALK RAMP DETAILS	604001-04	FRAMES AND LIDS, TYPE 1
12	DETAILS FOR FRAMES AND LIDS ADJUSTMENTS WITH MILLING (BD-8)	604006-05	FRAMES AND GRATES, TYPE 23
13	DETAILS FOR PAVEMENT PATCHING FOR HMA SURFACED PAVEMENT (BD-22)	606001-06	CONCRETE CURB TYPE B AND COMBINATION CONCRETE CURB AND GUTTER
14	DETAILS FOR CURB AND GUTTER REMOVAL AND REPLACEMENT (BD-24)	701011-04	OFF-ROAD OPERATION 2L, 2W DAY ONLY
15	BUTT JOINT AND HMA TAPER DETAILS (BD-32)	701301-04	LANE CLOSURE 2L, 2W, SHORT TIME OPERATIONS
16	TRAFFIC CONTROL AND PROTECTION FOR SIDE ROADS, INTERSECTIONS, AND DRIVEWAYS (TC-10)	701306-03	LANE CLOSURE, 2L, 2W, SLOW MOVING OPERATIONS DAY ONLY FOR SPEEDS GREATER THAN 45 MPH
17	TYPICAL APPLICATION FOR RAISED REFLECTIVE PAVEMENT MARKERS (TC-11)	701311-03	LANE CLOSURE, 2L, 2W, MOVING OPERATIONS - DAY ONLY
18	DISTRICT ONE TYPICAL PAVEMENT MARKINGS (TC-13)	701606-10	URBAN LANE CLOSURE, MULTILANE, 2W WITH MOUNTABLE MEDIAN
19	TRAFFIC CONTROL AND PROTECTION AT TURN BAYS (TO REMAIN OPEN TO TRAFFIC) (TC-14)	701701-10	URBAN LANE CLOSURE, MULTILANE INTERSECTION
20	PAVEMENT MARKING--LETTERS AND SYMBOLS FOR TRAFFIC STAGING (TC-16)	701801-06	SIDEWALK CORNER OR CROSSWALK CLOSURE
21	DISTRICT ONE - DETECTOR LOOP INSTALLATION DETAILS FOR ROADWAY RESURFACING (TS-07)	701901-06	TRAFFIC CONTROL DEVICES
22	DETECTOR LOOP LOCATION DETAILS	780001-05	TYPICAL PAVEMENT MARKING
23	ARTERIAL ROAD INFORMATION SIGNING (TC-22)	781001-04	TYPICAL APPLICATION RAISED REFLECTIVE PAVEMENT MARKERS
		886001-01	DETECTOR LOOP INSTALLATIONS
		886006-01	TYPICAL LAYOUTS FOR DETECTION LOOPS

BEFORE STARTING ANY EXCAVATION THE CONTRACTOR SHALL CALL "JULIE" AT 800-892-0123 OR "CUAN" (CHICAGO UTILITY ALERT NETWORK) AT 312-744-7000 FOR FIELD LOCATIONS OF BURIED ELECTRIC, TELEPHONE AND GAS FACILITIES. (48 HOURS NOTIFICATION IS REQUIRED).

10 FEET (3 METERS) TRANSITION SHALL BE USED TO MATCH PROPOSED CURB AND GUTTER AND MEDIAN ITEMS OF WORK TO EXISTING CURBS AND GUTTERS AND MEDIANS IN THE FIELD, UNLESS OTHERWISE SHOWN. THE TRANSITION SHALL BE PAID FOR AT THE CONTRACT UNIT PRICE FOR THE PROPOSED ITEMS OF WORK SPECIFIED.

THE CONTRACTOR SHALL COORDINATE CONSTRUCTION ACTIVITIES WITH THE UTILITY COMPANIES AND THE VILLAGES OF GLENWOOD AND THORNTON.

THE CONTRACTOR WILL NOT BE ALLOWED TO SET UP A YARD OR FIELD OFFICE ON STATE PROPERTY WITHOUT WRITTEN PERMISSION FROM THE DEPARTMENT.

ANY PAVEMENT MARKINGS AND RAISED REFLECTIVE PAVEMENT MARKERS OBLITERATED BY MILLING AND RESURFACING OPERATIONS ON SIDE STREETS AND ENTRANCES SHALL BE REPLACED AND PAID FOR IN KIND.

ALL DAMAGE TO EXISTING PAVEMENT MARKINGS OR RAISED REFLECTIVE PAVEMENT MARKERS OUTSIDE THE REMOVAL LINE SHOWN ON THE PLANS SHALL BE REPLACED AT NO ADDITIONAL COST TO THE DEPARTMENT.

ALL PAVEMENT PATCHING LOCATIONS WILL BE DETERMINED IN THE FIELD BY THE ENGINEER.

LOCATION OF COMBINATION CONCRETE CURB AND GUTTER REMOVAL AND REPLACEMENT (OR COMBINATION CURB AND GUTTER (THE TYPE SPECIFIED ON THE PLANS)), WILL BE DETERMINED IN THE FIELD BY THE ENGINEER.

DRAINAGE ADJUSTMENT OR RECONSTRUCTION LOCATIONS WILL BE DETERMINED IN THE FIELD BY THE ENGINEER.

IT SHALL BE THE CONTRACTORS RESPONSIBILITY TO VERIFY ALL DIMENSIONS AND EXISTING CONDITIONS IN THE FIELD PRIOR TO CONSTRUCTION AND ORDERING OF MATERIALS.

FRAMES AND GRATES ADJUSTMENT OF PRIVATE UTILITIES WITHIN THE LIMITS OF THE IMPROVEMENT SHALL BE DONE BY THEIR RESPECTIVE OWNERS AND ARE NOT IN PART OF THIS CONTRACT.

BEFORE BEGINNING ANY WORK, THE CONTRACTOR SHALL RETAIN AND RECORD FOR FUTURE REFERENCE, ALL EXISTING PAVEMENT MARKING LINES (RAISED REFLECTIVE PAVEMENT MARKERS) IN ORDER THAT THESE LOCATIONS CAN BE RE-ESTABLISHED FOR STRIPING. EXACT LOCATIONS OF ALL PAVEMENT MARKINGS SHALL BE AS DIRECTED BY THE ENGINEER.

WHEN THE MILLED PAVEMENT IS OPEN TO TRAFFIC THE MAXIMUM GRADE DIFFERENTIAL BETWEEN PASSES OF THE MILLING MACHINE SHALL NOT EXCEED 1/2 INCHES (40 mm) WHERE THE SPEED LIMIT IS 40 MPH (80 km/h) OR LESS AND 1 INCH (25 mm) WHERE THE SPEED LIMIT IS GREATER THAN 40 MPH (80 km/h). WITH WRITTEN APPROVAL OF THE ENGINEER, A MAXIMUM GRADE DIFFERENTIAL OF 3 INCHES (75 mm) MAY BE ALLOWED IF THE EDGE OF THE MILLING MACHINE IS SLOPED A MINIMUM (1:3).

THE CONTRACTOR SHALL CONTACT THE DISTRICT ONE TRAFFIC CONTROL CENTER AT (847) 705-4470 A MINIMUM OF 72 HOURS IN ADVANCE OF BEGINNING WORK.

PERMANENT PAVEMENT MARKINGS SHALL BE THERMOPLASTIC (OF THE EXTRUDED TYPE) AND SHOULD BE PLACED IN ACCORDANCE WITH THE "DISTRICT ONE TYPICAL PAVEMENT MARKINGS" DETAIL. (TC-13)

THE RESIDENT ENGINEER SHALL CONTACT PATRICE HARRIS, AREA TRAFFIC ENGINEER, AT PATRICE.HARRIS@ILLINOIS.GOV, A MINIMUM OF TWO (2) WEEKS PRIOR TO THE PLACEMENT OF PERMANENT PAVEMENT MARKINGS.

THE CONTRACTOR SHALL MAINTAIN PEDESTRIAN ACCESS AT ALL TIMES DURING CONSTRUCTION.

FILE NAME *	USER NAME * STEOPA	DESIGNED -	REVISED -	<p align="center">STATE OF ILLINOIS DEPARTMENT OF TRANSPORTATION</p>	<p align="center">INDEX OF SHEETS, STATE STANDARDS AND GENERAL NOTES FAU 2906 (WILLIAMS ST./GLENWOOD-THORNTON RD.)--MAIN ST. TO MARION ST.</p>	F.A.U. RTE.	SECTION	COUNTY	TOTAL SHEETS	SHEET NO.	
Default		CHECKED -	REVISED -			2906	6B-RS	COOK	23	2	
		DATE -	REVISED -			SCALE:		SHEET OF SHEETS		STA.	TO STA.
								ILLINOIS FED. AID PROJECT		CONTRACT NO. 62C59	

REV 6-7-17

URBAN

SUMMARY OF QUANTITIES

CONSTRUCTION TYPE CODE

CODE NO	ITEM	UNIT	TOTAL QUANTITIES	80/20 (FED/STATE) 0005
21101615	TOPSOIL FURNISH AND PLACE, 4"	SO YD	5	5
20200100	EARTH EXCAVATION	CU YD	5	5
25200110	SODDING, SALT TOLERANT	SO YD	2	2
40600290	BITUMINOUS MATERIALS (TACK COAT)	POUND	20807	20807
40600400	MIXTURE FOR CRACKS, JOINTS, AND FLANGEWAYS	TON	47	47
40600827	POLYMERIZED LEVELING BINDER (MACHINE METHOD), 1L-4.75, N50	TON	1272	1272
40600982	HOT-MIX ASPHALT SURFACE REMOVAL - BUTT JOINT	SO YD	327	327
40601005	HOT-MIX ASPHALT REPLACEMENT OVER PATCHES	TON	777	777
42001300	PROTECTIVE COAT	SO YD	498	498
42400200	PORTLAND CEMENT CONCRETE SIDEWALK 5 INCH	SO FT	3574	3574
42400800	DETECTABLE WARNINGS	SO FT	431	431
44000160	HOT-MIX ASPHALT SURFACE REMOVAL, 2 3/4"	SO YD	30824	30824
44000600	SIDEWALK REMOVAL	SO FT	3569	3569

URBAN

SUMMARY OF QUANTITIES

CONSTRUCTION TYPE CODE

CODE NO	ITEM	UNIT	TOTAL QUANTITIES	80/20 (FED/STATE) 0005
44002224	HOT-MIX ASPHALT REMOVAL OVER PATCHES, 6"	SO YD	2313	2313
44201741	CLASS D PATCHES, TYPE II, 8 INCH	SO YD	688	688
44201745	CLASS D PATCHES, TYPE III, 8 INCH	SO YD	388	388
44201747	CLASS D PATCHES, TYPE IV, 8 INCH	SO YD	1268	1268
48102100	AGGREGATE WEDGE SHOULDER, TYPE B	TON	499	499
56109210	WATER VALVES TO BE ADJUSTED	EACH	2	2
60300305	FRAMES AND LIDS TO BE ADJUSTED	EACH	5	5
* 66900200	NON-SPECIAL WASTE DISPOSAL	CU YD	5	5
* 66900450	SPECIAL WASTE PLANS AND REPORTS	LSUM	1	1
* 66900530	SOIL DISPOSAL ANALYSIS	EACH	1	1
67000400	ENGINEER'S FIELD OFFICE, TYPE A	CAL MO	6	6
67100100	MOBILIZATION	LSUM	1	1
70100460	TRAFFIC CONTROL AND PROTECTION, STANDARD 701306	LSUM	1	1
70102625	TRAFFIC CONTROL AND PROTECTION, STANDARD 701606	LSUM	1	1

* SPECIALTY ITEMS
□ NON-PARTICIPATING ITEMS

FILE NAME: p:\VLD\B4E\BID\NTEG\1104\spw\PW1007\Documents\1007...
 USER NAME: STEEDPA
 DESIGNED: [] REVISED: []
 CHECKED: [] DATE: []
 PLOT SCALE: 100.0000' / 1" / 16"
 PLOT DATE: 4/6/2007

STATE OF ILLINOIS
DEPARTMENT OF TRANSPORTATION

SUMMARY OF QUANTITIES
 FAU 2906 (WILLIAMS ST./GLENWOOD-THORNTON RD.)-MAIN ST. TO MARION ST.
 SCALE: [] SHEET NO. [] OF [] SHEETS STA. [] TO STA. []

F.A.U. RTE. 2906 SECTION 68-RS COUNTY COOK TOTAL SHEETS 23 SHEET NO. 3
 FED. ROAD DIST. NO. 1 ILLINOIS FED. AID PROJECT CONTRACT NO. 62C59

REV 6-7-17

URBAN

URBAN

SUMMARY OF QUANTITIES			CONSTRUCTION TYPE CODE				
CODE NO	ITEM	UNIT	TOTAL QUANTITIES	80/20 (FED/STATE)	0005		
70102630	TRAFFIC CONTROL AND PROTECTION, STANDARD 701601	LSUM	1	1			
70102635	TRAFFIC CONTROL AND PROTECTION, STANDARD 701701	LSUM	1	1			
70102640	TRAFFIC CONTROL AND PROTECTION, STANDARD 701801	LSUM	1	1			
70300100	SHORT TERM PAVEMENT MARKING	FOOT	3420	3420			
70300150	SHORT TERM PAVEMENT MARKING REMOVAL	SO FT	570	570			
70300210	TEMPORARY PAVEMENT MARKING LETTERS AND SYMBOLS	SO FT	120	120			
70300220	TEMPORARY PAVEMENT MARKING - LINE 4"	FOOT	27778	27778			
70300240	TEMPORARY PAVEMENT MARKING - LINE 6"	FOOT	631	631			
70300260	TEMPORARY PAVEMENT MARKING - LINE 12"	FOOT	603	603			
70300280	TEMPORARY PAVEMENT MARKING - LINE 24"	FOOT	90	90			
70300520	PAVEMENT MARKING TAPE, TYPE III 4"	FOOT	1710	1710			
*78000100	THERMOPLASTIC PAVEMENT MARKING - LETTERS AND SYMBOLS	SO FT	120	120			
*78000200	THERMOPLASTIC PAVEMENT MARKING - LINE 4"	FOOT	27778	27778			

SUMMARY OF QUANTITIES			CONSTRUCTION TYPE CODE				
CODE NO	ITEM	UNIT	TOTAL QUANTITIES	80/20 (FED/STATE)	0005		
*78000400	THERMOPLASTIC PAVEMENT MARKING - LINE 6"	FOOT	631	631			
*78000600	THERMOPLASTIC PAVEMENT MARKING - LINE 12"	FOOT	603	603			
*78000650	THERMOPLASTIC PAVEMENT MARKING - LINE 24"	FOOT	90	90			
*78008210	POLYUREA PAVEMENT MARKING TYPE I - LINE 4"	FOOT	254	254			
78100100	RAISED REFLECTIVE PAVEMENT MARKER	EACH	453	453			
78300200	RAISED REFLECTIVE PAVEMENT MARKER REMOVAL	EACH	408	408			
88600600	DETECTOR LOOP REPLACEMENT	FOOT	366	366			
89502376	REBUILD EXISTING HANDHOLES	EACH	5	5			
X0320050	CONSTRUCTION LAYOUT (SPECIAL)	LSUM	1	1			
X0327980	PAVEMENT MARKING REMOVAL - WATER BLASTING	SO FT	85	85			
X2020110	GRADING AND SHAPING SHOULDERS	UNIT	125	125			
X4060006	POLYMERIZED HOT-MIX ASPHALT SURFACE COURSE, STONE MATRIX ASPHALT, 12.5, N80	TON	3453	3453			
X5537800	STORM SEWERS TO BE CLEANED 12"	FOOT	1500	1500			

13

2


FILE NAME: D:\N\LOM\EBID\INT\EG\11\nd\spv\PW\DOT\Documents\COF	USER NAME: STEEDPA	DESIGNED: -	REVISED: -	STATE OF ILLINOIS DEPARTMENT OF TRANSPORTATION	SUMMARY OF QUANTITIES FAU 2906 (WILLIAMS ST./GLENWOOD-THORNTON RD.)-MAIN ST. TO MARION ST.			F.A.U. R.T.E.:	SECTION:	COUNTY:	TOTAL SHEETS:	SHEET NO.:
PLT SCALE: 1/100000	CHECKED: -	REVISED: -	2906					68-RS	COOK	23	4	
PLT DATE: 4/10/2017	DATE: -	REVISED: -	SCALE:					SHEET NO. OF SHEETS:	STA. TO STA.:	FED. ROAD DIST. NO. 1 ILLINOIS FED. AID PROJECT		

REV 6-7-17

URBAN

SUMMARY OF QUANTITIES				CONSTRUCTION TYPE CODE						
CODE NO	ITEM	UNIT	TOTAL QUANTITIES	80/20 (FED/STATE)						
				0005						
X6030310	FRAMES AND LIDS TO BE ADJUSTED (SPECIAL)	EACH	5	5						
X7030005	TEMPORARY PAVEMENT MARKING REMOVAL	SO FT	570	570						
Z0004562	COMBINATION CONCRETE CURB AND GUTTER REMOVAL AND REPLACEMENT	FOOT	478	478						
Z0018500	DRAINAGE STRUCTURES TO BE CLEANED	EACH	15	15						
Z0030850	TEMPORARY INFORMATION SIGNING	SO FT	51.4	51.4						
Z0034105	MATERIAL TRANSFER DEVICE	TON	3453	3453						

SUMMARY OF QUANTITIES				CONSTRUCTION TYPE CODE						
CODE NO	ITEM	UNIT	TOTAL QUANTITIES							

478 478 

6

FILE NAME :	USER NAME = STEEDPA	DESIGNED -	REVISED -
	0:\Users\jstee\OneDrive\Documents\100\Projects\6225\6225\6225\Design\013666\DRAWING	REVISIONS -	REVISIONS -
	PLOT SCALE = 100,0000 "/>		

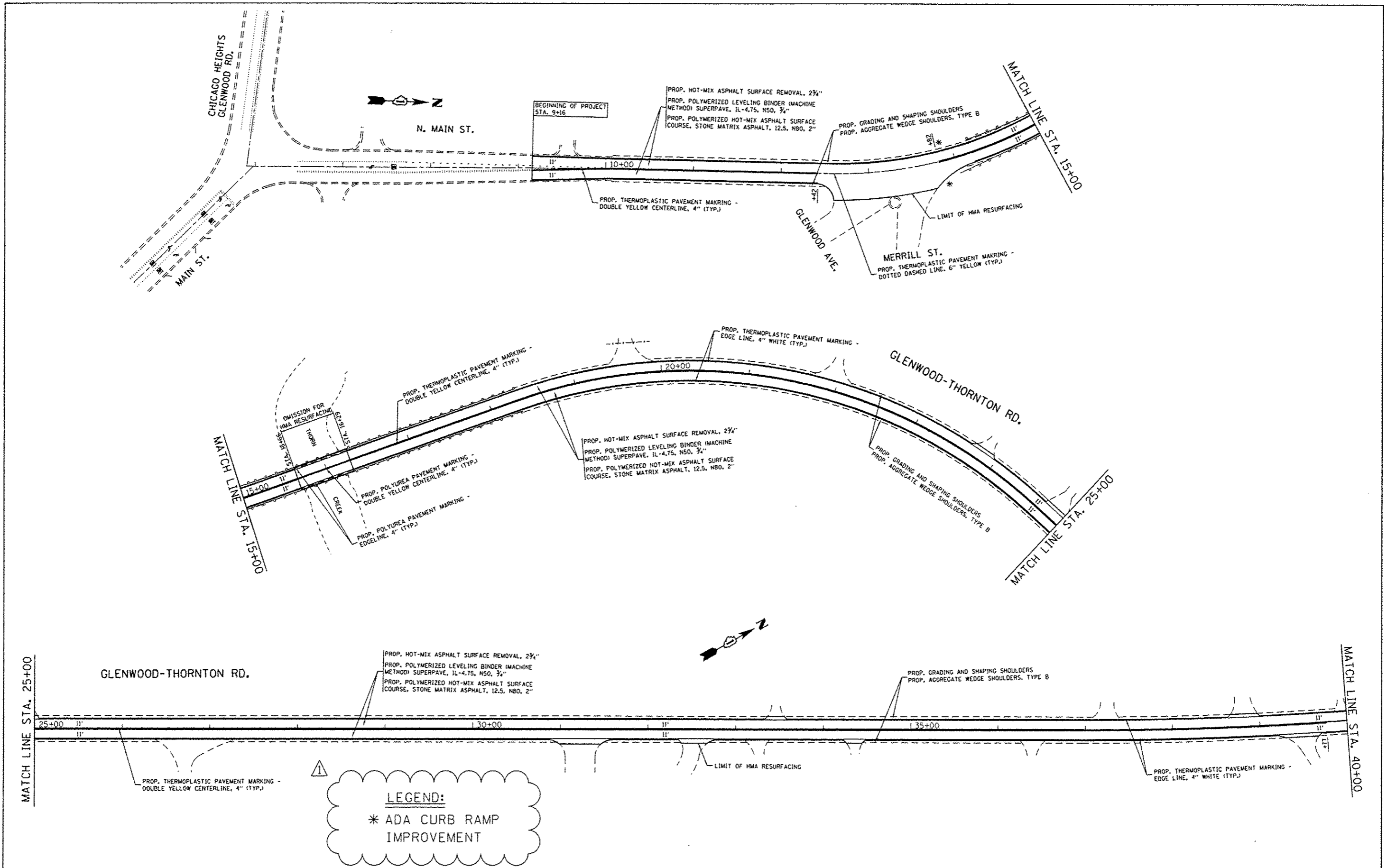
STATE OF ILLINOIS
DEPARTMENT OF TRANSPORTATION

SUMMARY OF QUANTITIES

F.A.U. RTE. 2906	SECTION 68-R5	COUNTY COOK	TOTAL SHEETS 23	SHEET NO. 5
FED. ROAD DIST. NO. 1 ILLINOIS FED. AID PROJECT CONTRACT NO. 62C59				

* SPECIALTY ITEMS
 NON-PARTICIPATING ITEMS

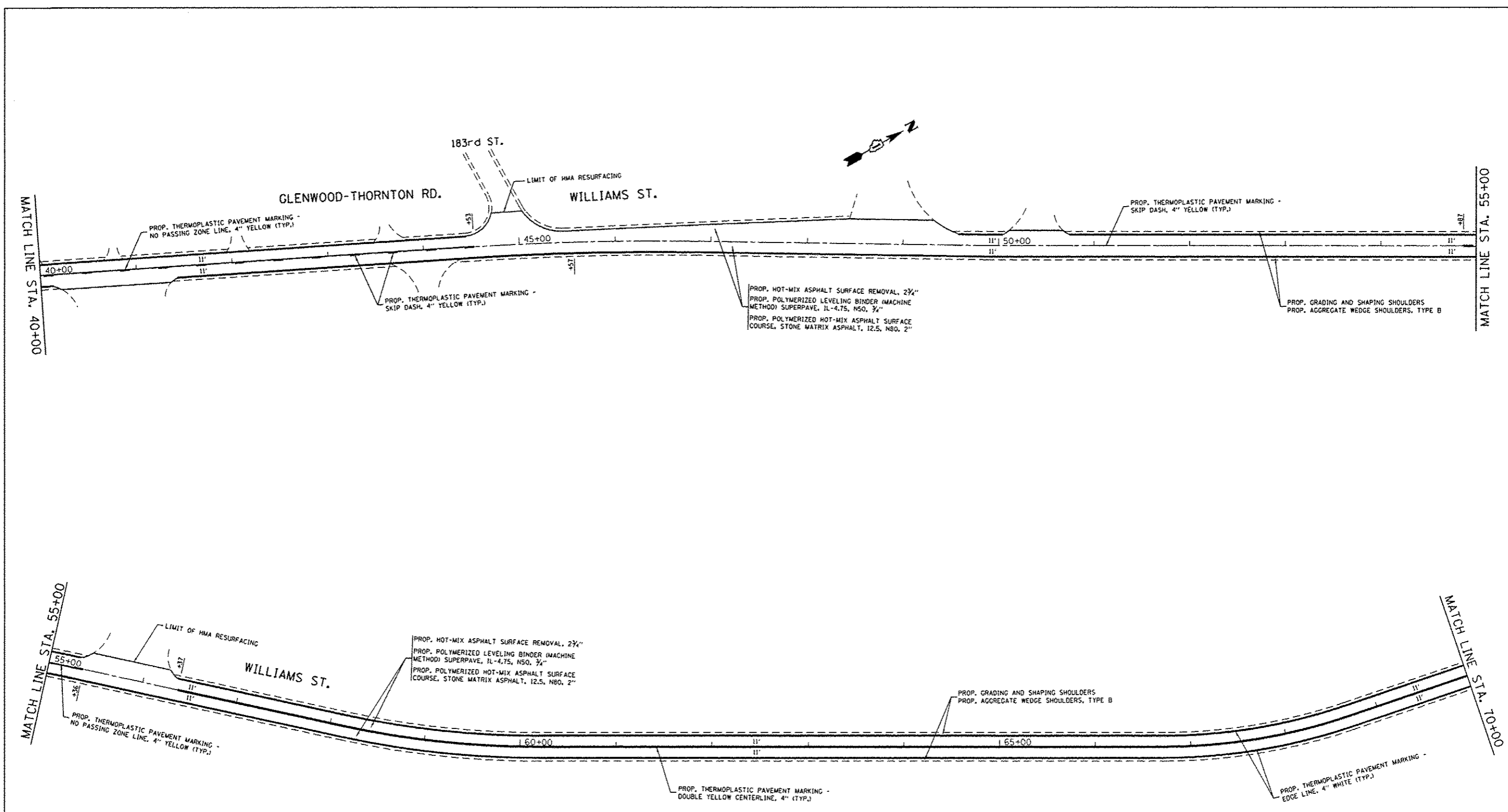
▲ REV 6-7-17



LEGEND:
 * ADA CURB RAMP IMPROVEMENT

FILE NAME =	USER NAME = STEEDPA	DESIGNED -	REVISED - Δ 5/30/2017	STATE OF ILLINOIS DEPARTMENT OF TRANSPORTATION	ROADWAY AND PAVEMENT MARKING PLANS			F.A.U. RTE.	SECTION	COUNTY	TOTAL SHEETS	SHEET NO.	
p:\118046BID\INTEG.illinois.gov\PHDDT\Documents\DOT Offices\District 1\Projects\0136616\0136616-ent-plan.dgn		CHECKED -	REVISED -		FAU 2906 (WILLIAMS ST./GLENWOOD-THORNTON RD.)-MAIN ST. TO MARION ST.	2906	68-RS	COOK	23	9			
Default		DATE -	REVISED -		SCALE: 1"=50'	SHEET	OF	SHEETS	STA.	TO	STA.	CONTRACT NO. 62C59	(ILLINOIS) FED. AID PROJECT

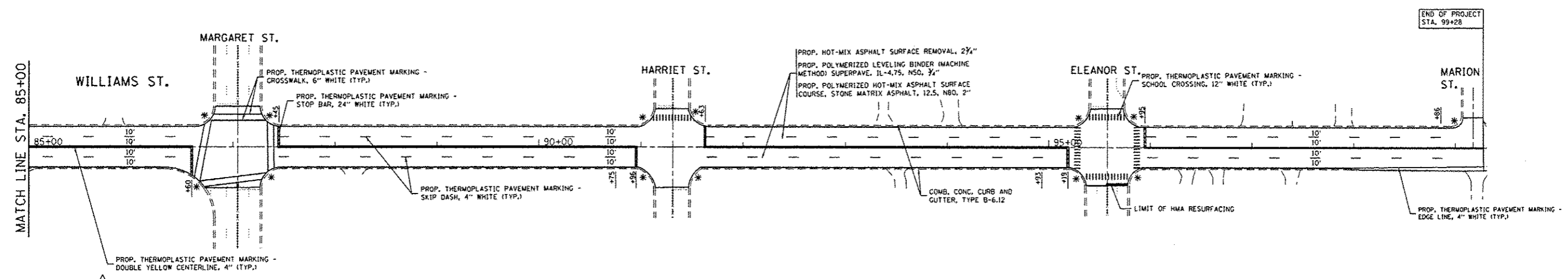
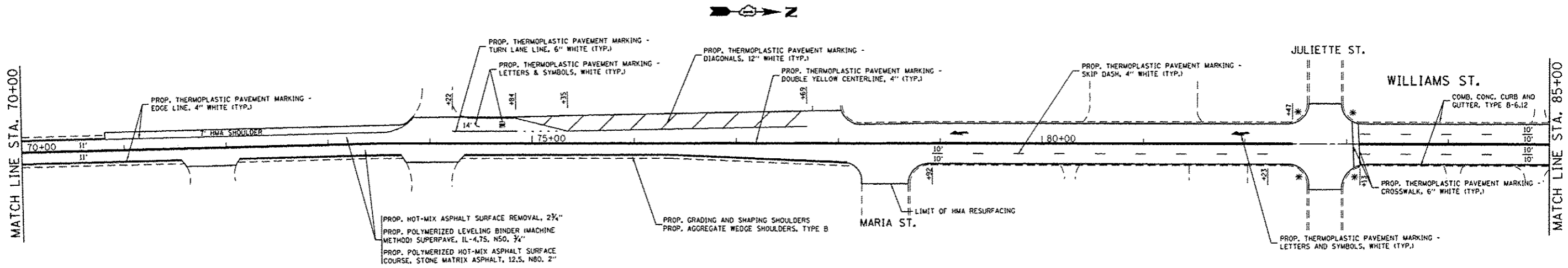
Δ REV 6-7-17



LEGEND:
 * ADA CURB RAMP IMPROVEMENT

FILE NAME =	USER NAME = STEEDPA	DESIGNED -	REVISED - Δ 5/30/2017	STATE OF ILLINOIS DEPARTMENT OF TRANSPORTATION	ROADWAY AND PAVEMENT MARKING PLANS				F.A.U. RTE.	SECTION	COUNTY	TOTAL SHEETS	SHEET NO.	
Default	Default	CHECKED -	REVISED -		FAU 2906 (WILLIAMS ST./GLENWOOD-THORNTON RD.)—MAIN ST. TO MARION ST.				2906	68-RS	COOK	23	10	
		DATE -	REVISED -		SCALE: 1"=50'				SHEET OF SHEETS		STA. TO STA.		CONTRACT NO. 62C59	
					ILLINOIS FED. AID PROJECT									

Δ REV 6-7-17



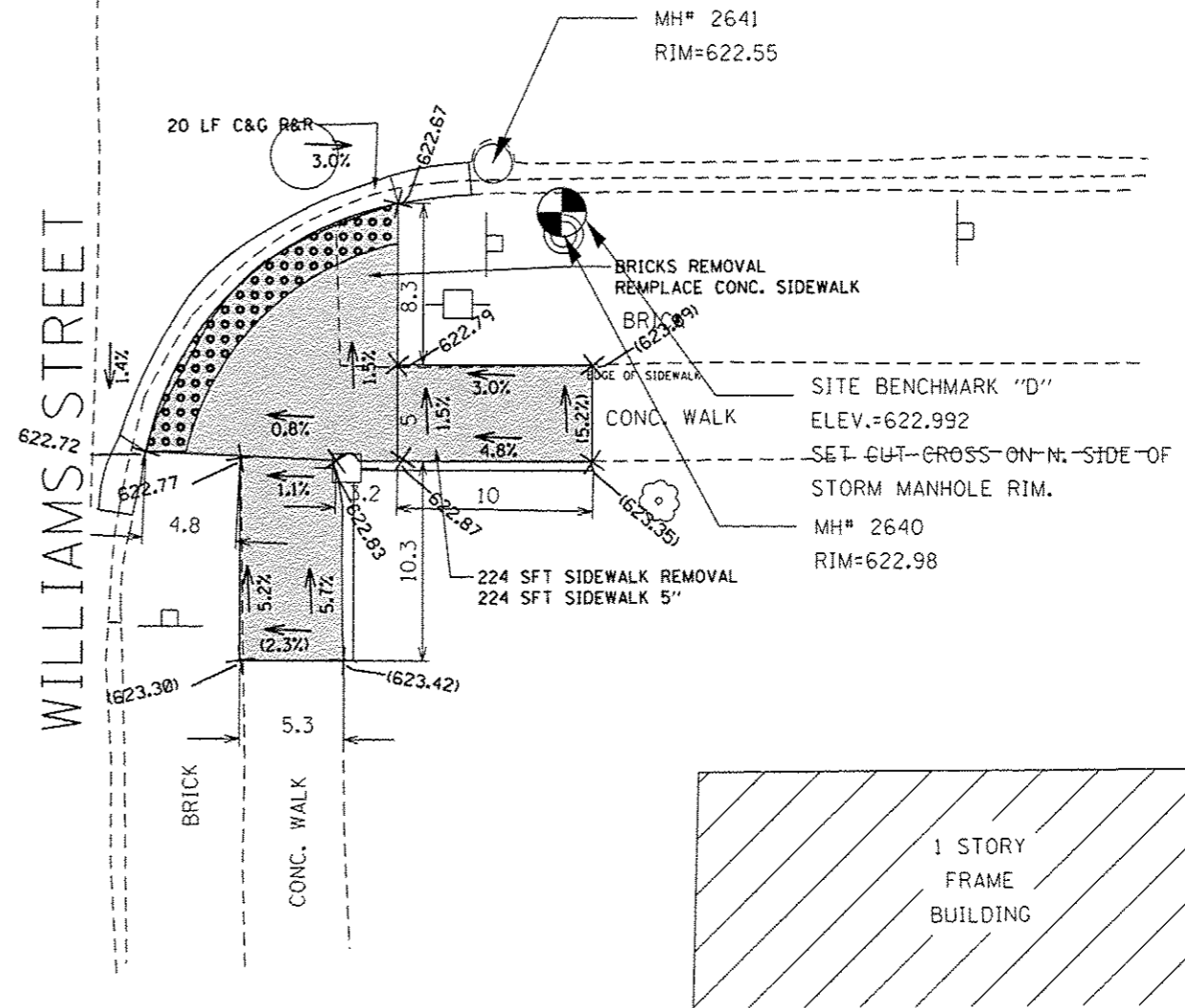
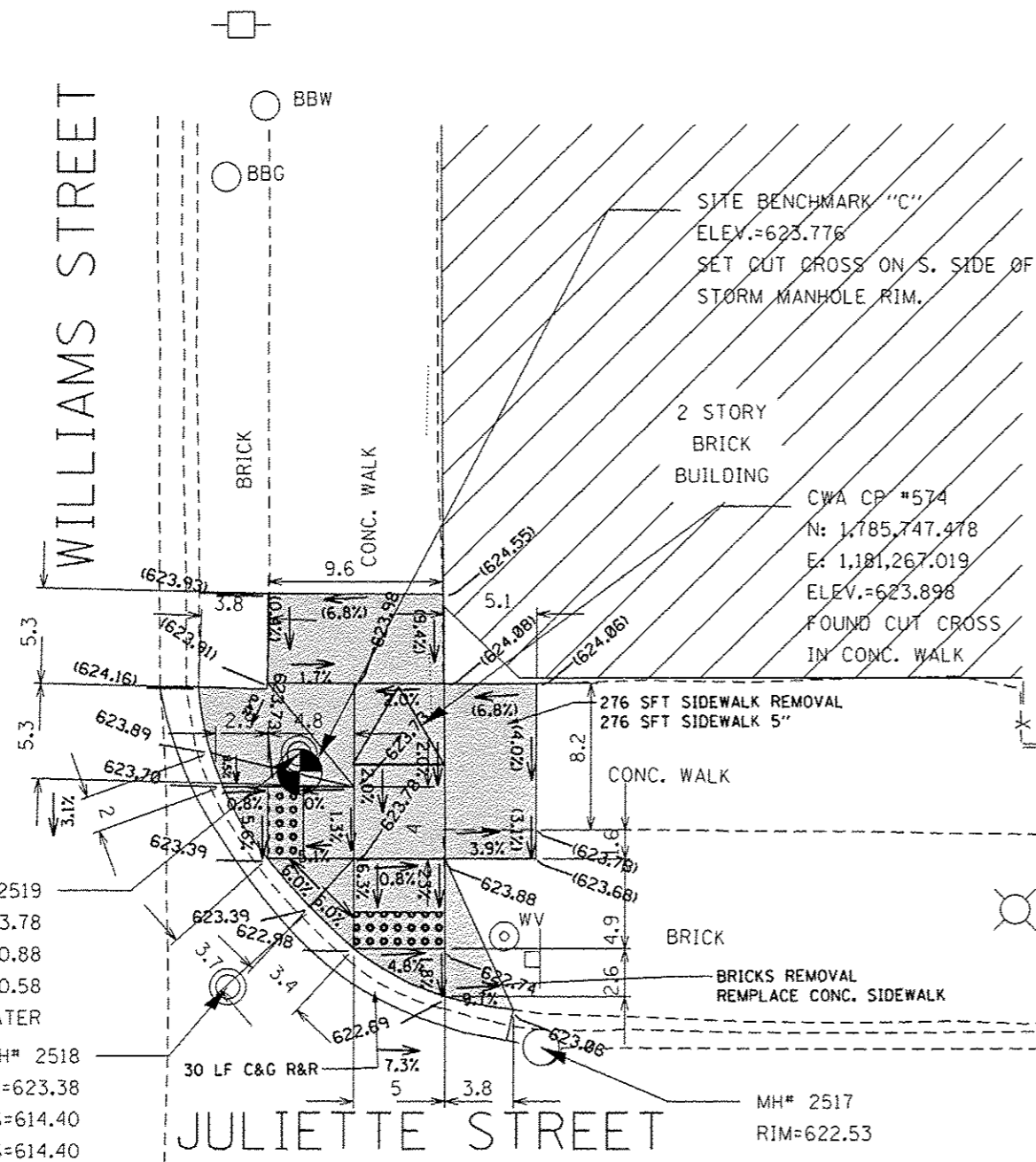
LEGEND:
 * ADA CURB RAMP IMPROVEMENT

FILE NAME: p:\11084EB10\INTEG\Illinois.gov\PI001\Do	USER NAME: STEEPA	DESIGNED: -	REVISED: - Δ 5/30/2017	STATE OF ILLINOIS DEPARTMENT OF TRANSPORTATION	ROADWAY AND PAVEMENT MARKING PLANS			F.A.U. RTE. 2906	SECTION 68-RS	COUNTY COOK	TOTAL SHEETS 23	SHEET NO. 11
Default	PROJECT: 11084EB10\INTEG\Illinois.gov\PI001\Do	CHECKED: -	REVISED: -		FAU 2906 (WILLIAMS ST./GLENWOOD-THORNTON RD.)-MAIN ST. TO MARION ST.					CONTRACT NO. 62C59		
	PLOT SCALE: 1/8"=1'-0"	DATE: -	REVISED: -		SCALE: 1"=50'			SHEET	OF SHEETS	STA.	TO STA.	ILLINOIS FED. AID PROJECT
	PLOT DATE: 5/30/2017											

Δ REV 6-7-17

JULIETTE STREET

WILLIAMS STREET



REFERENCE BENCH MARK ELEV 622.992
BENCHMARK : SET CUT CROSS ON N. SIDE OF THE STORM MANHOLE RIM
LOCATION : BASE AT SE CORNER OF JULIETTE STREET AND WILLIAMS STREET

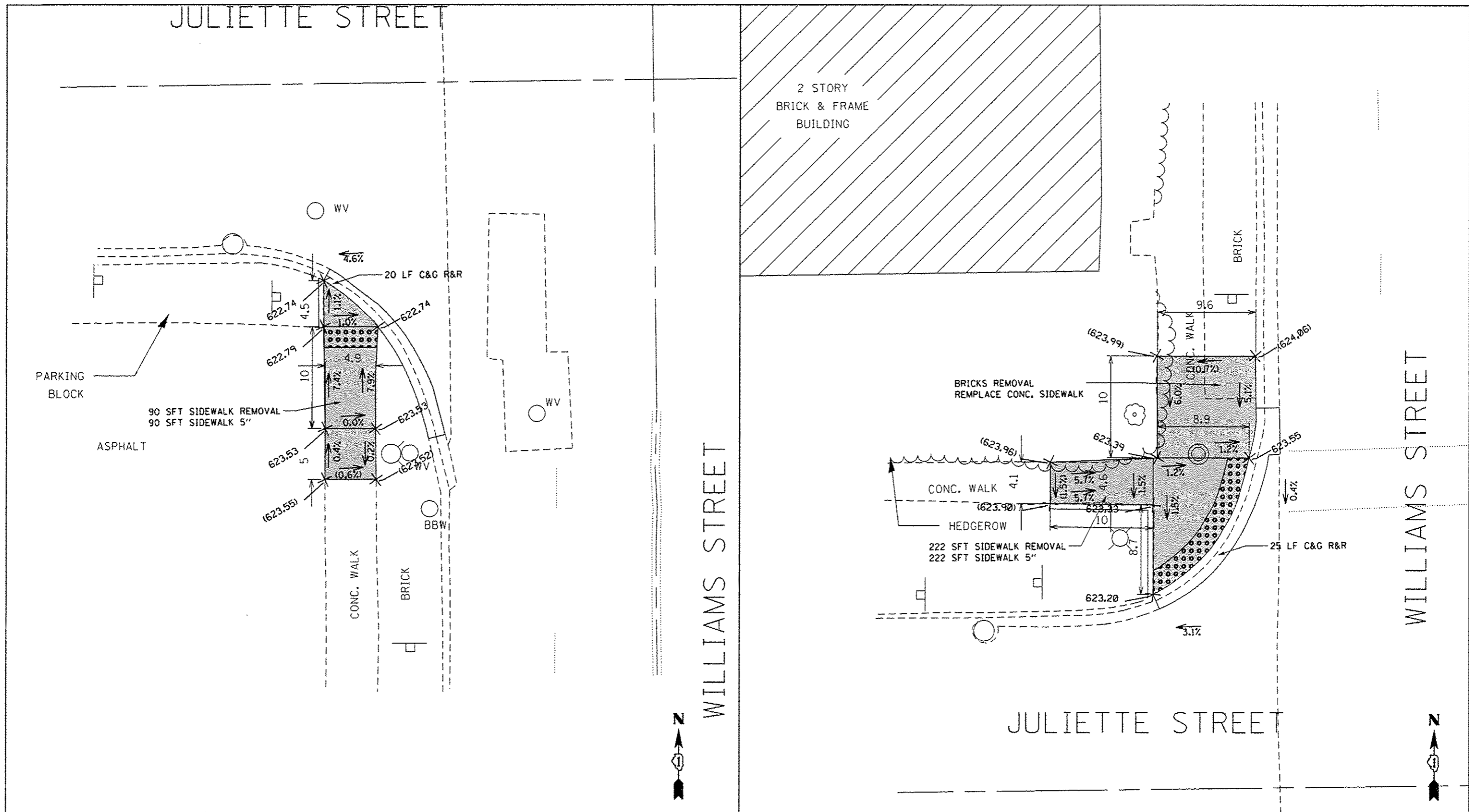
LEGEND

- xx,xx' EXISTING LENGTH
- PROPOSED SIDE CURB
- () EXISTING ELEVATION/SLOPE
- PROPOSED SIDEWALK
- DETECTABLE WARNINGS
- SIDEWALK REMOVAL
REPLACE W/TOPSOIL & SOD

REFERENCE BENCH MARK ELEV 622.992
BENCHMARK : SET CUT CROSS ON N. SIDE OF THE STORM MANHOLE RIM
LOCATION : BASE AT SE CORNER OF JULIETTE STREET AND WILLIAMS STREET

USER NAME • FUENTESJA	DESIGNED -	REVISED -	STATE OF ILLINOIS DEPARTMENT OF TRANSPORTATION	ADA RAMP DETAILS (JULIETTE STREET & WILLIAMS STREET) (WILLIAMS ST./THORNTON RD.)				F.A. RTE. 2906	SECTION 68-R5	COUNTY COOK	TOTAL SHEETS 23	SHEET NO. 11A
PLOT SCALE • 1/8" = 1'	DRAWN -	REVISED -		SCALE:	SHEET	OF	SHEETS	STA.	TO	STA.	ILLINOIS FED. AID PROJECT CONTRACT NO. 62C59	
PLOT DATE • 5/18/2017	CHECKED -	REVISED -										
	DATE -	REVISED -										

△ Sheet Added 6-7-17

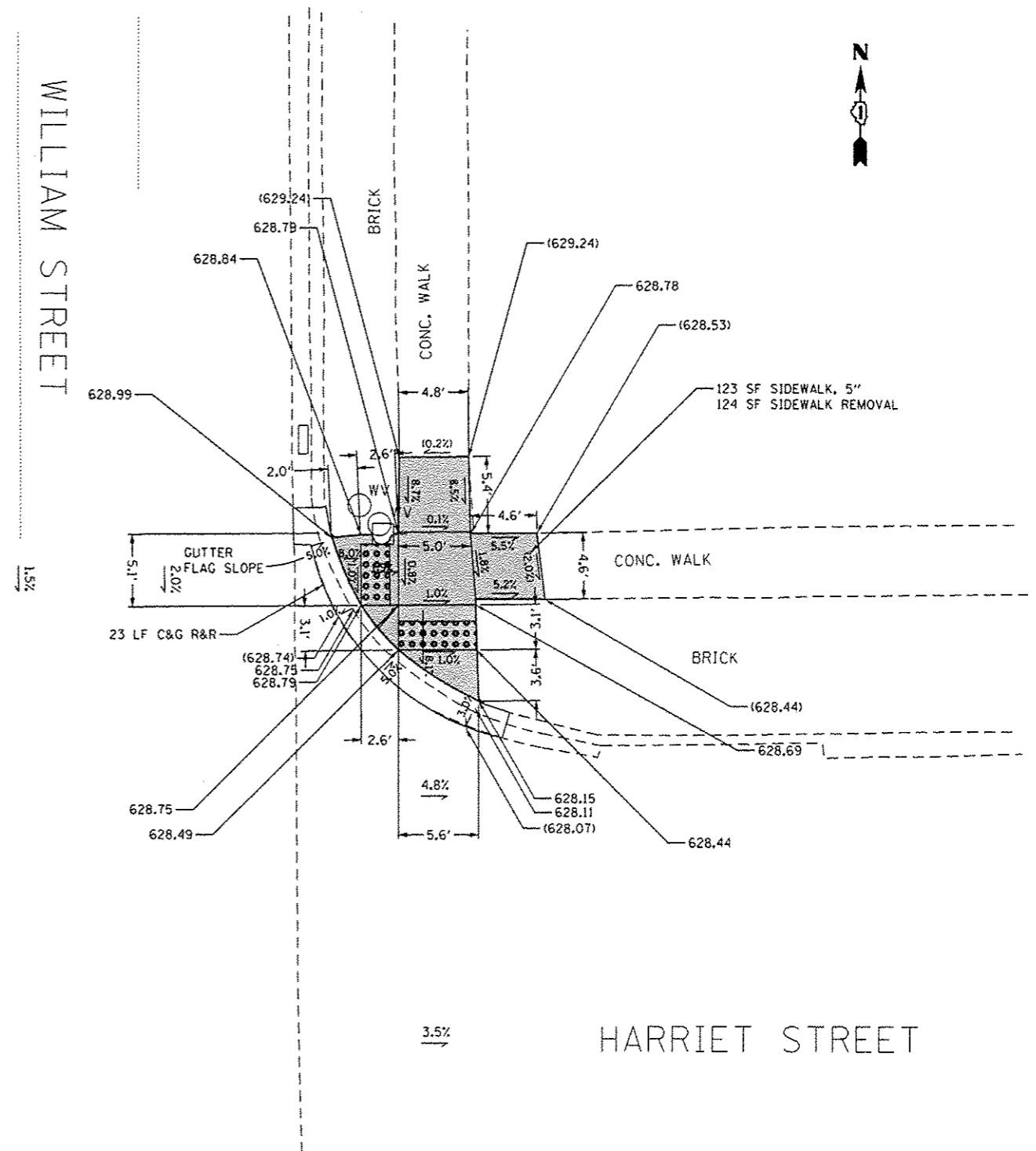
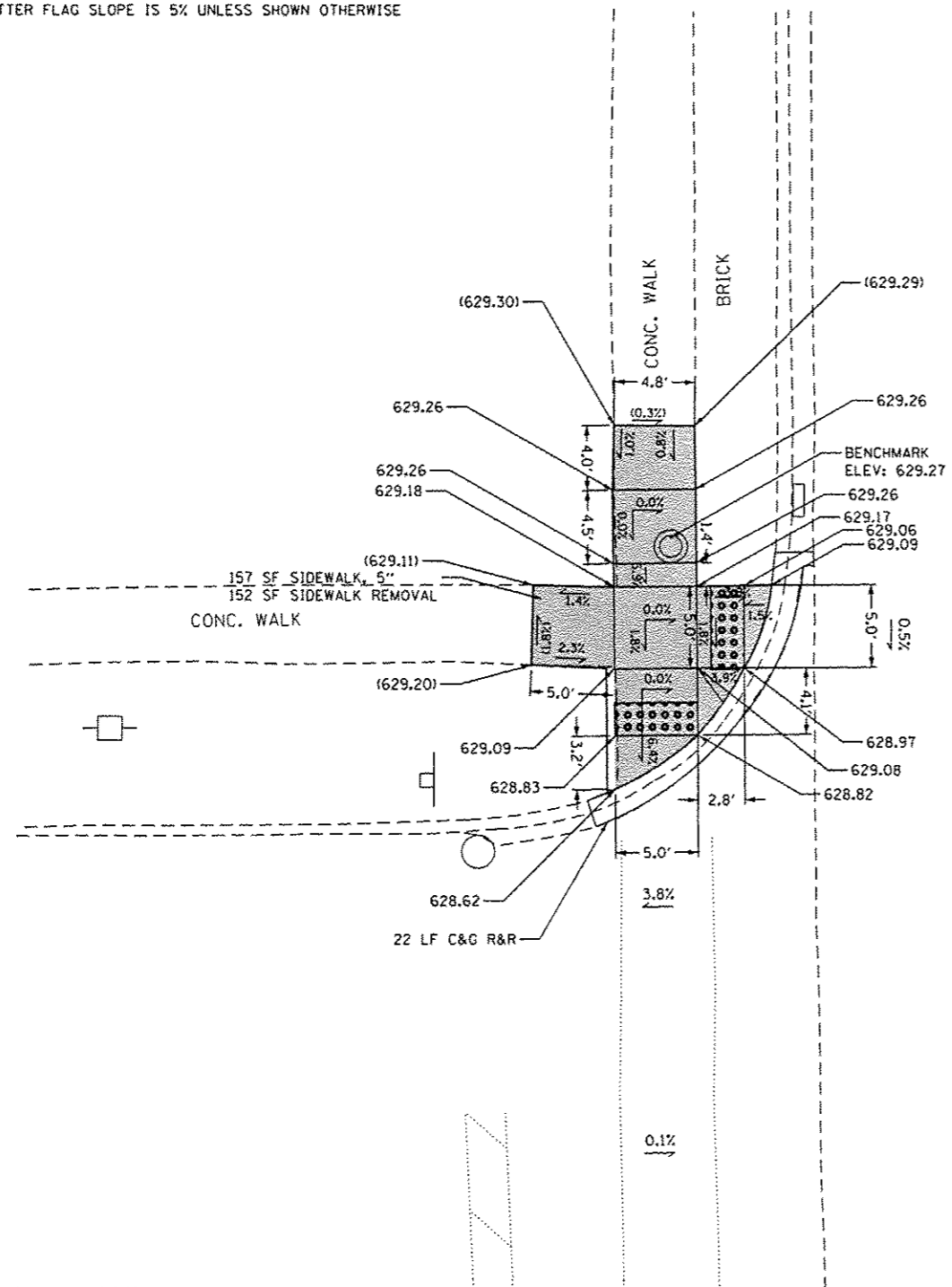


<p>REFERENCE BENCH MARK ELEV 623.707</p> <p>BENCHMARK : SET CUT CROSS ON S. SIDE OF THE STORM MANHOLE RIM</p> <p>LOCATION : STORM MANHOLE RIM ON NE CORNER OF WILLIAMS AND JULIETTE ST</p>	<p>LEGEND</p> <p>xx.xx' EXISTING LENGTH</p> <p>===== PROPOSED SIDE CURB</p> <p>() EXISTING ELEVATION/SLOPE</p> <p>■ PROPOSED SIDEWALK</p> <p>■ DETECTABLE WARNINGS</p> <p>■ SIDEWALK REMOVAL REPLACE W/TOPSOIL & SOD</p>	<p>REFERENCE BENCH MARK ELEV 623.707</p> <p>BENCHMARK : SET CUT CROSS ON S. SIDE OF THE STORM MANHOLE RIM</p> <p>LOCATION : STORM MANHOLE RIM ON NE CORNER OF WILLIAMS AND JULIETTE ST</p>
--	--	--

FILE NAME *	USER NAME * STEEDPA	DESIGNED -	REVISED -	STATE OF ILLINOIS DEPARTMENT OF TRANSPORTATION	ADA RAMP DETAILS (JULIETTE STREET & WILLIAMS STREET) (WILLIAMS ST./THORNTON RD.)	F.A. RTE.	SECTION	COUNTY	TOTAL SHEETS	SHEET NO.
pw\N\084EB10\ITEG\Illinois.gov\PI\DOT\Do	uments\DOT Offices\District 1\Projects\01306\01306\Design\0130616-shr-details.dwg	DRW	REVISED			2906	68-RS	COOK	23	11B
Default	PLOT SCALE = 9.0000' / 1"	CHECKED -	REVISED -			SCALE: SHEET OF SHEETS STA. TO STA.		CONTRACT NO. 62C59		
	PLOT DATE = 5/30/2017	DATE -	REVISED -			ILLINOIS FED. AID PROJECT				

△ Sheet Added 6-7-17

NOTE:
GUTTER FLAG SLOPE IS 5% UNLESS SHOWN OTHERWISE



REFERENCE BENCH MARK ELEV 629.27
 BENCHMARK : CROSS CUT ON NORTH SIDE OF STORM MANHOLE RIM
 LOCATION : STORM MANHOLE IN SIDEWALK ON NE CORNER OF HARRIET ST ABOUT 8' WEST OF WILLIAM ST EOP

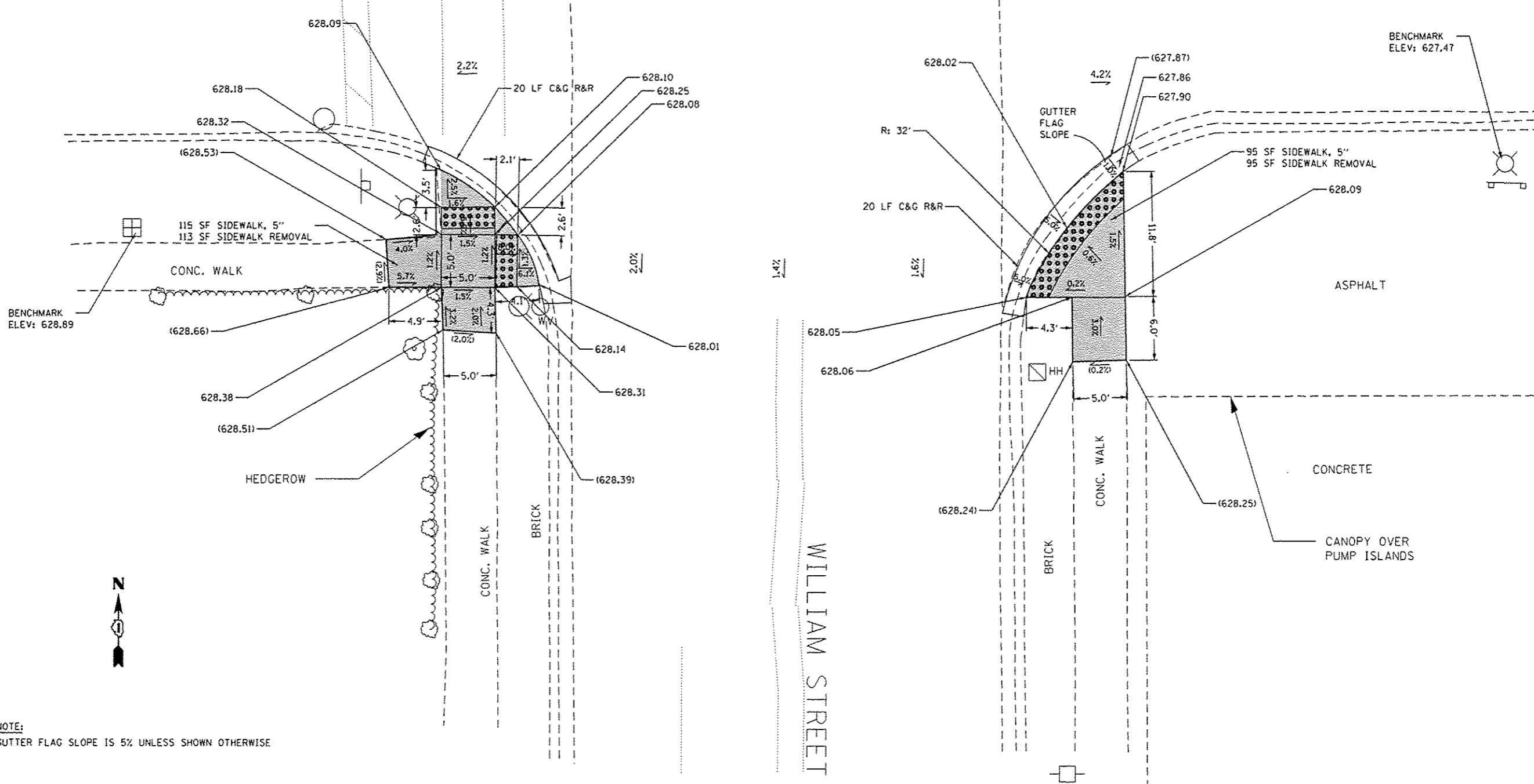
LEGEND	
xx.xx'	EXISTING LENGTH
	PROPOSED SIDE CURB
()	EXISTING ELEVATION/SLOPE
	PROPOSED SIDEWALK
	DETECTABLE WARNINGS
	SIDEWALK REMOVAL REPLACE W/TOPSOIL & SOD

REFERENCE BENCH MARK ELEV 629.27
 BENCHMARK : CROSS CUT ON NORTH SIDE OF STORM MANHOLE RIM
 LOCATION : STORM MANHOLE IN SIDEWALK ON NE CORNER OF HARRIET ST ABOUT 8' WEST OF WILLIAM ST EOP

FILE NAME =	USER NAME = STEEDPA	DESIGNED -	REVISED -	STATE OF ILLINOIS DEPARTMENT OF TRANSPORTATION	ADA RAMP DETAILS (WILLIAMS ST & HARRIET ST) NE & NW CORNER WILLIAM ST/GLENWOOD-THORTON RD (MARION ST TO MAIN ST)	F.A.U. RTE. =	SECTION	COUNTY	TOTAL SHEETS	SHEET NO.	
Documents\DOT Offices\District 1\Projects\01368\01368\Design\0136816-shc-details_03		CHECKED -	REVISED -			2906	68-RS	MCHENRY	23	11C	
PLOT SCALE = 10.0000' / 1" IN.		DATE -	REVISED -			SCALE: 1"=5'		SHEET OF SHEETS STA. TO STA.		CONTRACT NO. 62C59	
PLOT DATE = 5/30/2017						ILLINOIS FED. AID PROJECT					

Sheet Added 6-7-17

HARRIET STREET



BENCHMARK
ELEV: 628.89

BENCHMARK
ELEV: 627.47



NOTE:
GUTTER FLAG SLOPE IS 5% UNLESS SHOWN OTHERWISE

REFERENCE BENCH MARK ELEV 628.89
 BENCHMARK : CUT CROSS ON NE CORNER OF CONC. BASE FOR STREET LIGHT CABINET
 LOCATION : CONC. BASE ON SW CORNER OF HARRIET ST ABOUT 40' WEST OF WILLIAMS ST EOP

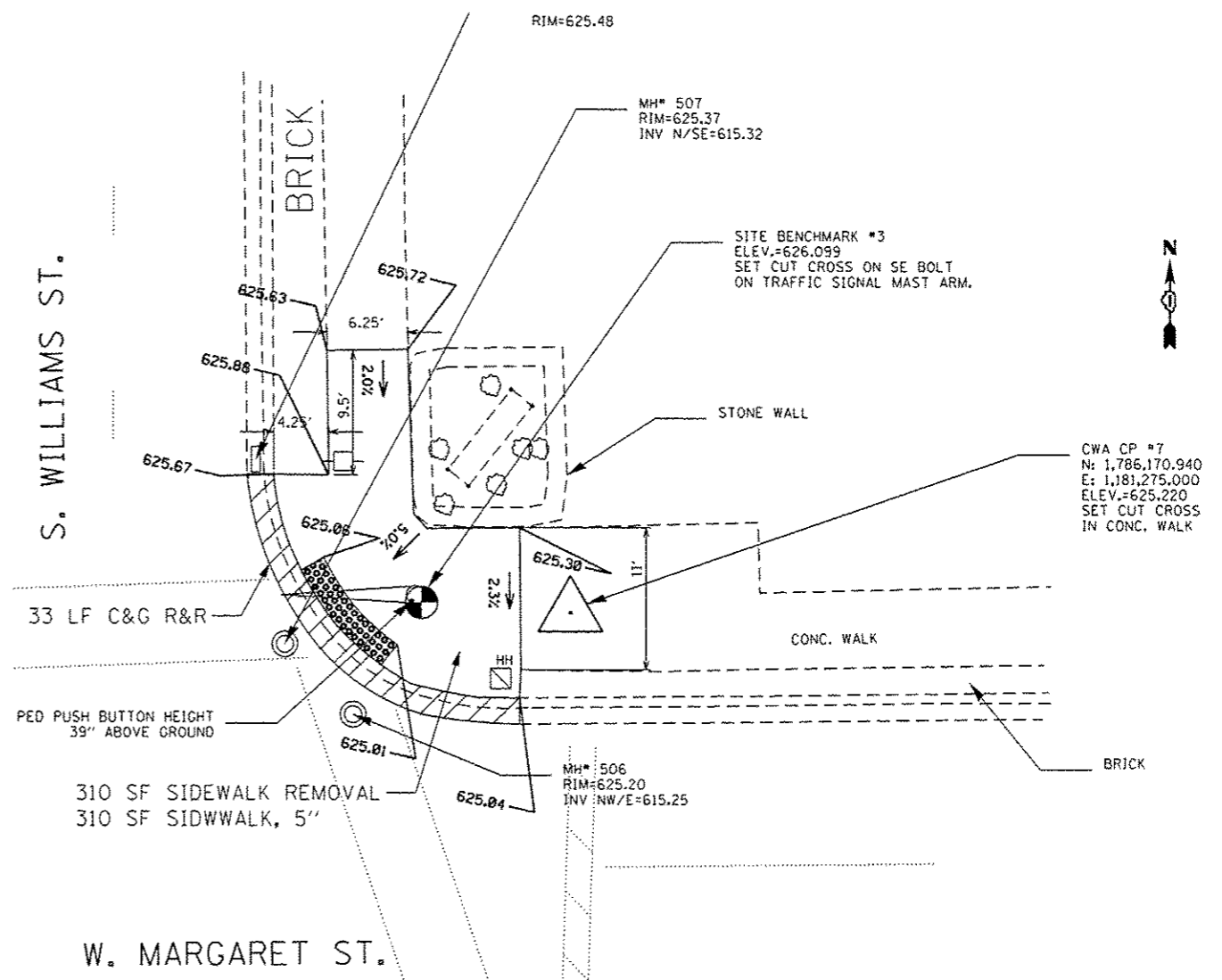
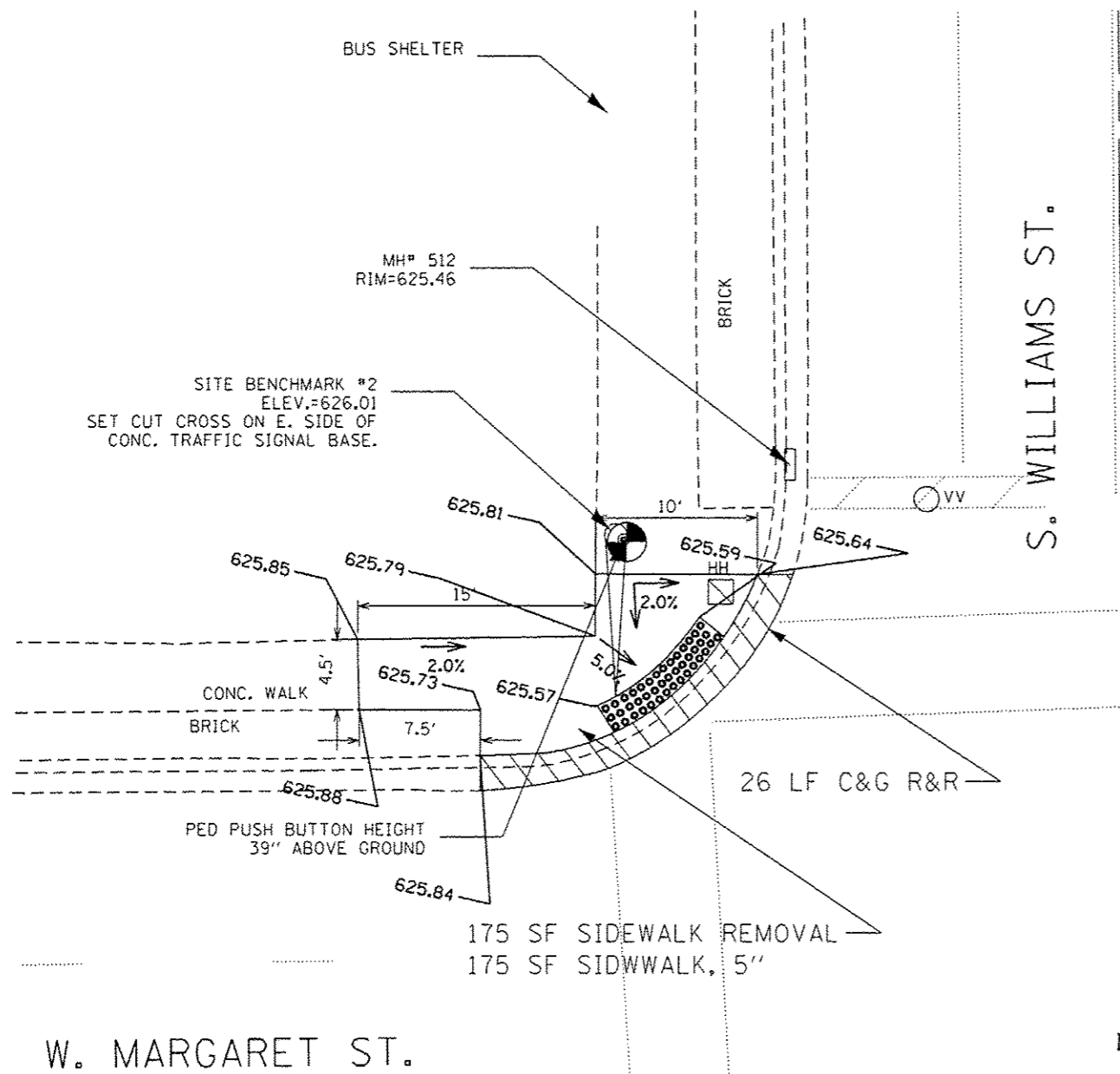
LEGEND

- xx.xx' EXISTING LENGTH
- ===== PROPOSED SIDE CURB
- () EXISTING ELEVATION/SLOPE
- PROPOSED SIDEWALK
- DETECTABLE WARNINGS
- SIDEWALK REMOVAL
REPLACE W/TOPSOIL & SOD

REFERENCE BENCH MARK ELEV 627.47
 BENCHMARK : CUT CROSS ON WEST SIDE OF LIGHT POLE BASE
 LOCATION : LIGHT POLE BASE ON SE CORNER OF HARRIET ST ABOUT 45' EAST OF WILLIAMS ST EOP

FILE NAME :	USER NAME : STEEDPA	DESIGNED -	REVISED -	STATE OF ILLINOIS DEPARTMENT OF TRANSPORTATION	ADA RAMP DETAILS (WILLIAMS ST & HARRIET ST) NE & NW CORNER WILLIAM ST /GLENWOOD-THORTON RD (MARION ST TO MAIN ST)	F.A.U. R.T.E.:	SECTION	COUNTY	TOTAL SHEETS	SHEET NO.		
p:\11\084EB\INTEG\11\mns.gov\PWIDOT\Documents\DOT Offices\District 1\Projects\DI38\DRWData\Design\DI36816-sht-details.B3						2906	68-RS	MCHENRY	23	110		
PLOT SCALE = 10,0000' / 1" / 10						CHECKED -	CONTRACT NO. 62C59		ILLINOIS FED. AID PROJECT			
PLOT DATE = 5/30/2017						DATE -	SCALE: 1"=5'	SHEET OF SHEETS		STA. TO STA.		

Sheet Added 6-7-17



REFERENCE BENCH MARK ELEV 626.01
BENCHMARK : SET CUT CROSS ON TRAFFIC SIGNAL BASE
LOCATION : BASE AT E. SIDE OF CONC. TRAFFIC SIGNAL

LEGEND

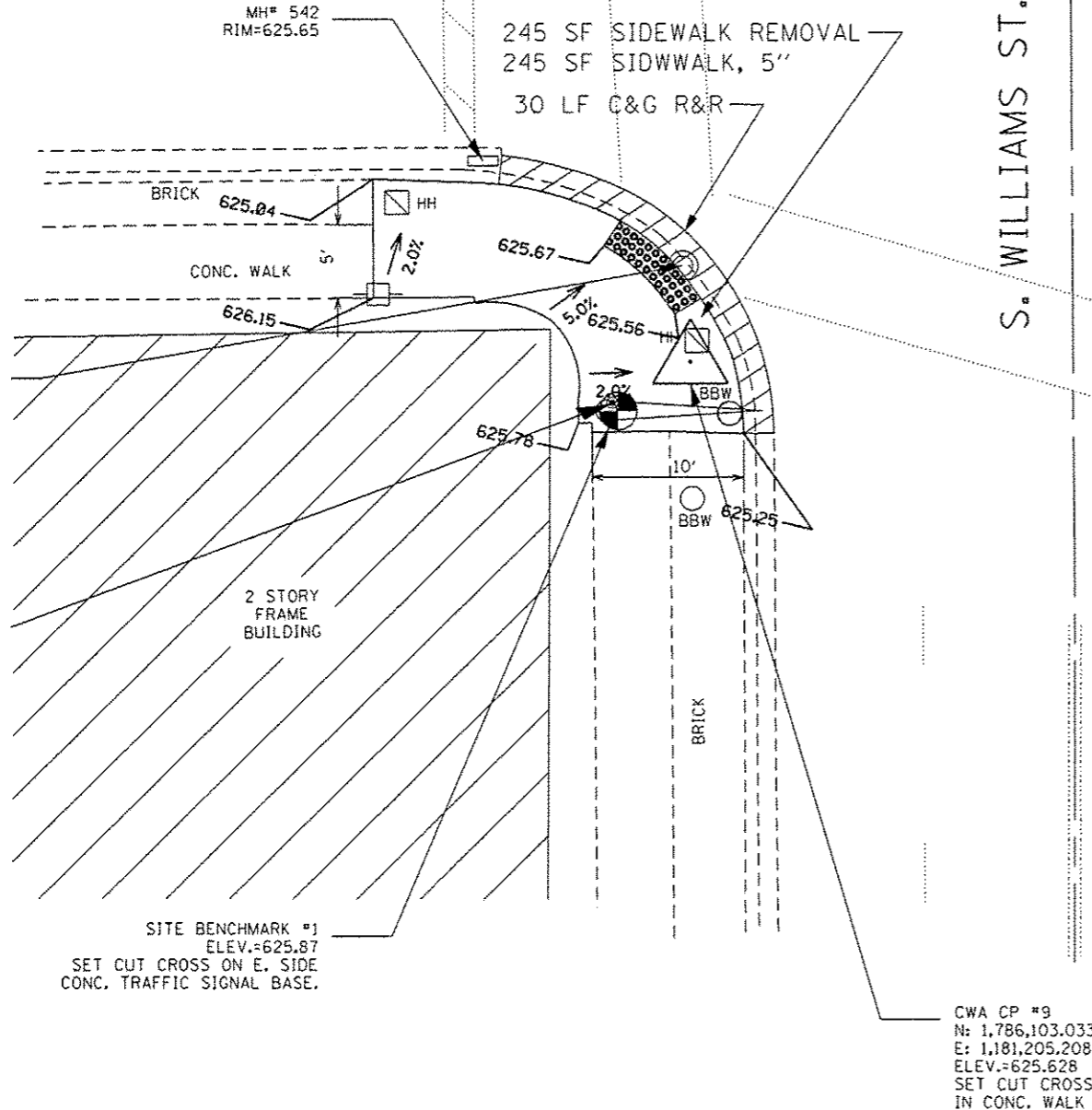
- xx.xx EXISTING LENGTH
- PROPOSED SIDE CURB
- () EXISTING ELEVATION/SLOPE
- PROPOSED SIDEWALK
- DETECTABLE WARNINGS
- SIDEWALK REMOVAL
REPLACE W/TOPSOIL & SOD

REFERENCE BENCH MARK ELEV 626.10
BENCHMARK : SET CUT CROSS ON SE BOLT
LOCATION : BASE AT TRAFFIC SIGNAL MAST ARM

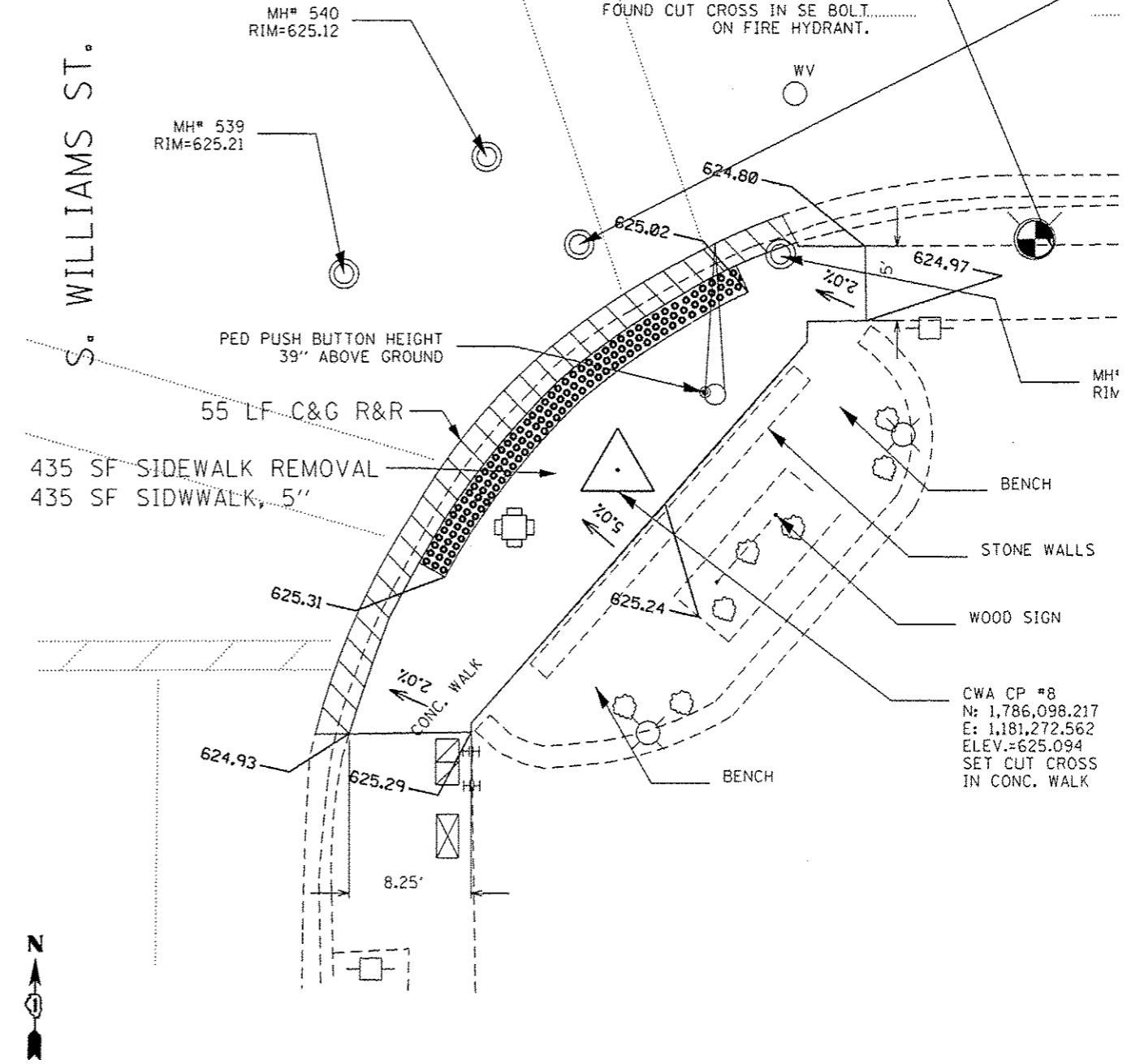
FILE NAME *	USER NAME * STEEDPA	DESIGNED -	REVISED -	STATE OF ILLINOIS DEPARTMENT OF TRANSPORTATION	ADA RAMP DETAILS (AT MARGARET ST.) NW & NE CORNERS WILLIAMS ST./GLENWOOD-THORNTON RD.	F.A.U. RTE. 2906	SECTION 6B-RS	COUNTY COOK	TOTAL SHEETS 23	SHEET NO. 11E	
Default	Documents\DOT Offices\District 1\Projects\0136616-ADA\0136616-ADA-2.dgn	CHECKED -	REVISED -			SCALE: 1"=5'	SHEET OF SHEETS	CONTRACT NO. 62C59		ILLINOIS FED. AID PROJECT	
	PLOT SCALE * 1/8"=1'-0"	DATE -	REVISED -			STA. TO STA.					
	PLOT DATE * 5/30/2017										

Sheet Added 6-7-17

W. MARGARET ST.



W. MARGARET ST.



REFERENCE BENCH MARK ELEV 625.87
 BENCHMARK : SET CUT CROSS ON TRAFFIC SIGNAL BASE
 LOCATION : BASE AT E. SIDE OF CONC. TRAFFIC SIGNAL

LEGEND

- xx.xx' EXISTING LENGTH
- PROPOSED SIDE CURB
- () EXISTING ELEVATION/SLOPE
- PROPOSED SIDEWALK
- DETECTABLE WARNINGS
- SIDEWALK REMOVAL
REPLACE W/TOPSOIL & SOD

REFERENCE BENCH MARK ELEV 626.10
 BENCHMARK : SET CUT CROSS ON SE BOLT
 LOCATION : BASE AT FIRE HYDRANT

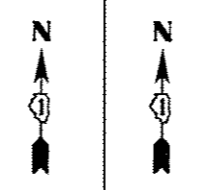
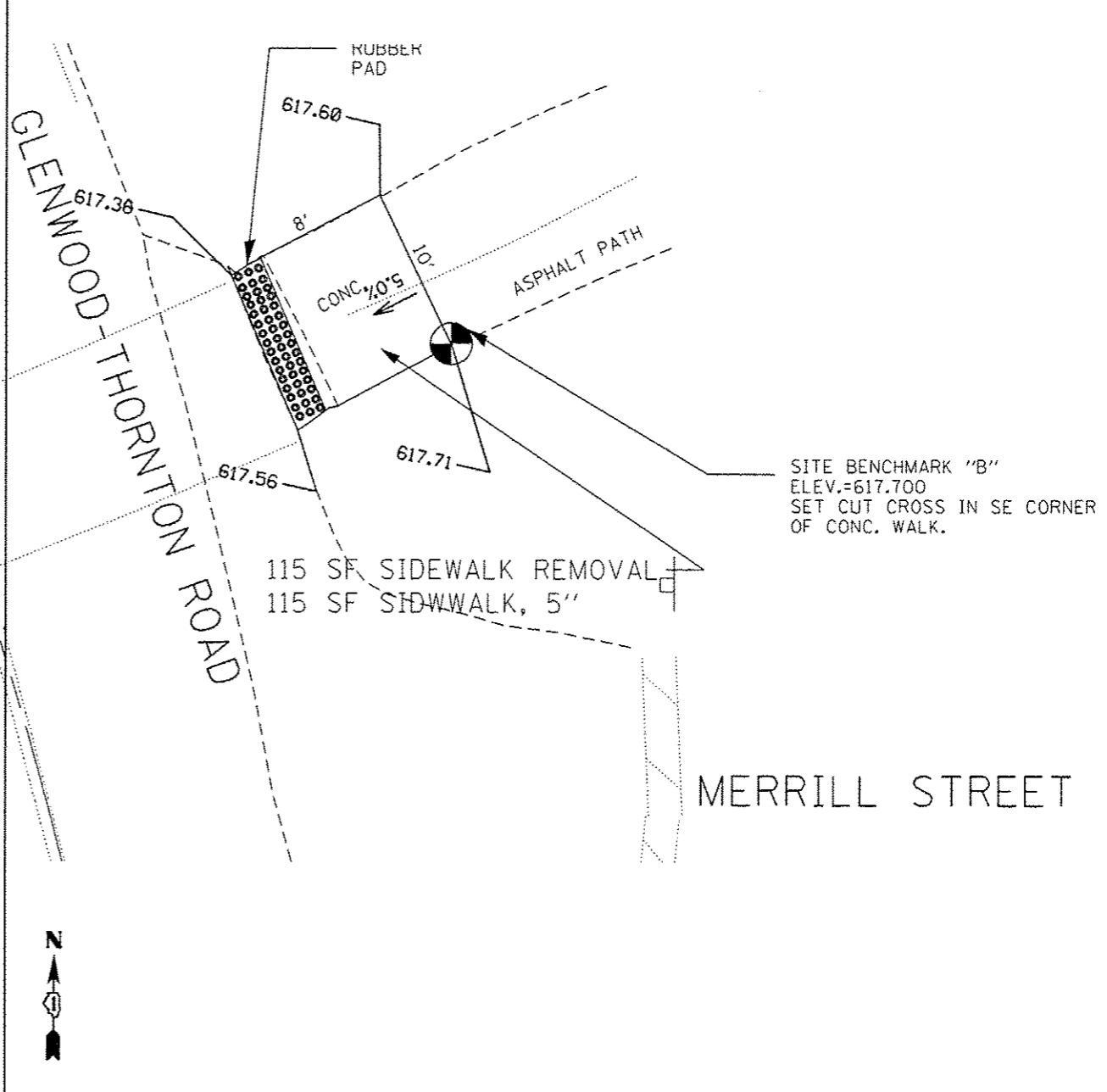
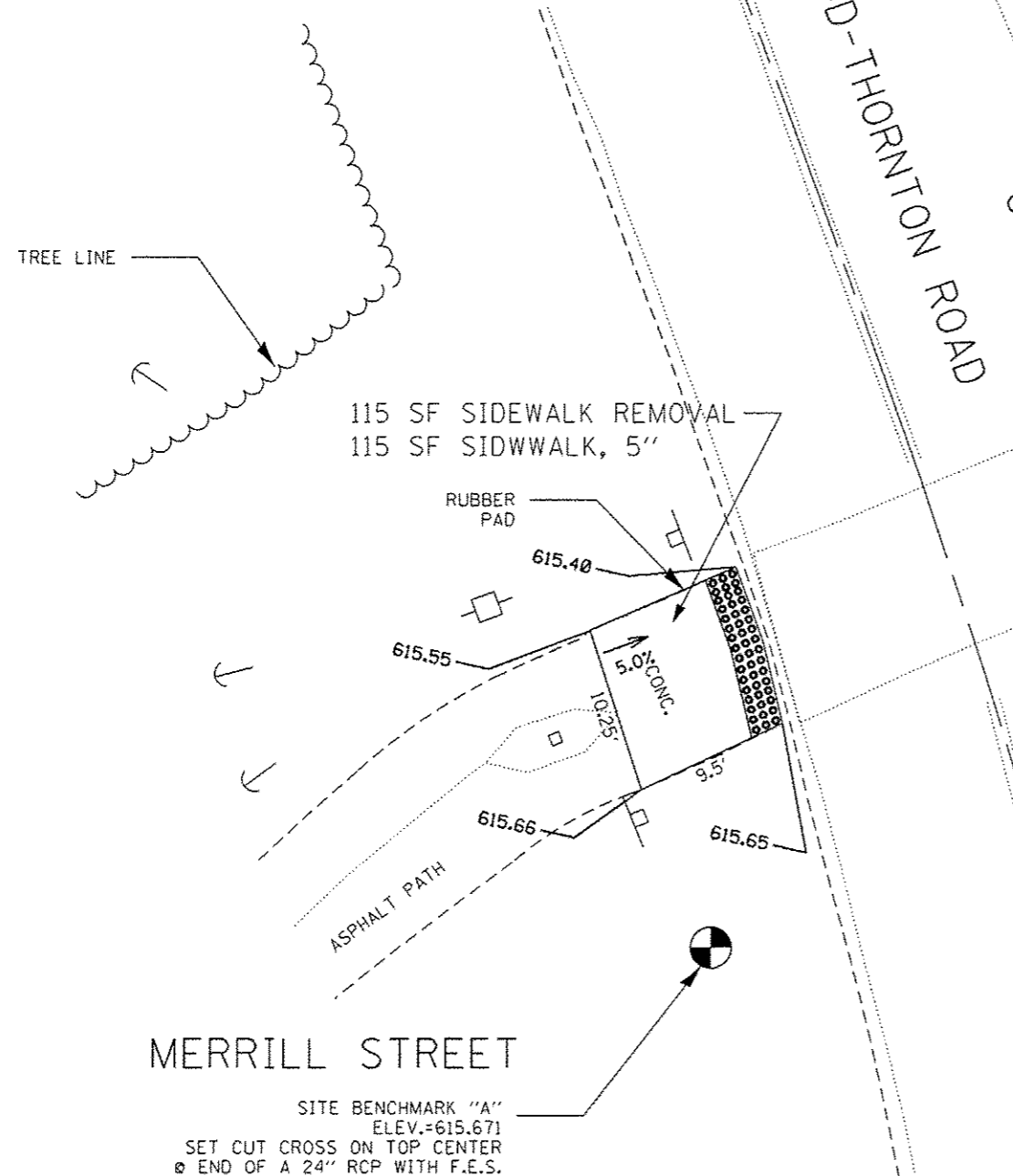
FILE NAME :	USER NAME : STEEDPA	DESIGNED -	REVISED -
PROJECT :	PROJECT :	CHECKED -	REVISED -
DATE :	DATE :	DATE -	REVISED -

**STATE OF ILLINOIS
 DEPARTMENT OF TRANSPORTATION**

**ADA RAMP DETAILS (AT MARGARET ST.) SW & SE CORNERS
 WILLIAMS ST./GLENWOOD-THORNTON RD.**

F.A.U. RTE.	SECTION	COUNTY	TOTAL SHEETS	SHEET NO.
2906	6B-RS	COOK	23	11F
CONTRACT NO. 62C59			ILLINOIS FED. AID PROJECT	

Sheet Added 6-7-17



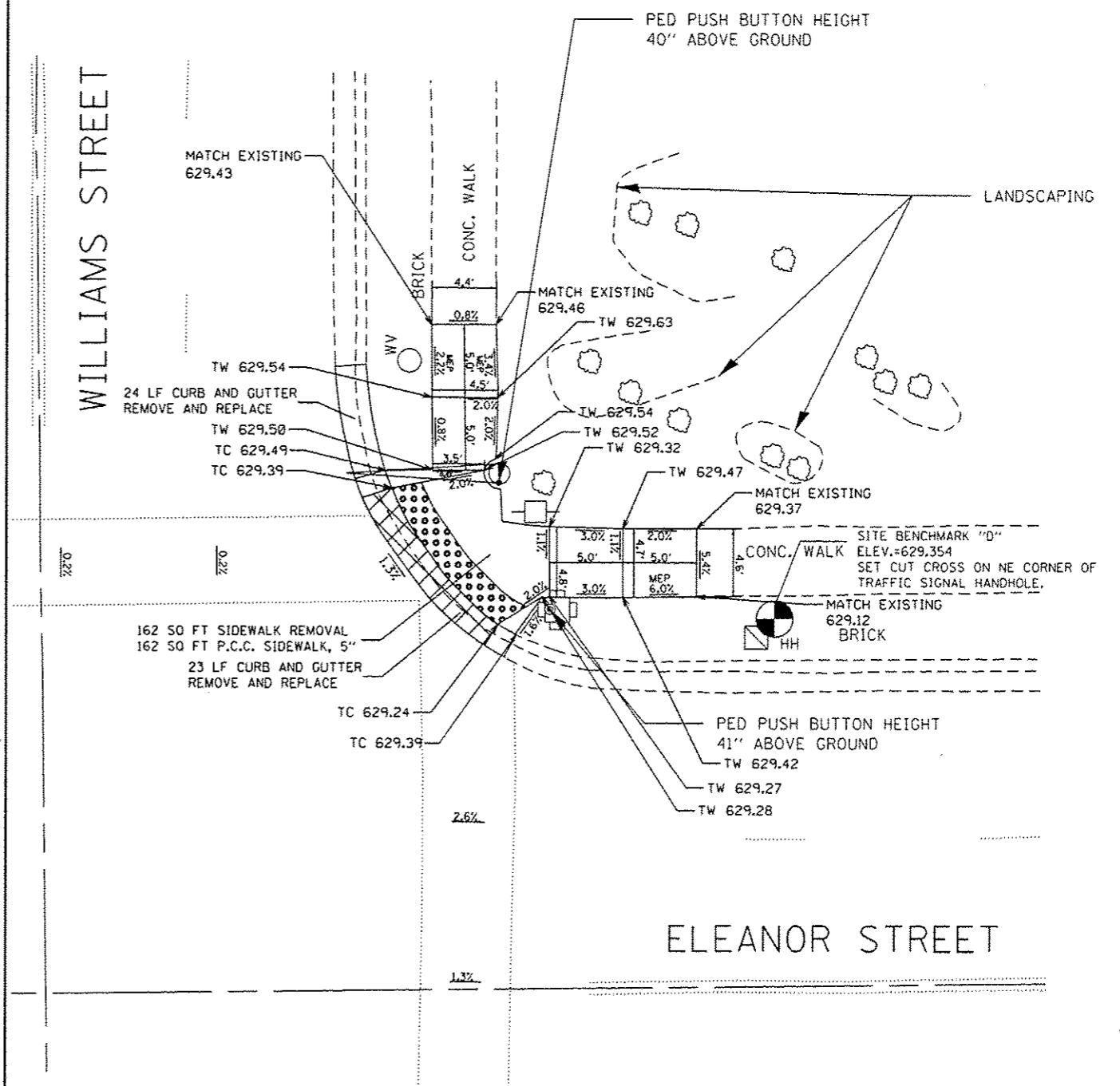
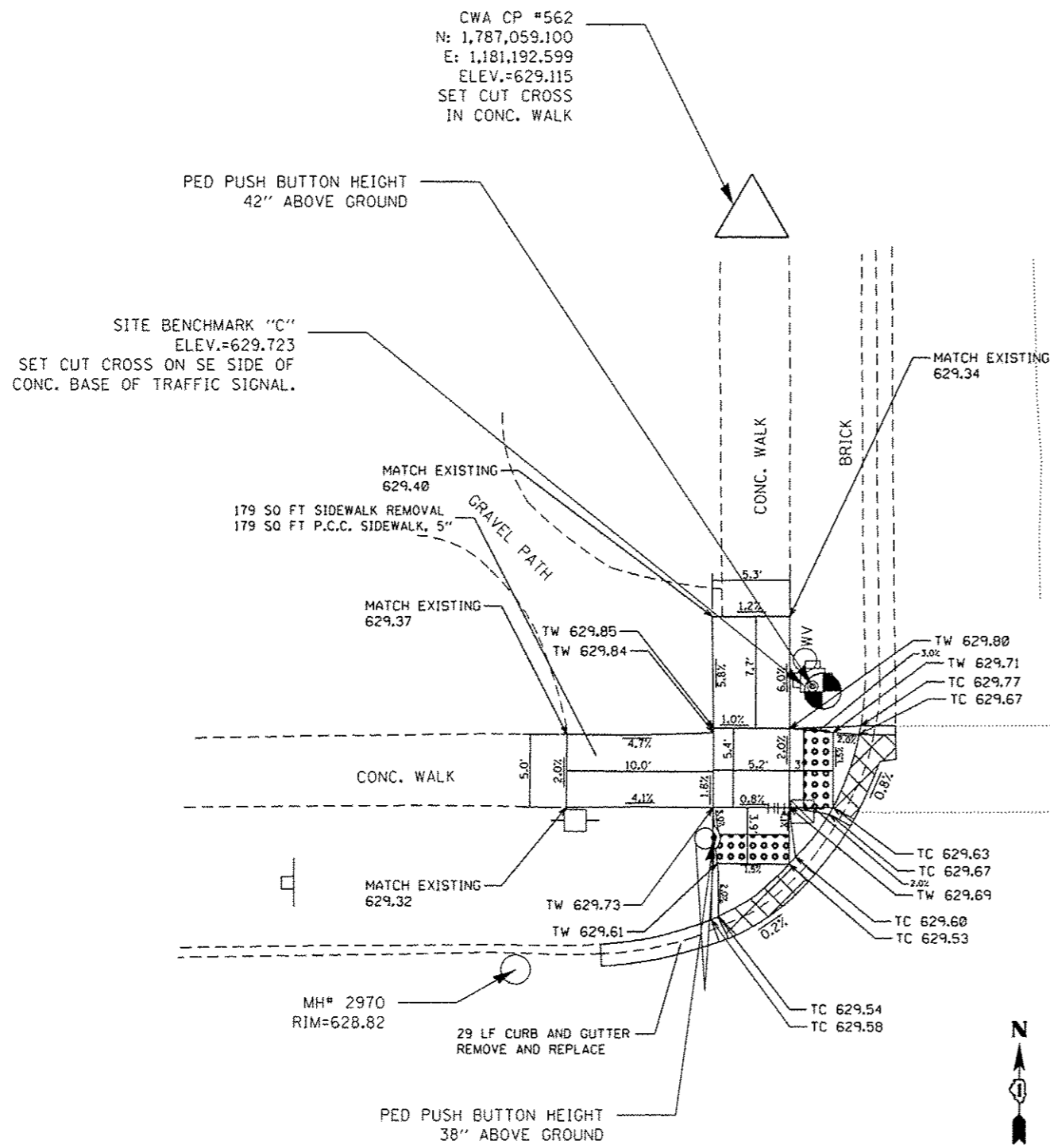
REFERENCE BENCH MARK ELEV 615.67
 BENCHMARK : SET CUT CROSS ON TOP CENTER
 LOCATION : END OF A 24" RCP WITH F.E.S.

LEGEND	
xx.xx'	EXISTING LENGTH
==	PROPOSED SIDE CURB
()	EXISTING ELEVATION/SLOPE
[]	PROPOSED SIDEWALK
[•••••]	DETECTABLE WARNINGS
[X X X X]	SIDEWALK REMOVAL REPLACE W/TOPSOIL & SOD

REFERENCE BENCH MARK ELEV 617.70
 BENCHMARK : SET CUT CROSS IN SE CORNER
 LOCATION : BASE AT SE CORNER IN CONC. WALK

FILE NAME *	USER NAME * STEEDPA	DESIGNED -	REVISD -	STATE OF ILLINOIS DEPARTMENT OF TRANSPORTATION	ADA RAMP DETAILS (AT MERRILL ST.) CORNERS WILLIAMS ST./GLENWOOD-THORNTON RD.	F.A.U. RTE.	SECTION	COUNTY	TOTAL SHEETS	SHEET NO.
2906	68-RS	COOK	23			116				
						CONTRACT NO. 62C59				
						ILLINOIS FED. AID PROJECT				

Sheet Added 6-7-17



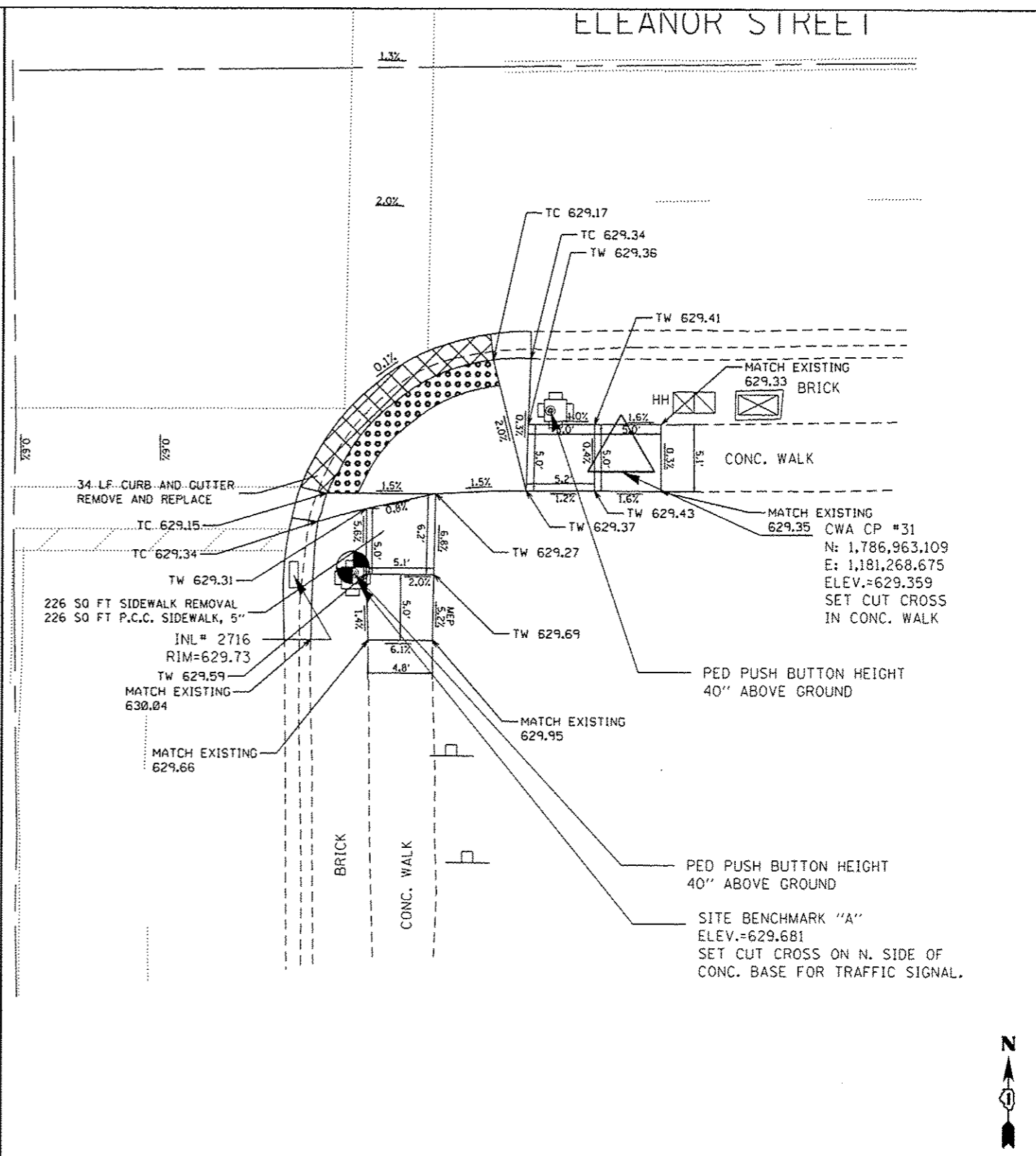
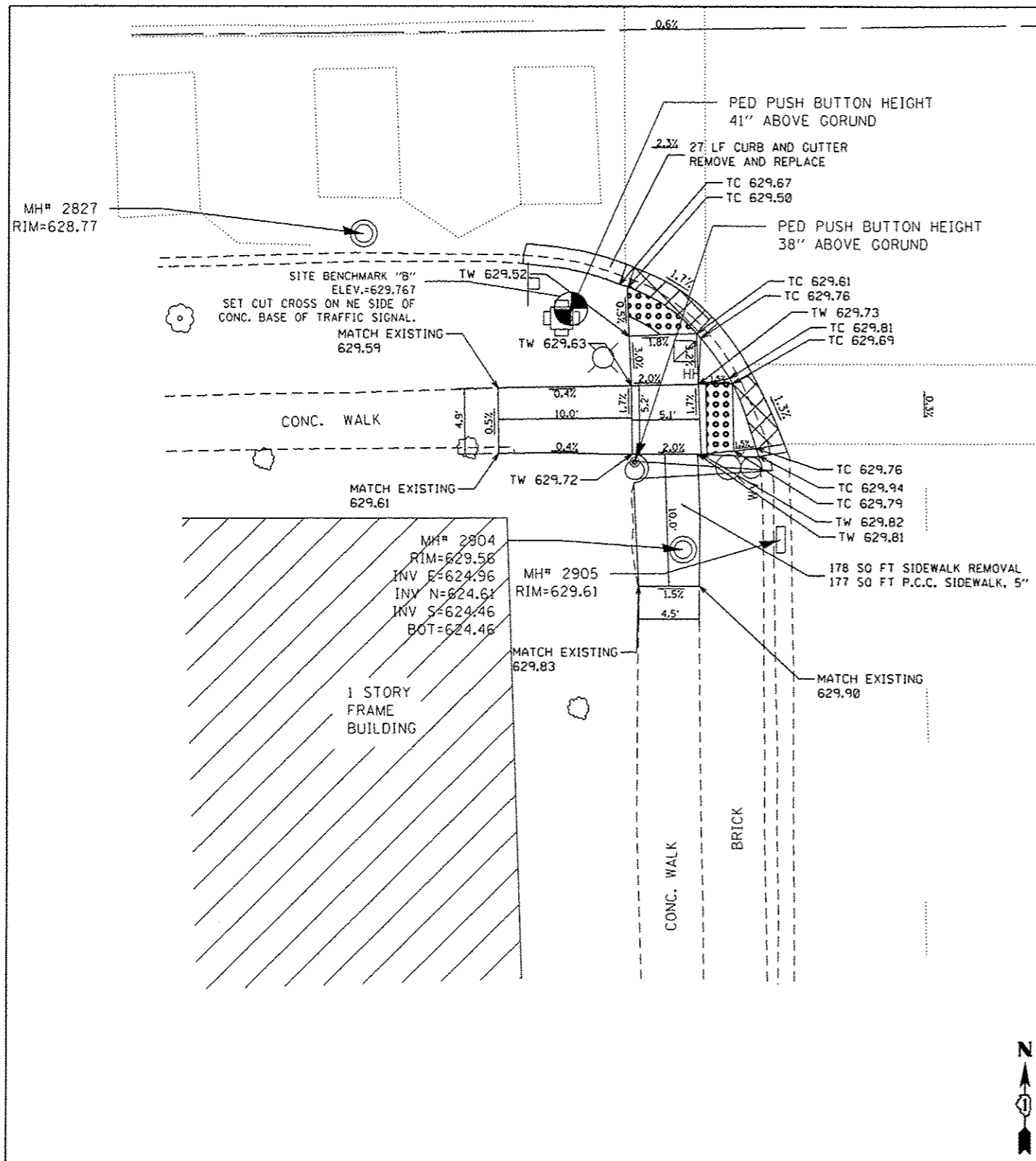
SITE BENCHMARK "C"
 REFERENCE BENCH MARK ELEV 629.72
 BENCHMARK : SET CUT CROSS ON SE SIDE OF CONCRETE BASE OF TRAFFIC SIGNAL
 LOCATION : BASE AT NW CORNER OF WILLIAMS ST. AND ELEANOR ST.

LEGEND	
xx.xx'	EXISTING LENGTH
=====	PROPOSED SIDE CURB
()	EXISTING ELEVATION/SLOPE
[]	PROPOSED SIDEWALK
[•••••]	DETECTABLE WARNINGS
[X/X/X]	DEPRESSED CURB AND GUTTER

SITE BENCHMARK "D"
 REFERENCE BENCH MARK ELEV 629.35
 BENCHMARK : SET CUT CROSS ON NE CORNER OF TRAFFIC SIGNAL HANDHOLE
 LOCATION : HANDHOLE AT NE CORNER OF WILLIAMS ST. AND ELEANOR ST.

FILE NAME :	USER NAME : STEEGPA	DESIGNED -	REVISED -	STATE OF ILLINOIS DEPARTMENT OF TRANSPORTATION	ADA RAMP DETAILS (WILLIAMS ST. AT ELEANOR ST.) (WILLIAMS ST/GLENWOOD-THORNTON RD.)-MAIN ST. TO MARION ST.			F.A.U. RTE.:	SECTION	COUNTY	TOTAL SHEETS	SHEET NO.
per\\L004E010INTEC\illinois.gov\PW\DOT\Documents\DOT Offices\District 1\Projects\0138\ADA\Design\0138615-ADA-1.dgn		CHECKED -	REVISED -		2906	68-RS	COOK	23	11H			
Default	PLOT SCALE : 10.0000' / in.	DATE -	REVISED -		SCALE:	SHEET	OF	SHEETS	STA. TO STA.	ILLINOIS FED. AID PROJECT	CONTRACT NO. 62CS9	
	PLOT DATE : 5/30/2017											

Sheet Added 6-7-17



SITE BENCHMARK "B"
 REFERENCE BENCH MARK ELEV 629.77
 BENCHMARK : SET CUT CROSS ON NE SIDE OF CONCRETE BASE OF TRAFFIC SIGNAL
 LOCATION : BASE AT SW CORNER OF WILLIAMS ST. AND ELEANOR ST.

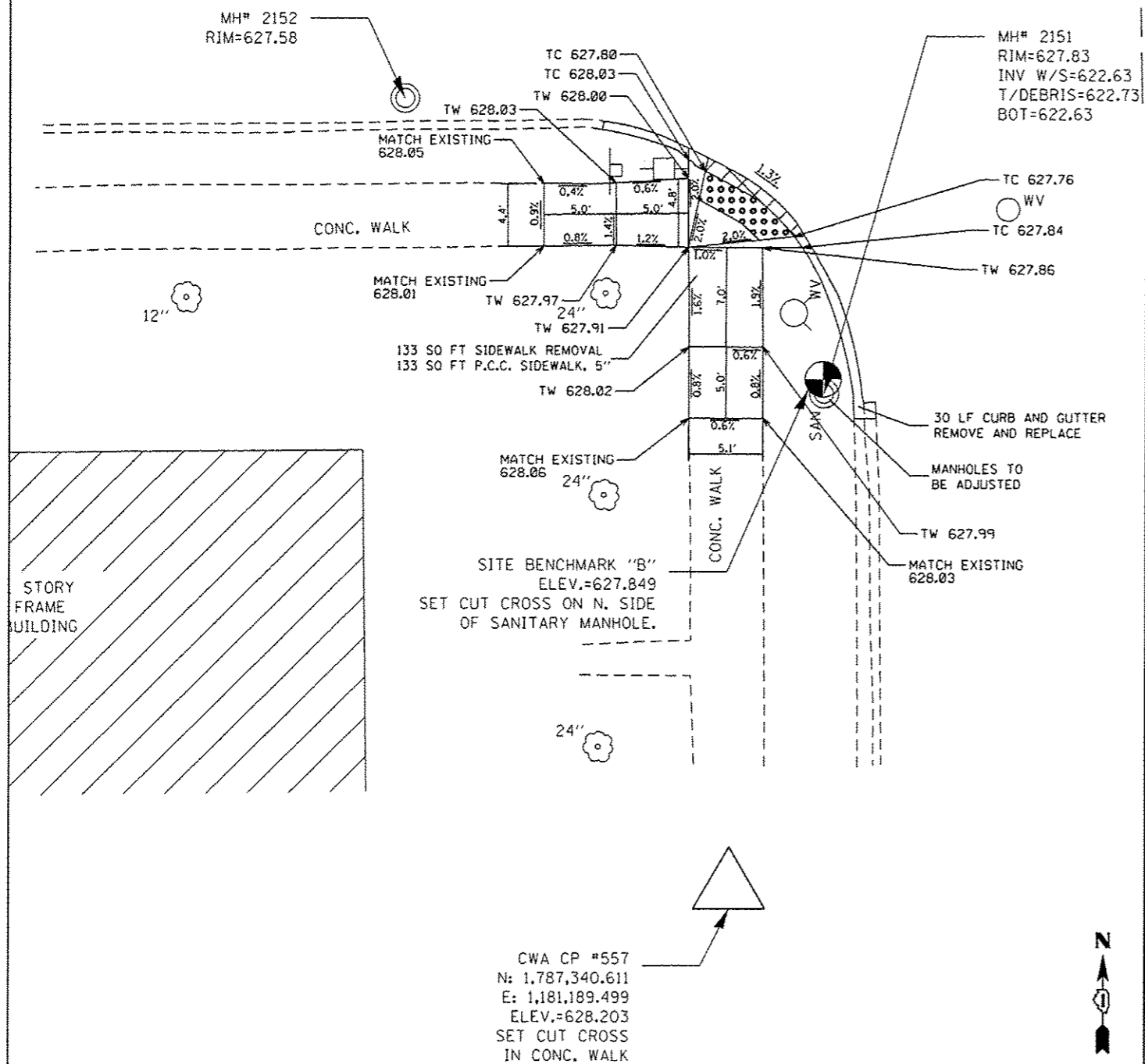
LEGEND	
xx.xx'	EXISTING LENGTH
=====	PROPOSED SIDE CURB
()	EXISTING ELEVATION/SLOPE
[]	PROPOSED SIDEWALK
[•••••]	DETECTABLE WARNINGS
[X/X]	DEPRESSED CURB AND GUTTER

SITE BENCHMARK "A"
 REFERENCE BENCH MARK ELEV 629.68
 BENCHMARK : SET CUT CROSS ON NORTH SIDE OF CONCRETE BASE OF TRAFFIC SIGNAL
 LOCATION : BASE AT SE CORNER OF WILLIAMS ST. AND ELEANOR ST.

FILE NAME *	USER NAME * STEEDPA	DESIGNED -	REVISED -	STATE OF ILLINOIS DEPARTMENT OF TRANSPORTATION	ADA RAMP DETAILS (WILLIAMS ST. AT ELEANOR ST.) (WILLIAMS ST./GLENWOOD-THORNTON RD.)—MAIN ST. TO MARION ST.	F.A.U. RTE.	SECTION	COUNTY	TOTAL SHEETS	SHEET NO.	
p:\11\00468\INTEG.illinois.gov\11001\Documents\11001\Offices\District 1\Projects\0136616-ADA-1.dgn	BRANDON	DATE	DATE			2906	68-R5	COOK	23	111	
Default	PLOT SCALE * 10.0000' / 1"	CHECKED -	REVISED -			SCALE: SHEET OF SHEETS STA. TO STA.		CONTRACT NO. 62C59			
	PLOT DATE * 5/30/2017	DATE -	REVISED -			ILLINOIS FED. AID PROJECT					

Sheet Added 6-7-17

MARION STREET



SITE BENCHMARK "B"
 REFERENCE BENCH MARK ELEV 627.85
 BENCHMARK : SET CUT CROSS ON NORTH SIDE OF SANITARY MANHOLE
 LOCATION : BASE AT SW CORNER OF WILLIAMS ST. AND MARION ST.

LEGEND

xx.xx'	EXISTING LENGTH		PROPOSED SIDEWALK
	PROPOSED SIDE CURB		DETECTABLE WARNINGS
()	EXISTING ELEVATION/SLOPE		DEPRESSED CURB AND GUTTER

FILE NAME *	USER NAME * STEEDPA	DESIGNED -	REVISED -	STATE OF ILLINOIS DEPARTMENT OF TRANSPORTATION	ADA RAMP DETAILS (WILLIAMS ST. AT MARION ST.) (WILLIAMS ST./GLENWOOD-THORNTON RD.)—MAIN ST. TO MARION ST.	F.A.D. RTE.	SECTION	COUNTY	TOTAL SHEETS	SHEET NO.
		CHECKED -	REVISED -			2906	68-R5	COOK	23	11J
Default	PLT SCALE * 10.0000 ' / in.	DATE -	REVISED -	SCALE:	SHEET OF SHEETS	STA.	TO STA.	ILLINOIS FED. AID PROJECT		

Sheet Added 6-7-17