

STATE OF ILLINOIS  
DEPARTMENT OF TRANSPORTATION

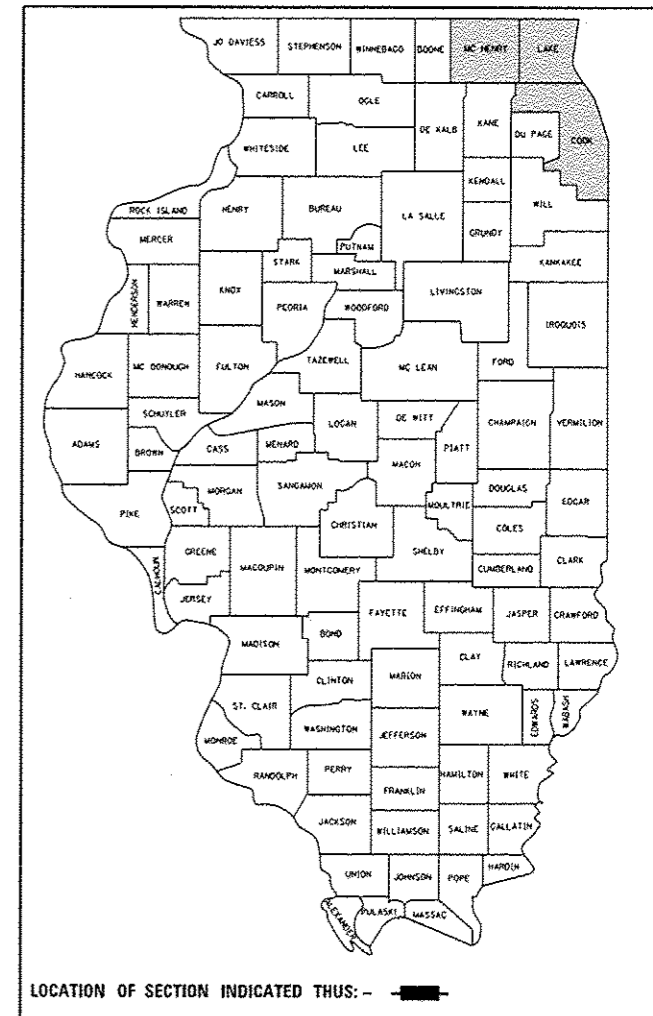
F.A. RTE.	SECTION	COUNTY	TOTAL SHEETS	SHEET NO.
	2016-056TS	VARIOUS	55	1
ILLINOIS			CONTRACT NO. 62D44	

△ \*55-1 = 54 total sheets

FOR INDEX OF SHEETS, SEE SHEET NO. 2

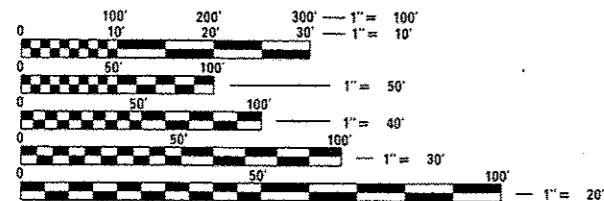
**PROPOSED  
HIGHWAY PLANS**  
VARIOUS LOCATIONS IN DISTRICT 1  
SECTION 2016-056TS  
PROJECT HSIP-000V(112)  
PEDESTRIAN SIGNAL INSTALLATION  
VARIOUS COUNTIES

C-91-023-17



FOR LOCATION MAP  
SEE SHEETS NO. 3-5

VARIOUS TOWNSHIPS



FULL SIZE PLANS HAVE BEEN PREPARED USING STANDARD ENGINEERING SCALES. REDUCED SIZED PLANS WILL NOT CONFORM TO STANDARD SCALES. IN MAKING MEASUREMENTS ON REDUCED PLANS, THE ABOVE SCALES MAY BE USED.

J.U.L.I.E.  
JOINT UTILITY LOCATION INFORMATION FOR EXCAVATION  
1-800-892-0123  
OR 811

PROJECT ENGINEER: JAMEELAH CURRY / LUKASZ POCIECHA  
PROJECT MANAGER: DARYLE DREW (847) 705-4424

CONTRACT NO. 62D44

STATE OF ILLINOIS  
DEPARTMENT OF TRANSPORTATION

SUBMITTED *March 24* 2017  
*Anthony [Signature]*  
REGIONAL ENGINEER

*May 12* 2017  
*Matthew M. Adams*  
ENGINEER OF DESIGN AND ENVIRONMENT

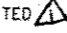
*May 12* 2017  
*[Signature]*  
DIRECTOR OF PROGRAM DEVELOPMENT


PRINTED BY THE AUTHORITY  
OF THE STATE OF ILLINOIS

△ Rev 6-5-17

**INDEX OF SHEETS**

SHT. NO.	DESCRIPTION
1	COVER SHEET
2	INDEX OF SHEETS, HIGHWAY STANDARDS, AND GENERAL NOTES
3-6	LOCATION MAPS
7-10	SUMMARY OF QUANTITIES
11-17	DISTRICT 1 STANDARD TRAFFIC SIGNAL DESIGN DETAILS (TS-05)

SHT. NO.	TS NO.	INTERSECTION NAME
18-19	15088	IL 47 AT IL 120
20-21	21410	IL 21 (MILWAUKEE AVE) AT CORPORATE WOODS PKWY
<del>22-23</del>	<del>6650</del>	<del>IL 21 (MILWAUKEE AVE) AT DEERFIELD PKWY</del> DELETED 
24-25	405	US 12 (RAND RD) AT KENNICOTT DR
26-27	12640	US 12 (RAND RD) AT ARLINGTON PLAZA
28-29	12595	US 12 (RAND RD) AT ARLINGTON HEIGHTS RD
30-31	12630	US 12 (RAND RD) AT PALATINE RD
32-33	421	US 12 (RAND RD) AT BEVERLY LN
34-35	415	US 12 (RAND RD) AT DRYDEN AVE
36-37	395	US 12 (RAND RD) AT EUCLID AVE
38-46	380	US 12 (RAND RD) AT IL 83 (ELMHURST RD) AT KENSINGTON RD
47-48	21285	BARRINGTON RD AT RAMBLEWOOD DR
49-50	13675	RANDOLPH ST AT DES PLAINES AVE
51-52	2650	IL 50 / IL 83 (CICERO AVE) AT 135TH ST
53-54	1850	IL 1 (HALSTED ST) AT JOE ORR RD

SHT. NO.	DESCRIPTION
55	ARTERIAL ROAD INFORMATION SIGN (TC-22)
55A	TYPICAL PAVEMENT MARKINGS (TC-13) 

**HIGHWAY STANDARDS**

STD. NO.	TITLE
701006-05	OFF-ROAD OPERATIONS, 2L, 2W, 15'(4.5 M) TO 24'(600 MM) FROM PAVEMENT EDGE
701101-05	OFF-ROAD OPERATIONS, MULTILANE, 15'(4.5 M) TO 24'(600 MM) FROM PAVEMENT EDGE
701701-10	URBAN LANE CLOSURE, MULTILANE INTERSECTION
701801-06	SIDEWALK, CORNER OR CROSSWALK CLOSURE
701901-06	TRAFFIC CONTROL DEVICES
857001-01	STANDARD PHASE DESIGNATION DIAGRAMS AND PHASE SEQUENCES
873001-02	TRAFFIC SIGNAL GROUNDING AND BONDING
878001-10	CONCRETE FOUNDATION DETAILS
880006-01	TRAFFIC SIGNAL MOUNTING DETAILS

**RLR NOTES**

DUE TO THE PRESENCE OF A RED LIGHT RUNNING (RLR) CAMERA FOR THE BELOW LISTED LOCATION, CONTRACTOR SHALL NOTIFY THE VILLAGE AND RLR CAMERA COMPANY PRIOR TO THE START OF CONSTRUCTION. THE VILLAGE OR THE RLR CAMERA COMPANY SHALL MAKE THE CAMERA INOPERATIVE FOR THE TIME OF CONSTRUCTION. ANY RLR CAMERA EQUIPMENT THAT IS IN CONFLICT WITH THE PROPOSED CONSTRUCTION SHALL BE REMOVED BY ITS RESPECTIVE OWNERS PRIOR TO THE START OF CONSTRUCTION.

**RLR CAMERA LOCATION:**

2650	IL 50 / IL 83 (CICERO AVE) AT 135TH ST
VILLAGE OF CRESTWOOD	RED SPEED, LLC.
13840 S CICERO	400 EISENHOWER LANE
CRESTWOOD, IL 60445	LOMBARD, ILLINOIS 60148
(708) 371-4849	(630) 317-5700

**GENERAL NOTES**

BEFORE STARTING ANY EXCAVATION, THE CONTRACTOR SHALL CALL "J.U.L.I.E." AT (800) 892-0123 OR 811 FOR FIELD LOCATIONS OF BURIED ELECTRIC, TELEPHONE AND GAS UTILITIES. 48 HOUR NOTIFICATION IS REQUIRED.

THE CONTRACTOR SHALL CONTACT THE TRAFFIC CONTROL SUPERVISOR AT (847) 705-4470 72 HOURS IN ADVANCE OF BEGINNING WORK.

IT SHALL BE THE CONTRACTOR'S RESPONSIBILITY TO VERIFY ALL DIMENSIONS AND CONDITIONS EXISTING IN THE FIELD PRIOR TO ORDERING MATERIALS AND BEGINNING CONSTRUCTION. THIS SHALL INCLUDE LOCATING THE MAST ARM FOUNDATIONS AND VERIFYING THE MAST ARMS LENGTHS.

THE EXACT LOCATION OF ALL UTILITIES SHALL BE FIELD VERIFIED BY THE CONTRACTOR BEFORE ORDERING ANY MATERIALS AND STARTING ANY WORK. FOR LOCATIONS OF UTILITIES, LOCALLY OWNED EQUIPMENT, LEASED ENFORCEMENT CAMERA SYSTEM FACILITIES AND IDOT UNDERGROUND FACILITIES, CONTACT THE LOCAL COUNTIES, MUNICIPALITIES AND IDOT FOR LOCATES. THE CONTRACTOR SHALL CALL "JULIE" AT (800) 892-0123 OR 811. IN THE CITY OF CHICAGO CONTACT DIGGER AT (312) 744-7000 FOR FIELD LOCATIONS OF BURIED UTILITIES (48 HOURS NOTIFICATION REQUIRED).

IF THIS CONTRACT REQUIRES THE SERVICES OF AN ELECTRICAL CONTRACTOR, THE CONTRACTOR SHALL BE RESPONSIBLE AT HIS/HER OWN EXPENSE FOR LOCATING EXISTING IDOT ELECTRICAL FACILITIES PRIOR TO PERFORMING ANY WORK. IF THIS CONTRACT DOES NOT REQUIRE THE SERVICES OF AN ELECTRICAL CONTRACTOR, THE CONTRACTOR MAY REQUEST ONE FREE LOCATE FOR EXISTING IDOT ELECTRICAL FACILITIES FROM THE DISTRICT ONE ELECTRICAL MAINTENANCE CONTRACTOR PRIOR TO THE START OF ANY WORK. ADDITIONAL REQUESTS MAY BE AT THE EXPENSE OF THE CONTRACTOR. THE LOCATION OF UNDERGROUND TRAFFIC FACILITIES DOES NOT RELIEVE THE CONTRACTOR OF THEIR RESPONSIBILITY TO REPAIR ANY FACILITIES DAMAGED DURING CONSTRUCTION AT THEIR EXPENSE.


THE CONTRACTOR SHALL COORDINATE CONSTRUCTION ACTIVITIES WITH UTILITY COMPANIES, LOCAL GOVERNMENT AGENCIES AND IDOT.

RESTORATION OF THE TRAFFIC SIGNAL WORK AREA SHALL BE INCLUDED IN THE RELATED PAY ITEM SUCH AS FOUNDATION, CONDUIT, HANDHOLE, ETC., AND NO EXTRA COMPENSATION SHALL BE ALLOWED. ALL ROADWAY SURFACES SUCH AS SHOULDERS, MEDIAN, SIDEWALKS, PAVEMENT ETC. SHALL BE REPLACED IN KIND. ALL DAMAGE TO MOWED LAWNS SHALL BE REPLACED WITH AN APPROVED SOD, AND ALL DAMAGE TO UNMOWED FIELDS SHALL BE SEEDED IN ACCORDANCE WITH STANDARD SPECIFICATIONS 252 AND 250 RESPECTIVELY.


THE CONTRACTOR SHALL RELOCATE ANY EXISTING SIGN PANELS, INCLUDING BLANK OUT SIGNS, FROM POSTS THAT ARE INDICATED FOR REPLACEMENT TO A NEW POST AS SHOWN ON THE PLANS OR AS DIRECTED BY THE ENGINEER. THE COST OF REMOVAL, RELOCATION, AND ANY NEW MOUNTING HARDWARE NECESSARY TO COMPLETE THIS WORK SHALL BE INCLUDED IN THE PAY ITEM OF THE LENGTH AS SPECIFIED IN THE PLANS.

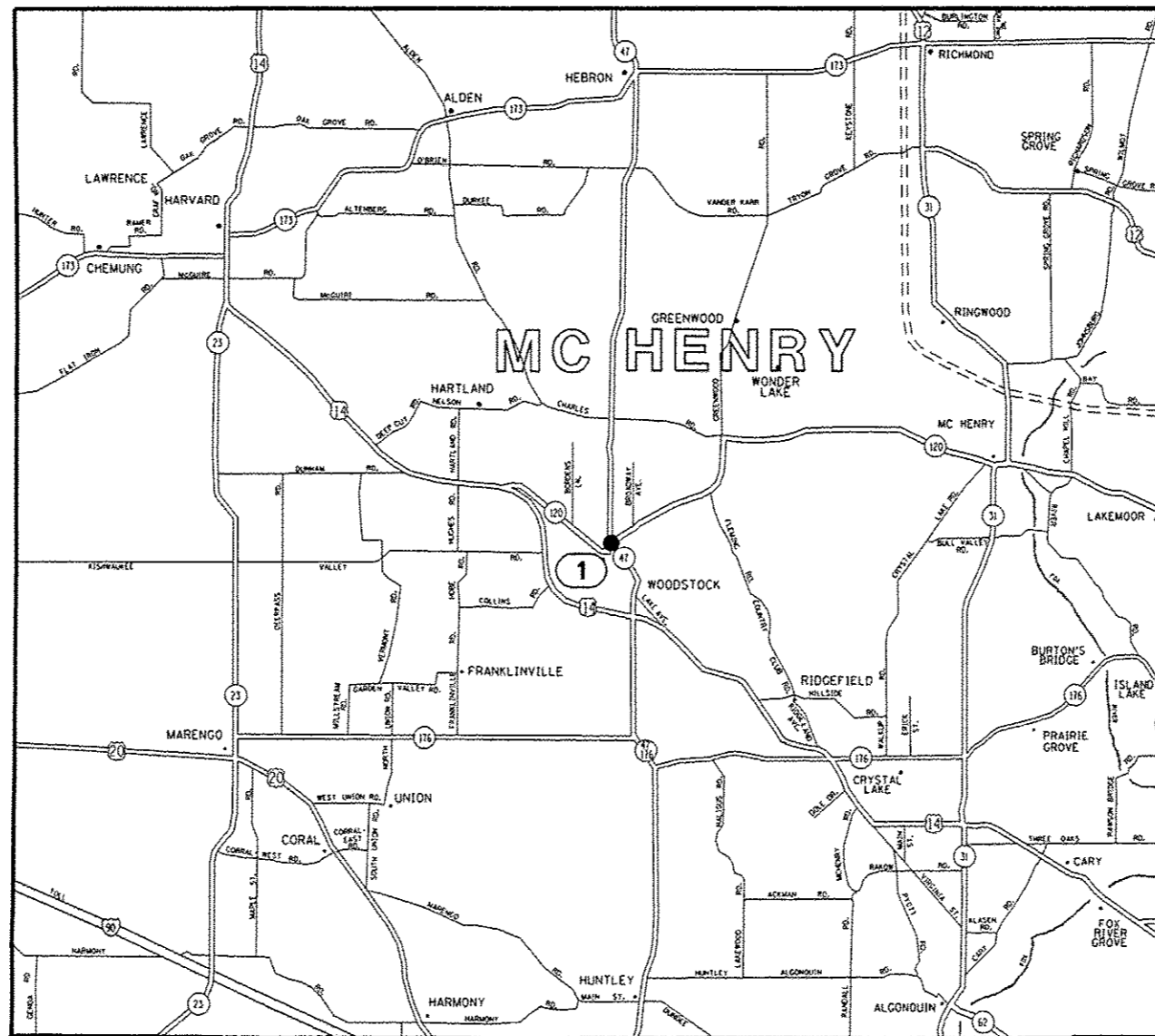
PARTIAL PAYMENT AS DESCRIBED IN ARTICLE 109.07(b) OF THE STANDARD SPECIFICATIONS WILL NOT BE ALLOWED FOR ITEMS INCLUDED IN THIS CONTRACT.

FILE NAME: p:\11\084E01D\INTEG\11\more.gov\PW\DOT\Documents\DOT Office\District 1\Projects\0102\DRAWINGS\Traffic\102317-shr-ts.dgn	USER NAME: ppeeschel	DESIGNED: JC	REVISED: JC 05/23/2017	<b>STATE OF ILLINOIS DEPARTMENT OF TRANSPORTATION</b>	<b>INDEX OF SHEETS, HIGHWAY STANDARDS &amp; GENERAL NOTES</b>				F.A. RTE.	SECTION	COUNTY	TOTAL SHEETS	SHEET NO.		
Default	PLOT SCALE: 1/8" = 1'-0"	CHECKED: LP	REVISED:		SCALE:	SHEET	OF	SHEETS	STA.	TO	STA.	2016-056TS	VARIOUS	55	2
	PLOT DATE: 5/25/2017	DATE: 03/24/2017	REVISED:		CONTRACT NO. 62D44										
											ILLINOIS FED. AID PROJECT				


 Rev 16-5-17

LOC. NO.	TS NO.	INTERSECTION NAME	MUNICIPALITY	COUNTY
1	15088	IL 47 AT IL 120	WOODSTOCK	MCHENRY
2	21410	IL 21 (MILWAUKEE AVE) AT CORPORATE WOODS PKWY	VERNON HILLS	LAKE
3	6660	IL 21 (MILWAUKEE AVE) AT DEERFIELD PKWY	BUFFALO GROVE	LAKE
4	405	US 12 (RAND RD) AT KENNICOTT DR	ARLINGTON HEIGHTS	COOK
5	12640	US 12 (RAND RD) AT ARLINGTON PLAZA	ARLINGTON HEIGHTS	COOK
6	12595	US 12 (RAND RD) AT ARLINGTON HEIGHTS RD	ARLINGTON HEIGHTS	COOK
7	12630	US 12 (RAND RD) AT PALATINE RD	ARLINGTON HEIGHTS	COOK
8	421	US 12 (RAND RD) AT BEVERLY LN	ARLINGTON HEIGHTS	COOK
9	415	US 12 (RAND RD) AT DRYDEN AVE	ARLINGTON HEIGHTS	COOK
10	395	US 12 (RAND RD) AT EUCLID AVE	ARLINGTON HEIGHTS	COOK
11	380	US 12 (RAND RD) AT IL 83 (ELMHURST RD) AT KENSINGTON RD	MOUNT PROSPECT	COOK
12	21285	BARRINGTON RD AT RAMBLEWOOD DR	STREAMWOOD / HANOVER PARK	COOK
13	13675	RANDOLPH ST AT DES PLAINES AVE	FOREST PARK	COOK
14	2650	IL 50 / IL 83 (CICERO AVE) AT 135TH ST	CRESTWOOD	COOK
15	1850	IL 1 (HALSTED ST) AT JOE ORR RD	CHICAGO HEIGHTS	COOK

DELETED 

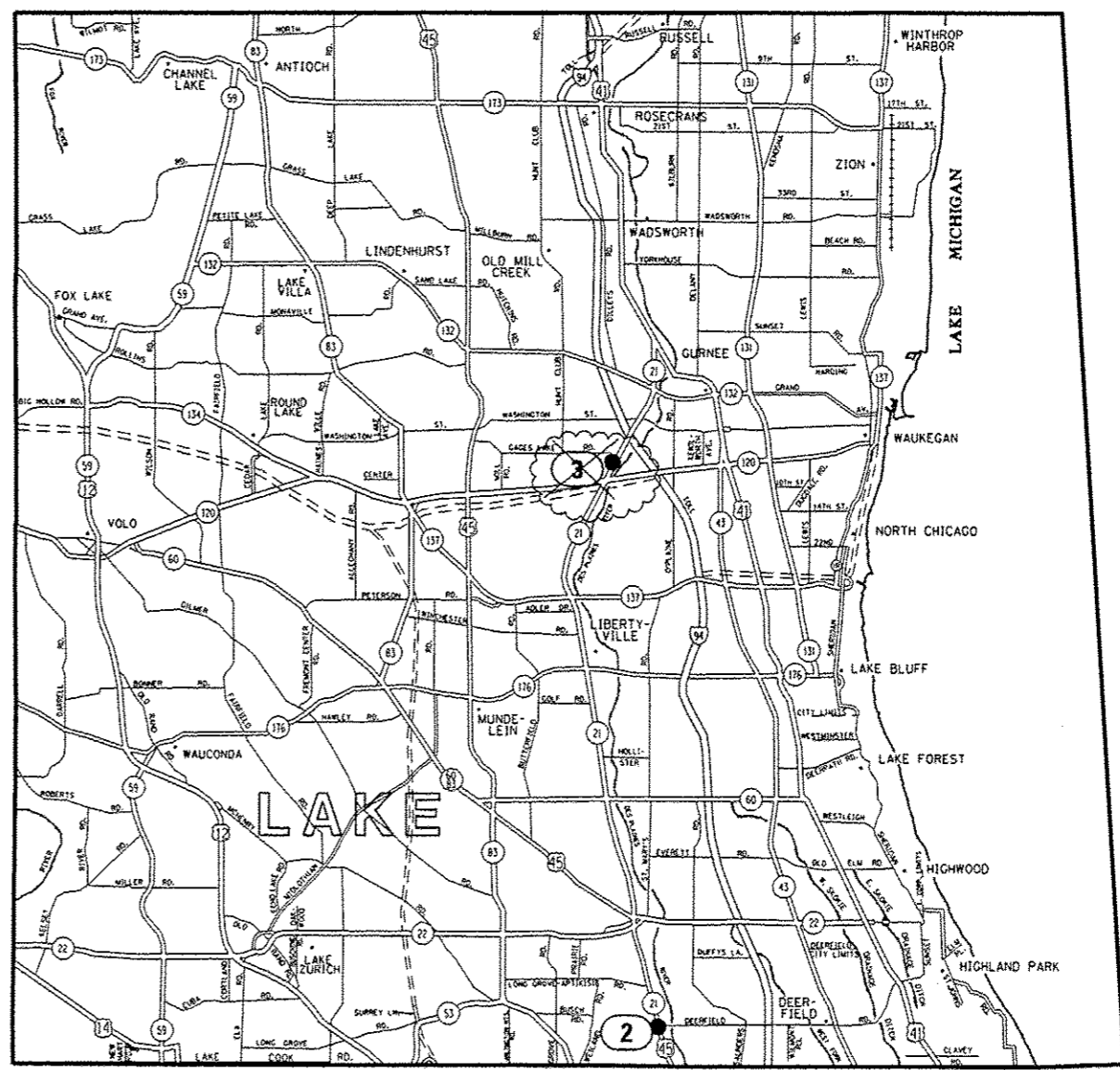


FILE NAME : p:\IL094EBID\INTEG\illinois.gov\PI007\Do	USER NAME : paaischal	DESIGNED - JC	REVISED - JC 05/23/2017	<b>STATE OF ILLINOIS DEPARTMENT OF TRANSPORTATION</b>	<b>LOCATION MAP MCHENRY COUNTY</b>		F.A. RTE.	SECTION 2016-056TS	COUNTY VARIOUS	TOTAL SHEETS 55	SHEET NO. 3	
Default	Documents\DOT Offices\District 1\Projects\DI02\DR\MapData\Traffic\3182317-shr-ta.dgn	CHECKED - LP	REVISED -		SCALE:	SHEET OF	SHEETS STA.	TO STA.	CONTRACT NO. 62044			
	PLOT SCALE : 100,0000 / 1" = 1 MI.	DATE - 03/24/2017	REVISED -		ILLINOIS FED. AID PROJECT							
	PLOT DATE : 5/25/2017											

 Rev 6-5-17



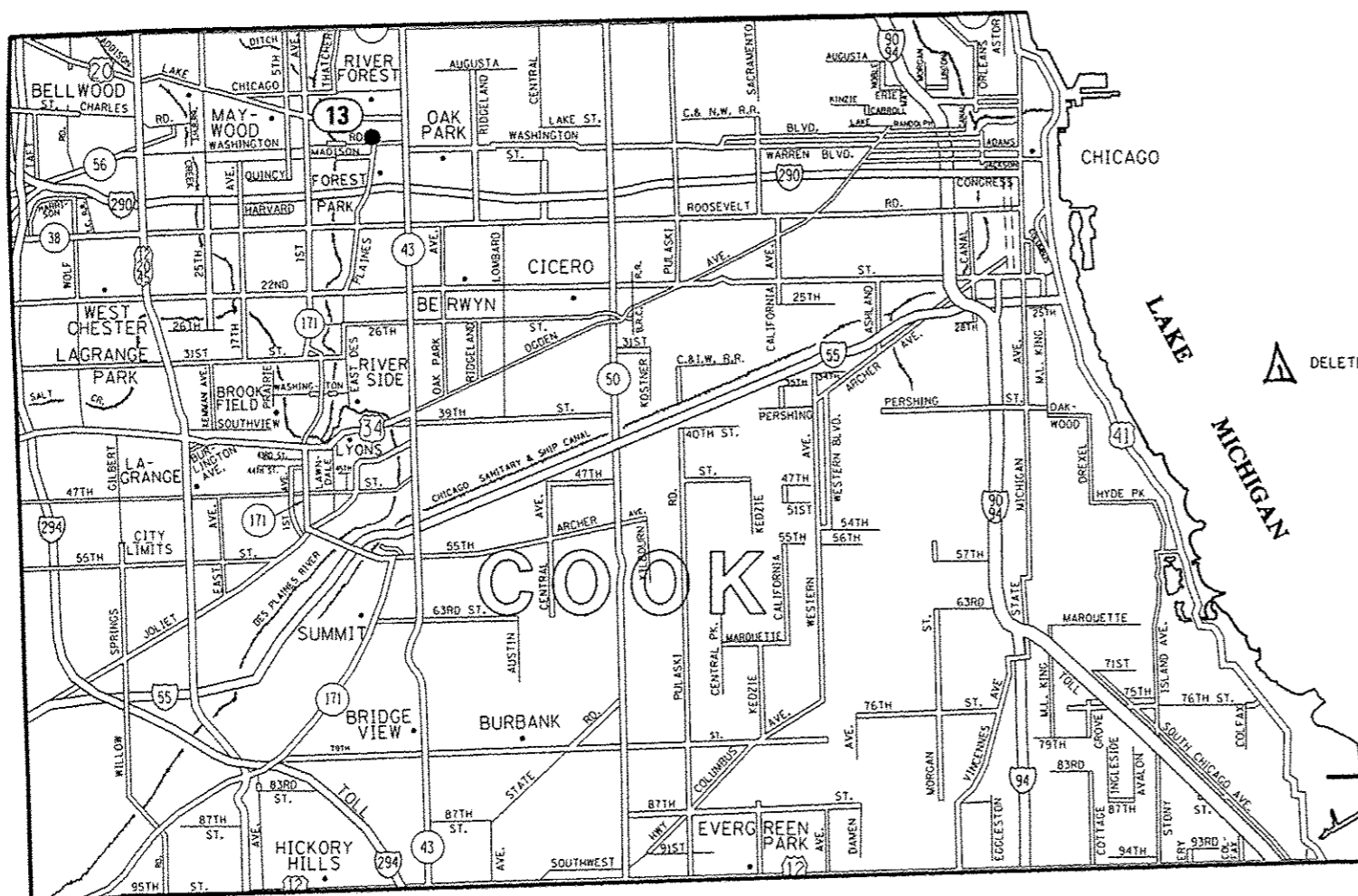
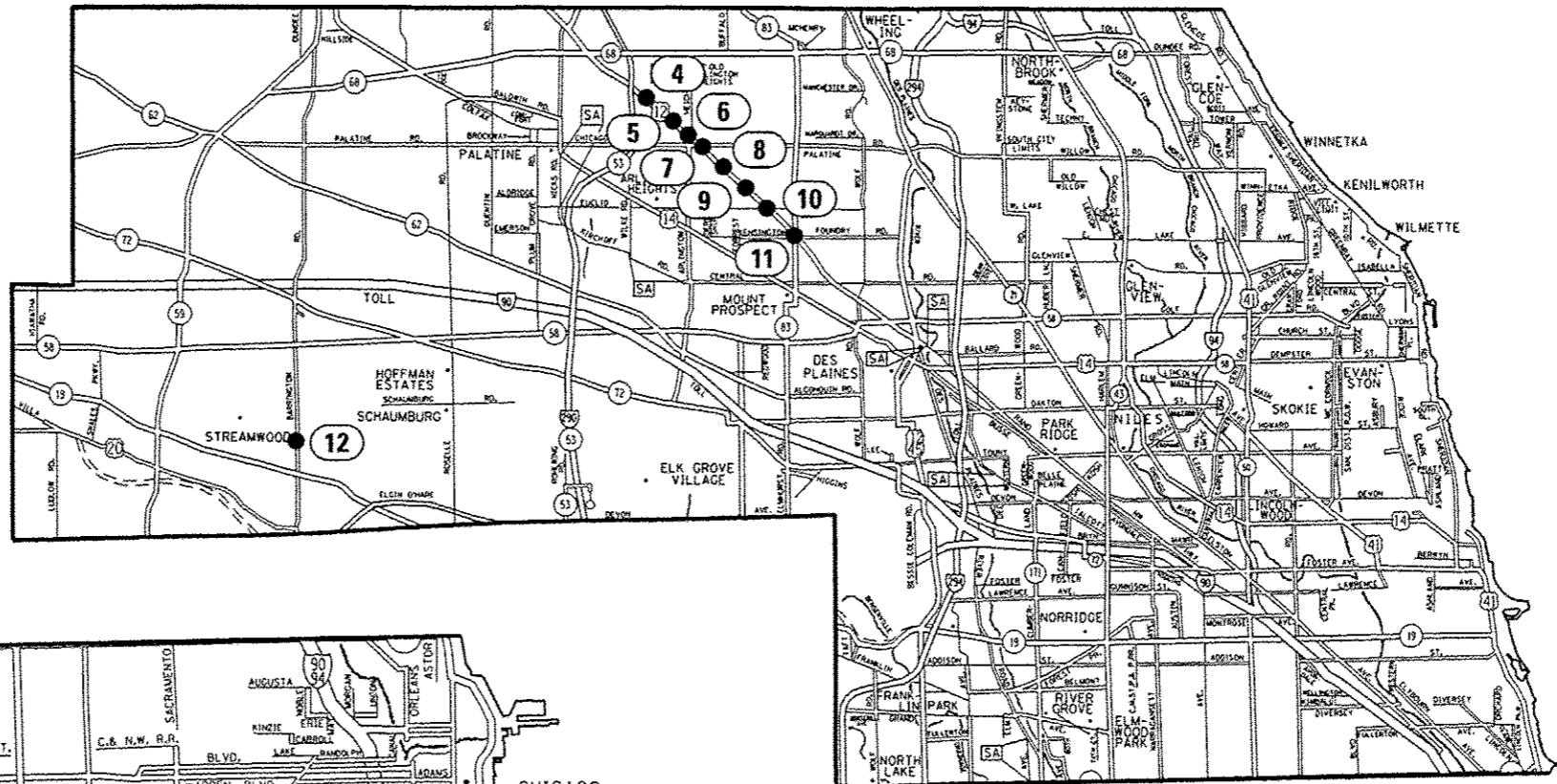
LOC. NO.	TS NO.	INTERSECTION NAME	MUNICIPALITY	COUNTY
1	15088	IL 47 AT IL 120	WOODSTOCK	MCHENRY
2	21410	IL 21 (MILWAUKEE AVE) AT CORPORATE WOODS PKWY	VERNON HILLS	LAKE
3	6050	IL 21 (MILWAUKEE AVE) AT DEERFIELD PKWY	BUFFALO GROVE	LAKE
4	405	US 12 (RAND RD) AT KENNICOTT DR	ARLINGTON HEIGHTS	COOK
5	12640	US 12 (RAND RD) AT ARLINGTON PLAZA	ARLINGTON HEIGHTS	COOK
6	12595	US 12 (RAND RD) AT ARLINGTON HEIGHTS RD	ARLINGTON HEIGHTS	COOK
7	12630	US 12 (RAND RD) AT PALATINE RD	ARLINGTON HEIGHTS	COOK
8	421	US 12 (RAND RD) AT BEVERLY LN	ARLINGTON HEIGHTS	COOK
9	415	US 12 (RAND RD) AT DRYDEN AVE	ARLINGTON HEIGHTS	COOK
10	395	US 12 (RAND RD) AT EUCLID AVE	ARLINGTON HEIGHTS	COOK
11	380	US 12 (RAND RD) AT IL 83 (ELMHURST RD) AT KENSINGTON RD	MOUNT PROSPECT	COOK
12	21285	BARRINGTON RD AT RAMBLEWOOD DR	STREAMWOOD / HANOVER PARK	COOK
13	13675	RANDOLPH ST AT DES PLAINES AVE	FOREST PARK	COOK
14	2650	IL 50 / IL 83 (CICERO AVE) AT 135TH ST	CRESTWOOD	COOK
15	1850	IL 1 (HALSTED ST) AT JOE ORR RD	CHICAGO HEIGHTS	COOK



DELETED

FILE NAME :	USER NAME : poatechel	DESIGNED - JC	REVISED - JC 05/23/2017	<b>STATE OF ILLINOIS DEPARTMENT OF TRANSPORTATION</b>	<b>LOCATION MAP LAKE COUNTY</b>			F.A. RTE.	SECTION	COUNTY	TOTAL SHEETS	SHEET NO.		
Default		CHECKED - LP	REVISED -		SCALE:	SHEET	OF	SHEETS	STA.	TO	STA.	VARIOUS	55	4
		DATE - 03/24/2017	REVISED -											

Rev 6-5-17



LOC. NO.	TS NO.	INTERSECTION NAME	MUNICIPALITY	COUNTY
1	15088	IL 47 AT IL 120	WOODSTOCK	MCHENRY
2	21410	IL 21 (MILWAUKEE AVE) AT CORPORATE WOODS PKWY	VERNON HILLS	LAKE
3	6650	IL 21 (MILWAUKEE AVE) AT DEERFIELD PKWY	BUFFALO GROVE	LAKE
4	405	US 12 (RAND RD) AT KENNICOTT DR	ARLINGTON HEIGHTS	COOK
5	12640	US 12 (RAND RD) AT ARLINGTON PLAZA	ARLINGTON HEIGHTS	COOK
6	12595	US 12 (RAND RD) AT ARLINGTON HEIGHTS RD	ARLINGTON HEIGHTS	COOK
7	12630	US 12 (RAND RD) AT PALATINE RD	ARLINGTON HEIGHTS	COOK
8	421	US 12 (RAND RD) AT BEVERLY LN	ARLINGTON HEIGHTS	COOK
9	415	US 12 (RAND RD) AT DRYDEN AVE	ARLINGTON HEIGHTS	COOK
10	395	US 12 (RAND RD) AT EUCLID AVE	ARLINGTON HEIGHTS	COOK
11	380	US 12 (RAND RD) AT IL 83 (ELMHURST RD) AT KENSINGTON RD	MOUNT PROSPECT	COOK
12	21285	BARRINGTON RD AT RAMBLEWOOD DR	STREAMWOOD / HANOVER PARK	COOK
13	13675	RANDOLPH ST AT DES PLAINES AVE	FOREST PARK	COOK
14	2650	IL 50 / IL 83 (CICERO AVE) AT 135TH ST	CRESTWOOD	COOK
15	1850	IL 1 (HALSTED ST) AT JOE ORR RD	CHICAGO HEIGHTS	COOK

DELETED

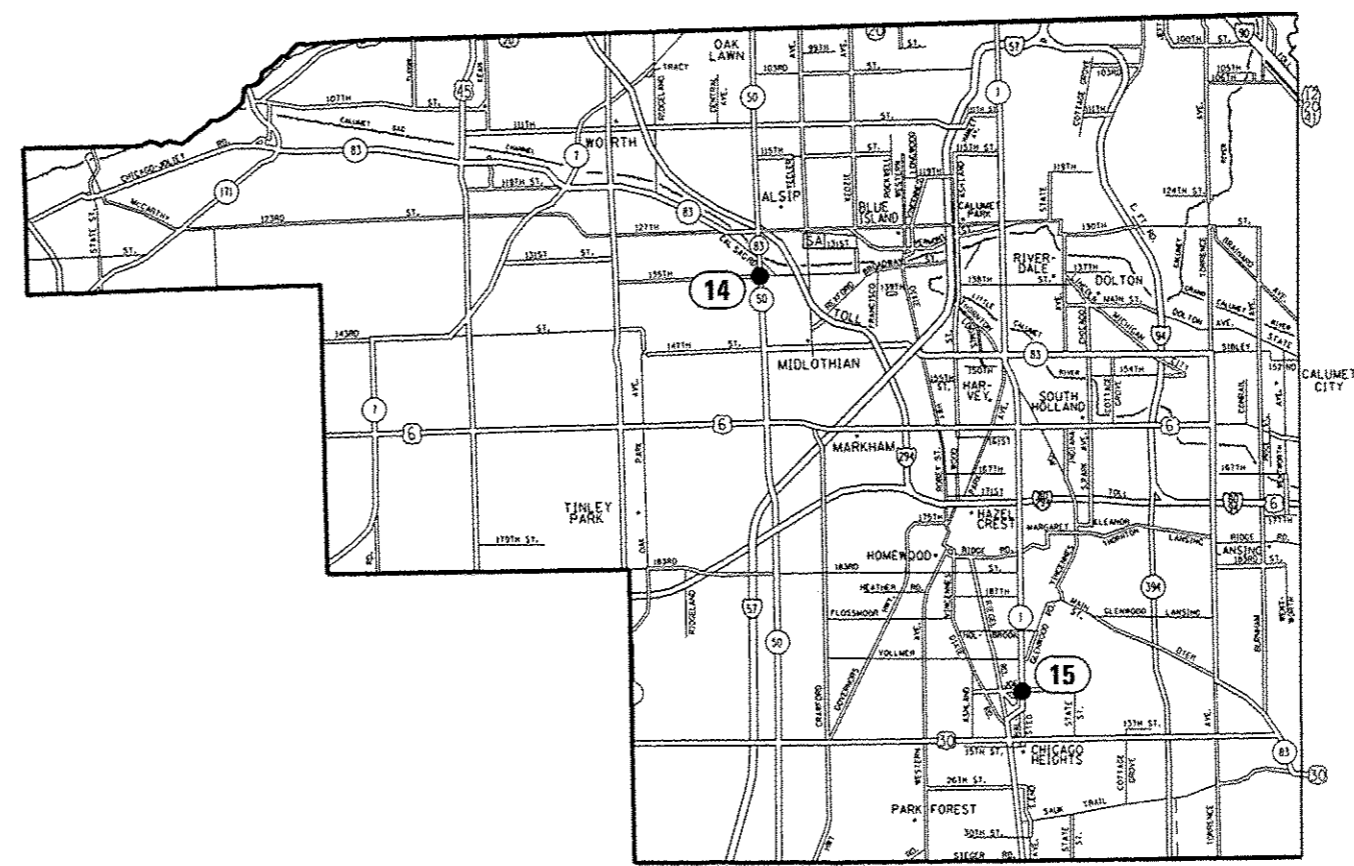
FILE NAME = p:\11\04E8\INTEG\illinois.gov\1007\...  
 USER NAME = poctechal  
 DESIGNED - JC  
 REVISIONS:  
 1 - JC 05/23/2017  
 2 -  
 3 -  
 4 -  
 5 -  
 6 -  
 7 -  
 8 -  
 9 -  
 10 -  
 11 -  
 12 -  
 13 -  
 14 -  
 15 -

**STATE OF ILLINOIS  
 DEPARTMENT OF TRANSPORTATION**

**LOCATION MAP  
 NORTH & CENTRAL COOK COUNTY**

F.A. RTE.	SECTION	COUNTY	TOTAL SHEETS	SHEET NO.
	2016-056TS	VARIOUS	55	5
SCALE:				CONTRACT NO. 62044
SHEET	OF	SHEETS	STA.	TO STA.

Rev 6-5-17



LOC. NO.	TS NO.	INTERSECTION NAME	MUNICIPALITY	COUNTY
1	15088	IL 47 AT IL 120	WOODSTOCK	MCHENRY
2	21410	IL 21 (MILWAUKEE AVE) AT CORPORATE WOODS PKWY	VERNON HILLS	LAKE
3	6650	IL 21 (MILWAUKEE AVE) AT DEERFIELD PKWY	BUFFALO GROVE	LAKE
4	405	US 12 (RAND RD) AT KENNICOTT DR	ARLINGTON HEIGHTS	COOK
5	12640	US 12 (RAND RD) AT ARLINGTON PLAZA	ARLINGTON HEIGHTS	COOK
6	12595	US 12 (RAND RD) AT ARLINGTON HEIGHTS RD	ARLINGTON HEIGHTS	COOK
7	12630	US 12 (RAND RD) AT PALATINE RD	ARLINGTON HEIGHTS	COOK
8	421	US 12 (RAND RD) AT BEVERLY LN	ARLINGTON HEIGHTS	COOK
9	415	US 12 (RAND RD) AT DRYDEN AVE	ARLINGTON HEIGHTS	COOK
10	395	US 12 (RAND RD) AT EUCLID AVE	ARLINGTON HEIGHTS	COOK
11	380	US 12 (RAND RD) AT IL 83 (ELMHURST RD) AT KENSINGTON RD	MOUNT PROSPECT	COOK
12	21285	BARRINGTON RD AT RAMBLEWOOD DR	STREAMWOOD / HANOVER PARK	COOK
13	13675	RANDOLPH ST AT DES PLAINES AVE	FOREST PARK	COOK
14	2650	IL 50 / IL 83 (CICERO AVE) AT 135TH ST	CRESTWOOD	COOK
15	1850	IL 1 (HALSTED ST) AT JOE ORR RD	CHICAGO HEIGHTS	COOK

DELETED



FILE NAME :	USER NAME : pccschal	DESIGNED - JC	REVISED - JC 05/23/2017	<b>STATE OF ILLINOIS DEPARTMENT OF TRANSPORTATION</b>	<b>LOCATION MAP CENTRAL COOK COUNTY</b>		F.A. RTE.	SECTION	COUNTY	TOTAL SHEETS	SHEET NO.	
Default	PL01 SCALE = 100.0000' / in.	CHECKED - LP	REVISED -		SCALE:	SHEET	OF	SHEETS	STA.	TO	STA.	ILLINOIS FED. AID PROJECT
	PL01 DATE = 5/25/2017	DATE - 03/24/2017	REVISED -								CONTRACT NO. 62044	
											VARIOUS 55 6	

△ Rev 6-5-17

SUMMARY OF QUANTITIES HEADING LEGEND

FUNDING PARTICIPATION

COLUMN NUMBER	TS NO.	INTERSECTION NAME	FEDERAL	STATE	LAKE COUNTY	VERNON HILLS	ARLINGTON HEIGHTS	MOUNT PROSPECT	STREAMWOOD	HANOVER PARK	FOREST PARK	CRESTWOOD										
1	15088	IL 47 AT IL 120	90%	10%																		
3	21410	IL 21 (MILWAUKEE AVE) AT CORPORATE WOODS PKWY	90%			10%																
<del>4</del>	<del>6650</del>	<del>IL 21 (MILWAUKEE AVE) AT DEERFIELD PKWY</del>	<del>90%</del>	<del>5%</del>	<del>5%</del>																	
5	405	US 12 (RAND RD) AT KENNICOTT DR	90%	6.7%			3.3%															
2	12640	US 12 (RAND RD) AT ARLINGTON PLAZA	90%				10%															
1	12595	US 12 (RAND RD) AT ARLINGTON HEIGHTS RD	90%	10%																		
1	12630	US 12 (RAND RD) AT PALATINE RD	90%	10%																		
2	421	US 12 (RAND RD) AT BEVERLY LN	90%				10%															
6	415	US 12 (RAND RD) AT DRYDEN AVE	90%	5%			5%															
1	395	US 12 (RAND RD) AT EUCLID AVE	90%	10%																		
7	380	US 12 (RAND RD) AT IL 83 (ELMHURST RD) AT KENSINGTON RD	90%	8.8%			1.1%															
8	21285	BARRINGTON RD AT RAMBLEWOOD DR	90%	5%				2.5%	2.5%													
9	13675	RANDOLPH ST AT DES PLAINES AVE	90%	7.5%							2.5%											
10	2650	IL 50 / IL 83 (CICERO AVE) AT 135TH ST	90%	7.5%								2.5%										
1	1850	IL 1 (HALSTED ST) AT JOE ORR RD	90%	10%																		

FILE NAME: ... USER NAME: pccochel ... DESIGNED: LP ... REVISIONS ... CHECKED: JC / BK ... DATE: 03/24/2017

STATE OF ILLINOIS DEPARTMENT OF TRANSPORTATION

SUMMARY OF QUANTITIES (SHEET 1 OF 4) SCALE: NONE SHEET NO. OF SHEETS STA. TO STA.

F.A. RATE	SECTION	COUNTY	TOTAL SHEETS	SHEET NO.
	2016-056TS	VARIOUS	55	7
			CONTRACT NO. 62044	

Rev 6-5-17

CODE NO.	ITEM	UNIT	TOTAL QTY	CONSTRUCTION CODE											
				1	2	3	4	5	6	7	8	9	10		
				TRAFFIC SIGNALS											
				0021											
				URBAN											
67000400	ENGINEER'S FIELD OFFICE, TYPE A	CAL MO	6	1.2	0.6	0.6			0.6	0.6	0.6	0.6	0.6	0.6	
W6700200	NON-SPECIAL WASTE DISPOSAL	CYD	25	11.85		0.5			1	2	3	0.5	2.35	3.8	
67100100	MOBILIZATION	LSUM	1	0.2	0.1	0.1			0.1	0.1	0.1	0.1	0.1	0.1	
W6700450	SPECIAL WASTE PLANS AND REPORTS	LSUM	1	0.44		0.08			0.08	0.08	0.08	0.08	0.08	0.08	
70102635	TRAFFIC CONTROL AND PROTECTION, STANDARD 701701	LSUM	1	0.2	0.1	0.1			0.1	0.1	0.1	0.1	0.1	0.1	
W6700530	SOIL DISPOSAL ANALYSIS	EACH	12	5		1			1	1	1	1	1	1	
70102640	TRAFFIC CONTROL AND PROTECTION, STANDARD 701801	LSUM	1	0.2	0.1	0.1			0.1	0.1	0.1	0.1	0.1	0.1	
W18000400	THERMOPLASTIC PAVEMENT MARKING TYPE - LINE 6"	FOOT	4,001	1,792	101				405	974				729	
81028220	UNDERGROUND CONDUIT, GALVANIZED STEEL, 3" DIA.	FOOT	878	458	10				17	29	260	2	56	46	
W18008230	POLYUREA PAVEMENT MARKING TYPE I - LINE 6"	FOOT	166		166										
85000200	MAINTENANCE OF EXISTING TRAFFIC SIGNAL INSTALLATION	EACH	14	5	2	1			1	1	1	1	1	1	
86400100	TRANSCEIVER - FIBER OPTIC	EACH	1								1				
87301215	ELECTRIC CABLE IN CONDUIT, SIGNAL NO. 14 2C	FOOT	18,452	7,575	560	270			150	1,030	6,322	330	875	1,340	
87301225	ELECTRIC CABLE IN CONDUIT, SIGNAL NO. 14 3C	FOOT	22,722	10,050	590	280			165	1,085	7,877	345	930	1,400	
87301900	ELECTRIC CABLE IN CONDUIT, EQUIPMENT GROUNDING CONDUCTOR, NO. 6 1C	FOOT	1,455	747		20			50	75	318	15	130	100	
87502440	TRAFFIC SIGNAL POST, GALVANIZED STEEL 10 FT.	EACH	36	20					2	1	5	1	3	4	
87800100	CONCRETE FOUNDATION, TYPE A	FOOT	180	80		4			8	16	32	4	20	16	
87900200	DRILL EXISTING HANDHOLE	EACH	44	20		1			2	3	8	1	5	4	
88102717	PEDESTRIAN SIGNAL HEAD, LED, 1-FACE, BRACKET MOUNTED WITH COUNTDOWN TIMER	EACH	90	40	4	2			2	8	16	2	8	8	

FILE NAME :	USER NAME : pcc1eche1	DESIGNED - LP	REVISED -
p:\1\6046BIDINTEG\Illinois.gov\PI007\Documents\1007 Offices\District 1\Projects\018230\Drawings\Traffic\87102317-shr-td.dgn		REVISIONS	REVISED -
	PLOT SCALE * 100.0000 1/4 in.	CHECKED - JC	REVISED -
	PLOT DATE * 3/23/2017	DATE - 03/24/2017	REVISED -

**STATE OF ILLINOIS  
DEPARTMENT OF TRANSPORTATION**

SUMMARY OF QUANTITIES (SHEET 2 OF 4)			
SCALE: NONE	SHEET NO. OF SHEETS	STA.	TO STA.

F.A. RTE.	SECTION	COUNTY	TOTAL SHEETS	SHEET NO.
	2016-056TS	VARIOUS	55	8
			CONTRACT NO. 62D44	
ILLINOIS FED. AID PROJECT				

Rev 6-5-17



CODE NO.	ITEM	UNIT	TOTAL QTY	CONSTRUCTION CODE															
				1	2	3	4	5	6	7	8	9	10						
				TRAFFIC SIGNALS															
				0021 URBAN															
88500100	INDUCTIVE LOOP DETECTOR	EACH	27							27									
88800100	PEDESTRIAN PUSH-BUTTON	EACH	76	30	4	2	2	2	8	14	8	8							
89500100	RELOCATE EXISTING SIGNAL HEAD	EACH	3						3										
89500400	RELOCATE EXISTING PEDESTRIAN PUSH-BUTTON	EACH	2	2															
89501150	RELOCATE EXISTING TRAFFIC SIGNAL POST	EACH	3						3										
89502200	MODIFY EXISTING CONTROLLER	EACH	13	5	2	1	1	1		1	1	1							
89502210	MODIFY EXISTING CONTROLLER CABINET	EACH	13	5	2	1	1	1		1	1	1							
89502350	REMOVE AND REINSTALL ELECTRIC CABLE FROM CONDUIT	FOOT	165	45					120										
89502375	REMOVE EXISTING TRAFFIC SIGNAL EQUIPMENT	EACH	2	1						1									
89502385	REMOVE EXISTING CONCRETE FOUNDATION	EACH	5	2					3										
X8570231	FULL-ACTUATED CONTROLLER AND TYPE V CABINET, SPECIAL	EACH	1							1									
X8760055	PEDESTRIAN PUSH-BUTTON POST, TYPE A	EACH	6			1	1			3		2							
X8880015	PEDESTRIAN PUSH-BUTTON, NON-LATCHING	EACH	2								2								
Z0030850	TEMPORARY INFORMATION SIGNING	SO FT	462.6	154.2		51.4	51.4	25.7		77.1	51.4	51.4	51.4						

FILE NAME :	USER NAME : pcciechal	DESIGNED - LP	REVISED -
p:\11094EBIDINTEG\Illinois.gov\PIDOT\Documents\1007 Offices\District 1\Projects\01022\DRM\02a\Traffic\102317-shs-ta.dgn		CHECKED - JC	REVISED -
		DATE - 03/24/2017	REVISED -

STATE OF ILLINOIS  
DEPARTMENT OF TRANSPORTATION

SUMMARY OF QUANTITIES (SHEET 3 OF 4)			
SCALE: NONE	SHEET NO. OF SHEETS	STA. TO STA.	

F.A. RTE.	SECTION	COUNTY	TOTAL SHEETS	SHEET NO.
	2016-056TS	VARIOUS	55	9
			CONTRACT NO. 62D44	
ILLINOIS FED. AID PROJECT				

Rev 6-5-17

CODE NO.	ITEM	UNIT	TOTAL QTY	CONSTRUCTION CODE											
				1	2	3	4	5	6	7	8	9	10		
				TRAFFIC SIGNALS											
				0021 URBAN											
Z0033044	RE-OPTIMIZE TRAFFIC SIGNAL SYSTEM LEVEL 1	EACH	14 <sup>Δ</sup>	5	2	1	1 <sup>Δ</sup>	1	1	1	1	1	1		

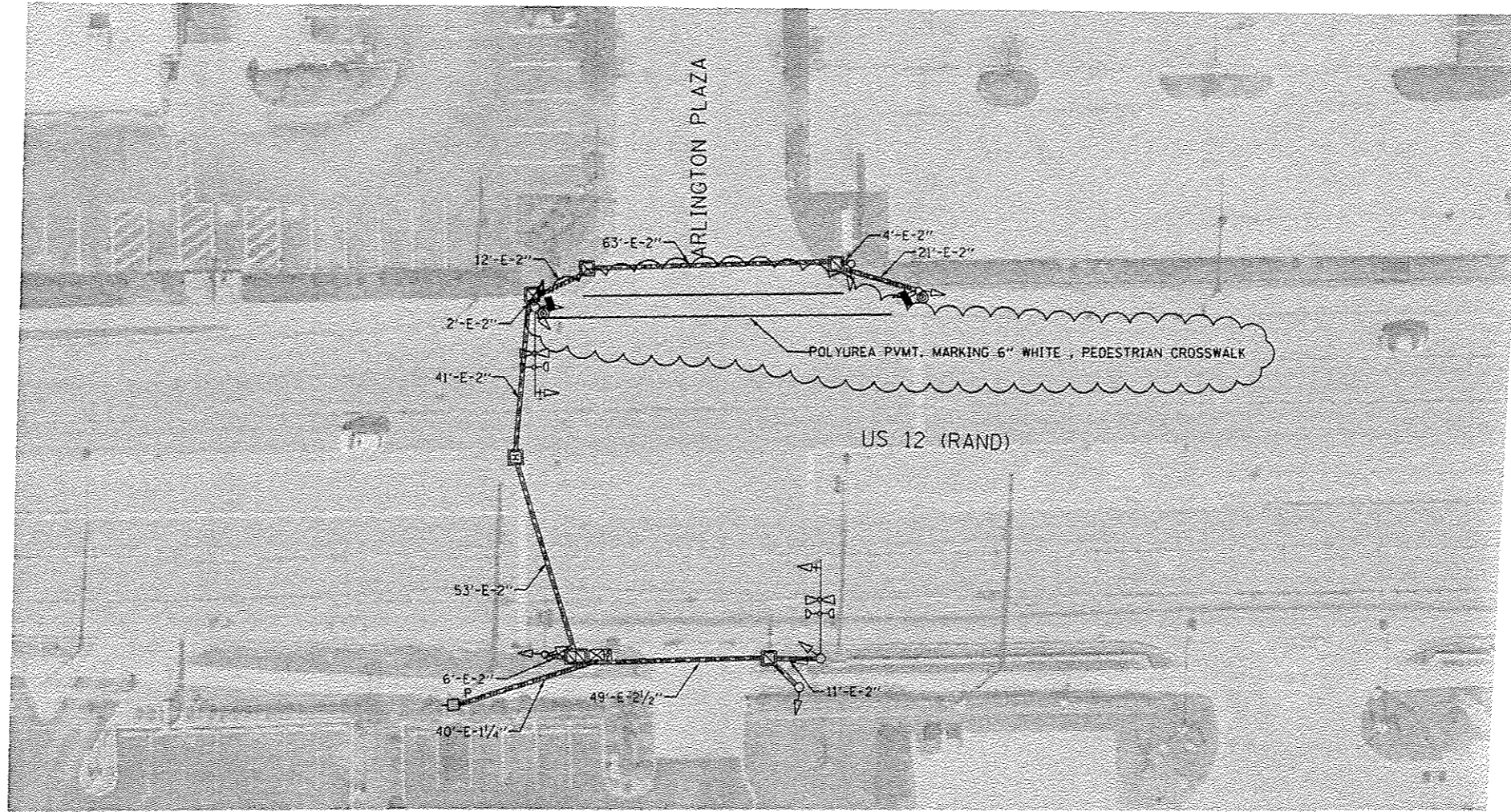
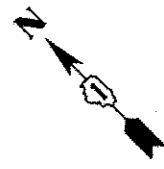
FILE NAME *	USER NAME * ppsuechal	DESIGNED - LP	REVISED -
p:\il084EBIDINTEG\illinois.gov\FWIDOT\Documents\DOT Offices\District 1\Projects\01003\DR\0317\off\182317-shs-ta.dgn		CHECKED - JC	REVISED -
PLOT SCALE * 100.0000 ' / in.	DATE - 03/24/2017	REVISED -	
PLOT DATE * 3/24/2017	DATE - 03/24/2017	REVISED -	

**STATE OF ILLINOIS  
DEPARTMENT OF TRANSPORTATION**

SUMMARY OF QUANTITIES (SHEET 4 OF 4)				
SCALE: NONE	SHEET NO. 4	OF 10 SHEETS	STA. 0+00	TO STA. 0+00

F.A. RTE.	SECTION	COUNTY	TOTAL SHEETS	SHEET NO.
	2016-056TS	VARIOUS	55	10
ILLINOIS FED. AID PROJECT CONTRACT NO. 62D44				

Δ Rev 6-5-17

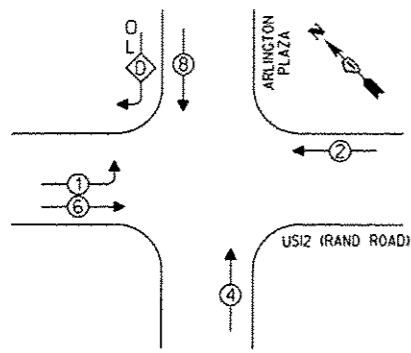


TS# 12640  
ARLINGTON HEIGHTS

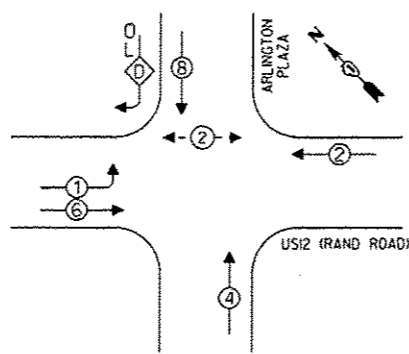
FILE NAME = p:\1\084EBID\HTEG.illinois.gov\PHDDT\Documents\DOT Offices\District 1\Projects\0182317\shl-1a3.dgn	USER NAME = paosechal	DESIGNED - JC	REVISED - JC 05/23/2017	<b>STATE OF ILLINOIS DEPARTMENT OF TRANSPORTATION</b>	<b>TRAFFIC SIGNAL MODERNIZATION US 12 (RAND RD) AT ARLINGTON PLAZA</b>		F.A. RTE.	SECTION	COUNTY	TOTAL SHEETS	SHEET NO.
PLDT SCALE = 40,0000' / in.	CHECKED - LP / ZJ	DATE - 03/24/2017	REVISED -		SCALE:	SHEET OF SHEETS	STA. TO STA.	2016-056TS	VARIOUS	55	26
PLDT DATE = 5/25/2017	DATE - 03/24/2017	REVISED -	REVISED -								CONTRACT NO. 62044
							ILLINOIS FED. AID PROJECT				

△ Revised Sheet 6-5-17

EXISTING CONTROLLER SEQUENCE



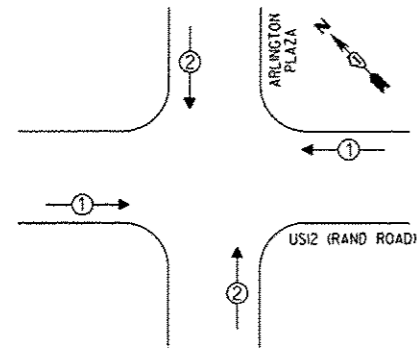
PROPOSED CONTROLLER SEQUENCE



PHASE DESIGNATION DIAGRAM

OVERLAP LETTER	PERMISSIVE PHASE	PROTECTED PHASE
D	8	1

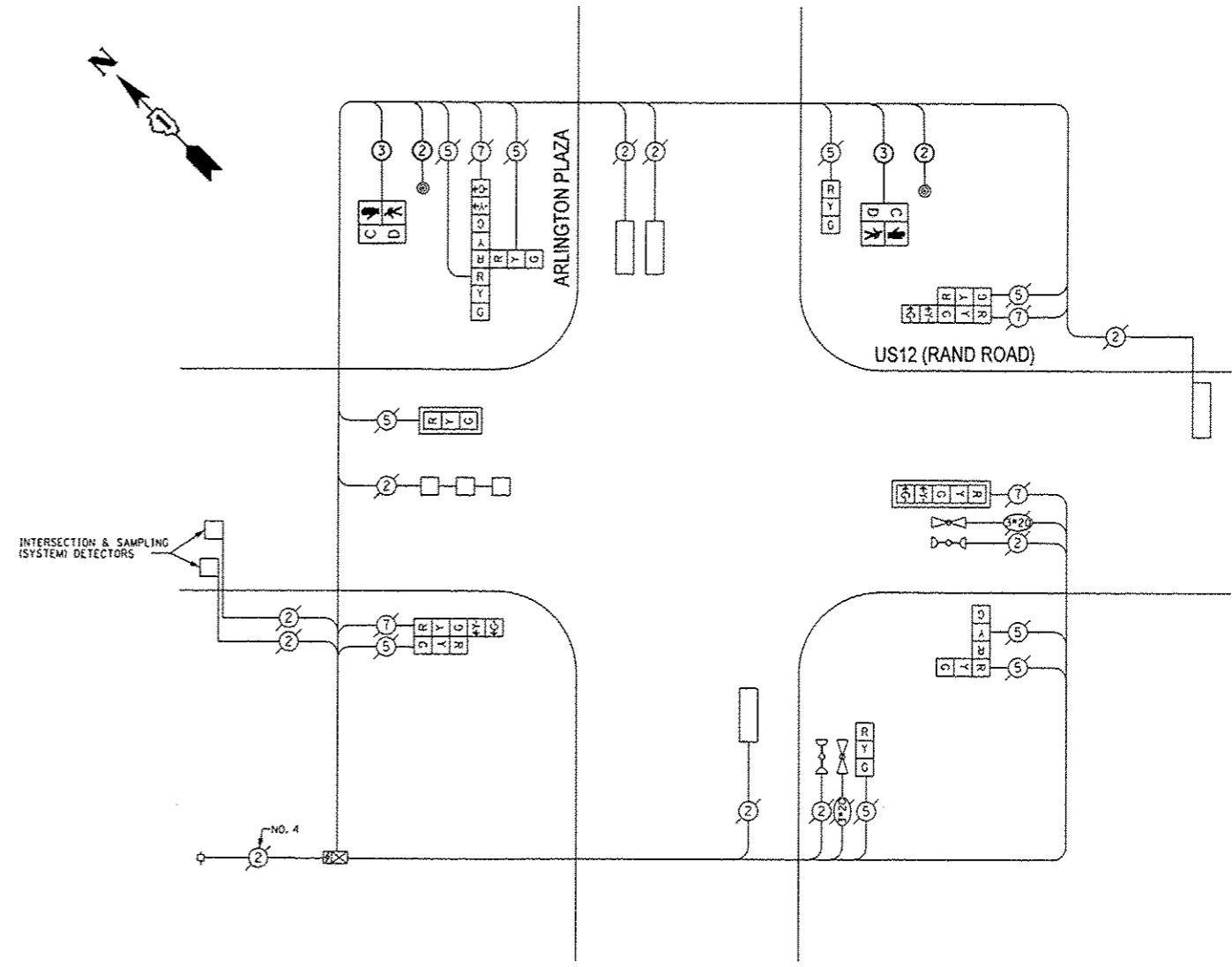
EMERGENCY VEHICLE PREEMPTION SEQUENCE



LEGEND:

- ← \* → PROTECTED PHASE
- ← \* - PROTECTED/PERMITTED PHASE
- ← \* → PEDESTRIAN PHASE
- ← OL → OVERLAP

INTERSECTION & SAMPLING (SYSTEM) DETECTORS



TRAFFIC SIGNAL ELECTRICAL SERVICE REQUIREMENTS

TYPE	NO. OF LAMPS	LED WATTAGE	% OPERATION	TOTAL WATTAGE
SIGNAL (RED)	13	11	50	71.5
(YELLOW)	13	20	5	13
(GREEN)	13	12	45	70.2
PERMISSIVE ARROW	8	10	10	8
PED. SIGNAL	2	20	100	40
CONTROLLER	1	100	100	100.0
UPS	1	25	100	25.0
VIDEO SYSTEM	-	150	100	-
BLANK-OUT SIGN	-	25	5	-
FLASHER	-	-	50	-
STREET NAME SIGN	-	120	50	-
LUMINAIRE	-	-	-	-
TOTAL =				327.7

ENERGY COSTS TO:

VILLAGE OF ARLINGTON HEIGHTS  
33 SOUTH ARLINGTON HEIGHTS ROAD  
ARLINGTON HEIGHTS, ILLINOIS 60005

ENERGY SUPPLY: CONTACT: DAVE SCHACHT  
PHONE: 630-437-2129  
COMPANY: COMMONWEALTH EDISON  
ACCOUNT NUMBER: ---

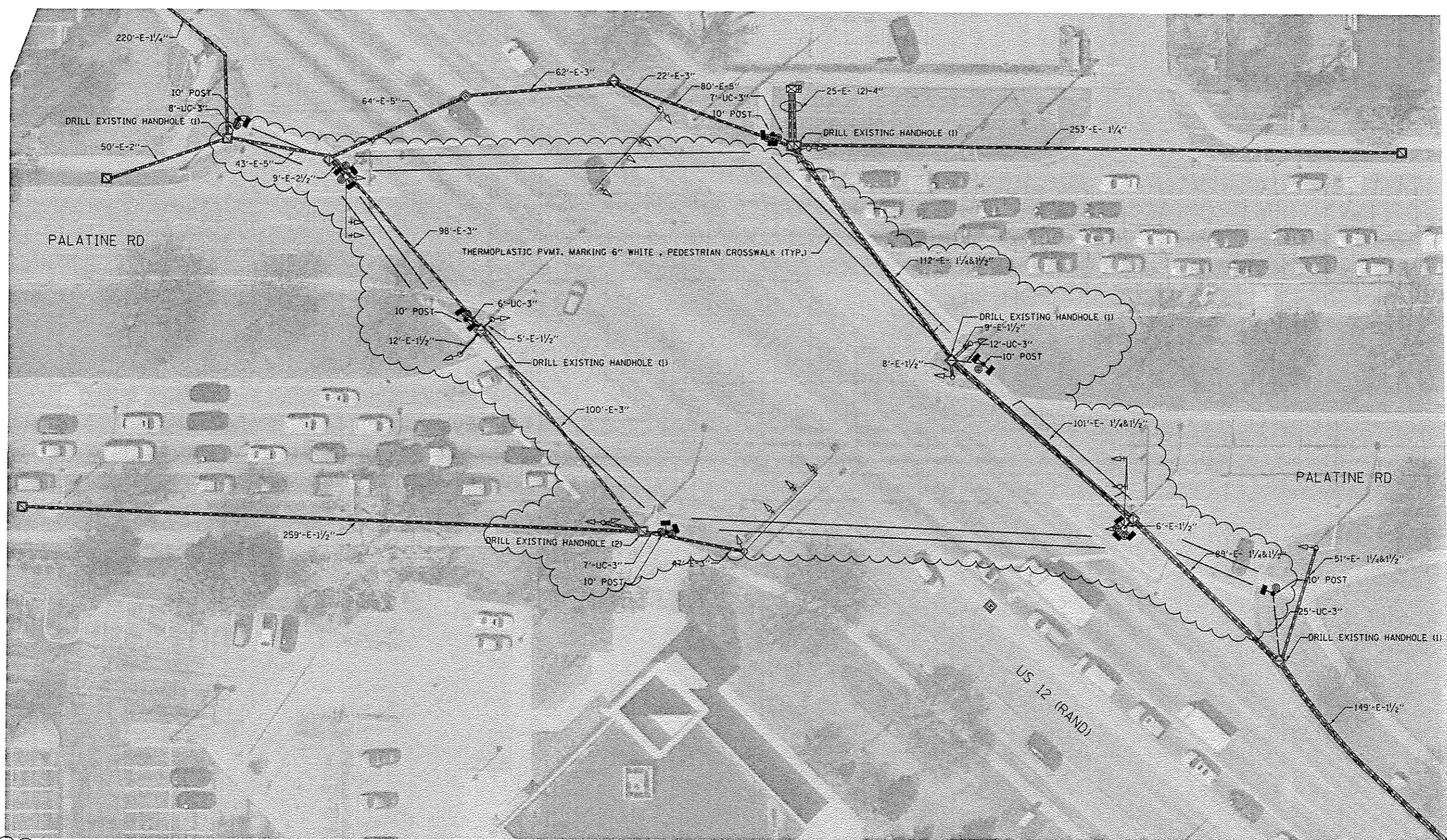
SCHEDULE OF QUANTITIES

ITEM DESCRIPTION	UNIT	TOTAL QTY.
MAINTENANCE OF EXISTING TRAFFIC SIGNAL INSTALLATION	EACH	1
ELECTRIC CABLE IN CONDUIT, SIGNAL NO. 14 2C	FOOT	395
ELECTRIC CABLE IN CONDUIT, SIGNAL NO. 14 3C	FOOT	410
PEDESTRIAN SIGNAL HEAD, LED, 1-FACE, BRACKET MOUNTED WITH COUNTDOWN TIMER	EACH	2
PEDESTRIAN PUSH-BUTTON	EACH	2
MODIFY EXISTING CONTROLLER	EACH	1
MODIFY EXISTING CONTROLLER CABINET	EACH	1
RE-OPTIMIZE TRAFFIC SIGNAL SYSTEM LEVEL 1	EACH	1
POLYUREA PAVEMENT MARKING - LINE 6"	FOOT	166

FILE NAME: p:\11\B4EBID\INTEG\Illinois.gov\PWIDOT\Documents\DOT Offices\District 11\Projects\0181\DRM\0181\Traffic\102317-shl-ts3.dgn	DESIGNED - JC	REVISD - JC 05/23/2017	STATE OF ILLINOIS DEPARTMENT OF TRANSPORTATION		SCHEDULE OF QUANTITIES, CABLE PLAN, PHASE DESIGNATION DIAGRAM AND EMERGENCY VEHICLE PREEMPTION SEQUENCE US 12 (RAND RD) AT ARLINGTON PLAZA		F.A. RTE.	SECTION	COURTY	TOTAL SHEETS	SHEET NO.
PLT SCALE: 40.0000' / in.	CHECKED - LP / ZJ	REVISD -			SCALE: SHEET OF SHEETS STA. TO STA.		2016-056TS	VARIOUS	55	27	
PLT DATE: 5/25/2017	DATE: 03/24/2017	REVISD -					ILLINOIS FED. AID PROJECT		CONTRACT NO. 62D44		

TS\* 12640  
ARLINGTON HEIGHTS

Rev 6-5-17

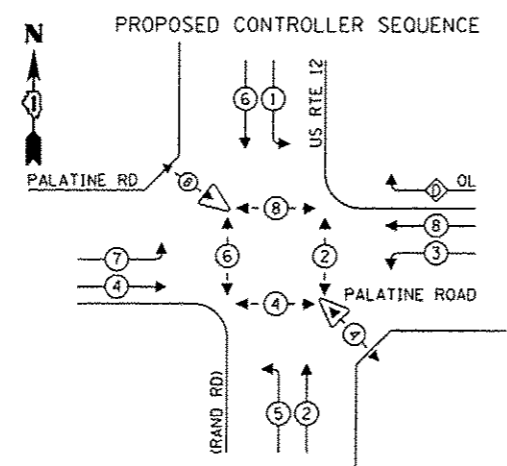
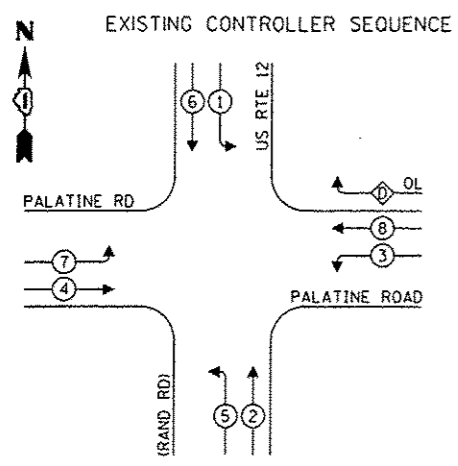


**GENERAL NOTES:**  
EXISTING FIELD CONDITIONS DIFFER FROM THE AERIALS.

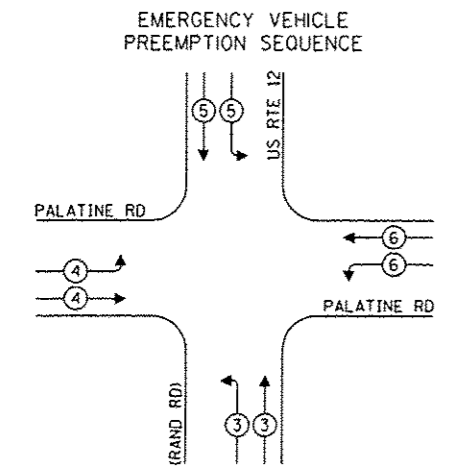
TS# 12630  
ARLINGTON HEIGHTS

FILE NAME *	USER NAME * poziechal	DESIGNED - JC	REVISED - JC 05/23/2017	<b>STATE OF ILLINOIS DEPARTMENT OF TRANSPORTATION</b>	<b>TRAFFIC SIGNAL MODERNIZATION US 12 (RAND RD) AT PALATINE RD</b>			F.A. RTE.	SECTION	COUNTY	TOTAL SHEETS	SHEET NO.		
pw:\il08\EBID\INTEG\Illinois.gov\PWIDOT\Documents\DOT Offices\District 11\Projects\018230\Drawings\Traffic\0182317-ah-ts3.dgn		CHECKED - LP / ZJ	REVISED -		SCALE:	SHEET	OF	SHEETS	STA.	TO STA.	2016-056T5	VARIOUS	55	30
Default	PLOT SCALE * 40.0000' / in.	DATE - 03/24/2017	REVISED -		ILLINOIS FED. AID PROJECT CONTRACT NO. 62D44									
	PLOT DATE * 5/25/2017		REVISED -											

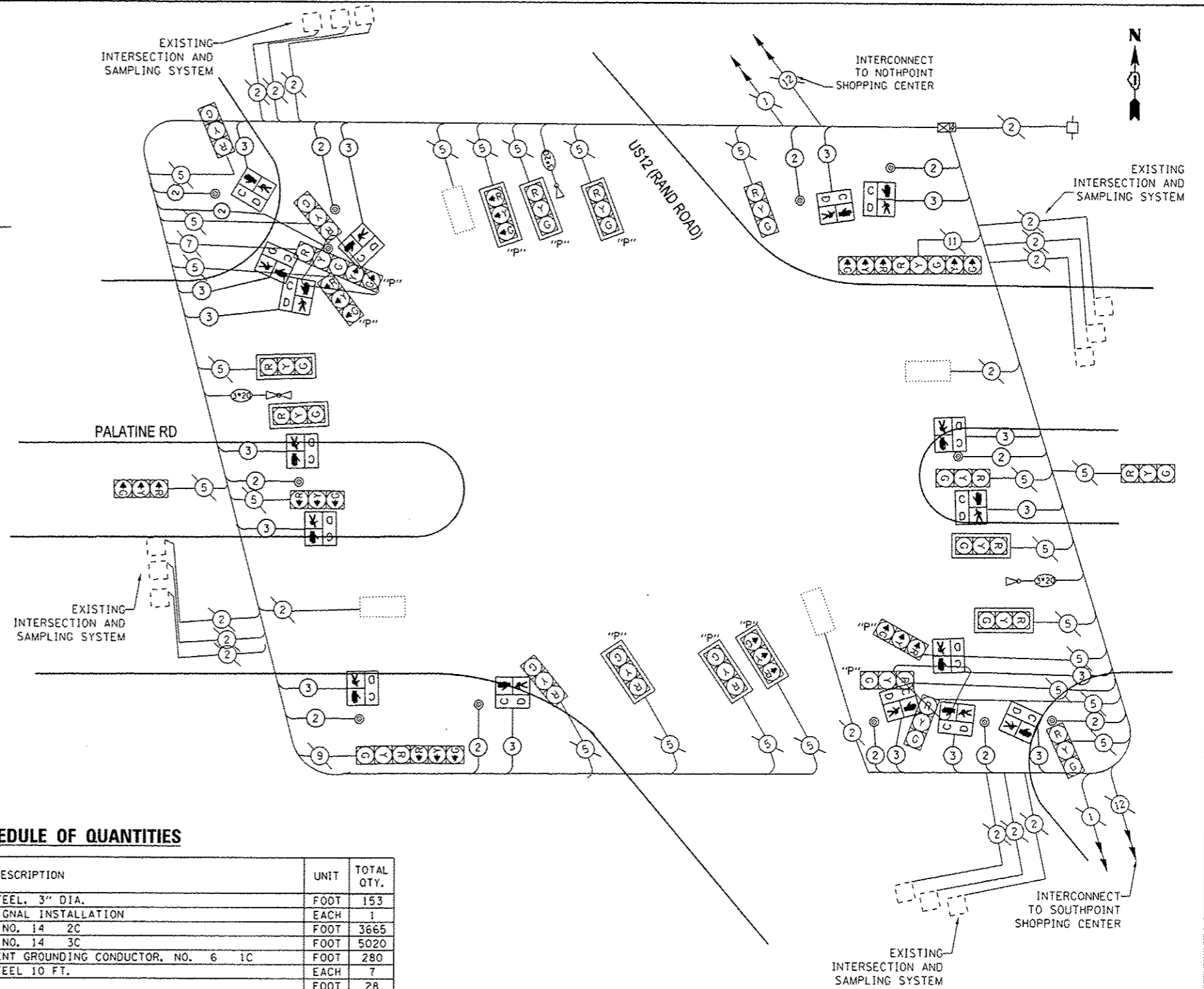
△ Revised Sheet 6-5-17



PHASE DESIGNATION DIAGRAM



EMERGENCY VEHICLE PREEMPTION SEQUENCE



**TRAFFIC SIGNAL ELECTRICAL SERVICE REQUIREMENTS**

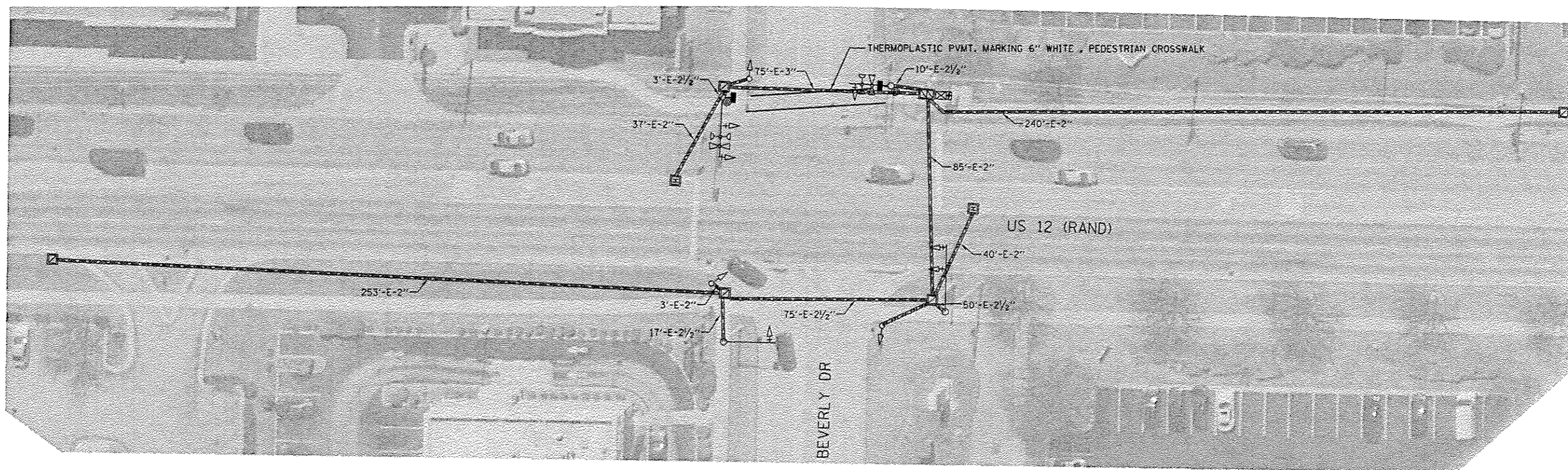
TYPE	NO. OF LAMPS	LED WATTAGE	% OPERATION	TOTAL WATTAGE
SIGNAL (RED)	28	11	50	154
(YELLOW)	28	20	5	28
(GREEN)	28	12	45	151.2
PERMISSIVE ARROW	4	10	10	4
PED. SIGNAL	16	20	100	320
CONTROLLER	1	100	100	100.0
UPS	1	25	100	25.0
VIDEO SYSTEM	-	150	100	-
BLANK-OUT SIGN	-	25	5	-
FLASHER	-	-	50	-
STREET NAME SIGN	-	120	50	-
LUMINAIRE	-	-	-	-
<b>TOTAL =</b>				<b>782.2</b>

ENERGY COSTS TO:  
**VILLAGE OF ARLINGTON HEIGHTS**  
 33 SOUTH ARLINGTON HEIGHTS ROAD  
 ARLINGTON HEIGHTS, ILLINOIS 60005  
 ENERGY SUPPLY: CONTACT: DAVE SCHACHT  
 PHONE: 630-437-2129  
 COMPANY: COMMONWEALTH EDISON  
 ACCOUNT NUMBER: ---

**SCHEDULE OF QUANTITIES**

ITEM DESCRIPTION	UNIT	TOTAL QTY.
UNDERGROUND CONDUIT, GALVANIZED STEEL, 3" DIA.	FOOT	153
MAINTENANCE OF EXISTING TRAFFIC SIGNAL INSTALLATION	EACH	1
ELECTRIC CABLE IN CONDUIT, SIGNAL NO. 14 2C	FOOT	3665
ELECTRIC CABLE IN CONDUIT, SIGNAL NO. 14 3C	FOOT	5020
ELECTRIC CABLE IN CONDUIT, EQUIPMENT GROUNDING CONDUCTOR, NO. 6 1C	FOOT	280
TRAFFIC SIGNAL POST, GALVANIZED STEEL 10 FT.	EACH	7
CONCRETE FOUNDATION, TYPE A	FOOT	28
DRILL EXISTING HANDHOLE	EACH	7
PEDESTRIAN SIGNAL HEAD, LED, 1-FACE, BRACKET MOUNTED WITH COUNTDOWN TIMER	EACH	16
PEDESTRIAN PUSH-BUTTON	EACH	12
MODIFY EXISTING CONTROLLER	EACH	1
MODIFY EXISTING CONTROLLER CABINET	EACH	1
RE-OPTIMIZE TRAFFIC SIGNAL SYSTEM LEVEL	EACH	1
THERMOPLASTIC PAVEMENT MARKING - LINE 6"	FOOT	1379

Rev 6-5-17

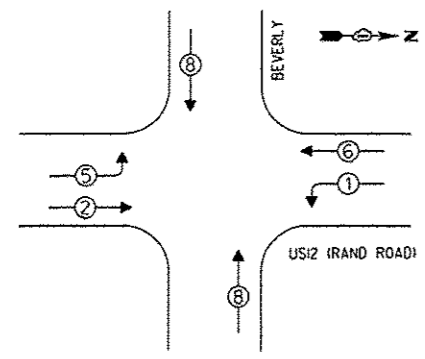


TS# 421  
ARLINGTON HEIGHTS

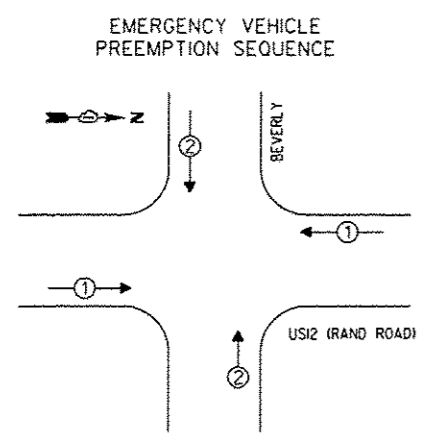
FILE NAME :	USER NAME : paciechol	DESIGNED - JC	REVISED - JC 05/23/2017	<b>STATE OF ILLINOIS DEPARTMENT OF TRANSPORTATION</b>	<b>TRAFFIC SIGNAL MODERNIZATION US 12 (RAND RD) AT BEVERLY LN</b>		F.A. RTE.	SECTION	COUNTY	TOTAL SHEETS	SHEET NO.
p:\11\004E010\INTEG.ILLINOIS.GOV\FW\DOT\Documents\DOT Offices\District 1\Projects\DI182\Drawings\Traffic\0182317-sht-ta3.dgn	DRAWN BY : LP / ZJ	CHECKED - LP / ZJ	REVISED -				2016-056T5	VARIOUS	55	32	
Default	PLOT SCALE = 40.0000' / in.	DATE - 03/24/2017	REVISED -				CONTRACT NO. 62044				
	PLOT DATE = 5/25/2017						ILLINOIS FED. AID PROJECT				
				SCALE:	SHEET	OF	SHEETS	STA.	TO	STA.	

△ Revised Sheet 6-5-17

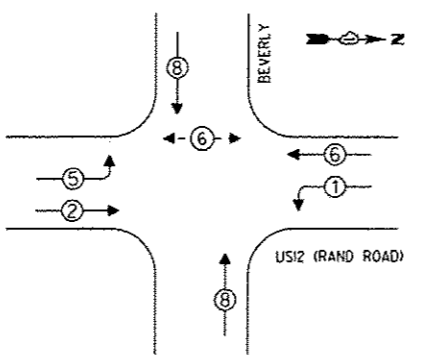
EXISTING CONTROLLER SEQUENCE



PHASE DESIGNATION DIAGRAM

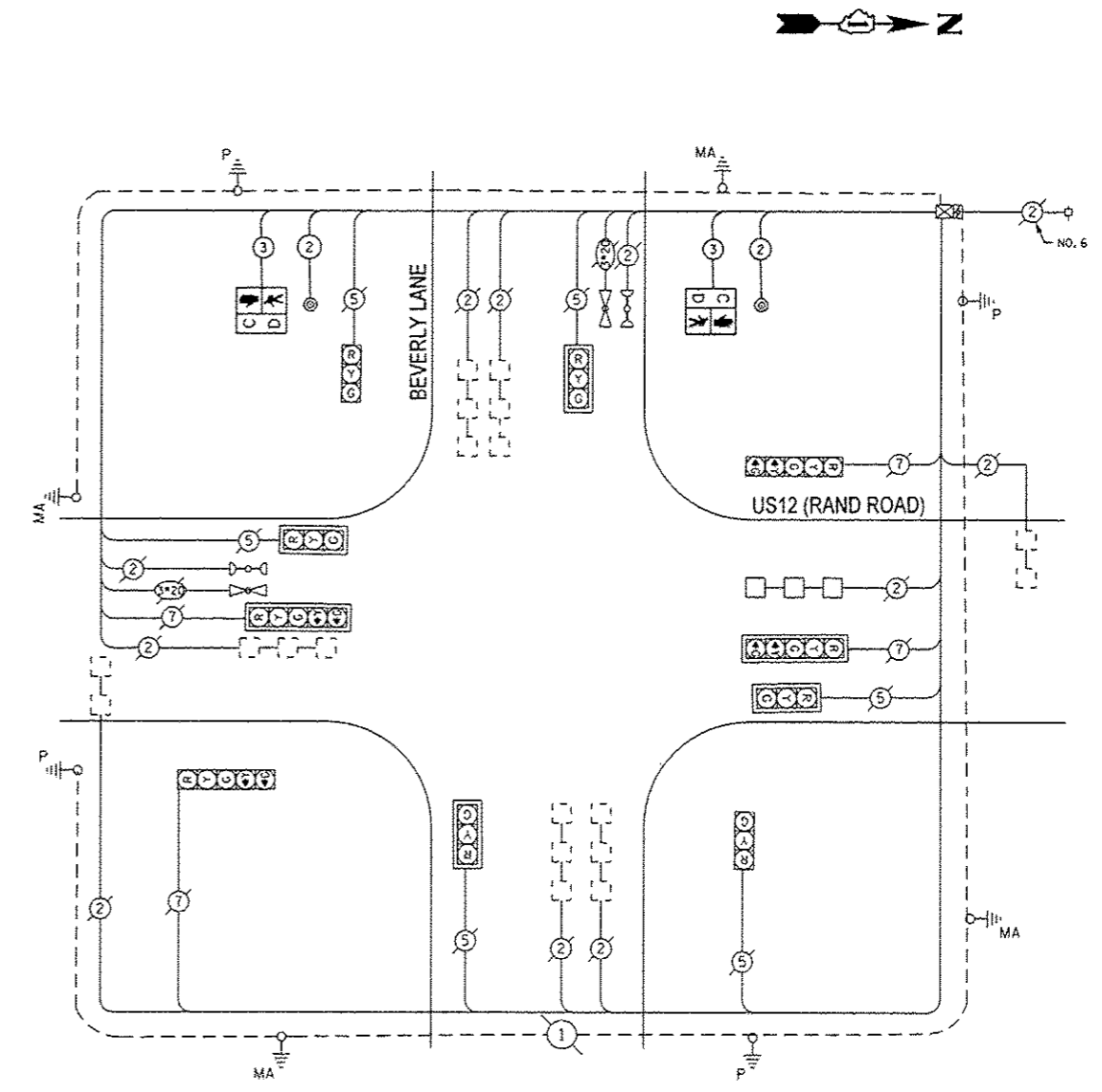


PROPOSED CONTROLLER SEQUENCE



LEGEND:

- ← (P) → PROTECTED PHASE
- ← (P) - (P) → PROTECTED/PERMITTED PHASE
- ← (P) → PEDESTRIAN PHASE
- ← (OL) → OVERLAP



CABLE PLAN

TRAFFIC SIGNAL ELECTRICAL SERVICE REQUIREMENTS

TYPE	NO. OF LAMPS	LED WATTAGE	% OPERATION	TOTAL WATTAGE
SIGNAL (RED)	10	11	50	55
(YELLOW)	10	20	5	10
(GREEN)	10	12	45	54
PERMISSIVE ARROW	8	10	10	8
PED. SIGNAL	2	20	100	40
CONTROLLER	1	100	100	100.0
UPS	1	25	100	25.0
VIDEO SYSTEM	-	150	100	-
BLANK-OUT SIGN	-	25	5	-
FLASHER	-	-	50	-
STREET NAME SIGN	-	120	50	-
LUMINAIRE	-	-	-	-
TOTAL =				292

SCHEDULE OF QUANTITIES

ITEM DESCRIPTION	UNIT	TOTAL QTY.
MAINTENANCE OF EXISTING TRAFFIC SIGNAL INSTALLATION	EACH	1
ELECTRIC CABLE IN CONDUIT, SIGNAL NO. 14 2C	FOOT	165
ELECTRIC CABLE IN CONDUIT, SIGNAL NO. 14 3C	FOOT	180
PEDESTRIAN SIGNAL HEAD, LED, 1-FACE, BRACKET MOUNTED WITH COUNTDOWN TIMER	EACH	2
PEDESTRIAN PUSH-BUTTON	EACH	2
MODIFY EXISTING CONTROLLER	EACH	1
MODIFY EXISTING CONTROLLER CABINET	EACH	1
RE-OPTIMIZE TRAFFIC SIGNAL SYSTEM LEVEL 1	EACH	1
THERMOPLASTIC PAVEMENT MARKING - LINE 6"	FOOT	101

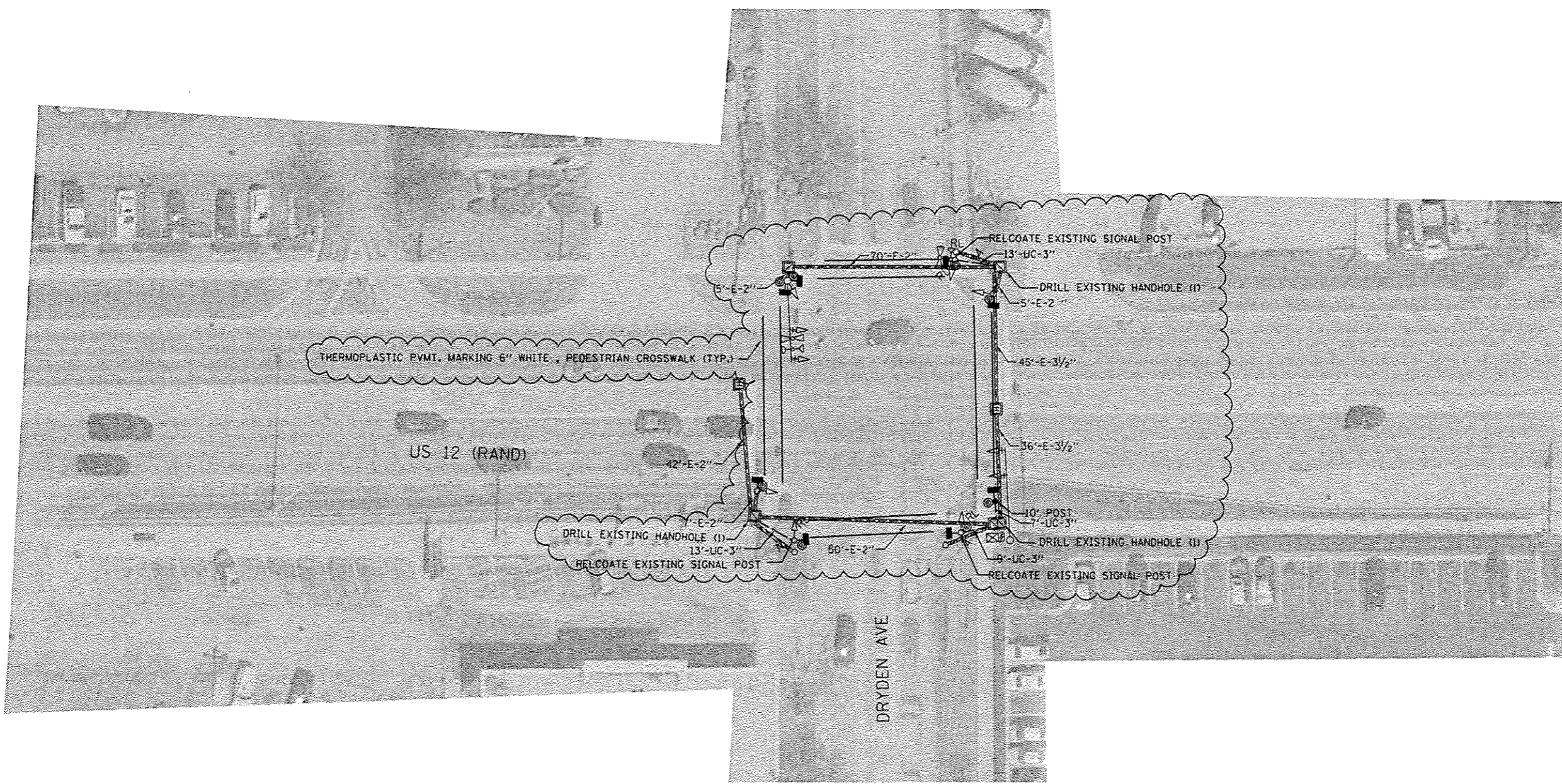
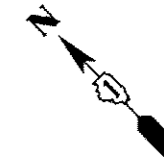
ENERGY COSTS TO:  
 VILLAGE OF ARLINGTON HEIGHTS  
 33 SOUTH ARLINGTON HEIGHTS ROAD  
 ARLINGTON HEIGHTS, ILLINOIS 60005  
 ENERGY SUPPLY: CONTACT: DAVE SCHACHT  
 PHONE: 630-437-2129  
 COMPANY: COMMONWEALTH EDISON  
 ACCOUNT NUMBER: ---

TS# 421  
 ARLINGTON HEIGHTS

FILE NAME: p:\N\104E810\INTEG\Illinois.gov\PID01\Documents\1001\Office\District 1\Projects\DIR2\DRW\2017\offic\2017\sh-ta2.dgn	DESIGNED - JC	REVISED - JC 05/23/2017	SCHEDULE OF QUANTITIES, CABLE PLAN, PHASE DESIGNATION DIAGRAM AND EMERGENCY VEHICLE PREEMPTION SEQUENCE		F.A. RTE.	SECTION	COUNTY	TOTAL SHEETS	SHEET NO.
Default	CHECKED - LP / ZJ	REVISED -	US 12 (RAND RD) AT BEVERLY LN		SCALE:	2016-056TS	VARIOUS	55	33
	DATE - 03/24/2017	REVISED -	STATE OF ILLINOIS DEPARTMENT OF TRANSPORTATION		SHEET OF SHEETS	ILLINOIS FED. AID PROJECT		CONTRACT NO. 62044	

Rev 6-5-17





TS# 415  
ARLINGTON HEIGHTS

FILE NAME *	USER NAME * pacischal	DESIGNED - JC	REVISED - JC 05/23/2017
pc:\v\l\094EBID\HTEG.illinois.gov\PI\DOT\Documents\DOT Offices\District 1\Projects\DRYDEN\DRYDEN\Traffic\0182317\ant-ta2.dgn			REVISED -
Default	PLOT SCALE = 40.0000' / in.	CHECKED - LP / ZJ	REVISED -
	PLOT DATE = 5/25/2017	DATE - 03/24/2017	REVISED -

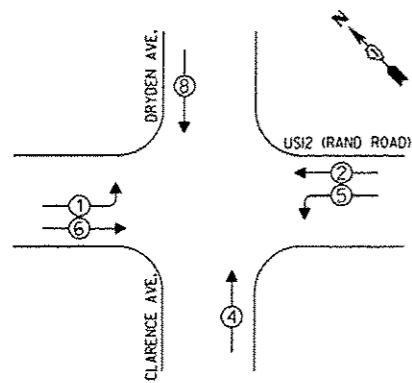
STATE OF ILLINOIS  
DEPARTMENT OF TRANSPORTATION

TRAFFIC SIGNAL MODERNIZATION  
US 12 (RAND RD) AT DRYDEN AVE

F.A. RTE.	SECTION	COUNTY	TOTAL SHEETS	SHEET NO.
	2016-056TS	VARIOUS	55	34
SCALE:			CONTRACT NO. 62044	
SHEET OF SHEETS		STA. TO STA.		
ILLINOIS FED. AID PROJECT				

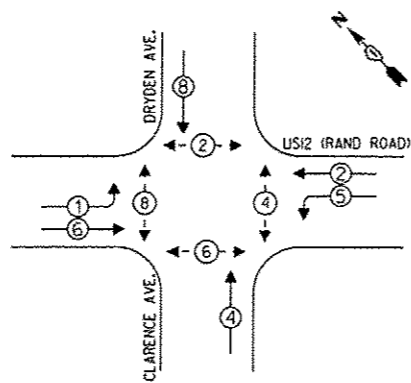
Revised Sheet 6-5-17

EXISTING CONTROLLER SEQUENCE



PHASE DESIGNATION DIAGRAM

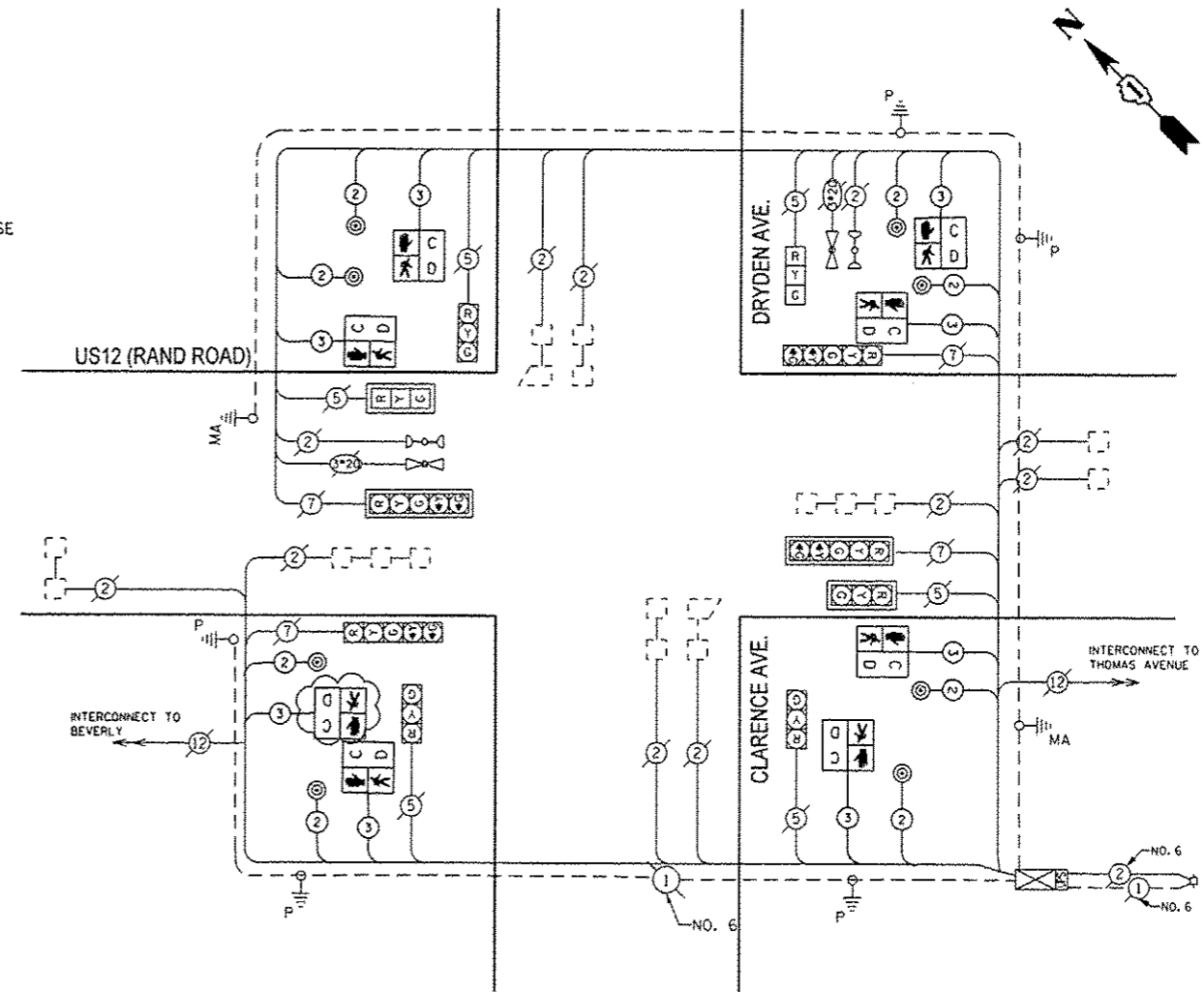
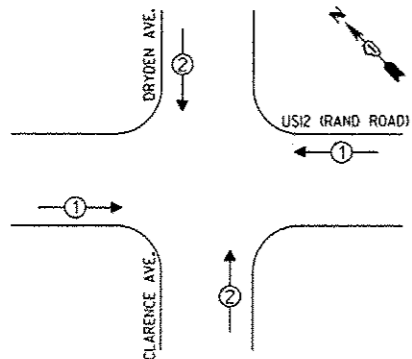
PROPOSED CONTROLLER SEQUENCE



**LEGEND:**

- ⊙ - PROTECTED PHASE
- ⊙ - PROTECTED/PERMITTED PHASE
- ⊙ - PEDESTRIAN PHASE
- OL - OVERLAP

EMERGENCY VEHICLE PREEMPTION SEQUENCE



CABLE PLAN

**SCHEDULE OF QUANTITIES**

ITEM DESCRIPTION	UNIT	TOTAL QTY.
UNDERGROUND CONDUIT, GALVANIZED STEEL, 3" DIA.	FOOT	29
MAINTENANCE OF EXISTING TRAFFIC SIGNAL INSTALLATION	EACH	1
ELECTRIC CABLE IN CONDUIT, SIGNAL NO. 14 2C	FOOT	1030
ELECTRIC CABLE IN CONDUIT, SIGNAL NO. 14 3C	FOOT	1085
ELECTRIC CABLE IN CONDUIT, EQUIPMENT GROUNDING CONDUCTOR, NO. 6 1C	FOOT	75
TRAFFIC SIGNAL POST, GALVANIZED STEEL 10 FT.	EACH	1
CONCRETE FOUNDATION, TYPE A	FOOT	16
DRILL EXISTING HANDHOLE	EACH	3
PEDESTRIAN SIGNAL HEAD, LED, 1-FACE, BRACKET MOUNTED WITH COUNTDOWN TIMER	EACH	8
PEDESTRIAN PUSH-BUTTON	EACH	8
RELOCATE EXISTING SIGNAL HEAD	EACH	3
RELOCATE EXISTING TRAFFIC SIGNAL POST	EACH	3
MODIFY EXISTING CONTROLLER	EACH	1
MODIFY EXISTING CONTROLLER CABINET	EACH	1
REMOVE AND REINSTALL ELECTRIC CABLE FROM CONDUIT	FOOT	120
REMOVE EXISTING CONCRETE FOUNDATION	EACH	3
RE-OPTIMIZE TRAFFIC SIGNAL SYSTEM LEVEL 1	EACH	1
THERMOPLASTIC PAVEMENT MARKING - LINE 6"	FOOT	405

**TRAFFIC SIGNAL ELECTRICAL SERVICE REQUIREMENTS**

TYPE	NO. OF LAMPS	LED WATTAGE	% OPERATION	TOTAL WATTAGE
SIGNAL (RED)	11	11	50	55
(YELLOW)	11	20	5	10
(GREEN)	11	12	45	54
PERMISSIVE ARROW	4	10	10	8
PED. SIGNAL	4	20	100	60
CONTROLLER	1	100	100	100.0
UPS	1	25	100	25.0
VIDEO SYSTEM	-	150	100	-
BLANK-OUT SIGN	-	25	5	-
FLASHER	-	-	50	-
STREET NAME SIGN	-	120	50	-
LUMINAIRE	-	-	-	-
<b>TOTAL =</b>				<b>412</b>

ENERGY COSTS TO:

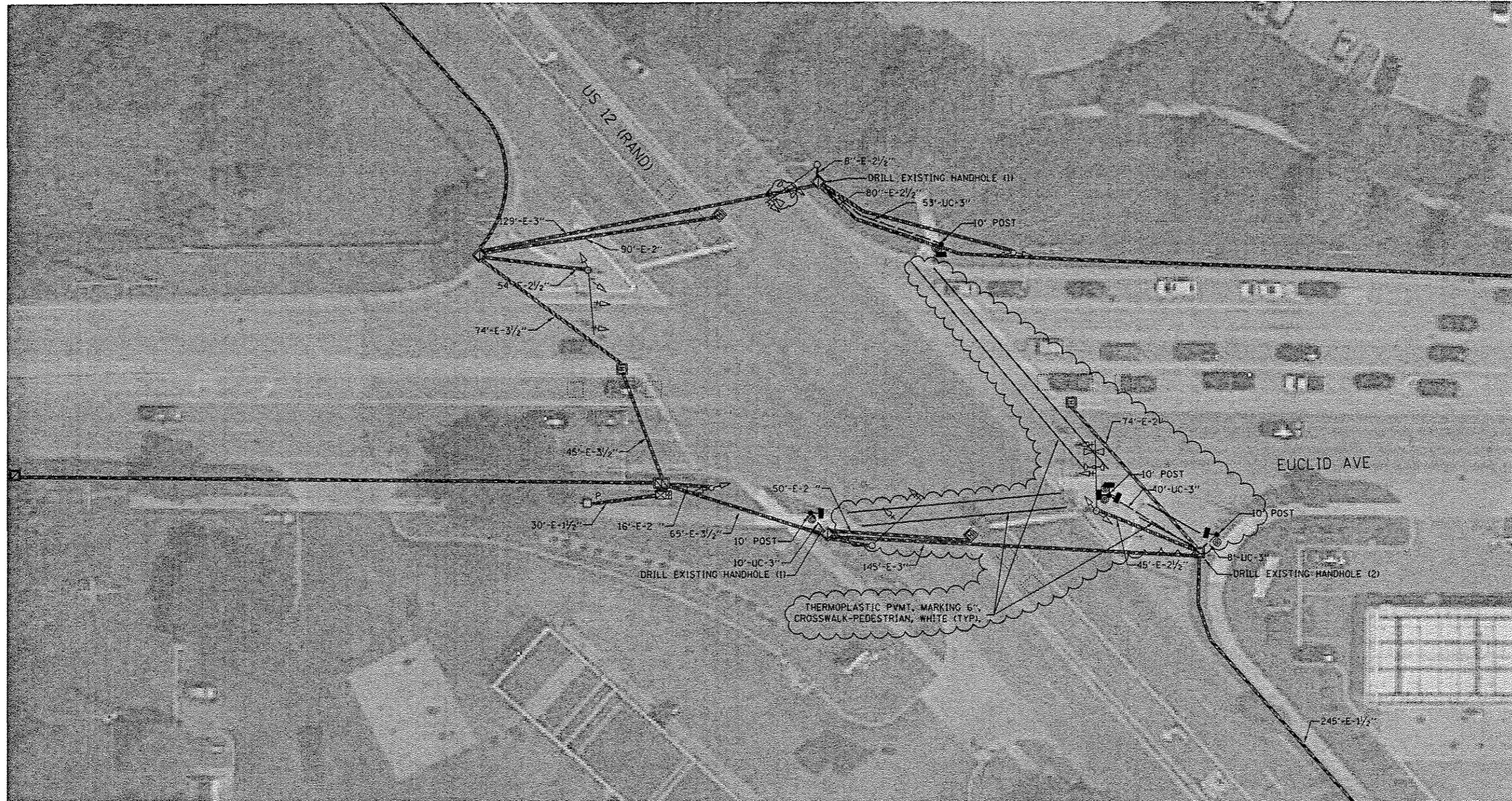
VILLAGE OF ARLINGTON HEIGHTS  
33 SOUTH ARLINGTON HEIGHTS ROAD  
ARLINGTON HEIGHTS, ILLINOIS 60005

ENERGY SUPPLY: CONTACT: DAVE SCHACHT  
PHONE: 630-437-2129  
COMPANY: COMMONWEALTH EDISON  
ACCOUNT NUMBER: ---

TS# 415  
ARLINGTON HEIGHTS

FILE NAME: p:\11084EBID\INTEG\111\mva.gov\PWIDOT-01\Projects\1001\Office\District 1\Projects\101023\DRM\Notes\Traffic\10102317-ah-t-3.dgn	USER NAME: pociachal	DESIGNED: JC	REVISED: JC 05/23/2017	<b>STATE OF ILLINOIS DEPARTMENT OF TRANSPORTATION</b>	<b>SCHEDULE OF QUANTITIES, CABLE PLAN, PHASE DESIGNATION DIAGRAM AND EMERGENCY VEHICLE PREEMPTION SEQUENCE</b>				F.A. RTE.	SECTION	COUNTY	TOTAL SHEETS	SHEET NO.
Default	Plot SCALE: 40,0000' / in.	CHECKED: LP / ZJ	REVISED:		SCALE:	SHEET	OF	SHEETS	STA.	TO	STA.	ILLINOIS FED. AID PROJECT	CONTRACT NO. 62044
Plot DATE: 5/25/2017	DATE: 03/24/2017	REVISED:	REVISED:		US 12 (RAND RD) AT DRYDEN AVE								
2016-0567S													

Rev 6-5-17



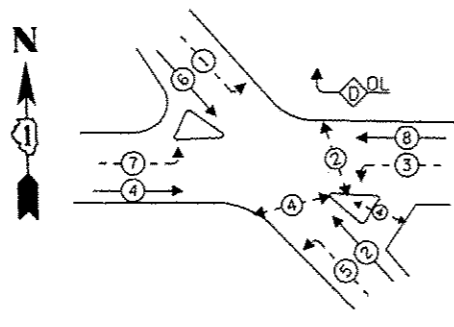
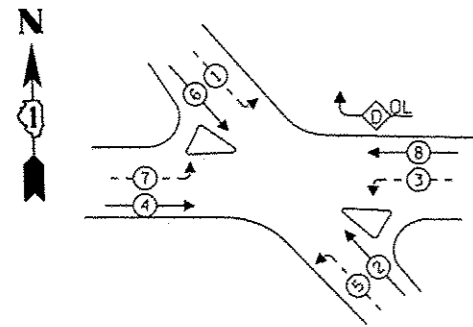
TS# 395  
ARLINGTON HEIGHTS

FILE NAME *	USER NAME * pascichal	DESIGNED - JC	REVISED - JC 05/23/2017	<b>STATE OF ILLINOIS DEPARTMENT OF TRANSPORTATION</b>	<b>TRAFFIC SIGNAL MODERNIZATION US 12 (RAND RD) AT EUCLID AVE</b>				F.A. RTE.	SECTION	COUNTY	TOTAL SHEETS	SHEET NO.
Default	Documents\DOT Offices\District I\Projects\0102317\shs-17.dgn	CHECKED - LP / ZJ	REVISED -		SCALE:	SHEET	OF	SHEETS	STA.	TO STA.	VARIOUS	55	36
	PLOT SCALE * 48.0000' / in.	DATE - 03/24/2017	REVISED -		CONTRACT NO. 62D44								
	PLOT DATE * 5/25/2017		REVISED -		ILLINOIS FED. AID PROJECT								

△ Revised Sheet 6-5-17

**EXISTING CONTROLLER SEQUENCE**

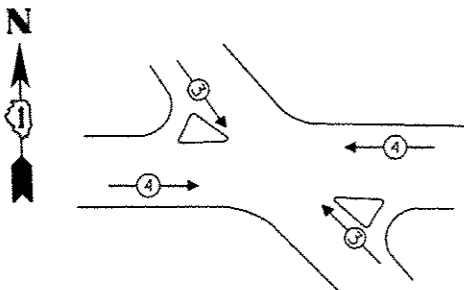
**PROPOSED CONTROLLER SEQUENCE**



**PHASE DESIGNATION DIAGRAM**

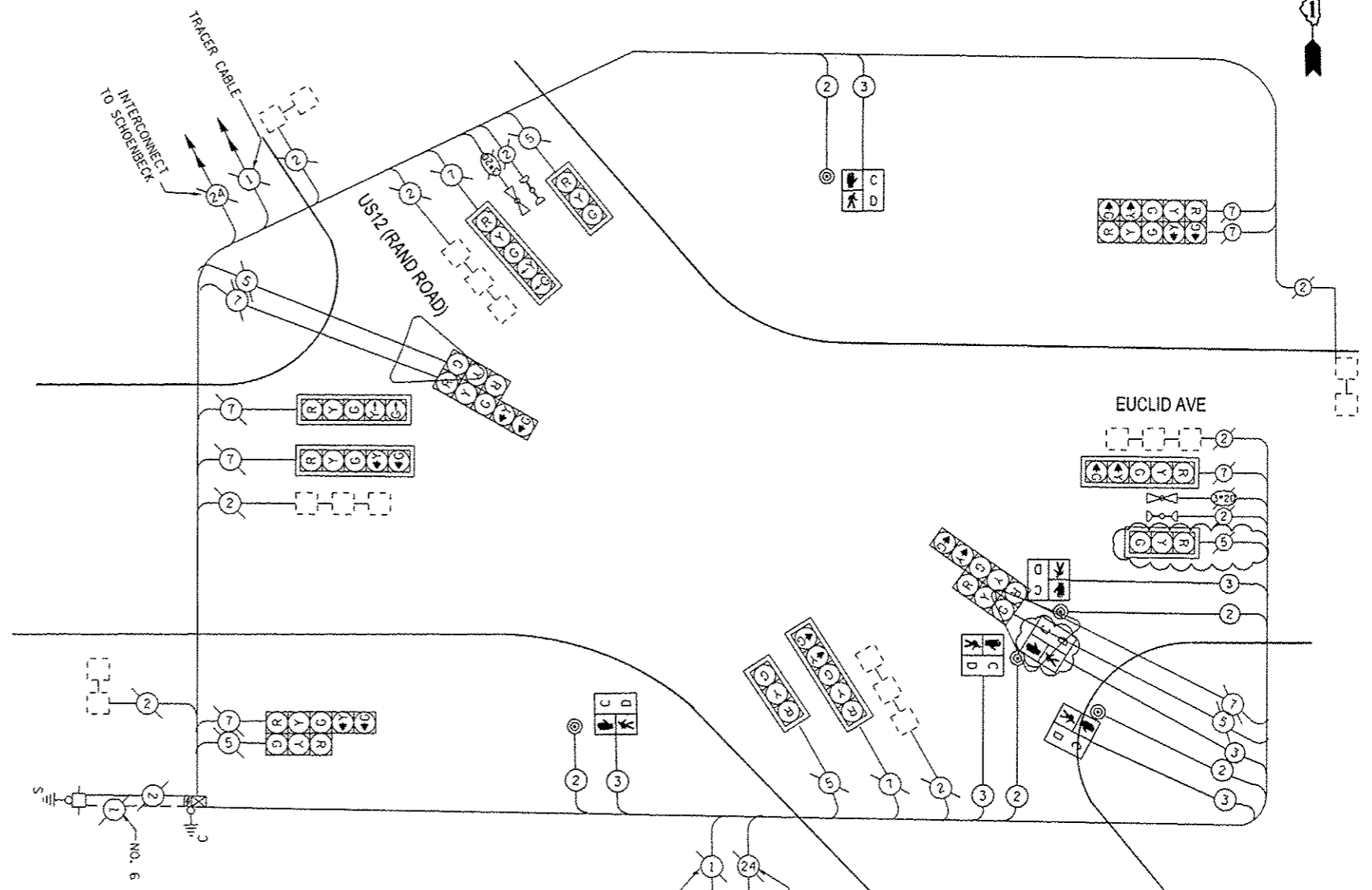
OVERLAP LETTER	PERMISSIVE PHASE	PROTECTED PHASE
D	8	1

**EMERGENCY VEHICLE PREEMPTION SEQUENCE**



**LEGEND:**

- ← \* → PROTECTED PHASE
- ← \* - PROTECTED/PERMITTED PHASE
- ← \* → PEDESTRIAN PHASE
- ← OL → OVERLAP



**TRAFFIC SIGNAL ELECTRICAL SERVICE REQUIREMENTS**

TYPE	NO. OF LAMPS	LED WATTAGE	% OPERATION	TOTAL WATTAGE
SIGNAL (RED)	16	11	50	88
(YELLOW)	16	20	5	16
(GREEN)	16	12	45	86.4
PERMISSIVE ARROW	18	10	10	20
PED. SIGNAL	6	20	100	120
CONTROLLER	1	100	100	100
UPS	1	25	100	25.0
VIDEO SYSTEM	-	150	100	-
BLANK-OUT SIGN	-	25	5	-
FLASHER	-	-	50	-
STREET NAME SIGN	-	120	50	-
LUMINAIRE	-	-	-	-
<b>TOTAL =</b>				<b>455.4</b>

**ENERGY COSTS TO:**

VILLAGE OF ARLINGTON HEIGHTS  
33 SOUTH ARLINGTON HEIGHTS ROAD  
ARLINGTON HEIGHTS, ILLINOIS 60005

ENERGY SUPPLY: CONTACT: DAVE SCHACHT  
PHONE: 630-437-2129  
COMPANY: COMMONWEALTH EDISON  
ACCOUNT NUMBER: ---

**SCHEDULE OF QUANTITIES**

ITEM DESCRIPTION	UNIT	TOTAL QTY.
UNDERGROUND CONDUIT, GALVANIZED STEEL, 3" DIA.	FOOT	111
MAINTENANCE OF EXISTING TRAFFIC SIGNAL INSTALLATION	EACH	1
ELECTRIC CABLE IN CONDUIT, SIGNAL NO. 14 2C	FOOT	1340
ELECTRIC CABLE IN CONDUIT, SIGNAL NO. 14 3C	FOOT	1680
ELECTRIC CABLE IN CONDUIT, EQUIPMENT GROUNDING CONDUCTOR, NO. 6 1C	FOOT	157
TRAFFIC SIGNAL POST, GALVANIZED STEEL 10 FT.	EACH	4
CONCRETE FOUNDATION, TYPE A	FOOT	16
DRILL EXISTING HANDHOLE	EACH	4
PEDESTRIAN SIGNAL HEAD, LED, 1-FACE. BRACKET MOUNTED WITH COUNTDOWN TIMER	EACH	6
PEDESTRIAN PUSH-BUTTON	EACH	5
MODIFY EXISTING CONTROLLER	EACH	1
MODIFY EXISTING CONTROLLER CABINET	EACH	1
RE-OPTIMIZE TRAFFIC SIGNAL SYSTEM LEVEL 1	EACH	1
THERMOPLASTIC PAVEMENT MARKING - LINE 6"	FOOT	413

FILE NAME *	USER NAME : pccipchal	DESIGNED - JC	REVISED - JC 05/23/2017	<b>STATE OF ILLINOIS DEPARTMENT OF TRANSPORTATION</b>	<b>SCHEDULE OF QUANTITIES, CABLE PLAN, PHASE DESIGNATION DIAGRAM AND EMERGENCY VEHICLE PREEMPTION SEQUENCE US 12 (RAND RD) AT EUCLID AVE</b>	F.A. RTE.	SECTION	COUNTY	TOTAL SHEETS	SHEET NO.
Default	PLT SCALE * 48.0000' / in.	CHECKED - LP / ZJ	REVISED -			2016-0567S	VARIOUS	55	37	
	PLT DATE * 5/25/2017	DATE - 03/24/2017	REVISED -			CONTRACT NO. 62044			ILLINOIS FED. AID PROJECT	
SCALE: SHEET OF SHEETS STA. TO STA.										

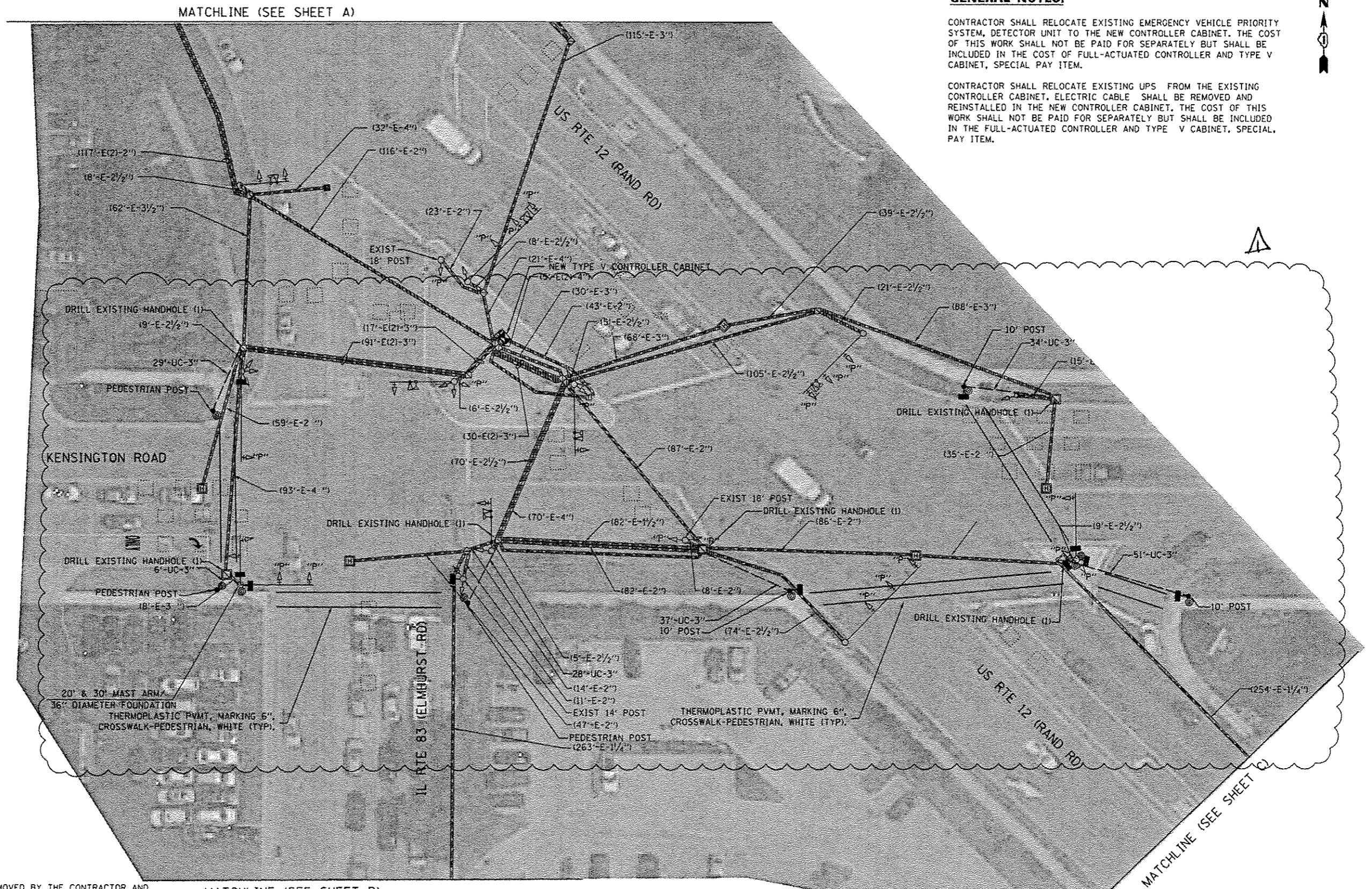
TS# 395  
ARLINGTON HEIGHTS

Rev 6-5-17

**GENERAL NOTES:**

CONTRACTOR SHALL RELOCATE EXISTING EMERGENCY VEHICLE PRIORITY SYSTEM, DETECTOR UNIT TO THE NEW CONTROLLER CABINET. THE COST OF THIS WORK SHALL NOT BE PAID FOR SEPARATELY BUT SHALL BE INCLUDED IN THE COST OF FULL-ACTUATED CONTROLLER AND TYPE V CABINET, SPECIAL PAY ITEM.

CONTRACTOR SHALL RELOCATE EXISTING UPS FROM THE EXISTING CONTROLLER CABINET. ELECTRIC CABLE SHALL BE REMOVED AND REINSTALLED IN THE NEW CONTROLLER CABINET. THE COST OF THIS WORK SHALL NOT BE PAID FOR SEPARATELY BUT SHALL BE INCLUDED IN THE FULL-ACTUATED CONTROLLER AND TYPE V CABINET, SPECIAL PAY ITEM.



**REMOVAL NOTES:**

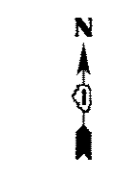
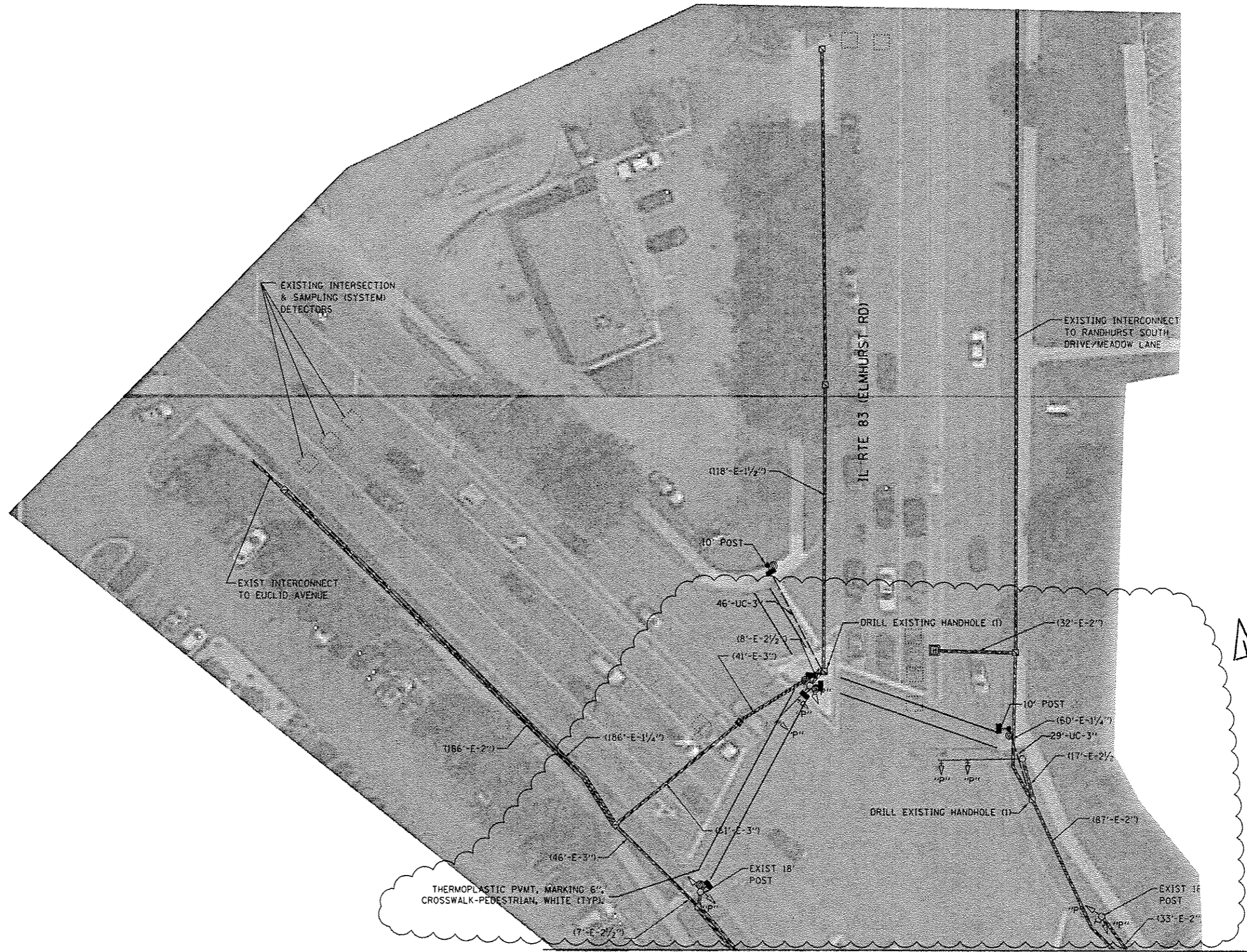
THE FOLLOWING ITEMS SHALL BE REMOVED BY THE CONTRACTOR AND SHALL BE DISPOSED OF BY THEM OUTSIDE THE RIGHT-OF-WAY AT THEIR EXPENSE. THE SALVAGE VALUE OF THE REMOVED EQUIPMENT SHALL BE REFLECTED IN THE CONTRACT BID PRICE.

- 1 EACH CONTROLLER AND CABINET (COMPLETE)

FILE NAME: p:\N\1084EBID\INTE0\Illinois.gov\PIW001\Documents\1001\Offices\District 14\Projects\DIR\30\1084EBID\Traffic\102317-sh-ts3.dgn	USER NAME: poorechal	DESIGNED - JC	REVISED - JC 05/23/2017	<b>STATE OF ILLINOIS DEPARTMENT OF TRANSPORTATION</b>	<b>TRAFFIC SIGNAL MODERNIZATION US 12 (RAND RD) AT IL 83 (ELMHURST RD) AT KENSINGTON RD (1 OF 3)</b>				F.A. RTE.	SECTION	COUNTY	TOTAL SHEETS	SHEET NO.	
Default	PLT SCALE: 48,0000' / in.	CHECKED - LP / ZJ	REVISED -		SCALE:	SHEET	OF	SHEETS	STA.	TO STA.	2016-056TS	VARIOUS	55	38
	PLT DATE: 5/25/2017	DATE - 03/24/2017	REVISED -		CONTRACT NO. 62044									
											ILLINOIS FED. AID PROJECT			

TS# 380  
ECON 194  
MOUNT PROSPECT

Rev 6-5-17



TS# 380  
ECON 194  
MOUNT PROSPECT

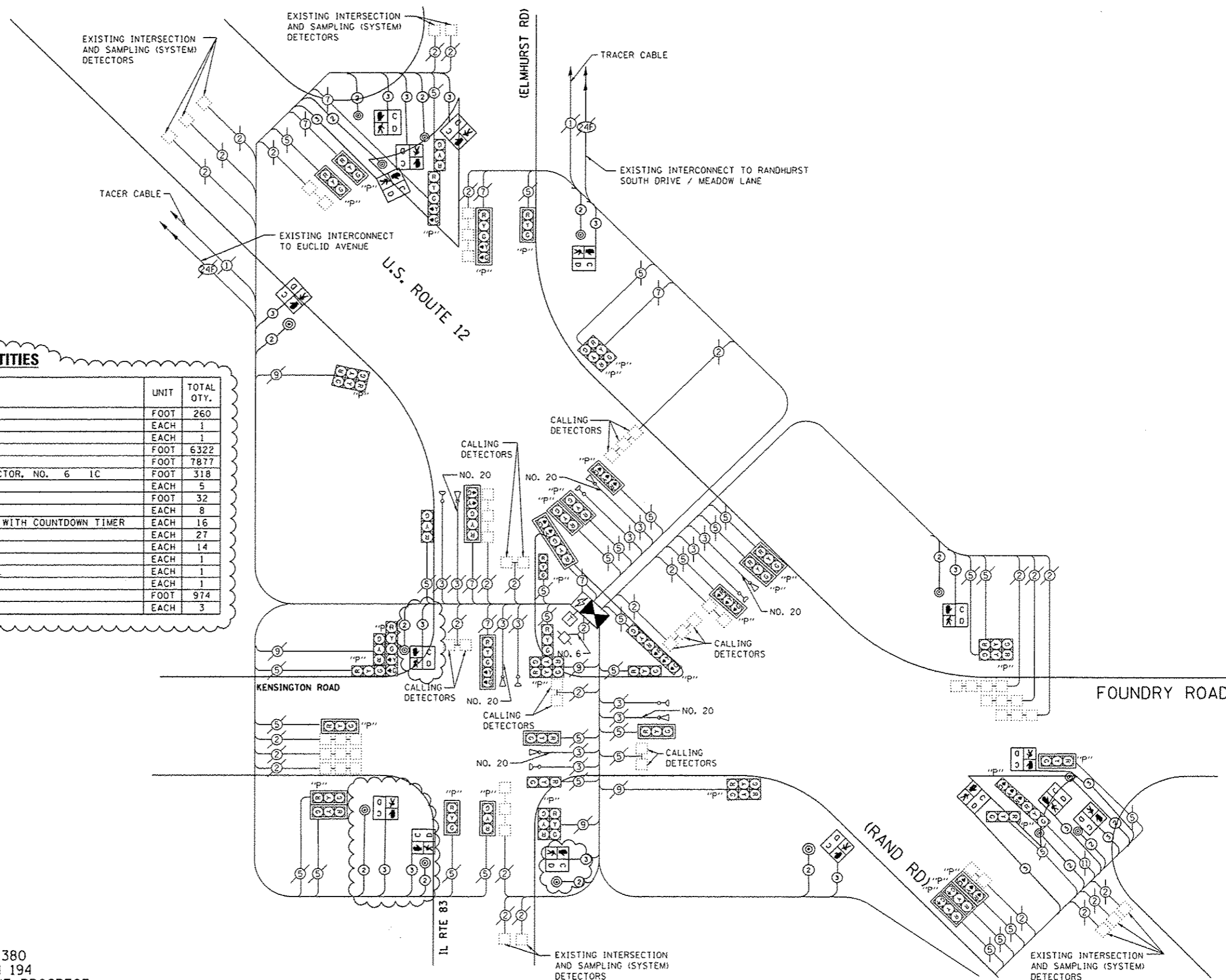
FILE NAME =	USER NAME = psoechel	DESIGNED - JC	REVISED - c JC 05/23/2017
p:\11\084EBID\INTEG\Illinois.gov\PI\001\Documents\DOT Offices\Districts\Projects\0823\Drawings\Traffic\0182317\shl-ts3.dgn			
Default	PLOT SCALE = 40.0000 1/ in.	CHECKED - LP / ZJ	REVISED -
	PLOT DATE = 5/25/2017	DATE - 03/24/2017	REVISED -

**STATE OF ILLINOIS  
DEPARTMENT OF TRANSPORTATION**

**TRAFFIC SIGNAL MODERNIZATION  
US 12 (RAND RD) AT IL 83 (ELMHURST RD) AT KENSINGTON RD (3 OF 3)**

F.A. RTE.	SECTION	COUNTY	TOTAL SHEETS	SHEET NO.
	2016-056TS	VARIOUS	55	40
CONTRACT NO. 62044			ILLINOIS FED. AID PROJECT	

Rev 6-5-17



**SCHEDULE OF QUANTITIES**

ITEM DESCRIPTION	UNIT	TOTAL QTY.
UNDERGROUND CONDUIT, GALVANIZED STEEL, 3" DIA.	FOOT	260
MAINTENANCE OF EXISTING TRAFFIC SIGNAL INSTALLATION	EACH	1
TRANSCEIVER - FIBER OPTIC	EACH	1
ELECTRIC CABLE IN CONDUIT, SIGNAL NO. 14 2C	FOOT	6322
ELECTRIC CABLE IN CONDUIT, SIGNAL NO. 14 3C	FOOT	7877
ELECTRIC CABLE IN CONDUIT, EQUIPMENT GROUNDING CONDUCTOR, NO. 6 1C	FOOT	318
TRAFFIC SIGNAL POST, GALVANIZED STEEL 10 FT.	EACH	5
CONCRETE FOUNDATION, TYPE A	FOOT	32
DRILL EXISTING HANDHOLE	EACH	8
PEDESTRIAN SIGNAL HEAD, LED, 1-FACE, BRACKET MOUNTED WITH COUNTDOWN TIMER	EACH	16
INDUCTIVE LOOP DETECTOR	EACH	27
PEDESTRIAN PUSH-BUTTON	EACH	14
REMOVE EXISTING TRAFFIC SIGNAL EQUIPMENT	EACH	1
FULL-ACTUATED CONTROLLER AND TYPE V CABINET, SPECIAL	EACH	1
RE-OPTIMIZE TRAFFIC SIGNAL SYSTEM LEVEL 1	EACH	1
THERMOPLASTIC PAVEMENT MARKING - LINE 6"	FOOT	974
PEDESTRIAN PUSH BUTTON POST, TYPE A	EACH	3

**TRAFFIC SIGNAL ELECTRICAL SERVICE REQUIREMENTS**

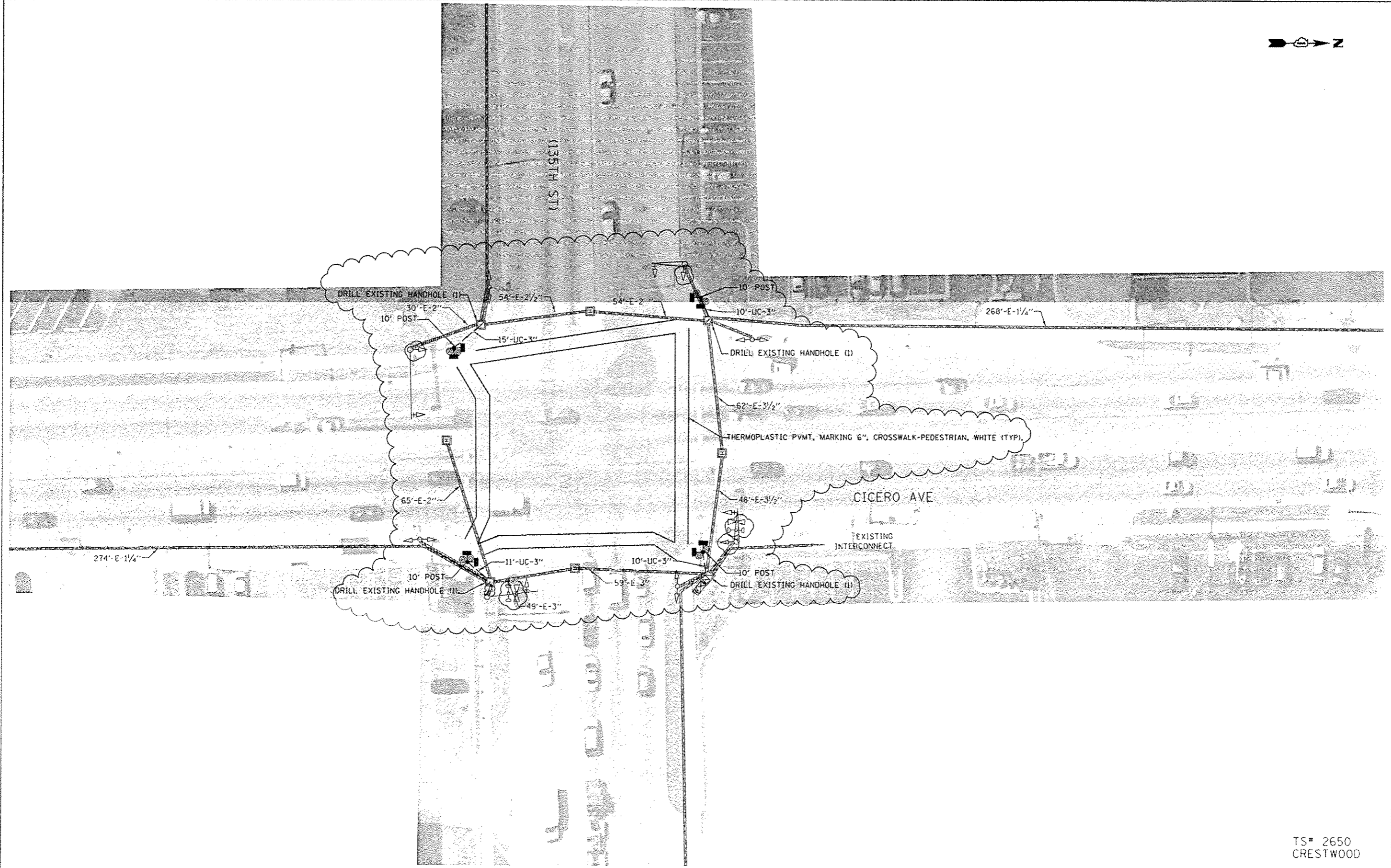
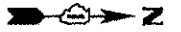
TYPE	NO. OF LAMPS	LED WATTAGE	% OPERATION	TOTAL WATTAGE
SIGNAL (RED)	51	11	50	280.50
(YELLOW)	51	20	5	51
(GREEN)	51	12	45	275.40
PERMISSIVE ARROW	12	10	10	12
PED. SIGNAL	16	20	100	320
CONTROLLER	1	100	100	100.0
UPS	1	25	100	25.0
VIDEO SYSTEM	-	150	100	-
BLANK-OUT SIGN	-	25	5	-
FLASHER	-	-	50	-
STREET NAME SIGN	-	120	50	-
LUMINAIRE	-	-	-	-
TOTAL =				1063.9

ENERGY COSTS TO:  
 IL DEPT OF TRANSPORTATION  
 201 W. CENTER COURT  
 SCHUAMBERG, IL 60196-1096  
 ENERGY SUPPLY: CONTACT: DAVE SCHACHT  
 PHONE: 630-437-2129  
 COMPANY: COMMONWEALTH EDISON  
 ACCOUNT NUMBER: ---

TS# 380  
 CON 194  
 MOUNT PROSPECT

FILE NAME: p:\11\84E01D\INTEG\Illinois.gov\PIW1001\Documents\1001\Office\District 1\Projects\102317-ahs-ta3.dgn	USER NAME: pociachal	DESIGNED: JC	REVISED: JC 05/23/2017	<b>STATE OF ILLINOIS DEPARTMENT OF TRANSPORTATION</b>	<b>SCHEDULE OF QUANTITIES, CABLE PLAN US 12 (RAND RD) AT IL 83 (ELMHURST RD) AT KENSINGTON RD</b>	F.A. RTE.:	SECTION: 2016-056T5	COUNTY: VARIOUS	TOTAL SHEETS: 55	SHEET NO.: 41
Default	PLOT SCALE: 40.0000' / in.	CHECKED: LP / ZJ	DATE: 03/24/2017	SCALE: SHEET OF SHEETS STA. TO STA.		CONTRACT NO. 62D44 ILLINOIS FEB. AID PROJECT				

Revised Sheet 6-5-17



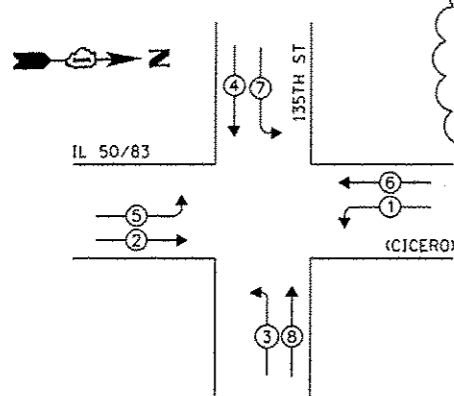
TS# 2650  
CRESTWOOD

FILE NAME	USER NAME	DESIGNED	REVISED	STATE OF ILLINOIS DEPARTMENT OF TRANSPORTATION		TRAFFIC SIGNAL MODERNIZATION		F.A.	SECTION	COUNTY	TOTAL	SHEET		
DRAWN						IL 50 /IL 83 (CICERO AVE) AT 135TH ST		RTE.	2016-05615	VARIOUS	SHEETS	NO.		
PLT SCALE	CHECKED	DATE	REVISED			SCALE:	SHEET	OF	SHEETS	STA.	TO STA.	CONTRACT NO.	62044	51
PLT DATE	DATE	REVISED	REVISED			ILLINOIS FED. AID PROJECT								

△ Revised Sheet 6-5-17

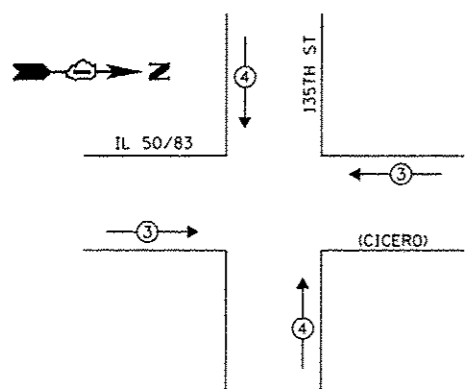


**EXISTING CONTROLLER SEQUENCE**

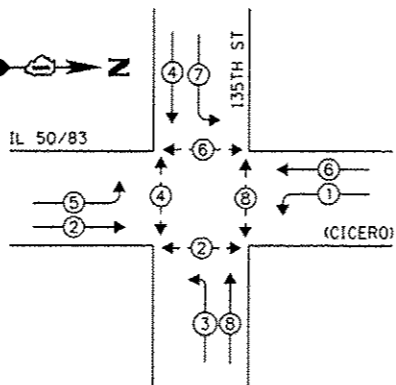


**EXISTING PHASE DESIGNATION DIAGRAM**

**EXISTING EMERGENCY VEHICLE PREEMPTION SEQUENCE**



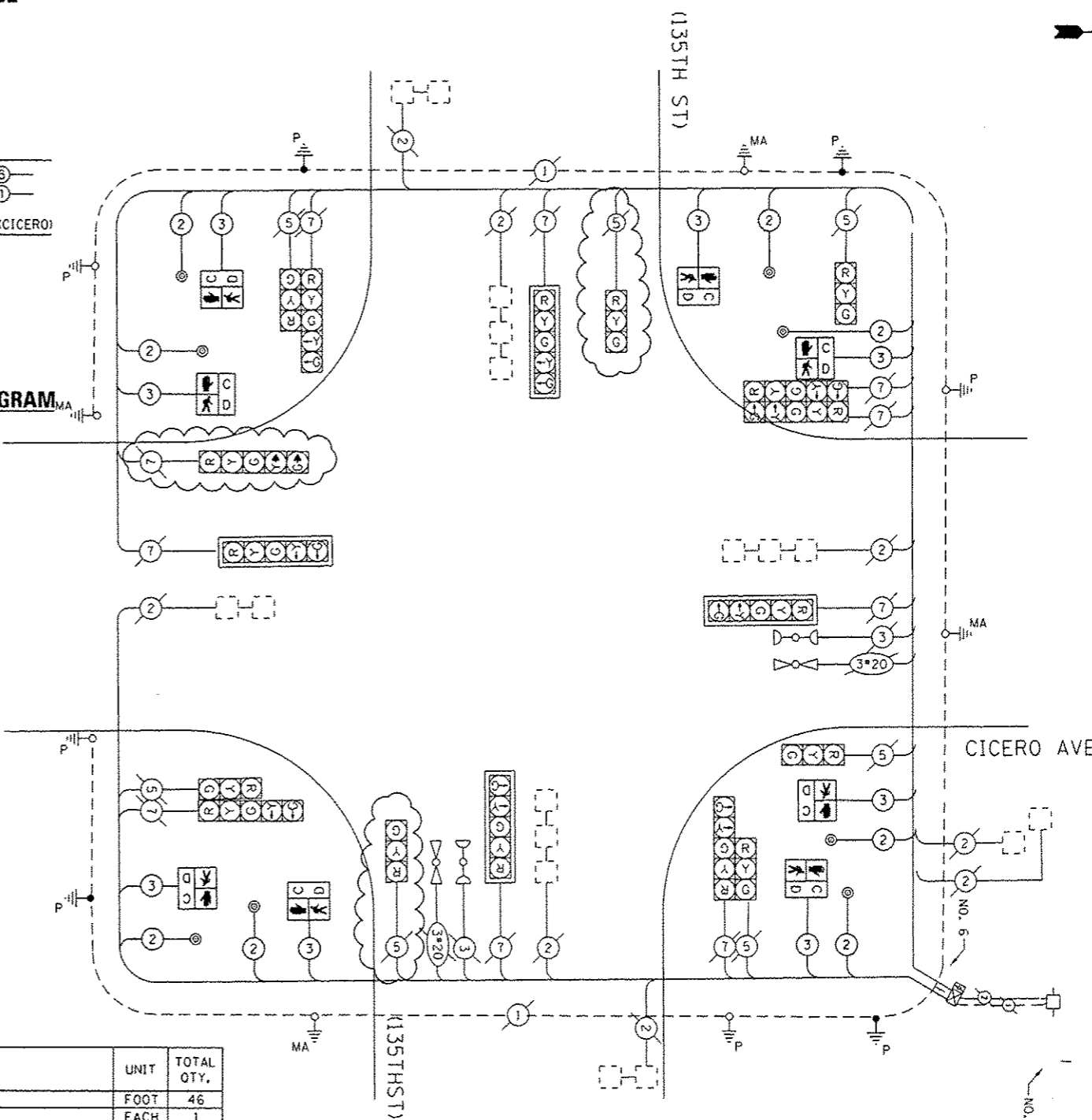
**EXISTING CONTROLLER SEQUENCE**



**EXISTING PHASE DESIGNATION DIAGRAM**

**LEGEND:**

- ← \* → PROTECTED PHASE
- ← \* - → PROTECTED/PERMITTED PHASE
- ← \* → PEDESTRIAN PHASE
- ◊ OL OVERLAP



**CABLE PLAN**

**SCHEDULE OF QUANTITIES**

ITEM DESCRIPTION	UNIT	TOTAL QTY.
UNDERGROUND CONDUIT, GALVANIZED STEEL, 3" DIA.	FOOT	46
MAINTENANCE OF EXISTING TRAFFIC SIGNAL INSTALLATION	EACH	1
ELECTRIC CABLE IN CONDUIT, SIGNAL NO. 14 2C	FOOT	1340
ELECTRIC CABLE IN CONDUIT, SIGNAL NO. 14 3C	FOOT	1400
ELECTRIC CABLE IN CONDUIT, EQUIPMENT GROUNDING CONDUCTOR, NO. 6 1C	FOOT	100
TRAFFIC SIGNAL POST, GALVANIZED STEEL 10 FT.	EACH	4
CONCRETE FOUNDATION, TYPE A	FOOT	16
DRILL EXISTING HANDHOLE	EACH	4
PEDESTRIAN SIGNAL HEAD, LED, 1-FACE, BRACKET MOUNTED WITH COUNTDOWN TIMER	EACH	8
PEDESTRIAN PUSH-BUTTON	EACH	8
MODIFY EXISTING CONTROLLER	EACH	1
MODIFY EXISTING CONTROLLER CABINET	EACH	1
RE-OPTIMIZE TRAFFIC SIGNAL SYSTEM LEVEL	EACH	1
THERMOPLASTIC PAVEMENT MARKING - LINE 6"	FOOT	729

**TRAFFIC SIGNAL ELECTRICAL SERVICE REQUIREMENTS**

TYPE	NO. OF LAMPS	LED WATTAGE	% OPERATION	TOTAL WATTAGE
SIGNAL (RED)	16	11	50	88
(YELLOW)	16	20	5	16
(GREEN)	16	12	45	86.4
PERMISSIVE ARROW	20	10	10	20
PED. SIGNAL	8	20	100	160
CONTROLLER	1	100	100	100.0
UPS	1	25	100	25.0
VIDEO SYSTEM	-	150	100	-
BLANK-OUT SIGN	-	25	5	-
FLASHER	-	-	50	-
STREET NAME SIGN	-	120	50	-
LUMINAIRE	-	-	-	-
<b>TOTAL =</b>				<b>495.4</b>

ENERGY COSTS TO:  
**VILLAGE OF CRESTWOOD**  
 13840 S CICERO AVENUE  
 CRESTWOOD, IL 60445  
 ENERGY SUPPLY: CONTACT: JOE STACHO  
 PHONE: (630) 424-5704  
 COMPANY: COMMONWEALTH EDISON  
 ACCOUNT NUMBER: ---

FILE NAME: p:\11084\BID\INTEG.illinois.gov\PIDOT\Documents\1101 Office\District 13\Projects\BID\Drawings\Traffic\182317-shr-ts2.dgn	DESIGNED - JC	REVISED - JC 05/23/2017
USER NAME: pccrcahal	CHECKED - LP / ZJ	REVISED -
PLOT SCALE: 1/4" = 1'-0"	DATE - 03/24/2017	REVISED -
PLOT DATE: 5/25/2017		

**STATE OF ILLINOIS  
 DEPARTMENT OF TRANSPORTATION**

**SCHEDULE OF QUANTITIES, CABLE PLAN, PHASE DESIGNATION DIAGRAM  
 AND EMERGENCY VEHICLE PREEMPTION SEQUENCE**  
 IL 50 / IL 83 (CICERO AVE) AT 135TH ST

F.A. RTE.	SECTION	COUNTY	TOTAL SHEETS	SHEET NO.
	2016-056TS	VARIOUS	55	52
CONTRACT NO. 62D44			ILLINOIS FED. AID PROJECT	

TS# 2650  
 CRESTWOOD

Revised Sheet 6-5-17

