

STATE OF ILLINOIS
DEPARTMENT OF TRANSPORTATION

F.A.P. RTE.	SECTION	COUNTY	TOTAL SHEETS	SHEET NO.
339	(115 & 115R)RS-4	MC HENRY	25	1
ILLINOIS CONTRACT NO. 62D50				

A *25 + 11 = 36 TOTAL SHEETS
D-91-044-17

FOR INDEX OF SHEETS, SEE SHEET NO. 2

PROJECT LOCATED IN THE VILLAGE OF ALGONQUIN

PROPOSED HIGHWAY PLANS
F.A.P. 339 /IL 62 (ALGONQUIN RD.)
IL 31 (MAIN ST.) TO COUNTRYSIDE DR.
RESURFACING (3P) AND
ADA PEDESTRIAN RAMPS
SECTION NO.: (115 & 115R)RS-4
PROJECT: NHPP-0339(036)
MC HENRY COUNTY
C-91-044-17



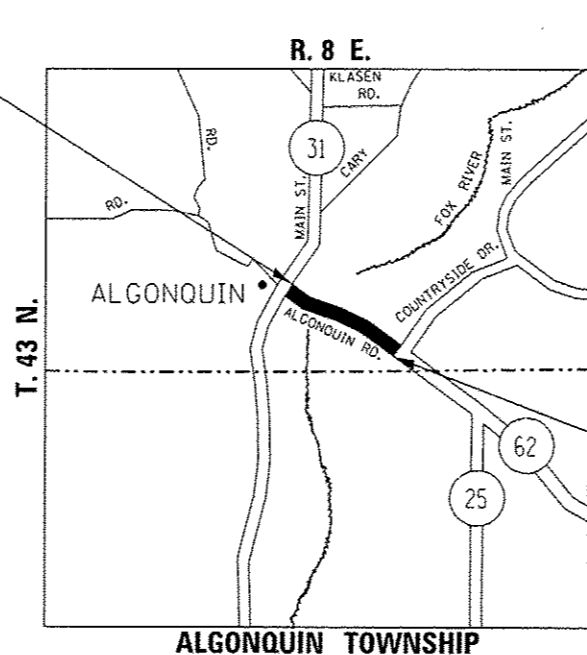
TRAFFIC DATA:

2016 ADT - 38800 TO 43200
SPEED LIMIT - 30 TO 40 MPH

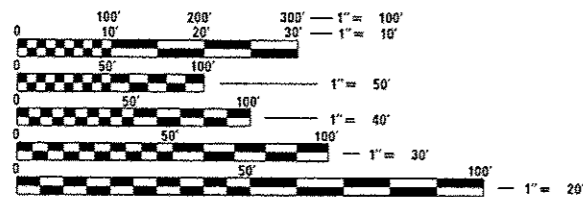
OMISSIONS:

BRIDGE OMISSION OVER FOX LAKE
STA. 35+46 TO STA. 39+93

PROJECT BEGINS
STA. 29+96



PROJECT ENDS
STA. 77+26



FULL SIZE PLANS HAVE BEEN PREPARED USING STANDARD ENGINEERING SCALES. REDUCED SIZED PLANS WILL NOT CONFORM TO STANDARD SCALES. IN MAKING MEASUREMENTS ON REDUCED PLANS, THE ABOVE SCALES MAY BE USED.

J.U.L.I.E.
JOINT UTILITY LOCATION INFORMATION FOR EXCAVATION
1-800-892-0123
OR 811

PROJECT ENGINEER: JENPAI CHANG (847) 705-4432
PROJECT MANAGER: FAWAD AQUEEL (847) 705-4247

CONTRACT NO. 62D50

GROSS LENGTH OF IMPROVEMENT - 4730 FEET - .89 MILES
NET LENGTH OF IMPROVEMENT - 4283 FEET - .81 MILES

STATE OF ILLINOIS
DEPARTMENT OF TRANSPORTATION

SUBMITTED April 3, 2017
[Signature]
REGION ENGINEER

May 12, 2017
[Signature]
ENGINEER OF DESIGN AND ENVIRONMENT

May 12, 2017
[Signature]
DIRECTOR OF PROGRAM DEVELOPMENT

PRINTED BY THE AUTHORITY
OF THE STATE OF ILLINOIS

Rev 6-5-17

INDEX OF SHEETS

SHEET NO.

DESCRIPTION:

STATE STANDARDS

GENERAL NOTES:

1	COVER SHEET
2	INDEX OF SHEETS, STATE STANDARDS AND GENERAL NOTES
3-5	SUMMARY OF QUANTITIES
6-7	TYPICAL SECTIONS
8-10	ROADWAY AND PAVEMENT MARKING PLANS
	10A-10L ADA SIDEWALK RAMP DETAILS
11	DETAILS FOR FRAMES AND LIDS ADJUSTMENTS WITH MILLING (BD-8)
12	DETAILS FOR PAVEMENT PATCHING FOR HMA SURFACED PAVEMENT (BD-22)
13	DETAILS FOR CURB AND GUTTER REMOVAL AND REPLACEMENT (BD-24)
14	BUTT JOINT AND HMA TAPER DETAILS (BD-32)
15	TRAFFIC CONTROL AND PROTECTION FOR SIDE ROADS, INTERSECTIONS, AND DRIVEWAYS (TC-10)
16	TYPICAL APPLICATION FOR RAISED REFLECTIVE PAVEMENT MARKERS (TC-11)
17	DISTRICT ONE TYPICAL PAVEMENT MARKINGS (TC-13)
18	TRAFFIC CONTROL AND PROTECTION AT TURN BAYS (TO REMAIN OPEN TO TRAFFIC) (TC-14)
19	PAVEMENT MARKING--LETTERS AND SYMBOLS FOR TRAFFIC STAGING (TC-16)
20	DISTRICT ONE - DETECTOR LOOP INSTALLATION DETAILS FOR ROADWAY RESURFACING (TS-07)
21-24	DETECTOR LOOP LOCATION DETAILS
25	ARTERIAL ROAD INFORMATION SIGNING (TC-22)

000001-06	STANDARD SYMBOLS, ABBREVIATIONS AND PATTERNS
424001-09	PERPENDICULAR CURB AND RAMPS FOR SIDEWALKS
424006-02	DIAGONAL CURB RAMPS FOR SIDEWALKS
424011-03	CORNER PARALLEL CURB RAMPS FOR SIDEWALKS
424021-03	DEPRESSED CORNER FOR SIDEWALKS
442001-04	CLASS C AND D PATCHES
604001-04	FRAMES AND LIDS, TYPE 1
604006-05	FRAMES AND GRATES, TYPE 23
606001-06	CONCRETE CURB TYPE B AND COMBINATION CONCRETE CURB AND GUTTER
701601-09	URBAN LANE CLOSURE, MULTILANE, 1W OR 2W WITH NON-TRAVERSABLE MEDIAN
701606-10	URBAN LANE CLOSURE, MULTILANE, 2W WITH MOUNTABLE MEDIAN
701701-10	URBAN LANE CLOSURE, MULTILANE INTERSECTION
701801-06	SIDEWALK CORNER OR CROSSWALK CLOSURE
701901-06	TRAFFIC CONTROL DEVICES
780001-05	TYPICAL PAVEMENT MARKING
781001-04	TYPICAL APPLICATION RAISED REFLECTIVE PAVEMENT MARKERS

BEFORE STARTING ANY EXCAVATION THE CONTRACTOR SHALL CALL "JULIE" AT 800-892-0123 OR "CUAN" (CHICAGO UTILITY ALERT NETWORK) AT 312-744-7000 FOR FIELD LOCATIONS OF BURIED ELECTRIC, TELEPHONE AND GAS FACILITIES. (48 HOURS NOTIFICATION IS REQUIRED).

10 FEET (3 METERS) TRANSITION SHALL BE USED TO MATCH PROPOSED CURB AND GUTTER AND MEDIAN ITEMS OF WORK TO EXISTING CURBS AND GUTTERS AND MEDIANS IN THE FIELD, UNLESS OTHERWISE SHOWN. THE TRANSITION SHALL BE PAID FOR AT THE CONTRACT UNIT PRICE FOR THE PROPOSED ITEMS OF WORK SPECIFIED.

THE CONTRACTOR SHALL COORDINATE CONSTRUCTION ACTIVITIES WITH THE UTILITY COMPANIES AND THE VILLAGE OF ALGONQUIN.

THE CONTRACTOR WILL NOT BE ALLOWED TO SET UP A YARD OR FIELD OFFICE ON STATE PROPERTY WITHOUT WRITTEN PERMISSION FROM THE DEPARTMENT.

ANY PAVEMENT MARKINGS AND RAISED REFLECTIVE PAVEMENT MARKERS OBLITERATED BY MILLING AND RESURFACING OPERATIONS ON SIDE STREETS AND ENTRANCES SHALL BE REPLACED AND PAID FOR IN KIND.

ALL DAMAGE TO EXISTING PAVEMENT MARKINGS OR RAISED REFLECTIVE PAVEMENT MARKERS OUTSIDE THE REMOVAL LINE SHOWN ON THE PLANS SHALL BE REPLACED AT NO ADDITIONAL COST TO THE DEPARTMENT.

ALL PAVEMENT PATCHING LOCATIONS WILL BE DETERMINED IN THE FIELD BY THE ENGINEER.

LOCATION OF COMBINATION CONCRETE CURB AND GUTTER REMOVAL AND REPLACEMENT (OR COMBINATION CURB AND GUTTER (THE TYPE SPECIFIED ON THE PLANS)), WILL BE DETERMINED IN THE FIELD BY THE ENGINEER.

DRAINAGE ADJUSTMENT OR RECONSTRUCTION LOCATIONS WILL BE DETERMINED IN THE FIELD BY THE ENGINEER.

IT SHALL BE THE CONTRACTORS RESPONSIBILITY TO VERIFY ALL DIMENSIONS AND EXISTING CONDITIONS IN THE FIELD PRIOR TO CONSTRUCTION AND ORDERING OF MATERIALS.

FRAMES AND GRATES ADJUSTMENT OF PRIVATE UTILITIES WITHIN THE LIMITS OF THE IMPROVEMENT SHALL BE DONE BY THEIR RESPECTIVE OWNERS AND ARE NOT IN PART OF THIS CONTRACT.

BEFORE BEGINNING ANY WORK, THE CONTRACTOR SHALL RETAIN AND RECORD FOR FUTURE REFERENCE, ALL EXISTING PAVEMENT MARKING LINES (RAISED REFLECTIVE PAVEMENT MARKERS) IN ORDER THAT THESE LOCATIONS CAN BE RE-ESTABLISHED FOR STRIPING. EXACT LOCATIONS OF ALL PAVEMENT MARKINGS SHALL BE AS DIRECTED BY THE ENGINEER.

WHEN THE MILLED PAVEMENT IS OPEN TO TRAFFIC THE MAXIMUM GRADE DIFFERENTIAL BETWEEN PASSES OF THE MILLING MACHINE SHALL NOT EXCEED 1/2 INCHES (40 mm) WHERE THE SPEED LIMIT IS 40 MPH (80 km/h) OR LESS AND 1 INCH (25 mm) WHERE THE SPEED LIMIT IS GREATER THAN 40 MPH (80 km/h). WITH WRITTEN APPROVAL OF THE ENGINEER, A MAXIMUM GRADE DIFFERENTIAL OF 3 INCHES (75 mm) MAY BE ALLOWED IF THE EDGE OF THE MILLING MACHINE IS SLOPED A MINIMUM (1:3).

THE CONTRACTOR SHALL CONTACT THE DISTRICT ONE TRAFFIC CONTROL CENTER AT (847) 705-4470 A MINIMUM OF 72 HOURS IN ADVANCE OF BEGINNING WORK.

PERMANENT PAVEMENT MARKINGS SHALL BE THERMOPLASTIC (OF THE EXTRUDED TYPE) AND SHOULD BE PLACED IN ACCORDANCE WITH THE "DISTRICT ONE TYPICAL PAVEMENT MARKINGS" DETAIL. (TC-13)

THE RESIDENT ENGINEER SHALL CONTACT WALTER CZARNY, AREA TRAFFIC FIELD ENGINEER, AT WALTER.CZARNY@ILLINOIS.GOV, A MINIMUM OF TWO (2) WEEKS PRIOR TO THE PLACEMENT OF PERMANENT PAVEMENT MARKINGS.

THE CONTRACTOR SHALL MAINTAIN PEDESTRIAN ACCESS AT ALL TIMES DURING CONSTRUCTION.

FILE NAME =	USER NAME = STEEDPA	DESIGNED -	REVISED - Δ 5/30/2017	STATE OF ILLINOIS DEPARTMENT OF TRANSPORTATION	INDEX OF SHEETS, STATE STANDARDS AND GENERAL NOTES FAP 339 /IL 62 (ALGONQUIN RD.)—IL 31 (MAIN ST.) TO COUNTRYSIDE DR.	F.A.P. RTE.	SECTION	COUNTY	TOTAL SHEETS	SHEET NO.	
p:\IL04EBID\INTEG.illinois.gov\1007\Documents\1007 Offices\District 1\Projects\DI04\OR\040101\Design\01B4417-ent-plan.dgn	OR	CHECKED -	REVISED -			339	1115 & 115RIRS-4	MC HENRY	25	2	
Default	PLOT SCALE = 100.0000' / in.	DATE -	REVISED -			CONTRACT NO. 62D50					
	PLOT DATE = 5/30/2017					SCALE:	SHEET	OF	SHEETS	STA.	TO

Δ Rev 6-5-17

URBAN

SUMMARY OF QUANTITIES			CONSTRUCTION TYPE CODE	
CODE NO	ITEM	UNIT	TOTAL QUANTITIES	80/20 (FED/STATE)
21101615	TOPSOIL FURNISH AND PLACE, 4"	SO YD	497	497
20200100	EARTH EXCAVATION	CU YD	33	33
25200110	SODDING, SALT TOLERANT	SO YD	497	497
40600290	BITUMINOUS MATERIALS (TACK COAT)	POUND	19358	19358
40600400	MIXTURE FOR CRACKS, JOINTS, AND FLANGEWAYS	TON	43	43
40600827	POLYMERIZED LEVELING BINDER (MACHINE METHOD), JL-4.75, N50	TON	1183	1183
40600982	HOT-MIX ASPHALT SURFACE REMOVAL - BUTT JOINT	SO YD	297	297
40601005	HOT-MIX ASPHALT OVER PATCHES	TON	144	144
42001300	PROTECTIVE COAT	SO YD	957	957
42400200	PORTLAND CEMENT CONCRETE SIDEWALK 5 INCH	SO FT	3324	3324
42400800	DETECTABLE WARNINGS	SO FT	354	354
44201692	CLASS D PATCHES, TYPE II, 4 INCH	SQ YD	8	8
44000159	HOT-MIX ASPHALT SURFACE REMOVAL, 2 1/2"	SO YD	23762	23762
44003100	MEDIAN REMOVAL	SQ FT	163	163
44000600	SIDEWALK REMOVAL	SO FT	3333	3333
44201765	CLASS D PATCHES, TYPE II, 10 INCH	SQ YD	175	175
44201803	CLASS D PATCHES, TYPE II, 13 INCH	SO YD	1339	1339
44201769	CLASS D PATCHES, TYPE III, 10 INCH	SQ YD	140	140
44201807	CLASS D PATCHES, TYPE III, 13 INCH	SO YD	1084	1084
44201771	CLASS D PATCHES, TYPE IV, 10 INCH	SO YD	150	150

URBAN

SUMMARY OF QUANTITIES			CONSTRUCTION TYPE CODE	
CODE NO	ITEM	UNIT	TOTAL QUANTITIES	80/20 (FED/STATE)
44201809	CLASS D PATCHES, TYPE IV, 13 INCH	SO YD	1165	1165
44002222	HOT-MIX ASPHALT OVER PATCHES, 5 1/2"	SO YD	465	465
56109210	WATER VALVES TO BE ADJUSTED	EACH	5	5
60257900	MANHOLES TO BE RECONSTRUCTED	EACH	2	2
60300105	FRAMES AND GRATES TO BE ADJUSTED	EACH	3	3
60619600	CONCRETE MEDIAN, TYPE SB-L.12	SQ FT	91	91
66900200	NON-SPECIAL WASTE DISPOSAL	CU YD	45	45
66900450	SPECIAL WASTE PLANS AND REPORTS	LSUM	1	1
66900530	SOIL DISPOSAL ANALYSIS	EACH	2	2
67000400	ENGINEER'S FIELD OFFICE, TYPE A	CAL MO	6	6
67100100	MOBILIZATION	LSUM	1	1
70102625	TRAFFIC CONTROL AND PROTECTION, STANDARD 701606	LSUM	1	1
70102630	TRAFFIC CONTROL AND PROTECTION, STANDARD 701601	LSUM	1	1
70102635	TRAFFIC CONTROL AND PROTECTION, STANDARD 701701	LSUM	1	1
70102640	TRAFFIC CONTROL AND PROTECTION, STANDARD 701801	LSUM	1	1
70300100	SHORT TERM PAVEMENT MARKING	FOOT	3298	3298

FILE NAME :	USER NAME : STEEDPA	DESIGNED -	REVISED -
OFFICE: 1115 Rte 101, N. Prospect St., Channahon, IL 61018	PROJECT: ILLINOIS DEPARTMENT OF TRANSPORTATION	CHECKED -	REVISED -
PLOT SCALE: 1/8" = 1'-0"	DATE: 4/3/2017	DATE -	REVISED -

**STATE OF ILLINOIS
DEPARTMENT OF TRANSPORTATION**

SUMMARY OF QUANTITIES
FAP 339 /IL 62 (ALGONQUIN RD.)—IL 31 (MAIN ST.) TO COUNTRYSIDE DR.

F.A.P. RTE. 339	SECTION 115 & 115RHS-4	COUNTY MC HENRY	TOTAL SHEETS 25	SHEET NO. 3
FED. ROAD DIST. NO. 1 [ILLINOIS] FED. AID PROJECT CONTRACT NO. 62050				

Rev 6-5-17

URBAN

SUMMARY OF QUANTITIES			CONSTRUCTION TYPE CODE	
CODE NO	ITEM	UNIT	TOTAL QUANTITIES	80/20 (feet/minute) 0005
70300150	SHORT TERM PAVEMENT MARKING REMOVAL	SO FT	550	550
70300210	TEMPORARY PAVEMENT MARKING LETTERS AND SYMBOLS	SO FT	649	649
70300220	TEMPORARY PAVEMENT MARKING - LINE 4"	FOOT	12605	12605
70300240	TEMPORARY PAVEMENT MARKING - LINE 6"	FOOT	3058	3058
70300260	TEMPORARY PAVEMENT MARKING - LINE 12"	FOOT	1128	1128
70300280	TEMPORARY PAVEMENT MARKING - LINE 24"	FOOT	468	468
70300520	PAVEMENT MARKING TAPE, TYPE III 4"	FOOT	1649	1649
*72406500	RELOCATE SIGN PANEL ASSEMBLY, TYPE A	EACH	2	2
*78000100	THERMOPLASTIC PAVEMENT MARKING - LETTERS AND SYMBOLS	SO FT	649	649
*78000200	THERMOPLASTIC PAVEMENT MARKING - LINE 4"	FOOT	12605	12605
*78000400	THERMOPLASTIC PAVEMENT MARKING - LINE 6"	FOOT	3058	3058
*78000600	THERMOPLASTIC PAVEMENT MARKING - LINE 12"	FOOT	1128	1128
*78000650	THERMOPLASTIC PAVEMENT MARKING - LINE 24"	FOOT	468	468

URBAN

SUMMARY OF QUANTITIES			CONSTRUCTION TYPE CODE	
CODE NO	ITEM	UNIT	TOTAL QUANTITIES	80/20 (feet/minute) 0005
*78008200	POLYUREA PAVEMENT MARKING TYPE I - LETTERS AND SYMBOLS	SO FT	73	73
*78008210	POLYUREA PAVEMENT MARKING TYPE I - LINE 4"	FOOT	1694	1694
*78008230	POLYUREA PAVEMENT MARKING TYPE I - LINE 6"	FOOT	159	159
*78008250	POLYUREA PAVEMENT MARKING TYPE I - LINE 12"	FOOT	48	48
*78100100	RAISED REFLECTIVE PAVEMENT MARKER	EACH	587	587
78300200	RAISED REFLECTIVE PAVEMENT MARKER REMOVAL	EACH	529	529
*85000200	MAINTENANCE OF EXISTING TRAFFIC SIGNAL INSTALLATION	EACH	3	3
*88600600	DETECTOR LOOP REPLACEMENT	FOOT	2163	2163
*89500400	RELOCATE EXISTING PEDESTRIAN PUSH-BUTTON	EACH	10	10
*89502376	REBUILD EXISTING HANDHOLE	EACH	8	8
X0320050	CONSTRUCTION LAYOUT (SPECIAL)	LSUM	1	1
X0327611	REMOVE AND REINSTALL BRICK PAVER	SO FT	150	150

Handwritten circled numbers in the first table:
 *78000200: 12605, 12605
 *78000400: 3058, 3058
 *78000600: 1128, 1128
 *78000650: 468, 468

Handwritten circled numbers in the second table:
 X0327611: 150, 150

Rev 6-5-17

URBAN

SUMMARY OF QUANTITIES

CONSTRUCTION TYPE CODE

Table with columns: CODE NO, ITEM, UNIT, TOTAL QUANTITIES, 80/20 (FED STATE), and CONSTRUCTION TYPE CODE. Rows include items like 'PAVEMENT MARKING REMOVAL - WATER', 'POLYMERIZED HOT-MIX ASPHALT SURFACE', etc.

SUMMARY OF QUANTITIES

CONSTRUCTION TYPE CODE

Empty table with columns: CODE NO, ITEM, UNIT, TOTAL QUANTITIES, and CONSTRUCTION TYPE CODE.

- * SPECIALTY ITEMS
☐ NON-PARTICIPATING ITEMS

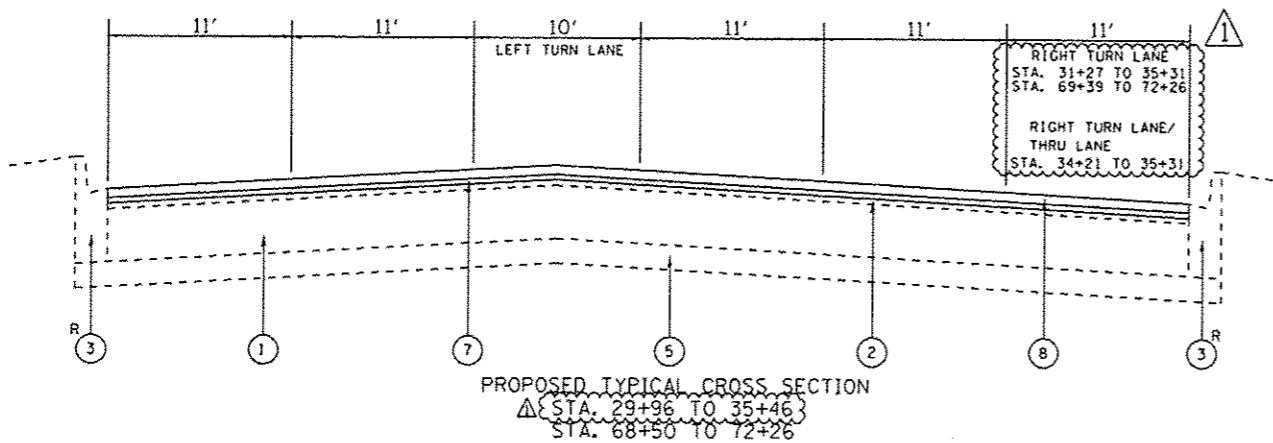
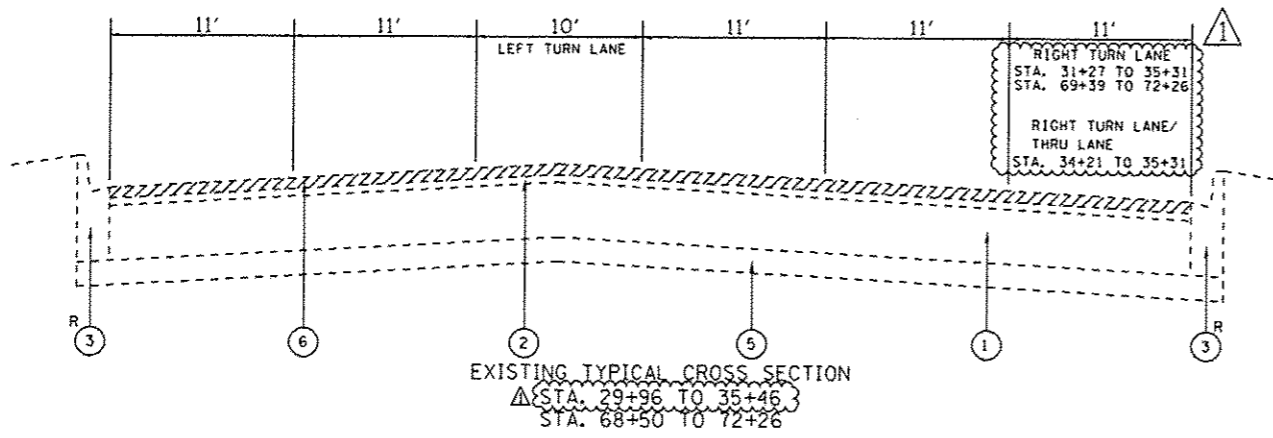
Small table with columns: USER NAME (STEEDPA), DESIGNED, REVISED, CHECKED, DATE, PLOT SCALE (1/4"), PLOT DATE (4/3/2007).

STATE OF ILLINOIS
DEPARTMENT OF TRANSPORTATION

SUMMARY OF QUANTITIES
FAP 339 /IL 62 (ALGONQUIN RD.)-IL 31 (MAIN ST.) TO COUNTRYSIDE DR.

Table with columns: F.A.P. RTE., SECTION, COUNTY, TOTAL SHEETS, SHEET NO., CONTRACT NO. 62050.

Rev 6-5-17



LEGEND:

- ① EXISTING P.C.C. PAVEMENT ±10"
- ② EXISTING HOT-MIX ASPHALT SURFACE, ±3" (AFTER MILLING)
- ③ EXISTING COMBINATION CONCRETE CURB & GUTTER, TYPE B-6.12
- ④ EXISTING COMBINATION CONCRETE CURB & GUTTER, TYPE B-6.24
- ⑤ EXISTING STABILIZED SUB-BASE
- ⑥ PROPOSED HOT-MIX ASPHALT SURFACE REMOVAL, 2½"
- ⑦ PROPOSED POLYMERIZED LEVELING BINDER (MACHINE METHOD), IL-4.75, N50, ¾"
- ⑧ PROPOSED POLYMERIZED HOT-MIX ASPHALT SURFACE COURSE, STONE MATRIX ASPHALT, 9.5, N80, 1½"
- R CURB AND GUTTER REMOVAL AND REPLACEMENT (AS DIRECTED BY THE ENGINEER)

MIXTURE REQUIREMENTS

MIXTURE TYPE	AIR VOIDS @ Ndes	OMP
PATCHING		
CLASS "D" PATCHES (HMA BINDER COURSE, IL-19MM)	4% @ 70 GYR.	QC / OA
PAVEMENT RESURFACING		
POLYMERIZED HOT-MIX ASPHALT SURFACE COURSE, STONE MATRIX ASPHALT, 9.5, N80	3.5% @ 80 GYR.	OCP
POLYMERIZED LEVELING BINDER (MACHINE METHOD), IL-4.75, N50	3.5% @ 50 GYR.	QC / OA
OMP DESIGNATION: QUALITY CONTROL FOR PERFORMANCE (OCP); QUALITY CONTROL / QUALITY ASSURANCE (QC / OA); PAY FOR PERFORMANCE (PPF)		

NOTES:

THE UNIT WEIGHT USED TO CALCULATE ALL HOT-MIX ASPHALT QUANTITIES IS 112 LBS./SQ. YD./ IN.

THE "AC TYPE" FOR POLYMERIZED HMA MIXES SHALL BE "SBS/SBR PG 76 -22" AND FOR NON-POLYMERIZED HMA THE "AC TYPE" SHALL BE "PG 64 -22" UNLESS MODIFIED BY DISTRICT ONE SPECIAL PROVISIONS.

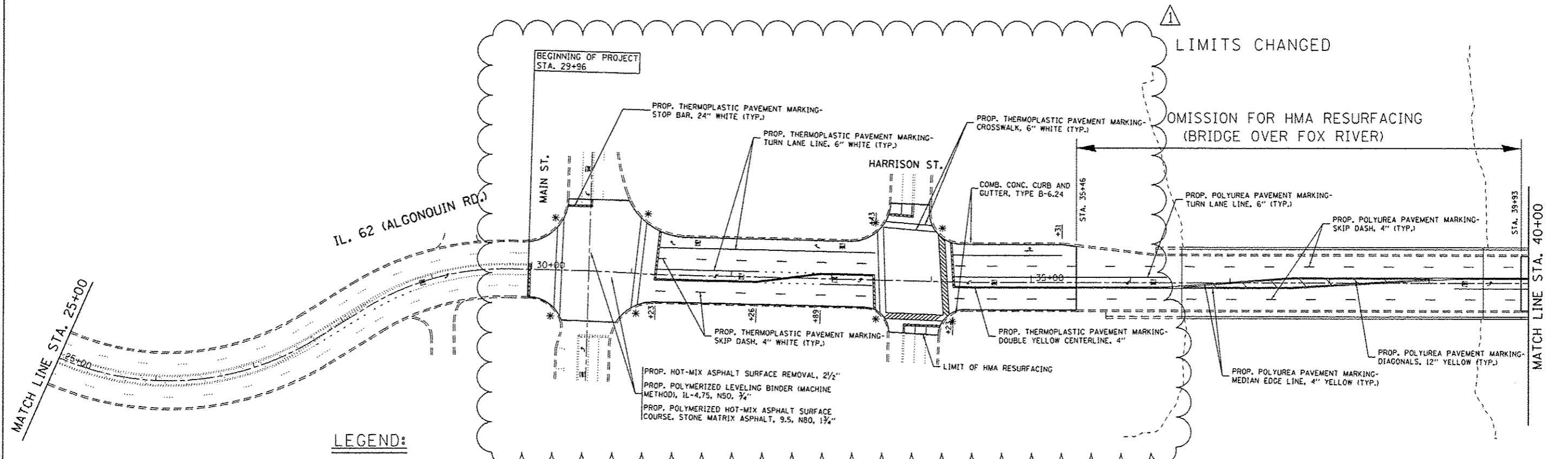
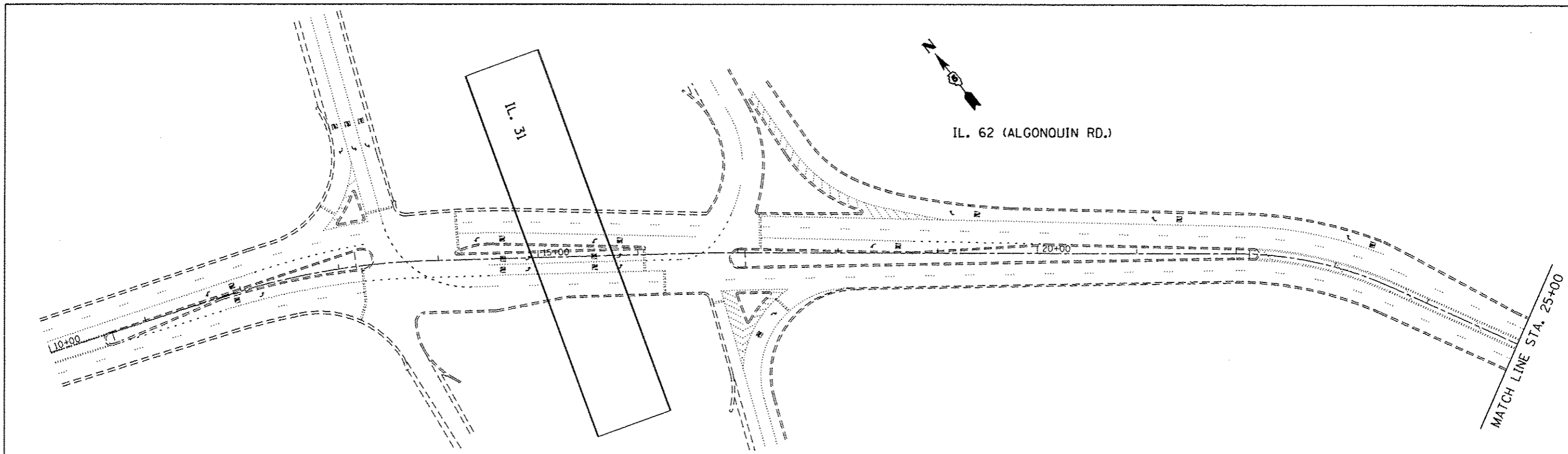
THE MILLING SHALL BE DONE PRIOR TO PATCHING

QUALITY MANAGEMENT PROGRAM (OMP) IDENTIFIES THE PARTICULAR QUALITY CONTROL SPECIFICATION THAT APPLIES TO THE HMA MIXTURE

FOR USE OF RECYCLED MATERIALS SEE SPECIAL PROVISIONS

FILE NAME	USER NAME = STEEDPA	DESIGNED -	REVISED - 5/30/2017	STATE OF ILLINOIS DEPARTMENT OF TRANSPORTATION	EXISTING AND PROPOSED TYPICAL SECTIONS	F.A.P. RTE.	SECTION	COUNTY	TOTAL SHEETS	SHEET NO.	
Default	Documents\DOT Offices\District 1\Projects\DOT-DRM\State\Design\184417-ent-plan.dgn	CHECKED -	REVISED -			339	115 & 115RIS-4	MC HENRY	25	6	
	PLOT SCALE = 100.0000' / in.	DATE -	REVISED -			SCALE:	SHEET	OF	SHEETS	STA.	TO STA.
	PLOT DATE = 5/30/2017					ILLINOIS FED. AID PROJECT CONTRACT NO. 62D50					

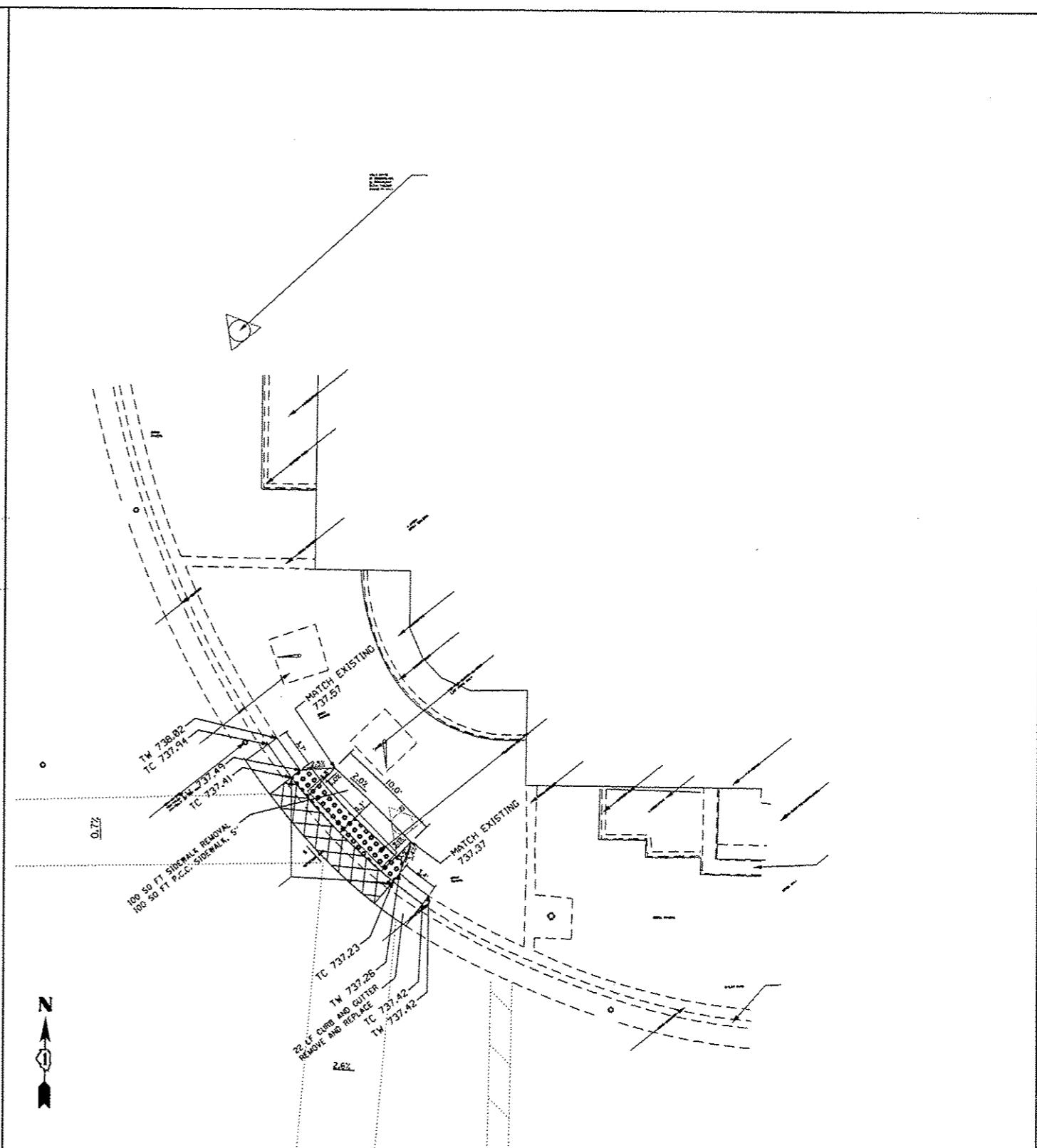
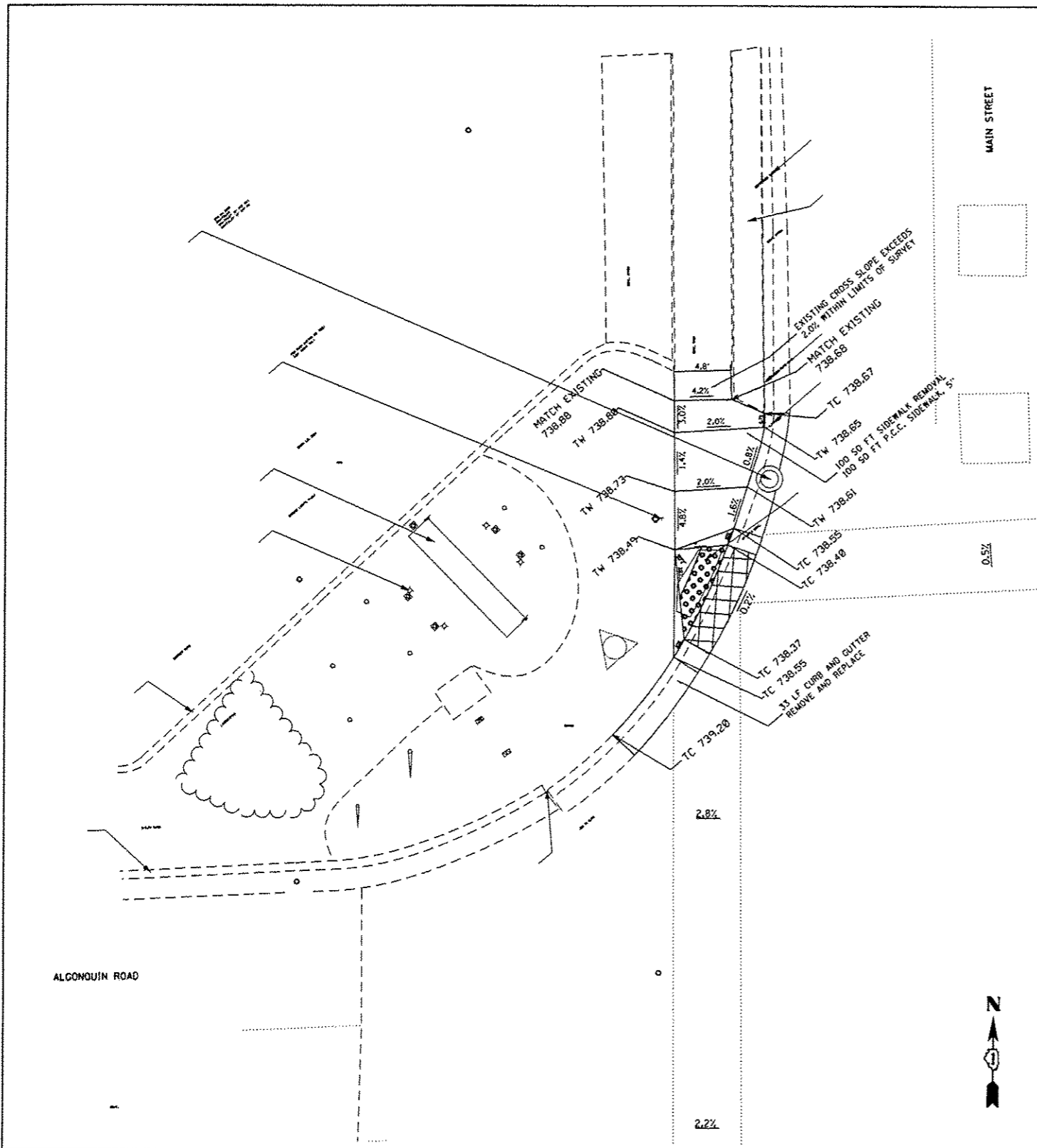
Rev 6-5-17



LEGEND:
 * ADA CURB RAMP IMPROVEMENT

FILE NAME =	USER NAME = STEEDPA	DESIGNED -	REVISED - 5/30/2017	STATE OF ILLINOIS DEPARTMENT OF TRANSPORTATION	ROADWAY AND PAVEMENT PLAN			F.A.P. RTE.	SECTION	COUNTY	TOTAL SHEETS	SHEET NO.
p:\IL04\EBID\INTEG.ILLINOIS.GOV\PI001\Documents\DOT Offices\District 1\Projects\DRB\DRBData\Design\Q184417-shr-plan.dgn		DRB	REVISED -		FAP 339 /IL 62 (ALGONQUIN RD.)—IL 31 (MAIN ST.) TO COUNTRYSIDE DR.			339	015 & 11SR1R5-4	MC HENRY	25	8
Default		CHECKED -	REVISED -		SCALE:	SHEET	OF	SHEETS	STA.	TO STA.	CONTRACT NO. 62D50	
		DATE -	REVISED -								ILLINOIS FED. AID PROJECT	

Rev 6-5-17



REFERENCE BENCH MARK ELEV 738.52
 BENCHMARK : SET X ON HYDRANT BOLT
 LOCATION : BASE AT SE CORNER OF IL 62 (ALGONQUIN RD.) AND MAIN ST.

LEGEND	
xx.xx'	EXISTING LENGTH
	PROPOSED SIDE CURB
()	EXISTING ELEVATION/SLOPE
	PROPOSED SIDEWALK
	DETECTABLE WARNINGS
	DEPRESSED CURB AND GUTTER

REFERENCE BENCH MARK ELEV 738.52
 BENCHMARK : SET X ON HYDRANT BOLT
 LOCATION : BASE AT SE CORNER OF IL 62 (ALGONQUIN RD.) AND MAIN ST.

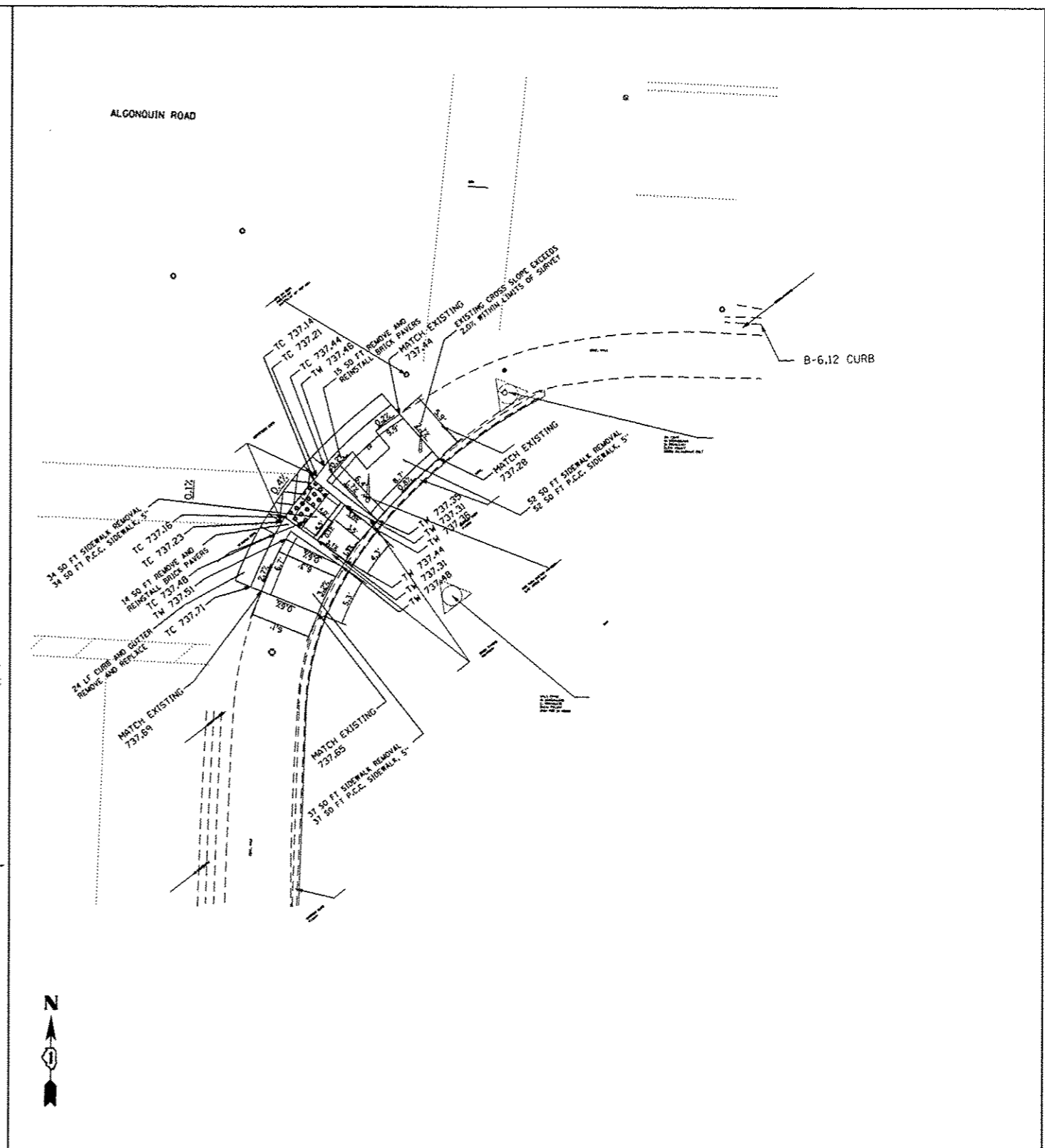
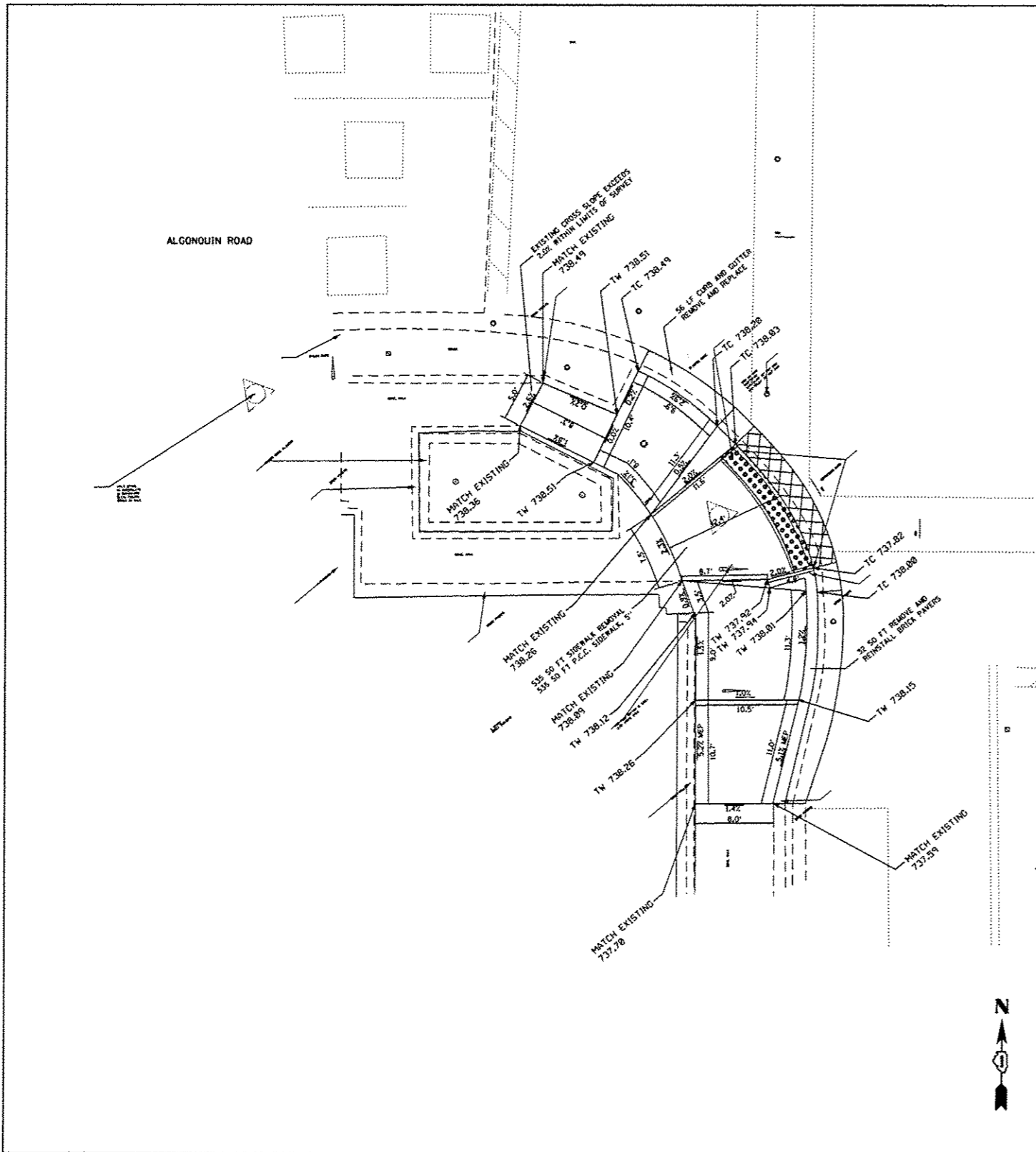
FILE NAME *	USER NAME = STEEOPA	DESIGNED -	REVISED -
Documents\DOT Offices\District 1\Projects\DRM\DRM\Design\DIR4417-ADA-1.dgn		REVISIONS	REVISIONS
	PLOT SCALE = 50.0000' / in.	CHECKED -	REVISED -
Default	PLOT DATE = 5/18/2017	DATE -	REVISED -

STATE OF ILLINOIS
 DEPARTMENT OF TRANSPORTATION

ADA RAMP DETAILS (IL 62 & MAIN ST.) NW & NE CORNERS
 IL 62 (ALGONQUIN RD.)—IL 31 (MAIN ST.) TO COUNTRYSIDE DR.
 SCALE: 1"=5'

F.A.P. RTE.	SECTION	COUNTY	TOTAL SHEETS	SHEET NO.
339	1115 & 115RHS-4	MC HENRY	25	10A
CONTRACT NO. 62D50			ILLINOIS FED. AID PROJECT	

Revised Sheet 6-5-17



REFERENCE BENCH MARK ELEV 738.52

BENCHMARK : SET X ON HYDRANT BOLT

LOCATION : BASE AT SE CORNER OF IL 62 (ALGONQUIN RD.) AND MAIN ST.

LEGEND



EXISTING LENGTH



PROPOSED SIDE CURB



EXISTING ELEVATION/SLOPE



PROPOSED SIDEWALK



DETECTABLE WARNINGS



DEPRESSED CURB AND GUTTER

REFERENCE BENCH MARK ELEV 738.52

BENCHMARK : SET X ON HYDRANT BOLT

LOCATION : BASE AT SE CORNER OF IL 62 (ALGONQUIN RD.) AND MAIN ST.

FILE NAME :	USER NAME :	DESIGNED :	REVISED :
per\\11084EBIDINTEG\illinois.gov\PIW001\Documents\DOT Offices\District 1\Projects\DRM\DRMData\Design\DRM417-ADA-1.dgn	STEEOPA	-	-
Default	PLOT SCALE :	CHECKED :	REVISED :
	50.0000 ' / in.	-	-
	PLOT DATE :	DATE :	REVISED :
	5/18/2017	-	-

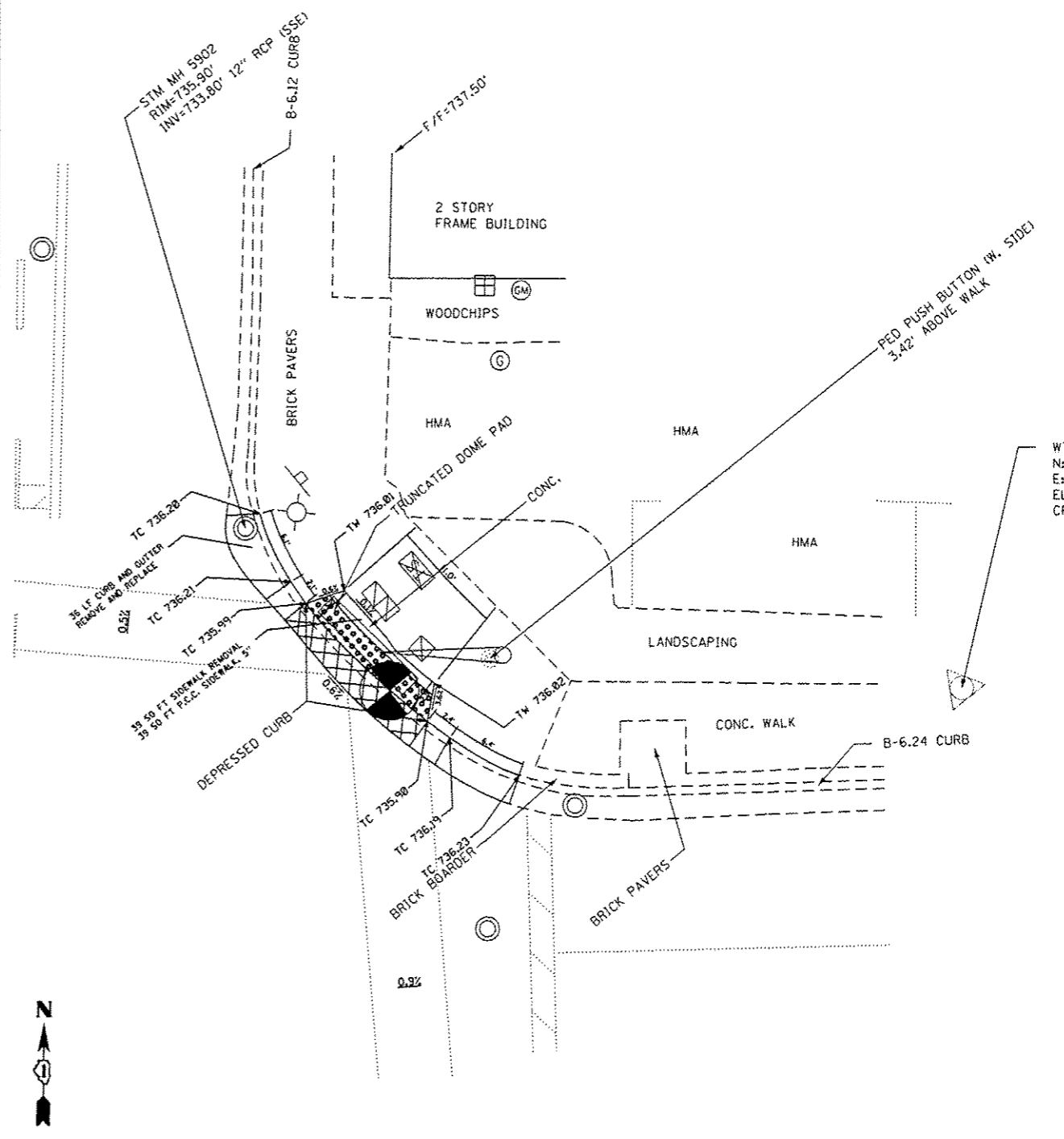
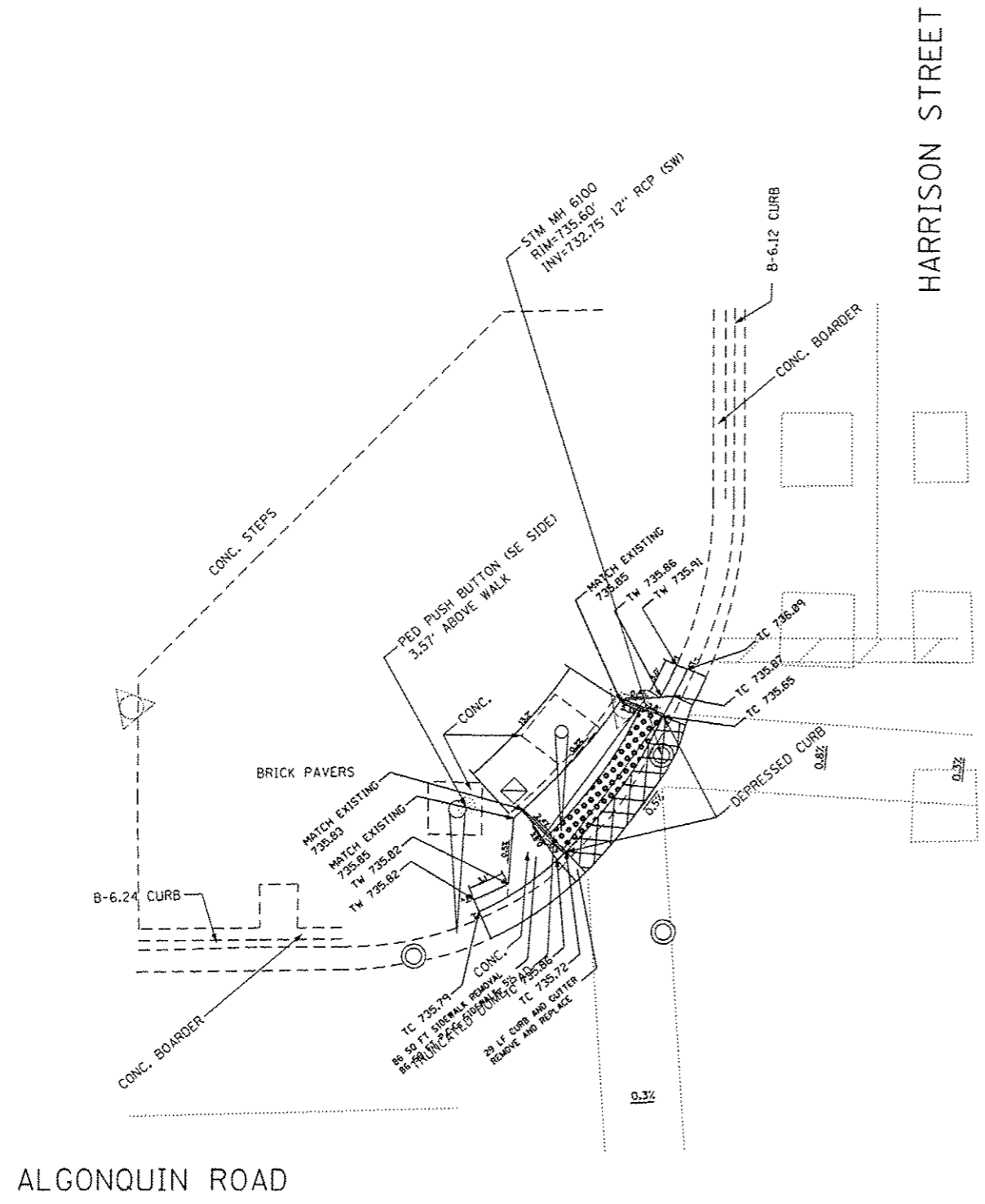
STATE OF ILLINOIS
DEPARTMENT OF TRANSPORTATION

ADA RAMP DETAILS (IL 62 & MAIN ST.) SW & SE CORNERS
IL 62 (ALGONQUIN RD.)—IL 31 (MAIN ST.) TO COUNTRYSIDE DR.

F.A.P. RTE.	SECTION	COUNTY	TOTAL SHEETS	SHEET NO.
350	(115 & 115RIRS-4	MC HENRY	25	10B
CONTRACT NO. 62D50				ILLINOIS FED. AID PROJECT

SCALE: 1"=5' SHEET OF SHEETS STA. TO STA.

Revised Sheet 6-5-17



WTLS CP*32
 N: 2003307.241
 E: 995787.320
 ELEV: 737.093
 CROSS IN WALK

REFERENCE BENCH MARK ELEV 738.52
 BENCHMARK : SET X ON HYDRANT BOLT
 LOCATION : BASE AT SE CORNER OF IL 62 (ALGONQUIN RD.) AND MAIN ST.

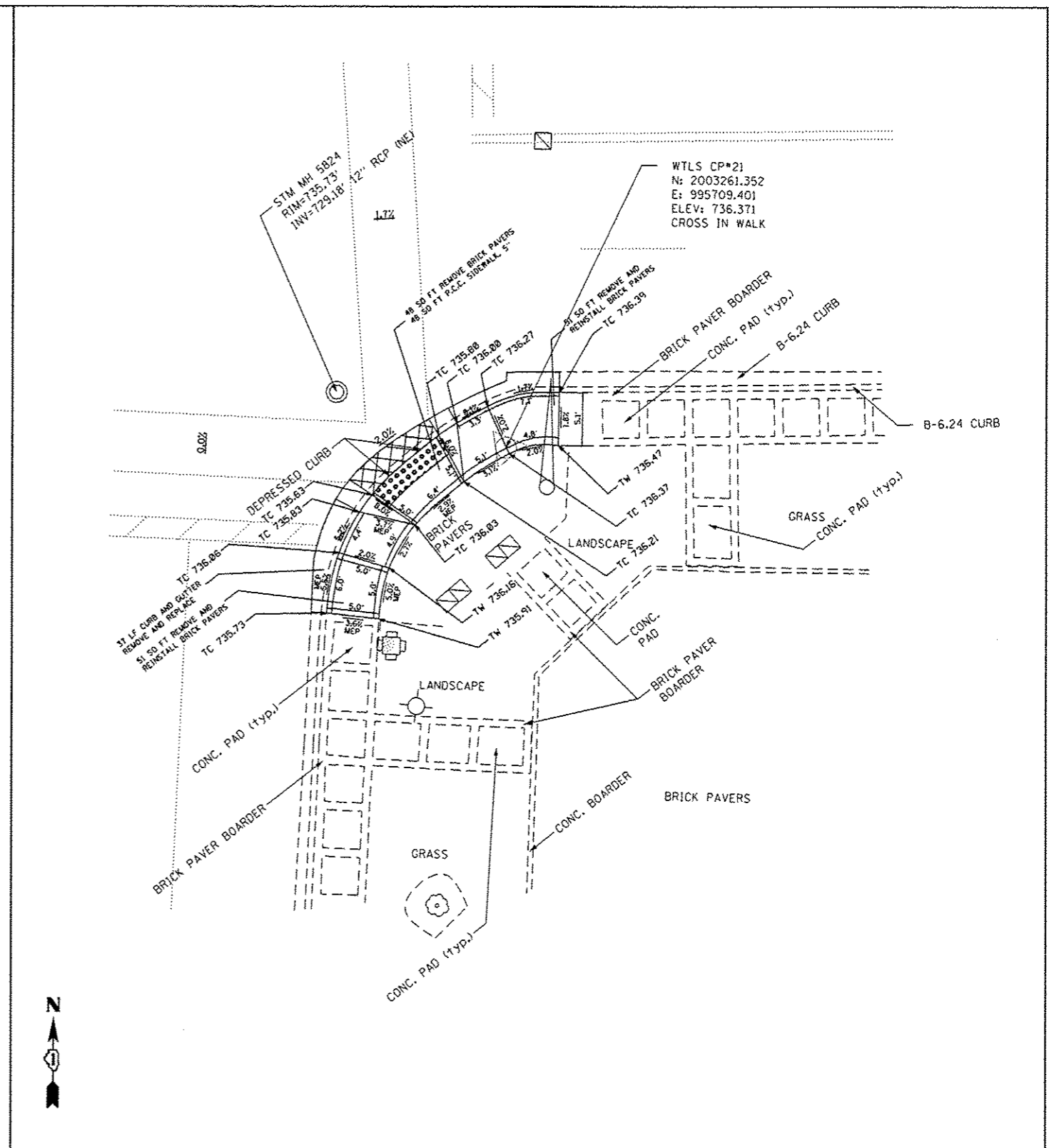
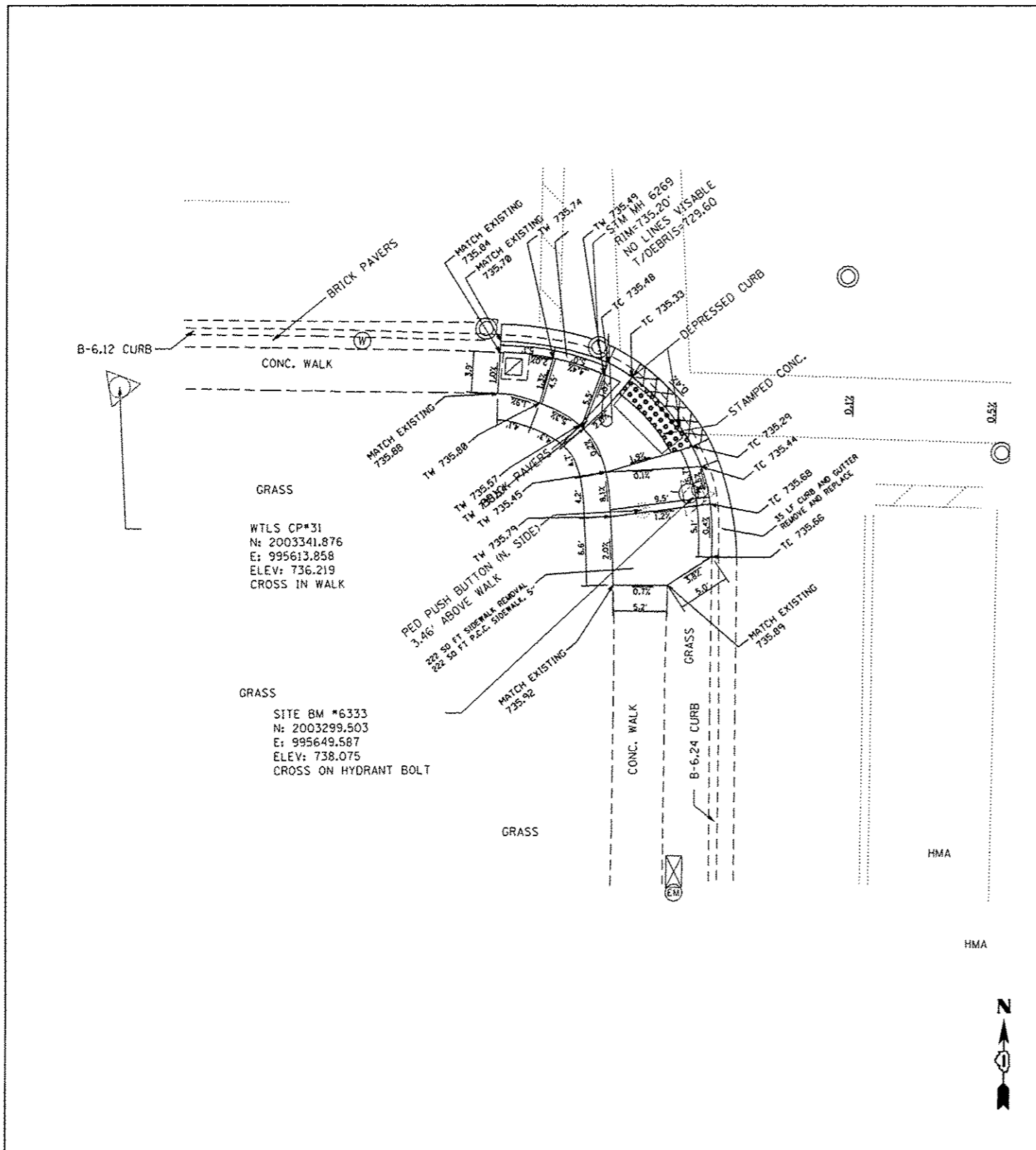
LEGEND

- xx.xx' EXISTING LENGTH
- PROPOSED SIDE CURB
- () EXISTING ELEVATION/SLOPE
- PROPOSED SIDEWALK
- DETECTABLE WARNINGS
- DEPRESSED CURB AND GUTTER

REFERENCE BENCH MARK ELEV 738.52
 BENCHMARK : SET X ON HYDRANT BOLT
 LOCATION : BASE AT SE CORNER OF IL 62 (ALGONQUIN RD.) AND MAIN ST.

FILE NAME =	USER NAME = STEEDPA	DESIGNED -	REVISED -	STATE OF ILLINOIS DEPARTMENT OF TRANSPORTATION	ADA RAMP DETAILS (IL 62 & MAIN ST.) SW & SE CORNERS IL 62 (ALGONQUIN RD.)—IL 31 (MAIN ST.) TO COUNTRYSIDE DR.	F.A.P. RTE.	SECTION	COUNTY	TOTAL SHEETS	SHEET NO.	
Default	Documents\DOT Offices\District 1\Projects\DOT\DRM\Design\117-404-1.dgn	CHECKED -	REVISED -			350	(115 & 115R1RS-4)	MC HENRY	25	10C	
	PLOT SCALE = 50,0000' / in.	DATE -	REVISED -			SCALE: 1"=5'		SHEET OF SHEETS		STA. TO STA.	
	PLOT DATE = 5/18/2017					ILLINOIS FED. AID PROJECT CONTRACT NO. 62D50					

Revised Sheet 6-5-17



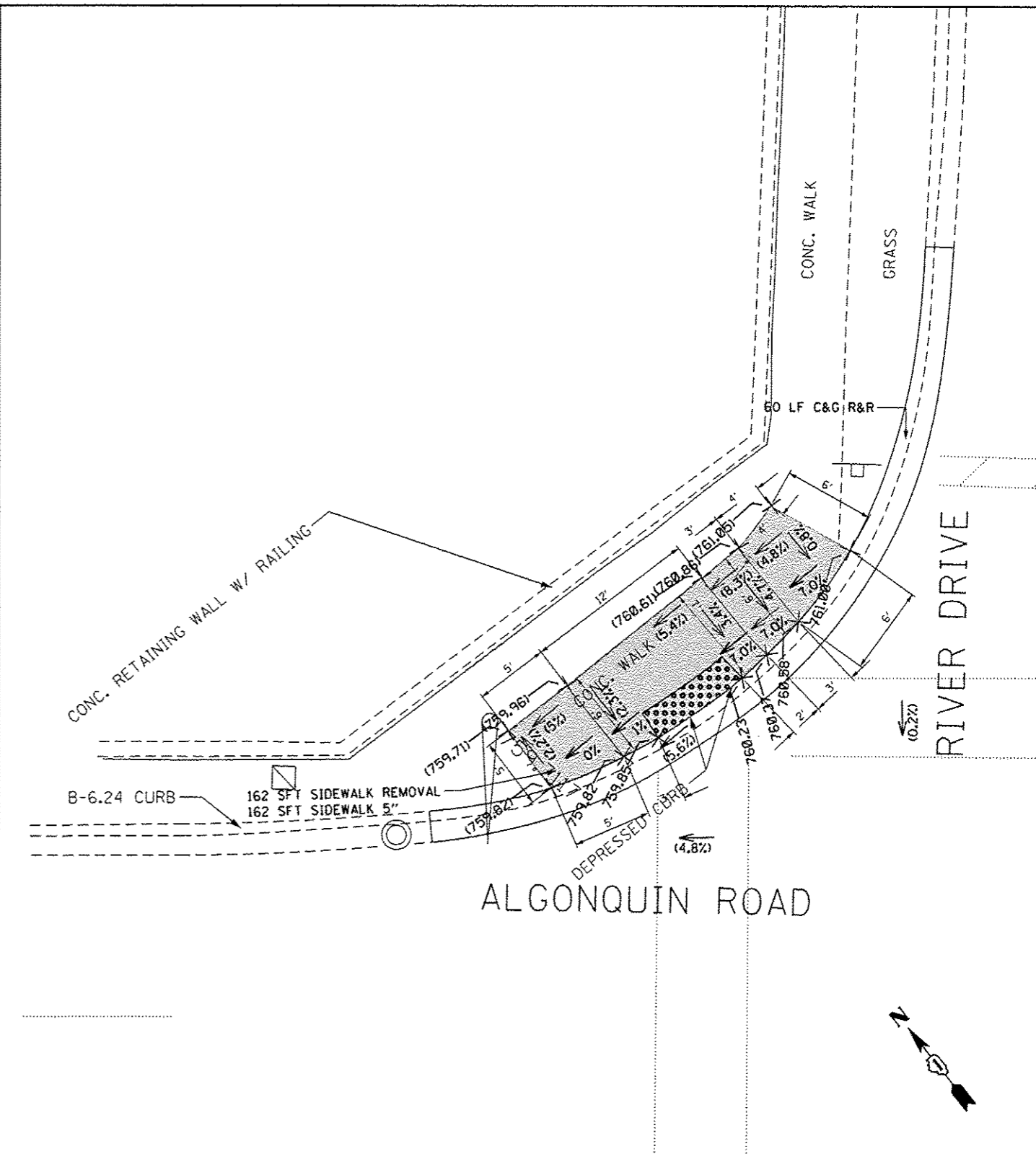
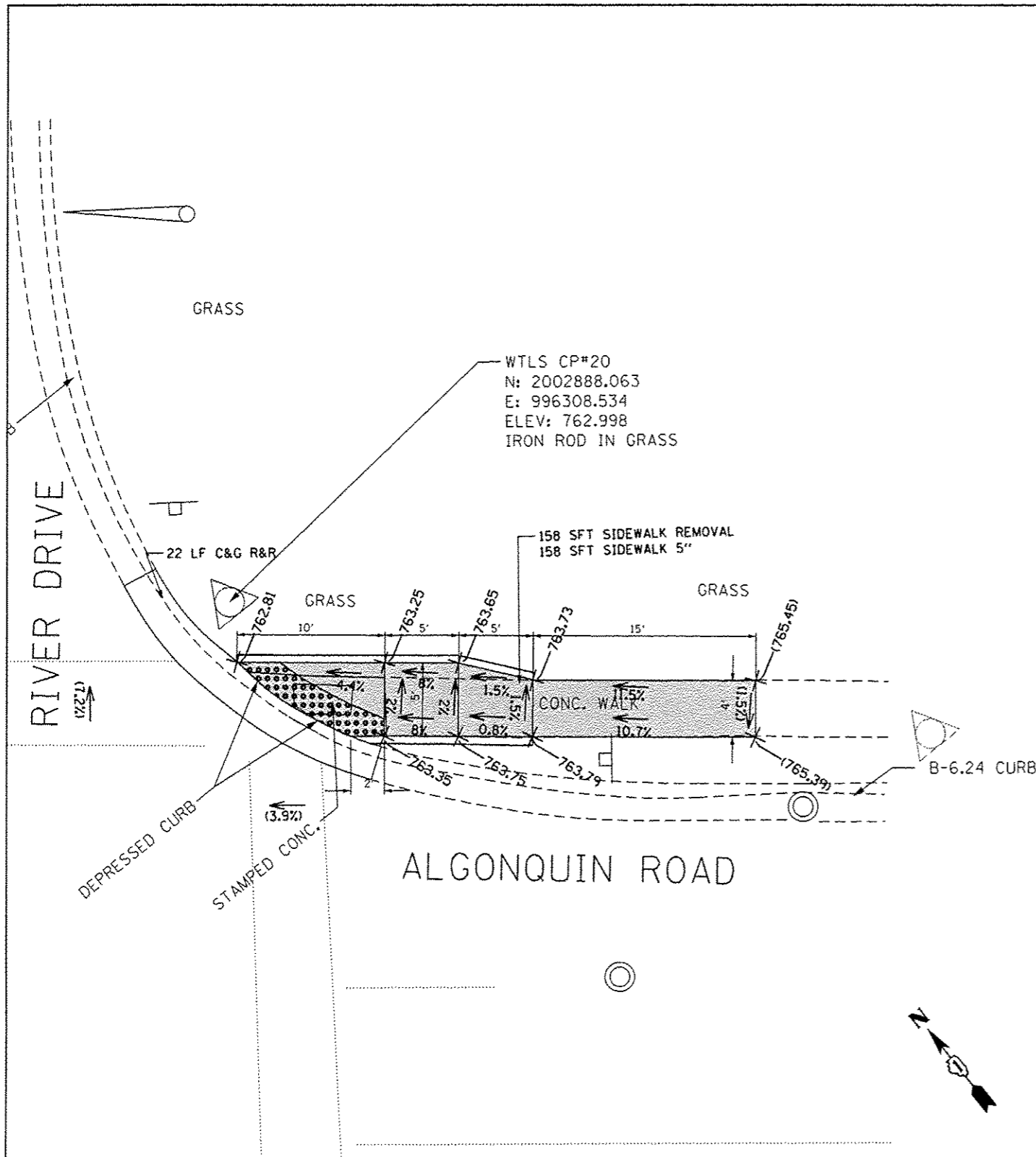
REFERENCE BENCH MARK ELEV 738.52
 BENCHMARK : SET X ON HYDRANT BOLT
 LOCATION : BASE AT SE CORNER OF IL 62 (ALGONQUIN RD.) AND MAIN ST.

LEGEND	
xx.xx'	EXISTING LENGTH
---	PROPOSED SIDE CURB
()	EXISTING ELEVATION/SLOPE
[]	PROPOSED SIDEWALK
[•••••]	DETECTABLE WARNINGS
[X/X/X]	DEPRESSED CURB AND GUTTER

REFERENCE BENCH MARK ELEV 738.52
 BENCHMARK : SET X ON HYDRANT BOLT
 LOCATION : BASE AT SE CORNER OF IL 62 (ALGONQUIN RD.) AND MAIN ST.

FILE NAME :	USER NAME : STEEDPA	DESIGNED :	REVISED :	STATE OF ILLINOIS DEPARTMENT OF TRANSPORTATION	ADA RAMP DETAILS (IL 62 & MAIN ST.) SW & SE CORNERS IL 62 (ALGONQUIN RD.)—IL 31 (MAIN ST.) TO COUNTRYSIDE DR.	F.A.P. RTE.:	SECTION:	COUNTY:	TOTAL SHEETS:	SHEET NO.:
Default						350	1115 & 115RIRS-4	MC HENRY	25	100
PLOT SCALE : 5/8"=1'-0"						CHECKED :	REVISED :	CONTRACT NO. 62050		ILLINOIS FED. AID PROJECT
PLOT DATE : 5/18/2017				DATE :	REVISED :	SCALE: 1"=5'		SHEET OF SHEETS STA. TO STA.		

Revised Sheet 6-5-17



REFERENCE BENCH MARK ELEV 761.265
BENCHMARK : CROSS ON HYDRANT BOLT
LOCATION : BASE AT SW CORNER OF S RIVER DRIVE AND IL 62 (ALGONQUIN RD.)

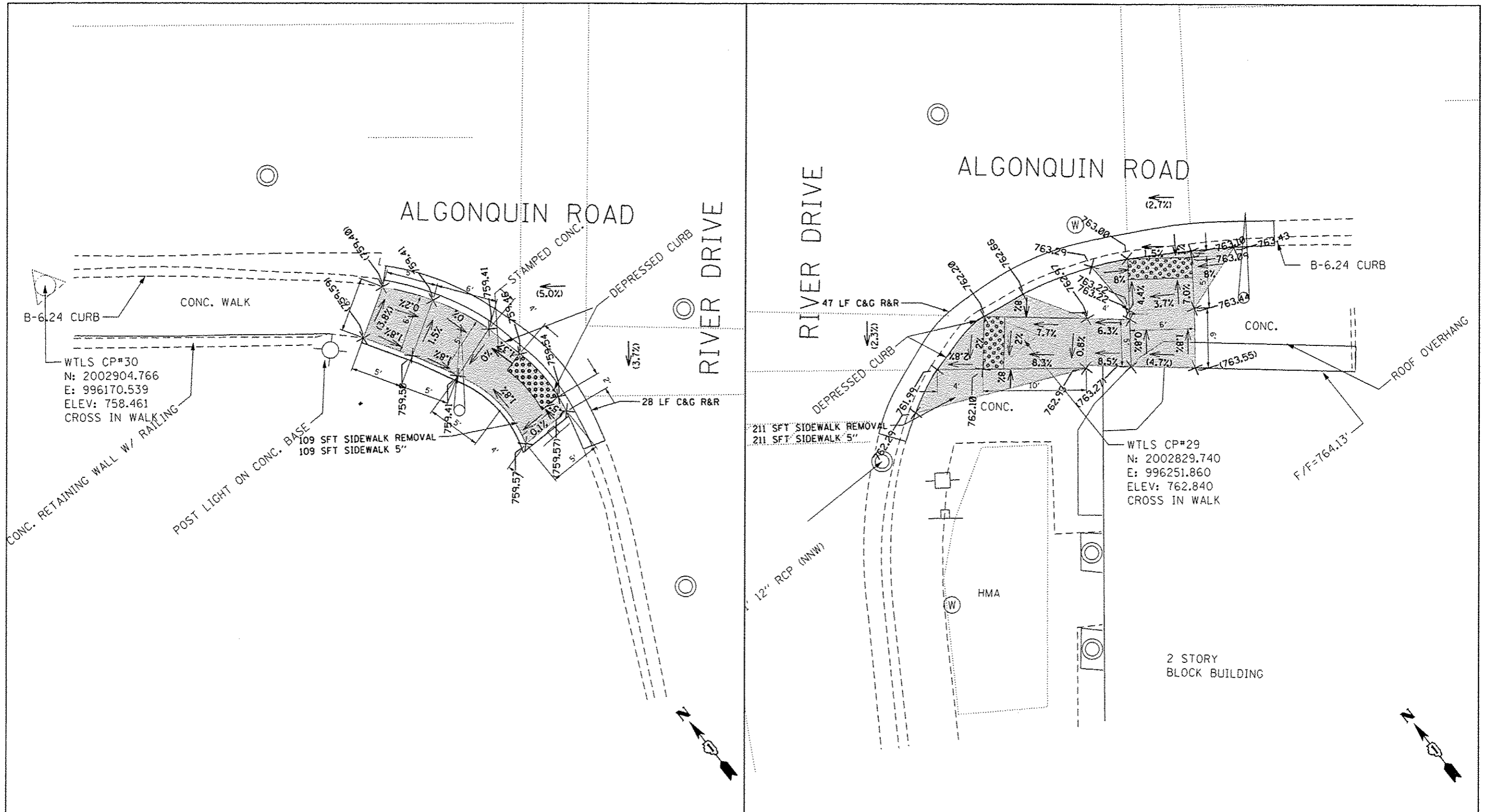
LEGEND

xx.xx'	EXISTING LENGTH		PROPOSED SIDEWALK
---	PROPOSED SIDE CURB		DETECTABLE WARNINGS
()	EXISTING ELEVATION/SLOPE		SIDEWALK REMOVAL REPLACE W/TOPSOIL & SOD

REFERENCE BENCH MARK ELEV 761.265
BENCHMARK : CROSS ON HYDRANT BOLT
LOCATION : BASE AT SW CORNER OF S RIVER DRIVE AND IL 62 (ALGONQUIN RD.)

FILE NAME *	USER NAME * FUENTESJA	DESIGNED -	REVISED -	STATE OF ILLINOIS DEPARTMENT OF TRANSPORTATION	ADA RAMP DETAILS (IL 62 & RIVER DRIVE) IL ROUTE 62 (IL 30 TO COUNTRYSIDE DR.)	F.A. RTE.	SECTION	COUNTY	TOTAL SHEETS	SHEET NO.	
Default		CHECKED -	REVISED -			339	(115 & 115R) RS-4	MCHENRY	25	10E	
		DATE -	REVISED -			CONTRACT NO. 62050					
						ILLINOIS FED. AID PROJECT					

Revised Sheet 6-5-17



REFERENCE BENCH MARK ELEV 761.265
 BENCHMARK : CROSS ON HYDRANT BOLT
 LOCATION : BASE AT SW CORNER OF S RIVER DRIVE AND IL 62 (ALGONQUIN RD.)

LEGEND

xx.xx'	EXISTING LENGTH		PROPOSED SIDEWALK
	PROPOSED SIDE CURB		DETECTABLE WARNINGS
()	EXISTING ELEVATION/SLOPE		SIDEWALK REMOVAL REPLACE W/TOPSOIL & SOD

REFERENCE BENCH MARK ELEV 761.265
 BENCHMARK : CROSS ON HYDRANT BOLT
 LOCATION : BASE AT SW CORNER OF S RIVER DRIVE AND IL 62 (ALGONQUIN RD.)

FILE NAME *	USER NAME = FUENTESJA	DESIGNED -	REVISED -
per\\11804EBID\INTEG\Illinois.gov\PI\DOT\Documents\DOT Offices\Districts\1\Projects\0184\DRAWING\Design\018417-shr-details-4.dwg		CHECKED -	REVISED -
Default	PLOT SCALE = 9.0050 "/td> <td>DATE -</td> <td>REVISED -</td>	DATE -	REVISED -
	PLOT DATE = 5/5/2017		

**STATE OF ILLINOIS
 DEPARTMENT OF TRANSPORTATION**

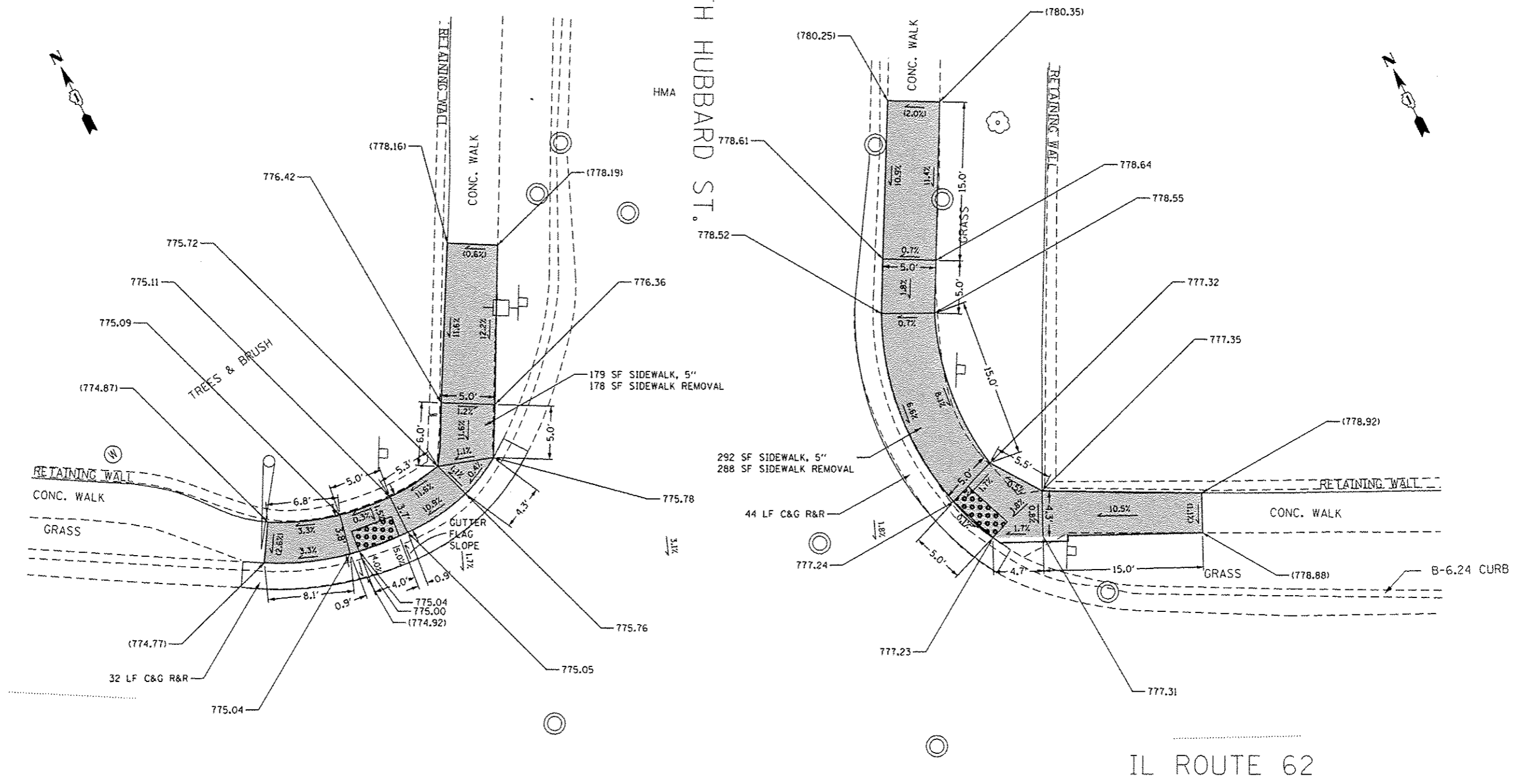
**ADA RAMP DETAILS (IL 62 & RIVER DRIVE)
 IL ROTE 62 (IL 30 TO COUNTRYSIDE DR.)**

SCALE: SHEET OF SHEETS STA. TO STA.

F.A. RTE.	SECTION	COUNTY	TOTAL SHEETS	SHEET NO.
339	(115 & 115R) RS-4	McHENRY	25	10F
CONTRACT NO. 62052			ILLINOIS FED. AID PROJECT	

Revised Sheet 6-5-17

NOTE:
GUTTER FLAG SLOPE IS 5% UNLESS SHOWN OTHERWISE



REFERENCE BENCH MARK ELEV 782.37
BENCHMARK : CROSS ON HYDRANT BOLT
LOCATION : HYDRANT ON S CORNER OF HUBBARD ST, 40' SW OF IL 62 EOP

LEGEND	
xx.xx'	EXISTING LENGTH
—	PROPOSED SIDE CURB
()	EXISTING ELEVATION/SLOPE
[Hatched Box]	PROPOSED SIDEWALK
[Dotted Box]	DETECTABLE WARNINGS
[Cross-hatched Box]	SIDEWALK REMOVAL REPLACE W/TOPSOIL & SOD

REFERENCE BENCH MARK ELEV 782.37
BENCHMARK : CROSS ON HYDRANT BOLT
LOCATION : HYDRANT ON S CORNER OF HUBBARD ST, 40' SW OF IL 62 EOP

FILE NAME =	USER NAME = rostkovskir	DESIGNED -	REVISED -
pw\11004\EDID\INTEG\111\moss.gov\PW\DOT\Documents\DOT Offices\District 1\Projects\DR&R\DR&R\Design\104417-ant-details.03			
Default	PLOT SCALE = 10.0000' / in.	CHECKED -	REVISED -
	PLOT DATE = 5/5/2017	DATE -	REVISED -

STATE OF ILLINOIS
DEPARTMENT OF TRANSPORTATION

ADA RAMP DETAILS (IL 62 & HUBBARD ST) N & E CORNER
IL ROUTE 62 (IL 31 TO COUNTRYSIDE DRIVE)

F.A.P. RTE.	SECTION	COUNTY	TOTAL SHEETS	SHEET NO.
339	(115 & 115R) RS-4	MCHENRY	25	100
CONTRACT NO. 62D50			ILLINOIS FED. AID PROJECT	

SCALE: 1"=5' SHEET OF SHEETS STA. TO STA.

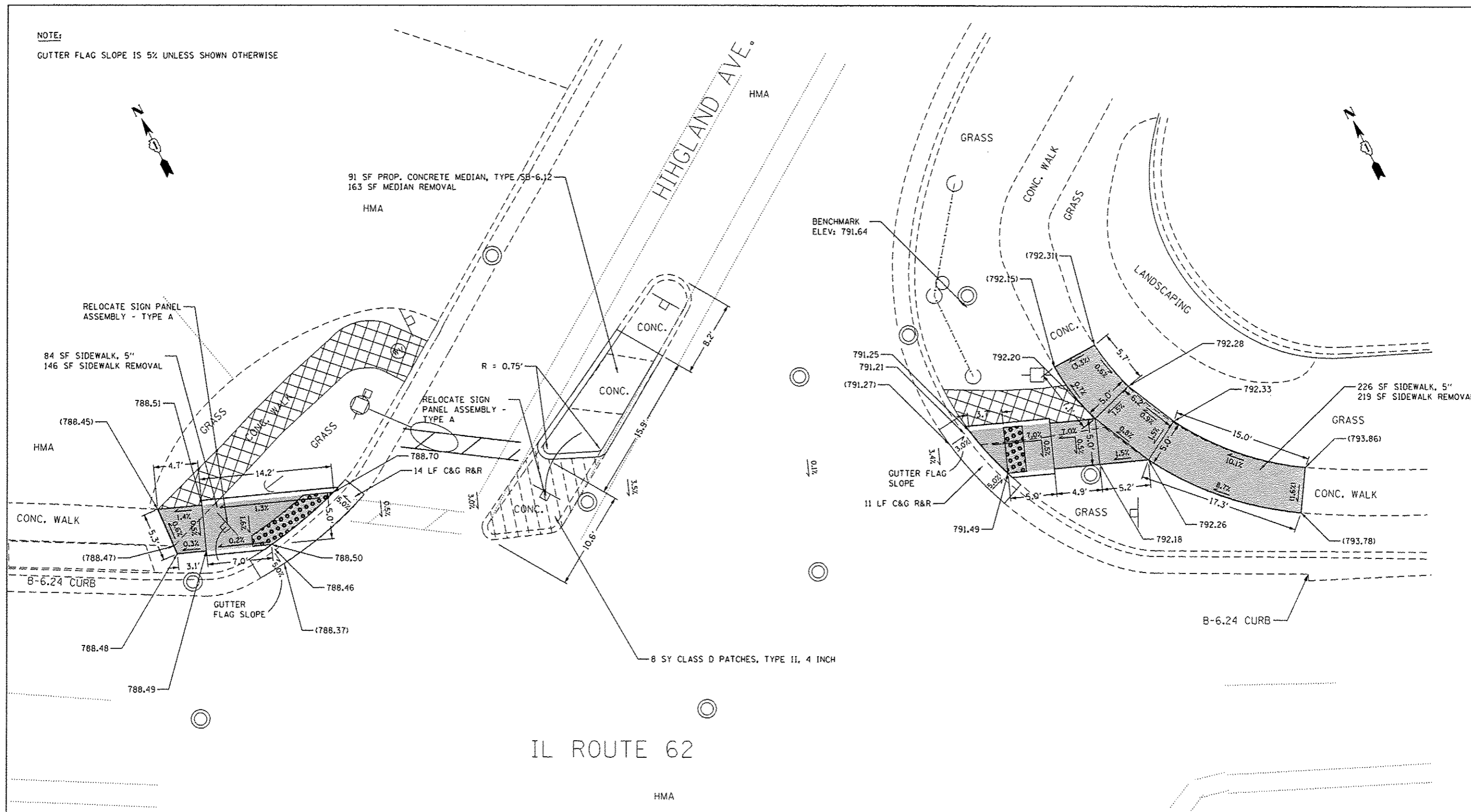
Revised Sheet 6-5-17

SHEET INTENTIONALLY LEFT BLANK

FILE NAME *	USER NAME * rostowski	DESIGNED -	REVISED -	STATE OF ILLINOIS DEPARTMENT OF TRANSPORTATION	(BLANK SHEET) IL ROUTE 62 (IL 31 TO COUNTRYSIDE DRIVE)	F.A.P. RTE.	SECTION	COUNTY	TOTAL SHEETS	SHEET NO.	
pc\NLR04EBIDINTEG.illinois.gov\PI00T\Documents\DOT Offices\District 1\Projects\DIR	DRWData\Design\0104417-sh1-details.dwg	CHECKED -	REVISED -			339	(115 & 115R) RS-4	MCHENRY	25	104	
Default	PLOT SCALE * 10.0000 / in.	DATE -	REVISED -			SCALE: 1"=5' SHEET OF SHEETS STA. TO STA.		ILLINOIS FED. AID PROJECT CONTRACT NO. 62050			
	PLOT DATE * 5/5/2017										

⚠ Sheet Added 6-5-17

NOTE:
GUTTER FLAG SLOPE IS 5% UNLESS SHOWN OTHERWISE



IL ROUTE 62

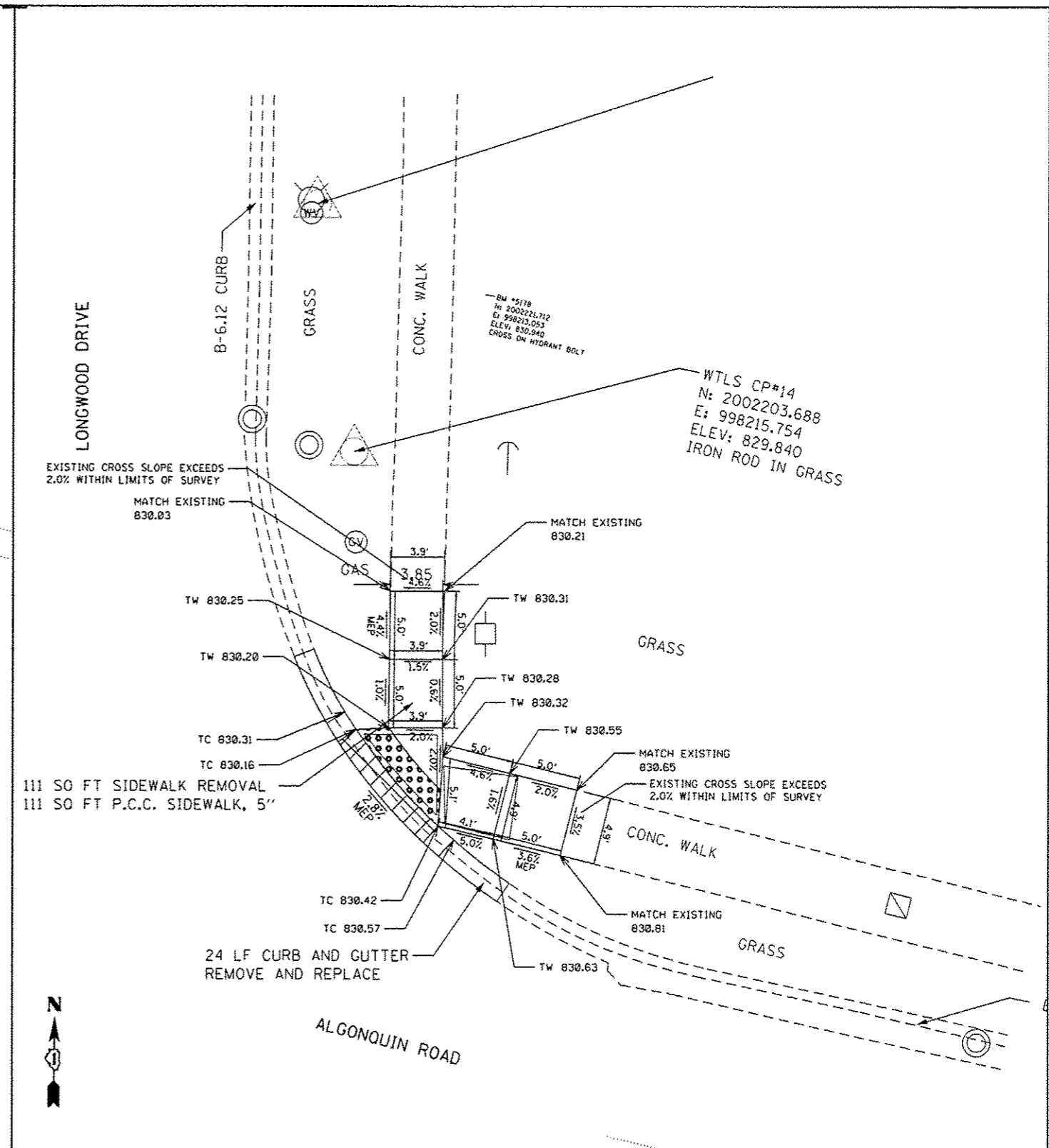
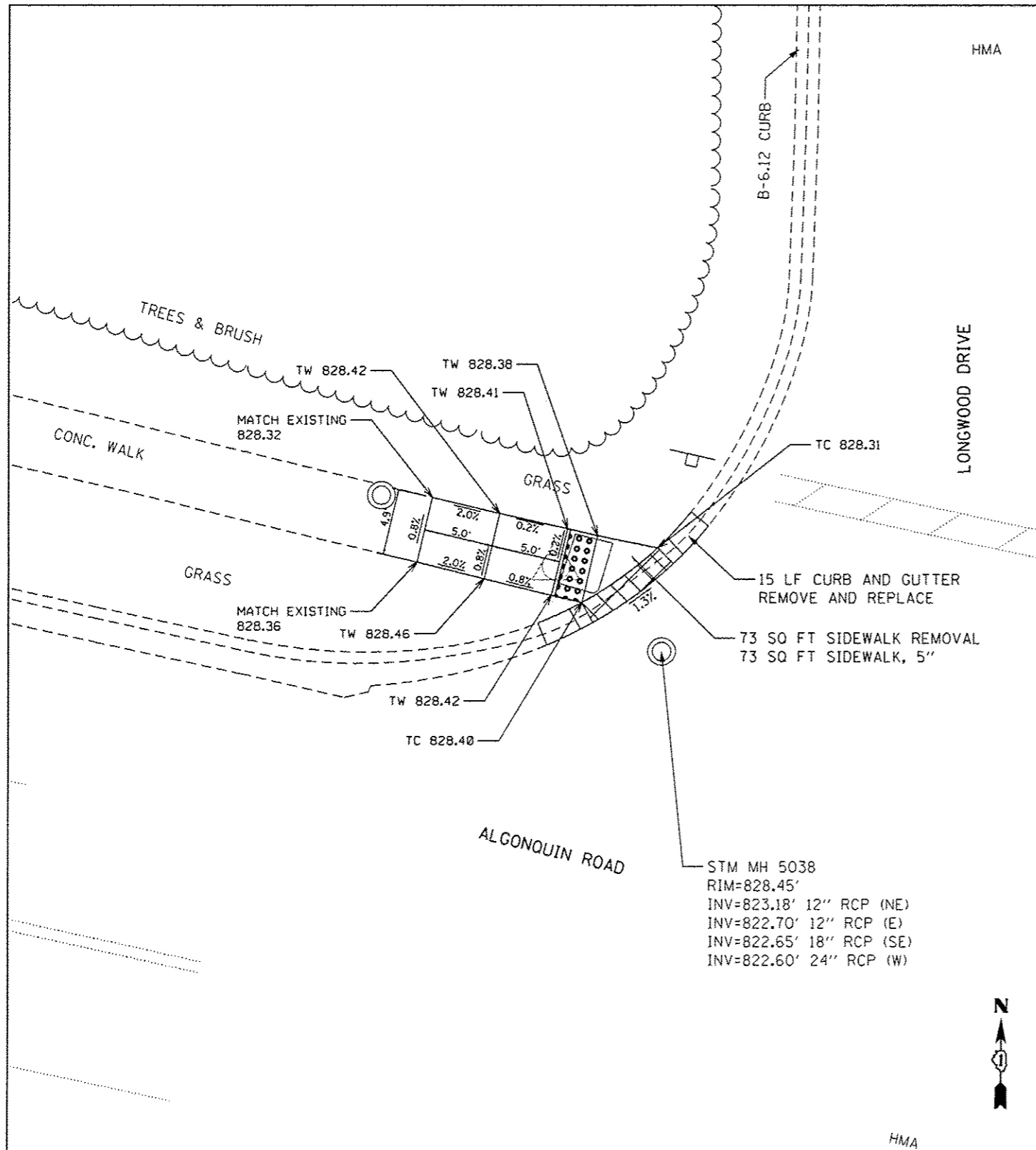
REFERENCE BENCH MARK ELEV 791.64
BENCHMARK : CROSS ON MANHOLE RIM
LOCATION : MANHOLE RIM ON E CORNER OF HIGHLAND AVE, 30' FROM IL 62 EOP

LEGEND	
xx.xx'	EXISTING LENGTH
—	PROPOSED SIDE CURB
()	EXISTING ELEVATION/SLOPE
[Hatched Box]	PROPOSED SIDEWALK
[Dotted Box]	DETECTABLE WARNINGS
[Cross-hatched Box]	SIDEWALK REMOVAL REPLACE W/TOPSOIL & SOD

REFERENCE BENCH MARK ELEV 791.64
BENCHMARK : CROSS ON MANHOLE RIM
LOCATION : MANHOLE RIM ON E CORNER OF HIGHLAND AVE, 30' N OF IL 62 EOP

FILE NAME :	USER NAME : roshawskir	DESIGNED -	REVISED -	STATE OF ILLINOIS DEPARTMENT OF TRANSPORTATION	ADA RAMP DETAILS (IL 62 & HIGHLAND AVE) N & E CORNER IL ROUTE 62 (IL 31 TO COUNTRYSIDE DRIVE)	F.A.P. RTE.	SECTION	COUNTY	TOTAL SHEETS	SHEET NO.	
Default	Documents\DOT Office\District 1\Projects\DRM\DRM\Design\0184417-ant-details_03	CHECKED -	REVISED -			339	(115 & 115R) RS-4	MCHENRY	25	101	
	PLOT SCALE : 10.0000' / 1"	DATE -	REVISED -			SCALE: 1"=5'		SHEET OF SHEETS		STA. TO STA.	CONTRACT NO. 62D50
	PLOT DATE : 5/5/2017					ILLINOIS FED. AID PROJECT					

Revised Sheet 6-5-17



REFERENCE BENCH MARK ELEV 830.94
 BENCHMARK : SET X ON HYDRANT BOLT
 LOCATION : BASE AT NE CORNER OF ALGONQUIN RD. AND LONGWOOD DR.

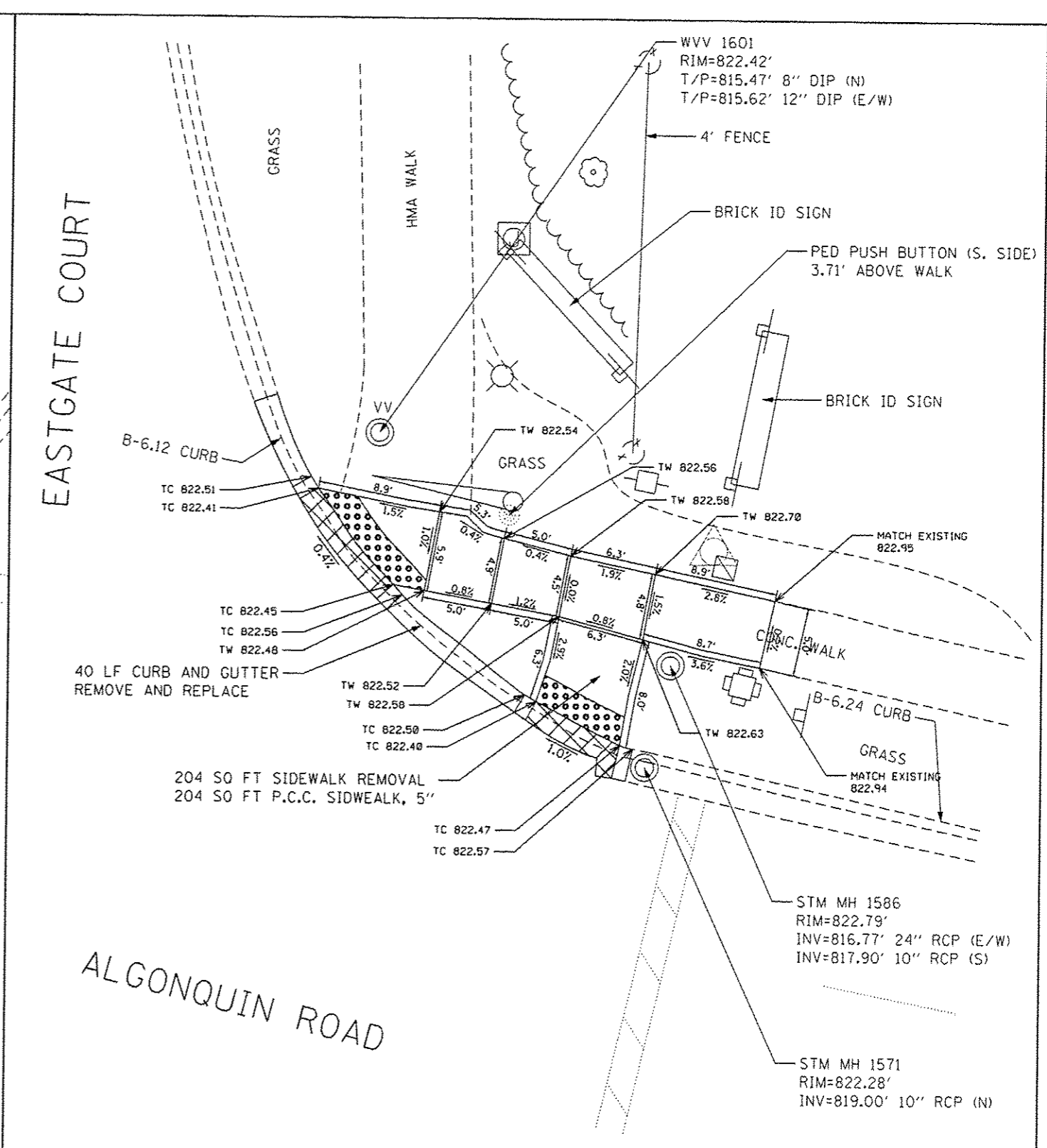
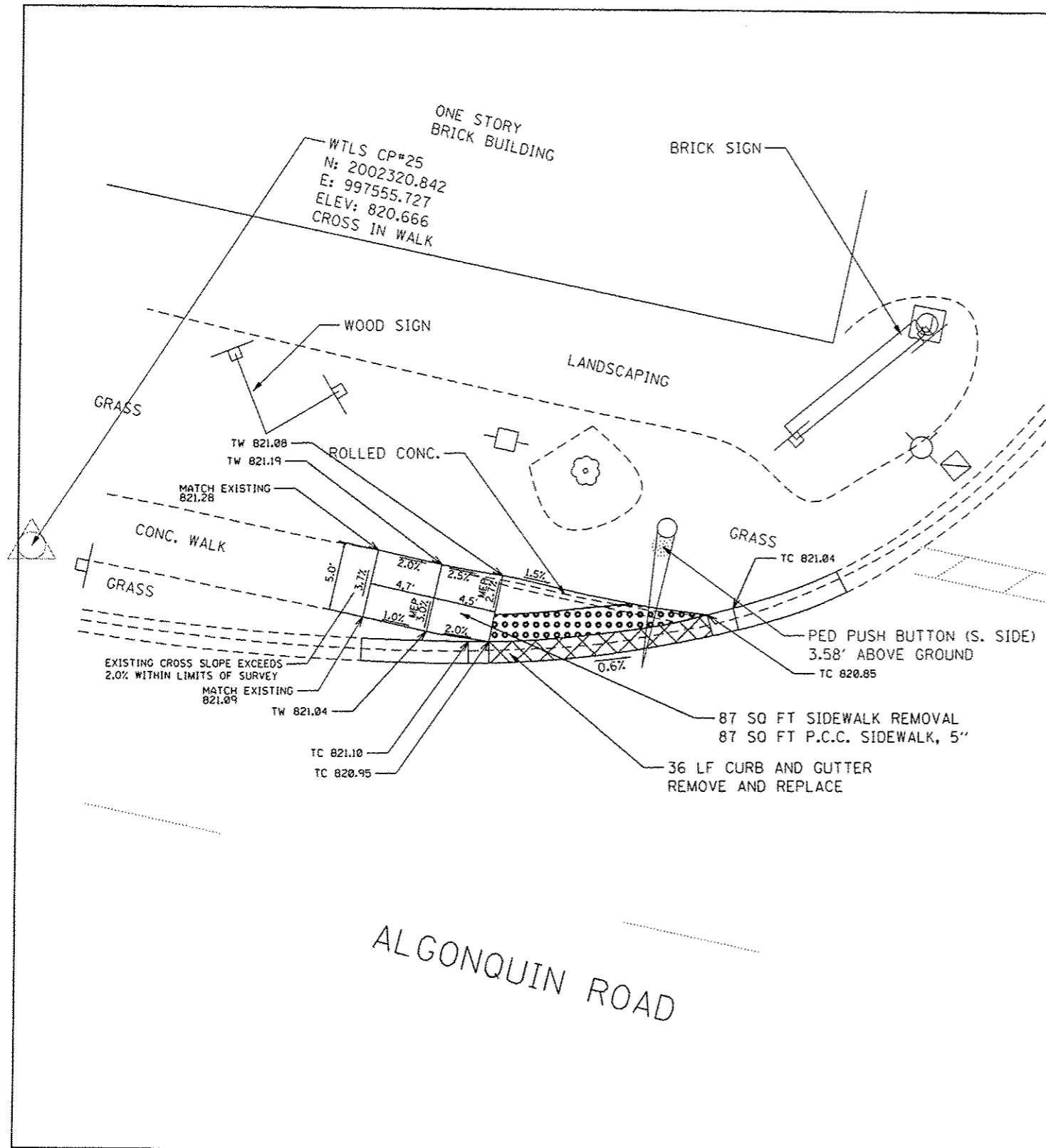
LEGEND

xx.xx'	EXISTING LENGTH		PROPOSED SIDEWALK
	PROPOSED SIDE CURB	●●●●	DETECTABLE WARNINGS
()	EXISTING ELEVATION/SLOPE	XXXX	SIDEWALK REMOVAL REPLACE W/TOPSOIL & SOD

REFERENCE BENCH MARK ELEV 830.94
 BENCHMARK : SET X ON HYDRANT BOLT
 LOCATION : BASE AT NE CORNER OF ALGONQUIN RD. AND LONGWOOD DR.

FILE NAME :	USER NAME : STEEOPA	DESIGNED -	REVISED -	STATE OF ILLINOIS DEPARTMENT OF TRANSPORTATION	ADA RAMP DETAILS (IL 62 & LONGWOOD DR.) NW & NE CORNERS IL ROUTE 62 (IL 31 TO COUNTRYSIDE DR.)	F.A.P. RTE.	SECTION	COUNTY	TOTAL SHEETS	SHEET NO.	
Default	Documents\DOT Office\District 1\Projects\1018\1018-ADA-2.dgn	CHECKED -	REVISED -			339	(115 & 115R) RS-4	MCHENRY	25	10J	
	PLOT SCALE : 5000.0000 / 1" =	DATE -	REVISED -			SCALE: 1"=5'		SHEET OF SHEETS STA. TO STA.		CONTRACT NO. 62D50	
	PLOT DATE : 5/30/2017					ILLINOIS FED. AID PROJECT					

▲ Revised Sheet 6-5-17



REFERENCE BENCH MARK ELEV 822.90
 BENCHMARK : SET CUT CROSS ON NW CORNER OF TRAFFIC SIGNAL HANDHOLE
 LOCATION : BASE AT NW CORNER OF ALGONQUIN RD. AND EASTGATE DR.

LEGEND

xx.xx	EXISTING LENGTH		PROPOSED SIDEWALK
	PROPOSED SIDE CURB		DETECTABLE WARNINGS
()	EXISTING ELEVATION/SLOPE		SIDEWALK REMOVAL REPLACE W/TOPSOIL & SOD

REFERENCE BENCH MARK ELEV 822.90
 BENCHMARK : SET CUT CROSS ON NW CORNER OF TRAFFIC SIGNAL HANDHOLE
 LOCATION : BASE AT NW CORNER OF ALGONQUIN RD. AND EASTGATE DR.

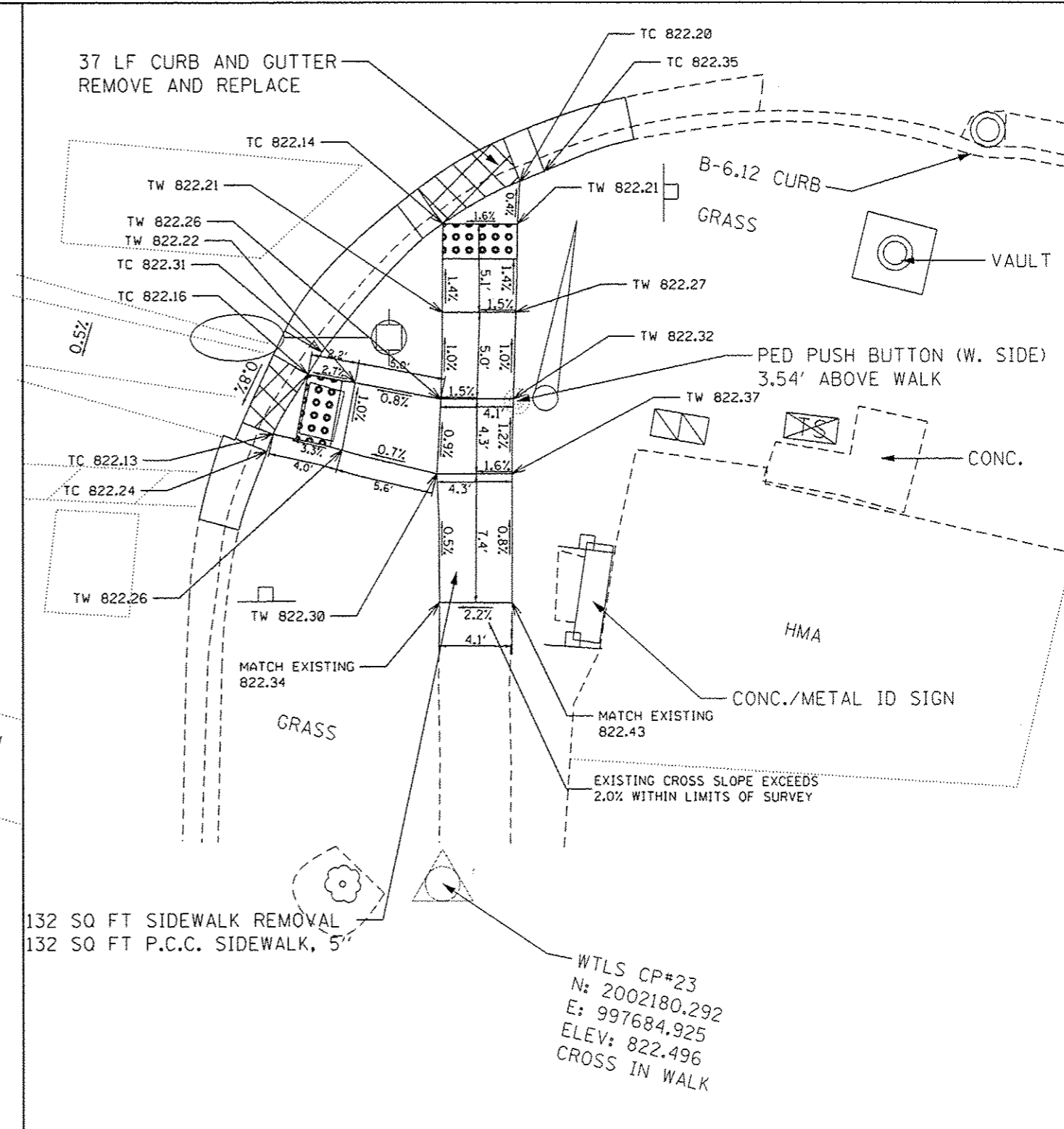
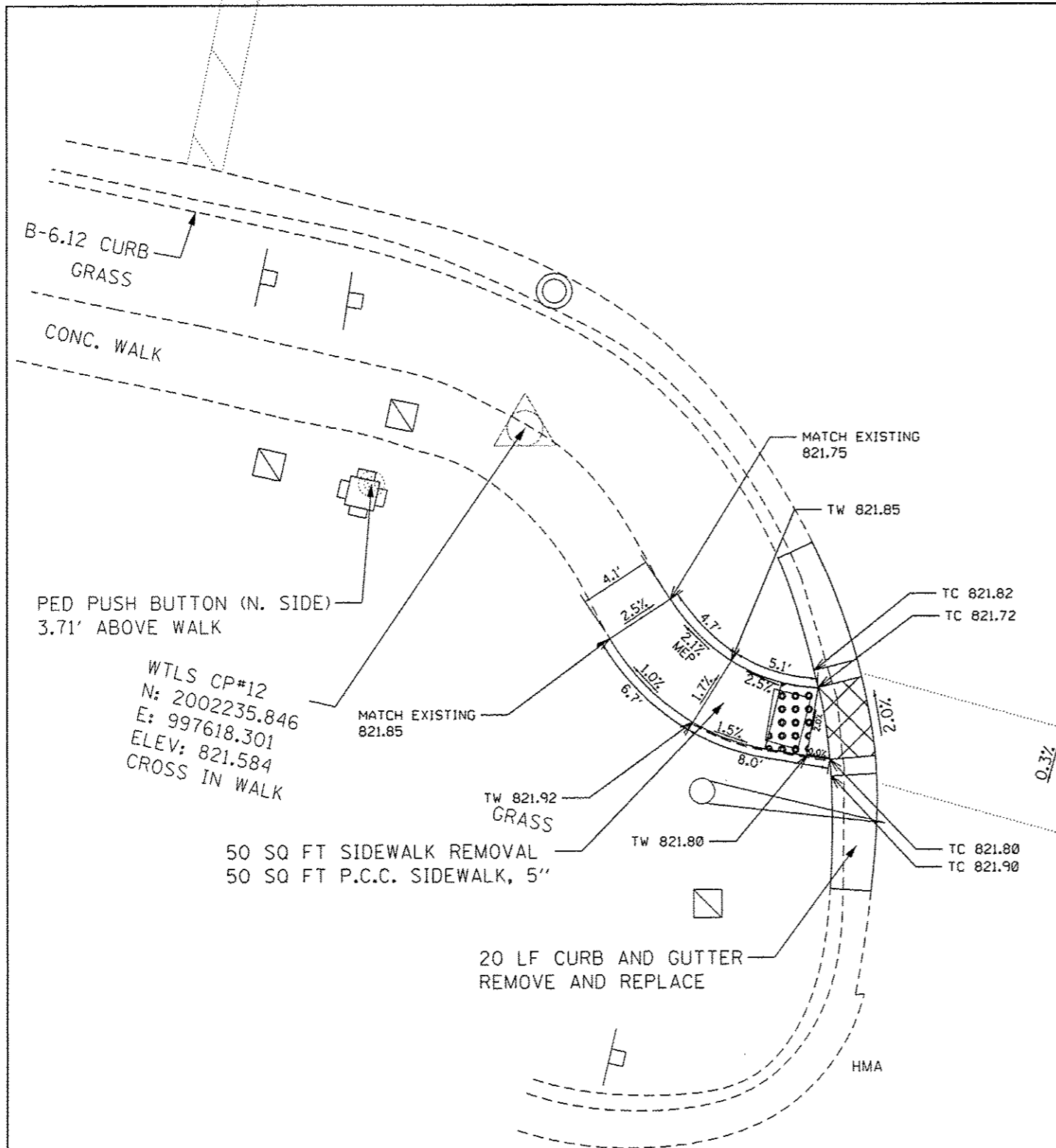
FILE NAME *	USER NAME * STEEDPA	DESIGNED -	REVISED -
pur\1\084EB\01\TEG\illinois.gov\WIDOT\Documents\DOT Offices\District 1\Projects\DR\DR\0417-ADA-2.dgn			
Default	PLOT SCALE * 5000.0000 1/4 in.	CHECKED -	REVISED -
	PLOT DATE * 5/30/2017	DATE -	REVISED -

**STATE OF ILLINOIS
 DEPARTMENT OF TRANSPORTATION**

**ADA RAMP DETAILS (IL 62 & EASTGATE DR.) NW & NE CORNERS
 IL ROUTE 62 (IL 31 TO COUNTRYSIDE DR.)**

F.A.P. RTE.	SECTION	COUNTY	TOTAL SHEETS	SHEET NO.
339	(115 & 115R) RS-4	MCHENRY	25	10K
CONTRACT NO. 62D50			ILLINOIS FED. AID PROJECT	

Revised Sheet 6-5-17



REFERENCE BENCH MARK ELEV 822.90
 BENCHMARK : SET CUT CROSS ON NW CORNER OF TRAFFIC SIGNAL HANDHOLE
 LOCATION : BASE AT NW CORNER OF ALGONQUIN RD. AND EASTGATE DR.

LEGEND

xx.xx'	EXISTING LENGTH		PROPOSED SIDEWALK
	PROPOSED SIDE CURB	•••••	DETECTABLE WARNINGS
()	EXISTING ELEVATION/SLOPE	X X X X	SIDEWALK REMOVAL REPLACE W/TOPSOIL & SOD

REFERENCE BENCH MARK ELEV 822.90
 BENCHMARK : SET CUT CROSS ON NW CORNER OF TRAFFIC SIGNAL HANDHOLE
 LOCATION : BASE AT NW CORNER OF ALGONQUIN RD. AND EASTGATE DR.

FILE NAME =	USER NAME = STEEDPA	DESIGNED -	REVISED -	STATE OF ILLINOIS DEPARTMENT OF TRANSPORTATION	ADA RAMP DETAILS (IL 62 & LONGWOOD DR.) NW & NE CORNERS IL ROUTE 62 (IL 31 TO COUNTRYSIDE DR.)	F.A.P. RTE. =	SECTION	COUNTY	TOTAL SHEETS	SHEET NO.
pw\11004EB10INTEG.s\Illinois.gov\WIDOT\do	uments\DOT Offices\District 1\Projects\018	DRAMA\Design\018417-ADA-2.dgn	REVISED -	SCALE: 1"=5'	SHEET OF SHEETS	339	(115 & 115R) R5-4	MCHENRY	25	10L
Default	PLOT SCALE = 5000.0000 1/4 in.	CHECKED -	REVISED -	SCALE: 1"=5' SHEET OF SHEETS STA. TO STA.		ILLINOIS FED. AID PROJECT		CONTRACT NO. 62050		
	PLOT DATE = 5/30/2017	DATE -	REVISED -							

△ Sheet Added 6-5-17