

STATE OF ILLINOIS
DEPARTMENT OF TRANSPORTATION

F.A. RTE.	SECTION	COUNTY	TOTAL SHEETS	SHEET NO.
VAR	D6 FIBER OPT EXP 2015	SANGAMON	22	1
		ILLINOIS	CONTRACT NO. 72H66	

FOR INDEX OF SHEETS, SEE SHEET NO. 2

TRAFFIC COUNTS

LOCATION 1
ADT: 16,800
PV: 92.98% HCV: 3.66%
SU: 2.53% MU: 0.83%

LOCATION 2
ADT: 6,450
PV: 90.95% HCV: 4.50%
SU: 3.88% MU: 0.67%

LOCATION 3
ADT: 17,700
PV: 86.06% HCV: 6.97%
SU: 4.93% MU: 2.04%

PROPOSED
HIGHWAY PLANS

VARIOUS ROUTES
SECTION D6 FIBER OPTIC EXP 2015

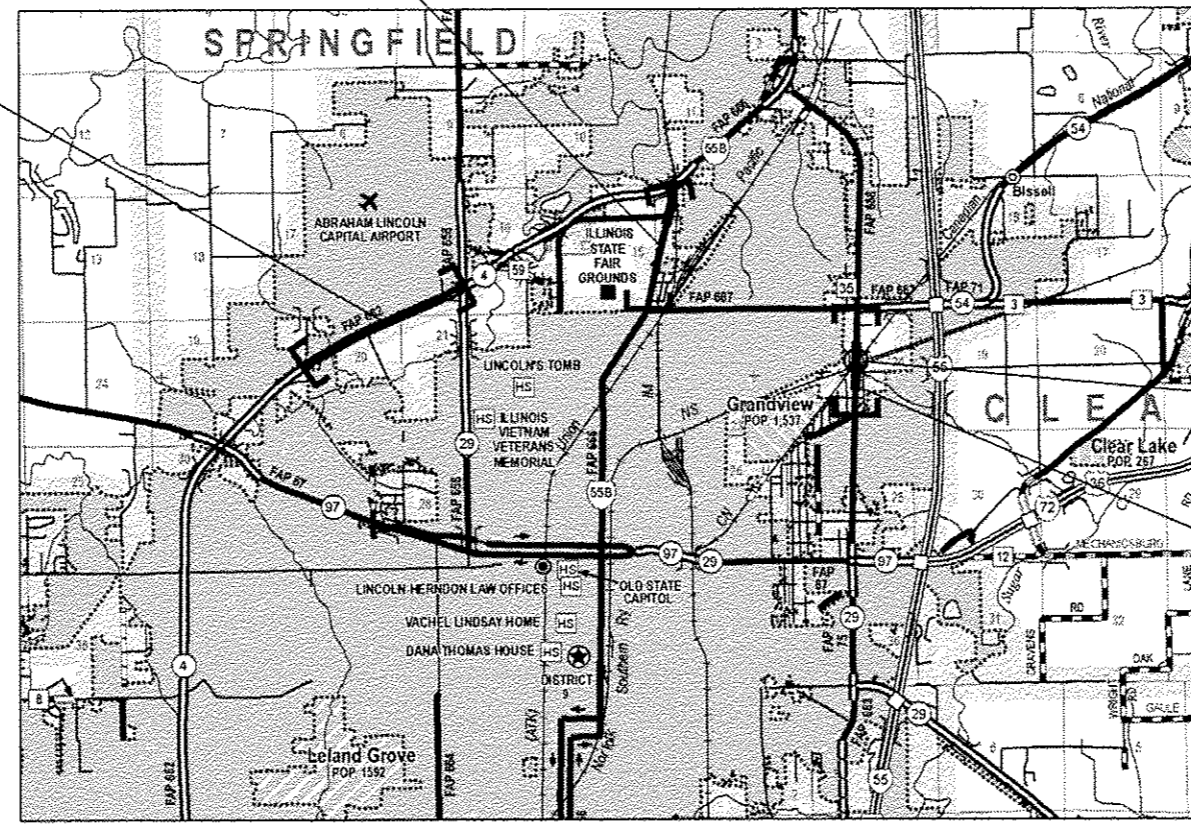
MISC TRAFFIC CONTROL
SANGAMON COUNTY

C-96-042-15



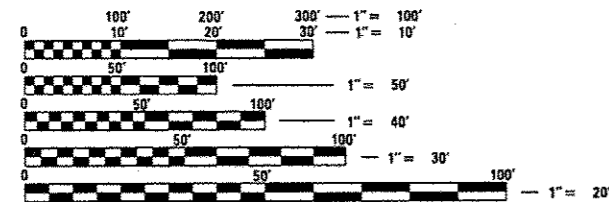
F.O. - LOCATION 2
BL 55 (PEORIA RD) - SANGAMON AVE TO IL 4 (VETERANS PKWY)
LENGTH: 1.039 MILES

F.O. - LOCATION 1
IL 4 - IL 29 (J DAVID JONES PKWY) TO BRUNS LN
LENGTH: 1.379 MILES



SN 084-0178
SN 084-0073

F.O. - LOCATION 3
DIRKSEN PKWY - RIDGE AVE
TO SANGAMON AVE
LENGTH: 0.854 MILES



FULL SIZE PLANS HAVE BEEN PREPARED USING STANDARD ENGINEERING SCALES. REDUCED SIZED PLANS WILL NOT CONFORM TO STANDARD SCALES. IN MAKING MEASUREMENTS ON REDUCED PLANS, THE ABOVE SCALES MAY BE USED.

J.U.L.I.E.
JOINT UTILITY LOCATION INFORMATION FOR EXCAVATION
1-800-892-0123
OR 811

PLAN & DESIGN ENGINEER
MICHAEL IRWIN (217) 524-7765

CONTRACT NO. 72H66

NET LENGTH = 17,276.20 FT. = 3.272 MILE

STATE OF ILLINOIS
DEPARTMENT OF TRANSPORTATION

SUBMITTED *30 March 2017*

[Signature] REGIONAL ENGINEER

May 12 2017

Maureen M. Addis, P.E. ENGINEER OF DESIGN AND ENVIRONMENT

May 12 2017

[Signature] DIRECTOR OF PROGRAM DEVELOPMENT

PRINTED BY THE AUTHORITY
OF THE STATE OF ILLINOIS

INDEX OF SHEETS

- 1 COVER SHEET
- 2 INDEX OF SHEETS, GENERAL NOTES, SIGNATURES, STANDARDS
- 3 SUMMARY OF QUANTITIES
- 4 SCHEDULE OF QUANTITIES
- 5-11 LOCATION 1 PLAN SHEETS
- 12-17 LOCATION 2 PLAN SHEETS
- 18-22 LOCATION 3 PLAN SHEETS

GENERAL NOTES

1. UNDERGROUND CABLE MARKING TAPE SHALL BE INSTALLED WITH ALL TRENCH AND BACKFILL FOR ELECTRICAL WORK IN ACCORDANCE WITH ARTICLE 815.03 AND 1066.05 OF THE STANDARD SPECIFICATIONS.
2. A 1/4" DIAMETER NYLON ROPE SHALL BE INSTALLED IN ALL CONDUIT RUNS, THE COST OF PULL ROPE SHALL BE INCLUDED IN THE PROPOSED ELECTRIC CABLE INSTALLATION IN THE CONDUIT.
3. THE CONTRACTOR SHALL NOT DRILL ANY HOLES IN THE BEAMS, DECK, OR SUBSTRUCTURE OF THE BRIDGE, UNLESS OTHERWISE APPROVED BY THE ENGINEER.
4. THE LOCATION OF EXISTING WATER MAINS, GAS MAINS, SEWERS, ELECTRIC POWER LINES, TELEPHONE LINES, AND OTHER UTILITIES SHOWN ON THE PLANS ARE BASED ON HISTORICAL DATA AND ARE THE BEST INFORMATION AVAILABLE; HOWEVER THEY ARE NOT GUARANTEED. IT SHALL BE CONTRACTOR'S RESPONSIBILITY TO ASCERTAIN THEIR EXACT LOCATION FROM THE UTILITY COMPANIES AND BY FIELD INSPECTION.
5. ALL UTILITIES SHALL BE LOCATED IN FIELD PRIOR TO ANY ATTEMPT TO CONSTRUCT ANY COMPONENT OF THE VARIOUS FIBER OPTIC RUNS. ILLINOIS STATE LAW REQUIRES A 72-HOUR NOTICE BE GIVEN TO UTILITY COMPANIES BEFORE DIGGING. CONTRACTOR SHALL CONTACT J.U.L.I.E. TO LOCATE ANY UTILITIES IN THE PROJECT LIMITS.
6. THE AREAS THAT ARE DISRUPTED DUE TO DIGGING OR TRENCHING SHALL BE COMPLETED ON WEEKLY BASIS USING SEEDING, CLASS 2 AND MULCH METHOD 1 AND SHALL CONFIRM TO THE REQUIREMENTS OF SECTION 251 OF THE STANDARD SPECIFICATIONS EXCEPT THAT NOT EMULSIFIED ASPHALT SHALL BE USED. THE COST SHALL BE INCIDENTAL TO THE CONTRACT.
7. THE CONTRACTOR SHALL COORDINATE AND COOPERATE WITH THE DEPARTMENT AND THE INVOLVED PARTIES AS DIRECTED BY THE DEPARTMENT.
8. EXISTING CONDUIT AND PULL POINTS LOCATIONS ARE TAKEN FROM HISTORICAL DATA. CONTRACTOR SHALL FIELD VERIFY EXISTING CONDUIT SIZES AND LOCATIONS PRIOR TO INSTALLING PROPOSED FIBER OPTIC CABLE WITHIN EXISTING CONDUIT.
9. BENDING RADIUS OF FIBER OPTIC CABLE SHALL NOT EXCEED 6 INCHES.
10. EXACT FIELD LOCATIONS OR ITS EQUIPMENT SHALL BE AS DIRECTED BY THE ENGINEER. THE CONTRACTOR SHALL TAKE CARE NOT TO INSTALL ITS EQUIPMENT IN DRAINAGE AREAS.
11. THE CONTRACTOR SHALL SUBMIT SHOP DRAWINGS, CONSTRUCTION METHODOLOGIES, PRODUCT MANUFACTURER SPECIFICATIONS, OWNER'S MANUALS, AND USER MANUALS BEFORE PROCEDURE AND INSTALLING ANY ITS EQUIPMENT AS PART OF THIS CONTRACT. ALL PROPOSED ITS WORK SHALL BE REVIEWED AND APPROVED BY THE DEPARTMENT.
12. THE CONTRACTOR SHALL BE RESPONSIBLE FOR COORDINATING TRAFFIC CONTROL FOR THE INSTALLATION OF ITS RELATED EQUIPMENT WITH OTHER CONTRACTS AND WORK IN THE AREA.

HIGHWAY STANDARDS

- 000001-06 STANDARD SYMBOLS, ABBREVIATIONS AND PATTERNS
- 001006 DECIMAL OF AN INCH AND OF A FOOT
- 701101-05 OFF-RD OPERATION, ML, 15' TO 24" FROM PAVEMENT EDGE
- 701601-09 URBAN LANE CLOSURE, ML, 1W OR 2W WITH NONTRAVERSABLE MEDIAN
- 701901-06 TRAFFIC CONTROL DEVICES
- 814001-03 HANDHOLES

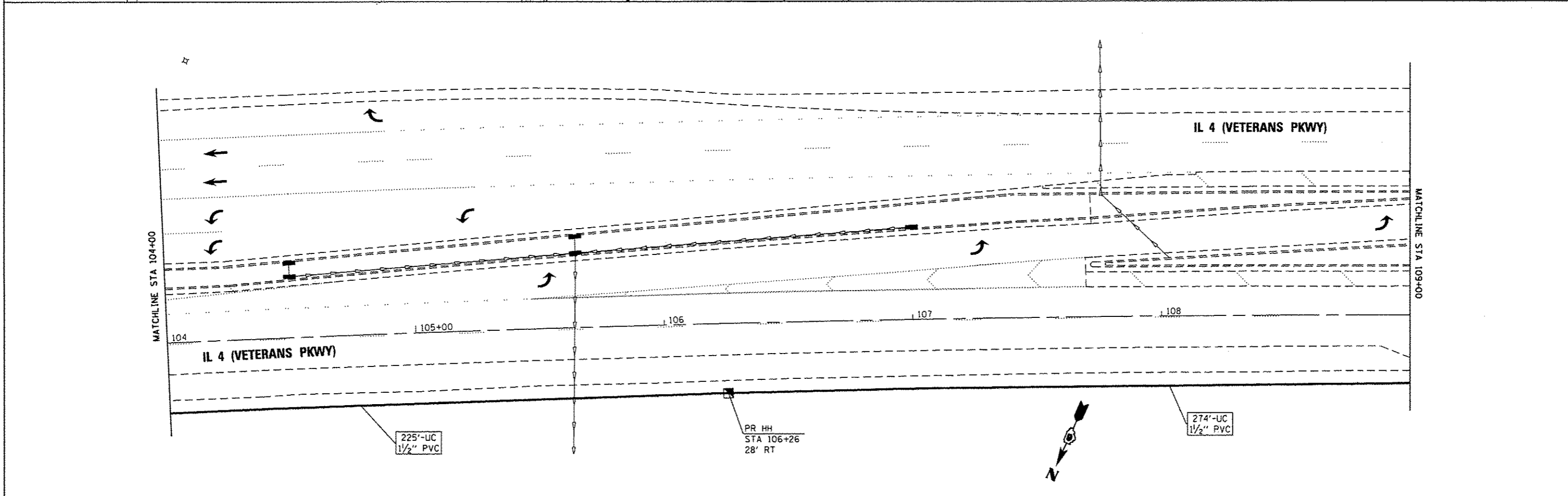
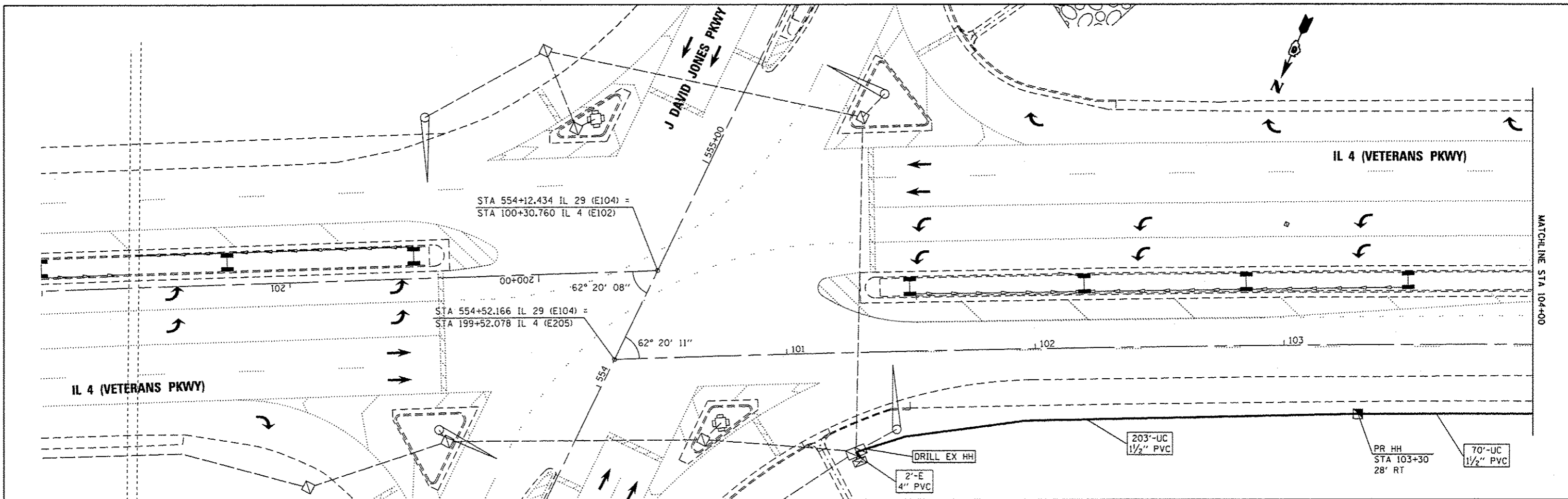
D6 SIGNATURES

STATE OF ILLINOIS DEPARTMENT OF TRANSPORTATION DIVISION OF HIGHWAYS DISTRICT 6	
EXAMINED	March 24 th 20 17 <i>[Signature]</i> ENGINEER OF OPERATIONS
EXAMINED	March 28 20 17 <i>[Signature]</i> ENGINEER OF PROJECT IMPLEMENTATION
EXAMINED	March 24 20 17 <i>[Signature]</i> ENGINEER OF PROGRAM DEVELOPMENT

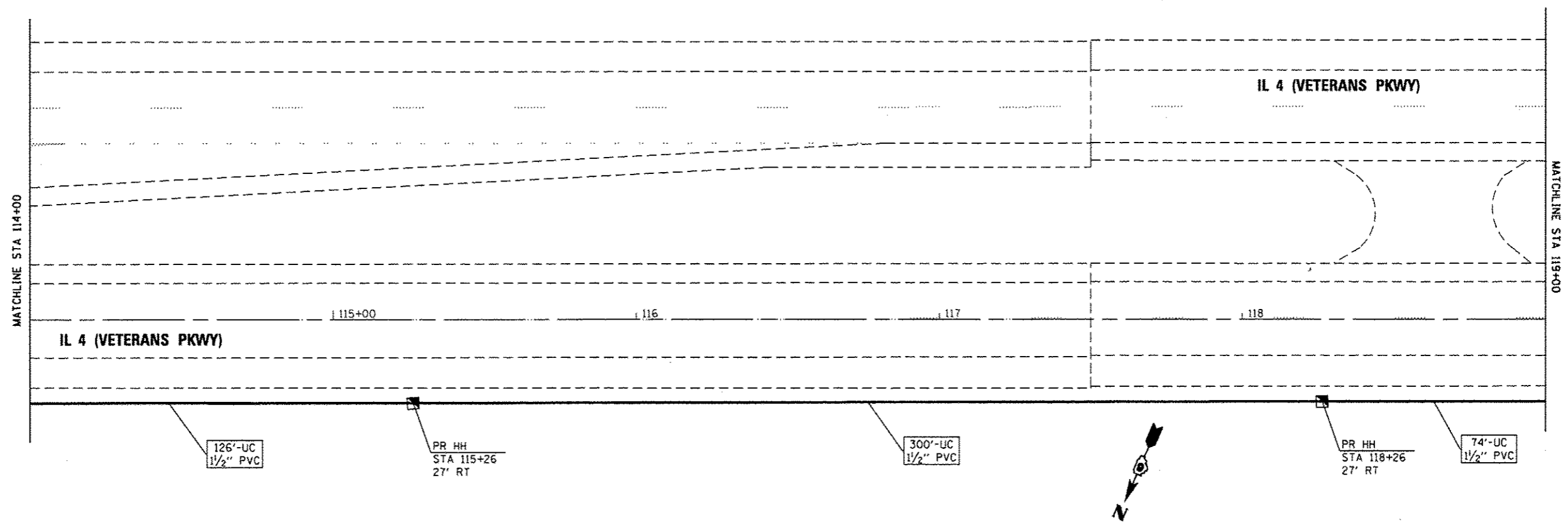
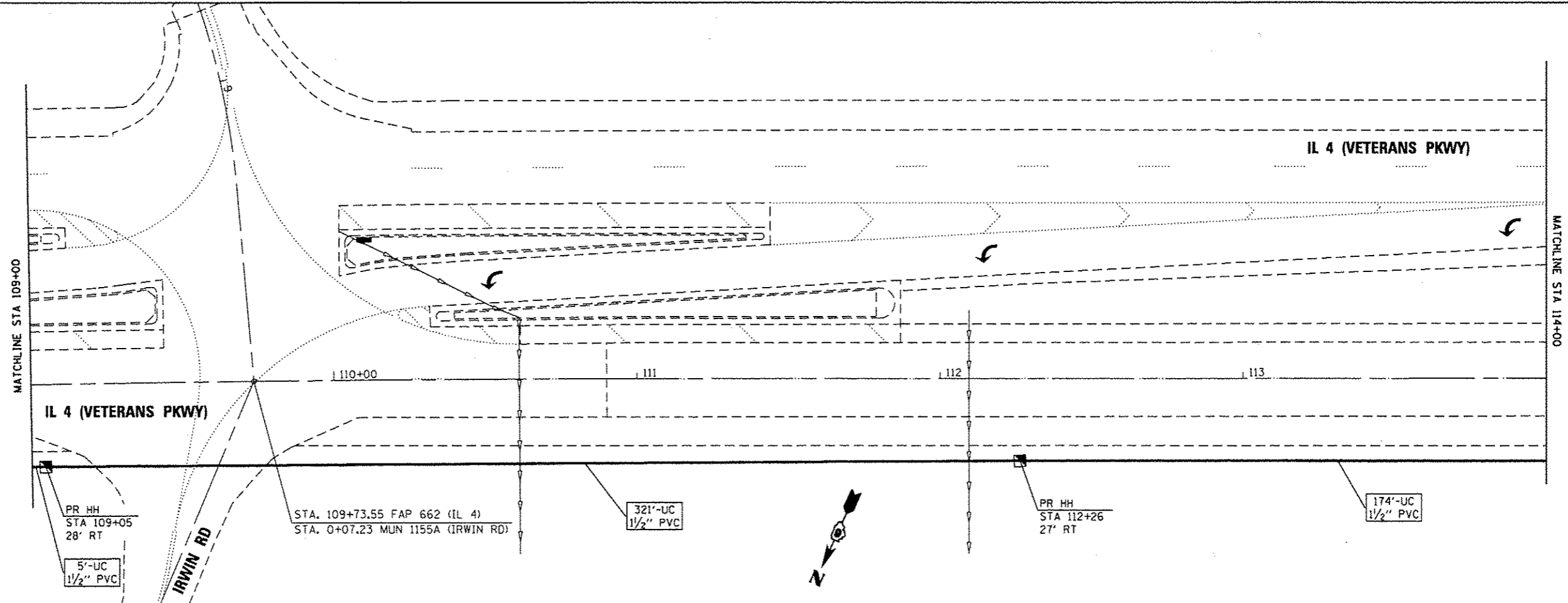
FILE NAME =	USER NAME = shahdm	DESIGNED - DWS 2/2017	REVISED -	STATE OF ILLINOIS DEPARTMENT OF TRANSPORTATION	INDEX OF SHEETS, GENERAL NOTES, SIGNATURES	F.A. RTE.	SECTION	COUNTY	TOTAL SHEETS	SHEET NO.
pl\11084EBIDINTEG\Illinois.gov\PIW001\Documents\1007 Offices\District 6\Projects\0671\BAYData\GA0sh\06022017\sh-covers	DESIGNED -	REVISED -	VAR			D6 FIBER OPT EXP 2015	SANGAMON	22	2	
Default	PLOT SCALE = 48.0000' / in.	CHECKED -	REVISED -			SCALE:	SHEET 1 OF 1 SHEETS	STA.	TO STA.	CONTRACT NO. 72H66 ILLINOIS FED. AID PROJECT

CODE NO.	ITEM	UNIT	TOTAL QUANTITY	6-00338-9999
				100% STATE TRAFFIC SIGNAL 0021 URBAN
67100100	MOBILIZATION	LSUM	1	1
70100350	TRAFFIC CONTROL AND PROTECTION, STANDARD 701101	EACH	1	1
70102630	TRAFFIC CONTROL AND PROTECTION, STANDARD 701601	LSUM	1	1
81028340	UNDERGROUND CONDUIT, PVC, 1 1/2" DIA.	FOOT	16420	16420
81100500	CONDUIT ATTACHED TO STRUCTURE, 1 1/2" DIA., GALVANIZED STEEL	FOOT	412	412
81400100	HANDHOLE	EACH	58	58
87900200	DRILL EXISTING HANDHOLE	EACH	6	6
89502210	MODIFY EXISTING CONTROLLER CABINET	EACH	6	6
X0323923	SUPPORT EQUIPMENT AND MAINTENANCE	LSUM	1	1
X0326266	ETHERNET SWITCH	EACH	60	60
X8710036	FIBER OPTIC CABLE 12 FIBERS, SINGLE MODE	FOOT	18139	18139
Z0048665	RAILROAD PROTECTIVE LIABILITY INSURANCE	LSUM	1	1

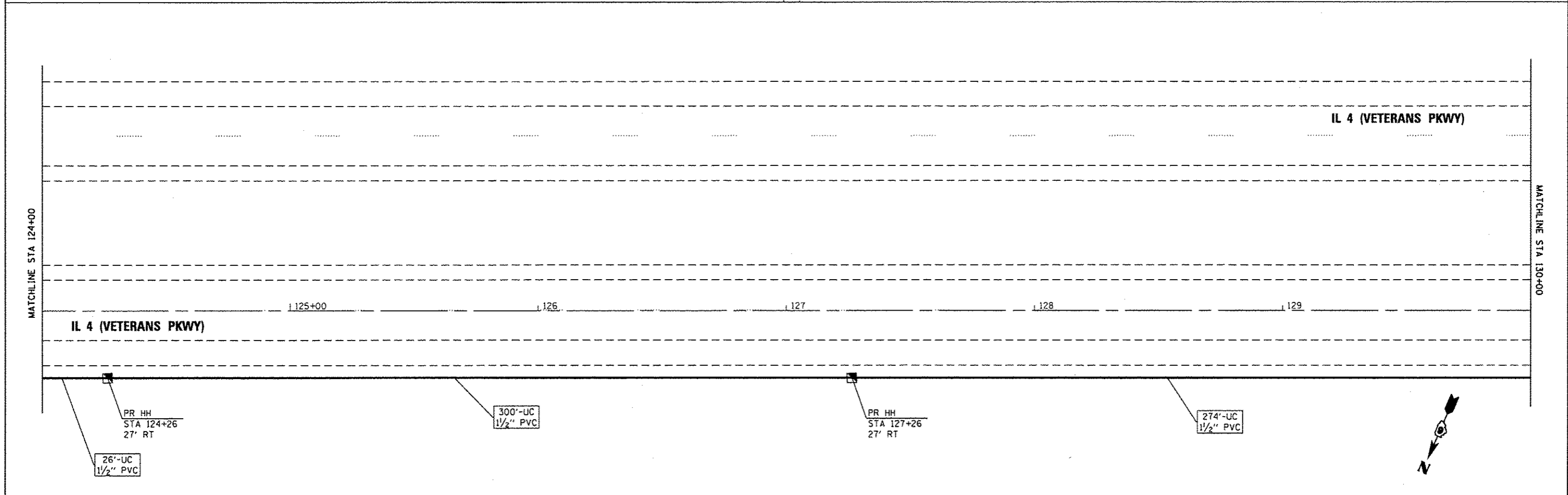
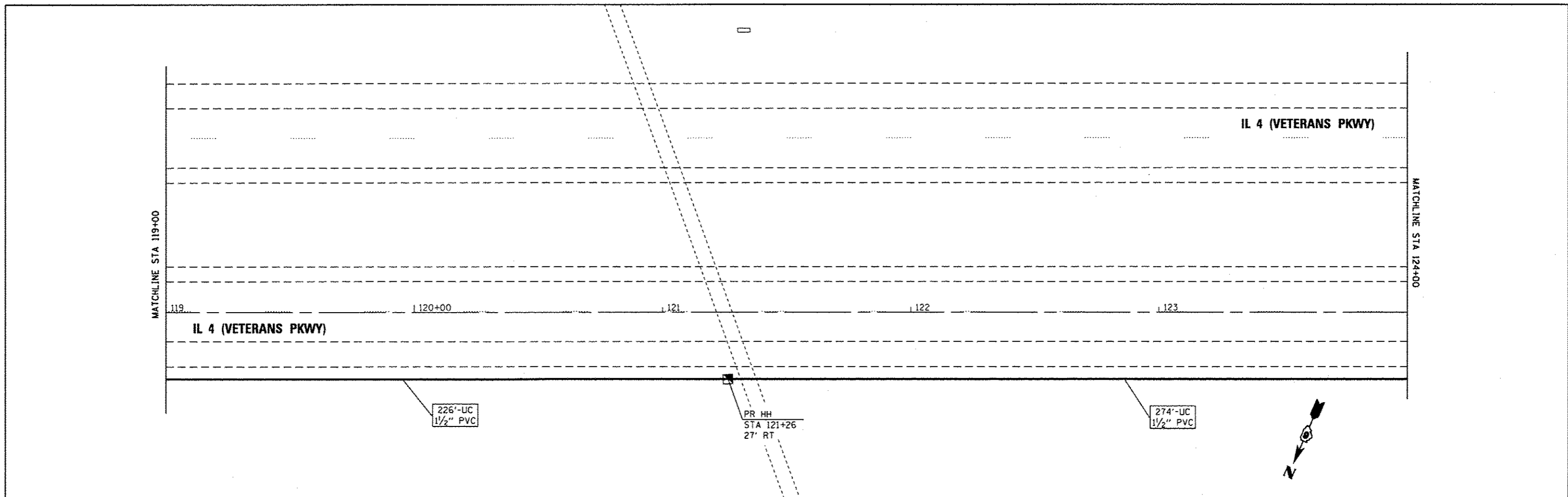
12



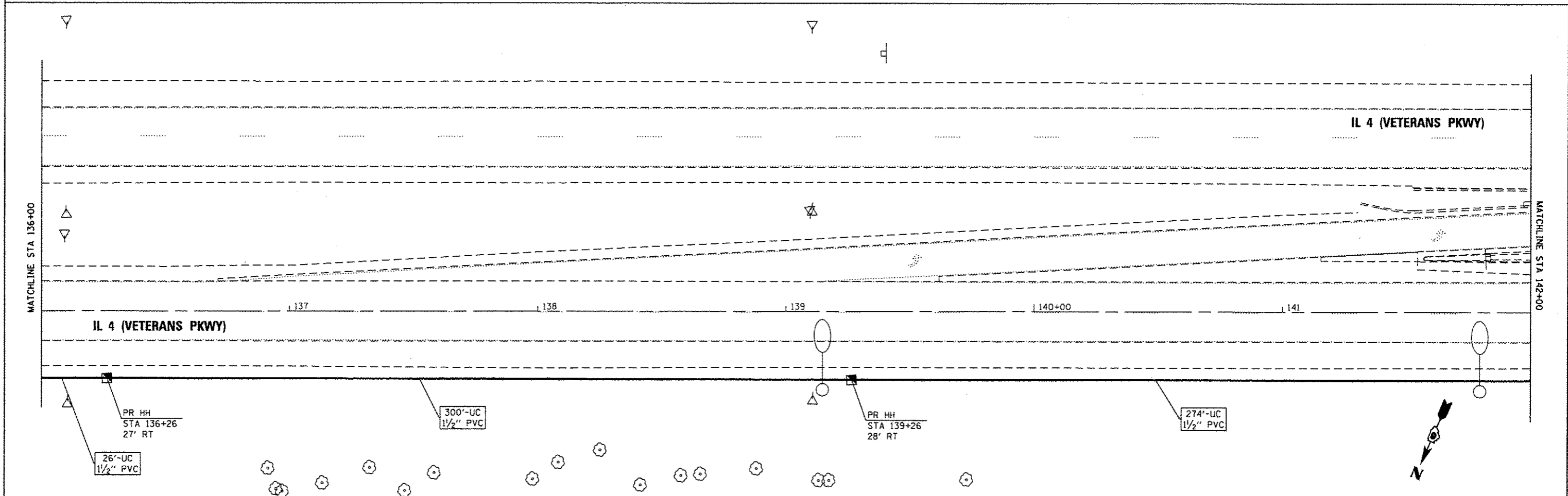
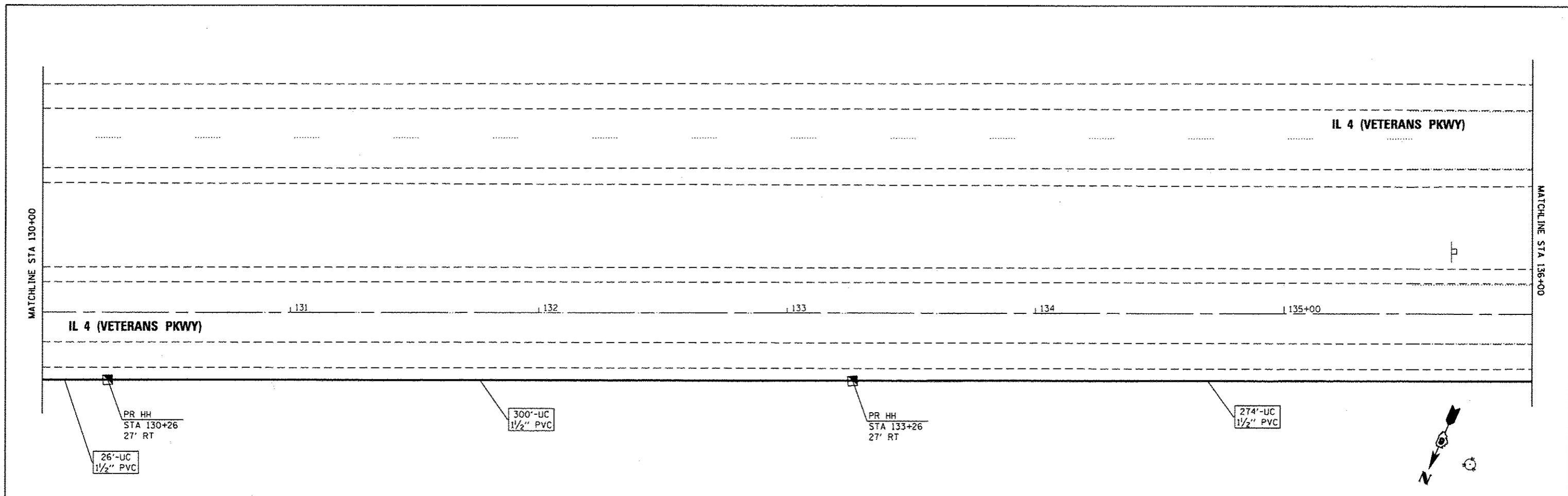
FILE NAME : p:\IL084EBID\INTEG\Illinois.gov\FWID01\Documents\1007 Offices\District 6\Projects\0672\BRN\Drawings\600sh\046.12\2017\sh-cover	USER NAME : shghdn	DESIGNED - DMS 2/2017	REVISED -	STATE OF ILLINOIS DEPARTMENT OF TRANSPORTATION	LOCATION 1 PLAN SHEET		F.A. RTE.	SECTION	COUNTY	TOTAL SHEETS	SHEET NO.
	PLOT SCALE : 48.0000' / in.	CHECKED -	REVISED -		SCALE:	SHEET 1 OF 7 SHEETS	STA. TO STA.	VAR	D6 FIBER OPT EXP 2015	SANGAMON	22
Default	PLOT DATE : 3/29/2017	DATE -	REVISED -	CONTRACT NO. 72H66							
ILLINOIS FED. AID PROJECT											



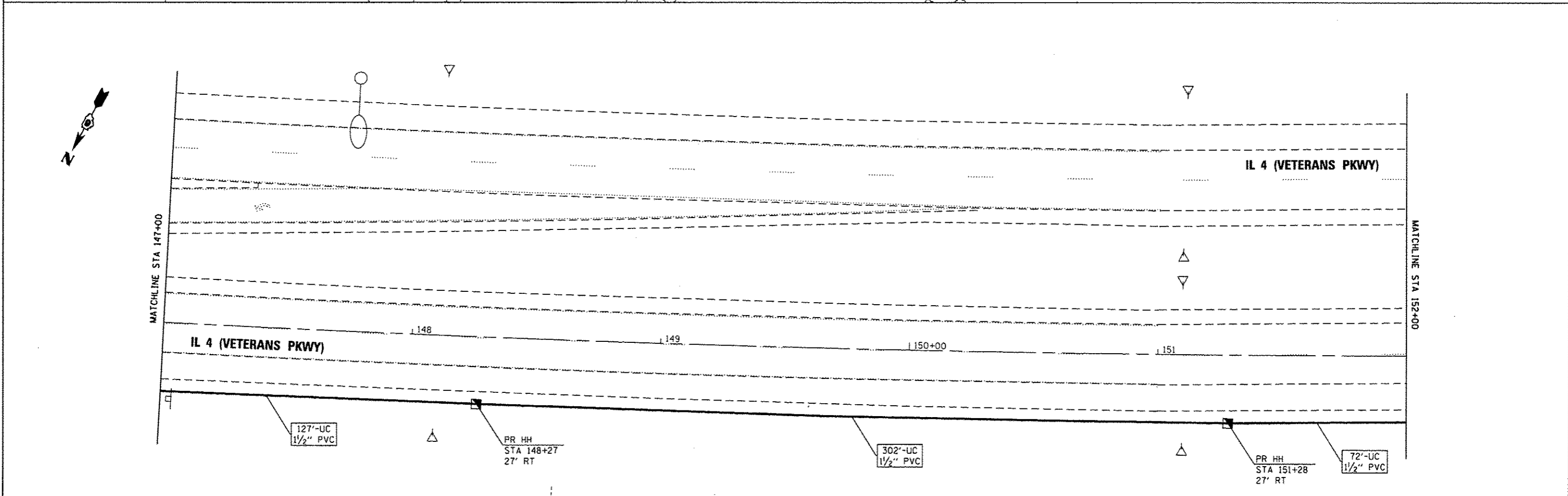
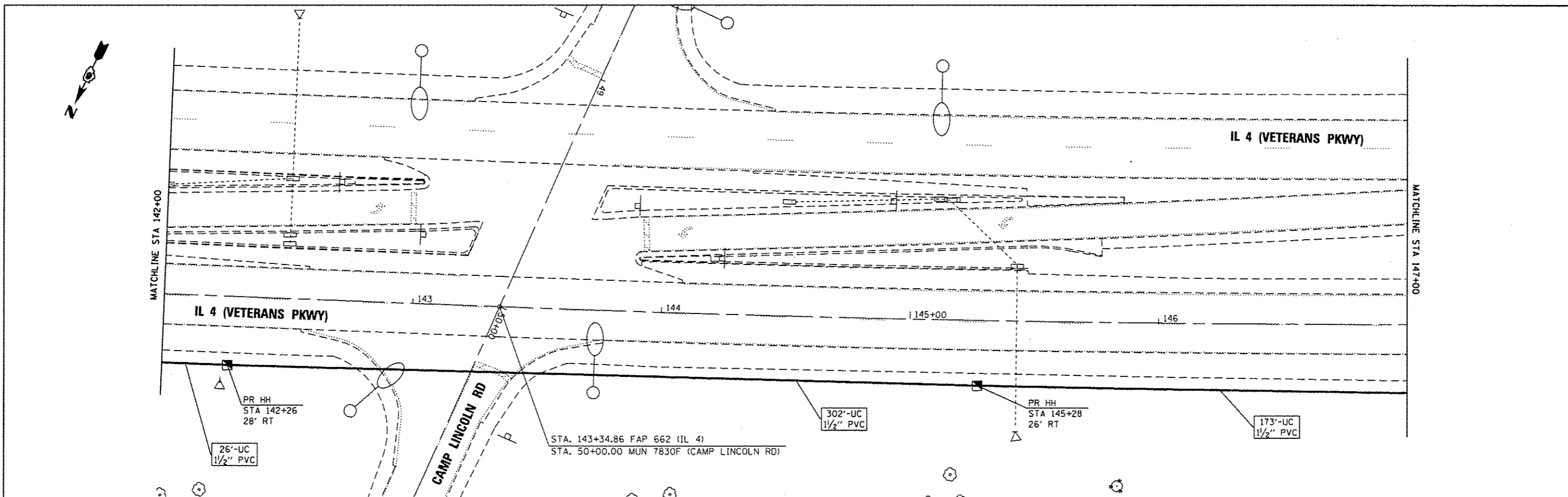
FILE NAME :	USER NAME : shahin	DESIGNED - DWS 2/2017	REVISED -	STATE OF ILLINOIS DEPARTMENT OF TRANSPORTATION	LOCATION 1 PLAN SHEET	F.A. RTE.	SECTION	COUNTY	TOTAL SHEETS	SHEET NO.	
Default		CHECKED -	REVISED -			VAR	D6 FIBER OPT EXP 2015	SANGAMON	22	6	
		DATE -	REVISED -			CONTRACT NO. 72H66					
					SCALE:	SHEET 2 OF 7 SHEETS		STA.	TO STA.		
ILLINOIS FED. AID PROJECT											



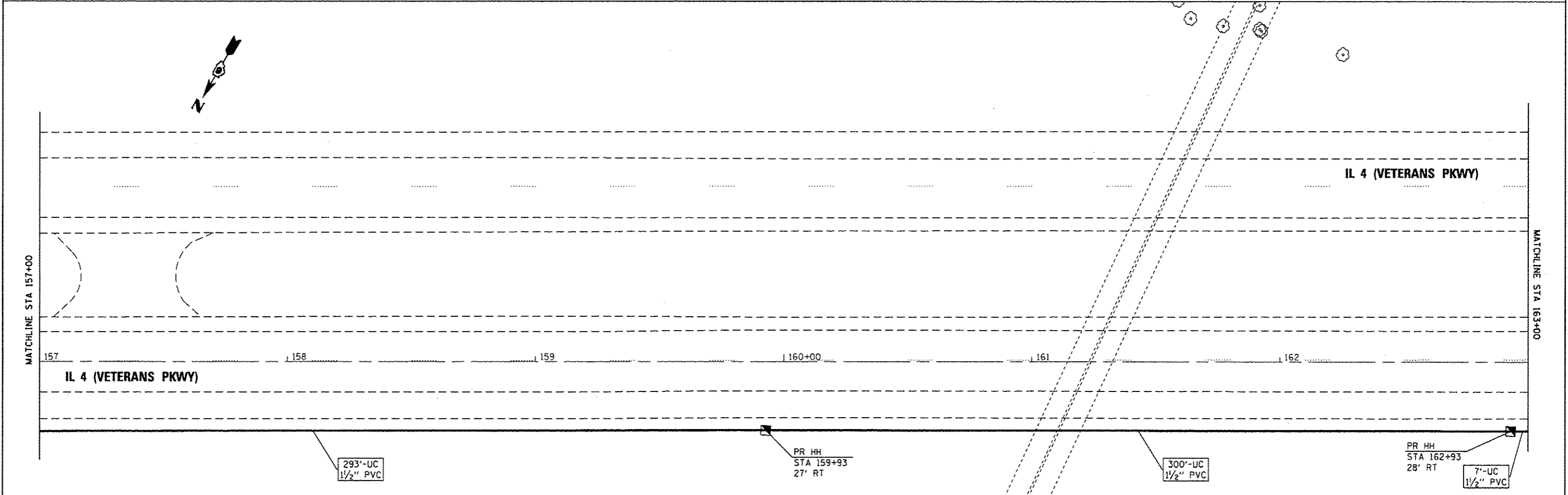
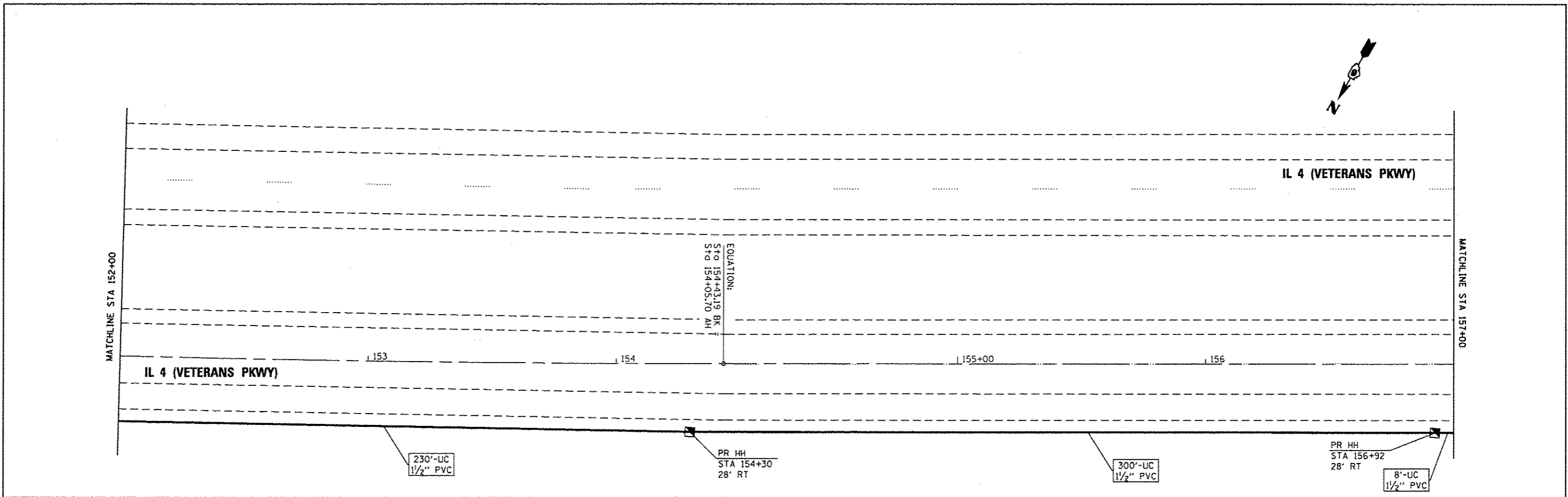
FILE NAME =	USER NAME = shahdn	DESIGNED - DMS 2/2017	REVISED -	STATE OF ILLINOIS DEPARTMENT OF TRANSPORTATION	LOCATION 1 PLAN SHEET		F.A. RTE.	SECTION	COUNTY	TOTAL SHEETS	SHEET NO.
\\nll94e8id\nteg\illinois.gov\FWIDOT\Documents\1007\07\Files\District 6\Projects\067-PR-HH-Data\CAD\11-07-2017\shah-dover	DESIGNED - DMS 2/2017	REVISED -	REVISED -		SCALE	SHEET 3 OF 7 SHEETS	STA. TO STA.	VAR 06 FIBER OPT EXP 2015	SANGAMON	22	7
PLOT SCALE = 48,0000 ' / in.	CHECKED -	REVISED -	REVISED -					CONTRACT NO. 72H66			
Default	PLOT DATE = 3/29/2017	DATE -	REVISED -					ILLINOIS FED. AID PROJECT			



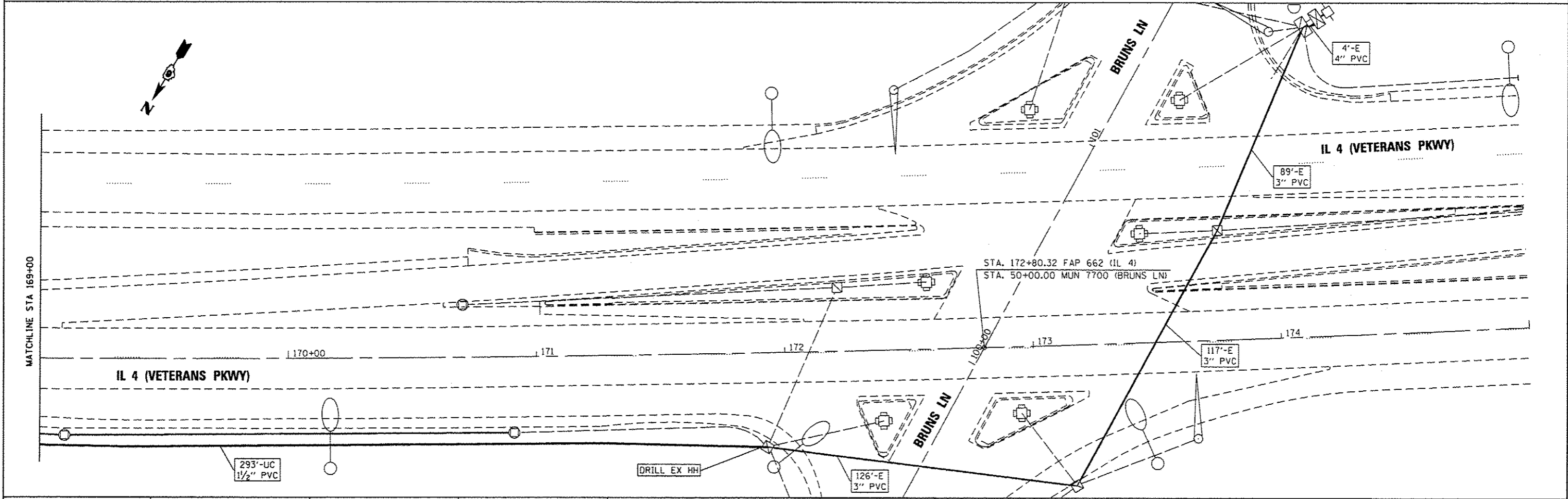
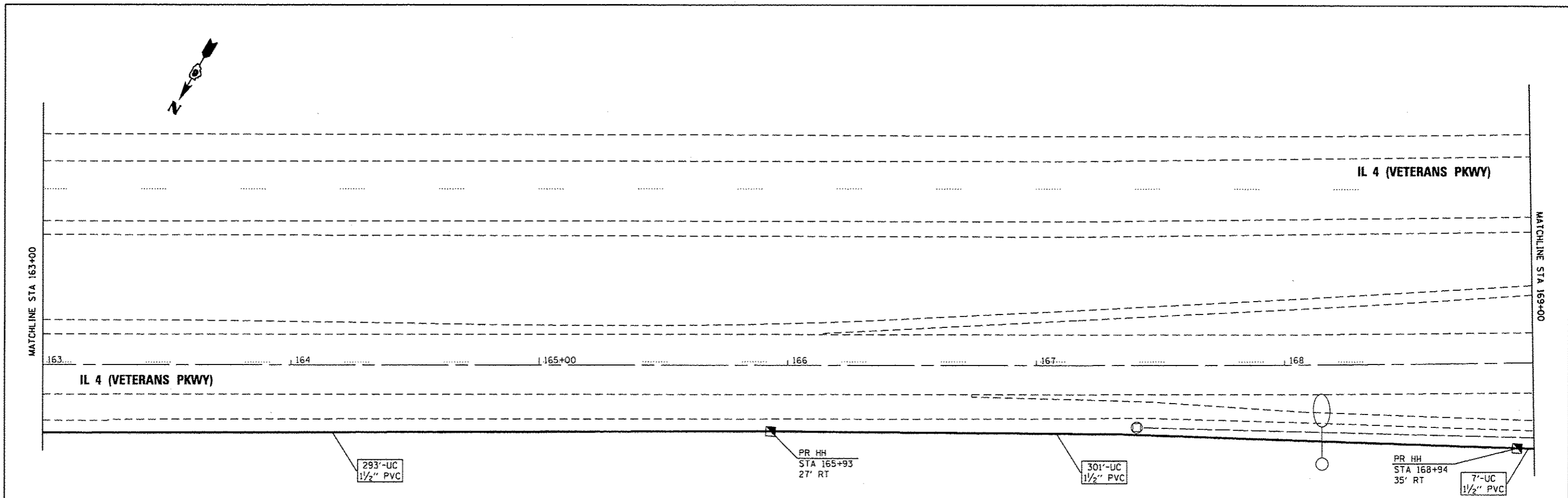
FILE NAME = p:\N\1884E810INTEG.11\mois.gov\PWIDOT\Documents\IDOT Office\District 6\Projects\067-District 6\DATA\ROAD\067-02\067-02.dwg	USER NAME = shahdm	DESIGNED - DMS 2/2017	REVISED -	STATE OF ILLINOIS DEPARTMENT OF TRANSPORTATION	LOCATION 1 PLAN SHEET		F.A. RTE.	SECTION	COUNTY	TOTAL SHEETS	SHEET NO.
	PLOT SCALE = 48.0000' / in.	CHECKED -	REVISED -				VAR	06 FIBER OPT EXP 2015	SANGAMON	22	8
Default	PLOT DATE = 3/29/2017	DATE -	REVISED -	SCALE: SHEET 4 OF 7 SHEETS STA. TO STA.		CONTRACT NO. 72H66 ILLINOIS FED. AID PROJECT					



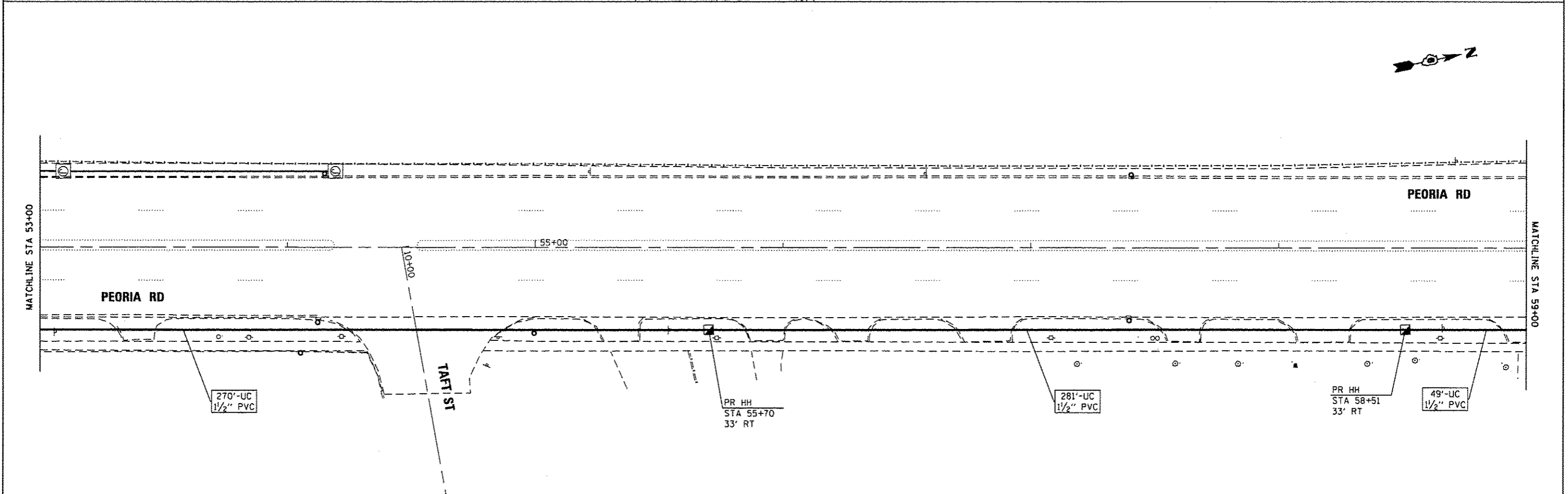
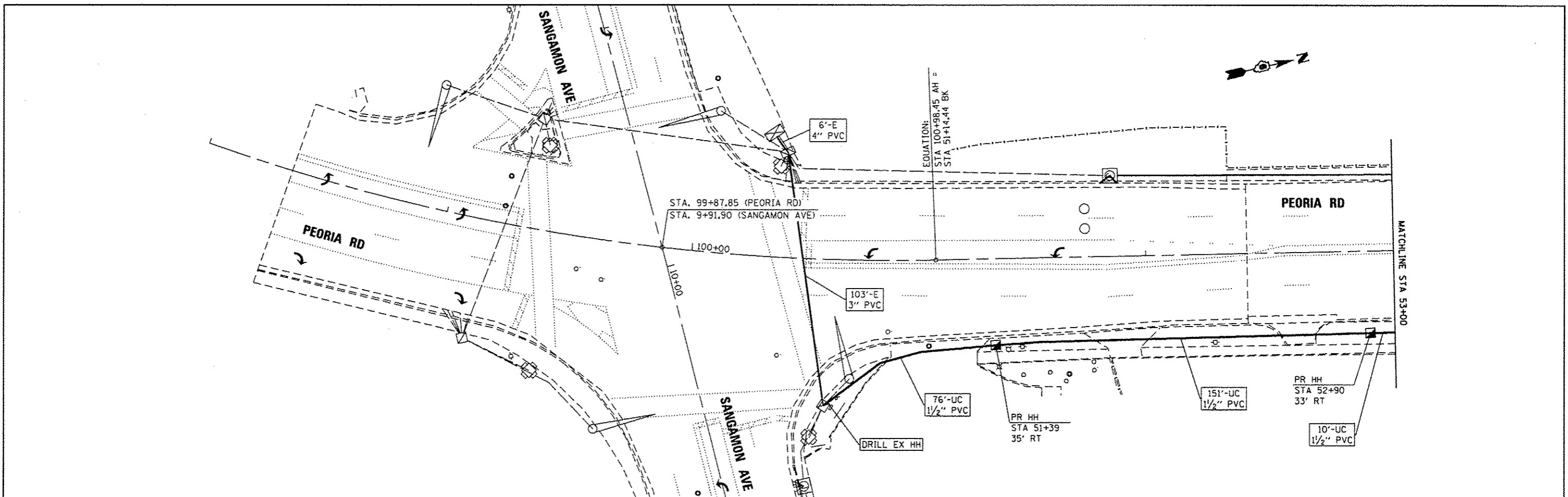
FILE NAME = p:\IL884EBID\INTEG\Illinois.gov\PI007\Documents\IDOT Offices\District 6\Projects\0673\BRN\0673\DATA\6AD\0673\0673.sht	USER NAME = shehdm	DESIGNED - DMS 2/2017	REVISED -	STATE OF ILLINOIS DEPARTMENT OF TRANSPORTATION	LOCATION 1 PLAN SHEET		F.A. RTE.	SECTION	COUNTY	TOTAL SHEETS	SHEET NO.
	PLT SCALE = 40.0000 ' / in.	CHECKED -	REVISED -				VAR	DG FIBER OPT EXP 2015	SANGAMON	22	9
Default	PLT DATE = 3/29/2017	DATE -	REVISED -	SCALE:	SHEET 5	OF 7 SHEETS	STA.	TO STA.	ILLINOIS FED. AID PROJECT CONTRACT NO. 72H66		



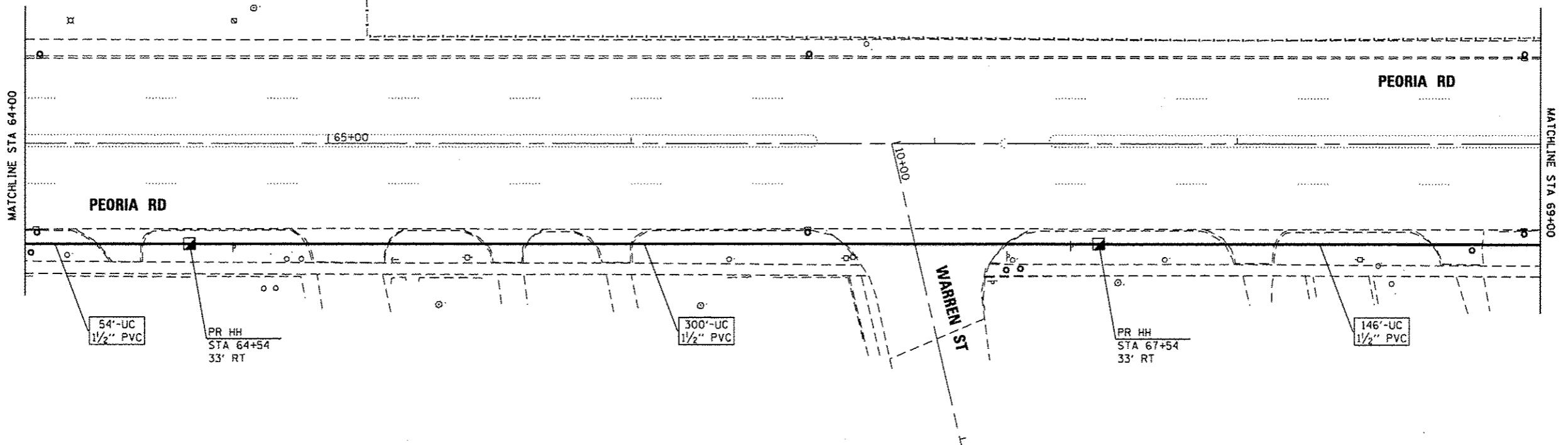
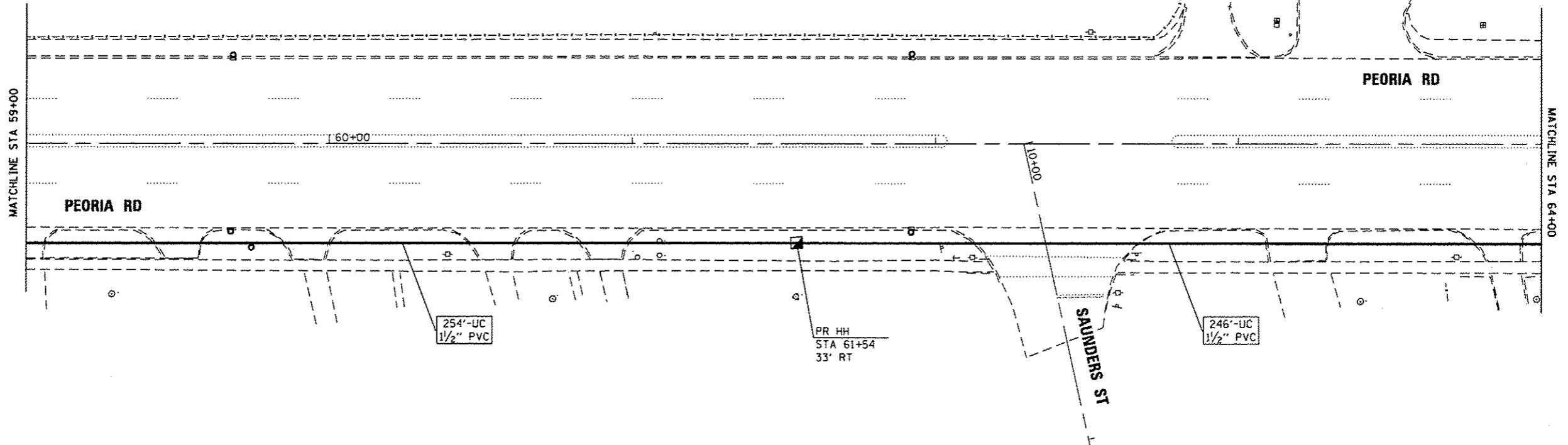
FILE NAME = p:\N\1084E8ID\INTEG\Illinois.gov\PIWIDOT\Documents\1007\Office\District 5\Projects\067\DATA\DATA\ERD\DATA\2017\shrc\cover	USER NAME = shahdm	DESIGNED - DMS 2/2017	REVISED -	STATE OF ILLINOIS DEPARTMENT OF TRANSPORTATION	LOCATION 1 PLAN SHEET	F.A. RTE.	SECTION	COUNTY	TOTAL SHEETS	SHEET NO.
	PLOT SCALE = 48.0000 ' / in.	CHECKED -	REVISED -			VAR	DG FIBER OPT EXP 2015	SANGAMON	22	10
Default	PLOT DATE = 3/29/2017	DATE -	REVISED -	SCALE:	SHEET 6 OF 7 SHEETS	STA.	TO STA.	ILLINOIS FED. AID PROJECT		
						CONTRACT NO. 72H66				



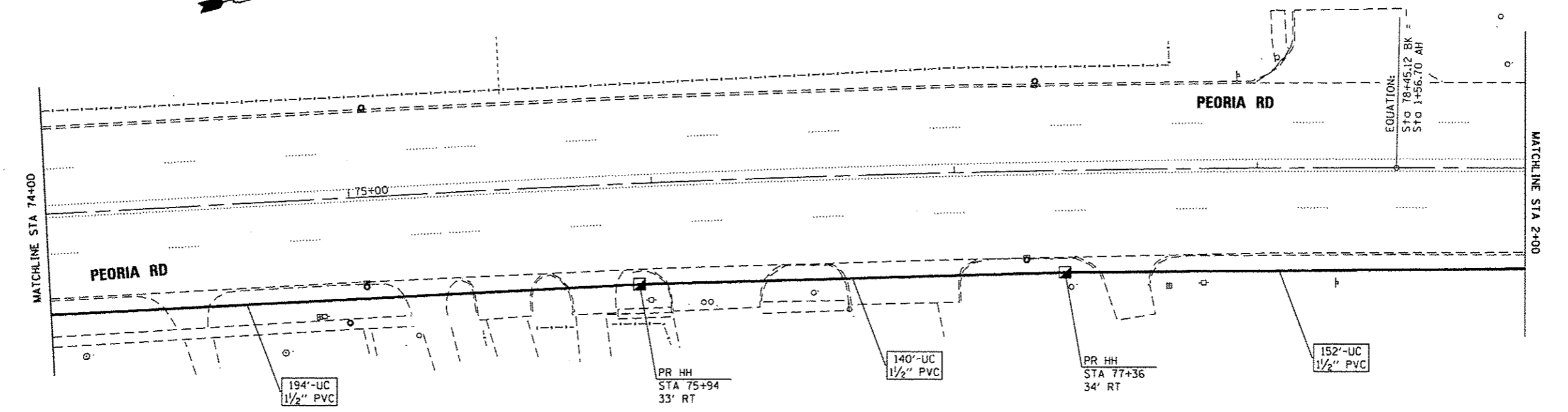
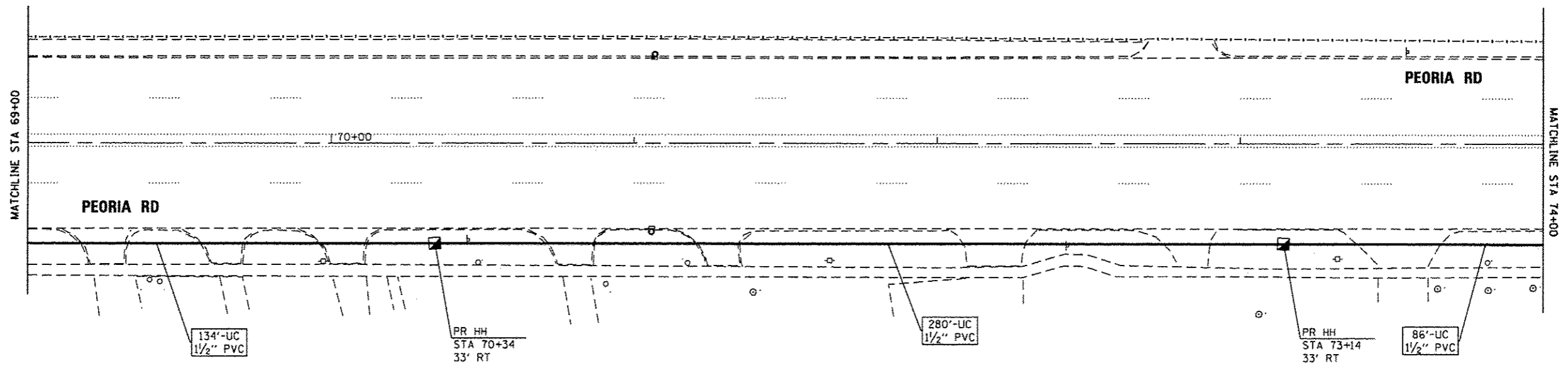
FILE NAME = p:\N\084E81D\INTEG\Illinois.gov\PWIDOT\Documents\DOT Offices\District 6\Projects\0672\BRUNNS LN\DATA\GAD\08-12-2017\shc\cover	USER NAME = shchdm	DESIGNED - QMS 2/2017	REVISED -	STATE OF ILLINOIS DEPARTMENT OF TRANSPORTATION	LOCATION 1 PLAN SHEET	F.A. RTE.	SECTION	COUNTY	TOTAL SHEETS	SHEET NO.
	PLOT SCALE = 49.0000" = 1 in.	CHECKED -	REVISED -			VAR	06 FIBER OPT EXP 2015	SANGAMON	22	11
Default	PLOT DATE = 3/29/2017	DATE -	REVISED -	SCALE: SHEET 7 OF 7 SHEETS STA. TO STA.		ILLINOIS FED. AID PROJECT CONTRACT NO. 72H66				



FILE NAME = p:\11884EBIDINTEG\Illinois.gov\PI00T\00	USER NAME = shahdm	DESIGNED - DMS 2/2017	REVISED -	STATE OF ILLINOIS DEPARTMENT OF TRANSPORTATION	LOCATION 2 PLAN SHEET		F.A. RTE.	SECTION	COUNTY	TOTAL SHEETS	SHEET NO.	
		CHECKED -	REVISED -		SCALE:	SHEET 1 OF 6 SHEETS	STA.	TO STA.	VAR	D6 FIBER OPT EXP 2015	SANGAMON	22 12
		DATE -	REVISED -		CONTRACT NO. 72H66						ILLINOIS FED. AID PROJECT	



FILE NAME = p:\1188481\INTEG.1\11note.gov\FWIDOT\00	USER NAME = shahdn	DESIGNED - DMS 2/2017	REVISED -	STATE OF ILLINOIS DEPARTMENT OF TRANSPORTATION	LOCATION 2 PLAN SHEET		F.A. RTE.	SECTION	COUNTY	TOTAL SHEETS	SHEET NO.
	PROJECT = 1188481\INTEG.1\11note.gov\FWIDOT\00	CHECKED -	REVISED -		SCALE: SHEET 2 OF 6 SHEETS STA. TO STA.	VAR	D6 FIBER OPT EXP 2015	SANGAMON	22	13	
Default	PLOT SCALE = 48,0000' / in.	DATE -	REVISED -					CONTRACT NO. 72H66		ILLINOIS FEG. AID PROJECT	
	PLOT DATE = 3/29/2017										



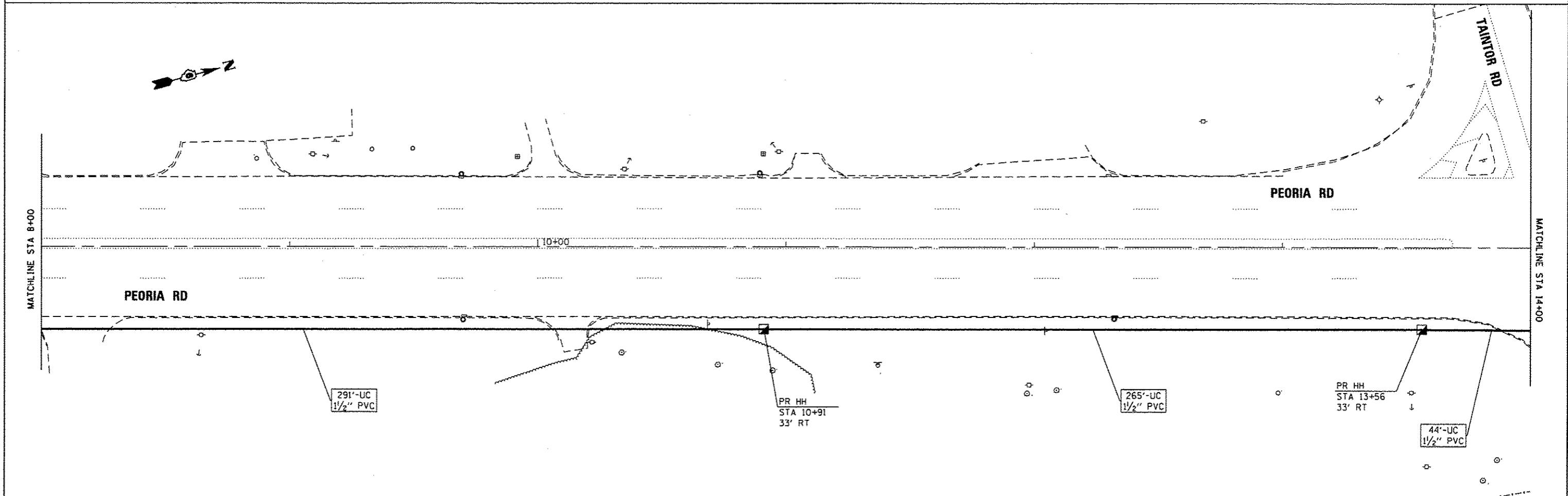
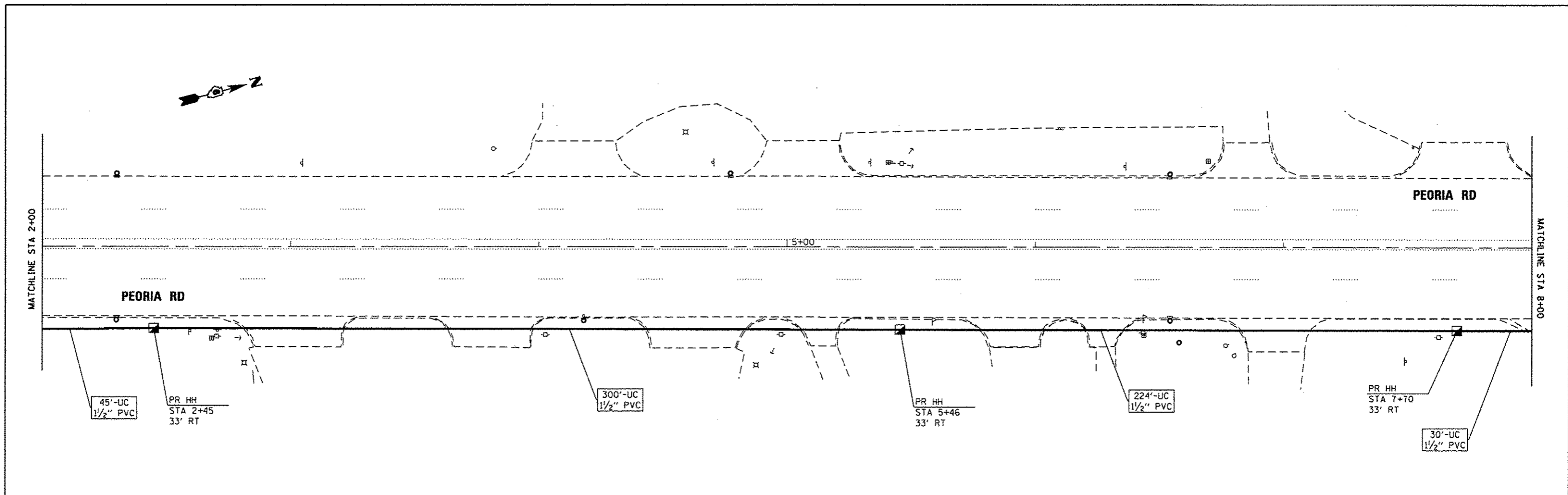
FILE NAME =	USER NAME = shahdm	DESIGNED - DMS 2/2017	REVISED -
p:\IL\804EB\INTEG\Illinois.gov\PI001\Documents\100T\Office\District 5\Projects\0672\0672\Drawn\Date\6ADsh\065\072017\shreover		CHECKED -	REVISED -
		DATE -	REVISED -

**STATE OF ILLINOIS
DEPARTMENT OF TRANSPORTATION**

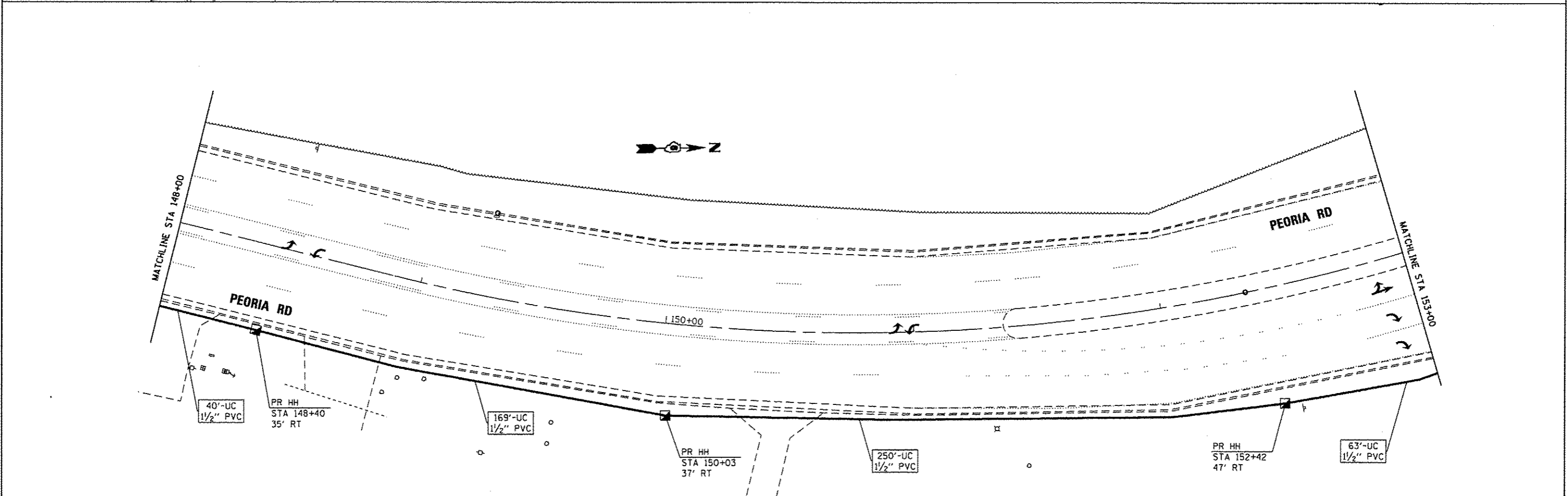
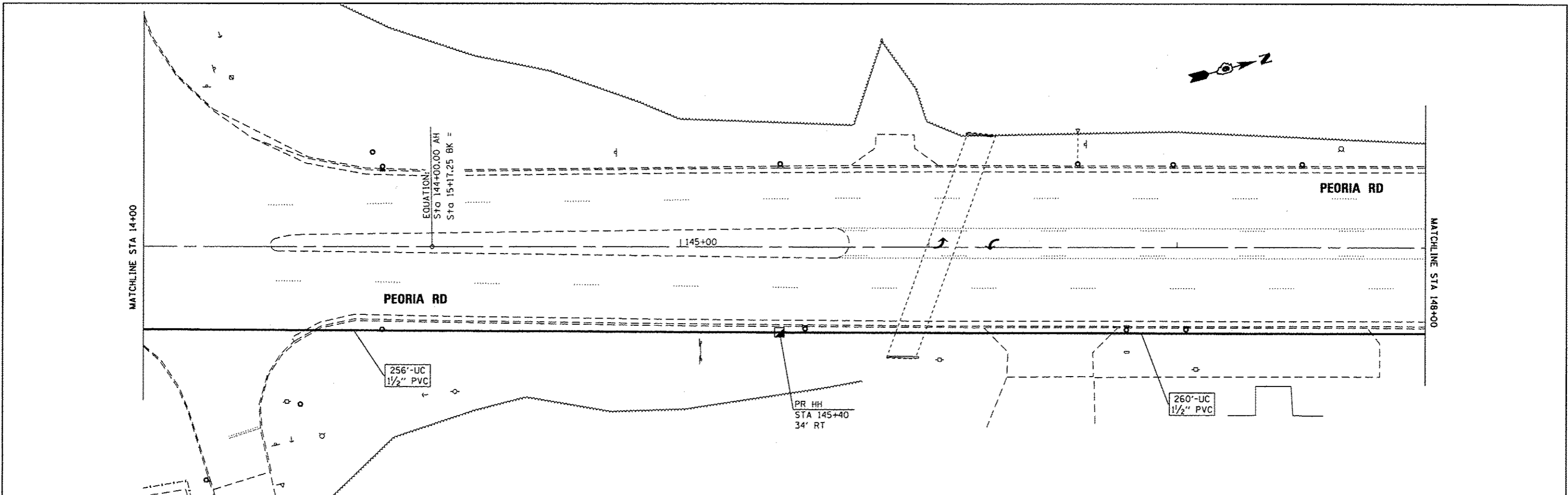
**LOCATION 2
PLAN SHEET**

SCALE: SHEET 3 OF 6 SHEETS STA. TO STA.

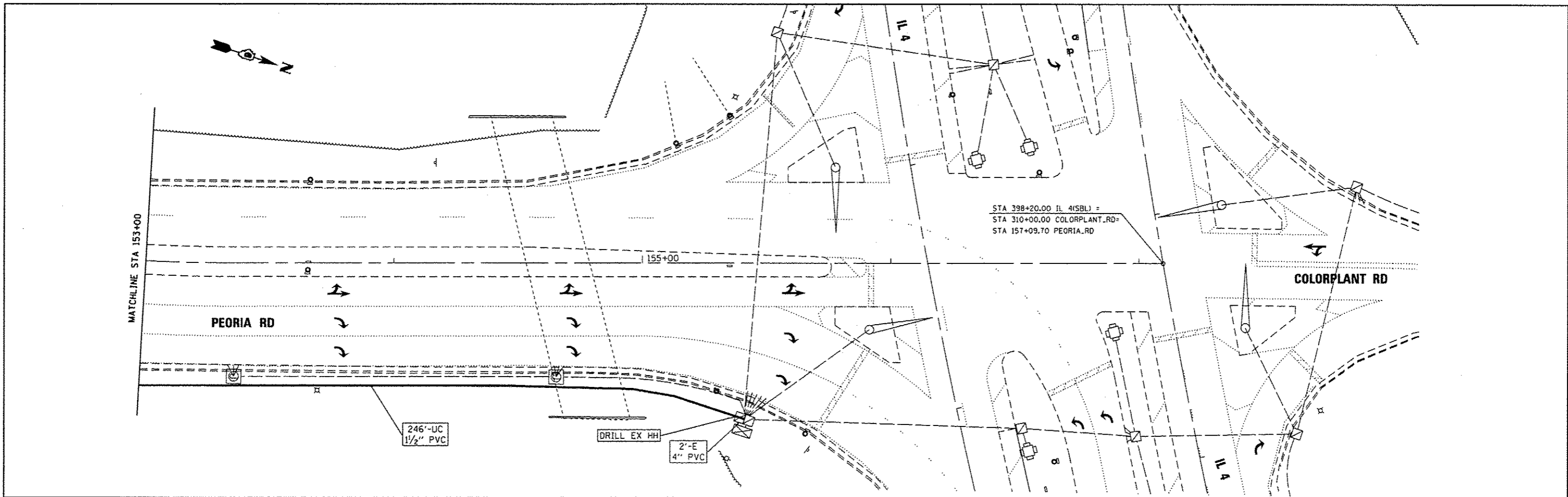
F.A. RTE.	SECTION	COUNTY	TOTAL SHEETS	SHEET NO.
VAR	06 FIBER OPT EXP 2015	SANGAMON	22	14
ILLINOIS FED. AID PROJECT			CONTRACT NO. 72H66	



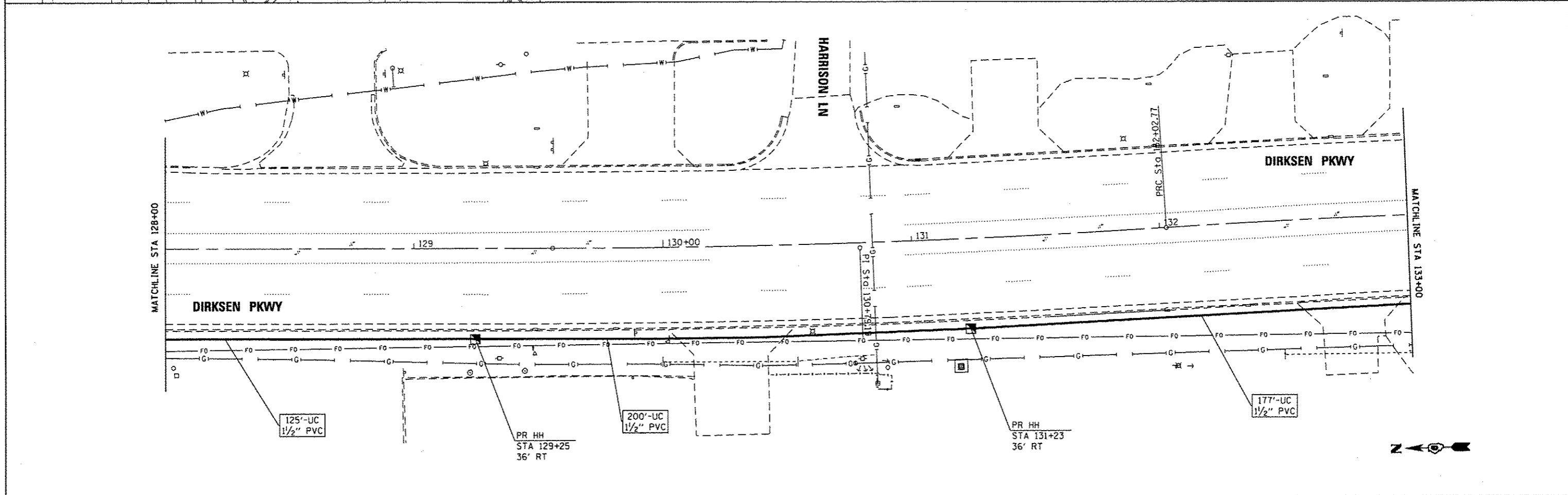
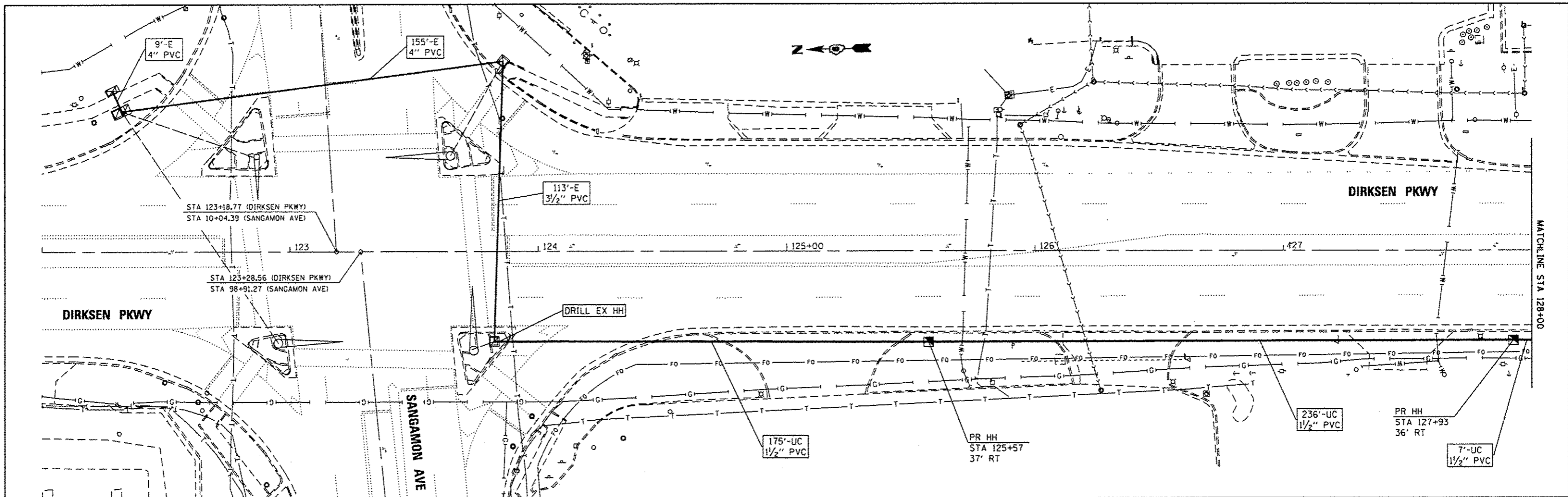
FILE NAME = p:\11094EBID\INTEG.illinois.gov\PI\DOT\Documents\IDOT Offices\District 5\Projects\0572\BRAN Data\640sh\0572\0572.dwg	USER NAME = gshahdm	DESIGNED - DMS 2/2017	REVISED -	STATE OF ILLINOIS DEPARTMENT OF TRANSPORTATION	LOCATION 2 PLAN SHEET		F.A. RTE.	SECTION	COUNTY	TOTAL SHEETS	SHEET NO.
	PLT DATE = 3/29/2017	CHECKED -	REVISED -				VAR	D6 FIBER OPT EXP 2015	SANGAMON	22	15
Default		DATE -	REVISED -	SCALE: SHEET 4 OF 6 SHEETS STA. TO STA.		ILLINOIS FED. AID PROJECT CONTRACT NO. 72H66					



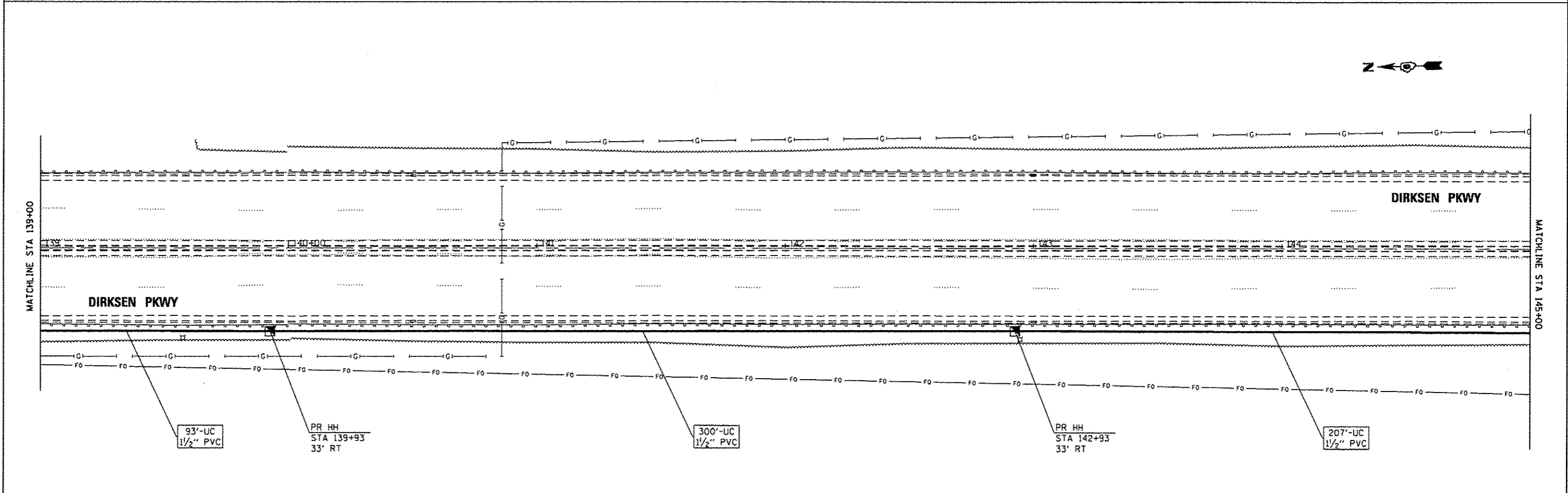
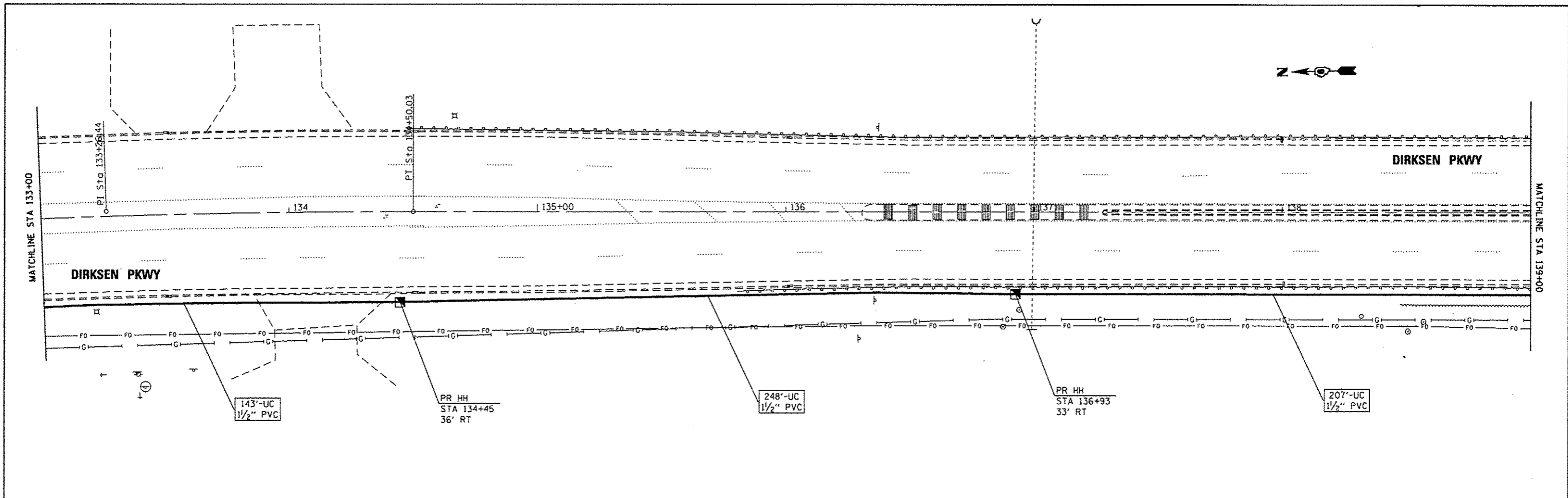
FILE NAME : p:\11084EBID\INTEG.illinois.gov\PI\DOT\Do	USER NAME : shehdm	DESIGNED - DMS 2/2017	REVISED -	STATE OF ILLINOIS DEPARTMENT OF TRANSPORTATION	LOCATION 2 PLAN SHEET	F.A. RTE.	SECTION	COUNTY	TOTAL SHEETS	SHEET NO.
	PROJECT: 11084EBID\INTEG.illinois.gov\PI\DOT\Do	CHECKED -	REVISED -			VAR	D6 FIBER OPT EXP 2015	SANGAMON	22	16
	PLOT SCALE = 40,0000' / in.	DATE -	REVISED -			CONTRACT NO. 72H66				



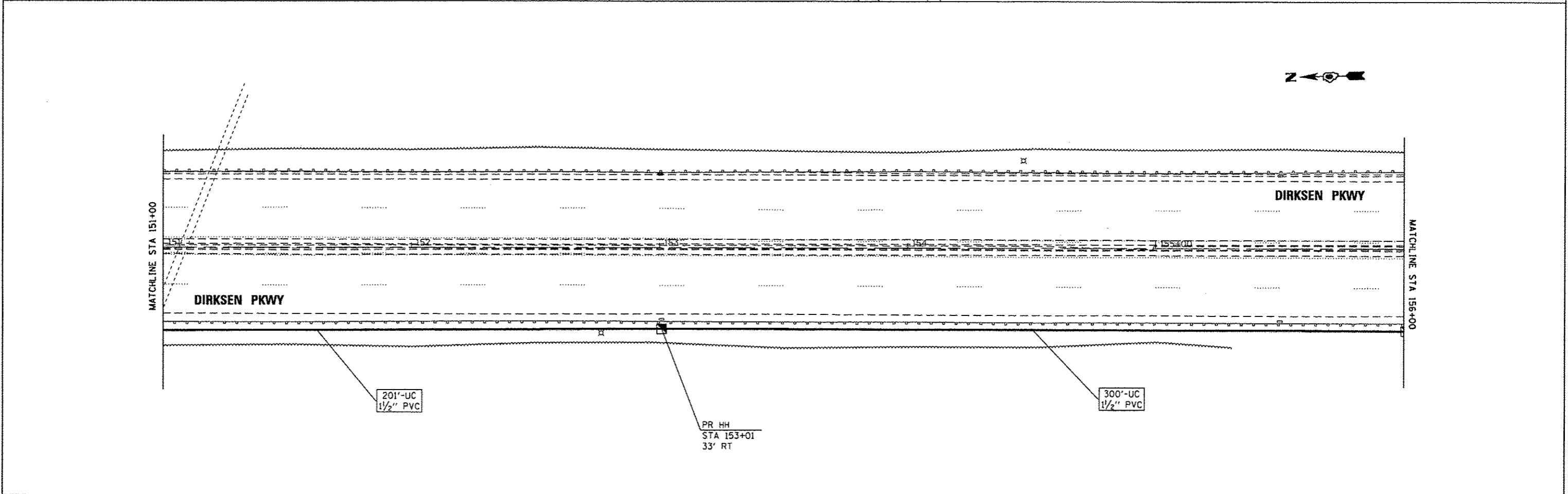
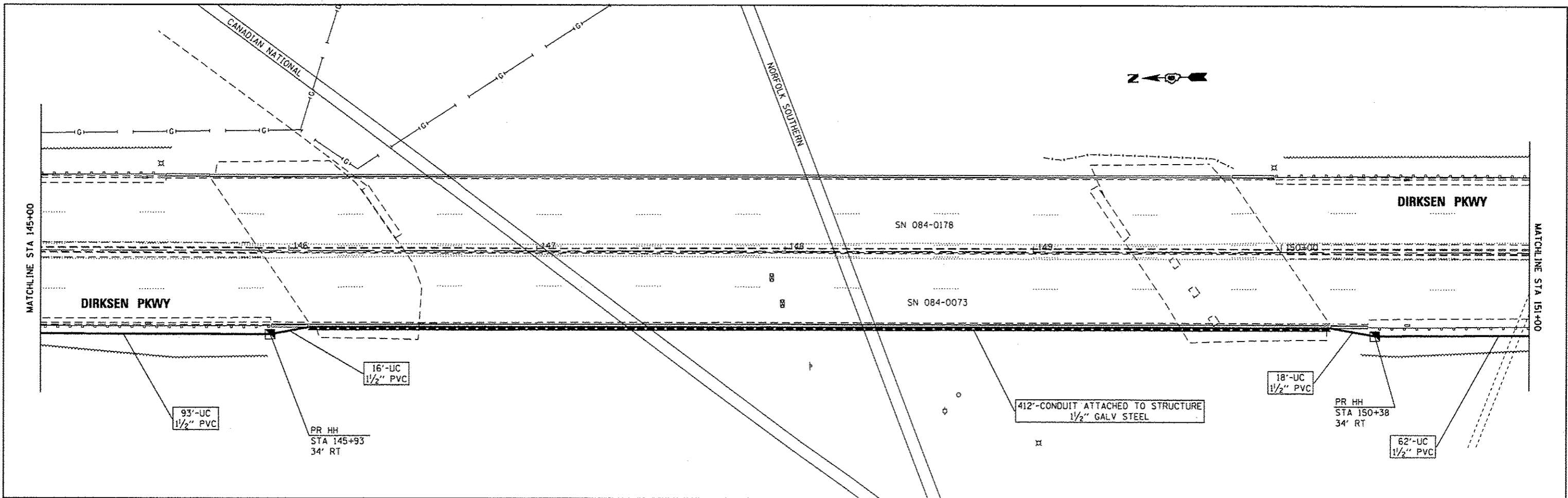
FILE NAME = p:\11884EBID\INTEG.illinois.gov\PI\DOT\00	USER NAME = shahdm	DESIGNED - DMS 2/2017	REVISED -	STATE OF ILLINOIS DEPARTMENT OF TRANSPORTATION	LOCATION 2 PLAN SHEET		F.A. RTE.	SECTION	COUNTY	TOTAL SHEETS	SHEET NO.
	PROJECT DATA = 06/27/2017	CHECKED -	REVISED -				VAR	06 FIBER OPT EXP 2015	SANGAMON	22	17
Default	PLOT SCALE = 40.0000' / in.	DATE -	REVISED -	SCALE: SHEET 6 OF 6 SHEETS STA. TO STA.		ILLINOIS FED. AID PROJECT CONTRACT NO. 72H66					



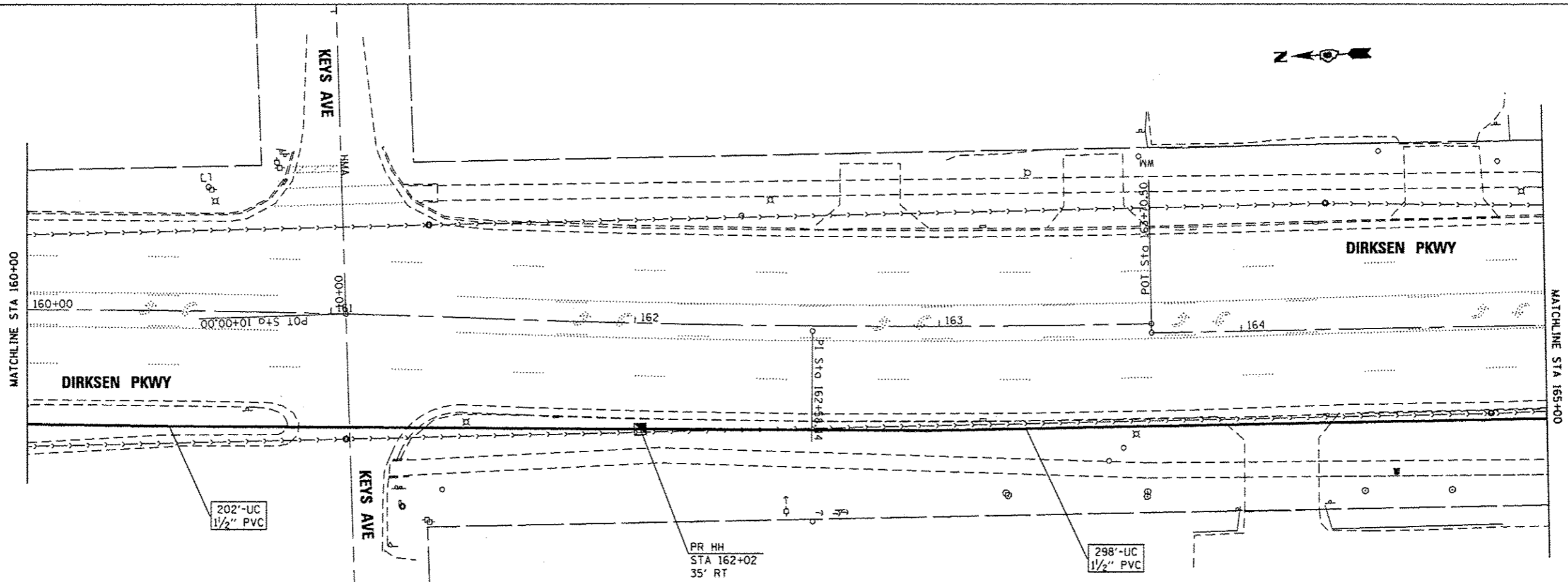
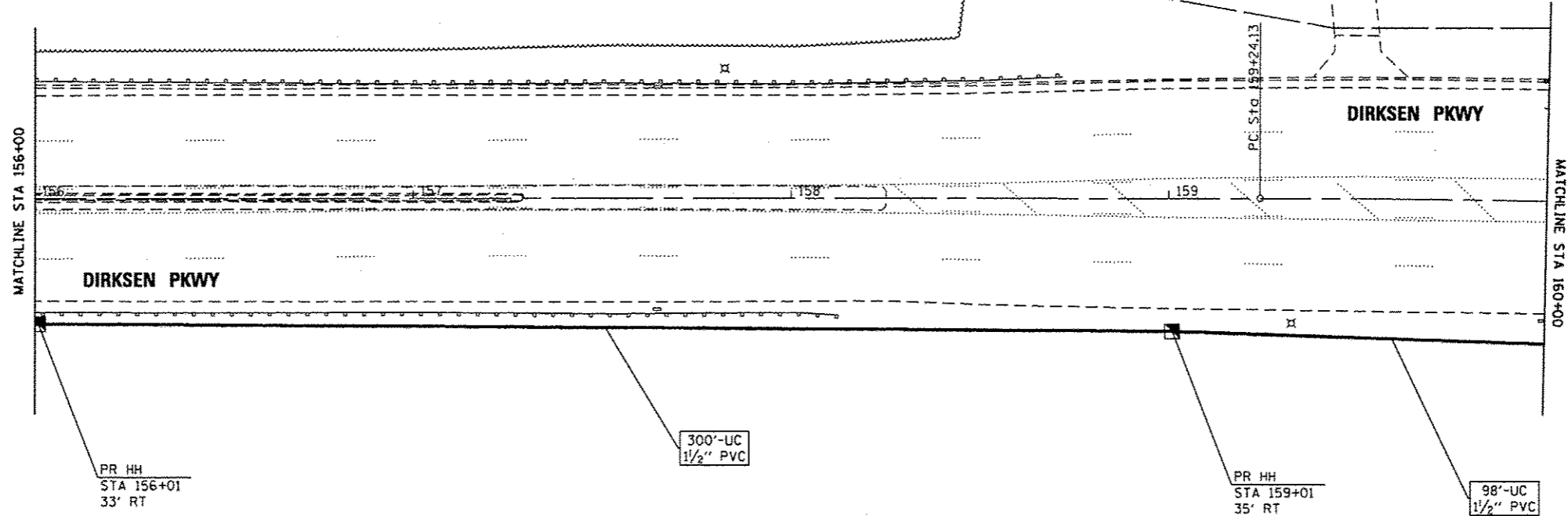
FILE NAME : p:\11\084610\INTEG.11\11084610.dwg	USER NAME : shahide	DESIGNED - DMS 2/2017	REVISED -	STATE OF ILLINOIS DEPARTMENT OF TRANSPORTATION	LOCATION 3 PLAN SHEET	F.A. RTE.	SECTION	COUNTY	TOTAL SHEETS	SHEET NO.
	PLT SCALE = 40.0000' / in.	CHECKED -	REVISED -			VAR	D6 FIBER OPT EXP 2015	SANGAMON	22	18
Default	PLT DATE = 3/29/2017	DATE -	REVISED -	SCALE:	SHEET 1 OF 5 SHEETS	STA.	TO STA.	ILLINOIS FED. AID PROJECT		



FILE NAME = p:\N\1084EB\INTEG\Illinois.gov\PWIDOT\Documents\DOT Offices\District 6\Projects\067-DR\Drawings\CAD\067-DR\Sheet\067-DR-01.dwg	USER NAME = shahdm	DESIGNED - DMS 2/2017	REVISED -	STATE OF ILLINOIS DEPARTMENT OF TRANSPORTATION	LOCATION 3 PLAN SHEET	F.A. RTE.	SECTION	COUNTY	TOTAL SHEETS	SHEET NO.
	PLOT SCALE = 49.0000' / in.	CHECKED -	REVISED -			VAR	D6 FIBER OPT EXP 2015	SANGAMON	22	19
Default	PLOT DATE = 3/29/2017	DATE -	REVISED -	SCALE: SHEET 2 OF 5 SHEETS STA. TO STA.		ILLINOIS FED. AID PROJECT CONTRACT NO. 72H66				



FILE NAME =	USER NAME = shehdm	DESIGNED - DMS 2/2017	REVISED -	STATE OF ILLINOIS DEPARTMENT OF TRANSPORTATION	LOCATION 3 PLAN SHEET	F.A. RTE.	SECTION	COUNTY	TOTAL SHEETS	SHEET NO.	
pc:\11884EBIDINTEG.illinois.gov\PKIDD\00	ements\DOT Offices\District 6\Projects\067	DATA\GAD\067\067.sht	067			VAR	D6 FIBER OPT EXP 2015	SANGAMON	22	20	
Default	PLOT SCALE = 40.0000 ' / in.	CHECKED -	REVISED -			SCALE: SHEET 3 OF 5 SHEETS STA. TO STA.		CONTRACT NO. 72H66			
	PLOT DATE = 3/29/2017	DATE -	REVISED -			ILLINOIS FED. AID PROJECT					



FILE NAME : p:\11\1864EB10\INTEC\Illinois.gov\WIDOT\Documents\1007 Offices\District 5\Projects\067-BRAMM\Date\CAD\02/2017\sho-over	USER NAME : shahdn	DESIGNED - DMS 2/2017	REVISED -	STATE OF ILLINOIS DEPARTMENT OF TRANSPORTATION	LOCATION 3 PLAN SHEET		F.A. RTE.	SECTION	COUNTY	TOTAL SHEETS	SHEET NO.
	PLOT SCALE : 48.0000 ' / in.	CHECKED -	REVISED -		VAR	D6 FIBER OPT EXP 2015	SANGAMON	22	21		
Default	PLOT DATE : 3/29/2017	DATE -	REVISED -	SCALE:	SHEET 4 OF 5 SHEETS	STA. TO STA.	ILLINOIS FED. AID PROJECT				
							CONTRACT NO. 72H66				

