

STATE OF ILLINOIS
DEPARTMENT OF TRANSPORTATION

T.R. RTE.	SECTION	COUNTY	TOTAL SHEETS	SHEET NO.
133	(1350th ST) BIT A3 - 2017	LOGAN	5	1
		ILLINOIS		CONTRACT NO. 72J86

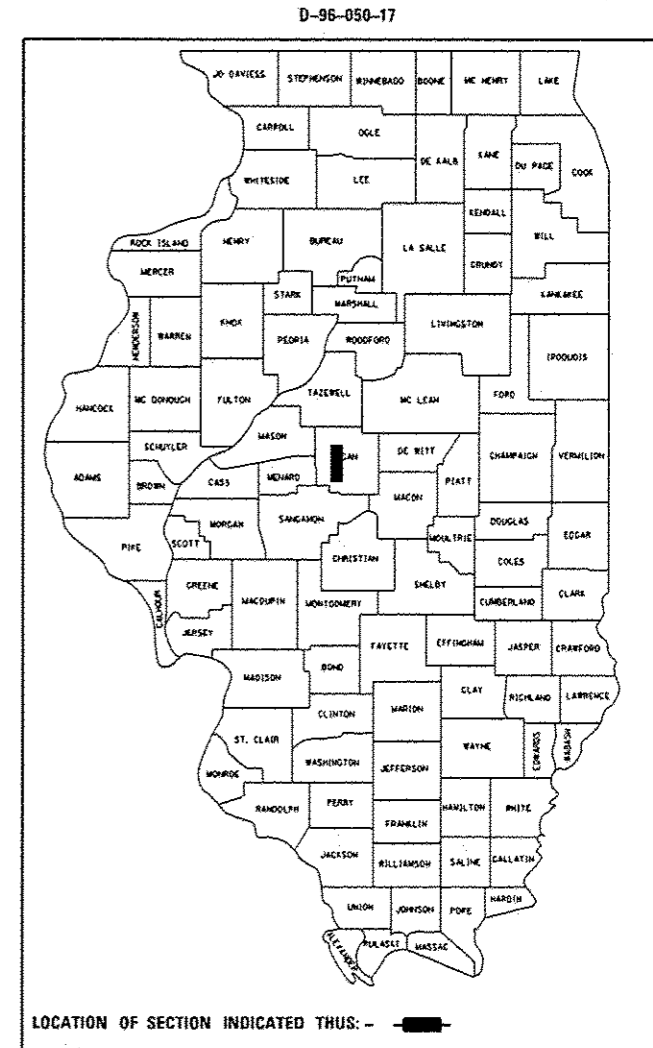
FOR INDEX OF SHEETS, SEE SHEET NO. 2

PROPOSED IMPROVEMENTS

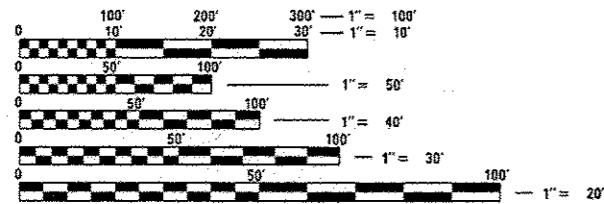
TR 133 (1350th ST)
SECTION (1350th ST) BIT A3 - 2017
BITUMIONOUS SURFACE TREATMENT

LOGAN CO

C-96-050-17



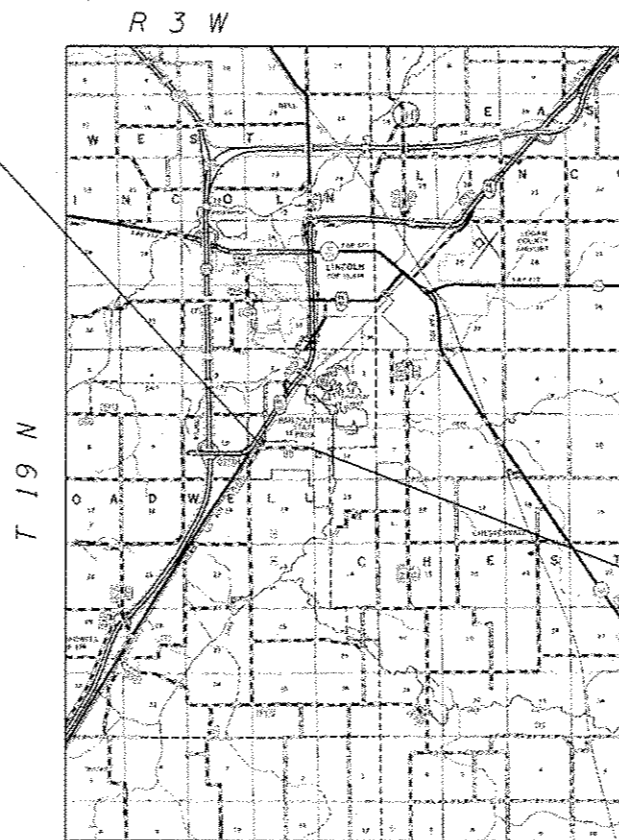
ADT = 1,350
SU = -
MU = -



FULL SIZE PLANS HAVE BEEN PREPARED USING STANDARD ENGINEERING SCALES. REDUCED SIZED PLANS WILL NOT CONFORM TO STANDARD SCALES. IN MAKING MEASUREMENTS ON REDUCED PLANS, THE ABOVE SCALES MAY BE USED.

J.U.L.I.E.
JOINT UTILITY LOCATION INFORMATION FOR EXCAVATION
1-800-892-0123
OR 811

BEGIN PROJECT
STA. 0+20.00



END PROJECT
STA. 34+32.00



PROJECT ENGINEER : MIKE IRWIN - (217)524-7765
PROJECT MANAGER : TIM SHARP - (217)524-9160

CONTRACT NO. 72J86

STATE OF ILLINOIS
DEPARTMENT OF TRANSPORTATION

SUBMITTED 12 April 2017

[Signature]
REGION FOUR ENGINEER

May 12 2017
[Signature]
ENGINEER OF DESIGN AND ENVIRONMENT

May 12 2017
[Signature]
DIRECTOR OF HIGHWAYS, CHIEF ENGINEER

PRINTED BY THE AUTHORITY
OF THE STATE OF ILLINOIS

INDEX OF SHEETS

SHEET NO.	DESCRIPTION
1.	COVER SHEET
2.	INDEX OF SHEETS, STANDARDS, GENERAL NOTES & SIGNATURE
3.	SUMMARY OF QUANTITIES
4.	PROJECT LOCATION MAP
5.	PROJECT TYPICAL SECTIONS

STANDARDS

STANDARD NO.	DESCRIPTION
701201-04	LANE CLOSURE, 2L, 2W, DAY ONLY, FOR SPEEDS \geq 45 MPH
701301-04	LANE CLOSURE, 2L, 2W, SHORT TERM OPERATIONS
701306-03	LANE CLOSURE, 2L, 2W, SLOW MOVING OPERATIONS DAY ONLY, FOR SPEEDS \geq 45 MPH
701311-03	LANE CLOSURE, 2L, 2W, MOVING OPERATIONS, DAY ONLY
701901-06	TRAFFIC CONTROL DEVICES

NOTES:

COVER AND SEAL COAT AGGREGATE SHALL BE CRUSHED STONE.

APPLICATION RATES		
	AGGREGATE	BITUMINOUS MATERIAL
COVER COAT 1	25 lb/sq yd	0.35 gal/sq yd
COVER COAT 2	25 lb/sq yd	0.45 gal/sq yd
SEAL COAT	20 lb/sq yd	0.35 gal/sq yd
THE APPLICATION RATES SHOWN ABOVE MAY BE ADJUSTED BY THE ENGINEER BASED ON FIELD CONDITIONS		

STATE OF ILLINOIS DEPARTMENT OF TRANSPORTATION DIVISION OF HIGHWAYS DISTRICT 6	
EXAMINED	March 20 th 20 17 <i>John C. [Signature]</i> ENGINEER OF OPERATIONS
EXAMINED	March 31 st 20 17 <i>[Signature]</i> ENGINEER OF PROJECT IMPLEMENTATION
EXAMINED	April 3 20 17 <i>[Signature]</i> ENGINEER OF PROGRAM DEVELOPMENT

				6-01142-0000
				100% STATE
				LOGAN
				ROADWAY
				0005
				URBAN
CODE NO.	ITEM	UNIT	TOTAL QUANTITY	
40300400	BITUMINOUS MATERIALS (COVER AND SEAL COAT)	TON	33	33
40300500	COVER COAT AGGREGATE	TON	228	228
40300600	SEAL COAT AGGREGATE	TON	91	91
67100100	MOBLIZATION	LSUM	1	1
70100450	TRAFFIC CONTROL AND PROTECTION, STANDARD 701201	LSUM	1	1
70100460	TRAFFIC CONTROL AND PROTECTION, STANDARD 701306	LSUM	1	1

6



END PROJECT
STA. 34+32.00

BEGIN PROJECT
STA 0+20.00

STATE OF ILLINOIS
DEPARTMENT OF TRANSPORTATION

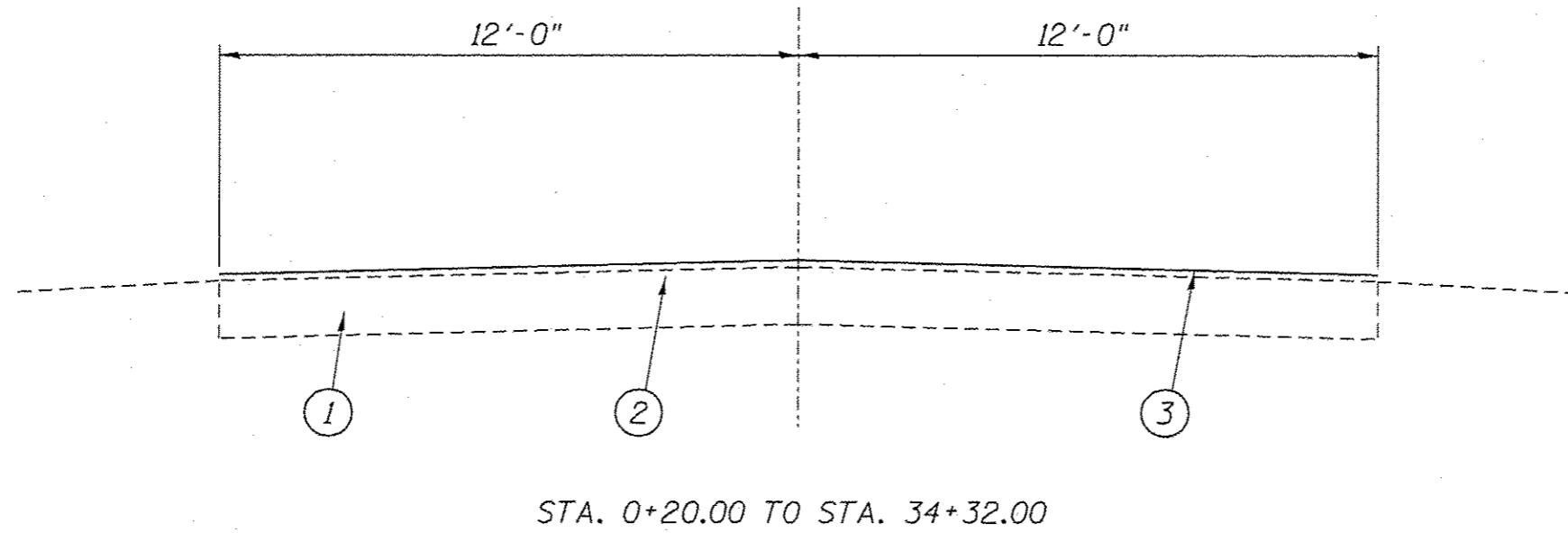
LOCATION MAP

FILE NAME *	USER NAME * sharpjd	DESIGNED -	REVISED -
S:\CONTRACTS\72J86 - A3 - TR 133	1350th St LOGAN COUNTY CORRECTIONALS CENTER	DRM\N72J86-sharpjd	REVISED -
Default	PLOT SCALE * 40,0000' / in.	CHECKED -	REVISED -
	PLOT DATE = 4/12/2017	DATE -	REVISED -

SCALE:	SHEET	OF	SHEETS	STA.	TO STA.
--------	-------	----	--------	------	---------

T.R. RTE.	SECTION	COUNTY	TOTAL SHEETS	SHEET NO.
133	(1350th St) BIT A3 - 2017	LOGAN	5	4
CONTRACT NO. 72J86				
ILLINOIS FED. AID PROJECT				

0303 03 89A



LEGEND

- 1 - EXIST. AGGREGATE BASE COURSE
- 2 - EXIST. BITUMINOUS SURFACE TREATMENT
- 3 - PROP. BITUMINOUS SURFACE TREATMENT, (PREVENTATIVE MAINTENANCE) A3

FILE NAME =	USER NAME = sharptd	DESIGNED -	REVISED -	STATE OF ILLINOIS DEPARTMENT OF TRANSPORTATION	TYPICALS	T.R. RTE.	SECTION	COUNTY	TOTAL SHEETS	SHEET NO.	
S:\CONTRMAINT_CAD\72J86 - A3 - TR 133	050th St LOGAN COUNTY CORRECTIONALS CENTER	DETAILED\72J86-SHT5-typicals.dgn	REVISED -			153	(1350th St) BIT A3 - 2017	LOGAN	5	5	
Default	PLOT SCALE = 3.0000' / 1"	CHECKED -	REVISED -			CONTRACT NO. 72J86					
	PLOT DATE = 4/12/2017	DATE -	REVISED -			ILLINOIS FED. AID PROJECT					
					SCALE:	SHEET	OF	SHEETS	STA.	TO STA.	