

**STATE OF ILLINOIS**  
**DEPARTMENT OF TRANSPORTATION**  
**DIVISION OF HIGHWAYS**  
**PROPOSED**  
**CONTRACT MAINTENANCE**

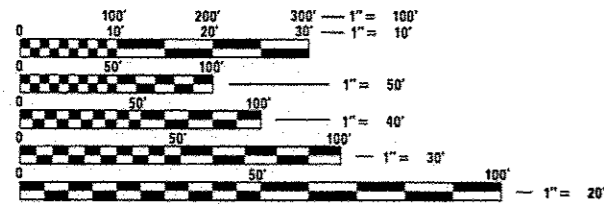
FOR INDEX OF SHEETS, SEE SHEET NO. 2

**FAI 72 (I-72)**  
**SECTION (69-8) BRR (69-9) BRR & BJR-1**

**BRIDGE REPAIRS**  
**MORGAN COUNTY**

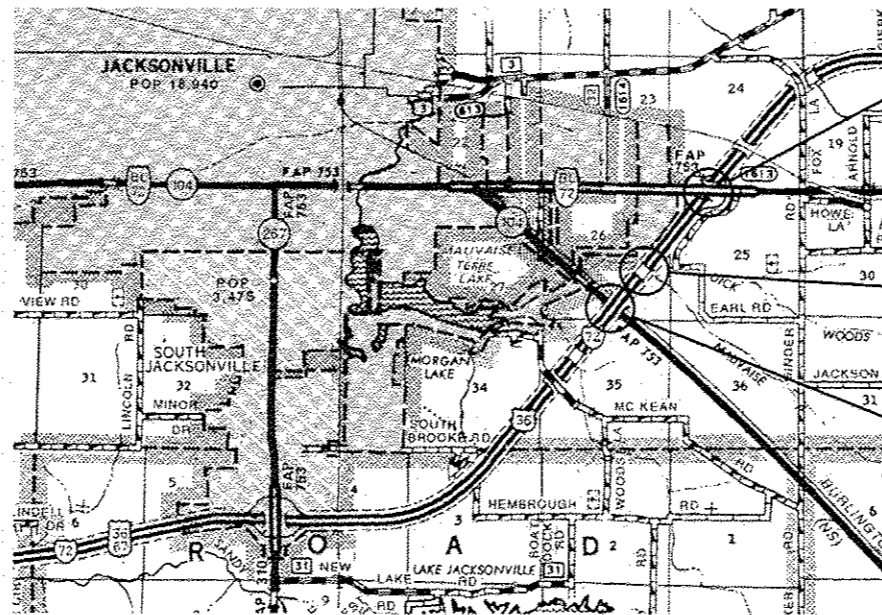
C-96-052-17

F.A.I. RTE.	SECTION	COUNTY	TOTAL SHEETS	SHEET NO.
72	(69-8)BRR(69-9)BRR&BJR-1	MORGAN	15	1
		ILLINOIS	CONTRACT NO. 72J88	



FULL SIZE PLANS HAVE BEEN PREPARED USING STANDARD ENGINEERING SCALES. REDUCED SIZED PLANS WILL NOT CONFORM TO STANDARD SCALES. IN MAKING MEASUREMENTS ON REDUCED PLANS, THE ABOVE SCALES MAY BE USED.

J.U.L.I.E.  
 JOINT UTILITY LOCATION INFORMATION FOR EXCAVATION  
 1-800-892-0123  
 OR 811



LOCATION #3  
 SN 069-0044  
 OLD 36 OVER I-72  
 I-72 / OLD 36 INT.

LOCATION #2  
 SN 069-0042 & 0043  
 I-72 OVER MAUVAISE TERRE CR.  
 0.8 MI SW OF OLD 36

LOCATION #1  
 SN 069-0040 & 0041  
 I-72 OVER IL 104 & BNRR  
 1.1 MI SE OF OLD 36

BRIDGE MAINTENANCE ENGINEER - BRANDON DUDLEY (217) 785-9290

GROSS LENGTH = NA  
 NET LENGTH = NA

CONTRACT NO. 72J88

STATE OF ILLINOIS  
 DEPARTMENT OF TRANSPORTATION  
 DIVISION OF HIGHWAYS

SUBMITTED 3 April 2017

*[Signature]*  
 REGION FOUR ENGINEER

May 12 2017  
*Maureen M. Addis*  
 ENGINEER OF DESIGN AND ENVIRONMENT

May 12 2017  
*[Signature]*  
 DIRECTOR OF HIGHWAYS, CHIEF ENGINEER

**PRINTED BY THE AUTHORITY**  
**OF THE STATE OF ILLINOIS**

INDEX OF SHEETS

- 1 COVER SHEET
- 2 INDEX, STANDARDS, GENERAL NOTES, & SIGNATURES
- 3 SUMMARY OF QUANTITIES
- 4-7 BRIDGE PLANS - SN 069-0040 & 0041
- 8-11 BRIDGE PLANS - SN 069-0042 & 0043
- 12-15 BRIDGE PLANS - SN 069-0044

HIGHWAY STANDARDS

- 000001-06
- 001006
- 701001-02
- 701006-05
- 701101-05
- 701106-02
- 701400-09
- 701406-11
- 701422-09
- 701901-06

GENERAL NOTES:

STATE OF ILLINOIS  
DEPARTMENT OF TRANSPORTATION  
DIVISION OF HIGHWAYS  
DISTRICT 6

EXAMINED March 23<sup>rd</sup> 20 17  
*[Signature]*  
ENGINEER OF OPERATIONS

EXAMINED March 28 20 17  
*[Signature]*  
ENGINEER OF PROJECT IMPLEMENTATION

EXAMINED MARCH 23 20 17  
*[Signature]*  
ENGINEER OF PROGRAM DEVELOPMENT

FILE NAME *	USER NAME * dudleybm	DESIGNED -	REVISED -	<b>STATE OF ILLINOIS DEPARTMENT OF TRANSPORTATION</b>	<b>INDEX OF SHEETS, STANDARDS, GENERAL NOTES, SIGNATURES, &amp; SUMMARY OF QUANTITIES</b>	F.A.I. RTE.	SECTION	COUNTY	TOTAL SHEETS	SHEET NO.
D:\OPERATIONS\Bridges\B-bridgeplans.CAD\72J88 - Morgan County substructure repairs\plan	72J88 - Morgan County substructure repairs\plan	CHECKED -	REVISED -			72	(69-8)BRR(69-9)BRR&BJR-1	MORGAN	15	2
Default	PLOT SCALE * 1/8" = 1' / in.	CHECKED -	REVISED -			CONTRACT NO. 72J88				
Default	PLOT DATE * 3/31/2017	DATE -	REVISED -			SCALE:	SHEET	OF	SHEETS	STA.

000 2.0 000

URBAN  
6-01623-6015  
100% STATE  
BRIDGE  
0014 ✓  
MORGAN

CODE NO.	ITEM	UNIT	TOTAL QUANTITY	
28100105	STONE RIPRAP, CLASS A3	SQ YD	45	45
50102400	CONCRETE REMOVAL	CU YD	1.4	1.4
50105220	PIPE CULVERT REMOVAL	FOOT	100	100
59300100	CONTROLLED LOW-STRENGTH MATERIAL	CU YD	3	3
60500305	FILLING INLETS	EACH	2	2
60618300	CONCRETE MEDIAN SURFACE, 4 INCH	SO FT	664	664
67100100	MOBILIZATION	L SUM	1	1
70100320	TRAFFIC CONTROL AND PROTECTION, STANDARD 701422	L SUM	1	1
70100700	TRAFFIC CONTROL AND PROTECTION, STANDARD 701406	L SUM	1	1
X4402020	CONCRETE MEDIAN SURFACE REMOVAL	SO FT	664	664
X5030530	FLOOR DRAIN EXTENSIONS	EACH	32	32
Z0001800	APPROACH SLAB REPAIR (PARTIAL DEPTH)	SO YD	4	4
Z0012754	STRUCTURAL REPAIR OF CONCRETE (DEPTH EQUAL TO OR LESS THAN 5 INCHES)	SO FT	680	680
Z0012755	STRUCTURAL REPAIR OF CONCRETE (DEPTH GREATER THAN 5 INCHES)	SO FT	18	18

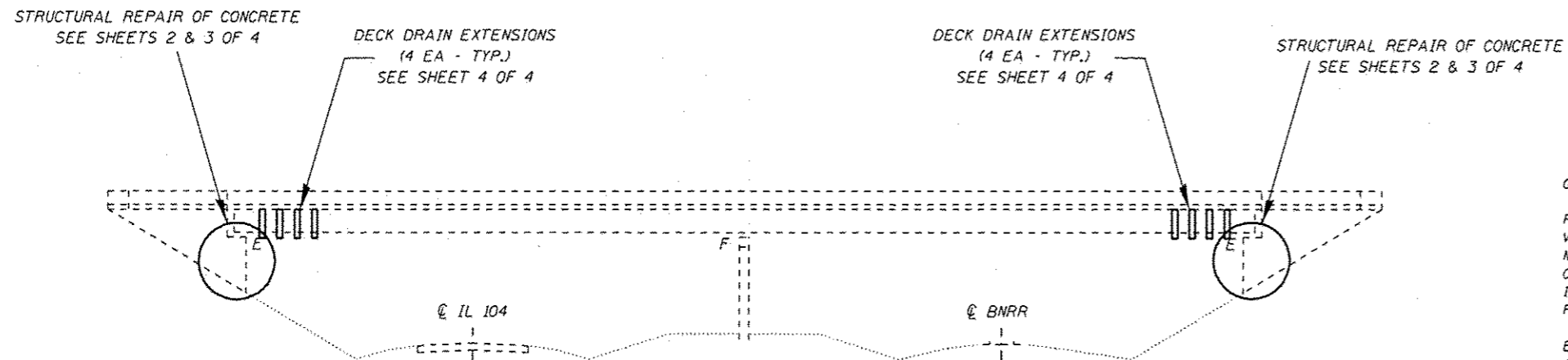
14

URBAN  
6-01623-6015  
100% STATE  
BRIDGE  
0014  
MORGAN

CODE NO.	ITEM	UNIT	TOTAL QUANTITY	
Z0016200	DECK SLAB REPAIR (PARTIAL)	SO YD	3	3
Z0021908	SILICONE JOINT SEALER, 2"	FOOT	232	232
Z0041895	POLYMER CONCRETE	CU FT	38	38
Z0048665	RAILROAD PROTECTIVE LIABILITY INSURANCE	L SUM	1	1

4

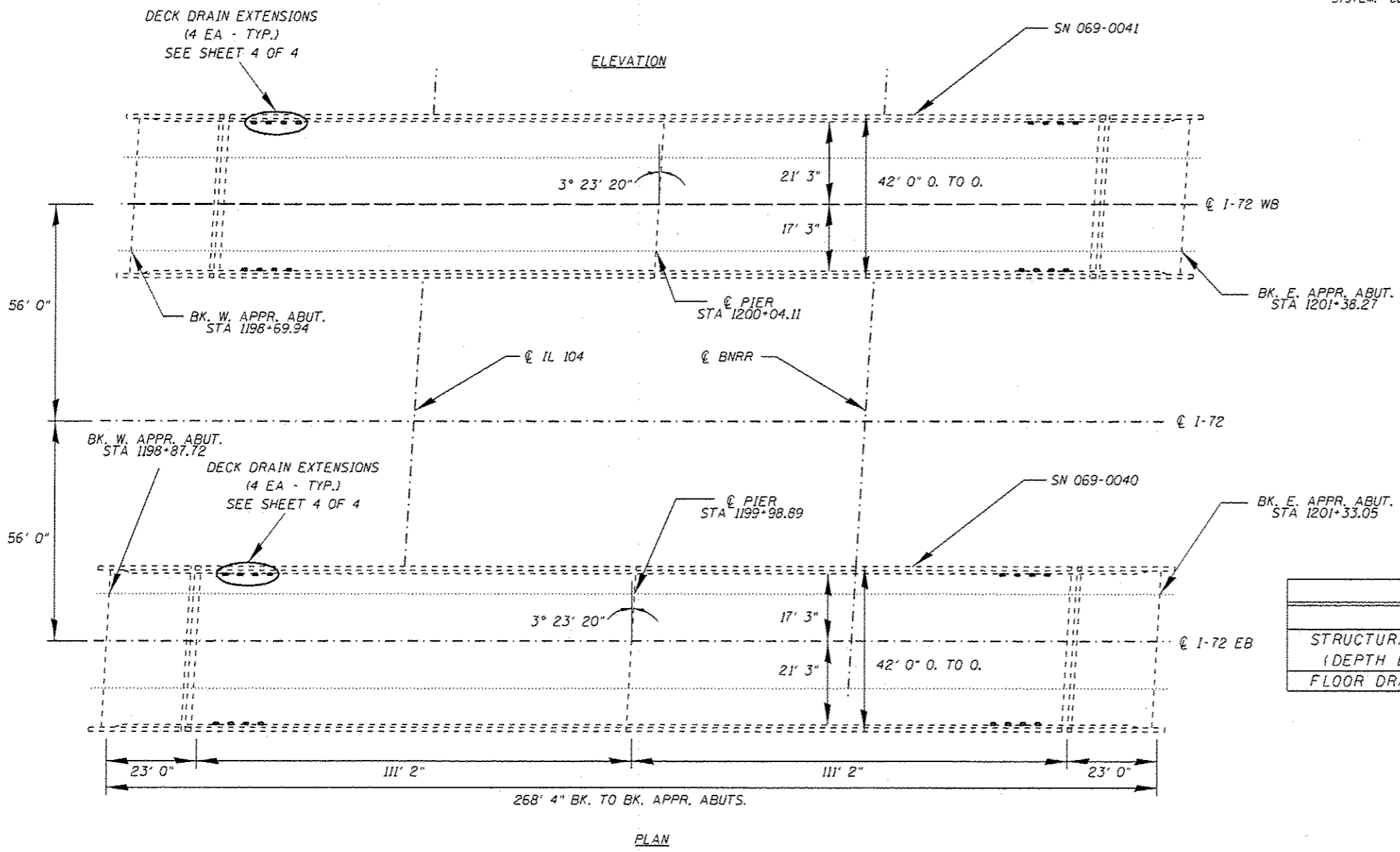
REV



**GENERAL NOTES:**

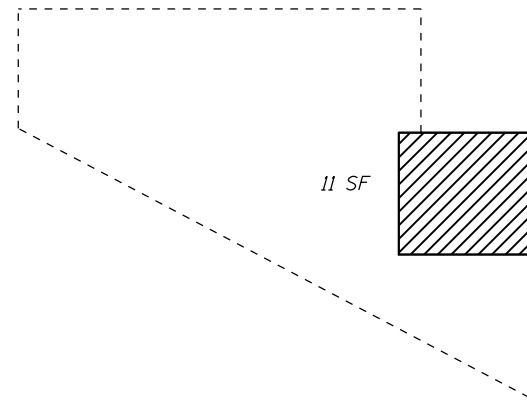
PLAN DIMENSIONS AND DETAILS RELATIVE TO EXISTING PLANS ARE SUBJECT TO NOMINAL CONSTRUCTION VARIATIONS. THE CONTRACTOR SHALL FIELD VERIFY EXISTING DIMENSIONS AND DETAILS AFFECTING NEW CONSTRUCTION AND MAKE NECESSARY APPROVED ADJUSTMENTS PRIOR TO CONSTRUCTION OR ORDERING OF MATERIALS. SUCH VARIATIONS SHALL NOT BE CAUSE FOR ADDITIONAL COMPENSATION FOR A CHANGE IN THE SCOPE OF WORK, HOWEVER, THE CONTRACTOR WILL BE PAID FOR THE QUANTITY ACTUALLY FURNISHED AT THE UNIT PRICE BID FOR THE WORK.

EXISTING REINFORCEMENT BARS EXTENDING INTO THE REMOVAL AREA SHALL BE CLEANED, STRAIGHTENED, AND INCORPORATED INTO THE NEW CONSTRUCTION. ANY REINFORCEMENT BARS THAT ARE DAMAGED DURING CONCRETE REMOVAL SHALL BE REPLACED WITH AN APPROVED BAR SPLICER OR ANCHORAGE SYSTEM. COST INCLUDED WITH CONCRETE REMOVAL.

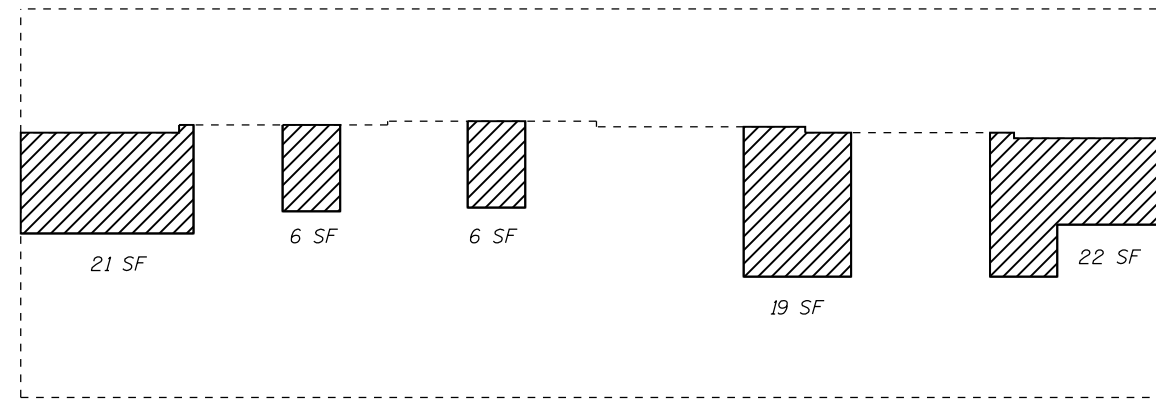


*David Carl Puzey* 5/8/17  
 Expires 11/30/18

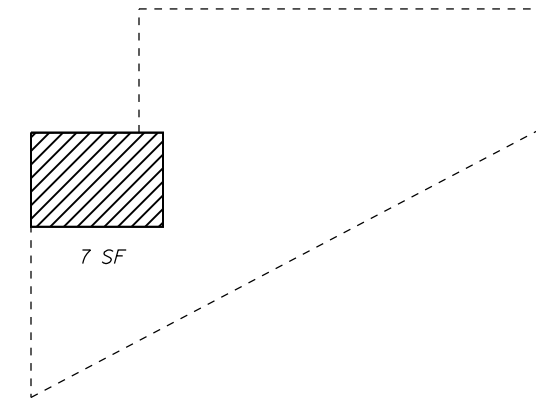
TOTAL BILL OF MATERIAL		
ITEM	UNIT	QUANTITY
STRUCTURAL REPAIR OF CONCRETE (DEPTH EQUAL TO OR LESS THAN 5")	SO. FT.	266
FLOOR DRAIN EXTENSIONS	EACH	32



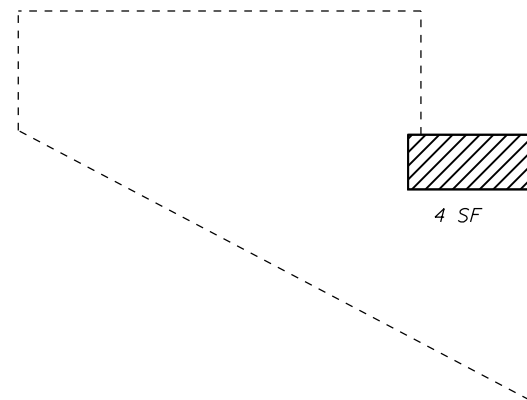
NORTH CURTAIN WALL ELEVATION  
(LOOKING SOUTH)



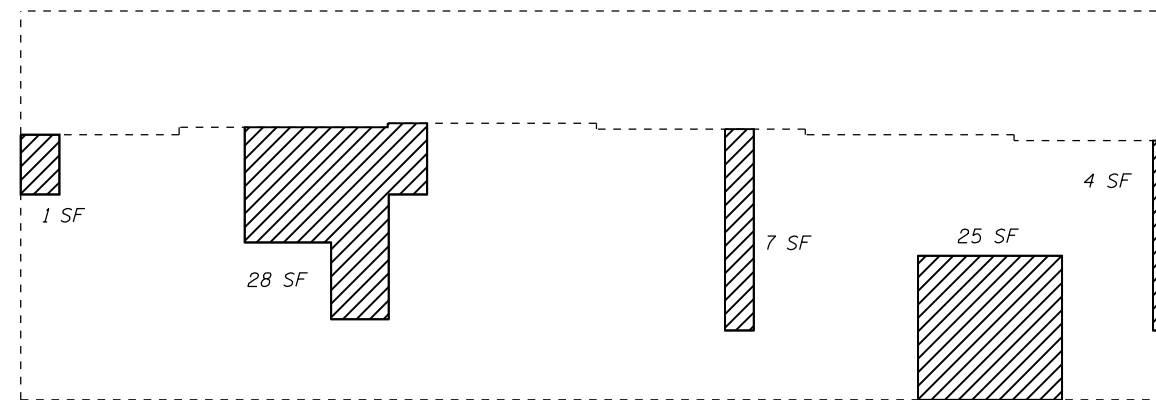
EAST ABUTMENT ELEVATION (LOOKING EAST)



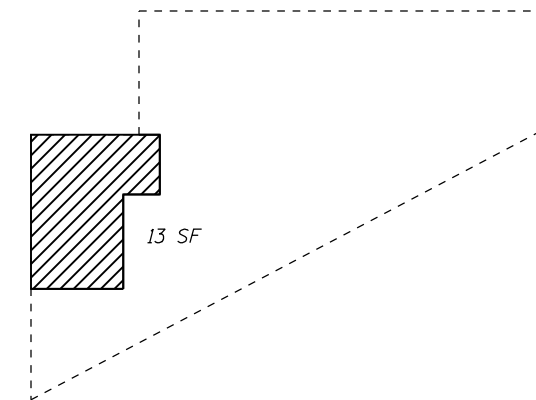
SOUTH CURTAIN WALL ELEVATION  
(LOOKING NORTH)



SOUTH CURTAIN WALL ELEVATION  
(LOOKING NORTH)



WEST ABUTMENT ELEVATION (LOOKING WEST)



NORTH CURTAIN WALL ELEVATION  
(LOOKING SOUTH)



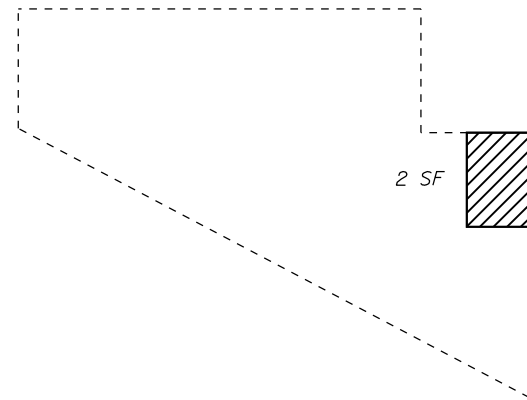
PROPOSED STRUCTURAL REPAIR OF CONCRETE  
(DEPTH EQUAL TO OR LESS THAN 5")

FILE NAME =	USER NAME = dudleybm	DESIGNED -	REVISED -
D:\OPERATIONS\Bridges\Bridgplans\CAD\72	JBB - Morgan County substructure repairs	DRAWN -	REVISED -
Default	PLOT SCALE = 100.0000' / in.	CHECKED -	REVISED -
	PLOT DATE = 4/3/2017	DATE -	REVISED -

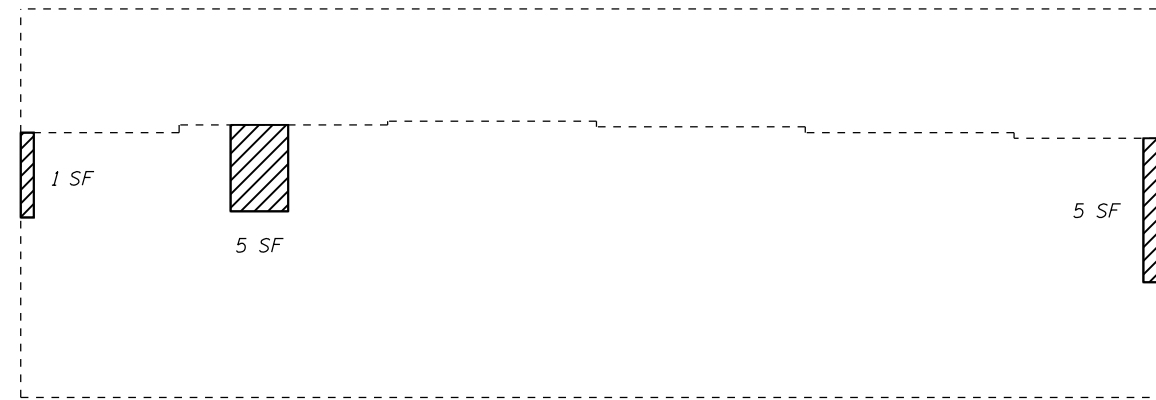
**STATE OF ILLINOIS**  
**DEPARTMENT OF TRANSPORTATION**

<b>SUBSTRUCTURE REPAIRS</b>			
<b>SN 069-0040</b>			
SCALE:	SHEET 2	OF 4 SHEETS	STA. TO STA.

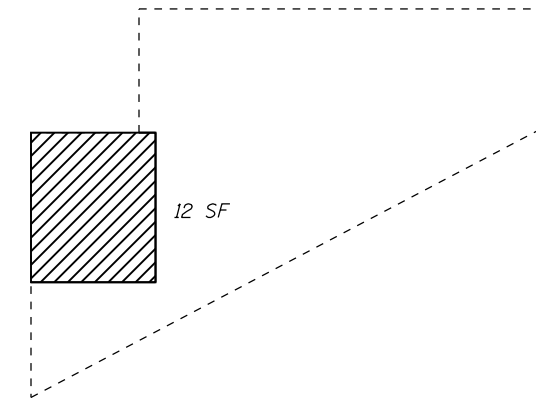
F.A.I. RTE.	SECTION	COUNTY	TOTAL SHEETS	SHEET NO.
72	(69-8)BRR(69-9)BRR&BJR-1	MORGAN	15	5
ILLINOIS FED. AID PROJECT			CONTRACT NO. 72J88	



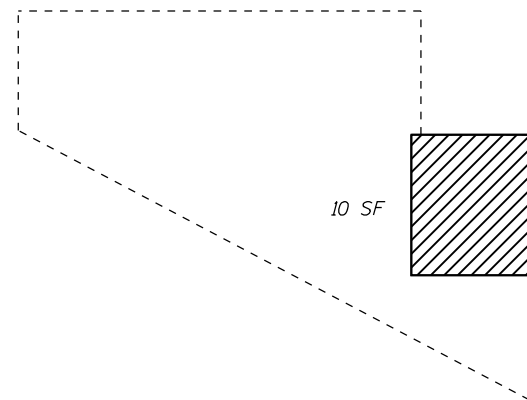
NORTH CURTAIN WALL ELEVATION  
(LOOKING SOUTH)



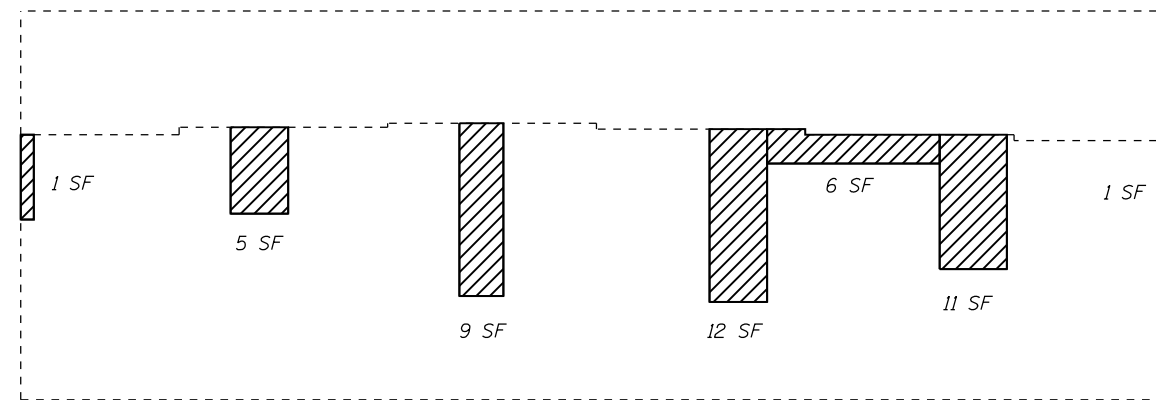
EAST ABUTMENT ELEVATION (LOOKING EAST)



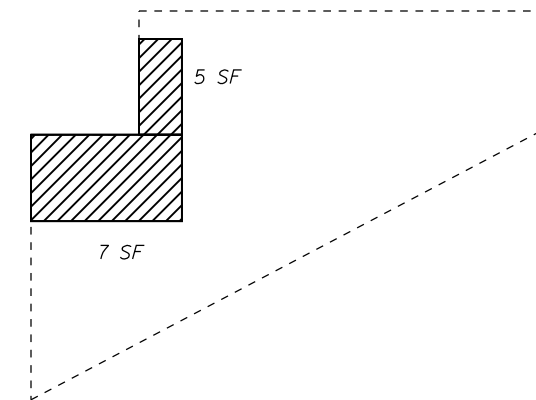
SOUTH CURTAIN WALL ELEVATION  
(LOOKING NORTH)



SOUTH CURTAIN WALL ELEVATION  
(LOOKING NORTH)



WEST ABUTMENT ELEVATION (LOOKING WEST)



NORTH CURTAIN WALL ELEVATION  
(LOOKING SOUTH)



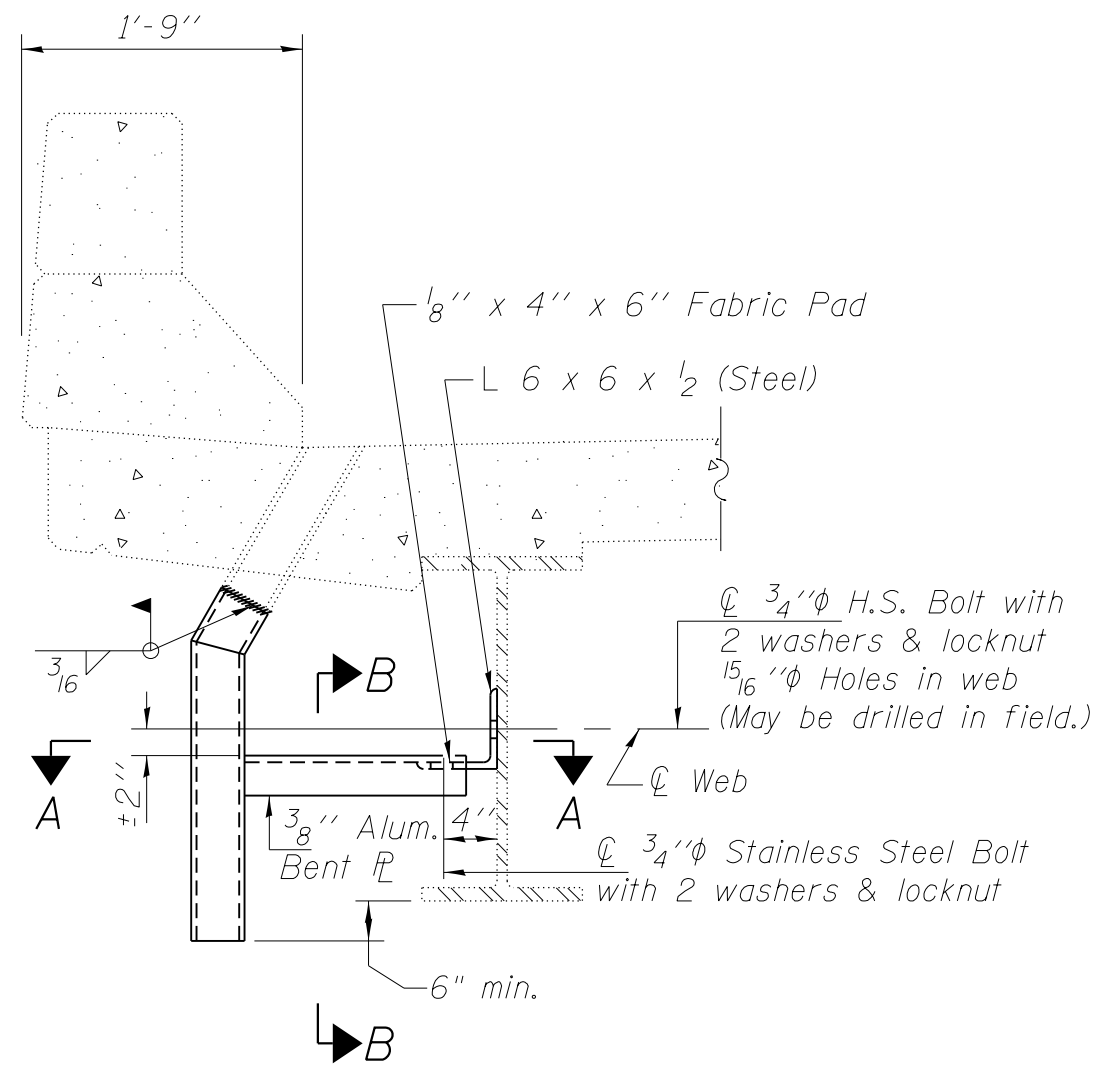
PROPOSED STRUCTURAL REPAIR OF CONCRETE  
(DEPTH EQUAL TO OR LESS THAN 5")

FILE NAME =	USER NAME = dudleybm	DESIGNED -	REVISED -
D:\OPERATIONS\Bridges\Bridgplans\CAD\72	JBB - Morgan County substructure repairs plan	DRAWN -	REVISED -
Default	PLOT SCALE = 100.0000' / in.	CHECKED -	REVISED -
	PLOT DATE = 4/3/2017	DATE -	REVISED -

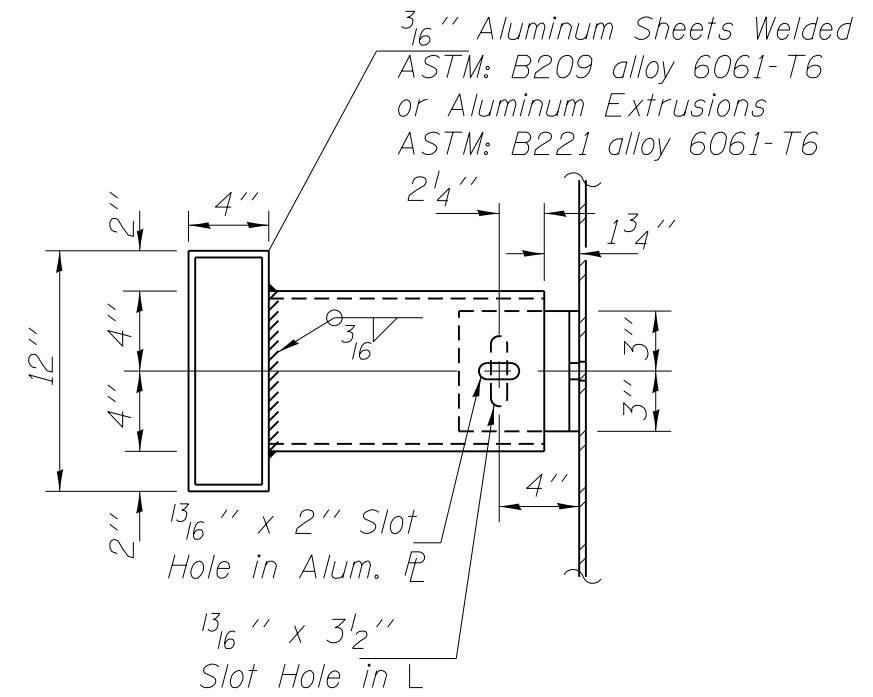
**STATE OF ILLINOIS**  
**DEPARTMENT OF TRANSPORTATION**

<b>SUBSTRUCTURE REPAIRS</b>			
<b>SN 069-0041</b>			
SCALE:	SHEET 3	OF 4 SHEETS	STA. TO STA.

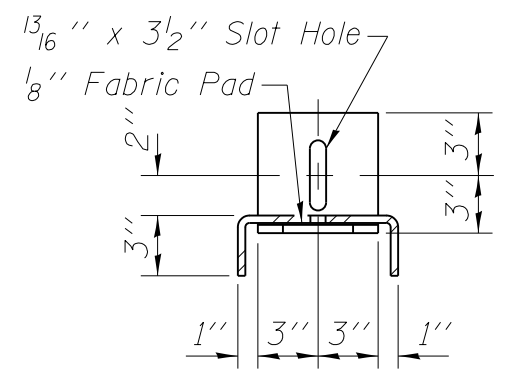
F.A.I. RTE.	SECTION	COUNTY	TOTAL SHEETS	SHEET NO.
72	(69-8)BRR(69-9)BRR&BJR-1	MORGAN	15	6
CONTRACT NO. 72J88				
ILLINOIS FED. AID PROJECT				



SECTION AT DRAIN



SECTION A-A



SECTION B-B

FILE NAME =	USER NAME = dudleybm	DESIGNED -	REVISED -
D:\OPERATIONS\Bridges\Bridgplans\CAD\72J88 - Morgan County substructure repairs\plan	DRAWN -	CHECKED -	REVISED -
Default	PLOT SCALE = 100.0000' / in.	DATE -	REVISED -
	PLOT DATE = 4/3/2017		

STATE OF ILLINOIS  
DEPARTMENT OF TRANSPORTATION

FLOOR DRAIN EXTENSION DETAIL  
SN 069-0040 & 0041

SCALE: SHEET 4 OF 4 SHEETS STA. TO STA.

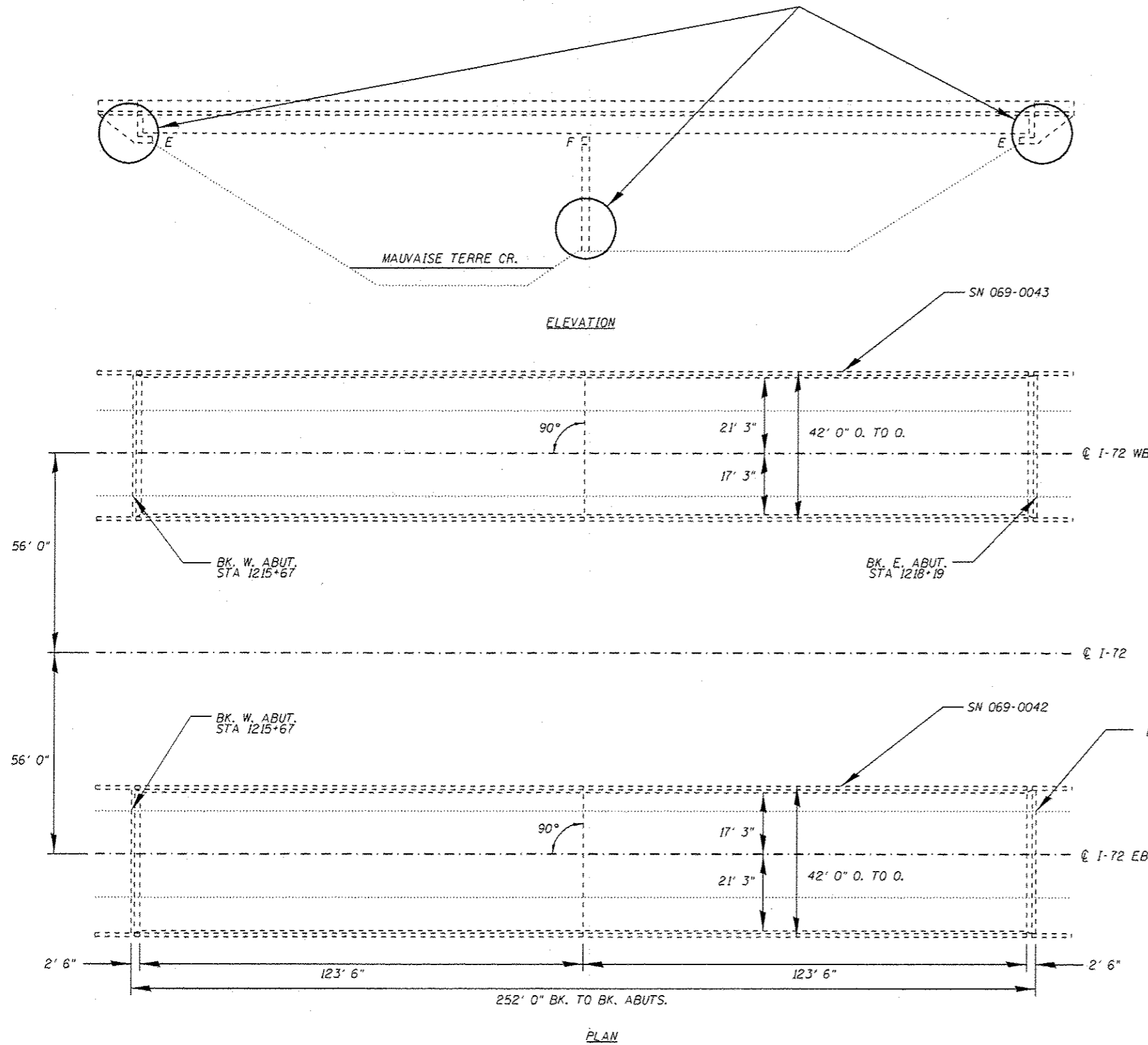
F.A.I. RTE.	SECTION	COUNTY	TOTAL SHEETS	SHEET NO.
72	(69-8)BRR(69-9)BRR&BJR-1	MORGAN	15	7
CONTRACT NO. 72J88				
ILLINOIS FED. AID PROJECT				

STRUCTURAL REPAIR OF CONCRETE  
SEE SHEETS 2 THRU 4 OF 4

GENERAL NOTES:

PLAN DIMENSIONS AND DETAILS RELATIVE TO EXISTING PLANS ARE SUBJECT TO NOMINAL CONSTRUCTION VARIATIONS. THE CONTRACTOR SHALL FIELD VERIFY EXISTING DIMENSIONS AND DETAILS AFFECTING NEW CONSTRUCTION AND MAKE NECESSARY APPROVED ADJUSTMENTS PRIOR TO CONSTRUCTION OR ORDERING OF MATERIALS. SUCH VARIATIONS SHALL NOT BE CAUSE FOR ADDITIONAL COMPENSATION FOR A CHANGE IN THE SCOPE OF WORK, HOWEVER, THE CONTRACTOR WILL BE PAID FOR THE QUANTITY ACTUALLY FURNISHED AT THE UNIT PRICE BID FOR THE WORK.

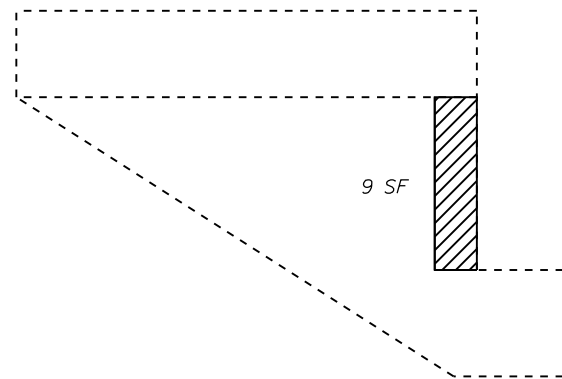
EXISTING REINFORCEMENT BARS EXTENDING INTO THE REMOVAL AREA SHALL BE CLEANED, STRAIGHTENED, AND INCORPORATED INTO THE NEW CONSTRUCTION. ANY REINFORCEMENT BARS THAT ARE DAMAGED DURING CONCRETE REMOVAL SHALL BE REPLACED WITH AN APPROVED BAR SPLICER OR ANCHORAGE SYSTEM. COST INCLUDED WITH CONCRETE REMOVAL.



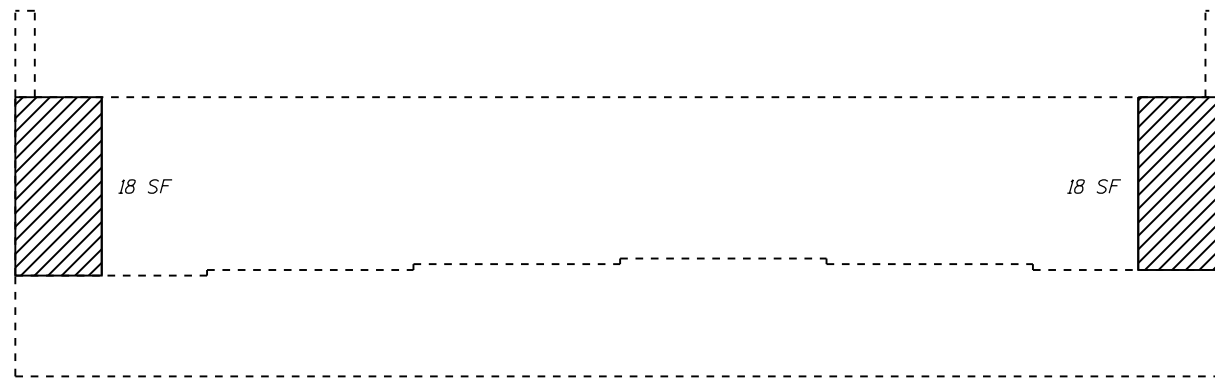
*David Carl Puzey* 5/8/17  
Expires 11/30/18

TOTAL BILL OF MATERIAL		
ITEM	UNIT	QUANTITY
STRUCTURAL REPAIR OF CONCRETE (DEPTH EQUAL TO OR LESS THAN 5")	SO. FT.	163
STRUCTURAL REPAIR OF CONCRETE (DEPTH GREATER LESS THAN 5")	SO. FT.	18

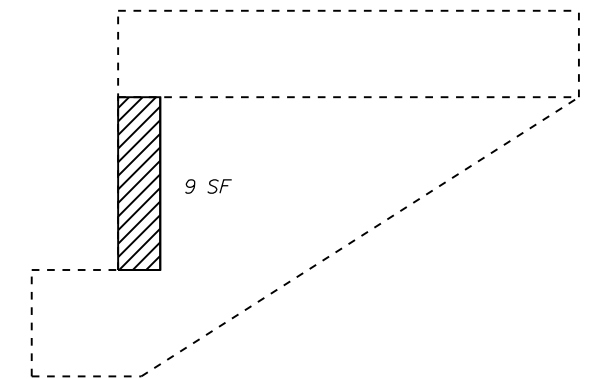




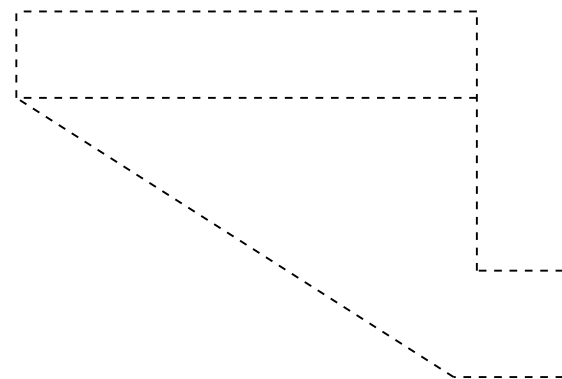
NORTH CURTAIN WALL ELEVATION  
(LOOKING SOUTH)



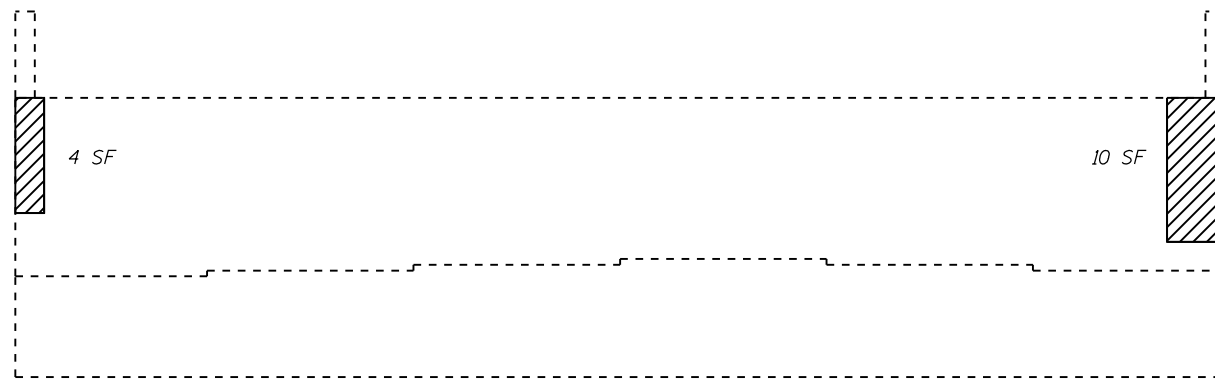
EAST ABUTMENT ELEVATION (LOOKING EAST)



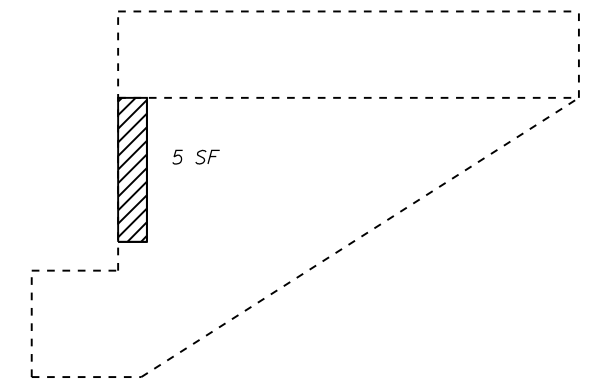
SOUTH CURTAIN WALL ELEVATION  
(LOOKING NORTH)



SOUTH CURTAIN WALL ELEVATION  
(LOOKING NORTH)



WEST ABUTMENT ELEVATION (LOOKING WEST)



NORTH CURTAIN WALL ELEVATION  
(LOOKING SOUTH)



PROPOSED STRUCTURAL REPAIR OF CONCRETE  
(DEPTH EQUAL TO OR LESS THAN 5")



PROPOSED STRUCTURAL REPAIR OF CONCRETE  
(DEPTH GREATER THAN 5")

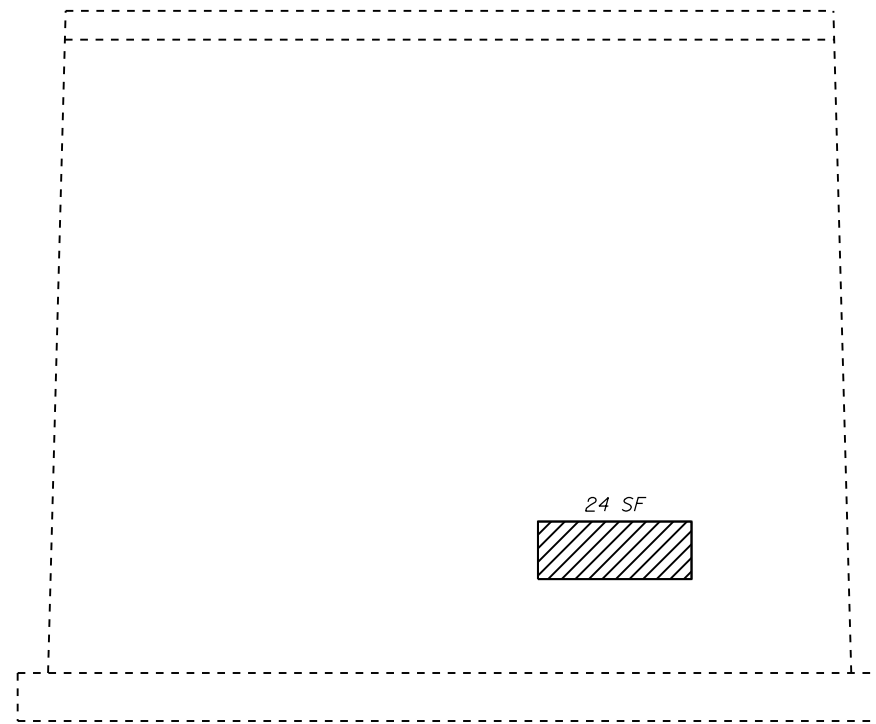
FILE NAME =	USER NAME = dudleybm	DESIGNED -	REVISED -
D:\OPERATIONS\Bridges\Bridgplans\CAD\72	J88 - Morgan County substructure repairs	DRAWN -	REVISED -
Default	PLOT SCALE = 100.0000' / in.	CHECKED -	REVISED -
	PLOT DATE = 4/3/2017	DATE -	REVISED -

**STATE OF ILLINOIS**  
**DEPARTMENT OF TRANSPORTATION**

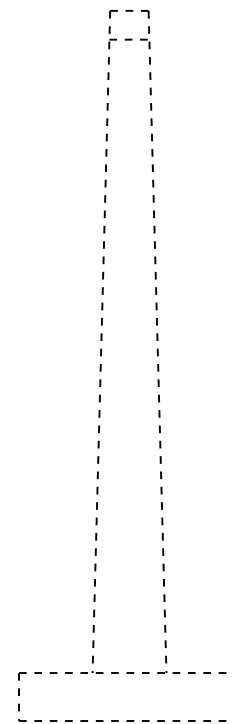
**SUBSTRUCTURE REPAIRS**  
**SN 069-0042**

SCALE: SHEET 2 OF 4 SHEETS STA. TO STA.

F.A.I. RTE.	SECTION	COUNTY	TOTAL SHEETS	SHEET NO.
72	(69-8)BRR(69-9)BRR&BJR-1	MORGAN	15	9
CONTRACT NO. 72J88			ILLINOIS FED. AID PROJECT	



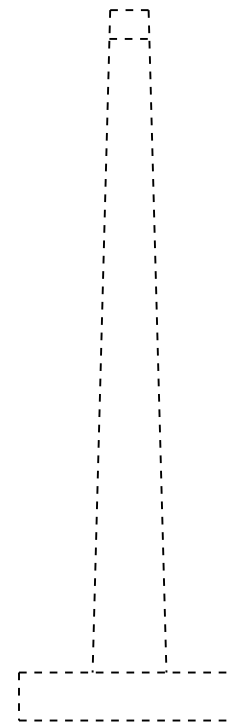
WEST PIER ELEVATION (LOOKING EAST)



SIDE ELEVATION (LOOKING NORTH)



EAST PIER ELEVATION (LOOKING WEST)



SIDE ELEVATION (LOOKING SOUTH)



PROPOSED STRUCTURAL REPAIR OF CONCRETE  
(DEPTH EQUAL TO OR LESS THAN 5")



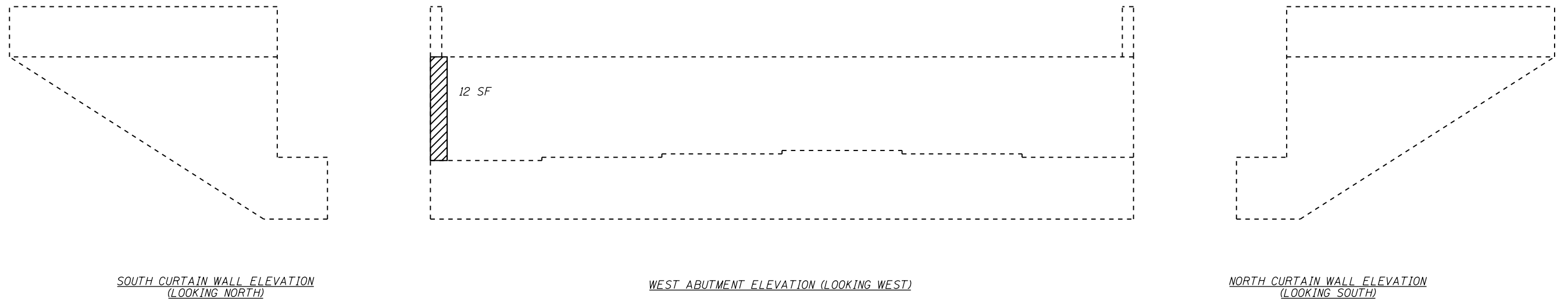
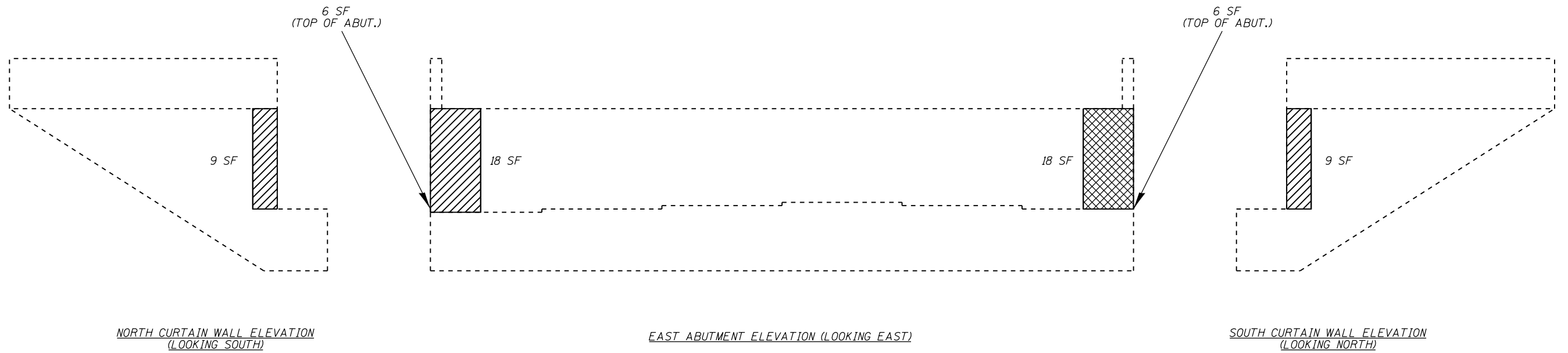
PROPOSED STRUCTURAL REPAIR OF CONCRETE  
(DEPTH GREATER THAN 5")

FILE NAME =	USER NAME = dudleybm	DESIGNED -	REVISED -
D:\OPERATIONS\Bridges\Bridgeplans\CAD\72	J88 - Morgan County substructure repairs\plan	DRAWN -	REVISED -
Default	PLOT SCALE = 100.0000' / in.	CHECKED -	REVISED -
	PLOT DATE = 4/3/2017	DATE -	REVISED -

**STATE OF ILLINOIS  
DEPARTMENT OF TRANSPORTATION**

<b>SUBSTRUCTURE REPAIRS</b>			
<b>SN 069-0042</b>			
SCALE:	SHEET 3	OF 4 SHEETS	STA. TO STA.

F.A.I. RTE.	SECTION	COUNTY	TOTAL SHEETS	SHEET NO.
72	(69-8)BRR(69-9)BRR&BJR-1	MORGAN	15	10
CONTRACT NO. 72J88				
ILLINOIS FED. AID PROJECT				



PROPOSED STRUCTURAL REPAIR OF CONCRETE  
(DEPTH EQUAL TO OR LESS THAN 5")



PROPOSED STRUCTURAL REPAIR OF CONCRETE  
(DEPTH GREATER THAN 5")

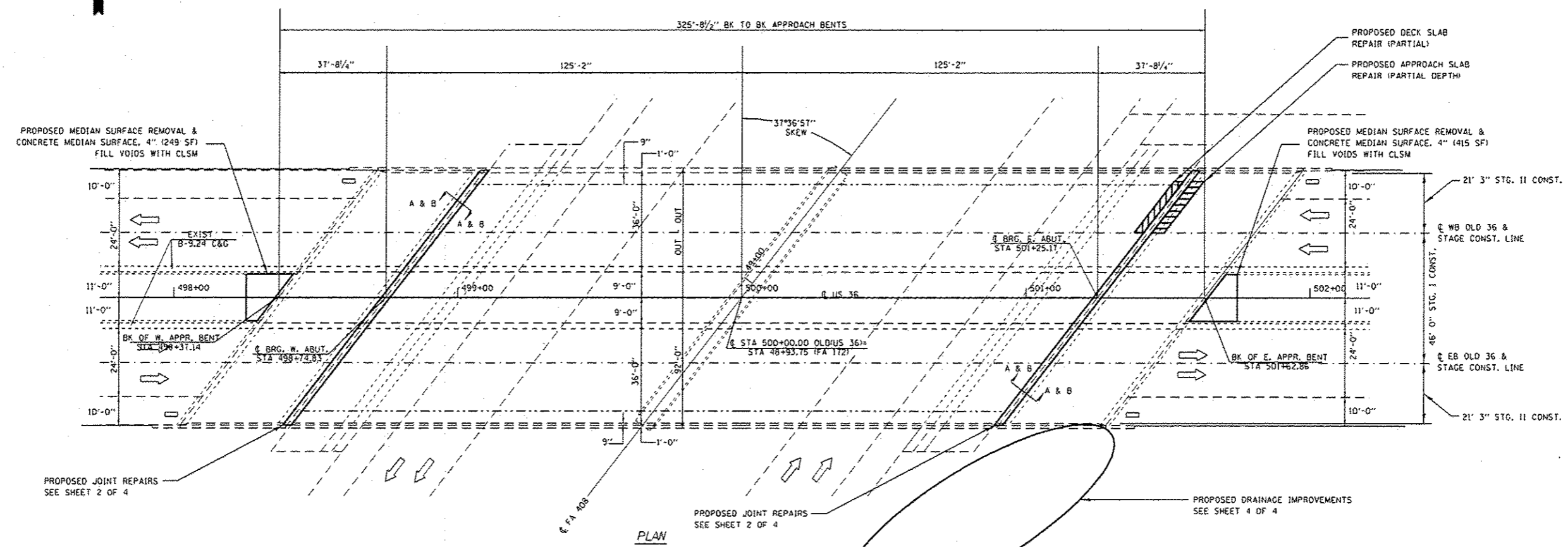
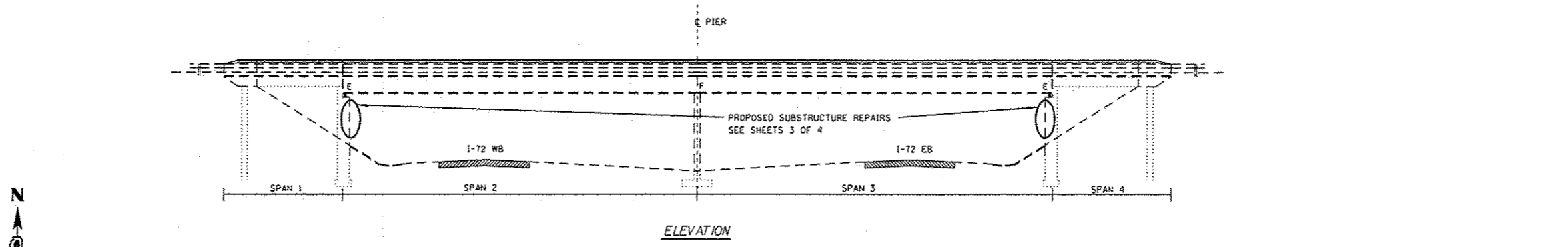
FILE NAME =	USER NAME = dudleybm	DESIGNED -	REVISED -
D:\OPERATIONS\Bridges\Bridgplans\CAD\72J88 - Morgan County substructure repairs\plan	DRAWN -	CHECKED -	REVISED -
Default	PLOT SCALE = 100.0000' / in.	DATE -	REVISED -
	PLOT DATE = 4/3/2017		

**STATE OF ILLINOIS  
DEPARTMENT OF TRANSPORTATION**

**SUBSTRUCTURE REPAIRS  
SN 069-0043**

SCALE: SHEET 4 OF 4 SHEETS STA. TO STA.

F.A.I. RTE.	SECTION	COUNTY	TOTAL SHEETS	SHEET NO.
72	(69-8)BRR(69-9)BRR&BJR-1	MORGAN	15	11
ILLINOIS FED. AID PROJECT			CONTRACT NO. 72J88	



TOTAL BILL OF MATERIAL		
ITEM	UNIT	QUANTITY
CONCRETE REMOVAL	CU. YD.	1.4
POLYMER CONCRETE	CU. FT.	38
SILICONE JOINT SEALER, 2"	FOOT	232
STRUCTURAL REPAIR OF CONCRETE (DEPTH EQUAL TO OR LESS THAN 5")	SO. FT.	251
CONCRETE MEDIAN SURFACE REMOVAL	SO. FT.	664
CONCRETE MEDIAN SURFACE, 4 INCH	SO. FT.	664
FILLING INLETS	EACH	2
CONTROLLED LOW-STRENGTH MATERIAL	CU. YD.	3
PIPE CULVERT REMOVAL	FOOT	100
STONE RIPRAP, CLASS A3	TON	45
DECK SLAB REPAIR (PARTIAL)	SO. YD.	3
APPROACH SLAB REPAIR (PARTIAL DEPTH)	SO. YD.	4

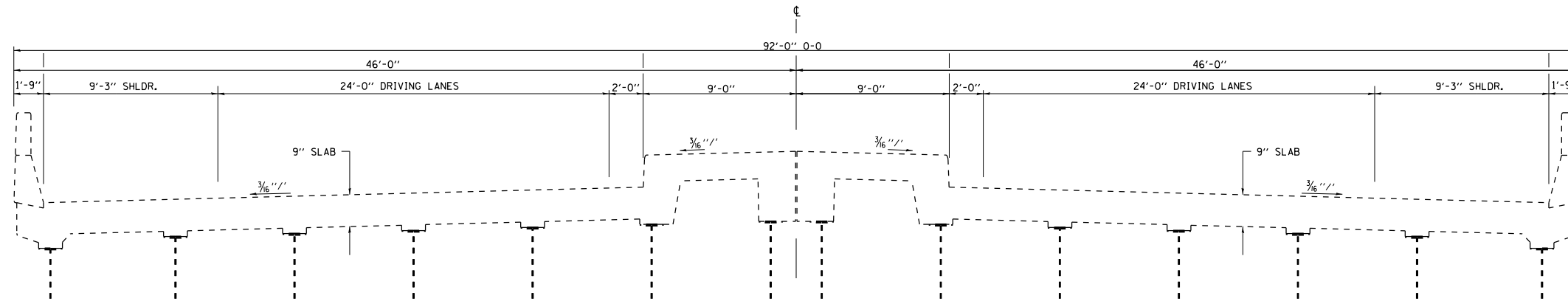


*David Carl Puzey* 5/8/17  
Expires 11/30/18

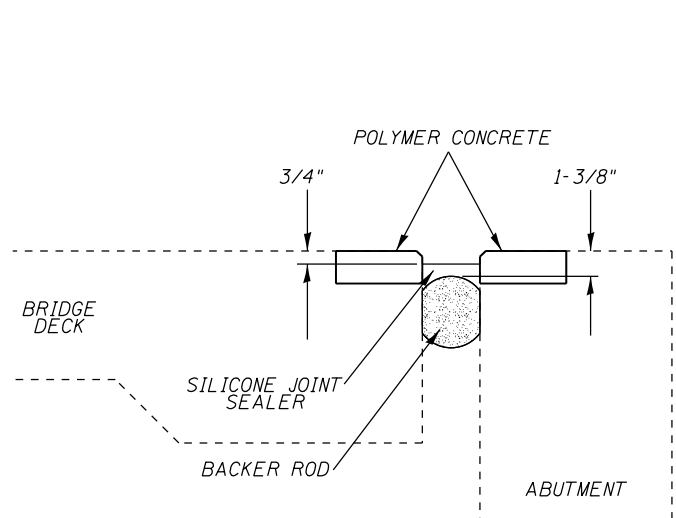
GENERAL NOTES:

PLAN DIMENSIONS AND DETAILS RELATIVE TO EXISTING PLANS ARE SUBJECT TO NOMINAL CONSTRUCTION VARIATIONS. THE CONTRACTOR SHALL FIELD VERIFY EXISTING DIMENSIONS AND DETAILS AFFECTING NEW CONSTRUCTION AND MAKE NECESSARY APPROVED ADJUSTMENTS PRIOR TO CONSTRUCTION OR ORDERING OF MATERIALS. SUCH VARIATIONS SHALL NOT BE CAUSE FOR ADDITIONAL COMPENSATION FOR A CHANGE IN THE SCOPE OF WORK, HOWEVER, THE CONTRACTOR WILL BE PAID FOR THE QUANTITY ACTUALLY FURNISHED AT THE UNIT PRICE BID FOR THE WORK.

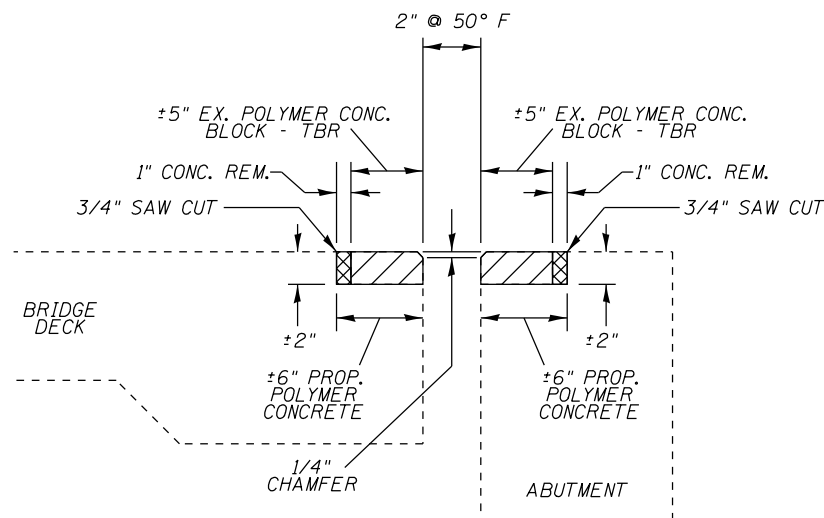
EXISTING REINFORCEMENT BARS EXTENDING INTO THE REMOVAL AREA SHALL BE CLEANED, STRAIGHTENED, AND INCORPORATED INTO THE NEW CONSTRUCTION. ANY REINFORCEMENT BARS THAT ARE DAMAGED DURING CONCRETE REMOVAL SHALL BE REPLACED WITH AN APPROVED BAR SPLICER OR ANCHORAGE SYSTEM. COST INCLUDED WITH CONCRETE REMOVAL.



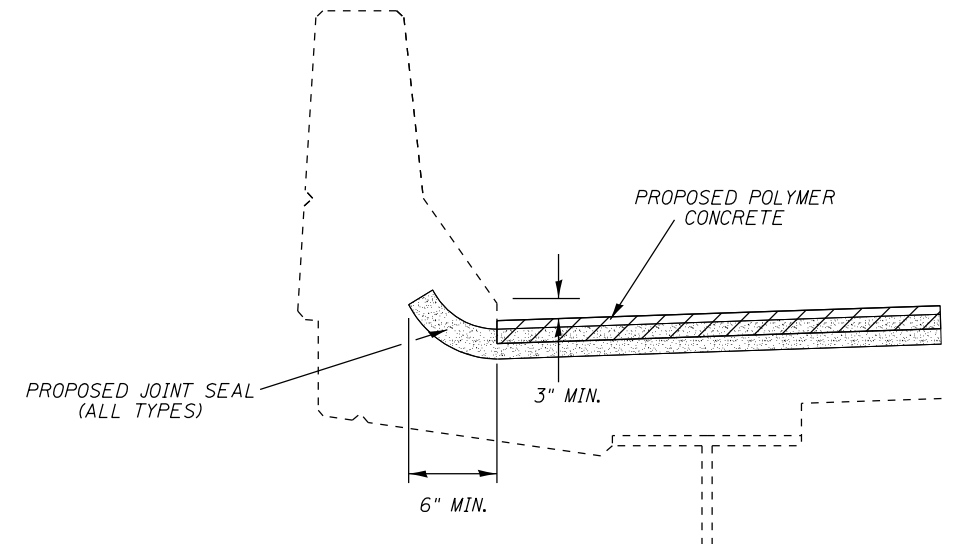
EXISTING DECK CROSS SECTION



SECTION A-A:  
SILICONE JOINT SEALER DETAIL



SECTION B-B  
PROPOSED POLYMER CONCRETE  
CROSS SECTION



TYPICAL PARAPET CROSS SECTION:  
JOINT SEALER END TREATMENT

NOTES:

- 1/4" CHAMFER MAY BE ACHIEVED BY GRINDING AFTER POLYMER CONCRETE HAS CURED.
- JOINT WIDTHS SPECIFIED IN PLANS ARE AT 50° F. THE CONTRACTOR SHALL INSTALL BACKER ROD HAVING A DIAMETER 25% GREATER THAN THE JOINT OPENING AT THE TIME OF INSTALLATION.
- IF UNSOUND CONCRETE IS DISCOVERED BENEATH THE POLYMER CONCRETE REMOVAL AREA, THE CONCRETE SHALL BE REPAIRED USING THE STRUCTURAL REPAIR OF CONCRETE PAY ITEMS. THE CONTRACTOR SHALL NOT PLACE POLYMER CONCRETE ON TOP OF REPAIRED AREAS OF CONCRETE UNTIL THEY HAVE CURED SUFFICIENTLY PER THE POLYMER CONCRETE MANUFACTURER'S RECOMMENDATION. THE CONTRACTOR MAY ELECT TO USE POLYMER CONCRETE IN THESE REPAIRS, BUT NO ADDITIONAL COMPENSATION WILL BE ALLOWED BEYOND THE BID PRICE FOR STRUCTURAL REPAIR OF CONCRETE.

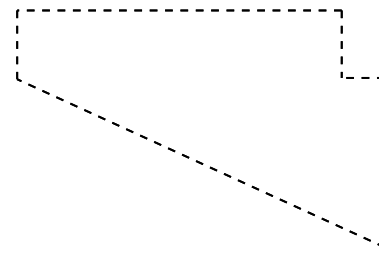
FILE NAME =	USER NAME = dudleybm	DESIGNED -	REVISED -
D:\OPERATIONS\Bridges\Bridgplans\CAD\72	J88 - Morgan County substructure repairs	DRAWN -	REVISED -
Default	PLOT SCALE = 100.0000' / in.	CHECKED -	REVISED -
	PLOT DATE = 4/3/2017	DATE -	REVISED -

STATE OF ILLINOIS  
DEPARTMENT OF TRANSPORTATION

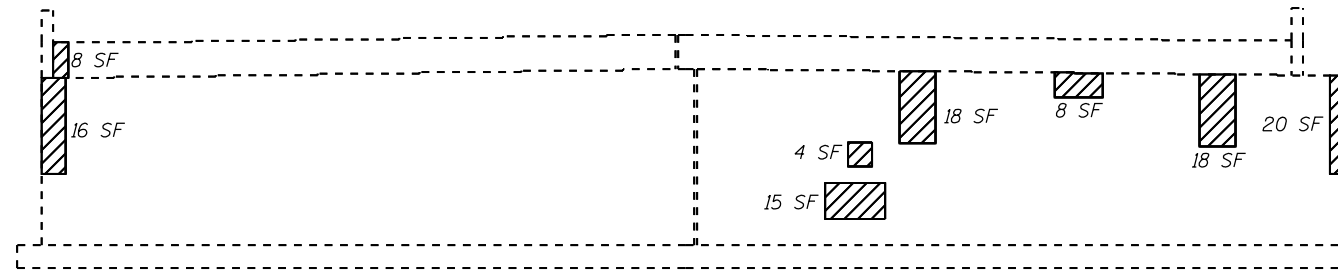
JOINT REPAIR DETAILS  
SN 069-0044

SCALE: SHEET 2 OF 4 SHEETS STA. TO STA.

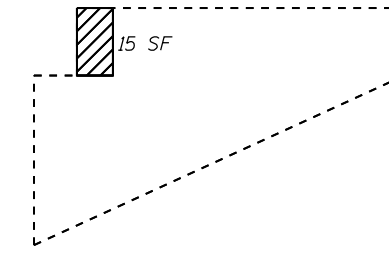
F.A.I. RTE.	SECTION	COUNTY	TOTAL SHEETS	SHEET NO.
72	(69-8)BRR(69-9)BRR&BJR-1	MORGAN	15	13
ILLINOIS FED. AID PROJECT			CONTRACT NO. 72J88	



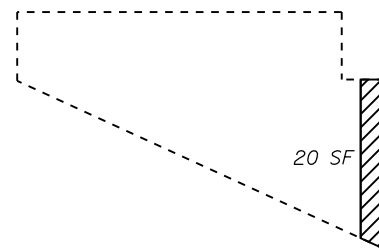
NORTH CURTAIN WALL ELEVATION  
(LOOKING SOUTH)



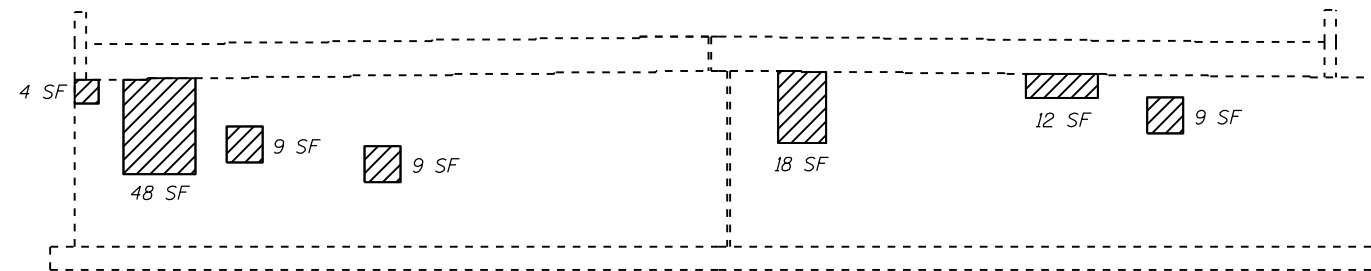
EAST ABUTMENT ELEVATION (LOOKING EAST)



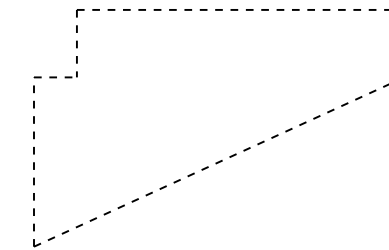
SOUTH CURTAIN WALL ELEVATION  
(LOOKING NORTH)



SOUTH CURTAIN WALL ELEVATION  
(LOOKING NORTH)



WEST ABUTMENT ELEVATION (LOOKING WEST)



NORTH CURTAIN WALL ELEVATION  
(LOOKING SOUTH)



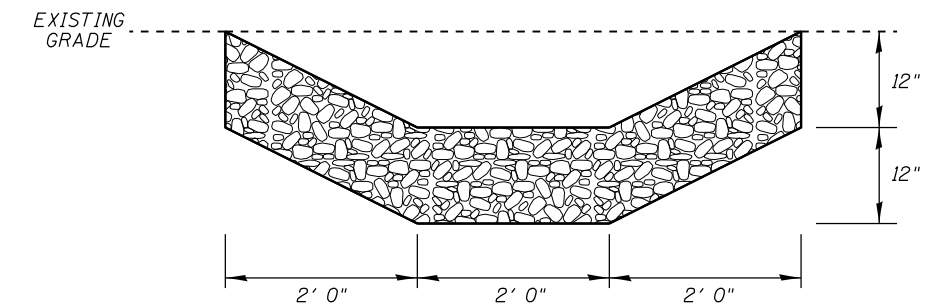
PROPOSED STRUCTURAL REPAIR OF CONCRETE  
(DEPTH EQUAL TO OR LESS THAN 5")

FILE NAME =	USER NAME = dudleybm	DESIGNED -	REVISED -
D:\OPERATIONS\Bridges\Bridgplans\CAD\72	JBB - Morgan County substructure repairs plan	DRAWN -	REVISED -
Default	PLOT SCALE = 100.0000' / in.	CHECKED -	REVISED -
	PLOT DATE = 4/3/2017	DATE -	REVISED -

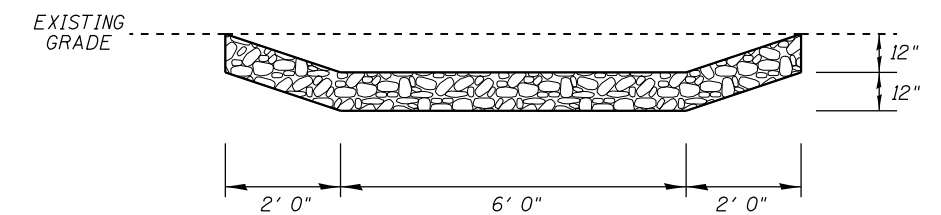
STATE OF ILLINOIS  
DEPARTMENT OF TRANSPORTATION

<b>SUBSTRUCTURE REPAIRS</b>			
<b>SN 069-0044</b>			
SCALE:	SHEET 3	OF 4 SHEETS	STA. TO STA.

F.A.I. RTE.	SECTION	COUNTY	TOTAL SHEETS	SHEET NO.
72	(69-8)BRR(69-9)BRR&BJR-1	MORGAN	15	14
CONTRACT NO. 72J88				
ILLINOIS FED. AID PROJECT				



SECTION C-C



SECTION D-D

**GENERAL NOTES:**

1. THE EXACT EXISTING PIPE ALIGNMENT AND OUTLET LOCATION COULD NOT BE VERIFIED. THE PIPE IS VISIBLE IN A SINKHOLE HALFWAY UP THE EXISTING SLOPE AND THE EXISTING ALIGNMENT WAS APPROXIMATED BASED ON SITE CONDITIONS. THE DEPTH OF THE EXISTING PIPE IS ESTIMATED TO BE ±3'. MINOR DEVIATIONS FROM EXISTING INFORMATION SHOWN SHALL NOT BE CAUSE FOR ADDITIONAL COMPENSATION.
2. ALL EXCAVATION FOR RIPRAP PLACEMENT SHALL BE CONSIDERED INCIDENTAL AND SHALL NOT BE MEASURED FOR PAYMENT SEPARATELY. EXCAVATED MATERIAL MAY BE USED TO BACKFILL VOIDS RESULTING FROM REMOVAL OF THE EXISTING CMP. ANY SURPLUS EXCAVATED MATERIAL SHALL BE DISPOSED OF. COSTS ASSOCIATED WITH MATERIAL DISPOSAL SHALL BE INCLUDED IN THE BID PRICE FOR STONE RIPRAP, CLASS A3.
3. ANY BRUSH OR STUMP REMOVAL NECESSARY FOR CONSTRUCTION OF RIPRAP AREAS SHALL BE CONSIDERED INCIDENTAL TO RIPRAP PLACEMENT AND SHALL NOT BE MEASURED FOR PAYMENT SEPARATELY.
4. FILLING OF INLETS SHALL BE PER SPECIAL PROVISION.
5. ALL DISTURBED AREAS SHALL BE SEEDED PER SECTION 250 OF THE STANDARD SPECIFICATIONS. CLASS 2 SEED MIX SHALL BE USED. ALL WORK AND MATERIALS ASSOCIATED WITH THIS NOTE SHALL BE CONSIDERED INCIDENTAL TO THE STONE RIPRAP, CLASS A3 PAY ITEM AND SHALL NOT BE MEASURED FOR PAYMENT SEPARATELY.

**BILL OF MATERIAL**

ITEM	UNIT	QUANTITY
FILLING INLETS	EACH	2
CONTROLLED LOW-STRENGTH MATERIAL	CU YD	3
PIPE CULVERT REMOVAL	FOOT	100
STONE RIPRAP, CLASS A3	TON	45

FILE NAME =	USER NAME = dudleybm	DESIGNED -	REVISED -
D:\OPERATIONS\Bridges\Bridgplans\CAD\72J88 - Morgan County substructure repairs\plan	DRAWN -	CHECKED -	REVISED -
Default	PLOT SCALE = 100.0000' / in.	DATE -	REVISED -
	PLOT DATE = 4/3/2017		

**STATE OF ILLINOIS  
DEPARTMENT OF TRANSPORTATION**

**SLOPE REPAIRS  
SN 069-0044**

SCALE: SHEET 4 OF 4 SHEETS STA. TO STA.

F.A.I. RTE.	SECTION	COUNTY	TOTAL SHEETS	SHEET NO.
72	(69-8)BRR(69-9)BRR&BJR-1	MORGAN	15	15
				CONTRACT NO. 72J88
ILLINOIS FED. AID PROJECT				