

STATE OF ILLINOIS
DEPARTMENT OF TRANSPORTATION
DIVISION OF HIGHWAYS
PROPOSED
CONTRACT MAINTENANCE

FOR INDEX OF SHEETS, SEE SHEET NO. 2

FAP 67 (IL 125)
SECTION (86) BJR-1

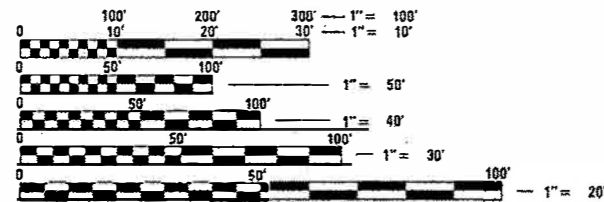
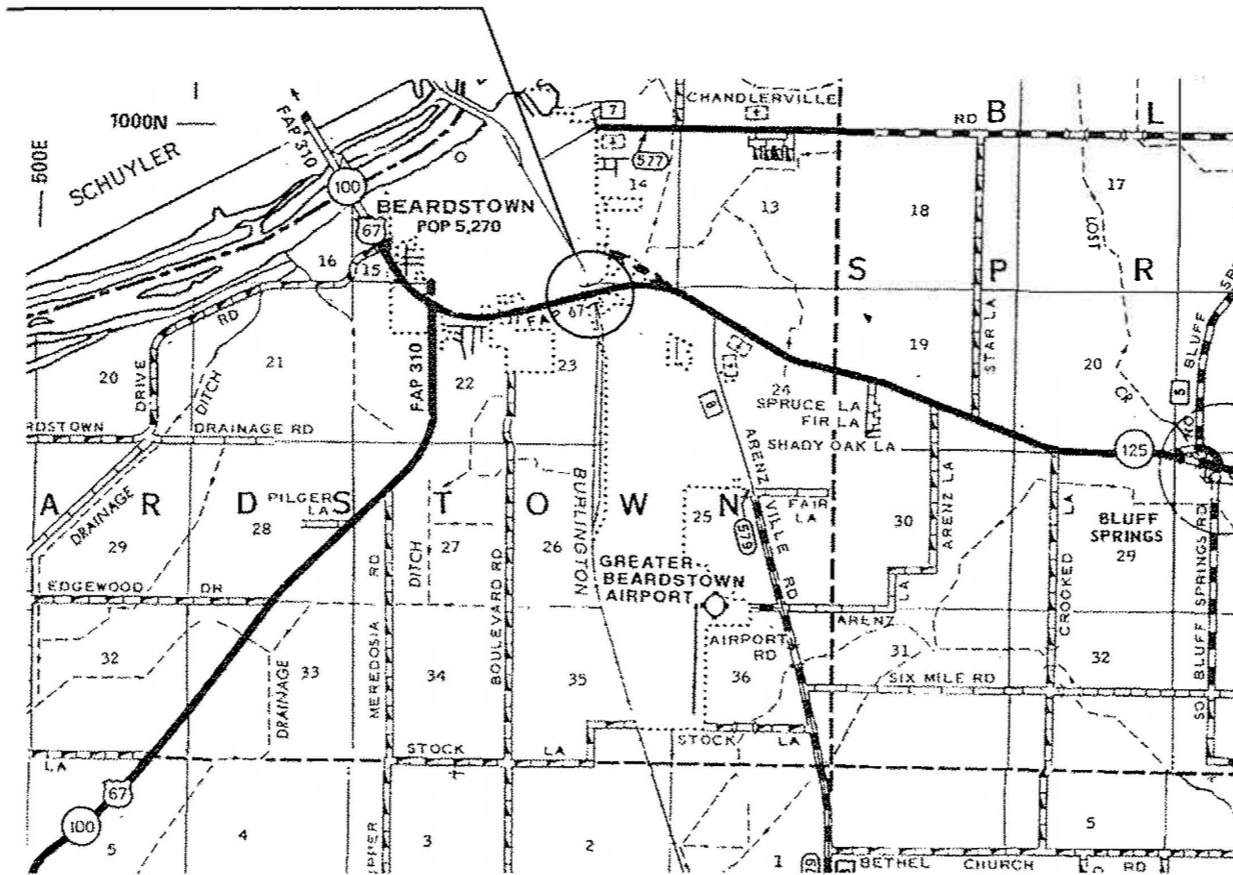
BRIDGE JOINT REPAIRS
CASS COUNTY

C-96-053-17

F.A.P. RTE.	SECTION	COUNTY	TOTAL SHEETS	SHEET NO.
67	(86) BJR-1	CASS	4	1
		ILLINOIS	CONTRACT NO. 72J89	



PROJECT LOCATION - SN 009-0002
 IL 125 OVER BNSF RR
 1 MI E OF US 67 IN BEARDSTOWN



FULL SIZE PLANS HAVE BEEN PREPARED USING STANDARD ENGINEERING SCALES. REDUCED SIZED PLANS WILL NOT CONFORM TO STANDARD SCALES. IN MAKING MEASUREMENTS ON REDUCED PLANS, THE ABOVE SCALES MAY BE USED.

J.U.L.I.E.
 JOINT UTILITY LOCATION INFORMATION FOR EXCAVATION
 1-800-892-0123
 OR 811

BRIDGE MAINTENANCE ENGINEER - BRANDON DUDLEY (217) 785-9290

GROSS LENGTH = 487 FT = 0.09 MI
 NET LENGTH = 487 FT = 0.09 MI

CONTRACT NO. 72J89

STATE OF ILLINOIS
 DEPARTMENT OF TRANSPORTATION
 DIVISION OF HIGHWAYS

SUBMITTED 3 April 2017
[Signature] REGION FOUR ENGINEER

May 12 2017
Katherine M. Adams, P.E. ENGINEER OF DESIGN AND ENVIRONMENT

May 12 2017
[Signature] DIRECTOR OF HIGHWAYS, CHIEF ENGINEER

**PRINTED BY THE AUTHORITY
 OF THE STATE OF ILLINOIS**

INDEX OF SHEETS

- 1 COVER SHEET
- 2 INDEX, STANDARDS, GENERAL NOTES, SIGNATURES, & SUMMARY OF QUANTITIES
- 3-4 BRIDGE PLANS - SN 009-0002

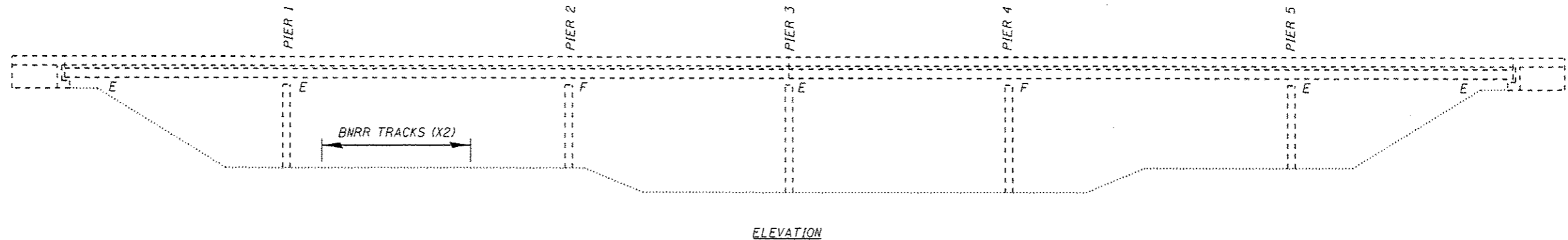
HIGHWAY STANDARDS

- 000001-06
- 001006
- 701001-02
- 701006-05
- 701301-04
- 701316-11
- 701901-06

GENERAL NOTES:

STATE OF ILLINOIS DEPARTMENT OF TRANSPORTATION DIVISION OF HIGHWAYS DISTRICT 6	
EXAMINED	<u>March 23rd 20 17</u> <i>[Signature]</i> ENGINEER OF OPERATIONS
EXAMINED	<u>March 28 20 17</u> <i>[Signature]</i> ENGINEER OF PROJECT IMPLEMENTATION
EXAMINED	<u>MARCH 23 20 17</u> <i>[Signature]</i> ENGINEER OF PROGRAM DEVELOPMENT

CODE NO.	ITEM	UNIT	TOTAL QUANTITY	0-01623-6017	
				URBAN	
				100% STATE	BRIDGE
				0014 ✓	
				CASS ✓	
50102400	CONCRETE REMOVAL	CU YD	0.2		0.2
67100100	MOBILIZATION	L SUM	1		1
70100100	TRAFFIC CONTROL AND PROTECTION, STANDARD 701316	EACH	1		1
70106500	TEMPORARY BRIDGE TRAFFIC SIGNALS	EACH	1		1
Z0012754	STRUCTURAL REPAIR OF CONCRETE (DEPTH EQUAL TO OR LESS THAN 5 INCHES)	SO FT	10		10
Z0021908	SILICONE JOINT SEALER, 2"	FOOT	38		38
Z0021912	SILICONE JOINT SEALER, 2.5"	FOOT	76		76
Z0041895	POLYMER CONCRETE	CU FT	19		19
Z0048665	RAILROAD PROTECTIVE LIABILITY INSURANCE	L SUM	1		1

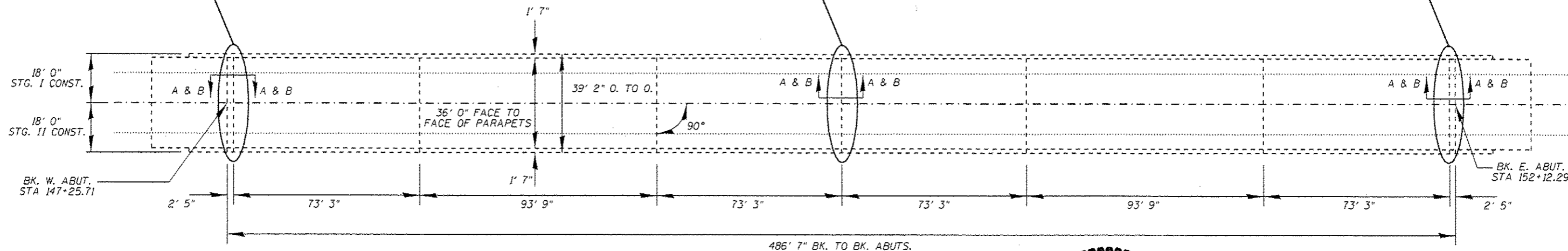


ELEVATION

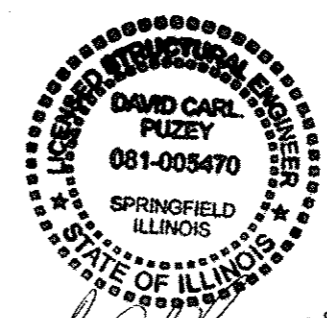
PROPOSED JOINT REPAIRS
SEE DETAILS ON SHEET 2 OF 2

PROPOSED JOINT REPAIRS
SEE DETAILS ON SHEET 2 OF 2

PROPOSED JOINT REPAIRS
SEE DETAILS ON SHEET 2 OF 2



PLAN



David Carl Puzey 5/8/17
Expires 11/30/18

NOTES:

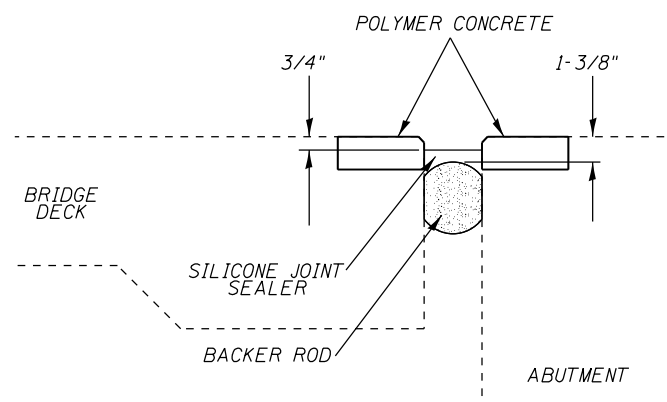
PLAN DIMENSIONS AND DETAILS RELATIVE TO EXISTING PLANS ARE SUBJECT TO NOMINAL CONSTRUCTION VARIATIONS. THE CONTRACTOR SHALL FIELD VERIFY EXISTING DIMENSIONS AND DETAILS AFFECTING NEW CONSTRUCTION AND MAKE NECESSARY APPROVED ADJUSTMENTS PRIOR TO CONSTRUCTION OR ORDERING OF MATERIALS. SUCH VARIATIONS SHALL NOT BE CAUSE FOR ADDITIONAL COMPENSATION FOR A CHANGE IN THE SCOPE OF WORK, HOWEVER, THE CONTRACTOR WILL BE PAID FOR THE QUANTITY ACTUALLY FURNISHED AT THE UNIT PRICE BID FOR THE WORK.

STRUCTURAL REPAIR OF CONCRETE IS INCLUDED IN CASE THERE IS ANY SPALLING OF CONCRETE BENEATH THE NEOPRENE JOINT REMOVAL AREA. THE CONTRACTOR SHALL NOT PERFORM THIS WORK UNLESS DIRECTED TO DO SO BY THE ENGINEER. IF USED, THE QUANTITY FOR PAYMENT SHALL BE MEASURED ON THE VERTICAL FACE OF THE SPALLED AREA AT THE END OF THE DECK OR ABUTMENT BACKWALL. THE ENGINEER SHALL NOTE REPAIRED AREAS ON THE AS-BUILT PLANS.

BILL OF MATERIAL

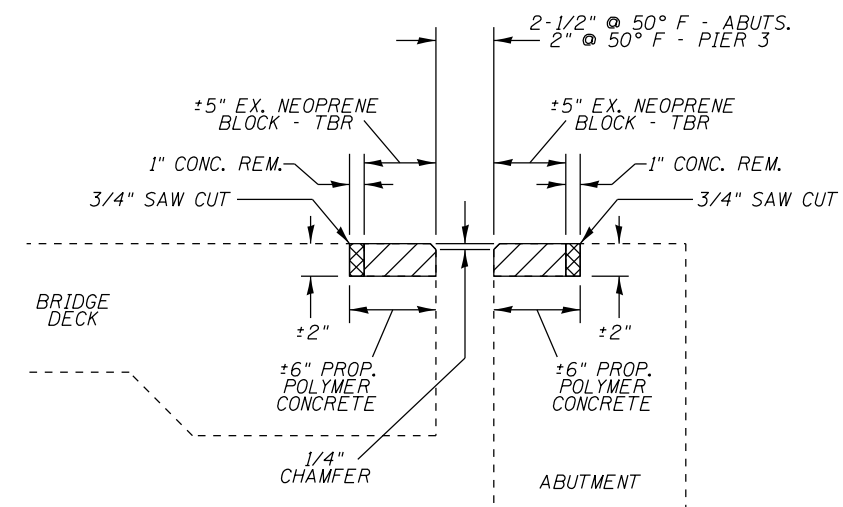
ITEM	UNIT	QUANTITY
CONCRETE REMOVAL	CU. YD.	0.2
POLYMER CONCRETE	CU. FT.	19
SILICONE JOINT SEALER, 2"	FOOT	38
SILICONE JOINT SEALER, 2-1/2"	FOOT	76
STRUCTURAL REPAIR OF CONCRETE (DEPTH EQUAL TO OR LESS THAN 5") *	SQ. FT.	10

* SEE NOTE



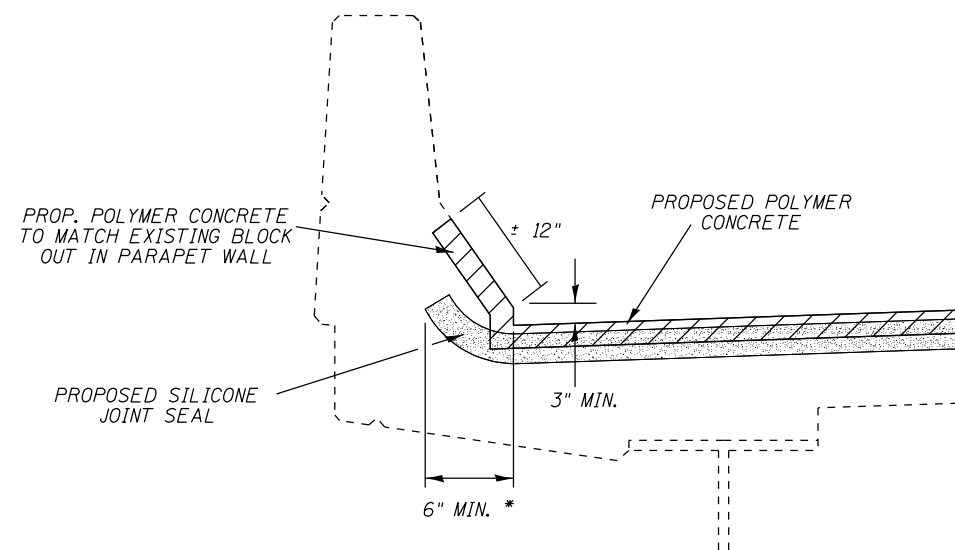
SECTION A-A:
SILICONE JOINT SEALER DETAIL **

** BOTH SIDES OF PIER 3 JOINT SIMILAR TO BRIDGE DECK PORTION OF DETAIL



SECTION B-B
PROPOSED POLYMER CONCRETE
CROSS SECTION **

** BOTH SIDES OF PIER 3 JOINT SIMILAR TO BRIDGE DECK PORTION OF DETAIL



TYPICAL PARAPET CROSS SECTION:
JOINT SEALER END TREATMENT

NOTES:

- 1/4" CHAMFER MAY BE ACHIEVED BY GRINDING AFTER POLYMER CONCRETE HAS CURED.
- REMOVAL OF EXISTING NEOPRENE EXPANSION JOINTS SHALL BE INCLUDED IN THE COST OF CONCRETE REMOVAL.
- ANY STEEL ANCHORING STUDS ENCOUNTERED IN THE NEOPRENE JOINT REMOVAL AREA SHALL BE CUT OFF FLUSH WITH THE EXISTING CONCRETE. COST TO BE INCLUDED IN THE BID PRICE FOR CONCRETE REMOVAL.
- JOINT WIDTHS SPECIFIED IN PLANS ARE AT 50° F. THE CONTRACTOR SHALL INSTALL BACKER ROD HAVING A DIAMETER 25% GREATER THAN THE JOINT OPENING AT THE TIME OF INSTALLATION.

FILE NAME =	USER NAME = dudleybm	DESIGNED -	REVISED -
D:\OPERATIONS\Bridges\Bridgplans\CAD\72	J89 - 0090002_joints\plansheet.dgn	DRAWN -	REVISED -
Default	PLOT SCALE = 100.0000' / 1in.	CHECKED -	REVISED -
	PLOT DATE = 4/3/2017	DATE -	REVISED -

STATE OF ILLINOIS
DEPARTMENT OF TRANSPORTATION

JOINT REPAIR DETAILS
SN 009-0002

SCALE: SHEET 2 OF 2 SHEETS STA. TO STA.

F.A.P. RTE.	SECTION	COUNTY	TOTAL SHEETS	SHEET NO.
67	(86) BJR-1	DAKE	4	4
			CONTRACT NO. 72J89	
ILLINOIS FED. AID PROJECT				