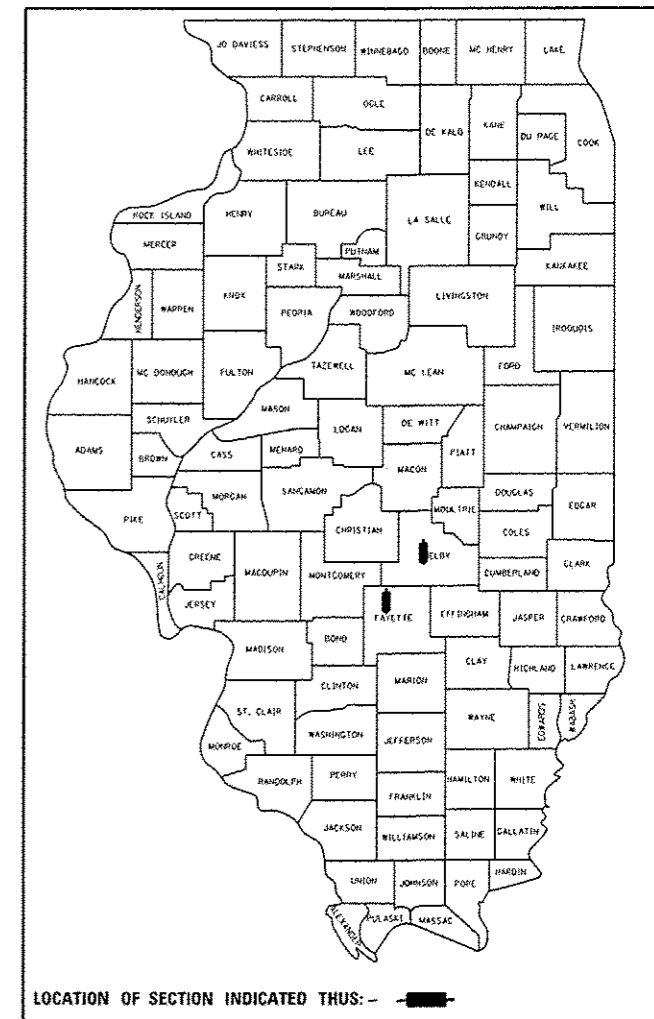


STATE OF ILLINOIS
DEPARTMENT OF TRANSPORTATION

F.A.P. RTE.	SECTION	COUNTY	TOTAL SHEETS	SHEET NO.
•	D7 HMA RESURF 2017-3	••	14	1
• 774 & 322		•• SHELBY & FAYETTE		

D-97-038-16



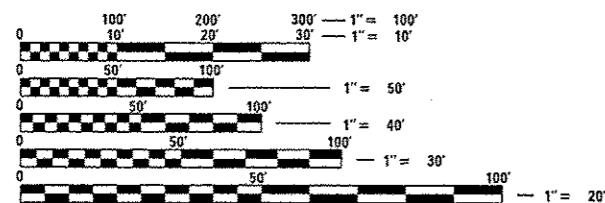
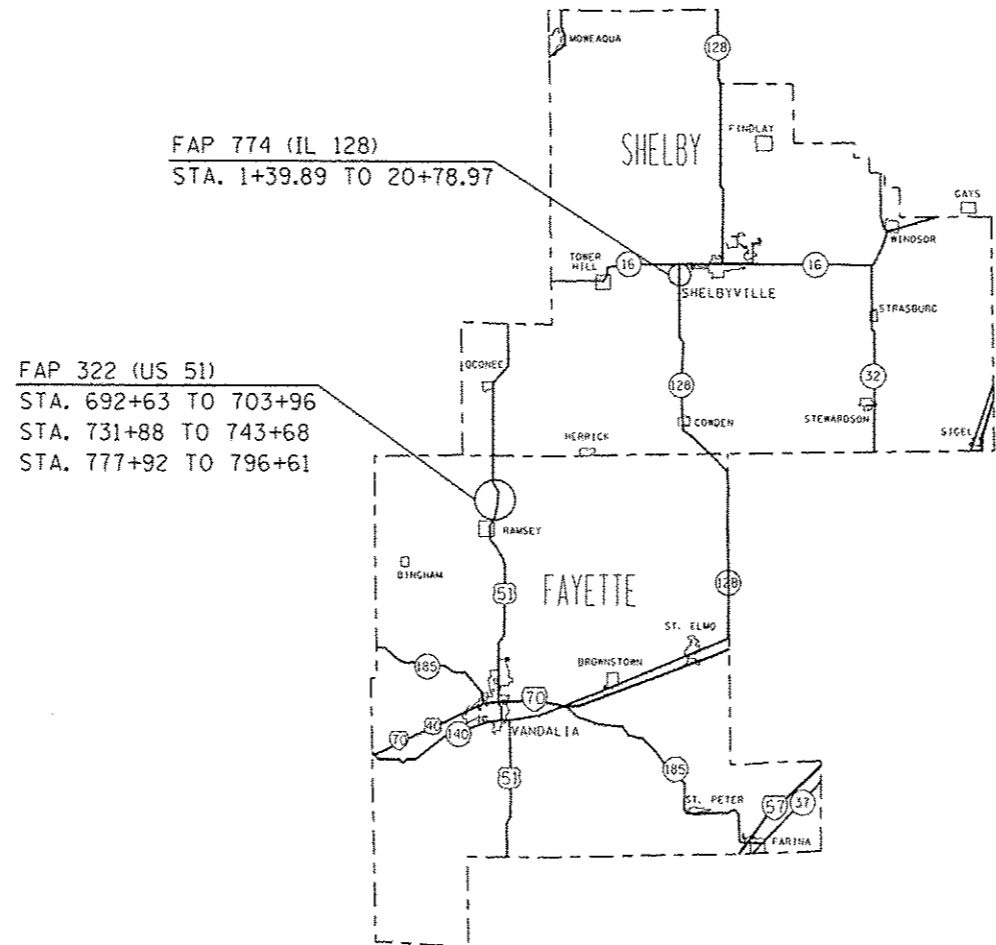
**PROPOSED
HIGHWAY PLANS**

FAP ROUTE 774 & 322 (IL 128 & US 51)
SECTION D7 HMA RESURF 2017-3

RESURFACING & SHOULDER REPAIR
SHELBY & FAYETTE COUNTY

C-97-069-16

FOR INDEX OF SHEETS, SEE SHEET NO. 3
ADT = 2600 (2015) IL 128
ADT = 3300 (2015) US 51



FULL SIZE PLANS HAVE BEEN PREPARED USING STANDARD ENGINEERING SCALES. REDUCED SIZED PLANS WILL NOT CONFORM TO STANDARD SCALES. IN MAKING MEASUREMENTS ON REDUCED PLANS, THE ABOVE SCALES MAY BE USED.

J.U.L.I.E.
JOINT UTILITY LOCATION INFORMATION FOR EXCAVATION
1-800-892-0123
OR 811

PROJECT ENGINEER: MARK DAUGHERTY
PROJECT MANAGER: MATT BOWER

CONTRACT NO. 74774

STATE OF ILLINOIS
DEPARTMENT OF TRANSPORTATION

SUBMITTED MARCH 9 2017
Jeffrey M. Sorell
REGIONAL ENGINEER

May 2 2017
Maurice M. Addis
ENGINEER OF DESIGN AND ENVIRONMENT

May 12 2017
Annelle Allen
DIRECTOR OF PROGRAM DEVELOPMENT

PRINTED BY THE AUTHORITY
OF THE STATE OF ILLINOIS

INDEX OF SHEETS

SHEET NO.	ITEM
1	COVER SHEET
2	INDEX OF SHEETS, HIGHWAY STANDARDS & GENERAL NOTES
3	LOCATION MAPS
4	SUMMARY OF QUANTITIES
5-6	TYPICAL CROSS SECTIONS
7	SCHEDULE OF QUANTITIES
8-10	PLAN SHEETS
11-14	PAVEMENT MARKING DETAILS

THE FOLLOWING STANDARDS ARE A PART OF THESE PLANS AND ARE INCLUDED FOLLOWING THE LAST NUMBERED SHEET OF THE PLANS.

STD. NO.	DESCRIPTION
000001-06	STANDARD SYMBOLS, ABBREVIATIONS, AND PATTERNS
001006	DECIMAL OF AN INCH AND OF A FOOT
482001-02	HMA SHOULDER ADJACENT TO FLEXIBLE PAVEMENT
701006-05	OFF-ROAD OPERATIONS, 2L, 2W, 15' TO 24" FROM PAVEMENT EDGE
701011-04	OFF-ROAD MOVING OPERATIONS, 2L, 2W, DAY ONLY
701201-04	LANE CLOSURE, 2L, 2W, DAY ONLY, FOR SPEEDS >= 45MPH
701301-04	LANE CLOSURE, 2L, 2W SHORT TIME OPERATIONS
701306-03	LANE CLOSURE, 2L, 2W, SLOW MOVING OPERATIONS DAY ONLY, FOR SPEEDS >= 45MPH
701311-03	LANE CLOSURE, 2L, 2W, MOVING OPERATIONS - DAY ONLY
701901-06	TRAFFIC CONTROL DEVICES
780001-05	TYPICAL PAVEMENT MARKINGS
781001-04	TYPICAL APPLICATIONS RAISED REFLECTIVE PAVEMENT MARKERS

GENERAL NOTES

THIS SECTION SHALL BE CONSTRUCTED IN ACCORDANCE WITH THE PLANS, THE "STANDARD SPECIFICATIONS FOR ROAD AND BRIDGE CONSTRUCTION", ADOPTED APRIL 1, 2016; THE "SUPPLEMENTAL SPECIFICATIONS AND RECURRING SPECIAL PROVISIONS" INDICATED ON THE CHECK SHEET, AND THE SPECIAL PROVISIONS INCLUDED IN THE PROPOSAL.

THIS PROJECT IS LOCATED ON FAP ROUTE 774 (IL 128) IN SHELBY COUNTY FROM IL 16 TO 0.4 MI SOUTH OF IL 16 AND FAP ROUTE 322 (US 51) IN FAYETTE COUNTY 0.1 MILES SOUTH OF CO ROAD 3100N TO 0.3 MI NORTH OF JEFFERSON ST IN RAMSEY, INCLUDED IN SECTION 07 HMA RESURF 2017-3 IS HOT-MIX ASPHALT SURFACE REMOVAL, HOT-MIX ASPHALT RESURFACING, PAVEMENT MARKING AND ANY OTHER WORK NECESSARY TO COMPLETE THE SECTION.

THE RESIDENT ENGINEER SHALL BE THE SOLE JUDGE CONCERNING THE CURING TIME FOR THE VARIOUS HOT-MIX ASPHALT LIFTS.

PAVEMENT MARKING SHALL BE APPLIED IN ACCORDANCE WITH SECTION 780 OF THE STANDARD SPECIFICATIONS. SHORT TERM PAVEMENT MARKING SHALL BE APPLIED TO THE MILLED SURFACE, BITUMINOUS MATERIALS (PRIME COAT), AND HOT-MIX ASPHALT SURFACE COURSE AS SPECIFIED IN SECTION 703 OF THE STANDARD SPECIFICATIONS. TEMPORARY TAPE SHALL BE USED ON THE SURFACE COURSE AND HOT-MIX ASPHALT SHOULDERS, PAINT SHALL BE USED ON MILLED SURFACES.

THE CONTRACTOR SHALL PROVIDE INTERNET ACCESS TO THE BITUMINOUS PLANT QUALITY CONTROL LAB SO THAT BITUMINOUS PLANT REPORTS CAN BE E-MAILED TO THE DISTRICT HEADQUARTERS. THIS WORK WILL NOT BE PAID FOR SEPARATELY BUT SHALL BE INCLUDED IN THE UNIT PRICES FOR OTHER ITEMS IN THE CONTRACT.

IN ADDITIONAL TO THE REQUIREMENTS FOR PORTABLE CHANGEABLE MESSAGE SIGNS IN ARTICLE 701.15(J), A LAPTOP COMPUTER SHALL ALSO BE SUPPLIED BY THE CONTRACTOR.

MATERIAL FOR AGGREGATE WEDGE SHOULDER, TYPE B SHALL BE CRUSHED STONE, CRUSHED CONCRETE OR RAP.

THE FOLLOWING RATES OF APPLICATION HAVE BEEN USED IN THE CALCULATING PLAN QUANTITIES:

BITUMINOUS MATERIALS (TACK COAT)	0.05 LBS/SQ FT
BITUMINOUS MATERIALS (TACK COAT)-FOG COAT	0.025 LBS/SQ FT
BINDER, SHOULDERS AND SURFACE MIXES	112 LBS/SQ YD/INCH

THE FOLLOWING MIXTURE REQUIREMENTS ARE APPLICABLE FOR THIS PROJECT:

APPLICATION	AC/PG	DESIGN AIR VOIDS	MIXTURE COMPOSITION	FRICTION AGGREGATE
<u>BINDER COURSE (VARIOUS DEPTHS)</u>				
HMA BINDER COURSE, IL-19.0 N70	PG 64-22	4.0% @ N=70	IL - 19.0	N/A
<u>HMA SURFACE COURSE</u>				
HMA SURFACE COURSE, IL 9.5, N70C	PG 64-22	4.0% @ N=70	IL - 9.5	MIX C

• 774 & 322

•• SHELBY & FAYETTE

STATE OF ILLINOIS
DEPARTMENT OF TRANSPORTATION

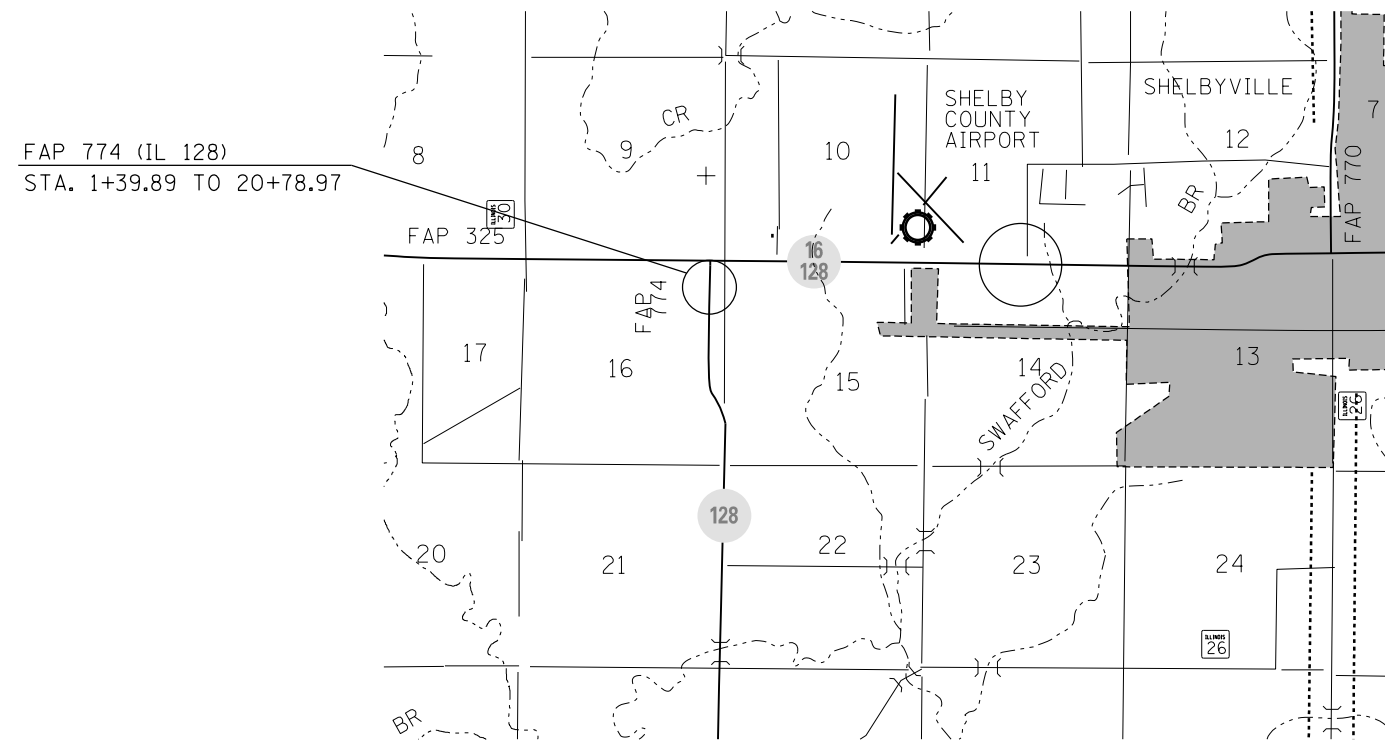
INDEX OF SHEETS, HIGHWAY
STANDARDS, & GENERAL NOTES

F.A.P. RTE.	SECTION	COUNTY	TOTAL SHEETS	SHEET NO.
•	07 HMA RESURF 2017-3	••	14	2
CONTRACT NO. 74774			ILLINOIS FED. AID PROJECT	

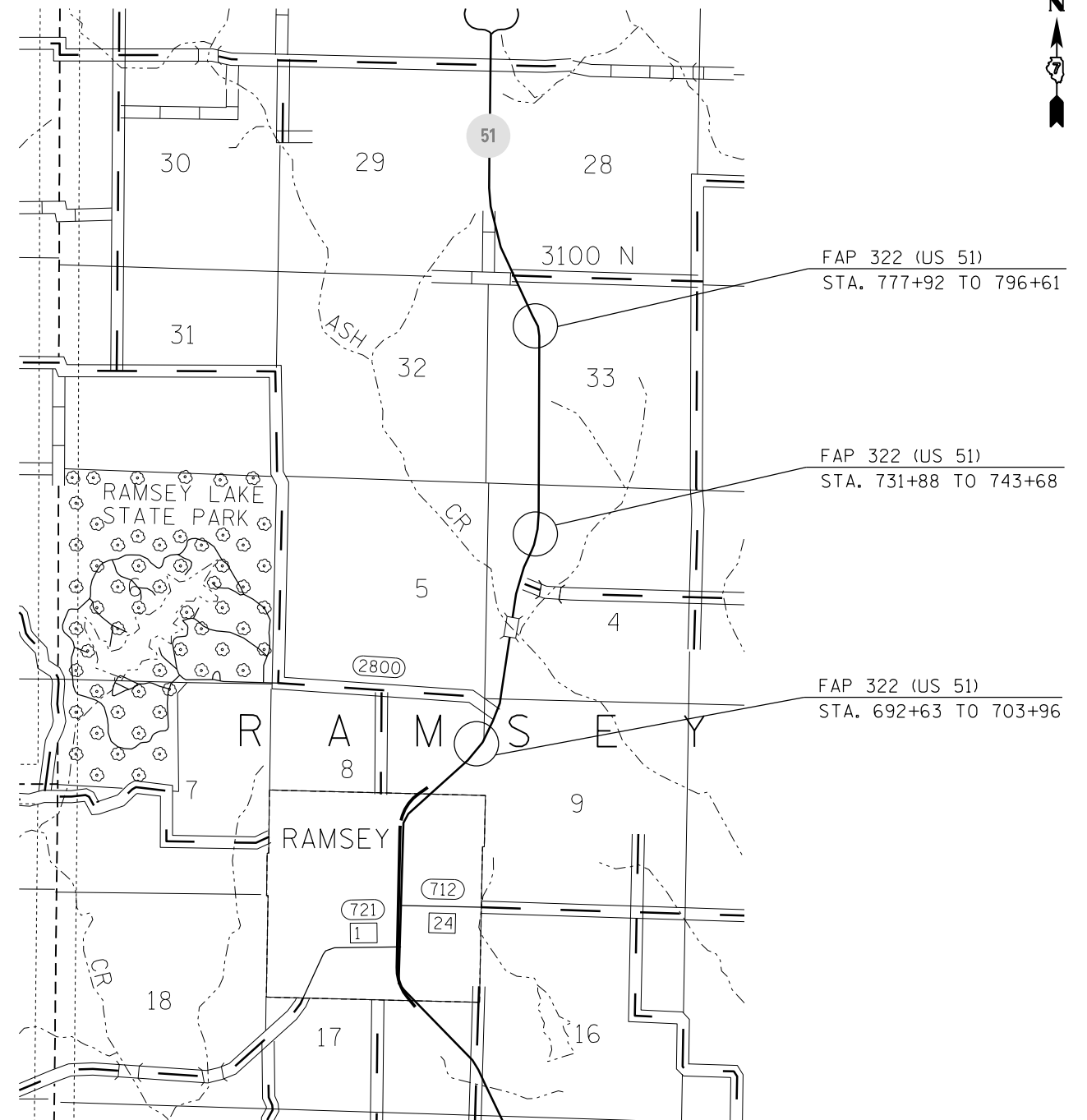
FILE NAME =	USER NAME = staffjenk	DESIGNED -	REVISED -
p:\11284E81D\INTEG\illinois.gov\WDDT\Documents\DOT Offices\District 7\Projects\74774\BAA\cadsheets\0774774-shr-gennotes		CHECKED -	REVISED -
Default	PLOT SCALE = 100.0000 1/ in.	DATE -	REVISED -
	PLOT DATE = 10/27/2016		

SCALE: SHEET OF SHEETS STA. TO STA.

FAP 774 (IL 128)



FAP 322 (US 51)



FILE NAME =	USER NAME = steffenmk	DESIGNED -	REVISED -
pw:\IL\084EBIDINTEG\illinois.gov\PIWIDOT\Documents\IDOT Offices\District 7\Projects\74774\Drawings\CAD\Sheets\0774774-sht-cover.dwg		DRAWN -	REVISED -
Default	PLOT SCALE = 100.0000' / 1in.	CHECKED -	REVISED -
	PLOT DATE = 10/27/2016	DATE -	REVISED -

STATE OF ILLINOIS
DEPARTMENT OF TRANSPORTATION

LOCATION MAPS

SCALE: SHEET OF SHEETS STA. TO STA.

• 774 & 322		••SHELBY & FAYETTE	
F.A.P. RTE.	SECTION	COUNTY	TOTAL SHEETS
•	D7 HMA RESURF 2017-3	••	14
			SHEET NO. 3
			CONTRACT NO. 74774
ILLINOIS FED. AID PROJECT			

RURAL
100% STATE

RURAL
100% STATE

SUMMARY OF QUANTITIES			TOTAL QUANTITIES	CONSTRUCTION TYPE CODE	
CODE NO	ITEM	UNIT		IL 128 0005 SHELBY	US 51 0005 FAYETTE
40600290	BITUMINOUS MATERIALS (TACK COAT)	POUND	4300	1163	3137
40600990	TEMPORARY RAMP	SQ YD	13	13	
40603085	HOT-MIX ASPHALT BINDER COURSE, IL-19.0, N70	TON	1327		1327
40603315	HOT-MIX ASPHALT SURFACE COURSE, MIX "C", N70	TON	451	217	234
44000155	HOT-MIX ASPHALT SURFACE REMOVAL, 1 1/2"	SQ YD	2585	2585	
44000189	HOT-MIX ASPHALT SURFACE REMOVAL, 10"	SQ YD	2788		2788
48102100	AGGREGATE WEDGE SHOULDER, TYPE B	TON	210	116	94
67100100	MOBILIZATION	LSUM	1	0.5	0.5
70100450	TRAFFIC CONTROL AND PROTECTION, STANDARD	LSUM	1	0.5	0.5
	701201				
70100460	TRAFFIC CONTROL AND PROTECTION, STANDARD	LSUM	1	0.5	0.5
	701306				
70300100	SHORT TERM PAVEMENT MARKING	FOOT	388	388	
70300150	SHORT TERM PAVEMENT MARKING REMOVAL	SQ FT	65	65	
70300220	TEMPORARY PAVEMENT MARKING - LINE 4"	FOOT	6606	2424	4182

SUMMARY OF QUANTITIES			TOTAL QUANTITIES	CONSTRUCTION TYPE CODE	
CODE NO	ITEM	UNIT		IL 128 0005 SHELBY	US 51 0005 FAYETTE
78001110	PAINT PAVEMENT MARKING - LINE 4"	FOOT	6606	2424	4182
78100100	RAISED REFLECTIVE PAVEMENT MARKER	EACH	24	24	
X7015005	CHANGEABLE MESSAGE SIGN	CAL DA	56	28	28

* SPECIALTY ITEM

FILE NAME #	USER NAME = stepfennik	DESIGNED -	REVISED -
g:\11\084EBIDINTEG\Illinois.gov\PIDOT\Documents\IDOT Offices\District 7\Projects\7477\084EBIDINTEG\CAD\Sheets\0774774-shs-500.dgn		CHECKED -	REVISED -
		DATE -	REVISED -

STATE OF ILLINOIS
DEPARTMENT OF TRANSPORTATION

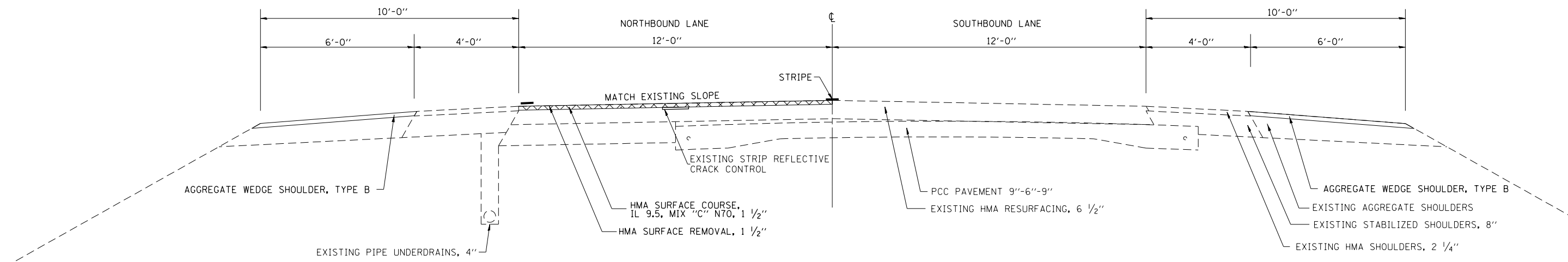
SCALE:	SHEET	OF	SHEETS	STA.	TO STA.
--------	-------	----	--------	------	---------

• 774 & 322		•• SHELBY & FAYETTE	
F.A.P. RTE.	SECTION	COUNTY	TOTAL SHEETS
*	DT HMA RESURF 2017-3	**	14
			SHEET NO. 4
			CONTRACT NO. 74774
ILLINOIS FED. AID PROJECT			

13

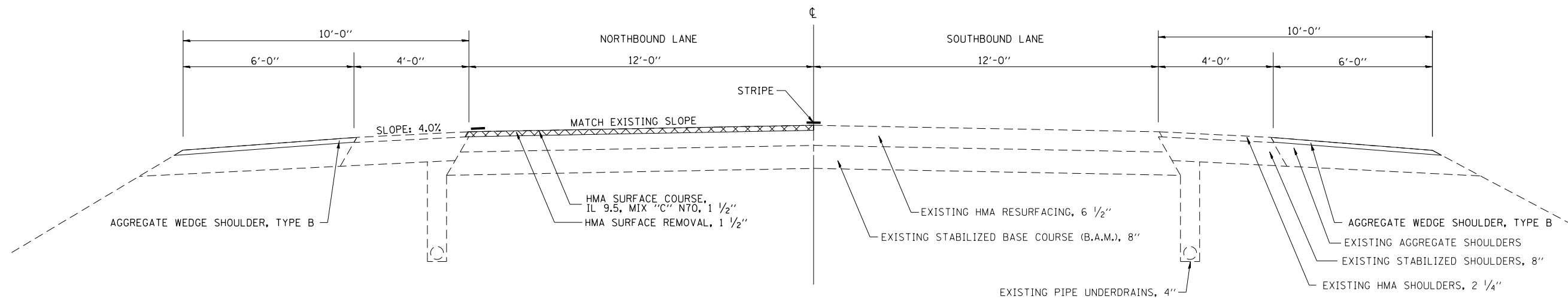
TYPICAL CROSS SECTION IL 128

STATION 1+39.89 TO STATION 5+99.94



TYPICAL CROSS SECTION IL 128

STATION 5+99.94 STATION 20+78.97



FILE NAME =	USER NAME = steffenmk	DESIGNED -	REVISED -
p:\IL\084EBIDINTEG\illinois.gov\PI\DOT\Documents\DOT Offices\District 7\Projects\74774\Drawings\CAD\Sheets\0774774-sht-typical.dwg		DRAWN -	REVISED -
Default	PLOT SCALE = 100.0000' / 1in.	CHECKED -	REVISED -
	PLOT DATE = 3/9/2017	DATE -	REVISED -

STATE OF ILLINOIS
DEPARTMENT OF TRANSPORTATION

TYPICAL CROSS SECTIONS

SCALE: SHEET OF SHEETS STA. TO STA.

• 774 & 322		•• SHELBY & FAYETTE	
F.A.P. RTE.	SECTION	COUNTY	TOTAL SHEETS
•	D7 HMA RESURF 2017-3	••	14
			SHEET NO. 5
			CONTRACT NO. 74774
ILLINOIS FED. AID PROJECT			

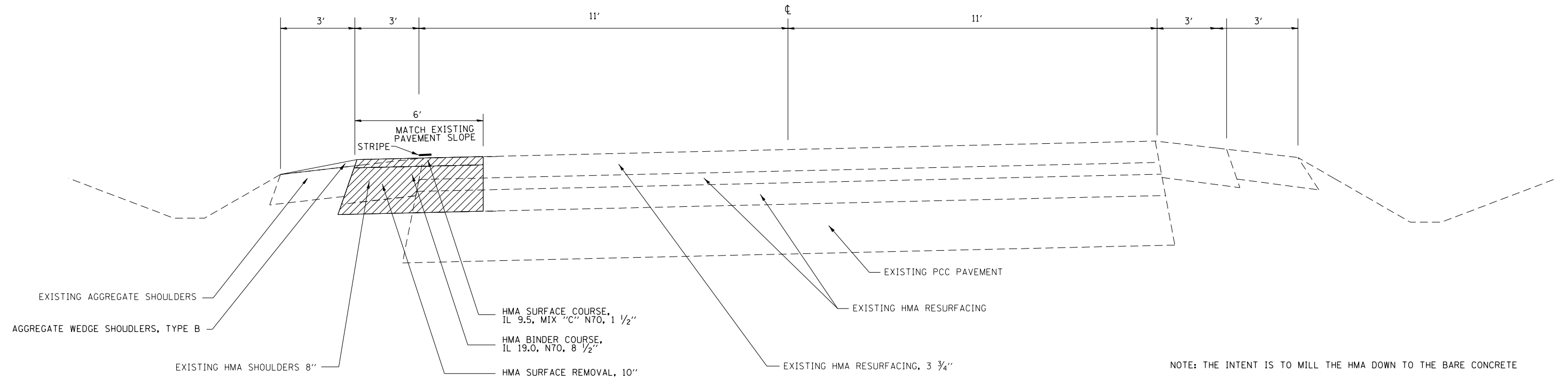
TYPICAL CROSS SECTION US 51

STA. 692+63 TO 703+96
 STA. 731+88 TO 743+68
 STA. 777+92 TO 796+61

STATION EQUATIONS
 (ALL STA. EQ. OUTSIDE OF WORK AREAS)

STA. 709+05.65 BK = 692+12.10 AH
 STA. 699+01.12 BK = 699+07.90 AH
 STA. 713+00.00 BK = 712+91.47 AH
 STA. 743+72.46 BK = 744+45.30 AH
 STA. 751+00.00 BK = 751+11.00 AH

LOOKING NORTH



FILE NAME =	USER NAME = steffenmk	DESIGNED -	REVISED -
p:\11084EBIDINTEG\illinois.gov\PWIDOT\Documents\DOT Offices\District 7\Projects\74774\Drawings\CAD\Drawings\74774-shr-typical.dwg		DRAWN -	REVISED -
Default	PLOT SCALE = 100.0000' / 1in.	CHECKED -	REVISED -
	PLOT DATE = 3/9/2017	DATE -	REVISED -

STATE OF ILLINOIS
 DEPARTMENT OF TRANSPORTATION

TYPICAL CROSS SECTIONS

SCALE: SHEET OF SHEETS STA. TO STA.

774 & 322		SHELBY & FAYETTE		
F.A.P. RTE.	SECTION	COUNTY	TOTAL SHEETS	SHEET NO.
D7 HMA RESURF 2017-3		**	14	6
CONTRACT NO. 74774			ILLINOIS FED. AID PROJECT	

40600290 BITUMINOUS MATERIAL (TACK COAT)			
STATION	TO	STATION	POUND
IL 128			
01+39.89		20+78.97	1163.4
TOTAL IL 128=			1163
US 51			
692+63.00		703+96.00	849.8
731+88.00		743+68.00	885.0
777+92.00		796+61.00	1401.8
TOTAL US 51=			3137
GRAND TOTAL=			4300

44000189 HMA SURFACE REMOVAL, 10"			
STATION	TO	STATION	SQ YD
US 51			
692+63.00		703+96.00	755.3
731+88.00		743+68.00	786.7
777+92.00		796+61.00	1246.0
TOTAL US 51=			2788

78001110 PAINT PAVEMENT MARKING - LINE 4"				
STATION	TO	STATION	FOOT	
IL 128				
01+39.89		20+78.97	1939.1	EDGE LINE
01+39.89		20+78.97	485	SKIP-DASH
TOTAL IL 128 =			2424	
US 51				
692+63.00		703+96.00	1133	EDGE LINE
731+88.00		743+68.00	1180	EDGE LINE
777+92.00		796+61.00	1869	EDGE LINE
TOTAL US 51 =			4182	
GRAND TOTAL=			6606	

40600990 TEMPORARY RAMP			
STATION	TO	STATION	SQ YD
IL 128			
1+39.89		1+44.89	6.7
20+73.97		20+78.97	6.7
TOTAL FOR IL IL 128=			13

48102100 AGGREGATE WEDGE SHOULDER, TYPE B			
STATION	TO	STATION	TON
IL 128			
01+39.89		20+78.97	116.3
TOTAL IL 128=			116
US 51			
692+63.00		703+96.00	25.5
731+88.00		743+68.00	26.6
777+92.00		796+61.00	42.1
TOTAL US 51=			94
GRAND TOTAL =			210

78100100 RAISED REFLECTIVE PAVEMENT MARKER				
STATION	TO	STATION	LENGTH (FT)	EACH
IL 128				
01+39.89		20+78.97	1939.08	24.2
TOTAL=			24	

40603085 HMA BINDER COURSE, IL-19.0, N70			
STATION	TO	STATION	TON
US 51			
692+63.00		703+96.00	359.5
731+88.00		743+68.00	374.5
777+92.00		796+61.00	593.1
TOTAL US 51=			1327

70300100 SHORT TERM PAVEMENT MARKING			
STATION	TO	STATION	FOOT
IL 128			
01+39.89		20+78.97	387.8
TOTAL=			388

70300150 SHORT TERM PAVEMENT MARKING REMOVAL				
STATION	TO	STATION	LENGTH (FT)	SQ FT
IL 128				
01+39.89		20+78.97	1939.1	64.6
TOTAL=			65	

40603315 HMA SURFACE COURSE, MIX "C", N70			
STATION	TO	STATION	TON
IL 128			
01+39.89		20+78.97	217.2
TOTAL IL 128=			217
US 51			
692+63.00		703+96.00	63.4
731+88.00		743+68.00	66.1
777+92.00		796+61.00	104.7
TOTAL US 51=			234
GRAND TOTAL=			451

70300220 TEMPORARY PAVEMENT MARKING - LINE 4"				
STATION	TO	STATION	FOOT	
IL 128				
01+39.89		20+78.97	1939.08	EDGELINE
01+39.89		20+78.97	484.77	SKIP-DASH
TOTAL IL 128=			2424	
US 51				
692+63.00		703+96.00	1133	EDGE LINE
731+88.00		743+68.00	1180	EDGE LINE
777+92.00		796+61.00	1869	EDGE LINE
TOTAL US 51=			4182	
GRAND TOTAL =			6606	

44000155 HMA SURFACE REMOVAL, 1 1/2"			
STATION	TO	STATION	SQ YD
IL 128			
01+39.89		20+78.97	2585.4
TOTAL IL 128=			2585

FILE NAME =	USER NAME = steffennk	DESIGNED -	REVISED -
pw:\IL084EBIDINTEG\illinois.gov\PIDOT\Documents\IDOT Offices\District 7\Projects\74774\Drawings\CAD\Sheets\0774774-sht-schedule		CHECKED -	REVISED -
Default	PLOT DATE = 10/27/2016	DATE -	REVISED -

**STATE OF ILLINOIS
DEPARTMENT OF TRANSPORTATION**

SCHEDULE OF QUANTITIES				
SCALE:	SHEET	OF	SHEETS	STA. TO STA.

• 774 & 322		•• SHELBY & FAYETTE		
F.A.P. RTE.	SECTION	COUNTY	TOTAL SHEETS	SHEET NO.
•	D7 HMA RESURF 2017-3	••	14	7
CONTRACT NO. 74774				
ILLINOIS FED. AID PROJECT				



FAP 774 (IL 128)
BEGINS: STA 1+39.89

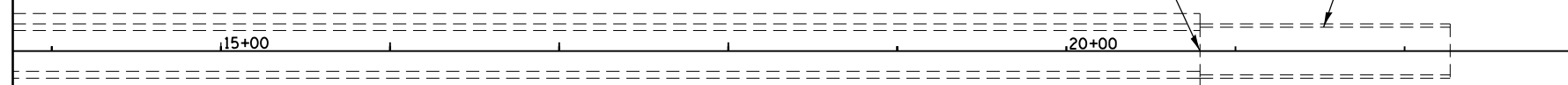


NOT TO SCALE



FAP 774 (IL 128)
ENDS: STA 20+78.97

SN 087-0021



NOT TO SCALE

• 774 & 322

•• SHELBY & FAYETTE

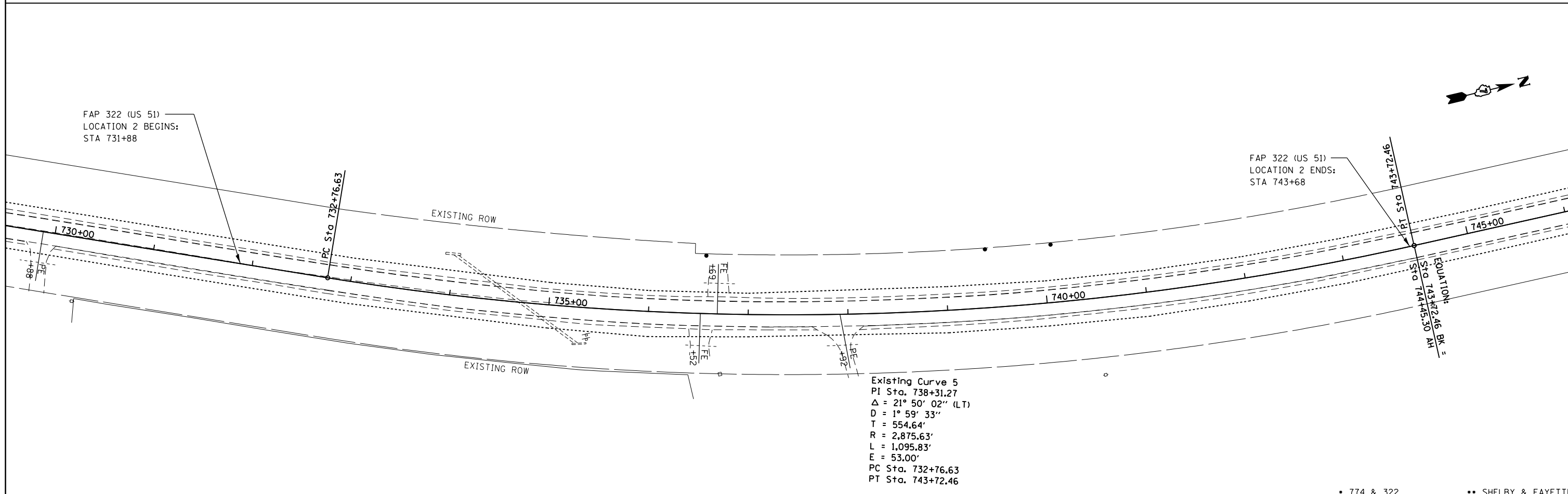
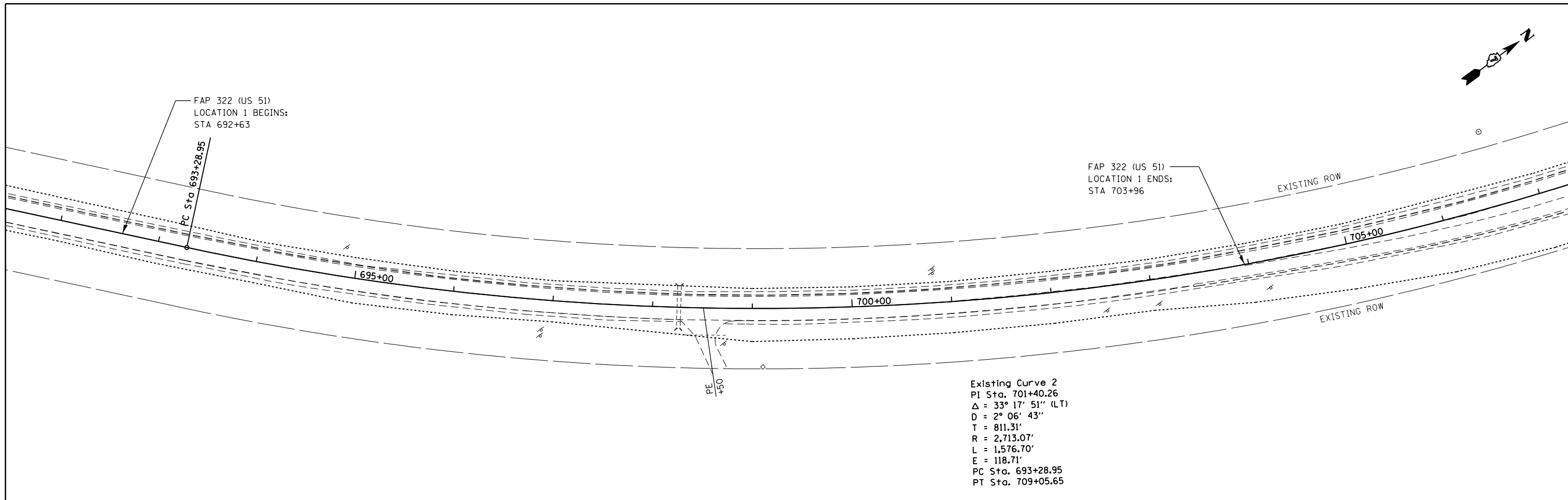
FILE NAME =	USER NAME = steffenmk	DESIGNED -	REVISED -
pw:\IL084EBIDINTEG\illinois.gov\PWIDOT\Documents\IDOT Offices\District 7\Projects\74774\CADD\Drawings\Drawings\74774-sht-plan.dgn		DRAWN -	REVISED -
Default	PLOT SCALE = 100.0000' / in.	CHECKED -	REVISED -
	PLOT DATE = 10/27/2016	DATE -	REVISED -

STATE OF ILLINOIS
DEPARTMENT OF TRANSPORTATION

PLAN SHEET
IL 128

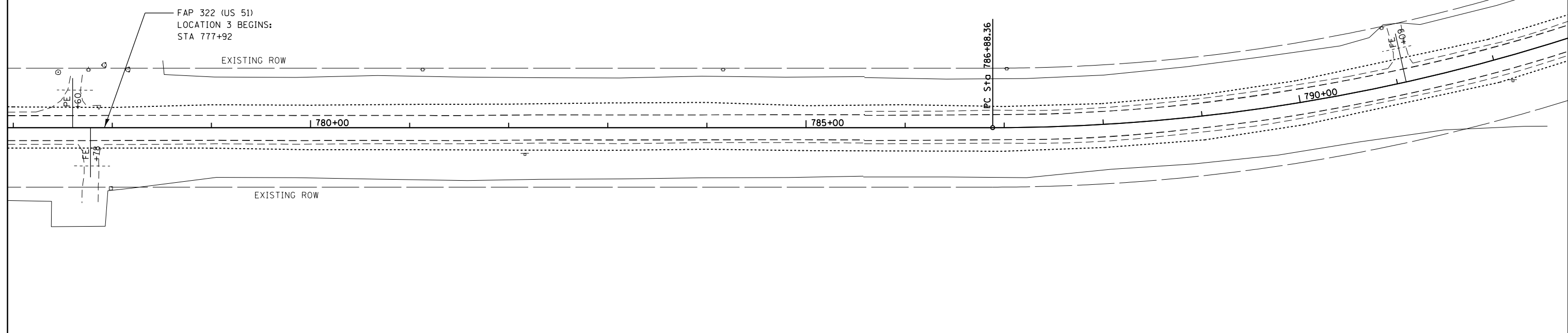
SCALE: SHEET OF SHEETS STA. TO STA.

F.A.P. RTE.	SECTION	COUNTY	TOTAL SHEETS	SHEET NO.
•	D7 HMA RESURF 2017-3	••	14	8
CONTRACT NO. 74774			ILLINOIS FED. AID PROJECT	

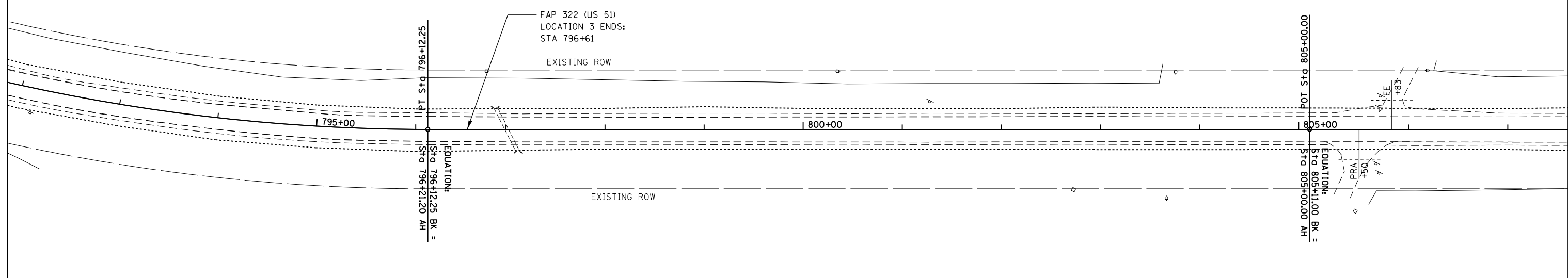


FILE NAME =	USER NAME = steffenmk	DESIGNED -	REVISED -	STATE OF ILLINOIS DEPARTMENT OF TRANSPORTATION	PLAN SHEET US 51			• 774 & 322 •• SHELBY & FAYETTE		
pw:\IL\084EBIDINTEG.illinois.gov\PWIDOT\Documents\DOT Offices\District 7\Projects\74774\Drawings\CAD\Sheets\D774774-sht-plan.dgn	DRAWN -	REVISED -	REVISED -		SCALE:	SHEET	OF	SHEETS	STA.	TO STA.
Default	PLOT SCALE = 100.0000' / in.	CHECKED -	REVISED -		CONTRACT NO. 74774					
	PLOT DATE = 10/27/2016	DATE -	REVISED -		ILLINOIS FED. AID PROJECT					

Existing Curve 6
 PI Sta. 791+59.51
 $\Delta = 27^\circ 41' 15''$ (LT)
 $D = 2^\circ 59' 49''$
 $T = 471.15'$
 $R = 1,911.88'$
 $L = 923.89'$
 $E = 57.20'$
 PC Sta. 786+88.36
 PT Sta. 796+12.25



Existing Curve 6
 PI Sta. 791+59.51
 $\Delta = 27^\circ 41' 15''$ (LT)
 $D = 2^\circ 59' 49''$
 $T = 471.15'$
 $R = 1,911.88'$
 $L = 923.89'$
 $E = 57.20'$
 PC Sta. 786+88.36
 PT Sta. 796+12.25

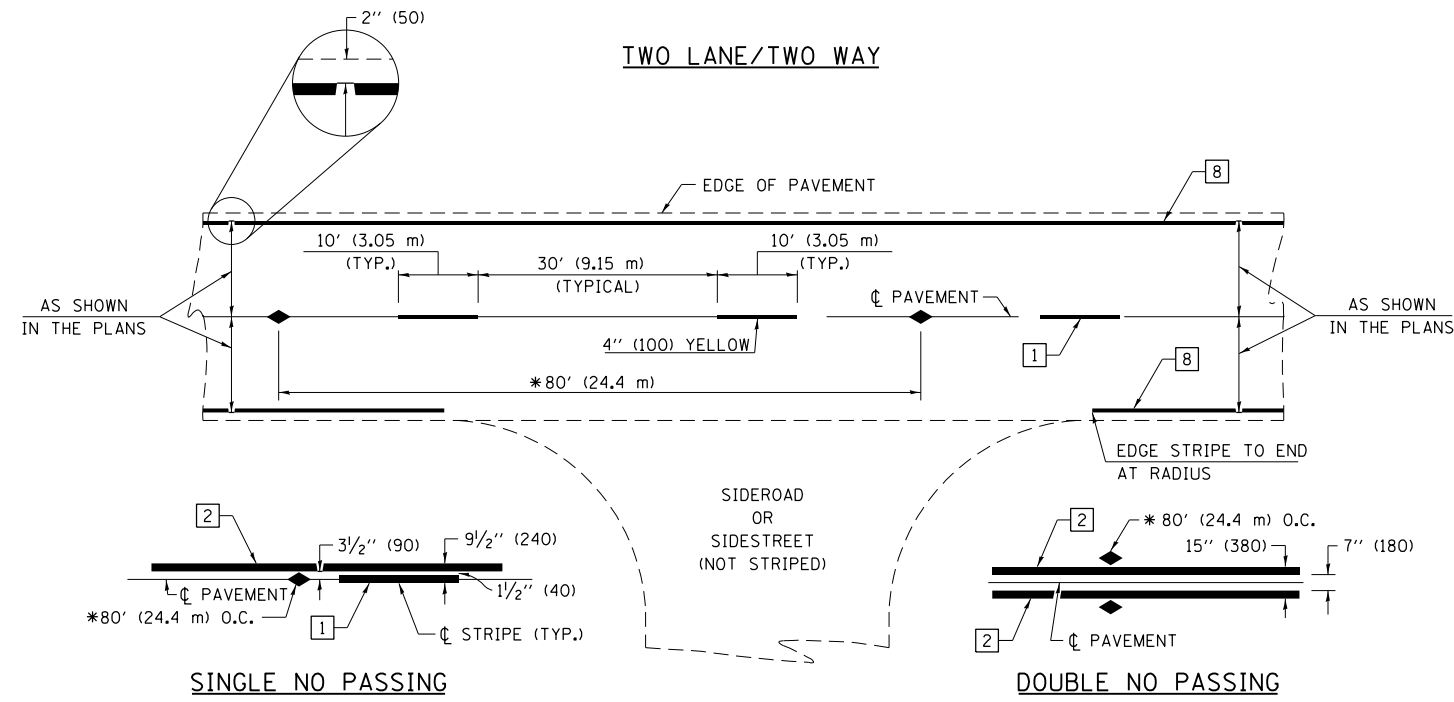


FILE NAME =	USER NAME = steffenk	DESIGNED -	REVISED -
pw:\IL\084EBIDINTEG.illinois.gov\PI\DOT\Documents\DOT Offices\District 7\Projects\74774\Drawings\CAD\Sheets\D774774-sht-plan.dgn		DRAWN -	REVISED -
Default	PLOT SCALE = 100.0000' / in.	CHECKED -	REVISED -
	PLOT DATE = 10/27/2016	DATE -	REVISED -

**STATE OF ILLINOIS
 DEPARTMENT OF TRANSPORTATION**

PLAN SHEET US 51			
SCALE:	SHEET	OF SHEETS	STA. TO STA.

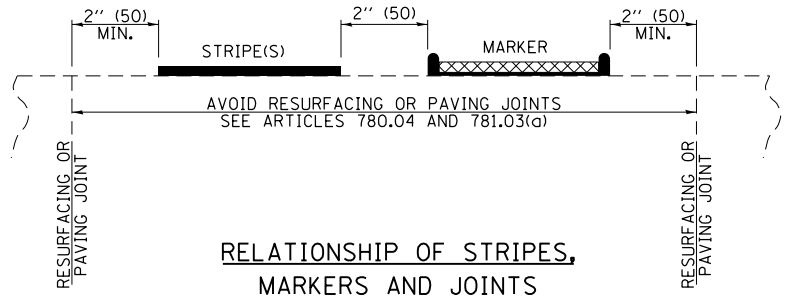
• 774 & 322		•• SHELBY & FAYETTE	
F.A.P. RTE.	SECTION	COUNTY	TOTAL SHEETS
•	D7 HMA RESURF 2017-3	••	14
			SHEET NO. 10
			CONTRACT NO. 74774
ILLINOIS FED. AID PROJECT			



PAVEMENT MARKING LEGEND

- 1 4" (100) SKIP-DASH (YELLOW)
- 2 4" (100) SOLID (YELLOW)
- 3 12" (300) DIAGONAL (YELLOW)
- 4 4" (100) DOUBLE YELLOW (NARROW)
- 5 12" (300) SOLID WHITE
- 6 RESERVED
- 7 6" (150) SKIP-DASH (WHITE)
- 8 4" (100) SOLID (WHITE)
- 9 12" (300) DIAGONAL (WHITE)
- 10 6" (150) SOLID (WHITE)
- 11 24" (600) STOP BAR (WHITE)
- 12 8" (200) SOLID (WHITE)
- 13 4" (100) PARKING WHITE

* REDUCE TO 40' (12.2 m) O.C. ON CURVES WITH POSTED OR ADVISORY SPEEDS OF 45 mph (70 km/h) OR LESS.

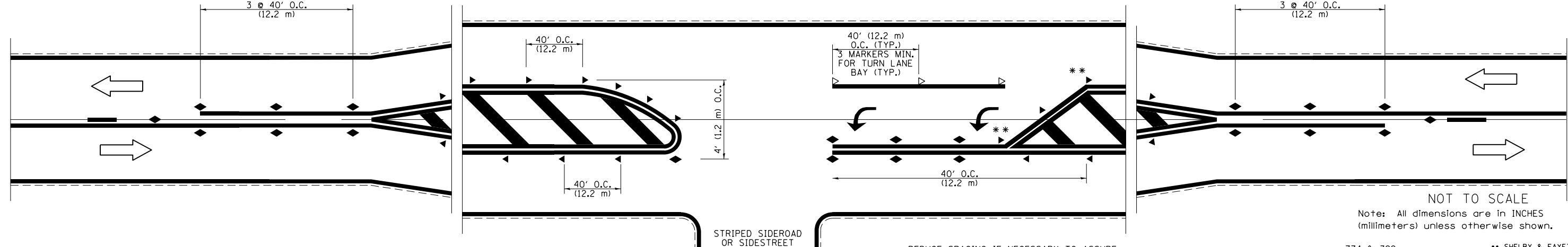


RELATIONSHIP OF STRIPES, MARKERS AND JOINTS

TYPICAL PAVEMENT MARKERS LEGEND

- ◆ TWO-WAY AMBER MARKER
- ▶ ONE-WAY AMBER MARKER
- ▷ ONE-WAY CRYSTAL MARKER

RAISED REFLECTIVE PAVEMENT MARKERS



NOT TO SCALE
Note: All dimensions are in INCHES (millimeters) unless otherwise shown.

** REDUCE SPACING IF NECESSARY TO ASSURE MARKERS AT CORNER POINTS.

• 774 & 322 •• SHELBY & FAYETTE

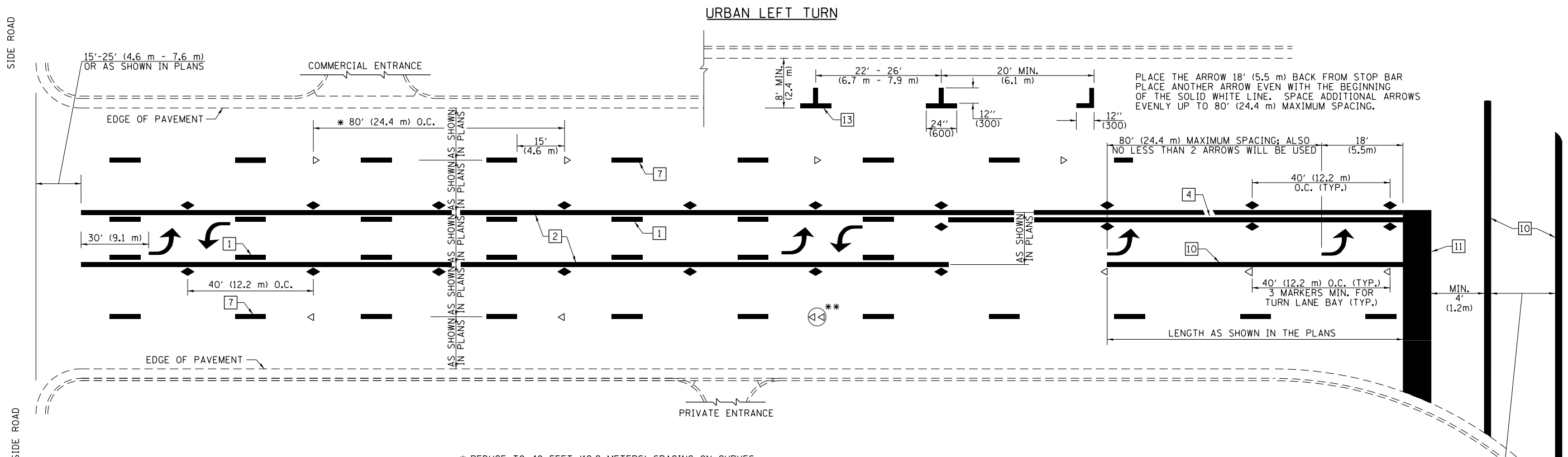
FILE NAME =	USER NAME = steffenmk	DESIGNED -	REVISED -
pw:\IL\084EBIDINTEG\illinois.gov\PIWIDOT\Documents\IDOT Offices\District 7\Projects\74774\Drawings\CABsheets\D774774-shd-details.dwg		CHECKED -	REVISED -
		DATE -	REVISED -

**STATE OF ILLINOIS
DEPARTMENT OF TRANSPORTATION**

**PAVEMENT MARKING AND RAISED REFLECTIVE PAVEMENT MARKERS
(RURAL & URBAN APPLICATIONS)**

SCALE: SHEET NO. 1 OF 4 SHEETS STA. TO STA.

DISTRICT 7 DETAIL NO. 7800001				
F.A.P. RTE.	SECTION	COUNTY	TOTAL SHEETS	SHEET NO.
•	D7 HMA RESURF 2017-3	••	14	11
			CONTRACT NO. 74774	
ILLINOIS FED. AID PROJECT				



PLACE THE ARROW 18' (5.5 m) BACK FROM STOP BAR
 PLACE ANOTHER ARROW EVEN WITH THE BEGINNING
 OF THE SOLID WHITE LINE. SPACE ADDITIONAL ARROWS
 EVENLY UP TO 80' (24.4 m) MAXIMUM SPACING.

* REDUCE TO 40 FEET (12.2 METERS) SPACING ON CURVES
 WHERE ADVISORY SPEEDS ARE 10 MPH (15 km/h) LOWER
 THAN POSTED SPEEDS.

** DOUBLE LANE LINE MARKERS SHALL BE SPECIFIED
 AND SPACED AS SHOWN IN HIGHWAY STANDARD
 781001 FOR MULTI-LANE DIVIDED AND UNDIVIDED
 HIGHWAYS.

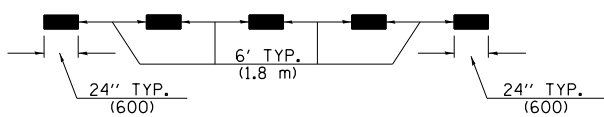
CROSSWALK WIDTH 6' (1.8m)
 OR AS SHOWN IN THE PLANS

PAVEMENT MARKING LEGEND

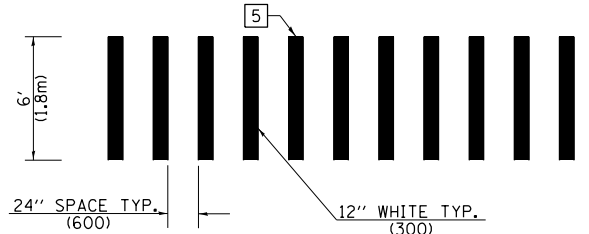
- 1 4" (100) SKIP-DASH (YELLOW)
 - 2 4" (100) SOLID (YELLOW)
 - 3 12" (300) DIAGONAL (YELLOW)
 - 4 4" (100) DOUBLE YELLOW (NARROW)
 - 5 12" (300) SOLID WHITE
 - 6 RESERVED
 - 7 6" (150) SKIP-DASH (WHITE)
 - 8 4" (100) SOLID (WHITE)
 - 9 12" (300) DIAGONAL (WHITE)
 - 10 6" (150) SOLID (WHITE)
 - 11 24" (600) STOP BAR (WHITE)
 - 12 8" (200) SOLID (WHITE)
 - 13 4" (100) PARKING WHITE
-

GENERAL NOTES

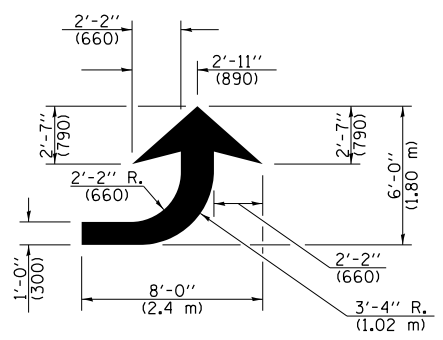
1. TURN ARROW PAIRS SHALL BE PLACED AT 250' (75 m) INTERVALS AND SHALL BE EVENLY SPACED BETWEEN BOTH ENDS OF THE BIDIRECTIONAL LEFT TURN LANE. USE A MINIMUM OF TWO PAIRS PER BLOCK.
2. THE SOLID YELLOW PAVEMENT MARKINGS [2] SHOULD GENERALLY START OR END NEAR THE RADIUS POINT OF EACH STREET RETURN EXCEPT WHERE ONE OR BOTH ENDS WOULD INCLUDE STOP BARS.
3. THE SKIP-DASH PAVEMENT MARKINGS [1] OR [7] SHOULD BE CENTERED BETWEEN BOTH ENDS OF EACH CITY BLOCK AND SHALL BE PLACED SO THEY LINE UP ACROSS FROM EACH OTHER.
4. USE LARGE ARROW SIZE FOR BOTH RURAL AND URBAN LOCATIONS. (SEE LAST PAGE OF SECTION 780x FOR SYMBOLS TABLE)
5. LANE LINE EXTENSIONS SHALL BE THE SAME COLOR AND WIDTH AS THE LANE LINE BEING EXTENDED.



LANE LINE EXTENSIONS

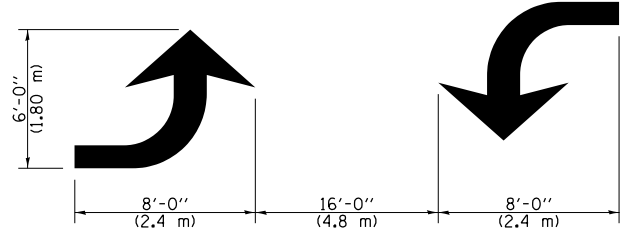


**CROSSWALK DETAIL
 (DECATUR CITY LIMITS ONLY)**



LEFT ARROW

REVERSE FOR RIGHT ARROW
 AREA = 15.6 SQ. FT. (1.47 m²)
 (WHITE)



**TYPICAL DOUBLE
 TURN ARROWS (WHITE)**

NOT TO SCALE

Note: All dimensions are in INCHES
 (millimeters) unless otherwise shown.

• 774 & 322 •• SHELBY & FAYETTE

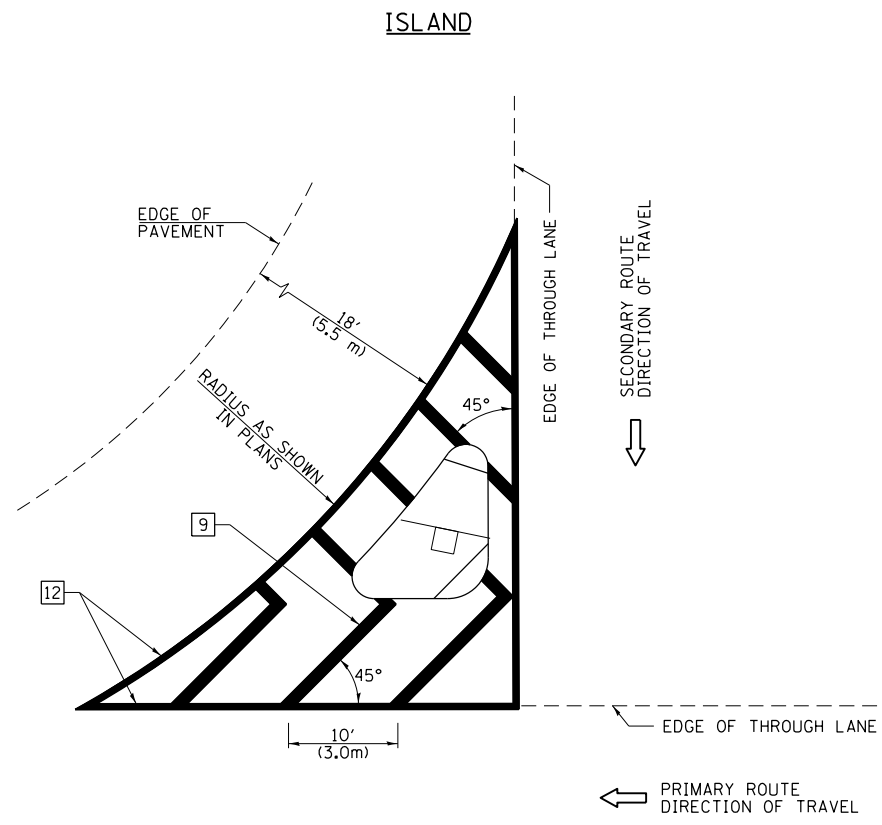
DISTRICT 7 DETAIL NO. 7800001

FILE NAME =	USER NAME = steffenmk	DESIGNED -	REVISED -
pw\11\084EBIDINTEG\illinois.gov\PWIDOT\Documents\DOT Offices\District 7\Projects\74774\Drawings\CABsheets\0774774-sht-details.dwg		CHECKED -	REVISED -
		DATE -	REVISED -

**STATE OF ILLINOIS
 DEPARTMENT OF TRANSPORTATION**

PAVEMENT MARKING AND RAISED REFLECTIVE PAVEMENT MARKERS (RURAL & URBAN APPLICATIONS)			
SCALE:	SHEET NO. 2 OF 4 SHEETS	STA.	TO STA.

F.A.P. RTE.	SECTION	COUNTY	TOTAL SHEETS	SHEET NO.
•	D7 HMA RESURF 2017-3	••	14	12
				CONTRACT NO. 74774
ILLINOIS FED. AID PROJECT				

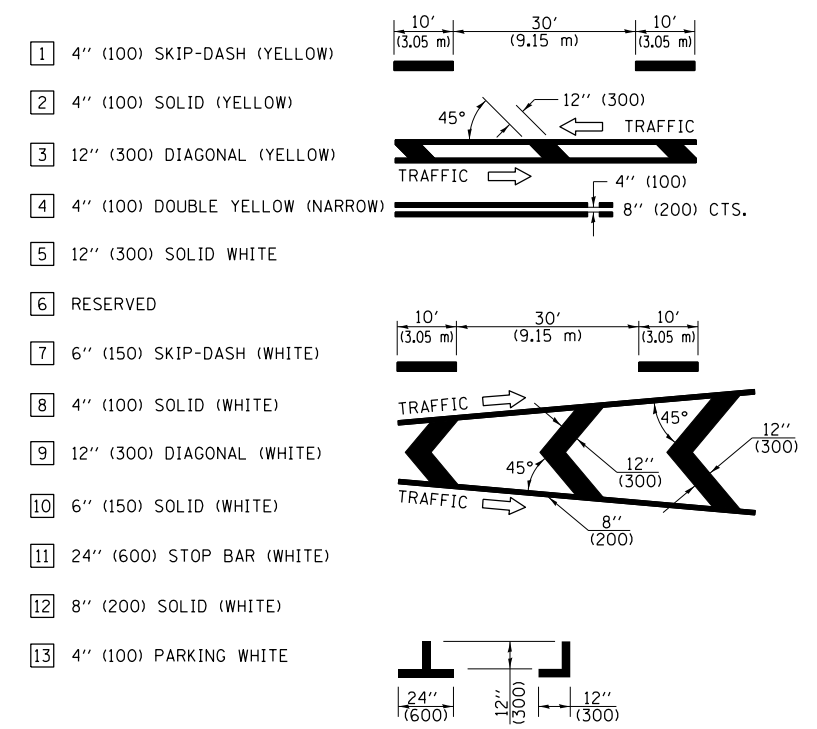


GENERAL NOTES

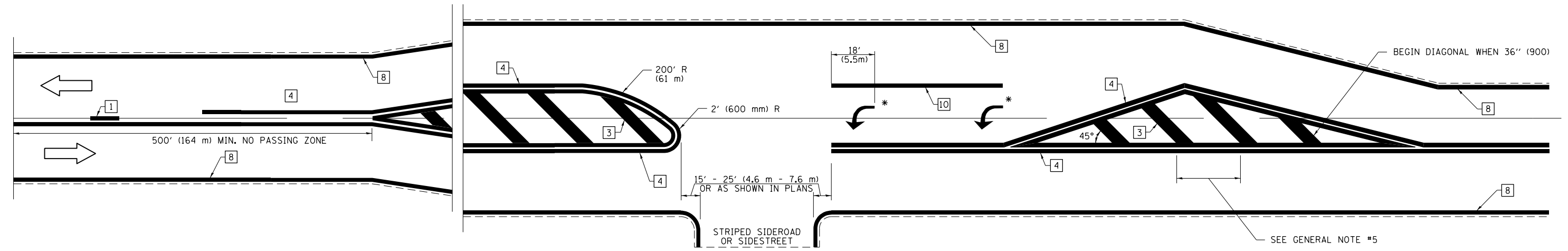
1. RAISED AND CORRUGATED MEDIANS SHALL BE OUTLINED WITH [2] IF PRESENT.
2. SOME OF THE INFORMATION INCLUDED WITH THIS DETAIL MAY NOT BE APPLICABLE TO THIS IMPROVEMENT.
3. PAVEMENT MARKINGS ARE TO BE EXTENDED THROUGH OMISSIONS WHEN APPLICABLE.
4. FINAL PAVEMENT MARKINGS SHALL BE IN PLACE PRIOR TO PLACING ANY RAISED REFLECTIVE PAVEMENT MARKERS.
5. THE FOLLOWING CRITERIA SHALL BE USED FOR SELECTING THE DIAGONAL PAVEMENT MARKING SPACING:

< 30 MPH (< 50 km/h)	15' (4.5 m)
30-45 MPH (50-75 km/h)	20' (6.0 m)
> 45 MPH (> 75 km/h)	30' (9.0 m)

PAVEMENT MARKING LEGEND



RURAL LEFT TURN STRIPING



* PLACE AN ARROW 18' (5.5 m) BACK FROM STOP BAR. PLACE ANOTHER ARROW EVEN WITH THE BEGINNING OF THE SOLID WHITE LINE. SPACE ADDITIONAL ARROWS EVENLY UP TO 80' (24.4 m) MAXIMUM SPACING. USE MINIMUM OF 2 ARROWS.

NOT TO SCALE
 Note: All dimensions are in INCHES (millimeters) unless otherwise shown.

• 774 & 322 • SHELBY & FAYETTE

DISTRICT 7 DETAIL NO. 7800001

FILE NAME =	USER NAME = steffenmk	DESIGNED -	REVISED -
pw:\IL\084EBIDINTEG\illinois.gov\PWIDOT\Documents\IDOT Offices\District 7\Projects\74774\Drawings\CABsheets\0774774-sht-details.dwg		DRAWN -	REVISED -
	PLOT SCALE = 2.0000' / in.	CHECKED -	REVISED -
	PLOT DATE = 10/27/2016	DATE -	REVISED -

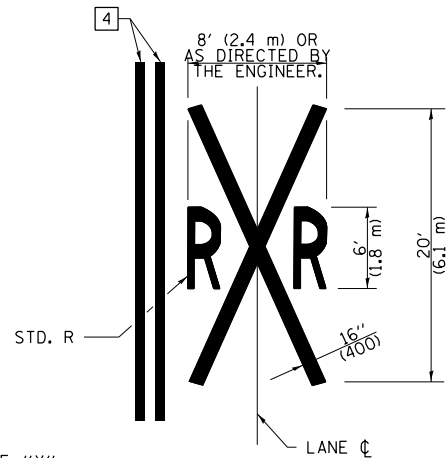
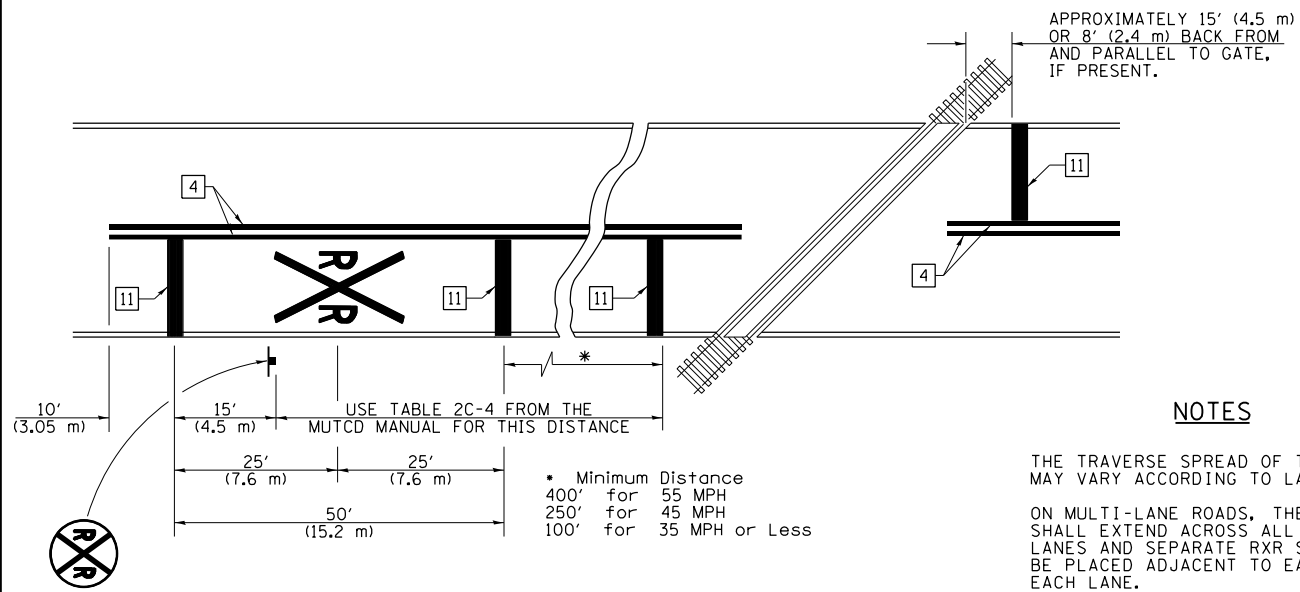
**STATE OF ILLINOIS
 DEPARTMENT OF TRANSPORTATION**

**PAVEMENT MARKING AND RAISED REFLECTIVE PAVEMENT MARKERS
 (RURAL & URBAN APPLICATIONS)**

SCALE: SHEET NO. 3 OF 4 SHEETS STA. TO STA.

F.A.P. RTE.	SECTION	COUNTY	TOTAL SHEETS	SHEET NO.
•	D7 HMA RESURF 2017-3	••	14	13
			CONTRACT NO. 74774	
ILLINOIS FED. AID PROJECT				

PAVEMENT MARKINGS AT RAILROAD-HIGHWAY GRADE CROSSING



NOTES

THE TRAVERSE SPREAD OF THE "X" MAY VARY ACCORDING TO LANE WIDTH.

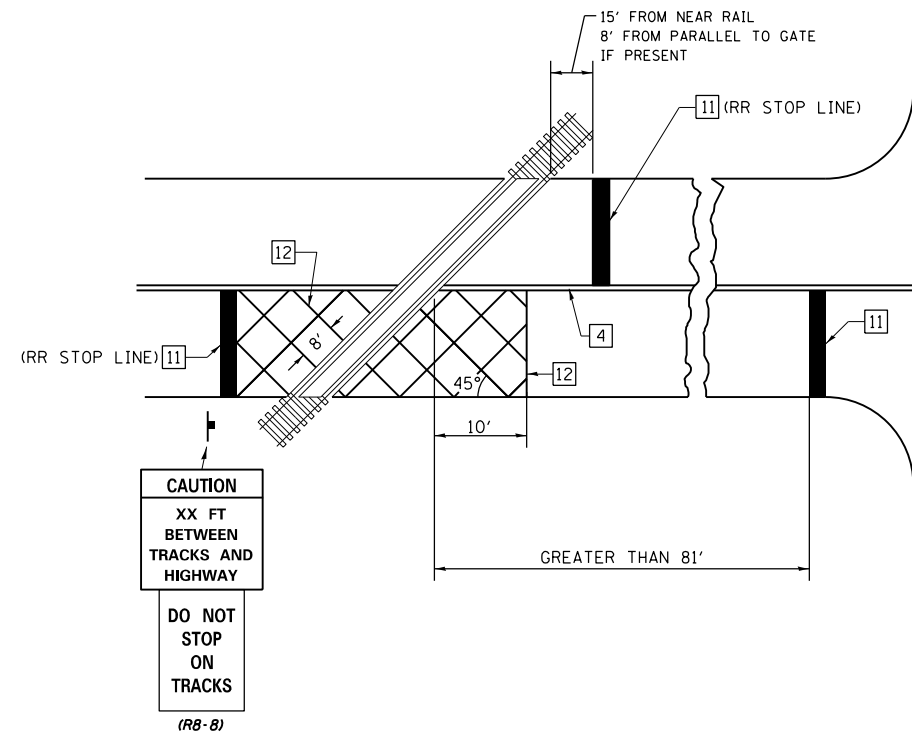
ON MULTI-LANE ROADS, THE STOP LINES SHALL EXTEND ACROSS ALL APPROACH LANES AND SEPARATE R X R SYMBOLS SHALL BE PLACED ADJACENT TO EACH OTHER IN EACH LANE.

WHEN THE PAVEMENT MARKING SYMBOL IS USED, A PORTION OF THE SYMBOL SHOULD BE LOCATED DIRECTLY ADJACENT TO THE ADVANCE WARNING SIGN (W10-1) AS PLACED BY TABLE II-1, CONDITION B OF THE MUTCD.

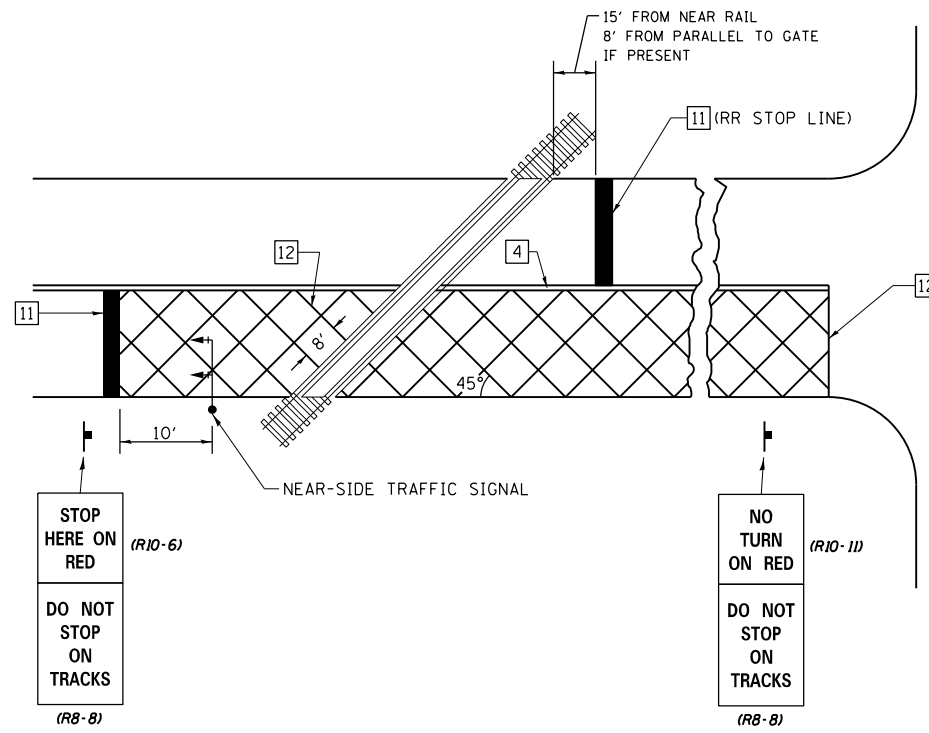
PAVEMENT MARKING LEGEND

- 1 4" (100) SKIP-DASH (YELLOW)
- 2 4" (100) SOLID (YELLOW)
- 3 12" (300) DIAGONAL (YELLOW)
- 4 4" (100) DOUBLE YELLOW (NARROW)
- 5 12" (300) SOLID WHITE
- 6 RESERVED
- 7 6" (150) SKIP-DASH (WHITE)
- 8 4" (100) SOLID (WHITE)
- 9 12" (300) DIAGONAL (WHITE)
- 10 6" (150) SOLID (WHITE)
- 11 24" (600) STOP BAR (WHITE)
- 12 8" (200) SOLID (WHITE)
- 13 4" (100) PARKING WHITE

RAILROAD CROSSING WITH INTERCONNECT ONLY



RAILROAD CROSSING WITH INTERCONNECT AND PRE-SIGNALS



GENERAL NOTES

- SUPPLEMENTAL PAVEMENT MARKINGS TO BE INSTALLED ONLY ON APPROACHES TO INTERSECTIONS CONTROLLED BY TRAFFIC SIGNALS WHICH ARE INTERCONNECTED WITH THE RAILROAD WARNING SIGNALS.
- EXTEND PAVEMENT MARKINGS TO THE INTERSECTION ONLY WHERE NEAR-SIDE TRAFFIC SIGNALS ARE USED.

SUPPLEMENTAL PAVEMENT MARKING TREATMENT FOR RAILROAD-HIGHWAY GRADE CROSSING

NOT TO SCALE

Note: All dimensions are in INCHES (millimeters) unless otherwise shown.

• 774 & 322 • SHELBY & FAYETTE

DISTRICT 7 DETAIL NO. 7800001

FILE NAME =	USER NAME = steffenmk	DESIGNED -	REVISED -	STATE OF ILLINOIS DEPARTMENT OF TRANSPORTATION	PAVEMENT MARKING AND RAISED REFLECTIVE PAVEMENT MARKERS (RURAL & URBAN APPLICATIONS)	F.A.P. RTE.	SECTION	COUNTY	TOTAL SHEETS	SHEET NO.
pw:\11\084EBIDINTEG.illinois.gov\PIWIDOT\Documents\DOT Offices\District 7\Projects\7477\Drawings\CABsheets\0774774-sht-details.dgn	PLotted	CHECKED -	REVISED -			•	D7 HMA RESURF 2017-3	••	14	14
PLOT SCALE = 2.0000' / in.	DATE = 10/27/2016	DATE -	REVISED -			CONTRACT NO. 74774				
						ILLINOIS FED. AID PROJECT				