

STATE OF ILLINOIS
DEPARTMENT OF TRANSPORTATION
DIVISION OF HIGHWAYS
PROPOSED
HIGHWAY PLANS

F.A.P. RTE.	SECTION	COUNTY	TOTAL SHEETS	SHEET NO.
682	22,21RS-3	RANDOLPH	20	1
FED. ROAD DIST. NO.	ILLINOIS	CONTRACT NO. 76J80		

FOR INDEX OF SHEETS, SEE SHEET NO. 2

TRAFFIC DATA

2015 ADT: 6100 (ACTUAL)
 2017 ADT: 6200 (ESTIMATED)
 2037 ADT: 7600 (ESTIMATED)
 SU: 9.0%
 MU: 3.3%

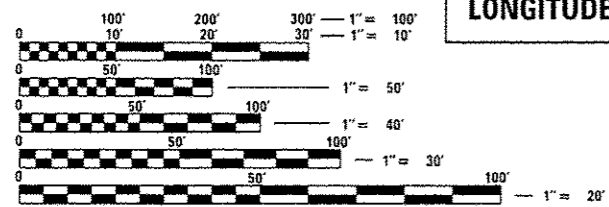
FAP ROUTE 682 (IL 4)
SECTION 22,21RS-3
PROJECT NO.: STP-0682(012)
3P RESURFACING
RANDOLPH COUNTY
C-98-059-16



PROJECT ENDS AT STA 871+05
LATITUDE: 38.2096
LONGITUDE: 89.7033

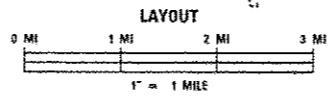
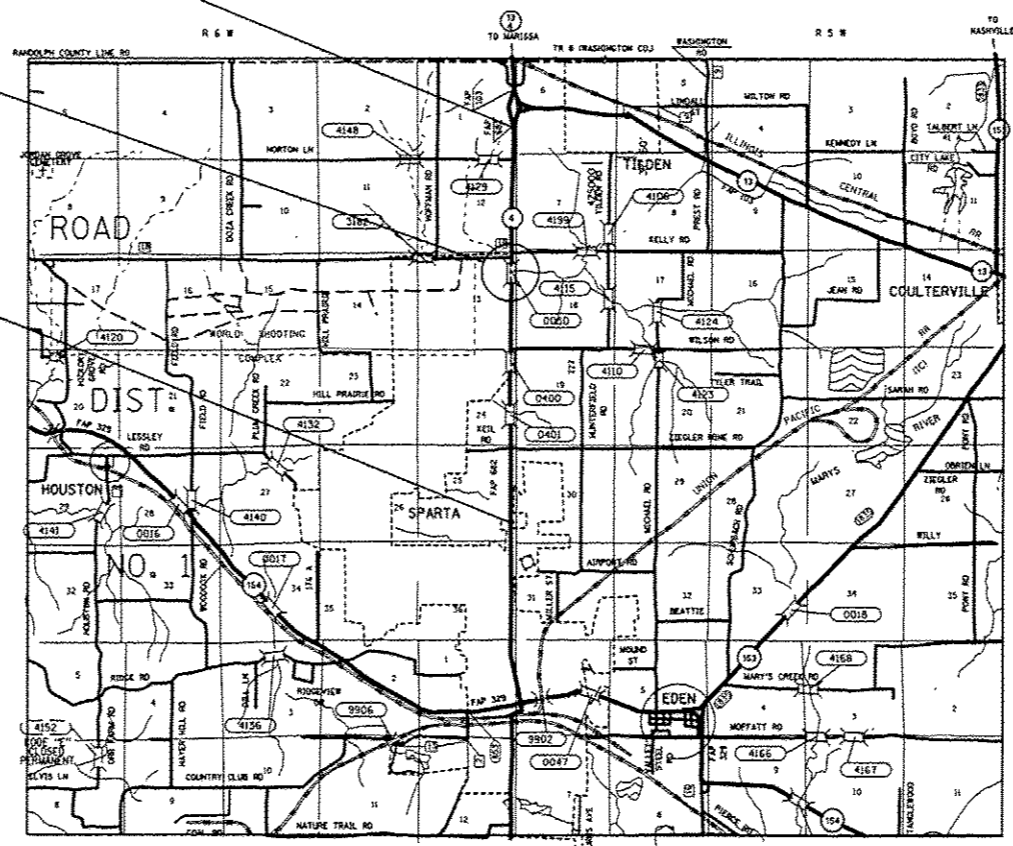
BRIDGE OMISSION
SN 079-0050
STA. 791+95.60 TO STA. 793+51.59

PROJECT BEGINS AT STA 658+60
LATITUDE: 38.1512
LONGITUDE: 89.7035



FULL SIZE PLANS HAVE BEEN PREPARED USING STANDARD ENGINEERING SCALES. REDUCED SIZED PLANS WILL NOT CONFORM TO STANDARD SCALES. IN MAKING MEASUREMENTS ON REDUCED PLANS, THE ABOVE SCALES MAY BE USED.

J.U.L.I.E.
 JOINT UTILITY LOCATION INFORMATION FOR EXCAVATION
 1-800-892-0123
 OR 811



PROJECT ENGINEER: TIM PADGETT (618) 346-3325
PROJECT MANAGER: STEPHANE B. SECK BIRHAME (618) 346-3333

CONTRACT NO. 76J80

GROSS LENGTH = 21245 FT. = 4.024 MILE
 NET LENGTH = 21089 FT. = 3.994 MILE

STATE OF ILLINOIS
 DEPARTMENT OF TRANSPORTATION

SUBMITTED *March 10 2017*
Jeffrey Z. Ke... REGIONAL ENGINEER
May 12 2017
Maureen M. Ad... ENGINEER OF DESIGN AND ENVIRONMENT
May 12 2017
Paul... DIRECTOR OF PROGRAM DEVELOPMENT

PRINTED BY THE AUTHORITY
OF THE STATE OF ILLINOIS

INDEX OF SHEETS

- 1. COVER PAGE
- 2. INDEX OF SHEETS, HIGHWAY STANDARDS, GENERAL NOTES, & COMMITMENTS
- 3. - 4. SUMMARY OF QUANTITIES
- 5. - 8. TYPICAL SECTIONS
- 9. - 12. SCHEDULE OF QUANTITIES
- 13. LOCATION MAP
- 14. - 15. PAVEMENT MARKING DETAILS
- 16. - 19. SURVEY MONUMENTS
- 20. DETAILS

GENERAL NOTES

- 1. THE THICKNESS OF THE HMA MIXTURES SHOWN ON THE PLANS IS THE NOMINAL THICKNESS. DEVIATIONS MAY OCCUR DUE TO IRREGULARITIES IN THE EXISTING SURFACE OR BASE ON WHICH THE HMA MIXTURE IS PLACED.
- 2. ILLINOIS STATE LAW REQUIRES A 48-HOUR NOTICE BE GIVEN TO ALL UTILITIES WITHIN THE PROJECT LIMITS BEFORE DIGGING. FIELD MARKING OF FACILITIES MAY BE OBTAINED BY CONTACTING J.U.L.I.E. OR FOR NON-MEMBERS, THE UTILITY COMPANY DIRECTLY. AGENCIES KNOWN TO HAVE FACILITIES WITHIN THE PROJECT AREA ARE AS FOLLOWS:

	ABOVE GROUND	BELOW GROUND
*AMEREN ILLINOIS (GAS AND ELECTRIC)	X	X
*CLEARWAVE COMMUNICATIONS (COMMUNICATIONS)	X	X
*EGYPTIAN ELECTRIC COOPERATIVE ASSOCIATION (ELECTRIC)	X	X
*EGYPTIAN TELEPHONE COOPERATIVE ASSOCIATION (COMMUNICATIONS)	X	X
*FRONTIER COMMUNICATIONS (COMMUNICATIONS)	X	X
*KASKASKIA WATER DISTRICT (WATER)		X
*VERIZON BUSINESS (COMMUNICATIONS)	X	X
*MEDIACOM LLC CENTRAL (CABLE TV)	X	X
*NEW WAVE COMMUNICATIONS (CABLE TV)	X	X
*CITY OF SPARTA (WATER & SANITARY SEWER)		X
*VILLAGE OF TILDEN (WATER & SANITARY SEWER)		X
*WASHINGTON COUNTY WATER CO. (WATER)		X
*ZAYO GROUP LLC (COMMUNICATIONS)	X	X

MEMBERS OF J.U.L.I.E. CALL TOLL FREE [(800) 892-0123 OR 811] ARE INDICATED BY *.
NON-J.U.L.I.E. MEMBERS MUST BE NOTIFIED INDIVIDUALLY.

- 3. ALL TURF AREAS DISTURBED BY THE CONTRACTOR SHALL BE SEEDED WITH THE APPROPRIATE ERSOION CONTROL, AS DIRECTED BY THE ENGINEER, AT THE CONTRACTOR'S EXPENSE.
- 4. THE CONTRACTOR AND ENGINEER SHALL BE AWARE THAT NO SURVEY WAS PERFORMED FOR THIS PROJECT. THE STATIONING, TOPOGRAPHY, AND QUANTITIES SHOWN IN THE PLANS WERE CREATED USING MICROFILM AND FIELD MEASUREMENTS. ALL SHALL BE ASSUMED TO BE APPROXIMATE. THE CONTRACTOR SHALL VERIFY DIMENSIONS AND CONDITIONS IN THE FIELD PRIOR TO CONSTRUCTION AND ORDERING OF MATERIALS.
- 5. AN ESTIMATED QUANTITY OF 2942.2 TONS OF CUTTINGS FROM THE HOT-MIX ASPHALT SURFACE REMOVAL OPERATION IS ANTICIPATED.
- 6. NO OVERNIGHT LANE CLOSURES WILL BE PERMITTED UNLESS WORKERS ARE PRESENT.
- 7. PROPOSED PAVEMENT MARKINGS SHALL BE PLACED IN THE SAME LOCATIONS AS EXISTING AS DIRECTED BY THE RESIDENT ENGINEER.
- 8. ACCESS SHALL BE MAINTAINED TO ALL PROPERTIES UNLESS OTHERWISE NOTED IN THE PLANS.
- 9. MILLING TRANSITION BETWEEN 1/2" , 2", AND 2 1/4" SHALL BE AT A RATE OF 1:240.

10. THE FOLLOWING MIXTURE REQUIREMENTS ARE APPLICABLE FOR THIS CONTRACT:

MIXTURE USE	SURFACE	LEVEL BINDER	SHOULDERS > 2.25"	SHOULDERS < 2.25
AC/PG	PG 64-22	PG 64-22	PG 64-22	PG 64-22
RAP % (MAX)	SEE S.P.	SEE S.P.	SEE S.P.	SEE S.P.
DESIGN AIR VOIDS	4.0% @ Ndes=70	4.0% @ Ndes=70	4.0% @ Ndes=30	2.0% @ Ndes=30
MIX COMPOSITION	IL 9.5	IL 9.5FG	IL 19.0L	IL 9.5L
FRICTION AGG.	MIXTURE "D"	MIXTURE "D"		
QUALITY MGMT PRGM	QCP	QCP	QC/QA	QC/QA

PLAN QUANTITIES FOR HOT-MIX ASPHALT SURFACE COURSE ITEMS ARE CALCULATED USING A UNIT WEIGHT OF 112 LB/SQ YD/IN (59.8 KG/SQ M/25 MM THICKNESS).

- 11. THE MATERIAL TRANSFER DEVICE SHALL BE EMPTIED PRIOR TO CROSSING THE FOLLOWING STRUCTURES: SN 079-0050, SN 079-0400, & SN 079-0401
- 12. TRANSITIONS BETWEEN VARIOUS MILLING DEPTHS SHOULD BE AT A RATE OF 1:240 AND SHALL NOT BE DONE IN FRONT OF SIDE ROADS OR ENTRANCES. THE TRANSITION SECTIONS SHALL BE PAID AS HOT-MIX ASPHALT SURFACE REMOVAL, 2" AND ANY ADDITIONAL COSTS TO COMPLETE THE TRANSITIONS SHALL BE CONSIDERED INCLUDED IN THIS PAY ITEM.

HIGHWAY STANDARDS

- 000001-06 STANDARD SYMBOLS, ABBREVIATIONS AND PATTERNS
- 001001-02 AREAS OF REINFORCEMENT BARS
- 001006 DECIMAL OF AN INCH AND A FOOT
- 406201-01 MAILBOX TURNOUT
- 482001-02 HMA SHOULDER ADJACENT TO FLEXIBLE PAVEMENT
- 482011-03 HMA SHLD. STRIPS/SHLD. WITH RESURFACING OR WIDENING AND RESURFACING PROJECTS
- 642006 SHOULDER RUMBLE STRIPS, 8 IN.
- 701001-02 OFF-RD OPERATIONS, 2L, 2W, MORE THAN 15' (4.5m) AWAY
- 701006-05 OFF-RD OPERATIONS, 2L, 2W, 15' (4.5m) TO 24" (600mm) FROM PAVEMENT EDGE
- 701011-04 OFF-RD MOVING OPERATIONS, 2L, 2W, DAY ONLY
- 701201-04 LANE CLOSURE, 2L, 2W, DAY ONLY, FOR SPEEDS > 45 MPH
- 701301-04 LANE CLOSURE, 2L,2W, SHORT TIME OPERATIONS
- 701306-03 LANE CLOSURE, 2L, 2W, SLOW MOVING OPERATIONS DAY ONLY, FOR SPEEDS > 45 MPH
- 701311-03 LANE CLOSURE 2L, 2W MOVING OPERATIONS-DAY ONLY
- 701901-06 TRAFFIC CONTROL DEVICES
- 780001-05 TYPICAL PAVEMENT MARKINGS
- 781001-04 TYPICAL APPLICATIONS RAISED REFLECTIVE PAVEMENT MARKERS

COMMITMENTS

NONE

FILE NAME =	USER NAME = Copperno11PE	DESIGNED -	REVISED -	STATE OF ILLINOIS DEPARTMENT OF TRANSPORTATION	INDEX OF SHEETS, HIGHWAY STANDARDS, GENERAL NOTES, & COMMITMENTS	F.A.P. RTE.	SECTION	COUNTY	TOTAL SHEETS	SHEET NO.	
pw:\IL084EBIDINTEG.illinois.gov\PWIDOTDocuments\DOT Offices\District 8\Projects\0876\DRAWINGData\EADsheets\0876J80-sh-typoc1	PLLOT SCALE = 100.0000' / in.	CHECKED -	REVISED -			682	22,21RS-3	RANDOLPH	20	2	
	PLLOT DATE = 3/15/2017	DATE -	REVISED -			CONTRACT NO. 76J80					
						SCALE:	SHEET NO. 1 OF 1 SHEETS	STA.	TO STA.	FED. ROAD DIST. NO. ILLINOIS FED. AID PROJECT	

CODE NO.	ITEM	UNIT	TOTAL QUANTITY	CONSTR. CODE	
				80% FEDERAL	20% STATE
				ROADWAY	
				0005	RURAL
40600290	BITUMINOUS MATERIALS (TACK COAT)	POUND	41970	41970	
40600637	LEVELING BINDER (MACHINE METHOD). IL-9, SFG, N70	TON	2159.9	2159.9	
40600982	HOT-MIX ASPHALT SURFACE REMOVAL - BUTT JOINT	SO YD	436	436	
40600990	TEMPORARY RAMP	SO YD	175	175	
40603340	HOT-MIX ASPHALT SURFACE COURSE, MIX "D", N70	TON	4355.8	4355.8	
40800029	BITUMINOUS MATERIALS (TACK COAT)	POUND	290	290	
40800050	INCIDENTAL HOT-MIX ASPHALT SURFACING	TON	32	32	
44000151	HOT-MIX ASPHALT SURFACE REMOVAL, 1/2"	SO YD	52049	52049	
44000157	HOT-MIX ASPHALT SURFACE REMOVAL, 2"	SO YD	10077	10077	
44000158	HOT-MIX ASPHALT SURFACE REMOVAL, 2 1/4"	SO YD	2613	2613	
44200202	PAVEMENT PATCHING, TYPE II, 17 INCH	SO YD	327	327	
44200204	PAVEMENT PATCHING, TYPE III, 17 INCH	SO YD	20	20	
48102100	AGGREGATE WEDGE SHOULDER, TYPE B	TON	548.4	548.4	
48203100	HOT-MIX ASPHALT SHOULDERS	TON	1670.4	1670.4	

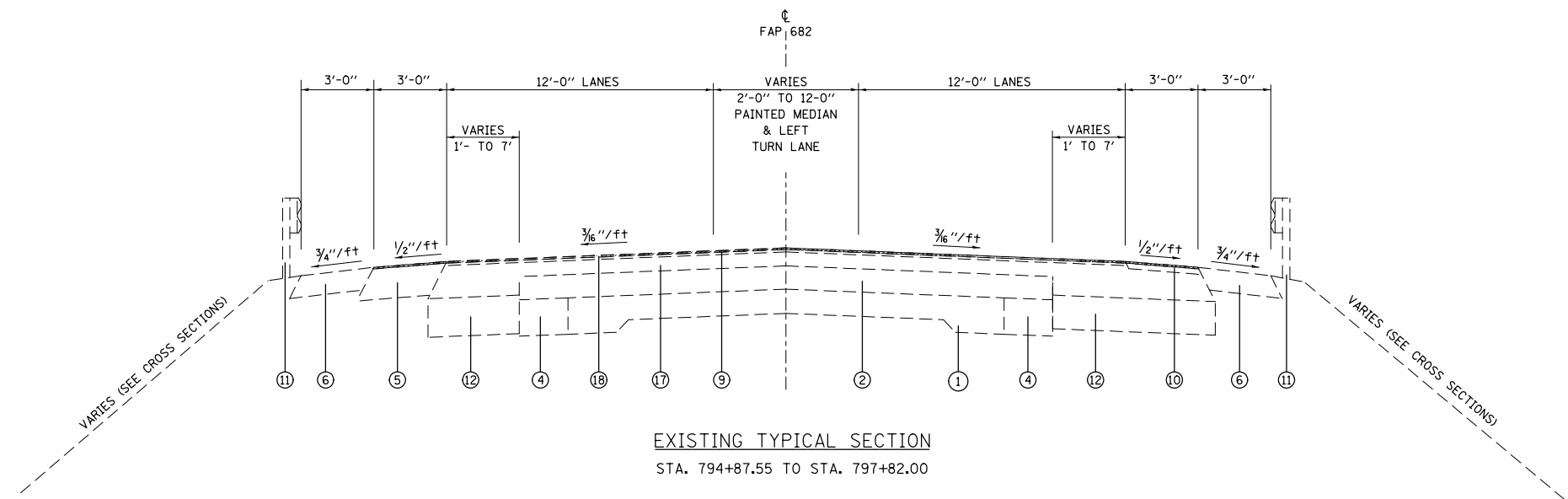
CODE NO.	ITEM	UNIT	TOTAL QUANTITY	CONSTR. CODE	
				80% FEDERAL	20% STATE
				ROADWAY	
				0005	RURAL
64200108	SHOULDER RUMBLE STRIPS, 8 INCH	FOOT	30566	30566	
67000400	ENGINEER'S FIELD OFFICE, TYPE A	CAL MO	3	3	
67100100	MOBILIZATION	LSUM	1	1	
70100450	TRAFFIC CONTROL AND PROTECTION, STANDARD 701201	LSUM	1	1	
70100460	TRAFFIC CONTROL AND PROTECTION, STANDARD 701306	LSUM	1	1	
70100600	TRAFFIC CONTROL AND PROTECTION, STANDARD 701336	LSUM	1	1	
70300100	SHORT TERM PAVEMENT MARKING	FOOT	2108	2108	
70300150	SHORT TERM PAVEMENT MARKING REMOVAL	SO FT	703	703	
70300210	TEMPORARY PAVEMENT MARKING LETTERS AND SYMBOLS	SO FT	31	31	
70300220	TEMPORARY PAVEMENT MARKING - LINE 4"	FOOT	60244	60244	
70300260	TEMPORARY PAVEMENT MARKING - LINE 12"	FOOT	181	181	
* 78000100	THERMOPLASTIC PAVEMENT MARKING - LETTERS AND SYMBOLS	SO FT	31	31	
* 78000200	THERMOPLASTIC PAVEMENT MARKING - LINE 4"	FOOT	60244	60244	
* 78000600	THERMOPLASTIC PAVEMENT MARKING - LINE 12"	FOOT	181	181	

* SPECIALTY ITEM

CODE NO.	ITEM	UNIT	TOTAL QUANTITY	CONSTR. CODE	
				80% FEDERAL 20% STATE	ROADWAY 0005 RURAL
* 78100100	RAISED REFLECTIVE PAVEMENT MARKER	EACH	300	300	
78300200	RAISED REFLECTIVE PAVEMENT MARKER REMOVAL	EACH	300	300	
X4405020	LONGITUDINAL PARTIAL DEPTH REMOVAL 2"	FOOT	100	100	
X4420900	LONGITUDINAL PARTIAL DEPTH PATCHING	TON	2.5	2.5	
X7030005	TEMPORARY PAVEMENT MARKING REMOVAL	50 FT	20293	20293	
Z0033700	LONGITUDINAL JOINT SEALANT	FOOT	44154	44154	
φ Z0076600	TRAINEES	Hour	1000	1000	
Z0034105	MATERIAL TRANSFER DEVICE	TON	6515.7	6515.7	
φ Z0076604	TRAINEES TRAINING PROGRAM GRADUATE	Hour	1000	1000	
Z0070100	SURVEY MONUMENT COVER ASSEMBLY	EACH	22	22	

* SPECIALTY ITEM

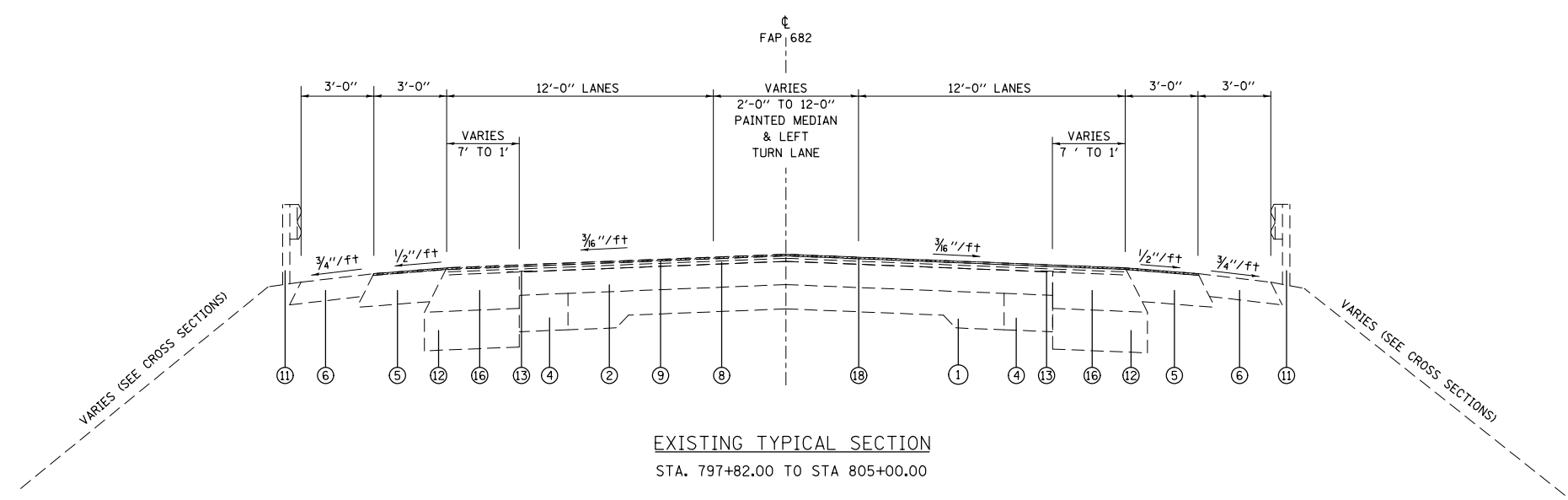
φ 0042



EXISTING TYPICAL SECTION
STA. 794+87.55 TO STA. 797+82.00

LEGEND

- ① EXISTING P.C.C. PAVEMENT 9-6-9
- ② EXISTING BITUMINOUS OVERLAY 6" (±)
- ③ EXISTING BITUMINOUS OVERLAY 2" (±)
- ④ EXISTING BASE COURSE WIDENING 9"
- ⑤ EXISTING HOT-MIX ASPHALT SHOULDER, 8"
- ⑥ EXISTING AGGREGATE SHOULDERS, 6"
- ⑦ EXISTING HOT-MIX ASPHALT BASE COURSE WIDENING, 12"
- ⑧ EXISTING LEVELING BINDER
- ⑨ EXISTING HOT-MIX ASPHALT SURFACE COURSE, 1/2"
- ⑩ EXISTING HOT-MIX ASPHALT SHOULDER, 2"
- ⑪ EXISTING GUARDRAIL
- ⑫ EXISTING SUB-BASE GRANULAR MATERIAL, TYPE A, 12"
- ⑬ EXISTING STRIP REFLECTIVE CRACK CONTROL
- ⑭ EXISTING GUTTER
- ⑮ EXISTING HOT-MIX ASPHALT STABILIZATION
- ⑯ EXISTING HOT-MIX ASPHALT BASE COURSE WIDENING, 12"
- ⑰ EXISTING HOT-MIX ASPHALT BINDER COURSE (VARIES 2 1/4" TO 34")
- ⑱ PROPOSED HOT-MIX ASPHALT SURFACE REMOVAL, 1/2"
- ⑲ PROPOSED HOT-MIX ASPHALT SURFACE REMOVAL, 2"
- ⑳ PROPOSED HOT-MIX ASPHALT SURFACE REMOVAL, 2 1/4"
- ㉑ PROPOSED LEVELING BINDER (MACHINE METHOD), IL-9.5FG, N70, 3/4"
- ㉒ PROPOSED HOT-MIX ASPHALT SURFACE COURSE, MIX "D", N70, 1 1/2"
- ㉓ PROPOSED HOT-MIX ASPHALT SHOULDERS, 2 1/4"
- ㉔ PROPOSED AGGREGATE SHOULDER WEDGE, TYPE B
- ㉕ PROPOSED SHOULDER RUMBLE STRIPS, 8"
- ㉖ PROPOSED LONGITUDINAL JOINT SEALANT
- ㉗ PROPOSED BITUMINOUS MATERIALS (TACK COAT)



EXISTING TYPICAL SECTION
STA. 797+82.00 TO STA. 805+00.00

FILE NAME =	USER NAME = CoppernoIPE	DESIGNED -	REVISED -
pw:\IL\084EBIDINTEG.illinois.gov\PWIDOT\Documents\IDOT Offices\District 8\Projects\0876\DRAWING\DATA\EA0\Sheets\0876J80-sh-typical		CHECKED -	REVISED -
		DATE -	REVISED -

**STATE OF ILLINOIS
DEPARTMENT OF TRANSPORTATION**

TYPICAL SECTIONS

SCALE: SHEET NO. 2 OF 4 SHEETS STA. TO STA.

F.A.P. RTE.	SECTION	COUNTY	TOTAL SHEETS	SHEET NO.
682	22,21RS-3	RANDOLPH	20	6
FED. ROAD DIST. NO. ILLINOIS FED. AID PROJECT			CONTRACT NO. 76J80	

INCIDENTAL HOT-MIX ASPHALT SURFACING SCHEDULE							
LOCATION		TYPE	SIZE			BITUMINOUS MATERIALS (TACK COAT)	INCIDENTAL HMA SURFACING
STA.	RT/LT		WIDTH (FT)	LENGTH (FT)	AREA (SQ YD)	(POUND)	(TON)
697+47	LT	DRIVEWAY	3	46	15.3	7	0.75
718+46	RT	FARM ENT.	3	33	11.0	5	0.54
721+77	LT	DRIVEWAY	3	42	14.0	6	0.69
722+53	RT	FARM ENT.	3	34	11.3	5	0.56
727+25	RT	DRIVEWAY	3	30	10.0	5	0.49
727+80	LT	FARM ENT.	3	34	11.3	5	0.56
731+00	RT	FARM ENT.	3	34	11.3	5	0.56
731+03	LT	FARM ENT.	3	31	10.3	5	0.51
735+55	RT	FARM ENT.	3	34	11.3	5	0.56
748+06	LT	DRIVEWAY	3	42	14.0	6	0.69
749+07	RT	SIDE ROAD	10	51	56.7	26	2.78
761+43	RT	FARM ENT.	3	33	11.0	5	0.54
762+33	RT	DRIVEWAY	3	37	12.3	6	0.60
783+69	RT	FARM ENT.	3	34	11.3	5	0.56
784+63	LT	FARM ENT.	3	34	11.3	5	0.56
801+12	LT	SIDE ROAD	10	162	180.0	81	8.82
802+82	RT	SIDE ROAD	10	52	57.8	26	2.83
809+80	LT	FARM ENT.	3	32	10.7	5	0.52
809+99	RT	DRIVEWAY	3	70	23.3	11	1.14
818+06	LT	DRIVEWAY	3	40	13.3	6	0.65
827+76	LT	DRIVEWAY	3	36	12.0	5	0.59
827+81	RT	FARM ENT.	3	36	12.0	5	0.59
828+26	RT	FARM ENT.	3	33	11.0	5	0.54
829+75	LT	DRIVEWAY	3	64	21.3	10	1.05
833+09	LT	DRIVEWAY	3	50	16.7	8	0.82
836+41	RT	FARM ENT.	3	34	11.3	5	0.56
840+67	LT	FARM ENT.	3	35	11.7	5	0.57
841+97	RT	FARM ENT.	3	35	11.7	5	0.57
842+46	RT	FARM ENT.	3	33	11.0	5	0.54
857+23	RT	FARM ENT.	3	34	11.3	5	0.56
868+22	RT	FARM ENT.	3	45	15.0	7	0.74
TOTAL						290	32.0

PAVEMENT PATCHING 17 INCH SCHEDULE							
LOCATION			LANE	LENGTH	LANE WIDTH	PAVEMENT PATCHING TYPE II	PAVEMENT PATCHING TYPE III
				(FT)	(FT)	(SQ. YD.)	(SQ. YD.)
ILL 4 NB							
664	+	70	NB	10.0	11.0	12.2	
667	+	70	NB	6.0	11.0	7.3	
668	+	40	NB	6.0	11.0	7.3	
668	+	70	NB	6.0	11.0	7.3	
669	+	0	NB	12.0	11.0	14.7	
675	+	0	NB	6.0	11.0	7.3	
675	+	10	NB	5.0	11.0	6.1	
681	+	40	NB	8.0	11.0	9.8	
683	+	20	NB	6.0	11.0	7.3	
683	+	35	NB	14.0	11.0		17.1
684	+	20	NB	6.0	11.0	7.3	
698	+	70	NB	6.0	11.0	7.3	
708	+	20	NB	6.0	11.0	7.3	
714	+	0	NB	6.0	11.0	7.3	
716	+	70	NB	6.0	11.0	7.3	
741	+	70	NB	6.0	11.0	7.3	
743	+	70	NB	6.0	11.0	7.3	
760	+	67	NB	8.0	11.0	9.8	
ILL 4 SB							
664	+	70	SB	6.0	11.0	7.3	
667	+	70	SB	10.0	11.0	12.2	
668	+	40	SB	6.0	11.0	7.3	
668	+	70	SB	6.0	11.0	7.3	
669	+	0	SB	12.0	11.0	14.7	
675	+	0	SB	6.0	11.0	7.3	
681	+	40	SB	8.0	11.0	9.8	
684	+	20	SB	6.0	11.0	7.3	
687	+	20	SB	6.0	11.0	7.3	
698	+	70	SB	6.0	11.0	7.3	
708	+	20	SB	8.0	11.0	9.8	
714	+	0	SB	6.0	11.0	7.3	
716	+	70	SB	6.0	11.0	7.3	
741	+	70	SB	6.0	11.0	7.3	
743	+	70	SB	6.0	11.0	7.3	
760	+	67	SB	8.0	11.0	9.8	
822	+	70	SB	6.0	11.0	7.3	
SUBTOTAL:						284.8	17.1
ANTICIPATED FAILURES (15%):						42.7	2.6
TOTAL:						327	20

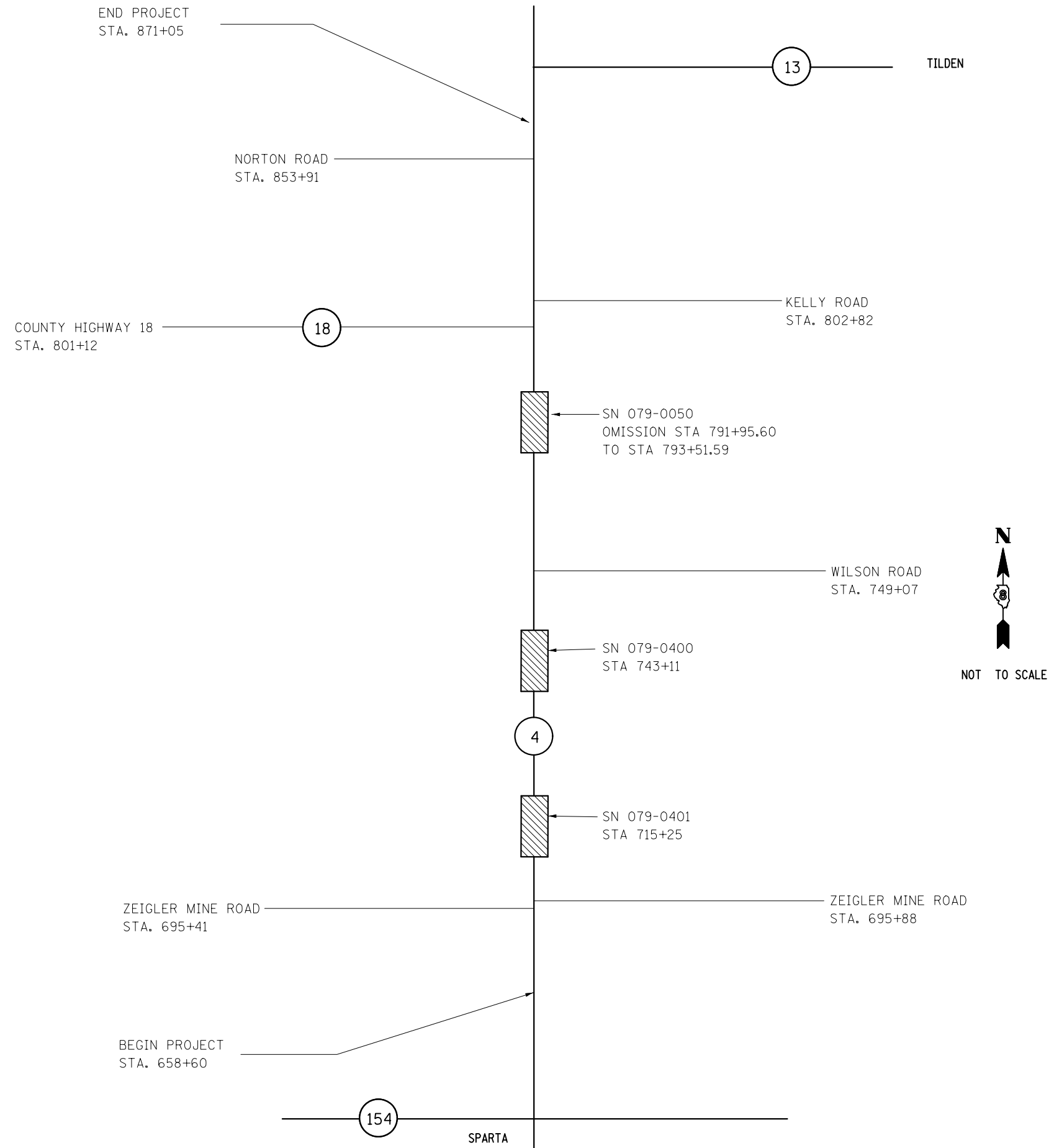
LONGITUDINAL PARTIAL DEPTH PATCHING							
LOCATION			LANE	LENGTH	WIDTH	LONGITUDINAL PARTIAL DEPTH REMOVAL, 2"	LONGITUDINAL PARTIAL DEPTH PATCHING
				(FT)	(FT)	(FT)	(TON)
ILL 4							
728	+	35	CENTERLINE	100.0	2.0	100.0	2.5
TOTAL						100.0	2.5

FILE NAME =	USER NAME = CopperrillPE	DESIGNED -	REVISED -
p:\IL084EBIDINTEG\Illinois.gov\PIWIDOT\Documents\DOT Offices\District 8\Projects\0875-DRAWING\DATA\6AD\Sheets\0876J80-shr-typoc		CHECKED -	REVISED -
		DATE -	REVISED -

**STATE OF ILLINOIS
DEPARTMENT OF TRANSPORTATION**

SCHEDULE OF QUANTITIES			
SCALE:	SHEET NO. 3 OF 4 SHEETS	STA.	TO STA.

F.A.P. RTE.	SECTION	COUNTY	TOTAL SHEETS	SHEET NO.
682	22,21RS-3	RANDOLPH	20	11
FED. ROAD DIST. NO.			ILLINOIS FED. AID PROJECT	
			CONTRACT NO. 76J80	

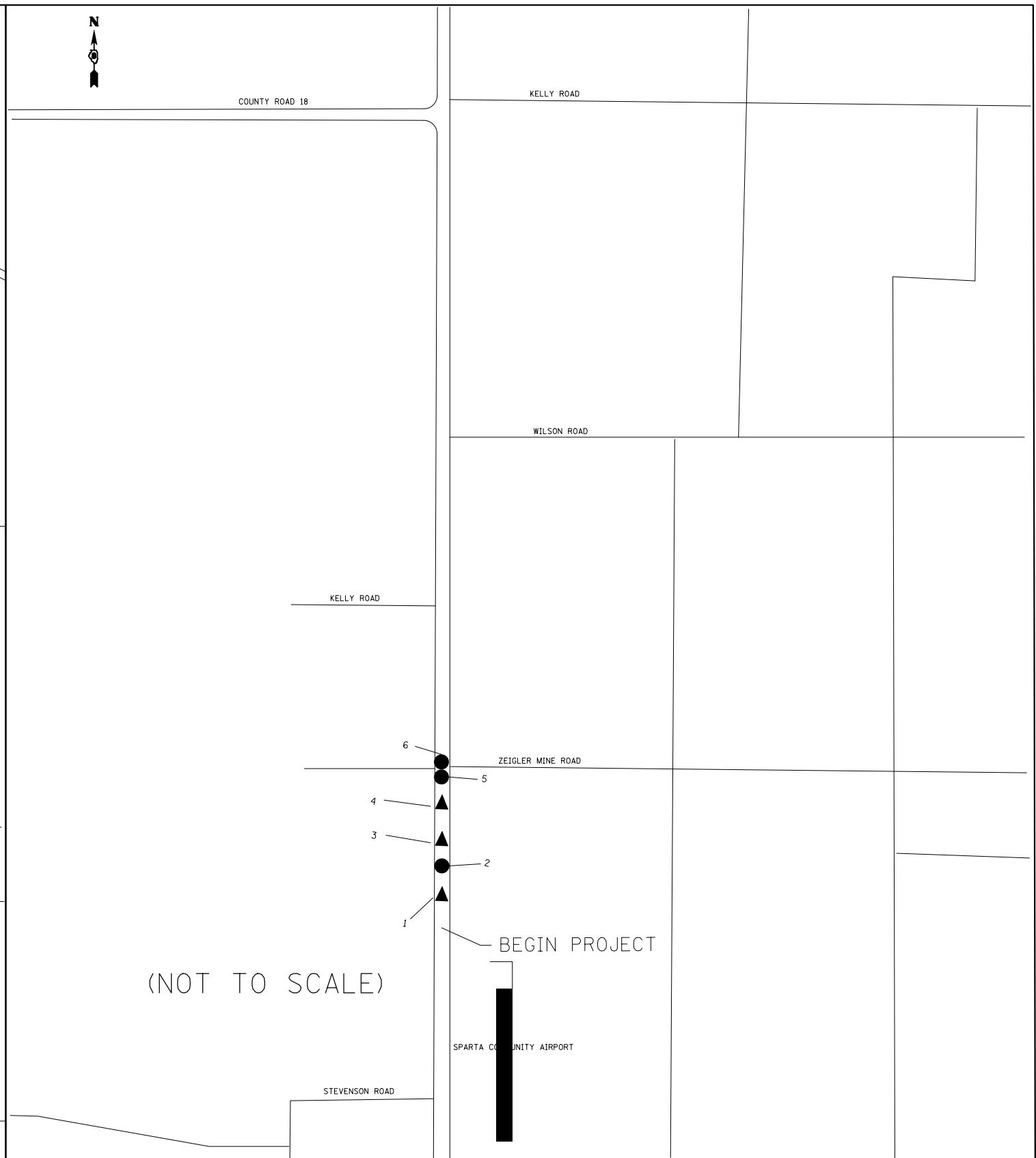
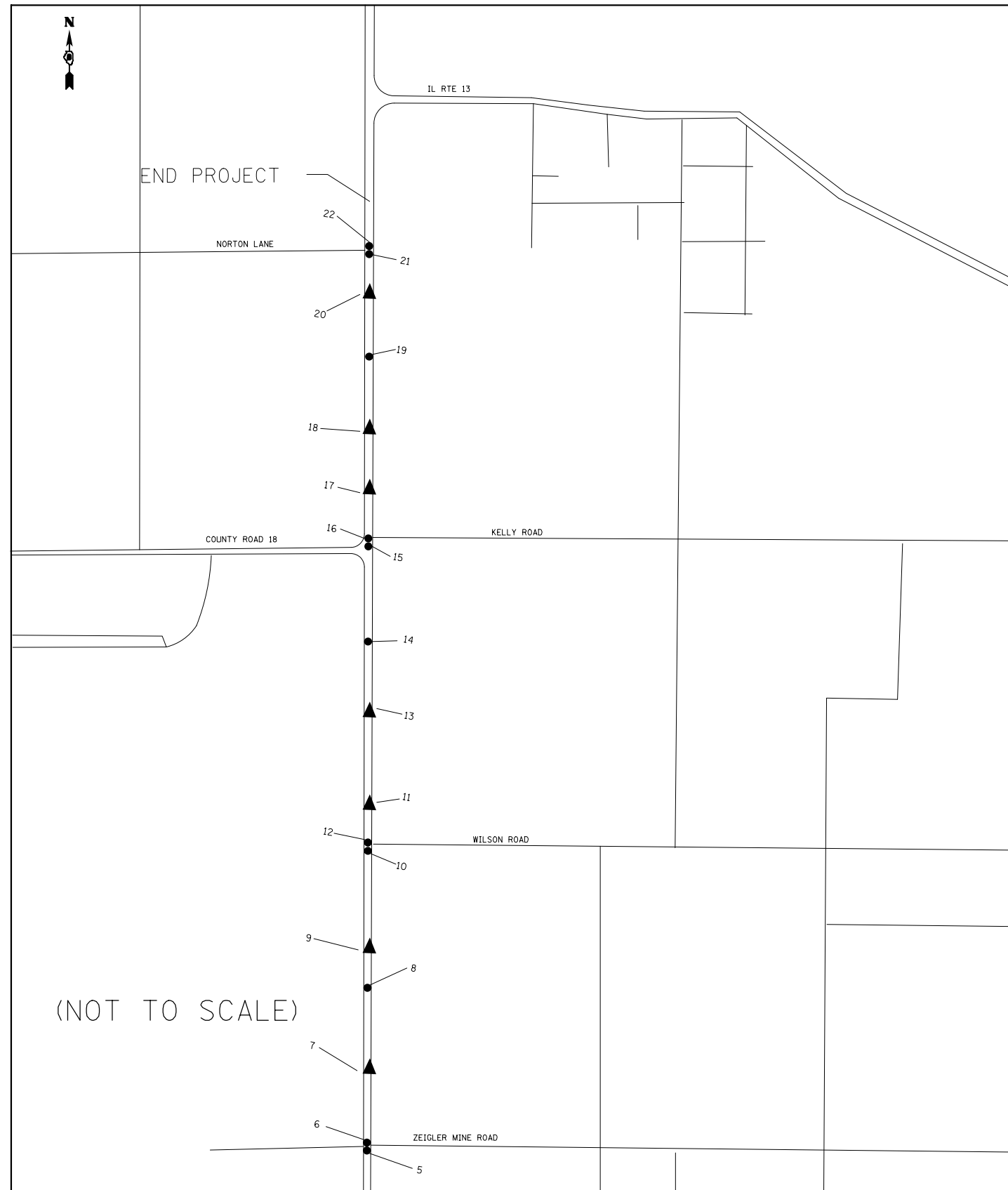


FILE NAME =	USER NAME = CoppernoIPE	DESIGNED -	REVISED -
p:\11\084EBIDINTEG.illinois.gov\PIWIDOT\Documents\IDOT Offices\District 8\Projects\0876\DRAWING\DATA\EA\Sheets\0876J80-sht-typoc1.dwg		DRAWN -	REVISED -
	PLOT SCALE = 100.0000' / 1in.	CHECKED -	REVISED -
	PLOT DATE = 3/15/2017	DATE -	REVISED -

**STATE OF ILLINOIS
DEPARTMENT OF TRANSPORTATION**

LOCATION MAP	
SCALE:	STATION TO STATION
SHEET NO. 1 OF 1 SHEETS	STA. TO STA.

F.A.P. RTE.	SECTION	COUNTY	TOTAL SHEETS	SHEET NO.
682	22,21RS-3	RANDOLPH	20	13
FED. ROAD DIST. NO. ILLINOIS FED. AID PROJECT			CONTRACT NO. 76J80	



LEGEND

- SECTION CORNERS
- ▲ CENTERLINE MARKERS

NOTE: STAMPED STATIONS ON FOUND CENTERLINE DISKS DO NOT REFLECT PROJECT STATIONING.

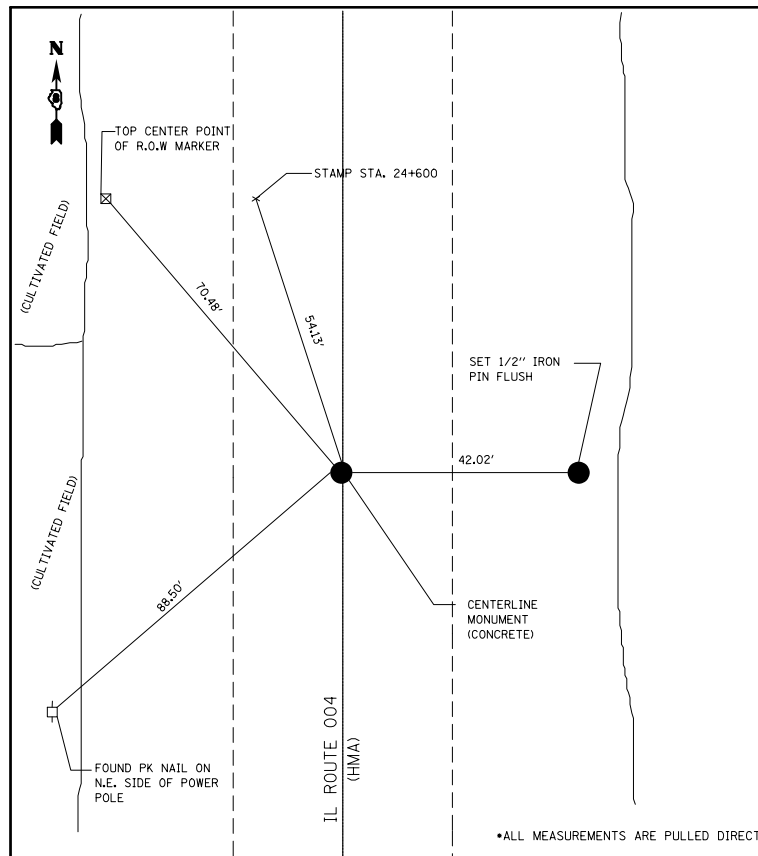
FILE NAME =	USER NAME = CoppernoIPE	DESIGNED -	REVISED -
pw:\IL\084EBID\INTEG\illinois.gov\PWIDOT\Documents\IDOT Offices\District 8\Projects\D876\DRAWING\DATA\CADsheets\D876J80-sht-typoc1.dwg		CHECKED -	REVISED -
Default	PLOT DATE = 3/15/2017	DATE -	REVISED -

**STATE OF ILLINOIS
DEPARTMENT OF TRANSPORTATION**

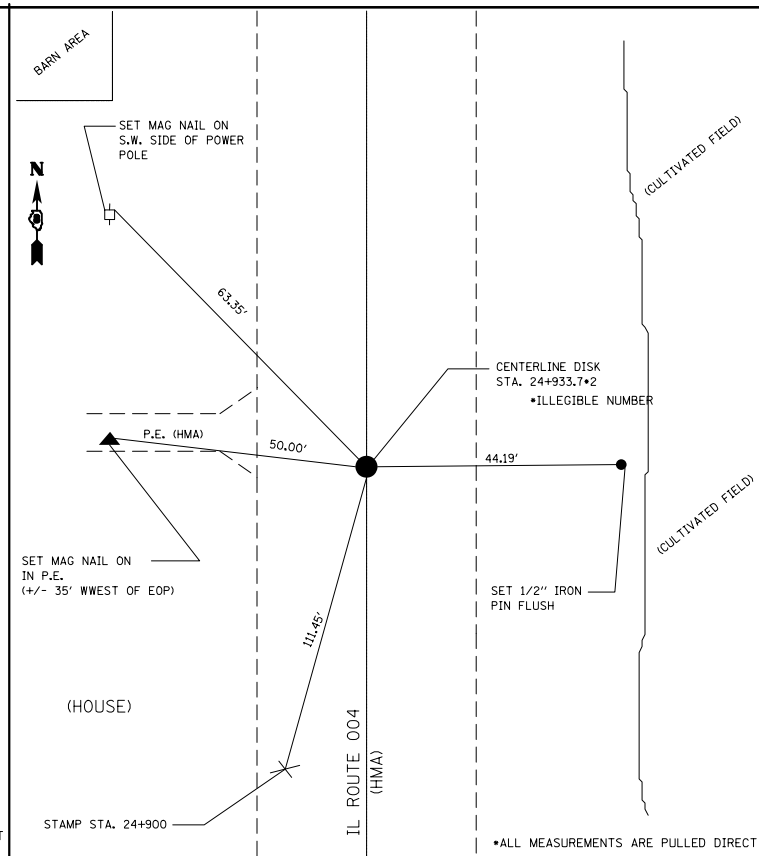
SURVEY MONUMENTS

SCALE: SHEET 1 OF 4 SHEETS STA. TO STA.

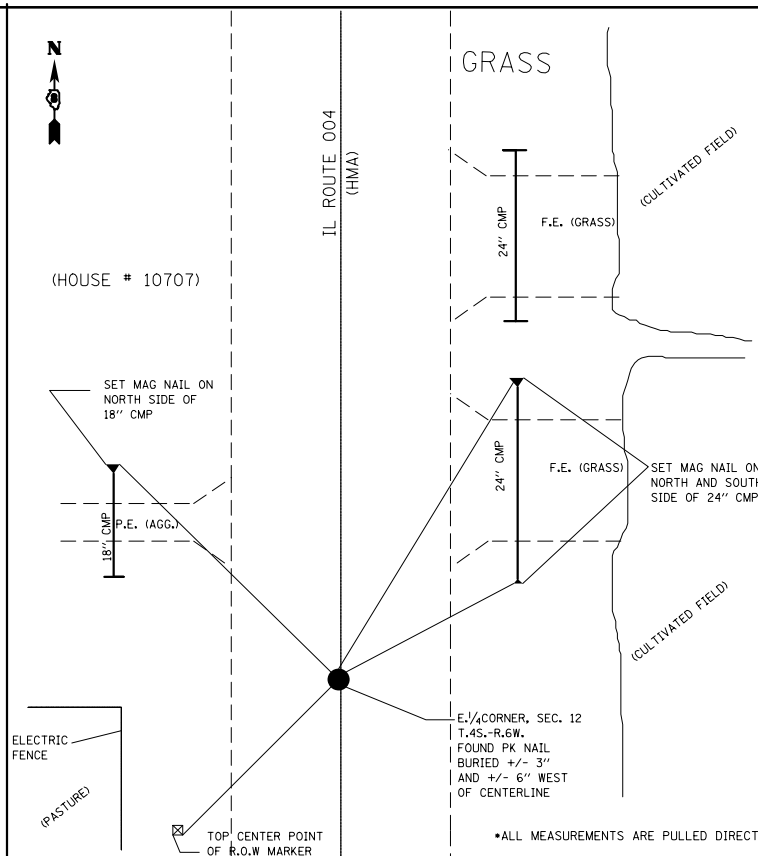
F.A.P. RTE.	SECTION	COUNTY	TOTAL SHEETS	SHEET NO.
682	22,21RS-3	RANDOLPH	20	16
CONTRACT NO. 76J80			ILLINOIS FED. AID PROJECT	



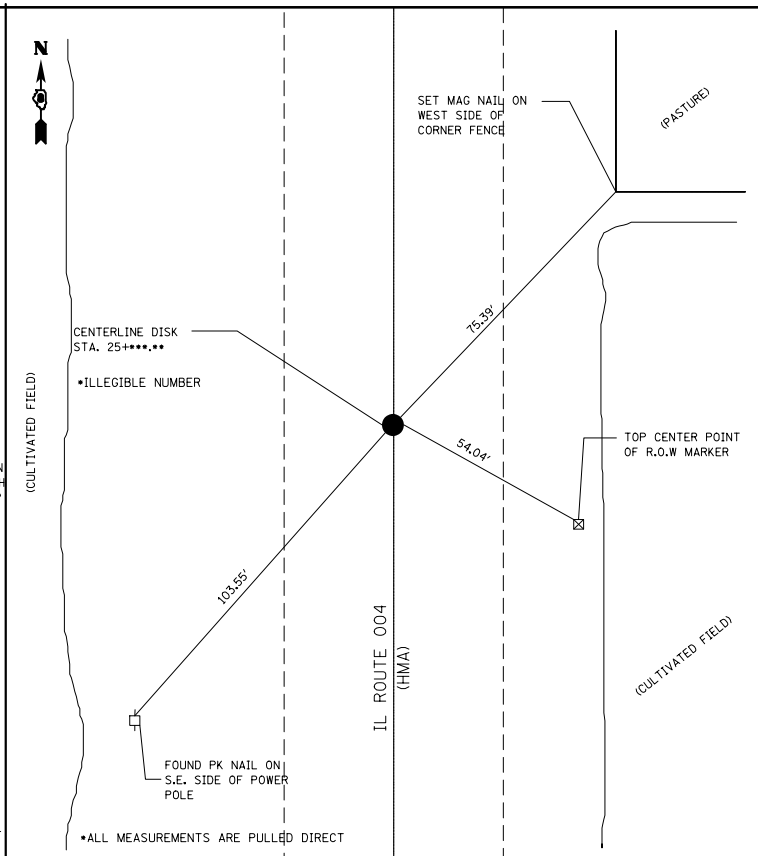
17 CENTERLINE MONUMENT (DISTURBED DISK HAS BEEN REMOVED)



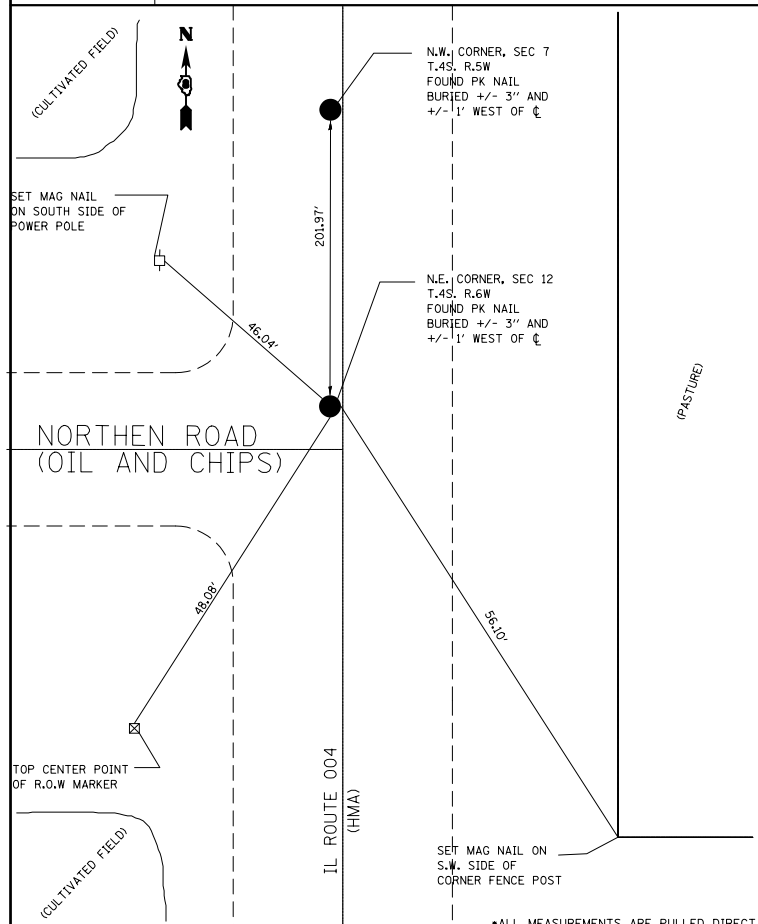
18 CENTERLINE STA. STAMPED "24+933.7*2" (DISK WITH DIMPLE)



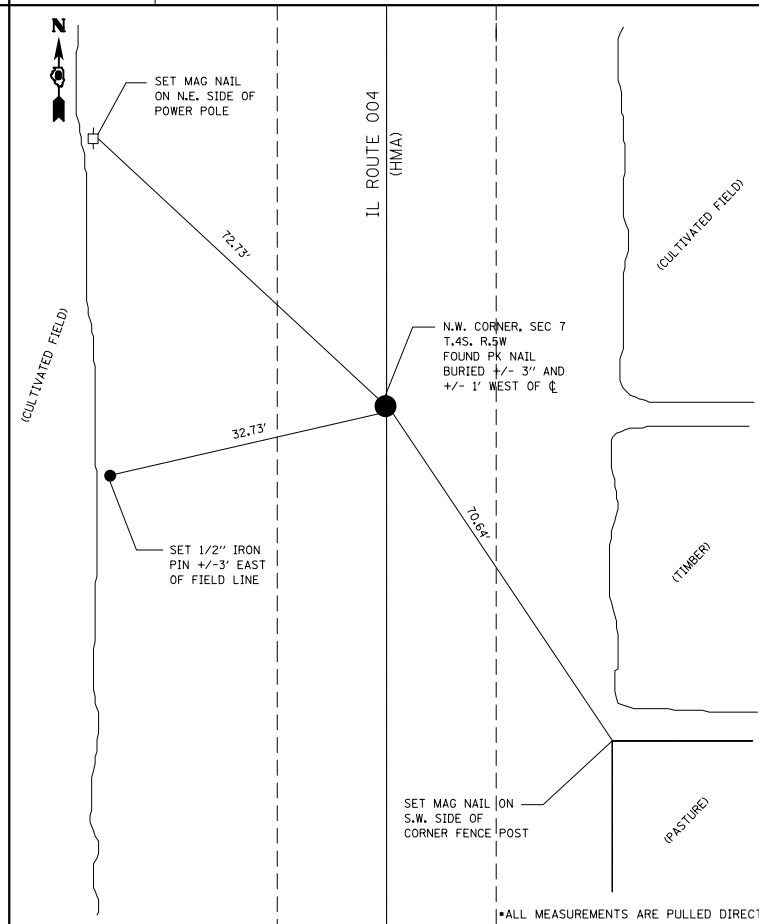
19 E 1/4 CORNER, SEC. 12, T4S-R.6W



20 CENTERLINE STA. STAMPED "25+****" (DISK WITH DIMPLE)

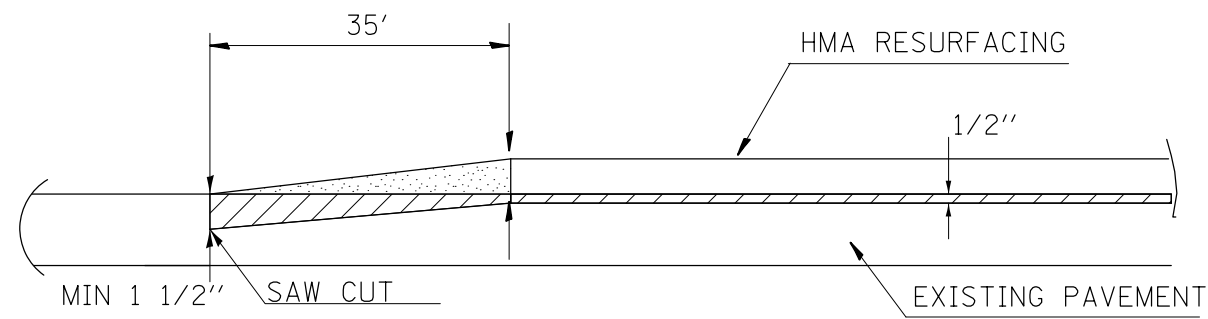


21 N.E. CORNER SEC. 12 T.4S.-R.6W.

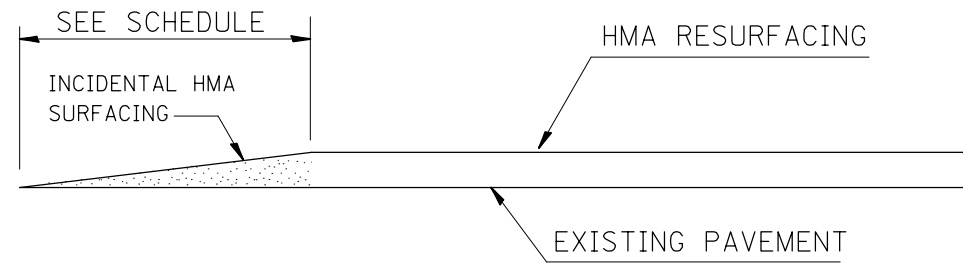


22 N.E. CORNER SEC. 7 T.4S.-R.5W.

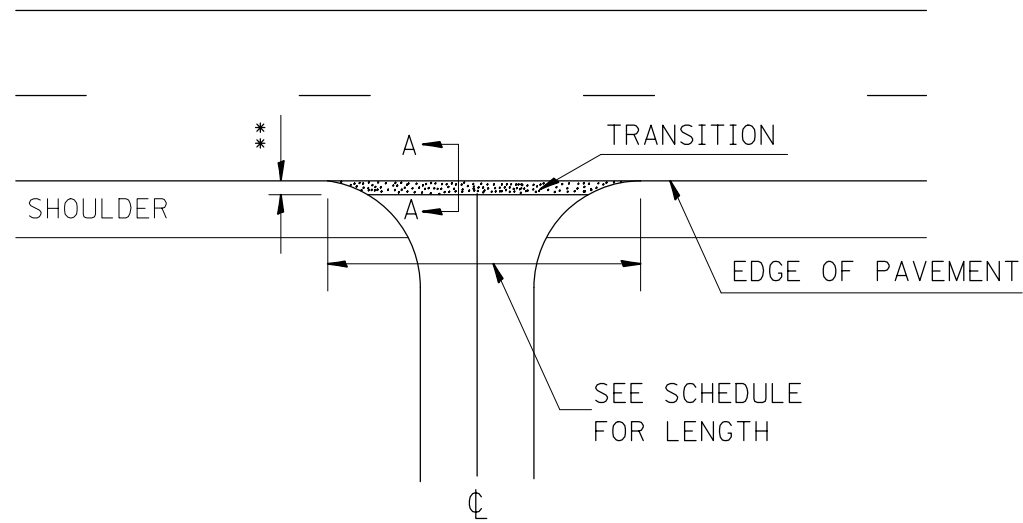
FILE NAME =	USER NAME = Copperno1PE	DESIGNED -	REVISED -	STATE OF ILLINOIS DEPARTMENT OF TRANSPORTATION	SURVEY MONUMENTS			F.A.P. RTE.	SECTION	COUNTY	TOTAL SHEETS	SHEET NO.	
Default		CHECKED -	REVISED -		SCALE:	SHEET #	OF 4 SHEETS	STA.	TO STA.	RANDOLPH	20	19	
	PLOT SCALE = 100.0000' / 1in.	DATE -	REVISED -							CONTRACT NO. 76J80			
	PLOT DATE = 3/15/2017									ILLINOIS FED. AID PROJECT			



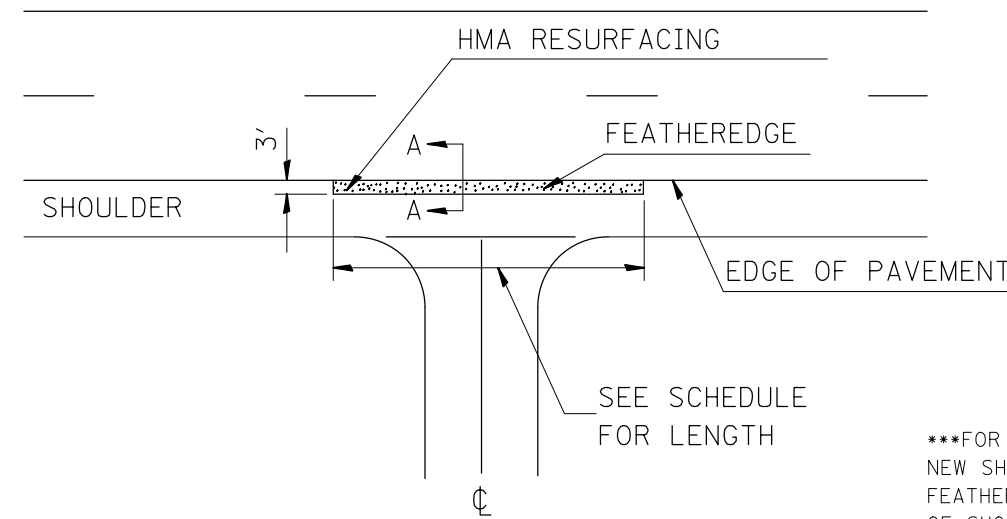
BUTT JOINT



FEATHEREDGE DETAIL SECTION A-A



SIDEROAD DETAIL



ENTRANCE DETAIL ***

***FOR ENTRANCES WITHIN THE LIMITS OF NEW SHOULDER CONSTRUCTION, THE FEATHEREDGE SHALL BEGIN AT THE EDGE OF SHOULDER.

*EOP ELEVATION CHANGE	**TOTAL TRANSITION LENGTH
1/2"	3.0'
3/4"	3.5'
1"	5'
1-1/2"	7.5'
2"	10'
2-1/2"	12.5'
3"	15'
3-1/2"	17.5'
4"	20'
4-1/2"	22.5'
5"	25'
5-1/2"	27.5'
6"	30'

NOTE:
WHERE THE HMA TRANSITION IS MATCHING INTO AN EXISTING HMA SIDE ROAD SURFACE, A MILLED BUTT JOINT SHALL BE CONSTRUCTED WITHIN THE LIMITS OF THE TOTAL TRANSITION LENGTH ON THE LOCAL ROUTE.