

STATE OF ILLINOIS
DEPARTMENT OF TRANSPORTATION

F.A.P. RTE.	SECTION	COUNTY	TOTAL SHEETS	SHEET NO.
805	125RS-6	ST. CLAIR	15	1
		ILLINOIS	CONTRACT NO. 76K19	

PROPOSED HIGHWAY PLANS

FAP ROUTE 805 (IL 161)
SECTION 125RS-6

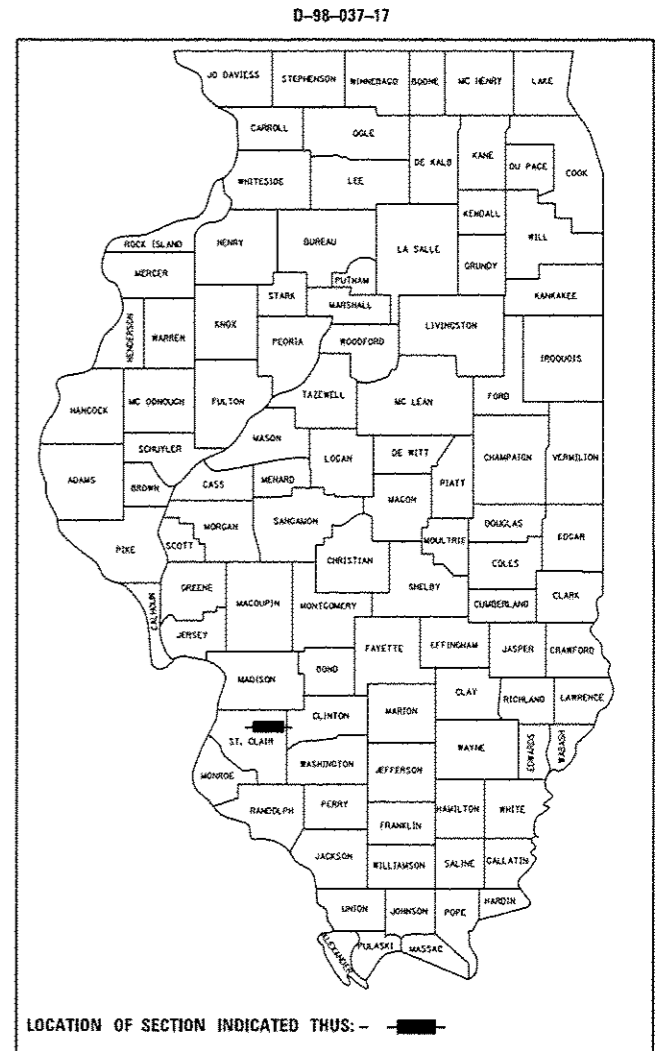
CM - 3P RESURFACING - WEST OF
I-64 E.B. RAMPS TO ONE STOP DR.
ST. CLAIR COUNTY

INDEX OF SHEETS

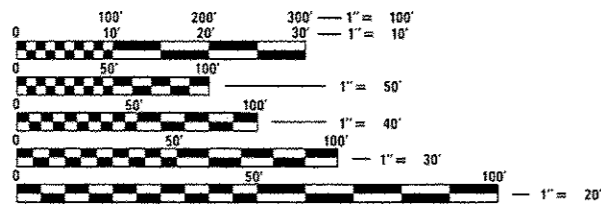
- 1 COVER
- 2 HIGHWAY STANDARDS, GENERAL NOTES, & COMMITMENTS
- 3-4 SUMMARY OF QUANTITIES
- 5-6 TYPICAL SECTIONS
- 7-8 SCHEDULE OF QUANTITIES
- 9 DETOUR SHEET
- 10-11 PLAN SHEETS
- 12-13 PAVEMENT MARKING SHEETS
- 14-15 MISCELLANEOUS DETAILS

TRAFFIC DATA - FAP 805 (IL 161)

2015 ADT=8700 (ACTUAL)
2017 ADT=8900 (ESTIMATED)
2037 ADT=10800 (ESTIMATED)
SU=6.3% MU=2.9%



C-98-026-17

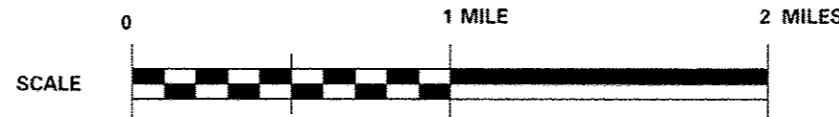
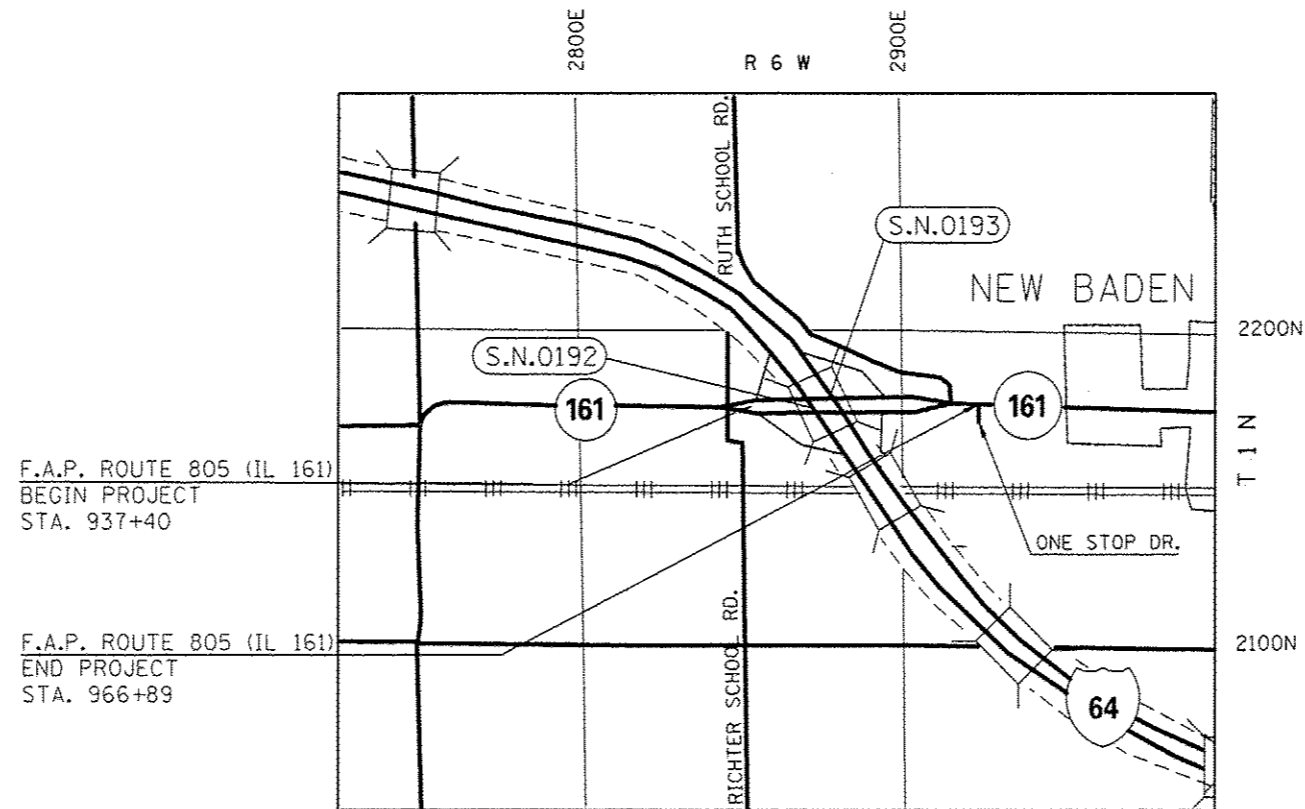


FULL SIZE PLANS HAVE BEEN PREPARED USING STANDARD ENGINEERING SCALES. REDUCED SIZED PLANS WILL NOT CONFORM TO STANDARD SCALES. IN MAKING MEASUREMENTS ON REDUCED PLANS, THE ABOVE SCALES MAY BE USED.

J.U.L.I.E.
JOINT UTILITY LOCATION INFORMATION FOR EXCAVATION
1-800-892-0123
OR 811

PROJECT ENGINEER TIMOTHY PADGETT 618-346-3325
PROJECT MANAGER JEFFREY SCHWEIZER 618-346-3206

CONTRACT NO. 76K19



GROSS LENGTH = 2,949.00 FT. = 0.56 MILE
NET LENGTH = 2,949.00 FT. = 0.56 MILE

STATE OF ILLINOIS
DEPARTMENT OF TRANSPORTATION

SUBMITTED *Mar 14 2017*
Jeffrey Z. Kan...
REGIONAL ENGINEER

May 12 2017
Maween M. Addis
ENGINEER OF DESIGN AND ENVIRONMENT

May 12 2017
Patricia A. ...
DIRECTOR OF PROGRAM DEVELOPMENT

PRINTED BY THE AUTHORITY
OF THE STATE OF ILLINOIS

LIST OF STANDARDS

000001-06	STANDARD SYMBOLS, ABBREVIATIONS AND PATTERNS
001006	DECIMAL OF AN INCH AND OF A FOOT
420701-03	PAVEMENT WELDED WIRE REINFORCEMENT
420001-08	PAVEMENT JOINTS
442201-03	CLASS C AND D PATCHES
606001-06	CONCRETE CURB TYPE B AND COMBINATION CONCRETE CURB AND GUTTER
606301-04	PC CONCRETE ISLANDS AND MEDIANS
701006-05	OFF-RD OPERATIONS, 2L, 2W, 15' (4.5M) TO 24" (600MM) FROM PAVEMENT EDGE
701011-04	OFF-RD MOVING OPERATIONS, 2L, 2W, DAY ONLY
701101-05	OFF-RD OPERATIONS, MULTILANE, 15' (4.5M) TO 24" (600MM) FROM PAVEMENT EDGE
701201-04	LANE CLOSURE, 2L, 2W, DAY ONLY, FOR SPEEDS > 45 MPH
701301-04	LANE CLOSURE, 2L, 2W SHORT TERM OPERATIONS
701306-03	LANE CLOSURE, 2L, 2W, SLOW MOVING OPERATIONS DAY ONLY, FOR SPEEDS > 45 MPH
701311-03	LANE CLOSURE, 2L, 2W MOVING OPERATIONS - DAY ONLY
701336-06	LANE CLOSURE, 2L, 2W WORK AREAS IN SERIES, FOR SPEEDS ≥ 45 MPH
701426-09	LANE CLOSURE, MULTILANE, INTERMITTENT OR MOVING OPER., FOR SPEEDS ≥ 45 MPH
701451-04	RAMP CLOSURE FREEWAY/EXPRESSWAY
701901-06	TRAFFIC CONTROL DEVICES
780001-05	TYPICAL PAVEMENT MARKINGS
781001-04	TYPICAL APPLICATIONS RAISED REFLECTIVE PAVEMENT MARKERS
782001-01	CURB REFLECTORS

GENERAL NOTES

- ILLINOIS STATE LAW REQUIRES A 48-HOUR NOTICE BE GIVEN TO ALL UTILITIES WITHIN THE PROJECT AREA BEFORE DIGGING. FIELD MARKING OF FACILITIES MAY BE OBTAINED BY CONTACTING J.U.L.I.E. OR FOR NON-MEMBERS, THE UTILITY COMPANY DIRECTLY. AGENCIES KNOWN TO HAVE FACILITIES WITHIN THE PROJECT AREA ARE AS FOLLOWS:

UTILITY	ABOVE GROUND	BELOW GROUND
*CHARTER COMMUNICATIONS, INC.	X	X
*CLINTON COUNTY ELECTRIC COOPERATIVE, INC.	X	X
*FRONTIER COMMUNICATIONS	X	X
*VILLAGE OF NEW BADEN		X
*WINDSTREAM KDL, INC.	X	X

MEMBERS OF J.U.L.I.E. CALL TOLL FREE (800) 892-0123 OR 811 AND ARE INDICATED BY *. NON- J.U.L.I.E. MEMBERS MUST BE NOTIFIED INDIVIDUALLY.

- "ROAD CONSTRUCTION AHEAD" SIGNS SHALL BE PLACED AT EACH END OF THE PROJECT PLUS THE INTERSECTING SIDE ROADS AND RAMPS, AND WILL BE CONSIDERED INCLUDED IN THE TRAFFIC CONTROL PAY ITEMS. ALL CONSTRUCTION SIGNS SHALL BE 48" X 48" FLUORESCENT ORANGE.
- ALL TURF AREAS DISTURBED BY THE CONTRACTOR SHALL BE SEEDED WITH THE APPROPRIATE EROSION CONTROL, AS DIRECTED BY THE ENGINEER, AT THE CONTRACTOR'S EXPENSE.
- THE CONTRACTOR AND THE ENGINEER SHALL BE AWARE THAT NO SURVEY WAS PERFORMED FOR THIS PROJECT. THE STATIONING, TOPOGRAPHY, AND QUANTITIES SHOWN IN THE PLANS WERE CREATED USING MICROFILM AND FIELD MEASUREMENTS. ALL SHALL BE ASSUMED TO BE APPROXIMATE. THE CONTRACTOR SHALL VERIFY DIMENSIONS AND CONDITIONS IN THE FIELD PRIOR TO CONSTRUCTION AND ORDERING OF MATERIALS.
- THE DEPARTMENT STRONGLY ENCOURAGES THE PRIME CONTRACTOR AND THEIR APPROVED SUB-CONTRACTORS TO HIRE MINORITY, WOMEN AND DISADVANTAGED INDIVIDUALS FROM ITS FEDERALLY FUNDED HIGHWAY CONSTRUCTION CAREERS TRAINING PROGRAM (HCCTP) TO HELP MEET WORKFORCE AND TRAINEE GOALS. THIS PROGRAM IS TRAINING MINORITIES, WOMEN AND DISADVANTAGED INDIVIDUALS IN HIGHWAY CONSTRUCTION-RELATED SKILLS, E.G., MATH FOR THE TRADES, JOB READINESS, TECHNICAL SKILLS COURSEWORK (CARPENTRY, CONCRETE FLATWORK, BLUEPRINT READING, SITE PLANS, SITE WORK, TOOLS USE, ETC.) AND OSHA 10 HOUR CERTIFICATION, TO PREPARE THEM FOR A CAREER IN THE HIGHWAY CONSTRUCTION TRADES. GRADUATES ARE WELL-TRAINED AND READY TO BECOME PRODUCTIVE ENTRY-LEVEL CONSTRUCTION WORKERS. CONTACT THE DISTRICT 8 EEO OFFICE AT 618-346-3360 AND/OR THE HCCTP COORDINATOR AT 618-874-6528 TO LEARN MORE ABOUT THE PROGRAM AND FOR ASSISTANCE IN MEETING WORKFORCE AND TRAINEE GOALS.

- THE PROPOSED PAVEMENT MARKINGS SHALL MATCH THE LOCATIONS OF THE EXISTING PAVEMENT MARKING, AS DIRECTED BY THE ENGINEER.
- THE THICKNESS OF HOT-MIX ASPHALT SURFACE MIXTURES SHOWN ON THE PLANS IS THE NOMINAL THICKNESS. DEVIATIONS MAY OCCUR DUE TO IRREGULARITIES IN THE EXISTING SURFACE OR BASE ON WHICH THE BITUMINOUS MIXTURE IS PLACED.
- AN ESTIMATED QUANTITY OF 2238 TONS OF CUTTINGS FROM THE HMA SURFACE REMOVAL OPERATION IS ANTICIPATED.
- NO OVERNIGHT LANE CLOSURES WILL BE PERMITTED.
- IF THE CONTRACTOR CHOOSES TO USE P.C.C. FOR PAVEMENT PATCHES THE MIX SHALL BE A HIGH EARLY STRENGTH MIXTURE.
- BETWEEN STATIONS 957+71 TO 966+89 THE CONTRACTOR SHALL SEQUENCE MILLING OPERATIONS TO AVOID HAVING A LIFT DIFFERENCE GREATER THAN 2" OR HAVING GREATER THAN A 1.5" VERTICAL MILLED FACE.
- TEMPORARY ENTRANCE RAMPS SHALL BE CONSTRUCTED USING INCIDENTAL HMA MIX, AT ALL INTERSTATE ON/OFF RAMPS, ENTRANCES, AND SIDE ROADS THAT ARE WITHIN THE PROJECT CONSTRUCTION LIMITS. THE TEMPORARY ENTRANCE RAMPS SHALL BE AS WIDE AS THE EXISTING ENTRANCE AND EXTENDING APPROXIMATELY 2 FT. LONG INTO THE TRAVEL LANES. SEE ENTRANCE DETAIL ON SHEET 15. TEMPORARY ENTRANCE RAMPS WILL BE PAID FOR WITH THE TEMPORARY RAMP PAY CODE.
- SHORT TERM PAVEMENT MARKING REMOVAL IS INCLUDED IN THE QUANTITIES BUT WILL ONLY BE PAID IF THE SHORT TERM PAVEMENT MARKING REMOVAL IS USED ON THE FINAL HMA SURFACE OR AS DIRECTED BY THE ENGINEER.

MIX REQUIREMENTS

ROUTE	FAP ROUTE 805
SECTION	125RS-6
COUNTY	ST. CLAIR
CONTRACT	76K19

DESCRIPTION:	3P RESURFACING ON IL 161 FROM I-64 W OF EB RAMPS TO ONE STOP DRIVE IN NEW BADEN.
--------------	--

MIXTURE USE	POLY SURFACE	LEVEL BINDER	INCIDENTAL	PATCHING
AC/PG	SBS PG 76-22	PG 64-22	PG 64-22	PG 64-22
RAP % (MAX)	SEE SPECIAL PROVISION	SEE SPECIAL PROVISION	SEE SPECIAL PROVISION	SEE SPECIAL PROVISION
DESIGN AIR VOIDS	4.0% @ Ndes=70	4.0% @ Ndes=70	4.0% @ Ndes=70	4.0% @ Ndes=70
MIX COMPOSITION (Gradation)	IL 9.5	IL 9.5FG	IL 9.5	IL 19.0
FRICTION AGG	MIXTURE "D"	MIXTURE "C"	MIXTURE "C"	MIXTURE "B"
QUALITY MGMT PROGRAM	QCP	QC/QA	QC/QA	QC/QA

PLAN QUANTITIES FOR HMA SURFACE COURSE ITEMS ARE CALCULATED USING A UNIT WEIGHT OF 112 LB/SQ YD/IN (59.8 KG/SQ M/25 MM THICKNESS)

COMMITMENTS

NONE

FILE NAME = D876K19-sht-gennote.dgn	USER NAME = Copperno11PE	DESIGNED -	REVISED -	STATE OF ILLINOIS DEPARTMENT OF TRANSPORTATION	HIGHWAY STANDARDS, GENERAL NOTES, & COMMITMENTS	F.A.P. RTE.	SECTION	COUNTY	TOTAL SHEETS	SHEET NO.
	PLOT SCALE = 100.0000' / 1in.	CHECKED -	REVISED -			805	125RS-6	ST. CLAIR	15	2
Default	PLOT DATE = 3/22/2017	DATE -	REVISED -	SCALE: N/A	SHEET 1 OF 1 SHEETS	STA. N/A	TO STA. N/A	ILLINOIS FED. AID PROJECT CONTRACT NO. 76K19		

100% STATE

CONSTR. CODE

CODE NO.	ITEM	UNIT	TOTAL QUANTITY	100% STATE	
				ROADWAY 0005	RURAL
40600290	BITUMINOUS MATERIALS (TACK COAT)	POUND	5032	5032	
40600295	POLYMERIZED BITUMINOUS MATERIALS (TACK COAT)	POUND	2516	2516	
40600637	LEVELING BINDER (MACHINE METHOD), IL-9.5FG, N70	TON	626	626	
40600982	HOT-MIX ASPHALT SURFACE REMOVAL - BUTT JOINT	SQ YD	87	87	
40600990	TEMPORARY RAMP	SQ YD	373	373	
40603540	POLYMERIZED HOT-MIX ASPHALT SURFACE COURSE, MIX "D", N70	TON	1252	1252	
40800050	INCIDENTAL HOT-MIX ASPHALT SURFACING	TON	6	6	
44000161	HOT-MIX ASPHALT SURFACE REMOVAL, 3"	SQ YD	11096	11096	
44000500	COMBINATION CURB AND GUTTER REMOVAL	FOOT	80	80	
44200192	PAVEMENT PATCHING, TYPE II, 16 INCH	SQ YD	110	110	
44200196	PAVEMENT PATCHING, TYPE III, 16 INCH	SQ YD	105	105	
44200198	PAVEMENT PATCHING, TYPE IV, 16 INCH	SQ YD	142	142	
60605900	COMBINATION CONCRETE CURB AND GUTTER, TYPE B-9.12	FOOT	80	80	
60618300	CONCRETE MEDIAN SURFACE, 4 INCH	SQ FT	400	400	

* SPECIALTY ITEM

100% STATE

CONSTR. CODE

CODE NO.	ITEM	UNIT	TOTAL QUANTITY	100% STATE	
				ROADWAY 0005	RURAL
67000400	ENGINEER'S FIELD OFFICE, TYPE A	CAL MO	1	1	
67100100	MOBILIZATION	LSUM	1	1	
70100450	TRAFFIC CONTROL AND PROTECTION, STANDARD 701201	LSUM	1	1	
70100460	TRAFFIC CONTROL AND PROTECTION, STANDARD 701306	LSUM	1	1	
70100600	TRAFFIC CONTROL AND PROTECTION, STANDARD 701336	LSUM	1	1	
70100820	TRAFFIC CONTROL AND PROTECTION, STANDARD 701451	LSUM	1	1	
70102632	TRAFFIC CONTROL AND PROTECTION, STANDARD 701602	LSUM	1	1	
70300100	SHORT TERM PAVEMENT MARKING	FOOT	2291	2291	
70300150	SHORT TERM PAVEMENT MARKING REMOVAL	SQ FT	764	764	
70300210	TEMPORARY PAVEMENT MARKING LETTERS AND SYMBOLS	SQ FT	187	187	
70300220	TEMPORARY PAVEMENT MARKING - LINE 4"	FOOT	21804	21804	
70300260	TEMPORARY PAVEMENT MARKING - LINE 12"	FOOT	193	193	
* 78000100	THERMOPLASTIC PAVEMENT MARKING - LETTERS AND SYMBOLS	SQ FT	94	94	
* 78000200	THERMOPLASTIC PAVEMENT MARKING - LINE 4"	FOOT	10902	10902	

14

100% STATE

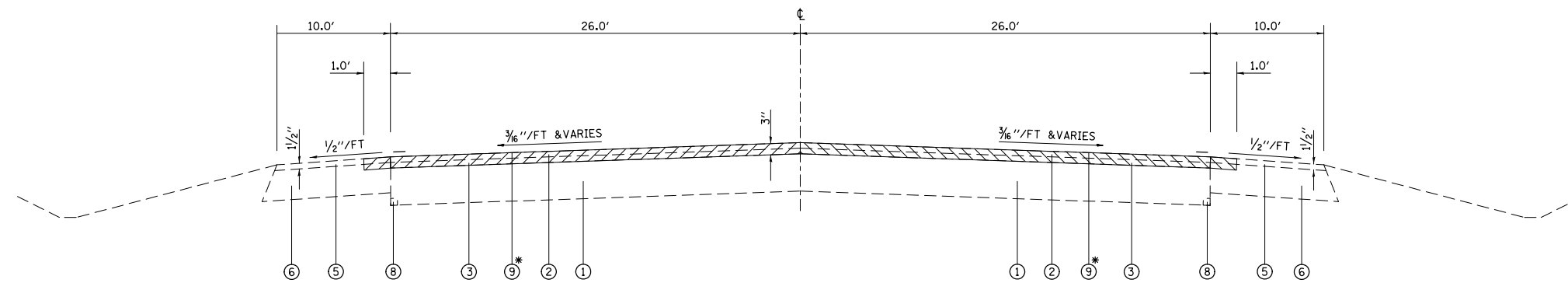
CONSTR. CODE

CODE NO.	ITEM	UNIT	TOTAL QUANTITY	100% STATE	
				ROADWAY 0005	RURAL
* 78000600	THERMOPLASTIC PAVEMENT MARKING - LINE 12"	FOOT	97	97	
* 78100100	RAISED REFLECTIVE PAVEMENT MARKER	EACH	33	33	
* 78200020	CURB REFLECTORS	EACH	119	119	
78300200	RAISED REFLECTIVE PAVEMENT MARKER REMOVAL	EACH	75	75	
X4402020	CONCRETE MEOIAN SURFACE REMOVAL	SO FT	400	400	
X7015005	CHANGEABLE MESSAGE SIGN	CAL DA	204	204	
X7030005	TEMPORARY PAVEMENT MARKING REMOVAL	SO FT	3824	3824	
* X7800100	PAINT PAVEMENT MARKING - RAISED MEDIAN	SO FT	31	31	
* X7800200	PAINT PAVEMENT MARKING CURB	FOOT	184	184	
Z0016702	DETOUR SIGNING	LSUM	1	1	
Z0033700	LONGITUDINAL JOINT SEALANT	FOOT	6070	6070	
Z0034105	MATERIAL TRANSFER DEVICE	TON	1879	1879	

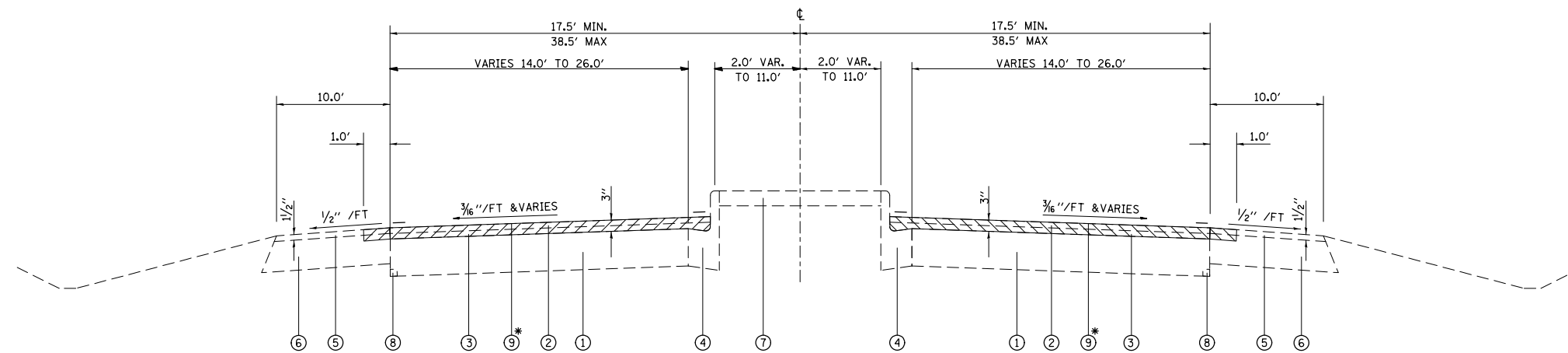
12

* SPECIALTY ITEM

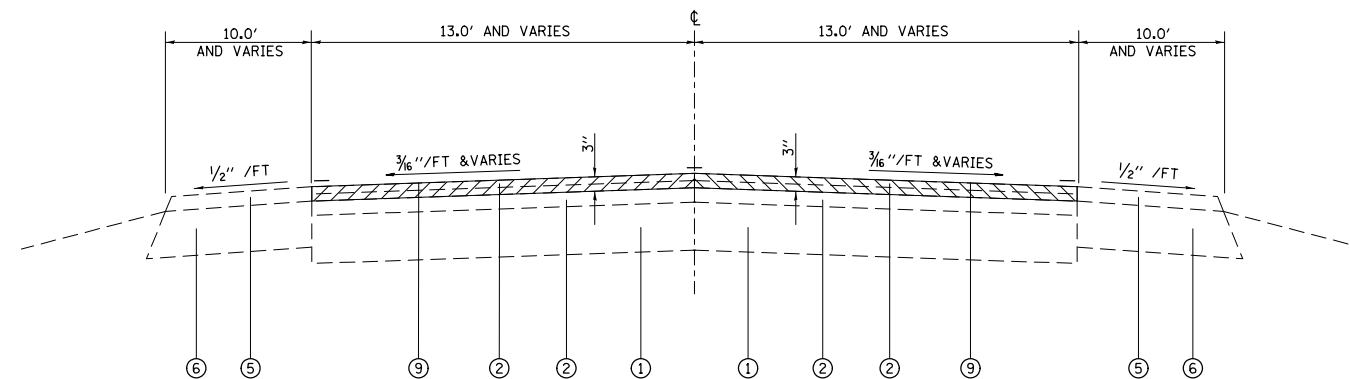
FILE NAME : 0876K19-shr-500.dgn	USER NAME : Copparrnol1PE	DESIGNED -	REVISED -	STATE OF ILLINOIS DEPARTMENT OF TRANSPORTATION	SUMMARY OF QUANTITIES				F.A.P. RTE.	SECTION	COUNTY	TOTAL SHEETS	SHEET NO.
	PLOT SCALE * 100.0000 "/ in.	DRAWN -	REVISED -						805	12SR5-6	ST. CLAIR	15	4
Default	PLOT DATE * 3/22/2017	CHECKED -	REVISED -		SCALE: N/A	SHEET 2	OF 2	SHEETS	STA. N/A	TO STA. N/A	CONTRACT NO. 76K19		
		DATE -	REVISED -		ILLINOIS FED. AID PROJECT								



EXISTING TYPICAL SECTION
 STA. 937+40 TO STA. 938+32
 STA. 951+40 TO STA. 952+35



EXISTING TYPICAL SECTION
 STA. 938+32 TO STA. 951+40
 STA. 952+35 TO STA. 959+23



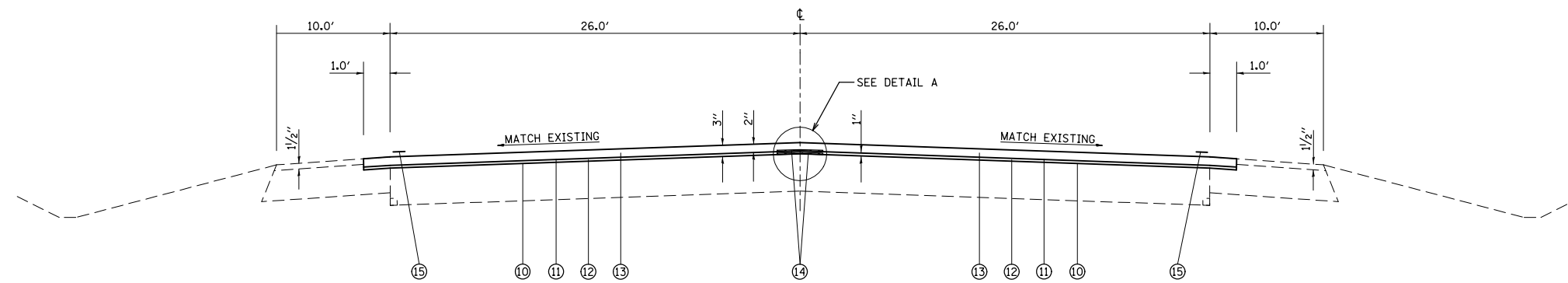
EXISTING TYPICAL SECTION
 STA. 959+23 TO STA. 966+89

- LEGEND**
- ① EXISTING P.C.C. PAVEMENT, VARIES 8"-12"
 - ② EXISTING HMA RESURFACING, VARIES 2"-5.5"
 - ③ EXISTING HMA LEVELING BINDER, 3/4" TO 1"
 - ④ EXISTING CURB AND GUTTER, TYPE B-9.12
 - ⑤ EXISTING HMA SHOULDER, 1 1/2"
 - ⑥ EXISTING STABILIZED SHOULDER, 8"
 - ⑦ EXISTING P.C.C. MEDIAN SURFACE, 4"
 - ⑧ EXISTING PIPE UNDERDRAIN
 - ⑨ PROPOSED HMA SURFACE REMOVAL, 3"
 - ⑩ PROPOSED BITUMINOUS MATERIALS (TACK COAT)
 - ⑪ PROPOSED POLYMERIZED BITUMINOUS MATERIALS (TACK COAT)
 - ⑫ PROPOSED LEVELING BINDER (MACHINE METHOD), MIX C, IL 9.5FG, N70, 1"
 - ⑬ PROPOSED POLYMERIZED HMA SURFACE COURSE, MIX D, IL 9.5, N70, 2"
 - ⑭ PROPOSED LONGITUDINAL JOINT SEALANT
 - ⑮ PROPOSED THERMOPLASTIC PAVEMENT MARKING

- NOTES:**
1. THE CONTRACTOR SHALL REMOVE 1 FT. OF THE EXISTING HMA SHOULDER FROM STA. 937+62 TO STA. 951+96 ON THE WESTBOUND TRAVEL LANE. ALSO SHALL REMOVE 1 FT. OF THE EXISTING HMA SHOULDER FROM STA. 937+74 TO STA. 952+08 ON THE EASTBOUND TRAVEL LANE SHOULDER.
 2. THE CONTRACTOR SHALL REMOVE EXISTING HMA TO BARE CONCRETE FROM STA. 937+45 TO STA. 959+23. FROM STA. 959+23 TO STA. 966+85 REMOVE A MINIMUM OF 3" OF EXISTING HMA OR TO BARE CONCRETE AS DIRECTED BY THE ENGINEER.
 3. LONGITUDINAL JOINT SEALANT SHALL BE INSTALLED AT ALL CENTERLINE OR LANE-TO-LANE LONGITUDINAL JOINTS OF HMA LIFTS.

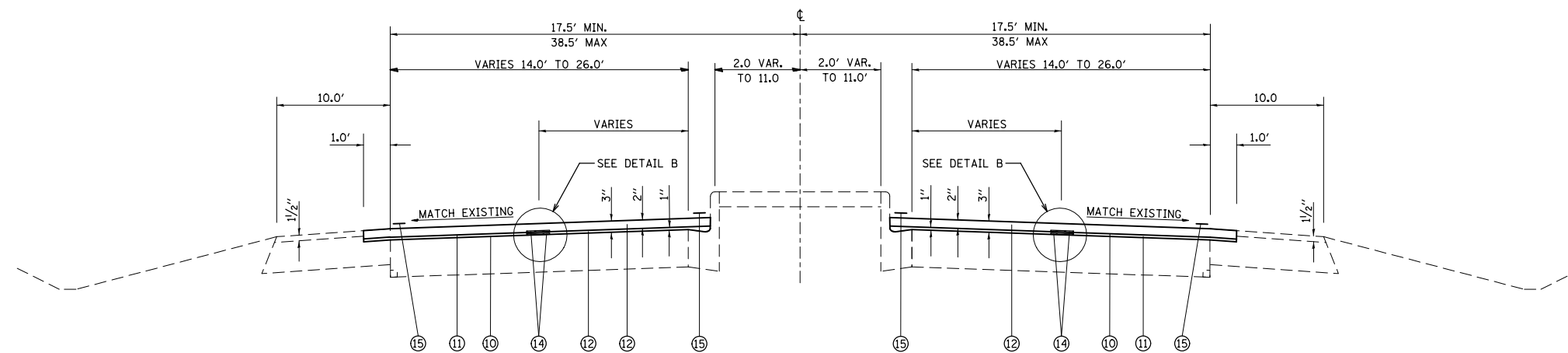
* THE INTENT OF THE MILLING OPERATION IS TO COMPLETELY REMOVE THE EXISTING HMA AND TO SLIGHTLY SCARIFY THE EXISTING CONCRETE SURFACE. THE PRICE FOR THE SCARIFY IS INCLUDED IN THE COST OF HMA SURFACE REMOVAL, 3".

FILE NAME = D876K19-sht-typical.dgn	USER NAME = CoppernalPE	DESIGNED -	REVISED -	STATE OF ILLINOIS DEPARTMENT OF TRANSPORTATION	EXISTING TYPICAL SECTIONS			F.A.P. RTE.	SECTION	COUNTY	TOTAL SHEETS	SHEET NO.
	PLOT SCALE = 100.0000' / 1".	CHECKED -	REVISED -					805	125RS-6	ST. CLAIR	15	5
Default	PLOT DATE = 3/22/2017	DATE -	REVISED -	SCALE: N.T.S.	SHEET 1	OF 2 SHEETS	STA. N/A	TO STA. N/A	ILLINOIS FED. AID PROJECT CONTRACT NO. 76K19			



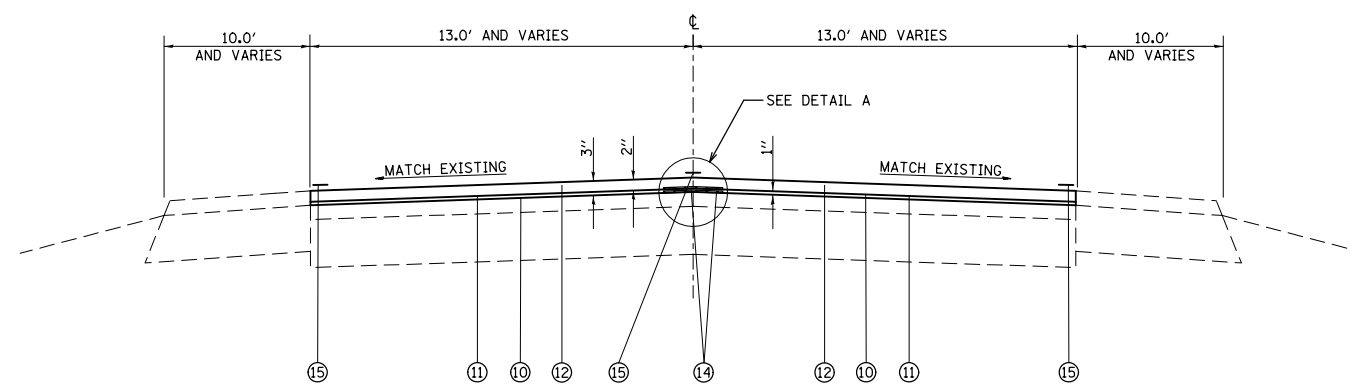
PROPOSED TYPICAL SECTION

STA. 937+40 TO STA. 938+32
STA. 951+40 TO STA. 952+35



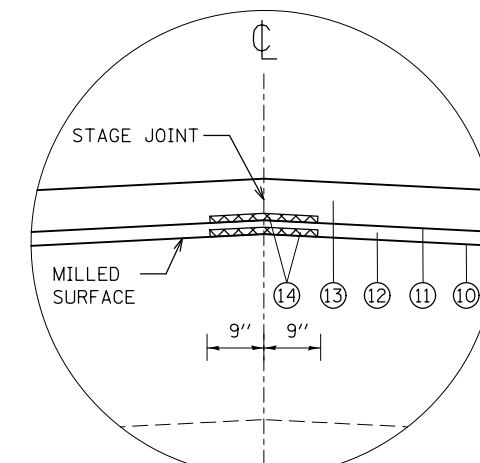
PROPOSED TYPICAL SECTION

STA. 938+32 TO STA. 951+40
STA. 952+35 TO STA. 959+23

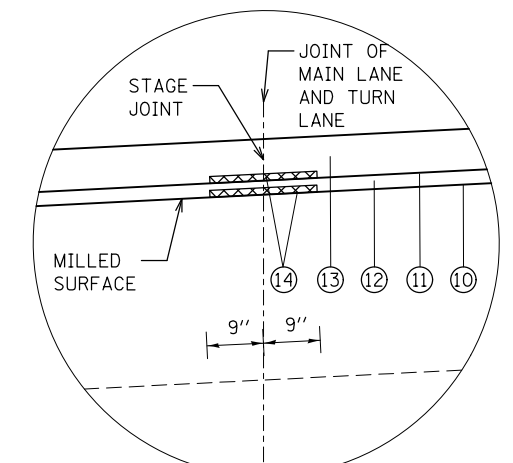


PROPOSED TYPICAL SECTION

STA. 959+23 TO STA. 966+89



DETAIL A (TYP.)
(N.T.S.)



DETAIL B (TYP.)
(N.T.S.)

LEGEND

- ① EXISTING P.C.C. PAVEMENT, VARIES 8"-12"
- ② EXISTING HMA RESURFACING, VARIES 2"-5.5"
- ③ EXISTING HMA LEVELING BINDER, 3/4" TO 1"
- ④ EXISTING CURB AND GUTTER, TYPE B-9.12
- ⑤ EXISTING HMA SHOULDER, 1 1/2"
- ⑥ EXISTING STABILIZED SHOULDER, 8"
- ⑦ EXISTING P.C.C. MEDIAN SURFACE, 4"
- ⑧ EXISTING PIPE UNDERDRAIN
- ⑨ PROPOSED HMA SURFACE REMOVAL, 3"
- ⑩ PROPOSED BITUMINOUS MATERIALS (TACK COAT)
- ⑪ PROPOSED POLYMERIZED BITUMINOUS MATERIALS (TACK COAT)
- ⑫ PROPOSED LEVELING BINDER (MACHINE METHOD), MIX C, IL 9.5FG, N70, 1"
- ⑬ PROPOSED POLYMERIZED HMA SURFACE COURSE, MIX D, IL 9.5, N70, 2"
- ⑭ PROPOSED LONGITUDINAL JOINT SEALANT
- ⑮ PROPOSED THERMOPLASTIC PAVEMENT MARKING

- NOTES:
1. THE CONTRACTOR SHALL REMOVE 1 FT. OF THE EXISTING HMA SHOULDER FROM STA. 937+62 TO STA. 951+96 ON THE WESTBOUND TRAVEL LANE. ALSO SHALL REMOVE 1 FT. OF THE EXISTING HMA SHOULDER FROM STA. 937+74 TO STA. 952+08 ON THE EASTBOUND TRAVEL LANE SHOULDER.
 2. THE CONTRACTOR SHALL REMOVE EXISTING HMA TO BARE CONCRETE FROM STA. 937+45 TO STA. 959+23. FROM STA. 959+23 TO STA. 966+85 REMOVE A MINIMUM OF 3" OF EXISTING HMA OR TO BARE CONCRETE AS DIRECTED BY THE ENGINEER.
 3. LONGITUDINAL JOINT SEALANT SHALL BE INSTALLED AT ALL CENTERLINE OR LANE-TO-LANE LONGITUDINAL JOINTS OF HMA LIFTS.

* THE INTENT OF THE MILLING OPERATION IS TO COMPLETELY REMOVE THE EXISTING HMA AND TO SLIGHTLY SCARIFY THE EXISTING CONCRETE SURFACE. THE PRICE FOR THE SCARIFY IS INCLUDED IN THE COST OF HMA SURFACE REMOVAL, 3".

FILE NAME =
D876K19-sht-typical.dgn
Default

USER NAME = CopperrillPE
PLOT SCALE = 100.0000' / 1" =
PLOT DATE = 3/22/2017

DESIGNED -
DRAWN -
CHECKED -
DATE -

REVISED -
REVISED -
REVISED -
REVISED -

STATE OF ILLINOIS
DEPARTMENT OF TRANSPORTATION

PROPOSED TYPICAL SECTIONS

SCALE: N.T.S. SHEET 2 OF 2 SHEETS STA. N/A TO STA. N/A

F.A.P. RTE.	SECTION	COUNTY	TOTAL SHEETS	SHEET NO.
805	125RS-6	ST. CLAIR	15	6
CONTRACT NO. 76K19				
ILLINOIS FED. AID PROJECT				

PAVEMENT PATCHING 16 INCH SCHEDULE							
LOCATION		LANE	LENGTH	LANE WIDTH	PAVEMENT PATCHING TYPE II	PAVEMENT PATCHING TYPE III	PAVEMENT PATCHING TYPE IV
FAP 805 (IL 161)			FOOT	FOOT	SQ YD	SQ YD	SQ YD
938+34	TO	938+40	EB	6	14	9.3	
942+30	TO	942+40	WB	10	20		22.2
943+67	TO	943+75	WB	8	14	12.4	
944+50	TO	944+56	EB	6	14	9.3	
945+37	TO	945+43	WB	6	14	9.3	
946+00	TO	946+06	EB	6	14	9.3	
946+15	TO	946+21	EB	6	14	9.3	
954+69	TO	954+75	WB	6	14	9.3	
955+00	TO	955+20	WB	20	14		31.1
956+00	TO	956+06	WB	6	14	9.3	
958+09	TO	958+15	WB	6	14	9.3	
959+24	TO	959+30	EB & WB	6	26		17.3
960+53	TO	960+59	EB & WB	6	26		17.3
962+00	TO	962+20	EB & WB	20	26		57.8
962+85	TO	962+91	EB & WB	6	26		17.3
963+70	TO	963+76	EB	6	13	8.7	
964+30	TO	964+36	EB & WB	6	26		17.3
964+60	TO	964+66	EB & WB	12	26		34.7
SUB - TOTAL:					95.8	91.6	123.6
ANTICIPATED FAILURES (15%):					14.4	13.7	18.5
TOTAL:					110	105	142

TEMPORARY RAMP SCHEDULE					
STATION	LOCATION	ROUTE	LENGTH	WIDTH	TEMPORARY RAMP
			FOOT	FOOT	SQ YD
931+80	EB	IL 161 START OF PROJECT	10	26	29
931+80	WB	IL 161 START OF PROJECT	10	26	29
937+45	WB	IL 161 AT I-64 EB OFF RAMP	2	25	6
937+45	EB	IL 161 AT I-64 EB ON RAMP	2	25	6
952+67	EB	IL 161 AT I-64 WB OFF RAMP	2	70	16
952+67	WB	IL 161 AT I-64 WB ON RAMP	2	115	26
960+38	EB	IL 161 AT PARK & RIDE	2	75	17
960+52	WB	IL 161 AT RUTH SCHOOL RD.	2	100	22
963+82	EB	IL 161 AT CASEYS CONC. ENT.	2	70	16
966+06	EB	IL 161 AT ONE STOP DR.	2	165	37
966+85	EB	IL 161 END OF PROJECT	10	13	14
966+85	WB	IL 161 END OF PROJECT	10	13	14
SUB - TOTAL:					187
TOTAL FOR TWO LIFTS:					373

INCIDENTAL HMA SURFACING SCHEDULE						
STATION	LOCATION	ROUTE	LENGTH	WIDTH	AREA	INCIDENTAL HMA SURFACING
			FOOT	FOOT	SQ YD	TON
944+02	WB	IL 161 HMA WEDGE UNDER I-64 EB BRIDGE	3	56	19	6
TOTAL:					19	6

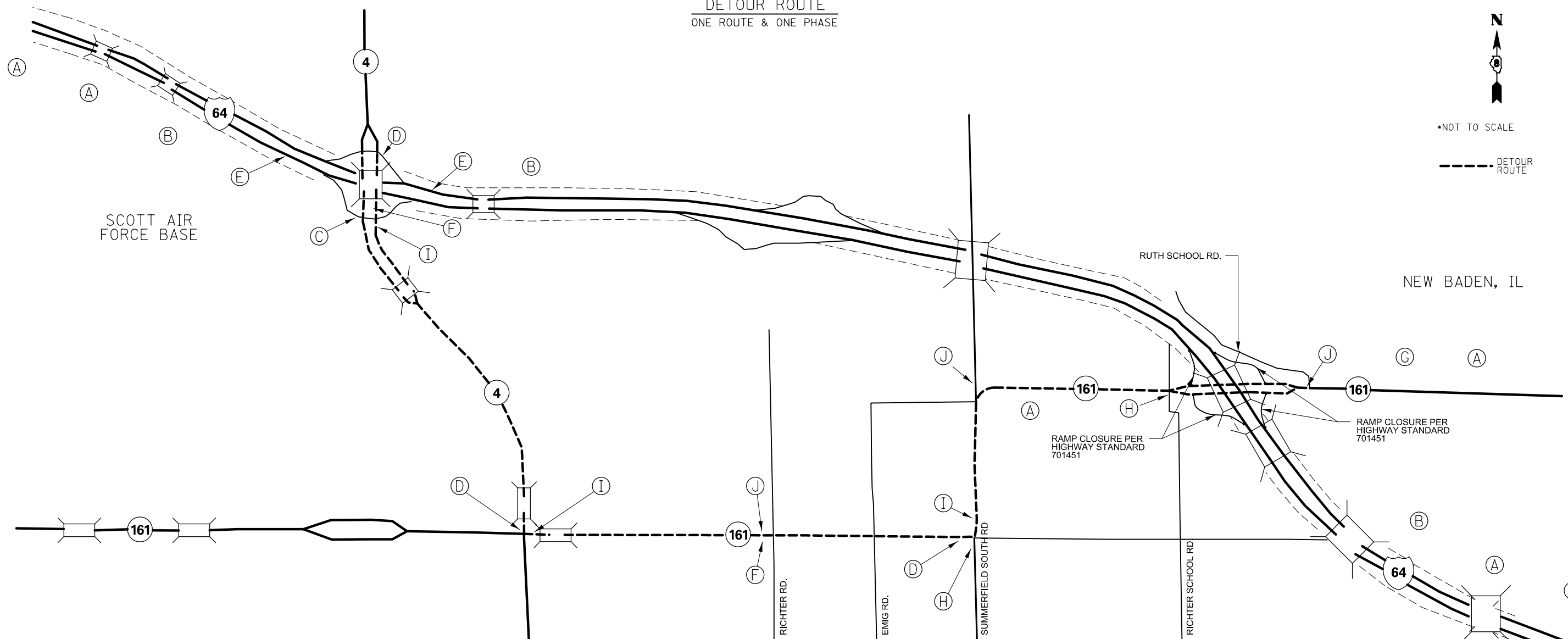
CONCRETE MEDIAN					
LOCATION (APPROXIMATE)	LENGTH	AVERAGE WIDTH	AREA	CONCRETE MEDIAN SURFACE REMOVAL	CONCRETE MEDIAN SURFACE, 4"
STATION	FOOT	FOOT	SQ FT	SQ FT	SQ FT
948+45	50	8	400	400	400
TOTAL:			400	400	400

DETOUR ROUTE
ONE ROUTE & ONE PHASE



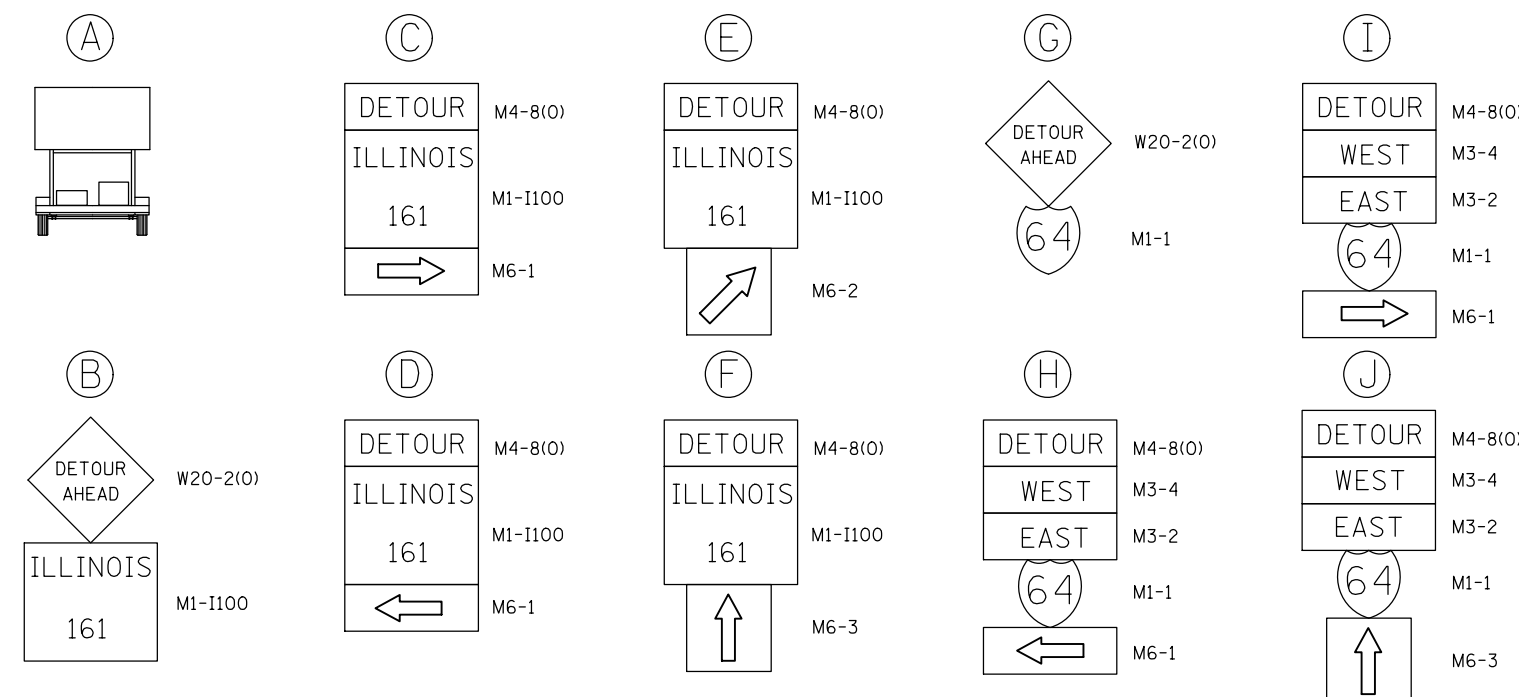
*NOT TO SCALE

--- DETOUR ROUTE



NOTES

1. RAMP CLOSURE WILL ONLY BE ALLOWED FOR A TOTAL MAXIMUM OF SIX CALENDAR DAYS.
2. THE TERMINALS FOR I - 64 AT IL ROUTE 161 WILL ALL BE CLOSED AT THE SAME TIME DURING CONSTRUCTION ON IL ROUTE 161. RAMP CLOSURE SHALL FOLLOW HIGHWAY STANDARD 701451.
3. THE CONTRACTOR SHALL FURNISH ALL SIGNS, POSTS, FLASHING LIGHTS, AND ERECT SIGNS AT THE LOCATIONS SHOWN ON THE PLANS, AS DIRECTED BY THE RESIDENT ENGINEER. THE SIGNS SHOWN ON THE PLAN SHALL CORRESPOND WITH THE SINGLE PHASE OF RAMP CLOSURES.
4. CONTACT JEAN SLAPE AT 618-394-2189 FOR "CLOSED" PANELS TO PLACE ON EXIT SIGNS PRIOR TO THE CLOSED RAMPS.
5. SIX CHANGEABLE MESSAGE SIGNS SHALL BE REQUIRED AND PLACED AT THE LOCATIONS SHOWN ON THE PLANS, AS DIRECTED BY THE RESIDENT ENGINEER, TWO WEEKS PRIOR TO RAMP CLOSURES.
6. THIS WORK SHALL BE INCLUDED IN THE COST FOR DETOUR SIGNING EXCEPT MESSAGE BOARDS (A) WILL BE PAID FOR SEPARATELY.



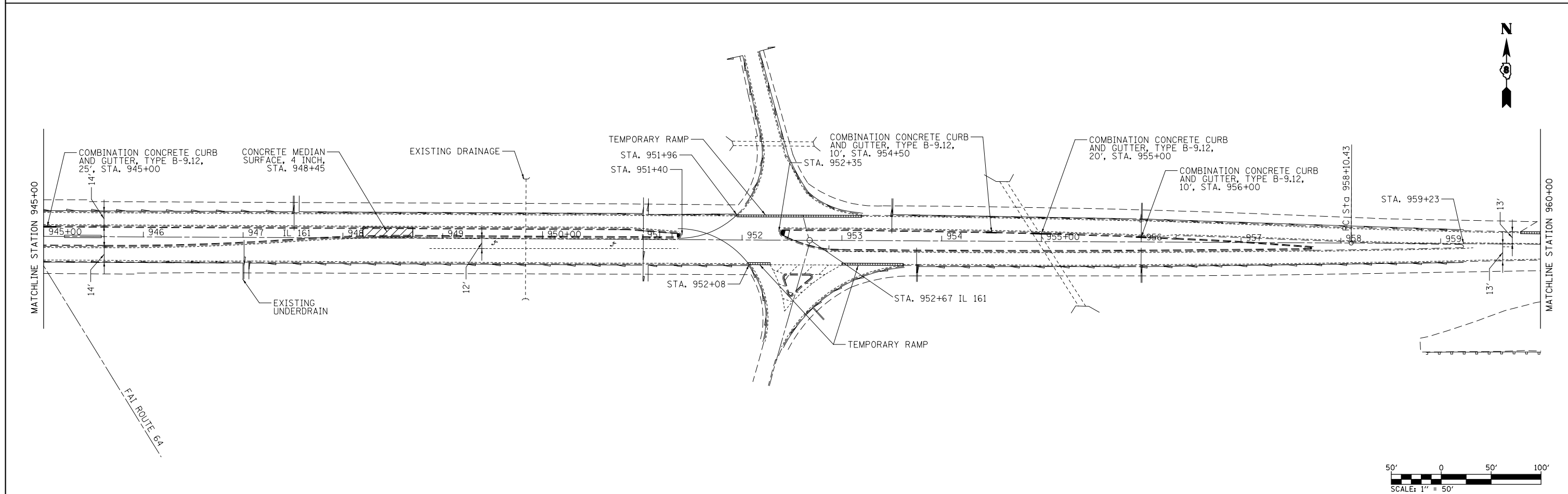
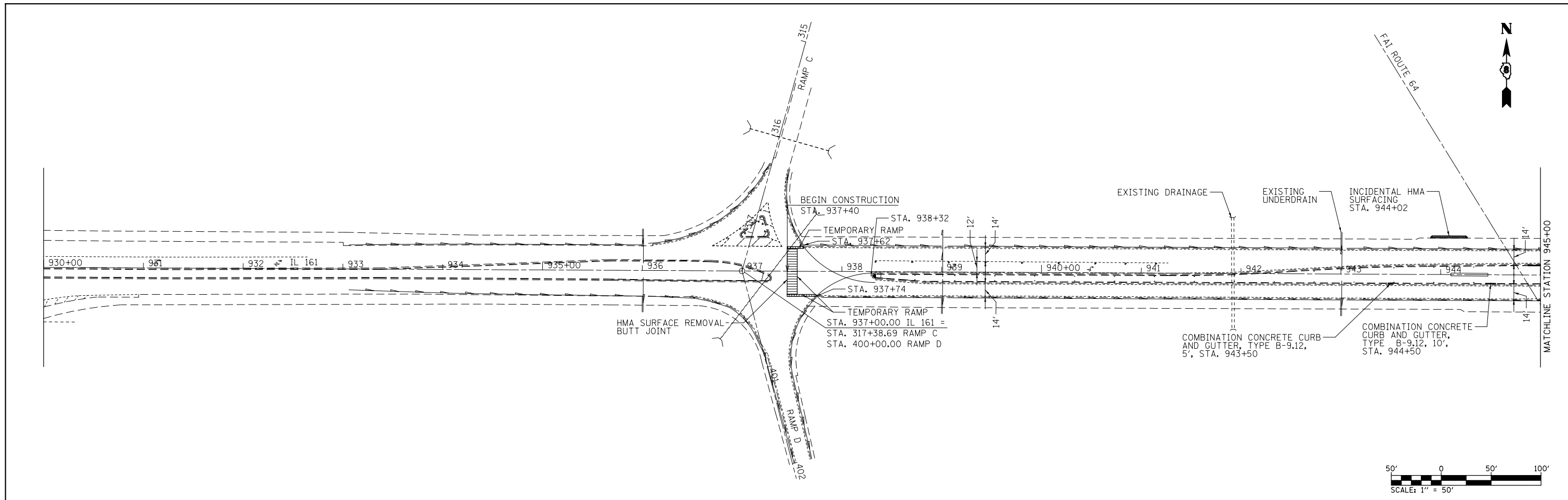
FILE NAME = D876K19-sht-gennote.dgn	USER NAME = Copperno1PE	DESIGNED -	REVISED -
Default	PLOT SCALE = 100.0000' / in.	DRAWN -	REVISED -
	PLOT DATE = 3/22/2017	CHECKED -	REVISED -
		DATE -	REVISED -

STATE OF ILLINOIS
DEPARTMENT OF TRANSPORTATION

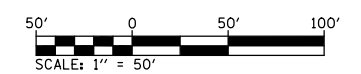
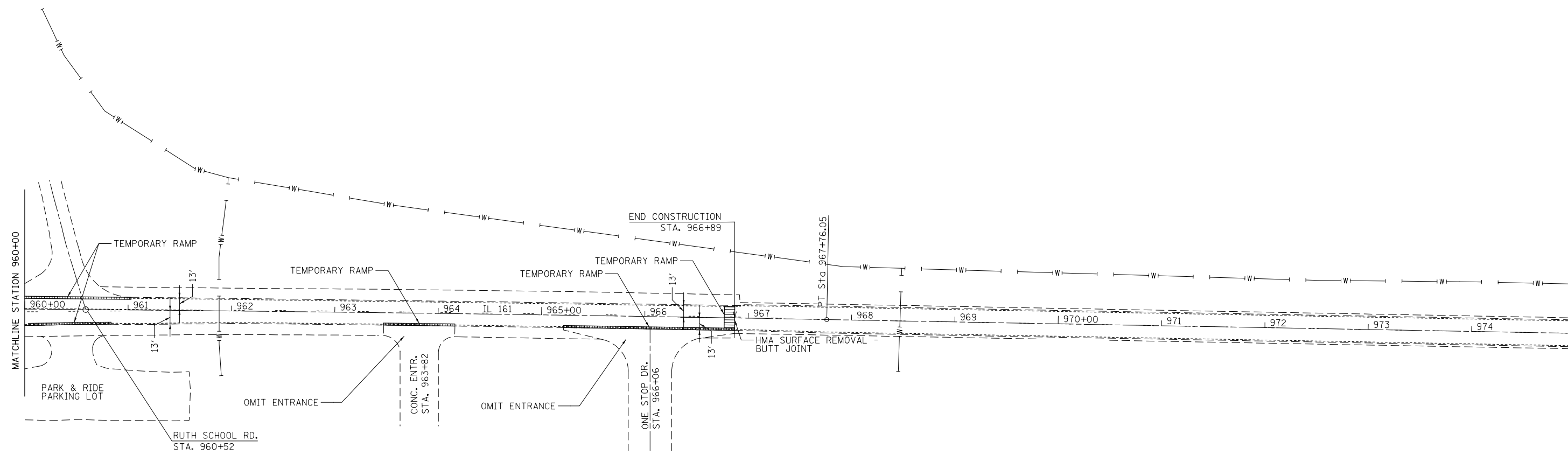
DETOUR ROUTES

SCALE: N.T.S. SHEET 1 OF 1 SHEETS STA. N/A TO STA. N/A

F.A.P. RTE.	SECTION	COUNTY	TOTAL SHEETS	SHEET NO.
805	125RS-6	ST. CLAIR	15	9
CONTRACT NO. 76K19				
ILLINOIS FED. AID PROJECT				



FILE NAME = D876K19-sht-plan.dgn	USER NAME = CoppernoIPE	DESIGNED -	REVISED -	STATE OF ILLINOIS DEPARTMENT OF TRANSPORTATION	PLAN			F.A.P RTE.	SECTION	COUNTY	TOTAL SHEETS	SHEET NO.	
Default	PLOT SCALE = 100.0000' / in.	DRAWN -	REVISED -		SCALE: 1" = 50'	SHEET 1	OF 2	SHEETS	805	125RS-6	ST. CLAIR	15	10
	PLOT DATE = 3/22/2017	CHECKED -	REVISED -		STA. 937+40	TO STA. 960+00		CONTRACT NO. 76K19					
		DATE -	REVISED -		ILLINOIS FED. AID PROJECT								



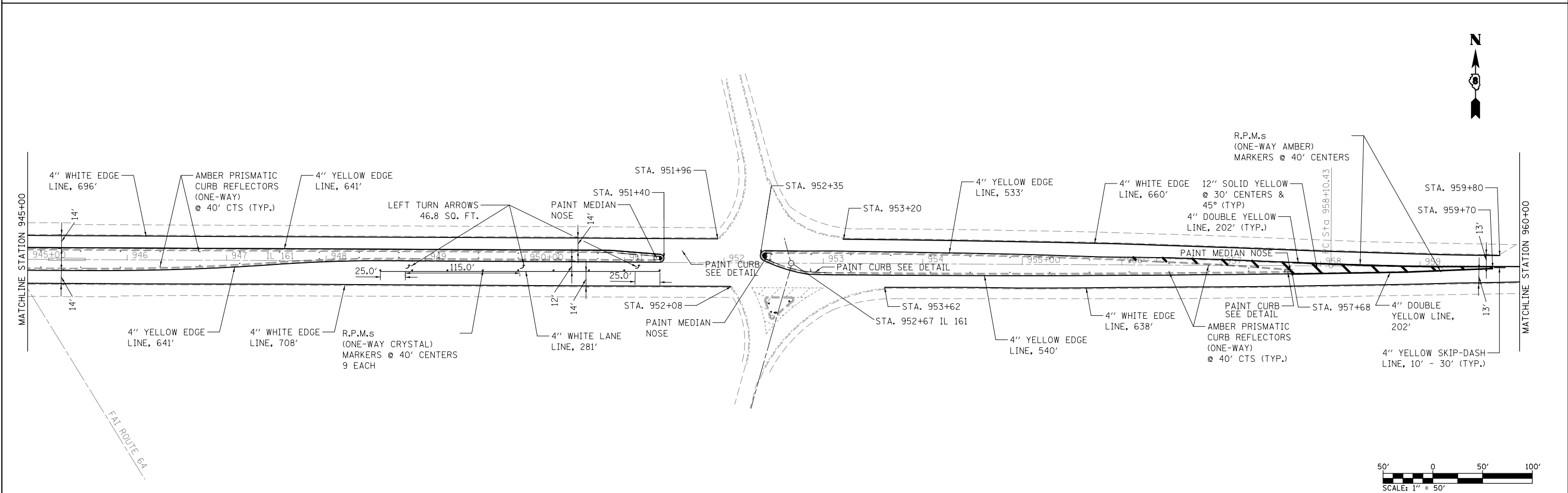
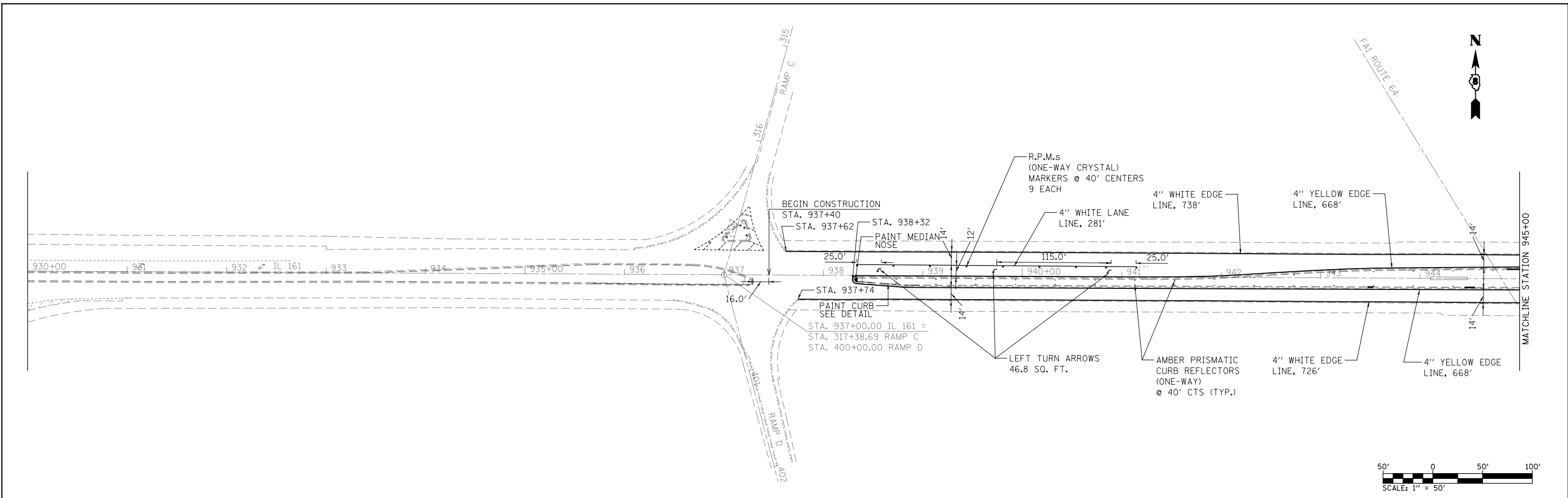
FILE NAME = D876K19-sht-plan.dgn	USER NAME = CoppernoIPE	DESIGNED -	REVISED -
Default	PLOT SCALE = 100.0000' / in.	DRAWN -	REVISED -
	PLOT DATE = 3/22/2017	CHECKED -	REVISED -
		DATE -	REVISED -

**STATE OF ILLINOIS
DEPARTMENT OF TRANSPORTATION**

PLAN

SCALE: 1" = 50' SHEET 2 OF 2 SHEETS STA. 960+00 TO STA. 966+89

F.A.P. RTE.	SECTION	COUNTY	TOTAL SHEETS	SHEET NO.
805	125RS-6	ST. CLAIR	15	11
CONTRACT NO. 76K19				
ILLINOIS FED. AID PROJECT				



FILE NAME =
D876K19-sht-pmk.dgn

USER NAME = CoppernoIPE
PLOT SCALE = 100.0000' / in.
PLOT DATE = 3/22/2017

DESIGNED -
DRAWN -
CHECKED -
DATE -

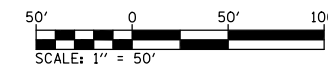
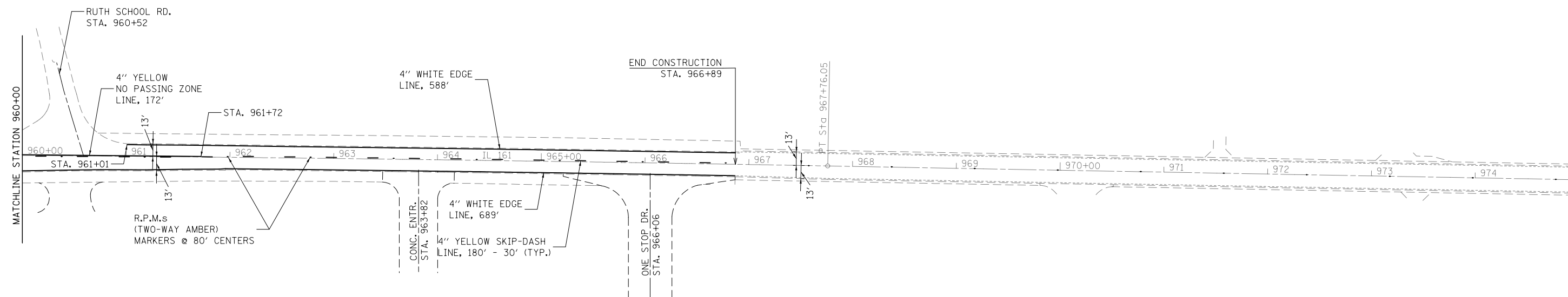
REVISED -
REVISED -
REVISED -
REVISED -

**STATE OF ILLINOIS
DEPARTMENT OF TRANSPORTATION**

PAVEMENT MARKINGS

SCALE: 1" = 50' SHEET 1 OF 2 SHEETS STA. 937+40 TO STA. 960+00

F.A.P. RTE.	SECTION	COUNTY	TOTAL SHEETS	SHEET NO.
805	125RS-6	ST. CLAIR	15	12
CONTRACT NO. 76K19				
ILLINOIS FED. AID PROJECT				



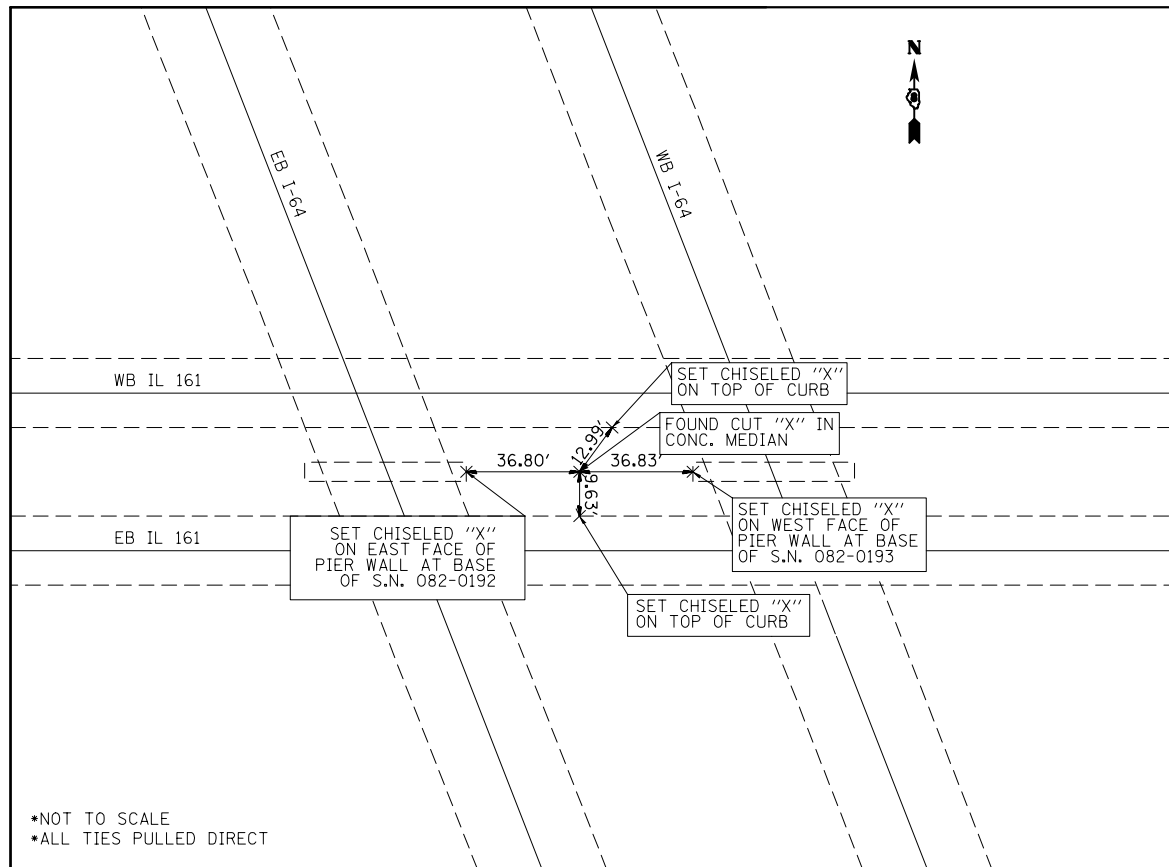
FILE NAME = D876K19-sht-pmk.dgn	USER NAME = CoppernoIPE	DESIGNED -	REVISED -
Default	PLOT SCALE = 100.0000' / in.	DRAWN -	REVISED -
	PLOT DATE = 3/22/2017	CHECKED -	REVISED -
		DATE -	REVISED -

**STATE OF ILLINOIS
DEPARTMENT OF TRANSPORTATION**

PAVEMENT MARKINGS

SCALE: 1" = 50' SHEET 2 OF 2 SHEETS STA. 960+00 TO STA. 966+89

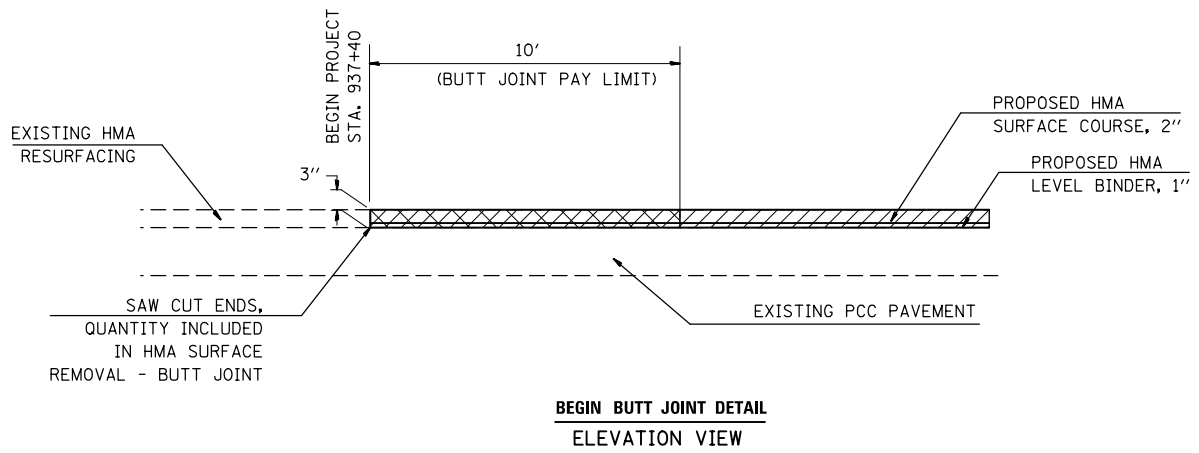
F.A.P. RTE.	SECTION	COUNTY	TOTAL SHEETS	SHEET NO.
805	125RS-6	ST. CLAIR	15	13
CONTRACT NO. 76K19				
ILLINOIS FED. AID PROJECT				



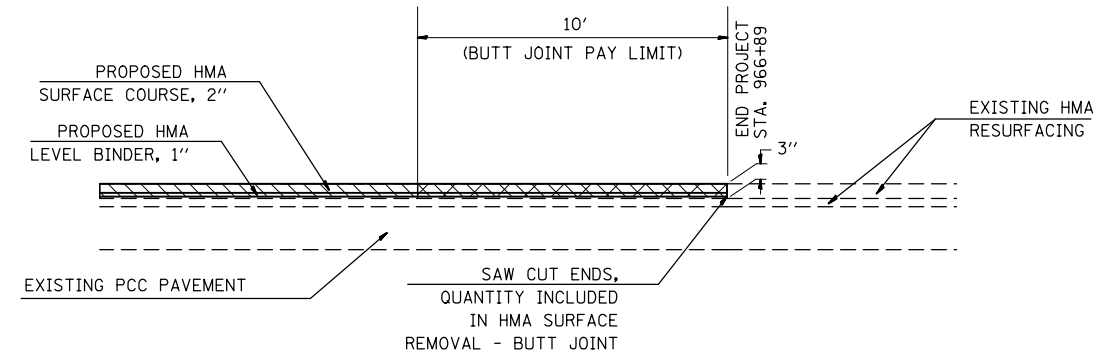
•NOT TO SCALE
•ALL TIES PULLED DIRECT

SURVEY RECORD

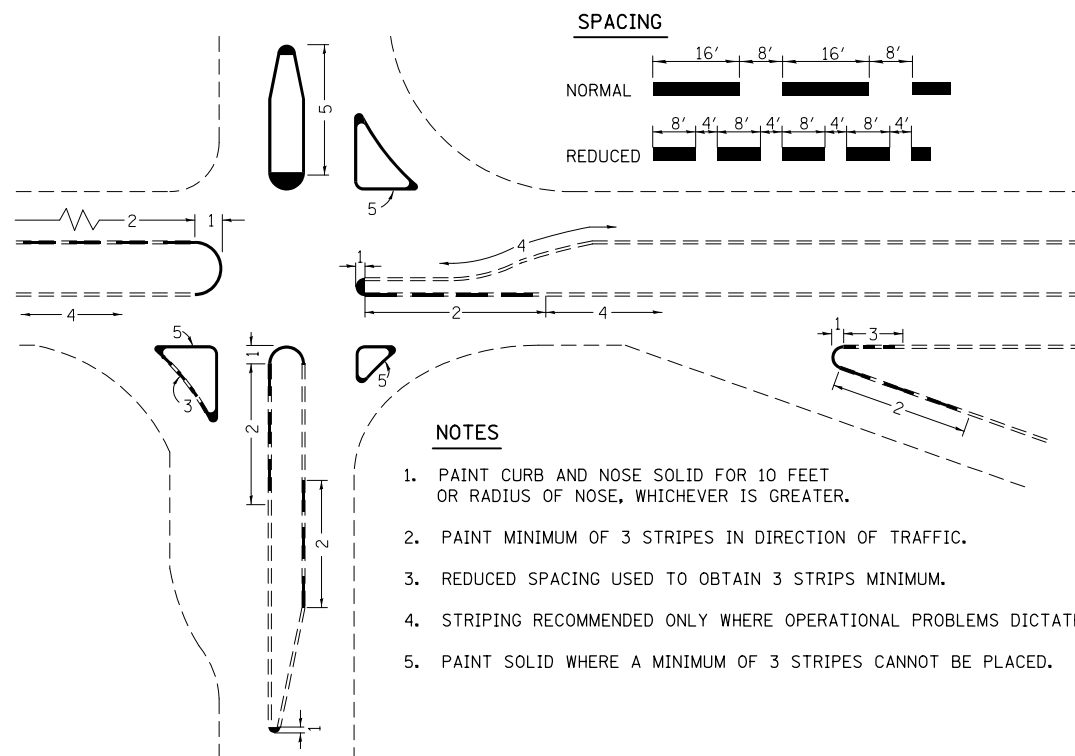
NE 1/4 SEC 14 , T.1.N., R.6.W.



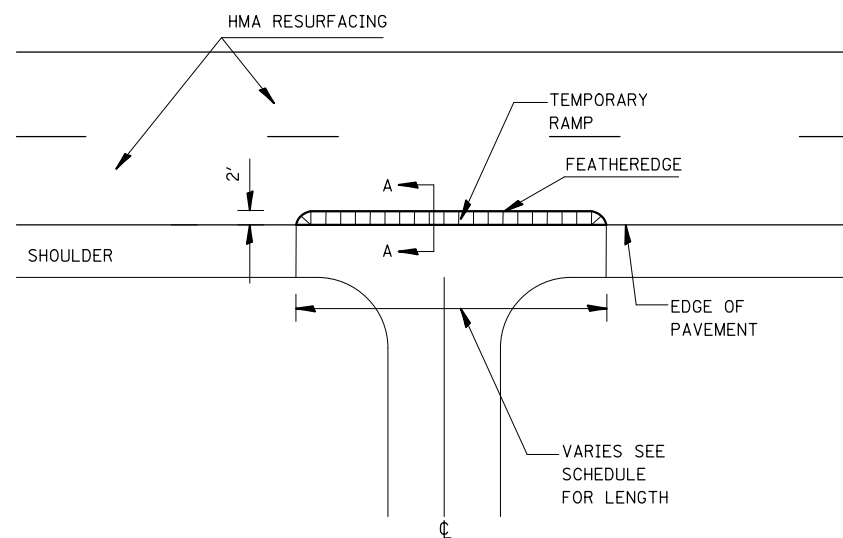
**BEGIN BUTT JOINT DETAIL
ELEVATION VIEW**



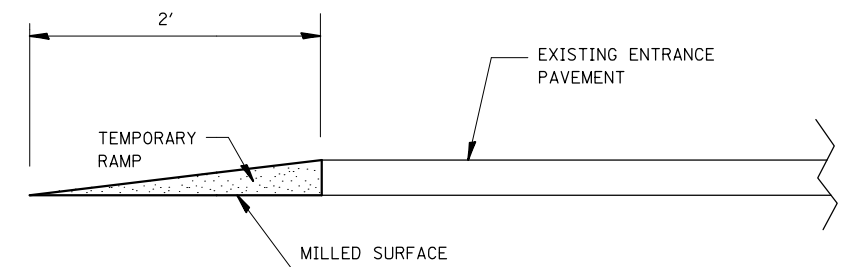
**END BUTT JOINT DETAIL
ELEVATION VIEW**



CURB MARKING DETAIL (N.T.S.)



**TEMPORARY RAMP ENTRANCE DETAIL
PLAN VIEW**



**SECTION A-A FEATHEREDGE DETAIL
SECTION VIEW**

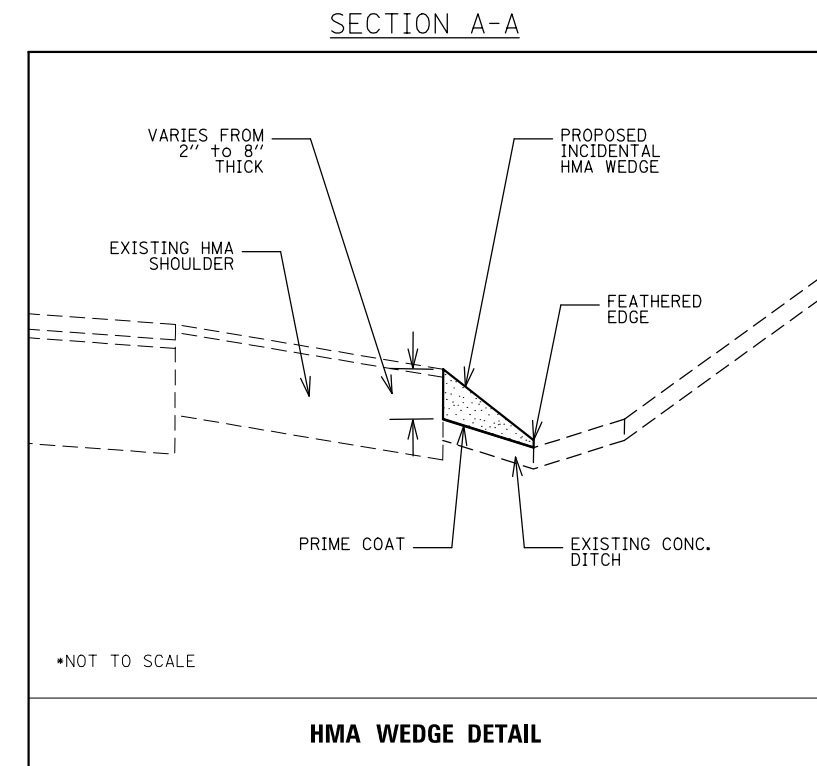
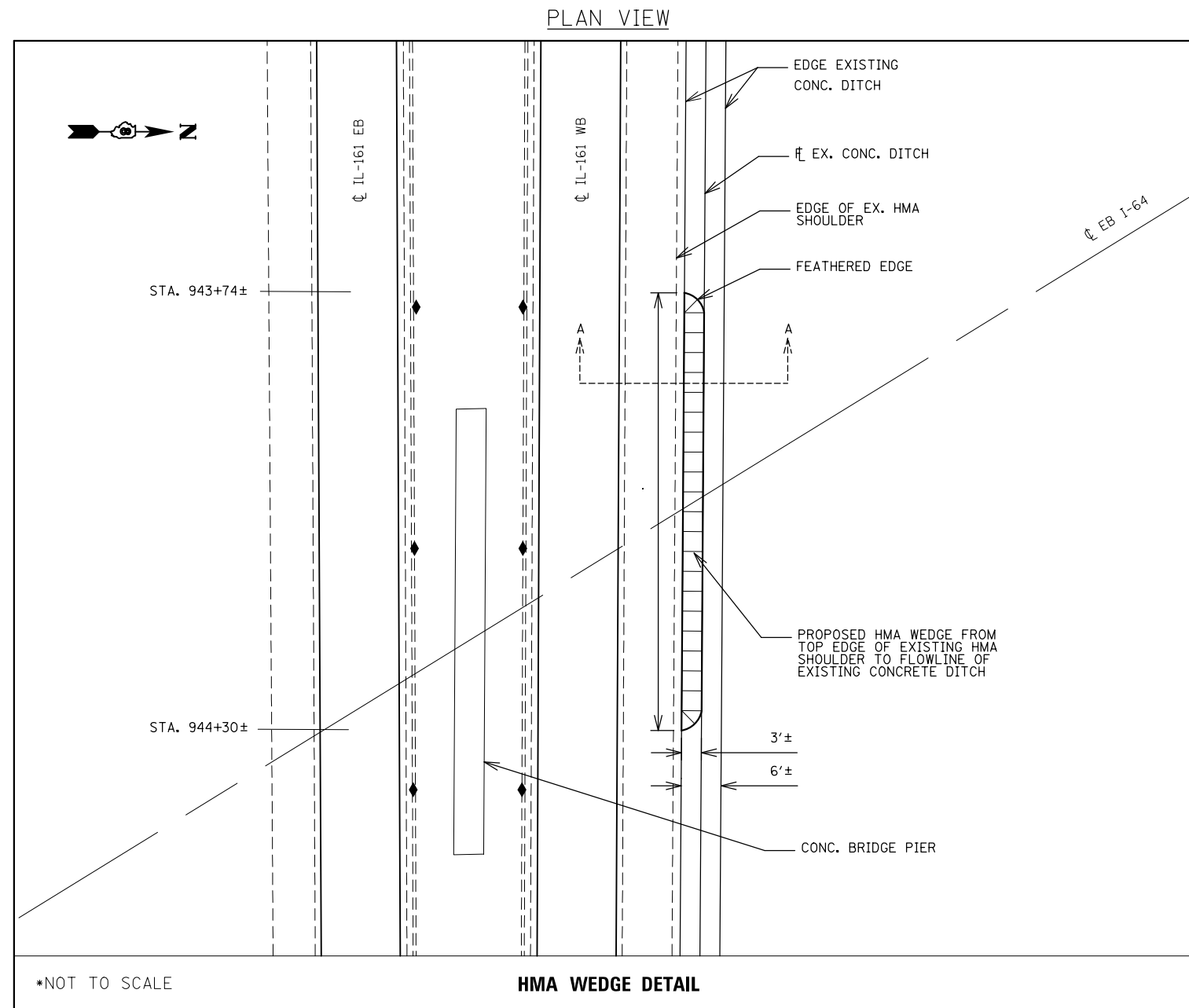
FILE NAME = D876K19-sht-gennote.dgn	USER NAME = CoppernalPE	DESIGNED -	REVISED -
Default	PLOT SCALE = 100.0000' / 1in.	DRAWN -	REVISED -
	PLOT DATE = 3/22/2017	CHECKED -	REVISED -
		DATE -	REVISED -

**STATE OF ILLINOIS
DEPARTMENT OF TRANSPORTATION**

MISCELLANEOUS DETAILS

SCALE: VARIES SHEET 1 OF 2 SHEETS STA. N/A TO STA. N/A

F.A.P. RTE.	SECTION	COUNTY	TOTAL SHEETS	SHEET NO.
805	125RS-6	ST. CLAIR	15	14
CONTRACT NO. 76K19				
ILLINOIS FED. AID PROJECT				



NOTES

1. THE SURFACE OF EXISTING CONCRETE DITCH UNDER BRIDGE SHALL BE FREE OF MOISTURE, LOOSE DEBRIS, AND MATERIAL BEFORE HMA WEDGE IS PLACED. CLEANING AND PREPARING THE CONCRETE DITCH SHALL NOT BE MEASURED FOR PAYMENT BUT SHALL BE INCLUDED IN THE COST OF INCIDENTAL HMA SURFACING.
2. INCIDENTAL IL 9.5, MIXTURE "C", HMA MIX SHALL BE USED FOR THE WEDGE. SEE GENERAL NOTES SHEET FOR EXACT MIX REQUIREMENTS.
3. THE BEGINNING AND END OF HMA WEDGE SHALL HAVE FEATHEREDGE ENDS WITH NO SIGNIFICANT DROPOFF.

FILE NAME = D876K19-sht-gennote.dgn	USER NAME = Copperno1PE	DESIGNED -	REVISED -	STATE OF ILLINOIS DEPARTMENT OF TRANSPORTATION	MISCELLANEOUS DETAILS				F.A.P. RTE.	SECTION	COUNTY	TOTAL SHEETS	SHEET NO.		
Default	PLOT SCALE = 100.0000' / 1in.	DRAWN -	REVISED -		SCALE: N.T.S.	SHEET 2	OF 2	SHEETS	STA. 943+74	TO STA. 944+30	805	125RS-6	ST. CLAIR	15	15
	PLOT DATE = 3/22/2017	CHECKED -	REVISED -						CONTRACT NO. 76K19						
		DATE -	REVISED -		ILLINOIS FED. AID PROJECT										