

STATE OF ILLINOIS  
DEPARTMENT OF TRANSPORTATION  
DIVISION OF HIGHWAYS

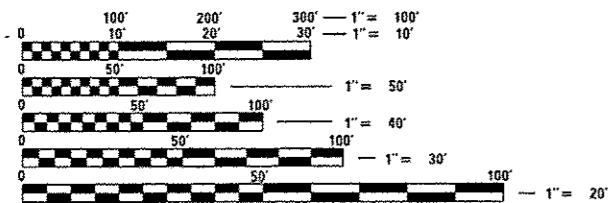
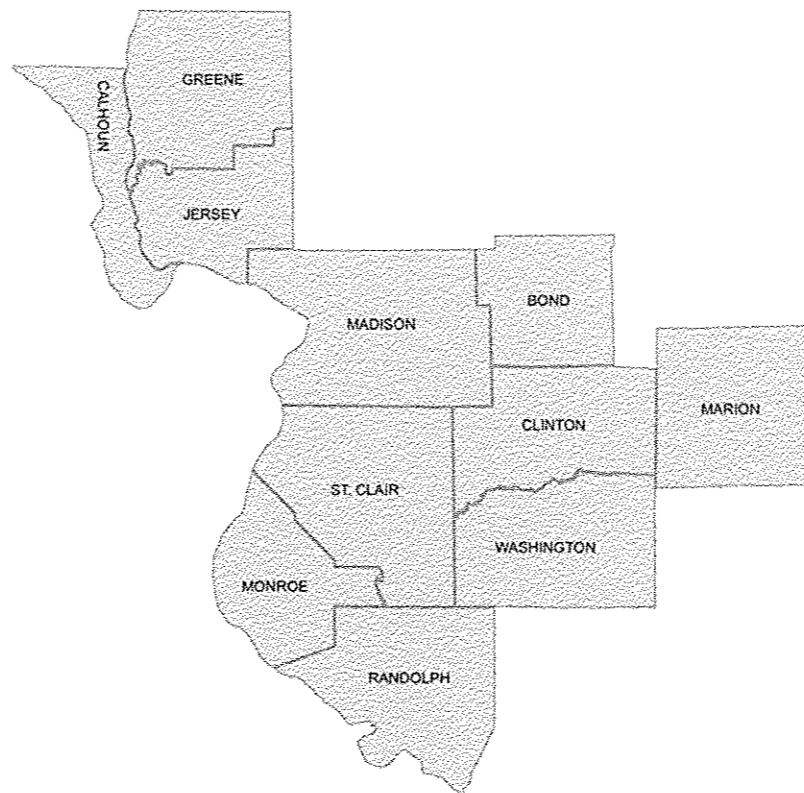
**PROPOSED  
HIGHWAY PLANS**

VARIOUS ROUTES  
SECTION DIST 8 L TS 2018-1  
HIGHWAY LIGHTING,  
TRAFFIC SIGNAL REPAIR  
VARIOUS COUNTIES

C-98-047-17

F.A. R.T.E.	SECTION	COUNTY	TOTAL SHEETS	SHEET NO.
VAR	DIST 8 L TS 2018-1	VARIOUS	11	1
		ILLINOIS	CONTRACT NO. 76K56	

- INDEX OF SHEETS:  
1 COVER SHEET  
2 HIGHWAY STANDARDS AND GENERAL NOTES  
3-11 SUMMARY OF QUANTITIES



FULL SIZE PLANS HAVE BEEN PREPARED USING STANDARD ENGINEERING SCALES. REDUCED SIZED PLANS WILL NOT CONFORM TO STANDARD SCALES. IN MAKING MEASUREMENTS ON REDUCED PLANS, THE ABOVE SCALES MAY BE USED.

J.U.L.I.E.  
JOINT UTILITY LOCATION INFORMATION FOR EXCAVATION  
1-800-892-0123  
OR 811

PROJECT ENGINEER: DAVE WALKER (618) 346-3274  
PROJECT MANAGER: TRISH PAPIN (618) 346-3276

CONTRACT NO. 76K56

NOTE: WORK CAN BE LOCATED WITHIN ANY OF THE ABOVE NOTED COUNTIES WITHIN DISTRICT 8/REGION 5.

STATE OF ILLINOIS  
DEPARTMENT OF TRANSPORTATION

SUBMITTED March 21 20 17  
Jeffrey Z. Kammer REGIONAL ENGINEER

May 12 20 17  
Maureen M. Addis ENGINEER OF DESIGN AND ENVIRONMENT

May 12 20 17  
Paula A. [Signature] DIRECTOR OF PROGRAM DEVELOPMENT

**PRINTED BY THE AUTHORITY  
OF THE STATE OF ILLINOIS**

HIGHWAY STANDARDS

701001-02	701400-09	701456-04
701006-05	701401-10	701601-09
701101-05	701406-11	701606-10
701106-02	701421-08	701701-10
701201-04	701422-09	701901-06
701206-03	701446-08	886001-01
701301-04	701451-04	886006-01

838001

1. THE LOCATIONS OF THE REPAIR AREAS SHALL BE DETERMINED BY THE ENGINEER/DEPARTMENT.
2. NO MATERIAL SHALL BE LEFT ON OR NEAR THE ROADWAY DURING NON-WORKING HOURS.
3. ANY NECESSARY TRAFFIC CONTROL WILL BE PROVIDED BY THE CONTRACTOR APPROPRIATE STANDARDS ARE LISTED.
4. ILLINOIS STATE LAW REQUIRES A 48-HOUR NOTICE TO BE GIVEN TO UTILITIES BEFORE DIGGING. FIELD MARKING OF FACILITIES MAY BE OBTAINED BY CONTACTING J.U.L.I.E. (PHONE 800 892-0123 OR 811) OR FOR NON-MEMBERS, THE UTILITY COMPANY DIRECTLY.
5. A FLAGGER SHALL BE REQUIRED AT ALL TIMES WHEN WORKERS OR EQUIPMENT ARE ENCROACHING ON THE LANE OF TRAFFIC.
6. 45 AND 55 MPH SIGNS ARE INCLUDED IN ALL INTERSTATE LANE CLOSURES. IF THE LANE CLOSURE DURATION IS LESS THAN 4 HOURS, THE 45 AND 55 MPH SIGNS ARE NOT REQUIRED.
7. ANY WORK ORDER MAY BE CANCELED AT THE ENGINEER'S/DEPARTMENT'S DISCRETION.
8. NO OVERNIGHT LANE CLOSURES WILL BE ALLOWED.

FILE NAME :	USER NAME : lewy	DESIGNED -	REVISED -	<b>STATE OF ILLINOIS DEPARTMENT OF TRANSPORTATION</b>	<b>HIGHWAY STANDARDS AND GENERAL NOTES</b>		F.A. RTE.	SECTION	COUNTY	TOTAL SHEETS	SHEET NO.
p:\IL084EBIDINTEG.illinois.gov\PWD01\Documents\DOT Offices\District 8\Projects\0870000000\DATA\GAD\sheets\0870000000-sht-gennod\0870000000-sht-gennod		CHECKED -	REVISED -				VAR	DIST 8 L TS 2018-1	VARIOUS	11	2
Default	PLOT SCALE : 100.0000' / in.	DATE -	REVISED -		SCALE: SHEET 1 OF 1 SHEETS STA. TO STA.		ILLINOIS FED. AID PROJECT CONTRACT NO. 76K56				
	PLOT DATE : 3/1/2017	DATE -	REVISED -								



RURAL  
CONSTR. CODE  
100% STATE

CODE NO.	ITEM	UNIT	TOTAL QUANTITY	0021
XP000032	FLATBED TRAILER	HOUR	16	16
XP000034	GENERATOR SET	HOUR	44	44
XP000035	PUMP, ELECTRIC, SUBMERSIBLE	HOUR	5	5
XP000036	PUMP, GAS, 2" OR LESS	HOUR	5	5
XP000101	ATQ 5A FUSE 200	EACH	1	1
XP000102	FNQ 5A FUSE	EACH	654	654
XP000103	KTQ 5A FUSE	EACH	1	1
XP000104	FNM 10A FUSE	EACH	1	1
XP000105	FRNR 60A FUSE	EACH	2	2
XP000106	BUCHANAN FUSEHOLDER KIT	EACH	53	53
XP000107	150W 240/480V HORIZONTAL HPS FIXTURE	EACH	1	1
XP000108	250W 240/480V HORIZONTAL HPS FIXTURE	EACH	11	11
XP000109	400W 240/480V HORIZONTAL HPS FIXTURE	EACH	13	13
XP000110	150W 240/480V MULTI-MOUNT HPS FIXTURE	EACH	1	1

14



RURAL  
CONSTR. CODE  
100% STATE

CODE NO.	ITEM	UNIT	TOTAL QUANTITY	0021
XP000125	PHOTO CONTROL, 105V-285V (ALR-MODEL SSTPV-ON)	EACH	6	6
XP000126	#12 XLPE 1/C COPPER WIRE	FEET	4615	4615
XP000127	#8 XLP-TYPE USE 1/C COPPER WIRE	FEET	500	500
XP000128	#6 XLP-TYPE USE 1/C COPPER WIRE	FEET	10282	10282
XP000129	60A LIGHTING CONTACTOR	EACH	2	2
XP000130	100A LIGHTING CONTACTOR	EACH	2	2
XP000131	15A CIRCUIT BREAKER, 1P	EACH	1	1
XP000132	50A CIRCUIT BREAKER, 1P	EACH	1	1
XP000133	20A CIRCUIT BREAKER, 2P	EACH	1	1
XP000134	30A CIRCUIT BREAKER, 2P	EACH	1	1
XP000135	50A CIRCUIT BREAKER, 2P	EACH	1	1
XP000136	100A CIRCUIT BREAKER, 2P	EACH	1	1
XP000137	150A CIRCUIT BREAKER, 2P	EACH	1	1
XP000138	200A CIRCUIT BREAKER, 2P	EACH	1	1

14

FILE NAME =	USER NAME = leej	DESIGNED -	REVISED -	<b>STATE OF ILLINOIS DEPARTMENT OF TRANSPORTATION</b>	<b>SUMMARY OF QUANTITES</b>	P.A. RTE.	SECTION	COUNTY	TOTAL SHEETS	SHEET NO.	
p:\1\10845810\10845810\Illinois.gov\PI\1001\001\Documents\IGOT Offices\District 8\Projects\0878\0878\0878\15A0 sheets\0878K56-shs-500.dwg						VAR	DIST 8 L TS 2018-1	VARIOUS	11	6	
PLOT SCALE = 100.0000' / in.						CHECKED -	REVIS	CONTRACT NO. 76K56			
PLOT DATE = 3/1/2017						DATE -	REVISED -	SCALE:	SHEET NO. 4 OF 9 SHEETS	STA. TO STA.	FED. ROAD DIST. NO.

RURAL  
CONSTR. CODE  
100% STATE

CODE NO.	ITEM	UNIT	TOTAL QUANTITY	0021
XP000139	BREAKAWAY COUPLING, 1"	EACH	25	25
XP000140	1/4" X 1/4" STAINLESS STEEL MESH	SQ FT	2	2
XP000141	ALUMINUM SIGNAL BASE, SQUARE (PELCO)	EACH	80	80
XP000142	ALUMINUM SIGNAL POST, 13', SCH 80 (PELCO)	EACH	3	3
XP000143	LOUVER, 12", 5 VANE, 0 DEGREE CUT-OFF	EACH	1	1
XP000144	LOUVER, GEOMETRICALLY PROGRAMMABLE, 12" (PELCO)	EACH	2	2
XP000145	MAST ARM BRACKET, 3 SECTION (PELCO AB 116)	EACH	7	7
XP000146	MAST ARM BRACKET, 4 SECTION (PELCO AB 116)	EACH	2	2
XP000147	MAST ARM BRACKET, 5 SECTION (PELCO AB 116)	EACH	8	8
XP000148	HORIZONTAL TERMINAL, ALUMINUM (PELCO)	EACH	1	1
XP000161	LAMP, QUARTZ HALOGEN, 43W @, 10.8V (GE OR EQUIVALENT)	EACH	41	41
XP000164	SIGNAL HEAD, POLYCARBONATE, LED, 1-SECTION, 12", R OR Y (ECONOLITE OR MCCAIN)	EACH	6	6
XP000165	SIGNAL HEAD, POLYCARBONATE, LED, 3-SECTION, 12", (ECONOLITE OR MCCAIN)	EACH	70	70
XP000166	SIGNAL HEAD, POLYCARBONATE, LED, 4-SECTION, 12", (ECONOLITE OR MCCAIN)	EACH	3	3

14

RURAL  
CONSTR. CODE  
100% STATE

CODE NO.	ITEM	UNIT	TOTAL QUANTITY	0021
XP000167	SIGNAL HEAD, POLYCARBONATE, LED, 5-SECTION, 12", (ECONOLITE OR MCCAIN)	EACH	12	12
XP000168	PEDESTRIAN HEAD, POLYCARBONATE, LED, 2-SECTION, 12", (ECONOLITE OR MCCAIN)	EACH	17	17
XP000169	LAMP, LED LAMP	EACH	400	400
XP000170	ELECTRIC CABLE, 2/C, #14, TW, SH	FEET	3221	3221
XP000171	ELECTRIC CABLE, 3 PR, #18, TW, SH	FEET	10	10
XP000172	ELECTRIC CABLE, 5 PR, #18, TW, SH	FEET	10	10
XP000173	ELECTRIC CABLE, 6 PR, #18, TW, SH	FEET	2191	2191
XP000174	ELECTRIC CABLE, 2/C, #14	FEET	1242	1242
XP000175	ELECTRIC CABLE, 3/C, #14	FEET	988	988
XP000176	ELECTRIC CABLE, 5/C, #14	FEET	4515	4515
XP000177	ELECTRIC CABLE, 7/C, #14	FEET	1964	1964
XP000178	GROUND WIRE, #10	FEET	10	10
XP000179	GROUND ROD, 8', COPPER CLAD	EACH	1	1
XP000180	SPLICE KIT (3-M SCOTCHCAST #72-N1)	EACH	10	10



CODE NO.	ITEM	UNIT	TOTAL QUANTITY	0021
XP000181	LOOP SEALANT (BONDO P606)	GALLON	1	1
XP000183	BACKPLATE, ABS PLASTIC, 3-SECTION (PELCO)	EACH	50	50
XP000184	BACKPLATE, ABS PLASTIC, 4-SECTION (PELCO)	EACH	10	10
XP000185	BACKPLATE, ABS PLASTIC, 5-SECTION (PELCO)	EACH	18	18
XP000186	J BOX, NEMA, 4X, SS, 6"X8"X4", W/ ALUMINUM BACKPLATE & LOCK KIT	EACH	1	1
XP000187	HANDHOLE, FRAME & COVER (NEENAH R-6660-JP)	EACH	1	1
XP000188	HANDHOLE, COVER ONLY (NEENAH R-6660-JP)	EACH	10	10
XP000189	GULFBOX, JUNCTION	EACH	1	1
XP000190	TERMINAL FACILITY, COMPLETE	EACH	1	1
XP000191	SIGN, ILLUMINATED, FIBEROPTIC-TYPE, 24"X30" "NO LEFT/RIGHT TURN" OR "LT TURN YIELD"	EACH	1	1
XP000192	SIGN, ILLUMINATED, FIBEROPTIC-TYPE, 24"X30" "NO LEFT/RIGHT TURN" OR "LT TURN YIELD"	EACH	1	1
XP000193	MONITOR, NEMA CONFLICT, 12 CHANNEL (EDI SSM-12E)	EACH	1	1
XP000194	RELAY, FLASH TRANSFER, (MIDTEX 136-62T3A1)	EACH	1	1
XP000195	DETECTOR, NEMA DIGITAL, 1-CH, SHELF MOUNT (DETECTOR SYSTEMS OR RENO)	EACH	1	1

14

CODE NO.	ITEM	UNIT	TOTAL QUANTITY	0021
XP000196	DETECTOR, NEMA DIGITAL, 2-CH, RACK MOUNT (DETECTOR SYSTEMS OR RENO)	EACH	1	1
XP000197	DETECTOR, POWER SUPPLY, RACK MOUNT (DETECTOR SYSTEMS OR RENO)	EACH	1	1
XP000198	CABINET, SIGNAL CONTROLLER, ALUM., TYPE IV, W/MONITOR & ALL PLUG-INS, COMPLETE (ECONOLITE)	EACH	1	1
XP000199	FLASHER, NEMA	EACH	5	5
XP000200	LOAD SWITCH, NEMA	EACH	22	22
XP000201	CONTROLLER, SIGNAL, (ECONOLITE ASC/2S-2100)	EACH	1	1
XP000202	MONITOR INTERSECTION (ECONOLITE MONITOR II)	EACH	1	1
XP000203	COLD GALVANIZING, SPRAY CAN	EACH	1	1
XP000204	ALUMINUM LIGHT POLE, 45', COMPLETE, ROUND, W 15' TRUSS STYLE ARM, W/TRANSFORMER BASE, 17" B.C.	EACH	1	1
XP000205	ALUMINUM LIGHT POLE MAST ARM, 15', TRUSS STYLE	EACH	8	8
XP000206	ALUMINUM TRANSFORMER BASE, 13" UPPER BOLT CIRCLE 17" LOWER BOLT CIRCLE	EACH	1	1
XP000207	ALUMINUM LIGHT POLE, 45', COMPLETE, RD, W/ TENON TOP, W/T BASE, 17" B.C., DK. BRONZE POWDER COAT	EACH	1	1
XP000208	ALUMINUM TRANSFORMER BASE, 15" UPPER BOLT CIRCLE 17" LOWER BOLT CIRCLE, DK. BRONZE POWDER COAT	EACH	22	22
XP000209	UPPER AND LOWER ARM ASSEMBLY, UNPAINTED ALUMINUM	EACH	103	103

FILE NAME : p:\IL\084E810\INTEG.illinois.gov\PIW001\Documents\1007 Offices\District B\Projects\0070\DATA\084E810\BADSheets\084E810\sh1-500.dwg	USER NAME : jeej	DESIGNED -	REVISED -
PLOT SCALE = 1/8" = 1' / 1" / 1"	CHECKED -	REVISOR -	REVISOR -
PLOT DATE = 3/1/2017	DATE -	REVISOR -	REVISOR -

STATE OF ILLINOIS  
DEPARTMENT OF TRANSPORTATION

SUMMARY OF QUANTITIES

SCALE: SHEET NO. 8 OF 9 SHEETS STA. TO STA.

F.A. RTE.	SECTION	COUNTY	TOTAL SHEETS	SHEET NO.
VAR	DIST 8 L TS 2018-1	VARIOUS	11	10
FED. ROAD DIST. NO. [ILLINOIS] FED. AID PROJECT			CONTRACT NO. 76K56	

RURAL  
CONSTR. CODE  
100% STATE

CODE NO.	ITEM	UNIT	TOTAL QUANTITY	0021
XP000210	FLASHER CONTROLLER CABINET ASSEMBLY, NEMA (PELCO SE-1005 OR EQUIVALENT)	EACH	1	1
XP000300	TRAFFIC SIGNAL RELAMPING	EACH	1	1
XP000301	TRAFFIC SIGNAL LAMP REPLACEMENT	EACH	325	325
XP000302	FLASHING BEACON INSPECTION	EACH	1	1
XP000303	TOWER LIGHTING INSPECTION	EACH	1	1
XP000304	REPLACE SERVICE INSTALLATION, COMPLETE	EACH	1	1
XP000307	REPAIR TRAFFIC SIGNAL KNOCKDOWN	EACH	67	67
XP000308	REPAIR FLASHING BEACON KNOCKDOWN	EACH	6	6
XP000309	REPAIR HIGHWAY LIGHT POLE KNOCKDOWN	EACH	31	31
XP000310	REPLACE HIGHWAY LIGHT POLE BREAKAWAY DEVICE, COUPLINGS	EACH	1	1
XP000311	REPLACE HIGHWAY LIGHT POLE BREAKAWAYDEVICE, TRANSFORMER BASE	EACH	1	1
XP000312	REPLACE TRAFFIC SIGNAL POST BASE ASSEMBLY	EACH	3	3

12

FILE NAME :	USER NAME : lawj	DESIGNED -	REVISED -
PH:\IL084EBIDINTEC\Illinois.gov\PID01\Docu	ments\1007 Offices\District 8\Projects\087	087\087\087\087\087\087\087\087\087\087	087\087\087\087\087\087\087\087\087
	PLOT SCALE : 180,0000' / in.	CHECKED -	REVISED -
	PLOT DATE : 3/1/2017	DATE -	REVISED -

STATE OF ILLINOIS  
DEPARTMENT OF TRANSPORTATION

SUMMARY OF QUANTITES

SCALE: SHEET NO. 9 OF 9 SHEETS STA. TO STA.

F.A. RTE.	SECTION	COUNTY	TOTAL SHEETS	SHEET NO.
VAR	DIST 8 L TS 2018-1	VARIOUS	11	11
FED. ROAD DIST. NO.		ILLINOIS FED. AID PROJECT		
		CONTRACT NO. 76K56		