

STATE OF ILLINOIS
DEPARTMENT OF TRANSPORTATION

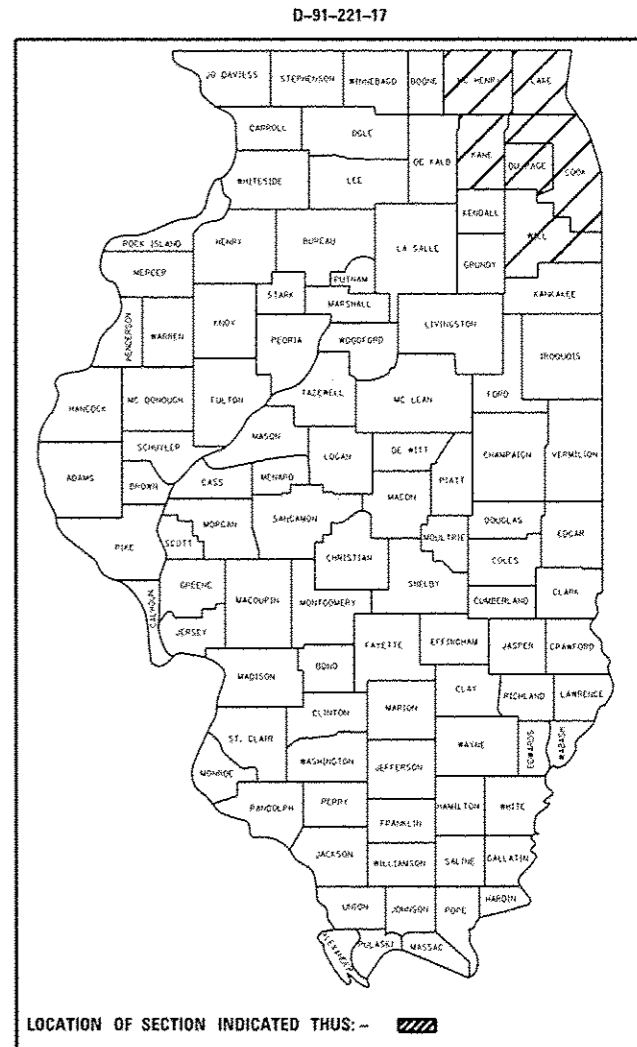
F.A. SHEETS	SECTION	COUNTY	TOTAL SHEETS	SHEET NO.
VAR.	2017-012-LS	VARIOUS	160	1
		ILLINOIS	CONTRACT NO. 62F13	

FOR INDEX OF SHEETS, SEE SHEET NO. 2

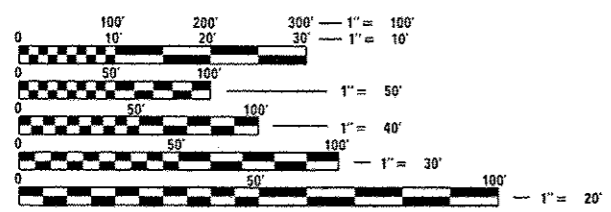
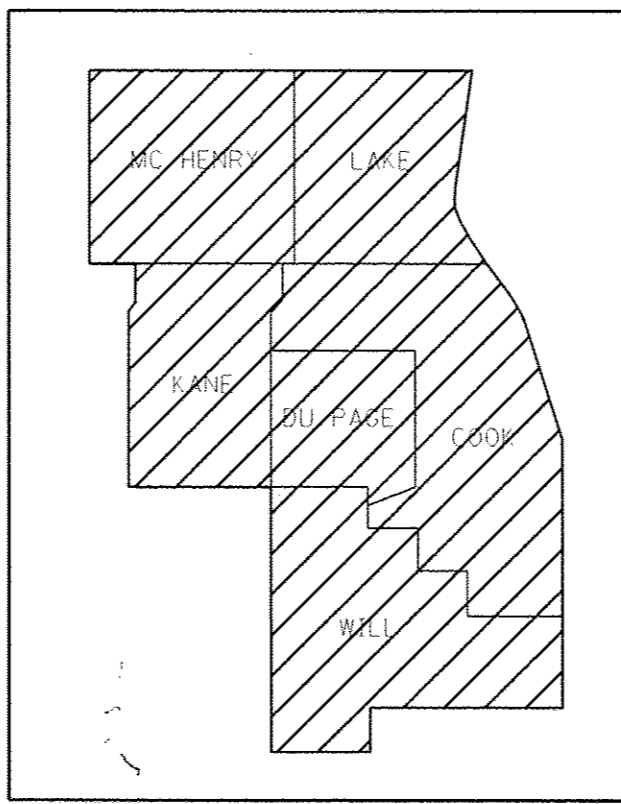
PROPOSED HIGHWAY PLANS

ROUTE: VARIOUS
SECTION: 2017-012-LS
LANDSCAPE REPAIR & RESTORATION
VARIOUS COUNTIES

C-91-221-17



IMPROVEMENTS ARE AT VARIOUS
LOCATIONS WITHIN DISTRICT ONE



FULL SIZE PLANS HAVE BEEN PREPARED USING STANDARD ENGINEERING SCALES. REDUCED SIZED PLANS WILL NOT CONFORM TO STANDARD SCALES. IN MAKING MEASUREMENTS ON REDUCED PLANS, THE ABOVE SCALES MAY BE USED.

J.U.L.I.E.
JOINT UTILITY LOCATION INFORMATION FOR EXCAVATION
1-800-892-0123
OR 811

PROJECT ENGINEER JAMES STUMPNER
PROJECT MANAGER GIOVANNA ZAFFINA (847) 705-4171

CONTRACT NO. 62F13

STATE OF ILLINOIS
DEPARTMENT OF TRANSPORTATION

SUBMITTED April 13 2017
Anthony J. [Signature]
REGIONAL ENGINEER

May 12 2017
Maureen M. Addis [Signature]
ENGINEER OF DESIGN AND ENVIRONMENT

May 12 2017
[Signature]
DIRECTOR OF PROGRAM DEVELOPMENT 2

PRINTED BY THE AUTHORITY
OF THE STATE OF ILLINOIS

INDEX OF SHEETS

SHEET NO.	DESCRIPTION
1	COVER SHEET
2	INDEX OF SHEETS, GENERAL NOTES, & STATE STANDARDS
3-5	SUMMARY OF QUANTITIES
6	GENERAL LOCATIONS
7-8	CALENDAR OF CONSTRUCTION & ESTABLISHMENT WORK
9	WORK ORDER
10-14	LANDSCAPE PLANS
15-16	DISTRICT DETAILS

GENERAL NOTES

PLANT MATERIAL WILL BE INSTALLED OVER THREE (3) PLANTING PHASES.

THE CONTRACTOR SHALL CONTACT THE DISTRICT ONE ARTERIAL TRAFFIC CONTROL SUPERVISOR AT (847) 705-4470 AND THE DISTRICT ONE EXPRESS-WAY TRAFFIC CONTROL SUPERVISOR AT (847) 705-4155 IN ADVANCE OF BEGINNING WORK.

BEFORE STARTING ANY EXCAVATION THE CONTRACTOR SHALL CALL THE STATE ELECTRICAL MAINTENANCE CONTRACTOR AT (773) 287-7600, EXTENSION 601, FOR FIELD LOCATIONS OF BURIED CABLE. THE CONTRACTOR SHALL ALSO CALL "JULIE" AT 800-892-0123 AND C.U.A.M. (CHICAGO UTILITY ALERT NETWORK) AT 312-744-7000 FOR FIELD LOCATIONS OF BURIED ELECTRICAL, TELEPHONE, AND GAS FACILITIES. 24 HOUR NOTIFICATION IS REQUIRED.

THE CONTRACTOR SHALL ADHERE TO LIMITS OF RESTORATION SHOWN. AREAS OUTSIDE THESE LIMITS THAT ARE DAMAGED OR DISTURBED BY THE CONTRACTOR SHALL BE RESTORED AT THE CONTRACTOR'S OWN EXPENSE. NO ADDITIONAL COMPENSATION WILL BE ALLOWED.

LANE CLOSURES, WORK ZONE RESTRICTIONS, REVISED WORK DAY HOURS AND WEEKEND OR HOLIDAY WORK SCHEDULES ARE SUBJECT TO THE APPROVAL OF THE COMMISSIONER. THE CONTRACTOR MUST RECEIVE WRITTEN AUTHORIZATION, EITHER BY PERMIT OR NOTIFICATION BY THE ENGINEER, BEFORE PROCEEDING WITH WORK UNDER THESE CIRCUMSTANCES.

PAY ITEMS IN THE SUMMARY OF QUANTITIES HAVE BEEN ESTIMATED. IF, IN THE ENGINEER'S OPINION, THE WORK IS NOT REQUIRED, THE ITEM WILL BE DEDUCTED FROM THE CONTRACT AND NO ADDITIONAL COMPENSATION TO THE CONTRACTOR WILL BE ALLOWED.

WORK PLANS WILL BE GIVEN AT THE PRECONSTRUCTION MEETING.

HIGHWAY STANDARDS

701001-02	OFF-ROAD OPERATIONS, 2L, 2W, MORE THAN 15' AWAY
701006-05	OFF-ROAD OPERATIONS, 2L, 2W, 15' TO 24' FROM PAVEMENT EDGE
701011-04	OFF-ROAD MOVING OPERATIONS, 2L, 2W, DAY ONLY
701106-02	OFF-ROAD OPERATIONS, MULTILANE, MORE THAN 15' AWAY
701501-06	URBAN LANE CLOSURE, 2L, 2W, UNDIVIDED
701601-09	URBAN LANE CLOSURE, MULTILANE, 1W OR 2W WITH NON TRAVERSABLE MEDIUM
701701-10	URBAN LANE CLOSURE, MULTILANE INTERSECTION
701901-05	TRAFFIC CONTROL DEVICES

FILE NAME	USER NAME	DESIGNED	REVISED	STATE OF ILLINOIS DEPARTMENT OF TRANSPORTATION	INDEX OF SHEETS, GENERAL NOTES, & STATE STANDARDS	F.A. RTE.	SECTION	COUNTY	TOTAL SHEETS	SHEET NO.
			9/19/2016			VARL	2017-012-L5	VARIOUS	16	2
						SCALE: _____	SHEET _____ OF _____ SHEETS	STA. _____ TO STA. _____	ILLINOIS FED. AID PROJECT	
		CHECKED	REVISED							CONTRACT NO. 62E13
		DATE	REVISED							

URBAN

URBAN

SUMMARY OF QUANTITIES					CONSTRUCTION TYPE CODE				
CODE NO	ITEM	UNIT	TOTAL QUANTITIES	100% STATE					
X1800008	SHRUB, RHUS AROMATICA (FRAGRANT SUMAC), 3' HEIGHT, BALLED AND BURLAPPED	EACH	75	75					
X2500322	SEEDING, CLASS 5A (MODIFIED)	ACRE	1	1					
X1900002	INTERSEEDING, CLASS 4 (MODIFIED)	ACRE	12	12					
X2000001	WEED CONTROL, NATIVE LANDSCAPE REMEDIATION	UNIT	25	25					
21101605	TOPSOIL FURNISH AND PLACE, 2"	50 YD	10000	10000					
21101615	TOPSOIL FURNISH AND PLACE, 4"	50 YD	4520	4520					
25000210	SEEDING, CLASS 2A	ACRE	3	3					
25000400	NITROGEN FERTILIZER NUTRIENT	POUND	275	275					
25000500	PHOSPHORUS FERTILIZER NUTRIENT	POUND	275	275					
25000600	POTASSIUM FERTILIZER NUTRIENT	POUND	275	275					
25000750	MOWING	ACRE	200	200					
25100630	EROSION CONTROL BLANKET	50 YD	24200	24200					
25200110	SODDING, SALT TOLERANT	50 YD	300	300					
25200200	SUPPLEMENTAL WATERING	UNIT	200	200					
28000305	TEMPORARY DITCH CHECKS	FOOT	550	550					

SUMMARY OF QUANTITIES					CONSTRUCTION TYPE CODE				
CODE NO	ITEM	UNIT	TOTAL QUANTITIES	100% STATE					
67100100	MOBILIZATION	L.SUM	1	1					
A2002008	TREE, AESCULUS FLAVEA (YELLOW SWEET BUCKEYE), 2" CALIPER, BALLED AND BURLAPPED	EACH	12	12					
A2002016	TREE, AESCULUS GLABRA (OHIO BUCKEYE), 2" CALIPER, BALLED AND BURLAPPED	EACH	15	15					
A2002916	TREE, CELTIS OCCIDENTALIS (COMMON HACKBERRY), 2" CALIPER, BALLED AND BURLAPPED	EACH	35	35					
A2004716	TREE, GLEDITSIA TRIACANTHOS (NERMIS SHADEMASTER (SHADEMASTER THORNLESS COMMON HONEYLOCUST)), 2" CALIPER, BALLED AND BURLAPPED	EACH	25	25					
A2005020	TREE, GYMNOCLADUS DIOICUS (KENTUCKY COFFEETREE), 2-1/2" CALIPER, BALLED AND BURLAPPED	EACH	50	50					
A2006516	TREE, QUERCUS BICOLOR (SWAMP WHITE OAK), 2" CALIPER, BALLED AND BURLAPPED	EACH	40	40					
A2006716	TREE, QUERCUS MACROCARPA (BUR OAK), 2" CALIPER, BALLED AND BURLAPPED	EACH	20	20					
A2007616	TREE, TAXODIUM DISTICHUM (COMMON BALD CYPRESS), 2" CALIPER, BALLED AND BURLAPPED	EACH	11	11					

15

9

DESIGNED	REVISION
DRAWN	REVISION
CHECKED	REVISION
DATE	REVISION

STATE OF ILLINOIS
DEPARTMENT OF TRANSPORTATION

LANDSCAPE REPAIR AND RESTORATION
SUMMARY OF QUANTITIES

SECTION	COUNTY	SHEET NO.
2022-012-15	VARIOUS	16
CONTRACT NO.		

REV

URBAN

URBAN

SUMMARY OF QUANTITIES			URBAN		CONSTRUCTION TYPE CODE				
CODE NO	ITEM	UNIT	TOTAL QUANTITIES	100% STATE 0031					
A2008468	TREE, ULMUS AMERICANA PRINCETON (PRINCETON AMERICAN ELM), 2" CALIPER, BALLED AND BURLAPPED	EACH	30	30					
B2000566	TREE, AMELANCHIER CANADENSIS (SHADBLOW SERVICEBERRY), 6' HEIGHT, SHRUB FORM, BALLED AND BURLAPPED	EACH	25	25					
B2001616	TREE, CRATAEGUS CRUSGALLI INERMIS (THORN LESS COCKSPUR HAWTHORN), 2" CALIPER, TREE FORM, BALLED AND BURLAPPED	EACH	25	25					
B2001666	TREE, CRATAEGUS CRUSGALLI INERMIS (THORNLESS COCKSPUR HAWTHORN), 6' HEIGHT, SHRUB FORM, BALLED AND BURLAPPED	EACH	40	40					
B2005366	TREE, MALUS ZUMI CALOCARPA (REDBUD ZUMI CRABAPPLE), 6' HEIGHT, CLUMP FORM, BALLED AND BURLAPPED	EACH	10	10					
B2006316	TREE, SYRINGA RETICULATA IVORY SILK (IVORY SILK JAPANESE TREE LILAC), 2" CALIPER, TREE FORM, BALLED AND BURLAPPED	EACH	20	20					
B2010070	TREE, CLADRSTIS KENTUCKEA (AMERICAN YELLOWWOOD), 2" CALIPER, BALLED AND BURLAPPED	EACH	20	20					

SUMMARY OF QUANTITIES			URBAN		CONSTRUCTION TYPE CODE				
CODE NO	ITEM	UNIT	TOTAL QUANTITIES	100% STATE 0031					
C2000348	SHRUB, AROMIA ARBUTIFOLIA (RED CHOKE BERRY), 4' HEIGHT, BALLED AND BURLAPPED	EACH	50	50					
C2001536	SHRUB, CORNUS RACEMOSA (GREY DOGWOOD), 3' HEIGHT, BALLED AND BURLAPPED	EACH	45	45					
C2003248	SHRUB, HAMMELIS VERNALIS (VERNAL WITCH HAZEL), 4' HEIGHT, BALLED AND BURLAPPED	EACH	30	30					
C2003348	SHRUB, HAMMELIS VIRGINIANA (COMMON WITCHHAZEL), 4' HEIGHT, BALLED AND BURLAPPED	EACH	25	25					
C2011748	SHRUB, VIBURNUM DENTATUM (ARROWWOOD VIBURNUM), 4' HEIGHT, BALLED AND BURLAPPED	EACH	50	50					
D2000284	EVERGREEN, JUNIPERUS CHINENSIS FAIRVIEW, (FAIRVIEW PYRAMIDAL JUNIPER, 6' HEIGHT, BALLED AND BURLAPPED	EACH	16	16					
D2001672	EVERGREEN, JUNIPERUS VIRGINIANA CANAERTII (CANAERTI RED CEDAR), 6' HEIGHT, BALLED AND BURLAPPED	EACH	16	16					
D2001984	EVERGREEN, PICEA CLAUCA DENSATA (BLACK HILLS SPRUCE), 7' HEIGHT, BALLED AND BURLAPPED	EACH	50	50					
D2002184	EVERGREEN, PICEA PUNGENS (COLORADO SPRUCE), 7' HEIGHT, BALLED AND BURLAPPED	EACH	40	40					

STATE OF ILLINOIS DEPARTMENT OF TRANSPORTATION

LANDSCAPE REPAIR AND RESTORATION SUMMARY OF QUANTITIES

DESIGNED, DRAWN, CHECKED, DATE, REVISED, COUNTY, SECTION, TOTAL SHEETS, CONTRACT NO.

URBAN

SUMMARY OF QUANTITIES					CONSTRUCTION TYPE CODE					SUMMARY OF QUANTITIES					CONSTRUCTION TYPE CODE								
CODE NO	ITEM	UNIT	TOTAL QUANTITIES	100% STATE						CODE NO	ITEM	UNIT	TOTAL QUANTITIES										
	BURLAPPED			0031																			
K0029632	WEED CONTROL, NON-SELECTIVE AND NON-RESIDUAL	GALLON	75	75																			
K0029634	WEED CONTROL, PRE-EMERGENT GRANULAR HERBICIDE	POUND	25	25																			
K1003658	MOWING STAKES	EACH	150	150																			
X2501800	SEEDING, CLASS 4 (MODIFIED)	ACRE	1	1																			
X2501820	SEEDING, CLASS 5 (MODIFIED)	ACRE	1	1																			
X2502014	SEEDING, CLASS 4A (MODIFIED)	ACRE	1	1																			
X2503100	MOWING	UNIT	25	25																			
X2503315	INTERSEEDING, CLASS 4A (MODIFIED)	ACRE	37	37																			
X2503318	INTERSEEDING, CLASS 4B (MODIFIED)	ACRE	35	35																			
X2503321	INTERSEEDING, CLASS 5 (MODIFIED)	ACRE	12	12																			
X2503323	INTERSEEDING, CLASS 5A (MODIFIED)	ACRE	37	37																			

DESIGNED	REVISOR
DRAWN	REVISOR
CHECKED	REVISOR
DATE	REVISOR

STATE OF ILLINOIS
DEPARTMENT OF TRANSPORTATION

LANDSCAPE REPAIR AND RESTORATION
SUMMARY OF QUANTITIES

SECTION	COUNTY	SHEET NO.	ET NO.
2011-012-LS	YABOOS	16	5
CONTRACT NO.			

COUNTY	CITY/TOWN	SHEET #	GENERAL LOCATION
COOK	POSEN	10	147 TH STREET AT I-57 INTERCHANGE
COOK	CHICAGO, DOLTON	11	I-94 EAST (BISHOP FORD EXPWY): 111 TH ST TO SIBLEY INTERCHANGE
COOK	MORTON GROVE	12	I-94 WEST (EDENS EXPWY) AT GROSS POINT ROAD
COOK	NORTHFIELD	13	WILLOW ROAD: IL 43 TO I-94 WEST (EDENS EXPWY)
MCHENRY	HEBRON	14	IL 47 AND HARRISON STREET

62F13 - SCHEDULE OF LANDSCAPE CONSTRUCTION AND ESTABLISHMENT WORK

Item	2019						2020										
	July	August	September	October	November	December	January	February	March	April	May	June	July	August	September	October	November

Item	PHASE IV																		PHASE V											
	3	3	3	2	2	1	3	3	3	3	3	3	3	3	2	2	2	1	1	2	2	2	1							
Plant Material Inspections																														
Submit completed plant inspection forms to IDOT by Jan 31 for spring planting season & Sept 30 for fall planting season																			IDOT inspects SPRING 2020 plant material at various nurseries											
Tree & Shrubs Plantings																														
Spring plantings of balled and burlapped: March 15 - May 30 Evergreens: March 15 to April 30																			Submit completed plant inspection sheets to IDOT for SPRING 2020 plantings (initial installations) & replacement plantings (if necessary)											
Fall (ONLY) plantings of balled and burlapped: October 15 - Nov 30 Evergreens: August 15 to October 15	PERIOD OF ESTABLISHMENT INSPECTION BY IDOT																		FALL PLANTINGS											
REPLACEMENT PLANTINGS FALL: October 15 to November 30 SPRING: March 15 to May 15	FALL REPLACEMENT PLANTINGS																		SPRING REPLACEMENT PLANTINGS											
Supplemental Tree Care																														
Supplemental Watering																			1		2		3		3		2		1	
Turf Restoration																														
Seeding, Class 2A Spring: March 15 to June 1 Fall: August 1 to Sept 15 Dormant: Sept 16 to March 15	FALL SEEDING																		DORMANT SEEDING		FALL SEEDING		DORMANT SEEDING							
Sodding, Salt Tolerant Spring: March 15 to June 1 Fall: August 1 to Sept 15 Dormant: Sept 16 to March 15	FALL SODDING																		SPRING SODDING		FALL SODDING									
Native Areas Restoration																														
Weed Control, Non-Selective & Non-Residual (Ground preparation for interseeding)																														
Interseeding/Seeding, Class 4 (Modified) Spring: March 1 to May 15 Fall: October 15 to November 30 Dormant: December 1 to March 1																														
Interseeding/Seeding, Class 4A (Modified) Spring: March 1 to May 15 Fall: October 15 to November 30 Dormant: December 1 to March 1																														
Interseeding, Class 4B (Modified) Spring: March 1 to May 15 Fall: October 15 to November 30 Dormant: December 1 to March 1																														
Mowing (Acre) to establish native seeded areas	MOW TO A HEIGHT OF 8 - 10"																													
Mowing (Unit)																			AREAS TO BE DETERMINED BY ENGINEER											
Weed Control, Native Landscape Remediation																			AREAS TO BE DETERMINED BY ENGINEER											

FILE NAME: I:\09-EB\BID\TECH\11\09-09-09\001\09-09-09\100-001.dwg
 USER NAME: d:\p\res\lms
 LUNASIS: DOT Office District 11 Project: 09-09-09\100-001.dwg
 PLOT SCALE: 100,001 in.
 PLOT DATE: 4-4-2017

DESIGNED: 9/19/2016
 CHECKED: _____
 DATE: _____

REVISED: _____
 REVISED: _____
 REVISED: _____
 REVISED: _____

STATE OF ILLINOIS
 DEPARTMENT OF TRANSPORTATION

CALENDAR OF CONSTRUCTION & ESTABLISHMENT WORK

SCALE: _____ SHEET _____ OF _____ SHEETS STA. _____ TO STA. _____

F.A. SECTION COUNTY TOTAL SHEET
 RTE. VAR. 2017-012-L5 VARIOUS 16 8
 ILLINOIS FED. AID PROJECT CONTRACT NO. 62F13



Illinois Department of Transportation

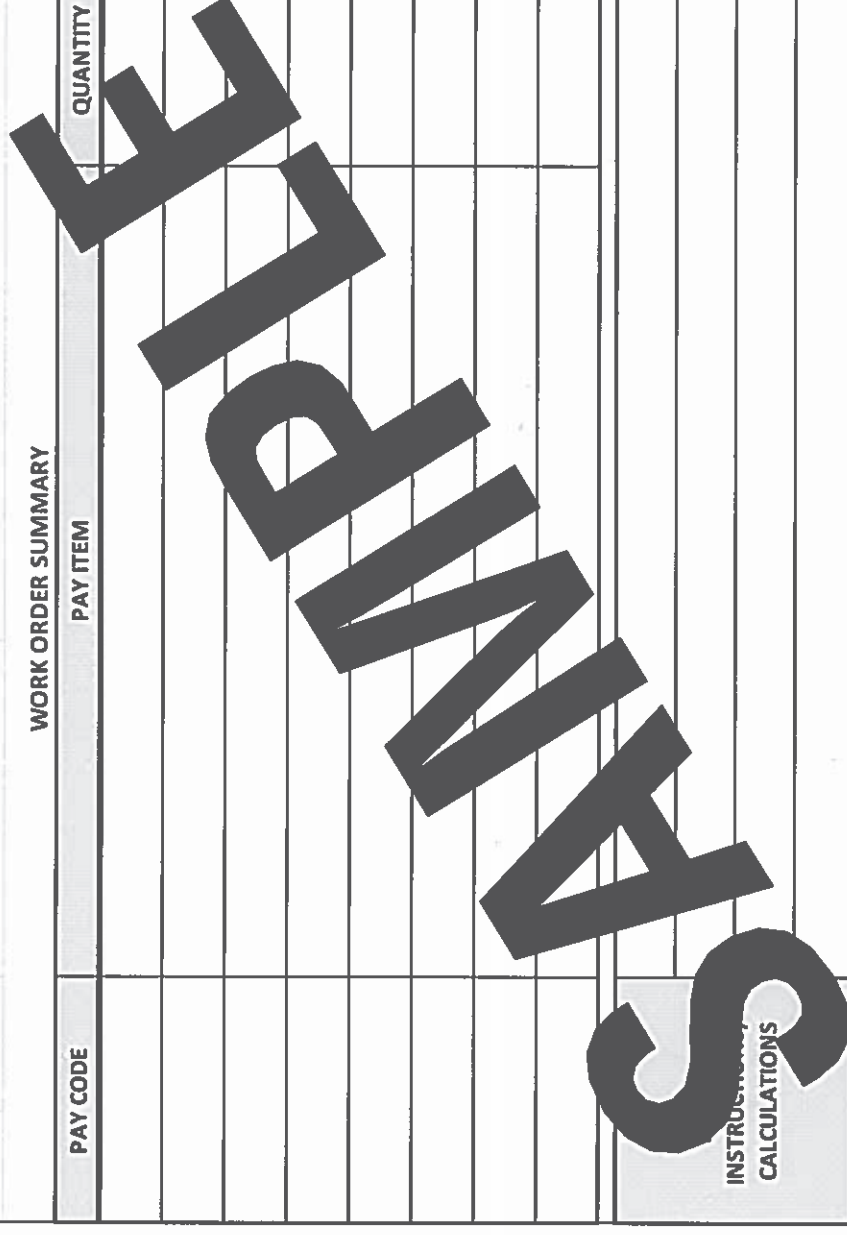
LANDSCAPE REPAIR
WORK ORDER
CONTRACT 62F13

WORK ORDER NUMBER: _____ PAGE: _____ OF _____

MARKED ROUTE: _____ LOCATION: _____ COUNTY: _____ MUNICIPALITY: _____

WORK ORDER SUMMARY

PAY CODE: _____ PAY ITEM: _____ QUANTITY: _____



AUTHORIZATION OF WORK ORDER

IDOT Resident Engineer/Technician Signature: _____

Date Work Order Issued: _____ Contractor Initial: _____

CERTIFICATION OF COMPLETED WORK

Contractor Signature: _____

Date Work Order Completed: _____

OFFICE USE ONLY

INITIAL(S) _____ DATE _____

Prepared by: _____
Measured in place by: _____
Calculated by: _____
Checked by: _____

INSPECTION AND ACCEPTANCE OF COMPLETED WORK

Inspector Signature: _____

Date Work Ordered Inspected and Accepted: _____

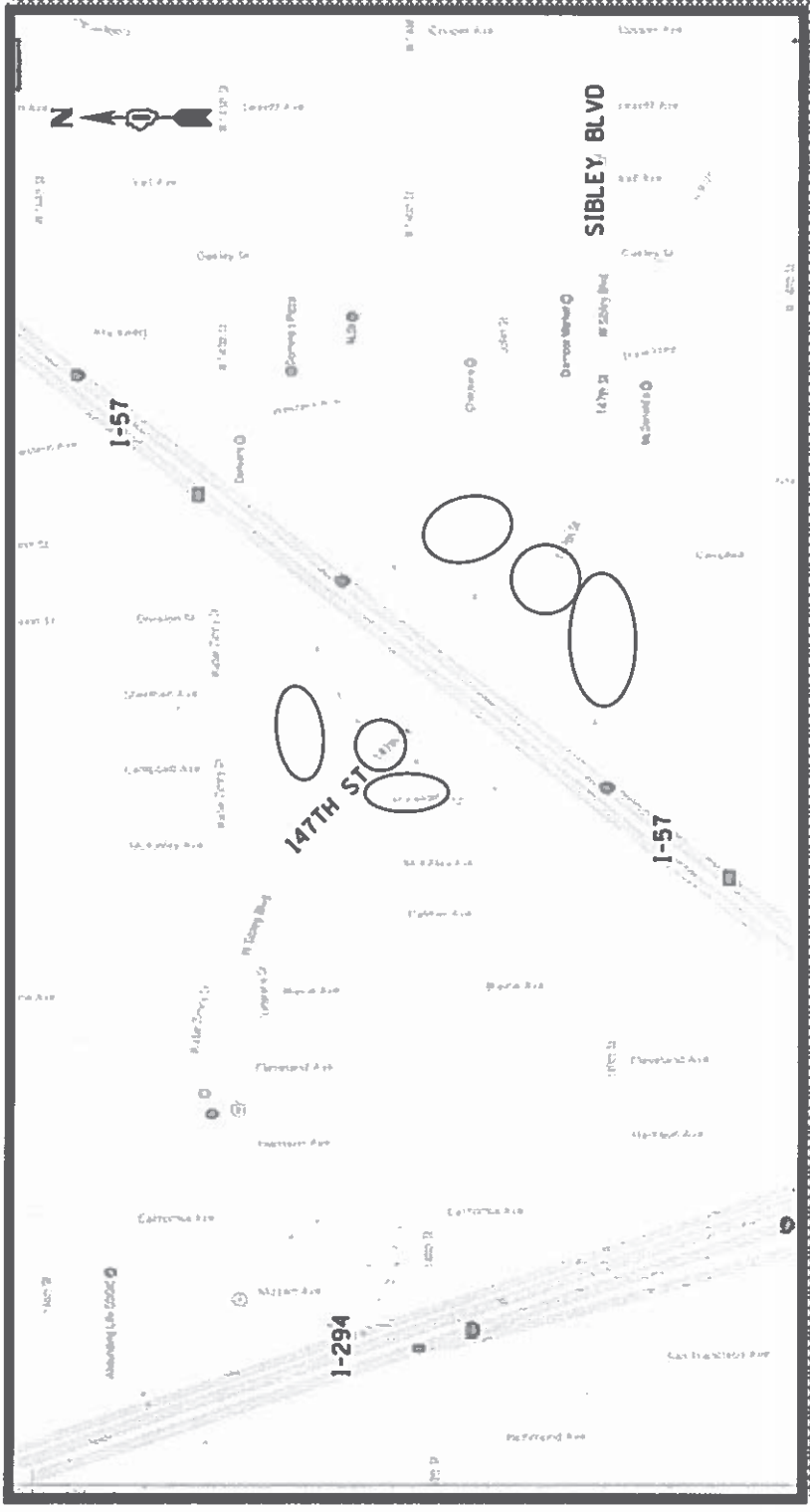
This is to certify that the work has been completed in conformance with contract

THIS WORK ORDER IS A SAMPLE FORM ONLY.

SCHEDULE OF LANDSCAPE ITEMS

DESCRIPTION	TOTAL QUANTITY / UNIT
GLEDITSIA TRIACANTHOS VAR. INERMIS 'SHADEMASTER', 2" CALIPER	1 EACH
MALUS ZUMI 'CALOCARPA', 6' HT	1 EACH
SYRINGA RETICULATA, 2" CALIPER	3 EACH
PICEA GLAUCA VAR DENSATA, 7' HT	16 EACH

GENERAL LOCATION MAP



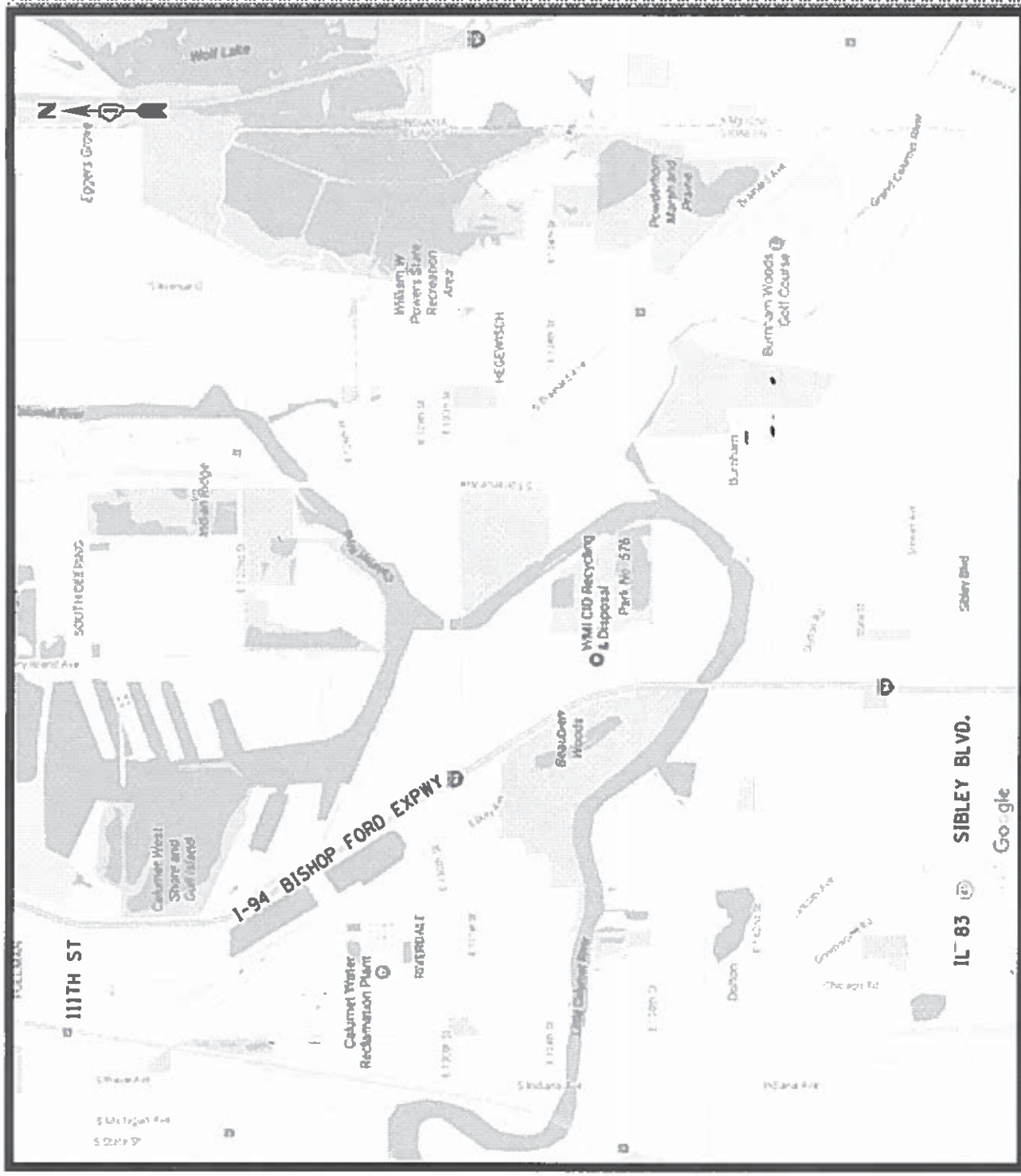
NOTE: THE GENERAL LOCATION MAP SHOWS THE GENERAL VICINITY OF PLANT LOCATIONS WITHIN THE 147TH ST INTERCHANGE.

FILE NAME = p:\11084501\11084501\11084501.dwg	USER NAME = astrassano	DESIGNED =	REVISIONS	STATE OF ILLINOIS DEPARTMENT OF TRANSPORTATION	147TH STREET AT I-57 INTERCHANGE POSEN, COOK COUNTY	SECTION 2017-012-LS	COUNTY VARIOUS	TOTAL SHEET SHEETS 16
PROJECT NO. = 100.008	PROJECT DATE = 4-4-2017	CHECKED =	DATE =	SCALE: SHEET OF SHEETS STA. TO STA.	CONTRACT NO. 62F13	ILLINOIS FED. AID PROJECT		

SCHEDULE OF LANDSCAPE ITEMS

DESCRIPTION	TOTAL QUANTITY / UNIT
INTERSEEDING, CLASS 4B (MODIFIED)	30 ACRES

GENERAL LOCATION MAP



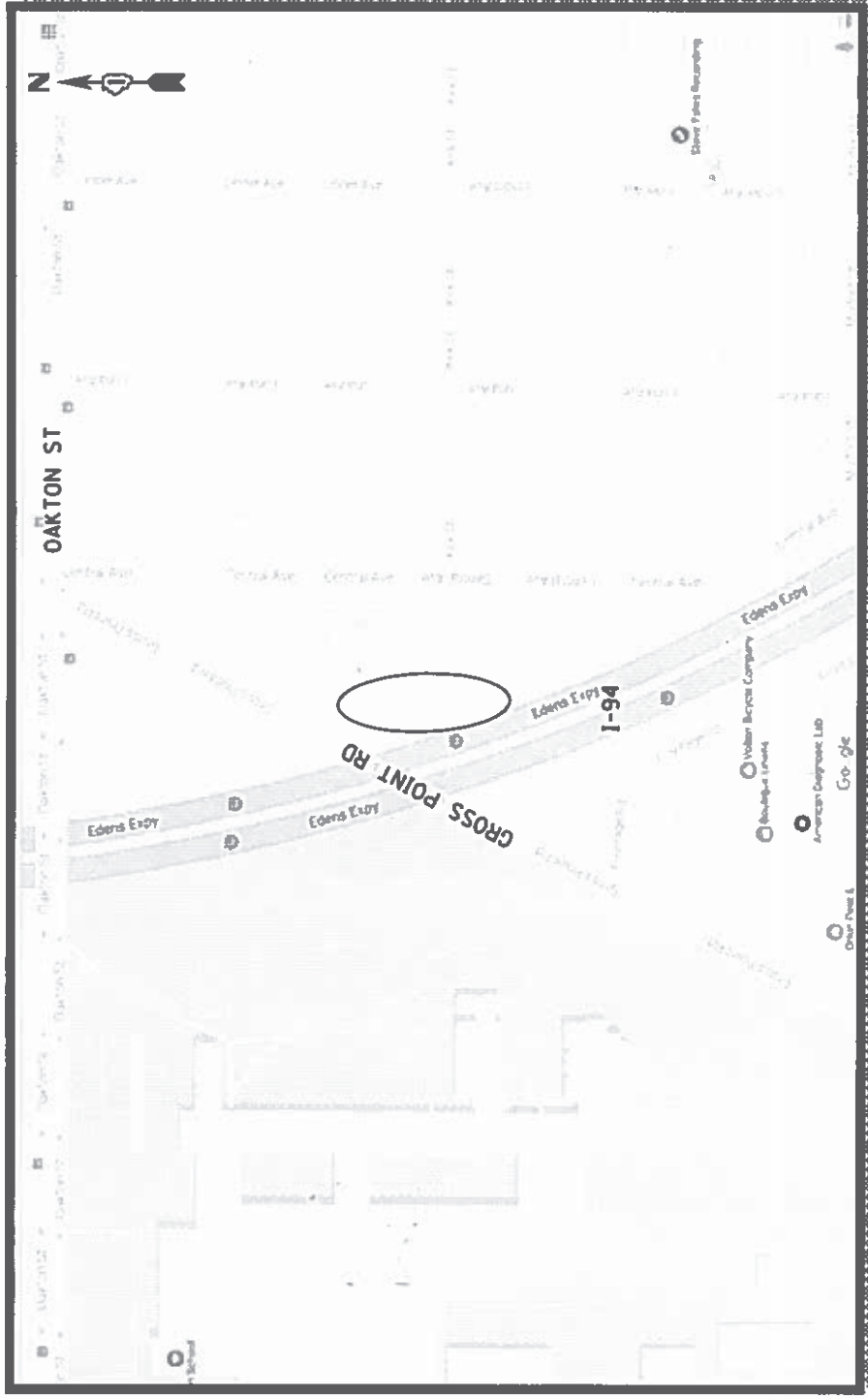
NOTE: SEEDING LIMITS ARE FROM 111TH ST TO SIBLEY INTERCHANGE. SEEDING WILL BE DONE ON BOTH SIDES OF THE STRAIGHTAWAY, NO INTERCHANGES. DETAILED LOCATION MAPS WILL BE GIVEN AT THE PRE-CONSTRUCTION MEETING.

FILE NAME: e:\1108\BISHOP\INTERSEC\Landscape\Project\DWG\1108\1108-012-15.dwg		DESIGNED: JORRAN		REVISIONS: REVISION 1	
USER NAME: JORRAN		CHECKED: DATE		REVISIONS: REVISION 2	
PROJECT NO.: 1108-012-15		SCALE: 1" = 400'		REVISIONS: REVISION 3	
STATE OF ILLINOIS DEPARTMENT OF TRANSPORTATION			I-94 EAST: 111TH ST TO SIBLEY INTERCHANGE CHICAGO & DOLTON, COOK COUNTY		
SHEET NO. OF SHEETS: 11 OF 11			STA. TO STA.: 62+13.15 TO 62+13.15		
COUNTY: COOK COUNTY			TOTAL SHEETS: 11		
SECTION: 2017-012-15			CONTRACT NO.: 62F13		

SCHEDULE OF LANDSCAPE ITEMS

DESCRIPTION	TOTAL QUANTITY / UNIT
CLADRASTIS KENTUKEA, 2" CAL.	2 EACH
PICEA GLAUCA VAR. DENSATA, 7' HT	4 EACH
PICEA PUNGENS, 7' HT	4 EACH

GENERAL LOCATION MAP



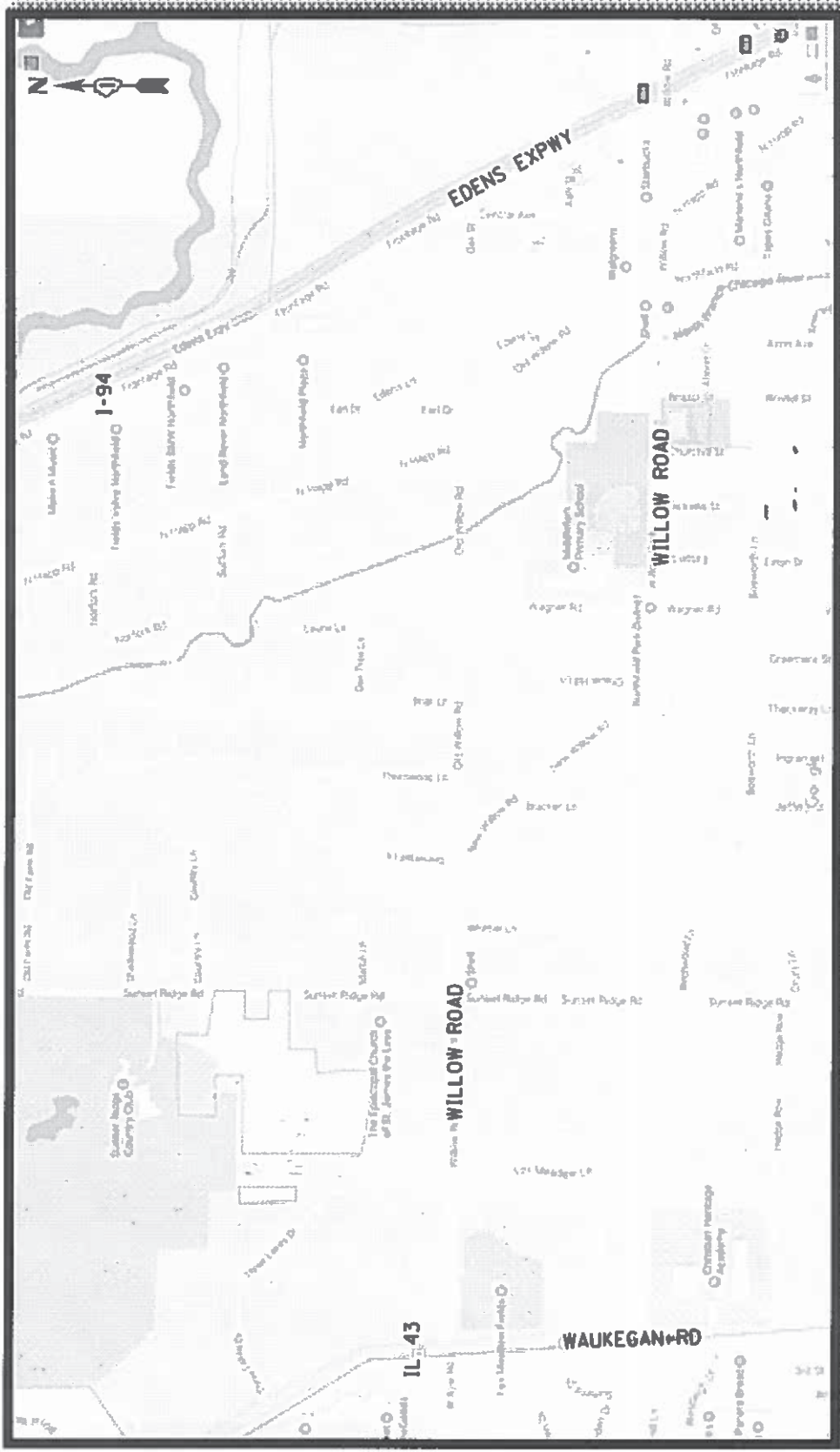
NOTE: THE PLANT LOCATIONS WILL BE WITHIN IDOT R.O.W. ALONG THE EAST SIDE OF I-94 WEST, APPROXIMATELY 75 SOUTH OF GROSS POINT ROAD. TREES SHALL BE PLANTED BEHIND HOUSE LOTS (7906 CENTRAL AVE, 7902 CENTRAL AVE, 7900 CENTRAL AVE.).

FILE NAME p:\1108\EBID\ITEG\11101010\p1\001.dwg	USER NAME delrosier@illinois.gov	DESIGNED 10/24/2017	REVISIONS 1	STATE OF ILLINOIS DEPARTMENT OF TRANSPORTATION	SECTION 2017-012-LS	COUNTY VARIABLES	TOTAL SHEET SHEETS NO. 12
PLOT SCALE 1" = 400.0000'	PLOT DATE 4/4/2017	CHECKED DATE	REVISIONS 1	I-94 WEST (EDENS EXPWY) AT GROSS POINT RD MORTON GROVE, COOK COUNTY	ILLINOIS STATE PROJECT	CONTRACT NO. 62F13	
SCALE: SHEET OF SHEETS STA. TO STA.							

SCHEDULE OF LANDSCAPE ITEMS

DESCRIPTION	TOTAL QUANTITY / UNIT
CLADRSTIS KENTUKEA, 2" CALIPER	3 EACH
CRATAEGUS CRUSGALLI INERMIS, 5' HT	2 EACH

GENERAL LOCATION MAP



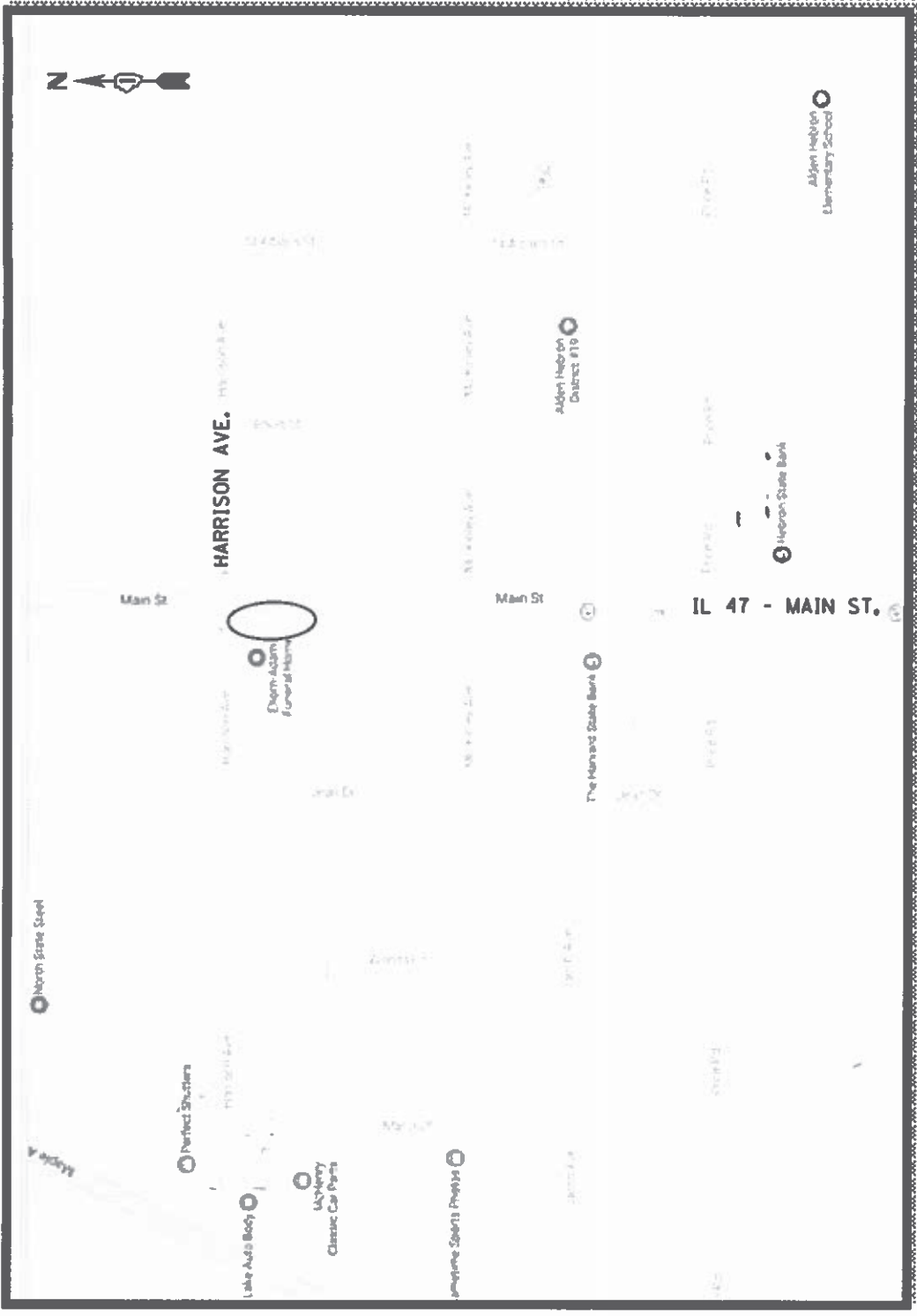
NOTE: THE PROPOSED LOCATIONS FOR (3) CLADRSTIS KENTUKEA ARE LOCATED 450' WEST OF CHAPEL HILL LANE, ON THE NORTH SIDE OF WILLOW ROAD. THE PROPOSED LOCATIONS FOR (2) CRATAEGUS CRUSGALLI ARE LOCATED 300' WEST OF SUNSET RIDGE ROAD, ON THE NORTH SIDE OF WILLOW ROAD.

FILE NAME: I:\0848\BCH\TEC\Illinois\Map\DOT Documents\DOT Office District 1 Projects\DOT\0848\Scale\DOT\0848\Scale.dwg	DESIGNED: JORAMBA	REVISIONS:	STATE OF ILLINOIS DEPARTMENT OF TRANSPORTATION	SECTION: 2017-012-LS	COUNTY: COOK	TOTAL SHEET NO.: 16
PLOT SCALE: 1"=100'	CHECKED:	DATE:	WILLOW ROAD: IL 43 TO I-94 WEST NORTHFIELD, COOK COUNTY	VAR:	VARIOUS	SHEETS: 16
PLOT DATE: 3-3-2017			SCALE: SHEET OF SHEETS STA. TO STA.		CONTRACT NO. 62F13	SHEETS: 16
					ILLINOISIFIED AID PROJECT	CONTRACT NO. 62F13

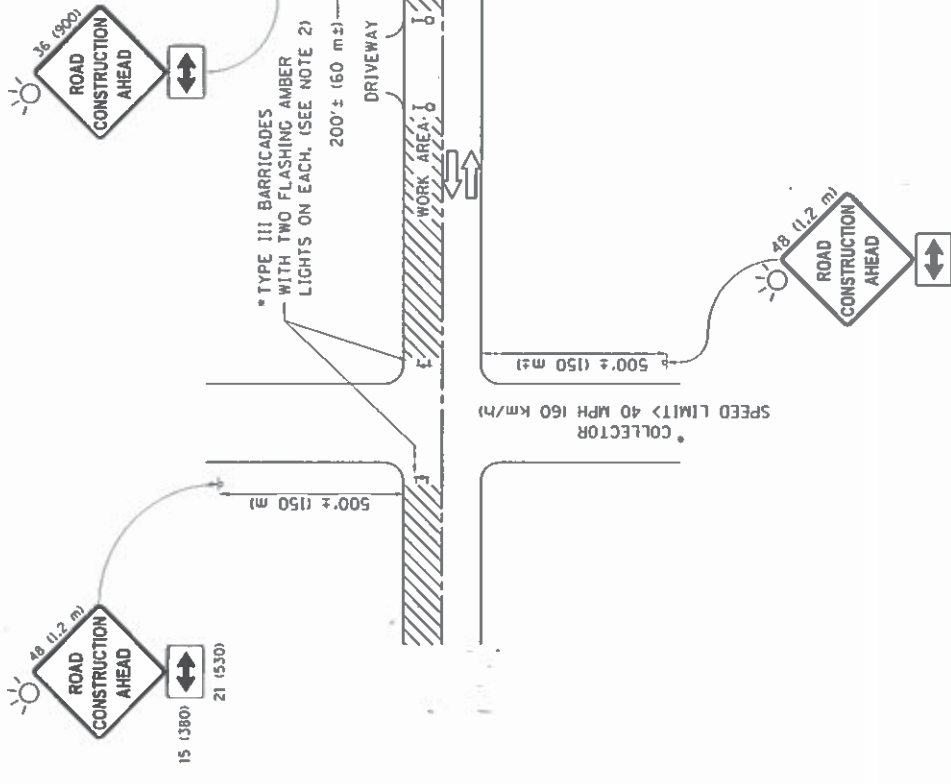
SCHEDULE OF LANDSCAPE ITEMS

DESCRIPTION	TOTAL QUANTITY / UNIT
AESCULUS FLAVA, 2" CALIPER	1 EACH
CELTIS OCCIDENTALIS, 2" CALIPER	1 EACH
CLADRASTIS KENTUCKEA, 2" CALIPER	1 EACH
ULMUS AMERICANA 'PRINCETON', 2" CALIPER	1 EACH

GENERAL LOCATION MAP



NOTE: THE PROPOSED LOCATIONS WILL BE IN FRONT OF THE FUNERAL HOME.



NOTES:

1. SIDE ROAD WITH A SPEED LIMIT OF 40 MPH (60 km/h) OR LESS AS SHOWN ON THE DRAWING AND AS DIRECTED BY THE ENGINEER:
 - a) ONE "ROAD CONSTRUCTION AHEAD" SIGN 36 x 36 (900x900) WITH A FLASHER MOUNTED ON IT APPROXIMATELY 200' (60 m) IN ADVANCE OF THE MAIN ROUTE.
 - b) THE CLOSED PORTION OF THE MAIN ROUTE SHALL BE PROTECTED BY BLOCKING WITH TYPE I, TYPE II OR TYPE III BARRICADES, 1/3 OF THE CROSS-SECTION OF THE CLOSED PORTION.
2. SIDE ROAD WITH A SPEED LIMIT GREATER THAN 40 MPH (60 km/h) AS SHOWN ON THE DRAWING AND AS DIRECTED BY THE ENGINEER:
 - a) ONE "ROAD CONSTRUCTION AHEAD" SIGN 48 x 48 (1.2 m x 1.2 m) WITH A FLASHER MOUNTED ON IT APPROXIMATELY 500' (150 m) IN ADVANCE OF THE MAIN ROUTE.
 - b) THE CLOSED PORTION OF THE MAIN ROUTE SHALL BE PROTECTED BY BLOCKING WITH TYPE III BARRICADES, 1/2 OF THE CROSS SECTION OF THE CLOSED PORTION.
3. CONES MAY BE SUBSTITUTED FOR BARRICADES OR DRUMS AT HALF THE SPACING DURING DAY OPERATIONS. CONES SHALL BE A MINIMUM OF 28 (710) IN HEIGHT.
4. WHEN THE SIDE ROAD LIES BETWEEN THE BEGINNING OF THE MAINLINE SIGNING AND THE WORK ZONE, A SINGLE HEADED ARROW (M6-1) SHALL BE USED IN LIEU OF THE DOUBLE HEADED ARROW (M6-4).
5. WHEN WORK IS BEING PERFORMED ON A SIDE ROAD OR DRIVEWAY, FOLLOW THE APPLICABLE STANDARDS. THE DIRECTIONAL ARROW (M6-1 OR M6-4) SHALL BE COVERED OR REMOVED WHEN NO LONGER CONSISTENT WITH THE TRAFFIC CONTROL SET-UP.
6. ADVANCE WARNING SIGNS ARE TO BE OMITTED ON DRIVEWAYS UNLESS OTHERWISE SPECIFIED IN THE PLANS OR BY THE ENGINEER.
7. THE TRAFFIC CONTROL AND PROTECTION FOR SIDE ROADS, INTERSECTIONS, AND DRIVEWAYS SHALL BE INCLUDED IN THE COST OF SPECIFIED TRAFFIC CONTROL STANDARDS OR ITEMS.

All dimensions are in inches (millimeters) unless otherwise shown.

FILE NAME s:\1134\FBI\HW\G...ll\map\gs\p\DOT	DESIGNED - L.H.A. DRAWN - G.DODD	REVISIONS	REVISOR	DATE
USER NAME * february		1	A. HOUSEN	10-15-96
PROJECT * 00101010		2	T. RAMMACHER	01-06-00
PLOT SCALE * 50,000 / 1 in.		3	A. SCHUETZE	07-01-13
PLOT DATE * 9/18/2015		4	A. SCHUETZE	09-15-16
Default				

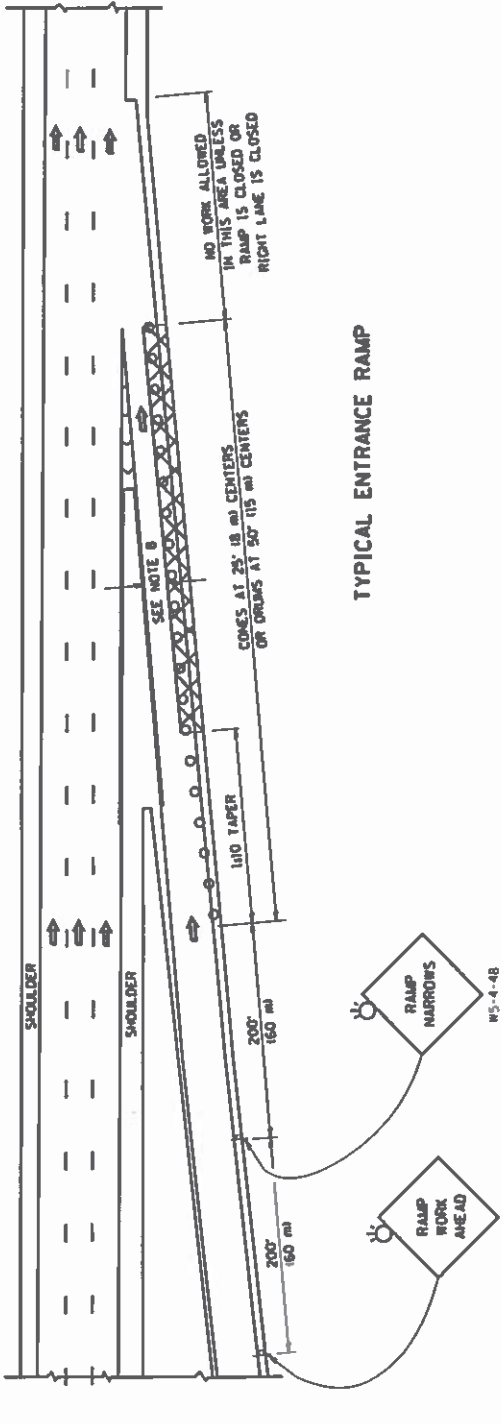
**STATE OF ILLINOIS
DEPARTMENT OF TRANSPORTATION**

**TRAFFIC CONTROL AND PROTECTION FOR
SIDE ROADS, INTERSECTIONS, AND DRIVEWAYS**

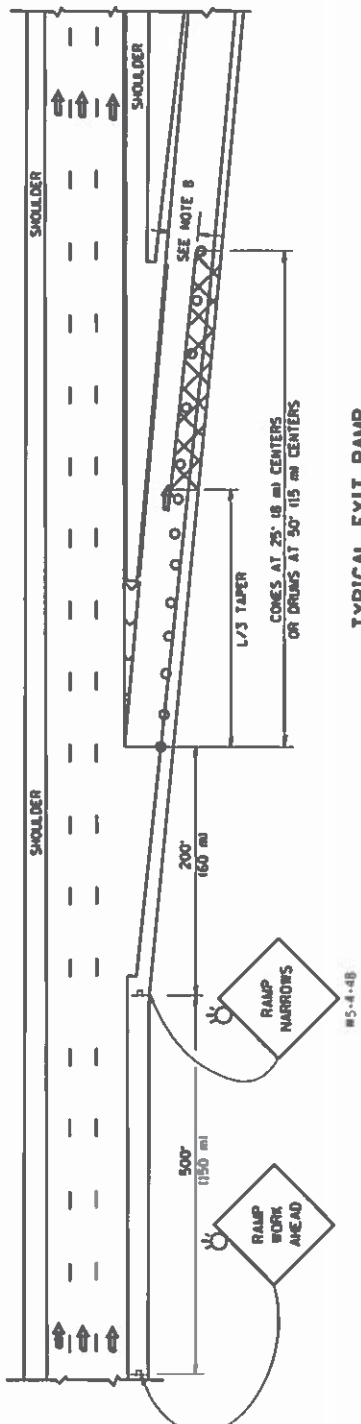
SCALE: NONE	SHEET 1	OF 1	SHEETS	STA.	TO STA.

FILE NO.	SECTION	COUNTY	TOTAL SHEETS
2017-012-15	TC-10	JACKSON	16
			15
			16
			17
			18
			19
			20
			21
			22
			23
			24
			25
			26
			27
			28
			29
			30
			31
			32
			33
			34
			35
			36
			37
			38
			39
			40
			41
			42
			43
			44
			45
			46
			47
			48
			49
			50
			51
			52
			53
			54
			55
			56
			57
			58
			59
			60
			61
			62
			63
			64
			65
			66
			67
			68
			69
			70
			71
			72
			73
			74
			75
			76
			77
			78
			79
			80
			81
			82
			83
			84
			85
			86
			87
			88
			89
			90
			91
			92
			93
			94
			95
			96
			97
			98
			99
			100
			101
			102
			103
			104
			105
			106
			107
			108
			109
			110
			111
			112
			113
			114
			115
			116
			117
			118
			119
			120
			121
			122
			123
			124
			125
			126
			127
			128
			129
			130
			131
			132
			133
			134
			135
			136
			137
			138
			139
			140
			141
			142
			143
			144
			145
			146
			147
			148
			149
			150
			151
			152
			153
			154
			155
			156
			157
			158
			159
			160

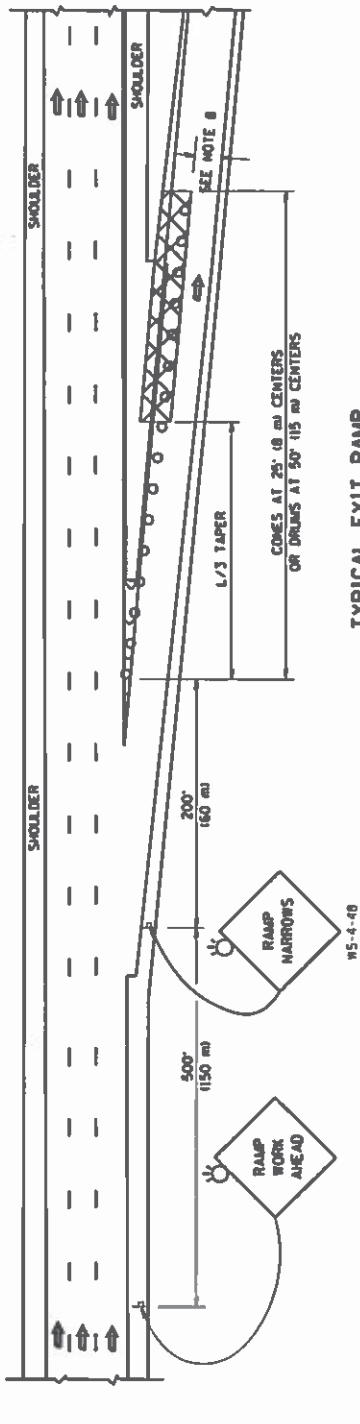
PARTIAL RAMP CLOSURE DETAILS



TYPICAL ENTRANCE RAMP



TYPICAL EXIT RAMP



SYMBOLS

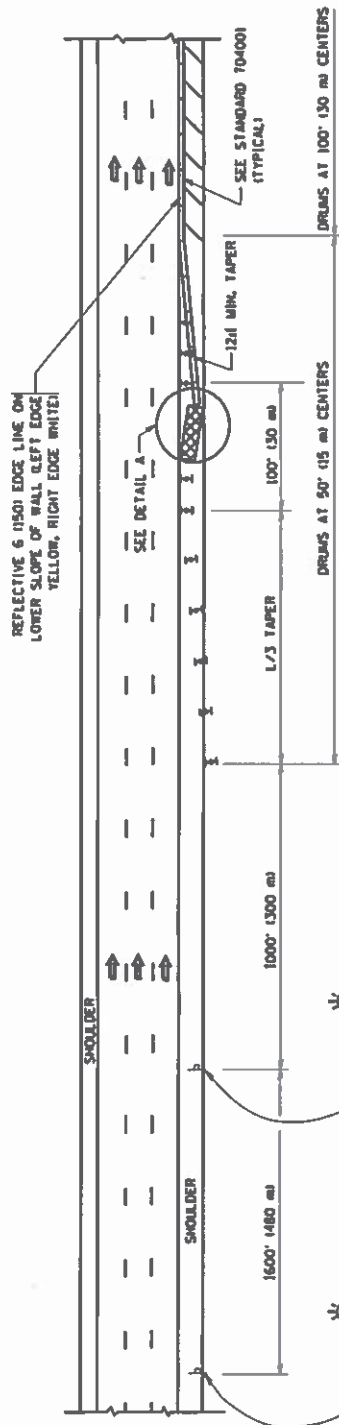
- ACTIVE WORK AREA
- SIGN ON PORTABLE OR PERMANENT SUPPORT
- FLAGGER WITH CONTROL SIGN
- TYPE II BARRICADE OR DRUM WITH STEADY BURN MONO-DIRECTIONAL LIGHT
- CONE, DRUM OR BARRICADE
- IMPACT ATTENUATOR OF TYPE AND TEST LEVEL SPECIFIED

GENERAL NOTES

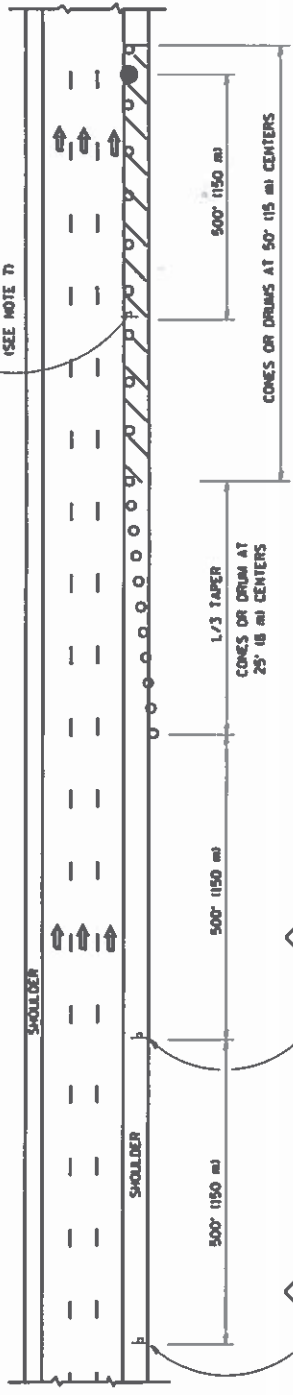
1. THE "L" DISTANCE EQUALS:
 - 45 mph 60 km/h
 - OR GREATER
2. PLASTIC DRUMS WITH HIGH PERFORMANCE REFLECTIVE SHEETING AND STEADY BURNING LIGHTS ARE REQUIRED FOR ALL NIGHTTIME CLOSURES.
3. ALL SIGNS SHALL BE POST MOUNTED IF THE CLOSURE TIME EXCEEDS FOUR DAYS.
4. FLASHING LIGHTS SHALL BE USED DURING THE HOURS OF DARKNESS AND SHALL BE INSTALLED ABOVE THE FIRST TWO SETS OF SIGNS.

FORMULAS	ENGLISH	METRIC
$W = 4.5 \times S$	$W = 1.5 \times S$	$W = 1.5 \times S$

SHOULDER CLOSURE DETAILS

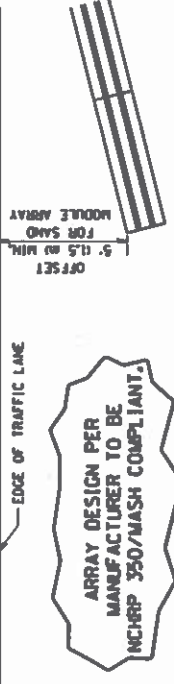


PERMANENT SHOULDER CLOSURE



DAYTIME SHOULDER CLOSURE

THIS DETAIL IS USED WHERE:
 1. VEHICLES, EQUIPMENT, WORKERS OR THEIR ACTIVITIES ENCRUSH IN AN AREA CLOSER THAN 15' (4.5 m) TO THE EDGE OF PAVEMENT FOR A PERIOD IN EXCESS OF 15 MINUTES.



**DETAIL "A"
 IMPACT ATTENUATOR, TEMPORARY
 (SEE NOTE 5)**

5. THE IMPACT ATTENUATOR, TEMPORARY IS NOT REQUIRED WHEN THE TEMPORARY CONCRETE BARRIER WALL IS PROTECTED BY OR IS TIED INTO THE EXISTING CURB/RAMP. IF OFFSET IS LESS THAN 5 FEET USE NARROW USE TYPE DEVICE TO MEET NCHRP350/MASH.
6. AUTHORIZATION FROM THE DISTRICT'S BUREAU OF TRAFFIC IS REQUIRED FOR ALL FREEWAY CLOSURES.
7. THE FLAGGER AND FLAGGER SIGN ARE REQUIRED AT THE ABOVE WORK SITES WHEN:
 - a. FOUR OR MORE WORK VEHICLES ENTER THE TRAFFIC LANES IN A ONE HOUR PERIOD.
 - b. THE WORK ACTIVITY REQUIRES FREQUENT ENCROACHMENT INTO THE LANE OPEN TO TRAFFIC.
 THE FLAGGER SHALL BE STATIONED APPROXIMATELY 100' (30 m) TO 200' (60 m) IN ADVANCE OF THE WORKERS.
8. 12' MIN. WIDTH TANGENT SECTION
 15' MIN. WIDTH CURVE SECTION.

ALL DIMENSIONS ARE IN INCHES (MILLIMETERS) UNLESS OTHERWISE SHOWN.

FILE NAME: c:\pwworkspace\projects\11833151\11833151.dwg	USER NAME: jayap	DESIGNED: J.A.F. 12-06	TRAFFIC CONTROL DETAILS FOR FREEWAY	TOTAL SHEET NO. 10
PLOT SCALE: 1/8" = 1'-0"	DRAWN: D.W.S.	REVISOR: S.P.B. 01-07	SHOULDER CLOSURES AND PARTIAL RAMP CLOSURES	COUNTY: VAZONES
PLOT DATE: 4/17/2014	CHECKED: S.P.B. 12-09	REVISOR: S.P.B. 12-09	SECTION: 2017-02-LS	DATE: 2017-02-15
	DATE: 11-96	REVISOR: M.D. 05-13	SHEET NO. 1 OF 1 SHEETS STA. TO STA.	CONTRACT NO. 62F13
				FED. ROAD DIST. NO. 1 (11/10/03) (REV. 08 PROJECT)