

STATE OF ILLINOIS
DEPARTMENT OF TRANSPORTATION
DIVISION OF HIGHWAYS

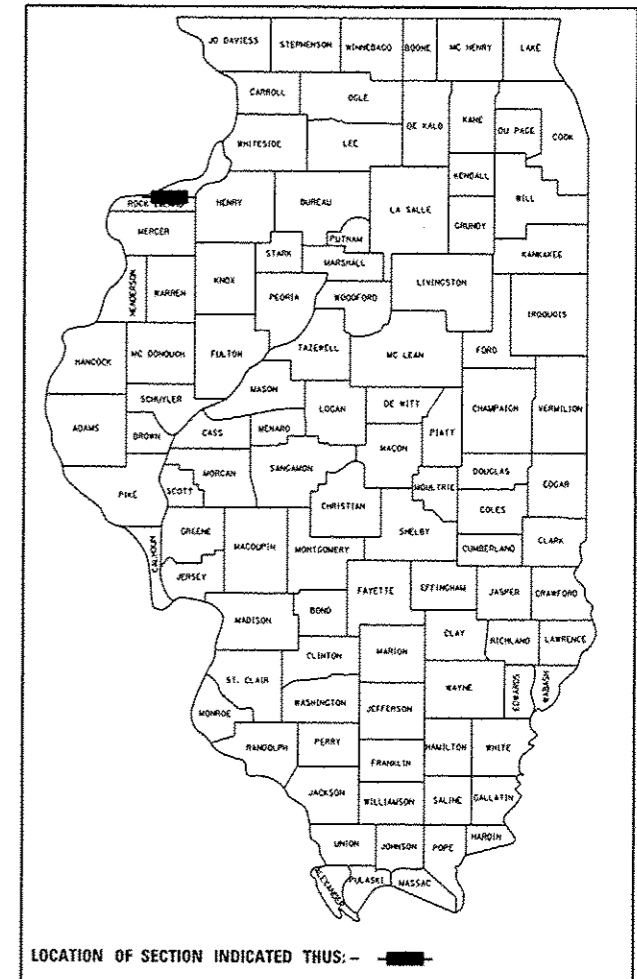
**PROPOSED
HIGHWAY PLANS**

FAP 310 (US 67) FAU 5857 (IL84)
SECTION (18R, 1R)TS
PROJECT HSIP-000V(108)
SIGNAL MODERNIZATION
ROCK ISLAND COUNTY

92-112-16

SHEET 1 OF 12*
* 12-1 = 11 TOTAL SHEETS

D-92-098-16



INDEX OF SHEETS

- 1. COVER SHEET AND INDEX OF SHEETS
- 2. - 4. SUMMARY OF QUANTITIES
- 5. UTILITIES
- 6. - 10. PLAN SHEETS
- 11. SIGN DETAILS

~~12. COMBINATION LIGHTING *~~

~~CONTROLLER DETAIL~~

* SHEET 12 DELETED

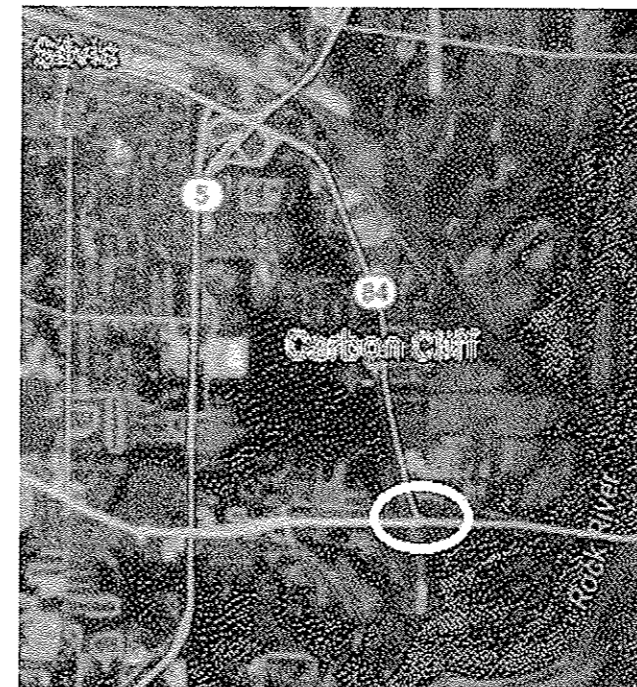
STANDARDS

- 606301-04
- 701006-05
- 701101-05
- 701411-09
- 701421-08
- 701701-10
- 701901-06
- 720011-01
- 728001-01
- 729001-01
- 814001-03
- 857001-01
- 873001-02
- 877001-06
- 877011-08
- 878001-10
- 880006-01
- 000001-06
- 701601-09



US 67 @ 92ND AVE/
MILAN BELTWAY

T-17-N R-2-W



IL 84 @ COLONA RD

T-17-N R-1-E

J.U.L.I.E.
JOINT UTILITY LOCATION INFORMATION FOR EXCAVATION
1-800-892-0123
OR 811

PROJECT ENGINEER SCOTT KULLERSTRAND 815-284-5468
PROJECT MANAGER KRISTINE L HILL 815-284-5476

CONTRACT NO. 64L77

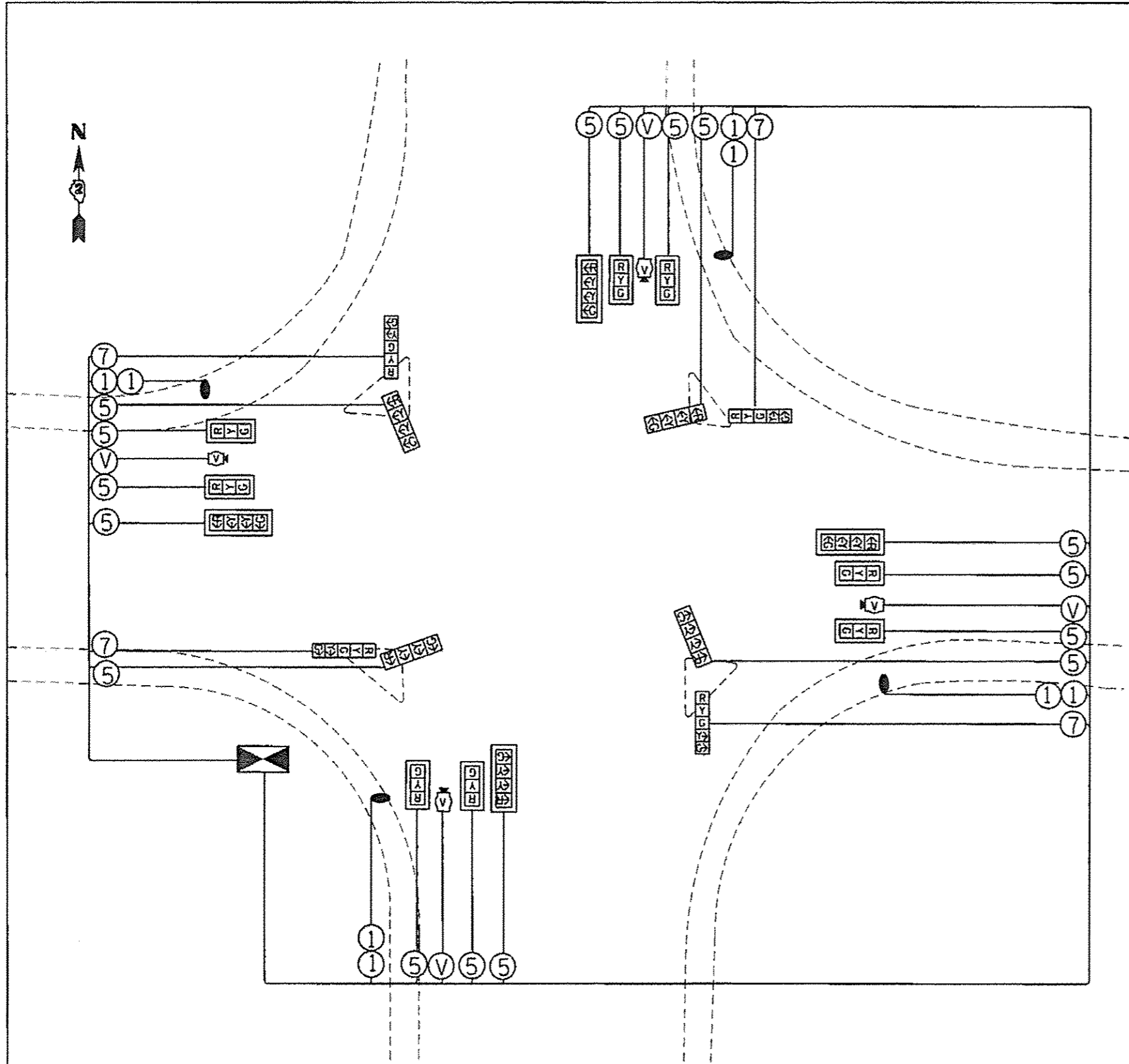
STATE OF ILLINOIS
DEPARTMENT OF TRANSPORTATION

SUBMITTED 3-10 2017
K. Mamb... REGIONAL ENGINEER

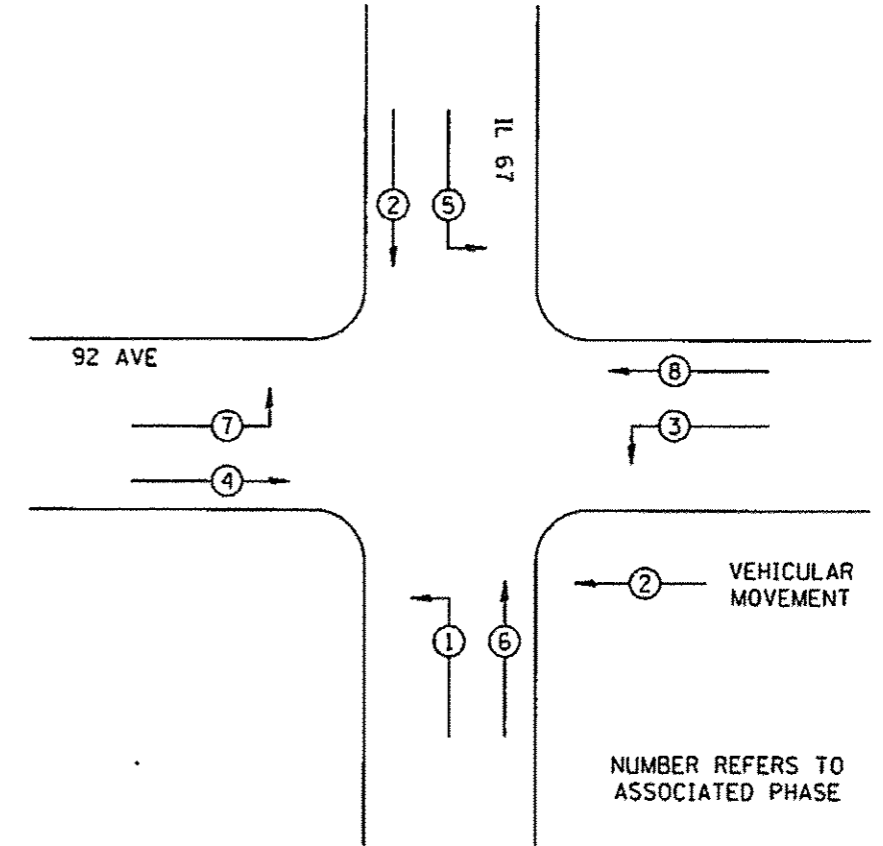
May 12 2017
Karman M. Addis PE, ES, PS
ENGINEER OF DESIGN AND ENVIRONMENT

May 12 2017
... 2
DIRECTOR OF PROGRAM DEVELOPMENT

PRINTED BY THE AUTHORITY
OF THE STATE OF ILLINOIS



PHASE DESIGNATION DIAGRAM



REFER TO STANDARD 857001

LEGEND

- ② INDICATES NUMBER OF NEW CONDUCTORS. ALL CABLE IS NO. 14 EXCEPT AS INDICATED. "P" INDICATES PAIR CABLE
- NEW SIGNAL HEAD WITH OR WITHOUT BACKPLATE
- LUMINAIRE, 250 WATT
LED LUMINAIRE, WITH PHOTOCELL
- VIDEO VEHICLE DETECTION SYSTEM

FILE NAME	USER NAME	DESIGNED	REVISED
PROJECT/CONTRACT NO.	DATE	CHECKED	REVISED
DATE	DATE	DATE	DATE

STATE OF ILLINOIS
DEPARTMENT OF TRANSPORTATION

US 67 AT 92ND AVENUE
PLAN SHEET
SCALE: SHEET OF SHEETS STA. TO STA.

F.A. RATE	SECTION	COUNTY	TOTAL SHEETS	SHEET NO.
	ILL. IDITS	ROCK ISLAND	12	8
CONTRACT NO. 64.77				

FAP 310 (US 67) FAU 5857 (84)

REV SHEET 6-6-17