

STATE OF ILLINOIS
DEPARTMENT OF TRANSPORTATION

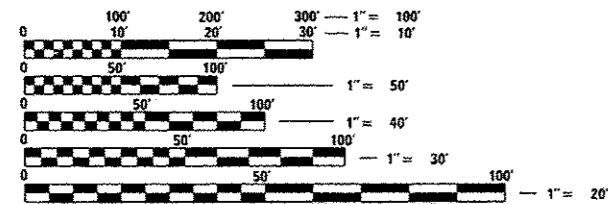
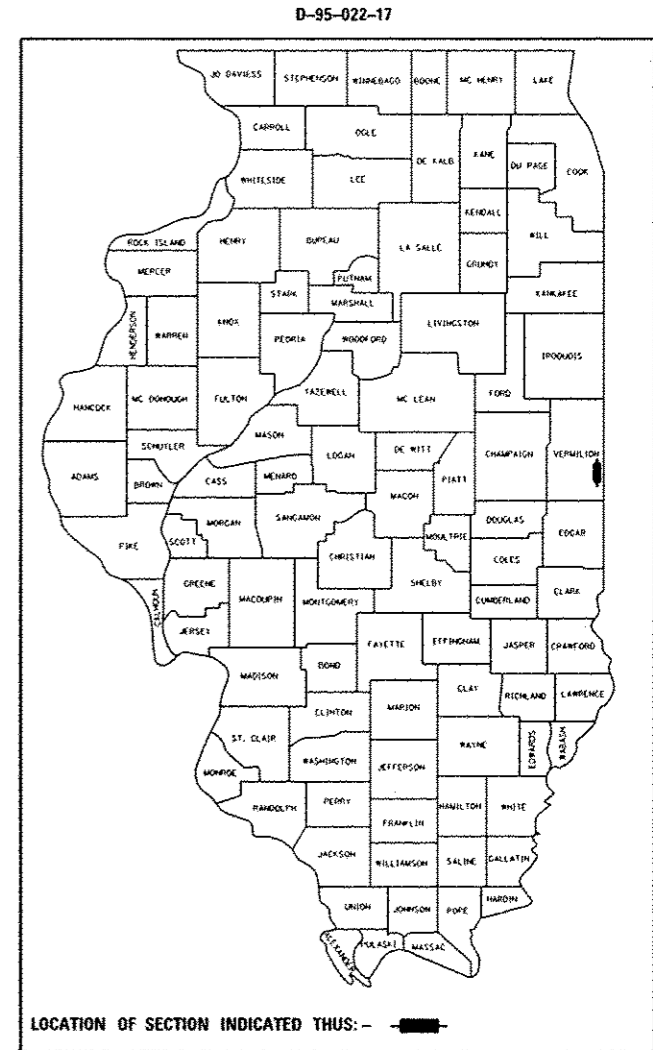
F.A.P. RTE.	SECTION	COUNTY	TOTAL SHEETS	SHEET NO.
332	(47)	VERMILION	18	1
		ILLINOIS	CONTRACT NO. 70C65	

FOR INDEX OF SHEETS, SEE SHEET NO. 2
FOR SUMMARY OF QUANTITIES, SEE SHEET NO. 3

PROPOSED HIGHWAY PLANS

F.A.P. ROUTE 332 (ILL 1, US 150)
SECTION (47)
PROJECT NHPP-0332(128)
FILL PEDESTRIAN UNDERPASSES
VERMILION COUNTY

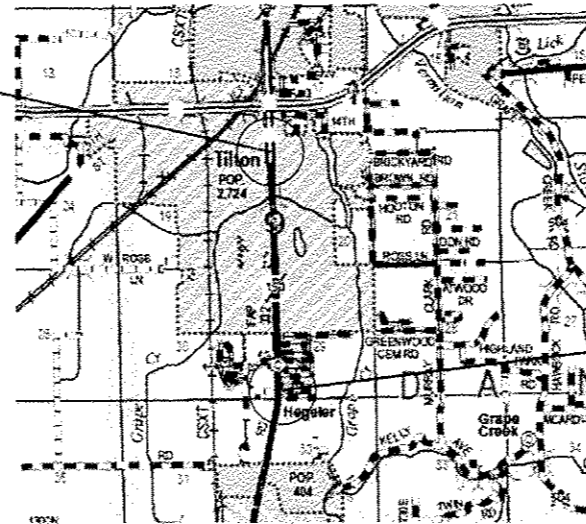
C-95-022-17



FULL SIZE PLANS HAVE BEEN PREPARED USING STANDARD ENGINEERING SCALES. REDUCED SIZED PLANS WILL NOT CONFORM TO STANDARD SCALES. IN MAKING MEASUREMENTS ON REDUCED PLANS, THE ABOVE SCALES MAY BE USED.

J.U.L.I.E.
JOINT UTILITY LOCATION INFORMATION FOR EXCAVATION
1-800-892-0123
OR 811

TILTON
S.N. 092-8012
NORTH OF 16TH ST



HEGELER
S.N. 092-8088
SOUTH OF FOREST AVE

STATE OF ILLINOIS
DEPARTMENT OF TRANSPORTATION

SUBMITTED March 20 2017
Kensal A. Burnett
REGIONAL ENGINEER *AKC*

May 12 2017
Maureen M. Addis Perle
ENGINEER OF DESIGN AND ENVIRONMENT

May 12 2017
James A. [Signature]
DIRECTOR OF PROGRAM DEVELOPMENT *2*

PRINTED BY THE AUTHORITY
OF THE STATE OF ILLINOIS

PROJECT ENGINEER: JEFF ALLEN
DESIGNER: JOSH CARY
PHONE NUMBER (217) 465-4181
CONTRACT NO. 70C65

GENERAL NOTES

G. N. -100
ENGLISH UNITS OF MEASUREMENT SHALL GOVERN OVER AND SUPERSEDE ANY METRIC UNITS SHOWN IN THIS CONTRACT. WHERE INCLUDED, METRIC UNITS ARE FOR INFORMATION ONLY.

G. N. -100A
ELECTRONIC FILES AND/OR ELECTRONIC SURVEY INFORMATION INCLUDING CADD FILES WILL NOT BE AVAILABLE TO THE CONTRACTOR.

OTHER GENERAL NOTES
CONTROLLED LOW-STRENGTH MATERIAL SHALL BE CONSTRUCTED ACCORDING TO THE REQUIREMENTS OF SECTION 593 OF THE STANDARD SPECIFICATIONS.

THE EXISTING CONCRETE CULVERTS SHALL BE FILLED WITH A CONTROLLED LOW STRENGTH MATERIAL. PRIOR TO FILLING THE CULVERTS, THE CONTRACTOR SHALL PLUG ALL DRAIN HOLES AS DETAILED TO THE APPROVAL OF THE ENGINEER. THE CONTROLLED LOW STRENGTH MATERIAL SHALL BE PLACED UNTIL IT COMPLETELY FILLS THE UNDERPASS.

ALL MEASUREMENTS AND DIMENSIONS ARE BASED ON AS-BUILT PLAN INFORMATION AND SHALL BE FIELD VERIFIED BY THE ENGINEER.

THERE ARE NO COMMITMENTS WITH THIS PROJECT

INDEX OF SHEETS

SHEET NO.	DESCRIPTION
1	COVER SHEET
2	GENERAL NOTES, INDEX OF SHEETS AND LIST OF STANDARDS
3	SUMMARY OF QUANTITIES
4	SCHEDULES OF QUANTITIES
5-12	HEGELER SCHOOL PLAN SHEET
13-18	TILTON PLAN SHEET

LIST OF STANDARDS

STANDARD NO.	DESCRIPTION
000001-06	STANDARD SYMBOLS, ABBREVIATIONS AND PATTERNS
001006	DECIMAL OF AN INCH AND OF A FOOT
701001-02	OFF-ROAD OPERATIONS, 2L, 2W, MORE THAN 15' AWAY
701006-05	OFF-ROAD OPERATIONS, 2L, 2W, 15' TO 24" FROM PAVEMENT EDGE
701101-05	OFF-ROAD OPERATIONS, MULTILANE, 15' TO 24" FROM PAVEMENT EDGE
701106-02	OFF-ROAD OPERATIONS, MULTILANE, MORE THAN 15' AWAY
701602-08	URBAN LANE CLOSURE, MULTILANE, 2W WITH BIDERICTIONAL LEFT TURN LANE
701801-06	SIDEWALK, CORNER, OR CROSSWALK CLOSURE
701502-07	URBAN LANE CLOSURE, 2L, 2W, WITH BIDIRECTIONAL LEFT TURN LANE
701901-06	TRAFFIC CONTROL DEVICES

STATE OF ILLINOIS
DEPARTMENT OF TRANSPORTATION

GENERAL NOTES, INDEX OF SHEETS,
AND LIST OF STANDARDS

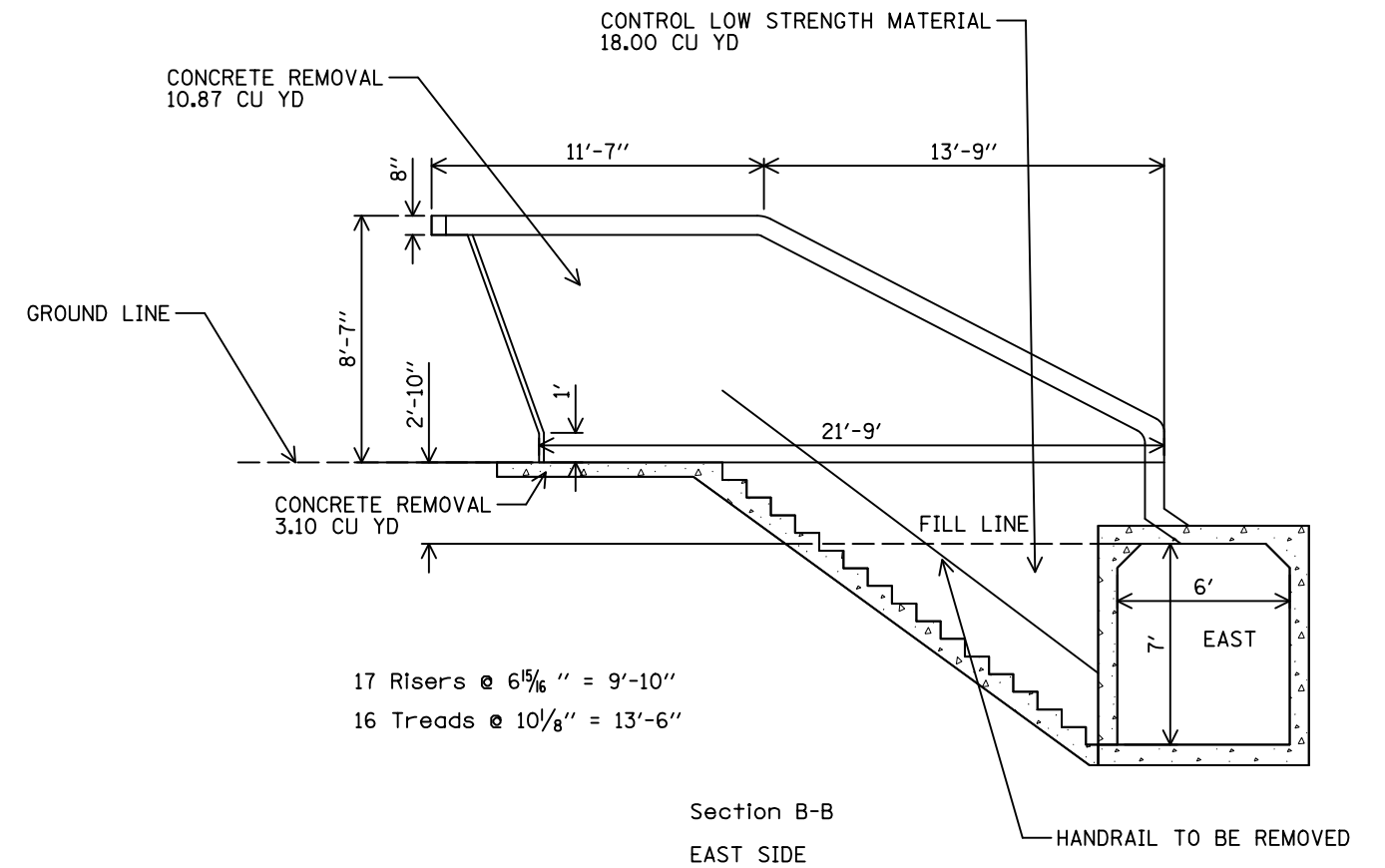
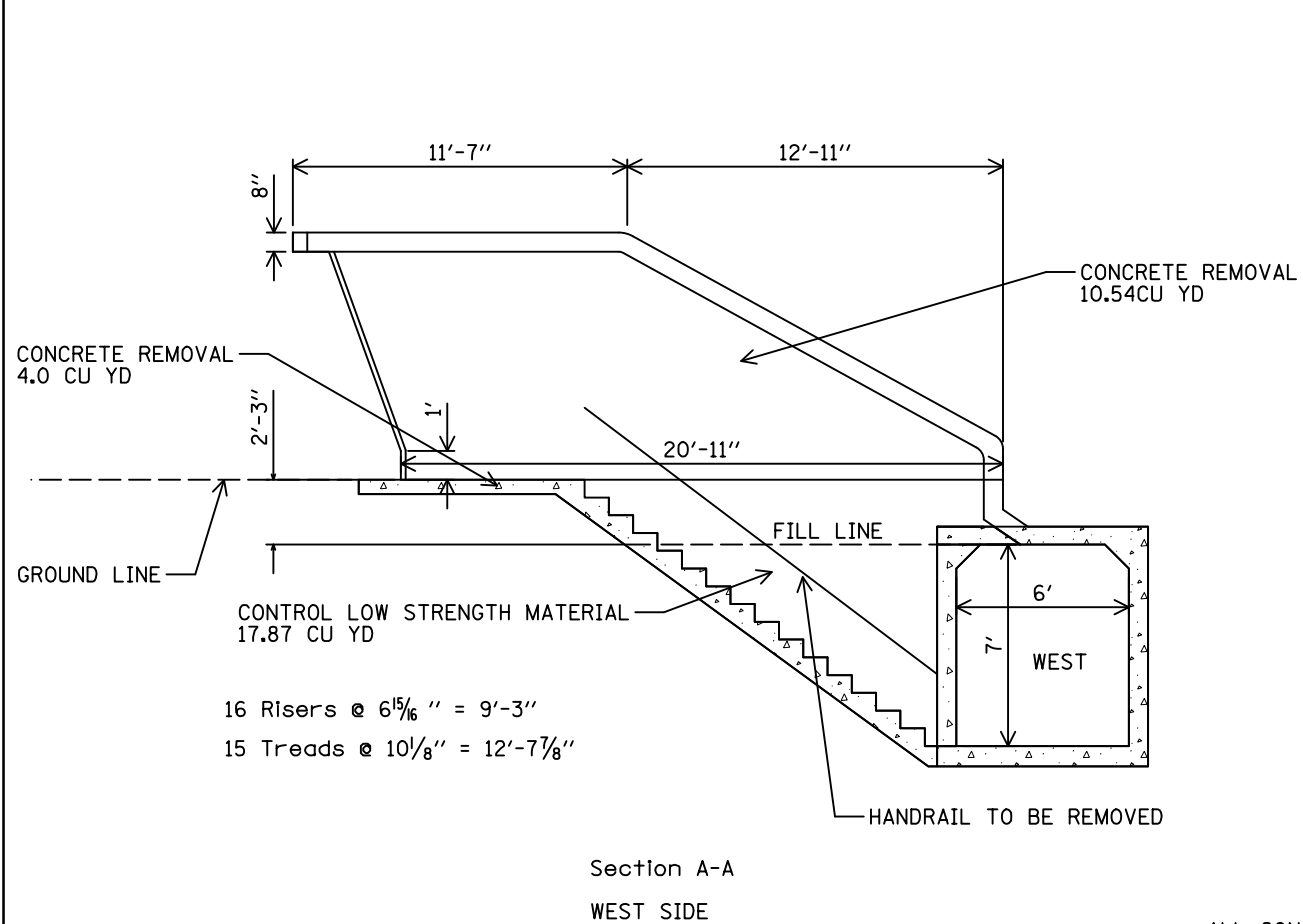
FILE NAME #	USER NAME #	DESIGNED -	REVISED -	SCALE: SHEET 1 OF 1 SHEETS STA. TO STA.	F.A.P. RTE	SECTION	COUNTY	TOTAL SHEETS	SHEET NO.
p:\11\284EBID\INTEG.illinois.gov\PIW\DOT\Documents\DOT Offices\District 5\Projects\0577\DRAWING>Data\Design\05770068-shr\gennote.dg	0577	0577	0577		332	(47)	VERMILION	18	2
MODELNAME#	PLOT SCALE #	CHECKED -	REVISED -		CONTRACT NO. 70C65				
	PLOT DATE #	DATE -	REVISED -		[ILLINOIS] FED. AID PROJECT				

REV

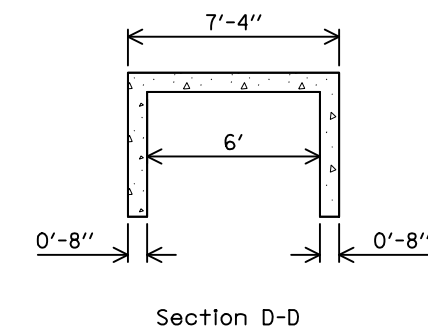
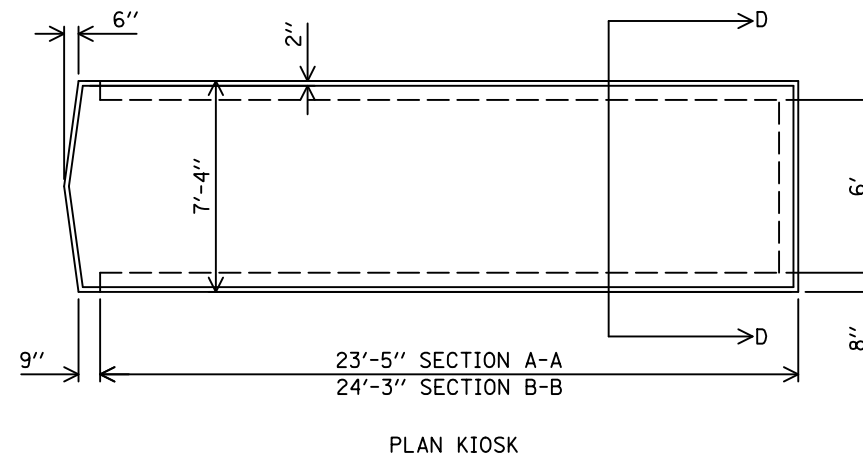
SCHEDULE OF QUANTITIES

CODE NO	ITEM	UNIT	TOTAL QUANTITY	HEGELER	TILTON
20400800	FURNISHED EXCAVATION	CU YD	55.0	36.5	18.5
25200100	SODDING	SQ YD	101.0	49.0	52.0
42400200	PCC CONC SIDEWALK 5	SQ FT	32.0	0.0	32.0
44000600	SIDEWALK REM	SQ FT	251.0	82.0	169.0
50102400	CONC REM	CU YD	50.7	28.5	22.2
59300100	CONTROL LOW-STRENGTH MATL	CU YD	344.0	203.6	140.4
X0322469	PLUG EX FLOOR DRAINS	EACH	15.0	14.0	1.0
X0325279	CLASS SI CONCRETE (MISCELLANEOUS)	CU YD	0.6	0.0	0.6
Z0007126	HANDRAIL REMOVAL	FOOT	112.0	52.0	60.0

HEGELER UNDERPASS S.N. 092-8088



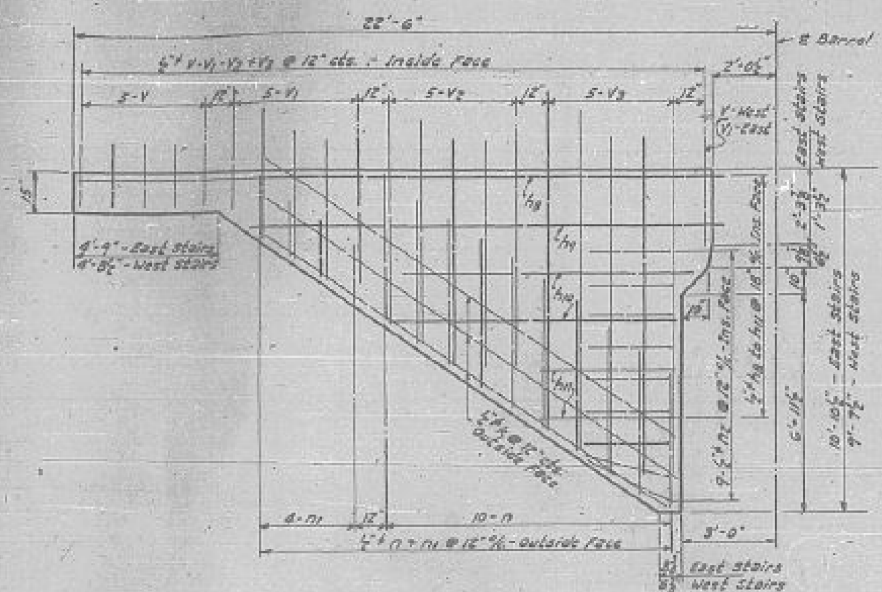
** ALL CONCRETE AND OTHER MATERIALS SHOULD
BE REMOVED TO A MINIMUM DEPTH OF 12"
BELOW GROUND LEVEL BEFORE SODDING



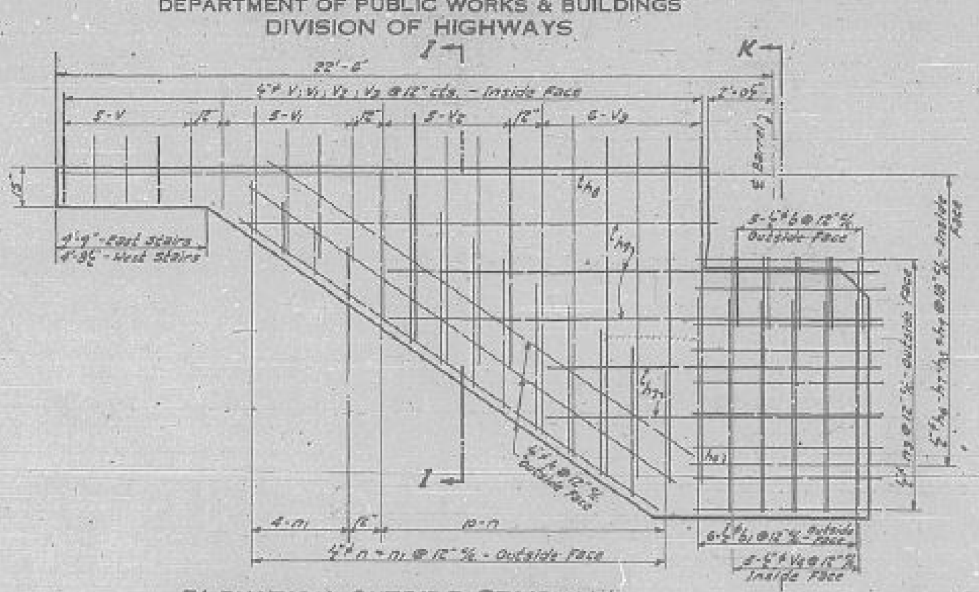
FILE NAME =	USER NAME = caryjk	DESIGNED -	REVISED -	STATE OF ILLINOIS DEPARTMENT OF TRANSPORTATION	HEGELER UNDERPASS STRUCTURE NUMBER 092-8088			F.A.P. RTE.	SECTION	COUNTY	TOTAL SHEETS	SHEET NO.	
p:\11\084EBIDINTEG.illinois.gov\PIWIDOT\Documents\IDOT Offices\District 5\Projects\0570\CDRAWING\0570\Design\0570C65-Design.dgn					REVISED -				332	(47)I	VERMILION	18	6
PLOT SCALE = 40.0000' / in.					CHECKED -				CONTRACT NO. 70C65				
#MODELNAME#					DATE -				ILLINOIS FED. AID PROJECT				
					SCALE: 50	SHEET 2	OF 8	SHEETS	STA.	TO STA.			

STATE OF ILLINOIS
DEPARTMENT OF PUBLIC WORKS & BUILDINGS
DIVISION OF HIGHWAYS

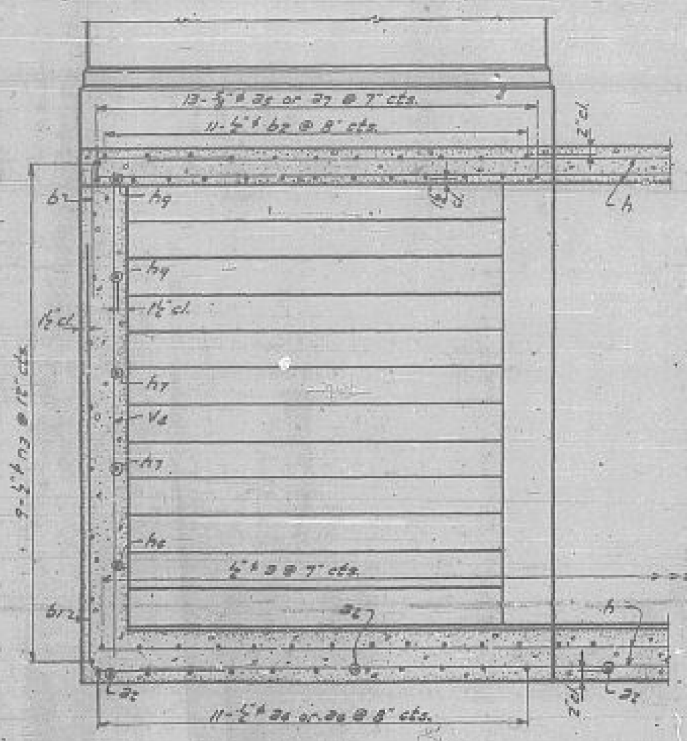
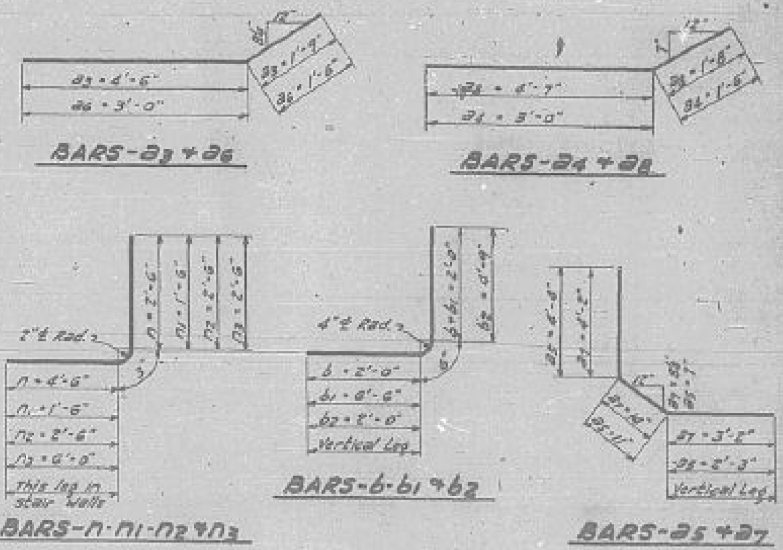
PROJECT NO.	DATE	COUNTY	SHEET NO.	TOTAL SHEETS
1	47YB	VERMILION	11	7
SHEETS				



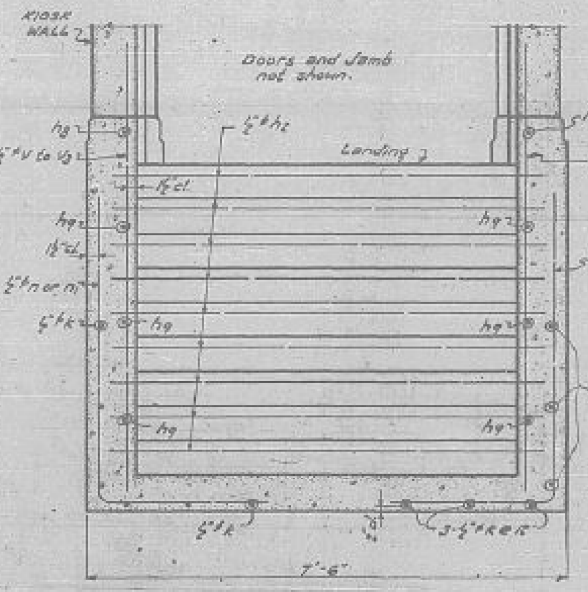
ELEVATION INSIDE STAIRWALL
Scale: 1/2" = 1'-0"



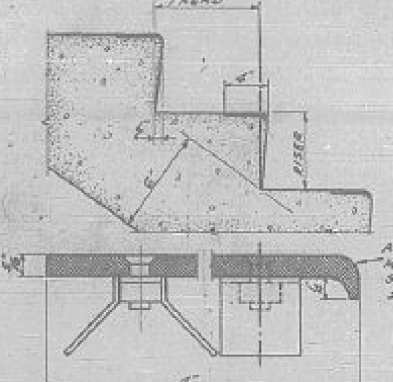
ELEVATION OUTSIDE STAIRWALL



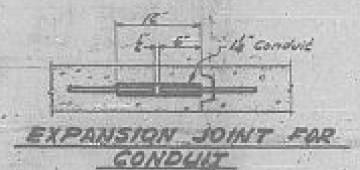
SECTION K-K



SECTION I-I



DETAILS OF STAIRS & TREAD TYPICAL

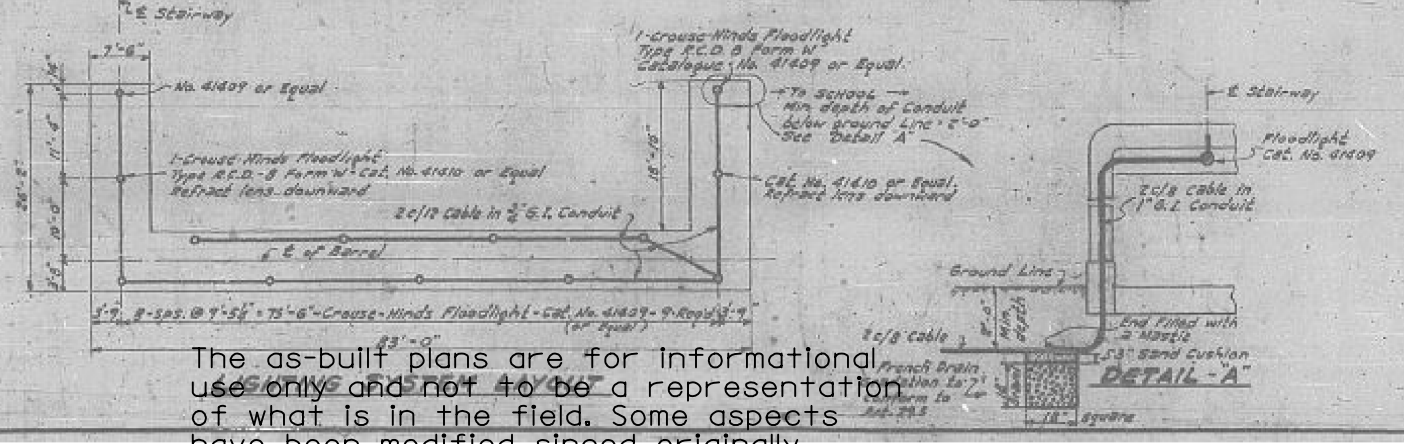


EXPANSION JOINT FOR CONDUIT

BILL OF MATERIAL - SUBSTRUCTURE

BAR No	SIZE	LGTH.	SHAPE	BAR No	SIZE	LGTH.	SHAPE
2	258	5'	6'-6"	19	8	5'	15'-6"
21	22	5'	3'-6"	19	4	5'	9'-3"
22	8	5'	6'-3"	19	4	5'	6'-3"
24	11	5'	4'-6"	19	4	5'	4'-3"
25	18	5'	7'-6"	19	24	5'	15'-6"
26	11	5'	4'-6"	19	16	5'	3'-3"
27	13	5'	8'-6"	19	20	5'	7'-0"
28	8	5'	6'-3"	19	18	5'	5'-3"
29	214	5'	4'-6"	19	18	5'	8'-9"
30	238	5'	9'-0"	19	21	5'	2'-0"
31	22	5'	7'-3"	19	21	5'	2'-0"
32	30	5'	18'-0"	19	22	5'	10'-6"
33	50	5'	21'-9"	19	22	5'	10'-6"
34	20	5'	7'-0"	19	22	5'	10'-6"
35	2	5'	6'-0"	19	10	5'	7'-9"
36	4	5'	10'-6"	19	10	5'	7'-9"
37	4	5'	20'-6"	19	10	5'	7'-9"

Class 1 Concrete	cu. Yds.	767
Reinforcement Bars	lbs.	7450
Pipe Handrail	Lin. Ft.	65
Stair Treads	Each	31
Floor Drains	Each	10
Porous Granular Backfill	cu. Yds.	11



DETAIL - A

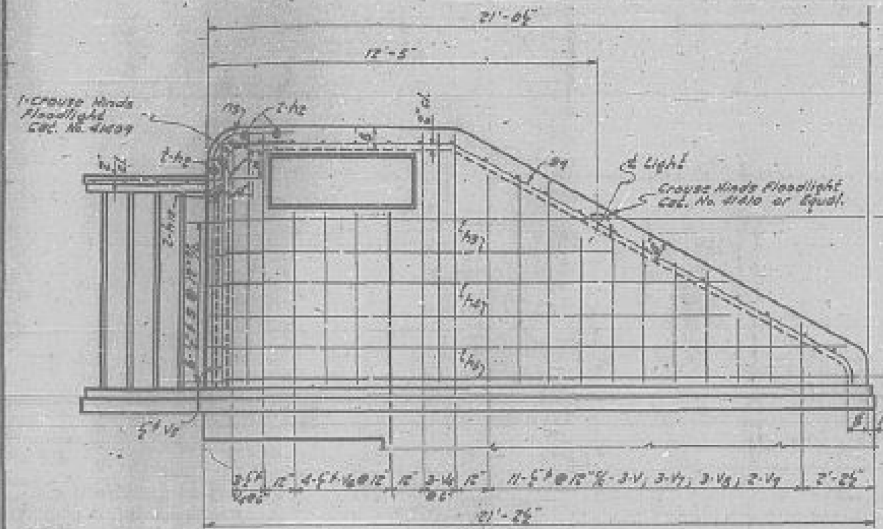
DESIGNED	R.D. WATKINS	EXAMINED	J. V. [Signature]
CHECKED	M. B. [Signature]	DRAWN	J. S. Nalecki
CHECKED	M. B. [Signature]	APPROVED	M. K. [Signature]

The as-built plans are for informational use only and not to be a representation of what is in the field. Some aspects have been modified since originally constructed

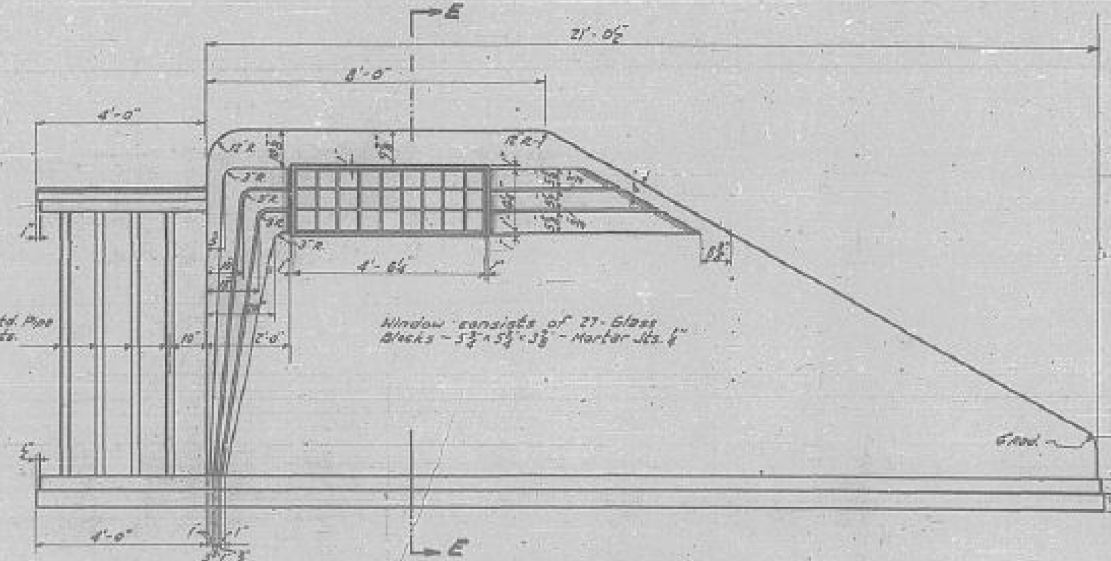
S.A.I. RTE. 1 SEC. 47-Y-B-1
VERMILION CO.
STA. 2937 + 35

STATE OF ILLINOIS
DEPARTMENT OF PUBLIC WORKS & BUILDINGS
DIVISION OF HIGHWAYS

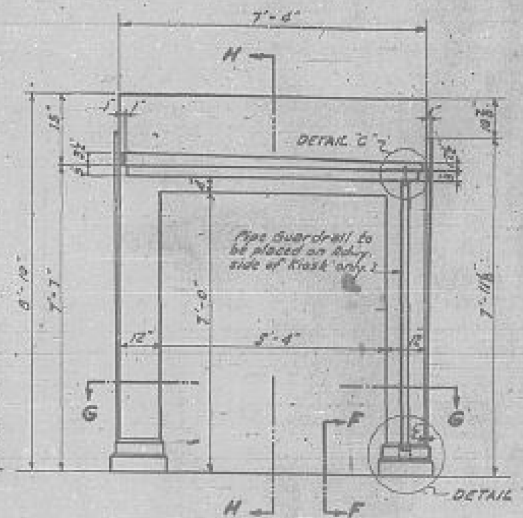
ROAD DISTRICT NO.	SECTION	COUNTY	TOTAL SHEETS	SHEET NO.	SHEET NO. OF SHEETS
1	RTB-1	VERMILION	11	8	3
FED. ROAD DIST. NO. 1					



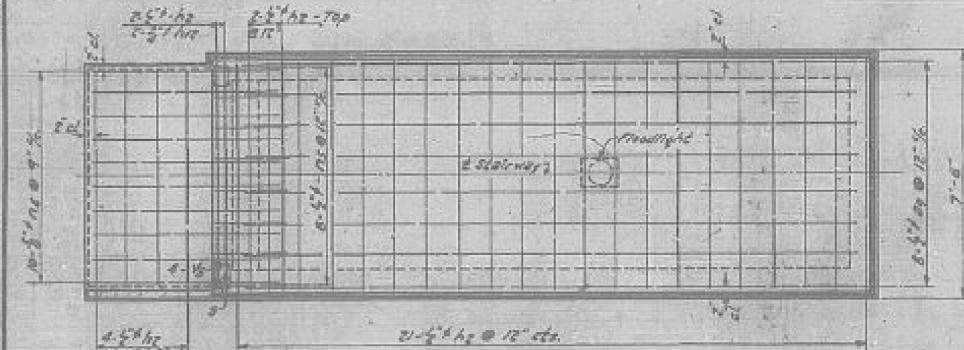
ELEVATION
Scale: 1/4" = 1'-0"



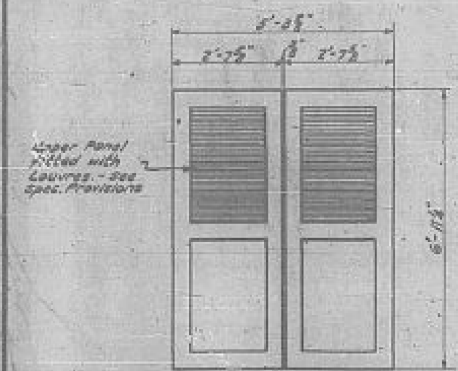
ELEVATION OF WEST KIOSK



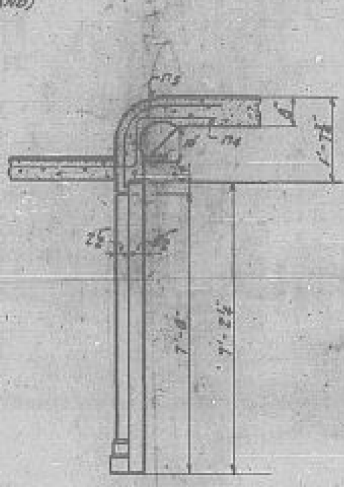
FRONT ELEVATION



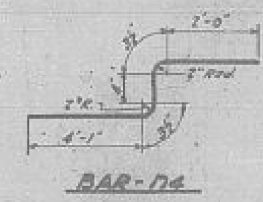
PLAN - WEST KIOSK
(EAST KIOSK OPPOSITE HAND)



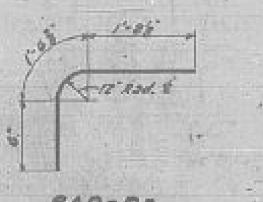
DETAIL OF DOORS



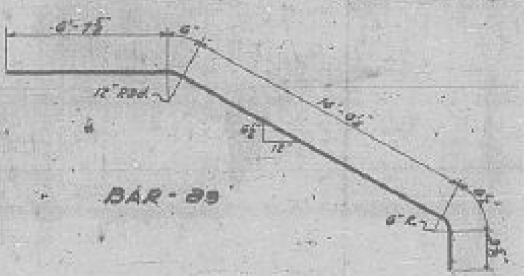
SECTION H-H



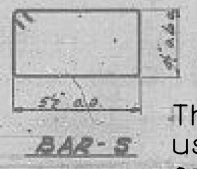
BAR-14



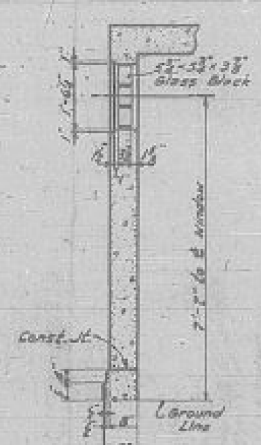
BAR-15



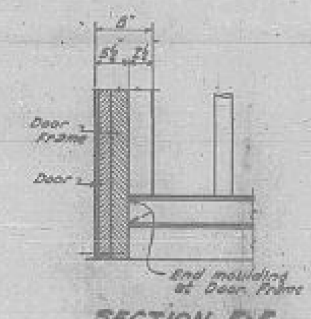
BAR-20



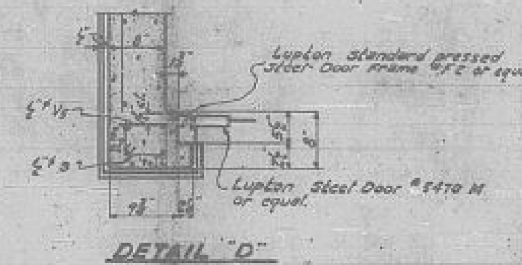
BAR-5



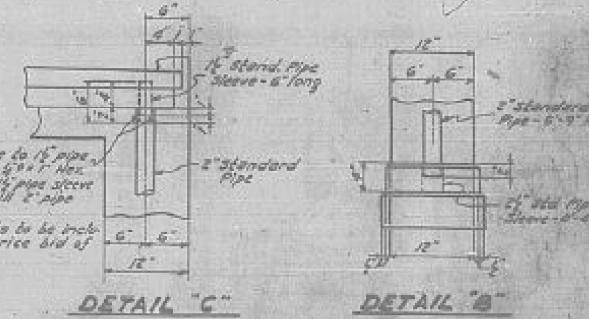
SECTION E-E



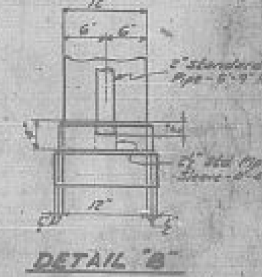
SECTION F-F



DETAIL D



DETAIL C



DETAIL B

Anchor 2" pipe to 1 1/2" pipe sleeve with 2-4" x 4" Hex. No. bolts. Top 1/2" pipe steer with 1/2" dia. Drill 2" pipe with 1/2" dia. Cost of Bolts to be included in unit price bid of 2" Pipe.

BILL OF MATERIAL - TWO KIOSKS

QTY	NO.	SIZE	LENGTH	SHAPE	BAR	NO.	SIZE	LENGTH	SHAPE
24	16	4"	22'-0"		3	24	4"	2'-6"	13
12	18	4"	7'-0"		4	12	4"	2'-0"	
12	8	4"	12'-3"		14	24	4"	7'-9"	
12	8	4"	18'-0"		16	16	4"	6'-9"	
12	8	4"	15'-6"		16	16	4"	5'-3"	
112	4	2"	7'-0"		15	12	4"	6'-0"	
12	20	4"	7'-0"		16	12	4"	4'-9"	
12	16	4"	3'-9"		14	8	4"	3'-6"	

Class X Concrete	Curbs	21.2
Reinforcement Bars	Lbs	1820
Glass Blocks	Each	108
Standard Pipe - 2" I.D.	Lin. Ft.	54
Narrow Metal Doors	EA.	4

DESIGNED: R.D. WATKINS
CHECKED: H.S. BARNHART
DRAWN: J.S. MATECH
CHECKED: H.S. BARNHART

EXAMINED: [Signature]
PASSED: [Signature]
APPROVED: [Signature]

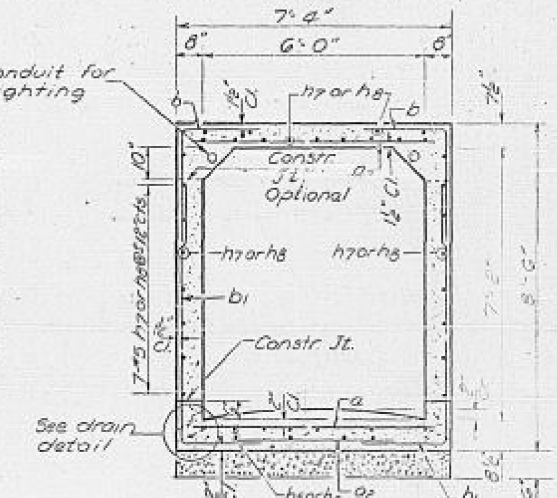
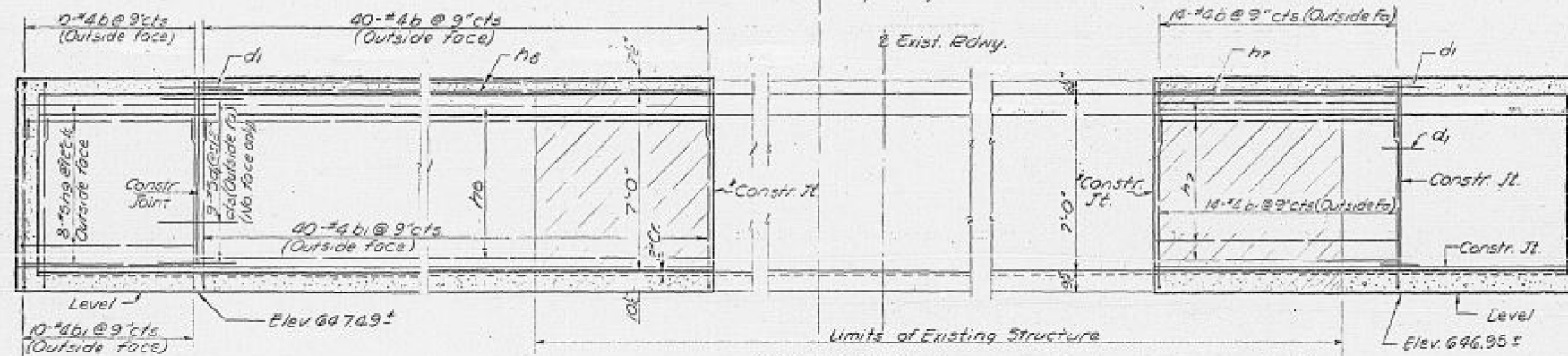
The as-built plans are for informational use only and not to be a representation of what is in the field. Some aspects have been modified since originally constructed

S.B.I. RTE. 1 SEC. 47-Y-B-1
VERMILION CO.
STA. 2337 + 35

Note: The hatched existing structure to be removed, the existing reinforcement cleaned and straightened and left two feet in new concrete.

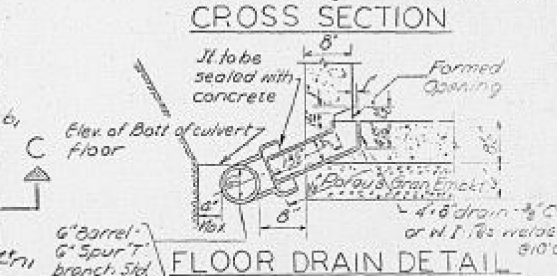
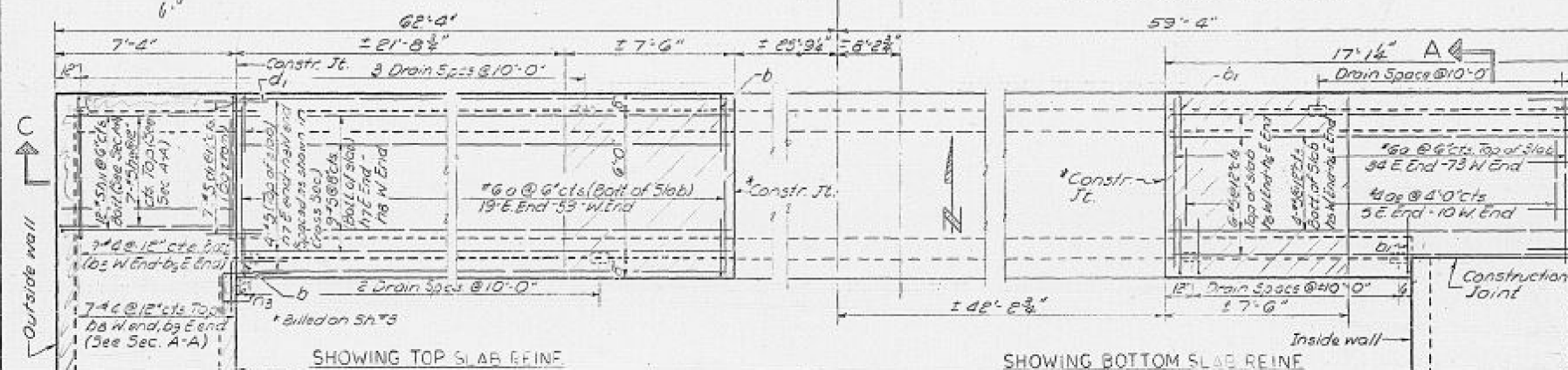
STATE OF ILLINOIS
DEPARTMENT OF PUBLIC WORKS & BUILDINGS
DIVISION OF HIGHWAYS

DATE	SECTION	COUNTY	TOTAL SHEETS	SHEET NO.
2/1	47R	Vermilion	116	61
SHEET NO. 2		4 SHEETS		



SECTION C-C

Construction joints shall be constructed in accordance with Sec. 504.13 (b) (3) of Std Specs.



PLAN

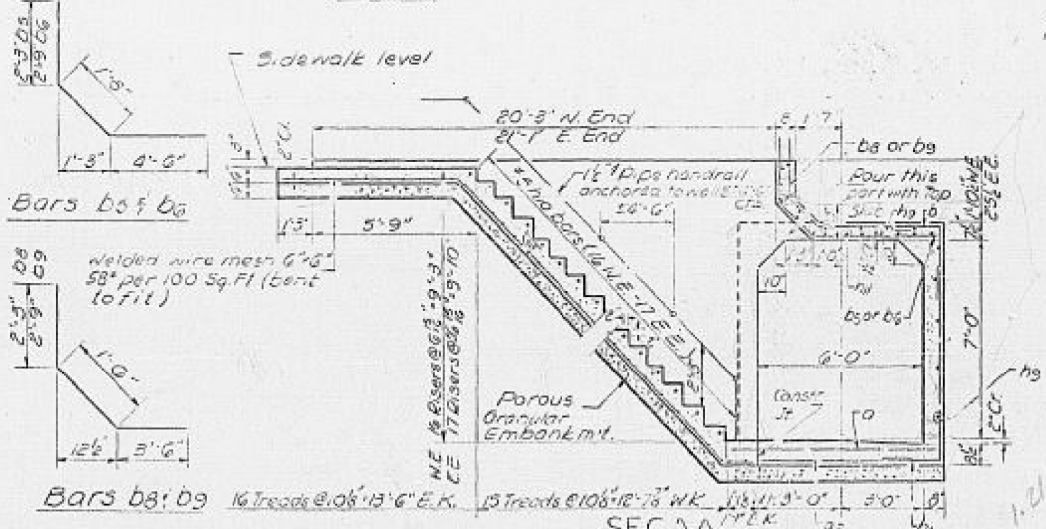
BILL OF MATERIALS

Bar	No	Size	Length	Splice
a	185	#6	6'-9"	
a2	15	#4	4'-0"	
b	128	#6	4'-0"	L
b1	128	#4	9'-5"	
b3	7	#4	8'-5"	
b6	7	#4	8'-11"	
b8	7	#4	7'-5"	
b9	7	#4	7'-9"	
d1	32	#5	3'-3"	
h5	10	#5	36'-5"	
h6	10	#5	16'-9"	
h7	29	#5	9'-6"	
h8	29	#5	29'-0"	
h9	30	#5	9'-0"	
h10	33	#5	5'-9"	
h11	24	#5	7'-0"	

DESIGNED: *Michael S. Smith*
CHECKED: *James Hamilton*
DRAWN: *F. Mercado*
CHECKED: *JH*

EXAMINED: *[Signature]*
PASSED: *[Signature]*
APPROVED: *[Signature]*

JUNE 18 10 00



SECTION A-A

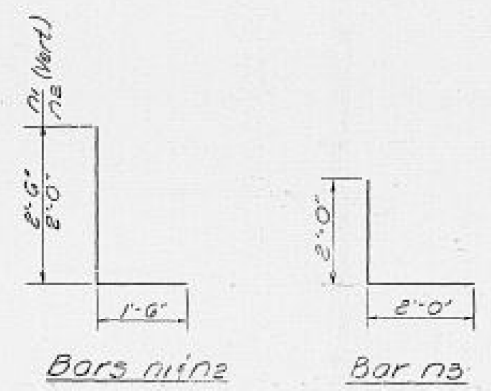
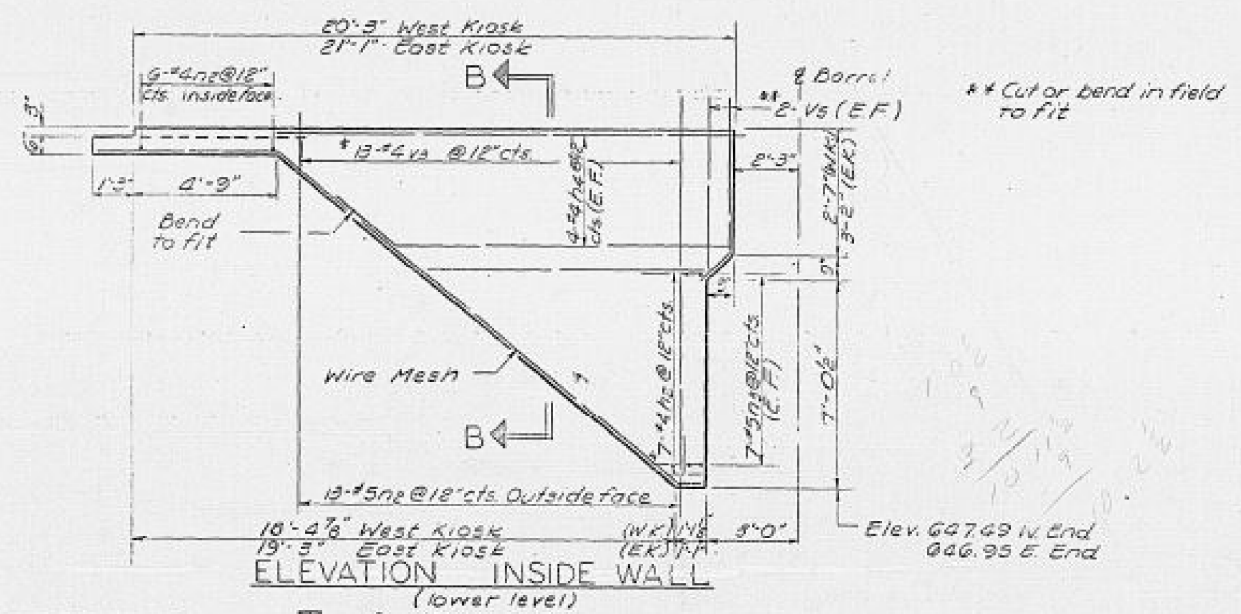
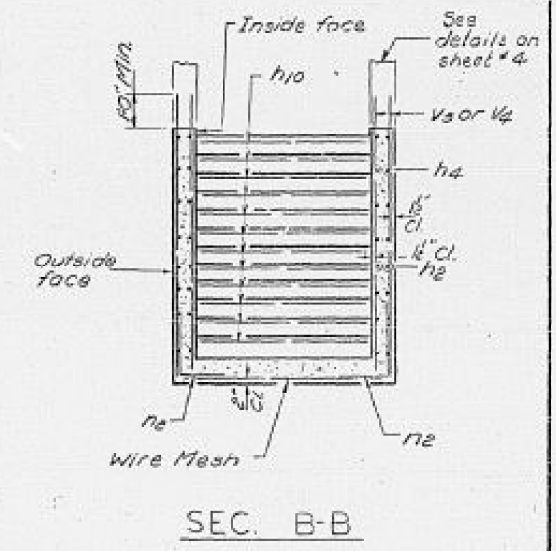
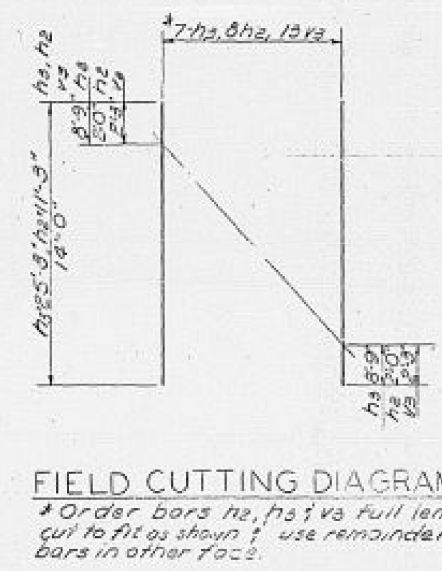
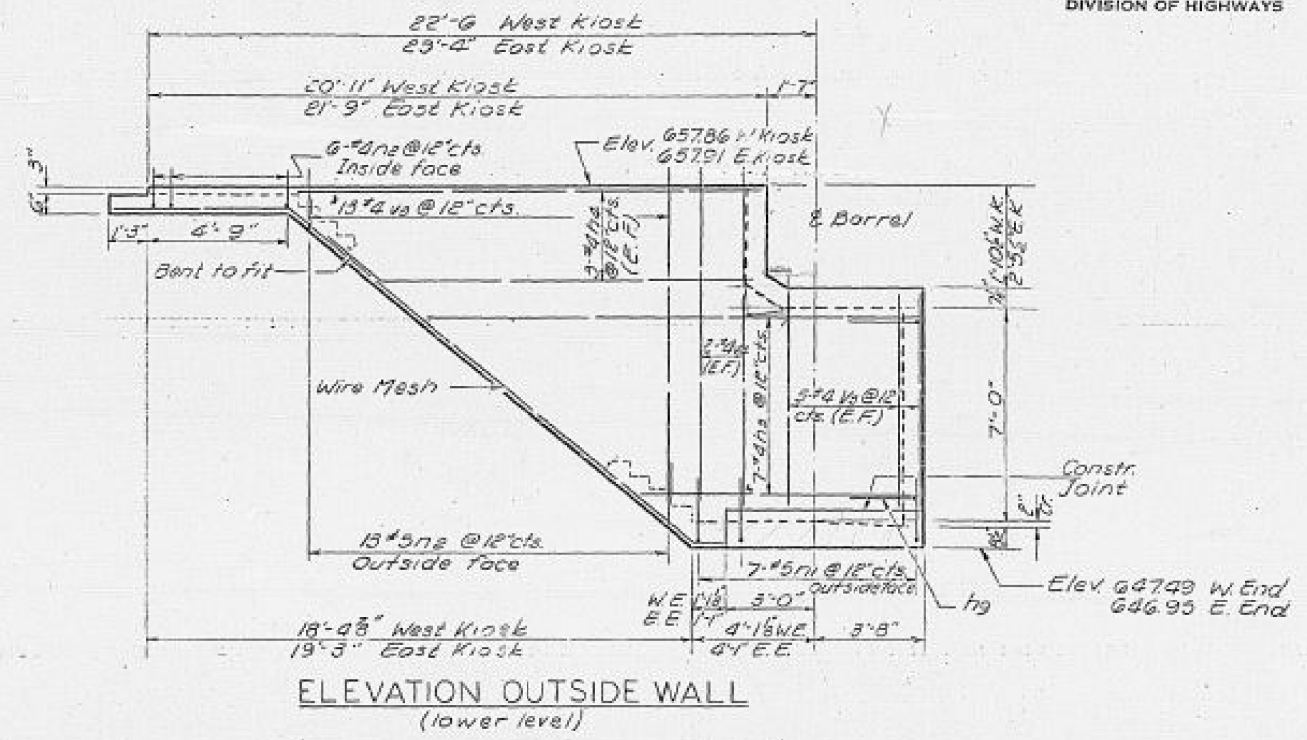
NOTE: All Construction Joints shall be bonded except as noted.

S.B.I. RTE 1 SEC. 47R
VERMILION COUNTY
STA. 2937+35

The as-built plans are for informational use only and not to be a representation of what is in the field. Some aspects have been modified since originally constructed

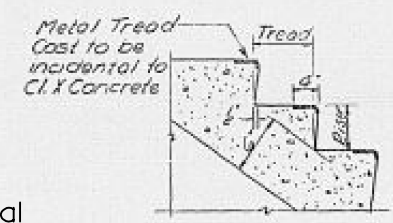
STATE OF ILLINOIS
DEPARTMENT OF PUBLIC WORKS & BUILDINGS
DIVISION OF HIGHWAYS

DATE	DESIGN	ISSUE	TOTAL SHEETS	SHEET NO.
8/16/17	8/16/17	1	4	3



BILL OF MATERIALS

Bar	No.	Size	Length	Shape
n1	14	#4	11'-3"	—
n2	16	#4	25'-3"	—
n3	28	#4	15'-6"	—
v3	52	#6	12'-0"	—
v4	8	#4	10'-6"	—
v5	28	#4	7'-0"	—



DETAIL OF KIOSK WALLS
S.B. RTE. 1 SEC. 47R
VERMILION COUNTY
STA. 2937+35

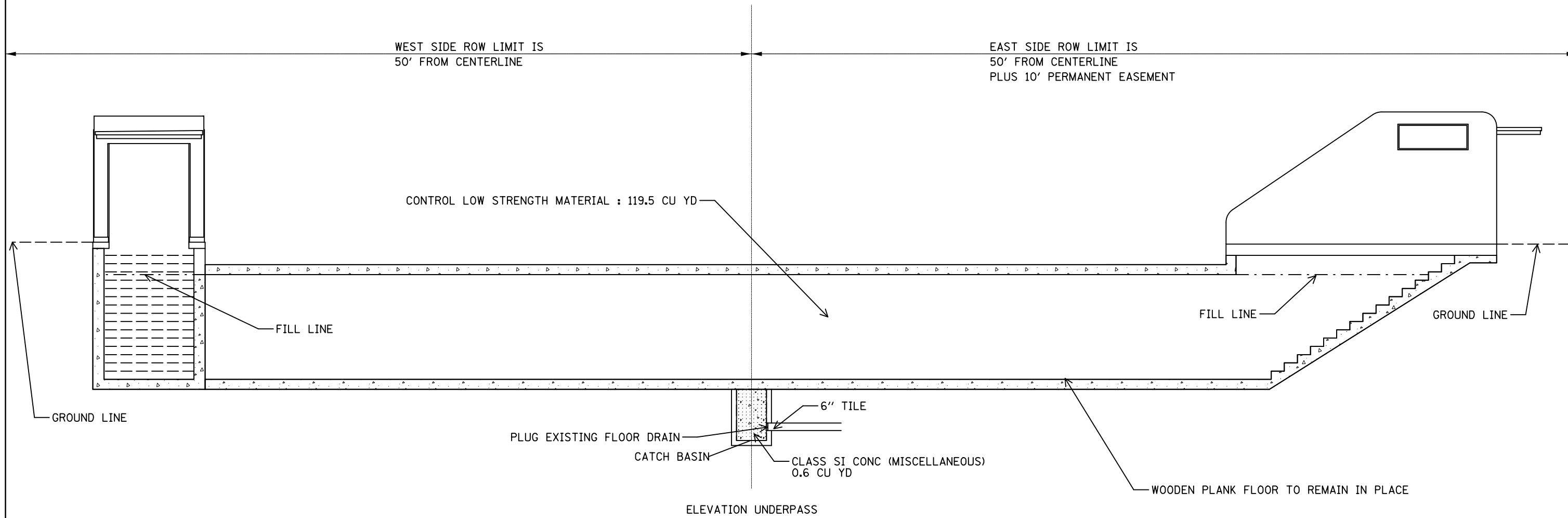
DESIGNED: *Harold Ling*
CHECKED: *James Hamilton*
DRAWN: *F. Mercado*
CHECKED: *JH*

EXAMINED: *[Signature]*
PASSED: *[Signature]*
APPROVED: *Richard H. Gortman*

JUNE 19 1965

The as-built plans are for informational use only and not to be a representation of what is in the field. Some aspects have been modified since originally constructed.

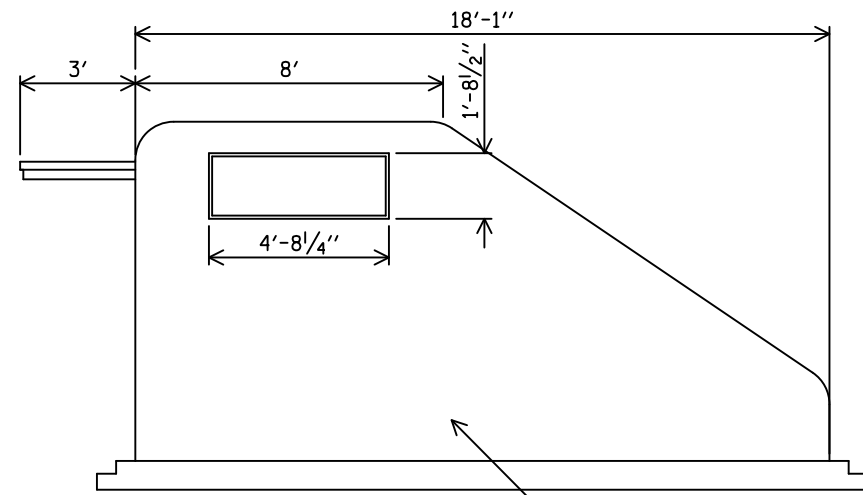
TILTON UNDERPASS
S.N. 092-8012



** ALL CONCRETE AND OTHER MATERIALS SHOULD
BE REMOVED TO A MINIMUM DEPTH OF 12"
BELOW GROUND LEVEL BEFORE SODDING

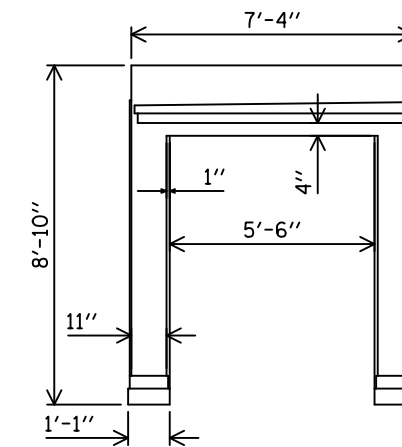
FILE NAME =	USER NAME = caryjk	DESIGNED -	REVISED -	STATE OF ILLINOIS DEPARTMENT OF TRANSPORTATION	TILTON UNDERPASS STRUCTURE NUMBER 092-8012			F.A.P. RTE.	SECTION	COUNTY	TOTAL SHEETS	SHEET NO.			
p:\11\084EBIDINTEG.illinois.gov\PIWIDOT\Documents\IDOT Offices\District 5\Projects\0570\Drawings\0570C65-Design.dgn		CHECKED -	REVISED -		SCALE: 50	SHEET 2	OF 6	SHEETS	STA.	TO STA.	332	(47)I	VERMILION	18	14
MODELNAME	PLOT SCALE = 40.0000' / in.	CHECKED -	REVISED -												
	PLOT DATE = 3/21/2017	DATE -	REVISED -												

TILTON UNDERPASS
S.N. 092-8012

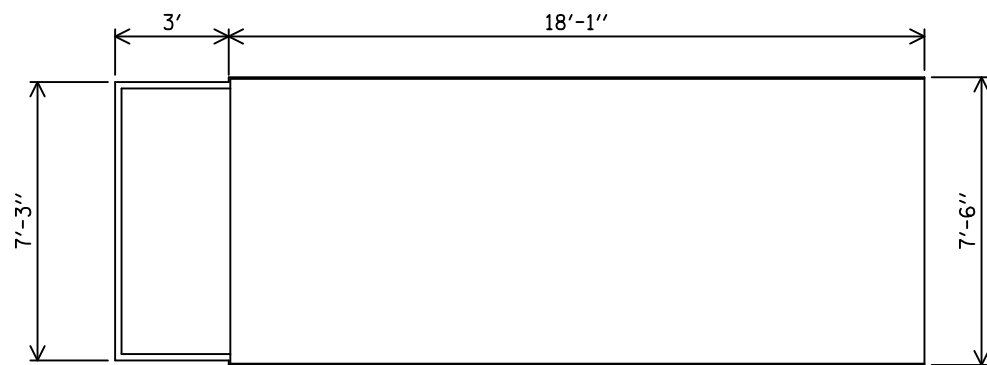


Elevation Kiosk

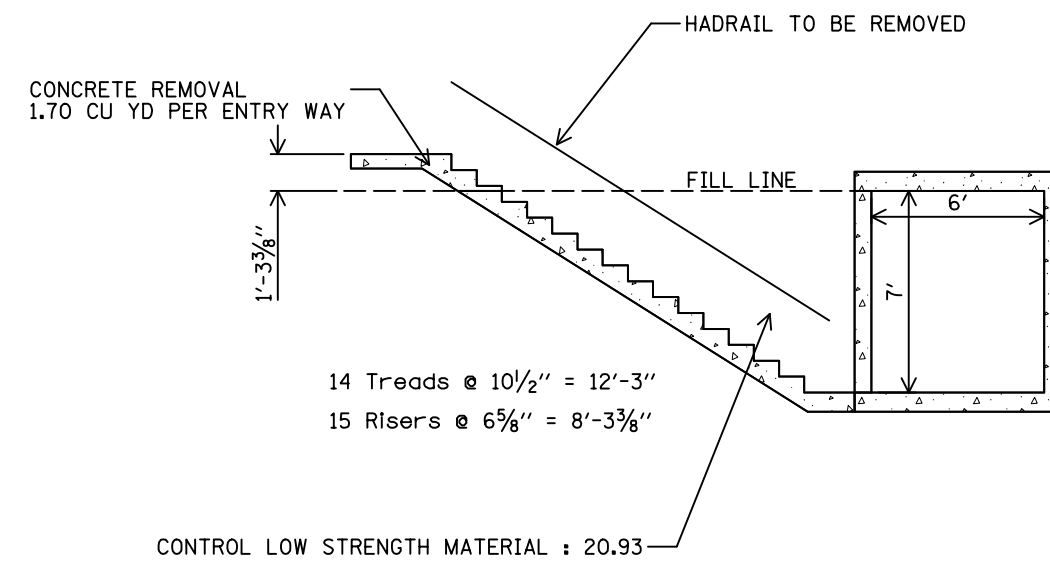
CONCRETE REMOVAL OF KIOSK = 9.40 CU YD PER KIOSK



Front Elevation Kiosk



Plan Kiosk



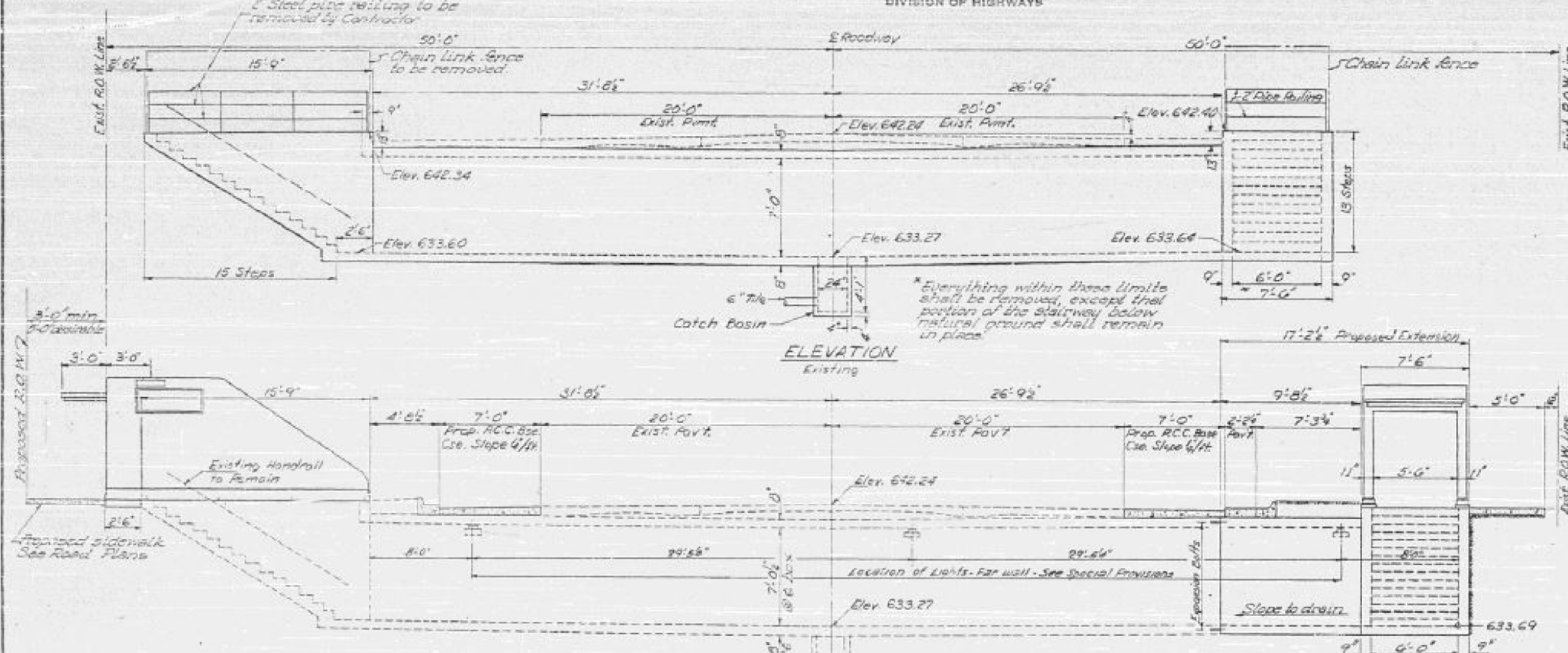
** ALL CONCRETE AND OTHER MATERIALS SHOULD
BE REMOVED TO A MINIMUM DEPTH OF 12"
BELOW GROUND LEVEL BEFORE SODDING

FILE NAME =	USER NAME = caryjk	DESIGNED -	REVISED -	STATE OF ILLINOIS DEPARTMENT OF TRANSPORTATION	TILTON UNDERPASS STRUCTURE NUMBER 092-8012			F.A.P. RTE.	SECTION	COUNTY	TOTAL SHEETS	SHEET NO.
p:\11\084EBIDINTEG.illinois.gov\PIWIDOT\Documents\DOT Offices\District 5\Projects\0577\KIOSK\05770065-Design.dgn		CHECKED -	REVISED -		332	(47)I	VERMILION	18	15			
MODELNAME	PLOT SCALE = 40.0000' / in.	CHECKED -	REVISED -		CONTRACT NO. 70C65			ILLINOIS FED. AID PROJECT				
	PLOT DATE = 3/21/2017	DATE -	REVISED -		SCALE: 50	SHEET 3	OF 6 SHEETS	STA.	TO STA.			

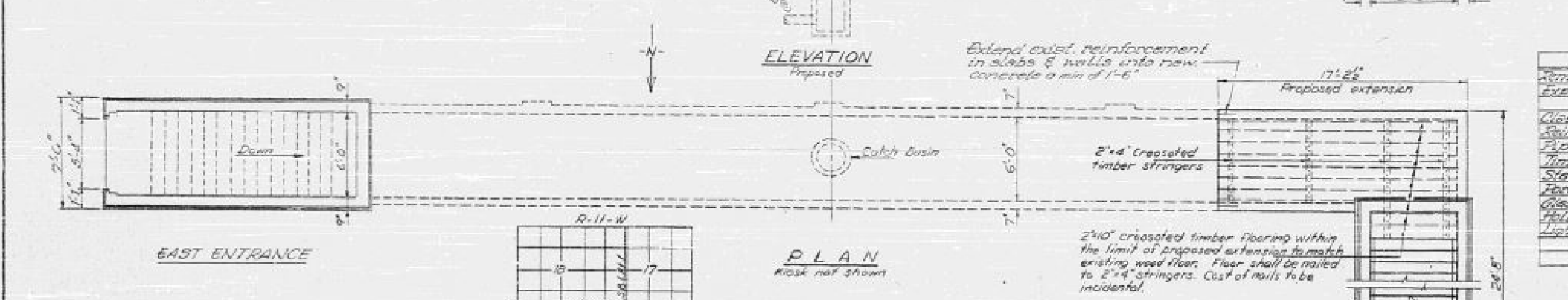
STATE OF ILLINOIS
DEPARTMENT OF PUBLIC WORKS & BUILDINGS
DIVISION OF HIGHWAYS

PROJECT NO.	SECTION	SHEET NO.	TOTAL SHEETS
104	47	1	5

3"x4" Channel on top of curb 22.0' Rd.
Sta. 71+26.5 E. 642.17
Existing R.C. Pedestrian subway to be improved
as shown



GENERAL NOTES
Class X Concrete shall be used thruout.
All reinforcement bars shall be lapped 20 diameters unless otherwise shown.
All Handrails shall be given one coat of red lead paint and two field coats of aluminum paint.
All exterior surfaces in contact with earth backfill shall be waterproofed.
Waterproofing shall be done in accordance with Art. 31.02 of the Std. Specifications.
Hollow Metal Flush Type doors shall be used. See Special Provisions and drawings.
Expansion bolts shall consist of self-drilling expansion shields with 8" hooked bolts. Hooked bolts shall extend a minimum of 9" into new concrete.
For lighting system, see drawing & Special Provisions.
Record of Existing Structures shall include the removal and disposal of the existing West entrance, pipe railing and chain link fence.
All excavation required for the complete construction of the Pedestrian Underpass shall be incidental to the item "Class X Concrete".
Prop. Sidewalk Elev. 641.95



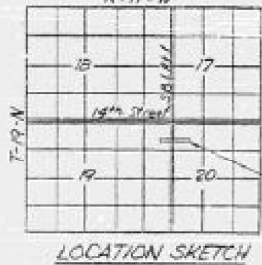
TOTAL BILL OF MATERIALS

Item	Unit	Subtotal	Quantity	Total
Removal of Exist. Struct's	EA		1	
Expansion Bolts (8")	EA	50		50
Class X Conc.	Cyds	21.3	18.0	39.3
Reinforcement Bars	Lbs.	3010	1850	4860
Pipe Handrail	Lin. Ft.	32		32
Timber (treated)	MB	822		822
Stair Treads	EA	15		15
Formwork Embankment	Cyds	7		7
Glass Blocks	EA		100	100
Hollow Metal Doors	EA		2	2
Lighting System Complete	EA		1	1

DESIGNED T. W. Young
CHECKED John W. Clark
DRAWN Thomas A. Lewis
CHECKED John W. Clark

EXAMINED
PASSED
APPROVED

JAN 31 1965



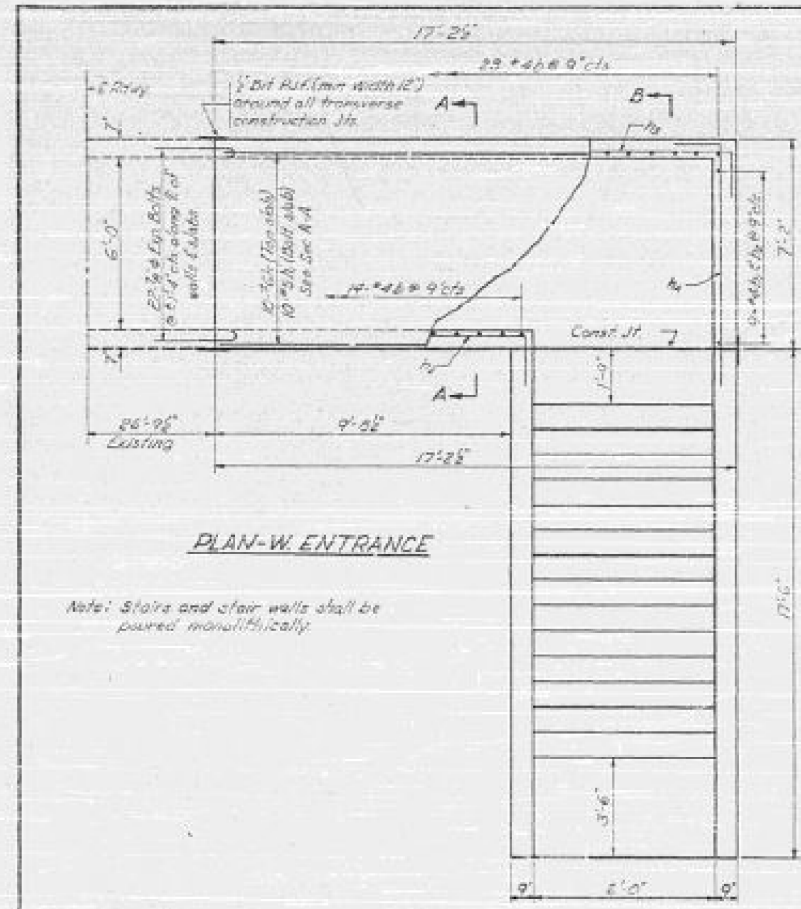
DESIGN STRESSES
f_c = 1,400 psi.
f_s = 50,000 psi.
n = 10

BILL OF CREOSOTED TIMBER

No.	Size	Length
7	2"x10"	10'-0"
3	2"x12"	6'-0"
2	2"x4"	5'-11"
2	2"x4"	8'-3"

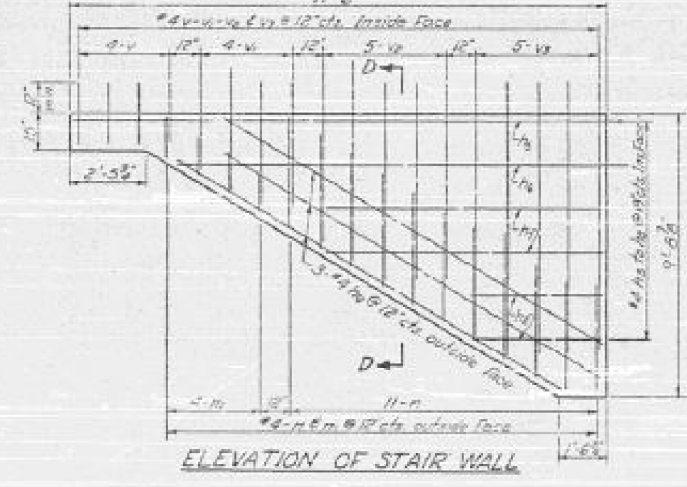
DANIEL SCHOOL UNDERPASS
GENERAL PLAN & ELEVATION
SBI R.I. SEC. 47K
VERMILION CO.
STA. 71+52.2

The as-built plans are for informational use only and not to be a representation of what is in the field. Some aspects have been modified since originally constructed

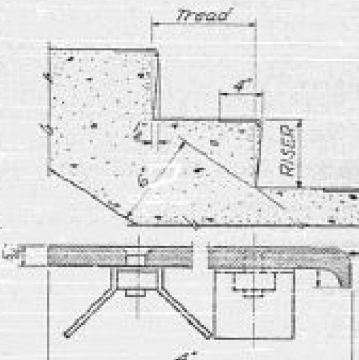


PLAN-W ENTRANCE

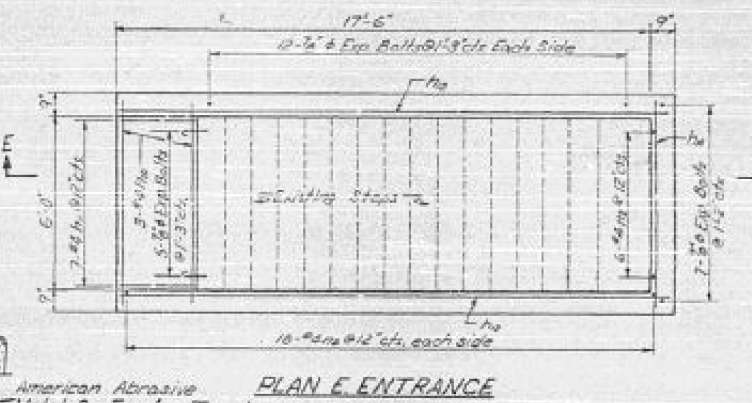
Notes: Stairs and stair walls shall be poured monolithically.



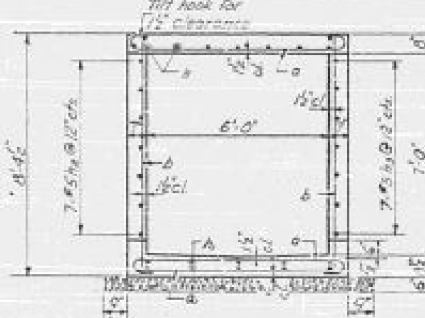
ELEVATION OF STAIR WALL



DETAILS OF STAIRS & TREAD TYPICAL



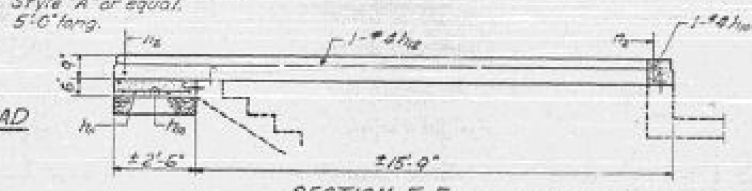
PLAN E ENTRANCE



SECTION A-A

A & B DIMENSIONS

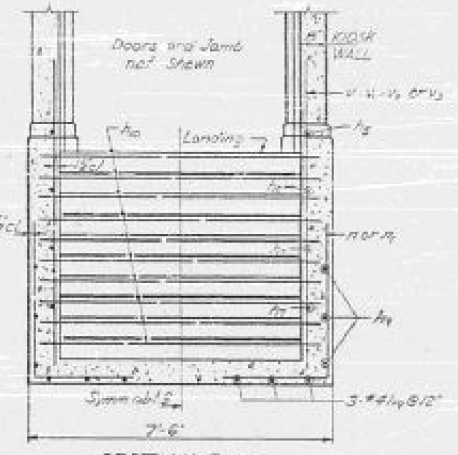
BAR	A	B
a	7'-0"	2'-0"
b	2'-0"	2'-0"
c	2'-6"	10'-0"
d	2'-6"	17'-0"
e	2'-6"	8'-6"
f	2'-0"	17'-9"
g	4'-0"	8'-6"
h	1'-6"	2'-6"
i	1'-9"	6"



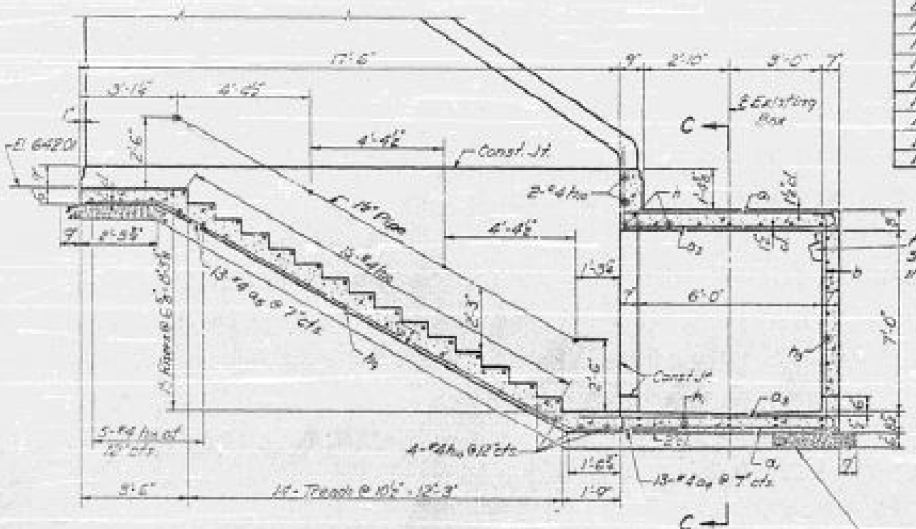
SECTION E-E

BILL OF MATERIAL-SUBSTRUCT.

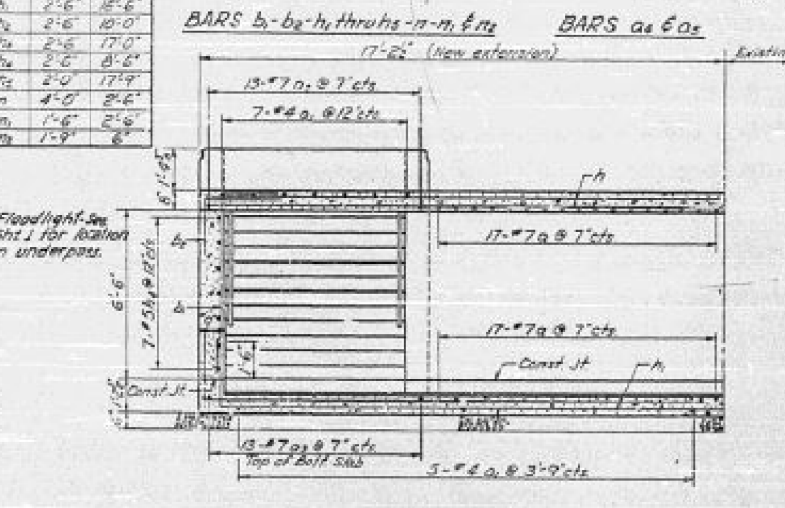
BAR	NO.	SIZE	LENGTH	WGT.
a	36	#4	6'-7"	
b	12	#4	6'-11"	
c	13	#7	10'-7"	
d	13	#7	9'-6"	
e	13	#4	5'-0"	
f	13	#4	4'-0"	
g	37	#3	8'-0"	
h	9	#4	9'-0"	
i	9	#4	4'-0"	
j	10	#6	7'-0"	
k	10	#5	19'-0"	
l	7	#5	15'-6"	
m	7	#5	15'-6"	
n	7	#5	11'-0"	
o	2	#2	19'-9"	
p	2	#2	15'-3"	
q	4	#4	9'-0"	
r	4	#4	8'-0"	
s	12	#4	14'-6"	
t	30	#2	7'-2"	
u	7	#2	2'-3"	
v	2	#4	18'-0"	
w	22	#4	6'-6"	
x	8	#4	4'-0"	
y	42	#4	2'-3"	
z	8	#4	2'-0"	
aa	3	#4	4'-3"	
ab	10	#2	2'-9"	
ac	10	#2	9'-3"	



SECTION D-D



SECTION B-B



SECTION C-C

DESIGNED *T. A. Lewis*
CHECKED *John N. Clark*
DRAWN *Thomas A. Lewis*
CHECKED *John N. Clark*

EXAMINED *[Signature]*
PASSED *[Signature]*
APPROVED *[Signature]*

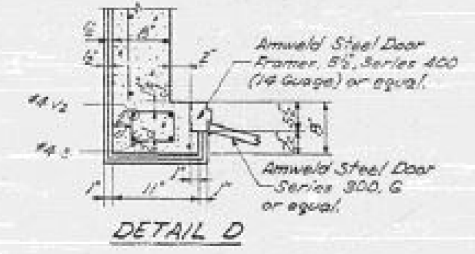
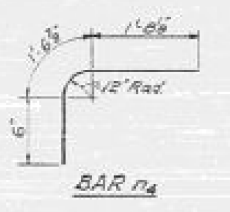
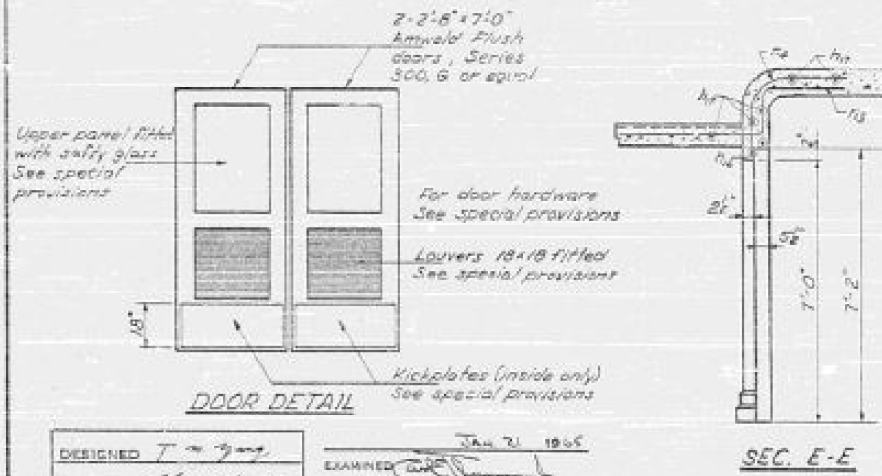
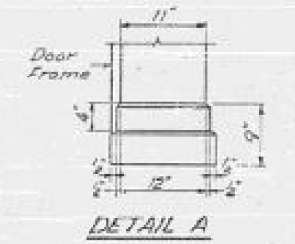
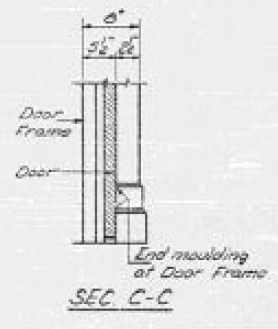
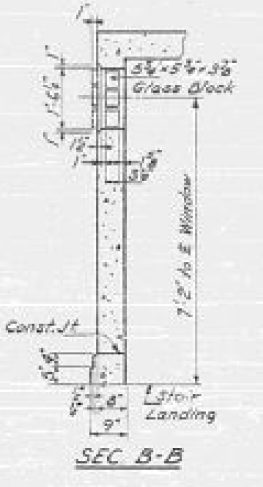
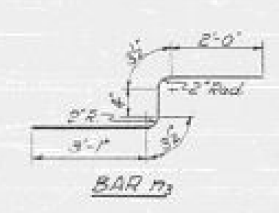
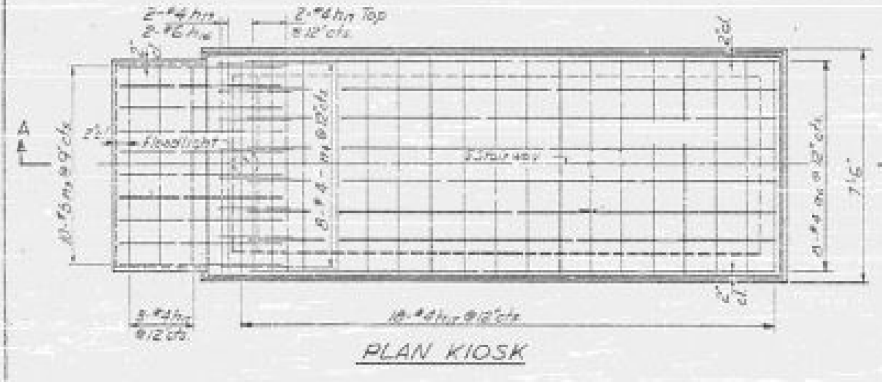
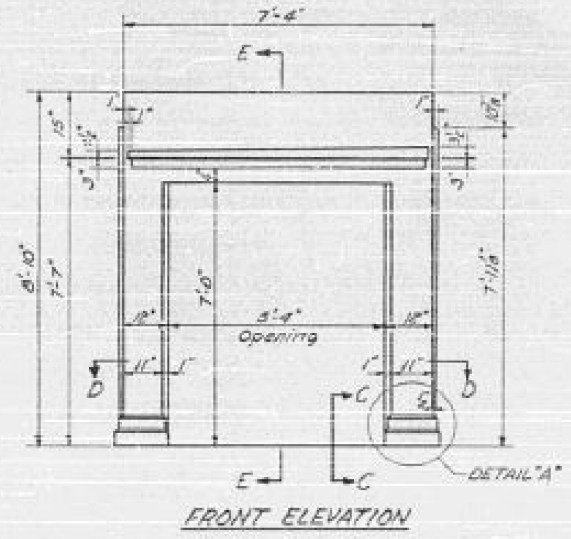
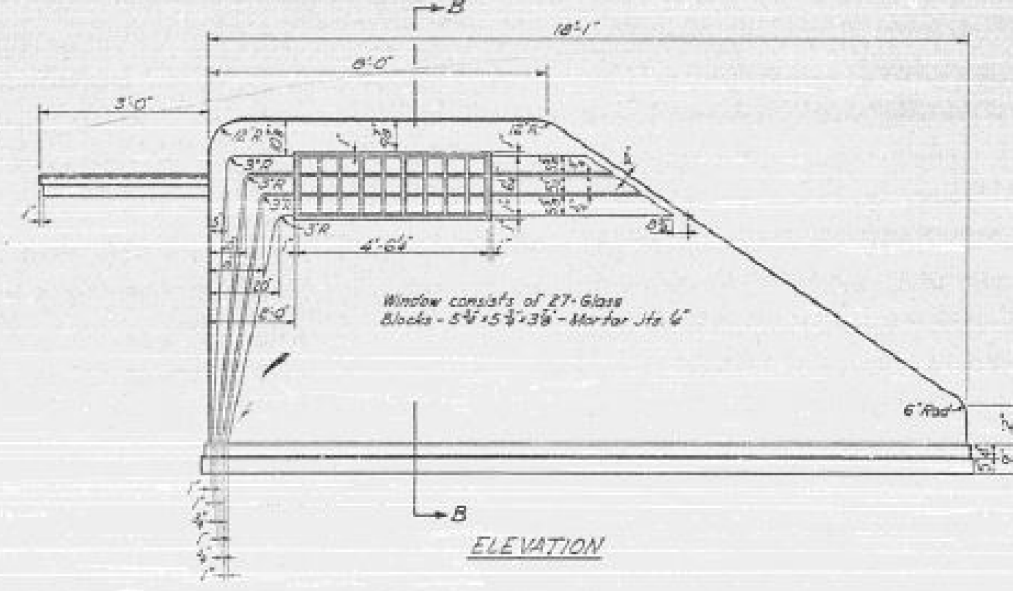
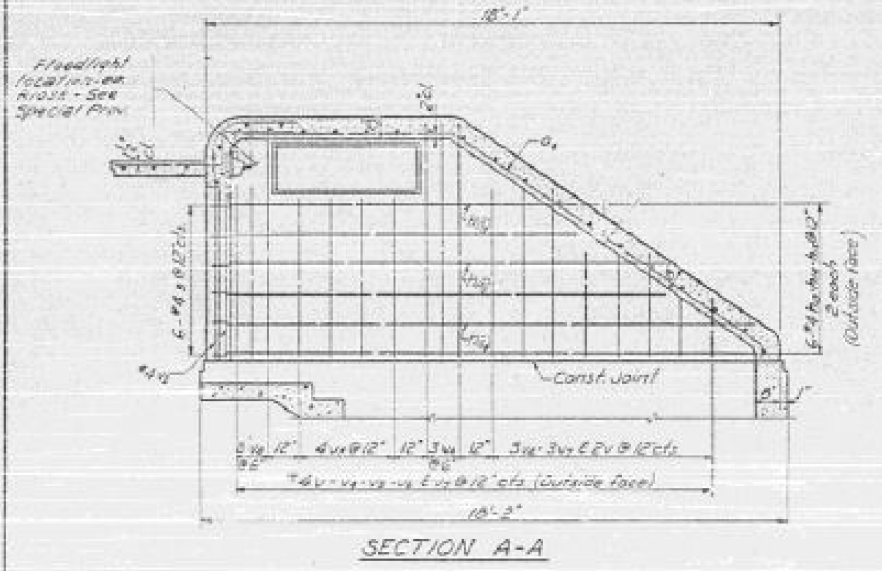
DATE: 2/1/1965

The as-built plans are for informational use only and not to be a representation of what is in the field. Some aspects have been modified since originally constructed

S.B. P. 1 SEC 47K
VERMILION CO.
STA. 71+52.2

STATE OF ILLINOIS
DEPARTMENT OF PUBLIC WORKS & BUILDINGS
DIVISION OF HIGHWAYS

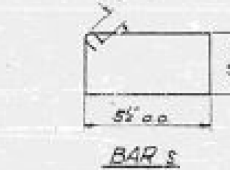
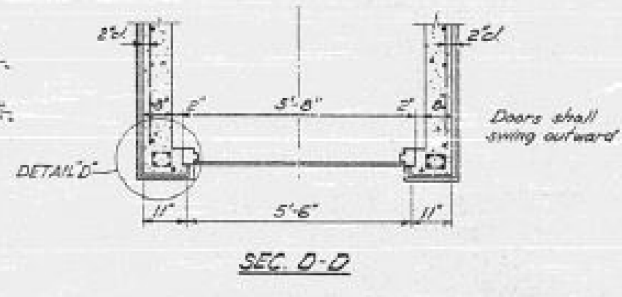
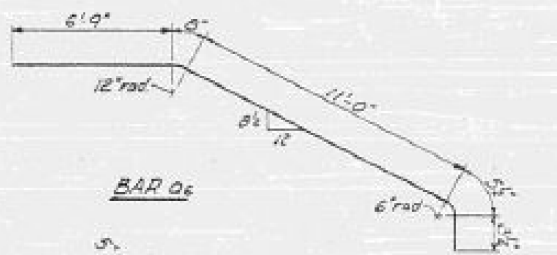
DATE	REVISION	BY	NO.	SHEET NO.
...	3



BILL OF MATERIAL-TWO KIOSKS

Bar No	Size	Length	Shape	Bar No	Size	Length	Shape
96	16	19'-2"		3	24	2'-6"	
n10	8	11'-0"		v	8	2'-0"	
n11	8	13'-9"		v1	16	6'-9"	
n12	8	16'-9"		v2	24	7'-9"	
n13	8	7'-0"		v3	18	5'-3"	
n14	50	7'-0"		v4	12	5'-9"	
n15	20	6'-0"		v5	12	3'-6"	
n16	16	3'-9"					

Class X Concrete Cu Yds 18.0
Reinforcement Bars Lbs. 1250
Glass Blocks Each 108



DESIGNED T. J. Grogan
CHECKED John W. Clark
DRAWN Thomas A. Lewis
CHECKED John W. Clark

EXAMINED [Signature]
PASSED [Signature]
APPROVED [Signature]

JAN 21 1965

The as-built plans are for informational use only and not to be a representation of what is in the field. Some aspects have been modified since originally constructed

KIOSK DETAILS
SBI PL 1 SEC. 47K
VERMILION COUNTY
STA. 71+52.2