

F.A.I. RTE.	SECTION	COUNTY	TOTAL SHEETS	SHEET NO.
**		VARIOUS	41	1
ILLINOIS			CONTRACT NO. 46386	

\*\* FAI 57 and FAI 64 \*D-9 OVD SIN STR REPL 16-28  
Jefferson Franklin

STATE OF ILLINOIS  
DEPARTMENT OF TRANSPORTATION  
DIVISION OF HIGHWAYS

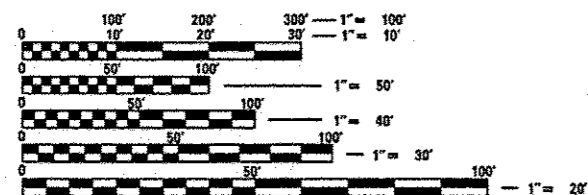
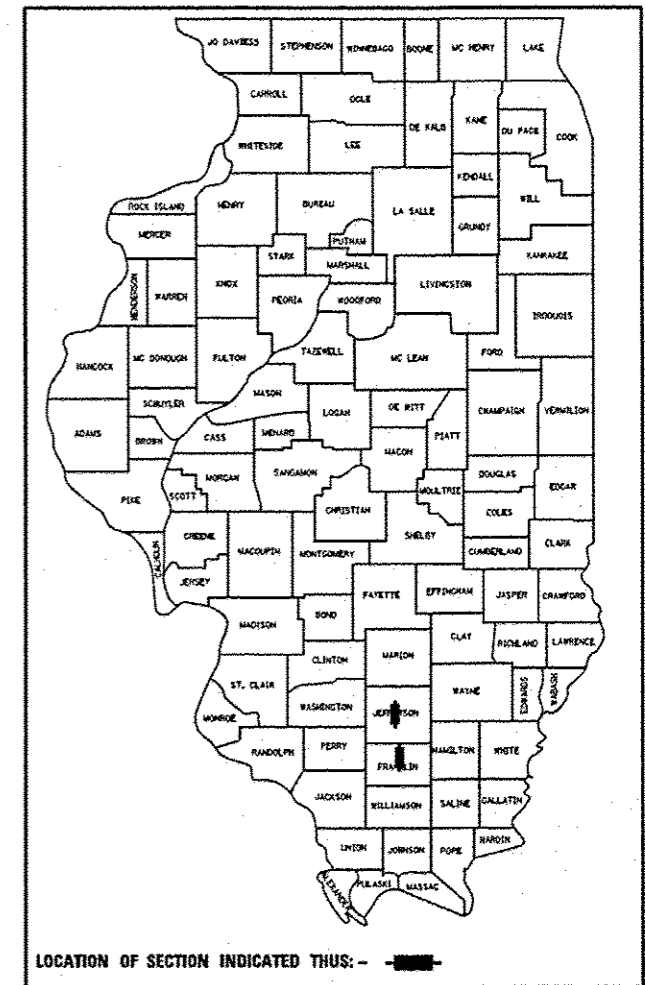
**PROPOSED  
HIGHWAY PLANS**

FAI I-57 (I-57) & FAI I-64 (I-64)  
SECTION D-9 OVD SIN STR REPL 16-28

**SIGN STRUCTURE REPAIR/REPLACEMENT  
JEFFERSON & FRANKLIN COUNTIES**

C-60-028-16

FOR INDEX OF SHEETS, SEE SHEET NO. 3

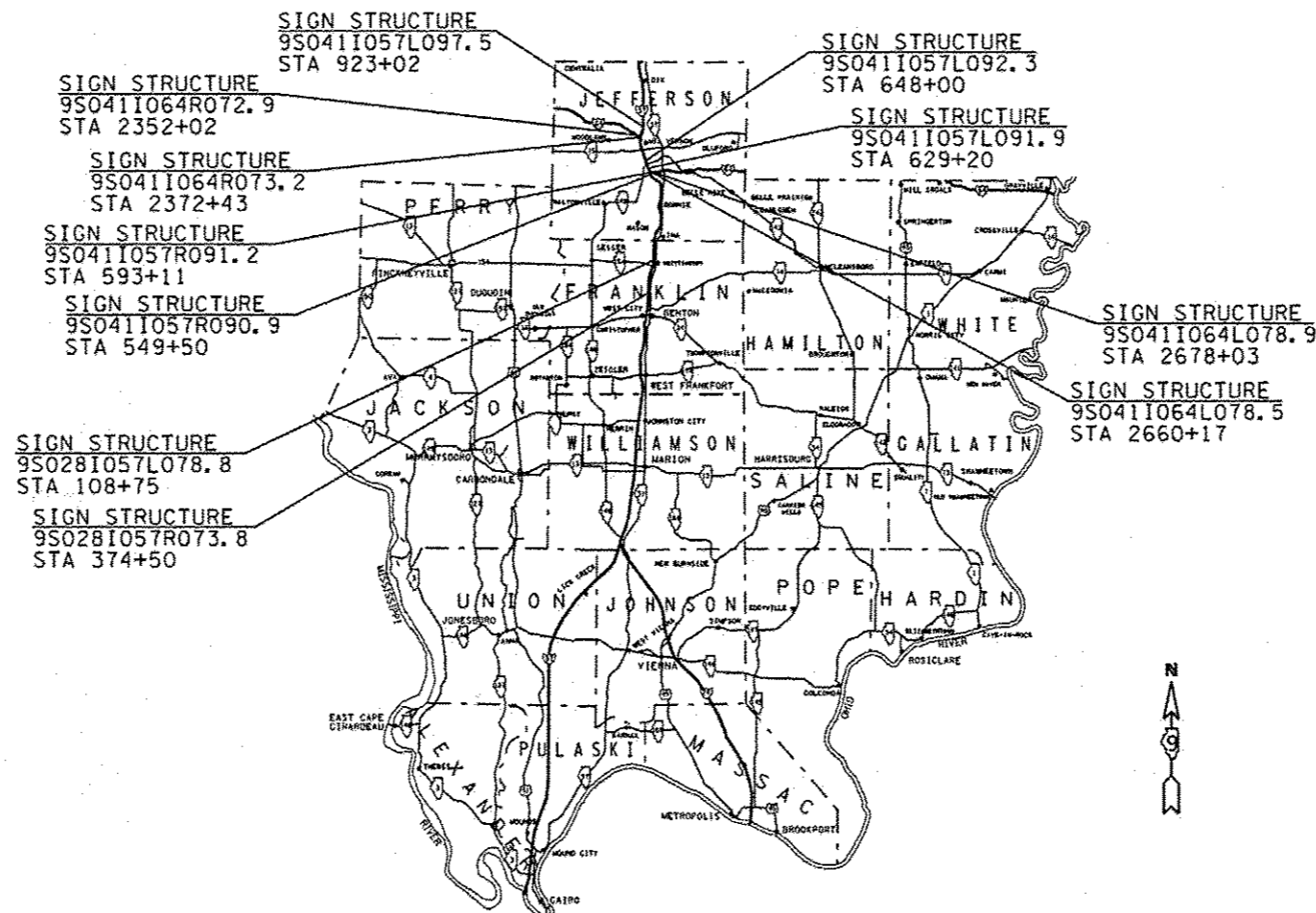


FULL SIZE PLANS HAVE BEEN PREPARED USING STANDARD ENGINEERING SCALES. REDUCED SIZED PLANS WILL NOT CONFORM TO STANDARD SCALES. IN MAKING MEASUREMENTS ON REDUCED PLANS, THE ABOVE SCALES MAY BE USED.

J.U.L.I.E.  
JOINT UTILITY LOCATION INFORMATION FOR EXCAVATION  
1-800-392-0123  
OR 811

PROJECT ENGINEER  
PROJECT MANAGER

CONTRACT NO 46386



GROSS LENGTH = 4489.3 FT. = 0.85 MILE  
NET LENGTH = 4489.3 FT. = 0.85 MILE

STATE OF ILLINOIS  
DEPARTMENT OF TRANSPORTATION  
DIVISION OF HIGHWAYS

SUBMITTED Jan 13 2017  
Ch. Elly  
DEPUTY DIRECTOR OF HIGHWAYS, ACTING ENGINEER OF OPERATIONS

Mar 12 2017  
Maureen M. Addis, P.E.  
ENGINEER OF DESIGN AND ENVIRONMENT

Mar 12 2017  
Joseph [Signature]  
DIRECTOR OF HIGHWAYS, CHIEF ENGINEER

**PRINTED BY THE AUTHORITY  
OF THE STATE OF ILLINOIS**

# INDEX OF SHEETS

SHEET NO	DESCRIPTION
1	COVER SHEET
<del>2</del>	<del>SIGNATURE SHEET</del>
3	INDEX OF SHEETS, GENERAL NOTES STANDARDS, PROJECT OVERVIEW
4-6	SUMMARY OF QUANTITIES
7-11	SUMMARY OF QUANTITIES - BY STRUCTURE
12	GUARDRAIL SCHEDULE
13	SEEDING & EROSION CONTROL SCHEDULE
14-22	SIGN STRUCTURE PLAN SHEETS
23-32	SIGN DETAILS
33-41	SOIL BORINGS

# PROJECT OVERVIEW

**	STRUCTURE	EXIST STATION	STRUCTURE LOCATION	TREATMENT - REASON	STRUCTURE TYPE	TRUSS TYPE
1	9S0411057R090.9	549+50.00	NB I-57 TO NB I-57 (WB I-64) & EB I-64	FULL REPLACEMENT - AGE	TRUSS	I-A
2	9S0411057R091.2	593+10.00	NB I-57 TO NB I-57 (WB I-64) & EB I-64	FULL REPLACEMENT - AGE	TRUSS	II-A
3	9S0411057L091.9	629+20.00	SB I-57/EB I-64 TO SB I-57 & EB I-64	FULL REPLACEMENT - AGE	TRUSS	II-A
4	9S0411057L097.5	923+02.00	SB I-57 TO WB I-64 & SB I-57/EB I-64	FULL REPLACEMENT - AGE	TRUSS	I-A
5	9S0411064R072.9	2352+02.00	EB I-64 TO NB I-57 & SB I-57/EB I-64	FULL REPLACEMENT - AGE	TRUSS	I-A
6	9S0411064R073.2	2372+43.00	EB I-64 TO NB I-57 & SB I-57/EB I-64	FULL REPLACEMENT - AGE	TRUSS	II-A
7	9S0411064L078.5	2660+17.00	WB I-64 TO SB I-57 & NB I-57/WB I-64	FULL REPLACEMENT - AGE	TRUSS	II-A
8	9S0411064L078.9	2678+03.00	WB I-64 TO SB I-57 & NB I-57/WB I-64	FULL REPLACEMENT - AGE	TRUSS	I-A
9	9S0411057L092.3	648+00.00	SB I-57/EB I-64 TO SB I-57 & EB I-64	FULL REPLACEMENT - COST EFFECTIVENESS	TRUSS	II-A
10	9S0281057R073.8	374+50.00	NB I-57 REST AREA - FRANKLIN CO	REMOVE AND REPLACE SIGN PANEL DISCONNECT LIGHTING REMOVE GROUT AND DRILL WEEP HOLES AT BASE OF COLUMN TO DRAIN TRAPPED MOISTURE AS DIRECTED BY THE ENGINEER RE-ATTACH UPPER ACCESS PLATE.	CANTILEVER	
11	9S0281057L078.8	108+75.00	SB I-57 REST AREA - FRANKLIN CO	REMOVE AND REPLACE BOTH SIGN PANELS DISCONNECT LIGHTING REMOVE GROUT CLEAN AND COLD GALVANIZE ANCHOR BOLTS	TRUSS	I-A

# GENERAL NOTES

EXISTING STATE-OWNED AND MAINTAINED UTILITY ARE PRESENT AT THE LOCATIONS. THE CONTRACTOR SHALL NOTIFY THE DISTRICT OPERATIONS ENGINEER TWO WEEKS PRIOR TO COMMENCING ANY EXCAVATION IN THE VICINITY OF THESE LINES. THE STATE WILL THEN LOCATE AND MARK THE HORIZONTAL LOCATIONS OF THE LINES AND PROVIDE ANY AVAILABLE INFORMATION AS TO THEIR DEPTH. SHOULD ANY OF THE LINES BE DAMAGED BY THE CONTRACTOR'S OPERATION, THE CONTRACTOR SHALL REPAIR THEM TO THE SATISFACTION OF THE ENGINEER AND AT NO COST TO THE STATE.

ALSO THERE MAY BE UTILITIES PRESENT WHICH WERE INSTALLED BY THE STATE BUT ARE MAINTAINED BY OTHERS (CITY, TOWN, ETC.). THE CONTRACTOR SHALL COORDINATE THE LOCATING OF THESE LINES WITH THE LOCAL AGENCY PRIOR TO COMMENCING ANY EXCAVATION OR BORING IN THEIR VICINITY. SHOULD THESE LINES BE DAMAGED BY THE CONTRACTOR'S OPERATIONS, THE CONTRACTOR SHALL REPAIR THEM TO THE SATISFACTION OF, AND AT NO COST TO, THE LOCAL AGENCY AND THE STATE.

FINAL GRADING SHALL BE DONE BY HAND AROUND ANY NATURAL OR MAN-MADE OBJECTS WHERE SHALLOW FILLS OR CUTS ARE ADJACENT TO THE ITEMS. IT IS THE INTENT THAT THE LIMITS OF CONSTRUCTION BE SUCH AS TO PRESERVE IN THE ORIGINAL STATE AS MUCH AREA OF TEMPORARY EASEMENTS AS POSSIBLE. THE DECISION AS TO ITEMS TO REMAIN IN PLACE SHALL BE AS DIRECTED BY THE ENGINEER. THIS WORK WILL NOT BE PAID FOR SEPARATELY, BUT SHALL BE CONSIDERED INCLUDED IN THE ASSOCIATED PAY ITEMS FOR SIGN TRUSS REPLACEMENT WITH NO ADDITIONAL COMPENSATION ALLOWED.

# HIGHWAY STANDARDS

- 000001-06 Standard Symbols Abbreviations & Patterns
- 001001-02 Areas of Reinf Rebars
- 001006 Decimal of Inch & Foot
- 630001-11 Steel Plate Beam Guardrail
- 630301-07 Shld Widen For Type 1 Guardrail Terms
- 631011-10 Traf Bar Term Type 2
- 635001-02 Delineators
- 701101-05 Off Rd Op - Multi Ln - Less Than 15 ft To EOP
- 701106-02 Off Rd Op - Multi Ln - More Than 15 ft Away
- 701400-09 Apprch To Ln Closure - Frwy Expwy
- 701401-10 Ln Closure Frwy Expwy
- 701446-08 Two Ln Closure - Frwy Expwy
- 701901-06 Traf Cntrl Devices
- 720021-02 Sign Panels - Extruded Alum Type
- 725001-01 Object and Terminal Markers
- 782006 Guardrail and Barrier Wall Reflector Mounting Details

REV.

FILE NAME =	USER NAME = Leftwihnd	DESIGNED -	REVISED -	<b>STATE OF ILLINOIS DEPARTMENT OF TRANSPORTATION</b>	SCALE: SHEET OF SHEETS STA. TO STA.	F.A.I. RTE.	SECTION	COUNTY	TOTAL SHEETS	SHEET NO.
per\\L084EBIDINTEG\illinois.gov\FWIDOT\Documents\DOT_Offices\District 9\Projects\sign	DRAWN - os\CADData\46386\CADData\CADsh	CHECKED -	REVISED -			**	*	VARIOUS	41	3
Defaults	PLOT SCALE = 200.0000' / in.	DATE -	REVISED -					CONTRACT NO. 46386		
	PLOT DATE = 12/13/2016							ILLINOIS FED. AID PROJECT		

# SUMMARY OF QUANTITIES

100 %  
STATE

COUNTY:	Jefferson	Jefferson	Franklin
ROUTE:	FAI 57 ✓	FAI 64 ✓	FAI 57 ✓
FUNDING:			
LOCATION:	RURAL ✓	RURAL ✓	RURAL ✓
TOTAL QUANTITY	ROADWAY 0021 ✓	ROADWAY 0021 ✓	ROADWAY 0021 ✓

CODE NUMBER	ITEM DESCRIPTION	UNIT	TOTAL QUANTITY	Jefferson ROADWAY 0021 ✓	Jefferson ROADWAY 0021 ✓	Franklin ROADWAY 0021 ✓
X7010216	TRAFFIC CONTROL AND PROTECTION, (SPECIAL)	LSUM	1.00	0.56	0.44	
X7330070	OVERHEAD SIGN SUPPORT GROUT REPAIR	EACH	4			4
X8040310	ELECTRICAL SERVICE DISCONNECT	EACH	5	1	2	2
Z0013798	CONSTRUCTION LAYOUT	LSUM	1.0	0.6	0.4	0.0
Z0077598	DRILL WEEP HOLE	EACH	1			1
20400800	FURNISHED EXCAVATION	CU YD	25	10	15	
50200400	ROCK EXCAVATION FOR STRUCTURES	CU YD	36	24	12	
* 63000001	STEEL PLATE BEAM GUARDRAIL, TYPE A, 6 FOOT POSTS	FOOT	575	300	275	
* 63100045	TRAFFIC BARRIER TERMINAL, TYPE 2	EACH	2	2	0	
* 63100167	TRAFFIC BARRIER TERMINAL, TYPE 1 (SPECIAL) TANGENT	EACH	1	1	0	
63200310	GUARDRAIL REMOVAL	FOOT	288	163	125	
* 63301210	REMOVE AND REERECT STEEL PLATE BEAM GUARDRAIL, TYPE A	FOOT	75	25	50	

\* SPECIALTY ITEM

# SUMMARY OF QUANTITIES - CONT

100 %  
STATE

COUNTY:	Jefferson	Jefferson	Franklin
ROUTE:	FAI 57	FAI 64	FAI 57
FUNDING:			
LOCATION:	RURAL	RURAL	RURAL
TOTAL QUANTITY	ROADWAY 0021	ROADWAY 0021	ROADWAY 0021

CODE NUMBER	ITEM DESCRIPTION	UNIT	TOTAL QUANTITY	Jefferson ROADWAY 0021	Jefferson ROADWAY 0021	Franklin ROADWAY 0021
* 63301990	REMOVE AND REERECT TRAFFIC BARRIER TERMINALS, TYPE 1	EACH	4	1	3	
* 63302000	REMOVE AND REERECT TRAFFIC BARRIER TERMINALS, TYPE 2	EACH	19	10	9	
67100100	MOBILIZATION	LSUM	1.0	0.5	0.4	0.1
70100205	TRAFFIC CONTROL AND PROTECTION, STANDARD 701401	EACH	11	5	4	2
X7015005	CHANGEABLE MESSAGE SIGN	CAL PA	75	45	30	
70200100	NIGHTTIME WORK ZONE LIGHTING	LSUM	1.0	0.5	0.4	0.1
72000300	SIGN PANEL - TYPE 3	SQ FT	3,900	1,931	1,769	200
72400330	REMOVE SIGN PANEL - TYPE 3	SQ FT	264			264
72501000	TERMINAL MARKER - DIRECT APPLIED	EACH	1	1	0	
73300100	OVERHEAD SIGN STRUCTURE - SPAN, TYPE I-A (4'-0" X 4'-6")	FOOT	352	176	176	
73300200	OVERHEAD SIGN STRUCTURE - SPAN, TYPE II-A (4'-6" X 5'-3")	FOOT	526	317	209	
* 73400200	DRILLED SHAFT CONCRETE FOUNDATIONS	CU YD	212.1	115.4	96.7	

12

\* SPECIALTY ITEM

REV

# SUMMARY OF QUANTITIES - CONT

100 %  
STATE

CODE NUMBER	ITEM DESCRIPTION	UNIT	TOTAL QUANTITY	COUNTY:	Jefferson	Jefferson	Franklin
				ROUTE:	FAI 57	FAI 64	FAI 57
				FUNDING:			
				LOCATION:	RURAL	RURAL	RURAL
					ROADWAY	ROADWAY	ROADWAY
					0021	0021	0021
73600100	REMOVE OVERHEAD SIGN STRUCTURE - SPAN	EACH	9		5	4	
73700300	REMOVE CONCRETE FOUNDATION - OVERHEAD	EACH	18		10	8	
78200006	GUARDRAIL REFLECTORS, TYPE B	EACH	5		5	0	
80300100	LOCATING UNDERGROUND CABLE	FOOT	360		200	160	
84200600	REMOVAL OF LIGHTING UNIT, NO SALVAGE	EACH	3				3

SN: 9S041I057R090.9      District: D9      County: Jefferson      Route: NB I-57      MilePost: 90.9

CODE NUMBER	PAY ITEM DESCRIPTION	UNIT	ABBREVIATION	QUANTITY
X7010216	TRAFFIC CONTROL AND PROTECTION, (SPECIAL)	LSUM	TC-PROT SPL	0.11
X8040310	ELECTRICAL SERVICE DISCONNECT	EACH	ELECT SERV DISCONNECT	0
Z0013798	CONSTRUCTION LAYOUT	LSUM	CONSTRUCTION LAYOUT	0.11
20400800	FURNISHED EXCAVATION	CU YD	FURNISHED EXCAVATION	0
50200400	ROCK EXCAVATION FOR STRUCTURES	CU YD	ROCK EXC STRUCT	1.0
63000001	STEEL PLATE BEAM GUARDRAIL, TYPE A, 6 FOOT POSTS	FOOT	SPBGR TY A 6FT POSTS	50
63100045	TRAFFIC BARRIER TERMINAL, TYPE 2	EACH	TRAF BAR TERM T2	0
63100167	TRAFFIC BARRIER TERMINAL, TYPE 1 (SPECIAL) TANGENT	EACH	TR BAR TRM T1 SPL TAN	0
63200310	GUARDRAIL REMOVAL	FOOT	GUARDRAIL REMOV	0
63301210	REMOVE AND REERECT STEEL PLATE BEAM GUARDRAIL, TYPE A	FOOT	REM RE-E SPBGR TY A	0
63301990	REMOVE AND REERECT TRAFFIC BARRIER TERMINALS, TYPE 1	EACH	REM RE-E T B TERM T1	0
63302000	REMOVE AND REERECT TRAFFIC BARRIER TERMINALS, TYPE 2	EACH	REM RE-E T B TERM T2	2
67100100	MOBILIZATION	LSUM	MOBILIZATION	0.10
70100205	TRAFFIC CONTROL AND PROTECTION, STANDARD 701401	EACH	TRAF CONT-PROT 701401	1
70106800	CHANGEABLE MESSAGE SIGN	CAL MO	CHANGEABLE MESSAGE SN	0.25
70200100	NIGHTTIME WORK ZONE LIGHTING	LSUM	NIGHT WORK ZONE LIGHT	0.10
72000300	SIGN PANEL - TYPE 3	SQ FT	SIGN PANEL T3	389
72501000	TERMINAL MARKER - DIRECT APPLIED	EACH	TERMINAL MARKER - DA	0
73300100	OVERHEAD SIGN STRUCTURE - SPAN, TYPE I-A (4'-0" X 4'-6")	FOOT	OVHD SIN STR-SPAN T1A	88
73400200	DRILLED SHAFT CONCRETE FOUNDATIONS	CU YD	DRILL SHAFT CONC FDN	20.2
73600100	REMOVE OVERHEAD SIGN STRUCTURE - SPAN	EACH	REMOV OH SIN STR-SPAN	1
73700300	REMOVE CONCRETE FOUNDATION - OVERHEAD	EACH	REM CONC FDN-OVHD	2
78200006	GUARDRAIL REFLECTORS, TYPE B	EACH	GRDRAIL REF TYPE B	0
80300100	LOCATING UNDERGROUND CABLE	FOOT	LOCATE UNDERGR CABLE	40

SN: 9S041I057R091.2      District: D9      County: Jefferson      Route: NB I-57      MilePost: 91.2

CODE NUMBER	PAY ITEM DESCRIPTION	UNIT	ABBREVIATION	QUANTITY
X7010216	TRAFFIC CONTROL AND PROTECTION, (SPECIAL)	LSUM	TC-PROT SPL	0.11
X8040310	ELECTRICAL SERVICE DISCONNECT	EACH	ELECT SERV DISCONNECT	0
Z0013798	CONSTRUCTION LAYOUT	LSUM	CONSTRUCTION LAYOUT	0.11
20400800	FURNISHED EXCAVATION	CU YD	FURNISHED EXCAVATION	0
50200400	ROCK EXCAVATION FOR STRUCTURES	CU YD	ROCK EXC STRUCT	8.0
63000001	STEEL PLATE BEAM GUARDRAIL, TYPE A, 6 FOOT POSTS	FOOT	SPBGR TY A 6FT POSTS	0
63100045	TRAFFIC BARRIER TERMINAL, TYPE 2	EACH	TRAF BAR TERM T2	0
63100167	TRAFFIC BARRIER TERMINAL, TYPE 1 (SPECIAL) TANGENT	EACH	TR BAR TRM T1 SPL TAN	0
63200310	GUARDRAIL REMOVAL	FOOT	GUARDRAIL REMOV	50
63301210	REMOVE AND REERECT STEEL PLATE BEAM GUARDRAIL, TYPE A	FOOT	REM RE-E SPBGR TY A	0
63301990	REMOVE AND REERECT TRAFFIC BARRIER TERMINALS, TYPE 1	EACH	REM RE-E T B TERM T1	0
63302000	REMOVE AND REERECT TRAFFIC BARRIER TERMINALS, TYPE 2	EACH	REM RE-E T B TERM T2	2
67100100	MOBILIZATION	LSUM	MOBILIZATION	0.10
70100205	TRAFFIC CONTROL AND PROTECTION, STANDARD 701401	EACH	TRAF CONT-PROT 701401	1
70106800	CHANGEABLE MESSAGE SIGN	CAL MO	CHANGEABLE MESSAGE SN	0.25
70200100	NIGHTTIME WORK ZONE LIGHTING	LSUM	NIGHT WORK ZONE LIGHT	0.10
72000300	SIGN PANEL - TYPE 3	SQ FT	SIGN PANEL T3	438
72501000	TERMINAL MARKER - DIRECT APPLIED	EACH	TERMINAL MARKER - DA	0
73300200	OVERHEAD SIGN STRUCTURE - SPAN, TYPE II-A (4'-6" X 5'-3")	FOOT	OVHD SIN STR-SPAN T2A	104
73400200	DRILLED SHAFT CONCRETE FOUNDATIONS	CU YD	DRILL SHAFT CONC FDN	24.3
73600100	REMOVE OVERHEAD SIGN STRUCTURE - SPAN	EACH	REMOV OH SIN STR-SPAN	1
73700300	REMOVE CONCRETE FOUNDATION - OVERHEAD	EACH	REM CONC FDN-OVHD	2
78200006	GUARDRAIL REFLECTORS, TYPE B	EACH	GRDRAIL REF TYPE B	0
80300100	LOCATING UNDERGROUND CABLE	FOOT	LOCATE UNDERGR CABLE	40

FILE NAME =	USER NAME = Leftwichd	DESIGNED -	REVISED -	<b>STATE OF ILLINOIS DEPARTMENT OF TRANSPORTATION</b>	SCALE:      SHEET      OF      SHEETS      STA.      TO      STA.	F.A.I. RE.	SECTION	COUNTY	TOTAL SHEETS	SHEET NO.
pw:\IL\084EBIDINTEG.illinois.gov\PIWIDOT\Documents\DOT Offices\District 9\Projects\sig	DRWN	REVISED	REVISED			•	•	VARIOUS	41	7
Default	PLOT SCALE = 200.0000' / in.	CHECKED -	REVISED -			CONTRACT NO. 46386				
	PLOT DATE = 12/13/2016	DATE -	REVISED -			ILLINOIS FED. AID PROJECT				

SN: 9S041I057L091.9      District: D9      County: Jefferson      Route: SB I-57      MilePost: 91.9

CODE NUMBER	PAY ITEM DESCRIPTION	UNIT	ABBREVIATION	QUANTITY
X7010216	TRAFFIC CONTROL AND PROTECTION, (SPECIAL)	LSUM	TC-PROT SPL	0.11
X8040310	ELECTRICAL SERVICE DISCONNECT	EACH	ELECT SERV DISCONNECT	1
Z0013798	CONSTRUCTION LAYOUT	LSUM	CONSTRUCTION LAYOUT	0.12
20400800	FURNISHED EXCAVATION	CU YD	FURNISHED EXCAVATION	0
50200400	ROCK EXCAVATION FOR STRUCTURES	CU YD	ROCK EXC STRUCT	12.0
63000001	STEEL PLATE BEAM GUARDRAIL, TYPE A, 6 FOOT POSTS	FOOT	SPBGR TY A 6FT POSTS	0
63100045	TRAFFIC BARRIER TERMINAL, TYPE 2	EACH	TRAF BAR TERM T2	1
63100167	TRAFFIC BARRIER TERMINAL, TYPE 1 (SPECIAL) TANGENT	EACH	TR BAR TRM T1 SPL TAN	0
63200310	GUARDRAIL REMOVAL	FOOT	GUARDRAIL REMOV	63
63301210	REMOVE AND REERECT STEEL PLATE BEAM GUARDRAIL, TYPE A	FOOT	REM RE-E SPBGR TY A	0
63301990	REMOVE AND REERECT TRAFFIC BARRIER TERMINALS, TYPE 1	EACH	REM RE-E T B TERM T1	0
63302000	REMOVE AND REERECT TRAFFIC BARRIER TERMINALS, TYPE 2	EACH	REM RE-E T B TERM T2	1
67100100	MOBILIZATION	LSUM	MOBILIZATION	0.10
70100205	TRAFFIC CONTROL AND PROTECTION, STANDARD 701401	EACH	TRAF CONT-PROT 701401	1
70106800	CHANGEABLE MESSAGE SIGN	CAL MO	CHANGEABLE MESSAGE SN	0.25
70200100	NIGHTTIME WORK ZONE LIGHTING	LSUM	NIGHT WORK ZONE LIGHT	0.10
72000300	SIGN PANEL - TYPE 3	SQ FT	SIGN PANEL T3	466
72501000	TERMINAL MARKER - DIRECT APPLIED	EACH	TERMINAL MARKER - DA	0
73300200	OVERHEAD SIGN STRUCTURE - SPAN, TYPE II-A (4' -6" X 5' -3")	FOOT	OVHD SIN STR-SPAN T2A	113
73400200	DRILLED SHAFT CONCRETE FOUNDATIONS	CU YD	DRILL SHAFT CONC FDN	24.2
73600100	REMOVE OVERHEAD SIGN STRUCTURE - SPAN	EACH	REMOV OH SIN STR-SPAN	1
73700300	REMOVE CONCRETE FOUNDATION - OVERHEAD	EACH	REM CONC FDN-OVHD	2
78200006	GUARDRAIL REFLECTORS, TYPE B	EACH	GRDRAIL REF TYPE B	0
80300100	LOCATING UNDERGROUND CABLE	FOOT	LOCATE UNDERGR CABLE	40

SN: 9S041I057L097.5      District: D9      County: Jefferson      Route: SB I-57      MilePost: 97.5

CODE NUMBER	PAY ITEM DESCRIPTION	UNIT	ABBREVIATION	QUANTITY
X7010216	TRAFFIC CONTROL AND PROTECTION, (SPECIAL)	LSUM	TC-PROT SPL	0.11
X8040310	ELECTRICAL SERVICE DISCONNECT	EACH	ELECT SERV DISCONNECT	0
Z0013798	CONSTRUCTION LAYOUT	LSUM	CONSTRUCTION LAYOUT	0.11
20400800	FURNISHED EXCAVATION	CU YD	FURNISHED EXCAVATION	0
50200400	ROCK EXCAVATION FOR STRUCTURES	CU YD	ROCK EXC STRUCT	0.0
63000001	STEEL PLATE BEAM GUARDRAIL, TYPE A, 6 FOOT POSTS	FOOT	SPBGR TY A 6FT POSTS	50
63100045	TRAFFIC BARRIER TERMINAL, TYPE 2	EACH	TRAF BAR TERM T2	0
63100167	TRAFFIC BARRIER TERMINAL, TYPE 1 (SPECIAL) TANGENT	EACH	TR BAR TRM T1 SPL TAN	0
63200310	GUARDRAIL REMOVAL	FOOT	GUARDRAIL REMOV	25
63301210	REMOVE AND REERECT STEEL PLATE BEAM GUARDRAIL, TYPE A	FOOT	REM RE-E SPBGR TY A	0
63301990	REMOVE AND REERECT TRAFFIC BARRIER TERMINALS, TYPE 1	EACH	REM RE-E T B TERM T1	0
63302000	REMOVE AND REERECT TRAFFIC BARRIER TERMINALS, TYPE 2	EACH	REM RE-E T B TERM T2	3
67100100	MOBILIZATION	LSUM	MOBILIZATION	0.10
70100205	TRAFFIC CONTROL AND PROTECTION, STANDARD 701401	EACH	TRAF CONT-PROT 701401	1
70106800	CHANGEABLE MESSAGE SIGN	CAL MO	CHANGEABLE MESSAGE SN	0.50
70200100	NIGHTTIME WORK ZONE LIGHTING	LSUM	NIGHT WORK ZONE LIGHT	0.10
72000300	SIGN PANEL - TYPE 3	SQ FT	SIGN PANEL T3	181
72501000	TERMINAL MARKER - DIRECT APPLIED	EACH	TERMINAL MARKER - DA	0
73300100	OVERHEAD SIGN STRUCTURE - SPAN, TYPE I-A (4' -0" X 4' -6")	FOOT	OVHD SIN STR-SPAN T1A	88
73400200	DRILLED SHAFT CONCRETE FOUNDATIONS	CU YD	DRILL SHAFT CONC FDN	22.4
73600100	REMOVE OVERHEAD SIGN STRUCTURE - SPAN	EACH	REMOV OH SIN STR-SPAN	1
73700300	REMOVE CONCRETE FOUNDATION - OVERHEAD	EACH	REM CONC FDN-OVHD	2
78200006	GUARDRAIL REFLECTORS, TYPE B	EACH	GRDRAIL REF TYPE B	0
80300100	LOCATING UNDERGROUND CABLE	FOOT	LOCATE UNDERGR CABLE	40

FILE NAME =	USER NAME = Leftwichd	DESIGNED -	REVISED -	<b>STATE OF ILLINOIS DEPARTMENT OF TRANSPORTATION</b>	SCALE:      SHEET      OF      SHEETS      STA.      TO      STA.	F.A.I. RE.	SECTION	COUNTY	TOTAL SHEETS	SHEET NO.
pw:\IL084EBIDINTEG.illinois.gov\PIWIDOT\Documents\DOT Offices\District 9\Projects\sig	DRWN	REVISED	REVISED			•	•	VARIOUS	41	8
Default	PLOT SCALE = 200.0000' / in.	CHECKED -	REVISED -			CONTRACT NO. 46386				
	PLOT DATE = 12/13/2016	DATE -	REVISED -			ILLINOIS FED. AID PROJECT				

SN: 9S041I064R072.9 District: D9 County: Jefferson Route: EB I-64 MilePost: 72.9

CODE NUMBER	PAY ITEM DESCRIPTION	UNIT	ABBREVIATION	QUANTITY
X7010216	TRAFFIC CONTROL AND PROTECTION, (SPECIAL)	LSUM	TC-PROT SPL	0.11
X8040310	ELECTRICAL SERVICE DISCONNECT	EACH	ELECT SERV DISCONNECT	0
Z0013798	CONSTRUCTION LAYOUT	LSUM	CONSTRUCTION LAYOUT	0.11
20400800	FURNISHED EXCAVATION	CU YD	FURNISHED EXCAVATION	10
50200400	ROCK EXCAVATION FOR STRUCTURES	CU YD	ROCK EXC STRUCT	0.0
63000001	STEEL PLATE BEAM GUARDRAIL, TYPE A, 6 FOOT POSTS	FOOT	SPBGR TY A 6FT POSTS	275
63100045	TRAFFIC BARRIER TERMINAL, TYPE 2	EACH	TRAF BAR TERM T2	0
63100167	TRAFFIC BARRIER TERMINAL, TYPE 1 (SPECIAL) TANGENT	EACH	TR BAR TRM T1 SPL TAN	0
63200310	GUARDRAIL REMOVAL	FOOT	GUARDRAIL REMOV	0
63301210	REMOVE AND REERECT STEEL PLATE BEAM GUARDRAIL, TYPE A	FOOT	REM RE-E SPBGR TY A	25
63301990	REMOVE AND REERECT TRAFFIC BARRIER TERMINALS, TYPE 1	EACH	REM RE-E T B TERM T1	2
63302000	REMOVE AND REERECT TRAFFIC BARRIER TERMINALS, TYPE 2	EACH	REM RE-E T B TERM T2	3
67100100	MOBILIZATION	LSUM	MOBILIZATION	0.10
70100205	TRAFFIC CONTROL AND PROTECTION, STANDARD 701401	EACH	TRAF CONT-PROT 701401	1
70106800	CHANGEABLE MESSAGE SIGN	CAL MO	CHANGEABLE MESSAGE SN	0.25
70200100	NIGHTTIME WORK ZONE LIGHTING	LSUM	NIGHT WORK ZONE LIGHT	0.10
72000300	SIGN PANEL - TYPE 3	SQ FT	SIGN PANEL T3	342
72501000	TERMINAL MARKER - DIRECT APPLIED	EACH	TERMINAL MARKER - DA	0
73300100	OVERHEAD SIGN STRUCTURE - SPAN, TYPE I-A (4'-0" X 4'-6")	FOOT	OVHD SIN STR-SPAN T1A	88
73400200	DRILLED SHAFT CONCRETE FOUNDATIONS	CU YD	DRILL SHAFT CONC FDN	19.9
73600100	REMOVE OVERHEAD SIGN STRUCTURE - SPAN	EACH	REMOV OH SIN STR-SPAN	1
73700300	REMOVE CONCRETE FOUNDATION - OVERHEAD	EACH	REM CONC FDN-OVHD	2
78200006	GUARDRAIL REFLECTORS, TYPE B	EACH	GRDRAIL REF TYPE B	0
80300100	LOCATING UNDERGROUND CABLE	FOOT	LOCATE UNDERGR CABLE	40

SN: 9S041I064R073.2 District: D9 County: Jefferson Route: EB I-64 MilePost: 73.2

CODE NUMBER	PAY ITEM DESCRIPTION	UNIT	ABBREVIATION	QUANTITY
X7010216	TRAFFIC CONTROL AND PROTECTION, (SPECIAL)	LSUM	TC-PROT SPL	0.11
X8040310	ELECTRICAL SERVICE DISCONNECT	EACH	ELECT SERV DISCONNECT	1
Z0013798	CONSTRUCTION LAYOUT	LSUM	CONSTRUCTION LAYOUT	0.11
20400800	FURNISHED EXCAVATION	CU YD	FURNISHED EXCAVATION	0
50200400	ROCK EXCAVATION FOR STRUCTURES	CU YD	ROCK EXC STRUCT	8.0
63000001	STEEL PLATE BEAM GUARDRAIL, TYPE A, 6 FOOT POSTS	FOOT	SPBGR TY A 6FT POSTS	0
63100045	TRAFFIC BARRIER TERMINAL, TYPE 2	EACH	TRAF BAR TERM T2	0
63100167	TRAFFIC BARRIER TERMINAL, TYPE 1 (SPECIAL) TANGENT	EACH	TR BAR TRM T1 SPL TAN	0
63200310	GUARDRAIL REMOVAL	FOOT	GUARDRAIL REMOV	50
63301210	REMOVE AND REERECT STEEL PLATE BEAM GUARDRAIL, TYPE A	FOOT	REM RE-E SPBGR TY A	0
63301990	REMOVE AND REERECT TRAFFIC BARRIER TERMINALS, TYPE 1	EACH	REM RE-E T B TERM T1	0
63302000	REMOVE AND REERECT TRAFFIC BARRIER TERMINALS, TYPE 2	EACH	REM RE-E T B TERM T2	2
67100100	MOBILIZATION	LSUM	MOBILIZATION	0.10
70100205	TRAFFIC CONTROL AND PROTECTION, STANDARD 701401	EACH	TRAF CONT-PROT 701401	1
70106800	CHANGEABLE MESSAGE SIGN	CAL MO	CHANGEABLE MESSAGE SN	0.25
70200100	NIGHTTIME WORK ZONE LIGHTING	LSUM	NIGHT WORK ZONE LIGHT	0.10
72000300	SIGN PANEL - TYPE 3	SQ FT	SIGN PANEL T3	485
72501000	TERMINAL MARKER - DIRECT APPLIED	EACH	TERMINAL MARKER - DA	0
73300200	OVERHEAD SIGN STRUCTURE - SPAN, TYPE II-A (4'-6" X 5'-3")	FOOT	OVHD SIN STR-SPAN T2A	104
73400200	DRILLED SHAFT CONCRETE FOUNDATIONS	CU YD	DRILL SHAFT CONC FDN	24.3
73600100	REMOVE OVERHEAD SIGN STRUCTURE - SPAN	EACH	REMOV OH SIN STR-SPAN	1
73700300	REMOVE CONCRETE FOUNDATION - OVERHEAD	EACH	REM CONC FDN-OVHD	2
78200006	GUARDRAIL REFLECTORS, TYPE B	EACH	GRDRAIL REF TYPE B	0
80300100	LOCATING UNDERGROUND CABLE	FOOT	LOCATE UNDERGR CABLE	40

FILE NAME =	USER NAME = Leftwichd	DESIGNED -	REVISED -	<b>STATE OF ILLINOIS DEPARTMENT OF TRANSPORTATION</b>	SCALE:      SHEET      OF      SHEETS      STA.      TO      STA.	F.A.I. RE.	SECTION	COUNTY	TOTAL SHEETS	SHEET NO.
pw:\IL084EBIDINTEG.illinois.gov\PWIDOT\Documents\DOT Offices\District 9\Projects\sig	DRWN	REVISED	REVISED			•	•	VARIOUS	41	9
Default	PLOT SCALE = 200.0000' / in.	CHECKED -	REVISED -			CONTRACT NO. 46386				
	PLOT DATE = 12/13/2016	DATE -	REVISED -			ILLINOIS FED. AID PROJECT				



SN: 9S041I064L078.5      District: D9      County: Jefferson      Route: WB I-64      MilePost: 78.5

CODE NUMBER	PAY ITEM DESCRIPTION	UNIT	ABBREVIATION	QUANTITY
X7010216	TRAFFIC CONTROL AND PROTECTION, (SPECIAL)	LSUM	TC-PROT SPL	0.11
X8040310	ELECTRICAL SERVICE DISCONNECT	EACH	ELECT SERV DISCONNECT	1
Z0013798	CONSTRUCTION LAYOUT	LSUM	CONSTRUCTION LAYOUT	0.11
20400800	FURNISHED EXCAVATION	CU YD	FURNISHED EXCAVATION	0
50200400	ROCK EXCAVATION FOR STRUCTURES	CU YD	ROCK EXC STRUCT	4.0
63000001	STEEL PLATE BEAM GUARDRAIL, TYPE A, 6 FOOT POSTS	FOOT	SPBGR TY A 6FT POSTS	0
63100045	TRAFFIC BARRIER TERMINAL, TYPE 2	EACH	TRAF BAR TERM T2	0
63100167	TRAFFIC BARRIER TERMINAL, TYPE 1 (SPECIAL) TANGENT	EACH	TR BAR TRM T1 SPL TAN	0
63200310	GUARDRAIL REMOVAL	FOOT	GUARDRAIL REMOV	50
63301210	REMOVE AND REERECT STEEL PLATE BEAM GUARDRAIL, TYPE A	FOOT	REM RE-E SPBGR TY A	0
63301990	REMOVE AND REERECT TRAFFIC BARRIER TERMINALS, TYPE 1	EACH	REM RE-E T B TERM T1	0
63302000	REMOVE AND REERECT TRAFFIC BARRIER TERMINALS, TYPE 2	EACH	REM RE-E T B TERM T2	2
67100100	MOBILIZATION	LSUM	MOBILIZATION	0.10
70100205	TRAFFIC CONTROL AND PROTECTION, STANDARD 701401	EACH	TRAF CONT-PROT 701401	1
70106800	CHANGEABLE MESSAGE SIGN	CAL MO	CHANGEABLE MESSAGE SN	0.25
70200100	NIGHTTIME WORK ZONE LIGHTING	LSUM	NIGHT WORK ZONE LIGHT	0.10
72000300	SIGN PANEL - TYPE 3	SQ FT	SIGN PANEL T3	485
72501000	TERMINAL MARKER - DIRECT APPLIED	EACH	TERMINAL MARKER - DA	0
73300200	OVERHEAD SIGN STRUCTURE - SPAN, TYPE II-A (4'-6" X 5'-3")	FOOT	OVHD SIN STR-SPAN T2A	105
73400200	DRILLED SHAFT CONCRETE FOUNDATIONS	CU YD	DRILL SHAFT CONC FDN	32.0
73600100	REMOVE OVERHEAD SIGN STRUCTURE - SPAN	EACH	REMOV OH SIN STR-SPAN	1
73700300	REMOVE CONCRETE FOUNDATION - OVERHEAD	EACH	REM CONC FDN-OVHD	2
78200006	GUARDRAIL REFLECTORS, TYPE B	EACH	GRDRAIL REF TYPE B	0
80300100	LOCATING UNDERGROUND CABLE	FOOT	LOCATE UNDERGR CABLE	40

SN: 9S041I064L078.9      District: D9      County: Jefferson      Route: WB I-64      MilePost: 78.9

CODE NUMBER	PAY ITEM DESCRIPTION	UNIT	ABBREVIATION	QUANTITY
X7010216	TRAFFIC CONTROL AND PROTECTION, (SPECIAL)	LSUM	TC-PROT SPL	0.11
X8040310	ELECTRICAL SERVICE DISCONNECT	EACH	ELECT SERV DISCONNECT	0
Z0013798	CONSTRUCTION LAYOUT	LSUM	CONSTRUCTION LAYOUT	0.11
20400800	FURNISHED EXCAVATION	CU YD	FURNISHED EXCAVATION	5
50200400	ROCK EXCAVATION FOR STRUCTURES	CU YD	ROCK EXC STRUCT	0.0
63000001	STEEL PLATE BEAM GUARDRAIL, TYPE A, 6 FOOT POSTS	FOOT	SPBGR TY A 6FT POSTS	0
63100045	TRAFFIC BARRIER TERMINAL, TYPE 2	EACH	TRAF BAR TERM T2	0
63100167	TRAFFIC BARRIER TERMINAL, TYPE 1 (SPECIAL) TANGENT	EACH	TR BAR TRM T1 SPL TAN	0
63200310	GUARDRAIL REMOVAL	FOOT	GUARDRAIL REMOV	25
63301210	REMOVE AND REERECT STEEL PLATE BEAM GUARDRAIL, TYPE A	FOOT	REM RE-E SPBGR TY A	25
63301990	REMOVE AND REERECT TRAFFIC BARRIER TERMINALS, TYPE 1	EACH	REM RE-E T B TERM T1	1
63302000	REMOVE AND REERECT TRAFFIC BARRIER TERMINALS, TYPE 2	EACH	REM RE-E T B TERM T2	2
67100100	MOBILIZATION	LSUM	MOBILIZATION	0.10
70100205	TRAFFIC CONTROL AND PROTECTION, STANDARD 701401	EACH	TRAF CONT-PROT 701401	1
70106800	CHANGEABLE MESSAGE SIGN	CAL MO	CHANGEABLE MESSAGE SN	0.25
70200100	NIGHTTIME WORK ZONE LIGHTING	LSUM	NIGHT WORK ZONE LIGHT	0.10
72000300	SIGN PANEL - TYPE 3	SQ FT	SIGN PANEL T3	457
72501000	TERMINAL MARKER - DIRECT APPLIED	EACH	TERMINAL MARKER - DA	0
73300100	OVERHEAD SIGN STRUCTURE - SPAN, TYPE I-A (4'-0" X 4'-6")	FOOT	OVHD SIN STR-SPAN T1A	88
73400200	DRILLED SHAFT CONCRETE FOUNDATIONS	CU YD	DRILL SHAFT CONC FDN	20.5
73600100	REMOVE OVERHEAD SIGN STRUCTURE - SPAN	EACH	REMOV OH SIN STR-SPAN	1
73700300	REMOVE CONCRETE FOUNDATION - OVERHEAD	EACH	REM CONC FDN-OVHD	2
78200006	GUARDRAIL REFLECTORS, TYPE B	EACH	GRDRAIL REF TYPE B	0
80300100	LOCATING UNDERGROUND CABLE	FOOT	LOCATE UNDERGR CABLE	40

FILE NAME =	USER NAME = Leftwichd	DESIGNED -	REVISED -	<b>STATE OF ILLINOIS DEPARTMENT OF TRANSPORTATION</b>	SCALE:      SHEET      OF      SHEETS      STA.      TO      STA.	F.A.I. RE.	SECTION	COUNTY	TOTAL SHEETS	SHEET NO.
pw:\IL084EBIDINTEG.illinois.gov\PWIDOT\Documents\DOT Offices\District 9\Projects\sig	DRW	REVISED	REVISED			•	•	VARIOUS	41	10
Default	PLOT SCALE = 200.0000' / in.	CHECKED -	REVISED -			CONTRACT NO. 46386				
	PLOT DATE = 12/13/2016	DATE -	REVISED -			ILLINOIS FED. AID PROJECT				

SN: 9S041I057L092.3      District: D9      County: Jefferson      Route: SB I-57      MilePost: 92.3

CODE NUMBER	PAY ITEM DESCRIPTION	UNIT	ABBREVIATION	QUANTITY
X7010216	TRAFFIC CONTROL AND PROTECTION, (SPECIAL)	LSUM	TC-PROT SPL	0.12
X8040310	ELECTRICAL SERVICE DISCONNECT	EACH	ELECT SERV DISCONNECT	0
Z0013798	CONSTRUCTION LAYOUT	LSUM	CONSTRUCTION LAYOUT	0.11
20400800	FURNISHED EXCAVATION	CU YD	FURNISHED EXCAVATION	10
50200400	ROCK EXCAVATION FOR STRUCTURES	CU YD	ROCK EXC STRUCT	3.0
63000001	STEEL PLATE BEAM GUARDRAIL, TYPE A, 6 FOOT POSTS	FOOT	SPBGR TY A 6FT POSTS	200
63100045	TRAFFIC BARRIER TERMINAL, TYPE 2	EACH	TRAF BAR TERM T2	1
63100167	TRAFFIC BARRIER TERMINAL, TYPE 1 (SPECIAL) TANGENT	EACH	TR BAR TRM T1 SPL TAN	1
63200310	GUARDRAIL REMOVAL	FOOT	GUARDRAIL REMOV	25
63301210	REMOVE AND REERECT STEEL PLATE BEAM GUARDRAIL, TYPE A	FOOT	REM RE-E SPBGR TY A	25
63301990	REMOVE AND REERECT TRAFFIC BARRIER TERMINALS, TYPE 1	EACH	REM RE-E T B TERM T1	1
63302000	REMOVE AND REERECT TRAFFIC BARRIER TERMINALS, TYPE 2	EACH	REM RE-E T B TERM T2	2
67100100	MOBILIZATION	LSUM	MOBILIZATION	0.10
70100205	TRAFFIC CONTROL AND PROTECTION, STANDARD 701401	EACH	TRAF CONT-PROT 701401	1
70106800	CHANGEABLE MESSAGE SIGN	CAL MO	CHANGEABLE MESSAGE SN	0.25
70200100	NIGHTTIME WORK ZONE LIGHTING	LSUM	NIGHT WORK ZONE LIGHT	0.10
72000300	SIGN PANEL - TYPE 3	SQ FT	SIGN PANEL T3	457
72501000	TERMINAL MARKER - DIRECT APPLIED	EACH	TERMINAL MARKER - DA	1
73300200	OVERHEAD SIGN STRUCTURE - SPAN, TYPE II-A (4'-6" X 5'-3")	FOOT	OVHD SIN STR-SPAN T2A	100
73400200	DRILLED SHAFT CONCRETE FOUNDATIONS	CU YD	DRILL SHAFT CONC FDN	24.3
73600100	REMOVE OVERHEAD SIGN STRUCTURE - SPAN	EACH	REMOV OH SIN STR-SPAN	1
73700300	REMOVE CONCRETE FOUNDATION - OVERHEAD	EACH	REM CONC FDN-OVHD	2
78200006	GUARDRAIL REFLECTORS, TYPE B	EACH	GRDRAIL REF TYPE B	5
80300100	LOCATING UNDERGROUND CABLE	FOOT	LOCATE UNDERGR CABLE	40

SN: 9C028I057R073.8      District: D9      County: Franklin      Route: NB I-57      MilePost: 73.8

CODE NUMBER	PAY ITEM DESCRIPTION	UNIT	ABBREVIATION	QUANTITY
X7330070	OVERHEAD SIGN SUPPORT GROUT REPAIR	EACH	OVHD SN SUP GROUT REP	2
X8040310	ELECTRICAL SERVICE DISCONNECT	EACH	ELECT SERV DISCONNECT	1
Z0077598	DRILL WEEP HOLE	EACH	DRILL WEEP HOLE	1
67100100	MOBILIZATION	LSUM	MOBILIZATION	0.05
70100205	TRAFFIC CONTROL AND PROTECTION, STANDARD 701401	EACH	TRAF CONT-PROT 701401	1
70200100	NIGHTTIME WORK ZONE LIGHTING	LSUM	NIGHT WORK ZONE LIGHT	0.05
72000300	SIGN PANEL - TYPE 3	SQ FT	SIGN PANEL T3	43
72400330	REMOVE SIGN PANEL - TYPE 3	SQ FT	REMOV SIGN PANEL T3	75
84200600	REMOVAL OF LIGHTING UNIT, NO SALVAGE	EACH	REM LT U NO SALV	1

SN: 9S028I057L078.8      District: D9      County: Franklin      Route: SB I-57      MilePost: 78.8

CODE NUMBER	PAY ITEM DESCRIPTION	UNIT	ABBREVIATION	QUANTITY
X7330070	OVERHEAD SIGN SUPPORT GROUT REPAIR	EACH	OVHD SN SUP GROUT REP	2
X8040310	ELECTRICAL SERVICE DISCONNECT	EACH	ELECT SERV DISCONNECT	1
67100100	MOBILIZATION	LSUM	MOBILIZATION	0.05
70100205	TRAFFIC CONTROL AND PROTECTION, STANDARD 701401	EACH	TRAF CONT-PROT 701401	1
70200100	NIGHTTIME WORK ZONE LIGHTING	LSUM	NIGHT WORK ZONE LIGHT	0.05
72000300	SIGN PANEL - TYPE 3	SQ FT	SIGN PANEL T3	157
72400330	REMOVE SIGN PANEL - TYPE 3	SQ FT	REMOV SIGN PANEL T3	189
84200600	REMOVAL OF LIGHTING UNIT, NO SALVAGE	EACH	REM LT U NO SALV	2

FILE NAME =	USER NAME = Leftwichdl	DESIGNED -	REVISED -	<b>STATE OF ILLINOIS DEPARTMENT OF TRANSPORTATION</b>	SCALE:      SHEET      OF      SHEETS      STA.      TO      STA.	F.A.I. RE.	SECTION	COUNTY	TOTAL SHEETS	SHEET NO.
pw:\IL084EBIDINTEG.illinois.gov\PWIDOT\Documents\DOT Offices\District 9\Projects\sig	DRWN	REVISED	REVISED			•	•	•	41	11
Default	PLOT SCALE = 200.0000' / in.	CHECKED -	REVISED -			CONTRACT NO. 46386				
	DATE = 12/13/2016	DATE -	REVISED -			ILLINOIS FED. AID PROJECT				

# GUARDRAIL SCHEDULE

\*\*  
FOR INFO ONLY

I-57 & I-64 JEFFERSON & FRANKLIN COUNTIES					SPBGR TYPE A 6' POST FOOT	TRAF BAR TERMINAL TYPE 2 EACH	TRAF BAR TERMINAL TY 1 SPL TAN EACH	REM RE-E SPBGR TYPE A EACH	REM RE-E TR B TERM TYPE 1 EACH	REM RE-E TR B TERM TYPE 2 EACH	GR REMOV FOOT	GR REFL TYPE B EACH	TERMINAL MARKER DA EACH	FURNISHED EXCAVATION CU YD	SEEDING ACRE	REMARKS
<b>EXISTING GUARDRAIL LOCATIONS</b>																
<b>I57S SN 9S0411057R090.9 S TRI-LEVEL</b>																
LOCATION	EXIST	549+50.00	PROP	549+75.00	25	AH										SHIFT GR WITH STRUCTURE
NB I-57	RT	546+28.13	TO	549+62.50		25.0				1						LEAVE APPROACH AS IS, EXTEND DEPARTURE 25 FT
NB I-57	LT	547+03.13	TO	549+62.50		25.0				1						LEAVE APPROACH AS IS, EXTEND DEPARTURE 25 FT
SB I-57	LT	549+37.50	TO	553+59.38												LEAVE AS IS
<b>57NBRAMPB1 SN 9S0411057R091.2 S TRI-LEVEL</b>																
LOCATION	EXIST	593+11.00	PROP	592+85.00	-26	BK										SHIFT GR WITH STRUCTURE
NB I-57	RT	590+26.63	TO	593+23.50						1	25.0					LEAVE APPROACH AS IS, SHORTEN DEPARTURE 25 FT
NB I-57	LT	589+64.13	TO	593+23.50						1	25.0					LEAVE APPROACH AS IS, SHORTEN DEPARTURE 25 FT
<b>I5764S SN 9S0411057L091.9 S TRI-LEVEL</b>																
LOCATION	EXIST	629+20.00	PROP	629+50.00	30	BK										SHIFT GR WITH STRUCTURE
SB I-57	RT	629+07.50	TO	632+04.38			1				37.5					LEAVE APPROACH AS IS, SHORTEN DEPARTURE 25 FT
SB I-57	LT	629+07.50	TO	632+66.88						1	25.0					LEAVE APPROACH AS IS, SHORTEN DEPARTURE 25 FT
<b>I57N SN 9S0411057L097.5 N TRI-LEVEL</b>																
LOCATION	EXIST	923+02.00	PROP	922+75.00	-27	AH										SHIFT GR WITH STRUCTURE
SB I-57	RT	922+89.50	TO	925+86.38		25.0				1						LEAVE APPROACH AS IS, EXTEND DEPARTURE 25 FT
SB I-57	LT	922+89.50	TO	926+48.88		25.0				1						LEAVE APPROACH AS IS, EXTEND DEPARTURE 25 FT
NB I-57	LT	919+55.13	TO	923+14.50						1	25					LEAVE APPROACH AS IS, SHORTEN DEPARTURE 25 FT
<b>I64 SN 9S0411064R072.9 N TRI-LEVEL</b>																
LOCATION	EXIST	2352+02.00	PROP	2352+30.00	28	AH										SHIFT GR WITH STRUCTURE
EB I-64	RT	2345+02.00	TO	2352+14.50		25.0				1						LEAVE APPROACH AS IS, EXTEND DEPARTURE 25 FT
EB I-64	LT	2350+55.13	TO	2352+14.50		125.0			1	1			5	0.1		EXTEND APPROACH 100 FT, EXTEND DEPARTURE 25 FT
WB I-64	LT	2351+89.50	TO	2353+45.75		125.0		25	1	1			5	0.1		EXTEND APPROACH 150', SHORTEN DEPARTURE 25 FT
<b>I5764C SN 9S0411064R073.2 N TRI-LEVEL</b>																
LOCATION	EXIST	2372+43.00	PROP	2372+15.00	-28	BK										SHIFT GR WITH STRUCTURE
EB I-64	RT	2369+58.63	TO	2372+55.50						1	25.0					REMOVE 25 FT DEPARTURE, LEAVE APPROACH AS IS
EB I-64	LT	2368+96.13	TO	2372+55.50						1	25.0					REMOVE 25 FT DEPARTURE, LEAVE APPROACH AS IS
<b>64WBRAMP1 SN 9S0411064L078.5 S TRI-LEVEL</b>																
LOCATION	EXIST	2660+17.00	PROP	2660+40.00	23	BK										SHIFT GR WITH STRUCTURE
WB I-64	RT	2660+04.50	TO	2663+63.88						1	25.0					REMOVE 25 FT DEPARTURE, LEAVE APPROACH AS IS
WB I-64	LT	2660+04.50	TO	2663+63.88						1	25.0					REMOVE 25 FT DEPARTURE, LEAVE APPROACH AS IS
<b>I64EB SN 9S0411064L078.9 S TRI-LEVEL</b>																
LOCATION	EXIST	2678+03.00	PROP	2678+30.00	27	BK										SHIFT GR WITH STRUCTURE
WB I-64	RT	2677+90.50	TO	2681+28.00						1	25.0					REMOVE 25 FT DEPARTURE, LEAVE APPROACH AS IS
WB I-64	LT	2677+90.50	TO	2680+90.50			25		1	1			5	0.1		REMOVE 25 FT DEPARTURE, EXTEND APPROACH 25 FT
EB I-64	LT	2674+18.63	TO	2678+15.50												LEAVE AS IS
<b>I5764S SN 9S0411057L092.3 S TRI-LEVEL</b>																
LOCATION	EXIST	648+00.00	PROP	648+25.00	25	BK										SHIFT GR WITH STRUCTURE
SB I-57	RT	647+87.50	TO	659+21.88						1	25.0					REMOVE 25 FT DEPARTURE, LEAVE APPROACH AS IS
SB I-57	LT	647+81.25	TO	650+40.63				25		1			5	0.1		REMOVE 25 FT DEPARTURE, ADD 25 FT TO APPROACH
NB I-57	LT	645+71.83	TO	648+39.27		200.0	1	1				5	1	5	0.1	ERECT NEW GUARDRAIL (STATIONING IS FOR PROP GR)
<b>NB I57 SN 9S0281057R073.8 REST AREA ENTRANCE</b>																
LOCATION	EXIST	374+50.00	PROP	374+50.00	0	AH										
NB I-57	RT	374+50.00	TO	374+50.00												NA
NB I-57	LT	374+50.00	TO	374+50.00												NA
SB I-57	LT	374+50.00	TO	374+50.00												NA
<b>SB I57 SN 9S0281057L078.8 REST AREA ENTRANCE</b>																
LOCATION	EXIST	108+75.00	PROP	108+75.00	0	AH										
SB I-57	RT	108+75.00	TO	108+75.00												NA
SB I-57	LT	108+75.00	TO	108+75.00												NA
NB I-57	LT	108+75.00	TO	108+75.00												NA
<b>TOTALS</b>																
					575.0	2	1	75	4	19	288	5	1	25	0.5	

NOTES: LT & RT ARE GIVEN IN THE DIRECTION OF TRAVEL; STATIONING GIVEN IS THE APPROXIMATE LOCATION OF THE EXISTING GUARDRAIL  
 \*\* SEE SPECIAL PROVISIONS: FURNISHED EXCAVATION

FOR INFORMATION ONLY  
SEEDING MULCHING & EROSION CONTROL

• For Information Only •• For Information Only •• For Information Only •• For Information Only •																
RTE 13 / 127 LOCATION STATION TO STATION			SEEDING CLASS 2	SEEDING CLASS 7	NITROGEN FERT NUTR		PHOSPHOROUS FERTILIZER	POTASSIUM FERTILIZER NUTRIENT	AGRICULTURAL GROUND LIMESTONE	MULCH METHOD 2		TEMP EROS CONTR SEEDING	PERIMETER EROSION BARRIER	FURNISHED EXCAVATION	REMARKS	
STA	TO	STA	ACRE	ACRE	CLASS 2 POUND	CLASS 7 POUND	POUND	POUND	TON	CLASS 2 ACRE	CLASS 7 ACRE	POUND	FOOT	CU YD		
SN: 950411064R072.9 District: D9 County: Jefferson Route: EB I-64 Mile Post: 72.9																
EB I-6	MEDIAN	2350+55.00	TO	2351+05.00	0.1	0.1	9	9	9	9	0.2	0.1	0.1	30	85	5
WB I-6	MEDIAN	2352+95.00	TO	2353+45.00	0.1	0.1	9	9	9	0.2	0.1	0.1	30	85	5	
SN: 950411064L078.9 District: D9 County: Jefferson Route: WB I-64 Mile Post: 78.9																
WB I-6	MEDIAN	2680+40.00	TO	2680+90.00	0.1	0.1	9	9	9	0.2	0.1	0.1	30	85	5	
SN: 950411057L092.3 District: D9 County: Jefferson Route: SB I-57 Mile Post: 92.3																
SB I-5	MEDIAN	649+90.00	TO	650+40.00	0.1	0.1	9	9	9	0.2	0.1	0.1	30	85	5	
NB I-5	MEDIAN	645+71.00	TO	646+21.00	0.1	0.1	9	9	9	0.2	0.1	0.1	30	85	5	

**GENERAL NOTES**

DESIGN: AASHTO Standard Specifications for Structural Supports for Highway Signs, Luminaires and Traffic Signals. ("AASHTO Specifications")

CONSTRUCTION: Current (at time of letting) Illinois Department of Transportation Standard Specifications for Road and Bridge Construction, Supplemental Specifications and Special Provisions. ("Standard Specifications")

LOADING: 90 M.P.H. WIND VELOCITY

WALKWAY LOADING: Dead load plus 500 lbs. concentrated live load.

DESIGN STRESSES:  
Field Units  
F<sub>c</sub> = 3,500 p.s.i.  
f<sub>y</sub> = 60,000 p.s.i. (reinforcement)

WELDING: All welds to be continuous unless otherwise shown. All welding to be done in accordance with current AWS D1.1 and D1.2 Structural Welding Codes (Steel and Aluminum) and the Standard Specifications.

MATERIALS: Aluminum Alloys as shown throughout plans. All Structural Steel Pipe shall be ASTM A53 Grade B or A500 Grade B or C. If A500 pipe is substituted for A53, then the outside diameter shall be as detailed and wall thickness greater than or equal to A53. All Structural Steel Plates and Shapes shall conform to AASHTO M270 Gr. 36, Gr. 50 or Gr. 50W\*. Stainless steel for shims, sleeves and handhole covers shall be ASTM A240, Type 302 or 304, or another alloy suitable for exterior exposure and acceptable to the Engineer.

The steel pipe and stiffening ribs at the base plate for the column shall have a minimum longitudinal Charpy V-Notch (CVN) energy of 15 lb.-ft. at 40° F. (Zone 2) before galvanizing.

FASTENERS FOR ALUMINUM TRUSSES: All bolts noted as "high strength" must satisfy the requirements of AASHTO M164 (ASTM A325), or approved alternate, and must have matching lock nuts. Threaded studs for splices (if Members interfere) must satisfy the requirements of ASTM A449, ASTM A193, Grade B7, or approved alternate, and must have matching lock nuts. Bolts and lock nuts not required to be high strength must satisfy the requirements of ASTM A307. All bolts and lock nuts must be hot dip galvanized per AASHTO M232. The lock nuts must have nylon or steel inserts. A stainless steel flat washer conforming to ASTM A240 Type 302 or 304, is required under both head and nut or under both nuts where threaded studs are used. High strength bolt installation shall conform to Article 505.04 (f) (2)d of the IDOT Standard Specifications for Road and Bridge Construction. Rotational capacity ("ROCAP") testing of bolts will not be required.

U-BOLTS AND EYEBOLTS: U-Bolts and Eyebolts must be produced from ASTM A276 Type 304, 304L, 316, or 316L, Condition A, cold finished stainless steel, or an equivalent material acceptable to the Engineer. All nuts for U-Bolts and Eyebolts must be lock nuts equivalent to ASTM A307 with nylon or steel inserts and hot dip galvanized per AASHTO M232. A stainless steel flat washer conforming to ASTM A240, Type 302 or 304, is required under each U-Bolt and Eyebolt lock nut.

GALVANIZING: All Steel Grating, Plates, Shapes and Pipe shall be Hot Dip Galvanized after fabrication in accordance with AASHTO M111. Painting is not permitted.

ANCHOR RODS: Shall conform to ASTM F1554 Gr. 105.

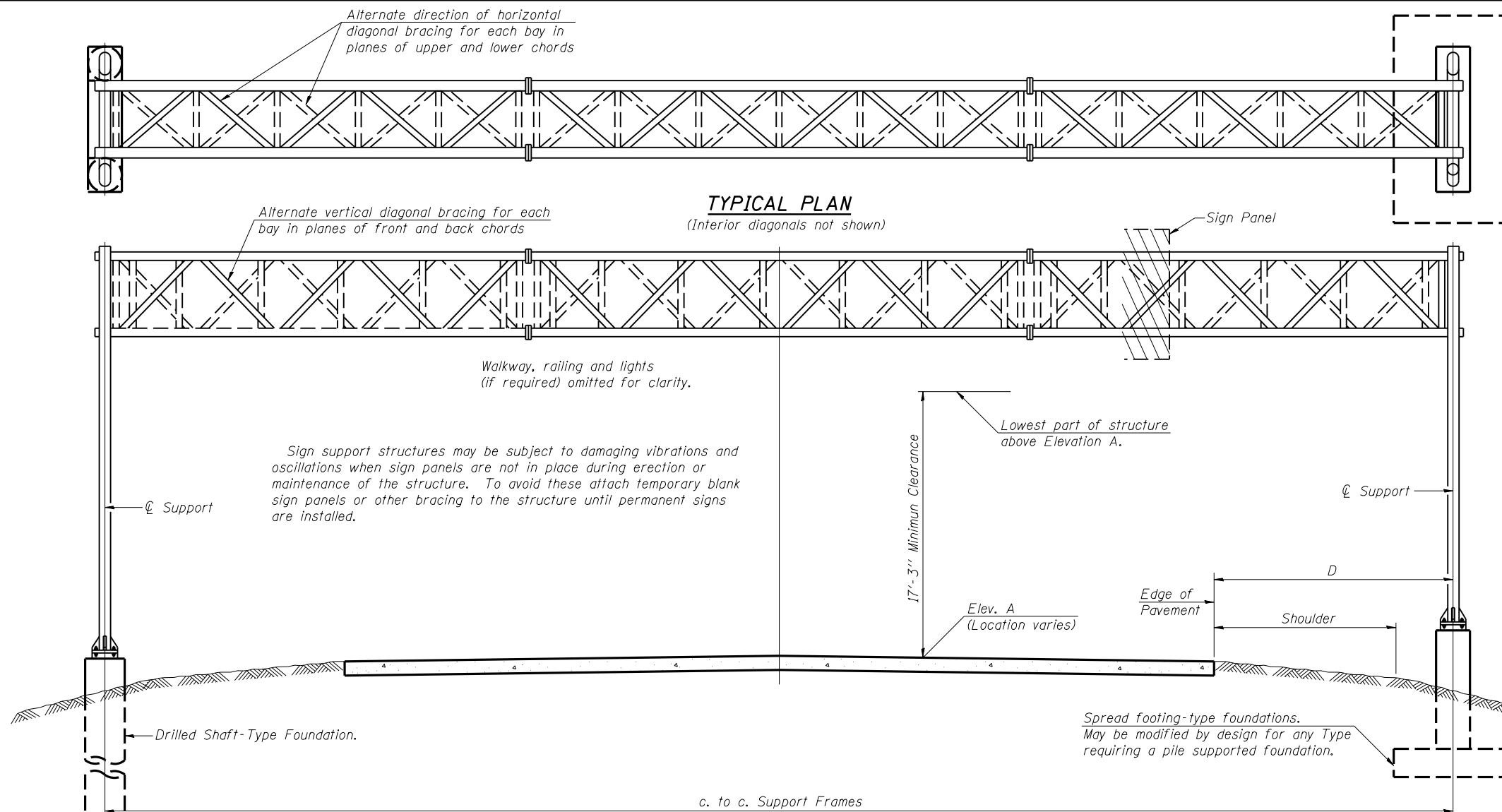
CONCRETE SURFACES: All concrete surfaces above an elevation 6" below the lowest final ground line at each foundation shall be cleaned and coated with Concrete Sealer in accordance with the Standard Specifications.

REINFORCEMENT BARS: Reinforcement Bars designated (E) shall be epoxy coated in accordance with the Standard Specifications.

FOUNDATIONS: The contract unit price for Concrete Foundations and Drilled Shaft Concrete Foundations shall include reinforcement bars complete in place.

**TOTAL BILL OF MATERIAL**

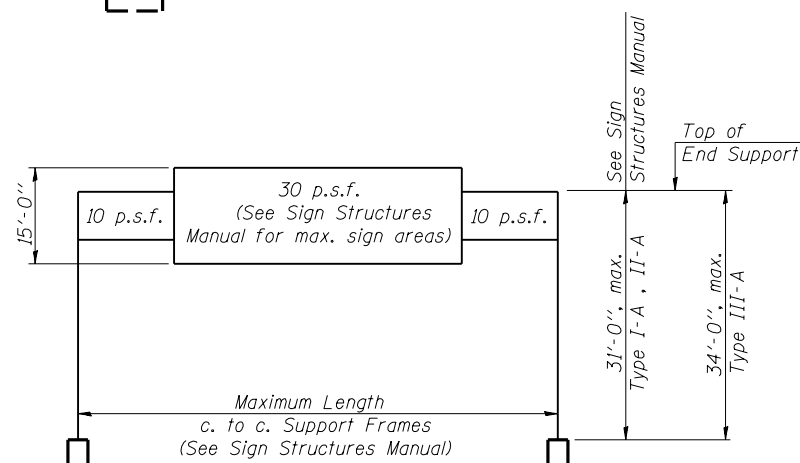
ITEM	UNIT	TOTAL
OVERHEAD SIGN STRUCTURE SPAN TYPE I-A	Foot	352
OVERHEAD SIGN STRUCTURE SPAN TYPE II-A	Foot	526
OVERHEAD SIGN STRUCTURE SPAN TYPE III-A	Foot	-
OVERHEAD SIGN STRUCTURE WALKWAY TYPE A	Foot	-
CONCRETE FOUNDATIONS	Cu Yds	-
DRILLED SHAFT CONCRETE FOUNDATION	Cu Yds	212.1



**TYPICAL ELEVATION**  
(Looking at Face of Signs)\*\*

Elev. A = Elevation at point of minimum clearance to sign, walkway support or truss.

STRUCTURE NUMBER	STATION	DESIGN TRUSS TYPE	C to C	ELEV A	DIM D	Height of	TOTAL
			Supports	FT	FT	FT	SQ FT
9S0411057R090.9	549+75.00	I-A	88	477.81	32.0	13.0	389
9S0411057R091.2	592+85.00	II-A	104	494.87	32.0	12.0	438
9S0411057L091.9	629+50.00	II-A	113	462.76	32.0	14.5	466
9S0411057L097.5	922+75.00	I-A	88	552.79	32.0	14.5	181
9S0411064R072.9	2352+30.00	I-A	88	490.13	32.0	12.0	342
9S0411064R073.2	2372+15.00	II-A	104	523.05	32.0	14.5	485
9S0411064L078.5	2660+40.00	II-A	105	456.35	32.0	14.5	485
9S0411064L078.9	2678+30.00	I-A	88	443.68	32.0	16.0	457
9S0411057L092.3	648+25.00	II-A	100	478.01	32.0	16.0	457



**DESIGN WIND LOADING DIAGRAM**

Parameters shown are basis for I.D.O.T. Standards and Sign Manual Tables. Installations not within dimensional limits shown require special analysis for all components.

\*\*Looking upstation for structures with signs both sides.

\* If M270 Gr. 50W (M222) steel is proposed, chemistry for plate to be used shall first be approved by the Engineer as suitable for galvanizing and welding.

OS-A-1

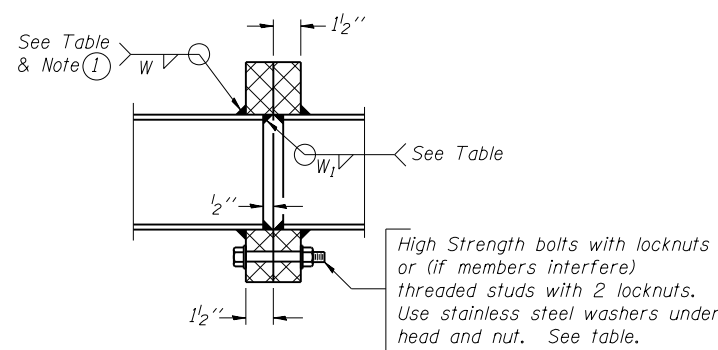
8-21-13

FILE NAME =	USER NAME = Leftwichdl	DESIGNED -	REVISED -	STATE OF ILLINOIS DEPARTMENT OF TRANSPORTATION	OVERHEAD SIGN STRUCTURES - GENERAL PLAN & ELEVATION - ALUMINUM TRUSS & STEEL SUPPORTS	F.A.I. R.E.	SECTION	COUNTY	TOTAL SHEETS	SHEET NO.
pw\11084EBIDINTEG\illinois.gov\PIWIDOT\Documents\IDOT Offices\District 9\Projects\sign\Drawings\CADDData\46386\CADDData\CAD\shdgn	DRAWN	CHECKED -	REVISED -			•	•	VARIOUS	41	14
Default	PLOT SCALE = 100.0000' / 1in.	DATE -	REVISED -			CONTRACT NO. 46386				
	PLOT DATE = 12/13/2016		REVISED -			ILLINOIS FED. AID PROJECT				



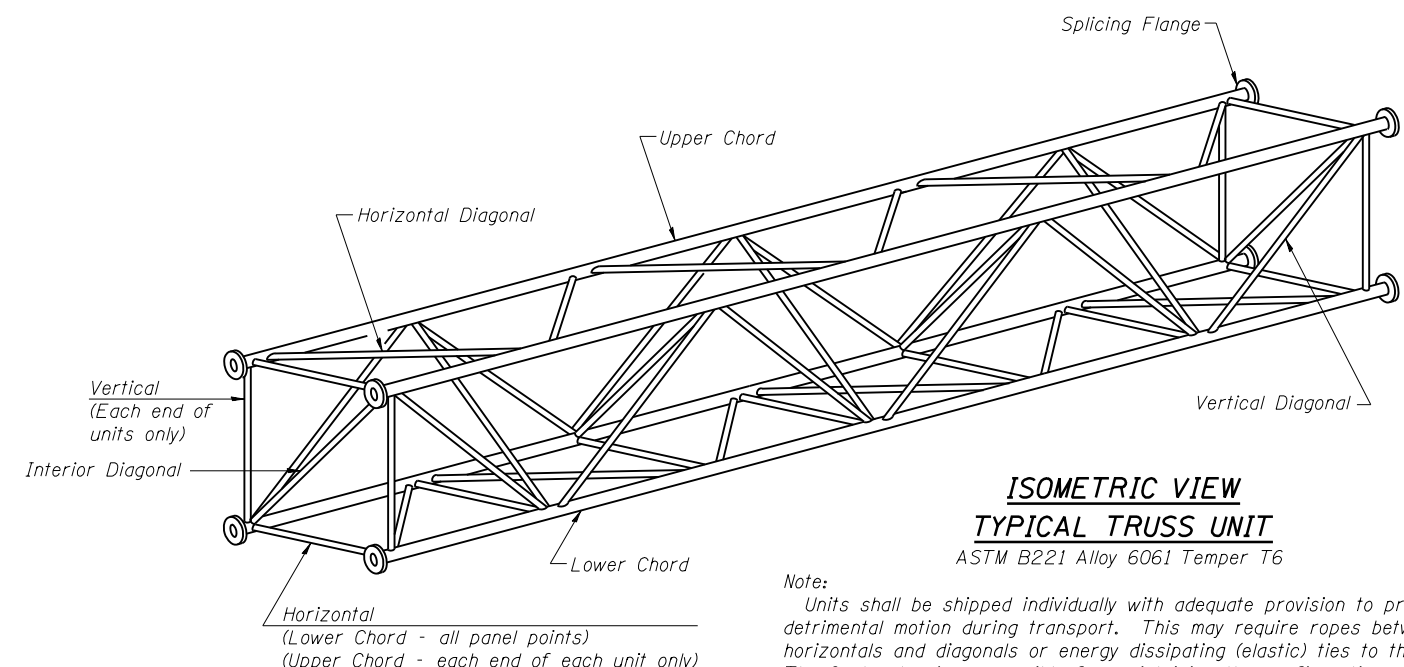
**TRUSS UNIT TABLE**

STRUCTURE NUMBER	STATION	DESIGN TRUSS TYPE	Exterior Units (2)			Interior Units				Upper & Lower Chord	Verticals; Horizontal; Vertical, Horizontal, Interior Diagonals	Camber at Midspan	Splicing Flange					
			No per Unit	Unit Length (Le)	Panel Length (P)	No Units Req'd	No per Unit	Unit Length (Le)	Panel Length (P)				OD X Wall	OD X Wall	per Splice	Bolts Dia	Weld Sizes	
			#	FT-IN	FT-IN	#	#	FT-IN	FT-IN	IN X IN	IN X IN	#	IN	IN			IN	IN
9S0411057R090.9	549+75.00	I-A	6	30' - 1 1/2"	4' - 8 1/2"	1	6	29' - 6"	4' - 8 1/2"	5 1/2 X 5/16	2 1/2 X 5/16	2.6875	6	7/8"	3/8"	1/4"	9 1/4"	12 1/4"
9S0411057R091.2	592+85.00	II-A	7	37' - 0 1/4"	5' - 0 1/4"	1	6	31' - 4 1/2"	5' - 0 1/4"	6 1/2 X 5/16	3 X 5/16	3.3125	6	1"	3/8"	1/4"	11"	14 1/2"
9S0411057L091.9	629+50.00	II-A	8	38' - 4 1/2"	4' - 6 3/4"	1	8	37' - 9"	4' - 6 3/4"	7 X 5/16	3 X 5/16	3.8125	6	1"	3/8"	1/4"	11 1/2"	15"
9S0411057L097.5	922+75.00	I-A	6	30' - 1 1/2"	4' - 8 1/2"	1	6	29' - 6"	4' - 8 1/2"	5 1/2 X 5/16	2 1/2 X 5/16	2.6875	6	7/8"	3/8"	1/4"	9 1/4"	12 1/4"
9S0411064R072.9	2352+30.00	I-A	6	30' - 1 1/2"	4' - 8 1/2"	1	6	29' - 6"	4' - 8 1/2"	5 1/2 X 5/16	2 1/2 X 5/16	2.6875	6	7/8"	3/8"	1/4"	9 1/4"	12 1/4"
9S0411064R073.2	2372+15.00	II-A	7	37' - 0 1/4"	5' - 0 1/4"	1	6	31' - 4 1/2"	5' - 0 1/4"	6 1/2 X 5/16	3 X 5/16	3.3125	6	1"	3/8"	1/4"	11"	14 1/2"
9S0411064L078.5	2660+40.00	II-A	7	37' - 5 1/2"	5' - 1"	1	6	31' - 9"	5' - 1"	6 1/2 X 5/16	3 X 5/16	3.375	6	1"	3/8"	1/4"	11"	14 1/2"
9S0411064L078.9	2678+30.00	I-A	6	30' - 1 1/2"	4' - 8 1/2"	1	6	29' - 6"	4' - 8 1/2"	5 1/2 X 5/16	2 1/2 X 5/16	2.6875	6	7/8"	3/8"	1/4"	9 1/4"	12 1/4"
9S0411057L092.3	648+25.00	II-A	6	34' - 1 1/2"	5' - 4 1/2"	1	6	33' - 6"	5' - 4 1/2"	6 1/2 X 5/16	3 X 5/16	3.125	6	1"	3/8"	1/4"	11"	14 1/2"



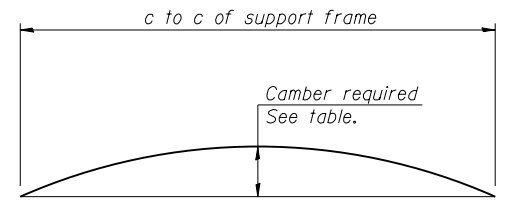
**SECTION B-B**

① Splicing Flanges shall be attached to each truss unit with the truss shop assembled to camber shown. Truss units shall be in proper alignment and flange surfaces shall be shop bolted into full contact before welding. Sufficient external welds or tacks shall be made to secure flanges until remaining welds are made after disassembly. Adjacent flanges shall be "match marked" to insure proper field assembly.



**ISOMETRIC VIEW  
TYPICAL TRUSS UNIT**  
ASTM B221 Alloy 6061 Temper T6

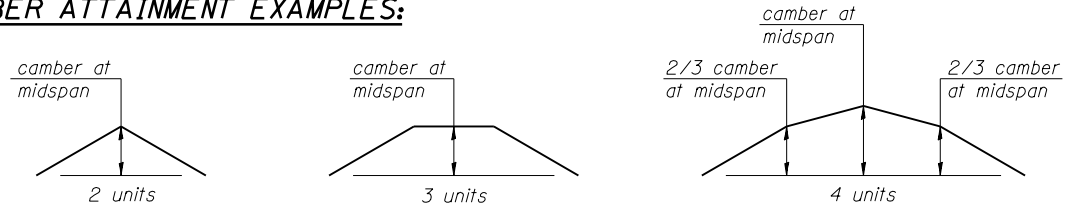
Note:  
Units shall be shipped individually with adequate provision to prevent detrimental motion during transport. This may require ropes between horizontals and diagonals or energy dissipating (elastic) ties to the vehicle. The Contractor is responsible for maintaining the configuration and protection of the units.



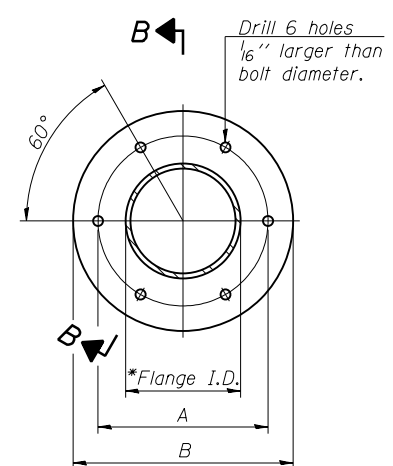
**CAMBER DIAGRAM**

Camber curve shown is theoretical. Actual camber attained by slope changes at splices between units.

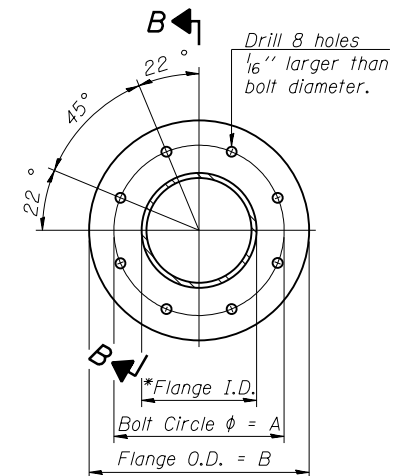
**CAMBER ATTAINMENT EXAMPLES:**



Camber shown is for fabrication only, measured with truss fully supported. (No-load condition)



**TRUSS TYPES I-A, II-A, & III-A**



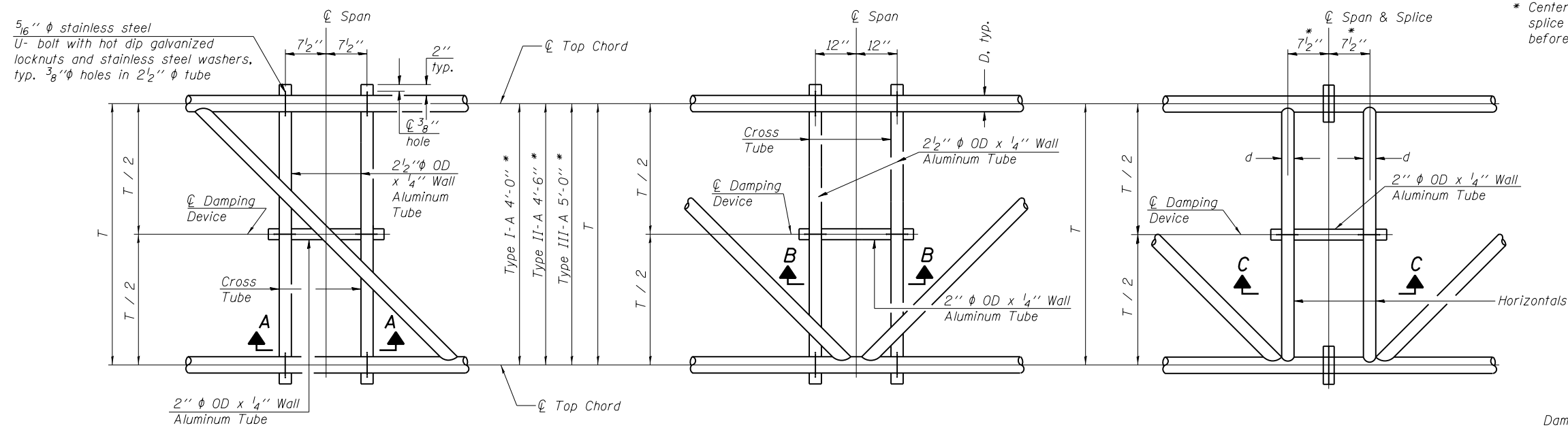
**TRUSS TYPES II-A & III-A  
SPLICING FLANGES**

ASTM B221, Alloy 6061-T6  
or ASTM B209, Alloy 6061-T651  
\*To fit O.D. of Chord with maximum gap of 1/16".

OS4-A-2

6-1-12

FILE NAME =	USER NAME = Leftwichdl	DESIGNED -	REVISED -	STATE OF ILLINOIS DEPARTMENT OF TRANSPORTATION	OVERHEAD SIGN STRUCTURES - ALUMINUM TRUSS DETAILS FOR TRUSS TYPES I-A, II-A AND III-A	F.A.I. RTE.	SECTION	COUNTY	TOTAL SHEETS	SHEET NO.
pw:\IL084EBIDINTEG.illinois.gov\PIWIDOT\Documents\DOT Offices\District 9\Projects\sigr	DRW	REVISION	REVISION			••	•	VARIOUS	41	16
Default	PLOT SCALE = 100.0000' / in.	CHECKED -	REVISED -			SCALE:	SHEET	OF	SHEETS	STA.



**PLAN DETAIL "A"**  
 ☐ Span between Panel Points

**PLAN DETAIL "B"**  
 ☐ Span at Panel Point

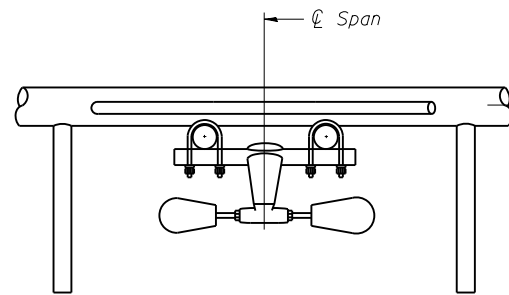
**PLAN DETAIL "C"**  
 ☐ Span at ☐ Chord Splice

\* Center of horizontal to center of splice dimension may vary. Verify before drilling holes in mounting tube.

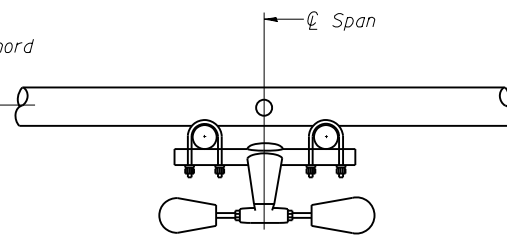
**NOTES**

Damper: One damper per truss. (31 lbs. minimum Stockbridge-Type Aluminum - 29" minimum between ends of weights) Cost included in Overhead Sign Structure...

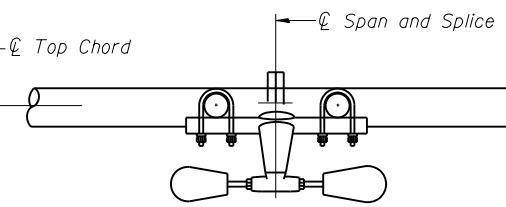
Materials: Materials: Aluminum tubes shall be ASTM B221 alloy 6061 temper T6. Cost included in Overhead Sign Structure...



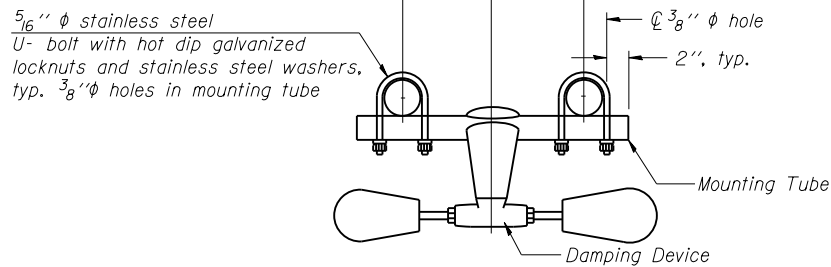
**SECTION A-A**



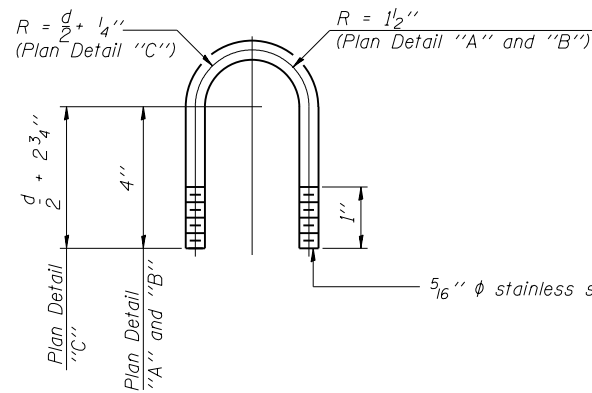
**SECTION B-B**



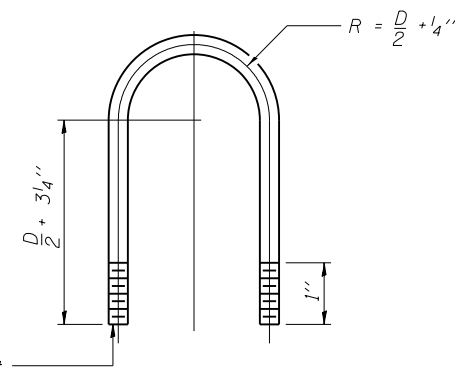
**SECTION C-C**



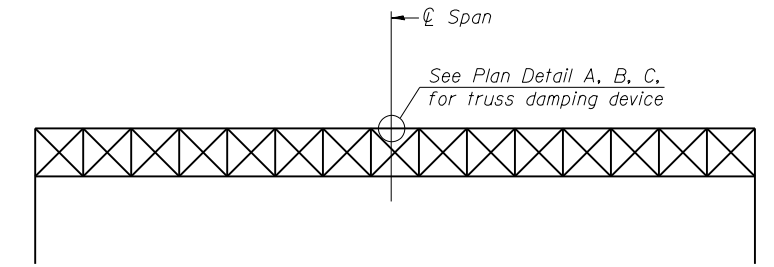
**TRUSS DAMPING DEVICE CONNECTION DETAIL**  
 (Typical)



**DAMPING DEVICE MOUNTING TUBE U-BOLT DETAIL**  
 (Typical)



**TOP CHORD TO CROSS TUBE U-BOLT DETAIL**  
 (Typical - Detail "A" and "B")



**ELEVATION**  
 Aluminum Overhead Sign Truss

OS-A-D

6-1-12

FILE NAME =	USER NAME = Leftwichdl	DESIGNED -	REVISED -
pw:\IL\084EBIDINTEG\illinois.gov\PWIDOT\Documents\DOT Offices\District 9\Projects\sign\Drawings\CADDData\46386\CADDData\CAD\Sheet\shdgn		DRAWN -	REVISED -
Default	PLOT SCALE = 100.0000' / in.	CHECKED -	REVISED -
	PLOT DATE = 12/13/2016	DATE -	REVISED -

STATE OF ILLINOIS  
 DEPARTMENT OF TRANSPORTATION

OVERHEAD SIGN STRUCTURE  
 DAMPING DEVICE

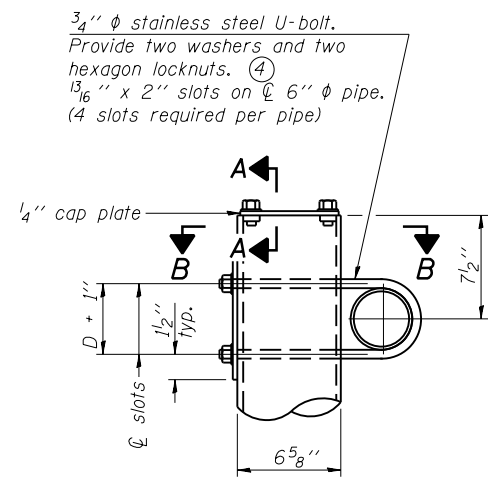
SCALE: SHEET OF SHEETS STA. TO STA.

F.A.I. RE.	SECTION	COUNTY	TOTAL SHEETS	SHEET NO.
••	•	VARIOUS	41	17
			CONTRACT NO. 46386	
ILLINOIS FED. AID PROJECT				

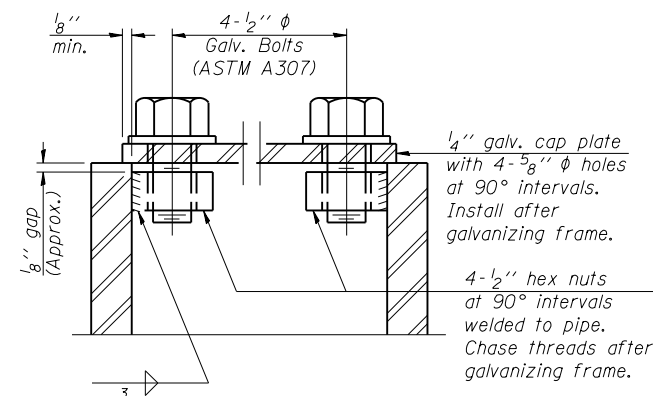
•• FAI 57 and FAI 64 •D-9 OVD SIN STR REPL 16-28

Jefferson Franklin



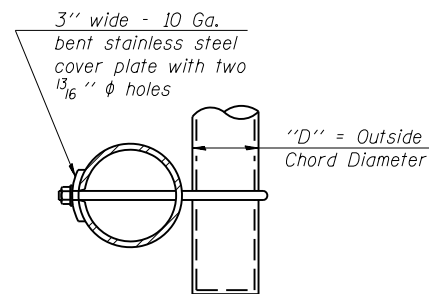


**DETAIL A**

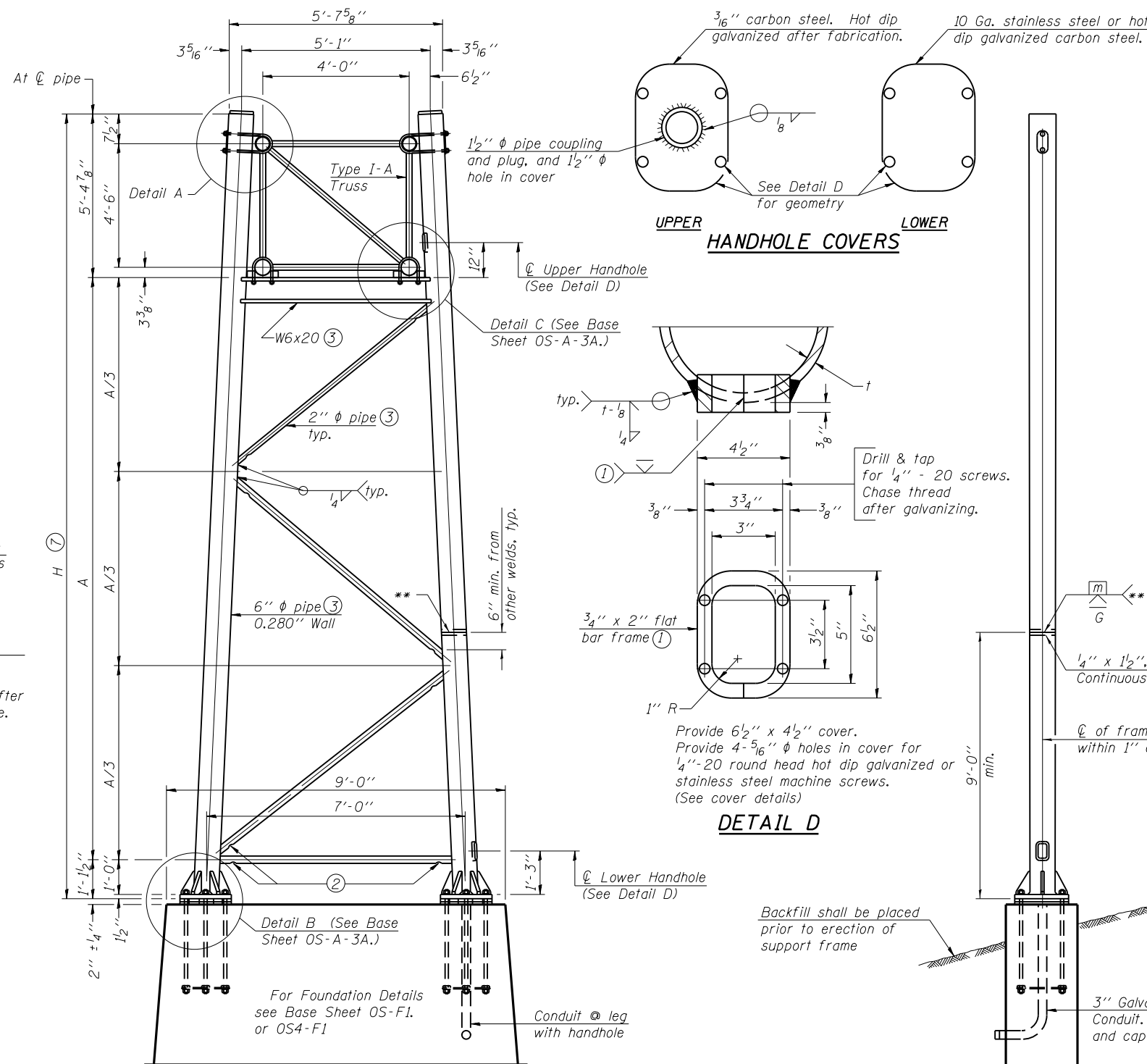


**SECTION A-A**

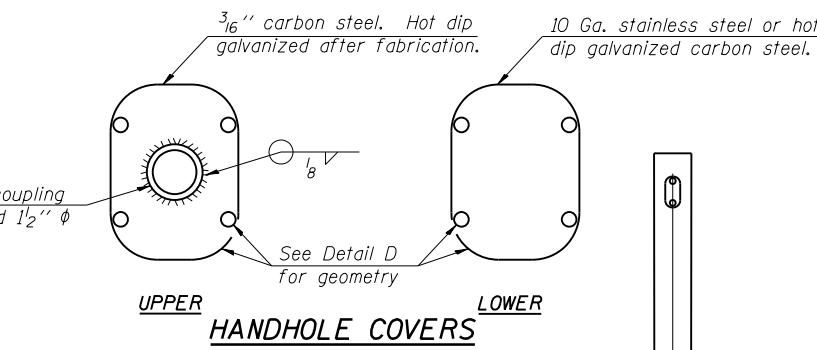
As an alternate to bolts, may use galvanized drive-fit caps installed after galvanizing frame.



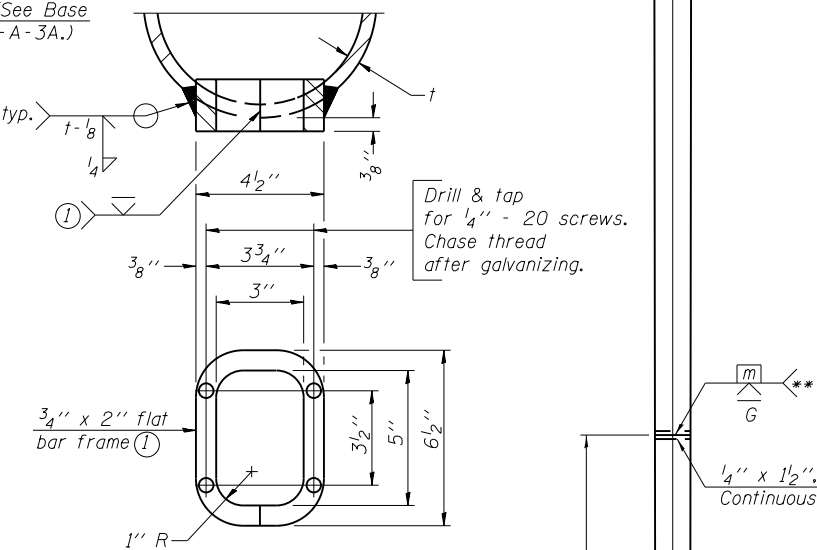
**SECTION B-B**



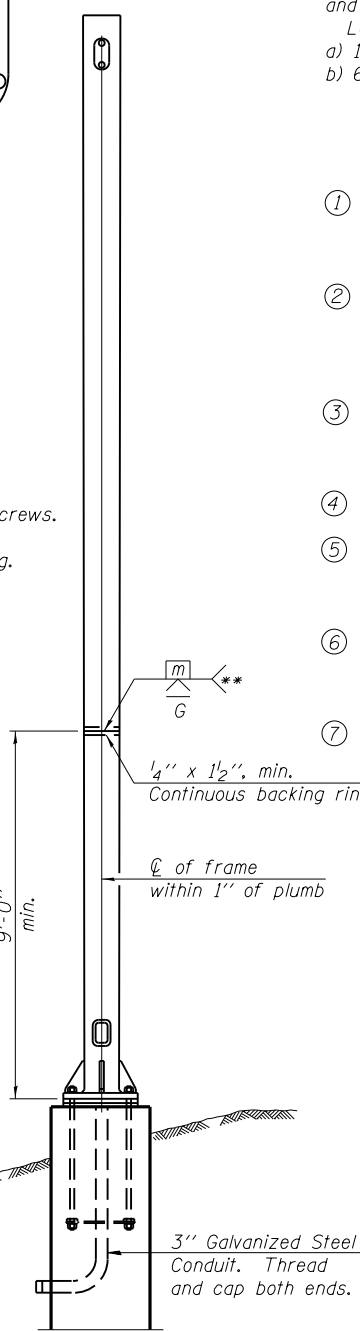
**SIDE ELEVATION**



**UPPER  
HANDHOLE COVERS  
LOWER**



**DETAIL D**



**END ELEVATION**

Support Design Loads: See Base Sheet OS-A-1 for design and loading criteria.  
Load combinations checked include deadload plus:  
a) 100% wind normal to sign, 20% parallel to sign  
b) 60% wind normal to sign, 30% parallel to sign

- ① In lieu of fabricated handhole frame as shown, may cut from 2" plate (rolling direction vertical). All cut faces to be ground to ANSI Roughness of 500 μin or less.
- ② Galvanizing vent holes of adequate size shall be provided on underside at each end of bracing pipes. Alternately, holes may be provided in wall of pipe column. All vent holes shall be drilled and de-burred, typ.
- ③ Steel pipe, plate, carbon steel handhole covers and rolled sections shall be hot dip galvanized after fabrication. Painting is not permitted. See Base Sheet OS-A-1.
- ④ See General Notes for fasteners.
- ⑤ This standard may be utilized for special short-span and/or short end support applications subject to verification of maximum loads and capacities by the designer.
- ⑥ Dimensions shown are based on selection criteria in the Sign Structures Manual. Nonstandard applications must have dimensions verified or amended as appropriate.
- ⑦ "H" based on 15'-0" or actual sign height, whichever is greater.

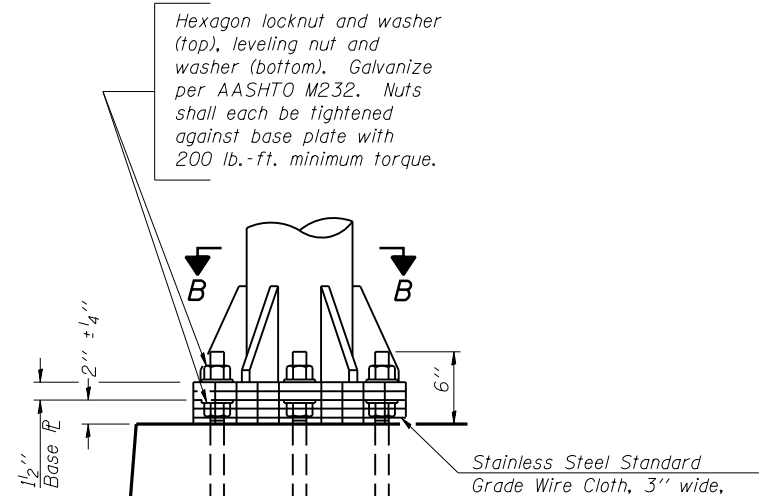
**6" PIPE TRUSS SUPPORT DETAILS**

\*\* One butt welded joint is allowed only on one post per support frame. If used, weld procedure must be pre-approved by Engineer and joint shall receive 100% RT or UT (tension criteria) at Contractor's expense.

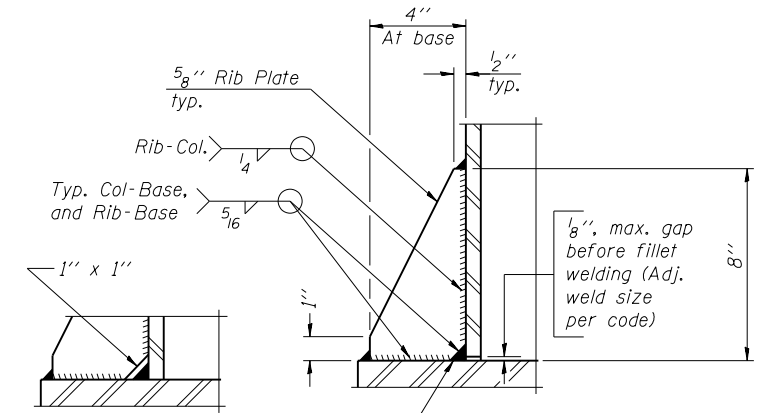
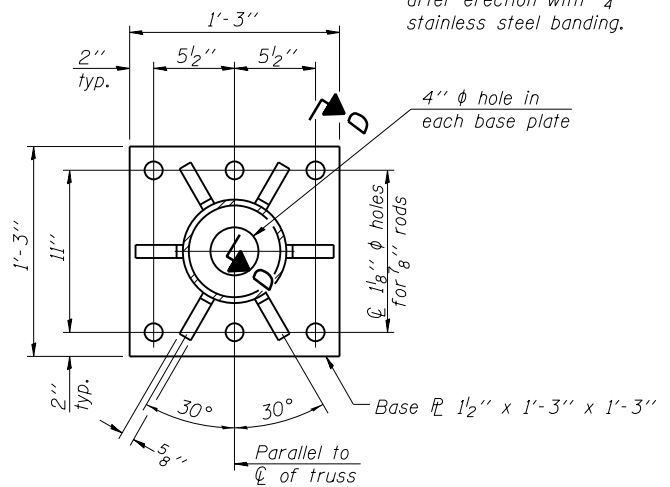
OS-A-3

6-1-12

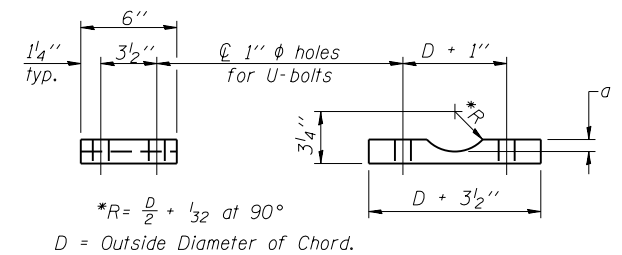
FILE NAME =	USER NAME = Leftwichdl	DESIGNED -	REVISED -	<b>STATE OF ILLINOIS DEPARTMENT OF TRANSPORTATION</b>	F.A.I. RTE.	SECTION	COUNTY	TOTAL SHEETS	SHEET NO.
pw:\11084EBIDINTEG.illinois.gov\PIWIDOT\Documents\IDOT Offices\District 9\Projects\sig	DRAWN =	CHECKED -	REVISED -		••	•	VARIOUS	41	18
Default	PLOT SCALE = 100.0000' / in.	DATE -	REVISED -		CONTRACT NO. 46386				
	PLOT DATE = 12/13/2016				ILLINOIS FED. AID PROJECT				



Stainless Steel Standard Grade Wire Cloth, 3" wide, 1/4" maximum opening with a minimum wire diameter of AWG. No. 16 with a minimum 2" lap. Secure to base plate after erection with 3/4" stainless steel banding.

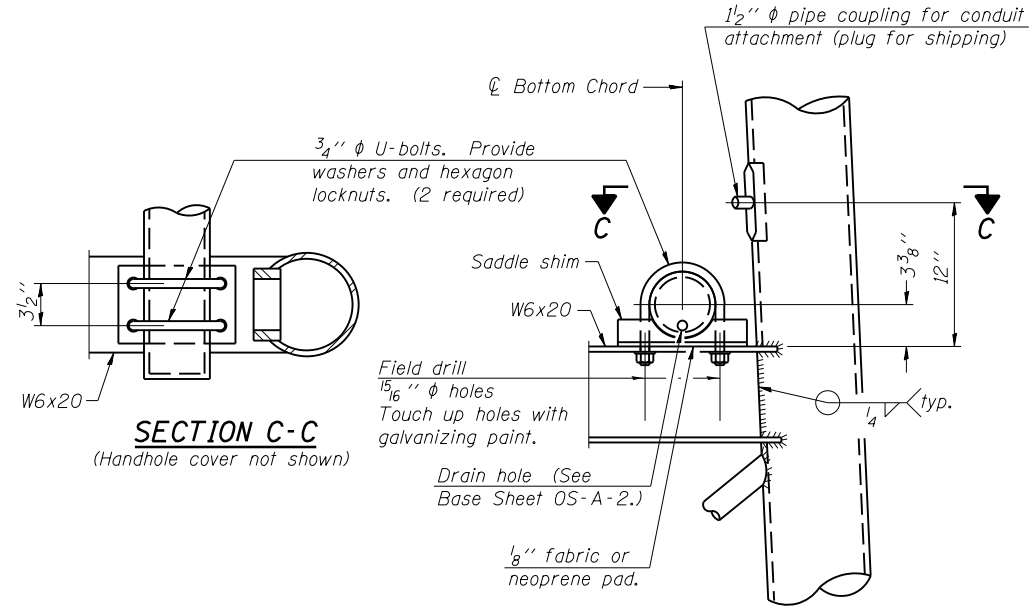
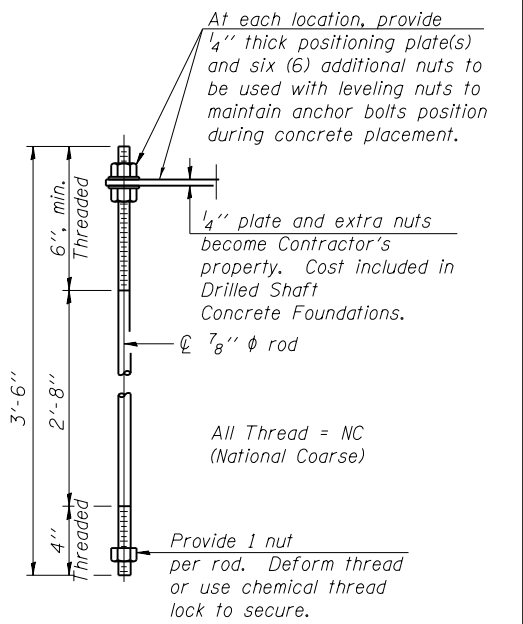
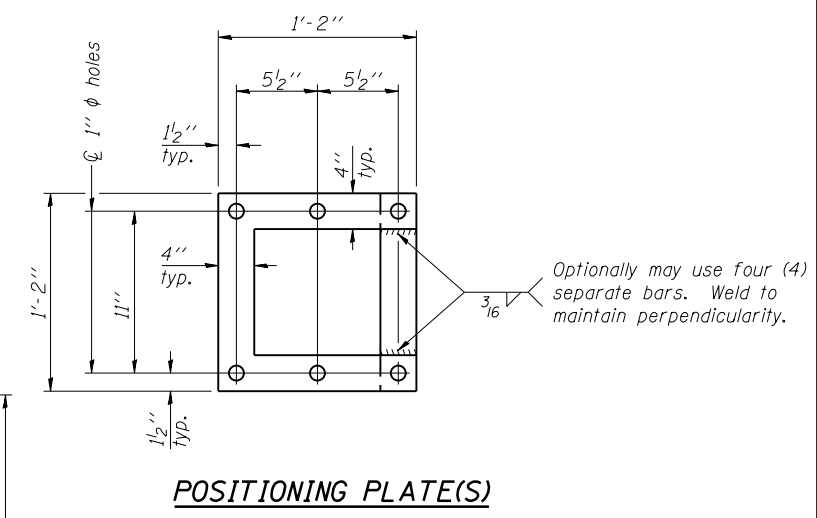
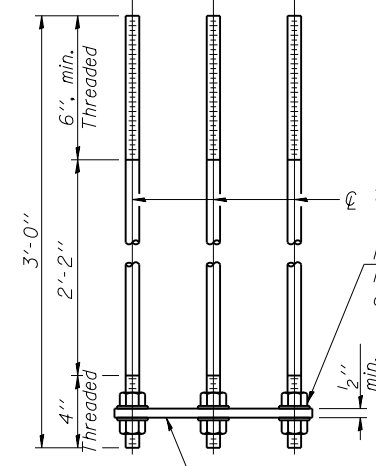
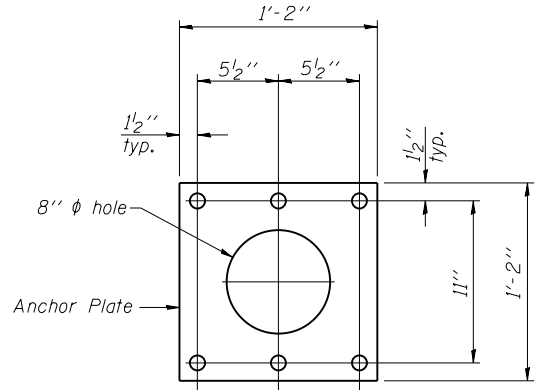


\*\* Alternate detail if welding col. to base plate first, then snip inside corner of ribs. Terminate weld on rib 1/4" from snip.



ASTM B26 Alloy 356-F or ASTM B209 Alloy 6061-T651 (4 required per sign truss)

Truss Chord Nominal Dia.	a
4 1/2"	1 1/16"
5"	3/4"
5 1/2"	1 3/16"



**SECTION C-C**  
(Handhole cover not shown)

**TYPE I-A TRUSS**  
**6" φ PIPE SUPPORT FRAME DETAILS**

Anchor rods shall conform to ASTM F1554 Grade 105. Galvanize upper 12" minimum per AASHTO M232. No welding shall be permitted on rods.

OS-A-3A

6-1-12

FILE NAME =	USER NAME = Leftwichdl	DESIGNED -	REVISED -
pw\11084EBIDINTEG\Illinois.gov\PIWIDOT\Documents\DOT Offices\District 9\Projects\sig	DRW\res\CADDData\46386\CADDData\CADsh	CHECKED -	REVISED -
Default	PLOT DATE = 12/13/2016	DATE -	REVISED -

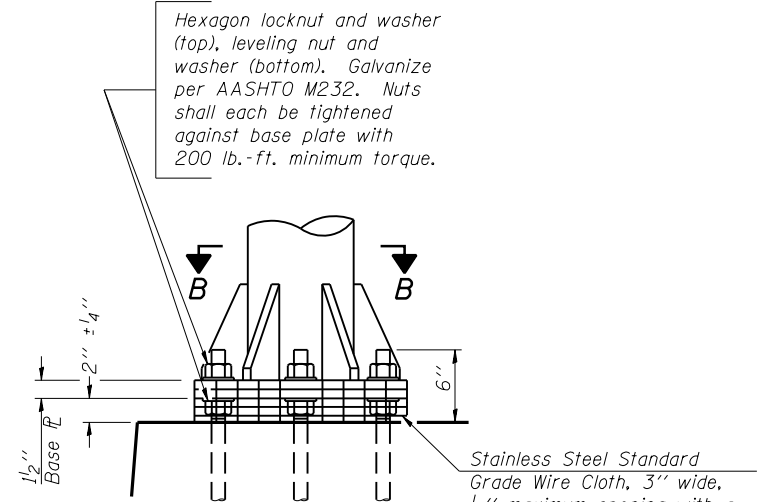
STATE OF ILLINOIS  
DEPARTMENT OF TRANSPORTATION

OVERHEAD SIGN STRUCTURES  
SUPPORT FRAME DETAILS ALUMINUM TRUSS

SCALE: SHEET OF SHEETS STA. TO STA.

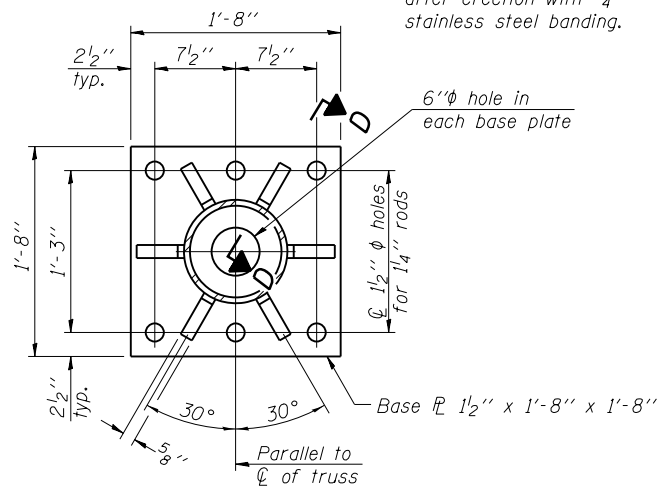
F.A.I. RTE.	SECTION	COUNTY	TOTAL SHEETS	SHEET NO.
..	.	VARIOUS	41	19
CONTRACT NO. 46386				



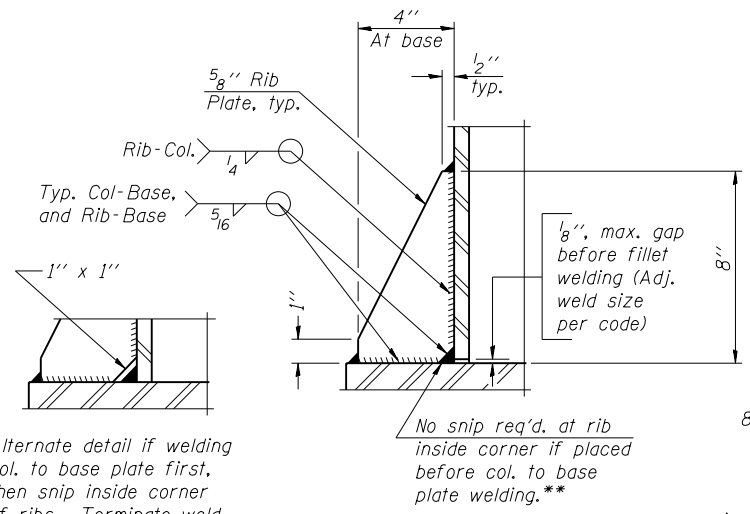


**DETAIL B**

Ribs shall be cut to fit slope of pipe.

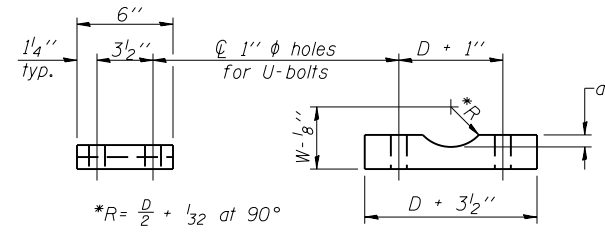


**SECTION B-B**



**SECTION D-D**

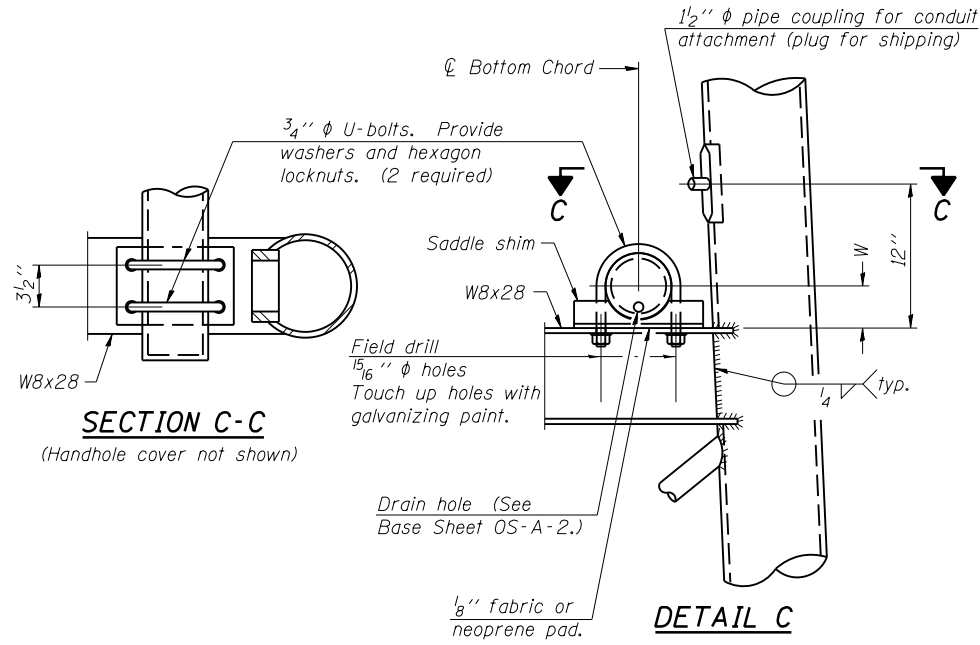
\*\* Alternate detail if welding col. to base plate first, then snip inside corner of ribs. Terminate weld on rib 1/4" from snip.



**SADDLE SHIM DETAIL**

ASTM B26 Alloy 356-F or ASTM B209 Alloy 6061-T651 (4 required per sign truss)

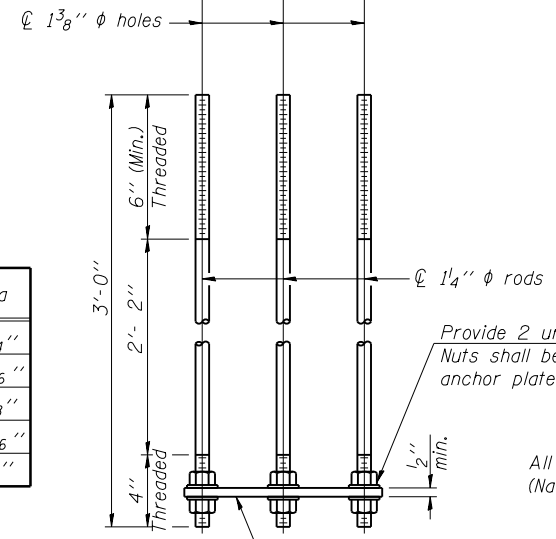
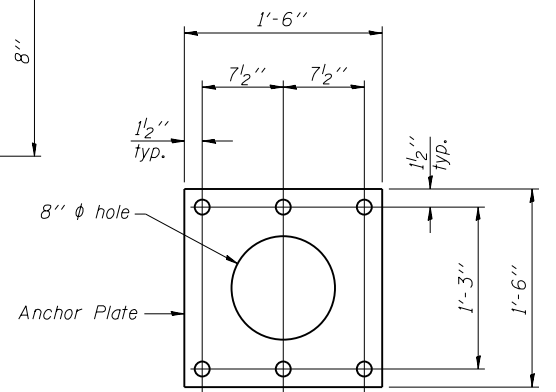
Truss Chord Nominal Dia.	a
5"	3/4"
5 1/2"	13/16"
6"	7/8"
6 1/2"	15/16"
7"	1"



**SECTION C-C**

(Handhole cover not shown)

**DETAIL C**



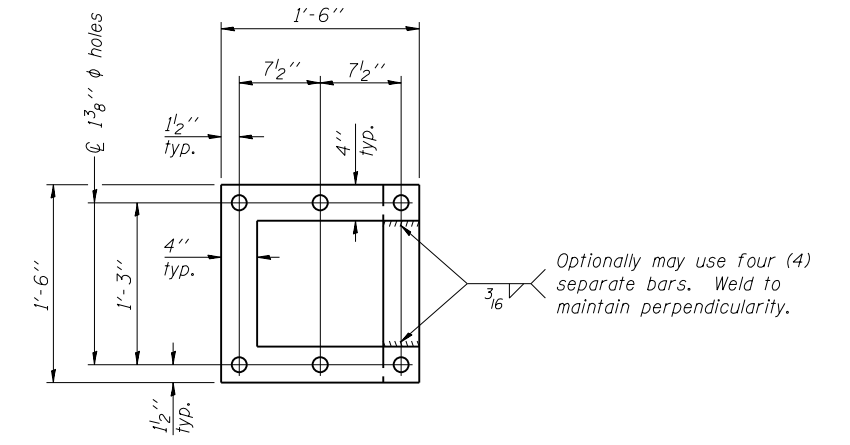
**ANCHOR ROD DETAIL**

Spread Footing Foundation

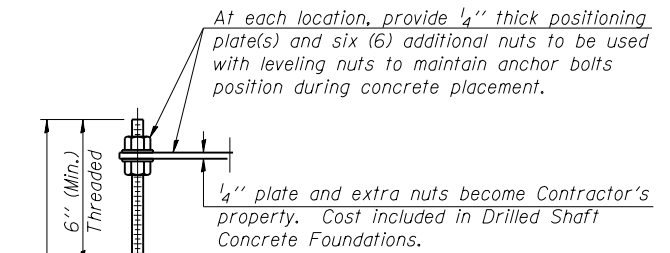
All Thread = NC (National Coarse)

Anchor rods shall conform to ASTM F1554 Grade 105. Galvanize upper 12" minimum per AASHTO M232. No welding shall be permitted on rods.

**10"  $\phi$  PIPE SUPPORT FRAME DETAILS**



**POSITIONING PLATE(S)**



**ANCHOR ROD DETAIL**

Drilled Shaft Foundation

All Thread = NC (National Coarse)

OS-A-6A

6-1-12

FILE NAME =	USER NAME = Leftwichdl	DESIGNED -	REVISED -
pw\11084EBIDINTEG.illinois.gov\PIWIDOT\Documents\DOT Offices\District 9\Projects\sign	DESIGNED -	CHECKED -	REVISED -
Default	PLOT DATE = 12/13/2016	DATE -	REVISED -

STATE OF ILLINOIS  
DEPARTMENT OF TRANSPORTATION

OVERHEAD SIGN STRUCTURES  
SUPPORT FRAME DETAILS - ALUMINUM TRUSS

SCALE: SHEET OF SHEETS STA. TO STA.

F.A.I. RTE.	SECTION	COUNTY	TOTAL SHEETS	SHEET NO.
		VARIOUS	41	21
CONTRACT NO. 46386				

**BAR LIST - EACH FOUNDATION**

Bar	Number	Size	Length	Shape
v4(E)	24	#9	F less 5"	—
#4 bar spiral (E) - see Side Elevation				

**NOTES:**

The foundation dimensions shown are based on the presence of mostly cohesive soils with an average Unconfined Compressive Strength (Qu) of at least 1.25 tsf, which must be determined by previous soil investigations at the jobsite. When other conditions are indicated, the boring data will be included in the plans and the foundation dimensions shown will be the result of site specific designs.

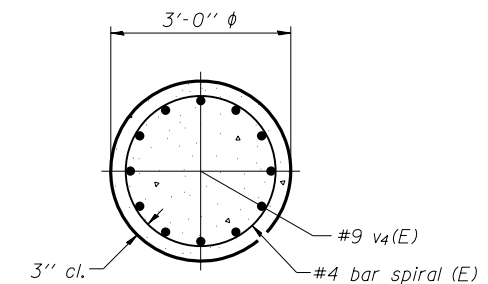
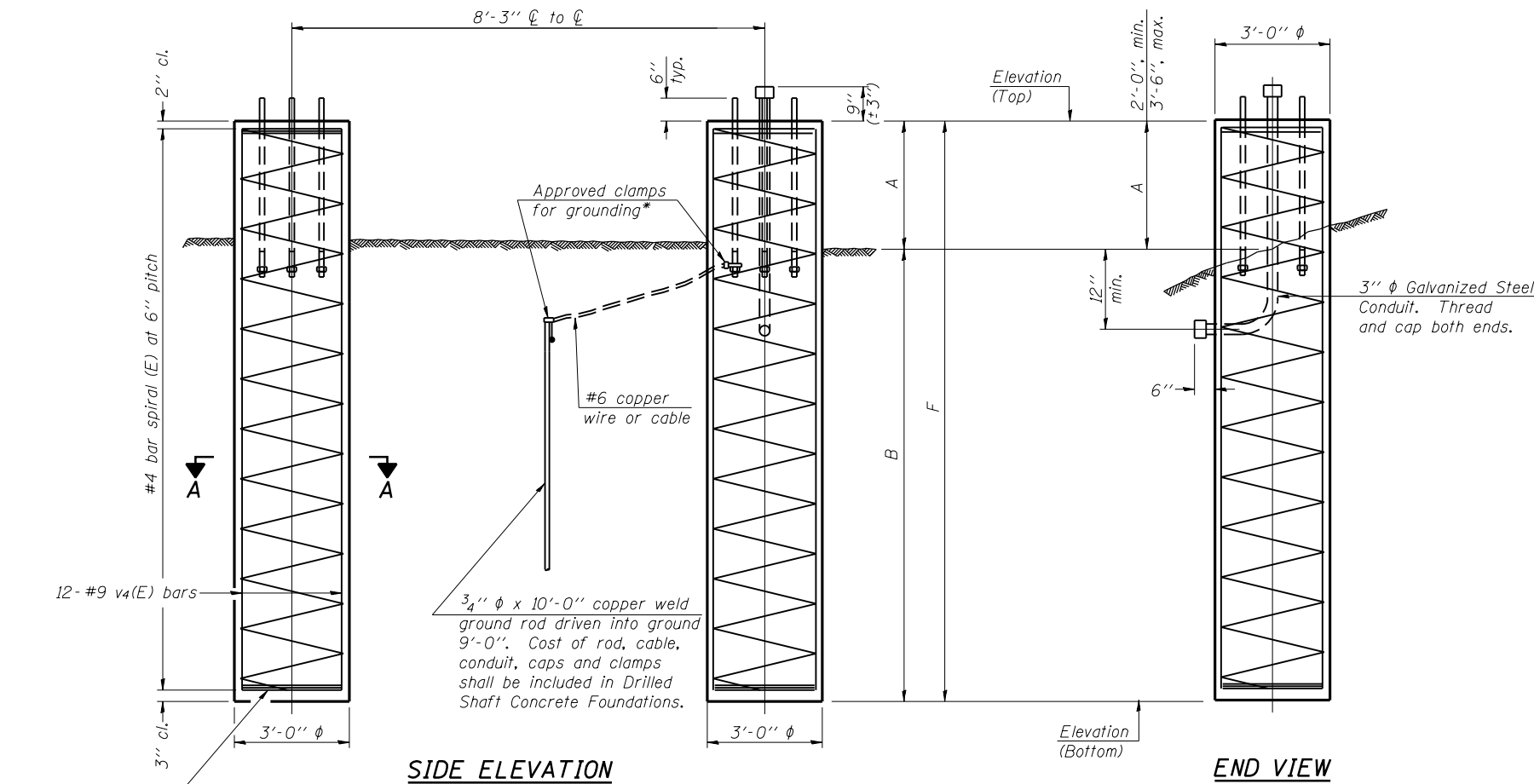
If the conditions encountered are different than those indicated, the Contractor shall notify the Engineer to determine if the foundation dimensions need to be modified. If dimensions "B" or "F" are revised by more than 12" by the Contractor, "as-built" plans shall be prepared and submitted to the District Bureau of Operations for future reference.

No sonotubes or decomposable forms shall be used below the lower conduit entrance. Permanent metal forms or other shielding may not be left in place below that elevation without the Engineer's written permission.

Concrete shall be placed monolithically, without construction joints.

Backfill shall be placed per Article 502 of Standard Specification and prior to erection of support column.

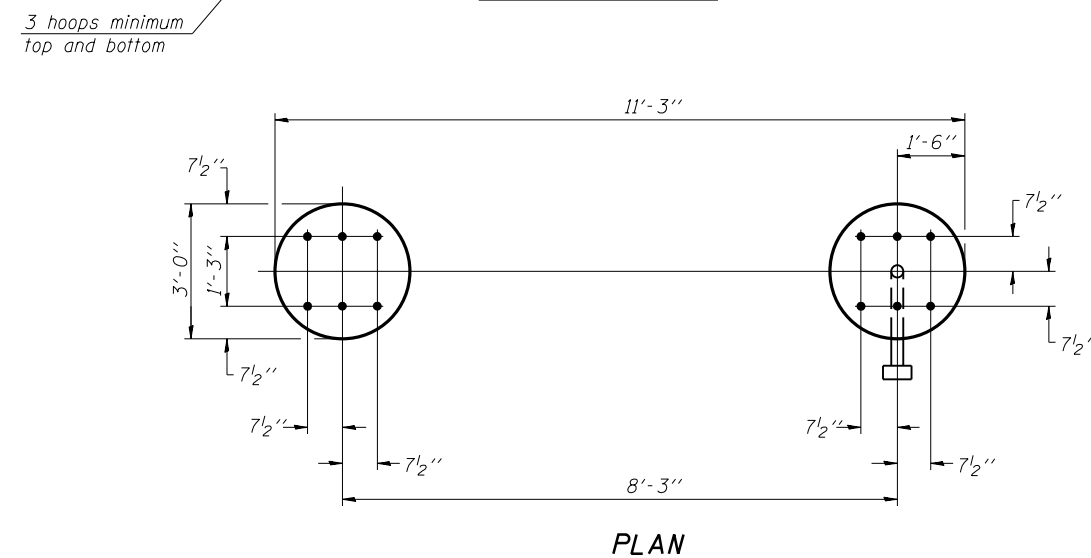
A normal surface finish followed by a Concrete Sealer application will be required on concrete surfaces above the lowest elevation 6" below finished ground line. Cost included in Drilled Shaft Concrete Foundation.



**SECTION A-A**

For anchor rod size and placement, see Support Frame Detail Sheet.

\* Anchor rod shall be ground or filed to bright metal at clamp and cable connection location.



**PLAN**

**DETAILS FOR 10" Ø SUPPORT FRAME  
TYPE I-A or II-A TRUSS**

STRUCTURE NUMBER	STATION	Left Foundation					Right Foundation					Class SI Concrete
		Elevation Top	Elevation Bottom	A	B	F	Elevation Top	Elevation Bottom	A	B	F	
		FT	FT	FT	FT	FT	FT	FT	FT	FT	FT	
9S041I057R090.9	549+75.00	475.50	456.78	2.22	16.50	18.72	475.50	455.71	3.29	16.50	19.79	20.2
9S041I057R091.2	592+85.00	494.00	471.22	2.28	20.50	22.78	491.50	467.95	3.05	20.50	23.55	24.3
9S041I057L091.9	629+50.00	460.50	437.52	2.48	20.50	22.98	460.50	437.20	2.80	20.50	23.30	24.2
9S041I057L097.5	922+75.00	551.00	531.96	2.54	16.50	19.04	550.00	526.25	3.25	20.50	23.75	22.4
9S041I064R072.9	2352+30.00	488.70	469.52	2.68	16.50	19.18	488.70	469.93	2.27	16.50	18.77	19.9
9S041I064R073.2	2372+15.00	523.00	499.76	2.74	20.50	23.24	520.50	497.43	2.57	20.50	23.07	24.3
9S041I064L078.5	2660+40.00	451.80	413.91	2.89	35.00	37.89	451.80	428.62	2.68	20.50	23.18	32.0
9S041I064L078.9	2678+30.00	442.50	423.04	2.96	16.50	19.46	442.50	422.89	3.11	16.50	19.61	20.5
9S041I057L092.3	648+25.00	476.70	453.96	2.24	20.50	22.74	476.70	453.00	3.20	20.50	23.70	24.3

OS4-F3

8-21-13

FILE NAME =	USER NAME = Leftwichdl	DESIGNED -	REVISED -
pw:\11084EBIDINTEG.illinois.gov\PIWIDOT\Documents\IDOT Offices\District 9\Projects\sig		DRAWN -	REVISED -
		CHECKED -	REVISED -
Default	PLOT DATE = 12/13/2016	DATE -	REVISED -

**STATE OF ILLINOIS  
DEPARTMENT OF TRANSPORTATION**

**OVERHEAD SIGN STRUCTURES  
DRILLED SHAFT DETAILS**

SCALE: SHEET OF SHEETS STA. TO STA.

F.A.I. RE.	SECTION	COUNTY	TOTAL SHEETS	SHEET NO.
••	•	VARIOUS	41	22
CONTRACT NO. 46386			ILLINOIS FED. AID PROJECT	

•• FAI 57 and FAI 64 •D-9 OVD SIN STR REPL 16-28

Jefferson Franklin



12.0" Radius, 2.0" Border, White on Green;  
 "N ORTH" E Mod 2K; "W EST" E Mod 2K; "St Louis" E Mod 2K; "Chicago" E Mod 2K;  
 Table of letter and object lefts.

57	N	O	R	T	H	64	W	E	S	T
16.4	64.4	80.0	93.0	104.0	115.1	148.8	196.8	216.2	227.2	238.7
S	t	L	o	u	i	s				
79.2	95.4	119.7	133.6	149.4	166.4	174.2				
C	h	i	c	a	g	o				
82.7	100.2	117.1	125.3	139.4	154.9	170.4				

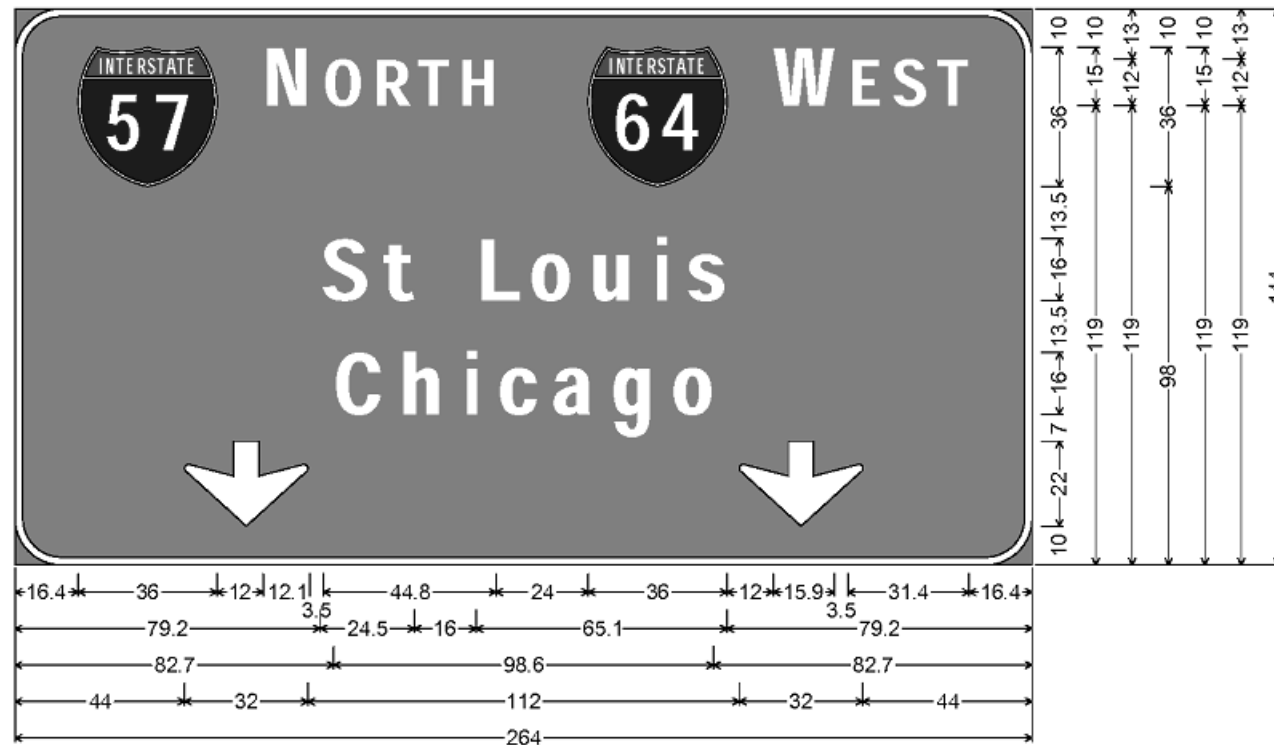
**TO BE USED WITH  
 SN 9S041I057R090.9**



12.0" Radius, 2.0" Border, White on Green;  
 "EXIT" E Mod 2K 120% spacing; " 92" E Mod 2K;  
 12.0" Radius, 2.0" Border, White on Green;  
 "E AST" E Mod 2K; "Louisville" E Mod 2K; Rectangle Yellow;  
 Table of letter and object lefts.

E	X	I	T	9	2			
66.7	75.8	87.0	91.2	113.6	128.9			
57	E	A	S	T				
29.5	77.5	92.1	106.1	117.6				
L	o	u	i	s	v	i	l	e
16.4	30.3	46.2	63.1	71.0	84.7	101.7	111.3	129.0
11.6								

**TO BE USED WITH  
 SN 9S041I057R090.9**



12.0" Radius, 2.0" Border, White on Green;  
 "N ORTH" E Mod 2K; "W EST" E Mod 2K; "St Louis" E Mod 2K; "Chicago" E Mod 2K;  
 Down Arrow 22.0" 270°; Down Arrow 22.0" 270°;  
 Table of letter and object lefts.

57	N	O	R	T	H	64	W	E	S	T
16.4	64.4	80.0	93.0	104.0	115.1	148.8	196.8	216.2	227.2	238.7
S	t	L	o	u	i	s				
79.2	95.4	119.7	133.6	149.4	166.4	174.2				
C	h	i	c	a	g	o				
82.7	100.2	117.1	125.3	139.4	154.9	170.4				
↓	↓									
44.0	188.0									

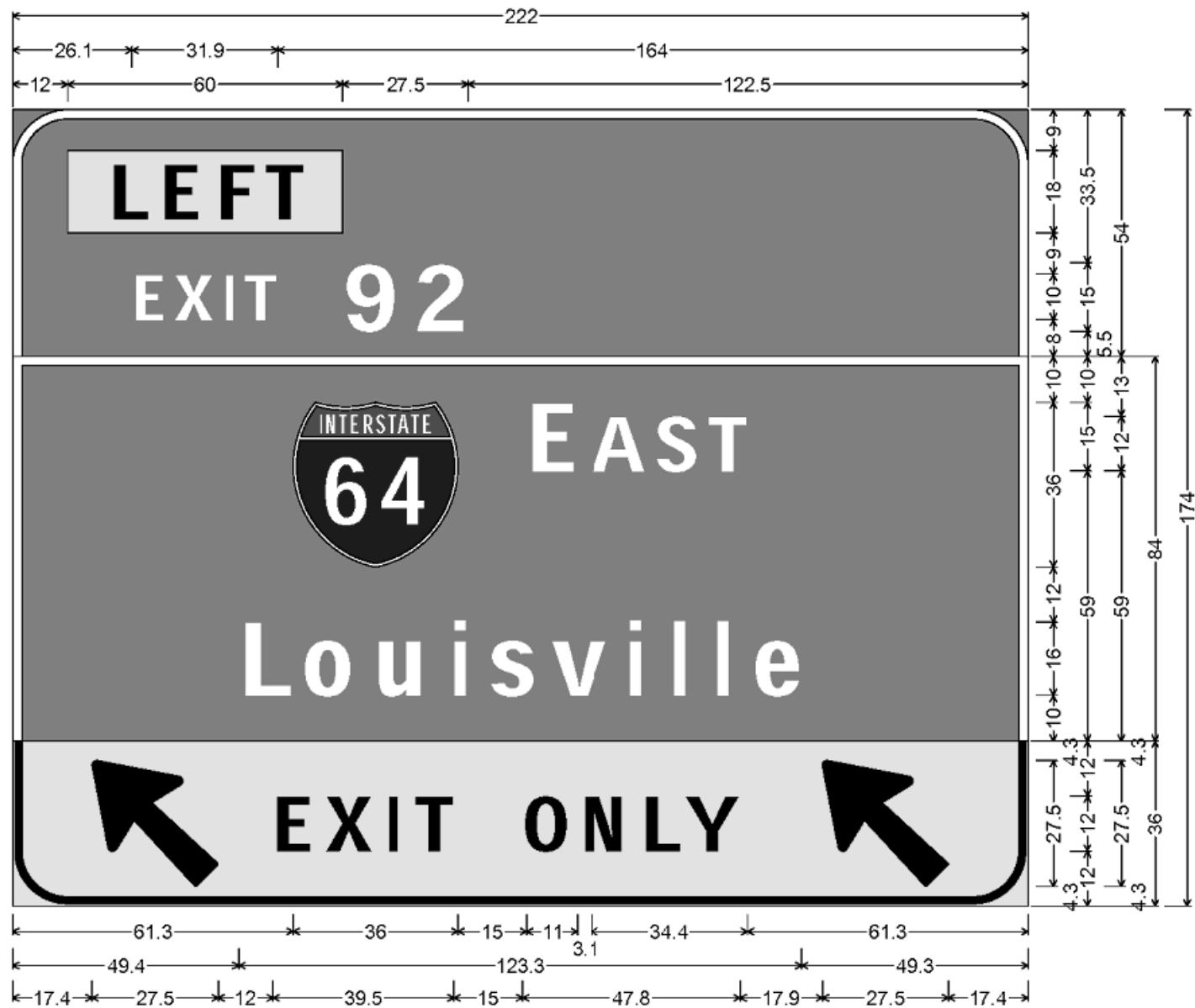
**TO BE USED WITH  
 SN 9S041I057R091.2**



12.0" Radius, 2.0" Border, White on Green;  
 "EXIT" E Mod 2K 120% spacing; "92" E Mod 2K;  
 12.0" Radius, 2.0" Border, White on Green;  
 "E AST" E Mod 2K; "Louisville" E Mod 2K;  
 12.0" Radius, 1.5" Border, 0.5" Indent, Black on Yellow;  
 "EXIT" E Mod 2K 140% spacing; Arrow 160 - 35.0" 45°; "ONLY" E Mod 2K;  
 Table of letter and object lefts.

E	X	I	T	9	2				
84.7	93.8	105.0	109.2	131.6	146.9				
64	E	A	S	T					
37.0	88.0	102.6	116.6	128.1					
L	o	u	i	s	v	i	l	e	
25.4	39.3	55.2	72.1	80.0	93.7	110.7	120.3	129.9	138.0
E	X	I	T	↗	O	N	L	Y	
19.6	30.8	44.8	50.2	71.1	110.6	123.6	136.7	146.3	

**TO BE USED WITH  
 SN 9S041I057R091.2**

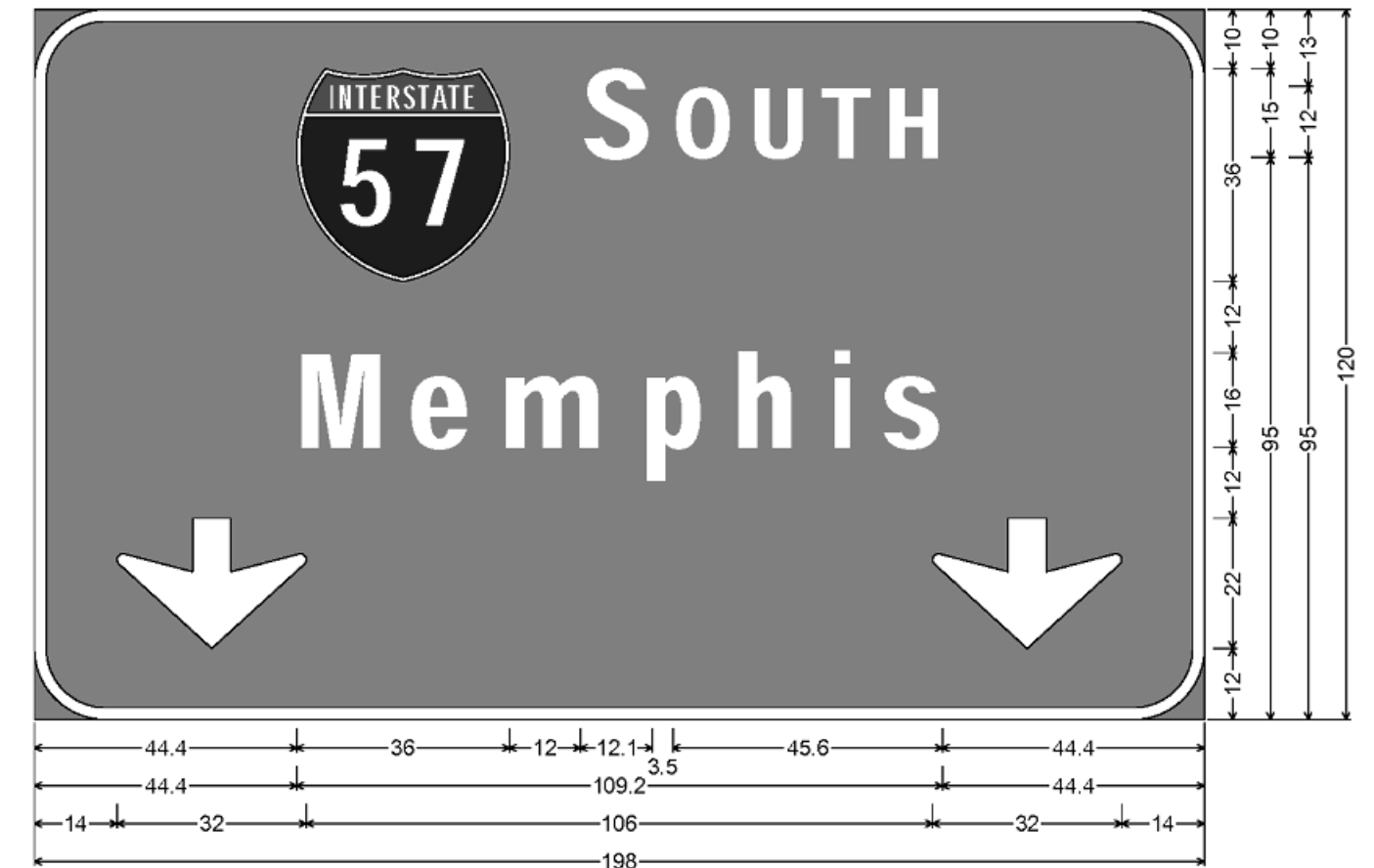


12.0" Radius, 2.0" Border, White on Green;  
 Rectangle Yellow;  
 "EXIT" E Mod 2K 120% spacing; "92" E Mod 2K;  
 12.0" Radius, 2.0" Border, White on Green;  
 "E AST" E Mod 2K; "Louisville" E Mod 2K;  
 12.0" Radius, 1.5" Border, 0.5" Indent, Black on Yellow;  
 Arrow 160 - 35.0" 135°; "EXIT " E Mod 2K 140% spacing; "ONLY" E Mod 2K; Arrow 160 - 35.0" 135°;

Table of widths and spaces.

12.0	60.0	-0.0	12.1	3.3	12.0	122.6					
26.1	E	X	I	T	164.1						
61.3	64	E	A	S	T	164.1					
49.4	L	O	U	S	V	123.3					
17.4	←	E	X	I	T	O	N	L	Y	→	17.4

**TO BE USED WITH  
 SN 9S041I057L091.9**



12.0" Radius, 2.0" Border, White on Green;  
 "S OUTH" E Mod 2K; "Memphis" E Mod 2K; Down Arrow 22.0" 270°; Down Arrow 22.0" 270°;

Table of letter and object lefts.

57	S	O	U	T	H	
44.4	92.4	108.0	121.0	132.9	143.9	
M	e	m	p	h	i	s
44.4	63.2	78.8	102.8	118.3	135.2	143.1
↓	↓					
14.0	152.0					

**TO BE USED WITH  
 SN 9S041I057L091.9**



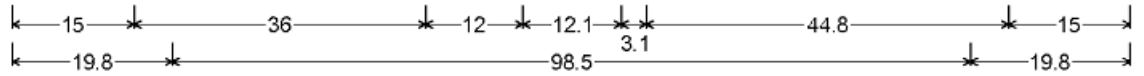


12.0" Radius, 2.0" Border, White on Green;  
 "EXIT" E Mod 2K 120% spacing; "96" E Mod 2K;  
 12.0" Radius, 2.0" Border, White on Green;  
 "Louisville" E Mod 2K; "St Louis" E Mod 2K; "1 MILE" E Mod 2K;

Table of letter and object lefts.

E	X	I	T	9	6				
60.8	69.9	81.1	85.3	107.7	122.8				
<table border="1"> <tr> <td>57.0</td> </tr> </table>						57.0			
57.0									
L	o	u	i	s	v	i	l	e	
13.4	27.3	43.2	60.1	68.0	81.7	98.7	108.3	117.9	126.0
S	t	L	o	u	i	s			
22.2	38.4	62.7	76.6	92.4	109.4	117.2			
1	M	I	L	E					
48.6	68.1	80.2	85.0	94.0					

**TO BE USED WITH  
 SN 9S0411057L097.5**

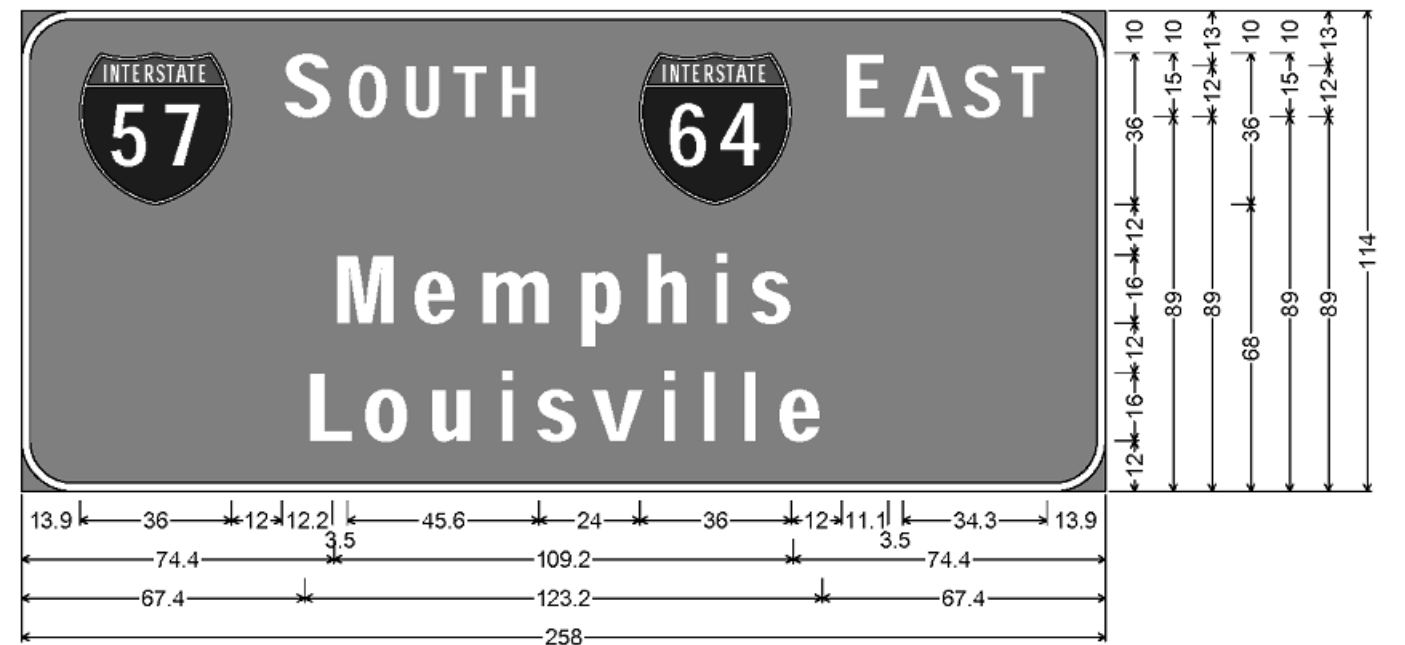


12.0" Radius, 2.0" Border, White on Green;  
 Rectangle Yellow;  
 "EXIT" E Mod 2K 120% spacing; "73" E Mod 2K;  
 12.0" Radius, 2.0" Border, White on Green;  
 "N ORTH" E Mod 2K; "Chicago" E Mod 2K;

Table of widths and spaces.

12.0	60.0	-0.0	7	12.1	2.3	12.1	39.5														
26.1	E	7.4	X	1.6	8.8	2.5	I	2.0	2.1	T	7.4	80.1									
15.0	57	36.0	12.0	N	12.1	3.1	O	10.1	2.9	R	9.8	1.3	T	8.9	2.1	H	9.8	14.9			
19.8	C	12.9	4.5	h	10.5	6.4	i	3.3	4.9	c	10.5	3.5	a	10.6	5.0	g	10.5	5.0	o	10.9	19.8

**TO BE USED WITH  
 SN 9S041I064R072.9**



12.0" Radius, 2.0" Border, White on Green;  
 "S OUTH" E Mod 2K; "E AST" E Mod 2K; "Memphis" E Mod 2K; "Louisville" E Mod 2K;

Table of letter and object lefts.

57	S	O	U	T	H	64	E	A	S	T
13.9	61.9	77.6	90.5	102.4	113.4	147.2	195.2	209.8	223.7	235.2
M	e	m	p	h	i	s				
74.4	93.2	108.8	132.8	148.3	165.2	173.1				
L	o	u	i	s	v	i	l	l	e	
67.4	81.3	97.2	114.1	122.0	135.7	152.7	162.3	171.9	180.0	

**TO BE USED WITH  
 SN 9S041I064R072.9**





12.0" Radius, 2.0" Border, White on Green;  
 Rectangle Yellow;  
 "EXIT" E Mod 2K 120% spacing; "78" E Mod 2K;  
 12.0" Radius, 2.0" Border, White on Green;  
 "S OUTH" E Mod 2K; "Memphis" E Mod 2K;  
 12.0" Radius, 1.5" Border, 0.5" Indent, Black on Yellow;  
 "EXIT" E Mod 2K 140% spacing; Arrow 160 - 35.0" 135°; "ONLY" E Mod 2K;

Table of widths and spaces.

6.0	60.0	-0.0	7	12.1	3.0	8	12.3	80.6															
20.1	E	X	I	T	7.4	1.6	8.8	2.5	2.0	2.1	7.4	122.1											
31.1	57	S	O	U	T	H	31.0	12.1	3.1	10.1	2.9	9.8	2.1	8.9	2.1	9.8	31.0						
32.4	M	e	m	p	h	i	s	32.4	11.9	1.0	10.5	5.0	17.5	6.5	10.5	5.0	10.5	6.5	3.1	1.6	10.6	32.4	
19.6	E	X	I	T	19.6	8.9	2.4	10.4	3.5	2.4	3.0	8.9	12.0	27.5	12.0	10.1	2.9	9.8	3.3	8.9	0.6	12.3	15.5

**TO BE USED WITH  
 SN 9S041I064L078.5**

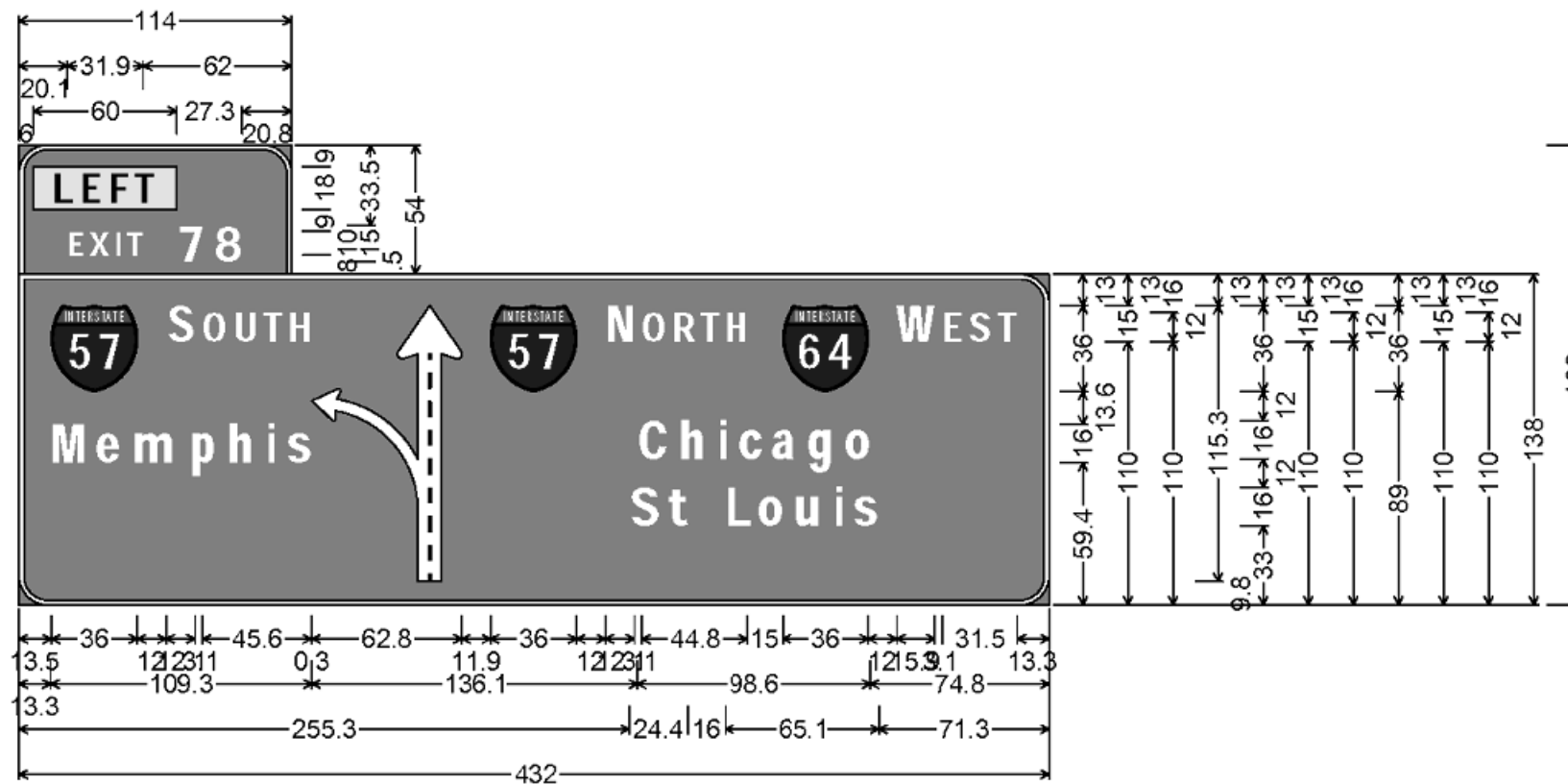


12.0" Radius, 2.0" Border, White on Green;  
 "N ORTH" E Mod 2K; "W EST" E Mod 2K; "Chicago" E Mod 2K; "St Louis" E Mod 2K;  
 Arrow 160 - 35.0" 45°; Arrow 160 - 35.0" 45°;

Table of letter and object lefts.

57	N	O	R	T	H	64	W	E	S	T
16.4	64.4	80.0	93.0	104.0	115.1	148.8	196.8	216.2	227.2	238.7
C	h	i	c	a	g	o				
82.7	100.2	117.1	125.3	139.4	154.9	170.4				
S	t	L	o	u	i	s				
79.2	95.4	119.7	133.6	149.4	166.4	174.2				
↖	↗									
47.0	189.5									

**TO BE USED WITH  
 SN 9S041I064L078.5**

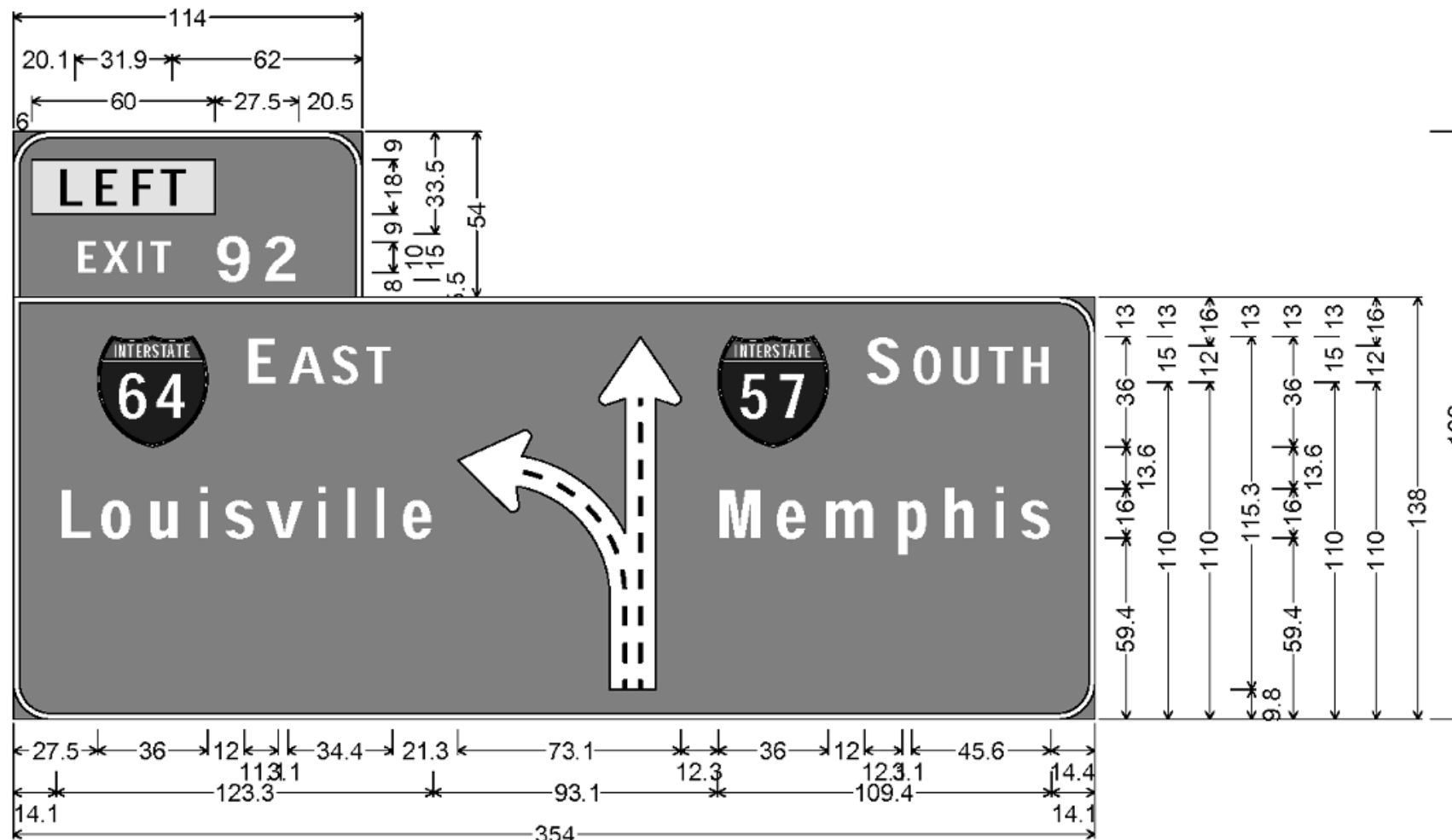


12.0" Radius, 2.0" Border, White on Green;  
 Rectangle Yellow;  
 "EXIT" E Mod 2K 120% spacing; "78" E Mod 2K;  
 12.0" Radius, 2.0" Border, White on Green;  
 "SOUTH" E Mod 2K; "Memphis" E Mod 2K; Diagrammatic Arrow lane lines Black;  
 "NORTH" E Mod 2K; "WEST" E Mod 2K; "Chicago" E Mod 2K;  
 "St Louis" E Mod 2K;

Table of widths and spaces.

6.0	60.0	0.0	7	3.0	8	12.3	338.6													
20.1	E	7.4	X	1.6	8.8	2.5	I	2.0	2.1	7.4	380.1									
13.5	36.0	12.0	S	12.1	3.1	O	10.1	2.9	9.8	2.0	8.9	2.3	9.6	0.3	62.8	11.9	36.0			
12.0	N	12.1	3.1	O	10.1	2.9	9.8	1.3	8.9	2.1	9.8	14.9	36.0	12.0	15.9					
3.1	E	8.9	2.1	S	9.8	1.8	8.9	13.3												
13.3	M	14.9	3.9	e	10.6	5.0	m	17.5	6.5	p	10.5	5.0	h	10.5	6.4	3.3	4.6	s	10.5	
136.3	C	12.9	4.5	h	10.5	6.5	i	3.1	5.0	c	10.6	3.5	a	10.5	5.0	g	10.6	4.9	10.9	74.8
255.3	S	12.9	3.1	t	8.4	16.0	L	11.9	2.0	10.9	5.0	u	10.5	6.4	i	3.3	4.6	s	10.5	71.3

**TO BE USED WITH  
 SN 9S041I064L078.9**

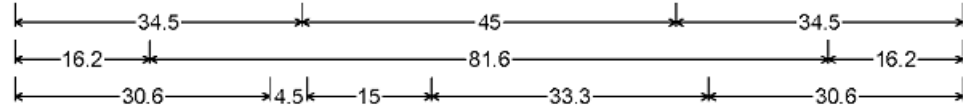


12.0" Radius, 2.0" Border, White on Green;  
 Rectangle Yellow;  
 "EXIT" E Mod 2K 120% spacing; "92" E Mod 2K;  
 12.0" Radius, 2.0" Border, White on Green;  
 "E AST" E Mod 2K; "Louisville" E Mod 2K; Diagrammatic Arrow lane lines Black;  
 "S OUTH" E Mod 2K; "Memphis" E Mod 2K;

Table of widths and spaces.

6.0	60.0	0.0	9	12.1	3.3	2	12.0	260.6																					
20.1	E	X	I	T	7.4	1.6	8.8	2.5	2.0	2.1	7.4	302.1																	
27.5	64	E	A	S	T	27.5	36.0	12.0	11.1	3.1	12.1	1.9	9.6	1.9	8.9	21.3	73.1	12.3	36.0	12.0	12.1								
	O	U	T	H	3.1	10.1	2.9	9.8	2.1	8.9	2.1	9.8	14.3																
14.1	L	o	u	i	s	v	i	l	e	14.1	11.9	2.1	10.9	4.9	10.6	6.4	3.1	4.8	10.5	3.1	12.4	4.6	3.3	6.4	3.1	6.5	3.1	5.0	10.5
	M	e	m	p	h	i	s	93.3	14.9	4.0	10.5	5.0	17.5	6.5	10.5	5.0	10.5	6.5	3.1	4.6	10.6	14.3							

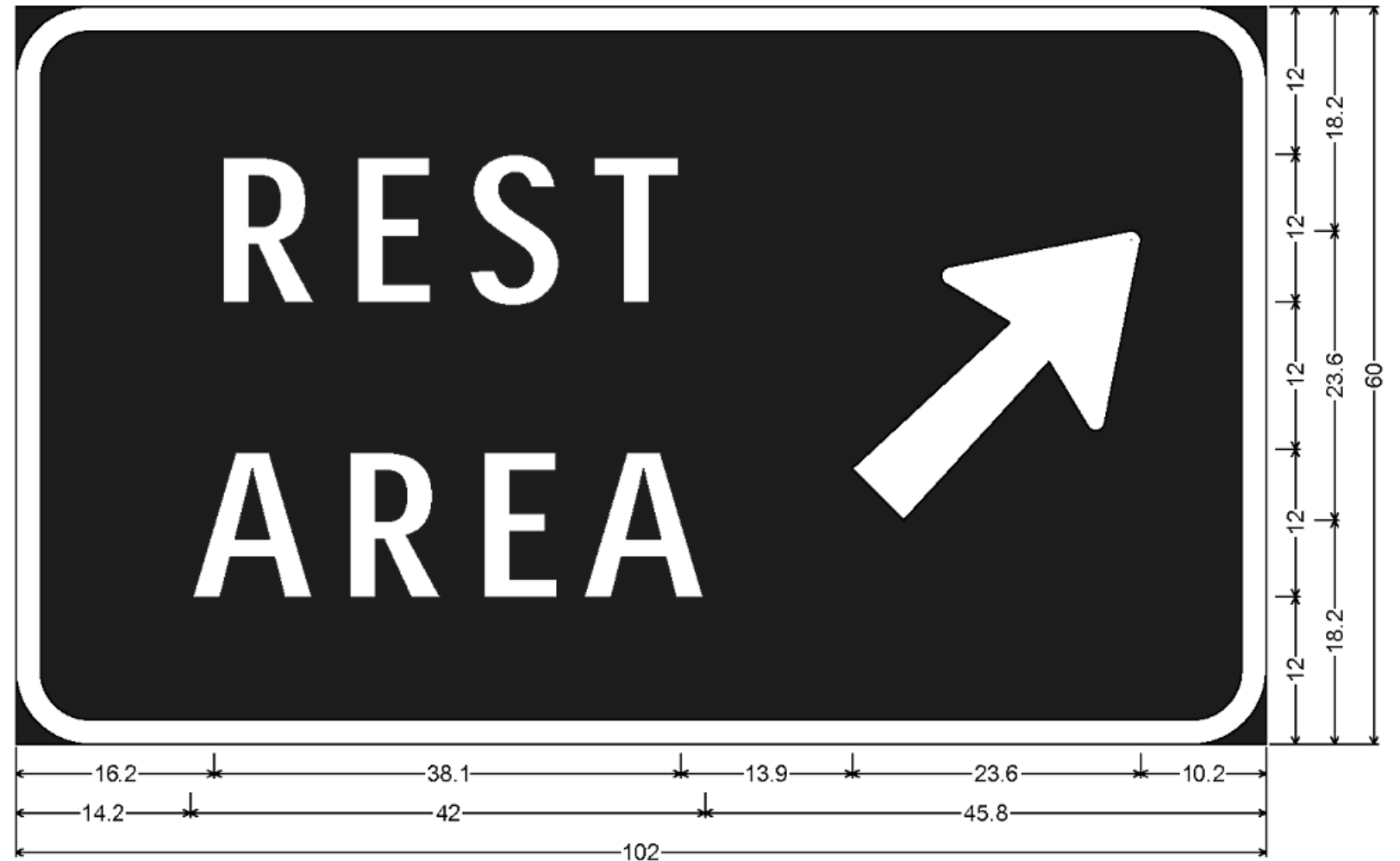
**TO BE USED WITH  
 SN 9S0411057L092.3**



12.0" Radius, 2.0" Border, White on Green;  
 "EXIT" E Mod 2K 120% spacing; "77" E Mod 2K;  
 12.0" Radius, 2.0" Border, White on Green;  
 "Sesser" E Mod 2K; "1 MILE" E Mod 2K;  
 Table of letter and object lefts.

E	X	I	T	7	7		
25.4	34.5	45.7	49.9	72.3	86.8		
<table border="1"> <tr> <td>ILLINOIS</td> </tr> <tr> <td>34.5</td> </tr> </table>						ILLINOIS	34.5
ILLINOIS							
34.5							
S	e	s	s	e	r		
16.2	32.7	46.4	60.2	74.3	89.8		
1	M	I	L	E			
30.6	50.1	62.2	67.0	76.0			

**TO BE USED WITH  
 SN 9S028I057L078.8**



6.0" Radius, 2.0" Border, White on Blue;  
 "REST" D; "AREA" D; Arrow 133 - 30.0" 45°;

**TO BE USED TWICE  
 SN 9S028I057L078.8 & SN 9S028I057R073.8**

FILE NAME =	USER NAME = Leftwichdl	DESIGNED -	REVISED -
pw\11084EBIDINTEG\illinois.gov\PIWIDOT\Documents\DOT Offices\District 9\Projects\sig		DRAWN=	REVISED=
Default	PLOT SCALE = 200.0000' / in.	CHECKED -	REVISED -
	PLOT DATE = 12/13/2016	DATE -	REVISED -

**STATE OF ILLINOIS  
 DEPARTMENT OF TRANSPORTATION**

SCALE:	SHEET	OF	SHEETS	STA.	TO	STA.	F.A.I. RTE.	SECTION	COUNTY	TOTAL SHEETS	SHEET NO.
							••	•	VARIOUS	41	32
										CONTRACT NO. 46386	
										ILLINOIS FED. AID PROJECT	

ILLINOIS DEPARTMENT OF TRANSPORTATION  
District Nine Materials

Bridge Foundation  
Boring Log

Sign Truss 9S041I057R090.9 Over FAI 57

Sheet 1 of 1

Route: FAI 57 Structure Number: \_\_\_\_\_ Date: 9/6/2013  
Section \_\_\_\_\_ Bored By: R Moberly  
County: Jefferson Location: MP 90.9 Median Checked By: R Graeff

Boring No	DEPTH	BLOWS	Qu	W%	Surf Wat Elev:	DEPTH	BLOWS	Qu	W%
1-S					Ground Water Elevation				
Station 549+55					when Drilling				
Offset 5' Rt CL Median					At Completion				
Ground Surface 96.9 Ft					At: _____				
					Hrs: _____				
Very stiff, damp to moist, brown, Clay A7-6					Bottom of hole = 25.0 feet				
		5			No free water observed				
		7	2.3B	14	Elevation referenced to top of existing median foundation; Assumed Elev. = 100.0 feet				
		7			Borehole advanced with hollow stem auger (8" O.D, 3.25" I.D.)				
92.4					To convert "N" values to "N60" multiply by 1.25				
Stiff, moist, brown mottled grey, Silty Clay to Clay A7-6	5.0	3				30.0			
		4	1.4B	20					
		4							
89.9									
Medium to stiff, moist to very moist brown mottled grey, Silty Clay A-6		2							
		4	1.0B	19					
		4							
87.4									
Stiff, moist, grey mottled brown, Clay to Silty Clay A7-6	10.0	2				35.0			
		4	1.4B	18					
		5							
		3							
		6	1.6B	17					
		8							
82.4									
Stiff, damp to moist, brown and grey, Clay A7-6	15.0	4				40.0			
		10	1.6S	15					
		12							
79.9									
Hard, damp to dry, brown, Clay to weathered Clay Shale		11							
		27	5.2S	12					
		33							
		8							
		31	5.2S	13					
		27							
74.4									
Hard, dry, grey and brown, Sandy Clay Shale		100/10"							
71.9	25.0	100/5"				50.0			

N-Std Pentr Test: 2" OD Sampler, 140# Hammer, 30" Fall (Type Fail. B-Bulge S-Shear E-Estimated P-Penetrometer)

ILLINOIS DEPARTMENT OF TRANSPORTATION  
District Nine Materials

Bridge Foundation  
Boring Log

Sign Truss 9S041I057R090.9 Over FAI 57

Sheet 1 of 1

Route: FAI 57 Structure Number: \_\_\_\_\_ Date: 10/3/2013  
Section \_\_\_\_\_ Bored By: R Moberly  
County: Jefferson Location: MP 90.9 Driving Shoulder Checked By: R Graeff

Boring No	DEPTH	BLOWS	Qu	W%	Surf Wat Elev:	DEPTH	BLOWS	Qu	W%
2-S					Ground Water Elevation				
Station 549+60					when Drilling				
Offset 66' Rt CL NBL					At Completion				
Ground Surface 94.8 Ft					At: _____				
					Hrs: _____				
Hard, damp, brown and grey, Silty Clay to Clay A7-6					Borehole advanced with hollow stem auger (8" O.D, 3.25" I.D.)				
		5			To convert "N" values to "N60" multiply by 1.25				
		9	4.5S	12					
		8							
90.3									
Stiff, moist, grey mottled brown, Clay A7-6	5.0	2				30.0			
		4	1.8B	21					
		4							
87.8									
Very stiff, damp to moist, grey and brown, Silty Clay to Clay A7-6		5							
		15	2.7S	16					
		18							
84.8	10.0	10				35.0			
Hard, dry, brown, Clay to weathered Clay Shale		100/10"	4.5P	13					
		15							
		38	4.5P	12					
		45							
79.8	15.0	18				40.0			
Hard, dry, brown, Clay Shale		100/10"							
		100/8"							
		100/6"							
74.8	20.0	100/6"				45.0			
Bottom of hole = 20.0 feet									
No free water observed									
Elevation referenced to top of existing median foundation; Assumed Elev. = 100.0 feet									
25.0						50.0			

N-Std Pentr Test: 2" OD Sampler, 140# Hammer, 30" Fall (Type Fail. B-Bulge S-Shear E-Estimated P-Penetrometer)





ILLINOIS DEPARTMENT OF TRANSPORTATION  
District Nine Materials

Bridge Foundation  
Boring Log

Sign Truss 9S041I057L091.9 Over FAI 57

Sheet 1 of 1

Route: FAI 57 Structure Number: \_\_\_\_\_ Date: 9/11/2013  
Section \_\_\_\_\_ Bored By: R Moberly  
County: Jefferson Location: MP 91.9 Median Checked By: R Graeff

Boring No Station Offset Ground Surface	D E P T H	B L O W S	Qu tsf	W%	Surf Wat Elev: Ground Water Elevation when Drilling At Completion At: Hrs:	D E P T H	B L O W S	Qu tsf	W%
1-S 2' S of existing 10' E of existing 95.5 Ft									
Very stiff, moist, brown, Silty Clay A-6									
		4							
		5	2.3B	18	Elevation referenced to top of existing median foundation; Assumed elev.= 100.0 feet				
		6							
91.0									
Very stiff, moist, brown mottled grey, Clay A7-6	5.0	3			Borehole advanced with hollow stem auger (8" O.D., 3.25" I.D.)	30.0			
		5	3.1B	19					
		6							
88.5					To convert "N" values to "N60" multiply by 1.25				
Very stiff, moist, grey and brown, Clay A7-6 to weathered Clay Shale		2							
		5	2.6S	17					
		7							
85.0	10.0	9				35.0			
Hard, damp to dry, brown, Clay Shale									
		12							
		100/8"							
81.0									
Hard, dry, grey, Clay Shale	15.0	100/6"				40.0			
		100/4"							
75.5	20.0	100/4"				45.0			
Bottom of hole = 19.8 feet									
No free water observed									
Station and location referenced to the existing median foundation									
25.0						50.0			

N-Std Pentr Test: 2" OD Sampler, 140# Hammer, 30" Fall (Type Fail. B-Bulge S-Shear E-Estimated P-Penetrometer)

ILLINOIS DEPARTMENT OF TRANSPORTATION  
District Nine Materials

Bridge Foundation  
Boring Log

Sign Truss 9S041I057L091.9 Over FAI 57

Sheet 1 of 1

Route: FAI 57 Structure Number: \_\_\_\_\_ Date: 10/1/2013  
Section \_\_\_\_\_ Bored By: R Moberly  
County: Jefferson Location: MP 91.9 Driving Shoulder Checked By: R Graeff

Boring No Station Offset Ground Surface	D E P T H	B L O W S	Qu tsf	W%	Surf Wat Elev: Ground Water Elevation when Drilling At Completion At: Hrs:	D E P T H	B L O W S	Qu tsf	W%
2-S 13' S of existing 24' E of existing 100.5 Ft									
Asphalt and crushed aggregate									
99.0									
Very stiff, moist, grey and brown, Clay A7-5		2			Elevation referenced to top of existing median foundation; Assumed elev.= 100.0 feet				
		5	2.3S	17					
		5							
96.0					Borehole advanced with hollow stem auger (8" O.D., 3.25" I.D.)	30.0			
Stiff, moist, brown, Clay to Clay Loam A7-6	5.0	2							
		4	1.9B	18	To convert "N" values to "N60" multiply by 1.25				
		4							
93.5									
Very stiff, moist, brown, Clay A7-6		2							
		5	2.5S	22					
		6							
91.0									
Very stiff, moist, brown mottled grey, Clay A7-6	10.0	2				35.0			
		6	3.5S	20					
		6							
88.5									
Very stiff, moist, brown mottled grey, Clay A7-6 to weathered Clay Shale		3							
		8	2.5B	18					
		9							
85.5	15.0	15				40.0			
Hard, dry, grey, Clay Shale		100/8"							
		100/8"							
80.5	20.0	100/6"				45.0			
Bottom of hole = 20.0 feet									
Free water observed at 14.5 feet									
Station and location referenced to the existing shoulder foundation									
25.0						50.0			

N-Std Pentr Test: 2" OD Sampler, 140# Hammer, 30" Fall (Type Fail. B-Bulge S-Shear E-Estimated P-Penetrometer)

ILLINOIS DEPARTMENT OF TRANSPORTATION  
District Nine Materials

Bridge Foundation  
Boring Log

Sign Truss 9S041I057L097.5 Over FAI 57

Sheet 1 of 1

Route: FAI 57 Structure Number: Date: 9/9/2013  
Section Bored By: R Moberly  
County: Jefferson Location: MP 97.5 Median Checked By: R Graeff

Boring No	DEPTH	BLOW	Qu	W%	Surf Wat Elev:	DEPTH	BLOW	Qu	W%
1-S					Ground Water Elevation when Drilling 78.6				
Station 923+10					At Completion				
Offset 54' Rt CL SBL					At: Hrs:				
Ground Surface 98.1 Ft									
Hard, damp to moist, brown mottled grey, Clay A7-6					Bottom of hole = 25.0 feet				
		4			Free water observed at 19.5 feet				
		5	4.7S	22					
		6			Elevation referenced to top of existing median foundation; Assumed elev. = 100.0 feet				
93.6					Borehole advanced with hollow stem auger (8" O.D., 3.25" I.D.)				
Medium to stiff, very moist, brown, Silty Clay to Silty clay Loam A-6	5.0	2			To convert "N" values to "N60" multiply by 1.25	30.0			
		3	0.9B	20					
		4							
		2							
		3	1.0B	16					
		4							
88.6									
Very stiff, moist, grey and brown, Sandy Clay A-6	10.0	1				35.0			
		4	2.2S	16					
		12							
86.1									
Dense, moist, grey and brown, clayey Sand A-4		6							
		17		11					
		20							
83.6									
Hard, damp, grey, Clay A7-6 to weathered Clay Shale	15.0	5				40.0			
		16	5.7S	12					
		17							
81.6									
Hard, dry, grey and brown, sandy Clay Shale		100/4"							
78.6									
Hard, dry, grey, Clay Shale with Sand layers	20.0	17				45.0			
		100/9"							
76.1									
Hard, dry, grey, Clay Shale		100/8"							
73.1	25.0	100/6"				50.0			

N-Std Pentr Test: 2" OD Sampler, 140# Hammer, 30" Fall (Type Fail. B-Bulge S-Shear E-Estimated P-Penetrometer)

ILLINOIS DEPARTMENT OF TRANSPORTATION  
District Nine Materials

Bridge Foundation  
Boring Log

Sign Truss 9S041I057L097.5 Over FAI 57

Sheet 1 of 1

Route: FAI 57 Structure Number: Date: 10/1/2013  
Section Bored By: R Moberly  
County: Jefferson Location: MP 97.5 Driving Shoulder Checked By: R Graeff

Boring No	DEPTH	BLOW	Qu	W%	Surf Wat Elev:	DEPTH	BLOW	Qu	W%
2-S					Ground Water Elevation when Drilling 82.1				
Station 922+83					At Completion				
Offset 20' Lt CL SBL					At: Hrs:				
Ground Surface 101.5 Ft									
Asphalt and crushed aggregate					Hard, dry, grey, Clay Shale 76.0				
100.0					Bottom of hole = 25.3 feet				
Very stiff, moist, brown, Clay to Clay Loam A7-6		1			Free water observed at 19.5 feet				
		4	2.7B	15	Elevation referenced to top of existing median foundation; Assumed elev. = 100.0 feet				
		6			Borehole advanced with hollow stem auger (8" O.D., 3.25" I.D.)				
97.0					To convert "N" values to "N60" multiply by 1.25				
Stiff, moist, grey, Clay A7-6	5.0	2				30.0			
		3	1.7B	28					
		4							
		2							
		6	3.9B	12					
		7							
89.5									
Very stiff, moist, brown, Clay to Clay Loam A7-6		2							
		6	3.9B	12					
		7							
		10.0							
		6	3.9B	15					
		7							
89.5									
Stiff, moist, brown and grey, Silty Clay to Clay A7-6		2							
		4	1.2B	20					
		4							
87.0									
Medium, very moist, grey and brown, Silty Clay Loam to Silty Clay A-6	15.0	2				40.0			
		3	0.7B	17					
		3							
84.5									
Medium, very moist, brown and grey, Clay Loam A-6		2							
		4	0.7B	19					
		6							
82.0									
Hard, damp, brown, weathered Clay Shale	20.0	5				45.0			
		15	4.1S	18					
		22							
		8							
		20	4.5P	-					
		38							
77.0									
Hard, dry, grey, Clay Shale	25.0	100/9"				50.0			

N-Std Pentr Test: 2" OD Sampler, 140# Hammer, 30" Fall (Type Fail. B-Bulge S-Shear E-Estimated P-Penetrometer)

ILLINOIS DEPARTMENT OF TRANSPORTATION  
District Nine Materials

Bridge Foundation  
Boring Log

Sign Truss 9S041I064R072.9 Over FAI 64

Sheet 1 of 1

Route: FAI 64 Structure Number: Date: 8/30/2013  
Section: Bored By: R Moberly  
County: Jefferson Location: MP 72.9 EBL Median Checked By: R Graeff

Boring No	DEPTH	BLOWS	Qu	W%	Surf Wat Elev:	DEPTH	BLOWS	Qu	W%
1-S					Ground Water Elevation when Drilling 467.6				
Station 2352+00					At Completion				
Offset 6' Lt CL					At: Hrs:				
Ground Surface 485.1 Ft									
Stiff, moist, brown mottled grey, Silty Clay to Clay A-6					Hard, damp, grey, Clay to Clay Loam A7-6	14	5.1S	13	
						16			
					458.1				
	2				Very stiff, moist, grey, Clay to weathered Clay Shale A7-6	5			
	3	1.5B	22			14	2.7B	18	
	4					16			
480.6					455.6				
Medium, moist to very moist, brown mottled grey, Silty Clay to Clay A-6	5.0	1			Hard, dry, grey, weathered Clay Shale	30.0	7		
		2	0.9B	22			15	14	
		3			454.1		18		
478.1									
Very stiff, moist, brown mottled grey, Clay A7-6		2			Bottom of hole = 31.0 feet				
		3	2.3B	17	Free water observed at 17.5 feet				
		4			Elevation referenced to BM 1010; BM Elev. = 485.0 feet	35.0			
10.0		1			Borehole advanced with hollow stem auger (8" O.D., 3.25" I.D.)				
		3	2.1B	22	To convert "N" values to "N60" multiply by 1.25				
		4							
473.1									
Medium, very moist, grey mottled brown, Silty Clay to Clay A-6		1							
		2	0.6B	22					
		2							
470.6									
Stiff, moist, brown mottled grey, Clay A7-6	15.0	2				40.0			
		3	1.2B	19					
		4							
468.1									
Stiff, moist, brown, Clay to Clay Loam A-6 w/ a sand layer		2							
		5	1.9B	16					
		7							
465.6									
Medium, very moist, brown, Sandy Clay Loam to Clay Loam A-4	20.0	1				45.0			
		5	0.8S	16					
		8							
464.1									
Very stiff, moist, brown, Silt Loam to Silty Clay Loam A-4		8							
		11	2.1B	17					
		16							
460.6									
25.0		5				50.0			

N-Std Pentr Test: 2" OD Sampler, 140# Hammer, 30" Fall (Type Fail. B-Bulge S-Shear E-Estimated P-Penetrometer)

ILLINOIS DEPARTMENT OF TRANSPORTATION  
District Nine Materials

Bridge Foundation  
Boring Log

Sign Truss 9S041I064R072.9 Over FAI 64

Sheet 1 of 1

Route: FAI 64 Structure Number: Date: 8/30/2013  
Section: Bored By: R Moberly  
County: Jefferson Location: MP 72.9 EBL Driving Shldr Checked By: R Graeff

Boring No	DEPTH	BLOWS	Qu	W%	Surf Wat Elev:	DEPTH	BLOWS	Qu	W%
2-S					Ground Water Elevation when Drilling 461.5				
Station 2352+10					At Completion				
Offset 85' Rt CL					At: Hrs:				
Ground Surface 486.0 Ft									
Stiff, moist, brown mottled grey, Silty Clay to Clay A7-6					Hard, damp, grey, Clay Loam A-6	12	5.2B	13	
						17			
					456.5				
		1							
		3	1.5B	23					
		4							
456.5									
Medium, moist to very moist, brown mottled grey, Silty Clay to Clay A-6	5.0	2			Hard, damp to dry, grey, weathered Clay Shale	30.0	4		
		2	1.1B	23			15		
		2			455.0		18		
476.5									
Bottom of hole = 31.0 feet		1			Bottom of hole = 31.0 feet				
Free water observed at 17.5 feet		3	1.5B	22	Free water observed at 24.5 feet				
		3			Elevation referenced to BM 1010; BM Elev. = 485.0 feet	35.0			
10.0		1			Borehole advanced with hollow stem auger (8" O.D., 3.25" I.D.)				
		3	2.1B	22	To convert "N" values to "N60" multiply by 1.25				
		4							
473.1									
Stiff, moist, brown mottled grey, Clay A7-6	10.0	1				35.0			
		3	1.5B	24					
		3			Borehole advanced with hollow stem auger (8" O.D., 3.25" I.D.)				
474.0									
Very stiff, moist, brown, Clay A7-6		2			To convert "N" values to "N60" multiply by 1.25				
		4	2.3B	17					
		6							
471.5									
Medium, very moist, brown, Clay to Clay Loam A7-6	15.0	2				40.0			
		3	0.7B	20					
		3							
469.0									
Very stiff, moist, brown, Clay to Clay Loam A7-6		3							
		6	2.9B	13					
		8							
466.5									
Medium to stiff, moist to v.moist, brown, Clay to Clay Loam A-6 w/ sand seams	20.0	2				45.0			
		5	1.0B	15					
		7							
464.0									
Stiff, moist, grey, Clay Loam A-4		8							
		18	1.3S	9					
		20							
461.5									
25.0		4				50.0			

N-Std Pentr Test: 2" OD Sampler, 140# Hammer, 30" Fall (Type Fail. B-Bulge S-Shear E-Estimated P-Penetrometer)



ILLINOIS DEPARTMENT OF TRANSPORTATION  
District Nine Materials

Bridge Foundation  
Boring Log

Sign Truss 9S041I064L078.5 Over FAI 64

Sheet 1 of 1

Route: FAI 64 Structure Number: \_\_\_\_\_ Date: 10/3/2013  
Section \_\_\_\_\_ Bored By: R Moberly  
County: Jefferson Location: MP 78.5 Median Checked By: R Graeff

Boring No	DEPTH	BLOW	Qu	W%	Surf Wat Elev:	DEPTH	BLOW	Qu	W%
2-S					Ground Water Elevation when Drilling 68.6				
Station 2660+20					At Completion				
Offset 85' Rt CL WB I64					At: Hrs:				
Ground Surface 90.6 Ft									
Very stiff, damp, brown and grey, Clay A7-6					Stiff, moist, grey mottled brown, Silty Clay to Silty Clay Loam A-6	3	1.2B	17	
						4			
		5							
		9	3.7S	13	Hard, dry, grey, Clay Shale	100/8"			
		9							
86.1									
Very stiff, moist, grey, Clay A7-6	5.0	5				30.0	100/2"		
		6	2.1B	20					
		6							
83.6									
Stiff, moist, grey and brown, Silty Clay to Clay A7-6		5			Bottom of hole = 29.7 feet				
		6	1.8B	22	Free water observed at 22.0 feet				
		6							
81.1									
Soft, very moist, grey, Silty Clay Loam A-6	10.0	1			Elevation referenced to top of existing driving shlder foundation: Assumed elev. = 100.0 feet	35.0			
		1	0.3B	27					
		1			Borehole advanced with hollow stem auger (8" O.D, 3.25" I.D.)				
		WH							
		WH	0.3B	29	To convert "N" values to "N60" multiply by 1.25				
		WH							
76.1									
Medium, very moist, grey mottled brown, Silty Clay to Silty Clay Loa A-6	15.0	1				40.0			
		2	0.8B	21					
		2							
		1							
		3	0.8B	19					
		3							
71.1									
Medium, moist, brown mottled grey, Clay Loam to Silty Clay Loam A-6 w/ pea gravel	20.0	2				45.0			
		5	0.8S	18					
		5							
		2							
		5	0.4S	17					
		5							
68.6									
Soft, very moist, brown mottled grey, Clay Loam to Loam A-4 w/ pea gravel		2							
		5	0.4S	17					
		5							
66.1									
	25.0	1				50.0			

N-Std Pentr Test: 2" OD Sampler, 140# Hammer, 30" Fall (Type Fail. B-Bulge S-Shear E-Estimated P-Penetrometer)

ILLINOIS DEPARTMENT OF TRANSPORTATION  
District Nine Materials

Bridge Foundation  
Boring Log

Sign Truss 9S041I064L078.5 Over FAI 64

Sheet 1 of 1

Route: FAI 64 Structure Number: \_\_\_\_\_ Date: 10/1/2013  
Section \_\_\_\_\_ Bored By: R Moberly  
County: Jefferson Location: MP 78.5 Driving Shoulder Checked By: R Graeff

Boring No	DEPTH	BLOW	Qu	W%	Surf Wat Elev:	DEPTH	BLOW	Qu	W%
1-S					Ground Water Elevation when Drilling				
Station 2660+05					At Completion				
Offset 20' Lt CL WB I64					At: Hrs:				
Ground Surface 102.1 Ft									
Asphalt and crushed aggregate					Medium, very moist, grey mottled brown, Silt Loam A-4	2	0.8B	21	
						3			
100.6									
Stiff, moist, grey and brown, Clay to Silty Clay A7-6		2			Stiff, moist, brown, Silty Clay Loam to Clay Loam A-6	1			
		4	1.9B	16		3	1.1S	17	
		6				4			
97.6									
Very stiff, moist, brown, Clay A7-6	5.0	2			Stiff, moist, brown mottled grey, Silt Loam A-4	30.0	3		
		4	2.5B	21			8	1.2S	18
		4					8		
95.1									
Stiff, moist, brown and grey, Clay A7-6		2			Bottom of hole = 31.0 feet				
		3	1.7B	19	No free water observed				
		4							
					Elevation referenced to top of existing shoulder foundation: Assumed elev. = 100.0 feet	35.0			
	10.0	2							
		5	1.3B	16	Borehole advanced with hollow stem auger (8" O.D, 3.25" I.D.)				
		5							
90.1									
Very stiff, moist, brown mottled grey, Silty Clay A-6		3			To convert "N" values to "N60" multiply by 1.25				
		4	2.3B	19					
		6							
87.6									
Very stiff, damp, grey and brown, Clay Shale and Sandstone fill	15.0	4				40.0			
		6	2.5E						
		7							
85.1									
Stiff, moist, brown, Clay and Clay Shale fill		2							
		5	1.2S	16					
		7							
82.6									
Stiff, moist, brown, Clay A7-6 with Clat Shale and Sandstone fill	20.0	4				45.0			
		4	1.7B	21					
		5							
80.1									
Stiff, moist, grey, Silt Loam A-4		3							
		4	1.6B	20					
		5							
77.6									
	25.0	1				50.0			

N-Std Pentr Test: 2" OD Sampler, 140# Hammer, 30" Fall (Type Fail. B-Bulge S-Shear E-Estimated P-Penetrometer)



ILLINOIS DEPARTMENT OF TRANSPORTATION  
District Nine Materials

Bridge Foundation  
Boring Log

Sign Truss 9S041I064L078.9 Over FAI 64

Sheet 1 of 1

Route: FAI 64 Structure Number: \_\_\_\_\_ Date: 9/9/2013  
Section \_\_\_\_\_ Bored By: R Moberly  
County: Jefferson Location: MP 78.9 Median Checked By: R Graeff

Boring No	DEPTH	BLOW	Qu	W%	Surf Wat Elev:	DEPTH	BLOW	Qu	W%
Station	H	S	tsf		Ground Water Elevation	H	S	tsf	
Offset					when Drilling				
Ground Surface					At Completion				
1-S					At: _____ Hrs: _____				
2677+85									
41' Rt CL WBL									
97.9 Ft									
Hard, damp, brown and grey, Silty Clay A-6					Medium, very moist, grey mottled brown, Clay to Silty Clay A7-6		1	0.7B	27
							2		
					70.9				
		7			Very stiff, moist, grey, Silty Clay A-6		1		
		12	4.1P	11			4	2.3B	19
		9					5		
93.4									
Very stiff, moist, brown mottled grey, Clay to Silty Clay A7-6	5.0	2					3		
		5	2.1S	19			9	3.1S	16
		6					11		
					66.9				
		2			Bottom of hole = 31.0 feet				
		5	2.1B	19	No free water observed				
		5							
88.4									
Stiff, moist, grey, Silty Clay Loam A-4	10.0	2			Elevation referenced to top of existing median foundation; Assumed elev. = 100.0 feet	35.0			
		3	1.6B	25					
		4			Borehole advanced with hollow stem auger (8" O.D., 3.25" I.D.)				
85.9									
Medium, very moist, grey, Silty Clay to Silty Clay Loam A-6		1			To convert "N" values to "N60" multiply by 1.25				
		1	0.7B	24					
		2							
83.4									
Stiff, moist, grey, Clay to Silty Clay A7-6	15.0	1				40.0			
		1	1.5B	25					
		2							
80.9									
Medium, moist to very moist, brown and grey, Clay Loam A-6		3							
		4	0.7B	17					
		4							
78.4									
Stiff, moist, brown mottled grey, Clay A7-6	20.0	2				45.0			
		3	1.3B	19					
		4							
75.9									
Very stiff, moist, brown mottled grey, Clay A7-6		2							
		4	2.3B	17					
		6							
73.4									
	25.0	2				50.0			

N-Std Pentr Test: 2" OD Sampler, 140# Hammer, 30" Fall (Type Fail. B-Bulge S-Shear E-Estimated P-Penetrometer)

ILLINOIS DEPARTMENT OF TRANSPORTATION  
District Nine Materials

Bridge Foundation  
Boring Log

Sign Truss 9S041I064L078.9 Over FAI 64

Sheet 1 of 1

Route: FAI 64 Structure Number: \_\_\_\_\_ Date: 9/9/2013  
Section \_\_\_\_\_ Bored By: R Moberly  
County: Jefferson Location: MP 78.9 Driving Shoulder Checked By: R Graeff

Boring No	DEPTH	BLOW	Qu	W%	Surf Wat Elev:	DEPTH	BLOW	Qu	W%
Station	H	S	tsf		Ground Water Elevation	H	S	tsf	
Offset					when Drilling				
Ground Surface					At Completion				
2-S					At: _____ Hrs: _____				
2677+92									
34' Lt CL WBL									
98.8 Ft									
Hard, damp, brown, Silty Clay A-6					Soft, very moist, brown mottled grey, Clay A7-6		2	0.4B	25
							2		
					71.8				
		5			Stiff, moist, grey, Clay A7-6		1		
		10	4.1P	8			2	1.6B	23
		8					4		
94.3									
Very stiff, moist, grey, Clay to Clay Loam A7-6	5.0	2			Very stiff, damp, grey, weathered Clay Shale	30.0	3		
		6	3.7B	17			12	3.0P	13
		7					16		
					67.8				
		3			Bottom of hole = 31.0 feet				
		7	2.3S	34	Free water observed at 27.0 feet				
		8							
89.3									
Stiff, moist, grey and brown, Silty Clay to clay A7-6	10.0	2			Elevation referenced to top of existing median foundation; Assumed elev. = 100.0 feet	35.0			
		5	1.9B	19					
		6			Borehole advanced with hollow stem auger (8" O.D., 3.25" I.D.)				
86.8									
Stiff, moist, brown, Silty Clay Loam A-4		3			To convert "N" values to "N60" multiply by 1.25				
		6	1.4S	14					
		8							
84.3									
Very stiff, moist, brown mottled grey, Clay to Clay Loam A7-6	15.0	2				40.0			
		4	2.2S	19					
		4							
81.8									
Stiff, moist, brown and black, Clay Loam A-6		3							
		5	1.3S	15					
		6							
79.3									
Stiff, moist, brown mottled grey, Clay A7-6	20.0	2				45.0			
		4	1.8B	20					
		4							
76.8									
Medium, very moist, brown mottled grey, Clay A7-6 with sand seams		1							
		3	0.6B	22					
		4							
74.3									
	25.0	1				50.0			

N-Std Pentr Test: 2" OD Sampler, 140# Hammer, 30" Fall (Type Fail. B-Bulge S-Shear E-Estimated P-Penetrometer)

ILLINOIS DEPARTMENT OF TRANSPORTATION  
District Nine Materials

Bridge Foundation  
Boring Log  
Sheet 1 of 1

Sign Truss 9S041I057L092.3 Over FAI 57/64  
Route: FAI 57/64 Structure Number: \_\_\_\_\_ Date: 8/26/2013  
Section \_\_\_\_\_ Bored By: R Moberly  
County: Jefferson Location: MP 92.3 SBL Median Checked By: R Graeff

Boring No	DEPTH	BLOWS	Qu	W%	Surf Wat Elev:	DEPTH	BLOWS	Qu	W%
2-S					Ground Water Elevation when Drilling _____				
Station 648+00					At Completion _____				
Offset 18' Rt E.O.P.					At: _____				
Ground Surface 474.3 Ft					Hrs: _____				
Stiff, moist, grey and brown, Clay A7-6					Bottom of hole = 24.8 feet				
		1			No free water observed				
		3	1.8B	19	Elevation referenced to BM at existing median foundation; BM Elevation = 475.7 feet				
		4			Borehole advanced with hollow stem auger (8" O.D, 3.25" I.D.)				
469.8					To convert "N" values to "N60" multiply by 1.25				
Very stiff, moist, grey and brown, Clay A7-6	5.0	2							
		4	2.9B	17					
		5							
467.3									
Stiff, moist, brown and black, Silty Clay to Clay A7-6		2							
		4	1.8S	21					
		6							
	10.0	2							
		4	1.6B	18					
		5							
462.3									
Stiff, moist, brown mottled grey, Clay to Clay Loam A-6		2							
		4	1.1B	23					
		6							
	15.0	5							
		12	3.1S	14					
		15							
457.3									
Very stiff to hard, moist, brown, weathered Clay Shale		3							
		8	3.9S	16					
		12							
	20.0	10							
454.3									
Hard, dry, brown and grey, Clay Shale		100/11"							
		100/7"							
449.3	25.0	100/4"							

N-Std Pentr Test: 2" OD Sampler, 140# Hammer, 30" Fall (Type Fail. B-Bulge S-Shear E-Estimated P-Penetrometer)

ILLINOIS DEPARTMENT OF TRANSPORTATION  
District Nine Materials

Bridge Foundation  
Boring Log  
Sheet 1 of 1

Sign Truss 9S041I057L092.3 Over FAI 57/64  
Route: FAI 57/64 Structure Number: \_\_\_\_\_ Date: 8/26/2013  
Section \_\_\_\_\_ Bored By: R Moberly  
County: Jefferson Location: MP 92.3 SBL Driving Shoulder Checked By: R Graeff

Boring No	DEPTH	BLOWS	Qu	W%	Surf Wat Elev:	DEPTH	BLOWS	Qu	W%
1-S					Ground Water Elevation when Drilling _____				
Station 647+90					At Completion _____				
Offset 4' Lt SB Dr. Shldr					At: _____				
Ground Surface 476.0 Ft					Hrs: _____				
Crushed aggregate					Bottom of hole = 25.0 feet				
					No free water observed				
475.0					Elevation referenced to BM at existing median foundation; BM Elevation = 475.7 feet				
Stiff to very stiff, moist, grey, Clay to Silty Clay A7-6					Borehole advanced with hollow stem auger (8" O.D, 3.25" I.D.)				
					To convert "N" values to "N60" multiply by 1.25				
	5.0	2							
		3	2.1B	21					
		3							
469.0									
Stiff, moist, brown mottled grey, Silty Clay A-6		2							
		4	1.2B	23					
		4							
	10.0	1							
		3	1.1B	19					
		3							
464.0									
Stiff, moist, brown, Clay to Clay Loam A7-6		2							
		3	1.5S	22					
		4							
	15.0	2							
		5	1.6B	21					
		6							
459.0									
Very stiff, moist, brown and black, Clay to Clay Loam A7-6		3							
		7	2.7B	15					
		10							
	20.0	5							
		25	2.7S	13					
		24							
456.5									
Very stiff to Hard, damp, brown and grey, weathered Clay Shale		8							
		100/8"							
453.5									
Hard, dry, grey, Clay Shale		100/6"							
451.0	25.0	100/6"							

N-Std Pentr Test: 2" OD Sampler, 140# Hammer, 30" Fall (Type Fail. B-Bulge S-Shear E-Estimated P-Penetrometer)