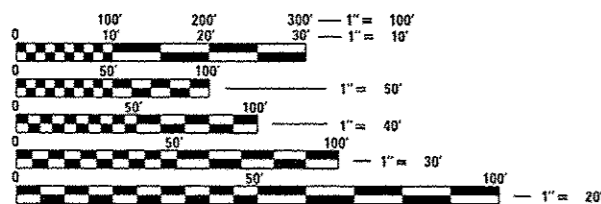


SHEET NO. INDEX OF SHEETS:

- 1 COVER SHEET
- 2 GENERAL NOTES AND COMMITMENTS
- 3 - 12 SUMMARY OF QUANTITIES
- 13 - 24 TYPICAL SECTIONS
- 25 - 34 SCHEDULE OF QUANTITIES
- 35 - 52 PLAN AND PROFILE
- 53 - 62 STAGE 1 CONSTRUCTION
- 63 - 72 STAGE 2 CONSTRUCTION
- 73 - 101 BRIDGE SHEETS SN 053-0135
- 102 - 117 BOX CULVERT SHEETS SN 053-2017
- 118 - 147 DETAILS
- 148 - 242 CROSS SECTIONS

HIGHWAY STANDARDS

SEE PAGE 2 FOR LIST OF HIGHWAY STANDARDS



FULL SIZE PLANS HAVE BEEN PREPARED USING STANDARD ENGINEERING SCALES. REDUCED SIZED PLANS WILL NOT CONFORM TO STANDARD SCALES. IN MAKING MEASUREMENTS ON REDUCED PLANS, THE ABOVE SCALES MAY BE USED.

J.U.L.I.E.
 JOINT UTILITY LOCATION INFORMATION FOR EXCAVATION
 1-800-892-0123
 OR 811

PROJECT ENGINEER: DAVE ALEXANDER, P.E.
UNIT CHIEF: PATRICK BRABOY, P.E.
 DISTRICT 3 NO. (815) 434-6131
CONTRACT NO. 66F23

STATE OF ILLINOIS
DEPARTMENT OF TRANSPORTATION
PROPOSED
HIGHWAY PLANS

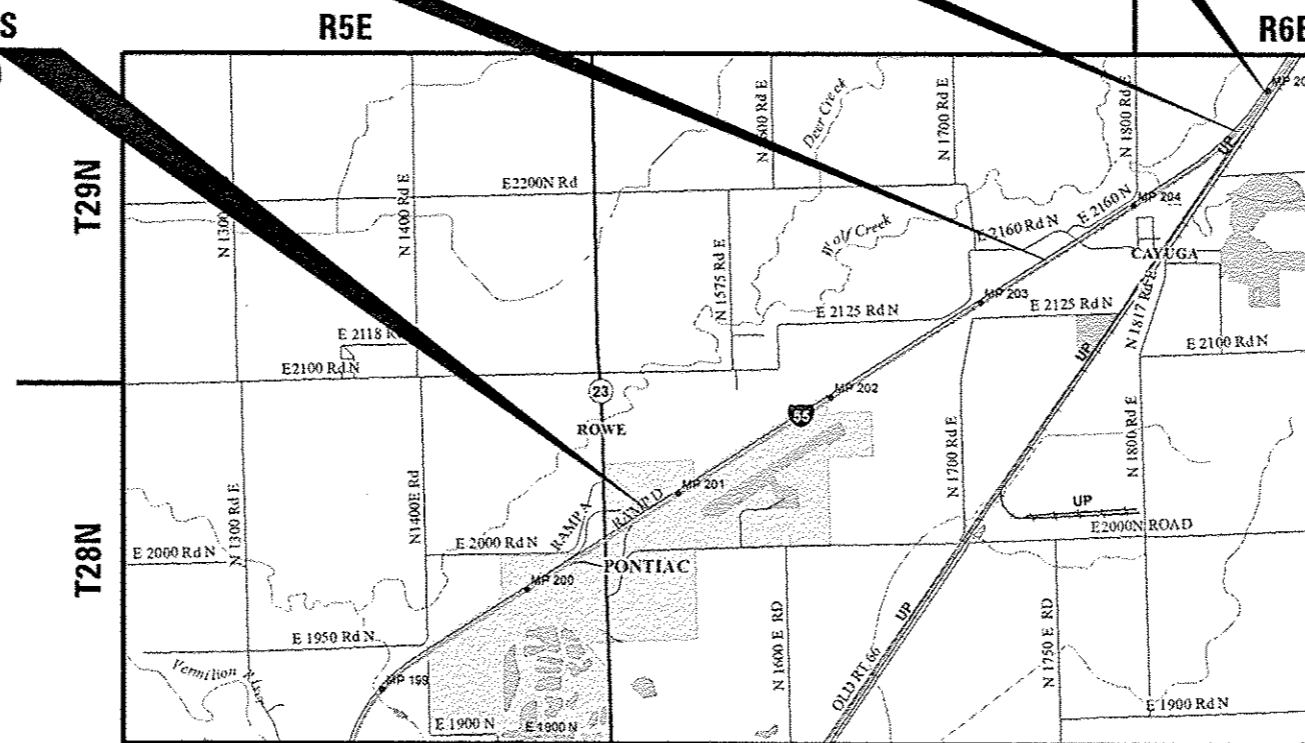
FAI 55(I-55)
PROJECT NHPP-0055(460)
SECTION (53-4) R&I
RUBBLIZATION / OVERLAY
LIVINGSTON COUNTY

C-93-034-16

STATION EQUATION
STA. 552 + 08.35 (BK) – STA. 121 + 28.60 (AH)
PROJECT ENDS
STA 533 + 50.00

STATION EQUATION.
STA. 452 + 99.5 (BK) – 453 + 00.38 (AH)

PROJECT BEGINS
STA 348 + 00.00



GROSS LENGTH = 22,683.7 FT. = 4.30 MILE
 NET LENGTH = 18,905.0 FT. = 3.58 MILE

F.A.I. RTE.	SECTION	COUNTY	TOTAL SHEETS	SHEET NO.
55	(53-4) R&I	LIVINGSTON	242	1
		ILLINOIS	CONTRACT NO. 66F23	

*242 + 1 = 243 TOTAL SHEETS
 P-93-077-16
 D-93-031-16

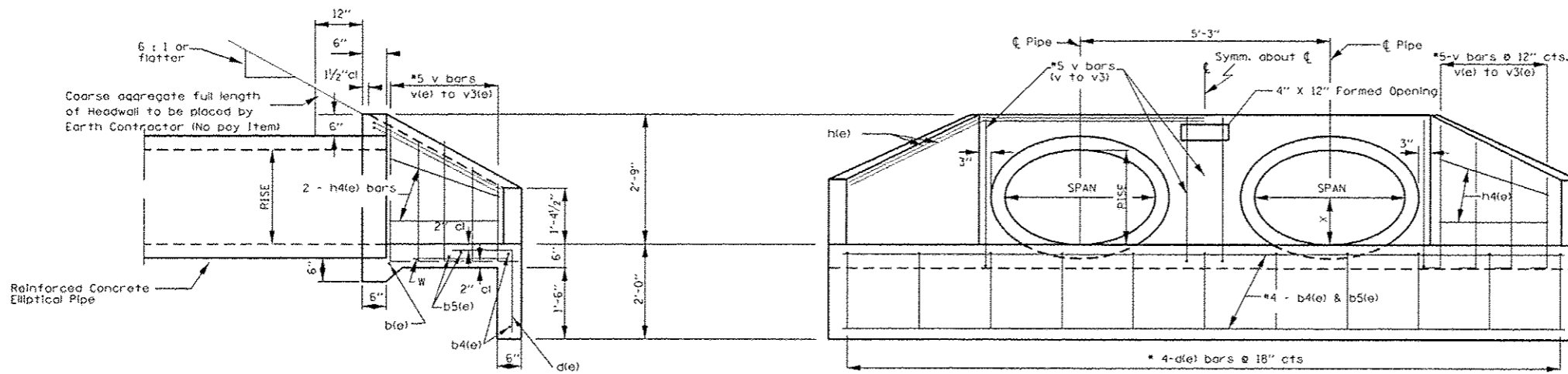


INTERSTATE (URBAN)
 2016 ADT = 21,210
 PV = 68.1% SU = 5.6% MU = 26.3%

STATE OF ILLINOIS
 DEPARTMENT OF TRANSPORTATION

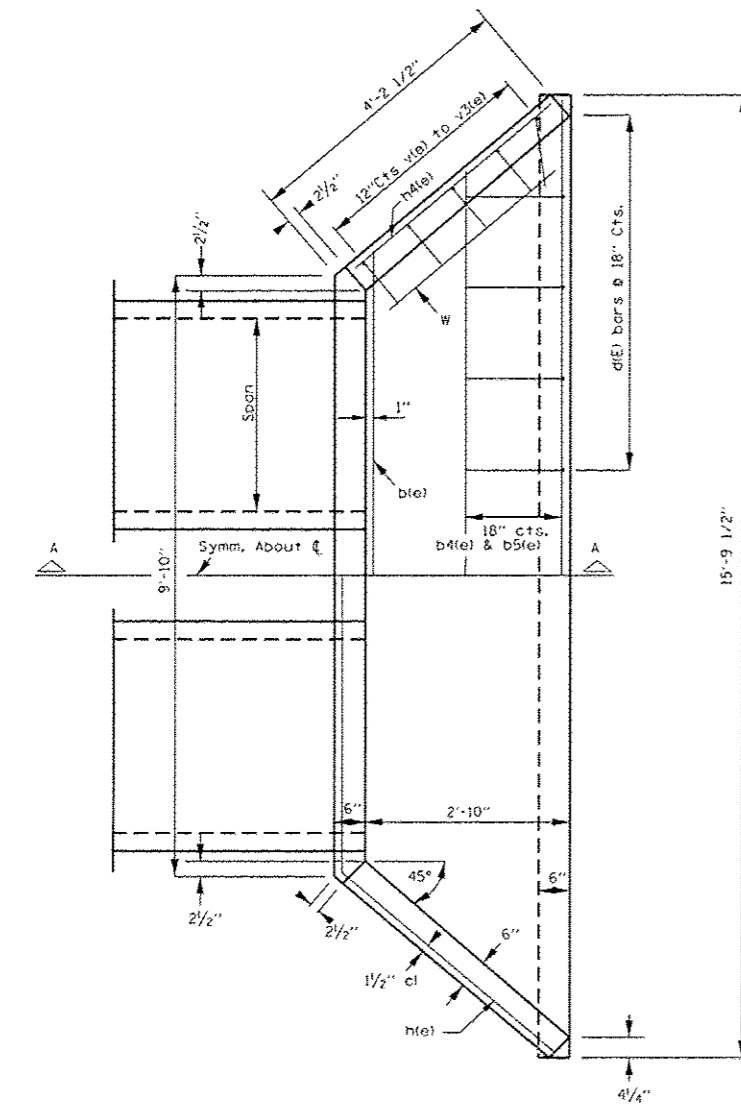
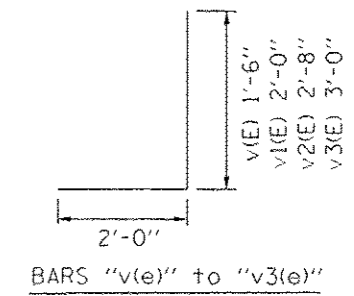
SUBMITTED 04/07 2017
Kenneth Marshall REGIONAL ENGINEER
 May 12 20 17
Maureen M. Addis ENGINEER OF DESIGN AND ENVIRONMENT
 May 12 20 17
Janice Allen 2
 DIRECTOR OF PROGRAM DEVELOPMENT

PRINTED BY THE AUTHORITY
OF THE STATE OF ILLINOIS

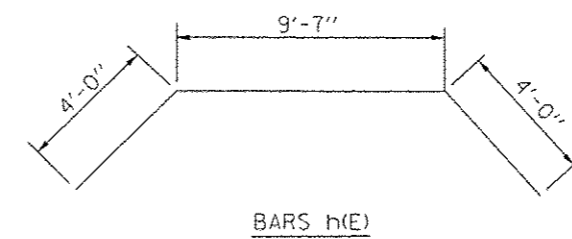


SECTION A-A

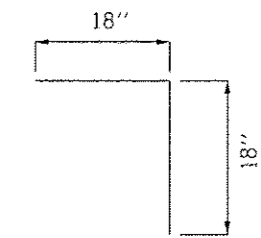
END ELEVATION



PLAN



BARS h1(e)



BARS "d1(e)"

TWO HEADWALLS
BILL OF MATERIALS

BAR	No.	Size	Length	Shape	
b1(E)	2	#5	10'-0"	—	
b4(E)	4	#4	15'-6"	—	
b5(E)	4	#4	12'-6"	—	
d1(E)	22	#4	2'-3"	┌	
h1(E)	4	#5	13'-7"	┌	
h4(E)	8	#4	3'-8"	—	
v1(E)	4	#5	3'-6"	┌	
v1(E)	4	#5	4'-0"	┌	
v2(E)	4	#5	4'-8"	┌	
v3(E)	12	#5	5'-0"	┌	
w1(E)	4	#4	3'-6"	—	
Headwall to be Removed				Each	2
Structure Excavation				Cu. Yd.	5.4
Reinforcement Bars				Pound	355
Epoxy Coated					
Miscellaneous Concrete				Cu. Yd.	3.7

FILE NAME =	USER NAME =	DESIGNED -	REVISED -	STATE OF ILLINOIS DEPARTMENT OF TRANSPORTATION	HEADWALLS STA. 373+00 LEFT AND RIGHT		F.A.I. RTE. 55	SECTION (53-41R&I)	COUNTY LIVINGSTON	TOTAL SHEETS 242	SHEET NO. 133A	
c:\pwork\p\dot\braboync\d8466743\03- ***shc-Box Culv Detail.dgn		DRAWN -	REVISED -		SCALE:	SHEET	OF	SHEETS	STA.	TO STA.	ILLINOIS FED. AID PROJECT CONTRACT NO. 66F23	
MODEL NAME #		CHECKED -	REVISED -									
		DATE -	REVISED -									

6-5-17

ASHEET ADDED