

STATE OF ILLINOIS
DEPARTMENT OF TRANSPORTATION

F.A.I. RTE.	SECTION	COUNTY	TOTAL SHEETS	SHEET NO.
80	150-2)PP	LASALLE	7	1
		ILLINOIS	CONTRACT NO. 66H39	

INDEX OF SHEETS

1. COVER SHEET
2. GENERAL NOTES
3. SUMMARY OF QUANTITIES
4. TYPICAL SECTION
5. SCHEDULES
- 6-7. CLASS B PATCHING DETAILS

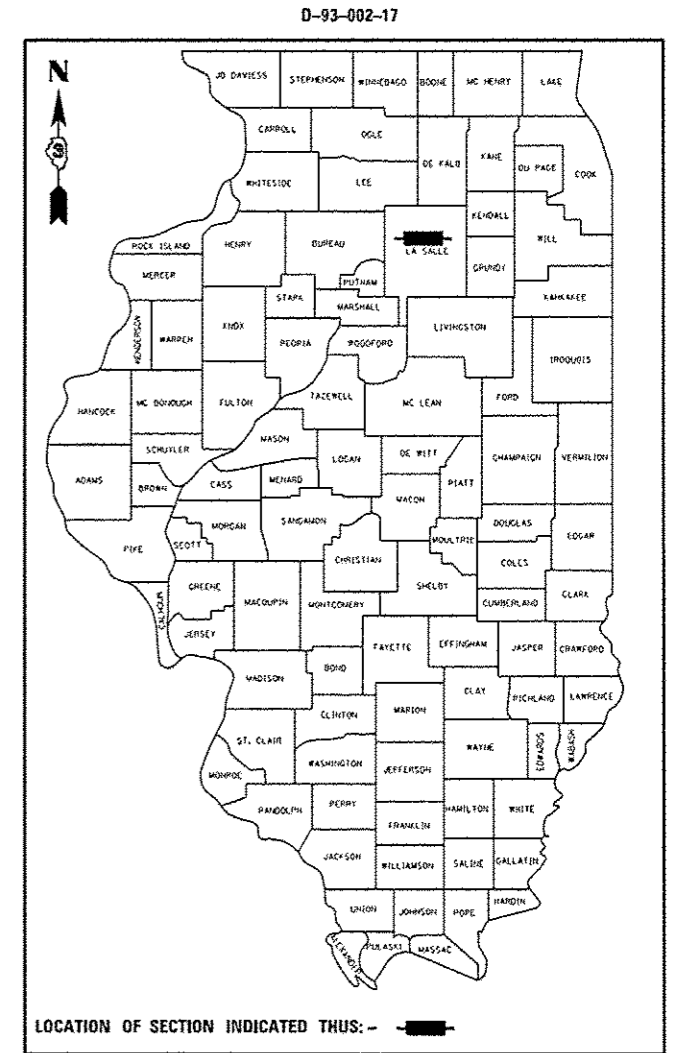
STANDARDS

000001-06	STANDARD SYMBOLS, ABBREVIATIONS AND PATTERNS
001006	DECIMAL OF AN INCH AND OF A FOOT
701001-02	OFF-ROAD OPERATIONS 2L, 2W, MORE THAN 15' (4.5 m) AWAY
701006-05	OFF-ROAD OPERATIONS 2L, 2W, 15' (4.5 m) TO 24" (600 mm) FROM PAVEMENT EDGE
701101-05	OFF-ROAD OPERATIONS, MULTILANE, 15' (4.5 m) TO 24" (600 mm) FROM PAVEMENT EDGE
701106-02	OFF-ROAD OPERATIONS, MULTILANE, MORE THAN 15' (4.5 m) AWAY
701301-04	LANE CLOSURE, 2L, 2W, SHORT TIME OPERATIONS
701456-04	PARTIAL EXIT RAMP CLOSURE FREEWAY/EXPRESSWAY
701901-06	TRAFFIC CONTROL DEVICES

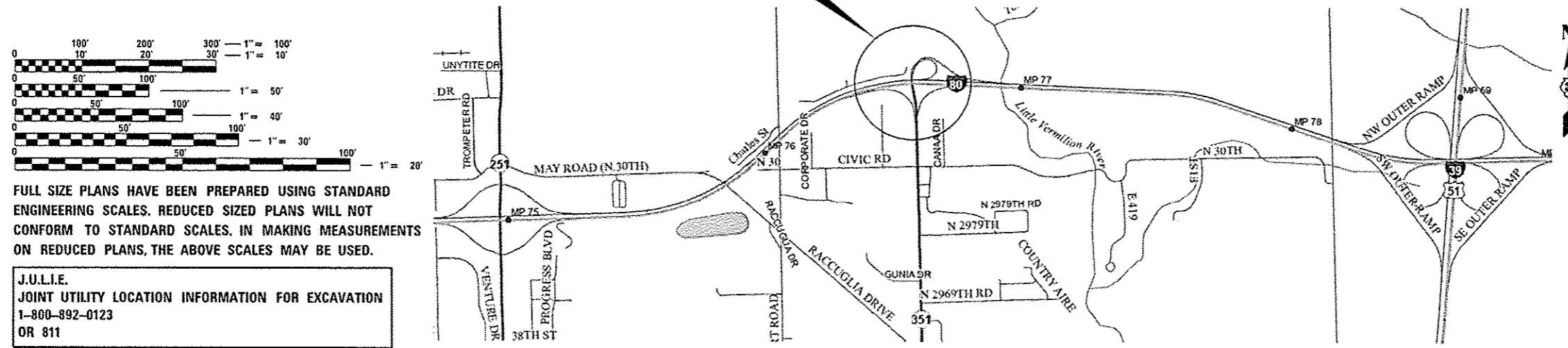
PROPOSED HIGHWAY PLANS

F.A.I. ROUTE 80 (I-80) SECTION (50-2)PP PAVEMENT PATCHING ON RAMPS AT I-80 AND IL 351 INTERCHANGE LASALLE COUNTY

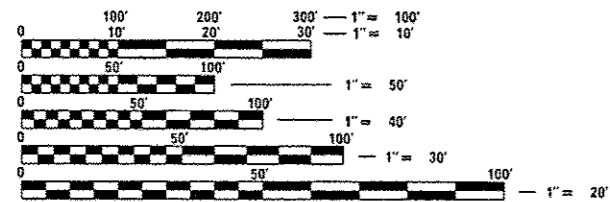
C-93-076-17



PROJECT LOCATION



POINT LOCATION



FULL SIZE PLANS HAVE BEEN PREPARED USING STANDARD ENGINEERING SCALES. REDUCED SIZED PLANS WILL NOT CONFORM TO STANDARD SCALES. IN MAKING MEASUREMENTS ON REDUCED PLANS, THE ABOVE SCALES MAY BE USED.

J.U.L.I.E.
JOINT UTILITY LOCATION INFORMATION FOR EXCAVATION
1-800-892-0123
OR 811

FUNCTIONAL CLASSIFICATION
URBAN - INTERSTATE
F.A.I. ROUTE 80 (I-80)
2016 ADT

I-80 WB TO IL 351	I-80 EB TO IL 351	IL 351 TO I-80 EB	IL 351 TO I-80 WB
ADT = 1850	ADT = 1200	ADT = 1950	ADT = 850
P.V. 67.7%	P.V. 62.5%	P.V. 59.0%	P.V. 66.4%
S.U. 6.7%	S.U. 8.3%	S.U. 7.7%	S.U. 7.1%
M.U. 25.6%	M.U. 29.2%	M.U. 33.3%	M.U. 26.5%

STATE OF ILLINOIS
DEPARTMENT OF TRANSPORTATION

SUBMITTED 04/06 20 17
Kevin Marshall (LUP)
REGIONAL ENGINEER

May 12 20 17
Marcus M. Adonis P.E.
ENGINEER OF DESIGN AND ENVIRONMENT

May 12 20 17
Patricia A. ...
DIRECTOR OF PROGRAM DEVELOPMENT

PROJECT ENGINEER: JOE KANNEL P.E.
UNIT CHIEF: RON WOODSHANK
DISTRICT 3 NO. (815) 434-6131
CONTRACT NO. 66H39

PRINTED BY THE AUTHORITY
OF THE STATE OF ILLINOIS

GENERAL NOTES

PLAN DIMENSIONS AND DETAILS RELATIVE TO EXISTING PLANS ARE SUBJECT TO NOMINAL CONSTRUCTION VARIATIONS. THE CONTRACTOR SHALL FIELD VERIFY EXISTING DIMENSIONS AND DETAILS AFFECTING NEW CONSTRUCTION AND MAKE NECESSARY APPROVED ADJUSTMENTS PRIOR TO CONSTRUCTION OR ORDERING OF MATERIALS. SUCH VARIATIONS SHALL NOT BE CAUSE FOR ADDITIONAL COMPENSATION FOR A CHANGE IN SCOPE OF WORK; HOWEVER, THE CONTRACTOR WILL BE PAID FOR THE QUANTITY ACTUALLY FURNISHED AT THE UNIT PRICE BID FOR THE WORK.

ALL EXCAVATED MATERIAL, WHICH INCLUDES DIGGING OR GRADING OF ANY SOIL OR FILL MATERIAL, WITH THE EXCEPTION OF AGGREGATE FILLS, MUST BE INCORPORATED WITHIN THE IDOT RIGHT OF WAY DUE TO ENVIRONMENTAL DOCUMENTATION REQUIREMENTS.

ANY REFERENCE TO A STANDARD IN THESE PLANS SHALL BE INTERPRETED TO MEAN THE EDITION AS INDICATED BY THE SUBNUMBER SHOWN IN THE LIST OF STANDARDS OR THE COPY INCLUDED IN THESE PLANS.

THE CONTRACTOR SHALL CONTACT JULIE AT LEAST 48 HOURS PRIOR TO

COMMITMENTS

STATE OF ILLINOIS
DEPARTMENT OF TRANSPORTATION
DISTRICT THREE
AS BUILT INFORMATION

SUPERVISING CONSTRUCTION FIELD ENGINEER

RESIDENT ENGINEER / TECHNICIAN

START & END DATES
OF CONSTRUCTION:

INSPECTORS:

STATE OF ILLINOIS
DEPARTMENT OF TRANSPORTATION
DISTRICT THREE

REVIEWED BY: *Dr. Bouie L*
DISTRICT STUDIES & PLANS ENGINEER

DATE: 4-6-17

EXAMINED BY: *J. P. Scott*
DISTRICT CONSTRUCTION ENGINEER

Michael A. Shaw
DISTRICT MATERIALS ENGINEER

Jim Heffernan
DISTRICT OPERATIONS ENGINEER

STATE OF ILLINOIS
DEPARTMENT OF TRANSPORTATION

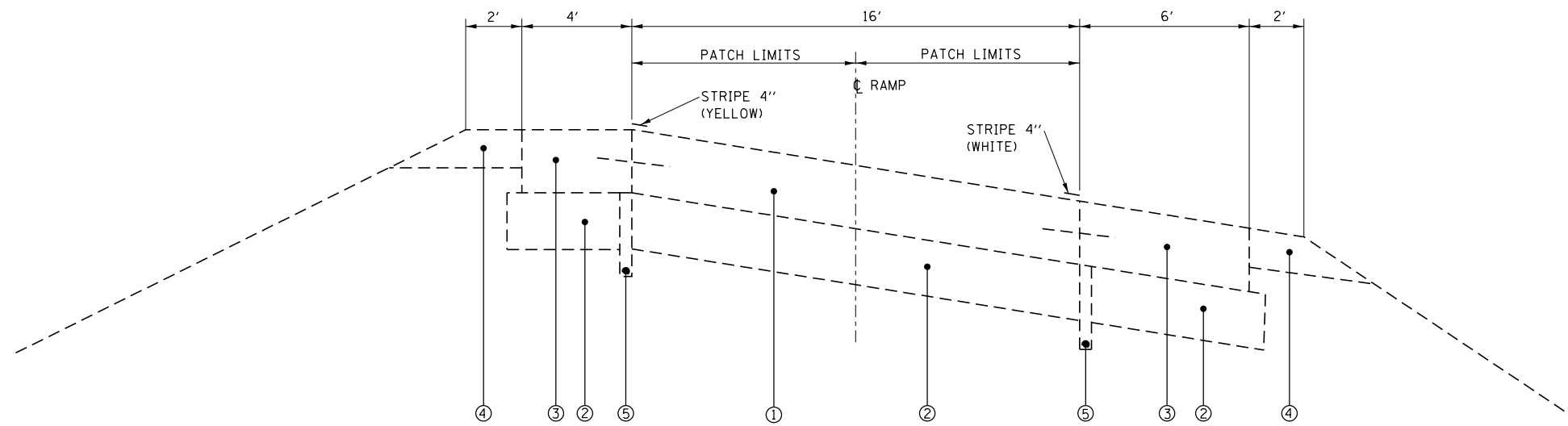
GENERAL NOTES

F.A.I. RTE.	SECTION	COUNTY	TOTAL SHEETS	SHEET NO.
80	(50-2)PP	LASALLE	7	2

FILE NAME	USER NAME	DESIGNED	REVISOR
\\FLO84E8ID\TEG\illinois.gov\PI\DOT\Documents\DOT Offices\District 3\Projects\036-DRAWING\66H39\RW\01.dgn	pietschr	RW	-
		CHECKED	REVISOR
		EP	-
		DATE	REVISOR
		3/20/2018	-

SCALE: SHEET 1 OF 1 SHEETS STA. TO STA.

CODE NO.	ITEM	UNIT	TOTAL QUANTITY	CONSTR. CODE
				CONT. MAINT.
				100% STATE
				ROADWAY
				0001
				RURAL
44200050	WELDED WIRE REINFORCEMENT	SQ YD	800	800
44200970	CLASS B PATCHES, TYPE II, 10 INCH	SQ YD	212	212
44200976	CLASS B PATCHES, TYPE IV, 10 INCH	SQ YD	800	800
44201299	DOWEL BARS 1 1/2"	EACH	560	560
44213200	SAW CUTS	FOOT	3910	3910
44213204	TIE BARS 3/4"	EACH	655	655
67100100	MOBILIZATION	LSUM	1	1
70100825	TRAFFIC CONTROL AND PROTECTION, STANDARD 701456	LSUM	1	1
78008210	POLYUREA PAVEMENT MARKING TYPE I - LINE 4"	FOOT	19660	19660
X7015005	CHANGEABLE MESSAGE SIGN	CAL DA	15	15



TYPICAL SECTION – RAMPS

LEGEND

- ① PORTLAND CEMENT CONCRETE PAVEMENT 9 3/4"
- ② SUB-BASE GRANULAR MATERIAL, TYPE A 12"
- ③ PORTLAND CEMENT CONCRETE SHOULDERS 9 3/4"
- ④ AGGREGATE SHOULDERS, TYPE B
- ⑤ PIPE DRAINS, 4"

FILE NAME =	USER NAME = pletschr	DESIGNED - RW	REVISED -	STATE OF ILLINOIS DEPARTMENT OF TRANSPORTATION	TYPICAL SECTIONS				F.A.I. RTE.	SECTION	COUNTY	TOTAL SHEETS	SHEET NO.
pw:\IL\084EBIDINTEG.illinois.gov\PWIDOT\Documents\IDOT Offices\District 3\Projects\0366\Drawings\66H39\66H39-1111.dgn		CHECKED - EP	REVISED -		80	(50-2)PP	LASALLE	7	4				
Default	PLOT SCALE = 100.0000' / in.	DATE - 3/20/2018	REVISED -		SCALE: SHEET 1 OF 1 SHEETS STA. TO STA.				CONTRACT NO. 66H39				
	PLOT DATE = 4/5/2017								ILLINOIS FED. AID PROJECT				

PATCHING SCHEDULE
IL 351 NORTHBOUND TO I-80 WESTBOUND RAMP

LOCATION	LEFT SIDE OF RAMP PAVEMENT							RIGHT SIDE OF RAMP PAVEMENT					
	PATCH LENGTH	CLASS B		DOWEL BARS	SAW CUTS	WELDED WIRE REINF.	TIE BARS	CLASS B		DOWEL BARS	SAW CUTS	WELDED WIRE REINF.	TIE BARS
LOG MILE	(FT)	TYPE II 10"	TYPE IV 10"	1 1/2"	FOOT	SQ YD	EACH	TYPE II 10"	TYPE IV 10"	1 1/2"	FOOT	SQ YD	EACH
0.20	100		89	14	274	89	50		89	14	274	89	50
0.30	10	9		14	49			9		14	49		
0.30	10	9		14	49			9		14	49		
SUBTOTALS	120	18	89	42	372	89	50	18	89	42	372	89	50
RAMP TOTALS		36	178	84	744	178	100						

PATCHING SCHEDULE
IL 351 NORTHBOUND TO I-80 EASTBOUND RAMP

LOCATION	LEFT SIDE OF RAMP PAVEMENT							RIGHT SIDE OF RAMP PAVEMENT					
	PATCH LENGTH	CLASS B		DOWEL BARS	SAW CUTS	WELDED WIRE REINF.	TIE BARS	CLASS B		DOWEL BARS	SAW CUTS	WELDED WIRE REINF.	TIE BARS
LOG MILE	(FT)	TYPE II 10"	TYPE IV 10"	1 1/2"	FOOT	SQ YD	EACH	TYPE II 10"	TYPE IV 10"	1 1/2"	FOOT	SQ YD	EACH
0.00	6	5		14	39			5		14	39		
0.01	8	7		14	44			7		14	44		
0.10	10	9		14	49			9		14	49		
0.10	10	9		14	49			9		14	49		
0.20	6	5		14	39			5		14	39		
0.20	100		89	14	274	89	75		89	14	274	89	75
SUBTOTALS	140	35	89	84	494	89	75	35	89	84	494	89	75
RAMP TOTALS		70	178	168	988	178	150						

PATCHING SCHEDULE
I-80 EASTBOUND EXIST RAMP TO IL 351 SOUTH

LOCATION	LEFT SIDE OF RAMP PAVEMENT							RIGHT SIDE OF RAMP PAVEMENT					
	PATCH LENGTH	CLASS B		DOWEL BARS	SAW CUTS	WELDED WIRE REINF.	TIE BARS	CLASS B		DOWEL BARS	SAW CUTS	WELDED WIRE REINF.	TIE BARS
LOG MILE	(FT)	TYPE II 10"	TYPE IV 10"	1 1/2"	FOOT	SQ YD	EACH	TYPE II 10"	TYPE IV 10"	1 1/2"	FOOT	SQ YD	EACH
0.10	12	11		14	54			11		14	54		
0.20	50		44	14	149	44	38		44	14	149	44	38
0.20	6	5		14	39			5		14	39		
0.30	10	9		14	49			9		14	49		
SUBTOTALS	78	25	44	56	291	44	38	25	44	56	291	44	38
RAMP TOTALS		50	88	112	582	88	75						

PATCHING SCHEDULE
I-80 WESTBOUND EXIST RAMP TO IL 351 SOUTH

LOCATION	LEFT SIDE OF RAMP PAVEMENT							RIGHT SIDE OF RAMP PAVEMENT					
	PATCH LENGTH	CLASS B		DOWEL BARS	SAW CUTS	WELDED WIRE REINF.	TIE BARS	CLASS B		DOWEL BARS	SAW CUTS	WELDED WIRE REINF.	TIE BARS
LOG MILE	(FT)	TYPE II 10"	TYPE IV 10"	1 1/2"	FOOT	SQ YD	EACH	TYPE II 10"	TYPE IV 10"	1 1/2"	FOOT	SQ YD	EACH
0.10	10	9		14	49			9		14	49		
0.10	100		89	14	274	89	75		89	14	274	89	75
0.10	6	5		14	39			5		14	39		
0.20	10	9		14	49			9		14	49		
0.20	6	5		14	39			5		14	39		
0.20	100		89	14	274	89	75		89	14	274	89	75
0.40	20			14	74		15			14	74		15
SUBTOTALS	252	28	178	98	798	178	165	28	178	98	798	178	165
RAMP TOTALS		56	356	196	1596	356	330						

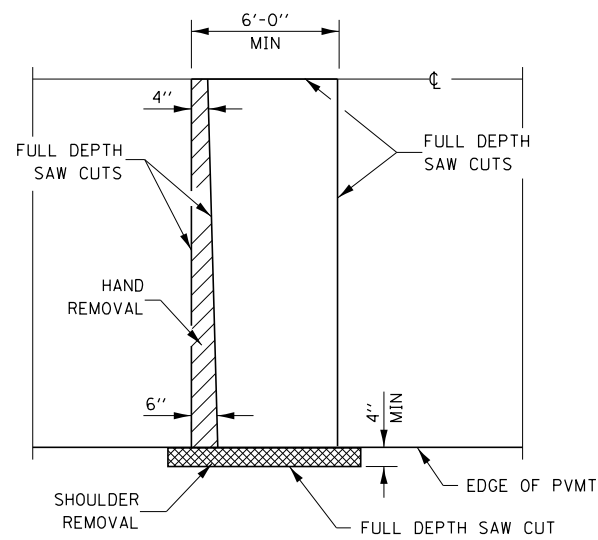
SCHEDULE
PAVEMENT MARKING

LOCATION	POLYUREA PAVEMENT MARKING TYPE I LINE 4"	
	YELLOW	WHITE
RAMP		
IL 351 NORTH TO I-80 WB	3170	3170
IL 351 NORTH TO I-80 EB	2690	2690
I-80 WEST TO IL 351 SOUTH	1730	1730
I-80 EAST TO IL 351 SOUTH	2240	2240
SUBTOTAL	9830	9830
RAMP TOTAL	19660	

QUANTITY HAS BEEN INCLUDED TO STRIPE THE ENTIRE LENGTH OF RAMPS

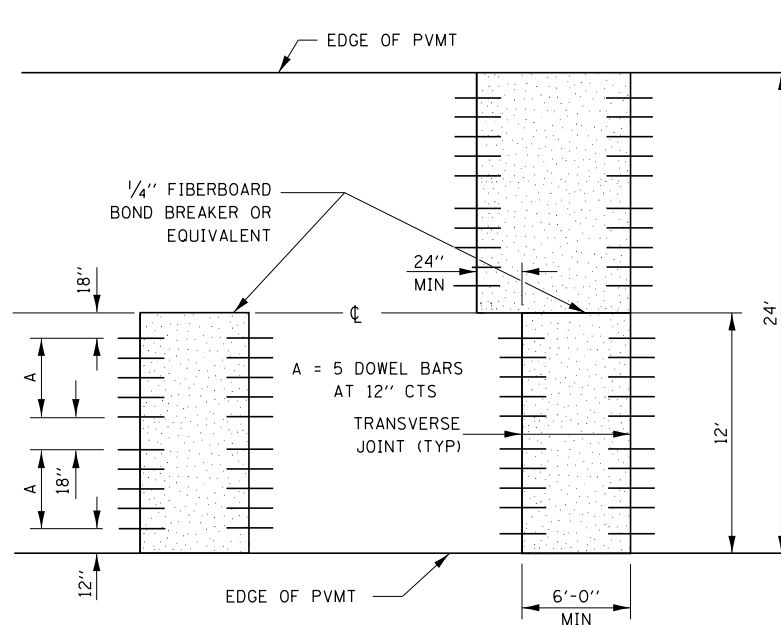
PATCHING TOTALS

CLASS B		DOWEL BARS	SAW CUTS	WELDED WIRE REINF.	TIE BARS
TYPE II 10"	TYPE IV 10"	1 1/2"	FOOT	SQ YD	EACH
SQ YD	SQ YD	EACH	FOOT	SQ YD	EACH
212	800	560	3910	800	655

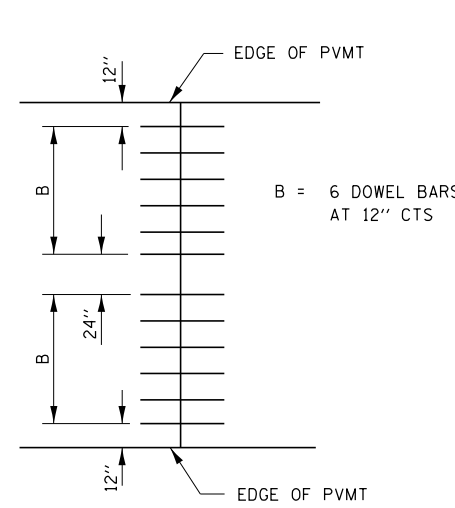


PAVEMENT SAWING DETAIL

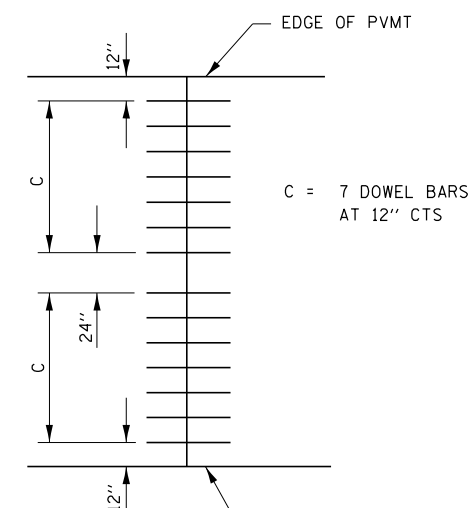
(HMA SHOULDER)



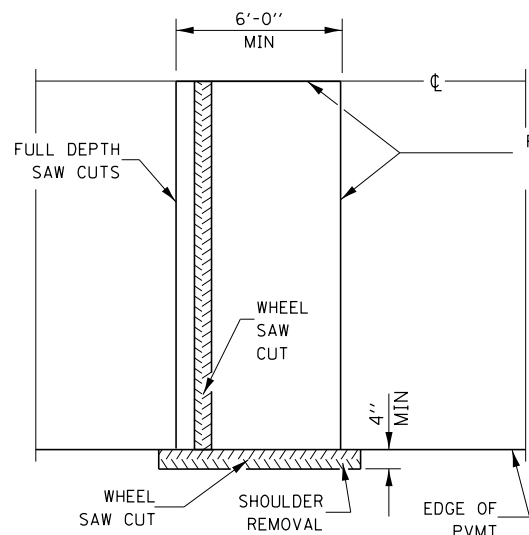
12' WIDE LANES



14' WIDE RAMP

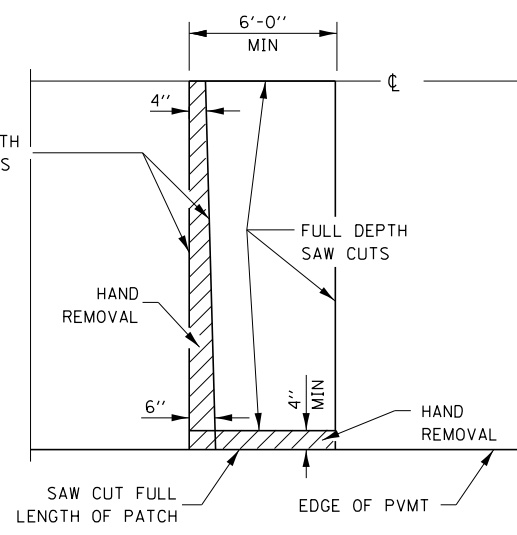


16' WIDE RAMP



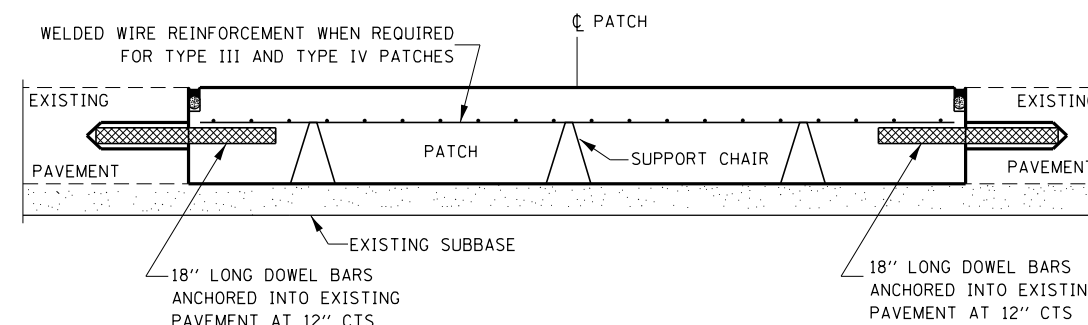
ALTERNATE SAWING DETAIL

(HMA SHOULDER)

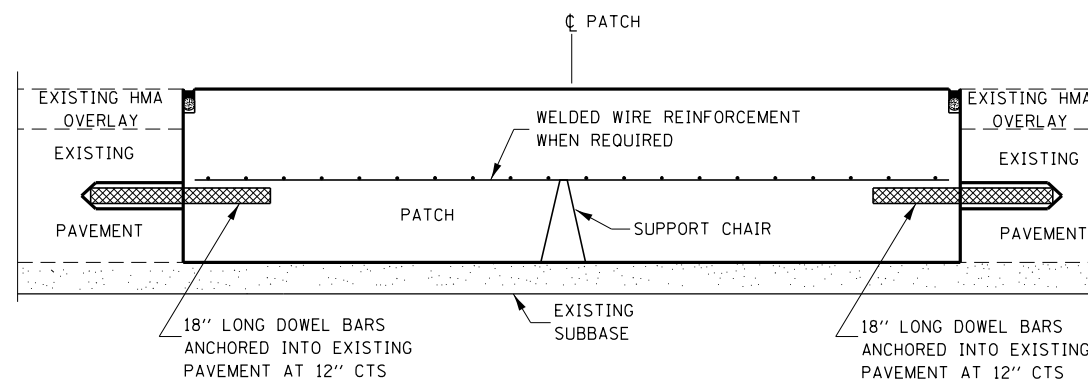


PAVEMENT SAWING DETAIL

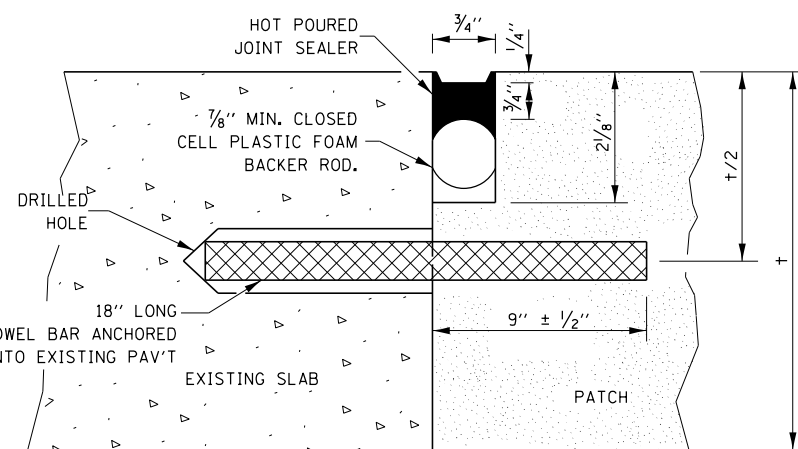
(PCC SHOULDER)



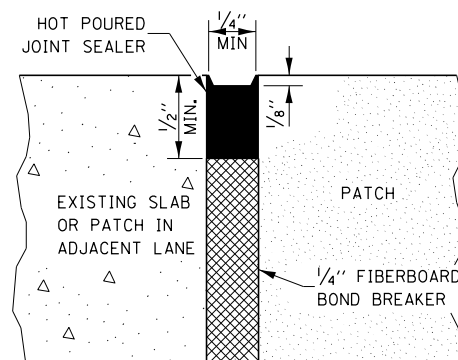
PATCHING WITHOUT HMA OVERLAY



PATCHING WITH HMA OVERLAY



TRANSVERSE JOINT

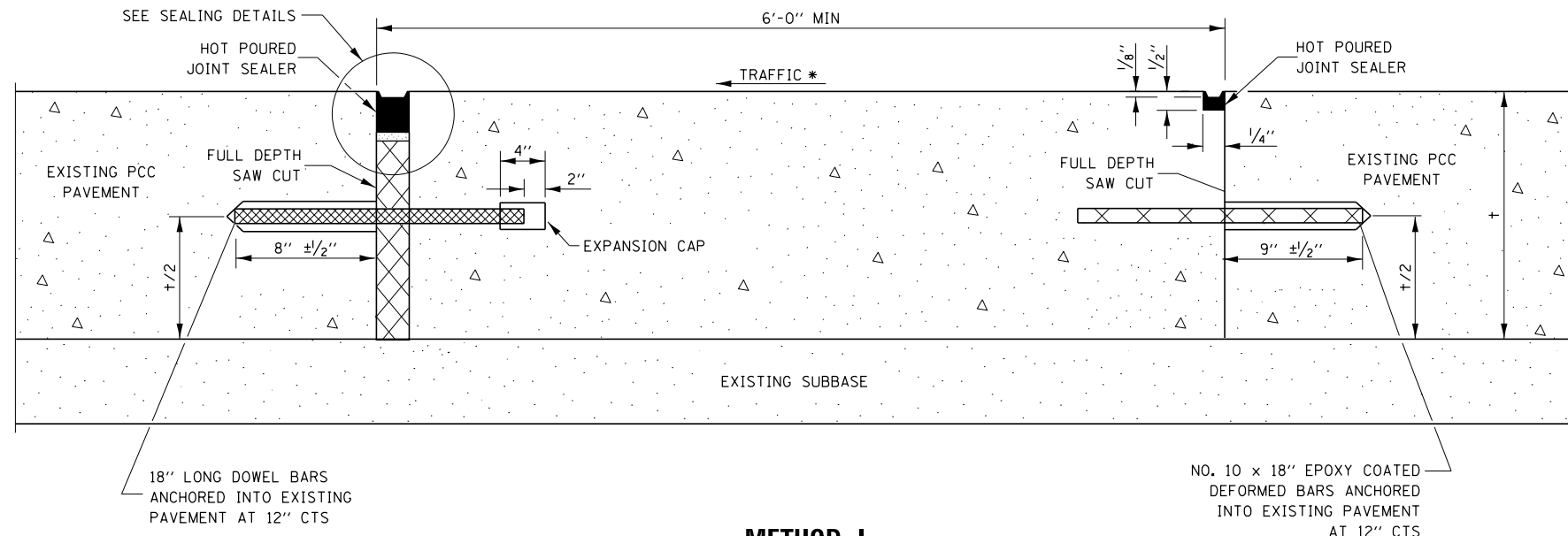


CENTERLINE JOINT

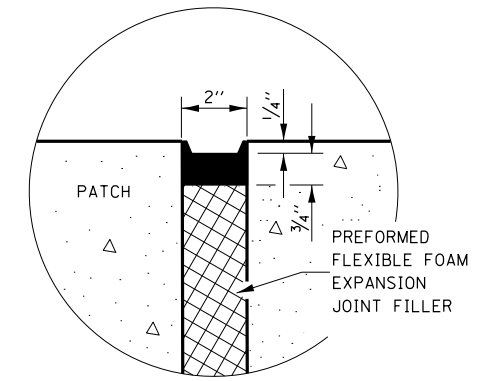
DOWEL BAR TABLE		
PAVEMENT THICKNESS	DOWEL BAR DIAMETER	HOLE DIAMETER
8" OR GREATER	1 1/2"	1 5/8"
7" THRU 7.99"	1 1/4"	1 3/8"
LESS THAN 7"	1"	1 1/8"

GENERAL NOTES

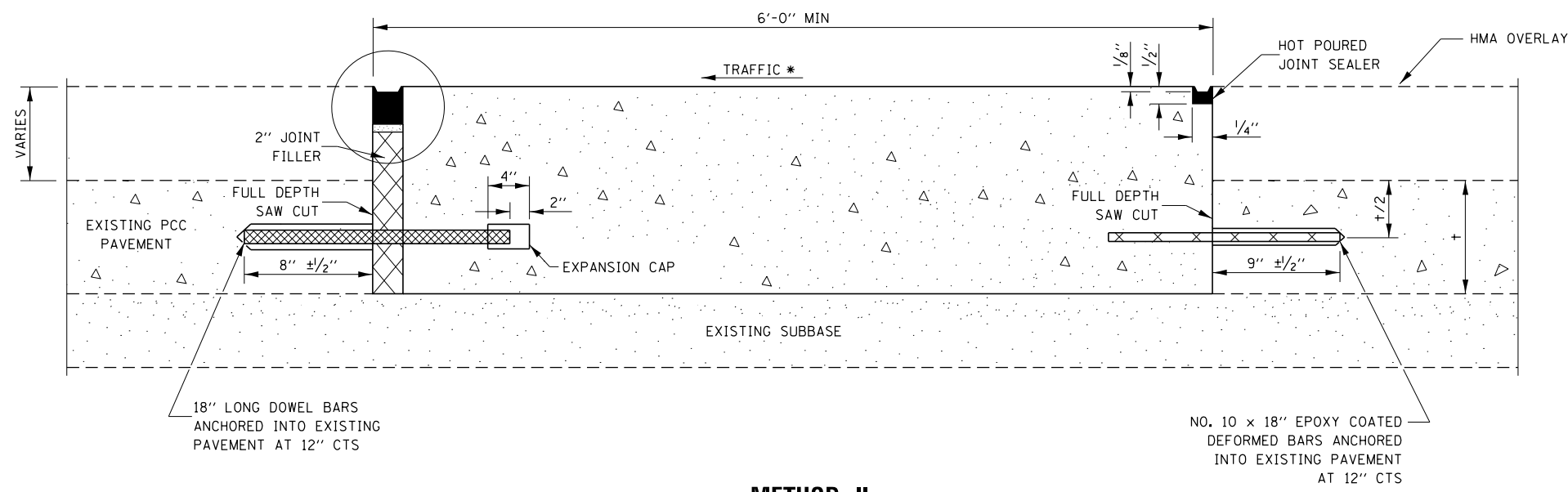
THE TRANSVERSE JOINTS FOR CLASS B PATCHES SHALL ALIGN WITH JOINTS OR CRACKS IN THE ADJECENT LANE WHENEVER POSSIBLE.
SEE STAMDARD 420701 FOR DETAILS OF PAVEMENT WELDED WIRE REINFORCEMENT.



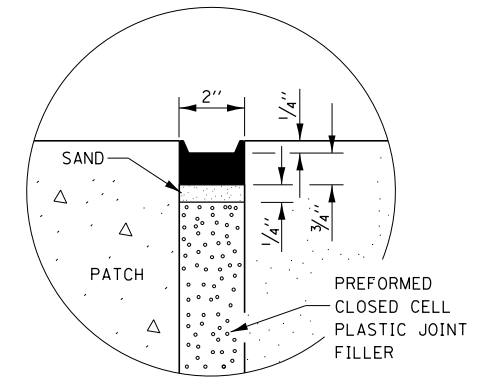
METHOD I
(WITHOUT HMA OVERLAY)



SEALING DETAIL



METHOD II
(WITH HMA OVERLAY)



SEALING DETAIL

NOTE

* WHEN RE-ESTABLISHING A TRANSVERSE EXPANSION JOINT ON A TWO-WAY ROAD, REVERSE THE ORIENTATION OF THE DOWEL BARS WITH RESPECT TO TRAFFIC FOR ONE OF THE PATCHES SUCH THAT THE JOINT WILL BE CONTINUOUS ACROSS BOTH LANES.

FILE NAME =	USER NAME = pletschr	DESIGNED - RW	REVISED -	STATE OF ILLINOIS DEPARTMENT OF TRANSPORTATION	CLASS B PATCHING DETAILS			F.A.I. RE.	SECTION	COUNTY	TOTAL SHEETS	SHEET NO.
pw:\IL\084EBIDINTEG.illinois.gov\PWIDOT\Documents\DOT Offices\District 3\Projects\0366\Drawings\66H39\01.dgn	PLLOT SCALE = 100.0000' / in.	CHECKED - EP	REVISED -					80	(50-2)PP	LASALLE	7	7
Default	PLLOT DATE = 4/5/2017	DATE - 3/20/2018	REVISED -		SCALE: SHEET 1 OF 1 SHEETS STA. TO STA.			CONTRACT NO. 66H39				
					ILLINOIS FED. AID PROJECT							