

STATE OF ILLINOIS
DEPARTMENT OF TRANSPORTATION
DIVISION OF HIGHWAYS

**PROPOSED
HIGHWAY PLANS**

FAP ROUTE 622 (IL 97)
SECTION 115I-2
FULTON COUNTY
C-94-020-15

F.A.P. RTE.	SECTION	COUNTY	TOTAL SHEETS	SHEET NO.
622	115I-2	FULTON	20	1
ILLINOIS			CONTRACT NO. 68C33	

INDEX OF SHEETS

1. COVER SHEET
2. GENERAL NOTES
- 3.-4. SUMMARY OF QUANTITIES
5. SCHEDULE OF QUANTITIES
6. EXISTING & PROPOSED TYPICAL SECTIONS
7. REMOVAL PLANS
8. PROPOSED PLANS
9. EROSION CONTROL PLANS
10. R.O.W. & TEMPORARY EASEMENT PLANS
- 11.-18. CROSS SECTIONS
19. DISTRICT CADD STANDARD:
281001-D4
20. DISTRICT CADD STANDARD:
542016-D4

HIGHWAY STANDARDS

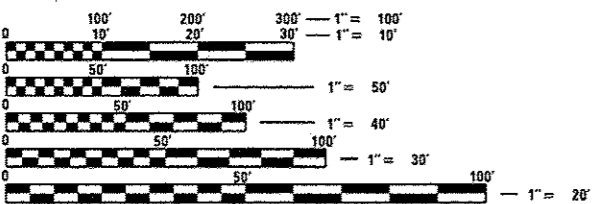
280001-07	701201-04
542301-03	701301-04
701001-02	701326-04
701006-05	701901-06

DESIGN DESIGNATION

ADT = 1,150 (2013)
MU % = 7.83%
SU % = 5.22%

PROJECT DESCRIPTION

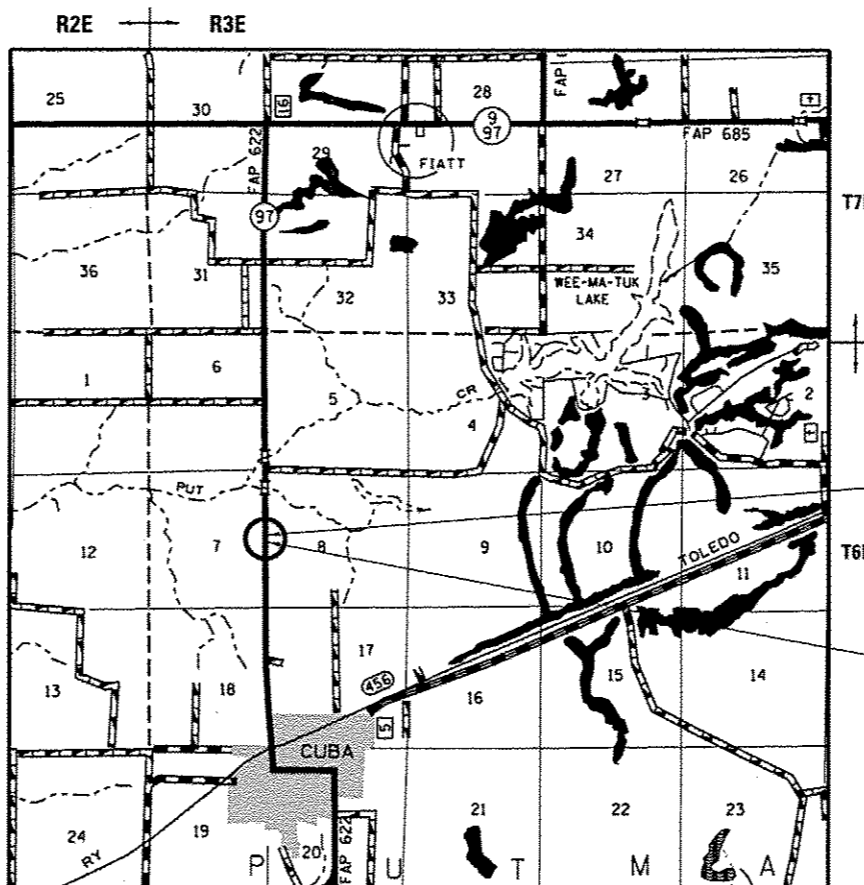
THIS PROJECT CONSISTS OF REMOVAL OF REVETMENT MAT, GRADING & SHAPING A NEW DITCH LINE AND PLACING OF RIPRAP ALONG IL 97, 0.5 MILES SOUTH OF PUTT CREEK, NORTH OF CUBA.



FULL SIZE PLANS HAVE BEEN PREPARED USING STANDARD ENGINEERING SCALES. REDUCED SIZED PLANS WILL NOT CONFORM TO STANDARD SCALES. IN MAKING MEASUREMENTS ON REDUCED PLANS, THE ABOVE SCALES MAY BE USED.

J.U.L.I.E.
JOINT UTILITY LOCATION INFORMATION FOR EXCAVATION
1-800-892-0123
OR 811

PROJECT ENGINEER: LEONEL CRESPO
PROJECT MANAGER: MIKE LEWIS
CATALOG NO. 035086-00D
CONTRACT NO. 68C33



GROSS LENGTH = 300 FT. = 0.0568 MILE
NET LENGTH = 181 FT. = 0.0343 MILE

D-94-014-15



STATE OF ILLINOIS
DEPARTMENT OF TRANSPORTATION
DIVISION OF HIGHWAYS

SUBMITTED 4/3 20 17
K. A. Gutz
REGION THREE ENGINEER

May 12 20 17
Maureen M. Addis, P.E.
ENGINEER OF DESIGN AND ENVIRONMENT

May 12 20 17
James A. [Signature]
DIRECTOR OF PROGRAM DEVELOPMENT

**PRINTED BY THE AUTHORITY
OF THE STATE OF ILLINOIS**

COMMITMENTS

No Commitments have been made for this project.

GENERAL NOTES

TREE REMOVAL

The District Four Tree Committee should be contacted and prior approval obtained for any tree removal beyond the limits/locations included in the plans.

TREE REMOVAL – UTILITY RELOCATION

Tree removal may be necessary prior to utility companies being able to relocate their facilities outside the construction limits. The Contractor should coordinate any contract tree removal activities with the utility companies to eliminate conflicts and potential delays caused by utility tree removal activities or incomplete utility relocations.

ENVIRONMENTAL REVIEWS

Prior to the use of any proposed borrow areas, use areas (temporary access roads, detours, run-arounds, etc.) and/or waste areas, the Contractor shall file the required environmental resource request surveys according to Section 107.22 of the Standard Specifications. These surveys are required in order for the Department to conduct cultural and biological resource surveys for the proposed site.

The required environmental resource documentation shall include the following:

- *BDE Form 2289 (Environmental Survey Request)
- *BDE Form 2290 (Waste/Use Area Review)
- *A location map showing the size limits and location of the use area
- *Color photographs depicting the use area
- *Borrow Area Entry Agreement form-D4 PI0101

Prior to any waste materials being removed from the construction site the required environmental resource surveys will need to be obtained and filed by the Contractor. Excess waste products removed from the construction site shall be disposed of as required in Section 202.03 of the Standard Specifications.

Any protruding metal bars shall be removed prior to the disposal of broken concrete at approved disposal sites.

Please note that a minimum of four weeks shall be allowed for the District to obtain the required environmental clearances and six weeks for the required borrow site environmental clearances.

JOB SPECIFIC NOTE:

All disturbed areas shall be leveled and seeded.
The contractor shall be responsible for any damage done to the existing roadway and/or shoulder.

All open excavation inside of the clear zone (18 ft. from edge of travel way) deeper than one (1) foot shall be protected according to Highway Standard 701326.

This work will be paid for at the contract unit price LSUM for Traffic Control and Protection Standard 701326.

UTILITY CONFLICT

AMEREN ILLINOIS (ELECTRIC)

ROUTE	OFFSET	LOCATION	TYPE OF UTILITY	TYPE OF CONFLICT	DISPOSITION
IL 97	44' Lt.	526 + 27.00	POWER POLE	DITCH GRADING	RELOCATE

CODE NO.	ITEM	UNIT	TOTAL QUANTITY	CONST. CODE
				0044
				RURAL
				FULTON CO.
				100%
				STATE
20100110	TREE REMOVAL (6 TO 15 UNITS DIAMETER)	UNIT	27	27
20100210	TREE REMOVAL (OVER 15 UNITS DIAMETER)	UNIT	53	53
20200100	EARTH EXCAVATION	CU YD	611	611
21101615	TOPSOIL FURNISH & PLACE, 4"	SO YD	612	612
25000300	SEEDING, CLASS 3	ACRE	0.5	0.5
25000400	NITROGEN FERTILIZER NUTRIENT	POUND	32	32
25000500	PHOSPHORUS FERTILIZER NUTRIENT	POUND	32	32
25000600	POTASSIUM FERTILIZER NUTRIENT	POUND	32	32
25100630	EROSION CONTROL BLANKET	SO YD	1695	1695
28000305	TEMPORARY DITCH CHECKS	FOOT	61	61
28000400	PERIMETER EROSION BARRIER	FOOT	215	215
28100127	STONE RIPRAP, CLASS B4	SO YD	371	371
28200200	FILTER FABRIC	SO YD	371	371
50800105	REINFORCEMENT BARS	POUND	35	35

101

REV

1/5/17 10:50:11

CODE NO.	ITEM	UNIT	TOTAL QUANTITY	CONST. CODE
				FULTON CO. STATE
54213669	PRECAST REINFORCED CONCRETE FLARED END SECTIONS 24"	EACH	1	0044 <i>RURAL</i>
54248510	CONCRETE COLLAR	CU YD	0.6	FULTON CO. STATE
67100100	MOBILIZATION	L SUM	1	100%
70100450	TRAFFIC CONTROL AND PROTECTION, STANDARD 701201	L SUM	1	STATE
70100500	TRAFFIC CONTROL AND PROTECTION, STANDARD 701326	L SUM	1	
X0322936	REMOVE EXISTING FLARED END SECTION	EACH	1	
X0322584	REVTMENT MAT REMOVAL	SO YD	307	
Z0001002	GUARDRAIL AGGREGATE EROSION CONTROL	TON	6	
Z0013798	CONSTRUCTION LAYOUT	L SUM	1	
Z0058668	GRADING AND SHAPING FORESLOPES	SO YD	1039	

10

TREE REMOVAL (6 TO 15 UNITS DIAMETER)	
LOCATION	UNITS
Lt. Sta. 525+91.52	15
Lt. Sta. 526+30.38	6
Lt. Sta. 526+37.09	6
TOTAL = 27	

TREE REMOVAL (OVER 15 UNITS DIAMETER)	
LOCATION	UNITS
Lt. Sta. 525+57.89	26
Lt. Sta. 525+80.86	27
TOTAL = 53	

REVTMENT MAT REMOVAL	
LOCATION	SQ YD
Lt. Sta. 524+88.73 to Sta. 526+66.95	307
TOTAL = 307	

EARTH EXCAVATION	
LOCATION	CU YD
Lt. Sta. 524+85.00 to Sta. 526+80.00	611
TOTAL = 611	

TOPSOIL FURNISH & PLACE, 4"	
LOCATION	SQ YD
Lt. Sta. 524+75.00 to Sta. 526+75.00	612
TOTAL = 612	

GRADING AND SHAPING FORESLOPES	
LOCATION	SQ YD
Lt. Sta. 524+25.00 to 526+75.00	1,039
TOTAL = 1,039	

PERIMETER EROSION BARRIER	
LOCATION	FOOT
TOTAL= 215	

SEEDING, CLASS 3	
LOCATION	ACRE
Lt. Sta. 524+29.16 to Sta. 526+75.00	0.50
TOTAL = 0.50	

NITROGEN FERTILIZER NUTRIENT	
LOCATION	POUND
Lt. Sta. 524+29.16 to Sta. 526+75.00	32
TOTAL = 32	

PHOSPHORUS FERTILIZER NUTRIENT	
LOCATION	POUND
Lt. Sta. 524+29.16 to Sta. 526+75.00	32
TOTAL = 32	

POTASSIUM FERTILIZER NUTRIENT	
LOCATION	POUND
Lt. Sta. 524+29.16 to Sta. 526+75.00	32
TOTAL = 32	

EROSION CONTROL BLANKET	
LOCATION	SQ YD
Lt. Sta. 524+29.16 to Sta. 526+75.00	1,695.00
TOTAL =1,695	

STONE RIPRAP, CLASS B4	
LOCATION	SQ YD
Lt. Sta. 524+90.43 to Sta. 526+75.00	371
TOTAL = 371	

FILTER FABRIC	
LOCATION	SQ YD
Lt. Sta. 524+90.43 to Sta. 526+75.00	371
TOTAL = 371	

GUARDRAIL AGGREGATE EROSION CONTROL	
LOCATION	TON
Lt. Sta. 526+64.13 to Sta. 526+78.68	6
TOTAL = 6	

TEMPORARY DITCH CHECKS	
LOCATION	FOOT
Lt. Sta. 524+89.28	15.9
Lt. Sta. 525+39.28	15.9
Lt. Sta. 525+89.28	14.4
Lt. Sta. 526+19.28	14.4
TOTAL = 61	

REMOVE EXISTING FLARED END SECTION	
LOCATION	EACH
Lt. Sta. 525+75.00	1
TOTAL = 1	

PRECAST REINFORCED CONCRETE FLARED END SECTIONS 24"	
LOCATION	EACH
Lt. Sta. 525+75.00	1
TOTAL = 1	

CONCRETE COLLAR	
LOCATION	CU YD
Lt. Sta. 525+75.00	TOTAL=0.6

REINFORCEMENT BARS	
LOCATION	POUND
Lt. Sta. 525+75.00	35
TOTAL = 35	

MOBILIZATION	
LOCATION	L.SUM
Jobsite	1
TOTAL = 1	

TRAFFIC CONTROL AND PROTECTION, STANDARD 701201	
LOCATION	L.SUM
Jobsite	1
TOTAL = 1	

TRAFFIC CONTROL AND PROTECTION, STANDARD 701326	
LOCATION	L.SUM
Jobsite	1
TOTAL = 1	

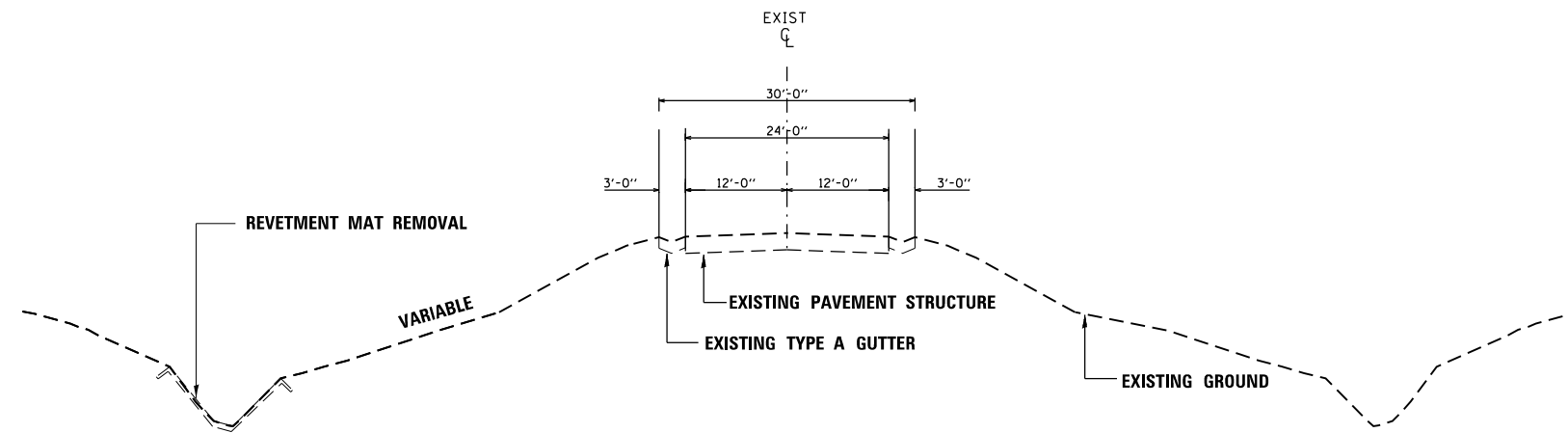
CONSTRUCTION LAYOUT	
LOCATION	L.SUM
Jobsite	1
TOTAL = 1	

FILE NAME = IL97-typical.dgn	USER NAME = jonesros	DESIGNED -	REVISED -
Default		DRAWN -	REVISED -
	PLOT SCALE = 80.0000' / in.	CHECKED -	REVISED -
	PLOT DATE = 4/5/2017	DATE -	REVISED -

**STATE OF ILLINOIS
DEPARTMENT OF TRANSPORTATION**

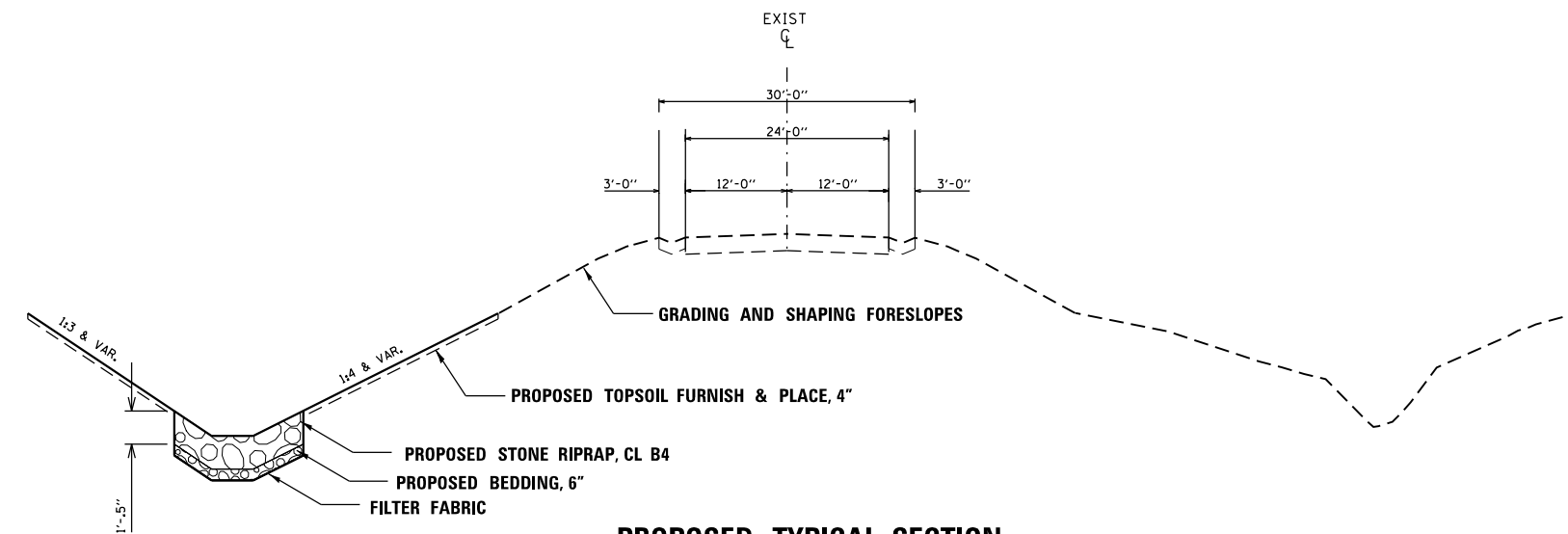
SCHEDULE OF QUANTITIES			
IL 97			
SCALE:	SHEET	OF SHEETS	STA. TO STA.

F.A.P. RTE.	SECTION	COUNTY	TOTAL SHEETS	SHEET NO.
622	1151-2	FULTON	20	5
CONTRACT NO. 68C33				
ILLINOIS FED. AID PROJECT				



EXISTING TYPICAL SECTION

FROM STA. 524 + 85.00 TO STA. 526 + 75.00



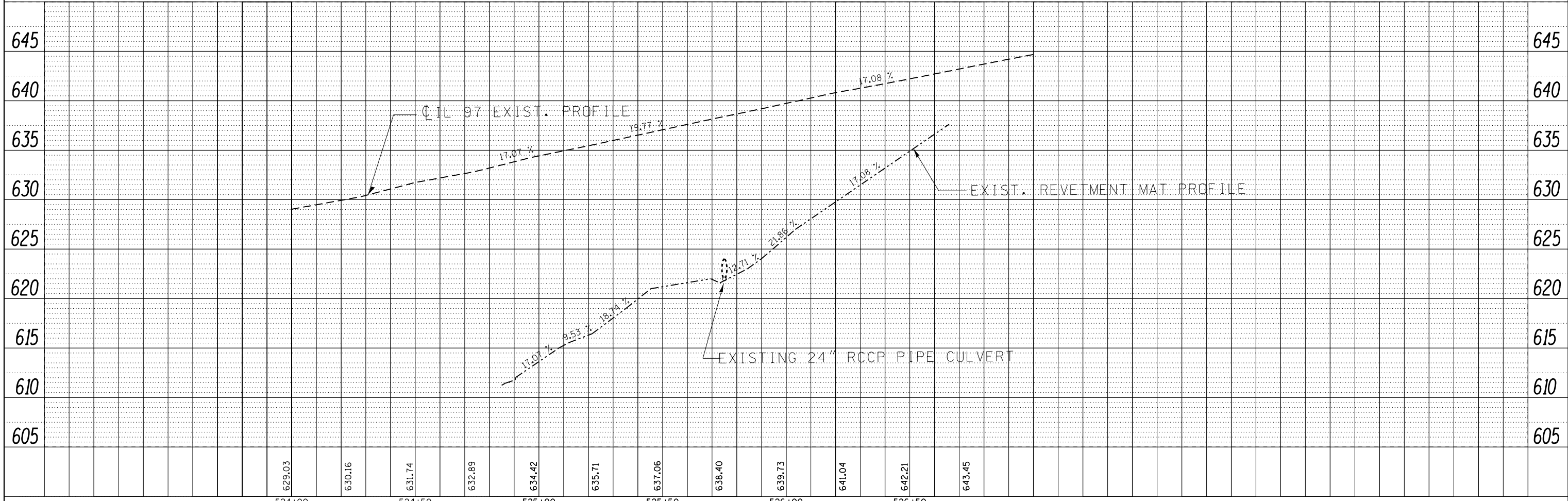
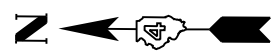
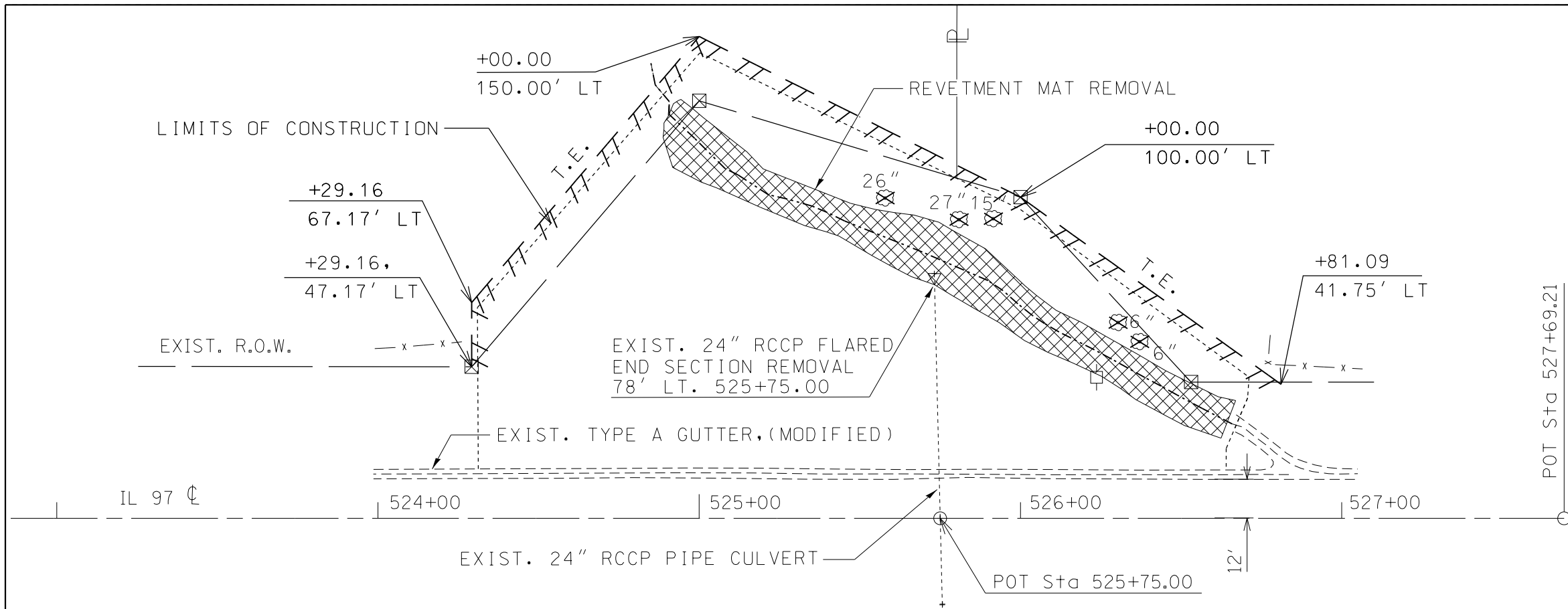
PROPOSED TYPICAL SECTION

FROM STA. 524 + 85.00 TO STA. 526 + 75.00

FILE NAME = IL97-typical.dgn	USER NAME = jonesros	DESIGNED -	REVISED -	STATE OF ILLINOIS DEPARTMENT OF TRANSPORTATION	EXISTING & PROPOSED TYPICAL SECTIONS			F.A.P. RTE.	SECTION	COUNTY	TOTAL SHEETS	SHEET NO.	
	PLOT SCALE = 80.0000' / in.	CHECKED -	REVISED -					622	1151-2	FULTON	20	6	
Default	PLOT DATE = 4/3/2017	DATE -	REVISED -		SCALE:	SHEET	OF	SHEETS	STA.	TO	STA.	CONTRACT NO. 68C33	
											ILLINOIS FED. AID PROJECT		

PLAN	SURVEYED	DATE
	PLOTTED	BY
	ALIGNED	
	CHECKED	
	FILED	
	NO.	
	NO.	
	NO.	

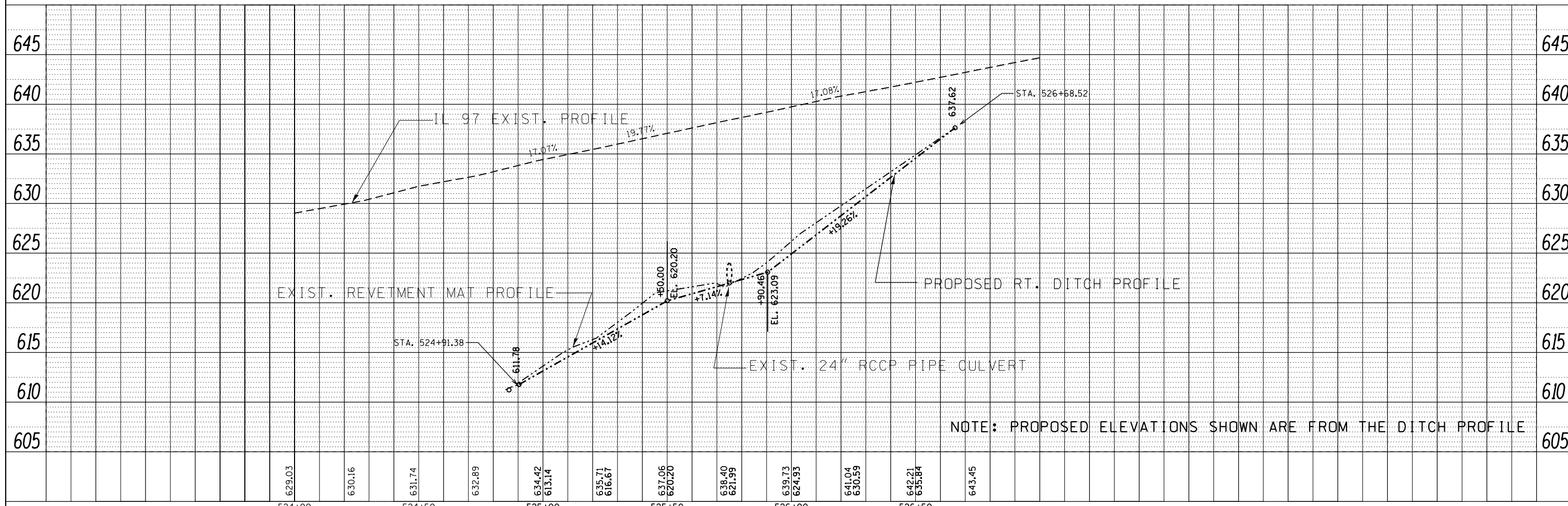
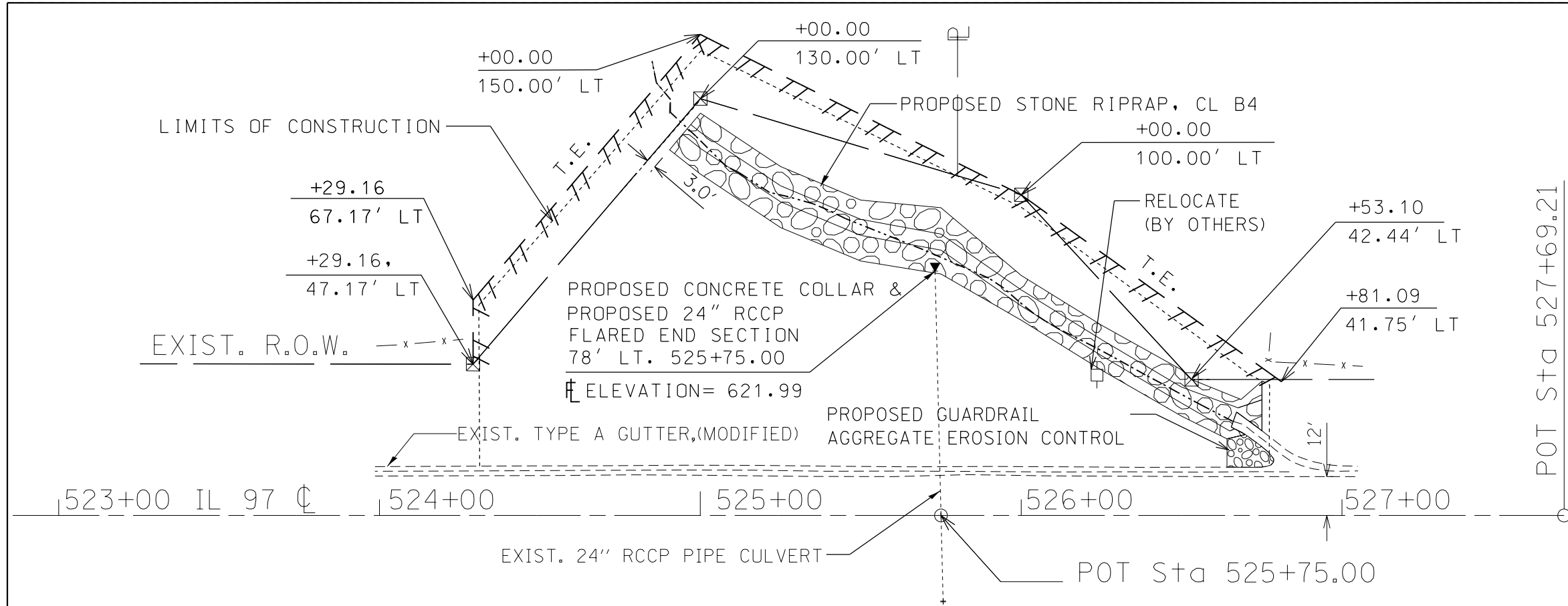
PROFILE	SURVEYED	DATE
	PLOTTED	BY
	GRADES	
	CHECKED	
	STRUCTURE	
	NOT AT THIS OFFICE	
	NO.	
	NO.	
	NO.	



FILE NAME = removalsheet.dgn	USER NAME = jonesros	DESIGNED -	REVISED -	STATE OF ILLINOIS DEPARTMENT OF TRANSPORTATION	REMOVAL PLANS	F.A.P. RTE. 622	SECTION 1151-2	COUNTY FULTON	TOTAL SHEETS 20	SHEET NO. 7
Default	PLOT SCALE = 48.0000' / in.	DRAWN -	REVISED -			CONTRACT NO. 68C33				
	PLOT DATE = 4/3/2017	CHECKED -	REVISED -			ILLINOIS FED. AID PROJECT				
		DATE -	REVISED -			SCALE:	SHEET OF SHEETS	STA. TO STA.		

PLAN	SURVEYED	DATE
	PLOTTED	BY
	ALIGNED	
	CHECKED	
	FILED	
	NO.	
	NO.	
	NO.	

PROFILE	SURVEYED	DATE
	PLOTTED	BY
	GRADES	
	CHECKED	
	STRUCTURE	
	NOTATIONS	
	NO.	
	NO.	
	NO.	



NOTE: PROPOSED ELEVATIONS SHOWN ARE FROM THE DITCH PROFILE

FILE NAME = ppsheet1.dgn
Default

USER NAME = jonesros	DESIGNED -	REVISED -
PLOT SCALE = 48.0000' / in.	DRAWN -	REVISED -
PLOT DATE = 4/3/2017	CHECKED -	REVISED -
	DATE -	REVISED -

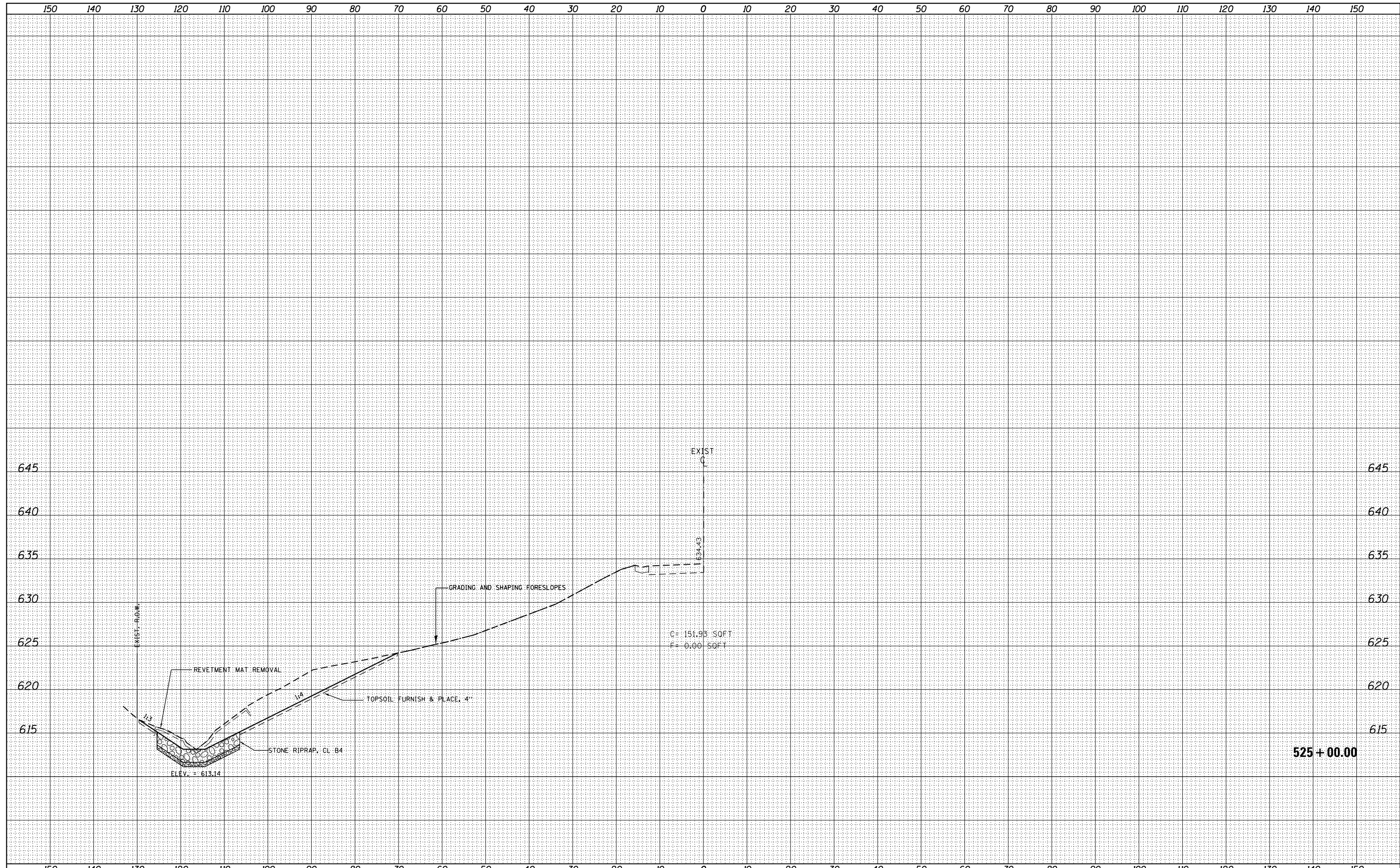
**STATE OF ILLINOIS
DEPARTMENT OF TRANSPORTATION**

PROPOSED PLANS			
SCALE:	SHEET	OF	SHEETS
	STA.	TO	STA.

F.A.P. RTE. 622	SECTION 1151-2	COUNTY FULTON	TOTAL SHEETS 20	SHEET NO. 8
CONTRACT NO. 68C33				
ILLINOIS FED. AID PROJECT				

DATE	
BY	
SURVEYED	
PLOTTED	
TEMPLATE	
AREAS	
CHECKED	
FINAL SURVEY	
NOTE BOOK	
NO.	

DATE	
BY	
SURVEYED	
PLOTTED	
TEMPLATE	
AREAS	
CHECKED	
ORIGINAL SURVEY	
NOTE BOOK	
NO.	



FILE NAME = IL97-xsc.mxd
 Default

USER NAME = jonesros	DESIGNED -	REVISED -
PLOT SCALE = 20.0000' / in.	DRAWN -	REVISED -
PLOT DATE = 4/3/2017	CHECKED -	REVISED -
	DATE -	REVISED -

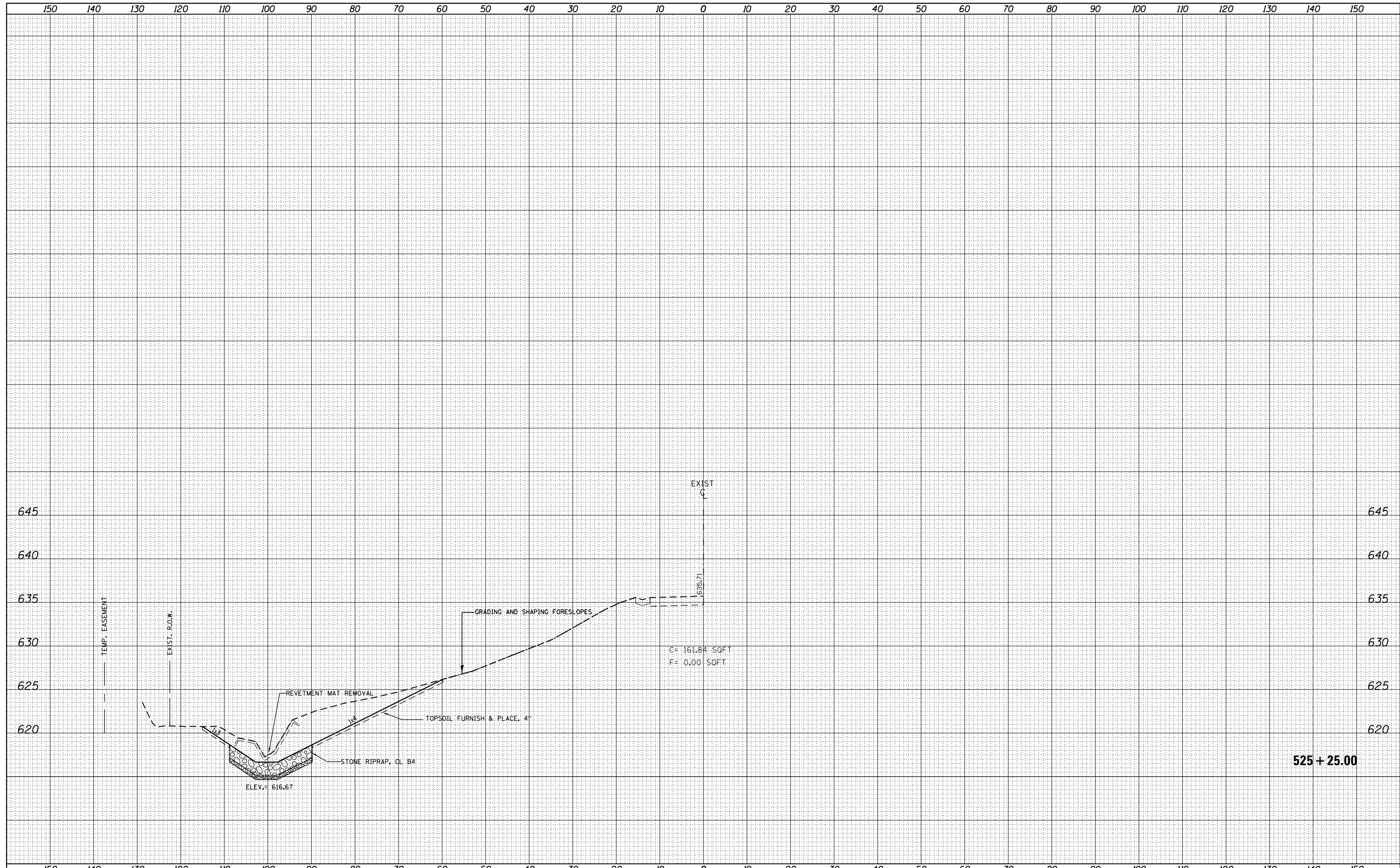
**STATE OF ILLINOIS
 DEPARTMENT OF TRANSPORTATION**

SCALE:	SHEET	OF	SHEETS	STA. 525+00.00	TO STA. 525+00.00
--------	-------	----	--------	----------------	-------------------

F.A.P. RTE.	SECTION	COUNTY	TOTAL SHEETS	SHEET NO.
622	1151-2	FULTON	20	13
CONTRACT NO. 68C33				
ILLINOIS FED. AID PROJECT				

DATE	
BY	
SURVEYED	
PLOTTED	
TEMPLATE	
AREAS CHECKED	
FINAL SURVEY NOTE BOOK NO.	

DATE	
BY	
SURVEYED	
PLOTTED	
TEMPLATE	
AREAS CHECKED	
ORIGINAL SURVEY NOTE BOOK NO.	



FILE NAME = IL97-xsc.mxd
 Default

USER NAME = jonesros	DESIGNED -	REVISED -
PLOT SCALE = 20.0000' / in.	DRAWN -	REVISED -
PLOT DATE = 4/3/2017	CHECKED -	REVISED -
	DATE -	REVISED -

**STATE OF ILLINOIS
 DEPARTMENT OF TRANSPORTATION**

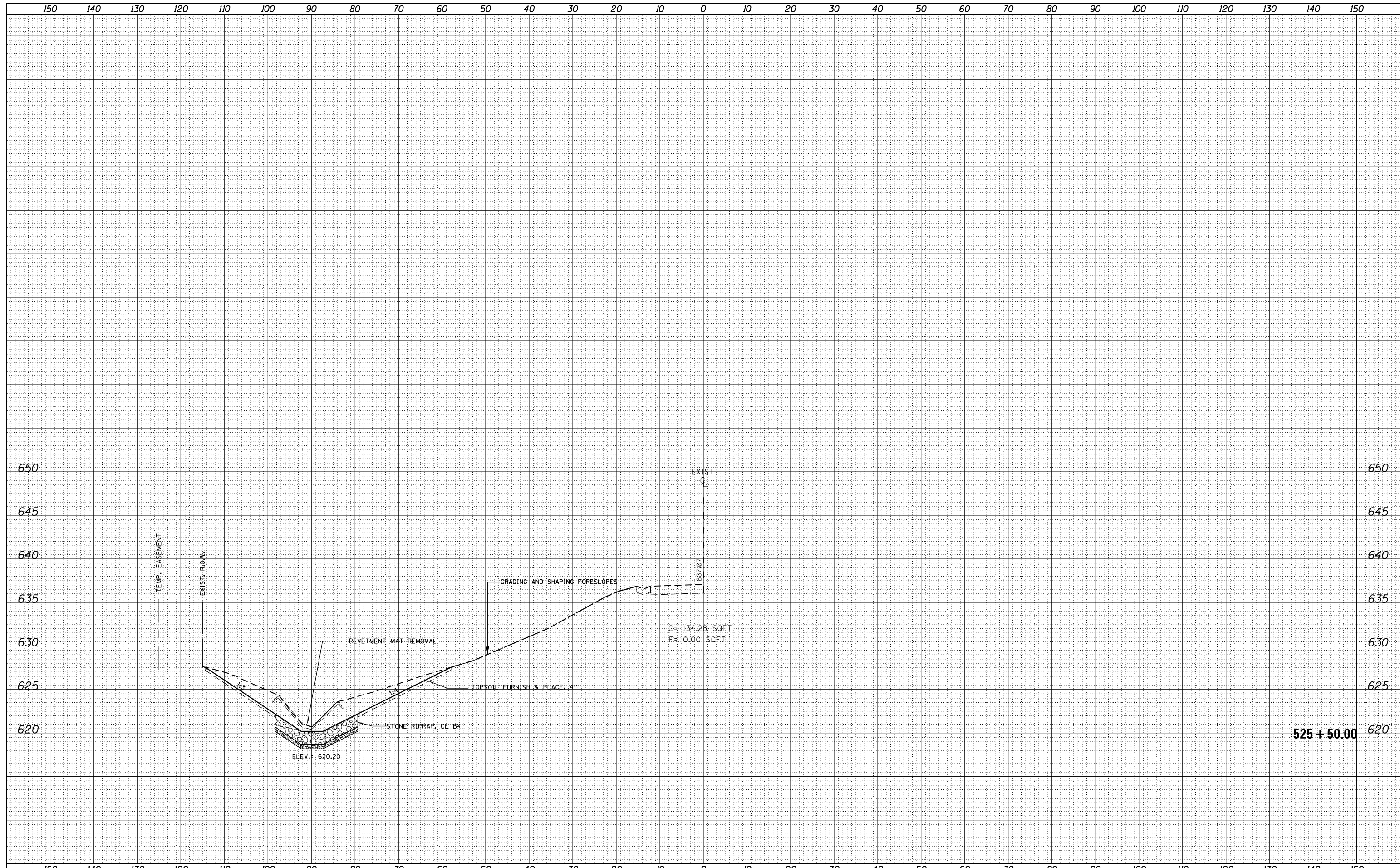
SCALE:		SHEET	OF	SHEETS	STA. 525+25.00	TO	STA. 525+25.00
--------	--	-------	----	--------	----------------	----	----------------

CROSS SECTIONS

F.A.P. RTE.	SECTION	COUNTY	TOTAL SHEETS	SHEET NO.
622	1151-2	FULTON	20	14
CONTRACT NO. 68C33				
ILLINOIS FED. AID PROJECT				

DATE	
BY	
SURVEYED	
PLOTTED	
TEMPLATE	
AREAS CHECKED	
FINAL SURVEY NOTE BOOK NO.	

DATE	
BY	
SURVEYED	
PLOTTED	
TEMPLATE	
AREAS CHECKED	
ORIGINAL SURVEY NOTE BOOK NO.	



FILE NAME = IL97-xsc.mldgn
 Default

USER NAME = jonesros	DESIGNED -	REVISED -
	DRAWN -	REVISED -
PLOT SCALE = 20.0000' / in.	CHECKED -	REVISED -
PLOT DATE = 4/3/2017	DATE -	REVISED -

**STATE OF ILLINOIS
 DEPARTMENT OF TRANSPORTATION**

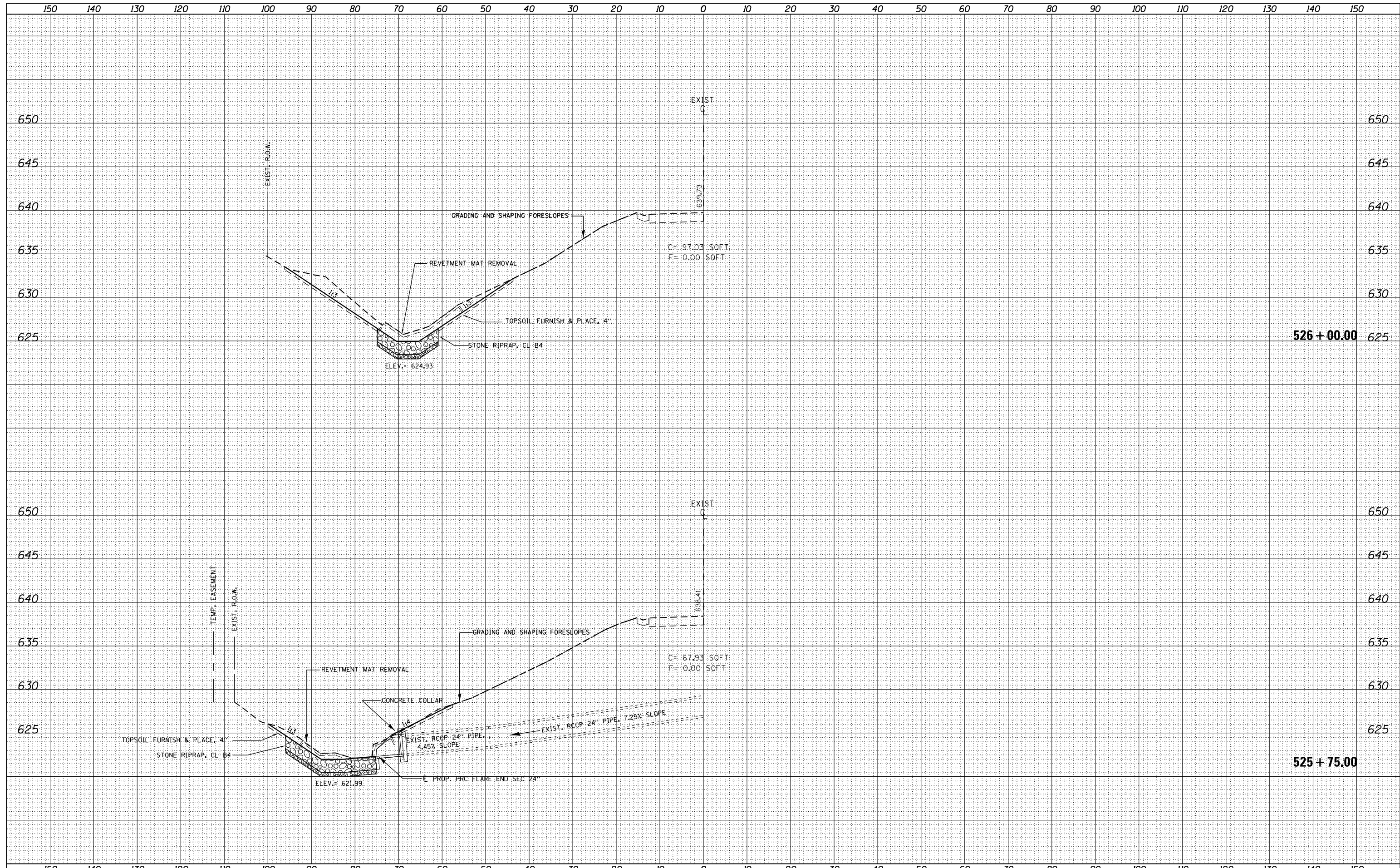
CROSS SECTIONS

SCALE: SHEET OF SHEETS STA. 525+50.00 TO STA. 525+50.00

F.A.P. RTE. 622	SECTION 1151-2	COUNTY FULTON	TOTAL SHEETS 20	SHEET NO. 15
CONTRACT NO. 68C33				ILLINOIS FED. AID PROJECT

DATE	
BY	
FINAL SURVEY	SURVEYED
NOTE BOOK	PLOTTED
NO.	TEMPLATE
	AREAS CHECKED

DATE	
BY	
ORIGINAL SURVEY	SURVEYED
NOTE BOOK	PLOTTED
NO.	TEMPLATE
	AREAS CHECKED



FILE NAME = IL97-xsc.mldgn
 Default

USER NAME = jonesros	DESIGNED -	REVISED -
	DRAWN -	REVISED -
PLOT SCALE = 20.0000' / in.	CHECKED -	REVISED -
PLOT DATE = 4/3/2017	DATE -	REVISED -

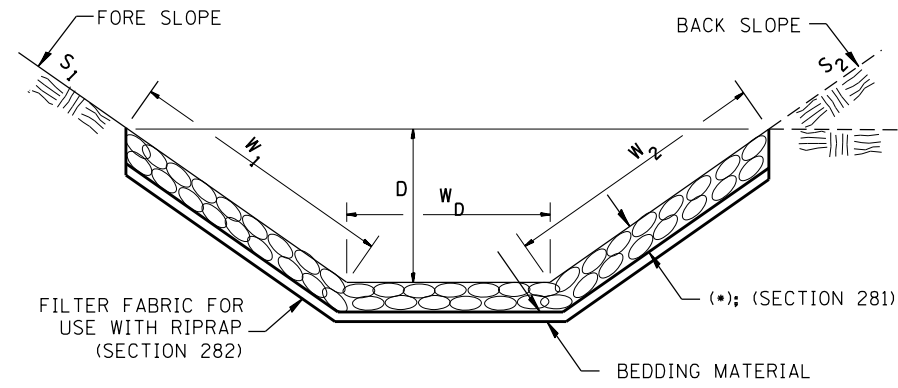
**STATE OF ILLINOIS
DEPARTMENT OF TRANSPORTATION**

CROSS SECTIONS
 SCALE: SHEET OF SHEETS STA. 525+75.00 TO STA. 526+00.00

F.A.P. RTE. 622	SECTION 1151-2	COUNTY FULTON	TOTAL SHEETS 20	SHEET NO. 16
CONTRACT NO. 68C33				ILLINOIS FED. AID PROJECT

Designer NOTES:
 1. Designer to modify this Special Detail Sheet, as needed for inclusion in plans.
 2. (*) Designer to specify pay item including material, quality, and gradation.
 3. Include District Special Provision if needed.

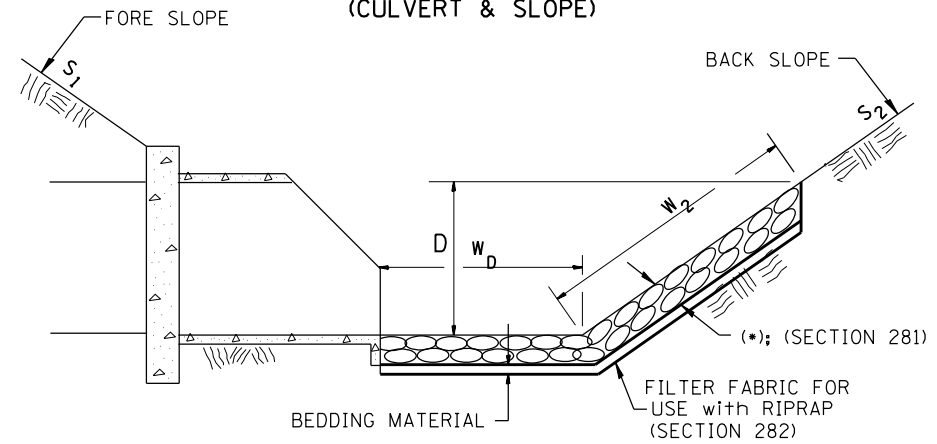
**CASE 1
(DITCH)**



(*)				
LOCATION	WIDTH (1)	LENGTH	RIPRAP	FABRIC
STA TO STA	lin ft (m)	lin ft (m)	tons (m tons)	sq yds (m ²)
524+90.43-526+75.00	17	202.6	278.4	371
TOTAL				

(1) WIDTH = $W_1 + W_2 + W_D$

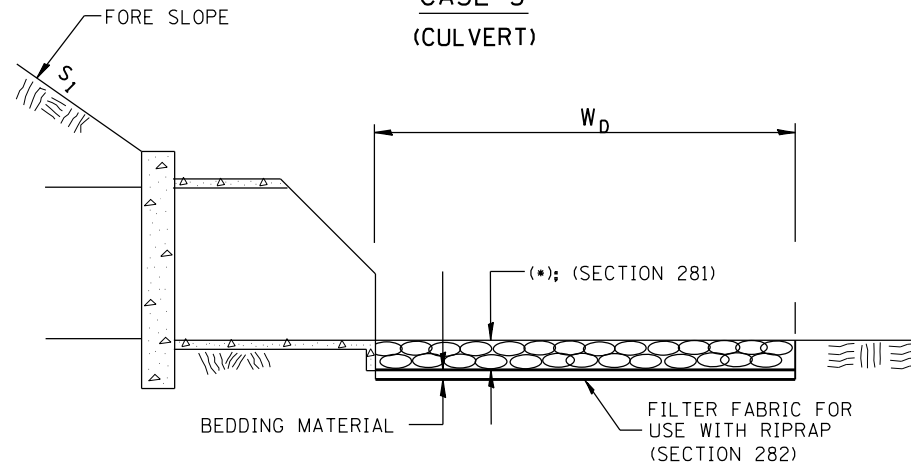
**CASE 2
(CULVERT & SLOPE)**



(*)				
LOCATION	WIDTH (1)	LENGTH	RIPRAP	FABRIC
STA TO STA	lin ft (m)	lin ft (m)	tons (m tons)	sq yds (m ²)
TOTAL				

(1) WIDTH = $W_2 + W_D$

**CASE 3
(CULVERT)**



(*)				
LOCATION	WIDTH (1)	LENGTH	RIPRAP	FABRIC
STA TO STA	lin ft (m)	lin ft (m)	tons (m tons)	sq yds (m ²)
TOTAL				

(1) WIDTH = W_D

All slope ratios are expressed as units of vertical displacement to units of horizontal displacement (V:H).

All dimensions are in inches (millimeters) unless otherwise noted.

1-1-97	RENUM. A-12.02, NEW REVISION BOX	T.P.
12-1-97	CORRECT FILTER FABRIC LEADER ARROW	J.A.
10-16-06	REVISED TO 2007 SPEC.	M.A.
9-6-12	REMOVED A DESIGNER NOTE AND MADE MINOR CHANGES	R.D.

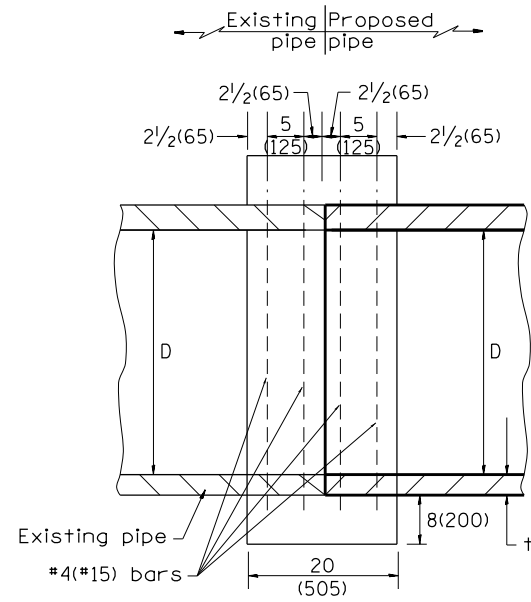
**STATE OF ILLINOIS
DEPARTMENT OF TRANSPORTATION**

RIPRAP DITCH FOR EROSION PROTECTION

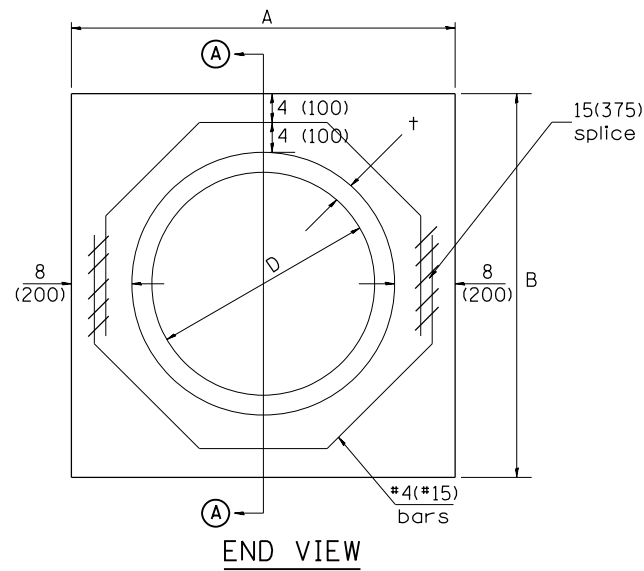
NOT TO SCALE

CADD STD. 281001-D4

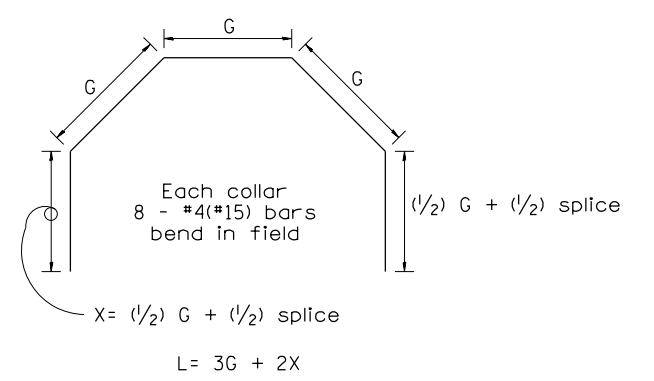
F.A.P. RTE.	SECTION	COUNTY	TOTAL SHEETS	SHEET NO.
622	1151-2	FULTON	20	19
CONTRACT NO. 68C33				
FED. ROAD DIST. NO. ILLINOIS FED. AID PROJECT				



SECTION A - A



END VIEW



Each Collar									
					Reinforcement Bars				
D	t	A	B	CL. SI CONC.	G	X	L	Weight	
in (mm)	in (mm)	ft (m)	ft (m)	cu.yd. (m ³)	in (mm)	in (mm)	ft (m)	lb (kg)	
12 (300)	2.00 (51)	2.67 (0.814)	2.67 (0.814)	0.4 (0.270)	9 ¹⁵ / ₁₆ (253)	12 ⁷ / ₁₆ (317)	4.57 (1.393)	24 (11)	
15 (375)	2.25 (57)	2.96 (0.902)	2.96 (0.902)	0.4 (0.315)	11 ³ / ₈ (290)	13 ³ / ₁₆ (335)	5.05 (1.541)	27 (12)	
18 (450)	2.50 (64)	3.25 (0.991)	3.25 (0.991)	0.5 (0.362)	12 ¹³ / ₁₆ (327)	13 ⁷ / ₈ (354)	5.54 (1.689)	30 (14)	
21 (525)	2.75 (70)	3.54 (1.079)	3.54 (1.079)	0.5 (0.411)	14 ¹ / ₄ (364)	14 ⁵ / ₈ (372)	6.02 (1.836)	32 (15)	
24 (600)	3.00 (76)	3.83 (1.167)	3.84 (1.167)	0.6 (0.460)	15 ¹¹ / ₁₆ (401)	15 ⁵ / ₁₆ (391)	6.51 (1.984)	35 (16)	
27 (675)	3.25 (83)	4.13 (1.259)	4.13 (1.259)	0.7 (0.516)	17 ¹ / ₄ (438)	16 ¹ / ₁₆ (409)	6.99 (2.131)	37 (17)	
30 (750)	3.50 (89)	4.42 (1.347)	4.42 (1.347)	0.7 (0.570)	18 ¹¹ / ₁₆ (475)	16 ³ / ₄ (428)	7.48 (2.279)	40 (18)	
33 (825)	3.75 (95)	4.71 (1.436)	4.71 (1.436)	0.8 (0.624)	20 ¹ / ₈ (512)	17 ¹ / ₂ (446)	7.96 (2.426)	43 (19)	
36 (900)	4.00 (102)	5.00 (1.524)	5.00 (1.524)	0.9 (0.682)	21 ⁹ / ₁₆ (549)	18 ³ / ₁₆ (465)	8.44 (2.574)	45 (20)	
42 (1050)	4.50 (114)	5.58 (1.701)	5.58 (1.701)	1.0 (.800)	24 ⁷ / ₁₆ (622)	19 ³ / ₄ (501)	9.41 (2.869)	50 (23)	
48 (1200)	5.00 (127)	6.17 (1.881)	6.17 (1.881)	1.2 (0.930)	27 ⁵ / ₁₆ (696)	21 ³ / ₁₆ (538)	10.38 (3.164)	55 (25)	

GENERAL NOTES

1. THE COLLAR SHALL BE CONSTRUCTED ENTIRELY OF CLASS SI CONCRETE IN ACCORDANCE WITH THE APPLICABLE PORTIONS OF SECTION 503 OF THE STANDARD SPECIFICATIONS. REINFORCEMENT BARS SHALL CONFORM TO SECTION 508.
2. This work shall be paid for by the cubic yard (cubic meter) for CONCRETE COLLAR and by the pound (kg) for REINFORCEMENT BARS.

QUANTITIES	
CALC. BY: R. J. D.	2-2-98
CHECKED BY: R. D. H.	2-6-98
	DATE:

QUANTITY CALCULATIONS ARE ON FILE AT THE DISTRICT 4 OFFICE; BUREAU OF PROJECT IMPLEMENTATION; DOCUMENTATION SECTION

All dimensions are in inches (millimeters) unless otherwise noted.

01-01-97	RENUM. B-8.03, NEW REVISION BOX, REVISED	T.P.	09-01-00	CORRECT WEIGHT	J.A.	STATE OF ILLINOIS DEPARTMENT OF TRANSPORTATION	PIPE CULVERT EXTENSION COLLAR (WITHOUT END SECTION)	F.A.P. RTE.	SECTION	COUNTY	TOTAL SHEETS	SHEET NO.	
	TITLE BOX, ADDED QUANTITY CALCULATION BOX		10-16-06	REV. TO 2007 SPEC., CORRECT mm UNITS	M.A.			622	1151-2	FULTON	20	20	
04-01-97	CORRECT BAR	J.A.	2-15-11	ADDED GENERAL NOTE #2	R.D.			CONTRACT NO. 68C33					
02-10-98	REVISE QUANTITIES	J.A.						FED. ROAD DIST. NO. ILLINOIS FED. AID PROJECT					

NOT TO SCALE

CADD STD. 542016-D4