

INDEX OF SHEETS:

- 1 COVER SHEET
- 2 COMMITMENTS, GENERAL NOTES, JOB SPECIFIC NOTES
- 3 SUMMARY OF QUANTITIES
- 4 LINE DIAGRAM
- 5 DIP AND PAVEMENT REPAIR DETAILS
- 6-8 SCHEDULE OF QUANTITIES
- 9 BRIDGE APPROACH PAVEMENT DETAIL
- 10-12 BUTT JOINTS
- 13 HOT MIX ASPHALT SURFACE REMOVAL (COLD MILLING)

HIGHWAY STANDARDS

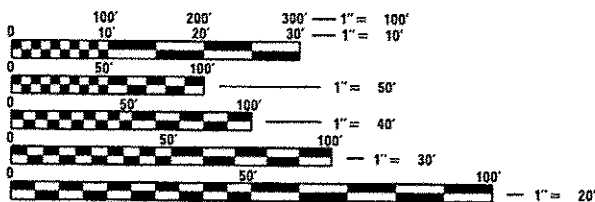
701101-05	701426-09
701400-09	701427-05
701401-10	701602-08
701411-09	701901-06

DISTRICT STANDARDS:

406101
440001

DESIGN DESIGNATION:

OTHER ARTERIAL
ADT: 4700 (2015)
SU: 4.2 % (2015)
MU: 12 % (2015)



FULL SIZE PLANS HAVE BEEN PREPARED USING STANDARD ENGINEERING SCALES. REDUCED SIZED PLANS WILL NOT CONFORM TO STANDARD SCALES. IN MAKING MEASUREMENTS ON REDUCED PLANS, THE ABOVE SCALES MAY BE USED.

J.U.L.I.E.
JOINT UTILITY LOCATION INFORMATION FOR EXCAVATION
1-800-892-0123
OR 811

PROJECT ENGINEER: CHRISTOPHER MAUSHARD (309) 671-3453
PROJECT MANAGER: SOBHI LABABIDI/RAYMOND SAMARA (309) 671-3459

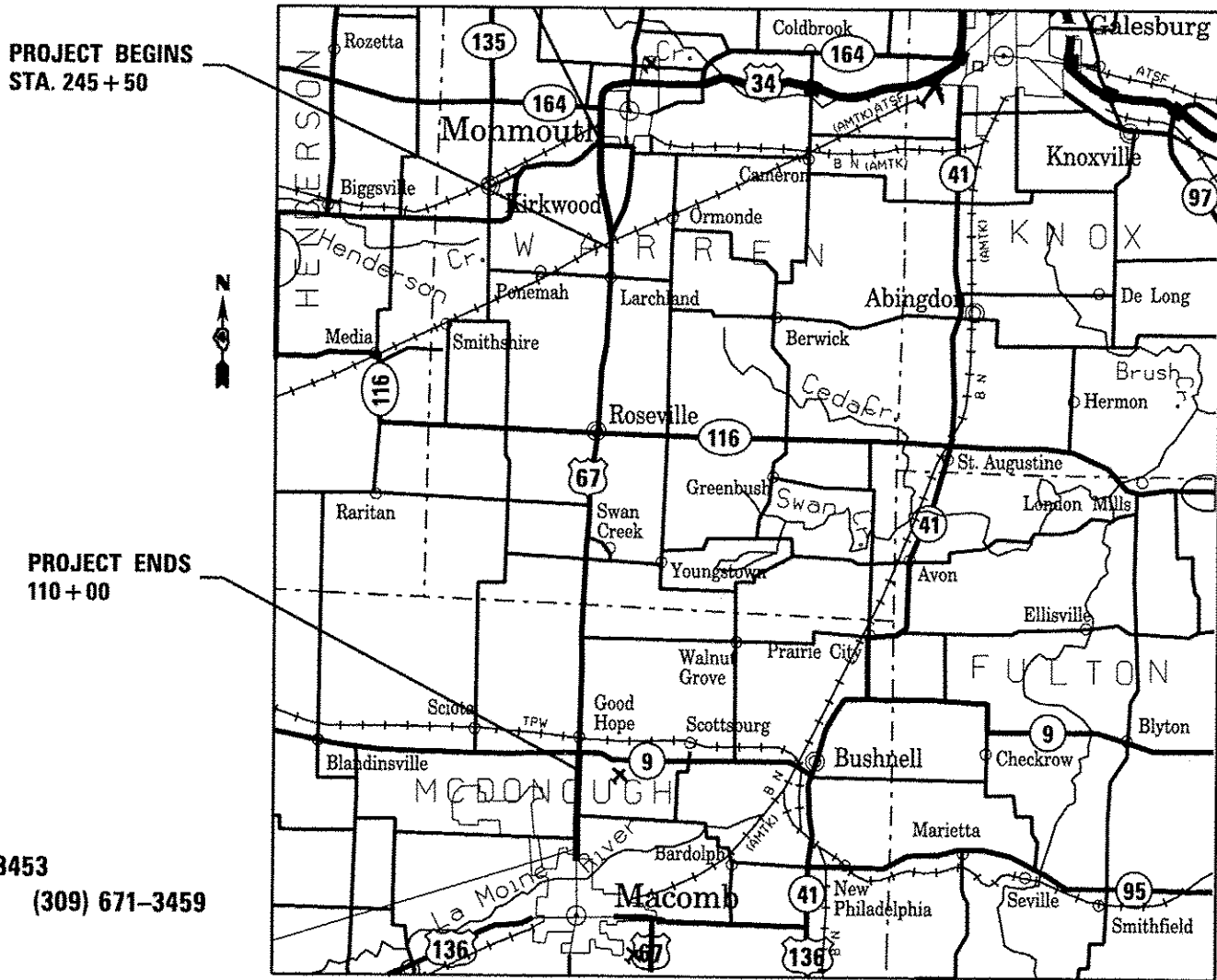
CONTRACT NO. 68D55
CATALOG NO. 035463-00D

STATE OF ILLINOIS
DEPARTMENT OF TRANSPORTATION
DIVISION OF HIGHWAYS
PROPOSED
HIGHWAY PLANS

FAP ROUTE 310 (US 67 & IL 110)
SECTION (101,32-38)I

TYPE of IMPROVEMENT: CONTRACT MAINTENANCE
WARREN & McDONOUGH COUNTY

C-94-049-17



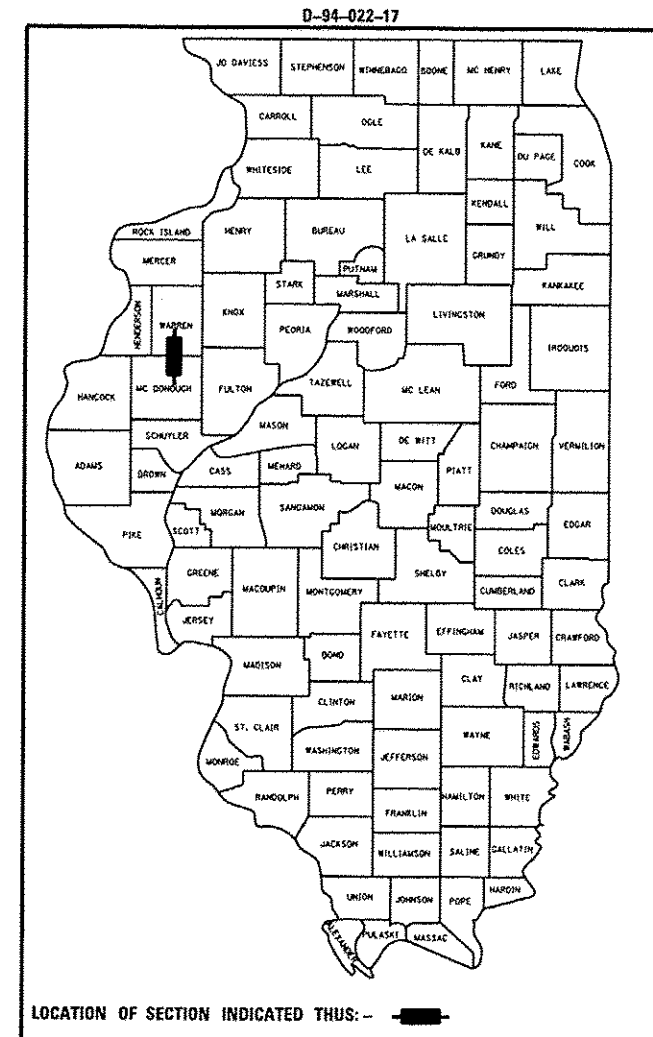
PROJECT BEGINS
STA. 245 + 50

PROJECT ENDS
110 + 00

GROSS LENGTH = 129,989 FT. = 24.62 MILE
NET LENGTH = 1,584 FT. = 0.30 MILE

F.A.P. RTE.	SECTION	COUNTY	TOTAL SHEETS	SHEET NO.
310	(101,32-38)I	ILLINOIS	1	13

• WARREN & McDONOUGH



LOCATION OF SECTION INDICATED THUS: -

PROJECT DESCRIPTION:

DIP REPAIR AT VARIOUS STRUCTURES LOCATED ON US 67 BETWEEN US 34 INTERCHANGE IN MONMOUTH AND JUST SOUTH OF IL 9 IN GOODHOPE

STATE OF ILLINOIS
DEPARTMENT OF TRANSPORTATION
DIVISION OF HIGHWAYS

SUBMITTED April 5 20 17
Kensil A. Garnett
REGION THREE ENGINEER

May 12 20 17
William M. Addis
ENGINEER OF DESIGN AND ENVIRONMENT

May 12 20 17
Paula J. [Signature]
DIRECTOR OF PROGRAM DEVELOPMENT

PRINTED BY THE AUTHORITY
OF THE STATE OF ILLINOIS

COMMITMENTS

Commitments are not to be altered without the written approval of all parties to which the commitment was made.

NO COMMITMENT HAVE BEEN MADE FOR THIS PROJECT

ENVIRONMENTAL REVIEWS

Prior to the use of any proposed borrow areas, use areas (temporary access roads, detours, run-arounds, etc.) and/or waste areas, the Contractor shall file the required environmental resource request surveys according to Section 107.22 of the Standard Specifications. These surveys are required in order for the Department to conduct cultural and biological resource surveys for the proposed site.

Prior to any waste materials being removed from the construction site the required environmental resource surveys will need to be obtained and filed by the Contractor. Excess waste products removed from the construction site shall be disposed of as required in Section 202.03 of the Standard Specifications.

Any protruding metal bars shall be removed prior to the disposal of broken concrete at approved disposal sites.

The required environmental resource documentation shall include the following:

- * BDE Form 2289 (Environmental Survey Request)
- * BDE Form 2290 (Waste/Use Area Review)
- * A location map showing the size limits and location of the use area
- * Color photographs depicting the use area
- * Borrow Area Entry Agreement form-D4 PI0101

Please note that a minimum of four weeks shall be allowed for the District to obtain the required environmental clearances and six weeks for the required borrow site environmental clearances.

HOT-MIX ASPHALT MIXTURE REQUIREMENTS:

Mixture Use(s):	SURFACE MIX
AC/PG:	SBS OR SBR 76-28
Design Air Voids:	4.0% @ N=70
Mixture Composition: (Mixture Gradation)	IL 9.5
Friction Aggregate:	Mix D
Quality Management Program:	QC QA

Notes: Individual lift thickness of each mix type will be no less than 3 times nominal maximum aggregate size and no more than 6 times nominal aggregate size.

JOB SPECIFIC NOTES:

- 1- AT LOCATIONS WHERE THE DROP OFF BETWEEN THE TRAVELED LANES IS MORE THAN 2 INCHES; THE CONTRACTOR SHALL MILL THE EXPOSED EDGE AT 1:3 SLOPE RATE AS DIRECTED BY THE RESIDENT ENGINEER. THE ABOVE WORK SHALL BE INCLUDED IN THE BID PRICE FOR "HOT MIX ASPHALT SURFACE REMOVAL VARIABLE DEPTH"
- 2- AT LOCATIONS WHERE THE ROADWAY DIP IS MORE THAN 2 INCHES; THE CONTRACTOR SHALL PLACE AND COMPACT A SCRATCH PASS OF SURFACE MIX PRIOR TO PAVING AS DIRECTED BY THE RESIDENT ENGINEER. THIS WORK WILL BE PAID FOR AT THE CONTRACT UNIT PRICE PER TON FOR "POLYMERIZED HOT-MIX ASPHALT SURFACE COURSE, MIX D, N70"
- 3- IN ORDER TO ACHIEVE THE CORRECT ROADWAY PROFILE IN THE FIELD; THE LIMITS OF THE OVERLAY MAYBE EXTENDED OR SHORTENED AS DIRECTED BY THE RESIDENT ENGINEER
- 4- THE MOVEMENT OF EQUIPMENT BETWEEN LOCATIONS AT SPEEDS BELOW POSTED SPEED SHALL BE ACCOMPLISHED BY ONE OF FOLLOWING CHOICES:
 - a. LOAD THE EQUIPMENT'S ON A VEHICLE /TRAILER CAPABLE OF DRIVING POSTED SPEED.
 - b. USE TRAFFIC CONTROL STANDARDS 701426 OR 701427
- 5- FOR BOTH MILLING AND PLACING HMA AT EACH LOCATION; AN AUTOMATED ELECTRONIC GRADE CONTROL SHALL BE OPERATED FROM A PRESENT GRADE CONTROL STRINGLINE. THE CONTRACTOR WILL ALLOW TIME AFTER THE SET UP OF THE TRAFFIC CONTROL TO ALLOW THE RESIDENT ENGINEER TO SURVEY THE EXISTING ROADWAY AND ESTABLISH THE PROFILE GRADE
- 6- THE RESIDENT ENGINEER SHALL NOTIFY THE TRAFFIC OPERATION ENGINEER ANNA GHIDINA AT 309-671-4477 WHEN THE JOB IS COMPLETED TO PROVIDE HER WITH THE FINAL LIMITS OF THE OVERLAY.

* WARREN & McDONOUGH

FILE NAME =	USER NAME = ltababidism	DESIGNED -	REVISED -	STATE OF ILLINOIS DEPARTMENT OF TRANSPORTATION	COMMITMENTS, GENERAL NOTES, JOB SPECIFIC NOTES	F.A.P. RTE.	SECTION	COUNTY	TOTAL SHEETS	SHEET NO.	
Cover_line.....dgn		DRAWN -	REVISED -			310	(101.32-381)	*	13	2	
Default		CHECKED -	REVISED -			CONTRACT NO. 68D55					
		DATE -	REVISED -			SCALE:	SHEET OF SHEETS	STA.	TO STA.	ILLINOIS FED. AID PROJECT	

RURAL

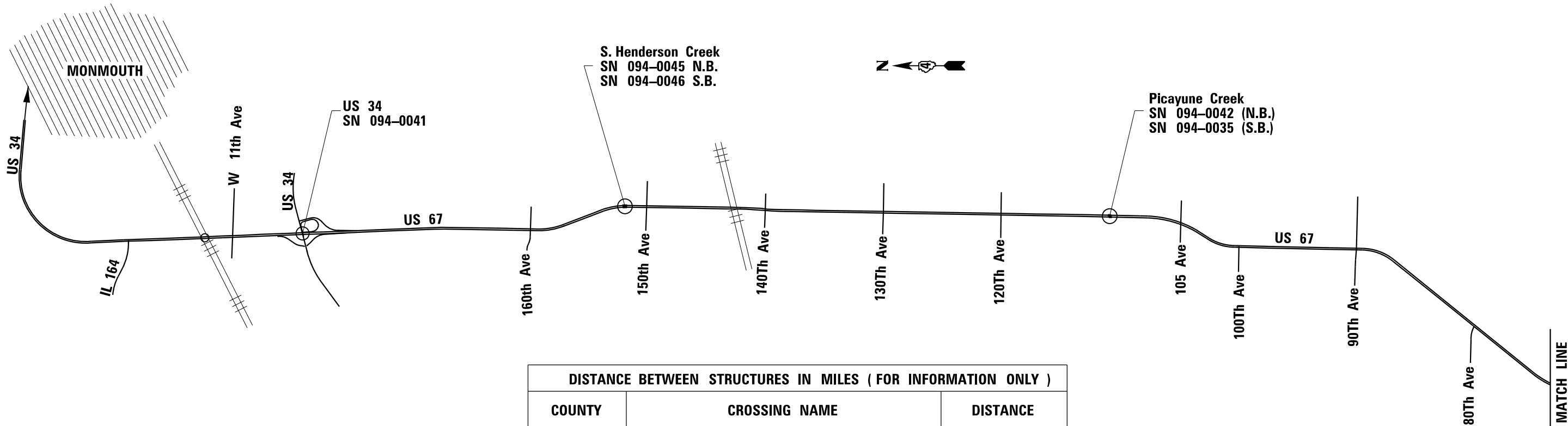
Page 1

CODE NO.	ITEM	UNIT	TOTAL QUANTITY	CONSTRUCTION CODE	
				WARREN COUNTY	MCDONOUGH COUNTY
				100 % STATE 0005	100 % STATE 0005
40600295	POLYMERIZED BITUMINOUS MATERIALS (TACK COAT)	POUND	7860	5567	2293
40600982	HOT - MIX ASPHALT SURFACE REMOVAL - BUTT JOINT	SO YD	909	649	260
40600985	PORTLAND CEMENT CONCRETE SURFACE REMOVAL - BUTT JOINT	SO YD	2012	1507	505
40600990	TEMPORARY RAMP	SO YD	1076	756	320
40603540	POLYMERIZED HOT - MIX ASPHALT SURFACE COURSE, MIX "D", N70	TON	965	680	285
44000155	HOT - MIX ASPHALT SURFACE REMOVAL, 1 1/2"	SO YD	956	956	
60260100	INLETS TO BE ADJUSTED	EACH	4	3	1
67100100	MOBILIZATION	L SUM	1	0.9	0.1
70100420	TRAFFIC CONTROL AND PROTECTION, STANDARD 701411	EACH	1	1	
70100800	TRAFFIC CONTROL AND PROTECTION, STANDARD 701401	L SUM	1	0.9	0.1
70102632	TRAFFIC CONTROL AND PROTECTION, STANDARD 701602	L SUM	1		1
78300200	RAISED REFLECTIVE PAVEMENT MARKER REMOVAL	EACH	38	24	14
X4401198	HOT-MIX ASPHALT SURFACE REMOVAL, VARIABLE DEPTH	SO YD	7040	4620	2420
X7015005	CHANGEABLE MESSAGE SIGN	CAL DA	14	7	7

199

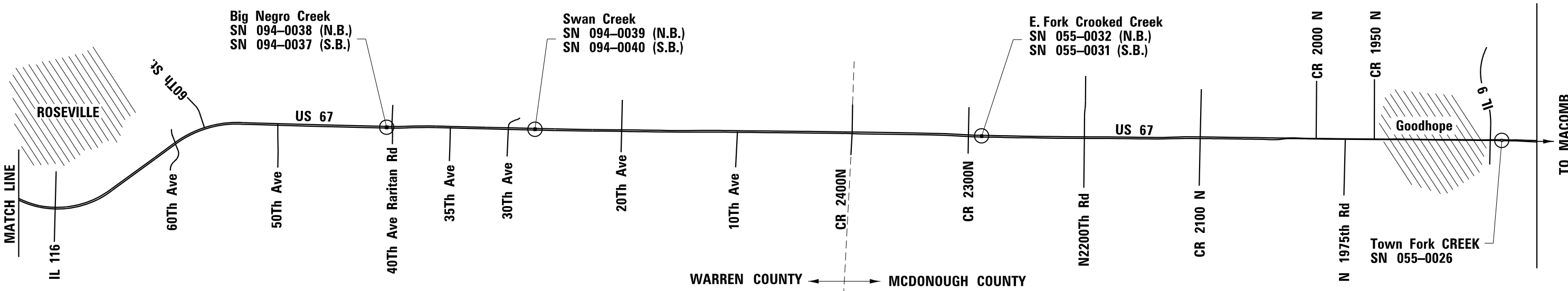
* WARREN & McDONOUGH

261



DISTANCE BETWEEN STRUCTURES IN MILES (FOR INFORMATION ONLY)

COUNTY	CROSSING NAME	DISTANCE
WARREN	PAVEMENT REPAIR UNDER US 34 STRUCTURE	2.80
	S. HENDERSON CREEK	4.10
	PICAYUNE CREEK	7.90
	BIG NEGRO CREEK	1.30
	SWAN CREEK	3.90
MCDONOUGH	E. FORK CROOKED CREEK	4.50
	TOWN FORK CREEK	



* WARREN & MCDONOUGH

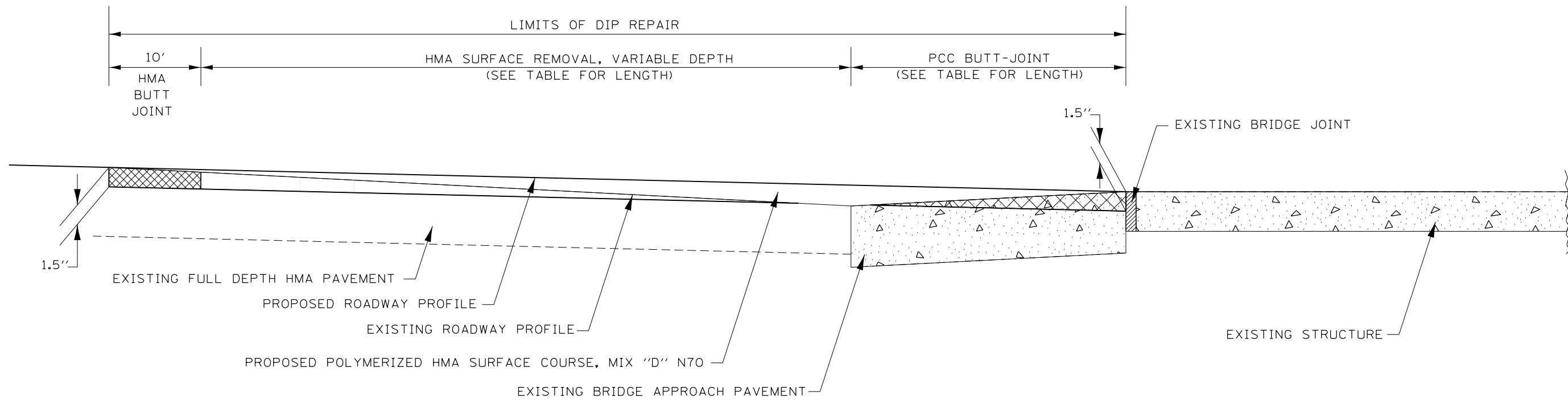
FILE NAME = Cover_line.dgn	USER NAME = lababidism	DESIGNED -	REVISED -
Default	PLOT SCALE = 400.0000' / in.	DRAWN -	REVISED -
	PLOT DATE = 4/7/2017	CHECKED -	REVISED -
		DATE -	REVISED -

**STATE OF ILLINOIS
DEPARTMENT OF TRANSPORTATION**

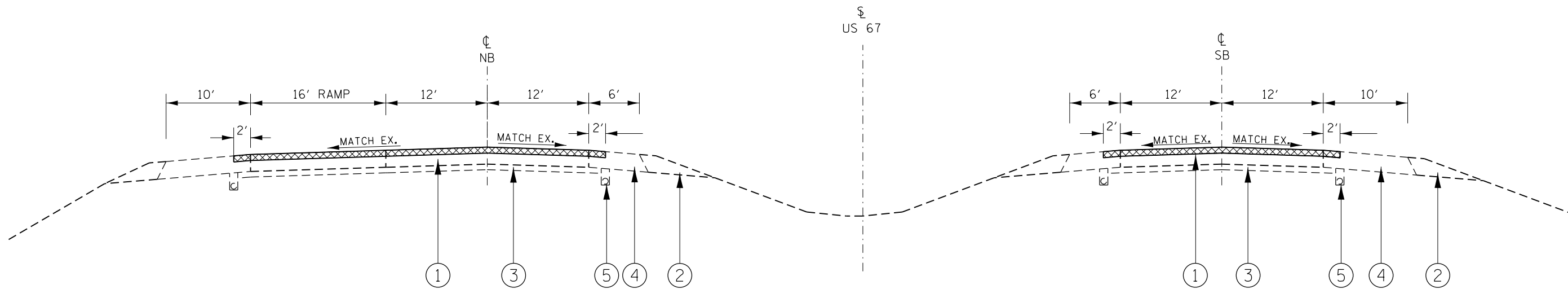
LINE DIAGRAM

SCALE: SHEET OF SHEETS STA. TO STA.

F.A.P. RTE.	SECTION	COUNTY	TOTAL SHEETS	SHEET NO.
310	(101,32-38)I	*	13	4
CONTRACT NO. 68D55			ILLINOIS FED. AID PROJECT	



DIP REPAIR ADJECENT TO STRUCTURES



- ① EXISTING FULL DEPTH HMA PAVEMENT
- ② EXISTING AGGREGATE SHOULDER
- ③ EXISTING LIME MODIFIED SUB GRADE
- ④ EXISTING HMA SHOULDER
- ⑤ EXISTING SUB-SURFACE DRAINS

PROPOSED HMA SURFACE REMOVAL 1.5"//
 PROPOSED POLYMERIZED HMA SURFACE COURSE, MIX "D" N70

PAVEMENT REPAIR UNDER US 34 STRUCTURE

* WARREN & McDONOUGH

FILE NAME = Cover_line.dgn	USER NAME = lababidism	DESIGNED -	REVISED -	STATE OF ILLINOIS DEPARTMENT OF TRANSPORTATION	DIP AND PAVEMENT REPAIR DETAILS				F.A.P. RTE.	SECTION	COUNTY	TOTAL SHEETS	SHEET NO.
	PLOT SCALE = 400.0000' / in.	DRAWN -	REVISED -						310	(101,32-38)I	*	13	5
Default	PLOT DATE = 4/7/2017	CHECKED -	REVISED -	NOT TO SCALE SHEET OF SHEETS STA. TO STA.				CONTRACT NO. 68D55					
ILLINOIS FED. AID PROJECT													

HMA RESURFACING QUANTITIES

COUNTY	CREEK NAME	NBL / SBL / MEDIAN	S.N.	DIP AND PAVEMENT REPAIR LOCATIONS						PORTLAND CEMENT CONCRETE SURFACE REMOVAL BUTT JOINT	HOT-MIX ASPHALT SURFACE REMOVAL, VARIABLE DEPTH	HOT-MIX ASPHALT SURFACE REMOVAL BUTT JOINT	POLYMERIZED BITUMINOUS MATERIALS (TACK COAT)***	TEMPORARY RAMP	HOT-MIX ASPHALT SURFACE REMOVAL 1.5"	AVERAGE DEPTH USED (FOR INFORMATION ONLY)	POLYMERIZED HOT-MIX ASPHALT SURFACE COURSE, MIX "D" N70			
				TYPE	STA.	TO	STA.	LENGTH	WIDTH											
								FT	FT											
								SQ YD	SQ YD	SQ YD	POUND	SQ YD	SQ YD	IN	TON					
WARREN	PAVEMENT REPAIR UNDER US 34 STRUCTURE 094-0041	SBL			STA. 248 + 50	TO	STA. 248 + 60	10	28			31.11	22.4	26.67	1.5	2.61				
					STA. 248 + 60	TO	STA. 250 + 10	150				336	466.67	1.5	39.20					
					STA. 250 + 10	TO	STA. 250 + 20	10						1.5	2.61					
		NBL			STA. 248 + 90	TO	STA. 249 + 00	10		44			31.11	22.4	26.67	48.89	35.2	44.44	1.5	4.11
					STA. 249 + 00	TO	STA. 250 + 00	100							352	488.89	1.5	41.07		
					STA. 250 + 00	TO	STA. 250 + 10	10					48.89	35.2	44.44	1.5	4.11			
	S. HENDERSON CREEK	NBL	094-0045	Approach	STA. 100 + 61	TO	STA. 100 + 71	10	40			44.44	32	26.67	1.5	3.73				
					STA. 100 + 71	TO	STA. 102 + 11	140				622.22	448	1.7	59.24					
					STA. 102 + 11	TO	STA. 102 + 41	30				133.33	96	2.5	18.67					
				Departure	STA. 103 + 82	TO	STA. 104 + 12	30	40			133.33			96	26.67	1.6	11.95		
					STA. 104 + 12	TO	STA. 105 + 52	140				622.22	448	1.5	52.27					
					STA. 105 + 52	TO	STA. 105 + 62	10					44.44	32	1.5	3.73				
		SBL	094-0046	Approach	STA. 103 + 82	TO	STA. 104 + 12	30	40			44.44	32	26.67	1.5	3.73				
					STA. 104 + 12	TO	STA. 105 + 02	90				400.00	288	1.5	33.60					
					STA. 105 + 02	TO	STA. 105 + 12	10					44.44	32	1.5	3.73				
		Departure	STA. 101 + 08	TO	STA. 101 + 18	10	40					44.44	32	26.67	1.5	3.73				
			STA. 101 + 18	TO	STA. 102 + 08	90				400.00	288	1.5	33.60							
			STA. 102 + 08	TO	STA. 102 + 38	30				133.33	96	1.5	11.2							
	PICAYUNE CREEK	NBL	094-0042	Approach	STA. 1185 + 22	TO	STA. 1185 + 32	10	40			44.44	32	26.67	1.5	3.73				
					STA. 1185 + 32	TO	STA. 1186 + 22	90				400.00	288	1.5	33.60					
					STA. 1186 + 22	TO	STA. 1186 + 52	30				133.33	96	1.5	11.2					
				Departure	STA. 1187 + 37	TO	STA. 1187 + 67	30	40			133.33			96	26.67	1.6	11.95		
					STA. 1187 + 67	TO	STA. 1188 + 57	90				400.00	288	1.5	33.60					
					STA. 1188 + 57	TO	STA. 1188 + 67	10					44.44	32	1.5	3.73				
		SBL	094-0035	Approach	STA. 1187 + 16	TO	STA. 1187 + 46	30	40				96	26.67	1.8	13.44				
					STA. 1187 + 46	TO	STA. 1188 + 16	70				311.11	224	1.5	26.13					
					STA. 1188 + 16	TO	STA. 1188 + 26	10					44.44	32	1.5	3.73				
		BIG NEGRO CREEK	NBL	094-0038	Approach		TO													
Departure						TO														
SBL			094-0037	Approach	STA. 806 + 78	TO	STA. 807 + 08	30	58	193.33			139.2	46.67	1.5	16.24				
	STA. 807 + 08				TO	STA. 808 + 08	100	46-58		577.78	416	1.5	48.53							
				STA. 808 + 08	TO	STA. 808 + 18	10	46			51.11	36.8	33.33	1.5	4.29					
Departure			TO																	

* WARREN & McDONOUGH

FILE NAME = Cover.lne.....dgn	USER NAME = lababidism	DESIGNED -	REVISED -	STATE OF ILLINOIS DEPARTMENT OF TRANSPORTATION	SCHEDULE OF QUANTITIES				F.A.P. RTE.	SECTION	COUNTY	TOTAL SHEETS	SHEET NO.
Default	PLOT SCALE = 400.0000' / in.	DRAWN -	REVISED -						310	(101,32-38)I	*	13	6
	PLOT DATE = 4/7/2017	CHECKED -	REVISED -		SCALE:	SHEET	OF	SHEETS	STA.	TO	STA.	CONTRACT NO. 68D55	
		DATE -	REVISED -		ILLINOIS FED. AID PROJECT								

HMA RESURFACING QUANTITIES

COUNTY	CREEK NAME	NBL / SBL / MEDIAN	S.N.	DIP AND PAVEMENT REPAIR LOCATIONS				PORTLAND CEMENT CONCRETE SURFACE REMOVAL BUTT JOINT	HOT-MIX ASPHALT SURFACE REMOVAL, VARIABLE DEPTH	HOT-MIX ASPHALT SURFACE REMOVAL BUTT JOINT	POLYMERIZED BITUMINOUS MATERIALS (TACK COAT)***	TEMPORARY RAMP	HOT-MIX ASPHALT SURFACE REMOVAL 1.5"	AVERAGE DEPTH USED)FOR INFORMATION ONLY)	POLYMERIZED HOT-MIX ASPHALT SURFACE COURSE, MIX "D" N70				
				TYPE	STA.	TO	STA.									LENGTH	WIDTH		
																FT	FT	SQ. YD	SQ. YD
WARREN	SWAN CREEK	NBL	094-0039	Approach	STA. 735 + 99	TO	STA. 736 + 09	10	38			42.22	30.4	26.67	1.5	3.55			
					STA. 736 + 09		STA. 736 + 99	90				273.6		1.6	34.05				
					STA. 736 + 99		STA. 737 + 29	30		126.67	380.00	91.2	26.67	1.7	12.06				
		Departure	STA. 738 + 17	TO	STA. 738 + 47	30	38	126.67			91.2	26.67	1.5	10.64					
			STA. 738 + 47		STA. 739 + 07	60			253.33		182.4	1.5	21.28						
			STA. 739 + 07		STA. 739 + 17	10				42.22	30.4	26.67	1.5	3.55					
	SBL	094-0040	Approach		TO		NO IMPROVEMENT												
							Departure	STA. 736 + 29	TO	STA. 736 + 39	10	38			42.22	30.4	26.67	1.5	3.55
								STA. 736 + 39		STA. 736 + 99	60			253.33		182.4	1.5	21.28	
	STA. 736 + 99	STA. 737 + 29	30	126.67		91.2		26.67		1.5	10.64								
	MCDONOUGH	E. FORK CROOKED CREEK	NBL	055-0032	Approach		TO		NO IMPROVEMENT										
									Departure		TO		NO IMPROVEMENT						
SBL			055-0031	Approach		TO		NO IMPROVEMENT											
								Departure	STA. 529 + 49	TO	STA. 529 + 59	10	38			42.22	30.4	26.67	1.5
STA. 529 + 59			STA. 530 + 39	80		337.78			243.2		1.5	28.37							
STA. 530 + 39			STA. 530 + 69	30	126.67		91.2		26.67		1.8	12.77							
TOWN CREEK FORK		NBL	055-0026	Approach	STA. 105 + 61	TO	STA. 105 + 36	25	34	94.44			68	26.67	1.6	8.46			
					STA. 105 + 36		STA. 106 + 61	125			472.22		340	1.5	39.67				
					STA. 106 + 61		STA. 106 + 71	10				37.78	27.2	26.67	1.5	3.17			
				Departure	STA. 103 + 18	TO	STA. 103 + 28	10	34			37.78	27.2	26.67	1.5	3.17			
					STA. 103 + 28		STA. 104 + 63	135			510.00		367.2	1.5	42.84				
					STA. 104 + 63		STA. 104 + 88	25		94.44		68	26.67	2.6	13.75				
		N. OF STRUCTURE	STA. 103 + 18	TO	STA. 103 + 28	10	12			13.33	9.6	13.33	1.5	1.12					
			STA. 103 + 28		STA. 104 + 63	135			180.00		129.6	1.5	15.12						
			STA. 104 + 63		STA. 104 + 88	25				33.33	24.00	13.33	2.6	4.85					
		S. OF STRUCTURE	STA. 105 + 61	TO	STA. 105 + 86	25	12			33.33	24.00	13.33	1.6	2.99					
			STA. 105 + 86		STA. 106 + 61	75			100.00		72.00	1.5	8.40						
			STA. 106 + 61		STA. 106 + 71	10			13.33		9.60	13.33	1.5	1.12					
		Approach	STA. 103 + 18	TO	STA. 103 + 28	10	34			37.78	27.2	26.67	1.5	3.17					
			STA. 103 + 28		STA. 104 + 63	135			510.00		367.2	1.5	42.84						
			STA. 104 + 63		STA. 104 + 88	25		94.44		68	26.67	1.6	8.46						
		Departure	STA. 105 + 61	TO	STA. 105 + 86	25	34				68	26.67	2.6	13.75					
			STA. 105 + 86		STA. 106 + 61	75			283.33		204	1.5	23.80						
			STA. 106 + 61		STA. 106 + 71	10				37.78	27.2	26.67	1.5	3.17					
TOTAL FOR WARREN COUNTY								1,506.67	4,620.00	648.89	5,566.40	755.56	955.56		680.09				
TOTAL FOR MCDONOUGH COUNTY								504.44	2,420.00	260.00	2,292.80	320.00	0.00		284.55				
GRAND TOTAL								2,012	7,040	909	7,860	1,076	956		965				

*** RESIDUAL PRIME COAT RATE USED 0.08 LB/SQ FT

* WARREN & MCDONOUGH

FILE NAME =	USER NAME = lababidism	DESIGNED -	REVISED -	STATE OF ILLINOIS DEPARTMENT OF TRANSPORTATION	SCHEDULE OF QUANTITIES				F.A.P. RTE.	SECTION	COUNTY	TOTAL SHEETS	SHEET NO.
Cover_line.....dgn		DRAWN -	REVISED -						310	(101,32-38)I	*	13	7
Default	PLOT SCALE = 400.0000' / in.	CHECKED -	REVISED -		SCALE: SHEET OF SHEETS STA. TO STA.				CONTRACT NO. 68D55				
	PLOT DATE = 4/7/2017	DATE -	REVISED -		ILLINOIS FED. AID PROJECT								

STA.	MOBILIZATION	
	L SUM	
	WARREN	MCDONOUGH
JOB SITE	0.9	0.1
TOTAL	1	

STA.	TRAFFIC CONTROL AND PROTECTION, STANDARD 701401	
	L SUM	
	WARREN	MCDONOUGH
JOB SITE	0.9	0.1
TOTAL	1	

STA.	TRAFFIC CONTROL AND PROTECTION, STANDARD 701602	
	L SUM	
	WARREN	MCDONOUGH
JOB SITE	0	1
TOTAL	1	

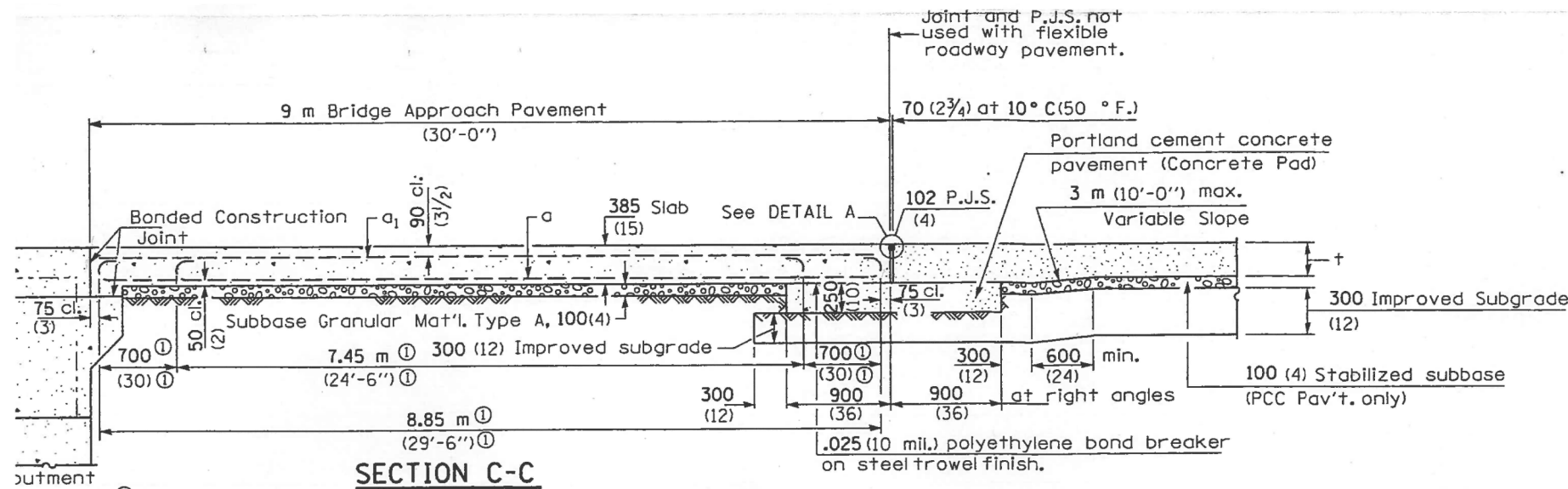
STA.	TRAFFIC CONTROL AND PROTECTION, STANDARD 701411	
	EACH	
	WARREN	MCDONOUGH
JOB SITE	1	0
TOTAL	1	

STA.	RAISED REFLECTIVE PAVEMENT MARKER REMOVAL	
	EACH	
	WARREN	MCDONOUGH
JOB SITE	24	14
TOTAL	38	

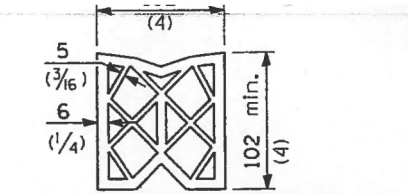
STA.	INLETS TO BE ADJUSTED	
	EACH	
	WARREN	MCDONOUGH
JOB SITE	3	1
TOTAL	4	

STA.	CHANGEABLE MESSAGE SIGN	
	CAL DAY	
	WARREN	MCDONOUGH
USE 2 @ 7 DAYS EACH	7	7
TOTAL	14	

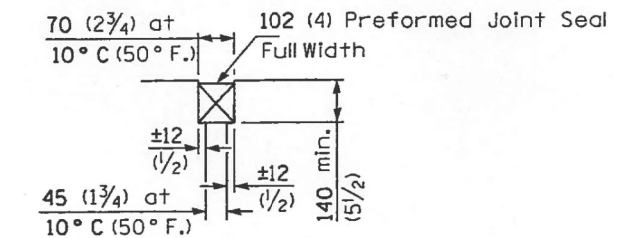
* WARREN & MCDONOUGH



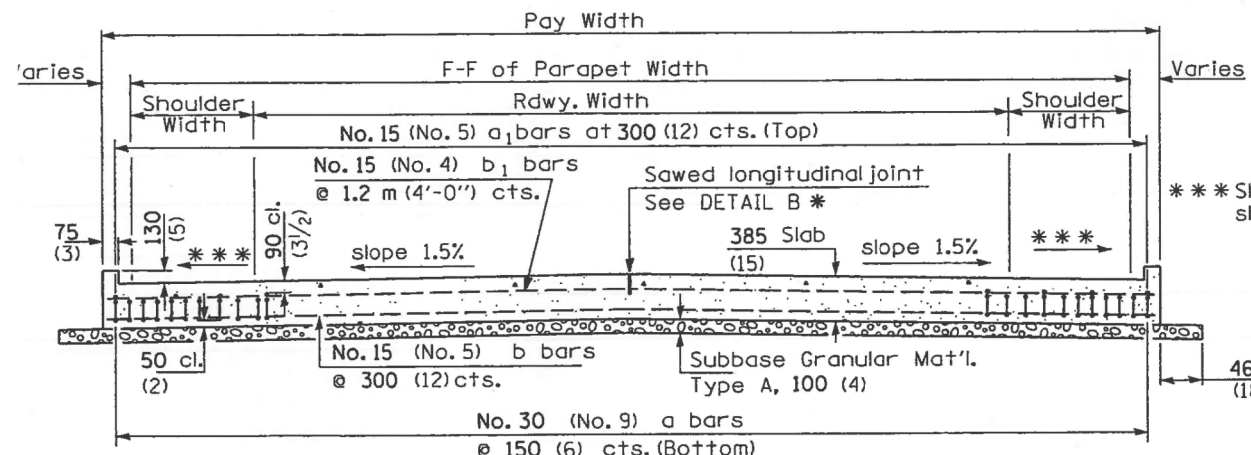
SECTION C-C
 ① Stagger No. 30 (No. 9) a bars as shown on plan - full width



PREFORMED JOINT SEAL

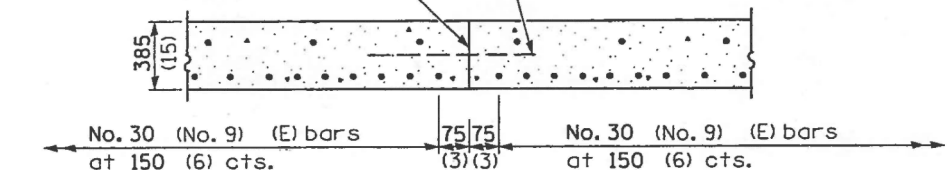


DETAIL A



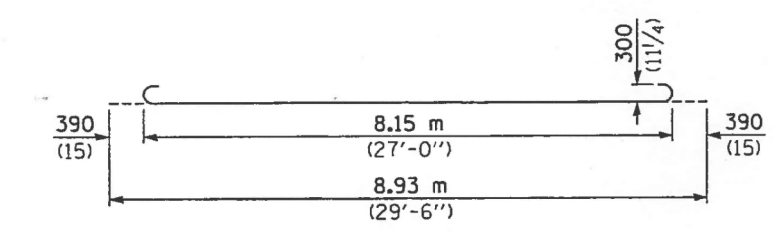
SECTION D-D
 (See Plan for Dimensions not shown)
 All reinforcement bars shall be epoxy coated.

Longitudinal Construction Joint in accordance with details shown on Standard 420001.

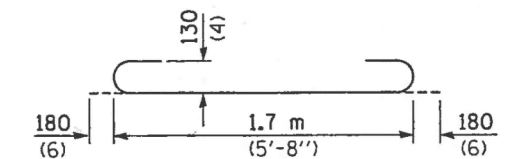


OPTIONAL LONGITUDINAL CONSTRUCTION JOINT

As approved by the Engineer, the Contractor may elect to reduce the widths of pour by use of the Optional Longitudinal Construction Joint shown. Joints shall be located at the edge of a traffic lane.

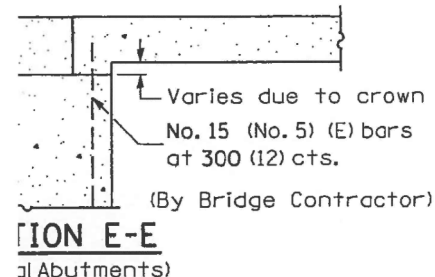


BAR a

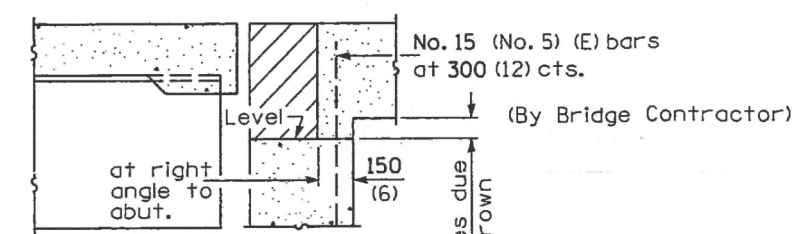


BAR a2

All dimensions are in millimeters (inches) unless otherwise shown.



SECTION E-E
 (Jointed Abutments)

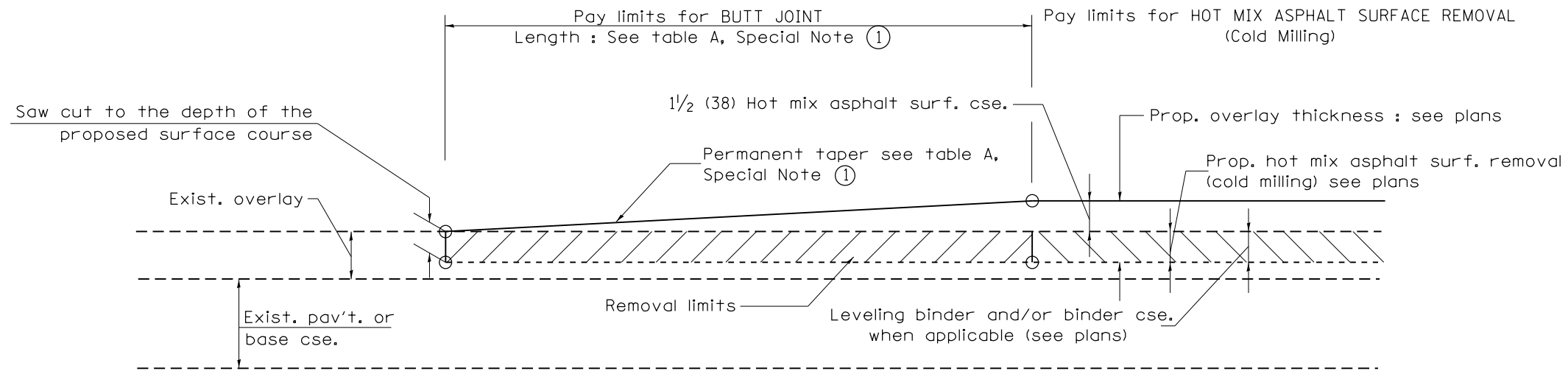


SECTION E-E
 (Jointed Abutments)

DESIGN STRESSES
 $f_y = 400 \text{ MPa (60,000 p.s.i.)}$
 $f'_c = 24 \text{ MPa (3,500 p.s.i.)}$
 $n = 8.5$

* WARREN & McDONOUGH

FILE NAME = Cover_line.dgn	USER NAME = lababidism	DESIGNED -	REVISED -	STATE OF ILLINOIS DEPARTMENT OF TRANSPORTATION	BRIDGE APPROACH PAVEMENT DETAIL (FOR INFORMATION ONLY)	F.A.P. RTE.	SECTION	COUNTY	TOTAL SHEETS	SHEET NO.	
Default	PLOT SCALE = 400.0000' / in.	DRAWN -	REVISED -			310	(101,32-38)I	-	13	9	
	PLOT DATE = 4/7/2017	CHECKED -	REVISED -			CONTRACT NO. 68D55					
		DATE -	REVISED -			ILLINOIS FED. AID PROJECT					



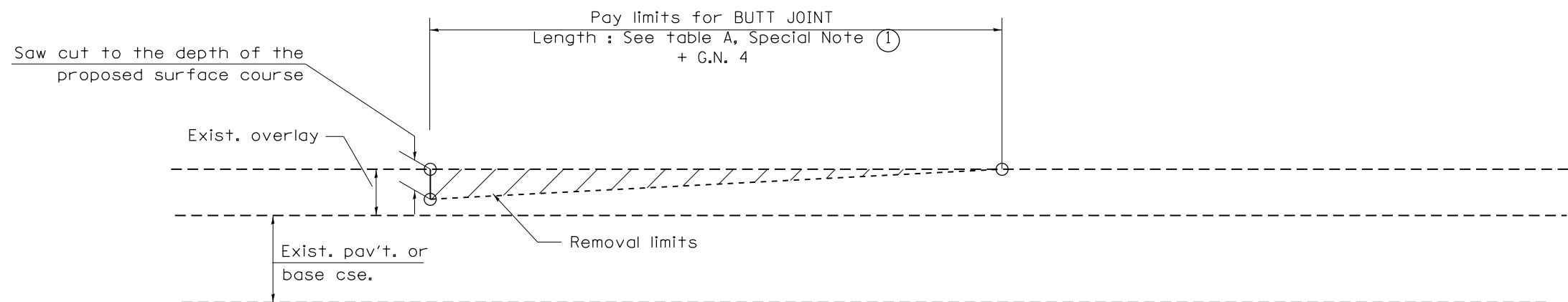
CASE 1 : WITH HOT MIX ASPHALT SURFACE REMOVAL (COLD MILLING)

**TABLE A
TAPER RATES**

SPECIAL NOTE NUMBER	ELEMENT	MAINLINE INTERSTATES & 4-LANE EXPRESSWAYS	ALL OTHERS
①	BUTT JOINT TAPER RATE	1:480	1:240
②	TEMPORARY RAMP TAPER RATE	1:80	1:40

GENERAL NOTES

1. The work shall be done in accordance with Article 406.08 and the Special Provision for Butt Joints.
2. The pavement surface to be removed may be either bituminous or P.C. concrete. The work shall be performed in accordance with Article 440.04 and the Special Provisions for Butt Joints.
3. The saw cut joints shall be primed just prior to the placing of bituminous material. The work will be in accordance with the applicable portions of Article 406.05.
4. The length of butt joint is based on the taper rate times change in cold milling depth within the butt joint pay limits, unless otherwise indicated.

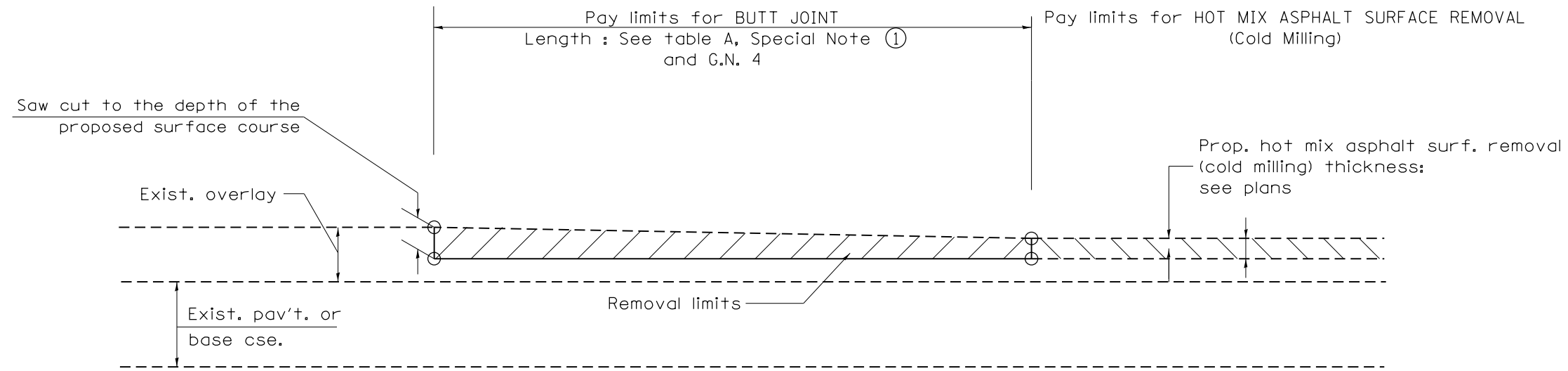


CASE 2 : NO HOT MIX ASPHALT SURFACE REMOVAL (COLD MILLING)

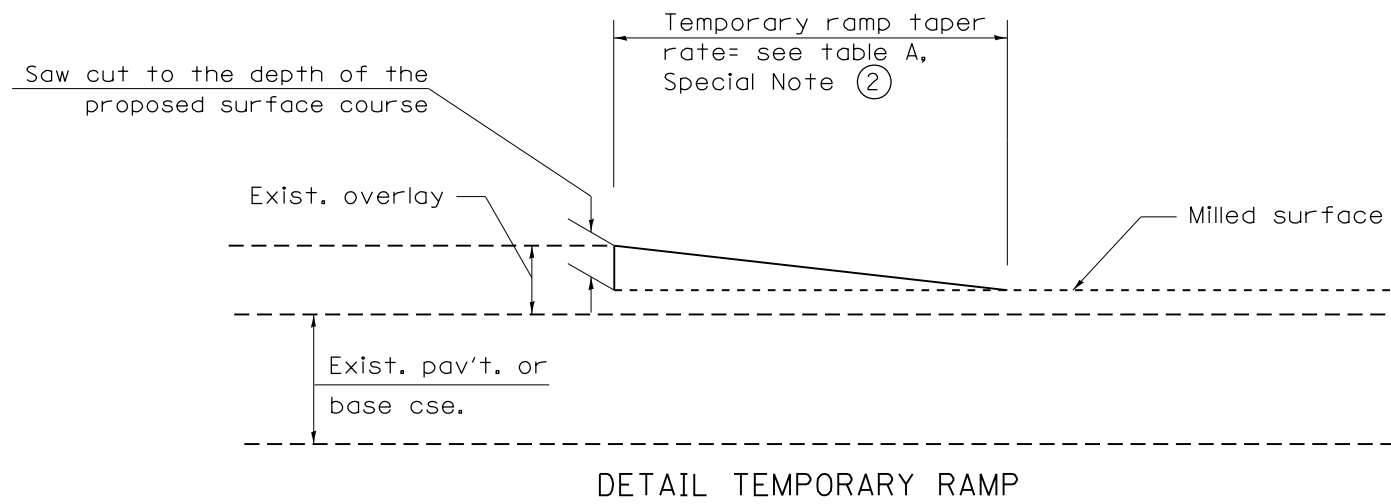
All dimensions are in inches (millimeters) unless otherwise noted.

* WARREN & McDONOUGH

01-01-97	RENUM. C-23.01, NEW REVISION BOX	T.P.	08-21-13	MAJOR MODIFICATIONS	R.D.	STATE OF ILLINOIS DEPARTMENT OF TRANSPORTATION	BUTT JOINTS	F.A.P. RTE.	SECTION	COUNTY	TOTAL SHEETS	SHEET NO.
04-01-97	CORRECTION TO DEPTH	J.A.	02-29-16	MINOR CORRECTIONS	R.D.			574	(101,32-38)I	*	13	10
09-15-05	REVISED DESIGNER NOTE	M.M.A.	04-12-16	MINOR CORRECTIONS	R.D.			SHT. 1 OF 3 CADD STD. 406101-D4		CONTRACT NO. 68D55		
10-16-06	REVISED TO 2007 SPEC.	M.A.						NOT TO SCALE		FED. ROAD DIST. NO. ILLINOIS FED. AID PROJECT		



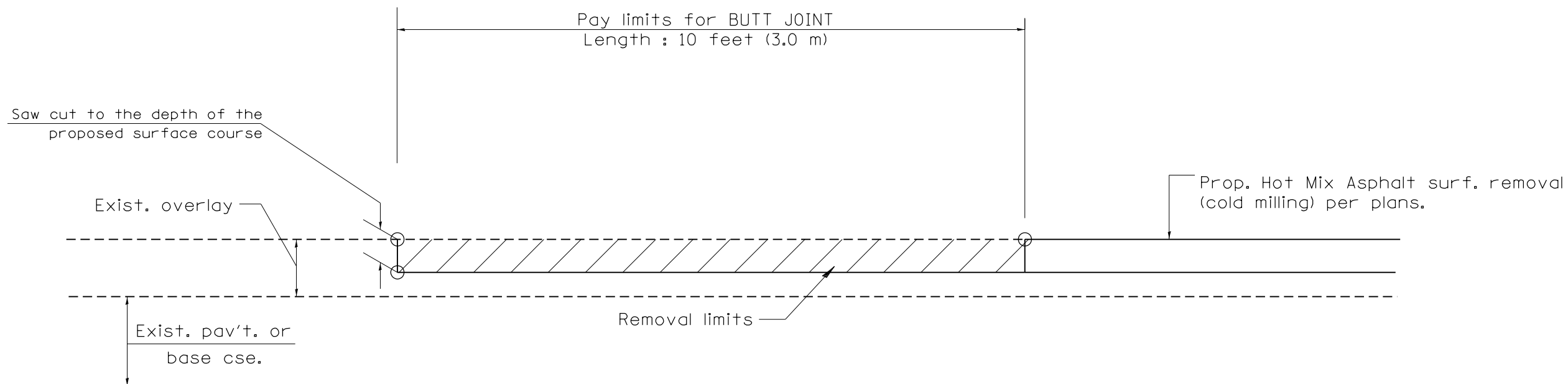
CASE 3 : HOT MIX ASPHALT SURFACE REMOVAL (COLD MILLING)
TIE-IN TO EXISTING BITUMINOUS TAPER



All dimensions are in inches (millimeters) unless otherwise noted.

* WARREN & McDONOUGH

				STATE OF ILLINOIS	BUTT JOINTS	F.A.P. RTE.	SECTION	COUNTY	TOTAL SHEETS	SHEET NO.
				DEPARTMENT OF TRANSPORTATION		310	(101,32-38)I	•	13	11
				NOT TO SCALE	SHT. 2 OF 3	FED. ROAD DIST. NO.		ILLINOIS FED. AID PROJECT	CADD STD. 406101-D4	CONTRACT NO. 68D55

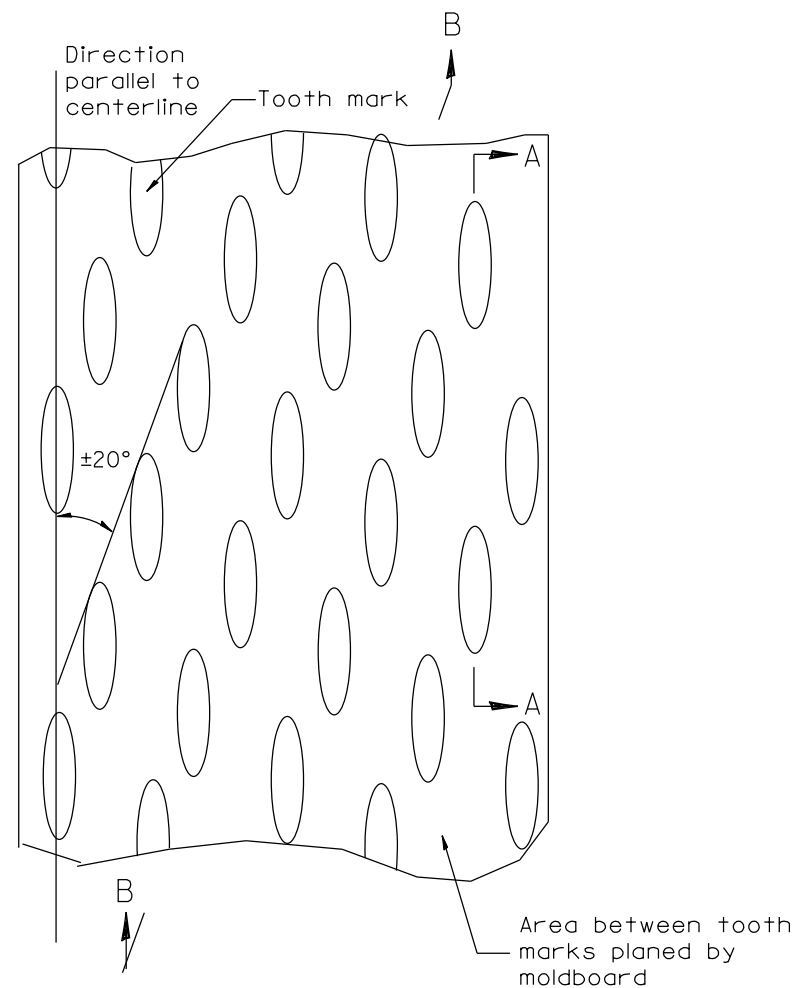


**CASE 4 : SINGLE LIFT OVERLAY WITH EQUIVALENT DEPTH
HOT MIX ASPHALT SURFACE REMOVAL (COLD MILLING)
TIE-IN TO EXISTING BITUMINOUS TAPER**

All dimensions are in inches (millimeters) unless otherwise noted.

* WARREN & McDONOUGH

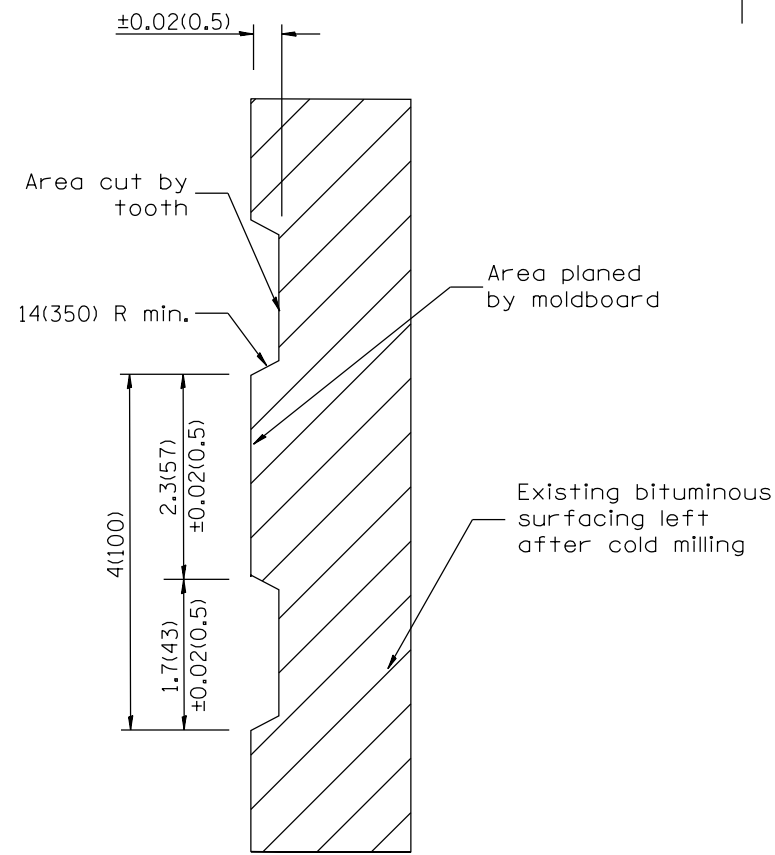
				STATE OF ILLINOIS DEPARTMENT OF TRANSPORTATION		BUTT JOINTS		SHT. 3 OF 3 CADD STD. 406101-D4		<table border="1"> <tr> <th>F.A.P. RTE.</th> <th>SECTION</th> <th>COUNTY</th> <th>TOTAL SHEETS</th> <th>SHEET NO.</th> </tr> <tr> <td>310</td> <td>(101,32-38)I</td> <td>*</td> <td>13</td> <td>12</td> </tr> </table>		F.A.P. RTE.	SECTION	COUNTY	TOTAL SHEETS	SHEET NO.	310	(101,32-38)I	*	13	12
F.A.P. RTE.	SECTION	COUNTY	TOTAL SHEETS	SHEET NO.																	
310	(101,32-38)I	*	13	12																	
						NOT TO SCALE				<table border="1"> <tr> <td>FED. ROAD DIST. NO.</td> <td>ILLINOIS FED. AID PROJECT</td> <td colspan="2" style="text-align: center;">CONTRACT NO. 68D55</td> </tr> </table>		FED. ROAD DIST. NO.	ILLINOIS FED. AID PROJECT	CONTRACT NO. 68D55							
FED. ROAD DIST. NO.	ILLINOIS FED. AID PROJECT	CONTRACT NO. 68D55																			



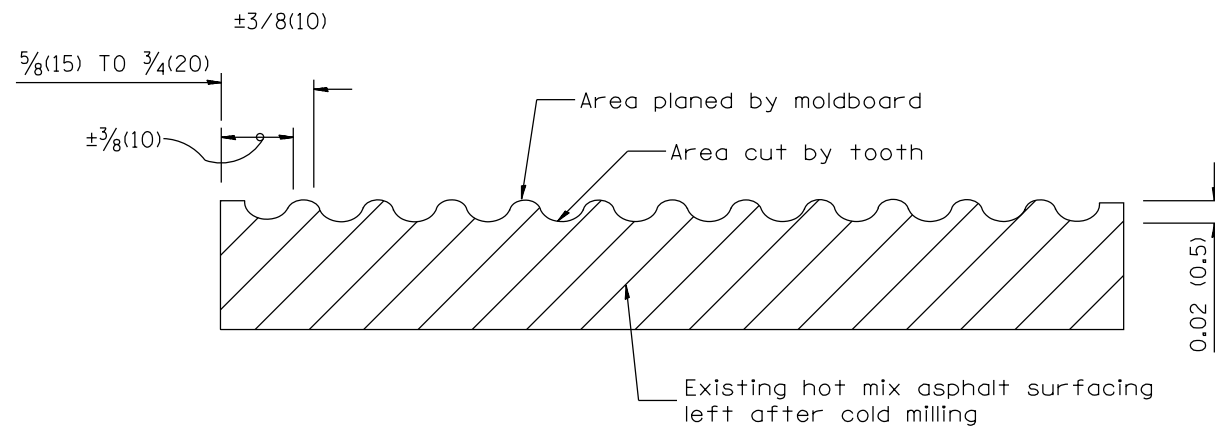
PLAN

General notes:

1. Coldmilling shall consist of two processes: Cutting with carbide teeth mounted on a rotating drum, and planing with a moldboard mounted immediately behind the cutting drum.
2. Other similar patterns will be acceptable if they consist of a smooth, flat, planed surface interspersed with a pattern of discontinuous longitudinal striations.



SECTION A-A



SECTION B-B PROJECTED
PERPENDICULAR TO CENTERLINE

All dimensions are in inches (millimeters) unless otherwise noted.

* WARREN & McDONOUGH

DESIGNER NOTES:
1. INCLUDE DISTRICT SPECIAL PROVISION, IF APPLICABLE.

01-01-97	RENUM. C-104.01, NEW REVISION BOX	T.P.
04-20-98	REMOVED MILLING DETAIL FROM STANDARD	J.A.
09-08-98	CORRECT NOTE LEADER PLACEMENT	R.W.
10-16-06	REVISED TO 2007 SPEC.	M.A.

STATE OF ILLINOIS
DEPARTMENT OF TRANSPORTATION

HOT MIX ASPHALT SURFACE REMOVAL (COLD MILLING)

NOT TO SCALE

CADD STD. 440001-D4

F.A.P. RTE.	SECTION	COUNTY	TOTAL SHEETS	SHEET NO.
310	(101,32-38)I	*	13	13
FED. ROAD DIST. NO. ILLINOIS FED. AID PROJECT			CONTRACT NO. 68D55	