

FOR INDEX OF SHEETS, SEE SHEET NO. 1

STATE OF ILLINOIS 06-16-2017 LETTING ITEM 216

F.A. RTE.	SECTION	COUNTY	TOTAL SHEETS	SHEET NO.
VAR	D4 BRIDGE WASHING 2017	ILLINOIS	8	1
			CONTRACT 68D57	

MARSHALL, MASON AND TAZEVELL

D-94-024-17

- 1. Cover Sheet
- 2. Location 3 map
- 3. Summary of Quantities
- 4. General Notes
- 5-8 Plan Sheets

DEPARTMENT OF TRANSPORTATION
DIVISION OF HIGHWAYS

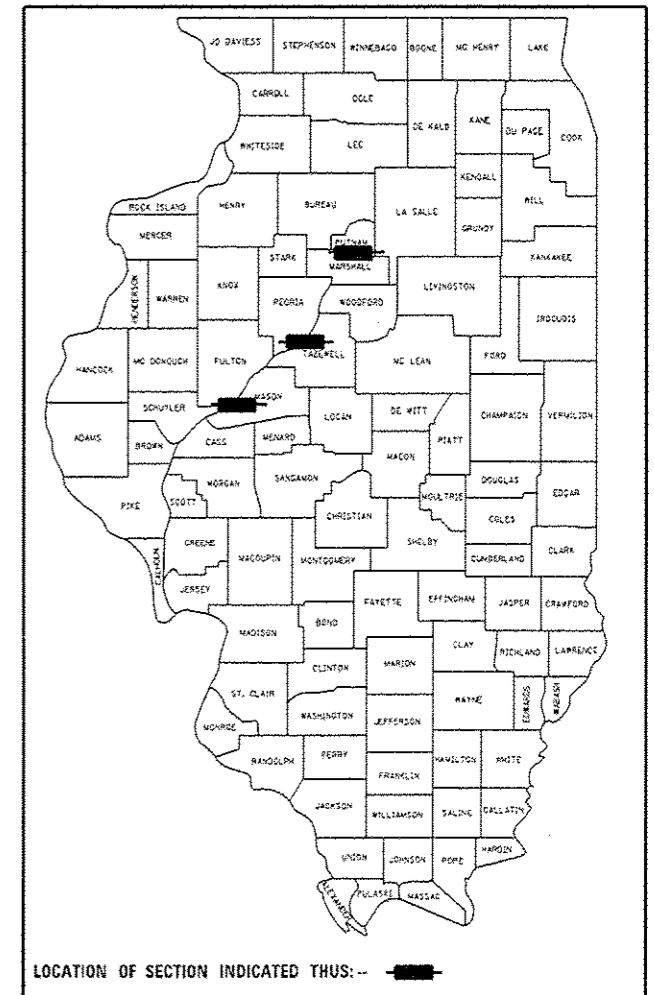
PROPOSED HIGHWAY PLANS

(VAR) ROUTE VARIOUS
SECTION D4 BRIDGE WASHING 2017

TYPE of IMPROVEMENT
MARSHALL, MASON AND TAZEVELL COUNTY
C-94-051-17

STANDARDS

- 701101 - 05
- 701106 - 02
- 701201 - 04
- 701606 - 10
- 701901 - 06

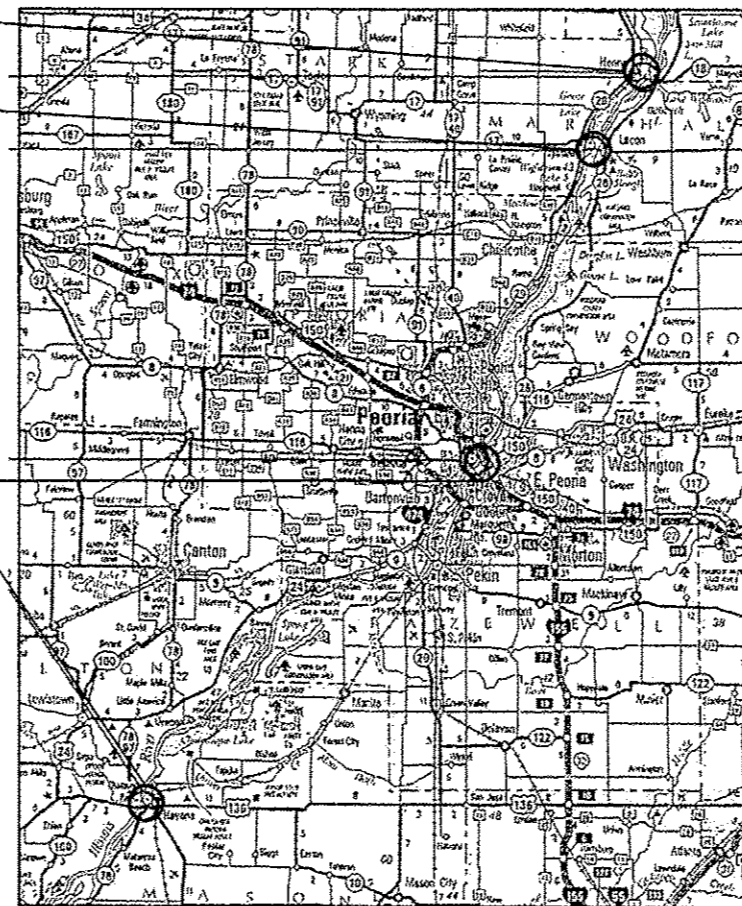


LOCATION 1 S.N. 062-0036

LOCATION 2 S.N. 062-0003

LOCATION 3 090-0122
SEE PAGE 2

LOCATION 4 S.N. 063-0002



ADT AND TRUCKS

- Location 1 2,750 Trucks 7.64%
- Location 2 6,300 Trucks 9.31%
- Location 3 19,100 Trucks 3.53%
- Location 4 5,300 Trucks 17.31%

J.U.L.I.E.
JOINT UTILITY LOCATION INFORMATION FOR EXCAVATION
1-800-892-0123
OR 811

PROJECT ENGINEER TOM INGLIS (309)671-3481
PROJECT MANAGER RICH DOTSON (309) 671-3455
CONTRACT NO. 68D57
CATALOG NO. 035474-00D

STATE OF ILLINOIS
DEPARTMENT OF TRANSPORTATION
DIVISION OF HIGHWAYS

SUBMITTED March 9 20 17

David A. Tanner
DEPUTY DIRECTOR OF HIGHWAYS, REGION ENGINEER

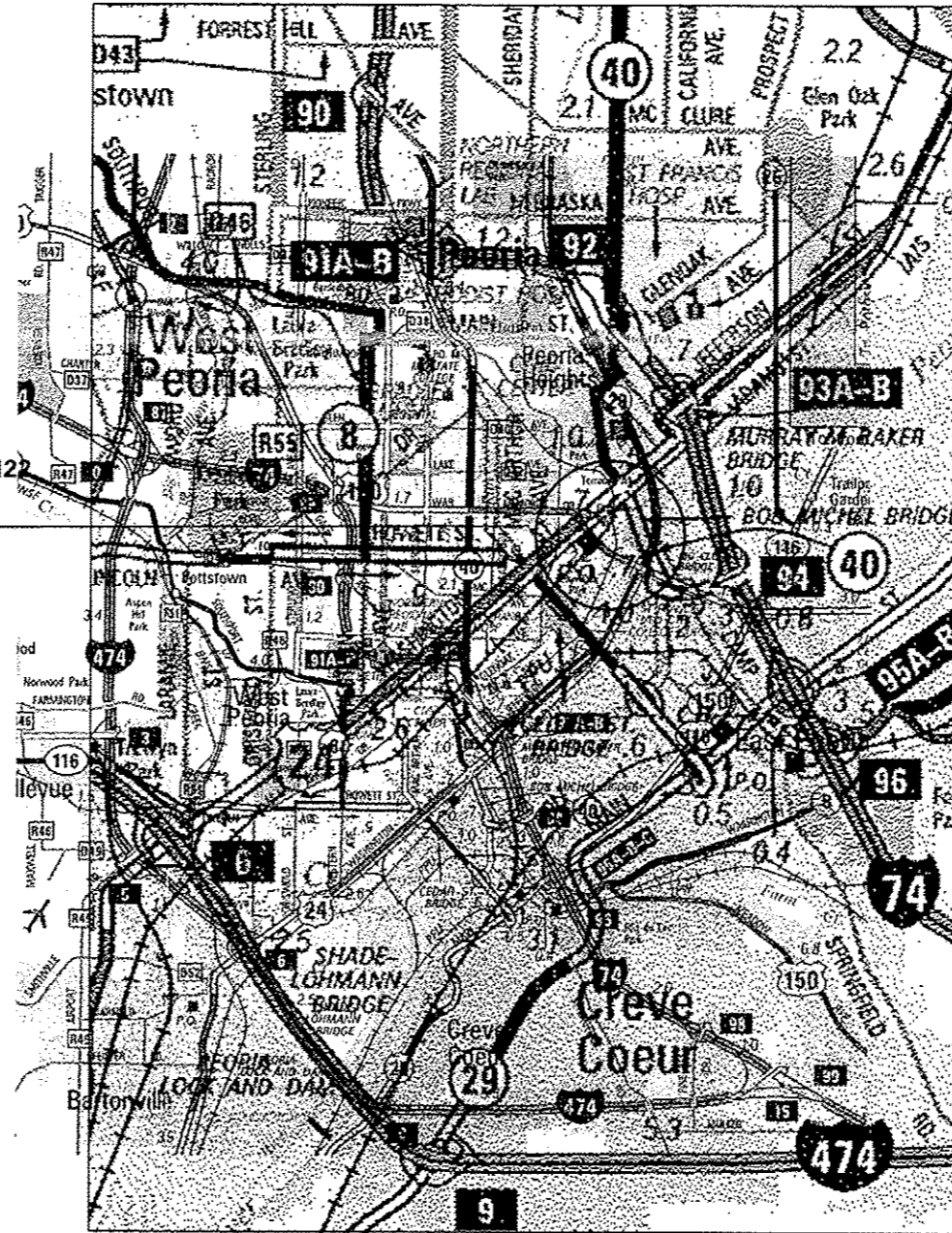
May 12 20 17
Maureen M. Addis
ENGINEER OF DESIGN AND ENVIRONMENT

May 12 20 17
Michelle Allen 2
DIRECTOR OF HIGHWAYS, CHIEF ENGINEER

PRINTED BY THE AUTHORITY
OF THE STATE OF ILLINOIS

LOCATION 3 S.N. 090-0122

LOCATION 3 S.N. 090-0122



STATE OF ILLINOIS
DEPARTMENT OF TRANSPORTATION

Map For Location 3

FILE NAME :	USER NAME : *USER*	DESIGNED -	REVISED -	STATE OF ILLINOIS DEPARTMENT OF TRANSPORTATION	Map For Location 3		F.A. RTE.	SECTION	COUNTY	TOTAL SHEETS	SHEET NO.		
FILEL		DRAWN -	REVISED -				VAR	04 BRIDGE WASHING 2017	-	8	2		
MODELNAME		CHECKED -	REVISED -				*MARSHALL, MASON AND TAZEWELL CONTRACT NO. 68057						
		DATE -	REVISED -				ILLINOIS FED. AID PROJECT						
				SCALE:	SHEET	OF	SHEETS	STA.	TO STA.				

CODE NO.	ITEM	UNIT	TOTAL QUANTITY	CONSTRUCTION CODE		
				RURAL	URBAN	RURAL
				Marshall 0014 ✓	Tazewell 0014 ✓	Mason 0014 ✓
				100 % State ✓	100 % State ✓	100 % State ✓
59200101	BRIDGE WASHING NO. 1	EACH	1	1		
59200102	BRIDGE WASHING NO. 2	EACH	1	1		
59200103	BRIDGE WASHING NO. 3	EACH	1		1	
59200104	BRIDGE WASHING NO. 4	EACH	1			1
67100100	MOBILIZATION	L SUM	1	0.5	0.25	0.25
70100450	TRAFFIC CONTROL AND PROTECTION, STANDARD 701201	L SUM	1	0.67		0.33
70102625	TRAFFIC CONTROL AND PROTECTION, STANDARD 701606	L SUM	1		1	

7

FILE NAME :	USER NAME : #USER#	DESIGNED -	REVISED -
#FILE#		DRAWN -	REVISED -
	PLOT SCALE : #SCALE#	CHECKED -	REVISED -
	PLOT DATE : #DATE#	DATE -	REVISED -

**STATE OF ILLINOIS
DEPARTMENT OF TRANSPORTATION**

SUMMARY OF QUANTITIES

F.A. RTE.	SECTION	COUNTY	TOTAL SHEETS	SHEET NO.
Var	D4 Bridge Washing 2017	*	8	3
MARSHALL, MASON AND TAZEVELL			CONTRACT NO. 68D57	
ILLINOIS FED. AID PROJECT				

COMMITMENTS

No Commitments have been made for this project.

GENERAL NOTES

Location 1,2 & 4. Expansion joints: 10 feet either side of deck joints down to the bearings, top of pier and abutment caps.

Entire lower cord, outside fascia of the stringer beam and the bottom of the bottom flange of the truss section, outside fascia beam and /or the outside girder and the bottom of the bottom flange on the approach spans.

All structural steel 22 feet above the bridge deck.

Location 3. The areas to be washed as designated in the plans.

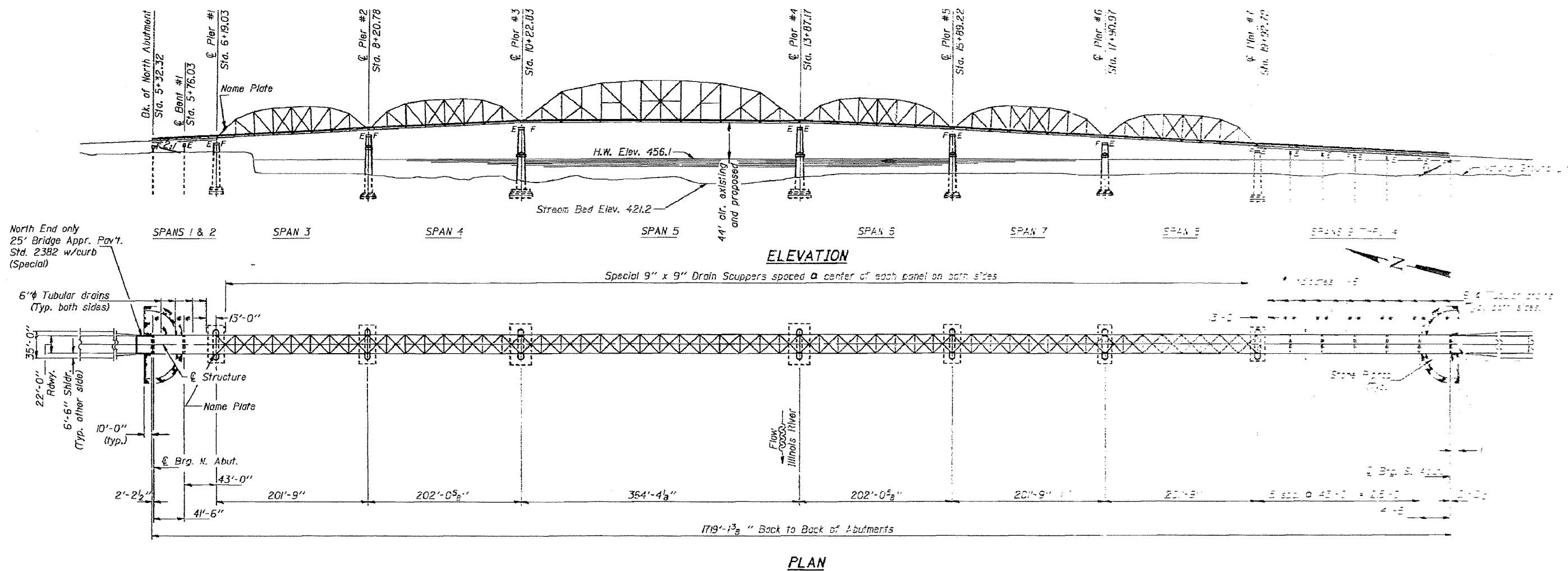
These areas shall also include drain troughs beneath the expansion devices and 10' either side of the expansion joints , top of pier caps and abutments. All of the outside girder and the bottom of the bottom flange.

All bridge locations 1-4 shall include washing of the bridge deck surfaces, curbs, sidewalks, deck drains, and drainage systems. This work will not be paid for separately, but will be included in the cost of the bridge washing pay items.

FILE NAME :	USER NAME * *USER*	DESIGNED -	REVISED -	STATE OF ILLINOIS DEPARTMENT OF TRANSPORTATION	Commitments And General Notes		F.A. RTE.	SECTION	COUNTY	TOTAL SHEETS	SHEET NO.
#FILE#		DRAWN -	REVISED -				VAR	D4 BRIDGE WASHING 2017	*	8	4
#MODELNAME#		CHECKED -	REVISED -		SCALE: SHEET OF SHEETS STA. TO STA.		*MARSHALL, MASON AND TAZEWELL CONTRACT NO. 68D57		ILLINOIS FED. AID PROJECT		
		DATE -	REVISED -								

Location 1 (IL 18 over IL River)

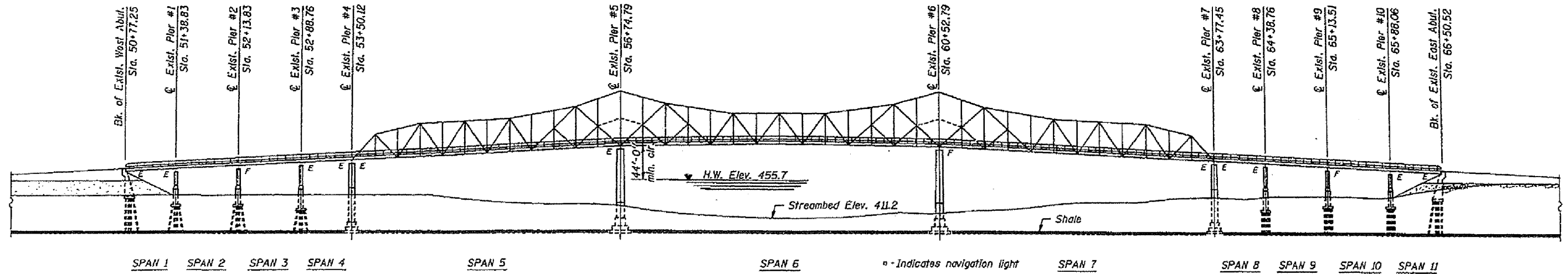
For information Only



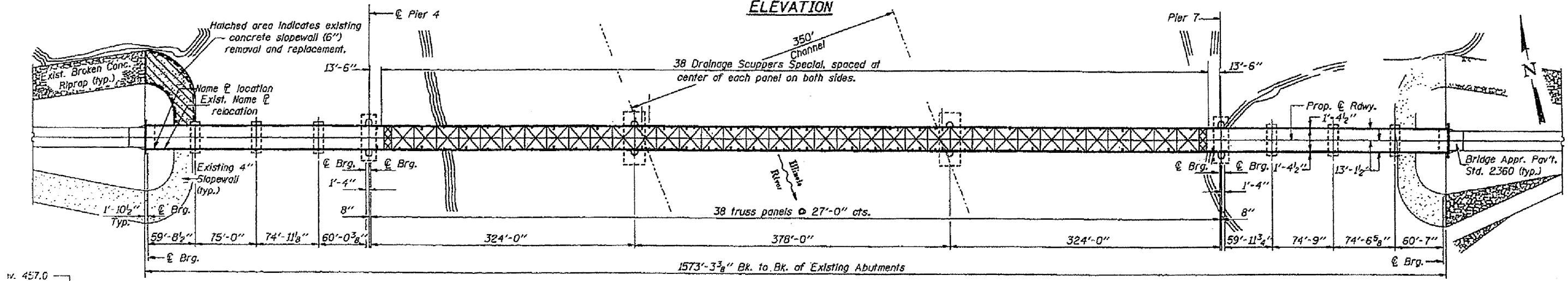
S.N. 062-0036

FILE NAME =	USER NAME = \$USER\$	DESIGNED -	REVISED -	STATE OF ILLINOIS DEPARTMENT OF TRANSPORTATION	Plan Sheet			F.A. RTE.	SECTION	COUNTY	TOTAL SHEETS	SHEET NO.	
*FILE#		DRAWN -	REVISED -		SCALE:	SHEET	OF	SHEETS	STA.	TO	STA.	8	5
		CHECKED -	REVISED -		*MARSHALL, MASON AND TAZEVELL CONTRACT NO. 68D57								
*MODELNAME#		DATE -	REVISED -		ILLINOIS FED. AID PROJECT								

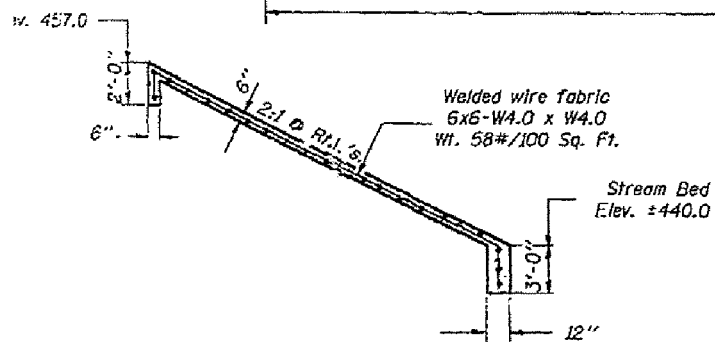
Location 2 (IL 17 over IL River) For information Only



ELEVATION



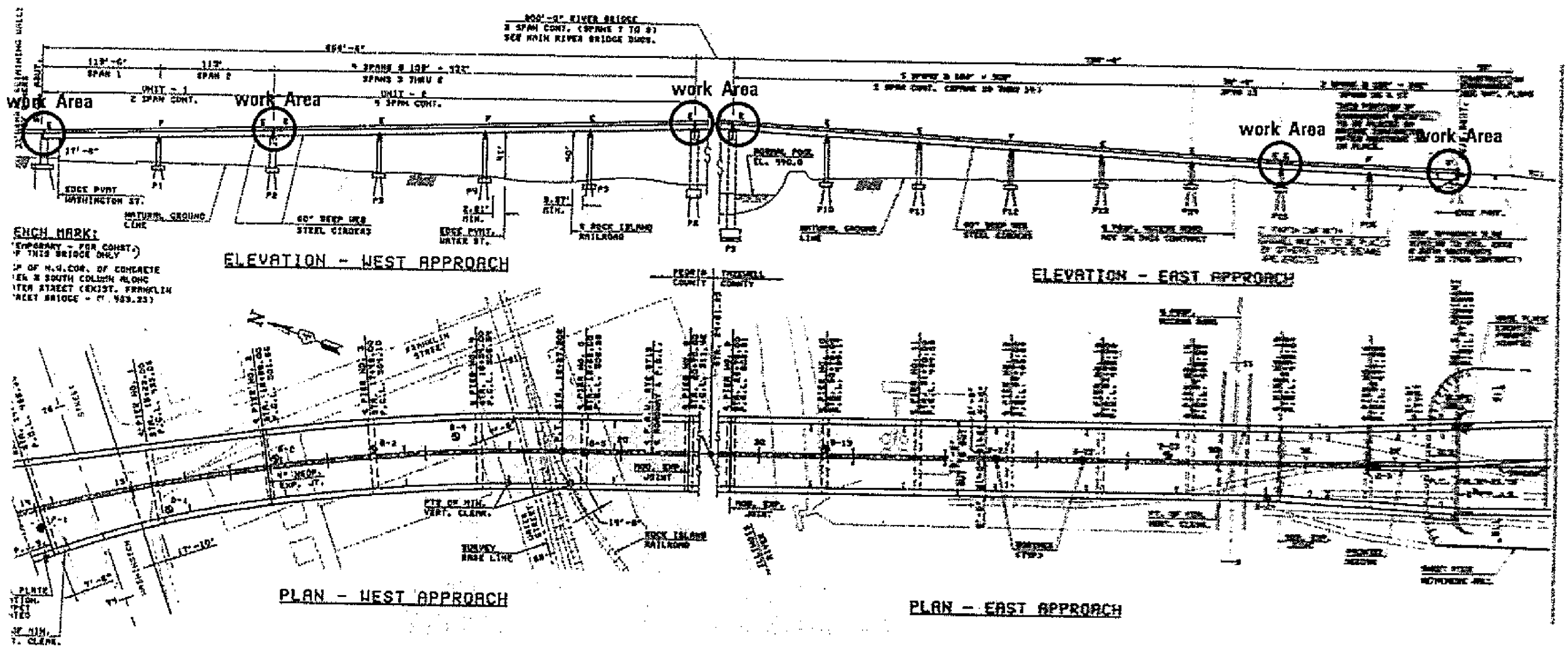
PLAN



S.N. 062-0003

FILE NAME =	USER NAME = #USER#	DESIGNED -	REVISED -	STATE OF ILLINOIS DEPARTMENT OF TRANSPORTATION	Plan Sheet				F.A. RTE.	SECTION	COUNTY	TOTAL SHEETS	SHEET NO.
#FILE#		DRAWN -	REVISED -		SCALE:	SHEET	OF	SHEETS	STA.	TO	STA.	8	6
#MODELNAME#		CHECKED -	REVISED -										
		DATE -	REVISED -										
MARSHALL, MASON AND TAZEWELL CONTRACT NO. 68D57											ILLINOIS FED. AID PROJECT		

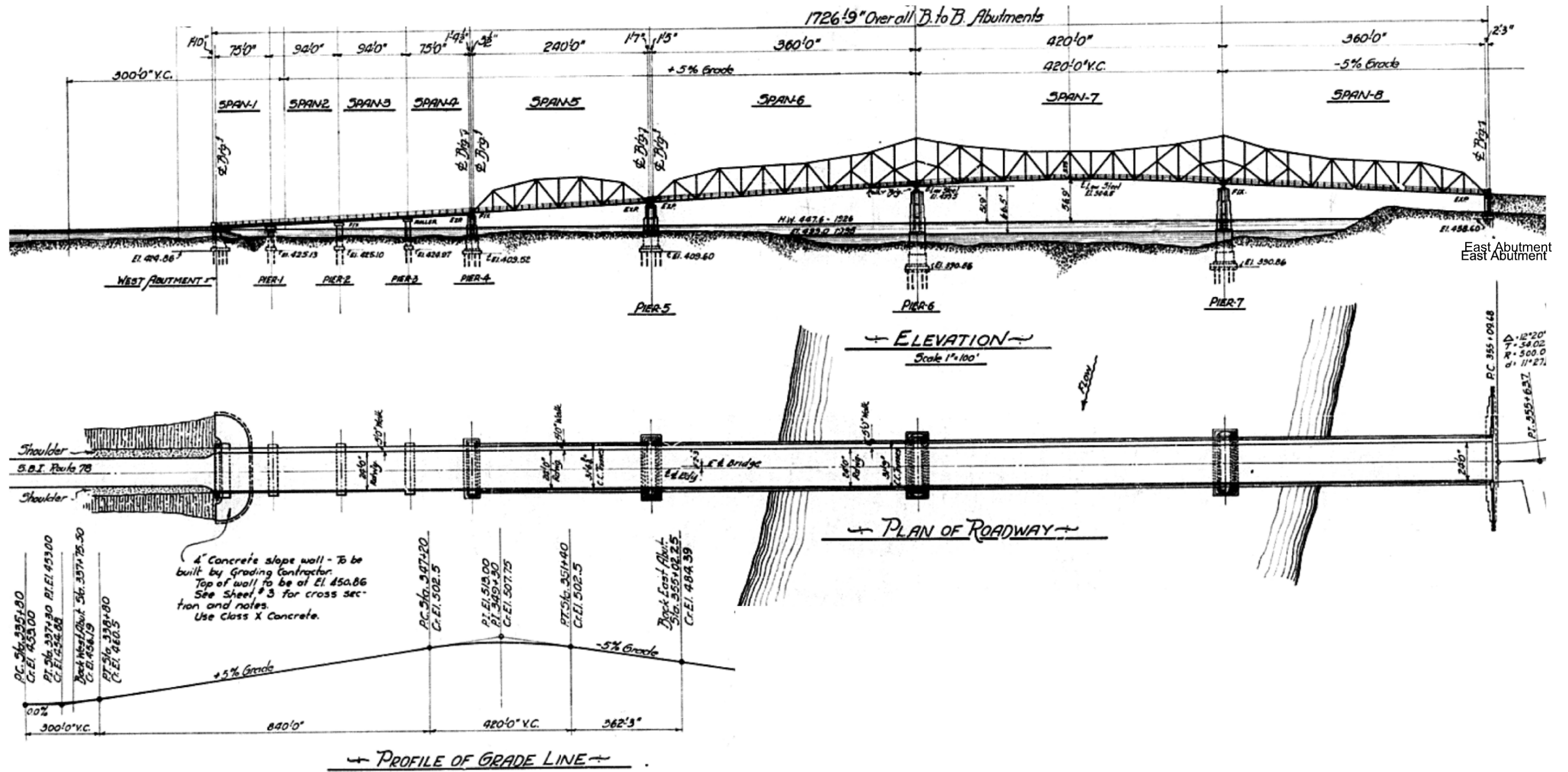
Location 3 (IL 40 over IL River) For information Only



FILE NAME =	USER NAME = *USER*	DESIGNED -	REVISED -	STATE OF ILLINOIS DEPARTMENT OF TRANSPORTATION	Plan Sheet	F.A. RTE.	SECTION	COUNTY	TOTAL SHEETS	SHEET NO.		
*FILE#		DRAWN -	REVISED -			VAR	D4 BRIDGE WASHING 2017	-	8	7		
*MODELNAME#		CHECKED -	REVISED -			MARSHALL, MASON AND TAZEWELL CONTRACT NO. 68D57						
		DATE -	REVISED -			ILLINOIS FED. AID PROJECT						
						SCALE:	SHEET	OF	SHEETS	STA.	TO	STA.

Location 4 (IL 136 over IL River)

For information Only



FILE NAME =	USER NAME = \$USER\$	DESIGNED -	REVISED -	STATE OF ILLINOIS DEPARTMENT OF TRANSPORTATION	Plan Sheet		F.A. RTE.	SECTION	COUNTY	TOTAL SHEETS	SHEET NO.		
\$FILE\$		DRAWN -	REVISED -		SCALE:	SHEET	OF	SHEETS	STA.	TO	STA.	8	8
\$MODELNAME\$		CHECKED -	REVISED -										
		DATE -	REVISED -										
											CONTRACT NO. 68D57		
											ILLINOIS FED. AID PROJECT		