

URBAN

URBAN

SUMMARY OF QUANTITIES			CONSTRUCTION TYPE CODE 0014	
CODE NO	ITEM	UNIT	TOTAL QUANTITIES	100% STATE 0014
42001300	PROTECTIVE COAT	SO YD	517	517
50900105	ALUMINUM RAILING, TYPE L	FOOT	29	29
X0900096	PREFORMED JOINT SEAL, 1"	FOOT	128	128
67000400	ENGINEER'S FIELD OFFICE, TYPE A	CAL MO	6	6
67100100	MOBILIZATION	LSUM	1	1
70300904	PAVEMENT MARKING TAPE, TYPE IV 4"	FOOT	5064	5064
* 78000200	THERMOPLASTIC PAVEMENT MARKING - LINE 4"	FOOT	1001	1001
* 78008210	POLYUREA PAVEMENT MARKING TYPE I - LINE 4"	FOOT	288	288
78100300	REPLACEMENT REFLECTOR	EACH	55	55
X0326766	CLEAN & RESEAL RELIEF JOINT	FOOT	88	88
X0327980	PAVEMENT MARKING REMOVAL - WATER BLASTING	SO FT	866	866
X5870015	BRIDGE DECK CONCRETE SEALER	SO FT	538	538
X7010216	TRAFFIC CONTROL AND PROTECTION, (SPECIAL)	LSUM	1	1
X7030005	TEMPORARY PAVEMENT MARKING REMOVAL	SO FT	1688	1688
Z0001700	APPROACH SLAB REPAIR (FULL DEPTH)	SO YD	1	1
Z0001800	APPROACH SLAB REPAIR (PARTIAL DEPTH)	SO YD	3	3

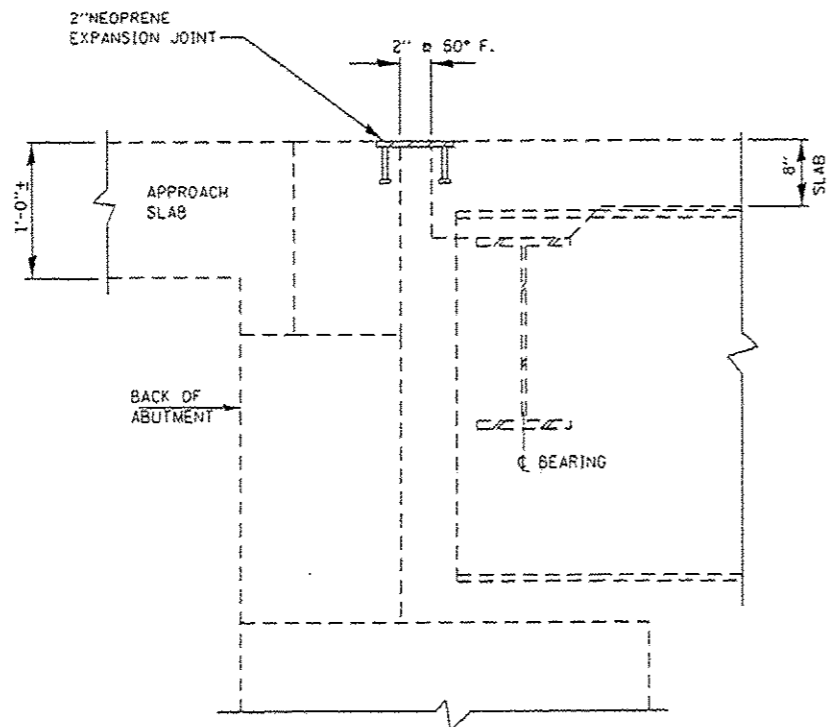
SUMMARY OF QUANTITIES			CONSTRUCTION TYPE CODE 0014	
CODE NO	ITEM	UNIT	TOTAL QUANTITIES	100% STATE 0014
Z0012102	CONCRETE BRIDGE DECK SCARIFICATION 3/8 INCH	SO YD	939	939
Z0012193	BRIDGE DECK THIN POLYMER OVERLAY 3/8"	SO YD	939	939
Z0012755	STRUCTURAL REPAIR OF CONCRETE (DEPTH GREATER THAN 5 INCHES)	SO FT	4	4
Z0016200	DECK SLAB REPAIR (PARTIAL)	SO YD	14	14
Z0030850	TEMPORARY INFORMATION SIGNING	SO FT	51.4	51.4
Z0041895	POLYMER CONCRETE	CU FT	6.6	6.6

16

FILE NAME :	USER NAME :	DESIGNED -	REVISED -	STATE OF ILLINOIS DEPARTMENT OF TRANSPORTATION	SUMMARY OF QUANTITIES	F.A. RTE.	SECTION	COUNTY	TOTAL SHEETS	SHEET NO.	
PROJECT :	PROJECT :	CHECKED -	REVISED -			397	104-BR	COOK	22	3	
PLOT SCALE :	PLOT DATE :	DATE -	REVISED -			CONTRACT NO. 62099		FED. ROAD DIST. NO. 1 ILLINOIS FED. AID PROJECT			
SCALE:		SHEET NO. OF SHEETS STA. TO STA.									

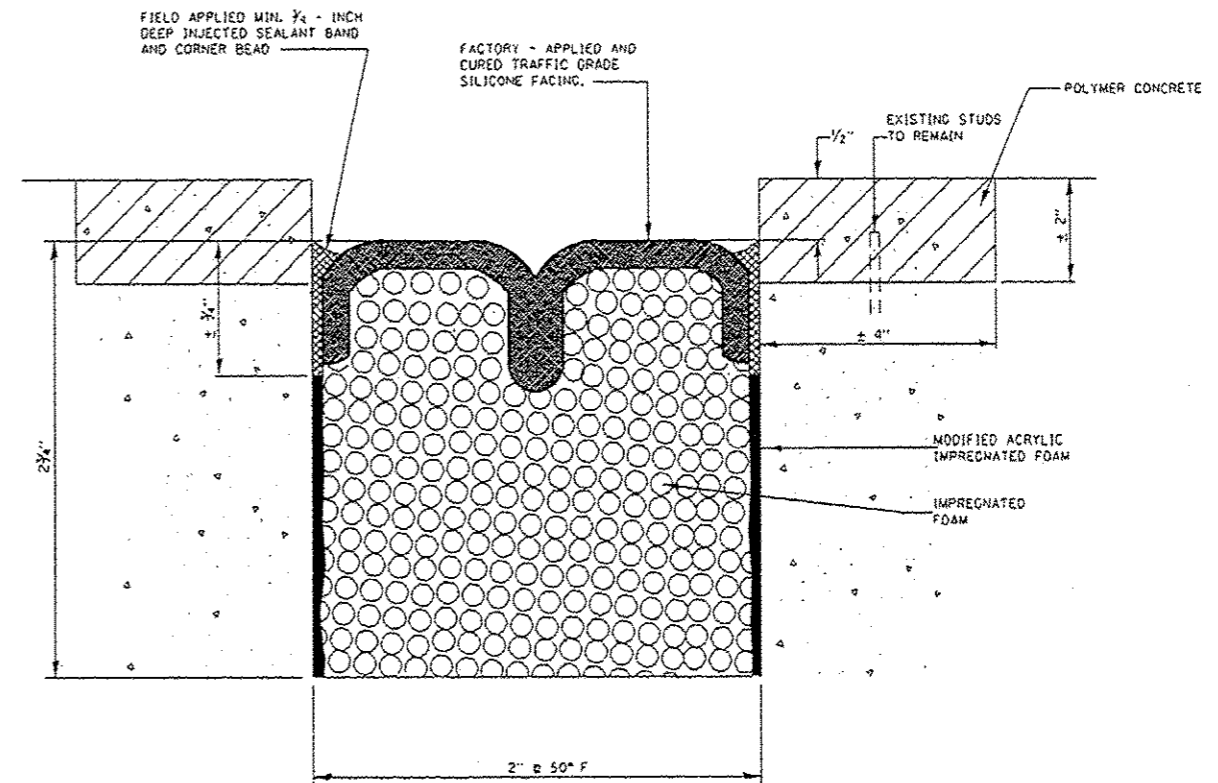
REV 6-7-17

REV

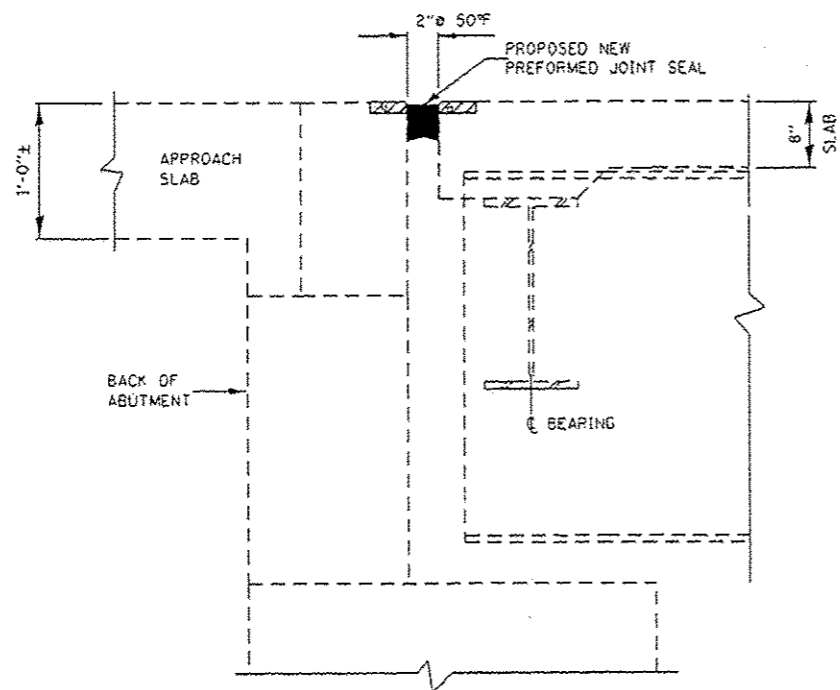


**SECTION A-A
EXISTING 2" NEOPRENE JOINT SEAL
AT EAST AND WEST ABUTMENTS**

(Cost of removing Existing Neoprene Joint Seal Shall be included in the cost of Polymer Concrete)



**PREFORMED JOINT SEAL
AT ABUTMENTS**



**SECTION A-A
PROPOSED NEW PREFORMED
JOINT SEAL AT ABUTMENTS**

GENERAL NOTES:

PLAN DIMENSIONS AND DETAILS RELATIVE TO EXISTING PLANS ARE SUBJECT TO NOMINAL CONSTRUCTION VARIATIONS. THE CONTRACTOR SHALL FIELD VERIFY EXISTING DIMENSIONS AND DETAILS AFFECTING NEW CONSTRUCTION AND MAKE NECESSARY APPROVED ADJUSTMENT PRIOR TO CONSTRUCTION OR ORDERING OF MATERIALS. SUCH VARIATIONS SHALL NOT BE CAUSE FOR ADDITIONAL COMPENSATION FOR A CHANGE IN SCOPE OF THE WORK, HOWEVER, THE CONTRACTOR WILL BE PAID FOR THE QUANTITY ACTUALLY FURNISHED BASED AT THE UNIT PRICE BID FOR THE WORK.

REPAIR AREAS OF SPALLED OR DETERIORATED CONCRETE ADJACENT TO EXPANSION JOINT.

JOINT SEALS SHALL BE PREFORMED PRE-COMPRESSED, SILICONE COATED SELF-EXPANDING SEALANT SYSTEM.

FILE NAME :	USER NAME : midgjn	DESIGNED - MVT	REVISED - 6/6/2017 ATH
PROJECT :	PROJECT :	CHECKED - JAM	REVISED -
DATE :	DATE :	DATE :	REVISED -

STATE OF ILLINOIS
DEPARTMENT OF TRANSPORTATION

(ILL 83 (SIBLEY BOULEVARD) OVER LITTLE CAL RIVER EXPANSION JOINTS AT ABUTMENTS S.N. 016 - 0954		F.A.P. RTE. 397	SECTION 104-BR	COUNTY COOK	TOTAL SHEETS 22	SHEET NO. 5
SCALE:	SHEET 2 OF 5 SHEETS	STA.	TO STA.	ILLINOIS FED. AID PROJECT CONTRACT NO. 62099		

Revised Sheet 6-7-17