

STATE OF ILLINOIS  
DEPARTMENT OF TRANSPORTATION

F.A.P. RTE.	SECTION	COUNTY	TOTAL SHEETS	SHEET NO.
397	104-BR	COOK	22	1
		ILLINOIS	CONTRACT NO. 62D99	

FOR INDEX OF SHEETS, SEE SHEET NO. 2

THE IMPROVEMENT IS LOCATED IN THE VILLAGES OF DOLTON AND HARVEY.

**TRAFFIC DATA**

IL 83 (SIBLEY RD.)

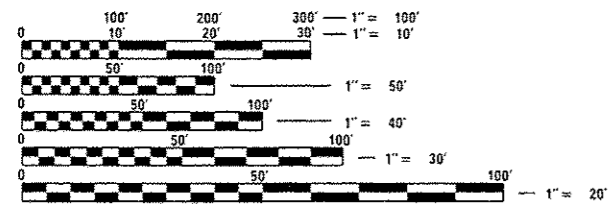
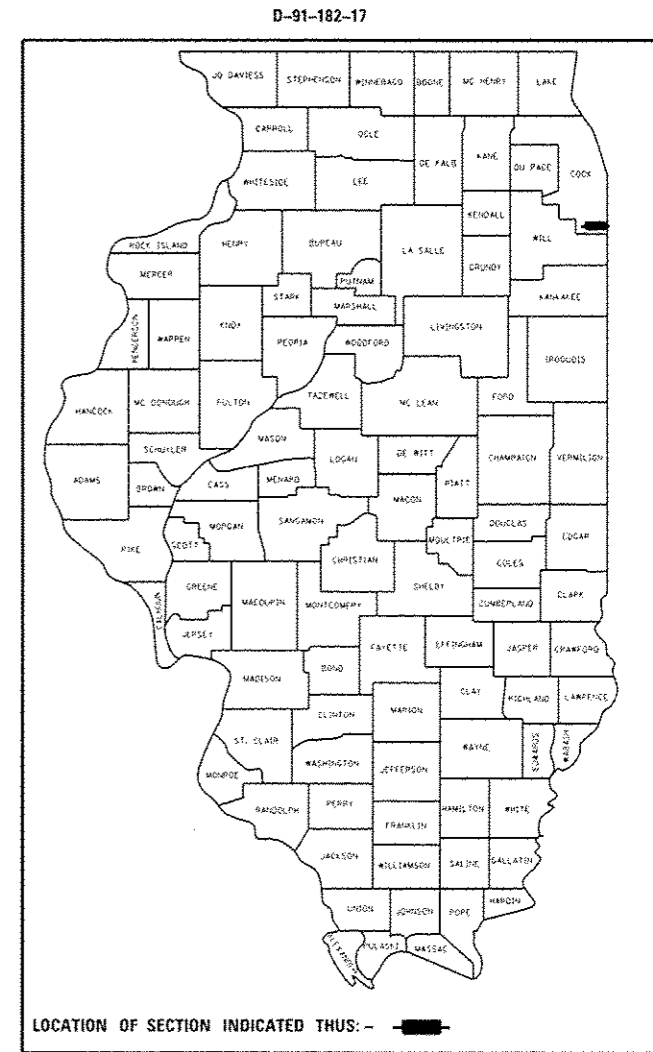
ADT (2015) = 26,600

POSTED SPEED LIMIT = 35 MPH

**PROPOSED  
HIGHWAY PLANS**

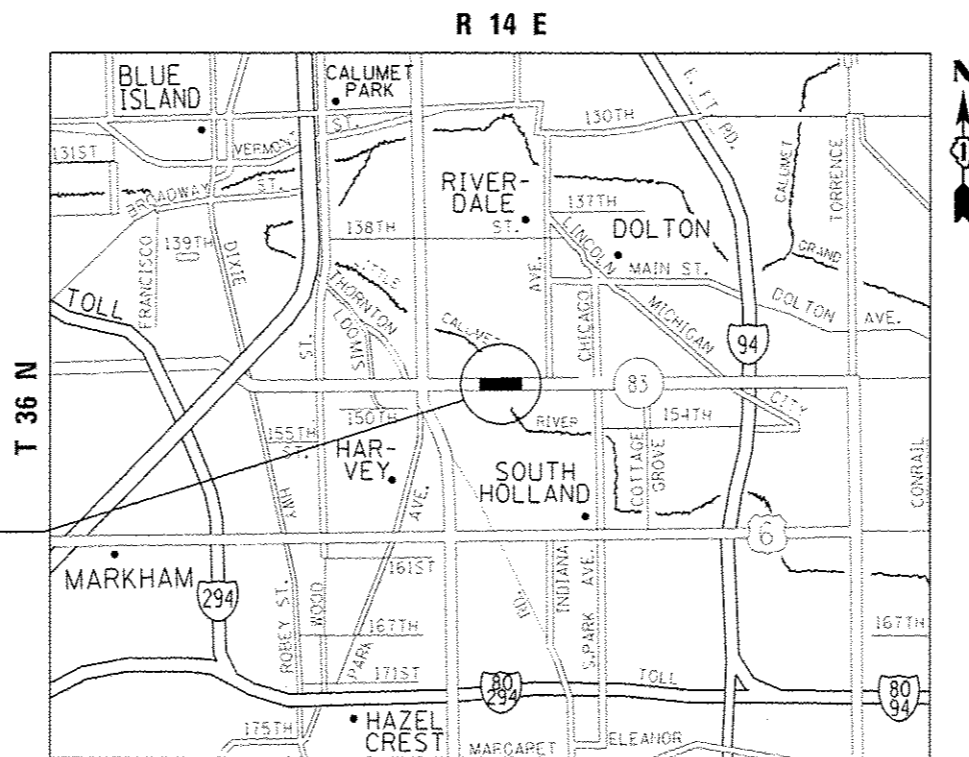
F.A.P. ROUTE 397 – IL 83  
SECTION: 104-BR  
OVER LITTLE CALUMET RIVER  
BRIDGE REPAIRS  
COOK COUNTY

C-91-182-17



FULL SIZE PLANS HAVE BEEN PREPARED USING STANDARD ENGINEERING SCALES. REDUCED SIZED PLANS WILL NOT CONFORM TO STANDARD SCALES. IN MAKING MEASUREMENTS ON REDUCED PLANS, THE ABOVE SCALES MAY BE USED.

J.U.L.I.E.  
JOINT UTILITY LOCATION INFORMATION FOR EXCAVATION  
1-800-892-0123  
OR 811



LOCATION OF IMPROVEMENT:  
SN 016-0954

THORNTON TOWNSHIP

GROSS & NET LENGTH = 192.0 FT. = 0.036 MILE

PROJECT ENGINEER J. ALAIN MIDY (847) 221-3056  
PROJECT MANAGER ISSAM RAYYAN (847) 705-4178

CONTRACT NO. 62D99

STATE OF ILLINOIS  
DEPARTMENT OF TRANSPORTATION

SUBMITTED *April 3* 20 *17*  
*Shrey J. Ray*  
REGIONAL ENGINEER

*May 12* 20 *17*  
*Manoj M. Add's P.E.*  
ENGINEER OF DESIGN AND ENVIRONMENT

*May 12* 20 *17*  
*Paul J. ...*  
DIRECTOR OF PROGRAM DEVELOPMENT

PRINTED BY THE AUTHORITY  
OF THE STATE OF ILLINOIS

**INDEX OF SHEETS**

SHEET NO.	DESCRIPTION
1	COVER SHEET
2	INDEX OF SHEETS, STANDARDS, AND GENERAL NOTES
3	SUMMARY OF QUANTITIES
4-8	BRIDGE PLANS (SN 016-0954)
9-15	STAGING PLANS
16-17	FINAL PAVEMENT MARKING PLANS
18	TRAFFIC CONTROL AND PROTECTION FOR SIDE ROADS, INTERSECTIONS, AND DRIVEWAYS (TC-10)
19	RAISED REFLECTIVE PAVEMENT MARKERS (SNOW-PLOW RESISTANT) (TC-11)
20	DISTRICT ONE TYPICAL PAVEMENT MARKINGS (TC-13)
21	TRAFFIC CONTROL AND PROTECTION AT TURN BAYS (TO REMAIN OPEN TO TRAFFIC) (TC-14)
22	ARTERIAL ROAD INFORMATION SIGN (TC-22)

**HIGHWAY STANDARDS**

STANDARD NO.	DESCRIPTION
701101-05	OFF-ROAD OPERATIONS, MULTILANE, 15' TO 24" FROM PAVEMENT EDGE
701106-02	OFF-ROAD OPERATIONS, MULTILANE, > 15' AWAY
701427-05	LANE CLOSURE, MULTIALNE, INTERMITTENT OR MOVING OPER.. FOR SPEEDS < 40 MPH
701606-10	URBAN LANE CLOSURE, MULTILANE, 2W. WITH MOUNTABLE MEDIAN
701611-01	URBAN HALF ROAD CLOSURE, MULTILANE, 2W WITH MOUNTABLE MEDIAN
701701-10	URBAN LANE CLOSURE, MULTILANE INTERSECTION
701801-06	SIDEWALK, CORNER OR CROSSWALK CLOSURE
701901-06	TRAFFIC CONTROL DEVICES

**GENERAL NOTES**

BEFORE STARTING ANY EXCAVATION, THE CONTRACTOR SHALL CALL J.U.L.I.E. AT (800) 892-0123 OR 811 FOR FIELD LOCATIONS OF BURIED ELECTRIC, TELEPHONE AND GAS UTILITIES. 48 HOUR NOTIFICATION IS REQUIRED.

THE CONTRACTOR SHALL COORDINATE CONSTRUCTION ACTIVITIES WITH UTILITY COMPANIES, AND THE VILLAGES OF DOLTON AND HARVEY.

PLAN DIMENSIONS AND DETAILS RELATIVE TO EXISTING PLANS ARE SUBJECT TO NOMINAL CONSTRUCTION VARIATIONS. THE CONTRACTOR SHALL FIELD VERIFY EXISTING DIMENSIONS AND DETAILS AFFECTING NEW CONSTRUCTION AND MAKE NECESSARY APPROVED ADJUSTMENTS PRIOR TO CONSTRUCTION OR ORDERING OF MATERIALS. SUCH VARIATIONS SHALL NOT BE CAUSE FOR ADDITIONAL COMPENSATION FOR A CHANGE IN SCOPE OF THE WORK. HOWEVER, THE CONTRACTOR WILL BE PAID FOR THE QUANTITY ACTUALLY FURNISHED BASED AT THE UNIT PRICE BID FOR THE WORK.

THE CONTRACTOR WILL NOT BE ALLOWED TO SET UP A YARD OR FIELD OFFICE ON STATE PROPERTY WITHOUT WRITTEN PERMISSION FROM THE DEPARTMENT.

ALL DAMAGE TO EXISTING PAVEMENT MARKINGS OR RAISED REFLECTIVE PAVEMENT MARKERS OUTSIDE THE REMOVAL LINE SHOWN ON THE PLANS SHALL BE REPLACED AT NO ADDITIONAL COST TO THE DEPARTMENT.

THE CONTRACTOR SHALL CONTACT THE DISTRICT ONE TRAFFIC CONTROL SUPERVISOR AT (847)705-4470 A MINIMUM OF 72 HOURS IN ADVANCE OF BEGINNING WORK.

THE ENGINEER SHALL CONTACT PATRICE HARRIS, IDOT'S AREA TRAFFIC FIELD TECHNICIAN VIA EMAIL AT PATRICE.HARRIS@ILLINOIS.GOV OR AT (708)597-9800 A MINIMUM OF TWO (2) WEEKS PRIOR TO THE PLACEMENT OF PERMANENT PAVEMENT MARKINGS.

THESE PLANS HAVE BEEN PREPARED FROM NOTES RECEIVED FROM THE BUREAU OF MAINTENANCE.

THE CONTRACTOR SHALL BE REQUIRED TO PROVIDE ACCESS TO ABUTTING PROPERTY AT ALL TIMES DURING THE CONSTRUCTION OF THIS PROJECT.

DO NOT SCALE PLANS FOR CONSTRUCTION DIMENSIONS.

CONTRACTOR SHALL MAINTAIN PEDESTRIAN ACCESS AT ALL TIMES DURING CONSTRUCTION.

THE CONTRACTOR SHALL OBTAIN COAST GUARD APPROVAL FOR ANY WORK THAT MAY INTERFERE WITH NAVIGATIONAL OPERATIONS OF THE NAVIGABLE WATERS. A WORK PLAN SHALL BE PREPARED BY THE CONTRACTOR, REVIEWED AND APPROVED BY THE ENGINEER AND BE SUBMITTED BY THE ENGINEER TO THE COAST GUARD AT THE ADDRESS LISTED BELOW FOR APPROVAL.

BRIDGE ADMINISTRATOR  
US COAST GUARD  
NINTH COAST GUARD DISTRICT  
1240 E. NINTH ST  
CLEVELAND, OH 44199-2060

FILE NAME :	USER NAME : pyzanzovskrb	DESIGNED -	REVISED -	<b>STATE OF ILLINOIS DEPARTMENT OF TRANSPORTATION</b>	<b>INDEX OF SHEETS, STATE STANDARDS AND GENERAL NOTES</b>	F.A. RTE.	SECTION	COUNTY	TOTAL SHEETS	SHEET NO.
p:\IL\094EBIDINTEC\illinois.gov\PI\DOT\Documents\IDOT Offices\District 1\Projects\0118217\0118217-stds-plan.dgn		CHECKED -	REVISED -			397	104-BR	COOK	22	2
Default	PLOT SCALE = 100.0000' / in.	DATE -	REVISED -			CONTRACT NO. 62099				
	PLOT DATE = 4/10/2017					SCALE: SHEET OF SHEETS STA. TO STA.		[ILLINOIS] FED. AID PROJECT		

URBAN

URBAN

SUMMARY OF QUANTITIES			CONSTRUCTION TYPE CODE 0014				
CODE NO	ITEM	UNIT	TOTAL QUANTITIES	100% STATE 0014			
42001300	PROTECTIVE COAT	SO YD	517	517			
50900105	ALUMINUM RAILING, TYPE L	FOOT	29	29			
X0900043	PREFORMED JOINT STRIP SEAL, 1"	FOOT	128	128			
67000400	ENGINEER'S FIELD OFFICE, TYPE A	CAL MO	6	6			
67100100	MOBILIZATION	LSUM	1	1			
70300904	PAVEMENT MARKING TAPE, TYPE IV 4"	FOOT	5064	5064			
* 78000200	THERMOPLASTIC PAVEMENT MARKING - LINE 4"	FOOT	1001	1001			
* 78008210	POLYUREA PAVEMENT MARKING TYPE I - LINE 4"	FOOT	288	288			
78100300	REPLACEMENT REFLECTOR	EACH	55	55			
X0326766	CLEAN & RESEAL RELIEF JOINT	FOOT	88	88			
X0327980	PAVEMENT MARKING REMOVAL - WATER BLASTING	SO FT	866	866			
X5870015	BRIDGE DECK CONCRETE SEALER	SO FT	538	538			
X7010216	TRAFFIC CONTROL AND PROTECTION, (SPECIAL)	LSUM	1	1			
X7030005	TEMPORARY PAVEMENT MARKING REMOVAL	SO FT	1688	1688			
Z0001700	APPROACH SLAB REPAIR (FULL DEPTH)	SO YD	1	1			
Z0001800	APPROACH SLAB REPAIR (PARTIAL DEPTH)	SO YD	3	3			

SUMMARY OF QUANTITIES			CONSTRUCTION TYPE CODE 0014				
CODE NO	ITEM	UNIT	TOTAL QUANTITIES	100% STATE 0014			
Z0012102	CONCRETE BRIDGE DECK SCARIFICATION 3/8 INCH	SO YD	939	939			
Z0012193	BRIDGE DECK THIN POLYMER OVERLAY 3/8"	SO YD	939	939			
Z0012755	STRUCTURAL REPAIR OF CONCRETE (DEPTH GREATER THAN 5 INCHES)	SO FT	4	4			
Z0016200	DECK SLAB REPAIR (PARTIAL)	SO YD	14	14			
Z0030850	TEMPORARY INFORMATION SIGNING	SO FT	51.4	51.4			
Z0041895	POLYMER CONCRETE	CU FT	6.6	6.6			

FILE NAME:   
 USER NAME:   
 DESIGNED:   
 REVISIONS:   
 PLOT SCALE: 1000000 / 1" = 100'   
 PLOT DATE: 4/11/2017

STATE OF ILLINOIS  
 DEPARTMENT OF TRANSPORTATION

SUMMARY OF QUANTITIES  
 SCALE: SHEET NO. OF SHEETS STA. TO STA.

F.A. RTE. 397 SECTION 104-BR COUNTY COOK TOTAL SHEET NO. 22 3 CONTRACT NO. 62099  
 FED. ROAD DIST. NO. 1 ILLINOIS FED. AID PROJECT

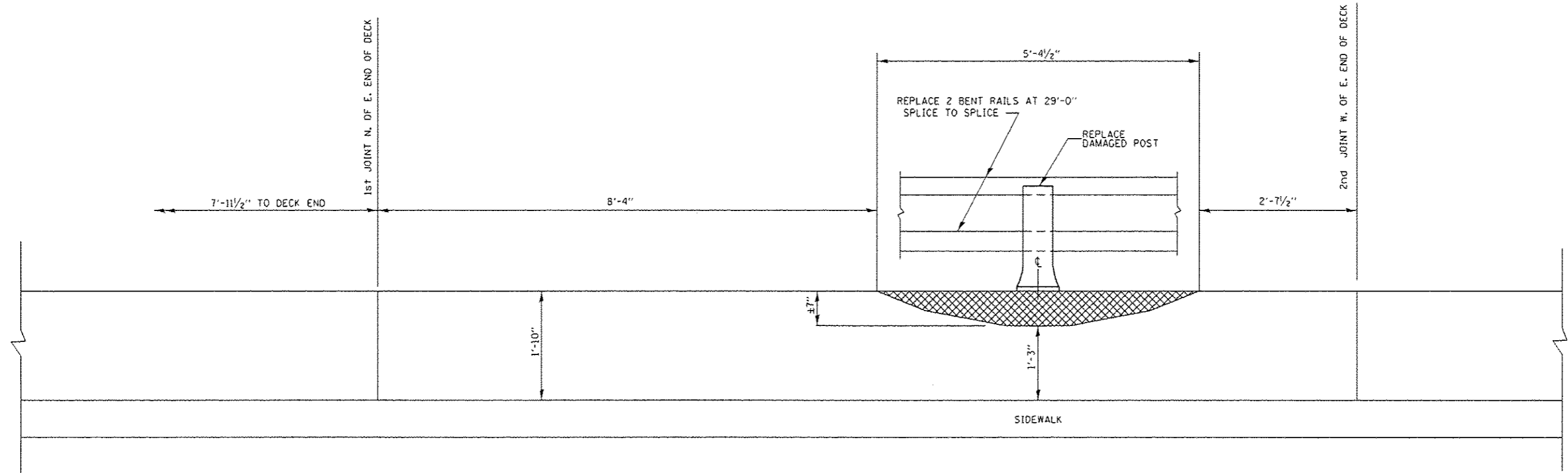
16

Rev

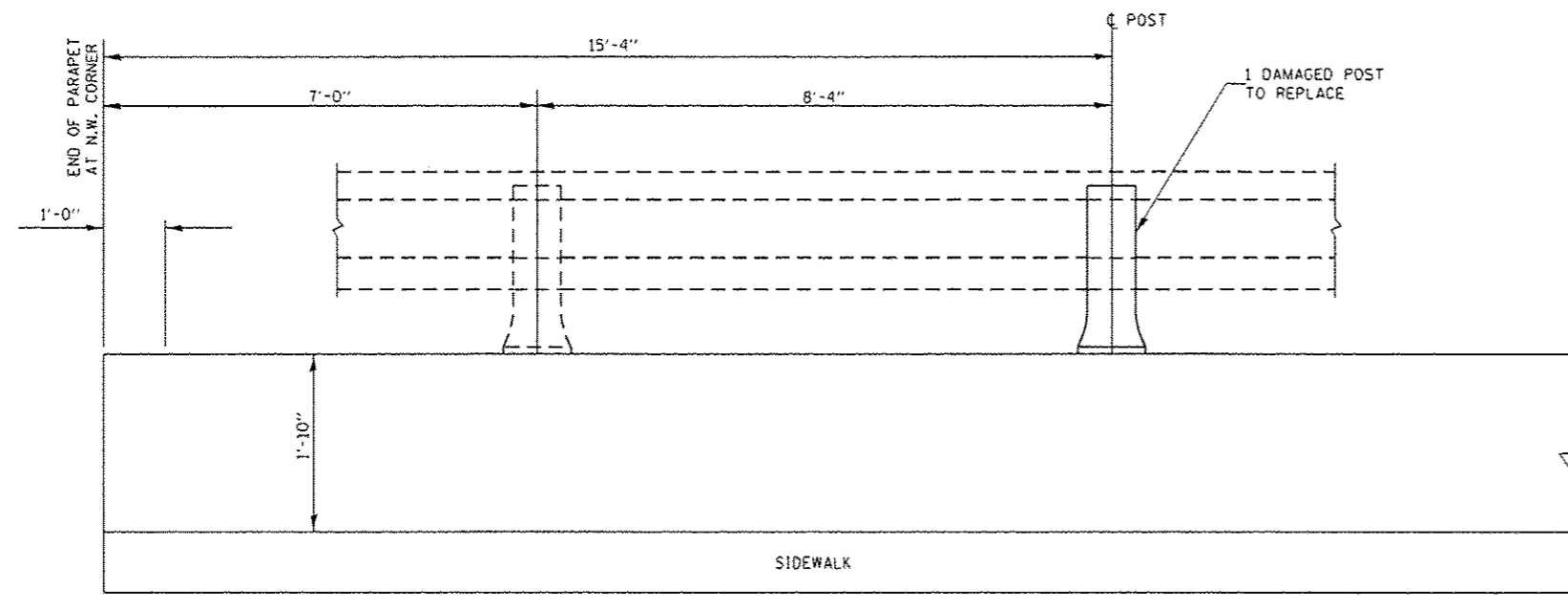








**SOUTH (EB) CONCRETE BRIDGE RAIL SPAN 4 FROM WEST**



**NORTH (WB) POST REPAIR**

**LEGEND:**

STRUCTURAL REPAIR OF CONCRETE (DEPTH >5")

**NOTE:**

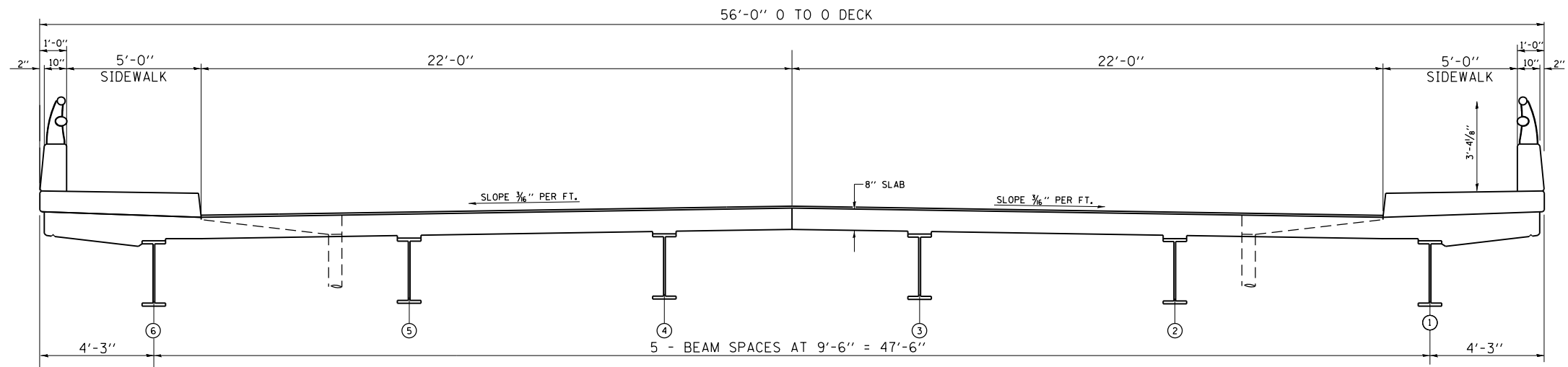
PARAPET THICKNES RANGE FROM 10" AT TOP TO 12" AT SPACE  
 COST OF POSTS AND RAIL REMOVAL INCLUDED WITH ALUMINUM RAILING, TYPE L

**BILL OF MATERIALS**

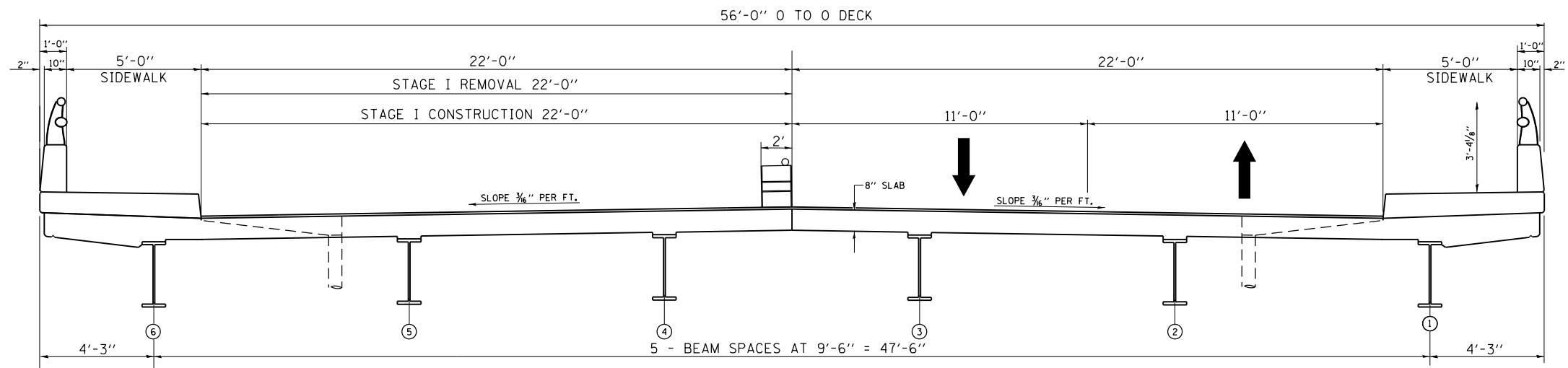
ITEM	UNIT	QUANTITY
ALUMINUM RAILING, TYPE L	FOOT	29
STRUCTURAL REPAIR OF CONCRETE (DEPTH >5")	SO.FT.	4



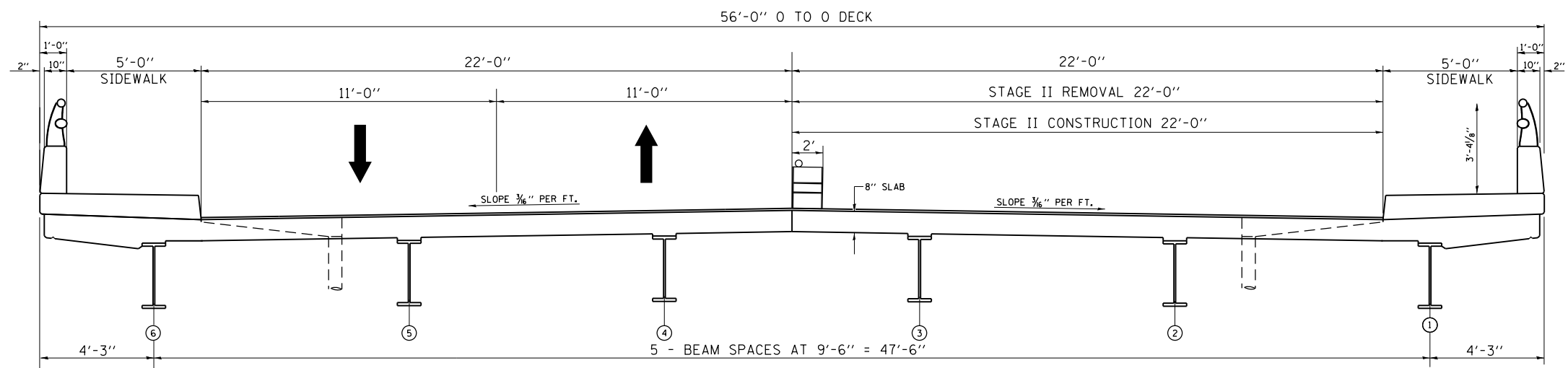




**CROSS SECTION**  
(LOOKING EAST)



**CROSS SECTION**  
(LOOKING EAST)

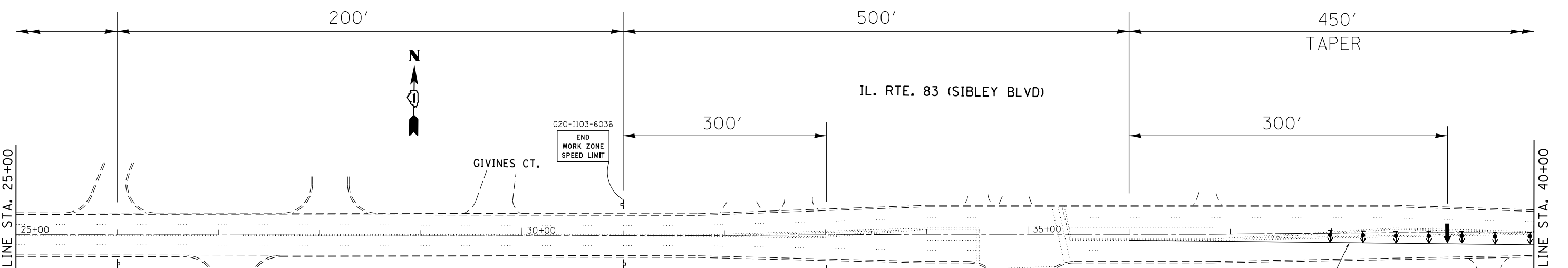
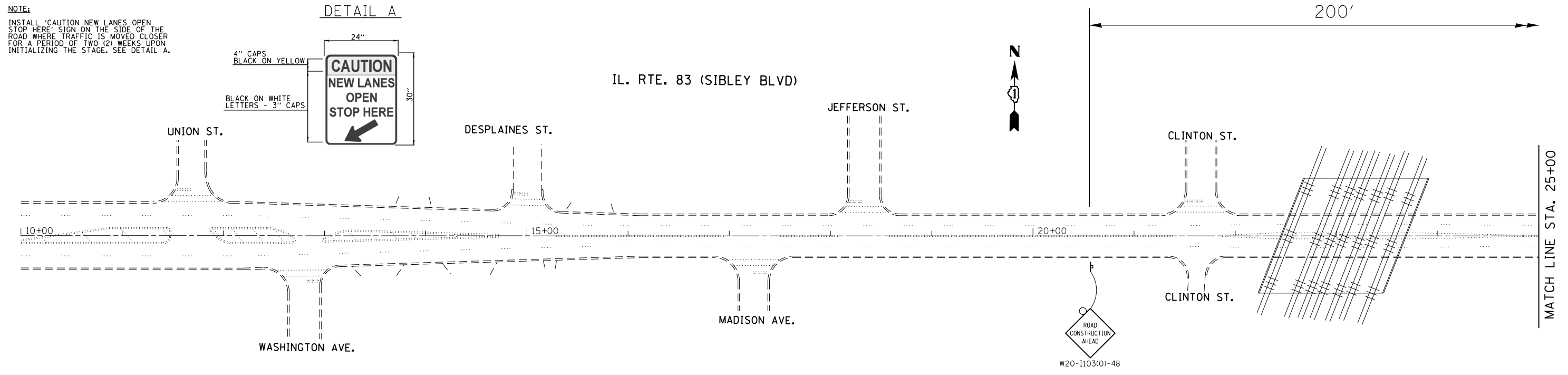
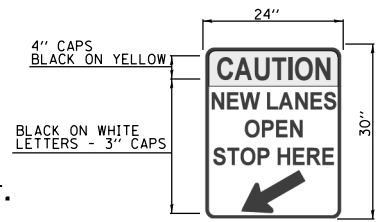


**CROSS SECTION**  
(LOOKING EAST)

FILE NAME =	USER NAME = pyznowskrb	DESIGNED -	REVISED -	<b>STATE OF ILLINOIS DEPARTMENT OF TRANSPORTATION</b>	<b>TRAFFIC CONTROL CROSS SECTIONS</b>			F.A.P. RTE.	SECTION	COUNTY	TOTAL SHEETS	SHEET NO.
pw\11084EBIDINTEG.illinois.gov\PIWIDOT\Documents\IDOT Offices\District 1\Projects\D118217\Drawings\Design\118217-shr-plan.dgn		CHECKED -	REVISED -		<b>IL 83 (SIBLEY BLVD.) OVER LITTLE CALUMET RIVER (SN 016-0954)</b>			397	104-BR	COOK	22	9
Default	PLOT SCALE = 100.0000' / in.	DATE -	REVISED -		SCALE:	SHEET 1	OF 1 SHEETS	STA.	TO STA.	<b>CONTRACT NO. 62D99</b>		
	PLOT DATE = 4/3/2017				ILLINOIS FED. AID PROJECT							

**NOTE:**  
 INSTALL "CAUTION NEW LANES OPEN STOP HERE" SIGN ON THE SIDE OF THE ROAD WHERE TRAFFIC IS MOVED CLOSER FOR A PERIOD OF TWO (2) WEEKS UPON INITIALIZING THE STAGE. SEE DETAIL A.

**DETAIL A**



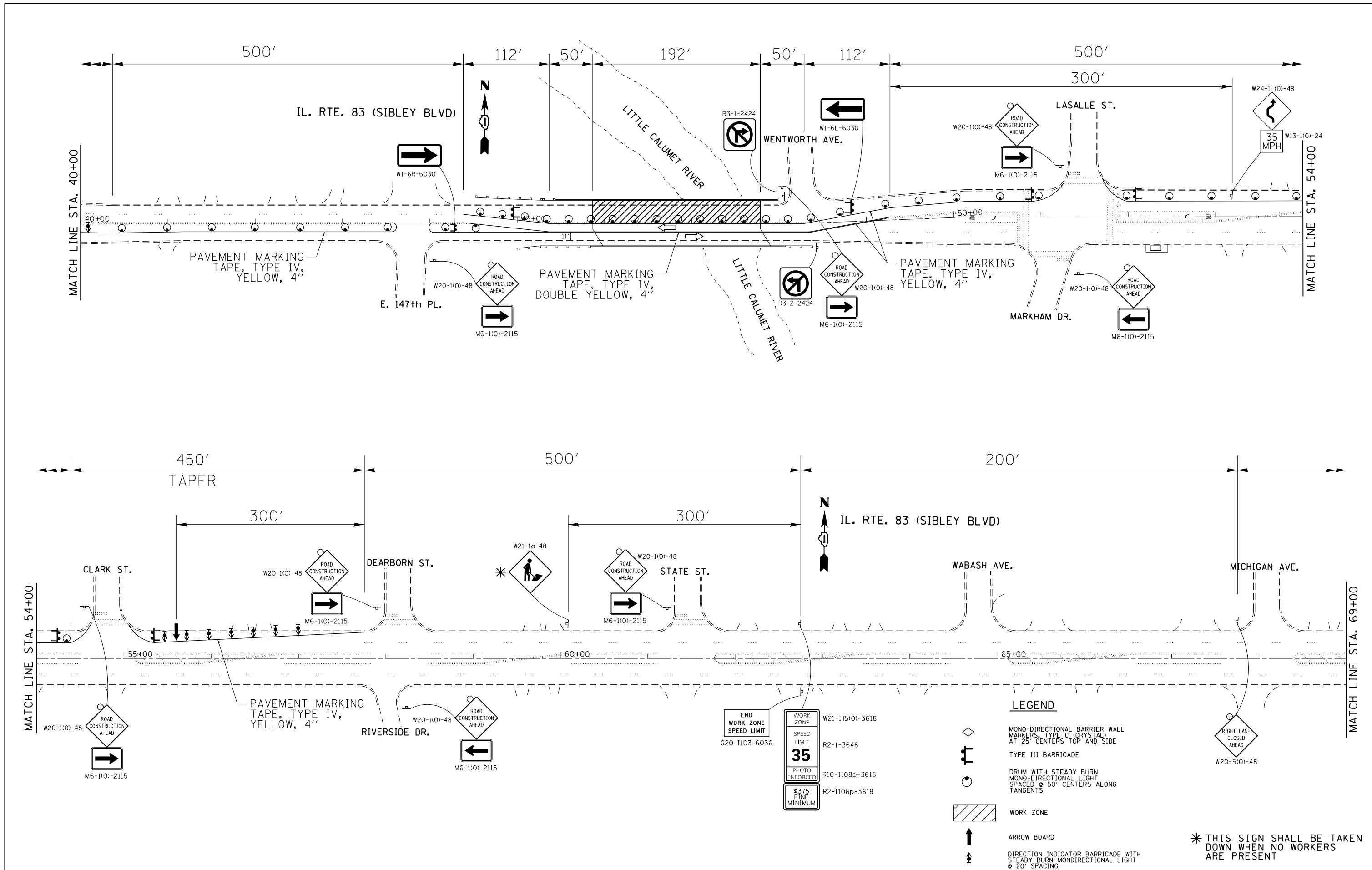
- LEGEND**
- MONO-DIRECTIONAL BARRIER WALL MARKERS, TYPE C (CRYSTAL) AT 25' CENTERS TOP AND SIDE
  - TYPE III BARRICADE
  - DRUM WITH STEADY BURN MONO-DIRECTIONAL LIGHT SPACED @ 50' CENTERS ALONG TANGENTS
  - WORK ZONE
  - ARROW BOARD
  - DIRECTION INDICATOR BARRICADE WITH STEADY BURN MONODIRECTIONAL LIGHT @ 20' SPACING

- WORK ZONE W21-1115(0)-3618
- SPEED LIMIT R2-1-3648
- PHOTO ENFORCED R10-1108p-3618
- \$375 FINE MINIMUM R2-1106p-3618



FILE NAME =	USER NAME = pyrzenowski	DESIGNED -	REVISED -	<b>STATE OF ILLINOIS DEPARTMENT OF TRANSPORTATION</b>	<b>TRAFFIC CONTROL AND PROTECTION (STAGE I) IL. RTE. 83 (OVER LITTLE CALUMET RIVER)</b>	F.A.P. RTE.	SECTION	COUNTY	TOTAL SHEETS	SHEET NO.	
pw:\IL\084EBIDINTEG\illinois.gov\PI\DOT\Documents\DOT Offices\District 1\Projects\118217\Drawings\Design\118217-sh1-plan.dgn	PLLOT SCALE = 100.0000' / in.	CHECKED -	REVISED -			397	104-BR	COOK	22	10	
Default	PLLOT DATE = 4/10/2017	DATE -	REVISED -			CONTRACT NO. 62D99					
						ILLINOIS FED. AID PROJECT					

SCALE: SHEET 1 OF 3 SHEETS STA. TO STA.



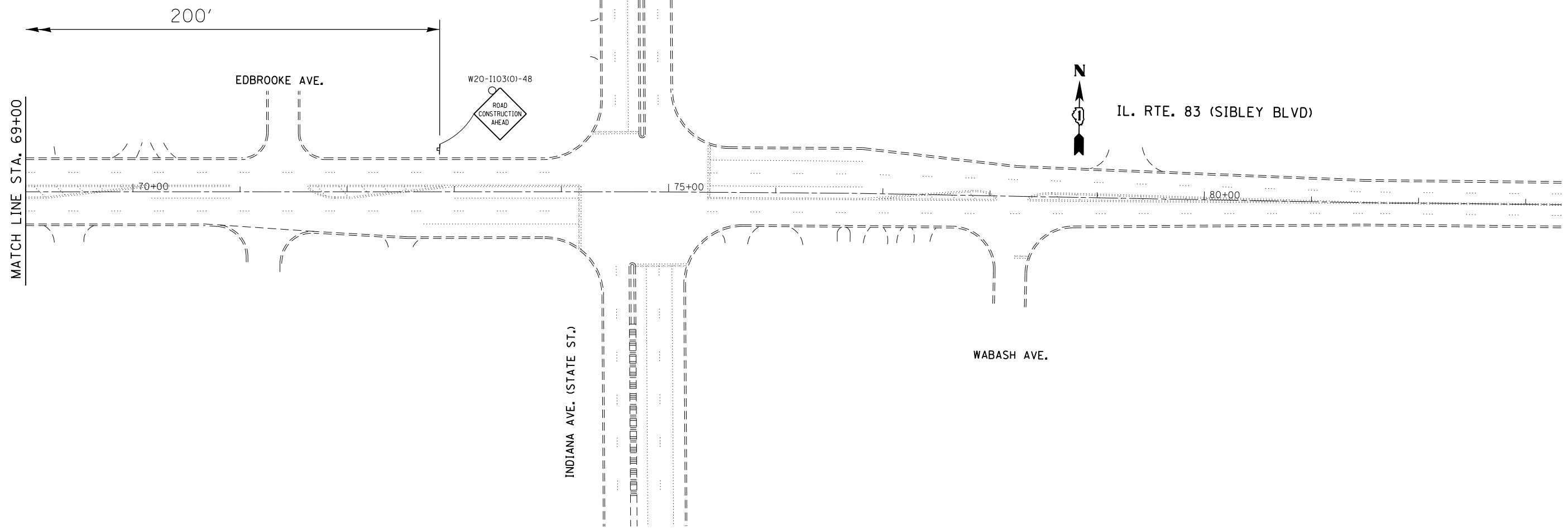
FILE NAME =	USER NAME = pyrzenowski	DESIGNED -	REVISED -
p:\IL\084EBID\INTEG\illinois.gov\PI\DOT\Documents\DOT Offices\District 1\Projects\DI18217\Drawings\Design\DI18217-sh1-plan.dgn		REVISED -	REVISED -
Default	PLOT SCALE = 100.0000' / 1" =	CHECKED -	REVISED -
	PLOT DATE = 4/7/2017	DATE -	REVISED -

**STATE OF ILLINOIS  
DEPARTMENT OF TRANSPORTATION**




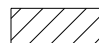

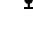
**TRAFFIC CONTROL AND PROTECTION (STAGE I)  
IL. RTE. 83 (OVER LITTLE CALUMET RIVER)**

F.A.P. RTE.	SECTION	COUNTY	TOTAL SHEETS	SHEET NO.
397	104-BR	COOK	22	11
CONTRACT NO. 62D99				
ILLINOIS FED. AID PROJECT				

SCALE: SHEET 2 OF 3 SHEETS STA. TO STA.



**LEGEND**

-  MONO-DIRECTIONAL BARRIER WALL MARKERS, TYPE C (CRYSTAL) AT 25' CENTERS TOP AND SIDE
-  TYPE III BARRICADE
-  DRUM WITH STEADY BURN MONO-DIRECTIONAL LIGHT SPACED @ 50' CENTERS ALONG TANGENTS
-  WORK ZONE
-  ARROW BOARD
-  DIRECTION INDICATOR BARRICADE WITH STEADY BURN MONODIRECTIONAL LIGHT @ 20' SPACING

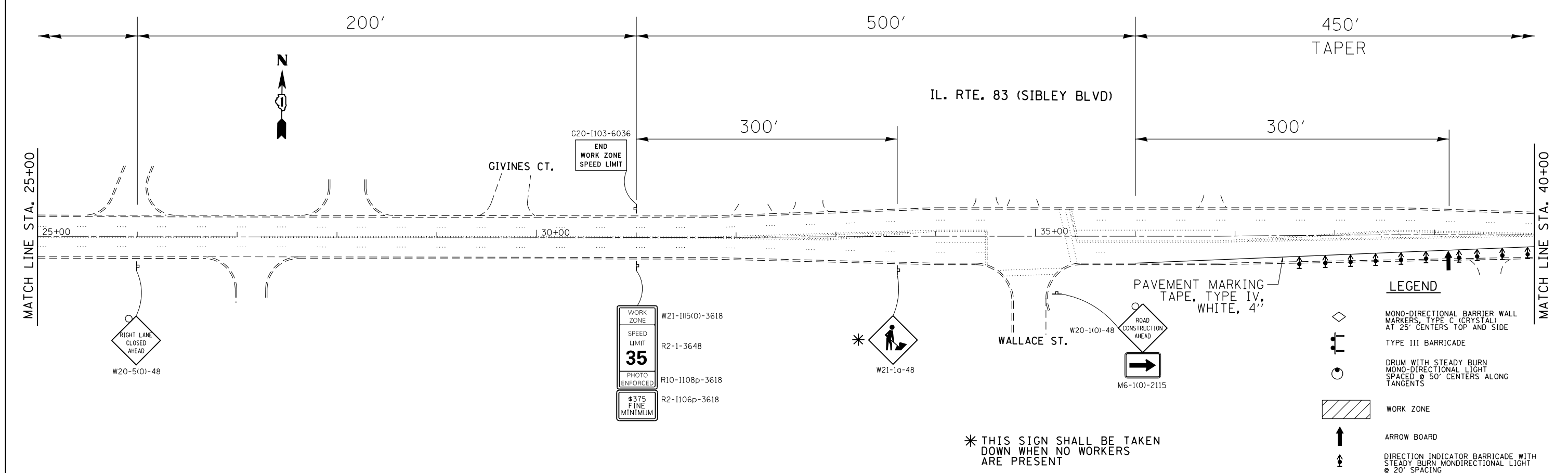
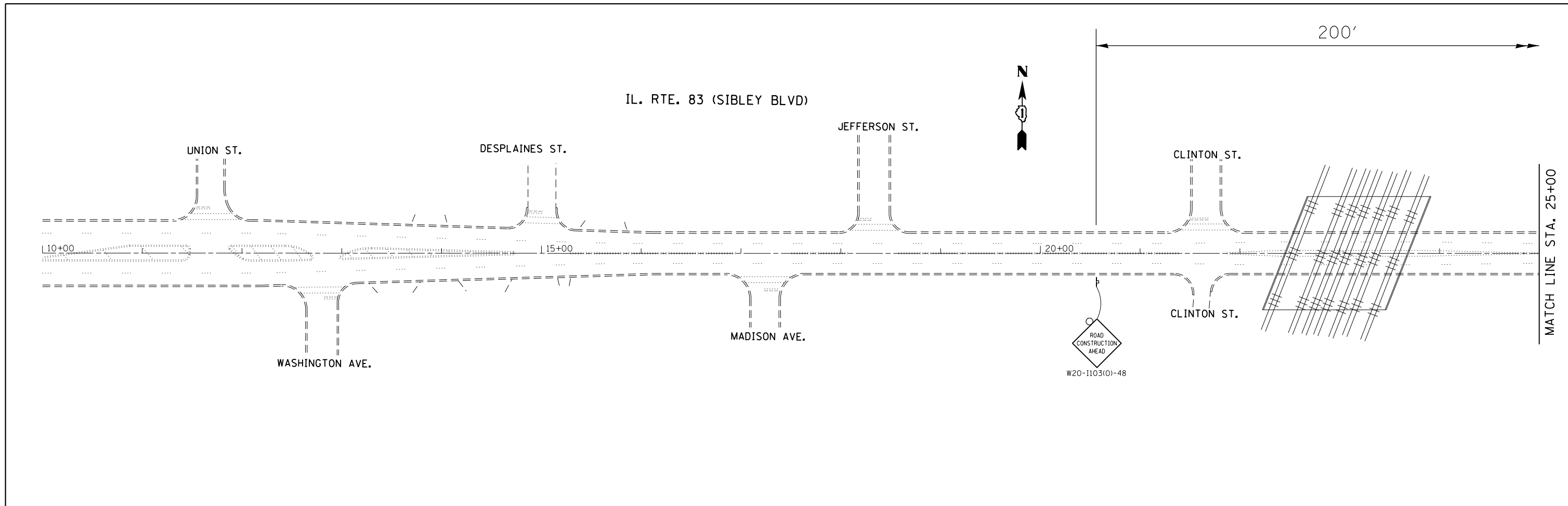
FILE NAME =	USER NAME = pyrzenowski	DESIGNED -	REVISED -
pw:\IL\084EBIDINTEG\illinois.gov\PIWIDOT\Documents\IDOT Offices\District 1\Projects\D118217\Drawings\Design\0118217-sh1-plan.dgn		CHECKED -	REVISED -
Default	PLOT SCALE = 100.0000' / in.	DATE -	REVISED -
	PLOT DATE = 4/7/2017		

**STATE OF ILLINOIS  
DEPARTMENT OF TRANSPORTATION**

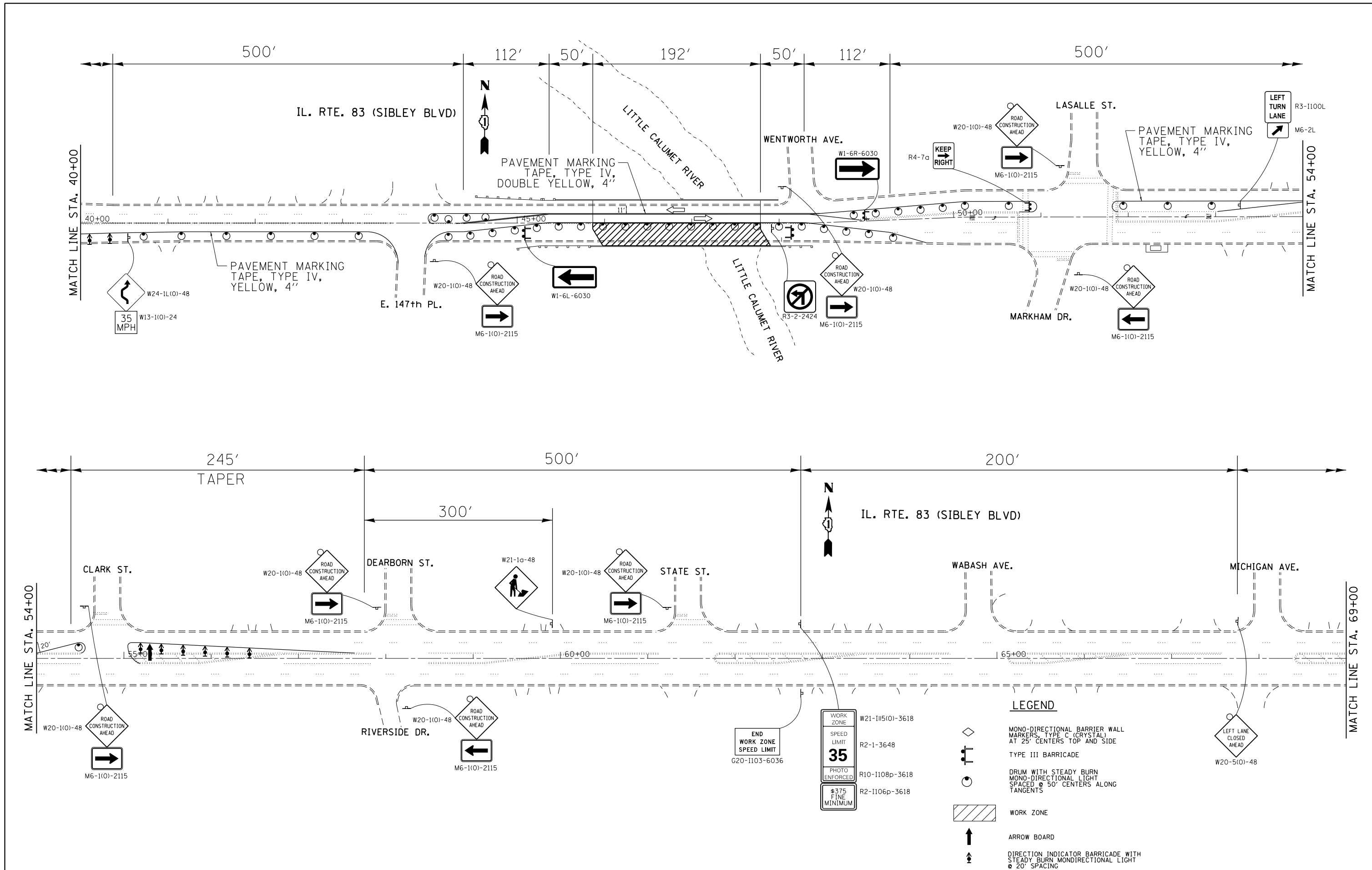
**TRAFFIC CONTROL AND PROTECTION (STAGE I)  
IL. RTE. 83 (OVER LITTLE CALUMET RIVER)**

SCALE: SHEET 3 OF 3 SHEETS STA. TO STA.

F.A.P. RTE.	SECTION	COUNTY	TOTAL SHEETS	SHEET NO.
397	104-BR	COOK	22	12
CONTRACT NO. 62D99				
ILLINOIS FED. AID PROJECT				



FILE NAME =	USER NAME = pyrzenowski	DESIGNED -	REVISED -	<b>STATE OF ILLINOIS DEPARTMENT OF TRANSPORTATION</b>	<b>TRAFFIC CONTROL AND PROTECTION (STAGE II) IL. RTE. 83 (OVER LITTLE CALUMET RIVER)</b>	F.A.P. RTE.	SECTION	COUNTY	TOTAL SHEETS	SHEET NO.	
pw\IL084EBIDINTEG.illinois.gov\PIWIDOT\Documents\IDOT Offices\District 1\Projects\D118217\Drawings\Design\118217-sh1-plan.dgn		CHECKED -	REVISED -			397	104-BR	COOK	22	13	
Default	PLOT SCALE = 100.0000' / in.	DATE -	REVISED -			CONTRACT NO. 62D99					
	PLOT DATE = 4/7/2017					ILLINOIS FED. AID PROJECT					



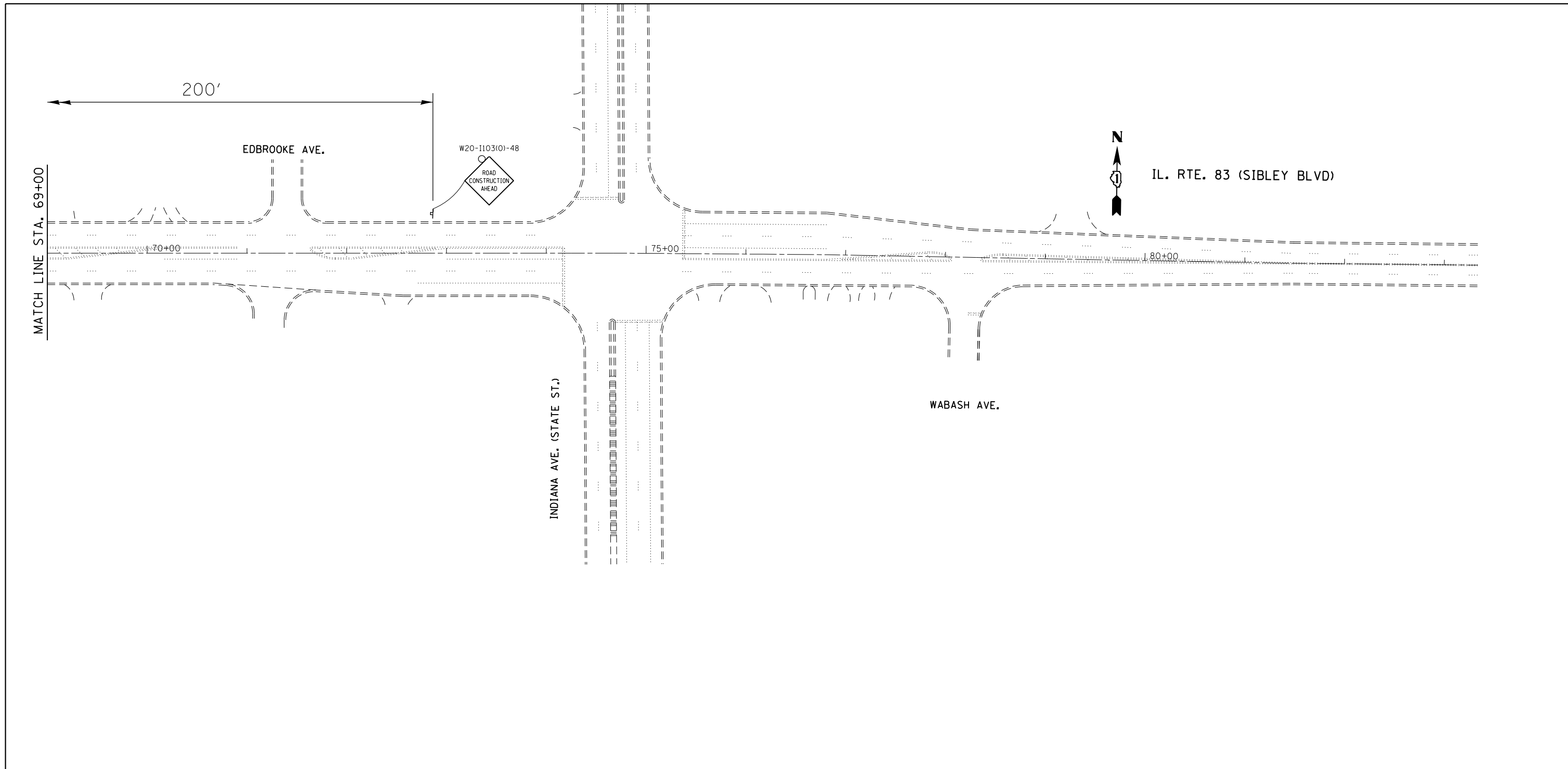
FILE NAME =	USER NAME = pyrzezowski	DESIGNED -	REVISED -
p:\IL\084EBID\INTEG\illinois.gov\PI\DOT\Documents\DOT Offices\District 1\Projects\DI18217\Drawings\Design\DI18217-sh1-plan.dgn		REVISED -	REVISED -
Default	PLOT SCALE = 100.0000' / 1" /	CHECKED -	REVISED -
	PLOT DATE = 4/10/2017	DATE -	REVISED -

**STATE OF ILLINOIS  
DEPARTMENT OF TRANSPORTATION**




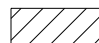


**TRAFFIC CONTROL AND PROTECTION (STAGE II)  
IL. RTE. 83 (OVER LITTLE CALUMET RIVER)**

F.A.P. RTE.	SECTION	COUNTY	TOTAL SHEETS	SHEET NO.
397	104-BR	COOK	22	14
CONTRACT NO. 62D99				
ILLINOIS FED. AID PROJECT				

SCALE: SHEET 2 OF 3 SHEETS STA. TO STA.



**LEGEND**

-  MONO-DIRECTIONAL BARRIER WALL MARKERS, TYPE C (CRYSTAL) AT 25' CENTERS TOP AND SIDE
-  TYPE III BARRICADE
-  DRUM WITH STEADY BURN MONO-DIRECTIONAL LIGHT SPACED @ 50' CENTERS ALONG TANGENTS
-  WORK ZONE
-  ARROW BOARD
-  DIRECTION INDICATOR BARRICADE WITH STEADY BURN MONODIRECTIONAL LIGHT @ 20' SPACING

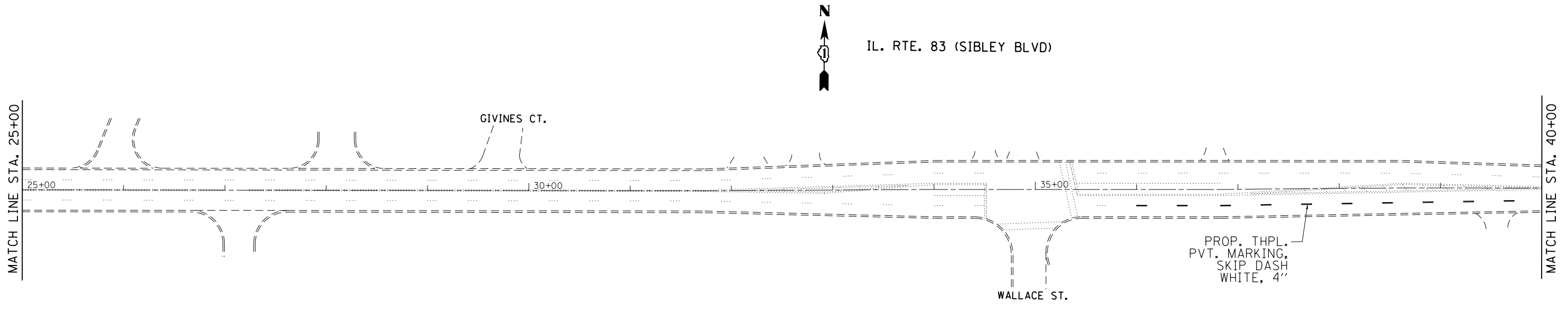
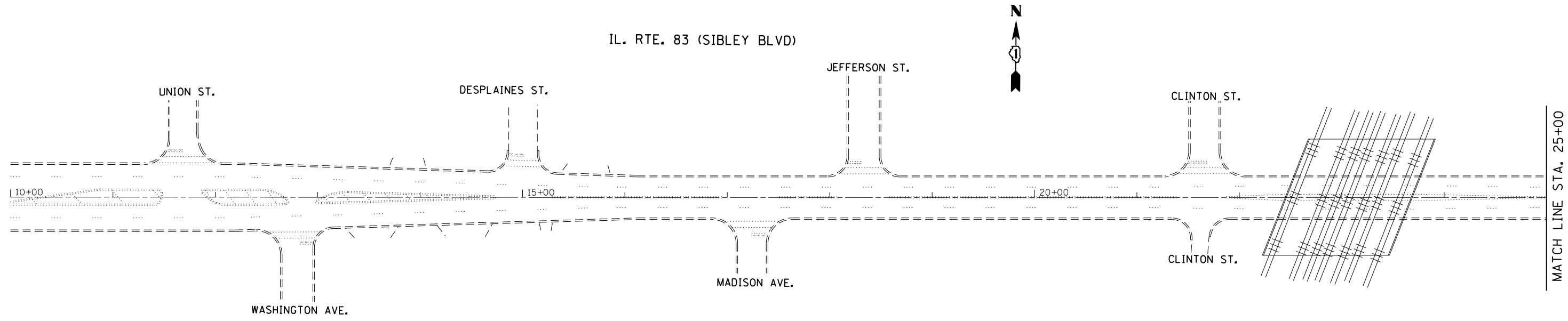
FILE NAME =	USER NAME = pyrzenowski	DESIGNED -	REVISED -
pw:\IL\084EBIDINTEG\illinois.gov\PI\DOT\Documents\IDOT Offices\District 1\Projects\D118217\Drawings\Design\118217-sh1-plan.dgn		CHECKED -	REVISED -
Default	PLOT DATE = 4/7/2017	DATE -	REVISED -

**STATE OF ILLINOIS  
DEPARTMENT OF TRANSPORTATION**

**TRAFFIC CONTROL AND PROTECTION (STAGE II)  
IL. RTE. 83 (OVER LITTLE CALUMET RIVER)**

SCALE: SHEET 3 OF 3 SHEETS STA. TO STA.

F.A.P. RTE.	SECTION	COUNTY	TOTAL SHEETS	SHEET NO.
397	104-BR	COOK	22	15
CONTRACT NO. 62D99				
ILLINOIS FED. AID PROJECT				



FILE NAME =	USER NAME = pyrzenowski	DESIGNED -	REVISED -
p:\IL\084EBIDINTEG\illinois.gov\PIWIDOT\Documents\IDOT Offices\District 1\Projects\D118217\Drawings\Design\118217-sh1-plan.dgn		CHECKED -	REVISED -
Default	PLOT DATE = 4/7/2017	DATE -	REVISED -

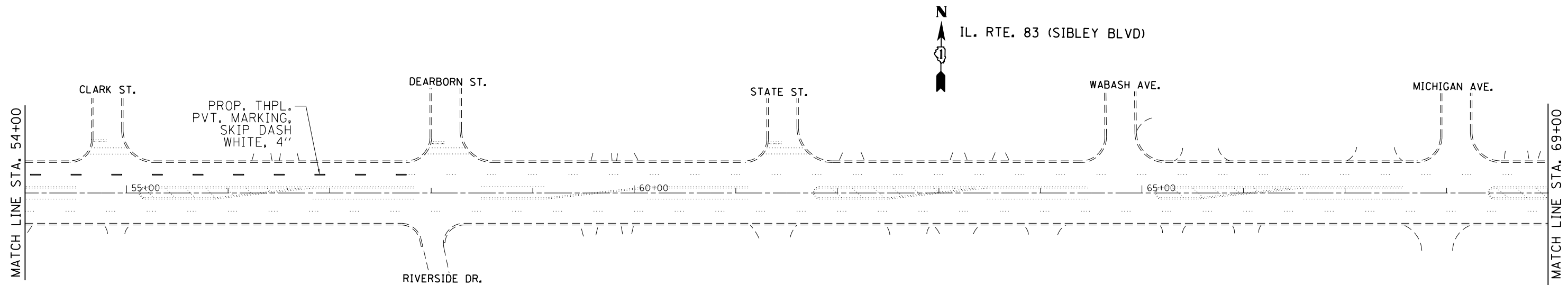
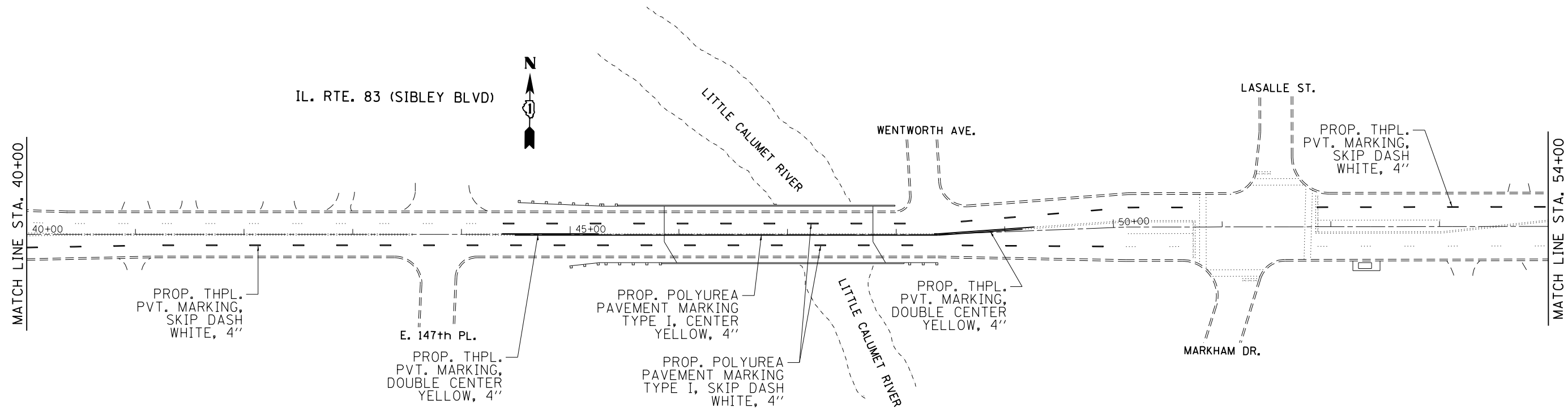
**STATE OF ILLINOIS  
DEPARTMENT OF TRANSPORTATION**

**TRAFFIC CONTROL AND PROTECTION (STAGE I)  
IL. RTE. 83 (OVER LITTLE CALUMET RIVER)**

SCALE: SHEET 1 OF 3 SHEETS STA. TO STA.

F.A.P. RTE.	SECTION	COUNTY	TOTAL SHEETS	SHEET NO.
397	104-BR	COOK	22	16
CONTRACT NO. 62D99				
ILLINOIS FED. AID PROJECT				





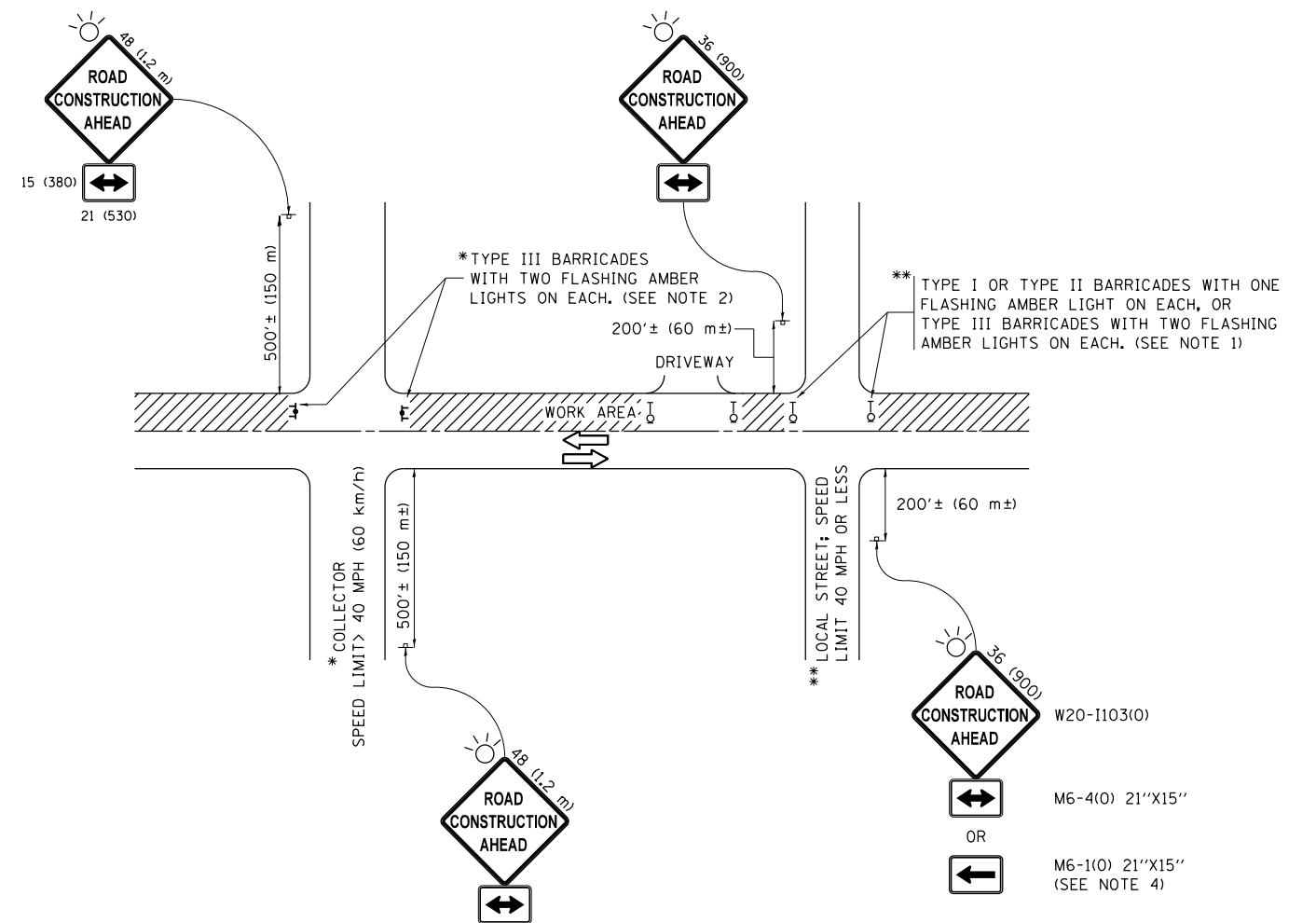
FILE NAME =	USER NAME = pyrzenowski	DESIGNED -	REVISED -
p:\IL\084EBIDINTEG\illinois.gov\PI\DOT\Documents\DOT Offices\District 1\Projects\118217\Drawings\Design\118217-sh1-plan.dgn		CHECKED -	REVISED -
Default	PLOT DATE = 4/7/2017	DATE -	REVISED -

**STATE OF ILLINOIS  
DEPARTMENT OF TRANSPORTATION**

**TRAFFIC CONTROL AND PROTECTION (STAGE I)  
IL. RTE. 83 (OVER LITTLE CALUMET RIVER)**

SCALE: SHEET 2 OF 3 SHEETS STA. TO STA.

F.A.P. RTE.	SECTION	COUNTY	TOTAL SHEETS	SHEET NO.
397	104-BR	COOK	22	17
CONTRACT NO. 62D99				
ILLINOIS FED. AID PROJECT				



**NOTES:**

1. SIDE ROAD WITH A SPEED LIMIT OF 40 MPH (60 km/h) OR LESS AS SHOWN ON THE DRAWING AND AS DIRECTED BY THE ENGINEER:
  - a) ONE "ROAD CONSTRUCTION AHEAD" SIGN 36 x 36 (900x900) WITH A FLASHER MOUNTED ON IT APPROXIMATELY 200' (60 m) IN ADVANCE OF THE MAIN ROUTE.
  - b) THE CLOSED PORTION OF THE MAIN ROUTE SHALL BE PROTECTED BY BLOCKING WITH TYPE I, TYPE II OR TYPE III BARRICADES, 1/3 OF THE CROSS SECTION OF THE CLOSED PORTION.
2. SIDE ROAD WITH A SPEED LIMIT GREATER THAN 40 MPH (60 km/h) AS SHOWN ON THE DRAWING AND AS DIRECTED BY THE ENGINEER:
  - a) ONE "ROAD CONSTRUCTION AHEAD" SIGN 48 x 48 (1.2 m x 1.2 m) WITH A FLASHER MOUNTED ON IT APPROXIMATELY 500' (150 m) IN ADVANCE OF THE MAIN ROUTE.
  - b) THE CLOSED PORTION OF THE MAIN ROUTE SHALL BE PROTECTED BY BLOCKING WITH TYPE III BARRICADES, 1/2 OF THE CROSS SECTION OF THE CLOSED PORTION.
3. CONES MAY BE SUBSTITUTED FOR BARRICADES OR DRUMS AT HALF THE SPACING DURING DAY OPERATIONS. CONES SHALL BE A MINIMUM OF 28 (710) IN HEIGHT.
4. WHEN THE SIDE ROAD LIES BETWEEN THE BEGINNING OF THE MAINLINE SIGNING AND THE WORK ZONE, A SINGLE HEADED ARROW (M6-1) SHALL BE USED IN LIEU OF THE DOUBLE HEADED ARROW (M6-4).
5. WHEN WORK IS BEING PERFORMED ON A SIDE ROAD OR DRIVEWAY, FOLLOW THE APPLICABLE STANDARD(S). THE DIRECTIONAL ARROW (M6-1 OR M6-4) SHALL BE COVERED OR REMOVED WHEN NO LONGER CONSISTENT WITH THE TRAFFIC CONTROL SET-UP.
6. ADVANCE WARNING SIGNS ARE TO BE OMITTED ON DRIVEWAYS UNLESS OTHERWISE SPECIFIED IN THE PLANS OR BY THE ENGINEER.
7. THE TRAFFIC CONTROL AND PROTECTION FOR SIDE ROADS, INTERSECTIONS, AND DRIVEWAYS SHALL BE INCLUDED IN THE COST OF SPECIFIED TRAFFIC CONTROL STANDARDS OR ITEMS.

All dimensions are in inches (millimeters) unless otherwise shown.

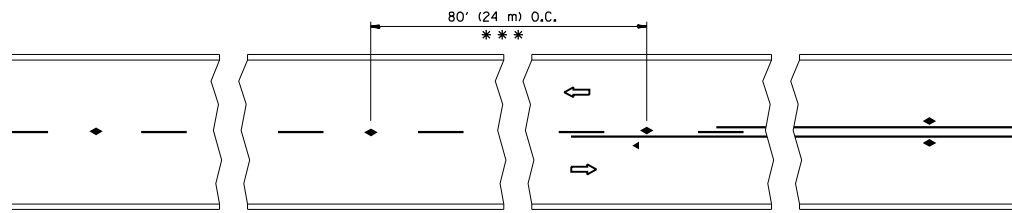
FILE NAME =	USER NAME = pyrzenowski	DESIGNED - L.H.A.	REVISED - A. HOUSEH 10-15-96
pw:\IL\084EBIDINTEG\illinois.gov\PWIDOT\Documents\IDOT Offices\District 1\Projects\DI1821\Drawings\Design\Diststd.dgn			REVISED - T. RAMMACHER 01-06-00
Default	PLOT SCALE = 100.0000' / in.	CHECKED -	REVISED - A. SCHUETZE 07-01-13
	PLOT DATE = 4/3/2017	DATE - 06-89	REVISED - A. SCHUETZE 09-15-16

**STATE OF ILLINOIS  
DEPARTMENT OF TRANSPORTATION**

**TRAFFIC CONTROL AND PROTECTION FOR  
SIDE ROADS, INTERSECTIONS, AND DRIVEWAYS**

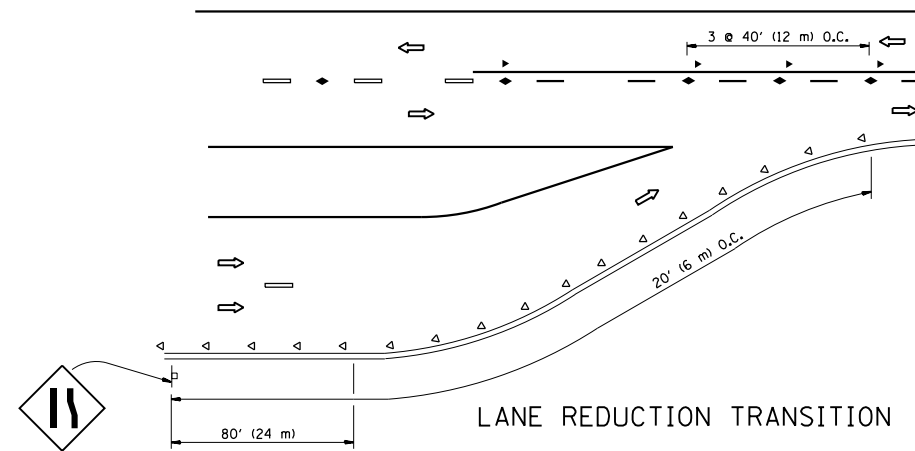
SCALE: NONE SHEET 1 OF 1 SHEETS STA. TO STA.

F.A. RTE.	SECTION	COUNTY	TOTAL SHEETS	SHEET NO.
397	104-BR	COOK	22	18
<b>TC-10</b>			<b>CONTRACT NO. 62D99</b>	
ILLINOIS FED. AID PROJECT				

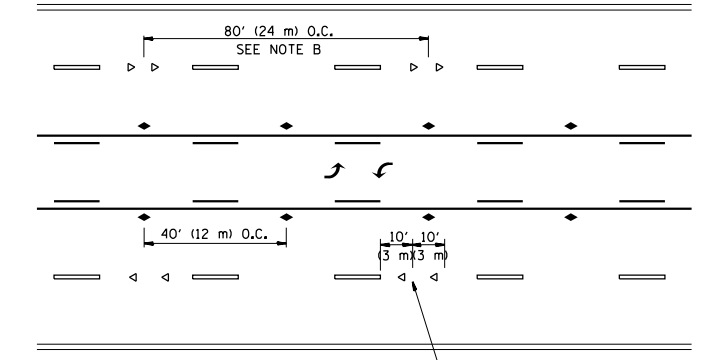


\*\*\* REDUCE TO 40' (12 m) O.C. ON CURVES WITH POSTED OR ADVISORY SPEED 45 M.P.H. (70 km/h) OR LESS.

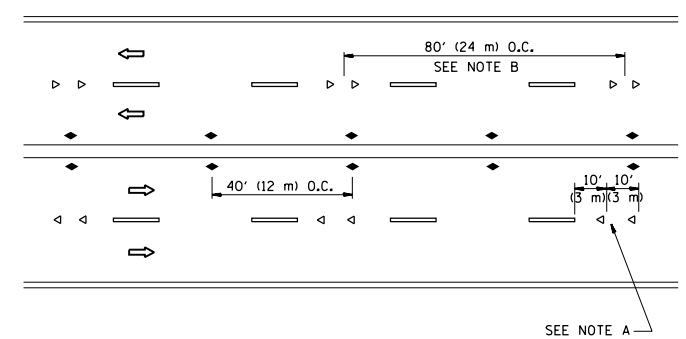
TWO-LANE/TWO-WAY



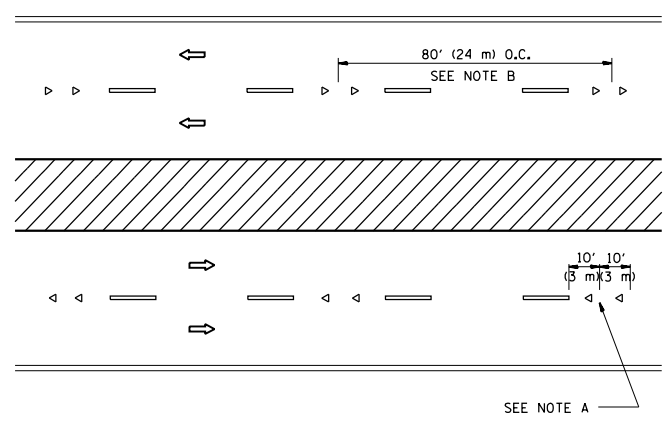
LANE REDUCTION TRANSITION



TWO-WAY LEFT TURN



MULTI-LANE/UNDIVIDED



MULTI-LANE/DIVIDED

GENERAL NOTES

1. MARKERS USED WITH DASHED LINES SHALL BE CENTERED IN THE GAP BETWEEN SEGMENTS.
2. MARKERS USED ADJACENT TO SOLID LINES SHALL BE OFFSET 2 TO 3 (50 TO 75) TOWARD TRAFFIC AS SHOWN.
3. MARKERS THROUGH TANGENTS LESS THAN 500' (150 m) IN LENGTH BETWEEN CURVES SHALL BE INSTALLED AT THE LESSER OF THE TWO CURVE SPACINGS.

SYMBOLS

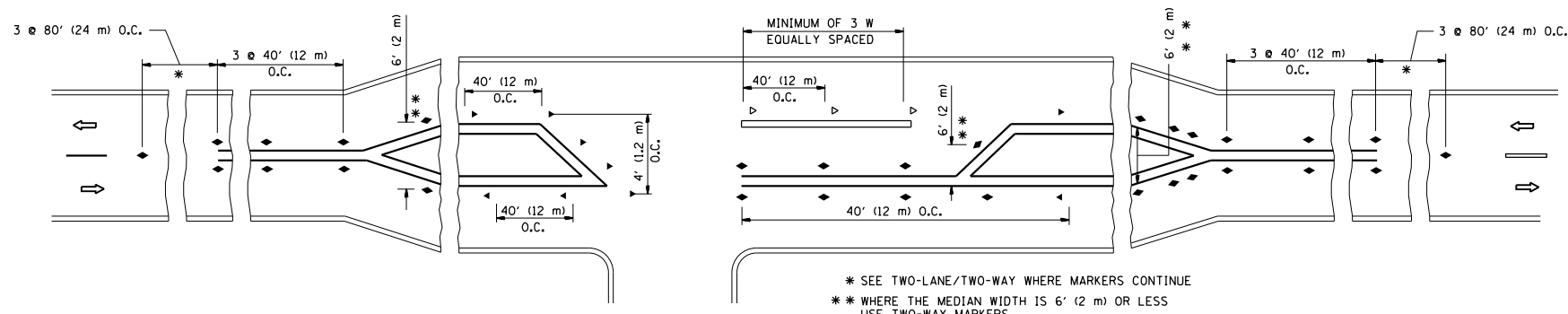
- YELLOW STRIPE
- WHITE STRIPE
- ◀ ONE-WAY AMBER MARKER
- ◁ ONE-WAY CRYSTAL MARKER (W/O)
- ◆ TWO-WAY AMBER MARKER

LANE MARKER NOTES

- A. USE DOUBLE LANE LINE MARKERS SPACED AS SHOWN.
- B. REDUCE TO 40' (12 m) O.C. ON CURVES WHERE ADVISORY SPEEDS ARE 10 M.P.H (20 km/h) LOWER THAN POSTED SPEEDS.

DESIGN NOTES

1. DOUBLE LANE LINE MARKERS SHALL BE USED UNLESS SPECIFIED OTHERWISE.
2. EXCEPT AS SHOWN ON THE LANE REDUCTION TRANSITION AND FREEWAY EXIT RAMP DETAIL, MARKERS ARE NOT TO BE SPECIFIED ON RIGHT EDGE LINES.
3. THE EXACT MARKER LIMITS, SPACING, AND COLOR SHALL BE INCLUDED IN THE PLANS WHEN STANDARD SPECIFICATIONS ARE NOT BEING USED.
4. MARKERS SHOULD NOT BE USED ALONGSIDE CURBS EXCEPT FOR EXTREMELY SHORT SECTIONS OF CURBS WHERE NOT MORE THAN TWO MARKERS WOULD BE INVOLVED.

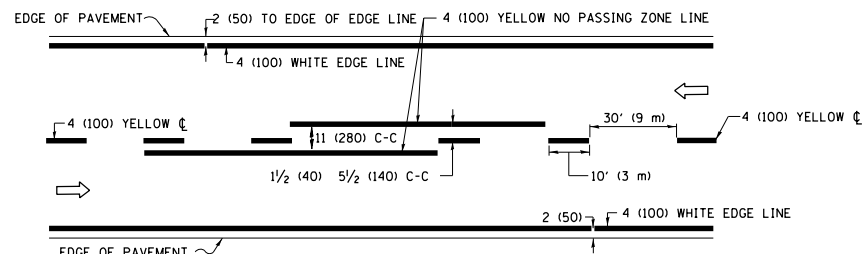


LEFT TURN

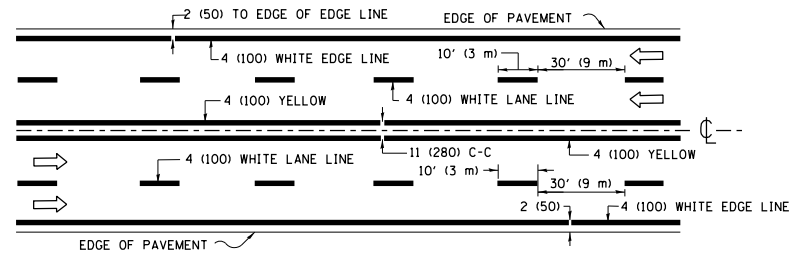
\* SEE TWO-LANE/TWO-WAY WHERE MARKERS CONTINUE  
 \*\* WHERE THE MEDIAN WIDTH IS 6' (2 m) OR LESS USE TWO-WAY MARKERS.

All dimensions are in inches (millimeters) unless otherwise shown.

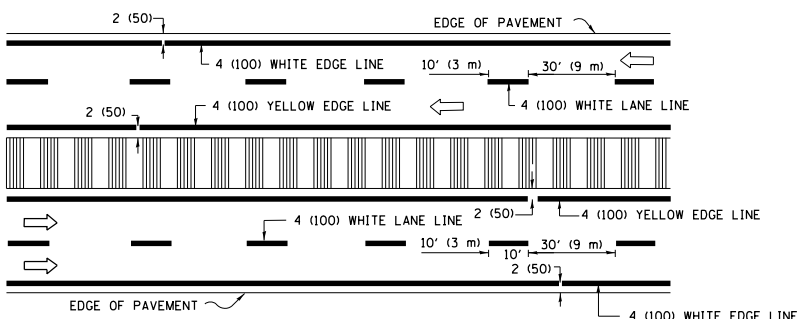
FILE NAME =	USER NAME = pyrzenowski	DESIGNED -	REVISED - T. RAMMACHER 09-19-94	<b>STATE OF ILLINOIS DEPARTMENT OF TRANSPORTATION</b>	<b>TYPICAL APPLICATIONS RAISED REFLECTIVE PAVEMENT MARKERS (SNOW-PLOW RESISTANT)</b>			F.A. RTE.	SECTION	COUNTY	TOTAL SHEETS	SHEET NO.
pw\11084EBIDINTEG.illinois.gov\PIWIDOT\Documents\IDOT Offices\District 1\Projects\DI1821\Drawings\Design\Diststd.dgn	PLOT SCALE = 100.0000' / 1in.	CHECKED -	REVISED - T. RAMMACHER 03-12-99					397	104-BR	COOK	22	19
PLOT DATE = 4/3/2017	DATE -	REVISED - T. RAMMACHER 01-06-00	REVISED - C. JUCIUS 09-09-09		<b>TC-11</b>			<b>CONTRACT NO. 62D99</b>				
					SCALE: NONE	SHEET NO. 1 OF 1 SHEETS	STA.	TO STA.		FED. ROAD DIST. NO. 1 ILLINOIS FED. AID PROJECT		



**2-LANE ROADWAY**

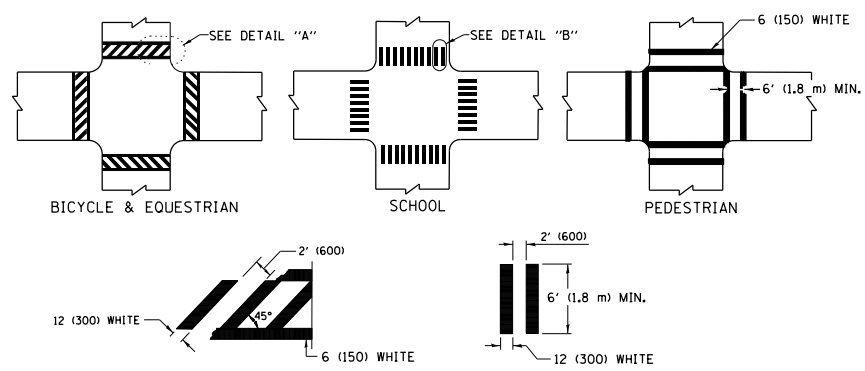


**MULTI-LANE UNDIVIDED**



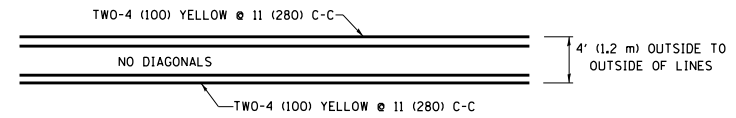
**MULTI-LANE DIVIDED WITH MEDIAN**

**TYPICAL LANE AND EDGE LINE MARKING**

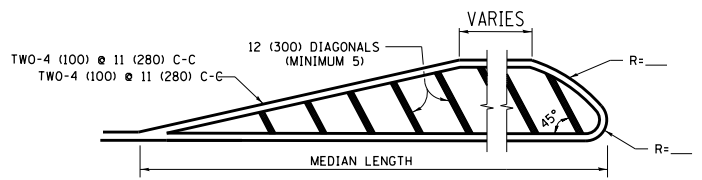


**TYPICAL CROSSWALK MARKING**

\* MARKINGS SHALL BE INSTALLED PARALLEL TO THE CENTERLINE OF THE ROAD WHICH IT CROSSES

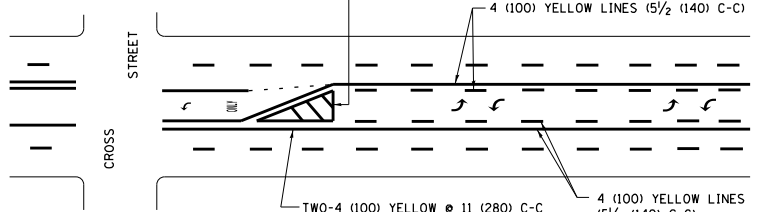


**4' (1.2 m) WIDE MEDIANS ONLY**



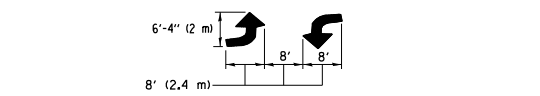
**MEDIANS OVER 4' (1.2 m) WIDE**

DIAGONAL LINE SPACING: 50' (15 m) C-C (LESS THAN 30MPH (50 km/h))  
75' (25 m) C-C 30MPH (50 km/h) TO 45MPH (70 km/h)  
150' (45 m) C-C (MORE THAN 45MPH (70 km/h))



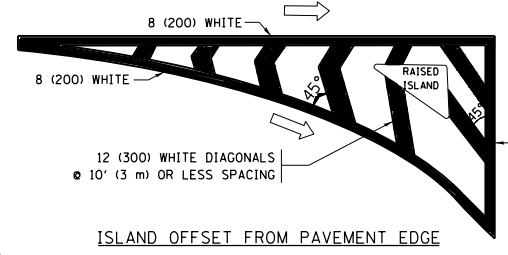
**MEDIAN WITH TWO-WAY LEFT TURN LANE  
TYPICAL PAINTED MEDIAN MARKING**

A MINIMUM OF TWO PAIRS OF TURN ARROWS SHALL BE USED, WHITE IN COLOR. ADDITIONAL PAIRS SHALL BE PLACED AT 200' (60 m) TO 300' (90 m) INTERVALS.

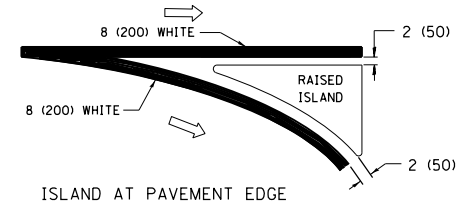


**TYPICAL LEFT (OR RIGHT) TURN LANE  
TYPICAL TURN LANE MARKING**

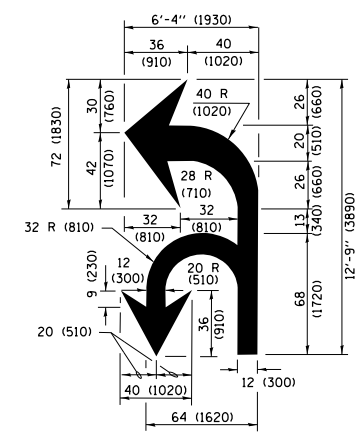
FULL SIZE LETTERS 8' (2.4 m) AND ARROWS SHALL BE USED.  
AREA = 15.6 SQ. FT. (1.5 m<sup>2</sup>) ONLY AREA = 20.8 SQ. FT. (1.9 m<sup>2</sup>)  
\* TURN LANES IN EXCESS OF 400' (120 m) IN LENGTH MAY HAVE AN ADDITIONAL SET OF ARROW - "ONLY" INSTALLED MIDWAY BETWEEN THE OTHER TWO SETS OF ARROW - "ONLY".



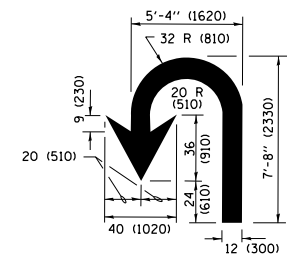
**ISLAND OFFSET FROM PAVEMENT EDGE**



**ISLAND AT PAVEMENT EDGE  
TYPICAL ISLAND MARKING**



**COMBINATION LEFT AND U-TURN**



**U-TURN**

**LANE REDUCTION TRANSITION**

\* LANE REDUCTION ARROWS REQUIRED AT SPEEDS OF 45 MPH OR GREATER OR WHEN SPECIFIED IN PLANS.

D(FT)	SPEED LIMIT
345	30
425	35
500	40
580	45
665	50
750	55

TYPE OF MARKING	WIDTH OF LINE	PATTERN	COLOR	SPACING /REMARKS
CENTERLINE ON 2 LANE PAVEMENT	4 (100)	SKIP-DASH	YELLOW	10' (3 m) LINE WITH 30' (9 m) SPACE
CENTERLINE ON MULTI-LANE UNDIVIDED PAVEMENT	2 @ 4 (100)	SOLID	YELLOW	11 (280) C-C
NO PASSING ZONE LINES FOR ONE DIRECTION FOR BOTH DIRECTIONS	4 (100) 2 @ 4 (100)	SOLID SOLID	YELLOW YELLOW	5/2 (140) C-C FROM SKIP-DASH CENTERLINE 11 (280) C-C OMIT SKIP-DASH CENTERLINE BETWEEN
LANE LINES	4 (100) 5 (125) ON FREEWAYS	SKIP-DASH SKIP-DASH	WHITE WHITE	10' (3 m) LINE WITH 30' (9 m) SPACE
DOTTED LINES (EXTENSIONS OF CENTER, LANE OR TURN LANE MARKINGS)	SAME AS LINE BEING EXTENDED	SKIP-DASH	SAME AS LINE BEING EXTENDED	2' (600) LINE WITH 6' (1.8 m) SPACE
EDGE LINES	4 (100)	SOLID	YELLOW-LEFT WHITE-RIGHT	OUTLINE MEDIANS IN YELLOW
TURN LANE MARKINGS	6 (150) LINE; FULL SIZE LETTERS & SYMBOLS (8' (2.4m))	SOLID	WHITE	SEE TYPICAL TURN LANE MARKING DETAIL
TWO WAY LEFT TURN MARKING	2 @ 4 (100) EACH DIRECTION 8' (2.4m) LEFT ARROW	SKIP-DASH AND SOLID IN PAIRS	YELLOW WHITE	10' (3 m) LINE WITH 30' (9 m) SPACE FOR SKIP-DASH; 5/2 (140) C-C BETWEEN SOLID LINE AND SKIP-DASH LINE SEE TYPICAL TWO-WAY LEFT TURN MARKING DETAIL
CROSSWALK LINES (PEDESTRIAN) A. DIAGONALS (BIKE & EQUESTRIAN) B. LONGITUDINAL BARS (SCHOOL)	2 @ 6 (150) 12 (300) @ 45° 12 (300) @ 90°	SOLID SOLID SOLID	WHITE WHITE WHITE	NOT LESS THAN 6' (1.8 m) APART 2' (600) APART 2' (600) APART SEE TYPICAL CROSSWALK MARKING DETAILS.
STOP LINES	24 (600)	SOLID	WHITE	PLACE 4' (1.2 m) IN ADVANCE OF AND PARALLEL TO CROSSWALK, IF PRESENT, OTHERWISE, PLACE AT DESIRED STOPPING POINT, PARALLEL TO CROSSROAD CENTERLINE, WHERE POSSIBLE.
PAINTED MEDIANS	2 @ 4 (100) WITH 12 (300) DIAGONALS @ 45° NO DIAGONALS USED FOR 4' (1.2 m) WIDE MEDIANS	SOLID	YELLOW; TWO WAY TRAFFIC WHITE; ONE WAY TRAFFIC	11 (280) C-C FOR THE DOUBLE LINE SEE TYPICAL PAINTED MEDIAN MARKING.
GORE MARKING AND CHANNELIZING LINES	8 (200) WITH 12 (300) DIAGONALS @ 45°	SOLID	WHITE	DIAGONALS: 15' (4.5 m) C-C (LESS THAN 30MPH (50 km/h)) 20' (6 m) C-C 30MPH (50 km/h) TO 45MPH (70 km/h) 30' (9 m) C-C (OVER 45MPH (70 km/h))
RAILROAD CROSSING	24 (600) TRANSVERSE LINES; "RR" IS 6' (1.8 m) LETTERS; 16 (400) LINE FOR "X"	SOLID	WHITE	SEE STATE STANDARD 780001 AREA OF: "R"=3.6 SQ. FT. (0.33 m <sup>2</sup> ) EACH "X"=54.0 SQ. FT. (5.0 m <sup>2</sup> )
SHOULDER DIAGONALS (REQUIRED FOR SHOULDERS ≥ 8')	12 (300) @ 45°	SOLID	WHITE - RIGHT YELLOW - LEFT	50' (15 m) C-C (LESS THAN 30MPH (50 km/h)) 75' (25 m) C-C (30 MPH (50 km/h) TO 45MPH (70 km/h)) 150' (45 m) C-C (OVER 45MPH (70 km/h))
U TURN ARROW	SEE DETAIL	SOLID	WHITE	16.3 SF
2 ARROW COMBINATION LEFT AND U TURN	SEE DETAIL	SOLID	WHITE	30.4 SF

FOR FURTHER DETAILS ON PAVEMENT MARKING REFER TO STANDARD SPECIFICATIONS FOR ROAD AND BRIDGE CONSTRUCTION AND STATE STANDARD 780001.

All dimensions are in inches (millimeters) unless otherwise shown.

FILE NAME =	USER NAME = pyznowskirb	DESIGNED - EVERS	REVISED - C. JUCIUS 09-09-09
pw\1\084EBIDINTEG\illinois.gov\PIWIDOT\Documents\DOT Offices\District 1\Projects\0118\Drawings\Design\Diststd.dgn		CHECKED -	REVISED - C. JUCIUS 07-01-13
Default	PLOT SCALE = 100.0000' / in.	DATE - 03-19-90	REVISED - C. JUCIUS 12-21-15
	PLOT DATE = 4/3/2017		REVISED - C. JUCIUS 04-12-16

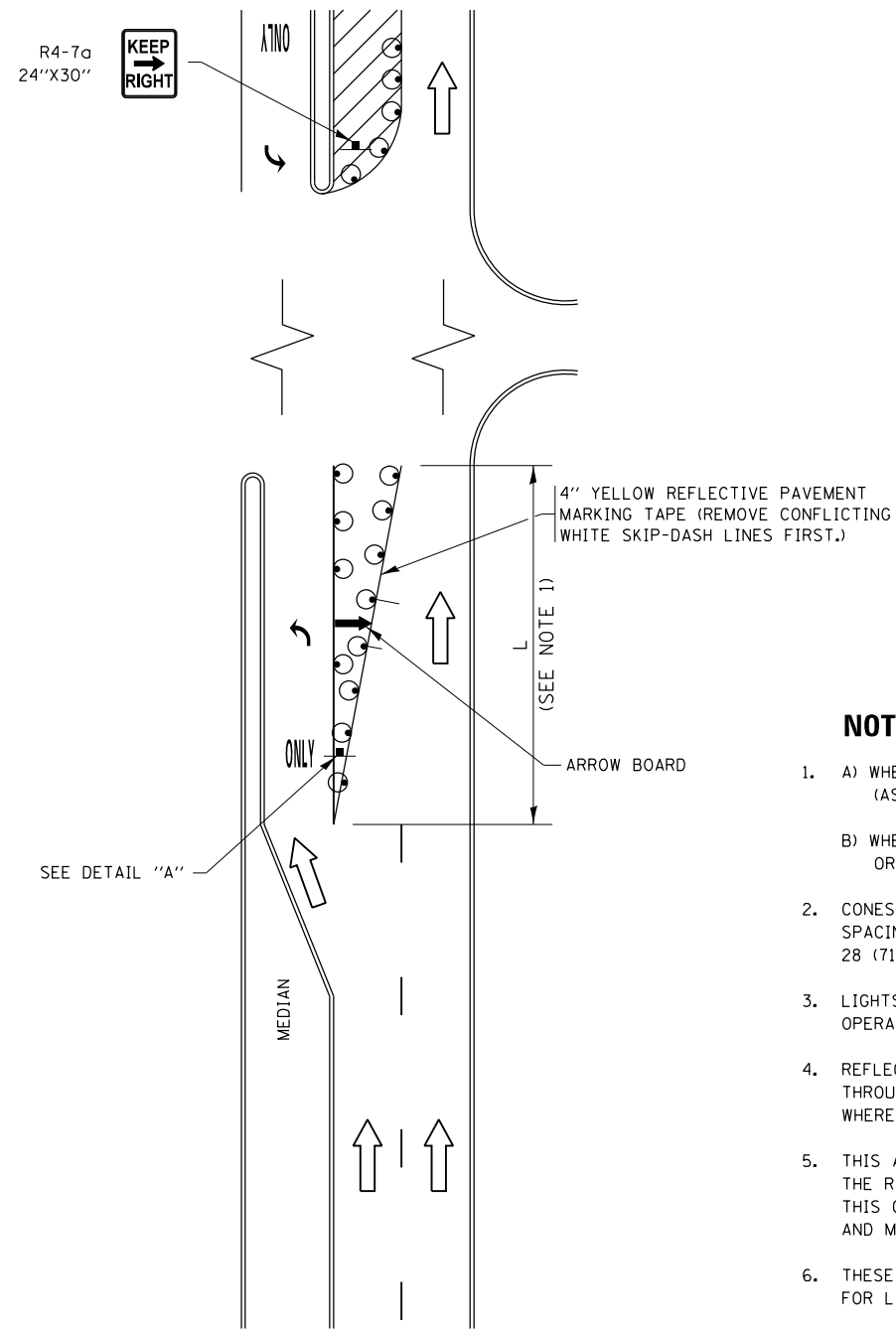
**STATE OF ILLINOIS  
DEPARTMENT OF TRANSPORTATION**

**DISTRICT ONE  
TYPICAL PAVEMENT MARKINGS**

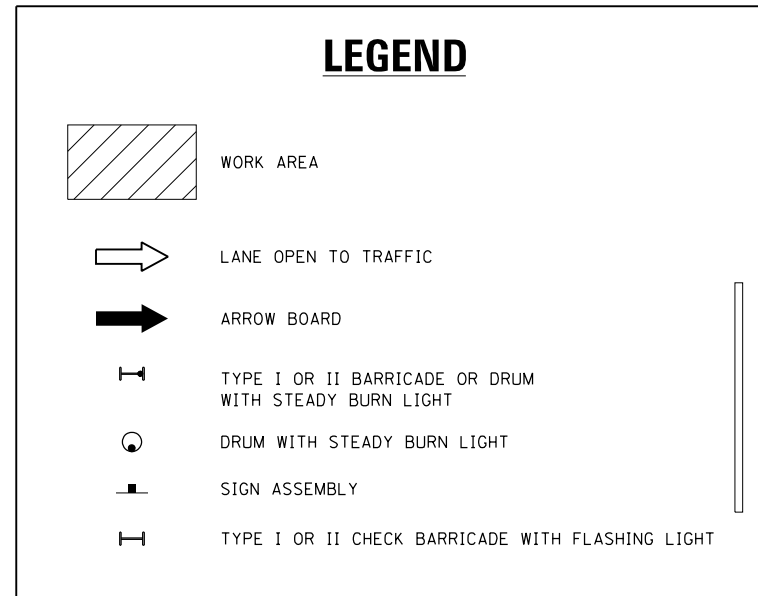
SCALE: NONE	SHEET 1	OF 1 SHEETS	STA. TO STA.
-------------	---------	-------------	--------------

F.A. RTE.	SECTION	COUNTY	TOTAL SHEETS	SHEET NO.
397	104-BR	COOK	22	20
<b>TC-13</b>		<b>CONTRACT NO. 62D99</b>	ILLINOIS FED. AID PROJECT	

# TURN BAY ENTRANCE AT START OF LANE CLOSURE TAPER



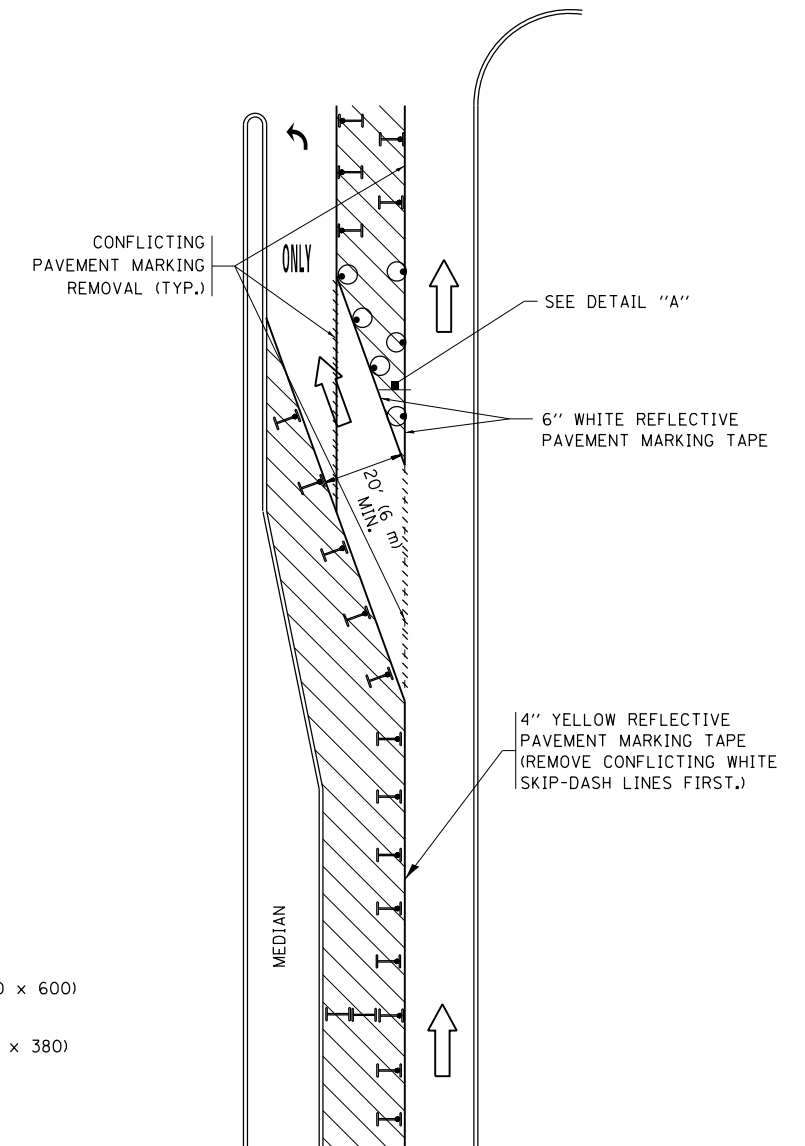
**FIGURE 1**



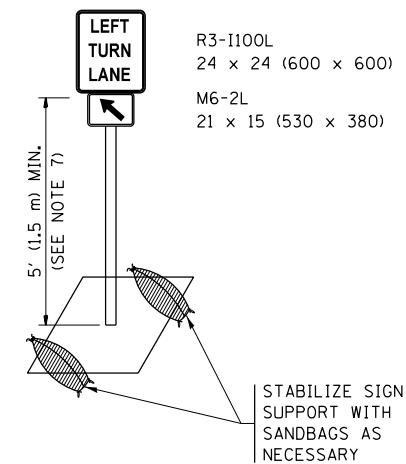
### NOTES:

1. A) WHEN "L" IS  $\leq$  THE STORAGE LENGTH OF THE TURN LANE (AS SHOWN IN FIG. 1), USE FIGURE 1.  
B) WHEN "L" IS  $>$  THE STORAGE LENGTH OF THE TURN LANE OR THE TURN LANE IS WITHIN THE LANE CLOSURE, USE FIGURE 2.
2. CONES MAY BE SUBSTITUTED FOR BARRICADES OR DRUMS AT HALF THE SPACING DURING DAY OPERATIONS. CONES SHALL BE A MINIMUM OF 28 (710) IN HEIGHT.
3. LIGHTS WILL NOT BE REQUIRED ON BARRICADES OR DRUMS FOR DAY OPERATIONS. ALL LIGHTS SHALL BE MONODIRECTIONAL.
4. REFLECTIVE TEMPORARY PAVEMENT MARKINGS SHALL BE PLACED THROUGHOUT THE BARRICADED AREAS OF EACH TURN BAY AS SHOWN WHERE THE CLOSURE TIME IS GREATER THAN FOURTEEN (14) DAYS.
5. THIS APPLICATION ALSO APPLIES WHEN WORK IS BEING PERFORMED IN THE RIGHT LANE(S) AND THE RIGHT TURN BAY IS TO REMAIN OPEN. UNDER THIS CONDITION, "RIGHT TURN LANE" R3-1100R 24 x 24 (600 x 600) AND M6-2R 21 x 15 (530 x 380) SHALL BE USED.
6. THESE CONTROLS SHALL SUPPLEMENT MAINLINE TRAFFIC CONTROL FOR LANE CLOSURES.
7. THE SIGNS SHALL BE MOUNTED ABOVE THE BARRICADES/DRUMS ON SEPARATE SIGN SUPPORTS THAT MEET NCHRP 350 OR MASH PREQUIREMENTS.
8. TRAFFIC CONTROL AND PROTECTION AT TURN BAYS (TO REMAIN OPEN TO TRAFFIC) SHALL BE INCLUDED IN THE COST OF SPECIFIED TRAFFIC CONTROL STANDARDS OR ITEMS.

# TURN BAY ENTRANCE WITHIN A LANE CLOSURE



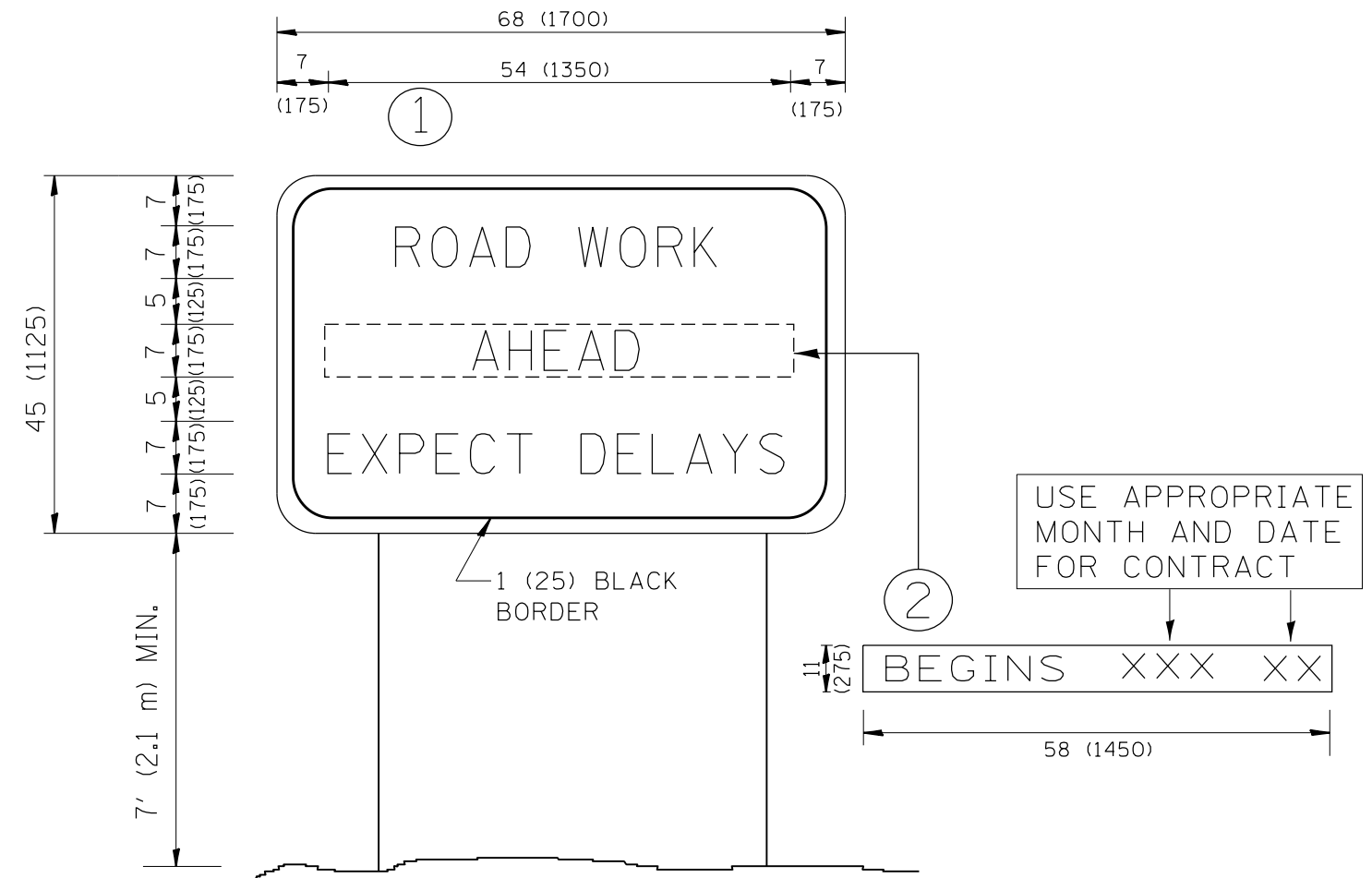
**FIGURE 2**



**DETAIL A**

All dimensions are in inches (millimeters) unless otherwise shown.

FILE NAME =	USER NAME = pyrzenowski	REVISED - T. RAMMACHER 09-08-94	REVISED - R. BORO 09-14-09	<b>STATE OF ILLINOIS DEPARTMENT OF TRANSPORTATION</b>	<b>TRAFFIC CONTROL AND PROTECTION AT TURN BAYS (TO REMAIN OPEN TO TRAFFIC)</b>			F.A. RTE.	SECTION	COUNTY	TOTAL SHEETS	SHEET NO.
Default		REVISED - A. HOUSEH 10-12-96	REVISED - A. SCHUETZE 09-15-16					397	104-BR	COOK	22	21
		REVISED - T. RAMMACHER 01-06-00	REVISED -		<b>TC-14</b>			<b>CONTRACT NO. 62D99</b>				
					SCALE: NONE	SHEET 1	OF 1 SHEETS	STA.	TO STA.	ILLINOIS FED. AID PROJECT		



**NOTES:**

1. USE BLACK LETTERING ON ORANGE BACKGROUND.
2. ERECT SIGNS IN ADVANCE OF THE LOCATION FOR THE "ROAD CONSTRUCTION AHEAD" SIGN AT LOCATIONS AS DIRECTED BY THE ENGINEER.
3. ERECT SIGN ① WITH INSTALLED PANEL ② ONE WEEK PRIOR TO THE START OF CONSTRUCTION.
4. REMOVE PANEL ② SOON AFTER THE START OF CONSTRUCTION.
5. SEE SPECIAL PROVISION FOR "TEMPORARY INFORMATION SIGNING" FOR ADDITIONAL INFORMATION.
6. ONE SIGN ASSEMBLY EQUALS 25.70 SQ. FT. (2.3 SQ. M.)
7. SHALL BE PAID FOR AS TEMPORARY INFORMATION SIGNING.

ALL DIMENSIONS ARE IN INCHES (MILLIMETERS) UNLESS OTHERWISE SHOWN.

FILE NAME =	USER NAME = pyrzenowski	DESIGNED -	REVISED - R. MIRS 09-15-97	<b>STATE OF ILLINOIS DEPARTMENT OF TRANSPORTATION</b>	<b>ARTERIAL ROAD INFORMATION SIGN</b>	F.A.P. RTE.	SECTION	COUNTY	TOTAL SHEETS	SHEET NO.
p:\11\084EBIDINTEG.illinois.gov\PWIDOT\Documents\DOT Offices\District 1\Projects\DI1821\Drawings\Design\Diststd.dgn			REVISED - R. MIRS 12-11-97			397	104-BR	COOK	22	22
PLOT SCALE = 100.0000' / 1in.	CHECKED -	REVISED - T. RAMMACHER 02-02-99				<b>TC-22</b>		<b>CONTRACT NO. 62D99</b>		
PLOT DATE = 4/3/2017	DATE -	REVISED - C. JUCIUS 01-31-07	SCALE: NONE			SHEET NO. 1 OF 1 SHEETS	STA.	TO STA.	FED. ROAD DIST. NO. 1   ILLINOIS FED. AID PROJECT	