

STATE OF ILLINOIS  
DEPARTMENT OF TRANSPORTATION

F.A.P. R.T.E.	SECTION	COUNTY	TOTAL SHEETS	SHEET NO.
711	1116) SLP	VERMILION	22	1
		ILLINOIS	CONTRACT NO. 70C58	

D-95-013-17

FOR INDEX OF SHEETS, SEE SHEET NO. 2  
FOR SUMMARY OF QUANTITIES, SEE SHEET NO. 4-5

CURRENT TRAFFIC DATA FOR FAP 711 (IL 119)

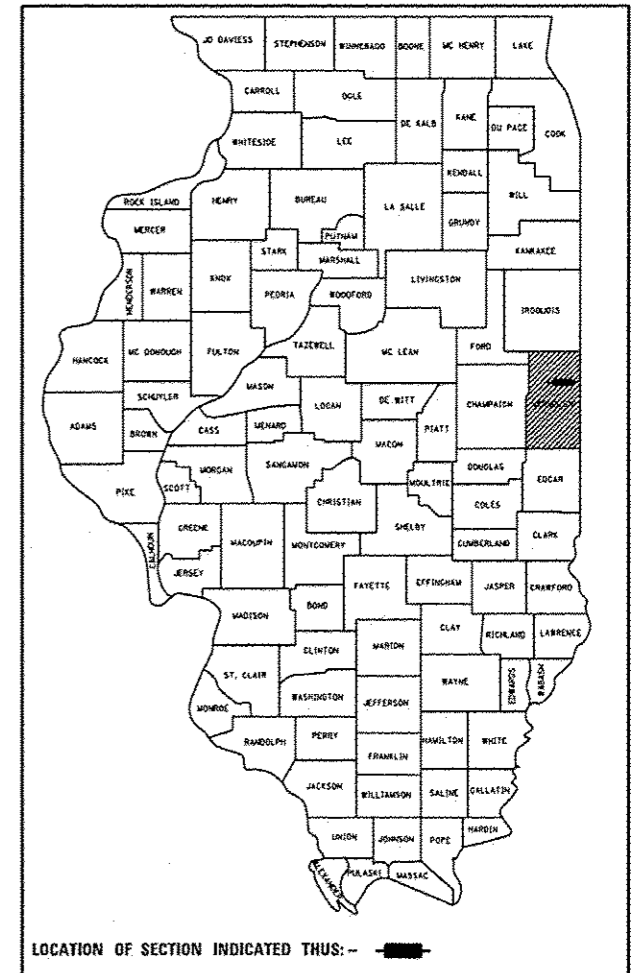
2016 ADT =	1200
P.U. %	89.2
S.U. %	2.5
M.U. %	8.3

DESIGN DESIGNATION  
N/A

# PROPOSED HIGHWAY PLANS

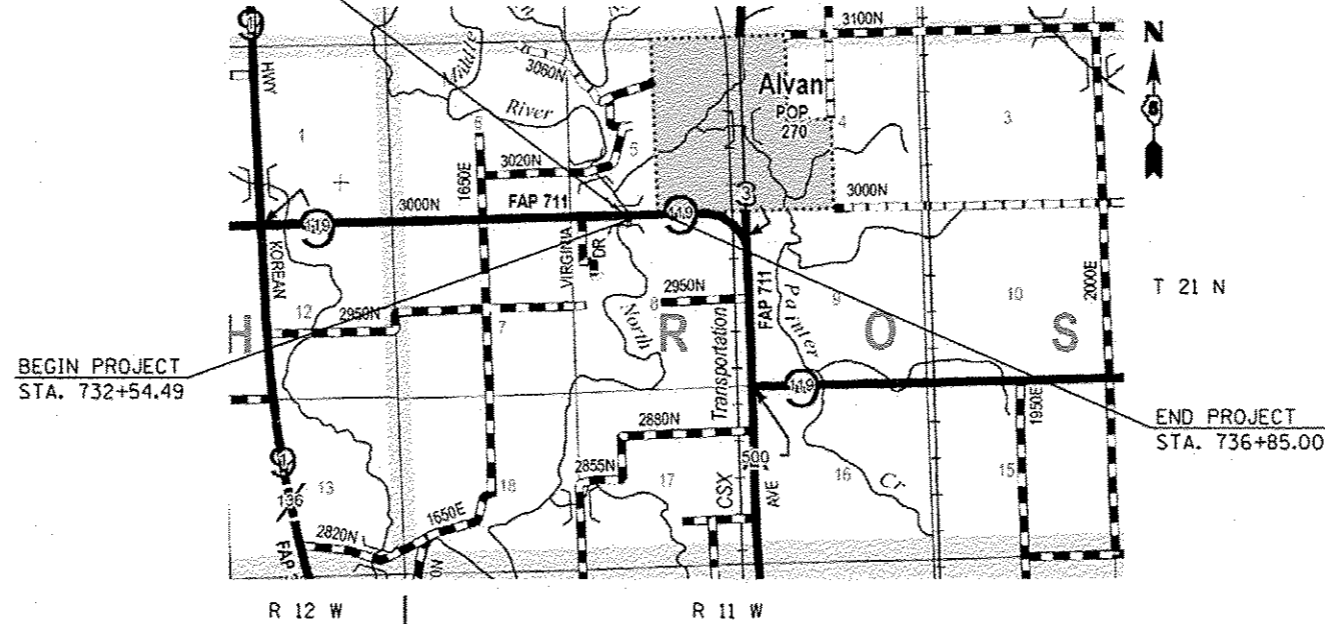
FAP ROUTE 711 (ILL 119)  
SECTION (116)SLP  
PROJECT:  
SLOPE STABILIZATION  
VERMILION COUNTY

C-95-013-17



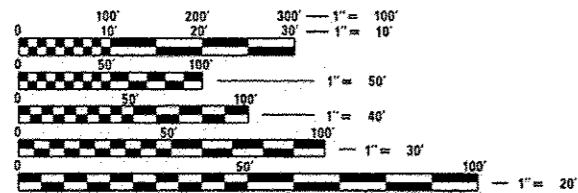
S.N. 092-0207  
STA. 730+85.00

N FORK VERMILION RIVER 2 MIE OF ILL 1



BEGIN PROJECT  
STA. 732+54.49

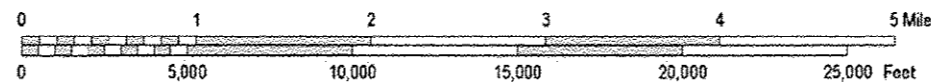
END PROJECT  
STA. 736+85.00



FULL SIZE PLANS HAVE BEEN PREPARED USING STANDARD ENGINEERING SCALES. REDUCED SIZED PLANS WILL NOT CONFORM TO STANDARD SCALES. IN MAKING MEASUREMENTS ON REDUCED PLANS, THE ABOVE SCALES MAY BE USED.

J.U.L.I.E.  
JOINT UTILITY LOCATION INFORMATION FOR EXCAVATION  
1-800-892-0123  
OR 811  
SOUTH ROSS TOWNSHIP

PROJECT ENGINEER: NANCY FASIG  
SQUAD LEADER: BRIAN J. HOGAN  
DESIGNER: ROBERT A. HODGSON  
PHONE NUMBER: (217)-465-4181  
CONTRACT NO. 70C58



GROSS LENGTH = 430.51 FT = 0.082 MILES  
NET LENGTH = 430.51 FT. = 0.082 MILES

STATE OF ILLINOIS  
DEPARTMENT OF TRANSPORTATION

SUBMITTED March 14, 2017  
Kensel A. Swarth  
REGIONAL ENGINEER

May 12, 2017  
Maureen M. Addis  
ENGINEER OF DESIGN AND ENVIRONMENT

May 2, 2017  
[Signature]  
DIRECTOR OF PROGRAM DEVELOPMENT

PRINTED BY THE AUTHORITY  
OF THE STATE OF ILLINOIS

## INDEX OF SHEETS

SHEET NO.	DESCRIPTION
1	COVER SHEET
2	INDEX OF SHEETS
2	LIST OF STANDARDS
3	GENERAL NOTES
4-5	SUMMARY OF QUANTITIES
6	TYPICAL SECTIONS
7-8	SCHEDULES OF QUANTITIES
9	PLAN AND PROFILE SHEETS
10-22	CROSS SECTIONS

## HIGHWAY STANDARDS

STANDARD NO.	DESCRIPTION
000001 - 06	STANDARD SYMBOLS, ABBREVIATIONS AND PATTERNS
001001 - 02	AREAS OF REINFORCEMENT BARS
001006	DECIMAL OF AN INCH AND OF A FOOT
280001 - 07	TEMPORARY EROSION CONTROL SYSTEMS
602306 - 03	INLET, TYPE B
630001 - 11	STEEL PLATE BEAM GUARDRAIL
701001 - 02	OFF-ROAD OPERATIONS, 2L, 2W, MORE THAN 15' (4.5 M) AWAY
701006 - 05	OFF-ROAD OPERATIONS, 2L, 2W, 15' (4.5 M) TO 24" (600 MM) FROM PAVEMENT EDGE
701201 - 04	LANE CLOSURE, 2L, 2W, DAY ONLY, FOR SPEEDS • 45 MPH
701901 - 06	TRAFFIC CONTROL DEVICES

## GENERAL NOTES

**G. N. -100**

ENGLISH UNITS OF MEASUREMENT SHALL GOVERN OVER AND SUPERSEDE ANY METRIC UNITS SHOWN IN THIS CONTRACT. WHERE INCLUDED, METRIC UNITS ARE FOR INFORMATION ONLY.

**G. N. -100B**

MICROSTATION AND GEOPAK FILES OF THIS PROJECT WILL BE MADE AVAILABLE TO THE CONTRACTOR AFTER CONTRACT AWARD. IF THERE IS A CONFLICT BETWEEN THE ELECTRONIC FILES AND THE PRINTED CONTRACT PLANS AND DOCUMENTS, THE PRINTED CONTRACT PLANS AND DOCUMENTS SHALL TAKE PRECEDENCE OVER THE ELECTRONIC FILES. THE CONTRACTOR SHALL ACCEPT ALL RISK ASSOCIATED WITH USING THE ELECTRONIC FILES AND SHALL HOLD THE DEPARTMENT HARMLESS FOR ANY ERRORS OR OMISSIONS IN THE ELECTRONIC FILES AND THE DATA CONTAINED THEREIN. ERRORS OR DELAYS RESULTING FROM THE USE OF THE ELECTRONIC FILES BY THE CONTRACTOR SHALL NOT RESULT IN AN EXTENSION OF TIME FOR ANY INTERIM OR FINAL COMPLETION DATE OR SHALL NOT BE CONSIDERED CAUSE FOR ADDITIONAL COMPENSATION. THE CONTRACTOR SHALL NOT USE, SHARE, OR DISTRIBUTE THESE ELECTRONIC FILES EXCEPT FOR THE PURPOSE OF CONSTRUCTING THIS CONTRACT. ANY CLAIMS BY THIRD PARTIES DUE TO USE OR ERRORS SHALL BE THE SOLE RESPONSIBILITY OF THE CONTRACTOR. THE CONTRACTOR SHALL INCLUDE THIS DISCLAIMER WITH THE TRANSFER OF THESE ELECTRONIC FILES TO ANY OTHER PARTIES AND SHALL INCLUDE APPROPRIATE LANGUAGE BINDING THEM TO SIMILAR RESPONSIBILITIES.

**G. N. -105.09A**

ALL ELEVATIONS SHOWN IN THE PLANS ARE BASED ON NORTH AMERICAN VERTICAL DATUM OF 1988. (NAVD 88)

**G. N. -107.37**

UTILITY LINES WERE PLOTTED FROM INFORMATION FURNISHED BY THE VARIOUS UTILITY COMPANIES INVOLVED (QUALITY LEVEL C &/OR QUALITY LEVEL D) AND THE ACCURACY SHOULD BE CONSIDERED APPROXIMATE ONLY.

UTILITY COMPANIES MAY BE ADJUSTING THEIR FACILITIES DURING CONSTRUCTION. THE CONTRACTOR SHALL COOPERATE WITH THESE ORGANIZATIONS WHILE THESE ADJUSTMENTS ARE BEING PERFORMED. J.U.L.I.E. - JOINT UTILITY LOCATION INFORMATION FOR EXCAVATORS SYSTEM (800) 892-0123 OR 811.

**G. N. -201**

TREES THAT INTERFERE WITH THE CONSTRUCTION OPERATIONS SHALL BE REMOVED AS DIRECTED BY THE ENGINEER. ANY TREE DUE TO ITS LOCATION AND DEEMED SUITABLE FOR SAVING BY THE ENGINEER SHALL BE PROTECTED DURING CLEARING AND SUBSEQUENT CONSTRUCTION OPERATIONS.

**G. N. -202**

GRADING SHALL BE DONE BY HAND AROUND LIGHT POLES, UTILITY POLES, SIGN POSTS, SHRUBS, TREES OR OTHER NATURAL OR MAN-MADE OBJECTS WHERE SHALLOW FILLS OR CUTS ARE ADJACENT TO THE ITEMS. IT IS THE INTENT THAT THE LIMITS OF CONSTRUCTION BE SUCH AS TO PRESERVE IN THE ORIGINAL STATE AS MUCH AREA OF TEMPORARY EASEMENTS AS POSSIBLE. THE DECISION AS TO ITEMS TO REMAIN IN PLACE SHALL BE AS DIRECTED BY THE ENGINEER.

THIS WORK WILL NOT BE PAID FOR SEPARATELY, BUT SHALL BE CONSIDERED INCLUDED IN THE CONTRACT UNIT PRICE PER CUBIC YARD FOR EARTH EXCAVATION AND NO ADDITIONAL COMPENSATION WILL BE ALLOWED

**G. N. -250C-SPL**

SEEDING, CLASS 7 AND MULCH, METHOD 2 IS INCLUDED IN THIS CONTRACT TO SEED NEW EARTH DITCHES DURING TIME PERIODS WHEN PERMANENT SEEDING IS NOT ALLOWED. SOME OR ALL OF THE CLASS 7 SEEDING AND MULCH WILL BE DELETED IF IT IS POSSIBLE TO PLACE PERMANENT SEEDING ON EARTH SHOULDERS AT THE TIME OF THEIR COMPLETION.

**G. N. -280**

TEMPORARY EROSION CONTROL SEEDING IS INCLUDED IN THIS CONTRACT TO SEED DISTURBED EARTH DURING TIME PERIODS WHEN PERMANENT SEEDING IS NOT ALLOWED. SOME OR ALL OF THE TEMPORARY EROSION CONTROL SEEDING WILL BE DELETED IF IT IS POSSIBLE TO PLACE PERMANENT SEEDING ON EARTH AT THE TIME OF THEIR COMPLETION.

**G. N. -280A**

THE VARIOUS MULCH PAY ITEMS IN THE PLANS INCLUDE QUANTITIES FOR TEMPORARY MULCH FOR EROSION CONTROL. THE TEMPORARY MULCH INCLUDES MAINTENANCE AND REMOVAL IF NECESSARY, PER THE REQUIREMENTS OF ARTICLE 280 OF THE STANDARD SPECIFICATIONS, AND NO ADDITIONAL COMPENSATION WILL BE ALLOWED. SOME OR ALL OF THE MULCH USED AS TEMPORARY EROSION CONTROL WILL BE DELETED IF IT IS NOT NECESSARY DUE TO ESTABLISHMENT OF PERMANENT SEEDING.

NO COMMITMENTS.

FILE NAME #	USER NAME # hodgeonna	DESIGNED -	REVISED -	<b>STATE OF ILLINOIS DEPARTMENT OF TRANSPORTATION</b>	<b>INDEX OF SHEETS, LIST OF STANDARDS, &amp; GENERAL NOTES</b>	F.A.P. RTE.	SECTION	COUNTY	TOTAL SHEETS	SHEET NO.	
PROJECT # 10848101	PROJECT NAME # 10848101	CHECKED -	REVISED -			711	(116)SLP	VERMILION	22	3	
PLOT SCALE # 48.0000 "/> in.	PLOT DATE # 3/28/2017	DATE -	REVISED -			SCALE: SHEET 2 OF 2 SHEETS STA. TO STA.					
ILLINOIS FED. AID PROJECT											

LOCATION OF WORK:

F. A. P. 711 ( ILL 119)

RURAL

MINOR ARTERIAL

STA. 731+50.00 TO STA. 742+00.00

VERMILION COUNTY

FUNDING BREAKOUT:

100% STATE

CONSTRUCTION TYPE CODE:

0020

CODE NO.	ITEM	UNIT	TOTAL QUANTITY
20100110	TREE REMOVAL ( 6 TO 15 UNITS DIAMETER)	UNIT	280.0 280.0
20100210	TREE REMOVAL (OVER 15 UNITS DIAMETER)	UNIT	211.0 211.0
20200100	EARTH EXCAVATION	CU YD	70.0 70.0
* 25000210	SEEDING, CLASS 2A	ACRE	0.25 0.25
* 25000350	SEEDING, CLASS 7	ACRE	0.75 0.75
* 25000400	NITROGEN FERTILIZER NUTRIENT	POUND	22.5 22.5
* 25000500	PHOSPHORUS FERTILIZER NUTRIENT	POUND	22.5 22.5
* 25000600	POTASSIUM FERTILIZER NUTRIENT	POUND	22.5 22.5
* 25100115	MULCH, METHOD 2	ACRE	0.75 0.75
* 25100630	EROSION CONTROL BLANKET	SQ YD	570.0 570.0
28000250	TEMPORARY EROSION CONTROL SEEDING	POUND	100.0 100.0
28000400	PERIMETER EROSION BARRIER	FOOT	635.0 635.0
28000500	INLET AND PIPE PROTECTION	EACH	1.0 1.0
28100105	STONE RIPRAP, CLASS A3	SQ YD	1,965.0 1,965.0

\* DENOTES SPECIALTY ITEM

14

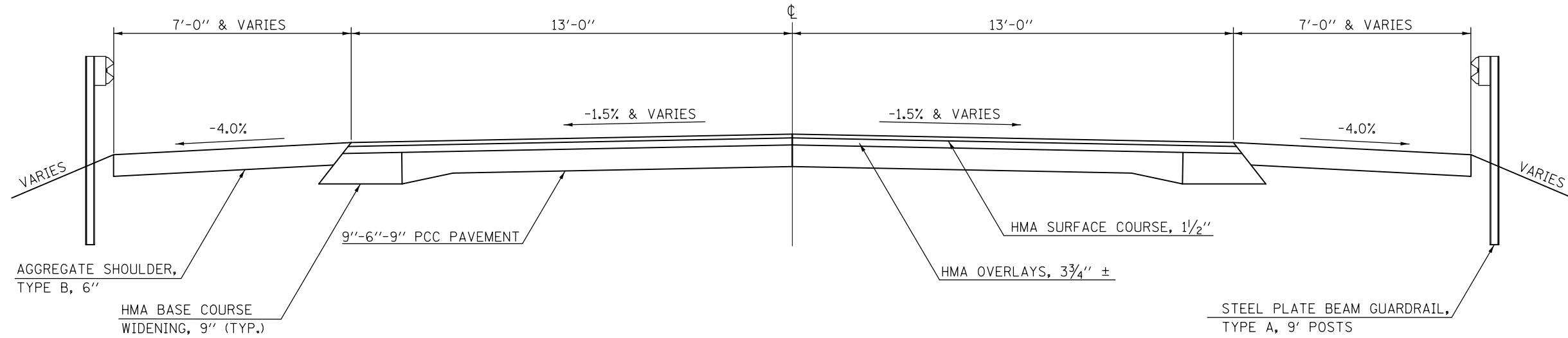


**EXISTING TYPICAL CROSS SECTION**  
**F.A.P. 711 (IL 119)**

①

**\*\*EXISTING GUARDRAIL:**  
 LT STA. 732+46.25 TO STA. 736+56.87  
 LT STA. 736+83.07 TO STA. 743+50.00  
 RT STA. 732+46.25 TO STA. 733+65.37  
 RT STA. 733+81.36 TO STA. 743+35.78

STATION      TO      STATION  
 732+54.49 LT      736+20.00 LT  
 734+53.14 RT      736+85.00 RT



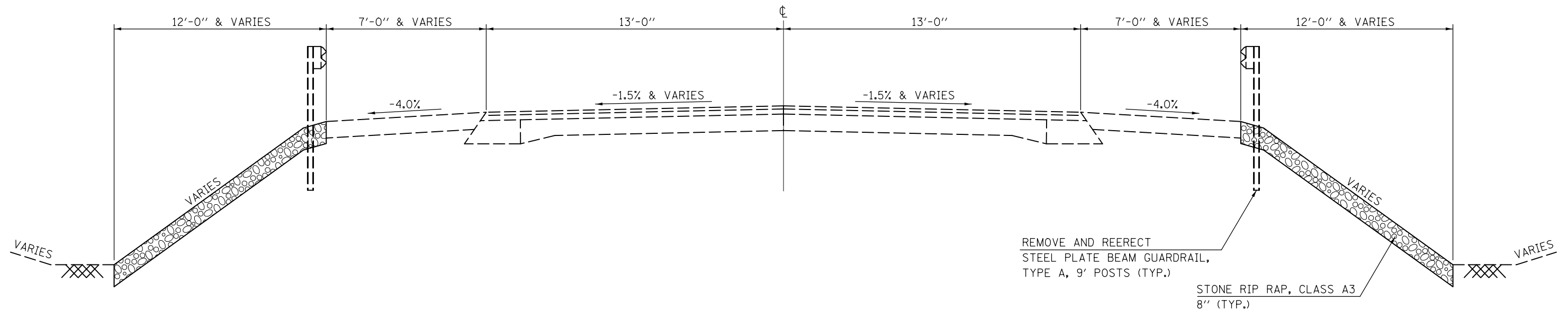
**PROPOSED TYPICAL CROSS SECTION**  
**F.A.P. 711 (IL 119)**

①

**\*\*EXISTING GUARDRAIL:**  
 LT STA. 732+46.25 TO STA. 736+56.87  
 LT STA. 736+83.07 TO STA. 743+50.00  
 RT STA. 732+46.25 TO STA. 733+65.37  
 RT STA. 733+81.36 TO STA. 743+35.78

**\*PROPOSED INSTALLATION OF A3 RIPRAP, 8"**  
 LT STA. 732+54.49 TO STA. 735+95.00  
 RT STA. 734+53.14 TO STA. 736+85.00

STATION      TO      STATION  
 732+54.49 LT      736+20.00 LT  
 734+53.14 RT      736+85.00 RT



FILE NAME =	USER NAME = hodgsonra	DESIGNED -	REVISED -	<b>STATE OF ILLINOIS DEPARTMENT OF TRANSPORTATION</b>	<b>TYPICAL CROSS SECTIONS</b>			F.A.P. R.T.E.	SECTION	COUNTY	TOTAL SHEETS	SHEET NO.
pw:\IL\084EBIDINTEG.illinois.gov\PI\DOT\Documents\DOT Offices\District 5\Projects\0570\Drawings\Design\0570C58-shr-typical.dwg	PLotted	CHECKED -	REVISED -					711	(116)SLP	VERMILION	22	6
#MODELNAME#	PLotted	DATE -	REVISED -		SCALE:      SHEET 1 OF 1 SHEETS      STA.      TO STA.			CONTRACT NO. 70C58				
	PLotted				ILLINOIS FED. AID PROJECT							

RIPRAP

STATION	TO	STATION	DISTANCE BETWEEN STATIONS (FOOT)	AVG. LEFT WIDTH (FOOT)	AVG. RIGHT WIDTH (FOOT)	LEFT DITCH STONE RIPRAP CLASS A3 28100105 (SQ YD)	RIGHT DITCH STONE RIPRAP CLASS A3 28100105 (SQ YD)	LEFT DITCH STONE RIPRAP CLASS A3 (TONS)	RIGHT DITCH STONE RIPRAP CLASS A3 (TONS)
732+54.49		732+59.56	5.1	36.2	0.0	20.4	0.0	6.80	0.00
732+59.56		732+61.75	2.2	36.3	0.0	8.8	0.0	2.94	0.00
732+61.75		733+00.00	38.3	37.9	0.0	160.9	0.0	53.65	0.00
733+00.00		734+00.00	100.0	36.5	0.0	405.6	0.0	135.19	0.00
734+00.00		734+53.21	53.2	32.8	32.1	193.8	189.7	64.60	63.22
734+53.21		735+00.00	46.8	31.4	32.4	163.1	168.4	54.38	56.15
735+00.00		735+66.73	66.7	22.7	32.4	168.2	240.5	56.05	80.15
735+66.73		735+95.15	28.4	14.2	32.2	44.7	101.7	14.90	33.89
735+95.15		735+95.45	0.3	13.7	32.3	0.5	1.1	0.15	0.36
735+95.45		736+00.00	4.6	0.0	32.3	0.0	16.3	0.00	5.44
736+00.00		736+20.45	20.4	0.0	32.3	0.0	73.4	0.00	24.48
TOTAL =						1,166.0	791.1	388.7	263.7
ROUND TO						1,170.0	795.0	390.0	270.0

NOTES

1. STONE RIPRAP AND BEDDING STONE TONNAGE QUANTITIES ARE ESTIMATES AND FOR INFORMATION ONLY.
2. STONE RIPRAP IS ESTIMATED BASED ON 1.5 TONS PER CU YD.

EARTH EXCAVATION

LOCATION	EARTH EXCAVATION FOR DITCH BOTTOMS (CU YD)	EARTH EXCAVATION FOR STONE RIPRAP (CU YD)	TOTAL EARTH EXCAVATION 20200100 (CU YD)	EARTH EXCAVATION ADJUSTED FOR SHRINKAGE (CU YD)	EMBANKMENT FOR DITCH BOTTOMS & STONE RIPRAP (CU YD)	EARTHWORK BALANCE WASTE (+) OR SHORTAGE (-) (CU YD)
LEFT DITCH	48.8	306.5	48.75	266.4	29.3	237.1
RIGHT DITCH	14.8	241.9	14.75	192.5	0.0	192.5
TOTAL =	63.5	548.4	63.5	458.9	29.3	429.6
ROUND TO:	--	--	70.0	--	--	430.0

NOTES:

1. THE SHRINKAGE FACTOR USED IS 25%.
2. SHRINKAGE, EMBANKMENT, AND BALANCE IS FOR INFORMATION ONLY.
3. NO PAYMENT WILL BE ALLOWED FOR OVERHAUL.
4. EARTH EXCAVATION FOR STONE RIPRAP WORK WILL NOT BE MEASURED FOR PAYMENT SEPARATELY IN ACCORDANCE WITH ARTICLE 281.03 OF THE STANDARD SPECIFICATIONS

PERIMETER EROSION BARRIER

DIRECTION	STATION	TO	STATION	OFFSET (FOOT)	PERIMETER EROSION BARRIER 28000400 (FOOT)
RIGHT	732+50.00		736+22.00	60.0' RT.	372.0
LEFT	734+30.00		736+90.00	60.0' LT.	260.0
TOTAL =					632.0
ROUND TO:					635.0

TREE REMOVAL

STATION	OFFSET (FOOT)	TREE REMOVAL (6 TO 15 UNITS DIAMETER) 20100110 (UNIT)	TREE REMOVAL (OVER 15 UNITS DIAMETER) 20100210 (UNIT)
733+23.85	43.2' LT.	6.0	--
733+02.17	52.5' LT.	--	19.0
733+11.12	45.7' LT	--	16.0
733+12.56	51.7' LT	--	16.0
733+24.93	46.7' LT	--	18.0
733+51.37	51.1' LT.	13.0	--
733+57.52	35.1' LT.	8.0	--
733+58.76	50.8' LT.	14.0	--
733+59.73	47.8' LT	--	17.0
733+62.79	36.1' LT.	8.0	--
733+65.82	44.6' LT	--	16.0
733+73.94	49.0' LT.	11.0	--
733+75.10	42.4' LT.	9.0	--
733+81.03	50.1' LT	--	20.0
733+82.52	37.8' LT.	12.0	--
733+90.98	31.3' LT.	12.0	--
734+12.95	52.2' LT.	8.0	--
734+13.39	50.4' LT.	12.0	--
734+58.99	52.7' LT.	13.0	--
734+61.93	39.2' RT	--	20.0
734+65.31	42.7' RT.	7.0	--
734+67.85	52.5' LT.	15.0	--
734+71.26	53.0' LT	--	16.0
735+12.49	51.2' LT.	9.0	--
735+17.63	51.7' LT.	15.0	--
735+26.92	52.0' LT	--	19.0
735+27.51	39.0' LT.	8.0	--
735+36.30	43.8' LT.	6.0	--
735+40.27	50.9' RT.	12.0	--
735+42.49	43.6' LT.	12.0	--
735+57.16	21.5' LT.	12.0	--
735+65.22	51.2' LT.	10.0	--
735+66.71	32.6' LT	--	34.0
736+05.60	51.2' LT.	9.0	--
736+12.28	49.5' LT.	15.0	--
736+14.77	51.9' LT.	10.0	--
736+26.61	46.7' RT.	14.0	--
TOTAL =		280.0	211.0
ROUND TO =		280.0	211.0

INLETS AND PIPE PROTECTION

STATION	OFFSET (FOOT)	NO. OF INLET/PIPE PROTECTORS 28000500 (EACH)	INLETS, TYPE B 60240395 (EACH)
732+59.56	50.6' LT.	1.0	1.0
TOTAL =		1.0	1.0

GUARDRAIL

STATION	TO	STATION	RIGHT/LEFT	REMOVAL AND REERECT STEEL PLATE BEAM GUARDRAIL, TYPE A 63301210 (FOOT)
732+46.00		736+21.00	LEFT	350.0
734+50.00		737+00.00	RIGHT	250.0
TOTAL =				600.0
ROUND TO				600.0

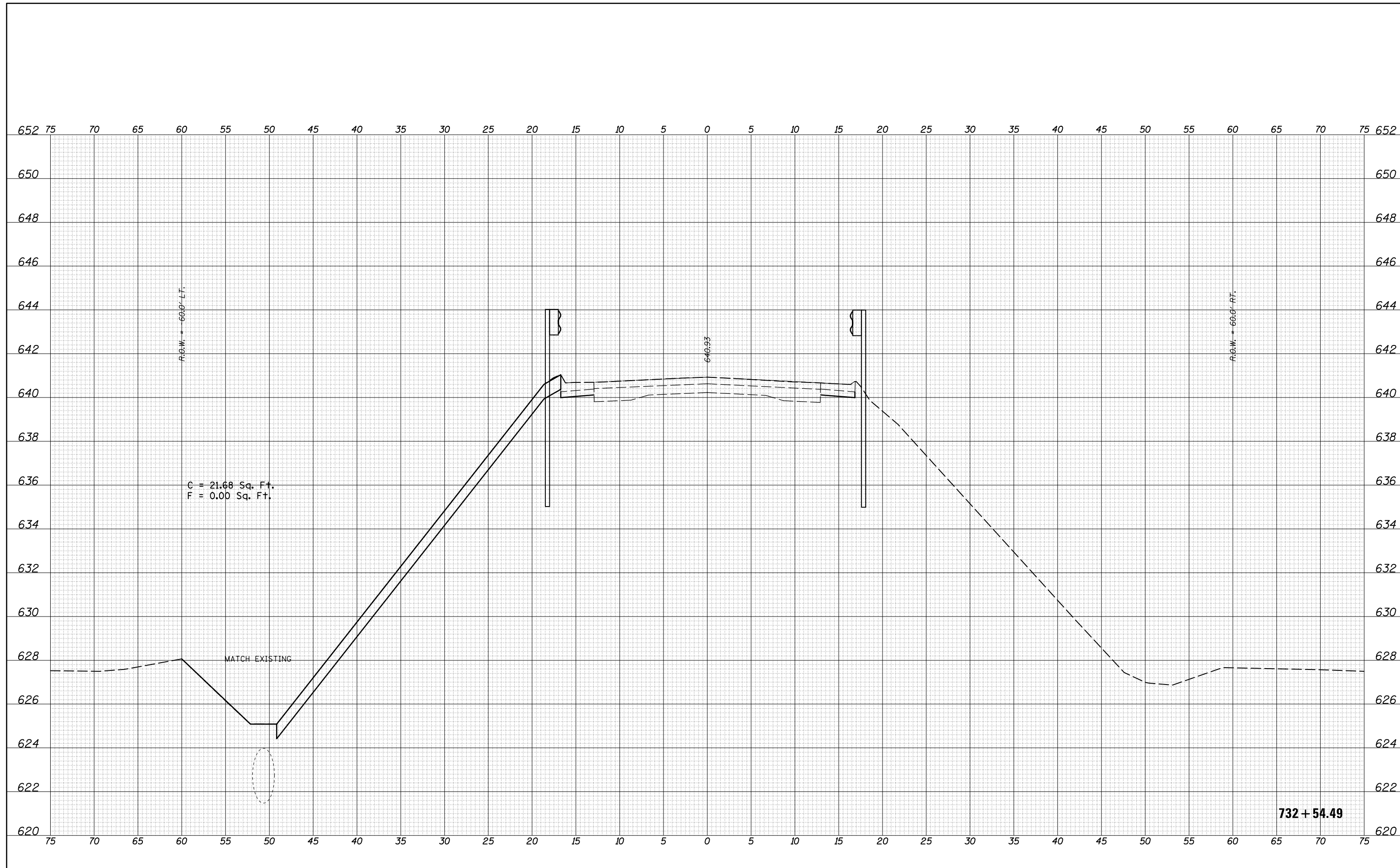
- NOTES  
 1. GUARDRAIL IS IN 25 FOOT SECTIONS.  
 2. POSTS ARE 9' LONG.





DATE	
BY	
SURVEYED	
PLOTTED	
TEMPLATE	
AREAS	
CHECKED	
FINAL SURVEY	
NOTE BOOK	
NO.	

DATE	
BY	
SURVEYED	
PLOTTED	
TEMPLATE	
AREAS	
CHECKED	
ORIGINAL SURVEY	
NOTE BOOK	
NO.	



FILE NAME =	USER NAME = hodgsonra	DESIGNED -	REVISED -
p:\11084EBIDINTEG\Illinois.gov\PIWIDOT\Documents\NIDOT Offices\District 5\Projects\0570C58\CAD\DRAWING\0570C58-sht-XS.dgn		CHECKED -	REVISED -
		DATE -	REVISED -
\$MODELNAME\$	PLOT DATE = 3/20/2017		

**STATE OF ILLINOIS  
DEPARTMENT OF TRANSPORTATION**

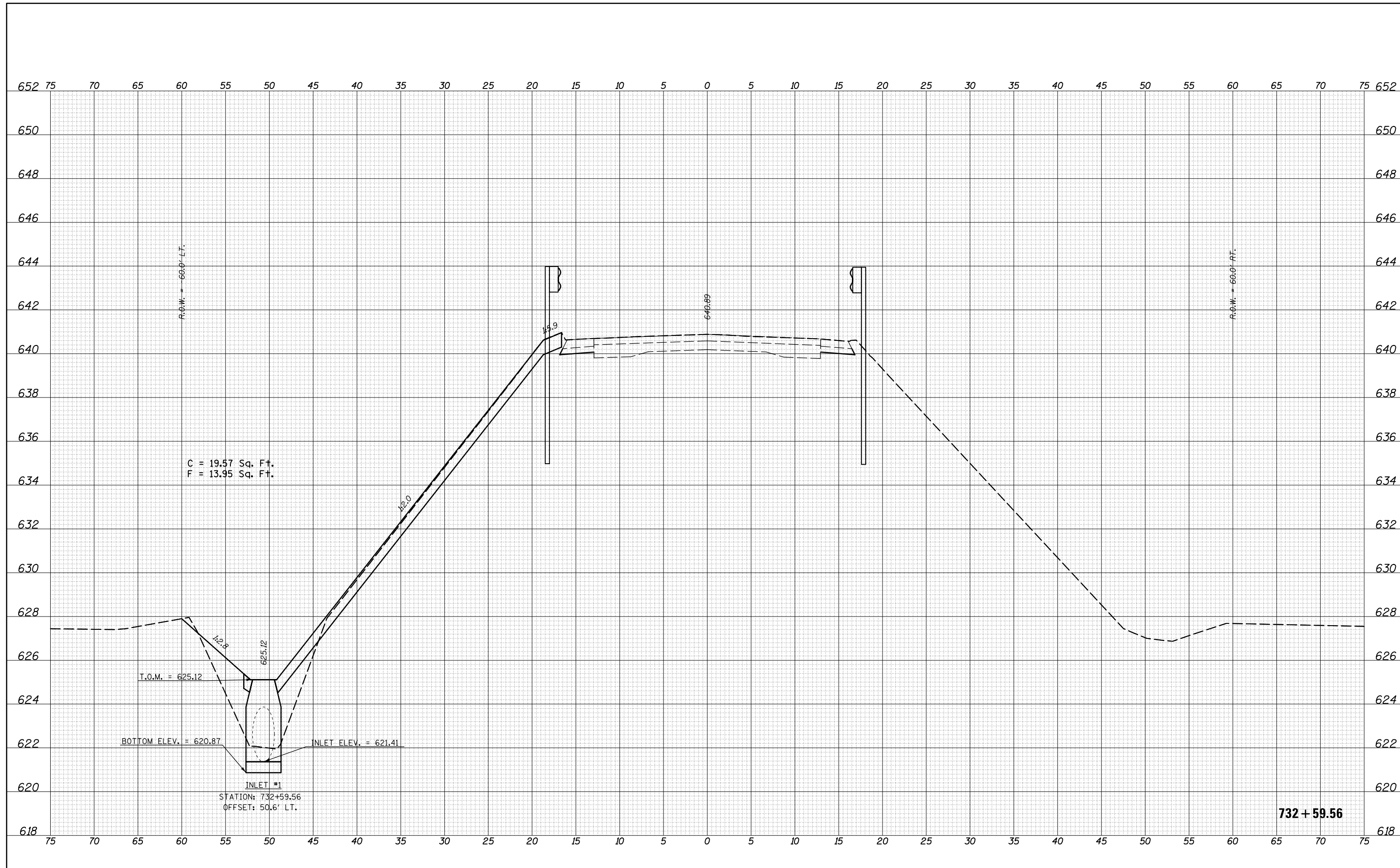
**ILL 119 CROSS SECTIONS**

SCALE: SHEET 1 OF 13 SHEETS STA. 732+54.49 TO STA. 732+54.49

F.A.P. RTE.	SECTION	COUNTY	TOTAL SHEETS	SHEET NO.
711	(116)SLP	VERMILION	22	10
CONTRACT NO. 70C58			ILLINOIS FED. AID PROJECT	

DATE	
BY	
FINAL SURVEY	SURVEYED
NOTE BOOK	PLOTTED
NO.	TEMPLATE
	AREAS
	CHECKED

DATE	
BY	
ORIGINAL SURVEY	SURVEYED
NOTE BOOK	PLOTTED
NO.	TEMPLATE
	AREAS
	CHECKED



C = 19.57 Sq. Ft.  
F = 13.95 Sq. Ft.

T.O.M. = 625.12

BOTTOM ELEV. = 620.87

INLET ELEV. = 621.41

INLET #1  
STATION: 732+59.56  
OFFSET: 50.6' LT.

732 + 59.56

FILE NAME =	USER NAME = hodgsonra	DESIGNED -	REVISED -
p:\11084EBIDINTEG\Illinois.gov\PIDOT\Documents\DOT Offices\District 5\Projects\0570C58\CAD\DRAWING\0570C58-sht-XS.dgn		CHECKED -	REVISED -
		DATE -	REVISED -
*MODELNAME*	PLOT DATE = 3/20/2017		

STATE OF ILLINOIS  
DEPARTMENT OF TRANSPORTATION

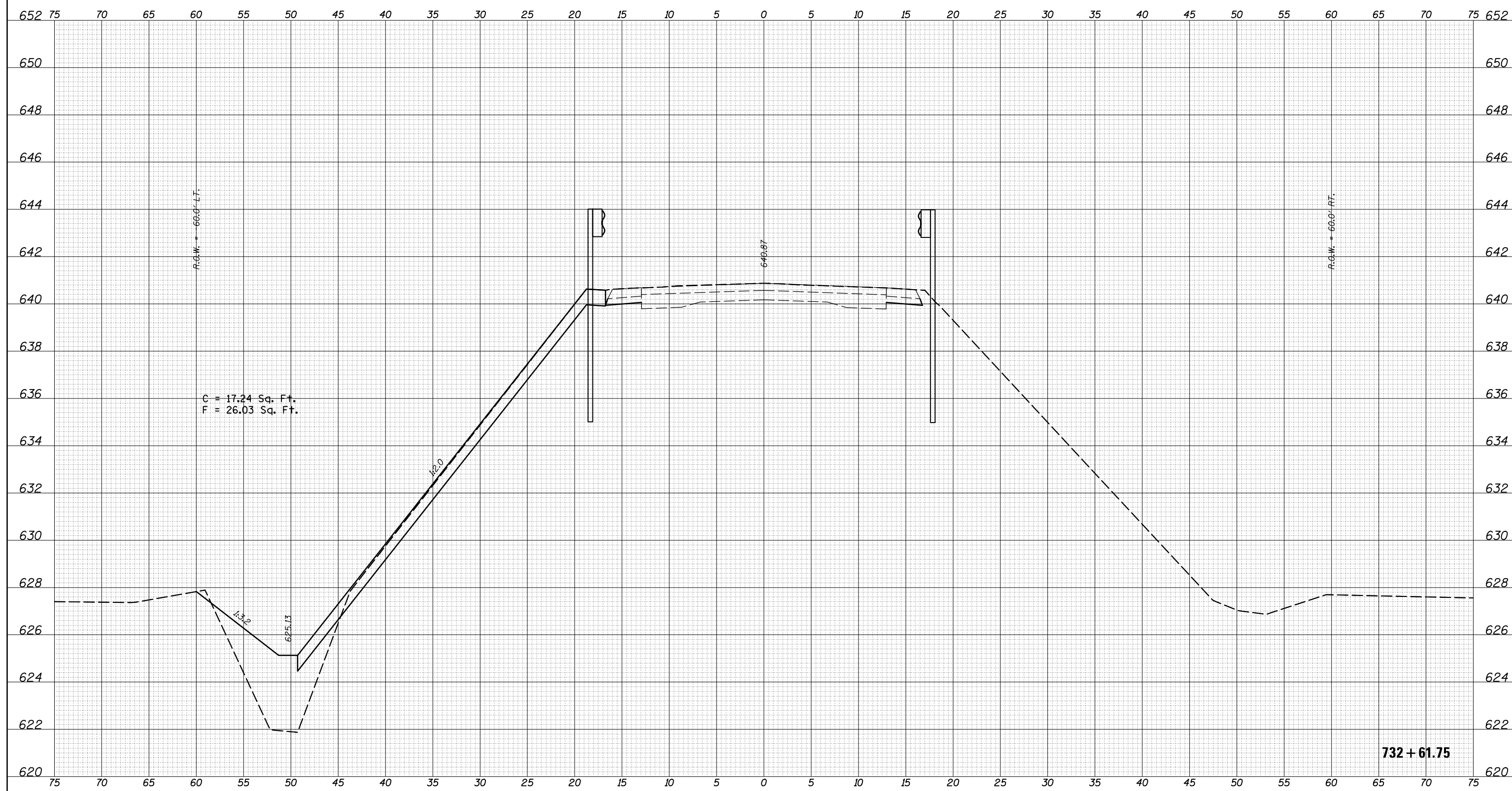
ILL 119 CROSS SECTIONS

SCALE: SHEET 2 OF 13 SHEETS STA. 732+59.56 TO STA. 732+59.56

F.A.P. RTE.	SECTION	COUNTY	TOTAL SHEETS	SHEET NO.
711	(116)SLP	VERMILION	22	11
CONTRACT NO. 70C58			ILLINOIS FED. AID PROJECT	

DATE	
BY	
SURVEYED	
PLOTTED	
TEMPLATE	
AREAS	
CHECKED	
FINAL SURVEY	
NOTE BOOK	
NO.	

DATE	
BY	
SURVEYED	
PLOTTED	
TEMPLATE	
AREAS	
CHECKED	
ORIGINAL SURVEY	
NOTE BOOK	
NO.	



FILE NAME =	USER NAME = hodgsonra	DESIGNED -	REVISED -
p:\11084EBIDINTEG\Illinois.gov\PIWIDOT\Documents\DOT Offices\District 5\Projects\0570C58\CAD\DRAWING\0570C58-sht-XS.dgn		CHECKED -	REVISED -
		DATE -	REVISED -
\$MODELNAME\$	PLOT DATE = 3/20/2017		

**STATE OF ILLINOIS  
DEPARTMENT OF TRANSPORTATION**

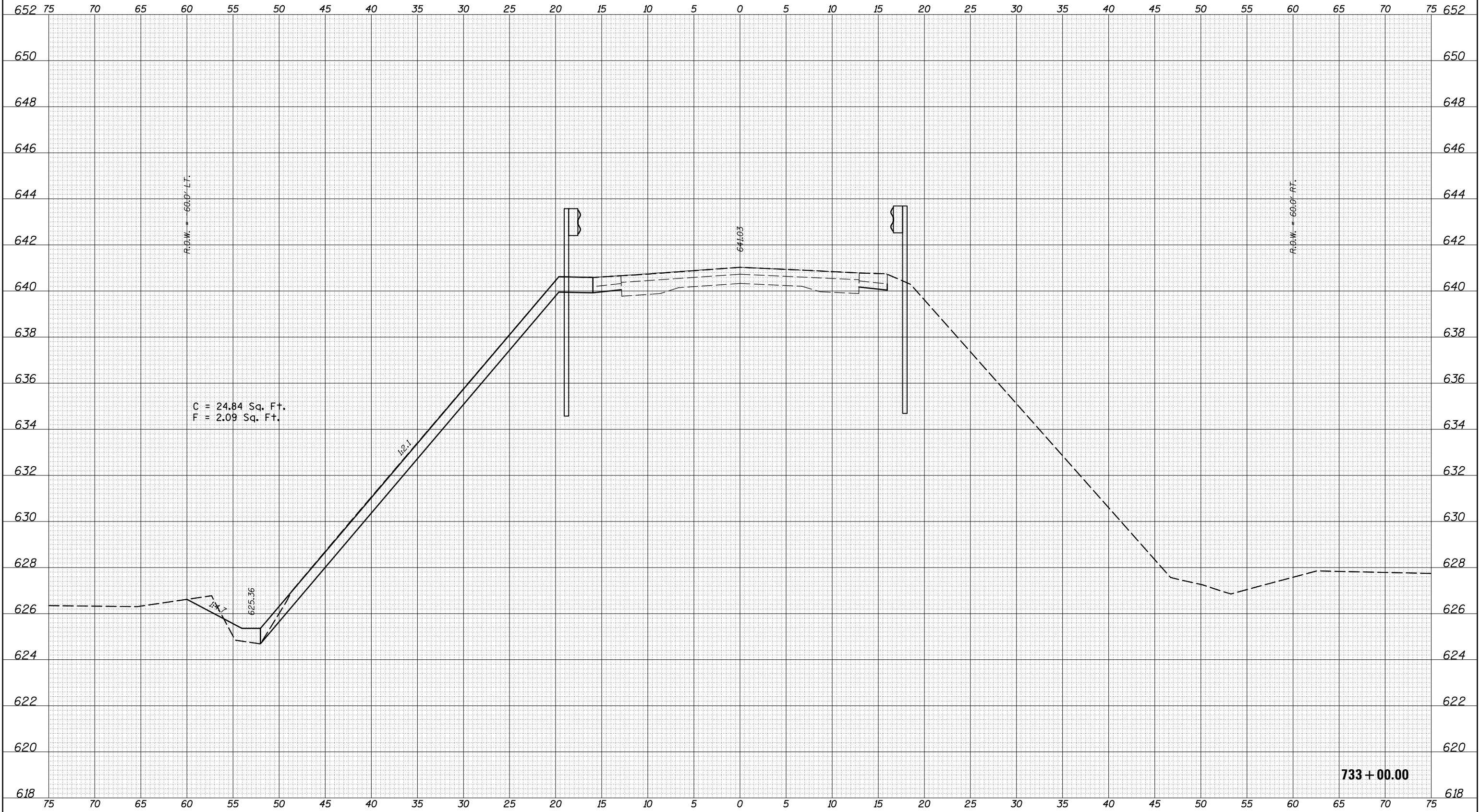
**ILL 119 CROSS SECTIONS**

SCALE: SHEET 3 OF 13 SHEETS STA. 732+61.75 TO STA. 732+61.75

F.A.P. RTE.	SECTION	COUNTY	TOTAL SHEETS	SHEET NO.
711	(116)SLP	VERMILION	22	12
			CONTRACT NO. 70C58	
ILLINOIS FED. AID PROJECT				

DATE	
BY	
SURVEYED	
PLOTTED	
TEMPLATE	
AREAS	
CHECKED	
FINAL SURVEY	
NOTE BOOK	
NO.	

DATE	
BY	
SURVEYED	
PLOTTED	
TEMPLATE	
AREAS	
CHECKED	
ORIGINAL SURVEY	
NOTE BOOK	
NO.	



733 + 00.00

FILE NAME =	USER NAME = hodgsonra	DESIGNED -	REVISED -
p:\11084EBIDINTEG\Illinois.gov\PWIDOT\Documents\NIDOT Offices\District 5\Projects\0570C58\CA\DRAWING\0570C58-sht-XS.dgn		REVISED -	REVISED -
\$MODELNAME\$	PLOT SCALE = 10.0000 / in.	CHECKED -	REVISED -
	PLOT DATE = 3/20/2017	DATE -	REVISED -

STATE OF ILLINOIS  
DEPARTMENT OF TRANSPORTATION

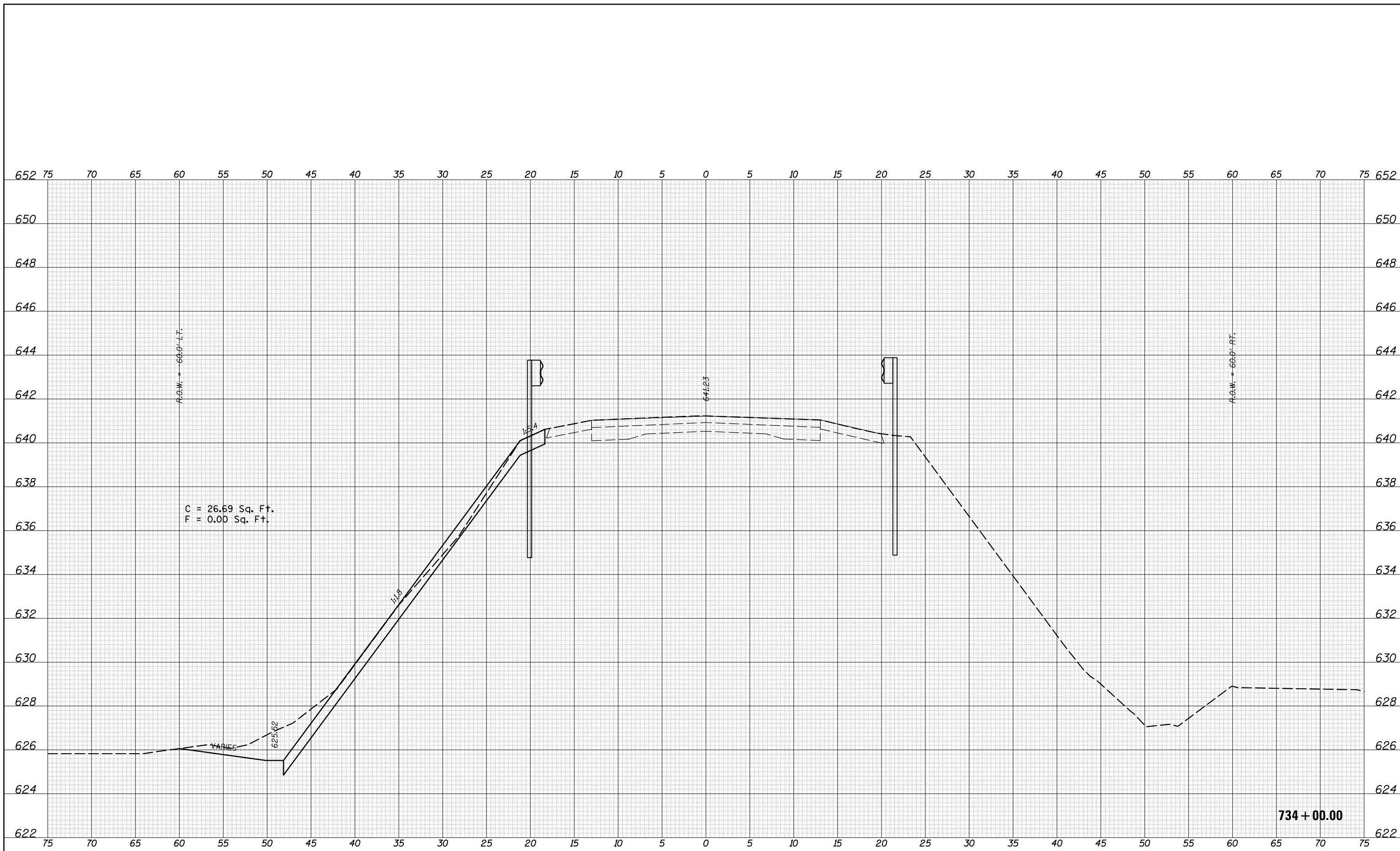
ILL 119 CROSS SECTIONS

SCALE: SHEET 4 OF 13 SHEETS STA. 733+00.00 TO STA. 733+00.00

F.A.P. RTE.	SECTION	COUNTY	TOTAL SHEETS	SHEET NO.
711	(116)SLP	VERMILION	22	13
			CONTRACT NO. 70C58	
ILLINOIS FED. AID PROJECT				

DATE	
BY	
FINAL SURVEY NO.	
SURVEYED PLOTTED AREAS CHECKED	
NOTE BOOK NO.	
TEMPLATE AREAS CHECKED	

DATE	
BY	
ORIGINAL SURVEY NO.	
SURVEYED PLOTTED AREAS CHECKED	
NOTE BOOK NO.	
TEMPLATE AREAS CHECKED	



FILE NAME =	USER NAME = hodgsonra	DESIGNED -	REVISED -
p:\11084EBIDINTEG\Illinois.gov\PIDOT\Documents\DOT Offices\District 5\Projects\0570C58\CAD\Drawn\0570C58-sht-XS.dgn		DRAWN	REVISED -
\$MODELNAME\$	PLOT SCALE = 10.0000' / in.	CHECKED -	REVISED -
	PLOT DATE = 3/20/2017	DATE -	REVISED -

**STATE OF ILLINOIS  
DEPARTMENT OF TRANSPORTATION**

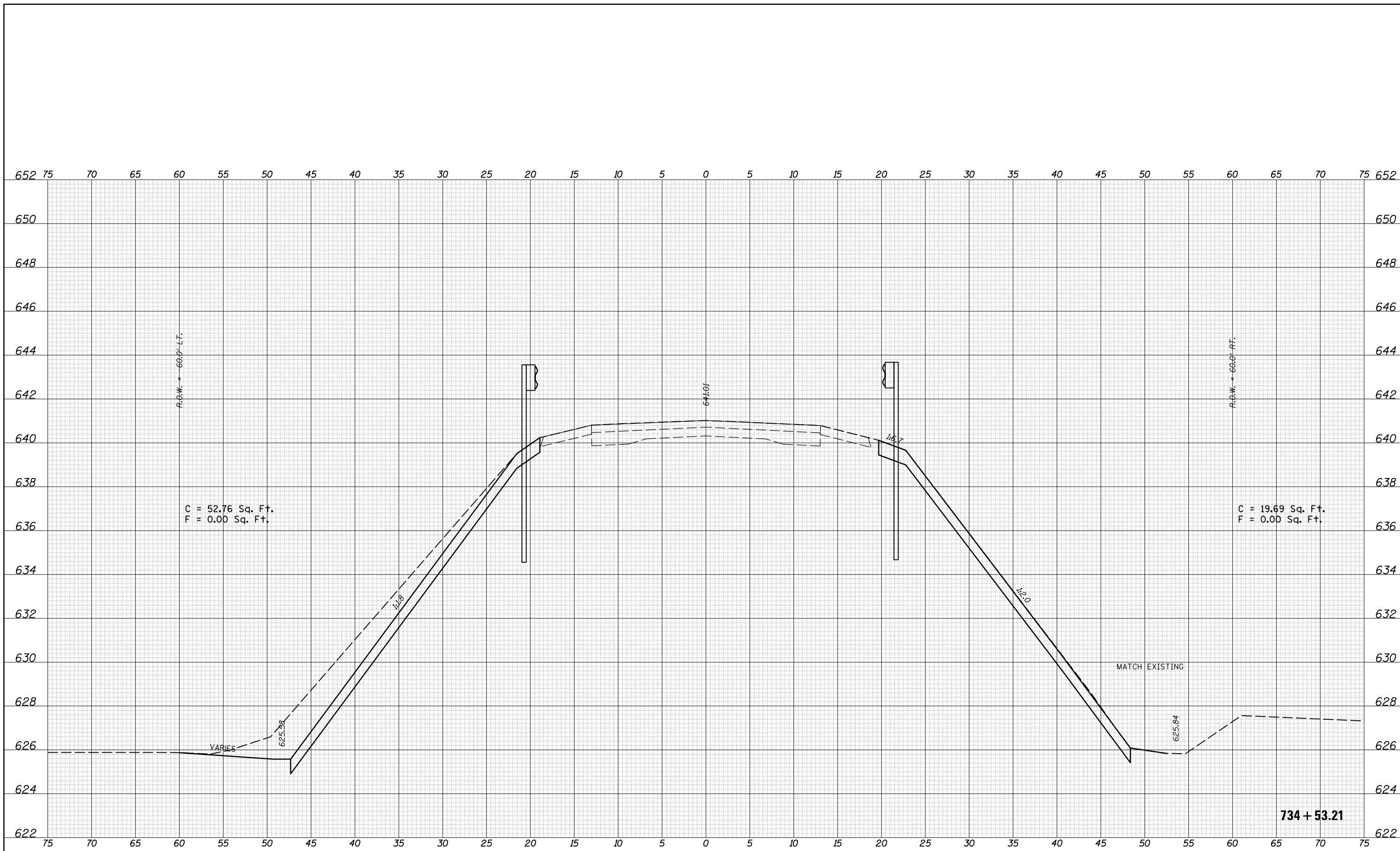
**ILL 119 CROSS SECTIONS**

SCALE: SHEET 5 OF 13 SHEETS STA. 734+00.00 TO STA. 734+00.00

F.A.P. RTE.	SECTION	COUNTY	TOTAL SHEETS	SHEET NO.
711	(116)SLP	VERMILION	22	14
CONTRACT NO. 70C58			ILLINOIS FED. AID PROJECT	

DATE	
BY	
FINAL SURVEY	
SURVEYED	
PLOTTED	
TEMPLATE	
NOTE BOOK	
AREAS	
CHECKED	
NO.	

DATE	
BY	
ORIGINAL SURVEY	
SURVEYED	
PLOTTED	
TEMPLATE	
NOTE BOOK	
AREAS	
CHECKED	
NO.	



FILE NAME =	USER NAME = hodgsonra	DESIGNED -	REVISED -
p:\11084EBIDINTEG\Illinois.gov\PIWIDOT\Documents\DOT Offices\District 5\Projects\0570C58\CD\DRAWING\0570C58-sht-XS.dgn		REVISOR -	REVISOR -
		CHECKED -	REVISOR -
		DATE -	REVISOR -
MODEL NAME =	PLOT DATE = 3/20/2017		

**STATE OF ILLINOIS**  
**DEPARTMENT OF TRANSPORTATION**

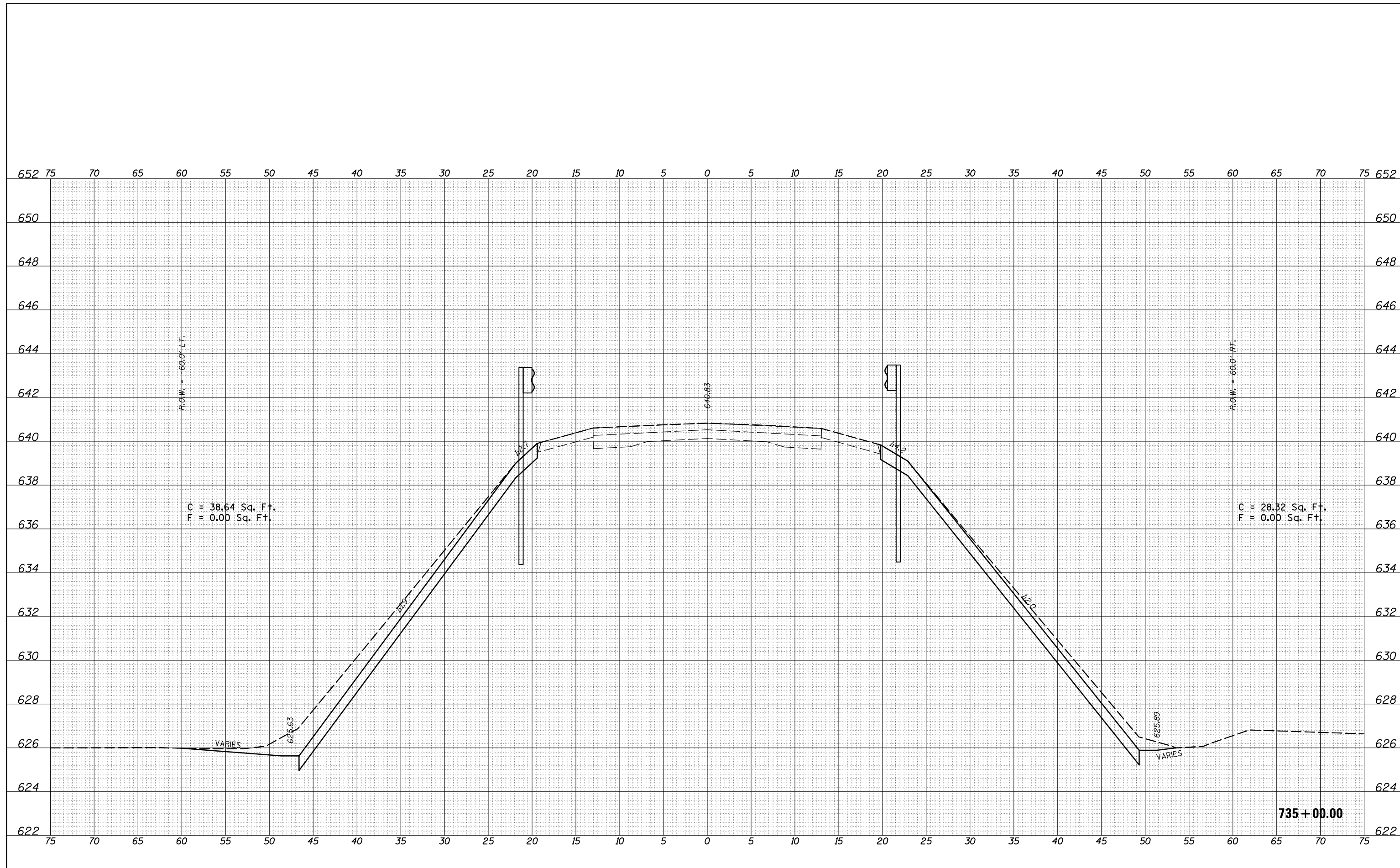
<b>ILL 119 CROSS SECTIONS</b>	
SCALE:	SHEET 6 OF 13 SHEETS STA. 734+53.21 TO STA. 734+53.21

F.A.P. RTE.	SECTION	COUNTY	TOTAL SHEETS	SHEET NO.
711	(116)SLP	VERMILION	22	15
			CONTRACT NO. 70C58	
ILLINOIS FED. AID PROJECT				



DATE	
BY	
FINAL SURVEY	
SURVEYED	
PLOTTED	
TEMPLATE	
AREAS	
CHECKED	
NO.	

DATE	
BY	
ORIGINAL SURVEY	
SURVEYED	
PLOTTED	
TEMPLATE	
AREAS	
CHECKED	
NO.	



FILE NAME =	USER NAME = hodgsonra	DESIGNED -	REVISED -
p:\11084EBIDINTEG\Illinois.gov\PIWIDOT\Documents\DOT Offices\District 5\Projects\0570C58\CD\DRAWING\0570C58-sht-XS.dgn		CHECKED -	REVISED -
		DATE -	REVISED -
\$MODELNAME\$	PLOT DATE = 3/20/2017		

**STATE OF ILLINOIS  
DEPARTMENT OF TRANSPORTATION**

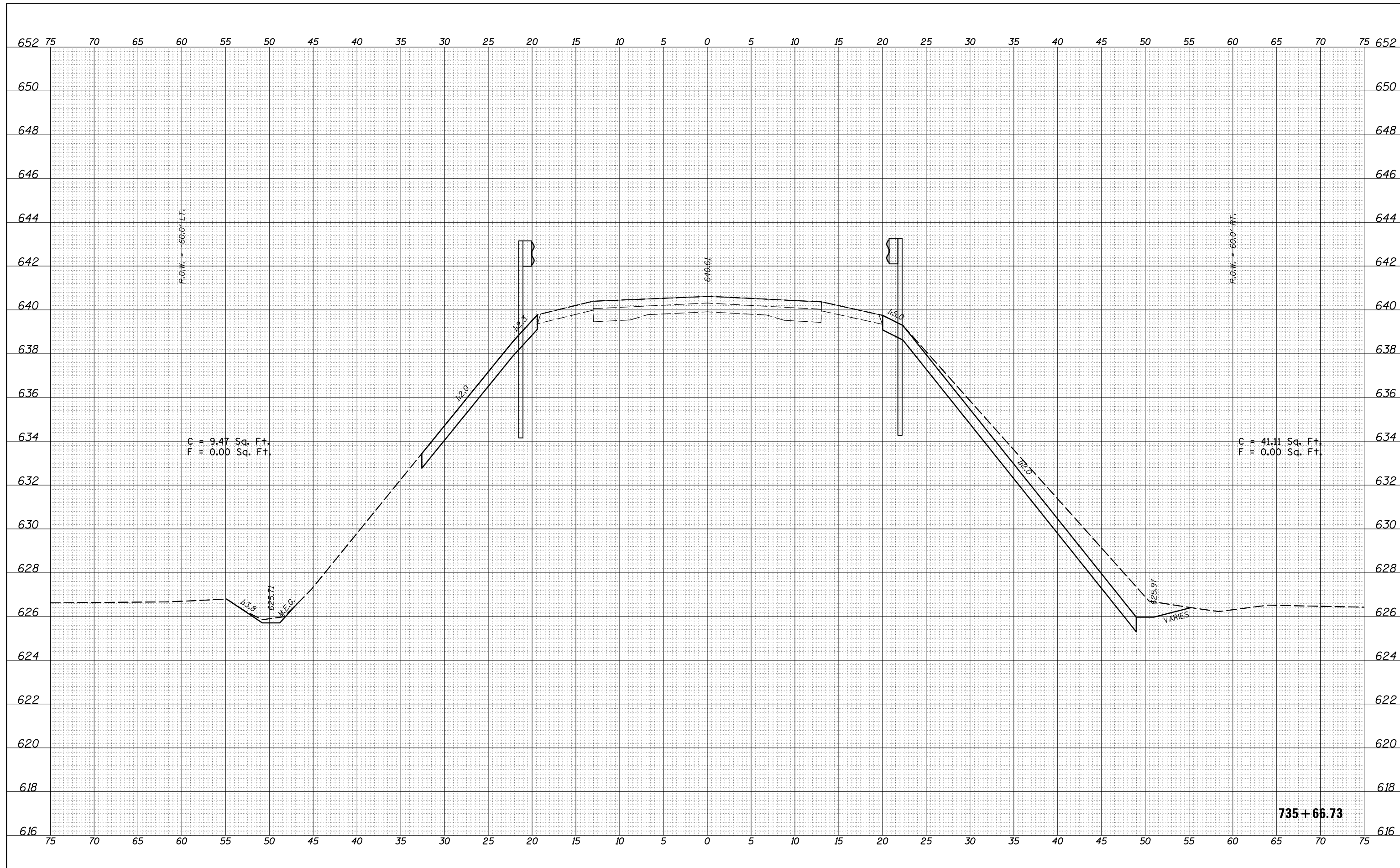
<b>ILL 119 CROSS SECTIONS</b>			
SCALE:	SHEET 7	OF 13	SHEETS
	STA. 735+00.00 TO STA. 735+00.00		

F.A.P. RTE.	SECTION	COUNTY	TOTAL SHEETS	SHEET NO.
711	(116)SLP	VERMILION	22	16
ILLINOIS FED. AID PROJECT			CONTRACT NO. 70C58	



DATE	
BY	
SURVEYED	
PLOTTED	
TEMPLATE	
AREAS	
CHECKED	
FINAL SURVEY	
NOTE BOOK	
NO.	

DATE	
BY	
SURVEYED	
PLOTTED	
TEMPLATE	
AREAS	
CHECKED	
ORIGINAL SURVEY	
NOTE BOOK	
NO.	



FILE NAME =	USER NAME = hodgsonra	DESIGNED -	REVISED -
p:\11084EBIDINTEG\Illinois.gov\PIDOT\Documents\NIDOT Offices\District 5\Projects\0570C58\CAD\DRAWING\0570C58-sht-XS.dgn		REVISIONS	REVISIONS
		CHECKED -	REVISED -
		DATE -	REVISED -
MODEL NAME	PLOT DATE = 3/20/2017		

**STATE OF ILLINOIS  
DEPARTMENT OF TRANSPORTATION**

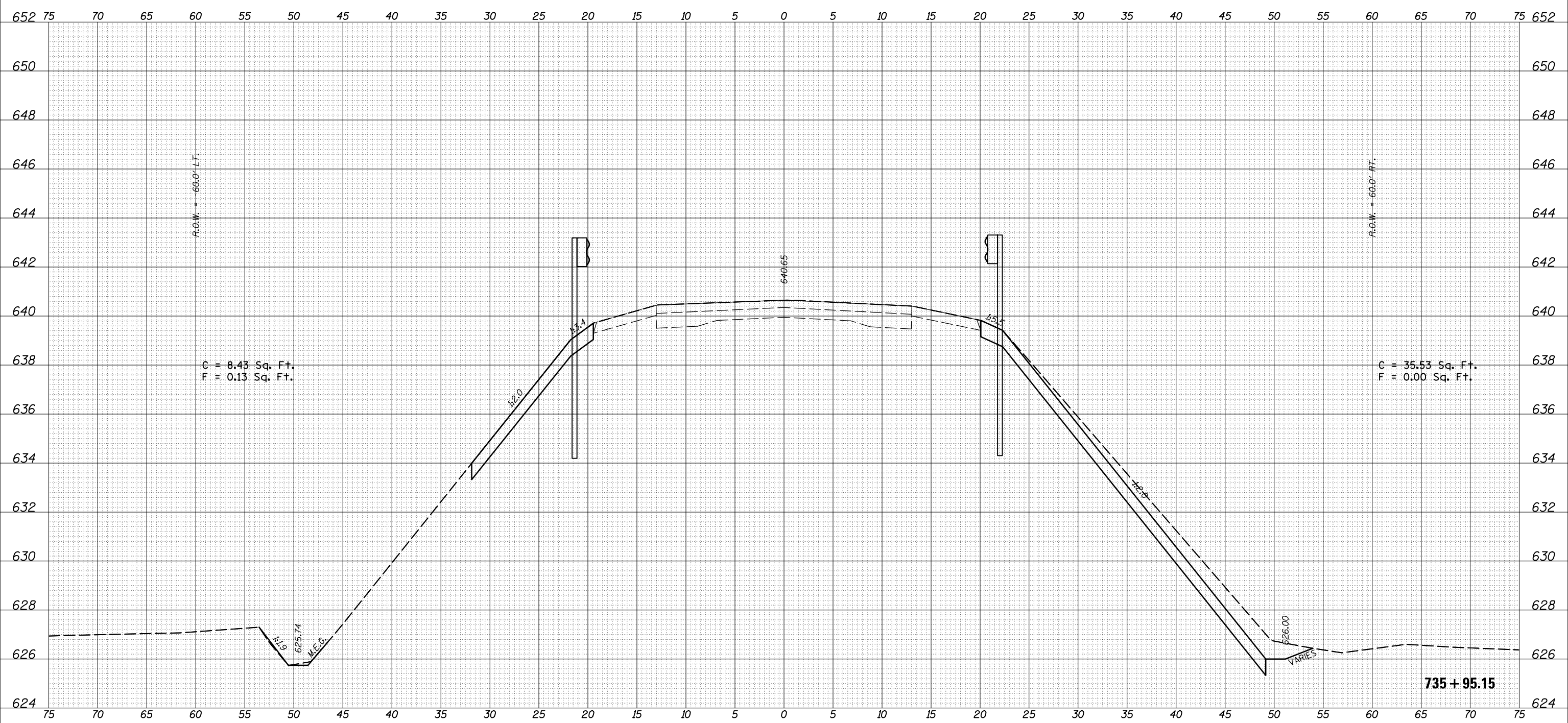
**ILL 119 CROSS SECTIONS**

SCALE: SHEET 8 OF 13 SHEETS STA. 735+66.73 TO STA. 735+66.73

F.A.P. RTE.	SECTION	COUNTY	TOTAL SHEETS	SHEET NO.
711	(116)SLP	VERMILION	22	17
CONTRACT NO. 70C58			ILLINOIS FED. AID PROJECT	

DATE	
BY	
FINAL SURVEY NO.	
SURVEYED PLOTTED	
NOTE BOOK	
AREAS CHECKED	

DATE	
BY	
ORIGINAL SURVEY NO.	
SURVEYED PLOTTED	
NOTE BOOK	
AREAS CHECKED	



FILE NAME =	USER NAME = hodgsonra	DESIGNED -	REVISED -
p:\1\084EBIDINTEG\illinois.gov\PIWIDOT\Documents\NIDOT Offices\District 5\Projects\0570C58\CD\DRAWING\0570C58-sht-XS.dgn		CHECKED -	REVISED -
		DATE -	REVISED -
\$MODELNAME\$	PLOT DATE = 3/20/2017		

**STATE OF ILLINOIS  
DEPARTMENT OF TRANSPORTATION**

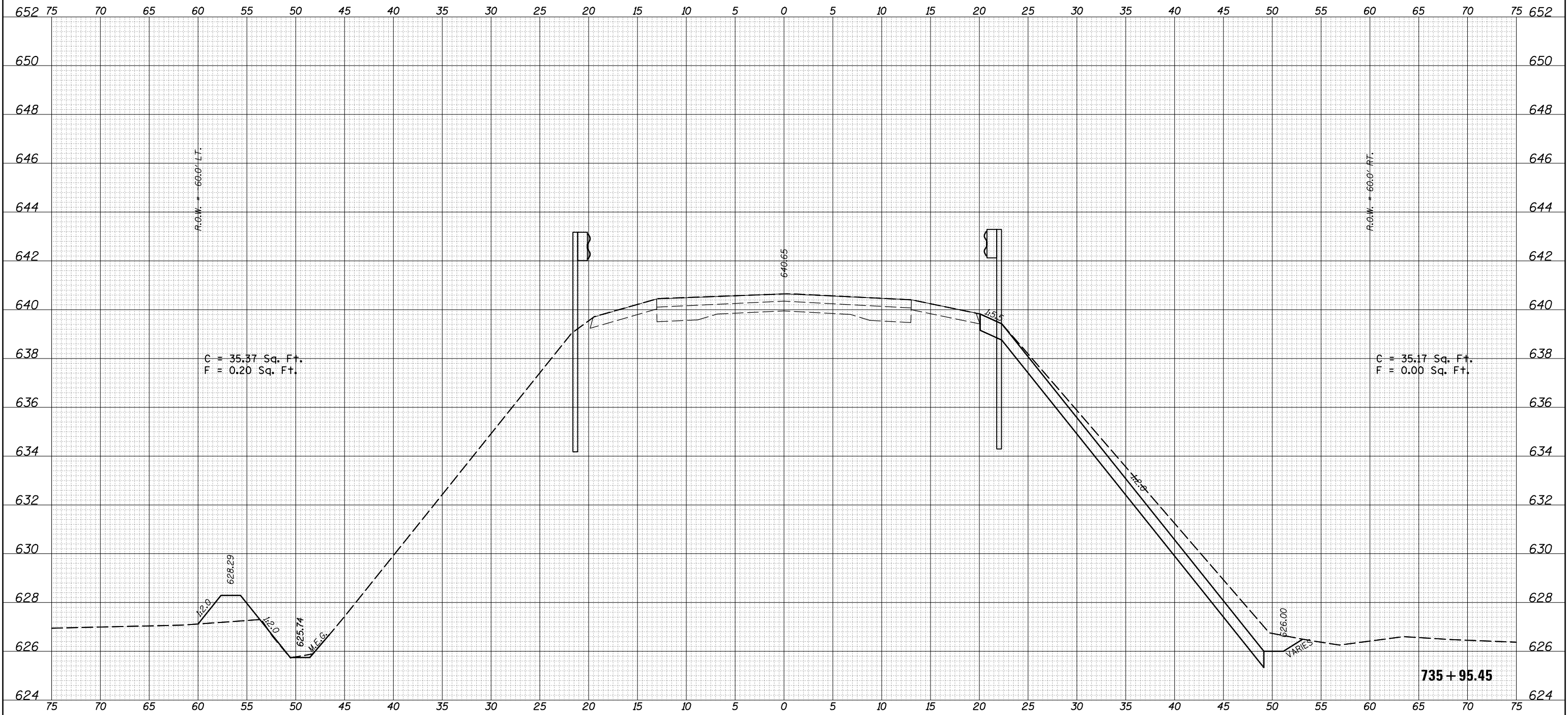
**ILL 119 CROSS SECTIONS**

SCALE: SHEET 9 OF 13 SHEETS STA. 735+95.15 TO STA. 735+95.15

F.A.P. RTE.	SECTION	COUNTY	TOTAL SHEETS	SHEET NO.
711	(116)SLP	VERMILION	22	18
CONTRACT NO. 70C58				
ILLINOIS FED. AID PROJECT				

BY	DATE

ORIGINAL SURVEY NO.	SURVEYED PLOTTED TEMPLATE AREAS CHECKED



FILE NAME =	USER NAME = hodgsonra	DESIGNED -	REVISED -

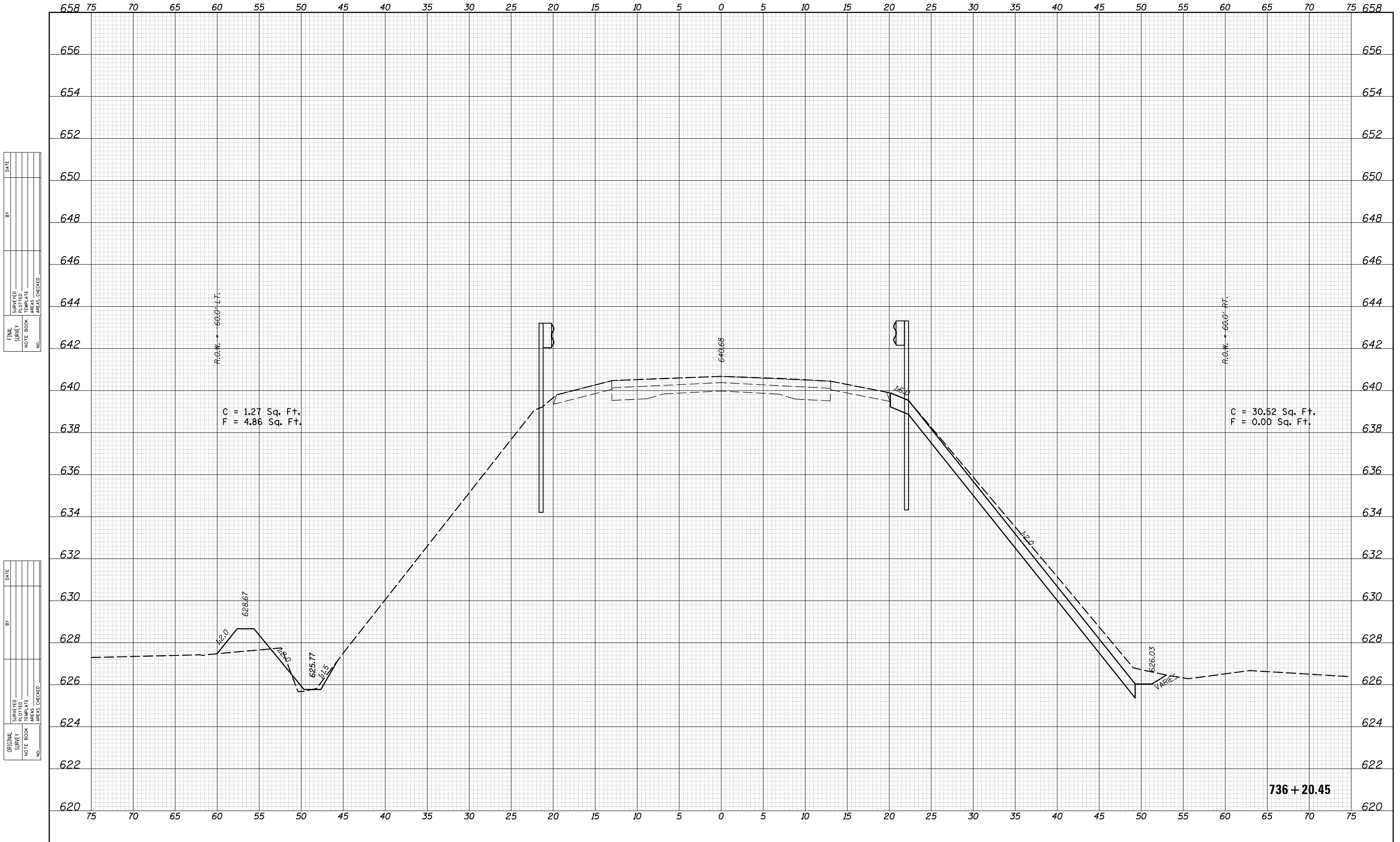
**STATE OF ILLINOIS  
DEPARTMENT OF TRANSPORTATION**

**ILL 119 CROSS SECTIONS**

SCALE: SHEET 10 OF 13 SHEETS STA. 735+95.45 TO STA. 735+95.45

F.A.P. RTE.	SECTION	COUNTY	TOTAL SHEETS	SHEET NO.
711	(116)SLP	VERMILION	22	19
CONTRACT NO. 70C58			ILLINOIS FED. AID PROJECT	





DATE	
BY	
SURVEYED	
PLOTTED	
TEMPLATE	
AREAS	
CHECKED	
FINAL SURVEY	
NOTE BOOK	
NO.	

DATE	
BY	
SURVEYED	
PLOTTED	
TEMPLATE	
AREAS	
CHECKED	
ORIGINAL SURVEY	
NOTE BOOK	
NO.	

FILE NAME =	USER NAME = hodgsonra	DESIGNED -	REVISED -
p:\11084EBIDINTEG\Illinois.gov\PIDOT\Documents\DOT Offices\District 5\Projects\0570C58\CAD\Drawings\0570C58-sht-XS.dgn		REVISOR -	REVISOR -
		CHECKED -	REVISOR -
		DATE -	REVISOR -
\$MODELNAME\$	PLOT DATE = 3/20/2017		

**STATE OF ILLINOIS  
DEPARTMENT OF TRANSPORTATION**

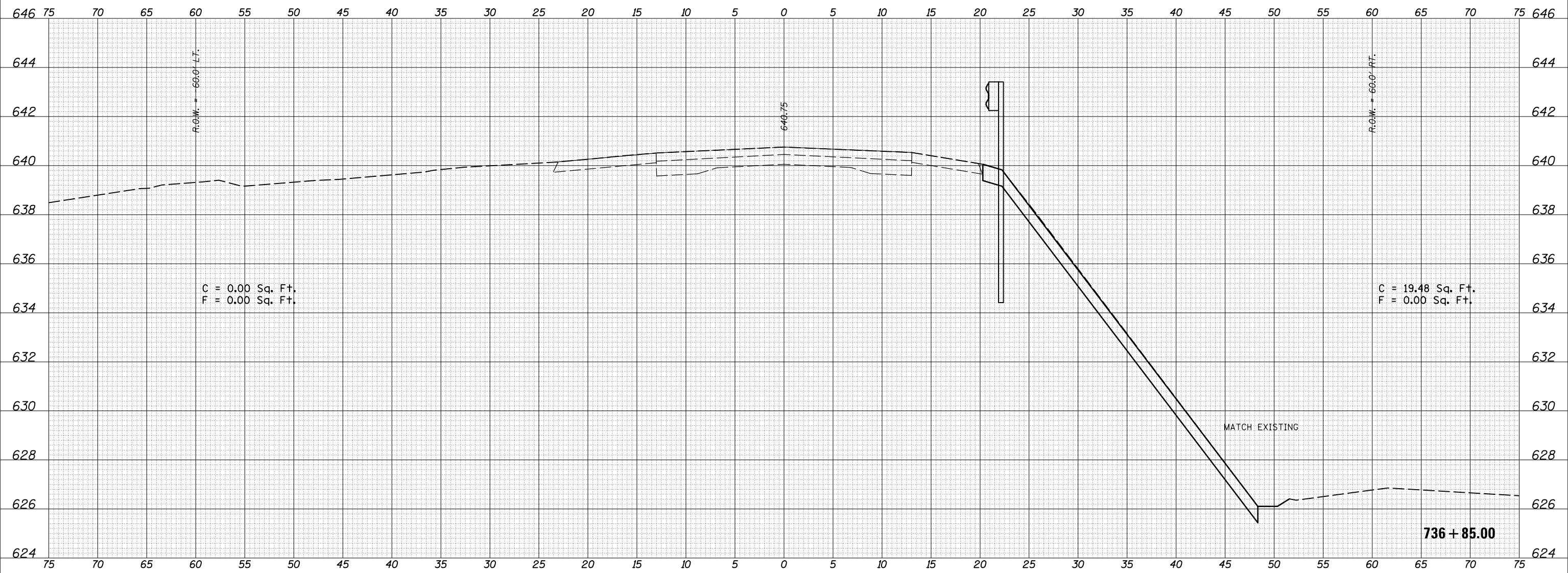
**ILL 119 CROSS SECTIONS**

SCALE: SHEET 12 OF 13 SHEETS STA. 736+20.45 TO STA. 736+20.45

F.A.P. RTE.	SECTION	COUNTY	TOTAL SHEETS	SHEET NO.
711	(116)SLP	VERMILION	22	21
CONTRACT NO. 70C58			ILLINOIS FED. AID PROJECT	

FINAL SURVEY	SURVEYED	DATE
NO.	PLOTTED	
	TEMPLATE	
	AREAS	
	CHECKED	

ORIGINAL SURVEY	SURVEYED	DATE
NO.	PLOTTED	
	TEMPLATE	
	AREAS	
	CHECKED	



FILE NAME =	USER NAME = hodgsonra	DESIGNED -	REVISED -
p:\11084EBIDINTEG\Illinois.gov\PIWIDOT\Documents\NIDOT Offices\District 5\Projects\0570C58\CD\DRAWING\0570C58-sht-XS.dgn		CHECKED -	REVISED -
\$MODELNAME\$	PLOT DATE = 3/20/2017	DATE -	REVISED -

**STATE OF ILLINOIS  
DEPARTMENT OF TRANSPORTATION**

**ILL 119 CROSS SECTIONS**

SCALE: SHEET 13 OF 13 SHEETS STA. 736+85.00 TO STA. 736+85.00

F.A.P. RTE.	SECTION	COUNTY	TOTAL SHEETS	SHEET NO.
711	(116)SLP	VERMILION	22	22
CONTRACT NO. 70C58			ILLINOIS FED. AID PROJECT	