

F.A.P. RTE.	SECTION	COUNTY	TOTAL SHEETS	SHEET NO.
74	D5 EAB CONTROL 2017-2	ILLINOIS	8	1

\* CHAMPAIGN, PIATT, & DEWITT

D-95-016-17



06-16-2017 LETTING ITEM 235

STATE OF ILLINOIS  
DEPARTMENT OF TRANSPORTATION

**PROPOSED  
HIGHWAY PLANS**

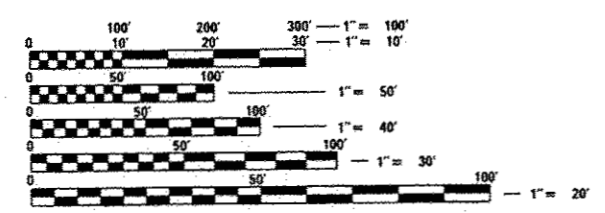
FAI ROUTE 74 (I-74)  
SECTION D5 EAB CONTROL 2017-2  
PROJECT  
CHAMPAIGN, PIATT, & DEWITT COUNTIES

C-95-016-17

FOR INDEX OF SHEETS, SEE SHEET NO. 2  
FOR SUMMARY OF QUANTITIES, SEE SHEET NO. 5

CURRENT TRAFFIC DATA		
F.A.I. ROUTE 74		
LEG "A"	33,200	WEST OF I-57 TO PRAIRIEVIEW ROAD
LEG "B"	30,700	PRAIRIEVIEW ROAD TO ILL. 47
LEG "C"	22,700	ILL. 47 TO MANSFIELD INTERCHANGE
LEG "D"	21,800	MANSFIELD INTERCHANGE TO ILL. 54
LEG "E"	20,700	ILL. 54 TO MCLEAN COUNTY LINE

FOR LOCATION MAPS, SEE SHEETS 3 & 4



FULL SIZE PLANS HAVE BEEN PREPARED USING STANDARD ENGINEERING SCALES. REDUCED SIZED PLANS WILL NOT CONFORM TO STANDARD SCALES. IN MAKING MEASUREMENTS ON REDUCED PLANS, THE ABOVE SCALES MAY BE USED.

J.U.L.I.E.  
JOINT UTILITY LOCATION INFORMATION FOR EXCAVATION  
1-800-892-0123  
OR 811

PROJECT ENGINEER: NANCY FASIG  
PHONE NO. (217)465-4181

CONTRACT NO. 70C60

STATE OF ILLINOIS  
DEPARTMENT OF TRANSPORTATION

SUBMITTED MARCH 13, 2017  
Kenneth A. Garnett  
REGIONAL ENGINEER

May 12, 2017  
Maureen M. Adams  
ENGINEER OF DESIGN AND ENVIRONMENT

May 12, 2017  
Shirley A. [Signature]  
DIRECTOR OF PROGRAM DEVELOPMENT

PRINTED BY THE AUTHORITY  
OF THE STATE OF ILLINOIS

## INDEX OF SHEETS

2	INDEX, STANDARDS, AND GENERAL NOTES
3 - 4	LOCATION MAPS
5	SUMMARY OF QUANTITIES
6 - 8	SCHEDULE OF QUANTITIES

## LIST OF STANDARDS

<u>STANDARD NO.</u>	<u>DESCRIPTION</u>
001006	DECIMAL OF AN INCH AND OF A FOOT
701101-05	OFF-ROAD OPERATIONS, MULTILANE, 15' (4.5M) TO 24" (600MM) FROM PAVEMENT EDGE
701106-02	OFF-ROAD OPERATIONS, MULTILANE, MORE THAN 15' (4.5 M) AWAY
701456-04	PARTIAL EXIT RAMP CLOSURE FREEWAY/EXPRESSWAY
701901-06	TRAFFIC CONTROL DEVICES

## GENERAL NOTES

G.N.-100  
 ENGLISH UNITS OF MEASUREMENT SHALL GOVERN OVER AND SUPERSEDE  
 ANY METRIC UNITS SHOWN IN THIS CONTRACT. WHERE INCLUDED,  
 METRIC UNITS ARE FOR INFORMATION ONLY.

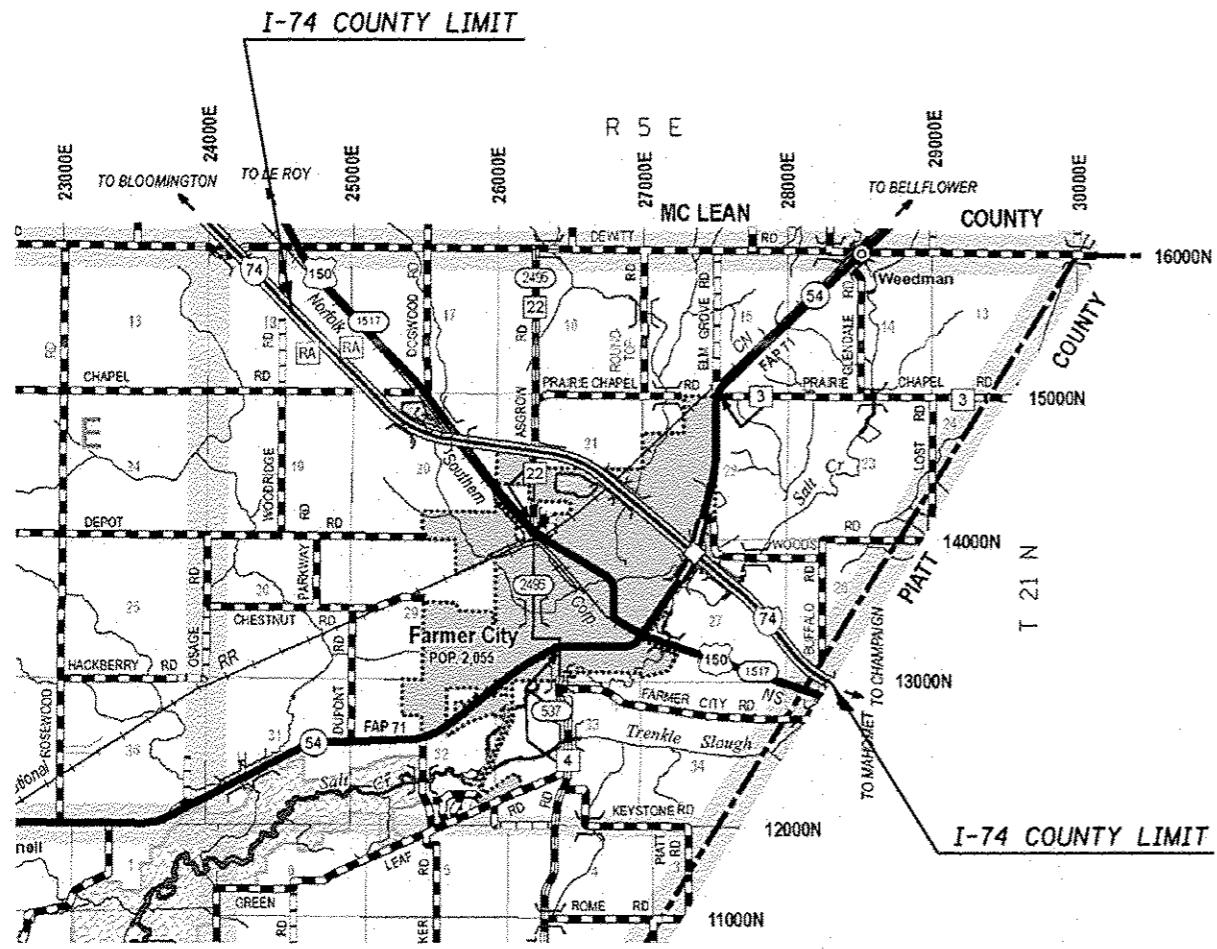
NO COMMITMENTS.

**STATE OF ILLINOIS  
 DEPARTMENT OF TRANSPORTATION**

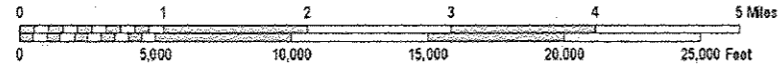
**INDEX OF SHEETS,  
 LIST OF STANDARDS & GENERAL NOTES**

FILE NAME *	USER NAME = pwrloakjd	DESIGNED -	REVISED -	<b>STATE OF ILLINOIS DEPARTMENT OF TRANSPORTATION</b>	<b>INDEX OF SHEETS, LIST OF STANDARDS &amp; GENERAL NOTES</b>	F.A.J. RTE.	SECTION	COUNTY	TOTAL SHEETS	SHEET NO.	
DESIGNED BY	DESIGNED DATE	CHECKED -	REVISED -			74	DS EAB CONTROL 2017-2		8	2	
PLLOT SCALE = 48.8888' / 1" =	CHECKED DATE	REVISIONS	REVISIONS			* CHAMPAIGN, PIATT & DEWITT CONTRACT NO. 70C60					
PLLOT DATE = 3/21/2017	DATE	REVISIONS	REVISIONS			[ILLINOIS] FED. AID PROJECT					
				SCALE: SHEET 1 OF 1 SHEETS STA. TO STA.							

**LOCATION MAP  
DEWITT COUNTY**



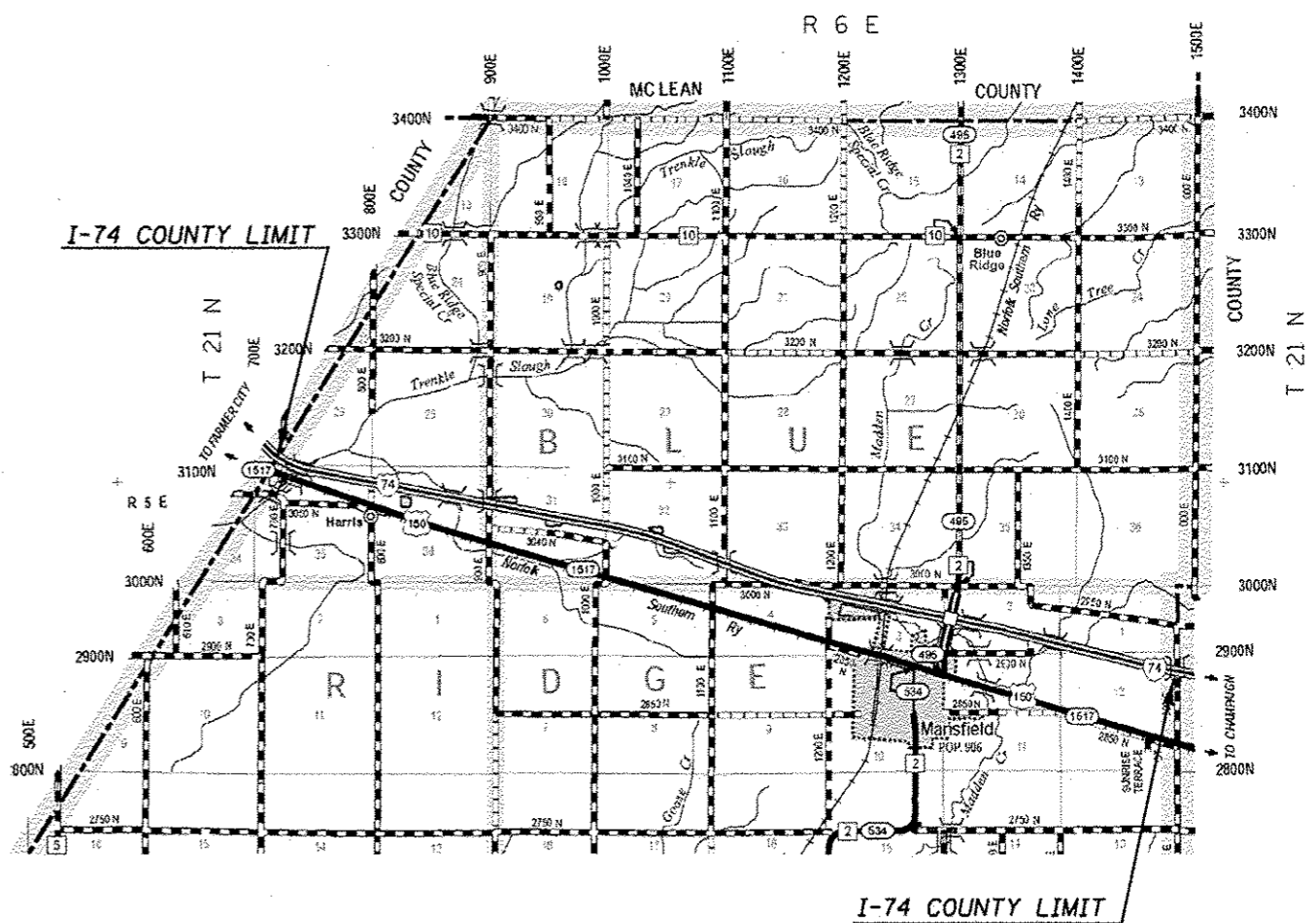
SCALE FOR MAIN MAP



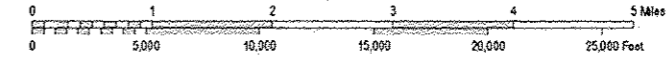
**TOWNSHIPS**

SANTA ANNA

**LOCATION MAP  
PIATT COUNTY**



SCALE FOR MAIN MAP



**TOWNSHIPS**

BLUE RIDGE

FILE NAME =	USER NAME = ceo-look_jd	DESIGNED -	REVISED -
p:\IL\894E\BID\INTEG\Illinois.gov\PI\DOT\Documents\DOT Offices\District 5\Projects\0578\BRAW\BData\6A0\Sheets\0578C68-Sht-1.dwg		CHECKED -	REVISED -
#MODELNAME#	PLOT DATE = 3/21/2017	DATE -	REVISED -

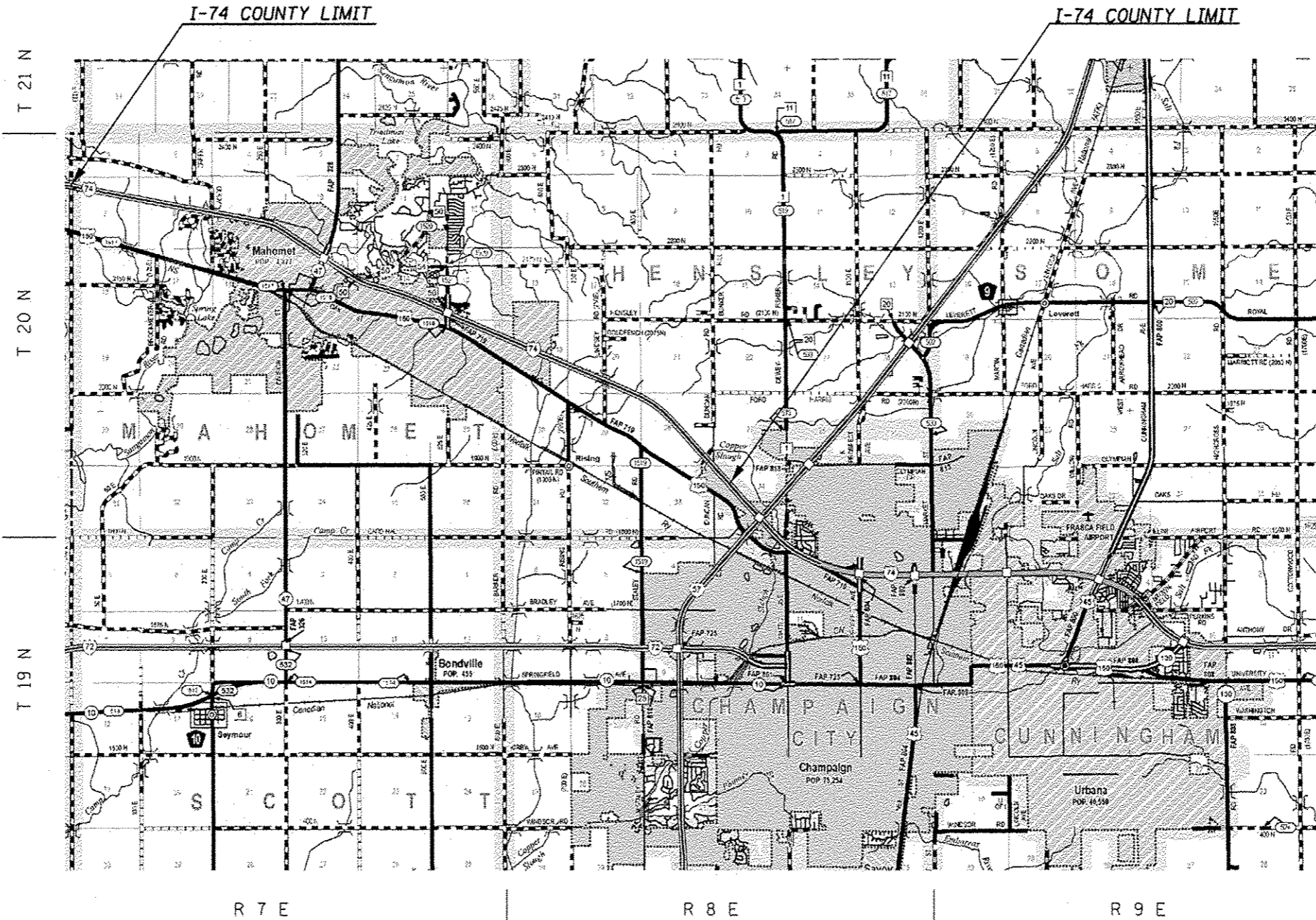
STATE OF ILLINOIS  
DEPARTMENT OF TRANSPORTATION

**LOCATION MAP  
DEWITT AND PIATT COUNTIES**

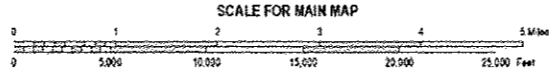
SCALE: SHEET 1 OF 1 SHEETS STA. TO STA.

F.A.I. RTE.	SECTION	COUNTY	TOTAL SHEETS	SHEET NO.
74	05 EAB CONTROL 2017-2		8	3
CHAMPAIGN, PIATT & DEWITT			CONTRACT NO. 70C60	
[ILLINOIS] FED. AID PROJECT				

# LOCATION MAP CHAMPAIGN COUNTY



**TOWNSHIPS**  
HENSLEY &  
MAHOMET



FILE NAME :	USER NAME : oas-jackjd	DESIGNED -	REVISED -	<b>STATE OF ILLINOIS</b> <b>DEPARTMENT OF TRANSPORTATION</b>	<b>LOCATION MAP</b> <b>CHAMPAIGN COUNTY</b>	F.A.J. RTE.	SECTION	COUNTY	TOTAL SHEETS	SHEET NO.	
PROJECT :	DATE :	CHECKED -	REVISED -			74	DS EAB CONTROL 2017-2	•	8	4	
MODELNAME# :	PLOT DATE : 3/21/2017	DATE -	REVISED -			SCALE: SHEET 1 OF 1 SHEETS STA. TO STA.		• CHAMPAIGN, PIATT & DEWITT CONTRACT NO. 70C60			
[ILLINOIS] FED. AID PROJECT											

# SUMMARY OF QUANTITIES

TEX. OR. 9AM

LOCATION OF WORK:

I-74	I-74	I-74	I-74	I-74	I-74
CHAMPAIGN	CHAMPAIGN	PIATT	PIATT	DEWITT	DEWITT
COUNTY	COUNTY	COUNTY	COUNTY	COUNTY	COUNTY
RURAL	URBAN	RURAL	URBAN.	RURAL	URBAN.
FUNDING BREAKOUT:	100% STATE	100% STATE	100% STATE	100% STATE	100% STATE
CONSTRUCTION TYPE CODE:	0031	0031	0031	0031	0031

CODE NO.	ITEM	UNIT	TOTAL QUANTITY							
20100110	TREE REMOVAL (6 TO 15 UNITS DIAMETER)	UNIT	1,531.0	240.0	22.0	314.0	40.0	167		748.0
20100210	TREE REMOVAL (OVER 15 UNITS DIAMETER)	UNIT	1,178.0	248.0	137.0	401.0	51.0	60		281.0
67100100	MOBILIZATION	L SUM	1.0	0.1	0.1	0.2	0.1	0.1		0.4
70100825	TRAFFIC CONTROL AND PROTECTION, STANDARD 701456	L SUM	1.0			0.1		0.9		
* DENOTES SPECIALTY ITEM										

4

# SCHEDULE OF QUANTITIES

SHEET 1 OF 3

## TREE REMOVAL

### CHAMPAIGN COUNTY - I-74 WESTBOUND STARTING WEST OF I-57/I-74 INTERCHANGE

LOCATION	DESCRIPTION (IF ANY)	MARKED NUMBER	6 TO 15 UNITS DIAMETER (UNITS)	OVER 15 UNITS DIAMETER (UNITS)	URBAN/RURAL
WEST OF INTERCHANGE	ASH	1		21	URBAN
WEST OF INTERCHANGE	ASH	2		24	URBAN
MM 178	ASH	3		27	URBAN
MM 178	ASH	4		26	URBAN
MM 177	DEAD LOCUST	5	14		RURAL
MM 177	DEAD LOCUST	6	15		RURAL
MM 177	DEAD LOCUST	7		16	RURAL
MM 177	DEAD LOCUST	8		16	RURAL
MM 177	DEAD LOCUST	9		16.5	RURAL
MM 177	DEAD LOCUST	10		15	RURAL
MM 177	DEAD LOCUST	11		16.5	RURAL
MM 176	DEAD PINE	12		16	RURAL
MM 176	DEAD PINE	13		17	RURAL
MM 176	ASH	14	14		RURAL
MM 175		15		22	URBAN
MM 175		16	7		URBAN
MM 175	MULTISTEM ASH	17	8		URBAN
NW QUAD PRARIEVIEW ROAD INTERCHANGE	ASH	18		17	URBAN
EAST OF STRUCTURE 208	ASH	19	7		URBAN
MM 170	DEAD LOCUST	20		18	RURAL
MM 170	ASH	21	13		RURAL
MM 170	ASH IN BURNING BUSH STAND	22	10.5		RURAL
MM 170	ASH	23	8		RURAL
MM 170	ASH	24	6		RURAL
MM 170	ASH	25	7		RURAL
MM 170	ASH	26	6.5		RURAL
MM 170	ASH	27	6.5		RURAL
MM 170	ASH	28	7.5		RURAL
MM 170		29	6		RURAL
MM 170		30	6.5		RURAL
MM 170		31	8.5		RURAL
MM 170	ASH	32		20	RURAL
MM 170	ASH	33	15		RURAL
MM 170	ASH	34		16	RURAL
MM 170	ASH	35	15		RURAL
MM 170	ASH	36		16.5	RURAL
MM 170	ASH	37		17	RURAL
MM 170	ASH	38		21	RURAL
MM 170		39	9.5		RURAL
MM 170		40	8		RURAL
MM 170		41	8		RURAL
MM 170	MULTISTEM ASH	42	7		RURAL
MM 170	ASH	43	14.5		RURAL
MM 170		44	6		RURAL
MM 170	MULTISTEM ASH	45	6		RURAL
MM 170	ASH	46	12		RURAL
MM 169		47		26	RURAL
MM 169	DEAD MULTISTEM TREE	48	9.5		RURAL
<b>SUBTOTAL I-74 WB CHAMPAIGN COUNTY</b>			261.5	384.5	
<b>USE</b>			262.0	385.0	

### PIATT COUNTY - I-74 WESTBOUND STARTING CHAMPAIGN/PIATT COUNTY LINE

LOCATION	DESCRIPTION (IF ANY)	MARKED NUMBER	6 TO 15 UNITS DIAMETER (UNITS)	OVER 15 UNITS DIAMETER (UNITS)	URBAN/RURAL
MM 169	ASH	49	15		RURAL
MM 169	ASH	50	12		RURAL
MM 169		51	12		RURAL
MM 169	MULTI-STEM	52	10.5		RURAL
MM 169	ASH TREE	53	8		RURAL
MM 169		54		19	RURAL
MM 168	DEAD LOCUST	55		19	RURAL
NE QUADRANT MANSFIELD INTERCHANGE	TREES TO BE REMOVED TO BE DETERMINED BY ENGINEER				RURAL
E. SIDE MANSFIELD RXR BRIDGE	ASH	56	12	90	RURAL
W. SIDE MANSFIELD RXR BRIDGE	ASH	57		18	RURAL
MM 165	MULTI-STEM	58		15.5	RURAL
MM 165	ASH TREE	59	6.5		RURAL
MM 165	ASH	60	12.5		RURAL
MM 165	ASH	61	14		RURAL
MM 165	ASH	62		20	RURAL
MM 164	DEAD TREE	63		20	RURAL
MM 162	ASH	64		17	RURAL
MM 162	ASH	65		17.5	RURAL
MM 162	ASH	66		17.5	RURAL
MM 162	ASH	67	15		RURAL
MM 161	DEAD TREE	68	15		RURAL
MM 161	DEAD TREE	69		21	RURAL
<b>SUBTOTAL I-74 WB PIATT COUNTY</b>			222.5	274.5	
<b>USE</b>			223	275	

# SCHEDULE OF QUANTITIES

**SHEET 2 OF 3**

**PIATT COUNTY - I-74 EASTBOUND  
STARTING PIATT/DEWITT COUNTY LINE**

LOCATION	DESCRIPTION (IF ANY)	MARKED NUMBER	6 TO 15 UNITS DIAMETER (UNITS)	OVER 15 UNITS DIAMETER (UNITS)	URBAN/ RURAL
MM 164	ASH	181		19	URBAN
MM 164	ASH	182		15.5	URBAN
MM 164	ASH	183		16	URBAN
MM 164	MULTI-STEM	184	7		URBAN
MM 164			185	7	URBAN
MM 164		ASH	186	11	
MM 164	ASH	187	15		URBAN
MM 165	ASH	188	14		RURAL
MM 165	ASH	189	8.5		RURAL
MM 165	ASH	190	6.5		RURAL
MM 165	ASH	191		29.5	RURAL
MM 167	ASH	192		16	RURAL
MM 167	ASH	193		18	RURAL
MM 167	ASH	194	10.5		RURAL
MM 167	ASH	195		16.5	RURAL
MM 167	ASH	196	8.5		RURAL
MM 167	ASH	197	11		RURAL
MM 167	ASH	198	10		RURAL
MM 167	ASH	199	11		RURAL
MM 167	ASH	200	11		RURAL
MM 167	ASH	201		25	RURAL
MM 167	ASH	202		21	RURAL
<b>SUBTOTAL I-74 EB PIATT COUNTY</b>			131	176.5	
		<b>USE</b>	131	177	

**DEWITT COUNTY - I-74 WESTBOUND  
STARTING DEWITT/PIATT COUNTY LINE**

LOCATION	DESCRIPTION (IF ANY)	MARKED NUMBER	6 TO 15 UNITS DIAMETER (UNITS)	OVER 15 UNITS DIAMETER (UNITS)	URBAN/ RURAL	
NW QUAD FARMER CITY INTERCHANGE	ASH	70	10		RURAL	
MM 157	DEAD TREE	71	11		RURAL	
MM 157	DEAD TREE	72	15		RURAL	
PAST FARMLAND RA ON RAMP	MULTI-STEM	73	9		RURAL	
PAST FARMLAND RA ON RAMP	ASH TREE			12.5		RURAL
PAST FARMLAND RA ON RAMP	MULTI-STEM	75	13		RURAL	
PAST FARMLAND RA ON RAMP			76	10.5		RURAL
PAST FARMLAND RA ON RAMP		ASH TREE	77	13		RURAL
PAST FARMLAND RA ON RAMP		78	9		RURAL	
PAST FARMLAND RA ON RAMP		79	10.5		RURAL	
PAST FARMLAND RA ON RAMP		80	12		RURAL	
PAST FARMLAND RA ON RAMP	ASH	81	12.5		RURAL	
PAST FARMLAND RA ON RAMP	ASH	82	13		RURAL	
PAST FARMLAND RA ON RAMP	ASH	83	6	20	RURAL	
PAST FARMLAND RA ON RAMP	ASH	84	10	20	RURAL	
PAST FARMLAND RA ON RAMP	DEAD TREE	85		19.5	RURAL	
<b>SUBTOTAL I-74 WB DEWITT COUNTY</b>			167	59.5		
		<b>USE</b>	167	60		

**DEWITT COUNTY - I-74 EASTBOUND  
STARTING NEAR FARMLAND REST AREA**

LOCATION	DESCRIPTION (IF ANY)	MARKED NUMBER	6 TO 15 UNITS DIAMETER (UNITS)	OVER 15 UNITS DIAMETER (UNITS)	URBAN/ RURAL
MM 158	ASH	86	6		URBAN
MM 158	MULTI-STEM	87	8		URBAN
MM 158	ASH TREE	88	8		URBAN
MM 158	DOWN TREE	89	11		URBAN
MM 158			90	10.5	
MM 158	MULTI-STEM	91	11		URBAN
MM 158	MULTI-STEM	92	12		URBAN
MM 158	ASH TREE	93	7		URBAN
MM 158	ASH	94		16	URBAN
MM 158	ASH	95	8		URBAN
MM 158	ASH	96		16.5	URBAN
MM 158	ASH	97	6.5		URBAN
MM 158	ASH	98	9		URBAN
MM 158	ASH	99	9.5		URBAN
MM 158	ASH	100	6		URBAN
MM 158	ASH	101	9.5		URBAN
MM 158	ASH	102	7.5		URBAN
MM 158	ASH	103	14.5		URBAN
MM 158	ASH	104	6		URBAN
MM 158	ASH	105	7		URBAN
MM 158	ASH	106	7		URBAN
MM 158	ASH	107	6		URBAN
MM 158	ASH	108	7		URBAN
MM 158	ASH	109	8		URBAN
MM 158	ASH	110	8		URBAN
MM 158	MULTI-STEM	111	11		URBAN
MM 158	ASH TREE	112	13		URBAN
MM 158	ASH	113	12		URBAN
MM 158	ASH	114	7		URBAN
MM 158	ASH	115	8		URBAN
MM 158	ASH	116	7		URBAN
MM 158	ASH	117	7.5		URBAN
MM 158	ASH	118	7		URBAN
MM 158	ASH	119	7		URBAN
MM 158	ASH	120	8		URBAN
MM 158	ASH	121	10.5		URBAN
MM 158	ASH	122	8		URBAN
MM 158	ASH	123	9.5		URBAN
MM 158	ASH	124	10		URBAN
MM 158	ASH	125	9		URBAN
MM 158	ASH	126	10		URBAN
MM 158	ASH	127	8		URBAN
MM 158	ASH	128	9		URBAN
MM 158	ASH	129	6		URBAN
W OF FARMER CITY EXIT RAMP 159	ASH	130		18	URBAN
W OF FARMER CITY EXIT RAMP 159	ASH	131	12		URBAN
W OF FARMER CITY EXIT RAMP 159	ASH	132	9		URBAN
W OF FARMER CITY EXIT RAMP 159	ASH	133	15		URBAN
W OF FARMER CITY EXIT RAMP 159	ASH	134		23.5	URBAN
W OF FARMER CITY EXIT RAMP 159	MULTI-STEM	135		16	URBAN
W OF FARMER CITY EXIT RAMP 159	ASH TREE			9.5	

# SCHEDULE OF QUANTITIES

SHEET 3 OF 3

## DEWITT COUNTY - I-74 EASTBOUND STARTING NEAR FARMLAND REST AREA, CON'T.

W OF FARMER CITY EXIT RAMP 159	ASH	137		21	URBAN	
W OF FARMER CITY EXIT RAMP 159	ASH	138		23	URBAN	
W OF FARMER CITY EXIT RAMP 159	ASH	139	6		URBAN	
W OF FARMER CITY EXIT RAMP 159	ASH	140	8		URBAN	
W OF FARMER CITY EXIT RAMP 159	ASH	141	8		URBAN	
W OF FARMER CITY EXIT RAMP 159	ASH	142	8		URBAN	
W OF FARMER CITY EXIT RAMP 159	ASH	143	12.5		URBAN	
W OF FARMER CITY EXIT RAMP 159	ASH	144	15		URBAN	
W OF FARMER CITY EXIT RAMP 159	ASH	145	6.5		URBAN	
W OF FARMER CITY EXIT RAMP 159	ASH	146	6		URBAN	
W OF FARMER CITY EXIT RAMP 159	ASH	147	8		URBAN	
W OF FARMER CITY EXIT RAMP 159	MULTI-STEM	148	6		URBAN	
W OF FARMER CITY EXIT RAMP 159	ASH TREE	149	8		URBAN	
W OF FARMER CITY EXIT RAMP 159	ASH	150	7		URBAN	
W OF FARMER CITY EXIT RAMP 159	ASH	151	8		URBAN	
W OF FARMER CITY EXIT RAMP 159	ASH	152	10		URBAN	
W OF FARMER CITY EXIT RAMP 159	ASH	153	10		URBAN	
W OF FARMER CITY EXIT RAMP 159	ASH	154	9		URBAN	
W OF FARMER CITY EXIT RAMP 159	ASH	155	6		URBAN	
W OF FARMER CITY EXIT RAMP 159	ASH	156	6.5		URBAN	
I-74 FARMER CITY ON RAMP	MULTI-STEM	157	14		URBAN	
I-74 FARMER CITY ON RAMP		158	11		URBAN	
I-74 FARMER CITY ON RAMP		159	10.5		URBAN	
I-74 FARMER CITY ON RAMP		160	9		URBAN	
I-74 FARMER CITY ON RAMP		161	7		URBAN	
I-74 FARMER CITY ON RAMP		162	13		URBAN	
I-74 FARMER CITY ON RAMP		163			16	URBAN
I-74 FARMER CITY ON RAMP		164	9			URBAN

## DEWITT COUNTY - I-74 EASTBOUND STARTING NEAR FARMLAND REST AREA, CON'T.

I-74 FARMER CITY ON RAMP	MULTI-STEM	165	13.5		URBAN	
I-74 FARMER CITY ON RAMP	ASH TREE	166		30	URBAN	
I-74 FARMER CITY ON RAMP	MULTI-STEM	167	11		URBAN	
I-74 FARMER CITY ON RAMP		168	12.5		URBAN	
I-74 FARMER CITY ON RAMP		ASH TREE	169	11		URBAN
I-74 FARMER CITY ON RAMP		170	12			URBAN
I-74 FARMER CITY ON RAMP	ASH	171		23	URBAN	
I-74 FARMER CITY ON RAMP	ASH	172		24	URBAN	
I-74 FARMER CITY ON RAMP	MULTI-STEM	173	13		URBAN	
I-74 FARMER CITY ON RAMP		174		15.5	URBAN	
I-74 FARMER CITY ON RAMP		175		19.5	URBAN	
I-74 FARMER CITY ON RAMP		ASH TREE	176	14.5		URBAN
I-74 FARMER CITY ON RAMP		177	8			URBAN
I-74 FARMER CITY ON RAMP		178	15			URBAN
I-74 FARMER CITY ON RAMP	ASH	179		19	URBAN	
MM 159	ASH	180	9.5		URBAN	
<b>SUBTOTAL I-74 EB DEWITT COUNTY</b>			748	281		
	<b>USE</b>		748	281		

**SUMMARY:**

I-74 WESTBOUND - CHAMPAIGN COUNTY	262	385
I-74 WESTBOUND - PIATT COUNTY	223	275
I-74 EASTBOUND - PIATT COUNTY	131	177
I-74 WESTBOUND - DEWITT COUNTY	167	60
I-74 EASTBOUND - PIATT COUNTY	748	281

**TOTAL:** 1531      1178