



Hurst-Rosche, Inc.
 PROFESSIONAL DESIGN NUMBER 19440209
 5 Bank Square
 E. St. Louis, IL
 618.398.0890 t
 www.hurst-rosche.com
 HILLSBORO, IL
 MARION, IL
 SPRINGFIELD, IL
 ARNOLD, MO
 NEOSHO, MO

INDEX OF SHEETS

- 1 COVER SHEET
- 2 GENERAL NOTES, AND TYPICAL SECTIONS
- 3 SUMMARY OF QUANTITIES & SCHEDULES
- 4 SCHEDULES
- 5-12 PLAN & PROFILE SHEETS
- 13-16 PAVEMENT STRIPING PLANS
- 17-20 SIDEWALK RAMPS
- 21 MISCELLANEOUS DETAILS

LIST OF STANDARDS

- 000001-06 STANDARD SYMBOLS, ABBREVIATIONS AND PATTERNS
- 001006 DECIMAL OF AN INCH AND OF A FOOT
- 424001-09 PERPENDICULAR CURB RAMPS FOR SIDEWALKS
- 424006-02 DIAGONAL CURB RAMPS FOR SIDEWALKS
- 424011-03 CORNER PARALLEL CURB RAMPS FOR SIDEWALKS
- 424016-03 MID-BLOCK CURB RAMPS FOR SIDEWALKS
- 424021-03 DEPRESSED CORNER FOR SIDEWALKS
- 424026-01 ENTRANCE / ALLEY PEDESTRIAN CROSSINGS
- 424031-01 MEDIAN PEDESTRIAN CROSSING
- 442201-03 CLASS C AND D PATCHES
- 602301-04 INLET - TYPE A
- 602306-03 INLET - TYPE B
- 602401-03 MANHOLE - TYPE A
- 604001-04 FRAME AND LID TYPE 1
- 604006-05 FRAME & GRATE TYPE 3
- 604066-02 FRAME & LID TYPE 15
- 606001-06 CONCRETE CURB TYPE B & COMBINATION CONCRETE CURB & GUTTER
- 606301-04 PC CONCRETE ISLANDS AND MEDIANS
- 701301-04 LANE CLOSURE 2L, 2W, SHORT TIME OPERATIONS
- 701501-06 URBAN LANE CLOSURE 2L, 2W, UNDIVIDED
- 701601-09 URBAN LANE CLOSURE MULTILANE, 1W OR 2W WITH NONTRAVERSABLE MEDIAN
- 701701-10 URBAN LANE CLOSURE, MULTILANE INTERSECTION
- 701801-06 SIDEWALK, CORNER OR CROSSWALK CLOSURE
- 701901-06 TRAFFIC CONTROL DEVICES
- 780001-05 TYPICAL PAVEMENT MARKINGS

STATE OF ILLINOIS
 DEPARTMENT OF TRANSPORTATION
 DIVISION OF HIGHWAYS
CITY OF EAST SAINT LOUIS

FAU ROUTE 9332
 (10TH STREET REHABILITATION)
 SEC 12-00228-00-RS
 PROJECT NO. M-5011 (388)



PROJECT LOCATION

ST. CLAIR COUNTY
 LOCATION OF SECTION INDICATED THUS --

PROJECT LOCATION

ST. CLAIR COUNTY
 JOB NO. C-98-362-12



BEGIN CONSTRUCTION
 STA. 0+77.05
 (MISSOURI AVE.)

END CONSTRUCTION
 STA. 35+86.66
 (PENNSYLVANIA AVE.)

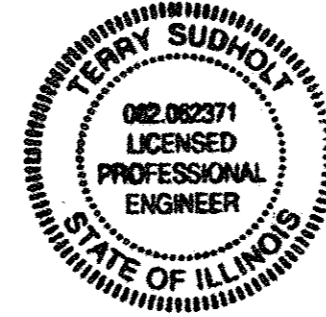
LOCATION MAP

NO SCALE

DESIGNATION: URBAN COLLECTOR (OWS-2)
 ADT = 2,200
 PROJECT LENGTH = 3451.01 FEET (0.654 MILES)
 DESIGN SPEED = 25 MPH -- MISSOURI AVE. TO M.L. KING DR.
 20 MPH -- M.L. KING DR. TO PENNSYLVANIA AVE.

CITY OF EAST ST. LOUIS

MAYOR: EMEKA JACKSON-HICKS
 CITY CLERK: DORENE HOOSMAN
 CITY TREASURER: CHARLOTTE MOORE



STATE OF ILLINOIS
 DEPARTMENT OF TRANSPORTATION

APPROVED: *Emeka Jackson-Hicks* 1/12/2017
 EMEKA JACKSON-HICKS, MAYOR, CITY OF EAST ST. LOUIS

PASSED: *James E. Ewing* 4/24/2017
 acting DISTRICT 8 ENGINEER OF LOCAL ROADS & STREETS

RELEASING FOR
 BID BASED ON
 LIMITED REVIEW: *John R. Keim* 4/24/2017
 REGION 8 ENGINEER

Terry Sudholt 1/12/2017
 TERRY A. SUDHOLT
 ILLINOIS P.E. NO. 062-062371
 EXPIRES: 11-30-17

PRINTED BY AUTHORITY OF THE STATE OF ILLINOIS

10TH STREET REHABILITATION
 MISSOURI AVENUE TO SUMMIT AVENUE
 CITY OF EAST ST. LOUIS
 ST. CLAIR COUNTY, ILLINOIS

MARK	DATE	DESCRIPTION
	01/20/17	

PROJECT NO: 192-1705		
DESIGN: JUC	DRAWN: SDD	CHECK: TAS

COVER SHEET

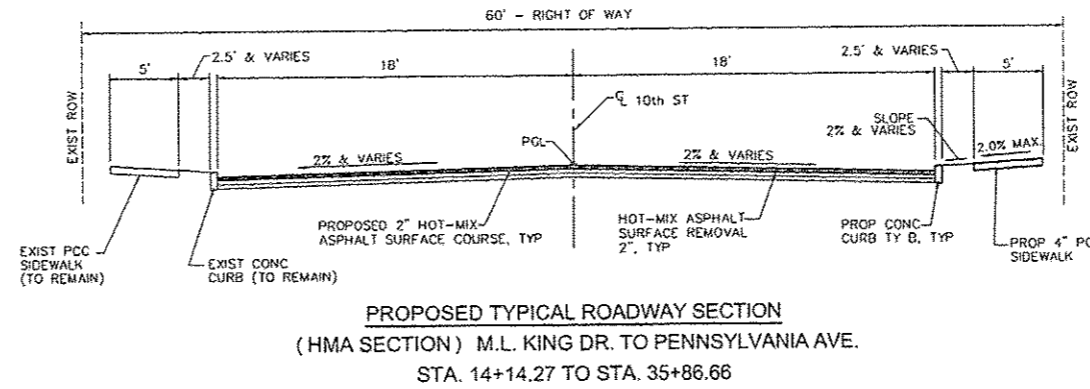
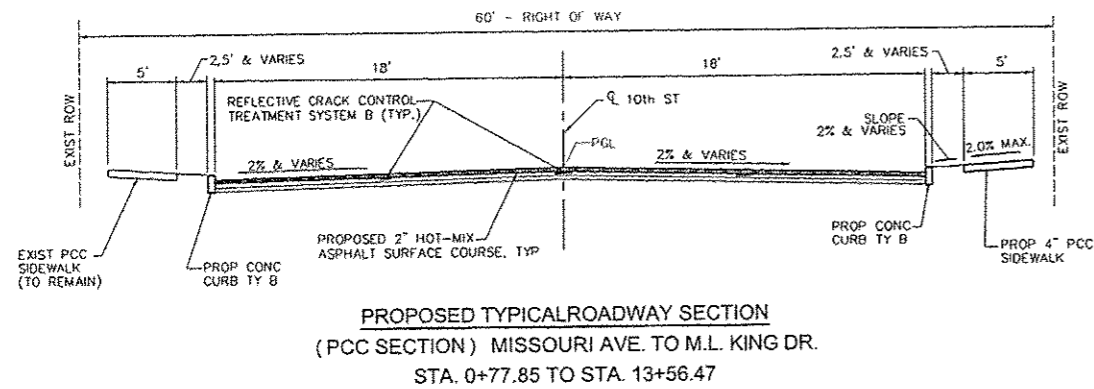
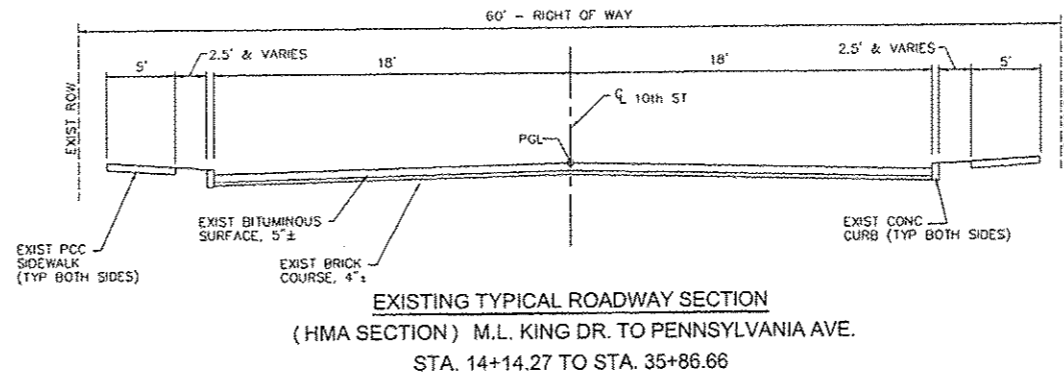
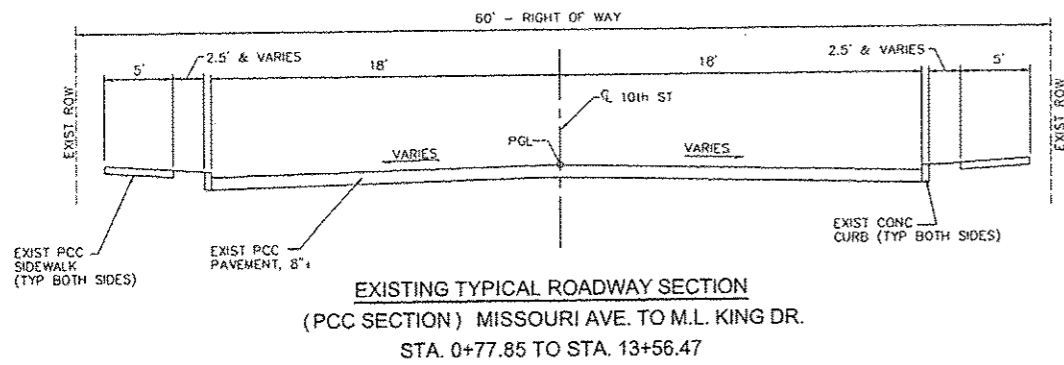
X:\projects\Current\192-1705 EST 10th St Rehab\DWG\COVER SHEET.dwg, 12/29/2016 3:34:04 PM, DWG To PDF.pc3



Hurst-Rosche, Inc.
PROFESSIONAL DESIGN NUMBER: 14-0077

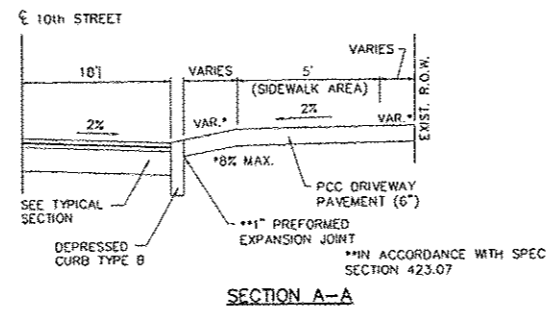
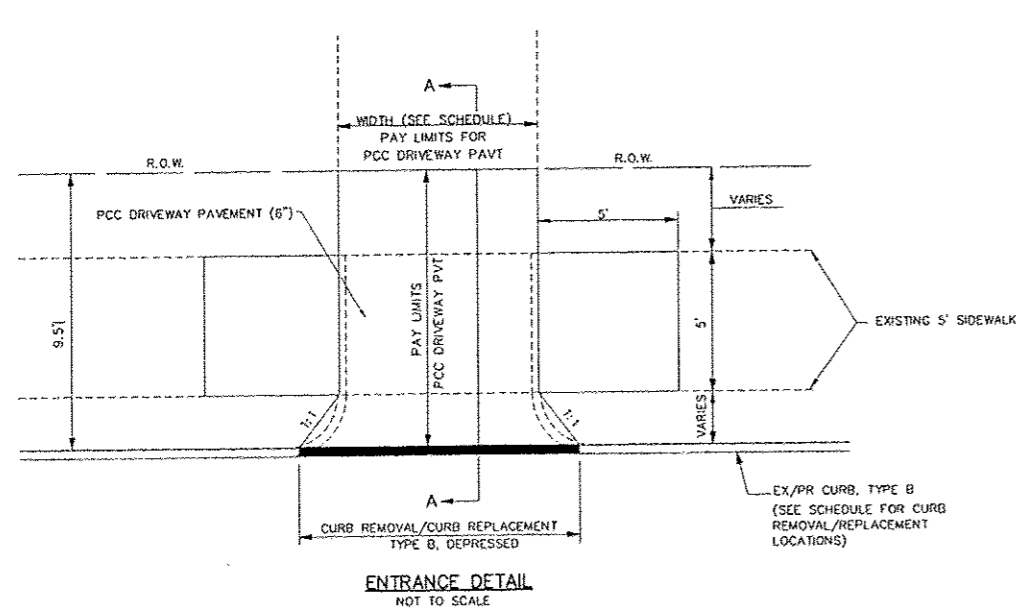
5 Bank Square
E. St. Louis, IL
618.398.0890 t
www.hurst-rosche.com

HILLSBORO, IL
MARION, IL
SPRINGFIELD, IL
ARNOLD, MO
NEOSHO, MO



GENERAL NOTES:

- THIS SECTION SHALL BE CONSTRUCTED IN ACCORDANCE WITH THE PLANS, THE "STANDARD SPECIFICATION FOR ROAD AND BRIDGE CONSTRUCTION" ADOPTED APRIL 1, 2016 AND THE SPECIAL PROVISIONS.
- ALL STATIONING REFERS TO THE CENTERLINE OF NEW CONSTRUCTION.
- THE LOCATIONS AND/OR DEPTHS OF UNDERGROUND UTILITIES SHOWN HAVE BEEN TAKEN FROM AVAILABLE RECORD INFORMATION AND MUST BE CONSIDERED APPROXIMATE. FIELD MARKING OF UTILITIES IN CRITICAL AREAS MAY BE OBTAINED BY PROVIDING A MINIMUM OF 48 HOURS ADVANCE NOTICE OF J.U.L.I.E. AT (800) 892-0123.
- THE FOLLOWING CONSTANTS WERE USED IN THE CALCULATIONS OF QUANTITIES FOR THIS PROJECT:
 - HMA SURFACE COURSE, MIX "C" N70 - 112 LBS. / SQ. YD. / INCH THICKNESS
 - BITUMINOUS MATERIALS (PRIME COAT) - 0.05 LBS./SQ. FT.
 - AGGREGATE (PRIME COAT) - 4 LBS. / SQ. YD.
- DISPOSAL OF ALL MATERIAL FROM DEMOLITION (CURB & SIDEWALK REMOVAL, ETC.) SHALL BE INCLUDED IN THE CONTRACT AND PERFORMED IN ACCORDANCE WITH ALL STATE AND LOCAL CODES.
- THE EXISTING RIGHT OF WAY LINES / PROPERTY LINES AND WIDTHS SHOWN ON THE PLAN SHEETS WERE TAKEN FROM EXISTING INFORMATION. THE LOCATIONS SHOWN ARE FOR INFORMATIONAL PURPOSES ONLY AND SHOULD BE CONSIDERED APPROXIMATE.
- EXISTING SEWERS AND STRUCTURES ARE APPROXIMATE ONLY. THE CONTRACTOR SHALL FIELD VERIFY LOCATIONS PRIOR TO ANY CONSTRUCTION.
- ALL EXISTING STORM STRUCTURES AND SEWER LINES TO BE USED IN PLACE UNLESS OTHERWISE NOTED. ALL EXISTING STRUCTURES AND SEWERS ARE TO BE PROTECTED. ANY DAMAGE TO EXISTING STRUCTURES OR SEWERS WILL BE REPAIRED OR REPLACED AT THE CONTRACTORS EXPENSE.
- "ROAD CONSTRUCTION AHEAD" SIGNS SHALL BE PLACED AT EACH END OF THE PROJECT AND AT ALL INTERSECTING SIDE ROADS. ADVANCE WARNING SIGNS SHALL BE 48" FLUORESCENT ORANGE. COST TO BE INCLUDED IN THE TRAFFIC CONTROL PAY ITEM.



MIXTURE TABLE

LOCATION	10TH STREET
MIXTURE USE	SURFACE COURSE
PG	PG 64-22
RAP % (MAX)	*
DESIGN AIR VOIDS	4.0% @ Ndes=70
MIX COMPOSITION (GRADATION MIXTURE)	IL-9.5
FRICTION AGGREGATE	MIXTURE "C"
MIXTURE WEIGHT	112 LBS/SQ. YD./IN

CONTROL POINTS

POINT NO.	NORTHING	EASTING	ELEVATION	DESCRIPTION
200	713939.51	2302186.25	423.22	100 SPIKE-NORTHWEST CORNER OF SUMMIT AVE & 10TH ST.
204	712019.04	2300160.11	425.43	MAG NAIL-CENTERLINE OF 10TH ST. & MISSOURI AVE.
205	712524.86	2300660.71	422.39	CHISLED "X" IN SIDEWALK-NORTHEAST CORNER 10TH ST. & ST. LOUIS AVE.
206	712927.23	2301093.09	422.79	CHISLED "X" IN SIDEWALK-NORTHWEST CORNER 10TH ST. & M.L. KING DR.

* SEE SPECIAL PROVISIONS

10TH STREET REHABILITATION
MISSOURI AVENUE TO SUMMIT AVENUE
CITY OF EAST ST. LOUIS
ST. CLAIR COUNTY, ILLINOIS

MARK	DATE	DESCRIPTION
	04/2017	

PROJECT NO:	192-1705
DESIGN:	JJC
DRAWN:	SDD
CHECK:	TAS

GENERAL NOTES,
AND
TYPICAL SECTIONS

2
SHEET 2 OF 21

Contract # 99638

SUMMARY OF QUANTITIES

CODE NO.	ITEM	UNIT	TOTAL QUANTITY	CONST CODE - 5 St. Clair ROADWAY	
				0006 URBAN	
20200100	EARTH EXCAVATION	CU YD	75	75	
28000500	INLET AND PIPE PROTECTION	EACH	24	24	
40600275	BITUMINOUS MATERIALS (PRIME COAT)	POUND	6562	6562	
40600902	HOT-MIX ASPHALT SURFACE REMOVAL - BUTT JOINT	SQ YD	200	200	
40600990	TEMPORARY RAMP	SQ YD	107	107	
40603315	HOT-MIX ASPHALT SURFACE COURSE, MIX "C", N70	TON	1633	1633	
42300290	PORTLAND CEMENT CONCRETE DRIVEWAY PAVEMENT, 6 INCH	SQ YD	202	202	
42400100	PORTLAND CEMENT CONCRETE SIDEWALK 4 INCH	SQ FT	20995	20995	
42400800	DETECTABLE WARNINGS	SQ FT	400	400	
44000157	HOT-MIX ASPHALT SURFACE REMOVAL, 2"	SQ YD	8866	8866	
44000290	DRIVEWAY PAVEMENT REMOVAL	SO YD	202	202	
44000300	CURB REMOVAL	FOOT	1416	1416	
44000600	SEWALK REMOVAL	SQ FT	20995	20995	
44003100	MEDIAN REMOVAL	SO YD	485	485	
44201325	CLASS C PATCHES, TYPE I, 8 INCH	SQ YD	100	100	
44201326	CLASS C PATCHES, TYPE II, 8 INCH	SQ YD	124	124	
44201327	CLASS C PATCHES, TYPE III, 8 INCH	SQ YD	64	64	
44201335	CLASS C PATCHES, TYPE IV, 8 INCH	SQ YD	113	113	
44300200	STRIP REFLECTIVE CRACK CONTROL TREATMENT	FOOT	3836	3836	
60218300	MANHOLES, TYPE A, 4-DIAMETER, TYPE 1 FRAME, OPEN LID	EACH	2	2	
60218400	MANHOLES, TYPE A, 4-DIAMETER, TYPE 1 FRAME, CLOSED LID	EACH	1	1	
60235700	INLETS, TYPE A, TYPE 3 FRAME AND GRATE	EACH	2	2	
60240320	INLETS, TYPE B, TYPE 15 FRAME AND LID	EACH	1	1	
60255000	MANHOLES TO BE ADJUSTED	EACH	16	16	
60500040	REMOVING MANHOLES	EACH	2	2	
60500060	REMOVING INLETS	EACH	17	17	
60600605	CONCRETE CURB, TYPE B	FOOT	1416	1416	
60618300	CONCRETE MEDIAN SURFACE, 4 INCH	SQ FT	481	481	
67100100	MOBILIZATION	L SUM	1	1	
70300100	SHORT TERM PAVEMENT MARKINGS	FOOT	511	511	
70300150	SHORT TERM PAVEMENT MARKING REMOVAL	SQ FT	170	170	
72000100	SIGN PANEL - TYPE 1	SO FT	167	167	
72400310	REMOVE SIGN PANEL - TYPE 1	SO FT	167	167	
72900100	METAL POST - TYPE A	FOOT	168	168	
76000200	THERMOPLASTIC PAVEMENT MARKING - LINE 4"	FOOT	863	863	
76000400	THERMOPLASTIC PAVEMENT MARKING - LINE 6"	FOOT	1704	1704	
76000500	THERMOPLASTIC PAVEMENT MARKING - LINE 8"	FOOT	40	40	
76000600	THERMOPLASTIC PAVEMENT MARKING - LINE 12"	FOOT	296	296	
85034240	INLETS, SPECIAL	EACH	13	13	
X7010216	TRAFFIC CONTROL AND PROTECTION (SPECIAL)	L SUM	1	1	

△ SPECIALTY ITEMS

EARTH EXCAVATION					
10TH STREET	LOCATION	L/RT	WIDTH	DEPTH (ft)	CU YD
00+76	to 01+10	RT	1	1.5	2.5
00+76	to 01+10	LT	1	1.5	2.5
00+76	to 01+93	LT	1	1.5	6.7
01+42	to 02+32	RT	1	1.5	5.0
02+71	to 03+63	RT	1	1.5	1.5
03+33	to 04+18	LT	1	1.5	2.5
03+49	to 03+63	LT	1	1.5	1.4
03+87	to 04+18	LT	1	1.5	1.9
03+90	to 04+27	RT	1	1.5	2.6
06+66	to 06+90	LT	1	1.5	1.7
06+76	to 06+92	RT	1	1.5	1.9
07+40	to 07+60	RT	1	1.5	1.7
07+40	to 07+60	LT	1	1.5	1.7
08+60	to 08+96	RT	1	1.5	1.5
08+63	to 10+13	RT	1	1.5	1.7
10+35	to 10+70	RT	1	1.5	1.8
11+20	to 11+45	RT	1	1.5	1.2
11+40	to 12+40	RT	1	1.5	2.5
13+30	to 13+57	LT	1	1.5	1.2
13+32	to 13+56	RT	1	1.5	5.0
14+13	to 14+40	LT	1	1.5	1.9
14+14	to 14+36	RT	1	1.5	1.7
17+64	to 17+74	RT	1	1.5	0.6
21+43	to 21+53	LT	1	1.5	0.6
21+47	to 21+56	RT	1	1.5	0.6
21+67	to 21+94	RT	1	1.5	0.6
22+02	to 22+12	RT	1	1.5	0.6
22+02	to 22+12	LT	1	1.5	0.6
23+76	to 23+10	RT	1	1.5	8.1
24+95	to 25+15	LT	1	1.5	1.1
25+46	to 25+56	RT	1	1.5	1.1
25+60	to 26+20	RT	1	1.5	2.2
25+82	to 27+07	RT	1	1.5	0.8
27+50	to 27+70	RT	1	1.5	0.8
28+20	to 28+37	LT	1	1.5	1.0
28+37	to 28+48	LT	1	1.5	1.1
28+40	to 28+51	RT	1	1.5	1.1
28+65	to 28+93	LT	1	1.5	1.1
28+69	to 29+03	RT	1	1.5	1.4
TOTAL					73.8

Rounded to nearest 5 **75.0**

INLET AND PIPE PROTECTION			
10th St	L/RT	EACH	
3+57	LT	1	
3+57	RT	1	
4+02	LT	1	
4+02	RT	1	
6+85	RT	1	
6+85	LT	1	
7+44	RT	1	
7+44	LT	1	
10+51	RT	1	
10+51	LT	1	
13+18	RT	1	
14+22	LT	1	
14+22	RT	1	
15+04	LT	1	
17+87	LT	1	
17+87	RT	1	
23+88	LT	1	
23+88	RT	1	
25+11	RT	1	
28+26	LT	1	
28+45	RT	1	
31+96	LT	1	
31+96	RT	1	
35+85	RT	1	
TOTAL			24

HOT-MIX ASPHALT SURFACE REMOVAL - BUTT JOINT			
10TH ST	LOCATION	SO YD	
00+77.85	to 00+87.85	50	
13+56.47	to 13+56.47	50	
14+14.27	to 14+24.27	50	
35+76.66	to 35+86.66	50	
TOTAL			200

TEMPORARY RAMP			
10th St	LOCATION	SO YD	
00+77.85	to 00+87.85	27	
13+56.47	to 13+56.47	27	
14+14.27	to 14+24.27	27	
35+76.66	to 35+86.66	27	
TOTAL			107

PORTLAND CEMENT CONCRETE SIDEWALK 4 INCH			
10th St	LOCATION	L/RT	SO FT
00+76	to 01+10	RT	345
00+76	to 01+10	LT	925
01+40	to 02+32	RT	530
02+71	to 03+63	RT	80
03+33	to 04+18	LT	305
03+43	to 04+63	LT	135
03+97	to 04+18	LT	215
03+98	to 04+18	RT	505
06+66	to 06+90	LT	160
06+76	to 06+92	RT	340
07+40	to 07+60	LT	210
07+40	to 07+60	RT	225
07+40	to 07+60	RT	1390
08+60	to 08+96	RT	550
10+10	to 10+40	RT	265
10+64	to 11+23	RT	760
11+40	to 12+00	RT	390
12+35	to 12+63	RT	135
13+30	to 13+57	LT	400
14+14	to 14+36	RT	300
14+14	to 14+40	LT	290
17+64	to 17+74	RT	55
17+72	to 18+67	LT	575
18+98	to 22+10	LT	1910
21+43	to 21+56	RT	200
21+87	to 22+12	RT	175
23+76	to 24+43	RT	360
24+95	to 25+10	RT	150
24+95	to 25+10	LT	75
25+46	to 25+48	RT	965
27+04	to 28+50	RT	900
28+34	to 28+48	RT	105
28+65	to 29+00	LT	110
28+89	to 29+03	RT	155
29+00	to 34+46	LT	3300
29+03	to 34+00	RT	3200
35+67	to 35+85	LT	185
35+74	to 35+85	RT	190
TOTAL			20995

DETECTABLE WARNINGS			
10th St	L/RT	SO FT	
0+76	RT	10	
0+76	LT	10	
3+57	RT	20	
3+62	LT	10	
4+03	LT	10	
4+00	RT	10	
6+89	RT	10	
6+86	LT	10	
7+44	RT	10	
7+42	LT	10	
13+56	LT	20	
13+55	LT	20	
13+44	RT	10	
13+50	RT	10	
14+20	LT	10	
14+20	RT	10	
21+50	LT	10	
21+54	RT	20	
21+89	RT	10	
22+07	RT	10	
22+07	LT	10	
22+64	RT	10	
22+05	LT	10	
25+09	RT	10	
25+49	RT	10	
28+42	LT	10	
28+13	RT	10	
28+46	LT	10	
28+49	RT	10	
28+86	LT	10	
28+93	RT	10	
28+34	LT	10	
35+80	LT	10	
35+80	RT	10	
TOTAL			400

CURB REMOVAL			
10TH STREET	LOCATION	L/RT	FOOT
00+76	to 01+10	RT	45
00+76	to 01+93	LT	120
01+42	to 02+32	RT	90
02+71	to 03+63	RT	23
03+33	to 03+63	RT	45
03+49	to 03+63	LT	25
03+87	to 04+18	LT	35
03+98	to 04+27	RT	50
06+66	to 06+90	LT	30
06+76	to 06+92	RT	35
07+40	to 07+60	RT	30
07+40	to 07+60	LT	30
08+60	to 08+96	RT	30
09+03	to 10+13	RT	30
10+35	to 10+70	RT	36
11+20	to 11+45	RT	25
11+95	to 12+40	RT	45
13+30	to 13+57	LT	50
13+32	to 13+56	RT	90
14+13	to 14+40	LT	35
14+14	to 14+36	RT	30
17+64	to 17+74	RT	10
21+43	to 21+53	LT	10
21+47	to 21+56	RT	25
21+87	to 21+94	RT	15
22+02	to 22+12	RT	10
22+02	to 22+12	LT	10
23+76	to 25+10	RT	145
24+95	to 25+15	LT	20
25+46	to 25+48	RT	20
25+60	to 26+20	RT	40
26+92	to 27+07	RT	15
27+55	to 27+70	RT	15
28+20	to 28+37	LT	18
28+37	to 28+48	LT	20
28+40	to 28+51	RT	20
28+85	to 28+93	LT	20
28+89	to 29+03	RT	25
35+76	to 35+85	LT	25
35+74	to 35+85	RT	25
TOTAL			1416

HOT-MIX ASPHALT SURFACE COURSE, MIX "C", N70			
10th St	LOCATION	TON	
00+77.85	to 13+56.47	631.2	
14+14.27	to 35+86.66	1001.9	
TOTAL			1633

HOT-MIX ASPHALT SURFACE REMOVAL, 2"			
10th Street	LOCATION	Depth (ft)	SO YD
00+77.85	to 13+56.47	2	8866
14+14.27	to 35+86.66	2	8866
TOTAL			8866

SIDEWALK REMOVAL			
10th St	LOCATION	L/RT	SO FT
00+76	to 01+10	RT	345
00+76	to 01+10	LT	925
01+40	to 02+32	RT	530
02+71	to 03+63	RT	80
03+33	to 04+18	LT	305
03+43	to 04+63	LT	135
03+97	to 04+18	LT	215
03+98	to 04		

MANHOLES, TYPE A, 4-DIAMETER, TYPE 1 FRAME AND CLOSED LID			
10th St	LT/RT		EACH
25+44	RT		1
TOTAL			1

MANHOLES, TYPE A, 4-DIAMETER, TYPE 1 FRAME, OPEN LID			
10th St	LT/RT		EACH
10+51	RT		1
25+11	RT		1
TOTAL			2

INLETS, TYPE B, TYPE 16 FRAME AND LID			
10th Street	LT/RT		EACH
16+04	LT		1
TOTAL			1

INLETS, TYPE A, TYPE 3 FRAME AND GRATE			
10th Street	LT/RT		EACH
3+57	LT		1
4+02	LT		1
TOTAL			2

REMOVE SIGN PANEL - TYPE 1				
10th Street	Sign			SQ FT
3+50	R1-1	LT		9.0
3+56	R6-2	LT		7.5
4+00	R1-1	RT		9.0
4+00	R6-2	RT		7.5
6+67	R1-1	LT		9.0
6+75	R1-1	RT		9.0
21+88	R1-1	RT		9.0
21+88	R6-2	RT		7.5
22+92	R6-3a	RT		5.0
23+93	R6-3a	RT		5.0
25+46	R1-1	RT		9.0
25+46	R6-2	RT		7.5
26+47	R1-1	LT		9.0
26+47	R6-2	LT		7.5
26+94	R1-1	RT		9.0
26+94	R6-2	RT		7.5
31+70	R6-3a	RT		5.0
35+74	R1-1	LT		9.0
35+74	R1-1	RT		9.0
35+85	R1-1	LT		9.0
35+85	R6-2	LT		7.5
TOTAL				167

SIGN PANEL - TYPE 1				
10th Street	Sign			SQ FT
3+50	R1-1	LT		9.0
3+50	R6-2	LT		7.5
4+00	R1-1	RT		9.0
4+00	R6-2	RT		7.5
6+67	R1-1	LT		9.0
6+75	R1-1	RT		9.0
21+88	R1-1	RT		9.0
21+88	R6-2	RT		7.5
22+92	R6-3a	RT		5.0
23+93	R6-3a	RT		5.0
25+46	R1-1	RT		9.0
25+46	R6-2	RT		7.5
26+47	R1-1	LT		9.0
26+47	R6-2	LT		7.5
26+94	R1-1	RT		9.0
26+94	R6-2	RT		7.5
31+70	R6-3a	RT		5.0
35+74	R1-1	LT		9.0
35+74	R1-1	RT		9.0
35+85	R1-1	LT		9.0
35+85	R6-2	LT		7.5
TOTAL				167

CLASS C PATCHES, TYPE IV, 8 INCH			
Station			SQ YD
10+61	LT		30.0
10+61	RT		30.0
12+33	RT		53.3
TOTAL			113

METAL POST - TYPE A			
10th Street	LOCATION		FOOT
3+50		LT	12
4+00		RT	12
6+67		LT	12
6+75		RT	12
21+88		RT	12
22+92		RT	12
23+93		RT	12
25+46		RT	12
26+47		LT	12
26+94		RT	12
31+70		RT	12
35+74		LT	12
35+74		RT	12
35+85		LT	12
TOTAL			168

THERMOPLASTIC PAVEMENT MARKING - LINE 12"			
10th St - White	LOCATION		FOOT
3+72.00	LT		16.0
3+90.00	RT		18.0
6+75.00	LT/RT		56.0
7+02.00	LT		24.0
7+28.00	RT		24.0
13+36.00	LT/RT		36.0
13+36.00	RT		20.0
13+36.00	RT		16.0
21+75.00	RT		16.0
25+36.00	RT		18.0
28+56.00	LT		18.0
28+62.00	RT		18.0
35+73.00	LT/RT		36.0
TOTAL			298

SHORT TERM PAVEMENT MARKING			
10th St - White (Skip Dash)	LOCATION		FOOT
10th St			
0+76	to	13+56	116.2
14+14	to	35+87	395.0
TOTAL			511

THERMOPLASTIC PAVEMENT MARKING - LINE 6"			
10th St - White	LOCATION		FOOT
13+56.00	LT		40.0
TOTAL			40

INLETS, SPECIAL			
10th St	LT/RT		EACH
3+57	RT		1
4+02	RT		1
6+85	RT		1
6+85	LT		1
7+44	RT		1
7+46	LT		1
10+55	LT		1
13+18	RT		1
17+87	LT		1
23+80	RT		1
28+26	LT		1
28+45	RT		1
35+85	RT		1
TOTAL			13

DRIVEWAY PAVEMENT REMOVAL			
10th St			SQ YD
2+13	RT		22.2
8+82	RT		24.9
9+96	RT		25.7
10+49	RT		32.0
11+32	RT		21.7
12+16	RT		46.7
26+99	RT		14.0
34+29	LT		13.3
TOTAL			202

REMOVING INLETS			
10th St	LT/RT		EACH
3+57	RT		1
3+57	LT		1
4+02	RT		1
4+02	LT		1
6+85	RT		1
6+85	LT		1
7+44	RT		1
7+46	LT		1
10+55	LT		1
10+51	RT		1
13+18	RT		1
16+04	LT		1
17+87	LT		1
23+80	RT		1
28+26	LT		1
28+45	RT		1
35+85	RT		1
TOTAL			17

THERMOPLASTIC PAVEMENT MARKING - LINE 6"					
10th Street - White	LOCATION				FOOT
0+86	to	00+86	LT/RT		36.0
0+92	to	00+92	LT/RT		36.0
3+60	to	03+60	LT/RT		36.0
3+66	to	03+66	LT/RT		42.0
3+57	to	04+02	RT		60.0
3+57	to	04+02	LT		60.0
4+02	to	04+02	LT/RT		36.0
4+06	to	04+06	LT/RT		36.0
6+80	to	06+80	LT/RT		36.0
6+86	to	06+86	LT/RT		42.0
6+87	to	07+42	RT		104.0
6+87	to	07+42	LT		104.0
7+46	to	07+52	LT/RT		36.0
7+46	to	07+52	LT/RT		36.0
13+34	to	13+36	RT		40.0
13+42	to	13+42	LT/RT		36.0
13+46	to	13+46	LT/RT		36.0
13+52	to	14+20	LT		68.0
13+56	to	14+12	LT		46.0
14+27	to	14+27	LT/RT		46.0
14+33	to	14+33	LT/RT		36.0
21+46	to	21+46	LT/RT		36.0
21+62	to	21+62	LT/RT		36.0
21+66	to	21+66	RT		30.0
21+65	to	21+88	RT		33.0
22+04	to	22+04	LT/RT		36.0
22+10	to	22+10	LT/RT		36.0
25+02	to	25+02	LT/RT		36.0
25+08	to	25+08	LT/RT		36.0
25+08	to	25+44	RT		36.0
25+12	to	25+43	RT		31.0
26+40	to	26+40	LT/RT		36.0
26+46	to	26+46	LT/RT		39.0
26+48	to	26+67	LT		39.0
26+40	to	26+85	LT		36.0
26+51	to	26+80	RT		39.0
26+46	to	26+90	RT		44.0
26+90	to	26+90	LT/RT		39.0
26+96	to	26+96	LT/RT		37.0
35+76	to	35+76	LT/RT		36.0
35+84	to	35+84	LT/RT		36.0
TOTAL					1784

MANHOLES TO BE ADJUSTED			
10th St	LT/RT		EACH
2+16	RT		1
3+80	CL		1
5+42	RT		1
7+15	CL		1
8+77	RT		1
10+46	LT		1
13+26	LT		1
16+12	RT		1
16+16	CL		1
18+77	CL		1
21+70	CL		1
25+29	CL		1
28+26	CL		1
28+67	LT		1
TOTAL			16

THERMOPLASTIC PAVEMENT MARKING - LINE 4"			
10th St	LOCATION		FOOT
10th St - Yellow (Skip Dash)			
0+76	to	13+56	316.7
14+14	to	35+87	543.1
TOTAL			860

CLASS C PATCHES, TYPE II, 8 INCH			
Station			SQ YD
0+86	RT		10.0
1+26	LT		12.0
2+00	RT		10.6
3+33	RT		5.0
3+88	RT		5.6
4+06	RT		10.7
5+82	LT		9.0
7+92	RT		6.0
8+51	RT		6.0
8+51	LT		6.0
11+95	RT		5.0
13+32	RT		10.0
17+81	LT		6.7
17+81	RT		6.7
18+83	LT		8.9
TOTAL			124

CLASS C PATCHES, TYPE III, 8 INCH			
Station			SQ YD
1+76	LT		16.0
22+93	RT		22.2
23+76	RT		15.1
TOTAL			54

STRIP REFLECTIVE CRACK CONTROL TREATMENT			
10th Street	LOCATION	Location	FOOT
00+77.65	to	13+56.47	3836
TOTAL			3836

SHORT TERM PAVEMENT MARKING REMOVAL			
10th St - White (Skip Dash) - CL	LOCATION		SQ FT
10th St			
0+76	to	13+56	35.7
14+14	to	35+87	131.5
TOTAL			170

BITUMINOUS MATERIALS (PRIME COAT)			
10th St	PLACED ON		POUND
00+77.65	to	13+56.47	2536.3
14+14.27	to	26+03.36	4825.7
TOTAL			6562

PCC DRIVEWAY PAVEMENT, 6"			
10th St	WIDTH (FT)		SQ YD
2+13	RT	16.0	22.2
6+82	RT	16.0	24.9
9+88	RT	24.0	26.7
10+49	RT	24.0	32.0
11+32	RT	17.0	21.7
12+16	RT	35.0	46.7
26+99	RT	12.0	14.0
34+26	LT	12.0	13.3
TOTAL			202

MEDIAN REMOVAL			
10th Street	LOCATION		SQ FT
13+32.00	to	13+56.00	485
TOTAL			486

REMOVING MANHOLES			
10th St	LT/RT		EACH
25+11	RT		1
25+44	LT		1
TOTAL			2

CONCRETE MEDIAN SURFACE, 4 INCH			
10th Street	LOCATION		SQ FT
13+32.00	to	13+56.00	481
TOTAL			481



Hurst-Rosche, Inc.
PROFESSIONAL DESIGN NUMBER 16-00707

5 Bank Square
E. St. Louis, IL
618.398.0890
www.hurst-rosche.com

HILLSBORO, IL
MARION, IL
SPRINGFIELD, IL
ARNOLD, MO
NEOSHO, MO

10TH STREET REHABILITATION
MISSOURI AVENUE TO SUMMIT AVENUE
CITY OF EAST ST. LOUIS
ST. CLAIR COUNTY, ILLINOIS

MARK



Hurst-Rosche, Inc.
 PROFESSIONAL ENGINEERS
 5 Bank Square
 E. St. Louis, IL
 618.398.0890 t
 www.hurst-rosche.com
 HILLSBORO, IL
 MARION, IL
 SPRINGFIELD, IL
 ARNOLD, MO
 NEOSHO, MO

10TH STREET REHABILITATION
 MISSOURI AVENUE TO SUMMIT AVENUE
 CITY OF EAST ST. LOUIS
 ST. CLAIR COUNTY, ILLINOIS

MARK	DATE	DESCRIPTION
	01/20/17	

PROJECT NO: 192-1705
 DESIGN: JJC DRAWN: SDD CHECK: YAS

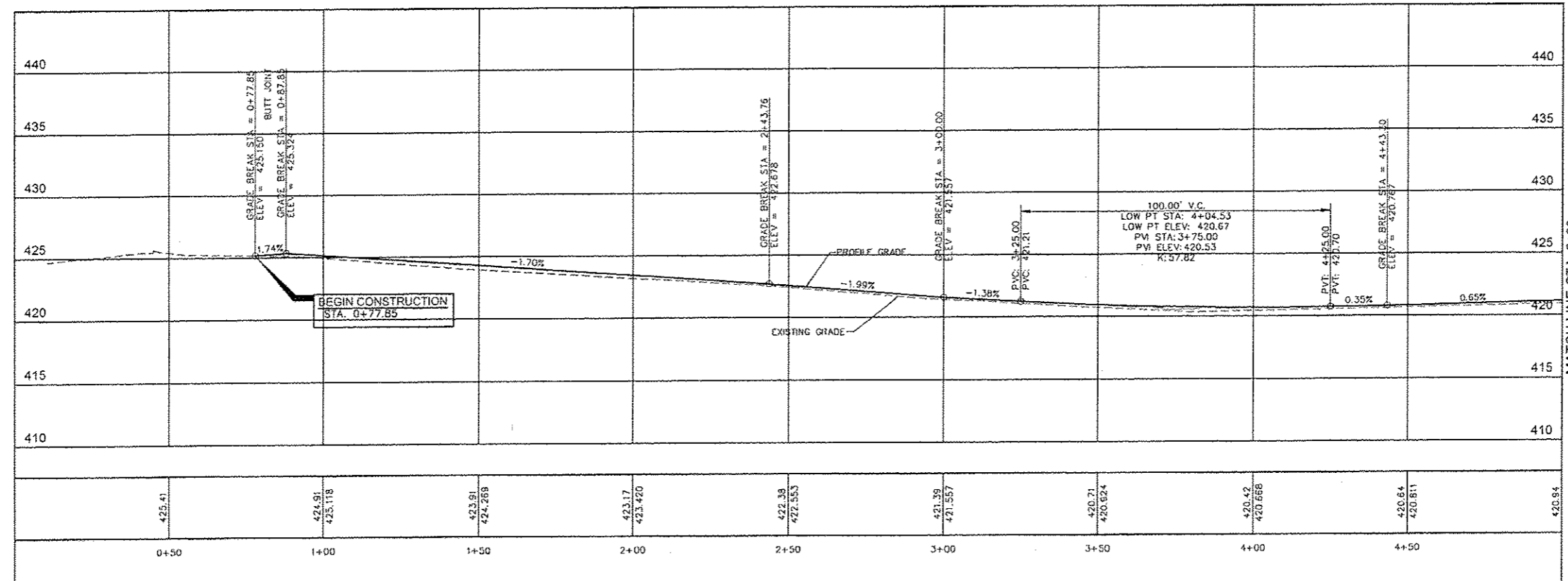
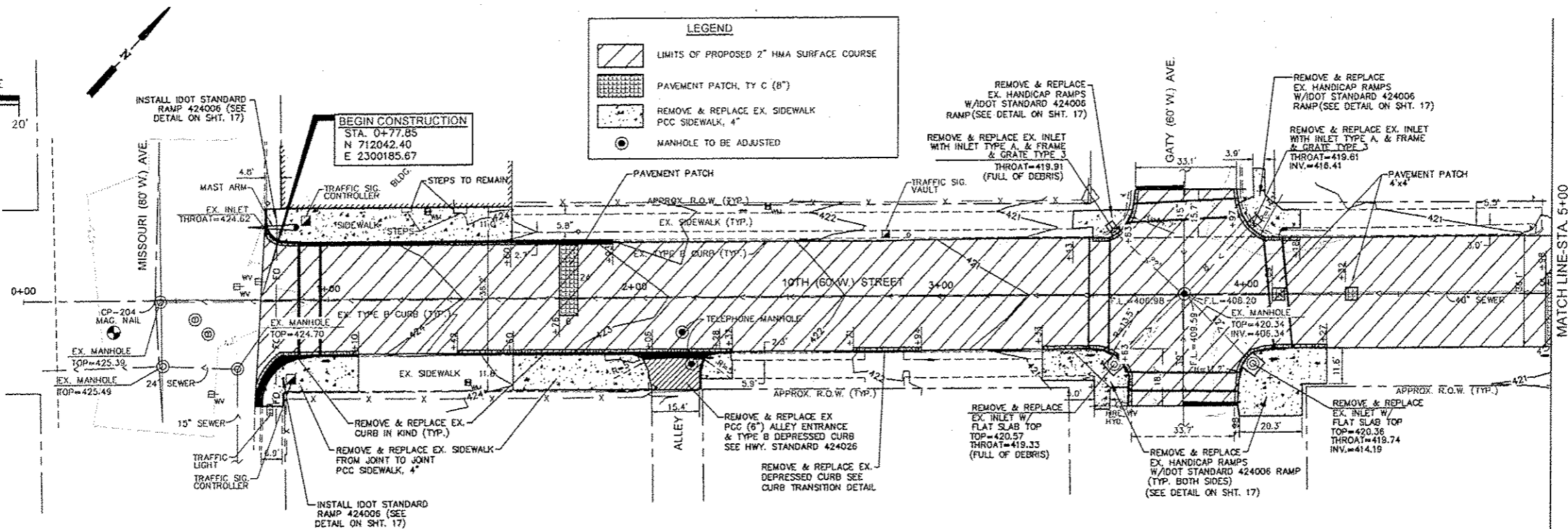
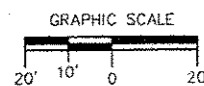
PLAN & PROFILE

5

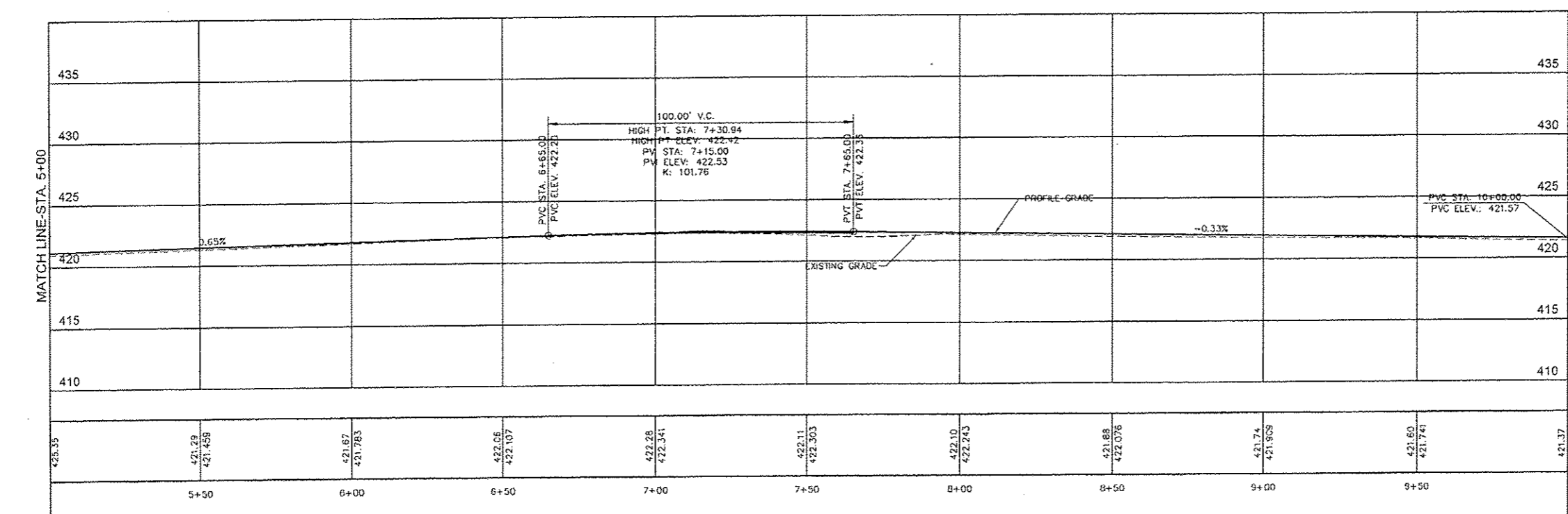
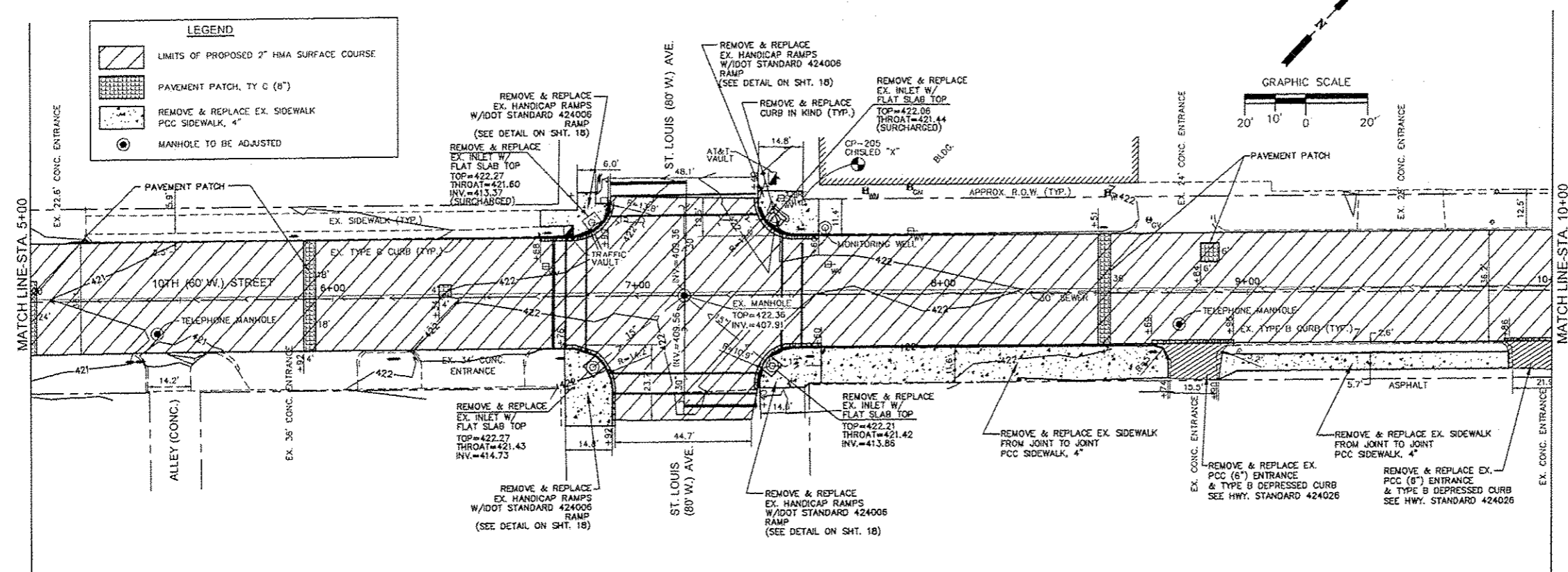
SHEET 5 OF 21

© 2017 HURST-ROSCH, INC.

Contract # 97638



MATCH LINE-STA. 5+00



HR
 Hurst-Rosche, Inc.
 PROFESSIONAL ENGINEERING FIRM
 5 Bank Square
 E. St. Louis, IL
 618.398.0890
 www.hurst-rosche.com

HILLSBORO, IL
 MARION, IL
 SPRINGFIELD, IL
 ARNOLD, MO
 NEOSHO, MO

10TH STREET REHABILITATION
 MISSOURI AVENUE TO SUMMIT AVENUE
 CITY OF EAST ST. LOUIS
 ST. CLAIR COUNTY, ILLINOIS

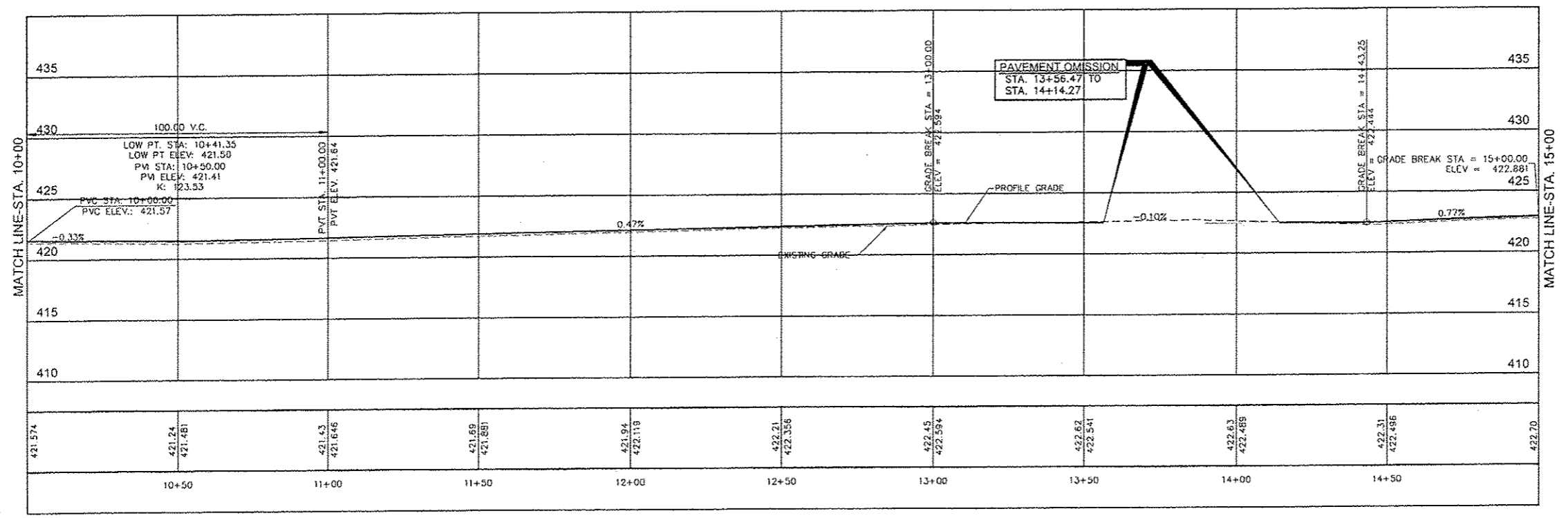
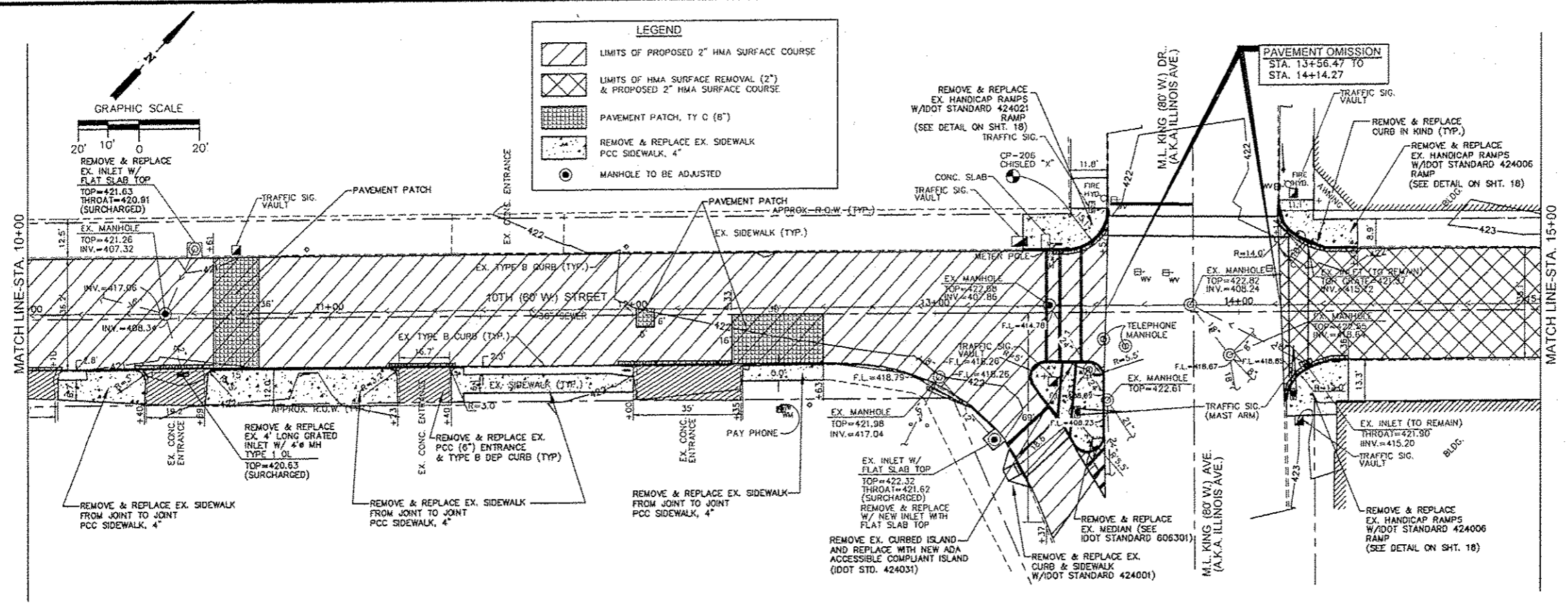
MARK	DATE	DESCRIPTION
	01/20/17	

PROJECT NO: 192-1705
 DESIGN: JJC DRAWN: SDD CHECK: TAS

PLAN & PROFILE

6
 SHEET 6 OF 21

Contract # 97638



HR
Hurst-Rosche, Inc.
PROFESSIONAL DESIGN NUMBER 142005
5 Bank Square
E. St. Louis, IL
618.398.0890
www.hurst-rosche.com
HILLSBORO, IL
MARION, IL
SPRINGFIELD, IL
ARNOLD, MO
NEOSHO, MO

10TH STREET REHABILITATION
MISSOURI AVENUE TO SUMMIT AVENUE
CITY OF EAST ST. LOUIS
ST. CLAIR COUNTY, ILLINOIS

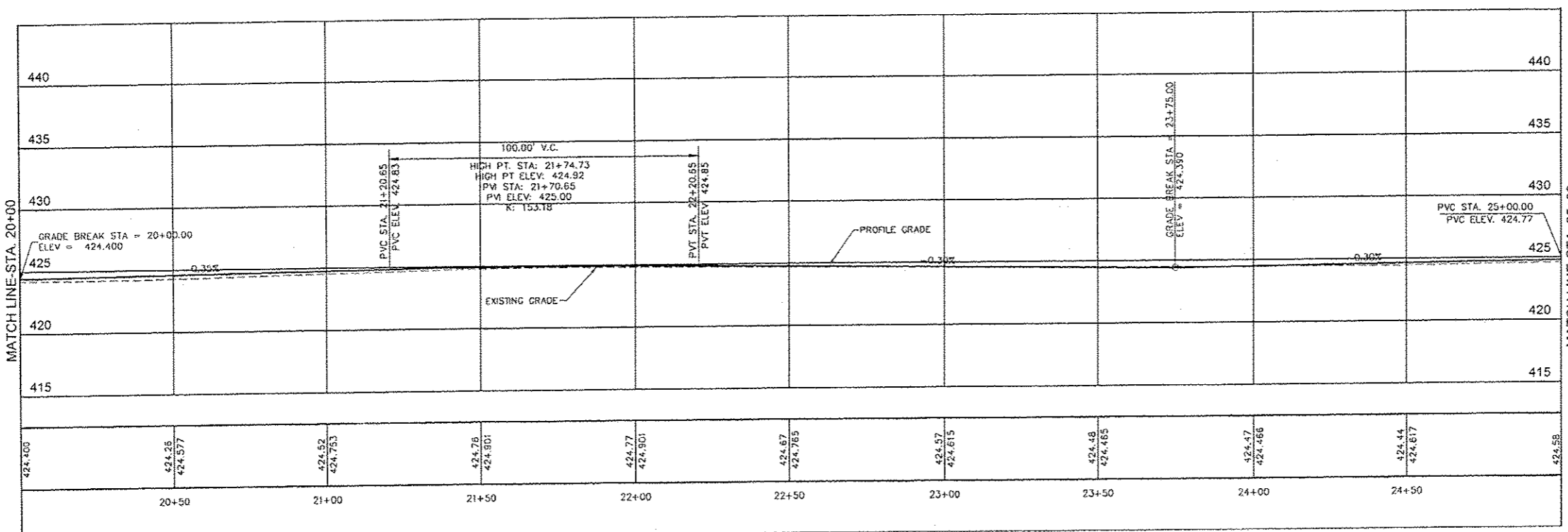
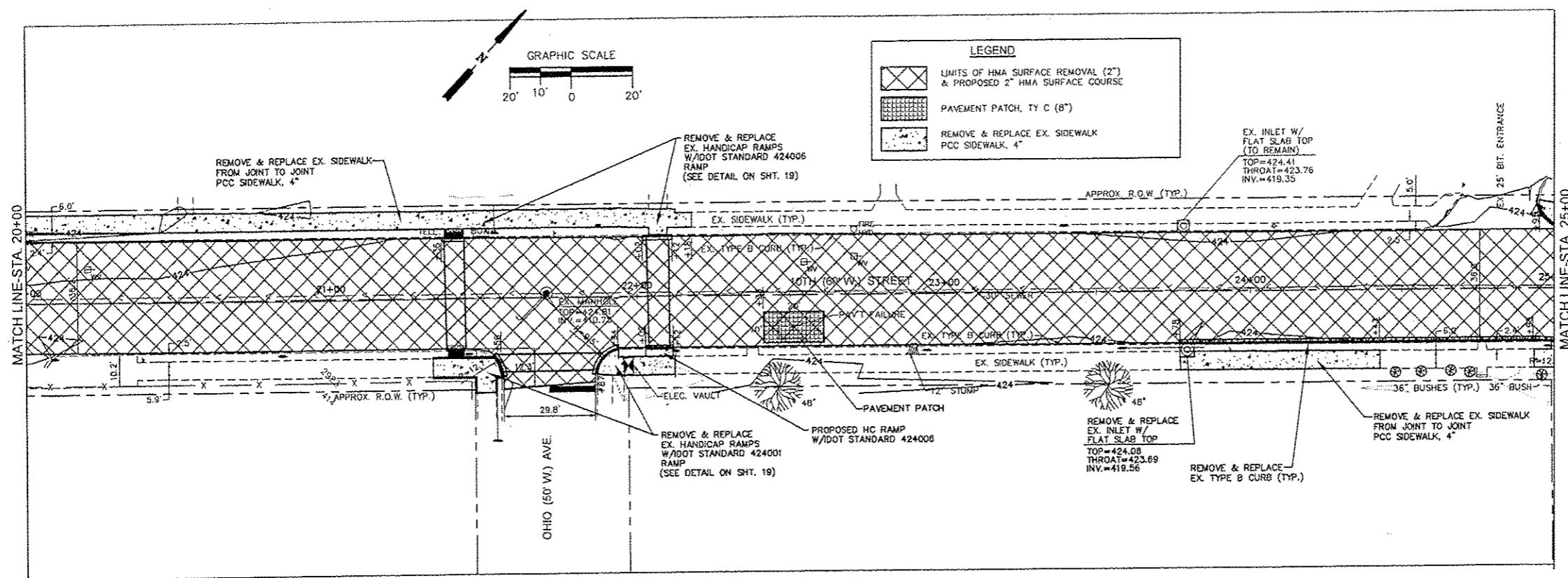
MARK	DATE	DESCRIPTION
	01/20/17	

PROJECT NO: 192-1705
DESIGN: JJC DRAWN: SDD CHECK: YAS

PLAN & PROFILE



Hurst-Rosche, Inc.
 PROFESSIONAL ENGINEERS
 5 Bank Square
 E. St. Louis, IL
 618.398.0890 t
 www.hurst-rosche.com
 HILLSBORO, IL
 MARION, IL
 SPRINGFIELD, IL
 ARNOLD, MO
 NEOSHO, MO



10TH STREET REHABILITATION
 MISSOURI AVENUE TO SUMMIT AVENUE
 CITY OF EAST ST. LOUIS
 ST. CLAIR COUNTY, ILLINOIS

MARK	DATE	DESCRIPTION
	01/2017	

PROJECT NO: 192-1705
 DESIGN: JJC DRAWN: SDD CHECK: TAS

PLAN & PROFILE

9

SHEET 9 OF 21

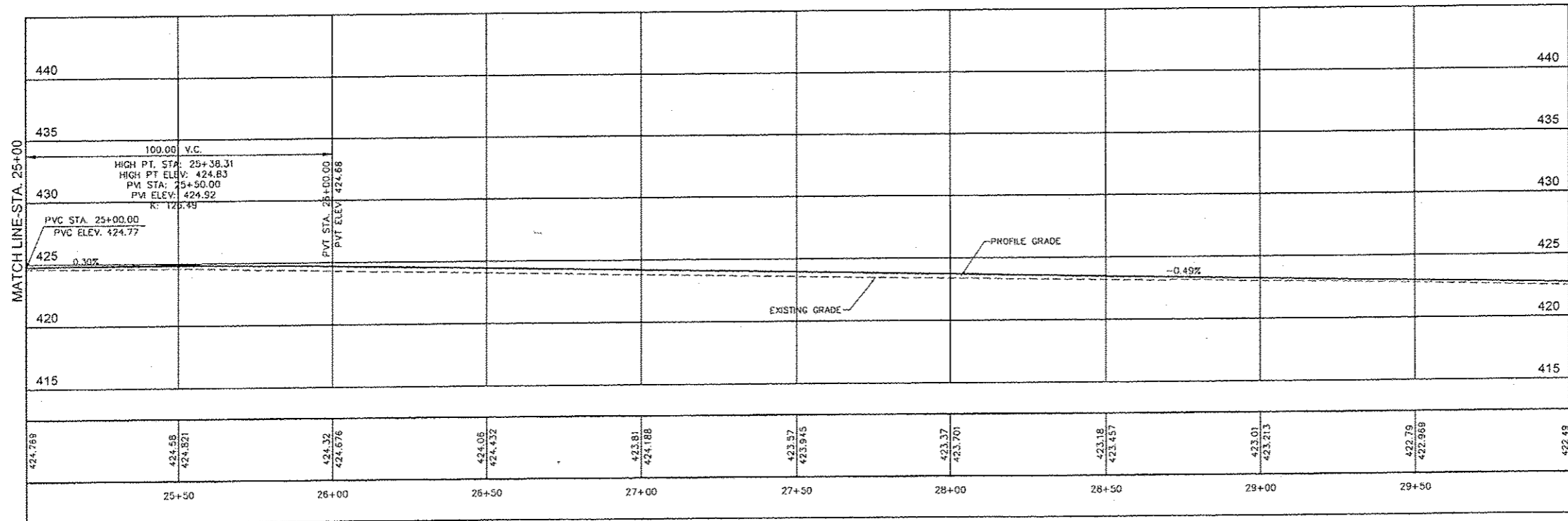
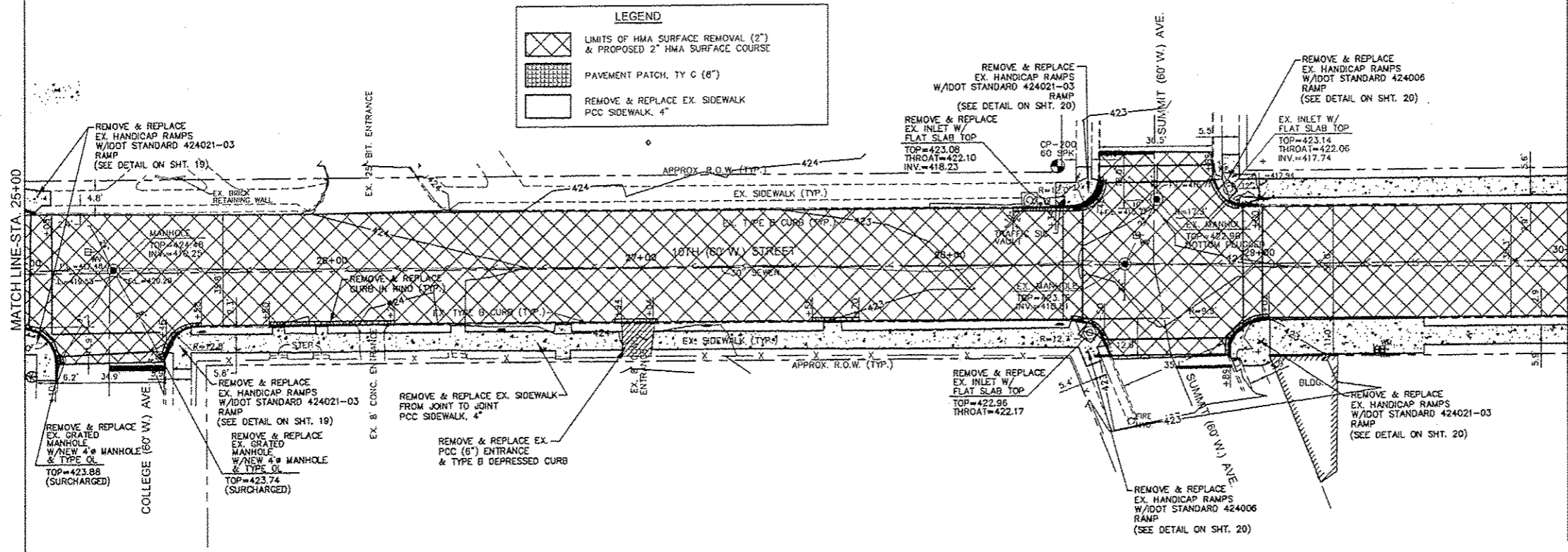
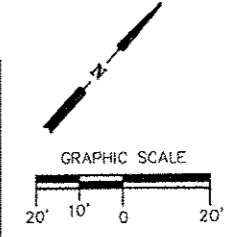
© 2017 HURST-ROSCH, INC.

Contract # 97638



Hurst-Rosche, Inc.
 5 Bank Square
 E. St. Louis, IL
 618.398.0890
 www.hurst-rosche.com

HILLSBORO, IL
 MARION, IL
 SPRINGFIELD, IL
 ARNOLD, MO
 NEOSHO, MO



10TH STREET REHABILITATION
 MISSOURI AVENUE TO SUMMIT AVENUE
 CITY OF EAST ST. LOUIS
 ST. CLAIR COUNTY, ILLINOIS

MARK	DATE	DESCRIPTION
	01/20/17	

PROJECT NO: 192-1795
 DESIGN: JJC DRAWN: SOD CHECK: TAS

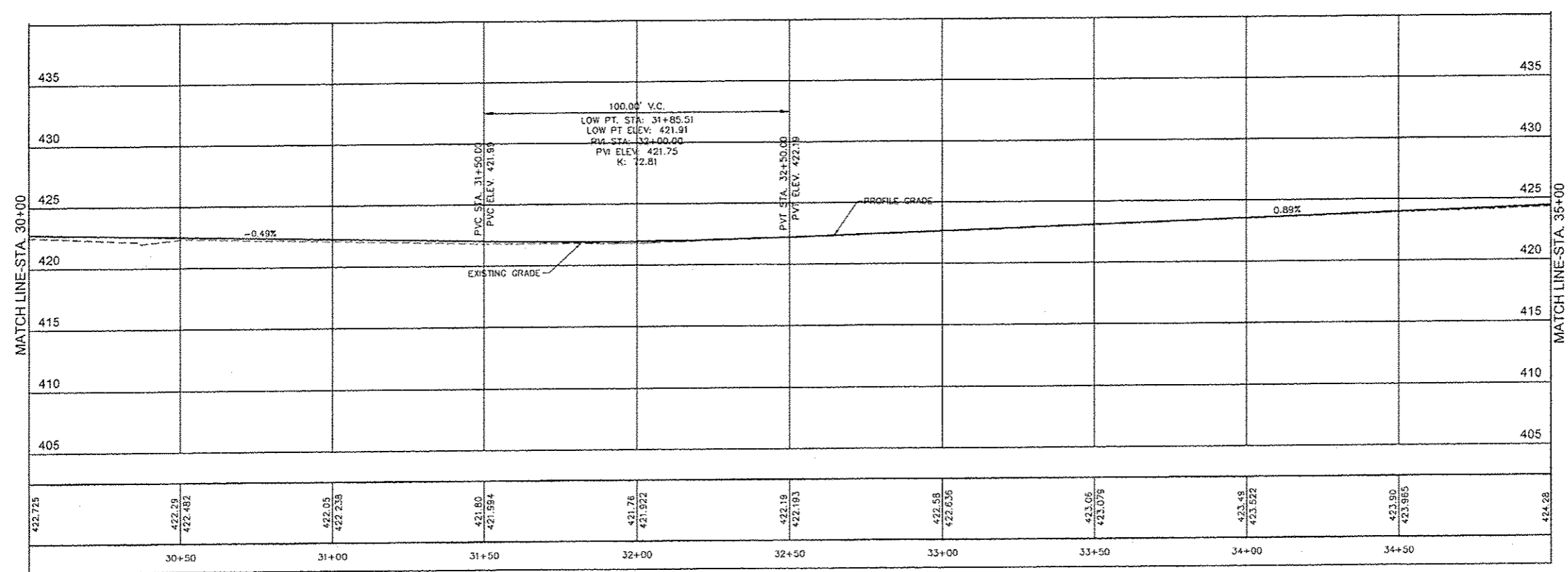
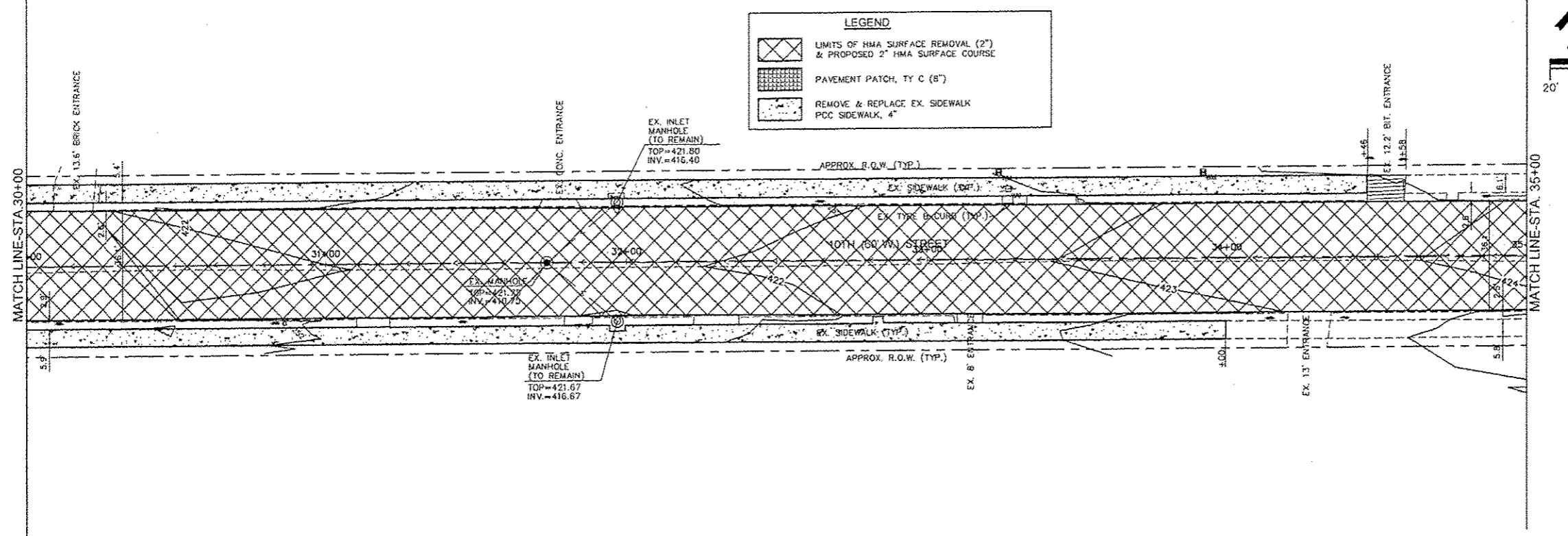
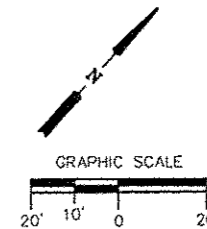
PLAN & PROFILE

10
 SHEET 10 OF 21



Hurst-Rosche, Inc.
 PROFESSIONAL DESIGN SERVICE, INC.
 5 Bank Square
 E. St. Louis, IL
 618.398.0890
 www.hurst-rosche.com

HILLSBORO, IL
 MARION, IL
 SPRINGFIELD, IL
 ARNOLD, MO
 NEOSHO, MO



10TH STREET REHABILITATION
 MISSOURI AVENUE TO SUMMIT AVENUE
 CITY OF EAST ST. LOUIS
 ST. CLAIR COUNTY, ILLINOIS

MARK	DATE	DESCRIPTION
	12/20/16	

PROJECT NO: 192-1705
 DESIGN: JJC DRAWN: SDD CHECK: TAS

PLAN & PROFILE

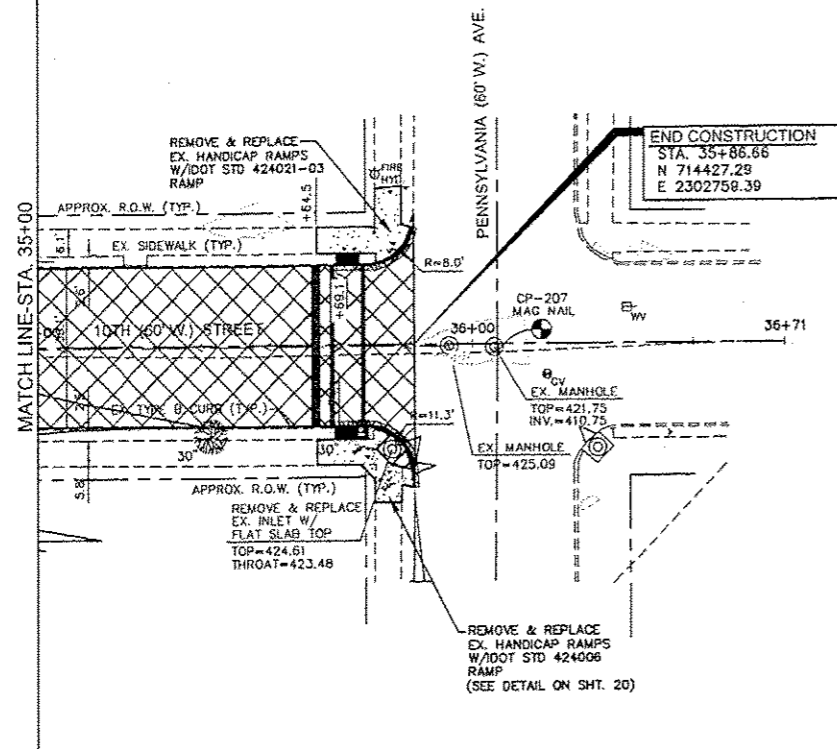
11

SHEET 11 OF 21

© 2017 HURST-ROSCHÉ, INC.

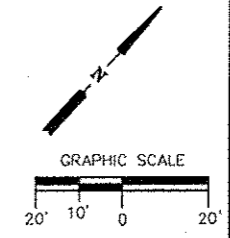
Contract # 97638

X:\Projects\Current\192-1705-EST-10th-St-Rehab\DWG\PLAN-RV5D-PROFILES\120116.dwg, 12/20/2016 9:05:50 AM, DWG to PDF.p3



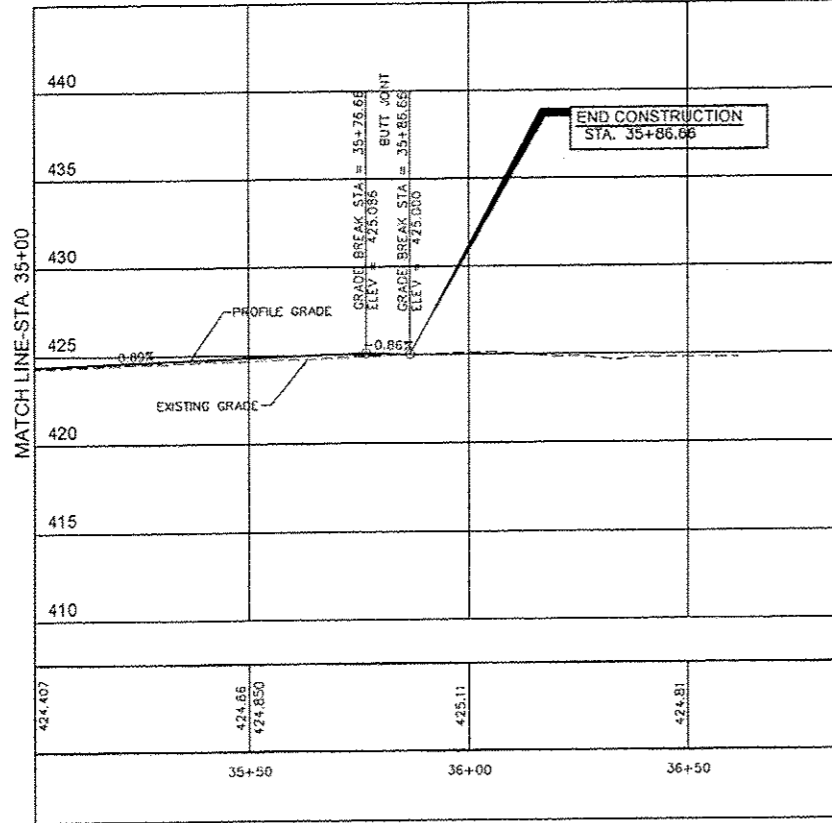
LEGEND

	LIMITS OF HMA SURFACE REMOVAL (2") & PROPOSED 2" HMA SURFACE COURSE
	PAVEMENT PATCH, TY C (8")
	REMOVE & REPLACE EX. SIDEWALK PCC SIDEWALK, 4"



HR
 Hurst-Rosche, Inc.
PROFESSIONAL ENGINEER REG. NO. 194-00028
 5 Bank Square
 E. St. Louis, IL
 618.398.0890 t
 www.hurst-rosche.com

HILLSBORO, IL
 MARION, IL
 SPRINGFIELD, IL
 ARNOLD, MO
 NEOSHO, MO



10TH STREET REHABILITATION
 MISSOURI AVENUE TO SUMMIT AVENUE
 CITY OF EAST ST. LOUIS
 ST. CLAIR COUNTY, ILLINOIS

MARK	DATE	DESCRIPTION
	01/20/17	

PROJECT NO: 192-1705
 DESIGN: JJC DRAWN: SDD CHECK: TAS

PLAN &
 PROFILE

12
 SHEET 12 OF 21

© 2017 HURST-ROSCH, INC.

Contract # 97638



Hurst-Rosche, Inc.
PROFESSIONAL ENGINEERING FIRM

5 Bank Square
E. St. Louis, IL
618.398.0890 t
www.hurst-rosche.com

HILLSBORO, IL
MARION, IL
SPRINGFIELD, IL
ARNOLD, MO
NEOSHO, MO

10TH STREET REHABILITATION
MISSOURI AVENUE TO SUMMIT AVENUE
CITY OF EAST ST. LOUIS
ST. CLAIR COUNTY, ILLINOIS

MARK	DATE	DESCRIPTION
	01/2017	

PROJECT NO: 192-1795
DESIGN: JUC DRAWN: SDD CHECK: TAS

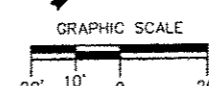
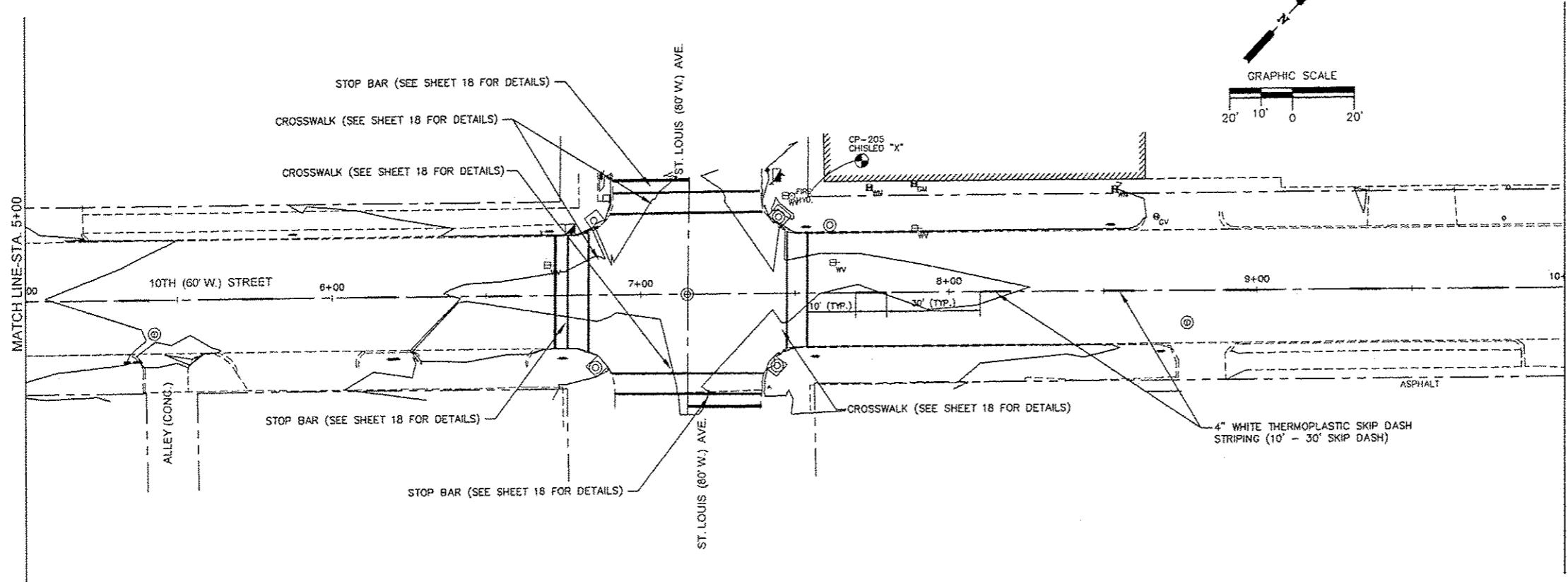
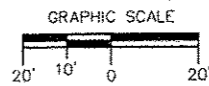
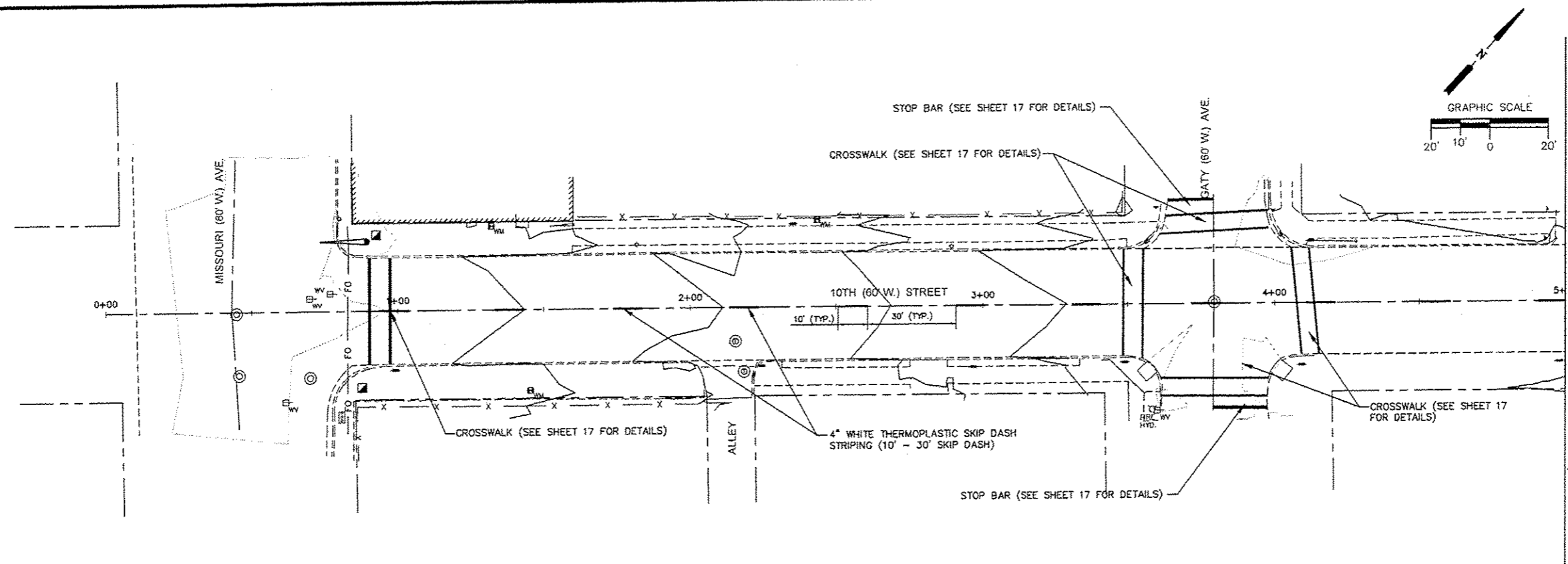
PAVEMENT STRIPING PLAN

13

SHEET 13 OF 21

© 2017 HURST-ROSCHÉ, INC.

Contract # 97638





Hurst-Rosche, Inc.

PROFESSIONAL DESIGN NUMBER: 04-00000
5 Bank Square
E. St. Louis, IL
618.398.0890 t
www.hurst-rosche.com

HILLSBORO, IL
MARION, IL
SPRINGFIELD, IL
ARNOLD, MO
NEOSHO, MO

10TH STREET REHABILITATION
MISSOURI AVENUE TO SUMMIT AVENUE
CITY OF EAST ST. LOUIS
ST. CLAIR COUNTY, ILLINOIS

MARK	DATE	DESCRIPTION
	01/2017	

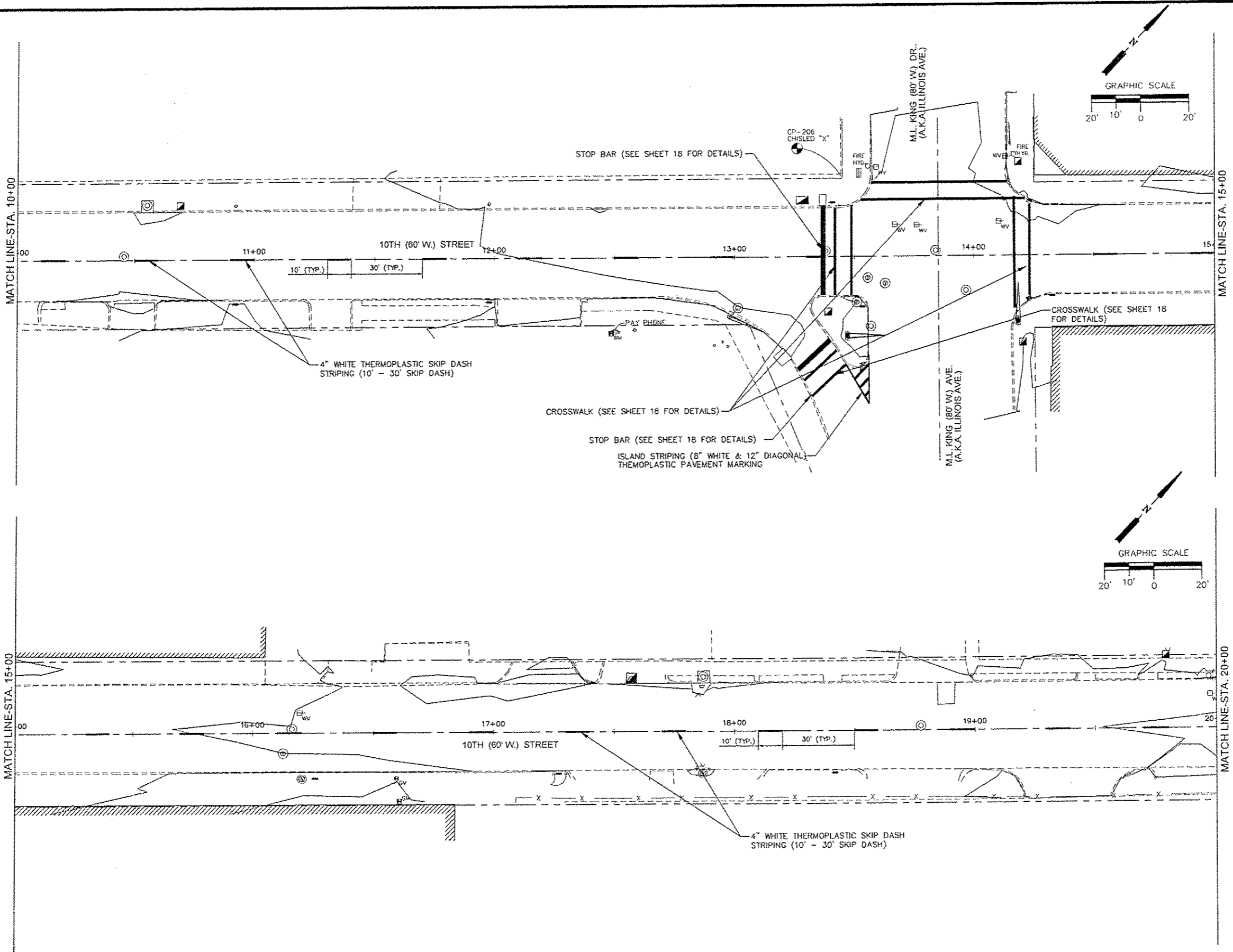
PROJECT NO: 192-1705
DESIGN: JJC DRAWN: SDD CHECK: TAS

PAVEMENT STRIPING PLAN

14
SHEET 14 of 21

© 2017 HURST-ROSCHÉ, INC.

Contract # 97638





Hurst-Rosche, Inc.
PROJ. LICENSE NO. 14A-00006

5 Bank Square
E. St. Louis, IL
618.398.0890
www.hurst-rosche.com

HILLSBORO, IL
MARION, IL
SPRINGFIELD, IL
ARNOLD, MO
NEOSHO, MO

10TH STREET REHABILITATION
MISSOURI AVENUE TO SUMMIT AVENUE
CITY OF EAST ST. LOUIS
ST. CLAIR COUNTY, ILLINOIS

MARK	DATE	DESCRIPTION
	01/2017	

PROJECT NO: 192-1705
 DESIGN: JJC DRAWN: SDD CHECK: TAS

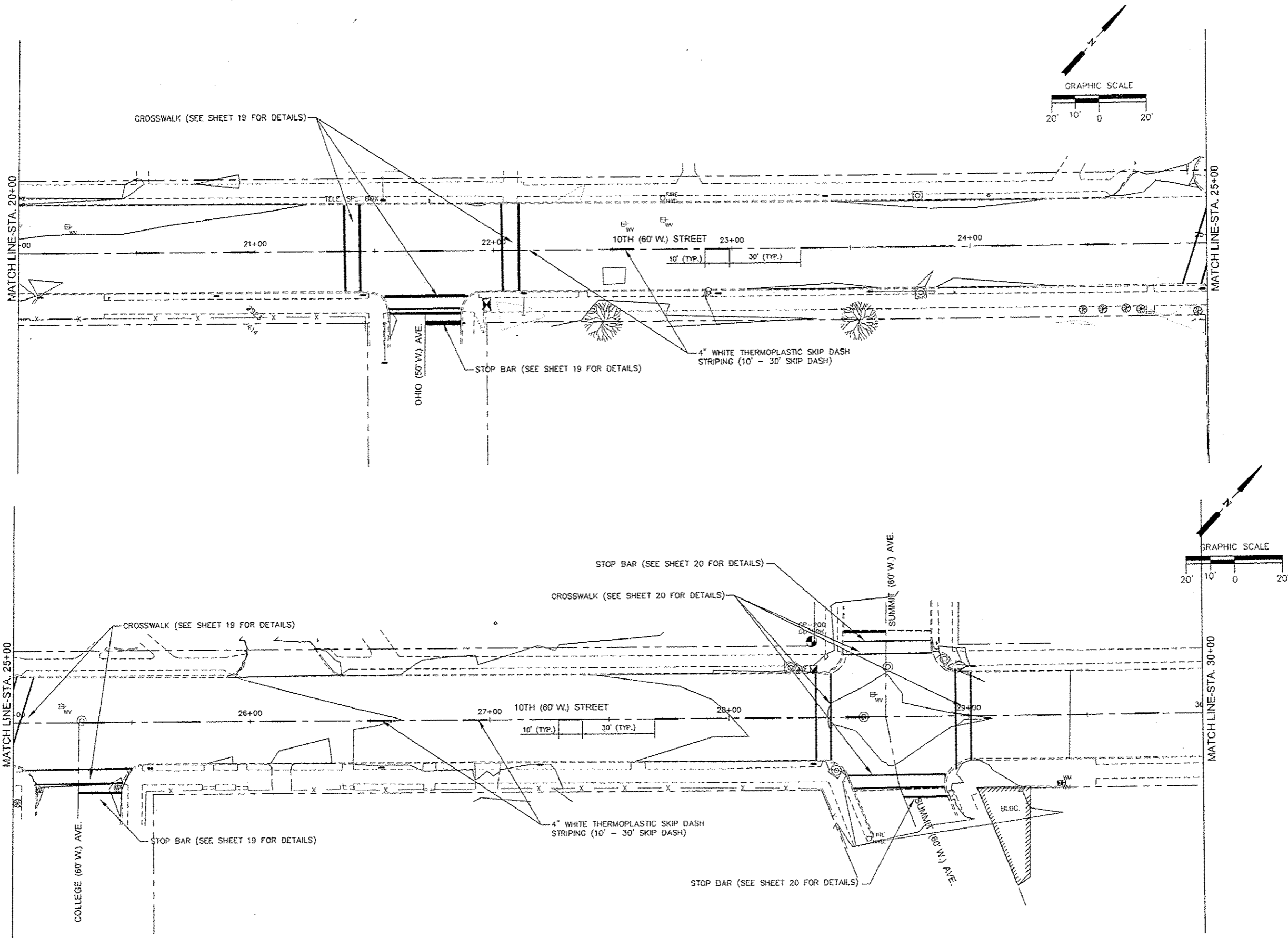
PAVEMENT STRIPING PLAN

15

SHEET 15 OF 21

© 2017 HURST-ROSCHÉ, INC.

Contract # 97638

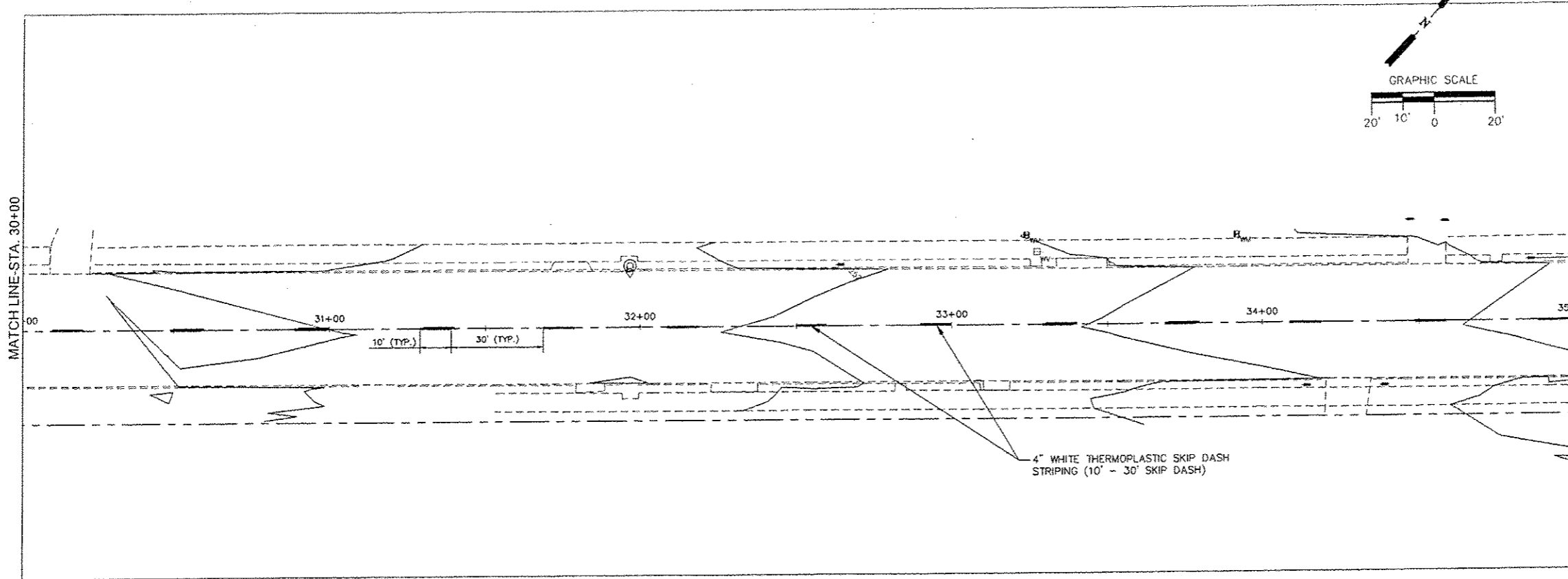




Hurst-Rosche, Inc.
PROFESSIONAL DESIGN NUMBER 14-0302P

5 Bank Square
E. St. Louis, IL
618.396.0890
www.hurst-rosche.com

HILLSBORO, IL
MARION, IL
SPRINGFIELD, IL
ARNOLD, MO
NEOSHO, MO



10TH STREET REHABILITATION
MISSOURI AVENUE TO SUMMIT AVENUE
CITY OF EAST ST. LOUIS
ST. CLAIR COUNTY, ILLINOIS

MARK	DATE	DESCRIPTION
	01/2017	

PROJECT NO: 192-1705		
DESIGN: JJC	DRAWN: SDD	CHECK: TAS

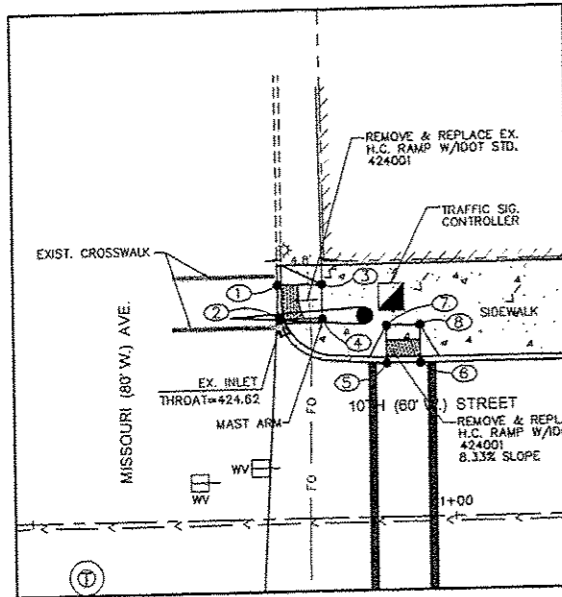
PAVEMENT STRIPING PLAN

16

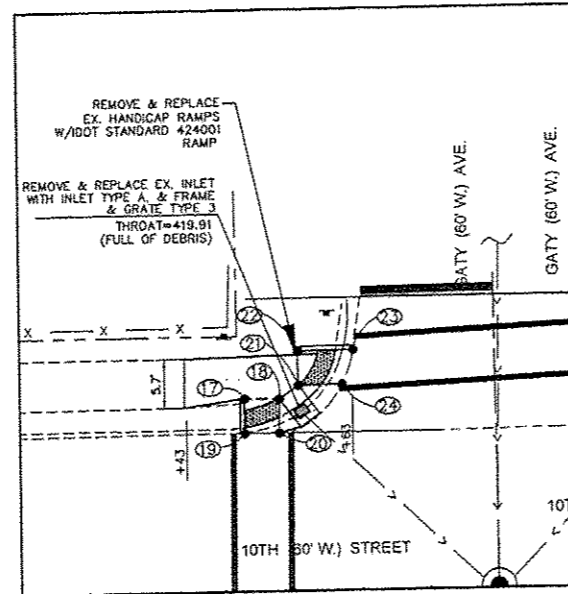
SHEET 16 OF 21

© 2017 HURST-ROSCHÉ, INC.

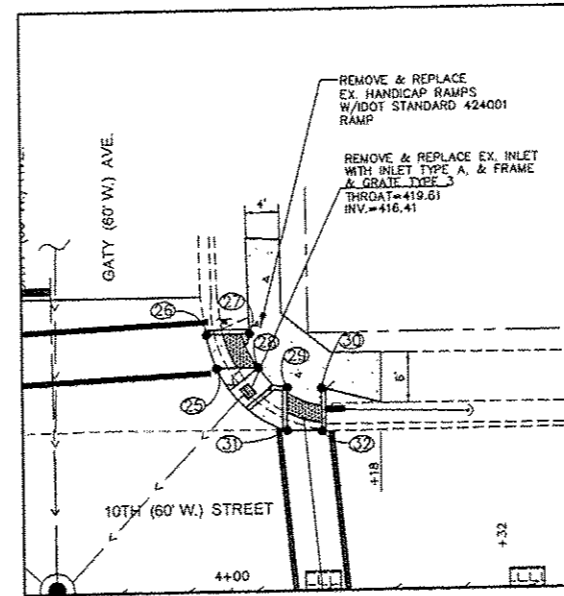
Contract # 97638



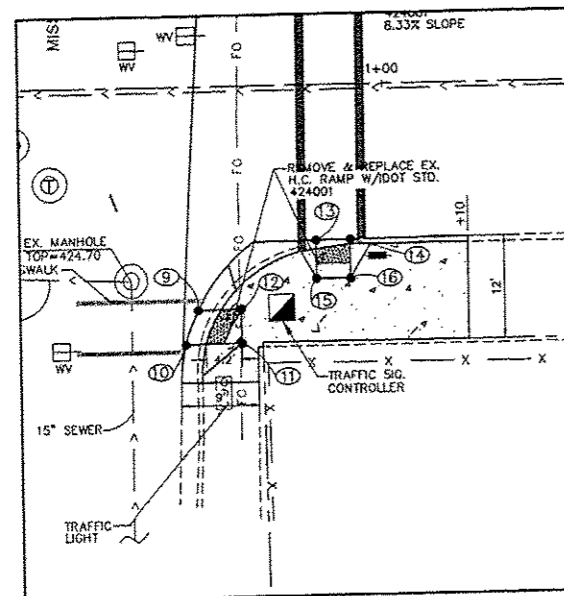
MISSOURI AVE. (NORTHEAST QUADRANT)



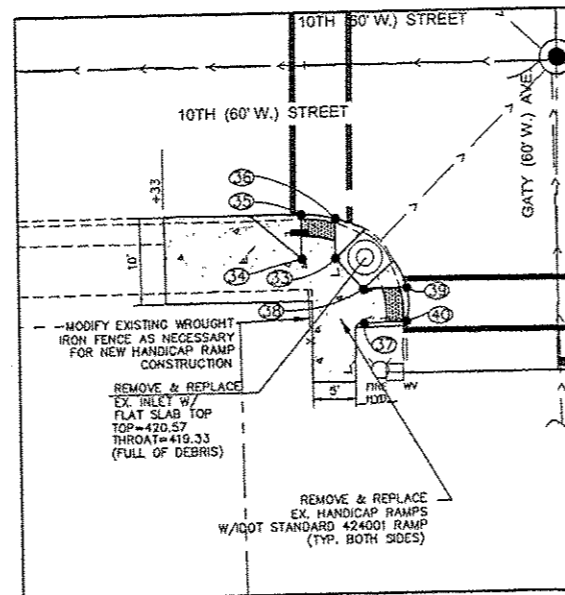
GATY AVE. (NORTHWEST QUADRANT)



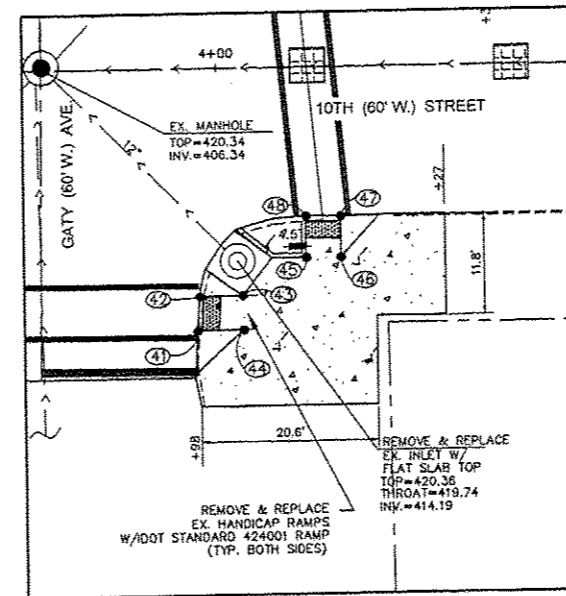
GATY AVE. (NORTHEAST QUADRANT)



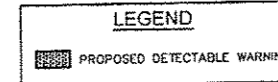
MISSOURI AVE. (SOUTHEAST QUADRANT)



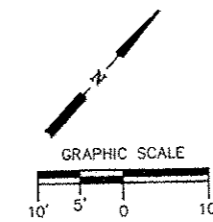
GATY AVE. (SOUTHWEST QUADRANT)



GATY AVE. (SOUTHEAST QUADRANT)



NOTE:
RELOCATE EXISTING UTILITY POLES AS NECESSARY FOR NEW HANDICAP RAMP CONSTRUCTION. COORDINATE WITH UTILITY COMPANIES.



Hurst-Rosche, Inc.
PROFESSIONAL DESIGN ENGINEERS
5 Bank Square
E. St. Louis, IL
618.398.0890
www.hurst-rosche.com
HILLSBORO, IL
MARION, IL
SPRINGFIELD, IL
ARNOLD, MO
NEGOSHO, MO

10TH STREET REHABILITATION
MISSOURI AVENUE TO SUMMIT AVENUE
CITY OF EAST ST. LOUIS
ST. CLAIR COUNTY, ILLINOIS

MARK	DATE	DESCRIPTION
	04/2017	

PROJECT NO: 192-1765
DESIGNER: JUC DRAWN: SDD CHECKER: TAS

SIDEWALK
RAMPS
MISSOURI &
GATY AVENUES

17

SHEET 17 OF 21

© 2017 HURST-ROSCH, INC.

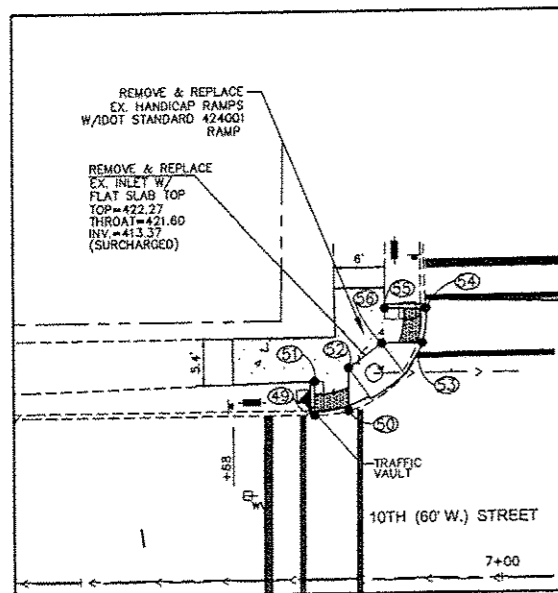
Contract # 97638



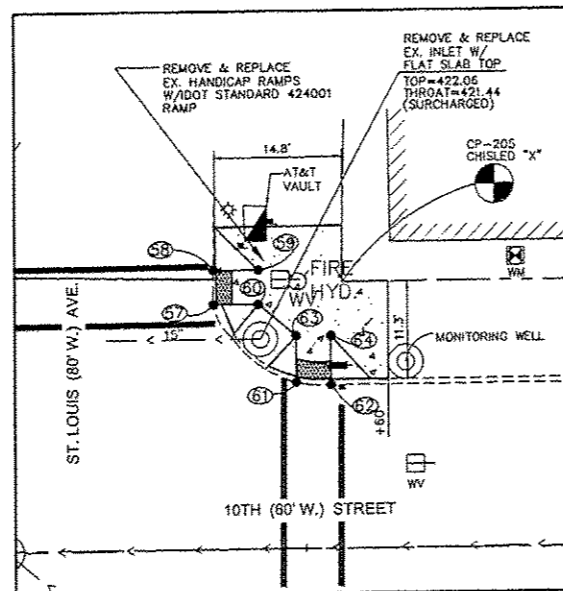
Hurst-Rosche, Inc.
PROFESSIONAL DESIGN FIRM NO. 0029

5 Bank Square
E. St. Louis, IL
618.398.0890 t
www.hurst-rosche.com

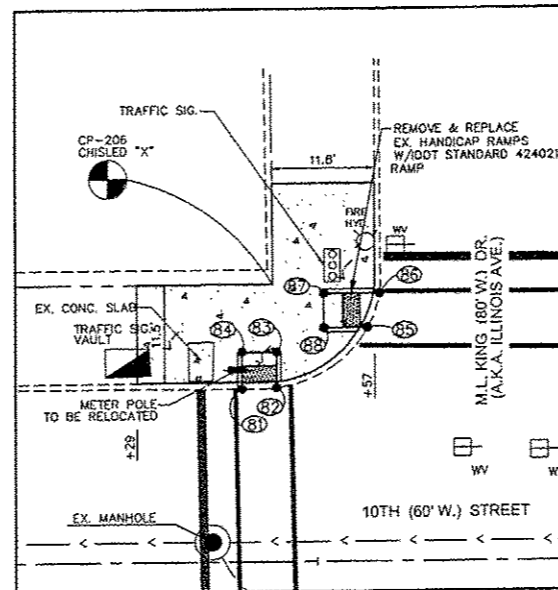
HILLSBORO, IL
MARION, IL
SPRINGFIELD, IL
ARNOLD, MO
NEOSHO, MO



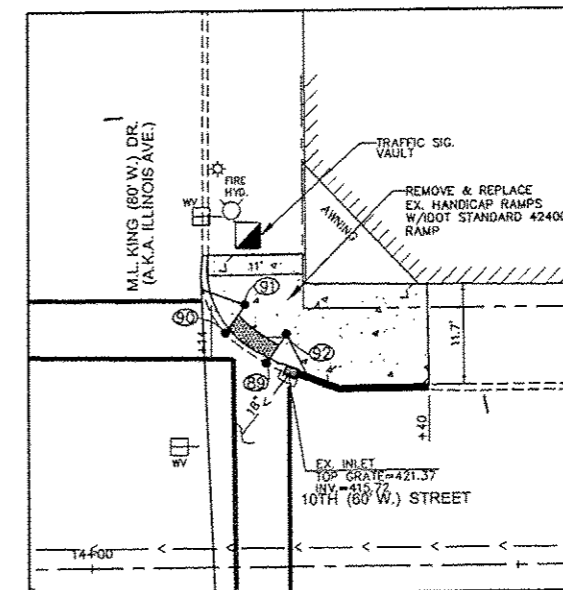
ST. LOUIS AVE. (NORTHWEST QUADRANT)



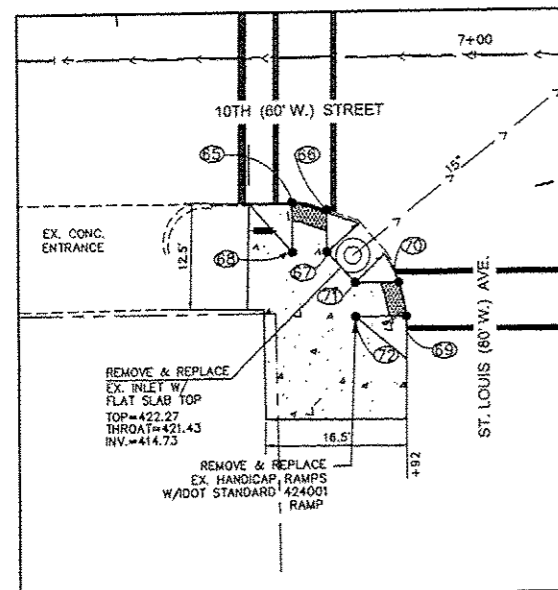
ST. LOUIS AVE. (NORTHEAST QUADRANT)



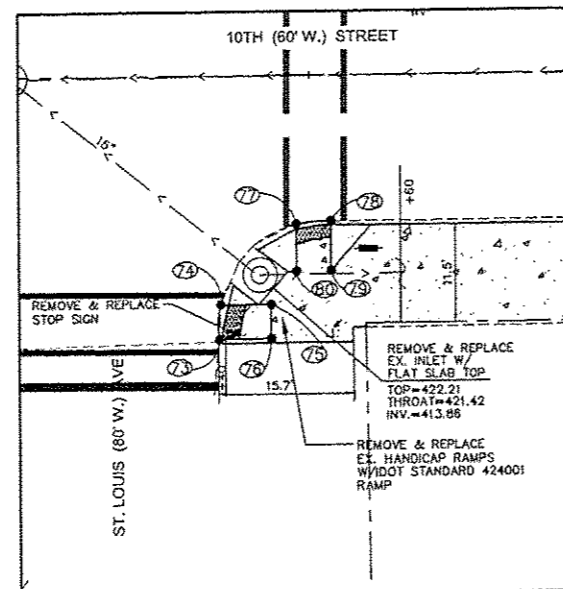
M.L. KING DRIVE (NORTHWEST QUADRANT)



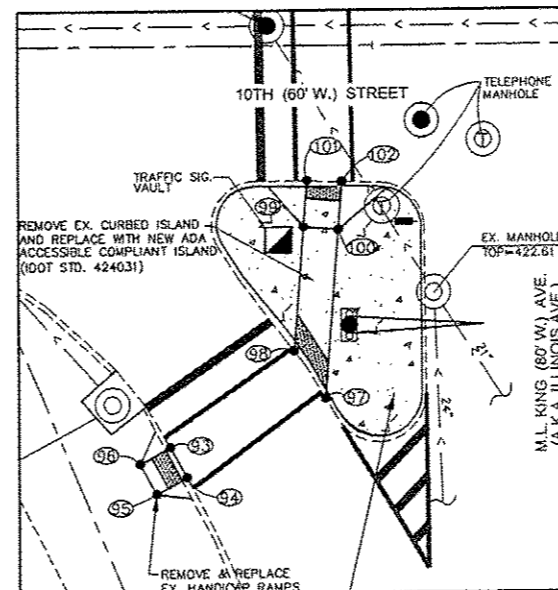
M.L. KING DRIVE (NORTHEAST QUADRANT)



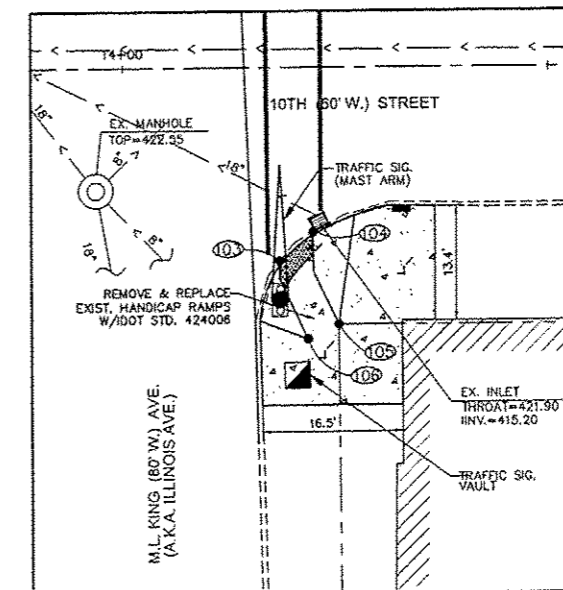
ST. LOUIS AVE. (SOUTHWEST QUADRANT)



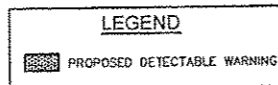
ST. LOUIS AVE. (SOUTHEAST QUADRANT)



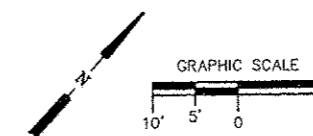
M.L. KING DRIVE (SOUTHWEST QUADRANT)



M.L. KING DRIVE (SOUTHEAST QUADRANT)



NOTE:
RELOCATE EXISTING UTILITY POLES AS NECESSARY FOR
NEW HANDICAP RAMP CONSTRUCTION. COORDINATE
WITH UTILITY COMPANIES.



10TH STREET REHABILITATION
MISSOURI AVENUE TO SUMMIT AVENUE
CITY OF EAST ST. LOUIS
ST. CLAIR COUNTY, ILLINOIS

MARK	DATE	DESCRIPTION
	04/2017	

PROJECT NO: 192-1705
DESIGN: JJC DRAWN: SDD CHECK: TAS

SIDEWALK
RAMPS
ST. LOUIS AVE.
& M.L. KING DR.

18

SHEET 18 OF 21

© 2017 HURST-ROSCH, INC.

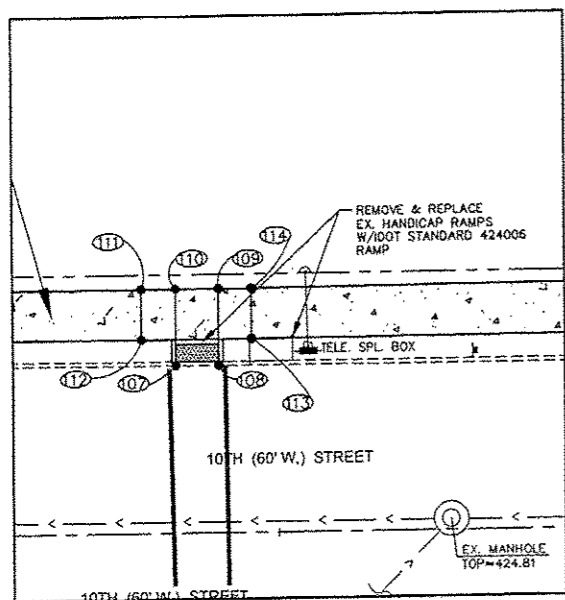
Contract # 97638



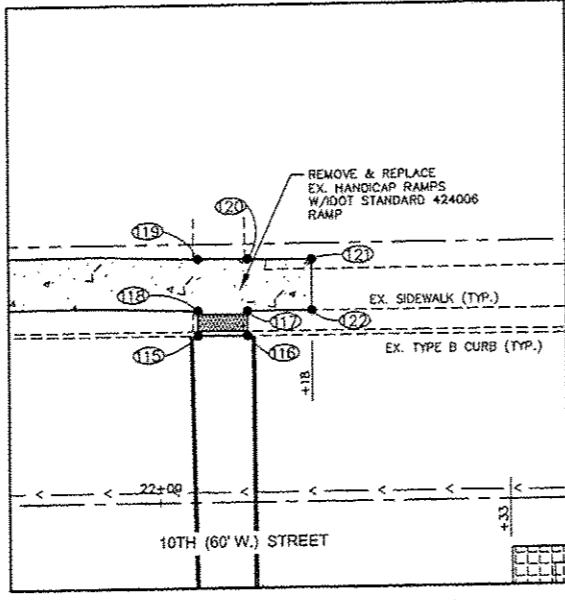
Hurst-Rosche, Inc.
PROFESSIONAL DESIGN FIRM 04-000000

5 Bank Square
E. St. Louis, IL
618.398.0890 t
www.hurst-rosche.com

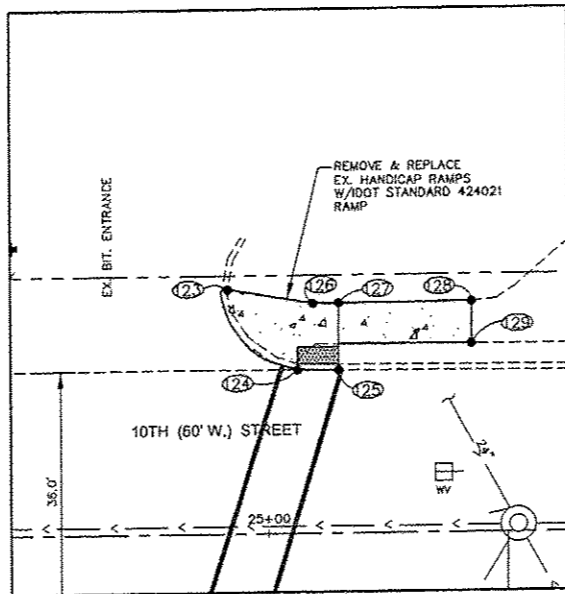
HILLSBORO, IL
MARION, IL
SPRINGFIELD, IL
ARNOLD, MO
NEOSHO, MO



OHIO AVE. (NORTHWEST QUADRANT)



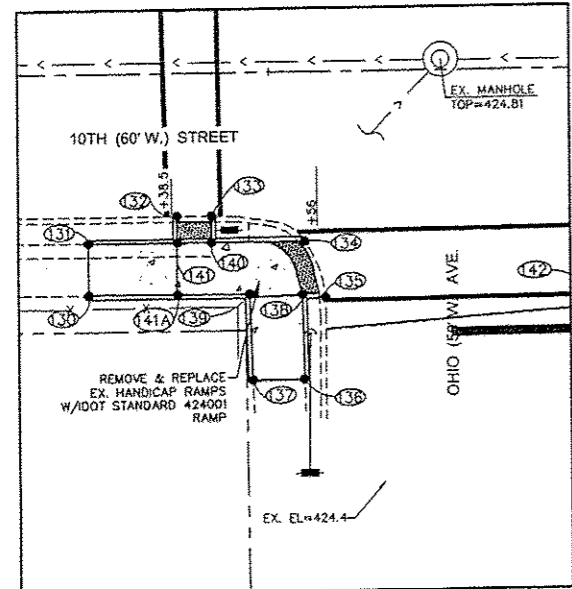
OHIO AVE. (NORTHEAST QUADRANT)



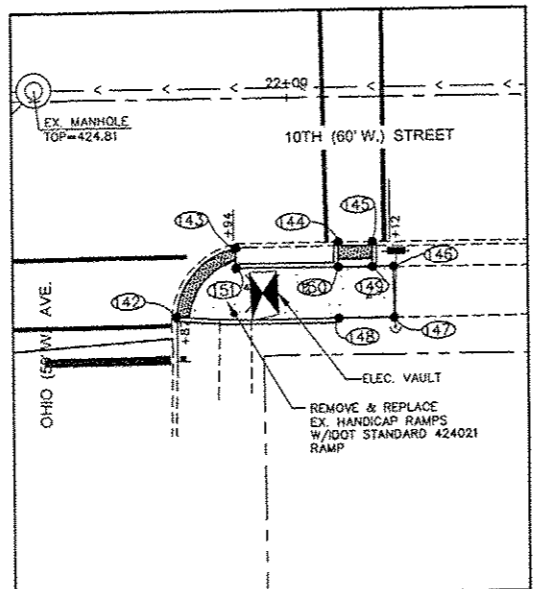
COLLEGE AVE. (NORTHWEST QUADRANT)

LEGEND

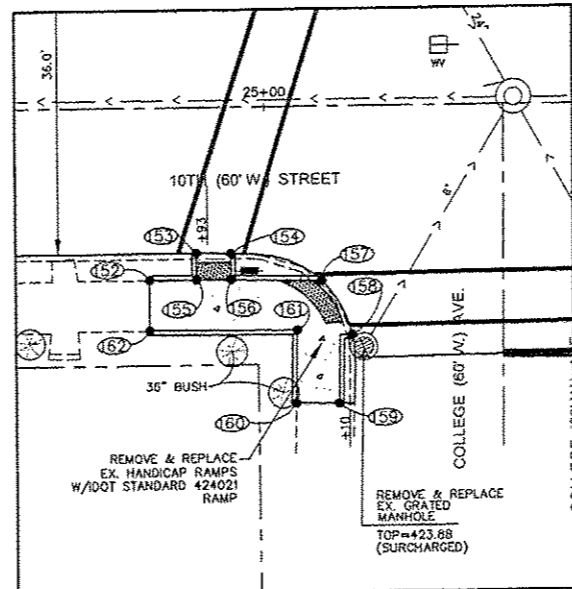
PROPOSED DETECTABLE WARNING



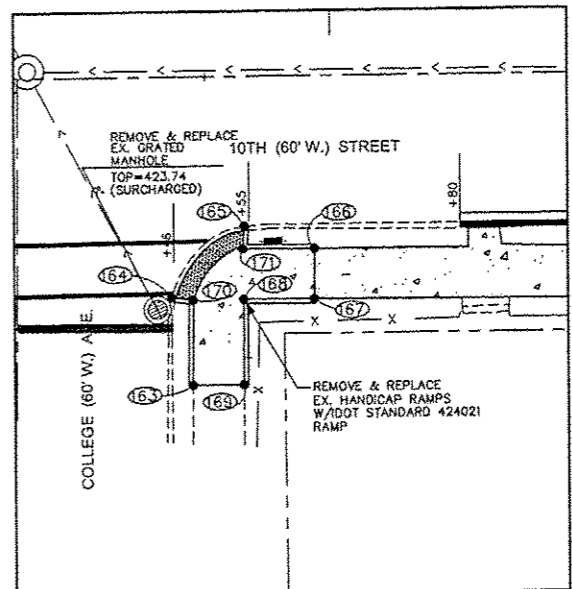
OHIO AVE. (SOUTHWEST QUADRANT)



OHIO AVE. (SOUTHEAST QUADRANT)

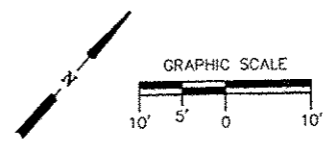


COLLEGE AVE. (SOUTHWEST QUADRANT)



COLLEGE AVE. (SOUTHEAST QUADRANT)

NOTE:
RELOCATE EXISTING UTILITY POLES AS NECESSARY FOR
NEW HANDICAP RAMP CONSTRUCTION. COORDINATE
WITH UTILITY COMPANIES.



10TH STREET REHABILITATION
MISSOURI AVENUE TO SUMMIT AVENUE
CITY OF EAST ST. LOUIS
ST. CLAIR COUNTY, ILLINOIS

MARK	DATE	DESCRIPTION
	04/2017	

PROJECT NO: 192-1705
DESIGN: JJC DRAWN: SDD CHECK: TAS

SIDEWALK
RAMPS
OHIO & COLLEGE
AVENUES

19

SHEET 19 OF 21

© 2017 HURST-ROSCH, INC.

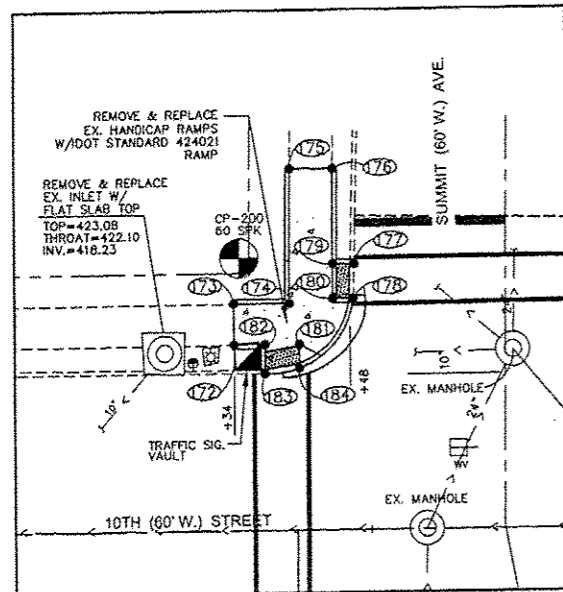
Contract # 97638



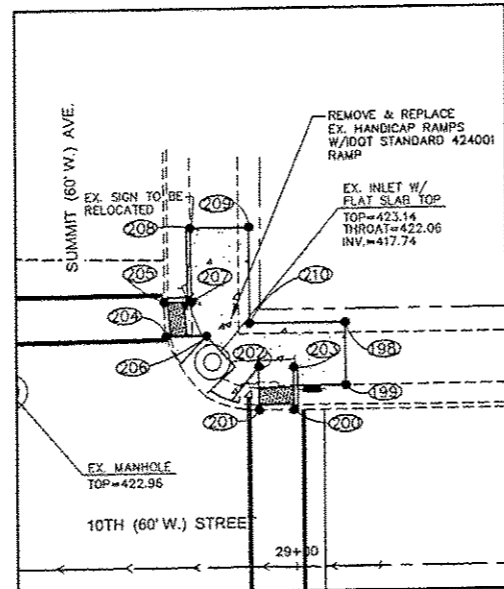
Hurst-Rosche, Inc.

5 Bank Square
E. St. Louis, IL
618.388.0890
www.hurst-rosche.com

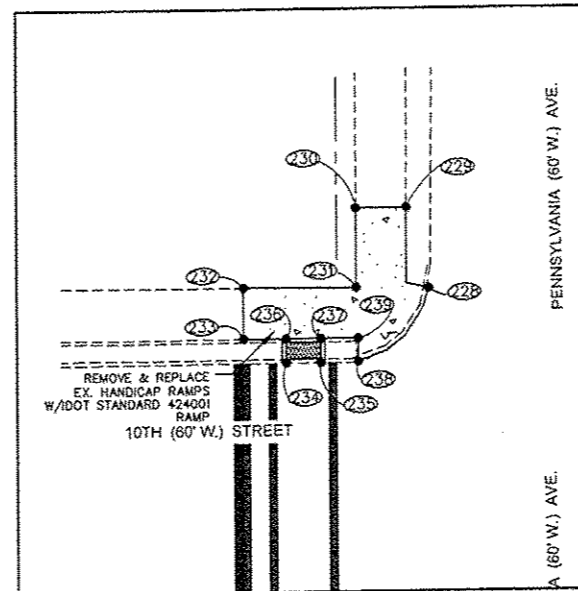
HILLSBORO, IL
MARION, IL
SPRINGFIELD, IL
ARNOLD, MO
NEOSHO, MO



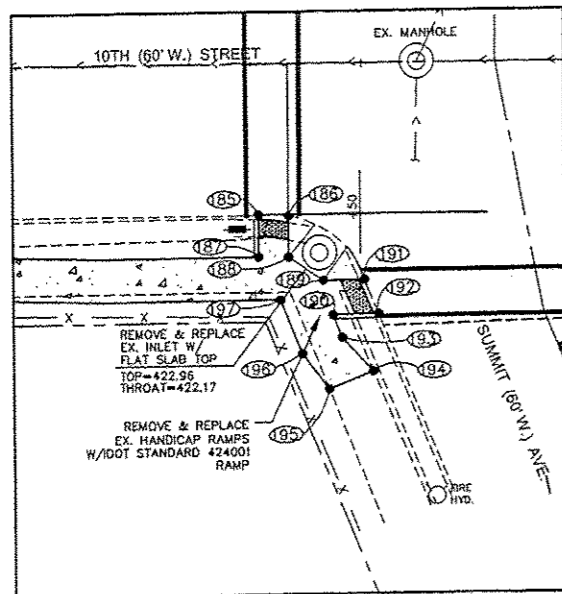
SUMMIT AVE. (NORTHWEST QUADRANT)



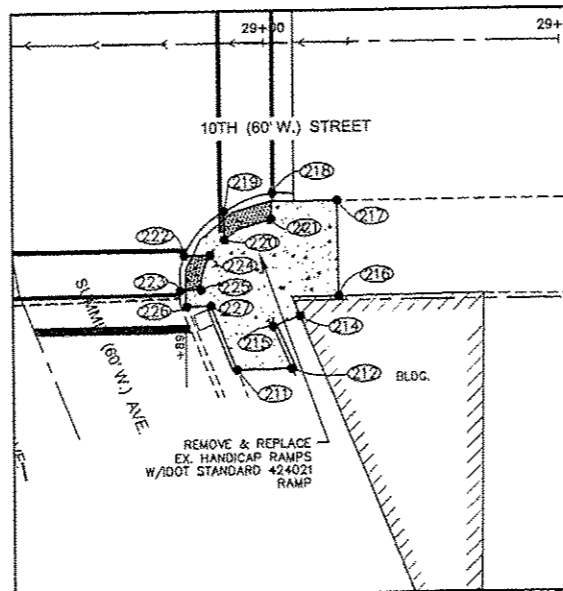
SUMMIT AVE. (NORTHEAST QUADRANT)



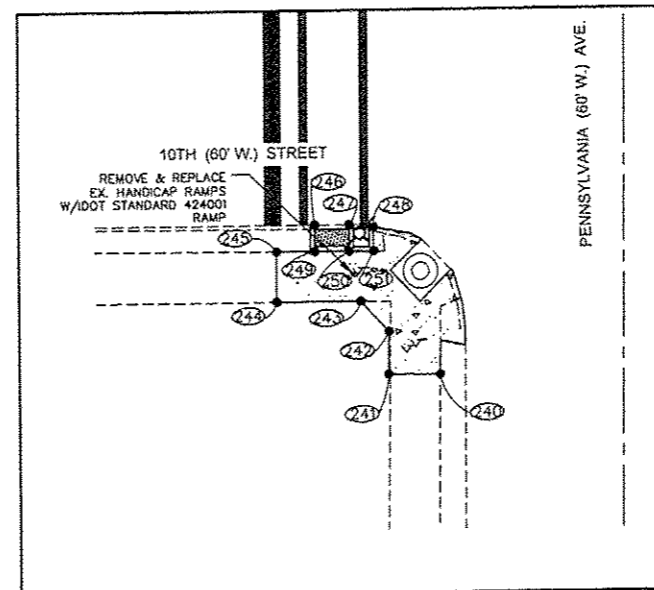
PENNSYLVANIA AVE. (NORTHWEST QUADRANT)



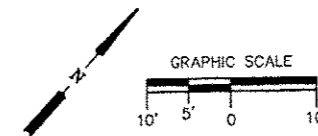
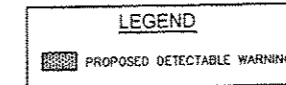
SUMMIT AVE. (SOUTHWEST QUADRANT)



SUMMIT AVE. (SOUTHEAST QUADRANT)



PENNSYLVANIA AVE. (SOUTHWEST QUADRANT)



NOTE:
RELOCATE EXISTING UTILITY POLES AS NECESSARY FOR NEW HANDICAP RAMP CONSTRUCTION. COORDINATE WITH UTILITY COMPANIES.

10TH STREET REHABILITATION
MISSOURI AVENUE TO SUMMIT AVENUE
CITY OF EAST ST. LOUIS
ST. CLAIR COUNTY, ILLINOIS

MARK	DATE	DESCRIPTION
	04/2017	

PROJECT NO:	192-1705
DESIGN:	JJC
DRAWN:	SDD
CHECK:	TAS

SIDEWALK RAMPS
SUMMIT AND
PENNSYLVANIA
AVENUES

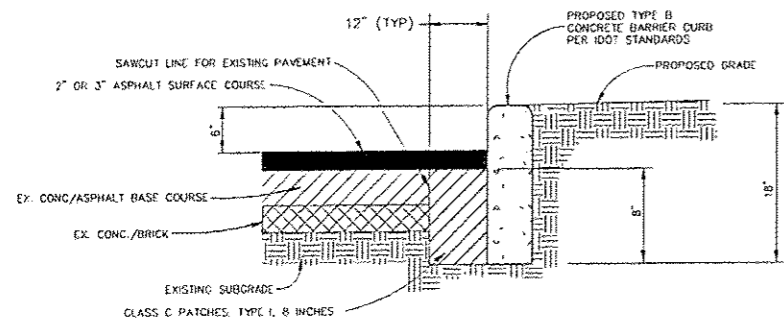
20
SHEET 20 OF 21



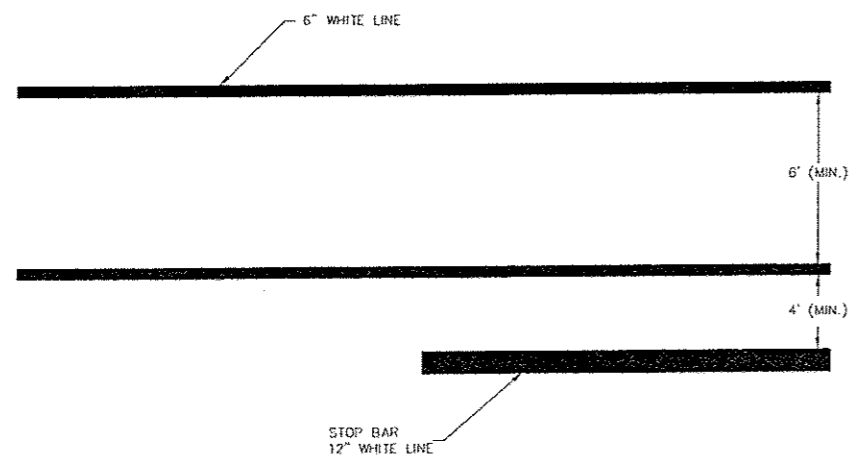
Hurst-Rosche, Inc.
PROFESSIONAL DESIGN NUMBER 184-02208

5 Bank Square
E. St. Louis, IL
618.398.0890
www.hurst-rosche.com

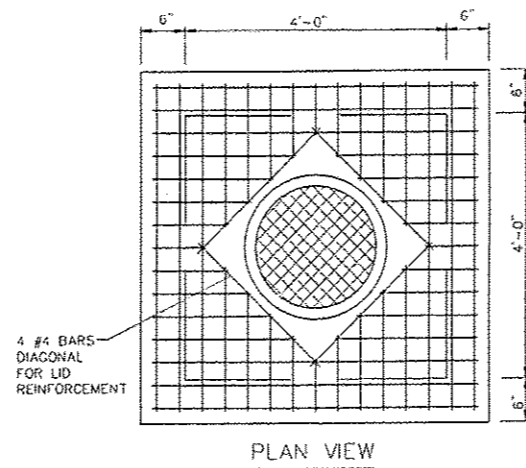
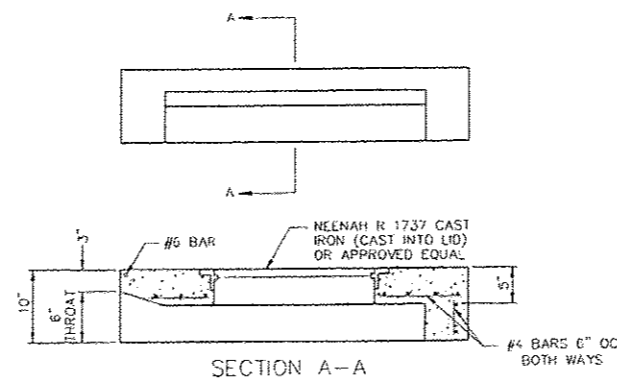
HILLSBORO, IL
MARION, IL
SPRINGFIELD, IL
ARNOLD, MO
NEOSHO, MO



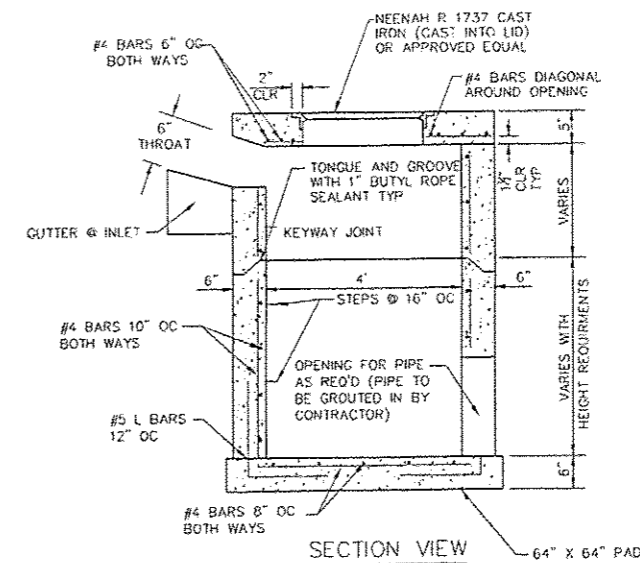
CLASS C PATCHES, TYPE I, 8 INCHES ALONG PROPOSED CURBING
N.T.S.



DETAIL CROSS-WALK
N.T.S.



PLAN VIEW



SECTION VIEW

INLET, SPECIAL
N.T.S.

10TH STREET REHABILITATION
MISSOURI AVENUE TO SUMMIT AVENUE
CITY OF EAST ST. LOUIS
ST. CLAIR COUNTY, ILLINOIS

MARK	DATE	DESCRIPTION
	01/2017	

PROJECT NO: 182-1705
DESIGN: JUC DRAWN: SDD CHECK: TAS

MISCELLANEOUS
DETAILS

21

SHEET 21 OF 21

© 2017 HURST-ROSCHÉ, INC.

Contract # 97638