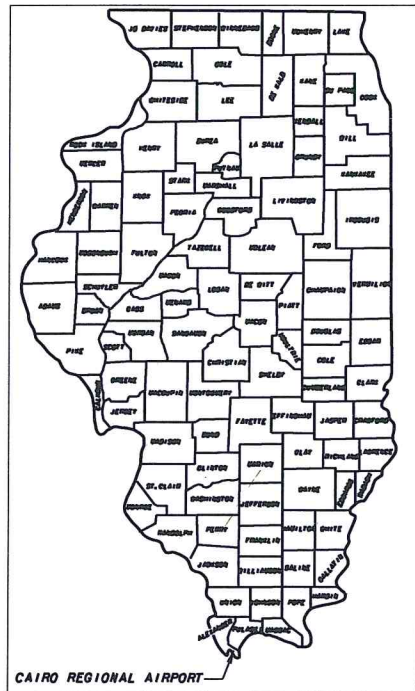


CAIRO REGIONAL AIRPORT

CAIRO - ALEXANDER COUNTY, ILLINOIS

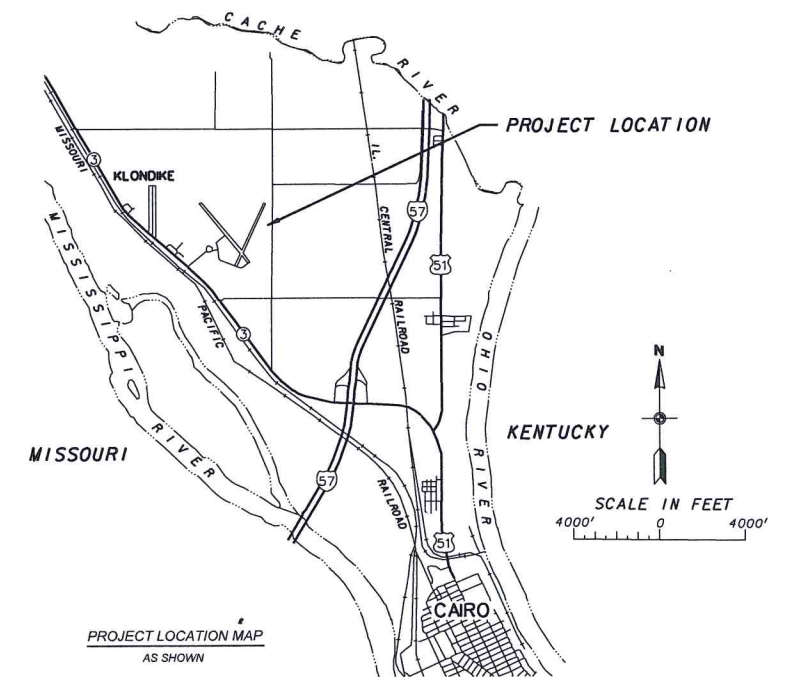
AIRPORT TYPE: BASIC UTILITY

REHABILITATION OF AIRCRAFT APRON & T-HANGAR TAXIWAYS & REMARK RUNWAYS



ILLINOIS PROJECT NO. CIR-4420
PROJECT NO. 3-17-SBGP-111/120

LATITUDE 37°03'52"
LONGITUDE 89°13'04"
ELEVATION 321 MSL



J.T.B.NO. E-9941
DATE OF PLANS: MAY, 2017

FINAL
MAY 22, 2017

<p>ALEXANDER COUNTY AIRPORT AUTHORITY</p> <p>APPROVED: <i>[Signature]</i> CHAIRMAN DATE: 5-23 2017</p> <p>APPROVED: <i>[Signature]</i> SECRETARY DATE: 5-23 2017</p>	<p>PREPARED BY J.T. BLANKINSHIP, INC.</p> <p>CONSULTING ENGINEERS MURPHYSBORO, ILLINOIS</p> <p>APPROVED: <i>[Signature]</i> DATE: 5-23 2017</p>	<p>STATE OF ILLINOIS AMANDA S. TINSLEY 062-063842 LICENSED PROFESSIONAL ENGINEER REG. NO. 062-063842</p>
--	---	--

GENERAL NOTES

ENGINEER'S FIELD OFFICE
AN ENGINEER'S FIELD OFFICE WILL NOT BE REQUIRED FOR THIS PROJECT

GENERAL NOTES REGARDING PLANS:

1. NO UNDERGROUND UTILITIES WERE LOCATED BY THIS SURVEY. VERIFICATION OF THE EXISTENCE AND POSITION OF ANY UNDERGROUND UTILITIES SHOULD BE DETERMINED PRIOR TO CONSTRUCTION.
2. THE ACCURACY OF THE HORIZONTAL AND VERTICAL TOPOGRAPHIC FEATURES DEPICTED HEREON WERE DERIVED BY SURVEY METHODS THAT EXCEED THE ACCURACY OF THE PLOTTED DOCUMENT AS DEFINED BY THE MAP SCALE. THE USE OF THIS SURVEY INFORMATION IN A DIGITAL ENVIRONMENT, CADD OR GIS SHALL NOT BE RELIED UPON TO AN ACCURACY GREATER THAN THAT OF THE MAP SCALE.
3. FOR CONSTRUCTION LAYOUT PURPOSES THE POSITION OF ALL PROPOSED IMPROVEMENTS ESTABLISHED FOR THIS PROJECT SHALL BE DEVELOPED FROM INFORMATION SHOWN ON THE PLOTTED DOCUMENT AND SHALL NOT BE DERIVED FROM INFORMATION OBTAINED FROM A DIGITAL ENVIRONMENT UNLESS OTHERWISE VERIFIED.
4. HORIZONTAL DATUM IS ILLINOIS STATE PLAN WEST ZONE (NAD83)
5. VERTICAL DATUM IS CAIRO AIRPORT DATUM - (NGVD29)

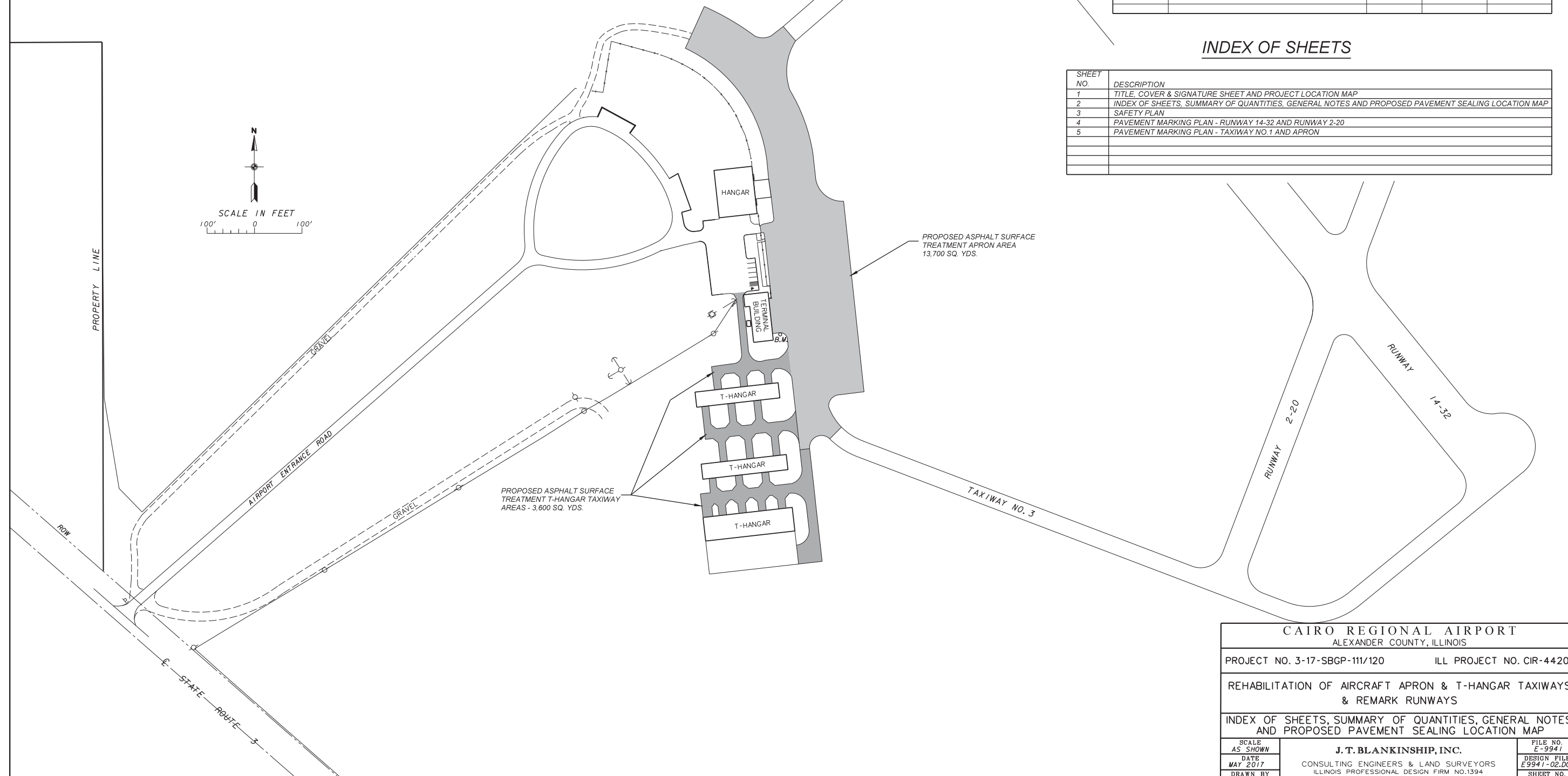
BENCHMARK
HEADBOLT NEXT TO "O" IN OPEN ON FLUSH HYDRANT
9'S.E. OF S.E. CORNER OF HANGAR/SHOP. (ELEV. - 321.05)

SUMMARY OF QUANTITIES - BASE BID

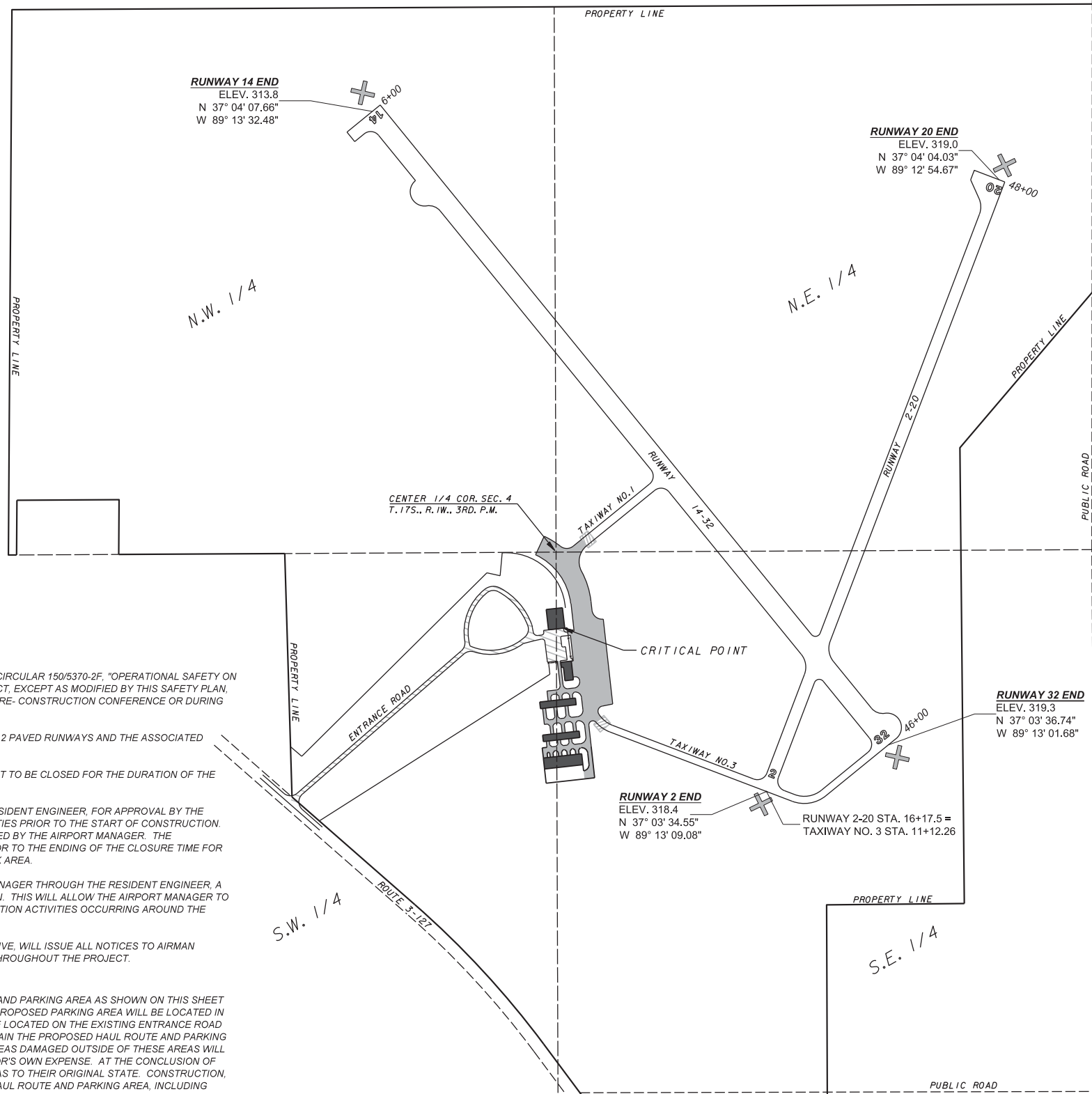
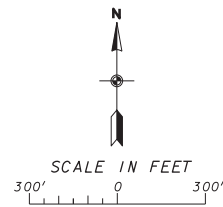
ITEM NO.	DESCRIPTION	UNIT	TOTAL QUANTITIES	AS BUILT QUANTITIES
AR201661	CLEAN & SEAL BITUMINOUS CRACKS	L.F.	10,000	
AR608510	EXISTING ASPHALT SURFACE TREATMENT	S.Y.	17,300	
AR620520	PAVEMENT MARKING - WATERBORNE	S.F.	18,740	
AR620525	PAVEMENT MARKING - BLACK BORDER	S.F.	3,236	

INDEX OF SHEETS

SHEET NO.	DESCRIPTION
1	TITLE, COVER & SIGNATURE SHEET AND PROJECT LOCATION MAP
2	INDEX OF SHEETS, SUMMARY OF QUANTITIES, GENERAL NOTES AND PROPOSED PAVEMENT SEALING LOCATION MAP
3	SAFETY PLAN
4	PAVEMENT MARKING PLAN - RUNWAY 14-32 AND RUNWAY 2-20
5	PAVEMENT MARKING PLAN - TAXIWAY NO.1 AND APRON



CAIRO REGIONAL AIRPORT ALEXANDER COUNTY, ILLINOIS		
PROJECT NO. 3-17-SBGP-111/120		ILL PROJECT NO. CIR-4420
REHABILITATION OF AIRCRAFT APRON & T-HANGAR TAXIWAYS & REMARK RUNWAYS		
INDEX OF SHEETS, SUMMARY OF QUANTITIES, GENERAL NOTES AND PROPOSED PAVEMENT SEALING LOCATION MAP		
SCALE AS SHOWN	J. T. BLANKINSHIP, INC. CONSULTING ENGINEERS & LAND SURVEYORS ILLINOIS PROFESSIONAL DESIGN FIRM NO. 1394 401 S. 17TH STREET MURPHYSBORO, ILLINOIS 62966 PHONE 618-687-1771	FILE NO. E-9941
DATE MAY 2017		DESIGN FILE E9941-02.DGN
DRAWN BY SDR		SHEET NO. 2 OF 5



PROPOSED SAFETY PLAN

ALL PROVISIONS OF THE LATEST EDITION OF FAA ADVISORY CIRCULAR 150/5370-2F, "OPERATIONAL SAFETY ON AIRPORTS DURING CONSTRUCTION" APPLY TO THIS CONTRACT, EXCEPT AS MODIFIED BY THIS SAFETY PLAN, OR AS MODIFIED BY THE CAIRO REGIONAL AIRPORT AT THE PRE- CONSTRUCTION CONFERENCE OR DURING THE COURSE OF THE CONTRACT.

GENERAL - THE CAIRO REGIONAL AIRPORT IS COMPRISED OF 2 PAVED RUNWAYS AND THE ASSOCIATED TAXIWAY SYSTEM.

THE PROPOSED PROJECT WILL REQUIRE THE ENTIRE AIRPORT TO BE CLOSED FOR THE DURATION OF THE WORK.

THE CONTRACTOR WILL BE REQUIRED TO SUBMIT TO THE RESIDENT ENGINEER, FOR APPROVAL BY THE AIRPORT MANAGER, A SCHEDULE OF CONSTRUCTION ACTIVITIES PRIOR TO THE START OF CONSTRUCTION. CLOSURE BEGINNING AND ENDING TIMES WILL BE DETERMINED BY THE AIRPORT MANAGER. THE CONTRACTOR IS REQUIRED TO ALLOW SUFFICIENT TIME PRIOR TO THE ENDING OF THE CLOSURE TIME FOR CURING OF PLACED MATERIALS AND CLEAN UP OF THE WORK AREA.

THE CONTRACTOR IS REQUIRED TO NOTIFY THE AIRPORT MANAGER THROUGH THE RESIDENT ENGINEER, A MINIMUM OF 7 DAYS PRIOR TO THE START OF CONSTRUCTION. THIS WILL ALLOW THE AIRPORT MANAGER TO ISSUE ALL NECESSARY NOTAMS REGARDING THE CONSTRUCTION ACTIVITIES OCCURRING AROUND THE AIRFIELD.

THE AIRPORT MANAGER, OR HIS DESIGNATED REPRESENTATIVE, WILL ISSUE ALL NOTICES TO AIRMAN (NOTAM) RELATED TO OPENING AND CLOSING PAVEMENTS THROUGHOUT THE PROJECT.

HAUL ROUTE AND PARKING AREA

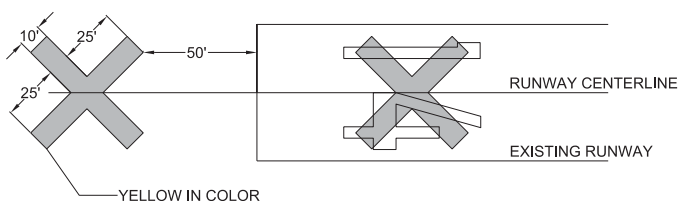
THE CONTRACTOR WILL USE THE DESIGNATED HAUL ROUTE AND PARKING AREA AS SHOWN ON THIS SHEET AND IN ACCORDANCE WITH THE SPECIAL PROVISIONS. THE PROPOSED PARKING AREA WILL BE LOCATED IN THE EXISTING AUTO PARKING LOT. THE HAUL ROUTE WILL BE LOCATED ON THE EXISTING ENTRANCE ROAD AS SHOWN. THE CONTRACTOR WILL BE REQUIRED TO MAINTAIN THE PROPOSED HAUL ROUTE AND PARKING AREA THROUGHOUT THE COURSE OF THE PROJECT. ANY AREAS DAMAGED OUTSIDE OF THESE AREAS WILL BE REPAIRED BY THE CONTRACTOR AND AT THE CONTRACTOR'S OWN EXPENSE. AT THE CONCLUSION OF THE PROJECT THE CONTRACTOR WILL RESTORE THESE AREAS TO THEIR ORIGINAL STATE. CONSTRUCTION, MAINTENANCE, AND ANY REQUIRED RESTORATION OF THE HAUL ROUTE AND PARKING AREA, INCLUDING LABOR, MATERIALS, EQUIPMENT, AND OTHER INCIDENTAL ITEMS WILL BE CONSIDERED INCIDENTAL TO THE PROJECT AND NO ADDITIONAL COMPENSATION WILL BE ALLOWED.

HEIGHT OF CONSTRUCTION EQUIPMENT

THE MAXIMUM HEIGHT OF THE CONSTRUCTION EQUIPMENT WILL BE 25 FEET.

EROSION CONTROL

THIS PROJECT WILL DISTURB LESS THAN 1 ACRE OF LAND, THEREFORE NEITHER A STORMWATER POLLUTION PREVENTION PLAN (SWPPP) NOR A N.P.D.E.S. PERMIT WILL BE REQUIRED.



DETAIL OF CROSS FOR CLOSED RUNWAY
NOT TO SCALE

LEGEND

- EXISTING PAVEMENTS
- EXISTING BUILDINGS
- PROPOSED HAUL ROUTE AND EQUIPMENT PARKING AREA
- PROPOSED SEALING
- BARRICADES

GENERAL NOTES

ALL AIRCRAFT SHALL REMAIN IN HANGERS DURING THE DURATION OF CONSTRUCTION. NO AIRCRAFT WILL BE ALLOWED TO BE PARKED ON THE RAMP DURING CONSTRUCTION.

CONTRACTOR RESPONSIBILITIES

IDENTIFICATION - WHEN THE CONTRACTORS VEHICLES AND EQUIPMENT ARE ON THE AIRPORT THEY SHALL BE PROPERLY MARKED WITH THREE (3) FOOT SQUARE CHECKERED FLAGS (INTERNATIONAL ORANGE AND WHITE). THE CONTRACTOR WILL ALSO PROVIDE WORKERS WITH SOME TYPE OF TAG OR GARMENT TO IDENTIFY THE PERSON AS BEING PART OF THE CONSTRUCTION CREW

RADIO CONTROL - THE CONTRACTOR WILL BE REQUIRED TO BE IN TWO-WAY RADIO CONTACT (122.80 MHz.) WITH THE AIRPORT UNICOM. THIS WILL KEEP THE CONTRACTOR IN CONSTANT CONTACT WITH THE CAIRO REGIONAL AIRPORT AND ENABLE THE AIRPORT TO IMMEDIATELY CONTACT THE CONTRACTOR IN CASE OF AN AERONAUTICAL EMERGENCY THAT WOULD REQUIRE ACTION BY THE CONTRACTOR AND/OR HIS PERSONNEL.

THE CONTRACTOR'S EQUIPMENT PARKING AND STORAGE AREA WILL BE AS SHOWN ON THIS SHEET. THE CONTRACTOR'S EMPLOYEES WILL PARK THEIR VEHICLES IN THIS AREA. ONLY CONTRACTOR VEHICLES WILL BE ALLOWED OUTSIDE THIS AREA.

THE CONTRACTOR AND HIS EMPLOYEES WILL BE RESTRICTED TO THE WORK AREA AND ALL OTHER AREAS OF THE AIRPORT ARE "OFF LIMITS" TO THEM.

ALL WORK PERFORMED SHALL BE DONE IN AN ORDERLY AND EFFECTIVE MANNER

THE CONTRACTOR IS RESPONSIBLE FOR PLACING, MAINTAINING, RELOCATING, AND REMOVING CROSSES AND OTHER MEANS OF TRAFFIC MAINTENANCE NECESSARY TO SUCCESSFULLY AND SAFELY CLOSE THE CONSTRUCTION WORK LIMITS.

THE CROSSES, THEIR MAINTENANCE, PLACEMENT AND REMOVAL WILL BE CONSIDERED AS AN INCIDENTAL ITEM TO THE CONTRACT AND NO ADDITIONAL COMPENSATION WILL BE ALLOWED.

AIRPORT SECURITY NOTE

THE AIRPORT SPONSOR MAY PROVIDE ADDITIONAL GUIDANCE AND TRAINING FOR AIRPORT SECURITY MEASURES. AIRPORT SECURITY WILL BE MAINTAINED AT ALL TIMES. THE CONTRACTOR WILL CLOSE AND LOCK THE EXISTING GATE IN THE HAUL ROUTE AT THE END OF EACH WORKING DAY. ANY ACCESS GATES WILL BE CLOSED AT ALL TIMES WHEN NOT IN USE. IF CONTINUOUS HAULING IS REQUIRED, THEN THE GATE ACCESS WILL BE MONITORED TO PREVENT A BREACH FROM OUTSIDE, NON-CONSTRUCTION RELATED TRAFFIC.

TEMPORARY RUNWAY CLOSURE NOTE

FAA CRITERIA REQUIRES A RUNWAY BE CLOSED IF CONSTRUCTION ACTIVITIES OR PERSONNEL ARE WITHIN 200 FT OF A RUNWAY CENTERLINE.

COST OF CONSTRUCTING, PLACING, MAINTAINING AND REMOVING CROSSES WILL BE CONSIDERED INCIDENTAL TO THE CONTRACT AND NO ADDITIONAL COMPENSATION WILL BE ALLOWED. ALL RUNWAY CLOSURES WILL BE IN ACCORDANCE WITH ALL FAA ADVISORY CIRCULARS THAT RELATE TO RUNWAY CLOSURES DURING CONSTRUCTION OPERATIONS. THE RUNWAY CLOSURE PROCEDURES SHALL BE REVIEWED BY THE AIRPORT MANAGER AND COORDINATED WITH THE RESIDENT ENGINEER. THE CROSSES WILL BE YELLOW IN COLOR AND SHALL BE MADE OF A SUITABLE MATERIAL, AS APPROVED BY THE RESIDENT ENGINEER AND REVIEWED BY THE AIRPORT MANAGER. THE CROSSES WILL BE PLACED OVER THE NUMERALS OR OFF EACH END OF THE RUNWAY AND SECURED IN A MANNER APPROVED BY THE AIRPORT MANAGER. THE PROPOSED CROSSES WILL BE PLACED WHEN THE RUNWAYS ARE CLOSED AND REMOVED WHEN THE RUNWAYS ARE RE-OPENED. THE CONTRACTOR WILL BE RESPONSIBLE FOR THE PLACEMENT AND REMOVAL OF THE CROSSES. NO ADDITIONAL COMPENSATION WILL BE ALLOWED.

RUNWAY CLOSURE

- * CONTACT THE AIRPORT MANAGER OR HIS ASSIGNED REPRESENTATIVE.
- * ISSUANCE OF NOTAM BY THE AIRPORT MANGAGER OR HIS ASSIGNED REPRESENTATIVE.
- * PLACEMENT OF CROSSES (SEE DETAIL THIS SHEET)

ONLY AT THE TIME THAT ALL OF THE ABOVE ARE COMPLETED MAY ANY CONSTRUCTION OPERATIONS BEGIN

RUNWAY RE-OPENING PROCEDURES:

- * REMOVE CROSSES.
- * NOTIFY THE AIRPORT MANAGER OR HIS REPRESENTATIVE TO CANCEL THE NOTAM.
- * CANCELLATION OF THE NOTAM.

CRITICAL POINT INFORMATION

DESCRIPTION	(NAD83)		MSL (NGVD29)
	LATITUDE	LONGITUDE	ELEVATION
NORTHEAST CORNER OF EXISTING PARKING LOT PAVEMENT	37°03'42.5670"	89°13'21.2372"	319.0

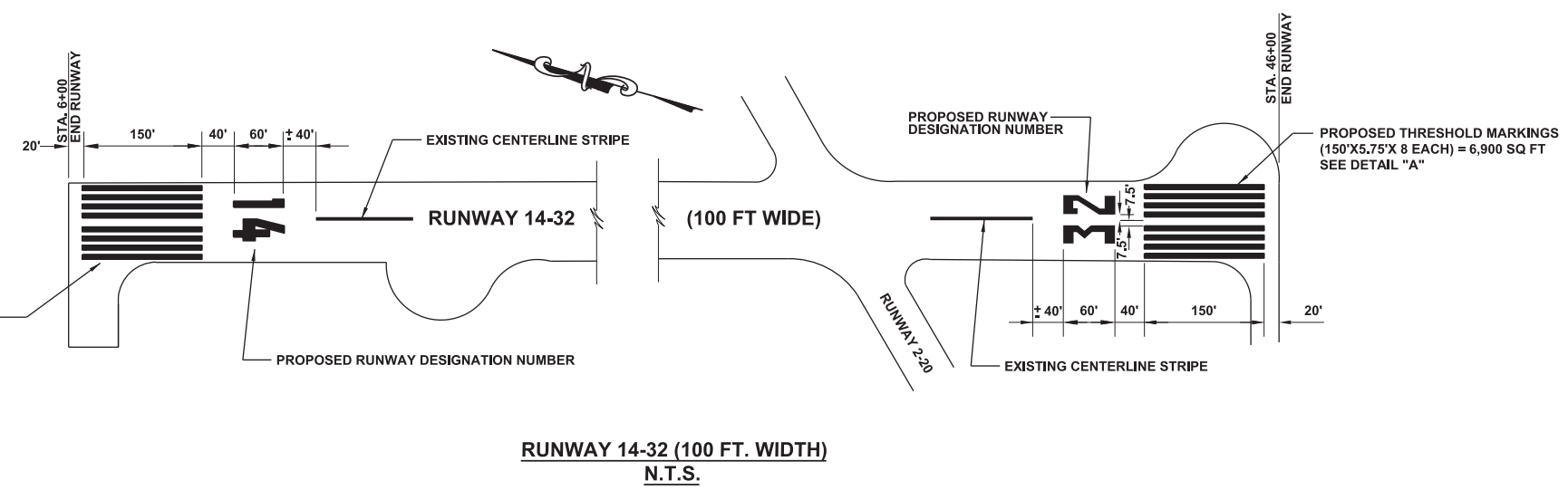
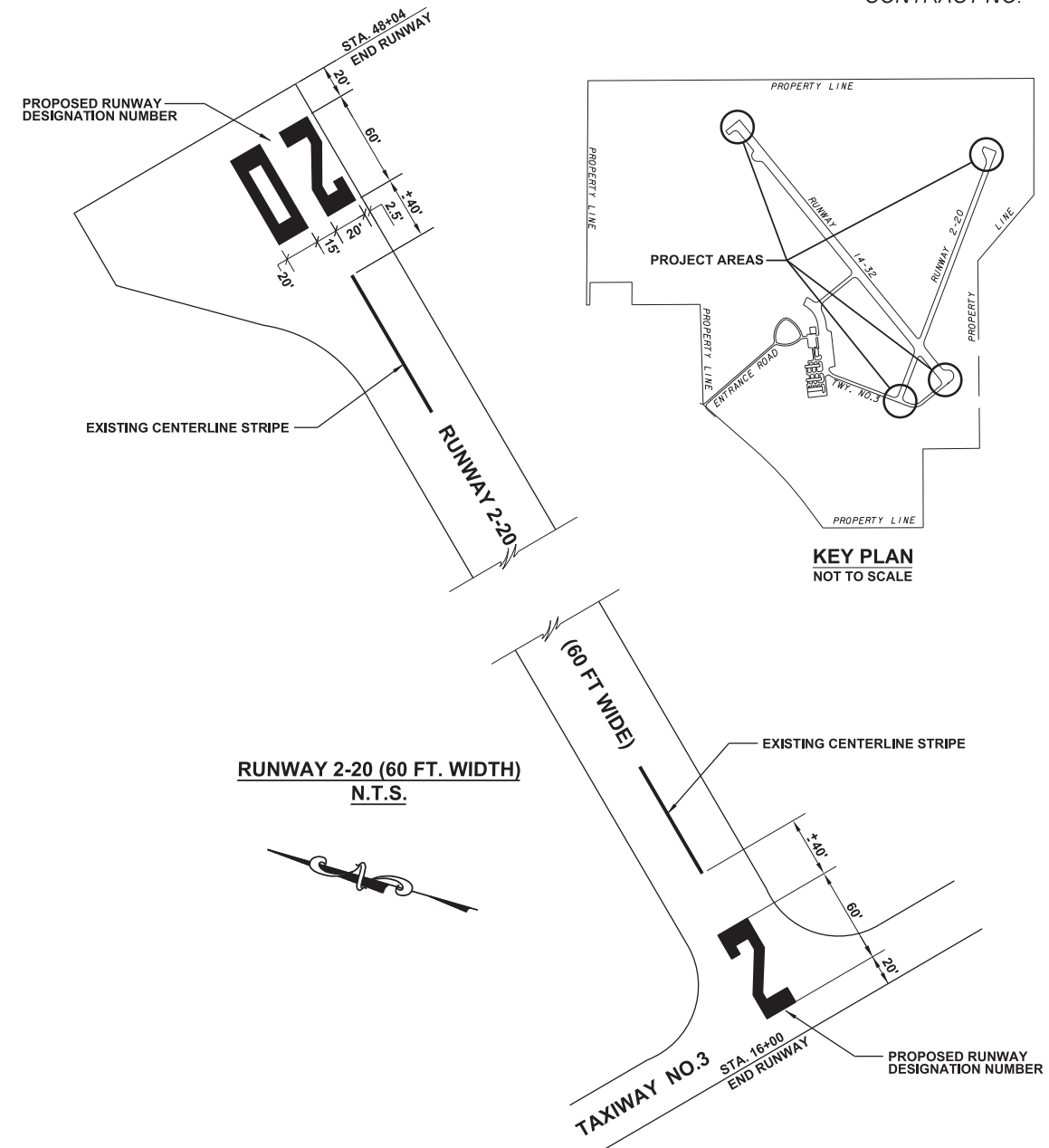
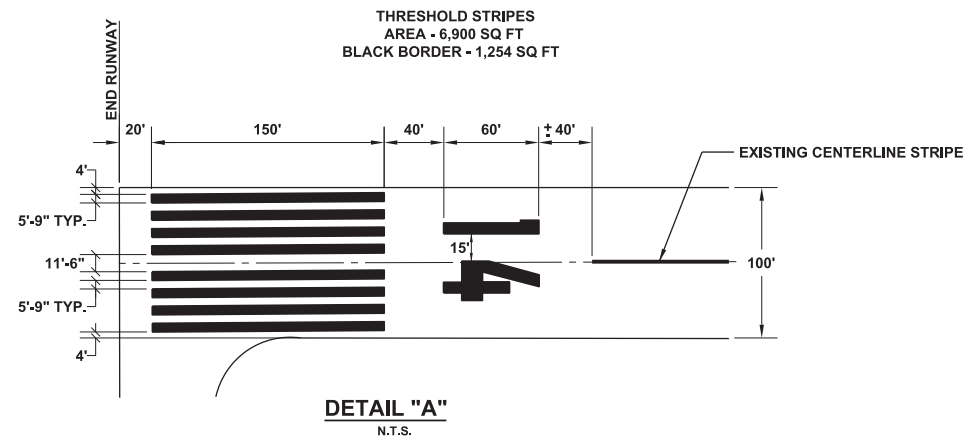
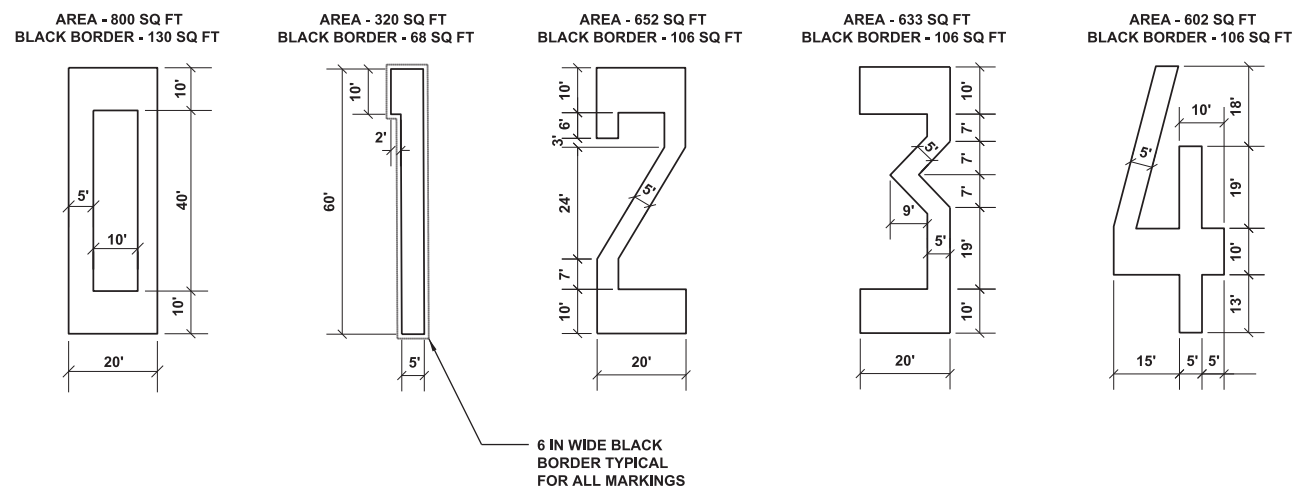
CAIRO REGIONAL AIRPORT
ALEXANDER COUNTY, ILLINOIS

PROJECT NO. 3-17-SBGP-111/120 ILL PROJECT NO. CIR-4420

REHABILITATION OF AIRCRAFT APRON & T-HANGAR TAXIWAYS & REMARK RUNWAYS

SBGP-111/120
SAFETY PLAN

SCALE AS SHOWN	J. T. BLANKINSHIP, INC. CONSULTING ENGINEERS & LAND SURVEYORS ILLINOIS PROFESSIONAL DESIGN FIRM NO.1394 401 S. 17TH STREET MURPHYSBORO, ILLINOIS 62966 PHONE 618-687-1771	FILE NO. E-9941
DATE MAY 2017		DESIGN FILE E9941-03.DGN
DRAWN BY SDR		SHEET NO. 3 OF 5



- NOTES TO CONTRACTOR:**
1. ALL RUNWAY MARKING TO BE WHITE WATERBORNE WITH BLACK BORDER
 2. SEE SPECIFICATIONS
 3. ONLY THE RUNWAY DESIGNATION NUMBERS AND THRESHOLD STRIPES TO BE PAINTED ON THIS CONTRACT.

CAIRO REGIONAL AIRPORT ALEXANDER COUNTY, ILLINOIS		
PROJECT NO. 3-17-SBGP-111/120		ILL PROJECT NO. CIR-4420
REHABILITATION OF AIRCRAFT APRON & T-HANGAR TAXIWAYS & REMARK RUNWAYS		
PAVEMENT MARKING PLAN RUNWAY 14-32 AND RUNWAY 2-20		
SCALE NOT TO SCALE	J. T. BLANKINSHIP, INC. CONSULTING ENGINEERS & LAND SURVEYORS ILLINOIS PROFESSIONAL DESIGN FIRM NO. 1394 401 S. 17TH STREET MURPHYSBORO, ILLINOIS 62966 PHONE 618-687-1771	FILE NO. E-9941
DATE MAY 2017		DESIGN FILE E9941-04.DGN
DRAWN BY SDR		SHEET NO. 4 OF 5

