

STATE OF ILLINOIS
DEPARTMENT OF TRANSPORTATION

| F.A.P. DATE | SECTION | COUNTY | TOTAL SHEETS | SHEET NO. |
|-------------|------------|-----------|--------------|--------------------|
| 308 | ILU 2023-2 | WINNEBAGO | 12 | 1 |
| | | ILLINOIS | | CONTRACT NO. 64R57 |

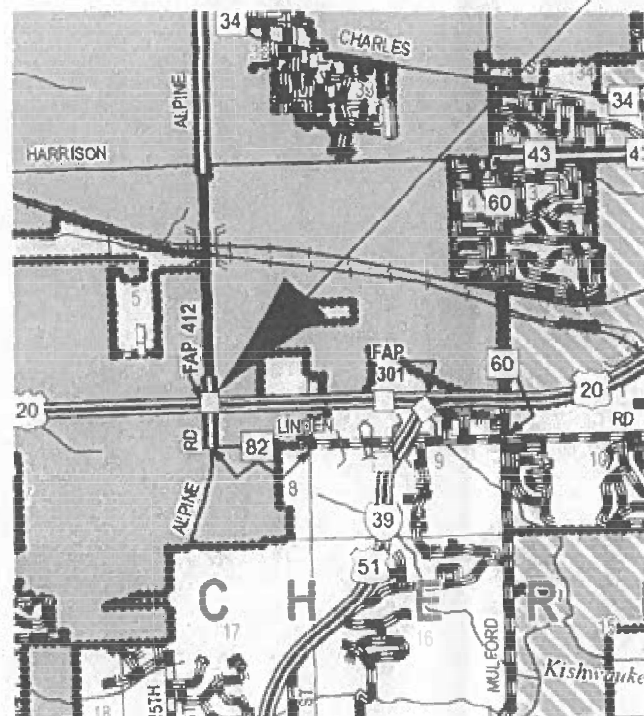
FOR INDEX OF SHEETS, SEE SHEET NO. 2

PROPOSED HIGHWAY PLANS

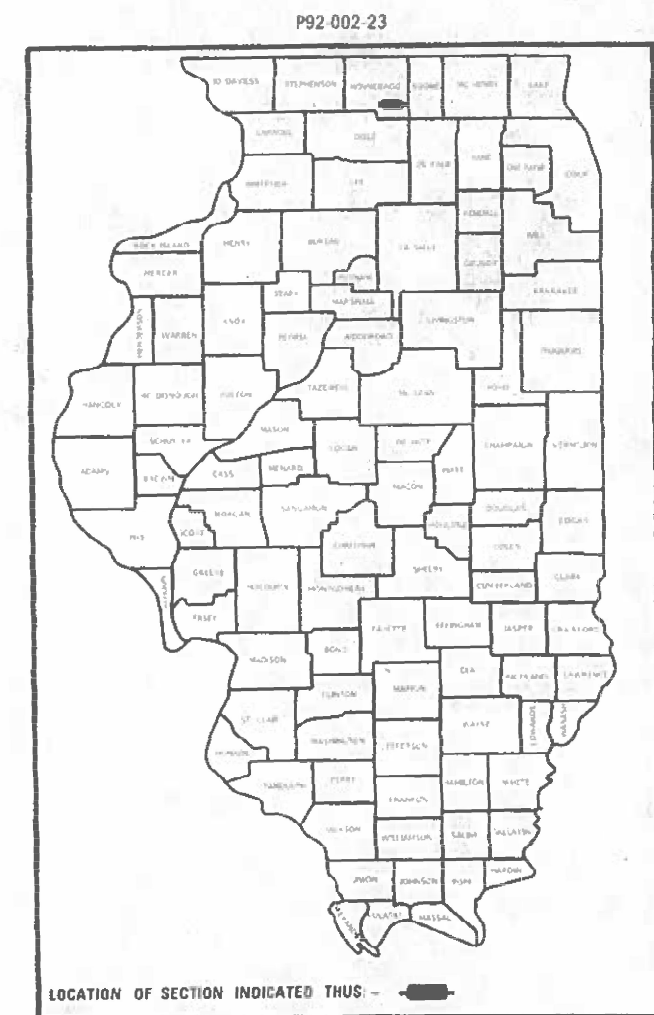
FAP ROUTE 308 (US-20)
SECTION ILU 2023-2
PROJECT NHPP-7B1P(114)
LIGHTING UPGRADE
WINNEBAGO COUNTY

C-92-067-22

PROJECT LOCATION
US 20 AT ALPINE RD INTERCHANGE



HENRY TWP SEC 8
T43N R2E



LOCATION OF SECTION INDICATED THUS: [Symbol]

FULL SIZE PLANS HAVE BEEN PREPARED USING STANDARD ENGINEERING SCALES. REDUCED SIZED PLANS WILL NOT CONFORM TO STANDARD SCALES. IN MAKING MEASUREMENTS ON REDUCED PLANS, THE ABOVE SCALES MAY BE USED.

J.U.L.I.E.
JOINT UTILITY LOCATION INFORMATION FOR EXCAVATORS
1-800-892-0123
OR 811

PROJECT ENGINEER SCOTT KULLERSTRAND
PROJECT MANAGER KRISTINE HILL

CONTRACT NO. 64R57

STATE OF ILLINOIS
DEPARTMENT OF TRANSPORTATION

SUBMITTED March 15, 2023





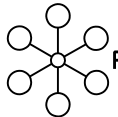
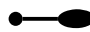

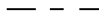

[Signature]
REGIONAL ENGINEER

May 12, 2023 [Signature]
ENGINEER OF DESIGN AND ENVIRONMENT

May 12, 2023 [Signature]
DIRECTOR OF HIGHWAYS PROJECT IMPLEMENTATION

PRINTED BY THE AUTHORITY
OF THE STATE OF ILLINOIS

LEGEND

-  R EXISTING ELECTRIC SERVICE TO BE REMOVED.
-  PROPOSED ELECTRIC SERVICE, 120/240V.
-  R EXISTING LIGHTING CONTROLLER TO BE REMOVED.
-  PROPOSED LIGHTING CONTROLLER, 240V, 60A.
-  R EXISTING HIGH MAST TOWER LIGHTING UNIT TO BE REMOVED.
-  PROPOSED LIGHTING UNIT, LUMINAIRE, LED, ROADWAY, OUTPUT DESIGNATION G, 40FT ALUMINUM POLE, 15 FT MAST ARM, METAL FOUNDATION, BREAKAWAY COUPLINGS WITH SS SCREEN, 15 FT SETBACK FROM EOP.
-  EXISTING ELECTRIC CABLE IN CONDUIT TO BE REMOVED.
-  PROPOSED UNIT DUCT, 600V, 2-1C NO.8, 1/C NO.8 GROUND, (XLP-TYPE USE), 3/4" DIA. POLYETHYLENE (UNLESS STATED OTHERWISE)
-  PROPOSED COILABLE NONMETALLIC CONDUIT 2" DIA. LENGTH AS NOTED

GENERAL NOTES

1. ELECTRICAL WORK SHALL CONFORM TO NATIONAL, STATE, AND LOCAL CODES.
2. THE CONTRACTOR SHALL SET LIGHT POLES 15' BEHIND EDGE OF PAVEMENT.

INDEX OF SHEETS

- 1 COVER SHEET
- 2 GENERAL NOTES, HIGHWAY STANDARDS, INDEX OF SHEETS, AND LEGEND
- 3 SUMMARY OF QUANTITIES AND UTILITIES
- 4 WIRING DIAGRAM AND LUMINAIRE PERFORMANCE TABLE
- 5-8 EXISTING LIGHTING REMOVAL PLAN US-20 AND ALPINE ROAD
- 9-12 PROPOSED LIGHTING PLAN US-20 AND ALPINE ROAD

HIGHWAY STANDARDS

| | |
|-----------|--|
| 821101-02 | LUMINAIRE WIRING IN POLE |
| 825011-04 | LIGHTING CONTROLLER PEDESTAL MOUNTED, 240V |
| 830001-03 | LIGHT POLE ALUMINUM MAST ARM |
| 836001-04 | LIGHT POLE FOUNDATION |
| 838001-01 | BREAKAWAY DEVICES |
| 701701-10 | 701426-09 |
| 701101-05 | 701456-05 |
| 701400-11 | 701901-08 |
| 701406-13 | |
| 701411-09 | |

MODEL: Default
FILE NAME: ip:\Village\pawhamby.com\HWIDOT\Documents\DOT_Office\District_2\Projects\64857\Operations\Traffic\Lighting_illus_from_Springs\64857_64857_1_legend.dgn

| | | |
|-------------------------------------|------------------|-----------------|
| USER NAME = Kristine.Hill | DESIGNED - _____ | REVISED - _____ |
| | DRAWN - _____ | REVISED - _____ |
| PLOT SCALE = 102.4922 ' / in. | CHECKED - _____ | REVISED - _____ |
| PLOT DATE = Mar-16-2023 08:25:59 AM | DATE - _____ | REVISED - _____ |

**STATE OF ILLINOIS
DEPARTMENT OF TRANSPORTATION**

**GENERAL NOTES, HIGHWAY STANDARDS,
INDEX OF SHEETS AND LEGEND**

SCALE: _____ SHEET ____ OF ____ SHEETS STA. _____ TO STA. _____

| | | | | |
|---------------------------|------------|-----------|--------------------|-----------|
| F.A.P. RTE. | SECTION | COUNTY | TOTAL SHEETS | SHEET NO. |
| 308 | ILU 2023-2 | WINNEBAGO | 12 | 2 |
| ILLINOIS FED. AID PROJECT | | | CONTRACT NO. 64857 | |

0021 URBAN
80% FED
20% STATE

| PAY ITEM | DESCRIPTION | UNIT | QUANTITY |
|----------|---|-------|----------|
| 67100100 | MOBILIZATION | L SUM | 1 |
| 70100700 | TRAFFIC CONTROL AND PROTECTION, STANDARD 701406 | L SUM | 1 |
| 70100420 | TRAFFIC CONTROL AND PROTECTION, STANDARD 701411 | EACH | 1 |
| 70100825 | TRAFFIC CONTROL AND PROTECTION, STANDARD 701456 | L SUM | 1 |
| 70102635 | TRAFFIC CONTROL AND PROTECTION, STANDARD 701701 | L SUM | 1 |
| 80400100 | ELECTRIC SERVICE INSTALLATION | EACH | 1 |
| 81028750 | UNDERGROUND CONDUIT, COILABLE NONMETALLIC, 2" DIA. | FOOT | 600 |
| 81603000 | UNIT DUCT, 600V, 2-1C NO. 1/C NO. 8, GROUND, (XLP-TYPE USE), 3/4" DIA. POLYETHYLENE | FOOT | 8,946 |
| 82110007 | LUMINAIRE, LED, ROADWAY, OUTPUT DESIGNATION G | EACH | 19 |
| 82500330 | LIGHTING CONTROLLER, PEDESTAL MOUNTED, 240V, 60AMP | EACH | 1 |
| 83008600 | LIGHT POLE, ALUMINUM, 40FT. M.H. 15 FT. MAST ARM | EACH | 19 |
| 83600356 | LIGHT POLE FOUNDATION, METAL, 15" BOLT CIRCLE 8 5/8" x 6' | EACH | 19 |
| 83800650 | BREAKAWAY DEVICE, COUPLING WITH STAINLESS STEEL SCREEN | EACH | 76 |
| 84200605 | REMOVAL OF LIGHTING TOWER, NO SALVAGE | EACH | 5 |
| 84500110 | REMOVAL OF LIGHTING CONTROLLER | EACH | 1 |
| 84500120 | REMOVAL OF ELECTIC SERVICE INSTALLATION | EACH | 1 |
| 84500130 | REMOVAL OF LIGHTING CONTROLLER FOUNDATION | EACH | 1 |
| 89502300 | REMOVE ELECTRIC CABLE FROM CONDUIT | FOOT | 14,436 |
| X2501000 | SEEDING, CLASS 2 (SPECIAL) | ACRE | 1.2 |
| X8420510 | REMOVAL OF TOWER FOUNDATION | EACH | 5 |

| UTILITIES | | | |
|--|----------------|--------------|----------------------------|
| Name and address of Utility | Type | Telephone | |
| Mr Saki Forah Nicor Gas Co. 1844 Ferry Road Naperville, IL 60563-9600 | Gas | 630-388-3019 | JULIE MEMBER? YES CALL: |
| Mr Kyle Gruhn Four Rivers Sanitation Authority 3501 Kishwaukee St Rockford, IL 61126-7480 | Sewer | 815-387-7400 | JULIE MEMBER? YES CALL: |
| Mr Butch Forkell Stratus Networks 4700 N Prospect Rd., Suite 8 Peoria Heights, IL 61616 | Communications | 309-222-2080 | JULIE MEMBER? YES CALL: |
| Mr Lance Sandy iFiber 348 Swanson Rd Sycamore, IL 60178 | Communications | 815-753-5798 | JULIE MEMBER? CALL: |
| Mr Kyle Saunders City of Rockford 425 E State St Rockford, IL 61104 | Government | 779-348-7300 | JULIE MEMBER? CALL: |
| Mr Nathan Hauck Adesta/G4S Technology, LLC 565 Willowbrook Center Pkwy Willowbrook, IL 60527-5512 | Communications | 331-264-1971 | JULIE MEMBER? YES CALL: |
| Mr Adam Vickery Frontier (North) 2239 Newburg Rd Belvidere, IL 61008 | Telephone | 815-323-0708 | JULIE MEMBER? YES CALL: |
| Mr Ronald Konopasek Commonwealth Edison Company 1 Lincoln Center Oak Brook Terrace, IL 60181 | Electric | 309-883-4400 | JULIE MEMBER? YES CALL: |
| Mr Jefin Stephen Everstream 1225 W 22nd St, Suite 105 Oak Brook, IL 60523 | Communications | 847-707-6829 | JULIE MEMBER? CALL: |
| Mr Brent Striegel Unite Private Networks 4201 42nd Street NE, Suite 210 Cedar Rapids, IA 52402 | Communications | 319-491-4760 | JULIE MEMBER? CALL: |
| Mr Dicky Patel Vinakom Communications 860 Remington Rd Schaumburg, IL 601736 | Communications | 847-592-5785 | JULIE MEMBER? CALL: |

MODEL: C:\raha...
 FILE: \raha...
 PROJECT: \raha...
 OFFICE: \raha...
 OPERATOR: \raha...
 DATE: \raha...

| | | |
|-------------------------------------|-------------------|-----------------|
| USER NAME = Kristine.Hill | DESIGNED - _____ | REVISED - _____ |
| DRAWN - _____ | REVISIONS - _____ | |
| PLOT SCALE = 102.4922' / in. | CHECKED - _____ | REVISED - _____ |
| PLOT DATE = Mar-16-2023 08:27:19 AM | DATE - _____ | REVISED - _____ |

STATE OF ILLINOIS
DEPARTMENT OF TRANSPORTATION

| | | | | | | |
|-------------------------------------|--|-----------------|--------------------|-----------------------------|-----------------|--------------------------|
| US 20 AT ALPINE RD INTERCHANGE | | F.A.P. RTE. 308 | SECTION ILU 2023-2 | COUNTY WINNEBAGO | TOTAL SHEETS 12 | SHEET NO. 3 |
| SUMMARY OF QUANTITIES AND UTILITIES | | SCALE: _____ | | SHEET _____ OF _____ SHEETS | | STA. _____ TO STA. _____ |

| | | |
|---------------------------|--|--------------------|
| ILLINOIS FED. AID PROJECT | | CONTRACT NO. 64R57 |
|---------------------------|--|--------------------|

Luminaire Performance Table

Project

| | | | |
|-----------------------|-----------------|----------------|-----------|
| Date | Contract Number | Section Number | County |
| 01/10/2023 | 64R57 | ILU 2023-2 | WINNEBAGO |
| Marked Route Number | | Municipality | |
| US-20 AND ALPINE ROAD | | N/A | |

Roadway

| | | | | |
|------------|------------|--------------|------------------------------|--------------|
| Lane Width | # of Lanes | Median Width | I.E.S Surface Classification | O-Zero Value |
| 16 | 1 | N/A | R3 | 0.07 |

Structure

| | | | |
|-----------------|------------|----------|--|
| Mounting Height | Arm Length | Set Back | Number of Luminaires (Highmast & Sign Lighting Only) |
| 40 FT | 15 FT | 15 FT | N/A |

Luminaire

| | | |
|--|-----------------------------|------------------------------|
| Description | I.E.S. Lateral Distribution | I.E.S. Vertical Distribution |
| ROADWAY LUMINAIRE, LED, OUTPUT DESIGNATION G | TYPE III | MEDIUM |
| Total Light Loss Factor (LLF) | BUG Rating | Shields |
| 0.7 | U = 0 | N/A |
| Dimming Protocol | | |
| 10V | | |

Layout

| |
|---|
| Spacing (to Nearest 5 Ft) Configuration (Opposite, Staggered, 1 Sided, or Median) |
| 190 FT SINGLE SIDED |

Performance

| | |
|---|-------------------------------------|
| Average Illuminance, E_{avg} (fc) | Uniformity Ratio, E_{avg}/E_{min} |
| 0.8 | 3.0 |
| Average Luminance, L_{avg} (cd/m ²) | Uniformity Ratio, L_{avg}/L_{min} |
| N/A | N/A |
| | Uniformity Ratio, L_{max}/L_{min} |
| | N/A |
| Veiling Luminance Ratio, L_v/L_{min} | |
| 0.31 | |

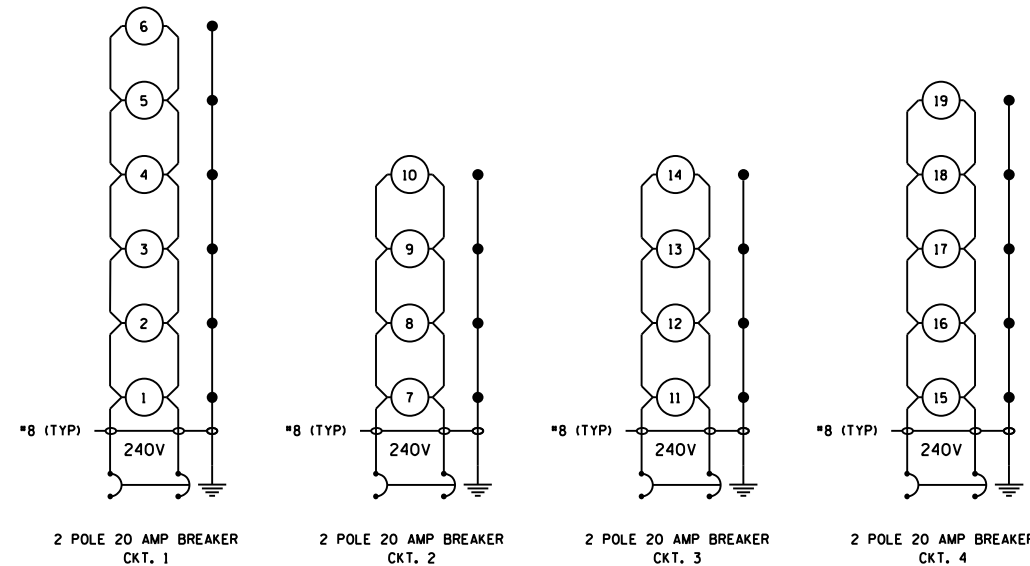
Light Trespass

| | | |
|-------------------------------|---------------------------------------|-------------------------------------|
| Distance to ROW (behind pole) | Max. Horizontal Illuminance at ROW, E | Max. Vertical Illuminance at ROW, E |
| N/A | N/A | N/A |

Notes

1. Set Back is from Edge of Pavement (white line) except for sign luminaires when it is vertical and horizontal distance from the sign to the luminaire.
2. Lighting calculations shall be performed with all luminaires oriented toward and perpendicular to roadway.
3. Total Light Loss Factor (LLF) = the product of "Lumen Maintenance" (LLD) = 0.9, "Dirt Depreciation" (LDD) = 0.8, and "Equipment Factors" (EF) = 0.95.
4. Performance requirements shall be the minimum acceptable standards of photometric performance for the luminaire, based on the given conditions above.

CALCULATIONS ARE TO BE PERFORMED IN ONE DIRECTION ONLY.
COMPLIANCE WITH PERFORMANCE CRITERIA SHALL BE HELD TO ONE SIGNIFICANT DIGIT.



US-20 AND ALPINE ROAD

PROPOSED LIGHTING CONTROLLER,
PEDESTAL MOUNTED, 240V, 60AMP

LEGEND:

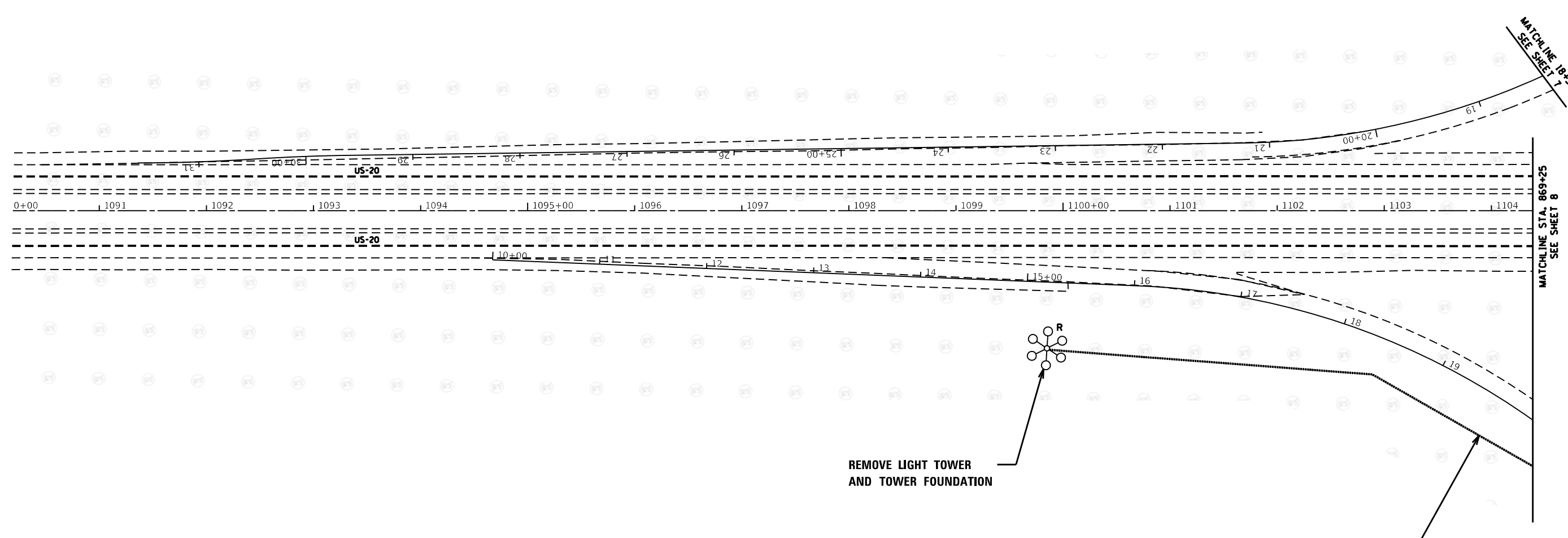
- 1 PROPOSED LIGHTING UNIT
- GROUND ROD

NOTES:

1. ALL NECESSARY REVISIONS TO THE WIRING SHOWN ON THIS SHEET SHALL BE MADE AT NO ADDITIONAL COST TO THE DEPARTMENT AND TO THE SATISFACTION OF THE ENGINEER.

MODEL: Default
FILE NAME: e:\w\illinois\pavement\illinois\DOT\Documents\DOT_offices\District_2\Projects\64R57\Operations\Traffic\Lighting_files_from_Sprinkler\64R57_Layout.dgn

| | | | | | | | | | | |
|-------------------------------------|------------------|-----------------|---|---|--------------------|---------------------------|-----------|--------------|-----------|--|
| USER NAME = Kristine.Hill | DESIGNED - _____ | REVISED - _____ | STATE OF ILLINOIS DEPARTMENT OF TRANSPORTATION | WIRING DIAGRAM AND LUMINAIRE PERFORMANCE TABLE | F.A.P. RTE. | SECTION | COUNTY | TOTAL SHEETS | SHEET NO. | |
| PLOT SCALE = 102.4922' / in. | CHECKED - _____ | REVISED - _____ | | | 308 | ILU 2023-2 | WINNEBAGO | 12 | 4 | |
| PLOT DATE = Mar-16-2023 08:28:36 AM | DATE - _____ | REVISED - _____ | | | CONTRACT NO. 64R57 | | | | | |
| | | | | | | ILLINOIS FED. AID PROJECT | | | | |



MODEL: Default
 FILE NAME: p:\illinois\pawent\ev.com\PIV\DOT\Documents\DOT Offices\District 2\Projects\64R57\Operations\Traffic\Lighting files from Sprint\file02_64R57_Rem\unit1.dgn

| | | |
|-------------------------------------|------------|-----------|
| USER NAME = Kristine.Hill | DESIGNED - | REVISED - |
| | DRAWN - | REVISED - |
| PLOT SCALE = 101.2480' / in. | CHECKED - | REVISED - |
| PLOT DATE = Mar-16-2023 08:30:01 AM | DATE - | REVISED - |

STATE OF ILLINOIS
DEPARTMENT OF TRANSPORTATION

| EXISTING LIGHTING REMOVAL PLAN | | | |
|--------------------------------|-------|----|--------|
| US-20 & ALPINE ROAD | | | |
| SCALE: | SHEET | OF | SHEETS |
| | STA. | TO | STA. |

| F.A.P. RTE. | SECTION | COUNTY | TOTAL SHEETS | SHEET NO. |
|---------------------------|------------|-----------|--------------|-----------|
| 308 | ILU 2023-2 | WINNEBAGO | 12 | 5 |
| CONTRACT NO. 64R57 | | | | |
| ILLINOIS FED. AID PROJECT | | | | |

MATCHLINE STA. 50+80
SEE SHEET 7

MATCHLINE STA. 1104+40
SEE SHEET 5

MATCHLINE STA. 1119+60
SEE SHEET 8

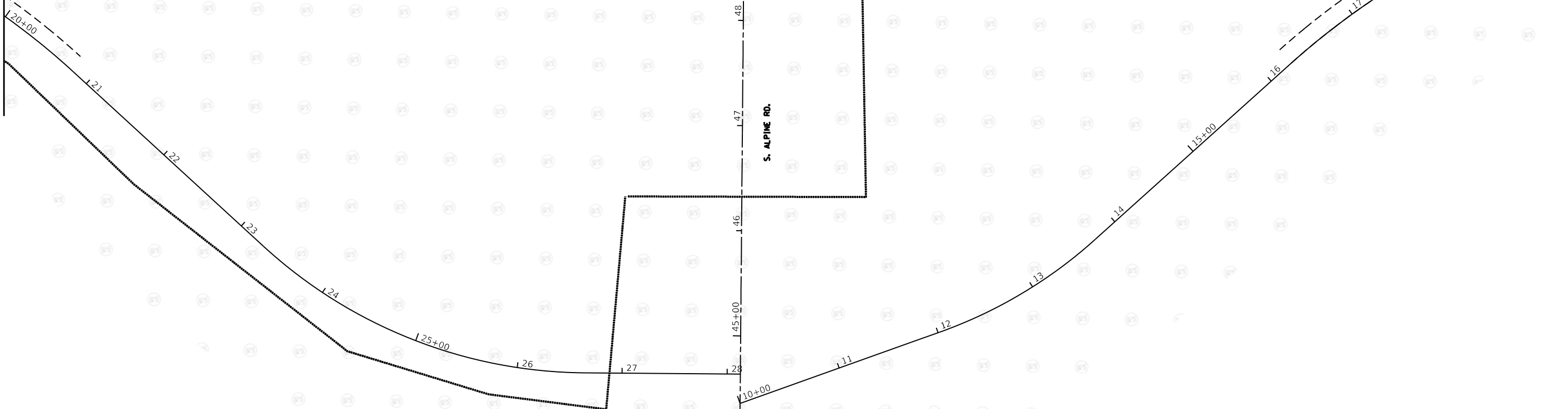
1105+00 1106 1107 1108 1109 1110+00 1111 1112 1113 1114 1115+00 1116 1117 1118 1119

US-20

US-20

REMOVE ELECTRIC CABLE
FROM CONDUIT (TYP.)

S. ALPINE RD.



SCALE IN FEET

MODEL: D:\pvt\...
FILE NAME: p:\11040440\DOT Documents\DOT_Offices\District_2\Projects\64R57\Operations\Traffic\Lighting_files_from_Sprinkler\02_64R57_RentLight2.dgn

| | | |
|-------------------------------------|------------|-----------|
| USER NAME = Kristine.Hill | DESIGNED - | REVISED - |
| PLOT SCALE = 100.7547 ' / in. | DRAWN - | REVISED - |
| PLOT DATE = Mar-16-2023 08:36:07 AM | CHECKED - | REVISED - |
| | DATE - | REVISED - |

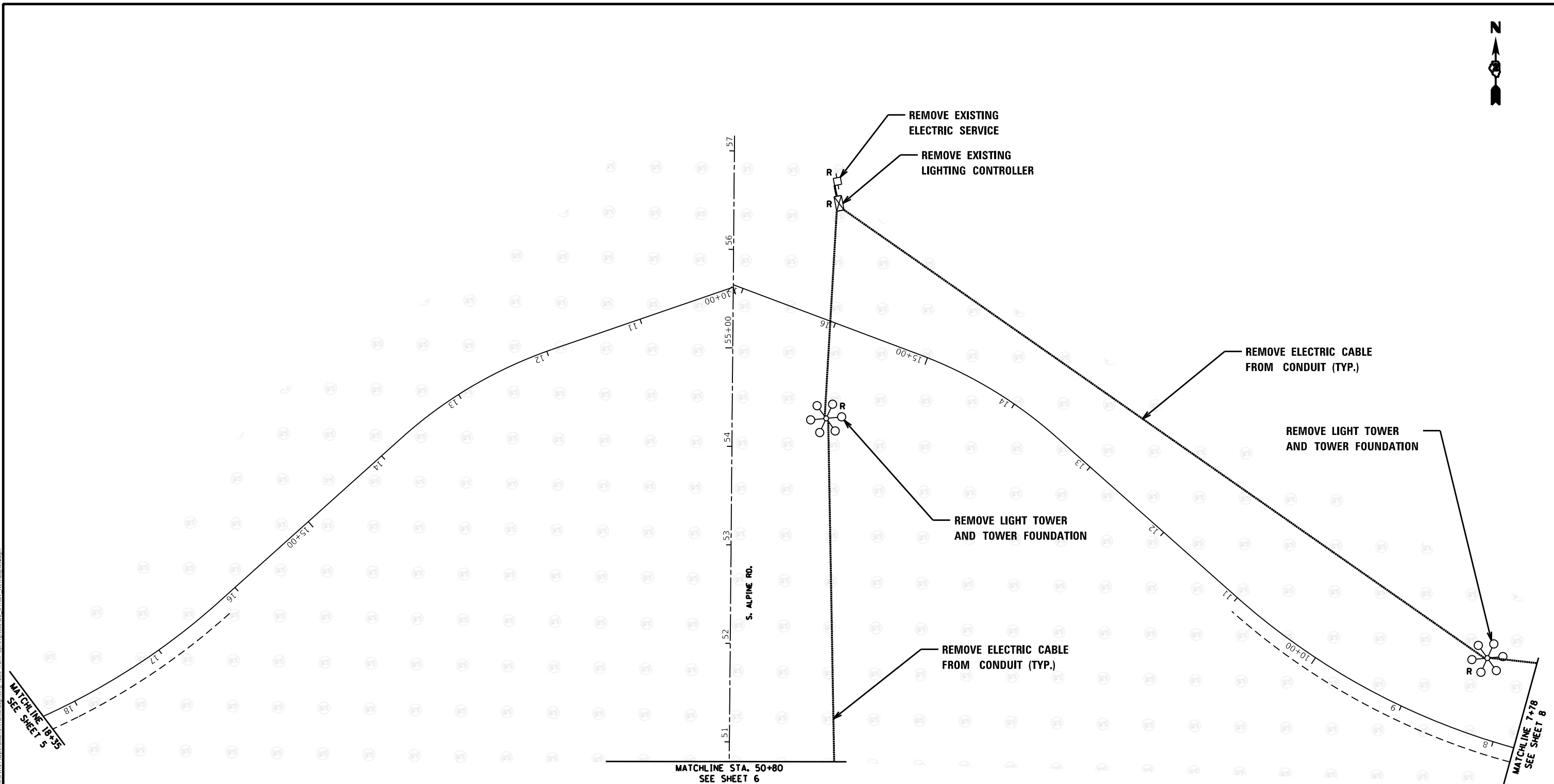
STATE OF ILLINOIS
DEPARTMENT OF TRANSPORTATION

EXISTING LIGHTING REMOVAL PLAN
US-20 & ALPINE ROAD

SCALE: SHEET OF SHEETS STA. TO STA.

| | | | | |
|---------------------------|-----------------------|---------------------|--------------------|----------------|
| F.A.P. RTE. 308 | SECTION ILU 2023-2 | COUNTY WINNEBAGO | TOTAL SHEETS 12 | SHEET NO. 6 |
| CONTRACT NO. 64R57 | | | | |
| ILLINOIS FED. AID PROJECT | | | | |





MODEL: Default
 FILE NAME: \\wulfsberg\share\dwg\p\W\DOT\Documents\DOT Offices\District 2\Projects\64R57\Operations\Traffic\Lighting files from Springfield\02_64R57_RemLit.dwg

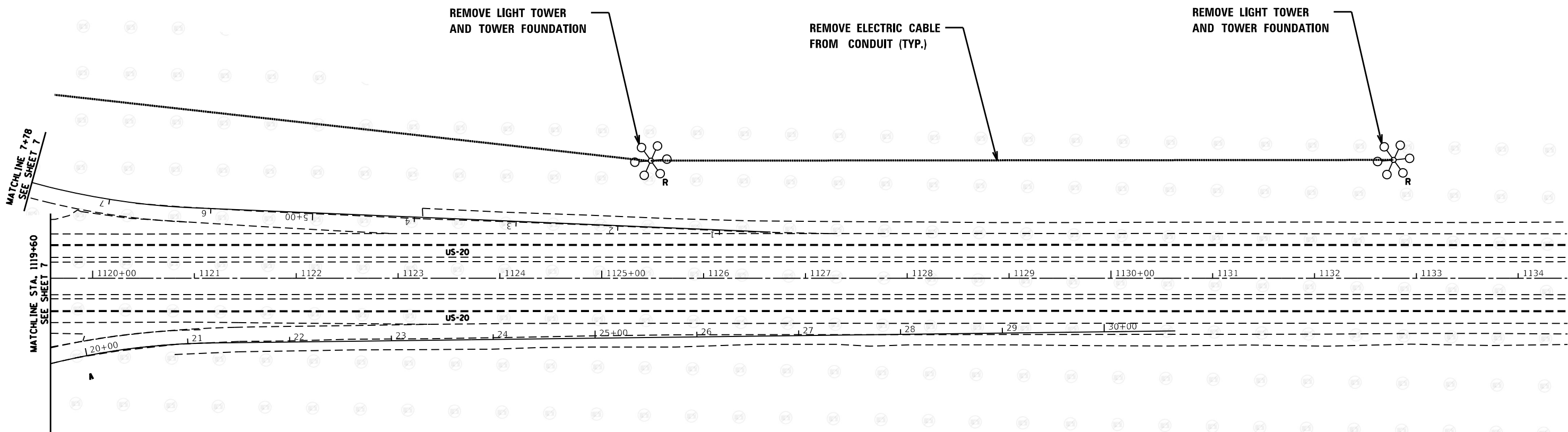
| | | |
|-------------------------------------|------------|-----------|
| USER NAME = Kristine.Hill | DESIGNED - | REVISED - |
| | DRAWN - | REVISED - |
| PLOT SCALE = 100.3187' / in. | CHECKED - | REVISED - |
| PLOT DATE = Mar-16-2023 08:37:30 AM | DATE - | REVISED - |

**STATE OF ILLINOIS
DEPARTMENT OF TRANSPORTATION**

**EXISTING LIGHTING REMOVAL PLAN
US-20 & ALPINE ROAD**

SCALE: SHEET OF SHEETS STA. TO STA.

| | | | | |
|---------------------------|-----------------------|---------------------|-----------------------|-------------------|
| F.A.P RTE. 308 | SECTION ILU 2023-2 | COUNTY WINNEBAGO | TOTAL SHEETS 12 | SHEET NO. 7 |
| CONTRACT NO. 64R57 | | | | |
| ILLINOIS FED. AID PROJECT | | | | |



C:\Users\khill\OneDrive\Documents\DOT\Office\District_2\Projects\64R57\Operations\Traffic\Lighting\Files\64R57_PermitLighting.dgn
 FILE NAME: 64R57_PermitLighting.dgn

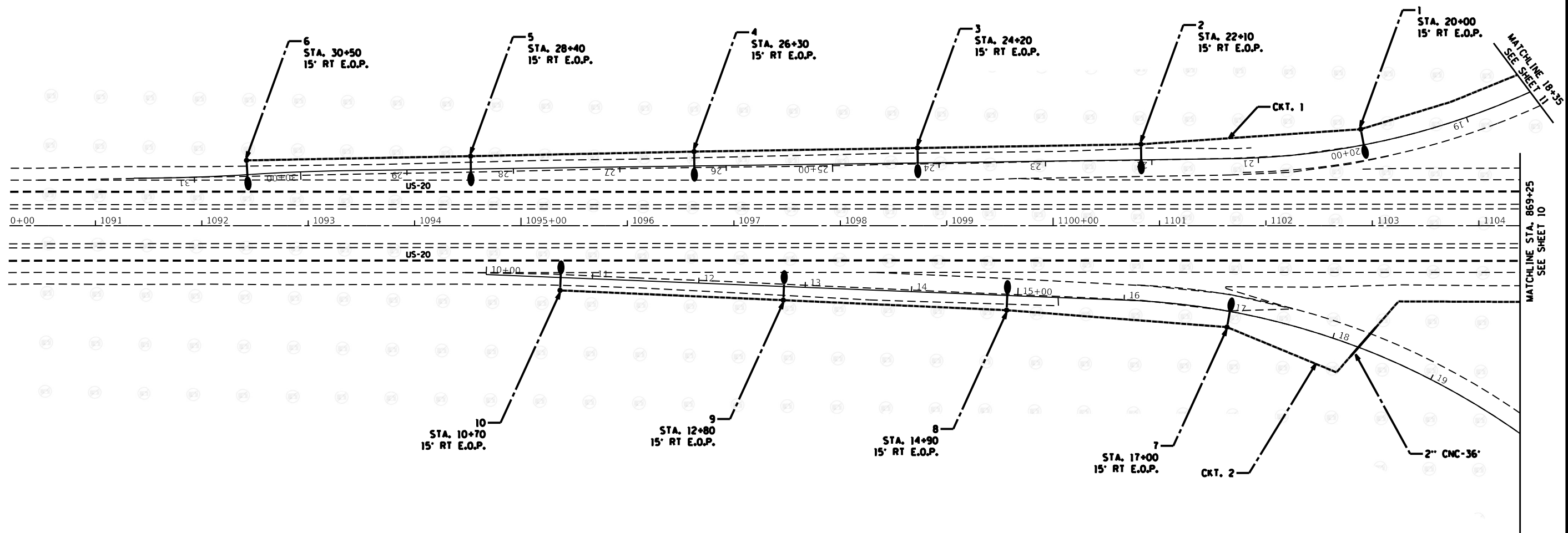
| | | |
|-------------------------------------|------------|-----------|
| USER NAME = Kristine.Hill | DESIGNED - | REVISED - |
| DRAWN - | REVISED - | |
| PLOT SCALE = 100.0192' / in. | CHECKED - | REVISED - |
| PLOT DATE = Mar-16-2023 08:39:14 AM | DATE - | REVISED - |

**STATE OF ILLINOIS
DEPARTMENT OF TRANSPORTATION**

**EXISTING LIGHTING REMOVAL PLAN
US-20 & ALPINE ROAD**

SCALE: SHEET OF SHEETS STA. TO STA.

| F.A.P. RTE. | SECTION | COUNTY | TOTAL SHEETS | SHEET NO. |
|---------------------------|------------|-----------|--------------|-----------|
| 308 | ILU 2023-2 | WINNEBAGO | 12 | 8 |
| CONTRACT NO. 64R57 | | | | |
| ILLINOIS FED. AID PROJECT | | | | |



MODEL: Default
 FILE: \\msf01-01-001\share\w\bea\hwy.com\PIV\DOT\Documents\DOT_Offices\District_3\Projects\64857\Operations\Traffic\Lighting\Files\from_Sup\lanfile\03_64857_Light1.dwg

| | | |
|-------------------------------------|------------|-----------|
| USER NAME = Kristine.Hill | DESIGNED - | REVISED - |
| PLOT SCALE = 100.1131' / in. | DRAWN - | REVISED - |
| PLOT DATE = Mar-16-2023 08:43:03 AM | CHECKED - | REVISED - |
| | DATE - | REVISED - |

STATE OF ILLINOIS
DEPARTMENT OF TRANSPORTATION

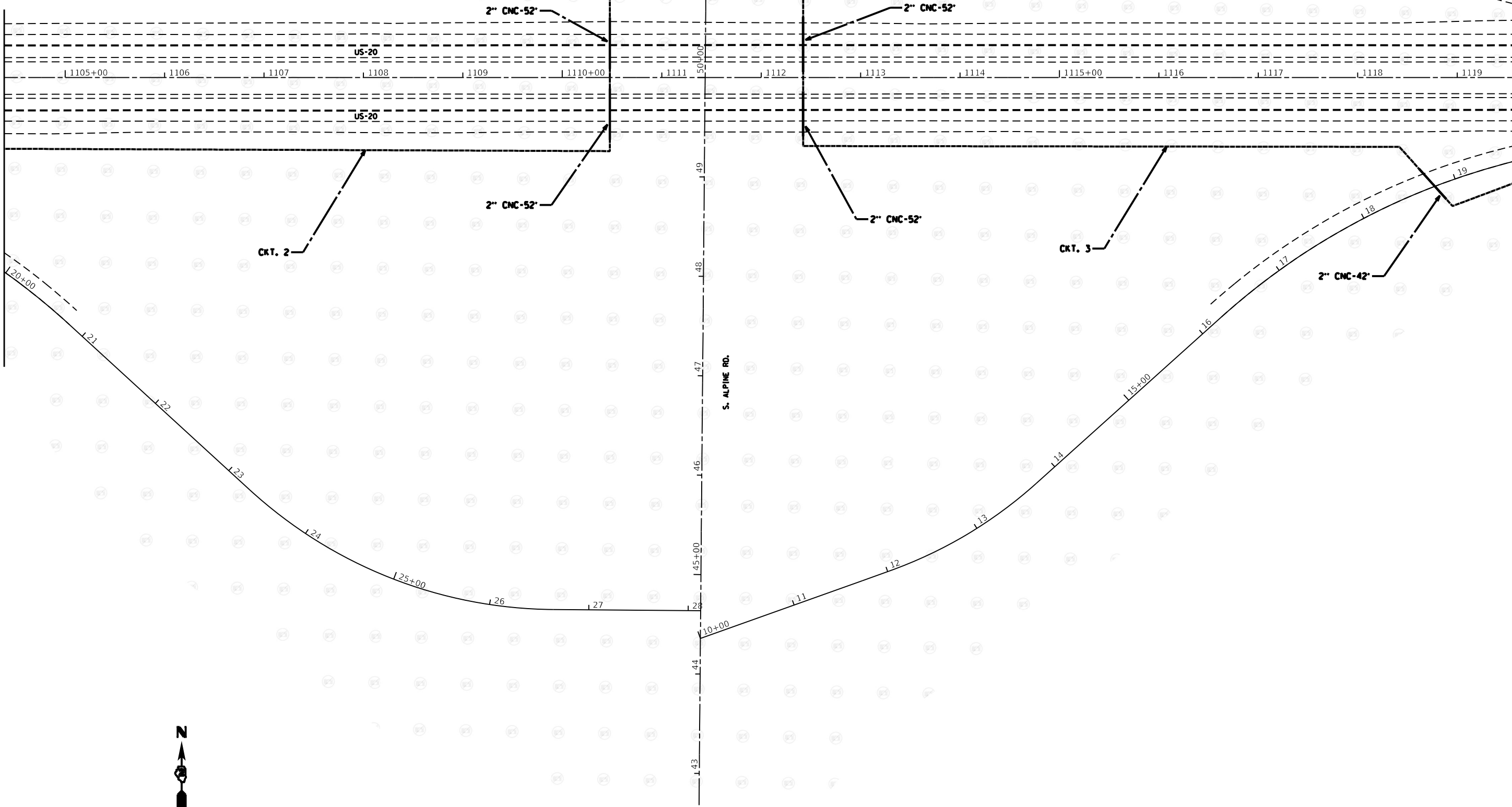
| | | | |
|---|-------|-----------|--------------|
| PROPOSED LIGHTING PLAN US-20 & ALPINE ROAD | | | |
| SCALE: | SHEET | OF SHEETS | STA. TO STA. |

| | | | | |
|---------------------------|------------|-----------|--------------|-----------|
| F.A.P. RTE. | SECTION | COUNTY | TOTAL SHEETS | SHEET NO. |
| 308 | ILU 2023-2 | WINNEBAGO | 12 | 9 |
| CONTRACT NO. 64R57 | | | | |
| ILLINOIS FED. AID PROJECT | | | | |

MATCHLINE STA. 50+80
SEE SHEET 11

MATCHLINE STA. 1104+40
SEE SHEET 9

MATCHLINE STA. 1119+60
SEE SHEET 12



SCALE IN FEET

MODEL: Default
FILE NAME: P:\Work\p\j\entirey.com\PI\DOT\Documents\DOT_Offices\District_2\Projects\64R57\Operations\Traffic\Lighting files from Spiriofile\1104_40\1119_60.dgn

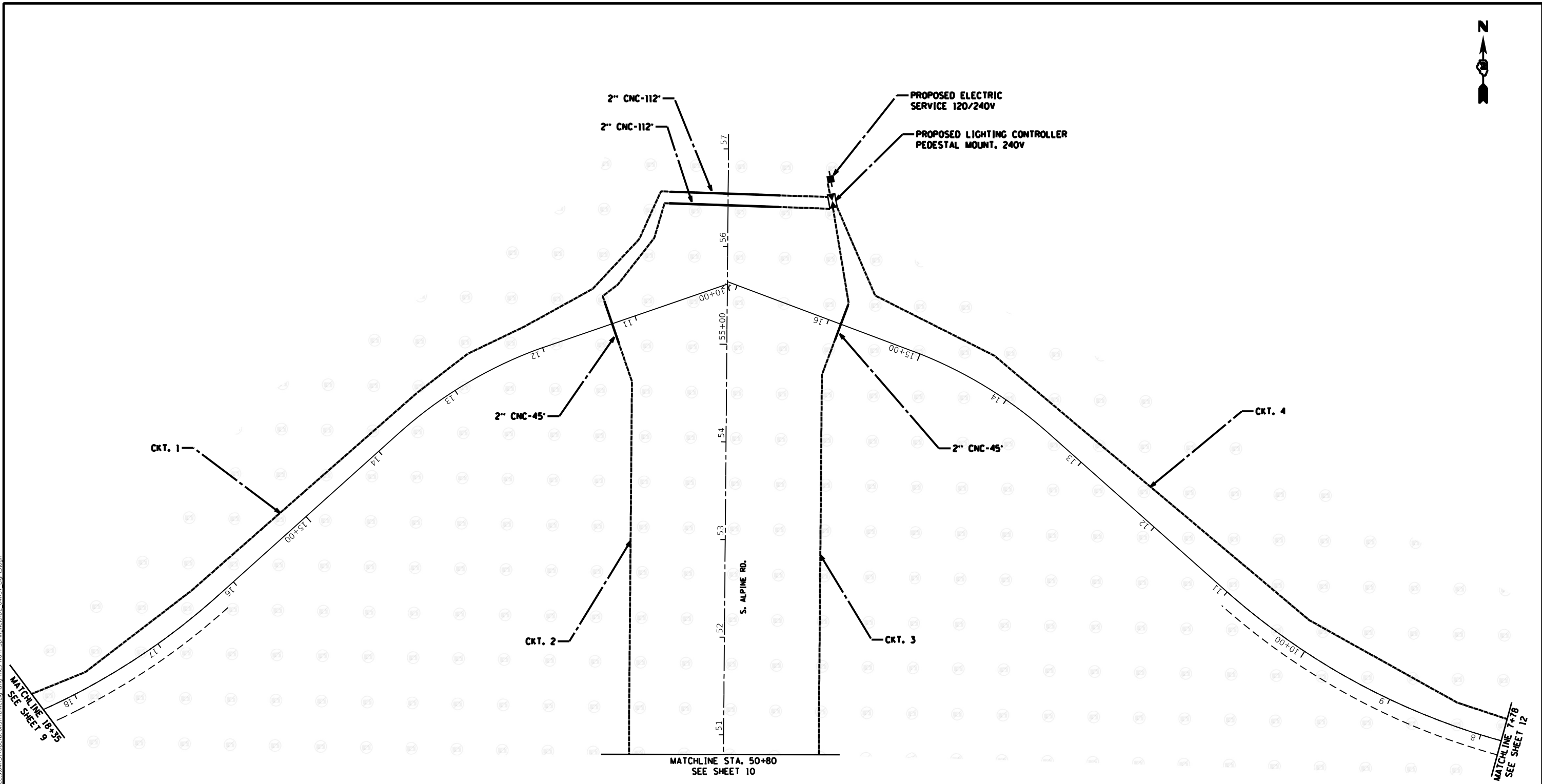
| | | |
|-------------------------------------|------------|-----------|
| USER NAME = Kristine.Hill | DESIGNED - | REVISED - |
| PLOT SCALE = 100.7861 ' / in. | DRAWN - | REVISED - |
| PLOT DATE = Mar-16-2023 08:44:04 AM | CHECKED - | REVISED - |
| | DATE - | REVISED - |

**STATE OF ILLINOIS
DEPARTMENT OF TRANSPORTATION**

**PROPOSED LIGHTING PLAN
US-20 & ALPINE ROAD**

SCALE: SHEET OF SHEETS STA. TO STA.

| | | | | |
|--------------------|-----------------------|---------------------|--------------------|---------------------------|
| F.A.P. RTE. 308 | SECTION ILU 2023-2 | COUNTY WINNEBAGO | TOTAL SHEETS 12 | SHEET NO. 10 |
| CONTRACT NO. 64R57 | | | | ILLINOIS FED. AID PROJECT |



MODEL: Default
 FILE NAME: p:\work\pawben\dev.com\FW\DOT\Documents\DOT - Offices\District 2\Projects\64R57\Operations\Traffic\Lighting - files from - Spinnable\DOT-64R57-Lights.dwg

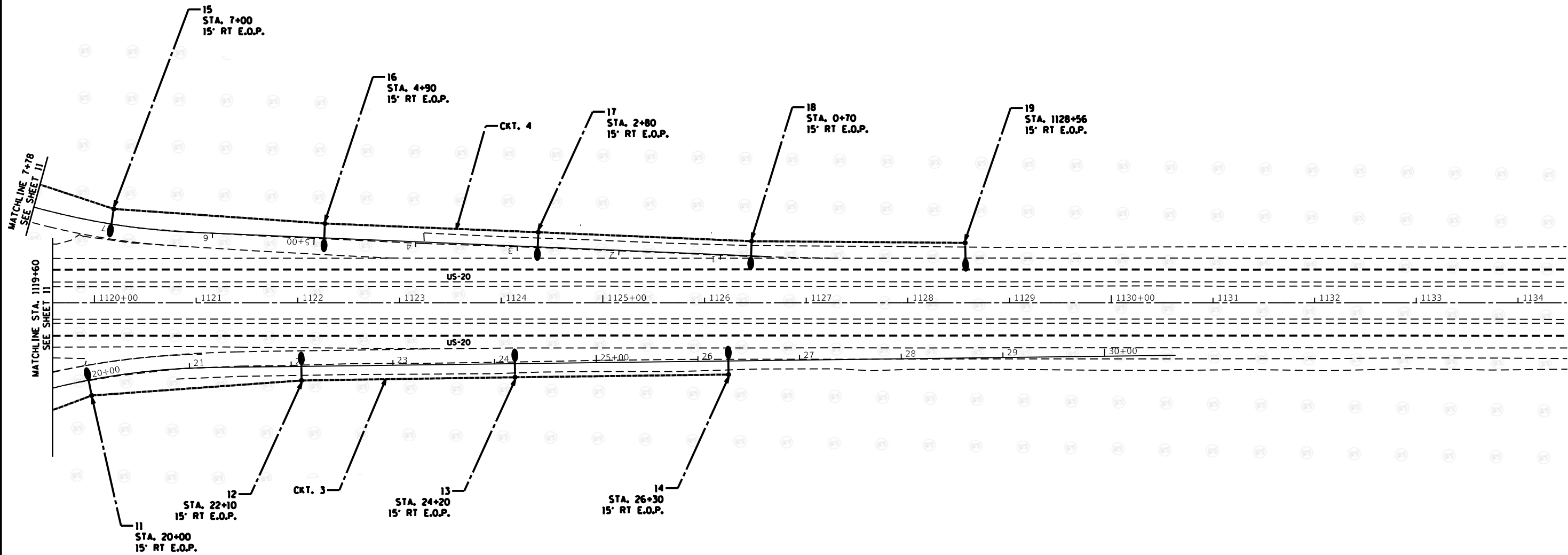
| | | |
|-------------------------------------|------------|-----------|
| USER NAME = Kristine.Hill | DESIGNED - | REVISED - |
| | DRAWN - | REVISED - |
| PLOT SCALE = 100,7767' / in. | CHECKED - | REVISED - |
| PLOT DATE = Mar-16-2023 08:45:04 AM | DATE - | REVISED - |

STATE OF ILLINOIS
DEPARTMENT OF TRANSPORTATION

PROPOSED LIGHTING PLAN
US-20 & ALPINE ROAD

SCALE: SHEET OF SHEETS STA. TO STA.

| | | | | |
|---------------------------|--------------------|------------------|-----------------|--------------|
| F.A.P. RTE. 308 | SECTION ILU 2023-2 | COUNTY WINNEBAGO | TOTAL SHEETS 12 | SHEET NO. 11 |
| CONTRACT NO. 64R57 | | | | |
| ILLINOIS FED. AID PROJECT | | | | |



MODEL: Default
 FILE NAME: p:\w\dep\wbeam\lay.com\FWD\DOT\Documents\11017 - Offices\District 2\Projects\64R57\Operations\TrafficLighting - files from Springfield\11017 - Light.dgn

| | | |
|-------------------------------------|------------|-----------|
| USER NAME = Kristine.Hill | DESIGNED - | REVISED - |
| PLOT SCALE = 100.7416' / in. | DRAWN - | REVISED - |
| PLOT DATE = Mar-16-2023 08:45:58 AM | CHECKED - | REVISED - |
| | DATE - | REVISED - |

STATE OF ILLINOIS
DEPARTMENT OF TRANSPORTATION

PROPOSED LIGHTING PLAN
US-20 & ALPINE ROAD

SCALE: SHEET OF SHEETS STA. TO STA.

| | | | | |
|---------------------------|-----------------------|---------------------|--------------------|-----------------|
| F.A.P. RTE. 308 | SECTION ILU 2023-2 | COUNTY WINNEBAGO | TOTAL SHEETS 12 | SHEET NO. 12 |
| CONTRACT NO. 64R57 | | | | |
| ILLINOIS FED. AID PROJECT | | | | |

