

STATE OF ILLINOIS  
DEPARTMENT OF TRANSPORTATION

F.A.P. RTE.	SECTION	COUNTY	TOTAL SHEETS	SHEET NO.
N/A	D4 PARKING LOT RESURF 2023-1	PEORIA	10	1
		ILLINOIS	CONTRACT NO. 68H67	

INDEX OF SHEETS

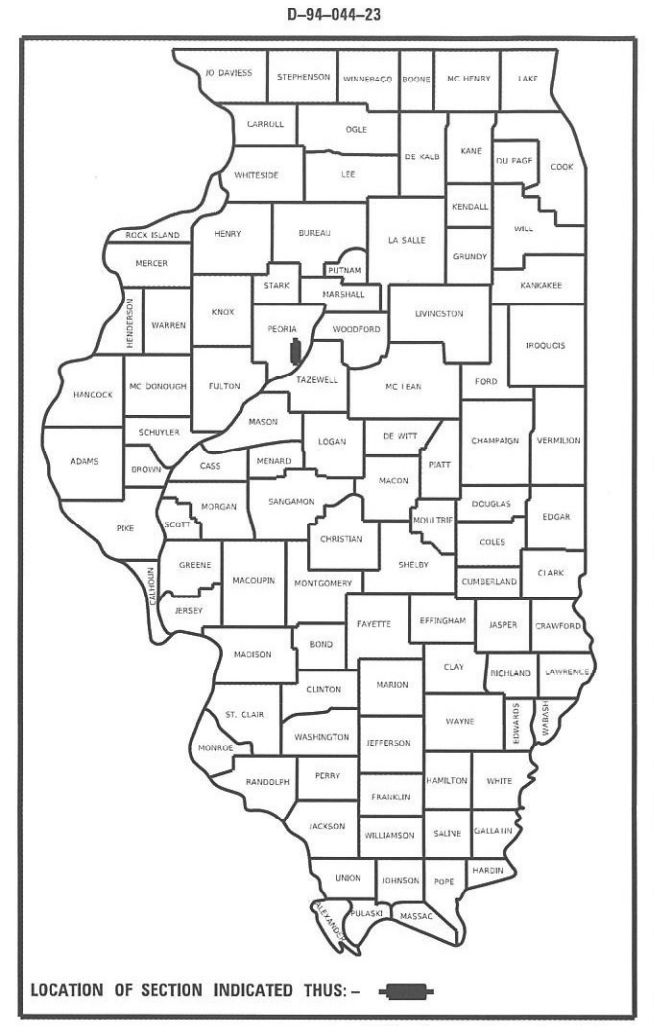
- 1 COVER SHEET
- 2 COMMITMENTS, GENERAL NOTES, AND PROJECT SPECIFIC NOTES
- 3-4 SUMMARY OF QUANTITIES
- 5 TYPICAL SECTION
- 6 SCHEDULE OF QUANTITIES
- 7 DEMOLITION PLAN
- 8 SITE PLAN
- 9 ELEVATIONS PLAN
- 10 PAVEMENT JOINT PLAN

HIGHWAY STANDARDS

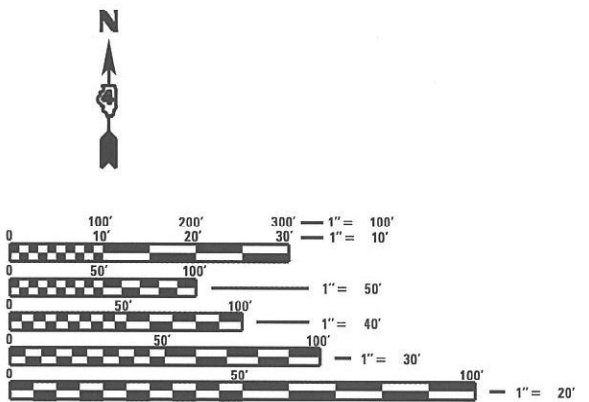
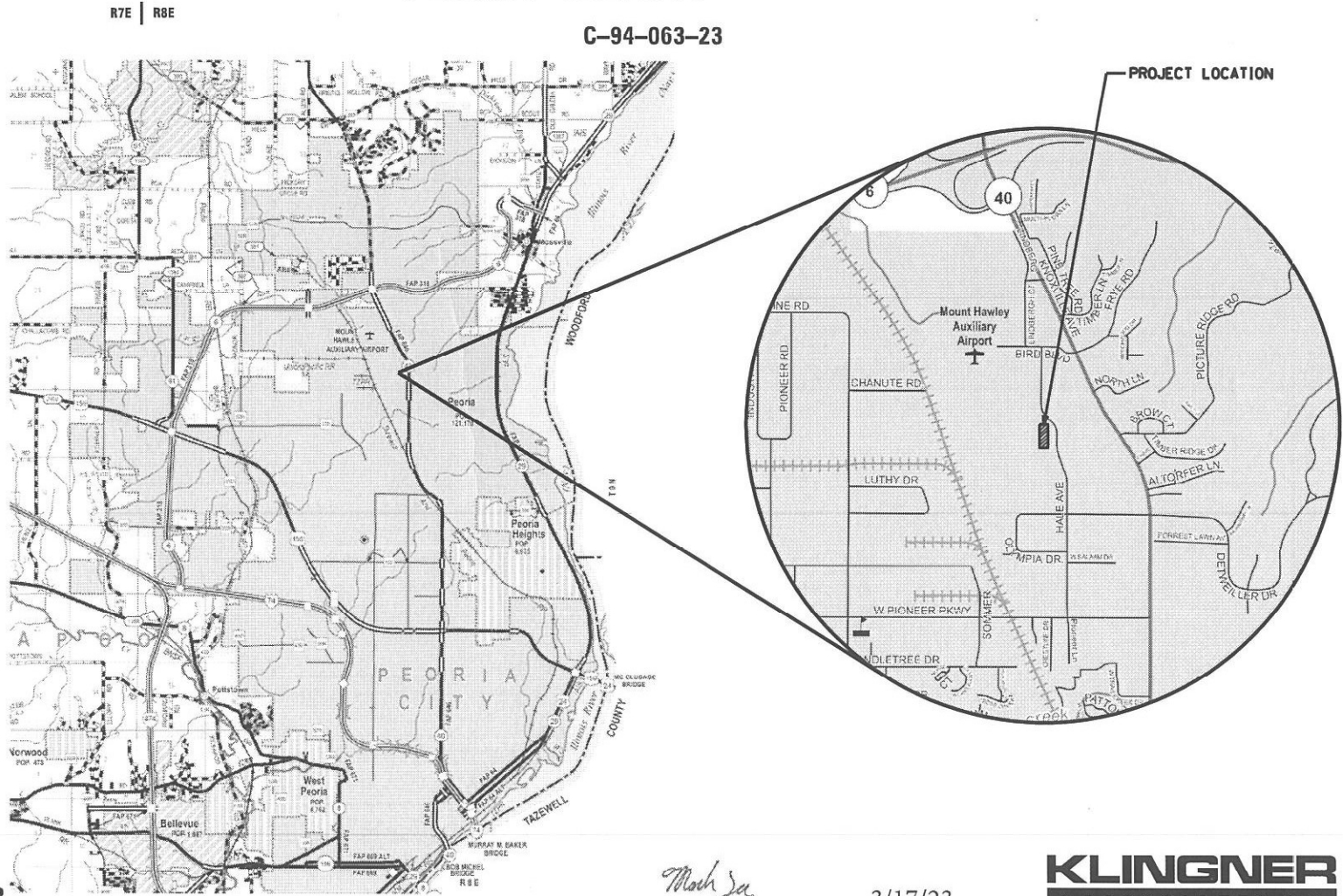
- 000001-08
- 280001-07
- 420001-10
- 420101-07
- 701201-05
- 701901-08

PROPOSED  
HIGHWAY PLANS

ROUTE D4 TRAFFIC MAINTENANCE YARD  
SECTION D4 PARKING LOT RESURF 2023-1  
PROJECT  
PARKING LOT IMPROVEMENTS  
PEORIA COUNTY



LOCATION OF SECTION INDICATED THUS: - [black rectangle] -



FULL SIZE PLANS HAVE BEEN PREPARED USING STANDARD ENGINEERING SCALES. REDUCED SIZED PLANS WILL NOT CONFORM TO STANDARD SCALES. IN MAKING MEASUREMENTS ON REDUCED PLANS, THE ABOVE SCALES MAY BE USED.

J.U.L.I.E.  
JOINT UTILITY LOCATION INFORMATION FOR EXCAVATION  
1-800-892-0123  
OR 811

PROJECT ENGINEER BEN TELLEFSON (309)671-3333  
PROJECT MANAGER ERIC PRICHARD (309)671-3333  
CONTRACT NO. 68H67  
CATALOG NO. 036418-00D

LOCATION MAP

*Mark C. Lee*  
MARK C. LEE DATE 3/17/23

REGISTERED PROFESSIONAL ENGINEER  
STATE OF ILLINOIS NO. 062-060864  
LICENSE EXPIRES NOVEMBER 30, 2023

**KLINGNER & ASSOCIATES, P.C.**

Engineers • Architects • Surveyors  
www.klingner.com  
Galesburg, Illinois  
46 North Prairie Street  
309.342.4042  
Quincy, IL Hannibal, MO  
Burlington, IA Peoria, IA Columbia, MO  
Liaisonport, IA Carbondale, IL

STATE OF ILLINOIS  
DEPARTMENT OF TRANSPORTATION  
SUBMITTED March 20 20 23  
*Kensel A. Darrell*  
REGIONAL ENGINEER  
May 12, 2023  
*Scott A. Eck*  
ENGINEER OF DESIGN AND ENVIRONMENT  
May 12, 2023  
*Stephen M. Lewis*  
DIRECTOR OF HIGHWAYS PROJECT IMPLEMENTATION

PRINTED BY THE AUTHORITY  
OF THE STATE OF ILLINOIS

## COMMITMENTS

COMMITMENTS ARE NOT TO BE ALTERED WITHOUT THE WRITTEN APPROVAL OF ALL PARTIES TO WHICH THE COMMITMENT WAS MADE.

NO COMMITMENTS HAVE BEEN MADE ON THIS PROJECT.

## ENVIRONMENTAL REVIEWS

PRIOR TO THE USE OF ANY PROPOSED BORROW AREAS, USE AREAS (TEMPORARY ACCESS ROADS, DETOURS, RUN-AROUNDS, ETC.) AND /OR WASTE AREAS, THE CONTRACTOR SHALL FILE THE REQUIRED ENVIRONMENTAL RESOURCE REQUEST SURVEYS ACCORDING TO SECTION 107.22 OF THE STANDARD SPECIFICATIONS. THESE SURVEYS ARE REQUIRED IN ORDER FOR THE DEPARTMENT TO CONDUCT CULTURAL AND BIOLOGICAL RESOURCE SURVEYS FOR THE PROPOSED SITE.

THE REQUIRED ENVIRONMENTAL RESOURCE DOCUMENTATION SHALL INCLUDE THE FOLLOWING:

- BDE FORM 2289 (CULTURAL AND NATURAL RESOURCE REVIEW OF BORROW AREAS)
- BDE FORM 2290 (WASTE/USE AREA REVIEW)
- A LOCATION MAP SHOWING THE SIZE LIMITS AND LOCATION OF THE USE AREA
- COLOR PHOTOGRAPHS DEPICTING THE USE AREA
- BORROW AREA ENTRY AGREEMENT FORM-D4 PI0101

PRIOR TO ANY WASTE MATERIALS BEING REMOVED FROM THE CONSTRUCTION SITE THE REQUIRED ENVIRONMENTAL RESOURCE SURVEYS SHALL BE OBTAINED AND FILED BY THE CONTRACTOR. EXCESS WASTE PRODUCTS REMOVED FROM THE CONSTRUCTION SITE SHALL BE DISPOSED OF AS REQUIRED IN SECTION 202.03 OF THE STANDARD SPECIFICATIONS.

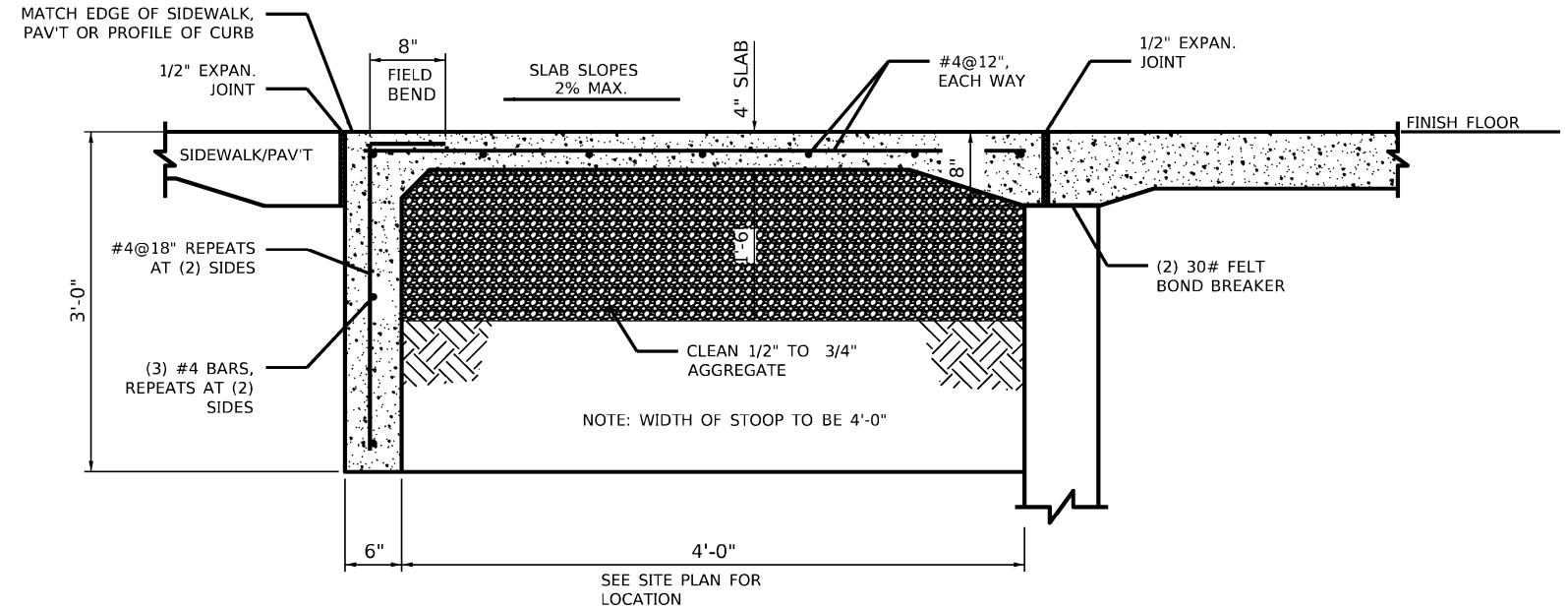
ANY PROTRUDING METAL BARS SHALL BE REMOVED PRIOR TO THE DISPOSAL OF BROKEN CONCRETE AT APPROVED DISPOSAL SITES.

PLEASE NOTE THAT A MINIMUM OF FOUR WEEKS SHALL BE ALLOWED FOR THE DISTRICT TO OBTAIN THE REQUIRED WASTE SITE ENVIRONMENTAL CLEARANCES AND SIX WEEKS FOR THE REQUIRED BORROW SITE ENVIRONMENTAL CLEARANCES.

## JOB SPECIFICATIONS

1. THE CONTRACTOR SHALL CONSTRUCT THE PARKING LOT IN TWO SEPARATE STAGES, EAST AND WEST. ACCESS TO THE PARKING AND ACCESS TO OVERHEAD DOORS ON EAST AND WEST SIDES CANNOT BE OBSTRUCTED AT THE SAME TIME.
2. CONTACT BILL HARRMANN AT 309-370-7513 AT LEAST TWO WEEKS PRIOR TO STARTING CONSTRUCTION.

## STOOP DETAIL



STOOP CONSTRUCTION TO BE PAID PER CUBIC YARD AS CONCRETE STEPS

## HOT-MIX ASPHALT MIXTURE REQUIREMENTS

THE FOLLOWING MIXTURE REQUIREMENTS ARE APPLICABLE FOR THIS PROJECT

LOCATION(S)	PARKING SURFACE	PARKING SURFACE
MIXTURE USE(S):	SURFACE LIFT	BINDER LIFTS (BUILDING TO BUILDING APRON)
AC/PG:	PG 58-28	PG 58-28
DESIGN AIR VOIDS:	4% N=50	4% N=50
MIXTURE COMPOSITION:	IL 9.5	IL 9.5
FRICTION AGGREGATE:	MIX C	N/A
QUALITY MANAGEMENT PROGRAM:	QC/QA	QC/QA
THICKNESS	1.5"	2.5"
MATERIAL TRANSFER DEVICE:	NO	NO

### NOTES:

- 1) INDIVIDUAL LIFT THICKNESS OF EACH MIX TYPE WILL BE NO LESS THAN 3 TIMES NOMINAL MAXIMUM AGGREGATE SIZE AND NO MORE THAN 6 TIMES NOMINAL MAXIMUM.
- 2) FOR DESIGN PURPOSES, MIXTURE WEIGHT FOR ALL MIXES IS DETERMINED TO BE 112.0 LB./S.Y./IN., UNLESS OTHERWISE NOTED.

## RATES OF APPLICATION

HOT-MIX ASPHALT:  
BITUMINOUS MATERIALS (PRIME COAT) 0.025 LB / SQ FT (ON HMA LIFTS)

STATE OF ILLINOIS  
DEPARTMENT OF TRANSPORTATION

COMMITMENTS, GENERAL NOTES,  
AND PROJECT SPECIFIC NOTES

SCALE: NONE SHEET 1 OF 1 SHEETS STA. N/A TO STA. N/A

F.A.X. RTE.	SECTION	COUNTY	TOTAL SHEETS	SHEET NO.
N/A	D4 PARKING LOT RESURF 2023-1	PEORIA	10	2
CONTRACT NO. 68H67				
ILLINOIS FED. AID PROJECT				

USER NAME = mrich	DESIGNED - MCR	REVISED -
PLOT SCALE = 100.0000' / in.	DRAWN - MCR	REVISED -
P. DT. DATE = 3/17/2023	CHECKED - MCL	REVISED -
	DATE -	REVISED -

CODE NO.	ITEM	UNIT	TOTAL QUANTITY	CONSTRUCTION CODE					
				PEORIA COUNTY					
				100% STATE					
				0044 URBAN					
20200100	EARTH EXCAVATION	CU YD	705	705					
21001000	GEO TECHNICAL FABRIC FOR GROUND STABILIZATION	SQ YD	485	485					
21101505	TOPSOIL EXCAVATION AND PLACEMENT	CU YD	10	10					
28000400	PERIMETER EROSION BARRIER	FOOT	200	200					
28000510	INLET FILTERS	EACH	1	1					
35101800	AGGREGATE BASE COURSE, TYPE B 6"	SQ YD	485	485					
35102000	AGGREGATE BASE COURSE, TYPE B 8"	SQ YD	2623	2623					
40600275	BITUMINOUS MATERIALS (PRIME COAT)	POUND	590	590					
40602978	HMA BINDER COURSE, IL 9.5, N50	TON	367	367					
40604050	HMA SURFACE COURSE, MIX C, IL 9.5, N50	TON	220	220					
42000401	PORTLAND CEMENT CONCRETE PAVEMENT 9" (JOINTED)	SQ YD	485	485					
44000100	PAVEMENT REMOVAL	SQ YD	550	550					
44200050	WELDED WIRE REINFORCEMENT	SQ YD	485	485					
60255700	MANHOLES TO BE ADJUSTED WITH NEW TYPE 1 FRAME & GRATE, OPEN LID	EACH	2	2					
60600605	CONCRETE CURB, TYPE B	FOOT	550	550					

MODEL: Default  
 FILE NAME: C:\Users\j1081\DOT - DST - 4 - P1B 201-033\Work - Order 13 - FY 2023 - Parking Lots\18 Transportation\CADD Sheets\Peoria Facility\003-4 - Summary - Quant - Sht.dgn  
 Galesburg, Illinois  
 49 North First  
 509-243-0424

**KLINGNER & ASSOCIATES, P.C.**  
 Engineers • Architects • Surveyors  
 www.klingner.com  
 Quincy, IL, Hannibal, MO  
 St. Louis, MO, Columbia, MO  
 Hannibal, IL, Carbondale, IL

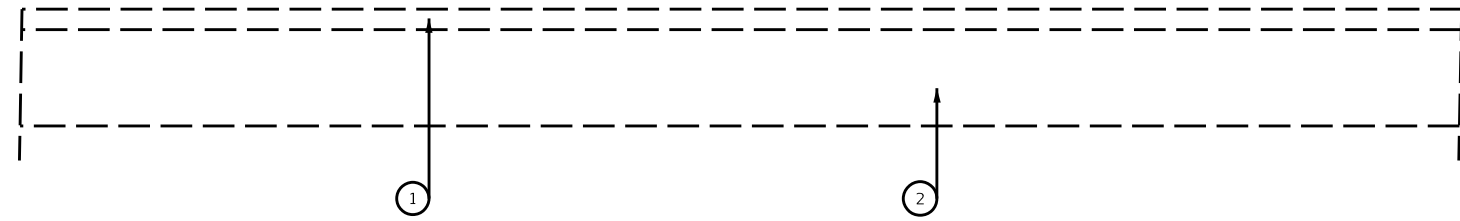
USER NAME = mrich	DESIGNED - MCR	REVISED -
	DRAWN - MCR	REVISED -
PLOT SCALE = 100.0000' / in.	CHECKED - MCL	REVISED -
PLOT DATE = 8/17/2023	DATE -	REVISED -

**STATE OF ILLINOIS**  
**DEPARTMENT OF TRANSPORTATION**

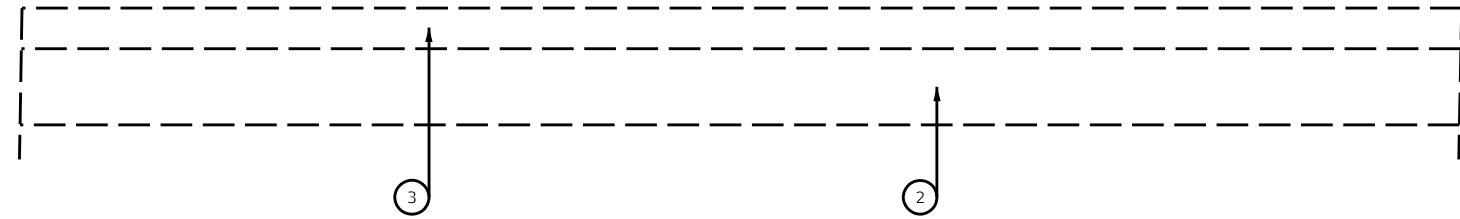
SUMMARY OF QUANTITIES			
SCALE: NONE	SHEET 1 OF 2 SHEETS	STA. N/A	TO STA. N/A

F.A.X RTE.	SECTION	COUNTY	TOTAL SHEETS	SHEET NO.
N/A	D4 PARKING LOT RESURF 2023-1	PEORIA	10	3
CONTRACT NO. 68H67			ILLINOIS FED. AID PROJECT	

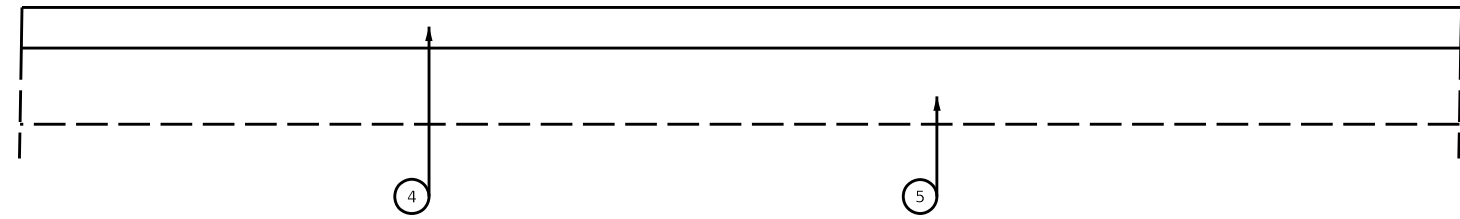




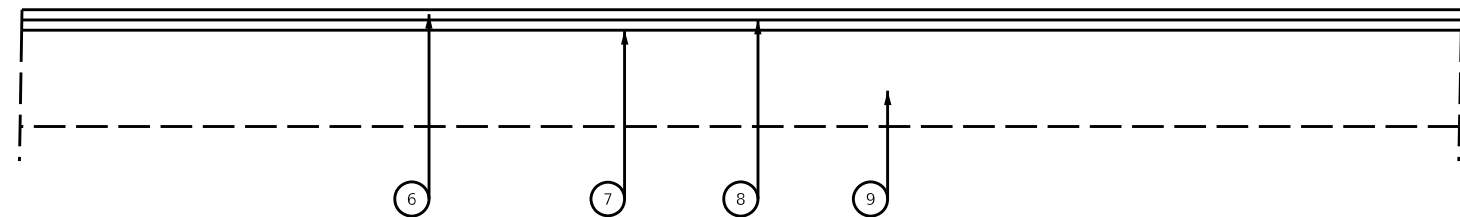
EXISTING TYPICAL PEORIA YARD PARKING LOT  
HMA SECTION



EXISTING TYPICAL PEORIA YARD PARKING LOT  
PCC SECTION



PROPOSED TYPICAL PEORIA YARD PARKING LOT  
PCC SECTION



PROPOSED TYPICAL PEORIA YARD PARKING LOT  
HMA SECTION

**LEGEND**

- ① EXISTING HMA PAVEMENT 4"
- ② EXISTING SUBBASE
- ③ EXISTING PCC PAVEMENT 8"
- ④ PROPOSED PCC PAVEMENT 9", JOINTED
- ⑤ PROPOSED AGGREGATE BASE COURSE, TYPE B 6"
- ⑥ PROPOSED HMA SURFACE COURSE, MIX C, IL 9.5, N50 1.5"
- ⑦ PROPOSED HMA BINDER COURSE, IL 9.5, N50 2.5"
- ⑧ POLYMERIZED BITUMINOUS MATERIALS (PRIME COAT)
- ⑨ PROPOSED AGGREGATE BASE COURSE, TYPE B 8"

MODEL: Mch1  
 FILE NAME: C:\3\files\21081\_IDOT - DIST - 4 - PTP 201623\Work\_Ordor\_13 - FY 2023 Parking Lots\18 Transportation\CADD Sheets\Peoria Facility\005\_Typical Sections.dgn

**KLINGNER & ASSOCIATES, P.C.**  
 Engineers • Architects • Surveyors  
 Galesburg, Illinois  
 40 North Peoria Street  
 Galesburg, IL 62541

USER NAME = mirch
PLOT SCALE = 40,000 / in.
PLOT DATE = 3/17/2023

DESIGNED - MCR	REVISD -
DRAWN - MCR	REVISD -
CHECKED - MCL	REVISD -
DATE -	REVISD -

**STATE OF ILLINOIS  
DEPARTMENT OF TRANSPORTATION**

**TYPICAL SECTION**

SCALE: NONE SHEET 1 OF 1 SHEETS STA. N/A TO STA. N/A

F.A.X RTE.	SECTION	COUNTY	TOTAL SHEETS	SHEET NO.
N/A	D4 PARKING LOT RESURF 2023-1	PEORIA	10	5
CONTRACT NO. 68H67				
ILLINOIS FED. AID PROJECT				

PARKING LOT SCHEDULE												
LOCATION	EARTH EXCAVATION	TOPSOIL EXCAVATION AND PLACEMENT	PERIMETER EROSION BARRIER	INLET FILTERS	PAVEMENT REMOVAL	HMA DRIVEWAY PVMT REMOVAL	GEOTECH FABRIC	AGGREGATE BASE COURSE, TYPE B 6"	AGGREGATE BASE COURSE, TYPE B 8"	WELDED WIRE REINFORCEMENT	PCC PVMT 9" (JOINTED)	CONCRETE CURB TY. B
	CU YD	CU YD	FOOT	EACH	SQ YD	SQ YD	SQ YD	SQ YD	SQ YD	SQ YD	SQ YD	FOOT
DETWEILER FACILITY (PEORIA)												
TOTALS	705	10	200	1	550	3012	485	485	2623	485	485	550
USE	705	10	200	1	550	3012	485	485	2623	485	485	550

PARKING LOT SCHEDULE (CONTINUED)											
LOCATION	HMA BINDER COURSE, 1L 9.5, N50	HMA SURFACE COURSE, MIX C, 1L 9.5, N50	PRIME COAT	MH TO BE ADJ WITH NEW TY1 FRAME & GRATE, OPEN LID	GAS VALVE TO BE ADJUSTED	BOLLARD REMOVAL	BOLLARDS	CONCRETE STEPS	MOBILIZATION	CONSTRUCTION LAYOUT	TC & P, STANDARD 701201
	TON	TON	POUND	EACH	L SUM	EACH	EACH	CU YD	L SUM	L SUM	L SUM
DETWEILER FACILITY (PEORIA)											
TOTALS	367	220	590	2	1	26	26	3	1	1	1
USE	367	220	590	2	1	26	26	3	1	1	1

MODEL: D:\p\h\l...  
 FILE NAME: C:\3\files\21081\_IDOT - DST - 4 - PTD\_201623\Work\_Order\_13 - FY\_2023\_Parking\_Lots\18\_Transportation\CADD\_Sheets\Peoria\_Facility\006\_Schedule\_Quant\_Sht.dwg

**KLINGNER & ASSOCIATES, P.C.**  
 Engineers • Architects • Surveyors  
 Galesburg, Illinois  
40 North Prairie Street, Galesburg, IL 62541  
 309.343.4442

USER NAME = mrich  
 PLOT SCALE = 100.0000' / in.  
 PLOT DATE = 3/17/2023

DESIGNED - MCR  
 DRAWN - MCR  
 CHECKED - MCL  
 DATE -

REVISED -  
 REVISED -  
 REVISED -  
 REVISED -

**STATE OF ILLINOIS  
 DEPARTMENT OF TRANSPORTATION**

**SCHEDULE OF QUANTITIES**





SCALE: NONE    SHEET 1 OF 1 SHEETS    STA. N/A    TO STA. N/A

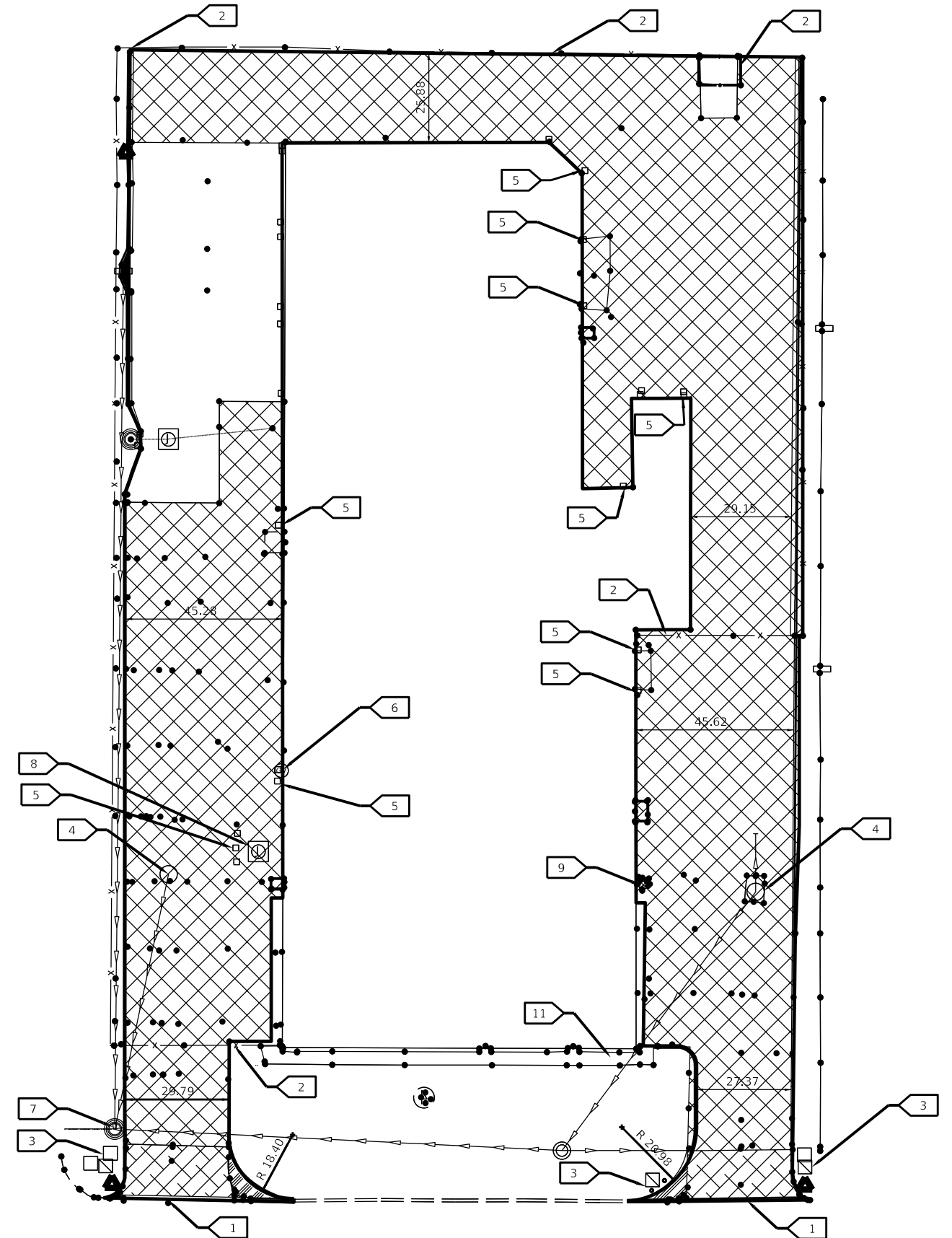
F.A.X RTE.	SECTION	COUNTY	TOTAL SHEETS	SHEET NO.
N/A	D4 PARKING LOT RESURF 2023-1	PEORIA	10	6
CONTRACT NO. 68H67				
ILLINOIS FED. AID PROJECT				

**SITE DEMOLITION PLAN KEY NOTES:**

- 1 CURB REMOVAL
- 2 FENCE GATE TO REMOVE AND REINSTALL
- 3 JUNCTION BOX TO REMAIN
- 4 FRAME AND GRATE/MANHOLE TO BE ADJUSTED
- 5 REMOVE BOLLARDS
- 6 VALVE TO BE ADJUSTED
- 7 MANHOLE TO REMAIN
- 8 ELECTRICAL BOX TO REMAIN
- 9 COMMUNICATION TOWER TO REMAIN
- 10 DUMPSTER TO BE REMOVED AND RE-SET
- 11 SIDEWALK TO REMAIN

**LEGEND**

-  PCC PAVEMENT AND INTEGRAL CURB REMOVAL
-  HMA PAVEMENT REMOVAL
-  GRASS/SOIL REMOVAL
-  FULL-DEPTH SAWCUT



MODEL: Mch1  
 FILE NAME: G:\3\Files\21081\_IDOT - DIST - 4 - PFB 201623\Work\_Ordor\_13 - FY 2023 Parking Lots\18\_Transportation\CADD\_Sheets\Peoria\_Facility\007\_Peoria\_DEMO.dwg  
 Galesburg, Illinois  
 40 North Payne Street  
 304.542.4442

**KLINGNER & ASSOCIATES, P.C.**  
 Engineers • Architects • Surveyors  
 www.klingner.com  
 Quincy, IL, Marshall, MO  
 Burlington, MA, Peoria, IL, Columbia, MO  
 Des Moines, IA, Columbus, IL

USER NAME = mirch  
 PLOT SCALE = 40.000 / in.  
 PLOT DATE = 3/17/2023

DESIGNED - MCR  
 DRAWN - MCR  
 CHECKED - MCL  
 DATE -

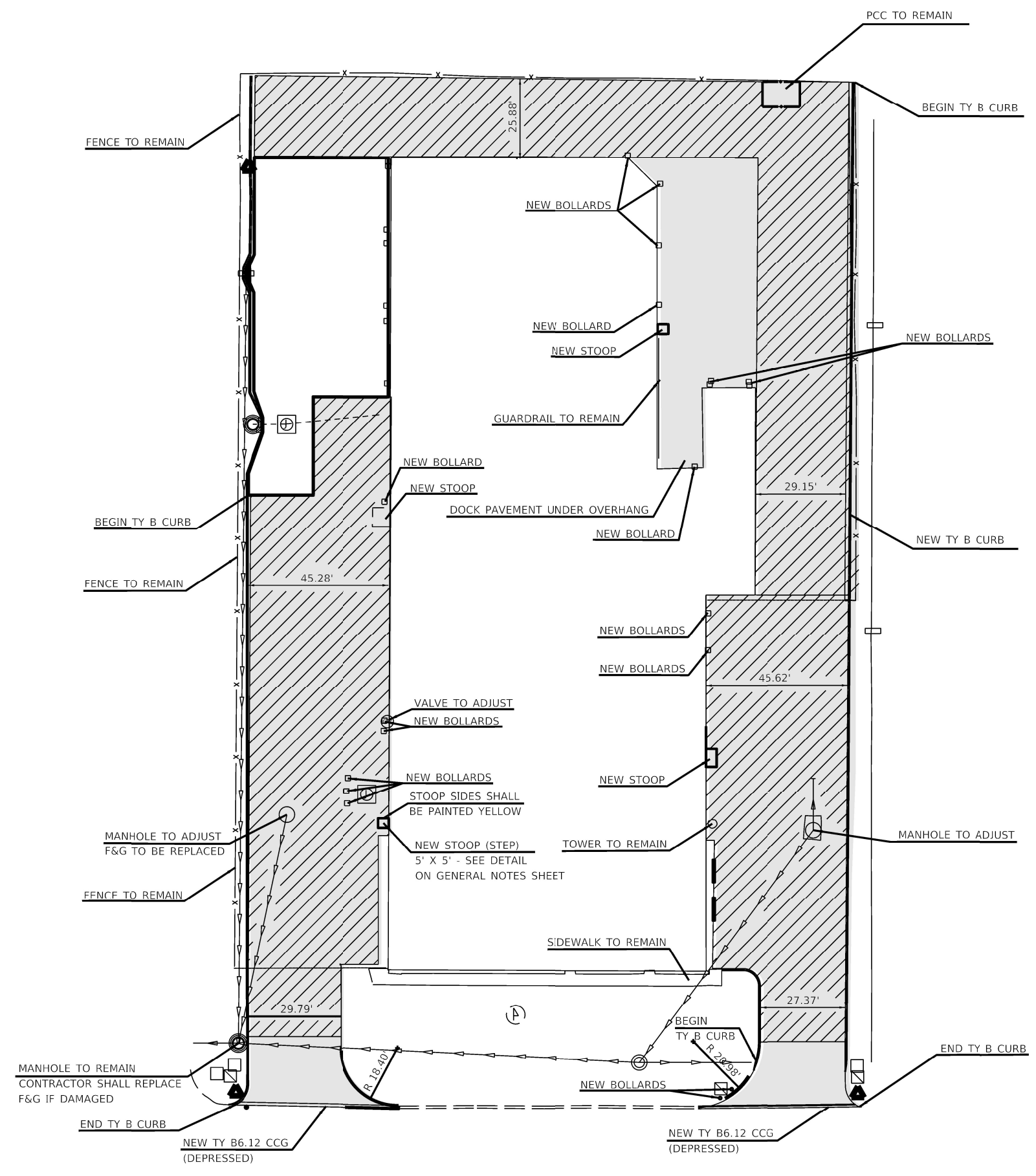
REVISED -  
 REVISED -  
 REVISED -  
 REVISED -

**STATE OF ILLINOIS  
DEPARTMENT OF TRANSPORTATION**

**DEMOLITION PLAN**

SCALE: SHEET 1 OF 1 SHEETS STA. N/A TO STA. N/A

F.A.X RTE.	SECTION	COUNTY	TOTAL SHEETS	SHEET NO.
N/A	D4 PARKING LOT RESURF 2023-4	PEORIA	10	7
CONTRACT NO. 68H67				
ILLINOIS FED. AID PROJECT				



**LEGEND**

- 9" PCC PAVEMENT W/ WELDED WIRE FABRIC
- ASPHALT



MODEL: Model  
 FILE NAME: C:\1101\1101\1101\DOT-DIST 4 - RTB 201-032\Work Order 13 - FY 2023 Parking Lot\18 Transportation\CADD Sheets\Peoria Facility\008 Peoria Site.dwg  
 QUINCY, IL  
 Galesburg, Illinois  
 49 North Prairie Street  
 302-442-4942

USER NAME = mrich	DESIGNED - MCR	REVISED -
PLOT SCALE = 40.000' / in	DRAWN - MCR	REVISED -
PLOT DATE = 3/17/2023	CHECKED - MCL	REVISED -
	DATE -	REVISED -

**STATE OF ILLINOIS**  
**DEPARTMENT OF TRANSPORTATION**

<b>SITE PLAN</b>			
SCALE:	SHEET 1	OF 1	SHEETS
	STA. N/A		TO STA. N/A

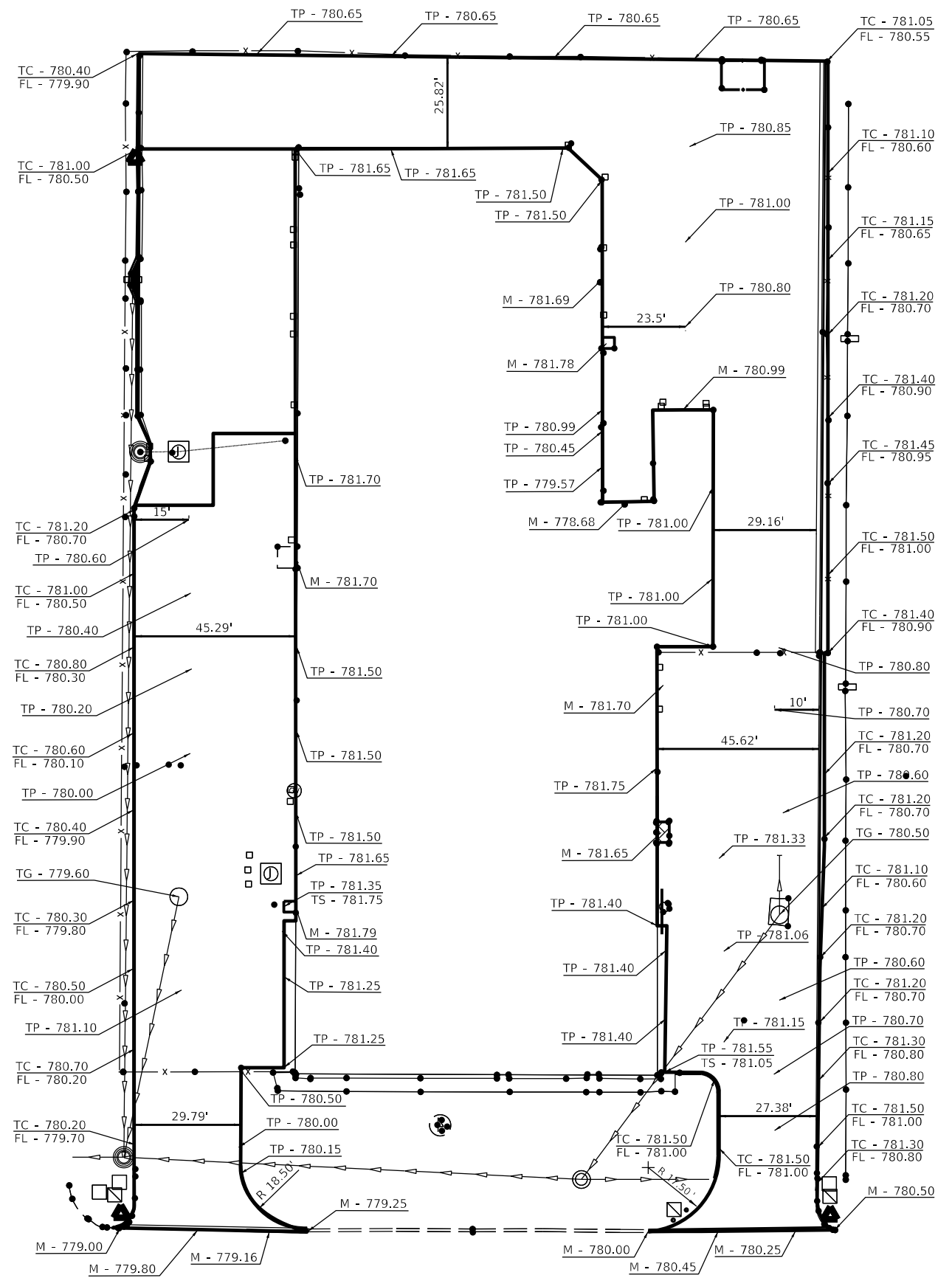
F.A.X RTE.	SECTION	COUNTY	TOTAL SHEETS	SHEET NO.
N/A	D4 PARKING LOT RESURF 2023-	PEORIA	10	8
ILLINOIS FED. AID PROJECT			CONTRACT NO. 68H67	



MODEL: Mch1  
 FILE NAME: G:\11files\21081.IDOT - DIST - 4 - PTP 201.023\Work\_Ordor\_13 - FY 2023 Parking Lots\18.Transportation\CADD Sheets\Peoria Facility\009 Peoria Elev.dwg

**ABBREVIATIONS**

- FL FLOWLINE ELEVATION
- TC TOP OF CURB ELEVATION
- GL GUTTER LINE ELEVATION
- TG TOP OF GRATE ELEVATION
- STA STATION
- FES FLARED END SECTION
- SWI STORM WATER INLET
- HP HIGH POINT
- LP LOW POINT
- TW TOP OF WALL ELEVATION
- BW BOTTOM OF WALL ELEVATION
- DS DOWNSPOUT
- G GROUND ELEVATION
- M MATCH EXISTING ELEVATION
- SW TOP OF SIDEWALK ELEVATION
- GR TOP OF GRAVEL ELEVATION
- FF FINISHED FLOOR ELEVATION
- TP TOP OF PAVEMENT ELEVATION
- EP EDGE OF PAVEMENT ELEVATION



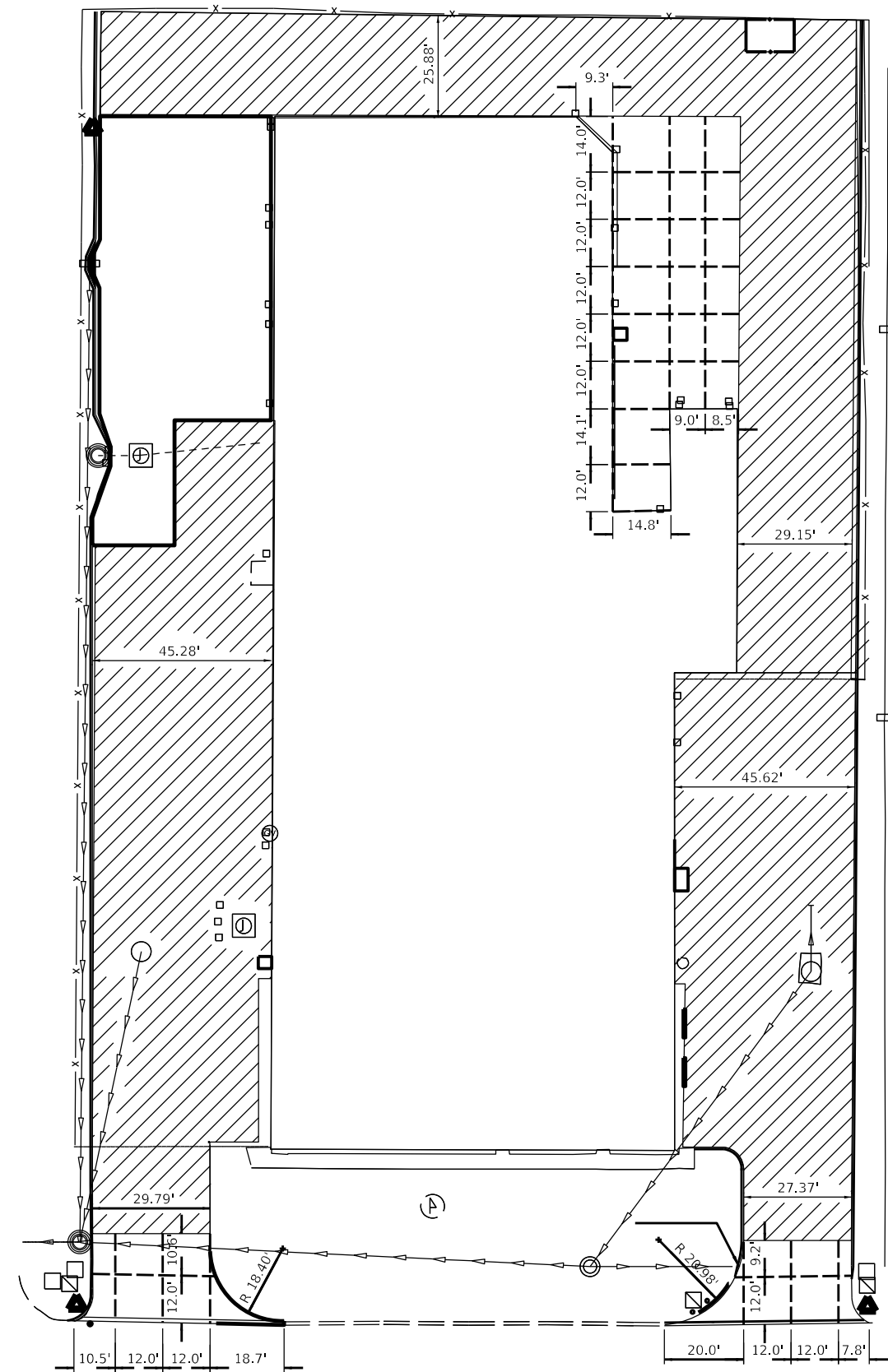
<p><b>KLINGNER &amp; ASSOCIATES, P.C.</b>          Engineers - Architects - Surveyors          Galesburg, Illinois</p>	USER NAME = mirch	DESIGNED - MCR	REVISED -	<b>STATE OF ILLINOIS          DEPARTMENT OF TRANSPORTATION</b>	<b>ELEVATIONS PLAN</b>			F.A.X RTE.	SECTION	COUNTY	TOTAL SHEETS	SHEET NO.
	PLOT SCALE = 40.000' / in.	DRAWN - MCR	REVISED -		N/A	D4 PARKING LOT RESURF 2023-	PEORIA	10	9	CONTRACT NO. 68H67		
Galesburg, Illinois 40 North Payne Street 304.543.4442	Quincy, IL, Hannibal, MO Burlington, MA, Peoria, IL, Columbia, MO Davenport, IA, Charleston, IL	CHECKED - MCL	REVISED -	SCALE:	SHEET 1	OF 1	SHEETS	STA. N/A	TO STA. N/A	ILLINOIS FED. AID PROJECT		
PLOT DATE = 3/17/2023	DATE -	REVISED -	REVISED -									

**PLAN NOTES**

- SEE STANDARD 420101 FOR SPACING AND JOINT DETAILS.  
CONTRACTOR TO DETERMINE DIRECTION OF LONGITUDINAL AND TRANSVERSE JOINTS.

**LEGEND**

--- PROPOSED JOINT LOCATIONS



MODEL: Mch1  
 FILE NAME: G:\3\Files\21081\_IDOT - DIST 4 - P7B 201623\Work\_Order\_13 - FY 2023 Parking Lots\18\_Transportation\CADD\_Sheets\Peoria\_Facility\0010 Joint\_Plan.dgn

**KLINGNER & ASSOCIATES, P.C.**  
 Engineers • Architects • Surveyors  
 Galesburg, Illinois  
 40 North Payne Street  
 Galesburg, IL 62540

USER NAME = mirch	DESIGNED - MCR	REVISED -
PLOT SCALE = 40.000' / in.	DRAWN - MCR	REVISED -
PLOT DATE = 3/17/2023	CHECKED - MCL	REVISED -
	DATE -	REVISED -

**STATE OF ILLINOIS  
DEPARTMENT OF TRANSPORTATION**

**PAVEMENT JOINT PLAN**

SCALE: 1"=20' SHEET 1 OF 1 SHEETS STA. N/A TO STA. N/A

F.A.X RTE.	SECTION	COUNTY	TOTAL SHEETS	SHEET NO.
N/A	D4 PARKING LOT RESURF 2023-4	PEORIA	10	10
CONTRACT NO. 68H67				
ILLINOIS FED. AID PROJECT				