

STATE OF ILLINOIS
DEPARTMENT OF TRANSPORTATION

F.A.P. RTE.	SECTION	COUNTY	TOTAL SHEETS	SHEET NO.
693	(FR)I-1	MCLEAN	12	1
		ILLINOIS	CONTRACT NO. 70G18	

FOR INDEX OF SHEETS, SEE SHEET NO. 2
FOR SUMMARY OF QUANTITIES, SEE SHEET NO. 3

TRAFFIC DATA					
	LEG "A"	LEG "B"	LEG "C"	LEG "D"	LEG "E"
2022 ADT =	17,600	19,100	22,300	18,900	7,000
P.U. %	97.5	85.3	85.5	96.3	85.0
S.U. %	2.0	3.1	3.0	2.4	3.2
M.U. %	0.5	1.6	1.5	1.3	1.8

TRAFFIC DATA LOCATIONS

TRAFFIC DATA LOCATIONS
LEG "A" is IL 9 (Empire St.) from Veteran's Pkwy to Ramp 19.30
LEG "B" is IL 9 (Empire St.) from Ramp 19.30 to Hershey Rd.
LEG "C" is IL 9 (Empire St.) from Hershey Rd. to Eastport Dr.
LEG "D" is IL 9 (Empire St.) from Eastport Dr. to Carnahan Dr.
LEG "E" is IL 9 Alt (Empire St.) W of Towanda Ave.

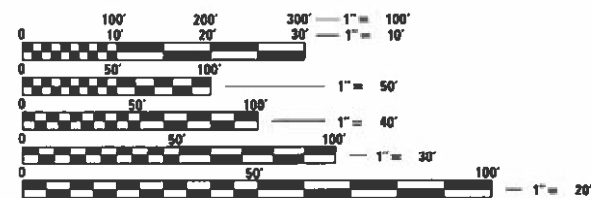
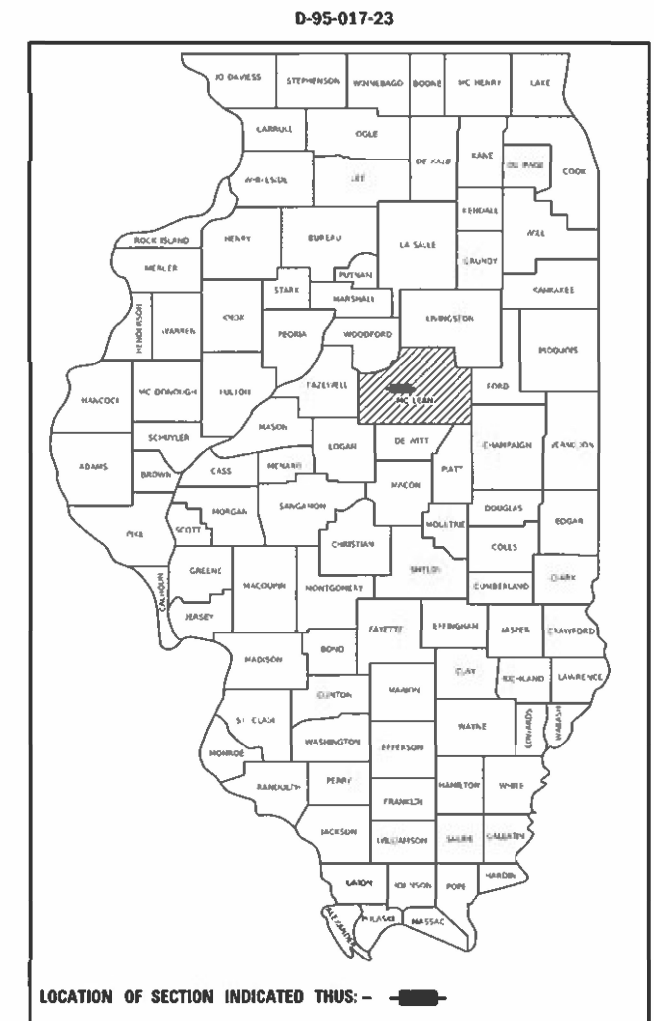
FUNCTIONAL CLASSIFICATION

LEG "A", LEG "B", LEG "C", LEG "D", AND LEG "E" = MINOR ARTERIAL

PROPOSED HIGHWAY PLANS

FAP ROUTE 693 (IL 9)
SECTION (FR)I-1
PROJECT
LONGITUDINAL JOINT REPAIR
W OF MT. VERNON DR. TO
CARNAHAN DR. IN BLOOMINGTON
MCLEAN COUNTY

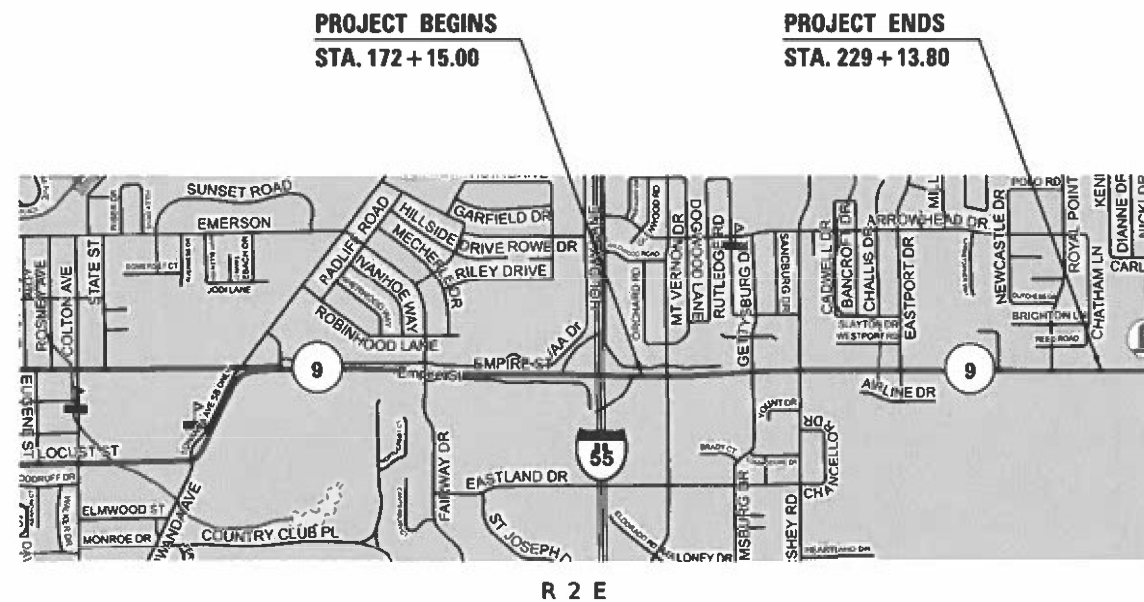
C-95-029-23



FULL SIZE PLANS HAVE BEEN PREPARED USING STANDARD ENGINEERING SCALES. REDUCED SIZED PLANS WILL NOT CONFORM TO STANDARD SCALES. IN MAKING MEASUREMENTS ON REDUCED PLANS, THE ABOVE SCALES MAY BE USED.

J.U.L.I.E.
JOINT UTILITY LOCATION INFORMATION FOR EXCAVATORS
1-800-892-0123
OR 811 BLOOMINGTON CITY TOWNSHIP

PROJECT ENGINEER: RYAN CARROLL
DESIGNER: JEANNIE BLAND
PHONE: (217)465-4181
CONTRACT NO. 70G18



GROSS LENGTH = 5,698.80 FT. = 1.08 MILE
NET LENGTH = 5,698.80 FT. = 1.08 MILE

STATE OF ILLINOIS
DEPARTMENT OF TRANSPORTATION

SUBMITTED 3/22 20 23
Kensil A. Barnettson
REGIONAL ENGINEER

May 12, 2023 [Signature]
ENGINEER OF DESIGN AND ENVIRONMENT

May 12, 2023 [Signature]
DIRECTOR OF HIGHWAYS PROJECT IMPLEMENTATION

PRINTED BY THE AUTHORITY OF THE STATE OF ILLINOIS

INDEX OF SHEETS

SHEET NO.	DESCRIPTION
1	COVER SHEET
2	INDEX OF SHEETS
2	HIGHWAY STANDARDS
2	GENERAL NOTES
3	SUMMARY OF QUANTITIES
4	TYPICAL CROSS SECTION
5	SCHEDULE OF QUANTITIES
6 - 11	PLAN SHEETS
12	TRAFFIC CONTROL AND PROTECTION DEVICES ROAD & SIDEROAD / STREET CLOSURES DETAIL

LIST OF HIGHWAY STANDARDS

STANDARD NO.	DESCRIPTION
000001-08	STANDARDS SYMBOLS, ABBREVIATIONS, & PATTERNS
001006	DECIMAL OF AN INCH AND OF A FOOT
701101-05	OFF ROAD OPERATIONS, MULTILANE 15' TO 24' FROM PAVEMENT EDGE
701106-02	OFF ROAD OPERATIONS, MULTILANE, MORE THAN 15' AWAY
701427-05	LANE CLOSURE, MULTILANE, INTERMITTENT OR MOVING OPERATIONS, FOR SPEEDS ≤ 40 MPH
701601-09	URBAN LANE CLOSURE, MULTILANE, DAY OPERATIONS ONLY, FOR SPEEDS ≤ 40 MPH
701701-10	URBAN LANE CLOSURE, MULTILANE INTERSECTION
701901-08	TRAFFIC CONTROL DEVICES

GENERAL NOTES

G.N.-100A
ELECTRONIC FILES AND/OR ELECTRONIC SURVEY INFORMATION INCLUDING CADD FILES WILL NOT BE AVAILABLE TO THE CONTRACTOR.

G.N. -406H

MIXTURE REQUIREMENTS

THE FOLLOWING MIXTURE REQUIREMENTS ARE APPLICABLE FOR THIS PROJECT:

Location	IL 9 (Locust St)	IL 9 (Locust St)
Mixture Use	Surface (Full Width Intersections)	Surface (Joint Inlays)
AC/PG	SBS PG 70-22	PG 64-22
Design Air Voids	4.0% @ Ndes=70	4.0% @ Ndes=70
Mix Comp(Gradation)	IL 9.5	IL 9.5
Friction Aggregate	Mix D	Mix D
Mixture Weight	112	112
Quality Management Program	QC/QA	QC/QA
Sublot Size	3000	3000
Material Transfer Device (Required ?)	NO	NO

COMMITMENTS

THERE ARE NO COMMITMENTS FOR THIS PROJECT

MODEL: I:\MODEL\MAME FILE NAME: P:\I\DOT\Documents\DOT Office\Dir\Dir: S:\Project\70G 18\CAD\Drawings\CADD\Sheets\70G18\Pl-GenNotes.dgn

USER NAME = Bridgette.Pierson	DESIGNED -	REVISED -
	DRAWN -	REVISED -
PLOT SCALE = 40,0000 * / in.	CHECKED -	REVISED -
PLOT DATE = 3/21/2023	DATE -	REVISED -

**STATE OF ILLINOIS
DEPARTMENT OF TRANSPORTATION**

**INDEX OF SHEETS, HIGHWAY STANDARDS,
COMMITMENTS & GENERAL NOTES**

SCALE: NONE SHEET 1 OF 1 SHEETS STA. TO STA.

F.A.P. RTE.	SECTION	COUNTY	TOTAL SHEETS	SHEET NO.
693	(FR)-1	MCLEAN	12	2
CONTRACT NO. 70G18				
ILLINOIS FED. AID PROJECT				

SUMMARY OF QUANTITIES

LOCATION OF WORK: FAP 693
 URBAN
 MINOR ARTERIAL
 STA. 172+15.00 TO STA. 229 + 13.80
 MCLEAN
 FUNDING BREAKOUT: 100% STATE
 CONSTRUCTION TYPE CODE: 0005

<u>CODE NO.</u>	<u>ITEM</u>	<u>UNIT</u>	<u>QUANTITY</u>
40600290	BITUMINOUS MATERIALS (TACK COAT)	POUND	1,958.00
40604062	HOT-MIX ASPHALT SURFACE COURSE, 1L-9.5, MIX "D", N70	TON	524.00
40604162	POLYMERIZED HOT-MIX ASPHALT SURFACE COURSE, 1L 9.5, MIX "D", N70	TON	86.00
44000159	HOT-MIX ASPHALT SURFACE REMOVAL 2 1/2"	SQ YD	4,350.00
67100100	MOBILIZATION	L SUM	1.00
70102630	TRAFFIC CONTROL AND PROTECTION, STANDARD 701601	L SUM	1.00
70102635	TRAFFIC CONTROL AND PROTECTION, STANDARD 701701	L SUM	1.00
Z0013798	CONSTRUCTION LAYOUT	L SUM	1.00
* DENOTES SPECIALTY ITEM			

MODEL: I:\MODEL\MMFE
FILE: MMFE.dwg
PLOT DATE: 3/21/2023

USER NAME = Bridgette.Pierson	DESIGNED -	REVISED -
PLOT SCALE = 40,0000 * / in.	CHECKED -	REVISED -
PLOT DATE = 3/21/2023	DATE -	REVISED -

**STATE OF ILLINOIS
DEPARTMENT OF TRANSPORTATION**

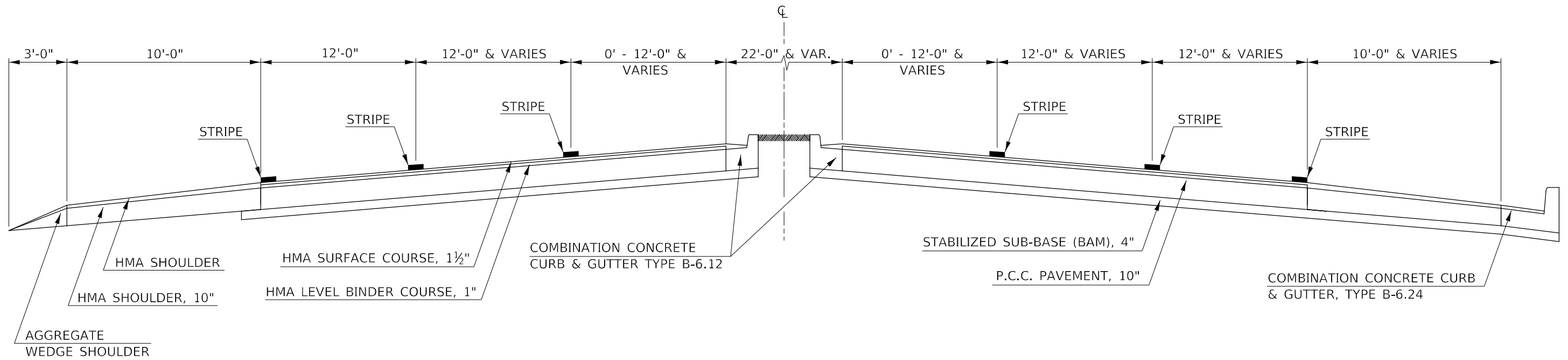
SUMMARY OF QUANTITIES

SCALE: NONE SHEET 1 OF 1 SHEETS STA. TO STA.

F.A.P. RTE.	SECTION	COUNTY	TOTAL SHEETS	SHEET NO.
693	(FR)-1	MCLEAN	12	3
CONTRACT NO. 70G18				
ILLINOIS FED. AID PROJECT				

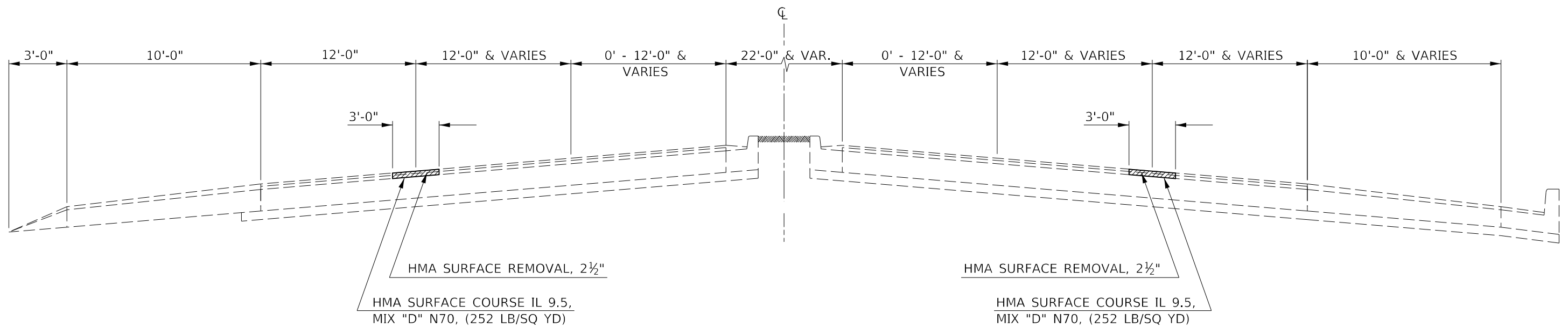
1 EXISTING TYPICAL CROSS SECTION

EMPIRE STREET
STA. 172 + 15.00 TO STA. 230 + 33.00



1 PROPOSED TYPICAL CROSS SECTION

EMPIRE STREET
STA. 172 + 15.00 TO STA. 230 + 33.00



MODEL: \\MODEL\MAME
 FILE: \\MAILS_PUB\pub\paw_bentley.com\PIV\DOT\Documents\DOT_Offices\Dir\dir: S:\Project\0570G\B\CAD\DATA\CAD\Sheet\0570G18-sh-ty-crsk-dgn

USER NAME = Bridgette.Pierson	DESIGNED -	REVISED -
	DRAWN -	REVISED -
PLOT SCALE = 40,0000 * / in.	CHECKED -	REVISED -
PLOT DATE = 3/21/2023	DATE -	REVISED -

STATE OF ILLINOIS
DEPARTMENT OF TRANSPORTATION

TYPICAL CROSS SECTIONS
EMPIRE STREET

SCALE: NONE SHEET 1 OF 1 SHEETS STA. TO STA.

F.A.P. RTE. 693	SECTION (FR)-1	COUNTY MCLEAN	TOTAL SHEETS 12	SHEET NO. 4
			CONTRACT NO. 70G18	
ILLINOIS FED. AID PROJECT				

SCHEDULE OF QUANTITIES

LOCATIONS	STATION	TO	STATION	LENGTH FT	WIDTH FT	AREA SQ FT	DEPTH INCH	40600290	44000159	40604072	40604062
								BITUMINOUS MATERIALS (TACK COAT) APP RATE = 0.05LBS / SQFT POUND	HOT MIX ASPHALT SURFACE REMOVAL 2 1/2" SQ YD	POLYMER HMA SURFACE CSE IL 9.5 MIX "D" N70 TON	HOT MIX ASPHALT SURFACE CSE IL 9.5 MIX "D" N70 TON
E EMPIRE (WB) CL	LT 172+15		LT 183+00	1,085.00	3.00	3,255.00	2.50	162.75	361.67		50.63
E EMPIRE (EB) CL	RT 172+15		RT 229+15	5,700.00	3.00	17,100.00	2.50	855.00	1,900.00		266.00
E EMPIRE (WB) CL	LT 183+60		LT 190+00	640.00	3.00	1,920.00	2.50	96.00	213.33		29.87
E EMPIRE (WB) CL	LT 191+25		LT 229+15	3,790.00	3.00	11,370.00	2.50	568.50	1,263.33		176.87
E EMPIRE (WB) LANES	LT 190+00		LT 191+25	125.00	44.00	5,500.00	2.50	275.00	611.11	85.56	
TOTAL =								1,957.25	4,349.44	85.56	523.37
USE =								1,958.00	4,350.00	86.00	524.00

MODEL: \\MODEL\MAME
 FILE: \\MAILS_P\public\paw_bentley.com\PIV\DOT\Documents\DOT_Offices\Dir\dtr_5\Project\0570G_IL\CAD\data\CAD\Sheets\0570G_IL\Sh-Schedule.dgn

USER NAME = Bridgette.Pierson	DESIGNED -	REVISED -
	DRAWN -	REVISED -
PLOT SCALE = 40,0000 * / in.	CHECKED -	REVISED -
PLOT DATE = 3/21/2023	DATE -	REVISED -

**STATE OF ILLINOIS
DEPARTMENT OF TRANSPORTATION**

SCHEDULE OF QUANTITIES

SCALE: NONE SHEET 1 OF 1 SHEETS STA. TO STA.

F.A.P. RTE.	SECTION	COUNTY	TOTAL SHEETS	SHEET NO.
693	(FR)-1	MCLEAN	12	5
CONTRACT NO. 70G18				
ILLINOIS FED. AID PROJECT				

T 24 N, R 2 E

PROJECT BEGINS
STATION 172+15.00



MT. VERNON
DRIVE

MATCHLINE STA. 173+00.00

167 168 169 170+00 171 172 EMPIRE ST. 172

T 23 N, R 2 E

T 24 N, R 2 E



18" CMP

173 174 175+00 176 177 EMPIRE ST. 178

MATCHLINE STA. 173+00.00

MATCHLINE STA. 179+00.00

PROSPECT
DRIVE

T 23 N, R 2 E

MODEL: \\MODELS\MAME
FILE: \\MAILS_P\Public\paw_bendley.com\PI\DOT\Documents\DOT_Offices\Dir\Dir: S\Project\70G\IL\CAD\DATA\CAD\Sheet\70G\18-FR-1-Sub_Empire.dwg

USER NAME = Bridgette.Pierson	DESIGNED -	REVISED -
PLOT SCALE = 40,0000 */ in.	DRAWN -	REVISED -
PLOT DATE = 3/21/2023	CHECKED -	REVISED -
	DATE -	REVISED -

STATE OF ILLINOIS
DEPARTMENT OF TRANSPORTATION

FAP 693 (IL RTE 9)
EMPIRE ST PLAN SHEET

SCALE: 1" = 50' SHEET 1 OF 6 SHEETS STA. 167+00.00 TO STA. 179+00.00

F.A.P. RTE.	SECTION	COUNTY	TOTAL SHEETS	SHEET NO.
693	(FR)-1	MCLEAN	12	6
CONTRACT NO. 70G18				
ILLINOIS FED. AID PROJECT				

T 24 N, R 2 E



MATCHLINE STA. 179+00.00

E. EMPIRE ST.

179 | 180+00 | EMPIRE ST. | 181 | 182 | 183 | 184

MATCHLINE STA. 185+00.00

T 23 N, R 2 E



T 24 N, R 2 E

MATCHLINE STA. 185+00.00

185+00 | 186 | EMPIRE ST. | 187 | 188 | 189 | 190+00

MATCHLINE STA. 191+00.00

T 23 N, R 2 E

MODEL: \\MODELS\MNF\...
FILE NAME: ...

USER NAME = Bridgette.Pierson	DESIGNED -	REVISD -
PLOT SCALE = 40,0000 */ in.	CHECKED -	REVISD -
PLOT DATE = 3/21/2023	DATE -	REVISD -

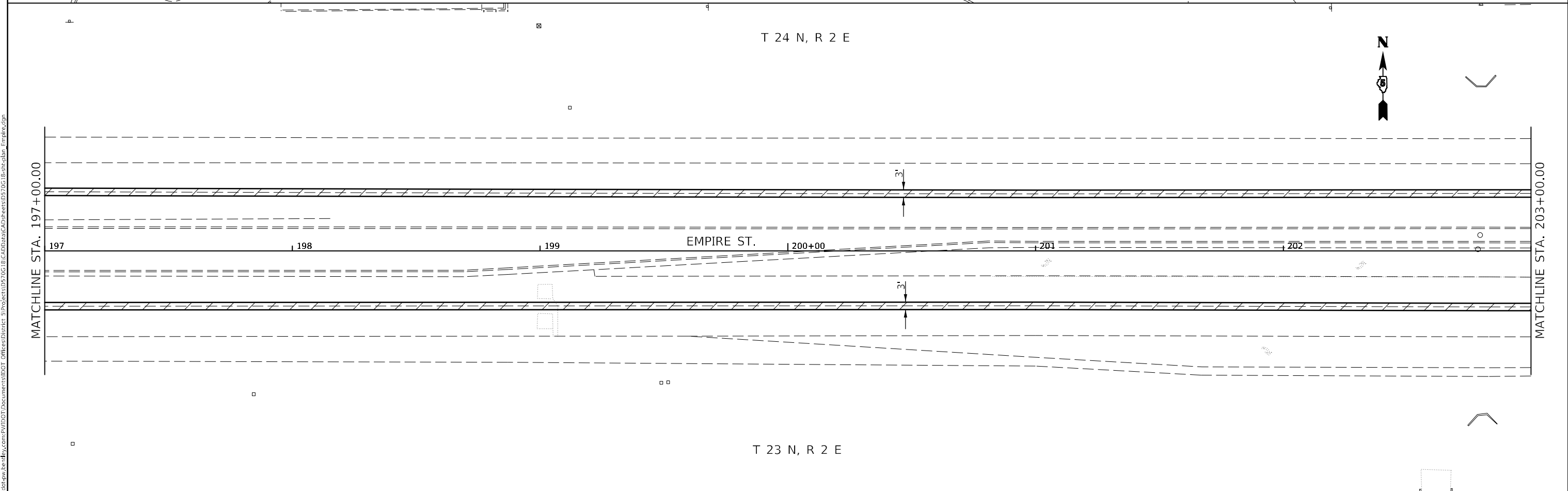
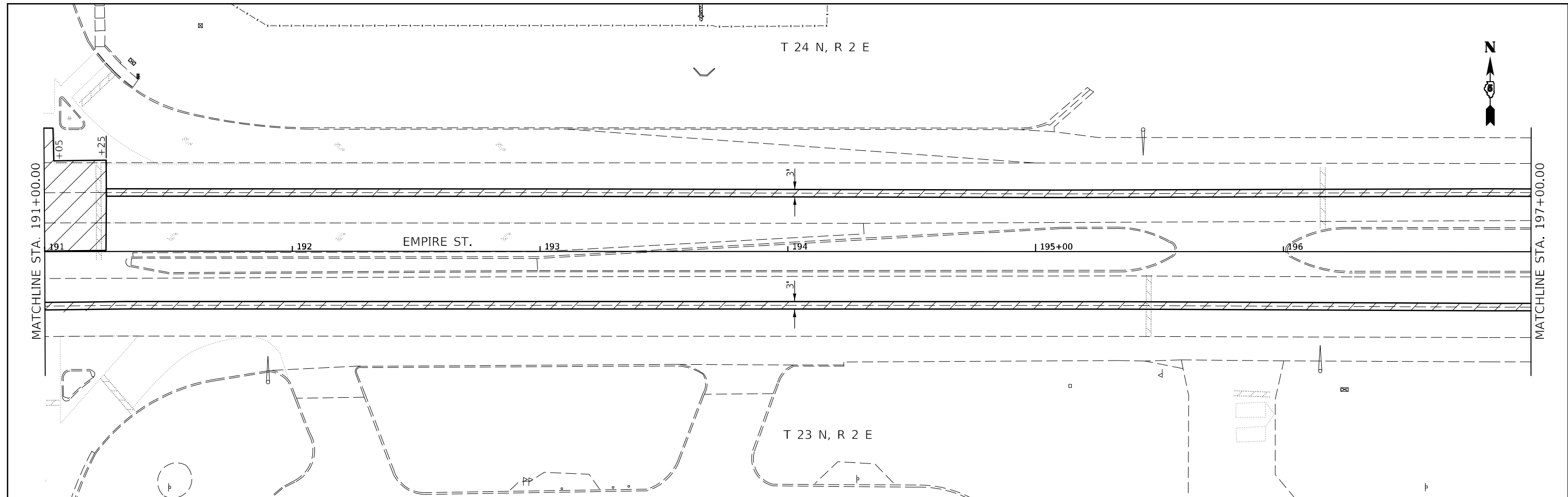
STATE OF ILLINOIS
DEPARTMENT OF TRANSPORTATION

FAP 693 (IL RTE 9)
EMPIRE ST PLAN SHEET

SCALE: 1" = 50' SHEET 2 OF 6 SHEETS STA. 179+00.00 TO STA. 191+00.00

F.A.P. RTE.	SECTION	COUNTY	TOTAL SHEETS	SHEET NO.
693	(FR)I-1	MCLEAN	12	7
CONTRACT NO. 70G18				
ILLINOIS FED. AID PROJECT				

MODEL: \\MODELS\MRFE
 FILE: \\MRFE_Plan\IUC\70G\B\CAD\DATA\CAD\Sheet0570G18\plan\plan_Empire.dwg



USER NAME = Bridgette.Pierson	DESIGNED -	REVISED -
	DRAWN -	REVISED -
PLOT SCALE = 40,0000 * / in.	CHECKED -	REVISED -
PLOT DATE = 3/21/2023	DATE -	REVISED -

**STATE OF ILLINOIS
 DEPARTMENT OF TRANSPORTATION**

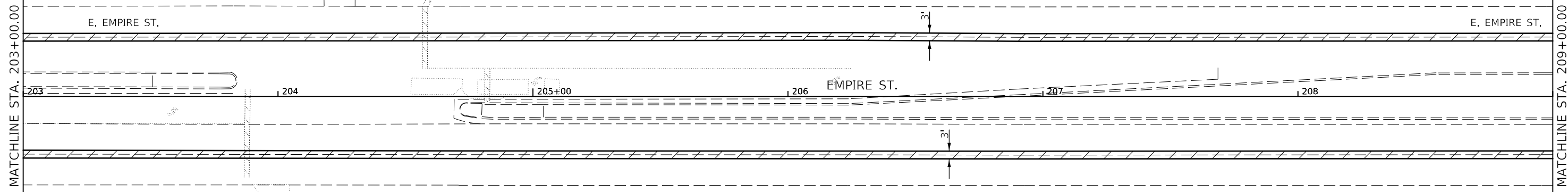
**FAP 693 (IL RTE 9)
 E EMPIRE ST PLAN SHEET**

SCALE: 1" = 50' SHEET 3 OF 6 SHEETS STA. 191+00.00 TO STA. 203+00.00

F.A.P. RTE. 693	SECTION (FR)-1	COUNTY MCLEAN	TOTAL SHEETS 12	SHEET NO. 8
CONTRACT NO. 70G18			ILLINOIS FED. AID PROJECT	



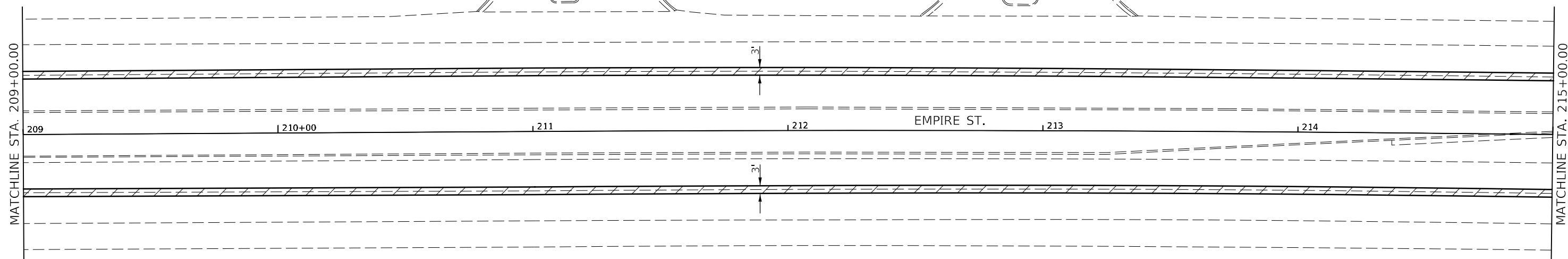
T 24 N, R 2 E



T 23 N, R 2 E



T 24 N, R 2 E



T 23 N, R 2 E

MODEL: \\MODELS\MAME
FILE: \\MAILS_Plan\110223\paw_bentley.com\FW\DOT\Documents\DOT_Offices\Dir\trc_5\Project\70G_IL\CAD\DATA\CAD\Sheet\70G_IL\trc-01b_Empire.dwg

USER NAME = Bridgette.Pierson	DESIGNED -	REVISED -
	DRAWN -	REVISED -
PLOT SCALE = 40,0000 */ in.	CHECKED -	REVISED -
PLOT DATE = 3/21/2023	DATE -	REVISED -

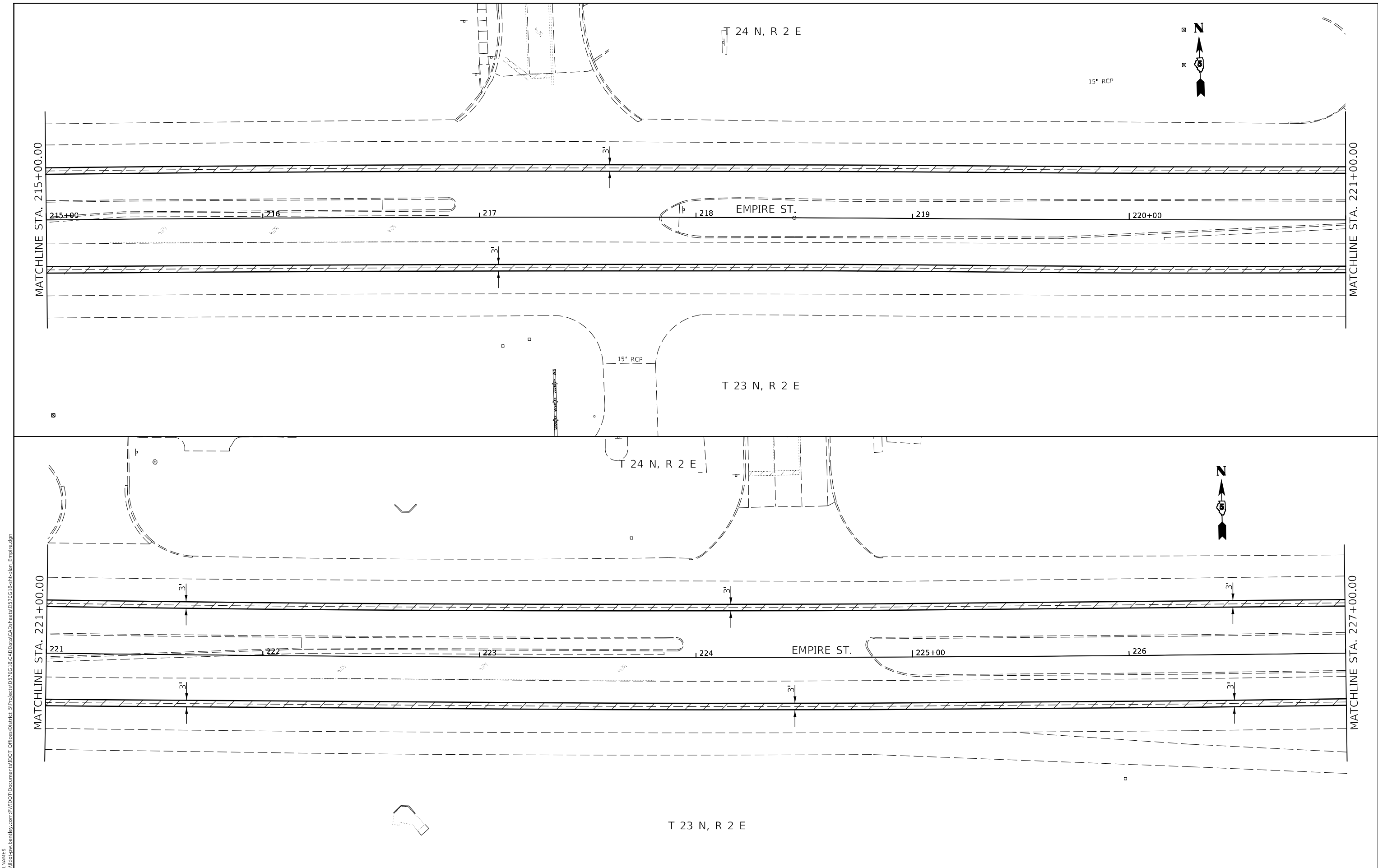
STATE OF ILLINOIS
DEPARTMENT OF TRANSPORTATION

FAP 693 (IL RTE 9)
EMPIRE ST PLAN SHEET

SCALE: 1" = 50' SHEET 4 OF 6 SHEETS STA. 203+00.00 TO STA. 215+00.00

F.A.P. RTE. 693	SECTION (FR)-1	COUNTY MCLEAN	TOTAL SHEETS 12	SHEET NO. 9
			CONTRACT NO. 70G18	
ILLINOIS FED. AID PROJECT				

MODEL: I:\MODELS\MHFE
 FILE: MHFE_Plan\IUCAD\CAD\Drawings\DOT\Office\Drawings\Project\70G\IUCAD\CAD\Drawings\70G18\Plan\Sub_Empire.dwg



USER NAME = Bridgette.Pierson	DESIGNED -	REVISED -
DRAWN -	REVISED -	
PLOT SCALE = 40,0000 * / in.	CHECKED -	REVISED -
PLOT DATE = 3/21/2023	DATE -	REVISED -

**STATE OF ILLINOIS
 DEPARTMENT OF TRANSPORTATION**

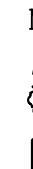
**FAP 693 (IL RTE 9)
 EMPIRE ST PLAN SHEET**

SCALE: 1" = 50' SHEET 5 OF 6 SHEETS STA. 215+00.00 TO STA. 227+00.00

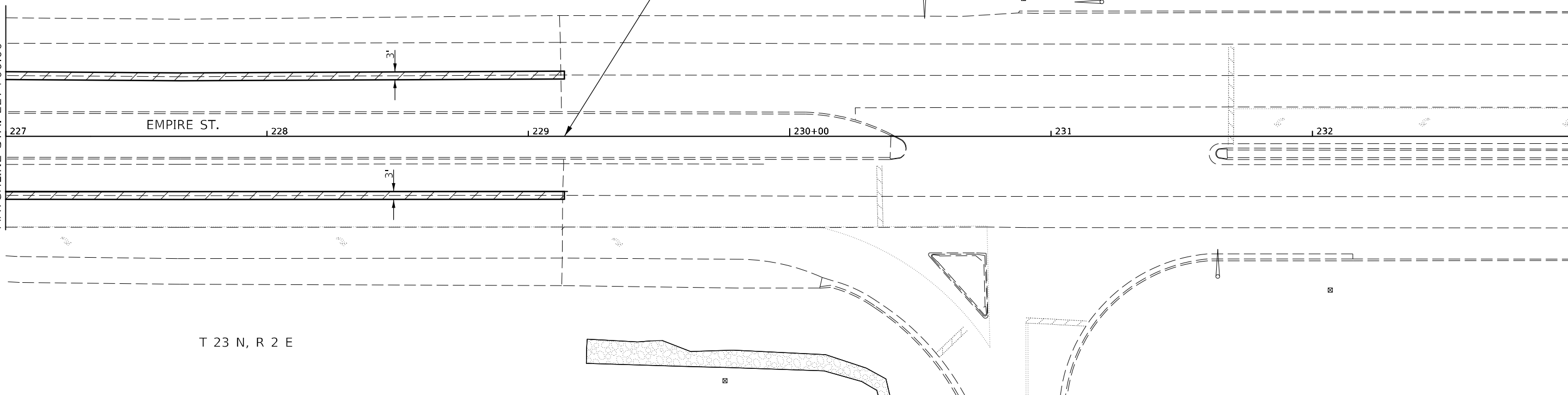
F.A.P. RTE. 693	SECTION (FR)-1	COUNTY MCLEAN	TOTAL SHEETS 12	SHEET NO. 10
CONTRACT NO. 70G18			ILLINOIS FED. AID PROJECT	

T 24 N, R 2 E

PROJECT ENDS
STATION 229+13.80



MATCHLINE STA. 227+00.00



EMPIRE ST.

T 23 N, R 2 E

MODEL: \\MODELS\MNMF
FILE: \\MAILS_Plan\Illinois\bea\ey.com\PIV\DOT\Documents\DOT_Offices\Dir\dr: S:\Project\0570G\B\CAD\DATA\CAD\Sheets\0570G\B\plan\plan_Empire.dwg

USER NAME = Bridgette.Pierson	DESIGNED -	REVISED -
	DRAWN -	REVISED -
PLOT SCALE = 40,0000 * / in.	CHECKED -	REVISED -
PLOT DATE = 3/21/2023	DATE -	REVISED -

**STATE OF ILLINOIS
DEPARTMENT OF TRANSPORTATION**

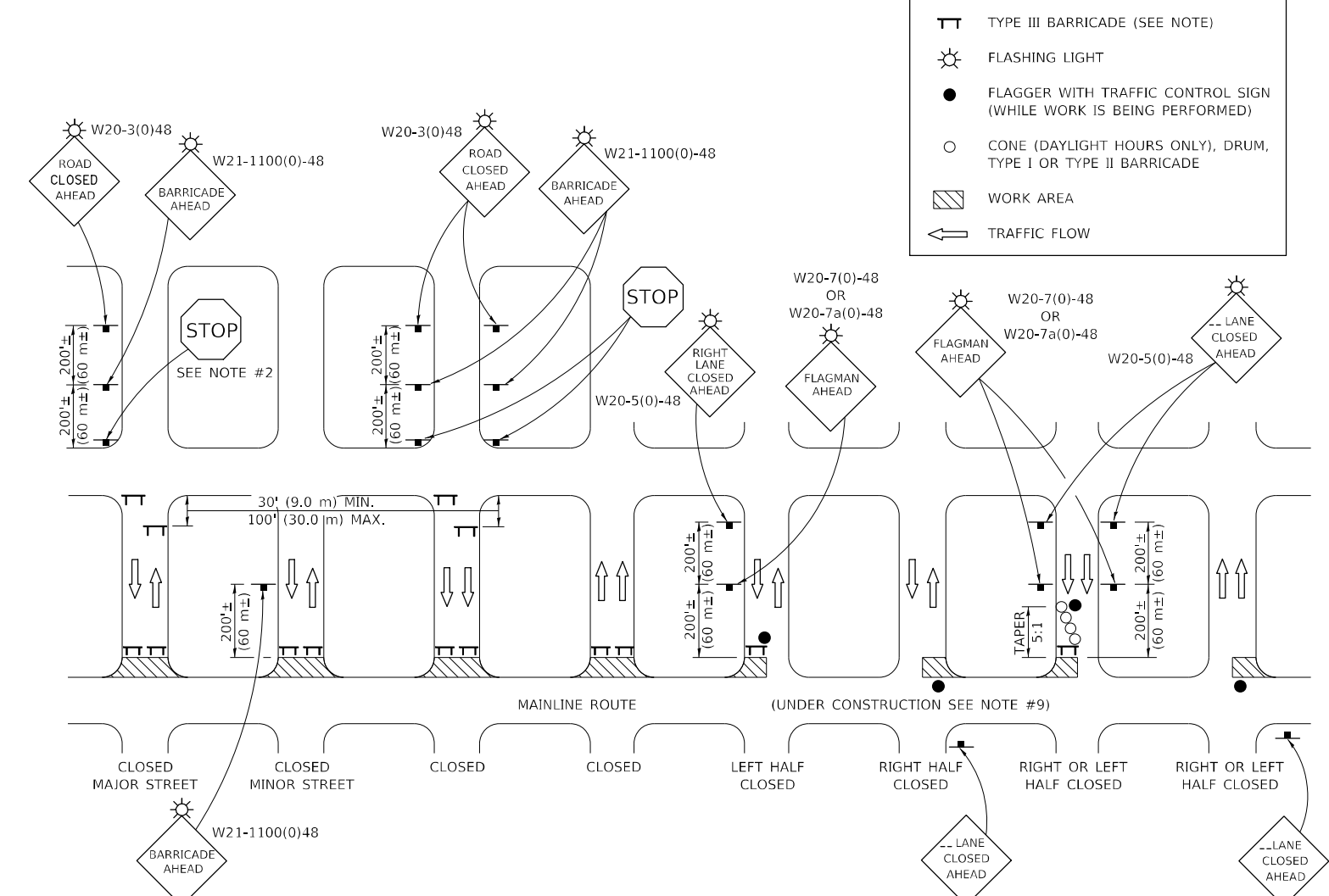
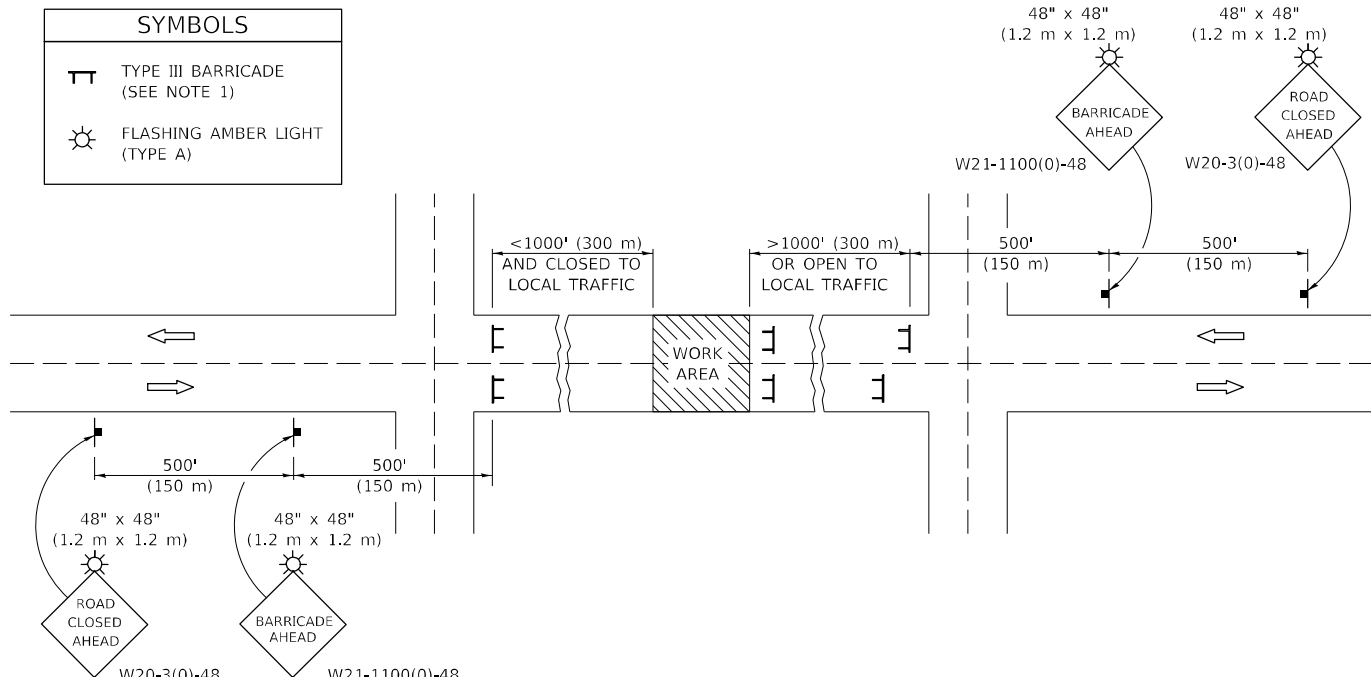
**FAP 693 (IL RTE 9)
EMPIRE ST PLAN SHEET**

SCALE: 1" = 50' SHEET 6 OF 6 SHEETS STA. 227+00.00 TO STA. 235+00.00

F.A.P. RTE.	SECTION	COUNTY	TOTAL SHEETS	SHEET NO.
693	(FR)-1	MCLEAN	12	11
			CONTRACT NO. 70G18	
ILLINOIS FED. AID PROJECT				

ROAD CLOSURE

SIDEROAD / STREET CLOSURE



GENERAL NOTES

- TYPE III BARRICADES SHALL BE AS SHOWN ON STANDARD 701901 "TYPICAL APPLICATIONS OF TYPE III BARRICADES CLOSING A ROAD". EACH TYPE III BARRICADE SHALL HAVE TWO FLASHING AMBER LIGHTS MOUNTED ABOVE IT.
- IF THE ROAD IS OPEN TO LOCAL TRAFFIC OR EXCEEDS 1000' (300 m), ANOTHER SET OF TYPE III BARRICADES, EQUIPPED AS IN NOTE 1 ABOVE, SHALL BE PLACED AT EACH END OF THE WORK AREA.
- WHEN A STOP CONDITION EXISTS, NO SIGNS ARE REQUIRED IN ADVANCE OF THE "STOP" SIGN WHEN THE ROAD IS CLOSED WITHIN 100' (30 m) OF THE INTERSECTION.
- STANDARD 701901 SHALL APPLY FOR THE PLACEMENT & DESIGN OF TYPE III BARRICADES.
- IF A TYPE III BARRICADE WITH AN ATTACHED SIGN PANEL WHICH MEETS NCHRP 350 IS NOT AVAILABLE, THE SIGNS MAY BE MOUNTED ON AN NCHRP 350 TEMPORARY SIGN SUPPORT DIRECTLY IN FRONT OF THE BARRICADE.
- REFLECTORIZED STRIPING SHALL APPEAR ON BOTH SIDES OF THE TYPE III BARRICADES IF ROAD IS OPEN TO LOCAL TRAFFIC.
- ALL SIGNS SHALL BE POST MOUNTED IF THE CLOSURE TIME EXCEEDS FOUR DAYS.
- A MINIMUM OF TWO FLASHING LIGHTS SHALL BE USED AT NIGHT ON EACH APPROACH IN ADVANCE OF THE WORK AREA. FLASHING LIGHTS SHALL BE INSTALLED ABOVE THE FIRST TWO SIGNS IN THE SERIES.
- LONGITUDINAL DIMENSIONS MAY BE ADJUSTED SLIGHTLY TO FIT FIELD CONDITIONS.
- FORMS BT. 725 AND BT. 726 ARE REQUIRED.
- WHEN A SIDEROAD INTERSECTS THE HIGHWAY ON WHICH WORK IS BEING PERFORMED, ADDITIONAL TRAFFIC DEVICES SHALL BE ERECTED AND PROVIDED AS DIRECTED BY THE ENGINEER.
- AN ADDITIONAL SIGN MAY BE REQUIRED AT A MAJOR INTERSECTING ROAD IN ADVANCE OF THE CLOSURE. THE ADDITIONAL SIGN SHALL GIVE THE DISTANCE TO THE BARRICADE IN MILES OR FRACTIONS OF A MILE.

GENERAL NOTES

- TYPE III BARRICADES SHALL BE AS SHOWN ON "TYPICAL APPLICATIONS OF TYPE III BARRICADES CLOSING A ROAD". EACH TYPE III BARRICADE SHALL HAVE TWO FLASHING AMBER LIGHTS MOUNTED ABOVE IT.
- WHERE A STOP CONDITION EXISTS, AS SHOWN ABOVE, WARNING SIGNS MAY BE OMITTED IN ADVANCE OF THE "STOP" SIGN.
- STANDARD 701901 SHALL APPLY FOR THE PLACEMENT & MANUFACTURE OF TYPE III BARRICADES.
- ALL SIGNS SHALL BE POST MOUNTED IF THE CLOSURE TIME EXCEEDS FOUR DAYS.
- ONE FLASHING LIGHT IS REQUIRED ABOVE EACH ADVANCE WARNING SIGN DURING HOURS OF DARKNESS.
- LONGITUDINAL DIMENSIONS MAY BE ADJUSTED SLIGHTLY TO FIT FIELD CONDITIONS.
- FORMS BT 725 AND BT 726 ARE REQUIRED.
- THE MAINLINE ROUTE TEMPORARY TRAFFIC CONTROL SHALL BE IN ACCORDANCE WITH THE PLANS, SPECIAL PROVISIONS AND STANDARD SPECIFICATIONS.
- ALL FLAGGERS REQUIRED AT SIDE ROADS AND ENTRANCES REMAINING OPEN TO TRAFFIC AND/OR ADDITIONAL BARRICADES REQUIRED BY THE ENGINEER TO CLOSE SIDE ROADS AND ENTRANCES WILL BE PAID FOR ACCORDING TO ARTICLE 109.04.

Note: All dimensions are in INCHES (millimeters) unless otherwise shown.

MODEL: I:\MODELS\MHFE... FILE NAME: ...

USER NAME = Bridgette.Pierson	DESIGNED -	REVISED - 11/06
	DRAWN -	REVISED - 12/07
PLOT SCALE = 40,0000 * / in.	CHECKED -	REVISED - 09/09 KJT
PLOT DATE = 3/21/2023	DATE -	REVISED -

**STATE OF ILLINOIS
DEPARTMENT OF TRANSPORTATION**

**TRAFFIC CONTROL & PROTECTION DEVICES
(ROAD & SIDEROAD / STREET CLOSURES)**

SCALE: NONE SHEET 1 OF 1 SHEETS STA. TO STA.

DISTRICT 5 DETAIL NO. 7020000

F.A.P. RTE.	SECTION	COUNTY	TOTAL SHEETS	SHEET NO.
693	(FR)-1	MCLEAN	12	12
			CONTRACT NO. 70G18	
		ILLINOIS	FED. AID PROJECT	