

STATE OF ILLINOIS
DEPARTMENT OF TRANSPORTATION

F.A.P. RTE	SECTION	COUNTY	TOTAL SHEETS	SHEET NO.
116	121RS-4, 122RS-5	JASPER	35	1
		ILLINOIS	CONTRACT NO. 74975	

FOR INDEX OF SHEETS, SEE SHEET NO. 2

ADT = 4100 (2021)

PROPOSED HIGHWAY PLANS

FAP ROUTE 116 (ILL 130)
SECTION 121RS-4, 122RS-5
PROJECT NO. STP-2P49(954)
JASPER COUNTY
DESIGN OVERLAY

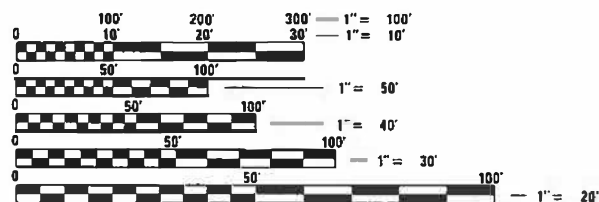
C-97-057-20

STATION EQUATIONS:

- 50 + 35.90(BK) = 50 + 89.10(AH)
- 132 + 03.20(BK) = 132 + 08.40(AH)
- 135 + 61.10(BK) = 135 + 79.50(AH)
- 245 + 33.80(BK) = 245 + 33.60(AH)
- 293 + 63.80(BK) = 293 + 72.40(AH)
- 379 + 44.50(BK) = 379 + 57.80(AH)

OMISSIONS:

99 + 79.77 TO 101 + 03.23

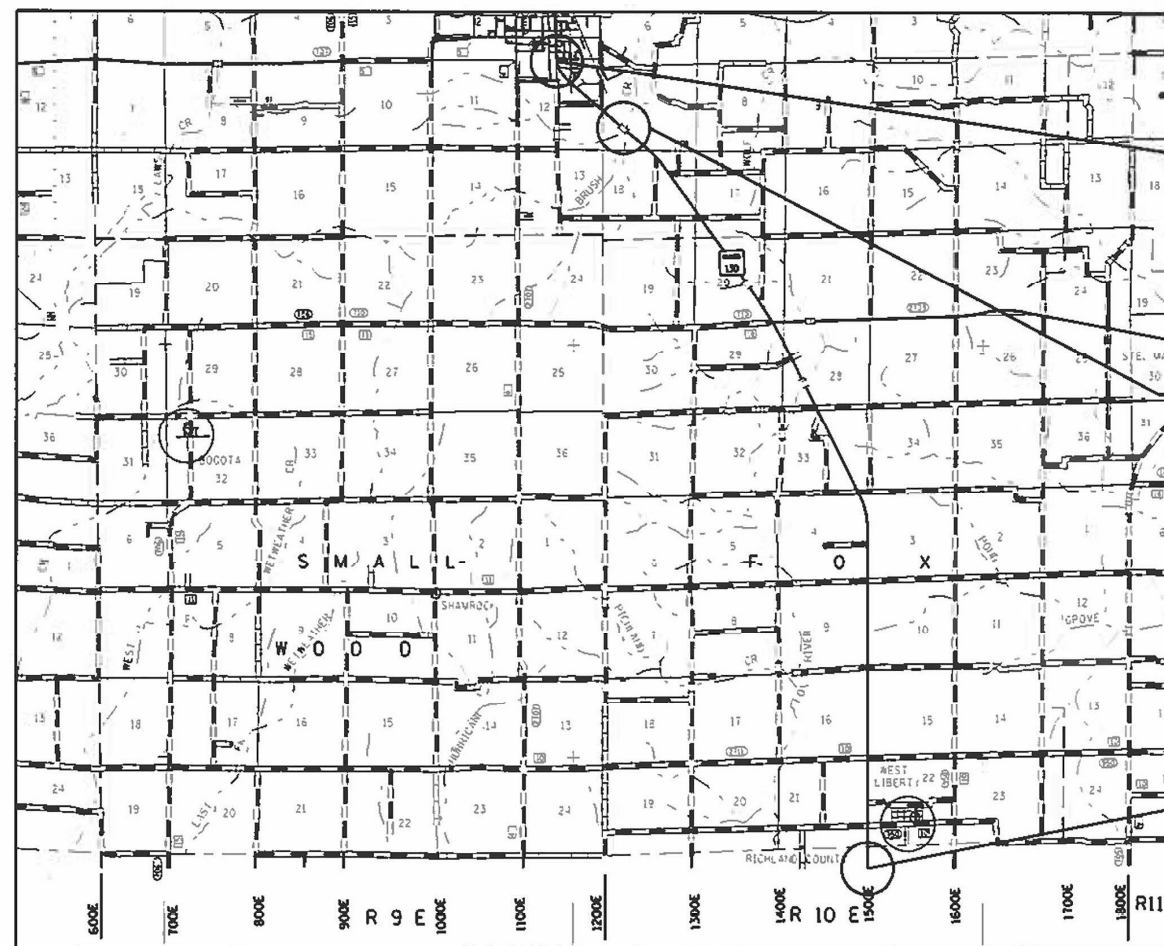


FULL SIZE PLANS HAVE BEEN PREPARED USING STANDARD ENGINEERING SCALES. REDUCED SIZED PLANS WILL NOT CONFORM TO STANDARD SCALES. IN MAKING MEASUREMENTS ON REDUCED PLANS, THE ABOVE SCALES MAY BE USED.

J.U.L.I.E.
JOINT UTILITY LOCATION INFORMATION FOR EXCAVATORS
1-800-892-0123
OR 811

PROJECT ENGINEER MATT BOWER
PROJECT MANAGER BRANDON HEMMEN

CONTRACT NO. 74975



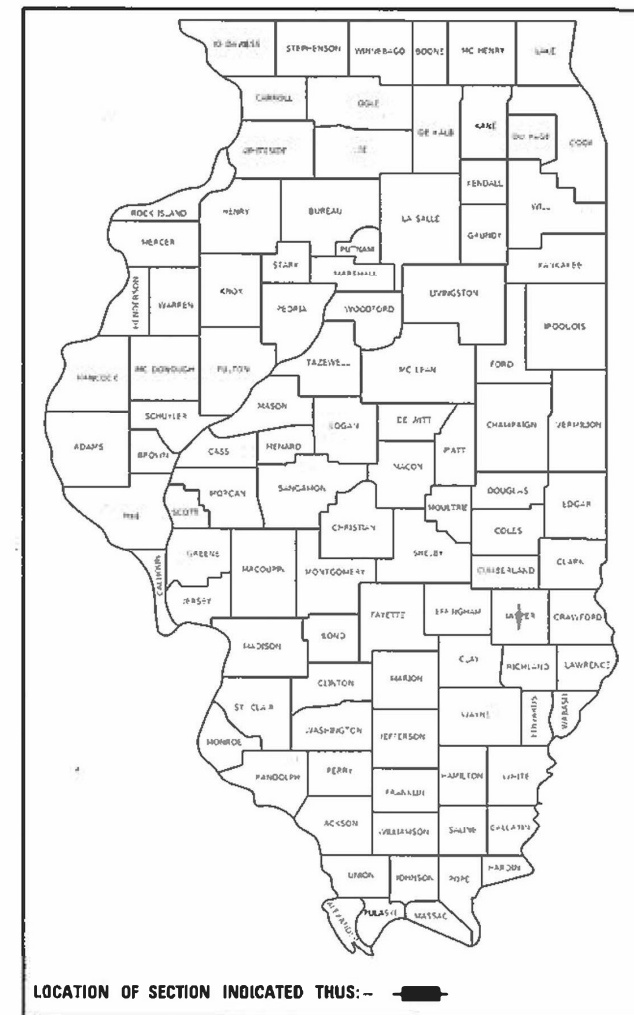
LOCATION MAP

GROSS LENGTH = 54195.5 FT. = 10.26 MILE
NET LENGTH = 54028.5 FT. = 10.23 MILE

PROJECT BEGINS
STA. 40 + 00

BRIDGE OMISSION
STR# 040-0018

PROJECT ENDS
STA. 582 + 94



LOCATION OF SECTION INDICATED THUS: -

STATE OF ILLINOIS
DEPARTMENT OF TRANSPORTATION

SUBMITTED March 1 2023

Jeff P. Meyer REGIONAL ENGINEER

May 12, 2023 Scott A. Etk
ENGINEER OF DESIGN AND ENVIRONMENT

May 12, 2023 Steph McNeill
DIRECTOR OF HIGHWAYS PROJECT IMPLEMENTATION

PRINTED BY THE AUTHORITY
OF THE STATE OF ILLINOIS

INDEX OF SHEETS

SHEET NO.	ITEM
1	COVER SHEET
2	INDEX OF SHEETS & GENERAL NOTES
3-4	SUMMARY OF QUANTITIES
5 - 7	TYPICAL SECTIONS
8 - 9	SCHEUDLE OF QUANTITIES
10 - 28	PLAN SHEEETS
29	PAVING DETAILS
30 - 35	DISTRICT DETAILS

THE FOLLOWING STANDARDS ARE A PART OF THESE PLANS AND ARE INCLUDED AFTER SHEET NO. 36

STD. NO.	DESCRIPTION
000001-08	STANDARD SYMBOLS, ABBREVIATIONS AND PATTERNS
001006	DECIMAL OF AN INCH & OF A FOOT
442201-03	CLASS C AND D PATCHES
642006-01	SHOULDER RUMBLE STRIPS, 8 IN.
667101-02	PERMANENT SURVEY MARKERS
701001-02	OFF-RD OPERATIONS, 2L, 2W, MORE THAN 15' FROM PAVEMENT EDGE
701006-05	OFF-RD OPERATIONS, 2L, 2W, 15' TO 24" FROM PAVEMENT EDGE
701011-04	OFF-RD MOVING OPERATIONS, 2L,2W, DAY ONLY
701201-05	LANE CLOSURE, 2L, 2W, DAY ONLY, FOR SPEEDS ≥ 45 MPH
701301-04	LANE CLOSURE, 2L, 2W, SHORT TIME OPERATIONS
701306-04	LANE CLOSURE, 2L, 2W, SLOW MOVING OPERATIONS DAY ONLY, FOR SPEEDS ≥ 45 MPH
701311-03	LANE CLOSURE 2L, 2W, MOVING OPERATIONS - DAY ONLY
701501-06	URBAN LANE CLOSURE, 2L, 2W, UNDIVIDED
701901-08	TRAFFIC CONTROL DEVICES
780001-05	TYPICAL PAVEMENT MARKINGS
781001-04	TYPICAL APPLICATIONS RAISED REFLECTIVE PAVEMENT MARKERS

GENERAL NOTES

THIS PROJECT IS LOCATED ON FAP ROUTE 116 (IL 130) IN JASPER COUNTY, FROM EDWARDS ST. IN NEWTON TO THE RICHLAND COUNTY LINE. THE WORK CONSISTS OF PAVEMENT PATCHING, MILLING, HOT-MIX ASPHALT RESURFACING, HOT-MIX ASPHALT SHOULDERS, AGGREGATE WEDGE SHOULDERS, PAVEMENT MARKING, RUMBLE STRIPS, AND ANY OTHER WORK NECESSARY TO COMPLETE THIS SECTION.

ADDITIONAL ONE-WAY CRYSTAL RAISED REFLECTIVE PAVEMENT MARKERS WILL BE PLACED AT 40 FOOT CENTERS ALONG THE 6 INCH EDGLINE OF THE TURN LANE AT THE ST. MARIE INTERSECTION.

LONGITUDINAL JOINT SEALANT SHALL BE PLACED ON TOP OF THE POLYMERIZED HOT-MIX ASPHALT BINDER COURSE, IL-9.5FG, N90.

THE MATERIAL USED FOR AGGREGATE WEDGE SHOULDERS, TYPE B SHALL BE CRUSHED STONE, CRUSHED CONCRETE, OR RAP. THE MATERIAL USED FOR AGGREGATE SURFACE COURSE, TYPE B SHALL BE CRUSHED STONE OR CRUSHED CONCRETE.

WHEN APPLYING SHORT TERM PAVEMENT MARKINGS, TEMPORARY TAPE SHALL BE USED ON THE SURFACE COURSE, AND PAINT SHALL BE USED ON BINDER AND MILLED SURFACES.

THE FOLLOWING RATES OF APPLICATION HAVE BEEN USED IN CALCULATING PLAN QUANTITIES:

HOT MIX ASPHALT	112 LBS/SQ YD/IN
AGGREGATE SURFACE COURSE	2.05 TONS/CU YD
AGGREGATE WEDGE SHOULDERS	2.05 TONS/CU YD

THE FOLLOWING MIXTURE REQUIREMENTS ARE APPLICABLE TO THIS PROJECT:

MIXTURE USE(S)	PG	DESIGN AIR VOIDS	MIXTURE COMPOSITION	FRICTION AGGREGATE	MIXTURE WEIGHT	QUALITY MANAGEMENT PROGRAM
POLYMERIZED HMA SURFACE COURSE, MIX "D", N90 (2")	SBS PG 70-22	4.0% @ N=90	IL - 9.5	MIXTURE D	N90	PFP
POLYMERIZED HMA BINDER COURSE, N90 (1 3/4")	SBS PG 70-22	4.0% @ N=90	IL - 9.5FG	N/A	N90	PFP
INCIDENTAL HMA SURFACING	PG 64-22	4.0% @ N=70	IL - 9.5	MIXTURE C	N70	QC/QA
CLASS "D" PAVEMENT PATCHING	PG 64-22	4.0% @ N=90	IL - 19.0	N/A	N90	QC/QA

MODEL: Default
 FILE NAME: p:\public\sw_bentley.com\p\midot\documents\dot_office\distrc\7\Project\374975\Cadd\data\CAD\sheet\074975-sh-egenote.dgn

REV. - MS

USER NAME = Mona.Steffen	DESIGNED -	REVISED -	STATE OF ILLINOIS DEPARTMENT OF TRANSPORTATION	INDEX OF SHEETS, STANDARDS, AND GENERAL NOTES		F.A.P. RTE.	SECTION	COUNTY	TOTAL SHEETS	SHEET NO.
PLOT SCALE = 100.0000' / in.	DRAWN -	REVISED -				116	121RS-4,122RS-5	JASPER	35	2
PLOT DATE = 3/1/2023	CHECKED -	REVISED -		SCALE: SHEET OF SHEETS STA. TO STA.		ILLINOIS FED. AID PROJECT CONTRACT NO. 74975				
	DATE -	REVISED -								

80% FED
20% STATE

80% FED
20% STATE

SUMMARY OF QUANTITIES			TOTAL QUANTITIES	CONSTRUCTION TYPE CODE		
CODE NO	ITEM	UNIT		0005		
40200800	AGGREGATE SURFACE COURSE, TYPE B	TON	108	108		
40600290	BITUMINOUS MATERIALS (TACK COAT)	POUND	122543	122543		
40600370	LONGITUDINAL JOINT SEALANT	FOOT	54707	54707		
40600990	TEMPORARY RAMP	SO YD	54	54		
40603219	POLYMERIZED HOT-MIX ASPHALT BINDER COURSE, IL-9.5FG, N90	TON	17792	17792		
40604164	POLYMERIZED HOT-MIX ASPHALT SURFACE COURSE, IL-9.5, MIX "D", N90	TON	20333	20333		
44000155	HOT-MIX ASPHALT SURFACE REMOVAL, 1 1/2"	SO YD	181545	181545		
44201815	CLASS D PATCHES, TYPE II, 14 INCH	SO YD	2822	2822		
44201819	CLASS D PATCHES, TYPE III, 14 INCH	SO YD	50	50		
44201821	CLASS D PATCHES, TYPE IV, 14 INCH	SO YD	50	50		
48102100	AGGREGATE WEDGE SHOULDER, TYPE B	TON	2846	2846		
64200108	SHOULDER RUMBLE STRIPS, 8 INCH	FOOT	102612	102612		
67000400	ENGINEER'S FIELD OFFICE, TYPE A	CAL MO	6	6		

SUMMARY OF QUANTITIES			TOTAL QUANTITIES	CONSTRUCTION TYPE CODE		
CODE NO	ITEM	UNIT		0005		
67000600	ENGINEER'S FIELD LABORATORY	CAL MO	6	6		
67100100	MOBILIZATION	L SUM	1	1		
70100450	TRAFFIC CONTROL AND PROTECTION, STANDARD 701201	L SUM	1	1		
70100460	TRAFFIC CONTROL AND PROTECTION, STANDARD 701306	L SUM	1	1		
70102620	TRAFFIC CONTROL AND PROTECTION, STANDARD 701501	L SUM	1	1		
70107025	CHANGEABLE MESSAGE SIGN	CAL DA	28	28		
70300100	SHORT TERM PAVEMENT MARKING	FOOT	4628	4628		
70300150	SHORT TERM PAVEMENT MARKING REMOVAL	SO FT	1528	1528		
* 78000100	THERMOPLASTIC PAVEMENT MARKING - LETTERS AND SYMBOLS	SO FT	78	78		
* 78000200	THERMOPLASTIC PAVEMENT MARKING - LINE 4"	FOOT	12383	12383		
* 78000400	THERMOPLASTIC PAVEMENT MARKING - LINE 6"	FOOT	320	320		
* 78001110	PAINT PAVEMENT MARKING - LINE 4"	FOOT	165023	165023		

* SPECIALTY ITEM

MODEL: Default
 FILE NAME: p:\project-aw-bee\paw.com\p\INDOT\Documents\DOT Office\Director_T\Project\74975\CADD\Drawings\CAD\Sheets\DOT74975-ph-500.dgn

USER NAME = Mona.Steffen	DESIGNED -	REVISED -
PLOT SCALE = 100,0000' / in.	DRAWN -	REVISED -
PLOT DATE = 3/1/2023	CHECKED -	REVISED -
	DATE -	REVISED -

STATE OF ILLINOIS
DEPARTMENT OF TRANSPORTATION

SUMMARY OF QUANTITIES

SCALE: SHEET OF SHEETS STA. TO STA.

F.A.P. RTE.	SECTION	COUNTY	TOTAL SHEETS	SHEET NO.
116	121RS-4,122RS-5	JASPER	35	3
CONTRACT NO. 74975				
ILLINOIS FED. AID PROJECT				

80% FED
20% STATE

SUMMARY OF QUANTITIES			TOTAL QUANTITIES	CONSTRUCTION TYPE CODE		
CODE NO	ITEM	UNIT		0005		
* 78011000	GROOVING FOR RECESSED PAVEMENT MARKING, LETTERS AND SYMBOLS	SO FT	78	78		
* 78011025	GROOVING FOR RECESSED PAVEMENT MARKING 5"	FOOT	12383	12383		
* 78011035	GROOVING FOR RECESSED PAVEMENT MARKING 7"	FOOT	320	320		
* 78100100	RAISED REFLECTIVE PAVEMENT MARKER	EACH	556	556		
78300200	RAISED REFLECTIVE PAVEMENT MARKER REMOVAL	EACH	563	563		
X0326440	SURFACE REMOVAL, VARIABLE DEPTH (SPECIAL)	SO YD	2255	2255		
X4060995	TEMPORARY RAMP, SPECIAL	SO YD	100	100		
X4080052	INCIDENTAL HOT-MIX ASPHALT SURFACING (SPECIAL)	TON	188	188		
Z0049799	PROTECTING OR RESETTING SURVEY MARKERS	EACH	1	1		

* SPECIALTY ITEM

MODEL: Default
 FILE NAME: p:\ultra-caw-bee\efw.com\PIV\DOT\Documents\DOT Office\Director_7\Project\74975\CADD\Drawings\CAD\Sheets\DOT74975-sh-SSQ.dgn

USER NAME = Mona.Steffen	DESIGNED -	REVISED -
PLOT SCALE = 100,0000' / in.	DRAWN -	REVISED -
PLOT DATE = 3/1/2023	CHECKED -	REVISED -
	DATE -	REVISED -

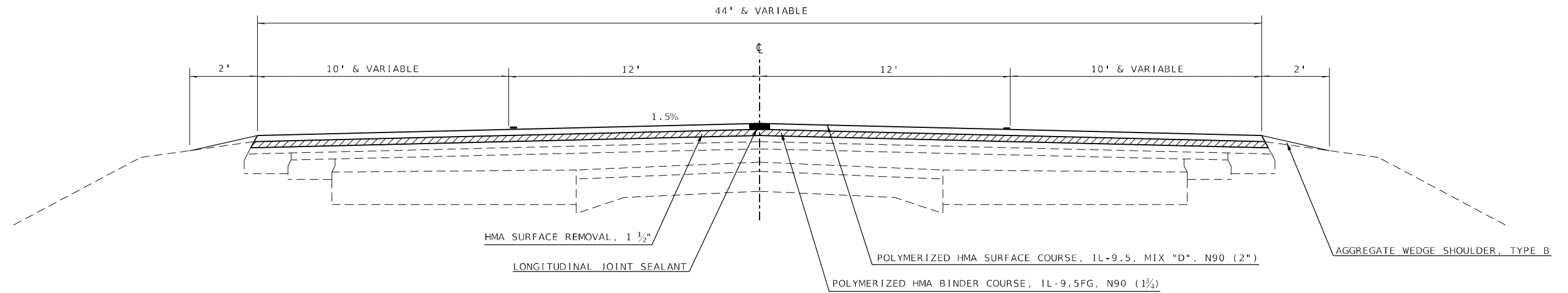
STATE OF ILLINOIS
DEPARTMENT OF TRANSPORTATION

SCALE:		SHEET	OF	SHEETS	STA.	TO STA.
--------	--	-------	----	--------	------	---------

F.A.P. RTE.	SECTION	COUNTY	TOTAL SHEETS	SHEET NO.
116	121RS-4,122RS-5	JASPER	35	4
CONTRACT NO. 74975				
ILLINOIS FED. AID PROJECT				

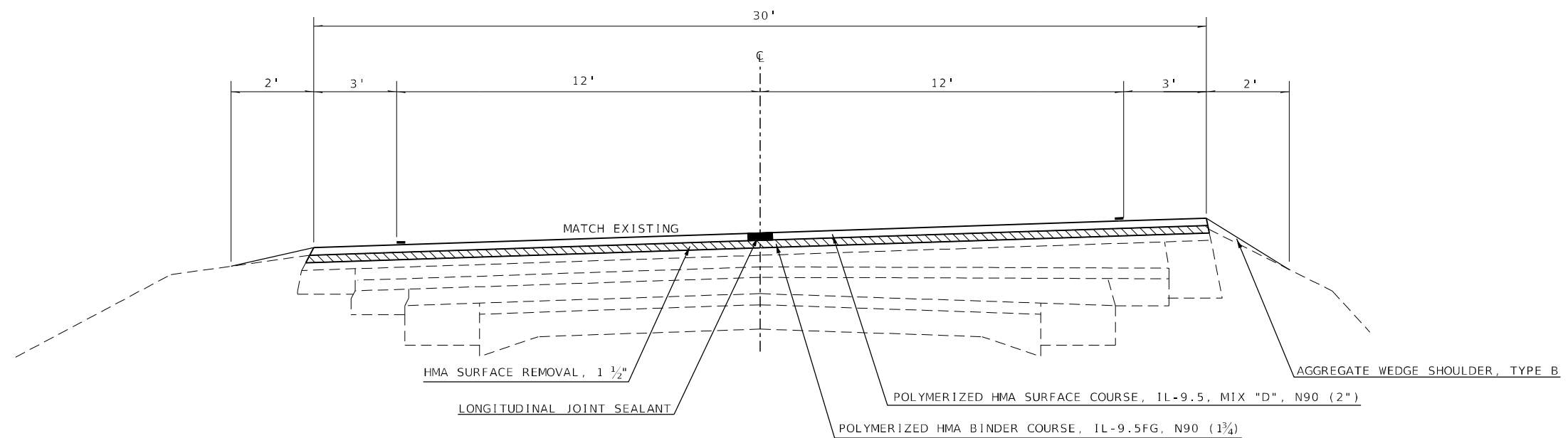
PROPOSED TYPICAL CROSS SECTION

STA 40+00 TO 41+91



PROPOSED TYPICAL CROSS SECTION

STA 41+91 TO 50+35.90



MODEL: Default
 FILE: \\mariya-pc\public\aw-beadley.com\PIV\DOT\Documents\DOT Office\Director_7\Project\74975\CADD\Drawings\CAD\Sheets\074975-sh-c1-typical.dgn

USER NAME = Mona.Steffen	DESIGNED -	REVISED -
	DRAWN -	REVISED -
PLOT SCALE = 100,0000' / in.	CHECKED -	REVISED -
PLOT DATE = 3/1/2023	DATE -	REVISED -

**STATE OF ILLINOIS
DEPARTMENT OF TRANSPORTATION**

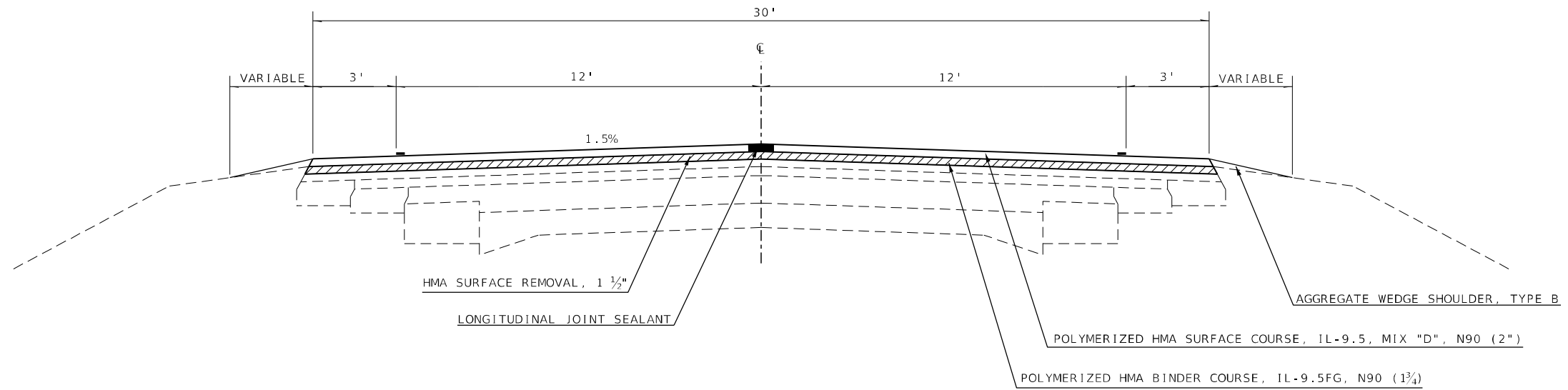
TYPICAL CROSS SECTIONS

SCALE: SHEET OF SHEETS STA. TO STA.

F.A.P. RTE.	SECTION	COUNTY	TOTAL SHEETS	SHEET NO.
116	121RS-4,122RS-5	JASPER	35	5
CONTRACT NO. 74975				
ILLINOIS FED. AID PROJECT				

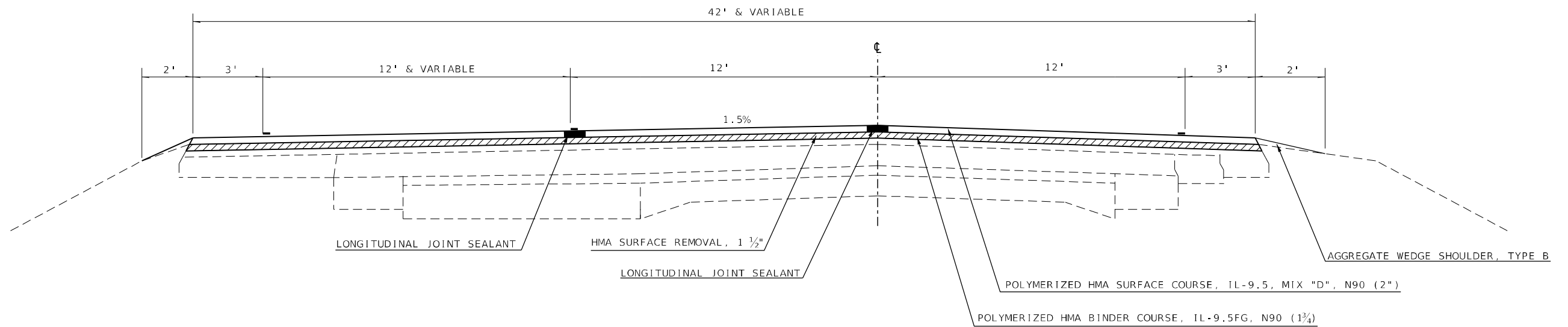
PROPOSED TYPICAL CROSS SECTION

STA 50+89.10 TO 99+80.50
 STA 101+02.50 TO 132+03.20
 STA 132+08.40 TO 135+61.10
 STA 135+79.50 TO 245+33.80
 STA 245+33.60 TO 251+20.00
 STA 256+20.00 TO 293+63.80
 STA 293+72.40 TO 371+16.20
 STA 379+57.80 TO 582+94.00



PROPOSED TYPICAL CROSS SECTION

STA 251+20 TO STA 256+20



MODEL: Default
 FILE: \\mupc-pub\ultra-cw-bead\p\com\PIV\DOT\Documents\DOT_office\Director_7\Project\74975\CADD\Drawn\CAD\sheet\074975-sh-typical.dgn

USER NAME = Mona.Steffen	DESIGNED -	REVISED -
	DRAWN -	REVISED -
PLOT SCALE = 100,0000' / in.	CHECKED -	REVISED -
PLOT DATE = 3/1/2023	DATE -	REVISED -

STATE OF ILLINOIS
 DEPARTMENT OF TRANSPORTATION

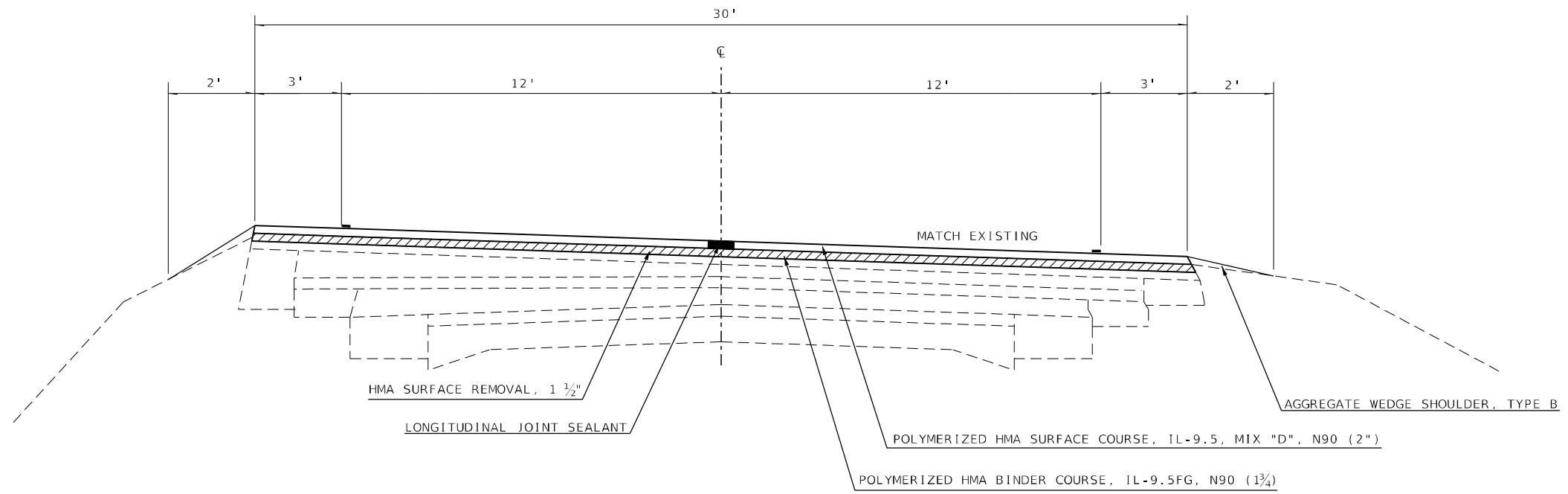
TYPICAL CROSS SECTIONS

SCALE: SHEET OF SHEETS STA. TO STA.

F.A.P. RTE.	SECTION	COUNTY	TOTAL SHEETS	SHEET NO.
116	121RS-4,122RS-5	JASPER	35	6
CONTRACT NO. 74975				
ILLINOIS FED. AID PROJECT				

PROPOSED TYPICAL CROSS SECTION

STA 371+16.20 TO STA 379+44.50



MODEL: Default
 FILE: Model.dwg
 PLOT SCALE: 100,0000' / in.
 PLOT DATE: 3/1/2023
 PROJECT: 74975\CADD\DATA\CAD\Sheets\0774975-shs-typical.dgn

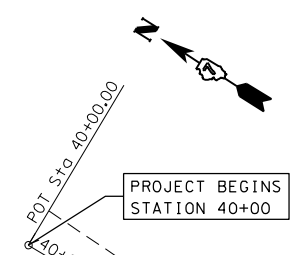
USER NAME = Mona.Steffen	DESIGNED -	REVISED -
	DRAWN -	REVISED -
PLOT SCALE = 100,0000' / in.	CHECKED -	REVISED -
PLOT DATE = 3/1/2023	DATE -	REVISED -

STATE OF ILLINOIS
DEPARTMENT OF TRANSPORTATION

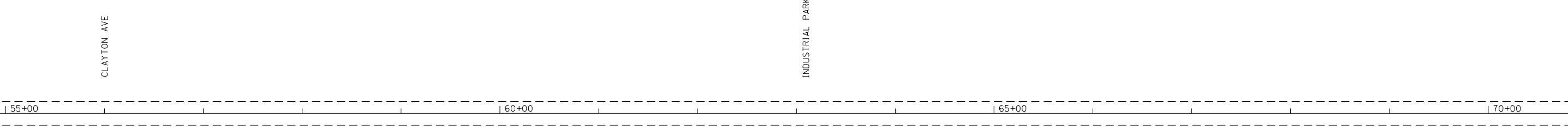
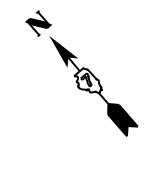
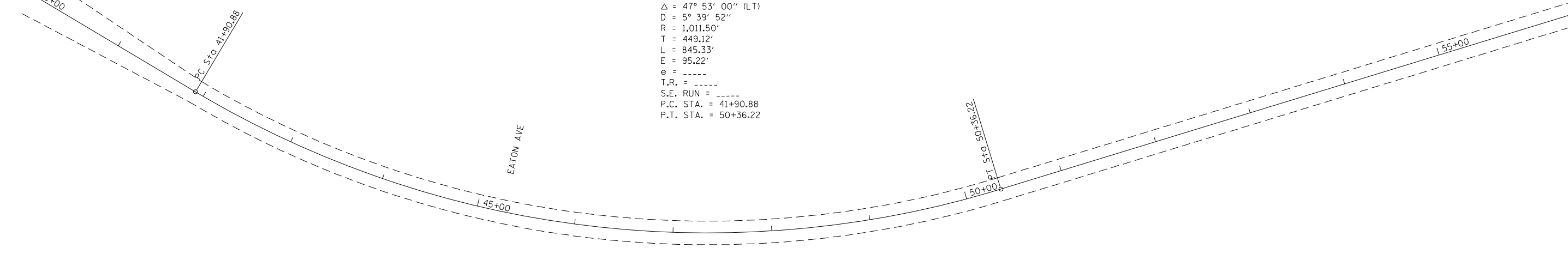
TYPICAL CROSS SECTIONS

SCALE: SHEET OF SHEETS STA. TO STA.

F.A.P. RTE.	SECTION	COUNTY	TOTAL SHEETS	SHEET NO.
116	121RS-4,122RS-5	JASPER	35	7
CONTRACT NO. 74975				
ILLINOIS FED. AID PROJECT				



EXIST. CURVE CURVE4
 PI STA. = 46+40.00
 Δ = 47° 53' 00" (LT)
 D = 5° 39' 52"
 R = 1,011.50'
 T = 449.12'
 L = 845.33'
 E = 95.22'
 e = -----
 T.R. = -----
 S.E. RUN = -----
 P.C. STA. = 41+90.88
 P.T. STA. = 50+36.22



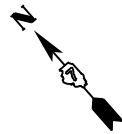
MODEL: Default
 FILE: \\na16f-pw-bentley.com\P\INDOT\Documents\IDOT_offices\District_7\Projects\74975\CADD\Drawings\Drawings\74975-pts-dwg.dgn

USER NAME = Mona.Steffen	DESIGNED -	REVISED -
PLOT SCALE = 106,0000 ' / in.	DRAWN -	REVISED -
PLOT DATE = 3/1/2023	CHECKED -	REVISED -
	DATE -	REVISED -

**STATE OF ILLINOIS
 DEPARTMENT OF TRANSPORTATION**

PLAN SHEET			
SCALE:	SHEET	OF	SHEETS
	STA.	TO	STA.

F.A.P. RTE.	SECTION	COUNTY	TOTAL SHEETS	SHEET NO.
116	121RS-4,122RS-5	JASPER	35	10
ILLINOIS FED. AID PROJECT			CONTRACT NO. 74975	



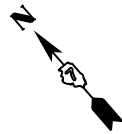
OCHS AVE

70+00

75+00

80+00

85+00



BRIDGE OMISSION
STR. # 040-0018

85+00

90+00

95+00

100+00

MODEL: Default
FILE NAME: p:\ultra-cw-bead\p\com\PIV\DOT\Documents\DOT Office\District 7\Project\74975\CADD\Drawings\CAD\Sheets\074975-sh-d1a.dwg

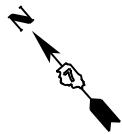
USER NAME = Mona.Steffen	DESIGNED -	REVISED -
	DRAWN -	REVISED -
PLOT SCALE = 106,0000 ' / in.	CHECKED -	REVISED -
PLOT DATE = 3/1/2023	DATE -	REVISED -

**STATE OF ILLINOIS
DEPARTMENT OF TRANSPORTATION**

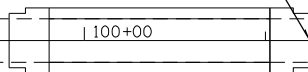
PLAN SHEET

SCALE: SHEET OF SHEETS STA. TO STA.

F.A.P. RTE.	SECTION	COUNTY	TOTAL SHEETS	SHEET NO.
116	121RS-4,122RS-5	JASPER	35	11
CONTRACT NO. 74975			ILLINOIS FED. AID PROJECT	



BRIDGE OMISSION
STR. # 040-0018

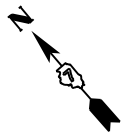


100+00

105+00

110+00

115+00



EXIST. CURVE CURVE7
PI STA. = 126+65.78
 Δ = 13° 30' 00" (RT)
D = 1° 15' 00"
R = 4,583.75'
T = 542.52'
L = 1,080.02'
E = 31.99'
e = -----
T.R. = -----
S.E. RUN = -----
P.C. STA. = 121+23.26
P.T. STA. = 132+03.28

115+00

120+00

P.C. Sta 121+23.26
S.Ta 120+70.38 BK =
S.Ta 121+23.26 AH =

FOULATION:

125+00

8008

130+00

MODEL: Default
FILE: M:\MFC_Plan\Subect-aw-bead-ey.com\FW\DOT\Documents\DOT Office\Director_7\Project\74975\CADD\Drawings\CAD\Sheets\0774975-sh-dh-a.dwg

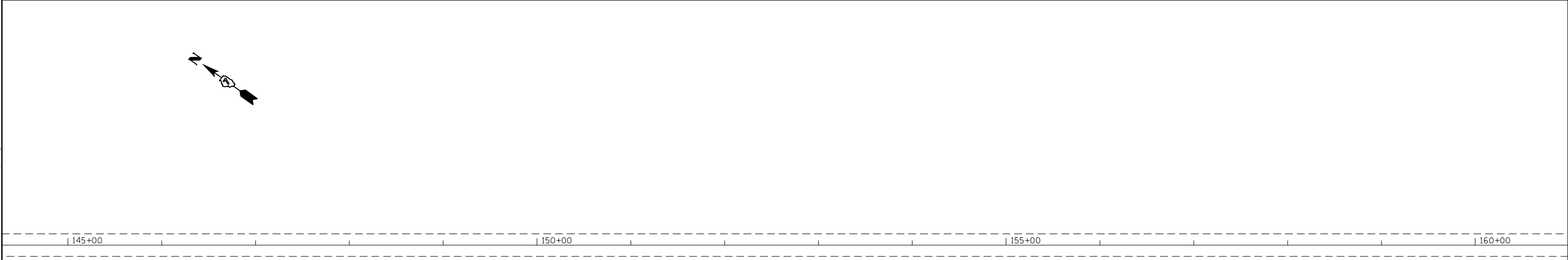
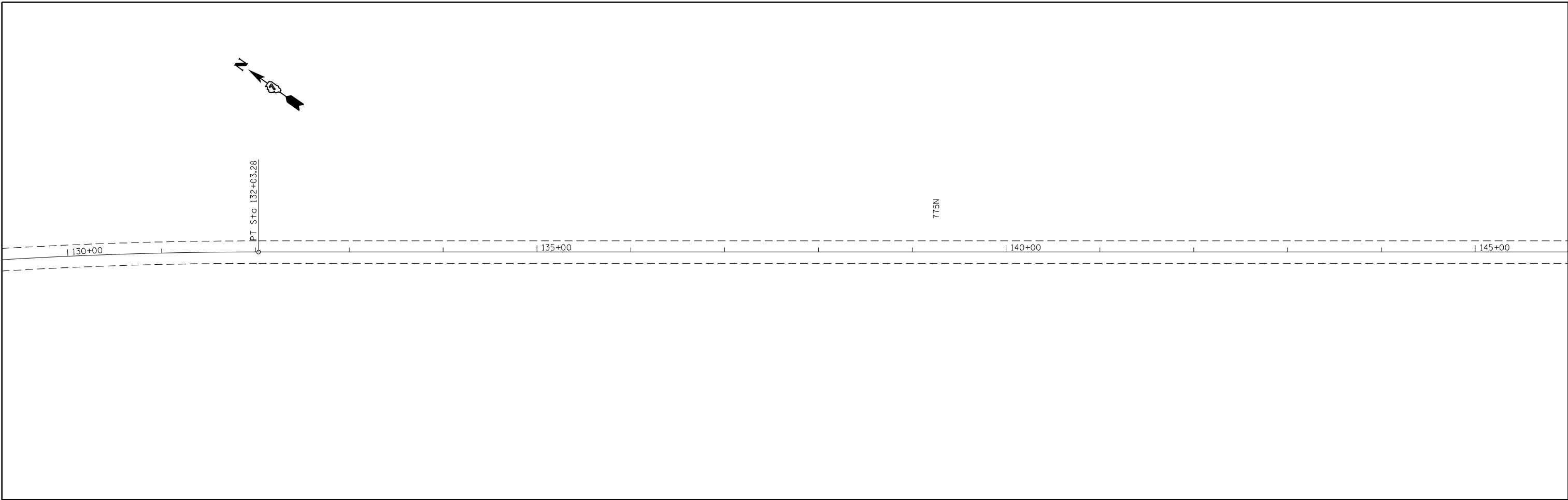
USER NAME = Mona.Steffen	DESIGNED -	REVISED -
	DRAWN -	REVISED -
PLOT SCALE = 106,0000 ' / in.	CHECKED -	REVISED -
PLOT DATE = 3/1/2023	DATE -	REVISED -

**STATE OF ILLINOIS
DEPARTMENT OF TRANSPORTATION**

PLAN SHEET

SCALE: SHEET OF SHEETS STA. TO STA.

F.A.P. RTE.	SECTION	COUNTY	TOTAL SHEETS	SHEET NO.
116	121RS-4,122RS-5	JASPER	35	12
ILLINOIS FED. AID PROJECT			CONTRACT NO. 74975	



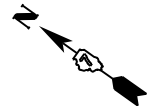
MODEL: Default
 FILE: \\mupc-pw\uldest-pw-beadley.com\P\W\DOT\Documents\1\DOT Office\District 2\Project\74975\CADD\Drawings\CAD\Sheets\074975-sht-dba.dwg

USER NAME = Mona.Steffen	DESIGNED -	REVISED -
	DRAWN -	REVISED -
PLOT SCALE = 106,0000 ' / in.	CHECKED -	REVISED -
PLOT DATE = 3/1/2023	DATE -	REVISED -

STATE OF ILLINOIS
DEPARTMENT OF TRANSPORTATION

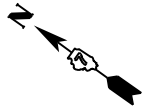
PLAN SHEET			
SCALE:	SHEET	OF	SHEETS
	STA.	TO	STA.

F.A.P. RTE.	SECTION	COUNTY	TOTAL SHEETS	SHEET NO.
116	121RS-4,122RS-5	JASPER	35	13
CONTRACT NO. 74975			ILLINOIS FED. AID PROJECT	



160+00 165+00 170+00 175+00

725N



175+00 180+00 185+00 190+00

MODEL: Default
FILE: \\MAILSrv\pub\ldict-cw-beadley.com\PIV\DOT\Documents\DOT\Office\Director_2\Projects\74975\CADD\Drawings\CAD\Sheets\74975-sht-d1-a.dwg

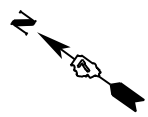
USER NAME = Mona.Steffen	DESIGNED -	REVISED -
	DRAWN -	REVISED -
PLOT SCALE = 106,0000 ' / in.	CHECKED -	REVISED -
PLOT DATE = 3/1/2023	DATE -	REVISED -

**STATE OF ILLINOIS
DEPARTMENT OF TRANSPORTATION**

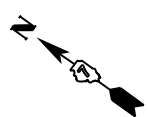
PLAN SHEET

SCALE: SHEET OF SHEETS STA. TO STA.

F.A.P. RTE.	SECTION	COUNTY	TOTAL SHEETS	SHEET NO.
116	121RS-4,122RS-5	JASPER	35	14
CONTRACT NO. 74975			ILLINOIS FED. AID PROJECT	



190+00 195+00 200+00 205+00



205+00 210+00 215+00 220+00

MODEL: Default
FILE NAME: p:\ultra-cw-bead\p\com\PIV\DOT\Documents\DOT Office\District 7\Project\74975\CADD\Drawings\CAD\sheet\074975-sh-dta.dwg

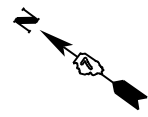
USER NAME = Mona.Steffen	DESIGNED -	REVISED -
	DRAWN -	REVISED -
PLOT SCALE = 106,0000 ' / in.	CHECKED -	REVISED -
PLOT DATE = 3/1/2023	DATE -	REVISED -

**STATE OF ILLINOIS
DEPARTMENT OF TRANSPORTATION**

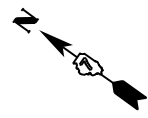
PLAN SHEET

SCALE: SHEET OF SHEETS STA. TO STA.

F.A.P. RTE.	SECTION	COUNTY	TOTAL SHEETS	SHEET NO.
116	121RS-4,122RS-5	JASPER	35	15
CONTRACT NO. 74975			ILLINOIS FED. AID PROJECT	



220+00 225+00 230+00 235+00



EXIST. CURVE CURVE10
 PI STA. = 243+18.50
 Δ = 2° 03' 00" (RT)
 D = 0° 26' 18"
 R = 13,068.75'
 T = 233.82'
 L = 467.59'
 E = 2.09'
 e = -----
 T.R. = -----
 S.E. RUN = -----
 P.C. STA. = 240+84.68
 P.T. STA. = 245+52.27

NO29

235+00 240+00 245+00 250+00

EQULATION:
 STG 240+61.16 BK =
 STG 240+84.68 AH

EQULATION:
 STG 245+52.54 BK =
 STG 245+33.88 AH

MODEL: Default
 FILE NAME: p:\uldest-cw-bead-fy.com\PIV\DOT\Documents\DOT Office\Dir\dir_7\Project\74975\CADD\Drawings\CAD\sheet\074975-sh-dta.dgn

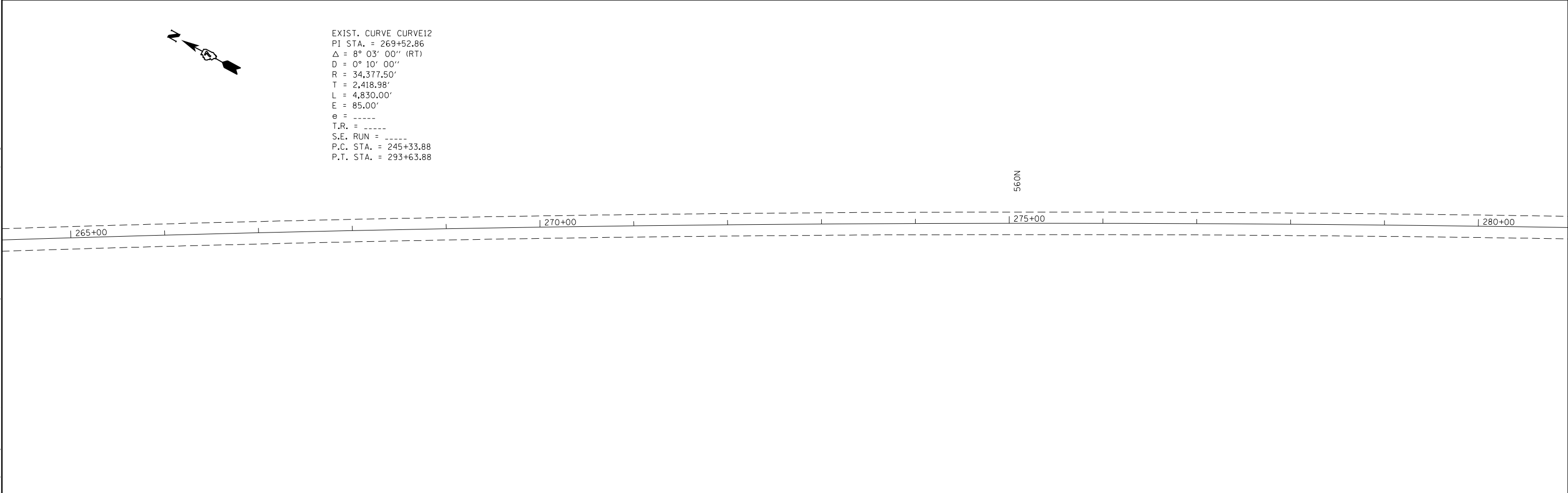
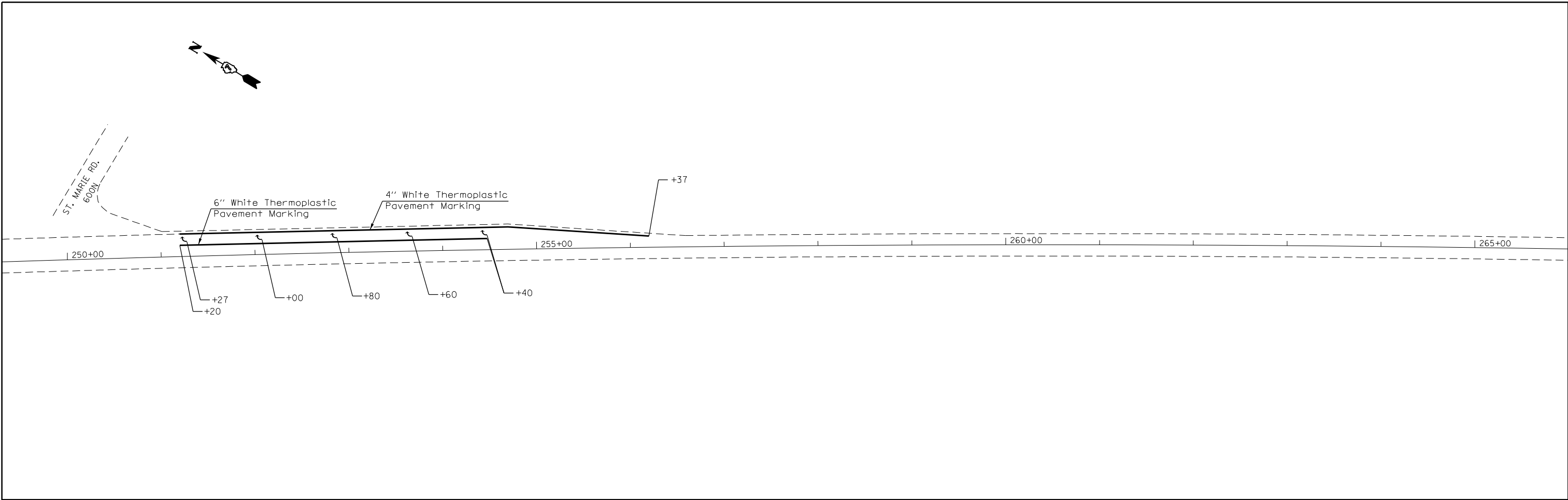
USER NAME = Mona.Steffen	DESIGNED -	REVISED -
	DRAWN -	REVISED -
PLOT SCALE = 106,0000 ' / in.	CHECKED -	REVISED -
PLOT DATE = 3/1/2023	DATE -	REVISED -

**STATE OF ILLINOIS
 DEPARTMENT OF TRANSPORTATION**

PLAN SHEET

SCALE: SHEET OF SHEETS STA. TO STA.

F.A.P. RTE.	SECTION	COUNTY	TOTAL SHEETS	SHEET NO.
116	121RS-4,122RS-5	JASPER	35	16
CONTRACT NO. 74975			ILLINOIS FED. AID PROJECT	



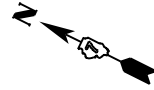
MODEL: Default
 FILE: Mainfile.pia\subject-aw-bee-fwy.com\PIV\DOT\Documents\DOT Office\District 7\Project\74975\CADD\Drawings\CD\Sheets\74975-sfs-dba.dwg

USER NAME = Mona.Steffen	DESIGNED -	REVISED -
	DRAWN -	REVISED -
PLOT SCALE = 106,0000 ' / in.	CHECKED -	REVISED -
PLOT DATE = 3/1/2023	DATE -	REVISED -

STATE OF ILLINOIS
DEPARTMENT OF TRANSPORTATION

PLAN SHEET			
SCALE:	SHEET	OF	SHEETS
	STA.	TO	STA.

F.A.P. RTE.	SECTION	COUNTY	TOTAL SHEETS	SHEET NO.
116	121RS-4,122RS-5	JASPER	35	17
CONTRACT NO. 74975				
ILLINOIS FED. AID PROJECT				



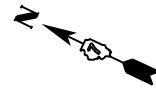
280+00

285+00

290+00

P.I. Sta 293+63.88

295+00



295+00

300+00

305+00

500N

310+00

Model: Default
File Name: p:\u0026amp;aw_bentley.com\p1\INDOT\Documents\INDOT_offices\Dir\dir_7\Project\74975\CADD\Drawings\Drawings\74975-sh-dta.dwg

USER NAME = Mona.Steffen
PLOT SCALE = 106,0000 ' / in.
PLOT DATE = 3/1/2023

DESIGNED -
DRAWN -
CHECKED -
DATE -

REVISED -
REVISED -
REVISED -
REVISED -

**STATE OF ILLINOIS
DEPARTMENT OF TRANSPORTATION**

PLAN SHEET

SCALE: SHEET OF SHEETS STA. TO STA.

F.A.P. RTE.	SECTION	COUNTY	TOTAL SHEETS	SHEET NO.
116	121RS-4,122RS-5	JASPER	35	18
CONTRACT NO. 74975				
ILLINOIS		FED. AID PROJECT		

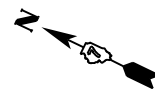


310+00

315+00

320+00

325+00



325+00

330+00

335+00

340+00

MODEL: Default
FILE: \\murf.com\public\aw_bentley.com\PIV\DOT\Documents\DOT Offices\District 7\Projects\74975\CADD\Drawings\Drawings\74975-sh-dt-a.dwg

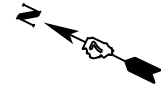
USER NAME = Mona.Steffen	DESIGNED -	REVISED -
	DRAWN -	REVISED -
PLOT SCALE = 106,0000 ' / in.	CHECKED -	REVISED -
PLOT DATE = 3/1/2023	DATE -	REVISED -

**STATE OF ILLINOIS
DEPARTMENT OF TRANSPORTATION**

PLAN SHEET

SCALE: SHEET OF SHEETS STA. TO STA.

F.A.P. RTE.	SECTION	COUNTY	TOTAL SHEETS	SHEET NO.
116	121RS-4,122RS-5	JASPER	35	19
CONTRACT NO. 74975			ILLINOIS FED. AID PROJECT	

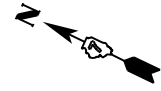


340+00

345+00

350+00

355+00



355+00

360+00

365+00

370+00

400N

Model: Default
File: Mainfile.pia\subject-new-beadley.com\PIV\DOT\Documents\DOT Office\Director_7\Project\74975\CADD\Drawings\CAD\Sheets\074975-sh-dta.dwg

USER NAME = Mona.Steffen	DESIGNED -	REVISED -
	DRAWN -	REVISED -
PLOT SCALE = 106,0000 ' / in.	CHECKED -	REVISED -
PLOT DATE = 3/1/2023	DATE -	REVISED -

**STATE OF ILLINOIS
DEPARTMENT OF TRANSPORTATION**

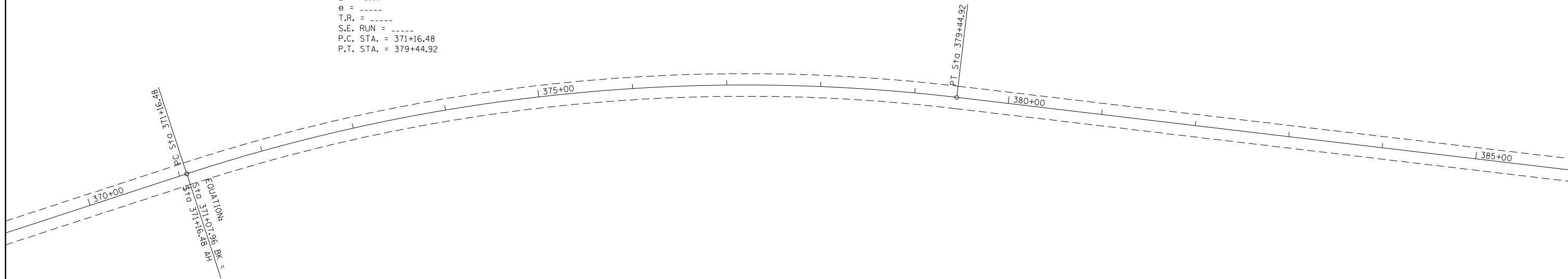
PLAN SHEET

SCALE: SHEET OF SHEETS STA. TO STA.

F.A.P. RTE.	SECTION	COUNTY	TOTAL SHEETS	SHEET NO.
116	121RS-4,122RS-5	JASPER	35	20
CONTRACT NO. 74975			ILLINOIS FED. AID PROJECT	



EXIST. CURVE CURVE15
 PI STA. = 375+37.32
 Δ = 24° 51' 00" (RT)
 D = 2° 59' 59"
 R = 1,910.10'
 T = 420.84'
 L = 828.44'
 E = 45.81'
 e = -----
 T.R. = -----
 S.E. RUN = -----
 P.C. STA. = 371+16.48
 P.T. STA. = 379+44.92



MODEL: Default
 FILE NAME: p:\ultra-cad\dwg\com\piv\DOT\Documents\DOT\Office\Dir\dir_7\Project\74975\CADD\Drawn\CAD\sheet\074975-sht.dwg

USER NAME = Mona.Steffen	DESIGNED -	REVISED -
PLOT SCALE = 106,0000 ' / in.	DRAWN -	REVISED -
PLOT DATE = 3/1/2023	CHECKED -	REVISED -
	DATE -	REVISED -

**STATE OF ILLINOIS
 DEPARTMENT OF TRANSPORTATION**

PLAN SHEET

SCALE: SHEET OF SHEETS STA. TO STA.

F.A.P. RTE.	SECTION	COUNTY	TOTAL SHEETS	SHEET NO.
116	121RS-4,122RS-5	JASPER	35	21
CONTRACT NO. 74975				
ILLINOIS FED. AID PROJECT				



400+00 405+00 410+00 415+00

330N



415+00 420+00 425+00 430+00

300N

MODEL: Default
FILE: \\mupls-pw-beadley.com\PW\DOT\Documents\DOT Office\District 7\Project\74975\CADD\Drawings\CAD\Sheets\074975-sh-dta.dwg

USER NAME = Mona.Steffen	DESIGNED -	REVISED -
	DRAWN -	REVISED -
PLOT SCALE = 106,0000 ' / in.	CHECKED -	REVISED -
PLOT DATE = 3/1/2023	DATE -	REVISED -

**STATE OF ILLINOIS
DEPARTMENT OF TRANSPORTATION**

PLAN SHEET

SCALE: SHEET OF SHEETS STA. TO STA.

F.A.P. RTE.	SECTION	COUNTY	TOTAL SHEETS	SHEET NO.
116	121RS-4,122RS-5	JASPER	35	22
CONTRACT NO. 74975			ILLINOIS FED. AID PROJECT	



430+00

435+00

440+00

445+00



445+00

450+00

455+00

460+00

MODEL: Default
FILE NAME: p:\u0002-cw-beadley.com\P\INDOT\Documents\INDOT Offices\District 7\Projects\74975\CADD\Drawings\CAD\Sheets\074975-sht-d1-a.dwg

USER NAME = Mona.Steffen
PLOT SCALE = 106,0000 ' / in.
PLOT DATE = 3/1/2023

DESIGNED -
DRAWN -
CHECKED -
DATE -

REVISED -
REVISED -
REVISED -
REVISED -

**STATE OF ILLINOIS
DEPARTMENT OF TRANSPORTATION**

PLAN SHEET

SCALE: SHEET OF SHEETS STA. TO STA.

F.A.P. RTE.	SECTION	COUNTY	TOTAL SHEETS	SHEET NO.
116	121RS-4,122RS-5	JASPER	35	23
CONTRACT NO. 74975			ILLINOIS FED. AID PROJECT	



460+00

465+00

470+00

475+00



475+00

480+00

485+00

490+00

220N

MODEL: Default
FILE: \\mupc-pw-bentley.com\PW\DOT\Documents\DOT Offices\District 7\Projects\74975\CADD\Drawings\Drawings\74975-sht-dt-a.dwg

USER NAME = Mona.Steffen
PLOT SCALE = 106,0000 ' / in.
PLOT DATE = 3/1/2023

DESIGNED -
DRAWN -
CHECKED -
DATE -

REVISED -
REVISED -
REVISED -
REVISED -

**STATE OF ILLINOIS
DEPARTMENT OF TRANSPORTATION**

PLAN SHEET

SCALE: SHEET OF SHEETS STA. TO STA.

F.A.P. RTE.	SECTION	COUNTY	TOTAL SHEETS	SHEET NO.
116	121RS-4,122RS-5	JASPER	35	24
CONTRACT NO. 74975			ILLINOIS FED. AID PROJECT	



490+00

495+00

500+00

505+00



505+00

510+00

515+00

520+00

Model: Default
File: \\mifs-pw-beadley.com\P\W\DOT\Documents\DOT\Office\Dir\rdt_7\Project\74975\CADD\Drawings\Drawings\74975-sh-dt-a.dwg

USER NAME = Mona.Steffen
PLOT SCALE = 106,0000 ' / in.
PLOT DATE = 3/1/2023

DESIGNED -
DRAWN -
CHECKED -
DATE -

REVISED -
REVISED -
REVISED -
REVISED -

**STATE OF ILLINOIS
DEPARTMENT OF TRANSPORTATION**

PLAN SHEET

SCALE: SHEET OF SHEETS STA. TO STA.

F.A.P. RTE.	SECTION	COUNTY	TOTAL SHEETS	SHEET NO.
116	121RS-4,122RS-5	JASPER	35	25
ILLINOIS FED. AID PROJECT			CONTRACT NO. 74975	



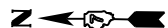
520+00

525+00

530+00

535+00

100N



535+00

540+00

545+00

550+00

MODEL: Default
FILE: \\mupc-pw-bentley.com\PW\DOT\Documents\DOT Offices\District 7\Projects\74975\CADD\Drawings\CADD\Drawings\74975-sh-dt-a.dwg

USER NAME = Mona.Steffen	DESIGNED -	REVISED -
	DRAWN -	REVISED -
PLOT SCALE = 106,0000 ' / in.	CHECKED -	REVISED -
PLOT DATE = 3/1/2023	DATE -	REVISED -

**STATE OF ILLINOIS
DEPARTMENT OF TRANSPORTATION**

PLAN SHEET

SCALE: SHEET OF SHEETS STA. TO STA.

F.A.P. RTE.	SECTION	COUNTY	TOTAL SHEETS	SHEET NO.
116	121RS-4,122RS-5	JASPER	35	26
CONTRACT NO. 74975			ILLINOIS FED. AID PROJECT	



550+00

555+00

560+00

565+00

05N



565+00

570+00

575+00

580+00

025N

MODEL: Default
FILE NAME: p:\subject-aw-beadley.com\P\INDOT\Documents\INDOT Offices\District 7\Projects\74975\CADD\Drawings\CADD\Drawings\74975-sht-dba.dwg

USER NAME = Mona.Steffen	DESIGNED -	REVISED -
	DRAWN -	REVISED -
PLOT SCALE = 106,0000 ' / in.	CHECKED -	REVISED -
PLOT DATE = 3/1/2023	DATE -	REVISED -

**STATE OF ILLINOIS
DEPARTMENT OF TRANSPORTATION**

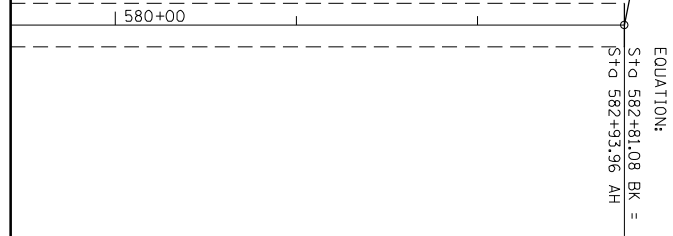
PLAN SHEET

SCALE: SHEET OF SHEETS STA. TO STA.

F.A.P. RTE.	SECTION	COUNTY	TOTAL SHEETS	SHEET NO.
116	121RS-4,122RS-5	JASPER	35	27
ILLINOIS FED. AID PROJECT			CONTRACT NO. 74975	



PROJECT ENDS
STATION 582+81



MODEL: Default
FILE: \\mupl-cw-bentley.com\P\DOT\Documents\DOT Offices\District 7\Projects\74975\CADD\Drawings\CAD\Drawings\74975-sht-dt-a.dwg

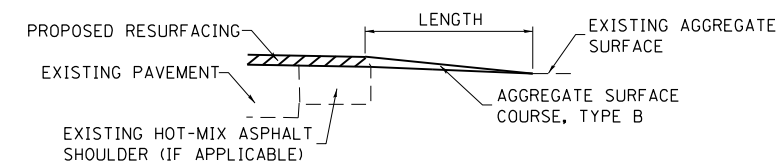
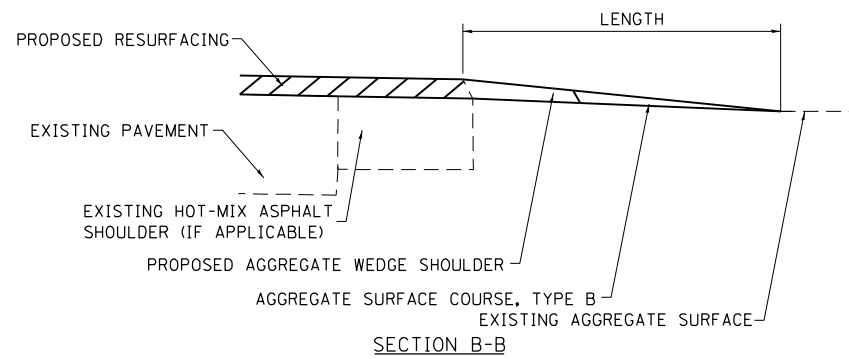
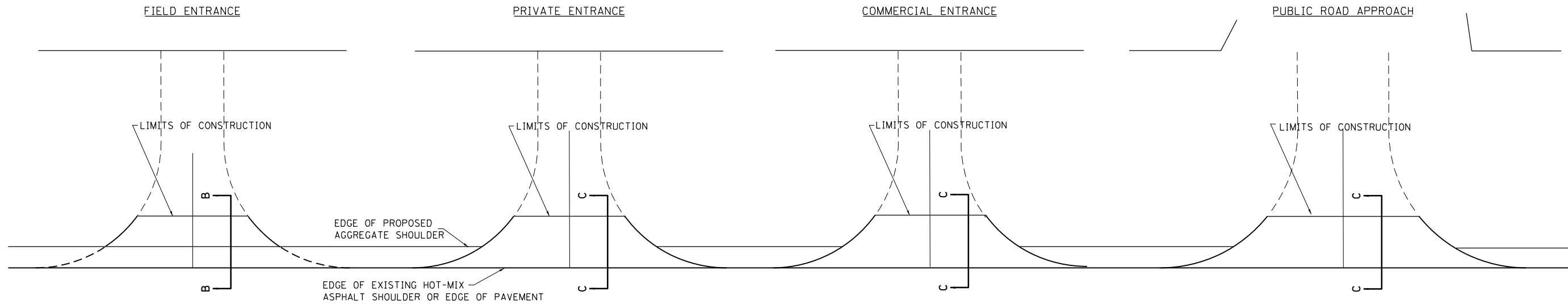
USER NAME = Mona.Steffen	DESIGNED -	REVISED -
	DRAWN -	REVISED -
PLOT SCALE = 106,0000 ' / in.	CHECKED -	REVISED -
PLOT DATE = 3/1/2023	DATE -	REVISED -

**STATE OF ILLINOIS
DEPARTMENT OF TRANSPORTATION**

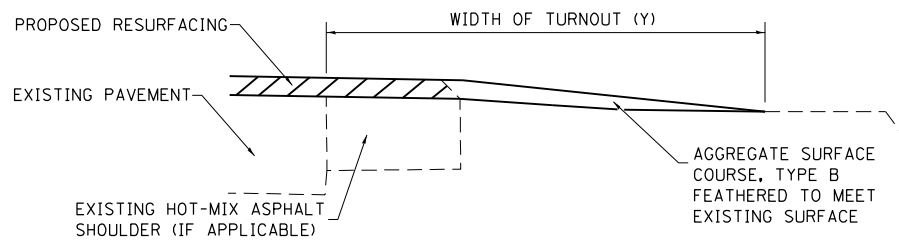
PLAN SHEET

SCALE: SHEET OF SHEETS STA. TO STA.

F.A.P. RTE.	SECTION	COUNTY	TOTAL SHEETS	SHEET NO.
116	121RS-4,122RS-5	JASPER	35	28
				CONTRACT NO. 74975
		ILLINOIS	FED. AID PROJECT	

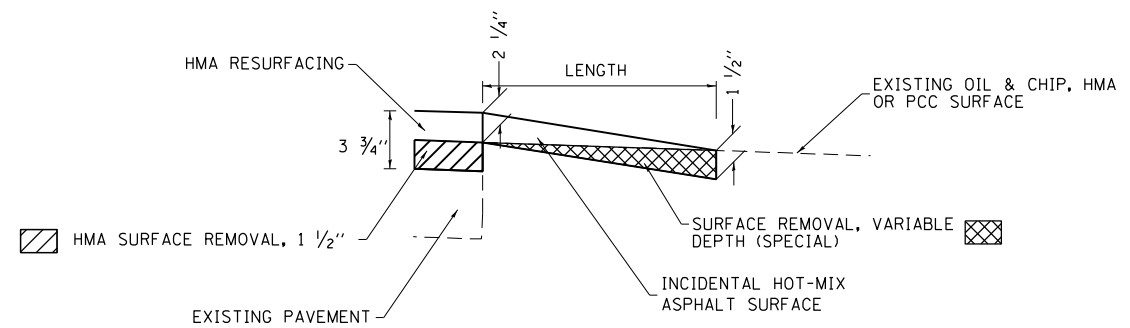


SECTION C-C



TYPICAL SECTION AT MAILBOX TURNOUT

NOTE: SEE STANDARD 406201 FOR MAILBOX TURNOUT DETAILS



SECTION C-C

NOTES

LENGTH = 10' UNLESS OTHERWISE NOTED ON PLANS

IF THERE IS NOT EXISTING HOT-MIX ASPHALT SHOULDER THEN THE ENTRANCE TAPER STARTS AT THE EDGE OF EXISTING PAVEMENT.

MODEL: Default
 FILE: Mailbox Turnout.dwg
 PROJECT: 174975\CADD\Drawings\DOT Office\Drawings\174975-RT-Details.dwg

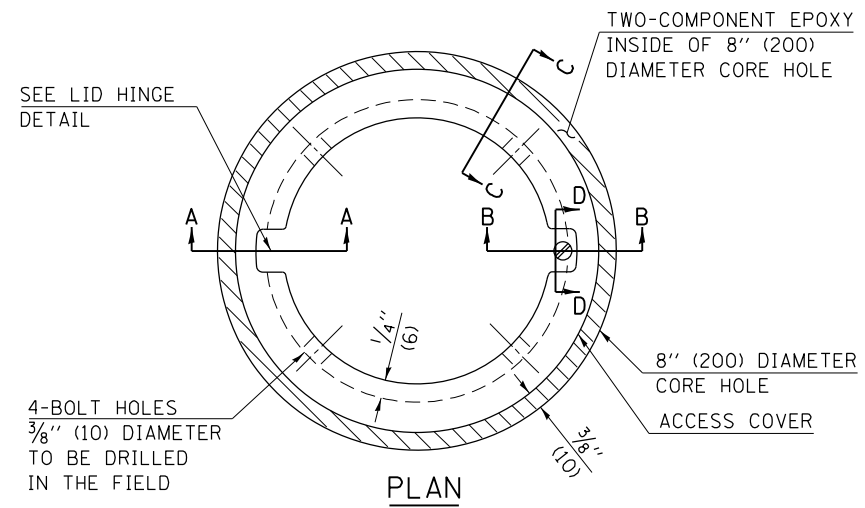
USER NAME = Mona.Steffen	DESIGNED -	REVISED -
	DRAWN -	REVISED -
PLOT SCALE = 40,0000 * / in.	CHECKED -	REVISED -
PLOT DATE = 3/1/2023	DATE -	REVISED -

STATE OF ILLINOIS
DEPARTMENT OF TRANSPORTATION

RURAL ENTRANCE AND MAILBOX TURNOUT DETAILS
WITH SHOULDERS

SCALE: N/A SHEET 1 OF 1 SHEETS STA. TO STA.

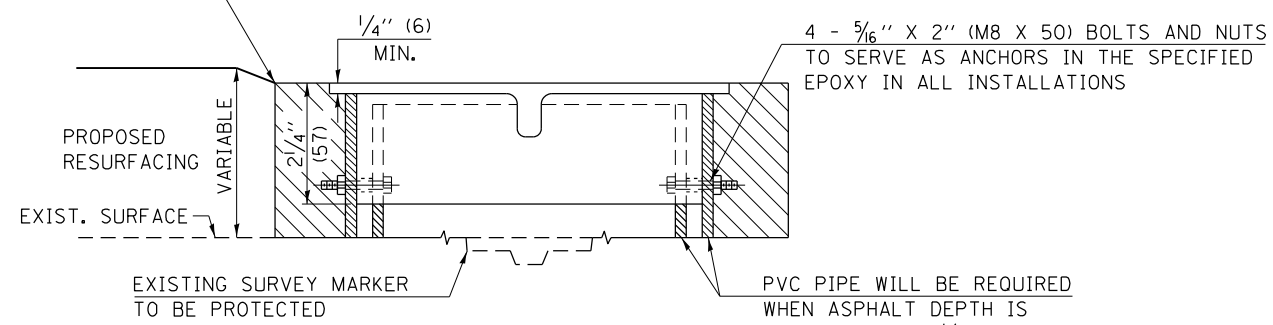
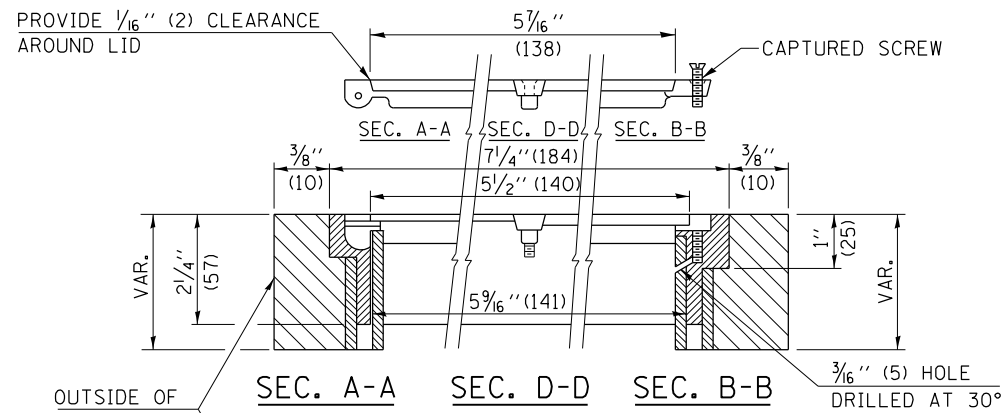
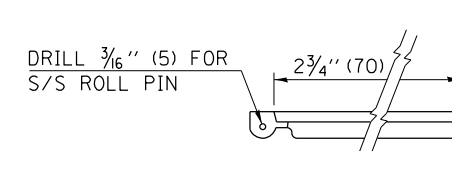
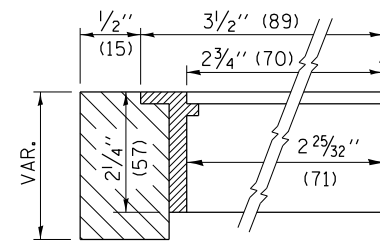
F.A.P. RTE.	SECTION	COUNTY	TOTAL SHEETS	SHEET NO.
116	121RS-4,122RS-5	JASPER	35	30
CONTRACT NO. 74975			ILLINOIS FED. AID PROJECT	



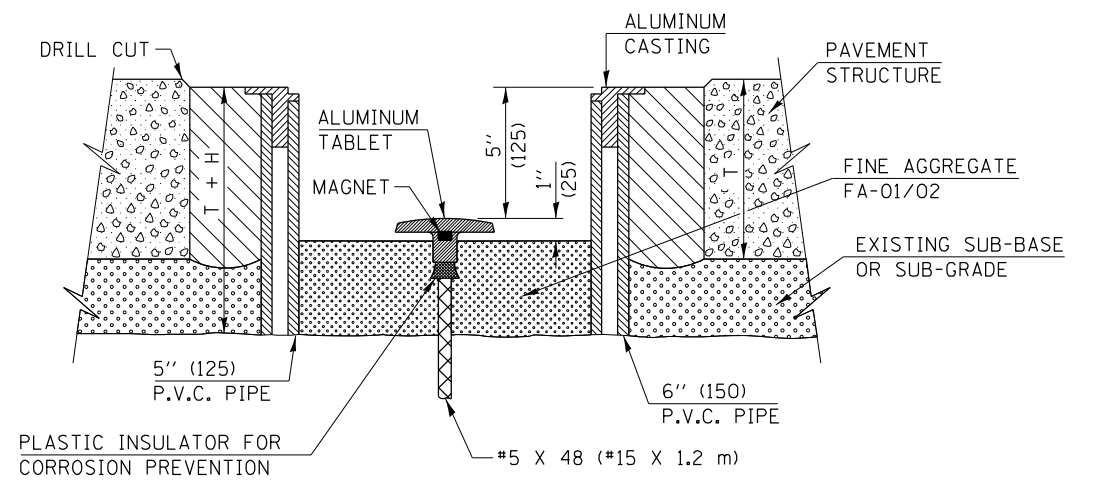
LEGEND

- ALUMINUM CASTING
- 5" (125) OR 6" (150) P.V.C. PIPE
- TWO-COMPONENT EPOXY
- T = THICKNESS OF PAVEMENT STRUCTURE
- H = THE THICKNESS OF THE SUB-BASE GRANULAR + 1" (25)

BILL OF MATERIAL	
ALUMINUM CASTING OF THE DIMENSIONS AND SPECIFICATIONS SHOWN OR OTHER SUBJECT TO ENGINEER'S APPROVAL OF SHOP DRAWINGS,	
4 EACH - $\frac{5}{16}$ " X 2" (M8 X 50) BOLTS WITH NUTS, EPOXY,	
5" OR 6" (125 mm OR 150 mm) DIAMETER P.V.C. PIPE, SCHEDULE 40 (WHEN REQUIRED).	



EXISTING SURVEY MARKER



PROPOSED SURVEY MARKER

NOT TO SCALE
 Note: All dimensions are in INCHES (millimeters) unless otherwise shown.

DISTRICT 7 DETAIL NO. Z0070202

FILE NAME =	USER NAME = Mono.Steffen	DESIGNED -	REVISED - MAD 6-11
pw:\idot-pw.bentley.com\PWIDOT\Documents\IDOT Offices\District 7\Projects\74975\CADD\Drawings\Drawings\74975-shd-details.dgn		CHECKED -	REVISED -
PLOT SCALE = 40.0000' / in.		DATE -	REVISED -
PLOT DATE = 3/1/2023			

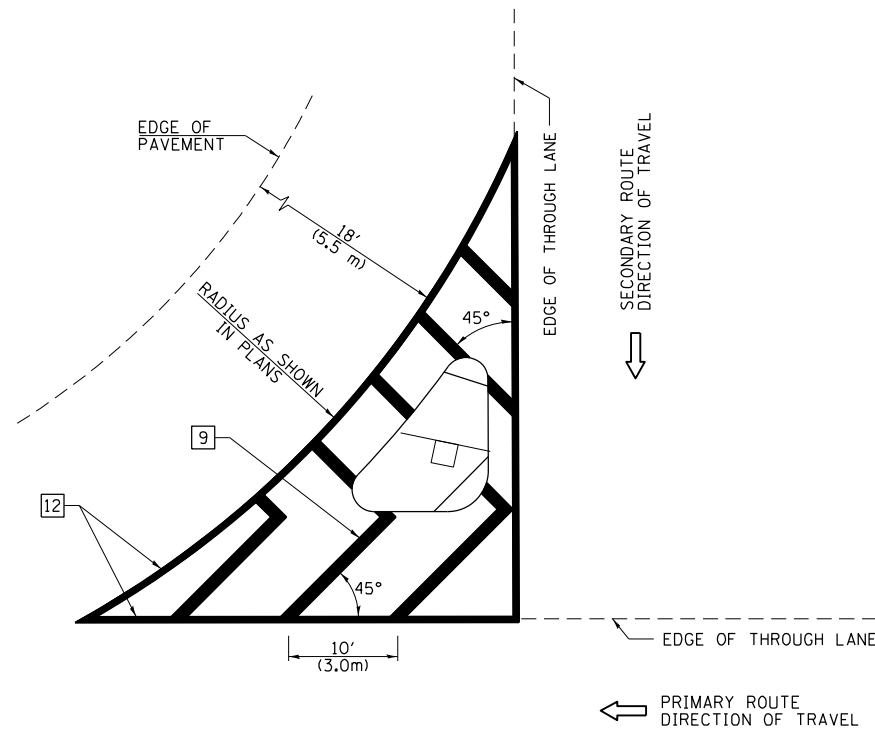
STATE OF ILLINOIS
 DEPARTMENT OF TRANSPORTATION

SURVEY MARKER VAULT

SCALE: N/A SHEET NO. 1 OF 1 SHEETS STA. TO STA.

F.A.P. RTE.	SECTION	COUNTY	TOTAL SHEETS	SHEET NO.
116	121RS-4,122RS-5	JASPER	35	31
CONTRACT NO. 74975				
FED. ROAD DIST. NO. ILLINOIS FED. AID PROJECT				

ISLAND

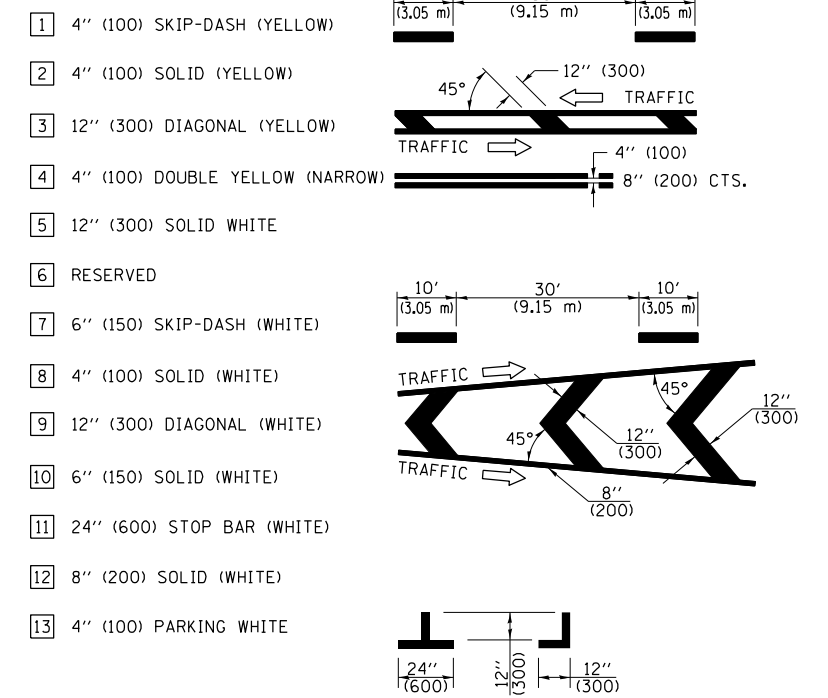


GENERAL NOTES

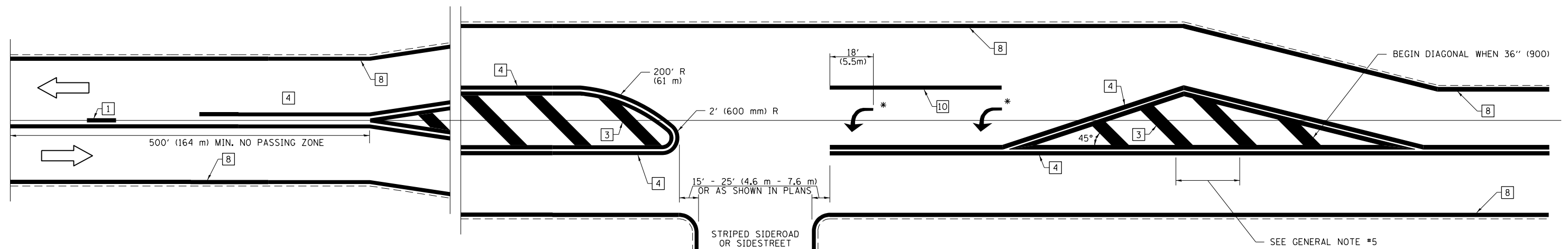
1. RAISED AND CORRUGATED MEDIANS SHALL BE OUTLINED WITH [2] IF PRESENT.
2. SOME OF THE INFORMATION INCLUDED WITH THIS DETAIL MAY NOT BE APPLICABLE TO THIS IMPROVEMENT.
3. PAVEMENT MARKINGS ARE TO BE EXTENDED THROUGH OMISSIONS WHEN APPLICABLE.
4. FINAL PAVEMENT MARKINGS SHALL BE IN PLACE PRIOR TO PLACING ANY RAISED REFLECTIVE PAVEMENT MARKERS.
5. THE FOLLOWING CRITERIA SHALL BE USED FOR SELECTING THE DIAGONAL PAVEMENT MARKING SPACING:

< 30 MPH (< 50 km/h)	15' (4.5 m)
30-45 MPH (50-75 km/h)	20' (6.0 m)
> 45 MPH (> 75 km/h)	30' (9.0 m)

PAVEMENT MARKING LEGEND



RURAL LEFT TURN STRIPING



* PLACE AN ARROW 18' (5.5 m) BACK FROM STOP BAR. PLACE ANOTHER ARROW EVEN WITH THE BEGINNING OF THE SOLID WHITE LINE. SPACE ADDITIONAL ARROWS EVENLY UP TO 80' (24.4 m) MAXIMUM SPACING. USE MINIMUM OF 2 ARROWS.

NOT TO SCALE

Note: All dimensions are in INCHES (millimeters) unless otherwise shown.

DISTRICT 7 DETAIL NO. 7800001

USER NAME = Mona.Steffen	DESIGNED -	REVISED -
PLOT SCALE = 40,0000 * / in.	DRAWN -	REVISED -
PLOT DATE = 3/1/2023	CHECKED -	REVISED -
	DATE -	REVISED -

**STATE OF ILLINOIS
DEPARTMENT OF TRANSPORTATION**

**PAVEMENT MARKING AND RAISED REFLECTIVE PAVEMENT MARKERS
(RURAL & URBAN APPLICATIONS)**

SCALE: SHEET 3 OF 4 SHEETS STA. TO STA.

F.A.P. RTE.	SECTION	COUNTY	TOTAL SHEETS	SHEET NO.
116	121RS-4,122RS-5	JASPER	35	34
CONTRACT NO. 74975				
ILLINOIS FED. AID PROJECT				

MODEL: Default
 FILE: \\na11c:\pub\jldet-cw-bentley.com\PIV\DOT\Documents\DOT Office\Director_7\Project\74975\CADD\Drawings\CD\Drawings\74975-PT-detailed.dgn

