

STATE OF ILLINOIS  
DEPARTMENT OF TRANSPORTATION

F.A.J. RTE.	SECTION	COUNTY	TOTAL SHEETS	SHEET NO.
70	82-3HVB-2R-RP	ST. CLAIR	15	1
		ILLINOIS	CONTRACT NO. 76R80	

# PROPOSED HIGHWAY PLANS

FAI ROUTE 70 (I-55 / I-64)  
SECTION 82-3HVB-2R-BP  
PROJECT NHPP-4U4R(955)  
BRIDGE PAINTING - SN 082-0144  
(SPANS D17 TO D22)  
ST. CLAIR COUNTY

C-98-154-22

FOR INDEX OF SHEETS, SEE SHEET NO. 2

**TRAFFIC DATA**

**SEGMENT A**

2017 ADT = 22600 (ACTUAL)  
2023 ADT = 23300 (ESTIMATED)  
2043 ADT = 25700 (ESTIMATED)  
SU = 2.9% MU = 7.5%

**SEGMENT B**

2017 ADT = 16600 (ACTUAL)  
2023 ADT = 17100 (ESTIMATED)  
2043 ADT = 18900 (ESTIMATED)  
SU = 2.3% MU = 8.7%

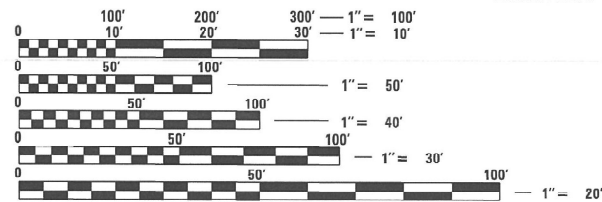
**SEGMENT C**

2017 ADT = 1900 (ACTUAL)  
2023 ADT = 2000 (ESTIMATED)  
2043 ADT = 2200 (ESTIMATED)  
SU = 2.6% MU = 1.6%

**FUNCTIONAL CLASSIFICATION**  
I-55/I-64: INTERSTATE

**PROJECT START**

SN 082-0144 (D17)  
LATITUDE: 38.615131  
LONGITUDE: -90.171297

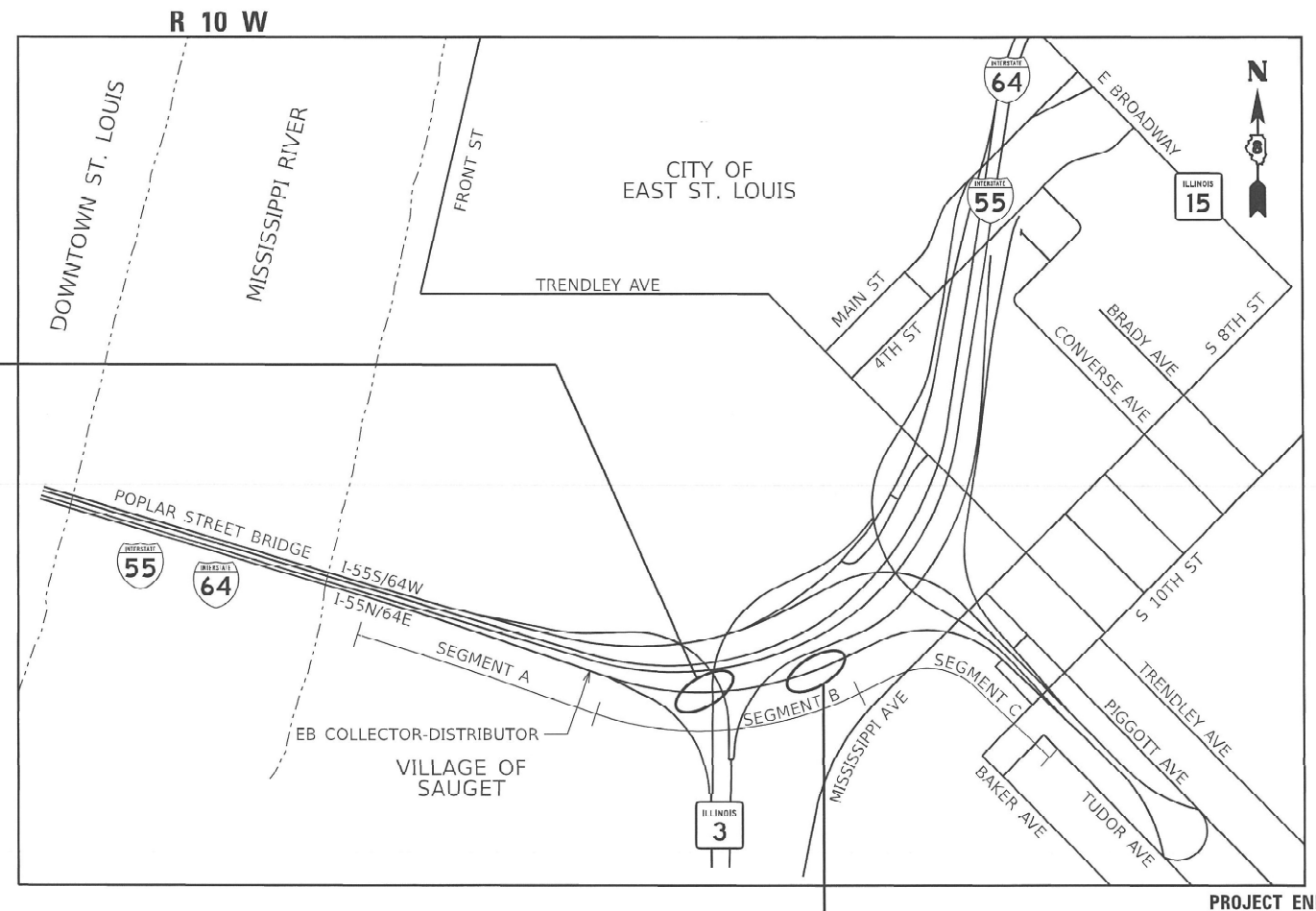


FULL SIZE PLANS HAVE BEEN PREPARED USING STANDARD ENGINEERING SCALES. REDUCED SIZED PLANS WILL NOT CONFORM TO STANDARD SCALES. IN MAKING MEASUREMENTS ON REDUCED PLANS, THE ABOVE SCALES MAY BE USED.

J.U.L.I.E.  
JOINT UTILITY LOCATION INFORMATION FOR EXCAVATION  
1-800-892-0123  
OR 811

PROJECT ENGINEER: BILLIE OWEN  
PROJECT MANAGER: MEIWU AN

CONTRACT NO. 76R80



GROSS LENGTH = 4,335 FT. = 0.821 MILE  
NET LENGTH = 4,335 FT. = 0.821 MILE

SN 082-0144 (D-22)  
LATITUDE: 38.615297  
LONGITUDE: -90.169962

D-98-122-22



LOCATION OF SECTION INDICATED THUS: - [black rectangle] -

STATE OF ILLINOIS  
DEPARTMENT OF TRANSPORTATION

SUBMITTED MARCH 15 20 23  
[Signature] REGIONAL ENGINEER  
May 12, 2023  
[Signature] ENGINEER OF DESIGN AND ENVIRONMENT  
May 12, 2023  
[Signature] DIRECTOR OF HIGHWAYS PROJECT IMPLEMENTATION

PRINTED BY THE AUTHORITY  
OF THE STATE OF ILLINOIS

**INDEX OF SHEETS**

- 1 COVER SHEET
- 2 INDEX OF SHEETS, HIGHWAY STANDARDS, GENERAL NOTES, & COMMITMENTS
- 3 SUMMARY OF QUANTITIES
- 4 LOCATION MAP
- 5-15 STRUCTURE DETAILS

**HIGHWAY STANDARDS**

- 001001-08 STANDARD SYMBOLS, ABBREVIATIONS AND PATTERNS
- 001006 DECIMAL OF AN INCH AND OF A FOOT
- 701101-05 OFF-ROAD OPERATIONS, MULTILANE, 15' TO 24" FROM PAVEMENT EDGE
- 701106-02 OFF-ROAD OPERATIONS, MULTILANE, MORE THAN 15' AWAY
- 701901-08 TRAFFIC CONTROL DEVICES

**GENERAL NOTES**

1. UTILITIES KNOWN TO HAVE FACILITIES WITHIN THE PROJECT AREA ARE AS FOLLOWS:

- AMEREN ILLINOIS (GAS & ELECTRIC)
- AT&T ILLINOIS (COMMUNICATIONS)
- CHARTER COMMUNICATIONS, INC. (CABLE TV)
- CLEARWAVE COMMUNICATIONS (COMMUNICATIONS)
- CITY OF EAST ST. LOUIS (LIGHTING)
- CITY OF EAST ST. LOUIS (SANITARY SEWER)
- EXPLORER PIPELINE COMPANY (PIPELINE)
- ILLINOIS AMERICAN WATER COMPANY (WATER)
- LEVEL 3 COMMUNICATIONS, LLC (COMMUNICATIONS)
- VERIZON BUSINESS (COMMUNICATIONS)
- METRO EAST SANITARY DISTRICT (SANITARY SEWER)
- SOUTHERN ILLINOIS UNIVERSITY-EDWARDSVILLE (COMMUNICATIONS)
- SOUTHERN ILLINOIS UNIVERSITY-EDWARDSVILLE (GAS)
- SOUTHERN ILLINOIS UNIVERSITY-EDWARDSVILLE (ELECTRIC)
- SOUTHERN ILLINOIS UNIVERSITY-EDWARDSVILLE (WATER & SANITARY SEWER)
- SPIRE NGL (PIPELINE)
- WINDSTREAM KDL, INC. (COMMUNICATIONS)
- ZAYO GROUP LLC (COMMUNICATIONS)

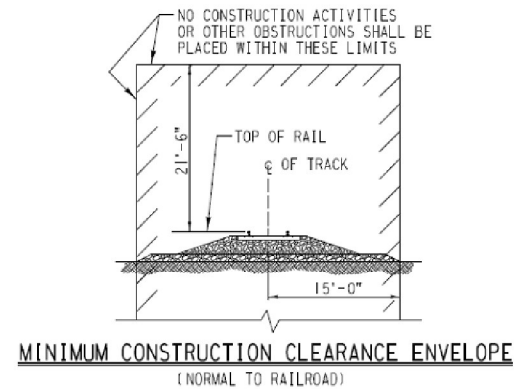
2. THE RESIDENT ENGINEER SHALL VERIFY THE EXISTENCE OF HIGHWAY LIGHTING AND/OR INTELLIGENT TRANSPORTATION SYSTEMS (I.T.S) UTILITIES WITHIN THE PROJECT LIMITS. IF HIGHWAY LIGHTING AND/OR I.T.S. EXISTS WITHIN THE PROJECT LIMITS, AND IF THESE ITEMS REQUIRE LOCATING, THE CONTRACTOR SHALL BE DIRECTED TO DO SO ACCORDING TO SECTION 803 OF THE STANDARD SPECIFICATIONS, THIS WORK SHALL BE PAID FOR ACCORDING TO ARTICLE 109.04 OF THE STANDARD SPECIFICATIONS.

3. THE DEPARTMENT STRONGLY ENCOURAGES THE PRIME CONTRACTOR AND THEIR APPROVED SUB-CONTRACTORS TO HIRE MINORITY, WOMEN AND DISADVANTAGED INDIVIDUALS FROM ITS FEDERALLY FUNDED HIGHWAY CONSTRUCTION CAREERS TRAINING PROGRAM (HCCTP) TO HELP MEET WORKFORCE AND TRAINEE GOALS. THIS PROGRAM IS TRAINING MINORITIES, WOMEN, AND DISADVANTAGED INDIVIDUALS IN HIGHWAY CONSTRUCTION RELATED SKILLS, E.G., MATH FOR THE TRADES, JOB READINESS, TECHNICAL SKILLS COURSEWORK (CARPENTRY, CONCRETE FLATWORK, BLUEPRINT READING, SITE PLANS, SITE WORK, TOOLS USE, ETC.) AND OSHA 10 HOUR CERTIFICATION, TO PREPARE THEM FOR A CAREER IN THE HIGHWAY CONSTRUCTION TRADES. GRADUATES ARE WELL-TRAINED AND READY TO BECOME PRODUCTIVE ENTRY-LEVEL CONSTRUCTION WORKERS. CONTACT THE DISTRICT 8 EEO OFFICE AT 618-346-3360 AND/OR THE HCCTP COORDINATOR AT 618-874-6528 TO LEARN MORE ABOUT THE PROGRAM AND FOR ASSISTANCE IN MEETING WORKFORCE AND TRAINING GOALS.

- 4. SSPC QP1 AND QP2 CERTIFICATION IS REQUIRED FOR THIS CONTRACT.
- 5. CLEANING AND PAINTING OF THE EXISTING STEEL SHALL BE AS SPECIFIED IN THE SPECIAL PROVISION FOR "CLEANING AND PAINTING EXISTING STEEL STRUCTURES". ALL BEAMS, BEARINGS, AND OTHER STRUCTURAL STEEL SHALL BE CLEANED PER NEAR WHITE BLAST CLEANING - SSPC-SP10.
- 6. THE AREAS CLEANED PER NEAR WHITE BLAST CLEANING SHALL BE PAINTED ACCORDING TO THE REQUIREMENTS OF PAINT SYSTEM 1-OZ/E/U. THE COLOR OF THE FINAL FINISH COAT FOR ALL STEEL SURFACES SHALL BE GRAY (MUNSELL NO. 5B 7/1).
- 7. A MINIMUM OF TWO AIR MONITORS WILL BE REQUIRED TO MONITOR THE ABRASIVE BLASTING OPERATIONS AT THIS SITE. SEE SPECIAL PROVISION FOR "CONTAINMENT AND DISPOSAL OF LEAD PAINT CLEANING RESIDUES".
- 8. NO SURVEY WAS PERFORMED FOR THIS PROJECT AND THE PLANS WERE CREATED USING MICROFILM AND FIELD MEASUREMENTS.
- 9. THE CONTRACTOR WILL BE REQUIRED TO SUBMIT A WORK PLAN TO THE RAILROAD FOR REVIEW WHICH SHOWS THE CONTAINMENT METHOD UTILIZED DOES NOT ALLOW PAINT AND OTHER DEBRIS TO FALL ONTO THE UP PROPERTY, KCS PROPERTY, AND TRRA PROPERTY BELOW. ADDITIONALLY, ALL FALSEWORK AND/OR CONTAINMENT MEANS ARE LOCATED OUTSIDE THE "MINIMUM CONSTRUCTION CLEARANCE ENVELOPE" AT ALL TIMES.

**COMMITMENTS**

NONE



MODEL: General Notes (Sheet)  
 FILE NAME: p:\ibids\contract\ibids\com\PMIDOT\Documents\IDOT\Office\District 8\8RD Projects\82-3HV\B-2R\BPsheets\82-3HV\B-2R\BPsheets.dgn

USER NAME = Nathan.Cox	DESIGNED -	REVISED -
PLOT SCALE = 0.16666633 1/ in.	DRAWN -	REVISED -
PLOT DATE = 3/13/2023	CHECKED -	REVISED -
	DATE -	REVISED -

**STATE OF ILLINOIS  
DEPARTMENT OF TRANSPORTATION**

**INDEX OF SHEETS, HIGHWAY STANDARDS,  
GENERAL NOTES, & COMMITMENTS**

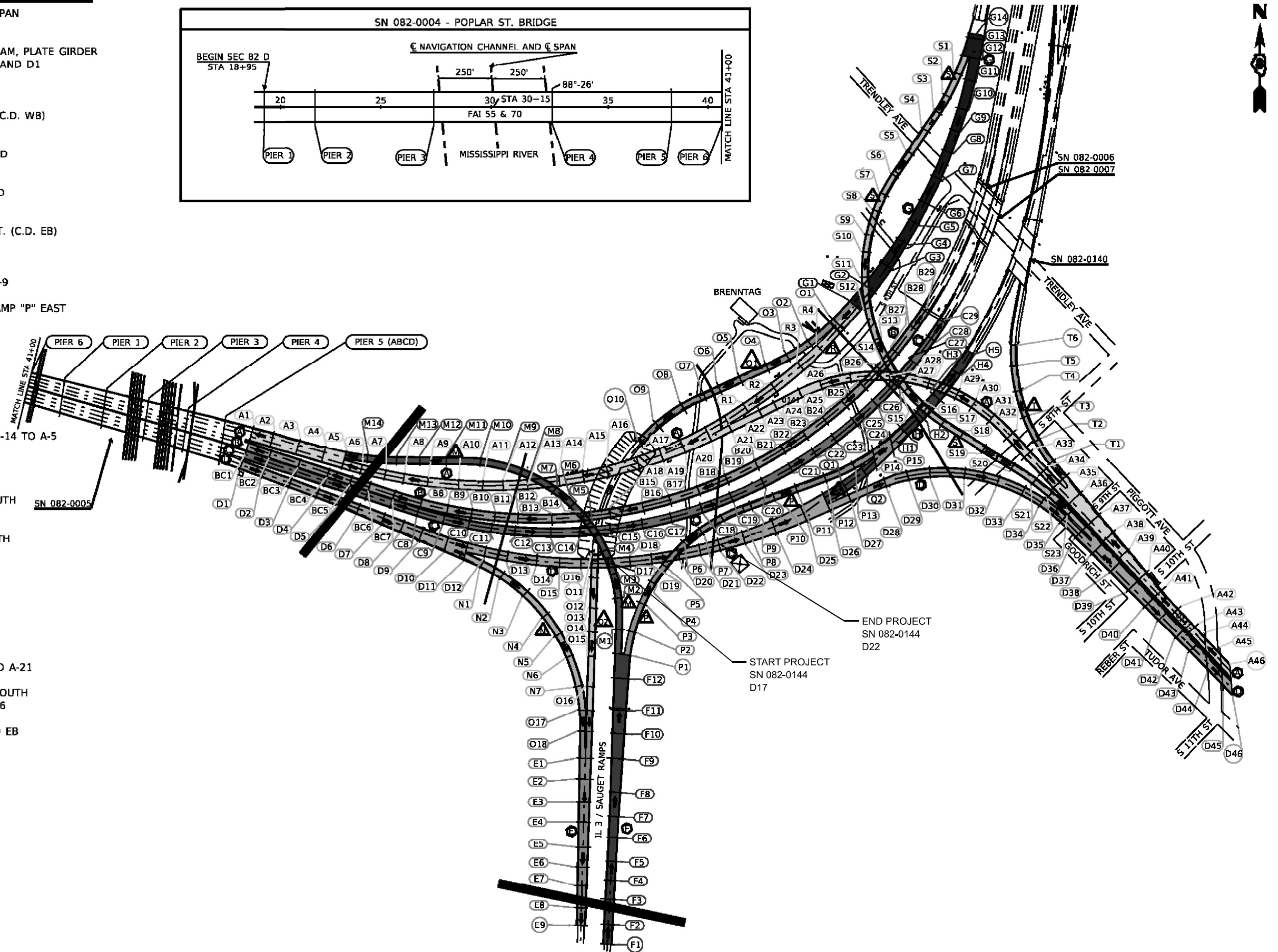
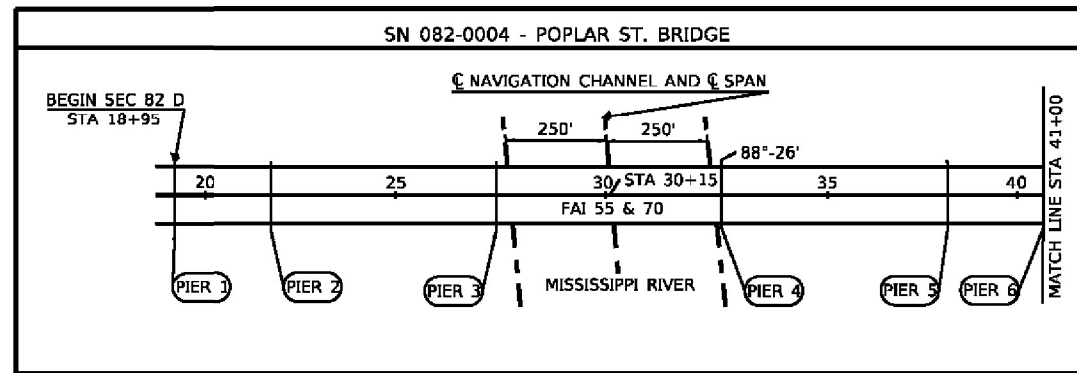
SCALE: N/A SHEET 1 OF 1 SHEETS STA. \_\_\_+\_\_\_ TO STA. \_\_\_+\_\_\_

F.A.I. RTE.	SECTION	COUNTY	TOTAL SHEETS	SHEET NO.
70	82-3HV/B-2R-BP	ST. CLAIR	15	2
CONTRACT NO. 76R80				
ILLINOIS FED. AID PROJECT				



# STRUCTURES

- 082-0004 - POPLAR ST. BRIDGE - ORTHOTROPIC - 5 SPAN  
LIMITS - RIVER PIER #1 TO RIVER PIER #6
- 082-0005 - 82-3 VB - 6 SPAN CONTINUOUS, MULTI BEAM, PLATE GIRDER  
LIMITS - RIVER PIER #6 TO PIERS A1, BC1, AND D1
- Start 2-GIRDER "POPLAR STREET COMPLEX"
- 082-0141 - RDWY "A" 45 SPAN 13TH ST. NORTH TO (C.D. WB)  
LIMITS - PIER A-1 ---- ABUT. A-46
- 082-0252 - RDWY "B" 28 SPAN MAINLINE WEST BOUND  
LIMITS - PIER B-1 ---- ABUT. B-29
- 082-0251 - RDWY "C" 28 SPAN MAINLINE EAST BOUND  
LIMITS - PIER C-1 ---- ABUT. C-29
- 082-0144 - RDWY "D" 45 SPAN ST. LOUIS TO 13TH ST. (C.D. EB)  
LIMITS - PIER D-1 ---- ABUT. D-46
- 082-0205 - RDWY "E" 10 SPAN TO ILL-3 SB  
LIMITS - PIER O-17, O-18, E-1 ---- ABUT. E-9
- 082-0204 - RDWY "F" 12 SPAN FROM ILL-3 NB TO RAMP "P" EAST  
LIMITS ABUT. F-1 ---- F-12 TO PIER P-1
- 082-0254 - RDWY "G" 13 SPAN (C.D. WB)  
LIMITS - ABUT. G-14 ---- PIER G-1
- 082-0256 - RDWY "H" 4 SPAN (C.D. EB)  
LIMITS - PIER H-1 ---- ABUT. H-5
- 082-0145 - RAMP "M" 15 SPAN ILL-3 TO W.B. CD  
LIMITS - PIER P-1 TO ABUT. M-1 ---- PIER M-14 TO A-5
- 082-0202 - RAMP "N" 8 SPAN EB CD TO ILL-3 SOUTH  
LIMITS - PIER D-11 TO N-1 ---- N-7 TO O-17
- 082-0201 - RAMP "O1" 10 SPAN WB CD TO ILL-3 SOUTH  
LIMITS - PIER G-1 TO O-1 ---- ABUT. O-10
- 082-0143 - RAMP "O2" 6 SPAN WB CD TO ILL-3 SOUTH  
LIMITS - ABUT. O-11 ---- PIER O-17
- 082-0203 - RAMP "P" 15 SPAN RTE. ILL-3 TO EB CD  
LIMITS - PIER P-1 ---- P-15 TO H-1
- 082-0255 - RAMP "Q" 3 SPAN EB CD  
LIMITS - PIER D-26 TO Q-1 TO Q-2 TO P-14
- 082-0253 - RAMP "R" 6 SPAN WB CD  
LIMITS - PIER G-1 TO O-1 TO R-4 ---- R-1 TO A-21
- 082-0142 - RAMP "S" 24 SPAN WB CD TO 13TH ST. SOUTH  
LIMITS - PIER G-12 TO S-1 ---- S-23 TO D-36
- 082-0146 - RAMP "T" 6 SPAN 13TH ST. NORTH TO CD EB  
LIMITS - PIER A-35 TO T-1 ---- ABUT. T-6



LEGEND	
○	ABUTMENT
←	DIRECTION OF TRAFFIC
○	PIER
△	RAMP
○	ROADWAY

MODEL: Location Map (Sheet)  
 FILE NAME: P:\BID\Bids\2023\Illinois\DOT\Office\Direct\BORD\Projects\082-0144\CD\Drawings\082-0144-46-Map.dgn

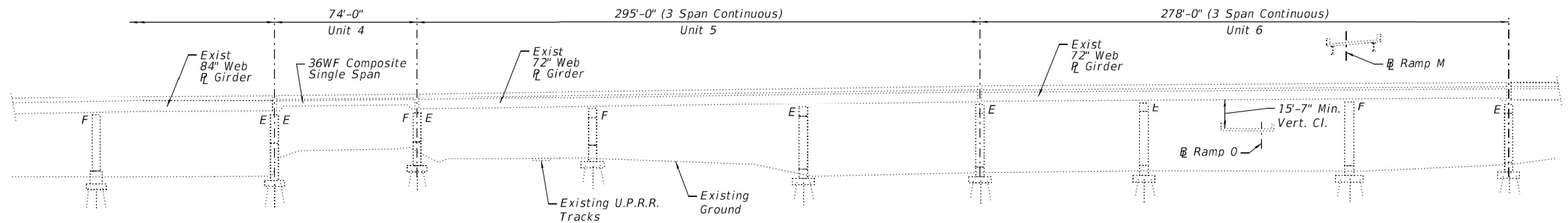
USER NAME = Nathan.Cox	DESIGNED -	REVISED -
DRAWN -	REVISED -	
PLOT SCALE = 0.16666833 / in.	CHECKED -	REVISED -
PLOT DATE = 3/13/2023	DATE -	REVISED -

**STATE OF ILLINOIS  
DEPARTMENT OF TRANSPORTATION**

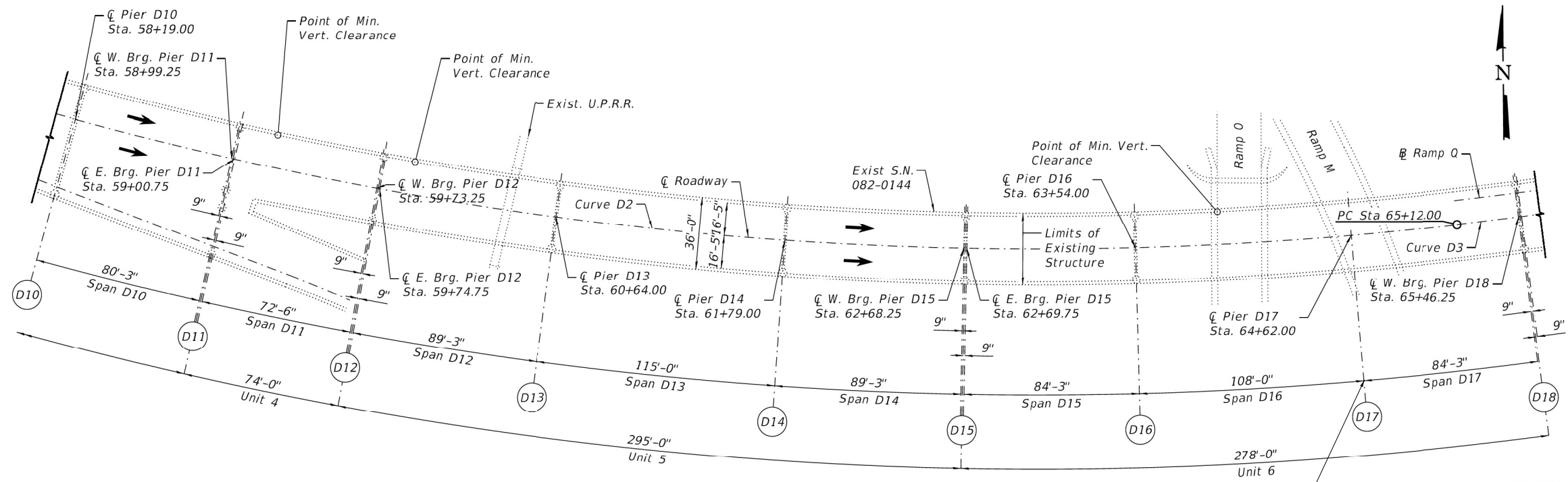
LOCATION MAP

SCALE: SHEET 1 OF 1 SHEETS STA. \_\_\_+\_\_\_ TO STA. \_\_\_+\_\_\_

F.A.I. RTE.	SECTION	COUNTY	TOTAL SHEETS	SHEET NO.
70	82-3VB-2R-BP	ST. CLAIR	15	4
CONTRACT NO. 76R80				
ILLINOIS FED. AID PROJECT				



**ELEVATION**



**PLAN (SPANS D10 - D17)**

Longitudinal dimensions measured along  $\bar{C}$  Roadway D

**GENERAL PLAN & ELEVATION**  
**F.A.I. 70 (I-55/I-64) EB CD "D"**  
**OVER RR, IL 3, 8TH ST**  
**SEC. 82-3HVB-2R-(2,1)-I-2**  
**ST. CLAIR COUNTY**  
**STATION 49+55.37**  
**STRUCTURE NO. 082-0144**

**FOR INFORMATION ONLY**

MODEL: Bridge\_Cad.dwg (10/18/2021)  
 FILE NAME: P:\Bids\2021\10\18\DOT\Documents\DOT Office\District 8\ORD Project\082-0144\082-0144-CD\Sheet\082-0144-CD-05.dwg

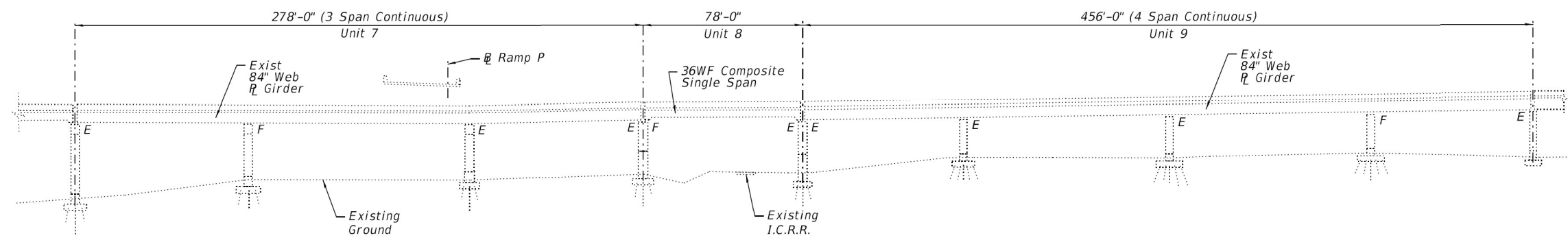
USER NAME = Nathan.Cox	DESIGNED -	REVISED -
DRAWN -	REVISED -	
PLOT SCALE = 0.16666633' / in.	CHECKED -	REVISED -
PLOT DATE = 3/13/2023	DATE -	REVISED -

**STATE OF ILLINOIS**  
**DEPARTMENT OF TRANSPORTATION**

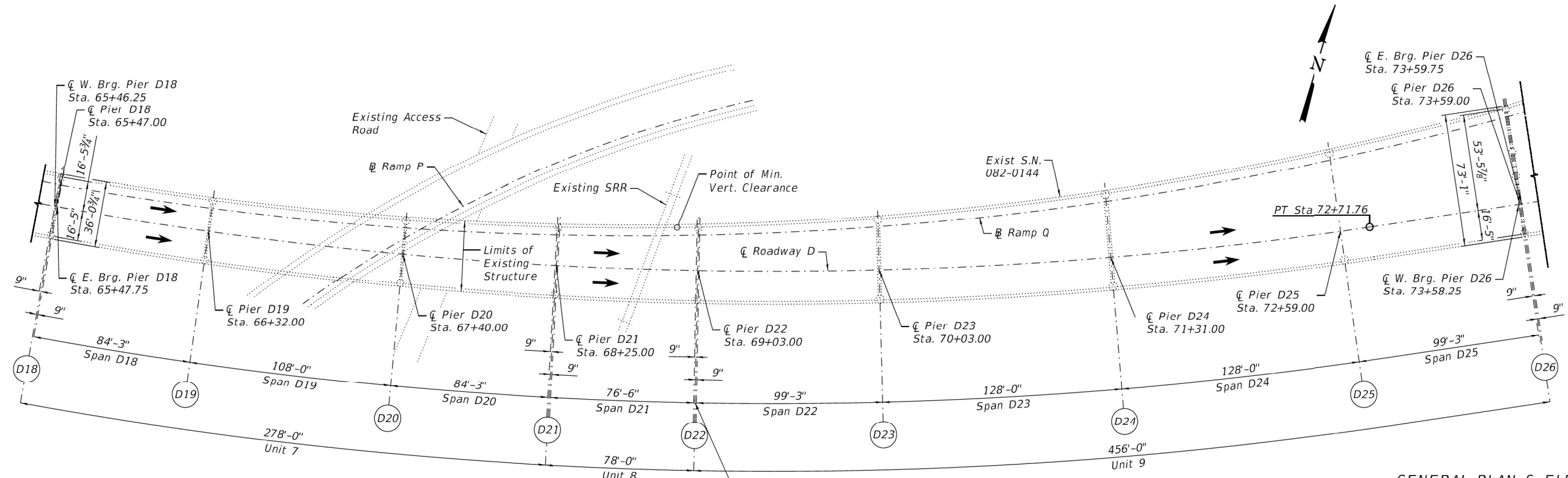
**STRUCTURE DETAILS**  
**S.N. 082-0144**

SCALE: N/A SHEET 1 OF 11 SHEETS STA. TO STA.

F.A.I. RTE.	SECTION	COUNTY	TOTAL SHEETS	SHEET NO.
70	82-3HVB-2R-BP	ST. CLAIR	15	5
CONTRACT NO. 76R80				
ILLINOIS FED. AID PROJECT				



**ELEVATION**



**PLAN (SPANS D18 - D25)**

Longitudinal dimensions measured along  $\bar{\bar{C}}$  Roadway D

**GENERAL PLAN & ELEVATION**  
**F.A.I. 70 (I-55/I-64) EB CD "D"**  
**OVER RR, IL 3, 8TH ST**  
**SEC. 82-3HVB-2R-(2,1)-I-2**  
**ST. CLAIR COUNTY**  
**STATION 49+55.37**  
**STRUCTURE NO. 082-0144**

**FOR INFORMATION ONLY**

MODEL: Bridge\_Cad.dwg (Sheet)  
 FILE NAME: P:\Bids\2023\11\13\DOT\Documents\DOT Office\District 8\ORD Project\082-0144\Drawings\082-0144-1.dwg

USER NAME = Nathan.Cox	DESIGNED -	REVISED -
PLOT SCALE = 0.16666633' / in.	DRAWN -	REVISED -
PLOT DATE = 3/13/2023	CHECKED -	REVISED -
	DATE -	REVISED -

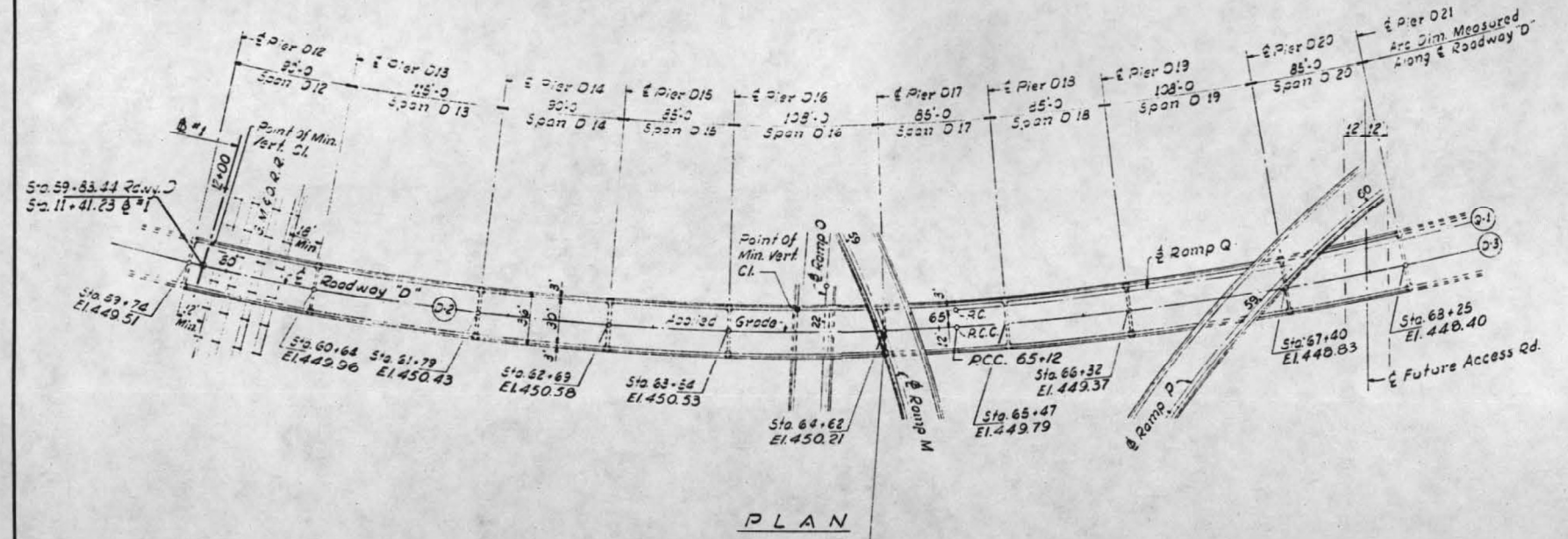
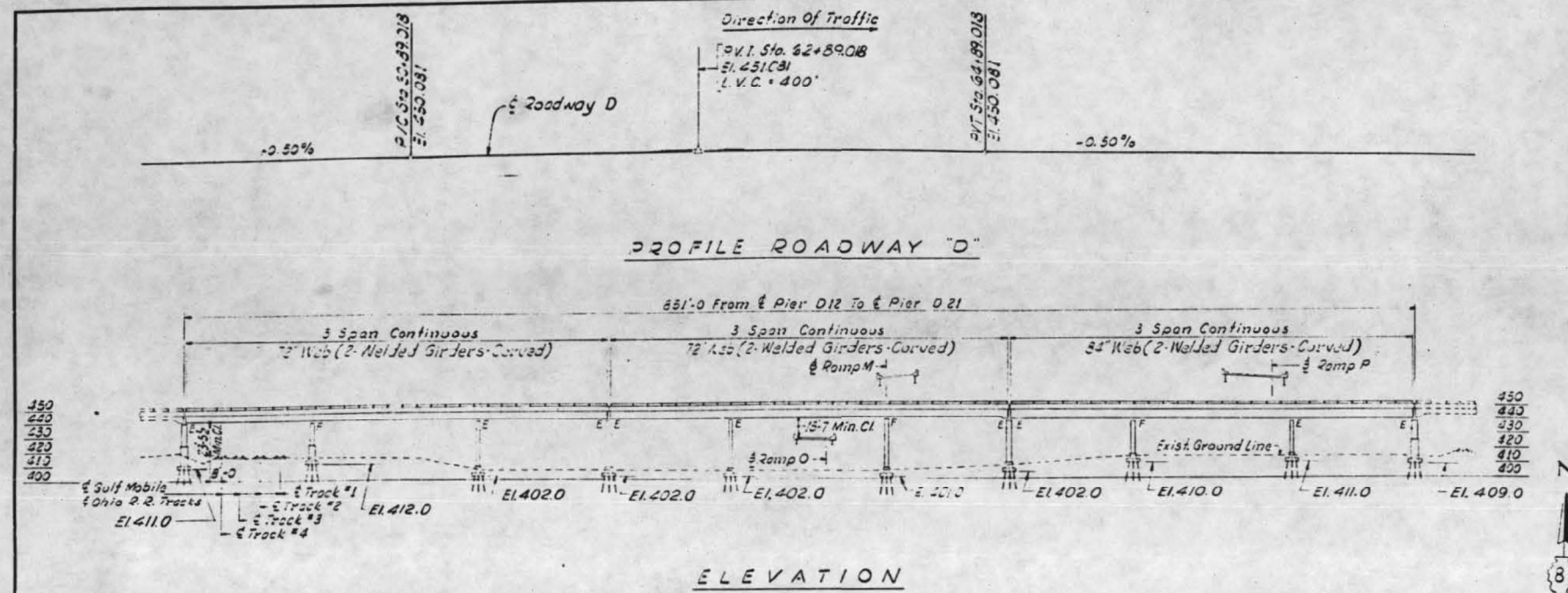
**STATE OF ILLINOIS**  
**DEPARTMENT OF TRANSPORTATION**

**STRUCTURE DETAILS**  
**S.N. 082-0144**

SCALE: N/A SHEET 2 OF 11 SHEETS STA. TO STA.

F.A.I. RTE.	SECTION	COUNTY	TOTAL SHEETS	SHEET NO.
70	82-3HVB-2R-BP	ST. CLAIR	15	6
CONTRACT NO. 76R80				
ILLINOIS FED. AID PROJECT				

ROUTE NO.	SECTION	COUNTY	TOTAL SHEETS	SHEET NO.
F. A. I. -70	82-3HVFBE-1	ST. CLAIR	247	29
FED. ROAD DIV. NO. 4	ILLINOIS	PROJECT		



THIS SECTION INCLUDES ALL ~~PIERS~~ EXCEPT PIER D17. DATA FOR PIER D17 SHOWN ON THIS SHEET IS FOR REFERENCE ONLY.

DESIGNED BY: JJN  
 DRAWN BY: GRAIZ  
 CHECKED BY: AJC  
 APPROVED BY: KA

STATE OF ILLINOIS  
 DEPARTMENT OF PUBLIC WORKS & BLDGS.  
 DIVISION OF HIGHWAYS

**PLAN AND ELEVATION**  
 SPANS D12 THRU D20  
 POPLAR STREET BRIDGE APPROACHES  
 ROADWAY "D"

F. A. I. RT. 70 ST. CLAIR CO. SECTIONS 82-3HVB-1  
 82-3HVFBE-1  
 82-3HVD-1

H. W. LOCHNER, INC.  
 ENGINEERS  
 CHICAGO, ILLINOIS

SHEET 11 OF 226

0144

FOR INFORMATION ONLY

USER NAME = Nathan.Cox	DESIGNED -	REVISED -
PLOT SCALE = 0.16666833 / in.	DRAWN -	REVISED -
PLOT DATE = 3/13/2023	CHECKED -	REVISED -
	DATE -	REVISED -

STATE OF ILLINOIS  
 DEPARTMENT OF TRANSPORTATION

STRUCTURE DETAILS  
 S.N. 082-0144

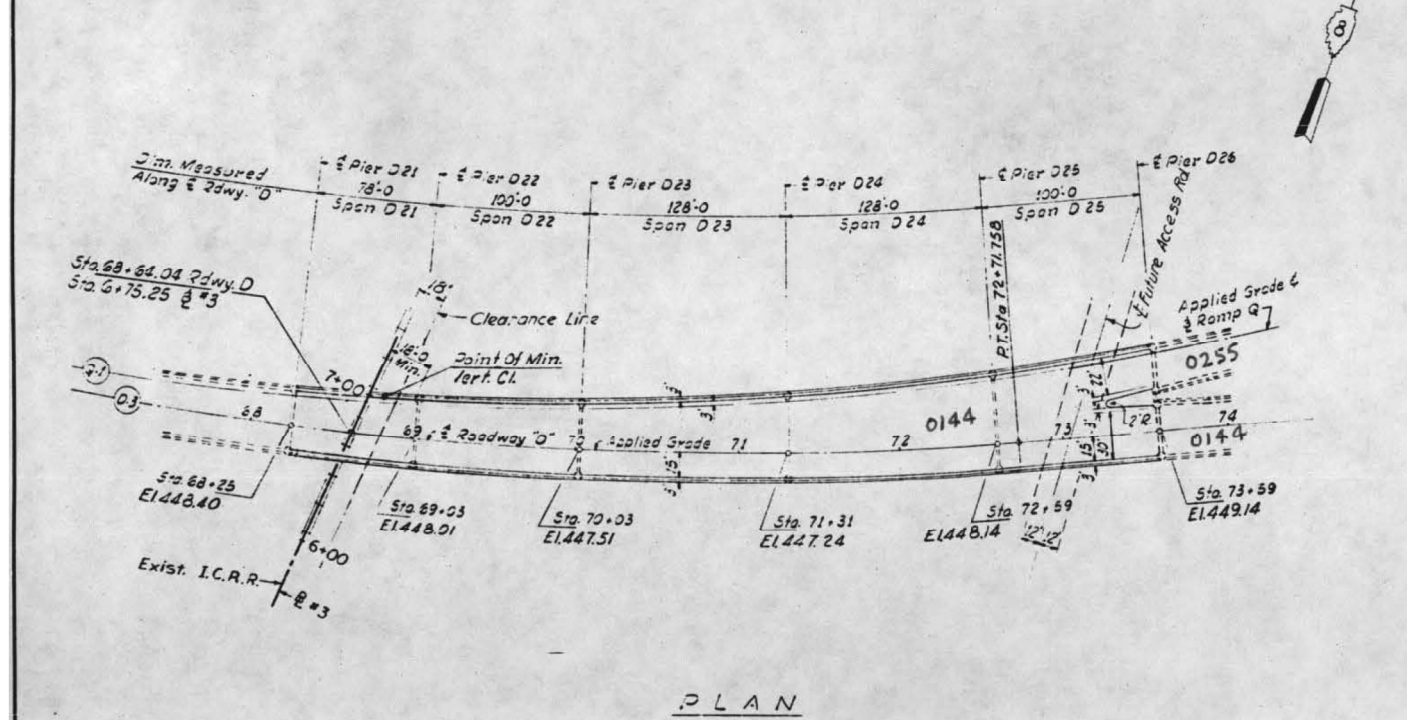
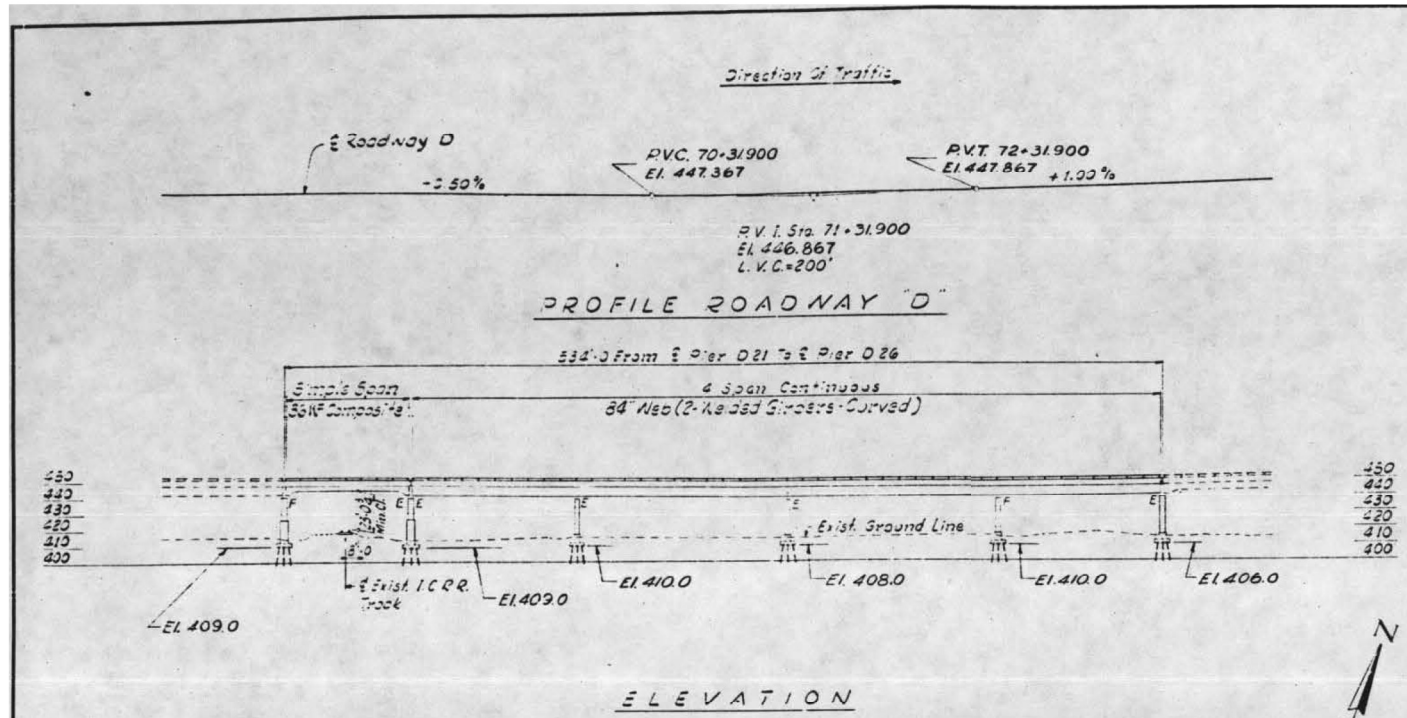
SCALE: N/A SHEET 3 OF 11 SHEETS STA. TO STA.

F.A.I. RTE.	SECTION	COUNTY	TOTAL SHEETS	SHEET NO.
70	82-3HVB-2R-BP	ST. CLAIR	15	7
				CONTRACT NO. 76R80
				ILLINOIS FED. AID PROJECT

MODEL: Bridge Details (Sheet) FILE NAME: P:\MIDOT\Documents\DOT Office\District 8\ORD Project\82-3HVB\82-3HVB-2R-BP.dwg

FOR INFORMATION ONLY

ROUTE NO.	SECTION	COUNTY	TOTAL SHEETS	SHEET NO.
F.A.I.R.T. 70	82-3HVFBE-1	ST. CLAIR	247	50
FED. ROAD DIV. NO. 4	ILLINOIS	PROJECT		



DESIGNED BY: JUN  
 DRAWN BY: GRATZ  
 CHECKED BY: BH  
 APPROVED BY: CA

STATE OF ILLINOIS  
 DEPARTMENT OF PUBLIC WORKS & BLDGS.  
 DIVISION OF HIGHWAYS  
**PLAN AND ELEVATION**  
 SPANS D21 THRU D25  
**POPLAR STREET BRIDGE APPROACHES**  
**ROADWAY "D"**  
 SECTIONS 82-3HVB-1  
 82-3HVFBE-1  
 82-3HVD-1  
 F.A.I.R.T. 70 ST CLAIR CO  
 H. W. LOCHNER, INC.  
 ENGINEERS  
 CHICAGO, ILLINOIS

0144

MODEL: Bridge-Deck-7 (Sheet)  
 FILE NAME: P:\MIDOT\Documents\DOT Office\District 8\ORD Project\823HVFBE\CAD\Drawings\823HVFBE-1.dwg

USER NAME = Nathan.Cox	DESIGNED -	REVISED -
PLOT SCALE = 0.16666633' / in.	DRAWN -	REVISED -
PLOT DATE = 3/13/2023	CHECKED -	REVISED -
	DATE -	REVISED -

STATE OF ILLINOIS  
 DEPARTMENT OF TRANSPORTATION

STRUCTURE DETAILS  
 S.N. 082-0144

SCALE: N/A SHEET 4 OF 11 SHEETS STA. TO STA.

F.A.I. RTE.	SECTION	COUNTY	TOTAL SHEETS	SHEET NO.
70	82-3HVB-2R-BP	ST. CLAIR	15	8
				CONTRACT NO. 76R80
				ILLINOIS FED. AID PROJECT

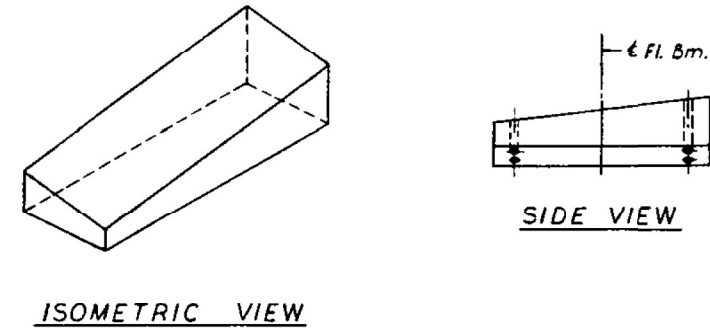
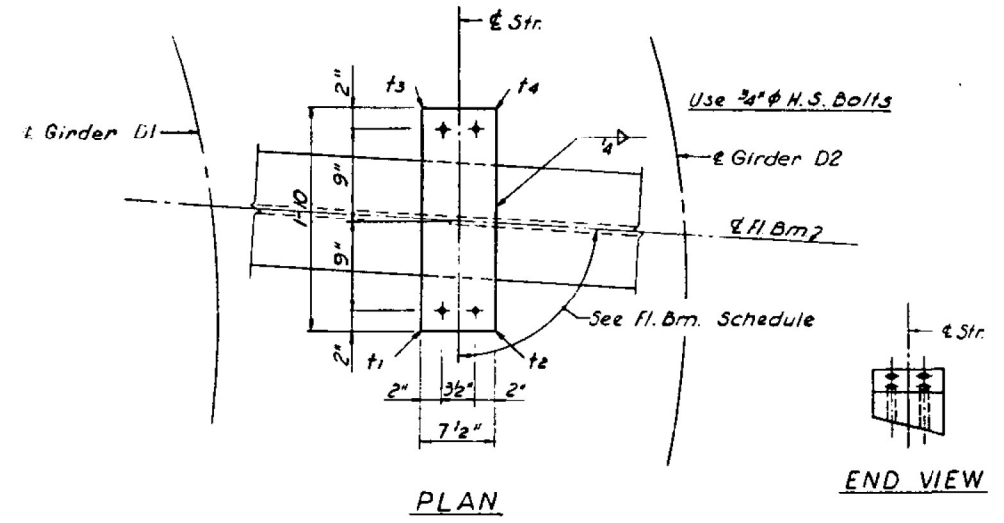




FOR INFORMATION ONLY

ROUTE NO.	SECTION	COUNTY	TOTAL SHEETS	SHEET NO.
F.A.I.-70	82-3HVF&E-1	ST. CLAIR	247	98
FED. ROAD DIV. NO. 4		ILLINOIS	PROJECT	

FLOOR BEAM 72 THRU 74	T1	T2	T3	T4
STR. 118 THRU 122	1 1/16	7/16	1 1/16	7/16
FLOOR BEAM 75 THRU 77	T1	T2	T3	T4
STR. 124 THRU 126	1 1/16	7/16	1 1/16	7/16
FLOOR BEAM 78 THRU 80	T1	T2	T3	T4
STR. 127 THRU 132	1 1/16	1/2	1	7/16
FLOOR BEAM 81 THRU 83	T1	T2	T3	T4
STR. 133 THRU 135	1 1/8	1/2	1	3/8
FLOOR BEAM 84 THRU 88	T1	T2	T3	T4
STR. 136 THRU 141	1 1/16	1/2	1	7/16



SHIM DETAIL

Shim thickness  $t_1$ ,  $t_2$ ,  $t_3$  &  $t_4$  shown in the Table are orientated with the Plan View shown above.

DESIGNED BY *A.J.C.*  
 DRAWN BY *D.C.H.*  
 CHECKED BY *A.S.*  
 APPROVED BY *K.A.*

STATE OF ILLINOIS  
 DEPARTMENT OF PUBLIC WORKS & BLDGS.  
 DIVISION OF HIGHWAYS

STRINGER SHIMS  
 SPANS D15 THRU D17  
 POPLAR STREET BRIDGE APPROACHES  
 ROADWAY "D"

F.A.I. RT. 70 ST. CLAIR CO. SECTION 82-3HVF&E-1

H. W. LOCHNER, INC.  
 ENGINEERS  
 CHICAGO, ILLINOIS

SHEET  
 247 OF 526

0144

MODEL: Bridge\_Civil\_5 (Sheet)  
 FILE NAME: P:\DOT\Documents\DOT Office\District 8\ORD Project\82-3HVF&E-1\CAD\Sheet\082-3HVF&E-1-98.dgn

USER NAME = Nathan.Cox	DESIGNED -	REVISED -
PLOT SCALE = 0.16666633 1/In.	DRAWN -	REVISED -
PLOT DATE = 3/13/2023	CHECKED -	REVISED -
	DATE -	REVISED -

STATE OF ILLINOIS  
 DEPARTMENT OF TRANSPORTATION

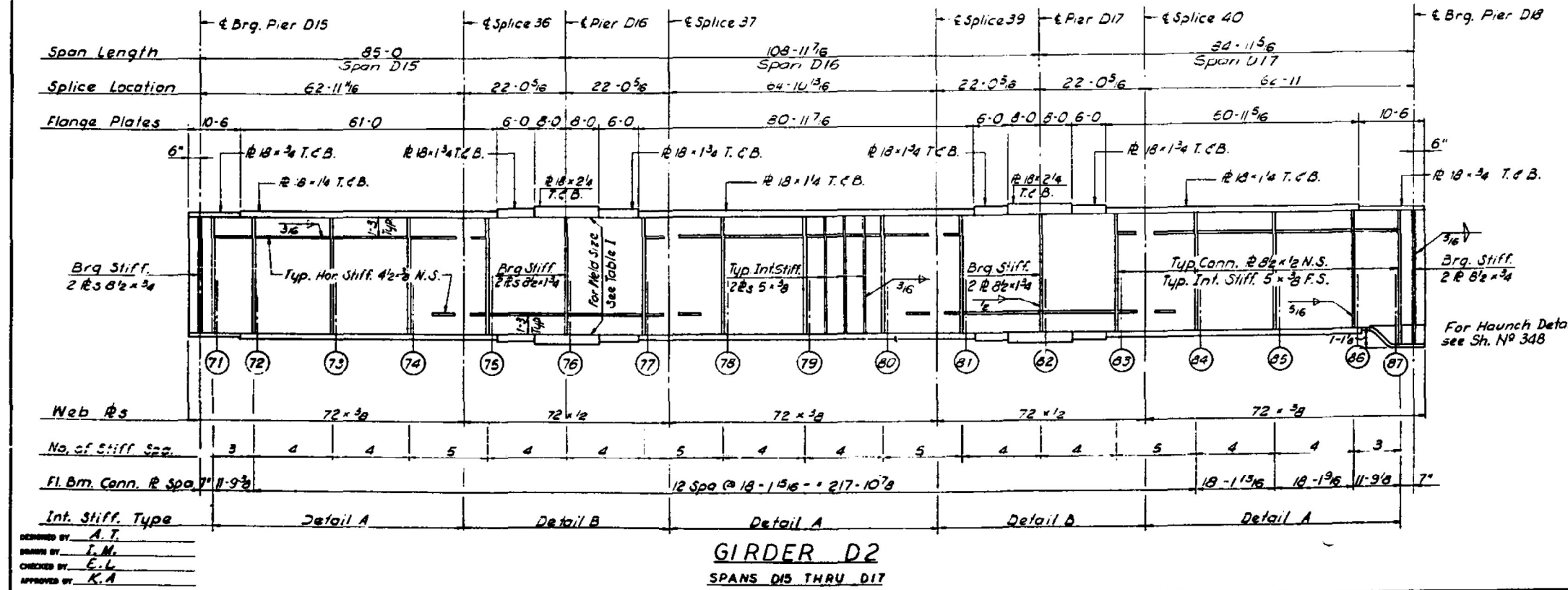
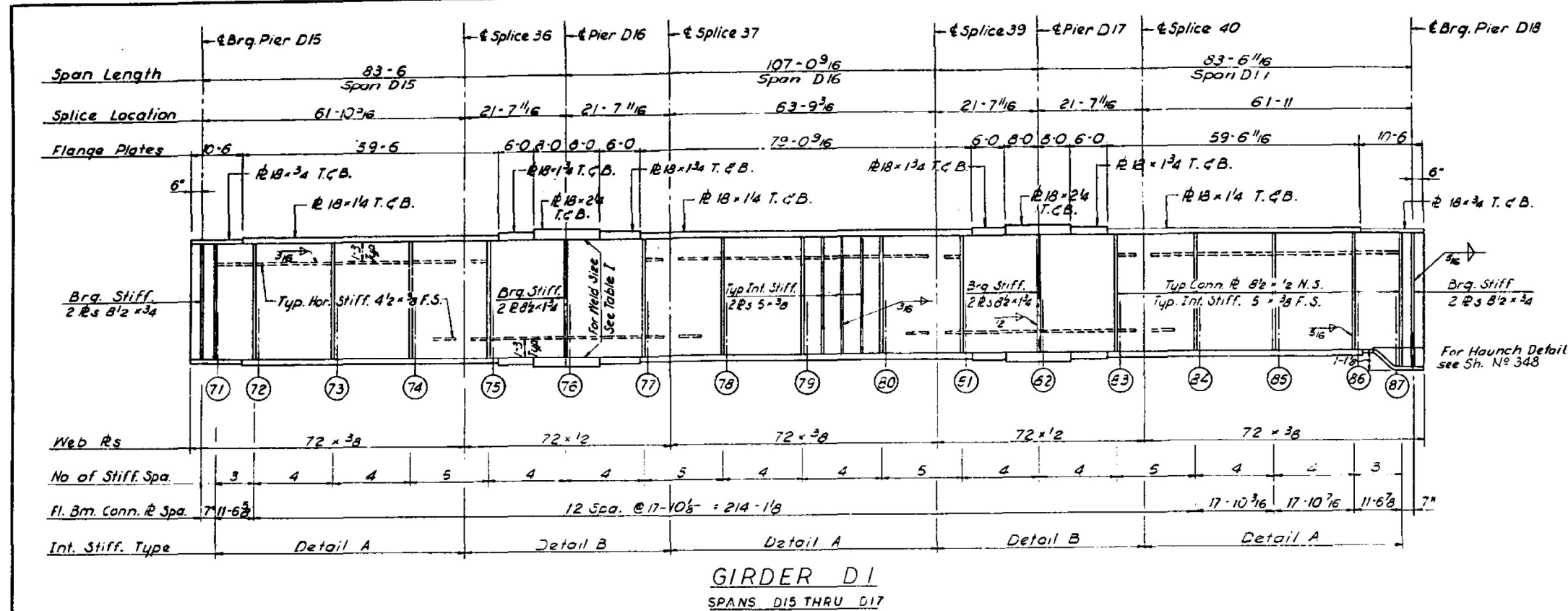
STRUCTURE DETAILS  
 S.N. 082-0144

SCALE: N/A SHEET 6 OF 11 SHEETS STA. TO STA.

F.A.I. RTE.	SECTION	COUNTY	TOTAL SHEETS	SHEET NO.
70	82-3HVB-2R-BP	ST. CLAIR	15	10
				CONTRACT NO. 76R80
				ILLINOIS FED. AID PROJECT

FOR INFORMATION ONLY

ROUTE NO.	SECTION	COUNTY	TOTAL SHEETS	SHEET NO.
F.A.I. 70	82-3HVF & E-1	ST. CLAIR	247	99
FED. ROAD DIV. NO. 4	ILLINOIS	PROJECT		



**Notes**  
All Longitudinal Dimensions shown are given along & of Web. See Sh. No. 226.  
All Bearing Stiffeners and Connection Plates to be vertical.  
For Splice, Stiffener, Connection Plate Details and Table I see Sh. No. 34B, 349 and 350.

STATE OF ILLINOIS  
DEPARTMENT OF PUBLIC WORKS & BLDGS.  
DIVISION OF HIGHWAYS

GIRDERS D1 AND D2  
SPANS D15 THRU D17  
POPLAR STREET BRIDGE APPROACHES  
ROADWAY "D"

F.A.I. RT. 70 ST. CLAIR CO. SECTION 82-3HVF & E-1

H. W. LOCHNER, INC.  
ENGINEERS  
CHICAGO, ILLINOIS

SHEET  
229 of 226

0144

MODEL: Bridge Detail 4 (Sheet)  
FILE NAME: P:\MIDOT\Documents\BORD\Office\Direct\BORD\Projects\823HVF&E-1\Drawings\CD\Drawings\823HVF&E-1.dwg

USER NAME = Nathan.Cox	DESIGNED -	REVISED -
PLOT SCALE = 0.16666633 / in.	DRAWN -	REVISED -
PLOT DATE = 3/13/2023	CHECKED -	REVISED -
	DATE -	REVISED -

DESIGNED BY <u>A.T.</u>	DESIGNED -	REVISED -
DRAWN BY <u>L.M.</u>	DRAWN -	REVISED -
CHECKED BY <u>E.L.</u>	CHECKED -	REVISED -
APPROVED BY <u>K.A.</u>	DATE -	REVISED -

STATE OF ILLINOIS  
DEPARTMENT OF TRANSPORTATION

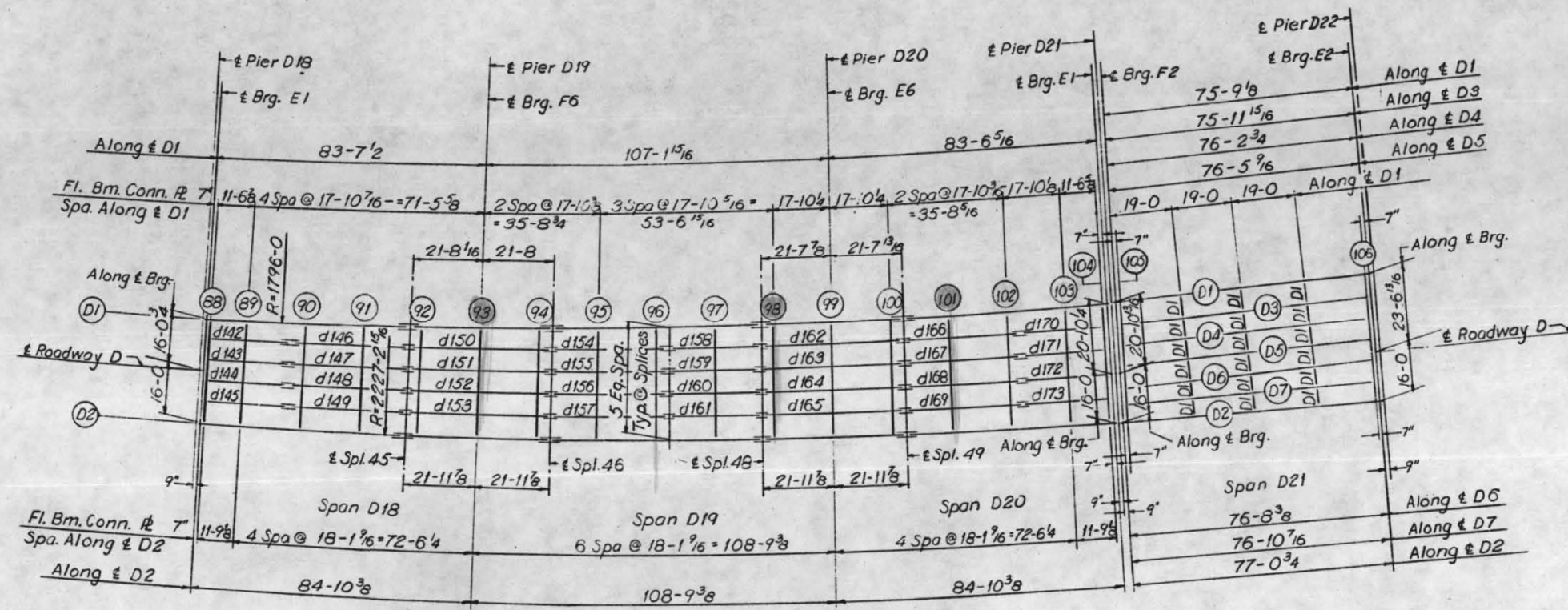
STRUCTURE DETAILS  
S.N. 082-0144

SCALE: N/A SHEET 7 OF 11 SHEETS STA. TO STA.

F.A.I. RTE.	SECTION	COUNTY	TOTAL SHEETS	SHEET NO.
70	82-3HVB-2R-BP	ST. CLAIR	15	11
CONTRACT NO. 76R80				
ILLINOIS FED. AID PROJECT				

FOR INFORMATION ONLY

ROUTE NO.	SECTION	COUNTY	TOTAL SHEETS	SHEET NO.
F.A.I.-70	82-3HVFB-E-1	ST. CLAIR	247	100
FED. ROAD DIV. NO. 4		ILLINOIS	PROJECT	



PLAN SPANS D18 THRU D21

ELEVATION TOP OF GIRDER WEB

	GIR. D1	GIR. D2	DIFF.
CL. BRG.	447.708	450.029	2.321
FLOOR BEAM 88	447.705	450.027	2.322
FLOOR BEAM 89	447.641	448.968	2.327
FLOOR BEAM 90	447.542	448.878	2.336
FLOOR BEAM 91	447.443	448.788	2.345
SPLICE 45	447.366	448.717	2.351
FLOOR BEAM 92	447.343	448.698	2.355
FLOOR BEAM 93	447.238	448.608	2.370
FLOOR BEAM 94	447.132	448.518	2.386
SPLICE 46	447.110	448.499	2.389
FLOOR BEAM 95	447.021	448.428	2.407
FLOOR BEAM 96	446.908	448.338	2.430
FLOOR BEAM 97	446.796	448.248	2.452
SPLICE 48	446.707	448.177	2.470
FLOOR BEAM 98	446.642	448.158	2.476
FLOOR BEAM 99	446.582	448.068	2.506
FLOOR BEAM 100	446.442	448.978	2.536
SPLICE 49	446.417	448.959	2.542
FLOOR BEAM 101	446.317	448.888	2.571
FLOOR BEAM 102	446.191	448.798	2.607
FLOOR BEAM 103	446.065	448.708	2.643
FLOOR BEAM 104	445.963	448.630	2.667
CL. BRG.	445.979	448.647	2.668

ELEVATION TOP OF FLANGE

	STR. D1	STR. D2	DIFF.
CL. BRG.	446.176	448.848	2.672
FLOOR BEAM 105	446.172	448.845	2.673
FLOOR BEAM 106	445.605	448.468	2.863
CL. BRG.	445.600	448.465	2.865

Note: Dimensions locating Floor Beams are given to the Floor Beam Conn. Plate see sketch Sheet No. 183

DESIGNED BY R.M.R.  
 DRAWN BY DCH  
 CHECKED BY A.L.C.  
 APPROVED BY K.A.

Rev. Str. Steel from 483,530 to 483,295 6-3-66 N.R.F.

BILL OF MATERIAL	
*Structural Steel	Lbs. 483,295
*Weight of Bearing Assemblies with Lead Plates and Anchor Bolts are Included as Structural Steel Est. Wt. 11,270 Lbs.	

STATE OF ILLINOIS  
 DEPARTMENT OF PUBLIC WORKS & BLDGS.  
 DIVISION OF HIGHWAYS  
 FRAMING PLAN  
 SPANS D18 THRU D21  
 POPLAR STREET BRIDGE APPROACHES  
 ROADWAY "D"

F.A.I. RT. 70 ST. CLAIR CO. SECTION 82-3HVFB-E-1  
 H. W. LOCHNER, INC.  
 ENGINEERS  
 CHICAGO, ILLINOIS

SHEET 23007526

0144

MODEL: Bridge-Details (Sheet) FILE NAME: P:\MIDOT\Documents\DOT Office\Direct\BORD\Projects\82-3HVFB-E-1\Drawings\82-3HVFB-E-1-100.dgn

FOR INFORMATION ONLY

ROUTE NO.	SECTION	COUNTY	TOTAL SHEETS	SHEET NO.
FAI. 70	B2-3HVFB-E-1	ST. CLAIR	Z47	101
FED. ROAD DIV. NO. 4		ILLINOIS	PROJECT	

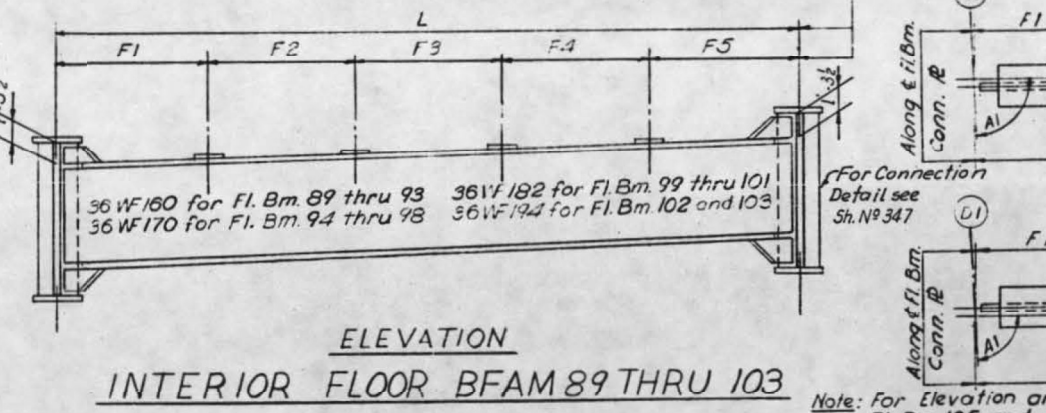
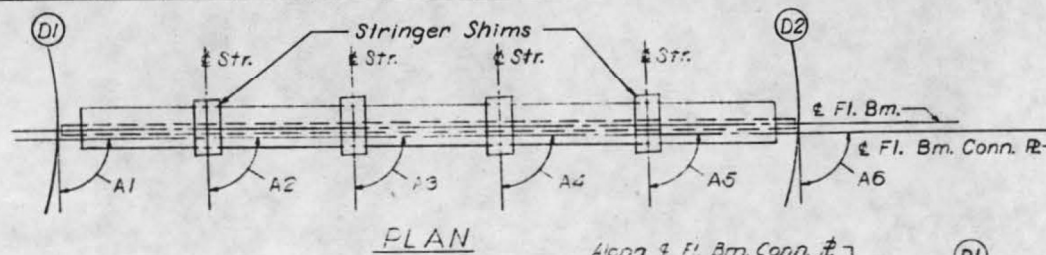
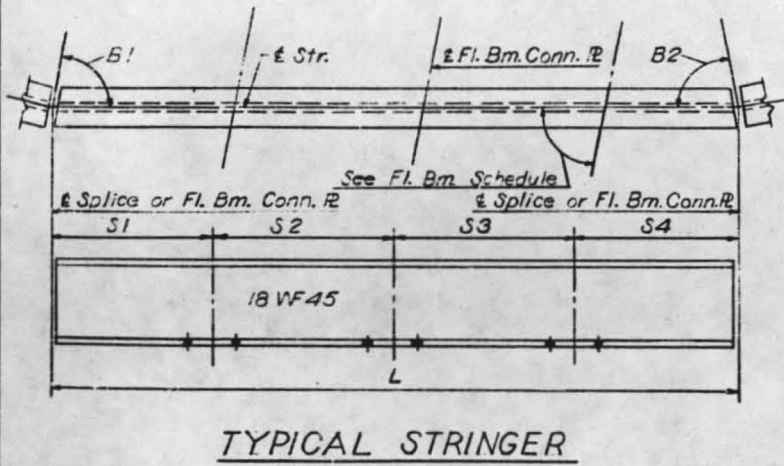
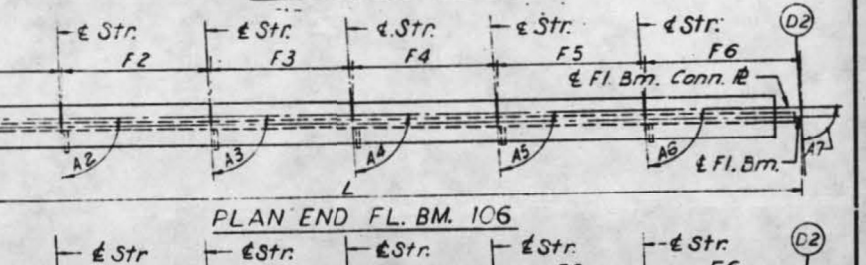
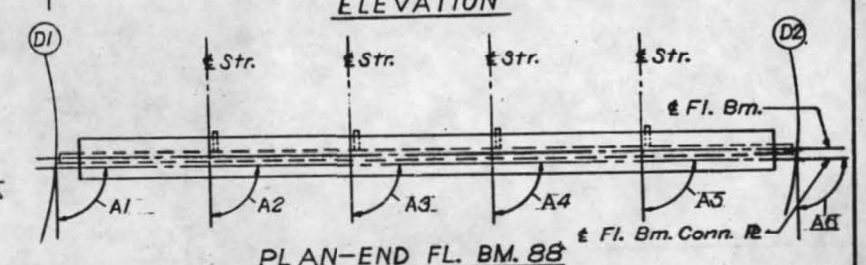
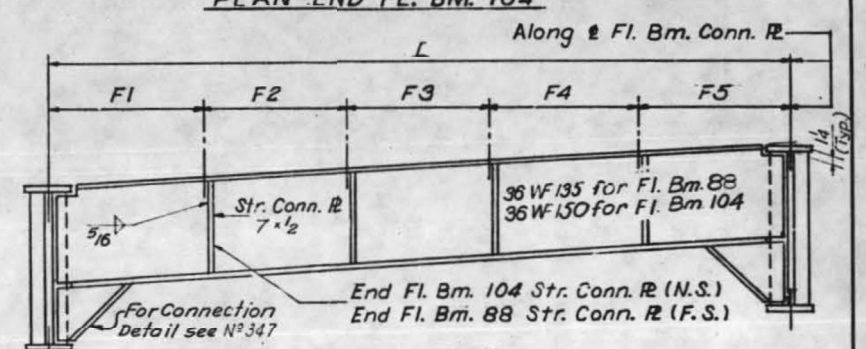
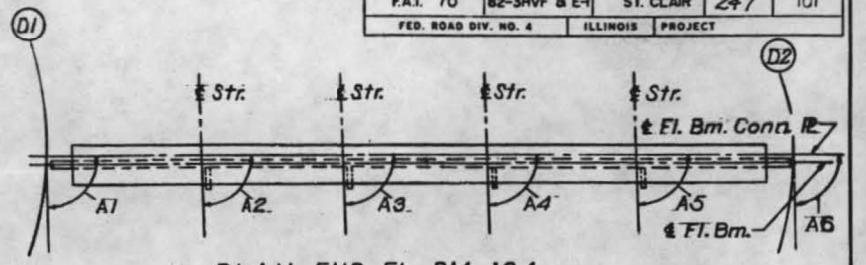
STRINGER DIMENSIONS

STRG	L	S1	S2	S3	S4	B1	B2
142	25'-8 5/16"	11'-7 3/4"			14'-1 1/4"	89,24,16"	89,53,30"
143	25'-9 1/2"	11'-7 3/4"			14'-1 3/4"	89,27,42"	89,50,04"
144	25'-10 7/16"	11'-8 3/16"			14'-2 1/4"	89,31,06"	89,46,40"
145	25'-11 7/16"	11'-9 11/16"			14'-2 3/4"	89,34,29"	89,43,17"
146	35'-10 1/16"	3'-9 13/16"	17'-11 1/16"		14'-1 1/4"	89,09,55"	89,54,07"
147	35'-11 5/16"	3'-9 15/16"	17'-11 11/16"		14'-1 3/4"	89,15,30"	89,48,32"
148	36'-5/8"	3'-10 1/16"	18'-5/16"		14'-2 1/4"	89,21,02"	89,43,00"
149	36'-1 7/8"	3'-10 3/16"	18'-15/16"		14'-2 3/4"	89,26,32"	89,37,29"
150	43'-5 5/8"	3'-9 13/16"	17'-11"	17'-11"	3'-9 13/16"	88,53,00"	89,59,07"
151	43'-7 1/8"	3'-9 15/16"	17'-11 11/16"	17'-11 5/8"	3'-9 15/16"	89,01,20"	89,50,47"
152	43'-8 11/16"	3'-10 1/16"	18'-5/16"	18'-1/4"	3'-10 1/16"	89,09,37"	89,42,29"
153	43'-10 1/4"	3'-10 3/16"	18'-15/16"	12'-15/16"	3'-10 3/16"	89,17,52"	89,34,15"
154	35'-9 15/16"	14'-1 3/16"	17'-10 15/16"		3'-9 3/4"	88,48,00"	90,16,02"
155	35'-11 1/4"	14'-1 11/16"	17'-11 5/8"		3'-9 15/16"	88,59,06"	90,04,56"
156	36'-1/2"	14'-2 1/4"	18'-1/4"		3'-10 1/16"	89,10,08"	89,53,54"
157	36'-1 12/16"	14'-2 3/4"	18'-7/8"		3'-10 3/16"	89,21,07"	89,42,55"
158	28'-2 5/16"	14'-1 3/16"			14'-1 1/8"	88,45,07"	90,30,50"
159	28'-3 3/8"	14'-1 11/16"			14'-1 11/16"	88,56,27"	90,17,30"
160	28'-4 3/8"	14'-2 3/16"			14'-2 3/16"	89,11,42"	90,04,15"
161	28'-5 7/16"	14'-2 11/16"			14'-2 11/16"	89,24,53"	89,51,04"
162	43'-5 5/16"	3'-9 3/4"	17'-10 15/16"	17'-11 7/8"	3'-9 3/4"	88,23,19"	90,28,47"
163	43'-6 15/16"	3'-9 15/16"	17'-11 9/16"	17'-11 1/2"	3'-9 7/8"	88,39,09"	90,12,58"
164	43'-8 1/2"	3'-10 1/16"	18'-1/4"	18'-3/16"	3'-10 1/16"	88,54,53"	89,57,14"
165	43'-10 1/8"	3'-10 3/16"	18'-7/8"	18'-7/8"	3'-10 3/16"	89,10,31"	89,41,36"
166	35'-9 11/16"	14'-1 1/8"	17'-10 13/16"		3'-9 3/4"	88,18,22"	90,45,39"
167	35'-11"	14'-1 5/8"	17'-11 1/2"		3'-9 7/8"	88,36,58"	90,27,04"
168	36'-3/8"	14'-2 3/16"	18'-3/16"		3'-10 1/16"	88,55,26"	90,26,36"
169	36'-1 3/4"	14'-2 11/16"	18'-7/8"		3'-10 3/16"	89,13,47"	89,50,15"
170	25'-8 1/8"	14'-1 1/11"			11'-7 1/16"	88,17,51"	90,59,55"
171	25'-9 3/16"	14'-1 9/16"			11'-7 9/16"	88,38,34"	90,39,11"
172	25'-10 1/4"	14'-2 1/8"			11'-8 1/16"	88,59,10"	90,18,36"
173	25'-11 5/16"	14'-2 11/16"			11'-8 5/8"	13,19,36"	89,58,10"

FLOOR BEAM DIMENSIONS

FL. BM.	L	F1	F2	F3	F4	F5	A1	A2	A3	A4	A5	A6
88	32'-0 13/16"	6'-4 15/16"	6'-4 15/16"	6'-4 15/16"	6'-4 15/16"	6'-4 15/16"	89,45,21"	89,24,16"	89,27,42"	89,31,06"	89,34,29"	89,57,56"
89	32'-1 3/8"	6'-4 9/16"	6'-5 1/8"	6'-5 1/8"	6'-5 1/8"	6'-5 9/16"	89,43,25"	89,44,29"	89,47,54"	89,51,19"	89,54,42"	90,00,00"
90	32'-2 5/8"	6'-4 15/16"	6'-5 5/16"	6'-5 5/16"	6'-5 5/16"	6'-5 11/16"	89,37,12"	89,15,53"	89,21,27"	89,27,00"	89,32,30"	90,00,00"
91	32'-4 1/4"	6'-4 11/16"	6'-5 11/16"	6'-5 11/16"	6'-5 11/16"	6'-6 1/2"	89,30,59"	89,43,52"	89,49,26"	89,54,59"	90,00,29"	90,00,00"
92	32'-6 1/4"	6'-5 9/16"	6'-6 1/16"	6'-6 1/16"	6'-6 1/16"	6'-6 1/2"	89,24,46"	88,58,57"	89,07,18"	89,15,35"	89,23,49"	90,00,00"
93	32'-8 5/8"	6'-5"	6'-6 9/16"	6'-6 9/16"	6'-6 9/16"	6'-7 7/8"	89,18,33"	89,26,56"	89,35,17"	89,43,34"	89,51,48"	90,00,00"
94	32'-11 3/8"	6'-6 5/8"	6'-7 1/8"	6'-7 1/8"	6'-7 1/8"	6'-7 1/2"	89,12,20"	89,54,55"	90,03,16"	90,11,33"	90,19,47"	90,00,00"
95	33'-2 9/16"	6'-6 3/4"	6'-7 3/4"	6'-7 3/4"	6'-7 3/4"	6'-8 9/16"	89,06,06"	89,10,01"	89,21,07"	89,32,10"	89,43,08"	90,00,00"
96	33'-6 1/8"	6'-8"	6'-8 7/16"	6'-8 7/16"	6'-8 7/16"	6'-8 3/4"	88,59,56"	89,38,00"	89,49,07"	90,00,09"	90,11,07"	90,00,00"
97	33'-10 1/16"	6'-8 9/16"	6'-9 1/4"	6'-9 1/4"	6'-9 1/4"	6'-9 13/16"	88,53,44"	89,07,09"	89,20,29"	89,33,44"	89,46,54"	90,00,00"
98	34'-2 3/8"	6'-9 9/16"	6'-10 1/16"	6'-10 1/16"	6'-10 1/16"	6'-10 1/2"	88,47,36"	88,29,17"	88,45,07"	89,00,51"	89,16,29"	90,00,00"
99	34'-7 1/16"	6'-9 1/2"	6'-11 1/10"	6'-11 1/10"	6'-11 1/10"	7'-3/8"	88,41,20"	88,57,16"	89,13,06"	89,28,50"	89,44,28"	90,00,00"
100	35'-3/16"	6'-11 9/16"	7'-1/16"	7'-1/16"	7'-1/16"	7'-1/2"	88,35,09"	89,25,15"	89,41,05"	89,56,49"	90,12,27"	90,00,00"
101	35'-5 11/16"	7'-1/8"	7'-1 3/16"	7'-1 3/16"	7'-1 3/16"	7'-2"	88,28,58"	88,40,24"	88,56,59"	89,17,27"	89,35,48"	90,00,00"
102	35'-11 1/2"	7'-1 15/16"	7'-2 5/16"	7'-2 5/16"	7'-2 5/16"	7'-2 5/8"	88,22,48"	89,08,23"	89,26,58"	89,45,26"	90,03,47"	90,00,00"
103	36'-5 3/4"	7'-3"	7'-3 9/16"	7'-3 9/16"	7'-3 9/16"	7'-4"	88,16,37"	88,39,52"	89,00,36"	89,21,11"	89,41,38"	90,00,00"
104	36'-10"	7'-4 3/8"	7'-4 3/8"	7'-4 3/8"	7'-4 3/8"	7'-4 3/8"	88,14,44"	89,00,05"	89,20,49"	89,41,24"	90,01,50"	90,02,04"

FL. BM.	L	F1	F2	F3	F4	F5	F6	A1	A2	A3	A4	A5	A6	A7
109	40'-11"	6'-8"	6'-8"	6'-8"	6'-8"	6'-5 1/2"	6'-5 1/2"	86,59,14"	86,59,11"	86,58,14"	86,58,14"	86,58,14"	87,58,57"	88,59,24"
106	43'-6 9/16"	6'-7 7/8"	6'-7 7/8"	6'-7 7/8"	6'-7 7/8"	6'-5 1/2"	6'-5 1/2"	85,59,30"	88,59,30"	88,59,30"	88,59,30"	88,59,30"	90,00,12"	91,00,30"



Note: For Elevation and Detail of End Fl. Bm. 105 and 106 See Sh. No.

Notes: Length L of Stringers and Fl. Bms. is correct as given in the table except the increment lengths are given to the nearest 1/16". All dimensions are in the horizontal plane. For Connection Plate Details see Sh. No. 234 For Details of Stringers in Span D21 see Sheet No. 234

DESIGNED BY A.T.A.I.C.  
DRAWN BY DCH  
CHECKED BY A.A.  
APPROVED BY K.A.

STATE OF ILLINOIS  
DEPARTMENT OF PUBLIC WORKS & BLDGS.  
DIVISION OF HIGHWAYS  
STRINGER AND FLOOR BEAM  
SCHEDULE  
SPANS D18 THRU D21  
POPLAR STREET BRIDGE APPROACHES  
ROADWAY "D"  
F.A.I. RT. 70 ST. CLAIR CO. SECTION 82-3HVFB-E-1  
H. W. LOCHNER, INC.  
ENGINEERS  
CHICAGO, ILLINOIS  
SHEET 234 OF 250

0144

MODEL: Bridge-Data-2 (Sheet) FILE NAME: P:\MIDOT\Documents\DOT Office\District 8\ORD Project\82-3HVFB-E-1\ORD-CAD\Sheet\82-3HVFB-E-1.dwg

USER NAME = Nathan.Cox	DESIGNED -	REVISED -
PLOT SCALE = 0.16666633 / in.	DRAWN -	REVISED -
PLOT DATE = 3/13/2023	CHECKED -	REVISED -
	DATE -	REVISED -

STATE OF ILLINOIS  
DEPARTMENT OF TRANSPORTATION

STRUCTURE DETAILS  
S.N. 082-0144

SCALE: N/A SHEET 9 OF 11 SHEETS STA. TO STA.

F.A.I. RTE.	SECTION	COUNTY	TOTAL SHEETS	SHEET NO.
70	82-3HVFB-2R-BP	ST. CLAIR	15	13
CONTRACT NO. 76R80				
ILLINOIS FED. AID PROJECT				

FOR INFORMATION ONLY

ROUTE NO.	SECTION	COUNTY	TOTAL SHEETS	SHEET NO.
F. A. I.-70	82-3HVF&E-1	ST. CLAIR	247	102
FED. ROAD DIV. NO. 4		ILLINOIS	PROJECT	

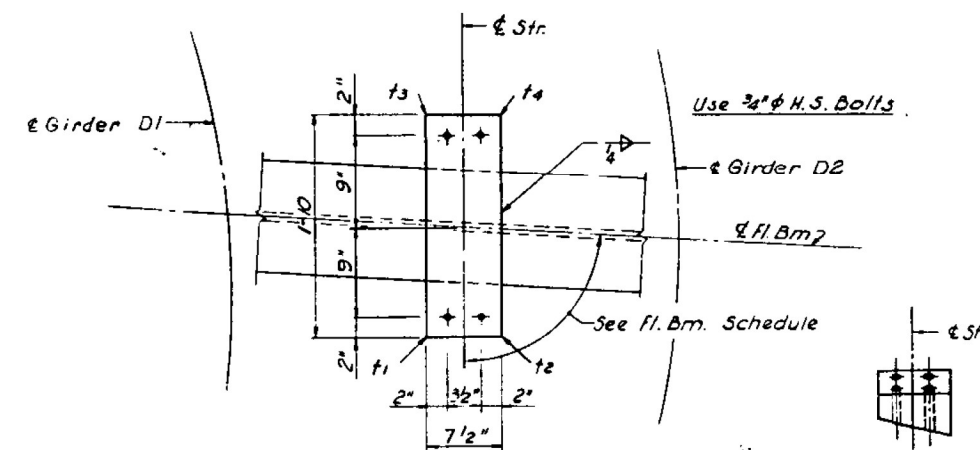
FLOOR BEAM 88 THRU 91	T1	T2	T3	T4
STR. 142 THRU 149	1 1/16	9/16	15/16	7/16

FLOOR BEAM 92 THRU 94	T1	T2	T3	T4
STR. 150 THRU 153	1 1/16	9/16	15/16	7/16

FLOOR BEAM 95 THRU 97	T1	T2	T3	T4
STR. 154 THRU 161	1 1/16	9/16	15/16	7/16

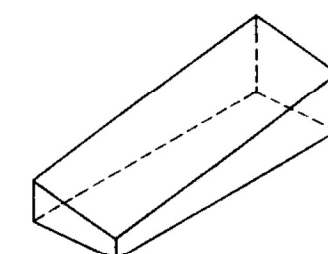
FLOOR BEAM 98 THRU 100	T1	T2	T3	T4
STR. 162 THRU 165	1 1/16	9/16	15/16	7/16

FLOOR BEAM 101 THRU 103	T1	T2	T3	T4
STR. 166 THRU 173	1 1/8	9/16	15/16	3/8

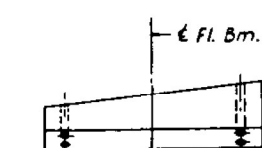


PLAN

END VIEW



ISOMETRIC VIEW



SIDE VIEW

SHIM DETAIL

Shim thickness  $t_1$ ,  $t_2$ ,  $t_3$  &  $t_4$  shown in the Table are orientated with the Plan View shown above.

DESIGNED BY A.S.C.  
 DRAWN BY D.C.H.  
 CHECKED BY A.S.  
 APPROVED BY K.A.

STATE OF ILLINOIS  
 DEPARTMENT OF PUBLIC WORKS & BLDGS.  
 DIVISION OF HIGHWAYS  
**STRINGER SHIMS**  
 SPANS D18 THRU D20  
 POPLAR STREET BRIDGE APPROACHES  
 ROADWAY "D"  
 F.A.I.R.T. 70 ST. CLAIR CO. SECTION 82-3HVF&E-1  
 N. W. LOCHNER, INC.  
 ENGINEERS  
 CHICAGO, ILLINOIS

0140

SHEET 232 of 526

MODEL: Bridge\_Civil\_1 (Sheet)  
 FILE NAME: P:\MIDOT\Documents\DOT Office\District 8\ORD Project\82-3HVF&E-1\Drawings\CAD\Sheet\82-3HVF&E-1-102.dgn

USER NAME = Nathan.Cox	DESIGNED -	REVISED -
PLOT SCALE = 0.16666833' / in.	DRAWN -	REVISED -
PLOT DATE = 3/13/2023	CHECKED -	REVISED -
	DATE -	REVISED -

STATE OF ILLINOIS  
 DEPARTMENT OF TRANSPORTATION

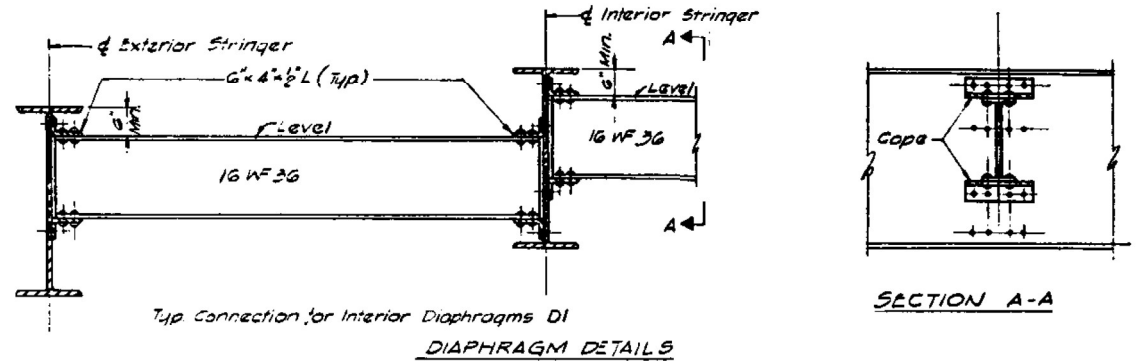
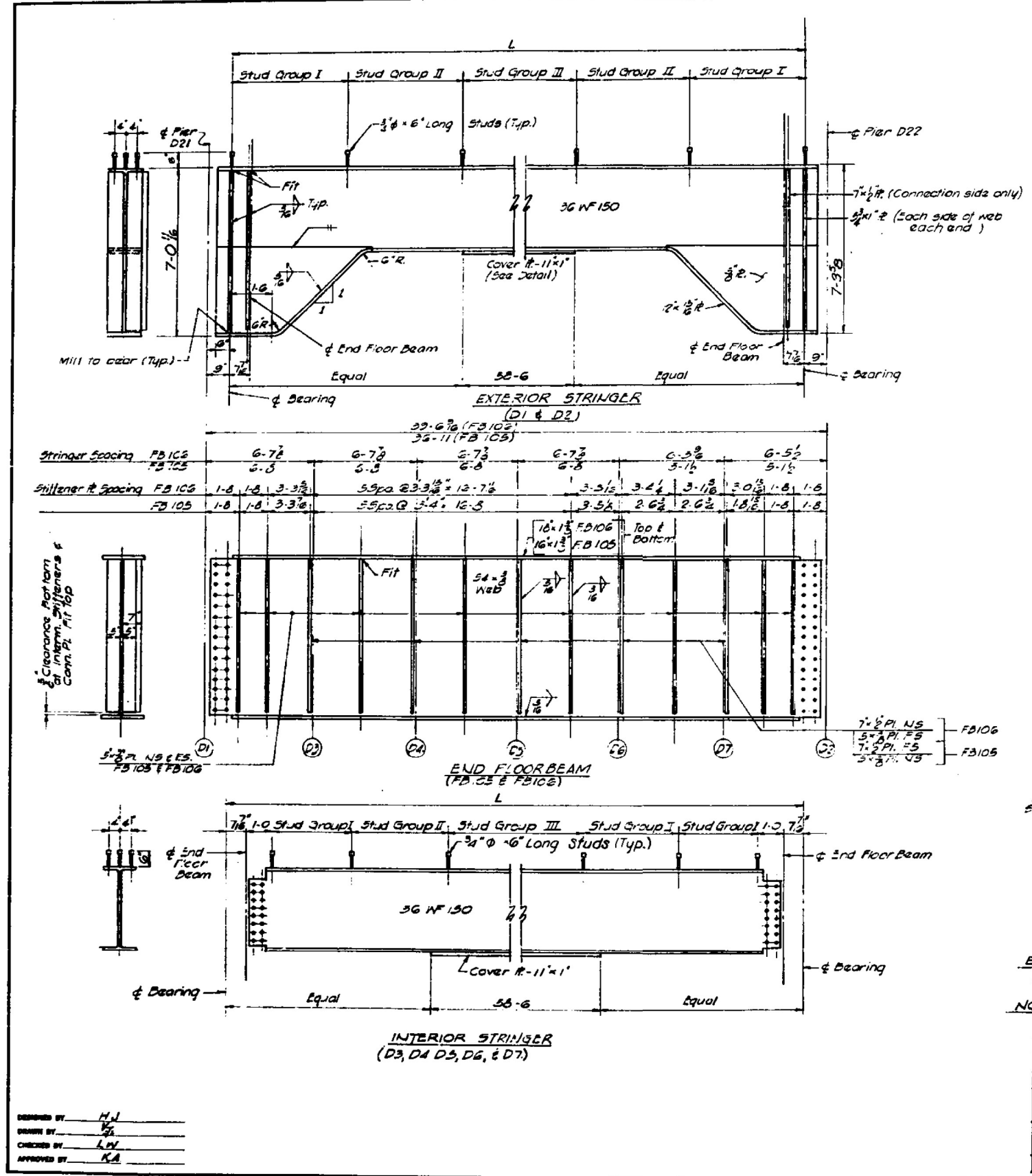
STRUCTURE DETAILS  
 S.N. 082-0144

SCALE: N/A SHEET 10 OF 11 SHEETS STA. TO STA.

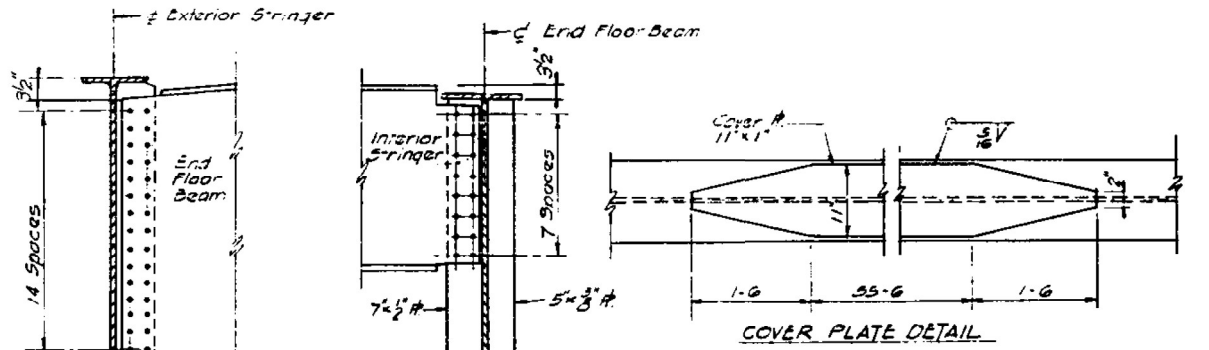
F.A.I. RTE.	SECTION	COUNTY	TOTAL SHEETS	SHEET NO.
70	82-3HVB-2R-BP	ST. CLAIR	15	14
				CONTRACT NO. 76R80
ILLINOIS FED. AID PROJECT				

FOR INFORMATION ONLY

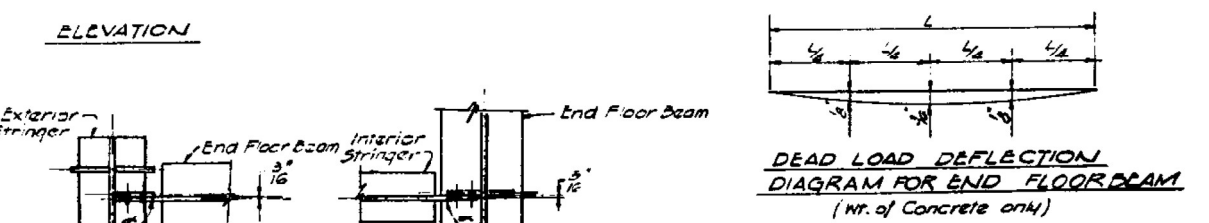
ROUTE NO.	SECTION	COUNTY	TOTAL SHEETS	SHEET NO.
F.A.I. 70	82-3HV&E-1	ST. CLAIR	277	104
FED. ROAD DIV. NO. 4	ILLINOIS PROJECT			



SECTION A-A



**NOTE:**  
 Clip all stiffeners and connection plates 1/4" at corners to clear welding of flange to web & to clear beam fillets.



**NOTES:**  
 For Expansion Device Detail see Sheet No. 363  
 For Framing Plan see Sheet No. 230

**NOTE:** For Angle = see Floor Beam Schedule Sheet No. 231

STRINGER LENGTH & SHEAR CONN. SPACING	GROUP I	GROUP II	GROUP III
D1	75-9 3/8	28@5 1/2"	20@7 1/2"
D2	75-11 1/8	24@5 1/2"	20@7 1/2"
D3	76-2 1/8	24@5 1/2"	22@7 1/2"
D4	76-3 1/8	26@5 1/2"	21@7 1/2"
D5	76-0 3/8	28@5 1/2"	21@7 1/2"
D6	76-10 3/8	28@5 1/2"	21@7 1/2"
D7	77-0 3/8	26@5 1/2"	22@7 1/2"

STATE OF ILLINOIS  
 DEPARTMENT OF PUBLIC WORKS & BLDGS.  
 DIVISION OF HIGHWAYS  
**STEEL DETAILS**  
 SPAN D21  
**POPLAR STREET BRIDGE APPROACHES**  
 ROADWAY 'D'  
 F.A.I. RT. 70 ST. CLAIR CO. SECTION 82-3HV&E-1  
 H. W. LOCKNER, INC.  
 ENGINEERS  
 CHICAGO, ILLINOIS

0144

DESIGNED BY: H.J.  
 DRAWN BY: J.P.  
 CHECKED BY: L.H.  
 APPROVED BY: K.A.

USER NAME = Nathan.Cox  
 PLOT SCALE = 0.16666833 / in.  
 PLOT DATE = 3/13/2023

DESIGNED -  
 DRAWN -  
 CHECKED -  
 DATE -

STATE OF ILLINOIS  
 DEPARTMENT OF TRANSPORTATION

STRUCTURE DETAILS  
 S.N. 082-0144

SCALE: N/A SHEET 11 OF 11 SHEETS STA. TO STA.

F.A.I. RTE. 70 SECTION 82-3HV&E-1 COUNTY ST. CLAIR TOTAL SHEETS 15 SHEET NO. 15 CONTRACT NO. 76R80 ILLINOIS FED. AID PROJECT