

INDEX OF SHEETS

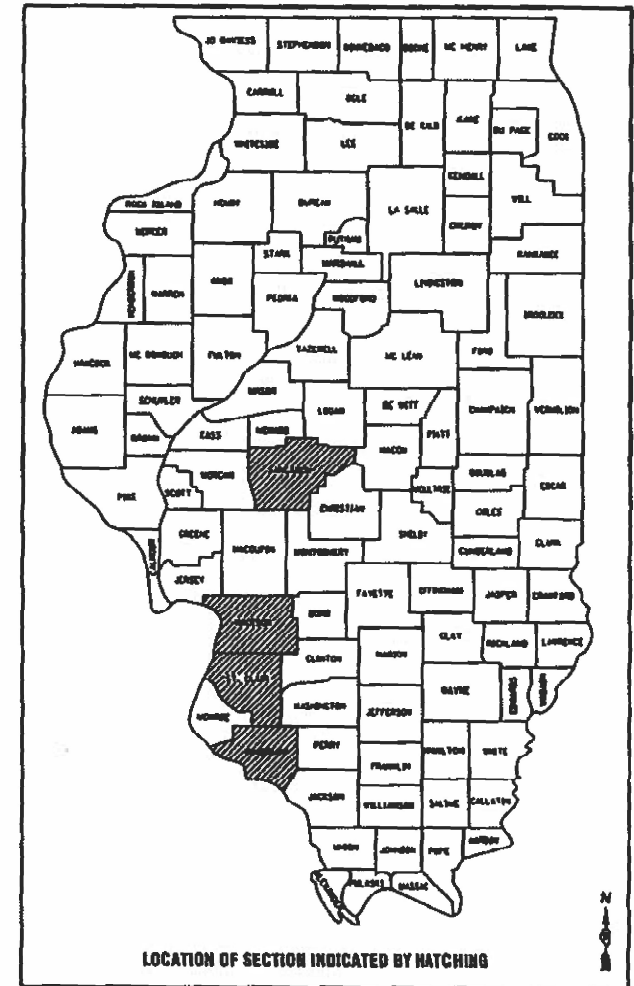
- 1 COVER SHEET
- 2 ELECTRICAL NOTES AND SYMBOLS AND LOCATION MAPS AND HIGHWAY STANDARDS
- 3 SUMMARY OF QUANTITIES
- 4 EXISTING MONITOR NO. 2 I-64 REST AREA E/B
- 5 EXISTING MONITOR NO. 3 I-64 REST AREA W/B
- 6 EXISTING MONITOR NO. 4 COLLINSVILLE #1
- 7 EXISTING MONITOR NO. 5 McCAMBRIDGE
- 8 EXISTING MONITOR NO. 6 I-70 REST AREA W/B
- 9 EXISTING MONITOR NO. 7 MISSOURI AVENUE
- 10 EXISTING MONITOR NO. 8 FUN & SUN
- 11 EXISTING MONITOR NO. 9 42ND STREET
- 12 EXISTING MONITOR NO. 10 VENICE
- 13 EXISTING MONITOR NO. 11 25TH STREET
- 14 EXISTING MONITOR NO. 12 I-55 REST AREA N/B
- 15 EXISTING MONITOR NO. 13 I-55 REST AREA S/B
- 16 EXISTING MONITOR NO. 14 9TH STREET
- 17 EXISTING MONITOR NO. 17 25TH STREET WELLS
- 18 EXISTING MONITOR NO. 18 TRI-LEVEL SOUTH WELLS
- 19 EXISTING MONITOR NO. 19 TRI-LEVEL NORTH WELLS
- 20 EXISTING MONITOR NO. 20 10TH STREET WELLS
- 21 EXISTING MONITOR NO. 21 15TH STREET WELLS
- 22 EXISTING MONITOR NO. 34 BOWMAN
- 23 PROPOSED MONITOR NO. 36 MARY'S RIVER COVERED BRIDGE

STATE OF ILLINOIS
DEPARTMENT OF TRANSPORTATION
PROPOSED
HIGHWAY PLANS

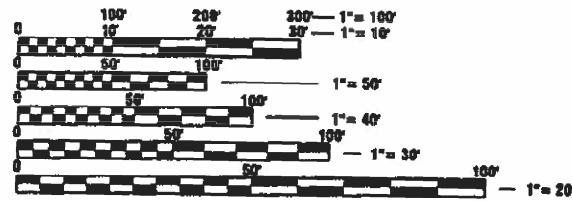
VARIOUS ROUTES
SECTION D8 PUMP STATIONS 2023-1
DISTRICT 8 PUMP STATION
SECURITY PROJECT
VARIOUS COUNTIES
 C-98-071-23

P.A.U. NTE.	SECTION	COUNTY	TOTAL SHEETS	SHEET NO.
VAR.	D8 Pump Stations 2023-1	VARIOUS	23	1
		ILLINOIS	CONTRACT NO. 76T02	

D-98-027-23



PLANS PREPARED BY:
KLINGNER & ASSOCIATES, P.C.
 Engineers • Architects • Surveyors
 www.klingner.com
 Quincy, Illinois
 416 North 26th Street
 217-223-2470
 STATE OF ILLINOIS DESIGN FIRM # 1642738



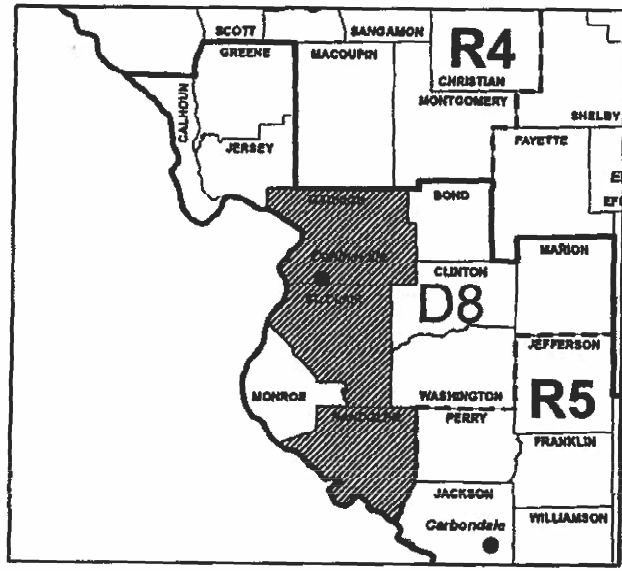
FULL SIZE PLANS HAVE BEEN PREPARED USING STANDARD ENGINEERING SCALES. REDUCED SIZED PLANS WILL NOT CONFORM TO STANDARD SCALES. IN MAKING MEASUREMENTS ON REDUCED PLANS, THE ABOVE SCALES MAY BE USED.

J.U.L.I.E.
 JOINT UTILITY LOCATION INFORMATION FOR EXCAVATION
 1-800-892-0123
 OR 811

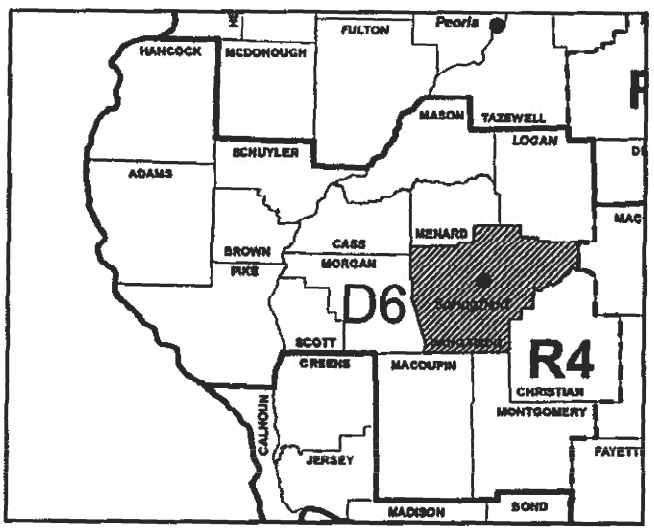
PROJECT ENGINEER: CHERYL KEPLAR
SQUAD LEADER: PHILLIP SAWYER

CONTRACT NO. 76T02

GROSS LENGTH = N/A
 NET LENGTH = N/A



SEE SHEET 2 FOR DETAILED PUMP STATION LOCATIONS



SEE SHEET 2 FOR DETAILED PUMP STATION LOCATIONS

PLANS PREPARED BY:
JOHN J. NEYENS
 062.063295
 REGISTERED PROFESSIONAL ENGINEER
 OF ILLINOIS
 DATE: 2/23/23

STATE OF ILLINOIS
 DEPARTMENT OF TRANSPORTATION

SUBMITTED March 1, 2023
K. Sawyer REGIONAL ENGINEER

May 12, 2023 [Signature]
 ENGINEER OF DESIGN AND ENVIRONMENT

May 12, 2023 [Signature]
 DIRECTOR OF HIGHWAYS PROJECT IMPLEMENTATION

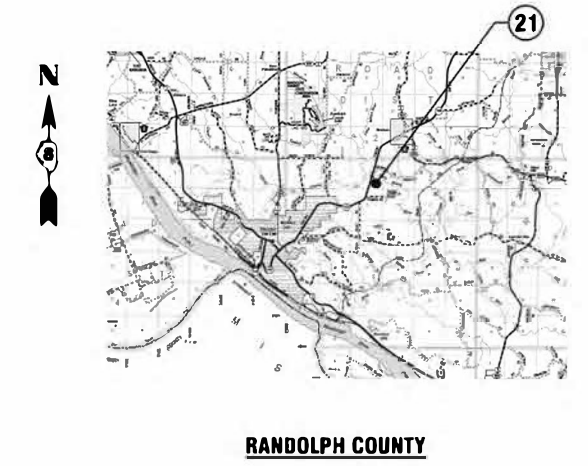
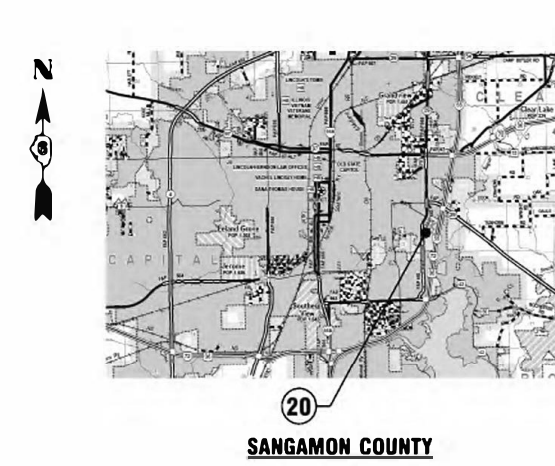
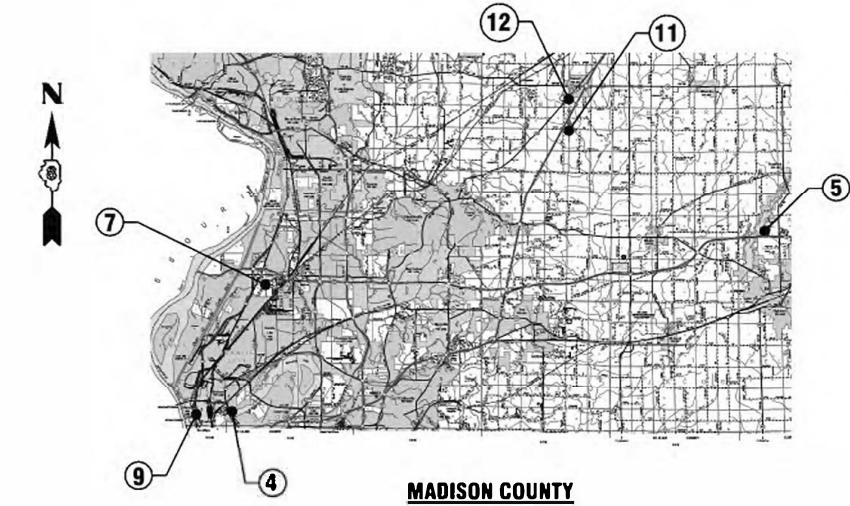
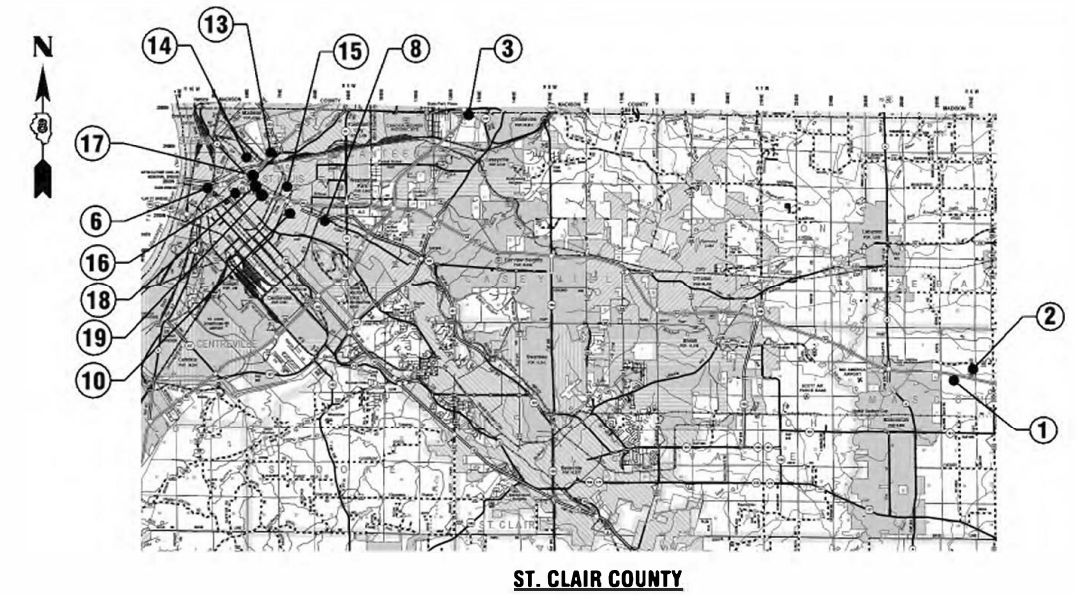
PRINTED BY THE AUTHORITY OF THE STATE OF ILLINOIS

GENERAL ELECTRICAL NOTES:

1. APPLICABLE STANDARDS: NFPA-70 AND THE OCCUPATIONAL SAFETY AND HEALTH ACT (OSHA) OF 1971 AND ALL AMENDMENTS THERETO: EQUIPMENT, DEVICES, APPARATUS, SYSTEMS, AND INSTALLATIONS SHALL BE ENTIRELY SUITABLE AND SAFE FOR EACH INTENDED APPLICATION AND BE IN FULL COMPLIANCE WITH APPLICABLE STANDARDS, REQUIREMENTS, RULES, REGULATIONS, CODES, STATUTES, ORDINANCES, ETC., OF MUNICIPAL, COUNTY, AND STATE GOVERNMENTS, OWNER'S INSURANCE COMPANY, LOCAL UTILITIES, AND LABOR REGULATIONS. NOTHING CONTAINED IN THESE PLANS AND SPECIFICATIONS SHALL BE CONSTRUED TO CONFLICT WITH THESE LAWS, CODES, AND ORDINANCES.
2. DRAWING PLANS, SCHEMATICS, AND DIAGRAMS INDICATE GENERAL LOCATION AND ARRANGEMENT OF SYSTEMS. INSTALL SYSTEMS AS INDICATED UNLESS DEVIATIONS TO LAYOUT ARE APPROVED ON COORDINATION DRAWINGS.
3. CONTRACTOR SHALL OBTAIN ALL NECESSARY PERMITS AND ARRANGE FOR ALL INSPECTIONS REQUIRED BY LOCAL AUTHORITIES.
4. CONTRACTOR SHALL FURNISH AND INSTALL ALL MATERIALS, ACCESSORIES, TOOLS, EQUIPMENT, TRANSPORTATION, LABOR, SERVICES AND OPERATIONS NECESSARY FOR A COMPLETE ELECTRICAL SYSTEM.
5. CONTRACTOR SHALL REMOVE AND SALVAGE EXISTING DIALER AND PROVIDE TO OWNER.
6. EXISTING 120V POWER SUPPLY TO CURRENT DIALER UNIT TO BE REUSED TO PROVIDE POWER FOR PROPOSED WIRELESS MONITORING AND REMOTE-CONTROL TERMINAL UNIT.
7. INPUT POINTS AND ASSOCIATED CONDUCTORS FOR CURRENT DIALER ARE TO BE REUSED UNLESS NOTED OTHERWISE. DISCONNECT CONDUCTORS FOR EACH INPUT POINT FROM EXISTING DIALER UNIT AND RECONNECT TO PROPOSED WIRELESS MONITORING AND REMOTE-CONTROL TERMINAL UNIT.
8. PROPOSED WIRELESS MONITORING AND REMOTE-CONTROL TERMINAL UNIT SHALL BE PROVIDED WITH APPROPRIATE MOUNTING BRACKETS AND HARDWARE TO ALLOW INSTALLATION IN THE SAME LOCATION AND IN THE SAME GENERAL CONFIGURATION AS THE CURRENT DIALER UNIT. INFILL PANELS AND OTHER MODIFICATIONS NECESSARY TO ACCOMMODATE THE INSTALLATION SHALL BE PROVIDED. STANDALONE TERMINAL UNITS SHALL BE INSTALLED WITHIN A NEW WALL-MOUNTED ENCLOSURE (CABINET).
9. EXISTING TELEPHONE CABLES SERVING THE EXISTING DIALER UNIT SHALL BE REMOVED BACK TO THEIR SOURCE.
10. PHOTOS OF EXISTING PUMP STATIONS AND ENCLOSURES WERE TAKEN IN OCTOBER 2021 AND ARE INCLUDED IN THE DRAWING SET ONLY AS A REFERENCE. CONTRACTOR SHALL VERIFY CURRENT SITE CONDITIONS.
11. CONTRACTOR TO NOTIFY CENTRAL OFFICE TO COORDINATE INSTALLATION AT STATION ONE IN DISTRICT 6.
 - * RANDY NEAL RANDY.NEAL@ILLINOIS.GOV
 - * JEREMY SELLERS JEREMY.SELLERS@ILLINOIS.GOV
12. THE DEPARTMENT STRONGLY ENCOURAGES THE PRIME CONTRACTOR AND THEIR APPROVED SUB-CONTRACTORS TO HIRE MINORITY, WOMEN AND DISADVANTAGED INDIVIDUALS FROM ITS FEDERALLY FUNDED HIGHWAY CONSTRUCTION CAREERS TRAINING PROGRAM (HCCTP) TO HELP MEET WORKFORCE AND TRAINEE GOALS. THIS PROGRAM IS TRAINING MINORITIES, WOMEN AND DISADVANTAGED INDIVIDUALS IN HIGHWAY CONSTRUCTION RELATED SKILLS, E.G., MATH FOR THE TRADES, JOB READINESS, TECHNICAL SKILLS COURSEWORK (CARPENTRY, CONCRETE FLATWORK, BLUEPRINT READING, SITE PLANS, SITE WORK, TOOLS USE, ETC.) AND OSHA 10 HOUR CERTIFICATION TO PREPARE THEM FOR A CAREER IN THE HIGHWAY CONSTRUCTION TRADES. GRADUATES ARE WELL TRAINED AND READY TO BECOME PRODUCTIVE ENTRY LEVEL CONSTRUCTION WORKERS. CONTACT THE DISTRICT 8 EEO OFFICE AT 618-346-3360 AND/OR THE HCCTP COORDINATOR AT 618-874-6528 TO LEARN MORE ABOUT THE PROGRAM AND FOR ASSISTANCE IN MEETING WORKFORCE AND TRAINEE GOALS.

PUMP STATION LOCATIONS

- 1 INTERSTATE 64 REST AREA E/B PUMP STATION
- 2 INTERSTATE 64 REST AREA W/B PUMP STATION
- 3 COLLINSVILLE #1 PUMP STATION
- 4 McCAMBRIDGE PUMP STATION
- 5 INTERSTATE 70 REST AREA W/B PUMP STATION
- 6 MISSOURI AVENUE PUMP STATION
- 7 FUN AND SUN PUMP STATION
- 8 42ND STREET PUMP STATION
- 9 VENICE PUMP STATION
- 10 25TH STREET PUMP STATION
- 11 INTERSTATE 55 REST AREA N/B PUMP STATION
- 12 INTERSTATE 55 REST AREA S/B PUMP STATION
- 13 9TH STREET PUMP STATION
- 14 BOWMAN PUMP STATION
- 15 25TH STREET WELLS
- 16 TRI-LEVEL SOUTH WELLS
- 17 TRI-LEVEL NORTH WELLS
- 18 10TH STREET WELLS
- 19 15TH STREET WELLS
- 20 STATION ONE
- 21 MARY'S RIVER COVERED BRIDGE



CONTROL DIAGRAM SYMBOL LEGEND	
	POWER (LINE VOLTAGE) WIRE, PROPOSED
	POWER (LINE VOLTAGE) WIRE, EXISTING
	CONTROL (LOW VOLTAGE) WIRE, PROPOSED
	CONTROL (LOW VOLTAGE) WIRE, EXISTING
	ELECTRICAL CONNECTION
	TRANSFORMER
	NORMALLY OPEN CONTACT
	NORMALLY CLOSED CONTACT

HIGHWAY STANDARDS

000001-08
001006

STATE OF ILLINOIS
DEPARTMENT OF TRANSPORTATION

ELECTRICAL NOTES AND SYMBOLS
AND LOCATION MAPS

F.A.U. RTE.	SECTION	COUNTY	TOTAL SHEETS	SHEET NO.
VAR	D8 Pump Stations 2023-1	VARIOUS	23	2
CONTRACT NO. 76102			ILLINOIS FED. AID PROJ. BC	

REV. - MS

D:\171\17128281\Work D-08 05 - District 8 Communications\CAD00 Sheets\0876102-sht-notes and Symbols.dgn

KLINGNER ASSOCIATES, P.C.
Engineers - Architects - Surveyors
1718 N 24TH ST QUINCY, ILLINOIS 62301 217 223 3670
STATE OF ILLINOIS DESIGN FIRM NO. 184-2003

USER NAME	DESIGNED	REVISED
m.schalzi	DESIGNED	REVISED
	DRAWN	REVISED
	CHECKED	REVISED
	DATE	REVISED

SCALE NONE SHEET 1 OF 1 SHEETS STA. TO STA.

ILLINOIS DEPARTMENT OF TRANSPORTATION

SUMMARY OF QUANTITIES

CODE NO.	ITEM	UNIT	TOTAL QUANTITY	CONSTRUCTION TYPE CODE		
				* MADISON, ST. CLAIR, SANGAMON, AND RANDOLPH COUNTIES		
				*		
				0044		
67100100	MOBILIZATION	L SUM	1	1		
X0783300	PUMP STATION ELECTRICAL WORK	L SUM	1	1		

REV. - MS

O:\171\115170264\Work Order 85 - District 8 Communications\CADD Sheets\18716102-sht-500.dgn
KLINGNER & ASSOCIATES, P.C.
 Engineers • Architects • Surveyors
 616 N.24TH ST. QUINCY, ILLINOIS 62301 217.223.3670
 STATE OF ILLINOIS DESIGN FIRM NO. 164-2738

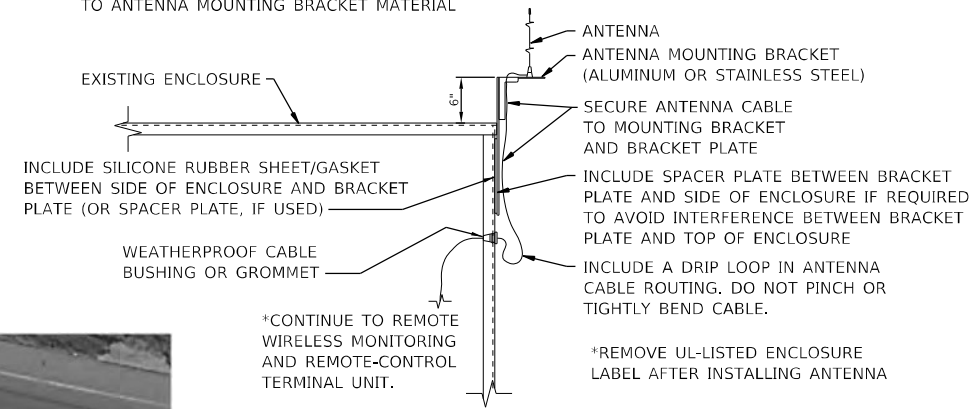
USER NAME = aschafer	DESIGNED - AMS	REVISED -
	DRAWN - AMS	REVISED -
PLOT SCALE = 2:1 1/8" = 1" / in.	CHECKED - EBB	REVISED -
PLOT DATE = 3/28/2023	DATE - 12/5/2022	REVISED -

STATE OF ILLINOIS
 DEPARTMENT OF TRANSPORTATION

SUMMARY OF QUANTITIES	
SCALE: NONE	SHEET 1 OF 1 SHEETS
STA. _____	TO STA. _____

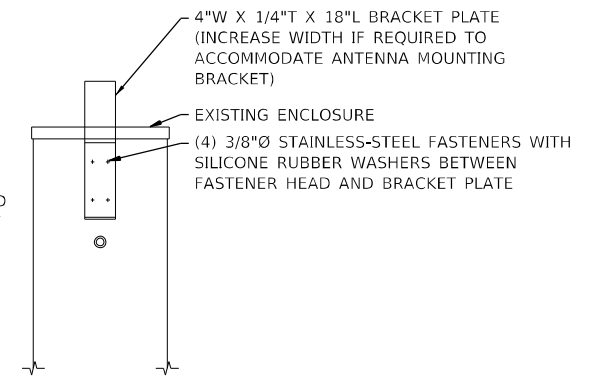
F.A.U. RATE:	SECTION	COUNTY	TOTAL SHEETS	SHEET NO.
VAR	D8 Pump Stations 2023-1	VARIOUS	23	3
				CONTRACT NO. 76T02
<small>ILLINOIS FED. AID PROJECT</small>				

*MATCH MATERIAL OF BRACKET PLATE, SPACER PLATE (IF USED), AND FASTENERS TO ANTENNA MOUNTING BRACKET MATERIAL



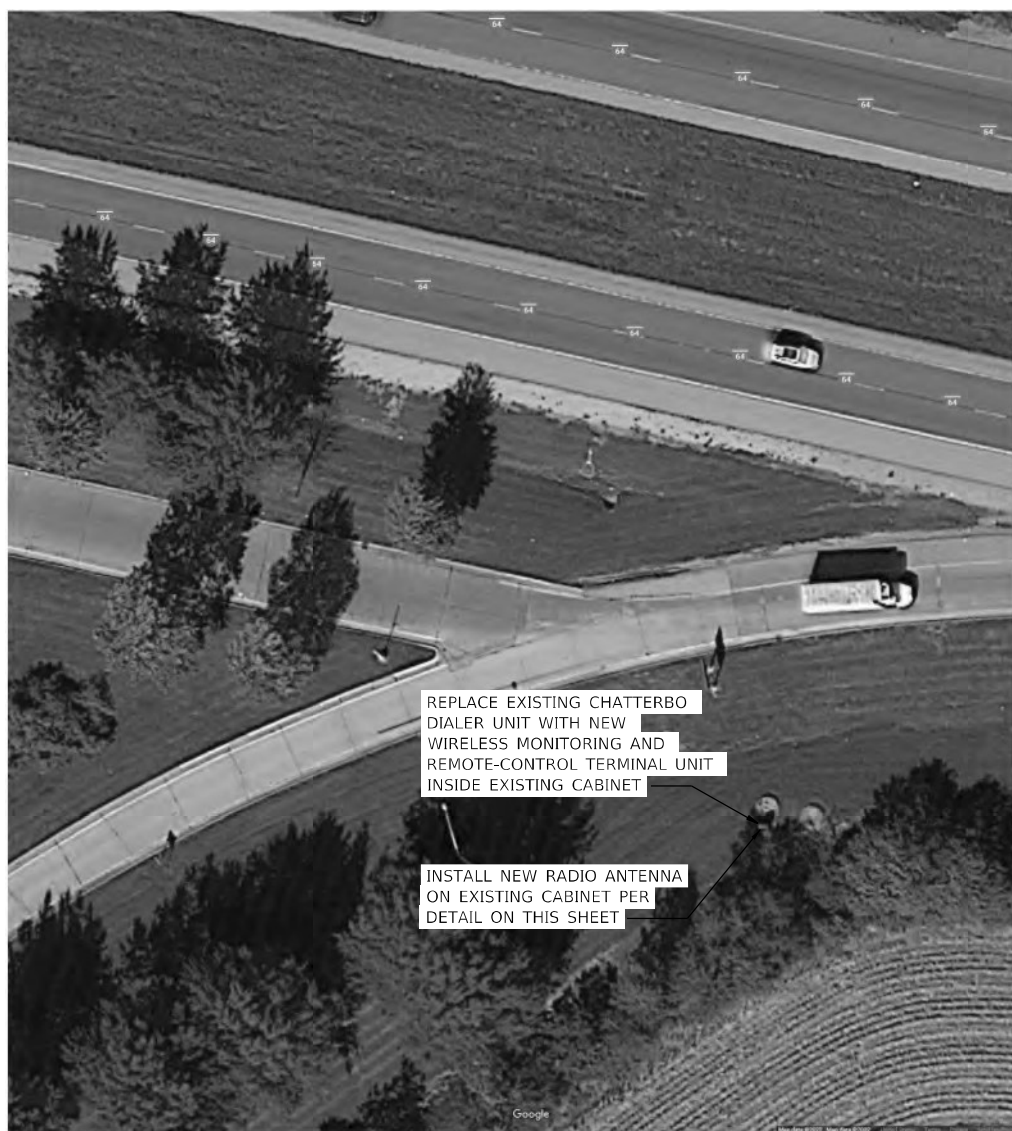
ENCLOSURE FRONT VIEW

*ANTENNA MOUNTING BRACKET NOT SHOWN.



ENCLOSURE SIDE VIEW

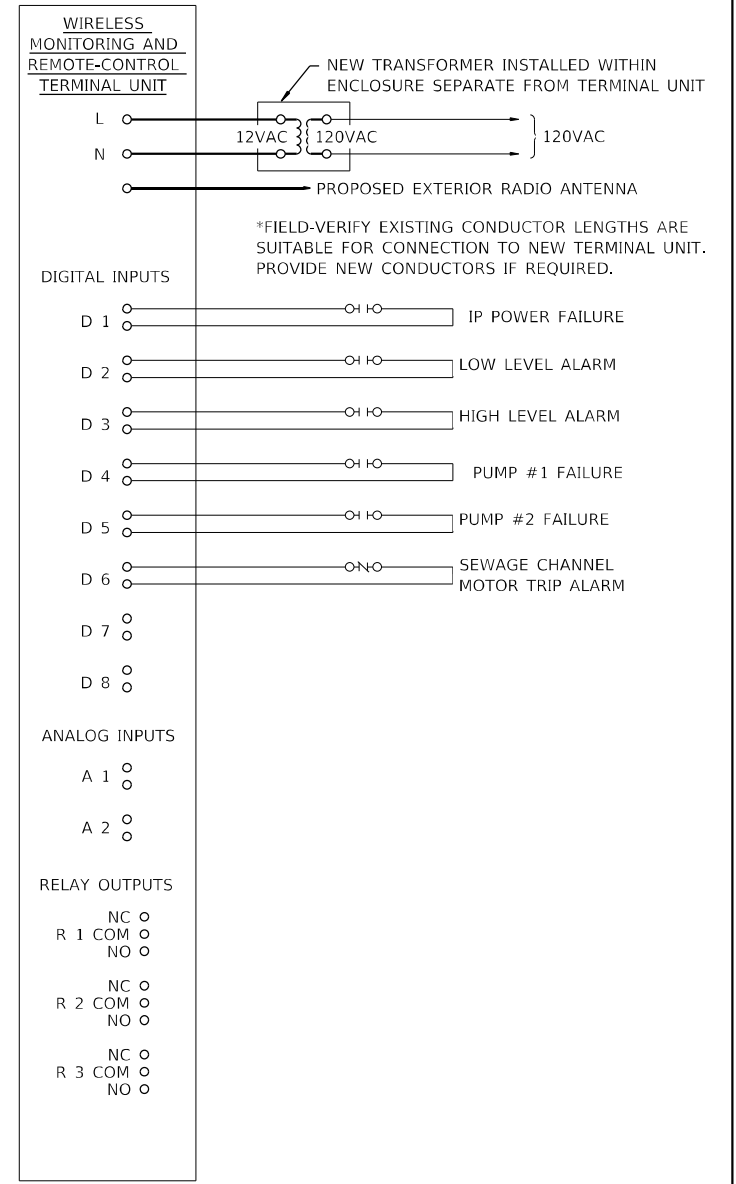
ENCLOSURE ANTENNA MOUNTING DETAIL



I-64 REST AREA E/B PUMP STATION PLAN PHOTO



I-64 REST AREA E/B PUMP STATION EXISTING DIALER PHOTO



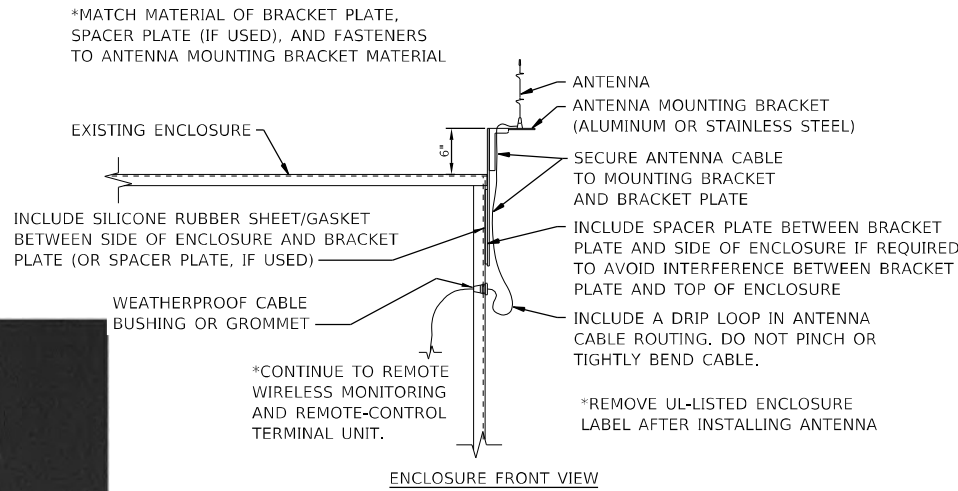
I-64 REST AREA E/B PUMP STATION CONTROL DIAGRAM

D:\171\115\170264\Work Order 85 - District 8 Communications\CA00 Sheets\1876102-sht-Plan01.dgn

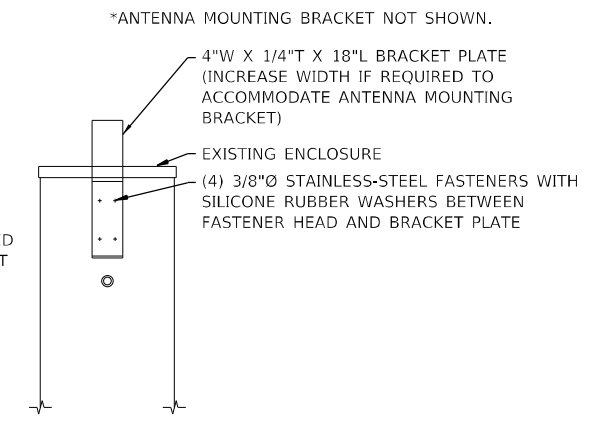
KLINGNER & ASSOCIATES, P.C. Engineers • Architects • Surveyors 616 N. 24TH ST. QUINCY, ILLINOIS 62301 217.223.3670 STATE OF ILLINOIS DESIGN FIRM NO. 164-2738	USER NAME = aschofer	DESIGNED -	REVISED -	STATE OF ILLINOIS DEPARTMENT OF TRANSPORTATION	EXISTING MONITOR NO. 2 I-64 REST AREA E/B			F.A.U. RTE.	SECTION	COUNTY	TOTAL SHEETS	SHEET NO.
	PLOT SCALE = 2:1 1/16" = 1 in.	DRAWN -	REVISED -		VAR	D8 Pump Stations 2023-1	VARIOUS	23	4			
	PLOT DATE = 1/3/2023	CHECKED -	REVISED -		SCALE: NONE SHEET 1 OF 1 SHEETS STA. TO STA.				CONTRACT NO. 76T02		ILLINOIS FED. AID PROJECT	
	DATE -	REVISED -										



I-64 REST AREA W/B PUMP STATION PLAN PHOTO



ENCLOSURE FRONT VIEW

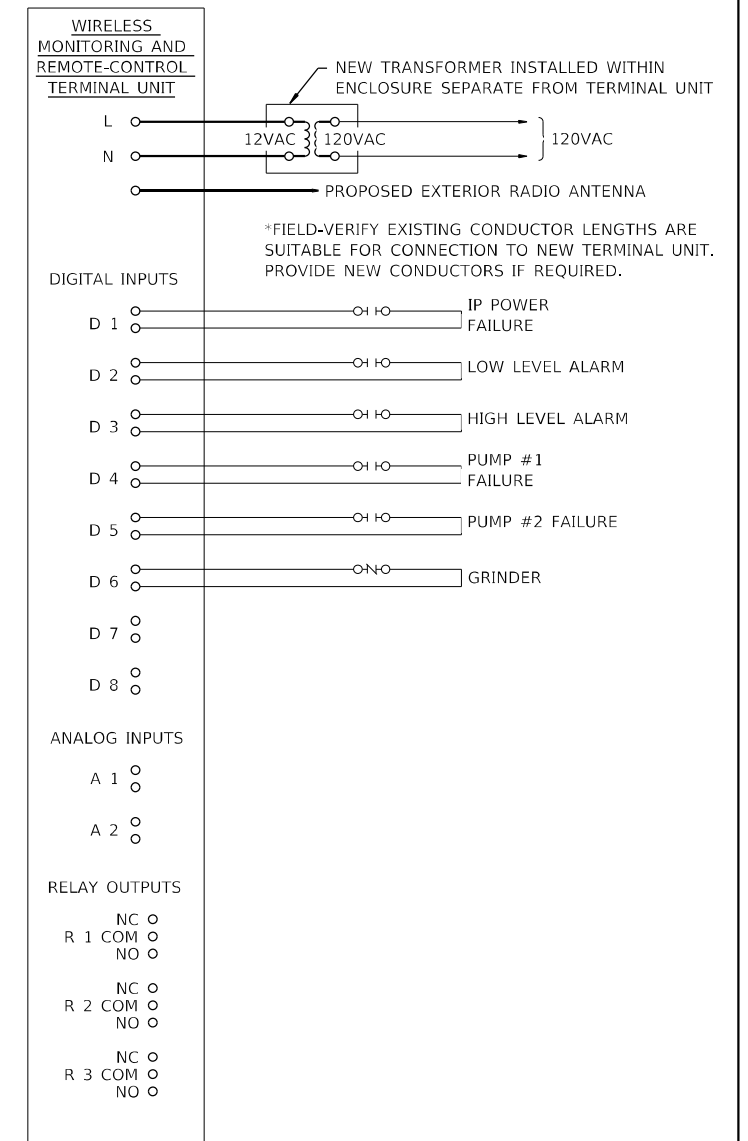


ENCLOSURE SIDE VIEW

ENCLOSURE ANTENNA MOUNTING DETAIL



I-64 REST AREA W/B PUMP STATION EXISTING DIALER PHOTO



I-64 REST AREA W/B PUMP STATION CONTROL DIAGRAM

D:\171\11es\170264\Work Order 85 - District 8 Communications\CA00 Sheets\1876102-sht-flm02.dgn

KLINGNER & ASSOCIATES, P.C.
 Engineers • Architects • Surveyors
 616 N.24TH ST. QUINCY, ILLINOIS 62301 217.223.3670
 STATE OF ILLINOIS DESIGN FIRM NO. 164-2738

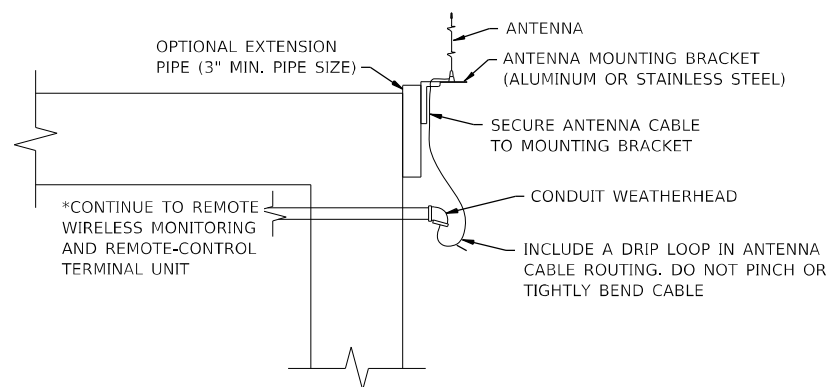
USER NAME = aschofer	DESIGNED -	REVISED -
PLOT SCALE = 2:1 1/16" = 1 in.	DRAWN -	REVISED -
PLOT DATE = 1/13/2023	CHECKED -	REVISED -
	DATE -	REVISED -

**STATE OF ILLINOIS
 DEPARTMENT OF TRANSPORTATION**

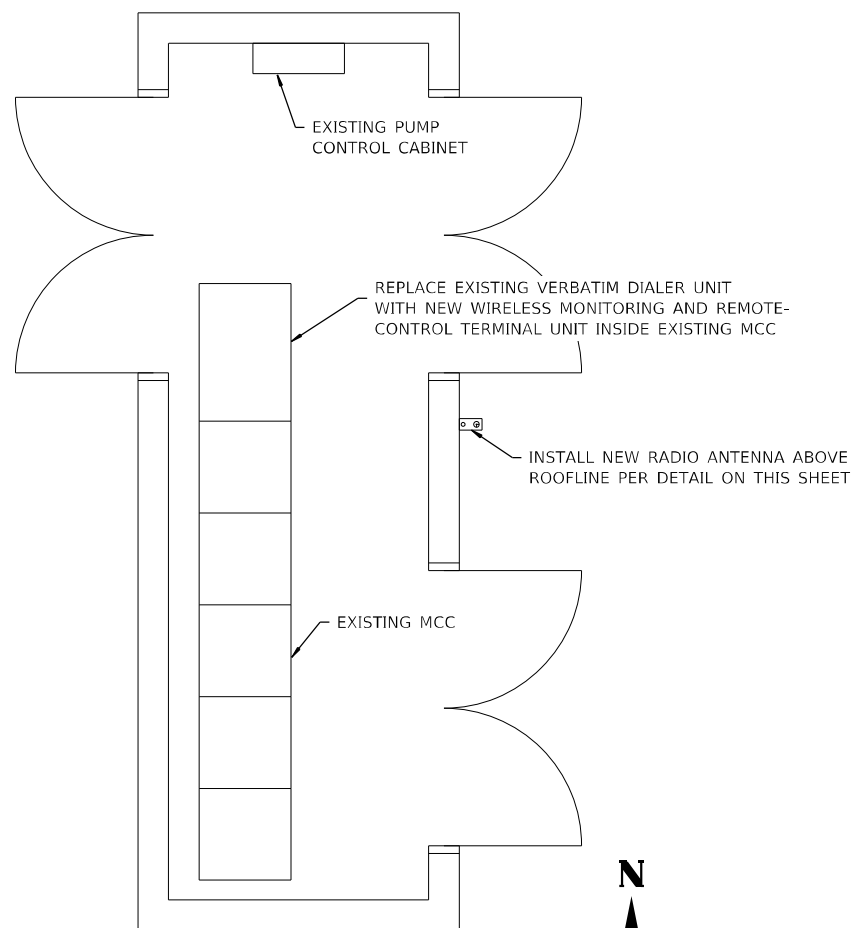
EXISTING MONITOR NO. 3 I-64 REST AREA W/B			
SCALE: NONE	SHEET 1 OF 1 SHEETS	STA.	TO STA.

F.A.U. RTE.	SECTION	COUNTY	TOTAL SHEETS	SHEET NO.
VAR	D8 Pump Stations 2023-1	VARIOUS	23	5
			CONTRACT NO. 76T02	
ILLINOIS FED. AID PROJECT				

*MOUNT ENTIRE ANTENNA ABOVE ROOFLINE ON EXISTING STRUCTURE. PROVIDE EXTENSION PIPE IF REQUIRED TO EXTEND ANTENNA MOUNTING BRACKET ABOVE ROOFLINE. MATCH PIPE MATERIAL TO ANTENNA MOUNTING BRACKET MATERIAL.



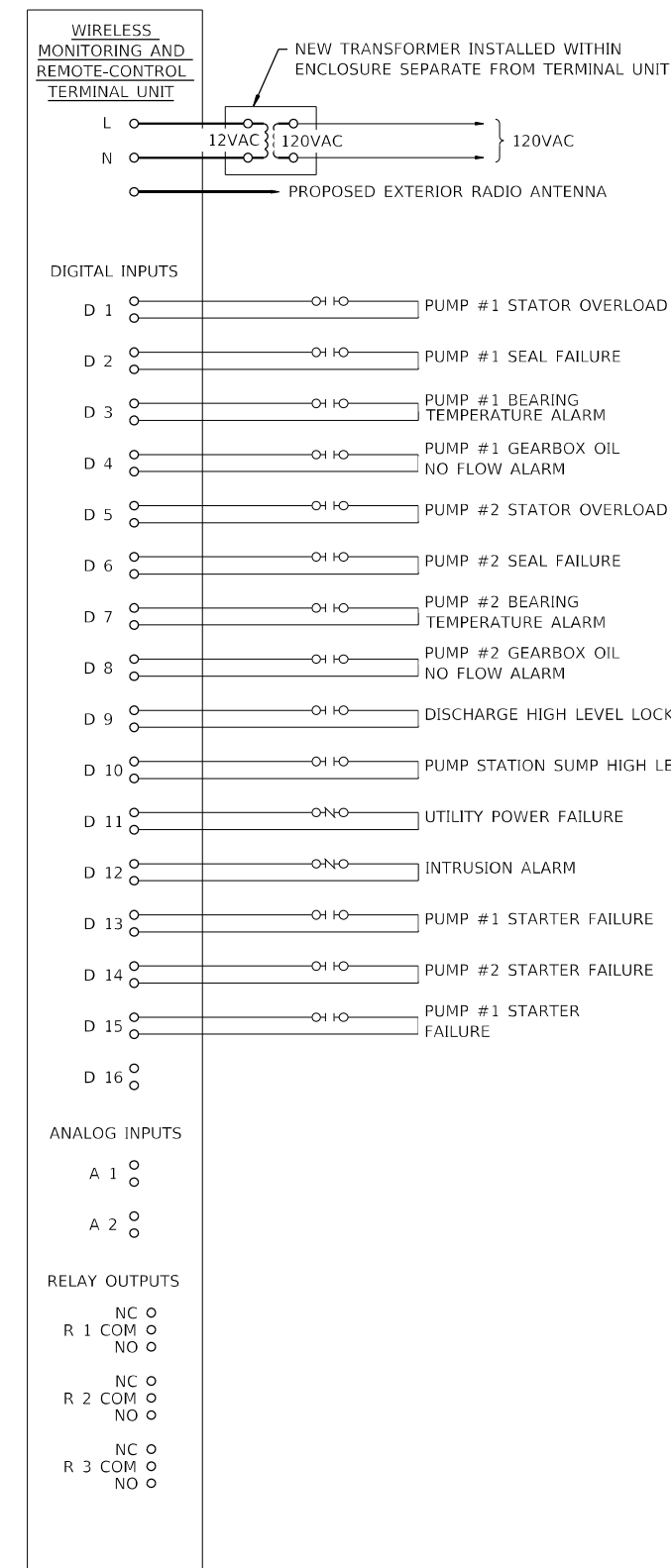
BUILDING ANTENNA MOUNTING DETAIL



COLLINSVILLE #1 PUMP STATION PLAN



COLLINSVILLE #1 PUMP STATION EXISTING DIALER PHOTO



COLLINSVILLE #1 PUMP STATION CONTROL DIAGRAM

D:\171\115\170264\Work Order 05 - District 8 Communications\CA00 Sheets\1876102-sht-Plan03.dgn

KLINGNER & ASSOCIATES, P.C.
 Engineers • Architects • Surveyors
 616 N.24TH ST. QUINCY, ILLINOIS 62301 217.223.3670
 STATE OF ILLINOIS DESIGN FIRM NO. 164-2738

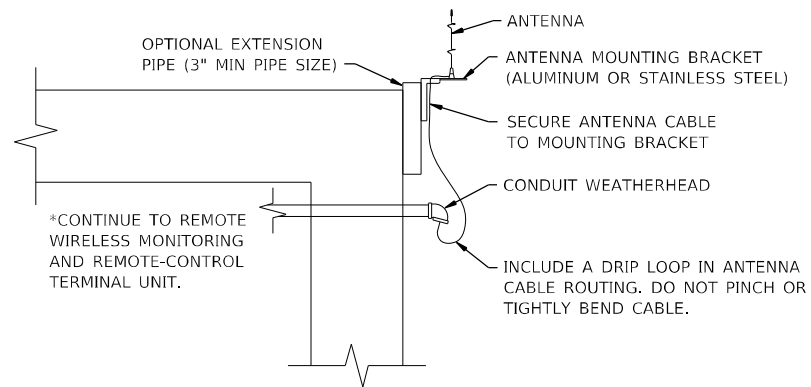
USER NAME = aschofer	DESIGNED -	REVISED -
PLOT SCALE = 2:1 1/16" = 1" / in.	DRAWN -	REVISED -
PLOT DATE = 1/3/2023	CHECKED -	REVISED -
	DATE -	REVISED -

**STATE OF ILLINOIS
 DEPARTMENT OF TRANSPORTATION**

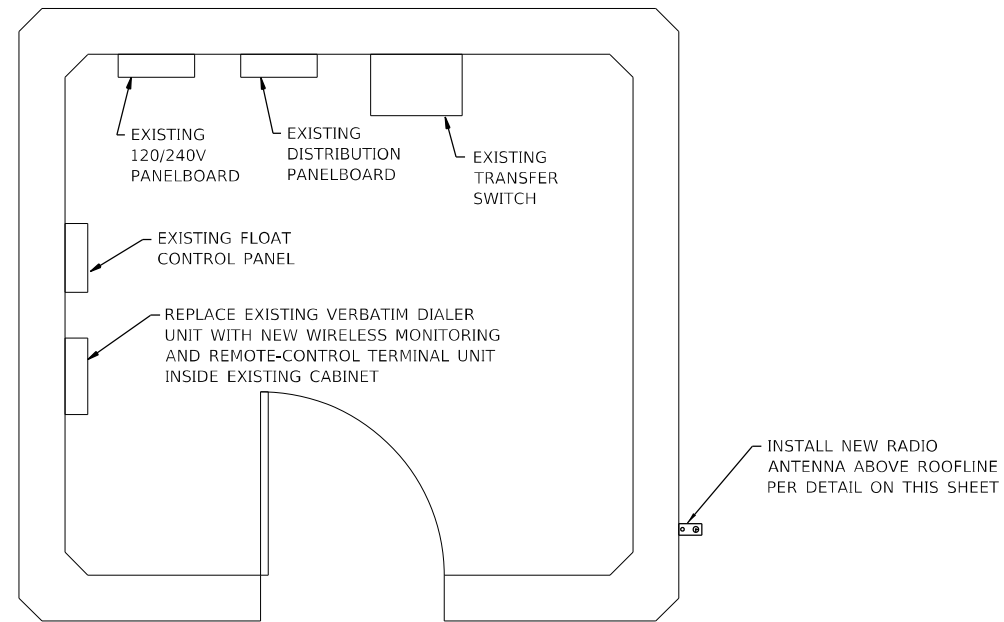
EXISTING MONITOR NO. 4 COLLINSVILLE #1			
SCALE: NONE	SHEET 1 OF 1 SHEETS	STA.	TO STA.

F.A.U. RTE.	SECTION	COUNTY	TOTAL SHEETS	SHEET NO.
VAR	D8 Pump Stations 2023-1	VARIOUS	23	6
			CONTRACT NO. 76T02	
ILLINOIS FED. AID PROJECT				

*MOUNT ENTIRE ANTENNA ABOVE ROOFLINE ON EXISTING STRUCTURE. PROVIDE EXTENSION PIPE IF REQUIRED TO EXTEND ANTENNA MOUNTING BRACKET ABOVE ROOFLINE. MATCH PIPE MATERIAL TO ANTENNA MOUNTING BRACKET MATERIAL.



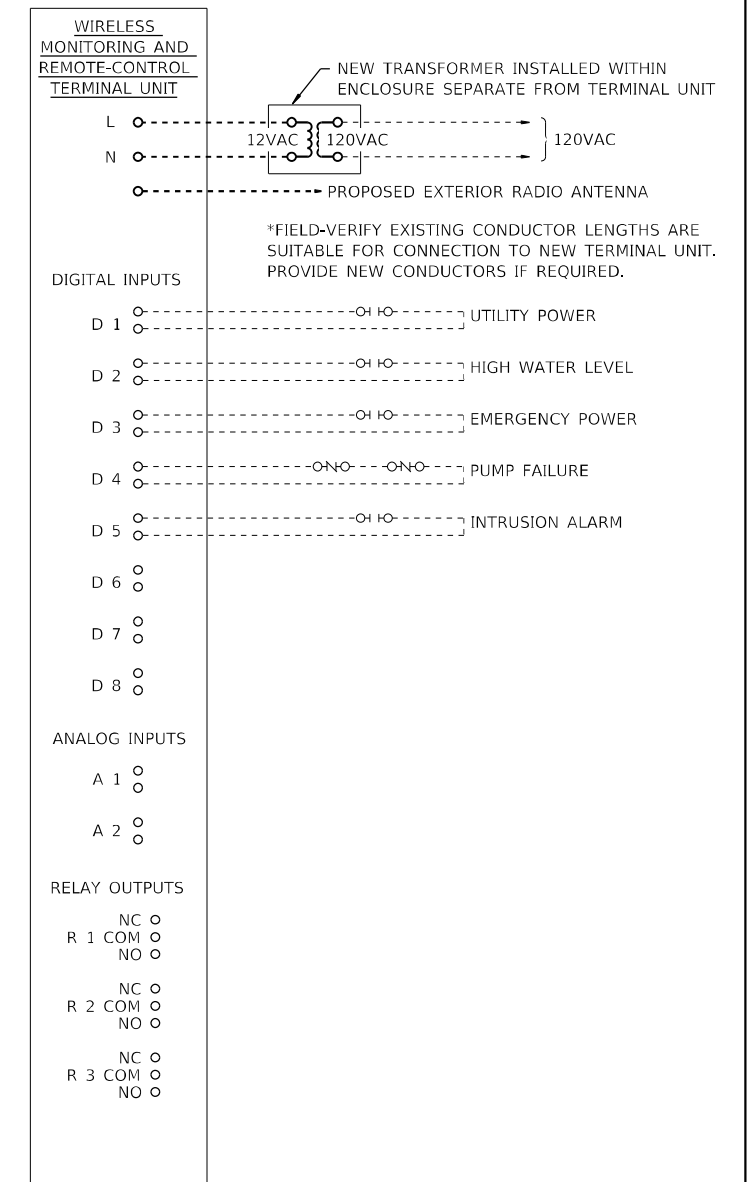
BUILDING ANTENNA MOUNTING DETAIL



MCCAMBRIDGE PUMP STATION PLAN

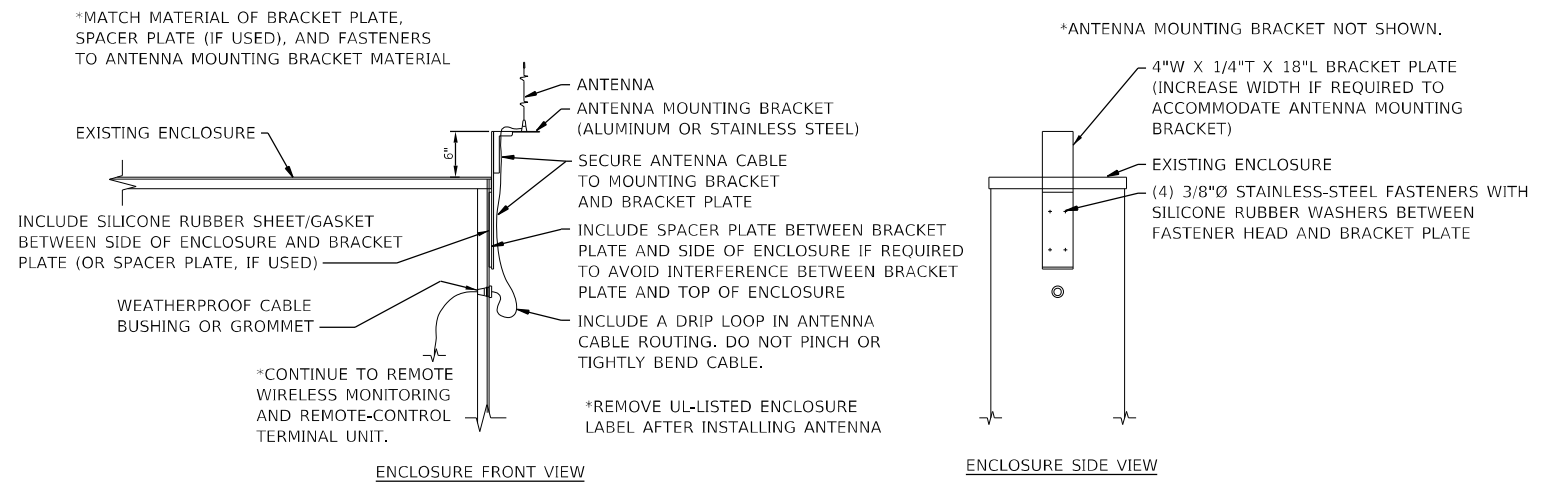


MCCAMBRIDGE PUMP STATION EXISTING DIALER PHOTO



MCCAMBRIDGE PUMP STATION CONTROL DIAGRAM

D:\171\1es\170264\Work Order 85 - District 8 Communications\CADD Sheets\1876102-sht-flw-04.dgn



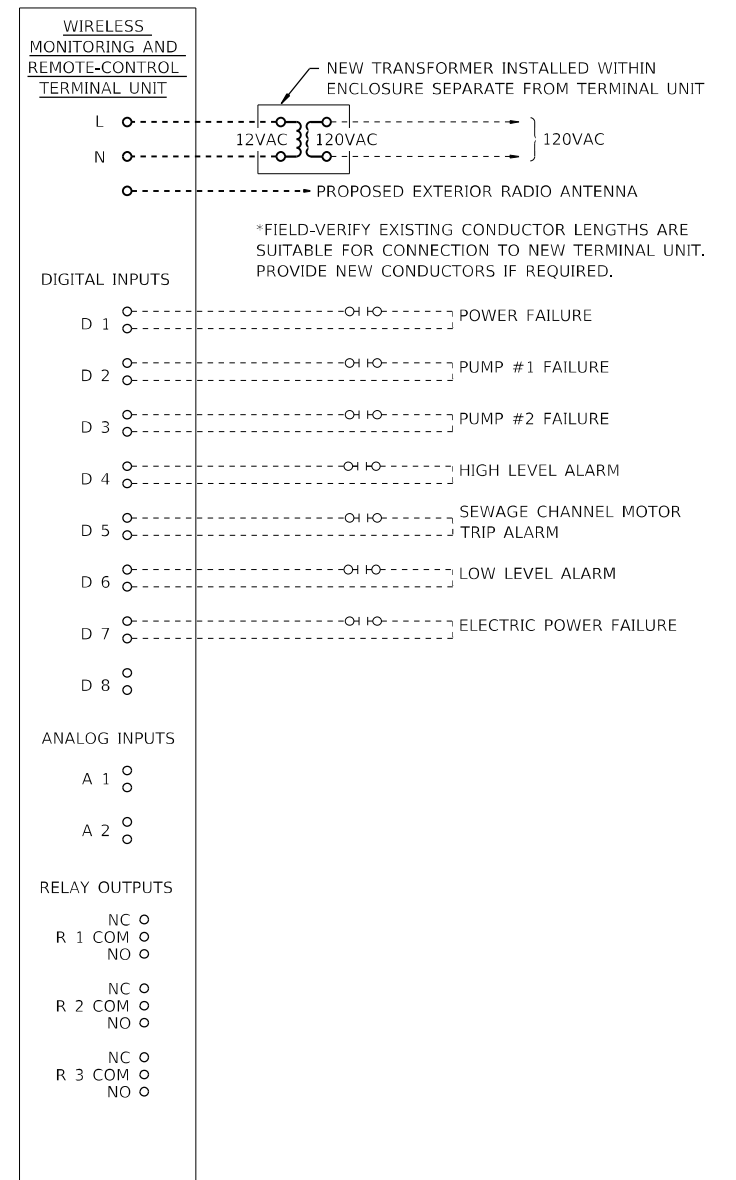
ENCLOSURE ANTENNA MOUNTING DETAIL



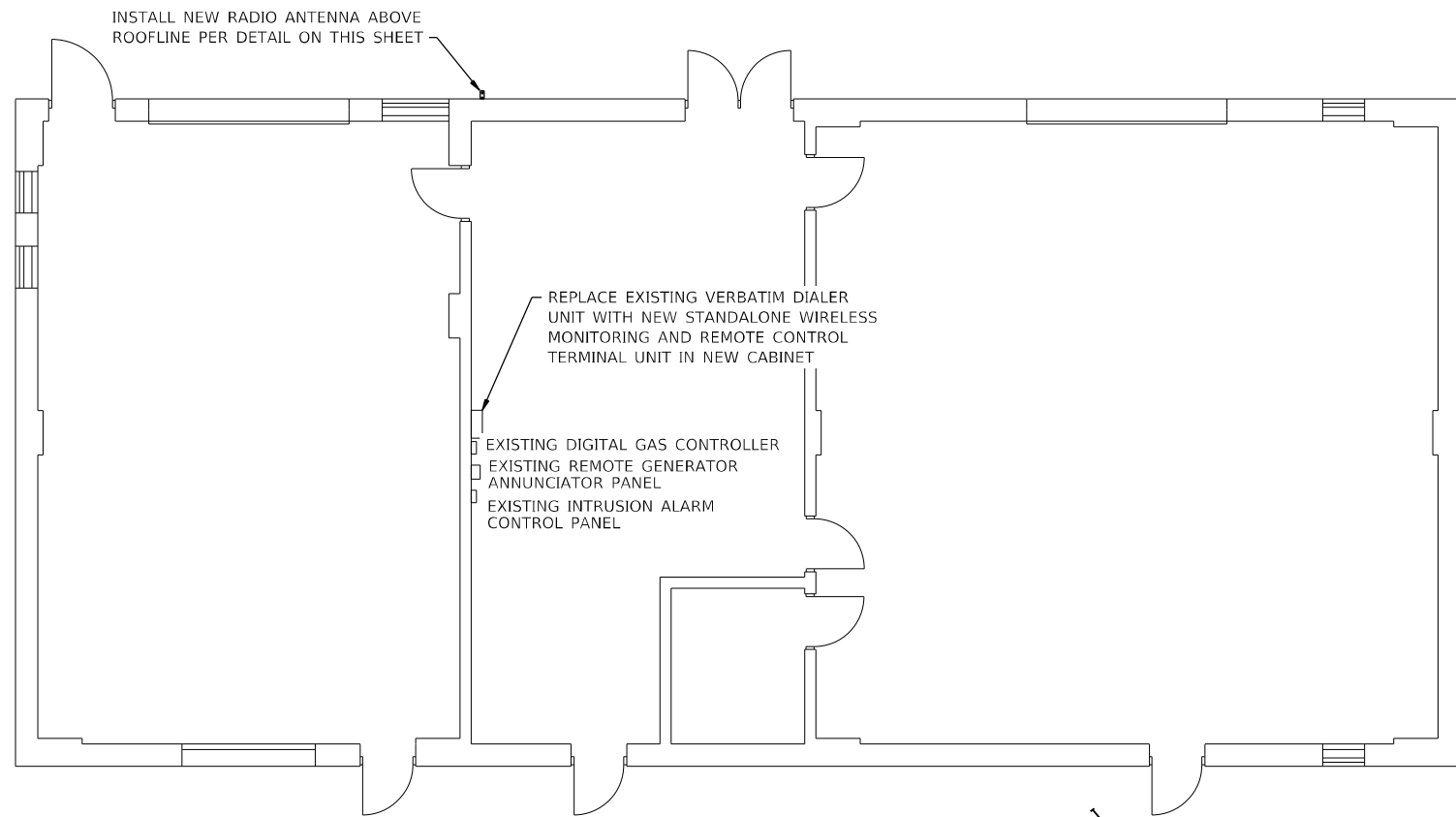
I-70 REST AREA W/B PUMP STATION PLAN PHOTO



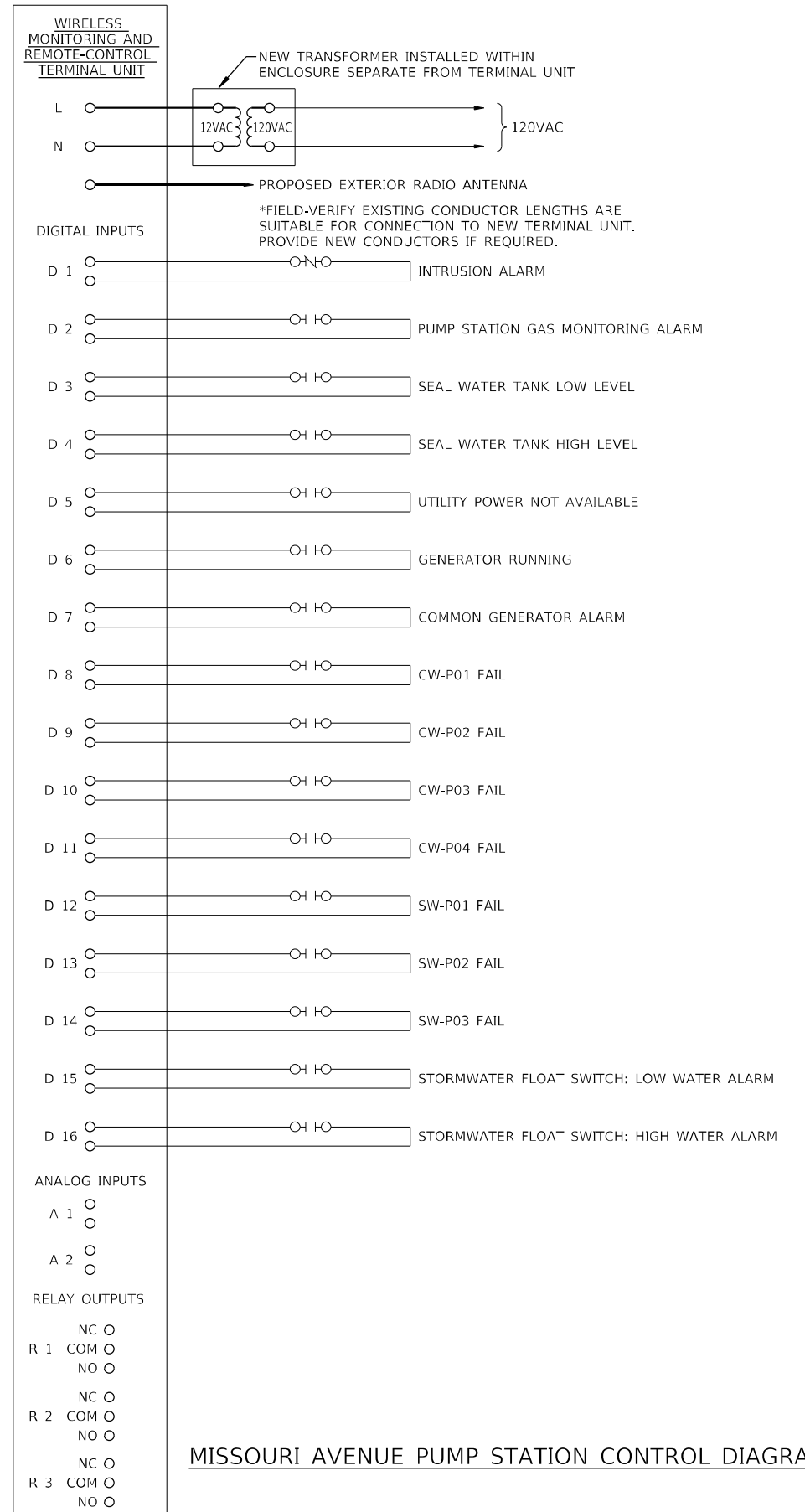
I-70 REST AREA W/B PUMP STATION EXISTING DIALER PHOTO



I-70 REST AREA W/B PUMP STATION CONTROL DIAGRAM



MISSOURI AVENUE PUMP STATION PLAN

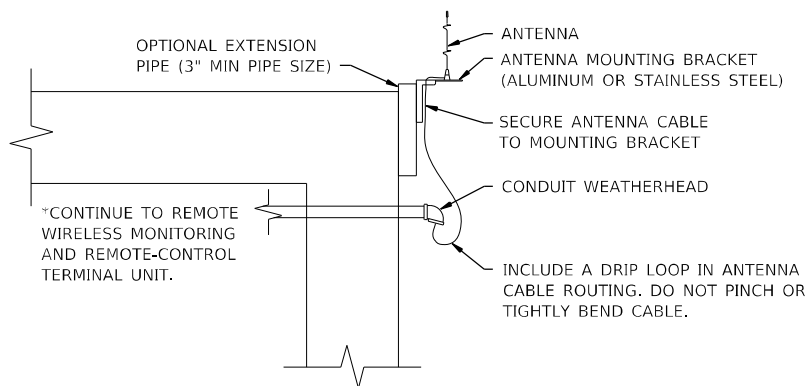


MISSOURI AVENUE PUMP STATION CONTROL DIAGRAM



MISSOURI AVENUE PUMP STATION EXISTING DIALER PHOTO

*MOUNT ENTIRE ANTENNA ABOVE ROOFLINE ON EXISTING STRUCTURE. PROVIDE EXTENSION PIPE IF REQUIRED TO EXTEND ANTENNA MOUNTING BRACKET ABOVE ROOFLINE. MATCH PIPE MATERIAL TO ANTENNA MOUNTING BRACKET MATERIAL



BUILDING ANTENNA MOUNTING DETAIL

D:\171\1710264\Work Order 85 - District 8 Communications\CADD Sheets\1876102-sht-Plan06.dgn

KLINGNER & ASSOCIATES, P.C.
Engineers • Architects • Surveyors
616 N. 24TH ST. QUINCY, ILLINOIS 62301 217.223.3670
STATE OF ILLINOIS DESIGN FIRM NO. 164-2738

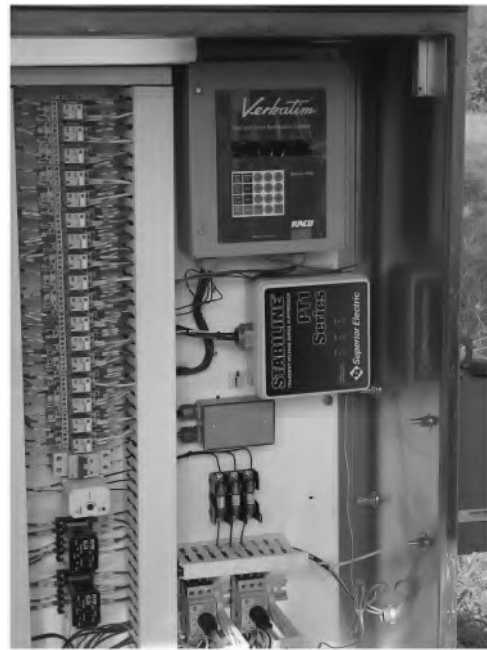
USER NAME = aschofer	DESIGNED -	REVISED -
PLOT SCALE = 2:1 1/16" = 1/8"	DRAWN -	REVISED -
PLOT DATE = 1/3/2023	CHECKED -	REVISED -
	DATE -	REVISED -

**STATE OF ILLINOIS
DEPARTMENT OF TRANSPORTATION**

**EXISTING MONITOR NO. 7
MISSOURI AVENUE**

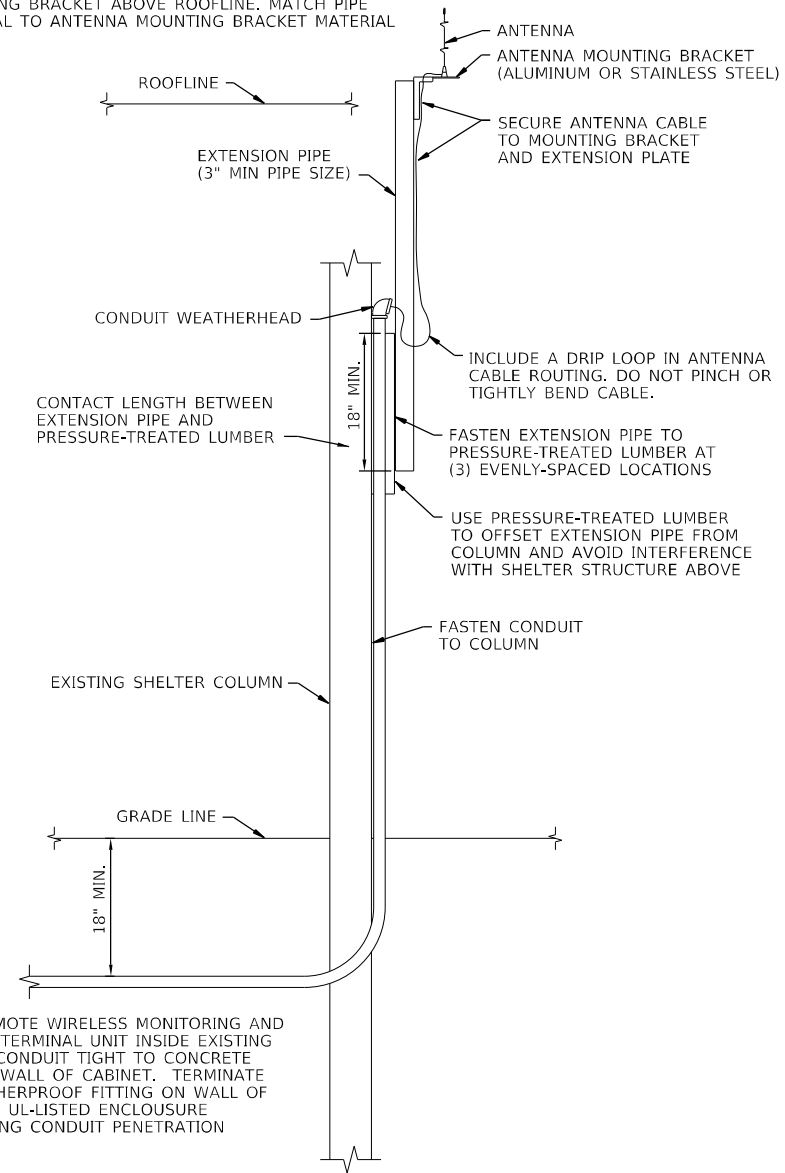
SCALE: NONE SHEET 1 OF 1 SHEETS STA. TO STA.

F.A.U. RTE.	SECTION	COUNTY	TOTAL SHEETS	SHEET NO.
VAR	D8 Pump Stations 2023-1	VARIOUS	23	9
				CONTRACT NO. 76T02
ILLINOIS FED. AID PROJECT				



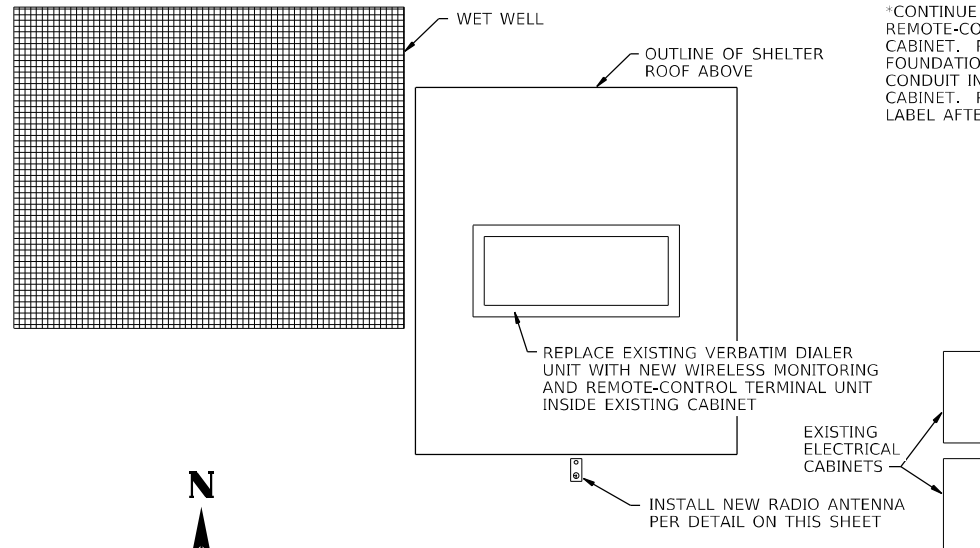
FUN & SUN PUMP STATION EXISTING DIALER PHOTO

*MOUNT ENTIRE ANTENNA ABOVE ROOFLINE ON EXISTING SHELTER. PROVIDE EXTENSION PIPE TO EXTEND ANTENNA MOUNTING BRACKET ABOVE ROOFLINE. MATCH PIPE MATERIAL TO ANTENNA MOUNTING BRACKET MATERIAL

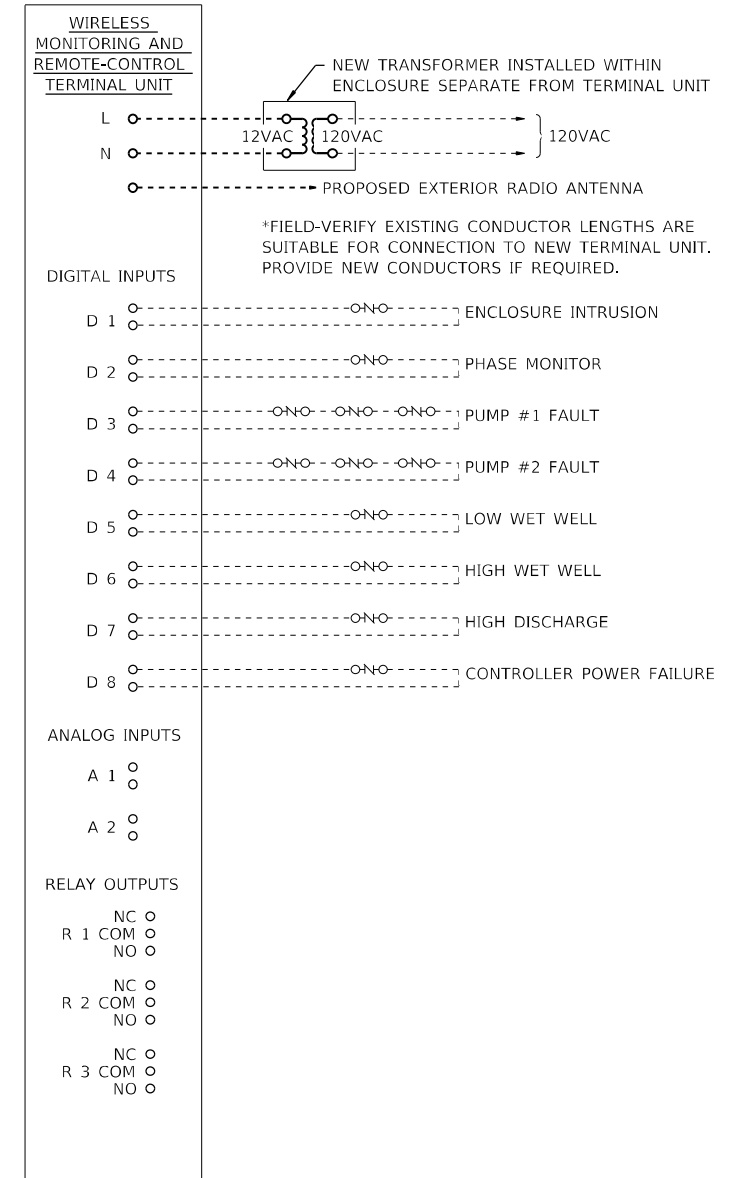


SHELTER ANTENNA MOUNTING DETAIL

*CONTINUE TO REMOTE WIRELESS MONITORING AND REMOTE-CONTROL TERMINAL UNIT INSIDE EXISTING CABINET. ROUTE CONDUIT TIGHT TO CONCRETE FOUNDATION AND WALL OF CABINET. TERMINATE CONDUIT IN WEATHERPROOF FITTING ON WALL OF CABINET. REMOVE UL-LISTED ENCLOSURE LABEL AFTER MAKING CONDUIT PENETRATION



FUN & SUN PUMP STATION PLAN



FUN & SUN PUMP STATION CONTROL DIAGRAM

D:\171\1es\170264\Work Order 05 - District 8 Communications\CADD Sheets\0876102-sht-Plan07.dgn

KLINGNER & ASSOCIATES, P.C.
 Engineers • Architects • Surveyors
 616 N. 24TH ST. QUINCY, ILLINOIS 62301 217.223.3670
 STATE OF ILLINOIS DESIGN FIRM NO. 164-2738

USER NAME = aschofer	DESIGNED -	REVISED -
PLOT SCALE = 2:1 1/16" = 1/8" / in.	DRAWN -	REVISED -
PLOT DATE = 1/13/2023	CHECKED -	REVISED -
	DATE -	REVISED -

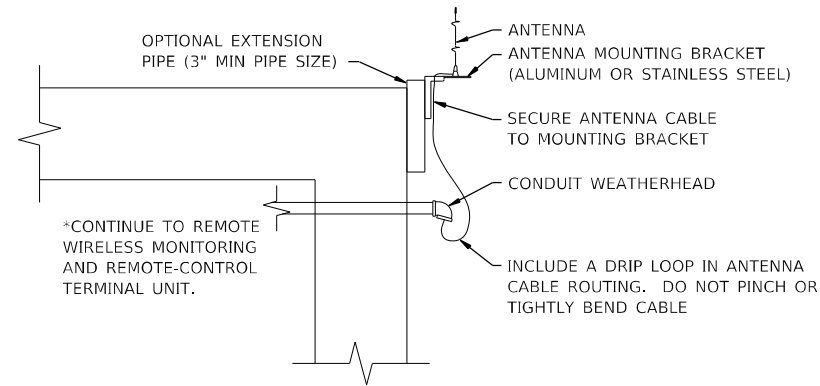
**STATE OF ILLINOIS
 DEPARTMENT OF TRANSPORTATION**

**EXISTING MONITOR NO. 8
 FUN & SUN**

SCALE: NONE SHEET 1 OF 1 SHEETS STA. TO STA.

F.A.U. RTE.	SECTION	COUNTY	TOTAL SHEETS	SHEET NO.
VAR	D8 Pump Stations 2023-1	VARIOUS	23	10
				CONTRACT NO. 76T02
ILLINOIS FED. AID PROJECT				

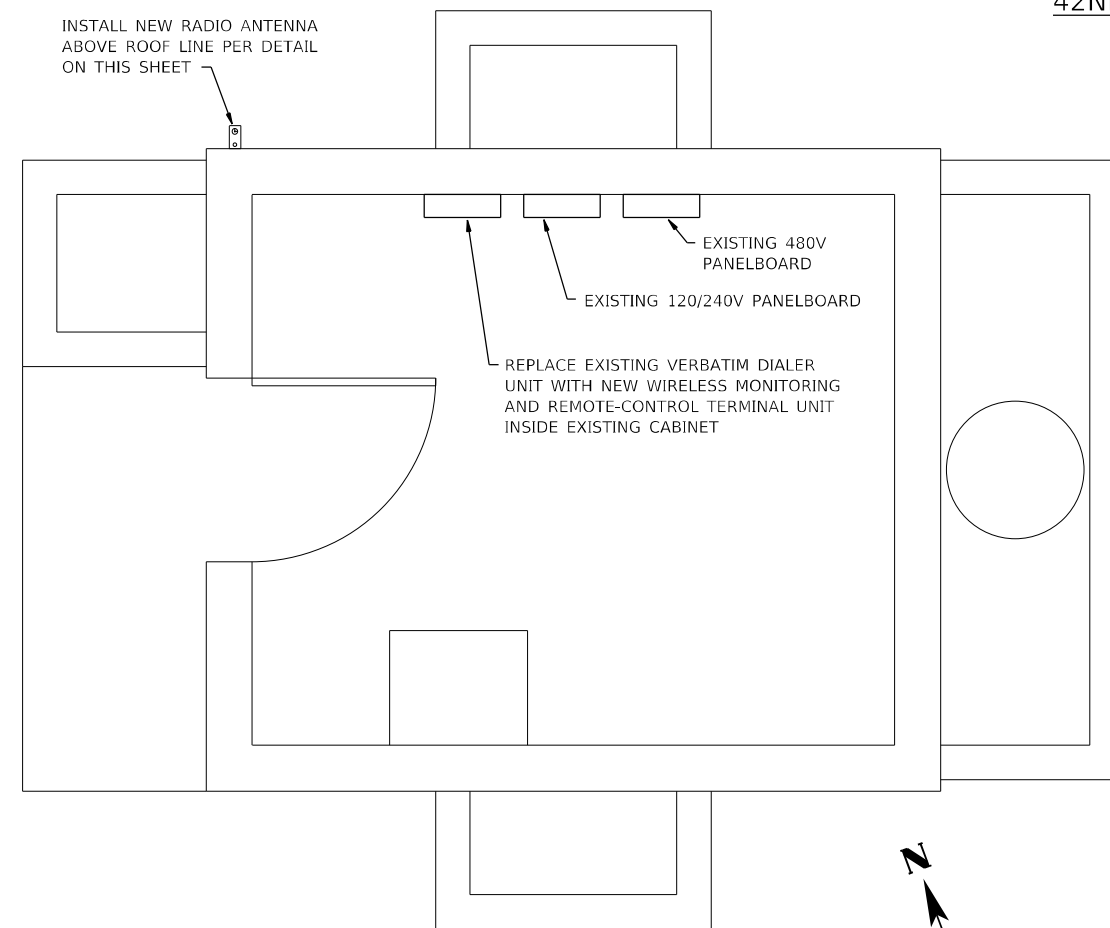
*MOUNT ENTIRE ANTENNA ABOVE ROOFLINE ON EXISTING STRUCTURE. PROVIDE EXTENSION PIPE IF REQUIRED TO EXTEND ANTENNA MOUNTING BRACKET ABOVE ROOFLINE. MATCH PIPE MATERIAL TO ANTENNA MOUNTING BRACKET MATERIAL



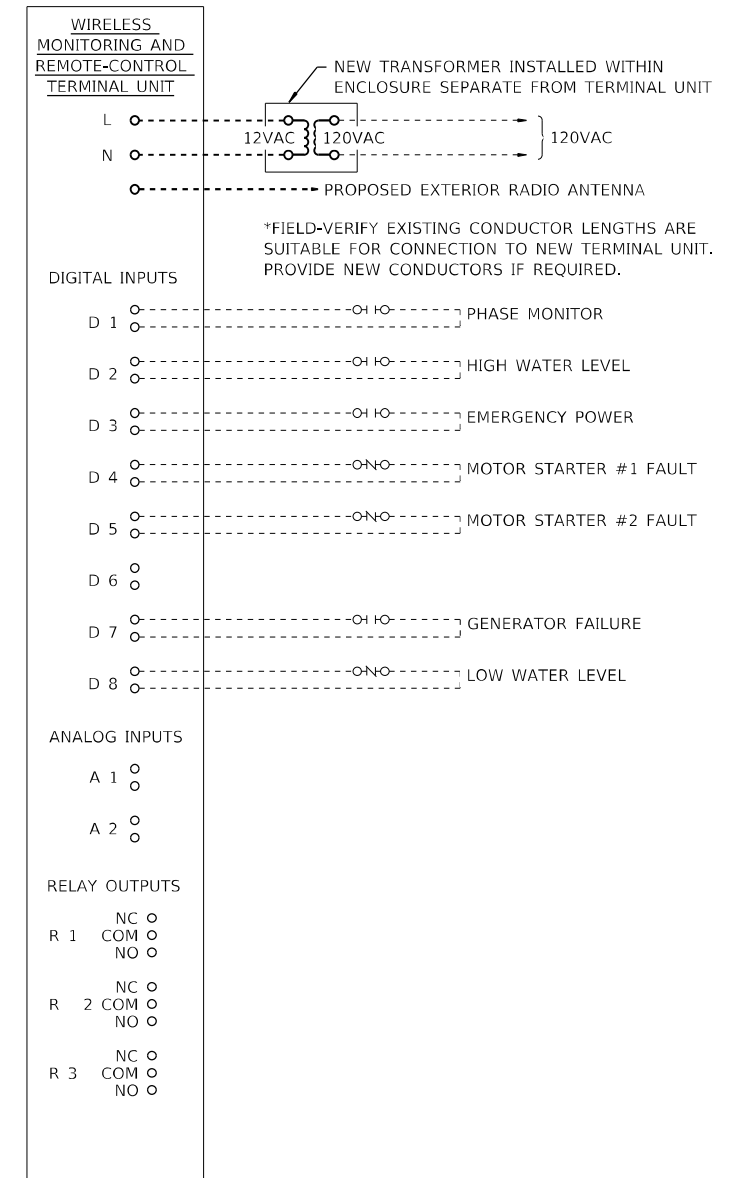
BUILDING ANTENNA MOUNTING DETAIL



42ND ST P.S. EXISTING DIALER PHOTO



42ND STREET PUMP STATION PLAN



42ND STREET PUMP STATION CONTROL DIAGRAM

D:\171\115\170264\Work Order 85 - District 8 Communications\CADD Sheets\18716102-sht-Plan06.dgn

KLINGNER & ASSOCIATES, P.C.
Engineers • Architects • Surveyors
616 N. 24TH ST. QUINCY, ILLINOIS 62301 217.223.3670
STATE OF ILLINOIS DESIGN FIRM NO. 164-2738

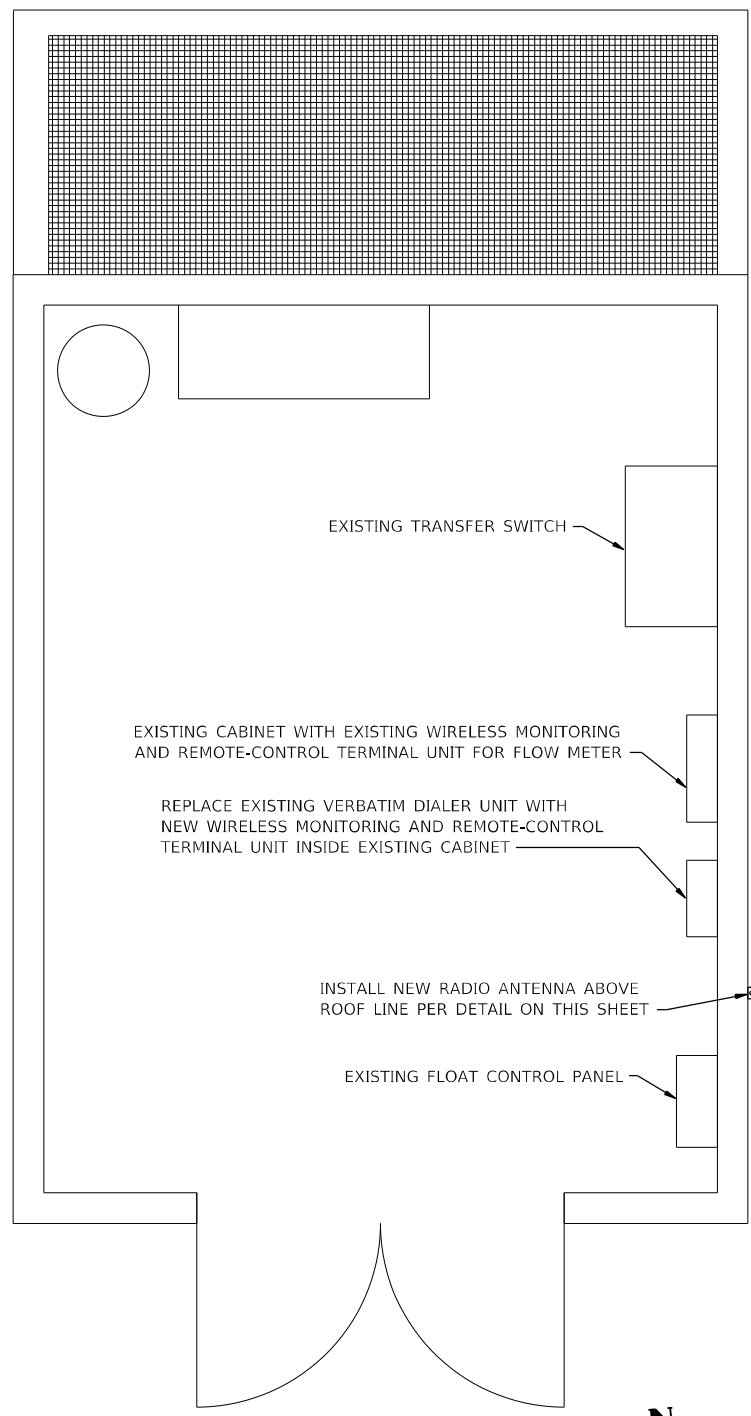
USER NAME = aschofer	DESIGNED -	REVISED -
PLOT SCALE = 2:1 1/16" = 1 in.	DRAWN -	REVISED -
PLOT DATE = 1/13/2023	CHECKED -	REVISED -
	DATE -	REVISED -

**STATE OF ILLINOIS
DEPARTMENT OF TRANSPORTATION**

**EXISTING MONITOR NO. 9
42ND STREET**

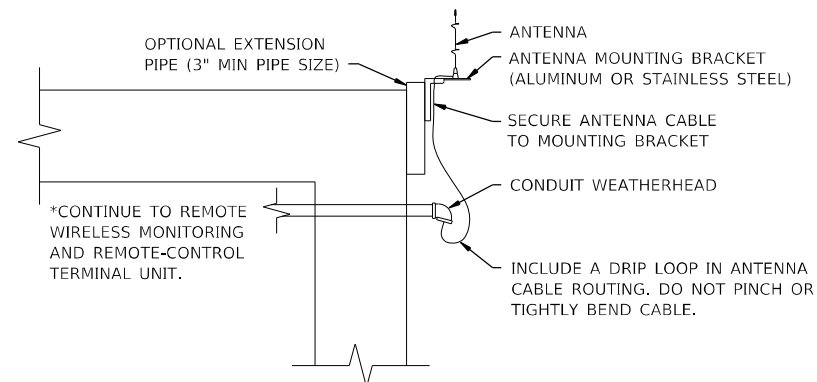
SCALE: NONE SHEET 1 OF 1 SHEETS STA. TO STA.

F.A.U. RTE.	SECTION	COUNTY	TOTAL SHEETS	SHEET NO.
VAR	D8 Pump Stations 2023-1	VARIOUS	23	11
			CONTRACT NO. 76T02	
ILLINOIS FED. AID PROJECT				



VENICE PUMP STATION PLAN

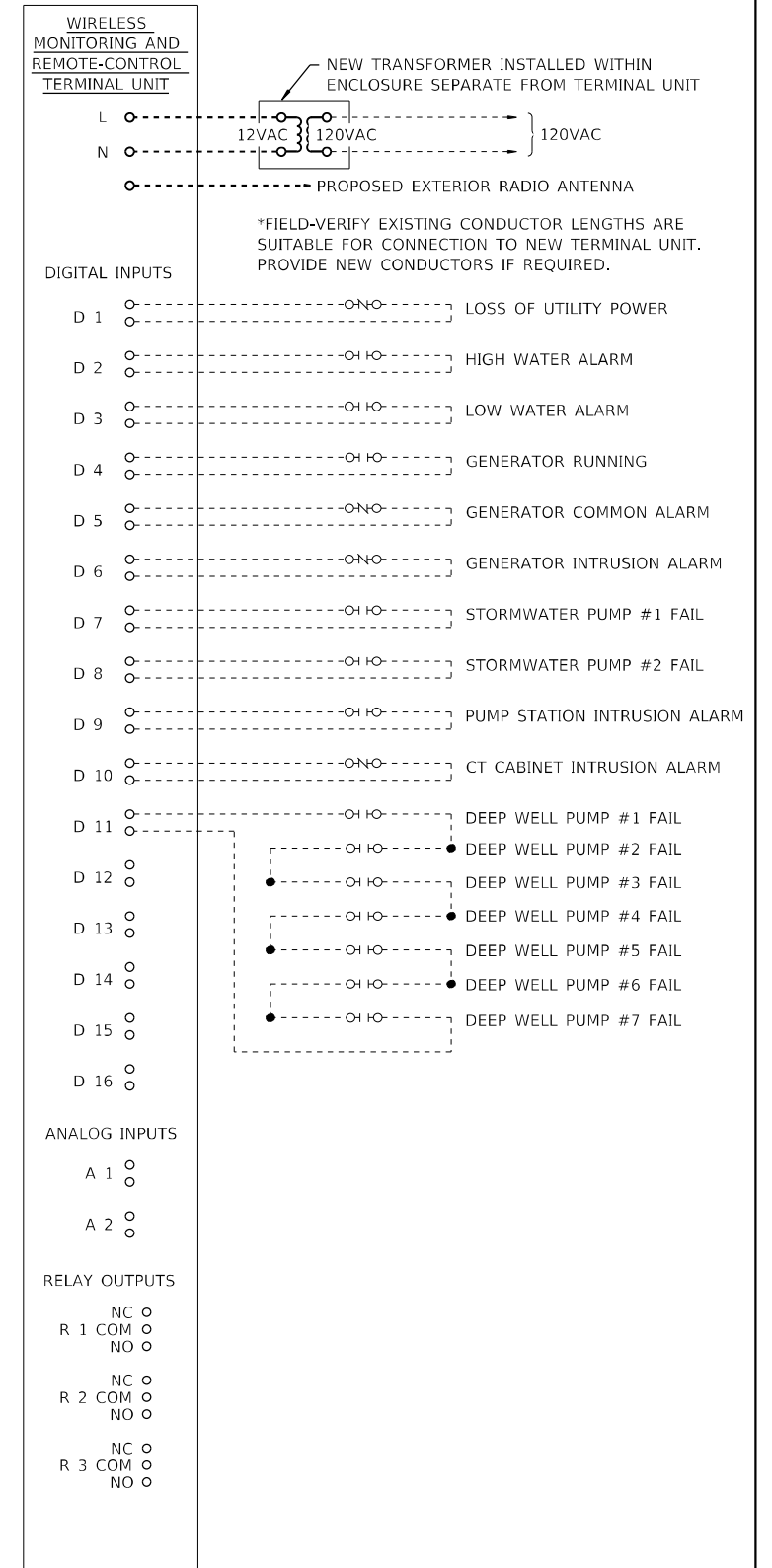
*MOUNT ENTIRE ANTENNA ABOVE ROOFLINE ON EXISTING STRUCTURE. PROVIDE EXTENSION PIPE IF REQUIRED TO EXTEND ANTENNA MOUNTING BRACKET ABOVE ROOFLINE. MATCH PIPE MATERIAL TO ANTENNA MOUNTING BRACKET MATERIAL



BUILDING ANTENNA MOUNTING DETAIL



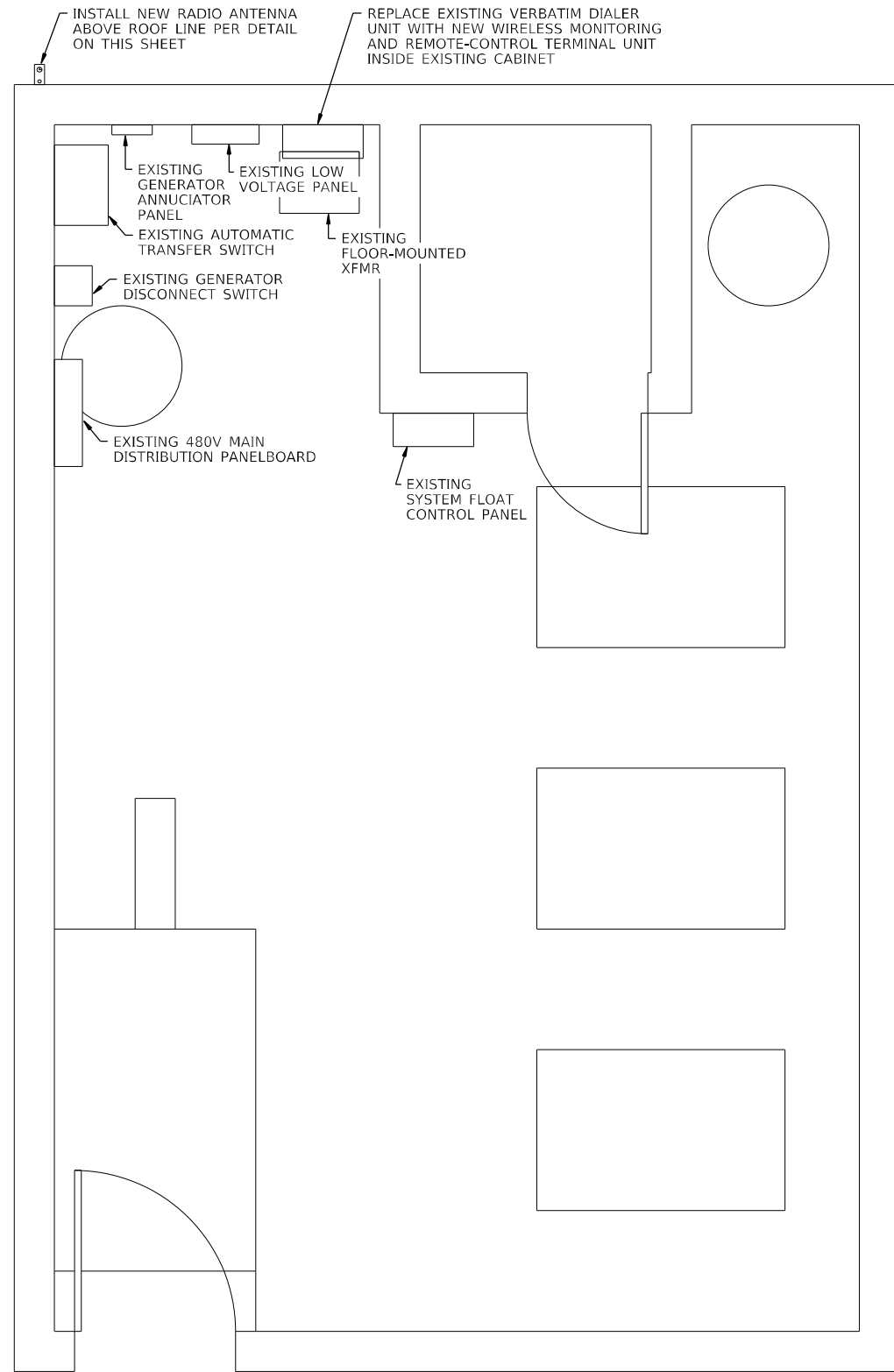
VENICE PUMP STATION EXISTING DIALER PHOTO



VENICE PUMP STATION CONTROL DIAGRAM

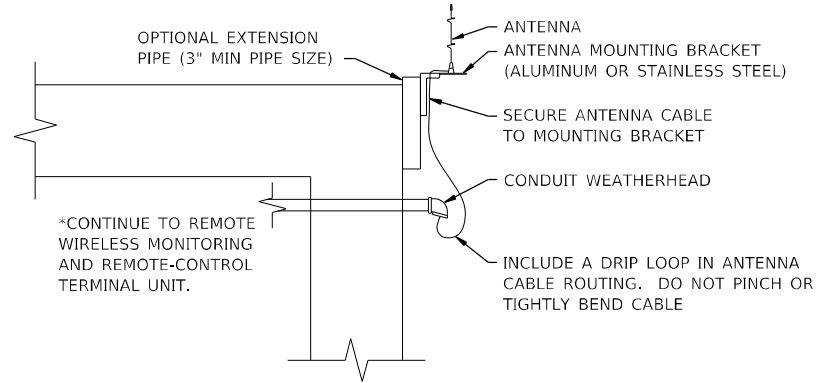
D:\171\1es\170264\Work Order 85 - District 8 Communications\CA00 Sheets\1876102-sht-Plan.dgn

USER NAME = aschofer	DESIGNED -	REVISED -
PLOT SCALE = 2:1 1/16" / in.	DRAWN -	REVISED -
PLOT DATE = 1/3/2023	CHECKED -	REVISED -
	DATE -	REVISED -



25TH STREET PUMP STATION PLAN

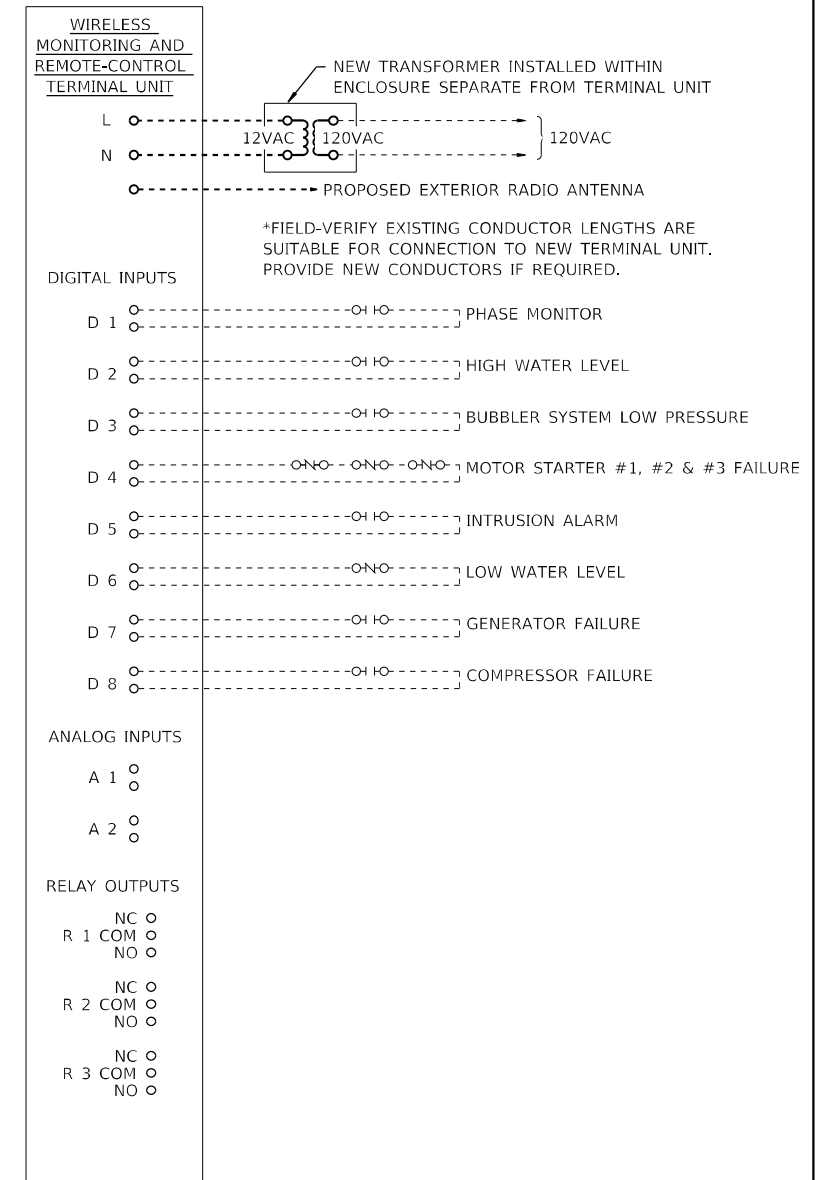
*MOUNT ENTIRE ANTENNA ABOVE ROOFLINE ON EXISTING STRUCTURE. PROVIDE EXTENSION PIPE IF REQUIRED TO EXTEND ANTENNA MOUNTING BRACKET ABOVE ROOFLINE. MATCH PIPE MATERIAL TO ANTENNA MOUNTING BRACKET MATERIAL



BUILDING ANTENNA MOUNTING DETAIL



25TH STREET PUMP STATION EXISTING DIALER PHOTO



25TH STREET PUMP STATION CONTROL DIAGRAM

D:\171\1es\170264\Work Order 85 - District 8 Communications\CADD Sheets\1876102-sht-Plan06.dgn

KLINGNER & ASSOCIATES, P.C.
 Engineers • Architects • Surveyors
 616 N. 24TH ST., QUINCY, ILLINOIS 62301 217.223.3670
 STATE OF ILLINOIS DESIGN FIRM NO. 164-2738

USER NAME = aschofer	DESIGNED -	REVISED -
PLOT SCALE = 2:1 1/16" = 1" / in.	DRAWN -	REVISED -
PLOT DATE = 1/13/2023	CHECKED -	REVISED -
	DATE -	REVISED -

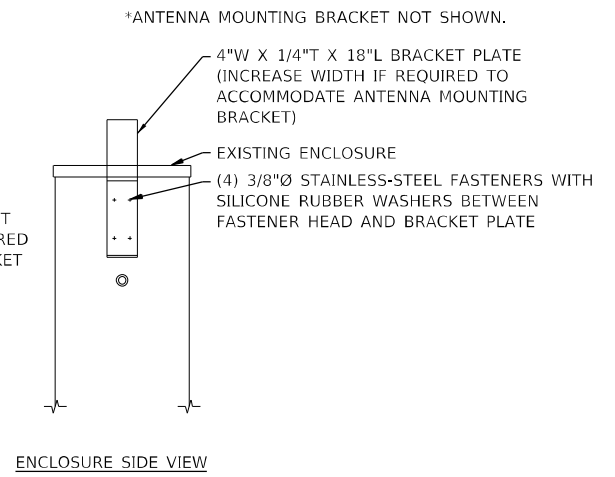
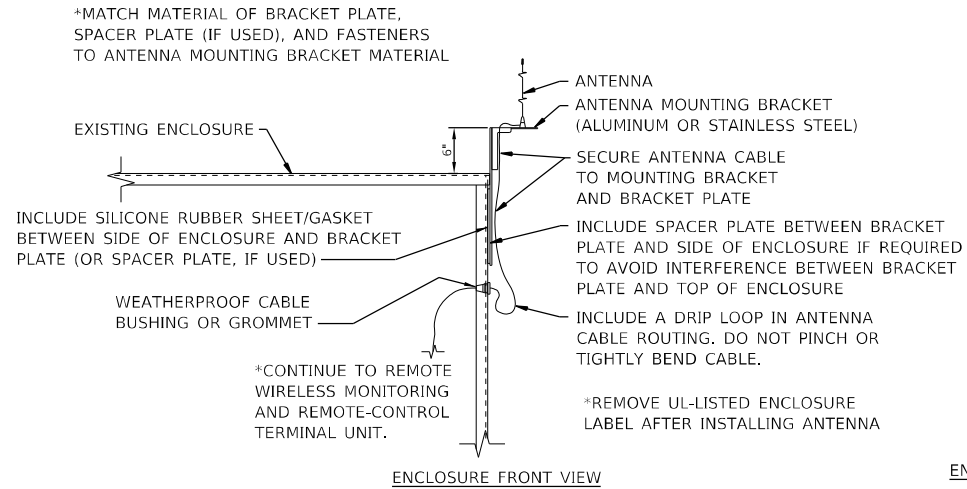
**STATE OF ILLINOIS
DEPARTMENT OF TRANSPORTATION**

EXISTING MONITOR NO. 11 25TH STREET			
SCALE: NONE	SHEET 1 OF 1 SHEETS	STA. TO STA.	

F.A.U. RTE.	SECTION	COUNTY	TOTAL SHEETS	SHEET NO.
VAR	D8 Pump Stations 2023-1	VARIOUS	23	13
				CONTRACT NO. 76T02
ILLINOIS FED. AID PROJECT				



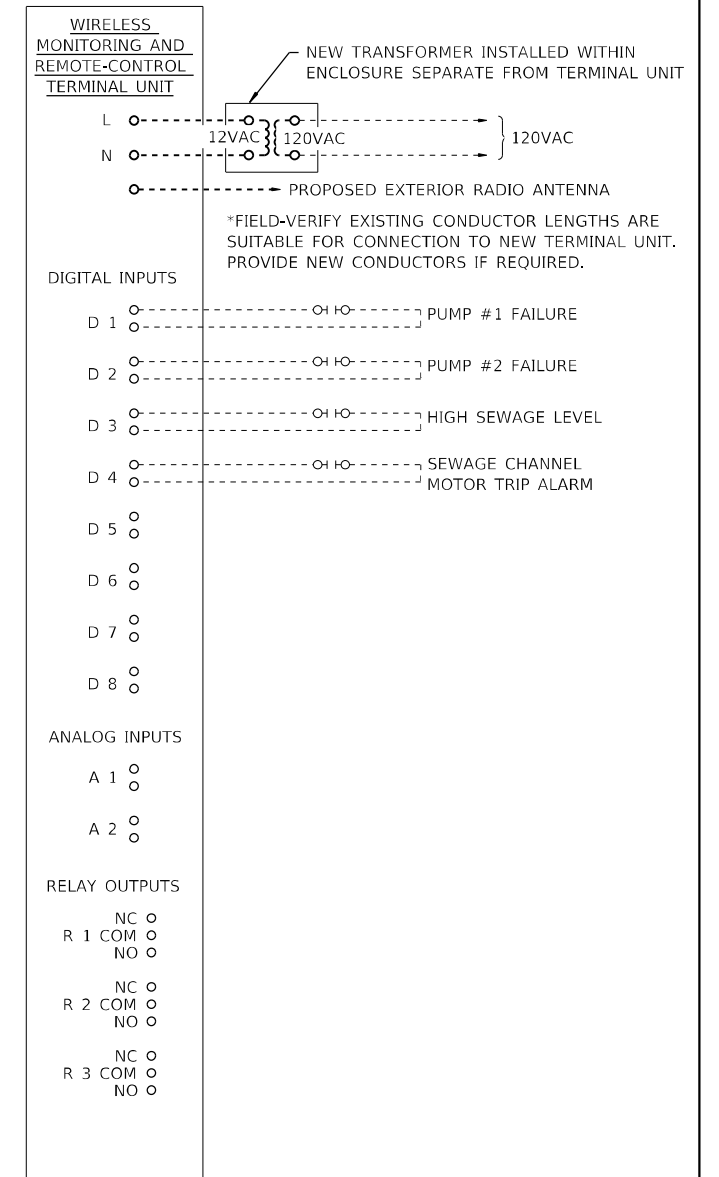
I-55 REST AREA N/B PUMP STATION PLAN PHOTO



ENCLOSURE ANTENNA MOUNTING DETAIL



I-55 REST AREA N/B PUMP STATION EXISTING DIALER PHOTO



I-55 REST AREA N/B PUMP STATION CONTROL DIAGRAM

D:\171\115\170264\Work Order 85 - District 8 Communications\CA00 Sheets\1876102-sht-Plan1.dgn

KLINGNER & ASSOCIATES, P.C.
 Engineers • Architects • Surveyors
 616 N. 24TH ST., QUINCY, ILLINOIS 62301 217.223.3670
 STATE OF ILLINOIS DESIGN FIRM NO. 164-2738

USER NAME = aschofer	DESIGNED -	REVISED -
PLOT SCALE = 2:1 1/16" = 1" / in.	DRAWN -	REVISED -
PLOT DATE = 1/3/2023	CHECKED -	REVISED -
	DATE -	REVISED -

**STATE OF ILLINOIS
 DEPARTMENT OF TRANSPORTATION**

EXISTING MONITOR NO. 12 I-55 REST AREA N/B			
SCALE: NONE	SHEET 1 OF 1 SHEETS	STA. TO STA.	

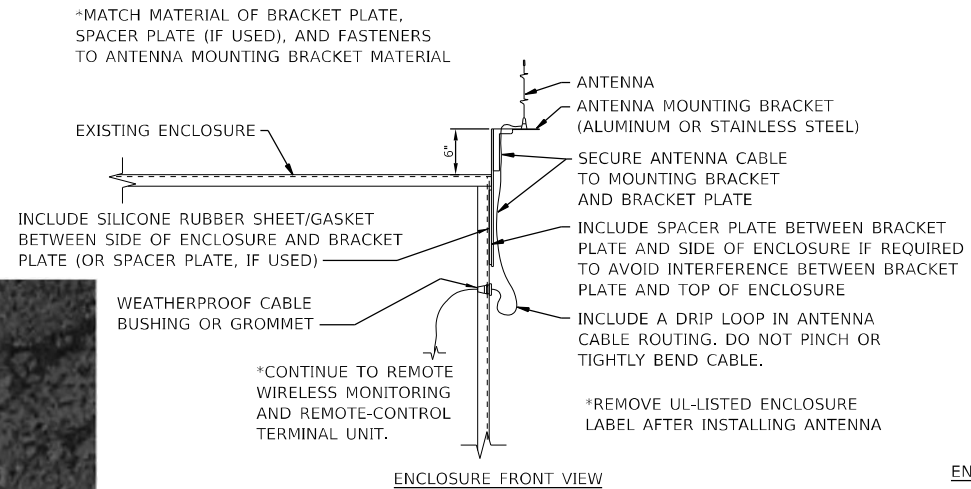
F.A.U. RTE.	SECTION	COUNTY	TOTAL SHEETS	SHEET NO.
VAR	D8 Pump Stations 2023-1	VARIOUS	23	14
			CONTRACT NO. 76T02	
ILLINOIS FED. AID PROJECT				



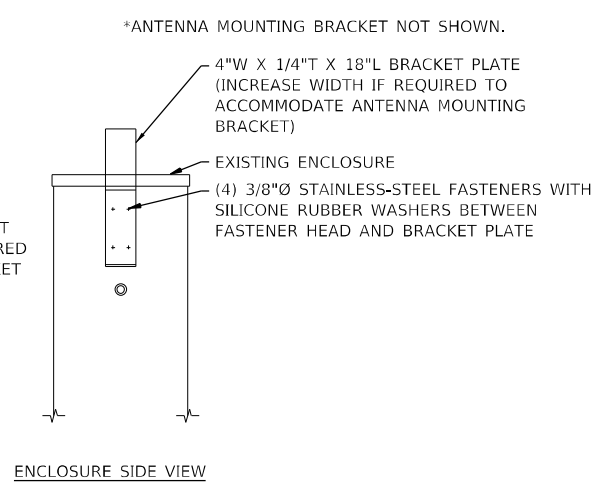
INSTALL NEW RADIO ANTENNA ON EXISTING CABINET PER DETAIL ON THIS SHEET

REPLACE EXISTING CHATTERBOX DIALER UNIT WITH NEW WIRELESS MONITORING AND REMOTE-CONTROL TERMINAL UNIT INSIDE EXISTING CABINET

I-55 REST AREA S/B/ P.S. PLAN PHOTO



ENCLOSURE FRONT VIEW

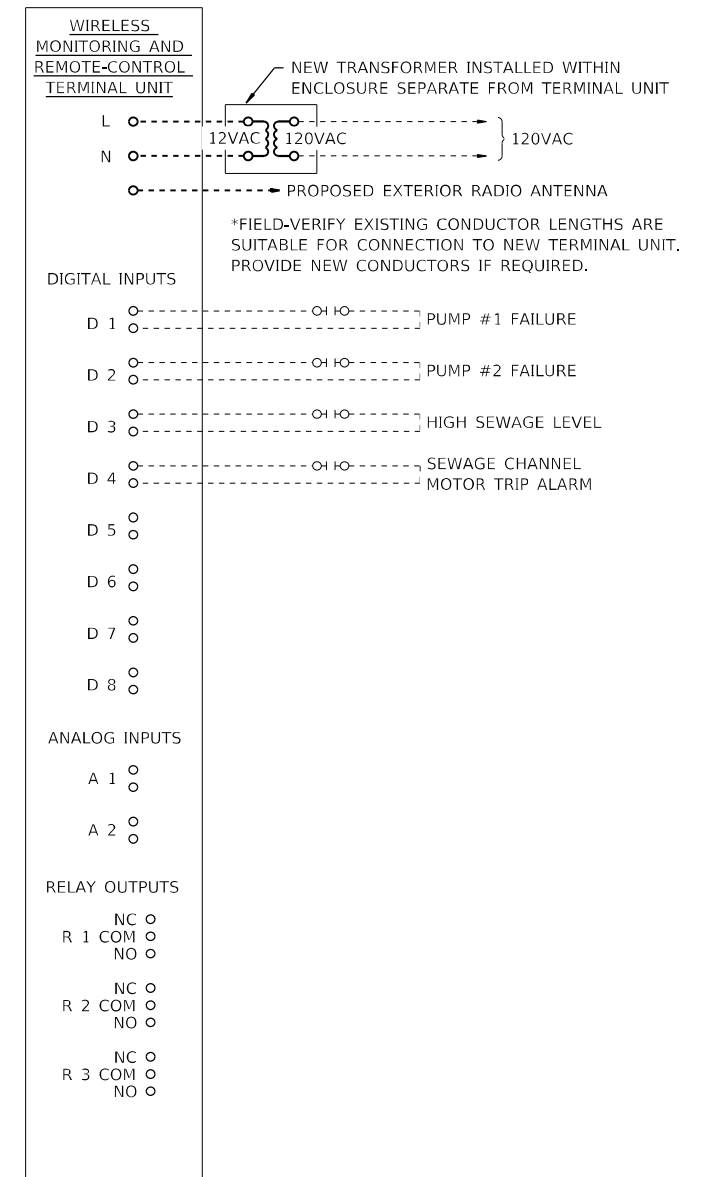


ENCLOSURE SIDE VIEW

ENCLOSURE ANTENNA MOUNTING DETAIL



I-55 REST AREA S/B/ P.S. EXISTING DIALER PHOTO



I-55 REST AREA S/B/ P.S. CONTROL DIAGRAM

D:\171\I-55\170264\Work Order 85 - District 8 Communications\CA00 Sheets\18716102-sht-Plan2.dgn

KLINGNER & ASSOCIATES, P.C.
 Engineers • Architects • Surveyors
 616 N. 24TH ST. QUINCY, ILLINOIS 62301 217.223.3670
 STATE OF ILLINOIS DESIGN FIRM NO. 164-2738

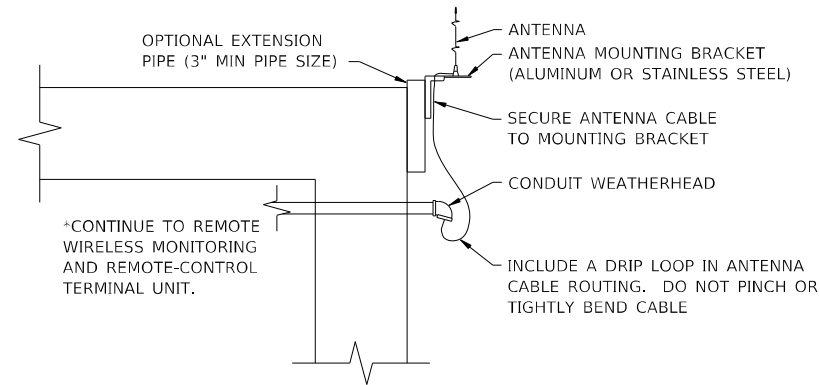
USER NAME = aschofer	DESIGNED -	REVISED -
PLOT SCALE = 2:1 1/16" = 1" / in.	DRAWN -	REVISED -
PLOT DATE = 1/3/2023	CHECKED -	REVISED -
	DATE -	REVISED -

**STATE OF ILLINOIS
 DEPARTMENT OF TRANSPORTATION**

EXISTING MONITOR NO. 13 I-55 REST AREA S/B			
SCALE: NONE	SHEET 1 OF 1 SHEETS	STA. TO STA.	

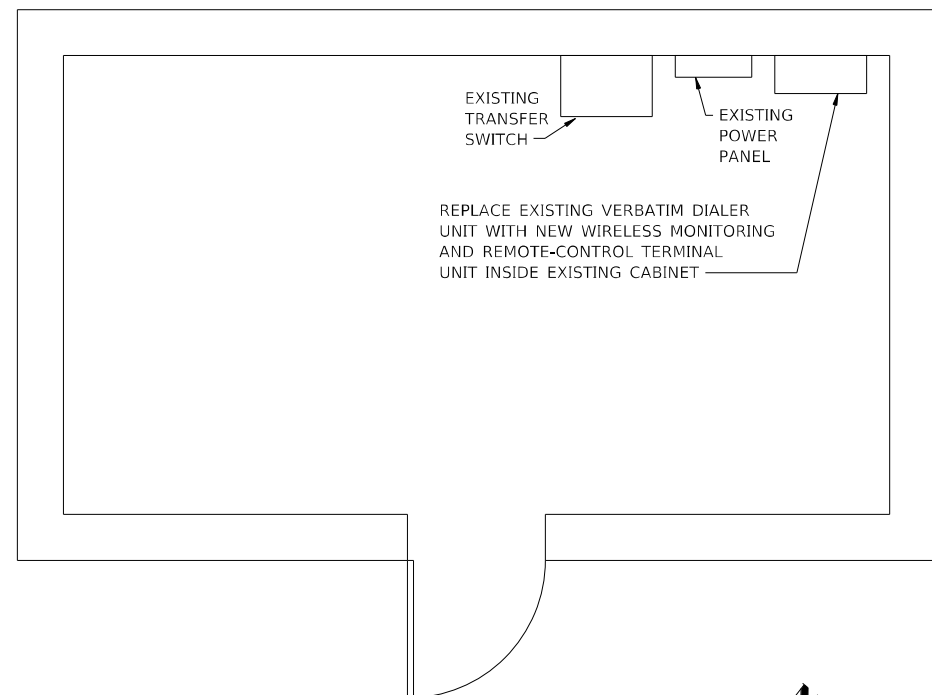
F.A.U. RTE.	SECTION	COUNTY	TOTAL SHEETS	SHEET NO.
VAR	D8 Pump Stations 2023-1	VARIOUS	23	15
				CONTRACT NO. 76T02
ILLINOIS FED. AID PROJECT				

*MOUNT ENTIRE ANTENNA ABOVE ROOFLINE ON EXISTING STRUCTURE. PROVIDE EXTENSION PIPE IF REQUIRED TO EXTEND ANTENNA MOUNTING BRACKET ABOVE ROOFLINE. MATCH PIPE MATERIAL TO ANTENNA MOUNTING BRACKET MATERIAL



BUILDING ANTENNA MOUNTING DETAIL

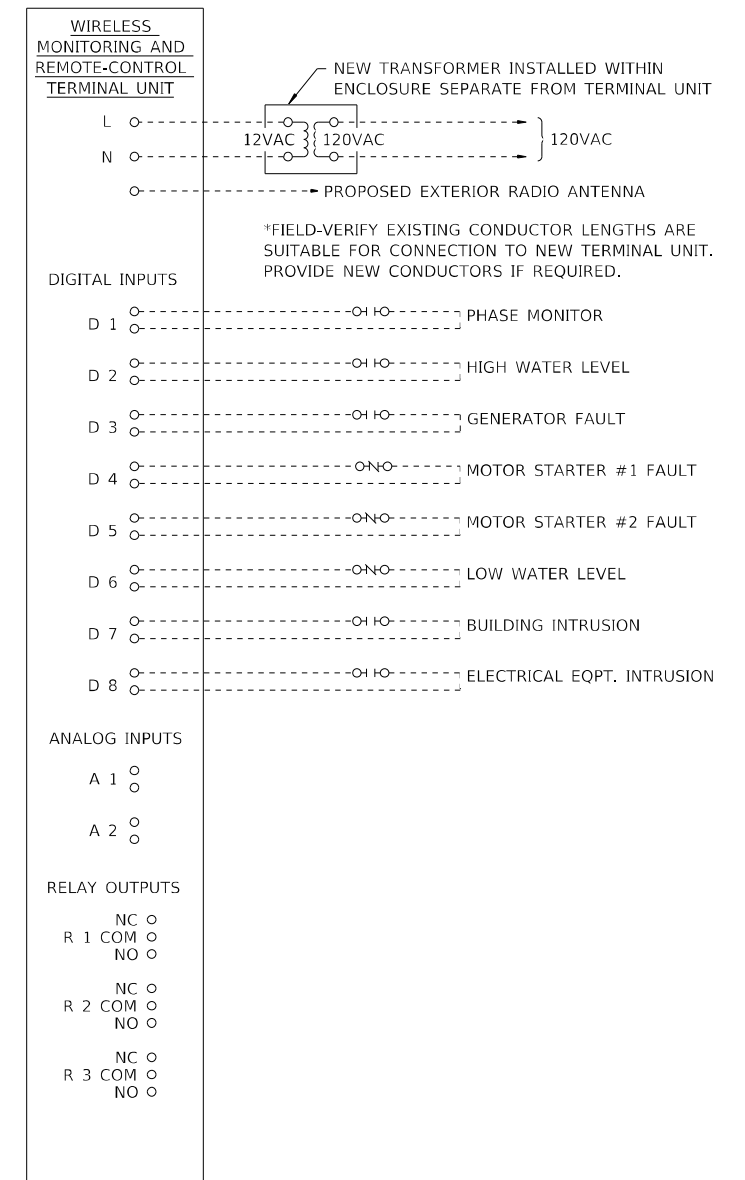
INSTALL NEW RADIO ANTENNA ABOVE ROOF LINE PER DETAIL ON THIS SHEET



9TH ST P.S. PLAN



9TH ST P.S. EXISTING DIALER PHOTO



9TH ST P.S. CONTROL DIAGRAM

D:\171\1es\170264\Work Order 85 - District 8 Communications\CADD Sheets\1876102-sht-Plan3.dgn

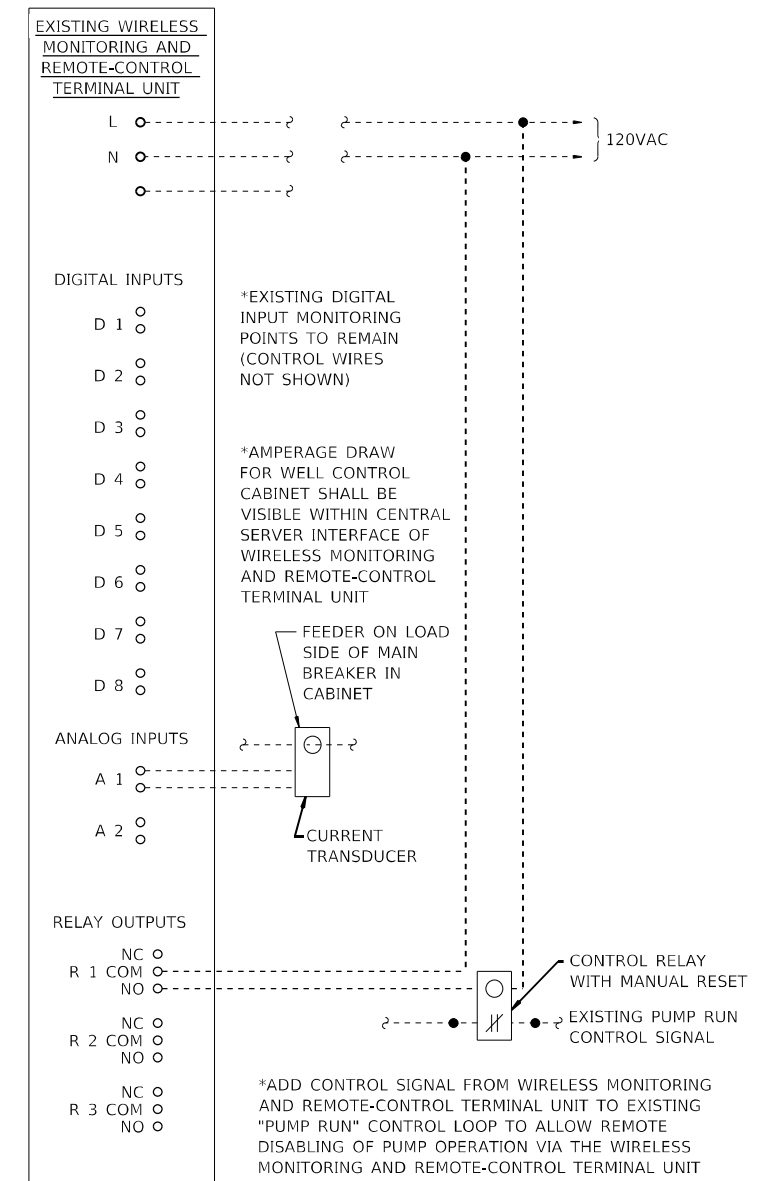
USER NAME = aschofer	DESIGNED -	REVISED -
PLOT SCALE = 2:1 1/16" = 1/8" / in.	DRAWN -	REVISED -
PLOT DATE = 1/3/2023	CHECKED -	REVISED -
	DATE -	REVISED -

EXISTING MONITOR NO. 14 9TH STREET			
SCALE: NONE	SHEET 1 OF 1 SHEETS	STA.	TO STA.

F.A.U. RTE.	SECTION	COUNTY	TOTAL SHEETS	SHEET NO.
VAR	D8 Pump Stations 2023-1	VARIOUS	23	16
CONTRACT NO. 76T02			ILLINOIS FED. AID PROJECT	



25TH STREET PLAN PHOTO



25TH STREET WELLS CONTROL DIAGRAM

D:\171\115\170264\Work Order 85 - District 8 Communications\CA00 Sheets\0876102-sht-Plan1.dgn

KLINGNER & ASSOCIATES, P.C.
Engineers • Architects • Surveyors
616 N. 24TH ST., QUINCY, ILLINOIS 62301 217.223.3670
STATE OF ILLINOIS DESIGN FIRM NO. 164-2738

USER NAME = aschofer	DESIGNED -	REVISED -
PLOT SCALE = 2:1 1/16" = 1/8" / in.	DRAWN -	REVISED -
PLOT DATE = 1/3/2023	CHECKED -	REVISED -
	DATE -	REVISED -

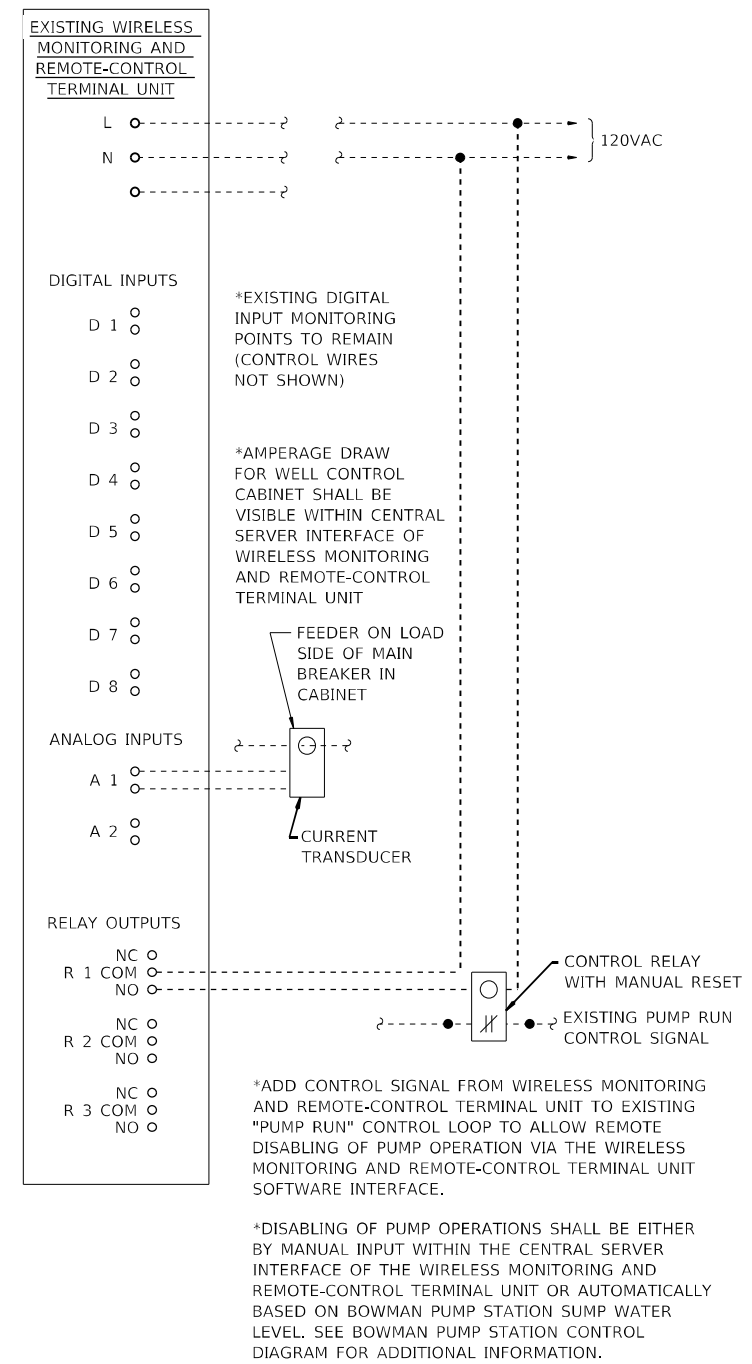
**STATE OF ILLINOIS
DEPARTMENT OF TRANSPORTATION**

EXISTING MONITOR NO. 17 25TH STREET WELLS			
SCALE: NONE	SHEET 1 OF 1 SHEETS	STA.	TO STA.

F.A.U. RTE.	SECTION	COUNTY	TOTAL SHEETS	SHEET NO.
VAR	D8 Pump Stations 2023-1	VARIOUS	23	17
				CONTRACT NO. 76T02
ILLINOIS FED. AID PROJECT				



TRI-LEVEL SOUTH WELLS PLAN PHOTO



TRI-LEVEL SOUTH WELLS CONTROL DIAGRAM

D:\171\115\170264\Work Order 85 - District 8 Communications\CADD Sheets\1876102-sht-PlanEdgn

KLINGNER & ASSOCIATES, P.C.
 Engineers • Architects • Surveyors
 616 N. 24TH ST. QUINCY, ILLINOIS 62301 217.223.3670
 STATE OF ILLINOIS DESIGN FIRM NO. 164-2738

USER NAME = aschofer	DESIGNED -	REVISED -
PLOT SCALE = 2:1 1/16" = 1" / in.	DRAWN -	REVISED -
PLOT DATE = 1/3/2023	CHECKED -	REVISED -
	DATE -	REVISED -

**STATE OF ILLINOIS
 DEPARTMENT OF TRANSPORTATION**

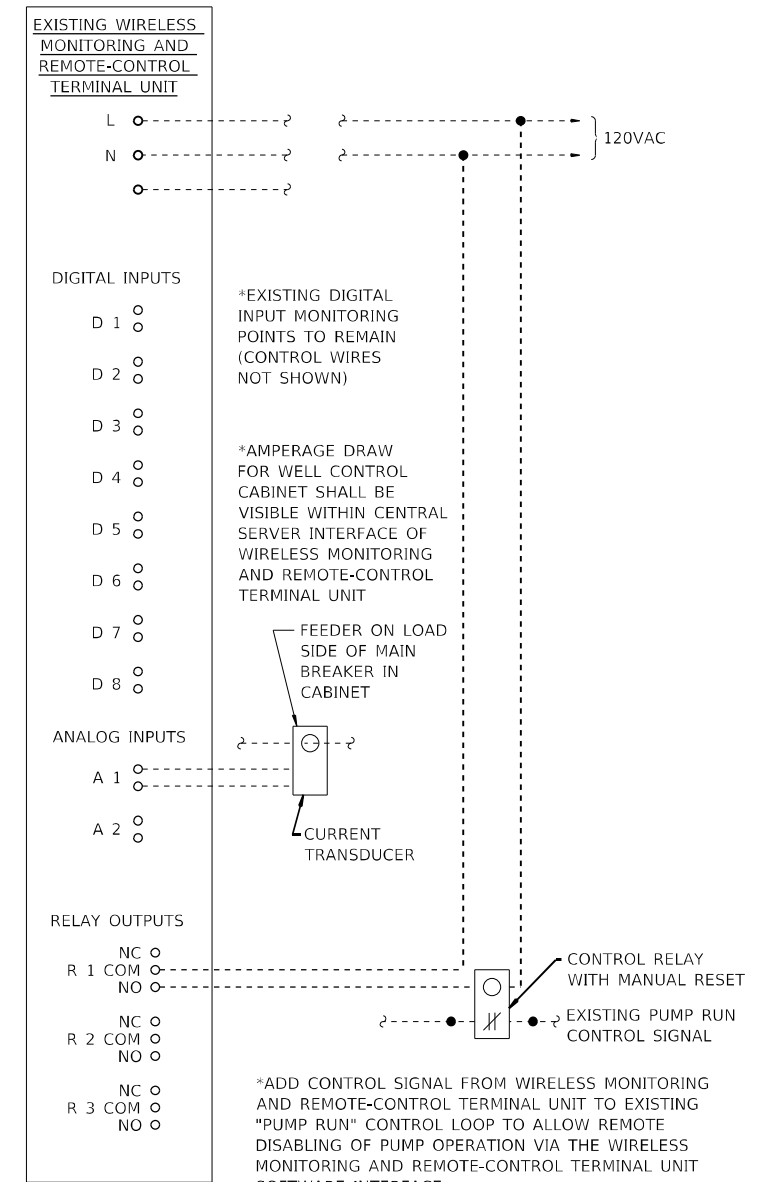
**EXISTING MONITOR NO. 18
 TRI-LEVEL SOUTH WELLS**

SCALE: NONE SHEET 1 OF 1 SHEETS STA. TO STA.

F.A.U. RTE.	SECTION	COUNTY	TOTAL SHEETS	SHEET NO.
VAR	D8 Pump Stations 2023-1	VARIOUS	23	18
				CONTRACT NO. 76T02
ILLINOIS FED. AID PROJECT				



TRI-LEVEL NORTH WELLS PLAN PHOTO



TRI-LEVEL NORTH WELLS CONTROL DIAGRAM

D:\171\115\170264\Work Order 85 - District 8 Communications\CA00 Sheets\1876102-sht-Plan6.dgn

KLINGNER & ASSOCIATES, P.C.
 Engineers • Architects • Surveyors
 616 N. 24TH ST. QUINCY, ILLINOIS 62301 217.223.3670
 STATE OF ILLINOIS DESIGN FIRM NO. 164-2738

USER NAME = aschofer	DESIGNED -	REVISED -
PLOT SCALE = 2:1 1/16" = 1" / in.	DRAWN -	REVISED -
PLOT DATE = 1/3/2023	CHECKED -	REVISED -
	DATE -	REVISED -

**STATE OF ILLINOIS
 DEPARTMENT OF TRANSPORTATION**

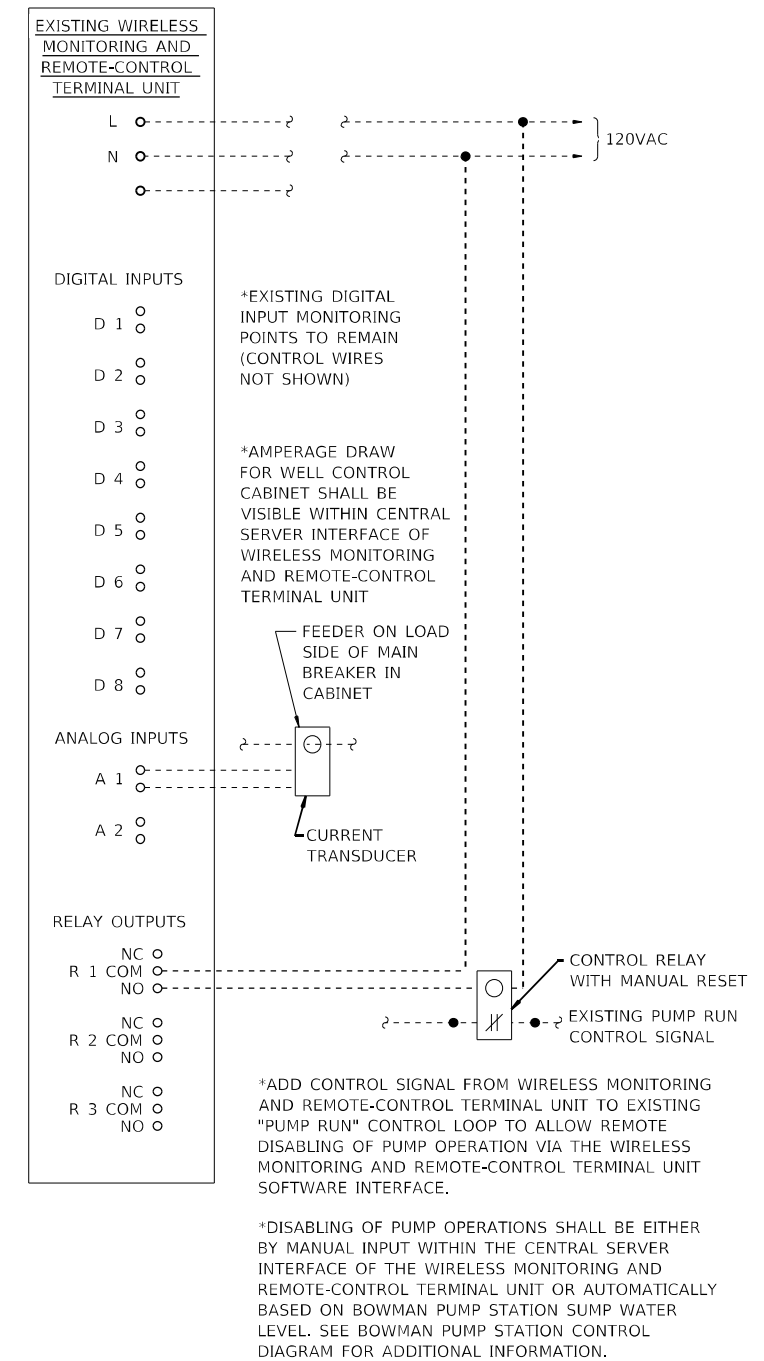
**EXISTING MONITOR NO. 19
 TRI-LEVEL NORTH WELLS**

SCALE: NONE SHEET 1 OF 1 SHEETS STA. TO STA.

F.A.U. RTE.	SECTION	COUNTY	TOTAL SHEETS	SHEET NO.
VAR	D8 Pump Stations 2023-1	VARIOUS	23	19
CONTRACT NO. 76T02			ILLINOIS FED. AID PROJECT	



10TH STREET WELLS PLAN PHOTO



10TH STREET WELLS CONTROL DIAGRAM

D:\171\115\170264\Work Order 85 - District 8 Communications\CA00 Sheets\10716102-sht-Plan17.dgn

KLINGNER & ASSOCIATES, P.C.
 Engineers • Architects • Surveyors
 616 N. 24TH ST., QUINCY, ILLINOIS 62301 217.223.3670
 STATE OF ILLINOIS DESIGN FIRM NO. 164-2738

USER NAME = aschofer	DESIGNED -	REVISED -
PLOT SCALE = 2:1 1/16" = 1" / in.	DRAWN -	REVISED -
PLOT DATE = 1/13/2023	CHECKED -	REVISED -
	DATE -	REVISED -

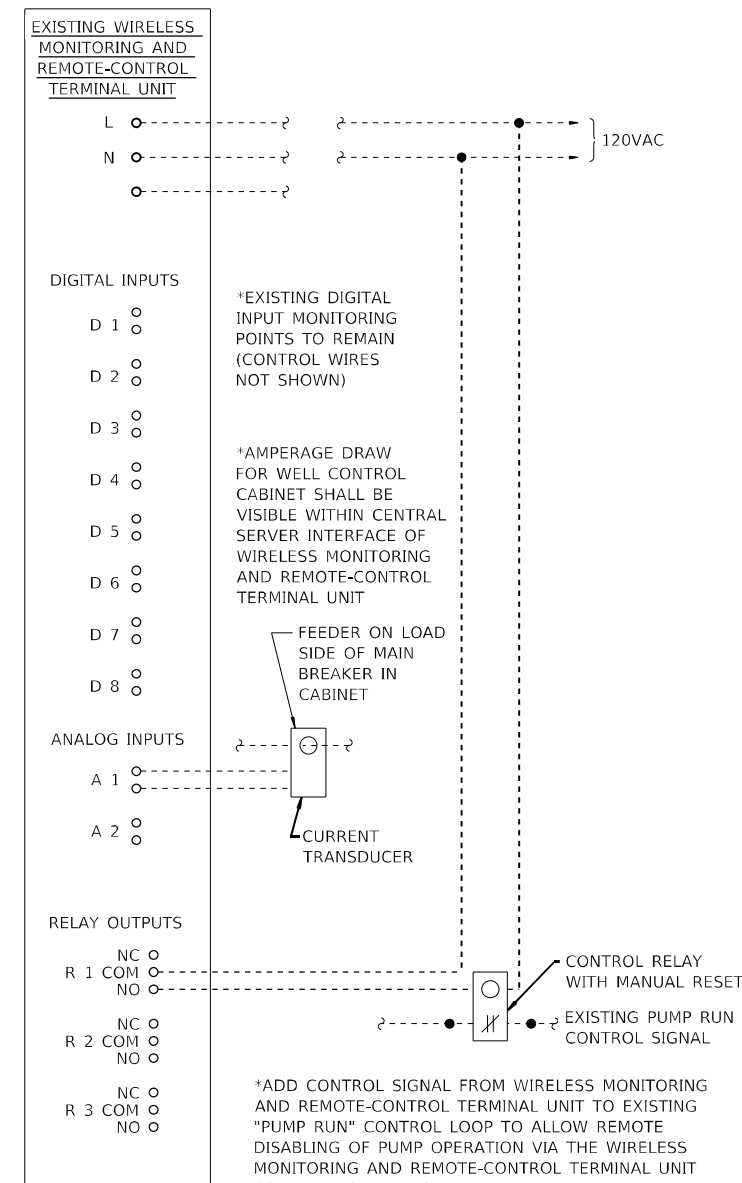
**STATE OF ILLINOIS
 DEPARTMENT OF TRANSPORTATION**

EXISTING MONITOR NO. 20 10TH STREET WELLS			
SCALE: NONE	SHEET 1 OF 1 SHEETS	STA. _____	TO STA. _____

F.A.U. / R.T.E.	SECTION	COUNTY	TOTAL SHEETS	SHEET NO.
VAR	D8 Pump Stations 2023-1	VARIOUS	23	20
CONTRACT NO. 76T02			ILLINOIS FED. AID PROJECT	



15TH STREET WELLS PLAN PHOTO



*ADD CONTROL SIGNAL FROM WIRELESS MONITORING AND REMOTE-CONTROL TERMINAL UNIT TO EXISTING "PUMP RUN" CONTROL LOOP TO ALLOW REMOTE DISABLING OF PUMP OPERATION VIA THE WIRELESS MONITORING AND REMOTE-CONTROL TERMINAL UNIT SOFTWARE INTERFACE.

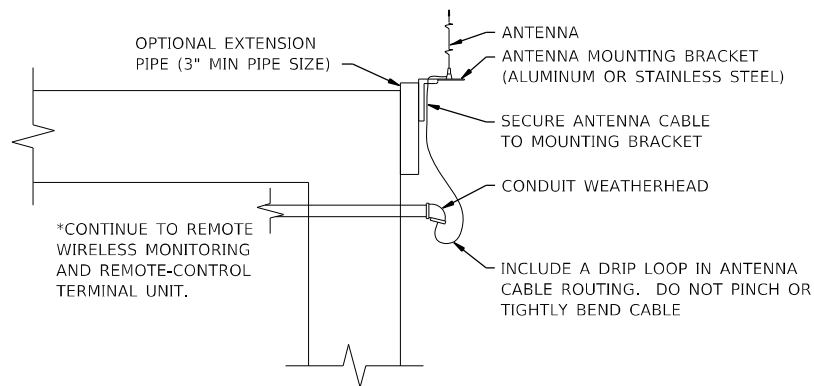
*DISABLING OF PUMP OPERATIONS SHALL BE EITHER BY MANUAL INPUT WITHIN THE CENTRAL SERVER INTERFACE OF THE WIRELESS MONITORING AND REMOTE-CONTROL TERMINAL UNIT OR AUTOMATICALLY BASED ON BOWMAN PUMP STATION SUMP WATER LEVEL. SEE BOWMAN PUMP STATION CONTROL DIAGRAM FOR ADDITIONAL INFORMATION.

15TH STREET WELLS CONTROL DIAGRAM

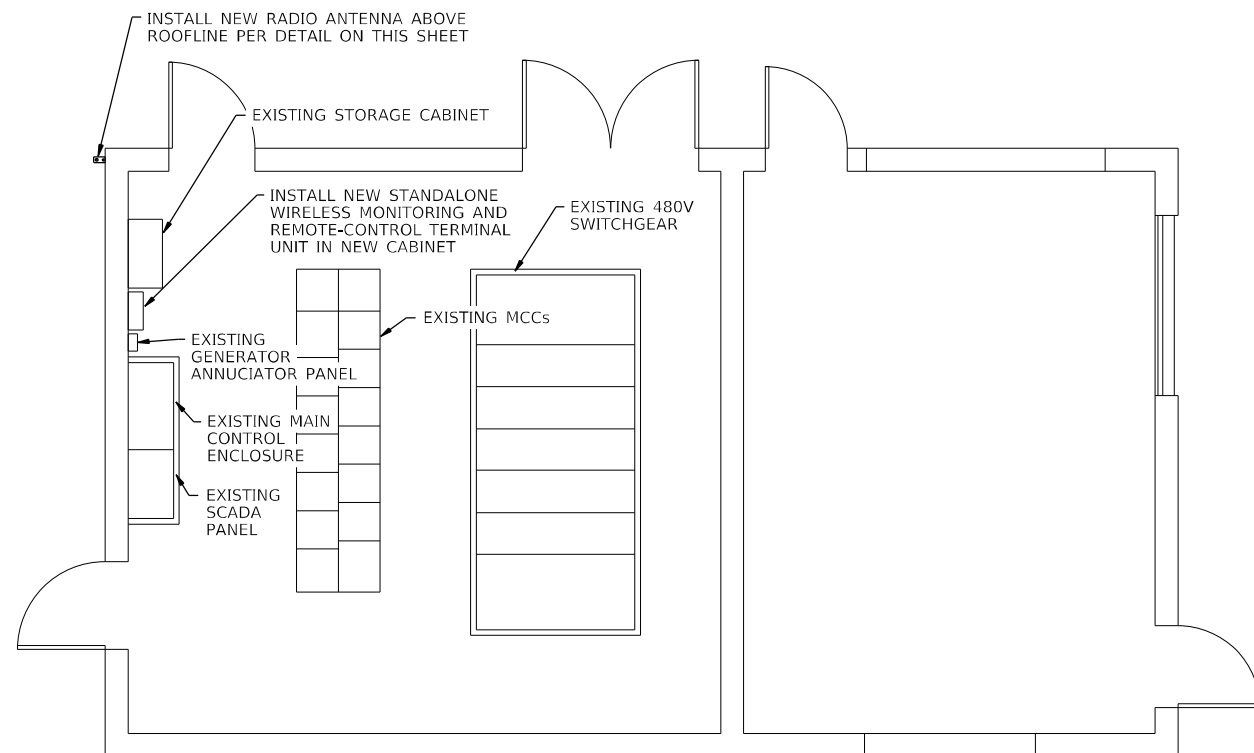
D:\171\15170264\Work Order 85 - District 8 Communications\CA00 Sheets\151702-sht-Plan8.dgn

USER NAME = aschofer	DESIGNED -	REVISED -
PLOT SCALE = 2:1 1/16" = 1/8"	DRAWN -	REVISED -
PLOT DATE = 1/13/2023	CHECKED -	REVISED -
	DATE -	REVISED -

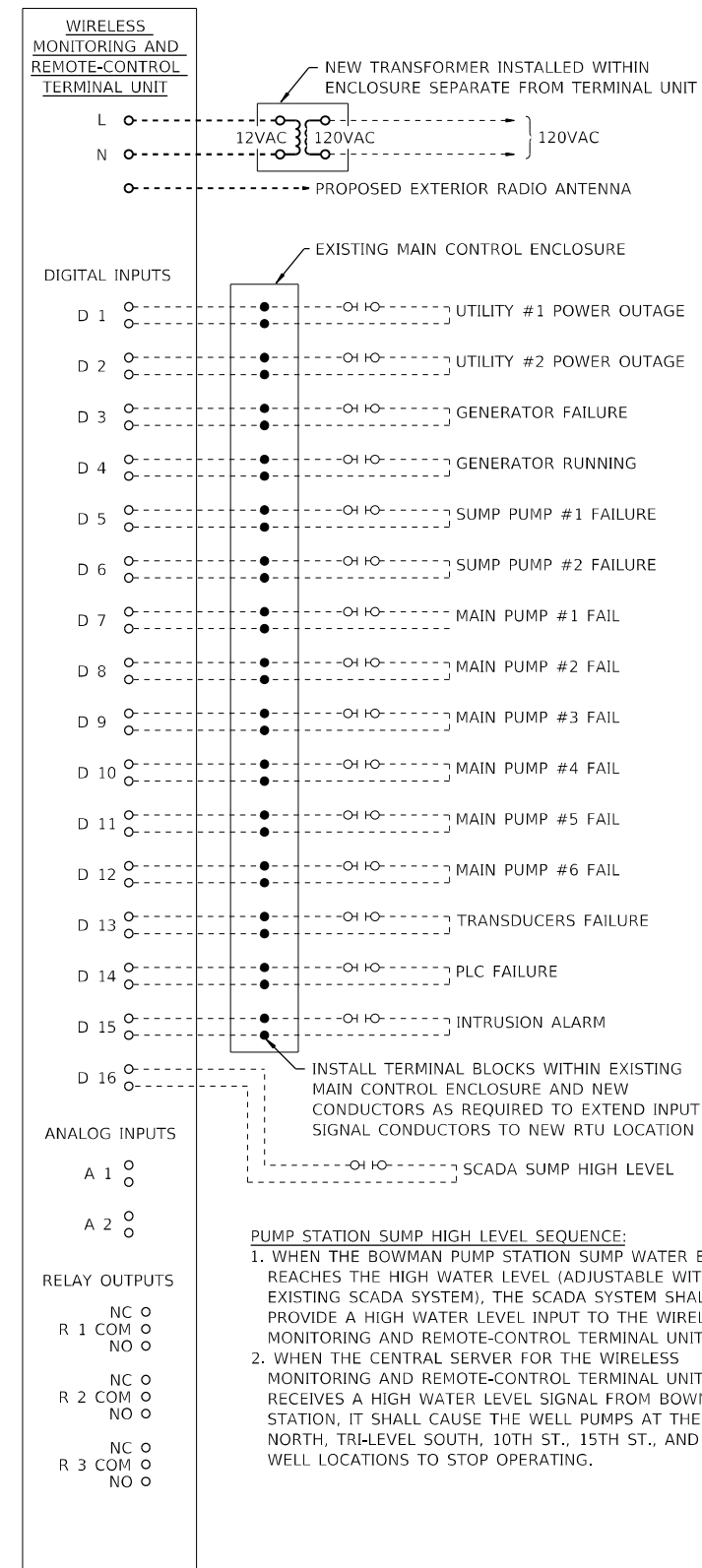
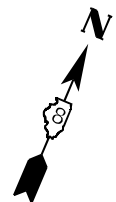
*MOUNT ENTIRE ANTENNA ABOVE ROOFLINE ON EXISTING STRUCTURE. PROVIDE EXTENSION PIPE IF REQUIRED TO EXTEND ANTENNA MOUNTING BRACKET ABOVE ROOFLINE. MATCH PIPE MATERIAL TO ANTENNA MOUNTING BRACKET MATERIAL



BUILDING ANTENNA MOUNTING DETAIL



BOWMAN PUMP STATION PLAN



BOWMAN PUMP STATION CONTROL DIAGRAM

D:\171\1710264\Work Order 85 - District 8 Communications\CAD\00 Sheets\0876102-sht-Plan19.dgn

KLINGNER & ASSOCIATES, P.C.
 Engineers • Architects • Surveyors
 616 N. 24TH ST., QUINCY, ILLINOIS 62301 217.223.3670
 STATE OF ILLINOIS DESIGN FIRM NO. 164-2738

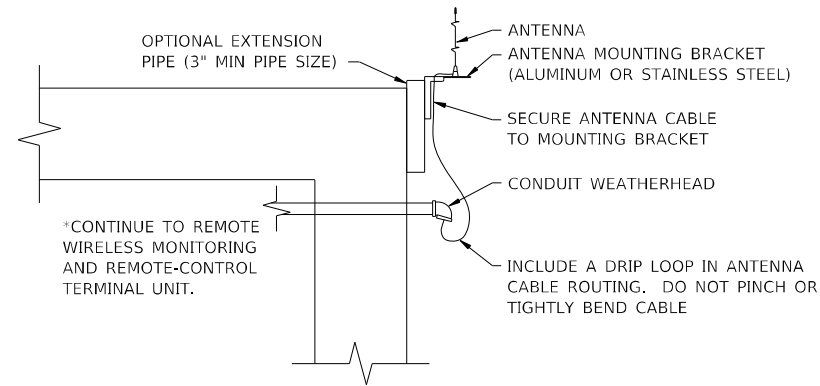
USER NAME = aschafer	DESIGNED -	REVISED -
PLOT SCALE = 2:1 1/16" = 1/8" / in.	DRAWN -	REVISED -
PLOT DATE = 1/13/2023	CHECKED -	REVISED -
	DATE -	REVISED -

**STATE OF ILLINOIS
 DEPARTMENT OF TRANSPORTATION**

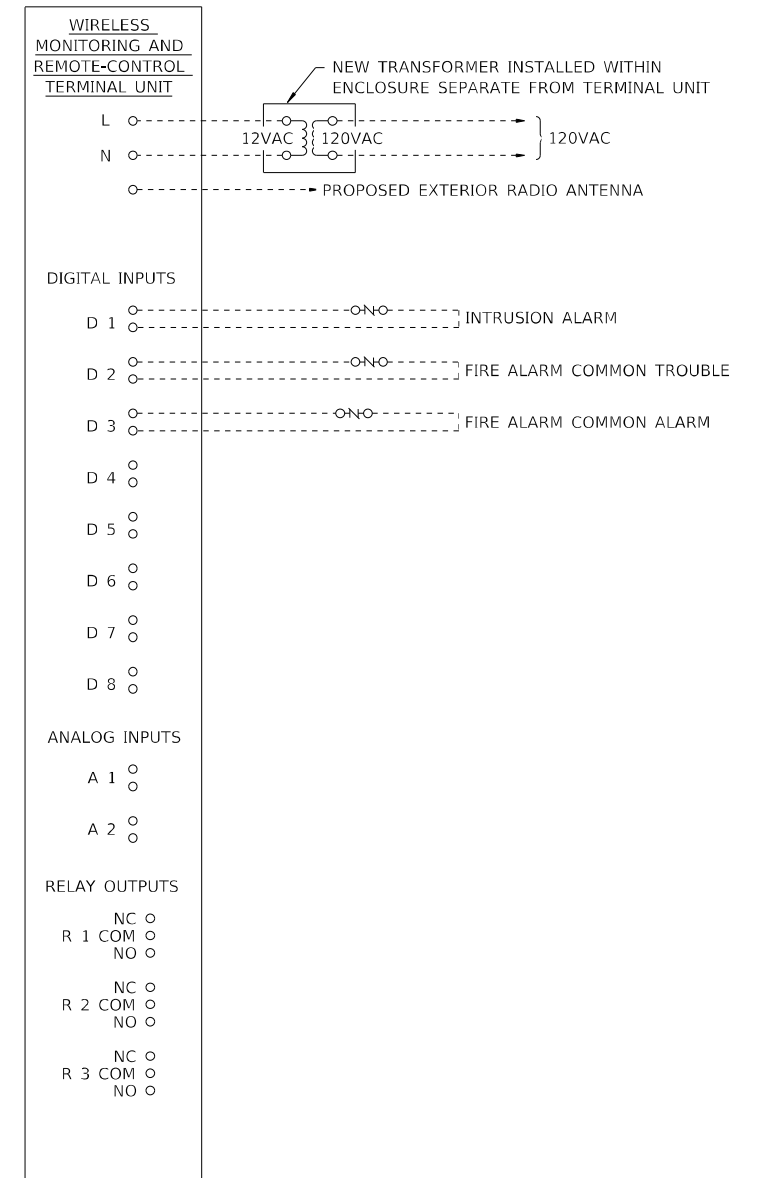
EXISTING MONITOR NO. 34 BOWMAN			
SCALE: NONE	SHEET 1 OF 1 SHEETS	STA. TO STA.	

F.A.U. RTE.	SECTION	COUNTY	TOTAL SHEETS	SHEET NO.
VAR	D8 Pump Stations 2023-1	VARIOUS	23	22
CONTRACT NO. 76T02				
ILLINOIS FED. AID PROJECT				

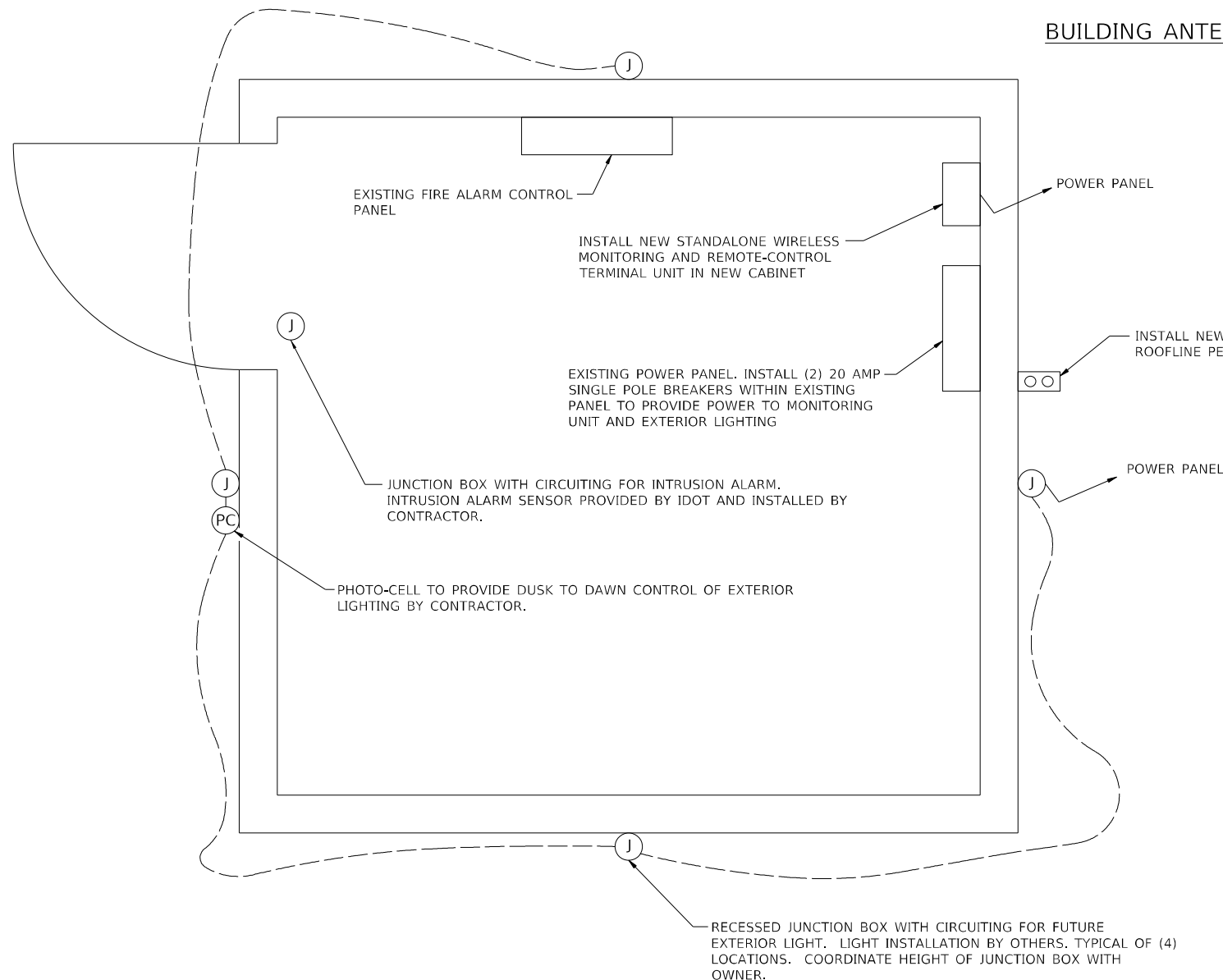
*MOUNT ENTIRE ANTENNA ABOVE ROOFLINE ON EXISTING STRUCTURE. PROVIDE EXTENSION PIPE IF REQUIRED TO EXTEND ANTENNA MOUNTING BRACKET ABOVE ROOFLINE. MATCH PIPE MATERIAL TO ANTENNA MOUNTING BRACKET MATERIAL



BUILDING ANTENNA MOUNTING DETAIL



MARY'S RIVER COVERED BRIDGE CONTROL DIAGRAM



MARY'S RIVER COVERED BRIDGE PLAN

D:\171\115\170264\Work Order 05 - District 8 Communications\CA00 Sheets\10716102-sht-Plan26.dgn

KLINGNER & ASSOCIATES, P.C.
 Engineers • Architects • Surveyors
 616 N. 24TH ST. QUINCY, ILLINOIS 62301 217.223.3670
 STATE OF ILLINOIS DESIGN FIRM NO. 184-2738

USER NAME = aschafer	DESIGNED -	REVISED -
PLOT SCALE = 2:1 1/16" = 1/8" / in.	DRAWN -	REVISED -
PLOT DATE = 1/3/2023	CHECKED -	REVISED -
	DATE -	REVISED -

**STATE OF ILLINOIS
 DEPARTMENT OF TRANSPORTATION**

**PROPOSED MONITOR NO. 36
 MARY'S RIVER COVERED BRIDGE**

SCALE: NONE SHEET 1 OF 1 SHEETS STA. TO STA.

F.A.U. RTE.	SECTION	COUNTY	TOTAL SHEETS	SHEET NO.
VAR	D8 Pump Stations 2023-1	VARIOUS	23	23
			CONTRACT NO. 76T02	
ILLINOIS FED. AID PROJECT				