

06-16-2023 LETTING 098

INDEX OF SHEETS

- 1 COVER SHEET
- 2 GENERAL NOTES AND COMMITMENTS
- 3 ALIGNMENT, TIES, AND BENCHMARKS
- 4-5 SUMMARY OF QUANTITIES
- 6 SCHEDULE OF QUANTITIES
- 7 TYPICAL SECTIONS
- 8 PLAN & PROFILE
- 9-20 STRUCTURE PLANS

STANDARDS (IN PROPOSAL)

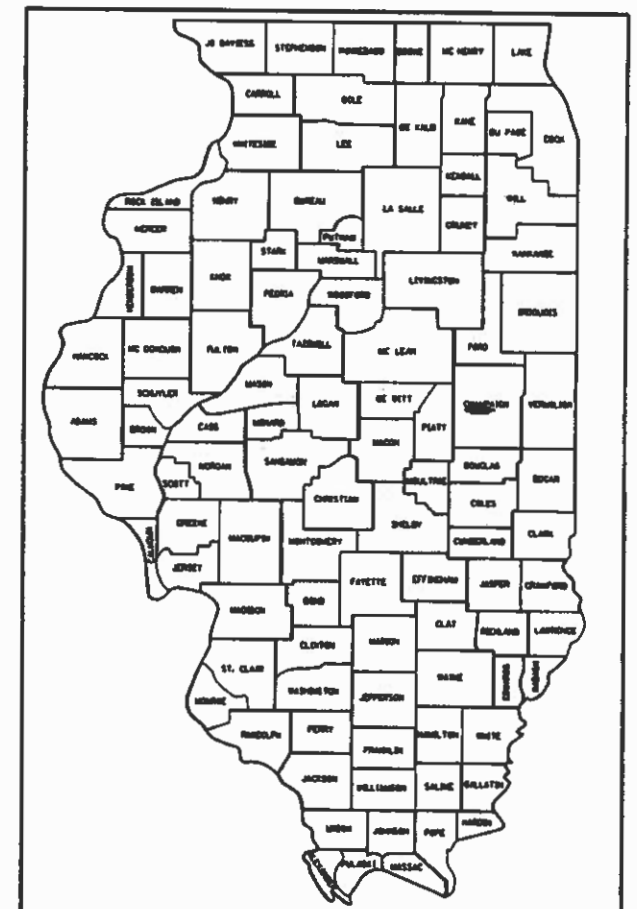
- 000001-08 STANDARD SYMBOLS, ABBREVIATIONS AND PATTERNS
- 001001-02 AREAS OF REINFORCEMENT BARS
- 001006 DECIMAL OF AN INCH AND OF A FOOT
- S15001-04 NAME PLATE FOR BRIDGES
- 701901-08 TRAFFIC CONTROL DEVICES
- 725001-01 OBJECT AND TERMINAL MARKERS
- BLR 21-9 TYPICAL APPLICATION OF TRAFFIC CONTROL DEVICES FOR CONSTRUCTION ON RURAL LOCAL HIGHWAYS

STATE OF ILLINOIS
DEPARTMENT OF TRANSPORTATION
**PLANS FOR PROPOSED
SUPERSTRUCTURE REPLACEMENT
LOCAL BRIDGE FORMULA PROGRAM**

TR 209A (WINDSOR RD.) OVER KASKASKIA DITCH
CHAMPAIGN TOWNSHIP
SECTION 22-03122-00-BR
PROJECT KUKM(571)
CHAMPAIGN COUNTY

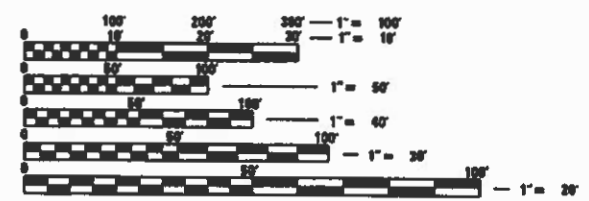
C-95-004-24

T.R. RTE.	SECTION	COUNTY	TOTAL SHEETS	SHEET NO.
209A	22-03122-00-BR	CHAMPAIGN	20	1
			CONTRACT NO. 91632	
			ILLINOIS FED. AID PROJECT KUKM(571)	



LOCATION OF SECTION INDICATED THUS: - -

FUNCTIONAL CLASSIFICATION - LOCAL ROAD
CURRENT ADT = 350
DESIGN SPEED = 40 MPH
3R GUIDELINES

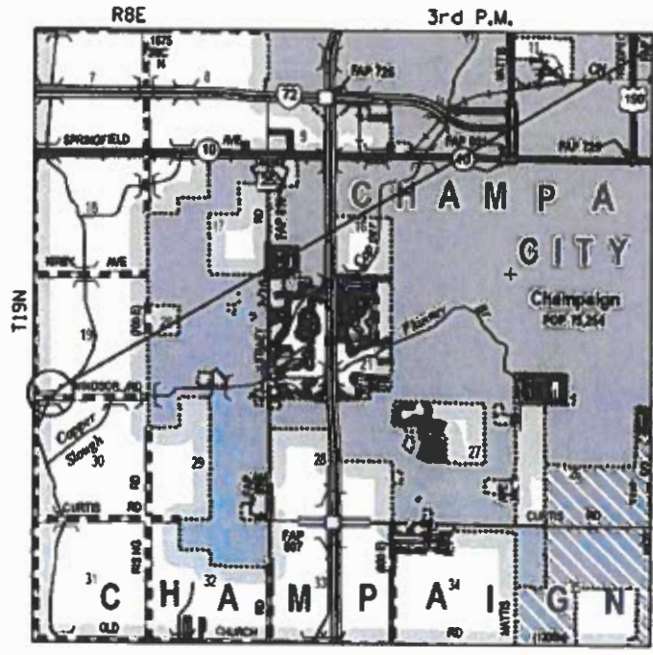


FULL SIZE PLANS HAVE BEEN PREPARED USING STANDARD ENGINEERING SCALES. REDUCED SIZED PLANS WILL NOT CONFORM TO STANDARD SCALES. IN MAKING MEASUREMENTS ON REDUCED PLANS, THE ABOVE SCALES MAY BE USED.

J.U.L.L.E.
JOINT UTILITY LOCATION INFORMATION FOR EXCAVATION
1-800-892-0123
OR 811

UTILITY COMPANIES:

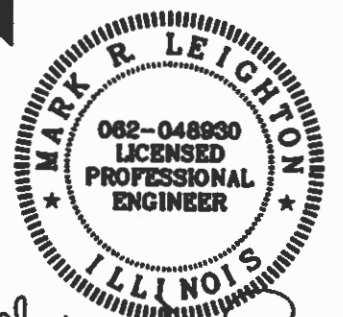
- AT&T DISTRIBUTION**
1000 COMMERCE DRIVE
OAK BROOK, IL 60523
PHONE: (630)-573-6414
CONTACT: G05256@ATT.COM
- MARATHON PIPE LINE LLC**
539 SOUTH MAIN STREET
FINDLAY, OH 45840
PHONE: (618)-554-0208
CONTACT: DEREK SHEETS
- FRONTIER COMMUNICATIONS**
109 E MARKET ST
BLOOMINGTON, IL 61701
PHONE: (618)-554-0208
CONTACT: DEREK SHEETS
- AMEREN ILLINOIS - (NORTH)**
300 LIBERTY
PEORIA, IL 61602
PHONE: (888)-659-4540
CONTACT: CONSTRUCTION SERVICES



LOCATION MAP

TOTAL LENGTH = 88.00 FEET (0.017 MI)
NET LENGTH = 88.00 FEET (0.017 MI)

PROPOSED SECTION 22-03122-00-BR BEGINS STA. 9+52.00 ENDS STA. 10+40.00 EXIST. SN 010-4019



Mark R. Leighton
Expires: 11/30/2025 2-23-23

PROJECT MANAGER: MARK R. LEIGHTON, P.E., P.L.S.

CONTRACT NO. 91632



WORK CONSISTS OF THE REMOVAL OF EXISTING PRECAST CHANNEL BEAMS AND REPLACEMENT WITH PPC DECK BEAMS, SUBSTRUCTURE REHABILITATION, AND THE NECESSARY BACKFILL AND INCIDENTAL APPROACH WORK FOR S.N. 010-4019 AT STA. 9+96.00.

APPROVED 3/8 2023
[Signature]
COUNTY ENGINEER

APPROVED _____ 20____
ROAD COMMISSIONER

PASSED MAR 22 2023
[Signature]
DISTRICT FIVE ENGINEER OF LOCAL ROADS AND STREETS

Released For Bid Based on Limited Review March 22 2023
[Signature]
REGION THREE ENGINEER

STATE OF ILLINOIS
DEPARTMENT OF TRANSPORTATION

2/23/2023
 2/23/2023
 C:\Users\jleighton\OneDrive\Documents\Projects\Champaign County\91632\Drawings\91632-01-01-01.dwg
 2/23/2023

GENERAL NOTES

1. EXCEPT AS NOTED ON THE PLANS, PAVEMENT GRADES SHOWN ARE AT THE TOP OF PAVEMENT SURFACES.
2. ELEVATIONS USED THROUGHOUT THIS PLAN SET ARE REFLECTED FROM THE EXISTING BRIDGE PLANS FOR S.N. 010-4019.
3. ABANDONED UNDERGROUND UTILITIES THAT CONFLICT WITH CONSTRUCTION SHALL BE DISPOSED OF OUTSIDE THE LIMITS OF THE RIGHT OF WAY ACCORDING TO ARTICLE 202.03 OF THE STANDARD SPECIFICATIONS AND AS DIRECTED BY THE ENGINEER. THIS WORK WILL NOT BE PAID FOR SEPARATELY BUT SHALL BE INCLUDED IN THE COST OF CONTRACT ITEMS INVOLVED.
4. THE FOLLOWING APPLICATION RATES HAVE BEEN USED IN CALCULATING PLAN QUANTITIES:
 TEMPORARY EROSION CONTROL SEEDING: 100 LB/ACRE
 AGGREGATE BASE COURSE: 2.05 TONS/CU YD
 AGGREGATE SURFACE COURSE: 2.05 TONS/CU YD
 RIPRAP: 1.75 TONS/CU YD
5. THE CONTRACTOR'S OPERATIONS AND TEMPORARY STORAGE ACTIVITIES SHALL BE LIMITED TO THE WORK AREA AND/OR CONSTRUCTION LIMITS. ANY ADDITIONAL STAGING AREAS ADJACENT TO THE PROJECT AREA ARE SUBJECT TO PRIOR APPROVAL BY THE ENGINEER AND MUST NOT CONFLICT WITH EXISTING SIDE ROADS, INTERSECTIONS, DRIVEWAYS, OR DRAINAGE. ALL OPERATIONS SHALL BE SUBJECT TO REGULATORY REQUIREMENTS PERMITTED FOR THIS PROJECT. NO ADDITIONAL COMPENSATION WILL BE ALLOWED TO THE CONTRACTOR FOR COMPLIANCE WITH THE ABOVE REQUIREMENTS.
6. DISTURBED AREAS SHALL RECEIVE PERMANENT STABILIZATION WITHIN 7 DAYS OF COMPLETION OF CONSTRUCTION ACTIVITIES. TEMPORARY STABILIZATION OF WORK AREAS IS REQUIRED FOR ALL AREAS REMAINING UNDISTURBED FOR 14 DAYS, UNLESS WORK RESUMES PRIOR TO 21 DAYS. TEMPORARY STABILIZATION MUST BE APPROVED BY THE ENGINEER.
7. THE CONTRACTOR SHALL RELOCATE OR REMOVE AND REPLACE ALL SIGNS THAT INTERFERE WITH THE CONSTRUCTION OPERATIONS AND TEMPORARILY RESET ALL SUCH SIGNS DURING ALL STAGES OF CONSTRUCTION AS DIRECTED BY THE ENGINEER. THE ENGINEER WILL DETERMINE THE PERMANENT LOCATION FOR EXISTING SIGNS TO BE RE-ERECTED.
8. CONTRACTOR SHALL FOLLOW CONSTRUCTION REQUIREMENTS OF SECTION 611 WHEN EXISTING FIELD TILE IS ENCOUNTERED. ALL FIELD TILES ENCOUNTERED SHALL BE CAREFULLY PRESERVED, REPAIRED AND CONNECTED TO THE PROPOSED DRAINAGE STRUCTURES, SEWERS OR DITCHES AS DIRECTED BY THE ENGINEER. PAYMENT FOR THIS WORK SHALL BE INCLUDED IN THE VARIOUS DRAINAGE ITEMS OR AS DIRECTED BY THE ENGINEER.
9. THE LOCATIONS OF EXISTING WATER MAINS, GAS MAINS, SEWERS, ELECTRIC POWER LINES, TELEPHONE LINES AND OTHER UTILITIES AS SHOWN ON THE PLANS ARE BASED ON THE BEST INFORMATION AVAILABLE, BUT THEY ARE NOT GUARANTEED. UNLESS ELEVATIONS ARE SHOWN. ALL UTILITY LOCATIONS SHOWN ON THE CROSS SECTIONS ARE BASED ON THE APPROXIMATE DEPTH SUPPLIED BY THE UTILITY COMPANY. IT SHALL BE THE CONTRACTOR'S RESPONSIBILITY TO ASCERTAIN THEIR EXACT LOCATION FROM THE UTILITY COMPANIES AND BY FIELD INSPECTION.
10. EMBANKMENTS ON HILLSIDES OR SLOPES SHALL BE CONSTRUCTED ACCORDING TO ARTICLE 205.03.
11. CONTRACTOR SHALL INSTALL ALL EROSION CONTROL MEASURES PRIOR TO STARTING ANY OTHER CONSTRUCTION WORK AT SITE.
12. CONTRACTOR SHALL VERIFY THE LENGTH OF REQUIRED PIPE CULVERTS AND PIPE DRAINS PRIOR TO ORDERING.

GENERAL NOTES

13. WHERE PERMANENT SURVEY MARKERS ARE ENCOUNTERED, THE ENGINEER SHALL BE NOTIFIED BEFORE SUCH MONUMENTS ARE DISTURBED. THE CONTRACTOR SHALL PROTECT AND PRESERVE ALL PROPERTY MARKERS AND MONUMENTS UNTIL THE OWNER AND AN AUTHORIZED SURVEYOR HAS WITNESSED OR OTHERWISE REFERENCED THE LOCATION.
14. THE CONTRACTOR SHALL USE CARE IN ALL REMOVAL ACTIVITIES NEAR ALL EXISTING ITEMS WHICH WILL REMAIN. ANY DAMAGE DONE TO EXISTING ITEMS BY THE CONTRACTOR SHALL BE REPAIRED AT THE CONTRACTORS EXPENSE.
15. A UNIFORMLY STRAIGHT SAW CUT SHALL BE MADE AT LOCATIONS WHERE PROPOSED CONTROLLED LOW-STRENGTH MATERIAL LIMITS MEET THE EXISTING OIL & CHIP SURFACES. THE SAW CUT SHALL BE MADE FULL DEPTH THROUGH THE EXISTING SURFACE. THIS WORK WILL BE CONSIDERED INCLUDED IN THE COST OF THE CONTRACT ITEMS INVOLVED AND NO EXTRA COMPENSATION WILL BE ALLOWED.

COMMITMENTS

1. THERE ARE NO COMMITMENTS ON THIS PROJECT.

MODEL Default
 FILE NAME C:\SP\WHKS & CO\Jobs-Spring - Projects\Champaign County\9123 Champaign Co. TR209A_over.kadaskia.dwg
 PROJECT\Champaign County\9123 Champaign Co. TR209A_over.kadaskia.dwg
 SHEET1923-ht-9123.dwg

design firm
 no. 184001036

 engineers + planners + land surveyors

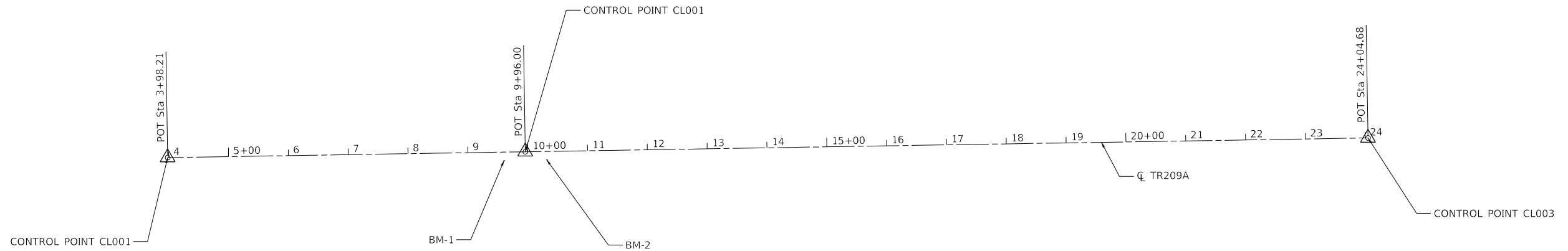
USER NAME = bjohnson	DESIGNED - BJJ	REVISED -
	DRAWN - GSJ/BJJ	REVISED -
PLOT SCALE = 1200.0000 ' / ft.	CHECKED - CWC	REVISED -
PLOT DATE = 2/23/2023	DATE - 2/23/2023	REVISED -

CHAMPAIGN COUNTY HIGHWAY DEPARTMENT

GENERAL NOTES AND COMMITMENTS			
TR 209A (WINDSOR RD.) OVER KASKASKIA DITCH			
SCALE: 1" = 50'	SHEET 1	OF 1 SHEETS	STA. TO STA.

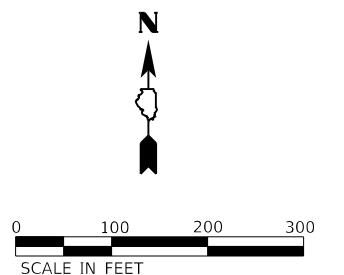
T.R. RTE.	SECTION	COUNTY	TOTAL SHEETS	SHEET NO.
209A	22-03122-00-BR	CHAMPAIGN	20	2
CONTRACT NO. 91632				
ILLINOIS			FED. AID PROJECT	

Beginning chain TR209A description
 =====
 Point CL001 N 1,244,488.980 E 979,476.846 Sta 3+98.21
 Course from CL001 to CL002 N 89° 03' 34.1" E Dist 597.795
 Point CL002 N 1,244,498.792 E 980,074.560 Sta 9+96.00
 Course from CL002 to CL003 N 89° 03' 34.1" E Dist 1,408.675
 Point CL003 N 1,244,521.915 E 981,483.045 Sta 24+04.68
 =====
 Ending chain TR209A description



BM 1
 STA 9+60.38, 14.00' RT
 TOP OF CONCRETE WEST ABUTMENT WINGWALL
 ELEVATION = 97.13

BM 2
 STA 10+31.62, 14.00' RT
 TOP OF CONCRETE EAST ABUTMENT WINGWALL
 ELEVATION = 97.13



MODEL: D:\p\h\c\c\c\SP\WHKS & CO\Jobs-Spring - Projects\Champaign County\9223 Champaign Co. TR209A over Kaskaskia Ditch\CADD\CAD_Sheets\9223-rt-ATE.dgn

design firm
 no. 184001036
whks
 engineers • planners • land surveyors

USER NAME = bjohanson	DESIGNED - BJJ	REVISED -
	DRAWN - GSJ/BJJ	REVISED -
PLOT SCALE = 2400.0000 ' / ft.	CHECKED - CWC	REVISED -
PLOT DATE = 2/23/2023	DATE - 2/23/2023	REVISED -

CHAMPAIGN COUNTY HIGHWAY DEPARTMENT

ALIGNMENT, TIES AND BENCHMARKS
TR 209A (WINDSOR RD.) OVER KASKASKIA DITCH
 SCALE: 1" = 100' SHEET 1 OF 1 SHEETS STA. TO STA.

T.R. RTE.	SECTION	COUNTY	TOTAL SHEETS	SHEET NO.
209A	22-03122-00-BR	CHAMPAIGN	20	3
ILLINOIS FED. AID PROJECT			CONTRACT NO. 91632	

CODE NO.	ITEM	UNIT	TOTAL QUANTITY	CONSTR. CODE
				BRIDGE
				0013
				S.N. 010-4019
20200100	EARTH EXCAVATION	CU YD	8	8
28100107	STONE RIPRAP, CLASS A4	SQ YD	83	83
28200200	FILTER FABRIC	SQ YD	83	83
35101400	AGGREGATE BASE COURSE, TYPE B	TON	18	18
50101500	REMOVAL OF EXISTING SUPERSTRUCTURES	EACH	1	1
50102400	CONCRETE REMOVAL	CU YD	0.6	0.6
50200100	STRUCTURE EXCAVATION	CU YD	19.6	19.6
50300225	CONCRETE STRUCTURES	CU YD	4.6	4.6
50400305	PRECAST PRESTRESSED CONCRETE DECK BEAMS (17" DEPTH)	SQ FT	1953	1953
50800205	REINFORCEMENT BARS, EPOXY COATED	POUND	650	650
* 50900205	STEEL RAILING, TYPE S1	FOOT	145	145
51500100	NAME PLATES	EACH	1	1
59300100	CONTROLLED LOW-STRENGTH MATERIAL	CU YD	41.8	41.8
60100060	CONCRETE HEADWALLS FOR PIPE DRAINS	EACH	2	2

* SPECIALTY ITEMS

MODEL: Default
FILE NAME: C:\SP\WHKS & CO\Jobs-Spring - Projects\Champaign County\9523 Champaign Co. TR209A over Kaskaskia Ditch\CADD\CAD_Sheets\9523-ht-500.dgn



USER NAME = bjohanson	DESIGNED - BJJ	REVISED -
PLOT SCALE = 1/2000:0.0000 " = 1" / ft.	DRAWN - GSJ/BJJ	REVISED -
PLOT DATE = 2/23/2023	CHECKED - CWC	REVISED -
	DATE - 2/23/2023	REVISED -

CHAMPAIGN COUNTY HIGHWAY DEPARTMENT

**SUMMARY OF QUANTITIES
TR 209A (WINDSOR RD.) OVER KASKASKIA DITCH**

SCALE: 1" = 50' SHEET 1 OF 2 SHEETS STA. TO STA.

T.R. RTE.	SECTION	COUNTY	TOTAL SHEETS	SHEET NO.
209A	22-03122-00-BR	CHAMPAIGN	20	4
ILLINOIS FED. AID PROJECT			CONTRACT NO. 91632	

LOCATION	20200100	FOR INFORMATION ONLY		
	EARTH EXCAVATION	EXCAVATION TO BE USED IN EMBANKMENT (ADJUSTED FOR SHRINKAGE) (EXC. x 0.75)	EMBANKMENT (FILL)	EARTHWORK BALANCE WASTE(+) AND SHORTAGE (-)
	CU. YD.	CU. YD.	CU. YD.	CU. YD.
STA. 9+52.00 TO STA. 9+59.11	4	3	3	0
STA. 9+59.11 TO STA. 10+32.89		0		0
STA. 10+32.89 TO STA. 10+40.00	4	3	3	0
TOTAL	8	6	6	0

EARTH EXCAVATION SHRINKAGE FACTOR = 25%

35101400 AGGREGATE BASE COURSE, TYPE B

TR 209A (WINDSOR RD.)	TON
CL 9+52.00 TO CL 9+59.79	9
CL 10+32.2 TO CL 10+40.00	9
TOTAL	18

60103700 PIPE DRAINS, CORRUGATED STEEL 18"

TR 209A (WINDSOR RD.)	FOOT
TOTAL	20

X7011800 TRAFFIC CONTROL AND PROTECTION, STANDARD BLR 21

TR 209A (WINDSOR RD.)	L SUM
TOTAL	1

67100100 MOBILIZATION

TR 209A (WINDSOR RD.)	L SUM
TOTAL	1

60100060 CONCRETE HEADWALLS FOR PIPE DRAINS

TR 209A (WINDSOR RD.)	EACH
TOTAL	2

X2501000 SEEDING, CLASS 2 (SPECIAL)

TR 209A (WINDSOR RD.)	ACRE
LT 9+52.00 TO LT 9+59.79	0.03
LT 10+32.2 TO LT 10+40.00	0.03
RT 9+52.00 TO RT 9+59.79	0.03
RT 10+32.2 TO RT 10+40.00	0.03
* TOTAL PER MIN. DEGREE OF ACCURACY	TOTAL 0.25

60103600 PIPE DRAINS, CORRUGATED STEEL 15"

TR 209A (WINDSOR RD.)	FOOT
TOTAL	20

X6110073 EXISTING FIELD TILE REMOVAL

TR 209A (WINDSOR RD.)	FOOT
TOTAL	40

MODEL: Default; FILE NAME: C:\SP\WHKS & CO\Jobs-Spring - Projects\Champaign County\9523 Champaign Co. TR209A over Kaskaskia Ditch\CADD\CAD_Sheets\9523-rt-schedule.dgn



USER NAME = bjohanson	DESIGNED - BJJ	REVISED -
	DRAWN - GSJ/BJJ	REVISED -
PLOT SCALE = 1/2000:0.0000 " = 1" / ft.	CHECKED - CWC	REVISED -
PLOT DATE = 2/23/2023	DATE - 2/23/2023	REVISED -

CHAMPAIGN COUNTY HIGHWAY DEPARTMENT

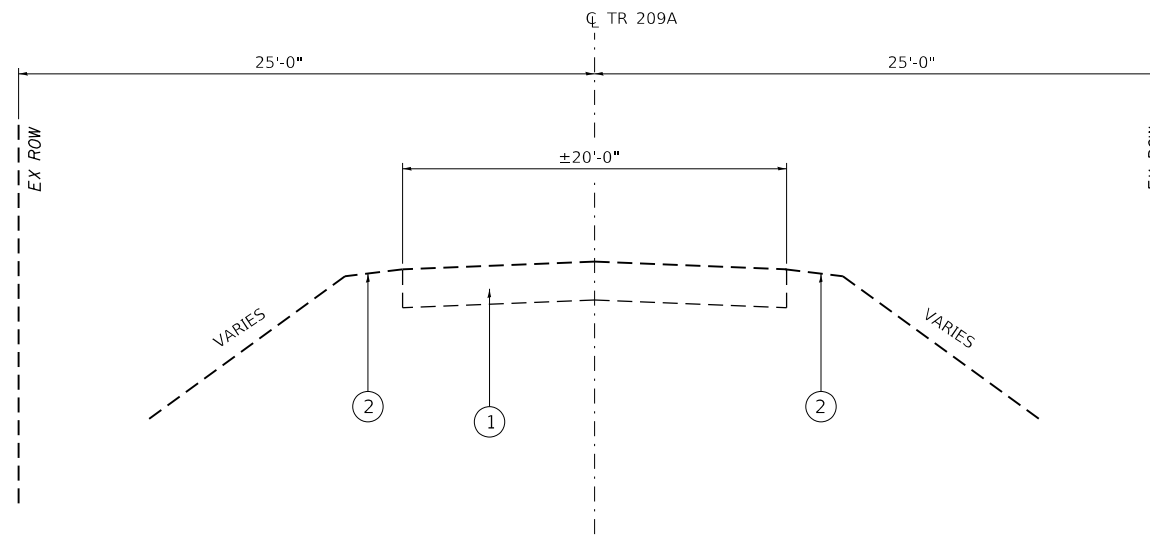
SCHEDULE OF QUANTITIES			
TR 209A (WINDSOR RD.) OVER KASKASKIA DITCH			
SCALE: 1" = 50'	SHEET 1	OF 1 SHEETS	STA. TO STA.

T.R. RTE.	SECTION	COUNTY	TOTAL SHEETS	SHEET NO.
209A	22-03122-00-BR	CHAMPAIGN	20	6
			CONTRACT NO. 91632	
		ILLINOIS	FED. AID PROJECT	

LEGEND

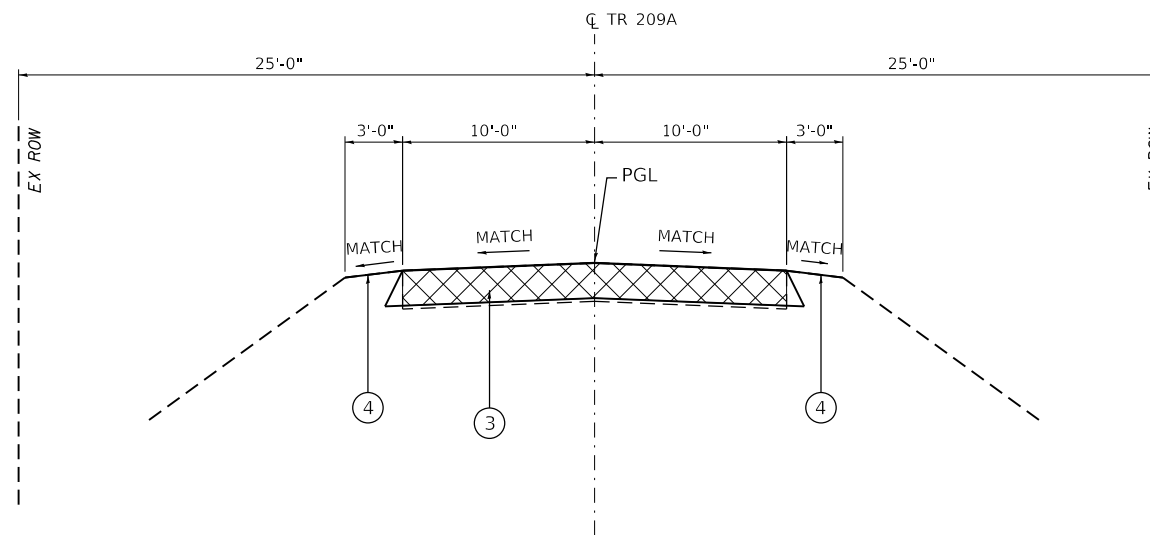
- ① EX OIL AND CHIP
- ② EX EARTH SHOULDER
- ③ PR AGGREGATE BASE COURSE, TYP B (8")
- ④ PR EARTH SHOULDERS

 TO BE REMOVED



EXISTING TYPICAL SECTION

STA. 9+52.00 TO STA. 9+59.11
 BRIDGE OMISSION STA. 9+59.11 TO 10+32.89
 STA. 10+32.89 TO STA. 10+40.00
 (LOOKING EAST)



PROPOSED TYPICAL SECTION

STA. 9+52.00 TO STA. 9+59.11
 BRIDGE OMISSION STA. 9+59.11 TO 10+32.89
 STA. 10+32.89 TO STA. 10+40.00
 (LOOKING EAST)

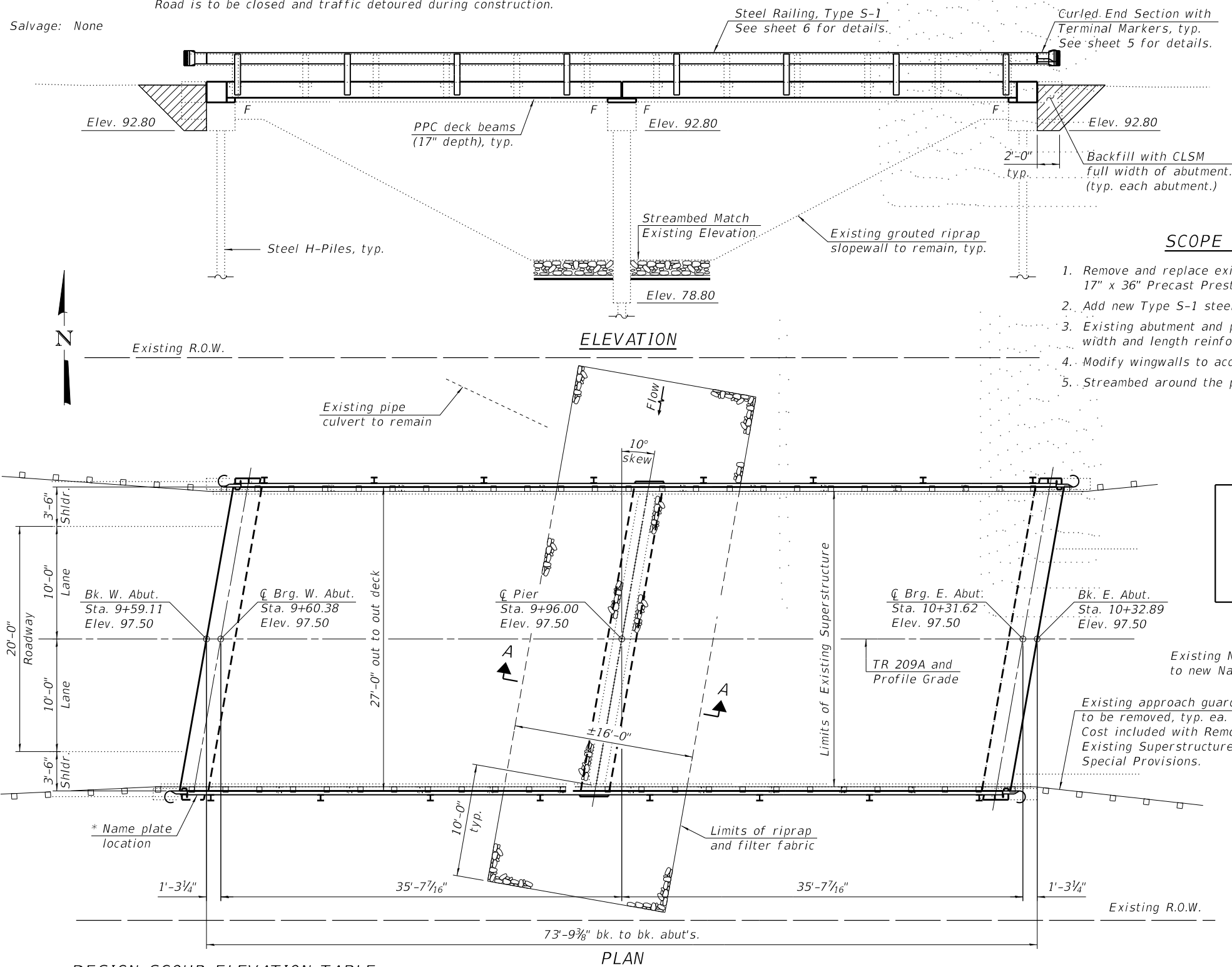
MODEL: Default; FILE NAME: C:\SP\WHKS & CO\Jobs-Spring - Projects\Champaign County\91632 Champaign Co. TR209A over Kaskaskia Ditch\CADD\CAD_Sheets\1923-24-TR-TYP.dgn

USER NAME = bjohanson	DESIGNED - BJJ	REVISED -
DRAWN - GSJ/BJJ	REVISED -	
PLOT SCALE = 1/20,000' / ft.	CHECKED - CWC	REVISED -
PLOT DATE = 2/23/2023	DATE - 2/23/2023	REVISED -

T.R. RTE.	SECTION	COUNTY	TOTAL SHEETS	SHEET NO.
209A	22-03122-00-BR	CHAMPAIGN	20	7
ILLINOIS			FED. AID PROJECT	

Benchmark: BM 1 - Sta. 9+60.38, 14.00' Rt. Top of concrete west abutment wingwall. Elevation = 97.13
 Existing Structure: SN 010-4019 was built in 1974 as Section CAB 5-73, Station 9+96. The structure is a two span precast channel beam bridge on pile-bent concrete abutments and a solid wall encased pile-bent concrete pier. The bridge is 73'-9 3/8" back-to-back of abutments with an out-to-out bridge width of 26'-3". The superstructure is to be removed and replaced. Road is to be closed and traffic detoured during construction.

Salvage: None



INDEX OF SHEETS

1. General Plan and Elevation
2. General Data
- 3.-4. 17" x 36" PPC Deck Beam Details
5. Superstructure Details
6. Steel Railing, Type S-1
7. Substructure Details
- 8.-12. Existing Plans (for information only)

DESIGN SPECIFICATIONS (New Const.)

2020 AASHTO LRFD Bridge Design Specifications
9th Edition

LOADING HL-93 (New Const.)

Allow 25#/sq. ft. for future wearing surface.

DESIGN STRESSES

FIELD UNITS (New Construction)

f'c = 3,500 psi
fy = 60,000 psi (Reinforcement)

FIELD UNITS (Existing)

f'c = 1,400 psi
fs = 20,000 psi (Reinforcement)

PRECAST UNITS (New Construction)

f'c = 6,000 psi
f'ci = 5,000 psi
f'pu = 270,000 psi (1/2" low lax strands)
f'pbt = 201,960 psi (1/2" low lax strands)

SEISMIC DATA (Exist. Const.)

Seismic Performance Zone (SPZ) = 1
Design Spectral Acceleration at 1.0 sec. (S_{D1}) = 0.054g
Design Spectral Acceleration at 1.0 sec. (S_{D5}) = 0.087g
Soil Site Class = C

SCOPE OF WORK

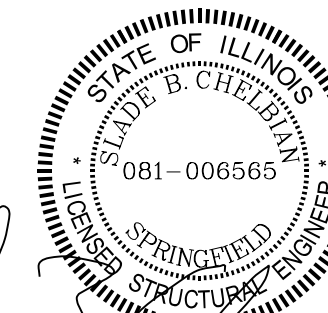
1. Remove and replace existing superstructure with nine (9) new 17" x 36" Precast Prestressed Concrete (PPC) Deck Beams.
2. Add new Type S-1 steel railing.
3. Existing abutment and pier caps to be raised with full width and length reinforced concrete cap extensions.
4. Modify wingwalls to accommodate new superstructure.
5. Streambed around the pier to be armored with stone riprap.

KASKASKIA DITCH
RE-BUILT BY
CHAMPAIGN COUNTY
SECTION 22-03122-00-BR
TR 209A STATION 9+96
STR. NO. 010-4019 LOADING HL93

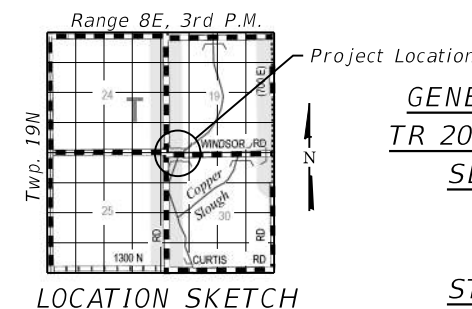
NAME PLATE

See Std. 515001

Existing Name Plate shall be cleaned and relocated next to new Name Plate. Cost included with Name Plates.



Slade B. Chelbian 2/23/2023
Expires: 11/30/2024



GENERAL PLAN AND ELEVATION
TR 209A OVER KASKASKIA DITCH
SECTION 22-03122-00-BR
CHAMPAIGN COUNTY
STATION 9+96
STRUCTURE NO. 010-4019

DESIGN SCOUR ELEVATION TABLE

Event / Limit State	Design Scour Elev. (ft.)			Item 113
	W. Abut.	Pier	E. Abut.	
Q100	-	79.2	-	8
Q200	-	74.9	-	
Design	92.8	79.2	92.8	
Check	92.8	74.9	92.8	

* Place on back side of 12" rail.

Notes:

1. See roadway plans for additional information not shown herein.
2. See Sheet 2 for Existing Profile Grade and Section A-A.

FILE NAME: C:\SP\WHKS & COL\Jobs-Spring - Projects\Champaign County\0523 Champaign Co. TR209A over Kaskaskia Ditch\CADD\CAD_Sheets\N010_4019.dgn



design firm no. 184001036	USER NAME = SUSERS	DESIGNED - GEM	REVISED -
		CHECKED - SBC	REVISED -
	PLOT DATE = 3/7/2023	DRAWN - DLH	REVISED -
	PLOT DATE = 11:35:57 AM	CHECKED - GEM / SBC	REVISED -

CHAMPAIGN COUNTY HIGHWAY DEPARTMENT

STRUCTURE NO. 010-4019

SHEET 1 OF 12 SHEETS

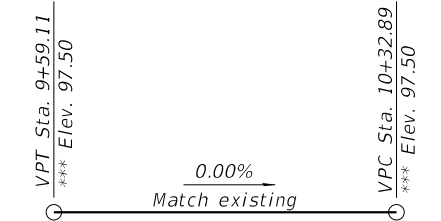
TR RTE.	SECTION	COUNTY	TOTAL SHEETS	SHEET NO.
209A	22-03122-00-BR	CHAMPAIGN	20	9
CONTRACT NO. 91632				
ILLINOIS		FED. AID PROJECT		

GENERAL NOTES

1. Reinforcement bars designated (E) shall be epoxy coated.
2. Plan dimensions and details relative to existing plans are subject to nominal construction variations. The Contractor shall field verify existing dimensions and details affecting new construction and make necessary approved adjustments prior to construction or ordering of materials. Such variations shall not be cause for additional compensation for a change in scope of the work, however, the Contractor will be paid for the quantity actually furnished at the unit price bid for the work.
3. Elevations shown herein have been taken from the existing plans and are subject to field verification and adjustment during construction.
4. Layout of the Pier Protection System may be varied in the field to suit ground conditions as directed by the Engineer. Minimum width of riprap shall be 16'-0". Thickness of riprap and bedding shall be as detailed herein.
5. The Contractor shall be responsible for diverting the water flow from the construction area using a method meeting the approval of the Engineer. This shall not be paid for separately but shall be included in the cost of the Contract.

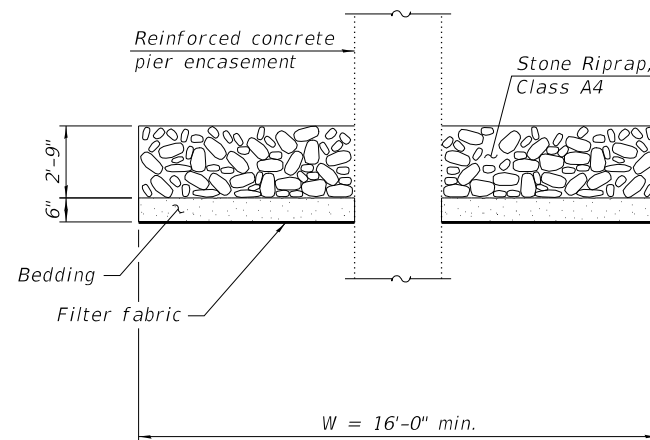
TOTAL BILL OF MATERIAL

Item	Unit	Super	Sub	Total
Stone Riprap, Class A4	Sq. Yd.		83	83
Filter Fabric	Sq. Yd.		83	83
Removal of Existing Superstructures	Each	1		1
Concrete Removal	Cu. Yd.		0.6	0.6
Structure Excavation	Cu. Yd.		19.6	19.6
Concrete Structures	Cu. Yd.		4.6	4.6
Precast Prestressed Concrete Deck Beams (17" Depth)	Sq. Ft.	1,953		1,953
Reinforcement Bars, Epoxy Coated	Pound		650	650
Steel Railing, Type S1	Foot	145		145
Name Plates	Each	1		1
Controlled Low-Strength Material	Cu. Yd.		41.8	41.8
Terminal Marker - Direct Applied	Each	4		4

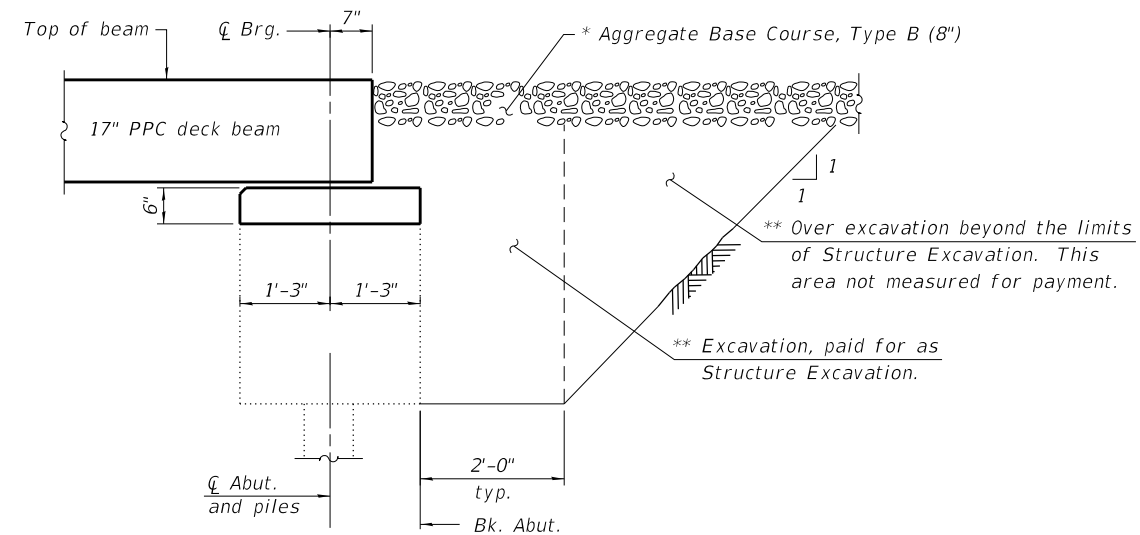


PROPOSED PROFILE GRADE
(Along ζ TR 209A)

*** Elevations were taken from existing plans and adjusted for a 2 1/2" wearing surface thickness measured in the field by WHKS & Co. in March 2022. (See General Note 2)



SECTION A-A
(Showing Pier Protection System)



SECTION AT ABUTMENT
(Dimensions are at Rt. L's)

- * See Roadway Plans
- ** Backfill with Controlled Low-Strength Material (CLSM) (Mix 2) full width of abutment cap only, typ. each abutment.

FILE NAME: C:\SP\WHKS & CO\Jobs-Spring - Projects\Champaign County\9523 Champaign Co. TR209A over Kaskaskia Ditch\CADD\CAD_Sheets\N010_4019.dgn



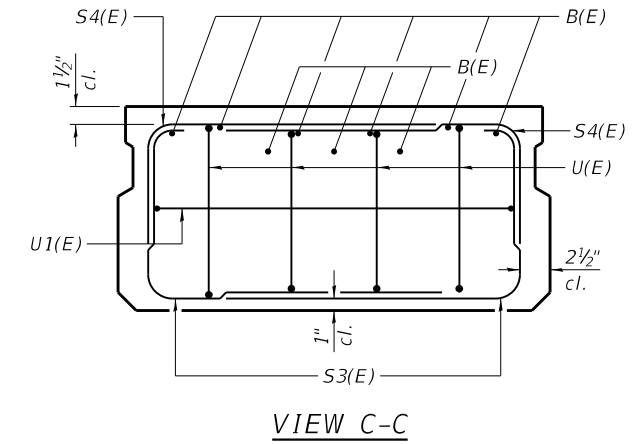
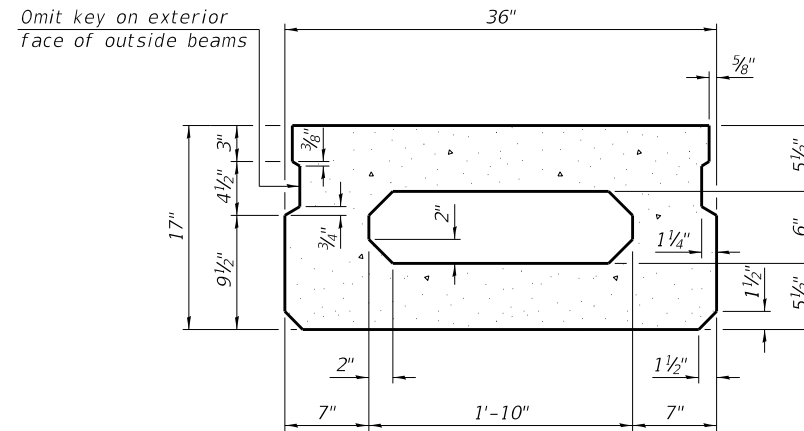
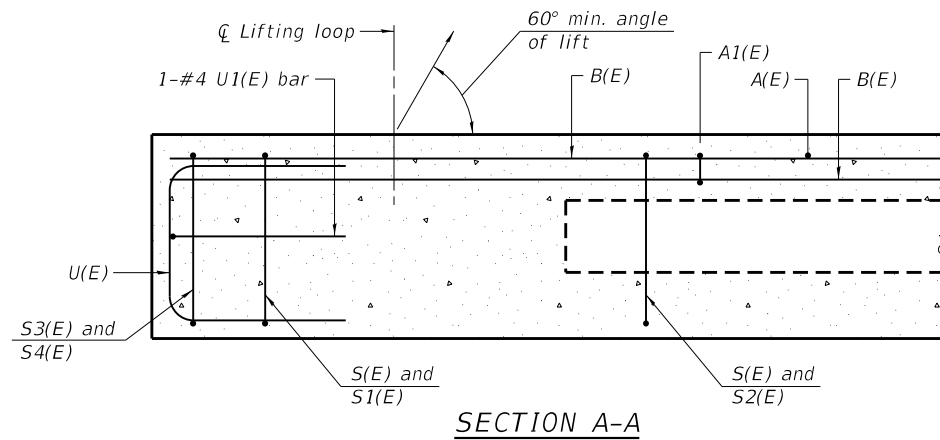
design firm no. 184001036	USER NAME = dheberling	DESIGNED - GEM	REVISED -
		CHECKED - SBC	REVISED -
	PLOT DATE = 2/23/2023	DRAWN - DLH	REVISED -
	PLOT DATE = 1:38:34 PM	CHECKED - GEM / SBC	REVISED -

CHAMPAIGN COUNTY HIGHWAY DEPARTMENT

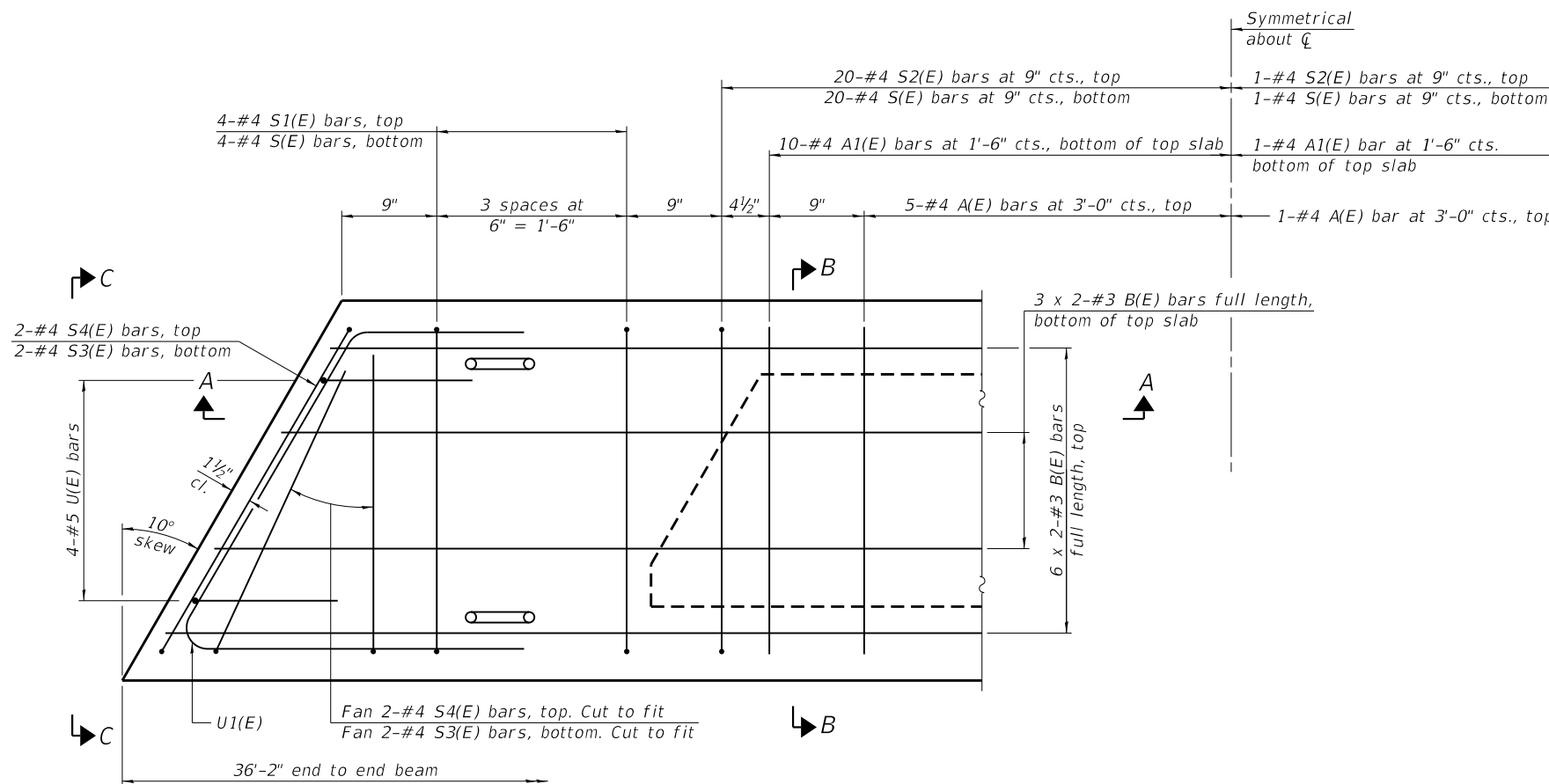
GENERAL DATA
STRUCTURE NO. 010-4019

SHEET 2 OF 12 SHEETS

TR RTE.	SECTION	COUNTY	TOTAL SHEETS	SHEET NO.
209A	22-03122-00-BR	CHAMPAIGN	20	10
CONTRACT NO. 91632			ILLINOIS FED. AID PROJECT	

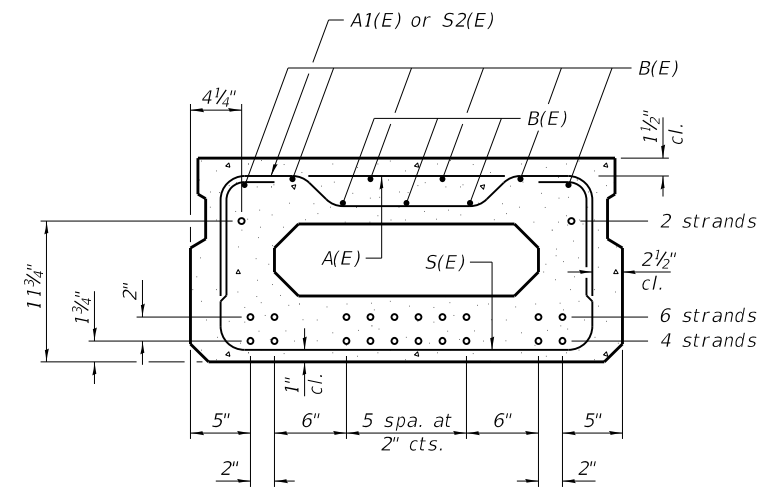


SECTION B-B
(Showing dimensions)



PLAN VIEW

Spacing of S(E) and S2(E) bars may be adjusted up to 4" in the immediate area of the transverse tie diaphragms to miss the block outs for the transverse ties.



SECTION B-B

(Showing reinforcement and permissible strand locations)

Place the number of strands specified in each row symmetrically about the centerline of beam in the permissible strand locations shown.

MINIMUM BAR LAP
#3 bar = 1'-6"

BAR LIST
ONE BEAM ONLY
(For information only)

Bar	No.	Size	Length	Shape
A(E)	11	#4	2'-7"	—
A1(E)	21	#4	2'-10"	~
B(E)	18	#3	18'-9"	—
S(E)	49	#4	5'-9"	⌋
S1(E)	8	#4	4'-3"	⌋
S2(E)	41	#4	4'-6"	⌋
S3(E)	8	#4	3'-11"	⌋
S4(E)	8	#4	3'-2"	⌋
U(E)	8	#5	3'-8"	⌋
U1(E)	2	#4	5'-5 1/2"	⌋

Notes:

- Bars indicated thus 3 x 2-#4 etc. indicate 3 lines of bars with 2 lengths per line.
- See sheet 4 for additional details and Bill of Material.

FILE NAME: C:\SP\WHKS & CO\Jobs-Spring - Projects\Champaign County\9523 Champaign Co. TR209A over Kaskaska Ditch\CADD\CAD_Sheets\N010_4019.dgn



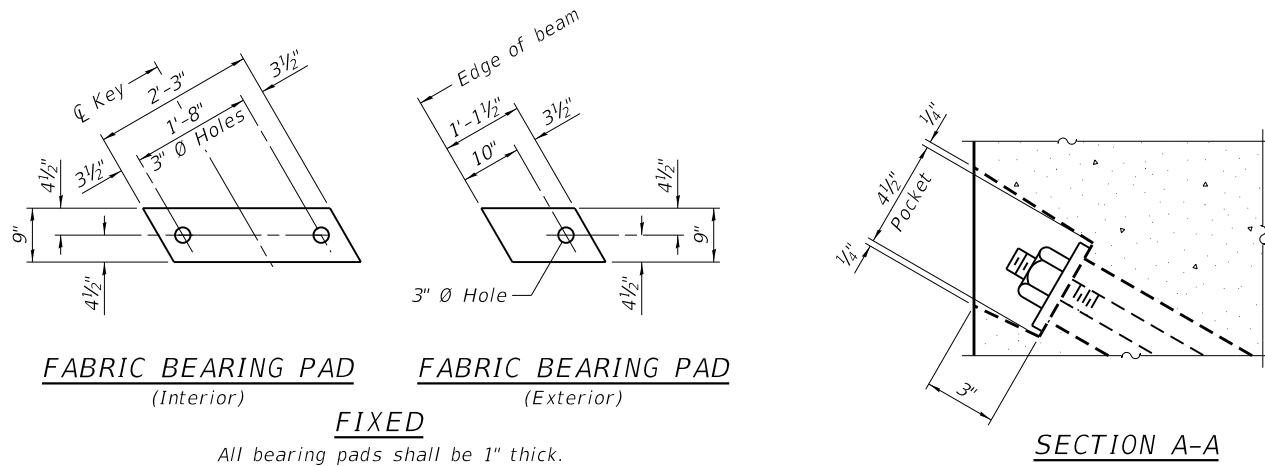
USER NAME = dheberling	DESIGNED - GEM	REVISED -
PLOT DATE = 2/23/2023	CHECKED - SBC	REVISED -
PLOT DATE = 1:38:35 PM	DRAWN - DLH	REVISED -
	CHECKED - GEM / SBC	REVISED -

CHAMPAIGN COUNTY HIGHWAY DEPARTMENT

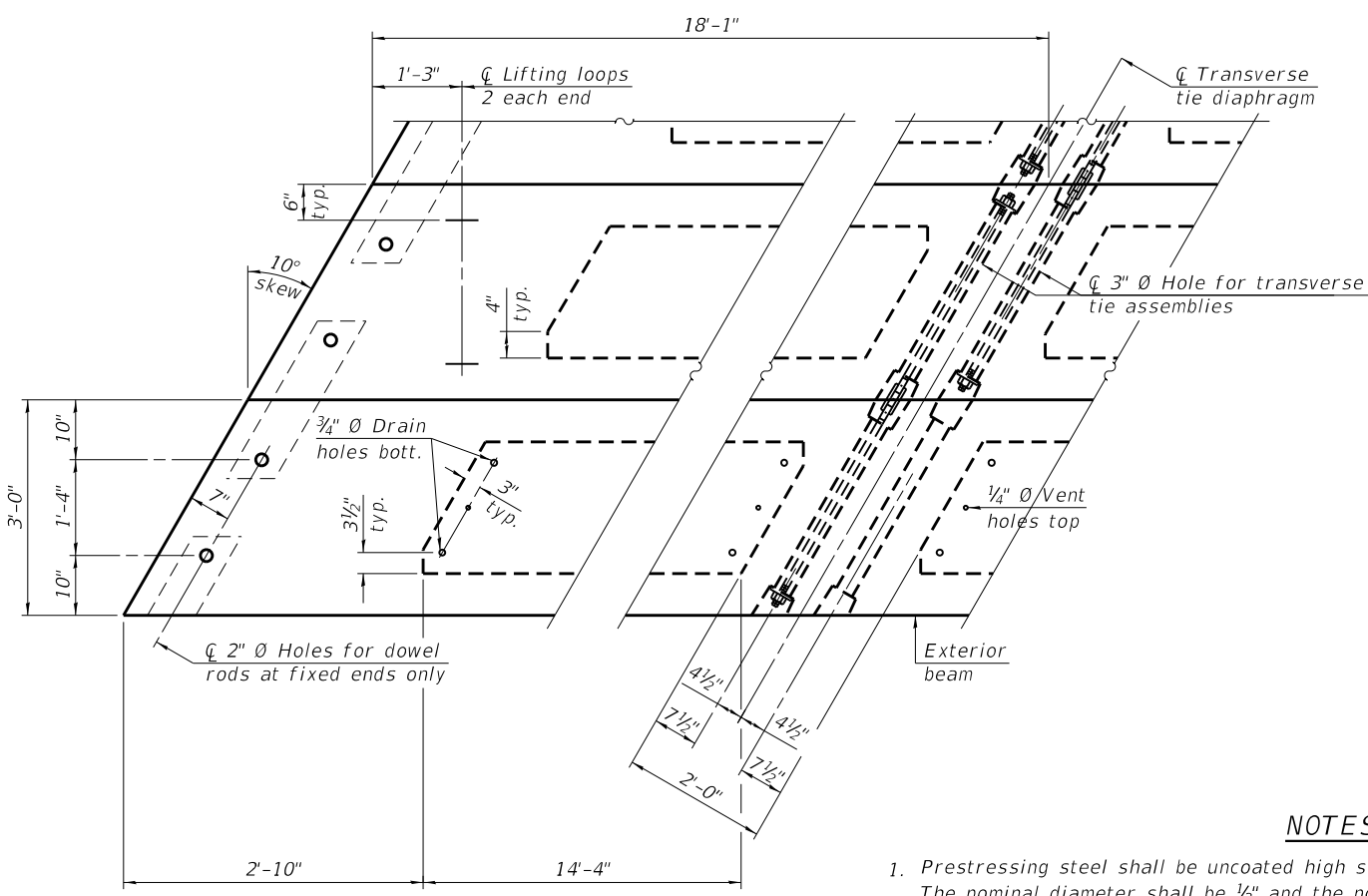
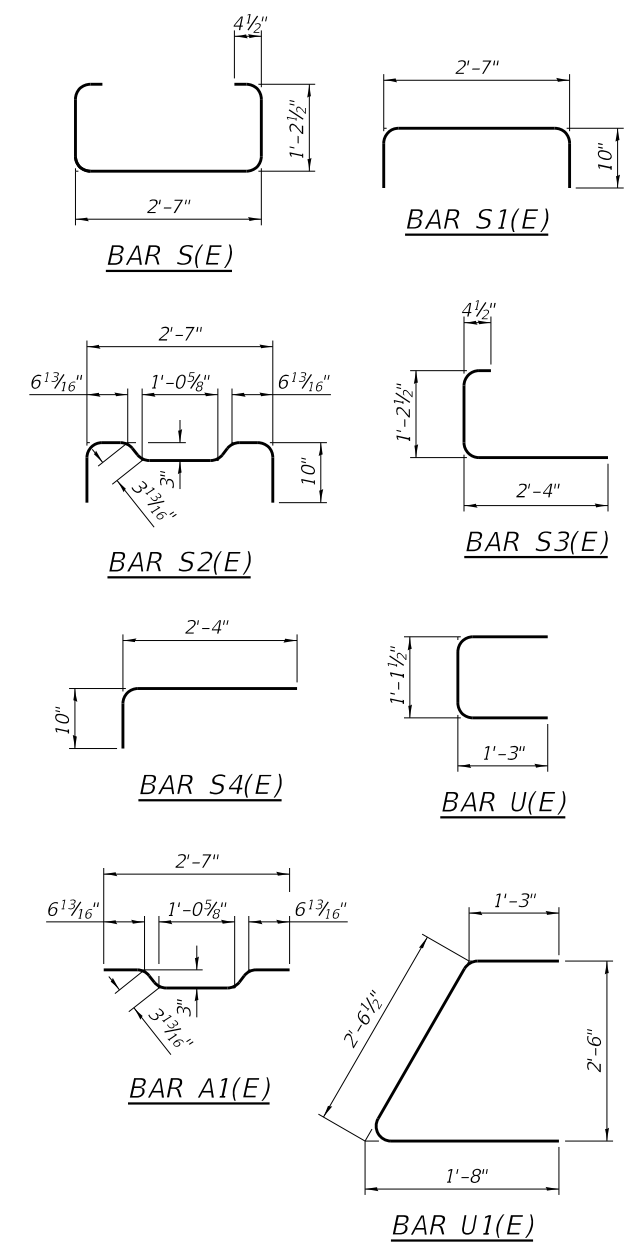
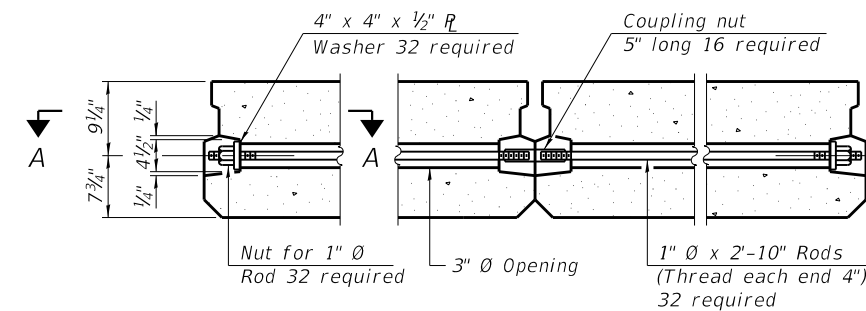
17" x 36" PPC DECK BEAM
STRUCTURE NO. 010-4019

SHEET 3 OF 12 SHEETS

TR RTE.	SECTION	COUNTY	TOTAL SHEETS	SHEET NO.
209A	22-03122-00-BR	CHAMPAIGN	20	11
CONTRACT NO. 91632				
ILLINOIS FED. AID PROJECT				



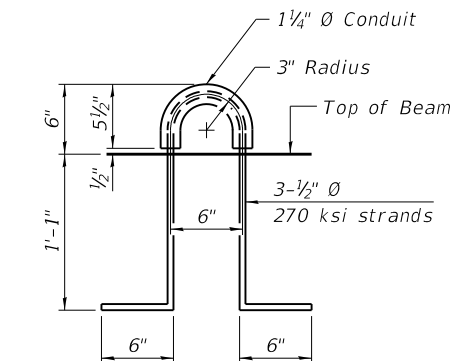
FIXED
 All bearing pads shall be 1" thick.



Connect beams in pairs with the transverse tie configuration shown.

NOTES

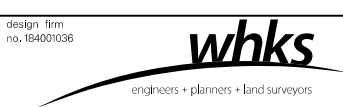
1. Prestressing steel shall be uncoated high strength, low relaxation 7-wire strand, Grade 270. The nominal diameter shall be 1/2" and the nominal cross-sectional area shall be 0.153 sq. in.
2. The 1" rods in the transverse tie assembly shall be tightened to a snug fit and the threads set. Pockets on exterior faces of bridge shall be filled with grout after transverse tie assembly is in place.
3. Two 1/8" fabric adjusting shims of the dimensions of the exterior bearing pad shall be provided for each bearing pad location.
4. A minimum 2 1/2" diameter lifting pin shall be used to engage the lifting loops during handling.
5. Corrosion Inhibitor, per Article 1020.05(b)(10) and 1021.07 of the Standard Specifications, shall be used in the concrete for precast prestressed concrete deck beams.
6. Compressive strength of prestressed concrete, f'c, shall be 6000 psi.
7. Compressive strength of prestressed concrete at release, f'ci, shall be 5000 psi.



BILL OF MATERIAL

Precast Prestressed Conc. Deck Bms. (17" depth)	Sq. Ft.	1,953
---	---------	-------

FILE NAME: C:\SP\WHKS & CO\Jobs-Spring - Projects\Champaign County\9523 Champaign Co. TR209A over Kaskaskia Ditch\CADD\CAD_Sheets\N010_4019.dgn



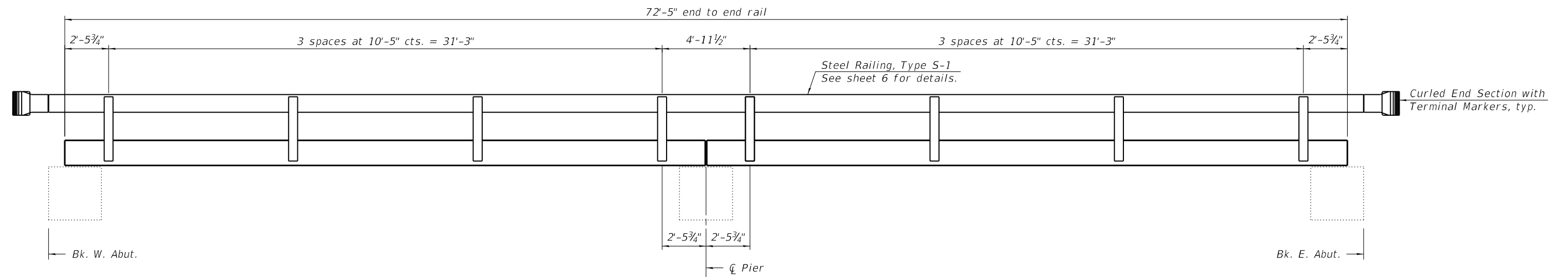
USER NAME = dheberling	DESIGNED - GEM	REVISED -
PLOT DATE = 2/23/2023	CHECKED - SBC	REVISED -
PLOT DATE = 1:38:35 PM	DRAWN - DLH	REVISED -
	CHECKED - GEM / SBC	REVISED -

CHAMPAIGN COUNTY HIGHWAY DEPARTMENT

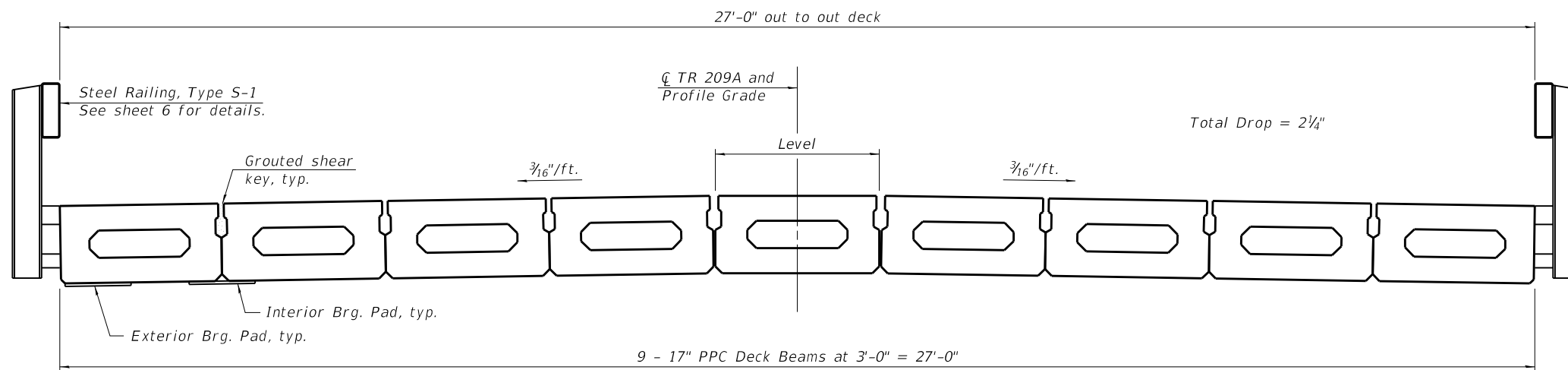
**17" x 36" PPC DECK BEAM DETAILS
 STRUCTURE NO. 010-4019**

SHEET 4 OF 12 SHEETS

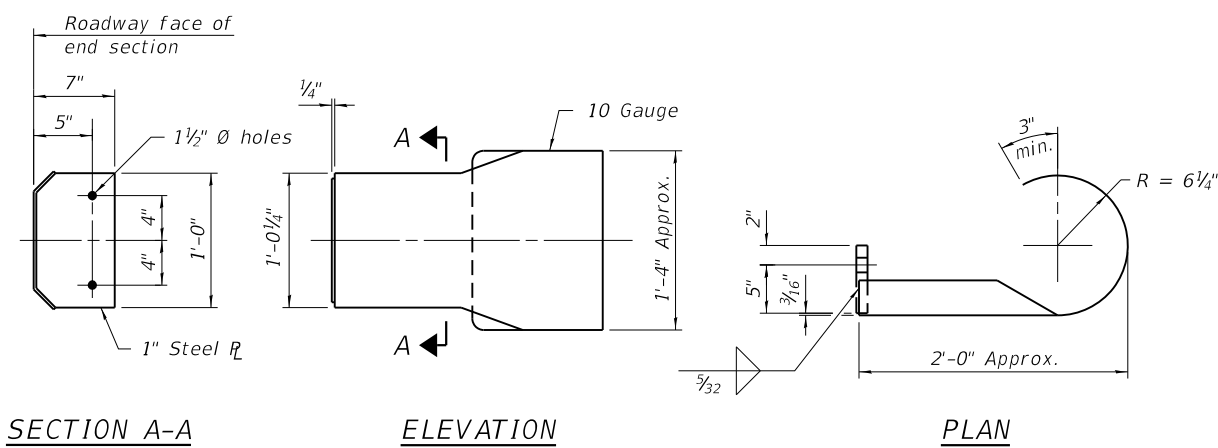
TR RTE.	SECTION	COUNTY	TOTAL SHEETS	SHEET NO.
209A	22-03122-00-BR	CHAMPAIGN	20	12
CONTRACT NO. 91632				
ILLINOIS FED. AID PROJECT				



RAIL POST SPACING
(Looking at South face, North face similar)



CROSS SECTION
(Looking East)



DETAILS OF CURLED END SECTION
(Cost included with Steel Railing, Type S-1.)

FILE NAME: C:\SP\WHKS & COL\Jobs-Spring - Projects\Champaign County\9523 Champaign Co. TR209A over Kaskaskia Ditch\CADD\CAD_Sheets\N010_4019.dgn



USER NAME = dheberling	DESIGNED - GEM	REVISED -
PLOT DATE = 2/23/2023	CHECKED - SBC	REVISED -
PLOT DATE = 1:38:35 PM	DRAWN - DLH	REVISED -
	CHECKED - GEM / SBC	REVISED -

CHAMPAIGN COUNTY HIGHWAY DEPARTMENT

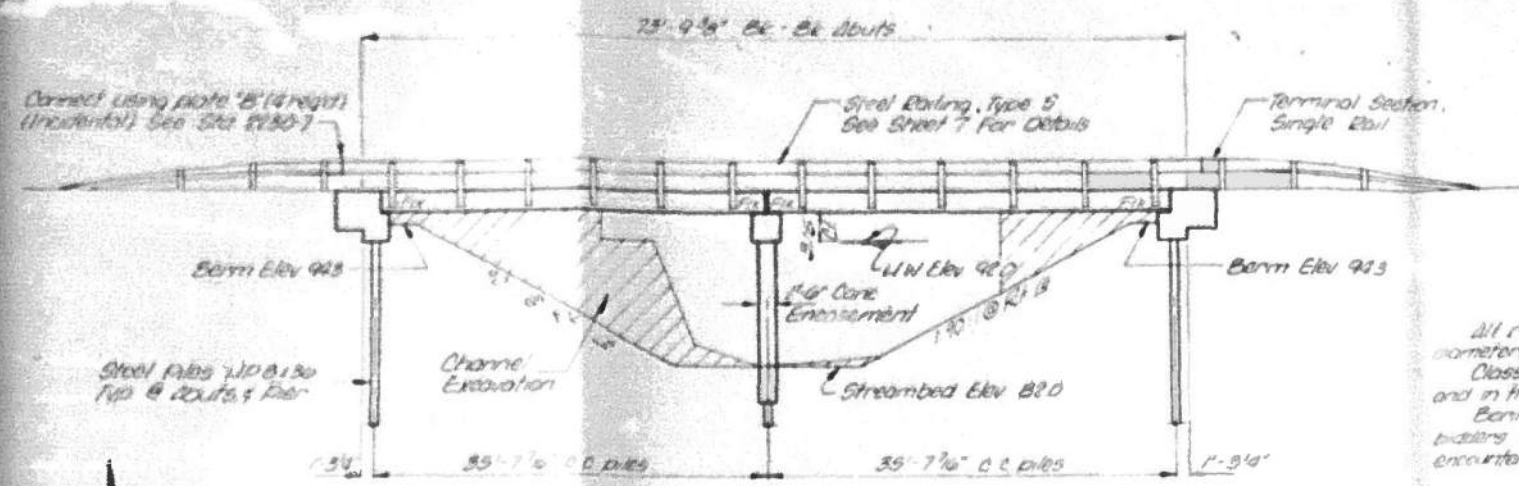
**SUPERSTRUCTURE DETAILS
STRUCTURE NO. 010-4019**

SHEET 5 OF 12 SHEETS

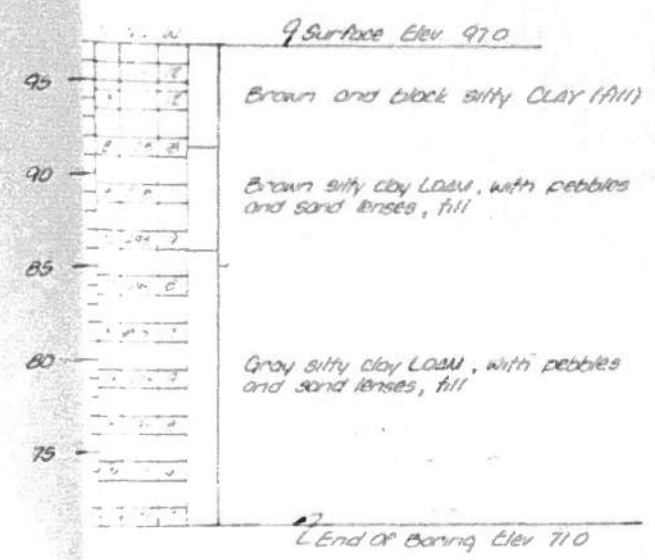
TR RTE.	SECTION	COUNTY	TOTAL SHEETS	SHEET NO.
209A	22-03122-00-BR	CHAMPAIGN	20	13
CONTRACT NO. 91632				
ILLINOIS FED. AID PROJECT				

DATE	BY	CHKD	TITLE	SHEET NO.
10-17-23	J.F.	J.F.	STRUCTURE NO. 010-4019	16

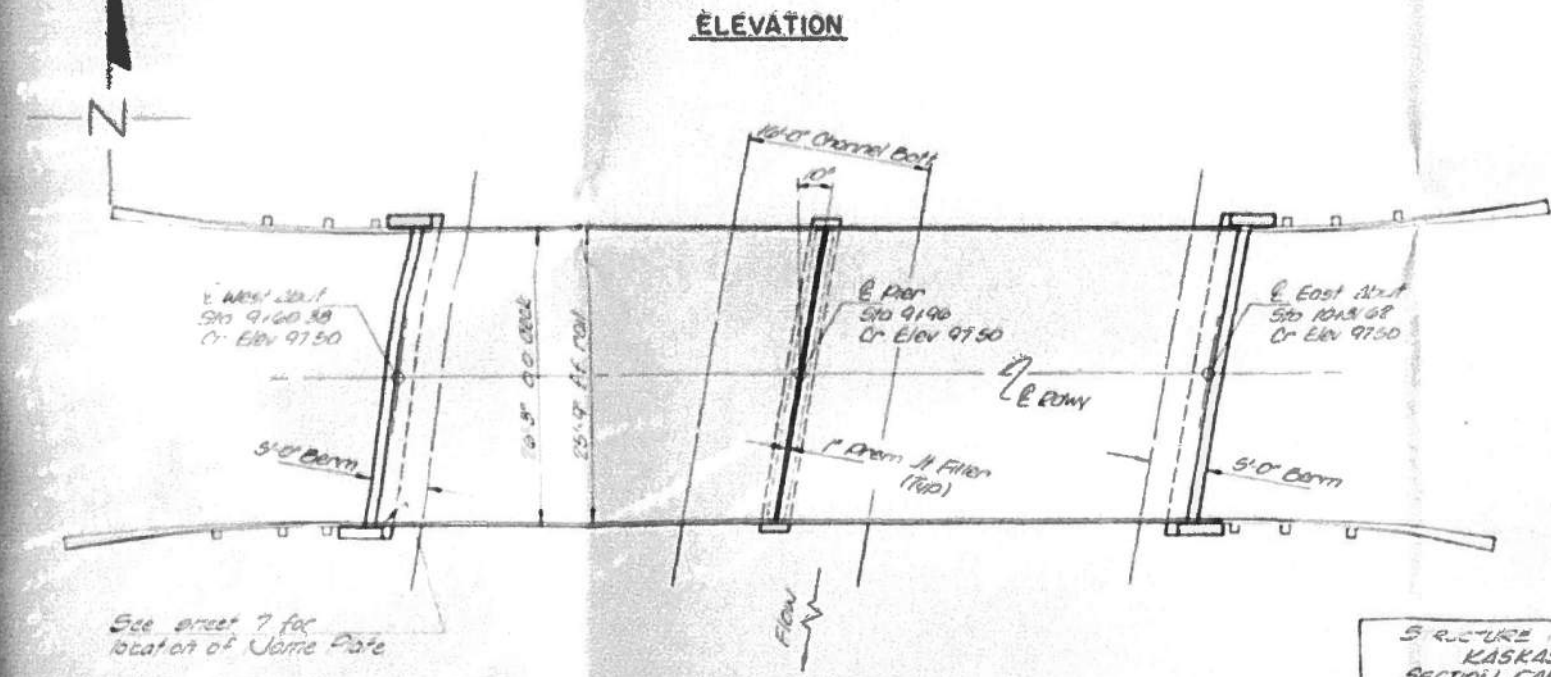
2.1 - R.R. Scale in Lower Part
 24" x 11" 5/16" x 1/2"
 Elev. 100.00 (Assumed)
 Existing Structure - One span I beam
 with concrete deck on stone abuts
 and concrete retaining walls.
 Contractor shall remove before
 constructing new bridge.



GENERAL NOTES
 All reinforcement bars shall be lapped 24 diameters unless otherwise shown.
 Class X Concrete shall be used in pier cap and in the abutments.
 Boring data is shown only as a guide to builders in estimating soil conditions which may be encountered in the work.



BORING DATA
 N - Standard Penetration Test Blows per foot to drive 2" O.D. Split Spoon Sampler 12" at 2" hammer falling 50".
 Qu - Unconfined Compressive Strength - 1/50
 W - Water Content - %
 B - Bulge Failure
 S - Shear Failure



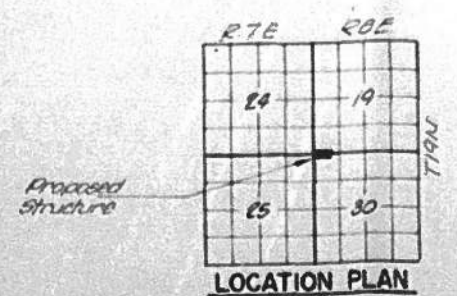
STRUCTURE NO.
 KASKASKIA DITCH
 SECTION CAB 5-73 BUILT 1971
 CHAMPAIGN ROAD DISTRICT
 CHAMPAIGN COUNTY
 LOADING HS 15
LETTERING FOR NAME PLATES
 See Site 2113

TOTAL BILL OF MATERIAL

ITEM	UNIT	SUPER	SUB	TOTAL
Precast Concrete Bridge Slab	Sq Ft	380		380
Class X Concrete	Cu Yd	401		401
Reinforcement Bars	Round	2500		2500
Steel Reinforcing Type 5	Lin Ft	155		155
Steel Plates 1/2" x 18" x 36"	Lin Ft		285	285
Coal Tar Epoxy Protective Coat	Sq Yd	20		20
Leveling Base (Machine Method)	Ton	14		14
Bit Coat Surf Cse C11	Ton	14		14
Name Plates	Each	1		1
Terminal Section, Single Rail	Each		4	4
Removal of Existing Structures	Each		1	1

WATERWAY DATA

Drainage Area	12,800 Acres
Req'd Opening (10 Yrs)	330 Sq Ft
Present Opening	230 Sq Ft
Proposed Opening	330 Sq Ft
Computed Discharge	1500 C.F.S.



DESIGN STRESSES
 $f_c = 1,800 \text{ psi (Precast Slab)}$
 $f_c = 1,800 \text{ psi (Class X Concrete)}$
 $f_s = 20,000 \text{ psi (Reinforcement)}$
 $n = 8 \text{ (Precast Slab)}$
 $n = 10 \text{ (Class X Concrete)}$
 LOADING HS 15-44
 Fred J. Stone Jr.
 Illinois Structural 10-2023

GENERAL PLAN & ELEVATION
 SECTION CAB 5-73
 CHAMPAIGN ROAD DISTRICT
 CHAMPAIGN COUNTY
 STATION 9+96
COLLINS AND RICE
 CONSULTING ENGINEERS
 DRAWN: J.F. DATE: 10-17-23 BY: J.F.

FILE NAME: C:\SP\WHKS & COL\Jobs-Spring - Projects\Champaign County\9523 Champaign Co. TR209A over Kaskaskia Ditch\CADD\CAD Sheets\010_4019.dgn



USER NAME = dheberling	DESIGNED - GEM	REVISED -
PLOT DATE = 2/23/2023	CHECKED - SBC	REVISED -
PLOT DATE = 1:38:37 PM	DRAWN - DLH	REVISED -
	CHECKED - GEM / SBC	REVISED -

CHAMPAIGN COUNTY HIGHWAY DEPARTMENT

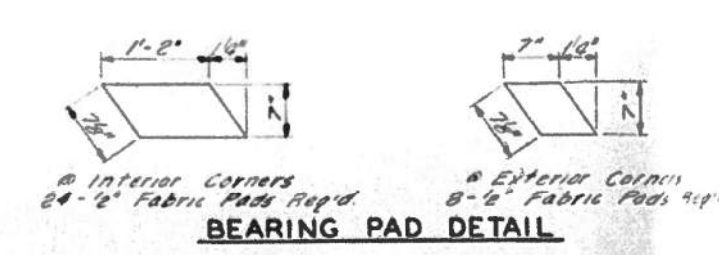
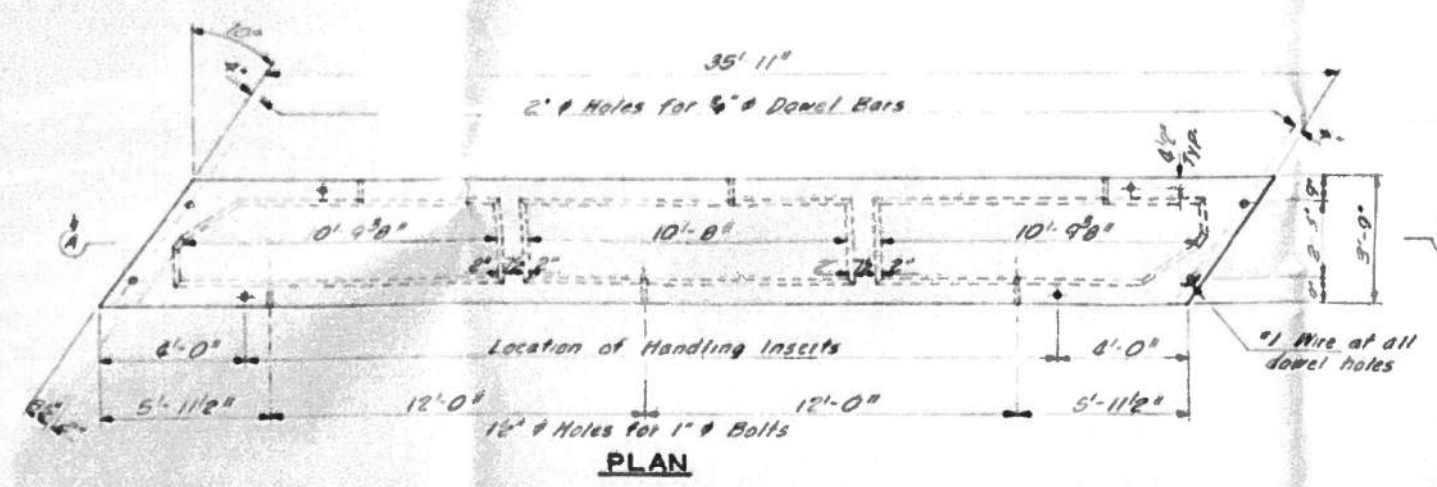
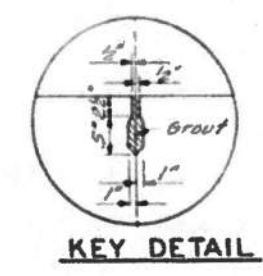
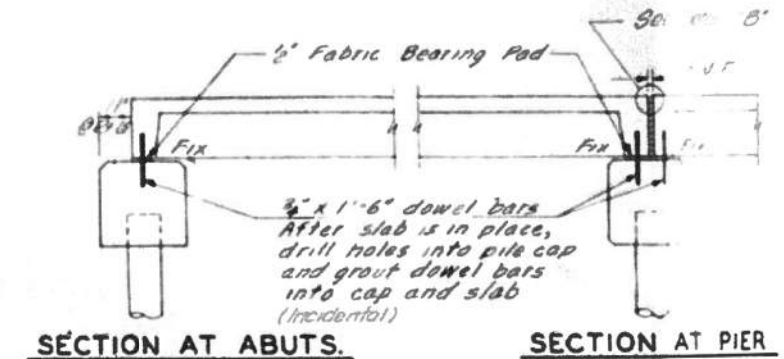
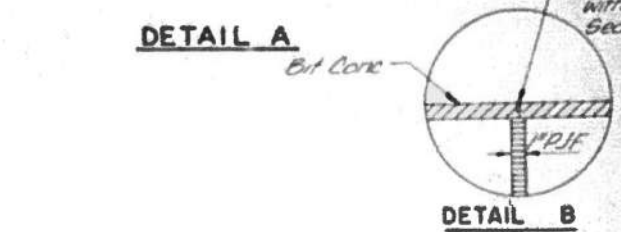
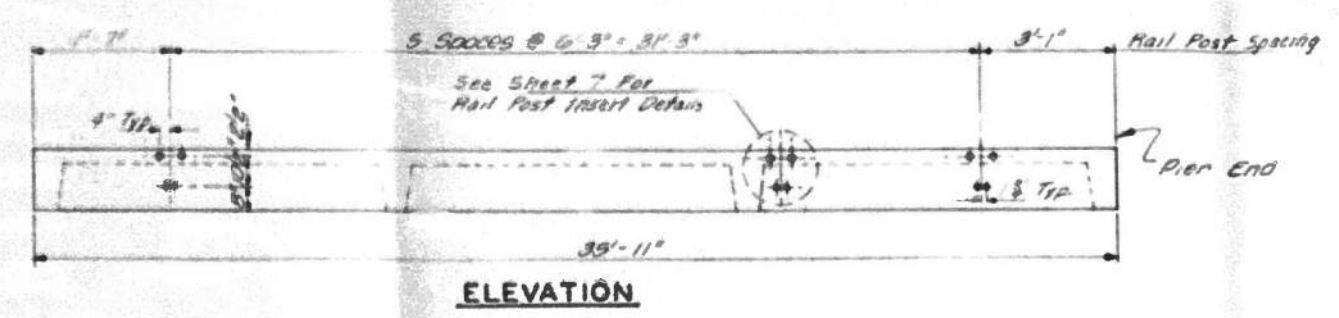
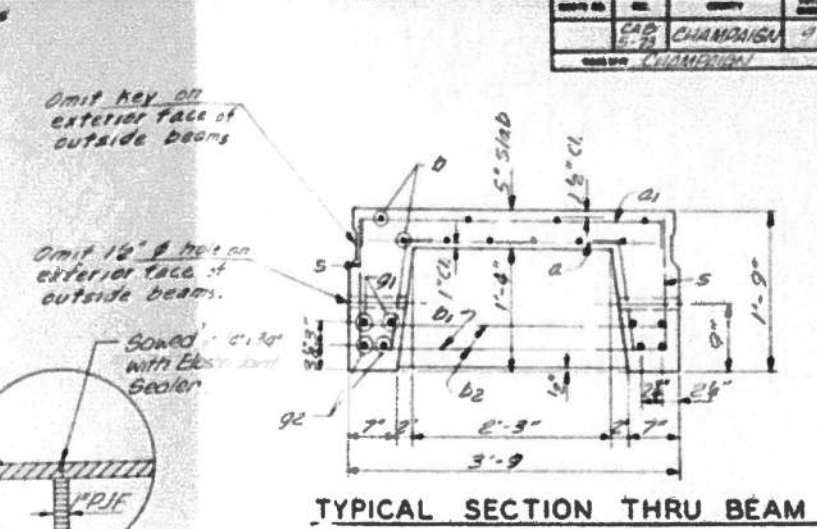
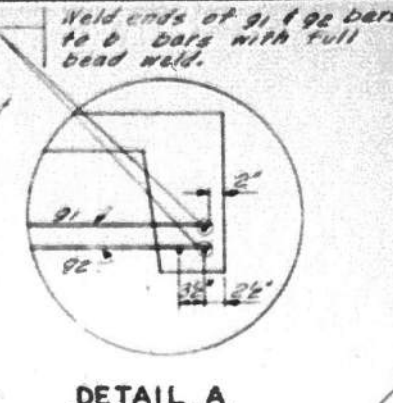
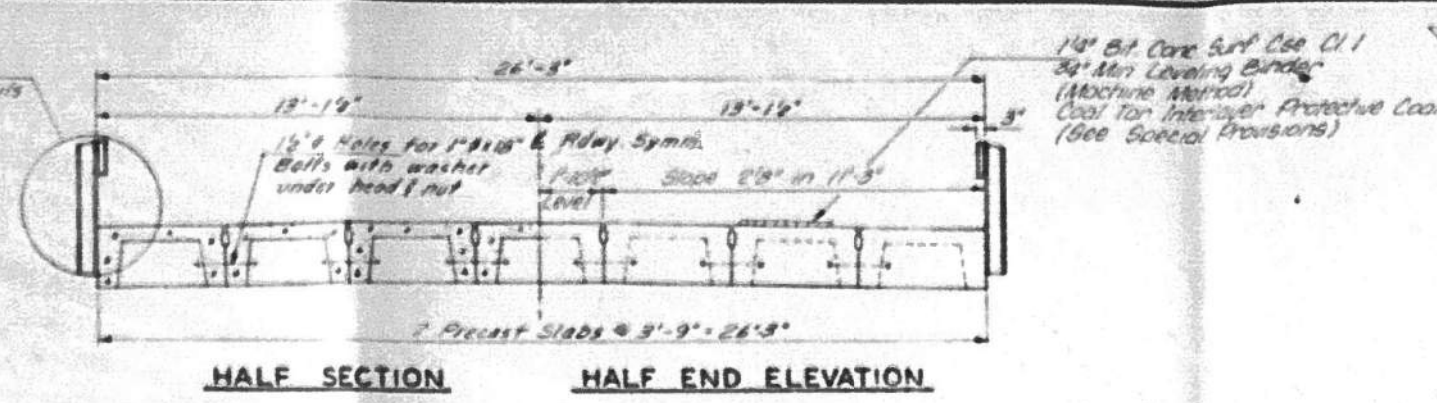
EXISTING PLANS (FOR INFORMATION ONLY)
 STRUCTURE NO. 010-4019

SHEET 8 OF 12 SHEETS

TR. RTE.	SECTION	COUNTY	TOTAL SHEETS	SHEET NO.
209A	22-03122-00-BR	CHAMPAIGN	20	16
			CONTRACT NO. 91632	
		ILLINOIS FED. AID PROJECT		

SECTION	CAB 5-73	CHAMPAIGN	DATE	10-19-73
DESIGNER	CHAMBERLIN			

See Sheet 7 For Complete Rail Details



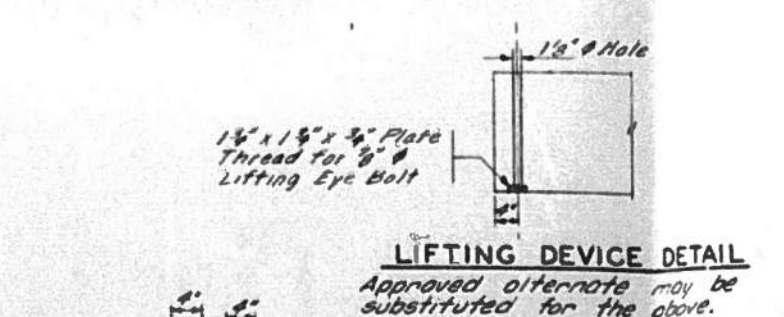
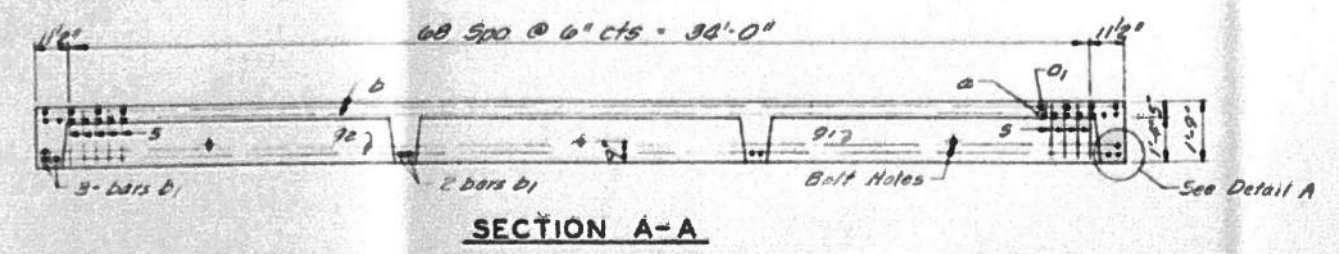
*** ESTIMATED QUANTITIES**

	Concrete Cu. Yd.	Reinf. Bars Lbs.
One Unit	4.9	2,312

*For information of suppliers of Precast Slab Units only.

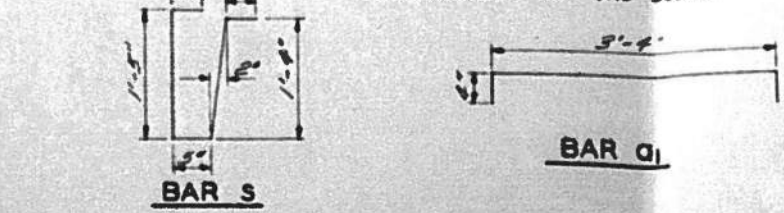
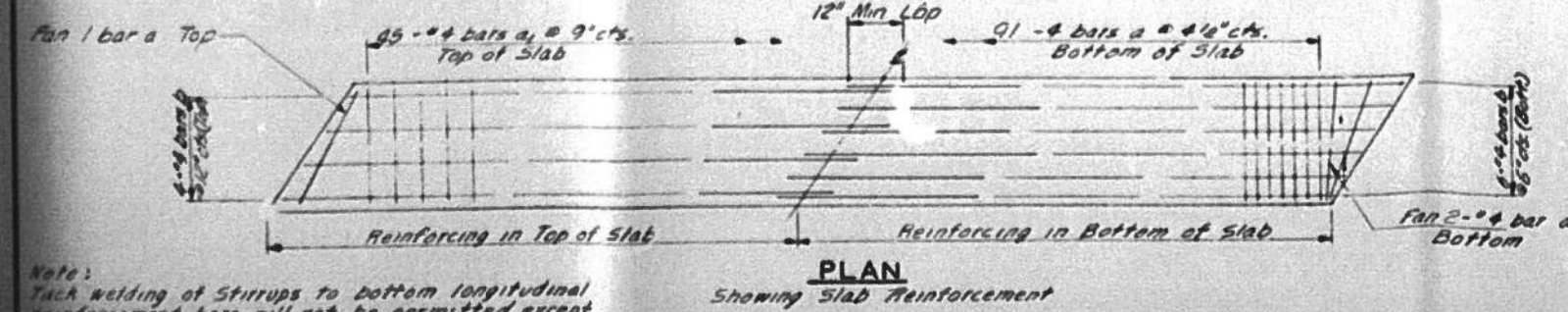
BILL OF MATERIAL - SUPERSTRUCTURE

Material	Quantity	Unit
Precast Concrete Bridge Slab	Sp. Fr.	1,880
Bit Conc. Surf. Cse. C11	Ton	14
Leveling Binder (Machine Method)	Ton	14
Coal Tar Interlayer	Sq Yd	210
Protective Coat	Sq Yd	210



BILL OF REINFORCEMENT BARS

Bar Size	No.	Length	INT UNIT
a	4	3'-3"	
a1	4	4'-0"	
b	20	18'-8"	
b1	4	3'-6"	
g1	4	35'-7"	
g2	4	35'-7"	
s	3	130	3'-10"



Note: Tack welding of stirrups to bottom longitudinal reinforcement bars will not be permitted except where authorized in writing by the Engineer.

SUPERSTRUCTURE SECTION CAB 5-73
 CHAMPAIGN ROAD DISTRICT
 CHAMPAIGN COUNTY
 STATION 9+96
 COLLINS AND RICE CONSULTING ENGINEERS

DESIGNED BY: F.S. J.F.
 CHECKED BY: J.F.

FILE NAME: C:\SP\WHKS & COL\Jobs-Spring - Projects\Champaign County\9523 Champaign Co. TR209A over Kaskaskia Ditch\CADD\CAD Sheets\NO10_4019.dgn

design firm no. 184001036	USER NAME = dheberling	DESIGNED - GEM	REVISED -
		CHECKED - SBC	REVISED -
	PLOT DATE = 2/23/2023	DRAWN - DLH	REVISED -
	PLOT DATE = 1:39:17 PM	CHECKED - GEM / SBC	REVISED -

CHAMPAIGN COUNTY HIGHWAY DEPARTMENT

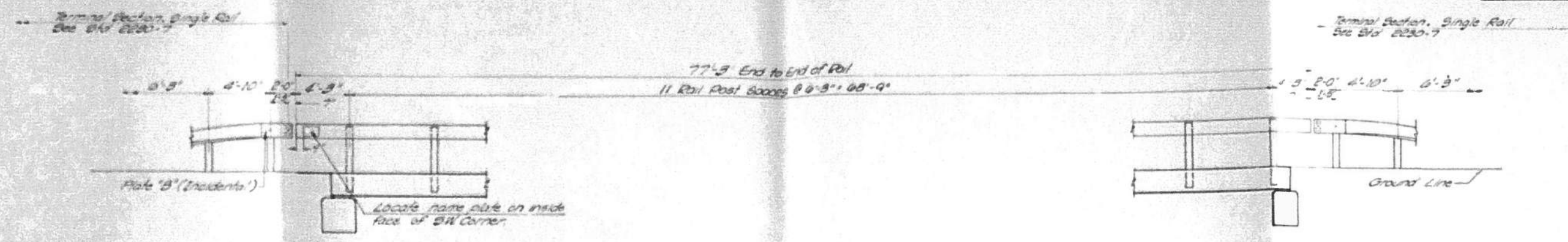
EXISTING PLANS (FOR INFORMATION ONLY)
 STRUCTURE NO. 010-4019

SHEET 9 OF 12 SHEETS

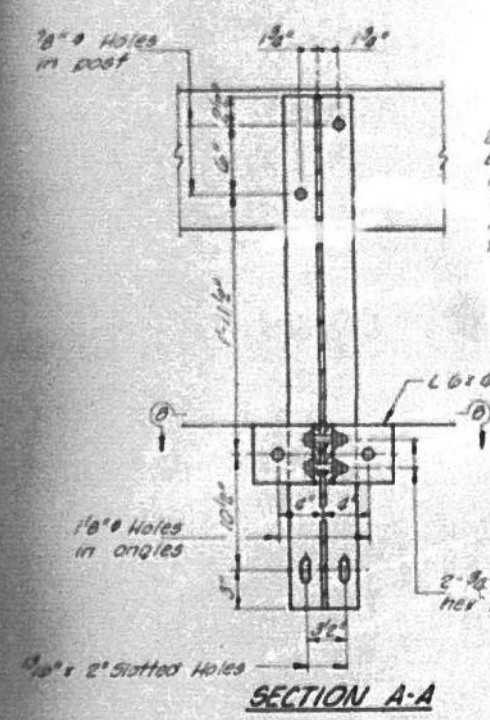
TR. RTE.	SECTION	COUNTY	TOTAL SHEETS	SHEET NO.
209A	22-03122-00-BR	CHAMPAIGN	20	17
			CONTRACT NO. 91632	
		ILLINOIS FED. AID PROJECT		



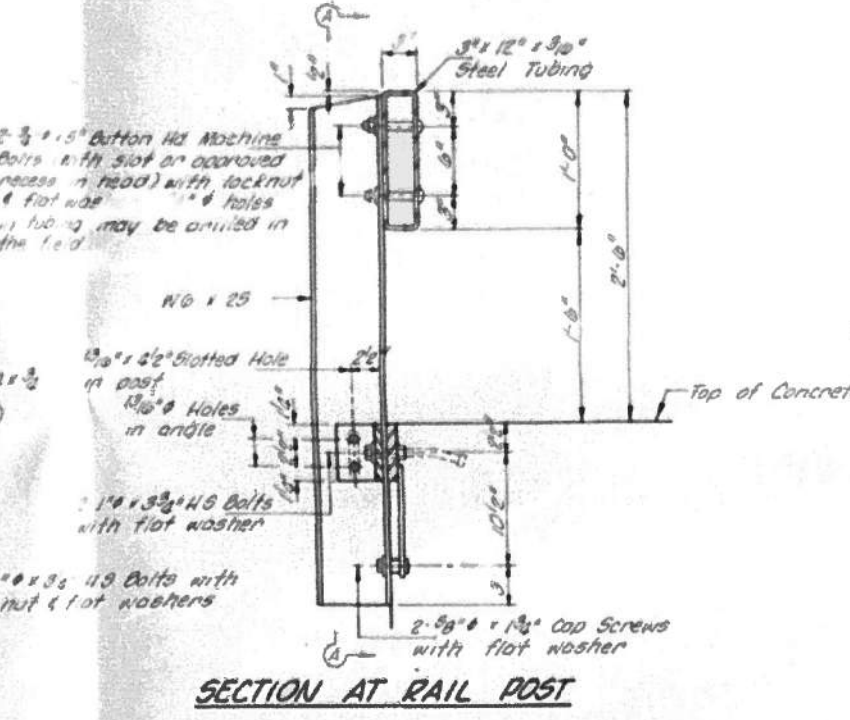
DATE	BY	CHKD	SCALE	SHEET NO.
5-73	CAMPAIGN		9	7
PROJECT: CHAMPAIGN				



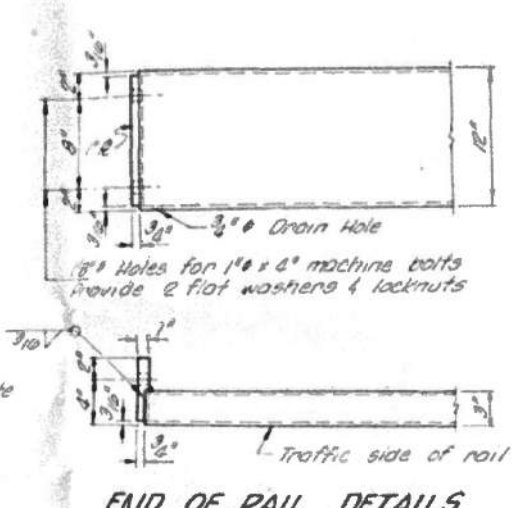
ELEVATION
Showing inside face of rail



SECTION A-A



SECTION AT RAIL POST



END OF RAIL DETAILS

NOTES

Hollow structural steel tubing shall conform to the requirements of ASTM designation A 500 Grade B or A 501 Structural Steel Tubing. All other shapes and plates shall conform to the requirements of ASTM designation A 36 except posts shall conform to ASTM A 441.

Bolts, cap nuts, and nuts shall conform to the requirements of ASTM designation A 307 except for high strength bolts, nuts and washers noted shall conform to ASTM designation A 325.

All bolts, cap screws, washers and lockwashers shall be galvanized in accordance with ASTM designation A-153.

All posts, rail splices, anchor devices and angles shall be galvanized in accordance with ASTM designation A-153. Galvanized rail shall not be painted.

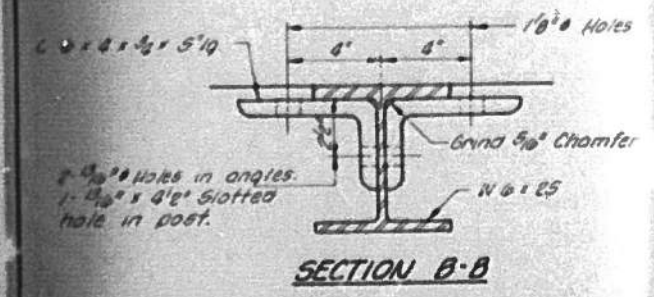
Railing shall be fabricated in accordance with Section 508 of the Standard Specifications, and shall be paid for at the contract unit price per lineal foot for STEEL RAILING, TYPE S.

All field joints shall be coated with an approved zinc rich paint before installation of the post flange in contact with concrete shall receive a coat of asphalt paint conforming to Section 714.08 Type B or place a 1/2" bearing pad between the post and concrete.

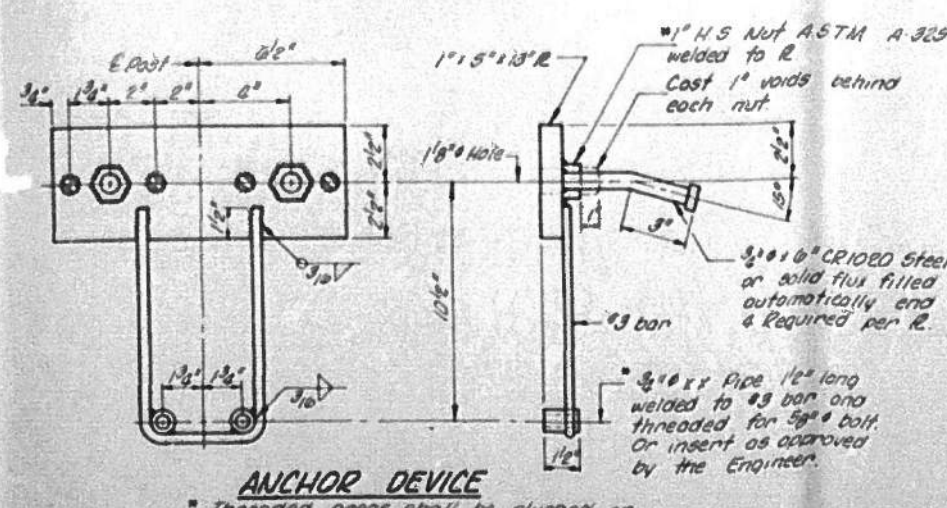
The 3/8" high strength bolts used to connect the 6" x 3/4" angles to the post shall be tightened in accordance with Article 710.11 of the Standard Specifications. The 1" high strength bolts connecting the angle to the post shall be tightened to a snug fit and given an additional 1/2 turn.

BILL OF MATERIAL

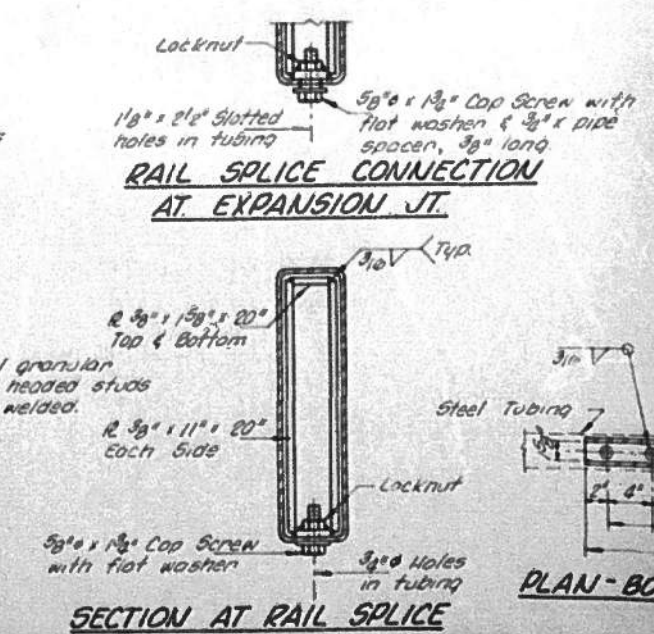
Item	Unit	Quantity
Steel Railing, Type S	Lin Ft	155



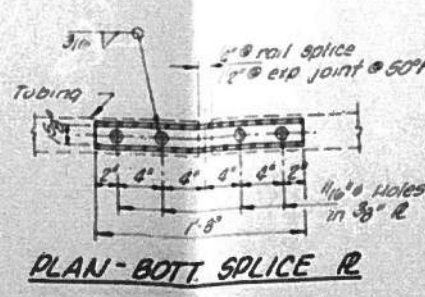
SECTION B-B



ANCHOR DEVICE



SECTION AT RAIL SPLICE



PLAN-BOTT SPLICE R

STEEL RAILING TYPE S
SECTION CAB 5-73
CHAMPAIGN ROAD DISTRICT
CHAMPAIGN COUNTY
STATION 9+96
COLLINS AND RICE
CONSULTING ENGINEERS

FILE NAME: C:\SP\WHKS & COL\Jobs-Spring - Projects\Champaign County\9523 Champaign Co. TR209A over Kaskaskia DICTY\CADD\CAD Sheets\51010_4019.dgn



design firm no. 184001036	USER NAME = dheberling	DESIGNED - GEM	REVISED -
		CHECKED - SBC	REVISED -
	PLOT DATE = 2/23/2023	DRAWN - DLH	REVISED -
	PLOT DATE = 1:40:11 PM	CHECKED - GEM / SBC	REVISED -

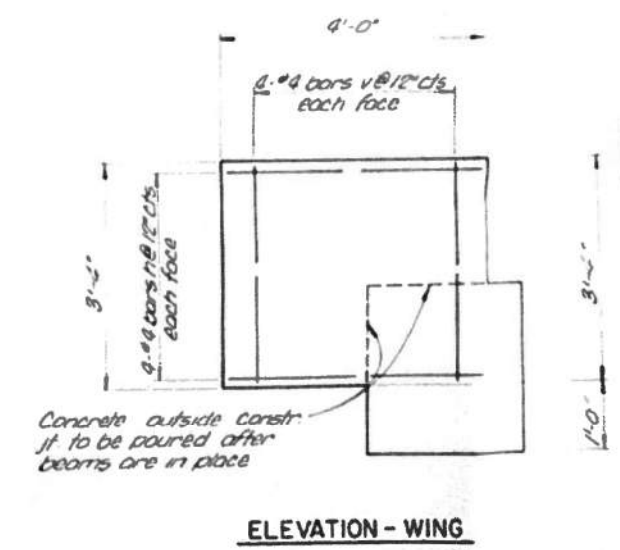
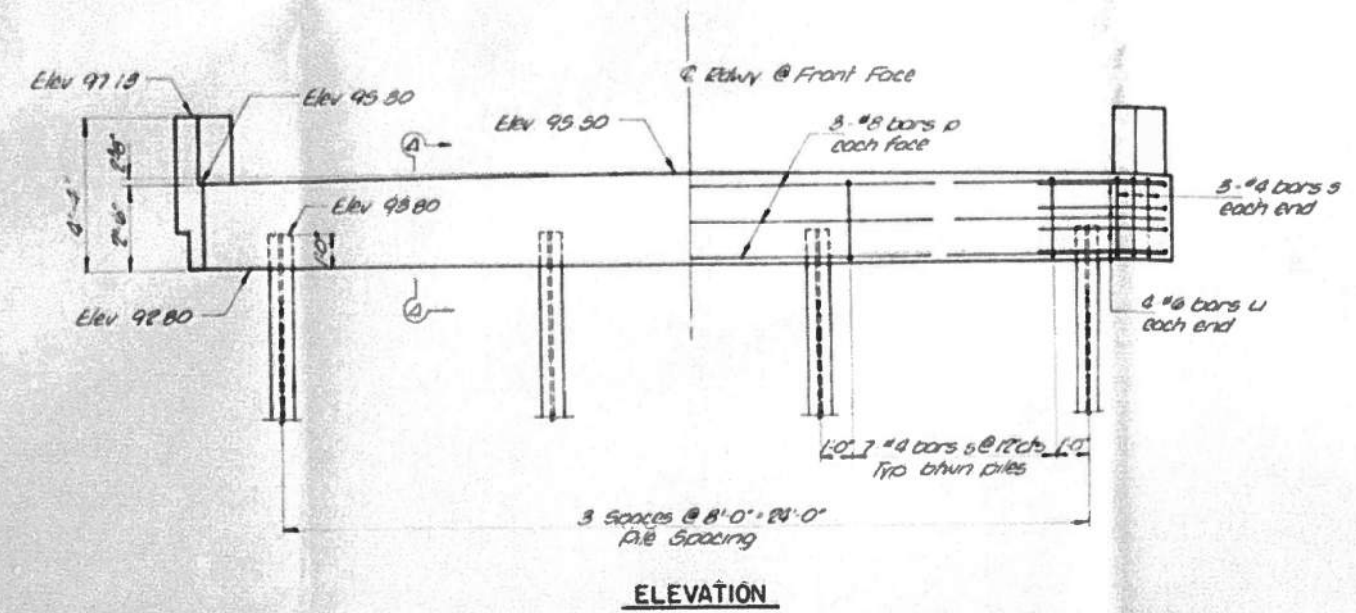
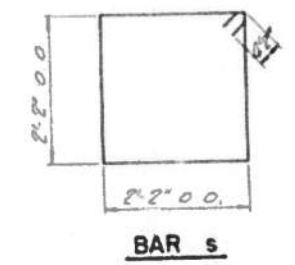
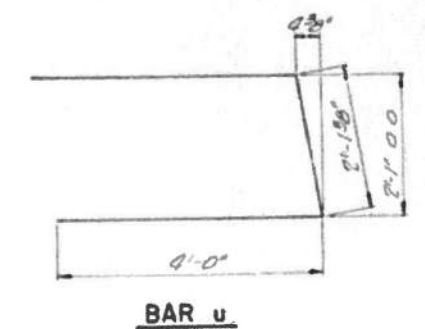
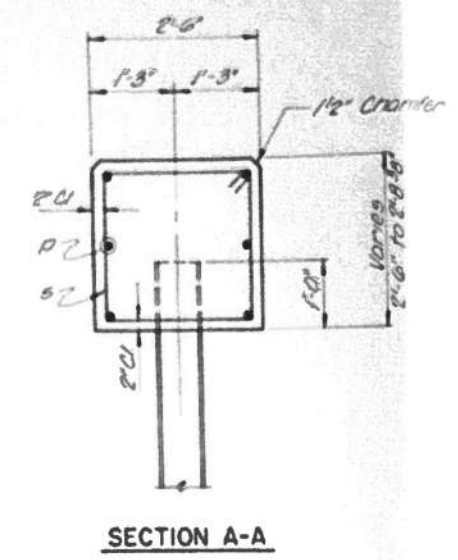
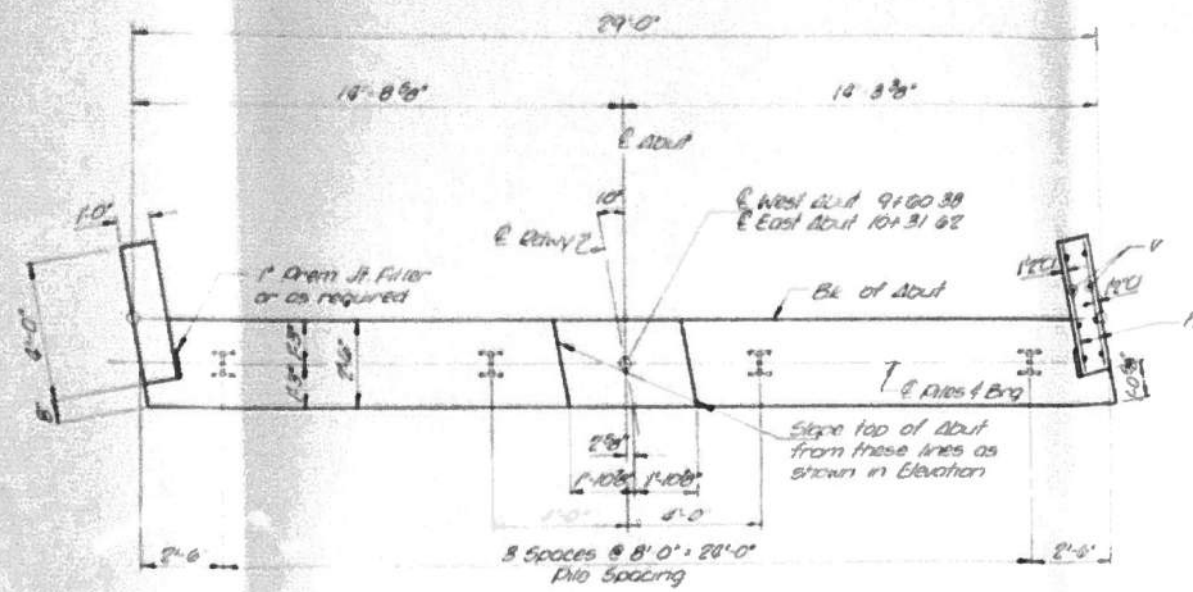
CHAMPAIGN COUNTY HIGHWAY DEPARTMENT

EXISTING PLANS (FOR INFORMATION ONLY)
STRUCTURE NO. 010-4019

SHEET 10 OF 12 SHEETS

TR RTE.	SECTION	COUNTY	TOTAL SHEETS	SHEET NO.
209A	22-03122-00-BR	CHAMPAIGN	20	18
CONTRACT NO. 91632			ILLINOIS FED. AID PROJECT	

DATE	NO.	BY	CHKD.	APP.
05/15/23	1	JF	AD	
PROJECT: CHAMPAIGN				



BILL OF MATERIAL - 2 ABUTS

BAR	NO	SIZE	LENGTH	SLOPE
n	32	#6	3'-9"	—
p	12	#8	28'-8"	—
u	16	#6	10'-1"	—
v	32	#4	3'-1"	—
s	54	#4	9'-5"	□
Class 1 Concrete			Cu Yd	15.7
Reinforcement Bars			Pounds	1,050
Steel Piles 1/2" x 8"			Lin Ft	100

PILE DATA

Type	Steel Piles 1/2" x 8"
No. Req'd (2 Abuts)	8
Est Length	20 Feet/Pile
Min Capacity	26 Tons/Pile

ABUTMENTS
 SECTION CAB 5-73
 CHAMPAIGN ROAD DISTRICT
 CHAMPAIGN COUNTY
 STATION 9+96
COLLINS AND RICE
 CONSULTING ENGINEERS

DESIGNED BY: FS
 CHECKED BY: JF
 DATE: 0-19-23

FILE NAME: C:\SP\WHKS & COL\Jobs-Spring - Projects\Champaign County\9523 Champaign Co. TR209A over Kaskaska DICT\CADD\CAD Sheets\NO10_4019.dgn



USER NAME = dheberling	DESIGNED - GEM	REVISED -
PLOT DATE = 2/23/2023	CHECKED - SBC	REVISED -
PLOT DATE = 1:40:56 PM	DRAWN - DLH	REVISED -
	CHECKED - GEM / SBC	REVISED -

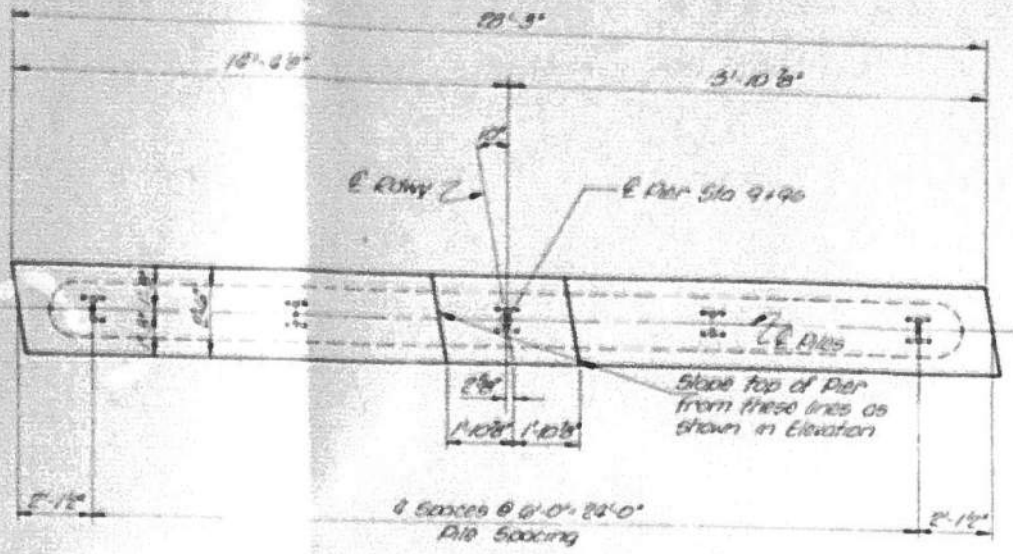
CHAMPAIGN COUNTY HIGHWAY DEPARTMENT

EXISTING PLANS (FOR INFORMATION ONLY)
 STRUCTURE NO. 010-4019

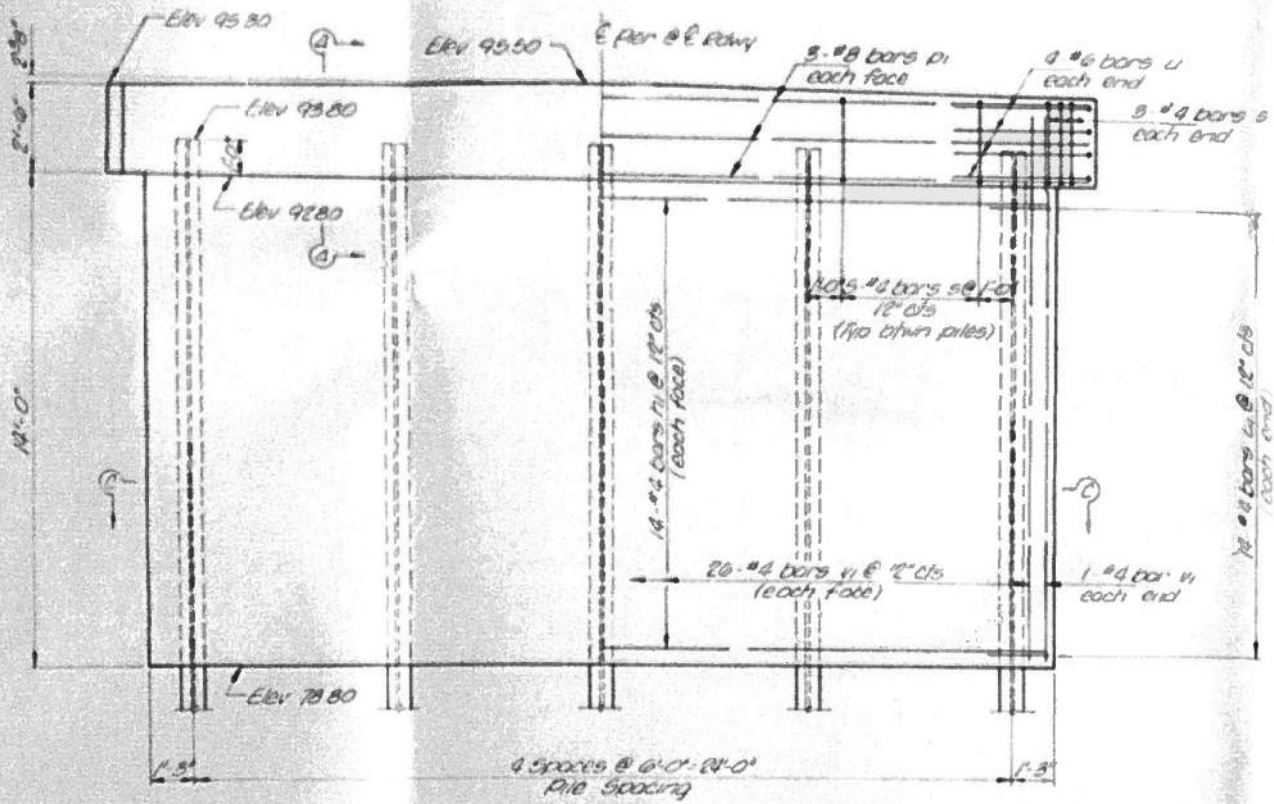
SHEET 11 OF 12 SHEETS

TR. RTE.	SECTION	COUNTY	TOTAL SHEETS	SHEET NO.
209A	22-03122-00-BR	CHAMPAIGN	20	19
CONTRACT NO. 91632				
ILLINOIS FED. AID PROJECT				

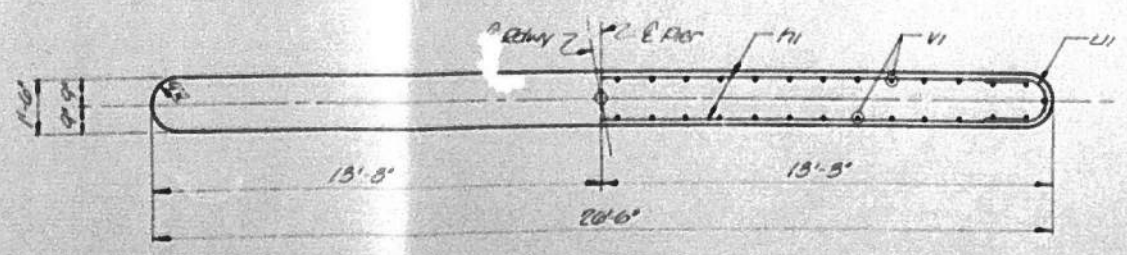
DATE	BY	CHECKED	SCALE	SHEET NO.
10-19-20	JF	FB	1/4" = 1'-0"	9



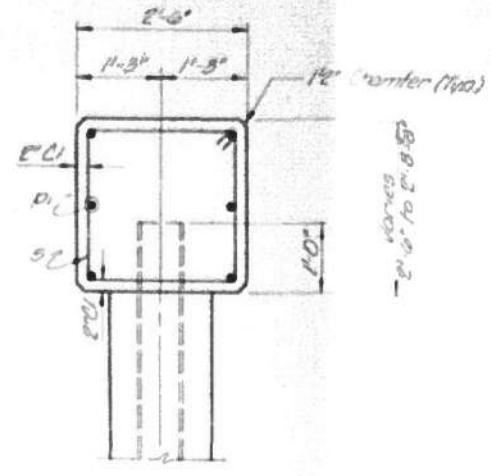
PLAN



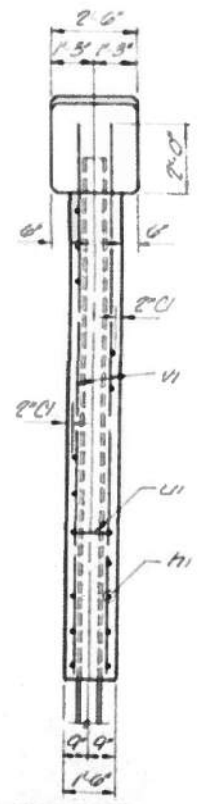
ELEVATION



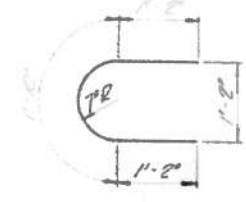
SECTION C-C



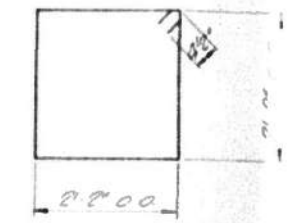
SECTION A-A



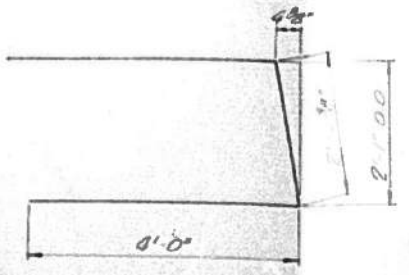
END VIEW



BAR u1



BAR s



BAR u

PILE DATA

Type	Steel Piles HP8x36
No Req'd (1 Pier)	5
Est Length	25 Feet / Pile
Min Capacity	38 Tons / Pile

BILL OF MATERIAL - 1 PIER

BAR NO	SIZE	LENGTH	SLAB
PI	#8	27'-11"	---
U1	#8	15'-10"	---
PI	#8	25'-0"	---
U	#8	10'-1"	---
U1	#8	4'-2"	---
S	#8	9'-5"	---

Class of Concrete	CU Yd	22.4
Reinforcement Bars	Pounds	1,850
Steel Piles HP8x36	Ln Ft	125

PIER
SECTION CAB 5-73
CHAMPAIGN ROAD DISTRICT
CHAMPAIGN COUNTY
STATION 9+96
COLLINS AND RICE
CONSULTING ENGINEERS

DESIGNED BY: FB
CHECKED BY: JF
DATE: 10-19-20

FILE NAME: C:\SP\WHKS & COLLABS\Projects\Champaign County\9523 Champaign Co. TR209A over Kaskaskia Ditch\CADD\CAD Sheets\NO10_4019.dgn

design firm
no. 184001036

engineers + planners + land surveyors

USER NAME = dheberling	DESIGNED - GEM	REVISED -
PLOT DATE = 2/23/2023	CHECKED - SBC	REVISED -
PLOT DATE = 1:41:36 PM	DRAWN - DLH	REVISED -
	CHECKED - GEM / SBC	REVISED -

CHAMPAIGN COUNTY HIGHWAY DEPARTMENT

EXISTING PLANS (FOR INFORMATION ONLY)
STRUCTURE NO. 010-4019

SHEET 12 OF 12 SHEETS

TR. RTE.	SECTION	COUNTY	TOTAL SHEETS	SHEET NO.
209A	22-03122-00-BR	CHAMPAIGN	20	20
			CONTRACT NO. 91632	
		ILLINOIS FED. AID PROJECT		