

F.A.U. RTE.	SECTION	COUNTY	TOTAL SHEETS	SHEET NO.
3578	FAU 3578 22 BR	COOK	13	1
		ILLINOIS	CONTRACT NO. 62U20	

06-16-2023 LETTING ITEM 131

STATE OF ILLINOIS  
DEPARTMENT OF TRANSPORTATION

**PROPOSED  
HIGHWAY PLANS**

**FAU ROUTE 3578: IL-7 (SOUTHWEST HIGHWAY)  
OVER CAL-SAG CHANNEL 0.5 MILES NORTHEAST OF IL-83  
SECTION: FAU 3578 22 BR  
BRIDGE DECK REPAIRS  
COOK COUNTY  
C-91-020-23**

FOR INDEX OF SHEETS, SEE SHEET NO. 2

THIS IMPROVEMENT IS LOCATED IN THE CITY OF PALOS HEIGHTS AND PALOS HILLS.

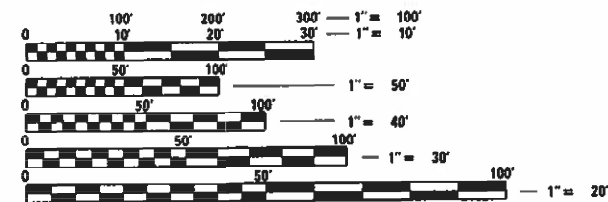
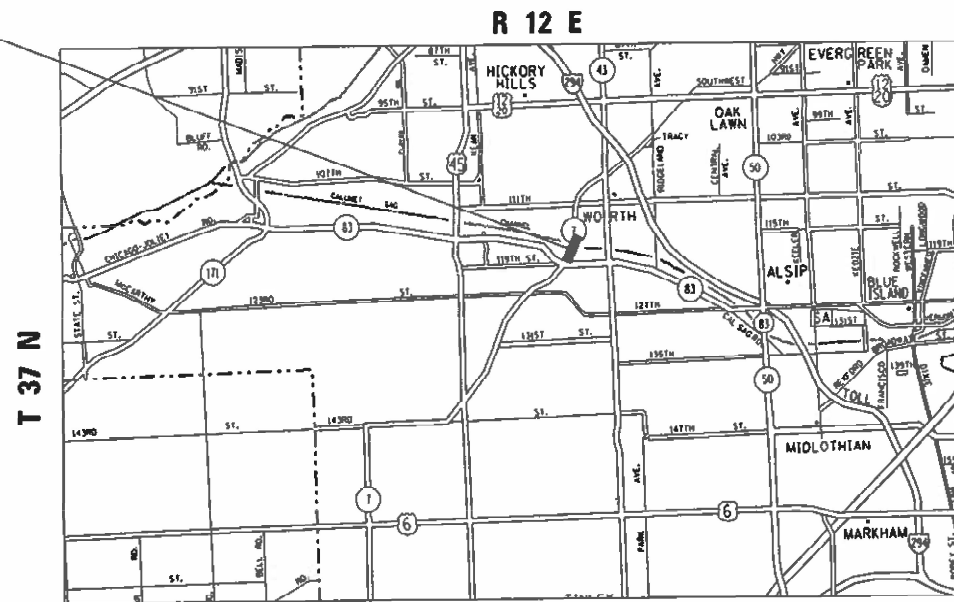
**TRAFFIC DATA**

2021  
IL-7 (SOUTHWEST HWY.) = 24,500

**POSTED SPEED LIMIT**

IL-7 (SOUTHWEST HWY) = 40 MPH

IMPROVEMENT LOCATION  
IL-7 OVER CAL-SAG CHANNEL  
SN: 016-0464



FULL SIZE PLANS HAVE BEEN PREPARED USING STANDARD ENGINEERING SCALES. REDUCED SIZED PLANS WILL NOT CONFORM TO STANDARD SCALES. IN MAKING MEASUREMENTS ON REDUCED PLANS, THE ABOVE SCALES MAY BE USED.

J.U.L.I.E.  
JOINT UTILITY LOCATION INFORMATION FOR EXCAVATORS  
1-800-892-0123  
OR 811

PROJECT ENGINEER: RODRIGO LEDEZMA (847)705-4580  
PROJECT MANAGER: JEAN A. MIDY (847)221-3056

CONTRACT NO. 62U20

D-91-014-23



LOCATION OF SECTION INDICATED THUS: - [black rectangle] -

STATE OF ILLINOIS  
DEPARTMENT OF TRANSPORTATION

SUBMITTED MARCH 17 20 23  
Jorge Rivas  
REGIONAL ENGINEER

May 12, 2023 J. A. Etk  
ENGINEER OF DESIGN AND ENVIRONMENT

May 12, 2023 Stephen M. ...  
DIRECTOR OF HIGHWAYS PROJECT IMPLEMENTATION

PRINTED BY THE AUTHORITY  
OF THE STATE OF ILLINOIS

**INDEX OF SHEETS**

- 1. COVER SHEET
- 2. INDEX OF SHEETS, STATE STANDARDS AND GENERAL NOTES
- 3. SUMMARY OF QUANTITIES
- 4-11 BRIDGE REPAIR DETAILS - S.N. 016-0464
- 12 TRAFFIC CONTROL AND PROTECTION FOR SIDE ROADS, INTERSECTIONS, AND DRIVEWAYS (TC-10)
- 13 ARTERIAL ROAD INFORMATION SIGN (TC-22)

**STATE STANDARDS**

- 701101-04 OFF-RD OPERATIONS, MULTILANE, 15' TO 24" FROM PAVEMENT EDGE
- 701601-09 URBAN LANE CLOSURE, MULTI LANE, 1W OR 2W WITH NONTRAVERSABLE MEDIAN
- 701801-05 SIDEWALK, CORNER OR CROSSWALK CLOSURE
- 701901-08 TRAFFIC CONTROL DEVICES

**GENERAL NOTES**

- 1. BEFORE STARTING ANY EXCAVATION, THE CONTRACTOR SHALL CALL "J.U.L.I.E." AT (800) 892-0123 OR 811 FOR FIELD LOCATIONS OF BURIED ELECTRIC, TELEPHONE AND GAS UTILITIES. 48 HOUR NOTIFICATION IS REQUIRED.
- 2. THE CONTRACTOR SHALL COORDINATE CONSTRUCTION ACTIVITIES WITH UTILITY COMPANIES, AND THE VILLAGES OF PALOS HEIGHTS AND PALOS HILLS.
- 3. THE CONTRACTOR WILL NOT BE ALLOWED TO SET UP A YARD OR FIELD OFFICE ON STATE PROPERTY WITHOUT WRITTEN PERMISSION FROM THE DEPARTMENT.
- 4. IT SHALL BE THE CONTRACTOR'S RESPONSIBILITY TO VERIFY ALL DIMENSIONS AND CONDITIONS EXISTING IN THE FIELD PRIOR TO CONSTRUCTION AND ORDERING OF MATERIALS.
- 5. THE CONTRACTOR SHALL CONTACT THE DISTRICT ONE TRAFFIC CONTROL SUPERVISOR KALPANA KANNAN-HOSADURGA AT KALPANA.KANNAN-HOSADURGA@ILLINOIS.GOV A MINIMUM OF 72 HOURS IN ADVANCE OF BEGINNING WORK.
- 6. THESE PLANS HAVE BEEN PREPARED FROM NOTES RECEIVED FROM THE BUREAU OF MAINTENANCE BRIDGE INSPECTORS.
- 7. THE CONTRACTOR SHALL BE REQUIRED TO PROVIDE ACCESS TO ABUTTING PROPERTY AT ALL TIMES DURING THE CONSTRUCTION OF THIS PROJECT
- 8. DO NOT SCALE PLANS FOR CONSTRUCTION DIMENSIONS.
- 9. THE CONTRACTOR SHALL OBTAIN COAST GUARD APPROVAL FOR ANY WORK THAT MAY INTERFERE WITH NAVIGATIONAL OPERATIONS OF THE NAVIGABLE WATERS. A WORK PLAN SHALL BE PREPARED BY THE CONTRACTOR, REVIEWED AND APPROVED BY THE ENGINEER AND BE SUBMITTED BY THE ENGINEER TO THE COAST GUARD AT THE ADDRESS LISTED BELOW FOR APPROVAL.  
  
Locations downstream (South) of 16th St Bridge in Lockport, IL:  
  
BRIDGE ADMINISTRATOR  
US COAST GUARD  
EIGHTH COAST GUARD DISTRICT  
1222 SPRUCE ST  
ST. LOUIS, MO 63103-2832  
  
Roger Wiebesch (314)269-2378
- 10. THE DEPARTMENT HAS DETERMINED THAT IN STREAM WORK IS NOT REQUIRED FOR THE WORK SPECIFIED IN THIS CONTRACT. THE DEPARTMENT HAS NOT OBTAINED A 404 PERMIT. IF THE CONTRACTOR CHOOSES TO USE ACTIVITIES REQUIRING AN USACE 404 PERMIT IT IS THE CONTRACTOR'S RESPONSIBILITY TO SECURE THE PROPER USACE PERMITS.

FILE NAME =	USER NAME = naveed.hesson	DESIGNED -	REVISED -	<b>STATE OF ILLINOIS DEPARTMENT OF TRANSPORTATION</b>	<b>IL 7 (SOUTHWEST HIGHWAY) OVER CAL-SAG CHANNEL (SN 016-0464) INDEX OF SHEETS, STATE STANDARDS, AND GENERAL NOTES</b>	F.A.U. RTE.	SECTION	COUNTY	TOTAL SHEETS	SHEET NO.	
p:\idot-pw\Bentley.com\PWIDOT\Documents\IDOT Offices\District 1\Projects\0101423\CAD\Drawings\0101423-General\Note.dgn	DRAWN	CHECKED -	REVISED -			3578	FAU 3578 22 BR	COOK	13	2	
Default	PLOT SCALE = 100.0/15' / in.	DATE -	REVISED -			CONTRACT NO. 62U20		ILLINOIS FED. AID PROJECT			
	PLOT DATE = 5/5/2023	DATE -	REVISED -			SCALE:	SHEET 1	OF 1	SHEETS	STA.	TO STA.

SUMMARY OF QUANTITIES			TOTAL QUANTITIES URBAN	100% STATE 0013	CONSTRUCTION TYPE CODE				
CODE NO	ITEM	UNIT							
50102400	CONCRETE REMOVAL	CU YD	4.9	4.9					
50300255	CONCRETE SUPERSTRUCTURE	CU YD	2.2	2.2					
50300300	PROTECTIVE COAT	SO YD	15.6	15.6					
50901735	BICYCLE RAILING, CURVED	FOOT	480	480					
63000001	STEEL PLATE BEAM GUARDRAIL, TYPE A, 6 FOOT POSTS	FOOT	65	65					
63301235	REMOVE AND REERECT STEEL PLATE BEAM GUARDRAIL, ATTACHED TO STRUCTURES	FOOT	240	240					
67100100	MOBILIZATION	L SUM	1	1					
70102630	TRAFFIC CONTROL AND PROTECTION, STANDARD 701601	L SUM	1	1					
70102640	TRAFFIC CONTROL AND PROTECTION, STANDARD 701801	L SUM	1	1					
X6700407	ENGINEER'S FIELD OFFICE, TYPE A (D1)	CAL MO	12	12					
Z0007101	CONTAINMENT AND DISPOSAL OF LEAD PAINT CLEANING RESIDUES NO. 1	L SUM	1	1					
Z0010501	CLEANING AND PAINTING STEEL BRIDGE NO. 1	L SUM	1	1					
Z0030850	TEMPORARY INFORMATION SIGNING	SO FT	52.4	52.4					

SUMMARY OF QUANTITIES				TOTAL QUANTITIES	CONSTRUCTION TYPE CODE				
CODE NO	ITEM	UNIT							
Z0076604	TRAINEES - TRAINING PROGRAM GRADUATE	HOURS	500	500					

FILE NAME =	USER NAME = <i>noved.novon</i>	DESIGNED -	REVISED -
<i>pw\N1dot-pw\benley.com\PW\DOT\Documents\DOT - Office\District\Projects\DI0423\CAD\Drawn\Design\SH-500.dgn</i>		DRAWN -	REVISED -
	PLOT SCALE = 100.0000' / 1" =	CHECKED -	REVISED -
	PLOT DATE = 3/30/2023	DATE -	REVISED -

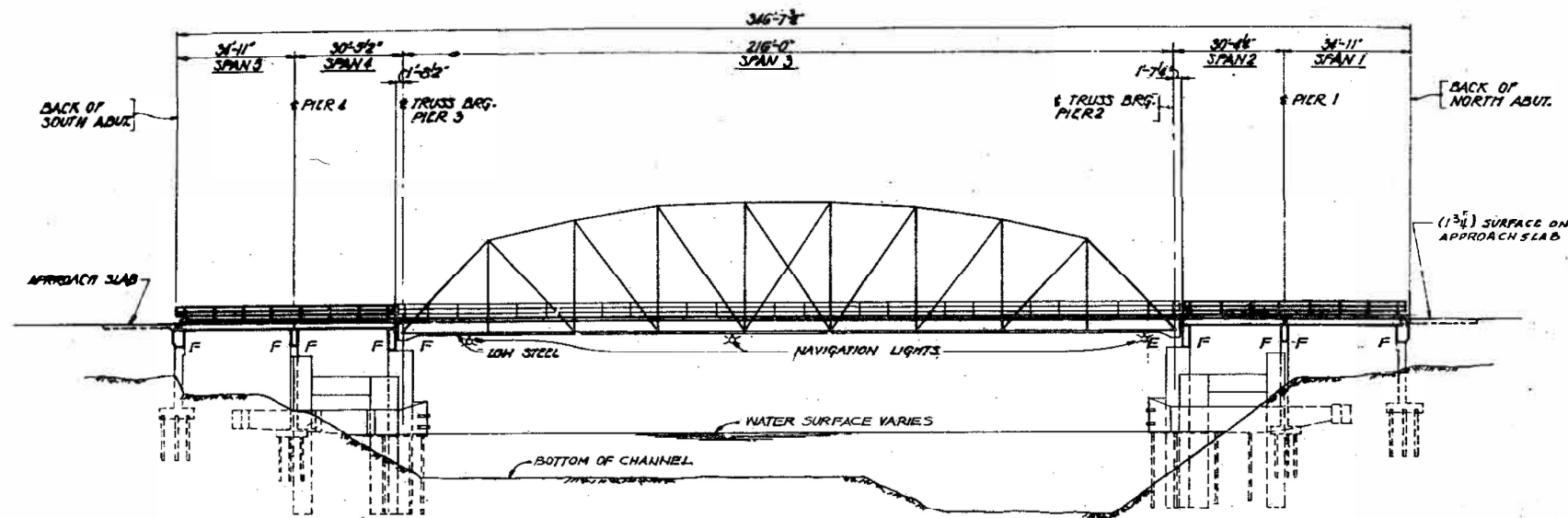
**STATE OF ILLINOIS  
DEPARTMENT OF TRANSPORTATION**

**IL-7 OVER CAL-SAG CHANNEL (016-0464)  
SUMMARY OF QUANTITIES**

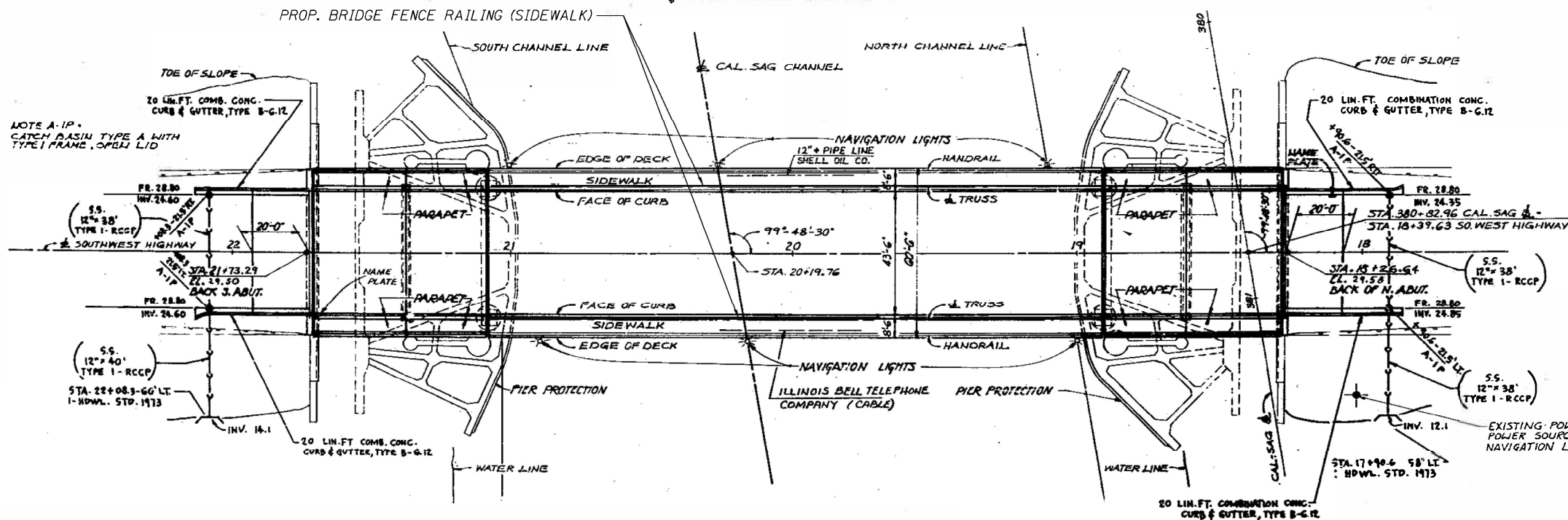
SCALE: SHEET NO. OF SHEETS STA. TO STA.

F.A.U. RTE.	SECTION	COUNTY	TOTAL SHEETS	SHEET NO.
3578	FAU 3578 22 BR	COOK	13	3
CONTRACT NO. 62U20				
FED. ROAD DIST. NO. 1 ILLINOIS FED. AID PROJECT				

Ø 0042



**ELEVATION**



**PLAN**  
SCALE: 1" = 20'



**GENERAL NOTES:**

Reinforcement Bars designated (E) shall be Epoxy Coated.

Prior to pouring the new concrete deck, all heavy or loose rust, loose mill scale, and other loose or potentially detrimental foreign material shall be removed from the surface in contact with concrete. Tightly adhered paint may remain unless otherwise noted. Removal shall be accomplished by methods that will not damage the steel and the cost will be included in the pay item covering removal of the existing concrete. As directed by the Engineer, existing construction accessories welded to the Truss members within the concrete fillers shall be removed.

The weld areas shall be ground flush and inspected for cracks using Magnetic Particle Testing (MT) or Dye Penetrant Testing (PT) by qualified personnel approved by the Engineer. Any cracks that cannot be removed by grinding 1/4 in. deep shall be identified and reported to the Bureau of Bridges and Structures for further disposition. The cost of removing welded accessories, grinding and inspecting weld areas and grinding cracks will be paid for according to Article 109.04 Of The Standard Specifications.

The existing structural steel coating contains lead. The Contractor shall take appropriate precautions to deal with the presence of lead on this project.

Any reinforcement bars that are damaged during concrete removal operations shall be repaired or replaced using an approved bar splicer or anchorage system. Cost incidental to "Concrete Removal".

Plan dimensions and details relative to existing plans are subject to nominal construction variations. The contractor shall field verify existing dimensions and details affecting new construction and make necessary approved adjustments prior to construction or ordering of materials. Such variations shall not be cause for additional compensation for a change in scope of the work, however, the contractor will be paid for the quantity actually furnished based at the unit price bid for the work.

**GENERAL PAINT NOTES:**

Cleaning and painting of the existing structural steel shall be as specified in the special provision for "cleaning and painting existing steel structures". All structural steel at the locations shown in the plans and within the limits shown on sheet 3 & 4 of 8 shall be cleaned per commercial grade power tool cleaning - sspc sp15.

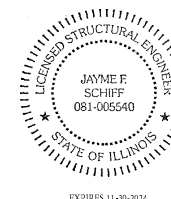
The designated areas cleaned per commercial grade power tool cleaning shall be painted according to the requirements of paint system 1 - oz/e/u. The color of the final finish coat for all truss members shall be blue, munsell no 10b 3/6.

A minimum of one (1) air monitor will be required to monitor abrasive operations for all structures. See special provision for "containment and disposal of lead paint cleaning residue"

It shall be the contractor's responsibility to protect and preserve the existing bridge lighting at any location that lighting is encountered adjacent to an area to be cleaned and painted.

**TOTAL BILL OF MATERIAL**

ITEM	UNIT	TOTAL
Concrete Removal	Cu. Yd.	4.9
Concrete Superstructure	Cu. Yd.	2.2
Protective Coat	Sq. Yd.	15.6
Bridge Fence Railing (Sidewalk)	Foot	480
Containment and Disposal of Lead Paint Cleaning Residues	L. Sum	1
Cleaning and Painting Steel Bridge No. 1	L. Sum	1



Jayme F. Schiff

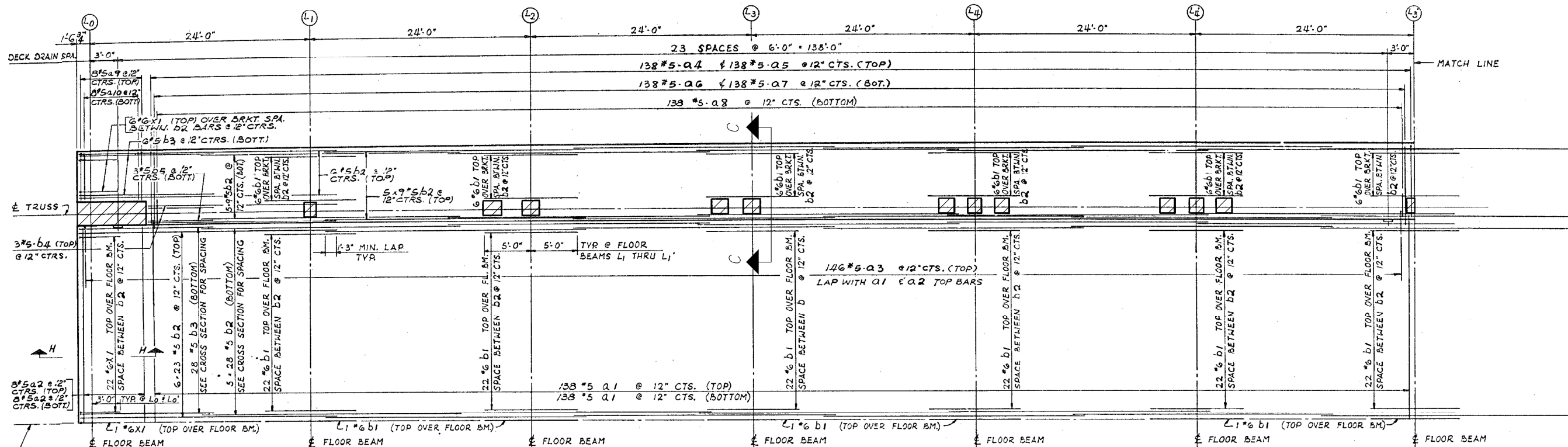
STATE OF ILLINOIS  
DEPARTMENT OF TRANSPORTATION

IL-7 OVER CAL-SAG CHANNEL (016-0464)  
GENERAL PLAN & ELEVATION

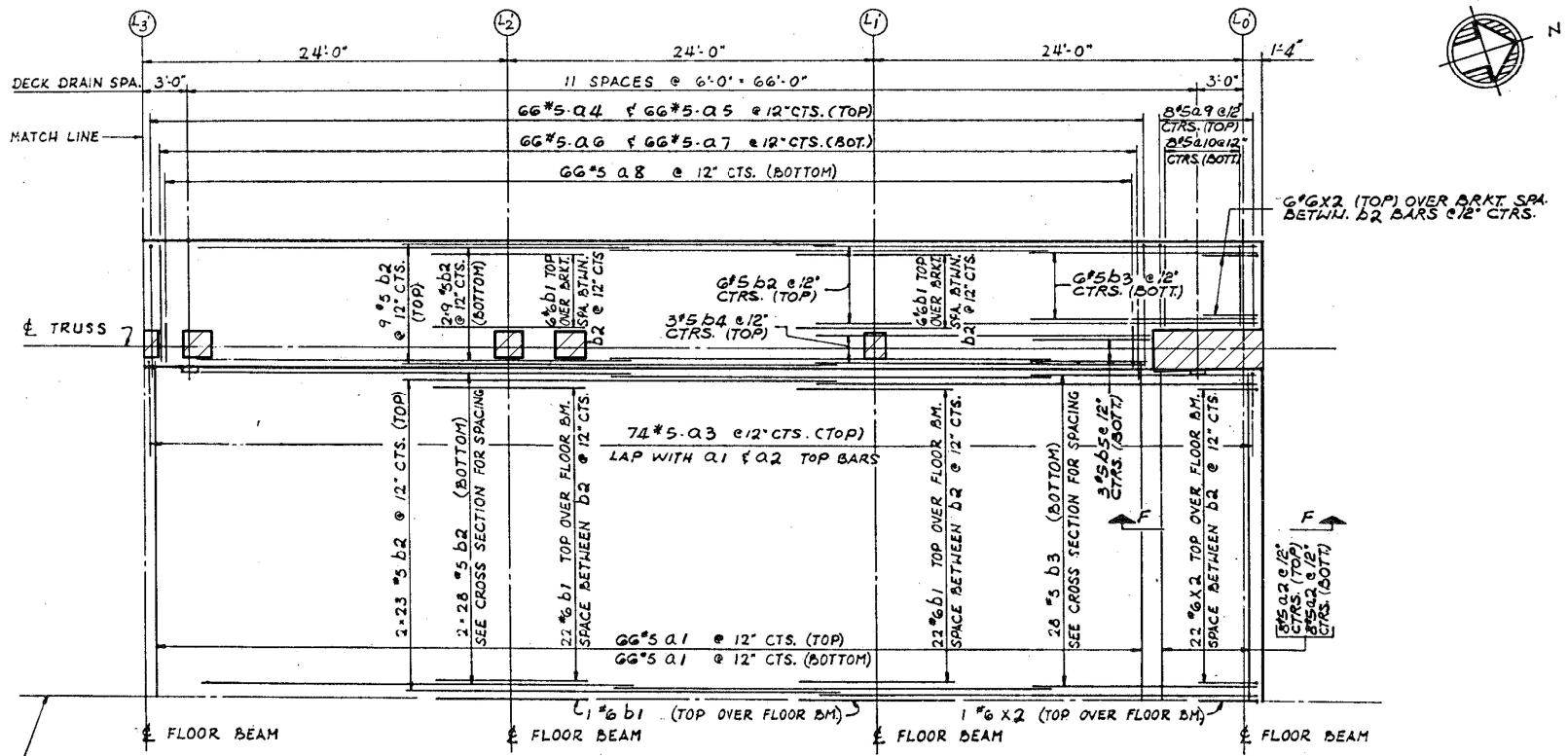
SCALE: SHEET 1 OF 8 SHEETS STA. TO STA.

FA.U. RTE.	SECTION	COUNTY	TOTAL SHEETS	SHEET NO.
3578	FAU 3578 22 BR	COOK	13	4
CONTRACT NO. 62U20				
ILLINOIS FED. AID PROJECT				

USER NAME = naveed.hassan	DESIGNED -	REVISED -
PLOT SCALE = 0.1666" / in.	DRAWN -	REVISED -
PLOT DATE = 5/5/2023	CHECKED -	REVISED -
	DATE -	REVISED -



PART PLAN OF DECK REINFORCEMENT - SPAN 3  
SCALE: 3/16" = 1'-0"



PART PLAN OF DECK REINFORCEMENT SPAN 3  
SCALE: 3/16" = 1'-0"

LEGEND:



BILL OF MATERIAL

Item	Unit	Quantity
Concrete Removal	CU YD	4.9
Concrete Superstructure	CU YD	2.2
Protective Coat	SQ YD	15.6

MODEL: Default  
 FILE NAME: p:\project\paw\beadefy.com\PIV\DOT\Documents\DOT\Office\Dir\drd...  
 PROJECT ID: 014231CADD\paw\beadefy.com\PIV\DOT\Documents\DOT\Office\Dir\drd...

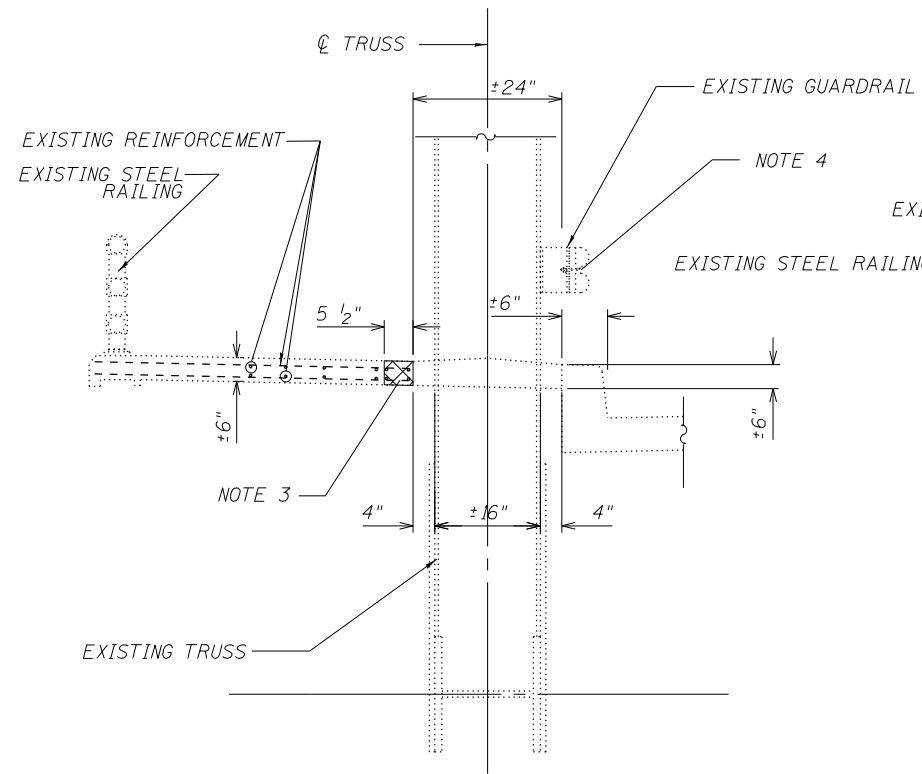
USER NAME = naveed.hassan	DESIGNED -	REVISED -
PLOT SCALE = 0.1667' / in.	DRAWN -	REVISED -
PLOT DATE = 3/30/2023	CHECKED -	REVISED -
	DATE -	REVISED -

STATE OF ILLINOIS  
DEPARTMENT OF TRANSPORTATION

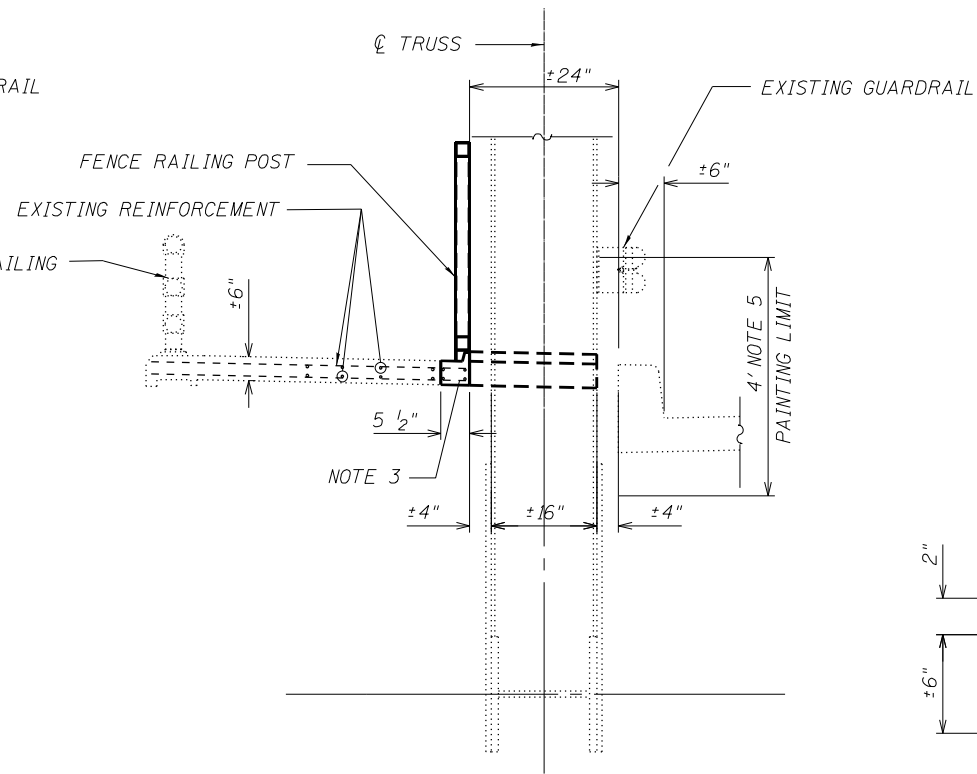
IL-7 OVER CAL-SAG CHANNEL (016-0464)  
DECK PLAN AND DETAILS

SCALE: SHEET 2 OF 8 SHEETS STA. TO STA.

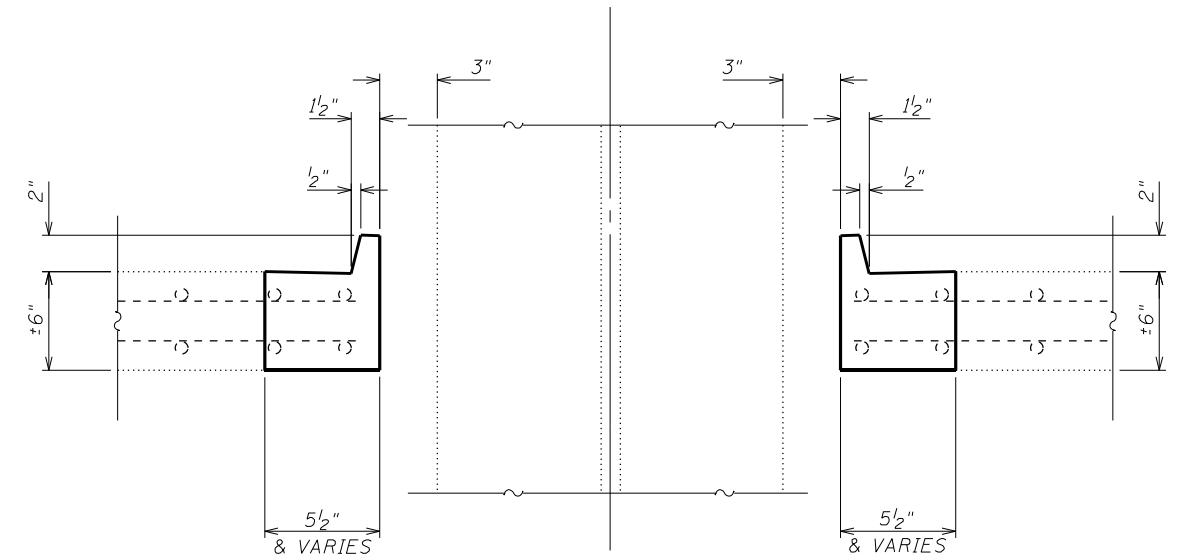
FAU. RTE. 3578	SECTION FAU 3578 22 BR	COUNTY COOK	TOTAL SHEETS 13	SHEET NO. 5
ILLINOIS FED. AID PROJECT			CONTRACT NO. 62U20	



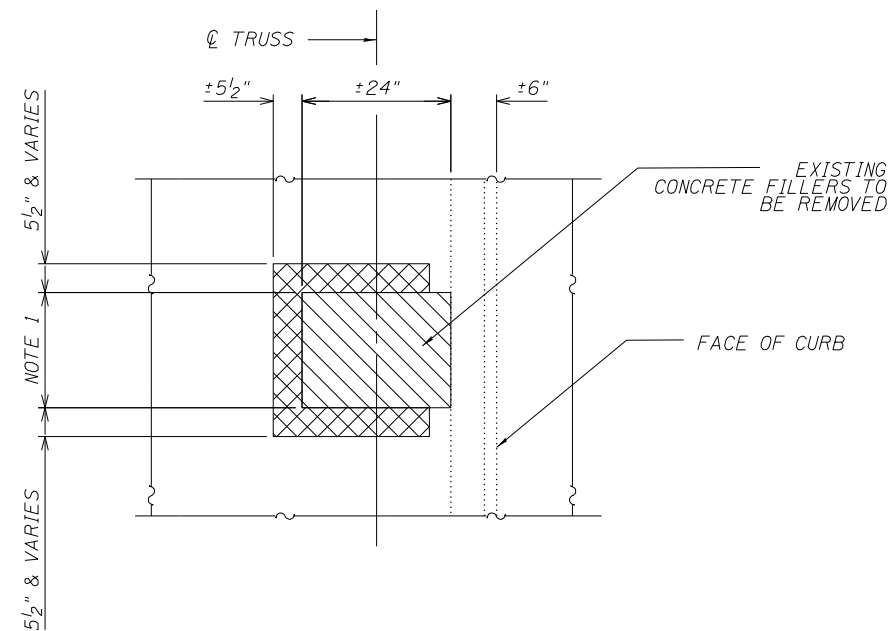
**EXISTING SIDEWALK CROSS SECTION C-C**  
at All East and West Trusses Except (L<sub>0</sub> U<sub>1</sub> & L<sub>0</sub>' U<sub>1</sub>' )



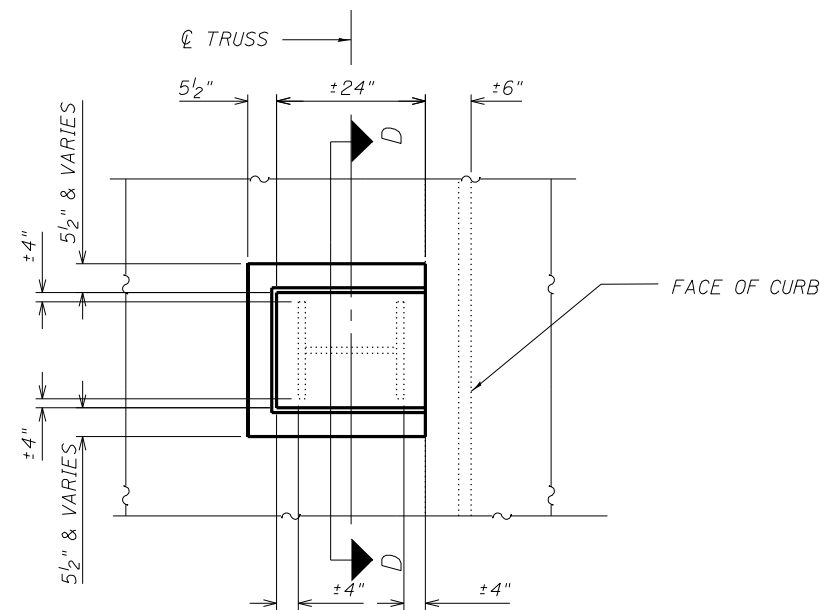
**PROPOSED SIDEWALK CROSS SECTION C-C**  
at All East and West Trusses Except (L<sub>0</sub> U<sub>1</sub> & L<sub>0</sub>' U<sub>1</sub>' )



**SECTION D-D**



**EXISTING SIDEWALK PLAN**  
at All East and West Trusses Except (L<sub>0</sub> U<sub>1</sub> & L<sub>0</sub>' U<sub>1</sub>' )



**PROPOSED SIDEWALK PLAN**  
at All East and West Trusses Except (L<sub>0</sub> U<sub>1</sub> & L<sub>0</sub>' U<sub>1</sub>' )

**NOTES:**

- EXISTING CONCRETE FILLERS AT TRUSS MEMBERS TO BE REMOVED. SEE SHEET 6 OF 8 FOR FILLER DIMENSIONS.
- EXISTING BAR FILLETS WELDED TO TRUSS MEMBERS WITHIN CONCRETE FILLERS ARE TO BE REMOVED USING THE AIR-ARC METHOD AND GRIND SMOOTH ALL WELD MATERIAL REMAINING ON THE STEEL TRUSS MEMBERS. COST INCLUDED IN CONCRETE REMOVAL.
- PERIMETERS OF CONCRETE REMOVAL AREAS SHALL BE SAW CUT 3/4" PRIOR TO THE REMOVAL OF THE CONCRETE. EXISTING REINFORCEMENT EXTENDING INTO REMOVAL AREA SHALL BE CLEANED, STRAIGHTENED AND INCORPORATED INTO THE NEW CONSTRUCTION. COST INCLUDED WITH CONCRETE REMOVAL.
- REMOVE AND RE-ERECT EXISTING GUARDRAIL & POSTS AS NEEDED.
- VERTICAL AND DIAGONAL TRUSS MEMBERS TO BE PAINTED FOR A LIMIT OF 2' ABOVE AND 2' BELOW CENTERLINE OF SIDEWALK.

MODEL: Default  
FILE NAME: p:\project\paw\_benefly.com\p\INDOT\Documents\INDOT Office\Dir\rdet\_11\project\1010423\CADD\DATA\Design\ent-edr.dgn

USER NAME = naveed,hassan	DESIGNED -	REVISED -
PLOT SCALE = 0.1667' / in.	DRAWN -	REVISED -
PLOT DATE = 3/30/2023	CHECKED -	REVISED -
	DATE -	REVISED -

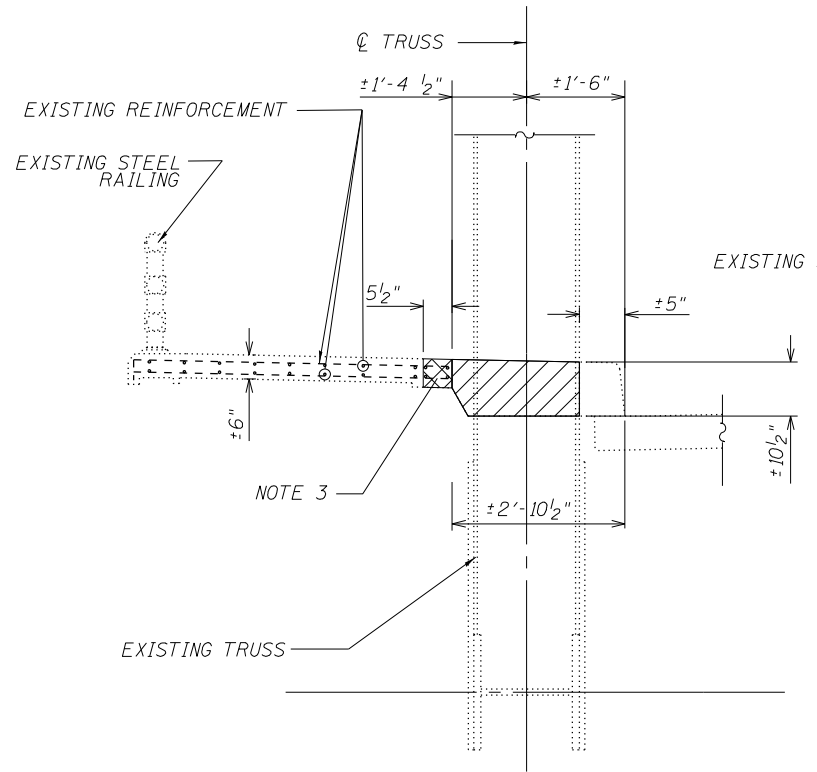
**STATE OF ILLINOIS  
DEPARTMENT OF TRANSPORTATION**

**IL-7 OVER CAL-SAG CHANNEL (016-0464)  
DETAILS**

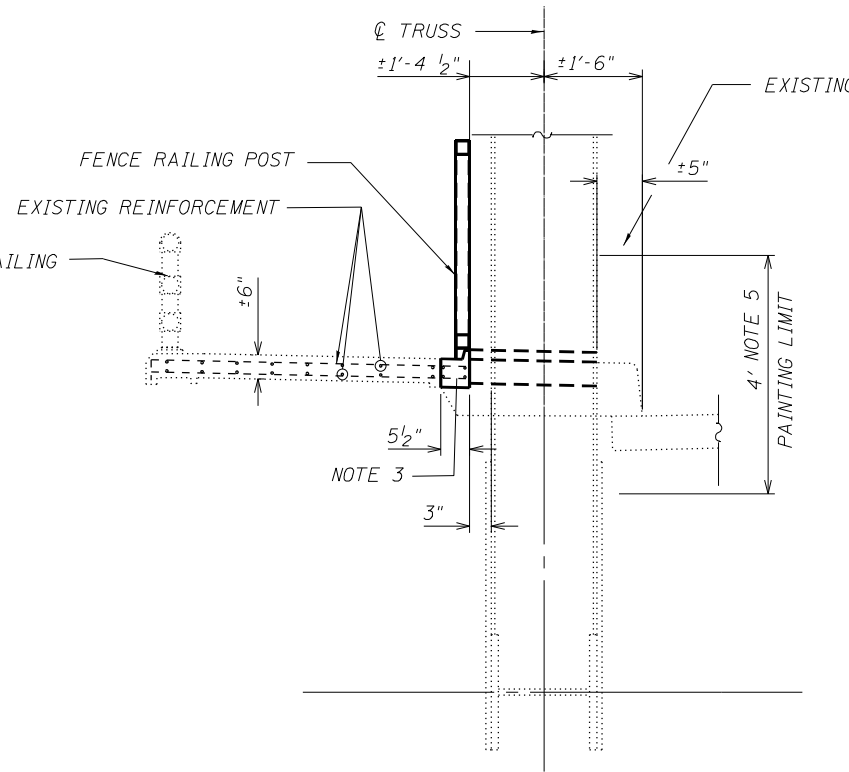
SCALE: SHEET 3 OF 8 SHEETS STA. TO STA.

FAU. RTE.	SECTION	COUNTY	TOTAL SHEETS	SHEET NO.
3578	FAU 3578 22 BR	COOK	13	6
CONTRACT NO. 62U20			ILLINOIS FED. AID PROJECT	

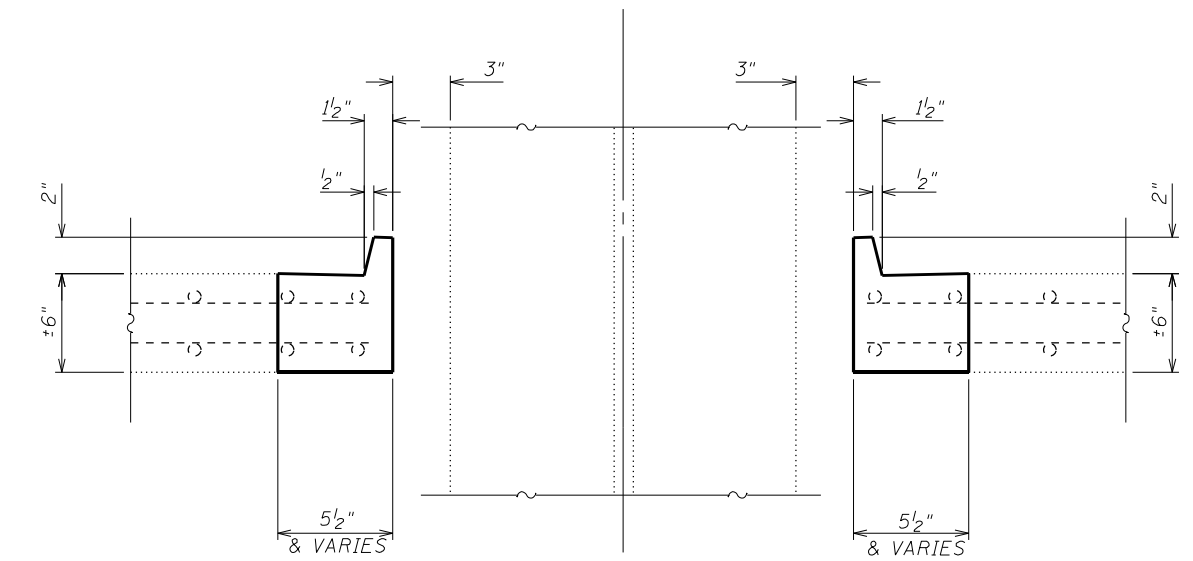
MODEL: Default  
 FILE: 3578\_016223\_CADDData\Drawings\ent-dbr.dgn  
 PROJECT: I:\016223\CADDData\Drawings\ent-dbr.dgn



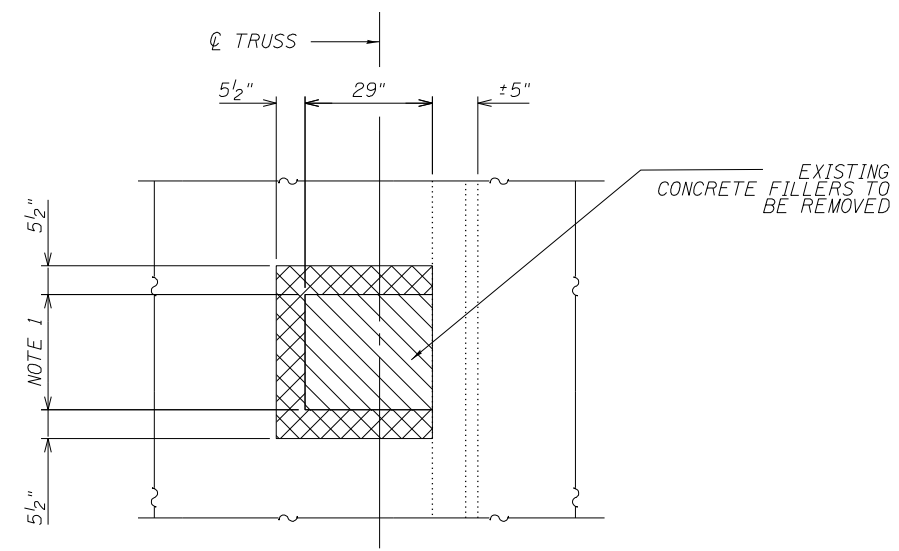
**EXISTING SIDEWALK CROSS SECTION C-C**  
at East and West Trusses (L<sub>0</sub>U<sub>1</sub> & L<sub>0</sub>' U<sub>1</sub>')



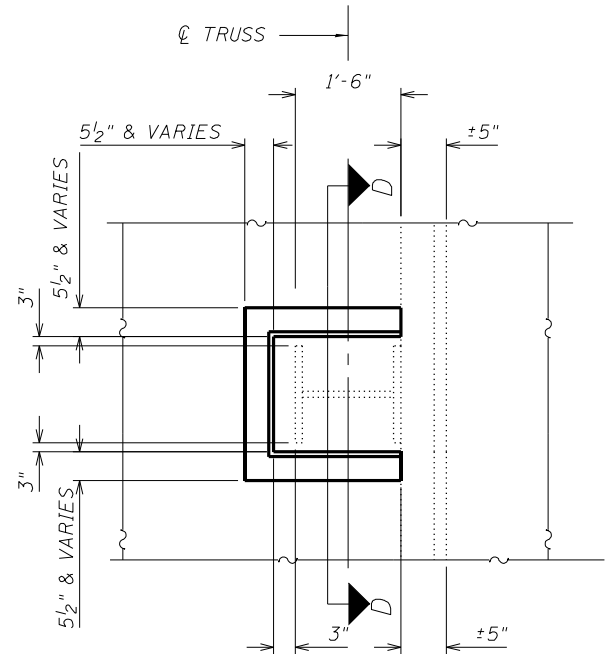
**PROPOSED SIDEWALK CROSS SECTION C-C**  
at East and West Trusses (L<sub>0</sub>U<sub>1</sub> & L<sub>0</sub>' U<sub>1</sub>')



EXISTING CONCRETE FILLERS TO BE REMOVED. REMOVAL SHALL BE PAID FOR AS CONCRETE REMOVAL  
 CONCRETE REMOVAL



**EXISTING SIDEWALK PLAN**  
at East and West Trusses (L<sub>0</sub>U<sub>1</sub> & L<sub>0</sub>' U<sub>1</sub>')



**PROPOSED SIDEWALK PLAN**  
at East and West Trusses (L<sub>0</sub>U<sub>1</sub> & L<sub>0</sub>' U<sub>1</sub>')

**NOTES:**

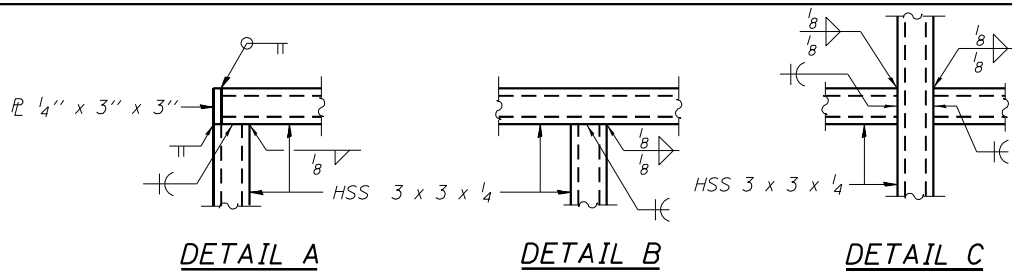
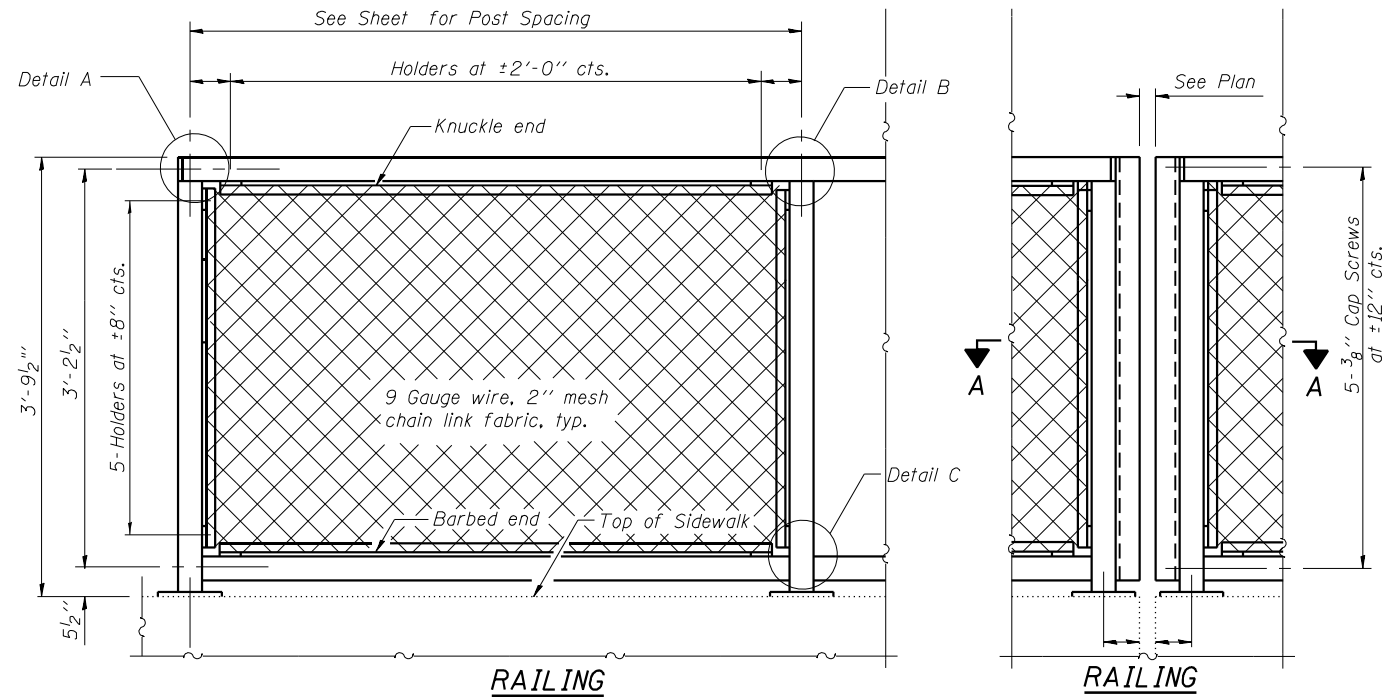
1. EXISTING CONCRETE FILLERS AT TRUSS MEMBERS TO BE REMOVED. SEE SHEET 6 OF 8 FOR FILLER DIMENSIONS.
2. EXISTING BAR FILLETS, WELDED TO TRUSS MEMBERS WITHIN CONCRETE FILLERS ARE TO BE REMOVED USING THE AIR-ARC METHOD AND GRIND SMOOTH ALL WELD MATERIAL REMAINING ON THE STEEL TRUSS MEMBERS. COST INCLUDED IN CONCRETE REMOVAL.
3. PERIMETERS OF CONCRETE REMOVAL AREAS SHALL BE SAW CUT 3/4" PRIOR TO THE REMOVAL OF THE CONCRETE. EXISTING REINFORCEMENT EXTENDING INTO REMOVAL AREA SHALL BE CLEANED, STRAIGHTENED AND INCORPORATED INTO THE NEW CONSTRUCTION. COST INCLUDED WITH CONCRETE REMOVAL.
4. REMOVE AND RE-ERECT EXISTING GUARDRAIL & POSTS AS NEEDED.
5. VERTICAL AND DIAGONAL TRUSS MEMBERS TO BE PAINTED FOR A LIMIT OF 2' ABOVE AND 2' BELOW CENTERLINE OF SIDEWALK.

USER NAME = naveed,hassan	DESIGNED -	REVISED -
DRAWN -	REVISOR -	
PLOT SCALE = 0.1667' / in.	CHECKED -	REVISOR -
PLOT DATE = 3/30/2023	DATE -	REVISOR -

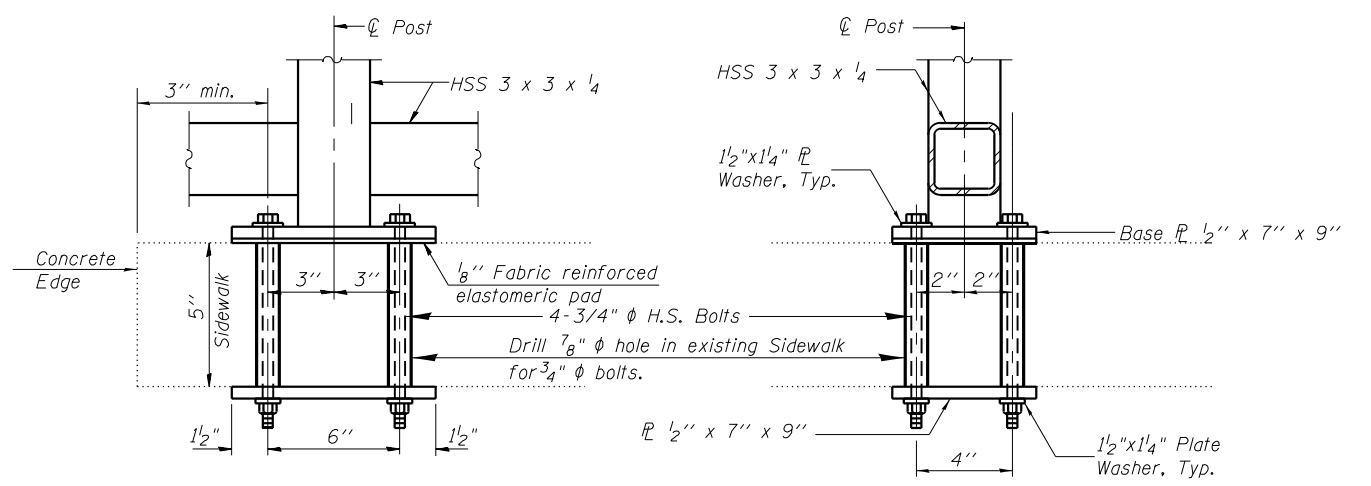
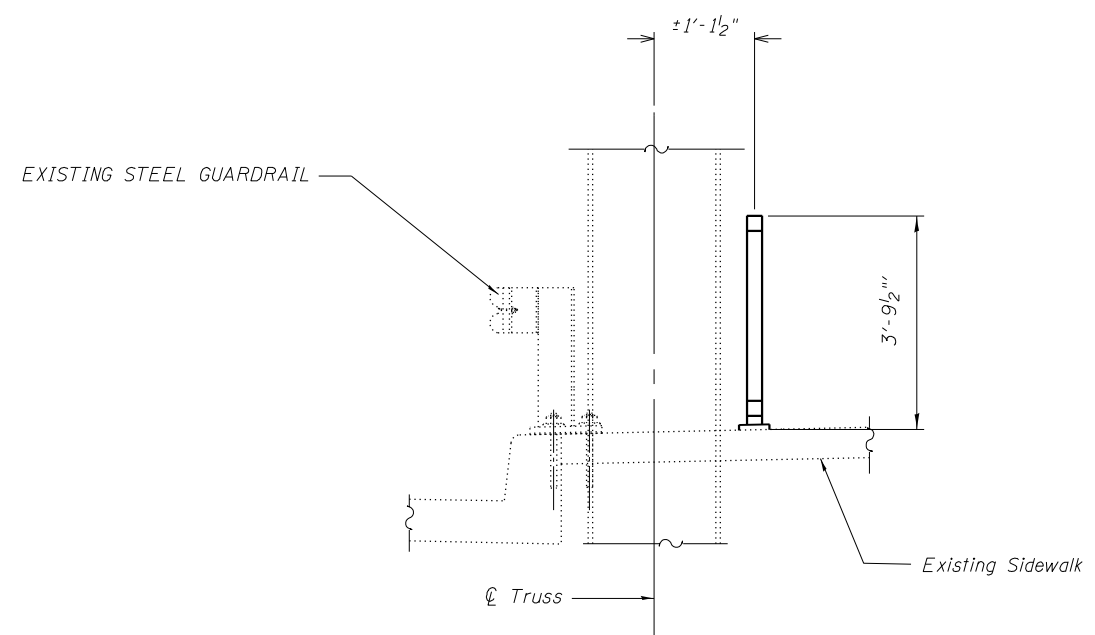
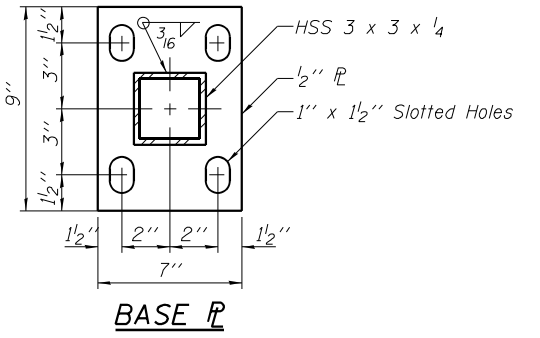
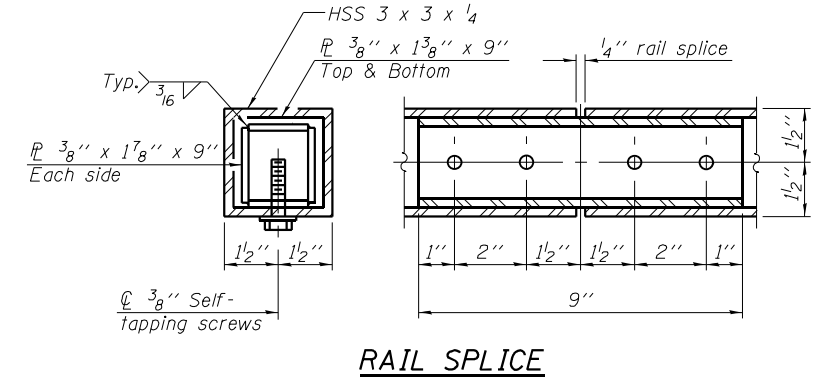
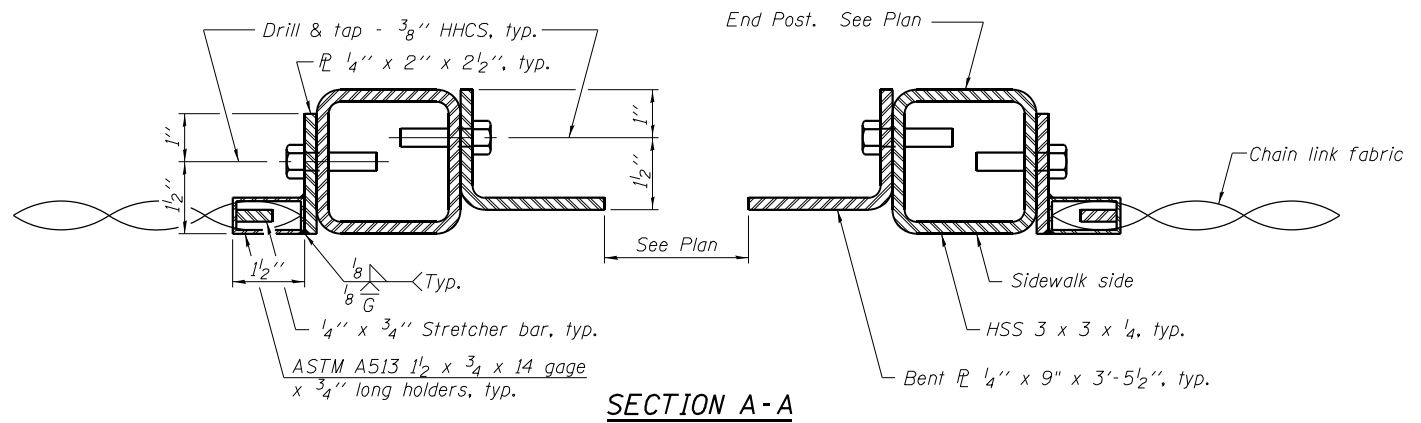
**STATE OF ILLINOIS**  
**DEPARTMENT OF TRANSPORTATION**

<b>IL-7 OVER CAL-SAG CHANNEL (016-0464)</b>	
<b>DETAILS</b>	
SCALE:	SHEET 4 OF 8 SHEETS STA. TO STA.

F.A.U. RTE.	SECTION	COUNTY	TOTAL SHEETS	SHEET NO.
3578	FAU 3578 22 BR	COOK	13	7
CONTRACT NO. 62U20				
ILLINOIS		FED. AID PROJECT		



All steel rail elements shall be galvanized according to Article 509.05 of the Standard Specifications.



(10'-0" Maximum Post Spacing. Posts shall be placed between truss members's sidewalk openings)

**BILL OF MATERIAL**

Item	Unit	Quantity
Bridge Fence Railing (Sidewalk)	Foot	480

R-29 (MODIFIED)

USER NAME = naveed,hassan	DESIGNED -	REVISED -
PLOT SCALE = 0.1667' / in.	DRAWN -	REVISED -
PLOT DATE = 3/30/2023	CHECKED -	REVISED -
	DATE -	REVISED -

**STATE OF ILLINOIS  
DEPARTMENT OF TRANSPORTATION**

**IL-7 OVER CAL-SAG CHANNEL (016-0464)  
BRIDGE FENCE RAILING (SIDEWALK)**

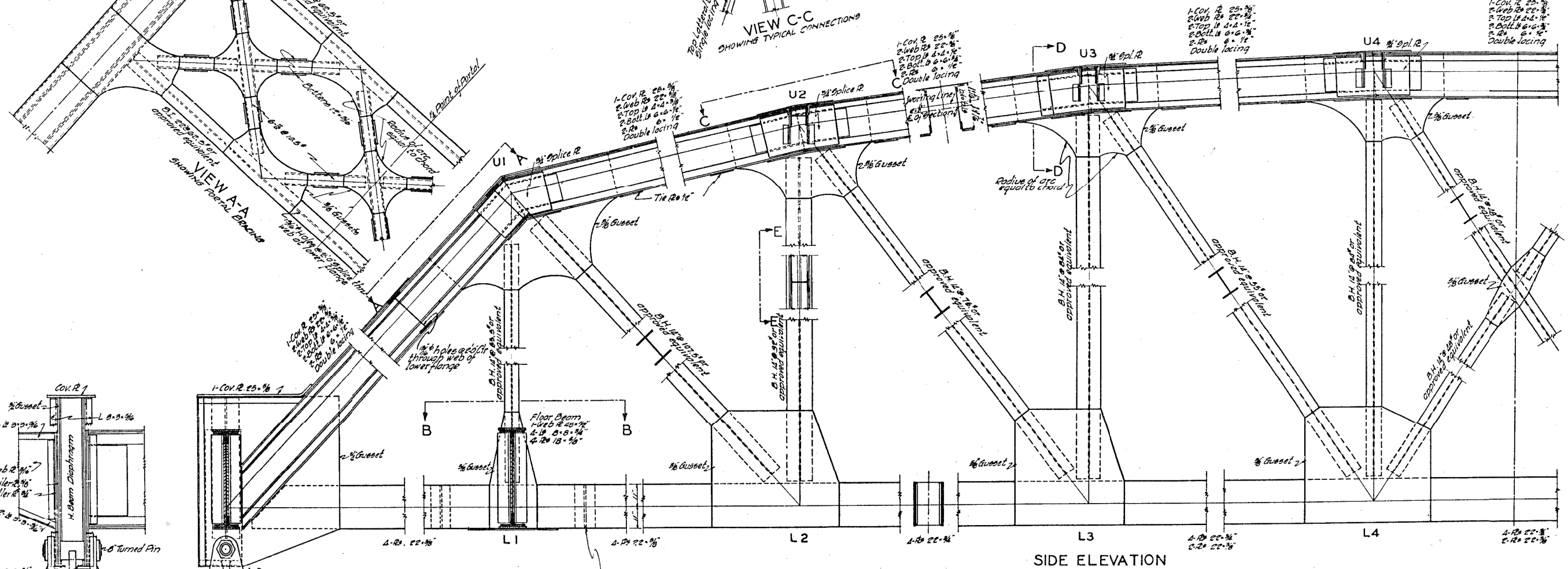
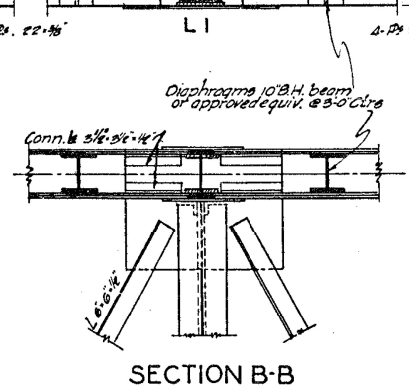
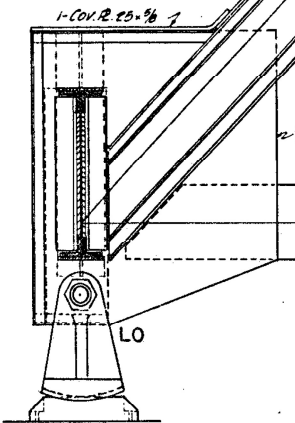
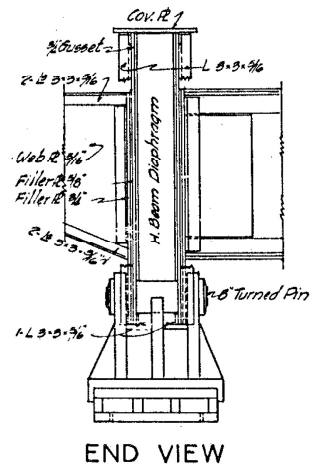
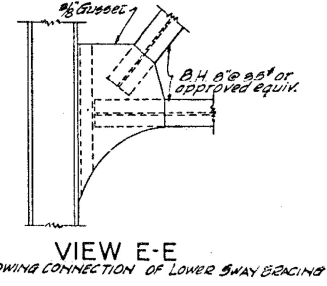
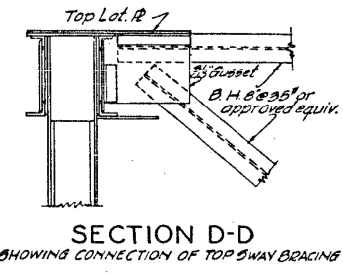
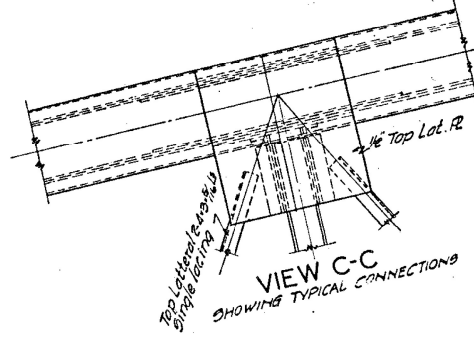
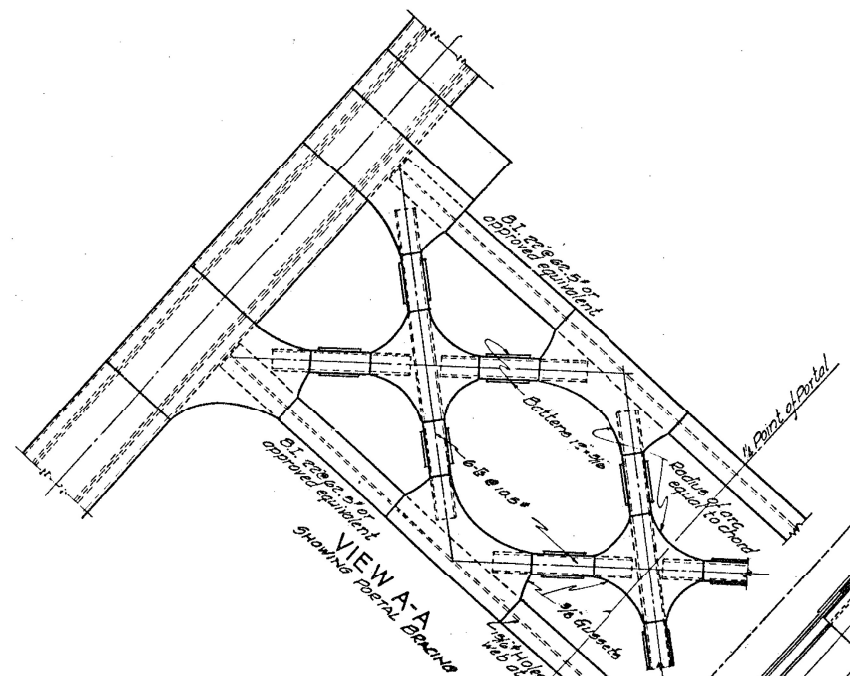
SCALE: SHEET 5 OF 8 SHEETS STA. TO STA.

FAJ. RTE.	SECTION	COUNTY	TOTAL SHEETS	SHEET NO.
3578	FAU 3578 22 BR	COOK	13	8
CONTRACT NO. 62U20				
ILLINOIS FED. AID PROJECT				

MODEL Default FILE NAME: p:\iludat-pw-bentley.com\p\iludot\Documents\DOT Office\Drawings\Project\101423\CADD\Drawings\Design\ent-e-bar.dgn







FOR INFORMATION ONLY

MODEL: Default  
 FILE: NAME: p:\project-new\beam-fy.com\FINDOT\Documents\DOT Office\Drawings\Project\3578\3578-22\BR-22-01.dwg  
 PROJECT: 3578-22-01

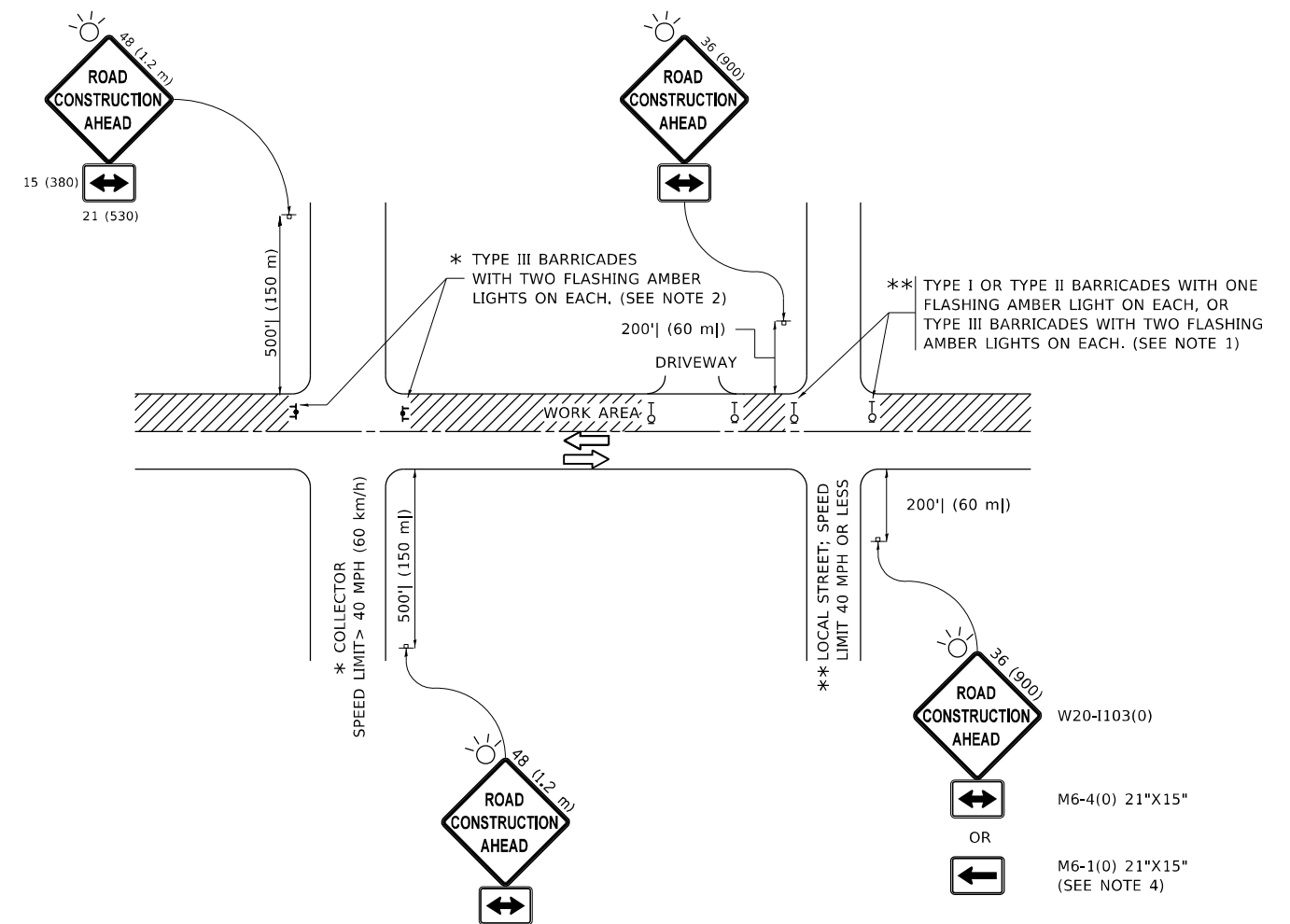
USER NAME = naveed,hassan	DESIGNED -	REVISED -
DRAWN -	REVISOR -	
PLOT SCALE = 0.1667' / in.	CHECKED -	REVISOR -
PLOT DATE = 3/30/2023	DATE -	REVISOR -

STATE OF ILLINOIS  
DEPARTMENT OF TRANSPORTATION

IL-7 OVER CAL-SAG CHANNEL (016-0464)	
TRUSS DETAILS (EXISTING)	
SCALE:	SHEET 7 OF 8 SHEETS STA. TO STA.

FAU. RTE.	SECTION	COUNTY	TOTAL SHEETS	SHEET NO.
3578	FAU 3578 22 BR	COOK	13	10
CONTRACT NO. 62U20			ILLINOIS FED. AID PROJECT	





**NOTES:**

1. SIDE ROAD WITH A SPEED LIMIT OF 40 MPH (60 km/h) OR LESS AS SHOWN ON THE DRAWING AND AS DIRECTED BY THE ENGINEER:
  - a) ONE "ROAD CONSTRUCTION AHEAD" SIGN 36 x 36 (900x900) WITH A FLASHER MOUNTED ON IT APPROXIMATELY 200' (60 m) IN ADVANCE OF THE MAIN ROUTE.
  - b) THE CLOSED PORTION OF THE MAIN ROUTE SHALL BE PROTECTED BY BLOCKING WITH TYPE I, TYPE II OR TYPE III BARRICADES, 1/3 OF THE CROSS SECTION OF THE CLOSED PORTION.
2. SIDE ROAD WITH A SPEED LIMIT GREATER THAN 40 MPH (60 km/h) AS SHOWN ON THE DRAWING AND AS DIRECTED BY THE ENGINEER:
  - a) ONE "ROAD CONSTRUCTION AHEAD" SIGN 48 x 48 (1.2 m x 1.2 m) WITH A FLASHER MOUNTED ON IT APPROXIMATELY 500' (150 m) IN ADVANCE OF THE MAIN ROUTE.
  - b) BLOCKING WITH TYPE III BARRICADES, 1/2 OF THE CROSS SECTION OF THE CLOSED PORTION.
3. CONES MAY BE SUBSTITUTED FOR BARRICADES OR DRUMS AT HALF THE SPACING DURING DAY OPERATIONS. CONES SHALL BE A MINIMUM OF 28 (710) IN HEIGHT.
4. SIGNING AND THE WORK ZONE, A SINGLE HEADED ARROW (M6-1) SHALL BE USED IN LIEU OF THE DOUBLE HEADED ARROW (M6-4).
5. WHEN WORK IS BEING PERFORMED ON A SIDE ROAD OR DRIVEWAY, FOLLOW THE APPLICABLE STANDARD(S). THE DIRECTIONAL ARROW (M6-1 OR M6-4) SHALL BE COVERED OR REMOVED WHEN NO LONGER CONSISTENT WITH THE TRAFFIC CONTROL SET-UP.
6. ADVANCE WARNING SIGNS ARE TO BE OMITTED ON DRIVEWAYS UNLESS OTHERWISE SPECIFIED IN THE PLANS OR BY THE ENGINEER.
7. THE TRAFFIC CONTROL AND PROTECTION FOR SIDE ROADS, INTERSECTIONS, AND DRIVEWAYS SHALL BE INCLUDED IN THE COST OF SPECIFIED TRAFFIC CONTROL STANDARDS OR ITEMS.

All dimensions are in inches (millimeters) unless otherwise shown.

MODEL: Default  
 FILE NAME: p:\project\paw\_bentley.com\p\i\DOT\Documents\DOT Office\Dir\rdet\_1\Project\1010423\CADD\DATA\Design\BRTStd.dgn

USER NAME = naveed,hassan	DESIGNED - L.H.A.	REVISED - A. HOUSEH 10-15-96
PLOT SCALE = 100,0000' / in.	CHECKED -	REVISED - T. RAMMACHER 01-06-00
PLOT DATE = 3/30/2023	DATE - 06-89	REVISED - A. SCHUETZE 07-01-13
		REVISED - A. SCHUETZE 09-15-16

**STATE OF ILLINOIS  
DEPARTMENT OF TRANSPORTATION**

**TRAFFIC CONTROL AND PROTECTION FOR  
SIDE ROADS, INTERSECTIONS, AND DRIVEWAYS**

SCALE: NONE SHEET 1 OF 1 SHEETS STA. TO STA.

F.A.U. RTE.	SECTION	COUNTY	TOTAL SHEETS	SHEET NO.
3578	FAU 3578 22 BR	COOK	13	12
<b>TC-10</b>			CONTRACT NO. 62U20	
ILLINOIS FED. AID PROJECT				

